

INSIDE

Engagements 4,5
Sports 6,7
Classifieds 11
Obituary 12

The Hansford County Reporter-Statesman

Serving All of Hansford County

12 pages

WEATHER

Day	Hi	Lo	Precip
Thu	88	63	0.29
Fri	90	66	0.02
Sat	85	60	1.79
Sun	83	63	0.00
Mon	91	62	0.02
Tue	97	69	0.56
Precip to date			9.77

Vol. 83, No. 35

213 Main

Spearman, Hansford County, Texas

25¢

Thursday, June 27, 1991

Commissioners' court votes to consolidate voting precincts

by JoAnn Morton
Editor

The Hansford County Commissioners' Court voted to consolidate voting precincts for the Special Constitutional Amendment Election on Aug. 10.

According to Hansford County Judge Jim Brown, the commissioners at their Monday, June 24 meeting authorized the county election to be held jointly with the school districts' elections in Hansford County. The action will effectively combine the two elections into one, with polling places combined, for cost-effectiveness and convenience.

County Clerk Amelia Johnson explained that, pending an agreement between the school districts and the county, the school districts will change their polling places to match polling places for the county election.

She said that voters in all precincts within the city limits of Spearman will cast ballots at one place in Spearman. The same goes for voters in Gruver, with all voters going to one

polling place for the special election.

Having only one polling place in each city will result in greater convenience for the voters, said Johnson. She added that those voters in precincts outside city limits will still vote at their regular polling places. For example, voters who regularly cast county election ballots at Oslo and wish to vote in the Gruver ISD election will be able to vote at Oslo for both elections.

"This should also save some money," commented Johnson, "since there will be only one set of voting materials and only one set of judges and clerks."

Details and locations of polling places will be announced at a later date.

In other business, commissioners officially took over museum properties owned by the Hansford County Historical Commission. Brown explained that the historical commission is already empowered by the county, but the action taken Monday

"makes it official."

In the resolution adopted by commissioners, the Hansford County Historical Survey Committee, Inc. was dissolved and reinstated as the Hansford County Historical Commission. The HCHC will continue to operate the Stationmaster's House Museum as a branch of Hansford County government.

Commissioners also approved a lease purchase agreement through Hansford Implement, for a tractor mower for Commissioner Val Winger's Precinct Four.

The Spearman Rotary Club had requested a variance on regulations concerning alcoholic beverages at the county barn, for the group's annual pheasant hunt. Commissioners denied the request.

A road easement for a water line on the Collard Ranch was approved, and commissioners approved regular agenda items such as minutes of their last meeting, the treasurer's report and payment of claims.



(photo by Jack Oakes)

Mrs. N.F. (Clementine) Renner was presented the Award of Merit by the Texas Historical Commission for exemplary efforts to preserve Texas' heritage. She was evaluated on time spent on projects, willingness to work, dependability, and overall concern for the work of the Hansford County Historical Commission. Congratulating her are Commission members Sylvia Robertson, Juanita Pierce, Gus Renner, Joyce Johnson, Rubyjo Wilbanks, Helen Boyd, Johnnie Lee, Jennie Blankenship, Bill K. Jackson, J.D. Wilbanks, G.W. Robinson and Harry Stumpf. Mrs. Renner was named

secretary-treasurer for the original Commission in 1962, and has served in that capacity almost the entire time since then. She has worked for the Stationmaster's House Museum in every conceivable way, from mowing grass to setting up displays and collecting money to keep the place thriving. Without her, there would be no museum in Hansford County. Commission members say that no one is more deserving of such an award than Mrs. Renner. The certificate is signed by Texas Historical Commission Chairman Karl A. Komatsu and its Executive Director Curtis Tunnell.

Council appoints city boards

The Spearman City Council discussed the 1991-92 city budget, made appointments to various city boards and discussed animal control at its Tuesday, June 18 regular meeting.

The council accepted a calendar for adopting the 1991-92 city budget. A proposed budget will be submitted to the council and filed with the city secretary on July 16. The council will have a budget workshop on July 25. On Aug. 20, the council will hold a budget hearing, set the tax rate and adopt a budget for the 1991-92 fiscal year.

Appointments and reappointments were made to the city's boards. All board appointments are for two year terms except the Airport Advisory Board, which has three year terms.

Allen Alford was appointed to the Planning and Zoning Commission, and Tindle Ramon was reappointed. Reappointed to the Electrical Board

were Verlin Behne, R.L. Uptergrove and Lee Shaver. Randy Kirk is the newest member of the Housing Board, and Scott Beedy and Al LaRochelle were reappointed.

The Charitable Solicitation Board will be made up of newly-appointed member the Rev. Todd Dyess, along with Don Townsen and Larry Butler, who were reappointed. Three members were reappointed to the Zoning Board of Adjustment. They are Mike Schnell, Verlan Winegarner and Larry Murphy. Reappointed as alternates are Randy Kirk, Butch Baker and Lynanne Maize. Newly appointed as alternate is Cindy Rice.

Kerry Henton, Clark Bridges and Larry Widener were reappointed to the Airport Advisory Board.

Review of Spearman's animal control ordinance will be done by an ad hoc committee appointed by the council. Members of the committee include Mayor Burl Buchanan,

Aldermen Bob Boxwell and Steve Benton, Dr. Tom Latta and Carla Woodington.

The committee will review and recommend a complete revision of the animal control ordinance, as requested by Joe Raper, director of public safety.

In other business, the council voted in favor of financial support of the Texas Municipal League's Telephone Franchise Steering Committee study. Cost of support for the study is one cent per capita with a minimum of \$50. Cost to Spearman will be \$50.

Regular council business included approval of minutes of meetings held May 21, June 10 and June 13, approval of monthly departmental reports, approval of monthly bills payable in the amount of \$130,422.55, approval of the city's current cash position, and approval of the April revenue and expense report.

Blackman is new chamber GM

The Spearman Chamber of Commerce Board of Directors announced last week they have hired Cindy Blackman to be the chamber's new General Manager.

Blackman is a lifelong resident of Spearman and has been very active in chamber activities over the years. Due to her knowledge of Spearman and the businesses here, Blackman has set three goals for her job. One is to build enthusiasm in Spearman. The second is to get people to shop more in Spearman. Third is to promote Spearman more.

In order to accomplish these goals, Blackman intends to increase the lines of communications between the chamber office and the community of Spearman. Blackman says she intends to make a personal contact with every business person in Spearman. She feels this will enable her to get a feel for what the needs of the

business people are.

Blackman said she would also like to have more input from non-business residents of Spearman. "I want the people of Spearman to feel that this office is always open, and that we will always be willing to listen to new ideas from anyone," Blackman said.

Blackman has a lifetime of experience in living and working in Spearman. She was born and raised here. Except for one year at West Texas State University, she has lived and worked in Spearman. She and her mother, Pat Dear, are co-owners of The Bunkhouse, a store on Main Street.

As a merchant in Spearman, Blackman has been a very active volunteer with the Spearman Chamber of Commerce. She is currently vice president of the Women's Division of the Chamber. She is also

an active member of the Spearman Merchants Committee. She has been a participant in several of the Chamber's fund-raising shows and activities.

Besides her chamber work, Blackman has been an active member of other organizations in Spearman. They include the YMCA Board of Directors, Beta Sigma Phi sorority, the Lynx and Lynettes Booster Club and the United Methodist Church of Spearman.

Blackman said she is very excited about being general manager, and is anxious to get started with the job. She said the chamber has several projects underway which need to be finished up. She also mentioned the chamber's golf tournament this weekend, and the \$10,000 Bash in July.

'91-92 Morse school calendar set

by JoAnn Morton
Editor

School for students in Pringle-Morse Consolidated Independent School District will begin Monday, Aug. 19. Teachers will begin the 1991-92 school year Thursday, Aug. 15, according to Superintendent Roy Harris.

The 1991-92 school calendar was set by the PMSISD Board of Trustees at its Tuesday, June 11 meeting. Harris noted the calendar provides for five additional days of school.

Other business for the school board included hearing Harris's Superintendent's Report. In his report to the board, Harris said he had been in District Court at Austin on June 11 with other representatives of budget balance schools. The group is challenging the constitutionality of the recently-passed Senate Bill 351, concerning statewide school funding.

Harris said the group contends that SB 351 is unconstitutional on two major points - moving money from one school district to another, and funding of schools by the state. He said the District Judge took the challenge under advisement, and an opinion could be issued in as little as two weeks.

The rest of Harris's report to the board concerned the formation of the new County Education Districts and the summer calendar for Pringle-Morse School.

He said there will be an election on Saturday, Aug. 10 in which voters will decide on a constitutional amendment concerning the CEDs. He explained that currently the CEDs, as taxing entities, do not have the power to grant homestead exemptions to state property tax payers.

The amendment would give the

CEDs that right, he said. In addition, the amendment would give CEDs the power to tax personal property such as automobiles. Harris said this amendment will affect each and every taxpayer in the state of Texas.

The school's depository contract for the next two years was awarded to First National Bank of Spearman. Surplus district funds were encumbered by the board to prevent possible recapture of the money by the state, said Harris.

Payroll for district personnel, both certified and non-certified, was set by the board, along with career ladder placement and payment for teachers. Regular summer maintenance of the school building and grounds was scheduled.

The board discussed the budget for the 1991-92 school year, and set an in-depth budget study for Tuesday, July 2.

City officials urge caution

by JoAnn Morton
Editor

Fireworks stands opened Monday, June 24 for the annual Independence Day celebration on Thursday, July 4.

Home fireworks use is permitted within the city limits of Spearman, but their use is discouraged by Spear-

man Police Chief and Director of Public Safety Joe Raper.

The City of Spearman has no ordinance which prohibits fireworks in town, said Raper, but he added that those who shoot fireworks are liable for any property damage resulting from their use.

He recommended that Spearman and area residents attend a public fireworks display if possible. Residents who do set off fireworks at home are urged to use caution and follow directions carefully.

Municipal laws prohibit the use, sale or manufacture of fireworks within the city limits of Gruver, according to Gruver Police Chief Steve Gaines.

Gaines said anyone found in violation of the ordinance is subject to a fine, which could be from \$1 to \$200.

Fireworks are classified as a nuisance because of their noise and potential hazard, he explained.

Gruver Fire Chief Sam Gruver said that while recent abundant rain has lessened fire hazards out in the country, it has also slowed the wheat harvest in some areas.

"If it rains more between now and then (July 4) and the harvest can't be completed, there may still be wheat standing," said Gruver. Fireworks set off in those areas could result in large losses for farmers if crops are ignited by sparks, he added.

The City of Gruver will host a Fourth of July celebration and fireworks display for the enjoyment of area residents. Fun, food and safe celebration of the holiday are available during the day and into the evening hours.



Cindy Blackman

The Reporter-Statesman office will be closed Thursday, July 4 for Independence Day. The newspaper will be printed Tuesday, July 2. Deadline for advertising and stories is Monday, July 1 at Noon.

Gruver 4th of July Celebration Schedule of Events

- 10:30 a.m. Bicycle Race
- 11 a.m. Dunking Board
- 11:30 a.m. Turtle Race
- Noon Barbecue
- 1:30 p.m. Boot Scramble
- 2 p.m. Stick Horse Race

All Day Events

Copper Mine, Water Polo, Horse Shoe & Washer Toss, Bingo

Hansford Happenings

A reception honoring Dr. Geir Overland of Norway, 1965-66 AFS Exchange Student, and his children Steffen, Camilla and Peder, is scheduled for Saturday, July 6 from 2:30 to 5 p.m. in the Hospitality Room of First State Bank of Spearman. All of Dr. Overland's friends and classmates are invited to attend.

Spearman Chamber of Commerce will sponsor a golf tournament Saturday and Sunday, June 29 and 30, at Hansford Golf Course. The tournament is a two-person, two-day, 18 low, 18 scramble, with entry fee set at \$85 per team. There is a 50-team limit. Entries can be made by contacting Hansford Golf Course at 659-2233 or the Spearman Chamber of Commerce at 659-5555.

A representative of the Pampa Social Security office will be in Spearman Thursday, July 11 from 10 to 11:30 a.m. at the Hansford County Courthouse. No visits are scheduled for August or September.

Community Bible Church in Gruver will hold Revival services from Wednesday, June 26 through Sunday, June 30 at 7 p.m. nightly. The Rev. Roland Depew and his wife Kathy from World Harvest 2000 Training Center in Houston will conduct the services. Other special events are also scheduled. Pastor Zane Gray extends an invitation to the public to attend any or all the services. The church is located on Highway 15 in Gruver.

Spearman City Manager Jim Murray and his wife Donna will be guests of honor at a farewell reception, scheduled for Friday, June 28 from 4 to 5:30 p.m. in the council chambers of Spearman City Hall, 30 S.W. Court.

Funds are still needed for the War Memorial improvements project. A total of \$4,000 is needed to make the improvements. The fund presently contains \$780. Donations can be made by contacting Rhonda North or Larry Trosper at First State Bank of Spearman.

At the movies...

Showing at the Lyric Theatre Friday, June 28 through Tuesday, July 2 is "Soapdish" at 8:00 p.m. on Screen 1 and "Wild Hearts Can't Be Broken" at 7:45 p.m. on Screen 2.

Daytime TV gets the once-over in "Soapdish," a satire that features an

impressive ensemble cast: Carrie Fisher, Cathy Moriarty, Sally Field, Kevin Kline, Robert Downey Jr., Whoopi Goldberg and Elisabeth Shue.

Also featured in the cast are two vintage comedy directors who dabble in acting: Carl Reiner and Garry Marshall.

In this wacky spoof, director Michael Hoffman and the all-star cast take aim at the venerable American soap opera.

"Soapdish" is rated PG-13 for adult situations and profanity.

Chamber Chatter

by Cindy Blackman
General Manager

This is my first official duty as the new general manager of the Spearman Chamber of Commerce. I hope in writing this column for you every week, you can keep up with everything that is happening within our chamber.

There will be one big change taking place. I hope to be working closer with the businesses of Spearman. It is here to help you. The chamber is the only organization in town that speaks in behalf of the business community.

Don't forget the Chamber of Commerce golf tournament coming up June 29-30. Craig Downing is in charge of the tournament. All you golfers be sure and sign up.

Also, we are doing the \$10,000 Bash again on July 27th. Clay Schnell is in charge of this and tickets are now on sale from any board member or call the chamber office, 659-5555.

I want to take this time to thank the Board of Directors for giving me the job of general manager. I'm excited about the job and hope we can work together in keeping Spearman a good place to live and work.

Letter to the editor

Dear Editor:

Operation Desert Storm will probably go down in history as one of our most successful military efforts ever. That was due in large part to the participation of the U.S. Army Reserve.

Beginning in August 1990, thousands of Army Reservists were called upon to perform the missions for which they had been trained. By now the whole country is aware of the tremendous contributions they made to the United States' Operation Desert Storm effort.

Their success was, in turn, made possible by the generous support of the American people. First, and perhaps most important, was the wide-ranging support by the communities of the Army Reservists who were activated. Local communities were particularly supportive of hometown units as they deployed. Without that, the activation would have been much harder to accomplish. But our Army Reservists went with the blessings and good wishes of the American people. We all realize just how important that is.

Without a doubt, one of the most significant factors in informing the public was the news media coverage of reserve activations. Overall, both the print and the electronic media presented a fair picture of the issues and activities surrounding the mobilization. As a result, the public saw how well prepared Army Reservists were and learned how important they were to the total Army effort.

The understanding that our Army

Reservists have received from their employers has been most encouraging. No one likes to lose a valuable employee suddenly for an extended and indefinite period of time, especially in times of economic uncertainty, but the response of the great majority of employers has been very positive. And many companies went beyond the requirements of the law and generously extended additional benefits to their Reservists. As a result, Army Reservists were able to deploy without worrying about their job security. Now, as they are returning, we are seeing that support continue as employers are welcoming them back into the work force.

And finally, the families of our reservists deserve special recognition. They bore the emotional, financial and physical burdens of their soldiers' absence. They supported their soldiers and that made a real difference.

Once again, Army Reservists have shown themselves to be dedicated to serving their country. They sacrificed their time, they were separated from their families, and many lost income when they were activated. They needed your support and they got it.

On behalf of our fine Army Reserve soldiers, I am privileged to thank all of you whose support made it all possible.

William F. Ward
Major General, U.S. Army
Chief, Army Reserve

Paleo-Indian sites surveyed by THC

AUSTIN - Texas Historical Commission archeologists are nearing completion of a three-month survey of four Panhandle counties along the Canadian River. They are documenting cultural materials associated with Paleo-Indians that lived in the area from 9,000 to 12,000 years ago.

Known as the Canadian River Breaks Survey, the investigation is conducted by the THC's Office of the State Archeologist (OSA) and encompasses areas in Ochiltree, Roberts, Hutchinson, and Hansford counties. It is sponsored by the Harold Courson family of Perryton.

"This kind of survey is somewhat different from most archeological projects in that it uses a predictive approach to locating sites of a particular age - in this case Paleo-Indian," said THC archeologist Andy Cloud. More than 100 previously unknown sites of Paleo-Indian and other later peoples have been located and recorded thus far, according to Cloud.

With permission of a landowner or at a landowner's request, the OSA regularly conducts surveys to locate prehistoric and historic sites. As part of the THC's overall cultural resource management responsibilities, efforts are made to protect significant sites on both public and private lands.

At this time, the Canadian River Breaks Survey is focused on the discovery and recording of sites, and there are no immediate plans to conduct scientific excavations.

"We are grateful to the landowners who have allowed us to survey on their land and to the Courson family for its strong support and assistance," said Robert J. Mallouf, state archeologist.

The Texas Historical Commission is the official state agency for historic preservation. Its staff seeks to preserve the cultural heritage of Texas.

Spearman has three Miss Texas entries

Spearman has the unique honor of being represented by three young women in the upcoming Miss Texas Scholarship Pageant to be held in Fort Worth on July 3, 4, 5 and 6. Mia Jennings, daughter of Marcella and Hoppy Jennings of Muleshoe, was chosen to represent us in the Miss Palo Duro Area preliminary pageant held in Spearman last August. Mia is a sophomore at Baylor University, and this will be her first year to participate in the Miss Texas Pageant.

Mechelle Graham, daughter of Ellen and Preston Graham of Spearman, will be a participant for the first time this year as Miss Abilene. Mechelle is a junior at Hardin Simmons University in Abilene, and was Miss Hansford 1988.

Kellie McWhirter, daughter of Steve and Sheri Benton of Spearman, is the reigning Miss West Texas, and will be returning to the Miss Texas Pageant for the second time. Last year, she participated as Miss Wheatheart 1990, and she is also a former Miss Hansford. Kellie is a senior at Baylor University in Waco. Mia will be performing a piano solo for her talent portion of the con-

test; Mechelle and Kellie are both vocalists and will be singing for their talent. All of the contestants will be staying in the Holiday Inn, North in Fort Worth, and would certainly appreciate cards and notes from the people of Spearman showing their support. The Spearman Chamber of Commerce will have information on how to address items to Miss Texas contestants.

The final night of the Miss Texas Scholarship Pageant will be telecast on KAMR, Channel 4, out of Amarillo.

Police Files

Spearman Police Department

On Thursday, June 13, the Spearman Police Department questioned a 9 year old boy regarding an attempted burglary. No property was reported stolen at that time.

During the week of June 10-16, Spearman police received 2 reports of larceny/theft, one report regarding weapons, investigated one disorderly conduct and recorded one parking violation.

Also during that week police investigated three reports of suspicious activity, responded to two alarms and had 15 miscellaneous calls to the office. One vehicle lockout was reported, as was one family fight. There were 11 calls regarding animal control.

On June 17 at 8:13 p.m., an accident occurred at 2nd and Barkley when a 1989 Chevrolet van driven by Rhonda Mans collided with a 1989 Ford pickup driven by Ray Phelps. Mans was cited for failure to yield right of way.

On June 18 at 11:15 a.m. a gas meter was reported by the city as having been damaged by a vehicle. The vehicle had already left the scene by the time the damage was discovered.

At 12:44 p.m. that day an accident occurred in a parking lot in the 900 block of Highway 207. A 1983 Oldsmobile driven by Martha Moreno struck a parked vehicle while Moreno was backing from a parking space. Moreno was cited for backing without safety.

At 9 p.m. June 18, an investigation was conducted into a report of a 9 year old boy being cut with a knife when he and another 9 year old boy were arguing. Parents of the children were contacted by Spearman police and were advised of the incident.

On Wednesday, June 19 at 8:10 p.m. a report of a canine bite was received and investigated. The victim was a 3 year old girl, who sustained a bite to the head. The owner of the dog released it to the police department to continue the investigation.

At 3:35 p.m. on Friday, June 21, a burglary of a residence was reported to have occurred on June 8. A 9 year old boy was questioned in the investigation, and the property was returned to the owner.

During the week of June 17-23, the Spearman Police Department received 34 calls. Among those were one report each of assault, burglary and fraud, three reports of disorderly conduct and one report of dog bite.

Spearman police recorded one lost person, one found person, one hit and run and one report of suspicion. Eight miscellaneous calls were received, two accidents were investigated, three vehicle lockouts were recorded, and eight responses were made regarding animal control.

Gruver Police Department

On Wednesday, June 12 the Gruver Police Department responded to a

report of a resident's illness in the 200 block of Richardson, and a complaint was filed for a canine at large in the 600 block of Cator.

On June 9 the department had received a report of harassment from a resident. In followup investigation, police identified a suspect and issued him a warning against further harassment on June 12.

On Thursday, June 13 a report of criminal mischief was received in the 900 block of Main. No property was taken but damage to the building occurred, said Police Chief Steve Gaines.

Also on June 13, Gruver police assisted and stood by for the Hansford County Sheriff's Department on a report of burglary out in the county. Two subjects were detained by the sheriff's department and taken to Spearman.

On Friday, June 14, Gruver police received a report of canines at large in the 200 block of Wornble, and a woman in the 200 block of East Fourth Street reported children had damaged her fruit trees by playing in them.

On Sunday, June 16, police received a report of teenagers loitering at the Allsup's Convenience Store. After being asked to leave by a Gruver officer, the teen left the premises without incident, according to Gaines.

A report of criminal mischief, vandalism, at the city park was received June 16. The incident is under investigation, said Gaines. Also on June 16, police received a report of a trailer blocking the roadway in the 600 block of Main. That same day, police were called to assist a motorist in the 100 block of Main, where a car had stalled. The vehicle was towed away by its owner, noted Gaines.

Gruver police were called to unlock a vehicle in the 900 block of King on Monday, June 17, and an officer was dispatched to the 300 block of King to deliver a message that same day.

Gruver police assisted the Highway Patrol with a reported assault out in the county on June 17. An arrest was made in connection with the report.

On Tuesday, June 18, Gruver police served a warrant on a resident for the Spearman Municipal Court. The fine was paid and the subject was released from custody.

On Wednesday, June 19, the police department received a report of a door open at a residence in the 400 block of Cator. The occupants of the residence were away at the time. An officer checked the residence and, finding nothing suspicious, secured the door.

On Saturday, June 22, the Gruver police received a report of a child being bitten by a dog in the 900 block of King. The dog was quarantined and charges are pending in the matter.

On Sunday, June 23, three dogs were found at large in the 100 block of Cooper. The dogs were impounded and the owner was cited for allowing his animals to run at large.

During the week of June 9-15, Gruver police filed seven complaints in municipal court. Last week there were three complaints filed in municipal court.

July 4th SALE

30% to 70% Off Selected Items

MAIN STREET
506 Main Av.
Gruver, Texas

Now Playing At The Lyric Theatre

Friday, June 28 - Tuesday, July 2

Bargain Nights Mon. & Tue. All Seats \$3

Screen 1 - 8:00 Screen 2 - 7:45

SOAPDISH
Sally Field • Kevin Kline
Whoopi Goldberg

WILD HEARTS
can't be broken

PG-13 113 Main, Spearman

IF YOUR BUDGET PLANNING IS ONLY THIS ACCURATE

The Budget Billing Plan Can Help

The Budget Billing Plan from Texas-New Mexico Power Company makes your electric bill predictable, regardless of the season. The plan averages the highs and lows of your bill so that you pay the same amount each month. To see if you qualify for the plan, call or visit your nearest TNP office.

Texas-New Mexico Power Company.

12c/90

Advertising Pays \$\$\$\$

Call 659-3434 or 1-800-395-9482

It's Our Birthday

In celebration of our Country's birthday, the FSB of Spearman will be closed Thurs. July 4th.

We wish you a safe and happy Fourth of July celebration.

FSB First State Bank

Spearman, Texas

The Hansford County Reporter-Statesman

"Serving All Of Hansford County"

USPS 509880
213 Main, Box 458, 659-3434
Spearman, TX 79081

Published Weekly at
213 Main, Spearman, Texas

Owned and Operated by:
Texas Independent Newspapers, Inc.
15915 Alsace
San Antonio, TX 78232
(512) 545-1739

Second Class postage paid at Spearman, Texas 79081.

Any erroneous reflection upon the character of any person or firm appearing in these pages will be gladly and promptly corrected upon being brought to the attention of the management.

Publisher - Robert M. Hulett
Editor - JoAnn Morton
Bookkeeper - Colleen Burkhammer

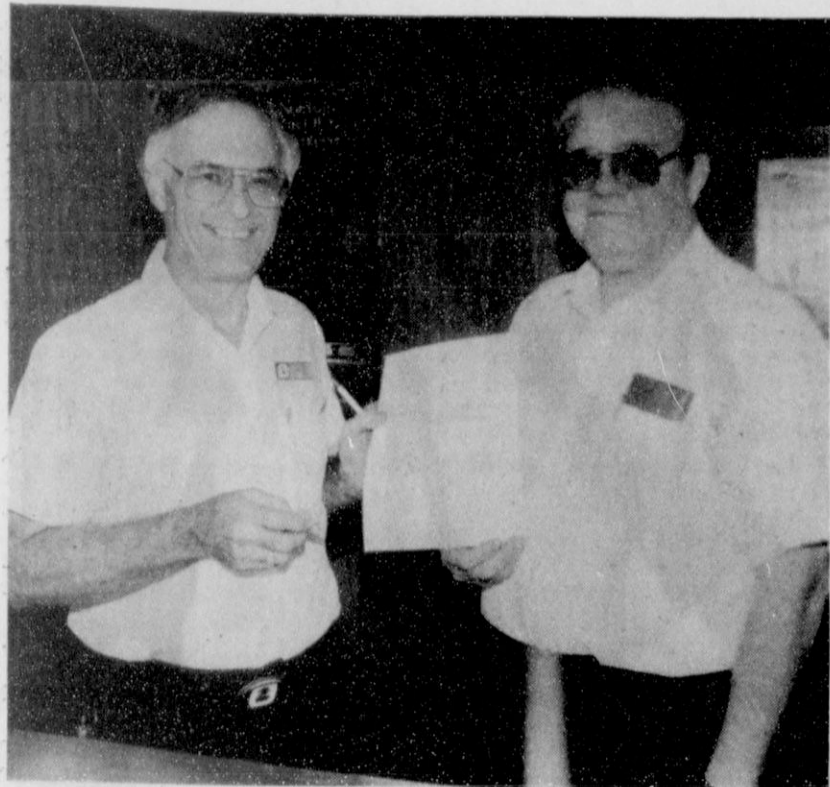
Subscription Rate: Hansford County, \$19.95; out of county, \$24.95 annually.

Postmaster: Send address changes to Hansford County Reporter-Statesman, Box 458, Spearman, TX 79081.

The publisher reserves the right to revise or reject at its option any advertisement which it deems objectionable, either in subject or phraseology, or which it may deem detrimental to its business.

Advertising and Story Deadlines: Tuesday, 12:00 p.m.

T.A. MEMBER TEXAS PRESS ASSOCIATION



Bill Turner, Spearman Post Office employee (left), receives the United States Postal Service's Pride in Performance Bronze Award and congratulations from Spearman Postmaster Otis McMillan. Turner was recommended for the award by Amarillo USPS Customer Service Representative Michael Getman for his efforts to provide quality service to Post Office customers. McMillan commented, "Bill makes an effort to do what the customer wants. He talks to customers about their needs. He also delivers mail to elderly customers to assist them. We're very proud to have him in Spearman."

Karen's Kozy Korner

by Karen Babitzke

JULY FOURTH IS NOT THE ONLY HOLIDAY

It's hard to think of winter holidays during the long, hot days of summer - but thinking, planning, and acting early could make the year-end holiday season more enjoyable and less stressful.

The practice of setting aside a sum of money each month to use for holiday expenses is not new, but the idea is still sound. When the holidays arrive, you will have the money you put away plus a little interest as a bonus. If you begin in July to save for holiday expenses, you can earn up to six months of interest on the money you deposit.

To get started, write a list of expected holiday expenses. Include presents, travel expenses, special holiday food, costs of hosting and attending social events, home decorating purchases and party apparel. Estimate the cost of each expense and arrive at a total expected cost for the year-end season. The amount may be more than you expect.

Next, divide the total into six equal amounts. Make a commitment to deposit that amount into savings each month, starting in July.

Finally, make a commitment to stick to your list. Giving in to impulse buying will defeat your feeling of control and may contribute to holiday stress.

Approaching the holidays this way helps in several ways:

- You reduce the stress and worry over money which often takes away from enjoyment of the holiday season. A cushion of money is already available to use which will not pull from regular income all at one time.
- You feel in control of your spending, not at the mercy of retailers, family members, or friends who encourage you to spend during the holidays.
- You build up interest, adding to the amount of money you are able to save.
- You avoid overuse of credit cards and the need to pay outstanding balances over time, which adds a finance charge to the initial amount of money spent on holiday expenses.
- You can buy gifts long before the holidays if you have planned what you will give and have money set aside for it. You may be able to find that "special" gift on sale. Selections will usually be better if you buy early in the year rather than during prime seasonal buying time.

So, when July Fourth arrives, remember those other holidays. Acting early will make it even more enjoyable this year.

CHILDREN IN A STEPFAMILY
Adults in stepfamilies have chosen this pattern of life. However, children in stepfamilies are there through no choice of their own. Adults of stepfamilies have many difficult situations and sets of feelings with which to cope. They find greater coping skills when their lives become more balanced and a new relationship brings them personal satisfaction. Children may have similar difficult situations and feelings, but they seldom find personal satisfaction in their current situation.

The problems most children in stepfamilies are concerned about are dealing with loss, divided loyalties, wondering where they belong, membership in two households, unreasonable expectations, fantasies of natural parents reuniting, guilt over causing the divorce and problems of identity and sexuality with stepbrothers and stepsisters.

Fortunately, most young children are able to respond quickly to a warm and caring step parent if there is little animosity between the parental adults. Adolescents often show anger and general feelings of helplessness when parents remarry. Misbehavior may get adolescents more parental attention than "being good."

Establishing and maintaining reasonable limits is a first step in helping stepparents discipline and take control of their family unit. All children need their own identity apart from the original nucleus family and from their stepfamily. This enables children to mature and become more self-sufficient. They, then, become more constructive rather than destructive to the family interactions.

Whether a family is a nucleus family or stepfamily, relationships require constant support, monitoring and change to be workable and rewarding to all members of the family.

Library Book Notes

by Sheri Benton Librarian
How's Your Library IQ?

To find out if you are taking advantage of a community service designed with you in mind and supported in part by your tax money, take the following lighthearted quiz:

- Your spouse tells you that he/she is on a waiting list for "The Eagle Has Flown." This means your spouse is:
 - For the birds
 - Seeing an ornithologist
 - Keeping up with the best sellers at the library
 - You love to read, but squinting at small print gives you a headache. You can:
 - Hire a freelance reader
 - Purchase a high-powered magnifying glass
 - Take two aspirins before reading
 - Check out the books from your library's large-print collection
- Your dear Great Aunt Tillie is coming to spend a few weeks with you. She's on a very restricted diet so you:
 - Float a small loan and hire a dietician for a few weeks
 - Float a larger loan and eat out every day
 - Ask your librarian about cookbooks for people with dietary problems
 - Your boss has strongly suggested that you read a series of magazine articles which appeared two years ago. You can:
 - Keep making doctors appointments until you find one who has the magazines in his waiting room
 - Place a personal ad in the newspaper
 - Look for another job
 - Request the magazines at your library
 - Your child likes to be read to, but you just don't always have the time to read to him. You can:
 - Pretend you lost your voice
 - Get him interested in television soap operas
 - Take him to the story time offered at the library
 - There is one particular book your son or daughter must have to finish a school paper, and it's available only at the Amarillo Public Library. You live here in Spearman, so you:
 - Move to Amarillo
 - Hire a driver to go steal the book for you
 - Tell your son or daughter to pick another topic for his/her paper
 - Ask your librarian to get the book for you through interlibrary loan
 - You lost that important telephone number from the classified ads in last week's paper. You can:
 - Call random numbers in the phone book until you get it
 - Try to find the newspaper in the trash
 - Check the local newspapers at your library
 - Your kindergartner just informed you that he/she has invited his/her whole class to her birthday party tomorrow. You:
 - Pretend you never saw the kid before
 - Disguise yourself and leave town on the next bus
 - Borrow a book on children's party activities from your local library
 - Your teenagers are tired of biology, history and math, and are already bored and complaining of nothing to do. You can:
 - Buy them several boxes of assorted cereal and tell them to read the boxes
 - Tell them to stand on the street corner and read license plates
 - Have them ask the librarian to recommend some good books for teens
 - You would like to be more meaningfully involved with your local public library. You can:
 - Take out a library card
 - Take out a librarian
 - Take out books, records, paperbacks or cassettes
 - Take advantage of all your library's programs
 - All of the above

The answers to these and lots of other questions can be found at the Hansford County Library. When you need to know what, how, when, where, why, who or whatever, check with us first. The "How's Your Library IQ" quiz was taken in part from the "Library Promotion Handbook" by Marian Edsall using some very liberal paraphrasing.

Hometown news

Travis Buzzard of Bald Knob, Ark., son of Betty Bailey and the late Lynn Buzzard, graduated recently from Harding University at Searcy, Ark. and was accepted to the University of Arkansas Medical School in Little Rock. He will begin med school in August. While he attended Harding, Buzzard maintained a 4.0 GPA and was elected vice president of the American Studies program. He also received the Carr Christian Service Award in 1990.

Buzzard, a member of Alpha Chi, was also a member and vice president of the Seminole social club and vice president of the Devita biology club, in addition to being involved in athletics.

Buzzard is the grandson of Lloyd and Dorothy Buzzard of Spearman.

Find the Gift of a Life Time

Stand Firm Christian Book Store

Books - newest titles for young people & adults

Bibles & Bible Studies

Video tape - sales or rentals

Latest in Christian music

T-shirts Greeting cards Jewelry

Gift Idea for the Week:
"Roses for Mama" by Janette Oke

Open Monday - Friday 9a.m. - 5p.m.
at 2 locations
322 Main Street - Gruver
519 S. Plains Mall - Spearman

Hometown News

SAN MARCOS - Duane A. Barker of Spearman is among the 1,502 students whose 1991 spring semester grades earned them places on the dean's list at Southwest Texas State University.

To qualify for the academic honors listing, an undergraduate student must have earned a grade point average of at least 3.5 during the semester while taking at least 12 semester hours of course work.

Mr. and Mrs. Ed Haner of Spearman went to Odessa for the graduation of their grandson Jason, son of Gary Haner, from Odessa High School. They returned to Amarillo for the graduation of their granddaughter Melissa, daughter of Dallas Haner, from Tascosa High School.

Melissa received the National Honor Society Scholarship, the Don and Sybil Harrington Honor Scholarship, the Regents Achievement Award from Amarillo College, and the Southwest Texas State University Orchestra Scholarship. Melissa, who was born in Spear-

man, will attend Texas Tech University in the fall. She signed a track scholarship agreement with Tech on Monday, June 10. Coach Jarvis Scott said Haner, undefeated in the 400 meters through District 3-5A, holds the school record in the 400 (57.62) and has high jumped 5-1.

She also ran on the 1600 meter and 4 x 100 meter relay teams that finished second in District 3-5A. Haner finished fourth in the 400 meters at the regional meet. Her 1600 meter relay team scratched and the 4 x 100 relay team finished sixth at regionals.

SAN MARCOS - Kerry Sidney Evans, formerly of Spearman, was among the 1,447 Southwest Texas State University students who were candidates for degrees awarded in spring commencement ceremonies May 10 and 11.

Evans, son of Mrs. Felma B. Evans of Fulton, received a bachelor of business administration with a major in accounting. He attended high school in Spearman.

FORECLOSURE SALE BY FDIC

This property will be sold at foreclosure on Tuesday, July 2, 1991 at 10:00 a.m. on the steps of the Hansford County Courthouse, Spearman, TX.

LOTS

Lots 11 & 12, in Block 3, J. I. Steele Subdv. of outlot 28, lying adjacent to the City of Spearman, Hansford County TX.

Opening bid.....\$28,600

For more information, contact
Nadine Sims 1-800-346-9755 ext. 6427

FDIC, P.O. Box 3148, Midland, TX 79702

Public Notice

Southwestern Bell Telephone Company (Company), in accordance with the rules of the Public Utility Commission of Texas (Commission), hereby gives notice of the Company's intent to implement a new schedule of telephone rates in Texas for residence Custom Calling Services, effective August 1, 1991, unless otherwise determined by the Commission. The Company has filed an application with the Commission to restructure and change the rates for certain residence Custom Calling Services.

The Custom Calling Services affected by the Company's application are optional telephone service arrangements that provide the following features: Call Waiting, Call Forwarding, Three Way Calling, Speed Calling 8 and Speed Calling 30.

The Company's proposal would increase the monthly rate for the individual Call Waiting feature from \$2.10 to \$3.10 for residence customers. Also, the rates for certain combinations of Custom Calling Features (Call Waiting, Call Forwarding, Three-Way Calling and Speed Calling-8) would increase or decrease depending upon the combination of features. In addition, the company proposes to obsolete the optional Custom Calling Service feature Speed Calling 30 for residence customers except for existing customers at their existing locations. Following are the feature combinations and their current and proposed rates.

One Feature Per Line	Current	Proposed
Call Waiting	\$2.10	\$3.10
Call Forwarding	2.10	2.10
Three-Way Calling	2.10	2.10
Speed Calling-8	2.10	2.10
Two Features Per Line	Current	Proposed
Call Waiting, Call Forwarding	3.75	4.50
Call Waiting, 3-Way Calling	3.70	4.50
Call Waiting, Speed Calling-8	3.70	4.50
Call Forwarding, 3-Way Calling	3.70	3.50*
Call Forwarding, Speed Calling-8	3.70	3.50*
3-Way Calling, Speed Calling-8	3.70	3.50*
Three Features Per Line	Current	Proposed
Call Waiting, Call Forwarding and 3-Way Calling	5.30	5.90
Call Waiting, Call Forwarding and Speed Calling-8	5.30	5.90
Call Waiting, 3-Way Calling and Speed Calling-8	5.30	5.90
Call Forwarding, 3-Way Calling and Speed Calling-8	5.30	4.90*
Four Features Per Line	Current	Proposed
Call Waiting, Call Forwarding, 3-Way Calling, Speed Calling-8	6.90	7.30
Speed Calling 30	3.20	3.20**

*denotes rate decrease
**Southwestern Bell's application proposes to obsolete residence Speed Calling 30 except for existing customers at their existing locations.

Most of the Company's residence customers in Texas who subscribe to one or more of the Custom Calling Service features will be affected by the proposed rate restructuring. It is expected that the proposed rate restructuring of Custom Calling Services will increase the Company's annual revenues by \$15.9 million, which is an increase of approximately one half of 1 percent in the Company's adjusted revenue for the twelve-month period ending December 1990. The restructuring will result in an increase in the Custom Calling Services rates for approximately 2.5 million residence customers and rate decreases for approximately 15,000 residence customers. Also, the obsolescence of the optional feature Speed Calling 30 will affect approximately 156,000 residence customers.

Persons who wish to intervene or otherwise participate in these proceedings should notify the commission as soon as possible. A request to intervene, participate, or for further information should be mailed to the Public Utility Commission of Texas, 7800 Shoal Creek Boulevard, Suite 400N, Austin, Texas 78757. Further information may also be obtained by calling the Public Utility Commission Public Information Office at (512) 458-0256 or (512) 458-0221 teletypewriter for the deaf.



BEHNE ELECTRIC & CONSTRUCTION

Electrical Repairs
& Handy Man Service
Reasonable Rates

CALL 659-3404

If You have a story to tell,

Call us TOLL-FREE!

The Hansford County
Reporter-Statesman

213 Main Spearman, Hansford County, Texas 25*

1-800-395-9482

Dial 659-3434 in Spearman

Among the Neighbors

by Helen Fisher

Betty and James Pugh have enjoyed having their daughters here recently. Week before last Cindy Patterson and four children came for a week. They are from Azle, Texas.

Angela and Sgt. Bobbie Shuler are here for two weeks. They were in the company of five month old Jeffroy who was making his first trip to Texas and to his grandparents.

Bobbie is with the Security Police Unit of the air force and stationed at Charleston, S.C.

Hollie and Earl Riley were among the large number of wagon-train members who attended the gathering and barbeque at the J.W. Jines ranch on Wolf Creek last Saturday.

There were 97 horseback riders and 21 wagons with all the support vehicles. The festivities lasted from Thursday through Sunday. They came great distances, meeting at pre-arranged sites and continuing the trip together.

Among the events were a wedding and barn dances at night.

John and Jolinda Hutchison were in Lubbock during the weekend. Her mother is recovering from surgery and they were pleased with her progress.

Mary Lou and Steve Mathews had a busy weekend as they were greeting the arrival of a new grandson in Lubbock on Friday (details of that later). Then on Saturday they attended the dinner party in Gruver for Del and Barbara Cluck.

Thoughtful in honoring their parents on their 35th wedding anniversary, Brad and Mary Cluck of Amarillo and Nanette and Tom Haines of Roswell hosted the affair.

Of course overseeing the whole party were Nanette's daughters, Bennett and Maison.

It was held at the El Vaquero and more than 40 guests came to wish the fine couple many more anniversaries, and to enjoy the food and fellowship.

Cody Mike arrived to brighten the lives of his parents, Jana and Cole Ivey on June 21 at the Methodist Hospital in Lubbock. He weighed seven pounds, two ounces and was 21 inches long.

Jana and Cole had moved to Amarillo from Lubbock just two weeks ago. Cody Mike has enough grandparents to keep him spoiled for a long time. They are Mary Lou and Steve Mathews; Bill and Ginger Pittman and Kay and Jim Ivey, all of Spearman.

Great-grandparents are Faye Cluck, Gruver; Ethel and Eris Pittman, Morse; Jack and Inez Softer, Tayson, Ariz., Elsie Mathews and Ann White, of Spearman. It is the first grandchild for the Pittmans and second for the Mathews.

Albert and Joan Graves were here three days last week, transacting business and greeting friends. They stayed in the home of Inez Holland.

They came from Lubbock where they had spent a week as his mother, Viola Graves, had been ill but is much improved.

The Graves are pleased with their life in Capshaw, Ala. though both have health problems. Joan has various interests and Albert has a full time job, enjoying his grandchildren.

Evelyn and Charles Brillhart spent

several days in Waco with their daughter, Susan Tracy and two children.

Susan and Jim Cummings were married in a home ceremony on June 15 with the parents of both attending.

They will live in the country near Crawford. Susan teaches in the school there.

Eighteen month old Colby Odegaard is announcing to the world that he has a younger brother as of June 14.

Caleb Gregory, new son of Shonda and Greg Odegaard was born at Northwest Texas Hospital in Amarillo, weighing six pounds, six ounces and 19 3/4 inches long. Grandparents are Roger and Elaine Odegaard, Spearman; Bob and Ann Corley, Sherman.

Great-grandparents are Carter and Marie Crawford, Spearman; Raymon and Gladys Odegaard, Golvick, Minn.

Shonda's mother stayed with the family here the first week and Shonda's sister, Stephani Swan and three girls of Vernon are here now to give them a hand.

Word came last week of the passing of Viola Jones Campbell, 66, in her sleep on June 18.

Viola grew up here, attending school and marrying Lucky Campbell, and leaving here a number of years ago.

At the time of her death, they were living in Hurst, Texas. Services were held in Graham on Friday. In addition to Lucky, she is survived by three children, seven grandchildren, and one great grandchild, two sisters - Avo Gray and Celo Grover of Gruver, and one brother, Hershhal Jones.

Avo and most of her family, Hershhal and Wanda and their family attended the services.

McDaniel, Fisher married

Cara Lynn McDaniel and Kevin Z. Fisher were united in marriage June 22 at 2 p.m. with the Rev. Ron Fox officiating. The ceremony was held at St. Luke's United Methodist Church in Lubbock.

The bride is the daughter of Dr. James McDaniel of Abilene and Ms. Cynthia McDaniel of Lubbock. Parents of the groom are Mr. and Mrs. Zack Fisher of Memphis, Texas.

Maid of honor was Ms. Sandra Blacksten of Amarillo. Bridal attendants were Mrs. Lynda Underwood of Spearman, and Ms. Leta Nester and Ms. Melodie Morgan, both of Canyon. Registering guests was Mrs. Kelli Little of Fort Worth, sister of the groom.

Best man was Rob Harris of Lubbock, and groomsmen were Hadley Reed of Spearman, John Hancock of Abilene and Brent Mundon of China Springs. Guests were seated by Russell McDaniel, brother of the bride, of Abilene, Gregg Clark of Lakeview, Bart Thoreson of Gruver and Michael Ivy of Albany.

For the ceremony, the church was decorated in white with yellow accents. The altar was flanked by emerald trees, Boston ferns and vases of yellow and white gladiolas. Yellow and white bows were placed on the appropriate pews.

Given in marriage by her father, the bride wore a formal white gown of bridal peau de soie. The pointed bodice covered with lace, iridescent sequins and pearls was gently gathered onto the skirt. In the back the dress was accented by a large double bow. The dress was accented by a Suzette off-the-shoulder neckline. The short puffed sleeves were tooled in lace, pearls and iridescent sequins. The hem and train were finished with white embroidered lace.

Her headpiece was a peau de soie bow decorated with a lace rosette.



MRS. KEVIN Z. FISHER (nee Cara Lynn McDaniel)

beads and iridescent sequins. The veil of shimmery net cascaded from the bow and was trimmed in white ribbon. She carried an arrangement of daisies and gardenias with yellow and white ribbons.

The bridal attendants wore dresses of white on white floral moire taffeta. The dresses had scooped necklines and short puffed sleeves trimmed with white lace. The fitted bodices were accented by a large bow in the back. The bridesmaids carried arrangements of yellow roses and daisies.

The mother of the bride chose a short jade brocade two-piece dress with gold jeweled buttons and matching jade shoes. The groom's mother was attired in a two-piece beige and floral dress with pearl buttons and matching fuschia shoes.

The groom wore a Pierre Cardin cabled black tuxedo with tails, a white bow tie and a white cummerbund. His boutonniere was a yellow rose.

The groomsmen and ushers wore Pierre Cardin cabled black tuxedos with black bow ties and cummerbunds. Their boutonnieres were daisies.

At a reception following the

ceremony, the bride's table stood before a white lattice background flanked by ficus trees and philodendrons. The table was decorated with greenery, yellow and white bows and a mirrored floral arrangement. The bride's cake was a three-tiered Italian creme cake with white and yellow daisies, roses and gardenias.

The groom's table was decorated with greenery and a silver coffee service. The groom's cake was a kahlua fudge cake decorated with chocolate covered strawberries and ivy.

For a honeymoon trip to points of interest in and around Orlando, Fla., the bride wore a beige linen city-short suit. Following the honeymoon, the couple will reside in Memphis, Texas, where the groom is engaged in ranching.

The bride graduated from West Texas State University with a degree in special education, and will teach in Childress. She is the granddaughter of Mr. and Mrs. Jack Patterson of Bovina.

The groom graduated from Tarleton State University. He is the grandson of Helen Fisher of Spearman and Harry Barkley of Memphis, formerly of Gruver.



Mr. and Mrs. Charles Shieldknight of Spearman and Mr. and Mrs. Mike Riethmayer of Friona announce the engagement of their children, Carly Brigitte Shieldknight and Brenton Robert Riethmayer. The couple is planning a late August wedding, after which they intend to return to College Station to attend school at Texas A&M University.

Club News

GLADIOLA FLOWER CLUB

The Gladiola Flower Club met in the home of Myra Berner on June 20. President Dickie Allen called the meeting to order, and roll call was answered with each member describing "What makes me happy."

A change for the July 4 meeting was made. The meeting will be held in the home of Margarette Evans.

Evans gave a program on wild flowers she had found in the area.

She noted that many of them were growing at the Palo Duro Dam, and described many different grasses, trees and shrubs that can be seen there.

June Jackson won specimen with a bluebonnet, and Evans won borrowed with an arrangement of wild flowers.

A guest, Virginia Levee of Magnolia, Texas, attended the meeting along with members June Jackson, Dorothy Buzzard, Margarette Evans, Jo Larson, Betty Davis, Virginia Head, Lorene Kunselman, Fay Holt, Dickie Allen, Dorothy Haner, Estelle Jackson, Kathleen Sutton and hostess, Myra Berner.

HOSPITAL AUXILIARY

Hansford Hospital and Manor Auxiliary met June 17 at Hansford Manor Auxiliary Room to decide how to distribute its Christmas Card Fund.

Members decided to use the donations to purchase a commercial blender and a commercial toaster for the hospital kitchen, four or five patio rocking chairs for the Manor and an extra large serving cart for the Manor.

The 17 members present extended a special thanks to everyone who contributed to the Christmas Card Fund and made the purchases possible.

Hometown news



Connie Woolley, daughter of Sue Woolley of Denton and Gary Woolley of Spearman, was featured in a junior voice recital at Texas Women's University.

Following the recital Woolley, a soprano, was honored with a reception. The recital was given in partial fulfillment of the requirements for a bachelor of science degree in applied music.

Woolley is the granddaughter of Mr. and Mrs. Walter Woolley of Spearman.

THANK YOU
for all the kind deeds of flowers, food, phone calls, visits, prayers & prayergrams during my stay in the hospitals & at home.
I'm improving daily.
Thanks again,
Frances Stump

THANK YOU
Of all the things God ever sends, None can compare to good neighbors and friends.
The Brown family wants to thank their neighbors and friends for their many kindnesses and especially all the prayers during Kory's surgery.

Thank you,
Jim, Rosemary
Kory & Family

You are invited to a sale of
JODY'S SWEETHEARTS

Country dolls & Bears
Friday & Saturday,
June 28 & 29
1-5 p.m.
777 Cotter Drive

You are invited to a
Bridal Shower Honoring
Cayla Eaton
bride elect of Don Schroeder
Saturday, June 29th
from 10 to 11:30 a.m.
Hospitality Room
First State Bank
Spearman

You are cordially invited to a
Bridal Shower honoring
Carly Shieldknight
bride-elect of
Brent Riethmayer
Monday, July 8th
from 7:00 to 8:30 p.m.
in the home of
Mary Ann Lasater
1109 Linn Dr. Spearman
Gift registry at Cha-Lor's & Celebrate

You are invited to a
Come and Go
Farewell Reception
honoring
Jim and Donna
Murray
Friday, June 28, 1991
4:00 to 5:30 p.m.
Council Chamber
in City Hall
Spearman

Robinson, Brandt to be married in July



Christy Dee Robinson

Mr. and Mrs. Joe C. Robinson of Gruver announce the engagement and approaching marriage of their daughter, Christy Dee Robinson, to David Allen Brandt, son of Mrs. and Mrs. W.L. Stevens of Booker.

The bride-to-be is the granddaughter of Mr. and Mrs. John C. Robinson of Gruver, Mr. and Mrs. Joe Barnett of Stinnett and Mr. and Mrs. O.E. Gammill Sr. of Gruver. She attended West Texas State University and is presently employed at Sam's in Amarillo.

The prospective groom attended Amarillo College and West Texas State University, and is currently employed by St. Anthony's Hospital in Amarillo.

The couple plans to be married Saturday, July 20 at 3 p.m. in the home of Mr. and Mrs. John Robinson, grandparents of the bride. After their marriage they will reside in Amarillo.

Church schedules revival services

Community Bible Church in Gruver will host Revival services Wednesday, June 26 through Sunday, June 30.

According to Pastor Zane Gray, services will be at 7 p.m. each night. A men's breakfast is scheduled for Saturday, June 29 at 8 a.m., to which all men are invited.

Horse shoe pitching and volleyball are on the schedule for Fellowship, set for Saturday, June 29 at 7 p.m. Everyone is invited.

The Rev. Roland Depew and his wife Kathy, from World Harvest 2000 Training Center in Houston, will conduct the services, said Gray.

He and the congregation of Community Bible Church extend an invitation to all area residents to attend these special services and hear the message brought by the Depews.

Community Bible Church is located on Highway 15 in Gruver.

Rasor to take part in truck showdown

Aubrey Rasor of Gruver, state Farm Bureau director for Area 1, will participate in the Farm Bureau's first "Texas Truck Showdown."

The "Texas Truck Showdown" is a practical field test of stock pickup trucks, tested for on farm use. The first of its kind in Texas, the event will pit stock models of both half-ton and three-quarter-ton Dodge, Ford and Chevrolet pickup trucks in various tests.

The TFB Board of Directors - all farmers representing different parts of the state - will put the vehicles through their paces and will submit written evaluations of each truck's performance.

Event coordinator James Gohlke says the "Truck Showdown" will be held in the Dallas-Fort Worth area on Friday, July 26 and Saturday, July 27.

"The farm truck is one of the most important pieces of equipment in Texas agriculture," Gohlke said. "We hope this event will showcase the capabilities of all these vehicles."

An off road obstacle course, complete with plowed ground and mud tests, will be held in Burleson at the Fox Hollow Simmental Ranch and Burleson MX Park on July 26.

Acceleration, maneuverability, braking and wet pavement tests, among others, are scheduled for the back parking lot of Six Flags Over Texas on July 27. Events on both days will begin at 7 a.m.

Both sessions are open to the public, with tickets on sale at the obstacle course. Tickets are \$3 with children 11 and under free. There is no charge for the Six Flags event on the 27th.

TEXAS

It's Like A Whole Other Country.

It's a sizzling gift-with purchase! We'll pack you up with travel-sized tubes of ERNO LASZLO'S terrific tanners, plus a pair of super sun "shades." They're fun. They're free. They're waiting for you with any \$45 purchase.



j-winston
of amarillo
2701 paramount
women's fashion
visa • mc • a ex
358-2457

On The Go With Joy

by Joy Henderson

I could tell last night that this was not going to be a "good day." Sometimes I think Monday should come at the end of the week and Friday come closer to the beginning. Everyone seems to look forward to Friday with anticipation of a relaxing weekend but does everyone dread getting up on Monday like I do? Could we maybe switch days and activities for awhile? No—I guess that wouldn't work; some of you already have your schedules so messed up that you can't tell whether you are supposed to go to work or get ready for church.

Then, on the other hand, since the farmers work from sun up to sun down and most of the time put in eight days a week, never know what day it is. I have to keep reminding M.H. when it is Wednesday or which day his doctor's appointment comes on, or if it's close to payday etc.

Oh well - so much for gloom and doom. I've allowed myself 30 minutes for my daily "pity party" and I will go on to happier thoughts.

M.H. came in and asked me what my problem was and I said I was having trouble figuring out whether my column would be straight, analyzed, dramatized or "funny" as usual and that I seemed to be "off" today. He commented that I didn't seem to be anymore "off" than usual.

At times like this, prayer usually helps bring some type of inspiration,

but my mind is like a nudist camp, nothing is going on. Some say praying with an ungrateful heart is like walking on water; it's easy to get in over your head. Making ripples isn't my thing and I'm not much for bothering the Lord with small talk but maybe my type of Christianity leaves something to be desired.

My type of Christianity isn't hard to identify and I see it all around me. It's something like the itch. It smarts a bit and turns me red when the preacher is around, but there's little chance of infecting others.

Well, I guess I'd better get down to business. It's a small world when you have visitors from Amarillo in town and you are driving down the street when she sees a friend from Amarillo who is here in Gruver visiting her grandmother. Such is the case of our guest Angela Bangs who saw her friend Lacy Hart who is visiting in the home of Mary Rae Lamb. Angie's mother and Lacy's mother are both employed at an Amarillo pharmacy.

Kay Hobbs, Pauline Winger, and Charmian Lyle made a quick trip to Denison to get sister Edith and then they all attended a family reunion at Calisburg.

Celebrating their 35th Anniversary, Barbara and Delano Cluck enjoyed their children Brad and Nanette and their families. Also helping with the festivities were Andy and Pat Burleson.

Lots of guests dropping in to wish Jessie Spivey a happy 9th birthday. This beautiful lady looks and gets around better at 90 years of age than I do at 60 years. (and I'm not even 60 yet).

The True Leathermans had several guests this past weekend. Included were son Gary and wife Ruth, children Corrie and Andrew; their daughter Phyllis and husband Jack Tolle from Broken Arrow, Okla. Other visitors were Joseph and Pam Hookham from Bixby, Okla.

Visiting in the home of Gary and Diane Doty were Jeff and Pam Wheelchel of College Station.

At this time of year there will be several changes in the community as new teachers will be moving in and others will be moving out to take employment elsewhere. How we are going to adjust to the loss of Pat Burnam will not be easy. Maybe we could keep her in Gruver while husband Mike takes up his new job as ag teacher at Cordell, Okla. Oh well! They have had enough long distance commuting in their recent years so if they insist on being together—

Talk about long distance travel, Kathy Gillispie is scheduled to return this week from Kenya, Africa. Maybe, we can get some stories and her observations for a future issue.

Charlie and Clea Casdorff have been able to return to their home in

Gruver after he spent a few weeks in the hospital. It is believed that the problem he was having with blood clots forming has been solved by placing a filter in to stop them from moving on to his heart.

While I visited with Margaret Fry, who had recently attended a family reunion, I learned that there is a connection with her and Melba (Morrison) Rasor. Some of the other people of Gruver may be unaware of this and would be interested in knowing more about the family genealogy. Dee Renteria has been doing some research and I will try to get her to write an article about them.

It is really good to see the big crowd at the Golden Age Center. After several months of repairing the damage done to the building, the senior citizens are able to continue their second and fourth Monday get-together with food, games and fellowship.

Those attending were Charmian Lyle, James and Ada Joyce Stedje, Leona Harris, Ida Hendrick, Vivian Green, Pauline Winger, Faye Cluck, Leo Frazier, Bill Etling, I.W. and Maylynn Myers, Ben Arthur, Merle Arthur, Mary Lou Trent, Eva Dozier, Maude McClellan, Fred and Georgia Davidson, Bob and Karen Setliff, Verna Finley, Fay Blount, the nurse Peggy White and a friend from Texhoma. There were four attending who were 90 years or over; they were Jessie Spivey, Ralph Bort, Lillian Murrell and Maude Alexander.

The building is nearing completion after refinishing the floor and repairing windows and installing mini-blinds.



Let Us Help You Plan For:

MORTGAGE SAVINGS AND PROTECTION RETIREMENT through OMNI-PLUS UNIVERSAL LIFE and other Modern Plans of WHOLE FAMILY SECURITY

ANNUITIES AND IRA'S at HIGHLY COMPETITIVE INTEREST RATES

CONTACT MARYLYNN HART District Deputy F.O. Box 428 Gruver, TX 79040 806-733-2228 806-733-2066

Royal Neighbors of America Fraternal Life Insurance Since 1895

PUBLIC NOTICE

BRIEF EXPLANATORY STATEMENTS OF PROPOSED CONSTITUTIONAL AMENDMENTS SPECIAL ELECTION AUGUST 10, 1991

PROPOSITION NO. 1 ON THE BALLOT

Senate Joint Resolution 42 proposes a constitutional amendment that would authorize the newly created county education districts to hold elections to exempt from ad valorem taxation a percentage of the market value of the residence homestead of a married or unmarried adult. The percentage exempted could not exceed 20% of such market value, and the amount exempted could not be less than \$5,000. The amendment would also authorize county education districts to hold elections to exempt from ad valorem taxation not less than \$3,000 of the market value of the residence homestead of a disabled person or a person sixty-five years of age or older. Finally, the amendment would authorize elections in county education districts for the taxation of certain tangible personal property exempted from ad valorem taxation by the legislature.

The proposed amendment will appear on the ballot as follows:

"The constitutional amendment to allow the voters of a county education district to adopt certain exemptions from the district's ad valorem taxation for residence homesteads and to provide for the taxation of certain tangible personal property."

PROPOSITION NO. 2 ON THE BALLOT

Senate Joint Resolution 5 proposes a constitutional amendment that would allow the legislature to pass general laws authorizing Texas Higher Education Coordinating Board or its successor to issue and sell up to \$300 million of general obligation bonds to finance educational loans to students. The maximum net effective interest rate to be borne by the bonds would be set by law. The amendment would also authorize the legislature to provide for the investment of bond proceeds and to establish an interest and sinking fund to pay the bonds and provide for the investment of such fund. Bonds authorized under this amendment would be paid from the first money coming into the treasury in each fiscal year that is not otherwise appropriated by the constitution, less any amount in an interest and sinking fund established at the end of the preceding year that is pledged to the payment of the bonds or interest.

The proposed amendment will appear on the ballot as follows:

"The constitutional amendment providing for the issuance of general obligation bonds to provide educational loans to students."

Estos son los informes explicatorios sobre las enmiendas propuestas a la constitución que aparecerán en la boleta el 10 de agosto de 1991. Si usted no ha recibido una copia de los informes en español, podrá obtener una gratis por llamada al 1/800/252/8683 o por escribir al Secretario de Estado, P.O. Box 12060, Austin, Texas 78711.

Published by the office of the Secretary of State of Texas

H&H Credit Union receives top rating

H & H School Employees Federal Credit Union has received a five-star rating by Bauer Financial Reports Inc., a Coral Gables, Fla. research firm.

This rating is given to the safest credit unions in the country, based on analysis of financial data filed with federal regulators. It indicates that

the credit union's deposits are federally insured up to \$100,000 per account, that its capital exceeds 9 percent of assets, and that H & H Credit Union is operating profitably.

Only about one-fourth of the 13,971 credit unions analyzed received the five-star rating.

Everyday Bargains

Floral Prints - 60" wide - \$3.85/yard
Floral Prints - 45" & 60" - \$1.79/yard
For Crafts, Rompers, etc.

100% cottons starting at \$3.10/yd.

50-50% Blends \$2.15/yd.

We have or will cut quilts!
Kits starting at \$55!

Jo's This n' That
216 Main Spearman

Your stories appreciated ...

Stories concerning club meetings and local events are an important part of the newspaper, and they are appreciated and needed to help inform the community about your club or project. A few simple guidelines are requested to help us cut down on inadvertent errors which appear on occasion.

Please submit stories or information typewritten and double-spaced. Handwritten stories, due to the disparity in penmanship, often leave interpretation lacking. When listing names, be sure to give both the first and last names. First names alone cannot be printed.

Help with this can help you get a more error-free article. We cannot be responsible for errors caused when these simple guidelines are not followed.

Readers who live outside Spearman are reminded the Reporter-Statesman has a toll-free number, 1-800-395-9482, to call with local events.

18 teams signed up for golf tourney

Eighteen two man teams have signed up to play in the Spearman Chamber of Commerce two-day golf tournament.

The tournament will be on Saturday and Sunday, June 29 and 30. It is a combination of 18 holes of two man low ball and 18 holes of two man scramble. Teams can tee off at 9 a.m. or 2 p.m. on either day of the tournament.

According to tournament coordinator Craig Downing, there are plenty of spots still open if anyone else wants to enter the tournament. He added that it looks like it will be a fun tournament.

Besides getting two rounds of golf, the entry fee for the tournament covers refreshments during the play and a hamburger supper after play concludes on Saturday night. The Spearman Junior High School cheerleaders will be selling sandwiches on Saturday and Sunday afternoons to help famished golfers finish their round.

At the end of the low ball round, the teams will be flighted according to their scores. After Sunday's scramble round, the scores will be totaled and the three lowest scores in each

flight will be awarded prizes. Besides finishing in the top three of their flight, golfers will be able to win additional prizes by hitting good shots on holes 4 and 9. On hole 4, the golfer who hits his first shot on the green and closest to the hole will win a prize. On hole 9, the golfer who hits the longest drive will win.

Downing said everyone is eligible to participate. He added that the teams can be mixed, a man and a woman. Anyone interested in signing up can contact the Spearman Chamber of Commerce office or the Hansford Golf Club.

SOUTHWEST OUTDOORS



Mel Phillips

Good news from the Coast Guard. For the fifth consecutive year, boating fatalities are down. These numbers are an improvement, but are of little comfort to the families of the 865 fatalities. The U.S. Coast Guard notes that "the fatality count has fallen 36 percent in the last ten years." The decline is attributed to an increase in public awareness of the dangers of drinking and driving in cars and boats.

After looking at all the fancy boats with huge engines, it is remarkable that fatal accidents are few and far between. It is estimated that nearly 20 million recreational boats are on the water each year.

OUTRAGE OF THE YEAR—People for the Ethical Treatment of Animals (PETA) raised some \$10 million from the public and then killed 32 "rescued animals" that had been liberated from research experiments. According to the monthly newsletter of SCOT (Sportsmen Conservationists of Texas), Ingrid Newkirk, director of PETA, confirmed the killing of 32 roosters and rabbits was done "with a great deal of concern." Maybe PETA should quit the self-righteous antics about

animal rights and admit that their real concerns are fund raising and staff salaries, not concern for the animals.

Next time some animal rights group shows an animal with a leg trap and wants your money, think about the 32 "rescued" animals that were not worth a few hitches and pens. PETA, of course, does have money to file lawsuits and other legal harassment of animal research projects.

By the way, SCOT is an excellent and reasonable conservation group that is worth the support of the hunters, fishermen, and real conservationists. Contact SCOT-Alan Allen, 807 Brazos, Suite 311, Austin, Texas 78701. Membership is only \$25. The legislative updates in both Austin and Washington, D.C. are worth far more than the \$25 dues.

The anti-hunting, anti-fishing and animal rights crowds have banded together. The hunters and anglers need to unite before it is too late. Check out SCOT because it is one of the best groups in Texas.

Good luck and enjoy the great outdoors.



Joy Gafford will be joining the other members of the North Country All Stars basketball team as they leave today to travel to Johnson City, Tenn. The team will compete in the AAU National 18 & Under Basketball Tournament. They earned the right to go to Tennessee by winning the qualifying tournament held in Amarillo. Gafford was named to the All Tournament Team in Amarillo. The national tournament will get underway on Friday, with opening ceremonies in the morning. Gafford's team will play its first game on Saturday. Gafford indicated that they may have to play two to three games a day over four days if the team is to win the tournament. Gafford is the daughter of Kathy and Ladd Gafford. She has a younger brother, Matt.

You can shut your eyes, but not your ears.

Protect your hearing. Wear ear protection.

(A public service of this newspaper and the Texas Hearing Aid Association.)

OSCAR'S WELDING & BACKHOE SERVICE

Repair All Types of Irrigation Lines
General Welding
Farm Equipment Welding
Aluminum Welding

INDUSTRIAL ROAD
659-2158
MOBILE 5832

Oil & gas report

WEEK ENDING JUNE 20

Intentions to Drill
CHILDRESS (WILDCAT) Larence Engineering Co., #2 L. McSpadden (320 ac) 600' from North & West line, Sec. 379.H,W&NW, 3/4 mi NE from Kirkland, PD 6600' (300 City Natl. Bldg., 807 8th Street, Suite 300, Wichita Falls, TX 76301)
HANSFORD (WILDCAT & HANSFORD Upper Morrow) Canyon Exploration Co., #1 Amy (640 ac) 1320' from North & 1980' from East line, Sec. 116.4-T,T&NO, 3 mi SE from Spearman, PD 7900' (Box 15185, Amarillo, TX 79106)
LIPSCOMB (NORTH MAMMOTH CREEK Cleveland) Samson Resources Co., #3 Gooch Unit (636 ac) 1250' from North & West line, Sec. 964.43.H&TC, 5.5 mi SE from Darrouzett, PD 7650' (Two West Second, Tulsa, OK 74103)
LIPSCOMB (NORTH MAMMOTH CREEK Cleveland) Samson Resources Co., #3 Mugg Estate (636 ac) 660' from North & West line, Sec. 963.43.H&TC, 6 mi SE from Darrouzett, PD 7650'
LIPSCOMB (GHEEN Lower Morrow) WhitMar Exploration Co., #1 Merydith (650 ac) 1320' from South & 1980' from East

line, Sec. 500.43.H&TC, 17 mi south from Booker, PD 10300' (1323 East 71st St., Suite 400, Tulsa, OK 74136)

LIPSCOMB (WILDCAT & APACHE Lower Morrow) K. Stewart Petroleum Corp., #1 Russell Meier (641 ac) 933' from North & West line, Sec. 902.43.H&TC, 14 mi SE from Booker, PD 9650' (1300 North Harvey, Suite 101, Okla. City, OK 73103)

MOORE (PANHANDLE Red Cave) Comstock Oil & Gas, Inc., #1-42M Bivins (330 ac) 660' from South & West line, Sec. 42.0-18.D&P, 8 mi westerly from Masterson, PD 2450' (506 LBJ Freeway, Suite 1150, Dallas, TX 75244)

MOORE (PANHANDLE & WEST PANHANDLE Red Cave) Anadarko Petroleum Corp., #16 Sneed 'B' (640 ac) 990' from North & West line, Sec. 4--TTRR, 5 mi north from Stinnett, PD 3250' (One Leadership Square, Suite 1400, Okla. City, OK 73102)

Application to Re-Enter
LIPSCOMB (WEST BRADFORD Tonkawa) R & R Exploration & Production, #1 Hamker (649.4 ac) 660' from North & 1880' from East line, Sec. 539.43.H&TC, 14 mi southerly from Booker, PD 6650' (Box 15163, Amarillo, TX 79106)

Plugged Wells
CARSON (PANHANDLE) Car-Tex, Inc., #2-14 Burnett 'G', Sec. 44.5.I&GN, spud 5-12-75, plugged 6-7-91, TD 3320' (oil) - Form 1 filed in Jay-Dee Production Co.

CARSON (PANHANDLE) Jay-Dee Production Co., #1 Con, Sec. 5.3.AB&M, spud unknown, plugged 5-30-91, TD 3101' (disposal) - Form 1 filed in Headington Brothers

HANSFORD (HANSFORD Lower Morrow) OTC Petroleum Corp., #1-256 Rafferty, Sec. 259.2.GH&H, spud 11-25-80, plugged 5-3-91, TD 7600' (gas) - Form 1 filed in Brock Hydrocarbons

HARTLEY (WILDCAT) Browning Oil Co., Inc., #1 Willis, Sec. 118.48.H&TC, spud 5-4-91, plugged 5-18-91, TD 6800' (dry) - HARTLEY (WILDCAT) Quingue Operating Co., #2 Dammer Ranch, Sec.

7.LE.G&M, spud 12-9-90, plugged 4-10-91, TD 1875' (dry) -

HARTLEY (HARTLEY HUGOTON Krider Dolomite) Cambridge Production, Inc., #1 Lasley, Sec. 4.1.J. Pbitvent, spud 1-5-91, plugged 5-31-91, TD 3618' (gas) -

HEMPHILL (WILDCAT) Kern-McGee Corp., #1 Olaf Rankin, Sec. 52.M-I.H&GN, spud 11-2-90, plugged 5-18-91, TD 14700' (dry) -

HEMPHILL (FELDMAN Tonkawa) Unit Petroleum Co., #1 Lockhart, Sec. 2--R. Moody, spud 11-7-83, plugged 5-15-91, TD 7843' (gas) -

HEMPHILL (WATERFIELD Upper Morrow) Kaiser Francis Oil Co., #1-25 Helton Buckthal, Sec. 25.A-1.H&GN, spud 3-26-90, plugged 4-1-90, TD 13726' (gas) -

HUTCHINSON (PANHANDLE) Jay-Dee Production Co., #1W Whittenburg 'A', Sec. 33.4.H&TC, spud 2-12-60, plugged 6-3-91, TD 2790' (disposal) - Form 1 filed in Landa Oil Co.

HUTCHINSON (PANHANDLE) J.M. Huber Corp., #1 Hodges, Sec. 1--J.C. Patton, spud unknown, plugged 5-27-91, TD 2817' (oil) -

LIPSCOMB (DOYLE Des Moines) Unit Petroleum Co., #1 Price, Sec. 709.43.H&TC, spud 12-8-84, plugged 5-10-91, TD 8100' (oil) -

MOORE (PANHANDLE) W.B.D. Oil &

Gas Co., #4W WBD Tract 1, Sec. 154.3-T.T&NO, spud 3-10-83, plugged 5-15-91, TD 3435' (oil) -



TRAVEL IN STYLE

THIS SUMMER

Buckle Up!

Letters to the Editor

The Reporter-Statesman welcomes letters to the editor on subjects of interest to its readers. Short letters are most likely to be chosen for publication, but the use of any material is at the discretion of the editor. Editing may be necessary for space and clarity or to avoid obscenity, libel or invasion of privacy, but ideas will not be altered. Upon request, editors will use initials only, but only rarely and for compelling reasons. A signed letter carries more weight with readers. Letters do not necessarily reflect the editorial policies or beliefs of this newspaper. All letters must bear the handwritten signature of the writer and include address and phone number(s) for verification purposes (address and phone number will not be printed).

IT'S **DOUBLE DEAL** TIME AT DAIRY QUEEN!

\$1.29

BANANA SPLIT
Bananas, whipped cream and all your favorite Dairy Queen toppings!

\$1.29

PEANUT BUSTER PARFAIT
Smooth, creamy fudge, lots of peanuts and plenty of DQ goodness!

ON SALE JUNE 17-30, 1991

THIS WEEK'S DQ VALUE

© 1991 U.S. Pat. & Tm. Off. Am. D.Q. Corp. At participating Dairy Queen stores.

BUCTRIL® KILLS BROADLEAVES WITHOUT INJURING MY CROP!

WITH BUCTRIL® BRAND HERBICIDE, THERE'S NO STALK BRITTLENESS, ROOT PRUNING OR BRACE ROOT DAMAGE. THAT REALLY PAYS OFF AT HARVEST TIME.

NOTHING MEASURES UP TO BUCTRIL®!

RHÔNE-POULENC
RHONE-POULENC AG COMPANY
P.O. Box 12014, 2 TW Alexander Drive
Research Triangle Park, NC 27709

BUCTRIL® BRAND HERBICIDE IS A RESTRICTED USE PESTICIDE. As with any crop protection chemical, always read and follow instructions on the label. BUCTRIL is a registered trademark of Rhone-Poulenc. © 1989 Rhone-Poulenc Ag Company

Area Eye Center
Dr. Billy Nowlin
Optometrist
206 Main 659-3109
Hours: Tuesday 9-12 & 1-5 Friday 9-12
Selection of Frames and contact lenses serving this area for 13 years.

Public Notice

Southwestern Bell Telephone Company (Company), in accordance with the rules of the Public Utility Commission of Texas (Commission), hereby gives notice of its intent to implement a new schedule of telephone rates in Texas for Directory Assistance Services, effective August 1, 1991, unless otherwise determined by the Commission. The Company has filed an application with the Commission to restructure and change the rates for Directory Assistance Service.

To help recover its costs, the Company is proposing to increase the rates for Directory Assistance calls from \$.30 to \$.40 per call (after the three-call allowance). Southwestern Bell is proposing that there be no change in the number of free Directory Assistance calls allowed each month (currently three) and that customers who qualify for exemption of Directory Assistance charges because of visual or physical handicaps continue to be exempt from these charges. The company also proposes to begin charging \$.25 per call for Directory Assistance from pay telephones.

If approved by the Commission, this proposed rate change for Directory Assistance will increase the Company's annual revenues by \$15.4 million, which is an increase of approximately one half of 1 percent in the Company's adjusted revenue for the twelve-month period ending December 1990. This proposed rate change would affect approximately 900,000 residence customers, approximately 155,000 business customers, approximately 500 private pay telephone owners and all customers who make Directory Assistance calls from public pay telephones.

Persons who wish to intervene or otherwise participate in these proceedings should notify the Commission as soon as possible. A request to intervene, participate, or for further information should be mailed to the Public Utility Commission of Texas, 7800 Shoal Creek Boulevard, Suite 400N, Austin, Texas 78757. Further information may also be obtained by calling the Public Utility Commission Public Information Office at (512) 458-0256 or (512) 458-0221 teletypewriter for the deaf.

Southwestern Bell Telephone

Spearman team third in home swim meet

The Spearman Swim Team hosted a swim meet last weekend, finishing third overall. Individual results for Spearman swimmers include:

- 8-under girls 100 m freestyle relay
 - 2nd - Spearman, 1:57.81, Randa Morris, Michelle Laughlin, Catrina Brooks, Kayla Taylor
- 8-under boys 100 m freestyle relay
 - 4th - Spearman, 2:01.05, Travis Brown, John Brock, Colton Miller, Chad Scarborough
- 9-10 girls 200 m free relay
 - 4th - Spearman, 3:29.66, Lana Martin, Cami Winegarner, Amber Ramon, Ashley Brown
- 9-10 boys 200 m free relay
 - 6th - Spearman, 4:19.02, Landon Miller, Brandon Hataway, Josh Schumann, Cody Brooks
- 8-under girls 25 m freestyle
 - 1st - Adrienne Simpson, 19.91
 - 3rd - Amber Elliott, 25.35
- 9-10 girls 50 m freestyle
 - 2nd - Audra Sanders, 42.63
 - 3rd - Ashley Brown, 44.19
- 9-10 boys 50 freestyle
 - 2nd - Aaron Winegarner, 38.24
- 8-under girls 25 m butterfly
 - 1st - Adrienne Simpson, 21.85 (pool record)
 - 4th - Amber Elliott, 29.66
 - 5th - Audrey Winegarner, 30.04
- 9-10 girls 50 m butterfly
 - 2nd - Audra Sanders, 48.73
- 9-10 girls 50 m butterfly
 - 1st - Aaron Winegarner, 45.27
 - 3rd - Landon Miller, 53.28
- 8-under girls 25 m backstroke
 - 1st - Adrienne Simpson, 22.61
 - 5th - Amber Elliott, 29.33
- 9-10 girls 50 m backstroke
 - 2nd - Audra Sanders, 49.21
- 9-10 boys 50 m backstroke
 - 1st - Aaron Winegarner, 44.34
- 8-under 25 breaststroke
 - 3rd - Randa Morris, 32.90
 - 4th - Audrey Winegarner, 33.53
- 8-under 25 breaststroke
 - 6th - John Brock, 31.90
- 9-10 boys 50 m breaststroke
 - 4th - Landon Miller, 54.87
- 8-under girls 100 m I.M.
 - 1st - Adrienne Simpson, 1:56.13
 - 4th - Amber Elliott, 2:20.99
- 9-10 girls 100 m I.M.
 - 3rd - Audra Sanders, 1:45.79
- 9-10 boys 100 m I.M.
 - 5th - Landon Miller, 1:56.95
- 10-under boys 100 m freestyle
 - 2nd - Aaron Winegarner, 1:29.21
- 8-under girls 100 m-Medley Relay
 - 1st - 1:51.17, Adrienne Simpson, Randa Morris, Amber Elliott, Audrey Winegarner
- 8-under boys 100 m Medley Relay
 - 3rd - 2:35.56, Travis Brown, John Brock, Colton Miller, Chad Scarborough
- 9-10 girls 200 m Medley Relay
 - 5th - 3:57.31, Ashley Brown, Cami Winegarner, Audra Sanders, Amber Ramon
- 9-10 boys 200 m Medley Relay
 - 3rd - 3:45.44, Landon Miller, Brandon Hataway, Josh Schumann, Cody Brooks
- Open girls 400 m freestyle
 - 3rd - Kristina Poole, 6:21.68
- 13-14 boys 200 free relay
 - 1st - Spearman A - 2:09.86, Martin Sanders, Phillip Sanders, Greg Elliott, Brent Collins
 - 4th - Spearman B - 2:32.14, Derrick Burnett, Jeremy Sutterfield, Josh Winegarner, Cody McLeod
- 15-18 girls 200 free relay
 - 1st - 2:24.59, Jessica Woolley, Suzanne Sanders, Sonya Nitschke, Sarah Sanders
- 11-12 girls 50 freestyle
 - 2nd - Brooke Trantham, 36.83
- 6th - Michelle Elliott, 37.81
- 11-12 boys 50 freestyle
 - 4th - Dillon Miller, 36.52
- 13-14 boys 50 freestyle
 - 1st - Phillip Sanders, 28.24 (pool record)
- 6th - Brent Collins, 33.80
- 15-18 girls 50 freestyle
 - 1st - Suzanne Sanders, 33.27
 - 5th - Jessica Woolley, 35.87
- 11-12 girls 50 butterfly
 - 2nd - Brooke Trantham, 40.99
- 11-12 boys 50 butterfly
 - 2nd - Kevin Baker, 40.19
- 13-14 boys 100 butterfly
 - 1st - Phillip Sanders, 1:13.22

- 3rd - Brent Collins, 1:34.64
- 4th - Derrick Burnett, 1:43.70
- 5th - Josh Winegarner, 1:49.37
- 11-12 girls 50 backstroke
 - 5th - Michelle Elliott, 44.70
- 11-12 boys 50 backstroke
 - 1st - Kevin Baker, 41.63
 - 3rd - Dillon Miller, 48.61
- 13-14 boys 100 backstroke
 - 5th - Greg Elliott, 1:43.84
- 15-18 girls 100 backstroke
 - 1st - Suzanne Sanders, 1:27.80
 - 11-12 girls 50 breaststroke
 - 2nd - Brooke Trantham, 47.74
 - 5th - Michelle Elliott, 49.44
 - 13-14 girls 100 breaststroke
 - 3rd - Kristina Poole, 1:43.07
 - 13-14 boys 100 breaststroke
 - 3rd - Greg Elliott, 1:36.60
 - 4th - Cody McLeod, 1:42.19
 - 11-12 girls 100 breaststroke
 - 1st - Jessica Woolley, 1:36.26
 - 13-14 girls I.M. (200 m)
 - 2nd - Kristina Poole, 3:27.86

- 13-14 boys 200 m I.M.
 - 1st - Josh Winegarner, 3:26.73
- 15-18 girls 200 m I.M.
 - 1st - Suzanne Sanders, 3:15.39
- 11-12 girls 100 freestyle
 - 3rd - Brooke Trantham, 1:23.70
- 11-12 boys 100 freestyle
 - 2nd - Kevin Baker, 1:18.60
 - 5th - Dillon Miller, 1:26.78
- 13-14 girls 100 freestyle
 - 3rd - Kristina Poole, 1:25.12
- 13-14 boys 100 freestyle
 - 1st - Phillip Sanders, 1:04.49
 - 4th - Martin Sanders, 1:15.56
 - 5th - Brent Collins, 1:18.47
- 11-12 boys 200 freestyle
 - 3rd - Kevin Baker, 2:57.99
- 13-14 girls 200 freestyle
 - 2nd - Kristina Poole, 3:04.16
- 13-14 boys 200 freestyle
 - 1st - Martin Sanders, 2:48.27
 - 2nd - Josh Winegarner, 3:03.03
- 11-12 girls 200 Medley Relay
 - 4th - 3:16.16, Candice Pipkin, Brooke

Trantham, Amy Murray, Michelle Elliott

11-12 boys 200 Medley Relay
4th - 3:34.02, Kevin Baker, Dillon Miller, Derek George, David Zabin

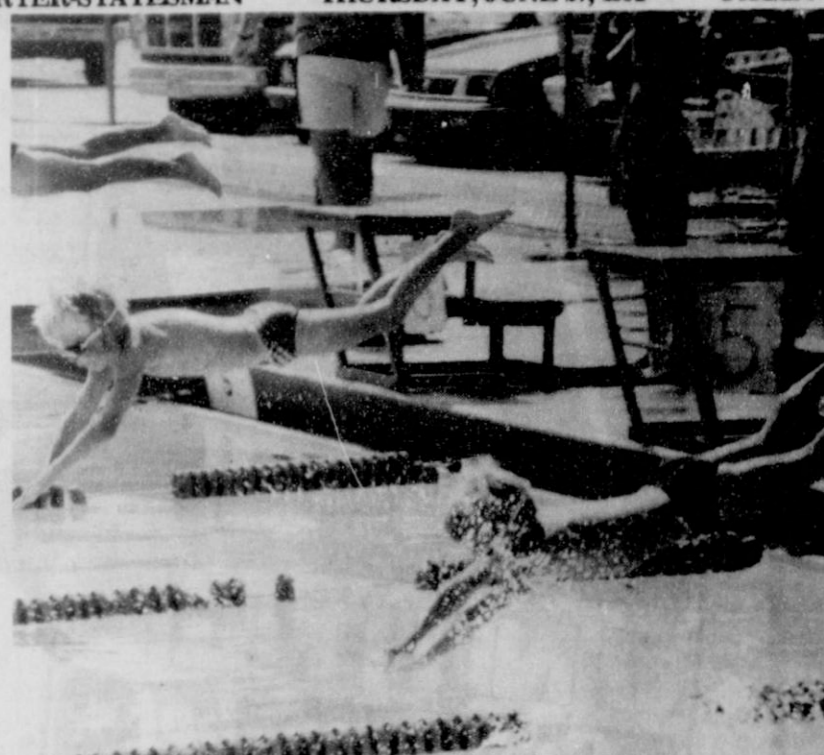
13-14 boys 200 Medley Relay
1st - Spearman A - Martin Sanders, Phillip Sanders, Greg Elliott, Brent Collins

3rd - Spearman B - Jeremy Sutterfield, Derrick Burnett, Josh Winegarner, Cody McLeod

15-18 girls 200 Medley Relay
1st - Suzanne Sanders, Jessica Woolley, Sonya Nitschke, Sarah Sanders.

Teams at the Spearman meet were Spearman, Garden City, Kan.; Guymon, Okla.; Ulysses, Kan.; and Cimarron, Kan. Spearman placed 3rd in the meet.

Next swim meet will be July 6th at Lakin, Kan.



John Brock and Travis Brown hit the water for the boys' 8 and under 25 meter breaststroke event.

Instructors course scheduled

PERRYTON - The Ochiltree County Chapter of the American Red Cross will conduct a Water Safety Instructor course beginning July 1 and running July 2, 8, 9, 11, 12, 15, 16, 18 and 19. The classes will be held at the Perryton & Vicinity Activity Center, 1201 S. W. 15th.

Prerequisites are: minimum of 17 years old; possess a current new American Red Cross Emergency

Water Safety or Lifeguarding certificate; possess a current Instructors authorization in a American Red Cross course or an Introduction to Health Services Education certificate issued within one year prior to the date of the instructors course. (This will be taught on the first night of class July 1); successfully complete the written and skills satisfactorily and in accordance with established skills standards.

Course length is approximately 36 hours. Recovery cost for the Introduction to Health Services course on July 1 will be \$12.50. Recovery cost for the Water Safety Instructor course will be \$40. Persons interested in attending should call the Red Cross office at 435-8175 weekday mornings to sign up. At least five participants are required to conduct the courses.

HENSON CHIROPRACTIC

410 S. Davis Spearman, TX
Call For Appointment 659-5603

Office Hours: Mon., Wed., Fri. 8:30-5:00
Tue., Thu. 8:30-11:30

AUCTION

— FARM EQUIPMENT —

Bruce Johnson Estate

Sat., June 29 — 10:30 a.m.

LOCATION: From Perryton, TX: 7 1/2 Mi. N on Hwy. 83, then 3 mi. E on Gravel Road, Then 1 mi. N. — Watch For Signs.

NOTE: Tractors, Combine, Truck and Cars Have Been Shredded.

TRACTORS — COMBINE

- 1—1982 IH 5288, Synchro Tri-6 Shift, DH, 18.4x38 Rubber, (Only 705 Actual Hours), Excellent.
- 2—CASE LA Tractors, LPG.
- 2—Gas Tanks & Heads For Above LA Tractors.
- 1—JD Model 55 Combine, Hercules Engine.
- 1—12' Sickle For Above Combine.

LIVESTOCK

- 1—Dehorners.
- 1—25-Gal. Branding Propane Bottle.
- 2—Rolls Barbed Wire.
- 2—Rolls Smooth Wire.
- 2—Calf Blabs.
- 1—2 Hole Pig Feeder.

TRUCK — CAR

- 1—1947 CHEVROLET 2 T Truck, 6 Cyl., 4 sp., Carousel Windows, Saddle Tank, New Rubber On Rear, Good Paint.
- 1—1965 FORD Galaxie 500, 4 dr., 352 V8, A/T, A/C.

LUMBER—SHOP—TOOLS

- 90—14' — 1x8's.
- 21—16' & 18' — 2x4's.
- 1—Lot Asst. Lumber.
- 1—Lot Tin.
- 1—Lot Shop Tools & Equipment Including Anvil, Vise, Avery Jack, Come-A-Longs, Boomers, Pipe Wrenches, Prybars, Hammers, Ratchets, Sockets, Screwdrivers, Wrenches, Buckets, Funnels, Etc.
- 1—120 Compartment Bolt Bin.
- 1—Lot Asst. Bolts, Nuts & Washers.

EQUIPMENT

- 1—CASE 480 24' Tandem Disc, Dual Carriers, CC, Spring Loaded Manual Fold Up.
- 1—RICHARDSON 3x5 Sweep, Pickers, Coulters, CC.
- 1—JD Model 970 15" Oneway, Levers.
- 1—JEFFROY 12' Chisel, LC, Levers.
- 2—DEMPSTER Model 21 Drills w/Hitch & Marker.
- 1—24' Grain Auger w/Briggs Engine, Shaft Drive.
- 1—NOBLE 3 Disc Marker.

NON-CLASSIFIED—ANTIQUES

- 500 Gal. Propane Tank.
- 500 Gal. OH Tank & Stand.
- Approx. 25 Gal. 30 Wt. Oil.
- 100 Gal. Nurse Tank.
- 2—Hand Pumps.
- Lubricants
- Asst. Tires & Wheels.
- Wheel Barrow.
- Doghouse.
- Measuring Wheel.
- Log Chains.
- SERVEL Gas Refrigerator.
- Wash Tubs.
- Antique Wrenches.
- Corn Shelter.
- Cobblers Last & Stand.
- 5 & 10 Gal. Crocks.
- 2—Galvanized 55 Gal. Drums.
- Footlocker.
- Metal Toys.

NOT RESPONSIBLE FOR ACCIDENTS.

DENZEL TEVIS

AUCTION & REALTY

P.O. Box 861
Perryton, Texas 79070
(806) 435-2768
TXS-7498

SNICKERS, MILKY WAY, 3 MUSKETEER
ICE CREAM BARS 2 OZ.

BOYER MALLO CUP, SMOOTHIE, PEANUT BUTTER CUP
CANDY BARS MIX OR MATCH

3 \$1 FOR

PENNY SMART BATHROOM TISSUE 79¢
4 Roll Pkg.

ASSORTED FLAVORS JUICES
OCEAN SPRAY 10 OZ. BTL.

59¢

ALL TYPES COCA-COLA
6 PACK-12 OZ. CANS
\$2.09

FREE!

DECKER NEW ZIPLOCK PACKAGE
COOKED HAM 10 OZ. PKG.

\$1.99

SWEET & LOW 3 1/2 Oz. Box **\$1.69**

DELI EXPRESS DOUBLE CHEESE BURGER FOR ONLY
\$1.49

APPLE OR ORANGE JUICE
BIG TEX 46 OZ. CAN **\$1.69**

7-UP, DR. PEPPER OR CHERRY 7-UP
SOFT DRINK BUBBLE GUM 3 FOR **\$1.00**

SURF LAUNDRY DETERGENT 39 Oz. **\$1.99**

HOMOGENIZED ALLSUP'S MILK GALLON
\$1.99

PLAY TODAY

Convenient Cash

Pick Up Your FREE Instant Win Scratch-Off Game Ticket at:

Over **325,000 Chances to win CASH, FREE PRODUCTS & FREE FOOD**

SHOP & SAVE

305 W. KENNETH, SPEARMAN
101 MAIN, GRUVER

ALWAYS THE BEST PRODUCTS AT THE BEST PRICES!

PRICES EFFECTIVE JUNE 27-JULY 2

WINNERS

\$1,000⁰⁰ WINNER:
WILLIAM HATCHER, ROSWELL, N.M.

\$100⁰⁰ WINNERS:
RODNEY N. COLE, HOBBS, N.M.
SHIRLEY MITCHELL, COLEMAN, TEXAS
JOANNE TRUJILLO, ALBUQUERQUE, N.M.
EUGENE HUDSON, ABILENE, TEXAS
WILLIAM HELD, HOBBS, N.M.

GAS FOR A YEAR:
ROCKY SMITH, PADUCAH, TEXAS

Berry Cleaners will be Closed

Monday, July 1 - Saturday, July 6 for Vacation.

Thank You for your Patronage.



Berry Cleaners

DAN DESIMONE - OWNER
Phone 659-3122 • P.O. Box 1017 • 207 Main St.
SPEARMAN, TEXAS 79081

Enter Our Second Chance Sweepstakes and Cruise The Caribbean

OR Be one of 9 lucky people who will win **FREE GAS FOR A YEAR*** (*8 Gallons a week for 52 weeks)

7 Day Cruise For Two Can Be Yours (a \$5000 Value) With \$300 Spending Money!

NO PURCHASE NECESSARY See Store For Complete Rules And Odds



GOOD THRU JULY 2ND
IN PERRYTON ONLY.

**Vlasic
Sweet Relish**



16 oz. **\$1.19**

**Betty Crocker
Specialty Potatoes**
Assorted



.89

**Hi-C
Boxed Drink**



Assorted 3 pak **.69**

**French's
Squeeze
Mustard**



16 oz. **.99**

**Fine Fare
Honey Nut
Oat
Cereal**

14 oz. **\$1.39**

**Nabisco
Nilla Wafers
& Cinnamon
Wafers**

12 oz. **\$1.79**

Double Coupons

7 days a week
See Store for details

GROCERY

QUANTITY RIGHTS RESERVED—NO SALES TO DEALERS

**Armour
Vienna Sausage**



5¢ off label
5 oz. **.39**

**Hunt's
BBQ
Sauce**



18 oz. **.79**

**Ranch Style
Pork 'N
Beans**



15 oz. **3 for \$1**

**Folgers
Coffee**



Assorted Grinds

13 oz. **\$1.89**

the personal touch



Dr. Barry Thompson, president of West Texas State University at Canyon, was in Spearman on Monday to visit with alumni and friends of the university. A reception in his honor was held at First State Bank's Hospitality Room. He told the gathering about his plans for West Texas State University and outlined what he wants for the school in the future, as he asked for involvement by local residents.

**Group wants more
Pantex information**

Occasionally citizens are called upon to square up stated public policy with their own core belief system. This is such a time. Some of our officials, on our behalf, have asserted a public policy position that we think is indefensible on economic, moral, or social grounds. That position is the enthusiastic endorsement of the Pantex expansion based solely upon the Department of Energy's (DOE) representations of safety.

Operation Commonsense is a coalition that has been formed to voice the concerns of thousands of Panhandle citizens who are not yet ready to jump on the Pantex bandwagon. We are calling for an independent assessment of the risks presented by the activities, after they have been fully disclosed. Simultaneously, we want to create a public awareness of the nature of the proposed expansion. We are not against Pantex, the expansion, jobs, or growth. We are withholding our support or endorsement pending a careful evaluation of the safety and environmental risks. We are calling all citizens to be mindful of potential risks to agriculture, the backbone of our economy. Finally we want a county by county referendum to either ratify or reject the project.

The position of supporting a hasty endorsement of the expansion seems driven by the high economic stakes set forth by the DOE. They have informed us that we need to wholeheartedly endorse the project or they may have some bad news - Pantex may be shut down. This has resulted in actions that have

GUEST COLUMN

by W.H. O'Brien

no foundation in carefully reasoned thought. Even though they acknowledge there is an uncontested series of environmental disasters haunting the DOE's past and even though it is likely that the expansion will involve plutonium handling or storage (the world's dirty linen) and even though they may not have a veto right later if they endorse now, they nevertheless believe it will be safe based solely on blind faith. This is the ultimate triumph of hope over experience. Furthermore they believe they can stop this process at will, even though people in Nevada tried to stop Yucca Mountain (a nuclear dump site) and couldn't. To stop this project if the DOE wants it, will literally require an act of Congress.

Officials often mention the new "culture of openness" at the DOE, yet we are told that we can not see our own proposal because the DOE insists it must be kept secret. We need to be assured the proposal provides a ban on nuclear materials and waste storage, as our state legislators outlined in their resolution. We also need to see how our officials plan to evaluate the safety risks of the project before we make our final decision. A recent newspaper article tells us that the DOE's assistant director of operations at Rocky Flats said they will be reopening operations even though they have not conformed to their own promise to comply with certain safety and environmental guidelines - not faith building news to Panhandle residents.

There is commonsense in the Panhandle. We all want safe growth. We all recognize the responsibility our government has to provide a sound defense policy that will protect us from ill-intentioned aggression. We all want the Panhandle to be a desirable place to live. However, there remains a body of fact that cannot be ignored and is expressed by the chief safety expert for the DOE, when he says, "Severe deficiencies in equipment, employee training, management, and safety, that have crippled the Savannah River and Rocky Flats plants are endemic in the nation's nuclear weapons industry." This observation was reinforced by Representative David Skaggs in an interview with the Denver Post when he said, "I have reluctantly come to the conclusion the Energy Department cannot demonstrate that an adequate margin of safety exists in plutonium operations."

It is because we share these common beliefs that it is absolutely critical that all citizens of this area become knowledgeable of this issue. As information is disclosed and evaluated, we are calling for a citizens committee to report on their recommendation to the public. They may seek the assistance of various experts in different fields as needed. Operation Commonsense calls on all citizens of this area to find out what is being proposed and the risks of those activities before endorsing the project. We ask the DOE to disclose a sufficient amount of information so the citizens of the Panhandle can make an informed decision. After that information is released and evaluated we recommend a county by county referendum.

City officials claimed these enthusiastic endorsements were needed to make the "short list." We now know there is only a short list, even though proposals were solicited from all over the country. In a time of recession when many communities are hungry for jobs and growth, no one outside the weapons plant locations, wanted this project even though it offered hundreds of millions of dollars in payroll annually, billions in constructions, and thousands of jobs. We need to put the burden of proof on the DOE to convince us the activities they propose are safe. We shouldn't accept this project on blind faith.

(W.H. O'Brien is a lifelong resident of Amarillo. He is the managing partner of Texas Beef Group, an integrated cattle company located in Amarillo with ranching and cattle feeding operations throughout the Panhandle. O'Brien graduated from Vanderbilt University in 1964 and is married to Alice O'Brien, who currently serves as president of the AISD school board. They have three children: Blake, who graduated from Davidson College in 1989 and is currently engaged in ranching; Alex, who is a junior at Stanford University; and Katherine, who is a junior at Tascosa High School.)

Editor's note: The opinions expressed in this guest editorial are those of the writer and do not necessarily reflect the opinions of the Reporter-Statesman, its management or staff.



According to one study, a mere nine words: and, be, have, it, of, the, to, will and you; account for a quarter of those used daily by most English-speakers.



Santiago Cerenil, part of the yard maintenance crew at Caprock Feedlot No. 2 (left), receives a service award from Pat O'Connell, manager, naming Cerenil as Quality Employee of the Year. Cerenil was nominated by his peers and was chosen for the award based on the quality of his work, his attitude toward his job, and his participation in the ongoing quality improvement process at Caprock No. 2.

Lookin' Back

5 YEARS AGO...

Thursday, June 26, 1986

April Pearcy Heitz was named to the President's List at West Texas State University with a grade point average of 4.00. She was the valedictorian of her eighth grade class of 1977 with a grade point of 98.068 and of her Spearman High School graduating class of 1981 with a grade point of 97.171. She is the daughter of Mr. and Mrs. Edwin Pearcy.

10 YEARS AGO...

Thursday, June 25, 1981

More than 5,200 students at Texas Tech qualified for the dean's list. They include nine Spearman residents. They are Scot Meek Martin, James Mark Fox, Shari D. Fox, Christine R. Collier, Steven R. Goff, Paige L. Mitchell, John R. Reneau, Kyle S. Beedy and Roy A. Uptergrove.

15 YEARS AGO...

Thursday, June 24, 1976

Steven Scott Latham and Steven Anthony Reed have been named to the Dean's List at McMurry College in Abilene.

Latham is a 1973 Spearman High School graduate and the son of Mr. and Mrs. O.R. Latham. He is a physical education major.

Reed is also a 1973 SHS graduate. He is the son of Mr. and Mrs. Carl E. Reed and is a political science major.

20 YEARS AGO...

Thursday, June 24, 1971

Eddie Martin, son of Mr. and Mrs. J.H. Martin, will perform the role of Archie Dyer during the sixth season of the musical drama, "Texas." As a student at Spearman High School he was president of the choir, president of FFA and senior class favorite. He has also performed in such productions as "Our Town" and "Child Buyer" at West Texas University and he also plays the organ in the Faith Student Choir.

Hansford County

provided by
Keith Martin

ASCS News

COLLEGE STATION - Jerry D. Harris, chairman of the Texas State ASC Committee, announced that over 150 Texas employees of the Agriculture Stabilization and Conservation Service were in Washington receiving awards from the Administrator of ASCS for outstanding and meritorious service to ASCS and the farmers and ranchers of Texas.

The group met with members of Congress including Senator Phil Gramm and House Agriculture Committee Chairman Kika de la Garza. Other congressmen addressing the group were Jim Chapman, Larry Combest, Chet Edwards, Greg Laughlin, Bill Sarpius, and Charles Stenholm.

Senator Gramm said, "Each year, ASCS employees find their work made more difficult by the increasing complexity of our farm programs. It really says something that 150 of our Texas ASCS employees overcame every hurdle and served the public so efficiently that they received the highest honor ASCS can bestow for excellence in service."

Kika de la Garza, chairman of the House Agriculture Committee, also gave high praise to the award recipients. Chairman de la Garza stated "We here in Washington have just honored one group of American heroes returning from the Persian Gulf. Now we honor a group of people who serve in agriculture, America's first line of defense. They have demonstrated superior qualities and as such are held in high esteem for their service to agriculture and their country."

In closing, Senator Gramm commented, "With the continued dedication and diligent effort of these employees, ASCS will continue to ad-

minister farm programs that all citizens can be very proud of."

Harris explained that the awards are presented annually by the Administrator of ASCS to recognize those employees whose exemplary performance of duties provided outstanding service to ASCS and American agriculture. The Administrator's Award for Service to Agriculture is the highest recognition that ASCS can give any individual or group of individuals.

In addition to other employees, the Texas State ASC Committee is being recognized for its management effectiveness and improvements. Chairman Jerry D. Harris is a cotton and grain sorghum producer from Lamesa. Other members that make up the committee are Mrs. Hope Huffman of McGregor, Dale Hunt of Garwood, D.V. Guerra Jr. of Edinburg, and Keigh Spears of Vernon. The panel oversees activities of the ASCS organization throughout Texas.

Harris noted that ASCS provides service to all Americans by administering farm programs that ensure an adequate supply of food and fiber at a reasonable cost.

"Texas ASCS employees are among the best in the nation. In 1990 over 100 Texas ASCS employees were recognized by the Administrator and here again in 1991, over 150 ASCS employees are being recognized for their outstanding service to the country," he said.

Harris added that "the Texas State ASC Committee is proud to be a part of such a dedicated and professional group and hopes that all Texans will share in the recognition of these employees."

Oil & Gas Reporting Service

Box 2052 Pampa, TX 79065

Providing the Oil & Gas Report
for Hansford County Readers

Doris Harrison

Phone 665-5800

Disabled can work and get benefits

by Virginia DeWitt
SSA branch manager

PAMPA - People with disabilities may work and still receive Social Security disability benefits or Supplemental Security Income (SSI) disability payments. And they may be able to earn more than they think under changes in the law.

The law has changed considerably in recent years and many people may not be aware of how much they can earn and still keep their cash benefits and Medicare or Medicaid coverage.

Special rules, called "work incentives," are designed to continue cash benefits and health care assistance, help with special work expenses caused by the disability, and provide rehabilitation and training to help people re-enter the workforce. The rules are different for Social Security and SSI, but under both programs they are designed to provide the support and assistance a person needs while attempting to work in spite of a disability.

A beneficiary who returns to work gets a "trial work period" of nine months (not necessarily consecutive) during which he or she can earn any amount without current benefits being affected. After the trial work period, benefits will stop if average monthly earnings exceeded \$500. However, there is a 36-month "extended period of eligibility" during which a person may receive a benefit for any month earnings fall below \$500. Medicare may continue for at least 39 months after the end of the trial work period.

Under SSI, cash payments continue as long as a person does not exceed the SSI income limits. In addition,

Medicaid may continue after cash payments stop if a person needs the Medicaid in order to work and is unable to afford similar health care coverage.

SSI does not count the first \$65 of earnings and only half of earnings over that. Because of the earnings exclusion, a person could earn as much as \$899 and still receive a partial Federal SSI payment. (In states that supplement the Federal SSI payment, the total earnings permitted may be higher.)

Under both programs, work expenses related to the disability - such as a seeing eye dog, a special typewriter, or a specially-equipped car to get to and from work - may be deducted in figuring if your work affects your benefits, even if they are also useful in regular daily activities.

Under both programs, disabled beneficiaries are referred to state vocational rehabilitation agencies for training. Benefits continue for disabled people who medically recover while involved in an approved vocational rehabilitation program until the program is over.

"Using these work incentives, people find that their total income is usually greater by working than by not working. And may find that their earnings increase to the point where they are no longer dependent on their disability benefits."

For more information or to make appointments please call our toll-free telephone 1-800-234-5772. The local Social Security office is located at 125 S. Gillespie, Pampa, Texas. Office hours are 9 a.m. until 4:30 p.m. Monday through Friday except on national holidays.



Most of the 100 million meteors that enter the Earth's atmosphere each day burn up and filter down to Earth as dust. The total weight of this dust that falls in one year is estimated to be four million tons.



IN CASE OF AN EMERGENCY, WILL WE BE ABLE TO FIND YOU?

In preparing to establish 9-1-1 service in your area, the Panhandle Regional 9-1-1 Network, in conjunction with local emergency service providers, is asking all residents and business operators to complete and return this form.

The information you provide will aid emergency service personnel in locating your residence or business operation and out precious seconds or minutes of their response time. The information will be very beneficial in finding rural locations since many homes are generally not numbered and many rural roads are unnamed. The information should be periodically updated by the resident and/or business operator when changes occur.

The information will remain strictly confidential. It will only be used when responding to a 9-1-1 emergency call.

The following should be considered before completing and returning the form:

1. If you have a telephone located elsewhere than just your business or residence, note this in the COMMENTS section. If it is a different number and within the vicinity of your residence, list that number also.

Include the children's number if different from your own.

2. When giving directions from the nearest city, rural residents should give the highway number and begin routing directions from the city limits marker on that highway. If bad weather frequently causes the normal route to be impassable, include an alternate route.
3. In the COMMENTS section, list any circumstances or situations that would be helpful in responding to an emergency, such as health problems, guard dogs, locked gate, flammable material, etc.
4. If you wish, include nearest relative or friend to contact in an emergency situation, including name, address and telephone number in the COMMENTS section.

Mail the completed form(s) to:

PANHANDLE REGIONAL 9-1-1 NETWORK
P.O. BOX 9257
AMARILLO, TEXAS 79105

Additional information may be attained by contacting your local law enforcement agency or by calling the Panhandle Regional Planning Commission at (806) 372-3381.

9-1-1 SERVICE WILL BE AVAILABLE IN THE SPEARMAN, GRUVER, GUYMON AND HARDESTY EXCHANGES IN SEPTEMBER 1991.

9-1-1 INFORMATION FORM

Please complete the following questionnaire for each telephone number.

Telephone Number: _____ Class of Service: _____
(Business, Residence, Mobile, Coin)

Name: _____

Mailing Address: _____

City: _____ County: _____

Location (Rural residents should give directions from nearest city using existing highway intersections as landmarks): _____

Comments (Provide any information emergency personnel should know about the location, such as health problems, guard dog, locked gate, etc.): _____



Good for You Have a safe & happy celebration

FNB of Spearman will be closed Thurs., July 4



First National Bank
729 W. 10th • Spearman, Texas
(806) 659-5544

Hospital Notes

ADMISSIONS

Thursday, June 20 - Carolyn Murphy
Friday, June 21 - Sondra Backus, Rodney McDowell
Saturday, June 22 - Gene Reynolds
Sunday, June 23 - none
Monday, June 24 - Thelma Mitchell, Jewel Turner, Ruth Skinner, Willie Vasquez
Tuesday, June 25 - none

DISMISSALS

Thursday, June 20 - none
Friday, June 21 - Virginia Trindle, Robert Blount
Saturday, June 22 - Sally Balentine
Sunday, June 23 - none
Monday, June 24 - Sondra Backus, Carolyn Murphy, Gene Reynolds
Tuesday, June 25 - none

PATIENT CENSUS

Wednesday, June 26 - Thelma Mitchell, Jewel Turner, Ruth Skinner, Willie Vasquez, Rodney McDowell

CELEBRATE...

JULY 4TH

...WITH SPECIAL SAVINGS

30% - 50% OFF Selected

★ Tamaridge Ladies Sports Wear
★ Rocky Mountain Jeans

Our Summer Clearance Sale Starts Thursday, July 27th!

★ Woolrich Shirts & Shorts
★ Jockey Sports Wear

THE BUNKHOUSE

212 Main Spearman 659-2476

JULY 4th

BLAST

SIDEWALK SALE

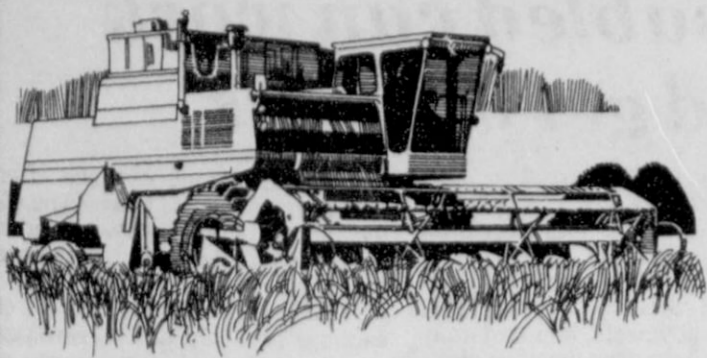
South End of Main Street in

GRUVER

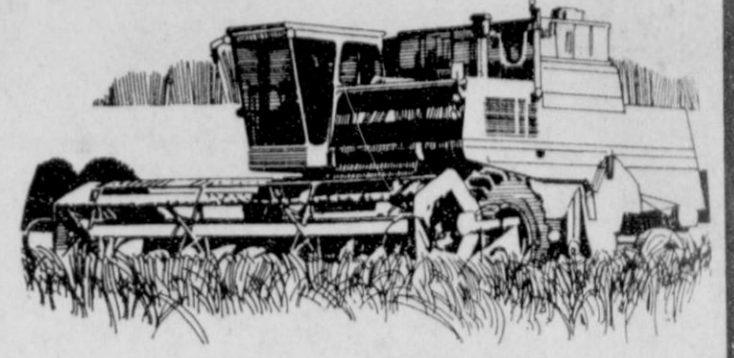
Starting at 8:30a.m.

Come Celebrate the 4th with us.

B.J.'s Petal Patch
G&G Foodliner
Main Street Store



HARVEST SALE



We've got a "Bumper Crop" of very nice "Factory Program" cars & late model used cars & trucks! We've cut our prices, so that you can reap the savings! All of our used cars & trucks from both dealerships will be located at Hergert Ford, 2322 S. Main, in Perryton. We have over 60 vehicles in stock with more trade-ins arriving daily. If you are looking for a nice used car or truck for yourself or a great school car for your son or daughter, then check our inventory. For your shopping convenience we have GMAC, Ford Motor Credit and bank financing available...(we have been known to take cash too!) Open Saturdays until noon.



***91 Lincoln Town Car 4-Dr. - 3 To Pick From!**

White (grey leather) 5,500 miles, white (red leather) 14,000 miles, silver rose (burgundy cloth) 13,900 miles! Keyless entry, Lincoln mags & Michelings, power seats, windows, locks, tilt, cruise, AM/FM cassette, defogger & more. * Balance of 4 yr./50,000 mile warranty remaining..... **YOUR CHOICE \$24,900.00**

***91 Lincoln Town Car 4-Dr. - 2 To Pick From!**

Charcoal (burgundy leather) 14,000 miles, dark met. blue (grey leather) 11,000 miles! Lincoln mags & Michelings, power seats, windows, locks, tilt, cruise, AM/FM cassette, defogger & more! *Balance of 4 yr./50,000 mile warranty remaining..... **YOUR CHOICE \$23,900.00**

***91 Taurus GL Station Wagon 4-Dr. - Dove Grey (Red Cloth)**

Only 7800 miles! 3.8 V6, Mag wheels, luggage rack, third seat, windows, locks, tilt, cruise, AM/FM stereo & more. ... **CASH \$15,950.00**

***91 Taurus GL 4-Dr. - Crystal Blue (5100 miles)**

Gold (16,000 miles)
V6, mags, windows & locks, tilt & cruise, AM/FM stereo, rear defogger. **YOUR CHOICE \$13,900.00**

***91 Thunderbirds - Met. Red (8,800 miles)**

Bright Red (8,500 miles)
3.8 V6, power bucket seats, windows & locks, tilt, cruise, AM/FM stereo, rear defroster. **YOUR CHOICE \$13,900.00**

***91 Mercury Sable GS 4-Dr. - Light Crystal Blue (Blue Cloth)**

Only 6,500 miles! 3.8 V6, mags, windows, locks, tilt, cruise, AM/FM stereo, rear defogger. **CASH \$13,900.00**

***91 Mercury Cougar LS 2-Dr. - White (Burgundy Cloth)**

Only 15,000 miles! 3.8 V6, power bucket seats, windows, locks, tilt, cruise, AM/FM, rear defogger. **CASH \$13,900.00**

***91 Tempo GL 4-Dr. - Bright Red (Burgundy Cloth)**

11,000 miles! 4 cyl. EFI, auto, air, windows, locks, tilt, cruise, AM/FM cassette, rear defogger..... **CASH \$9,250.00**

*Balance of factory warranty transferrable automatically.

***91 Ford 1/2 Ton 4x4 Explorer XL - Silver (Burgundy Cloth)**

Only 8,000 miles! 4.0 V6, auto, air, tilt, cruise, windows, locks, AM/FM cassette, rear defogger, luggage rack. **CASH \$18,900.00**

***91 Ford Aerostar XLT Extended Van - Light Sandtone/Brown**

Only 11,400 miles! Just in time for vacation! Mag wheels, luggage rack, lumber seats, center & third seats, rear air, windows, locks, tilt, cruise, AM/FM cassette, rear defogger. **CASH \$17,900.00**

***90 Lincoln Town Car - Adobe Beige (Tan Cloth)**

Only 10,000 miles! Power seats, mags & Michelings, AM/FM cassette, rear defogger & more! **CASH \$19,995.00**

***90 Lincoln Continental 4-Dr. - 2 to choose from!**

Crystal blue (blue leather) 10,500 miles, Gold (tan leather) 15,000 miles. 3.8 V6, leather power seats, AM/FM cassette, defogger..... **YOUR CHOICE \$18,900.00**

***90 Mercury Grand Marquis LS 4-Dr. - Light/Dark Woodrose**

Only 25,000 miles! We sold new! Formal coach roof, power seats, windows, locks, tilt, cruise, AM/FM cassette, mags & Michelings! **CASH \$13,950.00**

***90 Mercury Topaz & Ford Tempo 4-Dr. 3 to pick from!**

Tan, white, topaz (10,000 miles) Dark Blue Tempo (10,000 miles) mag wheels, auto, air, tilt, cruise, AM/FM cassette, rear defogger..... **YOUR CHOICE \$8,250.00**

88 Lincoln Continental 4-Dr. - Gold (Tan Cloth)

Only 43,000 miles! 3.8 V6, power seat, windows, locks, tilt, cruise, AM/FM cassette, rear defogger. **CASH \$13,900.00**

88 Chevy 1/2 Ton Scottsdale - Light Sandtone/Brown

305 V8, auto, air, tilt, cruise, AM/FM stereo. New steel radials, rally wheels. **CASH \$7,950.00**

87 Ford 3/4 Ton 4x4 XLT - White/Blue

351 V8, auto, new steel radials, windows, locks, tilt, cruise, AM/FM cassette. Great truck for farm or ranch! **CASH \$8,950.00**

*Balance of Factory Warranty Transferable Automatically.

***91 Cadillac Sedan DeVille 4-Doors - 2 to pick from!**

Light Auburn (leather) 10,000 miles! White (cloth) 9,000 miles! Both are equipped with Michelins & mags, power seats, AM/FM cassette, graphic equal, cruise, tilt & defogger. Balance of 4 yr./50,000 mile warranty with 0 deductible transferrable automatically. **YOUR CHOICE \$23,995.00**

***91 Buick Regal Custom 4-Dr. - Bright Met. Blue (Blue Cloth)**

Only 9,000 miles! V6, Buick mags, power windows & locks, tilt, cruise, AM/FM stereo. Balance pf 3 yr./50,000 mile warranty transferrable automatically. **CASH \$13,995.00**

***91 Olds Cutlass Supreme 4-Dr. - White (Gray Cloth)**

Only 12,000 miles! Olds mags & Michelins. V6, power windows & locks, tilt, cruise, AM/FM cassette, balance of 3 yrs./50,000 mile warranty transferrable automatically. **CASH \$13,995.00**

86 Lincoln Town Car "Signature" White (Blue Cloth)

Only 69,000 miles! Mag wheels, power seats, tilt, cruise, windows, locks, AM/FM cassette, rear defogger, padded roof. **CASH \$8,950.00**

86 Mercury Grand Marquis LS 4-Dr. - Dark Met. Blue (Blue Cloth)

Only 73,000 miles! Mag wheels, power seats, tilt, cruise, windows, locks, AM/FM cassette, rear defogger. **CASH \$7,250.00**

***91 Pontiac Grand Prix LE 4-Dr. - White (Blue Cloth)**

Only 12,000 miles! V6, power windows & locks, tilt, cruise, AM/FM cassette. Balance of 3 yr./50,000 mile warranty. **CASH \$13,995.00**

***91 Pontiac Grand Am LE's - 2 to Pick From!**

Light met. blue 2 dr., 9,600 miles, bright met. blue 4-dr., 8,800 miles. Both are equipped with 4 cyl. EFI, auto, air, tilt & cruise, AM/FM stereo & Michelins. Balance of 3 yr./50,000 mile warranty. **YOUR CHOICE \$9,995.00**

***90 Buick Park Avenue 4-Dr. - Ruby Red (Burgundy Cloth)**

Only 17,000 miles! V6, Michelins, power seats & recliner, tilt, cruise, AM/FM cassette, concert sound & rear defogger. Balance of 3 yr./50,000 mile warranty. **CASH \$16,500.00**

86 Pontiac 600 STE 4 Door - Gold (Tan Cloth)

70,000 miles, V6, auto, air, Pontiac mags, power seats & recliner, windows & locks, tilt & cruise. You must see the stereo on this one! **CASH \$5,950.00**

86 GMC 1/2 Ton Sierra Classic - Charcoal/Red

305 V8, auto, air, tilt & cruise, AM/FM cassette, rally wheels, chrome sunfighter & rails. Only 54,000 miles! We sold new! This one is a real eye catcher! **CASH \$7,500.00**

85 Cadillac FWD Fleetwood Br. - 4-Dr. - Black Cherry Pearlmist

High mileage but looks & runs great! We sold new! Wire wheels, BOSE stereo & loaded with equipment. **CASH PRICE \$6,950.00**

BARGAIN CORRAL

85 Olds 98 Regency Brougham 4-Dr. - Light Met. Blue (Blue Cloth)

Only 77,000 miles! 3.8 V6, wire wheels, new steel radials, BOSE stereo, windows, locks, tilt, cruise, luggage rack. **CASH \$5,250.00**

85 Buick LeSabre Limited 2-Dr. - Creme Beige/Tan (Tan Cloth)

307 V8, Landau top, AM/FM stereo, cruise & tilt. High mileage but looks & runs great. **CASH \$3,450.00**

85 Pontiac Grand Prix Brougham 2-Dr. - 2 Tone Silver

305 V8, Landau top, power seat, windows, locks, tilt, cruise, AM/FM cassette. Good school car! **CASH \$4,250.00**

85 Plymouth Reliant 4-Door - Metallic Blue

Only 67,000 miles! Michelings, 4 cyl., automatic, air, AM/FM cassette. This car would be economical & dependable! **CASH \$2,950.00**

85 Chevy Impala 4-Door - Burgundy (Burgundy Cloth)

4.3 EFI V6, auto, air, tilt & cruise, AM/FM stereo. Only 58,000 miles! This car would make good economical transportation! **CASH \$3,950.00**

84 Lincoln Town Car 4-Dr. - Gold (Saddle Tan Cloth)

302 V8, power seats, wire wheels, AM/FM cassette, cruise & tilt. **CASH \$4,950.00**

84 Chevy 3/4 Ton Tra Tech Conversion Van - Silver/Charcoal

Captain chairs & sofa bed, front & rear air & heat, running boards, rack & ladder, new steel radials. Only 75,000 miles! **CASH \$6,950.00**

84 Buick LeSabre Limited - 4-Dr. - Dark Met. Blue (Blue Cloth)

Only 75,000 miles! 307 V8, wire wheels, power seats & recliner, windows & locks, tilt & cruise, AM/FM cassette. ... **CASH \$3,950.00**

83 Olds 98 Regency Br. - 2-Dr. - Light Met. Brown/Burgundy

Only 78,000 miles! Burgundy cloth, power seats, windows & locks, tilt & cruise, AM/FM cassette. **CASH \$3,500.00**

82 Ford 1/2 Ton 4x4 Bronco - Burgundy/Charcoal

351 V8, auto, air, tilt & cruise, AM/FM cassette, alum mags, customized seat. This is a real eye catcher! Ready to go hunting, fishing, or to pull behind your motor home! **CASH \$3,500.00**

82 Ford 1/2 Ton Conversion Van - Silver/Blue

302 V8, chrome wheels, running boards, AM/FM cassette, air, tilt, cruise, luggage rack. **CASH \$3,950.00**

81 Buick LeSabre 4-Door - Dark Met. Brown/Tan

Only 31,000 miles! This car looks brand new! 4.1 V6, auto, air, tilt, cruise, power seat, AM/FM stereo. **CASH \$4,250.00**

81 Buick Park Ave. 4-Door - Light Met. Brown/Tan

High mileage but great mechanically! Power seats & recliner, windows & locks, tilt & cruise, AM/FM cassette. **CASH \$2,500.00**

81 Cadillac Fleetwood Br. - 4-Dr. - Charcoal

High mileage but great mechanically! Leather power seats & recliner & loaded. **CASH \$2,500.00**

80 Pontiac Trans Am - Black (Tan Cloth)

"Smokey & The Bandit" car! Pontiac mags & great steel radials, windows, locks, tilt, cruise, AM/FM stereo. Economical 301 V8! Good first car for school! **CASH \$2,500.00**

79 Ford LTD Landau 4-Dr. - Pastel Yellow (Tan Cloth)

302 V8, wire wheels, power seat, windows, locks, tilt, cruise, AM/FM stereo. Good work car! **CASH \$1,450.00**

79 Olds Toronado 2 Dr. - White (Red Cloth)

Only 76,000 miles! 350 V8, power seats, windows & locks, tilt & cruise, AM/FM cassette. **CASH \$2,750.00**

78 Mercury Cougar 2-Dr. - Light Turquoise/White

Wire wheels, power seats, windows & locks, tilt, cruise, AM/FM cassette, Landau padded roof. **CASH \$950.00**

73 Chevy Caprice Classic 4-Dr. - Dark Met. Brown/Tan

If you need a good work car in excellent condition, this is the one for you. It's loaded with equipment! **CASH \$1,750.00**

73 Chevy 3/4 Ton Suburban - Almond Tan

This is the work wagon to haul your crew to & from work. Would also make good hunting or fishing wagon! **CASH \$1,250.00**

67 Chevy 2 1/2 Ton Wrecker - Dark Met. Brown/Tan

This is our wrecker we have built up. We no longer need it, but you might! It's stickered & tagged with lights, etc., Tulsa wench, oilfield steel bed, Mr. Goodwrench 350 motor, 4-speed, 2-speed axle, & Imron paint job. It would be excellent for oilfield, farm, ranch, mechanic or body shop business! **CASH \$5,750.00**

48 Ford Flatbed Truck with Portable Sides

This truck has been refurbished & in excellent condition. Like new with very recent overhaul! Looks & runs great! **CASH \$2,000.00**

Hergert Ford
2322 S. Main
Perryton, TX
(806) 435-7676



Don Hergert Motors
420 S. Main
Perryton, TX
(806) 435-3686

•Don Hergert •Darl Hergert •Donnie Hergert •Leo Meyers •Steve Clumsky



WANT ADS Work Wonders!

NOTICE
Deadline to place or cancel classified line ads is Tuesday noon for Thursday insertion.
CLASSIFIED RATE
\$4.00 first insertion
\$3.00 each additional insertion (30 words or less)
13¢ each word over 30
Legal Notices: 15¢ per word
Ads must be paid in full in cash before publication, unless advertiser has established credit with the Reporter-Statesman.
Payment for out of state classifieds must be in the form of a money order or cashier's check.
No tearsheets provided for classified ads.
Tearsheets provided on request for legal notices.

REAL ESTATE

FOR SALE 3 bdr, 1 1/2 bath, pier & beam foundation, new atrium door, large Morgan storage building, in a great neighborhood. Priced to sell. 659-3057.
S32-RTN

SMALL EQUITY -Low interest assumable loan. Nice three bedroom, two bath home. Sunken living room, fireplace, fenced back yard, two car garage. Very nice location for children, 1120 Archer, Spearman. Call 659-2306.
S32-RTN

FOR SALE: 3 bedroom brick house on 1 1/2 lots, very nice on the inside. Reduced to \$28,500. Call 659-2024.
S32-4tp



GOLDEN SPREAD REALTY

Janye Helton Pointer, Broker Owner, 435-5444
Jennifer Nollner, Sales Associate 659-5243

200 Airport Road - Steel building w/office, large overhead door & concrete slab!

821 Dessen - 5/2, lots of house for the money! Call today!

515 S. Bemice - 4/1 1/4, extra large lot & close to school!

18 S. James - 3/2, extras include basement and large building in back!

605 Archer - 3/2, large rooms plus deck and hot tub!

515 Evans - 3/2, two story with all the amenities!

704 Wilbanks - 3/1 1/4, call for details on this Farmers' Home property!

505 Haney - 3/1 1/4. New listing! Sell or rent!

611 S. Evans - 3/1 1/4, affordable!

118 Townsend - 4/2, apartment included. Price slashed!

315 1/2 N. Bemice - Lot for sale!

Barn Off County Road - For sale!

NEW LISTINGS!

13 S. Brandt

1109 S. Haney

14 S. James-U.C.

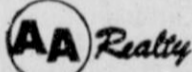
116 S. James

308 S. Hazelwood

312 N. Hazelwood

517 Haney

* and ** trademarks of Century 21 Real Estate Corporation. Equal Housing Opportunity. INDEPENDENTLY OWNED AND OPERATED.



Allen Alford-Broker-659-3034
Julie Martin-Sales-659-2425
Dennis Nelson-Sales-659-3608
Larry Trospen-Sales-659-3491

Office Building-Large-708 Roland
1121 Dessen-Neat-3/1 1/4-garage
715 Steele-Cute-3/1 1/4-garage-REDUCED
526 Townsend-Large-rooms-4/2
Country Home-3/1 1/4-Barns-2 acres
221 S. Barkley-Good Investment-REDUCED

Homes to Show Not Listed
Just Call For Showings

FOR QUALITY & SERVICE CALL US TODAY

Equal Housing Opportunity

REAL ESTATE

FOR SALE: 3 Bedroom, 2 bath home. Sunken living room, parquet floors, fireplace, covered patio, 2 car garage, sprinkler system, 2193 sq. ft. living space, excellent location. Call 659-3587 or 659-5022.
S33-RTN

OWNER MUST SELL: 3 bedroom, 1 1/2 bath, Morgan building, gas grill, hardwood floors. Assumable loan. Call 659-3057 for appointment. 703 E. 2nd.
S35-2tpRTN

NICE HOUSE on 1 1/2 lots. Fence, 3 bedrooms, 1 1/2 baths, study, utility room, lots of cabinet storage, garage, huge driveway, central air/heat, 1500 sq. feet. \$42,000. 727 Wilbanks. 659-3970 or 659-3838.
S24-3tpRTN

BOB HARDY REALTY
803 WILMETH DR.
659-3440

NEW LISTINGS

906 LINN DR. - Qualified buyers only. 4 BR, 2 1/2 Bath, 3 Car Garage, fenced, Sprinkler, Exceptional Quality. Price Reduced - Make Offer. Colorado Property For Sale.

ROBERT HARDY - BROKER

FOR SALE: Large house to be moved. \$35,000 OBO. Call K. Etling 358-0131 days, 374-1662 nights.
S32-4tp

ACREAGE FOR LEASE or sale. Approx. 11 acres grass + stock pens w/water & electric hook-ups. Southeast part of Spearman. 659-2376.
S33-3tp

MOVING - 3 bedroom, 2 bath, double garage, nice landscaping, very good location. May be the house you've been waiting for! Call Julie Martin, 659-2425. AA Realty.
S33-3tp

THREE BEDROOM one bath home, 5 acres and barns, 6 miles north of Gruver, priced to sell. Call 733-5229.
S34-2tp

FOR RENT

ONE BEDROOM FURNISHED house located at 221 S. Endicott. Call Gus McLain at 659-2274 or 659-3256.
S35-RTN

APARTMENTS FOR RENT. One and two bedrooms, furnished. Call J.P. at 659-2117.
S25-2tpRTN

FOR RENT or sale (pay like rent) inexpensive; older 10 x 56 two bedroom mobile home. Ideal for couple with no more than 2 children. Corner lot is completely fenced. 2-car off-street parking slab. 1 block from swimming pool. Close to all schools. Call 659-2954 and leave name and phone number.
S25-RTN

FOR RENT: large mobile home lot, storage bldg., sidewalk and 2-car parking slab. 6 ft wood privacy fence. 1 block from swimming pool and close to schools. Call 659-2954, leave name and phone number.
S35-RTN

MOBILE HOMES

FOR SALE: 16' by 80' mobile home. 3 bedroom, 2 bath, great shape. Must see to appreciate. Call (806) 733-5147.
S34-2tp

Today's Best Buys

SHURFINE SALTINES
16 Oz. Box 79¢
ALLSUP'S CONVENIENCE STORE

TOTAL CEREAL
18 Oz. Box \$3.89
UNITED SUPERMARKET-PERRYTON

KRAFT 1989 BARBECUE SAUCE
18 Oz. 99¢
UNITED SUPERMARKET-PERRYTON

FINE FARE COFFEE
13 Oz. Can 99¢
UNITED SUPERMARKET-PERRYTON

FARM PRODUCTS/ LIVESTOCK

HANSFORD COUNTY FARMERS - Thank you for calling (800) 725-0520 for your corn, milo and hay grazer seed needs.
S33-RTN

AUTOMOBILES

FOR SALE 1987 Olds Regency, 38,000 miles, clean, good as new. Call Anita Anthony after 7 p.m., 659-2819.
S35-1tp

FOR SALE 1987 Cadillac Fleetwood D'Elegance. Like new, only 30,000 miles. Call 659-2687.
S34-RTN

1978 CHEV. SUBURBAN excellent condition. 1977 Chev. Chevette, good shape, \$500. 659-3911.
S34-2tp

PETS

PRECIOUS AKC SCHNAUZER. Shots started and wormed. Two males and two females. Must sell the 29th or before. Will deliver on 30th of June. 6 weeks old. 405-938-2889.
S35-1tp

PERSONAL

IS DRINKING AFFECTING your life negatively? Join us at AA or Al-Anon. Tuesdays at 8 p.m., at 30 Hwy 760 (three blocks south of the Moose).
S35-4tp

MISC. FOR SALE

QUEEN SIZE WATERBED has flotation system with two bladders. See at 11 Glover Place. Also tools and shop equipment for sale. 659-2677.
S35-1tp

40 FT FONTANE float. 1982 28 ft Terry camp trailer. 659-3911.
S34-2tp

NEW TRAMPOLINES

Mats and springs. Resew trampoline mats. Make new boat covers. Call 806-659-2109
Hary Stumpf
301 W. 12th
Spearman, Texas

JAN'S ETC. NEW & USED & ANTIQUES TOO

Everything for home and family. Plains Shopping Center in Spearman. Open Monday - Saturday, 9:30 a.m. til 6:00 p.m.
S16-RTN

HELP WANTED

OPPORTUNITY FOR TEACHER - Financial institution willing to invest in two teachers to train in sales and management. Excellent income and bonuses while you are being trained. Excellent fringe benefits. Write: Manager, Box 602, Perryton, Texas 79070. S34-2tc6.68

SITUATION WANTED

FOR CARPET CLEANING, painting, roofing, mowing and odd jobs. Call Dallas Trospen, 659-3491. Free estimates. I need the work. S34-2tp

WILL DO SPRING cleaning (windows, paneling, garages, etc.) Reasonable hourly rates. Call Ginger, 659-3369, or Laci, 659-5007.
S34-2tp

LOST & FOUND

LOST: 10 heifers weighing around 600 lbs. missing, 17 miles southeast of Spearman. Branded 4 on right hip. Belonging to Beck Bros. Call Verlin Beck at 659-2020 or Ed Beck at 659-5304.
S35-4tp

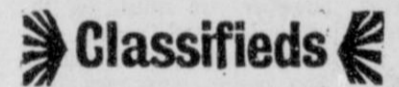
SERVICES

HANDYMAN - YOU WANT it done and can't or don't want to do it yourself!! Call Uncle Ed (Pearson) 659-3328 anytime! House, yard, fence, car, mower, bicycle, air conditioner, etc... Anything!!
S33-3tp

SPEARMAN ELECTRIC - New work and rework. Residential & commercial. All work is guaranteed. Call (806) 659-2636 before 11 a.m. or after 3 p.m.
S33-3tpRTN

CALL YOUR LOCAL Used Cow Dealer for 7 days a week dead stock removal. 659-3544 or 1-800-692-4043. Serving Cattlemen for the Past 20 Years.
G51-RTN

Stay in touch!
with
G&G ELECTRONICS
Callhome USA
*2-way Radio
*Mobile Telephones
*Repeater Spaces
*Pagers
Call Bruce Duncan
(806) 659-3673



GARAGE SALES

GARAGE SALE: Friday, June 28, 9 a.m. to 6 p.m. Saturday, June 29, 9 a.m. to 12 noon. Clothing, some furniture and many more items. 1114 S. Dessen
S35-1tp

GARAGE SALE: 1116 Barkley, Friday, June 28, 9:00 a.m. to 5:00 p.m. Clothes (various sizes), shoes, misc.
S35-1tp

PUBLIC NOTICES

STATEMENT OF NONDISCRIMINATION

North Plains Electric Cooperative, Inc. is the recipient of federal financial assistance from the Rural Electrification Administration, an agency of the U.S. Department of Agriculture, and is subject to the provisions of Title VI of the Civil Rights Act of 1964, as amended, Section 504 of the Rehabilitation Act of 1973, as amended, the Age Discrimination Act of 1975, as amended, and the rules and regulations of the U.S. Department of Agriculture which provide that no person in the United States on the basis of race, color, national origin, age, or handicap shall be excluded from participation in, admission or access to, denied the benefits of, or otherwise be subjected to discrimination under any of this organization's programs or activities.

The person responsible for coordinating this organization's nondiscrimination compliance efforts is Pat McAlister, General Manager. Any individual, or specific class of individuals, who feels that this organization has subjected them to discrimination may obtain further information about the statutes and regulations listed above from and/or file a written complaint with this organization; or the Secretary, U.S. Department of Agriculture, Washington, D.C. 20250; or the Administrator, Rural Electrification Administration, Washington, D.C. 20250. Complaints must be filed within 180 days after the alleged discrimination. Confidentiality will be maintained to the extent possible.
S35-1tc

NOTICE TO BIDDERS

Cafeteria of the Gruver Independent School District is receiving bids for all food items. Vendors interested in bidding should pick up specification sheets from the Business Office, 600 Garrett Street, Gruver, TX. Bid prices will be in effect until December 31, 1991. Bids must be received in the Business Office no later than 4:00 p.m., July 5, 1991. Envelope should be marked "Food Item Bid." Award will be made at the regularly scheduled Board Meeting, July 10, 1991 at 1:00 p.m. in the Board Room of the Gruver High School, 600 Garrett, Gruver.

Are You A Victim of Physical Abuse?

Call Toll Free 1-800-753-5308

We are in Spearman on the 1st and 3rd Wednesdays of each month from 9:30 to 11:30 a.m. Call for an appointment. Also, we can come to Spearman at any time upon request. We also operate a safe place for victims and their children to stay in times of crisis.

Panhandle Crisis Center

Serving Hansford, Lipscomb and Ochiltree Counties
317 S. Main Perryton, TX

Count on the Classifieds to Do the Job

PUBLIC NOTICES

PUBLIC NOTICE NOTICE OF PUBLIC HEARING

TX. The Board reserves the right to accept or reject in whole or part of any and all bids.
S35-2tc

The City of Spearman hereby gives public notice that a public hearing will be held on July 2, 1991, at 10:00 a.m. in the Council Chambers of City Hall, 30 S.W. Court, Spearman, Texas. The Council will consider a resolution to provide for the forfeiture and termination of the franchise agreement with Mission Cable. The resolution will provide for a period not to be less than 60 days to cure the substantial breach of Mission Cable that the City maintains.

This notice is being provided in accordance to Section 28, Paragraph D. of Ordinance No. 573, known as the Mission Cable Television Franchise Agreement.
S35-1tc

Fishing For Results?



Drop Your Line In The Classifieds!

NOTICE Wallace Monument Co. Monuments, Curbing, Grave Covers

1-800-999-9506
Local Representative
LEONARD JAMESON
Spearman, Texas
35s-rtm

ADVERTISING PROVISIONS

- Publisher reserves the right to reject, edit, revise and properly classify any advertisement at his sole discretion.
- Advertiser assumes all liability for advertisements printed pursuant to his instruction and shall indemnify and hold the publisher harmless from and against any and all claims and damages, including all costs incurred by publisher in connection therewith. Advertiser represents that all advertising copy is truthful and not misleading. Advertiser shall indemnify and hold publisher harmless from any claim against publisher arising out of or in connection with publication of advertising (except for modifications made by publisher without Advertiser's approval) including, but not limited to, claims for libel, invasion of privacy, commercial appropriation of one's name or likeness, copyright infringement, trademark, trade name or patent infringement, commercial defamation, false advertising, or any other claim whether based in tort or contract, or on account of any state or federal statute, including state and federal deceptive trade practices acts. If advertiser claims copyright ownership in any of the advertising published, advertiser must include proper notice of its copyright claim in the body of the advertisement, otherwise copyright ownership shall remain in publisher.
- Advertiser agrees to check advertisement in the first issue in which it appears and report any error at once as publisher assumes no responsibility for errors after the first insertion. For any error which is the fault of the publisher and of which publisher has been timely notified, publisher will reprint the corrected advertisement for one extra insertion or refund the proportionate cost of the advertisement containing the error. Publisher shall have no responsibility for errors appearing in the copy submitted by advertiser.

\$\$ CLASSIFIED ADS PAY OFF! \$\$

OSGOOD MONUMENT CO.

Amarillo, Texas
Dealers of Rock of Ages Granite, as well as all colored granites, marble and bronze memorials.

represented by
**BOXWELL BROS.
FUNERAL HOME**

519 S. Evans
659-3802

TexSCAN

Statewide Classified Advertising Network

Advertise in 291 Texas newspapers for only \$250.

Reach more than 3 MILLION Texans. Call this newspaper for details.

NEW GOLF COURSE adjacent to this 5-acre homestead, wooded, paved roads, deer, turkey, 15 minutes lake LBJ/Buchanan \$20,000 Texas Veteran, owner financing. Fox Realty, Burnet, Texas 1-512-756-6066.

COVENANT TRANSPORT hiring tractor trailer drivers *1 yr. O.T.R. Experience *Single 19-22e *East Coast Pay *Incentive pay *Benefits package -Minimum Age 23 *Teams 27-31e *1-800-441-4394.

FRIENDLY HOME PARTIES has openings for demonstrators. No cash investment. No service charge. Highest commission and hottest awards. Three catalogs, over 800 items. Call 1-800-488-4875.

MAKE THE RIGHT choice. Diets don't work. Body Wise does reduce body fat, increase energy, lower cholesterol. Call 1-800-457-4099 for free information, no obligation.

WOLFF TANNING BEDS: new commercial-home units from \$199. Lamps, lotions, accessories. Monthly payments low as \$18. Call today. Free new color catalog. 1-800-462-9197.

MOBILE HOME BUYERS. Drive a little save a lot. FUGUA clearance sale. Save thousands \$\$\$\$\$. Best built in Texas. Visit FUGUA Factory Outlet. 1-800-899-0440.

U.S. POSTAGE STAMP supply route for sale. Requirements: \$4,800 to \$36, investment -Car + 2-10 hrs. per week. Benefits: No selling. High income potential. Call 24hrs. 1-800-545-1305.

WHAT'S SO DIFFERENT about the Happy Jack 3-X fba collar? It works!!! For dogs & cats! At Farmland & Double Circle Co-Ops & better feed stores.

NEED CASH??? Receiving mortgage payments? We buy owner financed mortgages locally and nationwide. Ask for Donna at Diversified Funding Corporation today!!! Call 1-800-950-4112.

1991 PALM HARBOR doublewides-5BR/3BA only \$34,900!! 4BR/2BA only \$29,900!! 3BR/2BA only \$24,900!! Visit the factory, save thousands, FREE factory tours. Liberal financing. Call 1-800-880-SAVE.

SHARE AMERICA! Walls must fall! Deadlines near! AISE Exchange Students await family call for August. 31 countries/local representative. Just food, bed, sharing! Exciting! Rewarding! Relevant! Lifetime! 1-800-SIBLING.

CONVERT YOUR MOBILE home axles to trailers. Super value 24-ply 14.5 aircraft tires, \$24.95. Many sizes, 14" to 20" wheels. GENSCO, Box 14628, Houston, 77221.

BEAUMONT, LEASE/SALE 20,000 sq. ft. building. Extra land available IH-10. Easy on/off. 3,000 sq. ft. office. 2 bays, loading dock. Electric 240-3p. fenced storage 409-769-3407.

FDIC SEALED BID SALE. 55 residential, commercial & raw land properties located in Tarrant, Dallas, Ellis, Hood, Johnson, Parker and Wise counties. Dates: June 16th to July 11th. Deadline for receipt of bids: July 11th, 1991 @ 2:00 P.M. CDT. Broker participation invited. Call for bid information: Barber and Associates. Phone: 817-838-9999. Metro: 817-654-3421.

FOR SALE-MOTEL by owner. 16 units, owners apt, laundry, just remodeled, excellent business. Only motel in town. Owner retiring. Will trade. 915-653-3033.

LEARN BOOKKEEPING/ACCOUNTING. Special "user friendly" home study program. Over 80,000 students trained successfully. Two calculators included with course. Free career literature. 1-800-362-7070 Dept. AG722.

A WONDERFUL FAMILY experience. Australian, European, Scandinavian, Japanese high school exchange students arriving in August. Become a host family/American Intercultural Student Exchange. Call 1-800-SIBLING.

AGENTS FOR AVON sales, flexible hours. Free training. Earn up to 50%. No door to door required. Receive big discounts. Easy and fun. AVON 1-800-767-5915.

LAKEFRONT LOTS: BEAUTIFUL large lakefront lots in exclusive restricted lakeshore subdivision on lake Corpus

Christi. Paved roads, underground electricity, sandy beaches, financing available. 512-664-3479.

HOTEL-WE'LL PAY you to run your own business! Motel 6 seeks live-in management teams for nationwide opportunities. Free, furnished one bedroom apartment, paid utilities, paid training, generous health and retirement plans. Must have no dependents and be willing to relocate. Call 1-800-6-MOTEL-6. Ext. 400. EOE.

OWNER OPERATORS, TRACTORS only for 48 state flatbed diversion. Late model tractor needed. 50% advance, instant settlements. 1st in 1st out dispatch. PFT Roberson 800-441-0689.

RUIDOSO, NEW MEXICO: 3 bedroom, 3 bath, fully furnished townhouse in Innsbrook Village. Priced to sell \$125,000. 512-664-3479.

DEALERSHIP LOG HOMES: National log home manufacturing company has America's finest lines starting \$9,872. Great earning potential. Will not interfere with present employment. Deposit 100% secured by model home. Call Mr. Lamont 1-800-321-5647. The Original Old-Timer Log Homes and Supply Inc. Mt. Juliet, TN 37122.

GUARANTEED 4% INTEREST on Texas forfeited land. Local and statewide. Homesite, getaway, hunting, investment. 10 acres average. \$0-down, \$92/month for 360 months. State authorized agent 1-800-275-REPO.

ADOPTION: HAPPY AND LOVING couple, financially secure, wishes to adopt a newborn. Will give love and all best things in life. Expenses paid. Call Gary & Joyce collect or leave message. 201-447-4461.

ADOPTION: FULL-TIME MOM, loving dad and cuddly cat searching for special newborn to fill our hearts. Beautiful riverside home with garden, sandbox and jungle gym. Summers at the beach, vacations in Scandinavia, Christmases at Grandma's. Expenses paid. Please call Brenda and John collect anytime 1-212-928-9078.



Approximately 157 high school seniors spent June 12 at the third of four freshman orientation clinics at Southwestern Oklahoma State University at Weatherford, Okla. The seniors are among 707 freshmen who have already enrolled at SWOSU for the 1991 fall semester. The fourth and final orientation date is set for Aug. 16. Those attending the third orientation session

included (front row, l-r) Amanda Ferguson, Briscoe, Texas; Harvey Bozeman, Tulia; Shane Popwell, Wellington; Misty Savage, Spearman; (back row, l-r) Shanda Graham, Spearman; Amy Ward, McLean; Brook Robertson, Follett; Cris Frye, Amarillo; and Rachel Taylor, Weatherford, Texas.



Kelly Slover (center) of the Spearman FFA recently attended a Lamb Management Workshop on the campus of Tarleton State University. Sponsored by the university's Department of Agricultural Services and Development, the seminar was conducted by

Prater Gibbs (left), owner of Fast Forward Enterprises. Gibbs, who has shown grand champion animals in numerous shows across Texas, discussed cover selection, feeding, fitting and showing. At right is Ag Services and Development chairman Dr. Don Knotts.

Crisis Center reports

by Mary Frances Ellzey
You readers familiar with us may skip this paragraph, and start with the next one. The PCC offers services to men or women who are victims of domestic violence, whether verbal or physical. We give counseling, support, and information to these victims, plus a shelter to those who feel themselves to be in danger at home. These services are free of charge. If you want information only, call us at the office from 9 a.m. to 5 p.m. We are available for help at any time, 24 hours a day. Our number is 435-5008. For those of you who must call us long distance, we have a toll-free

number: 1-800-753-5308.
Two news items of which we are very proud:
The first is that once again our annual VOCA (Victims of Crime Act) grant proposal has been passed with flying colors! Appended to the letter of endorsement was a statement by Gary Pitner, supervisor of the Panhandle government grants, who has been with us on our project from Day One. The statement is as follows:
"Over the years the Panhandle Crisis Center, Inc. has championed the cause of victims of Domestic Violence and Sexual Assault in this

rural 3-county area of the Panhandle. The Center has played an integral part in putting back the pieces of many shattered lives by offering encouragement and hope in times of individual crisis."

Won't that just the buttons off your shirt?
The fact remains that the money has yet to be granted, but the proposal has been sent to the Governor's office. I've never known that office to reject a proposal that has been approved by the examining body. In our case, the Panhandle Regional Planning Commission is the examining agent.

The second button-buster is the report from our auditors: "An unqualified opinion of the PCC financial statement, which is the highest opinion permitted." The entire auditor's report is located in the PCC office, and is available to anyone who wants to review it. After all, we are a non-profit organization, we are supported both by government grants, other grants, and by your generous donations, so you have a right to see it.

Joe Hannon, Harrol Waterbury, and several PCC staff attended a Battered's Program presentation at the Denton Center, which has had several years' experience (and trial and error) with such a program. Battering is a learned behavior; therefore it can be un-learned and another behavior substituted.

The Diversive Program, with which Police Chief Joe Hannon is familiar, offers a choice to batterers: Plead guilty, accept the alternative to prison by enrolling in and following through with the locally available re-education program, and the charges will be dismissed. Sounds like a bargain, doesn't it? The PCC is hoping to include this program among its other helping projects. First, however, we must get the agreement of the local Courts.

And how do we do that? You guessed it. The police, care providers, schools, and yes, we laymen can bring pressure to bear. True, though many batterers are salvageable, some are not. Hence the resistance that some courts offer. But come on, you true believers - let's give it a try!

Dine out on
the 4th.

Casa Alvarez
A generous taste of old Mexico

Offering the finest in south of the
border cuisine
Open 11a.m. - 9p.m.
July 4th
Available for Parties

For carry out or reservations call 659-3422

Casa Alvarez
819 Hwy 207 S
Spearman, Texas
Mon.-Sat. 11am. - 9pm. Sunday 11am. - 8pm.

Scholarships still available

AUSTIN - College-bound 1991 Texas high school graduates seeking careers in science, mathematics or engineering have another opportunity to apply for scholarships before classes begin this fall.

The National Science Scholars Programs is offering \$976,000 in new scholarships to the country's high school graduates to pursue studies in physical science, life science, computer science, mathematics or engineering at colleges and universities. The program will award individual scholarships of up to \$5,000 a year for four-year and five-year science, mathematics and engineering programs.

To apply for the scholarships, students should contact their local high school or school district office. School districts are scheduled to receive application materials the week of June 17. Application forms also will be available from the state's 20 regional education service centers. Completed applications from school districts must be received by the Texas Education Agency by 5 p.m. July 3.

A state panel will evaluate scholarship applications and nominate at least four applicants from each of Texas' 27 congressional districts. At least one of the nominees will be female. Nominations will be submitted to the U.S. Department of Education by July 12.

Two students, including at least one female, from each congressional district will be awarded scholarships. President George Bush will announce the scholarship recipients September 30.

The National Science Scholars Program is authorized by the Excellence in Mathematics, Sciences and Engineering Education Act of 1990. The program is designed to recognize meritorious students who excel in science, mathematics and engineering by providing scholarships for students to continue their studies at the postsecondary level. The program also aims to strengthen the leadership of the United States in science, mathematics and engineering by attracting men and women into the fields and encouraging them to pursue teaching careers in these areas.

FmHA has loan program for socially disadvantaged

PERRYTON - The Farmers Home Administration (FmHA) has a loan program designed to help members of socially disadvantaged groups, including minorities, acquire land for farming and for farm operating expenses.

Under the program, FmHA will try to find persons in those categories who are interested in farming and can qualify for an FmHA insured or guaranteed farm ownership loan. The agency would also be prepared to sell or lease to them a farm held in its inventory if any are available in that county. FmHA can also provide other loan and technical assistance,

if needed, to help the borrower get started with an insured or guaranteed operating loan.

The program has funds that have been reserved for farm purchases based on the population of socially disadvantaged persons. The population groups involved are Hispanics, Native Americans, Blacks, Asians and Pacific Islanders.

Persons who think they might be eligible and who are farming or who would like to become farmers are urged to contact the Farmers Home Administration County Office serving their area at Six Southwest Third, Perryton, Texas.

Media literacy tips available from TFT

The Texas Federation of Teachers has made available a summer learning calendar entitled "Tune in to Media" which features tips and activities for each week in June, July and August to help children think critically about information they see, hear and read in media each day.

Children can receive media literacy tips and activities by calling

the "Learning Line" at 1-800-242-5465. This toll-free telephone service, sponsored by the Texas Federation of Teachers' parent organization, the American Federation of Teachers, can be reached 24 hours a day.

Copies of "Tune in to Media" are available by writing to Texas Federation of Teachers at P.O. Box 776, Austin, TX 78767.

Obituary

Viola May Campbell
HURST, Texas - Viola May Campbell, 66, died Tuesday, June 18

Mrs. Campbell was born Dec. 31, 1924 at Wheeler, Texas to Lee and Faye Leberton Jones. She married M.K. Campbell Jan. 31, 1944 at Los Angeles, Calif. She had been a resident of Hurst for eight years, moving from Lafayette, La.

She was a member of First Christian Church and the Disabled American Veterans Auxiliary.

Survivors include her husband, three sons, M.K. Campbell Jr. of Hurst, Bobby Lee Campbell of Birmingham, Ala., and William Larry Campbell of Decatur, Texas; a brother, Herschel Jones of Spearman; two sisters, Avo Gray of Spearman and Cleo Gross of Gruver; seven grandchildren; one great-grandchild; and her mother-in-law, Emma Campbell of Graham, Texas.

Funeral services were conducted Friday, June 21 in Memorial Christian Church with the Rev. Richard Clayborne of Arlington officiating. Burial was in Oak Grove Cemetery under the direction of Morrison Funeral Home of Graham.

-Gigots New Office In Spearman-

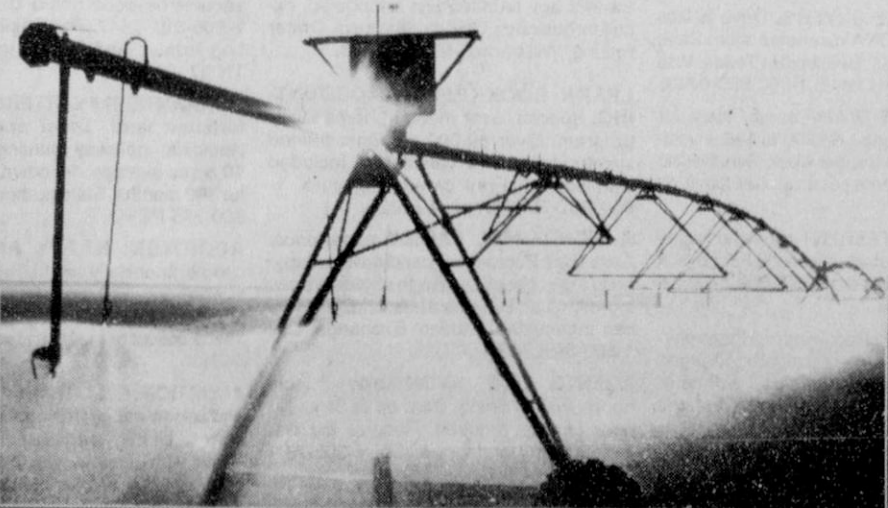


- CENTER PIVOTS
- CORNER SYSTEMS
- LINEAR SYSTEMS
- EZ-TOW SYSTEMS
- UNDERGROUND PIPE

We Service and Stock Parts For Other Brands of Sprinklers.

GIGOT AGRA PRODUCTS, INC.

E. HWY 54 - GUYMON, OK | HWY. 51 - HUGOTON, KS | HWY 15 W - SPEARMAN, TX
405-338-2536 | 316-544-4345 | 806-659-3121



FOURTH OF JULY

SAVINGS EXPLOSION

Pop
A Balloon & Save Sale
July 1, 2, & 3

Win 10%-15%-20% OFF
Sale or regular priced merchandise

Discounts not applicable to Estee Lauder or Dooney-Bourke

KIDS' STUFF & LADY FAIR

719 W. 7th
Spearman