

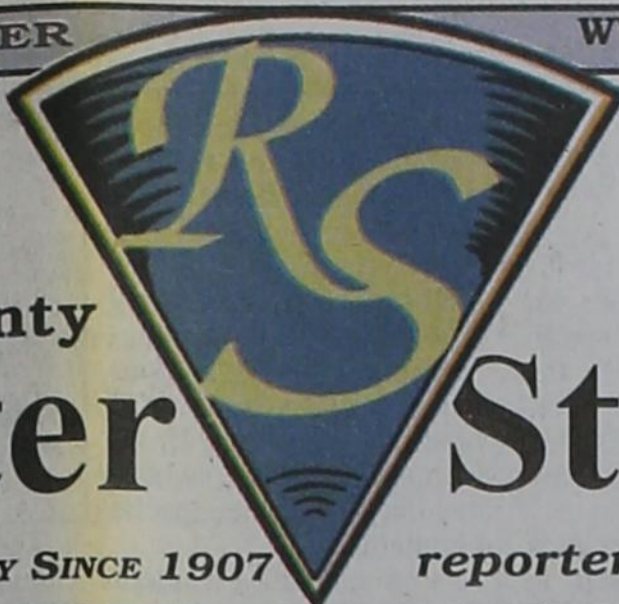


100 YEARS

The Hansford County

Reporter

PROUDLY SERVING HANSFORD COUNTY SINCE 1907



Statesman

reporter@spearmanreporter.com

SCR2
COMP
HANSFORD COUNTY LIBRARY
0122 MAIN ST
SPEARMAN TX 79081-2064

VOLUME 102 • ISSUE 34

THURSDAY, AUGUST 2009

Gruver Junior High Nominated as National Title I Distinguished School Finalist

The Texas Education Agency in conjunction with the Title I Statewide School Support/Parental Involvement Initiative at Region 16 Education Service Center has just notified Gruver Junior High, Gruver ISD, that their campus is among six (6) Texas schools eligible to be considered for nomination for the 2009 Title I, Part A National Distinguished School Recognition Program. The six campuses met the criteria set by the National Association of State Title I Directors and the Texas Education Agency, and will receive a site visit on September 9, 2009. The purpose of the Title I, Part A National Distinguished School Recognition Program is to identify schools that are demonstrating success in ensuring that all students, including all demographic groups of students, make significant progress toward learning.

The Texas Commissioner of Education has the opportunity to nominate two schools to receive this award from the National Association of State Title I Directors (NASTID). The winners will be honored at the National Title I Conference in Washington, D.C., on January 21, 2010, and will be featured in a publication that describes all of the National Title I Award winners.

To be considered for nomination this year, Gruver Junior High met the following criteria:

- Campus is designated as a Title I, Part A campus for 2009-2010, 2008-2009 and 2007-08;
- 40% or more low income in 2009-2010;
- Campus meets AYP in 2009, 2008;
- Campus is Exemplary in Spring 2009;
- Campus is Exemplary or Recognized in Spring 2008 and greater than or equal to 50% Commended Performance in Reading and Math;
- Campus is Academically Acceptable or Academically Unacceptable in Spring 2007.

Region 16 Education Service Center is honored to support Gruver Junior High in their commitment to maintaining a quality program, which serves as an example for other schools to follow. Region 16 ESC is proud to congratulate Gruver Junior High for their eligibility to participate in this program.

Spearman High School Track Closed for Repairs

The Spearman High School Track is undergoing some routine maintenance. According to Superintendent Rodney Sumner, the surface of the track was starting to show some significant wear which resulted in the need of the track surface to be removed and a new top surface reapplied. Mr. Sumner said that the surface of the track is a rubber based compound that wears down due to the use of the track over the years. He acquainted the track to a tire on your car that loses the tread and has to be replaced.

Currently, the track is closed while the rubber surface is being removed and the top surface reapplied. This will allow the base to be inspected and repaired if needed. Mr. Sumner said that we are on the schedule for the first of October for the new surface to be applied, and it will take several weeks for this process to be completed. The work is being done during a two week stretch while the Lynx have back to back out of town games and is being done in the fall in order to have it available for the 2010 track season.

Spearman Chamber of Commerce's

Yard of the Week

Glen Humphreys
8 Golden Circle
Javier Morales
409 Dressen

721 Haney St.

If you have a yard you would like to nominate, please contact the Spearman Chamber of Commerce at 659-5555.

C. Ralph Blodgett Memorial Radio Auction Raises Over \$14,000

Thank You to Everyone!!

The Golden Spread Center Radio Auction, held Saturday afternoon on KXDJ-FM radio and honoring the memory of former Spearman Mayor, C. Ralph Blodgett, has been declared a huge success. The event, which lasted over 5 hours, had "call-in" support from all over Hansford County and as far away as Canadian and Kansas.

The afternoon began with the presentation of a memorial plaque to Ralph's widow, Johanne Blodgett, and his daughter, Marilyn Cline. This plaque will hang alongside the plaques of previous honorees, Gene and France Cudd and Rosa Lee Butt. In the late 1980's, Ralph donated land near the Spearman High School that would serve as the location for the proposed O'Loughlin Center. Later, it was determined that the better location for this community facility would be near the public swimming pool on South Brandt, on land owned by the City of Spearman. The O'Loughlin Center board and the Spearman City Council executed a "land swap"; and, now there is a public park, known as Blodgett Park, on the land formerly donated by Ralph Blodgett to the O'Loughlin Center. And, The O'Loughlin Center is located at 5th and Brandt, on a lot where the old football stadium once stood. The Golden Spread Center (senior center) then moved from their old building to occupy The Blodgett Room in The O'Loughlin Center. This room was named in honor of Ralph and Johanne and Ralph's mother, Deta Blodgett, who was a charter member of The Golden Spread Center Board of Directors.

Once bidding got underway, it was an exciting afternoon, with phones ringing and people dropping by to view the items and bid. Each year, the Golden Spread Center, hosts this auction to provide funds for programming and expenses, which includes the operational and upkeep expenses of the GSC facility within The O'Loughlin Center. This year's revenue amount falls within the top 5 of all the radio auctions, held over approximately the last 15 years.

The Board of Directors of GSC and The O'Loughlin Center want to thank especially Chris Samples and KXDJ-FM for radio time, PTCI for providing 2 free phone lines, and First National Bank of Spearman, High Plains Observer and The Hans-



The afternoon began with Bob Boxwell presenting a memorial plaque to Ralph's widow, Johanne Blodgett, and his daughter, Marilyn Cline.

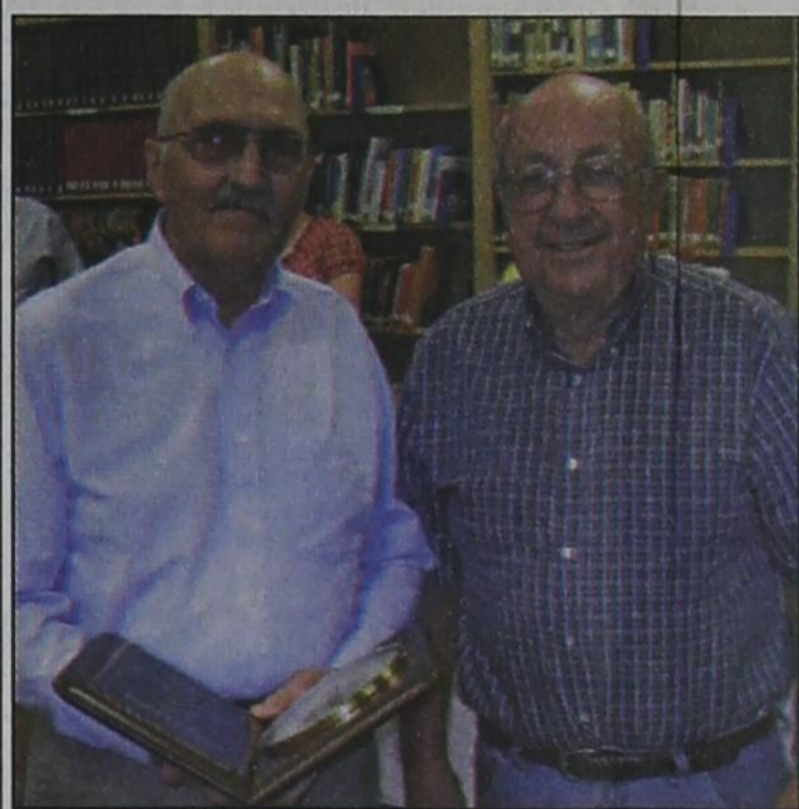
ford County Reporter for providing free advertising for this event. Also, they say a big thank-you to everyone who donated items and services and to everyone who bid and bought the items. Thanks to all the volunteers who came to help organize and prepare for the event, to broadcast the auction, to answer phones, and to work the boards. This list includes: Judy Nelson, Lynanne Maize, Missie Bates, Dick Gillaspie, Maria Sibley, Judy Yarbrough, Ginger Turner, Colleen Burkhammer, Kelsey Sumner, Marilyn Cline, Traci Venneman, Susan Poole, and "back-ups", Karla Flowers, Kara Harrell, Jennifer Vaquera, and Abby and Ryanne Howell. Thanks also to The O'Loughlin Center Staff who worked so hard these past 2 weeks: Jada Breen, Kristina Howell, Deanna Kenney, Rebecca, Alfredo and Fred Anima, Margie Vaquera, Natalie Saldivar, and Kaitlyn Howell.

Some of the 260 items donated were "held-over" to be purchased on a 1st come, 1st serve basis on Monday and Tuesday. Anyone interested in purchasing one of these and making a donation to the GSC, can go by The O'Loughlin Center. The auction will END at 4:00 on Tuesday. There are many good items, in-



The Radio Auction was made possible by the generous donation of time from local citizens.

Bob Hill Retires From Spearman ISD



Dwayne Mitchell, Spearman ISD Board President, presents Bob Hill with a retirement plaque honoring his 23 years of employment with the District at a reception on July 30, 2009. Bob started to work in the Transportation Department in 1986 and his last day on the job was July 31, 2009. Bob is currently in the process of moving to Lubbock.

Circle of Friends To Host Annual Membership Party

The Hansford County Circle of Friends will host a membership party in support of The Don & Sybil Harrington Cancer Center on Saturday, August 29, 2009 at 7:00 p.m. The party will be held at the O'Loughlin Center at 502 South Brandt in Spearman, Texas. Come and join us for a great time of friends, food and fun all for a great cause. It's not too late to RSVP or you can just show up on Saturday evening! The cost is \$20/single and \$35/couple and includes your membership dues and a wonderful meal catered by Richard & Wanda Wagner.

We will have a raffle, silent and live auctions. Some items featured in the live and silent auction include 2 paintings by Marilyn Yanke, Ruidoso, NM Weekend trip (lodging and golf package), beautiful china painted items, \$500 Gift Certificate to Duncan & Boyd Jewelers, beautiful ring from Graham Brothers Jewelers, CASE pink pedal tractor and much more. Everyone in attendance will receive a FREE raffle ticket to win a pair of diamond earrings donated by Graham Brothers Jewelers.

The Circle of Friends is a non-profit organization dedicated to helping cancer patients and their families in times of need.

Through its affiliation with Harrington Cancer Center, the Circle of Friends develops and implements fund raising activities to provide financial assistance and patient care and support programs for those affected by cancer. The Circle of Friends also works with Harrington Cancer Center to provide cancer educational opportunities for people throughout the region. Last year we assisted 174 individual patients* (almost twice as many as the previous year) with travel expenses, rent or mortgage, utilities, nutritional supplements, breast prostheses and prosthetic bras, take-home prescriptions, health insurance premiums and more. (*some patients received assistance more than once) The Circle of Friends also has two apartments available for use by patients receiving outpatient treatments. Typically these apartments are rented for 2-8 weeks at a time.

Come out and join us!! Don't miss out on the fun! For more information on the Hansford County Circle of Friends or if you are interested in attending and/or volunteering to help with the event please contact Holly McLain (806) 733-2268 (hollymclain13@yahoo.com) or Tonni Yanke (806) 733-2008.



AVAILABLE NOW!

E-SUBSCRIPTION

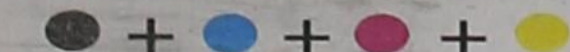
to the

Hansford County Reporter-Statesman

Delivered to your e-mail each Thursday for only \$35/year.

Purchase online at www.spearmanreporter.com

Call 806-659-3434 or e-mail reporter@spearmanreporter.com for details.



Wolf Creek Heritage Museum Notes

MUSEUM HAPPENINGS

This week was quiet with several of us committed to family matters, including me. I want to thank LaVaun Kraft for working for me while I go to museum meetings and accompany my husband to appointments. It truly takes a village to keep the museum open for our visitors.

The museum staff is taking a field trip this week and I will have a full report next week. It has been a long time since the group has ventured to other museums to visit and learn from other groups, so it should be fun.

Remember to sign up as a representative from your town for our book on Lipscomb County. We need representatives for all areas.

HISTORICAL MUSINGS

Here are four historical tidbits from Texas History that happened in August.

1. August 14: The first newspaper, The Nacogdoches Texas Republican,

was printed by Eli Harris. He printed the paper for the Hames Long expedition with content on the military and political operations going on in that quarter. The paper only published four issues.

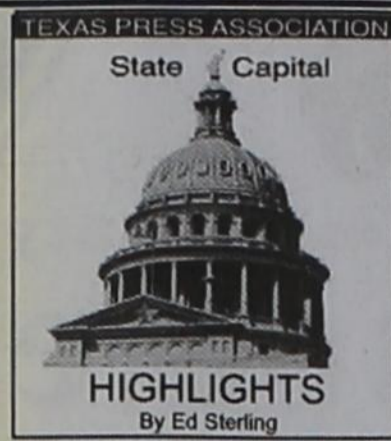
2. August 17: Black Jack Ketchum is captured in New Mexico. Thomas Edward (Black Jack) Ketchum and his brother Sam were members of a gang of outlaws that terrorized Arizona, New Mexico, and West Texas. Tom tried singlehandedly to rob a train previously attempted by his brother Sam (he was wounded) and he, too, was wounded by the conductor and picked up from beside the tracks the next day. He was sentenced to death and was hung at Clayton, New Mexico on April 26, 1901. It is theorized that Black Jack Ketchum may have inherited the nickname and reputation of Will "Black Jack" Christian.

3. August 19: Four

Apache chiefs, accompanied by numerous followers, buried a hatchet along with other weapons in a peace ceremony in San Antonio. The ceremony signified the Apaches' acceptance of Christian conversion in exchange for Spanish protection from Comanche raids, which had decimated the Apache population.

4. August 20: President Andrew Johnson, declaring that "the insurrection in the State of Texas has been completely and everywhere suppressed and ended," officially ending the Civil War by issuing a proclamation of peace between the United States and Texas. Johnson had declared a state of peace between the U.S. and the other ten Confederate states on April 2, 1866. The last land battle of the Civil War took place at Palmito Ranch near Brownsville on May 13, 1865, more than a month after Robert E. Lee surrendered at Appomattox Courthouse.

Today is tomorrow's history so make it interesting.



HIGHLIGHTS By Ed Sterling

The Texas Workforce Commission reported Aug. 21 that Texas added 37,900 new non-agricultural jobs in July.

But, 941,000 able Texas residents were listed as unemployed in July.

In June, 899,800 people were listed as unemployed, so even with the reported gain, that is a net loss of jobs over the month of July. Consequently, the unemployment rate grew from 7.4 percent to 7.9 percent - still less than the national unemployment rate of 9.4 percent.

The Commission also reported that 129,455 unemployed Texas residents will exhaust their unemployment benefits over the five-month period between August 2009 and Jan. 2, 2010.

The Federal Reserve Bank of Dallas, in its August regional economic update for Texas, said, "Despite the signs of stabilization, employment continues to decline, though there is evidence of improvement on this front as well. The most recent employment forecast estimates that Texas will see a decline of 2.8 percent in 2009. While not especially encouraging, it is a significant improvement from the previous forecast of minus-3.5 percent."

Drink, Drive, Go to Jail campaign

The annual "Drink, Drive, Go to Jail" campaign will be observed during the Labor Day holiday.

The campaign is a joint project of the National Highway Traffic Safety Administration, the Texas Department of Public Safety, the Texas Alcoholic Beverage Commission, Yellow Cab and local law enforcement agencies.

"The price of a cab ride pales in comparison to the hefty fines, attorney fees and other cost associated with being arrested for driving while intoxicated," said David Baker of the Texas Highway Patrol.

Convicted first-time DWI offenders can pay a fine of up to \$2,000, lose their driver's license for as long as a year, and serve 180 days in jail. Other costs associated with a drunken driving arrest and conviction can add up to more than \$17,000 for bail, legal fees, court appearances, court-ordered classes, vehicle insurance increases and other expenses.

Panel to decide in Keller case

A four-day state district court hearing in the case of Judge Sharon Keller ended

UNEMPLOYMENT RATE INCREASES EVEN AS TEXAS ADDS THOUSANDS OF NEW JOBS



by Ed Sterling

Aug. 20 in San Antonio.

Keller, who sits on the Texas Court of Criminal Appeals, is charged with judicial misconduct for not processing a late hour death row appeal in September 2007.

It's now up to the 13-member State Commission on Judicial Conduct to deliberate on findings of fact in the case, and rule. Possible outcomes: the dropping of charges, censure, or a recommendation that Keller be removed from office.

Hurricane preparations under way

Lessons learned because of monumentally disastrous Hurricane Ike last September are still fresh, and as named storms in the Atlantic Ocean rattle westward, generally toward us, Texas is coordinating disaster plans.

On Aug. 18, the Texas Department of Transportation said it, along with other state agencies, volunteer groups and private sector partners, are preparing. Responders are forming logistical support teams and working on evacuation and reentry, emergency traffic control, debris removal plans, and updating phone lists and Web sites.

After 36 hours, charges go up

The amount of time it takes the Texas Historical Commission to produce public information for requestors is going to make a difference shortly.

Employees of the Commission who round up information for inspection or making copies will have to

keep track of the time expended for each requestor.

If they go past 36 hours for you, the Commission will assess charges for personnel time. The hours will be calculated over the agency's fiscal year, which starts Sept. 1 and ends Aug. 31, 2010.

Off-highway vehicle parks coming

The sale of those \$8 official state decals that must be displayed on off-highway motorcycles and all-terrain vehicles is bringing in enough revenue to improve and build more park facilities where OHVs can be operated.

Parks & Wildlife plans to spend more than half a million dollars in decal revenue in 2010-2011 for such purposes as land surveys, appraisals, land acquisitions and biological or cultural surveys.

Perry asks for emergency funds

In an Aug. 18 letter to President Barack Obama, Gov. Rick Perry requested a federal emergency declaration for the state because of the extreme fire hazard from ongoing exceptional drought conditions. Also requested was funding for additional firefighting resources.

Celebrated Texas novelist dies

Elmer Kelton, 83, died Aug. 22, 2009, of natural causes. The Crane native wrote more than 60 books, mostly western novels. His work experience included 15 years as a farm and ranch writer for the San Angelo Standard-Times.

Gov. Perry, State Officials: Texas is Prepared for H1N1 Flu Season

Gov. Rick Perry today, along with Department of State Health Services (DSHS) Commissioner David Lakey, Texas Education Commissioner Robert Scott and Texas Agriculture Commissioner Todd Staples, highlighted the state's preparedness efforts in advance of the anticipated H1N1 flu season.

"Texas' effort to deal with the H1N1 virus is robust and we are more prepared than ever to handle the challenge with more anti-viral medication in stock, more state and local coordination and more science to battle H1N1," Gov. Perry said. "With the new school year beginning in most communities today, it's a good time to remind Texans that frequent handwashing, good hygiene and staying home if you're sick can fight the spread of the H1N1 flu virus."

As a proactive measure, in a letter to U.S. Health and Human Services Secretary Kathleen Sebelius today, Gov. Perry requested the Centers for Disease Control and Prevention (CDC) provide an additional 25 percent, which is approximately 800,000 courses, of Texas' allotment of antiviral medications from the Strategic National Stockpile. He also sent a letter to U.S. Homeland Security Secretary Napolitano requesting that the federal government allow a pandemic to be eligible for a major disaster declaration.

Texas currently has 2.5 million courses of antiviral medication prepositioned in the state, including the state's previous 25 percent allotment from the Strategic National Stockpile and

an additional 805,000 courses purchased with funding from the 81st Legislature.

"Although this flu season will be a challenge, it can be effectively managed. The good news is that, although this virus has rapidly spread worldwide, it has not changed and has not become more severe," Lakey said. "We must remain vigilant and take personal precautions such as covering our cough, washing our hands, staying home when ill and getting vaccinated for the flu."

To prepare for the upcoming flu season the Governor's Division of Emergency Management (GDEM) and DSHS co-hosted an H1N1 summit earlier this month, regional summits across the state, and a statewide conference call with state, regional and local leadership.

GDEM has been working with DSHS, the Texas Education Agency (TEA), and the Department of Agriculture to provide guidance to local school districts and health departments and the state will also provide H1N1 guidance letters to all school administrators.

"The health and safety of our students is paramount," Texas Education Commissioner Robert Scott said. "TEA will continue to provide information and support to districts as they prepare and coordinate with their local communities in advance of the upcoming flu season."

The Department of Agriculture and TEA have developed a plan for the continued distribution and access to free and reduced

lunches for children should schools close (Currently, 2.1 million school children participate).

"We are committed to protecting students from illnesses and ensuring nutritious meal services continue."

Agriculture Commissioner Todd Staples said, "Millions of Texas children depend on the meals served at school every day, and we want to make sure schools have the option of continuing this crucial service, while still protecting those students from any public health threat."

Health officials say everyone should follow standard precautions to reduce the spread of any respiratory illness.

•Stay home when you are sick to avoid spreading illness to others.

•Cough or sneeze into the crook of your elbow or a tissue and properly dispose of used tissues.

•Wash hands frequently and thoroughly with soap and warm water or use an alcohol-based hand sanitizer.

The CDC estimates the H1N1 vaccine will be available by mid-October and in Texas the distribution will be managed by DSHS. It is estimated that 45 million doses will be available nationwide.

Groups targeted for the vaccine will include pregnant women, household contacts and caregivers for children younger than six months of age, healthcare and emergency medical services personnel, all persons six months through 24 years of age and persons 25 years through 64 years of age who have health conditions associated with higher risk of medical complications from influenza.

The Hansford County Reporter-Statesman
 213 Main Street • Spearman, TX 79081
 Phone - (806) 659-3434 • Fax - (806) 398-9080
 www.spearmanreporter.com
 reporter@spearmanreporter.com
 cathysmith@valonet.com
Mon.-Thurs. 9 a.m.-12 p.m., Mon.-Wed. & 1-5 p.m.
Closed Thurs. afternoon and all day Fri., Sat. & Sun.

Gary Smith - Publisher Catherine Smith - Editor
 Contributing Writers: Dorothy Hudson, Jim Derington,
 Merry Sparks, Cecil Biggers
 Contributing Photographer: Charlie Johnson

Subscription Rates
 In Hansford County - \$30.00 • Out of County - \$40.00

The Hansford County Reporter-Statesman (USPS 529660) is published weekly in Spearman, TX. Periodical postage paid in Spearman, TX. **POSTMASTER:** Send address changes to: The Hansford County Reporter-Statesman, 213 Main Street, Spearman, TX 79081.

Publication Policy
 The deadline to submit news and advertising to The Hansford County Reporter-Statesman is Monday at 5 p.m. Items submitted after the deadline will be published at a later date, as time and space permit. Publication of all items is at the discretion of the editor.

Advertising
 Open Display rates are \$4.00 per column inch. Classified Ads are \$6 for the first 25 words and 10¢ per word for each additional word. (Additional charge for boxed classifieds.) There is a \$1 charge per week if billed.

Member of
 Gruver Chamber of Commerce
 Spearman Chamber of Commerce
 Texas Press Association and Panhandle Press Association

BACK TO SCHOOL

ACROSS

- Surface magmas
- French lake
- Lover's strike
- Defendant's excuse
- "Four score and seven years"
- Shade of purple
- Between Rive Droite and Rive Gauche
- *Navigational tool in geography class
- Caused from worry?
- *Chemistry or biology, e.g.
- *Roll call list
- DNA transmitter
- Creator of Willy Wonka
- Health resort
- Storm in "Fantastic Four" movie
- * school or junior high
- Skiers' ride
- *What libraries do
- Whimpers
- Prefix for air
- Type of wood resistant to rot
- *Assigned spot
- Sol-fa-sol-fa-sol-fa, e.g.
- *Unwelcome visitors that can spread quickly in classroom

DOWN

- Lad's counterpart
- Jack on "30 Rock"
- 8 to Caesar
- Comic strip "Li'l"
- Earth-tone pigment
- Feeble
- Turkish military leader
- Dried coconut meat
- "He's not worth his"
- Playwright Clare Booth
- Affirm with confi-

dence

- capita
- Islam follower
- Type of lily
- Unit of electrical resistance
- Make one resemble a dandy
- "Wipe the clean"
- Docks
- Spirits below level of angels and devils in Islamic mythology
- "It means start or end of class
- *Work area
- *Nerd
- Treeless plain
- Bar by estoppel
- Enameled metal-ware popular in 18th century
- Art style, popular in the 1920s
- "Superman" Christopher
- Beowulf, e.g.
- Robinson to "The Graduate"
- Same as sea moss
- On the move
- *School to Madeline, French
- Genuine
- Other than what's implied

These games are brought to you by the Hansford County Reporter-Statesman

SUDOKU

PRESENTED BY

Where volunteering begins.

6				7	8			5
9				5				1
	5							
7						8	1	
	4		9		2		3	
	6	8						5
							4	
5				9				7
1		4	6					8

© 2009, StatePoint Media, Inc. answer on classified page
 Fill in the blank squares in the grid, making sure that every row, column and 3-by-3 box includes all digits 1 through 9.

CROSSWORD

PRESENTED BY

Where volunteering begins.

© 2009, StatePoint Media, Inc. answer on classified page

Happy Birthday!

August 27
Birthdays - Amy Grubbs, Brian Hoel, Pat Ochoa, June Jackson, Donald Rhea, Gregg Weaver, Chad Davis, Patricia Bevera, Virginia Ortega Jr., J. T. Sanders, Bertha Watts, Gabriel Moreno, Krystal Vela, Christopher Abernathy, Cassidy Odegaard, Dara Faries, Jean Snider
Anniversary - Jim & Pamela Morrison, M/M Jerry Bowling

August 28
Birthdays - Kiki Carthel Brabham, Amy Gillispie, Mika McLain, Linda Nunez, Kory Sheppard, Mike Pearson, Joe Bravo, Keith Burgess, Andy Jones, Mabry Sutterfield, Penny Sumner, Alana Marie George

August 29
Birthdays - Rodney Clawson, Ginny Grotegut, Monica Ward, Mark Crooks, Bill Strawn, Richeardo Espinosa, Dusty Vinson, Linda Lou Lewis, Tony Cazares, Holly Brack, Katie Bynum
Anniversary - M/M Robert Blevins

August 30
Birthdays - Joshua Blount, Roy Dale Karr, Van Lewis, Jeff Nicholson, Chelly Rigdon, Christa Urban

August 31
Birthdays - Jill Hoel, Roger Dean Close, Estella Arjona, Mildred Lewis, Chad Wilkerson, Justin Eslick, Lonnie Shields, Danny Herrington, Bob Boxwell, Dale Jones, Clay Neff
Anniversary - M/M Brian Pressley, M/M Kent Guthrie

September 1
Birthdays - Sahala (McCloy) Galliard, Kathy (Nelson) Dumbold, Mrs. Don Allen, Eugene Yarborough, Irma Arjona, Pete Vera Jr., Jessica Williams, Rita Lindley, Erin Wafford, Misty Bynum, Hugo Villa, Richard Shad, Jessica Shad, Laura Bridges, Jace Lang, Ann Pipkin, Dane Harbour, Sandra Blankenship
Anniversary - M/M Daniel Boyd

September 2
Birthdays - Kelly Sue Jones, Melyn Johnson, Archie Smith, Felipe Lomelli, Carlos Mendoza Jr., Larry Gallimore
Anniversary - M/M Ron Antalek

September 3
Birthdays - Josh Mayhew, Isabel Martinez, Ruth Lackey, Kory Brown, Sheryl Meek, Sandy Russell, Janet Sandavol, Jessie Moore, Brandon Baker, Michelle Evens, Elena Vargas, Jason Quillin, Coy Herrington
Anniversary - M/M John Booth, George & Virginia Young

September 4
Birthdays - Val Winger, Peggy Frick, Jimmy Haden, Kathy Bowen, Marty Karr, Laci Murray, Darlene Pierce, Rodney Pointer, Tina Cator, Lighton Torres, Alix Boyd, Halee Beasley, Kristi Vasquez, Jarry Francis, Jerri Lane
Anniversary - M/M Ron Fox, Don & Wanda Reed

September 5
Birthdays - Kilee Ryan, Cathy Potts, Pat Minter, Dawn Brown, Mavis Floyd, David West, Mark Garcia, Betty Thomas, Mary Alice Gibner, Andy Riley, Sonya Tindell, Willie Wallis, Joyce Sharp, Lorenzo Sauz, Connor Odegaard, Daniel Swink, Stephen Lane
Anniversary - M/M Chuck Ball, Mr. and Mrs. Don Reed, M/M Bobby Hicks

September 6
Birthdays - Brad Hart, Mickey Nash, Ty Williams, Jennifer Profit, Josh Owens, Cheryl Green, Jonas Heath, Osbaldo Lomely, Alison Smith
Anniversary - George & Tina Rex, M/M Bill Wink, Judy & David Martin, M/M Kenneth Stewart

September 7
Birthdays - Alice Peddy, Kim Boone, Teal Armes, J.L. Brock, Richard Montgomery, Juanita Terceo, Melvin Willis, Kermit McKee, Jennifer Whitefield, Mardell Strawn
Anniversary - M/M Charlie West, M/M Jim Davis, M/M Ronnie Bullard

Words from Faith & Grace



by Cecil R. Biggers, Lutheran Lay Minister

In the thirteenth week of Pentecost, we learn how we should act and live as Christians as we study Deuteronomy 4: 1-9, Psalm 15, James 1: 17-27, and Mark 7: 1-23. Moses charges the people to observe the law as given to them and to teach the law to their children. He stresses that obedience to God results in blessings while disobedience leads to dire consequences. Moses tells the people that by living God's law they are wise and act as a witness to God's closeness to his people.

The Psalmist sings a question, "Who may abide in your tent? Who may dwell on your holy hill?" The Psalmist answers the question, "Those may enter the tabernacle who walk blamelessly." Those who are ethical in their dealings with others find favor with God.

James assures believers that every good gift is from God. James tells us to be quick to listen, slow to speak, and slow to anger. Consider that we have two ears and one mouth, so perhaps we should listen more than we speak. James calls upon believers to strip themselves of all sordidness and rank growth of wickedness and to receive the Word of God. Yet it is not enough to hear the word, one must act on it. Luther was afraid that Christians reading James might think that they could 'earn' their way into the Kingdom. I believe that the message of James is that if we have Christ in our hearts and spirits, our every-day lives will reflect the transforming love of Jesus Christ to everyone we meet. We must not only hear the Word of God but we must act upon it by living it.

Mark shows a confrontation between the Pharisees and Jesus. Jesus' disciples are eating without washing their hands. Now this 'hand-washing' was not done for hygienic purposes, but as a ceremonial, ritual cleansing. Jesus answers the Pharisees by quoting Isaiah, "This people honors me with their lips, but their hearts are far from me." It is not enough to know the law [here the ten commandments and the pentateuch] for true religion is more than adherence to ritual, ceremony and regulations. True religion is in living according to the Word of God. Nothing that we eat will defile us, rather it is those things that emanate from our hearts which can defile us. The cure for the evil within us is to strip these things away by hearing the Word of God and living it.

May the Holy Spirit enable you to hear the Word of God and live it daily.

Our Sympathy

GEORGE C. "BUD" LOWE

GRUVER - George C. "Bud" Lowe, 78, died Saturday, Aug. 25, 2009.

Graveside services will be at 10 a.m. Tuesday in Gruver Cemetery. Services will be at 11 a.m. Tuesday in Gruver United Methodist Church with the Rev. George Price and the Rev. Brad Reeves officiating. Arrangements are by Boxwell Brothers Funeral Home at Spearman.

George was born Oct. 11, 1930, on his parents' farm in Hansford County. He married Shirley Ann Keim on Feb. 1, 1953, in Perryton.

He was a rancher and farmer. He was a member of Gruver United Methodist Church, a 1948 graduate of Gruver High School, Wentworth Military Academy and a 1953 graduate of Texas Tech.

He was a member of Gruver Lions Club, Gruver Lodge No. 1326 A.F. and A.M., and was a Hansford County commissioner for 24 years.

Survivors include his wife, Shirley Lowe; two sons, Buddy Lowe and wife Marsha and Randy Lowe, all of Gruver; a sister, Billie Jean McCutchen of Levelland; three granddaughters, Cori Cox and husband Chip of Fort Worth, Shea Lowe of Amarillo and Bryn Weller and husband Aaron of Gruver; four adopted children, Jackie Sparks and husband John of Dallas, Kim Gruver Lehr and husband Wayne of Texhoma and Lance Sparks and wife Lori and Slavin Sparks and wife Angie, all of Gruver; and three great-grandchildren, Chloe Cox and Campbell Cox, both of Fort Worth and Cooper Weller of Gruver.

The family suggests memorials be to Gruver EMS, P.O. Box 947, Gruver, TX 79040; Gruver Cemetery Association, P.O. Box 947, Gruver, TX 79040; or a favorite charity.



Hurting from low CD rates? Call First Fidelity for the cure!

5.01%* APY

1 Year CD • FDIC Insured

Ask about our higher yielding tax-deferred products

Hurry - rate won't last!

FIRST FIDELITY
 Financial Group, LLC
 Your Safe Money Solution®
 1800 Washington, Suite 110 • Amarillo, TX

806-373-9480 By appointment only

First Fidelity is a financial services firm that locates FDIC insured banks offering the highest CD yields nationwide. Minimum deposits may apply; rate and deposit subject to availability; subject to change without notice; penalty for early withdrawal; FDIC insured to \$250,000 per institution; promotional incentive may be included to obtain yield. First Fidelity Financial Group is not a state or federally insured financial institution, and is not affiliated with First Fidelity Bank, First Fidelity Trust, or First Fidelity Savings & Loan. Insurance products, including fixed annuities, are not guaranteed by any bank, federal agency, or the FDIC. © 2009 First Fidelity Financial Group, LLC Rev. 5/09

MONUMENTS
Boxwell Brothers
Funeral Home
 519 Evans • Spearman
 659-3802

Dear friends,
 When you buy a monument from us we make sure it is exactly what you want at a price you can afford. If it is not right, we will make it right. And you will not have to search the countryside to find us. We are here when you have a need.

Sincerely,
 Bob Boxwell

FREE DIRECTV 5 MONTHS!

ALL 265+ DIGITAL CHANNELS!

130 HD CHANNELS!
 Plus HBO, Cinemax, Showtime & Starz!

NFL Sunday Ticket is Here!!!

ALL FREE FOR 5 MONTHS!
 Ask How

FREE DVR/HD
 We're Local Installers!

Toll Free 800-214-7110

Mortgage Payment Protection

Worried about losing your job? Relax! This free benefit will pay your mortgage for up to 6 mos, up to \$1,800/mo.

Now 14 Sales Offices in Texas.
 Visit ubh.com to find one near you.

United-Bilt Homes
 Homemade just for you.

800.756.2506 @ubh.com

"THE 2009 TEXAS STATE AUCTIONEERS CHAMPION"
JOHN SISK Tx#7425 - George West, Tx 361-456-7771
ANNOUNCES TWO TREMENDOUS AUCTIONS!!

#1 August 15th, 10am;
 Livingston Machine Shop & Real Estate Auction, Kingsville, Tx
 Milling Machines, Lathes, Presses, Drills, Saws, Hand Tools, Welding Machines, Scrap Iron, Calipers, Dial Indicators, Two Pipe Machines, & More! 10% B.P.

#2 August 22nd, 10am Adcock (Deceased) Estate Auction:
 Gold-Silver-Collectible Coins, Paper Money, Collector Guns, Stamps 10% B.P. (Live) 15% (On-Line) Bid Live In-Person or On-Line Live

WWW.SISKAUCTION.COM

Become a Police Officer

Now Accepting Applications

July 13th - August 28th, 2009

For more information please visit our website www.sanantonio.gov/sapd or you may call us at (210) 207-5050

REGLAN Parkinson's Like Symptoms
 Tongue Protrusions
 Frowning, Facial Twitching

Reglan® (metoclopramide) has been linked to a serious condition called Tardive Dyskinesia (TD), which causes involuntary movements of the tongue, face or mouth, lip smacking, shakes, NMS, Dystonia, Akathisia and other Parkinson's-like symptoms.

In Feb. 2009, the FDA required the manufacturers of Reglan® to include Black Box Warnings regarding the drug's usage for more than 12 weeks.

If you or a loved one has suffered severe side effects after taking Reglan® you may be entitled to compensation. Cases taken on a Contingency Fee Basis. Call for a Free Case Consultation

WILLIS LAW FIRM
 HOUSTON, TEXAS
 BOARD CERTIFIED
 PERSONAL INJURY TRIAL LAWYER
 Texas Board of Legal Specialization
 DAVID P. WILLIS - ATTORNEY AT LAW

1-800-883-9858

HOME PHONE SERVICE
1st Month FREE with Lifeline
 Starting at \$13.49/mo • \$0 Deposit
NO Credit Check • NO Contracts
Everyone Approved!
 Restrictions May Apply.
NEWTALK 866.934.3448

FAMILY POOL FUN.COM

Our pools create Generations of Memories everyday, vacations never end!

Aboveground & Inground pools at WHOLESALE PRICING

• SIMPLE DIY Pool Kit Assembly
 • SAVE MONEY on All Pool Supplies & Accessories. Ships Fast

Call Today! **800-250-5502**

Replenish the seed of faith through . . . DAILY BIBLE READING, PRAYER & REGULAR CHURCH ATTENDANCE

- Spearman**
- Apostolic Faith Church**
 822 S. Drexler • 659-2870
 Sunday School: 10 a.m.
 Worship Service: 11 a.m.
 Sun. Eve. 6 p.m.
 Wed. Prayer Mtg. 7 p.m.
 Pastor - Roland Haney
- First Assembly of God**
 401 N. Bernice • 659-2295
 Sunday School: 9:30 a.m.
 Worship: 10:40 a.m.
 Evening Worship: 6 p.m.
 Wed. Worship: 7 p.m.
 Wed. Youth: 7
 Pastor - Jerry Pollard
- First Christian Church**
 (Disciples of Christ)
 29 S. Bernice • 659-2036
 Sunday School: 9:45 a.m.
 Worship: 10:50 a.m.
 Minister -
- First Baptist Church**
 123 N. Bernice • 659-5557
 Sunday School: 9:45 a.m.
 Worship: 11 a.m.
 Evening Worship: 7 p.m.
 Men's Bible Study - Wed., 7 a.m.
 Children's Choir - Wed., 6 p.m.
 Adult Choir - Wed., 7 p.m.
 Wed. Bible Study: 7 p.m.
 Pastor - Jim Medley
- Church of Christ**
 121 S. Haney • 659-3244
 Sunday Bible Class: 9:45 a.m.
 Worship: 10:30 a.m.
 Evening Worship: 6 p.m.
 Bible Study Wed.: 7:30 p.m.
- Sacred Heart Catholic Church**
 901 Roland • 659-2792
 Sat. Night Mass: 5:30 p.m.
 Sun. Mass: 9 a.m. - English
 Sun. Mass: 11:30 - Spanish
 1:30 p.m. - Gruver - Christo
 Rector Mass - Spanish
 Rev. Guillermo Morales
- First United Methodist**
 407 S. Haney • 659-5503
 Sunday School: 9:45 a.m.
 Worship: 8:30 & 11 a.m.
 Jr. High Youth: 5 p.m. Sunday
 High School: 6 p.m. Sunday
 Kids Club: 3 p.m. Wed.
 Pastor - Neely Landrum
- Grace Presbyterian Church**
 (Worships with Faith Lutheran Church)
 1101 Bernice • 659-2033
- Faith Lutheran Church (ELCA)**
 1101 Bernice • 659-2252
 Sunday School: 9:45 a.m.
 Worship: 11 a.m.
 (Worships with Grace Presbyterian Church)
 Pastor - Cecil Biggers, PLM
- Union Church**
 31 S. Endicott • 659-2644
 Sunday School: 10:00 a.m.
 Worship: 11:00 a.m.
 Bible Study: 7 p.m. Wed.
 Youth Service: 6 p.m. Wed.
 Pastor - Don Baltazor
- Fellowship Baptist**
 1102 S. Archer • 659-2783
 Sunday School: 10 a.m.
 Worship: 11 a.m.
 Sun. Evening Worship: 6 p.m.
 Sun. Evening Spanish Worship: 7 p.m.
 Youth/Adult Service: 7:30 Wed.
 Pastor - Philip Hudson
- Primera Mision Bautista**
 502 E. 7th • 659-3991
 Sunday School: 9:45 a.m.
 Worship: 11 a.m.
 Evening: 6 p.m.
 Wed. Prayer Meeting: 7 p.m.
 Thurs. Visitation: 7 p.m.
 Pastor - Joe Garcia Jr.
- El Aposento Alto U.P.C.I.**
 1105 S. Roland
 Domingos: Escuela-Domical - 10 a.m.
 Culto Evangelistico - 7 p.m.
 Jueves: Oracion - 8 p.m.
 Mier: Estudio Biblico - 7 p.m.
 Pastor - A.G. Martell
 (806) 659-2153
- Gruver**
- First Baptist Church**
 402 E. Broadway • 733-2411
 Sunday School: 9:45 a.m.
 Worship: 10:50 a.m.
 Disciple Training: 6 p.m. Wednesday
 Prayer Meeting: 7:30 p.m. Wednesday
 Pastor - Scott Curry
- Church of Christ**
 209 King • 733-2760
 Sunday School: 9:30 a.m.
 Worship: 10:20 a.m.
 Evening Worship: 6 p.m.
 Wed. Worship: 7:00 p.m.
 Minister - Gaylord Cook
- First Christian Church**
 510 King • 733-2960
 Sunday School: 10:00 a.m.
 Sunday Worship: 11 a.m.
 Youth: 7:30, Sunday
 Adult Bible Study: 7:30, Sun.
 Wed. Bible Study: 8:00 p.m.
 Pastor - Gary Gumfory
- Gruver United Methodist**
 Broadway & Garrett
 733-2651
 Sunday School: 9:45 a.m.
 Worship: 8:30 & 10:50 a.m.
 Eve. Worship & UMY: 6 p.m.
 Pastor - George Price
- Spanish Cristo Redentor Church**
 Sunday Mass: 1:30 p.m.
 Friday Evening Mass
 Summer - 8:00 p.m.
 Fall/Winter - 7:30 p.m.
- Oslo**
- Oslo Lutheran Church (ELCA)**
 6 Miles West & 12 Miles
 North of Gruver
 339-7648
 Sunday School: 9:45 a.m.
 Worship: 11 a.m.
 Pastor - Arlen Lloyd
- Morse**
- Morse Baptist Church**
 733-2757
 Pastor - Mike Martin
- Waka**
- Church of Christ**
 300 Rogers Ave.
 202-7126
 Sunday Worship: 6 p.m.
 Wednesday Bible Study: 6 p.m.
 Preacher - James Gordon

He has showed you, O man, what is good. And what does the LORD require of you? To act justly and to love mercy and to walk humbly with your God.
 Micah 6:8

This feature is made possible through the sponsorship of these civic minded businesses:

- Deakin ELECTRIC**
 OILFIELD • RESIDENTIAL • COMMERCIAL
 321 S. MAIN • SPEARMAN
 1-800-999-1506 Chris
 Deakin (806) 659-5016 President
- Bartlett's Lumber & Hardware**
 105 W. Broadway • Gruver, TX
 (806) 733-2404
- BERRY CLEANERS**
 Ann & Vernon Pipkin - Owners
 Phone 659-3122 • P.O. Box 1017
 207 Main St. • Spearman, TX
- Morse Implement & Auto Supply**
 "Join us in church"
 Tom Dorch 733-2668
 Box 89 • Morse, TX 79062
- PRAIRIE MOTORS INC.**
 Hwy. 207 South • P.O. Box 430
 Spearman, TX 79081 • (806) 659-2541
 www.prairiemotors.com
- MurMur's Cafe**
 100 Roland St
 Spearman, TX.
 659-3580
- Hansford County Reporter-Statesman**
 "Proudly Serving Hansford County Since 1907"
 (806) 659-3434
 310 Barkley • Spearman, TX
- INTERSTATE BANK, sbs**
 www.interstatebank.net
 322 Main • P.O. Box 146
 Spearman, TX • 659-2559

HYI

FOR YOUR INFORMATION

Medical Fund for Krystal Puentes
A medical fund has been established for Krystal (Burkhamer) Puentes at First National Bank, Spearman. If you would like to make a contribution you may make a deposit with any teller or mail a donation to First National Bank, Krystal Puentes Medical Fund, PO Box 337, Spearman TX 79081.

Medical Fund for Rene Griffin
A medical fund has been established for Rene Griffin at First State Bank, Spearman. If you would like to make a contribution you may make a deposit with any teller or mail a donation to First State Bank, Rene Griffin Medical Fund, PO Box 247, Spearman TX 79081.

Medical Fund for Bruce Duncan
A medical fund has been established for Bruce Duncan at First National Bank, Spearman. If you would like to make a donation you may make a deposit with any teller or mail a donation to First National Bank, Bruce Duncan Medical Fund, PO Box 337, Spearman TX 79081.

Medical Fund for Nancy DeLuna Jernberg
A medical fund has been established for Nancy DeLuna Jernberg of Stinnett. Nancy was diagnosed with a rare malignant brain tumor and will be undergoing treatment. If you would like to make a contribution you may make a deposit with any teller or mail a donation to H&H Federal Credit Union, 104 Main Street, Stinnett TX 79083.

Booth Brothers Scheduled to Perform at Guymon
The Booth Brothers are coming to Guymon OK. This trio, known for their harmony-drenched vocals and warm, easy voices, are coming for an exciting musical event on Thursday, August 27th at Guymon Church of the Nazarene, 2214 Sunset LN, Guymon OK. Award winning lead singer Ronnie Booth, tenor Michael Booth and baritone Jim Brady make up the trio. Their unique ability to communicate through song and humor have garnered them many fans with their appearances on the Bill Gaither Homecoming tours and their own heavy touring schedule over the last several years. This concert will begin at 7 p.m. to acquire additional information regarding this exciting musical event, call 580-338-3553.

Rushing Wind Emmaus Community
Rushing Wind Emmaus Community will meet on Saturday, September 12, at the Spearman Methodist Church. A potluck meal will be served at 6 p.m., followed by a praise and worship service. Families and friends are invited to attend, a nursery will be provided, and there will be a training for sponsors.

Wheatheart Festival
A "Wheatheart Festival" is being planned in conjunction with the Wheatheart of the Nation Celebration for Aug. 22 from 11 a.m. - 5 p.m. at Leatherman Park in Perryton. The Celebration committee is seeking food and game booths and arts and crafts booths for the event. There is no charge to participate, but those interested can call 806-435-5458 between 9 a.m. - 5 p.m. to sign up. All non-profit organizations, church groups and clubs are encouraged to participate.

Golden Spread Center Radio Auction Planned
The O'Loughlin Center will be hosting the Golden Spread Center's annual KXDJ-FM Radio Auction on August 22, 2009. Donations of handmade items, goods, services, good furniture, cars, boats, golf carts, etc. are greatly appreciated. Funds will benefit the Golden Spread Center. To make your charitable donation, call Jada Breeden at 806-659-3030.

Women's Conference
Women of Victory of Victory Center Church will host their 17th annual Overcoming in Life Conference on August 27th, 28th, and 29th, at 5th and Quinn in Guymon. This year's theme is "Women of Excellence."

Fire Department Donations
Persons wishing to make donations to the Fire Departments in Hansford County may do so at the following addresses: Spearman Fire Dept., Box 37, Spearman TX 79081; Gruver Fire Dept., Box 947, Gruver TX 79040 or Morse Fire Dept., Box 28, Morse TX 79062

Take Off Pounds Sensibly Meets
Take Off Pounds Sensibly (TOPS) meets on Tuesday morning at 8:30 a.m. at the First Christian Church in Gruver. Anyone interested is invited. Contact Marilyn Been at 806-733-2087.

IRS won't e-mail you about your refund
If you get an e-mail about your tax refund that appears to be from the Internal Revenue Service, don't be fooled. It's probably coming from internet thieves looking to steal your personal information, like credit card or bank account numbers. "Many folks have tax refunds coming back this time of year, and crooks might take advantage of that fact," Sanford said if the IRS needs to contact you, they will generally send a notice or letter through the U. S. Mail. Delete bogus IRS e-mails or forward them to phishing@irs.gov.

Child Find
Your school district is looking for children ages 3-21 years who may be slow in developing communication skills, social interactions, walking skills and/or have major physical disabilities. We want to give your child the chance to receive the extra help he/she needs, if the disability interferes with his/her education. Please call your elementary campus to get more information or call Perryton SSA, 435-4412.

ATTENTION

2009 Summer Clearance Sale

Sale Prices Good from August 21-29

<p>• 30% OFF •</p> <p>Men & Boys Summer Clothing Men Summer Pullover & Sport Shirts Men Shorts & Swim Suits Men Summer Tallman Pullover & Sport Shirts Men & Boy Western & Fashion Straw Hats Boy Summer Clothing - Shirts & Shorts Men & Boys Adidas & Reebok Shoes</p> <p>Boy Fashion Jeans - \$29⁹⁵ Men Fashion Jeans - \$39⁹⁵ Men Tabasco & Chili Wear Shirts - \$39⁹⁵ Men Cinch Black Label Jeans - \$39⁹⁵ Men Cinch Green Label Jeans - \$32⁹⁵ Men Levi 550, 560, 501 PW Jeans - \$29⁹⁵ Men Riata Pants - \$29⁹⁵</p>	<p>20% OFF</p> <p>Boys Jeans (Levi, Wrangler, Cinch, 20X & Carhartt)</p> <p>Boys Shirts (Cinch, 20X)</p>
--	---

Come visit us at:
221 Main Street
Spearman, TX
(806) 659-3426

Store hours: Monday-Saturday, 9 a.m.-6 p.m.

A reminder from the Spearman Police Department

August 24th marked the beginning of the 2009-2010 school year for the Spearman ISD. The Police Department, as a courtesy, would like to extend a reminder to the community of the posted speed limits on the roads surrounding Gus Birdwell Elementary and the Spearman Jr. High Schools.

The speed limits of both 5th and 7th Street between Barkley and Townsend are 15 mph between the hours of 7:30AM and 4:00PM.

The same speed limit and times apply to both Barkley and Townsend between 5th and 7th Street.

Please also keep in mind that state law requires all vehicles to stop for persons using a crosswalk.

Also, in efforts to eliminate traffic congestion in the area during drop-off and pick-up times, we ask that all parents please use the designated lanes in front of the schools to pick-up and drop-off your child, as opposed to stopping in the middle of the roadway on the roads surrounding the schools.

Your efforts, heightened alertness, and special attention to the above when traveling to, from, or around the Elementary and Jr. High Schools during school hours will help us ensure that we have another great and safe school year.

Trees 4 Troops


Les Sullivan, with the help of local Boy Scouts, will be planting a tree at Hansford County Courthouse on September 11th in honor of our local soldiers.

Donations for the trees, as well as care packages (that will be sent to the troops serving in Afghanistan and Iraq) will be accepted at Hansford Implement, Prairie Motors, The Barber Shop, Hansford County Library and Lowe's.

For more information, you may contact Les Sullivan at 336-0456, or e-mail pennies4peace@rock-etmail.com.

AVAILABLE NOW! E-SUBSCRIPTION

to the
Hansford County Reporter-Statesman



You are invited to a
Bridal Shower
honoring
Amber Ramon
(bride-elect of Dustin King)
on Saturday, September 5, 2009
from 2:00-4:00 p.m. in the home of
Marsha Murphy
114 Bernice St. Spearman, TX

Gordon's



Couples Currently Registered

Amber Ramon & Dustin King - 9/5
Blythe Finley & Aaron Boyd - 9/19
Donia Henderson & Jason Varnon - TBA
Brittany Carter & Travis McDowell
Jordanna (Lozano) & Louis Wilson



Baby Registry

Detsi & T.J. Evans - 8/15 (girl)
Amy & Markus Schick - 8/15
Kandace & Manolito Cruz - 9/12
Krystal Vela - TBA
Krystle (Deeds) & Brian Haggard
Dusty Desmond

Gordon's 659-2141
314 Main Spearman

Garnett Enters Basic Cadet Training at U.S. Air Force Academy

Kegan M. Garnett has entered Basic Cadet Training at the U.S. Air Force Academy, Colorado Springs, Colo., in preparation to enter the first academic year at the academy. The six-week, two-phased orientation program must be successfully completed by the cadets prior to entering their freshman year. The training prepares men and women to meet the rigorous mental and physical challenges experienced by new cadets.



Phase one involves personal in-processing, orientation, and training in the fundamentals of being a cadet. Cadet trainees are prepared to adjust from civilian to military life and disciplines, and learn proper wear of the uniform, saluting policies and procedures, drill and ceremony, marching, and living quarters standards.

During phase two, cadets train outdoors living in tents while learning to function in field conditions. Cadets apply and practice team work, cohesion and learn to deal with physically and mentally demanding situations. They complete the obstacle, confidence, assault, and leadership reaction courses, and participate in a rescue mission termed Operation Warrior.

He is the son of Jon and Kelly Garnett of Spearman, Texas.

Garnett is a 2009 graduate of Spearman High School.

Spencer Graduates From Basic

Andrew Theron Spencer graduated from Basic Training at Ft. Jackson, SC on July 30, 2009.



He is the son of Earla Spencer, formerly of Spearman, and the grandson of Earl and June Spencer of Spearman.

He will now be stationed in Huntsville, AL.



Spearman Homecoming
October 2nd

Gruver Homecoming
October 9th

ALL OCCASION FLOWERS
202 N. Bernice • Spearman
(across from the Post Office)
659-5180

Celebrate

Gifts for all your celebrations!

Bridal Registry

Amber Ramon & Dustin King - 9/5
Kristina Ortiz & Andy Jones - 9/12
Blythe Finley & Aaron Boyd - 9/19
Donia Henderson & Jason Varnon - 9/27
Tessa Thoreson & Hunter Martin - TBA

Baby Registry

Krystle (Deeds) & Brian Haggard - TBA
Mika (McLain) & Matthew Devaney
Haley Tindell & Felix Lopez
Dusty Desmond
Amy & Markus Schick

Celebrate

203 Main St. Spearman, TX
(806) 659-3350 1-800-663-8026

Uniquely Yours...

**Brighton.
Your Day**

Men's, Women's, and Kid's Clothing

*a
CHARMED
life...*

Hours: M-S 9-8 • Sun 1-6
118 NW 4th St • 338.3332
Guymon, OK

by Dorothy Hudson

Out at the Lake

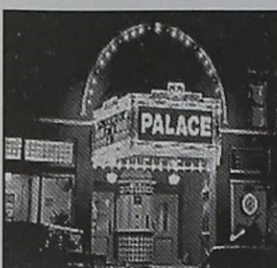


Jim Derington
Palo Duro River Authority
P.O. Box 99
Spearman, TX 79081
806-882-4401
pdra@dishmail.net

Lake Level--August 24, 2009--19.50 feet (-0.12)
Jim reported 2.30 inches of rain last week, and the creeks still did not run. However, the Park is green and beautiful.

He is hearing reports of bigger fish being caught. Chris Barclay, who works for the PDRA, had a birthday party for a friend at the shelter this week. It was also used by a male youth group from Dumas, as they camped Thursday and Friday night in tents north of the dam. Jim's picture of the week is somewhat of a mystery. He doesn't know who mis-

placed his grease gun in the crotch of a cottonwood tree growing close to the spot where the Steele house had stood. Before the lake level killed the tree, bark had grown over the gun to hold it in place. The gun can still be seen, but now it is rusty from its stay under water. Several had spotted the oddity, but Jim said he had often been near it without noticing.



Palace Theatre

MOVIE SHOW TIMES
Friday-Thursday - 7 p.m.
Sunday - 2 p.m.
Closed Sunday Night

FRESH POPCORN & DRINKS!
PARTY ROOM & ARCADE
MOVIE RENTALS

Palace Theatre
210 Main Street
Canadian TX 79014
806-323-5133
www.palacetheatre.com

The Palace Theatre meets Lucasfilm THX specifications for site and sound quality.

Jamaica Sunday

Sun., Aug. 30, 2009

Fun and Games for the Whole Family!

Swimming Pool Park
216 East 7th Street, Spearman
Booths open at 11 a.m.
Coronation of Queen - 7 p.m.

Raffle Tickets - \$5 Each
1st Prize - 42" Flat Screen TV
2nd Prize - \$250 Gas Card from Farm Supply
3rd Prize - \$150 Wal-Mart Gift Card

Burritos, Tacos, Gorditas, Fajitas, Sweet Corn, Fruit Cups, Cold Drinks, Games for the Entire Family
Live Music & Lots of Good Food!!!

Hope To See You There!
Sponsored by the Sacred Heart Catholic Church

Small Taxing Unit Notice

The City of Gruver will hold a meeting at 6:00 P.M. on September 9, 2009, at City Hall; 201 E. Broadway in Gruver, Texas, to consider adopting a proposed tax rate for tax year 2009. The proposed tax rate is \$0.3521 per \$100 of value.

The proposed tax rate would increase total taxes in City of Gruver by 1.20 percent.

*Weatherford
Construction*

Septic Systems

Kirk Weatherford (806) 336-2820
8125 FM 3395 Toll Free: 1-800-585-6047
Spearman, TX 79078 Email: kirk@weatherford-construction.com

Prices Good Thru 9/5/09

DIET COKE, SPRITE OR COKE
2 \$7.98
FOR

DIET COKE, SPRITE OR COKE
2 LITER BOTTLE
3 \$5.00
FOR

16 OZ. CAN
MONSTER ENERGY DRINK
2 \$3.00
FOR
(DOES NOT INCLUDE 15 OZ. JAVA)

305 W. Kenneth
Spearman • 659-3135

101 Main Ave.
Gruver • 733-2953

HOMOGENIZED, 1% OR 2%
ALLSUP'S MILK
GALLON
2 \$4.00
FOR

ALLSUP'S "MOO"
BUY 12 GALLONS OF FRESH ALLSUP'S MILK... GET ONE FREE!

Collect Bull Brand "Moo" Stamps Today & Your Next Milk Will Be FREE Milk For A Year!

LANA'S EGG ROLLS

BUY ONE GET ONE FREE

More Specials

JALAPENO CHICKEN MINI TACOS 8 PER ORDER	\$1.99
KETTLE WINGS 10 PER ORDER	\$5.99
BAR-S THIN CUT DELI LUNCH MEAT 9 OZ. HAM, TURKEY OR HONEY HAM	2 FOR \$5.00
KELLOGG'S CEREAL IN A CUP	99¢
KEEBLER COOKIES ASSORTED 2.2.5 OZ.	2 FOR \$1.00
ALLSUP'S WATER 16.9 OZ. BOTTLES CASE	\$3.99
ALLSUP'S SANDWICH BREAD 24 OZ. / 79¢ OR	2 FOR \$1.29
ALLSUP'S WHEAT BREAD 24 OZ. / 99¢ OR	2 FOR \$1.49

Combo Meals

#1 BACON/EGG BISCUIT & 16 OZ. COFFEE	\$2.09
#2 SAUSAGE/EGG BISCUIT & 16 OZ. COFFEE	\$2.09
#3 BBQ SANDWICH & 32 OZ. TALLSIP	\$2.09
#4 HOMESTYLE POPCORN CHICKEN & 32 OZ. TALLSIP	\$2.79
#5 SPICY POPCORN CHICKEN & 32 OZ. TALLSIP	\$2.79
#6 3 TAMALES, HOWLERS & 32 OZ. TALLSIP	\$2.69
#7 2 HOT LINKS WITH BREAD & 32 OZ. TALLSIP	\$2.59
#8 2 CORN DOGS & 32 OZ. TALLSIP	\$2.69
#9 CHIMICHANGA & 32 OZ. TALLSIP	\$2.49
#10 2 BEEF & BEAN BURRITOS & 32 OZ. TALLSIP	\$2.69

Meet The Lynx



School News

SHS Booster Club Watermelon Feed

The Annual Booster Club's Athlete Watermelon Feed will be held on Wednesday, September 2 at 5 pm.

GHS Mini-Cheer Camp

I just wanted to give you all a heads up that the Cheerleaders will be selling their old uniforms at Mini-cheer camp this year. If you are interested, please let me know. They will be sold as a set (a top and bottom) for \$35.

The date for mini-cheer camp has been set for September 15, from 4pm until 5:30pm in the elementary gym. It will be for girls PK-6th grade. Girls who attend camp will get the opportunity to cheer with the Varsity cheerleaders during the 3rd quarter of the Gruver vs. Clarendon game Friday, September 18th. The cost for camp will be \$10. We will be sending flyers home with the girls closer to the date.

Gruver Booster Club to Sell Hamburgers/Sausage Wraps

Gruver Booster Club will be serving hamburgers and sausage wraps at the football game against Wheeler on Friday the 28th. We will start serving at 6:30, so come on out and support our hounds!

Gruver Booster Club Selling Yard Dogs

Gruver Booster Club is selling yard dogs to student athletes, they are \$10. If you are interested and would like one you can call Brent Thornton at 733-2239 or Julie Logsdon at 736-2490.

Gruver Yearbooks

Come by Mrs. Hart's room 110 to pick yours up if you pre-ordered. We have several additional books for sale. The cost is \$50.00.

News from the GHS Counselor

Parents, please make plans to attend a Senior Parent Seminar on Tuesday, Sept. 15 at 6:30 p.m. in the FCS room of the high school for helpful information regarding the avalanche of information regarding college testing, college applications, scholarships, and vocational schools/training.

Parents, please make plans to attend a Junior Parent Seminar on Tuesday, Sept. 22 at 6:30 p.m. in the FCS room of the high school to receive information about how to best prepare for the senior year which includes searching for a college or vocational school.

Parents, please make plans to attend a Freshman Parent Seminar "MORPH 101" on Monday, August 31 at 6:30 p.m. in the FCS room of the high school. The seminar is geared to give helpful information to parents about the high school years.

The Coca-Cola Scholars Foundation has opened its scholarship for high school seniors. Please go to www.coca-colascholars.org to apply. The deadline is October 31.

The Wendy's High School Heisman is now available. Student athletes can go to www.wendysheisman.com to apply. The deadline is October 1.

Hargrove Photography

<http://spearmansports.smugmug.com>

Photos available of Spearman Lynx and Lynxette athletic events.



MITCHELL THEATRES NORTHBRIDGE CINEMA 8

Guymon, Oklahoma

FRESH POPCORN EVERYDAY!

-PARTY ROOM & ARCADE-

Call for Showtimes

580-338-3281

www.northridge8.com

Water District

Notice of Public Hearing on Tax Rate

The Palo Duro River Authority will hold a public hearing on a proposed tax rate for the tax year 2009 on September 8, 2009 at 2:00 pm at Palo Duro River Authority Office. Your individual taxes may increase or decrease, depending on the change in the taxable value of your property in relation to the change in taxable value of all other property and the tax rate that is adopted.

FOR the proposal:	Jack Lane	Margarette Evans
	Jay Goodwin	Paul Stavlo
	Don Savage	Rod Barkley
	Arthur Davidson	Les Taylor

AGAINST the proposal:

PRESENT and not voting:

ABSENT: Keith Christie

The following table compares taxes on an average residence homestead in this taxing unit last year to taxes proposed on the average residence homestead this year.

	Last Year	This Year
Total tax rate (per \$100 of value)	\$0.073065/\$100 Adopted	\$0.065761/\$100 Proposed
Difference in rates per \$100 of value		-\$0.007304/\$100
Percentage increase/decrease in rates (+/-)		-10.00%
Average appraised value	\$54,758	\$54,529
General exemptions available (excluding senior citizen's or disabled person's exemptions)	\$5,000	\$5,000
Average taxable value	\$49,758	\$49,529
Tax on average residence homestead	\$36.36	\$32.57
Annual increase/decrease in taxes if		
proposed tax rate is adopted (+/-)		-\$3.79
and percentage of increase (+/-)		-10.42%

NOTICE OF TAXPAYERS' RIGHT TO ROLLBACK ELECTION

If taxes on the average residence homestead increase by more than eight percent, the qualified voters of the district by petition may require that an election be held to determine whether to reduce the operation and maintenance tax rate to the rollback tax rate under Section 49.236(d), Water Code.

NOTICE:

Attention Farmers:

Batman Grain/Texas Farm, LLC, facility in Farnsworth, Texas, is no longer a Public Storage Elevator

Batman Grain/Texas Farm, LLC will continue to offer grain contracting and Guarantee the Best Milo Price in the Area!!!!

Please call us with questions or to discuss your future marketing needs.

806-435-2901

REAL ESTATE

FOR RENT: 1BR apartment, furnished, bills paid, laundry available. 659-2247. TFN(8/20/09)B

FOR SALE - Morse: 2BR, 1B, 2CG on 1 acre. Lg. living & dining, walk-in utility, chicken house, closed pen, smoke house, tool shed, concrete storm cellar, some appliances & furniture incl. 806-733-2706 2(8/6/09)B

FOR LEASE: Available Soon - 2 Bedroom Apartment, \$400.00 month, water paid, NO PETS! Call Larry O'Neal at 405-285-8782 or 580-819-0007. TFN(6/25/09)B

FOR RENT: Large 1BR apt. with washer/dryer hook-up, central AC/heat. \$375/month plus \$375 deposit. Call 940-631-0894. TFN(7/2/09)B

WINDMILL COURTYARD APARTMENTS: Available August!! 4 - 2 bedroom / 1 bath unfurnished apartments. Central heat and Air. All units include new appliances. Pets are allowed with additional deposit. Utilities are not included. \$500/month rent with a \$500 deposit. Inquire about applications at Deakin Electric 321 Main St. Spearman. TFN(7/16/09)B

HELP WANTED

HELP WANTED: First State Bank, Spearman, TX is taking applications for a New Account/Receptionist. Skills required are typing, computer, customer relation, ability to multi task, and telephone etiquette. Background in accounting, word processing and spreadsheets helpful. Good benefit program. Contact Ginger Turner at 806-659-5565 or email gturner@fsbspearman.com. First State Bank is an Equal Opportunity Employer. TFN(6/4/09)B

HELP WANTED: PART-TIME CUSTODIAN NEEDED to work 12 hours a week at the Hansford County Courthouse. Apply at Hansford County Judge's Office. TFN(8/13/09)B

SERVICES

HOOCHY POOCHY PARLOR Call us for all your pet's grooming and boarding needs. Call now for reservations! 806-273-2724. TFN(11/2/07)

GARAGE SALE

GARAGE SALE - SPEARMAN: 114 Barkley, Saturday, Aug. 28th, 8 a.m.-5 p.m. ONE DAY ONLY! 1(8/27/09)P

GARAGE SALE - SPEARMAN: 103 Townsend, Friday, Sept. 5th, 2-5 p.m. & Saturday, Sept. 6th, 9 a.m.-1 p.m. Clothes, knick-knacks, furniture, etc. 2(8/27/09)

PUBLIC NOTICE

NOTICE TO BIDDERS
Sealed proposals for a one year contract for bulk fuel will be received by the City of Spearman, Texas, until 11:00 a.m., August 31, 2009, and

Want to become a Certified Nurse Aid?
The Frank Phillips Allen Campus is offering CNA classes starting Aug 11th! Contact Jaci at the Allen Campus today to register or for more information at 806-648-1450.

then publicly opened and read. The City reserves the right to reject any or all bids, to waive informalities and to accept the bid deemed to be the most advantageous to the City. All bids received after the above closing hour will be returned unopened. All bids shall be sealed and marked on the outer envelope "Bulk Fuel." Specifications and bidding documents may be secured from PO Box 37, Spearman, Texas 79081. 2(8/13/09)B

NOTICE TO BIDDERS
Sealed proposals for a one year contract for bulk fuel will be received by the City of Spearman, Texas, until 11:00 a.m., August 31, 2009, and then publicly opened and read. The City reserves the right to reject any or all bids, to waive informalities and to accept the bid deemed to be the most advantageous to the City. All bids received after the above closing hour will be returned unopened. All bids shall be sealed and marked on the outer envelope "Bulk Fuel." Specifications and bidding documents may be secured from PO Box 37, Spearman, Texas 79081. 2(8/13/09)B

GUARDIANSHIP OR CONSERVATORSHIP CASE NUMBER S-1500-PB-59140
Superior Court of California, County of Kern, 1215 Truxtun Avenue, Bakersfield CA 93301, Metropolitan Division Guardianship of the person of ANNA SARAI PEREZ. This notice is required by law. This notice does not require you to appear in court, but you may attend the hearing if you wish.

1. NOTICE is given that ANA WESCOTT has filed a Petition for appointment of guardian of minor person.
2. You may refer to documents on file in this proceeding for more information (some documents filed with the court are confidential. Under some circumstances you or your attorney may be able to see or receive copies of confidential documents if you file papers in the preceding or apply to the court.)
3. A HEARING on the matter will be held as follows:
October 5, 2009, 9:00 A.M. Dept. "P" at 1215 Truxtun Avenue, Bakersfield CA 93301. Attorney for Petitioner: Susan Z. Mulligan, SBN 262990, Greater Bakersfield Legal Assistance Volunteer Attorney Program, 615 California Avenue, Bakersfield CA 93304, (661) 334-4662. 4(8/13/09)B

PUBLIC NOTICE

Pursuant to Sec. 152.905 of the Texas Local Govt. Code, on the 9th day of September, 2009 at 4:30 p.m., a public hearing will be held at the Hutchinson County Courthouse in Stinnett, Texas, in the 316th District Courtroom. The purpose of this hearing will be to hear testimony concerning the salary of the 84th District Court Reporter, the 316th District Court Reporter and the Hutchinson County Auditor. The public is invited to attend. 1(8/27/09)B

LEGAL NOTICE

Hansford County Commissioner's Court will receive sealed bids until 4:00 p.m. on Friday, September 25, 2009 on the sell of a 4240 Tractor. The tractor has a PTO problem (works, but won't shut off). Tractor belongs to Precinct 3. Bids will be opened on Monday, September 28, 2009 at the regular Commissioners' Court meeting beginning at 10:00 a.m. Tractor may be seen at Hansford County Maintenance Barn in Gruver on Front Street. For questions concerning tractor, contact Rex Casdorph, Precinct Foreman at 806-736-5009. The Court reserves the right to accept or reject any or all bids. Benny Wilson Judge Hansford County Judge 3(8/27/09)B

Quality Seed Wheat available at

Stratford Grain Co.
806-396-5541

LAVAS	LAC	SLAP	6	3	1	2	7	8	9	5	4
ALIBI	AGO	MAUVE	9	8	2	3	5	4	6	7	1
SEINE	MAP	ULGER	4	5	7	6	1	9	2	8	3
SCIENCE	ROSTER										
RNA	DAHL										
SPA	ALBA	MIDDLE	7	9	3	5	4	6	8	1	2
LIFT	LEND	MEWLS	1	4	5	9	8	2	7	3	6
AERO	ALDER	SEAT	2	6	8	7	3	1	4	9	5
TRILL	LICE	KENO	8	7	6	1	2	5	3	4	9
ESTEEM	FOES	BOP	5	2	4	8	9	3	1	6	7
GRAY	VEE		3	1	9	4	6	7	5	2	8
RECESS	TEACHER										
FELON	JOE	MOOLA									
EASED	IVE	ALLAY									
BLED	RAM	TEENS									

MARTIN & ASSOCIATES REALTY
Serving Hansford County for 15 years
Julie Martin: Broker - 659-2425
PRICE REDUCED ON BOTH 804 & 806 Wilbanks
New Construction. Call for your private showing!
We'd Like Your Listing!
FOR QUALITY & SERVICE CALL US TODAY!
Equal Housing Opportunity

Properties
Shirley Howard
We NEED listings!
Call us now to help YOU sell your home for top dollar!

1010 Dressen: 961 sq. ft. 1 bath, UNDER CONTRACT - Give us a call to take a look!
902 9th - Gruver: Horse Stables FOR SALE! 18 pens, circular training pen, arena, & 4500 sq ft barn on 10.42 acres!
712 Womble - Gruver: 1070sq. 3 Bed, 1 Bath, Central Heat, Lrg Corner Lot!
Shirley Howard, Broker/Owner 806-886-6536, Cell
Melinda McCullough, Realtor (806) 733-5678
We would LOVE to sell your HOUSE!
CALL US!

Blankenship Real Estate
659-3052 - 670-3774
4BR/3B Home (Spearman) - 3 living areas, new paint & flooring, storm shelter.
3BR/2B Home (Spearman) - 1500 sq. ft, brick, 2CG, patio, walk-in closets
3BR/2B Home (Spearman) - 1460 sq. ft, brick, 2CG, patio, walk-in closets
NEW LISTINGS WANTED!
Eulalia Blankenship - Sales
Eschol Blankenship - Broker


HARTLEY CO., TX - 640 ac., 10 miles to Hilmar Cheese plant, on pvt, dairy permit, 3 pivots, home, barn, grain storage.
HANSFORD CO - 640 acres, approx. 1/2 dryland 1/2 breaks of Coldwater Creek, pavement
HANSFORD CO - 2 1/2 miles from town, on pvt., 640 acres, choice land, 1/2 mile sprinkler, excellent location for dairy.
READY TO RANCH & DEVELOP (wind energy, comm., res.) Potter Co., TX - 4872.8 acres of beautiful ranch country four miles north of loop 335, Amarillo, TX, pvt. on four sides (3 mi. - hwy 287, 1 mi. - Western St., 1 mi. - Givens Rd., 1 mi. - Rivera Park Rd.) Well watered by pumps powered by solar energy (state of the art) and windmills. Deer, quail & dove. Talk to us about dividing (640 ac. min.).
OCHILTREE CO - Choice dairy location, strong water area, three phase electricity, 776.5 acres more or less of choice land (Pullman Clay Loam - almost all "A" slope) with two pivot points for sprinklers, two irrigation wells, preconditioning pens with indoor working area, grain, hay and fuel storage.
OCEANS OF WATER II - Hansford Co., Texas - 4 sections, strong water, dev. with sprinklers, wells, feedyard, home, barns, pvt., 2 mi. hwy. frontage.
SEE OUR WEBSITE OR CALL US!
www.scottlandcompany.com
Shawn Gillisple 806/922-5532
Ben G. Scott, Broker
1-800-933-9698 day/eve
TFN(7-30-09)

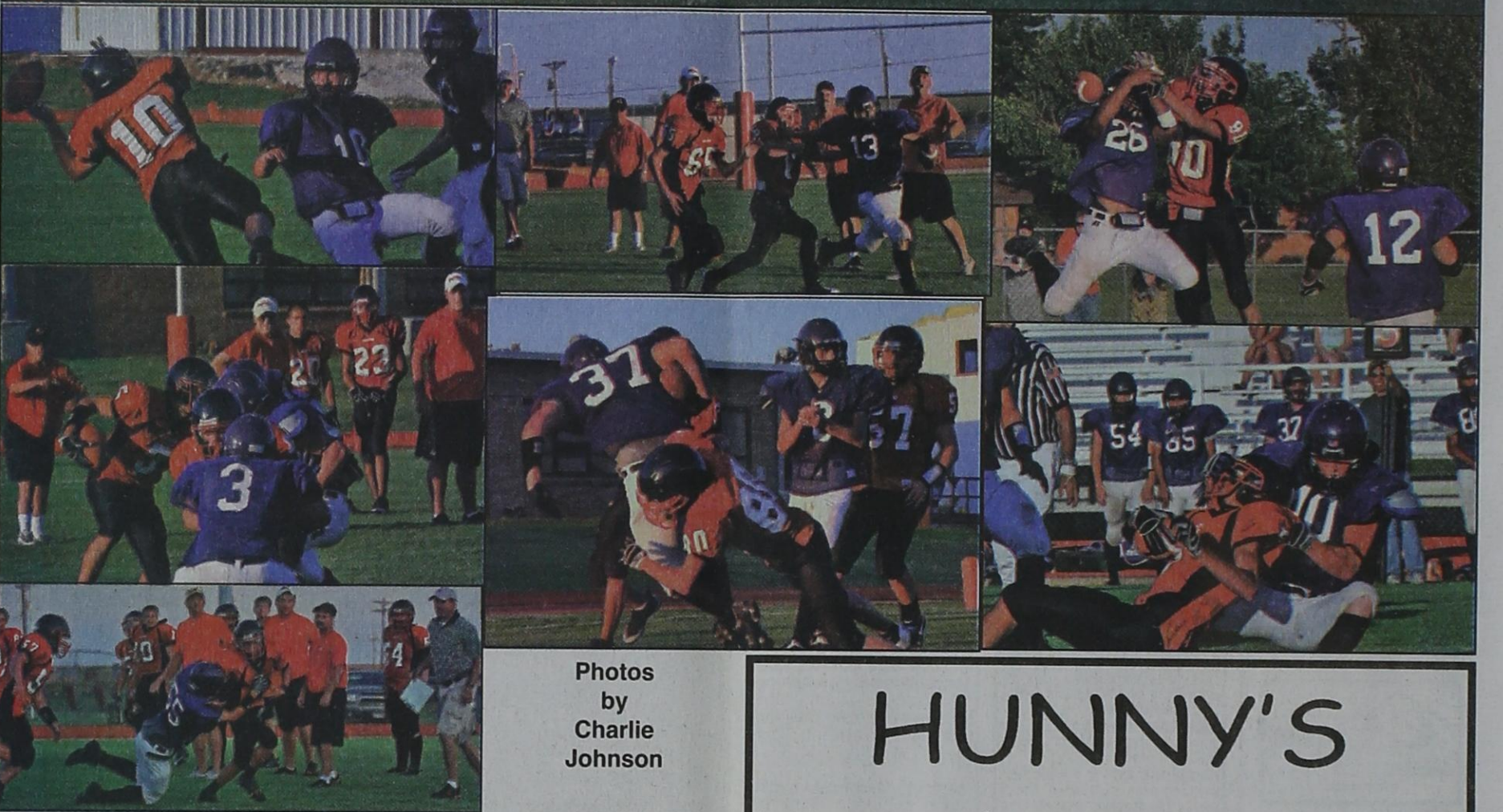
hchd
Hansford County Hospital District
Openings at Hansford Pharmacy
PART-TIME PHARMACY ASSISTANT needed. Great working environment and staff. Job duties include helping the Pharmacist to coordinate activities and functions of the District's Hospital, Manor and Retail Pharmacies.
Openings at Hansford Manor
LVN: Graduate of an approved LPN/LVN program. Must be able to make independent decisions when circumstances warrant. Must possess the ability to deal tactfully with residents, family and public.
Medication Aide: MA certification required. Must be able to provide assigned residents with routine daily nursing and services in accordance with the resident's assessment and care plan, and as may be directed by your supervisor.
CNA: CNA certification required. Must be able to provide assigned residents with routine daily nursing and services in accordance with the resident's assessment and care plan, and as may be directed by your supervisor.
Great working environment and staff, quality facility providing opportunities for professional growth. Great benefit package. Apply at 707 S. Roland, Spearman, TX or contact Jackie Nelson at 806-659-5841. Download application at www.hchd.net EEOE 2(8-20-09)B

Hoochy Poochy Parlor
For Boarding reservations and grooming appointments, call now!
Where Spearman Customers Get Priority!
Hoochy Poochy Parlor
421 E. 10th St.
Borger, TX 79007
806-273-2724
hoochypoochy@att.net
www.hoochypoochy.net
Hours:
Mon.-Fri., 8 a.m.-5 p.m.
Saturday by appointment only
We put the Hoochy in your Poochy.

NAYLOR AUCTION and REALTY, INC.
Rt. 1, Box 65 (580) 646-3548, Balko, OK 73931
AUCTION
August 28, 2009 - 10:00 1.m.
August 29, 2009 - 10:00 a.m.
Spearman TX

SELLER: Butch Turner, Booker, Texas
Directions: From Booker, TX - Hwy 23 North 6.5 miles, 1 mile west; From Elmwood, OK - Hwy 23 South 5 miles, 1 mile west
FRIDAY
5 Graham Hoeme chisels; 2 drill hitches; 4 IHC deep hole drill for parts; Lot Imp. wheels; Lot small air compressors; Air bubbles; Floor jacks; Bottle jacks; Clevis pins; Lot hand winches; Porta power; Hand tools; Snatch blocks; Lot casters; Pip wrenches, come-a-longs; Boomers, chains; 225 amp Lincoln welder; 3 elect. arm winches; Auto crane; Lot welding metal; Parts washer; Torch & gauges; Brake drums and rotors; 6 solar panels (hot air); Thermal pane windows; Aluminum storm doors; Misc. light fixtures; Ant. Fairbanks Morris power plant; 2 Delco Remy power plants; Pole vice; Ant. Fairbanks Morris scale
Household
King-size head board; Griddle; Sandwich maker Crock Pot, Roaster; Cast iron skillet, Pots & Pans; Dishes, Glasses, Utensils; Mini Blinds; 2 elect. heaters; Old Earley T-shirts
This is only a partial list.
WWW.NAYLORAUCTION.COM
NAYLOR AUCTION & REALTY, INC.
580-646-3548
806-435-1994
Rt. 1 Box 65 BALKO, OK 73934
TX Lic 7285
www.naylorauction.com

YOU'RE NOT A SHIRT. SO WHY IS YOUR PHONE COMPANY TAKING YOU TO THE CLEANERS?

So switch to AMA TechTel, stop being pressed and save some money!
AMATechTel, the nicer, cheaper, and better phone company
\$50
A MONTH AND NOT A PENNY MORE
• Save up to 30% on Phone and High Speed Internet
• No hidden fees, charges or taxes
• Includes 100 Long Distance Minutes
• No cost to switch. Keep your same number!
• 11 calling features (caller ID, call waiting, etc.)
• High Speed Internet
AMA-TECHTEL
Switch today and save over \$250.00 a year.
1-806-322-2429



Photos by Charlie Johnson

HUNNY'S
 Saturday September 19th

RBC Band
 From Liberal, KS
 Returns to Hunny's
 Playing songs from the 60's-70's-80's
 Band Starts 7:30

Hunny's
 103 N. Main
 Guymon, OK
 580-338-7383

Getting a **Quick Loan** for back-to-school clothes and supplies is as easy as

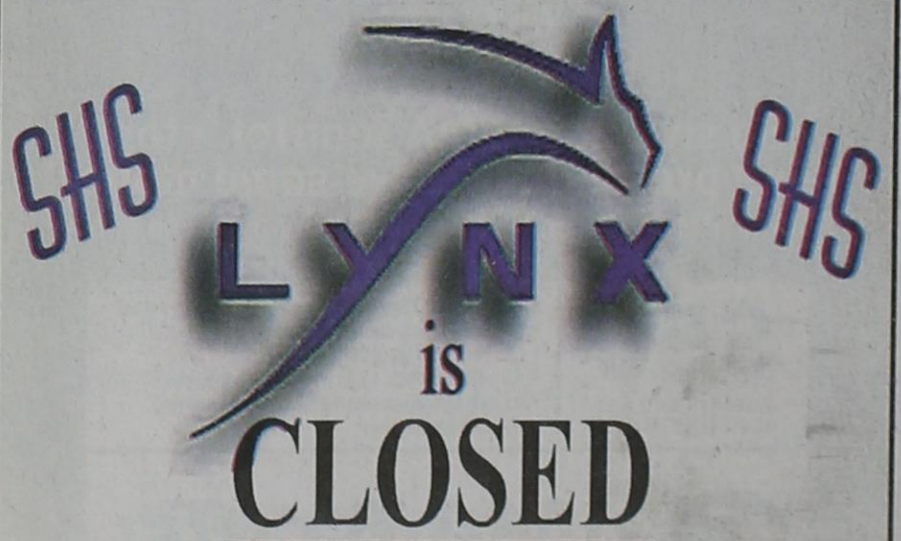
ABC

Get a Loan from \$100 - \$1193.24
 subject to our usual credit policy

Sun Loan & Tax Co.

106 S. Main • Perryton, TX • 435-7242 • Se Habla Espanol

HIGH SCHOOL TRACK



is **CLOSED**
 for 2 months for repair
 (NO WALKERS ALLOWED)

Tong's Chinese Restaurant
 (806) 644-2838
 22 Archer Street • Spearman

Buffet Specials

- Monday: Chicken w/Spiced Salt, Mongolian Beef, Sweet & Sour Chicken, Fried Rice, Etc. - \$6.99
- Tuesday: **CLOSED**
- Wednesday: Fried Shrimp, BBQ Chicken, Pork Sub Gum, Chop Suey, Lo Mein, Etc. - \$6.99
- Thursday: BBQ Park Ribs, Pepper Chicken, Won Ton Soup, Seafood Bun, Etc. - \$6.99
- Friday: Shrimp w/Spiced Salt, Sesame Chicken, Broccoli Beef, Rice Noodles, Etc. - \$7.25
- Saturday: Catfish, Pepper Steak, Egg Drop Soup, Black Pepper Chicken, Etc. - \$7.25
- Sunday: Roast Beef, Potatoes & Gravy, Sugar Biscuits, Chicken-on-a-Stick, Etc. - \$7.25

Lunch Buffet 11 a.m.-2:30 (Wednesday-Monday)
 Dinner Buffet 5:30-9 p.m. (except Sunday & Tuesday)