

# The Hansford County Reporter Statesman

PROUDLY SERVING HANSFORD COUNTY SINCE 1907

reporter@spearmanreporter.com

VOLUME 101 • ISSUE 25

WWW.SPEARMANREPORTER.COM

THURSDAY, JUNE 19, 2008



## 4-S Farms Takes Breather

4-S Farms will not be producing tomatoes for the next three months, but it has nothing to do with the salmonella outbreak.

"Our tomato plants are tired," said Gyene Spivey. "And it is time to replant."

"We have held the plants longer than usual this year due to the salmonella outbreak. Since our tomatoes were not infected, we continued to produce to try to cover some of the loss in the market."

"Although we did not have any contaminated fruit, it is time to replant," said Gyene. "It is our desire to always maintain the highest quality of produce, so when the temperature rises, we use that time to replant our seeds and grow new plants for the next season."

"From seed to tomato is three months," Gyene said. "We will be in full production again by the end of September with new, fresh tomatoes."

Brad and Gyene Spivey of Gruver, with their children, Lexy and Tim Glass, Chris and Eva Spivey and Kevin Spivey, began 4-S Farms in the late summer of 2004.

"We wanted to find something we could do together," Brad said. "Since I have always been interested in hydroponic farming, I thought we could use our farming experiences and expand it into hydroponic tomato farming." (Hydroponic farming is a means of growing plants in a soilless medium using water to deliver nutrients.)

4-S Farms would like to say thank you to all their loyal customers for their support.

"We look forward to serving you again with the best tomatoes in the fall," Gyene

## Williams Honored for Tennis, Basketball Achievements

Taylor Williams and Coach Troy Seagler attended the Kid's Inc. Sports Banquet where Taylor was named Tennis Player of the Year for the Panhandle Area.

Taylor Williams received the award after finishing in 3rd place in Boys Singles at the State 2A Tennis Tournament. Taylor's record for 2008 was 26-4, including the state tournament.

Taylor would like to thank everyone who has helped him with his accomplishments, including Coach Seagler - for always being there for him; his Papa and Bay (Jerry and Rita Williams) for all they have done for him; his older brother, Tucker, for pushing him to be his best with all the practice games they shared together; and last but not least, his parents, Ty and Paula Williams, who always tell him to want more, and not to settle for less than the best!

Taylor played in Varsity Football, where he received honorable mention; Varsity Basketball, where he received Offensive MVP for District 1-A and All-Region; Varsity Tennis where he took 3rd in State; Track; and he showed steers in FFA.

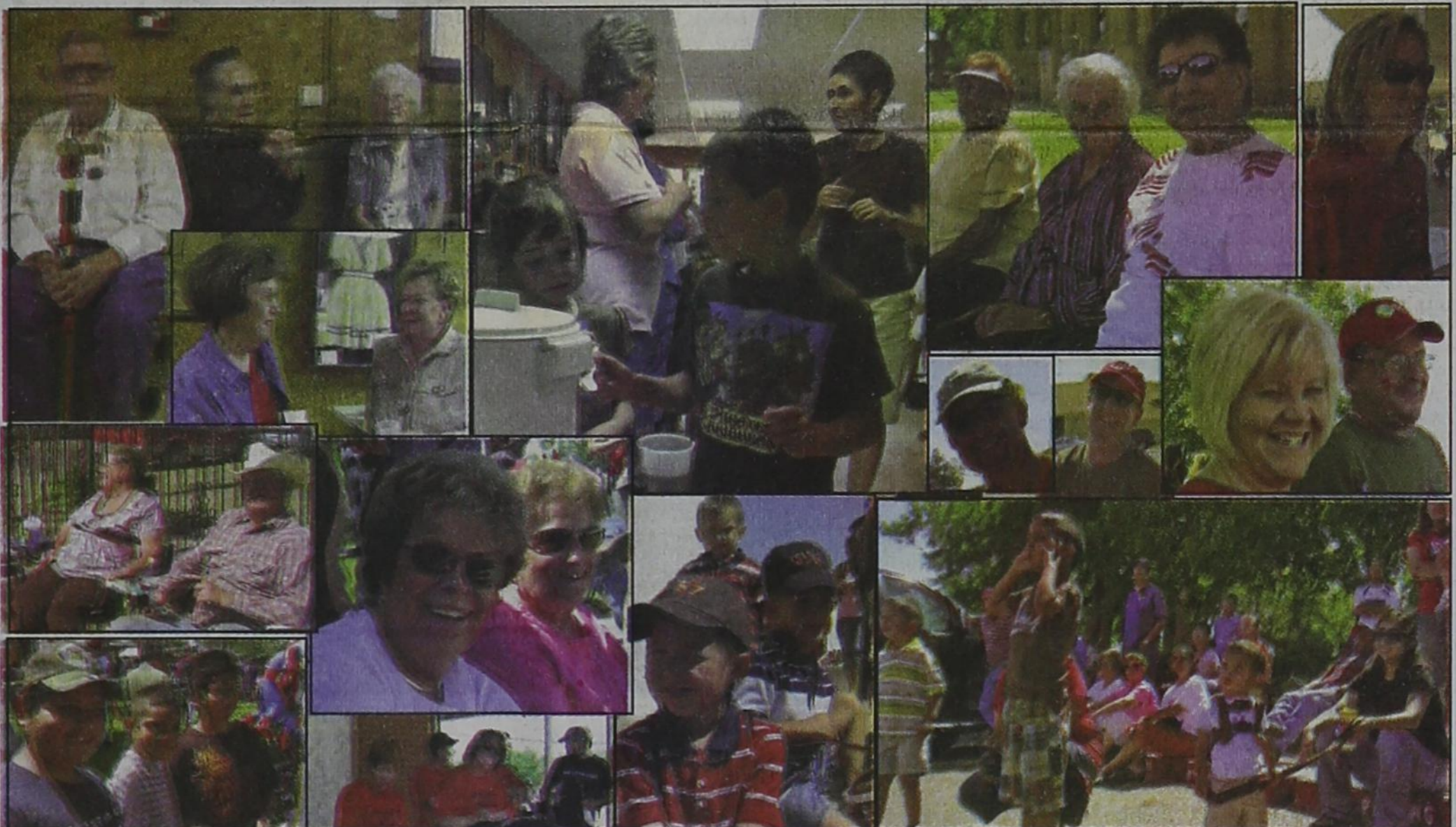
Taylor was selected to this year's 21st 2008-09 Texas Basketball Magazine's All-State Team.



Taylor Williams (left) and Coach Troy Seagler (right) attended the Kid's Inc. Sports Banquet where Taylor was honored for being named the Tennis Player of the Year for the Panhandle Area.

## Heritage Days 2008

For more pictures, go to [www.spearmanreporter.com](http://www.spearmanreporter.com), then click on "Caught on Camera" Event Name is "Heritage Days 2008"



## Weather Forecast

THURSDAY NIGHT - Partly cloudy in the evening then becoming mostly cloudy. A 20 percent chance of showers and thunderstorms. Lows in the upper 50s. Southeast winds 10 to 15 mph shifting to the north after midnight.

FRIDAY - Partly cloudy. Highs in the mid 80s. North winds 10 to 20 mph.

FRIDAY NIGHT - Partly cloudy. Lows in the upper 50s. East winds 10 to 15 mph.

SATURDAY - Partly cloudy. Highs in the upper 90s.

SATURDAY NIGHT - Partly cloudy. Lows in the mid 50s.

SUNDAY - Partly cloudy. Highs around 90.

SUNDAY NIGHT - Partly cloudy. Lows in the lower 60s.

MONDAY - Partly cloudy. Highs in the mid 90s.

## Texas Prepares: "Ready or Not?"

Hurricanes, tornadoes, floods and other disasters can strike with little or no warning, forcing you to evacuate or causing extensive damage to your property in a matter of minutes. Knowing in advance how you'll respond to these situations is the best way to protect your family.

The Texas Department of State Health Services (DSHS), through its "Ready or Not? Have a Plan" public education campaign, wants your family to be prepared for any emergency.

"Family emergency planning is essential," said Dr. David Lakey, DSHS commissioner. "The time to plan is now, not when an emergency is just down the road. We all need to set a simple goal to do at least one thing this week to get ready for any emergency."

Before an emergency happens, sit down together and decide how you will get in contact with each other, where you will go and what you will do. Keep a copy of this plan in your emergency essentials kit or another safe place where you can find it in the event of a disaster.

The "Ready or Not?" campaign focuses on three key elements: family, essentials and information. Build your personal family emergency plan around these elements to include:

Wallet cards for each member of your family reminding them whom to call and where to meet in case of an emergency. Share your plan with family, neighbors and friends. Ask an out-of-state relative or friend to serve as the family's contact. Make sure everyone knows the telephone number of this contact.

An emergency essentials kit with non-perishable foods, a three-day supply of water (a gallon per person per day), first aid kit, waterproof whistle, personal hygiene products and flashlights. Think about family-specific needs such as medications, contact lens

solution, diapers or pet supplies.

A waterproof document bag to keep your essential documents safe. Get copies of driver's licenses, photo IDs, passports, insurance documents and lists of medications or copies of prescriptions and put them in a waterproof storage bag in a safe place.

Basic ground rules to help your family decide whether to stay put or get away. Know where to get trusted information and plan for both possibilities. For example, prepare for possible evacuation by familiarizing yourself with available escape routes. Keep maps in your car.

An information link to the outside. Keep a battery-powered radio and extra batteries on hand. Make sure family members know where the radio is kept.

Family meeting places outside your neighborhood in case you are separated. Be sure everyone knows exactly where those meeting places are.

If you have pets, be sure to include them in your family disaster plan. Prepare a list of kennels, friends or family members who may be able to care for your pet in an emergency. Some evacuation shelters may not allow pets.

Be prepared to assess the situation, use common sense and make a mental inventory of whatever you have on hand to take care of yourself and your loved ones. Think about the places your family spends time: school, work and other places you frequent. Ask about their emergency plans. Find out how they will communicate with families during an emergency. If they don't have an emergency plan, consider helping them develop one.

Visit the "Ready or Not?" website at [www.TexasPrepares.org](http://www.TexasPrepares.org) or [www.TexasPrepara.org](http://www.TexasPrepara.org) (Spanish) to build a custom plan step by step. Several interactive

features allow you to get the full list of documents that families should put in a waterproof storage bag, a customized emergency supply list, wallet-size cards to designate emergency contacts and links to emergency information. Those without Internet access may dial 2-1-1 for help finding local sites that offer free Internet access.

## The Main Event

The Main Event is a community celebration being sponsored by the churches of Spearman and the surrounding area. It will be held August 21-24, 2008 at 8 p.m. at the Walking Park, east of Spearman High School. A pre-Service concert will be held each night beginning at 7:15 p.m.

Speakers will include: Jon Randles, a motivating collegiate athletic speaker, FCA speaker and former church minister; Jodi Wilson, a music leader, entertainer, conference leader, minister and minister's wife; and Blake Bolerjack, a contemporary Christian recording artist.

Funds are needed to help underwrite this event. Please make donations to your church marked "Main Event," or mail them to: Main Event, PO Box 97, Spearman TX 79081. Donations can also be take to Hansford Abstract.

Spearman Chamber of Commerce's

### Yard of the Week

**Lee Shaver**  
1100 Townsend

**Tom Latta**  
1101 Barkley

**Don Allen**  
706 Gibner

If you have a yard you would like to nominate, please contact the Spearman Chamber of Commerce at 659-5555.



# Lullabies, Legends & Lies

by Parson Smith, the Prime Minister of Laughter

A sweet little old lady (we'll call her Toots) walked into her doctor's office and confessed to an embarrassing problem.

"I do it all the time, Doctor Johnson, but they're soundless, and they have no odor. In fact, since I've been here, I did it no less than twenty times. What can I do?"

"Here's a prescription, Mrs. Harris. Take these pills three times a day for seven days and come back and see me in a week."

The next week, a very upset Mrs. Harris marched into Dr. Johnson's office. "Doctor, I don't know what was in those pills, but the problem is worse! I'm doing

it just as much, but now it smells terrible! What do you have to say for yourself?"

"Calm down, Mrs. Harris," said the doctor soothingly. "Now that we've fixed your sinuses, we'll work on your hearing!!!"

*Until the next time,  
May God Bless.*

## State Capital HIGHLIGHTS

AUSTIN - Gov. Rick Perry, in prepared remarks regarding the fire that gutted the governor's mansion on June 8, said, "... few sights have left a deeper impression on me than the charred remains of this genuine Texas treasure standing behind me. As I consider what was done to this once-majestic home, my heart aches beyond words."

The fire occurred while the governor and first lady Anita Perry were in Europe on a trade mission. On June 11 Perry toured the burned interior of the 152-year-old home now braced to prevent stone and masonry walls from falling.

"I cannot begin to understand what would motivate someone to do this, but I do know that they will be caught, and they will be prosecuted for what they have done," Perry said.

The state fire marshal has ruled the cause of the fire was arson. An investigation by state and federal agencies is under way.

A security camera recorded a human figure tossing an object at the mansion before the fire erupted. Authorities later said the object appeared to be a Molotov cocktail.

### TxDOT cuts back Corridor plan

The state's idea of building new rural toll roads in East Texas has been shelved after months of public hearings and input including 28,000 comments from citizens.

The Texas Department of Transportation announced June 11 it will recommend that the Interstate 69/Trans-Texas Corridor Project be developed using existing highway facilities wherever possible. If additional travel lanes are added to existing highways, only the new lanes would have tolls.

"After a dozen town hall meetings, nearly 50 public hearings and countless one-on-one conversations, it is clear to us that Texans want us to use existing roadways to start building the Texas portion of Interstate 69," explained Texas Transportation Commissioner Ted Houghton.

TxDOT Executive Director Amadeo Saenz, in a letter to the Federal Highway Administration, said the overwhelming sentiment of those 28,000 comments focused on the need to

## GOVERNOR PERRY MOURNS MANSION FIRE



by Ed Sterling

improve the existing transportation network rather than building a new corridor for the project.

Saenz said TxDOT would continue to talk to the public about the project. He encouraged Texans to ask questions and share their transportation ideas at [www.keptexasmoving.com](http://www.keptexasmoving.com).

### Secretary of state bids farewell

Phil Wilson, Texas' 106th secretary of state, on June 11 announced his resignation.

The Brownwood native is the fifth Texan to serve as secretary of state under Gov. Rick Perry. Wilson's four predecessors include Henry Cuellar, Gwen Shea, Geoff Connor and Roger Williams.

Dallas-based power producer Luminant announced Wilson will join the company as senior vice president of public affairs and start work on July 7.

Luminant is a subsidiary of Energy Future Holdings, formerly TXU Corp. The company bills itself as the largest purchaser of wind-generated electricity in Texas.

### Roadcheck results are reported

Highway patrol officers conduct a Roadcheck inspection blitz annually in states ranging from Mexico to Canada to reduce commercial vehicle highway fatalities.

Roadcheck 2008 ran from June 3 through 5. During it, Texas Department of Public Safety troopers inspected 5,824 commercial vehicles. Of those, 1,435 were put out of service for equipment violations, the DPS reported.

Also, 178 drivers were found to have serious enough safety violations to be removed from service.

### Inmate executed June 11

Karl Eugene Chamberlain was executed by the state of Texas on June 11 in Huntsville. The last execution was carried out in September 2007.

The execution followed a nine-month moratorium on executions observed by Texas and others states awaiting a U.S. Supreme Court ruling on a Kentucky case. Plaintiffs in that case argued that a three-injection regimen used to administer the death penalty is cruel. The court found for the defendant.

### Texas GOP meets in Houston

An estimated 12,000 delegates, alternates and guests attended the Republican Party of Texas convention in Houston, June 12-14. Tina Benkiser, a Houston lawyer, was reelected as chair of the state party. U.S. Sen. John McCain of Arizona was confirmed as the Republican party nominee for president.

## Wolf Creek Heritage Museum Notes

by Virginia Scott

### MUSEUM HAPPENINGS

We were all back from our travels this week. I want to thank Dorothy and LaVaun for covering for me while I journeyed into the land of Politics and the Democratic process. It was something to behold.

On Wednesday, we were all present and had a great time hearing everyone's tales. Mildred was full of tales about her visit with her sisters. We were working of course while visiting, folding our newsletter and preparing it for mailing. I hope everyone received theirs and their renewal for 2008 membership. Mailing them out together saves us the cost of two mailings.

This Saturday will begin the Lipscomb Summer Programs. We will open the museum at 4 p.m. for the reception for all the contributors to our May/June show of Bluebonnets and wildflowers. At 5 p.m., Rita Sell will present a program on flowers entitled "God's Creations." The museum will close at 7 p.m. so people can venture downtown to the dinner & dance. I hope everyone will come to Lipscomb and enjoy our old fashion good time and visiting.

We will also have a silent auction so don't miss out on excellent garden tools, electric tools, posters, etc. Interesting items to help increase our building fund kitty.

We are officially at the half way point in our fund raising. Please help us complete our project by joining us for our programs and donating to the fund. All our programs are free. Help us continue to grow and provide quality exhibits and programs.

SEE YOU SATURDAY, JUNE 21  
4 - 7 P.M.  
13310 HWY 305  
LIPSCOMB, TX  
806-852-2123

### HISTORICAL MUSINGS

Saturday was Flag Day, a day to celebrate patriotism and to recognize those who serve our country. Proclaimed a holiday in 1949 by President Truman to encourage all Americans to display our flags and reflect on the meaning of the Red, White, and Blue.

The Veterans of the Panhandle held their ceremony to honor servicemen by the laying of bricks around the monument with their names and service dates. LaVaun Kraft, Erwin and Nina Koch, Kellie Kjos and many others from Lipscomb County were present to witness the laying of bricks in honor of Henry Longhofer, Erwin Koch, Kay Turner, Frank McWhorter, and Norman Yauck.

Following is the poem "My Name is Old Glory," which was written by Howard Schnauber, a WWII veteran.

*I am the flag of the United States of America.*

*My name is Old Glory.*

*I fly atop the world's tallest buildings.*

*I stand watch in America's halls of justice.*

*I fly majestically over great institutes of learning.*

*I stand guard with the greatest military power in the world.*

*Look up! And see me!*

*I stand for peace - honor - truth and justice.*

*I stand for freedom*

*I am confident - I am arrogant*

*I am proud.*

*When I am flown with my fellow banners*

*My head is a little higher*

*My colors a little truer.*

*I bow to no one.*

*I am recognized all over the world.*

*I am worshipped - I am saluted - I am respected*

*I am revered - I am loved, and I am feared.*

*I have fought every battle of every war for more than 200 years:*

*Gettysburg, Shilo, Appomatox, San Juan Hill,*

*the trenches of France, the Argonne Forest, Anzio, Rome, the beaches of Normandy,*

*The deserts of Africa, the cane fields of the Philippines, the rice paddies and jungles of Guam, Okinawa, Japan, Korea, Vietnam, Guadalcanal*

*New Britain, Peleliu, and many more islands.*

*And a score of places long forgotten by all but those who were with me.*

*I was there.*

*I led my soldiers - I followed them.*

*I watched over them.*

*They loved me.*

*I was on a small hill in Iwo Jima.*

*I was dirty, battle-worn and tired, but my soldiers cheered me,*

*and I was proud.*

*I have been soiled, burned, torn and trampled on the streets of*

*countries I have helped set free.*

*It does not hurt, for I am invincible.*

*I have been soiled, burned, torn and trampled on the streets of*

*my country, and when it is by those*

*with whom I have served in battle - it hurts.*

*But I shall overcome - for I am strong.*

*I have slipped the bonds of Earth and stand watch over the*

*uncharted new frontiers of space*

*from my vantage point on the moon.*

*I have been a silent witness to all of America's finest hours.*

*But my finest hour comes when I am torn into strips to be used for bandages for my wounded comrades on the field of battle.*

*When I fly at half mast to honor my soldiers,*

*And when I lie in the trembling arms of a grieving mother at the graveside of her fallen son.*

*I am proud.*

*My name is Old Glory.*

*Dear God - Long may I wave.*

## SUMMER FUN

These games are brought to you by the Hansford County Reporter-Statesman

- ACROSS**
1. Pleases greatly
  5. Member of Shoshonean people of Utah
  8. Equals distance divided by time
  12. Homer's "The Odyssey," e.g.
  13. Done
  14. Drink used in Vedic ritual, pl.
  15. "For" in Spanish
  16. A beautiful and graceful girl
  17. \*Popular summer destinations for kids
  18. \*Filled with screams
  20. Fusses
  21. Lacking wit or imagination
  22. A in MoMA
  23. Newton or Einstein, e.g.
  26. Insult
  30. Uniform Resource Identifier
  31. Jimmy Carter was perhaps its most famous grower
  34. Hipbones
  35. Slow and apathetic
  37. It's increasingly placed on smoking
  38. Spews
  39. Fur-dwelling parasites
  40. \*Gotten at beach
  42. Doctor Dolittle, e.g.
  43. Recessed, as in eyes
  45. To be logically connected
  47. Type of English
- DOWN**
1. Cried
  2. Popular seafood dish that starts with O
  3. Traitor's device?
  4. Shrimp dish
  5. Part of eye containing iris, pl.
  6. Type of cloth used for towels
  7. Popular Scandinavian name
  8. \*Not as popular with high gas prices
  9. Type of army dump
  10. It means "lights out"
  11. Denotes female
  13. Not in favor
  14. \*Not typically worn in summer
  19. Etna could do this at any moment
  22. Toward the stern
  23. A group with simi-

24. Bert's TV buddy
25. A brother's daughter
26. Your mom or dad's sister
27. Popeye's sweetie
28. Used as fertilizer and explosive
29. Flavor
32. Adjoin
33. Indian bread
36. Substituted
38. Saw logs
40. Put down
41. \*Summer lemonade has this biting taste
44. Sounds of relief
46. Boss or chief
48. Panama's is among the most famous
49. Howard Stern's infamous sidekick
50. One of the Bridges
51. Pro \_\_\_\_\_, in proportion
52. Type of ball
53. Genus that includes hollies
54. One's reputation
55. Singer Stefani
56. \*Outdoor cooking energy source

**CROSSWORD**

1	2	3	4		5	6	7		8	9	10	11	
12					13				14				
15					16				17				
18					19				20				
					21				22				
23	24	25					26			27	28	29	
30					31		32	33			34		
35					36				37				
39							40			41		42	
43							44			45		46	
							47			48	49		
					50	51					53	54	55
56									57			58	
59									60			61	
62									63			64	

PRESENTED BY

VolunteerMatch.org  
Where volunteering begins.

© 2008, StatePoint Media, Inc. answer on classified page

**SUDOKU**

PRESENTED BY

VolunteerMatch.org  
Where volunteering begins.

				5			8		
			1			9		3	
6	1			2				4	
1		3				5	7		
			2		7				
	7	8				2		6	
8				4				6	2
3		1		8					
	4			5					

© 2008, StatePoint Media, Inc. answer on classified page

Fill in the blank squares in the grid, making sure that every row, column and 3-by-3 box includes all digits 1 through 9.

**The Hansford County Reporter-Statesman**

213 Main Street • Spearman, TX 79081  
Phone - (806) 659-3434 • Fax - (806) 398-9080  
[www.spearmanreporter.com](http://www.spearmanreporter.com)  
[reporter@spearmanreporter.com](mailto:reporter@spearmanreporter.com)  
[cathysmith@valornet.com](mailto:cathysmith@valornet.com)

Mon.-Thurs. 9 a.m.-12 p.m., Mon.-Wed. & 1-5 p.m.  
Closed Thurs. afternoon and all day Fri., Sat. & Sun.

**Gary Smith - Publisher** Catherine Smith - Editor  
Contributing Writers: Dorothy Hudson, Jim Derington, Merry Sparks, Cecil Biggers  
Contributing Photographer: Charlie Johnson

**Subscription Rates**  
In Hansford County - \$30.00 • Out of County - \$40.00

The Hansford County Reporter-Statesman (USPS 529660) is published weekly in Spearman, TX. Periodical postage paid in Spearman, TX. **POSTMASTER:** Send address changes to: The Hansford County Reporter-Statesman, 213 Main Street, Spearman, TX 79081.

**Publication Policy**  
The deadline to submit news and advertising to The Hansford County Reporter-Statesman is Monday at 5 p.m. Items submitted after the deadline will be published at a later date, as time and space permit. Publication of all items is at the discretion of the editor.

**Advertising**  
Open Display rates are \$4.00 per column inch. Classified Ads are \$6 for the first 25 words and 10¢ per word for each additional word. (Additional charge for boxed classifieds.) There is a \$1 charge per week if billed.

Member of  
Gruber Chamber of Commerce  
Spearman Chamber of Commerce  
Texas Press Association and Panhandle Press Association



# Happy Birthday!

*Editor's Note: This Happy Birthday list is run as a public service by the Hansford County Reporter-Statesman. We apologize if any names are misspelled. If you know of a name that needs to be changed, added or deleted, please call 659-3434.*

Thank you, Catherine

**June 19**  
**Birthday** - John Williams, Alan Beeson, Christina West, Jan Hunter, Phyllis Smith, Nathan Steger, Randy Coombs, Stanley Gruver, Marlene Miller  
**Anniversary** - M/M Barry Barkley

**June 20**  
**Birthday** - Mica Been, Pat Irwin, Neal Williams, Terry Patterson, Pete Vera, Brady Chase Brown, Skyley Jordan, Christen Grimsley, Eral Pond  
**Anniversary** - M/M Jim Kuykendall

**June 21**  
**Birthday** - Lynn Boyd, Rod Karlin, April Hall, Patrick Meek, Harry Stumpf, Rosa Baker, Rhonda Valdez, Steve Slater, Josh Kunsleman, Robert Breedon, Christi Black, Linda Town, Anita Sumner, Clint Lilly, Cody Mike Ivey, Amanda Thompson, Britani Vasquez, Clayton Acker, Jennifer Nollner  
**Anniversary** - M/M Jim Kuykendall

**June 22**  
**Birthday** - Tim Tunnell, Melissa Stewart, Ricky Jones, Benny Puentes Jr., Paul Lopez Jr., Tom Haden Hart, Presley Baker  
**Anniversary** - M/M Stanley Gruver, M/M Norman Brack

**June 23**  
**Birthday** - Myriam Alvarez, Robert Blevins, Rob Murrell, Brad Spivey, Andres Benavides, Joan Brown, Shannon Groves, Kali Shields, Amanda Apodaca  
**Anniversary** - M/M Mitch Fedrick, M/M T.J. Been, M/M Mike McLain

**June 24**  
**Birthday** - Patricia Miner, Ellen Graham, Denise Holliday, Allen Davis, Lee Bob Harper, C.T. Collier, Ed West, Margie Davis, David Pipkin, Nathan Kirk, Patricia Miner  
**Anniversary** - M/M Bobbie Archer

**June 25**  
**Birthday** - Betty Womble, Nita Bynum, Pete Stafford, Vickie

Stewart, Jennifer Umphress, Joey Woolley, Curtis Wayne Porter, Candice Janzen, Lisa LaFarr, Billie Jo Moore Pierson, Oneida Bynum

**Anniversary** - M/M B.J. Renner, Mr. and Mrs. Ronnie Williams, M/M Dennis Quimby, Terry & Sherry Moore, M/M Richard Marrs

**June 26**  
**Birthday** - Paula Kelly, Mike Blanton, Bill McClellan, Omar Sutton, Carla Harper, Doris Pinkerton, Teresa Bennett, Ann Vela, Ronnie Ring, Ashley Baker, Vanessa Cease, Paul Bynum, Joe Ruthlin, Chelsea Nollner, Trevor Shields

**Anniversary** - Will & Tiffany Crane, M/M Garry Hathaway, M/M Joe Lopez, M/M Verlin Beck

**June 27**  
**Birthday** - Max Frick, Clint Irwin, Steve Baggerly, Elden Allen, Allen Cook, Tyler Scott, Charlie Lopez, Karen Johnson, Bob Meek  
**Anniversary** - M/M Bill Turner, M/M Randy Coombs, Judy & Darl Hergert

**June 28**  
**Birthday** - Carson Womble, Linda Rowland, Don Allen, Ernie Vanderberg, Terri Brummett, Helen Hand, Mrs. A.F. Loftin, Sue Tindell, Trent England, Meghan Jade Snider  
**Anniversary** - Harvey & Sandra Proffitt, M/M Cecil Biggers, M/M Jim Derington, M/M Bruce Knight

**June 29**  
**Birthday** - Ira Gross, Hazel Taylor, Scott Strawn, Gary Johnson, Sandra Gumfory, Monica Blackman, Rajan Traften, June Tucker  
**Anniversary** - M/M Charles Bell, M/M Amadeo Cazares

**June 30**  
**Birthday** - Mike Minter, Ricky Thompson, Esmeralda Vela, John Snider, Margarette Evans, Kyle Brock, Jeff Hohertz, Keri Lou Schneider, Willie Vera, Paige Burgin, Daniel Crug, Ed Cook, Austin Benton, Katelyn Villareal, Shari (Smith) Githens  
**Anniversary** - Ishmael & Anna Vela, M/M Claude Sheets Jr., M/M D.A. Cator, M/M Walter Murrell, M/M Paul Stavlo, M/M S.J. Wells, M/M Carl Kunselman, Joe & Elvia Avila

## Our Sympathy

### GEORGIA GRACE PEARSON



Georgia Grace Pearson, 4, of Spearman, Texas died Tuesday June 17, 2008.

Georgia was born on September 19, 2003, in Amarillo, Texas to Roger Mark and Anne Marie Pearson.

Services will be held at 2:00 p.m. Thursday at the Church of Christ in Spearman, Texas. Burial will be at Holt Cemetery in Spearman. Funeral arrangements are under the direction of Boxwell Brothers Funeral Home, 519 Evans Street, Spearman TX 79081. 806-659-3802.

She was our precious gift from God. He allowed us to have her for a while. Greater joy we could not have known on earth than her smile and love.

Survivors include her parents, Roger Mark and Anne Marie Pearson; her brother, Charles Mark Pearson; her grandparents, Daniel Brown and Mary Charlotte Pearson and Billy Britt and Linda Holt Jarvis; her great grandparents, Nolan C. and Helen Etter Holt; and many other loving and supportive family and friends.

She was preceded in death by her great grandparents, Roger and Jewel Pearson and Charles and Grace Pyles; and her great grandmother, Georgia Marie Holt.

The family suggests memorials be to Cal Farley's Boys Ranch, P.O. Box 1890, Amarillo, Texas, 79174.

### JEAN MARABLE

WICHITA FALLS - Ruby Jean Marable, 77, passed away Saturday, June 14, 2008 in Wichita Falls, Texas.

Funeral services were at 2:00 p.m. on Tuesday, June 17, 2008 at the First United Methodist Church in Stinnett, Texas with Pastor Don Pellikan and Pastor Rhonda Greenwood officiating. Interment was at Lieb Cemetery. Arrangements were entrusted to Brown Funeral Directors.

Jean was born November 8, 1930 in Moore County on her family ranch to the late Archie and Maggie Stewart. She married Curtis "Red" Marable on December 21, 1957 in Dumas, Texas and preceded her in death on June 19, 2005. She spent the most of her life in Moore and Hutchinson County. She retired from Diamond Shamrock-Valero. She was a member of the First United Methodist Church and the Desk and Derick Club, where she held many offices and received many awards for her service.

She is survived by her daughters Deana Richards and Husband Robert of Burkburnett, Ann Pipkin and Husband Vernon of Spearman. One Granddaughter Maggie Jean Pipkin. Four Step-grandchildren Chad Richards of Burkburnett, Cody Pipkin and Wife Abby of Spearman, Mika Gumfory and Husband Garrett of Eastland, Holly Kaluza and Husband Nick of Dallas and 7 Step-great grandchildren.

She was preceded in death by her brother, I. H. "Bo" Stewart and wife Mary, her sister DeLena Young and husband Coy and a niece Jean McDowell. She has a brother Archie Stewart and wife Martha in Dallas, Nephew Jay Stewart of Dumas, Two Nieces Carolyn Carr of Lake Oswego, Oregon and Tracy Hayhurst of Amarillo.

Casket bearers were Lane Anderson, Rooster Dawson, Nick Kaluza, Cody Pipkin, Buddy Pool & Robin Wilson. Memorials may be made to the First United Methodist Church, PO Box 1192, Stinnett, TX 79083 or a charity of your choice.

Send personal condolences to www.brownfuneraldirector.net

## Words from Faith & Grace

by Cecil R. Biggers, Lutheran Lay Minister



One of the problems of being a Christian is that we still sin, and what is worse we sometimes enjoy it! Hence we study Jeremiah 20:7-13, Psalm 69:7-10(11-15), 16-18, Romans 6:1-11, and Matthew 10:14-39. Jeremiah writes one of his "confessions", a lament. Jeremiah is concerned that as a prophet, he is failing. He illustrates by his actions and communicates by his speech, the word of the Lord to the people, and the people mock him and revile him. Even his friends think Jeremiah has "lost it". Jeremiah is not having a crisis of faith, rather he is having a crisis of vocation. "Lord please let me do something at which I can be successful!" Yet, Jeremiah is true to God and realizes that if he trusts God enough, he can tell God anything, even his weaknesses, his doubts, his vulnerabilities. Jeremiah continues to prophesy, he cannot stop. The Psalmist inspired by his zeal for the Lord has offended those who do not follow the Lord and this has spiritually placed him waist deep in a swamp full of alligators. The Psalmist cries for deliverance. Yet, the Psalmist has faith in God's steadfast love, abundant mercy, and promise of salvation. God rescues the Psalmist.

Paul addresses the problem of sin in the life of the believer. We should not sin intentionally and often, in order that the Holy Spirit will have an abundance of work in spreading God's grace. Rather those of us in the faith community should remember the symbolism of our baptism. We are baptized into the crucifixion, death and resurrection of Jesus Christ! We emerge from the waters of baptism a "new creation". We are thus united with Christ and are therefore freed from our sins. Each day we sin and we must depend on a daily baptism of the Spirit to cleanse our hearts and keep our minds in Christ Jesus.

Jesus warns us in the faith community that even as He had to carry a cross, so shall we. Yet, Jesus shows that it is a privilege for the "student" to suffer as his "master", because in this way the "student" shares in the "master's" work. We are told not to fear those who can kill our body, but rather to fear and be loyal to, God who can kill body and soul. We are told not to fear because there is nothing that is "hidden" that will not be revealed. The "Truth" shall prevail. We are told that we are to speak that which we have received from Christ boldly and openly. Finally we are reassured that God knows even when a sparrow falls to the ground, and we are more valuable than sparrows. Note the verb translated "falls" can actually mean "lights", so the image may not be of a dying sparrow but an image of a sparrow hopping about on the ground in pursuit of food. Hence if God knows each "hop" of a sparrow, He knows each beat of the believer's heart.

May the Holy Spirit so keep your hearts and minds in Christ Jesus that a slip into sin will not separate you from the love of Christ Jesus.

### MONUMENTS

## Boxwell Brothers Funeral Home

519 Evans • Spearman  
659-3802

Dear friends,  
When you buy a monument from us we make sure it is exactly what you want at a price you can afford. If it is not right, we will make it right. And you will not have to search the countryside to find us. We are here when you have a need.  
Sincerely,  
Bob Boxwell

**FREE DIRECTV 4 ROOM SYSTEM!**

**NOW 95 HD CHANNELS!**

265+ CHANNELS!  
Pkgs. start at \$29.99

FREE HBO + Showtime + Starz

FREE DVR/HD!

No Start up costs!  
We're Local Installers!

**1-800-214-7110**

**STOP LEG CRAMPS BEFORE THEY STOP YOU.**

Calcet's triple calcium formula is designed to help stop low calcium leg cramps. Just ask your pharmacist.

**Mission**  
CAL-06901 Rev. 09/06/00 © 2006 Mission Pharmaceutical Company All rights reserved.

## ATV ROLLOVER

EXPERIENCE COUNTS  
Lawyers with over 85 years combined expertise.

All-terrain vehicles can be dangerous and deadly. Some ATVs are not manufactured properly or do not have adequate safety features, which may lead to serious injury or death. If you or a loved one has been injured on an all-terrain vehicle, call us today for professional insight.

Ryan A. Krebs, M.D., J.D.  
Doctor-Lawyer in Full-time Law Practice

Richard A. Dodd, L.L.C.

Timothy R. Cappolino, P.C.  
Board Certified Personal Injury Trial Law and Civil Trial Law by the Texas Board of Legal Specialization  
NO FEE FOR FIRST VISIT  
CAMERON, TEXAS

**1-800-460-0606**  
www.HeadTraumaLaw.com

## Replenish the seed of faith through . . . DAILY BIBLE READING, PRAYER & REGULAR CHURCH ATTENDANCE

<p><b>Spearman</b></p> <p><b>Apostolic Faith Church</b> 822 S. Dressen • 659-2870 Sunday School: 10 a.m. Worship Service: 11 a.m. Sun. Eve.: 6 p.m. Wed. Prayer Mtg: 7 p.m. Pastor - Roland Haney</p> <p><b>First Assembly of God</b> 401 N. Bernice • 659-2295 Sunday School: 9:30 a.m. Worship: 10:35 a.m. Kid's Church: 10:35 a.m. Evening Worship: 6 p.m. Wed. Worship: 7 p.m. Wed. Youth: 7 Pastor - Bob Elder</p> <p><b>First Christian Church</b> (Disciples of Christ) 29 S. Bernice • 659-2036 Sunday School: 9:45 a.m. Worship: 10:50 a.m. Minister -</p> <p><b>First Baptist Church</b> 123 N. Bernice • 659-5557 Sunday School: 9:45 a.m. Worship: 11 a.m. Evening Worship: 7 p.m. Men's Bible Study - Wed., 7 a.m. Children's Choir - Wed., 6 p.m. Adult Choir - Wed., 7 p.m. Wed. Bible Study: 7 p.m. Pastor - Jim Medley</p> <p><b>Church of Christ</b> 121 S. Haney • 659-3244 Sunday Bible Class: 9:45 a.m. Worship: 10:30 a.m. Evening Worship: 6 p.m. Bible Study Wed.: 7:30 p.m.</p>	<p><b>Sacred Heart Catholic Church</b> 901 Roland • 659-2792 Sat. Night Mass: 5:30 p.m. Sun. Mass: 9 a.m. - English Sun. Mass: 11:30 - Spanish 1:30 p.m. - Gruver - Christo Rendtor Mass - Spanish Rev. Guillermo Morales</p> <p><b>First United Methodist</b> 407 S. Haney • 659-5503 Sunday School: 9:45 a.m. Worship: 8:30 &amp; 11 a.m. Jr. High Youth: 5 p.m. - Sunday High School: 6 p.m. - Sunday Kids Club: 3 p.m. - Wed. Pastor - Neely Landrum</p> <p><b>Grace Presbyterian Church</b> (Worships with Faith Lutheran Church) 1101 Bernice • 659-2033 Pastor - Beverly Cook</p> <p><b>Faith Lutheran Church (ELCA)</b> 1101 Bernice • 659-2252 Sunday School: 9:45 a.m. Worship: 11 a.m. (Worships with Grace Presbyterian Church) Pastor - Beverly Cook</p> <p><b>Union Church</b> 31 S. Endicott • 659-2644 Sunday School: 9:45 a.m. Worship: 10:45 a.m. Evening Worship: 6 p.m. Bible Study: 7 p.m. - Wed. Pastor - Dr. Timothy Minor</p> <p><b>Fellowship Baptist</b> 1102 S. Archer • 659-2783 Sunday School: 10 a.m. Worship: 11 a.m. Sun. Evening Worship: 6 p.m. Youth/Adult Service: 7:30 Wed. Pastor - James Washburn</p>	<p><b>Primera Mision Bautista</b> 502 E. 7th • 659-3991 Sunday School: 9:45 a.m. Worship: 11 a.m.; Evening: 6 p.m. Wed. Prayer Meeting: 7 p.m. Thurs. Visitation: 7 p.m. Pastor Joe Garcia Jr.</p> <p><b>El Aposento Alto U.P.C.I.</b> 1105 S. Roland Domingos: Escuela-Dominical - 10 a.m. Culto Evangelistico - 7 p.m. Jueves, Oracion - 8 p.m. Mier. Estudio Biblico - 7 p.m. Pastor - A.G. Martell (806) 659-2153</p>	<p><b>Gruver United Methodist</b> Broadway &amp; Garrett 733-2651 Sunday School: 9:45 a.m. Worship: 8:30 &amp; 10:50 a.m. Eve. Worship &amp; UMY: 6 p.m. Pastor - George Price</p> <p><b>Spanish Cristo Redentor Church</b> Sunday Mass: 1:30 p.m. Friday Evening Mass Summer - 8:00 p.m. Fall/Winter - 7:30 p.m.</p>
<p><b>Oslo</b></p> <p><b>Oslo Lutheran Church (ELCA)</b> 6 Miles West &amp; 12 Miles North of Gruver 339-7646 Sunday School: 9:45 a.m. Worship: 11 a.m. Pastor - Arlen Lloyd</p>	<p><b>Gruver</b></p> <p><b>First Baptist Church</b> 402 E. Broadway • 733-2411 Sunday School: 9:45 a.m. Worship: 10:50 a.m. Disciple Training: 6 p.m. - Sunday Prayer Meeting: 7:30 p.m. - Wednesday Pastor - Scott Curry</p> <p><b>Church of Christ</b> 209 King • 733-2860 Sunday School: 9:30 a.m. Worship: 10:20 a.m. Evening Worship: 6 p.m. Wed. Worship: 7:00 p.m. Minister - Gaylord Cook</p> <p><b>First Christian Church</b> 510 King • 733-2860 Sunday School: 10:00 a.m. Sunday Worship: 11 a.m. Youth: 7:30, Sunday Adult Bible Study: 7:30, Sun. Wed. Bible Study: 8:00 p.m. Pastor - Gary Gumfory</p>	<p><b>Morse</b></p> <p><b>Morse Baptist Church</b> 733-2757 Pastor - Mike Martin</p>	<p>He has showed you, O man, what is good. And what does the LORD require of you? To act justly and to love mercy and to walk humbly with your God. Micah 6:8</p>

**PAID CDL TRAINING!**

**NO EXPERIENCE NEEDED!**

Stevens Transport, the premier refrigerated carrier in the US, sponsors the total cost of your CDL training! In 17 short days you will earn your CDL and begin your paid on-the-job training! Earn \$40K first year and up to \$150K fifth year! Excellent benefits and 401K!

For more information, call  
**800-333-8595**

**www.becomeadrivers.com**

**Woman climbs tree after using Thera-Gesic®**

BEXAR COUNTY - Mary Ann W., after using Thera-Gesic® on her sore calf muscle, climbed a 9 1/2 foot oak tree in front of the courthouse to protest the high cost of fuel. When asked why such a small tree, she painlessly replied, "None of your dang business!"

Go painlessly with Thera-Gesic®

## DIGITEK RECALL

Heart Drug Overdose - Sudden Death Lawsuits

On April 25, 2008, Actavis Mfg., Berlek, Inc. and UDL Labs announced the recall of the heart drug Digitek. Serious manufacturing defects resulted in TWO (2) TIMES the amount of the active ingredient being dispensed. This defect can cause digitalis (digoxin) toxicity resulting in serious heart arrhythmias, confusion, nausea, vision problems, diarrhea, vomiting, low blood pressure, weight loss, irregular or slow heart beat and sudden death. Speak to a Lawyer now.

Free Case Review Toll Free 1-800-883-9858

**WILLIS LAW FIRM**  
HOUSTON, TEXAS

BOARD CERTIFIED  
PERSONAL INJURY TRIAL LAWYER  
Texas Board of Legal Specialization

DAVID P. WILLIS - ATTORNEY AT LAW

**1-800-883-9858**  
www.Digitel-Lawsuits.com

**Deakin**

**ELECTRIC**

OILFIELD • RESIDENTIAL • COMMERCIAL  
321 S. MAIN • SPEARMAN  
1-800-999-1506 Chris Deakin  
(806) 659-5016 President

**Bartlett's Lumber & Hardware**

105 W. Broadway • Gruver, Texas  
(806) 733-2404

**BERRY CLEANERS**

Ann & Vernon Pipkin - Owners  
Phone 659-3122 • P.O. Box 1017  
207 Main St. • Spearman, TX

**Morse Implement & Auto Supply**

"Join us in church"

Tom Dortch 733-2668  
Box 89 • Morse, TX 79062

**PRAIRIE MOTORS INC.**

Hwy. 207 South • P.O. Box 430  
Spearman, TX 79081 • (806) 659-2541  
www.prairiemotors.com

**MurMur's Cafe**

100 Roland St  
Spearman, TX.  
659-3580

**Hansford County Reporter-Statesman**

"Proudly Serving Hansford County Since 1907"

(806) 659-3434  
310 Barkley • Spearman, TX

**INTERSTATE BANK, ssb**

www.interstatebank.net  
322 Main • P.O. Box 146  
Spearman, TX • 659-2559



# FIYI

FOR YOUR INFORMATION

### Lunch & Learn

Ponds & Fountains in the Home Landscape, will be the topic for Lunch & Learn, Tuesday, July 8, from 12:00 - 1:00 p.m. in the Fellowship Hall of Spearman Church of Christ. Ken Pirtle, Master Gardener from Amarillo and member of the Amarillo Botanical Garden Education Committee, will present the program. Participants will learn tips on constructing and caring for ponds and fountains in the home landscape. This free program is sponsored by the Texas AgriLife Extension Service and Extension Education clubs. Donations for lunch will be accepted. Call Peggy Winegarner at 659-4131 or 733-2901 for more information.

### Spearman Little League End of Season Celebration

The Spearman Little League will have their end of season celebration/cook-out on Tuesday, June 24th at the Swimming Pool Park. Hamburgers, hotdogs, chips, drinks, etc. will be served from 6-8 p.m., followed by swimming from 8-10 p.m. All players are asked to wear their uniforms, but bring a change of clothes. Pictures will be taken at this time, then the uniforms will be collected by the coaches. Anyone who has had their picture taken, but has not returned the picture form should bring them to the picnic. All raffle tickets and money must also be turned in at this time. For more information, contact Sharon Swan at 659-659-1734.

### Elks Angels Hosts Motorcycle Benefit Run

The Elks Angels are hosting a Motorcycle Benefit Run on Saturday, June 21, 2008. All proceeds will go to special needs children. Registration, and the beginning point, will be at Perryton Elks Lodge, 9th and Main, in Perryton. Registration will be held from 1-2 p.m. No prizes will be given for the ride (door prizes only). The ride starts at 2:15 and will cost \$30 for a rider and \$15 for passengers, and will include a meal and a door prize ticket. Riders will end at the Leatherman Park (3rd and Jefferson in Perryton) with a hamburger feed at 5:30 p.m. Door prizes and the People's Choice Award for the best looking bike will be awarded at this time. For more information, or for registration forms, call 806-733-2416, ext. 520 (day) or 806-435-4625 (evening). E-mail questions to mcelroy@ptsi.com or Brenda@TBP.com.

### Auction / Garage Sale to benefit Chambers Ministry

An Auction / Garage Sale will be held on Saturday, June 21, 2008 at the Mall on Hwy. 207 in Spearman (between Alco and Lowe's). The doors will open at 7 a.m., and the auction will begin at 8 a.m. This event is being sponsored by the First United Methodist Church in Spearman. All proceeds will go to the ministry of Daryl and Kelly Chambers, who are serving as missionaries in Ecuador. Some items that have been donated include: Golf Cart, Snow Mobiles, Automobiles, numerous Household Items, etc. Hamburgers will be available. If you would like to make a donation, or would like more information, please call Joey or Lyn at 806-659-3350 or 806-330-1997 (cell).

### Volunteers Needed

Gruver ISD Superintendent David Teel announced that the Texas Department of State Health Services needs volunteers in the event of a disease outbreak in Gruver. If you would like to volunteer, please go by the Gruver ISD administration office, located at 601 Garrett Avenue in Gruver, and fill out a form.

### Foreign Investors Notification

The Agricultural Foreign Investment Disclosure Act requires all foreign owners of U.S. agricultural land to report their holdings to the Secretary of Agriculture. The Farm Service Agency administers this program for USDA. Foreign persons who have purchased or sold agricultural land in the county are required to report the transaction to FSA within 90 days of the closing. Failure to submit the AFIDA form could result in civil penalties of up to 25 percent of the fair market value of the property. County government offices, realtors, attorneys and others involved in real estate transactions are reminded to notify foreign investors of these reporting requirements.

### Breast Cancer Screening Clinic

The Don and Sybil Harrington Cancer Center Comprehensive Breast Center will conduct a Breast Cancer Screening Clinic at Hansford County Hospital, 707 S Roland, in Spearman on June 26, 2008. Breast cancer affects one in eight women. The key to winning the battle against cancer is early detection by having an annual breast exam, mammogram and performing a breast self-exam each month. Funding is available through the Texas Department of Health for Texas residents who qualify for assistance. All exams are done by appointment only. Call (806) 356-1905 or 1-800-377-4673 for more information or to schedule an appointment.

### Tri-City Community Concert Association

Janie Kunselman is the representative for the Tri-City Community Concert Association of Borger, and is selling memberships to attend five special concerts in the 2008-2009 season. Contact Janie Kunselman at 659-2631 for more information.

### Liberal Community Concert Association

Janie Kunselman is the representative for the Liberal Community Concert Association of Liberal, KS. The Liberal Community Concert Association is selling memberships to attend five special concerts in the 2008-2009 season. Contact Janie Kunselman at 659-2631 for more information.

### Free Booklet from Narconon

Narconon reminds you that there is hope for those struggling with addiction and recovery is possible. Call today to receive a free booklet entitled The Life Cycle and Mechanics of Addiction. We offer free counseling, assessments and referrals to centers nationwide. Log on to www.stopaddiction.com or call 800-468-6933 before it's too late.

### You're Never Alone - Narcotics Anonymous Group

Each year individuals struggling with drug and alcohol addiction make the resolution to quit using drugs. For many of them it is a resolution that they cannot keep. Narcotics Anonymous can help. Open meetings are held on Monday and Thursday nights from 8-9 p.m. at the First Christian Church (29 S. Bernice in Spearman) for the "You're Never Alone" group of Narcotics Anonymous. Anyone interested is invited to attend. Drug addiction can leave you feeling helpless and out of control - we can help.

### Spearhead AA Group

The Spearhead AA Group meets every Tuesday at 8 p.m. in the Pittman-Shieldknight building. Alcoholics Anonymous is a fellowship of men and women who share their experience, strength and hope with each other to help solve their common problem and help others to recover from alcoholism. The only requirement for membership is a desire to stop drinking. There are no dues or fees for AA membership; we are self-supporting through our own contributions. Our primary purpose is to stay sober and help other alcoholics achieve sobriety. For information, call 662-1111.



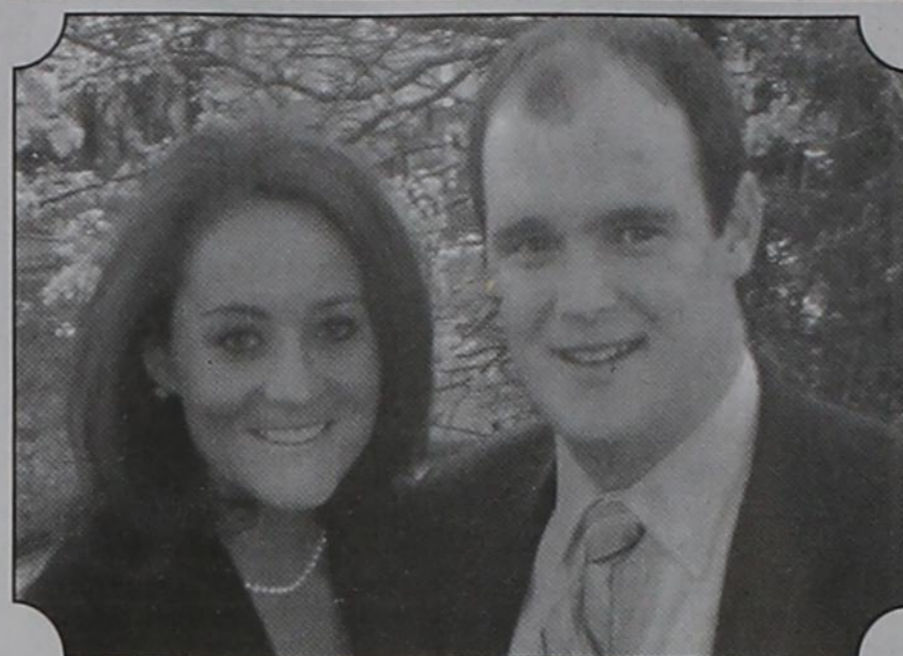
## Engagement Announcement

Homero and Maria Martinez would like to announce the engagement of their daughter, Alma Leticia Martinez to Mark Andrew (Andy) McElhannon son of Faye McElhannon and the late Stewart McElhannon Jr.

Alma graduated from Spearman High School and received her B.S. degree in Biochemistry from the University of Texas at Austin. She is currently employed as a Quality Control Unit Manager for CEDRA Corporation in Austin, TX.

Andy is a graduate of Southwest Dekalb High School in Decatur, GA. He received his B.S. degree in Biology from Furman University in Greenville, South Carolina and an M.D. from the Medical College of Georgia. Andy was a Physician at Scott & White Hospital in Belton, TX and is currently a Staff Physician for the Atlanta Medical Center in Atlanta, GA.

The couple plans to wed on August 23, 2008 at Hyde Park Baptist Church in Austin, TX and will make their home in Atlanta, GA.



## Engagement Announcement

Steve and Tracy Bevill of Gruver wish to announce the engagement of their daughter, Brooke Anne Bevill, to Andrew Mitchell McMurry, son of David and Claudia McMurry of Amarillo.

Brooke is the granddaughter of Mack and Patsy Bevill of Gruver and Don and Donna Hart of Sierra Vista, AZ and the late Mary Hart.

Andrew is the grandson of R.O. and Freda McMurry of Dumas and Gordon and Jean Herr of Amarillo.

The couple plan to wed on July 26, 2008 at the First Baptist Church in Gruver.

Brooke is a 2001 graduate of Gruver High School, she graduated from West Texas A&M University in 2006 with a degree in bilingual education. She teaches first grade at Margaret Wills Elementary in Amarillo.

Andrew is a 1997 graduate of Dumas High School and a 2001 graduate of Texas Tech University with a degree in Ag Business. He is a loan officer at First United Bank in Canyon.

## Thank You

The Stationmaster's House Museum would like to express their sincere appreciation to all the artists who donated their artwork to benefit the museum. The Panhandle area is fortunate to have such talented artists.

We would also like to express our appreciation to Gina and Brian Gillispie for their gracious hosting at the Zulu Arcade Art Center.

## Thank You

I would like to take this time to thank all the EMT's and rescue crews who helped me get out of my car. Your comforting words helped me so much. Thanks again for everything. Y'all are great!

Marie L.

## You are invited to a Bridal Shower honoring Megan Dorton

(bride-elect of Justin Raymer)

on Saturday, June 21, 2008

from 10:00-11:00 a.m.

in the First United Methodist Church

407 S. Haney Spearman

# Celebrate

Gifts for all your celebrations!

## Bridal Registry

### Shower Dates

- Brooke Bevill & Andrew McMurry - 6/21
- Jennifer Laxson & Anthony Smith - Wedding 6/21
- Megan Dorton & Justin Raymer - 6/27
- Tobi Barrera & Chris Guana - 6/28
- Audrey Winegarner & Braden Gibson - 7/12
- Sammie Stavlo & Wade Harkey - 9/6
- Kacee Smith & Joshua Ivey - TBA
- Delma Martinez & Andy McElhannon - TBA
- Kendra Hicks & Jason Cantrell
- Meghan Blaneck & Kevin Williams
- Claudia Vaquera & Scott Sauer
- Cortney Chambers & Keith Winegarner
- Jentry Edwards & Clinton Williams
- Cara Hathaway & Seth McAffee

## You are invited to a Bridal Shower honoring Brooke Bevill

(bride-elect of Andrew McMurry)

on Saturday, June 21, 2008

from 2:00-3:30 p.m.

in the home of Marsha Lowe

2 Miles East, Hwy 15, Gruver



### Couples Currently Registered

- Lourdes Vega & David Puebla - 6/14
- Brooke Bevill & Andrew McMurry - 6/21
- Megan Dorton & Justin Raymer - 6/21
- Audrey Winegarner & Braden Gibson - 7/12
- Sammie Stavlo & Wade Harkey - 9/6
- Kendra Hicks & Jason Cantrell - TBA
- Jennifer Ferrel & Jeff Coates - TBA
- Alma Martinez & Andy McElhannon - TBA
- Kacee Smith & Josh Ivey - TBA
- Jennifer Laxson & Anthony Smith
- Christen Imhof & Michael Lozano
- Miranda Barnhill & Travis Brown
- Jaqueta Dunn & Drew Clyburn
- Claudia Vaquera & Scott Sauer
- Meghan Blaneck & Kevin Williams
- Cortney Chambers & Keith Winegarner
- Jentry Edwards & Clinton Williams

### Baby Registry

- Kyle & Audra McLaughlin - 6/14
- Cristina (Cricket) Salgado & Ray Banaban - 6/15
- Jeffrey & Danielle Jackson - 7/12
- Chris and Stephnie (Bowling) Barclay - 7/13
- Radar & Betty Garcia - TBA
- Jessica Villarreal & Isaac Herndon

**Gordon's** 659-2141  
314 Main Spearman

Miss Vicky's

# Soul Food

817 SW 5th Street (Corner of 6th & Adams)  
Amarillo TX • (806) 372-2247

## Down Home Cooking at it's Best!

*All-You-Can-Eat*

- Chicken, Pork Chops, Ribs,
- Cheese Meat Loaf Fish, Smothered
- Chicken, Chicken 'n Dumplings,
- and Much More!
- Vegetables, Home-Made Desserts
- Kook-Aid

Hours: Monday-Tuesday, 11 a.m.-3 p.m.  
Wednesday-Sunday, 11 a.m.-5 p.m.

## Baby Registry

- Audra & Kyle McLaughlin - 6/14
- Cristina (Cricket) Salgado & Ray Banaban - 6/15
- Stephnie (Bowling) & Chris Barclay - 7/13
- Radar & Betty Garcia - TBA
- Danielle (Close) & Jeff Jackson - TBA
- Amy Travis TBA
- Jessica Villarreal & Isaac Herndon
- Adriane Watts & Corey Rex

# Celebrate

203 Main St. Spearman, TX  
(806) 659-3350 1-800-663-8026



# College Corner

## WTAMU Announces Honors Lists for Spring Semester

West Texas A&M University has named more than 1,000 students to honors lists for the spring 2008 semester. Of that total, 367 were named to the President's List and 645 students were named to the Dean's List.

Students named to the President's List must have a grade point average (GPA) of 4.00 and carry a minimum class load of 12 undergraduate hours.

President's List: Gruver - Matt D. Messer a Junior Finance major; Spearman - Ashley N. Hernandez a Senior Political Science major, and Jonathan C. Klemme a Sophomore Pre-Vet Medicine major.

Those named to the Dean's List must have a GPA between 3.50 and 3.99 and carry a minimum of 12 undergraduate hours.

Dean's List: Gruver - Carlos H. Borunda a Senior Sports/Exercise Sciences major, Bonnie L. Frick a Sophomore EC-4 Generalist major, and Lisa M. Johnson a Senior 4-8 English, Language Arts, Reading major; Andrew L. Eudy a Sophomore Sports/Exercise Sciences major, Karina Hernandez a Sophomore Nursing major, and Gerardo O. Ruiz a Senior Pre-Physical Therapy major.

## WTAMU Awards Diplomas

Degrees were officially conferred on 730 West Texas A&M University students during commencement exercises May 10 at the First United Bank Center. The University awarded 599 baccalaureate and 131 master's degrees.

Graduates with an overall grade point average of 3.50 or higher were recognized as honor graduates and wore gold honor cords. The three levels of honor recognition are Summa Cum Laude (3.90-4.00), Magna Cum Laude (3.75-3.89) and Cum Laude (3.50-3.74). The WTAMU Class of 2008 included 42 graduates with Summa Cum Laude honors, 65 students with Magna Cum Laude honors and 52 with Cum Laude honors.

The graduating class represented 17 states and 115 Texas cities and towns.

Graduating from Gruver was Gabriel E. Cruz, who received a BBA in Management. Graduating from Spearman were Kaitlyn L. Ballew, who received a BS in Biology, Adriana Mendoza-Pinon, who received a BS in Interdisciplinary Studies, and David C. Puebla, who received a BS in Sports/Exercise Sciences.

## Local Student Named To ENMU Honor Roll

Autumn D. Gruver, an Eastern New Mexico University student that graduated from Gruver High School in the Gruver area is among the 504 students on the 2008 Spring semester Deans Honor Roll.

To be eligible for the Deans Honor Roll, students must complete a minimum of 15 hours for the semester and maintain a 3.25 GPA. ENMU opened in 1934 and today has an enrollment of approximately 4,000 on its main campus in Portales, Eastern, which also has a branch campus in Rosewell and an instructional center in Ruidoso, offers 60 undergraduate and graduate programs.

visit "Caught on Camera" at [www.spearmanreporter.com](http://www.spearmanreporter.com)

## HANSFORD COUNTY ORDER NO. 01-2008 CONCERNING BURN BAN April 14, 2008 EXECUTIVE ORDER OF HANSFORD COUNTY JUDGE

WHEREAS, by proclamation issued November 20, 2007 the County Judge of Hansford County declared a state of disaster for Hansford County, resulting from:

THE POTENTIAL THREAT OF WILDFIRES DUE TO DROUGHT

AND ADVERSE WEATHER CONDITIONS

WHEREAS, said state of disaster requires that certain emergency measures be taken pursuant to the Texas Disaster Act of 1975 relating to Emergency Management;

THE COMMISSIONER'S COURT OF HANSFORD COUNTY, TEXAS NOW THEREFORE, orders the following regulations shall take effect immediately upon issuance of this order and shall remain in effect until the state of disaster is terminated:

1. The sale of "restricted fireworks" is prohibited. Restricted fireworks include "skyrockets and sticks" and missiles with "fins" as provided in 352.051, Texas Local Government Code.

a. A person selling any type of fireworks including restricted fireworks, shall at every location at which the person sells fireworks in the county, provide reasonable notice of the order.

2. THE USE OF COMBUSTIBLE MATERIALS IN AN OUTDOOR ENVIRONMENT BY ANY PERSON IS PROHIBITED.

a. Any individual gainfully employed in a trade or profession that involves the use of combustible materials or use of possible fire sources in the outdoor environment directly related to the successful operation of the business's goals and/or objectives may continue to conduct business as usual utilizing the materials and/or potential fire sources in the outdoor environment as they deem necessary; provided that the individual shall take all necessary safety precautions to prevent the ignition of any fire or fires that are not essential to the conducting of day to day business activities. Any business owner, operator or individual involved in any business operation citing this section of this order that has not taken the necessary safety precautions and as a result, damage occurs from a fire caused by their business operations, shall be liable for any and all damages that may occur and they shall be issued a citation and fined as allowed by law.

In an effort to combat high diesel prices, the Hansford County Commissioners Court will allow control burns with the following conditions:

a. Control burns permitted only for planting or harvesting of agriculture crops.

b. Prior to burn, Sheriff's Office Central Dispatch must be notified with precise directions to the field to be burned plus a return phone number.

c. Dispatch will then page all three Fire Departments about the proposed control burn.

d. Farmer should call back 30 minutes after initial call (806-659-4140). If no protest by any Fire Chief or Next-In-Command, then the control burn may be initiated.

3. THIS ORDER SHALL NOT APPLY TO AN OFFICIALLY AUTHORIZED PUBLIC DISPLAY.

In accordance with the Local Government Code, a person who knowingly or intentionally violates this order commits a Class C Misdemeanor, punishable by a fine of up to \$500.00.

THE PURPOSE OF THIS ORDER IS THE MITIGATION OF THE PUBLIC SAFETY HAZARD POSTED BY WILDFIRES DURING THE CURRENT DROUGHT AND SEVERE WEATHER CONDITIONS BY CURTAILING THE USE OF ALL COMBUSTIBLE MATERIALS.

Burn Ban extended as of April 14, 2008.

Benny Wilson,  
Hansford County Judge

# Fireworks Ban

The Mayor has determined that drought conditions exist in the City of Spearman and its extraterritorial jurisdiction to prohibit the sale or use of restricted fireworks.

No person may sell, detonate, ignite, or in any way use fireworks classified as "skyrockets with sticks" and "missiles with fins" in any portion of the city limits or its extraterritorial jurisdiction.

Fireworks that will be allowed are common fireworks, small in size, classified as Class C explosives; large fireworks devices designed primarily to produce visible or audible effects by combustion, deflagration, or detonation and classified as Class B explosive by the U.S. Dept of Transportation.

Any member of the fire department, police department or any other peace officer is hereby authorized to seize and cause to be destroyed any banned fireworks and explosives found within the city or its ETJ that are in violation. Violators shall be deemed guilty of a misdemeanor and upon conviction be punishable by fine.

This ban is effective as of noon on June 17, 2008 and shall be in effect until the Mayor determines when the ban shall end.

SIGNED June 17, 2008,  
MAYOR BRIAN GILLISPIE

ATTEST: CHERYL GIBSON-SALGADO, CITY SECRETARY

# Open Letter

Dear Anonymous,

I would like to thank you for choosing me to be the recipient of your scholarship worth \$500. I am so thankful to have grown up in a community that supports each graduating class. Your gratefulness is very much appreciated. Your support and thoughtfulness has been a tremendous help throughout my high school career. Without your support none of my accomplishments could be possible. I have been accepted and am going to attend Texas A&M University. I plan to major in biology and then move on to Pharmacy school to get my Pharm. D. Degree. Without the help of your scholarship, my goals would be hard to accomplish. Thank you so much for everything you have done. Your scholarship is more than money, it's a great help in the step to a better education. Your support means the world to me and it will never be forgotten. Thank you so much.

Sincerely,  
Brittney Bradley

## Come & Get It!

### HAPPY HOUR

3-5 p.m., Monday-Friday

ALL FOUNTAIN DRINKS 69¢

## MURMUR'S CAFE

100 S. Roland • 659-3580 • Spearman

# Join Us as we Celebrate our 5th Anniversary



## Ashmore Inn & Suites

**Amarillo** 2301 I-40 East, Exit 72-A (Behind Cracker Barrel Restaurant) 877-374-3344

**Lubbock** 4109 S. Loop, Quaker Exit (Behind Outback Steakhouse) 800-785-0061

The Ashmore Inn and Suites attributes our success over the past *Five Years* to the great interest the Panhandle Plains community has expressed in our guestrooms, meeting rooms, and service which is why we feel compelled to use our company milestone as a means to give back to that very same community. It's our sincere pleasure during our Two Week Anniversary Celebration and Charity Drive to raise awareness of the much needed donations for the "High Plains Food Bank"

Present a "GIFT" of *Five (5) Non-Perishable Food Items* and Receive a

# \$40.00

## Discount\*

\*Discount available through June.

Discount applied to Summer Rates. All hotel reservations are subject to availability and must be made in advance. Rate is not valid with groups/conventions and may not be combined with other promotional offers. Rate includes Deluxe Continental Breakfast for each guest registered to the guestroom. Rate does not include tax, gratuity or incidental charges.



See how John Deere precision can turn into payday for you.

Great financing options!



WE MAKE PRECISION PAY

There's never been a better time to put the time, money, and fuel saving advantages of a John Deere GreenStar™ Guidance System to work for you. Stop in and see just how easy and affordable it is to put the power of a guidance system to work in your operation!

JOHN DEERE

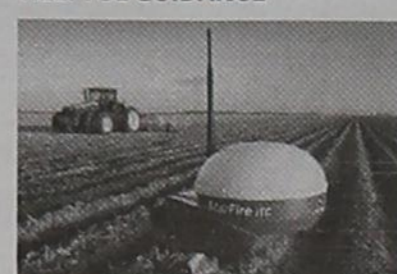
Nothing Runs Like A Deere

GREENSTAR™ 2 GUIDANCE SYSTEMS



Let Hansford Implement Company put together a hands-free guidance system that's right for your operation and your budget.

HELPFUL GUIDANCE



Start saving on fuel and other input costs while reducing wear and tear on your equipment. Start being more productive and less worn out.

Superior Innovation

Features That Matter

VISIT HANSFORD IMPLEMENT COMPANY TODAY!

[www.JohnDeere.com/Homeowners](http://www.JohnDeere.com/Homeowners)

12098 East Frederic Ave.  
Pampa, TX 79065  
(806) 665 - 1888

939 North Dumas Ave.  
Dumas, TX 79029  
(806) 935 - 7720



## HANSFORD IMPLEMENT CO.

South Loop Rd.  
Perryton, TX 79070  
(806) 435 - 4036

South Highway 207  
Spearman, TX 79081  
(806) 659 - 2568

John Deere's green and yellow color scheme, the leaping deer symbol, and JOHN DEERE are trademarks of Deere & Company. D748UB00002-AMS-HANZ100619HCR-bw-00248708



## Workshop to Explore Wind Power Development and Effects on Wildlife

With the Panhandle targeted for increased wind power development, many landowners already have signed or are considering signing contracts with energy companies. But questions remain, especially about wildlife.

The Panhandle Wind and Wildlife Conference on Aug. 8-9 at the Ambassador Hotel in Amarillo is aimed at answering some of those questions. The event is being organized by the Texas AgriLife Extension Service, Texas Parks and Wildlife and Texas Wildlife Association.

Ken Cearley, AgriLife Extension wildlife specialist, said Texas leads the nation in wind power development according to the American Wind Energy Association's rankings report.

The Horse Hollow Wind Energy Center in Taylor and Nolan counties was the single largest wind farm in operation in the nation in 2007, Cearley said. With four of the five largest U.S. wind farms now located in Texas, it is necessary to study the

impact on wildlife.

"We have information from California wind farms that have been in business for 20 years or so that shows minimal numbers of birds killed by the blades of wind turbines," he said.

But other questions remain, such as the impact on:

- Bat populations and movements (bats are important plant pollinators).
- Waterfowl movements and survival through the Central Flyway, which includes the Texas Panhandle and channels migratory birds north and south seasonally.
- Wildlife survival and reproduction in both the installation phase and long term.

Additionally, and maybe most important to some landowners, is how will land values be affected, Cearley said. Will real estate values drop with wind turbines on the land, disrupting the view and the peace and quiet, which so many of today's buyers cherish and are willing to pay large sums for? Will grazing and wildlife leases lose value?

"If I were a landowner being presented with this opportunity, it would be tempting, but I would want to give it a long hard look before deciding, and weigh all of the pros and cons," he said. "The added income might allow some landowners to keep the ranch for years to come, avoiding having to sell due to financial constraints or estate taxes."

Large ranches are often broken up into smaller parcels, fragmenting ownership with each subsequent sale and the further division makes it progressively more difficult to manage for wildlife, Cearley said.

The added income could finance habitat improvement work and relieve financial pressure that might be leading to heavy stocking rates and subsequent detrimental effects on wildlife, such as a lack of sufficient nesting and fawning cover, he said.

"Like a good bird dog easing toward the scent of a covey from downwind, landowners should approach wind energy income opportunities with all their faculties alert and check out all of the possible ramifications before making a decision that will likely be with you for a long time," Cearley said.

The fee is \$60 with pre-registration by July 15 and \$75 after. To register, contact Kassi Scheffer at 800-839-9453 or kscheffer@texas-wildlife.org. For more information on the conference, contact Cearley at 806-651-5760 or kcearley@ag.tamu.edu.

Two hundred-five people attended the Spearman Athletic Banquet on May 13, 2008 at The O'Loughlin Center. The banquet was sponsored by the Spearman Booster Club, and the meal was prepared by the Hungry Cowboy.

Athletes were recognized and honored for their participation and achievement in cross country, football, basketball, track, golf, tennis and cheerleading.

The Spearman Booster Club also presented \$500 scholarships to the following graduating seniors: Blayne Baker, Blaine Barton, Austin Benton, Kim Bergan, Amy Boyd, Brittney Bradley, Amy Brown, Mattie Davis, Jessica Diaz, Kylee Howard, Clara Kern, Christy Lang, Colby Odegaard, Kyla Reed, J.J. Rojas, Kendall Schneider, Tara Shields, & Ivan Terrazas.

**CROSS COUNTRY**  
The Spearman Cross Country team ran over 200 miles from August 13, leading up to the State meet, where they placed 2nd.

**Academic All District**  
Lynx - Senior - Ivan Terrazas, Freshman - Jesus Carrasco, Joel Kern, Jose Mendoza, Sol Pittman, Seth Salgado

**Lynxettes Cross Country Team**  
Seniors - Mattie Davis, Jessica Diaz, Kylee Howard, Kendall Schneider, Tara Shields, Juniors - Courtney Chambers, Bond Pittman, Sophomores - Preslee Baker, Leanna Espinosa, Suttan Garnett, Abbey Eudy - Manager, Freshman - Joselyn Terrazas

**Texas Coaches Assoc. Academic All State**  
Seniors - Mattie Davis, Jessica Diaz, Kylee Howard, Christy Lang, Kendall Schneider, Tara Shields; Juniors - Courtney Chambers, Bond Pittman; Sophomores - Preslee Baker, Leanna Espinosa, Suttan Garnett

Suttan Garnett, a sophomore, was voted **All State Cross Country** by the Texas Coaches Association and **Outstanding Cross Country Lynxette**.

**Outstanding Cross Country Lynx** - Jesus Carrasco, Freshman  
Coaches: Nan Cook and Steve Walker, Asst.

**FOOTBALL Academic All District**  
Seniors - Blayne Baker, Blaine Barton, Juan Ibarra, Jesse Moreno, Eddie Regalado; Juniors - Jordan Ashmore, Cullie Cooper, Chase Farrar, Lance Fishburn, Fabian Frayre, Kegan Garnett, Dayne Hargrove, Tyler Harper, Tyler Schnell; Sophomore - Dakota Cator, Chance Pack, Jesus Mendoza, Skyler Sumner

**Academic All State** - Blayne Baker  
**Outstanding Offense Award** - Blayne Baker  
**Head Hunter Award** - J.J. Rojas  
**Fighting Heart Award** - J.

J. Rojas  
**Off Season Award** (new award this year) - Jorge Brisenio

Coaches: Head - Ritchie Thornton, Assistants - Stan Anderson, Junior Ashmore, Lee Brandon, Kenny Eudy, Steve Rodman, Ken Rosser

**LYNXETTE BASKETBALL Academic All District**  
Seniors - Shannon Anderson, Brittney Bradley, Kylee Howard, Christy Lang, Kyla Reed, Kendall Schneider, Tara Shields; Juniors - Courtney Chambers, Bond Pittman; Sophomore - Leanna Espinosa

**Texas Association of Coaches - Kendall Schneider Outstanding Lynxette Most valued player** - Kendall Schneider

**Fighting Heart Award** - Kylee Howard  
**Krista Kirkland Award** - Kyla Reed

Coaches: Head - Nan Cook, Assistants - Steve Walker, Stan Anderson & Todd Baird

**LYNX BASKETBALL Academic All District**

Seniors - Austin Benton, Jesse Moreno, Ivan Terrazas; Juniors - Jordan Ashmore, Kegan Garnett, Dayne Hargrove, Tyler Harper, Tyler Schnell, Brett Winegarner; Sophomore - Tate Batton

**Most Valuable Player** - Jordan Ashmore & Next Year All-State Basketball team pick

**Fighting Heart Award** - Austin Benton

Coaches: Head - Junior Ashmore, Assts - Kenny Eudy, Brian Mancini, Lee Brandon

**LYNX/LYNXETTE TRACK Academic All District**

Lynxette - Amy Boyd, Jessica Diaz, Kylee Howard, Christy Lang, Kendall Schneider, Tara Shields, Courtney Chambers, DeeDee Delarosa, Bond Pittman, Haley Smith, Preslee Baker, Leanna Espinosa, Abbey Eudy, Suttan Garnett, Whitney Maestas, Andi Lynn Scarborough, Joselyn Terrazas, DeeDee Vaquera

Lynx - Blayne Baker, Chase Farrar, Kegan Garnett, Cameron Meddock, Jose Mendoza, Chance Pack, Eddie Regalado, J.J. Rojas, Ivan Terrazas

**Outstanding Lynxette Track** - Kylee Howard  
**Iron Women Tri Athlete Award** - Christy Lang

The Lynxettes won the District track meet for the 4th consecutive year.

**Outstanding Lynx Track Award** - Jerney Frost  
Coaches: Girls - Ken Eudy; Boys - Steve Rodman  
**Regional Track Qualifiers**  
Pole Vault - Christy Lang,

Bond Pittman & Dakota Cator - Christy went on to State placing 7th at State

Long Jump - Kylee Howard Triple Jump - Kylee Howard & Kegan Garnett - Kegan won Regional went on to State placing 6th at State

Discus - Kendall Schneider  
3200 - Suttan Garnett & Jesus Mendoza  
800 - Tara Shields, Jose Mendoza  
100 Hurdles - Kylee Howard  
110 Hurdles - Jeremy Frost

100 - Bond Pittman  
400 - Fernando Flores  
300 Hurdles - Bond Pittman

1600 - Suttan Garnett & Jesus Mendoza - Suttan went on to State placing 3rd at State Bronze Medal

1600 Relay - Kylee Howard, Preslee Baker, Joselyn Terrazas, Bond Pittman, Christy Lang & Jessica Diaz

**GOLF Academic All District**

Lynxettes - Brittney Bradley, Mattie Davis, Tayshia James & Kyla Reed

Lynx - Jordan Ashmore, Cullie Cooper, Tyler Harper, Blayne Schroeder, Sawyer Sutterfield, Brett Winegarner

**Outstanding Lynxette Golf** - Mattie Davis  
**Outstanding Lynx** - Tyler Harper

Coach - Junior Ashmore  
Boys and Girls golf teams both went to Regionals.

**TENNIS**

**Academic All District**  
Lynxettes - Cha'tea Avila, Brittney Bradley, Courtney Chambers, Ashley Close, Destiny Fisher, Rosa Ortiz, Kendall Schneider

Lynx - L.J. Fishburn, Joel Kern, Gabriel Moreno, T.J.

Worley  
**Outstanding Lynxette Tennis** - Kendall Schneider & Courtney Chambers - who went to Regionals

Brittney Bradley also went to Regionals.

**Outstanding Lynx Tennis** - T.J. Worley & Gabriel Moreno  
Coach - Steve Walker

**CHEERLEADERS Most Spirited Award** - Kyla Reed  
Cheerleaders for 2008-09 - Bond Pittman - Head Cheerleader, Destiny Fisher, Preslee Baker, Suttan Garnett, LeAnna Espinosa, Morgan Ashmore, Malory Martin, Cassie Bowers, Mascot - Andi Travis

Sponsor - Kristen Shieldknight  
**THANK YOU!**  
The Spearman Booster Club would like to thank all the members, sponsors, business, school faculty, administrators, HPO, The Hansford County Reporter-Statesman and SpearmanReporter.com, Dick Gillaspie, Jeff Beedy, Chris Samples, Ken Splawn, Quentin Shieldknight, Janet and Andy Scarborough, the Hungry Cowboy, The O'Loughlin Center and directors for helping make Booster Club work and support the great youth of our community. We truly appreciate all the things the community does for these great kids.

Over the last 2 years we have given over \$18,000 in scholarships to graduating seniors these funds all came from a very giving and caring community, we just want to say a great big THANK YOU for helping us get this accomplished.

**MITCHELL THEATRES**  
**NGS**  
GUYMON, OKLAHOMA

**MITCHELL THEATRES**  
**NORTHDRIDGE CINEMA 8**  
Guymon, Oklahoma

Movies beginning 6/20

**GET SMART**  
PG-13 -- Steve Carell

**THE LOVE GURU**  
PG-13 -- Mike Myers

**THE STRANGERS**  
R -- Liv Tyler, Scott Speedman

**THE INCREDIBLE HULK**  
PG-13 -- Edward Norton

**THE HAPPENING**  
R -- Mark Wahlberg

**KUNG FU PANDA**  
PG -- (Animated) Jack Black

**YOU DON'T MESS WITH THE ZOHAN**  
PG-13 -- Adam Sandler

**INDIANA JONES: CRYSTAL SKULL**  
PG-13 -- Harrison Ford

**FRESH POPCORN EVERYDAY!**  
-PARTY ROOM & ARCADE-

Call for Showtimes  
580-338-3281  
www.northridge8.com  
Office -- 580-338-8969  
CASH & CREDIT CARDS ONLY

Hotline for Priority Seating - 435-3945

**100 MONEYS**

**BBQ & STEAK HOUSE**

We Are THPLC-2-B

14 SE 3rd Ave Perryton, TX

Stan and Donna Zepp

**Under New Ownership**  
**Same Great Service & Menu!**

"Stick With The Best Food In Town"

**Flying X Steakhouse**  
By Reservation Only

From Stinnett: Go West on Hwy. 152  
17 miles - Turn Left at Big Red Cactus  
(About 2 miles on Gravel Road)

From Dumas: Go East on Hwy. 152  
16 miles - Turn Tight at Big Red Cactus  
(About 2 miles on Gravel Road)

(806) 935-9427  
Sheree & Eddie Burgess

# SHS Athletic Banquet Held

J. Rojas  
**Off Season Award** (new award this year) - Jorge Brisenio

Coaches: Head - Ritchie Thornton, Assistants - Stan Anderson, Junior Ashmore, Lee Brandon, Kenny Eudy, Steve Rodman, Ken Rosser

**LYNXETTE BASKETBALL Academic All District**  
Seniors - Shannon Anderson, Brittney Bradley, Kylee Howard, Christy Lang, Kyla Reed, Kendall Schneider, Tara Shields; Juniors - Courtney Chambers, Bond Pittman; Sophomore - Leanna Espinosa

**Texas Association of Coaches - Kendall Schneider Outstanding Lynxette Most valued player** - Kendall Schneider

**Fighting Heart Award** - Kylee Howard  
**Krista Kirkland Award** - Kyla Reed

Coaches: Head - Nan Cook, Assistants - Steve Walker, Stan Anderson & Todd Baird

**LYNX BASKETBALL Academic All District**

Seniors - Austin Benton, Jesse Moreno, Ivan Terrazas; Juniors - Jordan Ashmore, Kegan Garnett, Dayne Hargrove, Tyler Harper, Tyler Schnell, Brett Winegarner; Sophomore - Tate Batton

**Most Valuable Player** - Jordan Ashmore & Next Year All-State Basketball team pick

**Fighting Heart Award** - Austin Benton

Coaches: Head - Junior Ashmore, Assts - Kenny Eudy, Brian Mancini, Lee Brandon

**LYNX/LYNXETTE TRACK Academic All District**

Lynxette - Amy Boyd, Jessica Diaz, Kylee Howard, Christy Lang, Kendall Schneider, Tara Shields, Courtney Chambers, DeeDee Delarosa, Bond Pittman, Haley Smith, Preslee Baker, Leanna Espinosa, Abbey Eudy, Suttan Garnett, Whitney Maestas, Andi Lynn Scarborough, Joselyn Terrazas, DeeDee Vaquera

Lynx - Blayne Baker, Chase Farrar, Kegan Garnett, Cameron Meddock, Jose Mendoza, Chance Pack, Eddie Regalado, J.J. Rojas, Ivan Terrazas

**Outstanding Lynxette Track** - Kylee Howard  
**Iron Women Tri Athlete Award** - Christy Lang

The Lynxettes won the District track meet for the 4th consecutive year.

**Outstanding Lynx Track Award** - Jerney Frost  
Coaches: Girls - Ken Eudy; Boys - Steve Rodman  
**Regional Track Qualifiers**  
Pole Vault - Christy Lang,

Bond Pittman & Dakota Cator - Christy went on to State placing 7th at State

Long Jump - Kylee Howard Triple Jump - Kylee Howard & Kegan Garnett - Kegan won Regional went on to State placing 6th at State

Discus - Kendall Schneider  
3200 - Suttan Garnett & Jesus Mendoza  
800 - Tara Shields, Jose Mendoza  
100 Hurdles - Kylee Howard  
110 Hurdles - Jeremy Frost

100 - Bond Pittman  
400 - Fernando Flores  
300 Hurdles - Bond Pittman

1600 - Suttan Garnett & Jesus Mendoza - Suttan went on to State placing 3rd at State Bronze Medal

1600 Relay - Kylee Howard, Preslee Baker, Joselyn Terrazas, Bond Pittman, Christy Lang & Jessica Diaz

**GOLF Academic All District**

Lynxettes - Brittney Bradley, Mattie Davis, Tayshia James & Kyla Reed

Lynx - Jordan Ashmore, Cullie Cooper, Tyler Harper, Blayne Schroeder, Sawyer Sutterfield, Brett Winegarner

**Outstanding Lynxette Golf** - Mattie Davis  
**Outstanding Lynx** - Tyler Harper

Coach - Junior Ashmore  
Boys and Girls golf teams both went to Regionals.

**TENNIS**

**Academic All District**  
Lynxettes - Cha'tea Avila, Brittney Bradley, Courtney Chambers, Ashley Close, Destiny Fisher, Rosa Ortiz, Kendall Schneider

Lynx - L.J. Fishburn, Joel Kern, Gabriel Moreno, T.J.

**ESTATE SALE**  
**LORENE KUNSELMAN & DON KUNSELMAN ESTATE**  
1005 BERNICE SPEARMAN, TX 79081  
MONDAY JUNE 23, 2008 10:00 AM TO 4:00 PM  
TUESDAY JUNE 24, 2008 10:00 AM TO 2:00 PM

1940's 3 Pc. Bedroom Suite - 3 Recliners - Sleeper Sofa - Matching Sofa, Loveseat & Chair (Rust Velvet) - 2 Floral Occ. Chairs - Desk & Chair - 1 Lot TV's - Velvet Rocker - Brass Coat Rack - Litton Microwave - 1 Lot Maple End Tables - Sm Maple Bookcase - 1 Lot End Tables - Maple Cabinet Stereo - 3 Sweepers - 1 Lot Lamps - 1 Lot Records - 1 Lot Wall Decorations & Pictures - 1 Lg. Lot Christmas Decorations - 1 Lg. Lot Linens - 1 Lg. Lot Knick Knacks - 1 Lot Sm Kitchen Appliances - Litton Microwave - 1 Lot Dishes & Glassware - 1 Lg Lot Cookware - 1 Lg. Lot Corning ware - 1 Lot Kitchen Utensils - 1 Lot Tupperware - 1 Lot Amber Sandwich Glass - 5 Candlewick Glasses - LG. LOT AMBER FOSTORIA - 1 Lot Amber Moon & Star Glasses - 1 Set Royal China - 1 Lg. Set Russel Wright Pink Dinnerware - 1 Set Sonet White China - Card Table - TV Trays - 1 Lot Lawn & Garden - LG LOT COSTUME JEWELRY

For Information Call  
Bobbie Bozeman  
(806) 435-6377 or (806) 435-0940

**AUCTION / GARAGE SALE**  
Saturday, June 21st  
Mall on Hwy. 207, Spearman  
Between Alco and Lowe's  
Doors open at 7 a.m.  
Auction Begins at 8 a.m.  
Sponsored by First United Methodist Church, Spearman

All proceeds will go to the ministry of Darryl and Kelly Chambers, who are serving as missionaries in Ecuador.

Hamburgers will be available.  
Come join the fun!

Items include:  
Golf Cart, Snow Mobile, Automobiles,  
Numerous Household Items

Call Joey or Lyn at 806-659-3550 or 806-330-1997  
for more information.



**FOR SALE/RENT/LEASE**

**FOR SALE:** 601 Womble Gruver, App. 4600 Sq. Ft.; 1 Block from school. \$177,500 OBO. (806)733-2223 or (806) 736-1439. TFN(5-01-08)B

**FOR RENT:** 2BR apartment, \$400.00 per month, water paid. Call Larry O'Neal at 580-772-5617 or 580-819-0007. TFN(7-06-06)B

**FOR SALE:** 711 Townsend, 1735 sq ft, 3 BR, 2 bath, 2 living area, fireplace, 2 car garage, central heat/air, fenced backyard, 1 block from school, 659-1037 or 330-1004. TFN(6-19-06)B

**WANTED**

**COUPLE LOOKING FOR HOUSE TO RENT:** Teacher looking for 2/3BR home to rent in Spearman. No kids, no pets, non-smokers with steady income. Call 806-644-5969, please leave message. TFN(4-17-08)

**HELP WANTED**

**HELP WANTED:** First United Methodist Church is accepting applications for a maintenance/janitorial employee. Job requires a minimum of 20 hours per week, with flexibility for more hours at certain times. Salary will be based on applicant's skills and experience. Please apply in person at First United Methodist Church, 501 S. Haney, Spearman, or by mail at First United Methodist Church, P.O. Box 547, Spearman, TX, 79081. TFN(4-10-08)B

**HELP WANTED:** The Hansford County Sheriff's Office has an opening for a jailer/dispatcher. Must have a high school diploma or GED. Apply at Sheriff's Office, 806-659-4140. TFN(4-17-08)B

**SERVICES**

**HOCHY POOCHY PARLOR** Call us for all your pet's grooming and boarding needs. Call now for reservations! 806-273-2724. TFN(11-2-07)

**FOR SALE OR TRADE**

**FOR SALE:** MATTRESS \$100 TWIN SIZE set. In perfect condition. Never used 806-341-6233 TFN(1-31-08)

**FOR SALE:** Brand New full size mattress set in plastic with warranty Sell \$125 806-341-6233 TFN(1-31-08)

**FOR SALE:** New Visco Memory Foam Mattress & Box. Sealed in plastic with manufacturers warranty. Must move \$375 806-341-6233 TFN(1-31-08)

**FOR SALE:** \$140 Brand new queen size mattress set. Still in factory plastic, has warranty. 806-341-6233 TFN(1-31-08)

**FOR SALE:** Bed New Queen, pillow-top mattress set. In plastic, Warranty. Sacrifice \$150 806-341-6233 TFN(1-31-08)

**FOR SALE:** MATTRESS-All New KING set Pillowtop. In plastic w/warranty \$250 806-341-6233 TFN(1-31-08)

**ESTATE SALE**

**ESTATE SALE, Spearman:** Saturday, June 28th, 9 a.m.-6 p.m., 3 miles N of Spearman on Hwy. 760. Furniture, clothing, antiques, lots of misc. 1(6-19-08)P

**PUBLIC NOTICE**

The Board of Trustees of the Spearman Independent School District is accepting sealed bid proposals until 1:00 p.m. June 30, 2008 for "BREAD" for the 2008-2009 school year. Any proposals received after that time and date will not be read and returned unopened and not considered. Please mail or deliver bid proposals to Spearman ISD, Larry Murphy, 403 E. 11th Avenue, Spearman, TX 79081. The District reserves the right to reject any bid and/or all bids, to award the bid as it may appear to be advantageous to the District and to waive all formalities in bidding. 2(6-12-08)B

**PUBLIC NOTICE**

The Board of Trustees of the Spearman Independent School District is accepting sealed bid proposals until 1:00 p.m. June 30, 2008 for "ATHLETIC EQUIPMENT" for the 2008-2009 school year. Any proposals received after that time and date will not be read and returned unopened and not considered. Please mail or deliver bid proposals to Spearman ISD, Larry Murphy, 403 E. 11th Avenue, Spearman, TX 79081. The District reserves the right to reject any bid and/or all bids, to award the bid as it may appear to be advantageous to the District and to waive all formalities in bidding. 2(6-12-08)B

**PUBLIC NOTICE**

The Board of Trustees of the Spearman Independent School District is accepting sealed bid proposals until 1:00 p.m., June 30, 2008 for "DAIRY PRODUCTS" for the 2008-2009 school year. Any proposals received after that time and date will not be read and returned unopened and not considered. Please mail or deliver bid proposals to Spearman ISD, Larry Murphy, 403 E. 11th Avenue, Spearman, TX 79081. The District reserves the right to reject any bid and/or all bids, to award the bid as it may appear to be advantageous to the District and to waive all formalities in bidding. 2(6-12-08)B

**PUBLIC NOTICE**

The Board of Trustees of the Spearman Independent School District is accepting sealed bid proposals until 1:00 p.m., June 30, 2008 for "ATHLETIC/JUL STUDENT INSURANCE" for the 2008-2009 school year. Any proposals received after that time and date will not be read and returned unopened and not considered. Please mail or deliver bid proposals to Spearman ISD, Larry Murphy, 403 E. 11th Avenue, Spearman, TX 79081. The District reserves the right to reject any bid and/or all bids, to award the bid as it may appear to be advantageous to the District and to waive all formalities in bidding. 2(6-12-08)B

**PUBLIC NOTICE**

The Board of Trustees of the Spearman Independent School District is accepting sealed bid proposals until 1:00 p.m. June 30, 2008 for "BREAD" for the 2008-2009 school year. Any proposals received after that time and date will not be read and returned unopened and not considered. Please mail or deliver bid proposals to Spearman ISD, Larry Murphy, 403 E. 11th Avenue, Spearman, TX 79081. The District reserves the right to reject any bid and/or all bids, to award the bid as it may appear to be advantageous to the District and to waive all formalities in bidding. 2(6-12-08)B

**UNITED STATES DEPARTMENT OF AGRICULTURE Farm Service Agency**

**VACANCY ANNOUNCEMENT**

Hansford County Farm Service Agency will be accepting applications for a temporary position. Job duties include general office work, assisting with farm program administration, working with the public, and other responsibilities as required. The applicant must possess good public relation skills, computer skills, and the ability to work well with others. Applications must be received in the Hansford County FSA Office by close of business June 27, 2008, with all applicable signatures and information. Applications may be picked up at the Hansford County FSA Office, located at 909 West 9th Suite B, Spearman TX. The position will be September 30, 2008. The USDA is an Equal Opportunity provider and employer and prohibits discrimination in all its programs and activities on the basis of race, color, national origin, sex, religion, age, disability, political beliefs, sexual orientation, and marital or family status. (Not all prohibited bases apply to all Programs.) Persons with disabilities who require alternative means for communication of program information (Braille, large print, audio-tape, etc.) should contact USDA's TARGET Center at (202) 720-2600. To file a complaint of discrimination, write USDA, Director, Office of Civil Rights, Room 326-W, Whitten Building, 14th and Independence Ave. SW, Washington, DC 20250-9410 or call (202) 720-5964 (voice or TDD). 2(6-12-08)B

and date will not be read and returned unopened and not considered. Please mail or deliver bid proposals to Spearman ISD, Larry Murphy, 403 E. 11th Avenue, Spearman, Texas 79081. The District reserves the right to reject any bid and/or all bids, to award the bid as it may appear to be advantageous to the District and to waive all formalities in bidding. 2(6-12-08)B

**LEGAL NOTICE**

Hansford County Commissioners' Court will receive bids until 4:00 on Friday, July 11, 2008 to paint the District Courtroom and to install new carpet. Bids should be submitted to the Hansford County Judge's office, 16 Northwest Court, Spearman, Texas 79081-2052. Please contact County Judge for specifics. Bids will be opened on Monday, July 14, 2008 during the Commissioners' Court meeting in the Law Library of the Hansford County Courthouse, Spearman, Texas. Meeting will begin at 10:00 a.m. Hansford County reserves the right to accept or reject any or all bids. Benny Wilson, Hansford County Judge, 806-659-4100, 3(6-12-08)B

**PUBLIC NOTICE**

Pursuant to Sec. 152.905 of the Texas Local Govt. Code, on the 2nd day of July, 2008 at 3 p.m., a public hearing will be held at the Hutchinson County Courthouse in Stinnett, Texas, in the 316th District Courtroom. The purpose of the hearing will be to hear testimony concerning the salary of the 84th District Court Reporter. The public is invited to attend. 1(6-26-08)B

**PUBLIC NOTICE**

The City of Gruver will be selling: 1992 Ford Trash Truck, 1965 International Dump Truck, 1984 Ranger Pickup, 3-point woods mower, Air Compressor, 2008 Ford 1 ton pick-up bed sickle mower. Sealed bids will be accepted until 2:00 pm July 1, 2008 when they will be opened and awarded, the City reserves the right to accept the bid deemed most advantageous to the City of Gruver or reject any and all bids. 2(6-12-08)B

**NOTICE TO ALL PERSONS HAVING CLAIMS AGAINST THE ESTATE OF I.W. AYRES, JR.**

Notice is hereby given that original Letters Testamentary for the Estate of I.W. Ayres, Jr. were issued on June 13, 2008, in Cause No. 2542, pending in the County Court of Hansford County, Texas. All persons having claims against this estate, which is currently being administered, are required to present them within the time and in the manner prescribed by law. All claims should be sent to Bruce D. Ayres, 4857 Hialeah Court, Abilene, TX 79606. DATED the 13th day of June, 2008. John L. Hutchison, Attorney for the Estate, 2(6-12-08)B

Guymon, OK 73942  
580-338-2556  
1-800-562-2556  
1(6-12-08)B

**CUSTOMERS OF PANHANDLE TELECOMMUNICATION SYSTEMS, INC.:**

Effective July 1, 2008, the amount of the Federal Universal Service Charge (FUSC) appearing on your bill each month will increase as a result of an increase in the Federal Communications Commission's (FCC) universal service fund contribution factor from 11.3 percent to 11.4 percent. The new FUSC amount is calculated by multiplying the FCC's universal service contribution factor against your interstate access service charges. The federal universal service fund program is designed to help keep local telephone service rates affordable for all customers, in all areas of the United States. Panhandle Telecommunication Systems, Inc. Ron Strecker, CEO PO Box 1188 2222 NW Hwy 64 Guymon, OK 73942 580-338-2556 1-800-562-2556 1(6-12-08)B

**CUSTOMERS OF PANHANDLE TELEPHONE COOPERATIVE, INC.:**

Effective July 1, 2008, the amount of the Federal Universal Service Charge (FUSC) appearing on your bill each month will increase as a result of an increase in the Federal Communications Commission's (FCC) universal service fund contribution factor from 11.3 percent to 11.4 percent. The new FUSC amount is calculated by multiplying the FCC's universal service contribution factor against your interstate access service charges. The federal universal service fund program is designed to help keep local telephone service rates affordable for all customers, in all areas of the United States. Panhandle Telephone Cooperative, Inc. Ron Strecker, CEO PO Box 1188 2222 NW Hwy 64 Guymon, OK 73942 580-338-2556 1-800-562-2556 1(6-12-08)B

**FOR SALE**

**Ben Franklin Variety, Craft & Dollar Store is For Sale in Stratford, TX.** For details, contact Ben Franklin Representative David Larson at 1-800-992-9307, ext. 402. 1(6-19-08)B

**HELP WANTED**

Quiktrak is an asset verification company that provides fraud prevention inspections and inventory audits throughout the US and Canada. We are seeking reliable, tech-savvy persons interested in working as Independent Contractors. Contact Inspector Quality, 800-927-8725, ex: 3015, www.quiktrak.com. 1(6-19-08)B

LUSH	ELF	JAGS
OGEE	EMIR	MULLA
ALAR	NAME	ONSET
FINEPRINT	IKON	
TOOLS	ARM	
BEFOUL	CREASER	
EGO	FLORET	ILIA
CROWS	PAL	BLOGS
KETO	DAHLIA	THE
STERNAL	BLASTS	
LOB	NOISE	
EDDO	MESSAGING	
TROWS	ERSE	EDEN
AGREE	AVIS	ALBA
BOMB	LEA	NEST

4	1	6	5	9	3	7	2	8
5	3	8	2	4	7	6	9	1
7	2	9	1	6	8	5	4	3
6	7	2	4	8	1	3	5	9
9	4	5	6	3	2	1	8	7
3	8	1	9	7	5	2	6	4
8	5	3	7	2	4	9	1	6
2	6	4	3	1	9	8	7	5
1	9	7	8	5	6	4	3	2

**MARTIN & ASSOCIATES REALTY**

Serving Hansford County for 14 years

Julie Martin - Broker - 659-2425

**IN SPEARMAN**

1111 S. Townsend - Split level, 3/2/1 Are you looking for a home with that brand new feeling? This home has been redone throughout: all new flooring, paint, fixtures, baths, remodeled kitchen w/new appliances, granite countertops, split level deck. REDUCED!

703 Collier - 3/1/1. Call today - Let's Make a Deal!!

1005 S. Bernice - 3 bed, 2 bath, 1000 sq ft w/replace.

**UNDER CONTRACT**

We'd Like Your Listing FOR QUALITY & SERVICE CALL US TODAY! Equal Housing Opportunity

**Blankenship Real Estate**

659-3052 - 670-3774

3/1/1 - Lots of storage, inside & out, corner lot. Close to schools.

3/2/1 - Brick, 2 living areas, fenced w/storage

2/2/1 - Brick, 1000 sq ft w/storage

**NEW LISTINGS WANTED!**

Eulalia Blankenship - Sales

Eschol Blankenship - Broker

**Gruver Property**

310 Cluck - 3BR, 2B, fenced yard, 2CG, apartment in back.

715 Cluck - 3 Bed, 1 3/4 bath, 1,435 sq ft, CACH, \$70,000

**Spearman Property**

EX- 504 Roland - 3BR, 2B, storm shelter, stg bldg.

24 Archer/501 W. Kenneth - Restaurant - ready to open

115 Nelson Rd. - 2/2/2 - 1,900 sq ft. Country & City all at once!

**UNDER CONTRACT**

Shirley Howard, Broker/Owner 806-886-6536, Cell

Melinda McCullough, Realtor (806) 733-5678

We would LOVE to sell your HOUSE! Call US!

**Shirley Howard, Broker/Owner**

806-886-6536, Cell

Melinda McCullough, Realtor (806) 733-5678

We would LOVE to sell your HOUSE! Call US!

**OCHILTREE CO** - Choice dairy location, strong water area, three phase electricity, 776.5 acres more or less of choice land (Pullman Clay Loam - almost all "A" slope) with two pivot points for sprinklers, two irrigation wells, preconditioning pens with indoor working area, grain, hay and fuel storage.

**OCEANS OF WATER II** - Hansford Co., Texas - 4 sections, strong water, dev. with sprinklers, wells, feedyard, home, barns, pvtmt., 2 mi. hwy. frontage.

**HARTLEY CO** - 640 acres with nice home, landscaped, barns & sprinklers.

**SPEARMAN DAIRY** - permitted for 3,600 hd. (1,800 milking), 320 acre operation, milking started as construction nears completion.

**MOORE CO.** - 1766 acres, fully developed with wells & sprinklers & really nice home on all-weather road, priced to sell!

Choice milk processing and dairy sites available in Dallam, Hartley, Moore, Oldham, Sherman and Hutchinson Counties.

SEE OUR WEBSITE OR GIVE US A CALL! www.scottlandcompany.com Shawn Gillispie 806/922-5532 Ben G. Scott, Broker 1-800-933-9698 day/eve TFN(1-17-07)

**hchd** Hansford County Hospital District

**Openings at Hansford Hospital**

**Maintenance Person:** Performing duties for maintenance of the building, grounds, including carpentry, painting, plumbing, electrical work, air conditioning, gardening, furniture repair, welding, etc.

**Home Health RN:** Must be licensed in the State of Texas

**Openings at Hansford Manor**

**LVN:** Must be licensed in the State of Texas

Great working environment and staff, quality facility providing opportunities for professional growth. Great benefit package. Apply at 707 S. Roland, Spearman, TX or contact Jackie Nelson at 806-659-5841. Download application at www.hchd.net

EOE 2(6-12-08)B

**Hoochy Poochy Parlor**

**Professional Best Award Winning Stylist**

**Carmon Baker**

and Missy "The Hoochy Poochy"

A true professional and award winning creative groomer. Carmon has earned numerous awards for her excellent work and demonstrated professional technique. She has served the Texas Panhandle for the past 37 years. Catering to the small to medium pampered pet, we always do our best. Please visit us for a free estimate on your pet care needs.

Hours: Mon.-Fri., 8 a.m. until done Saturday by appointment only

806-273-2724 806-674-5409 116 Madison 421 E. 10th St. Borger, TX 79007 goingtothedogs@cablone.net

**TEXAS STATEWIDE CLASSIFIED ADVERTISING NETWORK**

**TexSCAN**

**TexSCAN Week of June 15, 2008**

**ADOPTION**  
ADOPTION: CHILDLESS COUPLE seeks to adopt newborn. Premising lots of love and security. Will be full-time mom and devoted father. Expenses paid. Allison and John, 1-888-286-8620.

**AUCTION**  
REAL ESTATE AUCTION, Sat, June 21, 10 am (est). Residential lots in Fairhope, Foley/Gulf Shores, Orange Beach & Pensacola. Some sell Absoulte! Hurry, all properties available for purchase before the auction! Auction held at 29121 Perdido Beach Blvd, Orange Beach, AL. 1-800-445-4608 or www.heritagesales.com for more info. DFarmer793, Heritage Realty & Auction.

**BUSINESS OPPORTUNITIES**  
ALL CASH CANDY Route. Do you earn \$800 in a day? Your own local candy route. 30 machines and candy. All for \$9,995. 1-888-625-5481. Multi Vend, LLC.

**DRIVERS**  
DRIVERS-CDL-A The grain is greener at PTL. Students with CDL welcome - excellent training program. Company drivers earn up to 46¢ cpm. Owner Operators earn \$1.41 cpm. meet age requirement. 12 mos OTR, No forced northeast! Company drivers call: 1-866-696-6290. Owner operators call: 1-877-774-3533. www.pdl-inc.com

DRIVERS: COMPANY DRIVERS & O's wanted! Dry van, no hazmat. Class A-CDL required! 48 state carrier. Call Guy 1-800-387-1011. www.aal.com

DRIVERS-FRESH START, Teams needed Sign-On bonus 35-42¢pm. Earn over \$1000 weekly. Excellent benefits. Need CDL-A & 3 months recent OTR. 1-800-635-8669, Melton Truck Lines.

DRIVERS STUDENTS: START your new career with sponsored training or tuition reimbursement! Possible \$40K 1st year. Experienced drivers, ask about \$5000 sign-on! www.fhinc.com, 1-800-569-9232

TRUCK DRIVERS: CDL training. Up to \$20,000 bonus. Accelerate your career as a soldier. Drive out terrorism by keeping the Army National Guard supplied. 1-800-GO-GUARD.com/truck

**EDUCATION**  
TEENS FROM AROUND the world need host families for next school year. Students are from 30 countries and families may choose their student. SHARF! 800-941-3738www.abitesofthewest.org

**HOMES FOR SALE**  
BUY FORECLOSURES! 3BR/2BA \$11,200 or \$199/month! 4BR/2BA \$25,300 or \$215/month! 5BR/3BA \$39,900 or \$285/month! For BNI listings 800-544-6258 x.1303

FORECLOSURES & BANK REPOS: 4BR/2BA \$29,343 or \$245/month! 3BR/2BA \$10,300 or \$199/month! (5% down, 20yrs, buy @ 8%) These homes won't last! For BNI listings call 1-800-544-6258 Ext. 9847

**MISCELLANEOUS**  
AIRLINES ARE HIRING Train for high paying aviation career. FAA predicts severe shortage. Financial aid if qualified, job placement assistance. Call Aviation Institute of Maintenance, 1-888-349-5387.

ATTEND COLLEGE ONLINE from home. Medical, Business, Paralegal, Computers, Criminal Justice. Job placement assistance. Computer available. Financial aid if qualified. Call 1-866-858-2121. www.CenturaOnline.com

**REAL ESTATE**  
214 ACRES, NORTHEAST New Mexico, water and electricity, beautiful mesa views, \$695 per acre. Smaller tracts available. Owner financing. Toll-free 1-877-797-2624. www.newmexicoranches.com

20 ACRES, NORTH of Brady, rural water, electricity, county road, large oaks, elm, seasonal creek, great hunting, \$4500 per acre, terms. 1-800-876-9720

COLORADO RANCH FORECLOSURES 100 Acres just \$59,900 Other ranches available Year-round roads, access to utilities. Excellent Financing Available. 1-866-696-5263 X.4288, www.TXCloseCD.com

LAKEFRONT SACRIFICE \$69,900. 3rd largest lake in Texas. Views, trees, easy highway access from DFW. Must sell! E2 terms. Call 1-888-316-5255.

LAKE PROPERTIES FROM JUST \$39,900 Lake Gunterville, Southbmo AL, Marina, gulf entrance, utilities. Buy now, build later! Excellent financing available! 1-877-917-5253 x.4272 www.seecp.com

**MEYERS CANYON RANCH**, Tract 48, 258.64 acres, \$350 per acre. Deer, dove, quail, and javelina. Good rd. w. Owner financed or texVet. 1-866-286-0199. www.ranchenterpriestd.com

**MONTANA'S BEST PROPERTY** June land sale! 20AC - County Road and Utilities-\$49,900. 160AC Tracts Starting at \$650/AC. 300-1000AC ranch lands for cattle, horses, and the best elk and deer area - Under \$900/AC. North of Billings, MT. Access to thousands of BLM. Owner financing or pay cash and receive discount. Call 1-888-361-3006 or visit www.WesternSkiesAnd.com

**NEW TO MARKET** Colorado Mountain Ranch. 35 Acres-\$39,900. Priced for quick sale. Overlooking a majestic lake, beautifully treed, 360 degree mountain views, adjacent to national forest. E2 Terms. 1-866-353-4810.

**PRIME LAND NEAR** Ruidoso, NM. 140 acre parcels from \$995/acre. Power, gravel roads, excellent horse property, borders national forest. May split. Owner financing! 1-877-289-6650. www.westernproperties.com

**SOUTHERN COLORADO RANCH** Sale 35 acres with well just \$69,900. Spectacular Rocky Mountain views. Year-round access. Nicely treed. Access to electric and telephone. Call Red Creek Land today! 1-866-OWN-LAND ext. 4122. www.secedarwoodstation.com

**TIME-SHARES RE-SALES!** The cheapest way to buy, sell and rent Time-shares. No commissions, or broker fees. Call or go to 1-888-446-6208 www.buyalimeshare.com

**Run Your Ad In TexSCAN!**

Statewide Ad .....\$450  
303 Newspapers, 1,017,914 Circulation  
North Region Only .....\$195  
98 Newspapers, 276,893 Circulation  
South Region Only .....\$195  
103 Newspapers, 488,623 Circulation  
West Region Only .....\$195  
102 Newspapers, 252,398 Circulation

To Order: Call This Newspaper direct, or call Texas Press Service at 1-800-749-4793 Today!

NOTICE: While most advertisers are reputable, we cannot guarantee products or services advertised. We urge readers to use caution and, in no doubt, contact the Texas Attorney General at 1-800-621-0508 or the Federal Trade Commission at 1-877-FTC-HELP. The FTC web site is www.ftc.gov/biz

**Extend your advertising reach with TexSCAN, your Statewide Classified Ad Network.**

**FSB First State Bank**

P.O. Box 247 Spearman, TX 79081 Telephone 806-659-5565 Member FDIC

Planning to buy a home, but not sure if you can get an affordable mortgage? Interest too high on your present mortgage? Want to do business with a local bank?

**We can help!**

**Come by First State Bank, Spearman.** Check out our competitive fixed and adjustable rate mortgages for terms up to 30 years. We can work with you to find a mortgage that fits your needs and help you buy or refinance your home. Contact Ginger Turner and find out more.



## Spearman ISD Students of the Month



Sandi Carbajal and Tyler Schnell

The April Students of the Month at Spearman High School are senior, Sandi Carbajal and junior, Tyler Schnell.

Sandi is the daughter of Ruben and Sandra Carbajal. She has two sisters, Kristi Valdez and Brenda Robledo and one brother, Ruben Carbajal. Sandi is a member of Family, Career, and Community Leaders of America (FCCLA) and the Sacred Heart Catholic Church Youth Group. Sandi was named Best Personality her senior year and she has been on the Honor Roll. In her spare time, Sandi enjoys spending time with her family and friends. She also loves to read and she enjoys taking care of people. Her future plans include attending college at West Texas A & M University to obtain a bachelor's degree in nursing. Sandi states the best thing about Spearman is, "Spearman is a small town where everybody knows everybody and everyone is very supportive in everything you do." The best thing about Spearman High School is, "It is a small school and teachers are always willing to help you." Sandi's most influential teacher during her school years is Mrs. Linda Wilkerson.

Tyler is the son of Mike and Patti Schnell. He has one younger brother, Ryan Schnell. Tyler is active in National Honor Society, Varsity Basketball, and the Big Brothers/Big Sisters program. Tyler has been named 1st team All-District in basketball and Academic All-District in football and basketball. In his spare time, Tyler likes sports, hunting, fishing, flying, working on cars, and hanging out with friends. Tyler plans on attending college at Texas A & M University and becoming a petroleum engineer or a pilot. Tyler states the best thing about Spearman is, "The support everyone has given me in my activities and the small town atmosphere." Tyler says the best thing about Spearman High School is, "playing basketball and being with all of my friends." Tyler's most influential teachers during his school years are Coach Junior Ashmore, Mrs. Kelly Hart, Mr. Richard Trantham, and Mrs. Linda Wilkerson.

Congratulations Sandi and Tyler on being named the Spearman High School April Students of the Month.

brought to you by these sponsors:

**Properties**  
Shirley Howard  
806-886-6536

**CASE iii Zimmatic**  
FIVE STAR EQUIPMENT, INC.  
HIGHWAY 15 WEST - BOX 658  
SPEARMAN, TEXAS 79081  
PHONE # (806) 659-3743  
HOME # (806) 659-3846  
CELL # (806) 330-0051  
RICHEY THOMPSON  
MANAGER 800-976-2759



A pair of bald eagles.

### Honoring Those Who Serve

The Hansford County Reporter-Statesman would like to thank those who are actively serving in the military.

Sgt. Juan Rojas  
VMM-162, S-2  
Unit 77041  
APO AE 09509-7041  
www.motomail.us  
Parents: Barbara & Eddie Rojas  
Lt. Col David McNulty  
US Air Force  
Active Guard Reserves  
Otis ANGB, MA  
In-laws: Gary & Cathy Smith  
TSGT Raul Ortega  
PO Box 18968  
Tucson, AZ 85731  
Parents: Virgino & Francisca Ortega  
Sr.A. John Clement  
US Air Force  
Dover Air Force Base, DE  
Parents: Jolene Clement, Dave Clement  
Grandparent: Willie Clement  
Spec. Paul Bynum  
US Army  
Ft. Bragg, NC  
Parents: Lella & Kurt Bynum  
Grandparents: Nita & Joe Bynum

If you have a name you would like added to this list, please contact Catherine Smith at the Hansford County Reporter-Statesman, 806-659-3434, or e-mail to reporter@spearmanreporter.com.

by Dorothy Hudson

## Out at the Lake

Jim Derington  
Palo Duro River Authority  
P.O. Box 99  
Spearman, TX 79081  
806-882-4401  
pdra@dishmail.net

Lake Level--June 16, 2008--16.17 feet (-0.15)

Jim was fortunate to catch the pair of bald eagles together in one of the dead trees at the edge of the Lake. Now we have proof that we have two, but we haven't found a nest. So we cannot determine if our pair of eagles have a young family.

Eagles build the biggest nest of all the birds. Typically the nests are seven or eight feet across. Two to four eggs are laid as early as Feb. 1 in places such as Oklahoma, but they can be laid as late as May in areas farther north. It takes 35 days for the eggs to hatch.

As the Lake level goes down and islands are appearing, life goes on and the water and the Park have visitors. The Church of Christ from Spearman used the shelter Sunday evening. Campers used the RVs or set up tents around the Lake. Fishermen were out, but no one spoke of catching big fish.

The state of Texas uses a Drought Scale to decide which counties should ban fireworks. According to this scale, fireworks are allowed in Hansford County, but citizens are asked to use good judgment in the dry sections. Fireworks, as always, are banned in the Park area. The soapweed yuccas did

not bloom this year in the Park, but blooms were seen in the other parts of the watershed. When conditions are favorable, the blooms are prolific. Otherwise, yucca plants may only bloom every two or three years. Therefore, a pasture with soapweed nearly always has some plants blooming each year. Perhaps one of the late freezes was harder in the Park.

This dry spring seemed different in Gruver in that the usual early henbit did not bloom in the purple waves. Instead we have little coarse green plants with little yellow flowers that turn into puff balls. I think they are a type of false dandelion.

## ANY KUBOTA'S A GOOD CHOICE!



\$0 DOWN 0% A.P.R. FINANCING FOR UP TO 42\* MONTHS



**PANHANDLE IMPLEMENT CO**  
710 NORTH MAIN STREET  
PERRYTON, TX  
806-435-6508

0% A.P.R. interest is available to customers if no dealer documentation preparation fee is charged. Dealer charge for document preparation fees shall be in accordance with state law. Not available for Rental, National Accounts or Governmental customers. Financing is available through Kubota Credit Corporation, U.S.A., subject to credit approval. Some exceptions apply. Offer expires June 30, 2008. See your local Kubota dealer for details on these and other low-rate options or go to www.kubota.com for more information. \*12/100 is used as example only.

**3 LARGE Topping PIZZAS**  
**\$19.99**

Mon.-Thurs. - 11:30am-9pm.  
Fri. - 11:30am-10:30pm.  
Sat. - 11:2noon-10:30pm.  
Sun. - 11:2noon-9pm.

312 Main Street - Spearman, TX  
(806) 659-9991

**Palace Theatre**

MOVIE SHOW TIMES  
Friday-Thursday - 7 p.m.  
Sunday - 2 p.m.  
Closed Sunday Night

FRESH POPCORN & DRINKS!  
PARTY ROOM & ARCADE  
MOVIE RENTALS

Palace Theatre  
210 Main Street  
Canadian TX 79014  
806-323-5133  
www.palacetheatre.com

The Palace Theatre meets  
Lucasfilm THX specifications for  
site and sound quality.

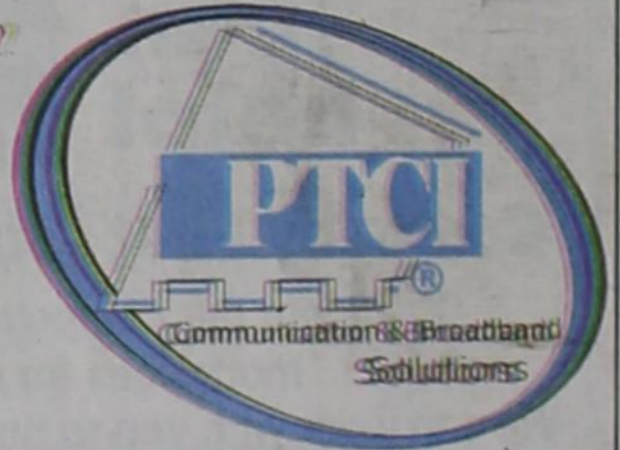
"I honestly could not do what I do without PTCI."  
~Gina Gillisple  
Editor, High Plains Observer  
www.highplainsobserver.com



**PTCI**  
Internet  
has speeds  
up to 6 MBps.

"We have used PTCI as our Internet Service Provider for almost two years now. ...it's fast, it's easy, and the service is great!"

"My favorite thing about PTCI? They're involved in everything that goes on, whether it's high school sports or a business promotion. Any time there's a need in the community, they're willing to be a part of it."



721 W. 7th in Spearman 1-800-562-2556 www.ptci.net