

SCR2
COMP
HANSFORD COUNTY LIBRARY
0122 MAIN ST
SPEARMAN TX 79081-2064



★ HANSFORD COUNTY
THE REPORTER-STATESMAN

THURSDAY,
NOVEMBER 18, 2010

CELEBRATING 103 YEARS OF SERVICE TO HANSFORD COUNTY
HANSFORD COUNTY'S ONLY NEWSPAPER

75¢

WWW.SPEARMANREPORTER.COM

VOLUME 103 • ISSUE 46

reporter@spearmanreporter.com

HANSFORD COUNTY - Home of the 2010 1A and 2A Girls Cross Country State Champs



Spearman Varsity Lynxettes

(Back Row, L-R) Kylie Hegstrom, Cynthia Mendoza, Shelby Hanna, Itzel Meza, Tylo Farrar, Coach Starla Whiteley; (Front Row, L-R) Erynn Saenz, Gately Garnett, Malory Martin, Sarah Snider.

By Travis Harsch

Different year, same results. On a cold, windy day at Old Settlers' Park that made Panhandle runners feel right at home, Spearman captured its third straight girls cross country team championship, Gruver earned its second consecutive girls team title, and Canyon took third place.

Spearman, led by a fifth-place finish from Tylo Farrar, finished with 92 points, well ahead of Cameron Yoe's total of 103, though Lynxette coach Starla Whiteley wasn't sure of the outcome until the results were posted.

"When we finished, I thought we were second," she said. "Putting everything in from regionals, we knew it was going to be close, but our pack came in well and won it for us."

Gately Garnett was the second runner for Spearman in 22nd, but the performance of Itzel Mesa in 41st, Sarah Snider in 47th and Malory Martin in 52nd provided the key points the Lynxettes needed to repeat.

Spearman finished the race well, as all the Lynxettes passed competitors in the final 1,000 meters.

"We always talk about how important it is from the dam to the finish and how important it is to be mentally tough at that point," Whiteley said. "The girls just do it, every year."

Farrar ran the 3,200 meter course in 11:57. "I would have liked to have done a little better, but I'm happy with it and excited about what we did as a team," she said.

Spearman won the title with five juniors and two sophomores.

"I've got five juniors that know nothing other than being a state champion, and that was a big key," Whiteley said.

Gruver won its second straight title with 75 points, beating Hamlin and Lindsay, which each had 90, and surpassing the expectations of Lady Greyhounds coach Rod Been.

"We'd been watching Hamlin all year, and we knew Lindsay had turned in some really good times from their region," Been said. "I thought if we won or if we lost, it would be five points or less."

The difference came from Gruver's last scoring runner, Makenzie Crane, who finished 38th, while Lindsay's fifth runner finished 60th and Hamlin's was 62nd.

Continued on Page 5



Gruver Varsity Lady Hounds

(Back Row, L-R) Coach Morrison, Mrs. Been, Madison McLain, Daniela Luciano, Shelley Gibson, Callie Stedje, Coach Been; (Front Row, L-R) Taylor Felderhoff, Angelica Valverde, Makenzie Crane, Macy McLennan

COME TO THE GAME

SPEARMAN LYNX vs CRAWFORD on 11/19 at 8 p.m. in Seymour Class 2A Div. II, Region I Area

COME TO THE GAME

Spearman Lynx/Lynxettes

11/18 & 20 JVG @ Perryton Tourney
11/22 VG (6:30) vs. Dimmitt at WT (Canyon)
11/22 7G (5), 8G (6), JVV (6) vs. H. Park
11/22 7B (5), 8B (6), 9B (6) @ H. Park
11/29 7G (5), 8G (6), JVV (6) @ Fritch
11/29 7B (5), 8B (6), 9B (6) vs. Fritch
11/30 JVG (5), JVB (5), VG (6:30), VB (8) vs. Texhoma

Gruver Greyhounds/Lady Hounds

11/18 & 20 JVG @ Perryton Tourney
11/19 JVG (4), JVB (5), VG (6:30), VB (8) @ Dalhart
11/22 JVG (4), JVB (5), VG (6:30), VB (8) vs. Perryton
11/22 7G (6), 7B (5), 8G (5), 8B (6) @ West Texas
11/23 JVG (5), JVB (5), VG (6:30), VB (8) @ Panhandle
11/29 7G (6), 7B (5), 8G (5), 8B (6) vs. Sunray
11/30 VG (6:30), JVG (8) @ Pampa
11/30 JVB (5), VB (8) @ Boys Ranch

Weather Forecast

THURSDAY NIGHT - Clear. Lows around 30. Southwest winds 15 to 20 mph.
FRIDAY - Mostly sunny. Highs in the lower 70s. Southwest winds 10 to 20 mph.
FRIDAY NIGHT - Mostly clear. Lows in the lower 30s. Southwest winds 10 to 15 mph.
SATURDAY - Partly cloudy. Highs in the upper 60s.
SATURDAY NIGHT - Partly cloudy. Lows in the mid 30s.
SUNDAY - Partly cloudy. Highs in the lower 70s.
SUNDAY NIGHT - Partly cloudy. Lows in the upper 30s.
MONDAY - Partly cloudy. Highs in the mid 60s.
MONDAY NIGHT - Partly cloudy. Lows in the lower 30s.
Read more: <http://www.city-data.com/forecast/w-Spearman-Texas.html#ixzz0xgJSWQkT>

Texas Crop & Weather

The following specific livestock, crop and weather conditions were reported by Panhandle Extension directors: Temperatures were near to above average early in the reporting period, with rain, sleet and snow coming to most of the region by the middle of the first week of November. By the following weekend, temperatures returned to near average or above. Soil-moisture levels were short to surplus with most counties reporting adequate. A few isolated fields of corn remained to be harvested. Wheat varied in condition from poor to good, with most counties reporting poor to fair. Rangeland varied from very poor to fair condition, with most counties reporting it to be in poor shape. Cattle were in good condition.

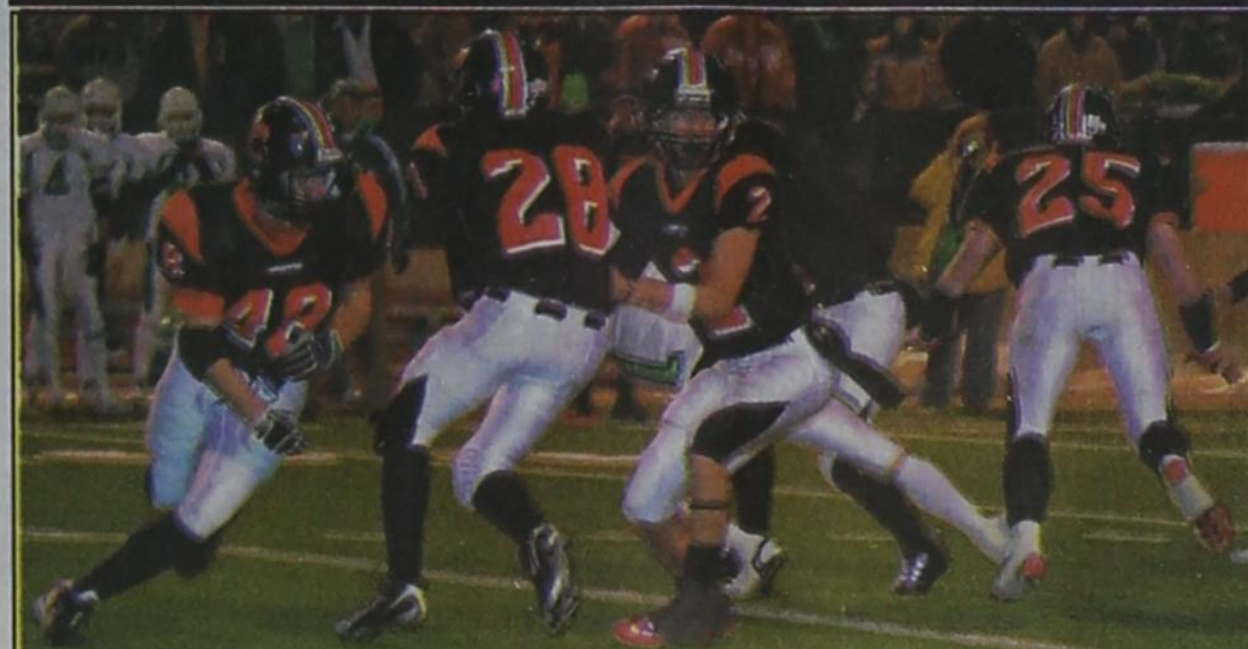
Spearman City Council Passes Ordinance #826

submitted by Ed Hansen, Spearman City Manager

The City of Spearman has authorized the issuance of about \$3.4 million dollars in Certificates of Obligation. These bonds will be used for the financing of some much needed infrastructure projects. Aging sewer mains will be replaced. New water wells will be drilled, along with the connection of the two ground storage tanks. These funds can also be used to assist in improvements of sidewalks, parks and the landfill.

The city earned an "A" credit rating due to its positive past fiscal performance and its current cash position. Our philosophy of paying as we go was also a point in our favor, along with the lack of debt. The interest rate for the cost of the bonds is 4.14%; the debt has a twenty year payout time line although the city has the option of paying them off early at ten years.

Continued on Page



Hounds fall to Irish

The Gruver Greyhounds lost to Shamrock 19-18 in double overtime on Friday, November 12, 2010.

See story on page 6

LEFT - The Gruver offensive - Jerrod Collier (48), Zach Logsdon (28), Zachary Saylor (2) and Colton Moffett (25) line tries to make its way to the endzone during their playoff game against the Shamrock Irish.

(Photo by Charlie Johnson)

Lynx Clobber Coahoma

The Spearman Lynx defeated Coahoma 27-7 on Friday, November 12, 2010.

The Spearman Lynx will play Crawford in Seymour on Friday, November 18th at 8 p.m. in Class 2A Division II, Region I Area playoff game. Spearman will be the visitors. Tickets at gate only. Adults \$5, students \$3.

See story on page 6

RIGHT - Cameron Meddock carries the ball while being helped by Blayne Schroeder (4) and Jose Mendoza (3)

(Photo by Tami Hargrove. Pictures available at <http://spearmansports.smugmug.com>)



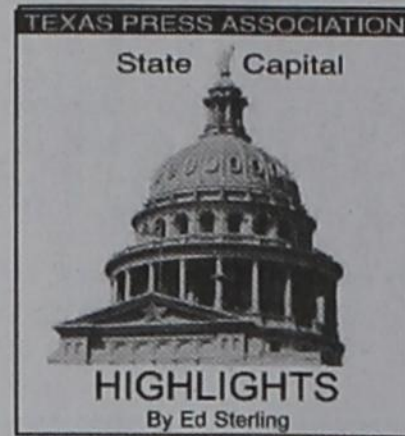
Wolf Creek Heritage Museum Notes

by Virginia Scott
MUSEUM HAPPENINGS
This was a busy week for us. We received our new shelves on Friday so Wednesday was spent cleaning out the space for them.
We also received word that we were granted a grant from THC for the purchase of photographic material for our collection. Look for our press release about the grant.
On Sunday we had our reception for Veterans. This year we honored Vietnam Veterans and we had a great crowd. County Judge Willis Smith presented Certificates to all Vietnam Veterans present. Barry Schoenhals presented a special certificate to Palma Koschke, Lipscomb County's only Gold Star

Mother. He also read the recent article about Michael's name on the Vietnam Wall being in a photo featured in the Tourist Brochure for Washington, D.C.
The program was a great tribute to our Lipscomb County Veterans. Refreshments were served after the program and a lot of good conversation followed. A good day for Veterans Day weekend.
A REMINDER THAT WE WILL BE CLOSED FOR THE MONTH OF DECEMBER. WE WILL RETURN IN JANUARY REFRESHED AND RESTED.

HISTORICAL MUSINGS
This week in history:
1. 1961 President John F. Kennedy decides to increase the number of Amer-

ican advisers in Vietnam from 1,000 to 16,000 over the next two years.
2. 1864 General William T. Sherman begins his 300 mile march of destruction across Georgia to the sea.
3. 1969 In the largest anti-war demonstration in U.S. History, an estimated 250,000 people marched in Washington, D.C. to protest the war in Vietnam.
4. 1907 Oklahoma is admitted to the Union as the forty-sixth state.
5. 1945 President Harry S. Truman trying to carry on the social agenda of Franklin Roosevelt, asks Congress to create a program of national health insurance.
6. 1969 The Department of Agriculture bans the insecticide DDT in residential areas.
Have a good week.



Challengers throw question marks into race for House speaker

AUSTIN — When the 82nd Texas Legislature convenes on Jan. 11, the first big task for the House of Representatives will be to elect a speaker. Incumbent Speaker Joe Straus, R-San Antonio, announced early for a second consecutive term, but a more conservative Republican movement is emerging with designs on the powerful office.
Rep. Bryan Hughes, R-Marshall, on Nov. 10 announced he had withdrawn the pledge of support he had given to Straus.
Rep. Ken Paxton, R-McKinney, on Nov. 11 filed to run for speaker and Rep. Jodie Laubenberg, R-Rockwall, withdrew her pledge to Straus and said she would vote for Paxton.
Rep. Warren Chisum, R-Pampa, on Oct. 13 filed the necessary paperwork to run for speaker, and Rep. Leo Berman, R-Tyler, in June made known his intention to oust Straus.
The current standing committee chairs that Straus named last session have signaled their support of him in the 2011 Legislature, but in question are the votes of the new crop of members-elect.
It takes a simple majority of 76 votes to win the speakership in the 150-seat House. So if Straus is to repeat, he needs 25 Republicans plus all of the Democrats to vote for him.
The Nov. 2 election increased the GOP's advantage in the Texas House by 22 seats, giving them to 99 seats over the Democrats' 51.
One of those Democratic seats came via a recount conducted last week, giving incumbent Austin House District 48 Rep. Donna Howard a razor-thin margin over Republican challenger Dan Neill.
If Neill had won the recount, the Republican Party would have had a super majority of 100 seats, which would have smoothed the way for the GOP to pass more of its legislation and block Democrats' bills on party-line votes.
Another YFZ rancher sentenced
A Tom Green County jury on Nov. 9 sentenced Keith William Dutson Jr. of Eldorado to six years in prison and a \$10,000 fine for sexual assault of a child, a second-degree felony in the state of Texas.
He was the 12th YFZ

Ranch-related defendant to have been indicted on sexual assault of a child, bigamy or other charges. Seven defendants have been convicted on felony charges and sentenced to prison. The other five defendants are awaiting trial.
In April 2009, state, federal and local law enforcement personnel entered the ranch. More than 400 women and children were transported to alternative living arrangements.
Since then, many ranch residents have returned but prosecutions handled by the Office of the Texas Attorney General continue in cooperation with San Angelo-based 51st Judicial District Attorney Steve Lupton.
Bus retrofit funding now available
The Texas Commission on Environmental Quality in late October welcomed grant applications to have eligible diesel-powered school buses retrofitted with emissions-reduction gear.
About \$9 million in grant money was made available to public and charter schools operating one or more diesel-powered school buses.
The U.S. Environmental Protection Agency shows a retrofit costs between \$5,000 and \$10,000 per bus. An emissions-reducing kit takes about 6 to 8 hours to install.
A simple calculation suggests 900 to 1,800 buses could be retrofitted with the available grant money.
Ag chief lauds gas

pump verdict
Commissioner of Agriculture Todd Staples applauded a Harris County jury's handing down of a \$30 million verdict against Petroleum Wholesale L.P.
The ruling stems from Operation Spotlight, a 2008 investigation led by the Texas Department of Agriculture that revealed pumps at the company's SunMart service stations were set to dispense less gasoline than consumers were paying for.
Long-time lawmaker laid to rest
State Rep. Edmund Kuempel of Seguin, who served as a Texas House member from 1983 until his death, died of a heart attack in Austin on Nov. 4. He was 67.
Burial was in the Texas State Cemetery on Nov. 9. More than 1,000 people attended the funeral.
A special election will be held to fill the seat for House Dist. 44, which includes Wilson, Guadalupe and Gonzales counties. Three people have filed as candidates.
Legislators file nearly 400 bills
Nov. 8 was the first day legislators could file bills in advance of the 82nd session of the Texas Legislature.
House members got off to a quick start, filing about 200 bills on Nov. 8 and Senate members filed about 150 bills out the gate.
In 2009's 81st session of the Legislature, House and Senate members combined to file a total of 7,419 bills, not including resolutions. Of those, 1,459 passed.

Wolf Creek Heritage Museum Receives History Museum Grant from Texas Historical Commission

Wolf Creek Heritage Museum is one of 22 recipients of a Texas Historical Commission (THC) History Museum Grant. The THC will distribute more than \$19,200 to institutions across the state to help improve the standard of collections care in small history museums. The funding will assist facilities with collections-related conservation and preservation services, supplies, and equipment. A total of 47 applications were submitted for the 2010 grants accounting for more than \$41,500 in requests.
"Museums throughout the state house real stories that need to be passed on to future generations," said THC Executive Director

Mark Wolfe. "The THC's grant program helps support these varied institutions whose dedication to Texas' dynamic history ensures the preservation of irreplaceable artifacts and collections."
Wolf Creek Heritage Museum is committed to telling the story of Lipscomb County. Funding provided by the THC's History Museum Grant will assist the museum with the preservation of the photographic collection. The grant will provide the needed archival sleeves and boxes needed to properly store the museum photographs.
Virginia Scott and Dorothy Schoenhals are the project coordinators for the grant and are pleased

that the museum received the award. Ms. Schoenhals explained that "Receiving this grant allows the museum to purchase twice the amount of materials that we can afford. The grant is a one to one match so for every dollar we spent, THC matches and that doubles our supplies."
The THC's History Museum Grant Program began in 1984 and is vital to preserving Texas history by ensuring that collections at museums, especially smaller ones, are protected. The grants are a facet of the THC's Museum Services Program that involves consulting with small history museums throughout the state on various aspects of museum operations, including the preservation, management and interpretation of museum collections. Museums' collections are subject to emergencies, as well as everyday threats such as light, humidity, infestation, and sometimes, neglect. In 2010, THC Museum Services staff produced a series of workshops aimed at helping smaller museums better understand and carry out procedures for safely managing their collections. As a result, many small museums have adopted standard collections management policies, which has helped them qualify for the History Museum Grant Program.
To learn more about the THC's History Museum Grants contact the History Programs Division at 512.463.5853 or visit www.thc.state.tx.us for more information about the Museum Services Program. To learn more about the Wolf Creek grant or how to be a volunteer at the museum call 806-852-2123.

City of Spearman

Cotinued from Page 1
Many smaller aspects of these projects have been, or are being done now. You might have noticed that there has been a survey crew plotting elevations around town. Also a camera crew has been in town videotaping our sewer mains.
The city is also in the process of applying for a disaster grant as a result of the rain event that we experience last summer. If awarded these funds they will be used toward these projects also.
Another issue addressed at the council meeting last Tuesday morning was Ordinance # 826. This ordinance addresses a concerned voice to the council of unrestricted parking in yards in town. This nuisance has affected some property values throughout Spearman. The city staff was charged with studying the problem and how it was solved by other cities in the panhandle. Our ordinance was modeled after several successful versions that were investigated.
The purpose of the ordinance was to protect public health and safety, help maintain property values and improve the appearance of neighborhoods.
The ordinance sets minimum parameters of a driveway. The possible fine amount is also set.
Although the ordinance has been adopted it shall not take full effect until March 1, 2011.
The permitted surfaces include concrete, asphalt, stone and brick. Any caliche surface used as a driveway when this ordinance was enacted (11-16-10) shall be allowed and will be considered as grandfathered.

SUDOKU
PRESENTED BY
VolunteerMatch.org
Where volunteering begins.
[Grid with numbers]
© 2010, StatePoint Media, Inc. answer on classified page
Fill in the blank squares in the grid, making sure that every row, column and 3-by-3 box includes all digits 1 through 9.

The Hansford County Reporter-Statesman
Mailing Address - 213 Main Street • Spearman TX 79081
Physical Address - 310 Barkley Street • Spearman TX 79081
Phone - (806) 659-3434 • Fax - (806) 398-9080
www.spearmanreporter.com • reporter@spearmanreporter.com
Mon.-Thurs. 9 a.m.-12 p.m., Mon.-Wed. & 1-5 p.m.
Closed Thurs. afternoon and all day Fri., Sat. & Sun.
Gary Smith - Publisher Catherine Smith - Editor
Contributing Writers: Dorothy Hudson, Jim Derington, Merry Sparks, Cecil Biggers
Contributing Photographers: Charlie Johnson, Lisa Johnson Tammy Batton, Bonnie Bergan
Subscription Rates
In Hansford County - \$30.00 • Out of County - \$40.00
E-Mail Subscription - \$35.00
The Hansford County Reporter-Statesman (USPS 529660) is published weekly in Spearman, TX. Periodical postage paid in Spearman, TX. POSTMASTER: Send address changes to: The Hansford County Reporter-Statesman, 213 Main Street, Spearman, TX 79081.
Publication Policy
The deadline to submit news and advertising to The Hansford County Reporter-Statesman is Monday at 5 p.m. Items submitted after the deadline will be published at a later date, as time and space permit. Publication of all items is at the discretion of the editor.
Advertising
Open Display rates are \$4.00 per column inch. Classified Ads are \$6 for the first 25 words and 10¢ per word for each additional word. (Additional charge for boxed classifieds.) There is a \$1 charge per week if billed.
Member of
Gruber Chamber of Commerce
Spearman Chamber of Commerce
Texas Press Association and Panhandle Press Association

ASTRONOMY
ACROSS
1. Rises to the top when milk boils
6. Lake in Provence
9. Tool storage place
13. Vast multitude
14. Id's partner
15. Buzz Lightyear's buddy
16. Dostoevsky's "The ___"
17. Sports fanatic
18. "Bad news travels fast", e.g.
19. Pick out
21. *Ours is the Milky Way
23. In favor of
24. "___ in Black" by AC/DC
25. *Constellation Leo is a big one
28. Do over
30. They're sometimes removed at youth, sing.
35. Mine deposits
37. Female equivalent of "sir"
39. Actress Watts
40. Lawn pest
41. *Galactic path
43. Tear in pantyhose
44. Arabian chieftain
46. Tropical edible root
47. Drug-induced state
48. Government collectors
50. Rock opera based on
"La Boheme"
52. Army bed
53. "What's the ___?"
55. Maiden name indicator
57. *Sky glow
60. *Point right above you
63. Assassinated Bolshevik leader
64. Bovine sound
66. White heron
68. Fireplace
69. 007 creator's given name
70. Recurrent element
71. A deadly challenge
72. Increase
73. A knight and his noble ___
DOWN
1. Life energy in Chinese philosophy
2. *Parts of eye that makes star-gazing possible
3. Between Ohio and Ontario
4. WWII villain
5. *___ shower
6. Right alternative
7. Turkish military leader
8. Line dance
9. Comes with a value meal
10. *Many thought this of the 1969 moon
landing
11. High-strung
12. Tie ___
15. Non-scholarship team member
20. Set of fundamental beliefs
22. "Think Globally, ___ Locally"
24. Pelt with missiles
25. *Halley's celestial body
26. Smell of baking bread, e.g.
27. Teleprinter exchange machine
29. *A shooting star does this across the night sky
31. Don Johnson's "___ Bridges"
32. *Space shuttles land with two ___ booms
33. Carl Jung's unconscious prototype of self
34. *It travels 186,000 miles per second
36. *Constellations are stars that ___ to form shapes
38. Irish name of Ireland
42. 1000 kilograms
45. Wove again
49. Neither
51. These are held to be true
54. Chinese silk plant
56. *Number of planets

These games are brought to you by the Hansford County Reporter-Statesman
CROSSWORD
[Grid with numbers]
PRESENTED BY
VolunteerMatch.org
Where volunteering begins.
© 2010, StatePoint Media, Inc. answer on classified page

Happy Birthday!

November 18 Birthday - Bryn Lowe, Gwen Parker, Kevin Rodriguez, Arnold Stork, Amanda Taylor, Jennifer Johnson, Steven Tindell, Rose Mary Tartar, Chris Taylor, Kashey Brown, Rita Underwood, Clayton Fox, Jennifer Nelson, Freida Burgess, Mona Lisa Garcia, Steven Cummings, Gabbi Boyd, Pepe Marquez, Eva Jo Pittman, Jill Clement, Marie Beck, Casie Butt

November 19 Birthday - Cherri Sherill, David Hall, James Davis, Brian Beck, Tim Gikas, Sharon Barkley, Aaron Shawn Moore, Jeff Jackson, Kasey Harris, Jeffrey Davis

Anniversary - M/M Brice Lewis

November 20 Birthday - Scott Davis, Jr. Rodriguez, Mrs. Ray McCammond, Jerry Wayne Dunaway, Danny Close, Ron Riley, Garland Dahl, Brenda Ferguson, Freda Sheets, Tammy Batton, Carie Tidwell, Casey Villines, Jason Payne, Josh Purvines, Ole Bergan, Christina Bowers

Anniversary - M/M Phillip Turner, M/M Ramon Garcia Jr., M/M Jesse Renteria, M/M Roberto Tarango

November 21 Birthday - Kaysha Cluck, Jackie Wilson, Jim Burch, Robert Janzen, Jody Robertson, Mark Pearson, Mrs. Jake Vernon, James Owens, Angie Salgado, Margie Alford, Matt Burnam, Denise Rojas, Victor White, Haley Coomen, Dawn Loomis, Brittanie Osbourne, Jody Robertson, Richard Landrum, JoAnn Robertson

Anniversary - M/M Johnny White, M/M J.L. Griffin, Ted & Cheryl Whitefield, Jose & Sylvia Tarango

November 22 Birthday - Garret Miner, Kevin Russell, Rusty Reed, Bonita Reimer, Phillip Janzan, Lesly Hayes, Nancy Morris, Russell Sheets, John David Bergin, Emily Lilley

November 23 Birthday - Steven Francis, Randy Karlin, Kim Venneman, Klint Venneman, Cooper, Wanda Widener, Ronald Swan, LaDell Scroggs, Delores Rylant, Sara George, Mary Hart

Anniversary - Lesly & Maurene Stinson, M/M Val

Winger, M/M Greg Stork, M/M Steve Mitchell, Andy & April DeLaRosa, Ryan & LaShera McElhane

November 24 Birthday - Brady Hart, Pablo Perez Jr., Danna Sue Floyd, Helen Gibson, Patty Younger, Duane Hart, James Jackson, Dana Garza, Lashera McElhany, Jamie Dawn Hanson, Stephanie Villalobos, Raymond Fairbank, Brianne (Burkhammer) Eslick, Georgia Holt, Teresa Page, Linda Weller, Elvin Wright, Sharon Arrington, Whitney Maestas

Anniversary - M/M Rex Casdorff, M/M David Imke

November 25 Birthday - Kasey Cazares, Tracy Logsdon, Krista Davis, Opal Wallin, Trudie Goodheart, Terrie Orr, Mike Hager, Melissa Moyer, Dustin Red, Kristi Holt, Carmen Roy, Sara Vela, Katy Mitchell, Jerry Moore, Donnie Pool

Anniversary - Sherry & Willis Boyd

November 26 Birthday - Lori Perez, Chad Stork, Mollie Holton, Tracy Vernon, Chris Stewart, Scott Barkley, Dale Red, Eldon Sparks, Aaron Brown, James Smith, Jorge Soto, Jr.

Anniversary - M/M Harlan Gerardy

November 27 Birthday - Jim Potts, Dorothy Evans, Marilyn Davis, Jackie Nelson, Monty Ross, Tony Pacheco, Susan Poole, Jesse Moreno, Jackie Nelson

Anniversary - M/M Dale Wofford, M/M James Winger, M/M James Dorman, M/M Ty Williams

November 28 Birthday - Casey Smith, Clint Williams, Jeanie McClellan, Frank Shields, Patty Spoonemore, Thelma Ford, Caroline Schick, Jeny Womble, Pat Hamilton, Harley Murrell, Marie Belle Vargas, Rick Howard, Toni Pittman, Tammy Red, Darlene Curry, Neely Landrum

Anniversary - M/M Julian Rodriguez, Mary Lou & Steve Matthews, Brenda & Verlan Winegarner

November 29 Birthday - Brian Presley, Steven Salazar, Wanda Wagner, Genna Floyd, Robert Browning, Ciria Vela, Ted Vela, Troy Lane Brown, Brenda Salgado, Amanda Burress

Words from Faith & Grace



by Cecil R. Biggers, Lutheran Lay Minister

We learn to say, "My Lord, My King, and My God!" as we celebrate Christ The King by studying Jeremiah 23: 1-6, Psalm 46, Colossians 1: 1-20, and Luke 23: 33-43.

Jeremiah brings the word of judgment upon the Shepherds of Israel. In this context, 'the shepherds' are the religious leaders, rulers and kings who have not cared for the sheep; the 'sheep' in this context are God's people, Israel. Leaders of the people are expected to strengthen the weak, care for the sick, seek the lost; but they have not done so. We see the judgment of God not to cause us to cower in fear, but to call us to repentance, to seek forgiveness, to amend our ways of life. Consider that as Christians we are God's sheep, but we are also sent out as shepherds to meet the needs of God's people.

The Psalmist sings a song of trust in God. He calls upon the believer to trust in God in cosmic turmoil. He sings that God tames the turmoil. He sings that God reigns. We can truly trust in our God who rules heaven and earth.

Paul is writing to the people of the Church in Colossae. These Christians are undergoing active persecution. Paul tells them that Christ has 'rescued' us from the power of darkness. The term translated as 'rescue' actually means an 'exodus'. We have been transferred to Christ's kingdom, so we should not fear an earthly one. Paul then gives us a Christology which shows us Christ as Lord, King and God. (There is more in the original language of this passage than I can comment on here.) Consider that we, dear Christian, are not what we have made ourselves, we are what God has made us. As a Christian we should live with fortitude (Greek 'hupomene'), the ability to persevere in our faith regardless of our circumstances. As a Christian we should have patience (Greek makrothumia) to deal with people in all circumstances. As a Christian we should have a joy in our heart that cannot be taken from us by others. Through Jesus Christ we have been transferred to his kingdom so that we live by faith in God and with love for our fellow man.

Luke shows us Jesus crucified. The leaders mock him; the soldiers mock him. One of the two thieves he is crucified between mocks him. Yet, Jesus said, "Father, forgive them; for they do not know what they are doing." Then the other thief asks Jesus, "Jesus, remember me when you come into your kingdom." Jesus replied, "Truly I tell you, today you will be with me in Paradise." Earlier Jesus had said, "Father, forgive them; for they do not know what they are doing." "Paradise" comes from a Persian word meaning 'walled garden'. It was an exceptional honor to be asked by a king to walk in his "Paradise". This shows us Christ the King, who even in the process of his death on a cross, reaches out to save.

May the Holy Spirit enable you to know My Lord, My King and My God!

Our Sympathy

MARIE MADDEN

PERRYTON - Marie Madden, 73, died Tuesday, Nov. 16, 2010.

Graveside services will be at 11 a.m. Thursday in Hansford Cemetery with Jed Miesner officiating. Arrangements are by Boxwell Brothers Funeral Home of Perryton.

Mrs. Madden was born Nov. 10, 1937, in Liberty, N.M. She married Billy Madden on June 1, 1962, in Amarillo.

She worked as a clerk at the bus station and was a member of the Community Worship Center of Perryton. Survivors include her husband; two sisters, Della Gittgood of Guthrie, OK, and Shirley Hixson of Farmersville, CA; and a brother, Vernie Barnett of Chowchilla, CA.

In lieu of flowers, the family suggests memorials be to St. Jude Children's Research Hospital, 501 St. Jude Place, Memphis, TN 38105-1905.

MONUMENTS

Boxwell Brothers Funeral Home

519 Evans • Spearman
659-3802

Dear friends,
When you buy a monument from us we make sure it is exactly what you want at a price you can afford. If it is not right, we will make it right. And you will not have to search the countryside to find us. We are here when you have a need.

Sincerely,
Bob Boxwell

WHEN DOES YOUR SUBSCRIPTION EXPIRE?

SCR1
09/10 EXPIRES

JOHN Q. PUBLIC
PO BOX 123
SPEARMAN TX 79081

Ex - piration dates are printed on the top of all mailing labels. Our readers can help keep the cost of subscriptions down by mailing in renewals in the appropriate month.

Thank you, Catherine Smith

THE HANSFORD COUNTY REPORTER-STATESMAN
213 Main Street • Spearman, TX 79081

Annual Subscription Rates
In Hansford County - \$30
Out of County - \$40
E-Subscription - \$35 (sent through e-mail)

LIMITED TIME DIRECTV OFFER!

FREE starz + SHOWTIME for 3 months!

With the DIRECTV XTRA Package or above.

FREE HD Access!

With the DIRECTV XTRA Package or above. HD Access.

FREE Standard Installation (1-4 lines)

ASK HOW! CALL DIRECTV STARTV An Authorized DIRECTV Dealer

Toll Free 800-214-7110

With 22 mo. approval. Offer ends 12/31. Credit card required. See us at MA & PAL. New approved customers only. Some restrictions apply. Call for details.

FREE HD FOR LIFE!

Only on DISH Network

- Lowest Price in America!
- \$ 24.99/mo for over 120 channels!
- \$500 Bonus!

Call Now!
1-866-799-8039

DIRECTV

Direct Sat TV
1-800-577-1322
Local installers!

Offers end 7/9/11 on approved credit. New customers only. Other restrictions apply. Call for details.

285+ Channels
160+ HD Channels

Packages Start At
\$29.99 Mo.

2 FREE Upgrades - HD DVR & HD Receiver - Ask How!

FREE starz & SHOWTIME For 3 Months

HOME PHONE SERVICE

NO Pre-Payment • NO Deposit Required!

Rates from \$6.99 per month*
(\$17/month including approximate taxes & fees)

FREE 1st Month of Service
Caller ID & Call Waiting included in Packages**

New-Talk 866.934.3448

*\$6.99/month with auto pay **Requires silver or gold package.

LIVE MULTI-PROPERTY AUCTION

Opportunity to Purchase land, homes, income property, investment and operating businesses

December 3, 2010 • 2 p.m.
Depot Civic & Cultural Center, Brownwood, TX

United Country Alliance Auction & Realty
Heart of Texas Real Estate

Brent Graves, Texas Auctioneer's License #13507 • 10% Buyers Premium

877-271-7891 • www.AllianceAuctioneers.com

Alva Monument Co.
Formerly Liberal Monument & Memorial Company

New Location:
111 Tucker Road
Liberal, Kansas

North of the New Wal-mart

Serving Kansas, Oklahoma & Texas for 93 years
(316) 624-4211 toll free # 888-654-9318

Replenish the seed of faith through . . . DAILY BIBLE READING, PRAYER & REGULAR CHURCH ATTENDANCE

- | | | | |
|---|--|---|---|
| <p>Spearman</p> <p>Apostolic Faith Church
822 S. Drensen • 659-2870
Sunday School: 10 a.m.
Worship Service: 11 a.m.
Sun. Eve.: 6 p.m.
Wed. Prayer Mtg.: 7 p.m.
Pastor - Jack Cornell</p> <p>First Assembly of God
401 N. Bernice • 659-2295
Sunday School: 9:30 a.m.
Worship: 10:40 a.m.
Evening Worship: 6 p.m.
Wed. Worship: 7 p.m.
Wed. Youth: 7 p.m.
Pastor - Jerry Pollard</p> <p>First Christian Church
(Disciples of Christ)
29 S. Bernice • 659-2036
Sunday School: 9:45 a.m.
Worship: 10:50 a.m.
Minister -</p> <p>First Baptist Church
123 N. Bernice • 659-5557
Sunday School: 9:45 a.m.
Worship: 11 a.m.
Evening Worship: 7 p.m.
Men's Bible Study - Wed., 7 a.m.
Children's Choir - Wed., 5 p.m.
Adult Choir - Wed., 7 p.m.
Wed. Bible Study: 7 p.m.
Pastor - Jim Medley</p> <p>Church of Christ
121 S. Haney • 659-3244
Sunday Bible Class: 9:45 a.m.
Worship: 10:30 a.m.
Evening Worship: 6 p.m.
Bible Study Wed.: 7:30 p.m.</p> | <p>Sacred Heart Catholic Church
901 Roland • 659-2166
Sat. Night Mass: 5:30 p.m.
Sun. Mass: 9 a.m. - English
Sun. Mass: 11:30 a.m. - Spanish
Rev. Gregory Bunyan</p> <p>First United Methodist
407 S. Haney • 659-5503
Sunday School: 9:45 a.m.
Worship: 8:30 & 11 a.m.
Jr. High Youth: 5 p.m. Sunday
High School: 6 p.m. Sunday
Kids Club: 3 p.m. Wed.
Pastor - Neely Landrum</p> <p>Grace Presbyterian Church
(Worships with Faith Lutheran Church)
1101 Bernice • 659-2033</p> <p>Faith Lutheran Church (ELCA)
1101 Bernice • 659-2252
Sunday School: 9:45 a.m.
Worship: 11 a.m.
(Worships with Grace Presbyterian Church)
Pastor - Cecil Biggers, PLM</p> <p>Union Church
31 S. Endicott • 659-2644
Sunday School: 10:00 a.m.
Worship: 11:00 a.m.
Bible Study: 7 p.m. Wed.
Youth Service: 6 p.m. Wed.
Pastor - Don Baltazor</p> <p>Fellowship Baptist
1102 S. Archer • 659-2783
Sunday School: 10 a.m.
Worship: 11 a.m.
Sun. Evening Worship: 6 p.m.
Sun. Evening Spanish Worship: 7 p.m.
Youth/Adult Service: 7:30 Wed.
Pastor - Phillip Hudson</p> | <p>Primera Mision Bautista
502 E. 7th • 659-3991
Sunday School: 9:45 a.m.
Worship: 11 a.m.;
Evening: 6 p.m.
Wed. Prayer Meeting: 7 p.m.
Thurs. Visitation: 7 p.m.
Pastor - Joe Garcia Jr.</p> <p>El Aposento Alto U.P.C.I.
1105 S. Roland
Domingos: Escuela-Domical - 10 a.m.
Culto Evangelistico - 7 p.m.
Jueves: Oracion - 8 p.m.
Mier. Estudio Biblico - 7 p.m.
Pastor - A.G. Martell
(806) 659-2153</p> | <p>Gruver United Methodist
Broadway & Garrett
733-2651
Sunday School: 9:45 a.m.
Worship: 8:30 & 10:50 a.m.
Eve. Worship & UMY: 6 p.m.
Pastor - George Price</p> <p>Spanish Cristo Redentor Church
Hwy 15 806-659-2166
Gruver, TX
Sun. Mass: 1:30 p.m. - Spanish
Rev. Gregory Bunyan</p> |
| <p>Oslo</p> <p>Oslo Lutheran Church (ELCA)
6 Miles West & 12 Miles
North of Gruver
339-7646
Sunday School: 9:45 a.m.
Worship: 11 a.m.
Pastor - Arlen Lloyd</p> | <p>Morse</p> <p>Morse Baptist Church
733-2757
Pastor - Gary Stevens</p> | <p>Waka</p> <p>Church of Christ
300 Rogers Ave.
202-7126
Sunday School: 9:30 a.m.
Sunday Worship: 10:30 a.m. & 6 p.m.
Wednesday Bible Study: 7 p.m.
Pastor - Ed Jenkins</p> | |

He has showed you, O man, what is good. And what does the LORD require of you? To act justly and to love mercy and to walk humbly with your God. Micah 6:8

This feature is made possible through the sponsorship of these civic minded businesses:

<p>Deakin ELECTRIC</p> <p>OILFIELD • RESIDENTIAL • COMMERCIAL 321 S. MAIN • SPEARMAN</p> <p>1-800-999-1506 Chris Deakin (806) 659-5016 President</p>	<p>Bartlett's Lumber & Hardware</p> <p>105 W. Broadway • Gruver, TX (806) 733-2404</p>	<p>BERRY CLEANERS</p> <p>Ann & Vernon Pipkin - Owners Phone 659-3122 • P.O. Box 1017 207 Main St. • Spearman, TX</p>	<p>Morse Implement & Auto Supply</p> <p>"Join us in church" Tom Dortch 733-2688 Box 89 • Morse, TX 79062</p>
<p>PRAIRIE MOTORS INC.</p> <p>Hwy. 207 South • P.O. Box 430 Spearman, TX 79081 • (806) 659-2541 www.prairiemotors.com</p>	<p>MurMur's Cafe</p> <p>100 Roland St Spearman, TX. 659-3580</p>	<p>Hansford County Reporter-Statesman "Proudly Serving Hansford County Since 1907" (806) 659-3434 310 Barkley • Spearman, TX</p>	<p>INTERSTATE BANK, sssb www.interstatebank.net 322 Main • P.O. Box 146 Spearman, TX • 659-2559</p>

HYI

FOR YOUR INFORMATION

Education Fund For Johnson Children

An education fund has been set up at First National Bank for the children of David Johnson. If anyone would like to donate, they can mail to PO Box 337, Spearman, TX or bring by the bank and give to any teller.

Pringle-Morse CISD Book Fair

Pringle-Morse CISD will hold their book fair on Nov. 15-19. Come see all the great books to purchase!

Annual Thanksgiving Dinner

The First United Methodist Choir is sponsoring Annual Thanksgiving Dinner on November 18th from 11:30 a.m. to 1 p.m. Ticket price \$8. Children under 6 are free. Tickets may be purchased from Choir member or at the front door. Call 659-5504 for take out on November 18th by 10:30 AM to the main double glass doors.

Seymour Concession Stand

Spearman Lynx fans are invited to come eat at the Seymour Band Boosters Concession Stand on Friday, November 19th during the Area Football Playoff Game. Hamburgers will be \$3, Cheeseburgers \$3.50, Sausage Wraps \$3.50 (Homemade Bohemian sausage and cheese wrapped in tortilla) with regular or jalapeno cheese, Hot Dogs \$1.50 (add chili or cheese for 50c), Meal Deals - Burger, 2 Hot Dogs or Sausage Wraps, Chips, Drink and Dessert - \$6. All drinks are \$1.50 each (Coca Cola products). Also available will be Frito Pies, Nachos, Candy and Popcorn. Help us raise funds to send our band to Florida next summer. To place orders or for more information, contact Cambie Lemmond at 940-232-5077 or Lita Staggie at 940-889-5851. Best of luck in your game!

Cub Scouts Father/Son Cake Bake

The Cub Scout Father/Son Cake Bake will be held on Saturday, November 20th at the Union Church in Spearman. Cakes may be submitted from 5:15-6 p.m. Judging will be held from 6-6:30 p.m. Everyone is invited to the auction at 6:30 - parents, grandparents, aunts, uncles, friends, neighbors, etc. The theme this year is the 100th birthday of Scouting. All proceeds from the auction go to the local Cub Scout Pack.

Stone Soup & A Turkey for Thanksgiving

Everyone is invited to the following play opportunities - "A Turkey for Thanksgiving" will be presented by Mrs. Holland's 1st Grade Class on Monday, November 22, 2010 at 1:45 p.m. in the auditorium, and again by Mrs. Gibson's 1st Grade Class at 2:15 p.m. "Stone Soup" will be presented by the 2nd grade at 10 a.m. on Tuesday, November 23, 2010 in the auditorium.

Pheasant Hunt to Benefit Moore County 4-H

Moore Co. 4-H is hosting a guided Pheasant hunt Dec. 4th. Cost is \$250 per hunter. There is over 50,000 acres of prime hunting land. There will be a kick-off steak dinner Friday night, Dec. 3rd. Saturday, 4 Dec. breakfast and lunch. This is 4-H's major fund raiser. Proceeds go to promote Moore County 4-H and other youth educational activities. Assistance is needed to market this event. Please, contact Sue, Marcel or Alicia at the Moore Co. AgriLIFE Extension Office: 806-935-2594.

Pringle-Morse CISD Cougar Pride Selling Cookbooks

The parent-teacher organization of Pringle-Morse CISD-Cougar Pride, is selling one-of-a-kind cookbooks. The cookbooks are a collection of recipes from the 1995 cookbook and more from this year, with over 1,300 recipes included. The recipes were collected from our community, friends, and family members. The proceeds from the books goes toward school and community projects. Please contact the school at 733-2507 or cindy.lieb@region16.net if you are interested in purchasing a cookbook.

Take Off Pounds Sensibly

Take Off Pounds Sensibly meets on Tuesday mornings at 8:30 a.m. at the First Christian Church in Gruver. For more information, contact Marilyn Been at 806-733-2087.

Hansford Gun Club Rifle Shoot

The Hansford Gun Club holds a .22 rifle shoot on the second Sunday of each month, starting at 1:30 p.m. at the gun range (located on Hwy. 15 between Spearman and Gruver). Everyone is invited to join the fun.

Care Packages

If you would like to help with Care Package Drop Offs, please contact Less Sullivan at lessullivan@hotmail.com. Less is collecting items for care packages in conjunction with AmericaSupportsYouTexas.com. Journals are also located at the O'Loughlin Center, Spearman High School, and Gus Birdwell Elementary for anyone wishing to sign them. For more information, contact Less at 330-0973.

Rainbow Kids Klub is Back!!

Our new building if finished and we are inviting all children Kindergarten -Fifth grade to join Rainbow Kids Klub. This is a weekly after school program with snacks, recreation, character building Bible lessons, memorization, music, games and its all free. Rainbow Kids Klub begins Wednesday, September 8, after school until 5 p.m. at the First United Methodist Church, 407 Haney, Spearman. For more info, call 659-5503.

Amarillo Botanical Gardens

Gate admission is free in 4th quarter to the Amarillo Botanical Gardens (1400 Streit Drive, Amarillo) thanks to the Josephine Anderson Trust. Everyone is invited to come out and take advantage of this great opportunity! Events and activities are subject to a fee. The conservatory currently has several unique and marvelous orchids in bloom. We also have a ginger plant in bloom that is very striking as well. The Botanical Gardens is an inviting sensory experience! Enjoy the many colors, aromas and textures in the gardens. Visit Tuesday-Saturday: 9a-5p. Annual Photo contest continues: Visit the Gardens, take photos of your favorite plants or garden spots and submit them to us for a chance to win a membership. Visit our website under 'photo gallery/ visitor shots' for more information or to view this year's submissions. CONTACT: We are now on Facebook! Become a fan! Visit our website at www.AmarilloBotanicalGardens.org. Call the office at 806-352-6513 for additional information.

Adult ESL Class

Improve your English skills and enroll in an adult ESL Class. Learn to speak the English Language and receive the educational skills necessary to help your children in school. Registration will be the first night of class. Classes begin Thursday, September 16, 2010, and will be held from 6:30-8 p.m. at Spearman High School. Mrs. Lopez will be the instructor. Classes will be held on Tuesday and Thursday nights. There is no charge for the class. For more information call Cindy Blackman at the Community Resource office, 659-3233.

Fire Department Donations

Persons wishing to make donations to the Fire Departments in Hansford County may do so at the following addresses: Spearman Fire Dept., Box 37, Spearman TX 79081; Gruver Fire Dept., Box 947, Gruver TX 79040 or Morse Fire Dept., Box 28, Morse TX 79062.

Low-Income Tax Clinic

The Texas Tech School of Law operates a Low-Income Tax Clinic to provide assistance relating to issues involving controversies with the Internal Revenue Service to low-income taxpayers and to individuals for whom English is a second language. Law students, under the supervision of a law professor, handle a wide range of issues and such as innocent spouse, offers in compromise, federal tax levies, payment agreements and representation before the United States Tax Court. Persons interested in seeking representation should contact the Texas Tech Law School Low Income Tax Clinic at (806) 742-4312 or (800) 420-8037 for further information or to schedule an appointment.

SPWA Seeks Volunteers

The Southwest Pioneer Windmill Association is seeking the next generation of volunteers to continue the work of restoring and maintaining the windmills of the SPWA. If you have an interest in windmills and their upkeep, and/or maintenance of the park, you are needed. For information, call Dwayne Mitchell, 270-0291 or Don Reed 330-0745.

O'Loughlin Center Hours

The O'Loughlin Center is open for the following hours: Mon-



Jace Linde, 11 year old from Cashion, OK, shot this 14 point, 225 lb., whitetail buck on November 14, 2010 while hunting at Walker Farms. This was Jace's first hunt with his new .243 Savage and made a great shot at 225 yards. His first buck came last year at age 10 while hunting in Oklahoma. Jace said that his "Papaw" (Ross Walker) told him there was a big buck that he wanted him to shoot, and Jace certainly believes this is the one that his great-grandpa was talking about. Jace is the son of Jeff and Lori Linde, and is a proud big brother to his sister, Jill. (She looks forward to her opportunity to show him up.) Jace is the grandson of Martha and David Anspach and great-grandson to the late Edna Marie Walker and Ross Walker, all from Gruver, TX. One of Jace's dreams is to own his own hunting ranch and tell stories like his "Papaw." Thanks again for another lifelong memory at the farm!



Trip to See Dresses Well Worth the Effort

by Joanne Eaton

When I called Patty Spoonemore, in October, I told her, "We're going to Canadian to see the Martha Washington Collection, of dresses, at The Citadelle Art Foundation." She agreed to go, thinking, "Work dresses! Why?" I had seen an article about the display, in Accent West, the Amarillo magazine.

Patty and I both love to visit Canadian, and the Citadelle, the former home of Dr. and Mrs. Malouf Abraham, who donated this home to the town of Canadian. If the word Canadian is said, both of us are willing to go.

When we arrived at the Citadelle, on November 11, we were both blown away when we saw the collection. I should have told Patty that the collection was called Colonial Couture.

The dresses were made for the annual Society of Martha Washington Colonial Pageant, a debutante ball, in Loreda, Texas. Each dress weighs between 80 and 100 pounds. Linda Leyendecker-Gutierrez makes the dresses. She searches for fabric in England and France. The beads are bought from many places and the designs are "built" by the designer, one bead at a time.

The collection will be on display until November 28, 2010. The display is on ground level. Cameras are allowed! You can also tour the Citadelle Mansion with the same ticket. There is a collection of photography, of the dresses, that is spectacular. We saw several men looking at the collection, They did not seem bored!

Information may be obtained by calling 806-323-8899 or looking online at www.thecitadelle.org. Usually the Citadelle is open on Thursday -Saturday, 11 a.m. to 4 p.m. and Sunday, 1 to 4 p.m. Admission is \$10.00 per adult or \$8.00 for seniors.



Eta Alpha Chapter of Delta Kappa Gamma met November 8, 2010 at the Perryton High School.

After the business session, members enjoyed a learning session on scrapbooking. Shown are Carrie Hargues, Carol Cole, Sandra Splawn, Dana Diedrich, Sandra Whittenberg, and Gayle Butler.

Pheasant Hunters Breakfast

The Alpha Mu Psi, a service sorority for Gruver, is hosting their annual Pheasant Hunters Breakfast on December 4, 2010 from 5:30-7:30 a.m. at the Gruver Elementary cafeteria, 405 Garrett Street. The cost is \$5 for adults and \$3 for children 12 and under.

Each breakfast ticket will be entered into a drawing for multiple door prizes to be given away. Additional tickets will be sold for \$1. You must be present to win. \$5 raffle tickets will be sold for the chance to win one of the following - Bushnell Binocular 10x42, case of shotgun shells, bibs, upland jacket, zero gravity lounge, gas smoker and a \$100 gift card to Gander Mountain. Need not be present to win.

Come start your pheasant hunt out right with a good hardy breakfast, good company and chances for great prizes.

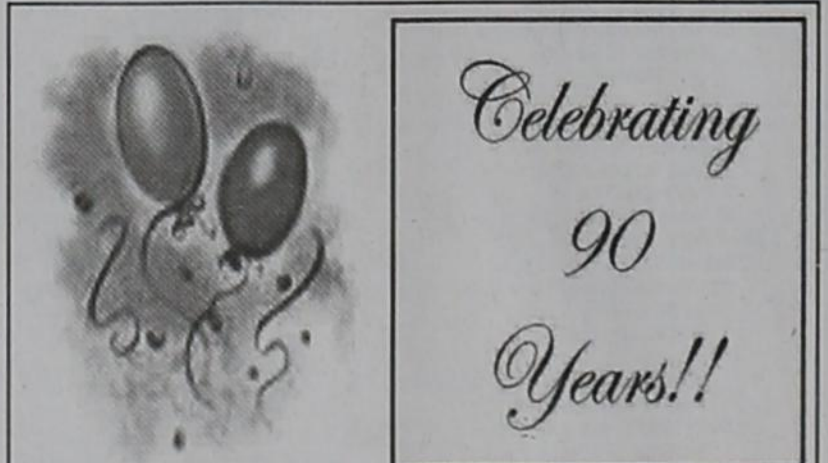
All funds earned go back into the community for helping needy families, elderly, scholarships, and much, much more.

You are invited to a
Baby Girl Shower

honoring
Nicole, Paul & Bryce Swanson

Saturday, November 20, 2010
at 2-3 p.m. at the

Church of Christ Parlor
121 Haney Spearman TX



Please join us to celebrate

The 90th birthday of
Ruby Lorene Riley

Saturday, December 4, 2010

From 2 p.m. - 4 p.m.

At

Church of Christ - Fellowship Hall
121 S. Haney Spearman, Texas

Cards may be mailed to: Ruby Riley
205 W. 12th Ave, Spearman TX 79081

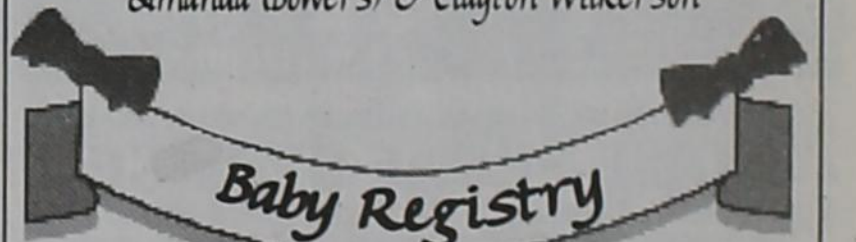
Best Wishes Only, please

www.spearmanreporter.com



Couples Currently Registered

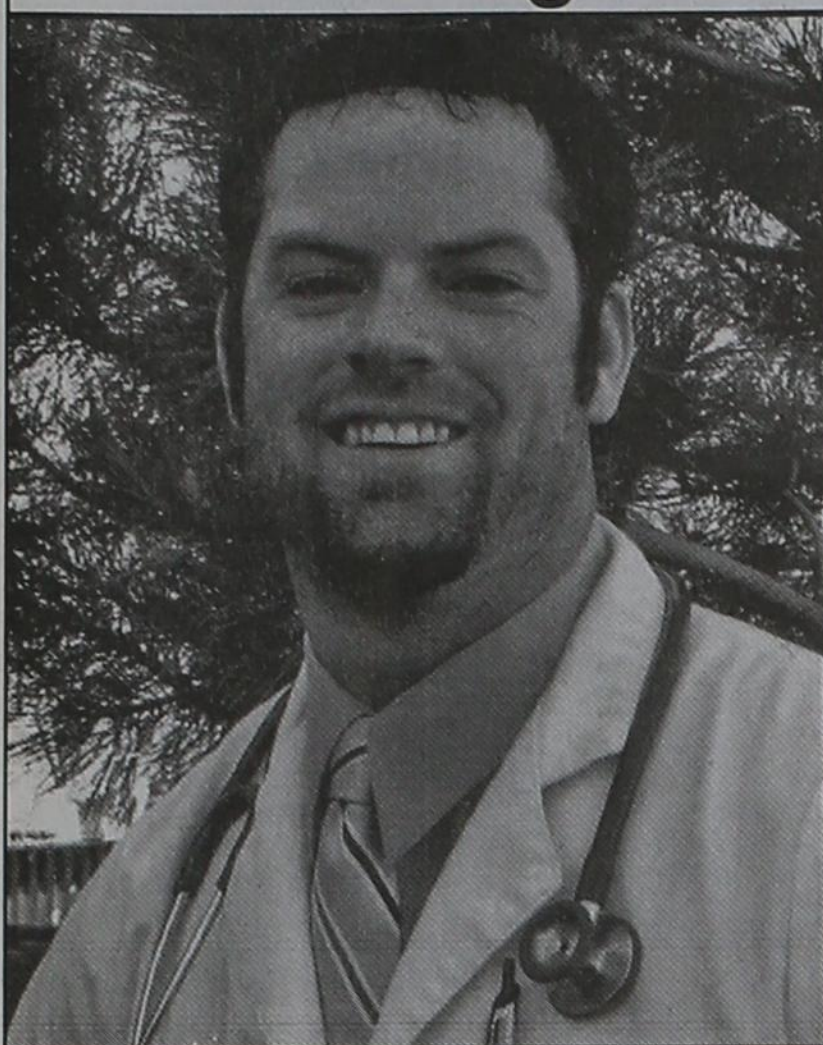
- Mary Beth Hargis & Jordan Hicks - 11/20
- Taleigh Lechinger & Lance Smith - 10/23 wedding
- Kylee Howard & Jeremy Frost - 11/13 wedding
- Megan Evans & Beau Clem - 11/20 wedding
- Amanda Wells & Scott Earle - 11/20 wedding
- Kathryn Murphy & Christopher Allen
- Amanda (Bowers) & Clayton Wilkerson



- Cortney & Keith Winegarner - 11/30
- LeAnn (Earle) & Ed Lackey - 11/6
- DeeDee DeLaRosa & Michael Ortega - 11/6
- Jennifer & Clint Jackson - 11/6
- Nicole & Paul Swanson - 11/20
- Tim & Charlotte Bynum
- Kellye & Roger Buchanan

Gordon's 659-2141
314 Main Spearman

Carthel Begins Residency



Dr. Kade Daniel Carthel, son of Dan and Harletta Carthel of Gruver, is currently serving his three-year residency in Internal Medicine at Texas A&M Health Science Center/Scott and White Memorial Hospital in Temple, TX.

Upon completion of his residency, Dr. Carthel plans to enter a fellowship for sub-specialty training. Dr. Carthel graduated in ceremonies at Texas Tech Medical School in May, where he was hooded by his brother-in-law, Dr. David Brabham.

A 2002 graduate of Gruver High School and a 2006 graduate of Abilene Christian University, he is also the grandson of Ann Carthel and the late Bill Carthel of Friona and Ruth Capps and the late Duane Capps of Vernon.

Spearman, Gruver Claim State Titles

Continued from Page 1

"The kids performed, and it comes down to your fifth runner," Been said. "Makenzie struggled at regionals, and we had Callie Stedje step up at region, and then today Makenzie ran a strong race and that was the difference for us."

"It's an unbelievable feeling for the kids to pull that off again."

Shelley Gibson finished fifth for Gruver in 11:59. Gibson qualified as an individual in 2008 and ran on the state championship team last year.

"The first year, it was fun, but it's a lot more fun

to have your whole team, and especially when you win," she said. "You run a lot better when you're running for your team instead of for yourself. Our four, five and six runners ran great."

Shamrock's Melissa Velazco followed Gibson across the finish line in sixth place as an individual.

"This whole season, I had a lot of stress in my life, so that affected me in a way," Velazco said. "But my coaches helped me a ton, and all of the positive attitude from everyone in Shamrock helped me so much."

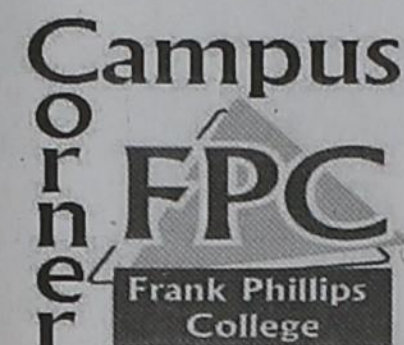
Wheeler's Taylor Sparks

put three area runners in the top 10 with a 10th-place finish in 12:16, and Farwell's Chelsea Bass finished 13th. Clarendon's Audrey Shelton was in 25th in the 1A race.

Wellington finished in fourth place in the 1A team standings, led by an eighth-place finish from Macy Davis and a 14th-place effort by Amber Thornberry.

Panhandle, making its first trip to state, finished seventh as a team, paced by Mary Cate Neeley's 24th place effort.

Bushland's Adrienne Jackson finished in 26th in the Class 2A race as an individual.



Allen Campus News and Information

Start Here...
...Go Anywhere!

Greetings from the Northernmost Facility of Higher Education in the Great State of Texas! On behalf of the Allen Campus team we wish each and every one of you a very happy Thanksgiving. After 3 months of the 2010-2011 academic year the Allen Campus has served 647 students and other residents of Perryton and the surrounding area. Academic classes account for 103 of these students, while Continuing Education classes have served 292 students and Community Service classes and events have served an additional 252 people.

This fall the Allen Campus continues to offer a wide variety of continuing education and community service classes. Starting November 9th and running through December 14th, 2010 will be an Adobe Photoshop Editing class. This class will meet on Tuesday nights from 6:00-

8:00 PM. If you are interested in taking the class please contact Jaci Geheb.

Our GED (High school equivalency) classes are still underway and there is still room for enrollment. Classes meet on Thursday nights from 6:00-9:00 PM and are free of charge. English as a Second Language (ESL) classes are also being conducted at the campus. At the moment they are full but there is a waiting list started and there will be a new orientation in January to allow more students into the class. To sign up on the waiting list please come by or call the Allen Campus.

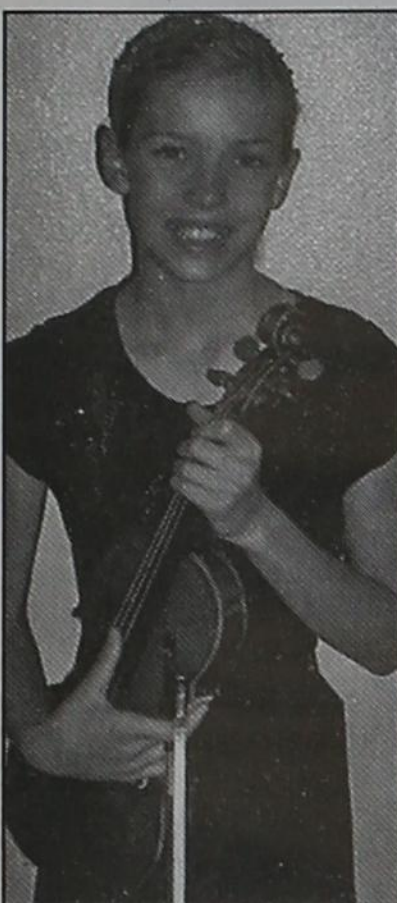
November 15th through the 18th are the dates for the next Concealed Handgun course. The class will meet from 6:00-9:00 PM each night and the cost for a new license is \$105.00 and a license renewal is \$80.00. If you can't make it this time get signed up for the next one to be held

in February of 2011.

November 17th, 2010 the Coffee Memorial Blood Center will be having a Blood Drive in the Conference Center from 11:00 AM-7:00 PM. Donors can register for the cruise drawing and hourly door prize drawings and you do not have to be present to win!

In December there will be another Fondant Cake Decorating class as well as a cookie and/or cupcake class!

Other classes in the works include CPR/First Aid, Basic Banking, Basic Computers Introduction to eBay, Woodworking, Workplace Spanish, QuickBooks, Basic Nutrition, Cajun Cooking, Web Page Design, and Basic Crochet. For more information on any of these classes or if you would like to teach a class please contact Jaci at the Allen campus (806-648-1450).



Hansford Nutrition Quiz Bowl team KD McCloy, Colby Wood and Maren Garnett.

Panhandle District 4-H Nutrition Quiz Bowl

Youth from across the Panhandle District gathered at West Texas A&M University in Canyon for the Texas AgriLife Extension Service District 4-H Nutrition Quiz Bowl on Nov. 6.

Winning the Gold Medal in the Junior division was the Hansford Nutrition Quiz Bowl team of Maren Garnett, KD McCloy and Colby Wood.

Nutrition Quiz Bowl helps participants increase their knowledge of basic nutrition, consumer information, food and kitchen safety, food preparation skills and storage, and nutrition and health.

Top Winners Named in Panhandle 4-H District Roundup

Hansford 4-H member, Maren Garnett, won the gold medal at Panhandle 4-H District Roundup, November 6 at WTAMU in Canyon.

Over 300 boys and girls from 25 counties competed in the 24 activities, including speaking events, illustrated talks, method demonstrations and performing arts. Maren placed at the top of her category by playing a violin solo in the Share-the-Fun Musical contest. She is the daughter of Dr. and Mrs. Mark Garnett.

GET YOURS TODAY! E-SUBSCRIPTION

to the **Hansford County Reporter-Statesman**

Delivered to your e-mail each Thursday for only \$35/year.

Purchase online at www.spearmanreporter.com

Call 806-659-3434 or e-mail reporter@spearmanreporter.com for details.

Hotline for Priority Seating - 435-3945

MONEY'S

BBQ & STEAK HOUSE

We Are THPLC-2-B

14 SE 3rd Ave. Perryton, TX

Stan and Donna Zepp

New, Updated Menu Same Great Service

Hoochy Poochy Parlor

For Boarding reservations and grooming appointments, call now!

Where Spearman Customers Get Priority!

Hoochy Poochy Parlor

Please visit us for a free estimate on your pet care needs.

421 E. 10th St.
Borger, TX 79007
806-273-2724
hoochypoochy@att.net
www.hoochypoochy.net

Hours:
Mon.-Fri., 8 a.m.-5 p.m.
Saturday by appointment only

We put the Hoochy in your Poochy

Palace Theatre

MOVIE SHOW TIMES
Friday-Thursday - 7 p.m.
Sunday - 2 p.m.
Closed Sunday Night

FRESH POPCORN & DRINKS!
PARTY ROOM & ARCADE
MOVIE RENTALS

Palace Theatre
210 Main Street
Canadian TX 79014
806-323-5133
www.palacetheatre.com

The Palace Theatre meets Lucasfilm THX specifications for site and sound quality.

Public Reporting of Progress in Meeting Highly Qualified Teacher Requirements 2010-2011 for Spearman ISD and each Campus - Public Meeting 11/08/2010

District Public Reporting of Highly Qualified Teacher Requirements

	Percentage of Classes Taught by HQ Teachers (State Aggregate)	Percentage of Classes Taught by HQ Teachers (High-Poverty Schools)	Percentage of HQ Teachers (State Aggregate)	Percentage of Teachers receiving high-quality Professional development (State Aggregate)
2010-2011 Target	100.0%	100.0%	100.0%	100.0%
District Report	100.0%	NA	100.0%	100.0%
HS Report	100.0%	NA	100.0%	100.0%
MS Report	100.0%	NA	100.0%	100.0%
Elem. Report	100.0%	NA	100.0%	100.0%

Local Sports

Lynx defeat Bulldogs 27-7 in Bi-District Game

The Spearman Lynx travelled to Plainview on Friday, November 12, 2010 for the Class 2A Division II Bi-District playoff game against the Coahoma Bulldogs.

Spearman scored in every quarter, allowing them to defeat Coahoma 27-7.

The Lynx were led by Cameron Meddock's 174 yards rushing, 24 carries, and a touchdown. Quarterback Blayne Schroeder completed 3-of-6 passes for 17 yards and two touchdowns.

The Lynx won the coin toss, but decided to begin the game with their strong point - defense. The decision proved correct when they held the Bulldogs on their first possession.

The Lynx offense took over, and drove the ball to the 4-yard line, where Schroeder completed a 4-yard touchdown pass to Jose Mendoza. The PAT by Camacho was good.

The Lynx defense continued to hold the Bulldog offense, not allowing them to score in the first quarter.

The Lynx offense continued their momentum as well, ending the first quarter with a 14-0 lead after Cameron Meddock scored on a 5-yard run. (The PAT by Camacho was good.)

The Lynx scored again in the second quarter with a 34-yard field goal by Camacho, sending the Lynx into halftime with a lead of 17-0.

Camacho kicked a 38-

yard field goal in the third quarter, but the Bulldog were able to answer this score with a touchdown. The score at the end of the third quarter was Lynx 20, Coahoma 7.

The Lynx defense held the Bulldogs in the fourth quarter. The offense was able to capitalize on a long drive to score on a 4-yard pass from Schroeder to Everardo Flores. The PAT was good, making the final score Lynx 27, Bulldogs 7.

The Lynx will travel to Seymour on Friday, November 19, 2010 to take on the undefeated Crawford Pirates. Kickoff is at 8 p.m. If you are unable to attend the game, listen to the broadcast on KXDJ-FM.

Score by Quarters

Spearman	14	3	7	27
Coahoma	0	0	7	7

Scoring

S-Jose Mendoza 4 pass from Schroeder (kick)	S-Cameron Meddock 5 run (kick)	S-34 FG	S-38 FG	C-Jason Martinez 4 run (Dakota Griffith kick)	S-Elvardo Flores 4 pass from Schroeder (kick)
---	--------------------------------	---------	---------	---	---

Team statistics

	SL	CB
First Downs	16	15
Rushing	40-239	46-222
Passing	17	0
Total Yards	256	222
C-A-I	3-6-0	0-5-1
Punts	1-27	2-23
Fumbles-Lost	2-1	1-1
Penalties	3-35	9-75

Shamrock grabs 19-13 victory

It took nearly 24 hours and two overtimes to complete, but Shamrock topped Gruver, 19-13, in a Class 1A Division II bidistrict game at Dick Bivins Stadium Friday night.

The game was set to kick off at 7:30 p.m. Thursday and finished nearly 24 hours later as several lightning and weather delays forced a postponement to an afternoon kickoff Friday.

Sheldon Hall of Shamrock was the star for the Irish as he ran for 140 yards and the game-winning touchdown in the second overtime. Gruver's Jerrod Collier ran for 125 yards and two scores for the Greyhounds.

Score by Quarters

Shamrock	7	0	6	0	6	19
Gruver	0	7	0	6	0	13

Scoring

S - Jordan Robison 2 run (Tommy Wright kick good)	G - Jerrod Collier 4 run (Lupe Pena kick)	G - Collier 9 run (kick failed)	S - Justin Whitely 1 run (kick failed)	S - Sheldon Hall 28 run
---	---	---------------------------------	--	-------------------------

Team statistics

	SI	GG
First Downs	11	12
Rushing	191	182
Passing	14	34
Total Yards	205	216
C-A-I	2-11-0	2-8-2
Punts	4-23.7	3-27.6
Fumbles-Lost	1-0	3-2
Penalties	7-50	6-65

Jr. High Lynxettes 11/15/10
7th Grade Lynxettes 35
Bushland 19

8th Grade Lynxettes 36
Bushland 22

Jr. High Lynx 11/15/10
7th Grade Lynx 12
Bushland 59

8th Grade Lynx 27
Bushland 13

Varsity Lynxettes 11/16/10

Spearman 11 28 41 52
Panhandle 14 32 42 55
S-Morgan Ashmore 20,
Kyla Walker 10, Shelby
Hanna 10, P-Emily Duckett
16, Addie Ewing 14.
Records: Panhandle 2-1,
Spearman 0-1. JV: Panhandle 53, Spearman 30.

Varsity Lady Hounds 11/16/10

Fritch 7 11 14 21
Gruver 13 31 37 43
SF-Summer Tubbs 4,
Marian Cummings 4,
Kelsey Hamim 4, Hollie
Naul 4; G-Madison McLain
21, Kaysha Bass 9.
Records: Gruver 1-1. JV:
Sanford-Fritch 35, Gruver
29.

Spearman seeks 3-peat Lynxettes single-minded on that number

By Barb Amrhein
The front of the t-shirt states a fact: Have 2. The back of the t-shirt reads: Want 3.

Yes, three!
The Spearman Lynxettes cross country team is seeking a rare feat in high school sports - three consecutive state champi-

onships when they toe the line at Old Settlers Park in Round Rock at 1:20 p.m. Saturday.

The bus was scheduled to pull out of the Spearman High parking lot at precisely 8:03 this morning to make the trip down state to Austin. That same bus was scheduled to arrive at precisely 7:33 p.m.

Warm-ups on the course Friday? Of course, planned for 3 p.m. Hotel reservations? Yes, the third floor.

"Our entire year, is planned around the number three," Lynxettes coach Starla Whitely said. "In the summer, I was driving home from Amarillo and saw a fence near Panhandle with a sign that said 'What's your dream? I took a picture and sent it to the girls on the team. One of the girls responded with just the number 3. That's become our entire theme.' In the quest for three gold state trophies, only one number is incorrect - five - the number of juniors on the team who helped to begin the dynasty when they were freshmen.

Tylo Farrar, who finished fourth individually at state last year, Gately Garnett, Sarah Snider and Shelby Hanna will run in their third championship with the fifth junior, Malory Martin running in her second after being the alternate as a freshman.

Sophomores Itzel Meza and Cynthia Mendoza complete the team of runners.

And Meza, who could not run last year due to a hip flexor, could be the key

to the three-peat according to Whitely.

"We've had three top runners, Tylo, Gately and Sarah, and Itzel has improved from 15 minutes to under 13 to help us out and run in the top three when Gately was sick," Whitely said. "She and Malory Martin will be the key for us. They've both really improved."

Three seems to be the correct number.

"It's amazing," Whitely said. "All of our bib numbers at regionals began with three and all of our numbers for state begin with three."

What teams are standing in the way of Spearman obtaining its magic number? Off course, three.

"Brady and Cameron Yoe are our main competition and East Bernard is very good too. It's those three," Whitely said. "But we're healthy again, so we'll be ready."

And the Lynxettes will ready themselves by putting on their uniforms at the hotel and pinning on their race numbers, 314 through 320, at 11:03 a.m. Saturday morning.

"We're not superstitious," Whitely said. "We're just all about wanting to bring home three (state championships) to Spearman. We plan to make it three."

With the race beginning at 1:20 p.m. and the fifth runners running about 13 minutes, the question of if the Lynxettes will win three should be answered Saturday at 1:33 p.m.

Spearman Lynx & Lynxettes

<http://spearmansports.smugmug.com>

Photos available of Spearman Lynx and Lynxette athletic events.

Owned & Operated by Linda & Charles Stephens

Double XXL Steakhouse

(formerly Flying X Steakhouse)

Make your reservations now for Christmas and New Year Parties!

From Stinnett: Go West on Hwy. 152 17 miles - Turn Left at Big White Sign (About 2 miles on Gravel Road)

From Dumas: Go East on Hwy. 152 16 miles - Turn Right at Big White Sign (About 2 miles on Gravel Road)

(806) 93JESUS
(806) 935-3787

Open: Friday & Saturday Night
Open anytime for parties of 8 or more

www.doublexxlsteakhouse.com
reservations suggested

Due to customer request, and the loyalty we feel for our customers,

Berry Cleaners

Will Remain Open
Mon.-Fri., 9 a.m.-12 noon

Spearman is a wonderful community and we want to be of service for them. We want to thank each of our customers for over 60 years of being able to take care of their dry cleaning needs.

Berry Cleaners, Inc.

(806) 659-3122
1-800-655-0351
PO Box 1017 • 207 Main St.
Spearman TX 79081

Three Falls COVE

From Sanford, take Hwy. 1319 across the Lake Meredith Dam. About 1/2 mile after crossing the dam, turn left on Hwy. 3395. Go 2 miles until you see a pond surrounded by beautiful cottonwood trees.

For map, go to www.threefalls.cove.com

Shopping items and Gift Certificates available.

Kirk and Rebecca Weatherford
8125 FM 3395
Sanford TX 79078
806-878-2366



**SPEARMAN
LYNX &
LYNXETTES**



**GRUVER
GREYHOUNDS
& LADY HOUNDS**

CROSS COUNTRY TEAMS



**Spearman Lynxettes
2A State Champions
3rd Year In-A-Row**

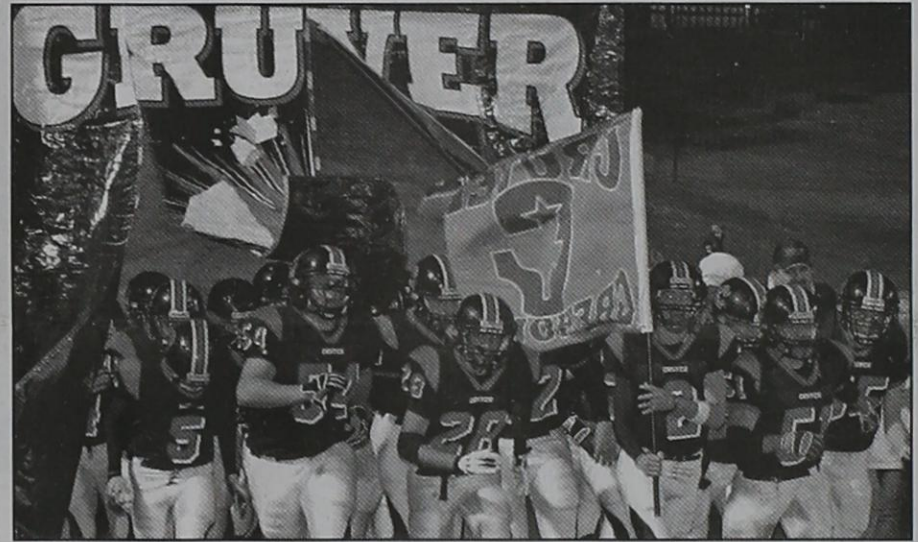


**Gruver Lady Hounds
1A State Champions
2nd Year In-A-Row**

**CONGRATULATIONS!
FOOTBALL TEAMS**



Spearman Lynx - Bi-District Champions



Gruver Greyhounds - 2010 Playoffs

WE'RE PROUD OF YOU!

Adobe Walls Gin, LP Spearman • 659-2574	Cates Men & Boys Spearman • 659-3426	Gordon's Drug Spearman • 659-2141	Hoochy Poochy Parlor Borger • 273-2724	Perryton Office Supply Perryton • (806) 435-4812
Aeroflight Publications Gruver • 733-2483	Delinda McLaughlin Photo Solutions Spearman • 659-2800	Gruver Ford Gruver • 733-2431	Hungry Cowboy Spearman • 659-5151	Pizza Hut Spearman • 659-2547
AeroTan Gruver • 733-2483	Dreamers Spearman • 659-9907	Gruver State Bank Member FDIC Gruver • 733-5061	Interstate Bank, ssb Spearman • 659-2559	Prairie Motors Spearman • 659-2541
All Occasion Flowers Spearman • 659-5180	El Vaquero Restaurant Gruver • 733-2407	H&H Credit Union Stinnett • 878-2452	Kirk Insurance Agency Spearman • 659-2794	Rocking F Boot & Saddle Shop Spearman • 659-3342
AMA TechTel Gruver • 806-322-5500	Equity Exchange Spearman • 659-2420	H&H Water Well Spearman • 659-5577	J&S Signs & Engraving Spearman • 736-7020	Sergio's Body Shop Spearman • 659-5217
Bartlett's Ace Hardware Gruver • 733-2404	First State Bank Spearman • 659-5565 member FDIC	Hansford Abstract Co. Spearman • 659-2516	Jarvis Law Office, P.C. Spearman • 659-2554	Spearman Lynx & Lynxette Booster Club
Berry Cleaners Spearman • 659-3122	Five Star Equipment Spearman • 659-3743	Hansford County Feeders Gruver • 733-5025	Jim's Diamond Shop Borger • (806) 274-2370	Spearman Chamber of Commerce Spearman • 659-5555
Bob & Cathy Davis Gruver • Spearman	Frank Phillips College Allen Campus Perryton • 648-1450	Hansford County Floral Co. Spearman • 644-4000	Lowe's Marketplace Spearman • 659-2522	Speartex Grain Co. Spearman • 659-3711
Bob & Jackie Pearson Gruver • Spearman	Frontier Feedyard Spearman • 882-4251	Hansford County Hospital District Spearman • 659-2534	M&D Aerial, LLC Spearman • 806-202-2360	Sunray Co-Op Gruver Branch Gruver • 733-2481
Bort Agency Gruver • 733-2404	Gigot Agri Products Spearman • 659-3121	Hansford County Reporter-Statesman Spearman • 659-3434	Money's Perryton • 435-3945	Tong's Chinese Food Spearman • 644-2838
Boxwell Brothers Funeral Home Spearman • 659-3802	Golden Spread Carpet Spearman • 659-3068	Hansford County Vet Clinic Spearman • 659-2100	Morse Implement Morse • 733-2668	Willis Boyd Dirt Services Spearman • 659-9848
Brown, Graham & Co. Spearman • 659-2538	Golden Spread Sales Co. Spearman • 659-3776	Hansford Pharmacy Spearman • 659-2226	MurMur's Cafe Spearman • 659-3580	Xcel Energy Responsible By Nature Perryton • 806-435-4052
The Bunkhouse Restaurant Spearman • 659-2089		Hi-Plains Auto Supply, Inc. Spearman • 659-2506	North Plains Electric Coop 806-435-5482 • 800-272-5482	
Cargill Ag Horizons Spearman • 659-3554				

Local Residents Attend 2010 World Series



Spearman residents Ed Whitefield and his daughter, Lisha, attended the final game of the 2010 World Series in Arlington, TX. This was the first appearance of the Texas Rangers in the World Series, and they were defeated by the San Francisco Giants, 3-1 in game 5. (The Giants won the Series 4-1.)

October was a good month for the Texas Rangers. They made history by making it to the World Series for the first time in franchise history. Their luck didn't continue through to the month of November, though.

The Rangers played game 5 on November 1st in Arlington, hoping for 52,050 seats to be filled with Ranger fans, but were greatly satisfied with the 52,045 Ranger fans who attended. Two of those fans were Lisha and her father Ed Whitefield of Spearman.

"Entering the game, we were given towels to wave high in the air, and encouraged to yell loud as the Giants were up to bat," remembered Lisha. "We waited hours in line to get World Series shirts, only to be told they were sold out."

"Prior to the game, we sat in the bleachers wondering if all these seats would be filled before the starting line-up," continued Lisha. "and before we knew it, the seats were all filled."

"Listening to Charlie Pride, singer and part owner of the Texas Rangers, sing the national anthem made us realize we are proud to be American, and realizing that after the first pitch, our experience of the World Series Game would begin" continued Lisha. "We cheered on the Rangers, but strike outs didn't go our way."

"Watching the Giants win the 2010 World Series and knowing that we were among those 52,045 people is something I will always be able to tell," concluded Lisha.

The Texas Rangers Baseball Club has made four appearances in the MLB postseason, all following division championships in 1996, 1998, 1999, and 2010. In 2010, the Rangers advanced past the Division Series for the first time in franchise history, defeating the Tampa Bay Rays. Texas then brought home their first American League Pennant after besting the New York Yankees in 6 games.

After winning the AL

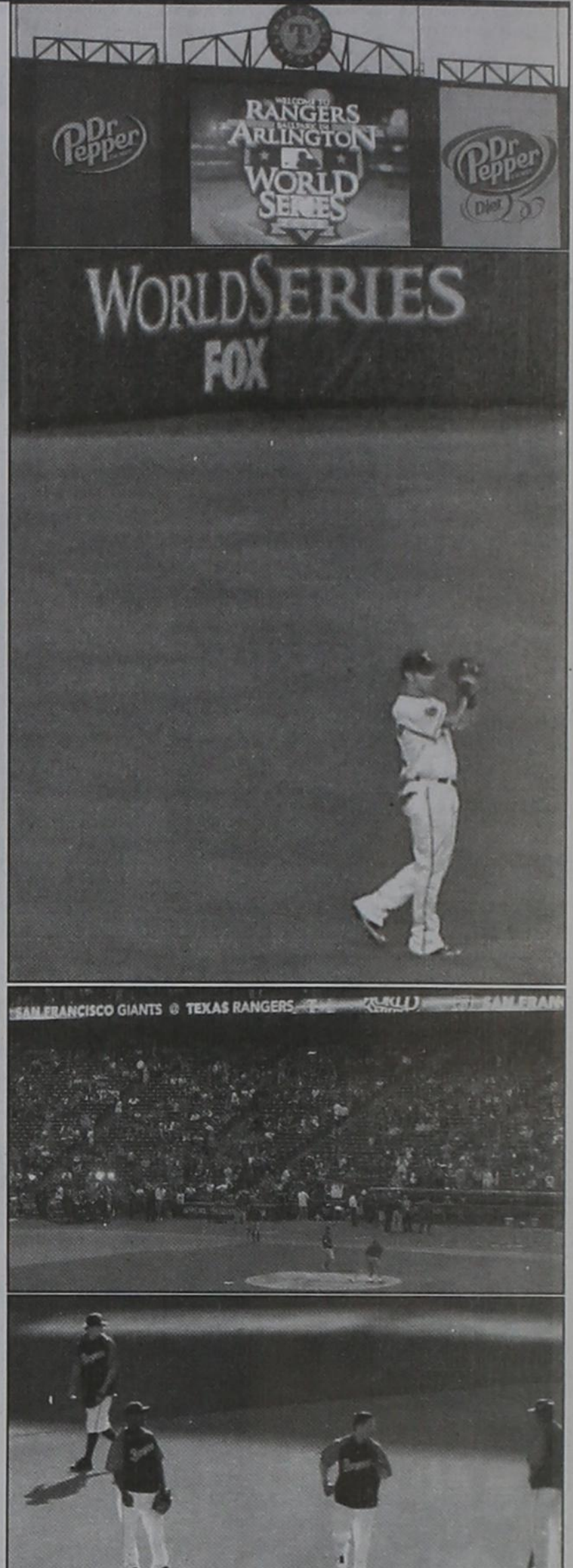


West with a 90-72 record, the Rangers entered the playoffs for the first time since 1999, and faced the Tampa Bay Rays for the first round, which ultimately resulted in a 3-2 series victory and marked the first postseason series victory in the 50-year history of the Rangers/Washington Senators franchise. Facing the Rangers in the American League Championship Series were the defending World Champion New York Yankees, the team the Rangers failed against three separate times in the 1990s. In the playoffs, the Rangers record against the Yankees was 1-9. In a 6-game series, the Texas Rangers came out victorious, winning the first Pennant in franchise history in front of an ecstatic home crowd. [27] Josh Hamilton was awarded ALCS MVP after setting a series record for intentional walks. The Texas Rangers faced the San Francisco Giants in the 2010 World Series.

The Rangers offense struggled against the Giants' young pitching and eventually lost the Series 4-1, the lone win coming in Arlington on October 30. For the first time, the Rangers ended their season in the month of November.

Rangers manager Ron Washington was named the runner-up 2010 American League Manager of the Year, behind Ron Gardenhire of the Minnesota Twins. Washington guided the Rangers to their first division title in 11 years and their first trip to the World Series in franchise history.

The franchise originated in 1961 as the Washington Senators, an expansion team awarded to Washington, D.C. after the city's first ballclub, the original Washington Senators, relocated to Minnesota and became the Twins. After the 1971 season, the new Senators moved to Arlington, Texas and debuted as the Rangers the following spring.

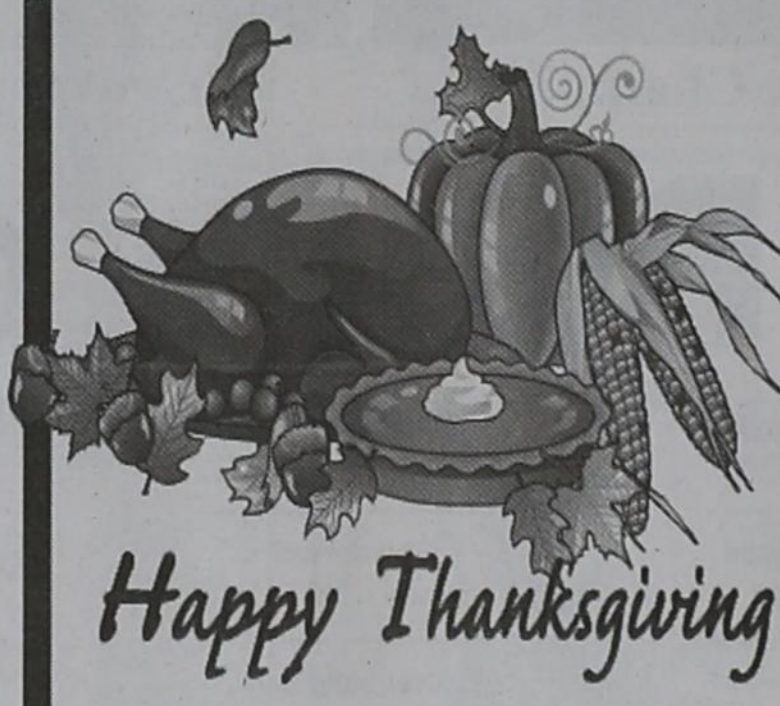


ALLSUP'S "MOO" GET ONE FREE!
 BUY 12 GALLONS OF FRESH ALLSUP'S MILK...
 Prices Good Thru 11/27/10

BUY ONE ORDER OF FRESH TAMALES (3 PER ORDER, MILD OR HOT) GET ONE ORDER FREE

MEATY TURKEY LEGS \$2.99

305 W. Kenneth Spearman • 659-3135
 101 Main Ave. Gruver • 733-2953



SHURFINE CINNAMON ROLLS 8 COUNT 2 FOR \$4



PLAINS EGG NOG QUART \$1.99

SHURFINE JUMBO BISCUITS 8 COUNT 2 FOR \$3

ASSORTED SOBE 20 OZ. 2 FOR \$3 OR ONE AT \$1.99

ASSORTED PEPSI 1 LITER BOTTLE 2 FOR \$3 OR ONE AT REG. PRICE

ASSORTED CHEEZ-ITS REG. \$2.09 & \$2.19 2 FOR \$3 OR ONE AT REG. PRICE

ASSORTED PEPSI 8 PACKS \$2.99

MORE SPECIALS!

- KELLOGG'S CEREAL CUPS ASSORTED 99¢
- MENTOS GUM OR ROLLS ASSORTED BUY ONE GET ONE FREE
- MARS KING SIZE CANDY BARS SNICKERS, M&M (PLAIN OR PEANUT) OR MILKYWAY \$1.19
- BLUE BUNNY PERSONALS 7 OZ. 99¢
- JACK LINKS JERKY 3.25 OZ. PKG. \$4.99
- WESTERN FAMILY BATH TISSUE 4 ROLL PKG. 99¢
- WESTERN FAMILY PAPER TOWELS ROLL 79¢
- ALLSUP'S SANDWICH BREAD 24 OZ. / 79¢ EACH OR 2 FOR \$1.29
- ALLSUP'S WHEAT BREAD 24 OZ. / 99¢ EACH OR 2 FOR \$1.49
- TENDERCRUST BROWN 'N SERVE ROLLS 12 PK. \$1.39
- TOM'S PORK SKINS PLAIN, HOT, BBQ, VINEGAR & SALT, HOT OR REG. CRACKLINS 89¢
- POWERADE 20 OZ. 99¢
- FULL THROTTLE ENERGY DRINK 16 OZ ASSORTED // 1 AT REGULAR PRICE OR 2 FOR \$4
- NESTEA 20 OZ. 99¢

REAL ESTATE

FOR SALE: 3BR, 2B, attached 2 car garage on 3.78 acres of land...

HELP WANTED

HELP WANTED: Gigot Agra Products is looking for a full-time Service Technician...

HELP WANTED: Mission Petroleum Carriers: Immediate Openings! Crude Oil Drivers...

HELP WANTED: First United Methodist Church, Spearman is currently taking applications for a nursery worker...

SERVICES

HOUSE CLEANING: I do house cleaning. Reasonable rates and references available...

CLICK PAINTING & HOME REPAIR Painting, Texturing, Drywall Repair, Fencing & General Carpentry...

HOCHY POUCHY PARLOR Call us for all your pet's grooming and boarding needs...

PUBLIC NOTICE

GRUVER ISD INVITATION TO BID Gruver Independent School District's Board of Trustees are accepting bid proposals...

opened at that time and considered by the PMCISD Board of Trustees at its regular meeting scheduled in December...

LEGAL NOTICE

Spearman I.S.D. is accepting sealed bids to replace the underground irrigation systems on the varsity football field...

NOTICE TO ALL PERSONS HAVING CLAIMS AGAINST THE ESTATE OF MARGUERITE NELSON, DECEASED

Notice is hereby given that original Letters Testamentary for the Estate of MARGUERITE NELSON, Deceased were issued on November 9, 2010 under Docket No. 2611...

care of the attorney for the Estate addressed as follows: Estate of MARGUERITE NELSON, Deceased c/o Greg Oelke HUNTER & OELKE, P.C. 507 Denrock Ave. PO Box 792 Dalhart TX 79022.

currently being administered are required to present them within the time and in the manner prescribed by law. DATED: November 9, 2010. HUNTER & OELKE, P.C. BY: GREG OELKE STATE BAR CARD NO. 15219700 1(11/18/10)B

The Jays of Summer Available all year! SNOW CONE STAND Monday-Friday 1:30-8 p.m. MURMUR'S CAFE 100 S. Roland • Spearman 659-3580

See us for: AUTO • HOME • CROP HAIL • FARM & RANCH • MULTIPERIL • LIVESTOCK INSURANCE BORT AGENCY, INC. 510 Main St. • Gruver, TX (806) 733-2456

MITCHELL THEATRES.COM GUYMON, OK • LIBERAL, KS • NEWTON, KS NORTHRIDGE 8 Guymon, Oklahoma www.northridge8.com 580-338-3281

SOUTHGATE 6 Liberal, Kansas www.southgate6.com 620-624-5573

SEQUOYAH 8 Garden City, Kansas www.sequoyah8.com 620-275-2760

CHISHOLM TRAIL 8 Newton, Kansas www.chisholmtrail8.com 316-283-0555 FRESH POPCORN EVERYDAY! -PARTY ROOM & ARCADE-

FIREWOOD FOR SALE Cedar firewood for sale. Delivered & stacked, or self pickup. Call (806) 658-2573. 15(8/12/10)P

This ad is just a small sample of the properties that we currently have for sale.

Please check our Web site and give us a call! We need your listings both large and small, all types of ag properties (ESPECIALLY CRP).

HARTLEY/MOORE COUNTY LINE - corn, wheat, cotton, cattle with all the perks, 992 acres, sprinkler irrigated with some improved pasture...

DALLAM COUNTY - Three adj. sections of dryland, some native grass, irrigation in area (new wells across the road).

SWINE PRODUCTION FACILITY - Moore Co., TX. - 1200 sow capacity, capable of running 28,000 pigs annually, computerized feed mill, flex-flo feeding system...

Properties Shirley Howard We NEED listings! Call us now to help YOU sell your home for top dollar!

902 9th - Gruver: Horse Stables FOR SALE! 18 pens, circular training pen, arena, & 4500 sq ft barn on 10.42 acres! PRICE REDUCED!!

1101 Dresden, 1.8 acre sqft - 3BR, 2B, 2 car garage plus 2 car carport Shirley Howard, Broker/Owner 806-886-6536, Cell Melinda McCullough, Realtor (806) 733-5678

We would LOVE to sell your HOUSE! CALL US!

French & Co., Realtors 273-7355 Beautiful 3 BR, 2B home in Morse, Texas. 1.06 acres. Updates Galore, Gorgeous tile & wood floors, stunning trim, custom paint, 28x33 garage & separate shop. Call Michele for details. 806 273 7355

Blankenship Real Estate 659-3052 - 670-3774 LET US HELP YOU SELL YOUR HOME.

4BR, 2B, 2CG, basement, separate garage & workshop. Excellent location and condition. Many special features.

NEW LISTINGS WANTED! Eulalia Blankenship - Sales Eschol Blankenship - Broker

hchd Hansford County Hospital District Openings at Hansford Manor

LVN: Graduate of an approved LPN/LVN program. Must be able to make independent decisions when circumstances warrant.

Great working environment and staff, quality facility providing opportunities for professional growth. Great benefit package. Apply at 707 S. Roland, Spearman, TX or contact Jackie Nelson at 806-659-5841.

Are You A Victim of Domestic Violence, Sexual Abuse or Physical, Emotional or Sexual Assault?

Call Toll Free Hotline 1-800-753-5308

We can see individuals from Hansford County anytime upon request. Call 435-5008 or 1-800-753-5308 to set up an appointment in Hansford County.

Panhandle Crisis Center Serving Hansford, Lipscomb & Ochiltree Counties 301 S. Ash • Pemyton, TX Memorials Accepted

CROSSWORD puzzle grid with clues: CREAM, HORDE, IDIOT, SELECT, CAT, ORES, MOLE, EMEER, TAXMEN, DUEL, LAC, EGO, FAN, GALAXY, REDO, TONSIL, DAME, ORBIT, TARO, RENT, AURORA, MOO, INGLE, EKE, SHED, WOODY, ADAGE, NAOMI, SNAG, HIGH, GOT, ZENITH, EGRET, THEME, STEED

4 2 6 7 3 5 1 9 8
1 3 7 9 4 8 2 5 6
5 8 9 2 1 6 3 7 4
9 5 2 3 6 4 7 8 1
7 4 8 1 2 9 5 6 3
3 6 1 5 8 7 4 2 9
2 1 5 6 9 3 8 4 7
6 7 4 8 5 1 9 3 2
8 9 3 4 7 2 6 1 5

Tong's Chinese Restaurant (806) 644-2838 22 Archer Street • Spearman Daily Buffet Lunch - 11 a.m.-2:30 p.m. • Dinner - 5:30-9 p.m. Open Wednesday-Monday - Closed Tuesday SUSHI ON SUNDAY BUFFET

TEXAS STATEWIDE CLASSIFIED ADVERTISING NETWORK TexSCAN

TexSCAN Week of November 14, 2010 BUSINESS OPPORTUNITIES WE BUY USED dry bulk pneumatic/tank trailers used for hauling sand, cement, flyash, barite, plastic beads etc.

DRIVERS - REGIONAL Van drivers, 35-37 yrs, BCBS benefits package, access to trophy fishing lake. We caught home every week. CDL-A with 1 year experience required. Call 1-888-362-8608 or apply at www.averittcareers.com. EOE

DRIVERS - COMPANY \$1000 Sign-on bonus. FFE seeks Class-A, CDL and 1 year experience for OTR. Also hiring 0/0's Students welcome. Call 1-800-569-9232 or recruit@ffex.net

DRIVER CDL-A: REGIONAL drivers. deBoer Transportation seeking CDL-A drivers to run I-35. Stay in Texas. Home most weekends/great pay. 8 month OTR experience. 1-888-730-9312, www.deboertrans.com

DRIVER-STEADY MILES. New pay package! Single source dispatch. Daily or weekly pay. Dry Van and Refrigerated. Great benefits, CDL-A, 6 months recent experience. 1-800-414-9569. www.driveknight.com

DRIVERS-100% Tuition paid CDL training! Start your new career. No credit check, no experience required! Call 1-888-417-7564. CRST EXPEDITED, www.JoinCRST.com

DRIVERS- FLATBED OWNER OPERATORS Up to \$1000 Sign on Bonus. Earn \$1.85 per mile or more! No age restriction on tractors/trailers. CRST Malone; 1-800-743-0435. www.JoinMalone.com

DRIVERS- REGIONAL Van drivers, 35-37 yrs, BCBS benefits package, access to trophy fishing lake. We caught home every week. CDL-A with 1 year experience required. Call 1-888-362-8608 or apply at www.averittcareers.com. EOE

HOME FOR THE HOLIDAYS! OTR drivers, APU Equipped, Pre-Pass, EZ-pass, every 60k mile raises. 2007 or newer equipment. Passenger / Pet Policy 100% NO touch. 1-800-528-7825

DRIVERS - REGIONAL Van drivers, 35-37 yrs, BCBS benefits package, access to trophy fishing lake. We caught home every week. CDL-A with 1 year experience required. Call 1-888-362-8608 or apply at www.averittcareers.com. EOE

DRIVER-CDL-A Drive in style! New 2011 Freightliner Cascadias plus the best miles, pay & performance bonus. \$500 sign-on for Flatbed. CDL-A, TWIC card and good driving record, Western Express; 1-866-863-4117

DRIVER-STEADY MILES. New pay package! Single source dispatch. Daily or weekly pay. Dry Van and Refrigerated. Great benefits, CDL-A, 6 months recent experience. 1-800-414-9569. www.driveknight.com

DRIVERS-100% Tuition paid CDL training! Start your new career. No credit check, no experience required! Call 1-888-417-7564. CRST EXPEDITED, www.JoinCRST.com

DRIVERS- FLATBED OWNER OPERATORS Up to \$1000 Sign on Bonus. Earn \$1.85 per mile or more! No age restriction on tractors/trailers. CRST Malone; 1-800-743-0435. www.JoinMalone.com

DRIVERS- REGIONAL Van drivers, 35-37 yrs, BCBS benefits package, access to trophy fishing lake. We caught home every week. CDL-A with 1 year experience required. Call 1-888-362-8608 or apply at www.averittcareers.com. EOE

HOME FOR THE HOLIDAYS! OTR drivers, APU Equipped, Pre-Pass, EZ-pass, every 60k mile raises. 2007 or newer equipment. Passenger / Pet Policy 100% NO touch. 1-800-528-7825

DRIVERS - REGIONAL Van drivers, 35-37 yrs, BCBS benefits package, access to trophy fishing lake. We caught home every week. CDL-A with 1 year experience required. Call 1-888-362-8608 or apply at www.averittcareers.com. EOE

DRIVER-CDL-A Drive in style! New 2011 Freightliner Cascadias plus the best miles, pay & performance bonus. \$500 sign-on for Flatbed. CDL-A, TWIC card and good driving record, Western Express; 1-866-863-4117

DRIVER-STEADY MILES. New pay package! Single source dispatch. Daily or weekly pay. Dry Van and Refrigerated. Great benefits, CDL-A, 6 months recent experience. 1-800-414-9569. www.driveknight.com

DRIVERS-100% Tuition paid CDL training! Start your new career. No credit check, no experience required! Call 1-888-417-7564. CRST EXPEDITED, www.JoinCRST.com

DRIVERS- FLATBED OWNER OPERATORS Up to \$1000 Sign on Bonus. Earn \$1.85 per mile or more! No age restriction on tractors/trailers. CRST Malone; 1-800-743-0435. www.JoinMalone.com

CLEANERS ATWOOD CLEANERS 508 MAIN • GRUVER TX • 806-733-5162 NEW BUSINESS HOURS: 8 A.M. - 5:30 P.M. STARTING MON., NOV. 15TH WE WELCOME NEW CUSTOMERS!

REAL ESTATE 9 ACRE LAKEFRONT short sale reduced from \$124,900; to only \$88,700 for quick sale. Access to huge private lake, gated, paved road. Financing available; call 1-866-730-0755 now! 20 ACRES, \$0 down! Only \$12,900. Near growing El Paso, Texas. Guaranteed owner financing, no credit checks. Money back guarantee. Free map/pictures; 1-866-415-7747. www.SunsetRanches.com 30.72 ACRES, north of Brackettville. Electricity, Oak, cedar cover, whitetail, axis, hogs, turkey, \$1750/acre, owner or TX Vet financing. 1-800-876-9720. www.hillcountryranches.com ABSOLUTELY THE BEST VIEW Lake Medina/Bandera 1/4 acre tract, central W/S/E, RV/motor home/house, OK only \$830 down \$235 month (12.91%/10yr). Guaranteed financing. More information call 1-830-460-8354

NOTICE: While most advertisers are reputable, we cannot guarantee products or services advertised. We urge readers to use caution and when in doubt, contact the Texas Attorney General at 1-800-621-0508 or the Federal Trade Commission at 1-877-FTC-HELP. The FTC web site is www.ftc.gov/bizop

by Dorothy Hudson

Out at the Lake



Jim Derington
Palo Duro River Authority
P.O. Box 99
Spearman, TX 79081
806-882-4401
pdra@dishmail.net



White-tail Buck with broken antlers.



Horse Creek running after rain and snow

Lake Level--November 15, 2010--49.89 feet (-0.08)

The combination rain and snow of last week had a reading of 2.80 inches in the office gauge. Jim said Horse Creek ran and it did reach the Lake. Jodie Hight, who lives near both Farwell Creek and its conjunction with Palo Duro Creek, said Farwell was running. It was wonderful moisture for the

part of the county that received it. Gruver had an inch of moisture. Stratford and Guymon didn't receive much.

We have heard that a fourteen point buck was taken in the northwest quadrant of the county. The deer on Coldwater Creek enjoy the crops around the farm area that the Creek bi-

sects. As Jim helps with the pheasant hunt sponsored by Rotary Club, I asked him what the prospects are for the December 4 opening this year. He said it depended on whom you were talking with. The big rains in June may have drowned many young pheasants.

The Hansford County Reporter-Statesman 2010 Holiday Schedule

SANTA LETTERS: The Reporter-Statesman will publish Santa Letters in the Thursday, December 23rd edition. The deadline to for this issue will be Thursday, December 18th.

HOLIDAY GREETINGS: Anyone wishing to place a holiday greeting in the paper is encouraged to call or come by the Reporter-Statesman office as soon as possible.

OFFICE CLOSED: The Reporter-Statesman office will be closed Wednesday-Friday, November 23-26 for Thanksgiving. (The deadline for the Thanksgiving edition is Friday, November 19th at 5 p.m.) The office will be closed December 21-31 for the Christmas Holidays. (The deadline for the December 23rd and 30th issues is Thursday, December 16th at 5 p.m.)

PERRYTON SATELLITE CENTER'S ANNUAL ARTS & CRAFTS FESTIVAL

November 20th from 9 AM to 6 PM
November 21st from 11 AM to 4 PM

We are taking orders for pecans this year, \$7 per pound! Call the Satellite Center at 435-4970 to place your order. Proceeds benefit clients with Mental Retardation in Ochiltree and the surrounding counties.

Hourly Door Prize Drawings
Grand Prize: Flat Screen TV

Expo Center

Weatherford Construction
Septic Systems

Kirk Weatherford (806) 336-2820
8125 FM 3395 Toll Free: 1-800-585-6047
Sanford, TX 79078 Email: kirk@weatherford-construction.com

Miss Vicky's Soul Food

1010 N. Fillmore (old Cee & Dee's)
Amarillo TX • (806) 517-1747

Down Home Cooking at it's Best!

Daily Specials

Lunch - \$6.99 Dinner - \$7.99

Fried Chicken, Fried Ribs, Chicken Fried Steak, Meatloaf, Pork Chops, Chicken 'N Dumplings, Cabbage, Sweet Potatoes, Mashed Potatoes, Red Beans, Greens, Corn, Black-Eyed Peas, Squash, & Much More!
Home-Made Desserts

Hours: Tuesday-Saturday, 11 a.m.-8 p.m.
Sunday, 11 a.m.-5 p.m., Closed Monday

PEOPLE POWER = CREATES COMMUNITY.

It's the people who make our communities strong. We are proud to support them with reliable power and we're committed to making this community a great place to work and live.

Wallace Hill, Regional Community Manager: 378-2916
Pat Rendon, Community Service Manager: 273-4142

ResponsibleByNature.com © 2010 XCEL ENERGY INC.

After Thanksgiving Specials!

Thanksgiving Day

Stuck in a Contract?
We'll buy you out!*

25

Black Friday ONLY!

We're Open!

Offers good Friday, Nov. 26
7 am to 1 pm
Perryton Office only
222 S Amherst in Perryton

Digital TV
\$29.99

per month for six months

PLUS: HBO
Starz/Encore
Showtime
Cinemax
The Movie Channel
for one month FREE*

Communication & Broadband Solutions

www.ptci.net
800-562-2556

*Restrictions apply. See your PTCI Customer Service Representative for details. All services not available in all areas.