

SCR2
COMP
HANSFORD COUNTY LIBRARY
0122 MAIN ST
SPEARMAN TX 79081-2064



HANSFORD COUNTY THE REPORTER-STATESMAN

THURSDAY,
SEPTEMBER 23, 2010

CELEBRATING 103 YEARS OF SERVICE TO HANSFORD COUNTY
HANSFORD COUNTY'S ONLY NEWSPAPER

75¢

WWW.SPEARMANREPORTER.COM

VOLUME 103 • ISSUE 38

reporter@spearmanreporter.com

Homecoming 2010

WHEN DOES YOUR SUBSCRIPTION EXPIRE?

SCR1
09/10 EXPIRES

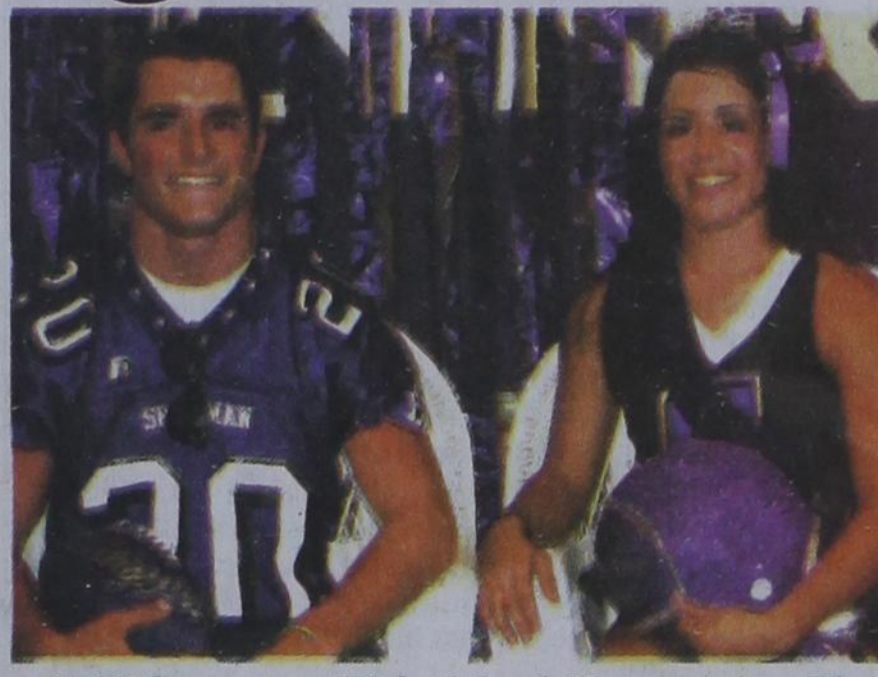
JOHN Q. PUBLIC
PO BOX 123
SPEARMAN TX 79081

Expiration dates are printed on the top of all mail labels. Our readers can help keep the cost of subscriptions down by mailing in renewals in the appropriate month.

Thank you, Catherine Smith

THE HANSFORD COUNTY REPORTER-STATESMAN
213 Main Street • Spearman, TX 79081

Annual Subscription Rates
In Hansford County - \$30
Out of County - \$40
E-Subscription - \$35 (sent through e-mail)



Spearman High School Homecoming festivities were held on Friday, September 17, 2010. (Back, L-R) Freshman attendant Gena Hargrove, Sophomore attendant Allison Brown and Junior attendant Sarah Snider; (Front, L-R) Senior Queen Candidates Shi Ann Bates, Jessica Bueno and Joselyn Terrazas. Not pictured are Senior King Candidates Jose Mendoza, Blayne Schroeder and Cameron Meddock.

2010 Spearman High School Homecoming King Cameron Meddock and Queen Jessica Terrazas.

COME TO THE GAME

SPEARMAN LYNX vs **FLOYDADA**
9/24
7:30 p.m.

GRUVER GREYHOUNDS 9/24
at **TEXICO, NM**
7 p.m.

Spearman Lynx
The 7th Grade (5 p.m.), 8th Grade (6:15 p.m.) and JV (7:30 p.m.) football teams will play Floydada in Spearman on 9/23. The Jr. High football teams (7th - 5 p.m., 8th - 6:15 p.m.) will play Highland Park in Highland Park on 9/30. The JV football team will play Highland Park in Spearman on 9/30 at 6 p.m..

Gruver Greyhounds
The 7th Grade (5 p.m.), 8th Grade (6:15 p.m.) and JV (7:30 p.m.) football teams will play West Texas in Gruver on 9/23. The 7th Grade (5 p.m.), 8th Grade (6:15 p.m.) and JV (7:30 p.m.) football teams will play Boys Ranch on 9/30 at Boys Ranch.



Gruver High School Homecoming festivities were held on Friday, September 17, 2010. (L-R) Brianne Mitchell, Homecoming Queen Mary Hart, and Cambry Cooper.



The 2010 Gruver High School Alumni Queen was Rene Morris from the class of 1980. She was escorted by Wayne Davis.

Dedication Ceremony Held at Cornelius Air Field

Jake Willimon, a Life Scout in Troop 551 of Spearman, has been working on his Eagle Scout Project for the past several months.

For his project, Jake chose to build a monument for Maj. Samuel B. Cornelius at Maj. Samuel B. Cornelius Field (Spear-

man Municipal Airport). He replaced the airport sign and is building a memorial in honor of Maj. Cornelius that will consist of a granite monument and a flag pole.

On September 17, 2010, National POW/MIA Recognition Day, Willimon hosted a dedication ceremony for the memorial. Boy Scout Troop 551 helped with the ceremony.

Following the Pledge of Allegiance, Sheryl Meek, Valedictorian of the Spearman High School Class of 1961, read a letter

written by fellow classmate Malcolm Kirkland. A letter from Governor Rick Perry was also read, as was the inscription of the monument honoring Maj. Cornelius.

Among those attending the ceremony were Maj. Cornelius' widow, Lynda Hester and her husband, Paul, and Sam's sister, Adele, and other family members.

Jake is the son of Mikal and Carla Willimon of Spearman.

See related story on Page 5.

CROSS COUNTRY

Gruver Greyhounds/Lady Hounds
The Gruver Greyhounds and Lady Hounds Jr. High and JV Cross Country teams will run in Race 4 the Cure in Amarillo on 9/25. The Gruver Varsity Cross Country teams will compete in the Lubbock Invitational meet.

Spearman Lynx/Lynxettes
The Spearman Varsity Lynx and Lynxettes will compete in the Lubbock Invitational on Saturday, September 25th. The Spearman Lynx and Lynxettes Jr. High and Jr. Varsity Cross Country teams will compete in the Beaver Invitational Cross Country Meet on Saturday, September 25th.

Watley Seed Company Wins Settlement

By Kevin Welch Amarillo Globe-News
The Texas A&M University System, through its licensee Watley Seed Co., won a \$115,000 settlement recently for claims producers and a Kansas co-op illegally sold wheat seed protected by federal law.

Watley Seed, TAMUS and other institutions are part of Farmers Yield Initiative, a coalition of public and private entities promoting wheat research and the enforcement of laws protecting companies from the selling of seed they developed by others.

"Illegally using our genetics is something that must stop if we are to have a forward-looking seed industry with good quality grain," said Watley Seed owner Andy Watley.



Jake Willimon is pictured with the new sign for Maj. Samuel B. Cornelius Field. Willimon built the sign as part of his Eagle Scout Project.

Weather Forecast

THURSDAY NIGHT - Partly cloudy with a 20 percent chance of showers and thunderstorms. Lows in the upper 50s. South winds 10 to 15 mph shifting to the northeast 5 to 10 mph after midnight.

FRIDAY - Partly cloudy. Highs in the lower 80s. East winds 10 to 15 mph.

FRIDAY NIGHT - Partly cloudy. Lows in the mid 50s. Southeast winds 5 to 10 mph.

SATURDAY - Mostly cloudy with a 20 percent chance of showers and thunderstorms. Highs in the lower 80s.

SATURDAY NIGHT - Partly cloudy. Lows in the upper 40s.

SUNDAY - Mostly sunny. Highs in the mid 70s.

SUNDAY NIGHT - Mostly clear. Lows in the upper 40s.

MONDAY - Mostly sunny. Highs in the lower 80s.

MONDAY NIGHT - Mostly clear. Lows in the upper 40s.

TUESDAY - Mostly sunny. Highs in the lower 80s.

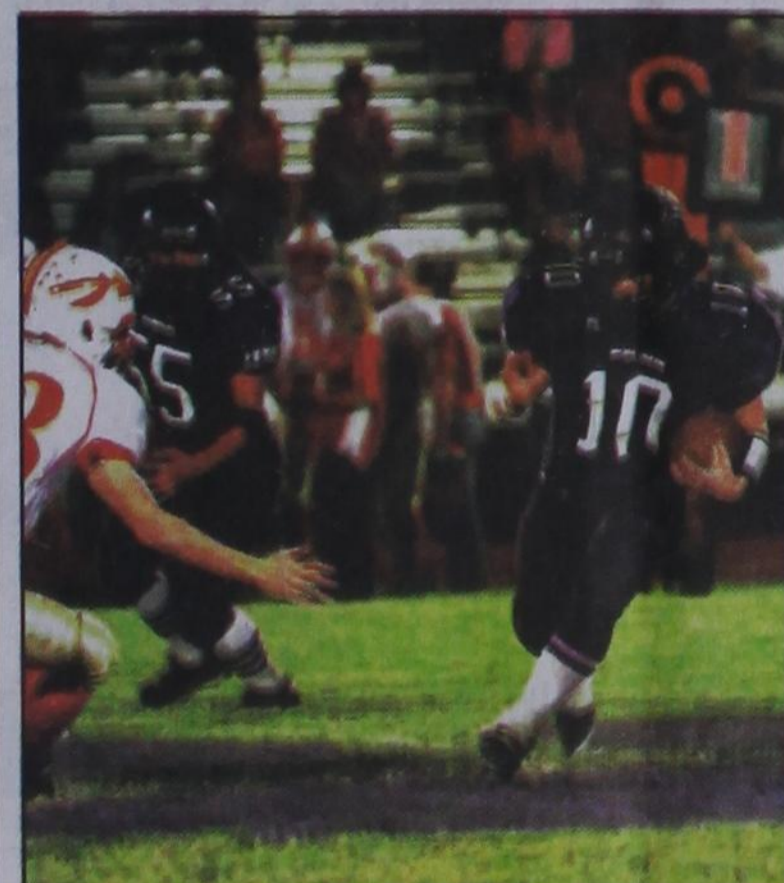
TUESDAY NIGHT - Mostly clear. Lows in the upper 40s.

WEDNESDAY - Mostly sunny. Highs around 80.

Read more: <http://www.city-data.com/forecast/w-Spearman-Texas.html#ixzz0xgJSWQkT>

Texas Crop & Weather

The following specific livestock, crop and weather conditions were reported by Panhandle Extension directors: Temperatures were mostly above average with soil-moisture levels rated mostly short. Corn harvest was under way in some areas. Cotton was in fair to good condition. Producers began spraying defoliants on cotton that was mature, and expectations were that the harvest will begin in two to three weeks. Sorghum was mostly in fair condition. Soybeans were rated mostly good. Growers continued planting wheat, but some areas needed a good rain before planting could be resumed. Rangeland and pastures were very poor to fair, with most reporting poor. Cattle were in good condition.



Greyhounds Outrun Bulldogs

The Gruver Greyhounds defeated the Hooker Bulldogs on Friday, September 17, 2010, 40-18 for a homecoming victory..

See related story on page 7

Jerrod Collier (45) carries the ball for one of his 26 carries during the Greyhounds defeat of the Hooker, OK Bulldogs. Payton Thoreson (2), Justin Bass (55), John Bergin (50) and Korbin Irwin (10) close in to block for Jerrod. (Photo by Charlie Johnson)



Lynx Clobber Comanches

The Spearman Lynx defeated the West Texas Comanches 24-14 on Friday, September 17th in Spearman for a Homecoming victory.

See related story on page 7

FAR LEFT - #55 Ramon Garcia blocks for Kyler Cator (#10) during Spearman's defeat of the Comanches.

LEFT - #20, Cameron Meddock, carries the ball in one of his 22 carries during Friday night's victory.

(Photos by Tami Hargrove. Pictures available at <http://spearmansports.smugmug.com>)



Wolf Creek Heritage Museum Notes

by Virginia Scott with Bell Books was excellent. Randy Bell, publisher. The week was indeed a got us to work on Tuesday busy one. Our work session morning and we were fin-

Words from Faith & Grace

by Cecil R. Biggers, Lutheran Lay Minister



We are asked, "What have you done for Lazarus?" as we study Amos 6: 1a,4-7, Psalm 146, 1 Timothy 6: 6-19, and Luke 16: 19-31.

Amos issues another condemnation of those who oppress the poor, especially the wealthy of the capital cities of Jerusalem (Southern Kingdom) and Samaria (Northern Kingdom). The prophet warns them to look at the surrounding kingdoms who have fallen to the Assyrian army and asks if they are any better. The rich elite slept on beds inlaid with ivory while the average person slept on a mat on the ground. The rich elite ate lamb and veal while the average person ate barley bread. The rich elite amused themselves with idle music and drank wine from bowls. The rich elite had no pity or grief over the suffering poor. The prophet warns that this rich elite shall be the first to go into captivity. God's judgment is an expression of God's love. God's anger is a sign of God's love for the oppressed. What have you done for Lazarus, dear Christian?

The Psalmist sings a song of praise which is a part of the concluding doxology to the Book of Psalms. This Psalm 146 is recited every day in the morning synagogue service. The Psalmist warns, "Do not put your trust in princes, in mortals, in whom there is no help." The Psalmist elaborates on a theme, "Happy are those whose help is the God of Jacob, whose hope is in the Lord their God." God is the ultimate provider for the poor and oppressed. What have you done for Lazarus, dear Christian?

Paul, an older man, is preparing to die for his faith. He writes Timothy, his "son" in Christ, with pastoral advice. "For we brought nothing into the world, so that we can take nothing out of it; but if we have food and clothing, we will be content with these... for the love of money is a root of all kinds of evil..." Contentment comes from an inward attitude toward life, from personal relationships with God and with our fellow man. Paul exhorts Timothy to "fight the good fight" and not to succumb to fear of persecution and to pursue righteousness, godliness, faith, love, endurance and gentleness. Timothy is to tell the rich to do good, to be rich in good works, generous and ready to share. Wealth is not a sin; wealth is a great responsibility. What have you done for Lazarus, dear Christian?

Jesus tells the parable of the Rich Man and Lazarus, the beggar. The rich man dressed in purple and fine linen and dined sumptuously each day. Lazarus, the beggar, was covered with sores and begged at the rich man's gate, and was happy to satisfy his hunger from the cast-off bread that the rich man used to clean his fingers at meals (they ate with their hands in Jesus' time). Lazarus dies and is carried by angels to heaven, the rich man also dies and is burning in hell. The rich man asks Abraham if Lazarus could dip his finger in water and come to him to cool his tongue. No. The rich man asks if Lazarus can go back and warn the rich man's brothers. No. Notice that the Rich Man's sin was not of commission, but omission. He could not 'see' Lazarus (whose name means God is my help).

Dear Christian the Spearman Ministerial Alliance has formed the Hansford County Food Bank to aid the hungry. If you wish to help financially or physically, please call my office at 659-5531. What have you done for Lazarus, dear Christian?

May the Holy Spirit enable you to 'see' those who need your help.

ished with our proofing and highlighting by 8 p.m., so we did not need to work very long on Tuesday. Georgia worked with him to finish the design for the front and back inside covers and we are ready for the final proof. If everything goes as scheduled, the book will be ready by the first of the year. It is hard to believe that we have been working on it since 2009. Time flies when you are having fun!

Saturday afternoon's reception brought a crowd of over 80 people, which is a great crowd for us. The Dord family and friends came to visit with the visitors from Amarillo Art Museum to view the documentary on Mr. Fitz and his art, as well as that of his students.

The exhibit is excellent and we thank Lovella for all her hard work on putting it together. The family was pleased with the exhibit and shared many memories with Lovella. I hope she remembers them and writes them down this week.

The Doyle descendants came to the museum and we had a good visit in the ranch room with the exhibits. This was the first trip to Lipscomb County for many of them and they enjoyed seeing the ranch and the county itself. We hope they will keep in touch.

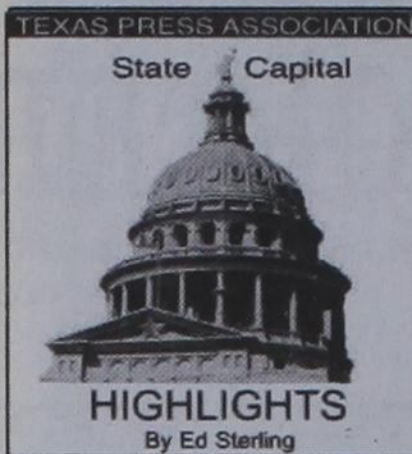
Georgia and I venture to Oklahoma City on Tuesday for the annual national meeting of the American Association of State and Local History. This will be our first experience at a national meeting, so we should return with lots of tales and information.

HISTORICAL MUSINGS

In cleaning the office, I found the four part article written in the Lipscomb Lighthouse in 1987 by the County Extension homemakers Clubs on the history of Lipscomb County. The article reported that the first Home Demonstration work began in 1939 when the County Commissioners hired Miss Frances Weimhold as the first agent. Originally there were nine clubs - Higgins, Locust Grove, Follett, Loland, Lipscomb, Booker, Third Creek, Plains and Darrouzett.

One of their first projects was to make a mattress. George and Lottie Seibel, with Kate Blau, went in a pickup to Mobeetie to buy a bale of cotton. The cotton cost 5-6 cents a pound and it took 55 pounds to make a mattress. It took 12 yards of ticking at 10-12 cents a yard. An extra long needle was needed with heavy waxed cord. A mattress cost about \$5 and it took the ladies about a day to make one.

Today there are two remaining clubs at Booker and Follett. They continue with their great programs and host a Christmas demonstration program every year. Have a good week.



STATE CAPITAL HIGHLIGHTS



by Ed Sterling

Perry backs efforts to retrieve education jobs funding

AUSTIN — Gov. Rick Perry on Sept. 14 praised legislation filed to repeal a Central Texas congressional representative's amendment to the recently passed federal education jobs bill, H.R. 1586.

U.S. Sens. Kay Bailey Hutchison and John Cornyn teamed up to write and file repealing legislation, S.3768, and U.S. Rep. Michael Burgess, R-Lewisville, led Texas' GOP House delegation in offering a House version, H.R. 6108, to strike the amendment from H.R. 1586.

The amendment authored by U.S. Rep. Lloyd Doggett, D-Austin, requires the governor to make assurances about how Texas would spend its \$830 million share bill's \$10 billion in jobs funding.

If the assurances are not made, Texas will not get the money. Gov. Perry called the requirement, which applies only to Texas, "unfair" and "anti-Texas."

The U.S. Department of Education rejected the Texas Education Agency's application for the \$830 million on Sept. 9, because the application lacked the required assurances from the governor. Perry, in response to the rejection, argued that the state constitution and state laws prohibit him from entering into binding commitments about future budgets or funding levels.

The Senate and House versions of the repealing legislation have been sent to committees and await deliberation. Meanwhile, members of the Texas congressional delegation have been sent a Sept. 15 letter by Johnny L. Veselka, executive director of the Texas Association of School Administrators, urging them to do what they can to remove barriers that would inhibit distribution of the \$830 million.

Sept. 15 debate 'deadline' passes

Gov. Perry's reelection campaign told challenger Bill White's campaign that White, former mayor of Houston, had until Sept. 15 to make public his tax returns from the period in 1993-95 during which he served as a deputy secretary of energy in the Clinton administration.

Perry, a Republican, said White, a Democrat, had to meet the deadline in order for the two to meet in a public debate. White chose

not to publicize his tax returns from that period, and on Sept. 15 he told reporters, "The fact is, it's the people of Texas that are entitled to the debate. ... (Perry) thinks that appearing in a debate where you can be accountable to the public is sort of like a favor to the other candidate to be bestowed or withheld on some whim or political calculation. I believe it's a public responsibility."

Perry said "(White) needs to come clean with the people of Texas. There's obviously something in those tax records or he would have released them by now."

Texas takes action to block EPA

The state of Texas on Sept. 17 filed motions to stop the U.S. Environmental Protection Agency from implementing new federal regulations that Texas Attorney General Greg Abbott said would harm the state's economy and increase unemployment.

The state's motions, filed in the U.S. Court of Appeals for the D.C. Circuit, seek to stay the EPA's greenhouse gas Endangerment Finding and other rules predicated on the Endangerment Finding.

The state claims the EPA's Endangerment Finding is legally unsupported because the agency outsourced its scientific assessment to organizations that "relied on flawed science to conclude that greenhouse emissions endanger public health and welfare."

Abbott, acting on behalf of the state, is asking the court to prevent the EPA from imposing its greenhouse gas regulations until the state's pending legal challenge is resolved.

On July 26, Abbott filed a legal challenge in the U.S. Court of Appeals for the Fifth Circuit in New Orleans to the EPA's decision to disapprove the state's Flexible Permits Program.

Unemployment rate rises slightly

The state's unemployment rate for August rose slightly to 8.3 percent, up from 8.2 percent in July, the Texas Workforce Commission reported on Sept. 17.

In contrast, the national unemployment rate was 9.6 percent for the month of August.

License division to be reorganized

The Texas Public Safety Commission on Sept. 17 approved a reorganization plan for the Texas Department of Public Safety's Driver License Division.

According to an official news release, the reorganization will focus on "improving customer service, protecting the public and making the Driver License Division a more desirable place to work."

It's time again for those flu shots

The Department of State Health Services is encouraging every Texan to get a flu vaccination in the fall. The official first day of the season is Sept. 22.

SUDOKU PRESENTED BY VolunteerMatch.org Where volunteering begins. Includes a 9x9 grid with some numbers filled in.

ARE YOU BURIED IN DEBT? WE CAN HELP YOU. Reduce Your Balances Up To 60%! Save THOUSANDS In Interest Payments. Arrange One AFFORDABLE Monthly Payment. Stop Harassing Creditor Calls! Have An Advocate Deal With Your Creditors! Settle ALL Your Debt In 12-36 Months! Alternative to Bankruptcy!

37th ANNUAL ARTS & CRAFTS SHOW Sat., Oct. 2, 9am-5pm Cameron City Park. 17th ANNUAL FUN RUN 5k Run/Walk & Children's Half Mile Start Time: 8am • On the Courthouse Square. Proceeds benefitting the Milam County Crime Stoppers.

The Hansford County Reporter-Statesman Mailing Address - 213 Main Street • Spearman TX 79081 Physical Address - 310 Barkley Street • Spearman TX 79081 Phone - (806) 659-3434 • Fax - (806) 398-9080 www.spearmanreporter.com • reporter@spearmanreporter.com Mon.-Thurs. 9 a.m.-12 p.m., Mon.-Wed. & 1-5 p.m. Closed Thurs. afternoon and all day Fri., Sat. & Sun. Gary Smith - Publisher Catherine Smith - Editor Contributing Writers: Dorothy Hudson, Jim Derington, Merry Sparks, Cecil Biggers Contributing Photographers: Charlie Johnson, Lisa Johnson Tammy Batton, Bonnie Bergan Subscription Rates In Hansford County - \$30.00 • Out of County - \$40.00 E-Mail Subscription - \$35.00

HEROES & VILLAINS These games are brought to you by the Hansford County Reporter-Statesman. Includes a list of crossword clues and a crossword grid.

CROSSWORD PRESENTED BY VolunteerMatch.org Where volunteering begins. Includes a crossword grid and a list of clues.

Happy Birthday!

September 23
Birthdays - Larry Babbs, Rodney Dale Clawson, Melissa Davis, Wilma Clark, Ray Ortega, Tony Papay, Will Black, Jan Hartsell, Luisa Volden, Karl Flowers, Amber Coombs, Kylie Cook, Jake Coates, Andrew Jacops, Melissa Lesly, Kylie (Snider) Moss
Anniversaries - M/M Harvey Atwood

September 24
Birthdays - Amadeo Cazares, Martha Jo Hadley, Cindy Blackman, Deena Murrell, Tony Shapley, Amy TeBeest, Linda Venneman, Trevor Williams, Sherri Kay West, Danny McLaughlin, Mandi Lusby, Julie Hays, Dan Pearson, Jeff Hawkins, Wesley Miser, Roberta Cole, Amber Elliott, Kylie Cook, Amy Powers, Dustin Tomlin, Bradon French

September 25
Birthdays - Brooke Salmons, Ann Taylor, Charles Martin, Jesse Renteria Jr., Cecil Slater, Stacy Lesly, Marcy Vitela, Pedro Vargas, Teresa Blau, Sandy Zamora, Chuck Cook, Edwin Percy, Andrew Dalton Raper, Eryn Saenz, Sally Pittman
Anniversaries - M/M Steve Holton, M/M Arturo Vargas

September 26
Birthdays - Whitt Barkley, Mandy Derington, David Tomlison, Tamera Shedd, Von Close, Idella Randall, Cari Babitzke Baker, Jennifer Martin, Wayne Cummings, Regan Boxwell, Wanda Reed, Sharon Whitefield, Joy Graham, Grace Davis, Torin Winkler
Anniversaries - M/M John Patterson

September 27
Birthdays - Jim Davis, Jon Hart, Kathy Slough, Nathan Watkins, Garland Hopper, Joe Gomez, Norma Hill, Dennis Randall, Kristina Poole Howell, Sara Shufeldt, Holly Simpson, Tindle Ramon
Anniversaries - M/M David Bergin

September 28
Birthdays - Will Crane, Mike Grotegut, Beverly Hintergard, Mike Yanke, Kim Brock, Teddie Whitefield, Judy Reed, Jimmie Vernon, Linda Lowen-

hagen, Julio Garcia, Sherry Moore, Jeff Gresset, Mone Borunda, Amanda Bain

September 29
Birthdays - Dick Hintergard, Kelly Vernon, Meguel Espinosa, Jeff Vandlingham, Vi Kjos, Charlie Salgado, Sue McCloy, Gabriel Rodriguez, Dave Laughlin, Ruben Olivarez, Christy Lang, Phillip Terry Moore, Travis Burgess, Tara Duke, Reyna Arreola

September 30
Birthdays - Aaron Boyd, Chile Favala, Kyle Williams, Tanya Adkins, Cindi Nash, Stan Seagler, Naomi Fryrear, Jana Tindell, June Spencer, Roger Jones, F.W. Thomas, Sandy Cummings, Jean West, Dixie Williams, James Whitaker, Patrick Jerman, Sharon Bailey, Jade Shaver, Chris Cudd, Jenn Schnell, Justin Parker, Glenn Robinson, Sable Ortiz
Anniversaries - M/M Aaron Brown, M/M A.D. Reed Jr., M/M Leon Wilson, M/M Charlie Salgado

October 1
Birthdays - Royce Mathews, Galen Slough, Merri Gale Sparks, Hector Nava, Beatrice Renteria, Brenda Pierson, Willie Clement, Sheila Watterly, Colene Schaefer, Randall Schell, Angela Rodriguez, Laci Ortega, David Nash, Betty Perry, Robbie Dewberry, Jeff Shields, Maria Sibley, Lacey Decker
Anniversaries - M/M Elwyn Young

October 2
Birthdays - Kyler Barkley, Wayne Garrett, Jeremy Tunnell, Richard Wagner, Della Reed, Kathi Gilley, Kelly Trout, Angelita Cruz, Pamela Ring, Robbi Dewberry, Jerry Jasper
Anniversaries - Glen Ray & Laura Mackie

October 3
Birthdays - Ruth Ann Jones, Lloyd Carroll, Doris Bateman, Eulalia Blankenship, Brian Watley, Teresa England, Timber Barkley, Chad Brown, Arlene Kennedy, Lynda Tunnell, Griffin George, Marsha Murphy
Anniversaries - M/M Scott Davis, Jim & Linda Beeson, M/M Jeff Hawkins, Mr. & Mrs Dan Desimone

Our Sympathy

LARUE "MURMUR" WHITEFIELD SPEARMAN - LaRue "MurMur" Whitefield, 79, died Thursday, Sept. 16, 2010.

Services were at 2 p.m. Monday in Church of Christ with John Scott and Larry McCollum officiating. Burial was in Hansford Cemetery by Boxwell Brothers Funeral Home of Spearman.

LaRue was born May 11, 1931, in East Afton. She married Harvey "Red" Whitefield on March 6, 1947, in Dumont.

LaRue was a homemaker and had a snow cone truck from 1987 to 1989. She owned and operated MurMur's Cafe from 1989 to 1998. She was a member of Church of Christ.

She was preceded in death by her husband, Harvey "Red" Whitefield, in 1995; and a son, Donlane Whitefield, in 2004.

Survivors include a daughter, Janice Gale Mayfield and husband Fred of Spearman; three sons, Harvey D. Whitefield and wife Gale of Canadian, and Ted Whitefield and wife Cheryl and Ed Whitefield and wife Tanja, all of Spearman; 15 grandchildren; and 21 great-grandchildren.

The family suggests memorials be to Hansford Hospice, 707 Roland St., Spearman, TX 79081.



DAVID TRUITT JOHNSON

SPEARMAN - David Truitt Johnson, 36, died Monday, September 13, 2010.

Services were at 11 a.m. Saturday in First Baptist Church in Morse with the Rev. Gary Stevens and the Rev. Wes Stevens officiating. Graveside service were at 4 p.m. in Hillcrest Cemetery in McLean with the Rev. Thacker Haynes officiating. Arrangements are by Boxwell Brothers Funeral Home of Spearman.

David passed from this earth on Monday, September 13, 2010, with a loving devoted family and loyal friends who are ready to carry the torch of service that he provided for others for many years.

David was born Jan. 21, 1974, in Pampa to Mike and Jan Johnson. He and his brother, Darren, grew up in McLean.

Growing up, David had many talents in sports, music and rodeo that he was able to graciously spend his time teaching and sharing with not only his kids but his nieces, nephews and other kids as well.

David was a member of First United Methodist Church of McLean, where he accepted Christ as his personal Savior. He graduated from McLean High School in 1992 and attended Texas Tech University, where he earned a Bachelor of Science in multidisciplinary science in 1997. He graduated from Southwestern Oklahoma University with a Bachelor of Science in pharmacy in 1999.

He married his high school sweetheart, Sandi Stevens, on Dec. 21, 1996.

David and Sandi were married for 14 years and made their home in Spearman with their five children, Steven, Carlee, Mattee, Suzee and Dixee.

David was the owner of Gordon's Drug and a member First Baptist Church in Morse. He was a well-respected and very active member of the community and involved in many youth organizations.

David mastered the art of doing for others, but had a hard time letting people do for him. Even when he was hurting and physically ill, he continued to take care of others. He had a passion for tending to and caring for the elderly and went above and beyond in serving the people in the community and his family.

All of David's nieces and nephews considered him the favorite uncle because he found a way to connect with all of them. Not a day went by that he didn't take the time to make contact with one or more of his nieces and nephews.

David never assigned a dollar value to anyone in his life, but saw everyone as a precious individual in his life and how he could serve them.

David loved his family in such a way that is truly incomprehensible and was ridden with desire that his kids know and love the Lord as he did.

David was preceded in death by his unborn child, whose soul greeted him in heaven.

Survivors include his wife, Sandi Johnson; a son, Steven Brae; four daughters, Carlee Inae, Mattee Mae, Suzee Shae and Dixee Rae; his parents, Jan Haynes and Mike Johnson; his stepparents, Sam Haynes and Brenda Johnson; a brother, Darren Johnson; his in-laws, Gary and Jean Stevens; three brothers-in-law, Wes Stevens, Patrick Covin and Billy Ivy; four sisters-in-law, Star Stevens, Shonna Covin, Joanie Ivy and Jalane Johnson; seven nephews, Andrew Covin, Austen Covin, Lane Ivy, Brent Ivy, Wheatley Stevens, Ansen Covin Levi Stevens; and eight nieces, Ashlee Covin, Aven Covin, Summer Stevens, Amber Covin, Macee Johnson, Halee Johnson, Autumn Stevens and Savanna Stevens.

In lieu of flowers, the family suggests memorials be to Johnson Kids' Education Fund at First National Bank in Spearman.

Leave comments and condolences at www.memoriesof davidjohnson.blogspot.com.

GENEVA STEVENS LANGLEY

SUNRAY - Geneva Stevens Langley, 81, formerly of Sunray, died Friday, Sept. 17, 2010.

Services were at 2 p.m. Monday in Sunray Baptist Church with Rick Stevens and Ed Stevens, Mrs. Langley's sons, officiating. Burial was in Lane Memorial Cemetery by Morrison Funeral Directors.

Geneva was born Oct. 18, 1928, in Floyd County to Dennis and Bertha Ford. She attended school and graduated from Spearman High School in 1946. She married Verlon Stevens on Nov. 17, 1945, in Spearman. He preceded her in death on June 25, 1967.

She married Rex Langley on Jan. 25, 1968, in Sunray.

Geneva was a homemaker who loved to sew and cook. She was very active in WMU, serving as the association director for many years. She also was a member of the Sunray Baptist Church. She had been a resident of Sunray for 63 years.

She also was preceded in death by a son, Paul Rex Langley; a brother, Dennis Ford Jr.; and a sister, Barbara Jackson.

Survivors include her husband, Rex; four sons, Rick Stevens and wife Marcia of Sunray, Ed Stevens and wife Beth of Bradford Pa., Steve Langley and wife Jana of Claremore Okla., and Les Langley and wife Paige of Kingwood; two daughters, Verna Ehlert and husband Dave of Draper, Utah, and Carla Brown and husband Floyd of Corpus Christi; three sisters, Nina Thomas, Dorothy Cline and Shirley McNew; 14 grandchildren, Rebecca, Deborah, Rachel, Leah, James, Carder, Cason, Kaitlyn, Zach, Stevie Jo, Alexis, Rex, Luke and Hope; and four great-grandchildren.

The family suggests memorials be to Gideons International, P.O. Box 432, Dumas TX 79029.

Sign the online guest book at www.morrisonfuneraldirectors.com.



MONUMENTS

Boxwell Brothers Funeral Home

519 Evans • Spearman
659-3802

Dear friends,
When you buy a monument from us we make sure it is exactly what you want at a price you can afford. If it is not right, we will make it right. And you will not have to search the countryside to find us. We are here when you have a need.

Sincerely,
Bob Boxwell

www.spearmanreporter.com

Replenish the seed of faith through . . .

DAILY BIBLE READING, PRAYER & REGULAR CHURCH ATTENDANCE

<p>Spearman</p> <p>Apostolic Faith Church 822 S. Drexler • 659-2870 Sunday School: 10 a.m. Worship Service: 11 a.m. Sun. Eve.: 6 p.m. Wed. Prayer Mtg: 7 p.m. Pastor - Roland Haney</p> <p>First Assembly of God 401 N. Bernice • 659-2295 Sunday School: 9:30 a.m. Worship: 10:40 a.m. Evening Worship: 6 p.m. Wed. Worship: 7 p.m. Wed. Youth: 7 Pastor - Jerry Pollard</p> <p>First Christian Church (Disciples of Christ) 29 S. Bernice • 659-2036 Sunday School: 9:45 a.m. Worship: 10:50 a.m. Minister -</p> <p>First Baptist Church 123 N. Bernice • 659-5557 Sunday School: 9:45 a.m. Worship: 11 a.m. Evening Worship: 7 p.m. Men's Bible Study - Wed., 7 a.m. Children's Choir - Wed, 6 p.m. Adult Choir - Wed, 7 p.m. Wed. Bible Study: 7 p.m. Pastor - Jim Medley</p> <p>Church of Christ 121 S. Haney • 659-3244 Sunday Bible Class: 9:45 a.m. Worship: 10:30 a.m. Evening Worship: 6 p.m. Bible Study Wed.: 7:30 p.m.</p>	<p>Sacred Heart Catholic Church 901 Roland • 659-2166 Sat. Night Mass: 5:30 p.m. Sun. Mass: 9 a.m. - English Sun. Mass: 11:30 a.m. - Spanish Rev. Gregory Bunyan</p> <p>First United Methodist 407 S. Haney • 659-5503 Sunday School: 9:45 a.m. Worship: 8:30 & 11 a.m. Jr. High Youth: 5 p.m. Sunday High School: 6 p.m. Sunday Kids Club: 3 p.m. Wed. Pastor - Neely Landrum</p> <p>Grace Presbyterian Church (Worships with Faith Lutheran Church) 1101 Bernice • 659-2033</p> <p>Faith Lutheran Church (ELCA) 1101 Bernice • 659-2252 Sunday School: 9:45 a.m. Worship: 11 a.m. (Worships with Grace Presbyterian Church) Pastor - Cecil Biggers, PLM</p> <p>Union Church 31 S. Endicott • 659-2644 Sunday School: 10:00 a.m. Worship: 11:00 a.m. Bible Study: 7 p.m. Wed. Youth Service: 6 p.m. Wed. Pastor - Don Baltazor</p> <p>Fellowship Baptist 1102 S. Archer • 659-2783 Sunday School: 10 a.m. Worship: 11 a.m. Sun. Evening Worship: 6 p.m. Sun. Evening Spanish Worship: 7 p.m. Youth/Adult Service: 7:30 Wed. Pastor - Philip Hudson</p>	<p>Primera Mision Bautista 502 E. 7th • 659-3991 Sunday School: 9:45 a.m. Worship: 11 a.m.; Evening: 6 p.m. Wed. Prayer Meeting: 7 p.m. Thurs. Visitation: 7 p.m. Pastor Joe Garcia Jr.</p> <p>El Aposento Alto U.P.C.I. 1105 S. Roland Domingos: Escuela-Domical - 10 a.m. Culto Evangelistico - 7 p.m. Jueves: Oracion - 8 p.m. Mier. Estudio Biblico - 7 p.m. Pastor - A.G. Martell (806) 659-2153</p>	<p>Gruver United Methodist Broadway & Garrett 733-2651 Sunday School: 9:45 a.m. Worship: 8:30 & 10:50 a.m. Eve. Worship & UMY: 6 p.m. Pastor - George Price</p> <p>Spanish Cristo Redentor Church Hwy 1506-659-2166 Gruver, TX Sun. Mass: 1:30 p.m. - Spanish Rev. Gregory Bunyan</p> <p style="text-align: center;">Oslo</p> <p>Oslo Lutheran Church (ELCA) 6 Miles West & 12 Miles North of Gruver 339-7646 Sunday School: 9:45 a.m. Worship: 11 a.m. Pastor - Arlen Lloyd</p> <p style="text-align: center;">Morse</p> <p>Morse Baptist Church 733-2757 Pastor -</p> <p style="text-align: center;">Waka</p> <p>Church of Christ 300 Rogers Ave. 202-7126 Sunday Worship: 10:30 a.m. & 6 p.m. Wednesday Bible Study: 7 p.m. Preacher -</p>
---	---	---	---

He has showed you, O man, what is good. And what does the LORD require of you? To act justly and to love mercy and to walk humbly with your God.

Micah 6:8

This feature is made possible through the sponsorship of these civic minded businesses:

DIRECTV's Best Package FREE for 5 months!

DIRECTV SUNDAY TICKET

PLUS: **FREE** Standard Installation

FREE HD for LIFE!

No start costs! Local installs!

ASK HOW! CALL DIRECTV STARTV An Authorized DIRECTV Dealer
Toll Free 800-214-7110

FREE HD FOR LIFE!
Only on DISH Network

- Lowest Price in America!
- \$ 24.99/mo for over 120 channels!
- \$500 Bonus!

Call Now!
1-866-799-8039

DIRECTV 285+ Channels
160 HD Channels

5 MONTHS FREE

Direct Sat TV
1-800-577-1322
Local Installers!

INCLUDES **HBO SHOWTIME STAZZ** cinemax

When you get NFL SUNDAY TICKET for \$59.99 a month for 5 months

2 FREE Upgrades - HD DVR & HD Receiver - Ask How!

Offers end 10/05/10. An approved credit card required. Some restrictions apply. Call for details.

Deakin ELECTRIC
OILFIELD • RESIDENTIAL • COMMERCIAL
321 S. MAIN • SPEARMAN
1-800-999-1506 Chris Deakin
(806) 659-5016 President

Bartlett's Lumber & Hardware
105 W. Broadway • Gruver, TX
(806) 733-2404

BERRY CLEANERS
Ann & Vernon Pipkin - Owners
Phone 659-3122 • P.O. Box 1017
207 Main St. • Spearman, TX

Morse Implement & Auto Supply
"Join us in church"
Tom Dortch 733-2668
Box 89 • Morse, TX 79062

PRAIRIE MOTORS INC.
Hwy. 207 South • P.O. Box 430
Spearman, TX 79081 • (806) 659-2541
www.prairiemotors.com

MurMur's Cafe
100 Roland St
Spearman, TX
659-3580

Hansford County Reporter-Statesman
"Proudly Serving Hansford County Since 1907"
(806) 659-3434
310 Barkley • Spearman, TX

INTERSTATE BANK, ssb
www.interstatebank.net
322 Main • P.O. Box 146
Spearman, TX • 659-2559

HYI

FOR YOUR INFORMATION

Medical Fund for Bruce Duncan

A medical fund has been established for Bruce Duncan at First National Bank, Spearman. If you would like to make a donation you may make a deposit with any teller or mail a donation to First National Bank, Bruce Duncan Medical Fund, PO Box 337, Spearman TX 79081.

Hansford Gun Club Rifle Shoot

The Hansford Gun Club holds a .22 rifle shoot on the second Sunday of each month, starting at 1:30 p.m. at the gun range (located on Hwy. 15 between Spearman and Gruver). Everyone is invited to join the fun.

Fire Department Donations

Persons wishing to make donations to the Fire Departments in Hansford County may do so at the following addresses: Spearman Fire Dept., Box 37, Spearman TX 79081; Gruver Fire Dept., Box 947, Gruver TX 79040 or Morse Fire Dept., Box 28, Morse TX 79062.

Celebrating 90 Years of Life

Mrs. Wilma Clark is Celebrating 90 Years of Life at the Fellowship Hall of the First United Methodist Church in Spearman on Saturday, September 25, 2010 from 1:30 to 3:00 p.m.

Rainbow Kids Klub is Back!!

Our new building is finished and we are inviting all children Kindergarten -Fifth grade to join Rainbow Kids Klub. This is a weekly after school program with snacks, recreation, character building Bible lessons, memorization, music, games and its all free. Rainbow Kids Klub begins Wednesday, September 8, after school until 5 p.m. at the First United Methodist Church, 407 S. Haney in Spearman. Invitations and enrollment forms will be given out at school. Please bring the enrollment form when you bring your child to Rainbow Kids Klub. For more information call 659-5503.

Care Packages

If you would like to help with Care Package Drop Offs, please contact Less Sullivan at lessullivan@hotmail.com. Less is collecting items for care packages in conjunction with AmericaSupportsYouTexas.com. Journals are also located at the O'Loughlin Center, Spearman High School, and Gus Birdwell Elementary for anyone wishing to sign them. For more information, contact Less at 330-0973.

4-H Smoked Meat Sale

4-H members across Hansford County (Spearman, Gruver & Morse) are selling smoked meats for their annual fund raising efforts. Products available include smoked & spiral hams (\$28), Turkey (\$23), peppered Turkey breasts (\$21), smoked or peppered bacon (\$14), beef (\$15) or chicken (\$13) fajitas, chicken tenders (\$16), tamales (\$16), pork patties (\$14) pork chub (\$10), sausage links (\$15), pecan cobbler (\$13), pulled pork BBQ (\$13), little porkies Wraps (\$14), sausage gravy (\$), Hunters Package (pancake mix, Canadian bacon, peppered pork loin & jalapeno cheese summer sausage (\$23) and pumpkin roll (\$13). Funds benefit the awards program, contest and recognition banquet for all 4-H members. Orders must be received by October 18th, with a delivery date before Thanksgiving. Please contact a 4-H member or call the County Extension Office 659-4130 or 733-2901, fax 659-4133 to place your order. If email would be easier hansford@ag.tamu.edu.

Spearman FFA Meat & Cookie Fundraiser Sale

Spearman FFA will be having their Meat & Cookie Fundraising Sale from October 4th thru October 15th. Spearman FFA and Jr. FFA members will be taking orders on these dates. The delivery of these items will be during the week of November 1st-5th. Proceeds will contribute support to the Spearman FFA's Chapter Activities. For any further information or questions, please contact Josh Brockman at 659-2584. Thank you for your support for the members of the Spearman FFA Chapter.

Quilt Home Tour

Take a Quilt/ Home Tour with us!! In conjunction with Ozfest in Liberal, Kansas on October 9th and 10th, this special event will feature over 200 quilts, 5 beautiful homes, the Coronado Museum and the Pancake Day Museum - ALL for the cost of \$5.00 per ticket! This will also include quilting demonstrations at each home, an "Everything OZ" quilt challenge display and souvenir items. Tickets are available at Prairie Trails Quilting and Quilted Treasures and guild members before the tour, and the museums and homes during the tour. Hours are Saturday from 10 am to 5 pm and Sunday from 1 pm to 5 pm. For more information call Ginny Anderson 620-624-8283. The proceeds go toward guild programs and the Susan G. Komen for the Cure. Sponsoring this event: Needles and Friends Quilt Guild -www.wequilt.net

USS Solace Reunion

Veterans, spouses and children of veterans who served on the USS Solace will travel to Lubbock from all over the country to attend their annual reunion September 29th-October 1st. Solace, a hospital ship, was at Pearl Harbor during the attack December 7th, 1941, and received seven battle stars for World War II service. William H. "Bill" Logan of Lubbock, who recently passed away, planned this year's reunion. Mr. Logan's wife, Editha, will now welcome the reunion in honor of her husband. The reunion group will tour the Silent Wings Museum, 6202 North Interstate 27, Thursday, September 30th at 2:00pm. The media and general public are encouraged to join the group at the Silent Wings Museum to ask questions and hear personal stories from the USS Solace. For additional information, contact Editha Logan at 806.799.2748.

Hospice Volunteer Class

Hansford Hospice is trying to create a new class for the year. If you are interested in becoming a volunteer or just to learn more about death and dying, please call 806-659-5811 or 806-659-3846. Please leave your name and phone number. (You are not required to be a Hospice Volunteer to take the Hospice Volunteer Class. The classes are open to anyone interested in learning more about Hospice Care.)

Spearman Booster Club

The Spearman Booster Club will meet on Monday, September 27, 2010 at 7 p.m. in Coach Rodman's room at Spearman High School. Anyone interested is encouraged to attend!

Adult ESL Class

Improve your English skills and enroll in an adult ESL Class. Learn to speak the English Language and receive the educational skills necessary to help your children in school. Registration will be the first night of class. Classes begin Thursday, September 16, 2010, and will be held from 6:30-8 p.m. at Spearman High School. Mrs. Lopez will be the instructor. Classes will be held on Tuesday and Thursday nights. There is no charge for the class. For more information call Cindy Blackman at the Community Resource office, 659-3233.

Low-Income Tax Clinic

The Texas Tech School of Law operates a Low-Income Tax Clinic to provide assistance relating to issues involving controversies with the Internal Revenue Service to low-income taxpayers and to individuals for whom English is a second language. Law students, under the supervision of a law professor, handle a wide range of issues and such as innocent spouse, offers in compromise, federal tax levies, payment agreements and representation before the United States Tax Court. Persons interested in seeking representation should contact the Texas Tech Law School Low Income Tax Clinic at (806) 742-4312 or (800) 420-8037 for further information or to schedule an appointment.

SPWA Seeks Volunteers

The Southwest Pioneer Windmill Association is seeking the next generation of volunteers to continue the work of restoring and maintaining the windmills of the SPWA. If you have an interest in windmills and their upkeep, and/or maintenance of the park, you are needed. For information, call Dwayne Mitchell, 270-0291 or Don Reed 330-0745.

O'Loughlin Center Hours

The O'Loughlin Center is open for the following hours: Monday-Thursday, 6:00 a.m.-8:00 p.m.; Friday, 6:00 a.m.-6:00 p.m.; and Saturday, 9:00 a.m.-12:00 p.m. (noon). For more information, contact The O'Loughlin Center, 502 S. Brandt, PO Box 733, Spearman TX 79081. (806-659-3030)



Engagement Announcement

Rick and Jan Howard of Spearman, TX wish to announce the engagement of their daughter, Kylee Howard to Jeremy Frost. Jeremy is the son of Glen and Stacie Ruga of Spearman, TX and Matt and Ramona Frost of Amarillo, TX.
Bridegroom's Address & Hometown: Spearman, Texas
The couple plan to wed on November 13, 2010 on the beach at Kelyll Island, GA.
Kylee graduated from Spearman High School in 2008 and attended West Texas A&M for two years.
Jeremy graduated from Spearman High School in 2008 and is currently serving in the United States Army.



Gruver Greyhound Pee Wee Football

The newly formed 3rd/4th grade Gruver Greyhound Pee Wee football team dominated over Perryton (Dale Marchman's team) on Saturday, September 18th.
The 3rd/4th graders started their season with a 48-0 season opener. Quarterback Jaedon Seigler was precise and complete in every play. Most of the hand-offs were to the Haynes brothers, Connor (#34) and Hunter (#20). They excelled on defense and offense. Tyler Gregory (#54) had 3 quarterback sacks, 1 fumble recovery and 1 strip. Ermilo Acosta (#64) also had several hard tackles along with the rest of the defensive line, Cole Wilkes, Braedon Ralston, Reed Anderson, John Robinson, Fernando Villalobos, Quentin Goodson, and Creed Caloway.
The Greyhounds would like to thank all their sponsors for the ability to play this season. USA Feed Yard, Larry's Welding, Mike Morlan and CJ's Pizza. They are learning the fundamentals of football and sportsmanship.
The 3rd, 4th, 5th, and 6th graders will continue playing the rest of the season in Perryton every Saturday morning for the next few weeks; they appreciate all the support from the fans.



Mirate by Mirate

by Gary C. Smith

One of my best minutes this past week was in Borger, TX. The Spearman First United Methodist Choir was singing at the St. Andrew United Methodist Church.
To say that the music was inspirational and heart lifting would be an understatement. The voices of these 20+ people (not age but number) were absolutely angelic.
I found tears in my eyes when soloists Tyndal Ramon, Greg Meek, Celia Crug, Richey Tompson, Mark Schonhals and Linda Winegarner praised God through the gift of music.
It does not do justice to simply say that their voices filled the sanctuary. Their voices filled the hearts of everyone in attendance.
Choir Director, Betty Womble gave a warm and heartfelt testimony. The tragedies in her life could have been crippling, but she let God see her through.
I owe a heart felt thank you to the Spearman FUMC Choir for filling our hearts with wonder and praise.
It was indeed, a wonderful gift.

You are invited to a
Bridal Shower
honoring
Kylee Howard
bride-elect of Jeremy Frost
on Sunday, September 26, 2010
from 2:00-3:30 p.m. at the home of
Sherry & Willis Boyd
904 Wilmeth Dr. Spearman TX

You are invited to a
Baby Shower
honoring
Emma Marie Biggers
daughter of Gina Biggers
on Sunday, September 26, 2010
from 2:00-4:00 p.m.
at the home of Glenda Close
700 Collier Drive Spearman TX

Gordon's

Your place for

Bridal Registry

Couples Currently Registered

- Kylee Howard & Jeremy Frost - 9/26
- Amanda (Bowers) & Clayton Wilkerson - 10/9
- Mona Sandoval & Kelsey Servantez
- Blanca Valtierra & Julian Gallegos
- Esmelda Bernal & Heriberto Navarrete
- Jessica Cornell & Hunter Beville
- Michelle Waide & Jarick Howard
- Callie Hargis & Brian Hensley
- Kathryn Murphy & Christopher Allen
- Laura McCloy & Daniel Harris
- Racquel (Waide) & Ben Hardesty
- Adrienne Hood & Kevin Baker
- Luci Alvarez & Gerardo Hernandez
- Taleigh Lechinger & Lance Smith
- Shea Lowe & Brian Lair

Baby Registry

- Brandy Luther & Mario Salazar - 9/26
- Gina Biggers - 9/26
- Erin & Bailey Reid
- Sammie (Stavlo) & Wade Harkey
- Kara (Pipkin) & Jon Taylor
- Kellye & Roger Buchanan
- Betsy & Tucker Henson

Gordon's 659-2141
314 Main Spearman

Red Adair's Red Acres Ranch

AUCTION
Saturday, October 2, 10AM
3161 FM 529, Bellville, Tx

Famous Oilwell Firefighter

377 acres located 50 miles west of Houston, TX to be offered in 3 tracts.
Bid on any tract, combination or entire property. Beautiful showplace in heart of Austin County

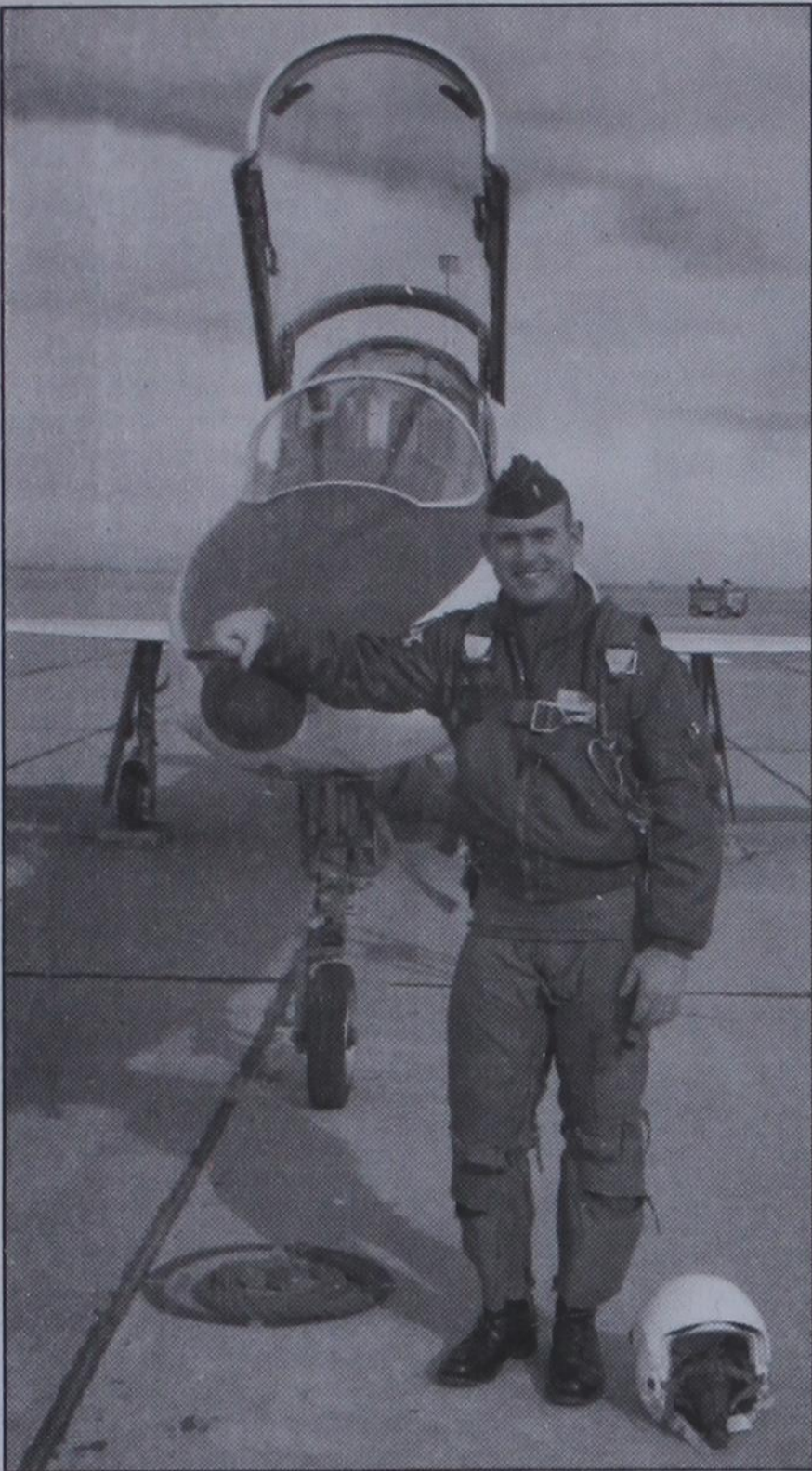
Famous Oilwell Firefighter

Land * Cattle
Equipment * Personal Property * Memorabilia

Switzer Auction Services 979-865-5468
www.switzerauction.net

J. Frank Monk Real Estate 979-865-3558
10% BP on Cattle, Equip & Personal Property
5% BP on Real Estate. Sale Day Announcements
TNS 742 take precedence over Printed Material.

Maj. Samuel B. Cornelius



Lt. Samuel B. Cornelius, Reese AFB, 1969

Samuel B. Cornelius moved with his family to Spearman in the summer of 1957. His father, Henry Cornelius, worked for Shamrock Oil & Gas. He had an older sister, Dell, and a younger brother, Edwin. All three graduated from Spearman High School (Dell - 1958, Sam - 1961, and Edwin - 1970).

Sam loved all sports, especially football. He played football for four years in Spearman, and received a football scholarship to Texas Tech, where he played for another four years. Sam was awarded the Del Morgan Courage Award for being an outstanding Red Raider, played in two Sun Bowl games and was recruited by the Kansas City Chiefs to play pro football.

Sam instead joined the U.S. Air Force and went through pilot training at Reese Air Force Base in Lubbock. He was commissioned as a Lieutenant and flew the F4 Phantom jet. He was stationed at bases in the U.S. from California and Washington State to North Carolina. He rose to the rank of Captain, and then Major.

Sam married Lynda Kilpatrick of McCamey, and they had a daughter, Leslie, in 1970, and a son, Doug, in 1973.

Sam made two tours to Vietnam, returning home safely from both. Early in

1973 a peace treaty was signed and the long Vietnam War stopped. All the Prisoners of War were returned to the states. Sam was stationed at Seymour Johnston AFT in 1973, and served as an escort to his friend, Brian, a released POW. These escorts flew to Washington, DC from North Carolina to pick up the returning men and take them back to their bases.

Soon after Brian returned home, and Sam's son was about 4 months old, Sam volunteered for one more tour of duty overseas. He was based in Thailand and flew bombing missions into Laos and Cambodia.

In mid-June of 1973, Sheriff R.L. McFarland and two USAF personnel from Lubbock informed his parents, Mary and Henry that Sam and his co-pilot, Capt. John Smallwood, had crashed over Cambodia and were said to be Missing in Action. Reports said that no parachutes were seen by aircraft flying with Sam. Search and rescue missions continued for some time with no results. Eventually, the searching stopped. Some years later, Sam and John were listed as KIA (killed in action).

Their remains have never been found, and a DNA sample was sent by Dell to the Recovery Center in Hawaii and will be stored there to one day hopefully be matched with some of

the discovered remains that still await testing.

Sam was thirty years old when he died. He met and knew people wherever he went. He loved to hunt and fish and always had dogs for pets. He lived a good life, and though it was a bit short. He gave his all for family, friends and country. He did the job he wanted to do and served his country.

Sam's wife, Lynda, and the children moved back to Texas. She eventually re-

married, to another Air Force pilot. They lived in the Arlington, VA area and both children attended colleges on the east coast.

Doug and his family, including a son, live in the DC/Virginia area. Leslie and her family, including a son and a daughter, live in Arizona.

Sam's parents are buried at Hansford Cemetery. His sister, Dell, lives in Abilene, and his brother, Edwin, lives in Galveston.

Editor's Note: The following is the inscription that will be on the Monument at Maj. Samuel B. Cornelius Field in Spearman.

Maj. Samuel B. Cornelius Field Monument

This airport shall be known as Major Samuel B. Cornelius Field and is dedicated to the heroism, honor, and sacrifice of Major Cornelius.

Major Samuel Blackmar Cornelius was born April 2, 1943, and graduated from Spearman High School in 1961. He attended Texas Tech University and after graduation entered the United States Air Force. He was a member of the 336th Tactical Fighter Squadron and piloted F4 Phantoms. His electronic weapons systems officer was Captain John J. Smallwood of Marietta, Georgia. On June 16, 1973, during his third tour of duty, Sam's F4 was hit by hostile fire and crashed in Cambodia. No parachutes were seen and no emergency beeper signals to indicate that the crew had ejected safely were heard.

Major Cornelius and Captain Smallwood were listed as MIA, and their bodies were never recovered. This incident occurred six months after the signing of the Paris Peace Accords.

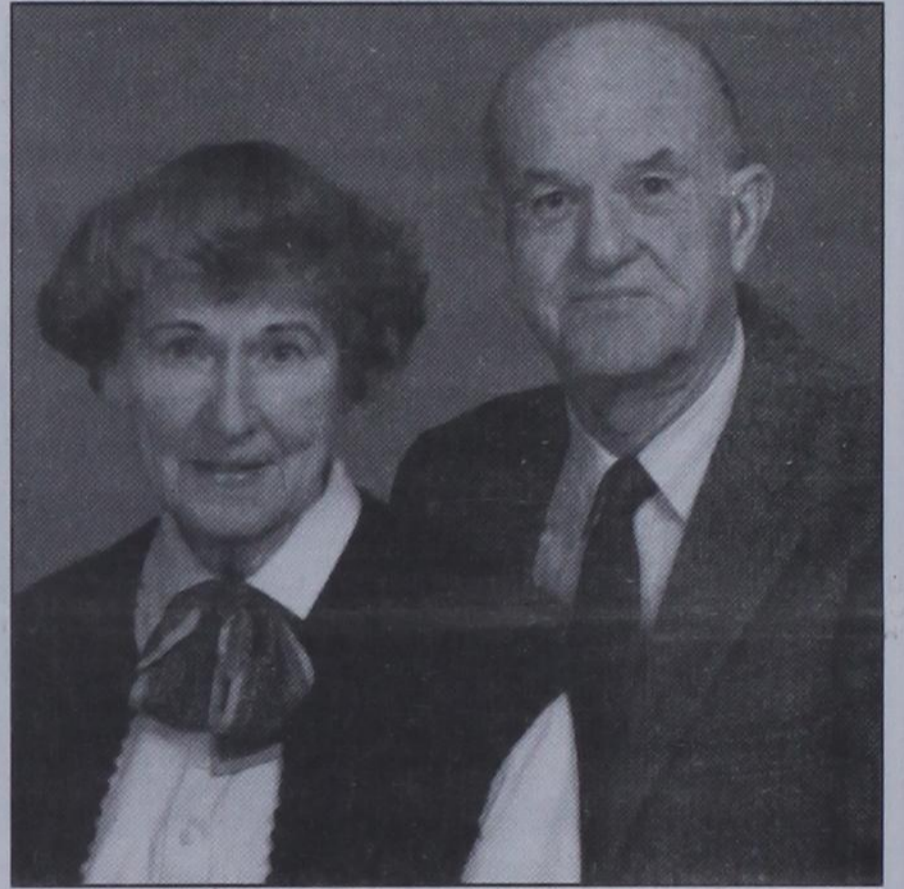
This monument is dedicated in gratitude of Major Samuel B. Cornelius, Captain John J. Smallwood, those who have sacrificed their lives and freedom to serve our country, all former American Prisoners of War, those still missing, and those Americans who may still be held prisoner.



Doug and Leslie Cornelius - February 21, 1974



Lynda and Sam Cornelius - July 29, 1967



Mary and Henry Cornelius



Sam Cornelius, 1960 Spearman High School

Any Large Specialty Pizza W/Breadsticks \$15.00 + Tax

3 Hour Special
3 LARGE SINGLE TOPPING PIZZAS
5-8 p.m. Only
\$19.99

Simple Simon's Pizza
312 Main Street Spearman, TX (806) 659-9991

Due to gas prices, a minimum order of \$10 is required for delivery. Please remember to tip our drivers.

NEW ITEMS
Manicotti w/Bread - \$5.99
Rib Tips w/Baked Potato, Bread, Lettuce & Tomato - \$8.99

Urgent news for people who had HIP REPLACEMENT

Several hip replacement systems used since 2003, including ones made by DePuy and Zimmer, have been recalled or had sales suspended due to an increased need for a second hip replacement. If you had or need a second hip replacement or are having unexpected hip problems, call us now for a free consultation at 1-800-THE-EAGLE (toll-free). No fees or costs until your case settles. We practice law only in Arizona, but associate with lawyers throughout the U.S.

GOLDBERG & OSBORNE
1-800-THE-EAGLE
(1-800-843-3245)
www.1800thecagie.com

Open 7 days a week

HOME PHONE SERVICE
NO Pre-Payment • NO Deposit Required!

Rates from \$6.99 per month*
(\$17/month including approximate taxes & fees)

FREE 1st Month of Service
Caller ID & Call Waiting included in Packages**

New-Talk 866.934.3448

*\$9.99/month with auto pay **Requires silver or gold package

20 Acre Ranches ONLY \$99 per/mo.

\$0 Down
\$12,900

Near Growing El Paso, Texas. Owner Financing, No Credit Checks Money Back Guarantee. Free Map/Pictures.

1-800-755-8953 www.sunsetranches.com

Everyone is invited to a **FREE Lynx Tailgate Party!**

Fri. September 24
5:00 pm - 7:00 pm or till food is gone!
Lynx Stadium (entrance)

Sausage on a Stick + Soft Drinks

Free Face Painting! Prizes!

Don't miss the fun!

Sponsored by: **PTCI** Communication & Broadband Solutions
721 W 7th in Spearman 800-562-2556 www.ptci.net

WARREN CAT INTERNET AUCTION

Bidding starts to close Wed., Sept. 29 at 12 P.M. All assets sell to the highest bidder regardless of price!

Tractors: JD 9620 4WD; JD 9520 4WD, JD 9320T, New Holland TJ375 4WD, JD 7830, CAT CH45 Combine; CAT Lexion 480 RWA Cotton Stripper; JD 7450 RWA Hay Equipment; Mac Don 9300 Swather; 16 ft Swather Head; (2) Challenger LB44 4x4 Larger Square Baler; Challenger BA4 Large Square Bale Accumulator

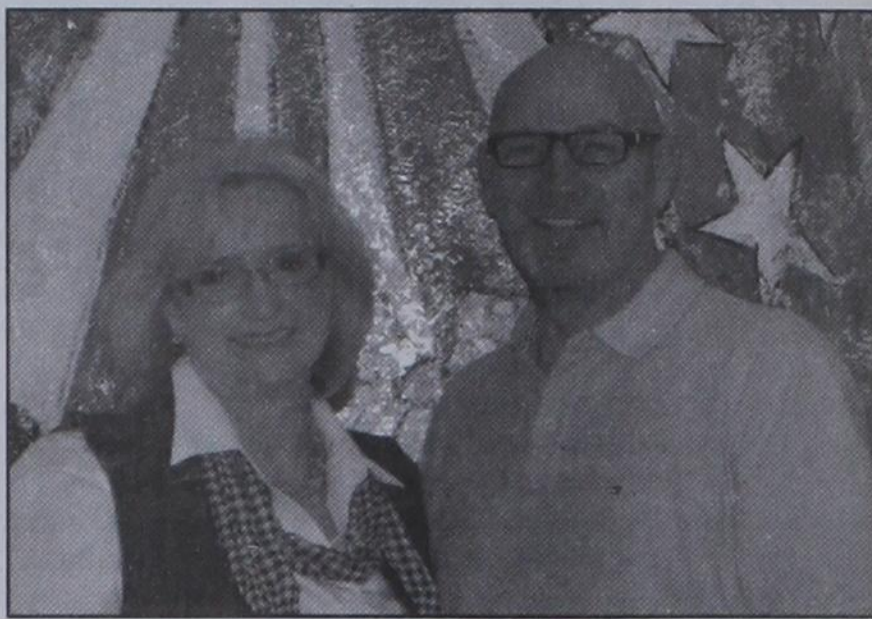
Planting Equipment: White 8500 Centrifill Fill System 16R30 Planter; JD 1900 Air Drill
Tillage Equipment: Sunflower 4510 14ft Disk Chisel and more with photos, descriptions, seller contact info and bidding online

Item #3140 '99 CAT LEXION 480 RWA
Item #3143 '06 NH TJ375 4WD w/blade

purplewave.com
866.608.9283

BBBS Volunteer of the Month

Over thirty years ago, a special couple chose Gruver as their place to call home and raise a family. Roy and Debby Mayhew settled into a career in education that has allowed them to touch the lives of hundreds of Gruver students. Debby currently serves as the principal of Gruver Elementary and Roy teaches social studies and computer technology to students at Gruver Junior High. Ask a Gruver student to describe Mr. or Mrs. Mayhew, and you will likely hear words such as "awesome" and "the best!"



Debby and Roy Mayhew

The Mayhew's involvement in our community has not been limited to the school grounds. They have both been intricately involved in youth ministry at the First Baptist Church. Mrs. Mayhew has also directed children's choirs and led women's Bible studies. She has enjoyed teaching Sunday School and working at VBS. Mr. Mayhew has helped with the Gruver Boys' Club and served as a City Councilman and Municipal Judge.

The Mayhews began an exciting new chapter of their lives this past year - as grandparents! They are very close to their extended family and spend much of their time involved in family activities.

It is very clear that the Mayhews lead busy, full lives. Yet, they have each

set aside time to serve as a mentor through Big Brothers Big Sisters. Mr. Mayhew has been matched with Little Brother, Tate, for a year now. They enjoy hunting, sports, Boys' Club activities, and just hanging out together. Mrs. Mayhew and Little Sis, Maggie, have spent many happy hours together scrapbooking, shopping, and enjoying lots of "girl talk." This past June they were named as our Volunteers of the Month as a way to honor their outstanding dedication to these relationships.

Julie Stedje, Gruver Program Manager, recently asked the Mayhews why they choose to spend some of their limited free time serving as mentors. Debby's response was "I love the honesty of children and have seen how much they benefit from feeling valued and 'special.'"

"I always come away from a time spent with a young person feeling happier and more fulfilled, too!" Roy stated, "I love kids of all ages, and I think they all need extra guidance, mentoring, and an adult to hang out with occasionally. Selfishly, we all need to be around young people so their fresh and honest perspective will rub off on us. They do keep us young."

BBBS is extremely thankful for the generous hearts of the Mayhews. The Mayhews and other caring volunteers make it possible for BBBS to serve over 100 youth in the communities of Perryton, Spearman, and Gruver.

For more information on the BBBS program, call the office at 806-434-0016 or Julie Stedje at 806-338-0180.

by Dorothy Hudson

Out at the Lake



Picture of the lovely fall flower -- Gay Feather. There are many gayfeathers scattered around the park, this year.

Lake Level--September 20, 2010--53.23 feet (-0.47)

Jim said his gauge at the office showed slightly over an inch from the spotted showers last Thursday.

The shelter was used for a birthday party on Saturday. On Sunday the Spearman Church of Christ used the shelter at noon. During the summer they meet at the Park one Sunday each

month. There were 7 campers behind the dam and one on the office side last week.

This is the time of year for flowers lovers to come out to see the last wild floral offering of the season. Two of my favorites are the Sand Lily and the bluish-purple Gay Feather. It is also known as the Blazing Star or Button Snakeroot. It's hard for me to think that the corm was once used to

treat rattlesnake bites. This year even the Sunflowers are especially plentiful and have more blooms than usual. Remember the sand lilies open late in the afternoon, bloom all night, and close in the morning.

Jim took a picture of an eagle today. It was west of Palo Duro Creek on the Gibner. This is a most unusual time to find an eagle at the Park.

ADOBE WALLS TOUR

October is Texas Archeology Month. An event in easy driving distance to our area is being held by Panhandle-Plains Historical Museum. They are conducting a walking tour of the Second Battle of Adobe Walls site on Saturday, October 16, from 12 noon to 2 p.m. Dr. Jeff Indeck, the curator who cares for the artifacts from Adobe Walls, will lead the tour. Tour participants must pre-register by calling Jeff Indeck at (806) 651-5231 or emailing jindeck@pphm.wtamu.edu.

I hope they will agree for participants from here to meet them at the site.

The Photo Shoppe

Digital and Film Printing • Edith & Mike Bowden
photoshoppe@sbcglobal.net

Corner of 8th & Deahl • 273-2541 • Monday - Friday • 10:00 a.m. - 5:00 p.m.



- We offer digital and photo services 35mm and disposable cameras • Color, black & white, & sepia
- Printed on real photographic paper • Digital prints from digital media
- Print sizes 4x6 to poster size • Reprints and enlargements • Slides to print and CD
- Photos from photos or CD • VHS to DVD Transfer • Photo Contests
- View your digital photos here in our shop from your digital media
- Order digital photos from home, just e-mail us your photos
- Senior Citizens Day - 1st Tuesday of every month

Crosses & Christian Gifts • Frames & Photo Albums • Photo Greeting Cards, Invitations & Announcements
One Hour, Same Day & Next Day Service Offered • Friendly Service • Work is done in house here in Borger
Convenient Drive-Thru & After Hours Drop Off • Get On Our E-Mail List For Upcoming Sales & Specials
• We Do The Work For You. Let Us Help You Share Your Memories

Hotline for Priority Seating - 435-3945

MONEY'S

BBQ & STEAK HOUSE

Stan and Donna Zepp

We Are THPLC-2-B

14 SE 3rd Ave. Perryton, TX

New, Updated Menu Same Great Service



VOTER REGISTRATION IS ONLY NINE QUESTIONS.

(AND ONE OF THEM'S YOUR NAME.)

VOTEXAS.ORG
(800)252-VOTE

- 1 Are you a United States Citizen?
- 2 Last Name (Include Jr, Sr, III)
- 3 Residence Address (Describe where you live.)
- 4 Mailing Address (If you cannot be reached at your residence address.)

Flashover Fiesta

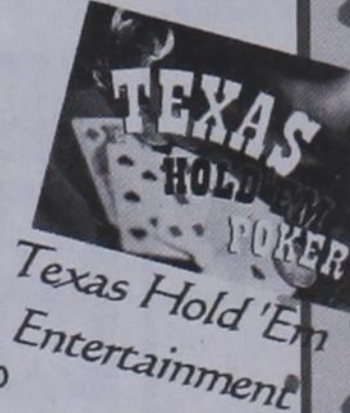
hosted by
Spearman Volunteer Fire Department

Saturday, October 23 • 6 p.m.
O' Loughlin Center • Spearman

BBQ Meal
Reverse Draw



3rd Prize: \$500
2nd Prize: \$1000
1st Prize: \$2500



Contact any Spearman firefighter or Kimmi at (806) 202-6374 for tickets!
\$50 for 2 meals and 1 drawing entry!

Lynx Down Comanches

The Spearman Lynx scored 16 points (almost 19) during a span of 43 seconds at the end of the second quarter to spring ahead of the West Texas Comanches on Friday night before a homecoming crowd of 1,500 at Lynx Stadium.

With the Comanches ahead 6-0, due to a 66-yard run by Terrence Bonds on West Texas' second possession of the game, the Lynx sprang into action with just 43 seconds remaining before the half. Jace Lang-Swan scored on a 2-yard run after a 13-play, 77-yard drive to the end zone.

Following the kickoff, WT's Bonds fumbled on the 22-yard-line, and the Lynx took over with 38 seconds left in the half.

Quarterback Blayne Schroeder threw a 21-yard touchdown pass to Everardo Flores with 31 seconds left, and Francisco Camacho's PAT was good, making the score 14-6.

Camacho's next kickoff went into the end zone, and WT's Jeremy O'Gorman dropped the ball, picked it up again, and was tackled for a safety with 11 seconds remaining in the half to give the Lynx a 16-7 lead.

The Comanches failed to get a first down and were forced to kick to the Lynx. Everardo Flores returned the ball to about the 30-yard-line, placing the Lynx in scoring position again with 3 seconds left in the half. Camacho's field-goal kick was slightly to the right due to wind, and the three-point attempt was thwarted.

"The final two minutes of the second quarter killed us," WT head coach Keith Hardin said. "We made some bad mistakes and they capitalized on them. Give them a world of credit. They played great ball-control football and made plays that they needed to."

"I'm disappointed at the way we lost, not how we played at

times. We improved on some things we needed to after the previous week's loss against White Deer. Now, we just have to go back and work on some other things that are fixable."

The Lynx dominated the second half as they ran 27 plays from scrimmage before the Comanches had run more than six. WT's first three possessions of the second half went for two plays each and resulted in two lost fumbles and a second safety.

"We were able to control the ball in the second half," Lynx head coach Steve Rodman said. "The way the game started out, I thought their speed was going to be a big factor."

"They have excellent speed, but our ability to control the ball and keep it away from them was huge for us."

"It's great to be 4-0 for the first time in a long while, but we're going to enjoy it only a few days. We start district play next week against Floydada at home, and we want to go back to work and focus on that game."

"Our team is the kind that can't just show up and win. We have to play hard, and that's what we did in this game."

Spearman's only points of the second half were on a safety and field goals by Camacho, from 38 and 33 yards.

The Lynx ran 61 plays for 349 total yards with 21 first downs. WT, meanwhile, ran 36 plays for 238 yards with eight first downs.

The Lynx will open district play by hosting Floydada on Friday, September 24, 2010.

Records: Spearman is 4-0. West Texas High is 2-2.

Noteworthy: Spearman scores 16 points during a 43-second span of the second quarter.

Score by Quarters

West Texas	6	0	0	8	14
Spearman	0	16	2	6	24

Scoring
WT--Terrence Bonds 66 run (kick blocked).

S--Jace Lang-Swan 2 run (Francisco Camacho kick).

S--Everardo Flores 21 pass from Blayne Schroeder (Camacho kick).

S--Safety.
S--Camacho 38 FG.
S--Camacho 33 FG.

	WT	SL
First Downs	8	21
Rushing	25-156	49-238
Passing	82	111
Total yards	238	349
C-A-I	7-11-1	8-12-1
Punts	1-38	1-46
Fumbles-Lost	3-3	3-1
Penalties	7-42	9-80

Individual Statistics
Rushing--WT: Bonds 6-85, Simmons 6-31, Hoff 8-35, O'Gorman 5-5. Spearman: Meddock 21-101, Lang-Swan 9-41, Rindlisbacher 4-30, Schroeder 12-21, Cator 2-40, Almanza 1-5.

Passing--WT: Hoff 7-11-1--82. Spearman: Schroeder 8-12-1-111.

Receiving--WT: Bonds 2-52, Ramirez 3-17, Cobb 1-7, Sale 1-6. Spearman: Meddock 3-39, Lang-Swan 2-26, Flores 1-21, Garcia 1-14, Cook 1-11.

Globe-News High School Football Players of the Week Honorable Mention

Spearman's Cameron Meddock carried 22 times for 101 yards and caught three passes for 39 yards in a 24-14 win over West Texas High.

Spearman's Blayne Schroeder completed 8-of-12 passes for 111 yards and one touchdown.

Spearman Powder Puff

The Spearman Powder Puff Homecoming Game was held on Tuesday, September 14, 2010. The Freshman/Junior team dominated the Sophomore/Senior team, by a score of 34-0.

Spearman 7th Grade

The Spearman 7th Grade lost to Stratford 44-0 on Thursday, September 16th.

Spearman 8th Grade

The Spearman 8th Grade defeated Stratford 16-8 on Thursday, September 16th.

Spearman JV

The Spearman JV football team lost to Stratford 16-26 on Thursday, September 16th.

Spearman Booster Club

The Spearman Booster Club will meet on Monday, September 27, 2010 at 7 p.m. in Coach Rodman's room at Spearman High School. Anyone interested is encouraged to attend!

Hounds Outrun Bulldogs, 40-0

Gruver was carried to victory on the legs of Jerrod Collier en route to their first victory of the season. The Greyhounds defeated the Hooker Bulldogs 40-18 before a homecoming crowd.

Collier carried the ball 26 times for 203 yards and two touchdowns. Two of Collier's runs went for a combined 90 yards. He had scoring runs of 31 and 59 yards.

Score by Quarters

Gruver	7	7	6	20	40
Hooker	6	0	6	6	18

Globe-News High School Football Player of the Week

Jerrod Collier, running back/defensive back

The Greyhounds won their first game after three losses, beating Hooker, Okla., 40-18, and Collier was a big reason. On offense, he carried 26 times for 203 yards and scored on runs of 31 and 59 yards. On defense, he made 10 tackles, including one for a loss, forced a fumble and recovered a fumble.

Comment: "We pretty much wore him out," Gruver head coach Terry Felderhoff said. "He got banged up some but only missed a few plays during the game. Jerrod is a good athlete with good speed. He's a real asset to our team on both

sides of the ball. He is the kind of player that doesn't like to come out of a game unless he has to."

Gruver Player of the Week for September 20

Jerrod Collier, Junior, #48, RB/DB, 5'9", 150 pounds, 26 rushes for 203 yards and 2 TDs; 10 tackles including 1 for a loss, forced a fumble and recovered a fumble.

Gruver 7th Grade

The Gruver 7th Grade defeated Pampa, 30-8, on Thursday, September 16th.

Gruver 8th Grade

The Gruver 8th Grade defeated Pampa, 30-0, on Thursday, September 16th.

Gruver JV

The Gruver JV football team defeated Arbor Academy, 36-0, on Thursday, September 16th.

Victor Serrano scored two touchdowns, Colten Jackson scored one touchdown and a two-point conversion, Victor Guereca scored one touchdown and a two-point conversion, Jace Lane scored one touchdown, and Manuel Borunda scored a two-point conversion.

Spearman Cross Country Results

The Spearman Varsity Lynxettes competed in the Running Water Draw Invitational Cross Country Meet in Plainview on Saturday, September 18, 2010. The Lynxettes competed in Division II, which is usually reserved for 4A-5A schools. They came in second with 52 points, behind Canyon Randall with 26, and ahead of Plainview with 81.

Tylo Farrar led the Lynxettes in third place, followed by Gately Garnett in 8th, Sarah Snider in 12th, Shelby Hanna in 13th, Malory Martin in 16th, and Itzel Meza in 19th.

The Varsity Lynxettes will run in the Lubbock Invitational Cross Country meet on Saturday, September 25th.

The Spearman Jr. High, JV and Varsity Lynx competed in the Sunray Invitational Cross Country Meet on Saturday, September 18, 2010.

The Varsity Lynxettes Team 2 came in 5th. They were led by Kylee Hegstrom in 15th, followed by Cynthia Mendoza in 19th, Erynn Saenz in 20th, Gena Hargrove in 28th, and Sadye Hanna in 34th.

The JV Lynxettes came in 3rd. They were led by Allison Brown in 7th. Other JV Lynxettes runners were Kyla Walker, Ashley Keim, Paige Pierson, Nikki Boyd, Katy Miser and Tristian Hughes.

The Spearman Jr. High Cross Country Lynxettes came in second with 52 points, one point behind Sunray with 51, and ahead of Dalhart with 62 and Borger with 88. There were 69 runners, and the top 15 medaled. The Lynxettes were led by Payton Harrell in 5th, Evelyn Jacquez in 10th, Slade Garnett in 12th, Hannah Patterson in 14th, and Brooke Walker in 15th.

The Spearman Jr. High Cross Country Lynx competed against five other teams in Sunray. The Lynx won first place with 46 points, followed by Borger with 51, Texline 75, and Pampa 86. There were 47 runners, and the top 15 medaled. The Lynx ere led by Peyton Garnett in 6th, Omar Mendoza 10th, Javier Caro 12th and Jose Carbajal 15th.

The Varsity Lynx, JV Lynx & Lynxettes and Jr. High Lynx & Lynxettes Cross Country teams will travel to Beaver, Oklahoma on Saturday, September 25th.

ALLSUP'S "MOO" GET ONE FREE!
BUY 12 GALLONS OF FRESH ALLSUP'S MILK...

Prices Good Thru 10/2/10

DELI SPECIALS

GIANT BBQ SANDWICH, TALLSUP & 99¢ BAG TOM'S CHIPS

\$3.98

BACON CHEESEBURGER BASKET WITH WEDGES & TALLSUP

\$3.29

BOGO

BUY ONE KELLOGG'S SPECIAL K BAR GET ONE FREE

BUY ONE LEMONADE OR ORIGINAL AIRHEAD EXTREME BELT GET ONE FREE

BUY ONE ASSORTED FLAVORS MENTOS ROLL GET ONE FREE

BUY ONE ASSORTED FLAVORS MENTOS GUM GET ONE FREE

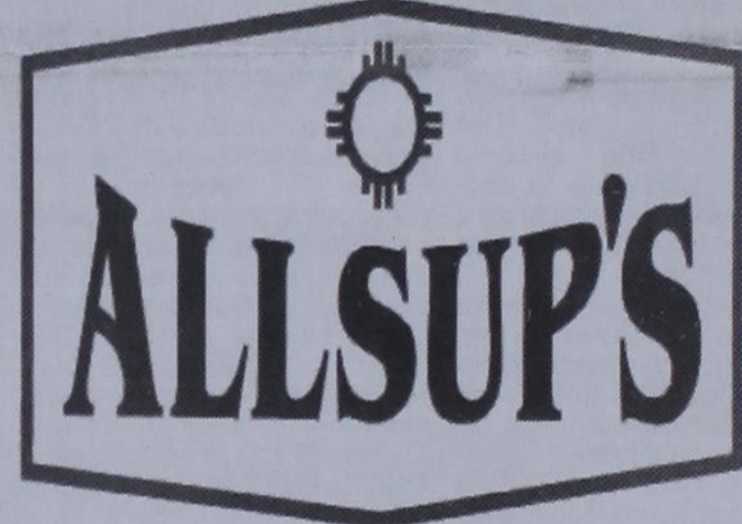
305 W. Kenneth
Spearman • 659-3135
101 Main Ave.
Gruver • 733-2953



BLUE BUNNY COOL TUBE OR HOMEMADE VANILLA BAR **79¢ EA.**

ASSORTED DOLLY MADISON SNACK CAKES

ASSORTED **99¢**



BUY A TALLSUP GET A 99¢ BAG OF TOM'S CHIPS FREE



SNICKERS, MILKY WAY, TWIX M&M'S (PLAIN OR PEANUT) MARS SINGLES **79¢**



////// MORE SPECIALS! ////

KELLOGG'S CEREAL CUPS ASSORTED **99¢**

ALLSUP'S SANDWICH BREAD 24 OZ. / 79¢ EACH OR **2 FOR \$1.29**

SELECT TRIDENT GUM 6 FLAVORS **\$1.09**

ALLSUP'S WHEAT BREAD 24 OZ. / 99¢ EACH OR **2 FOR \$1.49**

JACK LINKS CHEW .3 OZ. PKG. **99¢**

DUNKIN DONUTS CLASSIC ROAST 12 OZ. **\$6.99**

Q2 OR GATORADE ASSORTED 32 OZ. BOTTLE **2 FOR \$3.00**

COLORTEX BATHROOM TISSUE 4 ROLL PKG. **99¢**

RED DIAMOND ICE TEA GALLON **2 FOR \$5.00**

COLORTEX HOPPER TOWELS SINGLE ROLL PKG. **99¢**

PLAINS DIPS GREEN CHILE OR FRENCH ONION **\$1.79**

NOTICE OF PUBLIC HEARING CITY OF SPEARMAN TEXAS COMMUNITY DEVELOPMENT BLOCK GRANT PROGRAM COMMUNITY DEVELOPMENT FUND PROJECT

The City of Spearman is considering a proposed amendment to its approved 2009 Texas Community Development Block Grant Program (Tx-CDBG) contract with the Texas Department of Rural Affairs to make changes to the Performance Statement found within the contract between the City of Spearman and the Texas Department of Rural Affairs (TDRA). The improvements included in this contract amendment request are proposed to be made to water lines generally located.

A public hearing concerning the proposed amendment is scheduled to be held at 7:00 a.m. on Tuesday, September 28, 2010, at the City Hall located at 30 SW Court, Spearman, Texas. The purpose of this public hearing will be to discuss the proposed amendment and solicit citizen input on the proposed change in the scope of the City's 2009 Tx-CDBG project.

All citizens are encouraged to attend this public hearing and present their views to the City. The City Hall is accessible to the disabled; disabled individuals who might have difficulty in attending this public hearing should contact Mayor Brian Gillispie's office to arrange for special assistance. If anyone interested in attending the public hearing requires a translator, please contact Mayor Brian Gillispie's office prior to the public hearing so arrangements may be made. If you cannot attend in person, written comments may be submitted and will be accepted by the City until this public hearing is concluded.

A copy of the proposed amendment is available for review during normal business hours at the City Hall address listed above. For further information concerning the City's 2009 Tx-CDBG project and/or this proposed contract amendment, please contact Mayor Brian Gillispie, City of Spearman, at (806) 659-2524.

18(26/10)B

Application of Southwestern Public Service Company to Amend a Certificate of Convenience and Necessity for a Proposed 230 kV Transmission Line Within Hansford and Ochiltree Counties, Texas PUBLIC UTILITY COMMISSION OF TEXAS (PUC) DOCKET NO. 38524

Southwestern Public Service Company (SPS) originally ran this newspaper notice in August. The project has not changed. The purpose of this second newspaper notice is to correct some inadvertent errors and/or ambiguities in the original notice.

SPS is intending to secure a Certificate of Convenience and Necessity (CCN) amending its certificate to construct a new 230 kV transmission line in Hansford and Ochiltree Counties, Texas. SPS has filed an application with the Public Utility Commission of Texas (PUC or Commission) (Docket No. 38524 - Application of Southwestern Public Service Company to Obtain or Amend a Certificate of Convenience and Necessity for a Proposed 230 kV Transmission Line Within Hansford and Ochiltree Counties, Texas) and is requesting the approval of the Commission for this project.

The proposed project will provide a new 230 kV source to the Perryton, Texas area through the construction of approximately 38-50 miles of new 230 kV transmission line from the existing Hitchland Substation located in the northern/central Texas Panhandle region near the Texas-Oklahoma state line to a proposed new substation known as Ochiltree County Substation to be located near Perryton, Texas. The existing Hitchland Substation is served from SPS's 345 kV transmission lines (Circuit J06 and J07). This project is one part of nine in the Texas North Transmission (TXN) Upgrades required to serve load growth in the Texas and Oklahoma Panhandle areas. The substation upgrades required for the project will be located at Hitchland Substation and the proposed Ochiltree County Substation. The substation upgrade required at Hitchland Substation will include the addition of a new 230 kV circuit breaker terminal and associated relays, switches, and bus work. The proposed Ochiltree County Substation will consist of a new 230/115 kV - 150 MVA autotransformer along with four 115 kV circuit breaker terminals. The existing 115 kV lines from Perryton Substation to Cole Substation and Texas Farms Substation will be reconfigured and routed through the proposed new Ochiltree County Substation.

Table with 2 columns: Route Number, Links. 1 (Preferred Route) A-E-U-V-W-M-O-P-R, 2 A-E-U-H-M-O-Q, 3 A-E-F-G-T-Y-X-O-P-R, 4 A-E-F-G-T-Y-Z-Q, 5 A-B-C-G-I-L-N-Y-Z-Q

The following is a description of each of the Links: LINK A - Link A begins at the existing Hitchland Substation located in the northeast quadrant of Section 10. The Link travels in a southeasterly direction for approximately 1,960 feet through the eastern portion of Section 10 terminating at the southern boundary of Section 10 and the intersection of Links A, B, and E. The Link parallels the east side of an existing SPS 115 kV transmission line (Circuit T88) for approximately 1,440 feet.

LINK B - Link B begins at the intersection of Links A, B, and E. The Link travels in an easterly direction for a distance of approximately 6,600 feet from the northeast corner of Section 30 through the northwest corner of Section 31 to the northeast corner in a semicircle following the outer limits of the irrigation system located in Sections 11 and 31. A row of wind turbines follows this

corner structures. SPS chose single-pole steel structures over wood structures, in part, because of the low maintenance cost, strength of the line during adverse conditions, resistance to fire damage, and increased span lengths. The proposed transmission line will be constructed on new right-of-way consisting of a proposed easement width of 70 feet.

SPS is a member of, and its entire transmission system is located within, the Southwest Power Pool (SPP). As a Regional Transmission Organization, the SPP determined the need for this transmission line as a part of their regional studies. The SPP issued a Notification to Construct this line as a result of this determination. Specifically, the proposed new 230 kV project will provide a new stronger transmission source to the Perryton, Texas area and will improve reliability on the existing 115 kV transmission system.

A copy of the map illustrating SPS's preferred and alternate routes has been provided to directly impacted landowners. This map may be reviewed at SPS's office located at 600 S. Tyler, Amarillo, Texas, by contacting Brad Sparks at (806) 378-2132. Persons wishing a copy of the map should contact James Bagley at (806) 378-2868.

Depending on the route selected, the total estimated cost of the project, including the transmission line and substation costs, is approximately \$26,572,869.

Persons with questions about the transmission line may contact SPS's representatives Brad Sparks at 806-378-2132 or James Bagley at 806-378-2868. Persons who wish to intervene in the docket or comment on SPS's application should mail the original and 10 copies of their requests to intervene or their comments to:

Public Utility Commission of Texas Central Records

Attn: Filing Clerk 1701 N. Congress Avenue P. O. Box 13326 Austin, Texas 78711-3326

Persons who wish to intervene in the docket must also mail a copy of their request for intervention to all parties in the docket and all persons that have pending motions to intervene, at or before the time the request for intervention is mailed to the PUC.

The deadline for intervention in the docket is November 1, 2010, and the PUC should receive a letter from anyone requesting intervention by that date.

The PUC has a brochure titled "Landowners and Transmission Line Cases at the PUC." Copies of the brochure are available from Brad Sparks at (806) 378-2132 or James Bagley at (806) 378-2868 or may be downloaded from the PUC's website at www.puc.state.tx.us. To obtain additional information about this docket, you may contact the PUC's Customer Assistance Hotline at (512) 936-7120 or (888) 782-8477. Hearing and speech-impaired individuals (TTY) may contact the PUC's Customer Assistance Hotline at (512) 936-7136 or toll free at (800) 735-2989. In addition to the intervention deadline, other important deadlines may already exist that affect your participation in this docket. You should review the orders and other filings already made in the docket.

All routes described below will begin at the existing Hitchland Substation and end at the proposed Ochiltree County Substation. The existing Hitchland Substation is located near the Texas state line approximately fifteen miles north of Gruver, Texas, in north central Hansford County. The existing Hitchland Substation is located approximately two miles northwest of the intersection of County Road (CR) B and State Highway 207. The Hitchland Substation is located in the northeast quadrant of Section 10. The proposed Ochiltree County Substation is located north of the City of Perryton, Texas in the southeast corner of Section 19.

Table with 2 columns: Route Number, Links. 1 (Preferred Route) A-E-U-V-W-M-O-P-R, 2 A-E-U-H-M-O-Q, 3 A-E-F-G-T-Y-X-O-P-R, 4 A-E-F-G-T-Y-Z-Q, 5 A-B-C-G-I-L-N-Y-Z-Q

The following is a description of each of the Links:

LINK A - Link A begins at the existing Hitchland Substation located in the northeast quadrant of Section 10. The Link travels in a southeasterly direction for approximately 1,960 feet through the eastern portion of Section 10 terminating at the southern boundary of Section 10 and the intersection of Links A, B, and E. The Link parallels the east side of an existing SPS 115 kV transmission line (Circuit T88) for approximately 1,440 feet.

LINK B - Link B begins at the intersection of Links A, B, and E. The Link travels in an easterly direction for a distance of approximately 6,600 feet from the northeast corner of Section 30 through the northwest corner of Section 31 to the northeast corner in a semicircle following the outer limits of the irrigation system located in Sections 11 and 31. A row of wind turbines follows this

same alignment. From the northeast corner of Section 31, the Link intersects the southern boundary of Section 11 and north of Section 60 heading east along and parallel to CR B along the north side for approximately 14,650 feet to its intersection with CR 17 on the east side of an abandoned rail line. This portion of the Link parallels the southern boundary of Sections 11, 12, and 13. The Link ends at the intersection of Links B, C, and D.

LINK C - Link C begins at the intersection of Links B, C, and D and at the intersection of CR B and CR 17. The Link heads due east starting at approximately 520 feet east of CR 17 and an abandoned rail line. The Link continues parallel to the north side of CR B traveling due east to the intersection of CR B and CR 20, a total of approximately 12,720 feet and along the southern boundary of Sections 13, 14, and 15 crossing one wetland, one waterbody, CR 19, a pipeline, and one stream. The Link then turns due south at the northeast corner of Section 37 paralleling the east side of CR 20 and the western boundary of Section 37 for approximately 5,120 feet. This portion of the Link crosses a pipeline and a tributary of Hackberry Creek ending on the north side of FM 1261. The Link ends at the intersection of Links C, F, and G.

LINK D - Link D begins at the intersection of Links B, C, and D. The Link travels in a southwesterly direction through the middle of Section 48 paralleling the east side of an abandoned rail line and CR 17 for approximately 5,600 feet. The Link ends at the intersection of Links D, E, F, and U.

LINK E - Link E begins approximately 1,960 feet south of the existing Hitchland Substation, at the intersection of Links A, B, and E. The Link travels approximately 5,440 feet in a southeasterly direction through Section 30 to the southwest corner of Section 31. This portion of the Link parallels the east side of an existing SPS 115 kV transmission line (Circuit T88). The Link then turns due east parallel to the southern boundary of Sections 1, 60, 61, 48, and Section 1 for a distance of approximately 18,160 feet to the east side of an abandoned rail line and CR 17. This portion of the Link crosses SH 207. Wind turbines are situated along the common boundary of Sections 31 and 32. The Link terminates at the intersection of Links D, E, F, and U.

LINK F - Link F begins at the intersection of Links D, E, U, and F on the east side of an abandoned rail line and CR 17. The Link travels due east along the southern boundary of Sections 48, 47, and 38 crossing an unnamed tributary, two pipelines, and three unnamed streets, for approximately 14,640 feet to the east side of CR 20. A portion of this Link parallels the north side of a pipeline for approximately 6,000 feet. The Link ends at the intersection of Links C, F, and G.

LINK G - Link G begins at the intersection of Links C, F, and G at the east side of CR 20 on FM 1261. The Link heads due east parallel to the southern boundary of Section 37 for approximately 4,160 feet. The Link then crosses the section line to parallel the northern boundary of Sections 36, 27, 24, 14, and 11 for approximately 22,255 feet crossing Hackberry Creek and a pipeline and paralleling the south side of FM 1261 before ending at the northwest corner of Section 2. The Link terminates at the intersection of Links G, I, J, and T.

LINK H - Link H begins at the intersection of Links U, V, and H at the southwest corner of Section 50. The Link heads south along the western boundary of Section 51 and parallel to the east side of CR 17, for approximately 5,080 feet to the southwest corner of Section 51 crossing one tributary of Hackberry Creek. The Link then turns due east for approximately 42,600 feet paralleling the southern boundary of Sections 51, 44, 41, 34, 29, 22, 16, and 9, crossing three tributaries of Hackberry Creek, Hackberry Creek, a pipeline at the southeast quadrant of Section 41, CR 20 and CR 22, another pipeline at the southeast quadrant of Section 29 and one in the southeast quadrant of Section 9. The Link terminates on the east side of FM 3214 and the north side of CR F and the intersection of Links H, M, and W.

LINK I - Link I begins at the intersection of Links G, J, I, and T, extending due south along the western boundary of Sections 2 and 3 and parallel to the east side of FM 3214 for approximately 10,760 feet. The Link terminates at the southwest corner of Section 3, at the intersection of Links V, I, and W.

LINK J - Link J begins at the intersection of Links G, T, I, and J at the northwest corner of Section 2. The Link travels due north approximately 5,485 feet parallel to the western boundary of Section 1 and FM 1261. It continues through Section 19, and into Texas County, Oklahoma for approximately 3,985. The Link crosses the Texas-Oklahoma state line approximately 9,570 feet from where the link begins. The Link continues north approximately 10,900 feet north of the Texas-Oklahoma state line crossing two tributaries of Hackberry Creek and an

east-west pipeline and paralleling the western boundaries of Sections 36 and 25 along the east side of County Highway 16. The Link then turns due east for approximately 26,160 feet paralleling the southern boundary of Sections 24, 19, 20, 21, and 22, crossing several tributaries of Hackberry Creek. At that point, the Link turns due north for approximately 5,080 feet paralleling the eastern boundary of Section 22, crossing two unnamed streams and one tributary of Palo Duro Creek. The Link travels due east parallel to the south side of County Highway 14 for approximately 21,080 feet paralleling the northern boundary of Sections 23, 24, 19, and 20, crossing Palo Duro Creek, two small unnamed tributaries, two tributaries of Cottonwood Creek, and Cottonwood Creek. At the northeast corner of Section 20, the Link heads due south parallel to the eastern boundary of Sections 20 and 29 crossing two tributaries of Cottonwood Creek and Cottonwood Creek twice for approximately 10,400 feet. The Link terminates at the intersection of Links J, K, and L.

LINK K - Link K begins at the intersection of Links J, L, and K and in the southeast corner of Section 29 in Texas County, Oklahoma. The Link extends due east for approximately 5,560 feet parallel to the southern boundary of Section 28 and parallel to the north side of EO340 and then turns south parallel to the western boundary of Section 34 in Texas County, Oklahoma along the east side of County Highway 10 approximately 5,440 feet, intersecting a pipeline at approximately 560 feet from where it turns south. The Link then turns due west for approximately 1,480 feet parallel to the south side of EO350 Road in Oklahoma to its termination at the intersection of Links K, L, and N in Oklahoma.

LINK L - Link L begins at the intersection of Links J, K, and L. The Link heads due south for approximately 5,520 feet, crossing Cottonwood Creek and a pipeline, paralleling the eastern boundary of Section 32 and the west side of N1110 to a point south of EO350 in Texas County, Oklahoma. The Link then travels due east along the south side of EO350 for approximately 4,200 feet paralleling the Texas-Oklahoma state line crossing Cottonwood Creek, paralleling the northern boundary of Section 9 along the Texas-Oklahoma state line. The Link terminates at the intersection of Links L, K, and N in Oklahoma.

LINK M - Link M begins at the intersection of Links H, W, and M at the southwest corner of Section 4. The Link extends due east parallel to the north side of CR F for approximately 16,100 feet along the southern boundary of Sections 4, 16, 17, 18, 19, and 20 and the H.C. Day, T.J. Sparks, and W.J. Mitchell Surveys for a total of approximately 52,720 feet. The Link crosses several unnamed streets, Palo Duro Creek, and a tributary of Palo Duro Creek. The Link crosses a pipeline in the southwest quadrant of the H.C. Day Survey approximately 18,080 feet west of its termination point at the intersection of Links M, O, and X, at a point approximately 775 feet west of the intersection of FM 1267 and CR 5.

LINK N - Link N begins at the intersection of Links K, L, and N in Oklahoma. The Link crosses the state line and extends due south parallel to the east side of CR 5 for approximately 17,360 feet, crossing an unnamed street and a tributary of Chiquita Creek. The Link ends at the north side of CR E, at the intersection of Links N, T, and Y.

LINK O - Link O begins at the intersection of Links M, X, and O. The Link travels due east for approximately 16,480 feet parallel to the north side of FM 1267 and the southern boundary of the GF Sage and JJ Ware Surveys, crossing one tributary of Chiquita Creek, Chiquita Creek and two pipelines. The Link then continues along the north side of FM 1267 crossing the northeast corner of Section 26 in a southeasterly direction for approximately 3,640 feet and crossing CR 8 to the approximate midpoint of the southern boundary of Section 116. At that point, the Link extends due east along the north side of FM 1267 for approximately 13,180 feet parallel to the southern boundary of Sections 116, 105, 94, and 83 and crossing CR 10 and one pipeline. At this point, the Link crosses to the south side of FM 1267 and parallels the northern boundary of Section 71 for approximately 3,950 feet crossing CR 11 and CR 12. The Link then crosses back to the north side of FM 1267 and parallels the north side of FM 1267 and the southern boundary of Sections 61, 50, 39, and 28 crossing CR 13 and an existing SPS 115 kV electric transmission line. Approximately 1,043 feet from its termination point, the Link turns southeasterly and crosses to the south side of FM 1267. The Link ends at the intersection of Links O, P, Q, and Z and the intersection of FM 1267 and CR 15.

LINK P - Link P begins at the intersection of CR 15 and FM 1267 and the intersection of Links O, P, Q, and Z. The Link heads due east parallel to the northern boundary of Section 18 along the south side of FM 1267 for approximately 4,040

feet. The Link terminates at the intersection of Links P, R, and S.

LINK Q - Link Q begins at the intersection of Links O, P, Z, and Q. The Link travels due south along the west side of State Loop 143 parallel to the eastern boundary of Sections 27 and 26 for approximately 7,200 feet crossing one unnamed street and one unnamed stream. At the southeast corner of Section 26, the Link turns due east parallel to the southern boundary of Section 19 and the north side of an existing SPS 115 kV transmission line (Circuit T02) for approximately 3,880 feet. The Link ends at the proposed Ochiltree County Substation, at the termination of Links Q, R, and S.

LINK R - Link R begins at the intersection of Links P, S, and R. The Link heads due south parallel to the western boundary of Sections 5 and 4 for approximately 7,360 feet. The Link terminates at the north side of the proposed Ochiltree County Substation at the termination of Links Q, R, and S.

LINK S - Link S begins at the intersection of Links P, R, and S. The Link travels due east along the south side of FM 1267 and the northern boundary of Section 5 for approximately 3,400 feet. The Link turns due south for approximately 7,560 feet along the eastern half of Sections 5 and 4. The Link turns to the west paralleling the north side of an existing SPS 69kV electric transmission line along the southern boundary of Section 4 for approximately 2,840 feet before terminating on the east side of the proposed Ochiltree County Substation at the termination of Links Q, R, and S.

LINK T - Link T begins at the intersection of Links J, G, I, and T. The Link travels due east for approximately 32,040 feet along the northern boundary of Sections 2, 6, 7, 8, 9, and 10 crossing a pipeline, several unnamed streets, Sand Draw, a tributary of Sand Draw, and Palo Duro Creek. The Link turns south for approximately 8,840 feet, paralleling the eastern boundary of Sections 10 and 11 crossing a tributary of Palo Duro Creek and an unnamed street. The Link travels due east paralleling the northern boundary of the H.C. Day and T.J. Sparks Surveys, for approximately 14,120 feet crossing one tributary of Palo Duro Creek, then along the south side of CR E on the northern boundary of the W.J. Mitchell Survey or approximately 4,760 feet, for a total of approximately 18,880 feet. The Link terminates at the intersection of Links N, T, and Y.

LINK U - Link U begins at the intersection of Links D, E, F, and U. The Link extends in a southwesterly direction parallel to the east side of CR 17 and an abandoned rail line for approximately 3,720 feet through the northwest corner of Section 49 crossing a pipeline. The Link then leaves the abandoned rail line and travels due south along the east side of CR 17 for approximately 7,100 feet along the western boundary of Sections 49 and 50 crossing a pipeline and one unnamed stream to its intersection with an unnamed east-west street at the southwest corner of Section 50. The Link ends at the intersection of Links H, V, and U.

LINK V - Link V begins at the intersection of Links U, H, and V at the southwest corner of Section 50. The Link extends due east for approximately 42,360 feet along the southern boundary of Sections 50, 45, 40, 35, 28, 23, 15, and 10. The Link crosses Hackberry Creek, CR 20, CR 22, FM 3214, and three pipelines. The Link terminates at the southwest corner of Section 3 at the intersection of Links I, V, and W.

LINK W - Link W begins at the intersection of Links W, V, and I at the southwest corner of Section 3. The Link travels due south along the western boundary of Section 4 and parallel to the east side of FM 3214 for a distance of approximately 5,280 feet to the southwest corner of Section 4 at CR F. The Link terminates at the intersection of Links H, M, and

W. LINK X - Link X begins at the intersection of Links Y, Z, and X and at the intersection of CR E and CR 5. The Link runs in a southerly direction parallel to the east side of CR 5 for approximately 6,960 feet. It terminates at a point approximately 775 feet west of the intersection of FM 1267 and CR 5 and at the intersection of Links M, O, and X.

LINK Y - Link Y begins at the intersection of Links T, Y, and N. The Link travels due east parallel to the south side of CR E to its intersection with CR 5 for approximately 2,000 feet. The Link terminates at the intersection of Links X, Y, and Z.

LINK Z - Link Z begins at the intersection of Links X, Y, and Z. The Link extends due east for approximately 7,482 feet parallel to the south side of CR E and the northern boundary of the GF Sage Survey, crossing two tributaries of Chiquita Creek and CR 6. The Link then extends due north parallel to the east side of CR 6A for approximately 3,280 feet. The Link then turns due east for approximately 9,360 feet, crossing one tributary of Chiquita Creek, Chiquita Creek, and two pipelines. The Link heads due north for approximately 2,560 feet parallel to the west side of CR 8 to the intersection of CR 8 and CR D, crossing another tributary of Chiquita Creek. The Link then travels due east for approximately 34,480 feet along the north side of CR D, crossing through Section 10, and along the southern boundary of Sections 120, 101, 98, 79, 76, 57, 54, 35, and 32, crossing four identified wetland features, one tributary to Chiquita Creek, CR 10, CR 13, one pipeline and an existing SPS 115 kV transmission line (Circuit T02) in Section 35. At CR 15, the Link turns due south parallel to the west side of CR 15 and the eastern boundary of Sections 31, 30, 29, and 28 for approximately 15,000 feet. The Link terminates at the northeast corner of Section 27 and the intersection of Links O, P, Q, and Z.

19(20/10)B

See us for: AUTO • HOME • CROP HAIL • FARM & RANCH • MULTIPERIL • LIVESTOCK INSURANCE BORT AGENCY, INC. 510 Main St. • Gruver, TX (806) 733-2456

Are You A Victim of Domestic Violence, Sexual Abuse or Physical, Emotional or Sexual Assault? Call Toll Free Hotline 1-800-753-5308 We can see individuals from Hansford County anytime upon request. Call 435-5008 or 1-800-753-5308 to set up an appointment in Hansford County. We operate a safe place for victims and their children to stay in times of crisis. Battering Intervention & Anger Management Available Panhandle Crisis Center Serving Hansford, Lipscomb & Ochiltree Counties 301 S. Ash • Perryton, TX Memorials Accepted

MITCHELL THEATRES.COM GUYMON, OK • LIBERAL, KS • NEWTON, KS NORTHTRIDGE 8 Guymon, Oklahoma www.northridge8.com 580-338-3281

SOUTHGATE 6 Liberal, Kansas www.southgate6.com 620-624-5573

SEQUOYAH 8 Garden City, Kansas www.sequoyah8.com 620-275-2760

CHISHOLM TRAIL 8 Newton, Kansas www.chisholmtrail8.com 316-283-0555

FRESH POPCORN EVERYDAY! -PARTY ROOM & ARCADE-

Palace Theatre 210 Main Street Canadian TX 79014 806-323-5133 www.palacetheatre.com The Palace Theatre meets Lucasfilm THX specifications for site and sound quality.

REAL ESTATE

FOR SALE: 1984 Revere Trailer 14x64. Good condition. Must be moved. Call 806-733-5490. 2(9/16/10)

HELP WANTED

HELP WANTED: Dean Cluck Feedyard is now accepting applications for the following job openings: Feed Mill Operator, Feed Truck Driver, and Pen Rider. Experience preferred. Apply at Feedyard, located SW of Gruver, or fax resume to (806) 733-2244. 2(9/2/10)B

FOR SALE

FOR SALE: 2004 Lincoln Town Car. 30,000 miles, new set of tires. Must sell due to illness. Asking \$18,000. Call 644-2623. TFN(9/23/10)B

SERVICES

FIREWOOD FOR SALE: Taking orders for firewood. Call 417-529-1024 or 620-856-5489. Leave message if no answer. 4(9/2/10)B

CLICK PAINTING & HOME REPAIR Painting, Texturing, Drywall Repair, Fencing & General Carpentry. Serving Perryton, Spearman & Gruver. Don Click, 648-1480, or 202-1391 (cell). TFN(10/15/09)B

HOOCY POOCY PARLOR Call us for all your pet's grooming and boarding needs. Call now for reservations! 806-273-2724. TFN(11/2/07)B

PUBLIC NOTICE

NOTICE OF PUBLIC HEARING FOR THE CITY OF GRUVER

A public hearing will be held on September 29, 2010 at 6 p.m. in the council chambers at Gruver City Hall, 201 East Broadway, to consider the 2010-2011 Annual Budget. 2(9/16/10)B

PUBLIC NOTICE

The City of Gruver is accepting sealed bid proposals until 1:30 p.m. October 15, 2010 for fiscal year 2009-2010 Audit Services. Any proposals received after that time and date will not be read and returned unopened and not considered. Please mail or deliver bid proposals to City of Gruver, PO Box 947 or 201 East Broadway, Gruver TX 79040. For

FIREWOOD FOR SALE

Cedar firewood for sale. Delivered & stacked, or self pickup. Call (806) 658-2573. 15(8/12/10)P

questions, contact City Manager Steve McKay at 806-733-2424. The City reserves the right to reject any and/or all bids. 2(9/23/10)B

NOTICE OF PUBLIC HEARING

The Planning and Zoning Committee of the City of Gruver will hold a PUBLIC HEARING to discuss a zoning change, which has been applied for by Victor Rios.

The changes will apply to property located in Block 2, Lots 24-28, Original Town Addition of Gruver known as 406 Front Street. Requesting a change from I-H Industrial Heavy to M-H Manufactured Housing. The applicant wishes to place a Mobile Home in the back of his property.

The public hearing will be held on Monday, October 11, 2010 at 6:00 p.m. at the Gruver City Hall, 201 East Broadway Street, Gruver. 2(9/23/10)B

NOTICE OF RECEIPT OF APPLICATION AND INTENT TO OBTAIN AIR PERMIT RENEWAL

PERMIT NUMBER 45763 APPLICATION Farmers Ag Supply, LLC, has applied to the Texas Commission on Environmental Quality (TCEQ) for renewal of Air Quality Permit Number 45763, which would authorize continued operation of an Anhydrous Ammonia Storage Tank located at 703 Collard Street, Spearman, Hansford County, Texas 79081. The existing facility is authorized to emit the following air contaminants: ammonia.

This application was submitted to the TCEQ on July 26, 2010. The application will be available for viewing and copying at the TCEQ central office, TCEQ Amarillo regional office, and the Hansford County Library, 122 Main Street, Spearman, Hansford County, Texas, beginning the first day of publication of this notice. The facility's compliance file, if any exists, is available for public review in the Amarillo regional office of the TCEQ.

The executive director has determined the application is administratively complete and will conduct a technical review of the application. Information in the application indicates that

this permit renewal would not result in an increase in allowable emissions and would not result in the emission of an air contaminant not previously emitted. The TCEQ may act on this application without seeking further public comment or providing an opportunity for a contested case hearing if certain criteria are met.

PUBLIC COMMENT You may submit public comments, or request for a contested case hearing to the Office of the Chief Clerk at the address below. The TCEQ will consider all public comments in developing a final decision on the application. **The deadline to submit public comments is 15 days after newspaper notice is published.** After the deadline for public comments, the executive director will prepare a response to all relevant and material, or significant public comments. Issues such as property values, noise, traffic safety, and zoning are outside of the TCEQ's jurisdiction to address in the permit process.

After the technical review is complete the executive director will consider the comments and prepare a response to all relevant and material, or significant public comments. If only comments are received, the response to comments, along with the executive director's decision on the application, will then be mailed to everyone who submitted public comments or who is on the mailing list for this application, unless the application is directly referred to a contested case hearing.

OPPORTUNITY FOR A CONTESTED CASE HEARING You may request a contested case hearing. The applicant or the executive director may also request that the application be directly referred to a contested case hearing after technician review of the application. A contested

7	2	4	9	1	3	5	6	8
1	6	3	7	5	8	4	2	9
9	8	5	2	6	4	3	1	7
2	3	1	6	4	9	7	8	5
8	9	6	5	7	1	2	3	4
4	5	7	8	3	2	6	9	1
3	7	8	4	9	6	1	5	2
5	1	9	3	2	7	8	4	6
6	4	2	1	8	5	9	7	3

RESTS SOS FLEX
 UNTIE CAM GRIMM
 EDEMA ARE EERIE
 SPIDER LANTERN
 DOC ETUI
 JAR GLUT FULCRA
 OWES AGED SOLAR
 KALE THROB FADS
 ERICH SNOW TRIO
 RECTOS AMAH KIN
 NAIL NEE
 MAGNETO BATMAN
 ARIES TWO MOVIE
 RIVET AHA ATOLL
 SLED SOT NEWEL

case hearing is a legal proceeding similar to a civil trial in state district court. Unless a written request for a contested case hearing is filed within 15 days from this notice, the executive director may act on the application. If no hearing request is received within this 15-day period, no further opportunity for hearing will be provided. According to the Texas Clean Air Act § 382.056(o) a contested case hearing may only be granted if the applicant's compliance history is in the lowest classification under applicable compliance history requirements and if the hearing request is based on disputed issues of fact that are relevant and material to the Commission's decision on the application. Further, the Commission may only grant a hearing on those issues raised during the public comment period and not withdrawn.

A person who may be affected by emissions of air contaminants from the facility is entitled to request a hearing. If requesting a contested case hearing, you must submit the following: (1) your name (or for a group or association, an official representative), mailing address, daytime phone number, and fax number, or if any; (2) applicant's name and permit number; (3) the statement "[I/we] request a contested case hearing;" (4) a specific description of how you would be adversely affected by the application and air emissions from the facility in a way not common to the general public; (5) the

location and distance of your property relative to the facility; and (6) a description of how you use the property which may be impacted by the facility. If the request is made by a group or association, the one or more members who have standing to request a hearing and the interests the group or association seeks to protect must also be identified. You may also submit your proposed adjustments to the application/permit which would satisfy your concerns. **Requests for a contested case hearing must be submitted in writing within 15 days following this notice to the Office of the Chief Clerk at the address below.**

If any requests for a contested case hearing are timely filed, the executive director will forward the application and any requests for a contested case hearing to the Commissioners for their consideration at a scheduled Commission meeting. Unless the application is directly referred to a contested case hearing, the executive director will mail the response to comments along with notification of Commission meeting to everyone who submitted comments or is on the mailing list for this application. If a hearing is granted, the subject of a hearing will be limited to disputed issues of fact relating to relevant and material air quality concerns raised during the comment period. Issues such as property values, noise, traffic safety, and zoning are outside of the Commission's jurisdiction to address in this

proceeding.

MAILING LIST In addition to submitting public comments, you may ask to be placed on a mailing list for this application by sending a request to the Office of the Chief Clerk at the address below. Those on the mailing list will receive copies of future public notices (if any) mailed by the Office of the Chief Clerk for this application.

AGENCY CONTACTS AND INFORMATION All public comments and requests must be submitted either electronically at www.tceq.state.tx.us/about/comments.html or in writing to the Texas Commission on Environmental Quality, Office of the Chief Clerk, MC-105, PO Box 13087, Austin Texas 78711-3087. If you choose to communicate with the TCEQ electronically, please be aware that your email address, like your physical mailing address, will become part of the agency's public record. For more information about this permit application or the permitting process, please call the Office of Public Assistance, Toll Free, at 1-800-687-4040. Si desea informacion en Espanol, puede llamar al 1-800-687-4040. General information regarding the TCEQ can be found at www.tceq.state.tx.us.

Further information may also be obtained from Farmers Ag Supply, LLC, PO Box 385, Spearman Texas 79081-0385 or by calling Mr. Lonnie Clemmons, Manager at (806) 659-5507.

Notice Issuance Date: August 6, 2010. 1(9/23/10)B

Taylor Petroleum Companies
Equal Opportunity Employer
 At Taylor, it's all about a positive thinking attitude!
 Right now, we're looking for hard-working, high-energy, dedicated individuals who want to work with others in a dynamic environment.
 Be a part of the Taylor Team and enjoy flexible hours, competitive wages, free uniform shirts, wage reviews, career advancement opportunities & benefits. Taylor has some of the best full-time and part-time positions available in the industry.
APPLY NOW AT: www.taylorfoodmart.com

Tong's Chinese Restaurant
 (806) 644-2838
 22 Archer Street • Spearman
Daily Buffet
 Lunch - 11 a.m.-2:30 p.m. • Dinner - 5:30-9 p.m.
 Open Wednesday-Monday - Closed Tuesday
NEW
 Sushi on Sunday Buffet

TEXAS STATEWIDE CLASSIFIED ADVERTISING NETWORK
TexSCAN

TexSCAN Week of September 19, 2010

AUCTION
 ONLINE AUCTIONS - TX PARKS & WILDLIFE, closes 9/24. Trucks & More! 6.5% Purchasers Fee; US Fish & Wildlife weekly closings. www.LSA.cc or www.LSO.cc Burgess 7878

BIG EAGLE AUCTION AND Estate Services. TX11317. Baker Estate, Nice Antiques, Truck, 305 Limestone Terrace, Jarrel, TX. Sept 25-26, 10am Sun 1pm 512-845-2327 www.bigagleauctions.com

AUTO
 SAVE \$1000's On Auto Repairs! Get a vehicle service contract! Covered repairs paid, towing, rental car/roadside assistance 130,000 miles or less. FREE quote: 1-800-364-1655

BUSINESS OPPORTUNITY
 HIGH-SPEED INTERNET \$39.99/month. No DSL? No Cable? No Problem! Speeds 50x faster than dial-up. Lowest price anywhere - 5Mbps. Free Installation plus \$100 rebate. 1-888-338-0938

TONS OF GREAT PAYING FRAC hauling work in Texas. Need Big Rig, Pneumatic Trailer & Blower 817-769-7621. Investors call Flex Frac Logistics 817-769-7704

NATIONAL CARRIERS needs O/O's, Lease Purchase. Company Drivers for it's Expanding Fleet. Offering Regional/OTR runs. Outstanding Pay Package. Excellent Benefits. 1-888-707-7729 www.nationalcarriers.com

DRIVER/OWNER Operator Regional Company. drivers start up at 36 cpm O/O \$1.17 loaded. \$0 empty. CDL-A w/15 mo OTR exp. Apply today: 1-877-826-4605 www.tangotransport.com

DRIVERS - CO & O/O'S - Looking for an outstanding freight opportunity in your area? FFE seeks O/O & CO Drivers. Class A CDL & 1yr. Exp. Call 1-214-819-5680 or recruit@ffe.net

REEFER AND FLATBED DRIVERS NEEDED! Experienced drivers & Class A commercial student welcome! Incredible Freight network offers plenty of miles! Call Price today: 1-800-277-0212 www.primcinc.com

Advantages Keep Coming! High Miles, \$500 Sign-on for Flatbed. New performance bonus program. 2011 Freightliner Cascadias have arrived. CDL-A, TWIC Card and Good Driving Record. Western Express 1-866-863-4117

DRIVERS - 100% Tuition Paid CDL Training! Start your New Career. No Credit Check, No Experience required! Call 1-888-417-7564 **CRST EXPEDITED** www.JoinCRST.com

"CAN YOU DIG IT?" Heavy Equipment School. 3 Wk training program. Backhoes, Bulldozers, Trackhoes. Local job placement asst. Start digging dirt now. 1-866-362-6497

EQUIPMENT FOR SALE
 NEW NORWOOD SAWMILLS - Lumber Mate-Pro handles logs 34" diameter, mills boards 28" wide. Automated quick-cycle-sawing increases efficiency up to 40%! www.NorwoodSawmills.com/300N, 1-800-661-7746 Ext 300N

FINANCIAL
IT'S YOUR MONEY! Lump sums paid for structures settlement or fixed annuity payments. Rapid, high payouts. Call J.G. Wentworth. 1-866-294-8772. **A+ Better Business Bureau rating**

HELP WANTED
DRIVERS
 DRIVERS-ASAP! New pay increase: 376-436 cpm, fuel bonus up to 4¢ cpm need CDL-A and 3 months recent OTR. 1-877-258-8782. www.mclontruck.com

DRIVERS - O/O'S FED EX truck; all hub-to-hub miles paid. Mileage plus fuel programs, monthly safety incentives, weekly settlement. Fleet owners welcome! 1-866-832-6339. www.buildgroundbiz.com

REGIONAL DRIVERS WANTED! More equipment, top pay, excellent benefits, newer equipment. Up to 41¢/mile company drivers. Heartland Express. 1-800-441-4953. www.heartlandexpress.com

NATIONAL CARRIERS needs O/O's, Lease Purchase. Company Drivers for it's Expanding Fleet. Offering Regional/OTR runs. Outstanding Pay Package. Excellent Benefits. 1-888-707-7729 www.nationalcarriers.com

DRIVER/OWNER Operator Regional Company. drivers start up at 36 cpm O/O \$1.17 loaded. \$0 empty. CDL-A w/15 mo OTR exp. Apply today: 1-877-826-4605 www.tangotransport.com

DRIVERS - CO & O/O'S - Looking for an outstanding freight opportunity in your area? FFE seeks O/O & CO Drivers. Class A CDL & 1yr. Exp. Call 1-214-819-5680 or recruit@ffe.net

REEFER AND FLATBED DRIVERS NEEDED! Experienced drivers & Class A commercial student welcome! Incredible Freight network offers plenty of miles! Call Price today: 1-800-277-0212 www.primcinc.com

ABSOLUTELY THE BEST VIEW Lake Medina/Bandera 1/4 acre tract, central W/S/E. RV/motor home/house, OK only \$830 down \$235 month (2.91%/10yr). Guaranteed financing. More information call 1-830-460-8354

AMAZING LAKEVIEW! Gorgeous 1 acre homestead with huge views of Texas's 3rd largest lake. Access to lakeside park and pool area. Paved roads, utilities available. Build when you want, was \$49,900, now \$29,900. Call now! 1-214-613-1284

Sanderson area, 157.07 acres at \$395/acre. Native game. Owner financed or TX Vet. 1-866-886-0199 www.westernexasland.com

13.9 Acres, Duval County, end of the road. Heavy brush cover. Deer, Hogs, quail. Private roads, locked gate. \$2911/acre, owner financing or TX Vet. 1-866-286-0199. www.westernexasland.com

BANK SALES MUST SELL 5 AC beautiful Athens, great views, huge oak trees, access to professional horse training barn and fishing lake. Priced to sell at \$34,900. Call 1-888-243-4047

LAKEFRONT / BOAT DOCK COMBO! 1 acre dockable lakefront on 3rd largest lake in Texas, with brand new boat dock & sundeck. Only \$99,900! Utilities available and access to lakeside pool/park area. Quick sale needed. 1-214-506-1043.

LAKEFRONT LOT - NEW RELEASE Athens premiere lakefront community. Over one acre with the best view on the lake. 267' of lake frontage. This is an absolute steal for only \$89,900. Excellent financing available. 1-866-730-0755.

ONE TIME MONTANA land bargain, Billings area 166 acres. Was \$229,900 Now \$99,900 Only a few tracts! Below market prices! Trees, ridges & views. Close to Round-Up, MT & Musselshell River. The best land deal ever in Montana! Call 1-888-361-3006. www.WesternSkiesLand.com

WATER, WATER, WATER. 3 acre with central water, hard surfaced streets, near Ruidoso. Only \$17,900. Call NMLR. 1-877-926-8201.

676 ACRES-REEVES County, 15 Miles North Pecos. River frontage. Call Jack 1-214-755-6224.

\$106 MONTH BUYS land for RV, MH or cabin. Gated entry. \$690 down, (\$6900/10.91%/7yr) 90 days same as cash. Guaranteed financing. 1-936-377-3235

SCHOOLS/TRAINING
AIRLINES ARE HIRING Train for high paying aviation career. FAA approved program. Financial aid if qualified. Job placement assistance. Call Aviation Institute of Maintenance. 1-877-523-4531

HIGH SCHOOL DIPLOMA Graduate in 4 Weeks! FREE Brochure! CALL NOW! 1-866-562-3650 Ext 55 www.SoutheasternHS.com

Run Your Ad In TexSCAN!
 Statewide Ad\$500
 307 Newspapers, 1,018,288 Circulation
 North Region Only\$230
 90 Newspapers, 270,048 Circulation
 South Region Only\$230
 107 Newspapers, 601,889 Circulation
 West Region Only\$230
 101 Newspapers, 248,581 Circulation
To Order: Call This Newspaper direct, or call Texas Press Service at 1-800-749-4793 Today!

NOTICE: While most advertisers are reputable, we cannot guarantee products or services advertised. We urge readers to use caution and when in doubt, contact the Texas Attorney General at 1-800-621-0508 or the Federal Trade Commission at 1-877-FTC-HELP. The FTC web site is www.ftc.gov/bizop

Extend your advertising reach with TexSCAN, your Statewide Classified Ad Network.

Blankenship Real Estate
 659-3052 - 670-3774
LET US HELP YOU SELL YOUR HOME.
NEW LISTINGS WANTED!
 Eulalia Blankenship - Sales
 Eschol Blankenship - Broker

French & Co., Realtors
 273-7355
 Beautiful 3 BR, 2B home in Morse, Texas. 1.06 acres.
 Updates Galore, Gorgeous tile & wood floors, stunning trim, custom paint, 28x33 garage & separate shop.
 Call Michele for details.
 806.273.7355

Century 21
Golden Spread Realty
7959 FM 1573, GRUVER - 3BR, 1 3/4B, 2C attached garage, 1961 sq. ft. on 5 acres.
404 4th Ave, GRUVER - 2BR, 1B, 1090 sq. ft. Also available for rent.
121 S. Hwy. 207, Spearman - Apartment complex & Bunkhouse. **PRICE REDUCED - MAKE OFFER.**
Gina Deal, Broker/Owner (806)435-5444 www.century21.com
 INDEPENDENTLY OWNED & OPERATED. ©1992® and ™ Century 21 Real Estate Corporation. Equal Housing Opportunity. EOW(8-05-10)B

hchd
 Hansford County Hospital District
Openings at Hansford Manor
LVN: Graduate of an approved LPN/LVN program. Must be able to make independent decisions when circumstances warrant. Must possess the ability to deal tactfully with residents, family and public.
Great working environment and staff, quality facility providing opportunities for professional growth. Great benefit package. Apply at 707 S. Roland, Spearman, TX or contact Jackie Nelson at 806-659-5841. Download application at www.hchd.net (8/26/10)

Shirley Howard, Broker/Owner
 806-886-6536, Cell
Melinda McCullough, Realtor
 (806) 733-5678
We would LOVE to sell your HOUSE!
 CALL US!

DROUGHT INSURANCE
RAINFALL INSURANCE PROGRAM

BROKEN ARROW CROP INSURANCE
 FOR MORE INFORMATION and A PERSONALIZED QUOTE
Larry Schickedanz
 806.898.8930
OUR SPECIALTY IS THE USDA RANGELAND PROGRAM:
Serving Rangeland Policies for over 4 Years
DEADLINE: SEPTEMBER 30TH
WWW.BACROP.COM

This ad is just a small sample of the properties that we currently have for sale.
 Please check our Web site and give us a call! We need your listings both large and small, all types of ag properties (ESPECIALLY CRP).
HARTLEY/MOORE COUNTY LINE - corn, wheat, cotton, cattle with all the perks, 992 acres, sprinkler irrigated with some improved pasture, large brick home, large set of state of the art steel working pens with concrete feed bunks and covered working area, on pavement.
DALLAM COUNTY - Three adj. sections of dryland, some native grass, irrigation in area (new wells across the road).
SWINE PRODUCTION FACILITY - Moore Co., TX. - 1200 sow capacity, capable of running 28,000 pigs annually, computerized feed mill, flexible feeding system, management in place. **PRICED TO SELL! INVESTORS WELCOME!**
SEE OUR WEBSITE OR CALL US!
www.scottlandcompany.com
 Shawn Gillispie 806/922-5532
 Ben G. Scott, Broker
 1-800-933-9698 day/eve TFN(9-23-10)

Adobe Walls Gin

Our Experience is YOUR Gain!

Adobe Walls Gin's Board of Directors has over 100 years combined experience in processing and marketing cotton! We understand the cotton ginning industry as well as any gin in the country and have the track record to prove it. We are a customer first, service oriented gin (we have the equipment and expertise to put module fires out in your field) that will go the extra mile to insure your cotton is ginned in the best manner possible to preserve quality and turnout.

Adobe Walls Gin's Gin Supervisory Team has 42 years combined experience making cotton gins do what they do, gin cotton! Our head ginners have over 30 years experience working in cotton gins across the state. Very few, if any gins have this much experience in their lead production personnel.

Not only are we cotton ginners, we are cotton producers who know the in's and out's of every contract and will provide to our customers' the best contracting option at the time they (you) want to market all or a part of your cotton.

Many thanks to all of our customers over the past 4 years, we believe you are looking at great yields and super prices this year for your cotton. We appreciate your business greatly and will do everything within our abilities to insure your cotton crop is grown, processed, and marketed in the best manner possible.

If you haven't ginned with us in the past, we would welcome the opportunity to earn your business.

*Let us show you the difference
EXPERIENCE makes!*

*Jerrell Key, The Board of Directors,
Supervisors, and Staff of Adobe Walls Gin*

