



The Hansford County Reporter Statesman

PROUDLY SERVING HANSFORD COUNTY SINCE 1907

reporter@spearmanreporter.com

VOLUME 101 • ISSUE 42

WWW.SPEARMANREPORTER.COM

THURSDAY, OCTOBER 16, 2008

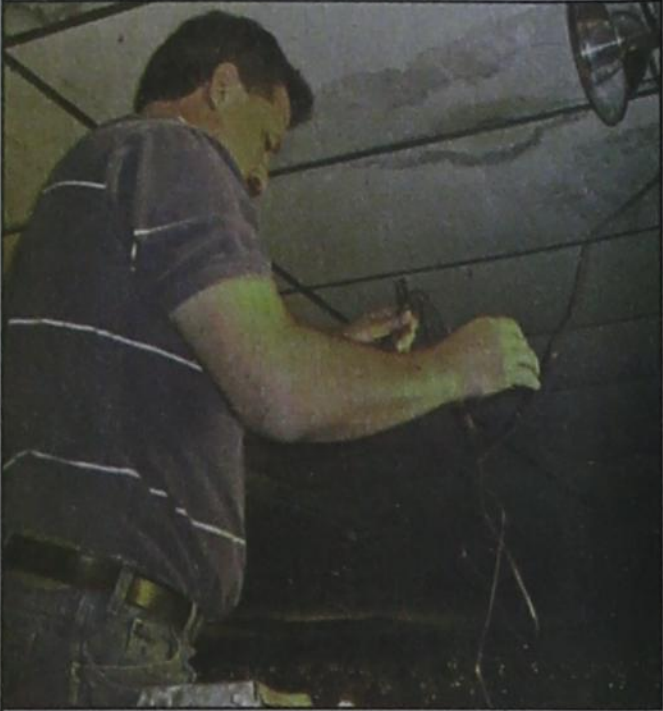


Dakota Cator (10) looks for an opening towards the end-zone during Friday nights game against the Highland Park Hornets. The Lynx defeated the Hornets 15-12 in the District 1-2A opener (Photo by Tami Hargrove. Pictures available at <http://spearmansports.smugmug.com>)

Country Market Comes to Town

submitted by **Tex Kopke**

The first Spearman 2nd Saturday Country Market was held on Saturday, October 11, 2008, and went really well. I guess we had over 500 attend, which is pretty good for a town of 3,000. (Especially if you consider we had a light rain all afternoon.) We had people say that stopped in because they saw all the cars in the parking lot and had to see what was going on.



next space.

Indoors, we have about 8,000 square feet. About half of which we used for the estate sale and the other 14 spaces we rented out.

Outside we had all the 9 covered walkway spaces out front rented, and 3 of the covered breezeway spaces rented out. Two of the spaces out front were rented by a garden center with all kinds of bright, blooming mums as well as pansies and other flowers and yard art. (Mom, Delphine Kopke, bought a 2-foot tall bird made of iron that rocks back and forth on a stand.) So the front entrance was bright and inviting with all the fall flowers and smelled great with the food cooking on the grills.

Continued on Page 6

One of the things I always enjoy when I go to the huge Canton First Monday Market is the combination of the smell of food being cooked and the adventure of all the neat stuff to look at, -both indoors and out. Well, we had our own little version of the Canton First Monday Market here at the Spearman 2nd Saturday Country Market.

We had a taco wagon cooking and selling fresh Mexican food out front, and also a vendor selling hamburgers and hot dogs hot off the grill by the front door. (The hamburger guy said they only came with 50 hamburger patties and ran out, so they had to go buy more.)

Inside we had a lady from Perryton selling pumpkin rolls. She sold over 50, so she had a good day. The family selling tamales sold out early, as did the lady selling pastries and bier ox (German burgers). They said they would bring more with them next time. We also had kettle corn, too, which smells and tastes great.

We had one lady who was selling pictures and jewelry, another who sold health and beauty aids, and one who sold food and clothing items. A lady from Perryton, who has a thrift shop, had 3 spaces inside and one outside. Jeffries Steaks sold soft drinks. Jim Beeson had neon and enamel signs. He sold all the neon signs. His friend sold tools and other assorted goods in the



Wolf Creek Heritage Museum

The public is invited to visit the Wolf Creek Heritage Museum in Lipscomb on Saturday, October 18, 2008 from 2 pm to 7 pm for an evening of entertainment with Cleon Roberts and Denny Mingus.

The public will view the latest exhibits, enjoy refreshments and listen as Cleon Roberts discusses "Stumbling Blocks to a Truthful Local History".

In conjunction with Mr. Roberts book signing, we will be hosting a reception for a Higgins Native and featured artist for October and November, Denny Mingus. Mr. Mingus now resides in New Deal, Texas and will be present to discuss his photographs and to visit with friends.

Admission is free. Call the museum for further information or for directions. The museum will be open from 10 am to 7 pm for the Fall Foliage weekend. Museum telephone number is 806-852-2123

Weather Forecast

THURSDAY NIGHT - Mostly clear. Lows in the mid 40s. South winds around 10 mph.

FRIDAY - Sunny. Highs in the lower 70s. Northwest winds 10 to 15 mph shifting to the north in the afternoon.

FRIDAY NIGHT - Mostly clear. Lows in the upper 40s. Light and variable winds.

SATURDAY - Mostly sunny. Highs in the upper 70s.

SATURDAY NIGHT - Mostly clear. Lows in the upper 40s.

SUNDAY - Mostly sunny. Highs in the upper 70s.

SUNDAY NIGHT - Partly cloudy. Lows in the upper 40s.

MONDAY - Mostly cloudy. Highs in the lower 70s.

MONDAY NIGHT - Mostly cloudy with a 20 percent chance of rain showers. Lows in the upper 40s.

TUESDAY - Mostly cloudy. Highs in the lower 70s.

TUESDAY NIGHT - Mostly cloudy with a 20 percent chance of rain showers. Lows in the mid 40s.

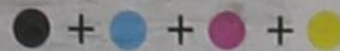
Texas Crop & Weather

The following specific livestock, crop and weather conditions were reported by Panhandle Extension directors: Temperatures were near to slightly above average most of the week. Most of the region received some rain at the end of the reporting period. Soil moisture ranged from surplus to very short with most areas reporting short to adequate. Corn was mostly fair to good. Cotton and sorghum were mostly fair. Soybeans were good. Wheat varied from fair to excellent with most areas reporting fair. Range and pasture conditions varied from very poor to good with most areas reporting good. Cattle were in good condition.



SPEARMAN
vs **Bushland**
10/17 - 7:30 p.m.
at **Lynx Stadium**

Gruver
vs **Greyhounds**
10/17 - 7:30 p.m. at **Gruver**



Lynxettes Claim Another Win on Road to District

Under drizzle, then steady rain, Spearman, Boys Ranch, Hereford and Canyon splashed to team victories Saturday, October 11, 2008 at West Texas A&M's Lathrop Memorial Buffalo Stampede in Canyon.

Spearman junior Suttan Garnett won her first race of the season to go with her four runner-up finishes. In the boys division, Swasey Brown of No. 2-ranked Boys Ranch won his first gold medal. Both runners led their teams to comfortable wins, Boys Ranch by 31 points over Gruver, and Spearman, the No. 5 team in 2A, won by 60 over Panhandle.

"My time was 11 seconds faster than it was last year here," Garnett said. "I knew the course. Last year, I made a wrong turn, and I had to go back around."

Garnett ran a 12:45.0 to edge teammate Farrar Tylo (12:51.0). The junior high and high school teams will compete in the Canyon Invitational on Saturday, October 18, 2008 at 8:15 a.m.

The District Cross Country Meet will be held in Spearman at Lake Palo Duro on Monday, October 27, 2008 at 2 p.m. There are 10 girls on the varsity team, and 28 total, counting managers.

The Spearman Lynx/Lynxette Booster Club is asking interested individuals and businesses to write letters of support to the runners prior to the meet. Letters may be mailed to: District Cross Country, % Lynx/Lynxette Booster Club, PO Box 343, Spearman TX 79081; or you may e-mail them to: tdbenton@ag.tamu.edu and she will get them to Coach Nan Cook.

Anyone interested is also invited to the Cross Country Meet on the 27th to cheer the Lynxettes on to another District Championship.

The Region 1 Meet will be held on November 8, 2008 in Lubbock and the State Meet will be held on November 15, 2008 at Round Rock. Region I--Lubbock

Girls, Division I

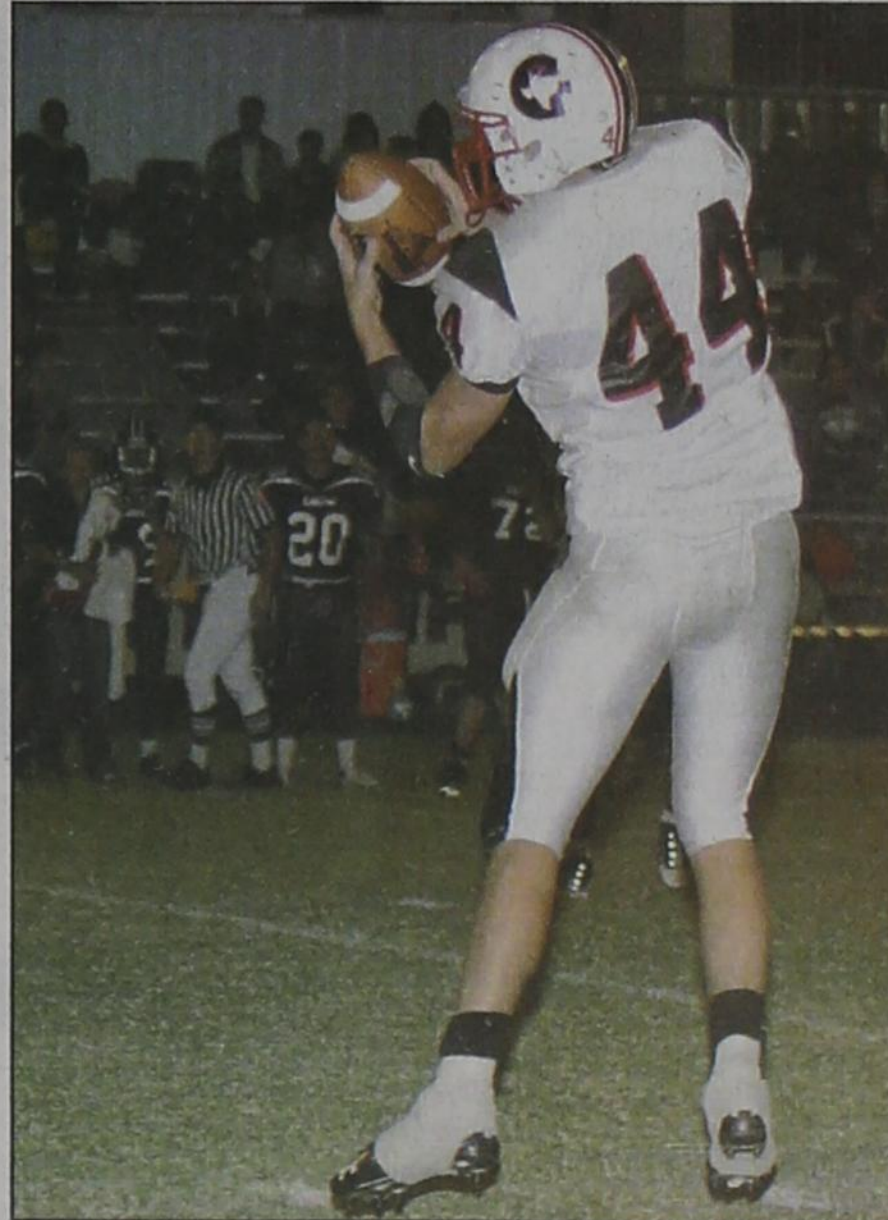
Team standings: 1. **Spearman 45**. 2. Panhandle 105. 3. Canadian 121. 4. Gruver 135. 5. Bushland 151. 6. Bovina 160. 7. Wellington 178. 8. Borger 192. 9. Nazareth 250. 10. Lefors 251. 11. Vega 301. 12. Dalhart 349. 13. White Deer 355. 14. Stratford 366. 15. Boys Ranch 384. 16. Follett 386. 17. Groom 440.

Top 10 individuals: 1. **Suttan Garnett, Spearman, 12:49.00**. 2. **Farrar Tylo, Spearman, 12:51.00**. 3. **Gately Garnett, Spearman, 13:13.00**. 4. **Shelley Gibson, Gruver, 13:14.00**. 5. Esmerelda Saucedo, Bovina, 13:16.00. 6. Maggie Langford, Wellington, 13:17.00. 7. Ashleigh Ortega, Bushland, 13:20.00. 8. Rebecca Ratliff, San Jacinto, 13:24.00. 9. Andrea Fuller, Panhandle, 13:29.00. 10. Yadira Garcia, Bovina, 13:29.00.

Boys, Division I

Team standings: 1. Boys Ranch 24. 2. **Gruver 55**. 3. Claude 78. 4. Borger 90. 5. Panhandle 118. 6. Dalhart 135. 7. Channing 199. 8. River Road 203.

Top 10 individuals: 1. Swasey Brown, Boys Ranch, 16:01.00. 2. Kenneth Curtis, Boys Ranch, 17:22.00. 3. Jesus Rocha, Bovina, 17:46.00. 4. **Jesus Carrasco, Spearman, 17:46.00**. 5. **Gonzalo Vega, Gruver, 17:56.00**. 6. Steven Birkenfeld, Nazareth, 17:57.00. 7. Billy Voyles, Boys Ranch, 17:58.00. 8. **Jerrold Collier, Gruver, 18:06.00**. 9. Matthew Grange, Claude, 18:12.00. 10. Michale Mikeska, Boys Ranch, 18:12.00.



Tyler Wills (44) catches a pass for a good yardage gain during the Greyhounds game against the Booker Kiowas. The Hounds won this district opener, 40-0. (Photo by Charlie Johnson)

Waun to Speak in Pampa

Roger Waun, candidate for United States Congress, will be in Sat., Oct. 2, 2008 at the library in Pampa, 111 N. Houston. Waun, is currently serving as Pastor of First Presbyterian Churches in Childress, and in Quanah, TX. He and his wife Vicki live in Wichita Falls, TX. A devoted family man, he and his wife Vicki have 5 adult children and 15 grandchildren.

He is qualified for Congress by virtue of his education, military and community service, and his business management experience. Prior to his current church pastorates, he was a Wichita Falls businessman with over 20 years business management, marketing, consulting, and training & development experience.

Lullabies, Legends & Lies

by Parson Smith, the Prime Minister of Laughter

Here, within the confines of Laugh and Live, I always try to be "fair and balanced." So, this week, when someone from Las Vegas accused my wife of being a "psuedo Christian bigamist" and said that "maybe she should stop espousing her beliefs until she understands what a Christian actually is" (all because she said that she

was not going to vote for John McCain), I did not use my column to state what I think he really is. Anyone who knows Cathy knows that she is a good, decent, Christian woman. So instead of defending her, I am going to prove that I really am fair and balanced. I am going to report an actual fair and balanced poll.

The Bill O'Reilly internet poll reported the following...
If you had to predict today who will win.
 McCain 66%
 Obama 34%

(Oh, by the way, I, too, am a Christian. But if anybody from Las Vegas attacks my wife again, I may have to go and do a little gamblin'.)

Until the next time,
 May God Bless.

State Capital HIGHLIGHTS

AUSTIN - With thousands of families still unable to return to their homes because of Hurricane Ike, Gov. Rick Perry on Oct. 8 extended his disaster declaration through Nov. 6 for 90 Texas counties.

Also, at Perry's request, the Federal Emergency Management Agency extended Hurricane Ike assistance through Nov. 1.

FEMA reimburses citizens for protective measures such as the removal of hurricane debris and continues its temporary lodging program with participating hotels and motels.

Since Ike hit Texas Sept. 13-14, the Office of the Attorney General has received price-gouging complaints on gas and lodging, price hikes on food, water and power generators.

Texans can continue to report allegations of price gouging to the AG's consumer complaint hotline, (800) 252-8011.

Attorney General Greg Abbott suggested Texans in hurricane-affected areas keep written records and receipts of any transaction they believe constitutes price gouging.

Ike's storm surge exposed timbers that underpin the 10-mile long Galveston seawall, which is 17 feet high and 16 feet wide at its base.

Land Commissioner Jerry Patterson announced a \$6 million emergency project to reinforce the 104-year-old seawall by restoring a length of beach in front of the massive concrete structure with trucked-in sand.

Sand will be placed on beaches from Galveston's 10th Street to 61st Street. Patterson said the project should be completed by next summer.

A current estimate of the cost of Ike is more than \$11 billion.

Perry speaks of energy diversity

At an Oct. 9 forum hosted by the Clean Coal Technology Foundation of Texas, Gov. Perry said that as a matter of foreign and economic policy, the nation must reduce its dependence on foreign oil by building a deeper, more diverse energy portfolio.

Perry said Texas must foster collaboration among government, industry and academia to promote clean coal and other energy technologies, such as natural gas, wind, solar and nuclear.

He spoke in opposition to bills in Congress that would

GOVERNOR, FEMA EXTEND IKE DISASTER AID TO AFFECTED CITIZENS



by Ed Sterling

tighten pollution controls on carbon dioxide emissions.

Energy guru Pickens speaks

Dallas billionaire T. Boone Pickens Jr. spoke at the University of Texas on Oct. 9 to promote his plan to reduce America's dependence on imported oil.

Pickens is exerting a national effort to add more natural gas and wind energy to the mix of energy sources that America uses.

Senate hopefuls engage in debate

Incumbent Republican U.S. Sen. John Cornyn joined in the first of two scheduled debates with challengers state Rep. Rick Noriega, D-Houston, and Libertarian Yvonne Adams Schick of Spicewood.

Topics included Cornyn's Oct. 1 vote in favor of the \$700 billion "Wall Street bailout" legislation, taxes, health care coverage for Texas children, Iraq, energy and immigration.

Agency rules out fish pedicures

The Texas Department of Licensing and Regulation on Oct. 8 ruled that a procedure known as "fish pedicure" -- the use of a school of tiny fish to nibble dead skin cells off of the feet -- is not permitted under Texas health and safety rules.

According to a statement issued by the agency, the procedure could transmit infectious diseases because the same fish are used on multiple customers, and the use of live fish does not allow for the footbaths and the holding tank for the fish to be adequately cleaned and disinfected in accordance with the rules.

Base school enrollments to grow

The Texas Education Agency on Oct. 10 reported military base realignments and closures will bring thousands of new families to Texas and trigger an enrollment surge in school districts in the El Paso, San Antonio and Killeen areas.

Education Commissioner Robert Scott announced his intent to transfer up to \$300,000 to three Education Service Centers to fund additional field service agents who serve as liaisons between service centers and school districts.

UT ends ban on political signs

The University of Texas at Austin stopped enforcing a prohibition on the display of political signs in dormitory windows. UT President William Powers Jr. said a committee of students and staff members will review the policy.

Words from Faith & Grace

by Cecil R. Biggers, Lutheran Lay Minister

We continue to study the Grace of God which provides for our salvation as we study Isaiah 45:1-7, Psalm 96:1-9, 1 Thessalonians 1:1-10, and Matthew 22:15-22. Isaiah tells of God's anointment of Cyrus, King of Persia, as ruler of the then known world. Cyrus is chosen by God for he is God's instrument to free the children of Israel from bondage, to return them to the Promised Land, and to allow them to rebuild the temple of God at Jerusalem. Indeed Cyrus is the only gentile ruler to be referred to as a "son of God" in the Old Testament.

God informs Cyrus that He is the only God, there is no other but Him. An earthly national leader becomes an instrument of God's purpose for His people.

The Psalmist sings a hymn of praise, a new song to the Glory of the One True God. A song of praise for the God who is God of all the nations.

Paul writes encouraging words to the Thessalonians. The Thessalonians on hearing the gospel, believed, and turned from the worship of the many idols in Thessalonica, unlike many, in the ancient world, who when hearing of a new god would merely add another god to those they already worshipped. When Paul says that the Thessalonians became "imitators" of the Lord, he is saying that even in persecution the Thessalonians have continued to serve God in faith and joy. From this we discover that even in our suffering, even when life is not fair, even in our darkest moments, through faith we experience the joy of knowing to whom we belong, and in whom we place our trust. Please note that the ending of this passage, "Jesus, who rescues us from the wrath that is coming" is in the present tense. In our time of turmoil and doubt, Jesus is in the process of rescuing us now!

Jesus after lambasting the Chief Priests and Pharisees with the parables of the "two sons", the "wicked servants",

and the "marriage feast" is tested in turn by the Chief Priests and Pharisees, who ask Jesus, "Is it lawful to pay taxes to Caesar or not?" They hope to trap Jesus into saying "it is not lawful" which would allow them to accuse Jesus to the Romans, and perhaps get him crucified as an enemy to Caesar; and, if Jesus says "pay the tax", many of the people will be unhappy with him and stop following him. Jesus responds, "Why are you putting me to the test, you hypocrites?" Jesus asks for a coin (a denarius) and asks,

"Whose head and whose title are on this coin?" The Chief Priests and Pharisees answer, "Caesar's". Jesus then tells them, "Give therefore to Caesar the things that are Caesar's and to God the things that are God's". Jesus has ensnared the would-be trappers. We are citizens of our country and of God's Kingdom, and owe duties to each. Today we are being told by our politicians that we need "change"; yet, they do not define this "change". Perhaps the change we need is in our hearts, to live the gospel of love. May the Holy Spirit keep your hearts and minds in Christ Jesus.

PAID CDL TRAINING! YOUR FUTURE BEGINS HERE

NO EXPERIENCE NEEDED!

Stevens Transport, the premier refrigerated carrier in the US, sponsors the total cost of your CDL training! In 17 short days you will earn your CDL and begin your paid on-the-job training! Earn \$40K first year and up to \$150K fifth year! Excellent benefits and 401K!

For more information, call **800-333-8595**

www.becomeadrivers.com

PAID CDL TRAINING! YOUR FUTURE BEGINS HERE

NO EXPERIENCE NEEDED!

Stevens Transport, the premier refrigerated carrier in the US, sponsors the total cost of your CDL training! In 17 short days you will earn your CDL and begin your paid on-the-job training! Earn \$40K first year and up to \$150K fifth year! Excellent benefits and 401K!

For more information, call **800-333-8595**

www.becomeadrivers.com

Local Man Prevails In Scuffle With Hoodlums

BEXAR COUNTY- Tom W., after using Thera-Gesic on a sore left shoulder, encountered two hoods breaking into a car in a parking lot. He whacked one of them upside the head and ran them off. When asked why he took the risk, he painlessly replied: "None of your dang business!"

Go painlessly with Thera-Gesic

High-Speed Internet. Right here, right now.

Everything You Need for \$99.95*
 Hurry - Offer Ends December 15, 2008
1-800-922-0527

WILDBLUE
 www.wildblue.com

SUDOKU
 PRESENTED BY

VolunteerMatch.org
 Where volunteering begins.

	4			6					
1	2	5							
				1				4	5
	5	6				9	7		
2	9							3	4
		4	3				5	6	
9	7					3			
							6	2	3
									9
				4					

© 2008, StatePoint Media, Inc. answer on classified page
 Fill in the blank squares in the grid, making sure that every row, column and 3-by-3 box includes all digits 1 through 9.

WORLD SERIES

These games are brought to you by the Hansford County Reporter-Statesman

ACROSS

- Russian title before 1917, pl.
- Civil rights advocate Wells
- His trademark song was "Thanks for the Memory"
- Raja's wife
- The sun in Spain
- "I Wanna Be ___ By You"
- Stay clear
- Modern prefix
- Make improvements or corrections
- *Chased in October
- English coin worth half penny
- Pigpen
- *Where the Red Sox and Phillie Phanatic play
- Home of Survivor
- Panache
- *Caught easily
- Original matter, according to Big Bang Theory
- *In 2003, the Florida Marlins defied them
- Water wheel
- Guinea pig or the like
- "___ Out," starring Costner
- One of "Tennessee Three"
- Right to another's property, pl.
- Heroic tale
- 1,000 grams
- Typographical errors
- Puppy cry
- Fifth sign of Zodiac
- Paris streets
- Oolong, e.g.
- *Game-winner for home team
- *Mr. October
- Homer's epic
- Extra cost
- Get up
- Subdivision of an act
- It is
- ___ prosequi, legal
- Barely audible attention grabber
- Word between dogs
- Hair net

DOWN

- *When ball is caught between glove and ground
- *Final pitcher's reward
- Shakespeare's "at another time"
- They're pulled back to ease up
- Make calm
- Is not
- Bambi's mom
- Pacific greeting
- *Where the field advantage is?
- Requires a mitt to operate
- He played Spicoli
- Whirlpool
- Subatomic particle
- Can run on a woman's leg
- Egyptian cobra
- On end or upright
- *It's never been accomplished in World Series
- "The ___ Witch Project"
- Cut off
- Fusses
- Chicken pox mark
- Physically weak
- Twisted cotton thread
- "Do you ___?"
- Tropical starling
- Wise old man
- Where Roosevelt, Churchill and Stalin met
- Walked with long steps
- ___ wiedersehen
- Pie nuts
- Wife of critic John Ruskin and later married his protegee
- Birthplace of Goodyear tire, OH
- Small tuft of hair
- *This season it's the Red Sox vs Devil Rays
- Fabrications
- German philosopher Immanuel
- Act in funny or teasing way
- Feed storage
- Capital of Norway
- As opposed to a want
- Estimated arrival 67, 2000 pounds

CROSSWORD

1	2	3	4	5	6	7	8	9	10	11	12		
13					14			15					
16					17			18					
19				20			21	22					
			23				24						
25	26	27		28		29		30		31	32	33	34
35			36			37		38		39			
40				41				42		43			
44				45		46				47			
48				49			50			51		52	
				53			54			55		56	
57	58	59	60				61				62	63	64
65						66	67			68			
69						70				71			
72						73				74			

PRESENTED BY

VolunteerMatch.org
 Where volunteering begins.

© 2008, StatePoint Media, Inc. answer on classified page

The Hansford County Reporter-Statesman

213 Main Street • Spearman, TX 79081
 Phone - (806) 659-3434 • Fax - (806) 398-9080
 www.spearmanreporter.com
 reporter@spearmanreporter.com
 cathy.smith@valornet.com

Mon.-Thurs. 9 a.m.-12 p.m., Mon.-Wed. & 1-5 p.m.
Closed Thurs. afternoon and all day Fri., Sat. & Sun.

Gary Smith - Publisher Catherine Smith - Editor
 Contributing Writers: Dorothy Hudson, Jim Derington,
 Merry Sparks, Cecil Biggers
 Contributing Photographer: Charlie Johnson

Subscription Rates
 In Hansford County - \$30.00 • Out of County - \$40.00

The Hansford County Reporter-Statesman (USPS 529660) is published weekly in Spearman, TX. Periodical postage paid in Spearman, TX. **POSTMASTER:** Send address changes to: The Hansford County Reporter-Statesman, 213 Main Street, Spearman, TX 79081.

Publication Policy
 The deadline to submit news and advertising to The Hansford County Reporter-Statesman is Monday at 5 p.m. Items submitted after the deadline will be published at a later date, as time and space permit. Publication of all items is at the discretion of the editor.

Advertising
 Open Display rates are \$4.00 per column inch. Classified Ads are \$6 for the first 25 words and 10¢ per word for each additional word. (Additional charge for boxed classifieds.) There is a \$1 charge per week if billed.

Member of
 Gruver Chamber of Commerce
 Spearman Chamber of Commerce
 Texas Press Association and Panhandle Press Association

TA **TEXAS PRESS ASSOCIATION**
 AWARD WINNER

Happy Birthday!

October 16
Birthdays - Buster Davis, Troy Miller, Tammy Benton, Virginia Fowler, Sammy Graham, Lola Newcomb, Joey Avila, Landree Woodward, Julie Payne, Meghan Stork

October 17
Birthdays - George B. Odom, Byron Peddy, Jackie Smith, Brad Beedy, Jeff Beedy, Carol Short, Erica Garrison, Misha Davis, Joe Paul, Oscar Ortiz, Carolyn McLeod, Jacob Burch, Sandra Soto, Hugo Villa Jr., Joyce Sparks, Debbie Jacops, Regina Vernon, John Crawford

Anniversary - Sharon & David Swan

October 18
Birthdays - Taos Weldon, Don Knox, Wilson McClellan, Jeff Hutchison, Angelica Arjona, Floyd Dean Gatlin, Chris Williamson, Elaine Swan, David Parker, Jan Howard, Maria Bullard, Courtney Baca, Kristian Faith Burke, Ramiro Morales, Mike Gift

Anniversary - M/M Dave Christian

October 19
Birthdays - Brian Gillispie, Joe Lopez Sr., Colton Mayfield, Carol Tolleson, Phyllis Owens, Joe Vanderburg, Marietta Davis, Ken Shufeldt, Calvin Garrard, Jeremy Blain, Harold Anderson, Brenda Lee Soto, Wayne Pierson, Kathy Bryant, Bill Park, Merry Wheelock, Doran Schoenhalz, Kenneth Schufeldt, Sidney Lee Greene, Jocelyn Whitefield

Anniversary - M/M Jimmy Traylor, Mickie & Odell Fanning

October 20
Birthdays - Marilyn Been, Kelly Boone, Brock Irwin, D'Anda Widener, Danny Ray Hendricks, Owen Montgomery, Melissa Cochran, Deborah Bishop, Billy Jones, Amy Stinson, Cara Nichols, Misty Wylie, Jeffrey Swan, Carrie Cenicerros, Angela Vela, Ori Cooksey, Cindy Sasser, Tatum Womble

Anniversary - M/M George Jackson, Ladd & Cathy Gafford

October 21
Birthdays - Don Hudson, Tammy McLain, Bill Cope, Eschol Blankenship, Brad Brown, Terry Austin, Kay Vernon, Dannie Garrard, Leslie Meritt Holton, Wade Burgess, Kathy Beck, Irene Tindell, Ed Williamson, Michael Avila, Brian McLaughlin, Jana McCloy, Kara Townsen, Candy Boxwell, Trish Rosales, Krista Baird, Brian McLaughlin

Anniversary - Helen & Nolan Holt, Rebecca & Ryan Matthews

October 22
Birthdays - Kurt Etling, Gertrude Archer, Danna Martin, Brent Ware, Guenna Wilson, Margaret Espinosa, Jared Hohertz, Sharon Austin, Misty Hand, Katie Sparks, Nae Gonzales, Charlie McIver, Britney Montgomery, Gregory Jacops, Matthew Younger, Kim Bergan

Anniversary - M/M Jerry Viden, M/M Steve Watkins, Peggy & Arlan Winegarner

October 23
Birthdays - Annette McCloy, Mallory Reid, Clois (Billy) Baker, Christopher Mitchum, Rhema Dell Harris, Melanie Cook, Kerri Young, Tamra Young, Bruce Goehring, Ewain Fletcher

Anniversary - M/M Joe Harris, Lynn & Sharon Cook, M/M Joe Morris, Ann & Vernon Pipkin, Carla & Ben Puentes

October 24
Birthdays - Sonny Blankenship, Gregg Haight, Doug Brown, Joyce Pierce, Lance Dennis, Cristina Cenicerros, Tony Gaspar, Sherry Johnson, Sonny Windom

Anniversary - M/M Don Moore, M/M James Walker, Ann & Dee Allen

October 25
Birthdays - Bailey Barkley, Cindy Barkley, Opal Johnson, Mark McCloy, Samuel Sanchez, Floydette Seal, Norma Daniel, Willie Joe Salgado, Junior DeLaCruz, Sheryl Stafford, Roman Arnold, Billy Clark, Ryan Davis, Cy Davis, Margaret Novak

Anniversary - M/M Tony Pacheco, Van & Kathy Lewis, Art & Teresa Maestas

October 26
Birthdays - Michael Foster, Laina Grotegut, Amy Mounts, Elizabeth O'Connell, Jeanette Allen, Becky Evans, Ginger Nelson, Myrna Biggers, Mari West, Bradley Mares, Tracy Taylor, Mary Wright, Lindy Weldon, Forrest Lopez, DeeDee Moreno, Pete Vera III, Danielle Garcia

Anniversary - M/M Ramiro Arjona, M/M Rod Been

October 27
Birthdays - Chase Lamb, Kathy Logsdon, Shea Lowe, Tim Stedje, Carole Stumpf, Carl Close, Sheila Schneider, Leslie Swan, Kelli Butts, Shannyn Nitschke, Tanya Tittle, Katrina Hughes, Scott Harris, Kent Tice, Delvin Reynolds, Angie Salgado, Ivan Briones, Michael Torres, Wiley Sheets

Anniversary - M/M Jerry Trout

October 28
Birthdays - Debra Burk, Bobby Hicks, Steve Thomas, Shelly Mitchell, Tammie Hogan, Jorge Vaquera, Elissa Conley, Clint Jackson

Anniversary - M/M Reynaldo Garza, M/M Bobby Miller

October 29
Birthdays - Sue Deakin, Kandy Montgomery, Zetha Blackburn, Mike Butts, Mac Butts, Jeff Price, Dale Harris, Richard Goehring, Christina Bartz, Andy DeLaRosa, Christina Hunter

Anniversary - Larry & Pam Jones, M/M Hix Spivey, Dr. & Mrs. Clint Irwin, Carol & Danny Rushing

October 30
Birthdays - Amy Babbs, Eva Dawn Spivey, Kandace Boyd, Jace Dawson, Carey Kauffman, Kelly McCloy, Marguerite Nelson, Donna Williams, Nordeen Cochran, Doris Jean Pipkin, Orfalinda Vela, Clayton Scribner, Herb Hager, Kyle Pearson, Richard Booth, Mrs. DeLuna, Mason Tindell, Taylor Simpson, Albert Graves

Our Sympathy

LUCILE BERGNER OAKLEY

Lucile Bergner Oakley, 89, of Amarillo died Tuesday, Sept. 16, 2008, in Plano.

Celebration of life services will be at 10 a.m. Saturday, October 18, 2008 in Boxwell Brothers Funeral Directors Ivy Chapel, 2800 Paramount Blvd.

Lucile, aka "Momsie," "Mama Lou," "Lucy," and "CG," was born Feb. 8, 1919, in Texhoma, Okla., to Exie and Tiff Thomason and died peacefully in her sleep, with her lipstick on. She and her brother, Jerry Thomason, were raised in Texhoma, where they and their parents spent much time in the family business, Thomason Brothers Dry Goods Store.

Lucile and John C. Bergner were married on Jan. 5, 1941, and raised five children in Stinnett, where they were involved in ranching, farming and other businesses. The Bergner family were United Methodist Church members. Lucile was a sought-after vocalist and the first woman to serve on the school board.

She was always taking care of others and devoted much time to the United Methodist Church, Meals on Wheels, Suicide Prevention Crisis Hotline and Crown of Texas Hospice. One of her favorite things to do was to prepare a colorful, healthy lunch for one of her many friends and visit about meaningful feelings, thoughts and ideas.

Her granddaughter, Marci, describes Lucile as a friend and mentor to many of all ages, she was nonjudgmental and accepting of others, appreciative of the simple things in life, a practical and inquisitive thinker, and she was poised and gracious until her last breath.

She was preceded in death by her husband, John, and their three sons, Charles, James and Bill Bergner.

She is survived by and was lovingly cared for by two daughters, Betty Womble of Spearman and Scout Bergner-Deese of Dallas. Lucile's extended family includes Levi Robinson of Weatherford, Okla., and O.K. and Sue Starks of The Woodlands. Survivors also include her husband, Roy Oakley, whom she married on Sept. 21, 1973; four grandchildren, Shelli Johnson of Grapevine, Robin Dye of Spring, Carson Womble of Spearman and Marci Barnes of Dallas. She was also blessed with eight great-grandchildren, Jordyn and Jake Johnson, Dillon and Darbi Dye, Wyatt and Tatum Womble and Bailey and Abigail Barnes.

The family suggests memorials be to Hospice Care of the Southwest, 1301 S. Coulter, Suite 404, Amarillo, TX 79106.

THOMAS WARD



Anchorage resident Thomas Eugene Ward, 77, died peacefully September 29, 2008, at Providence Alaska Medical Center with his children at his side.

A funeral service was held in Dillingham.

Tom was born June 27, 1931, in Gruver, Texas, to David and Elma Ward. Born and raised in the Texas panhandle, he worked in the family hardware store as well as neighboring ranches until graduating from Gruver High School in 1948. His adventurous spirit took him on a trip to New York City and Los Angeles and then Korea by enlisting in the U.S. Navy in 1950, serving as a boatswain's mate on the USS Toledo.

Upon honorable discharge from the Navy in 1954, he landed in Anchorage for a summer visit with his childhood friend, Jim Davis, and never left. His first job in Alaska brought him to Dillingham to work for U.S. Fish and Wildlife, where he met his wife, Trudy, of 50 years. Tom and Trudy lived in Anchorage, Bethel, Unalaska, Kodiak and Sitkinak Island before resettling in Dillingham to raise their family. Tom's early work history with NC Co. allowed them to meet many friends throughout the state. In Dillingham, Tom's work for NCA led to running the bulk fuel plant and dock. Upon retiring in 1994, Tom and Trudy moved to Anchorage.

Several of Tom's proudest achievements included being a founding member of the Dillingham Lions Club and a charter member of Dillingham Trinity Lutheran Church. For Tom, working on the dock was a gateway to a community involving the whole Nushagak Bay. Tom was an avid subsistence fisherman for his family. Tom enjoyed worldwide travels with his good friend, PG Brannon.

His family wrote: "Tom was a son of Texas and a father in Alaska. Many considered him a true friend."

He is survived by his children, Jimbo and Kathy Ward, Kay Lynn and Dana Thomas, Roy Ward, Sheila Brunsvold, and Sonja and Paul Stoker; grandchildren, Bristol, Seth, Tricia, Zach, Tommy, Kaila and Everett; great-granddaughter, Meadow; brother, Glenn Ward of Gruver, TX; and many nieces and nephews.

Tom was preceded in death by his wife, Trudy; brother, Leslie; and sons, Tommy Gene and John.

In lieu of flowers, donations can be made to the Dillingham Trinity Lutheran Church, P.O. Box 1730, Dillingham, Alaska 99576.

Hansford Hospice

cordially invites
you to attend a
Memorial Service
to honor those we have
cared for and lost.

The service will be held at
3 p.m. on Sun., Nov. 2, 2008
at Faith & Grace Church,
1101 S. Bernice St., Spearman.

MONUMENTS

**Boxwell Brothers
Funeral Home**

519 Evans • Spearman
659-3802

Dear friends,
When you buy a monument from us we make sure it is exactly what you want at a price you can afford. If it is not right, we will make it right. And you will not have to search the countryside to find us. We are here when you have a need.

Sincerely,
Bob Boxwell

Replenish the seed of faith through . . . DAILY BIBLE READING, PRAYER & REGULAR CHURCH ATTENDANCE

- | | | | |
|---|--|--|---|
| <p>Spearman</p> <p>Apostolic Faith Church
822 S. Dessen • 659-2870
Sunday School: 10 a.m.
Worship Service: 11 a.m.
Sun. Eve.: 6 p.m.
Wed. Prayer Mtg.: 7 p.m.
Pastor - Roland Haney</p> <p>First Assembly of God
401 N. Bernice • 659-2295
Sunday School: 9:30 a.m.
Worship: 10:40 a.m.
Evening Worship: 6 p.m.
Wed. Worship: 7 p.m.
Wed. Youth: 7
Pastor - Jerry Pollard</p> <p>First Christian Church
(Disciples of Christ)
29 S. Bernice • 659-2036
Sunday School: 9:45 a.m.
Worship: 10:50 a.m.
Minister -</p> <p>First Baptist Church
123 N. Bernice • 659-5557
Sunday School: 9:45 a.m.
Worship: 11 a.m.
Evening Worship: 7 p.m.
Men's Bible Study - Wed., 7 a.m.
Children's Choir - Wed, 6 p.m.
Adult Choir - Wed, 7 p.m.
Wed. Bible Study: 7 p.m.
Pastor - Jim Medley</p> <p>Church of Christ
121 S. Haney • 659-3244
Sunday Bible Class: 9:45 a.m.
Worship: 10:30 a.m.
Evening Worship: 6 p.m.
Bible Study Wed.: 7:30 p.m.</p> | <p>Sacred Heart Catholic Church
901 Roland • 659-2792
Sat. Night Mass: 5:30 p.m.
Sun. Mass: 9 a.m. - English
Sun. Mass: 11:30 - Spanish
1:30 p.m. - Gruver - Christo
Renditor Mass - Spanish
Rev. Guillermo Morales</p> <p>First United Methodist
407 S. Haney • 659-5503
Sunday School: 9:45 a.m.
Worship: 9:30 & 11 a.m.
Jr. High Youth: 5 p.m. Sunday
Kids Club: 3 p.m. Wed.
Pastor - Neely Landrum</p> <p>Grace Presbyterian Church
(Worships with Faith Lutheran Church)
1101 Bernice • 659-2033
Pastor - Beverly Cook</p> <p>Faith Lutheran Church (ELCA)
1101 Bernice • 659-2252
Sunday School: 9:45 a.m.
Worship: 11 a.m.
(Worships with Grace Presbyterian Church)
Pastor - Beverly Cook</p> <p>Union Church
31 S. Endicott • 659-2644
Sunday School: 10:00 a.m.
Worship: 11:00 a.m.
Bible Study: 7 p.m. Wed.
Youth Service: 6 p.m. Wed.
Pastor -</p> <p>Fellowship Baptist
1102 S. Archer • 659-2783
Sunday School: 10 a.m.
Worship: 11 a.m.
Sun. Evening Worship: 6 p.m.
Youth/Adult Service: 7:30 Wed.
Pastor - James Washburn</p> | <p>Primera Mision Bautista
502 E. 7th • 659-3991
Sunday School: 9:45 a.m.
Worship: 11 a.m.
Evening: 6 p.m.
Wed. Prayer Meeting: 7 p.m.
Thurs. Visitation: 7 p.m.
Pastor Joe Garcia Jr.</p> <p>El Aposento Alto U.P.C.I.
1105 S. Roland
Domingos: Escuela-Domical - 10 a.m.
Culto Evangelistico - 7 p.m.
Jueves: Oracion - 9 p.m.
Mier: Estudio Biblico - 7 p.m.
Pastor - A.G. Martell
(806) 659-2153</p> | <p>Gruver United Methodist
Broadway & Garrett
733-2651
Sunday School: 9:45 a.m.
Worship: 8:30 & 10:50 a.m.
Eve. Worship & UMY: 6 p.m.
Pastor - George Price</p> <p>Spanish Cristo Redentor Church
Sunday Mass: 1:30 p.m.
Friday Evening Mass
Summer - 8:00 p.m.
Fall/Winter - 7:30 p.m.</p> <p style="text-align: center;"><i>Oslo</i></p> <p>Oslo Lutheran Church (ELCA)
6 Miles West & 12 Miles
North of Gruver
339-7646
Sunday School: 9:45 a.m.
Worship: 11 a.m.
Pastor - Arlen Lloyd</p> <p style="text-align: center;"><i>Morse</i></p> <p>Morse Baptist Church
733-2757
Pastor - Mike Martin</p> |
|---|--|--|---|



KICK BACK. RELAX. AND EXPERIENCE NORMAN'S NEWEST HOTEL.

With spacious two-room suites, exceptional dining and unrivaled amenities, the new Embassy Suites Norman is the area's premier place to spend the night. Plus, we're located right where you want to stay - minutes from downtown Oklahoma City and only five miles from the University of Oklahoma. Book our Drive & Stay Package and you'll save 10%.

Call 1-800-EMBASSY and ask for the Drive & Stay Package.

- Spacious two-room suites
- Complimentary cooked-to-order breakfast
- Evening Manager's Reception*

Drive & Stay Package Save 10%*

*Must present this ad to receive promotional rate. Based on availability. Not available on special event dates. Offer good through 12/31/09.

EMBASSY SUITES®

Norman - Hotel & Conference Center
2501 Conference Drive, Norman, OK 73069
Tel: 405-384-8040
Fax: 405-384-3377
norman.embassysuites.com



The Hilton Family Another exceptional hotel by John O. Hammerl Hilton Honors

This feature is made possible through the sponsorship of these civic minded businesses.

- | | | | |
|---|--|---|--|
| <p>Deakin</p> <p>ELECTRIC</p> <p>OILFIELD • RESIDENTIAL • COMMERCIAL
321 S. MAIN • SPEARMAN
1-800-999-1506 Chris Deakin
806) 659-5016 President</p> | <p>Bartlett's Lumber & Hardware</p> <p>105 W. Broadway • Gruver, Texas
(806) 733-2404</p> | <p>BERRY CLEANERS</p> <p>Ann & Vernon Pipkin - Owners
Phone 659-3122 • P.O. Box 1017
207 Main St. • Spearman, TX</p> | <p>Morse Implement & Auto Supply</p> <p>"Join us in church"</p> <p>Tom Dortch 733-2668
Box 89 • Morse, TX 79062</p> |
| <p>PRAIRIE MOTORS INC.</p> <p>Hwy. 207 South • P.O. Box 430
Spearman, TX 79081 • (806) 659-2541
www.prairiemotors.com</p> | <p>MurMur's Cafe</p> <p>100 Roland St
Spearman, TX.
659-3580</p> | <p>Hansford County Reporter-Statesman</p> <p>"Proudly Serving Hansford County Since 1907"</p> <p>(806) 659-3434
310 Barkley • Spearman, TX</p> | <p>INTERSTATE BANK, ssb</p> <p>www.interstatebank.net
322 Main • P.O. Box 146
Spearman, TX • 659-2559</p> |

MYI

FOR YOUR INFORMATION

Medical Fund for Krystal Puentes

An emergency medical fund has been established for Krystal (Burkhammer) Puentes at First National Bank, Spearman. If you would like to make a contribution you may make a deposit with any teller or mail a donation to First National Bank, Krystal Puentes Medical Fund, PO Box 337, Spearman TX 79081.

Medical Fund for Rene Griffin

A medical fund has been established for Rene Griffin at First State Bank, Spearman. If you would like to make a contribution you may make a deposit with any teller or mail a donation to First State Bank, Rene Griffin Medical Fund, PO Box 247, Spearman TX 79081.

Medical Fund for Bruce Duncan

An emergency medical fund has been established for Bruce Duncan at First National Bank, Spearman. If you would like to make a contribution you may make a deposit with any teller or mail a donation to First National Bank, Bruce Duncan Medical Fund, PO Box 337, Spearman TX 79081.

Alpha Mu Psi Soup Cook-Off/Coat Drive

Alpha Mu Psi is raising money to help others in the community stay warm through the winter season! They will host a soup cook-off/coat drive at the Gruver United Methodist Church on Friday, October 17, 2008 from 5:30-8 p.m. Warm soup will be served at \$5.00/bowl. Please bring new or gently used coats, scarves, gloves, hats or other winter items to help others prepare for winter. Monetary donations accepted.

HC Library Harvest Craft Raffle

The Hansford County Library is announcing a Harvest Craft Raffle as the result of an idea spun from its mid-winter arts and crafts showcase. A number of participants in the showcase have generously donated items to be raffled to benefit the library's DVD collection. The drawing for the items will be on Monday, November 24, just in time to assist with your Christmas gift giving. Items are on view now with tickets selling for \$2 each or 3 for \$5. Come by the library to see the items, purchase tickets, and join in the fun.

Spearman Lynx/Lynxette Booster Club Meeting Set

The Spearman Lynx and Lynxette Booster Club will meet October 20, 2008 at 7:00 p.m. in the portable building at the High School.

8th Annual Christmas in October Event

Christmas seems to come earlier every year. This year it starts in October. The 8th Annual Christmas in October event will be Saturday October 25 from 10 am to 5 pm and Sunday October 26 from 1 pm to 5 pm in the Amarillo Civic Center South Exhibit Hall. With over 100 vendor booths filled with specialty items and one of the Panhandle's largest bake sales, Christmas in October is sure to help you prepare for the holidays. And, it benefits Sharing Hope Ministry. For more information on Christmas in October or Sharing Hope Ministry, contact the ministry office at 358-7803 or visit us online at www.sharinghopeministry.org.

Marketing & Hedging Seminar Set Oct. 17 in Randall County

AgriLife Extension Service's office in Randall County has teamed up with the Chicago Mercantile Exchange to conduct a marketing and hedging seminar beginning at 8 a.m. Oct. 17 at the Kuhlman Extension Center, located at 200 N. Brown Road on the west edge of Canyon. Topics will include an introduction to the Chicago Mercantile Exchange Group Inc.; risk management tools; mechanical aspects of trading futures; hedging overview; basics of options; overviews of grain markets, cattle and beef markets and the beef trading environment; and tips to manage input costs. For more information or to pre-register, call the AgriLife Extension office in Randall County at 806-468-5543. Lunch will be provided courtesy of the Chicago Mercantile Exchange.

2-day Brush Sculpting Workshop Offered in Snyder Oct. 23-24

Texas AgriLife Extension Service will offer a two-day seminar titled Brush Sculpting...A Decade Later on Oct. 23-24 in Snyder and near Roby. The first days activities will run from 8:30 a.m. until 6:30 p.m. at the Scurry County Coliseum in Snyder. The second days events will be at the Rolling Plains Quail Research Ranch at Roby. The first days topics will include case studies conducted on the King Ranch and Lazy B Ranch at Brownwood, optimizing U.S. farm bill cost-share programs, planning considerations for livestock, deer and quail management, and new brush sculpting innovations. The second days activities will include demonstrations of Brush Busters individual plant treatment techniques; prickly pear control using boomless nozzles and other application methods; half-cutting mesquite for quail cover; patch-burn grazing and summer burning. The pre-registration deadline has been extended until Oct. 17. Individual registration is \$30 before Oct. 17 and \$50 thereafter. Mail payments to: Brush Sculpting...A Decade Later, Texas Wildlife Association, 2800 NE Loop 410, Ste 105, San Antonio, TX, 78218. For more information contact Rollins or Dr. Allan McGinty, AgriLife Extension range specialist, at 325-653-4576.

Annual Festival of Arts & Crafts

Wesley United Methodist Church will be holding its 28th Annual Festival of Arts & Crafts on December 6, 2008, from 9 a.m.-5 p.m. at the community center in Hereford. Only a limited number of booths are available, with applications being screened. The booth fee is \$10. Applications may be obtained by writing or calling any of the following names or numbers: Ellen Collins, 801 Miles St, Hereford TX 79045, 806-364-0774; Jane Eggen, 126 Aspen, Hereford TX 79045, 806-364-5789; or Wesley United Methodist Church, PO Box 1743, Hereford TX 79045, 806-364-4419.

Marines invited to celebrate 233rd Birthday of the US Marine Corps

The United States Marines of Lubbock extend an invitation to ALL Marines, past and present, to join them in celebrating the 233rd birthday of the United States Marine Corps. The Ball will be held at the Holiday Inn and Towers at 801 Avenue Q in downtown Lubbock, TX on November 15, 2008. The celebration will commence with a cocktail hour at 5:00 p.m., followed by a traditional birthday ceremony, dinner and dancing. To purchase tickets or get additional information please contact, the Inspector-Instructor Staff at (806) 763-2853.

Child Find

Your school district is looking for children ages 3-21 years who may be slow in developing communication skills, social interactions, walking skills and/or have major physical disabilities. We want to give your child the chance to receive the extra help he/she needs, if the disability interferes with his/her education. Please call your elementary campus to get more information or call Perryton SSA, 435-4412. Our staff will answer your questions about early intervention.

Campus Corner

by Lew Hunnicutt

Allen Campus

News and Information

Start Here...
...Go Anywhere!

For the 2008-2009 academic year, Frank Phillips College has selected a service project with a lofty goal but a great message. One Penny at a Time is the name of the service project and the goal is to collect 6,000,000 pennies. Each penny will represent one victim of the Holocaust. The project was inspired by the book Night by Elie Wiesel. This book is mandatory reading for all students attending FPC this year. The project is student driven and the resulting funds will be used to create endowed scholarships in memory of holocaust victims. If you are interested in donating to the project please call or come by the Allen Campus.

The theme for October and November Continuing Education and Community Service classes is computer skills! We are offering Windows XP one more time before we convert to the Vista operating system over the Christmas holidays; a Vista class will be offered in January. Ron Bishop is ready to teach Introduction to Web Design, (we need one more participant for that class to be scheduled), and Introduction to eBay, a two-night, low-cost class. Kim Herring is offering Photoshop Elements 6 in November. In addition, Mechanics I is ready to be scheduled when we receive word of financial aid for the participants. The Anger Resolution Seminar, facilitated by Tina Buschman, is offered every other month.

Driving classes are offered regularly. The MIP Class is scheduled for October 27 and 29, and the DWI will be taught on November 3, 5, and 6. Driver's Education classes start on November 10. Contact Ronnie Watson at 202-0280 or 435-4643 for information.

We also offer industrial safety training on request; recent classes included HAZWOPER, CPR, and 1st Aid. Please call if you need training provided locally, and we can often create the class.

For most adult education classes, all we need is 6 participants and a teacher with the skill. There are no tests, and require a high school diploma is not necessary. If there is a class you would be interested in taking, please call Bobette at 806-645-1450 and check the Allen Campus section on the website at fpcx.edu.

Tour Llano Cemetery by Twilight

Panhandle-Plains Historical Museum Curator of History Dr. Bill Green and friends will be stationed in Amarillo's Llano Cemetery telling stories of people, symbolism and art, on Saturday, October 25, 2008, from 4:00 to 7:00 p.m., weather permitting.

"A cemetery is a history of people - a perpetual record of yesterday and sanctuary of peace and quiet today. A cemetery exists because every life is worth loving and remembering - always." — William Gladstone (1809-1897) —

Guests should enter Llano Cemetery through the gates on 34th Avenue. Weather permitting, good walking shoes, appropriate clothing for the weather and a flashlight are recommended. Parking attendants and event hosts will be onsite.

Cost of the tour is \$5 per person, which is payable at the gate. Children under 3 years will be free. Proceeds will benefit PPHM and Llano Cemetery.

For more information contact Amy David at 806-651-2233 or adavid@pphm.wtamu.edu. No reservation is required.

Considering windows before that cold North wind comes in?



PANHANDLE

Local References Available



Customs
LLC

~ Where Quality & Integrity Matter ~



Greg Utsey

806-367-1441

Jeff Wiley

806-790-1663

Gordon's

Your place for

Bridal Registry

Couples Currently Registered

- Annie Mayhew & Brandon Gilbert - 10/25
- Lauren Payne & Steven Haney - 11/15
- Macy Harbour & Kevin Beedy - 11/29
- Tashiana (Schumann) & Eric Haley - 11/8
- Nicole (Ramon) & Eric Neumeier - 11/29
- Kacee (Smith) & Josh Ivy - 11/29
- Nicole (Sander) & Paul Swanson - 11/29
- Shanda (Graham) & Doug Kerr - 11/29
- Sammie Stavlo & Wade Harkey - 11/29
- Katie Adcock & Tarin Rice - 11/29

Baby Registry

- Chris & Gale (baby girl - Acey Gale) - 10/18
- Janae & Kyle Igo (baby boy) - 10/25
- Felicia & Gilbert Perez (baby girl) - 10/25
- John & Courtney Brock (baby girl) - TBA
- Chad & Tara Gardiner (baby boy) - 10/25
- Bryn & Aaron Weller (baby boy) - 10/25

Gordon's 659-2141
314 Main Spearman

Celebrate

Gifts for all your celebrations!

Bridal Registry

- Annie Mayhew & Brandon Gilbert - 10/25
- Lauren Payne & Steven Haney - 11/15
- Tashi (Schumann) & Eric Haley - 11/8
- Macy Harbour & Kevin Beedy - 11/29
- Sammie Stavlo & Wade Harkey - 11/29
- Katie Adcock & Tarin Rice - 11/29

Baby Registry

- Gale & Chris Womble (Acey Gale) - 10/18
- Janae (Watley) & Kyle Igo - 10/25
- Bryn (Lowe) & Aaron Weller - 10/25
- Tara & Chad Gardiner - 10/25

Celebrate

203 Main St. Spearman, TX
(806) 659-3350 1-800-663-8026



Palace Theatre

MOVIE SHOW TIMES
Friday-Thursday - 7 p.m.
Sunday - 2 p.m.
Closed Sunday Night

FRESH POPCORN & DRINKS!
PARTY ROOM & ARCADE
MOVIE RENTALS

Palace Theatre
210 Main Street
Canadian TX 79014
806-323-5133
www.palacetheatre.com

The Palace Theatre meets
Lucasfilm THX specifications for
site and sound quality.

PTCI has the Sports YOU want to watch!

ESPN

ESPN2

Classic

SPEED

OUTDOOR

NFL NETWORK

GOLF CHANNEL



FSN FOX SPORTS NET.

VERSUS

HD NFL

HD Sports Channels

FSN SOUTHWEST

GOLF CHANNEL

SPEED HD

DIGITAL TV

VS HD

ESPN HD

ESPN2 HD

OUTDOOR CHANNEL
America's Leader in Outdoor TV

721 W 7th - Spearman
1-800-562-2556
www.ptci.net

Available in select areas only.

Local Exchange Students Meet



High School foreign exchange students and their host families from Goodwell, Guymon, Texhoma, and Yarbrough, Oklahoma, and Perryton and Spearman, Texas, recently met in Guymon for an outdoor barbeque. They and their host brothers and sisters are pictured above. The students are all participants in the CIEE program. They are Crissy Koenig, of Germany, host daughter of the Lin Kottke family, Goodwell; Friederike Paul of Germany, with Teri Barber, Goodwell; Alfonso Cancho Caceres of Spain, the Bobby Reid family, Guymon; Matchai Boonyam of Thailand, the Curt Kuriyama family, Guymon; Mariana Martins, Brazil, Sherol Ledbetter family, Guymon; Adela Bondova, Slovakia, the Frank Rhoden family, Perryton; Max Kopp of Germany, the Hull family, Spearman; Alexandra Thees, Germany, Ty Ellis family, Texhoma; Jessica Bastain, Germany, host mom Misty Viner, Yarbrough; Nattaya Kusuwan, Thailand, Ray Ortiz family, Guymon; Nikola Ilik, Macedonia, host Mary Ann Shaddy family, Guymon. Local coordinators for the program are Stacie Reid of Guymon and Melyn Johnson of the Oslo Community.

Statement of Ownership, Management, and Circulation
 UNITED STATES POSTAL SERVICE (All Periodicals Publications Except Requester Publications)

1. Publication Title: The Hansford County Reporter-Statesman
 2. Issue Frequency: Weekly
 3. Issue Date for Circulation Data Below: 9/28/08
 4. Annual Subscription Price: \$36.00 (In Country), \$48.00 (Out of Country)
 5. Number of Issues Published Annually: 52
 6. Annual Publication Date Range: 9/28/08 - 9/28/09
 7. Complete Mailing Address of Known Office of Publication (Street, city, county, state, and ZIP+4®):
 The Hansford County Reporter-Statesman
 213 Main Street
 Spearman, TX 79081
 8. Complete Mailing Address of Headquarters or General Business Office of Publisher (Not printer):
 The Hansford County Reporter-Statesman
 213 Main Street
 Spearman, TX 79081
 9. Full Names and Complete Mailing Addresses of Publisher, Editor, and Managing Editor (Do not leave blank):
 Publisher: Gary Smith, 213 Main Street, Spearman, TX 79081
 Editor: Catherine Smith, 213 Main Street, Spearman, TX 79081
 10. Owner (Do not leave blank. If the publication is owned by a corporation, give the name and address of the corporation immediately followed by the names and addresses of all stockholders owning or holding 1 percent or more of the total amount of stock. If not owned by a corporation, give the names and addresses of the individual owners. If owned by a partnership or other unincorporated firm, give its name and address as well as those of each individual owner. If the publication is published by a nonprofit organization, give its name and address.)
 11. Known Bondholders, Mortgagees, and Other Security Holders Owning or Holding 1 Percent or More of Total Amount of Bonds, Mortgages, or Other Securities. If none, check box: None
 12. Tax Status (For completion by nonprofit organizations authorized to mail at nonprofit rates) (Check one):
 The purpose, function, and nonprofit status of this organization and the exempt status for federal income tax purposes:
 Has Not Changed During Preceding 12 Months
 Has Changed During Preceding 12 Months
 13. Publication Title: The Hansford County Reporter-Statesman
 14. Issue Date for Circulation Data Below: 9/28/08
 15. Extent and Nature of Circulation
 a. Total Number of Copies (Net press run): 1600
 b. Paid and/or Requested Circulation (Sum of 15b(1) through 15b(10))
 (1) Mailed Outside-County Paid Subscriptions (Based on PS Form 3841 Outside-County Paid Subscriptions) 300 295
 (2) Mailed In-County Paid Subscriptions (Based on PS Form 3841 In-County Paid Subscriptions) 412 396
 (3) Paid Distribution Outside the Mails (Including Sales Through Dealers and Carriers, Street Vendors, Counter Sales, and Other Paid Distribution Outside USPS) 400 400
 (4) Paid Distribution by Other Classes of Mail Through the USPS (e.g. First-Class Mail®) 0 0
 (5) Total Paid Distribution (Sum of 15b(1) through 15b(5)) 1112 1091
 (6) Free or Nominal Rate Outside-County Copies (Included on PS Form 3841) 18 18
 (7) Free or Nominal Rate In-County Copies (Included on PS Form 3841) 5 5
 (8) Free or Nominal Rate Copies Mailed by Other Classes Through the USPS (e.g. First-Class Mail®) 0 0
 (9) Free or Nominal Rate Distribution Outside the Mail (Carriers or other means) 80 80
 (10) Total Free or Nominal Rate Distribution (Sum of 15b(6) through 15b(10)) 103 103
 c. Total Distribution (Sum of 15b(1) through 15b(10)) 1215 1194
 d. Copies not Distributed (See instructions to Publishers at page #12) 385 414
 e. Total (Sum of 15b(1) through 15b(11)) 1600 1600
 f. Percent Paid (Sum of 15b(1) through 15b(5) divided by 15a times 100) 69.4% 68.4%
 16. Publication of Statement of Ownership
 If the publication is a general publication, publication of this statement is required, and is printed in issue 10/16/08
 If the publication is a nonprofit organization, publication of this statement is required, and is printed in issue 9/28/08
 Signature and Title of Editor, Publisher, Business Manager, or Owner: *Richard Smith* 9/28/08
 I certify that all information furnished on this form is true and complete. I understand that anyone who furnishes false or misleading information on this form or who omits material or information requested on the form may be subject to criminal sanctions (including fines and imprisonment) and/or civil sanctions (including civil penalties).

Wolf Creek Heritage Museum Notes

MUSEUM HAPPENINGS
 I am back from a week in Amarillo attending a Grantsmanship Workshop and my brain is exhausted. The process of writing grants and finding funders is not an easy task. I hope we can produce some good proposals for our building project first, and then work on other projects. (I say hope because in these economic times, a lot is uncertain.) I met many fellow workers in the non-profit sector. I was the only museum person. Everyone else was from various charities - from feeding the homeless to drug awareness programs. We had attendees from Alaska, Kansas, Oregon and all points of Texas. An interesting and educational week. It is good to be home, and the rain is nice. Unfortunately, the rain caused the cancellation of the Kiowa Dedication. Please look for a rescheduling date. The Wednesday crew behaved nicely during my absence, leaving only two or three assignments on my desk.

HISTORICAL HAPPENINGS
 In several of my articles in the last two months, I have talked about the WWII parachute bail-outs that occurred near Lipscomb. As you may recall, we (the ladies) found the original newspaper article that reported the incident in 1945. We mailed the article to Ann and Bob Jamison in Dayton, TX who were researching the incident for a family friend, Glen Prater. They were thrilled with the article and the fact that we were also able to identify the man who died in the bail-out. Upon my return this week, I was met with a letter from Mr. Jamison thanking us for our efforts and to relate to us Mr. Prater's recollection of the events. Our article had reported that the dead man was the

first out of the plane. Mr. Prater stated that this was correct and that he jerked his rip cord open too soon and the prop blast blew the chute into the tail assembly of the airplane causing his death. Mr. Prater was rescued by Sheriff Shahan, who drove up pulling a trailer with a horse. Mr. Prater states the Sheriff asked him if he knew how to ride a horse so he could help them find the others. He got on the horse and they rescued several others, taking them into Lipscomb and putting them into ambulances. With our research and Mr. Prater's oral history, we now have a pretty good picture of the incident. We still need the names of the farmers who assisted in the rescue and the names of the other airmen who bailed out. Isn't history fun. Have a great week, and be sure to start early this weekend and come to Lipscomb.

Dorothy referred to me as "Commander in Chief" last week in the column. I beg to differ. They are pretty good at coming up with things to do. It is one reason why we have so much fun. At our board meeting on October 8, Verle Woods volunteered his dugout as a place for our fundraiser. Please look for our poster advertising our fundraiser at the end of the month for a dinner and program at Verle's Dugout. Tickets will be on sale with the exact date next week. The evening will be fun with a frontier dinner, tour of the dugout and surrounding area, and discussion on various topics of interest. This weekend is the Fall Foliage Tour, and the museum will have a program and book signing at 3 p.m. The book signing will be held by Cleon Roberts for Hereford. A reception will be held for Denny Mingus at 4 p.m. on Saturday, October 18, 2008.

HALLOWEEN SALE
20% OFF
 We're so scared of our Halloween items that we put them on sale!
Celebrate
 Spearman, TX
 203 Main St.
 800-663-8026
 (806) 659-3350
 Sale Until 10/31

MEMORIAL HOSPITAL OF TEXAS COUNTY
 is looking for OB, OR, ER, Med/Surg LPN's and RN's to join our team.

MHTC offers competitive salaries and great benefits including Health Insurance, Dental Insurance, generous Retirement Plan, Paid Days Off and more.

- Flexible Scheduling
- Sign-on Bonus
- Relocation Allowance
- Tuition Reimbursement

Contact Susanna Ritter
 Human Resources Department
 at 580-338-6515 ext 2204

See how John Deere precision can turn into payday for you.

Great financing options!

WE MAKE PRECISION PAY
 There's never been a better time to put the time, money, and fuel saving advantages of a John Deere GreenStar™ Guidance System to work for you. Stop in and see just how easy and affordable it is to put the power of a guidance system to work in your operation!

JOHN DEERE
 Nothing Runs Like A Deere

GREENSTAR™ 2 GUIDANCE SYSTEMS
 Let Hansford Implement Company put together a hands-free guidance system that's right for your operation and your budget.

HELPFUL GUIDANCE
 Start saving on fuel and other input costs while reducing wear and tear on your equipment. Start being more productive and less worn out.

Superior Innovation **Features That Matter**

VISIT HANSFORD IMPLEMENT COMPANY TODAY!
www.JohnDeere.com/Homeowners

12098 East Frederic Ave.
 Pampa, TX 79065
 (806) 665 - 1888

399 North Dumas Ave.
 Dumas, TX 79029
 (806) 935 - 7720

HANSFORD IMPLEMENT CO.

South Loop Rd.
 Perryton, TX 79070
 (806) 435 - 4036

South Highway 207
 Spearman, TX 79081
 (806) 659 - 2568

John Deere's green and yellow color scheme, the leaping deer symbol, and JOHN DEERE are trademarks of Deere & Company. ©2007 Deere & Company.

Precinct 1		
(Condado de) Hansford County, Texas November 4th, 2008 (4 de Noviembre de 2008)		
INSTRUCTION NOTE: 1. Vote for the candidate of your choice in each race by darkening in the oval provided to the left of the name of the candidate. 2. You may cast a straight-party vote (that is, cast a vote for all the nominees of one party) by darkening in the oval provided to the left of the name of the party. If you cast a straight party vote for all the nominees of one party and also cast a vote for an opponent of one of the party's nominees, your vote for the opponent will be counted as well as your vote for all the other nominees of the party for which the straight party vote was cast. 3. You may vote for a write-in candidate by writing in the name of the candidate on the line provided and darkening in the oval provided to the left of the line. 4. Use only the marker provided.		
NOTA DE INSTRUCCIÓN: 1. Voto por el candidato de su preferencia en cada carrera llenando completamente el espacio ovalado a la izquierda del nombre del candidato. 2. Usted podrá votar por todos los candidatos de un solo partido político (es decir, votar por todos los candidatos nombrados del mismo partido político) llenando completamente el espacio ovalado a la izquierda del nombre de dicho partido político. Si usted vota por un solo partido político ("straight ticket") y también vota por el contrincante de uno de los candidatos de dicho partido político, su computación su voto por el contrincante tanto como su voto por todos los demás candidatos del partido político de su preferencia. 3. Usted podrá votar por inscripción escrita escribiendo el nombre del candidato en la línea provista y llenando completamente el espacio ovalado a la izquierda de la línea. 4. Soloamente uso el marcador provisto.		
Straight Party (Partido Completo)	STATE (ESTADO)	STATE (ESTADO)
<input type="checkbox"/> REPUBLICAN PARTY (REP) <input type="checkbox"/> DEMOCRATIC PARTY (DEM) <input type="checkbox"/> LIBERTARIAN PARTY (LIB)	Railroad Commissioner (Comisionado de Ferrocarriles) <input type="checkbox"/> Michael L. Williams (REP) <input type="checkbox"/> Mark Thompson (DEM) <input type="checkbox"/> David Floyd (LIB)	Judge, Court of Criminal Appeals, Place 3 (Juez, Corte de Apelaciones Criminales, Lugar Núm. 3) <input type="checkbox"/> Tom Price (REP) <input type="checkbox"/> Susan Strawn (DEM) <input type="checkbox"/> Matthew E. Eilers (LIB)
FEDERAL (FEDERAL)	Chief Justice, Supreme Court (Juez Presidente, Corte Suprema) <input type="checkbox"/> Wallace B. Jefferson (REP) <input type="checkbox"/> Jim Jordan (DEM) <input type="checkbox"/> Tom Oxford (LIB)	Judge, Court of Criminal Appeals, Place 4 (Juez, Corte de Apelaciones Criminales, Lugar Núm. 4) <input type="checkbox"/> Paul Wornack (REP) <input type="checkbox"/> J.R. Molina (DEM) <input type="checkbox"/> Dave Howard (LIB)
President and Vice-President (Presidente y Vice Presidente) <input type="checkbox"/> John McCain / Sarah Palin (REP) <input type="checkbox"/> Barack Obama / Joe Biden (DEM) <input type="checkbox"/> Bob Barr / Wayne A. Rool (LIB)	Justice, Supreme Court, Place 7 (Juez, Corte Suprema, Lugar Núm. 7) <input type="checkbox"/> Dale Wainwright (REP) <input type="checkbox"/> Sam Houston (DEM) <input type="checkbox"/> David G. Smith (LIB)	Judge, Court of Criminal Appeals, Place 9 (Juez, Corte de Apelaciones Criminales, Lugar Núm. 9) <input type="checkbox"/> Cathy Cochran (REP) <input type="checkbox"/> William Bryan Strange, III (LIB)
United States Senator (Senador de los Estados Unidos) <input type="checkbox"/> John Cornyn (REP) <input type="checkbox"/> Richard J. (Rick) Noriega (DEM) <input type="checkbox"/> Yvonne Adams Schick (LIB)	Justice, Supreme Court, Place 8 (Juez, Corte Suprema, Lugar Núm. 8) <input type="checkbox"/> Phil Johnson (REP) <input type="checkbox"/> Linda Reyna Yañez (DEM) <input type="checkbox"/> Drew Shirley (LIB)	State Senator, District 31 (Senador Estatal, Distrito Núm. 31) <input type="checkbox"/> Kel Seliger (REP) <input type="checkbox"/> Lauren Poindexter (LIB)
United States Representative, District 13 (Representante de los Estados Unidos, Distrito Núm. 13) <input type="checkbox"/> Mac Thornberry (REP) <input type="checkbox"/> Roger James Waun (DEM)		

2nd Saturday Country Market

Continued from Page 1
 Almost all of our indoor vendors already rented their spaces back for next month, and 2 outside vendors took spaces inside for next month. We already rented out all the indoor spaces for next month, but I will move some of the estate sale goods around and make a couple more spaces if I need them. So, next month looks good already.

We sold a lot of stuff, but it is hard to tell that with all that remains. With much of the stuff marked under a dollar, we still sold over \$1,000 worth of stuff. (Mom and the rest of us were sure happy to see the stuff go.) We have a buyer waiting to purchase the house and property where all this stuff was stored, so getting rid of all this stuff will allow us to sell the property now. Even if we don't clear that much after all the insurance, advertising and other sale costs, at least we will be rid of all the junk and can sell the property. If the Country Market works

out, then that will be something interesting to do once a month, too.

The owner of the building was buzzing around all day. He owns the middle portion of the strip mall and most of his stores are empty. His empty cafe space just opened about a month ago, and now with the Country Market, he was all excited about all the activity and people. This month he gave me the building for free to get me to open the market. Next month I have talked to him about splitting the rental fees of spaces rented. It won't be that much but he says he is happy to see the building get used and is happy to get anything to help pay taxes and upkeep on the property. He hopes the activity will lead to someone renting the other smaller store spaces.

This time we had no electricity in the building so I had to run power cords all over the store and over to his neighboring store spaces as well as up on the roof to elec-

tric connections. This was an ordeal with breaker switches flipping off and other problems such as setting up shop lights and pole lamps for lighting. Next month we should have electricity from all the outlets at least. (The electric company wouldn't turn on the power because his boxes and connections on the back of the building didn't meet code anymore. He is having it all replaced now.) The lighting probably still won't work since the roof leaked and he is afraid to try to use them. But I have temporary lighting set up and can put up more if I need it.

I am worn out and ready for a rest, but will be looking forward to next month. The next Country Market will be on November 8th, and should be much easier without all the moving, pricing and electric power issues.

That is the short version of how it went. I'll let you know how it goes from here, but for our first market we were really happy with how well it turned out.

Sat., Oct. 18
 O'Loughlin Center
 7 p.m.
\$50/ticket

Dinner & Dance
 Enjoy a Tenderloin meal, dance to the music of a DJ and get a chance to win \$2,500, \$500, \$250 and other prizes!

Contact Damon Sibley (330-1004) for tickets, or purchase them at the door.

Important 2008 Voter Election Information

- October 20, 2008** - First Day of Early Voting (17th day before election day falls on a Saturday, first day moves to next business day)
- October 28, 2008** - Last Day to Apply for Ballot by Mail (must be received, not merely postmarked)
- October 31, 2008** - Last Day of Early Voting
- November 4, 2008** - Uniform Election Date

Hansford County Voting Precincts & Election Judges

- Precinct 1. CITY HALL** - 30 SW Court, Spearman, 659-2524; Election Judge - Kathy Boyd, 811 S. Bernice, Spearman, 659-3154
 - Precinct 2. RENNER RANCH** - Cristo-Redentor Catholic Church, 202 Hwy 15, Gruver; Election Judge - Pennye Ralston, Box 353, Spearman, Tx 733-2743; Interpreter provided by Courthouse
 - Precinct 3. CRISTO-REDENTOR CATHOLIC CHURCH** - Argelia Rodriguez, 202 Hwy 15, Gruver, Tx 733-2332; Election Judge - Barbara Stavlo, Box 1096, Gruver, Tx 733-2600; Interpreter provided by Courthouse
 - Precinct 4. CITY HALL**, 204 E. Broadway, Gruver, 733-2424; Election Judge - Kelly Harper, Box 602, Gruver, Tx 806 733 2533; Interpreter - Leticia Salazar
 - Precinct 5. O'LOUGHLIN CENTER**, 502 Brandt, Spearman, 659-3030; Election Judge - Paige Burgin, 905 Walter Wilmeth, Spearman, Tx 659-3399; Interpreter provided by Courthouse
 - Precinct 6. SPEARMAN HIGH SCHOOL** - 403 11th, Spearman, 659-2584; Election Judge - Harry Stumpf - 301 W. 12th - Spearman, Tx 659-2109; Interpreter - Denice Rojas
 - Precinct 7. OSLO LUTHERAN CHURCH** - 8605 Co Rd F, Oslo; Election Judge - JP TeBeest, 8511 FM 2349, Gruver, Tx 806 339 3947; Interpreter - Inez Azarte
 - Precinct 8. EARLY VOTE** - #15 N.W. Court, Courthouse, Spearman; Election Judge - Lynanne Maize - 707 E. 2nd, Spearman; **BRANCH OFFICE EARLY VOTE** - Gruver City Hall, 201 E. Broadway, Gruver, Tx 733-2424; Election Judge - Kayla McLennan
 - Precinct 9. PRINGLE/MORSE COMMUNITY BLDG** - 301 Main, Morse, 733-2301; Election Judge - Suzanne Gillispie, Box 97, Morse, Tx 79062 733-2657; Interpreter - Sadie DeLaCruz
- The Courthouse has two Spanish speaking employees and an Official Court Interpreter.

produ...
 • Real es...
 • Dairy c...
 • Feed y...

"Every year, we contribute our patronage funds to a worthy local project. It's our way of reinvesting in our community and our rural way of life."

Joe & Janet Reinart
 Stratford, Texas

Great Plains Ag Credit supports the cooperative principle of sharing our success with our stockholder-owners in the form of patronage. That's why our board is pleased to declare a \$3.64 million patronage to our customers this year. For more than eight consecutive years, Great Plains has allocated a total of \$17.9 million in association earnings as patronage, a tangible benefit of doing business with your locally managed agricultural lending cooperative.

Investing in our customers and investing in rural communities - Great Plains Ag Credit.

greatplainsagcredit.com

GREAT PLAINS AG CREDIT

GREAT PLAINS ... GENEROUS PATRONAGE

Annual Gordon's Drug & Panhandle Health Care

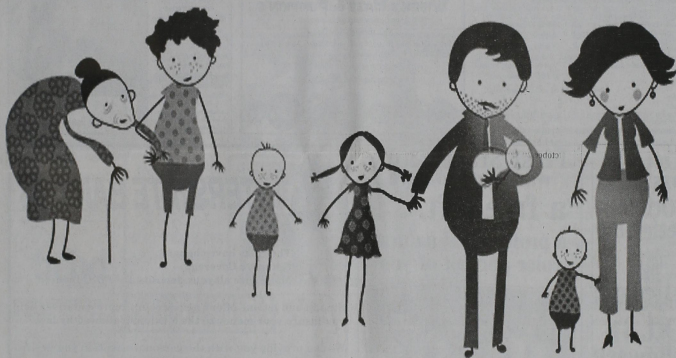
Flu Vaccine Clinic

DATE: October 21st

TIME: 9 a.m. - 5 p.m.

PLACE: Pharmacy of Gordon's Drug

COST: FREE to those with Medicare Part B, \$25 otherwise



Be sure to protect your family this flu season!

Gordon's

DRUG

314 Main • Spearman • 806-659-2141

Lynx Stun Highland Park, 15-12

reprinted from the Amarillo Globe-News

Spearman stopped a two-point conversion in the third quarter, then scored the winning touchdown in the fourth quarter to capture a 15-12 decision in the District 1-2A opener for both teams Friday night.

Seth Pruett's second TD run put HP ahead 12-7, but a host of Lynx defenders sacked Hornets quarterback Chris Swan on the two-point conversion.

Kegan Garnett ran 10 yards for the go-ahead touchdown for Spearman (2-4), which added Garnett's two-point conversion.

Garnett had 137 yards on 23 carries. Highland Park (3-3) had a 280-263 edge in total yards.

Game Statistics

	Hgh. Park	Spearman
First Downs	14	14
Rushing Yards	134	146
Passing Yards	146	117
Total Yards	280	263
Comp-Att-INT	14-27-1	9-22-2
Punts-Avg.	4-23.0	3-35.0
Fumbles-Lost	3-1	2-1
Penalties-Yards	8-45	6-55

Scoring

Highland Park	6	0	6	0	12
Spearman	0	0	7	8	15

HP-Seth Pruett 19 run (kick failed)
S-Chase Farrar 25 pass from Blayne Schroeder (Skyler Sumner kick)
HP-Pruett 6 run (run failed)
S-Kegan Garnett 10 run (Garnett run)

District 1-2A

Team	Dist.	Pts.	Opp.	All	Pts.	Opp.
Bushland (2)	1-0	34	0	6-0	212	79
Panhandle (4)	1-0	28	21	6-0	215	83
Spearman (5)	1-0	15	12	2-4	96	148
Highland Park (6)	0-1	12	15	3-3	120	107
Sanford-Fritch (3)	0-1	0	34	2-4	89	124
River Road (1)	0-1	21	28	2-4	124	125

Last Week: Bushland 34, Sanford-Fritch 0; Spearman 15, Highland Park 12; Panhandle 28, River Road 21.
This Week: Bushland at Spearman, Sanford-Fritch at Panhandle, River Road at Highland Park.

Hounds Scalp Kiowas

reprinted from the Amarillo Globe-News

Booker and Gruver had the same 2-4 overall records, but the Greyhounds start District 1-1A play with a 1-0 record

Payton Thoreson threw two touchdowns passes and Rily Urban and Drew Mireles one each for Gruver, which scored in each quarter.

Booker had only 55 yards. Miles Messer had a 10-yard TD run and gained 207 yards on 28 carries. Ricardo Padilla had 37 yards rushing to lead Booker.

Scoring

Gruver	7	19	6	8	40
Booker	0	0	0	0	0

G - Parker Grotegut 20 pass from Payton Thoreson (Justin Vazquez kick)
G - Vazquez 48 pass from Rily Urban (run failed)

G - Vazquez 32 pass from Drew Mireles (Vazquez kick)
G - Thoreson 2 run (kick failed)
G - Miles Messer 10 run (kick failed)
G - Blake Fitzgerald 10 pass from Thoreson (Vazquez pass from Taylor Williams)

Game Statistics

	Gruver	Booker
First Downs	22	4
Rushing Yards	220	39
Passing Yards	212	16
Total Yards	432	55
Comp-Att-INT	11-16-0	2-10-2
Punts-Avg.	1-39	5-28.2
Fumbles-Lost	2-2	4-2
Penalties-Yards	11-80	2-10

District 1-1A

Team	Dist.	Pts.	Opp.	All	Pts.	Opp.
Canadian (1)	1-0	61	14	6-0	308	68
Stratford (4)	1-0	46	21	5-1	199	116
Gruver (5)	1-0	40	0	2-3	77	106
Sunray (3)	0-1	21	46	3-3	181	164
West Texas (2)	0-1	14	61	3-3	87	148
Booker (6)	0-1	0	40	2-4	77	195


Last Week: Stratford 46, Sunray 21; Canadian 61, West Texas 14; Gruver 40, Booker 0.
This Week: Stratford at Canadian, Sunray at Gruver, Booker at West Texas.

Lynx/Lynxette Booster Club

The Spearman Lynx/Lynxette Booster Club met on Monday, October 13, 2008 at 7 p.m. in the Spearman High School Portable Building. 6 people were present for the meeting, which was called to order by Don Schroeder at 7:05 p.m.


Minutes from the last meeting were read. VP Boys - Tim Cooper reported the hats are in need to sell. Membership - Kellye Buchanan reported in the processes of collecting.

Ways and Means - Julie Pittman reported that things are going great. They used the new trailer and it worked well. Yard signs - Kelly Garnett reported she was working on yard signs and handed some out last Friday.



WIECK'S MAZE & PUMPKIN'S

2 Miles North of Eter (call for directions)
Now through Nov. 2nd
Fri. 4-8 p.m., Sat. 10 a.m.-8 p.m., Sun. 1-8 p.m., Mon. 4-7 p.m.
Other times by appointment.
For more information, call 806-922-3720.
www.wieckmazeandpumpkins.com



Treasurer/Secretary - Tammy Benton reported the bank and saving accounts balances and bills paid.

General Discussion - merchandise orders due to Sandi, some were delivered, but not all the order was sent. We should have the insurance for the trailer by Friday, as well as a smoke machine for the tunnel.

Cross Country request - there are 10 girls on the Varsity Lynxette Cross Country Team, and Coach Cook would appreciate letters from the community to support them. These girls are the 2nd Place State Champions for 2007.

Spearman ISD is hosting the District Cross Country Meet on Monday, October 27th at Palo Duro Lake, beginning at 2 p.m. There will be 6 teams of boys and girls, grades 7th - 12th competing in the District 1-AA meet. Everyone is encouraged to come out and support these girls in the District Meet. (By the time they get to the state meet, they will have run the same number of miles as the distance between Spearman and Austin!)


A Tailgate Party will be held in the east parking lot of Spearman High School on October 17th at 5:30 p.m. Everyone is invited to bring your own food and drinks to enjoy fellowship and support the football guys. Grills will be available for cooking your food.

The Spearman Lynx/Lynxette Booster Club is asking interested individuals and businesses to write letters of support to the runners prior to the meet. Letters may be mailed to: District Cross Country, % Lynx/Lynxette Booster Club, PO Box 343, Spearman TX 79081; or you may e-mail them to: tdbenton@ag.tamu.edu and she will get them to Coach Nan Cook.

Anyone wishing to write letters to the football teams is also encouraged to do so.

The meeting adjourned at 7:35 p.m. The Spearman Lynx/Lynxette Booster Club will meet on Monday, October 20, 2008 at 7 p.m. in the portable building behind the High School.

Hoochy Poochy Parlor




Are you going out of town? Call Carmon today to make reservations for your pets at Hoochy Poochy Parlor. (It's more like camp)

Hoochy Poochy Parlor
421 E. 10th St.
Borger, TX 79007
806-273-2724
hoochypoochy@att.net
www.hoochypoochy.net
Hours:
Mon.-Fri., 8 a.m. until done
Saturday by appointment only
Please visit us for a free estimate on your pet care needs.

Professional Award Winning Stylist

Carmon Baker



and Missy
"The Hoochy Poochy"

Oct. 16
Boss's Day

Oct. 18
Sweetest Day

Oct. 25
Make A Difference Day

Oct. 31
Halloween

Nov. 1
All Saint's Day

Nov. 3
All Souls Day

Nov. 4
Housewife's Day

Nov. 4
Election Day

All Occasion Flowers

202 N. Bernice (across from the Post Office)
659-5180 • Spearman

First State Bank

wants you to have
a free gift. . .
a professional natural
color portrait of you



or your entire family.

We are pleased to offer this gift to our valued customers and the members of our community. All you need to do to receive your free gift portrait is call us to set up an appointment for your portrait sitting.

Your portrait will be taken in the comfort of our offices by a qualified professional photographer. We will have special evening and weekend hours available so that your portrait may include those family members who work away from home.

When the photographer has your portrait ready, you will be able to select your Free Gift from the finished portraits. At that time, because portraits can be so many special things - warmly personal decorating pieces, family heirlooms, and thoughtful gifts - other portrait sizes and poses will be available for purchase at special low prices; however, you will be under absolutely no obligation to purchase any of these additional portraits. Call for your appointment today! one free gift per family, please.

FSB

First State Bank
One NE Court • P.O. Box 247
Spearman, Texas 79081
(806) 659-5565 • Fax 659-5292
Strength is our Tradition
Service our Goal

A Full Service Bank
That Wants Your Business. **FDIC**

INTERSTATE BANK, ssb

- The rules have changed
- Get more Coverage
- Make sure all your deposits are FDIC Insured

Stop in and let one of our new account representatives help you insure your money to the Maximum allowed by law.

We can provide you with the personal attention you desire and need.

PLUS

Open a new \$25,000 Certificate of Deposit
For 6 months and we'll pay you an APY** of 3.03%
Some restrictions may apply. Maximum \$500,000 per Entity.
Individuals & Businesses Eligible. Interest paid at maturity. Interest is Compounded Quarterly. (Excludes IRA's)
**Annual Percentage Yield: APR 3.03%

CALL OR COME BY TODAY!



INTERSTATE BANK, ssb

322 Main

659-2559

It's Your Money - BE SMART



EQUAL HOUSING LENDER



FDIC
FEDERAL DEPOSIT INSURANCE CORPORATION

MITCHELL THEATRES

NORTHRIDGE CINEMA 8

Guymon, Oklahoma

FRESH POPCORN EVERYDAY!
-PARTY ROOM & ARCADE-

Call for Showtimes
580-338-3281
www.northridge8.com

HELP WANTED

HELP WANTED: Gigot Agra Products, Valley Center Pivot Dealer, is seeking additional service technicians at our Spearman location. Experience desired, but not required. Benefit package is available. Send resume to PO Box 1413, Guyton OK 73942, or call 580-338-2536 or 806-659-3121. TFN(9-18-08)B

HELP WANTED: Now hiring FEEDYARD OFFICE MANAGER. Must be experienced in Feedyard Accounting, AP / AR / Payroll / Cattle, Grain and Inventories. Excellent Salary, Benefits, Health & Retirement. Resumes to kevin.hazelwood@cactusfeeders.com, or fax 806-371-4775. 6(9-25-08)B

HELP WANTED: General mechanic for automotive, irrigation work and tire repair. Tools provided. Apply at Morse Implement and Auto Supply in Morse. Call 06-733-2668. Ask for Tom or Gary. Good pay and working conditions. TFN(10-02-08)

HELP WANTED: Part-time Custodian Needed to work 12 hours a week at the Hansford County Courthouse. Apply at Hansford County Judge's Office. TFN(10-16-08)B

SERVICES

HOCHY POOCHY PARLOR Call us for all your pet's grooming and boarding needs. Call now for reservations! 806-273-2724. TFN(11-2-07)

FOR SALE OR TRADE

FOR SALE: ALL NEW king pillow top mattress & split box set. \$199. complete 3 pc set, still wrapped. 806-356-9215 TFN(1-31-08)

FOR SALE: Brand New!!! Queen Pillowtop Mattress(comes with factory warranty). Still in plastic. Only \$129. 806-341-6233 TFN(1-31-08)

FOR SALE: \$119. Queen size posture support mattress and box set, never used, warranty. 806-341-6233 TFN(1-31-08)

FOR SALE: DOUBLE/FULL orthopedic mattress set unopened with warranty \$109. Twin \$100 806-356-9215 TFN(1-31-08)

FOR SALE: NASA Tempurpedic type memory foam mattress HUGS body. New! \$350. 806-341-6233 TFN(1-31-08)

Blankenship Real Estate
659-3052 - 670-3774

Beauty Salon (Spearman) - 1-3 Bays, fixtures & inventory included.

3BR/1B Home (Spearman) - 2 living areas, nice fenced backyard, storage, close to school and hospital!

NEW LISTINGS WANTED!

Eulalia Blankenship - Sales
Eschol Blankenship - Broker



Openings at Hansford Hospital

Maintenance Person: Performing duties for maintenance of the building, grounds, including carpentry, painting, plumbing, electrical work, air conditioning, gardening, furniture repair, welding, etc.

Home Health RN: Must be licensed in the State of Texas

Openings at Hansford Manor

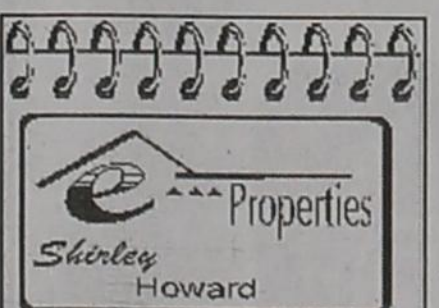
Dietary: Cooks, cooks helper and dishwasher

LVN: Must be licensed in the State of Texas

Housekeeper Full Time: Keeping our manor clean and sanitary for our residents, patients and family members

Housekeeper: Nights 4:00 - ? Keeping our manor clean and sanitary for our residents, patients and family members

Great working environment and staff, quality facility providing opportunities for professional growth. Great benefit package. Apply at 707 S. Roland, Spearman, TX or contact Jackie Nelson at 806-659-5841. Download application at www.hchd.net
ECE
2(10-16-08)B



Gruver Property
901 Womble - 4 BR/3.5 Bath 2107 sq ft
1100 W. 4th - 4 BR/3 Bath 2107 sq ft basement.

Shirley Howard, Broker/Owner
806-886-6536, Cell
Melinda McCullough, Realtor
(806) 733-5678

We would LOVE to sell your HOUSE!
CALL US!

HANSFORD CO - 2 1/2 miles from town, on pvt., 640 acres, choice land, 1/2 mile sprinkler, excellent location for dairy.

LIPSCOMB CO - 640 ac., strong water area, sprinklers & irr. wells, with some improved pasture, barns and pens.

POTTER CO, TX - 4872.8 acres of beautiful ranch country four miles north of loop 335, Amarillo, TX, pvt., on four sides (3 mi. - hwy 287, 1 mi. - Western St., 1 mi. - Givens Rd., 1 mi. - Rivera Park Rd.) Well watered by pumps powered by solar energy (state of the art) and windmills. Deer, quail & dove. Talk to us about dividing (640 ac. min.).

JUST LISTED! Texas Panhandle - 177 acres with extraordinary 5404 sq. ft. +/- home overlooking the property with beautiful views of live creek, trees, wildlife (deer, quail & turkey), covered horse training facilities, stables, excellent cattle working facilities and pens, employee housing.

HANSFORD CO - Choice farming area, 1/2 section, one irr. well, presently farmed dry-land, irr. potential. At \$750.00 per acre, let's look!

OCHILTREE CO - Choice dairy location, strong water area, three phase electricity, 776.5 acres more or less of choice land (Pullman Clay Loam - almost all "A" slope) with two pivot points for sprinklers, two irrigation wells, preconditioning pens with indoor working area, grain, hay and fuel storage.

TEXAS COUNTY, OK - 560 acre irrigated stock farm, wind energy lease.

OCEANS OF WATER II - Hansford Co., Texas - 4 sections, strong water, dev. with sprinklers, wells, feedyard, home, barns, pvt., 2 mi. hwy. frontage.

SEE OUR WEBSITE OR GIVE US A CALL!
www.scottlandcompany.com
Shawn Gillispie 806/922-5532
Ben G. Scott, Broker
1-800-933-9698 day/eve
TFN(9-25-08)



Serving Hansford County for 14 years
Julie Martin: Broker - 659-2425

IN SPEARMAN

1111 S. Townsend - Split level, 3/2/1 Are you looking for a home with that brand new feeling? This home has been redone throughout; all new flooring, paint, fixtures, baths, remodeled kitchen w/new appliances, granite countertops; split level deck. **REDUCED!** 703 Collier - 3/1/1 **SOLD** day - Let's Make a Deal!!

1005 S. Bernice - 3/2/2 bath, 2100 sq ft w/fireplace **SOLD**

We'd Like Your Listing FOR QUALITY & SERVICE CALL US TODAY!
Equal Housing Opportunity

See us for:
AUTO • HOME • CROP HAIL • FARM & RANCH • MULTIPERIL • LIVESTOCK

INSURANCE



BORT AGENCY, INC.
510 Main St. • Gruver, TX
(806) 733-2456

CHILD SEAT FAILURES

can cause death or severe injury. Some child seats are defectively designed or manufactured, causing severe injury or even death to children who use them. If your child or other loved one has been injured while in a child safety seat, call us today for professional insight.

EXPERIENCE COUNTS

Lawyers with over 85 years combined expertise.
Ryan A. Krebs, M.D., J.D. Doctor-Lawyer in Full-time Law Practice
Richard A. Dodd, L.C.
Timothy R. Cappolino, P.C. Board Certified Personal Injury Trial Law and Civil Trial Law by the Texas Board of Legal Specializations
NO FEE FOR FIRST VISIT
CAMERON, TEXAS
1-800-460-0606
www.YourCarWreck.com

SIGN UP FOR A FREE SCOOTER

One Scooter Given Away Each Month
Toll Free **800-606-9860**
Med Care MEDICAL SUPPLY
www.medcaremedicalsupply.com

Med Care MEDICAL SUPPLY

Ask us if you qualify for a **POWER CHAIR** at little or no cost to you.
In most cases, Medicare, Medicaid & Insurance will cover 100% of the cost for your Power Chair.
Toll Free **800-606-9860**
www.medcaremedicalsupply.com

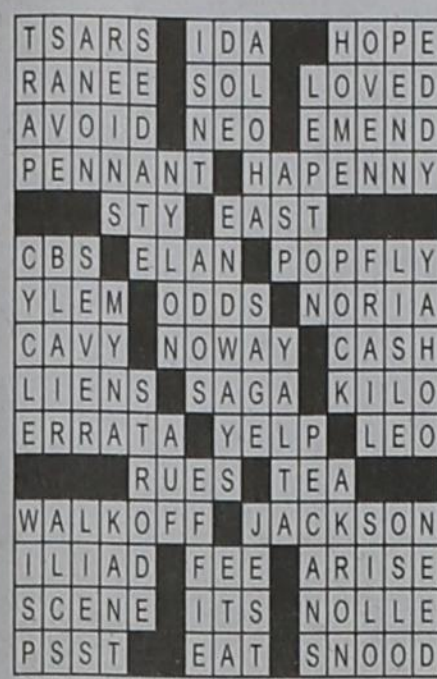
Christmas in October

FREE GIFT on first visit!
\$2,500 toward 10'x12' deck, storage shed or utility bills.
Starting From **\$309*/mo** For 3BR / 2Bath
SALE OF THE YEAR!
CALL TODAY FOR SALE & FREE GIFT **1-866-725-6222**



Degreed Field Geologist to work in the OK-TX panhandle as geo-steering representative for rapidly growing, Independent Exploration and Production Company, drilling horizontal wells. Previous field experience is advantageous. Excellent opportunity for advancement and experience with current technologies. Competitive salary and generous comprehensive benefit package, commensurate with experience & qualifications. Send cover letter and resume to:

Human Resources
P. O. Box 3105
Tulsa, OK 74101
hr@pantherenergy.us
Fax 866-585-2752



8	4	9	2	5	6	3	7	1
1	2	5	7	3	4	9	8	6
6	3	7	1	9	8	2	4	5
3	5	6	8	4	9	7	1	2
2	9	1	5	6	7	8	3	4
7	8	4	3	2	1	5	6	9
9	7	2	6	1	3	4	5	8
4	1	8	9	7	5	6	2	3
5	6	3	4	8	2	1	9	7

New, Used & Rental RV's



Bennett's Camping Center
Call 817-279-7500
or visit www.BennettsRV.com

FREE DIRECTV 4 ROOM SYSTEM!

FREE 4 MONTHS ALL 265+ CHANNELS!
Includes HBO, Cinemax, Showtime, Starz, Sports...Everything!
(Ends Soon, Ask How) FREE DVR/HD!
Pkgs. start only \$29.99!
No Start up costs!
We're Local Installers!
Toll Free 800-214-7110

FREE DIRECTV 4 ROOM SYSTEM!

FREE 4 MONTHS ALL 265+ CHANNELS!
Includes HBO, Cinemax, Showtime, Starz, Sports...Everything!
(Ends Soon, Ask How) FREE DVR/HD!
Pkgs. start only \$29.99!
No Start up costs!
We're Local Installers!
Toll Free 800-214-7110

Cattleman's Livestock Comm. Co.

Proverbs 16:3
Hwy 54 W Box 58 Dalhart, Tx 79022
Fax: (806) 249 - 4800 (806) 249 - 5505
www.cattlemanslivestock.net
Sale Held Every Thursday at 11:00 a.m.

10/9/08 Total: 1747

Heifers-	Head	Weight	Amount
Dumas TX	By hd	12	257# \$375.00
Mount Dora NM	Blk	8	336# \$110.00
Dumas TX	Blk	21	386# \$99.00
St. John AZ weaned	Blk	23	394# \$103.50
Vega TX	Blk	12	470# \$98.50
Vega TX	Blk	41	557# \$86.00
Stratford TX	Blk	20	559# \$92.50
San Jon NM	Blk	12	566# \$90.00
Logan NM	Blk	9	613# \$91.00
St. John AZ weaned	Blk	16	637# \$92.00
Boise City OK	Mix	11	685# \$87.00
Dalhart TX	Blk	33	730# \$89.50
Boise City OK	Mix	19	794# \$84.00
Dalhart TX	Blk	24	873# \$88.25

Steers-	Head	Weight	Amount
Dumas TX	By hd	14	247# \$350.00
Dalhart TX	Blk	12	318# \$129.00
St. John AZ weaned	Blk	14	349# \$135.00
Mills NM	Mix	5	365# \$122.00
Dumas TX	Blk	18	390# \$119.00
St. John AZ weaned	Blk	27	403# \$121.00
Dalhart TX	Blk	29	445# \$116.50
Vega TX	Blk	9	466# \$110.00
Mills NM	Mix	55	508# \$106.00
Dalhart TX weaned	Blk	33	538# \$107.50
Stratford TX weaned	Blk	18	574# \$102.50
Tucumcari NM	Blk	38	641# \$95.00
St. John AZ weaned	Mix	24	689# \$97.00
St. John AZ weaned	Blk	7	769# \$92.50
St. John AZ weaned	Blk	10	894# \$86.00

Cows-\$44.00 - \$50.50
Holsteins-\$46.00 - \$53.00

Matt's Notes: Just when you think the sky has fallen and the dow jones is down 600 pts, a few new faces show up at Dalhart to buy calves and the market ends up steady to 5 higher on the good weaned kind. The calf market is demanding your calves to be weaned something that should've started long ago.

Matt & Jeana Wing Jo Wing
Matt's Cell- 806-333-2522
Field Representatives
Clayton Ward (806)333-2199
Don Prather (580)426-2416
Craig Lawrence (806)384-2153
Ted Allen (806)333-4361
Lanny Cook (806)267-2251
Hannah Grice (806)339-2920

TEXAS STATEWIDE CLASSIFIED ADVERTISING NETWORK



TexSCAN Week of October 12, 2008

AUTOS WANTED
WE BUY DAMAGED & flooded cars, trucks and SUV's. Highest prices paid, 1998 to 2009. Immediate payment, free towing, www.DamagedCars.com or 1-877-877-7911

BUSINESS OPPORTUNITIES
ALL CASH CANDY Route. Do you earn \$800 in a day? Your own local candy route. 30 machines and candy. All for \$9,995. 1-888-625-5481. Multi Vend, LLC.
RED BULL, MONSTER, 5-hour energy drink routes. National accounts available. Profit Potential \$40K-\$400K Yearly! Call 247, 1-888-428-5392 Code 301. Minimum Investment Required!
WILLIAM SHATNER SAYS yes! Award-winning new Company from Norway chooses Texas for 2009 Launch. Create your own Microempire with Shatner's endorsement. www.texasmicroempres.com. 1-972-529-8245.

DRIVERS
CDL-A DRIVERS: EXPANDING Fleet offering Regional/OTR runs. Outstanding pay package. Excellent benefits. Generous hometime. \$300 lease special on Volvos. National Carriers. 1-888-707-7729, www.nationalcarriers.com
DRIVER: COMPANY DRIVERS CDL-A Earn up to 46¢ cpm. Excellent training for students with CDL. No forced Northeast. Average 2,500 to 2,800 miles a week. 1-877-740-6262. www.pl-inc.com
DRIVERS: ACT NOW! Sign-On bonus \$550-41¢ cpm. Earn over \$1000 weekly. Excellent benefits. Need CDL-A & 3 months recent OTR. Melton Truck Lines. 1-888-258-8782.
DRIVER: COMPANY DRIVERS CDL-A Earn up to 46¢ cpm. 12 cpm increase every 60K miles. Average 2,500 to 2,800 miles a week. No forced Northeast. 1-877-417-1155. www.pl-inc.com

REAL ESTATE
AAA FREE LIST of acreage land bargains, 1 to 5 acres, water access, waterfront, beach front! All great locations. Excellent financing. Call now 1-979-265-4432 x 1184
FORECLOSED HOME AUCTION Texas Statewide. 200+ Homes Must Be Sold! Free Brochure 1-800-351-5531, www.USHomeAuction.com
PRICED TO SELL! Newly released Colorado Mountain Ranch. 35 Acres- \$39,900. Majestic lake & mountain views adjacent to national forest for camping or hiking. Close to conveniences. EZ Terms. 1-866-353-4810.
TEXAS & OLD MEXICO. Affordable Hunting & Fishing Property. 100 acres for \$79,000 with 10% down & no credit check. All sizes available up to 20,000 acres. Call 1-877-77-BIGLAND (1-877-772-4452)
RV'S FOR SALE
REPO SALE! SEVERAL units must go. Call NOW, 1-866-813-2770.

EQUIPMENT FOR SALE
SAWMILLS FROM ONLY \$2,990.00-Convert your logs to valuable lumber with your own Norwood portable band sawmill. Log skidders also available. www.norwoodsawmills.com/300N -FREE information: 1-800-578-1363-Ext:300-N

HOMES FOR SALE
7 BR. 4BA HUD \$19,812! 3BR/2BA only \$10,900! 5BR/3BA only \$17,080! Foreclosures and bank repos! These Homes Must Sell! For local BNI listings call 1-800-544-6258 ext. 9847
FORECLOSED HOME AUCTION Texas Statewide. 200+ Homes Must Be Sold! Free Brochure 1-800-351-5531, www.USHomeAuction.com

MEDICAL SUPPLIES
SCOOTERS & POWER WHEELCHAIRS. Did you know in most cases Medicare, Medicaid and Insurance pay 100% of the cost? Call Melissa or Jon for details. 1-800-606-9860. www.medcaremedicalsupply.com.

MISCELLANEOUS
AIRLINES ARE HIRING Train for high paying aviation maintenance career. FAA approved program. Financial aid if qualified. Job placement assistance. Call Aviation Institute of Maintenance. 1-888-349-5387.
ATTEND COLLEGE ONLINE from home. Medical, Business, Paralegal, Computers, Criminal Justice. Job placement assistance. Computer available. Financial aid if qualified. Call 1-866-858-2121, www.CenturaOnline.com

Run Your Ad in TexSCAN!
Statewide Ad\$450
303 Newspapers, 1,017,914 Circulation
North Region Only\$195
98 Newspapers, 276,893 Circulation
South Region Only\$195
103 Newspapers, 488,623 Circulation
West Region Only\$195
102 Newspapers, 252,398 Circulation
To Order: Call This Newspaper direct, or call Texas Press Service at 1-800-749-4793 Today!

NOTICE: While most advertisers are reputable, we cannot guarantee products or services advertised. We urge readers to use caution and when in doubt contact the Texas Attorney General at 1-800-621-0508 or the Federal Trade Commission at 1-877-FTC-HELP. The FTC web site is www.ftc.gov/bizop

Extend your advertising reach with TexSCAN, your Statewide Classified Ad Network.



The Buzzard Tree

This picture, of a multitude of buzzards in a giant dead cottonwood tree on the Palo Duro Creek, was taken after sunrise by Charlie Johnson of Gruver on October 2, 2008. He had spotted the turkey vultures hanging out at this tree earlier and had decided it would photograph best with the morning sun. By being there early, he learned that not all the buzzards roosted in that tree overnight. As it got light, many of them were flying in from other trees along the creek. From late summer to October, these big, black birds begin gathering for their migration south. It is rare to see a buzzard in the Panhandle from the end of October to mid-March when they return.

The tree is located 8 miles south of Gruver on Highway 136. It is west of the burned out rock shell of the old Turkey Track house. This was the wooded camping ground that drew the early day buffalo hunters, because it had a good spring and plenty of dead wood. Later it became Near to Nature Park.

Joel Lackey, who lives east some two miles, was questioned as to what the age of the tree might be. The part of the Palo Duro Creek that runs through the Lackey ranch also has a few giant dead cottonwood trees. He replied that his grandfather, Joseph W. Jones, had planted those before 1908 by cutting small limbs from a cottonwood tree and then just sticking them in the wet ground back from the creek away. He thought the Buzzard Tree would also have been over a hundred years old.

THANK YOU!

The Spearman PTO would like to thank Cargill for their generous \$1000 donation to Gus Birdwell Elementary PTO.

by Dorothy Hudson

Out at the Lake

Jim Derington
Palo Duro River Authority
P.O. Box 99
Spearman, TX 79081
806-882-4401
pdra@dishmail.net

Lake Level--October 14, 2008--20.18 feet (+.50)

Despite 3 inches of rain over 3 days, the Lake level is only up 6 inches from its recent low of 19.68. The good news is that Horse Creek is still running and more rain is forecast. The ground should be well saturated and ready for a run-off, if we can get more rain.

Two fishermen came out Sunday afternoon, but they left soon. Jim didn't have any other activity to report. He had seen a flock of 10 flickers that he thought were getting ready for their fall migration south.

Do Skunks Hibernate?

We know as winter approaches our turtles in the Kid's Pond dig into the mud at the bottom of the pond to spend the winter, and that rattlesnakes den up in holes in the earth, but do we know what happens with our striped skunks?

My first thought was that



This dead buzzard was seen recently at Lake Palo Duro. Apparently, it was caught in fishing line, snagged by the tree.

my brothers at one time trapped skunks in the winter, so that must mean they don't hibernate. However, a little research shows that they often den, too, when weather gets really cold. As many as 10 have been found in one den, but the experts don't call it a true hibernation.

Females get drowsy when

the temperature gets down to freezing, but males can take temperature drops to 15 degrees before they go dormant. They may stay inactive for a month or more, depending on what the weather does.

At this time, they have fattened up for the winter and will be more active until we get our first freeze.

Spearman Lynx & Lynxettes

<http://spearmansports.smugmug.com/>

Photos available of Spearman Lynx and Lynxette athletic events.

Faith & Grace

Faith Lutheran Church and Grace Presbyterian Church

2-4 p.m. Sunday, October 26th

Faith & Grace 11th & Bernice Spearman

The Spearman faith community is invited to a reception celebrating Rev. Beverly Cook for her years of service with Faith & Grace.

MOONLIGHT MADNESS SALE

THURS., OCT. 23RD, 4-8 PM

25% OFF SELECT ITEMS

Where gift-giving is effortless & FUN!

314 Main St. • Spearman
806-659-2141

Jon Hart Trunk Show
Sale on Select Items
FREE MONOGRAMMING

Then and Now

	1980	2008
First Class Stamp	\$.15	\$.42
Dozen Eggs	\$.91	\$2.00
One Gallon Gasoline	\$1.25	\$3.70
Median Household Income	\$17,710	\$50,223
FDIC Insurance Coverage	\$100,000	???

Congress has *finally* increased FDIC Coverage from \$100,000 to \$250,000* per depositor and we think it's about time.

Come in and let the staff at FNB Spearman and Dumas help you sleep better. We can show you how a married couple can have FDIC insurance on up to \$1,500,000 with First National Bank.

*On Oct 3, 2008 FDIC deposit insurance temporarily increased from \$100,000 to \$250,000 per depositor through December 31, 2009

First National Bank

Member FDIC 800-583-4196 866-583-4196