

The Hansford County Reporter Statesman

PROUDLY SERVING HANSFORD COUNTY SINCE 1907

reporter@spearmanreporter.com

VOLUME 102 • ISSUE 4

WWW.SPEARMANREPORTER.COM

THURSDAY, JANUARY 22, 2009

Closing Notice!

The Hansford County Reporter-Statesman office will be closed February 12-22.

The deadline for submitting items for the February 12th edition will be February 5th at 5 p.m. and deadline for the 19th edition will be February 9th at 5 p.m. Items submitted after the deadline will be published at a later date, as time and space permit.

Items may be submitted by phone - 806-659-3434, fax - 806-398-9080, mail - Reporter-Statesman, 213 Main Street, Spearman TX 79081, or e-mail - reporter@spearmanreporter.com

Weather Forecast

THURSDAY NIGHT - Partly cloudy. Lows around 30. Light and variable winds becoming northwest around 10 mph after midnight.

FRIDAY - Partly cloudy. Highs in the lower 50s. Northeast winds 10 to 15 mph.

FRIDAY NIGHT - Mostly cloudy in the evening then becoming partly cloudy. Lows in the lower 20s.

SATURDAY - Partly cloudy. Highs in the lower 40s.

SATURDAY NIGHT - Partly cloudy. Lows around 17.

SUNDAY - Partly cloudy. Highs in the lower 40s.

SUNDAY NIGHT - Mostly cloudy. Lows around 19.

MONDAY - Mostly cloudy. Highs in the mid 40s.

MONDAY NIGHT - Mostly cloudy. Lows in the mid 20s.

TUESDAY - Mostly cloudy. Highs in the upper 40s.

Texas Crop & Weather

The following specific livestock, crop and weather conditions were reported by Panhandle Extension directors: Soil moisture ranged from short to very short. The cotton harvest was ongoing. Wheat varied from poor to excellent with most areas reporting fair to good. Range conditions varied from very poor to fair with most areas reporting fair to poor. Cattle were in good condition with supplemental feeding. Wildfire danger increased because of high winds and dry conditions.

COME TO THE GAME

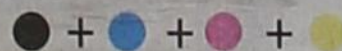
Spearman Lynx/Lynxettes

- 1/22 & 24 7th B, 7th G, 8th B, 8th G @ Spearman JH Tournament
- 1/23 JVB (5), JVG (5), VG (6), VB (7:30) at Panhandle*
- 1/26 7th G (5), 8th G (6), 9th G (7:30) vs River Road
- 1/26 7th B (5), 8th B (6), 9th B (7:30) at River Road
- 1/27 JVB (5), JVG (5), VG (6), VB (7:30) at Highland Park*
- 1/30 JVB (5), JVG (5), VG (6), VB (7:30) at Bushland*
- 2/2 7th B (5), 8th B (6), 9th B (7:30) vs Fritch
- 2/2 7th G (5), 8th G (6), 9th G (7:30) at Fritch
- 2/3 JVB (5), JVG (5), VG (6), VB (7:30) vs. River Road*
- 2/5-7 & 24 7th B, 7th G, 8th B, 8th G @ Gruver JH Tournament
- 2/6 JVB (5), JVG (5), VG (6), VB (7:30) at Fritch*
- 2/9 7th B (5), 8th B (6), 9th B (7:30) at Panhandle
- 2/9 7th G (5), 8th G (6), 9th G (7:30) vs Panhandle
- 2/10 JVB (5), JVG (5), VG (6), VB (7:30) vs. Panhandle*
- 2/13 JVB (6), VB (7:30) vs Highland Park*
- 2/17 JVB (6), VB (7:30) vs. Bushland*

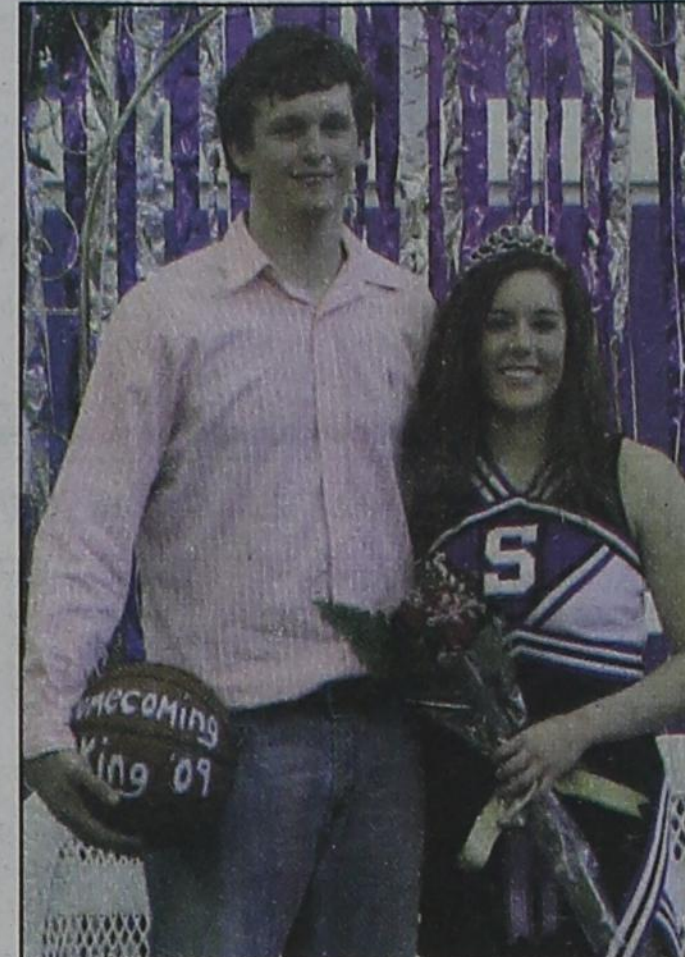
Gruver Greyhounds/Lady Hounds

- 1/22 7th B, 8th B @ Spearman JH Tournament
- 1/23 JVG (5), JVB (5), VG (6:30), VB (8) at West Texas*
- 1/26 7th B (5), 8th B (6), JV B Red vs Sunray
- 1/26 7th G (5), 8th G (6), JV G Red at Sunray*
- 1/27 JVG (5), JVB (5), VG (6:30), VB (8) at Stratford*
- 1/30 JVG (4), JVB (5:15), VG (6:30), VB (8) vs Sunray*
- 2/2 7th G (4), 8th G (5), 7th B (5), 8th B (7) at Boys Ranch
- 2/3 JVG (4), JVB (5:15), VG (6:30), VB (8) vs Beaver*
- 2/5-7 & 24 7th B, 7th G, 8th B, 8th G @ Gruver JH Tournament
- 2/6 JVG (4), JVB (5:15), VG (6:30), VB (8) at Boys Ranch*
- 2/9 8th G (5), 8th B (6) vs. Morse
- 2/10 JVG (5), JVB (5), VG (6:30), VB (8) vs West Texas*
- 2/13 JVB (5), VB (6:30) vs Stratford*

*District Game



The Spearman High School 2009 Homecoming Court: (from left) Dayne Hargrove, Cha'tae Avila, Tyler Schnell, Kegan Garnett, Bond Pittman, Jordan Ashmore, Tyler Harper, Haley Smith, Colton Mayfield, Josue Hernandez, Brett Winegarner, T. J. Worley, Gabriel Moreno.



Spearman High School 2009 Basketball Homecoming King and Queen: Jordan Ashmore and Bond Pittman

Obama Becomes 44th President

A few minutes past noon Eastern Standard Time on January 20th, 2009, Barack Hussein Obama was sworn in as the 44th president of the United States. As many as 2 million people from around the world flooded into Washington DC to celebrate as an African-American took America's highest oath of office for the first time.

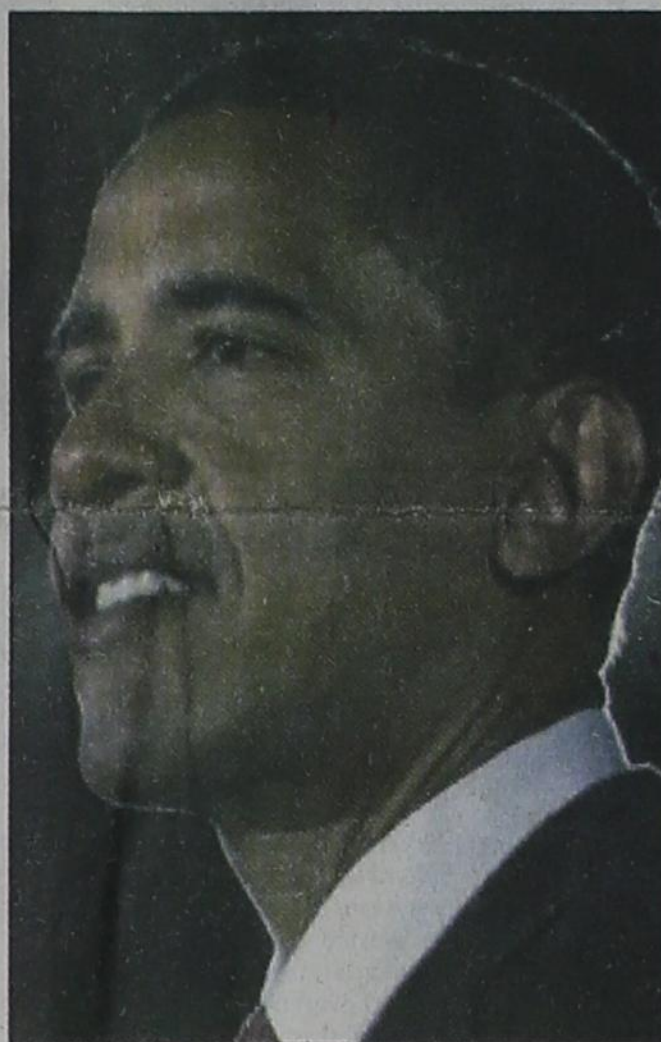
The fifty-sixth Presidential Inauguration also celebrated the 200th anniversary of Abraham Lincoln's birth. As we have done every four years since 1789, Americans joined together to witness our President take a simple oath of office consisting of thirty-five words. This historic event provides an occasion for all Americans to rededicate themselves to the principles that are the foundation of our representative democracy.

Framed against a backdrop of red, white, and blue bunting, the West Front of the United States Capitol featured five flags. The flag of the United States was displayed in the center. On either side were two earlier flags: one with twenty-one stars (that flew for one year from July 4, 1819, to July 4, 1820 in recognition of the entrance of Illinois into the Union), on the outside of these three flags, two more flags flew (popularly known as the "Betsy Ross flag" that first flew in the early 1790s) with stars arranged in a circle.

The President-elect took the oath of office and addressed the nation from the West Front of the United States Capitol, looking across the National Mall toward the Lincoln Memorial, where many of the sixteenth President's immortal words are inscribed. Although some inaugural traditions have changed since Lincoln's time, the swearing-in ceremony continues to symbolize the ideals of renewal, continuity, and unity that Lincoln so often expressed.

President-elect Barack Obama took the oath of office on a Bible from the Library of Congress' collections that is steeped in history — the same Bible upon which Abraham Lincoln swore March 4, 1861, to uphold the Constitution.

More information is available at: <http://inaugural.senate.gov/> or at www.spearmanreporter.com.



Historical Commission Seeks Historical Marker

The Hansford County Historical Commission is working on a Historical Marker for the Main Street of Spearman. Spearman was platted in 1917 in anticipation of construction on the North Texas and Santa Fe Railroad. A Post Office opened the same year.

The site was named for Thomas E. Spearman, vice-president of the rail line. Spearman moved some businesses from Hansford to Spearman. The town of Spearman was incorporated as a city in 1921. Several disastrous fires occurred in 1922 and 1924, but it still became the largest town in the county.

In 1927 the City Council of Spearman made plans to pave the streets early in 1927. In 1927 a brick school, hospital and several buildings were in place.

The contract for ditching the sewers to be laid beneath the payment was with George E. Ellison.

The paving contract between W.W. Merritt and J.M. McCandles and the Northwestern Construction Company named the sum of \$402,76 dollars to be paid by Merritt and McCandles to the Paving Company for their commercial lot, Lot 3 of Block 10 of the Original Town of Spearman, for 25 feet on the east side of Main Street. This was payable in 9 years, and the paving material was bricks. The paving started in March 1927 and ended in 1928. Individual property owners paid for their portion of Main Street to be paved.

The Texas Historical Commission has mailed the application and narrative for an official Historical Marker for "Brick Streets of Spearman" to the Hansford Historical Commission. Dedication for the Marker will be held at a later date, and will include Hansford County citizens.

If anyone would like to donate for the marker, we would be honored. Donations may be left at the Stationmasters House Museum, 30 South Townsend in Spearman, between 1:00 and 5:00 p.m., Tuesday through Saturday.

Governor Proclaims School Board Recognition Month

Governor Rick Perry has proclaimed January 2009 as School Board Recognition Month. Districts across the state will use this opportunity to show their appreciation of the vital role elected boards of education play in their local schools and communities.

"The biggest challenge of education is also one of its greatest strengths. During a time when state and national mandates rightly place more emphasis than ever on setting the bar high for education, it remains important for each community to retain control of its own educational system," Governor Rick Perry said.

"Balancing the need for local control with directives coming down from larger governmental bodies is neither an easy nor oftentimes appreciated task, but for over two centuries, school boards have risen to such challenges. Complicating matters further are issues such as the rapidly-expanding role of technology in the classroom, the challenge to keep our children both educated and physically active, and—as always—the difficulties inherent in dealing with budgetary priorities.

"The people who make up these boards are uncompensated and, all too often, unsung for their efforts. These people volunteer their time because they care; they care about their communities, they care about their schools and, most importantly, they care about the children. Each year the Texas Association of School Boards designates January as School Board Recognition Month, to emphasize to all of us the importance of the services these dedicated men and women provide to the schools and children of Texas. At this time I urge all Texans to recognize the invaluable contributions realized through the work of our school boards," he said.

Continued on Page 8



These turkey were seen on the steps of First National Bank in Spearman on Saturday morning, January 17. (Photo by Jim Derington)

2009 Hansford County Stock Show

The Hansford County Livestock Practice Show will be January 25, 2008 starting at 1 p.m. All weights need to be turned in by 12:30 p.m. This show will be held in Spearman County Barn.

The purpose of this show is to allow exhibitors to prepare for the Hansford County Stock Show, which will be held January 30 & 31 in Spearman.

Each of the different clubs or organizations are invited to attend. The Livestock Show Board of Directors have moved to one practice show to limit the costs of preparing both newly concreted barns.

The annual Hansford County junior Livestock Show and Premium Sale will be held on Friday and Saturday, January 30th and 31st in Spearman.

Friday's show will begin at 7 a.m. with the weighing in of all steers and lambs. The grand opening of the show will be held at 9 a.m.

The lamb show will begin at 9 a.m., with the steer show following at 1 p.m.. The weighing of pigs will be held after the steer show.

Saturday's schedule is as follows: 9 a.m. - Swine

show; 1 p.m. - judging contest; 6:30 p.m. - floor prices will be auctioned, with the presentation of Showmanship and Commercial Steer Awards. Immediately following the presentation of awards, the auction will begin. The sell order will be - lamb, swine and steer.

Everyone is encouraged to come out and support the 4-H and FFA members of Hansford County.

A concession stand with lots of great food will be open both days. barbecue brisket plates will be available at 5 p.m. on Saturday before the sale prepared by Richard and Wanda Wagner with proceeds going to 4-H Fund.

Members of the Hansford County Junior Livestock Show Board of Directors are: Dakota Cator, President, Spearman FFA; Lynn Vela, President, Gruver FFA; Brenna Reid, President, Morse 4-H; Dani Wheelock, President, Gruver 4-H; Dakota Cator, President, Spearman 4-H; Kevin Holt, Board President, Hansford County Stock Show.

Spearman Chamber of Commerce Banquet

DATE: Thursday, January 22, 2009
PLACE: The O'Loughlin Center
COST: \$20 per person for adults, \$8 for children 12 and under; Corporate tables available for \$150 (includes 8 tickets)
Tickets are available at the Spearman Chamber of Commerce Office, 211 Main Street, Spearman TX, (806) 659-5555.

Lullabies, Legends & Lies

by Parson Smith, the Prime Minister of Laughter

This was sent to me by a magician friend in Oregon. I have no way of knowing if it is true, but it sure sounded good to me.

A Tale of Blubber

or

A True-Life Adventure from the Pacific Northwest

I am absolutely not making this incident up; in fact I have it all on videotape. The tape is from a local TV news show in Oregon, which sent a reporter out to cover the removal of a 45-foot, eight-ton dead whale that washed up on the beach. The responsibility for getting rid of the carcass was placed on the Oregon State Highway Division, apparently on the theory that highways and whales are very similar in the sense of being large objects.

So anyway, the highway engineers hit upon the plan—remember, I am not making this up—of blow-

ing up the whale with dynamite. The thinking is that the whale would be blown into small pieces, which would be eaten by seagulls, and that would be that. A textbook whale removal.

So they moved the spectators back up the beach, put a half-ton of dynamite next to the whale and set it off. I am probably not guilty of understatement when I say that what follows, on the videotape, is the most wonderful event in the history of the universe. First you see the whale carcass disappear in a huge blast of smoke and flame. Then you hear the happy spectators shouting "Yay!" and "Whee!"

Then, suddenly, the crowd's tone changes. You hear a new sound like "splud". You hear a woman's voice shouting "Here come pieces of...MY GOD!!" Something smears the camera lens.

Later, the reporter explains: "The humor of the entire situation suddenly gave way to a run for survival as huge chunks of whale blubber fell everywhere." One piece caved in the roof of a car parked more than a quarter of a mile away. Remaining on the beach were several rotting whale sectors the size of condominium units. There was no sign of the seagulls, who had no doubt permanently relocated to Brazil.

My moral of the story... sometimes the cure is worse than the disease.

Until the next time,

Gary's Quote of the Month

Acting is all about honesty. If you can fake that, you've got it made.

George Burns (1896-1996)

State Capital HIGHLIGHTS

The 81st regular session of the Texas Legislature convened Jan. 13.

On a voice vote, House members unanimously elected state Rep. Joe Straus, R-San Antonio, as speaker. Straus succeeds Rep. Tom Craddick, R-Midland, in that powerful role.

Craddick, a House member for the last 40 years, will continue to represent his district. He was first elected speaker in 2003 and was reelected to the post in 2005 and 2007. His three sessions as speaker were contentious. For example, Craddick's refusal to recognize members who sought to question his authority sparked bipartisan dissent.

When Craddick succeeded Hale Center Democrat Pete Laney as speaker in 2003, Republicans had a 26-seat majority, 88 seats to the Democrats' 62. After the general election last November the GOP majority had eroded to only two seats, making the split 76 Republicans and 74 Democrats.

Now, with a near balance of major party membership in the House, Straus suggested in his acceptance speech that members should work closely on the state agenda, regardless of party affiliation.

"Our challenges this session are great, yet our opportunities are endless," Straus said. "Together, we will build a House where members have an opportunity to express their views and a chance to do something great for their districts and for Texas."

"We will create an atmosphere where everyone's voice can and should be heard; a place where we respect each other's points of view, Democrat and Republican, urban and rural, liberal and conservative."

"I know we will disagree at times. On a daily basis, we will debate. These disagreements and debates are necessary because the end result will be stronger and better laws."

The full House also met Jan. 14 and 15 and adjourned until Jan. 22, giving members who wanted to, ample time to attend the Jan. 20 presidential inauguration of Barack Obama in Washington, D.C.

Senate starts with disagreement

While a congenial spirit permeated the House Chamber in the days after the election of Speaker Straus, the atmosphere in the Texas Senate was comparatively raspy.

Senate rules normally require that 21 members (two-thirds) of the 31-member body consent to allow a bill to be heard.

But 18 of the Senate's 19 Republican members voted to change the rules so that only 16 votes - a simple majority - would be required to introduce legislation.

The one Republican who joined Democrats in voting to retain the traditional rule of requiring a two-thirds' vote was Sen. John Carona of Dallas.

Now, even if Democrats vote as a

bloc, they will not be able to prevent certain bills from being introduced.

In the debate on the rule change, Democrats expressed concern over "voter ID" legislation that was pushed by Republicans last session and will come up again this session. Voter identification legislation proposes to require voters to present their driver's license or other state-issued picture ID card in addition to their voter registration card at the polls.

Last session, Democrats fought voter ID legislation, arguing that it unfairly burdens the poor, minorities and older Texans.

The Senate adjourned and will be back in session Jan. 26.

Comptroller estimates revenue

For its 2010-11 budget period, state government can expect to have \$77.1 billion in funds available for general-purpose spending, Comptroller Susan Combs said earlier this month.

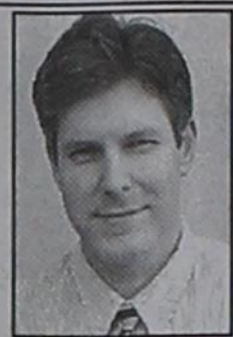
This represents a 10.5 percent decrease from the corresponding amount of funds available for 2008-09, she said.

General revenue-related tax and fee collections in 2010-11 likely will reach \$76.7 billion, with tax revenues accounting for 89 percent of the total.

About 65 percent of state tax revenue will come from the sales tax. Other significant sources of general revenue include motor vehicle sales taxes, the franchise tax, the natural gas tax, insurance premium taxes, and lottery proceeds.

In addition to the general revenue-related funds, Combs said, the state stands to collect \$91 billion in federal receipts and other revenues dedicated for specific purposes and cannot be used for general-purpose spending.

State revenue collections from all sources and for all purposes should total \$167.7 billion.



by Ed Sterling

Wolf Creek Heritage Museum Notes

MUSEUM HAPPENINGS

January continues to be a relatively quiet month with all of us summarizing 2008 for our annual report. Lovella has finished our final numbers for the year and our annual visits for 2008 was 1395. This is lower than last year, probably due to the price of gas and fewer out of county visitors. Our highest volume year was 2000 with 2089. This was the year we opened our new building.

I announced last week that our board would meet on the 21st. We had to reschedule and the board will now meet the 29th at 4 p.m. at the museum. As mentioned before, we will begin the review and development of the THC assessment tool and developing our needed policies, etc. to comply with their levels of achievement. There are five levels of organization: Organization, Membership, Training, Core Preservation, and Preservation in Action.

We will begin with Organization at this meeting, discussing meetings, by-laws, partnerships, and goals (short and long term). These discussions will be on the Historical preservation for the county with the museum being considered separately. If you are an amateur preservationist in the county (historical sites or homes), we need to hear from you and need your participation in preserving our county sites, etc.

A personal note: Our thoughts and prayers are with Mildred who is in Dallas receiving treatments for a medical condition recently diagnosed. We wish her well and hope she will return to us soon.

HISTORICAL MUSINGS

January and February have a lot of historical dates. January 17th is Benjamin Franklin's birthday; the week of his birthday used to be observed as Thrifty Week. A week where everyone was to observe and practice frugal habits to honor Mr. Franklin's thrift.

Monday, the 19th was our observance of Martin Luther King's birthday, and Tuesday was

Inauguration Day. This being an special historical one with the first African-American President giving the observance of Dr. King's birthday and work greater meaning this year.

President Obama has been compared with Lincoln, Kennedy and Franklin Roosevelt due to the problems he is inheriting, as well as his personality. To understand this comparison, I researched our archive of newspapers at the time of Roosevelt's inauguration and found in the Follett Times reports on March 23rd (he was sworn in on March 4, 1933) of his progress with the headlines of "Administration shows speedy action: Important Bills Passed" The article continued with the report that FDR's main focuses were on the Banking System and Employment.

Roosevelt put in force a "Banking Holiday" soon after he took office and in an article on March 9th, the Follett Times reported that the "U.S. Banking System is facing an overhauling from start to finish."

"Our local bank here, namely the Follett National Bank, is in the best shape it has been in for years and is said to be one of the strongest banks in the Panhandle."

On March 16th, F.B. Sumpter, cashier of the Follett National Bank, received a wire from Federal authorities stating that the bank could open and resume business in the usual way Wednesday morning.

This had the paper reporting that "Happy Days are here, again."

The article reported that while other towns throughout the Panhandle were taking scrip, Follett was continuing business as usual with the accepting of bank checks.

The Paper further reported that the nation's confidence had returned due to President Roosevelt's leadership. "Hats off to President Roosevelt. He is a man that gets things done."

By March 23rd, the President's leadership had obtained congressional passage of an economy bill,

an employment bill and a tax bill.

I can see the comparison with today's crisis and I hope our congressional leaders do also. President Obama is going to need everyone's assistance and cooperation and I hope they learn from Lincoln, Kennedy, and Roosevelt's successes and failures so that we don't repeat history. The most important lesson is that the citizens of this country supported these Presidents and their programs which included sacrifices.

The U.S. Constitution requires that the President, Vice-President and other members of the government to swear to preserve, protect and defend the Constitution of the United States. The National Conference on Citizenship suggests that every American reflect upon our own duties and responsibilities to our great nation. They suggest we begin by reading the Citizen's Oath:

As an American I embrace the responsibilities of self-government.

I PLEDGE to learn and live the principles set forth in the charters that define our freedoms: the Declaration of Independence, the Constitution and the Bill of Rights.

I PLEDGE to keep myself informed about the challenges that face our country and world, and to work with others to meet those challenges.

I PLEDGE to assist persons in need, and there by strengthen the bonds among us.

I PLEDGE to register and vote when I am of age, in every election in which I am eligible.

I PLEDGE to conduct myself according to the highest standards of civic decency, to foster those standards throughout my community and to expect them of all public officials.

Through these acts, I commit myself to building a more just, humane, and ethical nation, for my own and all future generations.

We are blessed to be living in this area in this great country, and I hope everyone participated and enjoyed this historical week. A lot of work will follow, but our country has always met its challenges and commitments.

ENJOY YOUR WEEK!

SUPER BOWL

- ACROSS**
- Gog and
 - *Half of NFL
 - Hipbones
 - Native of Oman
 - Belonging to you and me
 - New Zealand minority
 - Back of body, pl.
 - Sought at crime scene
 - ___ alert
 - Vital part
 - *This year's half-time show
 - Through-the-lens
 - Helmsley, a.k.a. "Queen of ___"
 - *Other half of NFL
 - *Where many sit to watch the big game
 - Antagonists in "Dances with Wolves"
 - ___, not his
 - Long forearm bone
 - Type of humor
 - Margarine
 - Second T in T&T drink
 - Swear, not as in curse
 - Camel's cousin
 - Popular Italian name
 - Father bear in "Goldilocks and the Three Bears"
 - Patterned table linen
 - Common feeling after visiting dentist
 - Author of "The Star-Spangled

- Banner**
- The west ___, in D.C.
 - *The well-heeled sit in a luxury one
 - *This year's host
 - Produced by distilling coal
 - Helper
 - Roman sun god
 - Leningrad's problem during World War II
 - The one involving O.J. was infamous
 - 2nd, 3rd or 5th in New York City
 - Clothes moths
 - Castle material
 - Fall behind
 - Locations
- DOWN**
- A la ___
 - Andy's radio and TV buddy
 - Fish with long jaws and needle-like teeth, pl.
 - The beginning, as with an illness
 - *Last year's champs
 - Lymph ___
 - "For the ___ of it"
 - Used to import and export
 - Stressed-unstressed poetry pattern
 - Member of Los Lobos band
 - Wraths
 - Broadcasts
 - Unnaturally frenzied woman
 - Can come in

- handy to gain influence
- As opposed to mishap
 - *Either MVP brother
 - Near the wind
 - Chap or gent
 - Best in a group, figurative
 - Severe form of punishment
 - Relatively new kind of sandwich
 - Conservative commentator and columnist Robert
 - Run off together
 - *QB with most Super Bowl starts
 - South of Market St. in San Francisco, acr.
 - Indigenous to northernmost islands of Japan
 - Fast food option
 - Adjective form of "swirl"
 - New on the block?
 - *What fan of winning team does?
 - Pinched nose sound
 - *This year's Super

- Bowl
- Saturated and unsaturated ones
 - Italian money
 - Husband of Frigg, Norse mythology
 - Literates can do it
 - Horsefly
 - Port city in Belgium
 - "A Death in the Family" author, James ___
 - Are there really seven of these?
 - Female reproductive cell, pl.

- Fill in the blank squares in the grid, making sure that every row, column and 3-by-3 box includes all digits 1 through 9.

© 2009, StatePoint Media, Inc. answer on page 7

The Hansford County Reporter-Statesman
 213 Main Street • Spearman, TX 79081
 Phone - (806) 659-3434 • Fax - (806) 398-9080
 www.spearmanreporter.com
 reporter@spearmanreporter.com
 cathy.smith@valomet.com
Mon.-Thurs. 9 a.m.-12 p.m., Mon.-Wed. & 1-5 p.m.
Closed Thurs. afternoon and all day Fri., Sat. & Sun.

Gary Smith - Publisher Catherine Smith - Editor
 Contributing Writers: Dorothy Hudson, Jim Derington, Merry Sparks, Cecil Biggers
 Contributing Photographer: Charlie Johnson

Subscription Rates
 In Hansford County - \$30.00 • Out of County - \$40.00

The Hansford County Reporter-Statesman (USPS 529660) is published weekly in Spearman, TX. Periodical postage paid in Spearman, TX. **POSTMASTER:** Send address changes to: The Hansford County Reporter-Statesman, 213 Main Street, Spearman, TX 79081.

Publication Policy
 The deadline to submit news and advertising to The Hansford County Reporter-Statesman is Monday at 5 p.m. Items submitted after the deadline will be published at a later date, as time and space permit. Publication of all items is at the discretion of the editor.

Advertising
 Open Display rates are \$4.00 per column inch. Classified Ads are \$6 for the first 25 words and 10¢ per word for each additional word. (Additional charge for boxed classifieds.) There is a \$1 charge per week if billed.

Member of
 Gruver Chamber of Commerce
 Spearman Chamber of Commerce
 Texas Press Association and Panhandle Press Association



CROSSWORD

1	2	3	4	5	6	7	8	9	10	11	12	
13					14			15				
16					17			18				
19				20			21	22				
23				24								
25	26	27		28	29		30	31	32	33	34	
35			36		37		38	39				
40				41			42	43				
44				45	46			47				
48				49			50		51		52	
				53			54		55		56	
57	58	59	60				61			62	63	64
65					66	67		68				
69					70			71				
72					73			74				

PRESENTED BY

Where volunteering begins.

© 2009, StatePoint Media, Inc. answer on page 7

Happy Birthday!

January 22
Birthday - James Lemons, Cynthia DeArmond, Alicia Ochoa, Lisa Love, Tommy Saltzman, Mandi Vargas, Stacey Mayfield, John Kunselman, Brandon Jones, Angelica Avila, Callie Hopkins, Joe Avila
Anniversary - M/M James Scroggs, M/M Walter McDade, M/M Steve Gross, M/M John Armes

January 23
Birthday - Pat Morley, Marci Roberts, Kay McFarlin, Michael Barnes, Brandon Sutton, Jimmy Kenney, Johnnie Fuller, Ann Zamora, Mac Blankenship, Willie Vasquez, Adrianna Reza
Anniversary - M/M Jim Roberts, M/M Gene Duncan

January 24
Birthday - Quentin Hart, Kenneth Irwin, Luis Salazar, Dearl Shelton, Ronnie Goodman, Alan Leach, Jean Prouty, Charla Roberts
Anniversary - Larry & Gayle Porter, M/M Archie Smith

January 25
Birthday - Kevin Babbs, Elizabeth Benton, Mike Dodd, Deloris Guthrie, Kurt Carson, Joanna Jarvis, Oralia Ochoa, Jackie Sparks, Van Baumgardner, Crystal D. Cantu, Braquel Reed, Amy Watley, Mason McLain, Kyla Reid, Damon Sibley
Anniversary - M/M Marvin Sparks

January 26
Birthday - Chase Reid, Joe Cage, Gary Woolley, Matt Archer, Patsy Hunt, Jon King, Tiffany Hendricks, Lori Ann Perez, Patsy Brown, Kellie Kjos, Mark Thomas, Debbie Hagerman, Rodolfo Garcia, Jordan Snider
Anniversary - Bill & Jody Harnish

January 27
Birthday - Jack Gillispie, Jerry Womble, Wanda Brown, Lynette Williams, Nickie Lozano, Jerry Hart, Twana Trout, Allen Leach, Andrew Boyd, Amber Ramon, Berry Kirkpatrick, Lyndle Cook
Anniversary - M/M Gus Vargas

January 28
Birthday - Brooke Bevell, Rita Williams, Howard Garnett, Tammy Burch, Joe Archer Jr., Melissa Donahue, Joyce Woolley, Patty Volden, Randy Burress, DeAnn Sparks, Brooke Adams, Curtis Cernik, Lupe Velasquez, Cari Stedje
Anniversary - M/M Clark Bridges

January 29
Birthday - Bill Hadley, Erin Derington, Linda Diaz, Johnnie Gaitner, Andy Graham, Richard Larson, Estella Gilmore, Andi Hager, Tanner Beedy, Gerry Davis, Nancy Mitchell, Dustin Hodge, Delphia Duke, Brad Hicks, Travis Reising, Jackson Davis, Ryan McElhany
Anniversary - M/M Harold Anderson

January 30
Birthday - Vicki Crawford, Terry Jackson, Timothy Schultz, Charolette Bynum
Anniversary - M/M Eusebio

Vela Sr., Richard & Arlene Paschel, M/M Jose Perez

January 31
Birthday - Breanna Dearin, Brian Stewart, Austin Zimmer, James Schnell, L.C. Owens, Cory Schneider, Charles Lilley, Hudson Williams, Jim Younger, Karen Ferguson
Anniversary - M/M Manuel Ruiz, M/M John Shields, M/M Dick Hintergardt, M/M Royce Mathews

February 1
Birthday - Mary Fern Terry, Lynn Whitefield, Kenneth Lee McClellan, Ann White, JoeBob Breendon, Terri Goodknight, Lacie Baker, Clint Linde, Anthony Renteria, Brian Johnson, Cheryl Thompson, T.J. Vasquez, Charles Davis, Skylar Tidwell
Anniversary - M/M George C. Lowe

February 2
Birthday - Sergio Favela Jr., Margie Boone, Michael T. Davis, Sheila Brand, Grace McDade, Nadine Bishard, Connie Garcia, Cayla Simon, Toby Thompson
Anniversary - Jeff & Chris Spencer, Bill & Dalene Baker, Louis & Mary Miesner

February 3
Birthday - Jerry Kiser, Joanne Hays, Kelly Davis, Jr. Hart, Pip Craig, Glenna Dibbern, Todd Ware, Donna Roberts, Beth Baker, Jerry Laird, Roy Dee Martin, Evelyn Burch, Traci Clift
Anniversary - M/M Shawn Cook, Bob & Candy Boxwell, M/M Jose Salgado

February 4
Birthday - Mary Dawn Henson, Bill Logsdon, Argelia Rodriguez, Heath Tolleson, Misty Barnes, Roy Lee Uptergrove, Linda Davis, Dale Hendrick, Tina Marie Jenkins, Andres Ortiz, Chris Evans, Cynthia Goodman, Ted Widener, Joan Farr, Bonnie Ball, Landri Burnam, Samantha Myatt
Anniversary - M/M Nick Jordan, Lenis & Holly Simpson

February 5
Birthday - Rose Lopez, Jerry Tipps, Kym Williams, Dorothy Cator, Reba Phillips, Cody Pipkin, Theron Spencer, Zachary McCammond, Matt Watlington, Mation Jones, George DeSantiago, Larue Mayo, Julie Richter, Larry Murphy, Vance Snider II

February 6
Birthday - Erica Blount, Mrs. Nell Patterson, Carlos Espinosa, Cora Lesly, Ruben Vera, Bradley Laxton, Ofelia Zamora, Courtney Jo Myers, Betty Allen, Kimberly LaFarr, Becky Brown, Moses Lomeli, Tammie Purvines, Gary Moss
Anniversary - M/M Jeff Hohertz, Patsy & Jerry Hunt, M/M Curt Fitzgearld

February 7
Birthday - Alicia Barkley, Chris Johnson, Buddy Lowe, Mike Stedje, Monique Yancy, Virginia Poole, Tracy Taylor, Calvin Pearson, Jill Havens, Kay Atkinson, Michelle Bass, Janice Noble, Dustin Mackie, Sara Eisfeld

Words from Faith & Grace



by Cecil R. Biggers, Lutheran Lay Minister

In search of the true nature of God, we study Jonah 3:1-5,10, Psalm 62: 5-12, 1 Corinthians 7: 29-31, and Mark 1: 14-20. In the story of Jonah we discover that God can forgive the unforgivable. Jonah, called to be a prophet, ran from God's call. Notice that the "word of the Lord came to Jonah a second time..." God does not give up on his plans. Jonah goes to Ninevah (located near the modern city of Mosul in Iraq) and delivers a message of repent or be destroyed. Jonah's conception of God is the "big frown in the sky" and he wanted God to destroy this evil city whose people were enemies of the Jews. Jonah is dismayed when the people of Ninevah listen to him and repent. Notice that God's word changed the people of Ninevah, but did not change the attitude of Jonah. Jonah was a reluctant prophet, but to his credit he did God's will.

The Psalmist sings of "my soul waits in silence, for my hope is in him". Learning to experience solitude in silence is difficult for us. Yet when we leave our reliance on words, noise and activity, we open ourselves to hear the voice of God. This is what occurred with Samuel in last week's lesson. Be still and know that I am God.

At the time of the writing of Corinthians, Paul expected Jesus to return really soon. He advised the unmarried not to marry, the married to work for Christ as if they were not married, and the business people to do what they had to do, but to not be distracted from serving Jesus Christ completely. The present form of the world is passing away. By the time Paul wrote Ephesians he recognized that the Christian home is where we can be enabled to live the Christian life and that from a Christian home we can draw the strength to live as we ought in the world. For all of us, regardless of our circumstances, we should live for Jesus Christ.

Mark shows us the call of Simon and Andrew and James and John. Jesus tells these fishermen that he will make them fish for people. Now for you that fish, there is a difference between "fishing" and "catching"; please note that the verb translated "fishing" actually means "catching". We are also told that Jesus is preaching the "Good News" of God. This is the "good news" of truth, for in Jesus we see what God is like. This is the "good news" of hope, in a world sunk in the mire of pessimism, Jesus gives us hope. This is the "good news" of God's promise, other religions show a god who is demanding, Christianity shows us a God who is loving and giving. This is the "good news" of immortality, Jesus rescues us from punishment and death, but more importantly gives us the power to live victoriously! This is the "good news" of salvation, Jesus is the Way to Life. Yes, Jesus called ordinary men and he called them for a task. Their mission and ours is to invite others to "come and see Jesus" so that the world may see God's living presence in Jesus Christ.

May the Holy Spirit allow you to hear the voice of God, put aside your reluctance, so that you may ask others to "come and see".

Thank You!

This is a very special thank you to all the wonderful friends and relatives of Edna Marie Williams Walker for all of your prayers, food, visits, flowers, donations and others acts of kindness during our time of loss. Special thank you to the Gruver EMS, Dr. Hasham, Dr. Garnett and HCHD staff Gruver Church of Christ and Boxwell Brothers. It seems a thank you is not enough to express our appreciation to such a wonderful community. We are so blessed to have such loving and caring friends. Also a special thank you to Bob Davis.

The family of Edna Marie Williams Walker

Thank You!

We would like to express our appreciation for all the prayers, calls, flowers, visits, food and memorials during Sonny's illness and death. We thank the Spearman and Stinnett EMTs and LIFESTAR for their quick response. It is a comfort to know that we have such capable people on call when we need them.

Nell Patterson, Bailey Patterson, Mindy Patterson, Cindy, Lem, Rustin and Sunny Russell

Are You A Victim of Domestic Violence, Sexual Abuse or Physical, Emotional or Sexual Assault?

Call Toll Free Hotline 1-800-753-5308

Battering Intervention & Anger Management Available

Panhandle Crisis Center
 Serving Hansford, Lipscomb & Ochiltree Counties
 301 S. Ash • Perryton, TX
 Memorials Accepted

Our Sympathy

LEONA "DAUT" HARP
 Leona "Daut" Harp, 90, of Amarillo died Tuesday, January 13, 2009. Services were at 11 a.m. Friday, January 16, 2009 in Blackburn-Shaw Funeral Directors Martin Road Chapel, 1505 Martin Road, with Dale Moreland and Roger Smith of The Church at Quail Creek officiating. Burial was in Memorial Park Cemetery.

Leona "Daut" Harp was born October 11, 1918, in Post to Rob and Ethel Stiles. She married John Harp on August 27, 1938, in Guymon, Okla. Nine years later, their son Johnny Bob was born. They worked on several area ranches during the early years of their marriage. She was a really good cowgirl. She wasn't afraid to get on any horse and did get bucked off a few times. She and her husband, John, moved in later years into Amarillo, where they made their home. Leona was a longtime member of San Jacinto Baptist Church and taught Sunday school to all ages. In recent years, she moved her membership to Pleasant Valley Baptist Church.

Survivors include a son, Johnny Bob and wife Miriam of Charleston, S.C.; two sisters, Elnora Gillaspie of Amarillo and Emma Gene Braden of Pahump, Nev.; a grandson, Kevin Harp of Charleston; three nephews, Billy Don Gillaspie of Amarillo, Dick Gillaspie and wife Leann and their children, Laura, Mindee, Caleb and Collin of Spearman and Dr. Robert Braden of Las Vegas; three nieces, Betty Navarro and husband Rudy of Merritt Island, Fla., Cula Jo Trout and husband Bob of Clarendon and Billie Mae Lowrey and husband Buddy of Pampa; and a host of friends.

The family suggests memorials be to Activity Center Building Fund, Pleasant Valley Baptist Church, 555 E. Hastings Ave., Amarillo, TX 79108.

Sign the online guest book at www.blackburnshaw.com.

LEONA "FERN" PORTER
 SPEARMAN - Leona Fern Porter, 61, died Friday, January 16, 2009. Memorial services were at 11 a.m. Tuesday, January 13, 2009 in Church of Christ with Larry McCollum officiating. Arrangements were by Boxwell Brothers Funeral Home of Spearman.

Mrs. Porter was born December 5, 1947, in Ralston, Okla. She married Bill Porter on April 24, 1965, in Clovis, N.M. She was employed by Panhandle Eastern Pipeline Co. and DCP for 33 years.

She was a member of Spearman Church of Christ.

Survivors include her husband, Bill Porter, a son, Trey Porter of Amarillo; her father, John F. Wagner of Kingfisher, Okla.; six brothers, Gary Wagner and Clarence Wagner, both of Wheeler, Kenneth Wagner and Richard Wagner, both of Watonga, Okla., John Wagner of El Reno, Okla., and Bob Wagner of Bermuda; and three grandchildren.

The family suggests memorials be to Hansford Hospice, 707 Roland St., Spearman, TX 79081.

MONUMENTS
Boxwell Brothers
Funeral Home
 519 Evans • Spearman
 659-3802

Dear friends,
 When you buy a monument from us we make sure it is exactly what you want at a price you can afford. If it is not right, we will make it right. And you will not have to search the countryside to find us. We are here when you have a need.

Sincerely,
 Bob Boxwell

GOLDSTON
DENTAL HEALTH CENTER

Hugh Goldston D.D.S. Shad Goldston D.D.S.

DEDICATED TO EXCELLENCE IN DENTISTRY

Orthodontic, Implant, Cosmetic and General Dentistry
103 E. Broadway
Gruver
 Office Hours 8:15AM until 4:45PM
 Wednesdays
 For appointment call 733-2700

Replenish the seed of faith through . . .

DAILY BIBLE READING, PRAYER & REGULAR CHURCH ATTENDANCE

Spearman

Apostolic Faith Church
 822 S. Drensen • 659-2870
 Sunday School: 10 a.m.
 Worship Service: 11 a.m.
 Sun. Eve.: 6 p.m.
 Wed. Prayer Mtg.: 7 p.m.
 Pastor - Roland Haney

First Assembly of God
 401 N. Bernice • 659-2295
 Sunday School: 9:30 a.m.
 Worship: 10:40 a.m.
 Evening Worship: 6 p.m.
 Wed. Worship: 7 p.m.
 Wed. Youth: 7
 Pastor - Jerry Pollard

First Christian Church
 (Disciples of Christ)
 29 S. Bernice • 659-2036
 Sunday School: 9:45 a.m.
 Worship: 10:50 a.m.
 Minister -

First Baptist Church
 123 N. Bernice • 659-5557
 Sunday School: 9:45 a.m.
 Worship: 11 a.m.
 Evening Worship: 7 p.m.
 Men's Bible Study - Wed. 6 p.m.
 Children's Choir - Wed. 6 p.m.
 Adult Choir - Wed. 7 p.m.
 Wed. Bible Study: 7 p.m.
 Pastor - Jim Medley

Church of Christ
 121 S. Haney • 659-3244
 Sunday Bible Class: 9:45 a.m.
 Worship: 10:30 a.m.
 Evening Worship: 6 p.m.
 Bible Study Wed.: 7:30 p.m.

Sacred Heart Catholic Church
 901 Roland • 659-2792
 Sat. Night Mass: 5:30 p.m.
 Sun. Mass: 9 a.m. - English
 Sun. Mass: 11:30 - Spanish
 1:30 p.m. - Gruver - Christo
 Rector: Rev. Guillermo Morales

First United Methodist
 407 S. Haney • 659-5503
 Sunday School: 9:45 a.m.
 Worship: 8:30 & 11 a.m.
 Jr. High Youth: 5 p.m. Sunday
 High School: 6 p.m. Sunday
 Kids Club: 3 p.m. Wed.
 Pastor - Neely Landrum

Grace Presbyterian Church
 (Worships with Faith Lutheran Church)
 1101 Bernice • 659-2033

Faith Lutheran Church (ELCA)
 1101 Bernice • 659-2252
 Sunday School: 9:45 a.m.
 Worship: 11 a.m.
 (Worships with Grace Presbyterian Church)
 Pastor - Cecil Biggers, PLM

Union Church
 31 S. Endicott • 659-2644
 Sunday School: 10:00 a.m.
 Worship: 11:00 a.m.
 Bible Study: 7 p.m. Wed.
 Youth Service: 6 p.m. Wed.
 Pastor - Don Baltazor

Fellowship Baptist
 1102 S. Archer • 659-2783
 Sunday School: 10 a.m.
 Worship: 11 a.m.
 Sun. Evening Worship: 6 p.m.
 Youth/Adult Service: 7:30 Wed.
 Pastor - James Washburn

Primera Mision Bautista
 502 E. 7th • 659-3991
 Sunday School: 9:45 a.m.
 Worship: 11 a.m.
 Evening: 6 p.m.
 Wed. Prayer Meeting: 7 p.m.
 Thurs. Visitation: 7 p.m.
 Pastor Joe Garcia Jr.

El Aposento Alto U.P.C.I.
 1105 S. Roland
 Domingos: Escuela: Dominical - 10 a.m.
 Culto Evangelistico - 7 p.m.
 Jueves: Oracion - 8 p.m.
 Mier: Estudio Biblico - 7 p.m.
 Pastor - A.G. Martell
 (806) 659-2153

Gruver

First Baptist Church
 402 E. Broadway • 733-2411
 Sunday School: 9:45 a.m.
 Worship: 10:50 a.m.
 Disciple Training: 6 p.m. Sunday
 Prayer Meeting: 7:30 p.m. Wednesday
 Pastor - Scott Curry

Church of Christ
 209 King • 733-2760
 Sunday School: 9:30 a.m.
 Worship: 10:20 a.m.
 Evening Worship: 6 p.m.
 Wed. Worship: 7:00 p.m.
 Minister - Gaylord Cook

First Christian Church
 510 King • 733-2960
 Sunday School: 10:00 a.m.
 Sunday Worship: 11 a.m.
 Youth: 7:30, Sunday
 Adult Bible Study: 7:30, Sun.
 Wed. Bible Study: 8:00 p.m.
 Pastor - Gary Gumfory

Gruver United Methodist
 Broadway & Garrett
 733-2651
 Sunday School: 9:45 a.m.
 Worship: 8:30 & 10:50 a.m.
 Eve. Worship & UMY: 6 p.m.
 Pastor - George Price

Spanish Cristo Redentor Church
 Sunday Mass: 1:30 p.m.
 Friday Evening Mass
 Summer - 8:00 p.m.
 Fall/Winter - 7:30 p.m.

Oslo

Oslo Lutheran Church (ELCA)
 6 Miles West & 12 Miles
 North of Gruver
 339-7646
 Sunday School: 9:45 a.m.
 Worship: 11 a.m.
 Pastor - Arlen Lloyd

Morse

Morse Baptist Church
 733-2757
 Pastor - Mike Martin

Waka

Church of Christ
 300 Rogers Ave.
 202-7126
 Sunday Worship: 6 p.m.
 Wednesday Bible Study: 6 p.m.
 Preacher - James Gordon

He has showed you, O man, what is good. And what does the LORD require of you?
 To act justly and to love mercy and to walk humbly with your God.

Micah 6:8

This feature is made possible through the sponsorship of these civic minded businesses:

Deakin ELECTRIC
 OILFIELD • RESIDENTIAL • COMMERCIAL
 321 S. MAIN • SPEARMAN
 1-800-999-1506 Chris Deakin
 806) 659-5016 President

Bartlett's Lumber & Hardware
 105 W. Broadway • Gruver, Texas
 (806) 733-2404

BERRY CLEANERS
 Ann & Vernon Pipkin - Owners
 Phone 659-3122 • P.O. Box 1017
 207 Main St. • Spearman, TX

Morse Implement & Auto Supply
 "Join us in church"
 Tom Dortch 733-2668
 Box 89 • Morse, TX 79062

PRAIRIE MOTORS INC.
 Hwy. 207 South • P.O. Box 430
 Spearman, TX 79081 • (806) 659-2541
 www.prairiemotors.com

MurMur's Cafe
 100 Roland St
 Spearman, TX.
 659-3580

Hansford County Reporter-Statesman
 "Proudly Serving Hansford County Since 1907"
 (806) 659-3434
 310 Barkley • Spearman, TX

INTERSTATE BANK, ssb
 www.interstatebank.net
 322 Main • P.O. Box 146
 Spearman, TX • 659-2559

H&H FOR YOUR INFORMATION

Medical Fund for Krystal Puentes
An emergency medical fund has been established for Krystal (Burkhammer) Puentes at First National Bank, Spearman. If you would like to make a contribution you may make a deposit with any teller or mail a donation to First National Bank, Krystal Puentes Medical Fund, PO Box 337, Spearman TX 79081.

Medical Fund for Rene Griffin
A medical fund has been established for Rene Griffin at First State Bank, Spearman. If you would like to make a contribution you may make a deposit with any teller or mail a donation to First State Bank, Rene Griffin Medical Fund, PO Box 247, Spearman TX 79081.

Medical Fund for Bruce Duncan
An emergency medical fund has been established for Bruce Duncan at First National Bank, Spearman. If you would like to make a donation you may make a deposit with any teller or mail a donation to First National Bank, Bruce Duncan Medical Fund, PO Box 337, Spearman TX 79081.

Medical Fund for Nancy DeLuna Jernberg
An emergency medical fund has been established for Nancy DeLuna Jernberg of Stinnett. Nancy was recently diagnosed with a rare malignant brain tumor and will be undergoing treatment. If you would like to make a contribution you may make a deposit with any teller or mail a donation to H&H Federal Credit Union, 104 Main Street, Stinnett TX 79083.

Project Graduation 2009 Fundraiser
Project Graduation 2009 is having a Fundraiser Night at Spearman Pizza Hut on Thursday, January 29, 2009 from 5-8 p.m. A portion of all sales during this time will be donated to Project Graduation 2009. Please join us and help us raise money for our graduates!

Project Graduation 2009
The parents of the Spearman High School Class of 2009 will sponsor and host a "Project Graduation Party" following commencement exercises Friday May 29th. Graduates will be provided with food, games, activities, and fun! In addition, to encourage the graduates to stay the entire night, door prizes are awarded throughout the evening. The graduation party will culminate with the distribution of grand prizes. Prizes, gift certificates, and cash are needed for the evening's gifts. If you, the community, who supported and encouraged these seniors these past 13 years of school, would be willing to share in the final "class of 2009" memory, making this project special, please contact Patti Schnell at 659-2919, Paula Cooper at 659-3133, Shannon Barnes at 659-2164 or Maria Sibley at 659-1037. Contributions can be mailed to: Project Graduation - Maria Sibley, P.O. Box 74, Spearman, TX. 79081.

Fund Established for Cross Country Lynxette Championship Rings
A fund has been established at First National Bank, Spearman for the Spearman Lynxettes Cross Country 2008 State Championship Team. The fund has been established to purchase a ring for each team member and their coach in honor of their achievement. If you would like to give money to support this endeavor, please contact Stephanie Brock at 659-1774, or take your check by First National Bank.

Timeless Treasures
Timeless Treasures will hold a quilt meeting on January 31, 2009 at the Disciple Center at the First Christian Church in Guymon OK. Cheryl Feese from Liberal will have a program and trunk show about "Panels and what to do with them." This will be the morning program. She will be selling kits for the afternoon program using valentine panels. Please RSVP to Cheryl at Quilted Treasures in Liberal so they will know how many kits to cut. nanas.treasures@sbcglobal.net. New members are welcome. Bring a friend. Breakfast brunch at 9:30. Bring a salad for noon meal.

Cotton Meeting Scheduled
A Cotton Meeting will be held in the Moore County Community Building (16th & Maddox) in Dumas on Thursday, February 5, 2009 from 8 a.m.-3 p.m. Suggested presenters and topics are: Randy Boman - Early Season Management (Seed bed preparation, seed to soil contact, getting a good stand, starter fertilizers); David Kerns - Insect Management (Thrips are the major problem for most producers, seed treatment effectiveness, use of Boll Guard II varieties); Jason Woodward - Disease Management (Seed treatments, early season plant survival); Jay Yates - Profitability (Picker versus Stripper economics); Nich Kenny - Cotton Irrigation (Efficient water use in cotton); David Reinart - Fertility and Irrigation Profitability Management; Roxanne Fegley - Thrips management in Moore County; Marcel Fischbacher - Moore/Scherman County Demonstrations Highlights (Seeding Rate and Varieties); Seed Company Highlights; Andy Neeb - AFD/Fibermax; Jerry Montgomery - Americot/NexGen; T.K. Baker - Delta Pine. For more information, contact the Hansford County Extension Office at 806-659-4130.

Region 16 ESC offers Free GED Preparation Software
Region 16 ESC is offering free GED preparation software for students interested in obtaining a GED. You will also have access to a free online GED prep program through the public library. If you are interested in finding out more information about these services, please contact: Cindy Blackman at 659-3233, Maria Carbajal or Margaret Ruttman at 659-2231 or stop by the Hansford County Library.

Spearman Lynx Basketball Fundraiser
The Spearman Lynx Varsity basketball players are painting paws on driveways (\$15 each or 2 for \$25) to raise money for tournament expenses this year. If you are interested in purchasing paws, please contact Coach Jr. Ashmore or any member of the Lynx basketball team.

GISD Offering Reward for Information
Gruver Independent School District is offering a \$1,000 reward for information that leads to the arrest and conviction of the person or persons who burglarized two Gruver teachers homes between October 17-19 2008. If you have any information, contact: Troy Seagler at 806-733-2477, Micah Davis at 806-733-2081, David Teal at 806-733-2001 or the Hansford County Sheriff's Office at 806-733-2901.

Web Page Development - Level 1 Class
There have been some inquiries expressing an interest in a "Web Page Development" class. If you are interested in taking this class, contact Cindy Blackman, at 659-3233 or cindy.blackman@region16.net.

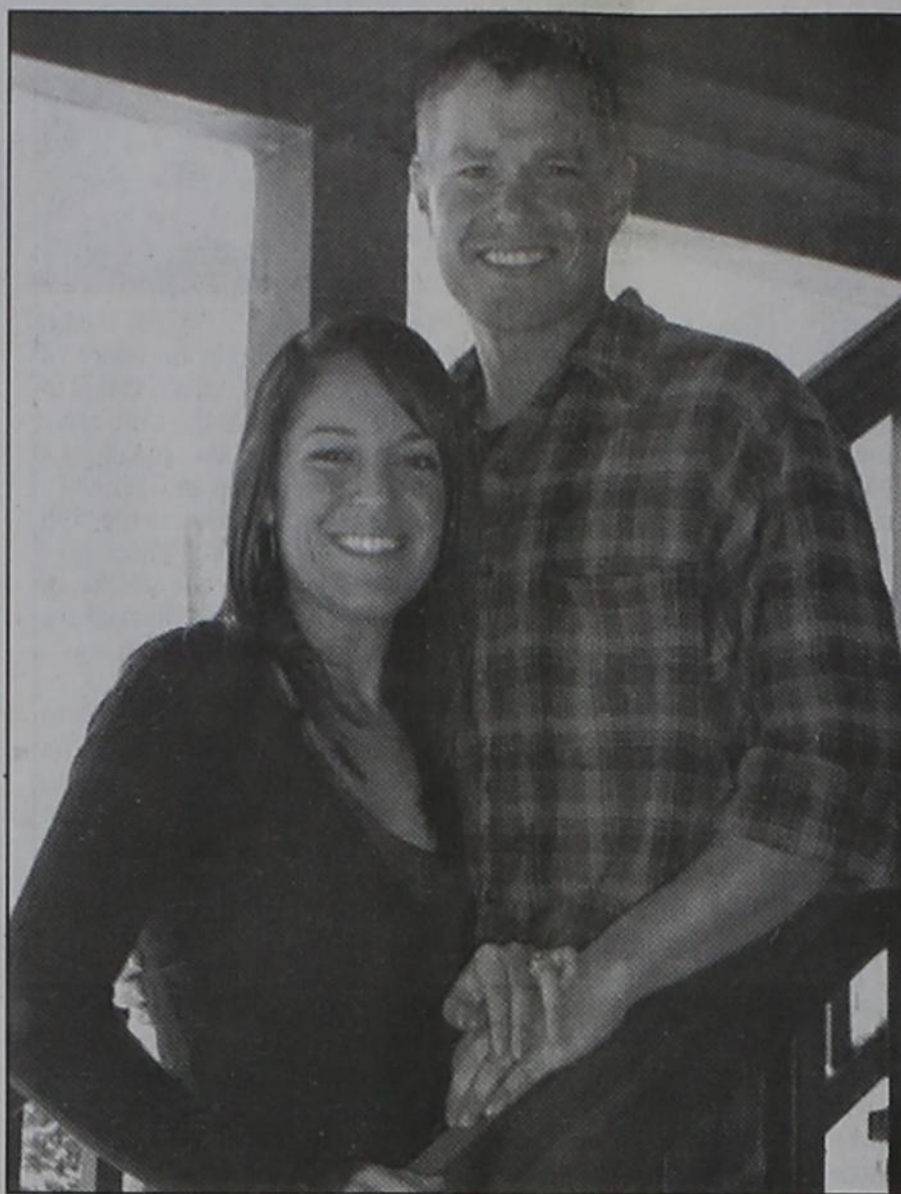
Child Find
Your school district is looking for children ages 3-21 years who may be slow in developing communication skills, social interactions, walking skills and/or have major physical disabilities. We want to give your child the chance to receive the extra help he/she needs, if the disability interferes with his/her education. Please call your elementary campus to get more information or call Perryton SSA, 435-4412.

Gruver Elementary Collects Register Tapes for Education
Gruver Elementary is participating in the Lowe's Marketplace Register Tapes for Education. Gruver Elementary is also collecting the pink Box Tops for Education and the yellow UPC bar code Labels for Education from Campbell and Swanson products. You can deposit your register tapes, pink Box Tops and UPC Bar Codes in the Elementary School Lobby, City Library, City Hall, Night & Day Beauty Salon or Hitchin' Nails Salon. Jo Clawson will also collect them at 711 Womble. Please help us earn free education equipment by collecting these items.

Beware of FAFSA Web Scam
Seniors, senior parents, and parents of college students should use the web site www.fafsa.ed.gov when filling out their Free Application for Federal Student Aid (FAFSA) online. There is currently a website that has found an interesting way to get in the college-bound's pocket. Known as fafsa.com, the website charges a fee for submitting the application. There is no fee for submitting the fafsa form on the www.fafsa.ed.gov site.

Panhandle Crisis Center Outreach Office
Panhandle Crisis Center (PCC) has an Outreach Office and Resale Store at 306 Hancock, in Spearman. In case of emergencies, please continue to call the hotline, 1-800-753-5308. To schedule an appointment with a worker in Hansford County, please call 659-3391 to leave a message, or call the hotline number above. Panhandle Crisis Center serves victims of domestic violence and sexual assault. Please call for more information regarding PCC's services. Hours for the Resale Store in Spearman are: Monday, Tuesday, Thursday & Friday from 10 a.m.-5 p.m.

Spearhead AA Group
The Spearhead AA Group meets every Tuesday at 8 p.m. in the Pittman-Shieldknight building. Alcoholics Anonymous® is a fellowship of men and women who share their experience, strength and hope with each other that they may solve their common problem and help others to recover from alcoholism. The only requirement for membership is a desire to stop drinking. There are no dues or fees for AA membership; we are self-supporting through our own contributions. AA is not allied with any sect, denomination, politics, organization or institution; does not wish to engage in any controversy, neither endorses nor opposes any causes. Our primary purpose is to stay sober and help other alcoholics to achieve sobriety. For more information, call 662-1111.



Engagement Announcement

Ralph and Beverly Mireles of Gruver wish to announce the engagement of their daughter, Sarah Mireles, to Nate Manor, son of Lewis and Nancy Manor of Williams, CA.

The couple have planned a wedding for June 20, 2009 at the First Baptist Church in Gruver at 2 p.m.

Sarah is a 2006 graduate of Gruver High School. She will receive a degree in Exercise and Sports Science/Athletic Training from Howard Payne University in Brownwood, TX in May 2009. After graduation she plans to be a high school athletic trainer.

Nate is a 2003 graduate of Colusa High School in Colusa, CA. He will graduate in May 2009 with a degree in Education/Social Studies Composite/Coaching from Howard Payne University in Brownwood, TX. Upon graduation he plans to be a teacher and coach.

Sarah is the granddaughter of Phyllis Rasor and the late Tom Rasor and Joe and Delia Mireles.

Nate is the grandson of Coleen Manor and the late Glen Manor and Irwin Sweet and the late Billy Sweet.

Harbour, Beedy Wed



Mr. and Mrs. Kevin Beedy

Macy Christine Harbour and Kevin Scott Beedy were married on December 20, 2008, at 6 p.m. at the First Baptist Church in Spearman. Travis Carpenter, college roommate of the groom, officiated the wedding. Macy is the daughter of Roy and Denise Harbour of Spearman and Kevin is the son of Scott and Becky Beedy of Spearman.

Grandparents of the bride are Buddy and Nell Benton of Spearman and Monty Harbour of Spearman. Grandparents of the groom are Brad and Dodie Beedy of Spearman.

Attending the bride were maid of honor, Dana McLaughlin, childhood friend of the bride of Rosenberg, Texas, Matron of Honor, Kristin Whitehead, sister of the groom, of Woodland, California, Casey Pollard, college roommate of the bride, of Sugarland, Texas, and Katy Stephens, college friend of the bride, of Marble Falls, Texas.

Attending the groom were best man, Adam Cherry, childhood friend of the groom, of Abilene, Texas, Robert Whitehead, brother-in-law of the groom, of Woodland, California, Dane Harbour, brother of the bride, of Stephenville, Texas and Lance Baker, childhood friend of the groom, of Lubbock, Texas.

Flower girls were Berkley Beedy, daughter of Blake and Hilary Beedy, cousin of the groom, of Canadian, Texas, and Lauren Francis, daughter of Travis Francis and Kellie Francis, cousin of the bride, of Montgomery, Texas. Ring Bearer was Blake Johnson, son of Nick and Salina Johnson, cousin of the bride, of Frisco, Texas.

Ushers were Tanner Beedy, cousin of the groom, of Kenville, Texas and Nicholas Benton, cousin of the bride, of Frisco, Texas.

Kellie Francis, cousin of the bride, of Montgomery, Texas, sang "O Holy Night". Carol Pack, pianist, provided the music, which consisted of traditional Christmas carols.

Macy is presently attending graduate school in Dallas, and Kevin is employed as an auditor for KPMG in Dallas.

The couple honeymooned in The Cook Islands, New Zealand, and will reside in Dallas.

You are invited to a
Wedding Shower
honoring
Kathy Hinds
(bride-elect of Carlos (Hernandez) Lopez)
on Saturday, January 24, 2009
from 10:30-11:30 a.m. at the
First United Methodist Church
407 S. Haney Spearman, TX

Celebrate
Gifts for all your celebrations!
Bridal Registry
Kathy Hinds & Carlos Lopez - 1/24
Kristi Talbott & Reagan Renner - 3/14
Amy Harris & Matt Lohse - 3/28
Lisa Espinosa & Dave Pope
Brittany Morris & Dustin Borden

Baby Registry
Leah (Mackie) & Marc Strickland - April
Kelci & Jordan Brock

The holidays are over, and
we're ready to clean
out our Christmas items!
Celebrate
203 Main St. Spearman, TX
(806) 659-3350 1-800-663-8026

Goldston Dental Health Center
OPEN HOUSE
103 East Broadway
Gruver
Tuesday, January 27
3:30 - 5:30 p.m.
Come meet the doctors and their staff.

Gordon's
Your place for
Bridal Registry
Couples Currently Registered
Kathy Hinds & Carlos Hernandez - 1/24
Lisa Espinosa & Dave Pope - TBA
Madeline Reed & Jeremy Schenk
Macy Harbour & Kevin Beedy
Lauren Payne & Steven Haney
Brittney Morris & Dustin Borden
Baby Registry
Kaisi (Foster) & Andy Cunningham
Kelci & Jordan Brock
Courtney & John Brock
Gordon's 659-2141
314 Main Spearman

HANSFORD COUNTY



Sgt. O. V. Walker, Jr.

Orville Vane Walker was born February 13, 1917 at a farm west of Gruver. He was the oldest of the three sons of Orville and Alice Spivey Walker. O.V. went to first grade in Texhoma and attended other grade schools at Goodwell and Hitchland. In 1930 his family moved to Gruver, and the Walker boys attended Gruver schools. After high school graduation in 1936, O.V. began farming.

When the war started in Europe in 1939, a national draft was

expected. O.V. and his slightly younger brother Ross felt that they would be called to serve. As they wanted to be in the Army Air Force, they took a test at Childress to see if they could join that branch of the service. O.V. and Ross were among the four out of eleven who passed. On September 11, 1940 they were inducted at Lubbock. For basic training O.V. and Ross were sent to Brooks Field in San Antonio. Afterwards, they were moved over to Randolph Field for twelve weeks of training on the repair and maintenance of airplanes. From there both were sent to Ellington Field in Houston as airplane mechanics.

When the news of Pearl Harbor broke, O.V. was doing KP duty. One of his memories was of another young man in the kitchen who began weeping when he heard the radio news: He had just arrived in Texas from Hickam Field at Pearl Harbor that week and had left behind all his buddies. Base security immediately toughened, as no one could be certain that an attack on the mainland would not follow. Some old WW I machine guns were rolled out and set up around the field as decoys, but there was no

ammunition for them. O.V. met his future wife, Nova Lee Henderson, while still in Houston. They were married December 19, 1942. Later he was sent back to San Antonio. He was within two days of being shipped overseas when the war ended, and the orders were cancelled.

Staff Sergeant O.V. Walker of the 3021st AAF BU (Army Air Force Base Unit) was given his military discharge at Las Vegas, Nevada on October 29, 1945 after devoting over 5 years of service to his country.

O.V. came back to Gruver and farmed for a year and a half with his father and two brothers. He and Nova Lee then moved to Arlington, Colorado, where he farmed and raised cattle for 6 years before Gruver drew him back in 1952 to work for Riley Brothers. In his spare time, O.V. became interested in finding uranium and in rock hunting.

O.V. and Nova Lee adopted two daughters, Georgia (Mrs. Jim Tuttle) and Geneva (Mrs. Steve Gilman). O.V. died January 11, 1995, and Nova Lee died in the same year on October 12. Both are buried in the Gruver Cemetery.

Pictures and information for this feature may be submitted to the Reporter-Statesman (310 Barkley Street), mailed to WW II Memories, % Reporter-Statesman, 213 Main Street, Spearman TX 79081, emailed to reporter@spearmanreporter.com, or they may be given to Dorothy Hudson, 733-2562, 806 Cluck Avenue, Gruver TX 79040, or emailed to dhudson862@gruver.net.

OPSU Student Athletes of the Week

By Scott Puryear of OPSU Sports on 01/21/2009

Each week during the school year, Oklahoma Panhandle State University recognizes their Student Athletes of the Week based upon a combination of citizenship, leadership, academic excellence and athletic performance. This week, Christy Lang of the Lady Aggie basketball team and Aaron Ruiz of the men's basketball squad have earned the honors.



Christy Lang

Lang is a hardworking guard from Spearman, Texas who has made her presence known on the court. The 5'10" freshman has performed well all season for the Lady Aggies and has also done an excellent job in the classroom as she pursues a degree in Health, Physical Education and Recreation (HPER). Ruiz is a guard on the men's basketball team and is one of the best shooters on the squad. A solid six feet tall and 200 pounds, he is a sophomore from Hooker, Oklahoma. Ruiz also gets the job done very well in the classroom with his studies that will lead him to a degree in HPER.

Newman Bests Lady Aggies

By Scott Puryear of OPSU Sports on 01/16/2009

The Oklahoma Panhandle State women's basketball team was on their home court against the Jets from Newman University on Thursday night. A strong Newman second half rally spelled the difference and they won 74-61.

Both teams shot 48% in the first half and the Lady Aggies held a 34-32 advantage at the intermission. OPSU's Nicole Candelaria scored 16 points in that first half.

Both teams are part of the Heartland Conference and in the early part of the second half, the contest contin-

ued to be a close one. With 14:50 left in the game, it was tied at 42 points each.

There was fast action at both ends of the court and with 10:15 left, OPSU's Lauren Chery nailed a three-pointer to put her team ahead 50-44, and by the nine minute mark, the Lady Aggies led 51-46.

There was plenty of fight in the Jets and they soon tied things up (54-54). Newman continued to be relentless at both ends of the court and with 2:30 to play they were ahead 62-56.

The Lady Aggies fought until the final buzzer, but Newman prevailed, 74-61.

A hot shooting Rainey Nickel of Newman (now 4-12 on the year and 1-2 in the league) led all scorers with 28 points.

The Lady Aggies shot 47.9% from the field, but lost the battle of the boards (30-19). The loss put them at 1-14 for the season (0-3 in the conference).

For OPSU, Candelaria was the high scorer with 21 and Kariz Bioni chipped in a dozen. Christy Lang scored nine and Natasha Normand added seven points. Bioni was high for the Lady Aggies in rebounds with five and Hallee Edwards had a game high four assists.

Lady Aggies Hammer Lincoln

By Scott Puryear of OPSU Sports on 01/19/2009

The Oklahoma Panhandle State women's basketball team was definitely up to the task on Saturday afternoon as they earned a convincing 80-47 win over Lincoln University. Both teams compete in the Heartland Conference and the Lady Aggies led wire to wire.

The Lady Aggies started fast with Nicole Candelaria's outside jumper to start the scoring and they raced to a 9-2 lead with 17 minutes to play before halftime. They continued to move the ball well and, adding in some good defense, they held the advantage at 19-8 with eight minutes to play before the break.

OPSU continued to play very well and they went to the intermission leading 34-17.

Three minutes into the second half, the Lady Aggies increased their advantage to 41-20. They continued their strong offensive effort and solid defense and a Candelaria three point bomb with 14:20 remaining gave them a 51-22 lead. At the final buzzer the Lady Aggies had earned their second win of the season with a 80-47 victory.

Stacey Smith of Lincoln led all scorers with 24 points, and was also the top rebounder with ten. Junior guard Kariz Bioni led the Lady Aggies with 18 points while Candelaria and Hallee Edwards scored 13 and ten respectively. Bioni led the Lady Aggie rebounders with seven and Edwards pulled down six. Bioni was also the assist leader with six and Lauren Chery came up with a game high five steals to go along with six points and four rebounds. Christy Lang added eight points and five rebounds.

The OPSU women (now 2-14 on the year) will continue their home stand this coming Thursday at 5:30 p.m. with a matchup with another Heartland rival, the University of Texas-Permian Basin.

Amarillo College Dean's List

Amarillo college has released the names of its Fall 2008 Dean's List. Students on the Dean's List are full-time students who earn a grade point average of 3.6 or higher.

Artemio Mundo of Gruver was among the 350 students from all over the country included in the Fall 2008 list.

Texas Executions

by Gary Smith

I am writing this at 3:00 pm on January 21, 2009.

At 6:00 this evening, Frank Moore, a native of Hot Springs, Arkansas is scheduled to die in Huntsville, TX.

Moore was an auto mechanic. He was convicted of killing Samuel Boyd and Patrick Clark outside of a nightclub in San Antonio.

Moore had a criminal record that included attempted murder, possession of cocaine and distribution of cocaine.

When you read this, he will very likely be dead.

Thursday evening at 6:00 pm Reginald Perkins is to be executed.

Perkins was a truck driver, a plumber and a laborer. He was convicted of strangling his step-mother in Fort Worth. Her body was discovered in the trunk of her car. The web page for the Texas Department of Criminal Justice does not list her name.

He had a prior conviction of rape.

Next week, three more executions are scheduled.

Larry Swearingin is scheduled to die Tuesday. Virgil Martinez is scheduled to die Wednesday. Ricardo Ortiz is scheduled to die Thursday.

Swearingin was convicted of kidnapping and strangling a 19 year old girl.

Martinez was convicted of shooting and killing four people - a mother, her two children and an 18-year-old man.

Ortiz was convicted of murdering a fellow inmate by injecting him with an overdose of heroin.

None of these men ever finished high school.

2009 Property Tax Announcement

Hansford County property owners have until January 31, 2009 to pay their property taxes before incurring penalty and interest fees. Second statements are sent to remind property owners to pay their taxes. Starting February 1, property owners face a 7% fee added to the taxes owed, plus an additional 2% each month they do not pay their taxes.

After July 1, delinquent accounts will be turned over to a tax attorney and an additional 20% will be added on top of the penalty and interest to pay for attorney fees. Delinquent taxpayers could also face a lawsuit in state district court. In order to avoid a lawsuit a pay agreement contract to make monthly payments may be signed at either Hansford County Tax Assessors Collector's office located in the county courthouse or the Hansford County Appraisal District Office at 709 W. 7th Avenue in Spearman.

Partial payments are accepted if you would like to divide your taxes in four payments October through January. Taxpayers are still required to pay taxes even though for some reason they did not receive a tax statement.

SPEARMAN INDEPENDENT SCHOOL DISTRICT STATEMENT OF REVENUES, EXPENDITURES, AND CHANGES IN FUND BALANCE GOVERNMENTAL FUNDS FOR THE YEAR ENDED AUGUST 31, 2008

Data Control Codes	10		60		60		60		Total Governmental Funds
	General Fund	Permanent Trust Fund	Cap. Proj. #3 Ag Farm	Cap. Proj. #2 HS Science	Cap. Proj. #1 JH and Elem	Other Funds	Governmental Funds		
REVENUES:									
5100	Total Local and Intermediate Sources	\$ 4,116,916	\$ 40,361	\$ 22	\$ 350	\$ 52,847	\$ 990,567	\$ 5,201,063	
5800	State Program Revenues	4,297,742	-	-	-	-	97,768	4,395,510	
5900	Federal Program Revenues	1,841	-	-	-	-	539,489	541,330	
5020	Total Revenues	8,416,499	40,361	22	350	52,847	1,627,824	10,137,903	
EXPENDITURES:									
Current:									
0011	Instruction	4,524,083	-	-	-	-	401,695	4,925,778	
0012	Instructional Resources and Media Services	142,641	-	-	-	1,125	22	143,788	
0013	Curriculum and Instructional Staff Development	51,485	-	-	-	-	1,355	52,840	
0021	Instructional Leadership	2,500	-	-	-	-	-	2,500	
0023	School Leadership	384,370	-	-	-	-	-	384,370	
0031	Guidance, Counseling and Evaluation Services	189,783	-	-	-	-	-	189,783	
0033	Health Services	81,351	-	-	-	-	-	81,351	
0034	Student (Pupil) Transportation	346,827	-	-	-	-	-	346,827	
0035	Food Services	-	-	-	-	-	402,881	402,881	
0036	Extracurricular Activities	311,179	-	-	-	-	1,475	312,654	
0041	General Administration	485,949	-	-	-	-	-	485,949	
0051	Facilities Maintenance and Operations	841,723	-	-	-	-	-	841,723	
0053	Data Processing Services	94,363	-	-	-	-	-	94,363	
0061	Community Services	39,066	-	-	-	-	-	39,066	
Debt Service:									
0071	Debt Service - Principal on Long Term Debt	-	-	-	-	-	305,000	305,000	
0072	Debt Service - Interest on Long Term Debt	-	-	-	-	-	493,181	493,181	
0073	Debt Service - Bond Issuance Cost and Fees	-	-	-	-	-	451	451	
Capital Outlay:									
0081	Facilities Acquisition and Construction	-	-	24,430	1,189,520	2,557,135	-	3,771,085	
Intergovernmental:									
0093	Payments to Fiscal Agent/Member Districts of SSA	61,146	-	-	-	-	-	61,146	
0099	Other Intergovernmental Charges	4,610	-	-	-	-	-	4,610	
6030	Total Expenditures	7,561,076	-	24,430	1,189,520	2,558,260	1,606,060	12,939,346	
1100	Excess (Deficiency) of Revenues Over (Under) Expenditures	855,423	40,361	(24,408)	(1,189,170)	(2,505,413)	21,764	(2,801,443)	
OTHER FINANCING SOURCES (USES):									
7912	Sale of Real and Personal Property	5,297	-	-	-	-	-	5,297	
7915	Transfers In	-	-	400,000	1,824,116	-	56,274	2,280,390	
8911	Transfers Out (Use)	(1,931,274)	(349,116)	-	-	-	-	(2,280,390)	
7080	Total Other Financing Sources (Uses)	(1,925,977)	(349,116)	400,000	1,824,116	-	56,274	5,297	
1200	Net Change in Fund Balances	(1,070,554)	(308,755)	375,592	634,946	(2,505,413)	78,038	(2,796,146)	
0100	Fund Balance - September 1 (Beginning)	4,300,311	1,472,876	-	-	2,552,410	51,535	8,377,132	
3000	Fund Balance - August 31 (Ending)	\$ 3,229,757	\$ 1,164,121	\$ 375,592	\$ 634,946	\$ 46,997	\$ 129,573	\$ 5,580,986	

Community GROUNDHOG Dinner

11:30 a.m. to 1 p.m.

Tuesday, February 3, 2009

Fellowship Hall of the First United Methodist Church

407 Haney, Spearman

\$7.00 for adults
children 6 and under free

Take-outs will be available by calling 659-5504 by 10:30 a.m.

Hansford County Sports

2008-09 THSCA Academic All-State Football Team

The Texas High School Coaches Association (THSCA) and State Farm Insurance are proud to announce the THSCA Academic All-State Football teams for 2008-09. The teams are selected by a point system that awards points for GPA, class rank and SAT or ACT score. The student/athletes are then placed on teams according to the number of points they have earned.

Three Gruver Greyhound football players have been selected to the Texas High School Coaches Association Academic All-State Team. These players are: Miles Messer - 2nd Team, Matt Salazar - 2nd Team and Gerardo Calderon - Honorable Mention.

Three Spearman Lynx football players have also been selected to the Texas High School Coaches Association Academic All-State Team. These players are: Kegan Gamett - 1st Team, Cullie Cooper - 2nd Team and Chase Farrar - Honorable Mention.

The Elite team represents the highest point total that can be achieved. Criteria required to be nominated is 1) a senior with an overall GPA of 92 or above, including grades 9-12 and the first six weeks of grade 12; 2) Be a member of the team in good standing at the time of nomination; 3) Be of good moral character. The program is in its 8th year and has steadily grown to over 2,000 applicants.

State Farm Insurance is in its second year as sponsor of the THSCA Academic All-State Football teams.

(1/21/09)

Wood, River Road NA 5.2

Gruver 14-7, 2-0.

District 1-2A - Girls

Team	Dist.	Overall
Spearman	4-0	19-3
Panhandle	4-0	15-10
River Road	2-2	12-16
Bushland	1-3	7-14
Highland Park	1-3	10-15
Sanford-Fritch	0-4	4-17

District 1-2A - Boys

Team	Dist.	Overall
Spearman	2-0	19-2
Panhandle	2-0	12-8
Highland Park	1-1	17-6
Bushland	1-1	10-8
River Road	0-2	10-14
Sanford-Fritch	0-2	5-13

Basketball Statistics

(1/19/09)

Classes 3A-2A-1A Boys Team Offense

Team Avg.
Spearman 65.7
Wheeler 64.4
Kress 63.3
Clarendon 62.0
Childress 61.2
Follett 51.0
River Road 43.1

Team Defense

Team Avg.
Follett 34.1
River Road 41.0
Kress 42.5
Wheeler 42.9
Spearman 43.2
Clarendon 44.0
Childress 48.3

Individual Scoring

Player, Team Points Avg.
Ashmore, Spearman 49.5
26.1

Messer, Wheeler 366 26.1
Flemons, Childress NA 19.2
Poston, Kress 201 18.3
Amador, Kress 192 17.5
Wood, Childress NA 15.8
J. Gaines, Clarendon 237 13.9
Hernandez, Follett 105 13.1
Wilson, Clarendon 218 12.8
Blau, Follett 96 12.0

Individual Rebounding

Player, Team Reb. Avg.
Messer, Wheeler 161 11.5
Poston, Kress 114 10.4
Chris, Kress 111 10.0
Ashmore, Spearman 179 9.4

Hernandez, Follett 65 8.1
Wilson, Clarendon 132 7.8
Shelton, Clarendon 129 7.6
Mitchell, River Road 126 6.3
Lewis, Wheeler 79 5.6
Fairchild, Childress NA 5.2

Classes 3A-2A-1A Girls Team Offense

Team Avg.
Gruver 57.1
Follett 52.4
Wellington 51.2
Muleshoe 50.0
Dalhart 47.5

Team Defense

Team Avg.
Wellington 29.0
Gruver 41.6
Dalhart 43.9
Muleshoe 46.3
Follett 50.5

Individual Scoring

Player, Team Points Avg.
Johnson, Muleshoe 384 16.7
Yanke, Gruver 351 16.0
Velasquez, River Road NA 15.9
Ashmore, Spearman NA 15.5

Schneiderjan, Dalhart 337 15.3
Vela, Gruver 322 14.6
Warrick, Wellington 296 13.5
Woods, Follett 198 13.2
Rinker, Perryton 262 12.5
Ashmore, Wellington 156 12.0
Pittman, Spearman NA 10.5
Smith, Muleshoe 231 10.0

Individual Rebounding

Player, Team Reb. Avg.
Warrick, Wellington 268 12.2
Yanke, Gruver 257 11.7
Velasquez, River Road NA 8.5
Woods, Follett 115 7.7
Allred, Perryton 151 7.2
Steele, Dalhart 156 7.1
Pyle, Muleshoe 137 6.5
Vela, Gruver 127 5.8
McLain, Gruver 125 5.7
Johnson, Muleshoe 126 5.5
Jeffers, Dalhart 122 5.5

SPEARMAN ISD

1/13/09

Varsity Lynx

Spearman Lynx 68
Stratford Elks 44

Varsity Lynxettes

Spearman Lynxettes 58
Bushland Lady Falcons 26

1/17/09

Varsity Lynx

Spearman 57, River Road 46
Records: Spearman is 18-2, 1-0 in District 1-2A. River Road is 10-13, 0-1.

Top Scorers: Spearman, Jordan Ashmore 28. River Road, Travis Price 17.

What Happened: The Lynx had a battle with the River Road Wildcats. The Lynx only managed 12 points in the first quarter, to the Wildcats 11. By half-time, however, the Lynx led 29-19. The Wildcats came back from the half ready to play, though, and outscored the Lynx 15 to 7 in the third quarter, closing the gap to 37-34, Lynx. In the district-opener, No. 9 Spearman broke open the game with a 20-12 fourth quarter, winning 57-46.

Varsity Lynxettes

Spearman 50, River Road 41
Records: Spearman 18-3 overall, 3-0 in District 1-2A. River Road 11-16, 1-2.

Top Scorers: Spearman-Bond Pittman 16, Morgan Ashmore 12, Shelby Hannah 10; River Road-Tori Velasquez 17, Summer Webb 9.

What Happened: The Lynxettes got off to a slow start, scoring only 10 points in the first quarter to River Road's 9. The Lynxettes managed a 27-20 lead going into the half, but struggled again in the third, ending with a 35-31 lead. River Road was within two with less than three minutes to go, but Spearman made several free throws down the stretch to expand the lead to nine.

1/19/09

7th Grade Lynx

Lynx 12, Bushland 39

8th Grade Lynx

Lynx 49, Bushland 23

9th Grade Lynx

Lynx 26, Bushland 36

JV White Lynx

JV White Lynx 32, Bushland 45

1/20/09

Varsity Lynxettes

Sanford-Fritch 13 24 40 51
Spearman 19 38 55 80
SF-Jameson 14, Jaronski 10; S-Morgan Ashmore 26, Shelby Hannah 17, Bond Pittman 12; Records: Spearman 19-3, 4-0; Sanford-Fritch 4-16, 0-4, JV: Sanford-Fritch 13, Spearman 36.

Varsity Lynx

Sanford-Fritch 9 9 11 29
Spearman 22 45 59 75
F-Cunningham 15, Wood 5; S-Jordan Ashmore 25, Tate Batton 13, Brett Winegarner 10. Records: Sanford-Fritch 5-13, 0-2; Spearman 19-2, 2-0.

JV Lynx

JV Lynx 39, Sanford-Fritch 27

JV Lynxettes

JV Lynxettes 26, Sanford-Fritch 13

GRUVER ISD

1/13/09

Varsity Hounds

Gruver 65, Sunray 25

Varsity Lady Hounds

Gruver 56, Sunray 37

1/20/09

Varsity Hounds

Boys Ranch 5 24 37 41
Gruver 8 17 35 47
BR-Sam Coombs 13, Jason Tilley 10, Laquan McGowan 10. G-Riley Urban 11, Blake Fitzgerald 9. Records: Boys Ranch 13-5, 1-2;

Varsity Lady Hounds

Boys Ranch 4 5 12 22
Gruver 16 27 53 68
BR-Shintsanya 7, Katie Jones 5.
G-Mattie Yanke 29, Madison McLain 12, Lynn Vela 12. Records: Boys Ranch 9-11, 1-2; Gruver 19-6, 3-0.

JV Hounds

JV: Gruver 44, Boys Ranch 36.

PRINGLE-MORSE CISD

11/13/08

Girls

Pringle-Morse 4, Balco 39

Boys

Pringle-Morse 31, Tyrone 23

11/15/08

Girls

Pringle-Morse 32, Rolla 16

Boys

Pringle-Morse 36, Hardesty 17

11/17/08

Girls

Pringle-Morse 38, Darrouzett 26

Boys

Pringle-Morse 36, Darrouzett 7

11/20/08

Girls

Pringle-Morse 31, Hardesty 13

Boys

Pringle-Morse 34, Hardesty 20

12/1/08

Girls

Pringle-Morse 31, Arbor Academy 20

Boys

Pringle-Morse 26, Arbor Academy 28

12/4/08

Girls

Pringle-Morse 22, San Jacinto 19

Boys

Pringle-Morse 24, San Jacinto 40

12/8/08

Girls

Pringle-Morse 32, Channing 7

Boys

Pringle-Morse 30, Channing 15

1/19/09

Girls

Pringle-Morse 15; Hartley 19
Score by Quarters: Pringle-Morse 2-6-9-15, Hartley 4-6-10-19
Scorers & Points Scored: Jennifer Crowl 6, Ashley Smith 4, Halli Mans 3, Audrey Lieb 2

The Cougars played their final home game of the 2008-2009 season. Playing their final home game for the girls at Pringle-Morse were 8th graders Kaysha Allen, Halli Mans, Audrey Lieb, Ashley Smith and Saira Rivera.

Boys

Pringle-Morse 38, Hartley 29
Score by Quarters: Pringle-Morse 8-14-27-38, Hartley 2-8-17-29

Scorers & Points Scored: Nathan Forrest 14, Jace Lane 6, Lupe Pena 6, Reese Clark 3, Kane Pittman 3
The Pringle-Morse boys led from the opening basket and then used a 10 point 4th quarter to claim the victory in front of the home crowd. Pringle-Morse was led by Nathan Forrest with a season high 14 points. The Pringle-Morse boys are led by 8th graders Reese Clark, Beto Ruiz, Lupe Pena, Nathan Forrest, Kolton Morrow, Clancy Cooper and Josh Sargent.

Next Game

Pringle-Morse will travel to St. Andrews in Amarillo on 1-26-09 for their final game of the season.

SPEARMAN JUNIOR HIGH BASKETBALL INVITATIONAL

JANUARY 22 & 24, 2009

7 th Girls	7 th Boys	8 th Girls	8 th Boys
Gruver	Gruver	Gruver	Gruver
Spearman	Spearman	Spearman	Spearman
Stratford	Stratford	Stratford	Stratford
Panhandle B	Panhandle B	Shamrock	Panhandle B

Tournament format:

Round Robin - 3 games each.
Records will determine the team's final place in the tournament. Plaques will be awarded to the 1st place team in each division.

Tie-breakers:

1) head to head
If tie not broken, 2) fewest total of points allowed in all games played
If tie not broken, 3) FT % average of all games played

SCHEDULE

ACTIVITY GYM

Thursday, Jan 22

5:00 7G	Stratford vs Gruver
6:15 8G	Stratford vs Gruver
7:30 7B	Stratford vs Gruver
8:45 8B	Stratford vs Gruver

VARSITY GYM

Thursday, Jan 22

5:00 7G	Spearman vs Panhandle B
6:15 8G	Spearman vs Shamrock
7:30 7B	Spearman vs Panhandle B
8:45 8B	Spearman vs Panhandle B

Saturday, Jan 24

9:00 7G	Stratford vs Panhandle B
10:15 7B	Stratford vs Panhandle B
11:30 8G	Stratford vs Shamrock
12:45 8B	Stratford vs Panhandle B
2:00 7G	Panhandle B vs Gruver
3:15 7B	Panhandle B vs Gruver
4:30 8G	Shamrock vs Gruver
5:45 8B	Panhandle B vs Gruver

Saturday, Jan 24

9:00 7G	Gruver vs Spearman
10:15 7B	Gruver vs Spearman
11:30 8G	Gruver vs Spearman
12:45 8B	Gruver vs Spearman
2:00 7G	Spearman vs Stratford
3:15 7B	Spearman vs Stratford
4:30 8G	Spearman vs Stratford
5:45 8B	Spearman vs Stratford

FIRST TEAM LISTED WEARS WHITE AND WILL BE HOME TEAM. WHEN SPEARMAN IS IN PURPLE THEY WILL STILL BE HOME ON SCOREBOARD. DRESSING ROOMS WILL BE SHARED.

PLEASE PARK ON THE WEST OR NORTH SIDE OF THE NEW JUNIOR HIGH BUILDING AND ENTER THROUGH THE FRONT ENTRANCE OF THE JUNIOR HIGH BUILDING.

Calendar of Events

Spearman ISD

Jan. 22 & 24 - Spearman Junior High Basketball Tournament
Jan. 23 - JV/V Lynx & Lynxettes at Panhandle, 6-9 p.m.
Jan. 26 - 9th Grade Lynx at River Road, 7:30 p.m.; 9th Grade Lynx vs. River Road, 6 p.m.
Jan. 27 - JV/V Lynx & Lynxettes at Highland Park, 6 & 7:30 p.m.
Jan. 29 - Elementary Choir Program (1st-5th Grade) - Cafeteria, 8:30 a.m.
Jan. 29 - Early Dismissal for Hansford County Livestock Show, 1:00 p.m.
Jan. 29 - District CX Debate Contest - WTA&MU
Jan. 30 - NO School - Hansford County Livestock Show
Jan. 30 - JV/V Lynx & Lynxettes at Bushland, 6 & 7:30 p.m.
Jan. 31 - JH Choir Solo & Ensemble Contest - WTA&MU

Gruver ISD

Jan. 22-24 - Spearman JH Tournament
Jan. 23 - GHS at West Texas, 5-9:30 p.m.
Jan. 26 - GJH vs. Sunray, 5-7:30 p.m.
Jan. 27 - GHS @ Stratford, 5-9:30 p.m.
Jan. 29 - Early Dismissal for Hansford County Livestock Show, 12 noon
Jan. 30 - NO School - Hansford County Livestock Show
Jan. 30 - GHS vs. Sunray, 4-9:30 p.m.

Pringle-Morse CISD

Jan. 22 - School Board Meeting
Jan. 26 - Cougars vs. St. Andrews
Jan. 29 - Early Dismissal for Hansford County Livestock Show
Jan. 30 - NO School - Hansford Co Stock Show

12 Month FDIC-Insured

5.00% APY
Ask About Our Higher Yielding Accounts



REAL ESTATE

FOR SALE: Trailer house in Morse with lot. 2BR, 1B. For more information call 806-733-2227 or 806-736-0566 or 806-736-0567. TFN(1-22-09)B

HELP WANTED

HELP WANTED: Gigot Agra Products, Valley Center Pivot Dealer, is seeking additional service technicians at our Spearman location. Experience desired, but not required. Benefit package is available. Send resume to PO Box 1413, Guyton OK 73942, or call 580-338-2536 or 806-659-3121. TFN(9-18-08)B

HELP WANTED: General mechanic for automotive, irrigation work and tire repair. Tools provided. Apply at Morse Implement and Auto Supply in Morse. Call 06-733-2668. Ask for Tom or Gary. Good pay and working conditions. TFN(10-02-08)

HELP WANTED: Hansford County Library is now accepting resumes for part-time employment. Position includes working with the public and some computer knowledge. Must be able to multitask. Send resumes to 122 Main, Spearman TX 79081. TFN(11-13-08)B

HELP WANTED: Duties include elevator operations, warehouse and fertilizer maintenance, some clerical and computer. English a must, bilingual is good. Must have valid driver's license. Good Benefits, vacation, insurance and retirement. Contact Sandy Earp, Spearman Equity, 104 Collard, Spearman, TX. 806-659-2420 or 806-270-0073. TFN(12-11-08)B

HELP WANTED: First State Bank, Spearman, has full time positions open for a Teller. Applicant must have a high school diploma or equivalent, typing and some tenkey skills required, customer relation and telephone skills are very important. Computer skills in word-processing and spreadsheets is helpful but not required. Benefit program includes group hospitalization insurance, retirement, vacation pay, sick leave pay and holiday pay. Apply with Ginger Turner at First State Bank, PO Box 247, Spearman, TX. 79081, telephone # (806) 659-5565. An Equal Opportunity Employer. 2(1-15-09)

Shirley Howard, Broker/Owner
806-886-6536, Cell
Melinda McCullough, Realtor
(806) 733-5678

We would LOVE to sell your HOUSE!
CALL US!

HANSFORD CO - 2 1/2 miles from town, on pvt., 640 acres, choice land, 1/2 mile sprinkler, excellent location for dairy.

LIPSCOMB CO - 640 ac., strong water area, sprinklers & irr. wells, with some improved pasture, barns and pens.

POTTER CO, TX - 4872.8 acres of beautiful ranch country four miles north of loop 335, Amarillo, TX. pvt. on four sides (3 mi. - hwy 287, 1 mi. - Western St., 1 mi. - Givens Rd., 1 mi. - Rivera Park Rd.) Well watered by pumps powered by solar energy (state of the art) and windmills. Deer, quail & dove. Talk to us about dividing (640 ac. min.).

JUST LISTED! Texas Panhandle - 177 acres with extraordinary 5404 sq. ft. +/- home overlooking the property with beautiful views of live creek, trees, wildlife (deer, quail & turkey), covered horse training facilities, stables, excellent cattle working facilities and pens, employee housing.

HANSFORD CO - Choice farming area, 1/2 section, one irr. well, presently farmed dry-land, irr. potential. At \$750.00 per acre, let's look!

OCILTREE CO - Choice dairy location, strong water area, three phase electricity, 776.5 acres more or less of choice land (Pullman Clay Loam - almost all "A" slope) with two pivot points for sprinklers, two irrigation wells, preconditioning pens with indoor working area, grain, hay and fuel storage.

TEXAS COUNTY, OK - 560 acre irrigated stock farm, wind energy lease.

OCEANS OF WATER II - Hansford Co., Texas - 4 sections, strong water, dev. with sprinklers, wells, feedyard, home, barns, pvt., 2 mi. hwy. frontage.

SEE OUR WEBSITE OR GIVE US A CALL!
www.scottlandcompany.com
Shawn Gillispie 806/922-5532
Ben G. Scott, Broker
1-800-933-9698 day/eve
TFN(9-25-08)

HELP WANTED: First State Bank is now taking applications for a full time building and yard maintenance person. Applicant should be self-motivated, have mechanical skills and be in good health and physical condition. A strong work ethic is a must. Benefit program includes group hospitalization insurance, retirement, paid vacation and a sick leave program. Contact Ginger Turner, 659-5565. An Equal Opportunity Employer. 2(1-15-09)

HELP WANTED: Receptionist. Duties include: answering phones, filing, data entry, customer service, etc. Basic computer skills a must; Bilingual and Quickbooks experience are preferred but not required. Benefits include: 401K, group health insurance, paid holidays and vacation. Inquire at Deakin Electric, 321 S. Main St. Spearman, TX. (806)659-5016. 1(1-22-09)

SERVICES

HOOCY POOCY PARLOR Call us for all your pet's grooming and boarding needs. Call now for reservations! 806-273-2724. TFN(11-2-07)

Blankenship Real Estate
659-3052 - 670-3774

3BR/1B Home (Spearman) - 2 living areas, nice backyard, storage, close to school and hospital!

NEW LISTINGS WANTED!
Eulalia Blankenship - Sales
Eschol Blankenship - Broker

Century 21

Golden Spread Realty

101 Wanda Dr., SPEARMAN - 1,321 sq. ft., 3BR, 1B, fireplace.

Gina Deal, Broker/Owner
(806)435-5444
www.century21.com

INDEPENDENTLY OWNED & OPERATED.
©1992® and "Century 21 Real Estate Corporation. Equal Housing Opportunity. EOW(12-11-08)B

MARTIN & ASSOCIATES REALTY

Serving Hansford County for 14 years

Julie Martin: Broker - 659-2425

23 N. Hoskins: 3 bed, 1 bath, cent heat/air, hardwood floors, carport, workshop, on 2 lots (FSB broker/owner)

We'd Like Your Listing!
FOR QUALITY & SERVICE CALL US TODAY!
Equal Housing Opportunity

hchd
Hansford County Hospital District

Openings at Hansford Manor

LVN: Full Time and Part Time needed

Housekeeper: Part Time 4:00pm - 8:00 pm 5 days a week and 8:00am - 5:00pm 3 days a week. Keeping our manor clean and sanitary for our residents, patients and family members

Great working environment and staff, quality facility providing opportunities for professional growth. Great benefit package. Apply at 707 S. Roland, Spearman, TX or contact Jackie Nelson at 806-659-5841. Download application at www.hchd.net EEOE 2(12-25-08)B

PUBLIC NOTICE

INVITATION FOR BIDS
Sealed proposals addressed to the Honorable Mayor and City Commission of the City of Spearman, Texas, the Honorable Mayor and City Commission of the City of Gruver, Texas, and the General Manager of the Palo Duro River Authority and the Board of Directors for the sealcoating of approximately 117,550 square yards of streets and alleys entitled: **SEALCOATING - 2009** will be received at the office of the City Manager of the City of Gruver at City Hall, 201 E. Broadway, P.O. Box 947, Gruver, Texas, 79040 until: **2:00 P.M. February 12, 2009**

A cashier's check, certified check or acceptable bidder's bond, payable to the Owner an amount equal to not less than five percent of the bid submitted, must accompany each bid as guarantee that, if awarded the contract, the Bidder will, within fifteen days after receipt of Contract Documents, enter into a contract with the Owner and will execute bonds on the forms provided in the Contract Documents. Any bid received after the time and date listed above will be returned unopened and will not be considered.

Bidders are expected to inspect the site of the work and inform themselves regarding all local conditions.

Contract Documents are on file and may be examined in the office of the City Manager, City of Gruver, 201 E. Broadway, P.O. Box 947, Gruver, Texas 79040, phone (806) 733-2424, the offices of the City Manager, City of Spearman, 30 Southwest Court, P.O. Box 37, Spearman, Texas 79081, phone (806) 659-2524, the office of Palo Duro River Authority 14320 River Authority Rd., Spearman, Texas 79081, phone (806) 882-4401, and the office of Brandt Engineers, Consulting Engineers, 4537 Canyon Drive, Amarillo, Texas 79110, telephone (806) 353-7233.

Plans and Specifications may be obtained from the Engineers, Brandt Engineers, 4537 Canyon Drive, Amarillo, Texas 79110, phone (806) 353-7233 in the following manner:
Cost: Fifty Dollars (\$50.00), non-refundable, for each set of plans and specifications.
Performance and Payment bonds shall be set forth in the Contract documents.
The Owner reserves the right to

M	A	G	O	G	N	F	O	I	L	I	A	
O	M	A	N	I	O	U	R	M	A	O	R	
D	O	R	S	A	D	N	A	A	M	B	E	
E	S	S	E	N	C	E	T	H	E	B	O	S
T	T	L	E	M	E	A	N					
A	F	O	S	O	F	A	P	A	W	A	N	N
H	E	R	S	U	L	N	A	D	R	O	L	L
L	L	E	O	T	O	N	I	C	A	P	A	W
O	L	L	A	M	A	G	I	N	O	P	A	P
D	A	M	A	S	K	N	U	M	B	K	E	Y
W	I	N	G	B	O	X						
F	L	O	R	I	D	A	C	O	A	L	G	A
A	I	D	E	R	S	O	L	S	I	E	G	E
T	R	I	A	L	A	V	E	T	I	N	E	A
S	A	N	D	L	A	G	S	I	T	E	S	

9	1	5	8	6	2	7	3	4
3	7	8	1	4	5	9	6	2
6	2	4	9	7	3	1	8	5
1	4	9	6	3	8	5	2	7
7	5	3	4	2	1	8	9	6
2	8	6	5	9	7	3	4	1
8	3	7	2	1	6	4	5	9
5	9	2	7	8	4	6	1	3
4	6	1	3	5	9	2	7	8

MITCHELL THEATRES
NORTHBRIDGE CINEMA 8

Guymon, Oklahoma

FRESH POPCORN EVERYDAY!
-PARTY ROOM & ARCADE-

Call for Showtimes
580-338-3281
www.northridge8.com

reject any or all bids and to waive any informalities in the bidding. In case of ambiguity or lack of clarity, the Owner reserves the right to adopt such interpretations as may be most advantageous or to reject the bid as informal. No bid may be withdrawn until the expiration of 30 days from the bid opening date.

CITY OF SPEARMAN CITY OF GRUVER PALO DURO RIVER AUTHORITY
2(1-22-08)B

NOTICE TO ALL PERSONS HAVING CLAIMS AGAINST THE ESTATE OF

MAXINE RUTH COOPER CLINE
Notice is hereby given that original Letters Testamentary for the Estate of MAXINE RUTH COOPER CLINE were issued to Dana Louene Cline and Devra Denise Cline Hledik, in Cause No. 2559, in the County Court of Hansford County, Texas. All persons having claims against this estate which are currently being administered, are required to present them within the time and in the manner prescribed by law. All claims should be sent to Dana Louene Cline, 10708 NW 28th St., Yukon OK 73099 or Devra Denise Cline Hledik, 12501 Eric Field Place, Oklahoma City OK 73142.

John L. Hutchison
PO Box 506
Spearman TX 79081
Attorney for the Estate
1(1-22-08)B

www.spearmanreporter.com
www.spearmantexas.biz

FREE DIRECTV 4 ROOM SYSTEM!

265+ ALL DIGITAL CHANNELS!
130 HD CHANNELS!
FREE HBO, Showtime & Starz for 3 Months!
Packages Start only \$29.99
FREE DVR/HD
No Start Up Costs!
We're Local Installers!
Toll Free 800-214-7110

Mesothelioma EXPERIENCE COUNTS
Lawyers with over 90 years combined expertise.

may occur 30 to 50 years after exposure to asbestos. Many workers were exposed from the 1940s through the 1970s. Industrial maintenance and operators are among those at risk for mesothelioma, throat cancer or lung cancer. Call us for professional insight.

Ryan A. Krebs, M.D., J.D.
Dorcas-Lawyer in Full-time Law Practice
Richard A. Dodd, L.C.
Timothy R. Cappolino, P.C.
Board Certified Personal Injury, Trial Law and Civil Trial Law by the Texas Board of Legal Specialization
NO FEE FOR FIRST VISIT - CAMERON, TEXAS

1-888-MESO-FIRM
(1-888-637-6347)
www.AsbestosLaw.com

SIGN UP FOR A FREE SCOOTER
One Scooter Given Away Each Month

Toll Free **800-606-9860**

Med Care MEDICAL SUPPLY
www.medcaremedicalsupply.com

Se Habla Espanol

TEXAS STATEWIDE CLASSIFIED ADVERTISING NETWORK

TexSCAN

TexSCAN Week of January 18, 2009 AUCTIONS

FORECLOSED HOME AUCTION Texas Statewide 500+ Homes must be sold! Reduced free brochure 1-800-655-5078, www.USHomeAuction.com

BUSINESS OPPORTUNITIES
100% RECEPTION PROOF! Do you earn \$800 in a day? Your own local candy route. 25 machines and candy. All for \$9,995. 1-888-625-5481. Multi Vend, LLC.

OWN A COMPUTER, put it to work! Work from anywhere. Two step process. Request online Information. Review Information. Set-up phone interview. Serious people only: www.PTMENTOR.com

DRIVERS

13 DRIVERS NEEDED Sign-On Bonus 35-41 upm. Earn over \$1000 weekly, excellent benefits. Need CDL-A & 3 months recent OTR. 1-877-258-8782. www.meliontruck.com

EXPERIENCED OTR CDL-A drivers. Only accepting applications from the best drivers in the area. Gainey Transportation, 1-806-326-8889.

CDL-A DRIVERS: Expanding Fleet offering Regional/OTR runs. Outstanding pay package. Excellent benefits. Generous hometime. \$300 lease special on Volvo's National Carriers, 1-888-707-7729. www.nationalcarriers.com

WE NEED 20 Long Haul Drivers! Texas based company so you will get home. Probably more than the wife wants you too! Call Paul at 1-713-674-4206

HELP WANTED
BETWEEN HIGH SCHOOL and College? Travel and Have Fun with young successful business group. No experience necessary. 2 weeks paid training. Lodging, transportation provided. 1-877-646-5050.

HEALTH INSURANCE
BEST RATES IN TEXAS. Any doctor or hospital with no deductible in most cases. Optical and dental included. Fully tax deductible. Call 1-800-343-0791 for quote.

HOME SCHOOLS
HOME-SCHOOL WEBSITE! Grades: 5-12th. Monthly-payments, Workbooks, Legal-Records, Grading services, Tutors, Report-Cards, & Diplomas. All included! Open year-round. Start anytime! E-mail: DrGMSykes@SykesAcademy.com. Visit: www.SykesAcademy.com.

HOME FOR SALE
FREE FORECLOSURE LISTINGS Over 200,000 properties nationwide. Low down payment. Call Now! Consumer Resource Network. 1-800-446-9804

FORECLOSED HOME AUCTION Texas Statewide 500+ Homes must be sold! Reduced free brochure 1-800-655-5078, www.USHomeAuction.com

FORECLOSURES & BANK REPOS: 4BR/3BA \$30,357 or \$245/month! 3BR/2BA \$10,300 or \$199/month! (5% down, 30 years, buy @ 8%) These Homes won't last! For listings call 1-800-544-6258 Ext. 9847

MISCELLANEOUS
AIRLINES ARE HIRING. Train for high paying aviation maintenance careers FAA approved program. Financial aid if qualified. Housing available. Call Aviation Institute of Maintenance, 1-888-349-5387.

ATTEND COLLEGE ONLINE from home. Medical, Business, Paralegal, Computers, Criminal Justice. Job placement assistance. Computer available. Financial aid if qualified. Call 1-800-858-2121, www.GenturaOnline.com

REAL ESTATE
ADVERTISE YOUR LAND, property or business for sale in 303 Texas newspapers. Reach over 2.5 million readers for ONLY \$450! Call this newspaper or visit: www.texaspress.com

COLORADO BANK FORECLOSURE 35 AC \$29,900 Enjoy 300 days of sunshine. Rocky Mtn. views, utilities. Excellent financing. 1st come, 1st serve! Call Today 1-866-696-5263, ext. 4941

GRAND LAKE HOMESITES from \$29,900 1-877-909-5253, ext. 4935

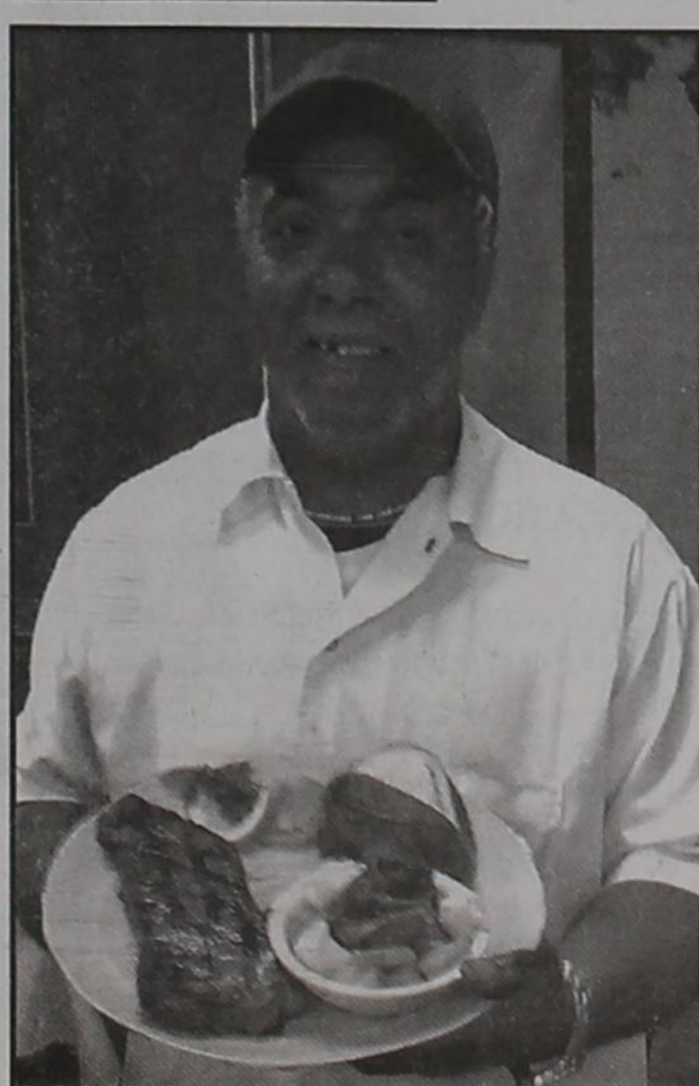
PAINT MARE RANCH #20, southwest Texas near Sanderson, 132.65 acres, \$295 per acre. White tail hunting. Owner financing or TX Vet Ranch Enterprises, 1-866-286-0199.

TEXAS & OLD MEXICO: Affordable hunting & fishing property. 100 acres for \$79,000 with 10% down & no credit check. All sizes available up to 20,000 acres. Call 1-877-77-ABIGLAND (1-877-772-4432)

WANTED TO BUY
OLD BARNS BOUGHT and sold! Salvage barns and barn wood wanted and sold. www.TheBarnPages.com

NOTICE: While most advertisers are reputable, we cannot guarantee products or services advertised. We urge readers to use caution and when in doubt contact the Texas Attorney General at 1-800-621-0508 or the Federal Trade Commission at 1-877-FTC-HELP. The FTC web site is www.ftc.gov/bizop

Extend your advertising reach with TexSCAN, your Statewide Classified Ad Network.



Jeffrey's Steaks & More

511 Plains Shopping Center
Spearman, Texas (806) 644-0953

For the best good ole country cooking around, don't drive out of town - get it right here at home!

Daily Lunch Buffet (11 a.m.-2 p.m., Tuesday-Friday, 11 a.m.-3 p.m., Sunday)
Includes 2-3 meats, 5-6 vegetables, homemade rolls and homemade desserts

Hours: Tues.-Thurs., 11 a.m.-9 p.m.; Fri., 11 a.m.-10 p.m.; Sat., 2-10 p.m.; Sun. 11 a.m.-3 p.m.

Subscriber Appreciation
Queen of Hearts Valentine Package

at the Ashmore Inn & Suites in Amarillo

Accommodations include:

- One Night in a Deluxe King Guestroom
- Turn-down Service with Schokolads Gourmet Chocolates
- Valentine Poem
- Chilled Cider with Keepsake Champagne Flutes
- Deluxe Continental Breakfast
- Late Check-out of 1 p.m. Package valued at \$158.70

Sponsored by The Hansford County Reporter-Statesman
Offer expires February 14, 2009. Must be at least 21. Valid credit card required.
Reservation must be made in advance. Certificate not valid on premium dates.
Open to paid subscribers of The Hansford County Reporter-Statesman
Entry deadline is January 31, 2009. Winner announced February 5, 2009.

Subscribers may enter by mailing your name, address and phone number to THE HANSFORD COUNTY REPORTER-STATSMAN, 213 MAIN STREET, SPEARMAN TX 79081; or e-mail to: reporter@spearmanreporter.com



(Photos by Tami Hargrove, <http://spearmanports.smugmug.com>)



(Photos by Charlie Johnson)

School Board Recognition Month

Continued from Page 1

"Today's public schools face tremendous challenges and opportunities, making the school board's role more critical than ever before," said James B. Crow, TASB executive director. "Local trustees diligently work with community leaders, parents, and educators to develop sound education policies. They help set high standards in the education system, encouraging us to strive to reach those goals and better prepare the next generation of leaders in our state and nation," Crow said.

"We urge every community to acknowledge the commitment that board service requires of more than 7,000 locally elected school board members in Texas and support them as they tackle the enormous task of governing school districts. We applaud their dedication as they offer vision and leadership and work to empower every child to succeed," Crow said.

TASB is a nonprofit association established in 1949 to serve local Texas school districts. School board members are the largest group of publicly elected officials in the state. The districts they represent serve more than 4.6 million students.

Spearman ISD Board of Directors - Dwayne Mitchell - President, Bob Boxwell - Vice-President, Maria Sibley - Secretary, Glen Ray Mackie, Dr. Mark Garnett, Carol Dunnihoo, Will Jarvis, Rod Sumner - Superintendent

Gruver ISD Board of Directors - Dwayne Thompson - President, Brent Stedje - Vice President, Jeff Graves - Secretary, Curt Fitzgearld, Traci Venneman, Jeff Purvines, Teague Winger, David Teal - Superintendent

Pringle-Morse CISD Board of Directors - Clyde McCloy-President, James Lieb - Vice President, Carolyn Shields - Secretary, Roney Clark, Jerry Crowl, Lance Gaillard, Bill Jack Pittman, Kent Hargis - Superintendent

ATTENCION CONTRIBUYENTE DE IMPUESTOS SOBRE LA PROPIEDAD

Duenos de propiedades tienen ciertos derechos que pueden reducir sus impuestos

DUENO DE HOGAR

Usted califica para una exención general, si es dueño de su hogar el día primero de enero, 2009. La solicitud para la exención es necesario si el dueño de la residencia cambio de hogar efectivo Enero 1, 2003, o califica para exenciones adicionales desde el año pasado. Un dueño de hogar mayor de 65 años puede aplazar el pago de una porción de sus impuestos si el valoracion de su hogar de residencia aumento mas de 5% que el valor del año anterior. Un aplazamiento de impuestos sin embargo, solo pospone su deuda impositiva. Se aplica un interes de 8 por ciento al año y se mantiene una garantía sobre la propiedad. Para aplicar por el aplazo, contacte al distrito de valoracion de su condado y complete la aplicacion.

PERSONAS INCAPACITADOS

Personas incapacitados bajo la Administracion del Seguro Social califican para las exenciones de dueño de hogar. Personas incapacitados deben aplicar con su distrito de valoracion con su prueba de dishabilitacion del Administracion del Seguro Social. Personas incapacitados reciben todos los beneficios en su hogar igual que personas mayor de 65 años.

PERSONAS MAYORES DE 65 AÑOS

Personas mayores de 65 años o dishabilitados pueden aplicar para mas exencions. Usted tambien obtiene un tope de impuestos para el total de sus impuestos escolares si usted cumple 65 años de edad durante 2009. Personas de 65 años o mas tienen que registrar una solicitud por la exención en su distrito de valoracion en su area. Usted puede aplazar algunos de sus impuestos sobre su hogar de residencia si lo desea. Los impuestos continuan a pesar del aplazo con interes de 8% anual, pero no se hace esfuerzo de abrir un juicio hipotecario durante el aplazo. La Contraloria de Cuentas Publicas de Texas le podra dar mas informacion.

VETERANOS INCAPACITADOS

Usted puede calificar para una exención del los impuetos sobre su propiedad. Debe tener documentos del Administracion de Veteranos que muestran el porcentaje de su incapacidad relacionada a su servicio militar. El distrito de valoracion solamente nesisita documentacion el primer año de calificacion o se su tasa de incapacidad cambia.

TERRENOS AGRICOLAS O GANADEROS

La valoracion/tasacion come terreno agricola disminuye el valor imponible del terreno. Se valora el terreno basandose en su capacidad para producir cultivos, ganado, o vida silvestre en lugar de su valor en el mercado de bienes y raices. Obtenga un formulario de solicitud en la oficina local de su distrito de valoracion. El tasador principal puede requerir que usted someta una nueva aplicacion.

SOLICITACIONES PARA EXENCIONES

Copias de solicitudes se pueden conseguir en el distrito de valoracion mas cerca de usted o del La Contraloria de Cuentas Publicas de Texas, en el 1/800-252-9121 Tambien se incluye solicitudes para exenciones totales para organizaciones religiosas.

Contact Hansford Appraisal District
709 W. 7th Avenue, Spearman, Texas
806-659-5575

by Dorothy Hudson

Out at the Lake

Jim Derington
Palo Duro River Authority
P.O. Box 99
Spearman, TX 79081
806-882-4401
pdra@dishmail.net

Lake Level--January 19, 2009--
21.50 feet (-0.17)

The Lake is virtually ice-free now, and a few fishermen are out. Two of them enjoyed watching two mature bald eagles in the dead cottonwoods last week. I asked Jim if they got to see the eagles catch any fish. They hadn't, but Jim has not seen this either. He has seen the eagles eating fish while they perch in trees, and he has seen them eating ducks and geese while standing on the ice. The fishing skill of eagles is a "wildlife happening" that I would like to see. Having seen it on television moderates the desire though.

Jim has a good picture of the tumbleweeds in the Park. I learned of another story of tumbleweeds at the Gruver Cemetery. Last week on one of the windy days, the tumbleweeds knocked part of the boundary fence down and then made a ramp over the wires. From the adjoining field fifteen head of cattle walked in to explore. They were soon found and removed. No damage was done.

Tractor Driving Story

Over the years of writing this column, I have collected some stories from different area tractor drivers. Now that I am seeing tractors moving in the fields as a few farmers are getting a jump on the spring work, it brought to mind a story from Jerry Hart, who lives in the middle of the area between Gruver, Spearman, and Morse. He is a dry-land farmer and spends a lot of time on the tractor during certain seasons. Like other farmers he sometimes see a coyote chasing a rabbit. The rabbits are quick and dodge well, but usually the coyote wins.



The two tumbleweed pictures were taken Jan. 12 after strong north winds. One shows them completely blocking the road to Horse Creek. The other shows how the row of Cottonwood trees around the lake catches so many of them.

Last year Jerry got to see a coyote take after a herd of seven antelope in the field east of Morse where he was working. The coyote tore after the herd as if he were confident that he would soon be eating one. No one had clued the coyote in that he was chasing the fastest animal around. Thus, the herd easily stayed ahead of the coyote. After awhile the coyote just sat down, panted and panted, and then slunk off.

ATTENTION PROPERTY OWNERS

Property owners have certain rights that may reduce their property tax burden.

HOMEOWNERS

Persons who own their residence on January 1, 2009, may claim their home as a residential homestead. The filing of this document is only necessary if the homeowner has changed homesteads since January 1, 2008, or has become eligible for additional exemptions since last year. Homeowners may also defer the portion of the tax on their residence homestead if the value of the home was raised more than 5% above the previous year. Although the tax collection is deferred, interest continues to run on the unpaid portion of tax at a rate of 8% per annum and the deferred tax remains a lien on the property. To apply for the deferral, the owner should contact the appraisal district which appraised the property in question and complete an application.

DISABLED PERSONS

Persons who are disabled under Social Security law are entitled to additional exemptions on their residential homestead. Disabled applicants must apply with the appraisal district and furnish a determination letter from Social Security. Disabled persons now receive all benefits on their home that are available to over 65 persons (see below)

PERSONS WHO ARE OVER 65 YEARS OF AGE

Persons who are over 65 years of age or disabled persons may file for additional exemptions and a ceiling on school taxes for their residential homestead if they become 65 during 2009. Over-65 persons should apply for this exemption at the appraisal district office in their area. Over-65 persons are also eligible to defer paying the tax on their residential homestead if they wish. The taxes continue to accrue during the deferral along with an interest rate of 8% annually, but no attempt will be made to force payment during the deferral. Details and an application may be obtained from any appraisal district or the State Comptroller.

DISABLED VETERANS

Persons who have been declared disabled by the Veteran's Administration are eligible for additional exemptions on property they own. The declaration letter from VA is mailed annually, but the appraisal district only needs a copy in the first year of eligibility or if the percentage of disability changes.

FARM AND RANCH OWNERS

Farmers and ranchers may be entitled to receive an alternate method of appraisal determined by the farm income to the property. This method is available to farms and ranches commercially raising crops or livestock or which are used as a wildlife habitat under State guidelines. An application for agricultural use value and additional information is available from your appraisal district. Re-filing is only necessary if requested to do so by the Chief Appraiser.

EXEMPTION APPLICATIONS

Exemption applications for all property tax exemptions including total exemptions for charitable, religious, and other total exemptions may be obtained from an appraisal district nearest you or through the State Comptroller's Office at 1/800-252-9121.

CONTACT HANSFORD APPRAISAL DISTRICT
709 W. 7th AVENUE
SPEARMAN, TEXAS 79081
806-659-5575