



HANSFORD COUNTY ★ THE REPORTER-STATESMAN ★

CELEBRATING 104 YEARS OF SERVICE TO HANSFORD COUNTY
HANSFORD COUNTY'S ONLY NEWSPAPER

THURSDAY,
JULY 14, 2011

75¢

WWW.SPEARMANREPORTER.COM

VOLUME 104 • ISSUE 28

REPORTER@SPEARMANREPORTER.COM



City of Spearman Asking for Voluntary Watering Reduction

submitted by Ed Hanson, Spearman City Manager

The City of Spearman is asking its citizens and businesses to curtail their water use by adhering to the following VOLUNTARY watering schedule: Even numbered addresses are asked to water lawns and gardens on Tuesday and Saturday starting at 6 p.m. and ending at 10 a.m. the next day. The odd numbered addresses are asked to please water on Wednesday and Sunday starting at 6 p.m. and ending at 10 a.m. the next day.

The water situation is not critical at this time, but we are asking for some voluntary cooperation to assist as we all endure this current drought. We are asking for the VOLUNTARY program to begin on Tuesday July 12th.

The North Plains Groundwater District has joined the cause by supplying the City of Spearman with a limited number of "Summer Shower Alert" kits. This kit contains a low flow massage spray shower head, a rain gauge, a drip gauge, and two toilet leak detector dye tablets. While they last, these kits are free to city utility customers, on a first come first serve basis. As of Monday, July 11th, we have about 60 kits at city hall.

Below are some additional water saving tips:

- Put food coloring in your toilet tank. If it seeps into the toilet bowl, you have a leak. Fixing it can save you up 1200 gals a month.

- When washing dishes don't let the water run while rinsing. Fill one sink with wash water and the other with rinse water.

- Run your clothes and dishwasher only when full. You could save up to 750 gals. a month.

- Shorten your shower time by a minute and save up to 150 gals a month.

- When cleaning out fish tanks give the nutrient-rich water to your plants.

- Check your sprinkler system valves periodically for leaks and keep the sprinkler heads in good shape.

- Turning off the water while brushing your teeth you can save nearly 100 gallons a month.

- Set a kitchen timer when watering your lawn to remind you when to stop or move your sprinkler. A running water hose can sometimes discharge up to 15 gallons a minute.

News from the Tax Office

submitted by Linda Cummings, Hansford County Tax Assessor-Collector

This legislative year has brought a variety of changes. I will highlight a few of them. Some could have a large impact on you and some you will not even notice. The agency has been known as TxDOT. It is now called TxDMV. This stands for Texas Department of Motor Vehicles. This change is in name only. All of the services that have been provided will remain the same.

The biggest change for TxDMV that will affect you is the restructuring of fees. The goal was to simplify the fee schedule. They have reduced the truck registrations of 6,000 lbs and more from 1600 fees to 7.

The passenger vehicles, trailers and light trucks will be one fee per classification. The base fee for passenger, trailers and light trucks will range from \$45.00 to \$50.75. The base fee for the larger trucks will range from \$54.00 to \$840.00. This is a huge restructuring. There has not been an adjustment in the fees since the 1980's. The new fees are in effect September 1. Some of you will see the change on your next renewal.

Several years ago the gift tax procedure was changed. The only way a vehicle transaction can be a gift is if it is between parents, children, spouses, grandparents and religious organizations. Both parties must sign the Gift Tax Affidavit in front of

a notary. June 20 was the start date for the new change. You will now have to show your picture ID when transferring a vehicle involved in a gift transfer.

Beginning January 1 everyone must provide a government issued id at each registration renewal or title transaction. I understand that this might offend some of you but it is the law so we will enforce it.

I thank you in advance for your patience while we continue to learn all of the news laws and changes. If you have any questions please do not hesitate to contact the office. I welcome your questions and comments.

Golden Spread Senior Auction Slated

The Golden Spread Center Radio Auction has been scheduled for July 16, 2011 from 9 a.m.-3 p.m. on KXDJ-FM (98.3). The 2011 Radio Auction will be held in memory of Peggy and Carl Archer for their lifelong commitment and generous support of the Golden Spread Senior Citizen's Center. Their volunteerism, philanthropy and passion for the community are deeply missed, not only by the Golden Spread Center, but the entire Hansford community.

Knick-knacks, kitchen appliances, gift certificates, antiques, handmade goods, furniture and baked goods are just a few of the items that will be auctioned during this year's event. Everyone is invited to stop by Meadows Hall at The O'Loughlin Center, 508 S. Brandt, on Thursday, July 14th (11 a.m.-7 p.m.) and Friday, July 15th (11 a.m.-5 p.m.), for viewing and pre-bidding.

This year's radio auction will again be on air for only 6 hours. Due to the shortened air time, items may possibly be bundled into an auction package with other donated items.

Donations of hand-made items, goods, services, good furniture, cars, boats, golf carts, etc. are greatly appreciated. All donations and support are a huge part of helping the O'Loughlin Center continue their long standing commitment to providing programs and activities for all of Hans-

ford County. Proceeds will benefit the Golden Spread Senior Citizen's Center.

Additional telephone lines for the auction are generously being provided by PTCI.

The Board of Directors would like to thank everyone in advance for the continued support. Without your help, the Golden Spread Center and the O'Loughlin Center could not continue to provide fitness, educational, social and leisure activities for our community.

Members of the Golden Spread Center and O'Loughlin Center are Verna Lee Shirley, President; Bob Boxwell, Vice President; Jackie Pearson, Secretary/Treasurer; James Cunningham, Sammie Harkey, Molly McCloy, Marsha Murphy, Susan Pearson, Lenny Pecha, Margaret Ralston, and Tindle Ramon. Please contact any of these members, or call the O'Loughlin Center at 806-659-3030, for more information.



Peggy and Carl Archer

To make your charitable donation, call The O'Loughlin Center at (806) 659-3030. Your generous donations will be greatly appreciated!

USDA Authorizes Emergency Haying of CRP Acres for 73 Texas Counties

In response to drought conditions, USDA's Farm Service Agency (FSA) authorized emergency haying use of Conservation Reserve Program (CRP) acres for 73 Texas counties.

The following counties are approved for emergency CRP haying: Armstrong, Bailey, Baylor, Borden, Briscoe, Callahan, Carson, Castro, Cochran, Coke, Coleman, Collingsworth, Concho, Cottle, Crosby, Deaf Smith, Dickens, Donley, Duval, Ellis, Fisher, Floyd, Foard, Gaines, Garza, Gray, Hale, Hall, Hansford, Hardeman, Hartley, Haskell, Hemphill, Hill, Hidalgo, Hockley, Howard, Jones, Kent, King, Kinney, Knox, Lamb, Lipscomb, Lynn, Mar-

tin, Maverick, Medina, Mitchell, Motley, Nolan, Ochiltree, Oldham, Parmer, Pecos, Potter, Randall, Roberts, Runnels, Scurry, Shackelford, Sherman, Starr, Stonewall, Swisher, Taylor, Terrell, Terry, Tom Green, Uvalde, Wheeler, Wilbarger and Yoakum Counties. Haying authorization will end on August 31, 2011.

"Eligible producers who are interested in emergency haying of CRP must request approval before haying eligible acreage," said Hargrove. "It is also important for producers to obtain a modified conservation plan from the Natural Resources Conservation Service that includes haying requirements," said Hargrove.

Upon approval of emergency haying, producers must leave at least 50 percent of each field or contiguous field unharmed for wildlife. For those counties that are eligible for emergency haying and grazing, the same CRP acreage cannot be both hayed and/or grazed at the same time. For example, if 50 percent of a field or contiguous field is hayed, the remaining unharmed 50 percent cannot be grazed; it must remain unharmed and ungrazed for wildlife.

In addition, participants are limited to one hay cutting and are not permitted to sell any of the hay. There will be a 25 percent CRP payment reduction depending on the number of acres actually hayed.

To take advantage of the emergency haying provisions, authorized producers can use the CRP acreage for their own livestock or may grant another livestock producer use of the CRP acreage for the purpose of haying.

For more information on and to request approval for emergency haying of CRP acres contact the Hansford County FSA office at (806) 659-3036 ext. 2.

USDA Crop Certification Deadline

Hansford County USDA Farm Service Agency (FSA) Executive Director Rick Hargrove, reminds producers that the annual crop certification deadline for spring-seeded crops is July 15, 2011.

Producers who file accurate and timely reports for all crops and land uses, including failed acreage can prevent the potential loss of FSA program benefits.

"I encourage all producers to visit the Hansford County FSA office to file an accurate crop certification report by the July 15 deadline in order to comply with FSA program eligibility requirements," said Hargrove.

Considering the current drought situation in Texas, producers are also reminded to report crop losses insured through Federal Crop Insurance and the Noninsured Crop Disaster Assistance Program (NAP) within 15 days of the disaster or after the loss is apparent.

For questions regarding crop certification and crop loss reports, please contact the Hansford County FSA office at 806-659-3036 ext. 2.

Child Care Providers Seminar

A Child Care Providers Seminar will be held Saturday, August 6, 2011 from 8:30am - 4:00pm at the Beaver County Fairgrounds, Beaver, Oklahoma. This seminar is open to the public, child care providers, parents, etc. Topics include: Let's Move, I Don't Speak English: But I Can Learn, The Importance of Active Play and Physical Activity In Preventing Childhood Obesity, and Learning Through Science For All Ages. Certificates will be presented for up to 6 hours of required formal training for licensing. A \$10.00 non-refundable fee will be charged which includes the noon meal and due with registration form by Friday, July 29th. Early Bird Special: Early registration by July 22nd is only \$5.00 per person for lunch and supplies. For more information and registration form please contact the Beaver County OSU Extension Service at 580-625-3464 or available at: <http://oces.okstate.edu/beaver/childcare-providers-seminar-1>.

Oklahoma Cooperative Extension Service offers its programs to all eligible persons regardless of race, color, national origin, religion, sex, age, disability or status as a veteran, and is an Equal Opportunity Employer.

Weather Forecast

THURSDAY - Partly cloudy. Highs around 102. South winds 10 to 20 mph.

THURSDAY NIGHT - Partly cloudy. Lows in the lower 70s. South winds 10 to 20 mph.

FRIDAY - Partly cloudy. Highs around 103.

FRIDAY NIGHT - Partly cloudy. Lows around 70.

SATURDAY - Partly cloudy. Highs around 100.

SATURDAY NIGHT - Partly cloudy. Lows in the upper 60s.

SUNDAY - Partly cloudy. Highs in the upper 90s.

SUNDAY NIGHT - Partly cloudy. Lows in the upper 60s.

MONDAY - Partly cloudy. Highs in the upper 90s.

MONDAY NIGHT - Partly cloudy. Lows in the upper 60s.

TUESDAY - Partly cloudy. Highs in the upper 90s.

Read more: <http://www.city-data.com/forecast/w-Spearman-Texas.html#ixzz1RxXtP2c7>



Weekly Update

Texas, July 11 - Average retail gasoline prices in Texas have risen 9.0 cents per gallon in the past week, averaging \$3.50/g yesterday. This compares with the national average that has increased 6.3 cents per gallon in the last week to \$3.63/g, according to gasoline price website TexasGasPrices.com.

Including the change in gas prices in Texas during the past week, prices yesterday were 96.8 cents per gallon higher than the same day one year ago and are 5.3 cents per gallon lower than a month ago. The national average has decreased 9.1 cents per gallon during the last month and stands 91.7 cents per gallon higher than this day one year ago.

GasBuddy operates TexasGasPrices.com, and over 225 other local gasoline pricetracking websites that follow prices at over 125,000 gasoline stations in the United States and Canada. GasBuddy also uses Facebook (facebook.com/gasbuddy) Twitter (twitter.com/gasbuddy), and phone apps to keep motorists ahead of changing gasoline prices.

Texas Crop & Weather

The following specific livestock, crop and weather conditions were reported by Panhandle Extension directors: Conditions remained hot, dry and windy with no moisture for most of the reporting period. On July 11, thunderstorms swept through the area, bringing only light showers in most counties, but dropping as much as 3 inches of rain in isolated areas. Most corn remained stressed, with increased reports of spider mites and western bean cutworm. Many producers were abandoning corn due to the ongoing drought. Irrigators were considering diverting what irrigation capacity they had to fewer acres. Irrigation of all crops continued to be very active. Rangeland and pasture conditions were mostly rated as very poor. Cow/calf producers reduced herd sizes where possible, and continued supplemental feeding. Hay supplies were dwindling fast.

Wolf Creek Heritage Museum Notes

by Virginia Scott
MUSEUM HAPPENINGS

We are working on staying cool and our air conditioners are working overtime. Watering our flower beds is a never ending project. We hope all of you are fairing well. The grounds are doing as well as they can. Inside is wonderful, so if you need to cool off, come visit!

The core team is coming to the end of their photograph project. The photographs are in new album boxes and are labeled so that we can locate the needed photographs by topic, town, etc. Next time you are in the area, come by to view our collection. This project will protect our collection as well as allow us to research our county history more efficiently. Congratulations to the core

team on a job well done! (I wonder what they will come up with next.)

We are starting to investigate resources for grants to complete our building fund. If your company offers grants to non-profits, please let us know.

Our second quarter newsletter will be mailed this week. If you are not a member and want to receive our newsletter, contact us at 806-862-2123 to join. Information is also on our website. I am still trying to learn how to blog and twitter. If there is someone out there that would like to be the museum's blogger or twitter person, PLEASE CALL ME.

Have a good week.

MUSEUM HAPPENINGS

James Collinsworth fell

or jumped off a boat in Galveston Bay and drowned on July 11, 1838. His death occurred less than two weeks after the announcement of his candidacy for President of Texas. His death is generally presumed to have been a suicide and his body lay in state in the capitol in Houston. In 1876 the legislature named Collingsworth County in his honor, though the act establishing the county misspelled his name. (So don't spell check and correct the way I have spelled his name because that is the way he spelled it not the way we are used to seeing it spelled. Spell check likes it with the "g".)

Collinsworth was born in Tennessee in 1806. He served as a district attorney in Tennessee, where he was a political ally of Andrew Jackson and Sam Houston. He moved to Texas by 1835. He represented Brazoria at the Convention of 1836 and was a signer of the Texas Declaration of Independence. Collinsworth later served as Houston's aide-de-camp, in the Senate of the republic, and as the first chief justice of the republic. He also helped organize the Texas Railroad, Navigation and Banking Company and was a charter member of the Philosophical Society of Texas. At the time of his death he was running against Mirabeau B. Lamar and Peter W. Grayson for the presidency.

This musing is from the Handbook of Texas Online articles by the Texas State Historical Association.

Wolf Creek Heritage Museum

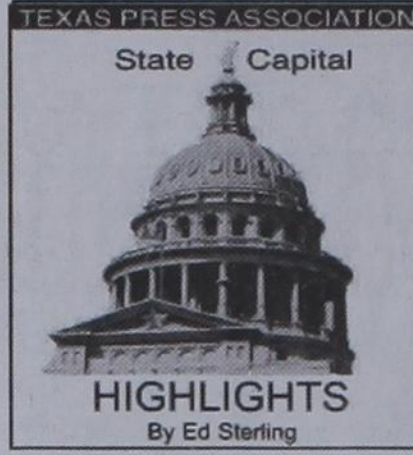
Museum Hours: Monday thru Friday 10 a.m. to 4 p.m., Special hours upon request.

Museum Information: 13310 Hwy 305, PO Box 5, Lipscomb TX 79056; telephone: 806-852-2123; e-mail: wolferk@amaonline.com; website: www.wolfcreekheritagemuseum.org

The Hansford County Reporter-Statesman is liable for errors and omissions in advertisements only when the newspaper fails to correct errors from the original layout and marked by the advertiser on a proof returned within the established time before publication. Liability of the newspaper for an alleged error in copy or publication shall not exceed the cost of the space occupied by the error.

Please report any errors in published advertisements immediately. Credit will be allowed for the first insertion only.

Notice of errors must be received in time for correction before the second insertion, or within three days of publication, or no claim for credit will be honored.



STATE CAPITAL HIGHLIGHTS

By Ed Sterling



Governor calls EPA rule 'federal overreach'

AUSTIN — A new rule announced July 6 by the U.S. Environmental Protection puts new controls on energy-related industries in Texas.

The EPA's Cross-State Air Pollution Rule requires 27 states including Texas to improve air quality by reducing power plant emissions that contribute to ozone and/or fine-particle pollution in other states, the agency stated.

Gov. Rick Perry, whose name is being circulated as a possible GOP candidate in the 2012 presidential race, reacted on July 7, calling the EPA's action "another example of heavy-handed and misguided action from Washington, D.C., that threatens Texas jobs and families and puts at risk the reliable and affordable electricity our state needs to succeed."

"From the attack on Texas' successful clean air program, to threatening endangered species listings in West Texas oil fields, to banning offshore energy exploration, the Obama Administration seems intent on increasing energy costs for American consumers and making us even more dependent on foreign energy."

"Texas will keep standing up to this destructive federal overreach and working to enhance environmental protection and domestic energy exploration and production," Perry said.

The EPA reported that the Cross-State Pollution Rule is intended to reduce the following:

- Premature mortality;
- Non-fatal heart attacks;
- Hospital and emergency department visits;
- Acute bronchitis;
- Upper and lower respiratory symptoms;
- Aggravated asthma; and
- Days when people miss work or school.

Trucking agreement is reached

Remember the North American Free Trade Agreement, an effort launched in 1994 to smooth commerce among the nations of our continent?

Well, the giant sucking sound of NAFTA may get a couple of notches quieter. On July 6 the United States and Mexico signed an agreement to resolve an old trucking dispute. (H. Ross Perot, Dallas businessman and 1992 presidential can-

didate, warned that NAFTA, if passed, would be a drain on the U.S. economy and Americans would recognize it as a "giant sucking sound.")

Combs hires security chiefs

Texas Comptroller Susan Combs, who has been under fire this year for not preventing the exposure of current and former state employees' personal data, last week announced the hiring of Elizabeth Rogers to be the agency's first chief privacy officer.

Combs said Rogers will be in charge of:

- Designing and updating privacy standards;
- Performing risk reviews to identify exchanges of personally identifiable information between the agency and other entities or individuals;
- Identifying new privacy risks and developing mitigation strategies; and
- Collaborating with chief privacy officers at the state and federal level on privacy related initiatives.

Rogers is a former general counsel of the State Bar of Texas.

Combs also announced the hiring of Jesse Rivera as the agency's chief information security officer to oversee information technology security and risk assessment; direct cyber security audits and ensure technologies are in place to reduce risks of attacks; and work on network security architecture based on the agency's business needs and security regulations.

Rivera is a former employee of the Central Intelligence Agency.

WHEN DOES YOUR SUBSCRIPTION EXPIRE?

SCR1
07/11 EXPIRES
JOHN Q. PUBLIC
PO BOX 123
SPEARMAN TX 79081

Expiration dates are printed on the top of all mailing labels. Our readers can help keep the cost of subscriptions down by mailing in renewals in the appropriate month.

Thank you, Catherine Smith

THE HANSFORD COUNTY REPORTER-STATESMAN
213 Main Street • Spearman, TX 79081
Annual Subscription Rates
In Hansford County - \$30
Out of County - \$40
E-Subscription - \$35 (sent through e-mail)

Editors Note...

Freedom of speech is one of the guarantees of the First Amendment of our Constitution, so we encourage readers to express themselves, even if we don't agree with what is said. However, freedom involves responsibility. Therefore, the only letters we will consider publishing are from individuals who are willing for their names to appear with the letter. Letters must contain the telephone number, address and a personal signature of the writer (for verification purposes only).

We will not knowingly publish any letter containing libelous or slanderous statements, or factually incorrect information. Letters containing language or content that we feel is inappropriate will not be published.

Examples of content that will cause letters to be rejected include the following: Confusing or unclear points; Crude language; Poor taste; Disrespectful comments regarding a group's or individual's ethnicity, gender, religion, culture, sexual orientation or race; Other incendiary language or remarks; Endorsements for or complaints about individually named commercial products or services.

"Letters To The Editor," like all materials submitted to this newspaper, are subject to editing for space and clarity. The publication of any letter or article is the decision of the Editor and Publisher.

We welcome your input. You may write to us by using the online form, e-mail - reporter@spearmanreporter.com; fax - 806-398-9080; or regular mail - Letters to the Editor, c/o Hansford County Reporter-Statesman, 213 Main Street, Spearman TX 79081.

The Hansford County Reporter-Statesman

The Hansford County Reporter-Statesman

Mailing Address - 213 Main Street • Spearman TX 79081
Physical Address - 310 Barkley Street • Spearman TX 79081
Phone - (806) 659-3434 • Fax - (806) 398-9080
www.spearmanreporter.com • reporter@spearmanreporter.com
Mon.-Thurs. 9 a.m.-12 p.m., Mon.-Wed. & 1-5 p.m.
Closed Thurs. afternoon and all day Fri., Sat. & Sun.

Gary Smith - Publisher Catherine Smith - Editor
Contributing Writers: Dorothy Hudson, Jim Derington, Merry Sparks, Cecil Biggers
Contributing Photographers: Charlie Johnson, Lisa Johnson Tammy Batton, Bonnie Bergan

Subscription Rates
In Hansford County - \$30.00 • Out of County - \$40.00
E-Mail Subscription - \$35.00

The Hansford County Reporter-Statesman (USPS 529660) is published weekly in Spearman, TX. Periodical postage paid in Spearman, TX. **POSTMASTER:** Send address changes to: The Hansford County Reporter-Statesman, 213 Main Street, Spearman, TX 79081.

Publication Policy
The deadline to submit news and advertising to The Hansford County Reporter-Statesman is Monday at 5 p.m. Items submitted after the deadline will be published at a later date, as time and space permit. Publication of all items is at the discretion of the editor.

Advertising
Open Display rates are \$4.00 per column inch. Classified Ads are \$6 for the first 25 words and 10¢ per word for each additional word. (Additional charge for boxed classifieds.) There is a \$1 charge per week if billed.

Member of
Gruber Chamber of Commerce
Spearman Chamber of Commerce
Texas Press Association and Panhandle Press Association



21ST CENTURY

ACROSS

- Involuntary contraction
- Mad Hatter's beverage of choice
- Additional
- "Fear of Flying" author Jong
- Argo propeller
- Whale's lunch
- Language like Chinese, e.g.
- Plays for pay
- Mountain nymph of Greek mythology
- *Asian disaster, 2004
- Screw up
- *"___ and a Half Men"
- Tropical tuberous root
- Bar association
- 1/36th of a yard
- Give expression to
- Bottle to a baby?
- Student's dwelling
- NE's largest city
- Very dark black
- Double-reed woodwinds
- Miners' passage
- Blood vessel
- *Author of "Decision Points"
- *Chilean disaster locale
- "Sounds like a plan," acr.
- "Did Casey Anthony have one?"
- Needlefish
- Jack and Jill did it
- St. Louis attraction
- Flightless bird
- Farthest from point of origin
- *Has 140 character limit
- Panna ____, dessert
- Promissory note
- Balkan zodiac
- Chicago's planetarium
- In good shape
- Antelope with twisted horns
- *World's fastest man
- "H1N1"
- Central Asia inhabitants, to ancient Greeks

DOWN

- Cobblestone
- Plural of #17 across
- Hokkaido language
- Less than the right amount
- Mozambique neighbor
- Large South African antelope
- A corn cob
- Smell of baking bread, e.g.
- Makes a mistake
- "Place" in French
- "Sounds like a plan," acr.
- Old age, archaic
- *Self-declared independent state, Europe
- World in Italian
- Before, archaic
- Drive-____
- At right angle to length of ship
- Hindi courtesy title
- Terminate, as in mission
- Baseball great infamous for surly temperament
- Allah's cleric
- Rock bottom
- *Economic behemoth
- Consumed at dinner, e.g.
- Not in favor
- Verde National Park
- Mole relative
- *Highest-grossing movie ever, 2009
- *21st century of Common __
- Upside down frowns
- Vertical rock exposure
- Being of service
- Famously extinct
- It will
- Proofreader's "disregard" word
- *Portman's character attire, 2010
- Type of ski lift
- European sea eagle
- Radicals
- *In many cities, this yellow ride got greener
- *Spilled from the HorizonFile a suit

SUDOKU

PRESENTED BY

VolunteerMatch.org
Where volunteering begins.

Fill in the blank squares in the grid, making sure that every row, column and 3-by-3 box includes all digits 1 through 9.

These games are brought to you by the
Hansford County Reporter-Statesman

CROSSWORD

VolunteerMatch.org
Where volunteering begins.

answer on classified page

Happy Birthday!

July 14
Birthday - Scott Bullard, Jo Alice Clawson, Shelly Logsdon, Albert Baker, Linda Jarvis, Carrie Pearson, Rebecca Rosales, Butch Baker

Anniversary - M/M Roy Stinson, Betty & Kenneth Redwine, Tim & Charollette Bynum

July 15
Birthday - Julie Imke, Carol Pack, Chris Jenkins, Sonya Nitchske, Maude McClellan, Ryan Renick, Julie Stork, Hazle Britt, Clarence Zabel, Samantha Baker, Kayla Schrader, Nelva Snow, Galen Coates

Anniversary - Alvin & Becky Byers, M/M Jack Jackson, M/M Bob Gillispie, M/M Richard Shad, M/M Jerry Hayes

July 16
Birthday - Dave Barkley, Dorothy Hudson, Maria McCall, Clinton Tindell, Mary Ann Kenney Peters, Jay Pack, Pam Fairfield

Anniversary - Hal & Sara Shufeldt

July 17
Birthday - Holly Meyer, Debbie Tolleson, Wesley Jarvis, Michael Dodd, Dennis Nelson, Marie Jones, Dr. Tom Latta, Charlie Garcia, Cody Baskin, Karl Bynum, Julie Baca, Veronica Rosales, Kevin Quillin, Denise Smith, Michael Lusby, Coley Griffin

Anniversary - M/M Willie Wilkerson, M/M Dick Thompson, M/M Jim Fowler

July 18
Birthday - Trixie Holt, Lisa Salmans, Maria Vela Acevedo, Linda McCoy, Cris McClellan, Greg Meek, Sonny Patterson, Shanda Denee Graham, Kathryn Murphy

Anniversary - Jim & Laquita Evans, Scott & Marla Bullard, Tracy & Angela Graham, Mr. and Mrs. Jim Deakin, Kim & Steven Francis

July 19
Birthday - June Barkley, Joe Lopez Jr., Ronnie Williams, Vincent Garcia, Blake Beedy, Mark Avila, Pauline Nava, Opal Petree, Amber TeBeest

Anniversary - Ray & Judy Martin, Joey & Lyn Woolley, Don & Carolyn Savage, M/M Corky Chapman, M/M Arlo Shearer

July 20
Birthday - Elaine Rogers, Arlo Shearer, Vic Schuman, Virginia White, Thomas Reed, Cal Nava, Mary Barnes, Meli Floyd Burgess, Bruce Bailey, Neale Estes, Sylvia Herara, Cheryl Wall, Braxton Crane

Anniversary - Rick & Jan

Howard, M/M Eric Brown, M/M Joe Archer Sr., M/M Mike Garnett, M/M F.W. Thomas

July 21
Birthday - Tasha Haight Hiles, Larry Kennedy, Clint Lilley, Trevor Shearer, Earl Goodheart, Jewell Turner, Ross Donahue, Josephine Schneider, Kirk Davis, Jessica Woolley, Ron Robinson, Barbara Farr, Larry Blackwell, Mary K. Harbour, Van Bradford, Ty Seagler, Matt Salazar

Anniversary - Jeff & Michelle Beedy, M/M Thomas Reyes, M/M Johnnie Williams, Mr. and Mrs. Chad Logsdon

July 22
Birthday - Robert Reid, Joe Cole, Tiffany Hand, Luke Pittman, Flavil Ayers, Edith Phillip, Jack Karlin, Danny Rushing

Anniversary - Jim Davis, M/M Roy Mayhew, Stephanie & Kyler Bates

July 23
Birthday - Linda Beeson, Becky Leach, Peggy Winegarner, Travis Bennett, Elivina Rodriguez, Mark Schoenhals, Grace Kirk, Keith Sumner, Austen Strawn

July 24
Birthday - Kaylee Holt, Christina Sanchez, Neil Pack, Irvan Barber, Tammy Freeman, Glen Ray Mackie, Maria Arjona, Ray Gressett, Sophia Salgado, Mary McIntyer, Nathan Pipkin, Mary Martinez, Aaron Winegarner, Adam Cherry, Shannon Acker, Mattie Yanke, Taylor Tice

Anniversary - M/M Lynn Boyd

July 25
Birthday - Robbie Butts, Brooke Lesly, Rhonda Baker

July 26
Birthday - Raquel Matthews Whitehead, George P. Odum, Jolain Ball, Jerry Long, Nell Benton, Ronnie Bullard, Rubyo Wilbanks, Tammi Holmes, Traci Lane, Misty Payne, Cayla Smith, Oscar Valdez, Mini Largent, DeeDee DeLaRosa, Jennifer Covington

Anniversary - M/M Sergio Vaquera, M/M Danny Henson

July 27
Birthday - Tracy Bevil, Misty Kauffman, Bobby Don Smith, Nancy McIntyre, Kay Beeson, Bob Dennis, Frank Salgado Jr., Olivia Renteria, Michael Wayne Ross, Carl Kizzar, Donny McMahan, Josh Lackey, Robin Capps, Ashley Swan, Ryan Phillips, Able Eaton, Valerie Burnum

Our Sympathy

BILLIE OXFORD GAITHER
 SPEARMAN - Billie Oxford Gaither, 85, died on Sunday, July 10, 2011.

Funeral services will be held on Thursday, July 14, 2011 at 10 a.m. in the Spearman Church of Christ with Larry McCollum officiating. Interment will be in Hansford Cemetery, under the direction of Boxwell Brothers Funeral Home of Spearman.

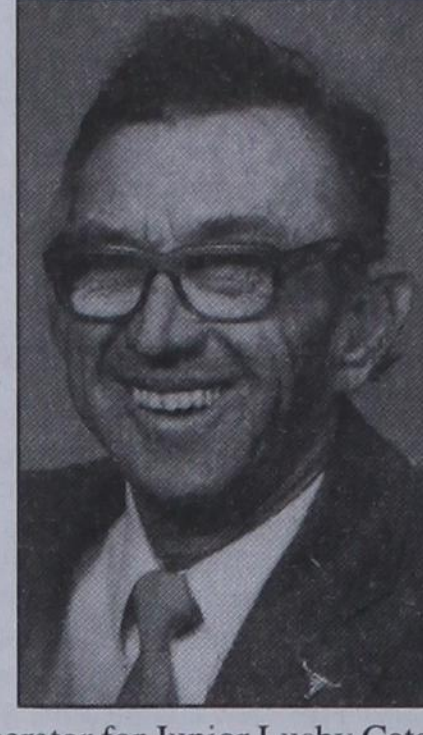
Bill was born in Spearman on April 3, 1926, and was a life-long resident of Spearman. He married Georgie Lee Armbrister in the Spearman Church of Christ on April 28, 1953.

Bill was a maintenance operator for Junior Lusby Cats. He was a WWII Army Veteran, and always willing to help others.

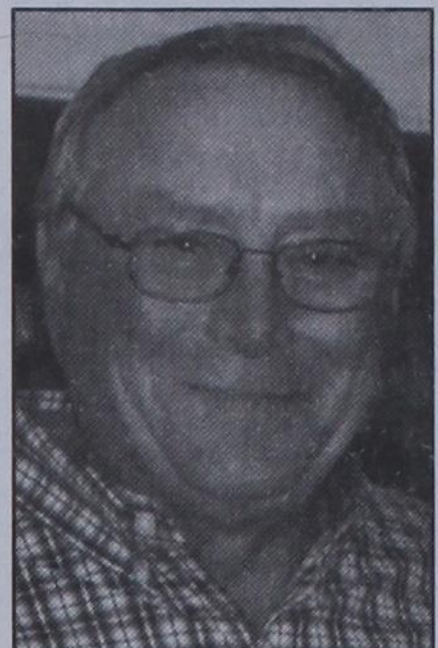
He was preceded in death by his wife, Georgie Lee Gaither; two sons, David Lee Gaither, and Leland Marshall Gaither; a sister, Clydene Bolen; and a brother, Joe Gaither.

Survivors include one daughter, Angela Gaither of Arlington; one sister, Nina Hendricks of Spearman; and two brothers, John Gaither of Brownwood and Gene Gaither of Kingfisher, OK.

The family requests memorials be to Hansford Hospice, 802 Roland, Spearman TX 79081, or Hansford Manor, 707 Roland, Spearman TX 79081.



CHARLES DAVID SHIELDKNIGHT



SPEARMAN - Charles David Shieldknight, 61, passed away Monday, July 11, 2011 at BSA Hospital, Amarillo, Texas.

The son of Lois Marie (Buzzard) and Jimmy Lee Shieldknight, he was born September 20, 1949 in Perryton, Texas. He attended Spearman schools, graduating with the Class of 1968. He attended Southern Methodist University, where he lettered in football and served in the Army National Guard for 6 years, stationed in Fort Polk, Louisiana.

He returned to Spearman to manage the family businesses that included farming, cattle, and the oil and gas industry. He was currently the general manager of AGCO Spearman, Inc. Charles was active in the community, serving on the Spearman Scholarship Foundation, Top of Texas Rural Rail Transportation District and as a director at Spearman First National Bank. He had been active in the Spearman Economic Development Committee and served on the Hansford County Farm Service Agency Board.

Always encouraging and supporting the youth of the community, he had served on the Spearman ISD School Board for more than 12 years and was an avid Spearman Lynx and Lynxette fan both in academics, arts and athletics. He also supported AAU youth sports, TCY Football, Little League Baseball and the Spearman Stingrays swim team. He was a member of the Church of Christ. Charles was united in marriage to Sonya on September 4, 2000 in Panhandle, Texas. He enjoyed his grandchildren, golfing and traveling.

Survivors include his wife, Sonya Shieldknight of Spearman; his children, daughters, Carly Simmons and husband Clay of Austin, TX; Haley Shields and husband, Joel; Ashly Patterson and husband, Caleb; Macy Holton and husband, Jason; all of Spearman; Lori Klinke and husband, Alex of Amarillo, TX; and son, Jeff Millican and wife, Erika of The Colony, TX; two sisters, Marcia Shieldknight and Leann Gillaspie and husband, Dick; brother, Fred Shieldknight and wife, Brenda; all of Spearman; and his mother-in-law, Wanda "Grandma Pink" Beddingfield. He was adored "Pa" to his 16 grandchildren, Hannah, Lilly and Chaz Patterson, Dawson and Shelby Riethmayer, Brantly and Reece Shields; Jack and Emma Simmons, Conner and Tessa Holton, Kinslee and Wesley Millican, Rylee, Ashton and Brady Klinke.

He was preceded in death by his parents, Lois and Jimmy Shieldknight.

Funeral services will be Friday afternoon, July 15th, 2:00 PM at the Spearman Church of Christ with Larry McCollum officiating. Interment will follow in Hansford Cemetery.

Visitation and viewing will be at the Spearman Church of Christ on Thursday evening, from 7:30-9:00 PM. Arrangements are by Henson-Novak Funeral Directors of Guymon, Oklahoma. www.hensonnovak.com

When am home ALONE
 I feel safe. I am protected. I have Life Alert.
 One touch of a button sends help quickly in the event of a medical emergency, fall, home invasion, fire or carbon monoxide poisoning.
 New! Now we have two systems available:
 Life Alert Classic for seniors
 Life Alert 50+ for people 50+
 For a FREE brochure call:
1-888-439-4935

MONUMENTS

Boxwell Brothers Funeral Home

519 Evans • Spearman
 659-3802

Dear friends,
 When you buy a monument from us we make sure it is exactly what you want at a price you can afford. If it is not right, we will make it right. And you will not have to search the countryside to find us. We are here when you have a need.

Sincerely,
 Bob Boxwell

DIRECTV
 Packages start at \$29.99/mo.
 The FAMILY™ package
 EVERYDAY LOW PRICE
 NO EQUIPMENT TO BUY! NO START-UP COSTS!
Switch today! 1-888-864-3134

Donate A Boat or Car Today!

Boat Angel
 "2-Night Free Vacation!"
1-800-CAR-ANGEL
 www.boatangel.com

285+ Channels
160+ HD Channels
Package Start At \$29.99 Mo.
2 FREE Upgrades - HD DVR & HD Receiver - Ask Now!
HBO SHOWTIME starz cine
For 3 Months

MAXIMUM CHOICES MINIMUM PRICES
dish
EVERYDAY PRICE GUARANTEE UNTIL 2013
866-799-8039

Visit **FAMILYPOOLFUN.COM**
 • Our pools create Generations of Memories everyday, vacations never end!
 • Aboveground & Inground pools at WHOLESALE PRICING
 • SIMPLE DIY Pool Kit Assembly
 • SAVE MONEY on All Pool Supplies & Accessories. Ships Fast
 Call Today! **800-950-2210**

EXPERIENCED TRUCK DRIVING POSITIONS AVAILABLE THROUGHOUT TEXAS
HOME DAILY OR WEEKLY
 Hiring Solo and Team Drivers in Dedicated, Intermodal, Tanker and Van (OTR, Regional) Divisions
 Experienced Drivers and Recent Driving School Grads Welcome
 Paid orientation/training | Comprehensive, low-cost benefits plan including medical, dental, vision and 401(k) plan available
 Apply at schneiderjobs.com/newjobs
Call 1-800-44-PRIDE for more information

Replenish the seed of faith through . . . DAILY BIBLE READING, PRAYER & REGULAR CHURCH ATTENDANCE

<p>Spearman Apostolic Faith Church 822 S. Drexler • 659-2870 Sunday School: 10 a.m. Worship Service: 11 a.m. Sun. Eve.: 6 p.m. Wed. Prayer Mtg.: 7 p.m. Pastor - Jack Cornell</p>	<p>Sacred Heart Catholic Church 901 Roland • 659-2166 Sat. Night Mass: 5:30 p.m. Sun. Mass: 9 a.m. - English Sun. Mass: 11:30 a.m. - Spanish Rev. Gregory Bunyan</p>	<p>Primera Mision Bautista 502 E. 7th • 659-3991 Sunday School: 9:45 a.m. Worship: 11 a.m.; Evening: 6 p.m. Wed. Prayer Meeting: 7 p.m. Thurs. Visitation: 7 p.m. Pastor Joe Garcia Jr.</p>	<p>Gruver United Methodist Broadway & Garrett 733-2651 Sunday School: 9:45 a.m. Worship: 8:30 & 10:50 a.m. Eve. Worship & UMY: 6 p.m. Pastor - George Price</p>
<p>First Assembly of God 401 N. Bernice • 659-2295 Sunday School: 9:30 a.m. Worship: 10:40 a.m. Evening Worship: 6 p.m. Wed. Worship: 7 p.m. Wed. Youth: 7 Pastor - Brad Smith</p>	<p>First United Methodist 407 S. Haney • 659-5503 Sunday School: 9:45 a.m. Worship: 8:30 & 11 a.m. Jr. High Youth: 5 p.m. Sunday High School: 6 p.m. Sunday Kids Club: 3 p.m. Wed. Pastor - Toni Bailey</p>	<p>El Aposento Alto U.P.C.I. 1105 S. Roland Domingos: Escuela-Dominical - 10 a.m. Culto Evangelistico - 7 p.m. Jueves: Oracion - 8 p.m. Mier: Estudio Biblico - 7 p.m. Pastor - A.G. Martell (806) 659-2153</p>	<p>Spanish Cristo Redentor Church Hwy 15 806-659-2166 Gruver, TX Sun. Mass: 1:30 p.m. - Spanish Rev. Gregory Bunyan</p>
<p>First Christian Church (Disciples of Christ) 29 S. Bernice • 659-2036 Sunday School: 9:45 a.m. Worship: 10:50 a.m. Minister -</p>	<p>Grace Presbyterian Church (Worships with Faith Lutheran Church) 1101 Bernice • 659-2033</p>	<p>Faith Lutheran Church (ELCA) 1101 Bernice • 659-2252 Sunday School: 9:45 a.m. Worship: 11 a.m. (Worships with Grace Presbyterian Church) Pastor - Cecil Biggers, PLM</p>	<p>Oslo Oslo Lutheran Church (ELCA) 6 Miles West & 12 Miles North of Gruver 339-7646 Sunday School: 9:45 a.m. Worship: 11 a.m. Pastor - Arlen Lloyd</p>
<p>First Baptist Church 123 N. Bernice • 659-5557 Sunday School: 9:45 a.m. Worship: 11 a.m. Evening Worship: 7 p.m. Men's Bible Study - Wed., 7 a.m. Children's Choir - Wed., 6 p.m. Adult Choir - Wed., 7 p.m. Wed. Bible Study: 7 p.m. Pastor - Jim Medley</p>	<p>Union Church 31 S. Endicott • 659-2644 Sunday School: 10:00 a.m. Worship: 11:00 a.m. Bible Study: 7 p.m. Wed. Youth Service: 6 p.m. Wed. Pastor - Don Baltazor</p>	<p>Gruver First Baptist Church 402 E. Broadway • 733-2411 Sunday School: 9:45 a.m. Worship: 10:50 a.m. Disciple Training: 6 p.m. Sunday Prayer Meeting: 7:30 p.m. Wednesday Pastor - Scott Curry</p>	<p>Morse Morse Baptist Church 733-2757 Pastor - Gary Stevens</p>
<p>Church of Christ 121 S. Haney • 659-3244 Sunday Bible Class: 9:45 a.m. Worship: 10:30 a.m. Evening Worship: 6 p.m. Bible Study Wed.: 7:30 p.m.</p>	<p>Fellowship Baptist 1102 S. Archer • 659-2783 Sunday School: 10 a.m. Worship: 11 a.m. Sun. Evening Worship: 6 p.m. Sun. Evening Spanish Worship: 7 p.m. Youth/Adult Service: 7:30 Wed. Pastor - Philip Hudson</p>	<p>Church of Christ 209 King • 733-2760 Sunday School: 9:30 a.m. Worship: 10:20 a.m. Evening Worship: 6 p.m. Wed. Worship: 7:00 p.m. Minister - Gaylord Cook</p>	<p>Waka Church of Christ 300 Rogers Ave. 202-7126 Sunday School: 9:30 a.m. Sunday Worship: 10:30 a.m. & 6 p.m. Wednesday Bible Study: 7 p.m. Preacher - Ed Jenkins</p>

He has showed you, O man, what is good. And what does the LORD require of you? To act justly and to love mercy and to walk humbly with your God. Micah 6:8

This feature is made possible through the sponsorship of these civic minded businesses:

<p>Deakin ELECTRIC OILFIELD • RESIDENTIAL • COMMERCIAL 321 S. MAIN • SPEARMAN 1-800-999-1506 Chris Deakin (806) 659-5016 President</p>	<p>Bartlett's Lumber & Hardware 105 W. Broadway • Gruver, TX (806) 733-2404</p>	<p>BERRY CLEANERS Ann & Vernon Pipkin - Owners Phone 659-3122 • P.O. Box 1017 207 Main St. • Spearman, TX</p>	<p>Morse Implement & Auto Supply "Join us in church" Tom Dortch 733-2668 Box 89 • Morse, TX 79062</p>
<p>PRAIRIE MOTORS INC. Hwy. 207 South • P.O. Box 430 Spearman, TX 79081 • (806) 659-2541 www.prairiemotors.com</p>	<p>MurMur's Cafe 100 Roland St Spearman, TX. 659-3580</p>	<p>Hansford County Reporter-Statesman "Proudly Serving Hansford County Since 1907" (806) 659-3434 310 Barkley • Spearman, TX</p>	<p>INTERSTATE BANK, sss www.interstatebank.net 322 Main • P.O. Box 146 Spearman, TX • 659-2559</p>

HYI

FOR YOUR INFORMATION

Medical Fund Established At First National Bank for Dynell Moore

Shawn and Dynell Moore, children of Johnny and Brenda Vera and Terry Moore of Spearman, have recently relocated their family to the Dallas-Fort Worth area. In March, Dynell was diagnosed with stomach cancer. She will be receiving treatments at MD Anderson in Houston and Baylor Medical Center in Fort Worth. After the birth of their second child, three tumors were discovered, two of which contained malignant cells. The tumors were safely removed at Mary Washington Hospital in Fredericksburg, VA. At which time, Dynell began oral oncology treatment to keep the cancer from spreading. The Moore's made the decision after consulting with their physician to continue an aggressive treatment program at MD Anderson Cancer Center in Houston as well as their sister facility in Fort Worth. There has been a Medical Fund established for the Moore family at First National Bank in Spearman to aid in treatment expenses. The Moore's feel extremely blessed with the early diagnoses of Dynell's condition and the support they have received from family and friends.

Tri-City Community Concert Association

Janie Kunselman is the representative for the Tri-City Community Concert Association of Borger and Liberal, and is selling memberships to attend concerts for the 2011-2012 season. Concerts are as follows: Borger - The Shangri-La Chinese Acrobats - September 22nd, 7:30 p.m.; Guy Penrod, February 13th, 7:30 p.m.; Shawn Belton-Miller - TBA. Season memberships are: Adults - \$40, Sr. Adult - \$35, Students - \$20, and Family - \$100. For information, call Janie Kunselman at 659-2631. Tickets purchased from Tri-City Concert Association admit members to concerts in Pampa and Plainview.

Liberal Community Concert Association

Janie Kunselman is the representative for the Liberal Community Concert Association of Liberal, KS. The Liberal Community Concert Association is selling memberships to attend five special concerts in the 2011-2012 season. Concerts are as follows: October 4th - Deborah Henson-Conant; November 8th - The Indigo Ensemble; January 30th - Mark Masri; February 16th - Guy Penrod; April 26th - Shangri-La Chinese Acrobats. Season memberships are: Adults - \$50, Students - \$25, and Family Pass - \$125. For information, call Janie Kunselman at 659-2631 or James Jackson at 620-624-5995.

Texas SNAP Benefits Assistance

Need help applying for SNAP benefits? We can help! High Plains Food Bank is providing application assistance for Texas SNAP benefits (Food Stamps) in your area. Telephone application assistance is available. If you need to apply for benefits, please call us today at 806374-8562 or 1-800-774-8564.

Rushing Wind Emmaus Community

Rushing Wind Emmaus community will meet Saturday, July 9 at 6 p.m. at the Waka Christian Center. A potluck supper will be served followed by sponsors training and a praise and worship service. A nursery will be provided and family and friends are welcome.

Perryton Area Parkinson's Disease Support Group

The Perryton Area Parkinson's Disease Support Group will meet Friday, July 8, 2011 at the Perryton Mennonite Church, 2921 S. Ash (across from United). Lunch will be provided for the 12 noon meeting. Speaker, Jo Bidwell from Lubbock, (who was unable to come at the last minute last month) will be our guest. She will be able to answer any and all questions you might have dealing with PD. Anyone or any family member who has PD is welcome to attend. Contact Bev Burger at 435-3437 or 435-0579 for more information.

Spearman Food Bank

If you would like to help the Spearman Food Bank, they need help unloading the truck at 11:30 each 1st Thursday of each month. Contact Cecil Biggers for more information.

Don't Text and Drive Decals

If you would like to purchase a lime green 'AMT 1994-2009 Don't Text and Drive' window decal in memory of Ali Tyler, please contact Stephanie Tyler at 806-736-0019. All proceeds go to the Ali Tyler Memorial Scholarship Fund. Decals are also available at Hansford County Floral Company on Main Street in Spearman.

Help Available for Breast Cancer Survivors

Any woman who has had breast cancer surgery and cannot afford undergarments and prosthetics can get help from the American Cancer Society through a grant from Susan G. Komen for the Cure®. The Amarillo Area Breast Prosthesis and Lymphedema Accessory Program will provide financial help to women in need of breast forms or prostheses, mastectomy bras and accessories to help with lymphedema, which is swelling of the arm caused by a build-up of lymph fluid. For more information, call the American Cancer Society office in Amarillo at (806) 353-4307 or 1-877-227-2345.

Timeless Treasures Quilt Guild

The Timeless Treasures Quilt Guild of Guymon, Oklahoma meets four times a year -- the last Saturday in the months of January, April, July and October. Registration begins at 9:30 a.m. in the First Christian Church Disciple Center located at 9th & Quinn streets. The meeting starts at 10 a.m. Members bring a carry-in luncheon, which is served at noon. The afternoon program begins at 1 p.m. Programs include trunk shows, demonstrations, workshops, door prizes and much more.

Friendship Quilter Quilt Guild

The Friendship Quilter Quilt Guild of Perryton, Texas would like to invite you to their meetings. The Day Guild meets the 2nd Wednesdays of each month at 9 a.m. in the Community Worship Center, 2210 SW 15th, Perryton. The Night Guild meets the 2nd Tuesday of each month at 6 p.m. in the Community Worship Center, 2210 SW 15th, Perryton. Annual dues are \$15. (To receive only the newsletter \$7.50/yr.) Visitors are welcome. For more information, contact Cynthia Shattles at 806-435-2765 or Marilyn Robins at 806-624-2691.

Thank You!

We would like to thank the Spearman Volunteer Fire Department for all your help putting out the fires on Friday night and Saturday morning. We would also like to thank AGCO for the use of their water truck, Fred and Brenda Shieldknight for supplying water, Ladd and Cathy Gafford, Zach Martindale, Bruce Town and Travis Loomis. We greatly appreciate your time, effort and superior work.

Thank you,
Edward McIntyre Family

Thank You!

We would like to express our sincere appreciation for all the prayers, calls, inquiries, flowers, visits, food, and donations during this difficult time. We would like to thank Dr. Garnett for his tireless watch on Gilbert. We would also like to thank the Hansford Manor nursing staff for the amazing job of taking care of him. When you hear a nurse say, "I sure do love you, Gilbert," you know he's in the right place and receiving excellent care. Also, we are extremely appreciative of the soldiers who drove from Fort Hood for their services to our country and for their duty to lay fellow soldiers to rest. We would like to express a special thank you to the Hansford Hospice staff for their care both of Gilbert and our family during and after this difficult time.

With Great Appreciation,
Ernestina Salgado; Olivia DeSantiago and family,
Sonya Jensen and family; and
Cristina Banaban and family

Words from Faith & Grace



by Cecil R. Biggers, Lutheran Lay Minister

In the fifth week of Pentecost we learn that we believers are Children of God, and something of what that means, as we study Isaiah 44: 6-8, Psalm 86: 11-17, Romans 8: 12-25, and Matthew 13: 24-30, 36-43.

Isaiah identifies God as the King of Israel, the Sovereign. Isaiah identifies God as the Redeemer, not only from sin but also from want, hunger and fear. Isaiah identifies God as the Lord of Hosts bringing forth a military image of God with his legions of angels. Verse 6 says, "I am the first and I am the last; besides me there is no god." We as believers have a rock to build our faith on, and that rock is the One True God.

The Psalmist sings an individual lament. Things are not well with the Psalmist, but he expresses commitment to God because of God's past help. He humbly requests that God teach him God's way, that the Psalmist might walk in it. God's ways are not our ways, and it takes prayer and instruction to learn them. The Psalmist is confident of God's protection because God is gracious, slow to anger, abounding in steadfast love and faithfulness. We may be lacking in many things, but we are never lacking in God's love.

Paul continues to contrast "flesh" (Gr. sax), which to Paul is a power that resists the Spirit of God, with the freedom that we have through a right relationship with God through Jesus Christ. For all who are lead by the Spirit of God are the children of God. Paul uses the example of adoption because with our baptism into Jesus Christ we have become Children of God and co-heirs with Christ. As such, we wait anxiously for the 'redemption of our bodies' in the Kingdom of God. Indeed all of God's creation groans in 'labor pains' waiting for the Kingdom of God. This is our 'hope', and 'hope' is not seeing but believing.

Jesus gives another sowing parable. A landowner sows good seed in his field, but while the laborers rest, an enemy comes in and plants weeds in the field. This is difficult because the weed, darnel, while growing resembles wheat and can only be distinguished as darnel when fully grown. The landowner's servants discover the act of the enemy and want to pluck up the darnel. The landowner forbids it; since the root system of the weeds are enmeshed with the root systems of the wheat and cannot be removed without damaging the wheat. The landowner instructs his laborers to wait until the wheat and the darnel are fully grown and harvest them both. The darnel can be burned in the oven while the wheat is gathered in to the landlord's barns. We can learn from this not to judge others. Too often we rely on outward appearances and external factors in judging others; only God is to judge and God sees all, not just the appearances.

May the Holy Spirit enable you to understand what it means to be a Child of God.



Spearman Chamber of Commerce member Grace Calvert presents the "All Time Favorite" Award to Cindy Blackman.

Longtime Spearman Supporter Honored

A very special, one-of-a-kind award was presented this year at the Spearman Chamber of Commerce Awards Banquet to Cindy Blackman, who was given an "All Time Favorite Award."

Cindy is a life-long resident of Spearman and Hansford County. She will soon be leaving us, and in her absence will leave shoes too big for anyone to fill.

The following is a list of how she has busied herself over the years of her active life in the town she will always call home: Chamber of Commerce ED 1991-1996; Community Resource Coordinator for SISD since 1996; Texas State Board for Community Education; Texas Homeless Education; Lions Club since 1992; Beta Sigma Phi Sorority since 1973; Spearman Economic Development Corporation Board; Institute for Organizational Management; Emergency Management; Hansford County Historical Committee; Stationmaster's House Museum Board; Leadership Spearman; and Texas Rural Leadership.

She is one of the "brightest lights to ever shine," and Spearman would like to say, "Best of luck, Cindy, and come back often!"



Kirk Weatherford (806) 336-2820
8126 FM 3395 Toll Free: 1-800-585-6047
Sanford, TX 79078 Email: kirk@weatherford-construction.com



Couples Currently Registered

- Ashley Lange & Clete Vanderburg - 7130
- Justine Rosales & Skyler Sumner - 813
- Cara Gwin & Lance Baker
- Rossilyn Bulls & Andrew Reed
- Saylee Flowers & Ryan Renick
- Tabatha (Shields) & Matt Jones
- Dana Lewis & Cass Cooper
- Kendra Skarke & T Jay Sherrill
- Jenna McElroy & Chance Riggins
- Jenny McCloy & Clay Finley

Baby Registry

- Baby Boy of Michelle & Jarick Howard - 814
- Baby Girl of Nikki & Brady Hart
- Baby Boy of Jessica Bueno & Britt Fleetwood

Gordon's 659-2141
314 Main Spearman

MITCHELL THEATRES.COM

GUYMON, OK • LIBERAL, KS • NEWTON, KS
NORTHRIDGE 8
Guymon, Oklahoma
www.northridge8.com
580-338-3281

SOUTHGATE 6
Liberal, Kansas
www.southgate6.com
620-624-5573

SEQUOYAH 8
Garden City, Kansas
www.sequoyah8.com
620-275-2760

CHISHOLM TRAIL 8
Newton, Kansas
www.chisholmtrail8.com
316-283-0555

FRESH POPCORN EVERYDAY!
-PARTY ROOM & ARCADE-

Are You A Victim of Domestic Violence, Sexual Abuse or Physical, Emotional or Sexual Assault?

Call Toll Free Hotline
1-800-753-5308

We can see individuals from Hansford County anytime upon request. Call 435-5008 or 1-800-753-5308 to set up an appointment in Hansford County. We operate a safe place for victims and their children to stay in times of crisis.

Battering Intervention & Anger Management Available

Panhandle Crisis Center
Serving Hansford, Lipscomb & Ochiltree Counties
301 S. Ash • Perryton, TX
Memorials Accepted

Sergio's Auto Sales

We appreciate your support!

Sergio Vargas

120 W Kenneth Ave • Spearman TX 79081
(806) 659-9971 - day • (806) 330-0173 - night
Canyon Location Phone Number: (806) 231-8388

SERGIO'S AUTO SALES



120 W. KENNETH AVE. SPEARMAN, TX 79081
806 659 9971 CEL. 806 330 0173

USDA Deadline to Apply for SURE Crop Disaster Benefits is July 29th

Hansford County USDA Farm Service Agency (FSA) Executive Director Rick Hargrove, announced that the deadline to apply for assistance for 2009 crop losses under the Supplemental Revenue Assistance Payments (SURE) program is July 29, 2011.

"The SURE program compensates producers for production and/or quality losses during times of disaster," said Hargrove. "All producers who have experienced crop production and/or crop quality losses must apply for SURE program benefits by the July 29th deadline," he said.

To meet program eligibility requirements, the farming operation must be physically located in a county that was declared a

primary or contiguous disaster county by the Secretary of Agriculture under a 2009 Secretarial Disaster Designation.

Producers located in designated disaster counties must have suffered at least a 10 percent loss on a crop of economic significance and purchased crop insurance through the Federal Crop Insurance Act or the Noninsured Crop Disaster Assistance Program (NAP).

However, an operation located in a county that did not receive a primary or contiguous disaster designation, can still qualify for SURE benefits if the actual farm production was less than 50 percent of the normal production on the farm due to a qualifying disaster event.

Producers and legal entities collectively cannot, directly or indirectly, receive more than \$100,000 in SURE and other FSA disaster assistance payments. FSA disaster programs include SURE, Livestock Forage Program (LFP), Livestock Indemnity Program (LIP), and Emergency Assistance for Livestock, Honeybees, and Farm-raised Fish (ELAP).

Producers or legal entities, whose nonfarm income is more than \$500,000, are not eligible for SURE program payments.

For questions regarding the SURE program, please contact the Hansford County FSA office at (806) 659-3036, ext. 2.

Irrigation Wells Pumping Air; Dryland Survives in Some Areas

by Robert Burns

One of the worst droughts in the state's history deepened, with nearly 98 percent of the state in one stage of drought or another, according to the U.S. Drought Monitor.

More than 90 percent of the state was suffering from extreme to exceptional drought, according to the monitor's most recent report on July 5.

In many areas, irrigators were experiencing severe drawdown of aquifers — pumping only air in some cases. Producers in other regions were abandoning corn in order to have enough water to save cotton.

per acre, compared to average yields of 3,500 to 4,000 pounds.

Cotton growers were either harvesting or preparing to harvest by July 12, he said. He expected yields to be about three-quarters of a bale per acre, which is about 65 to 70 percent of the long-term average.

"So, yes, compared to the rest of the state, we are a little bit better off," he said.

Of more concern are long-range forecasts for the region, Fromme said.

"It's not too promising in the future here," he said. "From all the reports I've read for the upcoming fall, winter and spring, we could still be on the dry side, and I don't know what we're going to do next year if that happens."

More information on the current Texas drought and wildfire alerts can be found on the AgriLife Extension Agricultural Drought Task Force website at <http://agrilife.tamu.edu/drought/>.

President Declares Major Disaster for the State of Texas

The U.S. Department of Homeland Security's Federal Emergency Management Agency (FEMA) today announced that federal disaster assistance has been made available to the state of Texas to supplement state and local recovery efforts in the area struck by wildfires during the period of April 6 to May 3, 2011.

Federal funding is available to state and eligible local governments and certain private nonprofit organizations on a cost-sharing basis for emergency protective measures, including direct federal assistance, in the counties of Andrews, Archer, Armstrong, Bailey, Baylor, Brewster, Callahan, Carson, Castro, Clay, Coleman, Concho, Cottle, Crockett, Dawson, Duval, Eastland, Garza, Glasscock, Hall, Hemphill, Hockley, Irion, Kent, King, Lynn, Martin, Mason, Mitchell, Moore, Motley, Pecos, Presidio, Scurry, Stephens, Sterling, Sutton, Terrell, Terry, Throckmorton, Tom Green, Trinity, Tyler, Val Verde, and Young.

Kevin L. Hanes has been named as the Federal Coordinating Officer for federal recovery operations in the affected area. Hanes said additional designations may be made at a later date if requested by the state and warranted by the results of further damage assessments.

Follow FEMA online at <http://blog.fema.gov>, www.twitter.com/fema, www.facebook.com/fema, and www.youtube.com/fema. Also, follow Administrator Craig Fugate's activities at www.twitter.com/craigatfema. The social media links provided are for reference only.

FEMA does not endorse any non-government websites, companies or applications.

FEMA's mission is to support our citizens and first responders to ensure that as a nation we work together to build, sustain, and improve our capability to prepare for, protect against, respond to, recover from, and mitigate all hazards.

USDA-FSA to Host Webinars on Hispanic, Women Farmer and Rancher Claims Process

USDA Farm Service Agency (FSA) State Executive Director Juan M. Garcia recently announced webinars (internet-based virtual meeting) to discuss the USDA Hispanic and Women Farmer and Rancher Settlement Claims Process and current FSA loan programs. These webinars are scheduled for July 14th, July 28th and August 11th at 7:00 PM.

On February 25, 2011, Secretary of Agriculture Tom Vilsack and Department of Justice Assistant Attorney General Tony West announced a process created to resolve the claims of Hispanic and women farmers and ranchers who assert they faced discrimination when seeking USDA farm loans during certain periods between years 1981 and 2000. The

optional claims process offers a streamlined alternative to litigation and provides at least \$1.33 billion in compensation, plus up to \$160 million in farm debt relief, to eligible Hispanic and women farmers and ranchers.

The interactive webinars will provide an overview of the USDA Hispanic and Women Farmer and Rancher Claims Process as well as FSA farm loan program updates. Farm loan program topics to be discussed include interest rates, terms, and eligibility and security requirements.

"I encourage producers who want more information about the claims process or about FSA farm loan programs to register for one of these webinars," said Garcia. "The webinars are free and open to the first 100

participants who register," he said.

Garcia emphasizes that these webinars are intended as forums to discuss the general plan for the claims process and FSA webinar hosts will not be able to discuss the details of any individual claim during the course of the webinars.

To view the webinar schedule and register, please go to www.fsa.usda.gov/Internet/FSA_File/tx_hwwebinar_2011.pdf.

For more information regarding the USDA Hispanic and Women Farmer and Rancher Claims Process and FSA Lending Program webinars, please contact Eddie Trevino in the Texas State FSA Office at (979) 680-5221 or via email at eddie.trevino@tx.usda.gov.

In most parts of the state, dryland crops have completely failed, but there were a few success stories, though they may only seem like wins by comparison to the rest of the state, said Dr. Dan Fromme, Texas AgriLife Extension Service agronomist for the Coastal Bend area.

Nearly all the corn, grain sorghum and cotton crops in the Coastal Bend area are dryland, according to Fromme. Though most of the region is classified as being under extreme drought, farmers there had the advantage of getting 4 to 6 inches of rain in January.

"We went into planting season with either a full-soil profile (of moisture) or maybe a little less, and that went a long way," he said. "And the couple of inches of rain we received in May helped immensely."

Grain sorghum and cotton comprise the vast majority of crops grown in the region, Fromme said. Grain sorghum has already been harvested, with yields averaging about 3,000 pounds

Prices Good Thru 8/6/11

SUMMER SIZZLERS

305 W. Kenneth
Spearman • 659-3135

101 Main Ave.
Gruver • 733-2953



ASST. 18.25 OZ.
Shurfine Cake Mix

AND ASST. 16 OZ.
Shurfine Cake Frosting

\$2.50



ASST. SHURFINE 3 OZ.
Gelatin

AND SHURFINE 16 OZ.
Peaches or Fruit Cocktail

\$1.50



TURKEY, BEEF ROAST,
or MEAT LOAF
HORMEL QUICK MEALS

17 OZ.
\$4.99



SHURFINE STRAWBERRY PRESERVES,
SHURFINE CHUNKY PEANUT BUTTER
& ALLSUP'S BREAD
(WHEAT OR WHITE)

\$4.99



SLIM JIM 1.94 OZ.
MONSTER

\$1.69



ASSORTED VARIETY
PEPSI COLA
6 PACK CANS
\$1.79



ASSORTED VARIETY
MTN. DEW
20 OZ.
99¢



12 OZ.
RED BULL
1 @ REG. PRICE OR
2 \$5 FOR



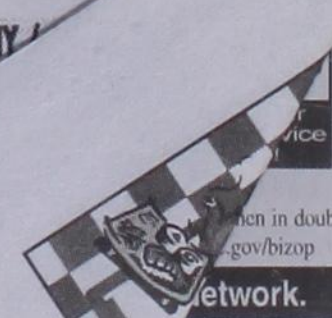
DOUBLE SHOT 15 OZ. OR
FRAPPUCCINO 13.7 OZ.
STARBUCKS
1 @ REG. PRICE OR
2 \$4 FOR



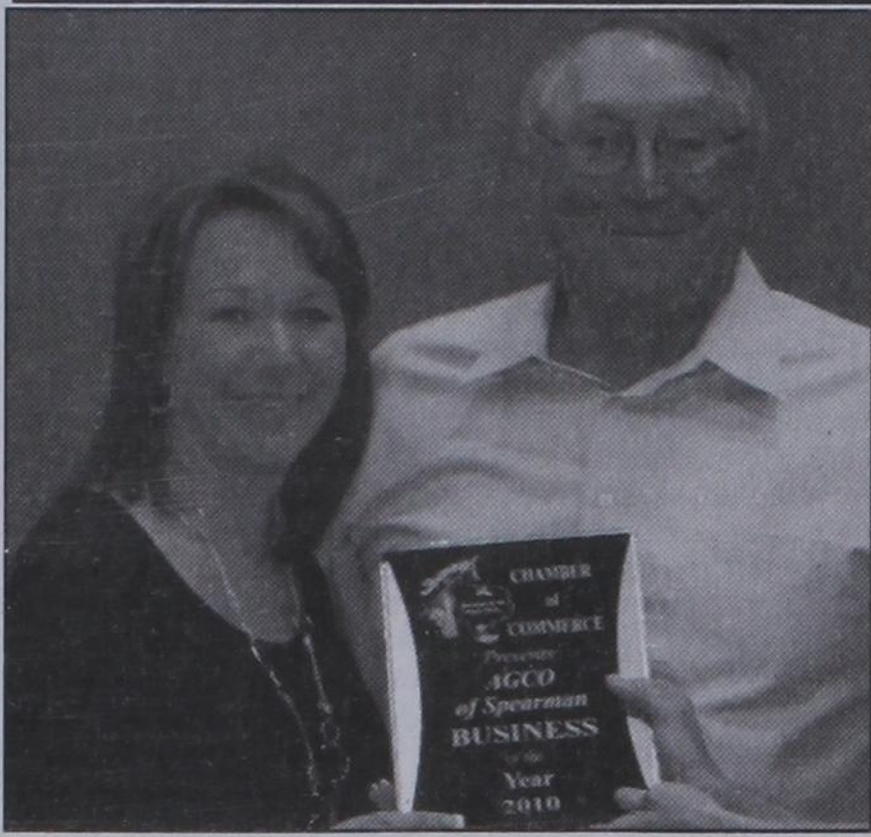
BLUE BUNNY ASST. FLAVORS
ICE CREAM
56 OZ. OVALS
\$3.99

JACK LINKS 1.5 OZ.
JERKY

2 \$5.99 FOR



Local Business, Citizens Recognized at Chamber of Commerce Banquet



AGCO began in 1977, with partners Jimmy Shield-knight, Loyd Buzzard, and George Jackson, who bought the old 4-Tex grain elevator (now called AGCO "A"). In 1980, the "Buzzard" location was built, which is the main location today. In 1986, Erlis Pittman and Jimmy Shield-knight bought out Jackson and Buzzard, and in 2000 Jimmy bought out the Pittman family. AGCO is one of the only family-owned and operated elevators left in the Texas panhandle.

In 1986, Jimmy asked Charles to help manage the elevator for a few months for him while he searched for a new manager. Charles managed the business for 25 years until his death on July 11, 2011.

Under the guidance of Charles, AGCO expanded greatly. AGCO not only is a grain elevator, but now also sells seed, fertilizer, and chemicals, as well as, providing custom application.

"We absolutely do our best to meet all our farmers needs," stated Charles.

In April of 2001, AGCO "A" was hit by a tornado resulting in minimal damage, compared to the tornado that hit the Buzzard location on June, 5 2003, which suffered complete devastation. The Buzzard location was rebuilt in 90 days from ground up to get ready for the fall harvest. The sign that hung at the Buzzard elevator for the new reopening said, "Built by One Man's Vision, Rebuilt by Family and Friends."

"Jimmy was definitely the man with the vision and the passion, but the way the AGCO employees, family and friends stepped up to the challenge was unbelievable," commented Charles.

Upon being named Spearman Chamber of Commerce Business of the Year, Charles commented "What makes our business great is all the outstanding employees that we have. This award is for our employees. We would not be where we are today, if we didn't have such great employees."

Employees at AGCO include: Haley Shields - Assistant Manager; Caleb Patterson - Seed, Fertilizer, and Chemical Sales Manager; Ladd Gafford - Elevator Manager; Rejino Vasquez - works at the elevator and has worked for AGCO for 28 years; Rosi Martinez - keeps the office in line with a smile; and Zach Martindale, Bernice Schmidt, Eleuterio Lerma, Brye Theara, and Ty Martin make up the AGCO team.

"We at AGCO fully believe that the businesses in our great community are what keep the community going," commented Charles. "There would not be programs for our youth if the businesses did not step up to the plate and help support these organizations. We admire all the volunteers who give freely of their time to support our youth, so if we can help out to make things a little easier, we sure don't mind."

"We try to supply water bottles for all the concession stands that might need our support," concluded Charles.

Some of the local organizations AGCO has supported include: Spearman Lynx and Lynxettes, Spearman Choir and Band, Hansford County Stock Show, Spearman Scholarship Foundation, Spearman Little League, Spearman Swim Team, Spearman Jr. Lynx and Lynxettes Basketball, and Spearman Youth Football, to name a few.



submitted by Jackie Pearson
I'm honored to be here tonight, to represent the Spearman Rotary and recognize this year's Employee of the Year.

I've attended many Chamber Banquets in Spearman, and I've seen many employees who have served their employers well. It was a joy to see the employers have the opportunity to publicly say, "thanks" for the employee's long, and dutiful service. Many of those who have been recognized, were employees who did everything that was expected of them and then, kind of like the bunny on the battery commercials, they just "kept on going," doing more and more to serve the employers and to help the employers serve their customers and this community.

This year's employee of the year, has given many years of dutiful service in other communities, but has only lived in Spearman for one year. This person came to Spearman, bringing a wealth of experience in serving a non-profit organization with skills in administration, organization and fund-raising.

We are fortunate to have someone who wanted to move to Spearman and to work for a non-profit organization in Hansford County whose purpose is to help make Spearman a better place to live—an organization known to us all as The O'Loughlin Center.

There isn't enough time for me to tell you everything that she has done to improve the programs, the staff, the exercise programs & classes, & the fundraising, but do let me take a minute to "ring her bell & toot her horn," because in less than a year, this year's Rotary Club employee of the year has worked with the Board of Directors to plan an \$130,000 improvement plan, which she organized and funded through grants from several foundations. Some are foundations that we had received funding from before she came to The O'Loughlin Center, but probably over half of the funds raised were from new foundations. This is a huge achievement! And not one that even she could have predicted would have happened in less than a year.

By now, I'm sure many of you know that this year's Rotary Club employee of the years is Debbie Goodheart. She started working on May 1st of last year. We wanted to have a "welcome" get-together to introduce her to the community, but she's kept us all so busy that we've never been able to organize such an event! Well, Debbie, I know you're gonna get me back for this, but WELCOME to SPEARMAN!! And, in case some of you don't know her, this is Debbie Goodheart, the "new" Executive Director of The O'Loughlin Center. Congratulations to the 2011 Rotary Club Employee of the Year, Debbie Goodheart!

The Spearman Chamber of Commerce Annual Membership Banquet was held on Saturday, April 16, 2011. The theme for this year's event was "Casino Knight."

Jackie Pearson recognized Debbie Goodheart as the Rotary Club Employee of the Year.

Tobe Shields was named the 2010 Citizen of the Year.

AGCO was named the Chamber of Commerce Business of the Year.

A special "All Time Favorite Award" was presented to Cindy Blackman.

The Spearman Chamber of Commerce Board of Directors include: Keith Hight, Executive Vice-President; Landon Jackson, President; Toby Thompson, Vice-President; Kyla Ortiz, Secretary/Treasurer; and members Carla Puentes, Lucy Lora, Orlando Ortiz, Grace Calvert, Kristina Howell and Rebecca Mathews. Ex-officio members are Ed Hanson, Spearman City Manager; Cindy Blackman, Spearman ISD Representative; Robert Baker, Spearman Chief of Police.

Steffan & Devin's Mowing Service

Steffan Werner (620) 482-0763
Devin Wells (806) 330-0752
References available upon request.

dish NETWORK

Packages starting at:

\$24.99

MO

For 12 months

Local Channels Included!

Prices valid for first 12 months. Requires 24 month agreement.

FREE INSTALLATION

With DVR!

In up to 6 rooms!

CHOOSE HBO cinema sketch

ONE Free for 3 Months!

FREE HD DVR Upgrade!

(Select DVR service fee applied)

FREE BLOCKBUSTER

for 3 months

FIVE PACKAGES UNDER \$50

FREE HD for life!

1-877-356-5528

Call 7 days a week 8am - 11pm EST Promo Code: MB0511

Hotline for Priority Seating - 435-3945

MONEY'S

BBQ & STEAK HOUSE

Stan and Donna Zepp

New, Updated Menu Same Great Service

Tong's Chinese Restaurant

(806) 644-2838

22 Archer Street • Spearman

Daily Buffet

Lunch Buffet 11 a.m.-2:30 p.m.

Dinner Buffet 5:30-9 p.m.

Open Wednesday-Monday - Closed Tuesday

FRESH POPCORN PARTY ROOM

NAYLOR

AUCTION and REALTY, INC.

Rt. 1, Box 65 (580) 646-3548, Balko, OK 73931

AUCTION

SATURDAY

July 23, 2011

10:00 a.m. • Booker TX

SELLER: DELBERT HOWARD

DIRECTIONS: From Booker, TX, Take Hwy 15 East to Co. Rd. 5 (3 mi.), South 1 Mi. and East 1/2 Mi.

AUCTIONEER NOTE: The Delbert Howards have sold their farm and are moving to Wichita, KS

ROLLING STOCK

- 1996 Ford Lincoln Town Car, auto, air, loaded
- 1989 Ford F150, 5 sp, 4x4
- 1987 Chevy Blazer, auto, V6 engine
- 1973 Chevy C60 grain truck, 4 sp-2 sp.
- Metl bed with lift

FARM EQUIPMENT

- 1986 JD 4640 (Ser. 016629R), 3 pt., pto
- Quad-range dual 18-4-38, 7,581 hrs.
- JD 4020, dsl., 3 pt., pto, w/Case loader
- Hi-Boy 8 row wiper, runs good
- Big 12 grain cart, 400 bu., 540 pto
- 3 pt, sprayer, 32 ft., pto pump, elect
- Noble 5-5 sweep plow w/pickers, NH3
- 19 Sunflower chisel
- Crustbuster 21' dbl. offset disc
- 3 JD LZ deephole drills, rubber press
- 16' brushhog mower, 540 pto
- 2 pickup bed trailers
- 16' grain drill auger, elect. motor
- Truc Bed, GSN trailer
- JD 7-18 moldboard plow, on land
- IH 605 Irrig. eng.
- Berkley 5x6 pump
- Speed King 12 v., drill fill auger
- Calkins seed cleaner
- Onan pto generator
- 500 gal. overhead tank
- LP tank converted to dsl tank, 500 gal.
- 3 pt. blade
- Grain bin on trailer
- Tool bar chisel
- Double tool bar

LIVESTOCK

- Calf cradle
- Hyd. wire roller
- 3 pt. post hole digger

- 10' stock tank
- Bale spear for loader
- Ant. 1 cye. engine
- 1 round bale feeder
- Lot elect. fence post
- 15-10' metal panels
- Lot wire mesh panels

NON-CLASSIFIED

- Old harness
- Ant. horse drawn 1 row lister
- Ant. 1 cye. engine
- Ant. drill
- Ant. pipe threader
- 3 axles
- Powermate 5000 generator
- JD SST 15 riding mower, 38" deck
- DR trimmer, elect. start
- 15 gal. 12 v. sprayer
- Murphy mower
- Poulan chain saw, 16"
- Yardman mower
- Torch w/cart
- 100 gal. dsl. tank w/pump
- Oil pump
- Outback SII guidance system, GPS
- Black & Decker radial arm saw
- Wheel Grinder
- Chop saw
- Right angle grinder
- Battery chargers
- Stainless steel vat
- Vise & table
- Garden plow - drip hose
- Shop tools - hand tools - garden tools
- Many more items too numerous to mention!

www.naylorauction.com
Not responsible for accidents.

For more info, call:

Dale Naylor
Owner/Broker

NAYLOR
AUCTION & REALTY, INC.

Rt. 1 Box 65 BALKO, OK 73934

OK 107486 - TX 7285
580-646-3548
806-435-1994 (cell)

www.naylorauction.com

E-SUBSCRIPTION

The Hansford County Reporter-Statesman

Delivered to your e-mail each Thursday for only \$35/year.

Purchase online at www.spearmanreporter.com

Call 806-659-3434 or e-mail reporter@spearmanreporter.com.

REAL ESTATE

FOR RENT: 2 Bedroom apartment, 822 S. Roland, \$425.00 month, 12 month lease, Water paid, NO PETS. Call Larry O'Neal at 405-285-8782 for application and to view apartment.
TFN(5/26/11)B

FOR RENT: 1BR & 2BR furnished apartment. All bills paid. Call 659-2247.
TFN(6/2/11)B

HELP WANTED

HELP WANTED: Experienced automotive technician needed. Good working environment, holiday pay, health insurance. Also service department helper needed. Apply in person at Prairie Motors in Spearman. (806) 659-2541 or 1-800-692-4657.
TFN(12/2/10)B

HELP WANTED: First State Bank, Spearman, has a full time positions open for a Teller and positions open in Book-keeping. Applicant must have a high school diploma or equivalent, typing and some ten-key skills required, customer relation and telephone skills are very important. Background in accounting, word processing and spreadsheets is helpful but not required. Benefit program includes group hospitalization insurance, retirement, vacation pay, sick leave pay and holiday pay. Apply with Ginger Turner at First State Bank, PO Box 247, Spearman, Tx. 79081, telephone #(806) 659-5565. An Equal Opportunity Employer.
TFN(6/2/11)B

HELP WANTED: Donut Maker needed 2 nights per week. Apply in person at City Cafe & Donuts, 417 S Highway 207, Spearman; or call (806) 644-6444 for more information.
2(7/14/11)B

SERVICES

HOOCY POOCY PARLOR
Call us for all your pet's grooming and boarding needs. Call now for reservations! 806-273-2724.
TFN(11/2/07)B

TIRED OF GARAGE SALE PRICES? Let me buy your good used furniture! 2nd Chance Antiques & Furniture, Don 806-648-1480; 806-202-1391 cell.
TFN(1/20/11)B

PUBLIC NOTICE

LEGAL NOTICE
Gruber Independent School District has an Employment Opening for District Business Manager.
The starting date is August 1, 2011. A degree in Accounting or Finance is preferred.
Position pays Teacher Pay Scale at 226 Days. Pay scale can be viewed at: www.gruverisd.net
District Link
Policies Link
The Application Deadline is July 18, 2011. Applications can be downloaded at: www.gruverisd.net
District Link
Employment Link
Send Applications and Resumes To: David H. Teal, Gruber Independent School District, Business Office, PO Box 650, Gruber TX 79040
2(7/7/11)B

PUBLIC NOTICE

Gruber ISD is requesting bids for fuel for the 2011-2012 school year. Interested bidders should contact the Business Office for proposal specifications. Address: 601 Garrett Street, P. O. Box 650, Gruber, TX 79040; phone 806-733-2821. Proposals must be received in the school office by July 26, 2011 at 11:00 a.m. Proposals will be opened at that time in the Superintendent's office and considered by the GISD Board of Trustees at its regular meeting in July. The Board reserves the right to accept or reject in whole or part of any and all proposals.
2(7/14/11)B

5	8	4	1	3	2	9	7	6
9	3	7	6	5	8	1	2	4
2	6	1	4	7	9	8	5	3
4	1	2	3	9	5	7	6	8
3	5	9	8	6	7	4	1	2
8	7	6	2	1	4	5	3	9
6	4	5	9	2	1	3	8	7
1	9	3	7	8	6	2	4	5
7	2	8	5	4	3	6	9	1

SP	AS	M	TEA	ELSE
ER	IC	A	OAR	KRILL
TON	AL	PRO	O	READ
TS	UN	AMI	M	ESSUP
TWO	T	A	R	O
ABA	I	NCH	E	VINCE
BABA	D	O	R	OMAHA
EBON	O	B	O	E
AORTA	B	USH	M	INE
MOTIVE	G	A	R	S
ARCH	E	M	U	
DISTAL	T	W	I	T
COTTA	I	O	L	I
ADLER	F	I	T	E
BOLT	F	L	U	S

M&D Aerial, LLC

David & Megan George
P.O. Box 520 Spearman, Texas 79081
David: (806) 202-2360
Megan: (806) 202-2358
mdaerial@yahoo.com

Go Painlessly™
Great Value, Great Results.
Go painlessly with Thera-Gesic™

AG EQUIPMENT INTERNET AUCTION
Bidding starts to close, Wed., July 27 | 10 am CDT

Combines: '09 & '08 JD 9770 STS, '08 JD 9870STS, '03 JD 9650W, (2) '98 CIH 2388, '95 JD 9600, '82 & '81 JD 7720, '92 CIH 2055 cotton picker
App equip: '08 JD 4930 self-propelled sprayer Loader: '08 JD 5425L Harvest: '07 Honey Bee SP30R 30' draper hd, '02 MacDon 972 30' draper hd, (2) JD 224 hd, (2) JD 930 hd, JD 224 hd, '96 JD 893 cm hd Hay/forage: '08 JD 568, NH 664, '01 Vermeer 605XL, '89 NH 1118 swthr
Plant/seed: JD 1770 CCS, JD 9300 drill Tillage: JD 1000 cultivator, Flex-King 5x5 undercutter, Flex-King KM25 undercutter and more

ITEM #A4697
'98 CIH 2388 combine
866.608.9283

www.purplewave.com
10% buyer's premium applies | Aaron McKee TX Lic #16401

If workers are not exposed to
ASBESTOS
they won't get
MESOTHELIOMA

This is the simple truth. People who have mesothelioma, a rare, aggressive and fatal form of cancer, worked around asbestos or had second-hand asbestos exposure. If you or a loved one have been diagnosed with mesothelioma or lung cancer, maybe we can help. Please call us for professional insight.

CAPPOLINO | DODD | KREBS
1-888-MESO-FIRM
888-637-6347 | www.AsbestosLaw.com
NO FEE FOR FIRST VISIT | Cameron, TX

AVAILABLE NOW!
E-SUBSCRIPTION

to the
Hansford County Reporter-Statesman
Delivered to your e-mail each Thursday for only \$35/year.
Purchase online at www.spearmanreporter.com
Call 806-659-3434 or e-mail reporter@spearmanreporter.com for details.

E-SUBSCRIPTION
The Hansford County Reporter-Statesman
Delivered to your e-mail each Thursday for only \$35/year.
Purchase online at www.spearmanreporter.com
Call 806-659-3434 or e-mail reporter@spearmanreporter.com.

Century 21
Golden Spread Realty
404 4th Ave, GRUBER - 2BR, 1B, 1090 sq. ft. Also available for rent for \$550/month.
Gina Deal, Broker/Owner (806)435-5444
www.century21.com
INDEPENDENTLY OWNED & OPERATED. ©1992® and™ Century 21 Real Estate Corporation. Equal Housing Opportunity. EOW(8-05-10)B

Insured 6 Month CD
4.21% APY
Ask about our IRA & 401K Specials
1-800-371-9201
By appointment only
First Fidelity Financial Amarillo, LLC
1800 Washington, Suite 110, Amarillo, TX

Come & Get It!
HAPPY HOUR
3-5 p.m., Monday-Friday
ALL FOUNTAIN DRINKS 69¢
MURMUR'S CAFE
100 S. Roland • 659-3580 • Spearman

The Joy's of Summer All Year
SNOW CONE STAND
2-8 p.m., Monday-Friday
MURMUR'S CAFE
100 S. Roland • Spearman
659-3580

Properties
Shirley Howard
We NEED listings!
Call us now to help YOU sell your home for top dollar!

MARTIN & ASSOCIATES REALTY
Serving Hansford County Since 1990
Julie Martin: Broker - 659-2425
We'd Like Your Listing!
FOR QUALITY & SERVICE CALL US TODAY!
Equal Housing Opportunity

Palace Theatre
MOVIE SHOW TIMES
Friday-Thursday - 7 p.m.
Sunday - 2 p.m.
Closed Sunday Night

TEXAS STATEWIDE CLASSIFIED ADVERTISING NETWORK
TexSCAN

523 Barkley - Spearman: 2,074 sq. ft. home with 2 1/2 baths, 2 car garage - Hardwood Floors!
1016 S Barkley - Spearman: 4,081 sq ft, 4 bed, 4 bath 3 lvg areas, 2 Att gar, Fireplace, Corner Lot! **REDUCED!**
Shirley Howard, Broker/Owner
806-886-6536, Cell
806-648-4444, Work
Melinda McCullough, Realtor
(806) 733-5678
We would LOVE to sell your HOUSE!
CALL US!

French & Co., Realtors
273-7355
Country Living in Morse
4 BR, 2 B, located on 1.06 acres - \$129,000.
Call for immediate showing
806-683-2267

Palace Theatre
210 Main Street
Canadian TX 79014
806-323-5133
www.palacetheatre.com
The Palace Theatre meets Lucasfilm THX specifications for site and sound quality.

TexSCAN Week of July 10, 2011 BUSINESS OPPORTUNITY
INVESTORS - OUTSTANDING and immediate returns in equipment leasing for frac industry. Immediate lease out. Tax benefits and high returns. We need more equipment!
1-888-880-5918

DRIVERS
CYPRESS TRUCK LINES Home weekends! Southwest regional, Top pay and great benefits. 1 year T/T experience CDL-A with Clean MVR. Call 1-800-545-1351, www.cypresstruck.com
DRIVER-GET HOME every 7-10 days with LinkAmerica's SW Regional Lanes! No hassles of running NE or NYC. CDL-A. 6 months recent experience. 1-800-483-5182, www.LKAM.com
DRIVER-GOOD MILES! Regional truck drivers start at 37¢ cpm with 1+years experience. Home every week. Affordable family benefits. Call 1-888-362-8608 or visit AVERITTcareers.com. EOE
DRIVER-PAY RAISE just announced! Company, owner operators, solos and teams. Consistent miles, benefits, all new trucks. CDL-A and 15 months experience required. www.drivefortango.com; 1-877-826-4605
DRIVERS-CLASS A Heavy haul immediate need for experienced multi-axle company and owner-operator drivers. We are busy all year long! 1-877-724-4554.
DRIVERS-NO EXPERIENCE - No Problem. 100% Paid CDL training. Immediate benefits. 2010 program. Trainers earn up to 49¢ per mile! CRST VAN EXPEDITED 1-800-326-2778; www.JoinCRST.com

DRIVERS SOUTHERN FLEET must live within 100 mile radius of Dallas. Refrigerated freight, 100% owner-operator company, run in Texas to Georgia, home weekly. Call 1-888-377-7537, www.suncocarrriers.com.
LANDSTAR INDEPENDENT AGENT looking for Drivers in Houston or Lubbock Areas! Bonus opportunities/home weekends. 1 year experience, hazmat, good driving record. Call Chris or Kristi: 1-800-486-4826 (ext. 1) dispatch@mccladdengrp.com
LOCAL DRIVING JOBS Big money, home daily. Class-A and 2 years experience required. More options in your area: Call Taylor today 1-866-687-5281 or www.taylorlogistics.com. Fleet Owner we have a \$\$\$ deal. EOE
OWNER OPERATORS NO Escrow, No plate permit charges. No hidden charges. Consistent miles 2800+ weekly. Average \$3500 gross weekly. CDL-A, 1 year OTR T/T experience. 1-888-902-4850, www.fxfreight.com
TOP PAY on excellent runs! Marten just raised pay/rates! Regional runs, steady miles, frequent overtime, new equipment. CDL-A, 6 months experience required. EEOE/AAP, 1-866-322-4039 www.Drive4Marten.com
QUALITY DRIVE AWAY, INC. is seeking 50 qualified CDL drivers to deliver new trucks out of Garland and Laredo. Flexibility, miles based bonus program, safety reward program. Call 1-866-764-1601 or www.qualitydriveaway.com
YOU GOT THE drive, we have the direction. OTR drivers, APU Equipped, Pre-Pass, EZ-pass, Pets / passenger policy. Newer equipment. 100% NO touch. 1-800-528-7825
HIGH SCHOOL DIPLOMA graduate in 4 weeks! Free brochure! Call now! 1-866-562-3650, ext. 55, www.southeasternHS.com
\$500 LOAN SERVICE: No credit refused, fast and secure. Easy on the budget. Payments spread out over three months. Toll free: 1-855-626-4373, LoanHere.com

HELP WANTED
HEAT & AIR JOBS Ready to work? 3 week accelerated program. Hands on environment. Nationwide certifications and local job placement assistance. 1-877-994-9904.
JOB TRAINING
AIRLINES ARE HIRING Train for high paying aviation career. FAA approved program. Financial aid if qualified, job placement assistance. Call Aviation Institute of Maintenance, 1-877-523-4531
REAL ESTATE
10.1 ACRES, Duval County. Heavy mesquite, brush cover, deer, hogs, quail. Good roads and locked gate. \$1475/down, \$290/month. (\$29,500, 5% down, 11%, 20-yr.) Toll-free 1-866-286-0199, www.westernexasland.com
\$106 MONTH BUYS land for RV, MH or cabin. Gated entry, \$690 down, (\$6900/10.91%/7yr) 90 days same as cash. Guaranteed financing, 1-936-377-3235
ABSOLUTELY THE BEST VIEW Lake Medina/Bandera 1/4 acre tract, central W/E, RV/motor home/home, OK only \$830 down \$235 month (12.91%/10yr). Guaranteed financing, more information call 1-830-460-8354
AFFORDABLE RESORT LIVING on Lake Fork. RV and manufactured housing OK! Guaranteed Financing with 10% down. Lots starting as low as \$6900. Call Josh, 1-903-878-7265
STEEL BUILDINGS
DISPLAY BUILDINGS NEEDED & Steel buildings, 30 yr warranty, 100% usable space -highest wind loads in the industry. Call now! 1-800-991-9251, www.cavalierbuildings.com
Run Your Ad In TexSCAN!
Statewide Ad\$500
301 Newspapers, 842,416 Circulation
North Region Only\$230
88 Newspapers, 263,811 Circulation
South Region Only\$230
101 Newspapers, 366,726 Circulation
West Region Only\$230
102 Newspapers, 311,881 Circulation
To Order: Call this Newspaper direct, or call Texas Press Service at 1-800-743-4793 Today!

Check our websites for other properties.
SHERMAN CO., TX - 627 acres, choice land, four 1/4 mile sprinklers, fully developed, one 1/4 mile off Hwy. 287 on paved CR - CC, 3 phase electricity, new irrigation well drilled in 2010.
AMARILLO, TX - 4 MI. N. OF LOOP 335 - development potential (wind energy, comm., res.) 4872.8 ac +/- of beautiful ranch country, pvtm on four sides. Deer, quail & dove. 50% MINERALS!
CASTRO CO., TX - on pvtm., 1845.6 ac +/-, sprinklers, irr. wells, employee housing, barns, cattle pens w/covered working area, hydraulic chute & truck/cattle scale.
DEAF SMITH COUNTY SECTIONS - Three adjoining sections east of Hereford, Texas, dryland farm, stock water, good fence.
WEST OF DUMAS on pvtm. 606 ac +/-, 17 lower sprinkler, four irr. wells, excellent location for residential or commercial development.
BUDDY CLINE ROAD - Moore Co., TX. - 1/2 section choice land, two wells (one new) and sprinklers.
MOORE CO., TX - 800 ac. with 1/2 section rigged for sprinkler plus 480 acres of CRP. 1 1/2 miles out of Dumas with pvtm. on two sides.
1200 SOW FARROW TO FINNISH OPERATION - Moore Co., TX - New 5 yr. lease with major hog company. Two separate units, can be divided - Please contact broker for info package and price.
www.scotlandcompany.com
www.texascrp.com
Shawn Gillispie 806/922-5532
Ben G. Scott, Broker
1-800-933-9698 day/eve
TFN(6-23-11)

French & Co., Realtors
273-7355
Beautiful 3 BR, 2B home in Morse, Texas. 1.06 acres.
Updates Galore, Corrugated tile & wood floors, stainless trim, custom paint, 28x33 garage & separate shop.
Call Michele for details.
806.273.7355

hchd
Hansford County Hospital District
Information Technology Assistant: Maintain daily system data backups, perform routine desktop backups, add users to domain, monitor AV log reports and/or any assigned duties by the IT Director.
Clinic Data Entry Clerk: Enter data, payments, etc. into patient account's daily.
Home Health/Hospice RN: Provide general nursing care to patients in resident setting. Interacts with patients and patient's families, Medical Staff members and other departments of HCHD on a continuous basis.
Great working environment and staff, quality facility providing opportunities for professional growth. Great Benefit package. Apply at 707 S Roland, Spearman, Tx or contact Jackie Nelson, HR 806-659-5841. Download application at hchd.net
EEOE (7/14/11)

Blankenship Real Estate
659-3052 - 670-3774
LET US HELP YOU SELL YOUR HOME.
3BR, 2 1/2B, 2 living areas, dining area, brick, close to schools.
3BR, 1 1/2B, 1CG, central heat/air, all appliances stay.
3BR, 1B, 2C Detached Garage, 20' central heat/air and roof.
NEW LISTINGS WANTED!
Eulalia Blankenship - Sales
Eschol Blankenship - Broker

NOTE: While most advertisers are reputable, we cannot guarantee products or services advertised. We urge readers to use caution and when in doubt, contact the Texas Attorney General at 1-800-621-0508 or the Federal Trade Commission at 1-877-FTC-HELP. The FTC web site is www.ftc.gov/bizop
Extend your advertising reach with TexSCAN, your Statewide Classified Ad Network.

Golden Spread Center Radio Auction

July 16, 2011 9AM-3PM

In Memory Of Carl & Peggy Archer

The 2011 Radio Auction is dedicated to the memory of Carl & Peggy Archer for their lifelong commitment and generous support of the Golden Spread Senior Citizen's Center. Their volunteerism, philanthropy and passion for the community are deeply missed, not only by the Golden Spread Center but the entire Hansford community.

Auction Viewing & Pre Bidding

July 14 ★ 11:00AM-7PM

July 15 ★ 11:00AM-5PM

Please tune in to 98.3 KXDJ-FM on July 16th to honor their memory by supporting the continued programs and activities of the Golden Spread Senior Citizen's Center.

A special THANKS to our 2011 Sponsors for their generous support!



For more information or to donate an item: please call 806-659-3030.



--3rd Annual--

Texas Plains Trail Regional TOURISM & PRESERVATION ROUND-UP Let's Go To Post!

Does your community need a shot of enthusiasm? Come join other chamber and museum directors, civic leaders, and county historical commissioners from our 52-County region for a day filled with marketing, community building, and preservation ideas. Call Deborah Sue McDonald at 806-231-3479 or e-mail: txplainstrail@yahoo.com for information.

August 15, 2011 / Trail Mixer / 6:00-8:00 p.m. / Post Heritage House / 109 N. Ave. N / \$25 per person (hors d'oeuvres, wine/beer and desserts)

August 16, 2011 /Regional Round-Up / 9:00 a.m-3:30 p.m. / Post Community Center /113 West Main / \$50 per person (includes conference fee, Continental Breakfast, Lunch & Snacks)

Visit: www.TexasPlainsTrail.com for details



STRATFORD JAMBOREE

Sat. July 30th

Parade
BBQ
Kid's Games
Vendor & Food Booths
& Street Dance

For information on the parade, call Stacey Rivers at 806-753-7358. For Vendor Booths, call Kathy Allen at 806-753-4897 or email scdc@st.net.

& SCDC Block Party

Complete schedule available at www.shermancountytx.org

Out at the Lake

by Dorothy Hudson

Jim Derington
Palo Duro River Authority
P.O. Box 99
Spearman, TX 79081
806-882-4401
pdra@dishmail.net



This bald eagle has been spotted twice, west of the bridge at Lake Palo Duro.

Lake Level--July 11, 2011--38.03 feet (0.34)

This week there were only 4 campers, but boaters and fishermen were out. It was just quieter after the Fourth of July crowds.

Scooter is slowly recovering from his broken pelvis. Jim wrote in the column last week that the lake dog had been run over by the internet installer's pickup. Scooter spends much of his time lying down, but he is walking some.

While Jim was holding him after he was hit, the dog's pain was so great that he snapped at Jim and bit his ear. Jim said the wound was very painful, but it is healing without infection.

Jim is seeing only one bald eagle at a time. He can't be sure there is only one, so if anyone sees two eagles together, he would like to know. My theory is that there is only one, and that he has been so lonesome that he is keeping company with the buzzards.

Recall that Jim has twice reported seeing an eagle flying with the buzzards as they circle high on the thermal currents.

Hansford County Land Map

Two weeks ago, I wrote of the WDC Hall Land Block east of Gruver. Since then I have researched a tract that joins Gruver on the east called the Mrs. W. P. B. DuBose. Looking through the Mell family history on the internet, I found an article printed in the Charleston Courier on August 18, 1897.

It stated that "young [William Pinckney B.] DuBose was the only son of Joel DuBose of Charleston, his mother being Mary A. Mell, the daughter of one of the wealthiest planters in the State. He came to manhood with brilliant prospects..."

"An unfortunate love affair ruined his life. The name and details will not be given. He was deceived by a faithless and fickle girl, a noted belle and beauty. His

own conduct was thoroughly generous and unselfish. He left her without reproach, hurriedly arranged his affairs, left his home, and was never again seen by any of his friends and kinsmen.

"He joined Colonel Fanning's Command and was massacred at Goliad, Texas in March, 1836, when 357 prisoners were killed by the orders of Santa Anna. In 1859 the Texas legislature granted a bounty of several thousand acres of land to the heirs of W. P. B. DuBose for his gallant service in the Texas war for independence. 447 acres in the Fort Bend, Marion, and Wichita counties, 540 acres in Hansford and 1920 acres in Grayson County."

Each piece I read raises more questions about how land could have been given in Hansford County as early as 1859. Given that the land is usually listed as Mrs. W.P.B. DuBose, the "faithless and fickle" female must have inherited it.

Hansford Hospice

20th Anniversary
Open House
Tuesday, July 19, 2011, 2-4 p.m.
Hospice Office
802 Roland St

Refreshments will be served

School supply drive

First National Bank and Parent Teacher Organization (PTO)

Working together for local children.

If you would like to donate school supplies for kids in need.

Supplies needed are:
Pencils
Crayons (Crayola brand)
Markers (Crayola brand)
Scissors (Fiskar brand)
Paper (wide rule)
Kleenex (200 count)

Member FDIC