

The Hansford County Reporter Statesman

PROUDLY SERVING HANSFORD COUNTY SINCE 1907

reporter@spearmanreporter.com

VOLUME 101 • ISSUE 33 WWW.SPEARMANREPORTER.COM THURSDAY, AUGUST 14, 2008

North Plains Groundwater Conservation District Public Stakeholder's Meeting

7:00 p.m. August 19, 2008
O'Loughlin Center
502 South Brandt, Spearman, TX

There is no formal agenda. This is a public stakeholder's meeting to invite public comment on setting the Desired Future Conditions for the Ogallala aquifer within the North Plains Groundwater Conservation District. A quorum of the Board of Directors may be present.

Weather Forecast

THURSDAY NIGHT - Mostly cloudy. Showers and thunderstorms likely in the evening - then a chance of showers and thunderstorms after midnight. Some thunderstorms may produce heavy rainfall. Lows in the mid 60s. Southeast winds 10 to 20 mph shifting to the northeast around 10 mph after midnight. Chance of precipitation 60 percent.

FRIDAY - Mostly cloudy with a 50 percent chance of showers and thunderstorms. Some thunderstorms may produce heavy rainfall. Highs in the lower 80s. Northeast winds 10 to 15 mph.

FRIDAY NIGHT - Mostly cloudy with a 50 percent chance of showers and thunderstorms. Some thunderstorms may produce heavy rainfall. Lows in the upper 50s. Northeast winds 10 to 15 mph.

SATURDAY - Mostly cloudy with a 40 percent chance of showers and thunderstorms. Some thunderstorms may produce heavy rainfall. Highs in the mid 70s.

SATURDAY NIGHT - Mostly cloudy with a 30 percent chance of showers and thunderstorms. Some thunderstorms may produce heavy rainfall. Lows in the mid 50s.

SUNDAY - Partly cloudy with a 20 percent chance of showers and thunderstorms. Some thunderstorms may produce heavy rainfall. Highs around 80.

SUNDAY NIGHT - Mostly cloudy with a 20 percent chance of showers and thunderstorms. Some thunderstorms may produce heavy rainfall. Lows in the lower 60s.

MONDAY - Mostly cloudy with a 20 percent chance of showers and thunderstorms. Highs in the mid 80s.

MONDAY NIGHT - Mostly cloudy with a 20 percent chance of showers and thunderstorms. Lows in the lower 60s.

TUESDAY - Mostly cloudy. Highs in the mid 80s.

TUESDAY NIGHT - Mostly cloudy with a 20 percent chance of showers and thunderstorms. Lows in the lower 60s.

WEDNESDAY - Mostly cloudy. Highs in the upper 80s.

Texas Crop & Weather

The following specific livestock, crop and weather conditions were reported by Panhandle Extension directors: Temperatures were above average. Soil moisture varied from adequate to very short with most areas reporting short. Corn tasseled and was rated mostly fair. Cotton varied from very poor to excellent with most areas reporting fair. The crop was squaring and setting bolls. Peanuts and sorghum varied from very poor to good with most areas reporting fair. Sorghum varied from very poor to good with most areas reporting fair. Range conditions deteriorated under the extreme heat and dry conditions. Cattle were in good condition.

Spearman ISD Names Stephen Rodman as Head Coach

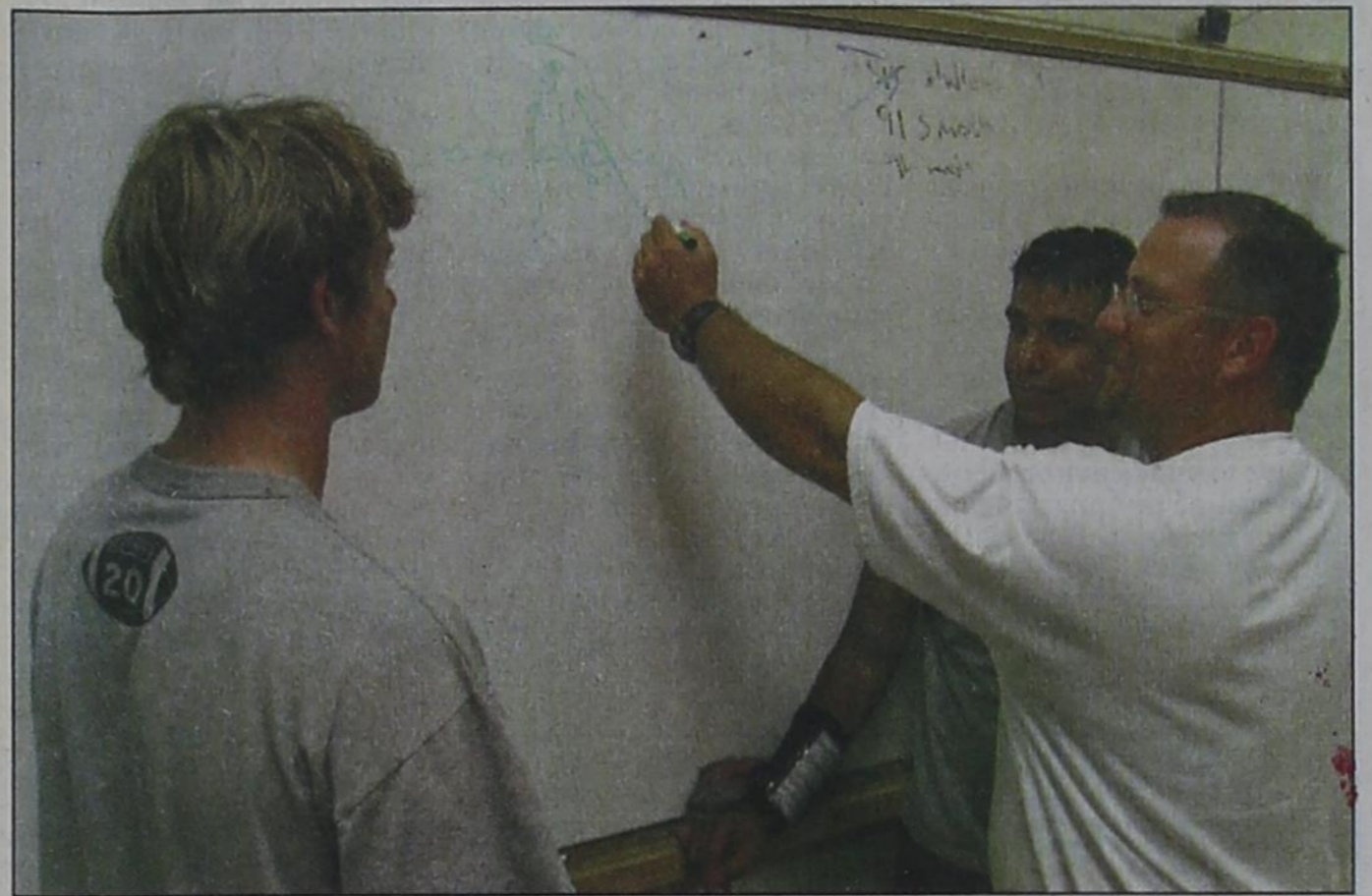


Spearman Independent School District is proud to announce that Stephen Rodman has assumed the duties of head coach for the Lynx football program. Coach Rodman replaces Ritchie Thornton who left July 1, 2008, after one-year at the helm of the Lynx football program to accept an administrative position with the Plainview Independent School District.

Stephen Rodman graduated from Sunray High School in 1992 and West Texas A&M University in 1998 with a undergraduate degree in sports exercise science and a minor in history.

Coach Rodman started his teaching and coaching career in Crane, Texas as a junior high Texas history teacher, varsity football coach assistant, 8th grade basketball and varsity assistant baseball coach. The Golden Cranes finished 13-1 overall and were State Quarter-Finalist in football. He worked in Crane for six-years and was part of a 14-1 State semi-finalist football team and girls' track State Champions in 2004.

In 2004, Coach Rodman moved to Seagraves, Texas to serve as defensive coordinator/assistant head football coach and head boys track coach. In addition to his coaching responsibilities, Coach Rodman taught U.S. History and served as part-time assistant principal handling all high school discipline referrals. His 2004 Seagraves varsity football team was Regional Finalist and finished the year with a 9-4 over-all record. His boys track team was the 2005 Regional Champion.



Coach Stephen Rodman (right) goes over plays with Varsity Lynx players Keagan Garnett (left) and Jorge Briseneno (center).

In 2007, Coach Rodman moved to Spearman to accept a similar position on the coaching staff of new Lynx football coach Ritchie Thornton as defensive coordinator/assistant head football coach and head boys track coach. After the unexpected departure of Ritchie Thornton on July 1, 2008, the Spearman Independent Board of Trustees met, and after much discussion, promoted Stephen Rodman as their new head football coach.

Coach Rodman takes over a program that finished 3-7 last year and was plagued by a

rash of injuries to key offensive and defensive players. This past spring, Coach Rodman was instrumental in an intense off-season program with an emphasis on strength, speed, agility, and conditioning.

Coach Rodman is married and his wife Jamie works at Gus Birdwell Elementary School as a computer paraprofessional. He has one son, Rugby, who is a 3rd grader at Gus Birdwell Elementary School. Coach Rodman's hobbies are hunting and fishing, and when not in Spearman, he enjoys camping in the mountains of Colorado.

Farm Bill Meeting Scheduled for Aug. 25 in Childress

Rolling Plains producers can get their questions on the new farm bill answered during a meeting Aug. 25 at the Fair Park Auditorium in Childress, said Lonnie Jenschke, Texas AgriLife Extension Service agriculture and natural resources agent in Childress County.

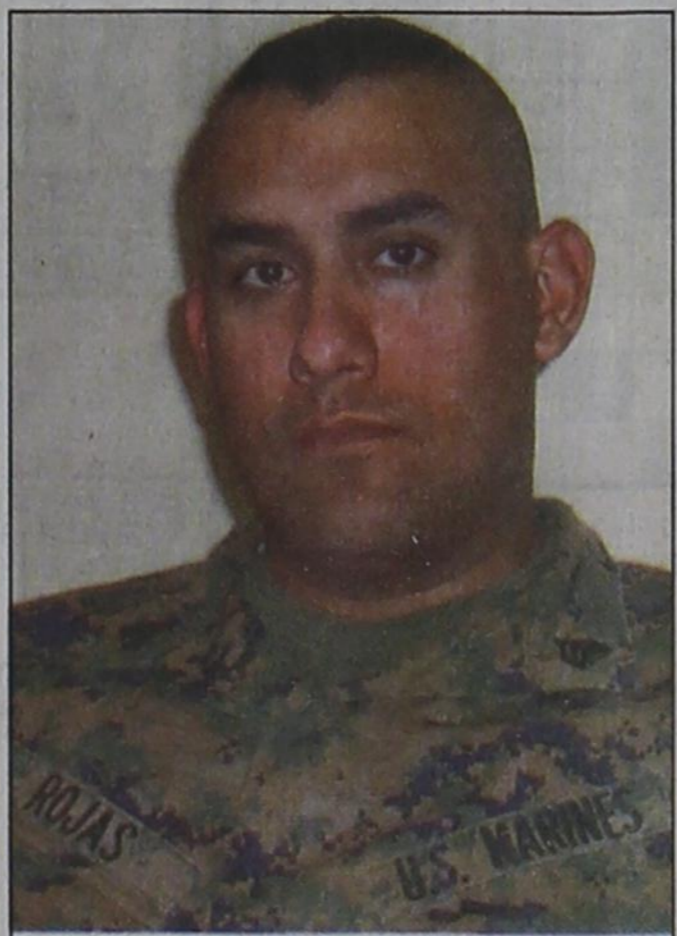
The meeting will run from 9 a.m. to noon in the Foyer Room with guest speaker Dr. Joe Outlaw, AgriLife Extension economist and co-director of the Agricultural and Food Policy Center at Texas A&M University.

The program will include an explanation of the Average Crop Revenue Election, or ACRE as it is referred to the farm bill, compared to counter-cyclical payments. Also on the program will be presentations on changes in payment limitations, in adjusted gross income criteria for payment eligibility, and in methods used to develop the posted county prices.

Farm Service Agency officials, as well as AgriLife Extension risk management specialists will be on hand to give updates.

The meeting is sponsored by AgriLife Extension, the Farm Service Agency, the Childress Co-op Gin and the Childress Ag Committee.

For more information, contact Jenschke at 940-937-2351 or l-jenschke@tamu.edu.



Rojas Promoted

Juan Rojas was recently promoted to Staff Sergeant.

Staff Sgt. Rojas, who has been in the Marine Corps for 7 years, is currently serving in Iraq.

Juan is the son of Eddie and Barbara Rojas and the grandson of Rosa Rojas and the late Aurora Vela, all of Spearman.

Tax-Free Weekend August 15-17

The 10th annual Texas sales tax holiday will be this weekend as families prepare to send children back to school.

Texas Comptroller Susan Combs announced most clothing and shoes priced less than \$100, with some exceptions, can be purchased tax free starting Friday, saving shoppers 8.25 percent.

Combs estimates shoppers will save about \$54 million.

Some tax-free items will include coats, diapers, hooded shirts and sweatshirts, jeans, suits and underclothes.

Taxes must still be paid on wallets, watches, handbags, jewelry and roller blades and skates.

Combs said the tax loss is not expected to have a significant impact on Texas sales tax collections. She said Texas sales tax revenue "continues to grow at a healthy pace."

For parents, the annual event can really help during back-to-school shopping since many stores offer big discounts on top of the tax break.

Many stores will open early and have extended hours to lure in shoppers.

Here are some of the guidelines for tax-free weekend.

* Customers will receive the break on individual items, regardless of the total amount they buy. For example, sales tax is not due if a customer buys six shirts each priced at \$99 each. But full tax is due on a shirt sold for \$100.

* Clothing and footwear used primarily for athletic activities or for protective wear are not eligible for the exemption. For example, customers buying golf cleats

or football pads must pay sales tax. Athletic wear that is also used for other non-athletic activities qualify for the tax exemption. For example, tennis shoes, baseball caps and jogging suits are often worn during everyday activities and will be tax-free.

* Accessories such as jewelry and watches are excluded and will be taxed, as well as items that are carried rather than worn, including handbags, briefcases and wallets.

For more information, call the tax-free hot line at (800) 252-5555 or visit the State Comptroller's Web site.

Below is a selected list of items and their exemption status during the sales tax holiday

TAX-Free

TAXED

- * Baby clothes
- * Backpacks for use by elementary and secondary students
- * Belts with attached buckles
- * Boots - cowboy, hiking
- * Caps/hats - baseball, fishing, golf, knitted
- * Coats and wraps
- * Diapers - adult and baby
- * Dresses
- * Gloves (generally)
- * Gym suits and uniforms
- * Hooded shirt and hooded sweatshirts
- * Hosiery
- * Jackets
- * Jeans
- * Jerseys - baseball and football
- * Jogging apparel
- * Neckwear and ties
- * Pajamas
- * Pants and trousers
- * Raincoats and ponchos
- * Robes
- * Shirts
- * Shoes - sandals, slippers, sneakers, tennis, walking
- * Socks (including athletic)
- * Shorts
- * Suits, slacks, and jackets
- * Sweatshirts
- * Sweat suits
- * Sweaters
- * Swimsuits
- * Underclothes
- * Work clothes and uniforms
- * Accessories (generally) - barrettes, elastic ponytail holders, wallets, watches
- * Backpacks - unless for use by elementary and secondary students
- * Baseball cleats and pants
- * Belt buckles (without belt)
- * Boots - climbing, fishing, rubber work boots, ski, waders
- * Buttons and zippers
- * Cloth and lace, knitting yarns, and other fabrics
- * Dry cleaning services
- * Football pants
- * Golf gloves
- * Handbags and purses
- * Handkerchiefs
- * Hard hats
- * Helmets - bike, baseball, football, hockey, motorcycle, sports
- * Ice skates
- * Jewelry
- * Laundering services
- * Leather goods - except belts with buckles and wearing apparel
- * Pads - football, hockey, soccer, elbow, knee, shoulder
- * Personal flotation devices
- * Rented clothing (including uniforms, formal wear, and costumes)
- * Roller blades and skates
- * Safety clothing, glasses
- * Shoes - bicycle (cleated), bowling, golf

Spearman Chamber of Commerce's

Yard of the Week

Stephen Batton
1117 Townsend

Brad Beedy
28 Golden Circle

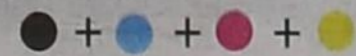
Will Jarvis
614 Roland

Ruby Riley
205 W. 12th Ave.

Rusty Tindell
521 S. Endicott

Dan Pearson
1014 Blodgett Dr.

If you have a yard you would like to nominate, please contact the Spearman Chamber of Commerce at 659-5555.



Wolf Creek Heritage Museum Notes

by Virginia Scott

A week of preparing for our August events, adding inventory to the gift shop, organizing and continuing our work on our artifacts and archives, has kept all of us busy.

In the midst of this were visitors, curious about our county. It still amazes and pleases us when visitors come in and make statements like "I can't believe a museum like this is here in the middle of nowhere," or "Your museum is one of the nicest ones I have ever visited."

A lot of the visitors are here to explore their genealogical history. One visitor this week was from Colorado, and found a photo of his great-grandfather in the 1916 class picture of the Lipscomb School. We made his day.

We have added several items to our gift shop. I mentioned in an earlier column the new books on topics of historical interest to our area. We now have some fun items - puzzles and posters, that are interesting to look at, study, and will add a lot of color to your environment.

Several of the puzzles and posters are about Texas subjects by Rick Vanderpool. Rick is known around the state for taking a subject like hamburgers or spurs and taking photographs from all

over the state and then making a photograph of all the photographs. They are fun to look at. Come check it out.

A note on our membership drive. It is going a little slow this year. So I thought I would again remind everyone to renew. The membership dues are used for our general operating funds, and allows us to purchase the supplies needed for conservation of our collection and for preparation of our exhibits. It also provides the funds for the programs we offer at no charge. We hope everyone will renew or join for the first time so we can continue at the level of activity that we presently are.

We appreciate the community support that we receive and we define community in this case as the region of the top northeast corner of Texas and the Oklahoma borders north and east of us. We recognize all of you that support us through your attendance at our programs and we hope you will renew your membership.

Reminder

A reception for Gwen Ferguson and Ann Pearce will be held on Saturday, August 16th, from 4-7 p.m. A program by Delbert Trew and Mike Oldham on "The Buffalo Hide Hunting Era of the 1870s" will be held at 5 p.m. The Museum is located at 13310 Hwy. 350 in Lipscomb.

HISTORICAL MUSINGS

The Kiowa Valley Independent newspaper for Darrouzett, published by Gene and Dorothy Ehrlich, always had a column for history. In the March 5, 1963 issue, Mrs. P.R. Wheatley wrote a column entitled "Pioneer-Woman of the Prairie." In this column she wrote about how she earned and saved her money as a girl in Maysville, Kentucky.

Her main source of income came from picking Blackberries, which she sold a 2 1/2 gallon bucket for 25 cents. "After carrying it a mile or more in the heat of July sun," Mrs. Wheatley wrote, "I was fond of the fruit, and also glad of the chance to earn a little money".

When she had a \$1, she went with a neighbor to Maysville, the county seat, to purchase a dress. Enroute to the department store, the neighbor ventured into a jewelry store, with Ms. Wheatley following. There she saw a pair of "ear screws" or "ear bobs" and she writes, "I was tempted to invest my dollar, that was the price, but common sense told me the dress was badly needed and would cover more territory, so I turned sorrowfully away. I did so want the pretty ear screws."

She purchased instead, a gray brocade, half wool, half cotton with a flowered figure or weave for 25 cents a yard, and she bought 4 yards. It became a dress that she wore year round.

She wrote of another shopping trip when she needed to purchase a "thin, summer corset, without which, no girl or woman was well dressed" and had it among her other purchases, but when the clerk totaled her purchases she did not have enough to cover everything and had to return the corset. She wrote "humiliating but I lived through it."

Another time she did not eat lunch when in town so that she could use that money for her purchases. She concludes with "These little incidents (of which there are many more) are just examples of how we could and did live, if there was need to cut expenses, which was most of the time." Thanks for sharing your wisdom.

State Capital



HIGHLIGHTS

AUSTIN - Recent heavy rains and flooding following Hurricane Dolly and Tropical Storm Edouard sent the Texas mosquito population soaring, the Texas Department of State Health Services reports.

Health Commissioner David Lakey suggested that citizens use bug repellent "every time they are outside."

Meanwhile, health officials are focusing on a dozen possible cases of flea-borne murine typhus in Travis County.

Headache, fever, nausea, body aches and skin rash are possible symptoms of typhus. Certain prescribed antibiotics are used to treat the disease.

State health officials said it is unusual for murine typhus to be contracted as far north as Travis County.

Stop now, AG tells debt collector

Texas Attorney General Greg Abbott on Aug. 6 charged a Dallas-based debt collection firm with using deceptive practices to collect payments from Texas consumers.

Abbott took legal action to stop Anderson, Crenshaw & Associates LLC from harassing Texas debtors with deceptive letters and unlawful telephone calls.

The enforcement action also accuses Anderson, Crenshaw & Associates of threatening to garnish consumers' wages or file liens against homesteads in violation of the Texas Debt Collection Act.

The attorney general's office cited complaints that the defendant's representatives harassed, abused and threatened debtors during profanity-laden, repeated or continuous telephone calls.

The attorney general's enforcement action seeks civil penalties of up to \$20,000 for each violation of the Texas Deceptive Trade Practices Act.

Perry criticizes ethanol decision

Gov. Rick Perry on Aug. 7 issued a statement lashing back at the U.S. Environmental Protection Agency's decision to deny his request for a 50 percent waiver from the grain-based Renewable Fuels Standard.

Perry said the EPA's decision "not only goes against common sense, but every American's grocery bill."

And, he said, the decision

BUG PROBLEMS DESCEND ON TEXAS AFTER HEAVY RAINS



by Ed Sterling

would increase the burden on families while doing even more harm to the livestock industry.

"Any government mandate that artificially props-up a single industry to the detriment of millions of Americans is bad public policy," he added.

Austin leads hard-drinking list

Forbes magazine reported Aug. 8 that Austin, Texas, is No. 1 on the list of the country's hardest-drinking cities.

Forbes based its story on the Centers for Disease Control and Prevention's 2007 Behavioral Risk Factor Surveillance System Survey, assessing what citizens reported about their drinking habits.

An estimated two-thirds of Austin residents have a least one drink per month, the study showed. That's easily more than half a million drinks.

The study put Milwaukee in second place and San Francisco in third.

Crane safety looms as issue here

News of collapsing cranes and related accidents in other cities has made Austin want to do more to ensure safety of workers and bystanders.

Capital city visitors find the "national bird of Texas"

or the heavy construction crane, easy to spot these days. They perch on or next to new high rise buildings that have popped in the downtown area.

City Manager Marc Ott is studying crane inspection processes and procedures used by other cities and will report his findings to the city council soon.

State executes 2 foreign nationals

The state of Texas executed convicted murderers Jose Medellin, 31, of Mexico on Aug. 5, and Heliberto Chi, 29, of Honduras on Aug. 7.

The Medellin execution prompted national and international concern because the Texas judiciary failed to inform Medellin of his right to consular access and assistance during trial. The failure reportedly violated the Vienna Convention, leaving to speculation what might happen to Americans arrested in foreign countries.

Goal: Cleaner air on school buses

The Texas Commission on Environmental Quality and the Texas Parent Teacher Association announced Aug. 7 that they will work together to distribute funding to protect school children from harmful particulate matter by retrofitting diesel burning school buses.

SIGN UP FOR A FREE SCOOTER
One Scooter Given Away Each Month
Toll Free **800-606-9860**
Med Care MEDICAL SUPPLY
www.medcaremedicalsupply.com

Med Care MEDICAL SUPPLY
Ask us if you qualify for a **POWER CHAIR** at little or no cost to you.
In most cases, Medicare, Medicaid & Insurance will cover 100% of the cost for your Power Chair.
Toll Free **800-606-9860**
www.medcaremedicalsupply.com

PAID CDL TRAINING! YOUR FUTURE BEGINS HERE
NO EXPERIENCE NEEDED!
Stevens Transport, the premier refrigerated carrier in the US, sponsors the total cost of your CDL training! In 17 short days you will earn your CDL and begin your paid on-the-job training! Earn \$40K first year and up to \$150K fifth year! Excellent benefits and 401K!
For more information, call **800-333-8595**
www.becomeadrivers.com

Wolf Creek Heritage Museum
Museum Hours: Monday thru Friday 10 a.m. to 4 p.m., Sunday 2 to 4 p.m. Special hours upon request.
Museum Information: 13310 Hwy 305, Box 5, Lipscomb TX 79056; telephone: 806-852-2123; email: wolfcrk@amaonline.com; website: www.wolfcreekheritagemuseum.com

FAMOUS FADS

and uncomfortable

ACROSS

- *It was trendy to post this in the early 1900s
- "To and ___"
- *Inanimate pet
- Axillary
- 3-point shot
- Short for raccoons
- A.K.A. "The Biggest Little City In The World"
- Alleviate
- Flooded
- *Aerobic fad
- Coarse diamonds
- Between rain and snow
- Short for horizontal
- Craves in Ten Commandments
- *Not your father's stuffed toy, released in '05
- Exclamation of surprise
- Writ of ___ corpus
- Fourth largest Great Lake
- *Disco's "Village People" lauded this "Man"
- Singer Winehouse
- Before taxes
- German Mrs.
- Maltreater
- After taxes
- Of yellow hue
- Informal address to someone's wife
- Said twice to the captain
- Porch
- It's typically dull

DOWN

- Psychologist Jung
- Toward the lee
- Phoned
- Snooze
- Around a picture
- Set to zero
- ___ and terminator
- Colleague
- Gray-haired
- Of the present month
- Religious Wednesday
- Know for her work in Calcutta
- Skewered meat
- Poetic although
- He is
- Comfortable
- Chicago's ORD
- Singing part
- Means
- Actor Jeremy
- One born to Japanese immigrants
- Outermost part of citrus fruit rind, pl.
- *Beanie what?
- Ostrich-like bird
- *Going around

These games are brought to you by the Hansford County Reporter-Statesman

since about the '50s
Widower's feelings
"Shock and ___"
Expresses emotion
Plural of #7 Down
Plant reproductive structures

48. Single-mast vessel
49. Sour-tasting
50. Gorillas and orangutans
51. Andean people's chew
52. *Shoulder helpers

53. *Kept as a pet in the 1970s
54. Mucky or muddy
55. Turn sharply
56. Romantic destination

CROSSWORD

1	2	3	4	5	6	7	8	9	10	11
12				13				14		
15				16				17		
18				19				20		
23	24	25			26			27	28	29
30				31	32	33		34		
35				36		37		38		
39				40				41		42
43				44				45		46
47					48	49				
50	51				52			53	54	55
56					57			58		
59					60			61		
62					63			64		

PRESENTED BY
VolunteerMatch.org
Where volunteering begins.
© 2008, StatePoint Media, Inc. answer on classified page

Industrial or Toxic CANCER EXPERIENCE COUNTS
Lawyers with over 85 years combined expertise.
Ryan A. Krebs, M.D., J.D. Doctor-Lawyer in Full-time Law Practice
Richard A. Dodd, L.L.C.
Timothy R. Cappolino, P.C.
Board Certified Personal Injury Trial Law and Civil Trial Law by the Texas Board of Legal Specialization
NO FEE FOR FIRST VISIT
CAMERON, TEXAS
1-888-MESO-FIRM
(1-888-637-6347)
www.AsbestosLaw.com

SUDOKU
PRESENTED BY
VolunteerMatch.org
Where volunteering begins.

	5	2				1				
6					2					
			1	4		6			7	
3	2				8				6	
	6	4						9	8	
	8				9				1	3
	4		9			7	8			
					1					4
				5				3	9	

© 2008, StatePoint Media, Inc. answer on classified page
Fill in the blank squares in the grid, making sure that every row, column and 3-by-3 box includes all digits 1 through 9.

The Hansford County Reporter-Statesman
213 Main Street • Spearman, TX 79081
Phone - (806) 659-3434 • Fax - (806) 398-9080
www.spearmanreporter.com
reporter@spearmanreporter.com
cathysmith@valomet.com
Mon.-Thurs. 9 a.m.-12 p.m., Mon.-Wed. & 1-5 p.m.
Closed Thurs. afternoon and all day Fri., Sat. & Sun.

Gary Smith - Publisher Catherine Smith - Editor
Contributing Writers: Dorothy Hudson, Jim Derington, Merry Sparks, Cecil Biggers
Contributing Photographer: Charlie Johnson

Subscription Rates
In Hansford County - \$30.00 • Out of County - \$40.00

The Hansford County Reporter-Statesman (USPS 529660) is published weekly in Spearman, TX. Periodical postage paid in Spearman, TX. POSTMASTER: Send address changes to: The Hansford County Reporter-Statesman, 213 Main Street, Spearman, TX 79081.

Publication Policy
The deadline to submit news and advertising to The Hansford County Reporter-Statesman is Monday at 5 p.m. Items submitted after the deadline will be published at a later date, as time and space permit. Publication of all items is at the discretion of the editor.

Advertising
Open Display rates are \$4.00 per column inch. Classified Ads are \$6 for the first 25 words and 10¢ per word for each additional word. (Additional charge for boxed classifieds.) There is a \$1 charge per week if billed.

Member of
Gruver Chamber of Commerce
Spearman Chamber of Commerce
Texas Press Association and Panhandle Press Association

TPA **TEXAS PRESS ASSOCIATION** AWARD WINNER

Happy Birthday!

Editor's Note: This Happy Birthday list is run as a public service by the Hansford County Reporter-Statesman. We apologize if any names are misspelled. If you know of a name that needs to be changed, added or deleted, please call 659-3434.

Thank you, Catherine

August 14
Birthday - Leslie Latta, Jimmy Nicholson, Mike Pack
Anniversary - M/M Monty Lusby

August 15
Birthday - Kelly Armes, Mary Jane Henson, Ryan Winger, Buddy Gaitner, Cole Umphress, Sara Butt, Vanessa Ortega, Dub Womble, John Booth
Anniversary - M/M Billy Baker, M/M David Hall, M/M Buddy Murrell, M/M Billy Logsdon Jr., M/M James Nicholson

August 16
Birthday - Corky Chapman, Ed Fry, Ronny Womble, Wayne Burchard, Ben Dunaway, Sondra Younger, Felix Sandaval, Tyce Hergert, Teresa Cook, Sharon Ross, Jason Villines, Lillie Love, Kathy Love, Nicholas Vinson, Ruben Gomez, Donetta Greene, Carlos Hernandez, Alexander Davis
Anniversary - M/M Bill Sparks

August 17
Birthday - Christy Brown, Guy Paul Hindergart, Allison Reid, Dean Sparks, Dottie Beedy, Delinda McLaughlin, Halee Rice, Bo Besinger, Kimberly Boyd
Anniversary - Betty & Dub Womble, M/M Danny Jackson, M/M Don Allen, M/M Wayne Ware, Kitty & Frank Edwards, David & Kim Swink

August 18
Birthday - Brenda Dahl, Carla Johnson, Heather Murrell, Jack Weldon, Tina Wilmeth, Jerry Beth Prachar, Tammy Welch, Bob Cook, Robbin Keetch, Pat Miller, Jeanie Bennett, Glen Ward, Andrew Correll, Janet Mayo
Anniversary - M/M David Link, M/M Dennis Baker, M/M Charles Deakin

August 19
Birthday - Diana Bradshaw, Buddy Murrell, Kenton Odum, Linda Tidwell, Carey Bridges, Perry Dixon, Mary Lou Mathews, Chris Trout, Lisa Collins, Teddy Lynn Whitefield, Melissa Harvey, Joshua Miller, Jordan Fisher, Lenny Pecha
Anniversary - M/M Kelly Smith, M/M Larry Hicks, M/M Jim Bartimus

August 20
Birthday - David Bergin, Joyce Messer, Joyce Lackey, Irene Snider, Tony Hart, Shelley Edenborough, Joe Olivarez, Derek Irlbeck, Kathy Lewis

Jodi Hight
Anniversary - M/M Mike Grotegut, M/M Les Barkley, M/M Tommy Russell, M/M Larry Babbs

August 21
Birthday - Lou Garrett, Lauren Hoel, Michael Lane Whitefield, Linda Lawson, Carolyn Mauldin, Brandon Babitzke, Joshua Bynum, Rick Harvey, Coy H. Kelly Jr, Shane Hill
Anniversary - M/M Dwayne Marrs

August 22
Birthday - Amber Roberts, Autumn Roberts, Tony Hester, Michelle Davis, Tuesday Reed, Jonell Sheets, Roger Brown, Marge Papay, John Michael Sterling, Phil Garza, Kathrine Tope, Janie Perez, Garrett Griffin, Brian Robinson, Brett Winegarner, Janie Reza, Kay Snider
Anniversary - M/M Silva, Kenneth & Lisa Brown, M/M Pat Jackson

August 23
Birthday - Ann Dorman, Reagan Baker, Eddie Reed, Donnie Mitchell, Sara Blackburn, Ralph Blodgett, Bill Jack Pittman, Kathy Lewis, Miriam Mendoza
Anniversary - M/M Billy DeArmond, M/M Chris Johnson, M/M Jimmie Vernon

August 24
Birthday - Frances Atwood, Laci Fitzgerald, Sarah Van Buskirk, Rosio Rosales, Charlie West, Claudine Clark, Melissa Kay McLain, Lila West, Scott Houghton, Willie Lee Wilkerson, LeRoy Farris, Clayton Wilkerson, Charlie West, Travis Boyd
Anniversary - M/M Terry Austin, M/M Dwayne Mitchell, M/M Randy Brown

August 25
Birthday - Carol Ross, Kathleen Sutton, Connie Sue Wooley, Kathy Yancey, Linda Young, Courtney Roach, Kathrine Pipkin, Gay Bowen, Michael Janzen, Katie Miesner
Anniversary - M/M Butch Lasater, M/M Roy Don Gammon

August 26
Birthday - Wayne Kruse, Debbie Davis, Chayci Dominguez, Mike Cudd, David Archer, Juanita Tucker, Mary Thompson, Kimberly Slater, Ashley Patterson
Anniversary - M/M Eddie Clemmons, M/M Vernon Morris

August 27
Birthday - Amy Grubbs, Brian Hoel, Pat Ochoa, June Jackson, Donald Rhea, Gregg Weaver, Chad Davis, Patricia Bevera, Virginio Ortega Jr., J. T. Sanders, Bertha Watts, Gabriel Moreno, Krystal Vela, Christopher Abernathy, Cassidy Odegaard, Dara Faries
Anniversary - Jim & Pamela Morrison, M/M Jerry Bowling

Words from Faith & Grace



by Cecil R. Biggers, Lutheran Lay Minister

We ponder the boundaries of God's grace as we study Isaiah 56:1-6, Psalm 67, Romans 11:1-2a, 29-32, and Matthew 15: 21-28. As the Jews returned from captivity in Babylon, an attitude arose among the people that all things foreign must be removed so that God will love his people. Isaiah turns this upon its head with, "Thus says the Lord: maintain justice, and do what is right, for soon my salvation will come, and my deliverance be revealed". The people, who thought they had already been delivered, pondered this saying. Isaiah tells that the outcasts of Israel (for example eunuchs) and others (for example foreigners) will be gathered to the Lord's Holy Mountain. (Note this "word of the Lord" overturns the Lord's prior command in the Law that no foreigner or person with "crushed testicles" could take part in the temple worship.) The Psalmist sings a hymn of praise to God asking God to be gracious and bless "us", included in the "us" are "all peoples". The Psalmist recognizes God as God of all the nations; a God who judges with equity and guides all nations. Even in the Old Testament, there is no boundary to God's grace. Grace is available for all who believe.

Paul recognizes that God is orchestrating human history. By trying to reconcile God's love for the Jews with their rejection of Jesus as Messiah. Paul concludes that his people by God's will are ignoring the Truth so that the gentiles may be brought to faith. Paul believes that in time God will bring the remnant of the Jews to faith in Jesus Christ. In this way, both the Children of the Promise, the Jews, and the Gentiles, will have come to righteousness by faith and not by self-effort in keeping the law. God keeps his promises, but our relationship with God is an individual relationship.

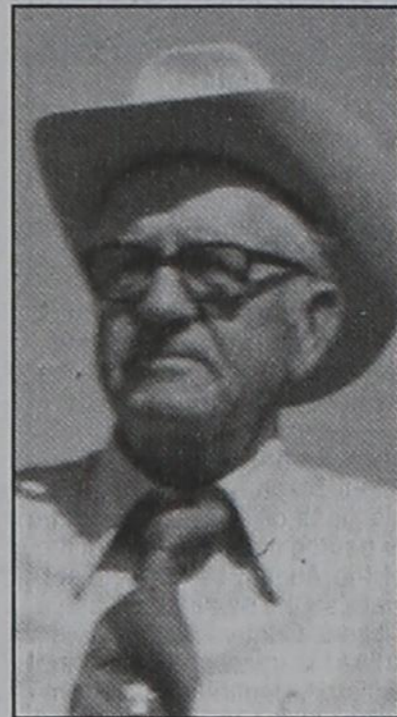
Jesus in an effort to spend time with his disciples, leaves Jewish territory and enters into Tyre and Sidon. Jesus encounters a Canaanite woman who begs him to heal her daughter. Jesus seemingly ignores her and she pleads with the disciples, who because of her persistence, ask Jesus to send her away.

Jesus tells her that he was only sent to the lost sheep of Israel. She repeats her request. Jesus replies that it is not proper to give the children's food to the dogs. She persistently replies, "Yes, Lord, yet even the dogs eat the crumbs that fall from their master's table." Jesus finds her to have great faith, and heals her daughter. Boundaries. Jesus has left the boundary of Palestine. The Canaanite woman has left the boundary of the hatred of her people for the Jews and begs rabbi Jesus for assistance. We see that there are no boundaries to the grace of God.

May the Holy Spirit open the boundaries of your heart that you may receive the grace of God.

Our Sympathy

J.C. HARRIS



GRUVER - J.C. Harris was born August 12, 1911 in Amarillo, TX. He passed from this life, while a lifelong resident of Gruver, TX, at the age of 96, one day short of 97.

Memorial services will be held at the Gruver Methodist Church on Thursday, August 14, 2008, at 2:00 pm. Burial will be at Gruver Cemetery, where JC will lay to rest in the lot next to his former wife. Funeral arrangements are under the direction of Boxwell Brothers Funeral Home.

J.C.'s father, W.L. Harris, came to Texas as a young boy from Henderson County, Tennessee, in 1888 with nine of his brothers and sisters. The majority of the children settled in the panhandle of Texas.

At the age of two, J.C., along with his mother and father, came to Amarillo to Hansford County in a covered wagon. J.C. was an only child and has spent his entire life in the Hansford County.

He started his education in a one-room country schoolhouse getting to and from school on horse-back. At the beginning of his senior year, a school opened in Gruver. He was the only student in his class of 1930 and the first graduate of Gruver High School and in typical J.C. style claimed the title of Valedictorian.

JC met his wife, Willie Brooks, while she was working at a grocery store in Gruver. They married in 1934 and were married for 48 years.

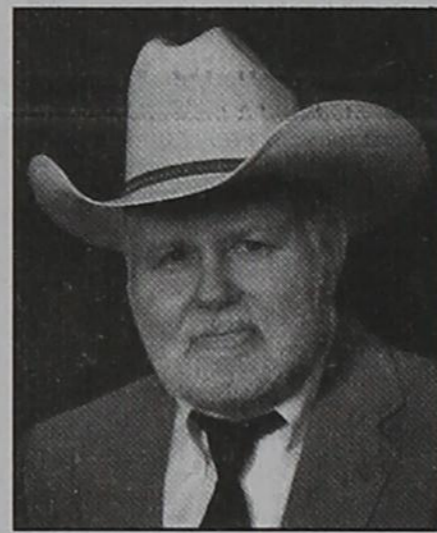
JC wore many different hats and worked various jobs to help his family survive. He was primarily a farmer and involved in the cattle business. JC also owned an Oldsmobile dealership and grain elevator. He helped start and was one of the founders of the Gruver Bank and was Mayor for a period of 12 years. JC was very active in the Gruver Methodist Church and local civic offices. In addition to all of this, JC flew his own airplane and for years he has been active on a daily basis in the stock market even up to days of his death. JC is known for his energetic, positive, and youthful attitude as well as his spirited determination.

JC said that he had been down quite a few roads and a lot of them weren't paved. Such as, after his 70th birthday, J.C. had each leg broken at different times snow skiing, separated his shoulder while roller skating, and broke his back at the age of 85 when the saddle turned on a horse and whipped him to the frozen ground. After two hip replacements in his 90's, beating prostate cancer, and having a pace maker put in, he explained that his life was very blessed.

JC is survived by his only son, Billy Bob Harris, special friend Vickie Wise, 2 step children Laddie Cluck and Glenda Cox, 2 nephews, 3 nieces, and a host of friends.

In lieu of flowers, the family suggests memorials be made to the Faith Promise Missions Fund of Gruver Methodist Church at Box 977, Gruver, TX 79040.

DWAYNE LEIGH SMITH



PAMPA - Dwayne Leigh Smith, 67, died Saturday, June 21, 2008 in Pampa.

At Mr. Smith's request, his body was donated to Texas Tech School of Medicine. Memorial services will be held at 1:30 p.m. Saturday, August 16, 2008, at the First United Methodist Church Chapel, with Rev. Jeff Taylor, pastor, officiating. Arrangements are by Carmichael-Whately Funeral Directors.

MONUMENTS

Boxwell Brothers Funeral Home

519 Evans • Spearman
659-3802

Dear friends,
When you buy a monument from us we make sure it is exactly what you want at a price you can afford. If it is not right, we will make it right. And you will not have to search the countryside to find us. We are here when you have a need.

Sincerely,
Bob Boxwell

Host an Exchange Student Today!

Make a lifelong friend from abroad.

Enrich your family with another culture. Now you can host a high school exchange student (boy or girl) from France, Germany, Scandinavia, Spain, Australia, Japan, Brazil, Italy or other countries. Single parents, as well as couples with or without children, may host.

Contact us for more information or to select your student today.

Karen at 1-800-473-0696 (Toll Free)
www.asse.com/host or email us at hostinfo@asse.com

Anna from Germany, 16 yrs. Likes to play tennis, swim, loves to dance. Anna hopes to play American football and learn American slang while in the USA.

Founded in 1976 ASSE International Student Exchange Program is a Non-Profit, Public Benefit Organization.

Replenish the seed of faith through . . .

DAILY BIBLE READING, PRAYER & REGULAR CHURCH ATTENDANCE

Spearman Apostolic Faith Church 822 S. Dressen • 659-2870 Sunday School: 10 a.m. Worship Service: 11 a.m. Sun. Eve. 6 p.m. Wed. Prayer Mtg: 7 p.m. Pastor - Roland Haney	Sacred Heart Catholic Church 901 Roland • 659-2792 Sat. Night Mass: 5:30 p.m. Sun. Mass: 9 a.m. - English Sun. Mass: 11:30 - Spanish 1:30 p.m. - Gruver - Christo Rendontor Mass - Spanish Rev. Guillermo Morales	Primera Mision Bautista 502 E. 7th • 659-3991 Sunday School: 9:45 a.m. Worship: 11 a.m. Evening: 6 p.m. Wed. Prayer Meeting: 7 p.m. Thurs. Visitation: 7 p.m. Pastor Joe Garcia Jr.	Gruver United Methodist Broadway & Garrett 733-2651 Sunday School: 9:45 a.m. Worship: 8:30 & 10:50 a.m. Eve. Worship & UMY: 6 p.m. Pastor - George Price
First Assembly of God 401 N. Bernice • 659-2295 Sunday School: 9:30 a.m. Worship: 10:35 a.m. Kid's Church: 10:35 a.m. Evening Worship: 6 p.m. Wed. Worship: 7 p.m. Wed. Youth: 7 Pastor - Bob Elder	First United Methodist 407 S. Haney • 659-5503 Sunday School: 9:45 a.m. Worship: 8:30 & 11 a.m. Jr. High Youth: 5 p.m. Sunday High School: 6 p.m. Sunday Kids Club: 3 p.m. Wed. Pastor - Neely Landrum	El Aposento Alto U.P.C.I. 1105 S. Roland Domingos: Escuela-Domical - 10 a.m. Culto Evangelistico - 7 p.m. Jueves: Oracion - 8 p.m. Mier: Estudio Biblico - 7 p.m. Pastor - A.G. Martell (806) 659-2153	Spanish Cristo Redentor Church Sunday Mass: 1:30 p.m. Friday Evening Mass Summer - 8:00 p.m. Fall/Winter - 7:30 p.m.
First Christian Church (Disciples of Christ) 29 S. Bernice • 659-2036 Sunday School: 9:45 a.m. Worship: 10:50 a.m. Minister -	Grace Presbyterian Church (Worships with Faith Lutheran Church) 1101 Bernice • 659-2033 Pastor - Beverly Cook Faith Lutheran Church (ELCA) 1101 Bernice • 659-2252 Sunday School: 9:45 a.m. Worship: 11 a.m. (Worships with Grace Presbyterian Church) Pastor - Beverly Cook	Gruver First Baptist Church 402 E. Broadway • 733-2411 Sunday School: 9:45 a.m. Worship: 10:50 a.m. Disciple Training: 6 p.m. Sunday Prayer Meeting: 7:30 p.m. Wednesday Pastor - Scott Curry	Oslo Oslo Lutheran Church (ELCA) 6 Miles West & 12 Miles North of Gruver 339-7646 Sunday School: 9:45 a.m. Worship: 11 a.m. Pastor - Arlen Lloyd
First Baptist Church 123 N. Bernice • 659-5557 Sunday School: 9:45 a.m. Worship: 11 a.m. Evening Worship: 7 p.m. Men's Bible Study - Wed. 7 a.m. Children's Choir - Wed. 6 p.m. Adult Choir - Wed. 7 p.m. Wed. Bible Study: 7 p.m. Pastor - Jim Medley	Union Church 31 S. Endicott • 659-2644 Sunday School: 10:00 a.m. Worship: 11:00 a.m. Bible Study: 7 p.m. Wed. Youth Service: 6 p.m. Wed. Pastor -	Church of Christ 209 King • 733-2760 Sunday School: 9:30 a.m. Worship: 10:20 a.m. Evening Worship: 6 p.m. Wed. Worship: 7:00 p.m. Minister - Gaylord Cook	Morse Morse Baptist Church 733-2757 Pastor - Mike Martin
Church of Christ 121 S. Haney • 659-3244 Sunday Bible Class: 9:45 a.m. Worship: 10:30 a.m. Evening Worship: 6 p.m. Bible Study Wed.: 7:30 p.m.	Fellowship Baptist 1102 S. Archer • 659-2783 Sunday School: 10 a.m. Worship: 11 a.m. Sun. Evening Worship: 6 p.m. Youth/Adult Service: 7:30 Wed. Pastor - James Washburn	First Christian Church 510 King • 733-2960 Sunday School: 10:00 a.m. Sunday Worship: 11 a.m. Youth: 7:30, Sunday Adult Bible Study: 7:30, Sun. Wed. Bible Study: 8:00 p.m. Pastor - Gary Gumfory	He has showed you, O man, what is good. And what does the LORD require of you? To act justly and to love mercy and to walk humbly with your God. Micah 6:8

This feature is made possible through the sponsorship of these civic minded businesses.

STOP LEG CRAMPS BEFORE THEY STOP YOU.

Calcet's triple calcium formula is designed to help stop low calcium leg cramps. Just ask your pharmacist.

Mission PHARMACEUTICAL
CAL-09901 REV 09/06 © 2006 Mission Pharmaceutical Company. All rights reserved.

LET'S TALK COLORADO

THE ONLY THING BETTER THAN A TRIP TO COLORADO IS A FREE TRIP TO COLORADO.

Let's talk excitement. Let's talk adventure. Let's talk Colorado.
Enter today for your chance to win 1 of 5 amazing Colorado vacations at COLORADO.COM.

FREE DIRECTV 4 ROOM SYSTEM!

FREE 4 MONTHS ALL 265+ CHANNELS!
Includes HBO, Cinemax, Showtime, Starz, Sports... Everything!
(Ends Soon, Ask How)
FREE DVR/HD!
Pkgs. start only \$29.99!
No Start up costs!
We're Local Installers!

NFL Sunday Ticket is Here!!!

Toll Free 800-214-7110

Deakin
ELECTRIC
OILFIELD • RESIDENTIAL • COMMERCIAL
321 S. MAIN • SPEARMAN
1-800-999-1506 Chris Deakin
806) 659-5016 President

Bartlett's Lumber & Hardware
105 W. Broadway • Gruver, Texas
(806) 733-2404

BERRY CLEANERS
Ann & Vernon Pipkin - Owners
Phone 659-3122 • P.O. Box 1017
207 Main St. • Spearman, TX

MORSE Implement & Auto Supply
"Join us in church"
Tom Dortch 733-2668
Box 89 • Morse, TX 79062

PRAIRIE MOTORS INC.
Hwy. 207 South • P.O. Box 430
Spearman, TX 79081 • (806) 659-2541
www.prairiemotors.com

MurMur's Cafe
100 Roland St
Spearman, TX.
659-3580

Hansford County Reporter-Statesman
"Proudly Serving Hansford County Since 1907"
(806) 659-3434
310 Barkley • Spearman, TX

INTERSTATE BANK, sss
www.interstatebank.net
322 Main • P.O. Box 146
Spearman, TX • 659-2559

HYI

FOR YOUR INFORMATION

Wheatheart Wheat Conference To Be Held

The Texas AgriLife Extension offices in Ochiltree, Hansford, Hutchinson, Lipscomb and Hemphill counties are sponsoring the 10th annual Wheatheart Wheat Conference on Thursday, August 14, 2008. The conference will be held at the Ochiltree County Expo Center in Perryton. Registration is at 8:00 am and programs begin at 8:30 am. All area wheat producers are invited to hear extension and industry specialists cover a wide range of topics related to wheat production and marketing. Plus, 5 CEU's will be provided for all attending with a pesticide applicator license. Lunch will be provided and there is no charge to attend the meeting. For more information about the conference you may contact the Texas AgriLife Extension in Ochiltree County at 806-435-4501.

Infection Prevention Topic of August Senior Seminar

West Nile Virus, "superbug" Methicillin-resistant Staph Aureus, shingles, flu and pneumonia are just a few of the infections or illnesses that can seriously affect senior citizens. How an older person can help prevent the onset of such diseases will be the topic of the August senior seminar. Entitled "Infection Prevention—It's in Your Hands", the seminar will begin at 11 a.m. Aug. 14 at the Amarillo Senior Citizens Center, 1217 S. Tyler, Room 115. Ona Montgomery, nationally certified in infection control and responsible for infection control at the Amarillo VA Health Care System, will review some key principles to help seniors stay healthy and avoid infections. The seminars are open to the public free of charge. For more information, contact AgriLife Extension - Potter County at 373-0713. Door prizes will be donated by Scott's Flowers. Senior Seminars are sponsored by the Potter Coalition on Aging and Amarillo Senior Citizens' Association.

Gruver Elementary - Meet the Teacher

Gruver Elementary will hold a Meet the Teacher event at 9:30 am. on Friday, August 22, 2008, in the Gruver Auditorium. We look forward to seeing parents and students at this time to kick off this new year.

Hansford County 4-H Awards Banquet

The Hansford County 4-H Awards Banquet will be held on Sunday, August 24, 2008 at 12:30 p.m. in the Spearman Church of Christ Fellowship Hall. Those planning to attend should RSVP by Thursday, August 21st by calling 659-4130 or 733-2901.

Hansford County Soccer Sign-ups

Hansford County Soccer Sign-ups will be held on Tuesday, August 19th. Players may register in Gruver from 5:30-7:30 p.m. at Gruver Elementary, or in Spearman from 6:00-8:00 p.m. at the Hungry Cowboy. For more information, Brandi Puentes at 659-2462 or Rebecca Mathews at 733-2783. A free coach and referee clinic will be held at the Spearman Church of Christ on August 26th & 28th at 7:00 p.m. For more information, or to register for the clinic, contact Abby Pipkin at 330-1119.

Women of Victory Women's Conference

Women of Victory will celebrate their 16th annual women's conference August 21st, 22nd and 23rd at The Victory Center Church, 5th and Quinn, in Guymon, Ok. This year's theme is "Blessed & Highly Favored" with special guest speakers Rev. Nancy James of Triumph Ministries, Karen Jensen, instructor at Rhema Bible Training Center, Margaret Mendenhall, Co-Pastor Victory Center and Beth Elliott, praise and worship. Early Bird Registration fee by August 15th is \$30 and after the 15th the cost will be \$35. Free luncheon on Friday with paid registration. No nursery will be provided. To register or for more information, you may call Victory Center Church (580) 338-5616, fax (580) 338-2575, or e-mail victory@pts.net. (Attached are pictures from our flyer if you would like to use them.)

SAVE the DATE for the Pork Bowl!

The OPSU Football season gets underway Saturday, August 30, and the Oklahoma Pork Council has sponsored the Pork Bowl, offering all fans FREE admission! In addition, Seaboard is sponsoring the pre-game tailgate party and will provide pork burgers and pork on a stick. Tailgate party begins at 5 p.m. near the entrance to Carl Wooten Field. Kick-off is scheduled for 7 p.m., Aggies vs. Fort Lewis College. Plan now to come see your Aggies in Action!

S.T.A.R. Presents "Back in Control!" Parenting Workshop

STAR (Services-To-At-Risk Youth & Their Families) brings you... "Back in Control" Parenting Workshop on Saturday, September 6, 2008, from 8:45 a.m.-4:00 p.m. at the TPMHMR Children's Services Building, 1500 S. Taylor Street, Amarillo, Texas 79101. Participants must pre-register! Call 359-2005 CEUs available for LPCs & MSWs; General CEUs will also be available. (Must attend full class for certificate) There is no charge to attend, and seating is limited. No childcare is provided. STAR is a TDFPS funded program of TPMHMR.

Stationmaster's House Museum Doll Show

The Stationmasters House Museum is planning a Doll Show for late September or early October. If you have a collection or a doll you wish to display, please call Doris at 659-3008, Tuesday-Saturday, from 1-5 p.m., or Reba at 733-2786.

Thriftshop Policy

Hansford County Library has a policy barring children under 12 from the Thriftshop and the surrounding area outside. No strollers or buggies of any type are allowed in the Thriftshop. This policy is due to overcrowding in a small area and continuing discipline problems. Shoppers are asked to be considerate of the volunteers as well as other shoppers, and leave children under 12 at home.

Beware of FAFSA Web Scam

Seniors, senior parents, and parents of college students should use the web site www.fafsa.ed.gov when filling out their Free Application for Federal Student Aid (FAFSA) online. There is currently a website that has found an interesting way to get in the college-bound's pocket. Known as fafsa.com, the website charges a fee for submitting the application. There is no fee for submitting the fafsa form on the www.fafsa.ed.gov site.

Panhandle Crisis Center Outreach Office

Panhandle Crisis Center (PCC) has an Outreach Office and Resale Store at 306 Hancock, in Spearman. In case of emergencies, please continue to call the hotline, 1-800-753-5308. To schedule an appointment with a worker in Hansford County, please call 659-3391 to leave a message, or call the hotline number above. Panhandle Crisis Center serves victims of domestic violence and sexual assault. Please call for more information regarding PCC's services. Hours for the Resale Store in Spearman are: Monday, Tuesday, Thursday & Friday from 10 a.m.-5 p.m.

Crisis Center Needs Volunteers

The Panhandle Crisis Center is in need of volunteers to work at its donation center one to three hours, one day a week, sorting clothing and other donated items. The crisis center gives the items donated to the center to its clients free of charge. To volunteer, contact Janice at the crisis center, 435-5008.

You are invited to a 50th Wedding and Ministry Anniversary Reception honoring

Rev. Roland & Loretta Haney
on Sunday, August 17, 2008
from 1:30-4:00 p.m.
at The O'Loughlin Center
502 Brandt St Spearman



Golden Anniversary

Wayne A. and Myrtle A. Pearson Ware will celebrate their 50th wedding anniversary on Saturday, August 16, 2008 at the Spearman Church of Christ Fellowship Hall, 121 S. Haney, from 2-4 p.m.

Wayne was raised in Wellington, TX and Myrtle was raised in Perryton, TX. They were married in the Church of Christ in Perryton on August 17, 1958.

Wayne is a 1954 graduate of Wellington High School, and a 1961 graduate of Abilene Christian College. He is a farmer, truck driver and rural mail carrier.

Myrtle is a 1954 graduate of Perryton High School, and a 1958 graduate of Abilene Christian College. She is a housewife, bookkeeper at Equity Elevator and medical records at Hansford Manor.

The couple have three children, Denise Ware Breshears of Stinnett, TX; Brent Ware of Pasadena, CA; and Todd Ware of Spearman.

You are invited to a Bridal Shower honoring

Crystal Milburn
(bride-elect of Brandon Vanderburg)
on Saturday, August 16, 2008
from 2:00-3:30 p.m.
in the Clementine Bed & Breakfast
822 S. Evans Spearman

You are invited to a Bridal Shower honoring

Nicole Sander
(bride-elect of Paul Swanson)
on Saturday, August 23, 2008
from 2:00-3:30 p.m.
in the Clementine Bed & Breakfast
822 S. Evans Spearman

Celebrate

Gifts for all your celebrations!

Bridal Registry

- Crystal Milburn & Brandon Vanderburg - 8/16
- Shanda Graham & Doug Kerr - 8/23
- Nicole Sander & Paul Swanson - 8/23
- Sammie Stavlo & Wade Harkey - 9/6
- Nicole Ramon & Eric Neumeier - 9/13
- Jentry Edwards & Clinton Williams
- Alma Martinez & Andy McElhannon
- Jessica Adams & Kevin Black
- Racee Smith & Joshua Ivy

Baby Registry

- Bryn (Lowe) & Aaron Weller - 9/6
- Rose & John Harper - 9/6
- Radar & Betty Garcia

Celebrate

203 Main St. Spearman, TX
(806) 659-3350 1-800-663-8026



Couples Currently Registered

- Crystal Milburn & Brandon Vanderburg - 8/16
- Shanda Graham & Doug Kerr - 8/23
- Nicole Sander & Paul Swanson - 8/23
- Sammie Stavlo & Wade Harkey - 9/6
- Nicole Ramon & Eric Neumeier - 9/13
- Jennifer Ferrel & Jeff Coates
- Brooke Bevill & Andrew McMurry
- Audrey Winegarner & Braden Gibson
- Jentry Edwards & Clinton Williams
- Alma Martinez & Andy McElhannon
- Jessica Adams & Kevin Black
- Racee Smith & Josh Ivy

Baby Registry

- Aaron & Bryn (Lowe) Weller - 9/6
- Radar & Betty Garcia
- Dustin and Rowena May Parks

Gordon's 659-2141
314 Main Spearman



Palace Theatre

MOVIE SHOW TIMES
Friday-Thursday - 7 p.m.
Sunday - 2 p.m.
Closed Sunday Night

FRESH POPCORN & DRINKS!
PARTY ROOM & ARCADE
MOVIE RENTALS

Palace Theatre
210 Main Street
Canadian TX 79014
806-323-5133
www.palacetheatre.com

The Palace Theatre meets
Lucasfilm THX specifications for
site and sound quality.

Confident your computer is safe from viruses?

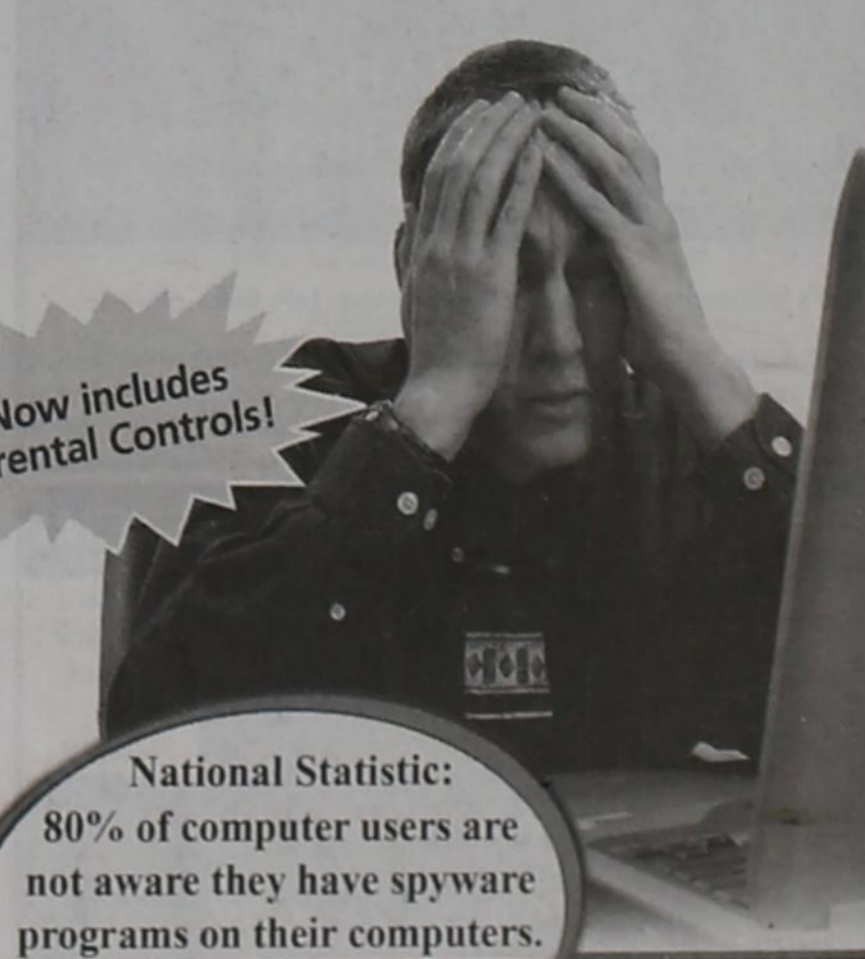
THINK again!



Get SecureIT Plus
Guaranteed computer protection

Now includes
Parental Controls!

Sign up today to get
3 months FREE!



National Statistic:
80% of computer users are
not aware they have spyware
programs on their computers.

Not available in all areas. Some restrictions apply.

Offer good through September 30, 2008

721 W 7th - Spearman 1-800-562-2556 www.ptci.net

Blanek, Williams Wed

Meghan Blanek and Kevin Williams were united in marriage on July 12, 2008 at the Angelo State University LeGrand Center in San Angelo, TX. Reverend James Mitchell officiated the ceremony.

Meghan is the daughter of Bill and Bethany Blanek of San Angelo. She is the granddaughter of Beth Wells of Sterling City, TX and Margaret Blanek of San Angelo, TX.

Kevin is the son of Burt and Lynell Williams of Spearman. He is the grandson of Dean Williams of Hamilton, TX and Dimple Jetton of Spearman.

The bride was given in marriage by her father, Bill Blanek.

Bridesmaids were Scarlett Blair of College Station, Kory Evenson of Dumas, Amanda Jo Harman of Lubbock and Ginger Moore of Lubbock, all friends of the bride.

The flower girl was Steeley Blanek of Glen Rose, TX, niece of the bride.

Groomsmen were Jason Belew of Irving, Kelly Cook of Liberal, KS, Aaron Preator of Goodwell, OK, all friends of the groom, and Josh Blanek of Glen Rose, TX, brother of the bride.

Scripture readers were Lynette Babcock, sister of the groom, and Stacy Sparks, cousin of the bride. Programs were handed out by Kaitlyn Babcock, niece of the groom, and Jordan and Devin Hemker, cousins of the groom.

Violin music was performed by The Concho Classics.

Meghan is a graduate of San Angelo Lake View High School. She has a BS in Animal Science and an MS in Animal Science, both from Texas Tech University. She works for CEV Multimedia.

Kevin is a graduate of Spearman High School. He has a BS in Ag Education, a MS in Ag Education, and a Ed.D in Ag Education, all from Texas Tech University. He is the Director of Agricultural Education at



Mr. & Mrs. Kevin Williams

Oklahoma Panhandle State University in Goodwell, OK.

A reception was held at the LeGrand Center following the wedding ceremony.

After a trip to Cancun, Mexico, the couple will make their home in Goodwell, OK.

First Annual Big Fun Run 5K Race and Family Fun Walk Benefits Big Brothers Big Sisters

The Wheatheart Satellite of Big Brothers Big Sisters of the Texas Panhandle will hold a 5K race and Family Fun Walk in conjunction with Perryton's Wheatheart Celebration on Saturday, August 23rd. All of the proceeds will benefit the local program.

The race, dubbed The First Annual Big Fun Run, will start at 8 am at Perryton High School; a one mile walk will begin at 8:30.

There will be five divisions for the race: 18 and under, 19-29, 30-39, 40-49 and 50 and over. Prizes will be awarded to male and female first and second place win-

ners in each division.

The deadline to pre-register is August 8th but registration will be available the morning of the event. The entry fee for individual runners is \$25; members of the Lone Star Runners Club or SWFTR pay only \$20. Individual walkers pay \$25. Entry fees include a t-shirt.

The 5K route will begin in front of the high school on Jefferson and follow a course up 9th Street, along several blocks of Main Street, down 19th Street with a detour on Eton and around Stark Park. The race continues on Grinnell in front of Wright Elementary and joins 19th Street again to pass Williams Intermediate School and concludes back at the high school. The community is encouraged to come out and cheer on the racers. The Family Fun Walker

Package is \$90 and includes four t-shirts. Pre-registration is required to guarantee youth size shirts. The route will follow the perimeter of the high school grounds. Some special fun is planned for these participants.

Additional shirts may be purchased at the event for \$15 each.

Event sponsors are Weatherford, Lemon Law Office and Caprock Supply.

The local Big Brothers Big Sisters' office serves Ochiltree and Hansford counties and the city of Booker. Over 110 children have been matched with caring mentors in school and community based programs this year. For more information about the program or to register call BBBS at 806-434-0016 or email bigsmagic@windstream.net for a registration form.

Thank you!

I want to express my heartfelt thanks and gratitude to my friends and neighbors for making my 100th birthday the best! I was really tickled to see everyone that attended the party and was astonished at the number of cards and birthday greetings I received also. This is a great community and I am blessed to have Spearman as my home. Thanks again to everyone!

Raye Gibson & family

Are You A Victim of Domestic Violence, Sexual Abuse or Physical, Emotional or Sexual Assault?

Call Toll Free Hotline
1-800-753-5308

Battering Intervention & Anger Management Available

Panhandle Crisis Center
Serving Hansford, Lipscomb & Ochiltree Counties
301 S. Ash • Perryton, TX
Memorials Accepted

Hansford County Circle of Friends To Host Membership Party

The Hansford County Circle of Friends will host a membership party in support of The Don & Sybil Harrington Cancer Center on August 23, 2008 at 7:00 p.m. The party will be held at the O'Loughlin Center at 502 South Brandt in Spearman, Texas. Come and join us for a great time for a great cause. The cost is \$20/single and \$35/couple.

This year the Hansford County Circle of Friends will also begin a new tradition as they hold the first Hansford County 5K Run/Walk to benefit the Don & Sybil Harrington Cancer Center on August 16, 2008. The run/walk will begin in the parking lot of the Gruver High School Stadium. If you are interested in participating and volunteering please contact Holly McLain (806) 733-2268 (hollymclain13@yahoo.com) or

Erika Stedje (806) 733-2509.

The Circle of Friends is a non-profit organization dedicated to helping cancer patients and their families in times of need. Through its affiliation with Harrington Cancer Center, the Circle of Friends develops and implements fund raising activities to provide financial assistance and patient care and support programs for those affected by cancer. The Circle of Friends also works with Harrington Cancer Center to provide cancer educational opportunities for people throughout the region. Examples of Circle of Friends support of Harrington Cancer Center patients includes:

- Two furnished apartments for out-of-town patients to use when going through treatment
- Pediatric Patient/Family Gatherings (a day at

Wonderland Park, Christmas Party, etc.)

- Supplies for weekly support groups

- Materials for chemotherapy classes, new patient books

- Refreshments for patients during treatment

- Assistance with patients' travel, insurance premiums, rent or mortgage payments, medication, nutritional supplements, utilities and breast prosthesis

We are currently looking for committee members to help with these two events. For more information on the Hansford County Circle of Friends or if you are interested in attending and/or volunteering to help with the event please contact Holly McLain (806) 733-2268 (hollymclain13@yahoo.com) or Erika Stedje (806) 733-2509.

Notice of Public Hearing on Tax Increase

The City of Spearman will hold two public hearings on a proposal to increase total tax revenues from properties on the tax roll in the preceding tax year by 11.58 percent (percentage by which proposed tax rate exceeds lower of rollback tax rate or effective tax rate calculated under Chapter 26, Tax Code). Your individual taxes may increase at a greater or lesser rate, or even decrease, depending on the change in the taxable value of your property in relation to the change in taxable value of all other property and the tax rate that is adopted.

The first public hearing will be held on August 26, 2008 at 7:00 AM at Spearman City Hall.

The second public hearing will be held on September 9, 2008 at 7:00 AM at Spearman City Hall.

The members of the governing body voted on the proposal to consider the tax increase as follows:

FOR:

Ron Antalek	Jon Garnett
Charles Elliott	Mike Schnell
Kathy Boyd	

AGAINST:
PRESENT and not voting:
ABSENT:

The average taxable value of a residence homestead in City of Spearman last year was \$32,342. Based on last year's tax rate of \$0.529900 per \$100 of taxable value, the amount of taxes imposed last year on the average home was \$171.38.

The average taxable value of a residence homestead in City of Spearman this year is \$36,829. If the governing body adopts the effective tax rate for this year of \$0.479460 per \$100 of taxable value, the amount of taxes imposed this year on the average home would be \$176.58

If the governing body adopts the proposed tax rate of \$0.535000 per \$100 of taxable value, the amount of taxes imposed this year on the average home would be \$197.04.

Members of the public are encouraged to attend the hearings and express their views.

STATE OF TEXAS

COUNTY OF HANSFORD

BUDGET HEARING

WHEREAS, the Board of Directors of Hansford County Hospital District has caused to be prepared an annual budget for the fiscal year beginning October 1, 2008, and ending September 30, 2009, Notice is hereby given that a public hearing on said proposed budget will be held on Wednesday, August 27, 2008, at 6:00 p.m. in the Activity Room of Hansford Manor, 707 Roland, Spearman, Hansford County, Texas.

Ginger Pittman
President / Board of Directors

COMPLIANCE ADVISORY

starting **Sept. 1, 2008,**
State Law Requires
that all homes built or remodeled in unincorporated areas or in cities without residential building inspections must be inspected at various construction stages by a fee inspector.

Texas Residential Construction Commission
Quality Construction for Texans

For more information go to
www.texasrcc.org - www.comisiondecasa.org
or call 877-651-TRCC.

HANSFORD COUNTY

JEWEL WARD

Jewel came with his family to a farm in Hansford County when he was 5 months old. He attended school at Spearman first, but when the new brick school was opened in Gruver in 1930, he enrolled there and graduated from high school in 1935. His next goal was to graduate from Texas Tech University and then become a doctor. The Depression and the Dust Bowl meant he would have to earn much of his way. By the time War was declared, he had completed three years at Texas Tech and was working in Amarillo at Walgreen's to earn money for the next year's schooling.

On February 10, 1942, Jewel was drafted into military service and sent to Fort Bliss, Texas. Eight days later, he was transferred to Company A, 83rd Infantry at Camp Roberts in California. In March, with very brief training, he was sent to Schofield Barracks in Oahu, Hawaii to be in Combat Service. Most of this early time was spent on guard duty on Ewa Beach.

Then there was a blackout of information as to Jewel's whereabouts. He had been transferred to the Service Company of the 35th Division as a mechanic. Later we found his 35th

Division was joined to the 25th Division, which was known as the Tropic Lightning Division. Its patch was in the form of a taro leaf with a jagged stroke of lightning in the middle.

On November 1, 1942, Jewel's unit was informed that they would be going to the South Pacific. Then they were given less than a month of intensive training in jungle and amphibious operations before they began joining convoys heading for Guadalcanal.

After Pearl Harbor the Japanese had seemingly become invincible as they overtook the land around the Pacific perimeter from Japan south to almost Australia. With their powerful navy and invasion of the Solomon Islands, they were trying to cut the route from California to Australia.

The landing on Guadalcanal beginning December 17, 1942, was the first attempt to reconquer the invaded country. Jewel's outfit took up the defense of the Henderson Airfield perimeter. In November of 1943 he was able to write about it.

His letter states, "was in combat one month--the longest days I've ever known; Old Mother Earth really felt good more than once and we didn't waste any time digging foxholes to sleep in."

One of the funny stories

Jewel told later was of a soldier at Guadalcanal who was sitting on a barrel saying that he wasn't afraid and wasn't going to dig a foxhole. Just then there was a blast that knocked the barrel out from under him. From then on he could dig a foxhole faster than anybody.

After the Guadalcanal campaign was over, Jewel and the 25th Division moved on to what was to become the New Georgia campaign and another bad time in the jungles.

Next came Vella La Vella. This landing wasn't as bad he wrote, "but a funny feeling to look up and see the dive bombers diving at you. Thank goodness they missed."

He also added, "The Japs were bombing and strafing us before we landed and then there was no let-up for 3 days and 3 nights. It seems like yesterday, the gun crews were super, and made one appreciate the good things of life."

After 11 months of terrible jungle warfare, something nice happened. The Division was sent to Auckland in New



Zealand for Rest and Relaxation during November and December. Jewel wrote of how wonderful the people were to them. All too soon, it was on to New Caledonia for training in preparation for the liberation of the Philippines.

During this training period Jewel was awarded the Expert Infantry Combat Badge in May of 1944. In August he was promoted to T/4 Technical Sergeant. A bright spot was visiting with Elmer Ayres of Gruver, the only person he knew from

home. Elmer was sent home soon after.

On January 11, 1945, the 25th Division came ashore to move to an assembly point on Lingayan Gulf of the Philippines. Then began a period of 165 days of continuous combat with the enemy. Finally, they were relieved and returned to a rest area.

Jewel wrote little of this period. He mentioned a truck driver giving each soldier a fresh egg, which they boiled and ate before bedtime--"best egg they'd had in a year!" A pig was bought from a farmer and then roasted on a piece of pipe. "This was very good eating." Most of their meals were K-rations.

Jewel left Luzon for home the day before World War II was officially declared over on September 2, 1945. He spent one week on Angel Island before going to Fort Sam Houston in San Antonio, Texas where he was discharged on September 21, 1945. He hitchhiked home.

Jewel spent 3 Christmases overseas and 3 years and 7 months in the army. His decorations and cita-

tions included the Asiatic-Pacific Campaign Medal with 3 bronze battle stars, the Philippine Liberation Medal with 1 bronze battle star, and a Good Conduct Medal.

Back home again, Jewel became a partner with his brother Autra Ward in the Ward Supply hardware store and in farming. In 1957 he sold his partnership in the store to Autra and bought the Ward family farm.

Jewel and Betsy Dahl married and raised their family southeast of Gruver. Their son J. W. and his wife Rhonda live in Gruver, and their daughter Ann and her husband Russell McClure live near Amarillo. Their daughter Karen died with leukemia at the age of five.

Jewel died January 5, 2001 after 52 years of marriage. His wife continues to live on the Ward family farm.

(This information comes from the letters that Jewel sent his Mom--42 letters in 1942, 36 in 1943, 40 in 1944, and 19 in 1945. Jewel did not talk about his army experience, except to mention something funny that had happened.)

Pictures and information for this feature may be submitted to the Reporter-Statesman (310 Barkley Street), mailed to Hansford Heroes, % Reporter-Statesman, 213 Main Street, Spearman TX 79081, emailed to reporter@spearmanreporter.com, or they may be given to Dorothy Hudson, 733-2562, 806 Cluck Avenue, Gruver TX 79040, or emailed to dhudson862@gruver.net.

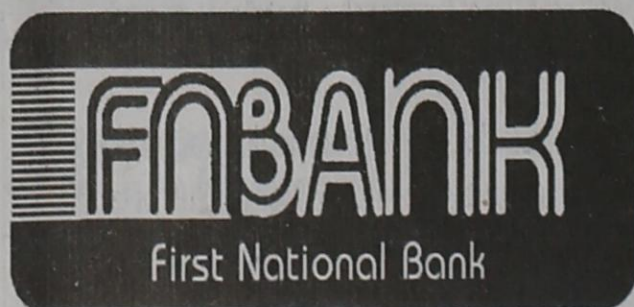
SUBPRIME LOANS?? NO WAY!! RISKY REAL ESTATE INVESTMENTS? NOPE! LOANS TO CREDIT WORTHY, LOCAL INDIVIDUALS, BUSINESSES AND AGRICULTURAL ENTERPRISES? YOU BET!

The problems of the Big West Coast and Wall Street Financial Institutions are not the problems of our local community banks. and certainly not problems of The First National Bank, of Spearman and Dumas.

- Our local economy is strong. Our Real Estate market is sound and our Bank is strong, profitable and ready to meet the legitimate financial needs of our area.
- We, of course, are Members of FDIC and no one has ever lost a penny of FDIC Insured deposits in community banks.
- If you are concerned with all the negative press about problems in the finance industry, please talk to us. We can help you understand the truth about community banks.

We will also be glad to show you how you can take full advantage of the FDIC Insurance.

Call or come by



First National Bank

Spearman, Texas 79081 Dumas, Texas 79029

806-659-5544

806-934-8455

800-583-4196

866-583-4196

Member FDIC

The Bank that "Always Puts You First!"



Hoochy Poochy Parlor



A true professional and award winning creative groomer, Carmon has earned numerous awards for her excellent work and demonstrated professional technique. She has served the Texas Panhandle for the past 37 years. Catering to the small to medium pampered pet, we always do our best. Please visit us for a free estimate on your pet care needs.

Hours: Mon.-Fri., 8 a.m. until done Saturday by appointment only

806-273-2724
806-674-5409

116 Madison
421 E. 10th St.
Borger, TX 79007
goingtothedogs@cablone.net

Professional Award
Winning Stylist

Carmon Baker



and Missy

"The Hoochy Poochy"



2008 Summer Clearance Sale

Sale Prices Good from August 15-23

NO SALES TAX ON PURCHASES MADE FRIDAY & SATURDAY, AUGUST 15 & 16

(Excludes jewelry, buckles, wallets, and any items selling for \$100 or more)

• 30% OFF •

Men & Boys Summer Clothing
Men Summer Pullover & Sport Shirts
(Company 81, Chaps, Tommy Hilfiger, Izod, Falcon Bay)
Men Shorts & Swim Suits
Men Summer Tallman Pullover & Sport Shirts
Men & Boy Western & Fashion Straw Hats
Boy Summer Clothing - Shirts & Shorts
(Company 81, Tommy Hilfiger, Levi, Union Bay)

Men Levi Jeans (550, 560, 501 STF) - \$29⁹⁵

20% OFF

Boy Cinch Shirts - 20X Shirts
Boy Jeans
(Levi, Wrangler, Cinch, 20X)

Store hours: Monday-Saturday, 9 a.m.-6 p.m.

30% OFF

Men & Boys
Adidas Shoes

Boy Fashion
Jeans

\$29⁹⁵

Men Fashion
Jeans

Come visit us at:
221 Main Street
Spearman, TX
(806) 659-3426

by Jim Derington

Out at the Lake



Jim Derington
Palo Duro River Authority
P.O. Box 99
Spearman, TX 79081
806-882-4401
pdra@dishmail.net

Lake Level--August 11, 2008--17.56 feet (-0.24)

Although the rain gauge at the Lake showed only .37 of an inch, Friday's rain helped the grass stay green. The bigger showers we heard about, such as east of Spearman and on the Stavlo Ranch north of the dam, didn't fall in our watershed.

Over the weekend there were 2 campers on the office side and 3 behind the dam.

Tent campers are still coming out, and fishermen are around day and night. There are some good catches. Most of the regulars are fishing on the bottom for catfish.

Saturday evening Kristle Scribner, PDRA secretary, and her husband Clay and their two children brought out Clay's parents, Gerald and Cindy Scribner for a fun evening. They all enjoyed seeing deer, raccoons, and

skunks, but the hit of the evening for the children were the fireflies.

Breaking and Entry at Old Hansford

Today I heard an exciting story: On Sunday afternoon residents of a house in Old Hansford were startled when their glass door was shattered by an intruder. They called the Sheriff's Office to send out a deputy. I could just picture the owner huddled

in a room with the door barred while she called for help on her cell phone and heard the replay, "Help is on the way." When the deputy arrived, he found a billy goat asleep under the kitchen table.

The true story as told to me by Mary Sue Adams bore little resemblance to the other. Mrs. Adams came home to her house in Old Hansford Sunday afternoon to find her glass back door had been smashed. She

could see some brown and white hairs on the glass but didn't think they were from her dog. As she stood on the porch calling her neighbor to see if she had seen anything strange going on, a brown and white billy goat sauntered out and made its way to its home.

Mrs. Adams suspects that the goat wandered into the neighborhood, noticed his reflection in the glass door, presumed that he was seeing a rival goat, and lowered his

head and slammed into the glass in an effort to demolish the interloper. Then he cased the house trying to find the enemy.

The goat's name is Timotel. Until recently he had been a companion of two dogs and contented himself chasing birds and doing other things that dogs do. Now that the dogs have left, Timotel has not stayed home as usual. And before long he may have a new address.

Long's Ben Franklin
303 N. Main • Stratford • 806-366-3522
New Hours for Final Week: Mon.-Thurs., 10 a.m.-6 p.m.; Fri. & Sat., 8 a.m.-6 p.m.
Your Hometown Variety, Craft & Dollar Store!

FINAL DAYS!

Last Day
Sat., August 16th

SALE

Early Birds!
Opening at 8 a.m. on
Friday & Saturday
for
**Tax-Free
Weekend**
& Final Discounts!

**ENTIRE
STORE
30%-80% Off!**
All sales final.

Ask about buying an
entire department
w/fixtures for
additional savings!
All Fixtures For Sale!
2" & 4" Hooks For Sale!

DON'T MISS OUT!! HURRY IN! STOCK UP NOW!!

SUMMER CLEARANCE SALE

Sale Starts Thursday, August 14th

Just In Time for
BACK TO SCHOOL

ROOM IT UP!
Backpacks & Organization Items
25% Off!

Stop in to see all the new items and check out our sale!

Gordon's DRUG

Where gift-giving is
effortless & FUN!
314 Main • Spearman • 806-659-2141

Have you been waiting for the perfect time to begin taking college courses? Well, that time is now!

Small Class Size! Quality Education!

REGISTRATION

for
Fall 2008 Classes:
THURSDAY, AUGUST 14th
from 10:00 A.M. to 1:00 P.M.
at the Allen Campus
(2314 S. Jefferson)

Affordable! Close to Home!

FPC
Frank Phillips College
Allen Campus
2314 S. Jefferson
Perryton, Texas 79070

FPC
Frank Phillips College
Allen Campus
2314 S. Jefferson
Perryton, Texas 79070

Download a schedule of classes from the
"Perryton Campus" page of our website: www.fpctx.edu.
Call (648-1450) or come by for more information and begin your higher education adventure today.

Frank Phillips College is an equal opportunity community college. 1h 6/08