

| INSIDE | | | |
|---------------------|----|----------------------|---|
| At the Movies | 2 | Spiritually Speaking | 6 |
| Among the Neighbors | 5 | Out at the Lake | 4 |
| Obituaries | 11 | For the Short of It | 8 |
| School Lunch Menus | 2 | Recycling Words | 6 |
| Extension News | 4 | A "Center" Piece | 6 |
| Museum Musings | 4 | City Lites | 4 |

Sports Schedules

Page 9&10

| WEATHER FOR WEEK OF 8-17 THRU 8-23 | | | | | | | |
|------------------------------------|----|----|--------|---------------------|----|----|--------|
| Day | Hi | Lo | Precip | Day | Hi | Lo | Precip |
| Thu | 93 | 69 | .00 | Mon | 95 | 67 | .00 |
| Fri | 94 | 68 | .00 | Tue | 94 | 66 | .00 |
| Sat | 89 | 66 | .00 | Wed | -- | 67 | .00 |
| Sun | 94 | 66 | .00 | Total Precipitation | | | 18.33 |

HANSFORD COUNTY LIBRARY
0120 MAIN ST.
SPEARMAN, TX 79081-2064
EXPIRES 04/15/1996 THANK YOU

The Hansford County Reporter-Statesman

Serving Hansford County Since 1907

Volume 87 • Issue 34

213 Main • Spearman, Texas 79081

Thursday • August 24, 1995

City of Spearman meets in session

The city of Spearman met in Regular Session in the Council Chambers of City Hall on August 15, 1995. Present for the meeting were: Mayor Burl Buchanan; and Aldermen, Charles Elliott, Steve Benton, Ed Garner, Don Reed, and Brian Gillispie. Among the staff present were: City Manager, Kelvin Knauft; City Secretary, Cheryl Gibson; Assistant to the City Manager, Chris Eppley; EMS Director, Michele Davis; and SVFD Representative, Randall Sauer. Visitors present were: Cindy Blackman, Tom Whitson, Buddy Hopper, Paul Moore, Ricky Rattan, Jeff Smith, and Monty Blackman.

At 7:30 p.m. Mayor Buchanan declared a quorum present and called the meeting to order, and then preceded to give the invocation and lead the Pledge of Allegiance to the Flag.

A motion was made by Garner to approve the minutes of previous meetings held on July 18 and August 7 as written; approve the monthly fire, ambulance, police, municipal court, animal control, solid waste, recycling, and sales tax reports for July; approve the

monthly bills payable in the amount of \$297,845.55 and the current cash position as presented; approve the revenue and expense report for July as presented; and the approve resolution #6-95 to participate in the "Main Street" program and designate the City Manager to coordinate all program activities. This motion was seconded by Reed and the motion unanimously carried.

Cindy Blackman, Chamber Executive, was present and stated that she had received word from Austin that the City of Spearman was in the top ten of five cities to be chosen to receive a grant and that the final decision should be made by October.

The meeting then moved on to the Regular Agenda. The Council first considered Ordinance #650, an ordinance approving services and establishing rates for electric service by Southwest Public Service Company.

Tom Whitson, SPS Representative, was present and stated that these rates are additional rate classes that are required by the Public Utility Commission. A motion was made by Benton and seconded

by Elliott to adopt Ordinance #650. The motion unanimously carried.

The Council next considered Ordinance #651, an ordinance approving the sale of Mission Cable to Classic Cable.

Jeff Smith, a representative from Mission Cable, and Ricky Rattan, a representative from Classic Cable, were present and answered questions. After discussion was held, a motion to approve Ordinance #651 was made by Garner and seconded by Elliott. The motion unanimously carried.

They then opened a Public Hearing at 7:46 p.m. concerning an amendment to specific zoned districts and amending the zoning ordinance.

Buddy Hopper, adjacent property owner, was present and stated that he had no problems with the zoning change with the proposed site restrictions. After discussion was held, the Mayor declared the public hearing closed at 7:50 p.m.

They next considered ordinance #652, an ordinance amending Chapter 14, Planning and Zoning, of the Spearman Municipal Code; amending the Zoning Code by amending certain district boundaries on the zoning map of the city, and providing for an effective date.

A motion was made by Elliott to adopt Ordinance #652 and was seconded by Garner. The motion unanimously carried. The ordinance will amend the district bound-

See CITY OF SPEARMAN, page 10

Spearman School Board meets

The Board of Trustees of the Spearman Independent School District met in Regular Session on August 14, 1995, at 7:00 p.m. at the High School.

Mr. Craig Schumann, President of the Board of Trustees, announced that a quorum was present and called the meeting to order.

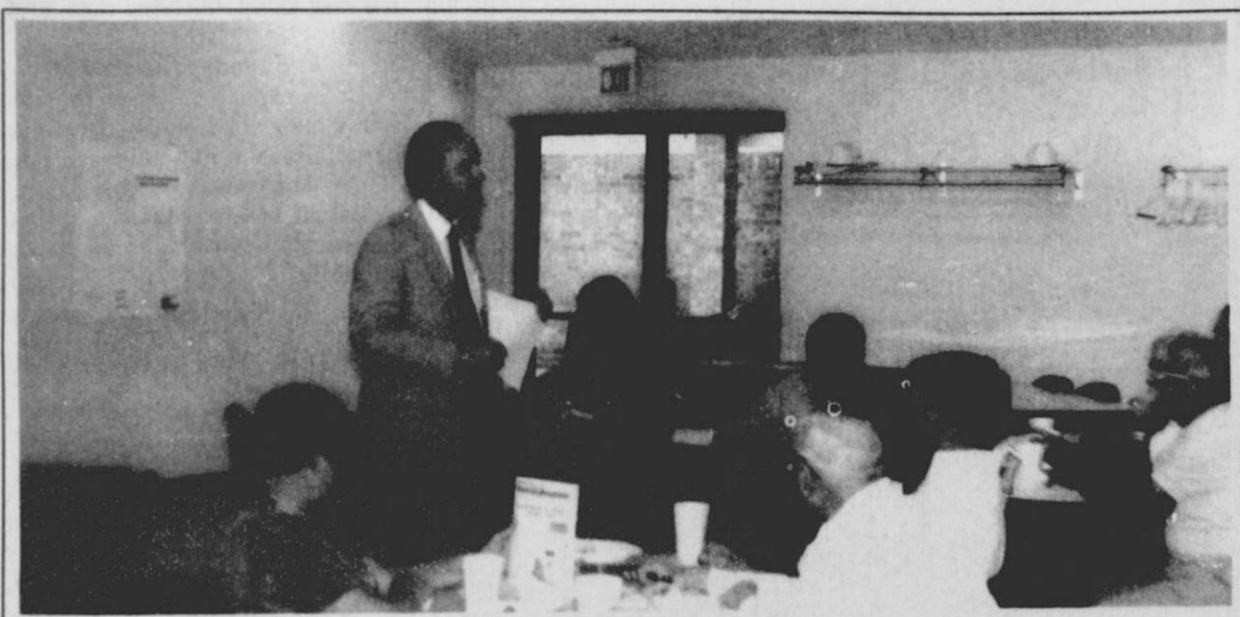
The Board first heard from Burl Buchanan and Renee Grimes, from Ted L. Parker and Associates, who presented information on the health insurance program. Due to the claims history, adjustments are necessary in the program, such as benefits and rate structure adjustment.

In the Action Items portion of the agenda the Board approved changes in student handbooks, accepted Equity's gas/diesel bid, approved paying the monthly bills in the amount of \$104,120.20, approved the minutes of previous meetings, approved the sale of WADA to Pringle-Morse CISD, and they did not act on a date to set the tax rate.

The Board then went on to discuss items of the agenda that need consideration. They reviewed the preliminary budget.

Mr. Murrey presented areas that needed to be addressed in the leave policy due to Senate Bill 1. The Board will need to modify their current policy to comply with the new law, but no action was taken at this time.

See SPEARMAN, page 10



TAX PROPOSALS - Bob Beardon of the Texas Comptroller's Office met with several concerned citizens of Spearman last Wednesday to discuss the possibility of two new taxes to the area - 4A and 4B. Beardon, who has been with the Comptroller's office for 19 years, told how, with the new taxes pass, that even one-half of percent on sales tax would raise revenues to around \$80,000 in one year alone. For more information, please see related story.

Beardon speaks on tax proposal

Several people around the Spearman area have been talking about the new sales tax option that is now being proposed to its citizens. To clear up any misconceptions or questions that anyone may have had a special task force, that was set up for the proposals, held a community forum last Tuesday, the 22nd. Around 50 concerned citizens turned out for the catered luncheon to hear and ask questions to Texas Comptroller's Office (TCO) Representative Bob Beardon.

Beardon, who has been with the TCO for around 19 years, explained that the city of Spearman has two options for a tax that have the right to vote on. However, the voter is not limited to only voting on one, they may vote on both choices. The

proposed tax options, the 4A tax and the 4B, are intended for Economic Development for the community of Spearman.

What is a 4A tax and a 4B tax? A 4A tax is eligible to a city in a county with a population of less than 500,000 if the new combined local tax rate does not exceed to 2 percent and the city is not a part of a rapid transit authority. The city may use the money raised by this sales tax for purposes related to industrial development, which may include, purchasing land, buildings, and equipment, paying principal and interest on debt, improving airports that are an integral part of an industrial park, or making improvements to support waterborne commerce. Cities may also use this

sales tax to fund other purposes found in the Act that are in the best interest of the city.

Under the 4B sales tax, a city is eligible if, as with the 4A tax, the new combined local sales tax rate does not exceed 2 percent. This tax also has the same perks as 4A, but it also includes the right to use the revenues for professional and amateur sports facilities (which may include children's sports), athletic, entertainment, tourist, and park facilities, municipal buildings, and street and sewer facilities.

Area cities such as Amarillo, Borger, Canadian, Dalhart, Pampa, Panhandle, and Peryton have already adopted the 4A tax, and it

See TAX PROPOSAL, page 10



S.T.O.P. - Sheri Benton, Kathy Bryant, Eloida Bravo, Debbi Cantu, Ernest Pape, and Kent Hargis, members of the Spearman Task Force on Parenting, met last Wednesday, the 16th, to put the finishing touches on their up and coming program "Love and Limits". The program will feature three key note speakers, and will give parents helpful ideas on raising children in today's society. The cost of the program is nothing, and anyone from anywhere is urged to attend. (Photo by Chad Davis)

STOP Committee acting in full force

What do you really want for your children? In answering that question, most of us would mention their health, happiness and safety. We want to be the best parents we can be, but sometimes find that the world is changing so fast that we can't keep up. As parents, we must try to prepare our children to live in their world rather than in our world - the one we grew up in just a few years ago.

The Spearman Task Force on Parenting (STOP) is working to make all of us more informed parents. On August 26, they will be presenting a seminar called "Love and Limits" from 9:45 a.m. to 3:30 p.m. at the O'Loughlin Center with lunch provided. The STOP committee is working to obtain sponsors for this seminar so that it can be provided at no charge to the participants.

Speakers for this seminar are Pat Socia who has been featured on Focus on the Family, and is a well-known authority on helping your child deal with peer pressure and teaching abstinence; Linda Quiroz, a bilingual specialist on communication with your children and helping them succeed in school; and Dr. Jerry Lane, a counselor who deals with choosing effective discipline techniques, giving children responsibilities, and encouraging motivation.

The STOP committee has also

made arrangements for Pat Socia to speak to junior high and some high school students on Friday, August 25, prior to the seminar for parents on Saturday. By having informed students as well as informed parents, communication should be easier and more effective.

The Spearman Task Force on Parenting is made up of the following members: Marty Haney, Counselor for Spearman Junior High and Elementary Schools; Arnis Pape, Minister Spearman Church of Christ; Peggy Winegarner, County Extension Agent; Kent

See STOP, page 11

Hansford Happenings

The Countrymen

Spearman Ministerial Alliance presents The Countrymen in concert featuring Southern Gospel, Traditional, and Contemporary Christian music. Sunday, August 27, at 7:00 p.m. at First United Methodist Church at 407 S. Haney. (806)659-5503. Refreshments provided by local churches and Fellowship in the Fellowship Hall following the concert. Free child care for children under 4 years.

Rainbow Kids Klub

Rainbow Kids Klub will be starting again August 23, 3:15 - 5:00 p.m. Wednesdays from 3:15 to 5:00 p.m. at First United Methodist Church located at 407 S. Haney, 659-5503. Crafts, games, snacks, singing, devotional, and stories for K-6th grades. Be sure to look for the church van on 7th Street after school. Rides will be provided to the church. If parents can, please pick up children after Klub at 5:00 p.m. We will provide rides home if you cannot pick them up.

Immunization Clinic

There will be an immunization clinic at the Gruver Elementary Library on August 28 from 9 a.m. to 11:30 a.m. School children, infants, and adults are eligible.

S.T.O.P. Community Seminar

Saturday, August 26, S.T.O.P. (Spearman Task-force on Parenting) will be presenting a free community seminar for parents called "Love and Limits". Speakers for this event are Pat Socia, Linda Quiroz and Jerry Lane. Registration begins at 9:45 a.m. with the first session starting at 10:00 a.m. Free child care will also be provided; please call Kathy Bryant at 659-3030 for more information. Lunch will be furnished by the Lions, Rotary, Sacred Heart Women and WDSCC. Be sure and plan on attending this informative program at the O'Loughlin Community Center.

Annual Sew Fair

"Fashion, Fabrics and Fun" will be the theme of the annual Sew Fair to be held Thursday, Aug. 31 at the Texas A&M Center, 6500 Amarillo Blvd. West. Registration is at 1:00 p.m. and 6:30 p.m.

Circle of Friends Party Planned

Hansford County residents are invited to attend an outdoor Circle of Friends membership party Thursday, August 24th, in the backyard of Claude and Jo Nell Sheets, 610 East Kenneth, Spearman. Rick Sander will be preparing veef tenderloin for the evening meal. Please contact Holly Simpson at her office, 659-2538 or at her home 659-2052 for reservations.

Cub Scout Round-up

Spearman Cub Scout Pack 558 is having a cub scout round-up Aug. 31 at the Elementary School Cafeteria from 7 to 8 p.m. All boys grades one through five are invited to join. For further information call Andy Scarborough at 659-3882.

Pickup Times for Spearman Elementary Kids

Spearman Elementary Pre-Kindergarten Classes will take place from 8:15-11:15 a.m. in the morning and 12:30-3:30 in the afternoon. Kindergarten will begin at in the morning at 8:15-1:15 through Sept. 8th, and then it will begin at 8:15-2:55. First and Second grades will go to 8:10-3:10, while the third through fifth grades will go from 8:10-3:15.

Spearman Year Books

Last year's Spearman Year Books are in! An autograph signing party will be after the football scrimmage Friday, August 25. High School will be at the Church of Christ from 9 to 11 p.m.; Junior High will be at the Methodist Church from 8 to 9 p.m.; last year's seniors can pick up books at any time. For more information contact Toni Thomas at the Spearman High School.

Yard of the Week...

Yard of the Week winners for this week are: Blanche Greene at 221 S. Bemice, Alfred and Cindy Avila at 721 Wilbanks, Richard and Lisa Pipkin at 404 Townsend, and Brad and Dodie Beedy at 28 Golden Circle.



BLANCHE GREENE



ALFRED and CINDY AVILA



RICHARD and LISA PIPKIN



BRAD and DODIE BEEDY

At the movies...

Showing at The Lyric Theatre Friday, August 25 through Tuesday, August 29 on Screen 1 beginning at 7:30 p.m. is "First Knight", and on Screen 2 beginning at 7:45 p.m. is "Operation Dumbo".*

In "First Knight", a recreation of the Camelot story, a young Gunevere (Julia Ormond) is torn by her love for two men, King Arthur (Sean Connery) and Lancelot (Richard Gere). Directed by Jerry Zucker, the man behind "Ghost"

In "Operation Dumbo Drop", Give Green Berets stationed in Vietnam must find a way to secretly transport an elephant through the jungle so a village can stage a ceremonial ritual.

*The Lyric now has new times



The first machines operated by remote control were radio-controlled motorboats used by the German Navy in the First World War.

School Lunch Menus

SPEARMAN ISD LUNCH MENU

Monday, August 28
Chicken patty, whipped potatoes, green beans, hot rolls, butter/jelly, and milk.

Tuesday, August 29
Enchiladas, refried beans, Spanish rice, salad, birthday cake, and milk.

Wednesday, August 30
Chicken pot pie, corn on the cob, cucumbers with ranch dressing, bread, peaches, and milk.

Thursday, August 31
Baked potato, chili con carne, sour cream, bacon bits, bread, pears, and milk.

Friday, September 1
Cheeseburger, French fries, salad, cherry or blueberry cobbler, and milk.

BREAKFAST
Monday-Breakfast pizza, fruit, and milk.
Tuesday-Cereal, toast, juice, and milk.

Wednesday-Pancake, sausage, fruit, and milk.
Thursday-Ham and egg breakfast taco, fruit, and milk.
Friday-French toast sticks, fruit, and milk.

GRUVER ISD LUNCH MENU

Monday, August 28
Chicken nuggets, mashed potatoes with gravy, green beans, tapioca pudding, hot roll, and milk.

Tuesday, August 29
Soft tacos, lettuce, cheese, fruit, and milk.

Wednesday, August 30
Sub sandwich, potato chips, pickle spears, fruit, and milk.

Thursday, August 31
Frito pie, cheese, tossed salad, fruit, crackers, and milk.
Friday, September 1
Hamburger, French fries, lettuce, pickle, cheese, rice krispie

treat, and milk.
BREAKFAST
Monday-Cereal, muffin, juice, and milk.

Tuesday-Toast, peanut butter and jelly, juice, and milk.
Wednesday-Pancakes, syrup, juice, and milk.
Thursday-Breakfast burrito, juice, and milk.
Friday-cinnamon roll, juice, and milk.

PRINGLE-MORSE ISD LUNCH MENU
Monday, August 28
Nachos, beans, salad, cornbread, milk, and fruit.

Tuesday, August 29
Chicken strips, potatoes and gravy, salad, rolls, cookie, and milk.

Wednesday, August 30
Bar BQ sandwich, potato salad, pickles, fruit, and milk.

Thursday, August 31
Stroganoff, salad, corn, rolls, cake, and milk.

Friday, September 1
Pizza, salad, fruit, ice cream, and milk.

BREAKFAST
Monday-Cheese toast, toast, juice, and milk.
Tuesday-Cereal, toast, juice, and milk.

Wednesday-Waffles, sausage, juice, and milk.
Thursday-Cinnamon toast, toast and jelly, juice, and milk.
Friday-Eggs, toast, juice, and milk.

A wrong reason is worse than no reason at all.
—G.E. Lessing

Another good reducing exercise consists in placing both hands against the table edge and pushing back.
—Robert Quillen

At The Lyric Theatre...

Friday, August 25 - Tuesday, August 29

Bargain Nights Mon. & Tue. Adults - \$4
Fri., Sat., Sun., Adult \$5 - Child \$3 every night
Closed Wednesday & Thursday

SCREEN 1 • 7:30 PM SCREEN 2 • 7:45 PM

First Knight

(R)

Operation Dumbo Drop

(PG)

113 Main • Spearman

Paula's Gymnastics

is coming to Spearman!

Classes in Spearman • Thursdays

Classes in Gruver • Mondays

CLASSES LIMITED

Call Paula Williams

(806)733-2983

100 Years
Fraternal Life Insurance

Royal Neighbors OF AMERICA

Complete FRATERNAL LIFE INSURANCE for the entire family including
Omni-Plus II Universal Life
Annuities and IRAs --
Highly Competitive Interest Rates
Term-Plus

MARILYNN HART
P.O. BOX 426
GRUVER, TX
(806)733-2066

GET THE ALICO Advantage



FREE

SECOND SET OF PRINTS EVERY TUESDAY!

Receive a second set of 3" prints FREE with any exposure roll of 35mm, disc, 110 or 126 color print film left for developing and printing at our everyday prices! C-41 process only. Excludes larger 4" size prints, photo galaxy or kodalux finishes.



DAILY:
9 a.m. to 8 p.m.

SUNDAY:
12 p.m. to 5 p.m.

521 Hwy 207 S. • Spearman, TX

The Hansford County Reporter-Statesman

Serving all of Hansford County
Spearman • Gruver • Morse

USPS 509660 • 213 Main, Box 458 • Spearman, Tx. 79081
(806) 659-3434 • 1-800-395-9482 • FAX (806) 659-3368

Published weekly at 213 Main, Spearman, Texas
Owned & Operated by
Texas Independent Newspapers, Inc.
16607 Blanco Road #100 • San Antonio, Tx. 78232
(210) 492-8907

Second class postage paid at Spearman, Texas 79081

Any erroneous reflection upon the character of any person or firm will be gladly and promptly corrected upon being brought to the attention of the management.

Publisher - Deziree Torres

Editor/Advertising - Chad Davis

Associate Editor - Wade Atwood

Student Assistant - Erin Atwood

The publisher reserves the right to revise or reject at its option any advertisement which it deems objectionable, either in subject or phraseology, or which it may deem detrimental to its business.

Subscription Rate: Hansford County, \$19.95; out of county, \$24.95 annually.
Postmaster: Send address changes to Hansford County Reporter-Statesman, Box 458, Spearman, Tx. 79081.
Advertising & Story Deadlines
Monday, 5:00 p.m.



ATTENTION MEDICARE PATIENTS

Do you suffer with breathing problems?
Are you currently using costly inhalants?
Are you getting all of your Medicare benefits?
Free information.
Call Home Health Care 800-848-1769

Moore's Pharmacy & Home Health Care

- We Care About You -

MONEY RATES

Interstate Savings & Loan Association

301 S. Main • P.O. Box 947 Perryton, TX 322 S. Main • P.O. Box 146 Spearman, TX

ALWAYS Offers You Competitive C D Rates!

Annual Percentage Yields (APY) are effective as of 8-16-95

| | | | | |
|--------------------------------|---------|----------|----------|-----------|
| 6 MONTHS | 5.01% | 5.11% | 5.22% | 5.42% |
| | APY | APY | APY | APY |
| | \$2,500 | \$20,000 | \$40,000 | \$100,000 |
| 12 MONTHS | 5.25% | 5.35% | 5.46% | 5.77% |
| | APY | APY | APY | APY |
| | \$500 | \$20,000 | \$40,000 | \$100,000 |
| 18 MONTHS | 5.46% | 5.61% | 5.72% | 6.03% |
| | APY | APY | APY | APY |
| | \$500 | \$20,000 | \$40,000 | \$100,000 |
| INDIVIDUAL RETIREMENT ACCOUNTS | | | | |
| Fixed and Variable Rates | | | | |
| 18 MONTHS | 5.46% | 5.61% | 5.72% | 6.03% |
| | APY | APY | APY | APY |
| | \$50 | \$20,000 | \$40,000 | \$100,000 |

Stated minimum balance must be maintained to earn the corresponding APY. A penalty may be imposed for early withdrawal. Your deposit is Federally insured to \$100,000.

Other rates & terms available, call us at (806)435-4071 • Perryton or (806)659-2559 • Spearman 1-800-757-4071

Lifestyles



MRS. MARK HODGES

Boone and Hodges unite in marriage

Kim Boone and Mark Hodges exchanged wedding vows Saturday afternoon at the First Baptist Church in Gruver with Larry Miller officiating. The bride is the daughter of Tommy and Cathy Boone of Gruver and the granddaughter of Kermit and Verna Jean Boone of Brownwood and Tommy Record of Dumas. Mark is the son of Randy and Barby Hodges of Plainview and the grandson of Jack and Jeanne Kunz and Wanda Hodges all of Plainview.

Given in marriage by her father, the bride wore a traditional white regal satin gown designed with an open Queen Anne neckline on a fitted bodice encrusted with pearls and lace. Her full length Edwardian style sleeves were enhanced with pearl beading. The skirt of the gown was a sheath styled slim skirt with a draped peplum and the hemline of the chapel length train was double edged with borders of European lace. She wore a crown of silk flowers, pearls and sequins with a beaded pouf that fell to a short silk illusion veil. Her pearl necklace that she wore was her great-great-grandmother's on her father's side of the family. The bridal bouquet was a round gathered bouquet of hot pink roses and white daisies that were tied with a large bow.

The bride's sister, Kelly Boone of Gruver was the Maid of Honor. Bridesmaids were Janelle Haefner of Amarillo, Holly Venneman and Amy Gumfory of Gruver, Heath May of Dumas, and Brendy Brown and Marca Sommerville of Lubbock. They wore satin fuchsia two piece dresses that featured a top with a sweetheart neckline, a fitted bodice and short pleated sleeves and they had a straight skirt that fell right above the knee. Each carried a gathered bouquet of single hot pink rose and white daisies that were tied with a gold bow.

The groom's brother, Matt

Hodges of Lubbock was the Best Man. Groomsmen were Brent Coker, Brian Arrott, Dustin Morphis, and Clint Freeman all of Lubbock and Ryan Dykes and Kevin Karrh of Plainview.

TyLee Record of Buffalo, OK was the flower girl. Carol Ann Boone of Abilene and TeeKay Record of Buffalo, OK were the candlelighters. Rex Ralston of Gruver, Rance Jameson of Dumas and Bill Boone of Abilene were the ushers. Lyndie Painter of Plainview registered the guests. Musical selections were presented by Ann Dorman, organist and Carolyn Fletcher, pianist. Amy Gumfory, Andee Salmons and Rodney Clawson were the vocalists.

A reception was held in the Church Activity Center following the ceremony.

After a wedding trip to Montego Bay, Jamaica, the couple will reside in Lubbock. The bride is a 1993 graduate of Gruver High School and attends Texas Tech University. Hodges is a 1992 graduate of Plainview high School and will graduate from Texas Tech in December with a Bachelors in Business Management. He is employed at American Bank of Commerce of Lubbock.

The groom's parents were hosts for a Rehearsal Dinner at the Golden Age Center in Gruver. A miscellaneous shower was given in Gruver at the home of Mrs. Joe T. Venneman and there were twenty-nine co-hostesses. A lingerie shower was given in Lubbock by Mrs. Brooke Savage. Other bridal courtesies included a miscellaneous shower in Plainview in the home of Mrs. Pat Karrh and there were eleven co-hostesses. A couple's shower was held in the home of Mike and Jeannie Buchanan in Plainview and there were five co-hosts, and a Christmas Shower was held in the home of Maxine Houlette of Plainview.

Employee of the Quarter goes to Lair

Matt Lair, R.N., was voted "Employee of the Quarter" for the second quarter by his peers at Hill Regional Hospital in Hillsboro.

He was presented a check for \$100 by Jan McClure, executive director of the hospital, and a green plant from the corporate office of Community Health Systems, Inc.

Lair entered the U.S. Navy in June of 1971 after graduating from Spearman High School in Spearman, Texas. He served three years in the service aboard the USS Mount Vernon, including one year in Vietnam. He was discharged in May of 1975 as a 2nd Class Petty Officer. He then farmed with his father, James Lair, and brother, Phil, in Ochiltree County until 1989.

Lair's nursing career began in 1990 when he attended Frank Phillips College in Borger. He was president of the Nurses Association, on the President's Honor Roll and was a member of the Phi Beta Kappa Honor Society. He graduated from the Vocational Nursing Program in 1991 and then attended Amarillo Junior College, graduating with his Associated Degree in

Nursing in 1992.

A nursing supervisor at Hill Regional Hospital, Lair, currently works from 11:00 p.m. until 7:00 a.m.

Some comments expressed by his fellow workers are: "...has a positive friendly attitude and is a very good leader"; "always there when you need him and is very helpful, not afraid to jump right in and do whatever it takes to get the job done"; "no matter what time of day or night you catch Matt, he is always in a good mood. No job is too big or small for him"; and "he has a great attitude and keeps the morale of the workers up."

Lair and his wife, Karen, moved to Whitney in the spring of 1994. He has three children, Tyler, Breean, and Crosbie. Living in Whitney gives him the opportunity to enjoy his hobbies of fishing and water skiing.

According to Mrs. McClure, "Matt is a very caring and professional nurse. We are proud to have someone with his qualities on our nursing staff."

Birth announcement

Ryan Alexander Schnell was introduced into the world on August 8, 1995.

He is the new son of Mike and Patty Schnell.

Ryan was born at High Plains

Baptist Hospital where he weighed in at five pound and eight ounces and was a total of eighteen inches long.

Ryan is also the grandson of Carroll Short and Verna Lee Shirley.

Local dancers compete in American Kids finals

Students of Carla's Dance Studio competed in the National finals in American Kids August 12th. Tucker Barkley, age 5, won 1st place in the 5 and under General Variety category, he sang and tap danced to "Give My Regards to Broadway". At the State Finals Tucker won his division plus the overall general variety category of all ages.

Kelcee Barkley, Amanda Adams, and Glen Hicks won 1st place in the other dance category in the duet division, they clogged to "Hillbilly Rock". "Hillbilly Rock" was also first runner-up overall other dance at the Texas State Finals.

Cassidy Keifer won 1st place in the 15 and up Jazz category, she danced to "Pacific Walk". Cassidy was also, the Texas State Jazz overall winner.

Glen Hicks won 2nd place in the 9-11 tap category, and was also 3rd place overall ages tap winner. He

danced to "Top Hat, White Tie, and Tails". Glen was also, the overall state tap dance winner, this year.

Andraya Duke won 3rd place in solo other dance 12-14 age category. She did a character clogging dance to "Ease on Down the Road".

Amanda Adams, Kelcee Barkley, Andraya Duke, Glen Hicks, Cassidy Keifer, and Jennifer McCarty won 2nd place in the large group other dance category, 12-14. They did a clogging dance to "Third Rock From the Sun". This group won the overall other dance award at the Texas State Finals, also, this group at the Texas State Finals won the overall dance award and won \$200. The Third group was also asked to entertain in Oklahoma City for a Media Reception for the American Kids National Finals.

Carla's Dance Studio was also named Studio of the Year.

PERRYTON CLEANERS & LAUNDRY
Furs & Woolens
Cleaned and then stored in our temperature and humidity controlled locked vault.
CALL FOR DETAILS
1-800-232-5370

You are Invited
to a
Wedding Shower
honoring
RAQUEL MATHIEWS
Bride-elect of
Jarel Whitehead
Saturday, August 26, 1995
2:00 - 3:30 p.m.
in the Home of
Mrs. Mike Yanke
107 Van Kurt St., Gruver
Selections at Gruver Merchants

To KRDF-FM staff,
Cindy Blackman and all
contributors and
buyers of the Radio
Auction. Your
generosity is
appreciated by the
Golden Spread Senior
Citizens. May God bless
each of you for helping
to make our lives more
enjoyable.

Gordon's DRUG
Bridal Gift Registry

COME BY & LET US
HELP YOU SET UP YOUR
SPECIAL GIFT TABLE

Couples Currently Registered

Chad & Tara (Russell) Davis *July 29
Brandon & Misti Babitzke *July 29
J Garnett & Brooke Bivins * August 26
Jill Garrett & Dean Mariott
Kimberly Slater & Kelly Smith
Alvin Byers & Becky Lusby
Dee Mayfield & Sheila Fedric
Billie Jo Moore & Wayne Pierson
Trevor Pool & Diane Milacek

314 MAIN PHONE 659-2141 **Gordon's DRUG** SPEARMAN TEXAS

OPEN HOUSE & SHOWER HONORING J & BROOKE GARNETT

You are cordially invited to an open house and shower for J and Brooke Garnett, Saturday, August 26, 1995, at the O'Loughlin Center. The reception will be held in the Blodgett Room beginning at 7:30 p.m. until 9:00 p.m.

Gift Selections may be found at Celebrate and Gordon's.

The woo'n' and courtin' is coming to an end as their lifetime together is about to begin.

Mr. Don Jones & Mrs. Sandy Jones and Mr. & Mrs. Bill Wright request the pleasure of your company as their children Angela Lee Jones and Truman G. Wright are united in marriage on Saturday, the Twenty-sixth day of August, Nineteen Hundred and Ninety-five at four o'clock in the afternoon in the Walsh United Methodist Church 445 Nevada - Walsh, Colorado

Reception following

Out at the Lake

Lake Depth-August 21, 1995-29 feet and 2 inches.

The Lake rose about twelve inches from last week's rain, but by now it is only showing 5 inches above the report of last week.

Last week was rather quiet-only one R.V., some picnickers, and a few fishermen. The fishing Laxtons caught a catfish that their experienced eyes said weighed between 8 and 9 pounds, but it was not officially measured.

There are now about 20 of the beautiful white Great Egrets at the Lake.

Remember the moose found southeast of Spearman in the late 1980's? While Dr. Cobb cleaned my

teeth this morning, he told me the rest of the story: The moose wandered up near Liberal where a veterinarian sedated it and moved to near Cuchara in Colorado.

As Dr. Cobb had canceled two patients to go see the moose when it was near Spearman, and as the Cobbs have a cabin near Cuchara, he kept up with this big fellow. He said the moose kept all the ponds cleared of moss and algae. He also ate the bark from some of the trees. However, a year or so ago, the moose disappeared. Many of the locals felt a poacher had killed him, but I am willing to think his wanderlust streak hit again.

Extension News

By Peggy Winegarner
Hansford County Extension Agent

Does World War III break out whenever your kids get near each other? Believe it or not, your efforts may be doing more harm than good.

Sibling conflict refers to fighting, lack of affection, or antagonism that occurs between kids. When there is more than one child and they are less than 6 years apart there will be conflict.

Sibling rivalry is different because it develops out of conflict as a result of parental intervention. When we intervene, one child becomes the villain and the other the victim. We do not intend to make this happen but it does. The unspoken message to one child is "you did something wrong" while the other message is "you did not deserve to be treated like this". The children then begin to compete for the "Victim Award".

Two things usually happen. First the parent's strategy backfires because there are more conflicts. Second, the children begin to learn that when in conflict with another person, there is advantage to playing the victim. This can teach them to handle all relationships this way.

What do you do? Do not ignore all disagreements among siblings.

Make children equally responsible for any disruption. Three rules you might set up are: 1) no hurting, meaning you cannot hit, pinch, kick, or throw things 2) your conflict should not disturb others 3) no tattling or complaining. If any of these rules are broken, they are both punished with the same punishment usually apart from each other. You do not try to determine who did what to whom, why they were fighting, or who was right. When they break the rule they both pay the price and soon try to avoid this.

Choosing effective discipline techniques is always a challenge for parents. Make plans to attend the "Love and Limits" parenting seminar to be held Saturday, August 26 at the O'Loughlin Center in Spearman.

Dr. Jerry Lane will offer helpful advice to all persons on positive discipline and motivating children. We have a terrific opportunity to hear two more wonderful speakers, including Pat Socia and Linda Quiroz. Childcare is available, lunch is provided and the seminar is free. Please call 659-4130 or 733-2901 if you need more details.



Museum Musings

by Joanne Eaton

The Museum ground are still undergoing some facelifting. Charles Eaton, local contractor, is painting the Palo Duro School and staining Fort Zulu on the north side. It won't be much longer before the little school will be ready to have things moved into it.

The members of the Historical Commission and Museum Committee are really going to miss Juanita Pierce. She was so knowledgeable about Hansford County and did so much for the Museum.

Juanita put a lot of the displays together. If I needed to know anything about the history of Hansford County, I could always count on Juanita to answer by questions or refer me to someone who could.

Very often the wooden Indian at

the Museum is the recipient of abuse. He is really an unusual piece of art for Hansford County. If you should view any of this abuse, please do not hesitate to contact the law.

The Indian was cut out with a chain saw by a man from Guymon about 1977. He was designed from a tree that had died in front of the Museum. Helen and Irwin Boyd paid to have the Indian made.

I remember watching the man the day he cut the Indian out. Wood chips were flying everywhere! It was amazing that anything could emerge from such a shower of chips and sawdust.

We would like to have more traffic through the Museum. There is

See MUSEUM, page 11

City Lites

by Kelvin Knauf,
Spearman City Manager

Economic development is a hot topic for communities in the 80's and 90's. While many communities have adopted economic development programs, there is no guaranteed method of having a successful economic development program. Having had more than five years experience in economic development before coming to Spearman, I had an opportunity to participate in economic development on a large scale and a small scale.

Not every community has the opportunity to fund a \$190 million expansion program for a major airline with the money provided by a London bank (if you have never signed your name on documents that have a \$190 million price tag, I can tell you that it is a real trip!) But not everything I have done has been on such a massive scale. I also designed an economic development strategy, implemented an economic development department, prepared economic development goals and objectives, advised on a business retention program, negotiated the relocation of several businesses to the community, assisted with developing a targeted industry strategy, wrote tax abatement policies and served on numerous economic development task forces and committees. One community where I worked was doubling its population every five years and its tax base was growing by more than twenty percent a year.

In my experience, I have discovered that successful communities have some things in common. The first thing they have in common is that they know their community's strengths and weaknesses. Successful communities take a hard, realistic look at their community and development a marketing program around those strengths and weaknesses. Many unsuccessful communities let their civic pride (which usually includes an attitude like "This is our town and we'll do it our way") guide their marketing program. Often, civic pride does

translate into dollars and sense for potential businesses.

Another factor shared by successful communities is that they have clear goals and objectives in marketing their community. These communities know what kind of businesses make money in their community and what kind of businesses fit in with the community. In their marketing program, these communities provide clear, factual information that is relevant to business decision making; successful communities stay away from broad generalities about how great is to live there.

A third factor that successful communities have is that they are in economic development for the long haul. It takes time and a lot of effort to build up the contacts and connections needed for a community to start attracting new businesses. Successful communities do not give up after the first year or after failing to attract the first business that shows an interest in the community.

Fourth, successful communities take care of their local businesses. Economic development in not just attracting new businesses. Economic development also means helping your local businesses become more successful. Successful communities encourage that start-up and growth of local businesses through local and regional promotions.

Finally, successful communities find the money needed to conduct a marketing program, provided the services needed to attract new businesses and help local businesses. No economic development program can survive without money to operate on. Even in hard economic times (and we all know what hard economic times are), successful communities find ways to raise money for their economic development programs. Once the money is raised, successful communities spend the

See LITES, page 11

CPR
can keep your love alive

American Heart Association
Fighting Heart Disease and Stroke

Hansford Manor

NONDISCRIMINATION POLICY

In accordance with Title VI of the Civil Rights Act of 1964 and its implementing regulation, HANSFORD MANOR will admit and treat all persons without regard to race, color or national origin in its provision of services and benefits, including assignments or transfers within the facility and referrals to or from the facility. Staff privileges are granted without regard to race, color or national origin (where appropriate).

In accordance with Section 504 of the Rehabilitation Act of 1973 and its implementing regulation, HANSFORD MANOR will not, directly or through contractual or other arrangements, discriminate on the basis of disability in admissions, access, treatment or employment. The Administrator has been designated as the coordinator for implementation of this policy.

In accordance with the Age Discrimination Act of 1975 and its implementing regulation, HANSFORD MANOR will not, directly or through contractual or other arrangements, discriminate on the basis of age in the provision of services, unless age is a factor necessary to the normal operation or the achievement of any statutory objective.

POLIZA ANTIDISCRIMINATORIA

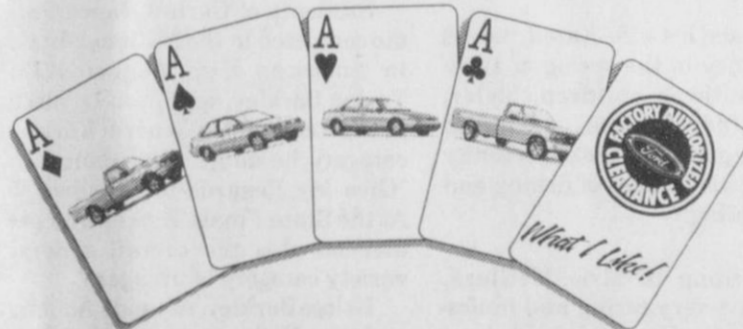
De acuerdo con el articulo VI del condigo de Derechos Civiles de 1964, poniendo esta ley en efecto, HANSFORD MANOR admitira y dara servicios a todas las personas sin excepcion de raza, color o de origen nacional, al proveer los servicios, beneficios y recomendaciones en relacion con este local.

de acuerdo con la seccion 504 de la ley Rehabilitacion de 1973, HANSFORD MANOR de ninguna manera discriminara a ninguna persona por tener impedimento o restricción fisicas, de la admision o acceso, tratamiento o empleo. El Administrador ha sido asignado como coordinador para poner en efecto esta ley.

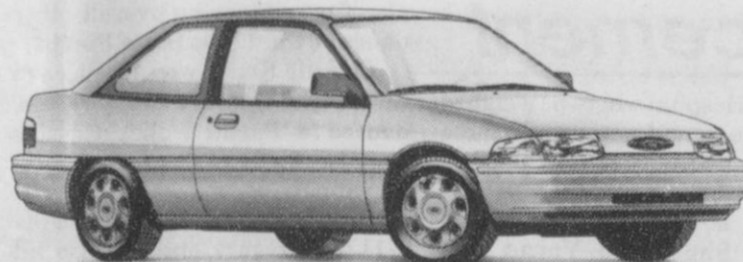
De acuerdo con la ley de Discriminacion por edad, de 1975 y la regulacion poniendo dicha ley en efecto, HANSFORD MANOR de ninguna manera discriminara por la edad, a ninguna persona a menos que la edad sea un factor necesario para la operacion normal o para lograr un objetivo de la determinada.

Published in the Hansford County Reporter-Statesman on August 24, 1995

It's Tough To Beat A Deal This Good.



Your Ford Dealer's got all his cards on the table during Ford's Factory Authorized Clearance. The best offers all year on new '95 Ford cars and trucks, hands down. But hurry, these deals end soon, and that's no bluff.



'95 ESCORT
3.9% APR financing^(A) OR \$600 Customer Cash + 500 RCO Cash + \$1,100 Total Cash Back + 400 Young Buyer Cash

up to **\$1,500** Cash Back^(B) with Ford Credit's Red Carpet Option



'95 CONTOUR
\$229/ month^(C)
Just with Ford Credit's RCO



'95 F-SERIES
\$1,575 Option Pkg. 500A Savings
500 Manual Trans. Discount
806 Air Conditioning Discount
+ 363 Decor Pkg. B Discount



'95 RANGER
\$179/ month^(C)
Just with Ford Credit's RCO

\$3,242 Total Savings^(D)

What I Like...



GRUVER FORD, INC. 531 Main Street (806) 733-2431

(A) 3.9% APR financing on '95 Escort. Varies by creditworthiness of consumers as determined by Ford Credit. 3.9% APR for 48 months at \$22.55 per month per \$1,000 financed with 10% down. Dealer participation may affect savings. Take new retail delivery from dealer stock by 9/2/95. See dealer for details. (B) Disc. Must take new retail delivery from dealer stock by 9/2/95. Residency and RCO restrictions apply. See dealer for details. (C) \$228.56 per mo. for 25 mos. with 3 options for final pmt. with Ford Credit's RCO. \$178.67 per mo. for 25 mos. with 3 options for final pmt. with Ford Credit's RCO. (D) Disc. '95 F-150 XL 4x2 with manual trans PEP 500A and Decor Package B. Option package savings based on MSRP of vehicle package vs. options purchased separately. Disc. '95 Contour GL w/PEP 225A. \$15,070 MSRP less \$500 customer cash plus \$500 Ford Credit RCO cash. '95 Ranger XLT M/T PEP 804A. \$12,842 MSRP less \$300 customer cash plus \$500 Ford Credit RCO cash. 11.5-16.5% APR Ford Credit RCO plan financing varies by creditworthiness of consumers as determined by FMC. Some consumers will not qualify. Example based on 8.9% APR for 24 mos. On Contour and 11.5% APR for 24 mos. on Ranger. \$1,280 down on Contour and \$1,867 down on Ranger. Amount financed \$11,899 on Contour, \$11,175 on Ranger. 24 mos. at \$228.56 per mo., and one final pmt. of \$9,042 on Contour, \$178.67 per mo., and one final pmt. of \$8,174 on Ranger. Amount financed \$8,174 on Ranger. Amount financed monthly pmt., and down pmt. may be different. Tax, license, title fees and insurance extra. Purchaser may purchase the vehicle for the amount of final pmt., refinance the final pmt. with no increase in amount of monthly pmt., or return the vehicle to Ford Credit at end of term and pay \$250 disposal fee plus any excess mileage and wear charges. Dealer financial participation may affect consumer cost. Must take retail delivery by 9/2/95. Residency restrictions apply. See dealer for qualification details.

Among the Neighbors

by Helen Fisher

If the students of Brenda and Verlan Winegarner are as enthusiastic about starting back to school as are the Winegarner's, it will be an exciting term.

They have just returned from a most enjoyable summer in the northeast. In June Brenda and little Brett flew to Boston where her people live. Verlan followed a little later.

For a month they stayed there, especially enjoying the beach where her sister has a beach house. Later Brenda and Verlan made a trip to Cape Cod and Martha's Vineyard.

Next was a 2600 mile tour by car to Prince Edward Island, Nova Scotia, and other points of interest including New Brunswick and to the most eastern port of Cape Breton. They also visited some places of interest in Maine.

Numerous highlights of the summer will long be in their memories, but it was good to be back at home and prepare for the beginning of school.

Word from Paul Lopez, now of Crosbyton, is that on Friday, their son, Daniel, 25, had an arm amputated just below the elbow. This was caused by an automobile accident about 10 days ago in which his arm was crushed. Daniel is still in Northwest Texas Hospital, but is now in a room and is recovering. It is possible that he will be able to leave the hospital by the end of the week. His former classmates here wish him the best of luck.

Father Fern, as he is affectionately known, is back in the Sacred Heart parish after his vacation in Vermont, his first in several years.

He reports that the weather in Vermont was most unusual in that it reached 90 degrees during his stay. Well, Father, it could be said that you take warmth with you!

His was missed by those within and without his congregation. He was surprised and pleased and expressed his appreciation for his warm welcome home.

An unexpected visitor for Billy Miller one day last week was Bill Reynolds, now of Norman, OK. He came to Spearman soon after the close of WWII and was associated with the Ford Motor Company. He was called back into service for the Korean "Police Action" and did not live her afterward.

It has been many years, and nine children later, since he was here.

June Day is back at home after eight days in High Plains Baptist Hospital. Her recovery is very slow, but enhanced by the TLC provided by husband, Glen.

Pastor Kyle and Cindy Henderson are back after their ten day vacation in the Colorado mountains. For ten days they camped, really camped, with a tent, camp fires, and limited facilities. The first few days were in Mueller State Park near Colorado Springs. While there, they drove to the top of Pike's Peak, their first, and perhaps last, trip up.

Then they spent the next several days at Rocky Mountain State Park. They hiked, studied nature, and built wonderful memories for their sons. Logan, 5, and Lane, 8, were thrilled to watch deer, elk, and even some Big Horn Sheep.

The sinking cattle market is causing jitters. Finally, there is a way of foretelling when the bottom will be reached. The method is not based on cost of feed projections, nor on export expectations, nor weather predictions, nor placements on feed. The low point can be based on when the cattle in which your neighbor has an interest will be coming off feed.

S'fact-proven repeatedly.

Grandson admits his favorite word is "sensuous" as in "Sensuous up, honey, get me a coke!!"

The many friends here of Mrs.

Eva Adkison were saddened by word of her passing on Sunday. Details are in the obituary in this issue.

Brittni Torres, two year old daughter of Dezi Torres, suffered a severe and painful laceration about her mouth on Friday afternoon when she was bitten by a cocker spaniel dog.

She, with her mother, was in the home of friends where the dog lives and she was gently patting it. Unexpectedly and viciously, it bit her face. She was taken to the hospital where seven stitches were needed to close the wounds.

Carolyn and Ray Gressett joined their children and grandchildren in Oklahoma City last week-end. They were Khristi and Kelly Jones with Ches, Lesly and Christina of Amarillo; Cindy and Tom Sinclair with Luke and Abby, of Pine Bluff, Arkansas; and Jeffrey Gressett of Jeddah, Saudi Arabia. His friend and student, also of Jeddah, Osamah Baakdah, was a guest.

Jeffrey, on a month's leave, spent several days here with his parents. It is remembered that he teaches English for the Amaro Oil Company in Jeddah. He and Osamah will be transacting some business and doing as much sight seeing as possible before returning to Saudi Arabia.

After the family visit they flew to Los Angeles. Their itinerary includes Las Vegas, Albany, New York, Tampa, Florida, then to

Washington D.C. There they will drive to Martha's Vineyard, Mass. For a reunion of the Hungary #2 Peace Corps. Jeffrey served with them during his duty in Hungary. Osamah is getting married in January. Jeffrey has not met, nor even seen his fiancée as non-Muslims are not permitted to speak to Muslim women. They are completely covered from head to foot, except for their eyes.

Wasn't it great to see the signs of welcome for the Lasater family last Friday?

The yellow ribbons in the trees and posts, and the Welcome Home sign on their lawn. Both Butch and son Cass have been hospitalized for most of the summer in Amarillo-Butch for heart surgery and Cass after a serious car accident.

Julia Adams underwent emergency surgery Friday night at High Plains Baptist Hospital in Amarillo.

She, with her little daughter, and mother, Ann Sanders, was enroute to Amarillo on Friday when her condition seemed to require immediate attention. They rushed to North Plains Hospital in Borger and she was taken by ambulance to Amarillo. The surgery was for kidney stones.

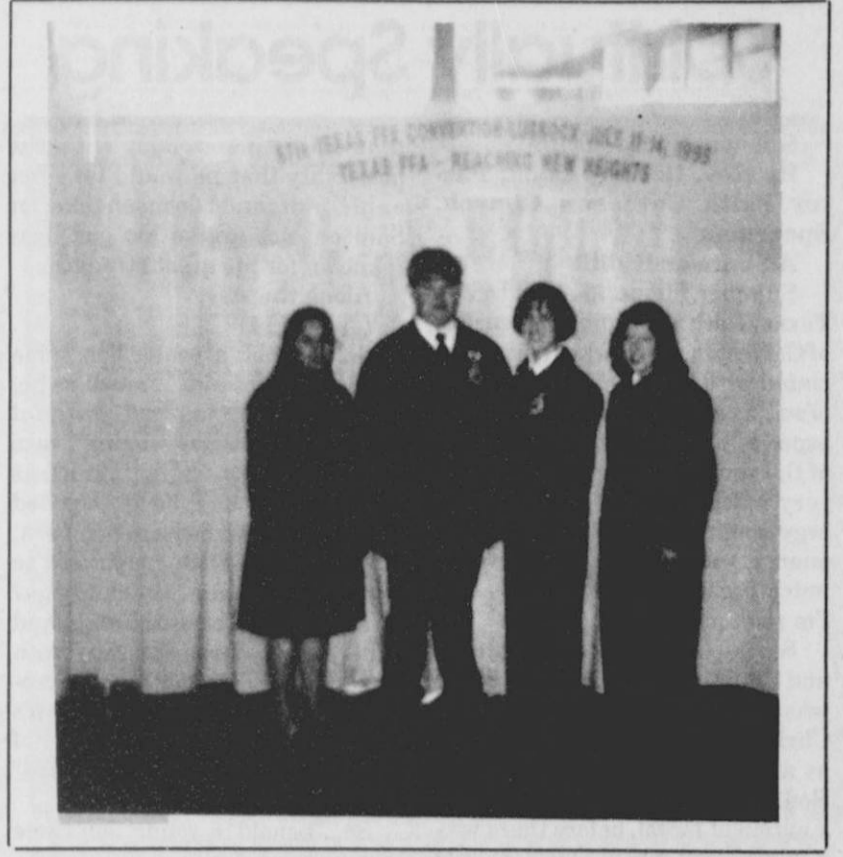
Much to the surprise and relief of her family she was able to return home on Monday. Further treatment will be needed later.

Club News

The Gladiola Flower Club held their annual summer picnic at the Historical Bugbee Ranch with Marvin and Ruth Ann Jones as hosts on August 17th at 7:00 p.m.

Lorraine Kunselman and Fay Holt planned a delicious meal of fried chicken, potato salad, baked beans, cole slaw, relish plate, and fruit cobbler.

Members are their husbands attending were: Dickie and Newell



Spearman FFA members attend State Convention

By Jocelyn Edwards

Monday, July 10th, the Spearman FFA set out for the 67th Annual State Convention in Lubbock. The group was composed of 1995 President, Lena Harbour; Vice President, Norma Hinojos; Reporter Jocelyn Edwards; Sentinel, Monty Herrington; and Advisor, Bob McGaha. Although the group was small, they each got a great deal of experience not only in agriculture but in life as well.

We arrived at the Barcelona Court around 2:00 p.m. It was gorgeous, but best of all it was only a block from the mall. The next morning we got up and went to the convention center, over 6,000 people had registered and by noon it was extremely crowded. Colleges and Universities of every size were there from Sul Ross to Texas A&M.

Later that week we went to workshops led by Roger Kelly, the FFA state choir director, and Jim Wand a Hypnotist. We also attended a

speech by James E. "Pete" Laney, the speaker of the Texas House of Representatives. They each had a very important message to deliver to us.

Since there were only four of us there, we all were fortunate enough to be voting delegates. We were proud to be represented by Krisse Pigg from the Area I Association. Corey Rosenbush, from Area VII, was elected State President, and Alice Gonzalez, from Area VII, was elected first vice president, all will do a great job!

Thursday night was perhaps the most fun. After the talent contest we all went to a dance on the Texas Tech campus. It was a lot of fun, but no one stayed long because it was so hot!

We returned home Friday evening as different people. We not only had a lot of fun, but we learned the importance of cooperation, leadership, and most of all respect.

MARY KAY
FACE TO FACE BEAUTY ADVICE™
Leann Gillaspie
Beauty Consultant
659-3889

HENSON CHIROPRACTIC
300 S. Ash • Perryton, TX
Call for Appointment • 435-7525
OFFICE HOURS:
Monday, Wednesday & Friday 9:00 to 5:00
Tuesday & Thursday 9:00 to 11:30

1995 PROPERTY TAX RATES IN HANSFORD HOSPITAL DISTRICT

This notice concerns 1995 property tax rates for HANSFORD HOSPITAL DISTRICT. It presents information about three tax rates. Last year's tax rate is the actual rate the taxing unit used to determine property taxes last year. This year's effective tax rate would impose the same total taxes as last year if you compare properties taxed in both years. This year's rollback tax rate is the highest tax rate the taxing unit can set before taxpayers can start tax rollback procedures. In each case these rates are found by dividing the total amount of taxes by the tax base (the total value of taxable property) with adjustments as required by state law. The rates are given per \$100 of property value.

| | |
|------------------------------------|------------------|
| Last year's tax rate: | |
| · Last year's operating taxes..... | \$922,032.69 |
| · Last year's debt taxes..... | \$503,849.31 |
| · Last year's total taxes..... | \$1,425,882.00 |
| · Last year's tax base..... | \$397,890,948.00 |
| · Last year's total tax rate..... | 0.35836/\$100 |

| | |
|--|------------------|
| This year's effective tax rate: | |
| · Last year's adjusted taxes..... | \$1,414,971.76 |
| (after subtracting taxes on lost property) | |
| · This year's adjusted tax base..... | \$364,715,858.00 |
| (after subtracting value of new property) | |
| = This year's effective tax rate..... | \$0.38796/\$100 |

| | |
|--|-----------------|
| x 1.03 = maximum rate unless unit publishes notices and holds hearing..... | \$0.39959/\$100 |
|--|-----------------|

| | |
|---|------------------|
| This year's rollback tax rate: | |
| · Last year's adjusted operating taxes..... | \$914,977.69 |
| (after subtracting taxes on lost property and adjusting for transferred function) | |
| · This year's adjusted tax base..... | \$364,715,858.00 |
| = This year's effective operating rate..... | \$0.25087/\$100 |
| x 1.08 = this year's maximum operating rate..... | \$0.27093/\$100 |
| + This year's debt rate..... | \$0.13459/\$100 |
| = This year's rollback rate..... | \$0.40552/\$100 |
| - Sales tax adjustment rate..... | \$0.0005/\$100 |
| = Rollback tax rate..... | \$0.5446/\$100 |

SCHEDULE A: Unencumbered Fund Balances

The following balances will be left in the unit's property tax accounts at the end of the fiscal year. These balances are not encumbered by a corresponding debt obligation.

| Type of Property Tax Fund | Balance |
|---------------------------|--------------|
| M & O Fund | \$241,000.00 |
| | \$ |

SCHEDULE B: 1995 Debt Service

The unit plans to pay the following amounts for long-term debts that are secured by property taxes. These amounts will be paid from property tax revenues (or additional sales tax revenues, if applicable).

| Description of Debt | Principal or Contract Payment to be paid from Property Taxes | Interest to be Paid from Property Taxes | Other Amounts to be Paid | Total Payment |
|--|--|---|--------------------------|---------------|
| 1986 Gen Obligation | \$0.00 | \$0.00 | \$0.00 | \$0.00 |
| Bonds | \$460,000.00 | \$165,650.00 | \$0.00 | \$476,650.00 |
| Total required for 1995 debt service | | | | |
| - Amount (if any) paid from funds listed in Schedule A | \$476,650.00 | \$0.00 | \$0.00 | \$0.00 |
| - Excess collections last year | \$ | \$ | \$ | \$ |
| = Total to be paid from taxes in 1995 | \$476,650.00 | \$ | \$ | \$476,650.00 |
| + Amount added in anticipation that the unit will collect 97% of its taxes in 1995 | \$14,741.75 | \$ | \$ | \$14,741.75 |
| = Total Debt Levy | \$491,391.75 | \$ | \$ | \$491,391.75 |

This notice contains a summary of actual effective and rollback tax rate calculations. You can inspect a copy of the full calculations at Hansford County Tax Office
Name of person preparing this notice: Helen Dry
Title: Tax Assessor/Collector
Date prepared: 08/11/95

Miniscopic Deep-Canal Hearing Instrument Now Available

Our office is happy to announce that we are currently fitting a completely in-the-canal hearing instrument. This remarkable new hearing instrument is discreet and comfortable to wear. Its placement deep in the canal of the ear (see illustration at top) makes it barely visible. Others may not recognize you are wearing a hearing aid.

The Miniscopic is the smallest hearing instrument ever manufactured by NU-EAR. Call now to schedule an appointment for your hearing assessment and consultation.

Hearing tests are for hearing aid selection and not for medical diagnosis of hearing loss.
© 1994 NU-EAR/OTIS/PHSA

HIGH PLAINS HEARING AID CENTER
Golden Spread Senior Citizens Room in the O'Loughlin Community Center
Every 2nd & 4th Tuesday
2:00 p.m. to 4:00 p.m.
274-5311
1-800-753-1696
659-3866

HAZEL CROSSMAN ESTATE
Saturday, August 26, 1995 • 10 A.M.
Location: 1501 N. Russell, Pampa, TX

RIDING MOWER - LAWN & GARDEN - RECREATIONAL
JOHN DEERE SX75 9hp Riding Mower w/Bagger & Mulcher Blade - Garden Hose & Sprinklers - Yard Tools - Wheel Barrow - Old Push Mower - Birdfeeder - 3 Bar-B-Que Grills - 2 Charcoal - 1 Gas - Wood Porch Rocker

BEDROOM & LIVING ROOM FURNITURE
6 Piece Bedroom Suite (Nice) - 3 Piece Bedroom Suite, Post Bed (Antiquy) - 2 Piece Blond Bedroom Suite - Queen Size Bed w/Brass Rail Headboard - Regular Size Bed w/Bookcase Headboard - Metal Frame Bed - 2 Night Stands, 1 Blond - Dresser - 2 Shoe Shelves - 2 Sofas, 1 MASSOUD w/Pillows - Love Seat - Oval Marble Topped Coffee Table - Round Wood Coffee Table - 2 Matching End Tables w/Drawers - 2 Matching Square Leather Inlay Mahogany 4 Leg End Tables - Round Two Tiered End Table - Wood Hall Table - Square Marble Top, 4 Leg Plant Stand - Upholstered Wingback Arm Chair - 4 Upholstered Wood Frame Arm Chairs - 2 Ladder Back Cane Bottom Arm Chairs - 2 Matching Rocker Recliners - 2 Swivel Rockers - 2 ZENITH 25" Color TVs, 1 w/Remote - Table Lamps - Floor Lamps - WURLITZER Fun Organ - Wood Office Desk (For Restoration)

DINING ROOM FURNITURE
DUNCAN PHYFE Mahogany Dining Table w/3 Leaves, Pads, 6 Mahogany Side Chairs & 2 Mahogany Arm Chairs (Nice) - Matching Mahogany China Cabinet & Hutch (Nice) - Round Pedestal Dining Table w/Oak Inlay, 3 Leaves, 6 Oak Ladder Back Cane Bottom Chairs, One w/Arms - Oak China Cabinet - Table Cloths, Some Linen

GLASSWARE - SILVER - CERAMICS
2 Glass Teardrop Candlestick Holders w/Globes - 12 Place, 100 Piece Gold Glass Place Setting - 8 Piece Etched Stemware Set - Footed Glasses - Carnival Glass Pitcher w/6 Tumblers - Milk Glass Including Pedestal Cake Stand, Fruit Bowl, & Candlestick Holders - Punch Bowl w/Serving Tray & 10 Cups - Covered Glass Pedestal Bowl - Nut & Candy Dishes - Blown Glass Stagecoach - Silver Plated Serving Tray & Nut Dish - Sterling Silver Salt & Pepper Shakers, Weighted & Numbered - BAUER Ceramic Bowls

KITCHEN - APPLIANCES - HOUSEHOLD - FUR COAT
Large Lot Corning Ware Baking & Casserole Dishes - 8" Cast Iron Skillet - Pots, Pans, Dishes, Serving Bowls, Kitchen Utensils, Sifter, Colander, Percolators, Etc. - Dinner Place Settings - 3 - 10 Place Stainless Steel Silver Sets - Mason Fruit Jars - Utility Carts - Formica Top Utility Table - TV Trays - Carousel Microwave Oven - SINGER 401 A Sewing Machine & Cabinet - CAMERON Ironrite w/Wood Cabinet - Vacuum Sweepers - Ironing Board - Kerosene Heater - DEARBORN Heater - Exercise Bike - Purses - Pictures & Frames - Knick Knacks, Bric Brac, Etc. - Luggage - Blankets, Bed Clothes, Sheets - Christmas Decorations - MINCARA Fur Coat

SHOP - NON CLASSIFIED
Air Compressor w/Large Upright Volume Tank - 7 1/2hp Electric Motor, 3 ph - 3 Metal Tables on Castors - Metal Shelving & Cabinets - Wood Shelving - 3 Sets Metal Dollies - 3 Wood Ladders - Lot Green Corrugated Fiberglass - Military Foot Locker

DENZEL TEVIS (806) 435-2768
814 S. Main
Perryton, TX 79070
AUCTION & REALTY TXS 7498

Spiritually Speaking

Spiritually Speaking
By Rev. Beverly Cook, Pastor Faith Lutheran Church, Spearman

A Summer Riddle
Summer, for me, as a child of the Texas Gulf Coast and the beaches of Galveston, has always been associated with "sun", lots and lots of sun, and this summer has been especially so. Feeling the warmth of the sun's rays always makes me very much aware of energy, ... energy coming from beyond myself, energy with power and strength much greater than my own. And I'm reminded of Samson.

Samson's name means "sunlike", and, for some ancient peoples, he was a sun god. But the Judeo-Christian tradition remembers him as a "judge", ...one of the judges of God's people Israel before there was a nation of Israel, before there was a kingdom, ...when God's people were a loosely organized but closely-knit group of Hebrew settlers trying to carve out a place for themselves among the pagan peoples of Canaan, the Philistines being chief among their adversaries at this time.

Now, the Philistines had learned the hard way that it was futile to directly oppose the people of Yahweh-God because His great strength, and so theirs was an opposition of duplicity-political intrigue, false promises, betrayal, back-stabbing, and the like, ...trying to get around God by just trying not to cross paths with Him, ...in many ways, a more insidious opposition than a strength-against approach.

In was in such times that Samson is remembered as a judge of Israel, ...and as propounder of a certain riddle. His riddle comes out of an experience he had while on his way to the land of the Philistines where he was to look over a reluc-

tant Philistine woman with the possibility that he would take her as his bride, and I do mean take, for Samson, not unlike his god, was renowned for his great strength.

Along the way, (Judges 14)

5.... behold, a young lion came roaring toward him.... much as he, a physically strong and powerful young man, was "roaring" into Philistia to take a bride, ... much as Yahweh-God had been imposed upon him before he was even born, as his life was then committed to God by his parents - "the child grew up and the Lord blessed him, ...and so here was Samson, "blessed" with extraordinary strength and "provided for" by God without Samson's consent in the matter, the power of Yahweh-God had been "forced" upon him, so to speak.

So... "behold, a young lion came roaring toward him,

6 And the Spirit of the Lord came upon him mightily, so that he tore him as one tears a kid though he had nothing in his hand...

8 When he returned later to take her (his new bride), he turned aside to look at the carcass of the lion; and behold, a swarm of bees and honey were in the body of the lion.

9 So he scraped the honey into his hands and went on, eating as he went. When he came to his father and mother, he gave some to them and they ate it; but he did not tell them that he had scraped the honey out of the body of the lion.

It is out of this experience that Samson shortly propounds the following riddle to the young Philistine men who are in attendance at his wedding feast:

14.... "Out of the eater came something to eat, And out of the strong came something sweet."

See SPIRITUALLY, page 11



Gruver CTA meets with 36 members present

The Gruver Classroom Teachers met Tuesday, August 15, at 8:00 a.m. in the Junior High Library. Thirty-six members were present. Superintendent, Barry Haenisch, was present to explain questions and proposals on salaries.

New officers for 1995-96 were introduced; President, Linda Haenisch; 1st Vice President, Clay Montgomery; 2nd Vice President, Mary Jane Henson; Secretary/Treasurer, Pat Overbey.

Minutes from the previous meeting and the Treasurer's Report were read and approved.

Building Representatives were appointed as follows:

Elementary, Peggy Frick and Dixie Karlen; Junior High, Pat Dawson and Corby Haight, High School, Penny Ralston and Angie Lopez.

Linda Lackey volunteered to serve on the Publicity Committee and Todd Parker volunteered to work on the Hospitality Committee.

Dues were set at \$10. It was agreed that retired teachers be in-

cluded to join as ex-officio members and that they would be invited to the "end of the year" meeting. All money will go toward a scholarship to a Gruver graduate who is an education major.

There was some discussion concerning making donations to award a scholarship to a graduating senior. This was turned over to a committee for further investigation.

It was announced that there had been outstanding applicants for this year's Classroom Teacher Scholarship. Kathy Gillispie was the recipient. Kathy is a Senior Education major at Panhandle State University.

Roy Mayhew gave a report from a special committee.

The next meeting will be in January.

There was no further business, so the meeting was adjourned at 9:20.

Recycling Words

By MARGIE FAGAN
Spearman-Gruver Recycling Co-ordinator

My mother's favorite expression (well one of her favorite expressions, she had a lot) was "Never a borrower or a lender be". I'll never forget the day I borrowed eggs from Mrs. Dobson. When mom arrived home from work she "hit-de-roof". By the time dad pulled in the drive with our only car, she was pacing the front walk. Without a how-do-you-do she snatched those keys from my dad, hot footed to the grocery store and had me return those eggs. I had trouble borrowing library books for a long time after that.

I you received a Waste Reduction Survey recently, I made a tiny joke about borrowing stuff from the neighbors instead of buying it yourself. (Really mom, it was just a joke.) I know many of you took it seriously because you crossed it out before you answered "yes" to the question "Do you practice source reduction techniques in your home?". I was amazed at how many people truly abhor borrowing. Mom...you were right.

You can still practice source reduction or pre-cycling without knocking on the neighbors door with an empty cup in your hand. Here's how.

Check the packaging. I recently had a choice of English muffins in a paper carton in a plastic bag or just the plastic bag. I could pick the sugar coated sweetie crunchies cereal in a bag or in a cardboard box with the bag inside. For source reduction I pick the package with the least waste.

Instead of choosing between paper or plastic at the store you could choose no bag for small purchases or large single items. If you are the type who actually remembers to bring your shopping list to the store you could bring bags with you as well.

Buy large jugs of cleaners or any thing for that matter. One large bottle produces far less waste than several small ones. For easy handling you could refill a small bottle from the large.

Use cloth napkins and rags instead of paper, the latter being very classy. We've used cloth napkins for a few years now and I think they beat paper hands down even if I didn't care about source reduction. (It's probably because I'm so classy.)

Don't take plastic veggie bags for one tomato and don't buy heavily processed foods in excessive packages. My son's favorite brown bag pick, the Lunchable, comes to mind.

Buy concentrates (like orange juice) and mix in reusable containers. Avoid single serving containers.

Stop magazine subscriptions you never read, check out books from the library, use both sides of the paper, take care of things so they'll last longer, learn to mend socks, save panty hose for stuffing (dolls not turkeys), eat your leftovers, say no to your children at the checkout (better and cheaper to just leave them at home), don't make a copy of everything, shop garage sales, use refills, and so on.

You can make an impact on the amount of solid waste the community has to deal with and your neighbors won't pull the shades if they see you coming. (Unless you're bringing that extra zucchini from your garden again)

★ **SIGNS ...** ★
★ **SIGNS ...** ★
★ **SIGNS !!!** ★
★ Get your business the attention it deserves. ★
★ Update your old sign or get a new one. ★
★ Call for FREE estimate Professional-quality, ★
★ References. ★
★ **659-5319** ★

A "Center" Piece

The Summer Lotus quilt was drawn for August 12th. Lynn Anne Maize was the happy recipient. Congratulations Lynn Anne. Thanks to all the people near and far for buying chances on the quilt and for buying chances on the beautiful handwork. The quilters are happy that their work was so appreciated.

Operating expenses of the Golden Spread Senior Citizens organization includes a \$16,000 contribution to the O'Loughlin Community Center a year or over \$1,300 per month. Wages, paper goods including office supplies and telephone plus miscellaneous expenses makes up another part of the overall operating costs.

August 24th a program on Medicare, Medicaid, and Nursing Home

Care will be held at 1:00 p.m. in the Blodgett Room at the O'Loughlin Center. The public is invited to join in the 12:00 luncheon and attend the program.

May God Bless Our Country

BLADES
ROOFING & CONSTRUCTION

Residential & Commercial
FREE Estimates

STONEY BLADES • (806)935-5933 • 800-294-2102

Cable TV for only 99 cents, plus \$100 coupon book!!!!

*THE BEST VALUE OF THE YEAR, GUARANTEED!!

WHAT A DEAL!!

A GREAT VALUE!!!

"99 cent price covers installation of wired and not wired homes.
"Coupon book worth \$100 for your favorite groceries is yours free with cable installation.
"Offer good while quantities last.



Call Now 659-3363

"Offer good for a limited time. Some restrictions apply. Some services not available in all areas. Please allow 4-6 weeks for delivery of grocery coupon book. First month fee for basic service due at installation.



MISSION CABLE

GOOD FOR \$100.00 IN GROCERY COUPON SAVINGS

1995 PROPERTY TAX RATES IN PALO DURO RIVER AUTHORITY

This notice concerns 1995 property tax rates for PALO DURO RIVER AUTHORITY. It presents information about three tax rates. Last year's tax rate is the actual rate the taxing unit used to determine property taxes last year. This year's effective tax rate would impose the same total taxes as last year if you compare properties taxed in both years. This year's rollback tax rate is the highest tax rate the taxing unit can set before taxpayers can start tax rollback procedures. In each case these rates are found by dividing the total amount of taxes by the tax base (the total value of taxable property) with adjustments as required by state law. The rates are given per \$100 of property value.

| | |
|----------------------------------|--------------------|
| Last year's tax rate: | |
| Last year's operating taxes..... | \$167,652.41 |
| Last year's debt taxes..... | \$2,116,632.96 |
| Last year's total taxes..... | \$2,284,285.37 |
| Last year's tax base..... | \$1,698,606,018.00 |
| Last year's total tax rate..... | 0.13448/\$100 |

| | |
|--|--------------------|
| This year's effective tax rate: | |
| Last year's adjusted taxes..... | \$2,279,325.73 |
| (after subtracting taxes on lost property) | |
| / This year's adjusted tax base..... | \$1,600,853,582.00 |
| (after subtracting value of new property) | |
| = This year's effective tax rate..... | \$0.14238/\$100 |

| | |
|--|-----------------|
| x 1.03 = maximum rate unless unit publishes notices and holds hearing..... | \$0.14665/\$100 |
|--|-----------------|

| | |
|---|--------------------|
| This year's rollback tax rate: | |
| Last year's adjusted operating taxes..... | \$167,288.41 |
| (after subtracting taxes on lost property and adjusting for transferred function) | |
| / This year's adjusted tax base..... | \$1,600,853,582.00 |
| = This year's effective operating rate..... | \$0.01044/\$100 |
| x 1.08 = this year's maximum operating rate..... | \$0.01127/\$100 |
| + This year's debt rate..... | \$0.13774/\$100 |
| = This year's rollback rate..... | \$0.14901/\$100 |

SCHEDULE A: Unencumbered Fund Balances

The following balances will be left in the unit's property tax accounts at the end of the fiscal year. These balances are not encumbered by a corresponding debt obligation.

| | |
|---------------------------|----------------|
| Type of Property Tax Fund | Balance |
| M & O Fund | \$88,542.00 |
| I & S | \$1,679,235.00 |
| | \$ |

SCHEDULE B: 1995 Debt Service

The unit plans to pay the following amounts for long-term debts that are secured by property taxes. These amounts will be paid from property tax revenues (or additional sales tax revenues, if applicable).

| | | | | |
|--|--|---|--------------------------|----------------|
| Description of Debt | Principal or Contract Payment to be Paid from Property Taxes | Interest to be Paid from Property Taxes | Other Amounts to be Paid | Total Payment |
| Bonds | \$1,000,000.00 | \$1,126,001.00 | \$285.00 | \$2,126,286.00 |
| Total required for 1995 debt service | \$2,126,286.00 | | | |
| - Amount (if any) paid from funds listed in Schedule A | \$0.00 | | | |
| - Excess collections last year | \$ | | | |
| = Total to be paid from taxes in 1995 | \$2,126,286.00 | | | |
| + Amount added in anticipation that the unit will collect 97% of its taxes in 1995 | \$111,894.79 | | | |
| = Total Debt Levy | \$2,238,180.79 | | | |

This notice contains a summary of actual effective and rollback tax rate calculations. You can inspect a copy of the full calculations at Hansford County Tax Office
Name of person preparing this notice: Helen Dry
Title: Tax Assessor/Collector
Date prepared: 08/10/95

Sports

Chamber holds 5th annual golf tourney

The Spearman Chamber of Commerce 5th Annual 2 day Golf Classic was in full swing this past Saturday and Sunday at the Spearman Golf Course.

As is no surprise, Toby Thompson and Hank Sutterfield, both of Spearman, dominated a tough class of competitors to shoot a 122 and take the championship.

Pampa's Doug Ware and Richard, as well as Perryton's Jim Harper and Jimmy Dodson were not far behind the twosome, as they finished 125.

Troy James and Melvin Bradley shot a 128 to give the best score in the 1st flight. Justin Boyd, of Spearman, and Curt Fitzgerald, of Gruver, were second with 131, and not far behind them were Travis Wolf, of Spearman, and Jack Wolf, of Goodwell, Ok, came only one stroke higher with 132.

For the 2nd flight, Spearman's Kent Benton and Tindle Ramon, finished the best with a 135, while Amarillo's Byron Sutterfield, a former Spearman native, and Mark McGinnis, came in a close 2nd with 137. Spearman's Bob Hardy and Travis Schnell also came in with a 137.

The 3rd flight of competitors really showed what competition was all about. Shawn Schroeder, of Spearman, and Jim Schroeder, of Hardesty; Don Smith, of Spearman, and Eddi Clemmons, of Spearman; and Mike Cudd, of Spearman, and Danny Henson, of Gruver, all ended their heated game with a 141.

This is the 5th annual golf tournament for the Chamber of Commerce, and without the support of the following business it could not have been possible:

Brown, Graham and Co., Hansford Implement, First State Bank, Lowe's Marketplace, Shawn Schroeder, Toby Thompson, Eugene

and Judy Yardbrough, Charlie Salgado, Rusty Tindell, Randall Sauer, and to Don Schroeder and board members who participated and worked the tournament and the business who sponsored ads.

★ ★ ★ ★ ★
FOR SALE
 ★ ★ ★ ★ ★
UNBELIEVABLY AT
 ★ ★ ★ ★ ★
BECKETT PRICE!
 ★ ★ ★ ★ ★
Michael Jordan Rookie
 ★ ★ ★ ★ ★
Card and/or set. Call
 ★ ★ ★ ★ ★
659-3863 or 659-2912
 ★ ★ ★ ★ ★



FINAL FOUR - Landon Miller, Michelle Elliott, Amber Elliott, and Colton Miller finished off their summer swimming season last August 4th, 5th, and 6th at the Junior Olympic Swimming Championship held in Kansas City.

Spearman Swim Team end at junior olympics

Spearman swimmers ended the summer season with a big splash, as the four remaining swimmers, Amber Elliott, Michelle Elliott, Landon Miller, and Colton Miller competed in the Missouri Valley Junior Olympic Swimming Championship in Kansas City last August 4, 5, and 6.

These swimmers had to qualify times in another meet to compete in this Division one long course meet. After the Championship Meet in Dodge City, Charles Elliott took over as head coach for these four fine swimmers, while Jill Lusby prepared to return to College. In preparation for this big meet, he increased workouts to over 3,000 meters per day - the equivalent to 4 miles. The hard work and long house paid off. These swimmers had their best times ever in all races. The competing was tough

since most competing are in year round swimming programs, but these Spearman athletes who compete and train only two months of the year, were not intimidated. There were between thirty and sixty swimming in each race.

Colton Miller, 10, who qualified in seven events for this three day meet, had an exceptional meet. He came home with two medals and scored 54 individual points for the Western Kansas Swim League Division team. In his first race, the 50 Breaststroke, he finished 13th, with a time of 48.30. The next race for the day was the 100 Freestyle, where he came up from the slowest heat to finish with a time of 1:19.63 to earn him an 8th place medal. His last race of the day was the 50 Butterfly, where he improved his

See SWIM TEAM, page 8

NOTICE OF VOTE ON TAX RATE

The Hansford County Commissioner's Court is scheduled to vote

on the 1995 tax rate at a public meeting

to be held on

Thursday, August 31, 1995

at 1:30 p.m.

at the

Hansford County Courthouse

NOTICE

Farmers/Contractors
As of August 1, 1995,
ELITE CONSTRUCTION
is expanding it's services to include:

- Underground Irrigation Repair/Plastic & Cement Pipe
- Underground Irrigation Pipe Installation
- Backhoe Service
- General Welding Service
- Contract Cement Work For Commercial, Industrial, or Residential

Fully Insured/Competitive Prices
ELITE CONSTRUCTION • 435-7814

RATTLESNAKE ROUND-UP!

ALLSUP'S

Every Ticket Can Win!

Win A 1995 Ford F-150 Super Cab XLT!

STORE LOCATION

Enjoy CLASSIC

SAVE ON **COCA-COLA SOFT DRINKS**

ALLSUP'S **SAUSAGE & BISCUIT** FOR ONLY **79¢**

NABISCO PREMIUM CRACKERS 1 LB. BOX **99¢**

STORE SPECIAL

PRICES EFFECTIVE AUGUST 20-26, 1995

ATTENTION CUSTOMERS!

Our Rattlesnake Round-up game will be coming to a close in the next few weeks. We still have tickets available for the next week. *Be sure to turn in all your winning tickets.*

| | |
|--|--|
| <p>LANE'S BIG VALUE CHIPS REGULAR 99¢ 2\$1</p> | <p>OLD GOLD PRETZELS REGULAR \$1.99 \$1.49</p> |
| <p>LANA'S PORK EGG ROLLS</p> | <p>DECKER MEAT BOLOGNA 12 OZ. PKG.</p> |
| 2\$1 | 69¢ |

GAS FOR A YEAR WINNERS:

Bobby Langston • Plainview, TX.
 Leroy Bray • Gallup, N.M.
 Helen Sutton • Hobbs, N.M.
 J.M. Moss • Roswell, N.M.
 Kathleen Ferguson • Merkel, TX.
 Kaye Price • Loving, N.M.
 Antonio Medina • Ballinger, TX.
 Kelly Raber • Spur, TX.

CASH WINNERS:

Maria Pennington • Petersburg, TX. **1000**
 Bernice Freeman • Seagraves, TX. **1000**
 Frances Collier • Plainview, TX. **500**
 Joe Cisneros • Alamogordo, N.M. **500**
 Jose Garcia • Santa Fe, N.M. **500**
 Becky Hill • Spur, TX. **500**
 Kenneth Hughes • Eunice, N.M. **500**
 Gloria Ramon • Abilene, TX. **500**
 Edward Gonzalez • Tahoka, TX. **500**
 Belia Aquilar • Hereford, TX. **500**
 Robin Rumfield • Carlsbad, N.M. **500**

No Purchase Necessary. Game begins May 28, 1995 and ends August 18, 1995. Official Rules and game piece available at participating ALLSUP'S locations or by sending a SASE to "RATTLESNAKE ROUND-UP", P.O. Box 1277, Lynnwood WA 98044-1277 by August 18, 1995. Game open to legal NH, OK and TX residents. Void where prohibited.

Enter To Win A 1995 F-150 Super Cab XLT!

For the Sport of it

by Bob Bort

Tonight, Thursday, August 24, is the big night - the opening of pre-season action, as the Hounds scrimmage the Turpin Cardinals at 6:00 p.m. in Greyhound Stadium. I don't know about the Hounds, but I am all primed and ready to for 1995!

ANSWER TO LAST WEEK'S TRIVIA QUESTION #1: The four boys who played on the 1993 Texas County Babe Ruth Oklahoma State Championship team, and travelled to Babe Ruth Regionals in New Orleans were Max Frick, Sammy Renteria, Daniel Bort and Jarrod Hoel. Max, Sammy and Daniel are seniors at GHS this year. Jarrod has moved to the Austin area, where he is able to play baseball, and he will be playing baseball at Wimberley this year, his junior year; and next year, his senior year, if he is still there. He, and his family, are welcome to return to Gruver of course....

ANSWER TO LAST WEEK'S TRIVIA QUESTION #2: The family of four - father, mother, and two sons - who all played for Hounds and Lady Hounds playoff teams are Mack and Darlene Hoel, and sons Brian and Matthew. Mack played on the 1965 state semi-finalist Hounds' team, and the 1966 state championship Hounds' team; Darlene played on the 1963 Lady

Hounds' regional qualifying team, and the 1964 Lady Hounds regional finalist team; Brian played on the 1989 Hounds regional finalist team; and Matthew played on the 1991 Hounds area championship team, and the 1992 Hounds bi-district championship team. All four of them made it to regionals at some point in their high school careers.

 The basketball season is scheduled to get under way Tuesday, November 14, with the Dumas Demons at Gruver. But don't count on the Hounds opening that night! This year, for the first time in 11 years, the football season will cut into the opening of the basketball schedule, because the Hounds will be playoff bound! At least, that is what I am predicting.

 Well, here is the lineup for the opening night of football action, Friday night September 8. There are 40 games - all will be played Sept. 8 except for the first two:

Pampa at Garden City, KS (Sept. 1); Plainview at Lubbock Estacado (Sept. 7).

Clovis, NM at Amarillo High; Amarillo Palo Duro at Odessa; Amarillo Tascosa at Hereford; Lubbock High at Canyon Randall; Lubbock Coronado at El Paso Eastwood;

Abilene at Lubbock Monterey.

Amarillo Caprock at Levelland; Big Spring at Borger; Canyon at Tulia; Dumas at Dalhart; Pampa, open.

Friona at Amarillo River Road; West Texas High at Childress; Geymon, OK at Perryton; Canadian at Sanford-Fritch; Dimmitt at Springlake-Earth; Lockney at Floydada; Muleshoe, open; Abernathy at Shallowater; Lubbock Roosevelt at Hale Center.

Boys Ranch, open; Wheeler at Gruver; Spearman at Panhandle; Stratford at Sudan; Claude at Clarendon; Happy at Highland Park; Quanah at Memphis; Hollis, OK at Wellington; Farwell at Morton; Bovina at Olton.

Booker at Beaver, OK; Groom at Valley; Shamrock at Motley County; Sunray, open; Vega at White Deer; New Deal at Kress; Nazareth at Lubbock Christian.

Samnorwood at Higgins; Silvertown at Lefors; Pollett at Miami; Patton Springs at McLean; Meadow at Lazbuddie.

 Sophomore quarterback Brant Armes has fallen to an elbow injury, and he will be out for six to eight weeks. The JV team will really miss him. Brant has super talent.



PILE IT ON - The Spearman Booster Club put on their annual ice cream social last Wednesday night at Spearman High School. The entire parking lot of the school was jammed with people, as several people ate enjoyed there selves at this athletic event. The event is also a time for players, fans, supporters, and coaches to get together and talk about the up coming season. Athletes and coaches from football to cross country were introduced, and several people were shocked to find this year's CC team will be featuring boys. (Photo by Chad Davis)

Swim Team CONTINUED FROM PAGE 7

time by four seconds with a 40.86 and took home 9th place, missing a medal by hundredths of a second. On Saturday morning, his first race was the 50 Freestyle. Colton showed his blazing speed by finishing with a 34.98 and a 7th place medal. In the 100 Breaststroke, his time was 1:44.37, giving him another 9th place. He was the anchor leg for the WKSL 200 Free Relay that finished fifth. He began the last day of the meet swimming the 200 Freestyle. Again, he missed the medal by placing yet another 9th with a time of 2:54.00. His last race of the meet was the 100 Butterfly where his chances were good to win another medal, but he was disqualified on a false start. Colton, a very competitive athlete was possibly too pumped up for his last race. He is planning to compete in a few winter meets this year.

Amber Elliott, 11, competed in the 11-12 year old girls 50 Freestyle. Although she didn't place, she had an exceptional time of 32.72,

a personal best. Amber will be back next year in this same age group a year older and much faster. It was a great accomplishment to make it this far and be at the bottom of her age group. Amber didn't get to swim on relay as only one other girl from WKSL was competing.

Michelle Elliott, 15, competed in the Senior girls 50 Freestyle. She had a personal best of 31.42. Michelle had some tough luck, as her goggles broke and fell off on her dive, but this didn't stop her from doing her best. Her next race was the 100 backstroke. This is Michelle's specialty that she holds several records in. She didn't place, but had a great time. She was also swimming against older girls, many of whom will be attending college on swim scholarships this fall. Michelle was on 3 WKSL relays swimming the Freestyle and backstroke. She will definitely be a force to be reckoned with in future years.

Landon Miller, 14 competed in

the 50 Freestyle. He had a personal best finish of 29.17. Two of his WKSL teammates place 2nd and 4th, showing how tough this age group is even in the regular league. Landon was also on 3 WKSL relay teams, where he was the anchor leg in both Medley relays and lead-off in the free relay. He returned home on Tuesday in time to begin two-a-day practices for football on Wednesday. His main reason for swimming this summer was to keep in shape for his other sport activities.

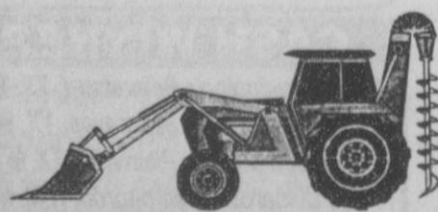
These swimmers need to be commended for their hard work and dedication. Coach Elliott is planning to try a winter swim league. The practices will be in Perryton beginning in September.

Also attending the meet and other Kansas City sites were Charles and Melanie Elliott, Jim, Marlene and Dillion Miller.

Be sure to watch for these athletes, as well as other superstars of this nature, as they will be back in the pool come this winter.

West Texas Gas, Inc. Reminds you to call BEFORE you dig

Before you begin to dig, trench, excavate, grade, build, put up a fence, plan a construction project, plant, install a sprinkler system, or landscape. Call us first to make sure you're not digging where our underground pipelines are located.



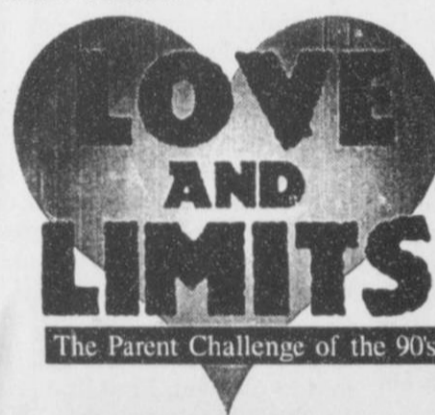
If a natural gas line is broken or cut, it will cause considerable inconvenience and expense.

Big or small, if it's a digging project, call West Texas Gas before you plan to do any landscaping or construction work to mark gas lines before you dig!



West Texas Gas, Inc.
 Canadian, Texas
 323-6464

S.T.O.P. Presents...



A Community Seminar for Parents

free Saturday, August 26; 9:45 a.m. to 3:30 p.m.
 O'Loughlin Community Center

Featuring...
 Pat Socia
Straight Talk About Sex: Raising an Abolished Child
 Linda Quiroz
Helping Your Child Succeed in School
 Dr. Jerry Lane
Building Capable Kids & Positive Discipline

Free Child Care Provided
 Call Kathy Bryant at 659-3030 to reserve a spot for your pre-school child.
Spearman Task-force On Parenting
 is a committee of Spearman citizens and parents. Call Kathy Bryant at the O'Loughlin Center (659-3030) for information.
 Lunch provided free of charge by:
 Spearman Lion's Club
 Spearman Rotary Club
 W.D.S.C.C.

1995 PROPERTY TAX RATES IN PRINGLE-MORSE C.I.S.D.

This notice concerns 1995 property tax rates for PRINGLE-MORSE C.I.S.D. It presents information about three tax rates. Last year's tax rate is the actual rate the school district used to determine property taxes last year. This year's effective tax rate would impose the same total taxes as last year if you compare properties taxes in both years. This year's rollback tax rate is the highest tax rate the school district can set before it must hold a rollback election. In each case these rates are found by dividing the total amount of taxes and state funds by the tax base (the total value of taxable property) with adjustments as required by state law. The rates are given per \$100 of property value.

| | |
|----------------------------------|-----------------|
| Last year's tax rate: | |
| Last year's operating taxes..... | \$1,126,208.19 |
| Last year's debt taxes..... | \$0.00 |
| Last year's total taxes..... | \$1,126,208.19 |
| Last year's tax base..... | \$89,381,602.00 |
| Last year's total tax rate..... | 1.2600\$100 |

| | |
|--|-----------------|
| This year's effective tax rate: | |
| Last year's adjusted taxes..... | \$1,124,500.56 |
| (after subtracting taxes on lost property) | |
| / This year's adjusted tax base..... | \$84,432,624.00 |
| (after subtracting value of new property) | |
| = This year's effective tax rate..... | \$1.3318\$100 |


x 1.03 = maximum rate unless school district publishes notices and holds hearing.....\$1.3717\$100

| | |
|---|-----------------|
| This year's tax rate to trigger a rollback election: | |
| Last year's adjusted operating taxes..... | \$1,124,500.56 |
| / This year's adjusted tax base..... | \$84,432,624.00 |
| = This year's local maintenance and operating rate..... | \$1.3318\$100 |
| x .08 = this year's maximum operating rate..... | \$1.4118\$100 |
| + This year's debt rate..... | \$\$.00 |
| = This year's rate to trigger a rollback election..... | \$1.4118\$100 |

SCHEDULE A: Unencumbered Fund Balances
 The following balances will be left in the unit's property tax accounts at the end of the fiscal year. These balances are not encumbered by a corresponding debt obligation.

| | |
|---------------------------|--------------|
| Type of Property Tax Fund | Balance |
| Maintenance & Operation | \$583,600.00 |
| | \$ |

This notice contains a summary of actual effective and rollback tax rate calculations. You can inspect a copy of the full calculations at Hansford County Tax Office.
 Name of person preparing this notice: Helen Dry
 Title: Tax Assessor/Collector
 Date prepared: 08/21/95



1995 Gruver Greyhounds Football Schedule

VARSITY

| | |
|--|----------------------------------|
| Aug. 24 - Turpin Scrimmage, H, 6:00 p.m. | Oct. 6 Panhandle, T, 8:00 p.m. |
| Sept. 1 - Canadian Scrimmage, T, 6:00 p.m. | Oct. 13 Boys Ranch, H, 7:30 p.m. |
| Sept. 8 - Wheeler, H, 7:30 p.m. | Oct. 20 Stratford, T, 7:30 p.m. |
| Sept. 15 - Texhoma, H, 8:00 p.m. * | Oct. 27 Spearman, H, 7:30 p.m. |
| Sept. 22 - Highland Park, T, 7:30 p.m. | Nov. 3 OPEN |
| Sept. 29 - Booker, T, 7:30 p.m. | Nov. 10 West Texas, T, 7:30 p.m. |

* Homecoming

JUNIOR VARSITY

| | |
|--|--|
| Sept. 7 Boys Ranch, H, 6:00 p.m. | Oct. 12 Boys Ranch, T, after J.H. Game |
| Sept. 14 Stratford, T, 6:00 p.m. | Oct. 19 Stratford, H, after J.H. Game |
| Sept. 21 Spearman, H, after J.H. Game | Oct. 26, Spearman, H, after J.H. Game |
| Sept. 28 Sunray, T, after J.H. Game | Nov. 2, Sunray, H, after J.H. Game |
| Oct. 5, West Texas, T, after J.H. Game | Nov. 9, West Texas, H, after J.H. Game |



19th Annual Gray County 4-H Youth Rodeo held August 18-19

The 19th Annual Gray County 4-H Youth Rodeo was completed August 19, with a total of 223 contestants. These youth were in competition for a total of one saddle in the 15-18 age group and 31 belt buckles which were awarded to the top winners in the 9-11 and 12-14 age groups. A total of 225 ribbons and 33 trophies were awarded to the top Pee Wee winners.

An All-Around saddle was given to the top contestant in the 15-18 age group.

At this exciting event that was displayed in Grey County, there was only one winner of Hansford County. This outstanding young man, Quentin Harper, really showed his talent in these events: Breakaway Roping which he placed 4th, Calf Roping which he placed

1st, and Ribbon Roping which he placed 3rd. Harper has been doing an excellent job with his talent, hopefully the future will be his to win.

TEXAS

It's Like A Whole Other Country.

FAMILY LAUNDRY

New Machines & Dryers
Large Triple Load Machines for
Quilts, Bedspreads, ect.

**CLEAN
&
NEAT!**

***** **SELF SERVICE** *****
OR
FULL LAUNDRY SERVICE

Wash, Fold, Dry

Mon., Wed., & Fri.

8 a.m. to Noon and 2 p.m. to 6 p.m.

NOW IN SERVICE !!

112 HANCOCK



1995 Spearman Lynx Football Schedule

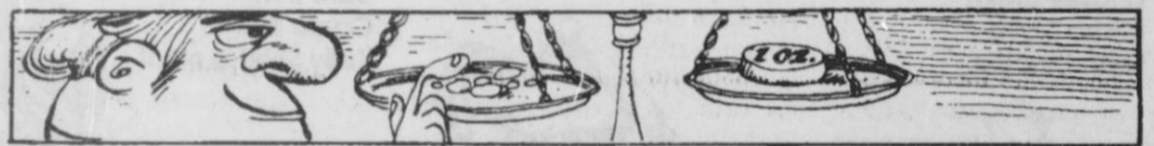
VARSITY

| | |
|---|----------------------------------|
| Aug. 25 - Canadian Scrimmage, H, 6:00 p.m. | Oct. 6 Fritch, T, 8:00 p.m. |
| Sept. 1 - Highland Park Scrimmage, T, 6:00 p.m. | Oct. 13 Stratford, H, 7:30 p.m. |
| Sept. 8 - Panhandle, T, 8:00 p.m. | Oct. 20 OPEN |
| Sept. 15 - Memphis, H, 8:00 p.m. | Oct. 27 Gruver, T, 7:30 p.m. |
| Sept. 22 - Clarendon, T, 8:00 p.m. * | Nov. 3 West Texas, H, 7:30 p.m. |
| Sept. 29 - Perryton, T, 8:00 p.m. | Nov. 10 Boys Ranch, T, 7:30 p.m. |

* Homecoming

JUNIOR VARSITY

| | |
|---|--|
| Sept. 7 Stratford, H, 6:00 p.m. | Oct. 12 Stratford, T, after J.H. Game |
| Sept. 14 Sunray, T, 6:00 p.m. | Oct. 19 Sunray, H, after J.H. Game |
| Sept. 21 Spearman, T, after J.H. Game | Oct. 26, Gruver, H, after J.H. Game |
| Sept. 28 West Texas, H, after J.H. Game | Nov. 2, West Texas, T, after J.H. Game |
| Oct. 5, Boys Ranch, T, after J.H. Game | Nov. 9, Boys Ranch, H, after J.H. Game |



When weighing precious stones, there are about 142 carats in an ounce.

**It's time to
Hit the Books...**



**...and the
Highways!**

5 Common Roadside Emergencies

- Flat Tire
- Bad Starter
- Bad Alternator
- Overheated Engine
- Car Accident

Whether it's your college student going away, or you going to their activities...
A cellular phone from **CELLULARONE®**
is the best way to get there!

NOKIA
bag phone

\$9.95

2 months
FREE Voice Mail
with each activation

*Only 1 yr. contract required
Offer Expires Sept. 5, 1995

Country Cellular Communications

Jeff Beedy * Dick Gillaspie

(806)659-2541



1995 Spearman Lynx and Lynxettes Cross Country Schedule

| DATE | LOCATION |
|----------|------------|
| Sept. 2 | Borger |
| Sept. 9 | Wolf Creek |
| Sept. 23 | Amarillo |
| Sept. 30 | Dumas |
| Oct. 7 | Wheeler |
| Oct. 14 | Stratford |

ALL ABOVE MEETS WILL BEGIN AT 9:00 A.M.

This year's wind runners are
BOYS

Jason Villines
Darrell Scroggs

Heath Archer
Zack Furlow

GIRLS

Holly Pipkin
Grace Davis
Kristin Beedy
Leslie Holton
Britni Beedy
Lisa Swink
Jennifer Neff
Andee McGaha
Jocelyn Edwards
Judith Hernandez
Lindsey Smith
Misha Davis
Leah Mackie

Kasey Duniho
Becca Howard
Keisha O'Quin
Ashley Brown
Brooke Trantham
Gena Kunselman
Mindy Tigrett
Samantha Beasley
Macy Shieldknight
Shayla Barber
Tara Butt
Carrie Burton
Kelly Shieldknight



Tax Proposal

CONTINUED FROM PAGE 1

seem as though it is working perfectly. The difference in pricing is minimal. Other area cities such as Clarendon and Gruver have adopted the 4B tax, and it too is proving most effective.

The tax itself is quite simple. There will be a one cent sales tax increase and one-half cent property tax relief. The sales tax for property tax relief reduces city property taxes. These funds from retail sales tax is more equitable as both residents and non-residents are contributing and does not add to the property tax burden.

As mentioned earlier there has been a task force established, which represents different citizens in Spearman. They will research and distribute information to the residents to inform them of issues concerning the proposals for a sales tax. This task force includes Bill Pittman, Monty Blackman, Cindy Blackman, Dick Gillaspie, Pete Fisher, Judy Tindell, Larry Butts, Steve Benton, Brad Beedy, Mike Schnell, and Verlan Winegarner.

There has been increased concern over the lack of growth of business in Spearman. The option to

look at what we as a community can do to promote business growth and retention, can be looked at through passing a sales tax for economic development. Through revenue brought in by the sales tax, the community can organize an economic development program enabling them to actively seek business and to promote business retention. Without a sales tax for economic development in Spearman it is going to put us at distinct disadvantage when vying with the surrounding communities which have already passed this tax.

City of Spearman

CONTINUED FROM PAGE 1

aries on the zoning map for lots 4, 5, and 6, and the adjacent 165' X 140' property in outlot 35 on the east side of the 300 block of Archer St.

A motion was then made by Reed, after discussion, to approve the Chamber of Commerce's budget in relation to the Amended Contract for the Disbursement of the Collected Hotel/Motel Taxes. The motion was seconded by Elliott, and unanimously carried. Benton and Gillispie abstained due to being on the Board of Directors of the Chamber of Commerce.

The Council then considered approving the amended outdoor warning system test and exercise procedures.

Chief Kenealy was present and stated that monthly test on the outdoor warning system needs to be preformed and proposed the following system:

A 3-5 minute wavering tone (se-

ries of short blasts) is an attack warning and will mean an attack has been detected. You should take immediate action and go to assigned shelter.

A 3-5 minute steady tone is an alert or attention. This means an actual emergency condition other than attack has occurred and you should take cover and tune into your local radio or TV to your local EBS station and listen for mobile vehicles, public address system, ect...

The regular monthly tests will follow a 1 minute steady tone, then a 1 minute silence, then a 1 minute steady tone format, and you should take no action.

The daily test will be a one minute steady tone only, and for this you should also take no action.

A motion was made by Gillispie to approve the amended outdoor warning system test and exercise

procedures as presented. The motion was seconded by Elliott, and the motion unanimously carried.

The council then considered appointing Tim Luttrell to fill a vacancy on the zoning board of adjustment.

Mayor stated that Dick Gillaspie had resigned from this position and that Mr. Luttrell expressed an interest to serve.

A motion was made by Elliott to appoint Tim Luttrell to the ZBA, and was seconded by Benton. The motion unanimously carried.

Next, the council held a workshop on the 1995-96 budget, but no action was taken.

Finally, with no other business, a motion was made by Garner to adjourn which was seconded by Elliott.

Mayor Buchanan declared the meeting adjourned at 8:59 p.m.

Spearman

CONTINUED FROM PAGE 1

Charles Elliott then discussed problems that are occurring in the activity gym during the summer. On some occasions the gym has been locked because of vandalism. The Board requested that alternatives be explored for supervision and that assistance from the local law enforcement be provided.

Mr. Murrey then went on to give his Superintendent's Report. He stated that the third party administrator of the Section 125 Plan

would not change, the lunchroom meal prices were being evaluated, and that a contract is being drawn up for the roof repair at the High School.

The Board then went into closed session and reconvened and announced that they had accepted the resignation of Marsha Pipkin and that they had adopted the 1995-96 Compensation Plan.

Insurance will pay for the bond for the roof repair. The budget for

this year will be adopted on August 28, 1995. Mr. Murrey and other superintendents will meet with the Commissioner of Education in Amarillo regarding the notice on court ruling concerning taxes, the number of vocational students at the High School are fewer than previously thought, the price of school lunches will be raised ten cents per meal for the 1995-96 school year, and the insurance workshop was continued.

HAPPY 94TH BIRTHDAY, FIRST UNITED METHODIST CHURCH!!

Spearman, Texas — August 27, 1995

94 REASONS TO ATTEND F.U.M.C.

- You are invited.
- Covered dish dinners
- Great music
- Friendly people
- We want you to attend
- Great Sunday School teachers
- Faithful Men singing ensemble
- Church is conveniently located
- We have ministries for all ages
- Birthday cake for everyone (8/27/95 only)
- Special children's time during worship
- Lots of pictures to look at
- First Methodist Church was first structure for worship in Hansford County
- Rainbow Kids Klub
- Great youth programs
- We love to have company
- We want to minister to entire community
- Temple Tune-ups (aerobic exercise)
- Cool, air-conditioned building
- Great nursery facilities
- New young adult class is being formed
- Men's study group
- Women's monthly Fellowship Dinner
- Weekly Jr. High programming
- Weekly Sr. High programming
- Disciple Bible Study
- United Methodist Men's monthly breakfast
- Tuesday morning Bible Study
- New Prayer Ministry
- Annual Mission Trip
- Men's Prayer Group
- Women's Prayer Group
- Worship Service broadcast on KRDF-98.3FM
- Superb choir program
- Revival Services
- Ground Hog Day Dinner
- Chili Cook-Off
- We support Ministerial Alliance events and ministries
- Christmas Eve Communion
- Friendly Greeters
- Vacation Bible School
- Father/Son Breakfast on Father's Day
- Mother/Daughter Dinner in May
- Carols and Candles Service in December
- Chancel Choir Panhandle Tour in September
- Annual Youth Extravaganza
- Community Thanksgiving Dinner
- Membership Class
- Plenty of Committees to go around
- A fine church staff
- Ash Wednesday Service
- Holy Week Noon Services
- Fifth Quarter Fellowships
- Exciting, meaningful worship services every Sunday
- Back in the Saddle Day
- Mother's Day Luncheon by Methodist Men
- First Sunday Devotionals
- Divorce Recovery Workshop
- United Methodist Women Sunday
- Church camps for all ages
- Youth Ski Trips
- Happy Days Drive-In
- Sunday night worship
- Laymen's Retreat in August
- Sr. High camping trip
- "Circuit Writer" - weekly newsletter
- Methodist Men's annual Garage Sale
- We are working toward being completely handicapped accessible
- Newly moved and updated church library
- Holy (Maundy) Thursday Communion
- Lots of free coffee
- Sr. High Bible Study
- Fully padded pews
- Talented musicians
- Worship services at Hansford Manor
- Good Friday service
- Sr. High Dinner Theatre
- Relaxed Summertime Worship
- Improved sound system
- "Experiencing God" class
- Sunday School Classes for all ages
- Meals on Wheels
- Sr. High Thanksgiving Fiesta Dinner
- Children's Church
- Monthly Communion
- Beautiful Banners
- Support several missionaries
- Helpful ushers
- Jr. High Super Bowl Sunday Spaghetti Dinner
- Don't have to agree with the preacher
- Assist several families at Christmas-time
- Well-kept facility
- New carpet in some classrooms
- 94! "The World is Our Parish" — John Wesley

CLIFCO WINDSHIELD REPAIR
We Can Repair:
Rock Chips
'Stars'
'Bulls Eye'
Cracks up to 14"
Toll Free Mobile 930-1704



HERGERT FORD
Top Quality Body and Paint Repairs

DARL HERGERT
420 S. Main Perryton, TX 435-7676

Thank You

We would like to express our heartfelt thanks and appreciation for the visits, prayers, prayergrams, cards, food, phone calls, flowers and memorials and all the kindness shown during the illnesses and death of our beloved husband, father & grandfather.

Our special thanks to the Prayer Ministry and Homebound Ministry programs of the First Baptist Church.

May God's blessings be with each of you.

Minnie Weaver
John & Lexlen Weaver
Robert and Carolyn Weaver
Ricky B. and Cris Weaver
Eric and Connie Weaver
Vance and Charla Weaver
Kelly and Kimie Cunningham
Jana and Tad Hall
Dana and Ralph Johnson

Obituaries

Eva Mae Adkison

SPEARMAN-Eva Mae Adkison, 87, a former Spearman resident, died Sunday, August 20, 1995, in Odessa.

Services were on Tuesday in Greenfield Acres Baptist Church in Odessa with the Rev. Teddy Short officiating. Additional services were held on Wednesday in first Baptist Church in Spearman. Burial was in Hansford Cemetery by Hubbard-Kelly Funeral Home of Odessa.

Mrs. Adkison was born in Quay, OK. She married Authur Adkison in 1928. He died in 1982. She also was preceded in death by a daughter, Darla Kay Barnes, in 1994; and by a son, A.D. Adkison, in 1937.

She lived in Spearman from 1959 to 1994, when she moved to Odessa. She was a homemaker and a member of Greenfield Acres Baptist Church.

Survivors include four sons, Fred Adkison of Yukon, OK, Charles Adkison of Hobbs, NM, Darrel Adkison of Odessa and Harrel Adkison of Mansfield; four daughters, Velora Farrar of Albuquerque, NM, Eva Lee of Hobbs, Freda Pearce of Durant, OK, and Glenda "Susie" Woods of Odessa; 28 grand-

children; and 33 great-grandchildren.

Morris M. Poole

BORGER-Morris M. Poole, 72, died Sunday, August 20, 1995.

Services were on Tuesday at the Wesley United Methodist Church with the Rev. Sammie Rainey, pastor, officiating. Burial will be in Highland Park Cemetery by Brown funeral Home.

Mr. Poole was born in Garner, Arkansas, and had lived in Borger for 48 years. He married Eddie Harton in 1946 at Arkansas City, Kansas. He retired as a mechanical supervisor with Phillips Petroleum Co. He was a veteran, serving with the Army Air Corps during World War II. He was a member of the Wesley United Methodist Church.

Survivors include his wife; three sons, Dr. Morris O. Poole of Sweetwater, Stephen Poole of Spearman and Ray Poole of Amarillo; three brothers, M.T. "Bud" Poole of Smackover, Arkansas, Bill Poole of Amarillo and Thomas Poole of Miami, OK; a sister, Virginia Werther of Borger; seven grandchildren; and a great-grandchild.

MUSEUM

CONTINUED FROM PAGE 4

something there that will interest everyone. It will be different for each person. I love the quilts, the Indian artifacts, Civil War artifacts, and old sewing things. You may like the barn with the wagon, old furniture, pioneer things, old dishes, children's toys, or Fort Zulu. Whatever you're interested in, you will

surely find something that pertains to that interest. **Come on by!**

Museum hours are Tuesday through Saturday from 1 until 5 p.m. Special tours can be arranged by calling J.D. or Rubyjo Wilbanks at 659-3084 or Clementine Renner at 659-2335.

LITES

CONTINUED FROM PAGE 4

money wisely and stay away from speculative ventures. Successful communities provide money for businesses and projects that benefit the entire community and not just a few citizens.

In November, the city will hold an election which will have two propositions on the ballot. The first proposition will ask voters whether

or not they want to create a 1/2 cent sales tax and use the money to reduce property taxes. The other proposition will ask voters whether or not they want to create a 1/2 cent sales tax and use the money for economic development. I hope every citizen takes the time to learn about these issues and go to the polls in November.

SPIRITUALLY

CONTINUED FROM PAGE 6

In Scripture the "lion" is frequently used to symbolize the earthly power of God, especially when it is a "young lion." And a "roaring" lion symbolizes God's "anger" and "wrath" - "energies" for "destruction", surely, or so one might have expected, as Samson did, even for himself, not an "enemy" but a "champion" of Yahweh-God.

But that is not who God is, nor is He like a beast whose actions-anger are as predictable, and therefore as manipulatable as is anger itself. Samson's God, even in anger, is always and only, true to Godself, profoundly "for" human life. Samson had discovered that about God, and his experience with the lion that day confirmed this.

Yes, God who is mighty like a lion can be as angry as the youngest, fiercest lion can be angry; yet God also **Loves** fiercely, too, as has "sweet things" inside, as if one will but meet Him honestly and with the strength of good faith, as Samson did, meeting the "beast of Summer" on the way to taking a "bride", on the way to making a lifetime commitment and covenant with one who did not know what "commitment for life" and "covenant with God" were all about, one destined to betray him, and to do this by undermining Samson through the very source of his strength - his, Samson's, commitment to his God, symbolized by his long hair, his head "untouched by

razor." The person of faith, upon hearing Samson's riddle, knows that the "answer", the "solution" to it is "Yahweh-god", Samson's God, God who is relentless in seeking out unworthy partners for relationship with Godself,.... relentless to the point of submitting to being torn "limb from limb" by human hands. Why, then, does Samson choose to accept the answer that the Philistines give to his riddle? And this, knowing were their answer came from and how they got it? But why does Samson choose to accept their answer of "a lion" and "honey"?

...A first step, perhaps, in getting to truly know his God?

It occurs to me that even if a person were to answer "Yahweh-God", do we really know who we're talking about and what's at stake in getting to know Him? Samson himself was surprised, it seems to me. And now, I'm moved to ask Why does God continue to accept my answers?

Feeling the warmth of the Summer sun rekindles my awareness of "energies" for life that are far, far beyond my own. And I'm reminded, not only Samson, but of Jesus, and His "consuming Love for me,.... Love which lets me tear Him "limb from limb" and hang Him on a cross, then join Him at His Feast, to dine on His body:

"Out of the eater comes something to eat; and out of the strong comes something sweet." Amen.

STOP

CONTINUED FROM 1

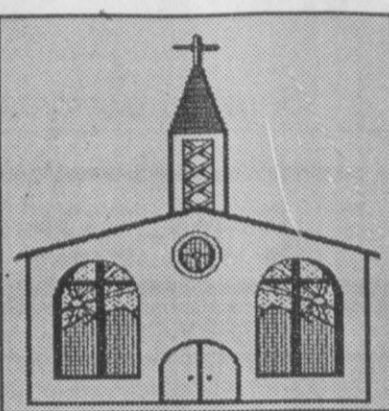
Hargis, Principal at Spearman Elementary; Sheri Benton, Librarian at Hansford County Library; Father Fern Couture, Priest at Sacred Heart Catholic Church; Elodia Bravo, Migrant Coordinator for Spearman ISD; Kathy Bryant, Executive Director for the O'Loughlin Center; Debbie Cantu, ESL Instructional Assistant; Kyle Henderson, Pastor First Baptist Church; Larry Kenealy, Chief of Police. If you are interested in supporting this important endeavor

to insure the future of Spearman's young people, please contact one of these committee members and make a donation.

Anyone is eligible regardless of age, location, or time you can attend. There will also be free child care provided, and the swimming pool will be open for school age children. Also be sure and register for the kids bicycle donated by B&E Sales Co., which is on display at the Spearman Elementary School.

Let us replenish the seed of faith through...

REGULAR CHURCH ATTENDANCE, DAILY BIBLE READING & PRAYER



Curtis' Hot Oilers
806-659-3432
"Taking Service to Perfection"
806-659-2912 P.O. Box 714
800-821-6714 Spearman, TX 79081

Palo Duro Supper Club
22 S. Archer
659-2232

C.O.'S SUPPLY CO.
Plumbing & Tire Sales & Service
421 W. Kenneth • Spearman
659-3781 or 659-3555

Bartlett's Ace Hardware
105 W. Broadway
733-2404

GILLASPIE
AUTO & TRUCK CENTER, INC.
420 Davis
Spearman, Texas 79081

ELECTRIC
OILFIELD • RESIDENTIAL • COMMERCIAL
321 Main Street
Spearman, TX 79081
1-800-999-1506 (806)659-5016

PORTER SATELLITE
TREY PORTER
806-659-3657
420 Davis
Spearman, Texas 79081

Gruver Cablevision
Quality Family Entertainment with "the Disney Channel"
308 Main • 733-5295

Morse Implement Company
"Join us in church this week"

Boxwell Bros. Funeral Home

THE HANSFORD COUNTY REPORTER-STATESMAN
Serving The Communities Of Spearman, Gruver & Morse
213 Main • 659-3434
1-800-395-9482

CORONADO HOSPITAL
Pampa, Texas
(806)665-3721

Compliments of **G&G FOODLINER**
516 Main • Gruver
733-2471

CANDLE IN THE NIGHT



There is something about a candle...something about a flame...something about fire itself...that has fascinated man throughout the centuries. Despite the fact that you can translate fire, these days, into a known chemical formula, it is still a mystery, a wonder, and sometimes a fear.

It is an elemental thing that this little girl is studying as she watches the candle flicker. And, like so many of the elemental things - like Nature itself, and like Faith, for that matter - it is awesome.

Faith, too, is a mystery and a wonder. Yet, the only feat that Faith engenders is the fear, deep within one's heart, that it might be lost.

So that this essential ingredient of life does not elude you and does not diminish during misfortune, make it a habit of attending the church or synagogue of your choice regularly. Here you will be given spiritual strength and inspiration and kindle the mystery of love and joy within your heart.

| SUNDAY | MONDAY | TUESDAY | WEDNESDAY | THURSDAY | FRIDAY | SATURDAY |
|------------------|------------------|-------------------|-------------|---------------|------------------|-----------------|
| Galatians 5:1-15 | Galatians 6:1-10 | Leviticus 19:1-10 | Ruth 2:1-23 | 2 Kings 4:1-7 | Nehemiah 5:14-19 | Hebrews 13:1-19 |

Scriptures Selected by The American Bible Society
Copyright 1995, Keister-Williams Newspaper Services, P. O. Box 8005, Charlottesville, VA 22906

In Spearman...

Apostolic Faith Church
822 S. Dressen • 659-2870
Sunday School: 10 a.m.
Worship: 11 a.m.
Evening Worship: 6 p.m. Sun.
Wed. Prayer Meeting: 7:30 p.m.
Pastor James Brown

First Assembly of God
401 N. Bernice • 659-2295
Sunday School: 9:45 a.m.
Worship: 10:50 a.m.
Evening Worship: 7 p.m.
Wednesday Worship: 7:30 p.m.
Youth: 7:30 Wednesday
Pastor Todd Lillard

First Christian Church (Disciples of Christ)
29 S. Bernice • 659-2036
Sunday School: 9:45 a.m.
Worship: 10:50 a.m.
Evening Bible Study Worship: 6:30 p.m. Sundays.
Pastor LaVern Draper

First Baptist Church
123 N. Bernice • 659-5557
Sunday School: 9:45 a.m.
Worship: 11 a.m.
Evening Worship: 7 p.m.
Jr. High Youth: 6 p.m. Wed.
High School Youth: 7 p.m. Wed.
Youth Choir: 6 p.m. Sun.
Pastor Kyle Henderson

Church of Christ
121 S. Haney • 659-3244
Sunday Bible Class: 9:45 a.m.
Worship: 10:30 a.m.
Evening Worship: 6 p.m.
Bible Study Wed. 7:30 p.m.
KRDF Radio Program
Living With Christ 7:50 a.m. M-F
Minister Arnis Pape

Fellowship Baptist
1102 S. Archer • 659-2783
Sunday School: 10 a.m.
Worship: 11 a.m.
Evening Worship: 6 p.m. Sunday
Youth & Adult Serv.: 7:30 Wed.
Pastor Tim Luttrall

Primera Mision Bautista
502 E. 7th • 659-3991
Sunday School: 9:45 a.m.
Worship: 11 a.m.; Evening: 6 p.m.
Wed. Prayer Meeting: 7 p.m.
Thurs. Visitation: 7 p.m.
Pastor Isaias Martinez.

Trinity Community Church
717 W. 7th Ave. • 659-2671
Celebration of Praise 10:15
Worship Service and Children's Church 10:30
Sunday Evening 6:30 p.m.
Wednesday evening: 7 p.m.
Pastor Dan Carter

Faith Lutheran Church (ELCA)
1101 Bernice • 659-2252
(Worships with First Presbyterian Church)

First Presbyterian Church
(Worships with Faith Lutheran Church)
1021 Cotter • 659-2033
Sunday School: 9:45 a.m. at Lutheran Church
Worship: 11 a.m. (alternates monthly between addresses above)
Pastor Beverly Cook

First United Methodist
407 S. Haney • 659-5503
Sunday School: 9:45 a.m.
Worship: 11 a.m.
Jr. High Youth: 5 p.m. Sun.
High School: 6 p.m. Sun.
Pastor Jeff Lust

Union Church
31 S. Endicott • 659-2644
Sunday School: 9:45 a.m.
Worship: 10:45 a.m.
Evening Worship: 6:00 p.m.
Bible Study & Prayer Meeting: 7:00 p.m. Wed.
Pastor Billy Stanford

Sacred Heart Catholic Church
901 Roland • 659-2792
Sat. Night Mass: 7 p.m.
Sunday Mass: 8:45 a.m. - English (8:45 a.m. Service on KRDF 98.3 FM)
11:15 a.m. - Spanish
1:30 p.m. - Gruver - Christo Renditor Mass - Spanish
Rev. Fernand Couture

This feature is made possible through the Sponsorship of these Civic Minded Businesses

"WE SUPPORT OUR LOCAL CHURCHES"
CAPROCK#1 & #2
Bill Park, Gen. Mgr.
(806)733-5043 or 733-5025
"Custom Cattle Feeding"

In Gruver...

First Baptist Church
402 E. Broadway • 733-2411
Sunday School: 9:45 a.m.
Worship: 10:50 a.m.
Disciple Training: 6 p.m. Sunday
Prayer Meeting: 7:30 p.m. Wednesday
Pastor Larry Miller

Church of Christ
209 King • 733-2760
Sunday School: 9:30 a.m.
Worship: 10:20 a.m.
Evening Worship: 6 p.m.
Wed. Evening Worship: 7:30 p.m.
Minister Bob Setliff

First Christian Church
510 King • 733-2960
Sunday School: 9:45 a.m.
Worship: 11 a.m.
Wed. Bible Study: 7:30 p.m.
Youth: 6:30 Wednesday
Pastor Gary Gumfory

Oslo Lutheran Church (ECLA)
West of Gruver on Hwy 15 & N. FM 1162
339-7646
Sunday School: 9:45 a.m.
Worship: 11 a.m.
Morning Prayer: 9 a.m. Wed.
Pioneer Clubs (Grades 1-6): 4-5:30 p.m. Wednesday
Pastor John R. Chandler

Community Bible Church (Interdenominational)
Hwy. 15 • 733-2443
Sunday School: 10 a.m.
Worship: 11 a.m.
Wed. Prayer Meeting: 7 p.m.

First United Methodist
Broadway & Garrett • 733-2651
Sunday School: 9:45 a.m.
Worship: 8:30 a.m. & 10:50 a.m.
Evening Worship: 6 p.m.
Pastor Lewis Holland

In Morse...

Morse Baptist Church
Pastor Mike Martin
733-2757

"Your Home Away From Home"
Nursanickel Motel
815 Hwy. 207 S.
Phone: (806)659-3737 P.O. Box 115
Spearman, Texas 79081

BERRY CLEANERS
DAN DESIMONE - OWNER
Phone 659-3122 • P.O. Box 1017
207 Main St. • Spearman, Tx. 79081

GRUVER FORD
531 Main • Gruver • 733-2431

Interstate Savings & Loan
322 Main • Spearman • 659-2559

Hagerman Services
Backhoe • Dozer • Welding
North Hwy. 15 • Spearman
659-5131

Gordon Drugs
Dependable Prescription Service
314 Main • Spearman
659-2141
Jim Evans

Compliments of...
AGCO of Spearman, Inc.
"See you in Church"
659-3751

"IT'S FOR YOU"...

The Classifieds Have Something For Everyone!

The Home Sealer...
The Car Buyer...
The Do-It-Yourselfer...
The Mother's Helper...
The Job Seeker...
The Bargain Reaper...

When you want results, turn to The Classifieds.

The Hansford County Reporter-Statesman

Serving Hansford County Since 1907

Telephone: 1-800-395-9482 or (806)659-3434

REAL ESTATE

AA Realty

Allen Alford - Broker • 659-3034
Julie Martin - Broker • 659-2425

1103 S. Townsend - 3/1 1/2, good loc.
613 Kenneth - 5 BR, 2 story, rock house
Good Hanger & Storage - Old Airport
REDUCED!!!

NEW LISTINGS

2 LOTS at 7th & Barkley - Bldrs. Dream
204 S. Dressen-UNDER CONTRACT
1018 Blodgett -4/3, UNDER CONTRACT
716 Collier-UNDER CONTRACT
16 Golden Circle- 3/2/2, prime location
FOR QUALITY & SERVICE CALL US TODAY
We Need Your Listing.

REAL ESTATE

HOUSE FOR SALE: 2167 sq. ft., double garage, central air/heat, 4 bedroom, 2 living areas, 18x27 Morton building workshop, nice area, close to high school, 2 parks, swimming pool, and O'Loughlin Center. 707 Lee Dr. Call 659-3027 between 8:30 and 4 p.m., 659-3071 after 4 p.m.
S28, 8tp, 2tp

HOUSE FOR SALE: Reduced in price. Located at 703 E. 2nd, 3 bdr, 1 1/2 bath, new air conditioner. Outside storage building. Priced at \$26,000. Any reasonable offer will be accepted, with lots of storage. Call 273-3793 or 273-2768.
S34, RTN

FOR RENT

FOR RENT: 2 bedroom house. 659-3260.
S60, RTN

FOR RENT: One bedroom newly decorated, furnished apartments, utilities paid. Call 659-3260.
S47, RTN

FOR RENT: Furnished, efficiency apt. for one person. \$160 a month and \$100 deposit - bills paid. 6 mo. lease. Call 659-2404.
S34, 2tp

FOR RENT: Trailer park spaces for rent. Located on S.E. 7th and Loop road, Spearman. \$30 per month. Call 435-5080.
S23, 1tp/RTN.

FOR SALE

FOR SALE: Railroad box car (good for storage). Call (806)287-1538.
S25, 3tp, RTN

FOR SALE: Completely rebuilt 605 International and HD 800 Moline irrigation engines. Call 733-5263 or 659-5036 7:30 a.m. to 5:30 p.m., Monday thru Friday, 7:30 a.m. to 12 p.m. Saturdays.
S4, RTN

SEED WHEAT FOR SALE: Tam 200 and Tam 202. Call Morse Seed Co., (806)733-2203.
S30, RTN

FOR SALE: Suzuki 750 motorcycle, Chevy 305 motor, 12 ft. boat, 15 h.p. motor, self contained pickup camper. 659-2113.
S32, RTN

SEED WHEAT FOR SALE: Tam 200. 733-5157.
S31, 4tc

FOR SALE: 2 bunk mattresses - \$20; Patio table - \$5; Swivel rocker - \$20; Refrigerator - \$30; Sofa - \$125; For more information or to see items, call 659-2533.
S34, RTN

1117 TOWNSEN: Price reduced to under \$50,000! New paint! New carpet! Affordable 3 bedroom, 1 3/4 bath, with game room and basement. Call Real Estate and Rental TODAY! 435-4623.
S32, RTN

MAKE US AN OFFER: Great brick home in great location. 2,200 sq. ft., 4 bedrooms, 3 baths, big den with fireplace, basement, double car garage. 702 Gibner. Call and let's make a deal! 659-3838 or 733-5555.
S19, RTN

HOME FOR SALE: Split level, 3 bedroom, living room and den with large fireplace and lots of built-ins, playroom, large utility, 1 3/4 bath, 3 car garage. Call 659-3052 or 659-3215.
S29, RTN

HELP WANTED: Semi truck drivers, CDL required. Must be 25 yrs. old. Conventional's new hopper bottom trailers. McCarty Trucking, 806/362-4907.
S10, RTN

DO YOU KNOW THIS PERSON: A fine career opportunity - with financial security assured - is available when he or she qualifies as the Security Mutual Life NE representative in the community. Daniel Martinez, CLU, LUTCF, 1616 S. Kentucky, Suite C-360, Amarillo, TX 79102, (806)356-7083.
S31, 4tc

HAVE FUN! EARN EXTRA CASH showing merchandise with House of Lloyd party plan. Work your own hours. No investment! Free kit. Call Olivia (806)659-3705.
S33, 3tc

HELP WANTED: Experienced parts man. Apply in person at Hi Plains Auto at 118 Main.
S32, RTN

HELP WANTED: Caprock 1 in Gruver needs full-time vehicle maintenance mechanic. Contact donny Perez. Also full-time yard maintenance personnel needed. Contact Lawrance Tindell at 733-5025.
S32, 3tc

HELP WANTED: Lone Star Service Center is needing a full-time mechanic. Call 733-5263 after 6:30 p.m. or 733-2861. Ask for Lane Salmans.
S33, RTN

TRUCK DRIVERS NEEDED: Class A CDL required, 150 m radius around Spearman hauling grain and cattle. 21% of gross. Call 659-2549, night - 2021. Speartex Grain.
S33, 2tc

COUNTRY LIVING WITH CITY CONVENIENCE: W. of Spearman-Nelson Addition, Lg. Country Kitchen, 2 LA woodburner, 3 BR, 2 BA, 2 carport, RV Storage, Lg. Storage Building. Call for appt. 659-2663.
S33, RTN

FOR SALE: Lots 4 and 5, Unit 2, Tract 3, Crawford Addition - just north of Ag Farm - 10 feet tall chain linked outer fences, storage building, tack room, electric waters, sheds. Excellent facility for horses or any animals. Call (806)287-1538.
S25, 3tp, RTN

FARM PRODUCTS

200 ACRES FARMLAND: 6 miles south of Spearman, irrigation well, no mineral. Seller reserves right to approve. Call Realty, 659-3440, Robert...
S59, RTN

GARAGE SALE

MULTI-FAMILY GARAGE SALE: Friday, August 25th, 4:00 p.m. til 8:00 p.m., Saturday, August 26th, 8:30 a.m. til 2:00 p.m. Baseball cards, clothing, appliances, furniture, electric typewriter, bicycle, lots of misc. 113 N. Brandt St. (Baker's Harvester's Shop).
S34, 1tp

HOUSE FOR SALE: In Gruver, 402 Front St., 3 bdr., 2 bath, garage and fenced backyard, \$30,000.
733-5119.
S34, 3tc

CONSOLE/SPINET PIANO FOR SALE: Take on small payments. See locally. 1-800-343-6494.
S34, 1tp

FOR SALE: PERFECT FOR THE LAKE: 8' Water Buster 2 1/2 HP Johnson with electric trolling motor and battery. See at 620 S. Endicott, Spearman, TX or call 659-3201.
S34, 1tp

FOR SALE: Five piece sectional/hide-a-bed sofa, pastel colors. Each end of sofa recliners. 4 yrs. old, very good condition. Call after 6:00 p.m., Jerry or Cindy Holton, 659-3573.
S34, 2tp

PIANO FOR SALE: Wanted, responsible party to take on small monthly payments on piano - See locally - Call Piano Credit manager at 1-800-658-1724 - Brier & Hale Music - Liberal, KS.
S32, 4tc

HOMETOWN REALTY

Rex Hoover - Broker • 800-755-4291
Larry Trosper - Sales • 659-3491
Diana Hoover - Sales • 658-9113

706 Collier Dr. - Super nice, 3 bedroom, single garage, 1 1/2 bath, family room, large workshop in back. Price To Sell!!!

NEW LISTINGS

908 Bemice - 3 bedroom, game room, Great Starter House!
730 Gibner - Extra Clean- 3 bedroom, 2 bath, 2 car garage, large living room, 10x15 storage, 1,899 sq. ft.
11.1 Acres - Large 3 br/basement/2cg, 2 1/2 baths, fireplace, lots of extras!
1013 Linn Drive - 3 br., 3 bath, 2 car garage, fine place, lots of extras!
NEW NEW
320 acres irrigated farmland, Hwy Frontage, close to elevator. Lets Deal!
We need and appreciate your listings!

JAN'S ETC. NEW & USED & ANTIQUES TOO

Everything for home and family. Plains Shopping Center in Spearman

Open Monday - Saturday 10 a.m. til 6 p.m.

JOB OPPORTUNITIES

OWN YOUR OWN APPAREL OR SHOE STORE, CHOOSE: Jean/sportswear, bridal, lingerie, westernwear, ladies, men's, large sizes, infant/preteen, petite, dancewear/aerobic, maternity, or accessories store. Over 2000 name brands. \$25,900 to \$37,900: inventory, training, fixtures, grand opening, etc. Can open 15 days. Mr. Loughlin (612) 888-6555.
S1, 3tp

SERVICES

PITS CLEANED: Dragline or Loader. Call LeeRoy Mitchell, 733-2384 or 733-2175.
S47, 1tc/RTN.

CALL YOUR LOCAL Used Cow Dealer for days a week stock removal. 659-3544 or 1-800-692-4043. Serving Cattlemen for the past 20 years.
G51/RTN.

J & M Service Center 24-Hour Service-415 Collard, Spearman 79081. 659-5519 or 659-3352. Tires, flats, oil & lube, wash, brakes, batteries and minor repairs. Now selling gas.
S27, 1tc/RTN.

CARPENTER FOR HIRE: Remodeling, painting, plumbing, all around handy man, free estimates. 659-5319.
S25, RTN

NOW TAKING ORDERS: For wooden yard ornaments or various wood projects. Call 659-2317 and ask Lynn for details. Will also do other wood work.
S34, 4tp

PUBLIC NOTICE

NOTICE

All estimated finished goods left over 30 days can and will be sold. B.G.'s Upholstery, Waka, TX. S32, 4tp

PUBLIC NOTICE

NOTICE OF PUBLIC HEARING, SPEARMAN INDEPENDENT SCHOOL DISTRICT, BUDGET ADOPTION

The president of the board of Trustees of the Spearman Independent School District, pursuant to Section 44.004 of the Texas Education Code, Article 29e V.A.T.S., has called a meeting of the Board of Trustees for the purpose of adopting a budget for the 1995-1996 fiscal year of the district that shall cover all expenditures for the fiscal year. The meeting shall be held on the 28th day of August, 1995 at 7:00 p.m. in Room #114 of the Spearman High School, 403 East 11th Avenue, Spearman, TX 79081. Any taxpayer of the district may be present and participate in the hearing.
S33, 1tc

PUBLIC NOTICE

NOTICE TO BIDDERS

Sealed bids for the purchase of one (1) 1996 Full-size, police special, four door Sedan with heavy duty equipment will be received by the City of Gruver, at the office of the City manager up until 2:00 p.m., Friday, September 8, 1995, then publicly opened and read.

The City reserves the right to reject any or all bids, to waive informalities and to accept the bid deemed to be most advantageous to the City. All bids received after the above closing date will be returned unopened.

Specifications and bidding documents may be secured from the Office of the City manager, P.O. Box 947, Gruver, Texas 79040.
S33, 2tc

AUTOMOBILES

FOR SALE: 1984 Ford Truck with 20' van and lift. V-8 diesel engine. Excellent condition. For more information call 659-3432 or 659-2912.
S52, RTN

BOB JOHNSON MOTOR COMPANY in Borger sells cars: used cars, program cars, Ford, Plymouth, Chrysler, Dodge, Jeep, Eagle, Dodge truck, Ford truck, Lincoln, Mercury & more used. Mon-Fri, 8 to 6, closed Sat. Open Sunday 12-6 p.m. PH. #806/273-7541.
S33, 4tc

FOR SALE: '81 Chevrolet pickup and '83 Blazer. Call 659-3017.
S34, 1tp

FOR SALE: 1992 GMC Sierra 1/2 ton reg. cab 4x4 pickup. Dark blue. Fully loaded. 41,000 miles. Excellent cond. 435-9327.
S31, 4tp

PUBLIC NOTICE

LEGAL NOTICE

Hansford County Commissioner's Court will hold a budget hearing at a Special Meeting at 1:30 p.m. on August 31, 1995 on a proposed budget for 1996 (October 1, 1995 through September 30, 1996, in the amount of \$2,241,210.00).
Jim D. Brown
Hansford County Judge
S33, 2tc

PUBLIC NOTICE

NOTICE OF PUBLIC HEARING

The City of Gruver will hold a public hearing on September 14, 1995 to discuss the proposed 1995-96 Annual Budget. The hearing will be held at the Gruver City Hall, 108 East Broadway Street, at 5:00 p.m.

The proposed annual budget is on file at the office of the City Clerk at the City Hall and is available for public inspection.

A.J. Ratliff/City manager
S34, 2tc

AMERICAN CANCER SOCIETY

Are You A Victim of Domestic Abuse . . .

Physical, Emotional or Sexual?
Call Toll Free
1-800-753-5308

We are in Spearman on the 1st, 3rd, & 5th Wednesdays of each month at the First Presbyterian Church, 1021 Cotter. On the 2nd & 4th Wednesdays we are at the First Christian Church at 510 King in Gruver. We can come to Spearman & Gruver any time upon request. We operate a safe place for victims & their children to stay in times of crisis.

Panhandle Crisis Center
Serving Hansford, Lipscomb & Ochiltree Counties
317 S. Main
Perryton, Tx.
Memorials Accepted

PUBLIC NOTICE

NOTICE OF BUDGET HEARING, ADOPTION, AND TAX RATE

The Gruver Independent School District will hold a public hearing on the 1995-96 budget on Thursday, August 31, 1995, at 6:00 p.m. in the Board Room of the Gruver High School, 601 Garrett St., Gruver, TX. The public is invited to be present and may participate in the hearing. After the hearing, other matters of business will be considered and the meeting adjourned. The Board will reconvene and adopt the budget and get a tax rate for the 1995-96 school year.
S33, 1tc

PUBLIC NOTICE

LEGAL NOTICE

STATE OF TEXAS, COUNTY OF HANSFORD, BUDGET HEARING

Whereas, the Board of Directors of the Hansford County Hospital District have caused to be prepared an annual budget for the fiscal year beginning October 1, 1995 and ending September 30, 1996.

Notice is hereby given that a public hearing on said proposed budget will be held on Friday, September 8, 1995 at 6:30 p.m. in the Board Room of the Hansford Hospital: 707 S. Roland Street; Spearman, Hansford County, Texas.
S34, 1tc

WANTED

Adults willing to work for above minimum wage! First or Second Shift! Any day of the week, and weekends!

Whenever the store is open!
PAID VACATION SICK DAYS

IN-STORE ADVANCEMENT RETIREMENT PLAN

Apply in person only at
TAYLOR FOOD MART
17 Collard, Spearman

OSGOOD MONUMENT CO.
Amarillo, Texas

Dealers of Rock of Ages Granite, as well as all colored granites, marble and bronze memorials.

Represented by
Boxwell Bros. Funeral Home
519 S. Evans
659-3802

Research saves lives.

American Heart Association

FOR SALE

Seedless watermelon, all sweet watermelon & jubiles, canalope, tomatoes, onions, squash, black eyed peas, & potatoes.

Epperson's Garden Market
1-800-233-4891
Mon., Wed. & Fri. mornings at the Courthouse Square

NEW TRAMPOLINES

Mats & springs
Resew trampoline mats.
Make new boat covers.
Call (806)659-2109
Harry Stumpf
301 W. 12th
Spearman, Texas

Advertising Pays \$\$\$\$\$\$

Call 659-3434

or
1-800-395-9482

FOR SALE

Seedless watermelon, all sweet watermelon & jubiles, canalope, tomatoes, onions, squash, black eyed peas, & potatoes.

Epperson's Garden Market
1-800-233-4891
Mon., Wed. & Fri. mornings at the Courthouse Square

OSGOOD MONUMENT CO.
Amarillo, Texas

Dealers of Rock of Ages Granite, as well as all colored granites, marble and bronze memorials.

Represented by
Boxwell Bros. Funeral Home
519 S. Evans
659-3802

Advertising Pays \$\$\$\$\$\$

Call 659-3434

or
1-800-395-9482

IT'S NO WONDER 9 OF 10 CUSTOMERS SAID THEY WOULD RECOMMEND US TO FRIENDS.

Results from our CENTURY 21® Quality Service Survey* indicate that 9 out of 10 customers would recommend the CENTURY 21 system to their friends. They told us their CENTURY 21 professional was knowledgeable and understood their needs. Let us earn your recommendation.

LEAN ON US.
Century 21
Golden Sprock Realty
200 S. Main
Perryton, TX
806-435-2444

Source: CENTURY 21 Quality Service Survey. These results include responses from 37,362 buyers and 24,082 sellers who closed a transaction with a CENTURY 21 office during July-December 1994. Questionnaires were mailed to CENTURY 21 customers and clients throughout the United States. The results from this survey have a 95% confidence interval of +/- 0.5% for buyers and +/- 0.6% for sellers. Responses were asked: "Would you recommend the CENTURY 21 system to a friend who is going to buy or sell real estate?" ©1995 Century 21 Real Estate Corporation. All rights reserved. CENTURY 21 Real Estate Corporation. Equal Housing Opportunity. A REALTY COMPANY OF THE CENTURY 21 REAL ESTATE CORPORATION. CENTURY 21 Real Estate Corporation is a proud national sponsor of The National Letter Spelling Society.