



★ HANSFORD COUNTY ★

# THE REPORTER-STATESMAN

CELEBRATING 105 YEARS OF SERVICE TO HANSFORD COUNTY

HANSFORD COUNTY'S ONLY NEWSPAPER  
REPORTER@SPEARMANREPORTER.COM

WWW.SPEARMANREPORTER.COM

75¢



HANSFORD COUNTY LIBRARY  
0122 MAIN ST  
SPEARMAN TX 79081-2064  
COMP  
SCR2

VOLUME 105 • ISSUE 46

THURSDAY, NOVEMBER 15, 2012

COME TO THE GAME

**LYNX** vs. **Abernathy Antelopes**  
11/17 at 6:30 p.m. at **Kimbrough Stadium in Canyon**

**Gruver Greyhounds** vs. **White Deer**  
on 11/9 at 7:30 p.m. at **Gruver**

COME TO THE GAME

**Spearman Lynx/Lynxettes**  
11/15-11/17 - JVG @ Perryton JV Tourney  
11/16-11/17 - VG @ Canyon Shootout  
11/19 - JVG (6:30) & VG (8) vs. San Jacinto @ WT  
11/27 - VG (6) & VB (7:30) vs. Texline  
11/29-12/1 - VB at Nazareth Tourney  
11/29-12/1 - JVG & JVB at Gruver JV Tourney  
11/30-12/1 - VG at Kids Inc. Tourney in Canyon  
**Gruver Greyhounds/Lady Hounds**  
11/15 - 7G (5), 8G (6) vs. White Deer  
11/16 - JVG (5) & VG (6:30) @ Canadian  
11/15 - 7G (4), 7B (6), 8G (5), 8B (7) @ Booker  
11/19 - 7G (4), 7B (6), 8G (5), 8B (7) vs. Sunray  
11/20 - JVG (4), JVB (5:15), VG (6:30) & VB (8) @ Panhandle  
11/27 - JVG (4), JVB (5:15), VG (6:30) & VB (8) @ Texhoma  
11/29-12/1 - JVG & JVB at Gruver JV Tourney  
11/29-12/1 - VG & VB at Miami Varsity Tourney

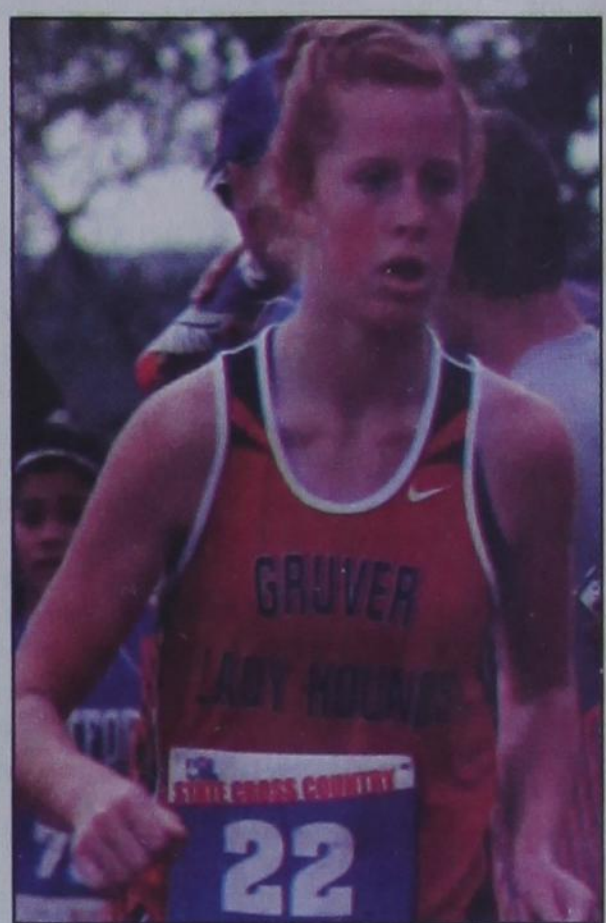
by GasBuddy.com  
**TexasGasPrices.com**

**Weekly Update**  
**Texas, November 12** - Average retail gasoline prices in Texas have fallen 5.1 cents per gallon in the past week, averaging \$3.17/g yesterday. This compares with the national average that has fallen 3.2 cents per gallon in the last week to \$3.46/g, according to gasoline price website TexasGasPrices.com.  
Including the change in gas prices in Texas during the past week, prices yesterday were 5.8 cents per gallon lower than the same day one year ago and are 35.9 cents per gallon lower than a month ago. The national average has decreased 32.6 cents per gallon during the last month and stands 3.1 cents per gallon higher than this day one year ago.  
"The national average has again decreased in the last week, but the decreases are beginning to slow down," said GasBuddy.com Senior Petroleum Analyst Patrick DeHaan. "Wholesale gasoline prices rose strongly on Friday which could send prices higher in states with among the lowest prices in the United States. The fuel tightness has also continued in NYC- for those in Sandy's wake, fuel availability remains difficult, and is the reason GasBuddy has implemented an emergency fuel availability service," DeHaan said. The Hurricane Sandy fuel availability site can be found by navigating to <http://www.gasbuddy.com/sandy/>.  
GasBuddy operates, TexasGasPrices.com, and over 225 other local gasoline pricetracking websites that follow prices at over 125,000 gasoline stations in the United States and Canada. GasBuddy also uses Facebook ([facebook.com/gasbuddy](http://facebook.com/gasbuddy)) Twitter ([twitter.com/gasbuddy](http://twitter.com/gasbuddy)), and phone apps to keep motorists ahead of changing gasoline prices.

**Weather Forecast**  
**THURSDAY** - Partly cloudy. Highs in the upper 50s. North winds 10 to 15 mph.  
**THURSDAY NIGHT** - Mostly clear. Lows in the upper 20s. Northeast winds 5 to 10 mph shifting to the southeast after midnight.  
**FRIDAY** - Partly cloudy. Highs in the upper 50s.  
**FRIDAY NIGHT** - Partly cloudy. Lows in the lower 30s.  
**SATURDAY** - Partly cloudy. Highs in the lower 60s.  
**SATURDAY NIGHT** - Partly cloudy. Lows in the mid 30s.  
**SUNDAY** - Partly cloudy. Highs in the mid 60s.  
**SUNDAY NIGHT** - Partly cloudy. Lows in the upper 30s.  
**MONDAY** - Partly cloudy. Highs in the mid 60s.  
Read more: <http://www.city-data.com/forecast/w-Spearman-Texas.html#ixzz2CAJtKLE>

## Gruver Girls Claim Bronze at State Meet

By Travis Harsch, Amarillo Globe-News



Gruver's Lariat Larner rounds a curve early in the Class 1A girls state cross country meet Saturday in Round Rock. Larner finished third individually in 12:06. (Photo by Travis Harsch)

One Texas Panhandle-area streak came to an end Saturday, one continued, and yet another may just be getting started.

Gruver, which was seeking its fourth consecutive UIL girls state cross country championship, finished third in the Class 1A title chase.

The Canyon Lady Eagles finished in the top three in the Class 4A team standings for the third straight year.

And the Bushland Lady Falcons, in their first appearance at the UIL state cross country meet as a team, took the Class 2A state title.

Lady Falcons coach Kevin Ufford said his team executed its strategy perfectly for a windy meet at Old Settlers Park, placing three runners in the top 20.

Gruver's three-year stretch of state championships ended with the Lady Greyhounds still on the podium with a third-place finish.

"Obviously we wanted to be getting up there to get the gold medal, but we lost our three top runners from last year and had a runner turn up sick this week, so we're very happy and proud to be walking away with hardware," Gruver coach Bekah Morrison said. "We have three freshmen, two sophomores and two juniors, so we're really proud of them."

Gruver's Lariat Larner finished third individually in 12:06, with Clarendon's Audrey Shelton taking sixth in 12:16.

Continued on Page 6



Gruver Varsity Lady Hounds (Photo by Lisa Johnson)

## Couple Leads Charge to Fund Community Center

By Chip Chandler, Amarillo Globe-News

Bob and Jackie Pearson figure they were just raised right. "We had a good background," Bob Pearson said. "I had loving parents, and so did Jackie. They were giving people."

The Pearsons, Perryton natives who now live in Spearman, have kept alive that tradition of giving, including leading the charge to raise \$1.2 million to build the O'Loughlin Center, a community center in Spearman.

Bob and Jackie helped add to the mostly local gifts by researching foundations, helping write grants, and making several visits to secure the final funding for the project. The O'Loughlin Center offers Senior Citizen programs, Kids Kamps, a Full Fitness Center, a Sports Gymnasium, Health & Wellness programs and screenings, and Facilities to host meetings and events. Without the Pearsons Hansford County and the surrounding area might not have been able to enjoy this broad range of programs.

The Pearsons have also donated to over 30 other nonprofits including: Panhandle Crisis Center, High Plains Food Bank, American Red Cross, Meals On Wheels, Amarillo Area Foundation and many more in Hansford County and across the Texas Panhandle.

The couple will be recognized as the area's outstanding philanthropists for 2012 at the National Philanthropy Day luncheon, set for Thursday and hosted by the Texas Plains Chapter of the Association of Fundraising Professionals.

The luncheon is set for 11:30 a.m. Thursday in the Amarillo Civic Center Heritage Ballroom, 401 S. Buchanan St.

Seven additional individuals, businesses and others also will be recognized at the luncheon.

Those who nominated the Pearsons for the award lauded them for showing a commitment beyond donating money.

"The greatest gift that Bob and Jackie have given is their volunteerism, wealth of energy and time," wrote Debbie Goodheart, the O'Loughlin Center's executive director.

"It's easy to sign a check, but to spend hours committed to the betterment of humankind is by far a gift that all organizations need," Goodheart wrote.



Jackie and Bob Pearson led the charge to raise \$1.2 million to build the O'Loughlin Center in Spearman. Photo by Sparrow Photography

"They are committed to serving, and they serve with their heart."

The Pearsons founded the Spearhead Corp. in 1994 to build the 17,000-square-foot center, raising a large portion of the cost of the building from fellow county residents, Goodheart wrote.

"I just can't express enough how much they give," Goodheart said Wednesday. "It never is for the glory or for people to know ... they do it because they want to."

The center opened two years later.

"We needed a community center in Spearman," Jackie Pearson said. "We didn't raise that money by ourselves ... but we built that facility completely paid for."

The couple, which has given both time and energy to dozens of other causes, said they realize that, while they might like to keep their generosity under wraps, there are benefits of accepting such a public award.

"I might not even go to this except for the fact ... the whole purpose of this award, I think, is to encourage people to give," Bob Pearson said.

"Like everybody else," his wife said, "you want to do something and not tell everybody you did it. (But) the people we respected when we were young ... I re-

member thinking, I'll be glad when I can get to that point in my life that I can do the things those people did with their time and money."

Goodheart said Spearman "would not be what it is without them."

"It is sincerely from the heart when they give," she said. "It doesn't matter what size (of gift); they just do it because it's the right thing to do."

Other honorees include:

- B&W Pantex, outstanding business/corporation, nominated by Coffee Memorial Blood Center for its monetary and volunteer support

- Suddenlink Communications, outstanding media, nominated by Amarillo Family YMCA for its participation in community events through awareness and fundraising

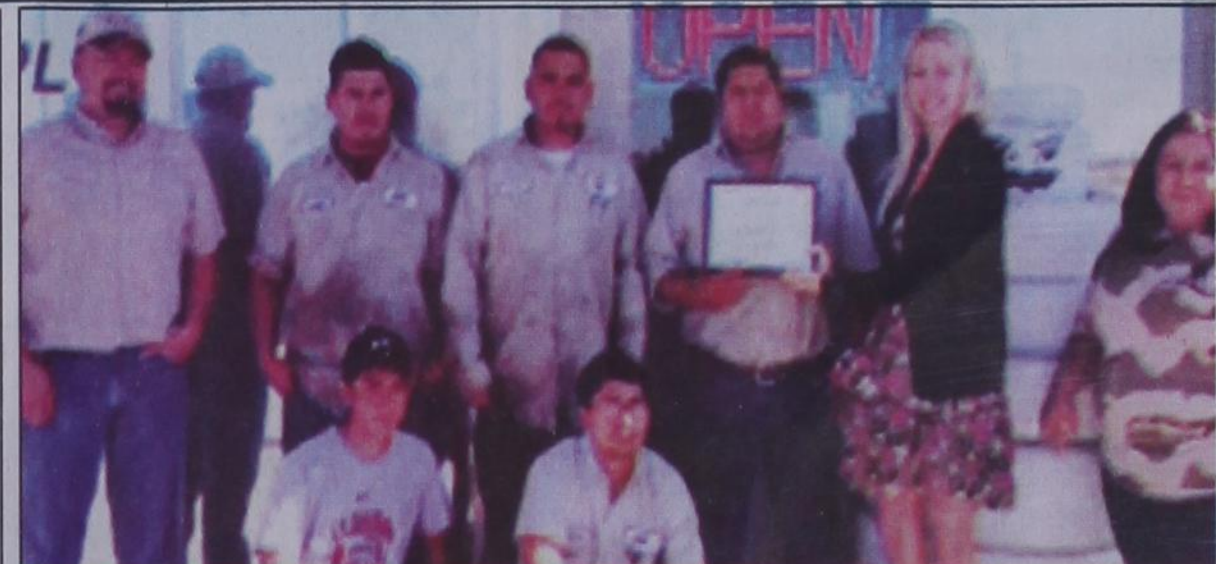
- Lone Star Ballet Guild, outstanding community service organization, nominated by the Lone Star Ballet for its fundraising and volunteer efforts

- Dyron Howell, outstanding volunteer fundraiser, nominated by Amarillo Area Foundation for founding the Snack Pak 4 Kids in 2010 and raising almost \$600,000 to provide food for area children

Continued on Page 5

### Texas Crop & Weather

The following specific livestock, crop and weather conditions were reported by Panhandle Extension directors for November 6, 2012: For most of the week, the region had above-average temperatures, with colder weather by the weekend. Soil-moisture levels mostly were short. The warm weather and light winds were perfect for harvesting crops. Early planted wheat that was pre-watered looked good, and some was already being grazed. Without rain, much wheat continued to need irrigation. Dryland wheat needed moisture badly. Rangeland and pastures were mostly in very poor to poor condition. Cattle remained in good condition with supplemental feeding.



The winner of the Chamber of Commerce Fall/Halloween decorating contest was Farm Supply and Service. Chamber President Grace Calvert is shown awarding the first place certificate. Pictured from left to right are Armando, Cesar, Hector, Javier, Grace, Bea, Jose and Martin.



# Wolf Creek Heritage Museum Notes

by Virginia Scott

## MUSEUM HAPPENINGS

I hope you missed our column last week. I was again out of town. This time it was on family business. I journeyed to Tucson and Pinetop, AZ to visit with my sister, brother, and cousins. We had a great time and reinforced my interest in our family genealogy. I came home Saturday after waking up at my sisters with snow on the ground. I tried to bring it home with me, but it stopped at the New Mexico border. The scenery was beautiful, but it was great arriving home.

Before I left we enjoyed our fundraiser dinner. It was a great success with great food, wonderful entertainment, and the conversation at all the tables were interesting, informative, and fun. We had an overflowing crowd and we ran out of food. To those of you who arrived late and didn't get fed, we apologize and ensure you next year we will order more than enough food to prevent a reoccurrence.

J.W. Beeson gave us a wonderful performance and we thank him for donating his time. We appreciate his

support of our museum. To each and every one of you who came out and supported the event, thank you.

Currently, the museum staff is preparing newspapers to be sent off for digitalization. This is the current method used to preserve the information of our past newspapers so that future visitors and generations can research what events occurred in Lipscomb County.

**TWO REMINDERS:**  
**1. November exhibit is Town Sports.** Georgia has collected uniforms, photographs, and newspaper articles about sports teams (baseball, basketball) from our towns and area that used to compete. As usual the exhibits is full of interesting information and as always reliving a rich history of fun. Be sure to come in and see it.

**2. Sunday and Monday, November 18 and 19 on PBS is Ken Burns Documentary on the Dust Bowl.** His interview is also on during the week. Our area is featured with an excellent interview of Follett's Trixie Brown. As a participating museum we were invited to one of the previews and this is one

documentary you don't want to miss. It is GREAT. There will be a book released later and we will have it in the gift shop when available.

## HISTORICAL MUSINGS

This week we honored our Veterans for their service. I hope each of you thanked someone who served. I would request our most recent veterans who have served in Iraq and Afghanistan to send us your names. We are trying to keep a record of all our service men and women for future reference.

In honor of this week and to thank all our veterans, I offer the following extract for General Eisenhower's final report to the Combined Chiefs of Staff. "More important than weapons was the indomitable fighting spirit of the men who wielded them. The courage and devotion to duty which they exhibited throughout the campaign were unsurpassable. ...To those who gave their lives, and to those who bear the wounds of battle, we, their comrades in arms, render most grateful and humble tribute."



# STATE CAPITAL HIGHLIGHTS



by Ed Sterling

## Incumbents win most contested races on Nov. 6

AUSTIN — America elected Democrat Barack Obama of Illinois to a second term as president on Nov. 6, with Republican challenger Mitt Romney of Massachusetts winning Texas and 23 other states.

Unofficial election night returns for Texas posted by the secretary of state's office show the Obama-Biden ticket with 3,294,440 votes (41.36 percent) and the Romney-Ryan ticket with 4,555,799 votes (57.20 percent) of nearly 8 million total ballots cast. Of the total, more than 5 million ballots were cast in early voting. Seven other presidential candidates on the ballot combined for less than 1 percent of the vote.

Also, as reported by the secretary of state's Elections Division, statewide turnout was 58.36 percent of 13,646,226 registered voters. In contrast, more than 8 million Texans voted in the 2008 presidential election, or 59.5 percent of the 13,575,062 voters registered for that contest.

Below the presidential race on the ballot was the contest for the U.S. Senate seat being vacated at the end of the year by Sen. Kay Bailey Hutchison of Dallas. Republican Ted Cruz of Houston, a former Texas solicitor general, won with 56.63 percent of the vote to a former state representative, Democrat Paul Sadler of Henderson, who drew 40.45 percent.

Notably, in the races for congressional seats, state Rep. Pete Gallego, D-Alpine, won against incumbent U.S. Rep. Francisco Canseco, R-San Antonio, for sprawling West Texas Congressional District 23. State Rep. Joaquin Castro, D-San Antonio, won CD-20, and will succeed retiring U.S. Rep. Charlie Gonzalez, D-San Antonio. Also, state Rep. Marc Veasey, D-Fort Worth, won the race for Fort Worth's CD-33; former Secretary of State Roger Williams won CD-25 in Central Texas; and state Rep. Randy Weber, R-Pearland, won against former U.S. Rep. Nick Lampson, a Democrat, in the race for CD-14 which includes the coastal counties of Brazoria, Galveston and Jefferson.

In other races, incumbent state Sen. Wendy Davis, D-Fort Worth, was elected to a second term, overcoming GOP challenger Mark Shelton, a member of the Texas

House of Representatives. Republican Christi Craddick, daughter of former House Speaker Tom Craddick, R-Midland, won a seat on the three-member Texas Railroad Commission, the state agency that regulates the gas and oil industry.

Looking at judicial, state board of education, and other races, incumbency once again proved an advantage. Complete election results may be found via the Internet at sos.state.tx.us.

## Order sides with provider

A Travis County state district court on Nov. 8 extended a temporary injunction preventing the State of Texas from cutting off funding to Planned Parenthood.

Pursuant to a law passed by the Texas Legislature in 2011, the state has been planning to ban Planned Parenthood from participating in the state-run but federally funded Women's Health Program. If not for a temporary injunction granted last month, funding would have been cut off on Nov. 1.

The state's case for cutting the funding stems from the law's "affiliate ban" meant to punish health care providers that refer women to any entity that offers abortion services.

The temporary injunction now extends until Dec. 17, the date of a formal hearing in state district court.

## Famed Coach Royal dies

Darrell K Royal, coach of the University of Texas Longhorn football team from 1957 to 1976, died at age 88 in Austin on Nov. 7. A private burial was scheduled in the Texas State

Cemetery. Royal's teams won national championships in 1963, 1969 and 1970. In his honor, the Longhorns' home field was renamed Darrell K Royal - Texas Memorial Stadium in 1996.

Royal compiled the most victories of any UT football coach to date, with a record of 167 wins, 47 losses and 5 ties. His teams won 11 Southwest Conference titles.

Lately, Royal made strides in generating awareness about Alzheimer's disease, which he suffered from. Royal and his wife, Edith, founded the DKR Fund for Alzheimer's research.

## Noted judge Kilgarlin dies

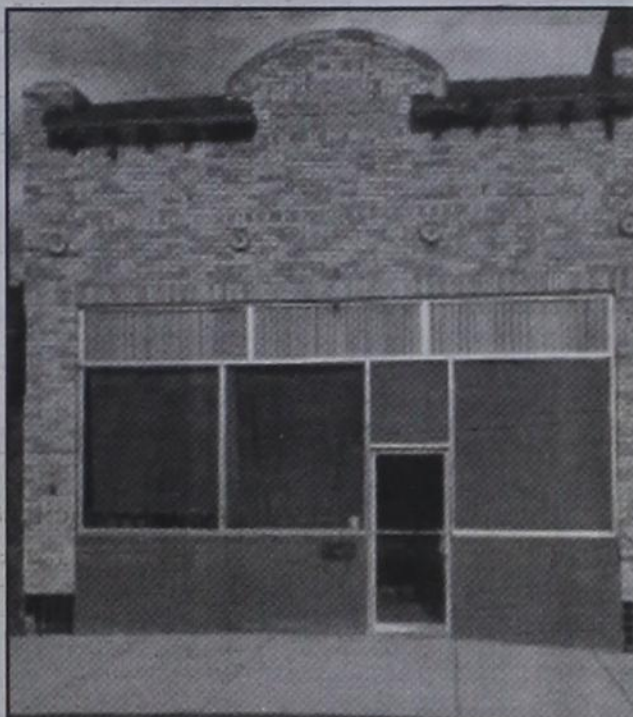
Former Texas Supreme Court Justice William Wayne Kilgarlin, 79, died Nov. 5 in Albuquerque. Burial was in the Texas State Cemetery on Nov. 10.

Kilgarlin served on the court from 1983 to 1989 and served as a Houston state district judge from 1978 to 1982. A Democrat, he was elected to represent a district of Houston in the Texas Legislature in 1958 and did not seek reelection in 1960.

In 1962 he earned a law degree from the University of Texas.

Among his noted roles were in: (1) the 1964 federal case, Kilgarlin v. Martin, which through the U.S. Supreme Court forced Texas to draw redistricting maps by population rather than land area; and (2) the Texas "Robin Hood" law requiring wealthy school districts to share a portion of their property tax revenue with poor school districts.

# SPEARMAN Chamber & Economic Development News



by Tex Kopke, Spearman Chamber of Commerce Director

Need more proof that Spearman is a great place to live with a lot of really great people? Pictured are volunteers unloading food recently at the Spearman Ministerial Alliance Hansford Food Bank. From left to right are Daniel Kovaly, Ray Tate, Yvette Hopper, Victor White, Wanda Redwine, Adella White, Peggy Varnon and taking picture Tex Kopke.

The food truck normally delivers to Spearman on the 2nd Thursday of the month around 11:30, except for holidays and other special circumstances. Food distribution takes place the following day from 10-12 and 2-4. If you or any club or organization would be interested in volunteering to help unload or distribute food, please contact Yvette Hopper at 659-5531 at the law office of Cecil Biggers. Should you need to find out what other kinds of help is available locally, Yvette and Cecil are also the people to contact about that.

The Ministerial Alliance Food Bank is such a great asset to those in need in our county, but it depends on your support to

operate. So, as you prepare to celebrate Thanksgiving with a huge meal and prayers of thanks for all God has provided, please remember those among us who are in need.

Just remembering them doesn't actually accomplish anything though. You need to follow up on those good thoughts by calling Yvette to volunteer your time or money! Charity starts at home, so as nice as it is to help all those charities in far off places, please remember to help those among us who are in need first.

And now, speaking of those in need, please remember to get out this Sunday from 1-5 for our annual Merchants Christmas Open House. Our local merchants need your support to stay in business. Before you race off to Amarillo right after Thanksgiving to do your Christmas shopping, please shop first at your own local stores. Visit participating stores this Sunday for their special Christmas Open House festivities. See the Christmas Open House ad on the back page, sponsored by the Chamber of Commerce, for a list of participating stores.

**The Hansford County Reporter-Statesman**  
 Mailing Address - 213 Main Street • Spearman TX 79081  
 Physical Address - 310 Barkley Street • Spearman TX 79081  
 Phone - (806) 659-3434 • Fax - (806) 398-9080  
 www.spearmanreporter.com • reporter@spearmanreporter.com  
**Mon.-Thurs. 9 a.m.-12 p.m., Mon.-Wed. & 1-5 p.m.**  
**Closed Thurs. afternoon and all day Fri., Sat. & Sun.**

**Gary Smith - Publisher,** Catherine Smith - Editor  
 Clayton Smith - Reporter, Jill Noel - Photographer  
 Contributing Writers: Dorothy Hudson, Jim Derington,  
 Cecil Biggers, Virginia Scott, Ed Sterling  
 Contributing Photographers: Lisa Johnson, Tami Hargrove

**Subscription Rates**  
 In Hansford County - \$30.00 • Out of County - \$40.00  
 E-Mail Subscription - \$35.00

The Hansford County Reporter-Statesman (USPS 529660) is published weekly in Spearman, TX. Periodical postage paid in Spearman, TX. **POSTMASTER:** Send address changes to: The Hansford County Reporter-Statesman, 213 Main Street, Spearman, TX 79081.

**Publication Policy**  
 The deadline to submit news and advertising to The Hansford County Reporter-Statesman is Monday at 5 p.m. Items submitted after the deadline will be published at a later date, as time and space permit. Publication of all items is at the discretion of the editor.

**Advertising**  
 Open Display rates are \$4.00 per column inch. Classified Ads are \$7 for the first 20 words and 15c per word for each additional word. (Additional charge for boxed classifieds.) There is a \$1 charge per week if billed.

Member of  
 Gruver Chamber of Commerce  
 Spearman Chamber of Commerce  
 Texas Press Association and Panhandle Press Association

## ANIMAL WORLD

**ACROSS**

- Girder that looks like a letter
- Largest North American deer
- Methane release by a cow
- \_\_\_ -la
- Actress \_\_\_ Thompson
- Rance's wrap
- Luxurious sheet fabric
- Opposite of guzzle
- Donor's loss
- \*Cause of African Sleeping Sickness
- \*Dangerous delicacy
- Nada
- Rented on the links
- Distant
- Fountain order
- Like body temperature of 98.6°
- Month of Purim
- Barber's supply
- A Judd
- Rounded elevation
- Member of the lowest Hindu caste
- "Goodbye" to Sophia Loren
- Fat cat in the Orient
- Toot one's horn
- Julia Robert's character
- Bad blood
- Bassoon cousin
- Ensign, for short

**DOWN**

- Student aid
- Grandmother, for short
- \*Dian Fossey's domain
- Bob Dylan's words, e.g.
- Indian coin
- Austin Powers, e.g.
- Inhabitants of Thailand
- Poker stakes
- Across, in verse
- \*It opens wide
- \_\_\_ lighting
- Country song "Harper Valley \_\_\_"
- Walk through mud
- \_\_\_ alive!
- Babysitter's nightmare
- Chow or grub
- Sci-fi classic
- \*Praying Insect
- "... or \_\_\_"
- "Fantasy Island" prop
- 10th letter of Greek alphabet
- Throw up
- Encourage
- Infantry's last rows, e.g.
- Mont Blanc, e.g.
- \_\_\_ crime"
- One-armed bandits
- Big coffee server
- Used for boiling

These games are brought to you by the  
**Hansford County Reporter-Statesman**

**SUDOKU**

**dish** Starting at \$19.99  
**DISH NETWORK** SAVE! & Ask About SAME DAY Installation!  
 PLUS 30 Premium Movie Channels FREE for 3 Months!  
 CALL 1-888-903-6814

			3			4
4		7			8	2
	9	2				5
6	8	4		3	5	
		3	8			
	7	3	5	2		8
2			7	5		
	3	7		2		1
4			9			

Fill in the blank squares in the grid, making sure that every row, column and 3-by-3 box includes all digits 1 through 9.

**CROSSWORD**

1	2	3	4	5	6	7	8	9	10	11	12		
13					14			15					
16					17			18					
	19				20			21	22				
		23			24								
25	26	27		28		29		30		31	32	33	34
35			36		37		38		39				
40					41			42		43			
44					45		46			47			
48					49		50			51		52	
					53		54			55		56	
	57	58	59				60				61	62	
63					64	65			66				67
68					69				70				
71					72				73				

if you could save \$522 ... why wouldn't you?  
 Call 1-866-929-9071 to get your fast, free car insurance quote.  
**esurance** on Allstate company



# Happy Birthday!

**November 15**  
**Birthday** - Pam Shearer, Debbie Clawson, Virginia Ortega, Rudy Zamora, Kiki Kelp Connelly, Carolyn Sadler, Jeremy Hunter, Rue Sanders, Brenda Vassar, Francis Balderama, Maria Tarango, Reese Castillo, Edna Bassel

**Anniversary** - M/M Richard Pipkin

**November 16**  
**Birthday** - Felipe Alvarez, Charles Bell, Don Heddins, Chandler Miner, Angela Overbey, Clint Patterson, Charlotte Pearson, Karen (Kenney) Bonath, Keith Goodman, David McGuire, Ryan Quillin, Alexa Thoreson, Lindsey (Smith) Savage, Callie Smith

**Anniversary** - Bertha & Francisco Martinez

**November 17**  
**Birthday** - Pam Cassidy, Janyth Hart, Francis Pipkin, Curtis Gross, Abby Winegarner, Bill Sparks

**Anniversary** - M/M Corky Kizzar, M/M Marvin Jones, Bernie & Kelly Kjos

**November 18**  
**Birthday** - Bryn Lowe, Gwen Parker, Kevin Rodriquez, Arnold Stork, Amanda Taylor, Jennifer Johnson, Steven Tindell, Rose Mary Tartar, Chris Taylor, Kashey Brown, Rita Underwood, Clayton Fox, Jennifer Nelson, Freda Burgess, Mona Lisa Garcia, Steven Cummings, Gabbi Boyd, Pepe Marquez, Eva Jo Pittman, Jill Clement, Marie Beck, Casie Butt

**November 19**  
**Birthday** - Cherri Sherill, David Hall, James Davis, Brian Beck, Tim Gikas, Sharon Barkley, Aaron Shawn Moore, Jeff Jackson, Kasey Harris, Jeffrey Davis

**Anniversary** - M/M Brice Lewis

**November 20**  
**Birthday** - Scott Davis, Jr. Rodriguez, Mrs. Ray McCammond, Jerry Wayne Dunaway, Danny Close, Ron Riley, Garland Dahl, Brenda Ferguson, Freda Sheets, Tammy Batton, Carie Tidwell, Casey Villines, Jason Payne, Josh Purvines, Ole Bergan, Christina Bowers

**Anniversary** - M/M Phillip Turner, M/M Ramon Garcia Jr., M/M Jesse Renteria, M/M Roberto Tarango

**November 21**  
**Birthday** - Kaysha Cluck, Jackie Wilson, Jim Burch, Robert Janzen, Jody Robertson, Mark Pearson, Mrs. Jake Vernon, James Owens, Angie Salgado, Margie Alford, Matt Burnam, Denise Rojas, Victor White, Haley Coomen, Dawn Loomis, Brittanie Osbourne, Jody Robertson, Richard Landrum, JoAnn Robertson

**Anniversary** - M/M Johnny White, M/M J.L. Griffin, Ted & Cheryl Whitefield, Jose & Sylvia Tarango

**November 22**  
**Birthday** - Garret Miner, Kevin Russell, Rusty Reed, Bonita Reimer, Phillip Jan-

zan, Lesly Hayes, Nancy Morris, Russell Sheets, John David Bergin, Emily Lilly

**November 23**  
**Birthday** - Steven Francis, Randy Karlin, Kim Venneman, Klint Venneman, Cooper, Wanda Widener, Ronald Swan, LaDell Scroggs, Delores Rylant, Sara George, Mary Hart

**Anniversary** - Lesly & Maurene Stinson, M/M Val Winger, M/M Greg Stork, M/M Steve Mitchell, Andy & April DeLaRosa, Ryan & LaShara McElhaney

**November 24**  
**Birthday** - Brady Hart, Pablo Perez Jr., Danna Sue Floyd, Helen Gibson, Patty Younger, Duane Hart, James Jackson, Dana Garza, Lashera McElhany, Jamie Dawn Hanson, Stephanie Villalobos, Raymond Fairbank, Brienne (Burkhammer) Eslick, Georgia Holt, Teresa Page, Linda Weller, Elvin Wright, Sharon Arrington, Whitney Maestas

**Anniversary** - M/M Rex Casdorff, M/M David Imke

**November 25**  
**Birthday** - Kasey Cazares, Tracy Logsdon, Krista Davis, Opal Wallin, Trudie Goodheart, Terrie Orr, Mike Hager, Melissa Moyer, Dustin Red, Kristi Holt, Carmen Roy, Sara Vela, Katy Mitchell, Jerry Moore, Donnie Pool

**Anniversary** - Sherry & Willis Boyd

**November 26**  
**Birthday** - Lori Perez, Chad Stork, Mollie Holton, Tracy Vernon, Chris Stewart, Scott Barkley, Dale Red, Eldon Sparks, Aaron Brown, James Smith, Jorge Soto, Jr.

**Anniversary** - M/M Harlan Gerardy

**November 27**  
**Birthday** - Jim Potts, Dorothy Evans, Marilyn Davis, Jackie Nelson, Monty Ross, Tony Pacheco, Susan Poole, Jesse Moreno, Jackie Nelson

**Anniversary** - M/M Dale Wofford, M/M James Winger, M/M James Dorman, M/M Ty Williams

**November 28**  
**Birthday** - Casey Smith, Clint Williams, Jeanie McClellan, Frank Shields, Patty Spoonemore, Thelma Ford, Carolin Schick, Jennye Womble, Pat Hamilton, Harley Murrell, Marie Belle Vargas, Rick Howard, Toni Pittman, Tammy Red, Darlene Curry, Neely Landrum

**Anniversary** - M/M Julian Rodriguez, Mary Lou & Steve Winnegar, Brenda & Verlan Winegarner

**November 29**  
**Birthday** - Brian Presley, Steven Salazar, Wanda Wagner, Genna Floyd, Robert Browning, Ciria Vela, Ted Vela, Troy Lane Brown, Brenda Salgado, Amanda Burress

**Anniversary** - M/M Kermit Ford, M/M David Schick, M/M Jose Garcia, M/M Phil Tripp, M/M Brad Hart

# Our Sympathy

**BILLY GLEN MADDEN**  
 SPEARMAN - Billy G. Madden, 72 years old, went to be with the Lord on Sunday November 11, 2012. Services were at the Hansford County Cemetery on Tues November 13, 2012 at 2:00 with Jed Miesner officiating.

Billy Glen Madden was born in Spearman, TX on February 21, 1940 to Charlie Madden and Marie Haralson Madden. Billy married Marie Barnett Madden June 1, 1962 in Amarillo, TX.

He passed away November 16, 2012. She is preceded in death by his wife, parents, two brothers, Wayne Madden and Charles Madden. He is survived by one sister, Mary Miesner of Spearman. One uncle, J.D. Haralson of Spokane, WA and nieces, nephews and cousins.

He moved from Spearman to Perryton in 1972. In Spearman he worked for Frank Allen, Tom Allen, Newell Allen, Carl Archer, and the Hansford Implement.

In Perryton he was employed by Arcoma until he retired.

He was a member of Community Worship Center. Memorials can be sent to the Hospice Volunteers of Perryton or the charity of your choice.

## GAYLORD A. "BUTCH" WOLF



GOODWELL, OK — Gaylord A. "Butch" Wolf, 71, of Goodwell died Monday, Nov. 5, 2012.

Graveside services were at 3 p.m. Saturday in Goodwell Cemetery with longtime friend Rev. Odie Nunley officiating. Arrangements were by Henson-Novak Funeral Directors of Guymon.

Survivors include his wife, Cheryl; children, Gayla Sand of Healdton, Okla., Travis Wolf of Spearman, Texas, and Jack Wolf of Ulysses, Kan.; six grandchildren; a sister, Helen Hamilton of Guymon; and two brothers, Steve Bell of Tyrone and Ronnie Hayes of Goodwell.

The family suggests memorials be to Boy Scouts of America, in care of the local home, P.O. Box 1306, Guymon, OK 73942.

## MONUMENTS

### Boxwell Brothers Funeral Home

519 Evans • Spearman  
659-3802

Dear friends,  
When you buy a monument from us we make sure it is exactly what you want as a price you can afford. If it is not right, we will make it right. And you will not have to search the countryside to find us. We are here when you have a need.

Sincerely,  
Bob Boxwell

## EVELYN MILLER MCCLOY

LA JUNTA, CO — Evelyn Miller McCloy died November 3, 2012 in La Junta, Colorado.



Funeral services will be held Thursday November 8, 2012 at 10:00 am at the Nazarene Church in La Junta, Colorado. A visitation will be held at the Baptist Church in La Junta, Colorado, TX at 9:00 a.m. on Saturday, November 10, 2012. Graveside services will be November 10, 2012 at 11:00 a.m. at Lieb Cemetery in Morse, Texas by Henson-Novak Funeral Directors, Guymon, OK.

Evelyn was born August 25, 1929 to Grady and Beulah Miller in Thurber, Texas. She was their fourth child and always known as "Sis" to her sister and brothers. Evelyn graduated from Huckabay high school in 1947. She then attended North Texas State Teachers College in Denton, Texas, now known as State Texas College University. She earned a Bachelor's Degree in Education in 1950. Evelyn traveled to Morse, Texas to teach elementary school. While in Morse, Evelyn lived with the H.B. and Laverne Parks family. This family became a loving addition to Evelyn's life. After teaching in Morse for several years, Evelyn married Carson McCloy, a local farmer/rancher on June 19, 1954. They moved to the family farm. While living and working there two children were born to the couple, Clyde and Reba. In the summer of 1960, Evelyn and Carson moved to a ranch in the Higbee Valley south of La Junta, Colorado. Soon a third child, Leah, joined the family. Evelyn thrived as a rancher's wife. She fed countless meals to ranch hands being given to serve delicious pies. Evelyn was willing to help Carson with any chore that needed to be done on the ranch. She was that extra set of hands that make a ranch successful. Many children from the Higbee area in 1960s and 1970s remember Evelyn as a 4H leader. In 2008, Evelyn and Carson moved to Casa Del Sol retirement community in La Junta, Colorado.

Evelyn was a member of the First United Methodist Church in La Junta and attended services at the Cowboy Church in La Junta.

Evelyn was preceded in death by her parents and two brothers, Grady Miller and Dr. James W. Miller and wife Nita Miller.

Evelyn is survived by her husband Carson of their home in La Junta; three children—Clyde (Connie) McCloy of Morse, Texas, Reba Hoskins of La Junta, and Leah (Tommy) Severson of La Junta; eleven grandchildren—Jimmilee McCloy of Amarillo, Texas, Eva McCloy of Stephenville, Texas, Wil and Conner McCloy of Morse, Texas, Levi Hoskins of Swink, CO, Lacie (Edward) Mayhoffer of La Junta, CO, Lexie (Cody) Kurtz of Rocky Ford, Woo Chul Han McCloy of South Korea and Carson, Cullen, and Carter Severson of La Junta and one precious great-grandchild Briley Mayhoffer of La Junta. Evelyn is also survived by one sister, Leona Roberts of Stephenville, Texas and one sister-in-law, Mary Miller of Fort Hancock, Texas along with many nieces and nephews. Evelyn's greatest wish was that everyone come to know her Savior.

In Lieu of flowers we ask that donations be made to Ark Valley Hospice, Valley Cowboy Church or Operation Christmas Child through Peacock-Larsen Funeral Home, 401 Raton, La Junta, CO 81050.

## Mesothelioma

EXPERIENCE COUNTS  
Lawyers with over 100 years combined expertise.

may occur 30 to 50 years after exposure to asbestos. Many workers were exposed from the 1940s through the 1970s. Industrial and construction workers, along with their families (second hand exposure) are among those at risk for mesothelioma, lung cancer or gastro cancer (throat, stomach, colon). Call us for professional insight.

Ryan A. Krebs, M.D., J.D.  
Doctor-Lawyer in Full-time Law Practice  
Richard A. Dodd, L.C.  
Timothy R. Cappolino, P.C.  
Board Certified Personal Injury Trial Law and Civil Trial Law by the Texas Board of Legal Specialization  
NO FEE FOR FIRST VISIT  
CAMERON, TEXAS

**1-888-MESO-FIRM**  
(1-888-637-6347)  
www.MesoFirm.com

The former

## WyoBraska Wildlife Museum Auction

10am Saturday, November 17<sup>th</sup>  
Worstell Auction Facility  
8424 Hansen, Houston TX 77075  
www.taxidermy-auctions.com • 713.702.3666

Over 400 Animal Mounts •  
100s of Shoulder Mounts • Fantastic Ivory Pair 185 LBS  
15 Life Size Bears • Fants: Lion, Zebra, Bear, etc.

Mark Thomas Auctions Inc., TX Lic# 15784

Do you take **VIAGRA** or **CIALIS**?

»»SAVE \$500!««

Get 40 100mg/20mg pills for only \$99.00  
BUY THE BLUE PILL NOW!  
call 1-888-395-8456

CALL NOW AND GET 4 BONUS PILLS FREE!

**SATISFACTION GUARANTEED**

## Replenish the seed of faith through . . .

### DAILY BIBLE READING, PRAYER & REGULAR CHURCH ATTENDANCE

- |  |  |  |   |
|--|--|--|---|
| <p><b>Spearman</b></p> <p><b>Apostolic Faith Church</b><br/>822 S. Drexler • 659-2870<br/>Sunday School: 10 a.m.<br/>Worship Service: 11 a.m.<br/>Sun. Eve.: 6 p.m.<br/>Wed. Prayer Mtg: 7 p.m.<br/>Pastor - Jack Cornell</p> <p><b>First Assembly of God</b><br/>401 N. Bernice • 659-2295<br/>Sunday School: 9:30 a.m.<br/>Worship: 10:40 a.m.<br/>Evening Worship: 6 p.m.<br/>Wed. Worship: 7 p.m.<br/>Wed. Youth: 7<br/>Pastor - Brad Smith</p> <p><b>First Christian Church</b><br/>(Disciples of Christ)<br/>29 S. Bernice • 659-2036<br/>Sunday School: 9:45 a.m.<br/>Worship: 10:50 a.m.<br/>Minister -</p> <p><b>First Baptist Church</b><br/>123 N. Bernice • 659-5557<br/>Sunday School: 9:45 a.m.<br/>Worship: 11 a.m.<br/>Men's Bible Study - Wed., 7 a.m.<br/>Children's Choir - Wed., 6 p.m.<br/>Adult Choir - Wed., 7 p.m.<br/>Wed. Bible Study: 7 p.m.<br/>Pastor - Jim Medley</p> <p><b>Church of Christ</b><br/>121 S. Haney • 659-3244<br/>Sunday Bible Class: 9:45 a.m.<br/>Worship: 10:30 a.m.<br/>Evening Worship: 6 p.m.<br/>Bible Study Wed.: 7:30 p.m.</p> | <p><b>Sacred Heart Catholic Church</b><br/>901 Roland • 659-2166<br/>Sat. Night Mass: 5:30 p.m.<br/>Sun. Mass: 9 a.m. - English<br/>Sun. Mass: 11:30 a.m. - Spanish<br/>Rev. Gregory Bunyan</p> <p><b>First United Methodist</b><br/>407 S. Haney • 659-5503<br/>Sunday School: 9:45 a.m.<br/>Worship: 8:30 &amp; 11 a.m.<br/>Jr. High Youth: 5 p.m. Sunday<br/>High School: 6 p.m. Sunday<br/>Kids Club: 3 p.m. Wed.<br/>Pastor - Toni Bailey</p> <p><b>Grace Presbyterian Church</b><br/>(Worships with Faith Lutheran Church)<br/>1101 Bernice • 659-2033</p> <p><b>Faith Lutheran Church (ELCA)</b><br/>1101 Bernice • 659-2252<br/>Sunday School: 9:45 a.m.<br/>Worship: 11 a.m.<br/>(Worships with Grace Presbyterian Church)<br/>Pastor - Cecil Biggers, PLM</p> <p><b>Union Church</b><br/>31 S. Endicott • 659-2644<br/>Sunday School: 10:00 a.m.<br/>Worship &amp; Kid's Church: 11:00 a.m.<br/>Wednesday Evening Worship and Bible Study Service: 7 p.m. Wed.<br/>Pastor - Steve Hinshaw<br/>www.unionchurchonline.org</p> <p><b>Fellowship Baptist</b><br/>1102 S. Archer • 659-2783<br/>Sunday School: 11 a.m.<br/>Worship: 11 a.m.<br/>Sun. Evening Worship: 6 p.m.<br/>Sun. Evening Spanish Worship: 7 p.m.<br/>Youth/Adult Service: 7:30 Wed.<br/>Pastor - Philip Hudson</p> | <p><b>Primera Mision Bautista</b><br/>502 E. 7th • 659-3991<br/>Sunday School: 9:45 a.m.<br/>Worship: 11 a.m.<br/>Evening: 6 p.m.<br/>Wed. Prayer Meeting: 7 p.m.<br/>Thurs. Visitation: 7 p.m.<br/>Pastor Joe Garcia Jr.</p> <p><b>El Aposento Alto U.P.C.I.</b><br/>1105 S. Roland<br/>Domingos: Escuela-Domical - 10 a.m.<br/>Culto Evangelistico - 7 p.m.<br/>Jueves: Oracion - 8 p.m.<br/>Mier: Estudio Biblico - 7 p.m.<br/>Pastor - A.G. Martell<br/>(806) 659-2153</p> | <p><b>Gruver United Methodist</b><br/>Broadway &amp; Garrett<br/>733-2651<br/>Sunday School: 9:45 a.m.<br/>Worship: 6:30 &amp; 10:50 a.m.<br/>Eve. Worship &amp; UMY: 6 p.m.<br/>Pastor - George Price</p> <p><b>Spanish Cristo Redentor Church</b><br/>Hwy 15 806-659-2166<br/>Gruver, TX<br/>Sun. Mass: 1:30 p.m. - Spanish<br/>Rev. Gregory Bunyan</p> <p><b>Oslo</b></p> <p><b>Oslo Lutheran Church (ELCA)</b><br/>6 Miles West of Gruver<br/>North of Gruver<br/>339-7646<br/>Sunday School: 9:45 a.m.<br/>Worship: 11 a.m.<br/>Pastor - Arlen Lloyd</p> <p><b>Morse</b></p> <p><b>Morse Baptist Church</b><br/>733-2757<br/>Pastor - Gary Stevens</p> <p><b>Waka</b></p> <p><b>Church of Christ</b><br/>300 Rogers Ave.<br/>202-7126<br/>Sunday School: 9:30 a.m.<br/>Sunday Worship: 10:30 a.m. &amp; 6 p.m.<br/>Wednesday Bible Study: 7 p.m.<br/>Preacher - Ed Jenkins</p> |
|--|--|--|---|

He has showed you, O man, what is good. And what does the LORD require of you? To act justly and to love mercy and to walk humbly with your God.

Micah 6:8

This feature is made possible through the sponsorship of these civic minded businesses:

<p><b>Deakin ELECTRIC</b> OILFIELD • RESIDENTIAL • COMMERCIAL 321 S. MAIN • SPEARMAN 1-800-999-1506 Chris Deakin (806) 659-5016 President</p>	<p><b>Bartlett's Lumber &amp; Hardware</b> 105 W. Broadway • Gruver, TX (806) 733-2404</p>	<p><b>Money's</b> Stan &amp; Donna Zepp - Owners Phone 435-3945 14 SW 3rd Ave, Perryton TX</p>	<p><b>Morse Implement &amp; Auto Supply</b> "Join us in church" Tom Dortch • Gary Urban Box 89 • Morse, TX 79062 (806) 733-2668</p>
<p><b>PRAIRIE MOTORS INC.</b> Hwy. 207 South • P.O. Box 430 Spearman, TX 79081 • (806) 659-2541 www.prairiemotors.com</p>	<p><b>MurMur's Cafe</b> 100 Roland St Spearman, TX. 659-3580</p>	<p><b>Hansford County Reporter-Statesman</b> "Proudly Serving Hansford County Since 1907" (806) 659-3434 310 Barkley • Spearman, TX</p>	<p><b>INTERSTATE BANK, sss</b> www.interstatebank.com 322 Main Street • Spearman, TX (806) 659-2559</p>



# HWT

FOR YOUR INFORMATION

### Medical Fund Established for Jeremy Frost

A fund has been set up at First National Bank for Kylee and Jeremy Frost. To donate you can either call the bank at 659-5544 or mail it to Box 337, Spearman.

### John DeLaRosa

A medical account has been opened for John & Deborah DeLaRosa at First National Bank. John has been diagnosed with oral cancer. He will be going through radiation and chemo treatment.

### Spearman Food Bank 1st Thursday

If you would like to help the Spearman Food Bank, they need help unloading the truck at 11:30 each 1st Thursday of each month. Contact Cecil Biggers for more information.

### Gruver Booster Club Fund Raiser

This year the Booster Club has decided to sell raffle tickets for a chance to win 1/4 beef rather than the Greyhound Grand! This is our major fundraiser for the year and allows us to help ALL Greyhound athletic programs where needed!! Please contact Mack McLain or Greg Haight if you would like to buy some tickets and support the Gruver Greyhounds!

### Flu Shots

Flu shots are available through the Gruver school nurse's office. They are \$15 each. Contact Sahala at 733-5415.

### 4-H Smoked Meat Sale

4-H members across Hansford County (Spearman, Gruver & Morse) sold smoked meats for their annual fund raising efforts. We have some extra smoked meat for sale. Items available include: Sausage Links, Sausage Gravy, Whole Hams, Spiral Hams, Hunter Pack, Pork Chub, Sausage Wrap, Pepper Bacon, Smoke Bacon, Turkey and Pumpkin Roll. Please call the office at 659-4130 - if you are interested in purchasing smoke meats.

### Rainbow Room Needs Your Help

Stephanie Brock is gathering up names for sponsors for children to benefit the Rainbow Room in Borger. This particular project is for Christmas. This organization does service Hansford County. There was an overwhelming response last year. Just get your names to Stephanie Brock at 659-1774 or email her at sbrock@ptsi.net. You can request a young child (around \$75) or an older child (around \$125) You can even go in with another person to purchase something off the child's wish list. It is a tax deductible expense. It is truly a worthy project and one that blesses many children.

### Education Tapes for Education

The Gruver Elementary School is participating in the Education Tapes for Education. Help our school earn credit for free educational equipment by saving your receipts from any Lowe's. Our collection boxes are located in the Elementary School Lobby or the South entrance. They are also located in the City Library, City Hall, Night & Day Beauty Salon and Shear Style. The collection boxes will be open from August 17th, 2012 - March 31st, 2013.

**Hansford Co. Library Thrift Shop Accepting Donations**  
Alley Katz (Library Thrift Shop) is accepting donations of quality items. You may ask for the key to the Thrift Shop at the library desk during regular hours (9:30 a.m.-5 p.m., Monday-Friday). Alley Katz is open from 10 a.m.-4 p.m. each Wednesday.

### Firefighters Wanted

The Spearman Volunteer Fire Department is actively recruiting new members. Both men and women age 18 and over are welcome. The number of volunteers has dropped to dangerously low levels and the roster needs to be increased. If you have an interest in helping to keep your community safe, the SVFD would like to talk to you. All new candidates will have access to the best training available. All interested parties should either come to the fire station located at 513 S Hazelwood or call Kimmi Rivera at 806-202-6374. The SVFD meets every Thursday night at 7 PM. Bring a friend and come join the team.

### Hansford Hospice

Volunteering for Hospice is very flexible and easy to work into your schedule. Our volunteers provide important services to the people we serve, whether it is: providing companionship to patients and their families; helping with clerical duties in the office; helping with special projects such as cooking food, baking, running or helping with community outreach. If you are interested in being a Hansford Hospice Volunteer, please contact us at 806-659-5811.

### Texas SNAP Benefits Assistance

Need help applying for SNAP benefits? We can help! High Plains Food Bank is providing application assistance for Texas SNAP benefits (Food Stamps) in your area. Telephone application assistance is available. If you need to apply for benefits, please call us today at 806374-8562 or 1-800-774-8564.

### Don't Text and Drive Decals

If you would like to purchase a lime green 'AMT 1994-2009 Don't Text and Drive' window decal in memory of All Tyler, please contact Stephanie Tyler at 806-736-0019. All proceeds go to the All Tyler Memorial Scholarship Fund. Decals are also available at Hansford County Floral Company on Main Street in Spearman.

### Help Available for Breast Cancer Survivors

Any woman who has had breast cancer surgery and cannot afford undergarments and prosthetics can get help from the American Cancer Society through a grant from Susan G. Komen for the Cure®. The Amarillo Area Breast Prosthesis and Lymphedema Accessory Program will provide financial help to women in need of breast forms or prostheses, mastectomy bras and accessories to help with lymphedema, which is swelling of the arm caused by a build-up of lymph fluid. For more information, call the American Cancer Society office in Amarillo at (806) 353-4307 or 1-877-227-2345.

### Friendship Quilter Quilt Guild

The Friendship Quilter Quilt Guild of Perryton, Texas would like to invite you to their meetings. The Day Guild meets the 2nd Wednesdays of each month at 9 a.m. in the Community Worship Center, 2210 SW 15th, Perryton. The Night Guild meets the 2nd Tuesday of each month at 6 p.m. in the Community Worship Center, 2210 SW 15th, Perryton. Annual dues are \$15. (To receive only the newsletter \$7.50/yr.) Visitors are welcome. For more information, contact Cynthia Shattles at 806-435-2765 or Marilyn Robins at 806-624-2691.

### Fire Department Donations

Persons wishing to make donations to the Fire Departments in Hansford County may do so at the following addresses: Spearman Fire Dept., Box 37, Spearman TX 79081; Gruver Fire Dept., Box 947, Gruver TX 79040 or Morse Fire Dept., Box 28, Morse TX 79062. For more information, contact Marilyn Been at 806-733-2087.

### SPWA Seeks Volunteers

The Southwest Pioneer Windmill Association is seeking the next generation of volunteers to continue the work of restoring and maintaining the windmills of the SPWA. If you have an interest in windmills and their upkeep, and/or maintenance of the park, you are needed. For information, call Dwayne Mitchell, 270-0291 or Don Reed 330-0745.

### Timeless Treasures Quilt Guild

The Timeless Treasures Quilt Guild of Guymon, Oklahoma meets four times a year - the last Saturday in the months of January, April, July and October. Registration begins at 9:30 a.m. in the First Christian Church Disciple Center located at 9th & Quinn streets. The meeting starts at 10 a.m. Members bring a carry-in luncheon, which is served at noon. The afternoon program begins at 1 p.m. Programs include trunk shows, demonstrations, workshops, door prizes and much more.

### O'Loughlin Center Hours

The O'Loughlin Center is open for the following hours: Monday-Thursday, 6:00 a.m.-8:00 p.m.; Friday, 6:00 a.m.-6:00 p.m.; and Saturday, 9:00 a.m.-12:00 p.m. (noon). For more information, contact The O'Loughlin Center, 502 S. Brandt, PO Box 733, Spearman TX 79081. (806-659-3030)

## Circle of Friends

**What:** The Annual Hansford County Membership Party for the Circle of Friends

**When:** Saturday, November 17, 2012, 5-10 p.m.

**Where:** The O'Loughlin Center, 506 S. Brandt, Spearman, Texas

The Hansford County Circle of Friends are busily preparing for our Annual Membership Party. We are seeking responsible student volunteers to help out with various details of the evening which include dinner preparation, greeting guests, and live auction attendants. We are expecting about 150 guests for the evening and would love some help!

The Circle of Friends is a non-profit organization founded to support the philosophy and goals of the Don & Sybil Harrington Cancer Center. The Circle of Friends was founded by 15 visionaries in 1981. Since then, the COF has expanded to more than 2000 members and has donated more than \$1 Million to HCC, helping cancer patients and their families in times of need. The COF provides support that is still vital today to continue programs in cancer treatment, research and education. It is also a means to assure that those founding communities continue to benefit from and be aware of the Center's services.

In 2011 The Circle of Friends assisted approximately 175 patients, many of those more than once. These patients received help with travel expenses, rent or mortgage, utilities, nutritional supplements, breast prostheses and prosthetic bras, take-home prescriptions, health insurance premiums and more. The Patient Care Committee of

the Circle of Friends oversees 2 apartments that are provided for patients to use while receiving out-patient treatments.

Patients usually stay in these apartments for 2 to 8 weeks at a time. Each year the Circle of Friends also grants about \$25,000 to the HCC for patient needs for simple things like popcorn for patient comfort and bigger items like new equipment for patient treatments.

If you decide to help you will be helping make a difference in the lives of patients at the Harrington Cancer Center!!

Thank you for your consideration!

If interested please contact, Holly McLain, Chairman of Hansford County. Home: 806-733-2268, Cell 806-733-0181



## Cattle Raisers Set to Host Ranch Gathering at AQHA in Amarillo

The Texas and Southwestern Cattle Raisers Association (TSCRA) will host a ranch gathering Saturday, Nov. 17, at the American Quarter Horse (AQHA) Hall of Fame and Museum in Amarillo. Registration will begin at 5 p.m. with a reception and entertainment followed by a complimentary beef dinner. The museum will be open to attendees during the gathering.

Joe Parker Jr., TSCRA president, and Walt Olson, Texas Cattle Feeders Association (TCFA) president, will address the group about issues that concern the Texas cattle industry, both from the cow-calf and feedlot perspective.

"TSCRA ranch gatherings are a great place for folks to get together and discuss what's going on in the cattle business and how they can get involved," said Joe Parker Jr., rancher and TSCRA president. "These gatherings aren't just for TSCRA and TCFA members. Anyone interested in the cattle industry is invited to attend."

The event is open to the public. All members of the press are invited to attend.

Please RSVP to 800-242-7820, ext. 192, or [rsvp@tskra.org](mailto:rsvp@tskra.org).

The AQHA Hall of Fame and Museum is located at 1600 Quarter Horse Dr. in Amarillo.

New members who sign up at the event will receive a free metal gate sign.

The ranch gathering is sponsored by Amarillo Brokerage; Amarillo National Bank; Bank of America; Bar G Feedyard; Bezner Beef; Capital Farm Credit; DuPont Range and Pasture; Great Plains Ag Credit; Kirkland Feedyard; Livestock Nutrition Center; Merck Animal Health; Rabo AgriFinance; Y-Text; and Scharbauer Ranches.

[www.spearmanreporter.com](http://www.spearmanreporter.com)

## Perryton Satellite Center's Annual Arts & Crafts Festival

November 17th from 9 a.m. to 6 p.m.  
November 18th from 11 a.m. to 4 p.m.

Expo Center

Hourly Door Prize Drawings  
Grand Prize 24" Flat Screen TV

87 Vendors and 132 Booths will be here this year!  
Proceeds benefit clients with Mental Retardation in Ochiltree and the surrounding counties.

celebrate being FAMILIAR

give thanks

This Thanksgiving we are so thankful for the love and support of all our friends and families!!

Jeremy and Kylee Frost  
Rick and Jan Howard  
Jarick, Michelle and Emmett Howard

thankful for YOU





# HANSFORD COUNTY

Continued from the 11/8/12 Edition of The Hansford County Reporter-Statesman

A somewhat amusing incident occurred during my stay at Port Hueneme. Jimmie Hicks had been sent to a training school at the Lockheed Aircraft Factory in Burbank, California. One weekend we arranged to get together in Burbank on weekend passes and spent that Saturday going to a movie, playing pool, probably having a couple of beers. About 2 am we decided we were tired and started looking for a hotel room. None seemed to be available. We saw a cop on the street and asked if he knew where we could get a bed. He offered us a bed in the Burbank jail!! We were tired enough to take him up on the offer. Well...it was an experience to say the least! They had us leave our wallet and other pocket stuff at the desk and took us back to a cell that had a couple of bunks in it and they did lock us up. I just remember that the bunks had some blankets on the bed. In the morning we woke up to find that both of us had many bed-bug bites. Believe me; I never wanted to spend another night in jail!!! And, so far, have avoided it.

Argus Unit 7 sailed out of Port Hueneme on the SS Dashing Wave April 23, 1943, along with the 42nd CB Battalion, bound for places unknown. Our official title was Argus/Acorn 7. The group was designed to be able to set up, construct, and operate an airfield. It turned out that we were headed for Noumea, New Caledonia, arriving there May 13. Argus personnel were a part of Communications Unit 4 for administration and allocation of equipment. We left

there May 18 and on May 21 arrived at Kukum Beach, Guadalcanal, where we were encamped, collecting our equipment from the ship. On June 3 we moved our gear and camp down the beach to Koli Point.

On stepping ashore at Kukum Beach, the first thing most of us did was start digging a foxhole. Our digging only a few inches into the sand produced water. We were forced to move inland a little further to set up the camp.

"The Canal," as it was referred to by most of the troops, was still under attack by Washing Machine Charlie, usually a single Japanese twin engine Betty Bomber or one of their smaller planes which came at night proving to be more of a nuisance than doing any real damage. Their engines had a distinct sound, different from ours and were easily identified by ear. The twin engines were never in sync. Some daytime raids occurred, but I do not recall that any damage was done. Our Combat Air Patrol managed to keep the island pretty well protected.

Guadalcanal Island, one of seven main islands in the Solomons, is approximately 100 miles long on its NW/SE axis and 38 miles wide at its widest point. It was a place of sand and mud even away from the beach. It had some high hills, mountains along its spine with a lot of jungle in between the hills and shore from the north side. Coconut palm plantations were near the beach. We were told that some of the plantations on this and other islands were owned by Palmolive Peet Inc. and Lever Brothers.

During the five or six weeks we were on Guadalcanal, we spent the time un-

packing, testing and repacking our equipment. We had been transferred or just renamed Argus Unit II (Eleven) under the continuing leadership of Lt. Commander Harris Carrigan.

A detachment of some 34 officers and men of Argus II boarded a transport, formerly the liner President Jackson, and headed for Rendova. On June 30, 1943, we off loaded there down a cargo net hung over the side into a bouncing small boat. We each had our backpack and carbine. Being support troops, we went ashore in the 10th or 11th wave. Within a hundred yards or so of going ashore, I saw my first fatality of the war: a 2nd Lt. whose body was draped over the stump of a coconut tree with a neat little round hole in the right side of his helmet. I thought he must have been hit by a tree-sniper and I wondered if the Japanese soldier that killed him was still hanging around waiting to do the same to me!!!! Fortunately, our troops had cleared the area of enemy soldiers and we found our bivouac up on a rise about a quarter of a mile or so from shore.

It was there that we set up our first radar set, a REL model 602. It was a short range set, probably less than 20 miles, and difficult to keep working as the sets only worked for 8 days before succumbing to the equatorial humidity. Another was set up about 500 yards away. We had left the United States with a Model 270 D Truck Mounted, Long Range Radar, but it had been turned over to the Marines to operate. They had to be trained in our operational procedures. I do not recall a Combat Information Center being set up there, although there must have been one with a plot-

ting board to show where the planes, both friendly and enemy (bogies), were in distance and direction from Rendova. There would have been radios to communicate with our planes. On invasion day, the planes had been controlled by a CIC in a destroyer.

The radar operators would note a blip on the screen and notify the plotters of the direction and distance. If it showed a particular kind of blip, it could be identified as friendly. If it did not show this IFF (Identification Friend or Foe) it would be deemed a bogie and its direction and distance would be noted. Thus with a series of readings, the speed and direction the plane was traveling could be determined. If a bogie, a friendly plane could be directed to do battle with it. That was the job that Argus Units were designed to perform.

On Rendova, a steel tower with a platform about the height of the palm trees was set up and we stood watch there with field glasses looking for planes. We used a pair of Japanese artillery spotting glasses with outer lenses of about 6 inches diameter. Often several of us would climb the tower and watch when off duty just to help a little and kill some time. One man of our group was a man from Illinois by the name of Wise. He had an unusually keen sense of hearing. Many times when we were under air-raid alert, he would tell us to hit the dirt before any of the rest of us could hear the planes coming. I thought his presence was a real blessing. We referred to him as "Radar Ears."

Rendova is an island that

lies about 5 miles across a strait from Munda Point, New Georgia Island, where the Japanese had constructed an airfield to be used to harass Guadalcanal and defend their holdings further north at Bougainville, Truk, New Britain, etc. Admiral Halsey and General McArthur thought we needed to take it so we could attack those same Japanese strong holds.

July 2 brought a near disaster to our detachment when a group of about 24 or so Japanese twin-engine Betty bombers slipped in overhead and plastered the beach and surrounding area. None of our radar was working at the time. Two men of our group, Beagi

and Morrison, who were guarding our equipment on the beach, were blasted into eternity. No trace of them was found. Twelve others were wounded. I was spared. I dropped to the ground when the explosions started and rolled up in to the fetal position as we had been trained to do when under such an attack, to make the smallest target that we could. Most of the wounds were not serious enough to keep the sailors from continuing to perform their jobs, although I believe some of them were kept at sickbay for a day or so.

Continued in next week's edition of The Hansford County Reporter-Statesman.

## Couple Leads Charge

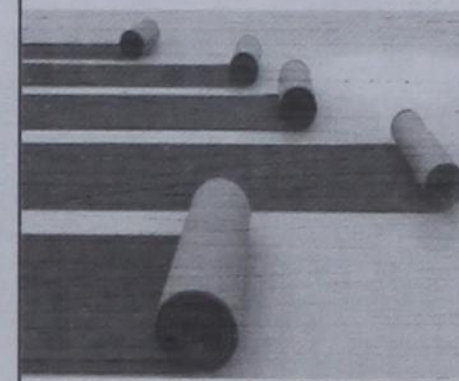
Continued from Page 1

- Josephine Anderson Charitable Trust, outstanding foundation, nominated by Lone Star Ballet for its production support
- Susie Akers, outstanding fundraising professional, nominated by the National Philanthropy Day selection committee, for her work with the group and 10-year history as a fundraiser with Cal Farley's Boys Ranch, Ceta Canyon Camp & Retreat Center and the Mary E. Bivins Foundation
- Junior Board of the Amarillo Tri-State Fair Exposition, outstanding youth in philanthropy, nominated by the exposition for 600 hours of volunteer service for the fair

## Red Carpet Center, Inc.

Full Service Flooring

We strive for pride in our work.  
Free Estimates • Satisfaction Guaranteed



920 N Cedar  
Borger TX 79070  
806-273-2728

Servicing the Panhandle and Beyond

## HOSPICE & HANSFORD MANOR STOCKING FUND fund raiser

WIN PROFESSIONAL TOBY RATLIFF TO COME DECORATE YOUR HOME WITH CHRISTMAS LIGHTS!!!

DRAWING NOVEMBER 20TH \$5.00 per ticket

Tickets can be bought from various people in town. For more info contact Hansford Manor 806-733-2954

## Happy Thanksgiving!

We will be closed Thursday, November 22nd in observance of Thanksgiving.

Let us help you decorate this holiday season!

- Thanksgiving Centerpieces with or without Candles
  - Fall ceramic containers for plants or fresh flowers
  - Gourmet baskets for Thanksgiving or Christmas (or anytime)
  - Cornucopias • Gift Baskets • Christmas Home Decor
- Order your Poinsettias now!

## All Occasion Flowers

202 N. Bernice (across from the Post Office)  
659-5180 • Spearman



Veteran's Day - 11/11  
Thanksgiving - 11/22  
Christmas - 12/25



See us for:  
AUTO • HOME • CROP HAIL  
FARM & RANCH  
MULTIPERIL • LIVESTOCK

**INSURANCE**

**BORT AGENCY, INC.**  
510 Main St. • Gruver, TX  
(806) 733-2456

Are You A Victim of Domestic Violence, Sexual Abuse or Physical, Emotional or Sexual Assault?  
Call Toll Free Hotline 1-800-753-5308

We can see individuals from Hansford County anytime upon request. Call 435-5008 or 1-800-753-5308 to set up an appointment in Hansford County. We operate a safe place for victims and their children to stay in times of crisis.

Battering Intervention & Anger Management Available

**Panhandle Crisis Center**  
Serving Hansford, Lipscomb & Ochiltree Counties  
301 S. Ash • Perryton, TX  
Memorials Accepted

Have you been thinking about college classes? We can help!  
Be sure to ask us about HYBRID CLASSES!

**REGISTRATION** for **Spring 2013 classes:**  
**FRIDAY, NOVEMBER 30TH**  
from 10:00 A.M. to 1:00 P.M.  
at the Allen Campus  
(2314 S. Jefferson)

**FPC** Frank Phillips College  
Allen Campus  
2314 S. Jefferson  
Perryton, Texas 79070

**FPC** Frank Phillips College  
Allen Campus  
2314 S. Jefferson  
Perryton, Texas 79070

**Classes to Home! Affordable! Quality Education!**

You can download a schedule of classes from the "Allen Campus" tab on our homepage: [www.fpctx.edu](http://www.fpctx.edu).  
Call (648-1450) or come by for more information and begin your higher education adventure today.

Frank Phillips College is an equal opportunity community college. cll 10/12



"I knew I needed to stay in front and not get caught up behind a bunch of people," Shelton said. "I knew I wanted to get in the top 10. To be able to get a medal in my last year is pretty awesome."

Stratford's Samantha Gonzalez was two second behind Shelton in seventh place.

"Coach said you don't win it at the beginning, you win it at the end, and that's what I was able to do," Gonzalez said. "I hope I can build on it next year."

**Class 2A Girls**

**Individuals (Top 10 and Amarillo-area):** 1. Annie Dunlap, Crawford, 11:36.1. 2. Kristaly Munoz, Luling, 11:54.6. 3. Macy Schulte, Comanche, 12:05.0. 4. Pamela Marquez, Keene, 12:15.5. 5. Courtney High, Vanderbilt Industrial, 12:17.6. 6. Aundera Schroder, Bushland, 12:23.7. 7. Meghan Dupree, Bruceville-Eddy, 12:24.9. 8. Rebecca Parsons, Caddo Mills, 12:25.5. 9. Carley Glass, Luling, 12:27.6. 10. Aspen Eaton, Tuscola Jim Ned, 12:28.5. 14. Kenzie Schaffer, Bushland, 12:43.0. 19. Cortnie Grauel, Bushland, 12:51.9. **44. Morgan Lackey, Bushland, 13:18.7.** 48. Ellie Cornett, Bushland, 13:24.1. 61. Madison Berry, Bushland, 13:36. **65. Itzel Meza, Spearman, 13:38.8.** 72. Stormie Fuentes, Bushland, 13:49.3.

**Class 1A Girls**

**Team Standings:** 1. Hamlin 66. 2. Harper 69. **3. Gruver 76.** 4. San Saba 94. 5. Stratford 119. 6. Sunray 140. 7. Zephyr 152. 8. Thrall 250. 9. Zavala 263. 10. San Antonio Stacey 278. 11. Cushing 300. 12. Shelbyville 302.

**Individuals (Top 10 and Amarillo-area):** 1. Olivia Jalomo, Quanah, 11:54.5. 2. Macey Siegert, Seymour, 11:54.6. **3. Lariat Lerner, Gruver, 12:06.7.** 4. Lauren Gibbs, Lindsay, 12:09.8. 5. Megan Holt, Lindsay, 12:13.9. 6. Audrey Shelton, Clarendon, 12:16.6. 7. Samantha Gonzalez, Stratford, 12:18.6. 8. Kayley Calhoun, Valley View, 12:19.6. 9. Kelsey Warren, Hico, 12:22.0. 10. April Padilla, Van Horn, 12:24.0. 20. Lindsey Williams, Sunray, 12:50.1. **25. Bailey Stedje, Gruver, 12:56.8.** 26. Trejo Mayra, Sunray, 12:57.2. **36. Reagan Haynes, Gruver, 13:09.1.** **42. Emilynn Robinson, Gruver, 13:18.0.** 45. Alexie Wright, Stratford, 13:20.9. 47. Karen Lozoya, Stratford, 13:25.5. **50. Hadlee Spivey, Gruver, 13:27.9.** 60. Nohemi Ruedas,

Stratford, 13:45.6. 61. Noemy Franco, Stratford, 13:52.2. 62. Melissa Corbin, Sunray, 13:53.5. **67. Maggie Gaspar, Gruver, 14:00.6.** 70. Grajeda Kimberly, Sunray, 14:03.3. **72. Antolina Mendoza, Gruver, 14:05.6.** 74. Mendoza Miriam, Sunray, 14:07.5. 76. Samantha Corbin, Sunray, 14:13.4. 84. Caitlin Williams, Sunray, 14:23.9. 92. Yadhira Chavoya, Stratford, 14:42.0.

**High School Football Standings**

By LEE PASSMORE, Posted: 10/27/2012

**District 1-2A Division II**

Team	Dist.	Pts.	Opp.	All	Pts.	Opp.
xy-Sanford-Fritch	4-0	163	69	5-4	227	193
x-Canadian	3-1	173	62	8-2	367	179
x-Spearman	2-2	96	85	7-3	248	175
Boys Ranch	1-3	64	137	2-8	150	262
Highland Park	0-4	45	188	1-9	106	326

Last week: Canadian 57, Highland Park 14; Sanford-Fritch 55, Boys Ranch 22. **End of regular season.**

**District 2-1A Division II**

Team	Dist.	Pts.	Opp.	All	Pts.	Opp.
xy-Gruver	3-0	110	28	8-2	297	149
x-Claude	2-1	79	63	7-3	258	197
x-Vega	1-2	65	51	3-7	227	222
White Deer	0-3	41	153	0-10	106	435

Last week: Claude 21, Vega 12; Gruver 55, White Deer 15. **End of regular season.**

**Gruver Greyhound Football**

**Gruver 25, Claude 7**

Gruver 55, White Deer 15  
Gruver (8-2, 3-0) finished the regular season with an easy win at home over District 1-1A foe White Deer (0-10, 0-3). The Greyhounds won the district title and will face the winner of a Sudan-Crosbyton in an upcoming playoff game. Gruver's Colton Jackson rushed for 169 yards and two touchdowns, while teammate Carson Williams totaled 60 yards receiving, including the game's first touchdown.

**Score by Quarters**

White Deer 0 0 8 7 — 15  
Gruver 20 14 14 7 — 55

**Scorers**

G—Carson Williams 25 pass from Korbin Irwin (Johny Terrazas kick)  
G—Irwin 14 run (kick failed)  
G—Irwin 19 run (Terrazas kick)  
G—Colton Jackson 6 run (Terrazas kick)  
G—Manuel Dorunda (Terrazas kick)  
G—Beau Blankenship 25 pass from Irwin (Terrazas kick)  
WD—Shawn Roper 65 run (Graham Wilson run)  
G—Jackson 80 run (Terrazas kick)  
WD—Roper 50 pass from Wilson (Wilson kick)  
G—L.C. Perez 16 pass from Aaron Felderhoff (Terrazas kick)

**Statistics**

	White Deer	Gruver
First Downs	4	12
Rushing Yards	117	288
Passing Yards	52	107
Total Yards	169	395
C-A-I	3-9-1	6-19-0
Punts-Avg.	7-25	3-34
Fumbles-Lost	5-3	2-2
Penalties-Yards	7-50	4-35
Penalties-Yards	3-20	6-45

**High School Basketball Linescores**

11/6/12

**Spearman Lynxettes**

Hartley	9	18	24	32
Spearman	2	17	25	35

H—Rebekah Van Dijk 10, Esther Van Dijk 10. S—Kyla Walker 12, Mabry Sutterfield 6. Records: Spearman 1-0, Hartley 0-1

11/13/12

**Gruver Lady Hounds**

JV Girls 14 - Fritch 11

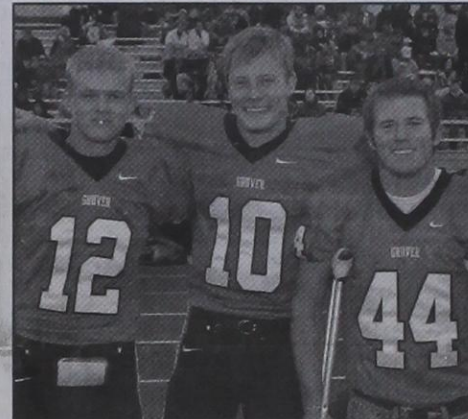


**SPEARMAN  
LYNX &  
LYNXETTES**

**GRUVER  
GREYHOUNDS  
& LADY HOUNDS**



**Spearman Lynx  
2012 Playoffs**



**Gruver Greyhounds  
2012 Playoffs**



**Gruver Lady Hounds  
3rd Place at State**

**WE'RE  
PROUD  
OF YOU!**

<b>Adobe Walls Gin, LP</b> Spearman • 659-2574	<b>Delinda McLaughlin</b> <b>Photo Solutions</b> Spearman • 659-2800	<b>Golden Spread Sales Co.</b> Spearman • 659-3776	<b>Hungry Cowboy</b> Spearman • 659-5151	<b>North Plains Electric Coop</b> 806-435-5482 • 800-272-5482
<b>Aeroflight Publications</b> Gruver • 733-2483	<b>Jim &amp; Mandy Derington</b> Congratulations & Good Luck	<b>Gruver Ford</b> Gruver • 733-2431	<b>Interstate Bank, ssb</b> Spearman • 659-2559 Member FDIC Equal Housing Lender	<b>Perryton Office Supply</b> Perryton • (806) 435-4812
<b>AeroTan</b> Gruver • 733-2483	<b>Dreamers</b> Spearman • 659-9907	<b>Gruver State Bank</b> Member FDIC Gruver • 733-5061	<b>Kirk Insurance Agency</b> Spearman • 659-2794	<b>Pizza Hut</b> Spearman • 659-2547
<b>All Occasion Flowers</b> Spearman • 659-5180	<b>El Vaquero Restaurant</b> Gruver • 733-2407	<b>H&amp;H Water Well</b> Spearman • 659-5577	<b>J&amp;S Signs &amp; Engraving</b> Spearman • 736-7020	<b>Prairie Motors</b> Spearman • 659-2541
<b>AMA TechTel</b> Gruver • 806-322-5500	<b>Equity Exchange</b> Spearman • 659-2420	<b>Hansford County Feeders</b> Gruver • 733-5025	<b>Jarvis Law Office, P.C.</b> Spearman • 659-2554	<b>Rocking F Boot &amp; Saddle Shop</b> Spearman • 659-3342
<b>B&amp;B Sales</b> Spearman • 659-2662	<b>First National Bank</b> Spearman • 659-5544 member FDIC	<b>Hansford County Floral Co.</b> Spearman • 644-4000	<b>Jim's Diamond Shop</b> Borger • (806) 274-2370	<b>Sergio's Body Shop</b> Spearman • 659-5217
<b>Bartlett's Ace Hardware</b> Gruver • 733-2404	<b>First State Bank</b> Spearman • 659-5565 member FDIC	<b>Hansford County Hospital District</b> Spearman • 659-2534	<b>Lowe's Marketplace</b> Spearman • 659-2522	<b>Spearman Chamber of Commerce</b> Spearman • 659-5555
<b>Bob &amp; Cathy Davis</b> Gruver • Spearman	<b>Five Star Equipment</b> Spearman • 659-3743	<b>Hansford County Reporter-Statesman</b> Spearman • 659-3434	<b>M&amp;D Aerial, LLC</b> Spearman • 806-202-2360	<b>Spartex Grain Co.</b> Spearman • 659-3711
<b>Bob &amp; Jackie Pearson</b> Gruver • Spearman	<b>Frank Phillips College</b> <b>Allen Campus</b> Perryton • 648-1450	<b>Hansford County Vet Clinic</b> Spearman • 659-2100	<b>Medic Pharmacy</b> Spearman • 659-2141	<b>Sunray Co-Op</b> <b>Gruver Branch</b> Gruver • 733-2481
<b>Bort Agency</b> Gruver • 733-2404	<b>Frontier Feedyard</b> Spearman • 882-4251	<b>Hansford Pharmacy</b> Spearman • 659-2226	<b>Money's</b> Perryton • 435-3945	<b>Tong's Chinese Food</b> Spearman • 644-2838
<b>Boxwell Brothers Funeral Home</b> Spearman • 659-3802	<b>Gigot Agri Products</b> Spearman • 659-3121	<b>Hi-Plains Auto Supply, Inc.</b> Spearman • 659-2506	<b>Morse Implement</b> Morse • 733-2668	<b>Willis Boyd Dirt Services</b> Spearman • 659-9848
<b>The Bunkhouse Restaurant</b> Spearman • 659-2089	<b>Golden Spread Carpet</b> Spearman • 659-3068	<b>Hoochy Poochy Parlor</b> Borger • 273-2724	<b>MurMur's Cafe</b> Spearman • 659-3580	<b>Xcel Energy</b> Responsible By Nature Perryton • 806-435-4052



REAL ESTATE

FOR SALE: 3 Bedroom Single wide "like new" 2006 models most never lived in. Starting at 19,900, will deliver. Call A-1 homes 1-800-633-3955. RBL35824 4(9/30/12)
FOR SALE: Park Model Travel Trailer's. 32' Bumper pull. at used prices. Most never lived in. Call A-1 Homes 1-800-633-3955. 4(9/30/12)B

HELP WANTED

HELP WANTED: Wolf Creek Feedyard, located in Perryton, TX, is accepting applications for Feed Truck Driver and general labor. CDL not required. Experience is not required. We will train the right applicant. We offer a competitive wage, benefits including health insurance and a retirement plan. Please call 435-5697 or come by the office to fill out an application. TFN(6/14/12)B

HELP WANTED: Five Star Equipment is looking for an experienced diesel mechanic and an ATV specialist. Salary plus commission including benefits such as retirement, vacation, uniforms and sick leave. Apply in person at five star equipment 10397 Highway 15 West or call 806-659-3743. Come grow with us, we have a lot to offer! TFN(6/14/12)

HELP WANTED: Oilfield work, must have drivers license. Good pay and benefits. Call 806-659-3911 or come by at 1103 West 7th, Spearman. Trencor Enterprises, Inc. TFN(8/16/12)B
FULL TIME ROAD HAND NEEDED: for Hansford County, Precinct 4. Heavy equipment operator. CDL required. Applications can be picked up at the County Treasurer's Office and at the County Judge's Office at the Hansford County Courthouse, Spearman, Texas. 3(11/12)B

HELP WANTED: Feed Truck

Century 21 Golden Spread Realty 122 S Hazelwood - Vacant lot, 50x140, can be used for mobile homes - Make Offer! MaryAnn Martinez, Realtor (806)202-1654 Gina Deal, Broker/Owner (806)435-5444 www.century21.com

INDEPENDENTLY OWNED & OPERATED. ©1992 and ©2012 Century 21 Real Estate Corporation. Equal Housing Opportunity. (8-02-12)B

Blankenship Real Estate 659-3052 - 670-3774 LET US HELP YOU SELL YOUR HOME.

30 Haney Completely remodeled building on 70x140 ft. lot. Ideal for office or small business.

Brick 3BR, 2B Separate dining room, basement, single car garage, fence, storage building.

NEW LISTINGS WANTED! Eulalia Blankenship - Sales Eschol Blankenship - Broker

ALL STATE REALTY 806 435-SOLD (7653) All State Realty Sherrie E. Rima 806-435-SOLD (7653)

Interest Rates are at historic lows... Homes are available... prices are LOW!! The Perfect Combination! Call TODAY!

322 Darsen, Spearman - SPACE! SPACE! 3 BR/3.5 Bath, 2487 sq. ft., Open Living/Dining/Kitchen, Corner lot, Best bargain in TOWN! \$70,000.

905 Cluck, Gruver - 2462 sq. ft. 4BR/2 3/4 BA, CHCA, Sunroom, Game room, Hot tub! \$180,000

512 Richardson, Gruver - \$65,000, 1,956 sq. ft., 3br/2bath, brick, new A/C, Roof 5 yrs old. Taxes \$490, Motivated Sellers!!

Country Living, Hitchland TX - Country Living at its BEST!! Convenience to Town yet Peaceful surroundings 1344 sq. ft. 3 BR/1 3/4 Bath CACH. \$65,000

We have BUYERS, but we need LISTINGS!

Call Us Today & Let us put the Two of us together!

Driver, General Feedyard help needed at Wolf Creek Feedyard, located in Perryton, TX. Experience is not required. We will train the right applicant. CDL not required. We offer a competitive wage, benefits, including health insurance, uniforms and a retirement plan. Please call 435-5697 or come by the office, 6 miles East on FM 2711, to fill out an application. TFN(11/8/12)B
HELP WANTED: Nursanickel Hotel is seeking a person for Housekeeping. Apply in person. Call 659-3737 for more information. 4(11/8/12)B

SERVICES

FIREWOOD FOR SALE. Sea-soned oak - \$320 for a cord, delivered. Call 806-753-7465 4(10/18/12)B

HOOCY POOCY PARLOR Call us for all your pet's grooming and boarding needs. Call now for reservations! 806-273-2724. TFN(11/20/12)B

TIRED OF GARAGE SALE PRICES? Let me buy your good used furniture! 2nd Chance Antiques & Furniture, Don 806-648-1480; 806-202-1391 cell. TFN(11/20/12)B

HANDYMAN Will help with your odd jobs. Call (817) 894-1630 or (806) 584-4793. TFN(8/23/12)B

BEGINNER GUITAR LESSONS Can teach any style you want to play. Call 806-584-4793 or 817-894-1630 TFN(8/23/12)B

WANTED

OLD MUSICAL INSTRUMENTS If you have any type of musical instruments laying around, let us take them off your hands! Call 806-584-4793 or 817-894-1630 and we will come pick it up. TFN(8/16/12)B

GARAGE SALE

LARGE INDOOR GARAGE SALE: Saturday, November 17, 2012, From 8-3, Spearman Union Church, 31 S. Endicott. Lots of clothing items, children's and adult. Shoes, household items, furniture, holiday decorations, crafts,

HOOCY POOCY PARLOR Call us for all your pet's grooming and boarding needs. Call now for reservations! 806-273-2724.

Parachute Cord Parachute Stocks are here at the Knife Tables at Country Market. Over 200 knives, 25 brands, all at prices 10-65% off regular retail. Open every Saturday in the Alco Shopping Center. 3(11/15/12)

Check our websites for other properties. LIPSCOMB CO., TX - Sportman's Dream 674 ac. +/-, w/3 bdrm./2 bath modular home located on the south bank of Wolf Creek which loops through the property yielding aesthetic value, beauty, great hunting, fishing, and recreation, on all-weather road.

SHERMAN CO., TX - Choice 320 ac. +/- with two 1/4 mile sprinklers & two irrigation wells all tied together with underground pipe, well located in close proximity to grain handling facilities and large feedyards.

SHERMAN CO., TX - 627 acres, choice land, four 1/4 mile sprinklers, fully developed, one 1/4 mile off Hwy. 287 on paved CR - CC, 3 phase electricity.

MOORE CO., TX - COMMERCIAL PROPERTY - Cactus, TX. - 13.79 ac. +/-, one 20,000 sq. ft. bldg., concrete slab, one 5,000 sq. ft. bldg., concrete slab, office, grain handling equipment & in ground scales.

1200 SOW FALLOW TO FINNISH OPERATION - Moore Co., TX - New 5 yr. lease with major hog company. Two separate units, can be divided - Please contact broker for info package and price. www.scotlandcompany.com www.texascrp.com Shawn Gillispie 806/922-5532 Ben G. Scott, Broker 1-800-933-9698 day/eve TFN(11-01-12)

Julie Martin: Broker - 659-2425

We'd Like Your Listing!

FOR QUALITY & SERVICE CALL US TODAY!

Equal Housing Opportunity

MARTIN & ASSOCIATES REALTY Serving Hansford County Since 1990 1105 S. Haney - 2B, single garage, cent. heat Julie Martin: Broker - 659-2425

hchd Hansford County Hospital District Dr. Mark Gorman, M.D. Dr. Heath Cozler, D.O. Dr. Hasham, M.D. Michelle Davis, PA-C 707 S. Roland • Spearman, TX (806) 659-2535

OPENINGS AT HANSFORD HOSPITAL Clinic LVN: Providing nursing care in a clinic setting.

OPENINGS AT HANSFORD Manor RN: Supervising the day-to-day nursing activities of the facility.

CNA: Daily nursing care in accordance with the resident's assessment and care plan, and as may be directed by the supervisor. Must be certified by the State of Texas.

Great working environment and staff, quality facility providing opportunities for professional growth. Great Benefit package. Apply at 707 S Roland, Spearman, Tx or contact Jackie Nelson, HR 806-659-5841. Download application at hchd.net EEOE (11/15/12)

Shirley Howard, Broker/Owner 806-886-6536, Cell 806-648-4444, Work Melinda McCullough, Realtor (806) 733-5678

We NEED listings! Call us now to help YOU sell your home for top dollar!

1119 S Townsend - Spearman: 2,650 total sq ft - 4 BR/3 3/4 bath, beautiful cov patio, and much more! REDUCED to \$110,000.

Shirley Howard, Broker/Owner 806-886-6536, Cell 806-648-4444, Work

Melinda McCullough, Realtor (806) 733-5678

We would LOVE to sell your HOUSE!

CALL US! (10/18/12)

toys, infant items, etc. Something for Everyone! 1(11/15/12)B

PUBLIC NOTICE

CELLCO Partnership and its controlled affiliates doing business as Verizon Wireless (Verizon Wireless) proposes to build a 316-foot Guyed Communications Tower. Anticipated lighting application is medium intensity dual red/white strobes. The Site location is 9450 FM 278, Gruver, Hansford County, TX, 79040, N 36° 15' 38.77" W 101° 23' 28.07". The Federal Communications Commission (FCC) Antenna Structure Registration (ASR, Form 854) filing number is A0789958.

ENVIRONMENTAL EFFECTS - Interested persons may review the application (www.fcc.gov/asr/applications) by entering the filing number. Environmental concerns may be raised by filing a Request for Environmental Review (www.fcc.gov/asr/environmentalrequest) and online filings are strongly encouraged. The mailing address to file a paper copy is: FCC Requests for Environmental Review, Attn: Ramon Williams, 445 12th Street SW, Washington, DC 20554. HISTORIC PROPERTIES EFFECTS - Public comments regarding potential effects on historic properties may be submitted within 30 days from the date of this publication to: Danna Allen, 200 Wingo Way, Suite 101, Mt. Pleasant, SC 29464, (843) 416-5100, vzwnepa@erm.com. 1(11/15/12)B

8 5 2 1 9 3 6 7 4
3 4 1 7 6 5 8 2 9
7 6 9 8 2 4 1 3 5
6 9 8 2 4 7 3 5 1
5 2 4 3 1 8 9 6 7
1 7 3 6 5 9 2 4 8
2 8 6 4 7 1 5 9 3
9 3 7 5 8 2 4 1 6
4 1 5 9 3 6 7 8 2

IBEAM ELK BURP
TRALA LEA SAREE
SATIN SIP ORGAN
TSETSE PUFFER
NIL CART
FAR SODA NORMAL
ADAR TALC NAOMI
UMBO SUDRA CIAO
NABOB BRAG ERIN
ANIMUS OBOE ENS
LOAN NAN
JUNGLE LYRICS
RUPEE SPY THAIS
ANTES OER HISSO
MOOD PTA GLOSH

MURMUR'S MUR MUF'S CAFE

Are You A Victim of Domestic Violence, Sexual Abuse or Physical, Emotional or Sexual Assault? Call Toll Free Hotline 1-800-753-5308 Battering Intervention & Anger Management Available Panhandle Crisis Center Serving Hansford, Lipscomb & Ochiltree Counties 301 S. Ash • Perryton, TX

See us for AUTO • HOME • CROP HAIL • FARM & RANCH • MULTIPERIL • LIVESTOCK INSURANCE BORT AGENCY, INC. 510 Main St. • Gruver, TX (806) 733-2456

Yes Dollar General values a positive, friendly attitude. In fact, our rapidly growing company has become the nation's largest small-format retail discounter by improving lives through service. We also serve our employees by offering competitive compensation and advancement potential. We have the following opportunities available at our store in Spearman, TX: • Store Manager • Sales Associates Applicants interested in Store Management positions, send resume to cewicker@dollargeneral.com. All others may apply online or download a Sales Associate application at www.dollargeneral.com/careers. EOE M/F/D/V DOLLAR GENERAL DG CAREERS Serving others is our mission. Make it yours.

Perryton Satellite Center's Annual Arts & Crafts Festival November 17th from 9 a.m. to 6 p.m. November 18th from 11 a.m. to 4 p.m. Expo Center Hourly Door Prize Drawings

MURMUR'S 26 Archer St Spearman TX 806-659-3580 Snow Cone Stand Monday-Friday 2-8 p.m.

TEXAS STATEWIDE CLASSIFIED ADVERTISING NETWORK TexSCAN Week of November 11, 2012 ADOPTIONS WE WILL PROVIDE a happy, loving home, beautiful life for your precious newborn baby Expenses paid, married couple Walt/Gina Call for info: 1-800-315-6957 AUCTIONS ABSOLUTE BANKRUPTCY land auction. Wed, Nov 28 at 11:00am Wotham, Texas. Selling a 100+/- acre ranch. www.billhallauctioneer.com for details. 1-254-780-1158. Licensed & Bonded, TXS # 6949 BOOKS FOR SALE WORRIED? STRESSED OUT? Depressed? Buy and read Dianetics. The Modern Science of Mental Health. 22 million people have! You'll see why! Only \$20, no tax, free shipping. Order your copy today! Call 1-214-524-5300. Hubbard Dianetics Foundation, 451 Decker Drive, Irving, TX 75062, DallasDianetics@gmail.com DRIVERS SOUTHERN REGIONAL and National runs earn 32¢-45¢ per mile. \$1200 sign-on bonus. Assigned equipment, pet policy, deBoer Transportation 1-800-825-8511. O/O's welcome! www.deboertrans.com DRIVER TANGO TRANSPORT now hiring regional OTR team. Top pay, plenty of miles. great home time. Family medical/dental 401k, paid vacation. Call 1-877-826-4605 or www.drivertango.com DRIVERS - HIRING Experienced/inexperienced Tanker drivers! Earn up to 51¢/mile. Great benefits and pay! New fleet Volvo tractors! 1-year OTR experience required! Tanker training available. Call today! 1-877-882-6537 www.OakleyTransport.com DRIVERS - TEAMS AND SOLOS dedicated runs, recession proof freight. Class CDL-A and one-year experience. Lease purchase program with down payment assistance. Call 1-866-904-9230. DriveForGreatwide.com DRIVERS-OWNER OPERATORS and fleet drivers, Texas or Oklahoma CDL. New pay package, sign-on bonus, return to Texas every 6-8 days. Call 1-800-765-3952. EXPERIENCED FLATBED DRIVERS Regional opportunities now open with plenty of freight and great pay. 1-800-277-0212 or primeinc.com OWNER OPERATORS Home every other night. Dedicated to one customer! lease purchase program with down payment assistance. Class CDL-A and 1-year experience. Competitive mileage pay. Call Tonya 1-866-242-4978. DriveForGreatwide.com YOU GOT THE DRIVE, we have the direction. OTR drivers, APU Equipped, Pre-Pass, EZ-pass, no touch. 1-800-528-7825 EDUCATION/TRAINING AIRLINES ARE HIRING Train for hands on aviation maintenance career. FAA approved training. Financial aid if qualified, housing available. Call Aviation Institute of Maintenance, 1-877-523-4531 ATTEND COLLEGE ONLINE from home. Medical, Business, Criminal Justice. Hospitality. Job placement assistance. Computer available pay/benefits. Minimum 6-months and Class CDL-A. Family owned 1-888-518-7084, Call 1-888-205-8920. www.ScirevaOnline.com CAN YOU DIG IT? Heavy equipment school. DRIVERS - STUDENTS 18-days from start 3-week training program. Backhoes, bulldozers, excavators. Local job placement assistance. Step up to a new career with training VA benefits approved. Two national fee www.driveff.com, 1-855-355-7122 certifications. 1-866-362-6497 NOTICE: While most advertisers are reputable, we cannot guarantee products or services advertised. We urge readers to use caution and when in doubt, contact the Texas Attorney General at 1-800-621-0508 or the Federal Trade Commission at 1-877-FTC-HELP. The FTC web site is www.ftc.gov/bzcp. Extend your advertising reach with TexSCAN, your Statewide Classified Ad Network.



by Dorothy Hudson  
**Out at the Lake**  
 Jim Derington  
 Palo Duro River Authority  
 P.O. Box 99  
 Spearman, TX 79081  
 806-882-4401  
 pdra@dahmail.net



A whitetail buck and doe near Lake Palo Duro.

Lake Level--November 12, 2012--23.59 feet (-0.19)

Last Saturday's wind and dust took me back to the Dust Bowl days of the Thirties. There was even a tease of rain that started and ended with south windows that looked as if some one had thrown pans of dirty water on them. I was glad that the cross country races and mountain bike races were not being held.

Riding the mountain bike trails sounds like a fun way to exercise. However, if you don't have a mountain bike, you can also walk these trails. Jim said there are a number of trails on either side of the dam. Kitty and Frank Edwards are a Spearman couple who have been interested in developing biking trails in the Park for some years.

Frank was entered in the older age (40 years up) category of the races.

Rick Harbison of Guymon now has a shop that sells and repairs the bikes. Many of us know Rick from the past when he built homes in Spearman and Gruver. He has since become a lawyer, but biking is his hobby.

Jim is seeing a pair of eagles, but he is not seeing juveniles. It is the time that eagles start appearing at the Lake in their winter migration. Ducks are showing up in quantities. A roadrunner has been seen near the shop. The mountain bluebirds have arrived.

Fishing is picking up with Jim weighing a 23 pound blue catfish last week. He saw another one that weighed 8 pounds. I think they are mostly using shad for bait.

## Gruver Banker Named to Board of Independent Bankers Assn. of Texas

**IBAT Elects New Board Members During 38th Annual Convention**



Kyle Irwin

Kyle Irwin of Gruver State Bank was elected to

the Independent Bankers Association of Texas (IBAT) Board of Directors during IBAT's 38th Annual Convention held in Austin on Oct. 6-9, 2012. Irwin will serve in this leadership position for the nation's largest state community banking association through 2012-2013.

Additional board members joining Irwin include Peter Bennis of Pinnacle Bank in Keene, Tommy

McCulloch of Fidelity Bank in Wichita Falls, Stan Pinkham of Texas Leadership Bank in Royce City, Marvin E. Singleton III of Citizens National Bank in Waxahachie and Tom Turner of First State Bank in Abernathy.

New board executives also elected during the recent convention are Chairman Troy Robinson of BankTexas in Quitman, Chairman-Elect Jay Gober

of First State Bank in Graham, Vice Chairman John Jay of Roscoe State Bank in Roscoe and Secretary-Treasurer Rogers Pope, Jr. of Texas Bank and Trust in Longview.

Austin-based IBAT represents more than 2,000 independent banks and branches in 700 Texas communities.



**WEST TEXAS A&M IEC**  
 Panhandle

### NATIONAL RURAL HEALTH DAY November 15, 2012

The Panhandle Area Health Education Center (AHEC) would like to Celebrate the Power of Rural!

Nearly 60 million people – about one in five Americans – live in rural areas. You are community-minded individuals that possess a selfless, "can do" spirit that has helped our country grow and thrive.

You also have unique healthcare concerns that are being met by your local resources such as:

- Hospitals or Hospital Districts
- Community Health Centers & Rural Health Clinics
- National Health Service Corp Sites
- Student Clinical Preceptor Sites
- Area Community Colleges & Universities
- Local Healthcare Organizations, Agencies & Businesses
- Rural Independent School Districts

For more information about Panhandle AHEC contact us at: 806-651-3480 or [www.westtexasahec.org](http://www.westtexasahec.org)

Panhandle AHEC is affiliated with the West Texas A&M University College of Nursing and Health Sciences, West Texas AHEC and the Texas Tech University Health Sciences Center F. Marie Hall Institute for Rural and Community Health.

### AVAILABLE NOW!

**E-SUBSCRIPTION**

to the  
**Hansford County Reporter-Statesman**

Delivered to your e-mail each  
 Thursday for only \$35/year.  
 Purchase online at  
[www.spearmanreporter.com](http://www.spearmanreporter.com)

Call 806-659-3434 or e-mail [reporter@spearmanreporter.com](mailto:reporter@spearmanreporter.com) for details.



The **Jays of Summer**  
 Available all year!

**SNOW CONE STAND**

Monday-Friday  
 2-8 p.m.

**MURMUR'S CAFE**

100 S. Roland • Spearman  
 659-3580



## Christmas Open House

Refreshments will be served.

**Sunday  
 Nov. 18th  
 Spearman TX**

1-5 p.m.

Sponsored by the  
 Spearman Chamber  
 of Commerce

**Sport Zone**

[www.thesportzone.net](http://www.thesportzone.net)  
 719 W 7th Street

Medic Pharmacy  
 314 Main Street

All Occasion  
 Flowers  
 202 N. Bernice

Hansford County  
 Floral Company  
 300 Main Street

Headquarters  
 217 Main Street

Prairie Garden  
 Flowers  
 215 Main Street

Lily's Clothing &  
 Gifts  
 next to Lowe's

Casa Gladys  
 beside Alco

**MITCHELL THEATRES.COM**

**NORTHRIDGE 8**  
 Guymon, Oklahoma  
[www.northridge8.com](http://www.northridge8.com)  
 580-338-3281

**SOUTHGATE 6**  
 Liberal, Kansas  
[www.southgate6.com](http://www.southgate6.com)  
 620-624-5573

**SEQUOYAH 8**  
 Garden City, Kansas  
[www.sequoyah8.com](http://www.sequoyah8.com)  
 620-275-2760

**CHISHOLM TRAIL 8**  
 Newton, Kansas  
[www.chisholmtrail8.com](http://www.chisholmtrail8.com)  
 316-283-0555

FRESH POPCORN EVERYDAY!  
 -PARTY ROOM & ARCADE-

**Digital TV**

**\$29.99 per month**  
 First 6 months

**FREE Installation**  
 on up to 4 set-top boxes

**Premium Channels FREE**  
 for 8 months

**NO Monthly Fee on first two set-top boxes!**

Enter to win a trip for 2 to fabulous Las Vegas!

ptci.net  
 721 W 7th - Spearman  
 800-562-2556

Some restrictions apply.

**PTCI**  
 Communications & Broadband Solutions