



THE HANSFORD COUNTY Reporter-Statesman

Serving Hansford County Since 1907

THURSDAY, MARCH 14, 1996

213 MAIN • SPEARMAN, TEXAS, 79081

VOLUME 89, ISSUE 11

Hansford County Election Results

An estimated figure off 900 Hansford County people took to the pole last Tuesday, March 7, for the heated races of the Republican and the Democratic parties. Spearman, which used to be a strong Democratic Party supporter in the not so distant past, has really deevloped into that of a Republican party supporter community. More people actually turned out for the Republican primary, rather than the Democraic.

Listed below are the results of how each citizen voted:

DEMOCRATIC PRIMARY

Presidential Nominee

Bill Clinton - pct. 1 - 11, pct. 2 - 1, pct. 4 - 8, pct. 5 - 9, pct. 6 - 9, pct. 7 - 0, early voters - 11, and pct. 9 - 0, total - 49.

Ted L. Gunderson - pct. 1 - 1, pct. 5 - 1, pct. 6 - 1, pct. 7 - 4, early voters - 1, and pct. 3 and 4 and 9 - 0, total - 8.

Heather Harder - pct. 1 - 1, pct. 5 - 0, pct. 6 - 1, 3, 4, 7 and early voters - 0, total - 3.

Fred Hudson - pct. 1 - 2, pct. 5 - 1, 0 on rest of pcts. total - 3.

Lyndon H. Larouze, Jr. - pct. 7 - 1, total - 1.

Elvena E. Lloyd-Duffie - pct. 6 - 2, pct. 7 - 1, totals - 3.

United States Senator

John Will Odam - pct. 1 - 2, pct. 5 - 1, pct. 6 - 1, and early voters - 1, 0 on rest of pcts, total - 5.

Victor M. Morales - pct. 1 - 2, pct. 4 - 3, pct. 5 - 1, pct. 6 - 4, pct. 7 - 1, and early voters - 6, total - 17.

Jim Chapman - pct. 1 - 10, pct. 3 - 1, pct. 4 - 3, pct. 5 - 5, pct. 6 - 4, pct. 7 - 2, early voters - 4, totals - 29.

John Bryant - pct. 4 - 3, pct. 5 - 5, pct. 6 - 3, pct. 7 - 2, early voters - 1, totals - 14.

US Rep. Dist. 19

Michael G. Clennan - pct. 1 - 5, pct. 3 - 1, pct. 4 - 1, pct. 5 - 5, pct. 6 - 5, pct. 7 - 3, early voters - 8, totals - 28.

John W. Sawyer - pct. 1 - 6, pct. 4 - 6, pct. 5 - 7, pct. 6 - 6, pct. 7 - 2, early voters - 4, totals - 31.

Railroad Commissioner

Hector Uribe - pct. 1 - 11, pct. 3 - 1, pct. 4 - 4, pct. 5 - 9, pct. 6 - 14, pct. 7 - 5, early voters - 10.

Chief Justice, Supreme Court

Andrew Jackson Kupper - pct. 1 - 11, pct. 3 - 1, pct. 4 - 7, pct. 5 - 10, pct. 6 - 14, pct. 7 - 5, early voters - 12.

Justice Supreme Court Place 1

Patrice Barron - pct. 11, pct. 3 - 1, pct. 4 - 6, pct. 5 - 10, pct. 6 - 14, pct. 7 - 5, early voters - 12.

Justice Supreme Court Place 2

Gene Kelly - pct. 1 - 11, pct. 3 - 1, pct. 4 - 7, pct. 5 - 10, pct. 6 - 14, pct. 7 - 5, early voters - 11.

Judge Court of Cimmanial Appeals Place 1

Bob Perkins - pct. 1 - 4, pct. 3 - 1, pct. 4 - 4, pct. 5 - 8, pct. 7 - 3, early voters - 5, totals - 25.

Frances Nothcutt - pct. 1 - 7, pct. 3 - 4, pct. 5 - 5, pct. 6 - 12, pct. 7 - 1, early voters - 8, totals - 36.

Judge Court of Crimminial Appeals Place 2

Charles Holcomb - pct. 1 - 5, pct. 3 - 1, pct. 4 - 6, pct. 5 - 6, pct. 6 - 2, pct. 7 - 1, early voters - 6, totals - 27.

Norman Lanford - pct. 5 - 1, pct. 6 - 1, early voters - 3, totals - 5.

Gary Taylor - pct. 1, pct. 5 - 2, pct. 6 - 4, pct. 7 - 3, early voters - 1, totals - 12.

Winston Cochran - pct. 1 - 3, pct. 4 - 1, pct. 5 - 4, pct. 6 - 1, pct. 7 - 1, early voters - 1, totals - 11.

Judge Court of Crimminial Appeals Place 3

Frank Maloney - pct. 1 - 8, pct. 3 - 1, pct. 4 - 7, pct. 5 - 8, pct. 6 - 14, pct. 7 - 4, early voters - 8, totals - 50.

County Tax Assessor-Collector

Helen Dry - pct. 1 - 15, pct. 3 - 1, pct. 4 - 9, pct. 5 - 13, pct. 6 - 14, pct. 7 - 9, early voters - 15, totals - 76.

REBULICAN PRIMARY

Presidential Nominee

Phil Gramm - pct. 1 - 10, pct. 2 - 1, pct. 3 - 2, pct. 4 - 7, pct. 5 - 4, pct. 6 - 5, early voters - 4, pct. 9 - 1, totals - 34.

Richard G. Lugar - pct. 5 - 1, early voters - 2, totals - 3.

Lamar Alexander - pct. 1 - 2, pct. 4 - 1, pct. 5 - 1, pct. 6 - 1, early voters - 4, totals - 9.

Mary "France" Letulle - 0.

Steve Forbes - pct. 1 - 14, pct. 2 - 1, pct. 3 - 4, pct. 4 - 18, pct. 5 - 11, pct. 6 - 10, pct. 7 - 4, early voters - 9, totals - 71.

Susan Ducey - pct. 1 - 2, pct. 5 - 2, pct. 6 - 1 - totals - 5.

Alan L. Keys - pct. 1 - 5, pct. 2 - 1, pct. 3 - 3, pct. 4 - 6, pct. 5 - 8, pct. 6 - 4, pct. 7 - 2, early voters - 1, totals - 30.

Charles E. Collins - 0.

Bob Dole - pct. 1 - 123, pct. 2 - 9, pct. 3 - 62, pct. 4 - 133, pct. 5 - 12, pct. 7 - 2, early voters - 13, pct. 9 - 11, totals - 528.

Pat J. Buchanan - pct. 1 - 25, pct. 2 - 3, pct. 3 - 7, pct. 4 - 34, pct. 5 - 12, pct. 6 - 16, pct. 7 - 2, early voters - 13, pct. 9 - 11, totals - 123.

Uncommitted - pct. 1 - 8, pct. 3 - 3, pct. 4 - 5, pct. 5 - 2, pct. 6 - 4, early voters - 4.

United States Senator

Henry Grover - pct. 1 - 11, pct. 2 - 3, pct. 3 - 2, pct. 4 - 5, pct. 5 - 9, pct. 6 - 5, pct. 7 - 1, early voters - 7.

Phil Gramm - pct. 1 - 166, pct. 2 - 10, pct. 3 - 78, pct. 4 - 172, pct. 5 - 85, pct. 6 - 105, pct. 7 - 14, pct. 8 - 73, pct. 9 - 26.

David Young - pct. 1 - 11, pct. 4 - 15, pct. 5 - 2, pct. 6 - 3, early voters - 2, pct. 9 - 1, totals - 34.

US Representative Dist. 19

Larry Combest - pct. 1 - 155, pct. 2 - 11, pct. 3 - 74, pct. 4 - 174, pct. 5 - 91, pct. 6 - 97, pct. 7 - 16, early voters - 64, pct. 9 - 26, totals - 708.

Railroad Commissioner

Robert A. Wood - pct. 1 - 52, pct. 2 - 5, pct. 3 - 16, pct. 4 - 46, pct. 5 - 28, pct. 6 - 26, pct. 7 - 3, early voters - 29, pct. 9 - 8, totals - 213.

Carole Keeton Rylander - pct. 1 - 112, pct. 2 - 6, pct. 3 - 58, pct. 4 - 127, pct. 5 - 62, pct. 6 - 75, pct. 7 - 13, early voters - 43, pct. 9 - 18, totals - 514.

Chief Justice Supreme Court

Tom Phillips - pct. 1 - 128, pct. 2 - 8, pct. 3 - 5, pct. 4 - 150, pct. 5 - 79, pct. 6 - 77, pct. 7 - 15, early voters - 58, pct. 9 - 21.

Justice Supreme Court Place 1

John Coryn - pct. 1 - 121, pct. 2 - 6, pct. 3 - 55, pct. 4 - 142, pct. 5 - 77, pct. 6 - 73, pct. 7 - 15, early voters - 53, pct. 9 - 18, totals - 560.

Justice Supreme Court Place 2

James A. Baker - pct. 1 - 122, pct. 2 - 8, pct. 3 - 8, pct. 4 - 143, pct. 5 - 75, pct. 6 - 72, pct. 7 - 15, early voters - 53, pct. 9 - 19.

Justice Supreme Court Place 3 Unex Term

Greg Abbott - pct. 1 - 118, pct. 2 - 7, pct. 3 - 53, pct. 4 - 137, pct. 5 - 73, pct. 6 - 70, pct. 7 - 15, early voters - 53, pct. 9 - 17.

Judge Court Crimminial Appeals Place 1

Jeffrey B. Keck - pct. 1 - 25, pct. 3 - 3, pct. 4 - 19, pct. 5 - 10, pct. 6 - 7, pct. 7 - 3, early voters - 5, pct. 9 - 2, totals - 74.

Matthew Paul - pct. 1 - 17, pct. 2 - 1, pct. 3 - 13, pct. 4 - 9, pct. 5 - 13, pct. 6 - 9, early voters - 11, pct. 9 - 2, totals - 75.

Susan Baetz Brown - pct. 1 - 17, pct. 2 - 3, pct. 3 - 7, pct. 4 - 17, pct. 5 - 9, pct. 6 - 7, pct. 7 - 2, early voting - 5, pct. 9 - 1, totals 68.

James "Daniel" Boone - pct. 1 - 27, pct. 2 - 2, pct. 3 - 9, pct. 4 - 30, pct. 5 - 7, pct. 6 - 13, pct. 7 - 3, early voters - 11, pct. 9 - 8 totals - 80.

Sue Holland - pct. 1 - 16, pct. 3 - 2, pct. 5 - 17, pct. 6 - 14, pct. 7 - 2, early voters - 4, pct. 9 - 1, totals - 80.

Janice Law - pct. 1 - 7, pct. 3 - 1, pct. 4 - 8, pct. 5 - 6, pct. 6 - 10, pct. 7 - 2, early voters - 7, totals - 41.

Judge Court Crimminial Appeals Place 2

Brad Wiewel - pct. 1 - 7, pct. 2 - 1, pct. 3 - 1, pct. 4 - 8, pct. 5 - 4, pct. 6 - 3, early voters - 4, pct. 9 - 1, totals - 29.

Paul Womack - pct. 1 - 40, pct. 2 - 2, pct. 3 - 15, pct. 4 - 30, pct. 5 - 24, pct. 6 - 27, pct. 7 - 4, early voters - 21, pct. 9 - 2, totals 165.

Ray J. McQuary - pct. 1 - 20, pct. 3 - 3, pct. 4 - 11, pct. 5 - 6, pct. 6 - 10, early voters - 3, pct. 9 - 5, totals - 58.

Mike Keasler - pct. 1 - 17, pct. 2 - 1, pct. 3 - 14, pct. 4 - 30, pct. 5 - 9, pct. 6 - 14, pct. 7 - 4, early voters - 7, pct. 9 - 3, totals - 99.

Pat Barber - pct. 1 - 34, pct. 2 - 2, pct. 3 - 7, pct. 4 - 30, pct. 5 - 23, pct. 6 - 15, pct. 7 - 4, early voters - 12, pct. 9 - 5, totals - 132.

Judge Court Crimminial Appeals Place 3

Cheryl A. Johnson - pct. 1 - 34, pct. 2 - 2, pct. 3 - 9, pct. 4 - 32, pct. 5 - 30, pct. 6 - 28, pct. 7 - 4, early voters - 14, pct. 9 - 4, totals - 157.

I. Gary Trichter - pct. 1 - 7, pct. 2 - 1, pct. 3 - 1, pct. 4 - 8, pct. 5 - 4, pct. 6 - 4, pct. 7 - 1, early voters - 7, pct. 9 - 2, totals - 35.

Tom Price - pct. 1 - 40, pct. 3 - 19, pct. 4 - 41, pct. 5 - 17, pct. 6 - 20, pct. 7 - 5, early voters - 13, pct. 9 - 6, total - 161.

Continued on Page 6



Mike Stewart, of Lusbsey's Cats, is pictured above picking grain up from the ground and dumping it into the elevator.

Elevator Involved In Hit & Run

On Saturday evening at approximately 8:00 p.m. a cattle truck ran into the load-out spout of Spearman Equity Elevator, spilling approximately 550,000 pounds of wheat onto the ground.

Fast and competent action by John Gable, Equity employee, and later assistance by Dale Wolford, averted a major loss.

The dollar value of the wheat spilled was approximately \$50,000 dollars. However, through clean-up

operations lasting through most of Sunday morning, a very small amount of grain was lost. According to Lonnie Treadway, "The last portion remaining on the ground, along with some rocks, will be cleaned and screened so that there is no damage to the quality of the grain."

While the truck remains unidentified, there are several strong leads as to who was involved.

Jones Honored

The Volunteer Center of San Mateo County honored Peggy Bort Jones of Hillsborough, as Outstanding Volunteer for San Mateo County at their ninth annual "Very Important Volunteer Dinner."

The dinner was held on Wednesday, March 6th, with a no host reception at 6:30 p.m. and dinner at 7:15 p.m. at the Westin Hotel San Francisco Airport in Millbrae, CA.

Mrs. Jones was elected as the Very Important Volunteer because of the exceptional work she has done and continues to do since 1976. Peggy is an active volunteer in San Francisco and San Mateo counties, particularly with youth, health care, seniors and educational issues.

Peggy Jones is currently the Chair of the Senior Focus Gala, sponsored by Mills-Peninsula Hospital Foundation Board of Trustees. She is the Fund Raiser Chair for the San Mateo County Arthritis Board event, Nit at the Races.

Peggy has been an active member of the Hillsborough Garden Club, not only as President but as Horticulture Chair for two terms and Conservation-Education for Vision Chair at the San Francisco Flower Show. She has been chosen to represent the Hillsborough Garden Club at the 1997 Vision Show.

Peggy is also serving in leadership positions on the Boards of the University of the Ozarks in Clarksville, Arkansas, the California Pacific Medical Center, the Coyote

Point Museum, the Auxiliary for Crippled Children and Adults, the Gals of the American Lung Association and the Junior League of San Francisco.

Peggy is a 1954 graduate of Gruver High School, and a 1958 graduate of Southern Methodist University. She is the daughter of Ralph and Beulah Bort of Gruver.

In addition to volunteer activities, Peggy Jones is a Trustee for the Bort Cattle Company, in Gruver, Texas and is Director and Officer for her family owned vitamin business, the Jameson Companies in Burlingame, CA.

The "VIV" dinner benefited the Volunteer Center of San Mateo County, which recruits and interviews volunteers to be referred to a nonprofit agency requesting volunteers. Through workshops and training sessions the Center staff teaches nonprofit groups how to manage their volunteer programs. This past year the Center placed over 6,000 adults and teens in volunteer jobs selected to fit their individual skills, interests and schedules.

Co-chairs of the dinner and former "VIV" recipients are Andrew S. Berwick Jr., John H. Clinton Jr., Frances B. Nelson, Roger B. Menard, Jean E. Auer, Celeste Cron, Mary Jane Armacost and David and Ruth Wisnom. Members of the dinner committee include Nancy Guntly, Sarah Lufkin, Marsha Pendergrass, and Maomi Youndoff.

Project Graduation

The parents of the Senior Class of 1996 will sponsor and host a "Project Graduation Party" following commencement services Friday, May 24th. To encourage the party goers to stay the entire night, an auction is held just after breakfast is served. Prizes, gift certificates, and cash are needed for the auction.

If you would like to help make this an event to remember with a "Special" prize or donation, please call one of the following people for assistance: Denise Schumann at 659-3508 or 659-2280; Kathy Boyd at 659-3154 or 659-5544; or Cheryl Oquin at 659-3229 or 659-5544.

Thank you from the parents of the 1996 Seniors!



A ribbon cutting ceremony was held for Amanda's Collectibles on Friday, March 8th. Pictured above are: (Front Row, L-R) Mark Thomas, Devin Wells, Sylvia Hodges, Amanda Wells, Judy Tindell, Tindle Ramon; (Middle Row, L-R) George Finley, Burl Buchanan, J.L. Brock, Davonna Dahars; (Back) Cindy Blackman.

Hire The Older Worker Week

Each year Green Thumb promotes Hire the Older Worker Week which spotlights our senior work force and the contributions they bring to the labor market and encourages employers to profit from their skills, abilities, and experience. Since 1965, Green Thumb, Inc., has operated the Senior Community Service Employment Program which provides mature workers with part-time employment and training opportunities.

Green Thumb workers Hansford County are: Joe Avila, who works for the City of Spearman; John Cotter, who works for the City of Gruver at the Recycling Center; Floydene Gaitlin, who works for the Golden Spread Senior Citizen Center; and Avo Gray, who works for the Hansford Soil and Water Conservation District.

Funded through the U.S. Department of Labor, the program serves primarily the rural areas in 132 Texas counties. Green Thumb gives older, economically-disadvantaged job seekers the opportunity of sharing their years of experience, hard work, and

dedication through work assignments in locally-based organizations. Through their participation, the seniors maintain their independence as productive contributors to their communities and profit from job-skills training which allows for transition back into private sector employment.

According to Diane Cowan, program administrator, "During this important week, March 10th through March 16th, let us focus upon the important contributions of our senior work force and strengthen our commitment to assure that this important resource continues in the mainstream of our state's economic and social development. Employers should invest in the skills and abilities of senior job seekers not only during Older Worker Week but year round. Hiring experience, dependability, reliability, and dedication is just good business!"

For more information regarding senior employment and training opportunities, contact Green Thumb, Inc., P.O. Box 7898, Waco, TX 76714, (817) 776-4081.

Hansford Happenings

Spearman/Gruver Chamber of Commerce Goat Shares

The Spearman/Gruver Chamber of Commerces are still accepting money for the Hansford County Stockshow goat shares. For donations or more information, please call Cindy at the Chamber 659-5555 or A.J. Ratlif at 733-5144.

Attention Swimmers

If you are interested in being on the Spearman Swim Team this summer, please contact Michele Goodheart at 659-5611 or 659-3424 or Kitty Edwards at 659-3773. You don't have to be a super swimmer. Beginners are very welcome. Come join the team and have fun.

Father-son Pushmobile Competition

The father-son competition for the Gruver Ezra Boys Club for the month of March is pushmobiles. The event is scheduled for March 20th at 6:30 p.m. at the City Park, and fathers and sons are urged to attend this family oriented project.

Hospice Meeting

Hansford Hospice will meet at First State Bank in Spearman on March 18th at 6 p.m. Rex Bernett, HIV/AIDS education Director from Amarillo will be speaking. The regular Hospice meeting will follow at 7 p.m.

Skill Show

The Lone Wolf District Scout Skill Show will be held Saturday, March 16th from 9:00 a.m. - 4:00 p.m. at the O'Loughlin Center in Spearman. Several Cub Packs are expected to have participation and craft booths. Boy Scouts will offer scout skills. District Pinewood Derby Race, weigh-in at 10:00 a.m., race around noon.

Fund Raiser

The Sacred Heart Catholic Church in Spearman is having a spaghetti luncheon on Wednesday, March 20th from 11:00 a.m. - 1:30 p.m. at the Parish Hall, 902 S. Roland. Adults are \$5.50, Children are \$3.75, and under 6 are free. The menu includes meat sauce, salad, garlic bread, and homemade desserts.

Little Women

The Spearman High School's Theater Arts Department will present a one-act play entitled "Little Women" for the local enjoyment of the community. The play, done for U.I.L. competition, will be on stage March 19th at 8:00 p.m. at the High School Auditorium. Admission is \$1.00.

Laugh and Live

by Gary Smith



I've been working on a book for quite a while now. Just as soon as I finish, I'm going to start reading another one. But in the mean time, I am going to start studying philosophy.

There are some things that are just too difficult for one small brain to understand. So I thought that you, dear reader, might help me solve these tough questions.

A DOZEN AND A HALF THINGS I JUST DON'T UNDERSTAND

1. How does the guy who drives the snowplow get to work?
2. Why isn't phonetic spelled the way it sounds?
3. Why are there flotation devices under plane seats instead of parachutes?
4. If Allsup's is open 24 hours a day, 365 days a year, why are there locks on the doors?
5. Why do you need a driver's license to buy liquor when you can't drink and drive?
6. Why do they put Braille dots on the keypad of the drive-up ATM?
7. Why is it that when you transport something by car, it's called shipment but when you transport something by ship it's called cargo?
8. If con is the opposite of pro, is Congress the opposite of progress?
9. If olive oil comes from olives, where does baby oil come from?
10. Why is it that when you're driving and looking for an address, you turn down the radio?
11. Why are they called apartments when they are all stuck together?
12. Do vegetarians eat animal crackers?
13. Why are cigarettes sold at gas stations when smoking is prohibited?
14. Why do we drive on parkways when we park on driveways?
16. Do you need a silencer if you are going to shoot a mime?
17. If a cow laughed, would milk come out her nose?
18. If buttered toast always lands buttered side down and a cat always lands on its feet, what would happen if you tied a piece of buttered toast on the back of a cat and dropped it?

These are a few of the many things that I just don't understand.

Until the next time,
May God Bless

Happy Birthday & Happy Anniversary

Thursday, March 14
Birthdays - Sue Gerardy, Chris Johnson, Brandy Shelton, Buck Tidwell, Windy Slater, Edward Papay, Steve Cook, Barbara Brown, Reagan Renner, James Ray Bartimus, David Terry, and Kelly Mills.
Anniversaries - Charles, and Betty West, Beth and Jim Baker, and Mr. and Mrs. Jimmy Bishard.

Friday, March 15
Birthdays - Trena Horton, Jerry Bowling, Randy Stafford, Lisa Hays, Darlene Schick, Parrish Larson, Gary Osborne, Mona Rivera, Richard Varnon, Trent Seagler, Ora Fay Watkins, and Krista Dement.
Anniversaries - Mr. and Mrs. Bill Robertson, Mr. and Mrs. Joe Bynum, and Mr. and Mrs. Joe T. Venneman.

Saturday, March 16
Birthdays - Edna Gruver, Ted Harbour, Tonya Woodington, Janice Mayfield, Gary Davis, Missy Sumner, Dan McCloy, Amber Moore, and Michael Gruver.
Anniversaries - Carey and Denise Bridges and Mr. and Mrs. Ed Garner.

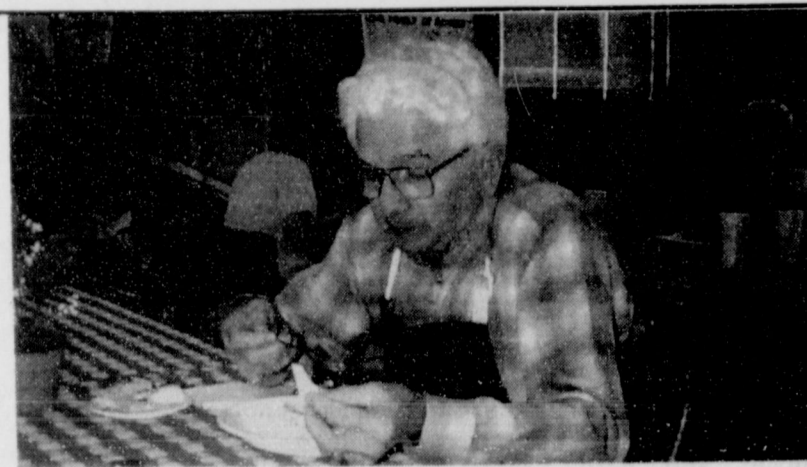
Sunday, March 17
Birthdays - Darla Shapley, J.P. TeBeest, Elvana Davis, Kathy Slater, Carrol Vanbuskirk, Tony Barrera Jr., Tony Miller III, Jamie Thomas, Terry Latham, Jason Genn, and Joe Baca.

Anniversaries - Mr. and Mrs. Richard Ooley and Mr. and Mrs. Woody Gibner.

Monday, March 18
Birthdays - Danny Henson, Bill Burger, Rob Howerter, Tony Harper, Charles Friday, Cody McLeod, Kenny Virden, Laura Garcia, and adn Tobe Shields.
Anniversaries - Mr. and Mrs. Edwin Pearcy, Mr. and Mrs. Ken Bullard, and Mr. and Mrs. Mike Banks.

Tuesday, March 19
Birthdays - Barry Haenisch, Melinda McCullough, Kerri Minter, Ron Gibson, Altha Groves, Vera Mae Hays, Pete Garcia Jr., Jesse Ruth Gerrard, and Rose marie Bruning.

Wednesday, March 20
Birthdays - Mack Bevell, Travis Ferguson, Chad TeBeest, Fronye Close, Ila Mae Buchanan, Martha Stinson, Florancio Martinez, Angela Sintas, Tomi Vera, Jane Henton, Kim Gruver, and Marion Upchurch.
Anniversaries - Mr. and Mrs. R.M. Crawford, Mr. and Mrs. Benny McCullough, and Mr. and Mrs. Rod Barkley.



Jack McWhirter is pictured above as he enjoys a bowl of chili during the Hansford Hospice Chili, Soup and Homemade Pie Luncheon that was held on Thursday, February 29th.

At The Movies

Showing at the Lyric Theatre Friday, March 15 through Tuesday, March 17 on Screen I beginning at 7:30 p.m. is "Mr. Holland's Opus" and on Screen II beginning at 7:45 p.m. is "Mr. Wrong."

In "Mr. Holland's Opus", Richard Dreyfuss always wanted to be a teacher. Now he gets a chance in this drama of epic proportions (and length) about a music teacher whose students are

his life's work. The movie drags on for a period covering 30 years, so you've got to learn something.

"Mr. Holland's Opus" is rated (PG).

In "Mr. Wrong", Ellen DeGeneres, in her big-screen debut, can't catch a break in love when her dream man (Bill Pullman) turns into the date from hell.

"Mr. Wrong" is rated (PG-13).

Our Sympathy

Mary Evelyn Mackie

Mary Evelyn Mackie, 78, passed away on Wednesday, March 6, 1996 in Pampa, Texas.

Services were held at 2:00 p.m. on Friday, March 8, 1996 at Carmichael-Whatley Colonial Chapel with Arnis Pape, pastor of the Church of Christ in Spearman, and Rev. Roger Hubbard, pastor of the Bible Church of Pampa, officiating. Burial followed at Fairview Cemetery under the direction of Carmichael-Whatley Funeral Directors.

Mary was born on December 13, 1917 in Miller County, Arkansas. She married Gerald M. Powell in 1939 in Dallas. He preceded her in death in 1955. She later married Albert Mackie in 1960 in Grand Prairie. He preceded her in death in 1993. She moved to Pampa in

1993 from Spearman.

She worked for Dr. Damon Gregg's office, and for the Hansford Hospital in Spearman from 1960-1973. She was a member of the Spearman Church of Christ and the Business and Professional Women's Club in Spearman. She was a hospital auxiliary volunteer in Spearman.

Survivors include four daughters, Nancy Allen of Pampa, Betty Reeves of Joshua, Patsy Welch of Comanche, and Paula Venable of Dumas; one son, Don Mackie of Fritch; one brother, J.M. Morrow, Jr. of Texarkana, Arkansas; one sister, Annie Boyd of Comanche; 14 grandchildren, and nine great-grandchildren. She was preceded in death by a son, Jimmy Powell in 1954, three brothers and two sisters.

At the Lyric Theatre..

Friday, March 15 - Tuesday March 19

**Bargain Nights Mon. & Tues. Adults - \$4
 Fri., Sat., Sun., \$5 - Child \$3 every night
 Closed Wednesday & Thursday**

7:30
SCREEN
I

7:45
SCREEN
II

**MR. HOLLAND'S
 OPUS**
(PG)

Mr. Wrong
(PG-13)

213 MAIN * SPEARMAN

Guess Who's
Turning
40?

Happy
Birthday,
Loni!



ENRICH YOUR WORLD!



High School students from Europe, Scandinavia, Russia, Asia & So. America arriving in August. You provide a bed, food and love. Student has insurance spending money and a culture to share. All students and families fully supported by competent Area Representatives.
CALL TODAY: 1-800-SIBLING

We listen to

KRDF

98.3 FM



The Voice of
Hansford
County

The Hansford County Community Calendar

March 14-23

Thursday, March 14
 12:00 p.m. - Chamber Board of Directors meets, Palo Duro Cafe
 6:00 p.m. - Gruver I.S.D. Board of Trustees Meets

Saturday, March 16
 9:00 a.m.-4:00 p.m. - Lone Wolf District Scout Skill Show, O'Loughlin Center
 12:00 p.m. - District Pinewood Derby, O'Loughlin Center

Monday, March 18
 5:00 p.m. - Deadline for Citizen and Business of the Year Nominations
 6:00 p.m. - Hospice Meeting, First State Bank Meeting Room
 7:00 p.m. - Spearman i.S.D. Board of Trustees Meets

Tuesday, March 19
 8:00 p.m. - High School One Act Play - H.S. Auditorium
 12:30 p.m. - Hansford County Spelling B, Spearman

Wednesday, March 20
 9:30-11:30 a.m. & 1-3 p.m. - Immunization Clinic, TxDOH, 721 S. Evans
 11:00-1:30 - Spaghetti Luncheon, Sacred Heart Catholic Church Parish Hall
 12:00 p.m. - W.D.S.C.C. Meeting - Palo Duro Cafe
 6:30-9:30 p.m. - Defensive Driving Class, upstairs in Library
 6:30 p.m. - Gruver Ezra Boys Club Father-Son Pushmobile Competition, City Park

Thursday, March 21
 6:30-9:30 p.m. - Defensive Driving Class, upstairs in Library

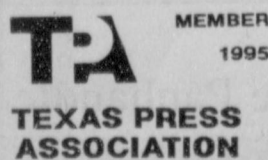
Friday, March 22 & Saturday, March 23
 Little Dribbler's Tournament, Varsity Gym

To place an event in the Community Calendar, please call the Reporter-Statesman at (806) 659-3434

The Hansford County Reporter-Statesman

213 Main
Spearman, TX 79081
Serving Spearman, Gruver and Morse
Published weekly in Spearman, TX
Owned and operated by Gary and Catherine Smith

Gary Smith- Publisher
Catherine Smith-Editor
Chad Davis-Associate Publisher
Second Class postage permit USPS 509660
Postage paid in Spearman, TX



Annual Subscription Rates
In Hansford County, \$20.00
Out of County, \$25

Advertising and Story Deadlines
Tuesday 12:00 noon

Dreamsicles

The #1 selling line in the country. Each creation is individually handcrafted and meticulously finished to produce a uniquely collectible treasure.



Only At
Celebrate
203 Main
Spearman, TX

(806) 659-3350 ☎ 1-800-663-8026

Please Help



We have lost our dog. He is like a family member. He is 12 years old, and needs medicine in his ears.

If you see him, please call 659-5298, or come by 703 Lee Drive.

Thank You, Paul and Julie Moore

Ask Dr. Dobson

QUESTION: My wife and I are extremely busy during this period of our lives. My job takes me on the road several days a week, and my wife has become very successful as a real estate agent.

Quite honestly, we are not able to spend much time with our three children, but we give them our undivided attention when we are together. My wife and I wish we had more family time, but we take comfort in knowing that it's not the quantity of time between parent and child that really matters; it's the quality of time that makes the difference.

Would you agree with that statement?

DR DOBSON: There is a grain of truth in most popular notions, and this one is no exception.

We all can agree that there is no benefit in being with our children seven days a week if we are angry, oppressive, un-nurturing and capricious with them. But from that point forward, the quantity verses quality issue runs around. Simply stated, that dichotomy will not be tolerated in any other area of our lives; why do we apply it to our children?

Let me illustrate:
Let's suppose you are very hungry, having eaten nothing all day. You select the best restaurant in your city and ask the waiter for the finest steak on his menu. He replies that the filet mignon is the house favorite, and you order it charcoal-broiled, medium rare.

The waiter returns 20 minutes

later with the fare and sets it before you. There in the center of a large plate is a lonely piece of meat, one inch square, flanked by a single bit of potato.

You complain vigorously to the waiter, "This is what you call a steak dinner?"

He then replies, "Sir, how can you criticize us before you taste that meat? I have brought you one square inch of the finest steak money can buy. I doubt if you could get a better piece of meat anywhere in the country. I'll admit that serving is small, but after all, sir, everyone knows that it isn't the quantity that matters; it's the quality that counts in steak dinners."

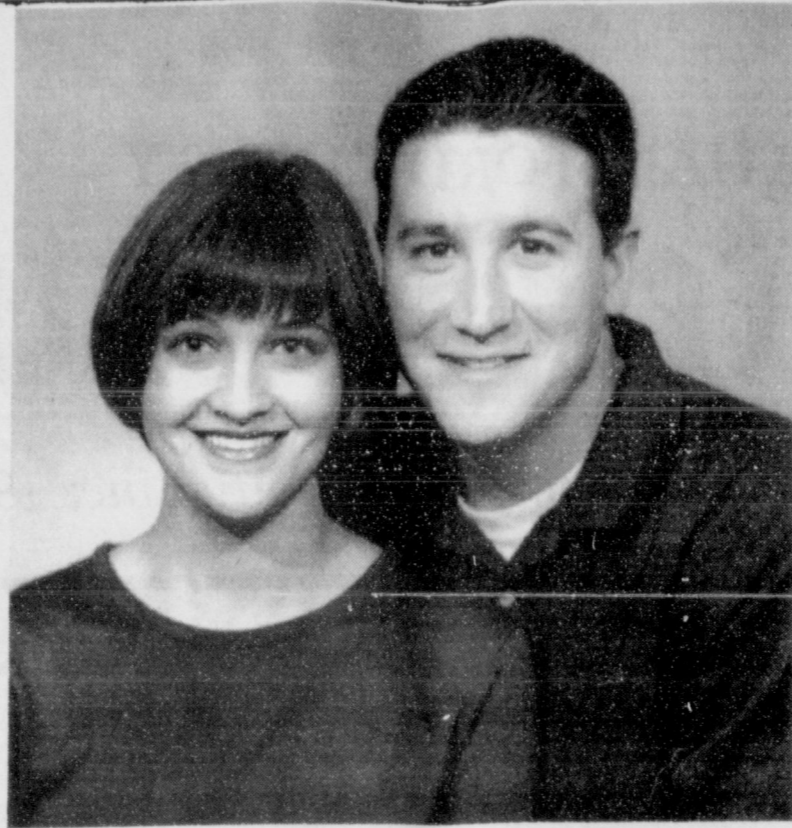
"Nonsense," you reply, and I certainly agree.

My concern is that the quantity vs. quality cliché has become, perhaps, a rationalization for giving our kids neither! This phrase has been bandied about by over-committed and harassed parents who feel guilty about the lack of time they spend with their children.

The boys and girls are parked at child-care centers during the day and with baby-sitters at night, leaving little time for traditional parenting activities.

And to handle the discomfort of neglecting their children, Mom and Dad cling to a catch phrase that makes it seem so healthy and proper: "Well, you know, it's not the quantity of time that matters, it's the quality of your togetherness that counts."

I maintain that this convenient generalization won't hold water.



Engagement Announcement

Mr. and Mrs. Rodney Maupin and Mr. and Mrs. James Edward Orr are pleased to announce the engagement of their children, Shanna Faith Maupin and Douglas Edward Orr.

Grandparents of the Bride-to-be are Mr. and Mrs. Dude and Verna Brown of Spearman, and the late Mr. Douglas Maupin.

Miss Maupin received her Bachelor of Science degree from Oklahoma State University, where she was a member of Chi Omega Sorority.

She is currently working at Riverside Chevrolet and the Day Center for the Homeless in Tulsa, Oklahoma.

Mr. Orr is a graduate of the University of Arkansas where he received a Bachelor of Science degree. Mr. Orr is currently working as an Assistant Producer for Ackerman McQueen Advertising in Tulsa, OK.

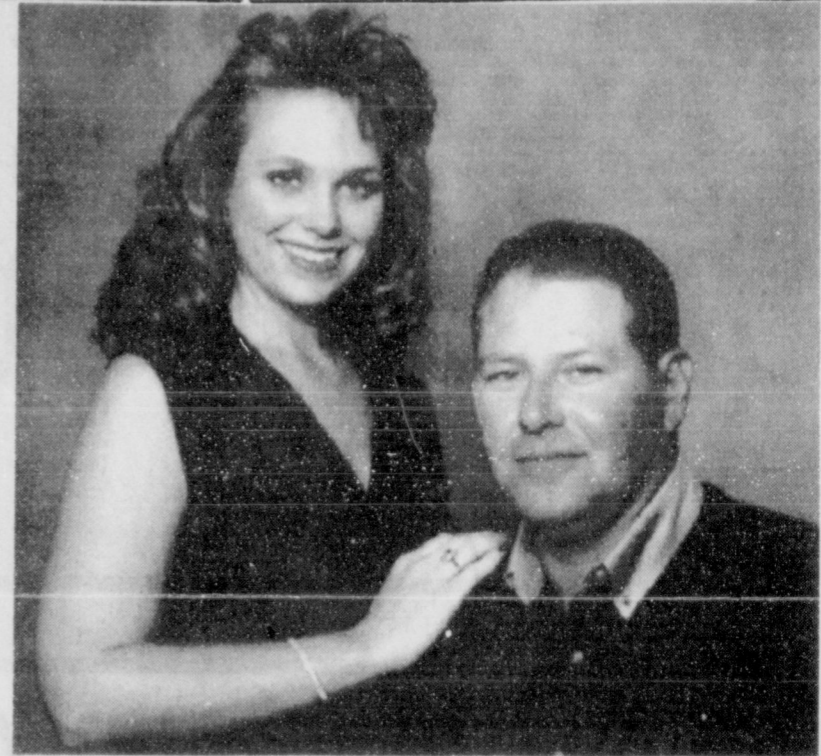
The couple will be married October 19, 1996 at the Southminster Presbyterian Church of Tulsa and will reside in Tulsa.

Wedding Announcement

Deziree Dawne Pearson and Homer Lee Hughes were united in holy matrimony on Monday, March 4, 1996 in Hutchison County.

Deziree, daughter of Edwin and Jean Pearson and Donlane and Sharon Whitefield, all of Spearman, is a graduate of Spearman High School, and attended Frank Phillips College. She is employed by J&M Service Center in Spearman.

Homer is the son of the late Bill Hughes and Thomas and Marilyn Cain of Spearman.



Engagement Announcement

Billy and Cynthia DeArmond of Spearman are pleased to announce the engagement of their daughter, Shanna Lee, to Mr. Jimmy M. Kenney, also of Spearman. Jimmy is the son of James and DeAnn Kenney of Spearman.

Shanna is a 1992 graduate of Spearman High School. She attended West Texas A&M University will graduate in December with a Bachelor degree in Special Education.

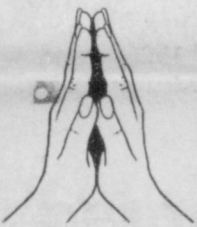
Jimmy is also a graduate of Spearman High School, and attended Panhandle State University. He is currently employed by Continental Hydrocarbons Inc., of Beaver, OK.

The couple will be married on June 1, 1996 at the First Baptist Church of Spearman.

Mr. and Mrs. Gary D. Faries
request the honor of your presence at the
marriage of their daughter
Kara Kay and Robert Carson Womble
Saturday, the sixteenth of March
at seven o'clock in the evening
First Baptist Church
123 Bernice \textyen Spearman, Texas



Dave Oliver (center), of KFTA channel 10 in Amarillo, is pictured above with (L-R) Michael Lozano, Crystal Contreras, Carlos Camos, and Russell Sheets. Mr. Oliver presented a program on weather to the 4th and 5th grade science classes on Tuesday, March 5th.



Let us replenish the seed of faith through...

REGULAR CHURCH ATTENDANCE, DAILY BIBLE READING & PRAYER

Spiritually Speaking

by Jeff Lust

What does one DO, exactly, when one is a Christian? Is it just a lot of "thou shalt not's" that robs us of any fun in life? Do we have to commit to being a missionary or preaching? No. The Christian life goes way beyond a list of don't or a call to go to the ends of the earth. The Christian life is to be lived right where we are. But what does one DO, exactly?

In Jesus' time Jewish people (Jesus was a Jew, remember) had three basic practices that expressed their Jewish faith and also helped them grow their faith to God. Acts of charity, or giving alms, was one of the basics. Giving to a person in need was a spiritual exercise. It was more about the giver's need to give than the other's need to receive.

Another basic practice was prayer. At certain times of the day devout Jews would stop whatever they were doing, turn toward Jerusalem, and pray. This is very similar to what you might have observed among Muslims (except they turn toward Mecca). The third practice of ancient Jews was fasting. This is denying oneself food for a given period (usually a day) for the purpose of devoting oneself to prayer and growing in God.

In many ways we are very far removed from the ancient Jews. I suggest three practices that, done on a daily basis, will identify one as a Christian and also help one grow in faith.

1. Pray. You don't have to turn toward Nashville, but it is very helpful to stop whatever one is doing and pray for 15 or 30 minutes. It's easier if it is the same time every day.

2. Study. We have more information at our fingertips than at any time in history. Granted, some people do not enjoy reading. But the Bible is the essential tool to help us know God. Aim for 15 to 30 minutes a day.

A. Begin with either the book of Matthew or Mark. Read about 3 chapters a day.
B. Ask yourself as you read: What does this say about God? What does this mean? What is God trying to say to me through the Bible? How can I apply this to my every day life right now?

3. Listen. In our day and time we do not have so many beggars, but we do have many people begging to be heard. Think of people who really need someone to listen. (This is different from giving advice, sharing our own stories of difficult times.) Then make an effort to be with that person in some way, and listen.

These are basic practices for us Christians to do every day. By these things, among others, people will know that we are Christians. But most of all, they will know we are Christians by our love.

This feature is made possible through the sponsorship of these civic minded businesses.

- | | | |
|---|---|---|
| <p>Apostolic Faith Church
822 S. Dressen • 659-2870
Sunday School: 10 a.m.
Worship: 11 a.m.
Evening Worship: 6 p.m. Sun.
Wed. Prayer Meeting: 7:30 p.m.
Pastor - James Brown</p> | <p>Trinity Community Church
717 W. 7th Ave. • 659-2671
Worship Service & Children's Church: 10:30 a.m.
Sunday Night School: 5:30 p.m.
Wed. Night Youth: 7 p.m.
Interim Pastor - Richard Humphries</p> | <p>First Baptist Church
402 E. Broadway • 733-2411
Sunday School: 9:45 a.m.
Worship: 10:50 a.m.
Disciple Training: 6 p.m. Sunday
Prayer Meeting: 7:30 p.m. Wednesday
Pastor - Larry Miller</p> |
| <p>First Assembly of God
401 N. Bernice • 659-2295
Sunday School: 9:45 a.m.
Worship: 10:50 a.m.
Evening Worship: 7 p.m.
Wed. Worship: 7:30 p.m.
Youth: 7:30 Wednesday
Pastor - Walter Greaser, Jr.</p> | <p>First Presbyterian Church
(Worships with Faith Lutheran Church)
1021 Cotter • 659-2033
Sunday School: 9:45 a.m. at Lutheran Church
Worship: 11 a.m. (alternates monthly between Lutheran and Presbyterian Church Buildings)
Pastor - Beverly Cook</p> | <p>Church of Christ
209 King • 733-2760
Sunday School: 9:30 a.m.
Worship: 10:20 a.m.
Evening Worship: 6 p.m.
Wed. Evening Worship: 7:30 p.m.
Minister - Bob Setliff</p> |
| <p>First Christian Church
(Disciples of Christ)
29 S. Bernice • 659-2036
Sunday School: 9:45 a.m.
Worship: 10:50 a.m.
Evening Bible Study
Worship: 6:30 p.m. Sun.
Pastor - LaVern Draper</p> | <p>Faith Lutheran Church (ELCA)
1101 Bernice • 659-2252
(Worships with First Presbyterian Church)</p> | <p>Oslo Lutheran Church (ECLA)
West of Gruver on Hwy. 15 & N. FM 1162
339-7646
Sunday School: 9:45 a.m.
Worship: 11 a.m.
Morning Prayer: 9 a.m., Wednesday
Pioneer Clubs (Grades 1-6): 4-5:30 p.m., Wed.
Pastor - John R. Chandler</p> |
| <p>First Baptist Church
123 N. Bernice • 659-5557
Sunday School: 9:45 a.m.
Worship: 11 a.m.
Evening Worship: 7 p.m. Wed.
Jr. High Youth: 6 p.m. Wed.
High School Youth: 7 p.m. Wed.
Youth Choir: 6 p.m. Sun.
Pastor - Kyle Henderson</p> | <p>Union Church
31 S. Endicott • 659-2644
Sunday School: 9:45 a.m.
Worship: 10:45 a.m.
Evening Worship: 6 p.m.
Bible Study & Prayer Mtg.: 7 p.m. Wed.
Pastor - Billy Stanford</p> | <p>Community Bible Church
(Interdenominational)
Hwy. 15 • 733-2443
Sunday School: 10 a.m.
Worship: 11 a.m.
Wed. Prayer Meeting: 7 p.m.</p> |
| <p>Church of Christ
121 S. Haney • 659-3244
Sunday Bible Class: 9:45 a.m.
Worship: 10:30 a.m.
Evening Worship: 6 p.m.
Bible Study Wed.: 7:30 p.m.
KRDF Radio Program
Living With Christ: 7:50 a.m., M-F
Minister - Arnis Pape</p> | <p>Fellowship Baptist
1102 S. Archer • 659-2783
Sunday School: 10 a.m.
Worship: 11 a.m.
Evening Worship: 6 p.m. Sunday
Youth & Adult Serv.: 7:30 Wed.
Pastor - Tim Luttrall</p> | <p>First United Methodist
Broadway & Garrett • 733-2651
Sunday School: 9:45 a.m.
Worship: 8:30 a.m. & 10:50 a.m.
Evening Worship: 6 p.m.
Pastor - Lewis Holland</p> |
| <p>Sacred Heart Catholic Church
901 Roland • 659-2792
Sat. Night Mass: 7 p.m.
Sunday Mass: 8:45 a.m. - English (8:45 a.m. Service on KRDF 98.3 FM)
Sunday Mass: 11:15 - Spanish 1:30 p.m. - Gruver - Christo Rendontor Mass - Spanish
Rev. Fernand Couture</p> | <p>Primera Mision Bautista
502 E. 7th • 659-3991
Sunday School: 9:45 a.m.
Worship: 11 a.m.; Evening: 6 p.m.
Wed. Prayer Meeting: 7 p.m.
Thurs. Visitation: 7 p.m.
Pastor - Isaias Martinez</p> | <p>Morse Baptist Church
733-2757
Pastor - Mike Martin</p> |

GILLASPIE
AUTO & TRUCK CENTER, INC.
CHEVROLET • OLDS • PONTIAC • BUICK
CHRYSLER • PLYMOUTH • DODGE
Hwy. 207 South • P.O. Box 430
Spearman, Texas 79081
(806) 659-2541

Porter Satellite
Trey Porter
(806) 659-3657
420 Davis
Spearman, Texas 79081

C.O.'S SUPPLY CO.
Plumbing & Tire Sales & Service
421 W. Kenneth • Spearman, TX
659-3781 or 659-3555

Curtis' Hot Oilers
806-659-3432
"Taking Service to Perfection"
806-659-2912 P.O. Box 714
800-821-6714 Spearman, TX 79081

Palo Duro Supper Club
22 S. Archer
659-2232

GRUVER FORD
Ford FORD
531 Main • Gruver • 733-2431

Interstate Savings & Loan
322 Main • Spearman • 659-2559

Gruver Cablevision
Quality Family Entertainment with
"The Disney Channel"
308 Main • 733-5295

Morse Implement Company
"Join us in church this week"

Boxwell Bros. Funeral Home

CORONADO HOSPITAL
Pampa, Texas
(806) 665-3721

Compliments of
G&G FOODLINER
516 Main • Gruver, TX
733-2471

Bartlett's Ace Hardware
105 W. Broadway • Gruver, TX
733-2404

BERRY CLEANERS
DAN DESIMONE • OWNER
Phone 659-3122 • P.O. Box 1017
207 Main St. • Spearman, TX

"WE SUPPORT OUR LOCAL CHURCHES"
CAPROCK #1 & #2
Bill Park, Gen. Mgr.
(806) 733-5043 or 733-5025
"Custom Cattle Feeding"

Compliments of...
AGCO
of Spearman, Inc.
"See you in Church"
659-3751

The Hansford County
Reporter-Statesman
Serving The Communities Of
Spearman, Gruver & Morse
213 Main • Spearman, TX
(806) 659-3434

Deakin ELECTRIC
OILFIELD • RESIDENTIAL • COMMERCIAL
321 S. MAIN • SPEARMAN
1-800-999-1506 Chris Deakin
(806) 659-5016 President

If I Were President . . .

The Kindergarten classes of Gruver Elementary were asked "If I were president, I would give a speech. I would say . . ." Listed below are their responses.

MRS. HENSON'S CLASS
"I will give each of you a hug. I love all of you. Give a love to your mom. Get food for you and your mom. I like you. Get a present for your mom. You are so nice. If the day is cold, you've got to wear your coat. I'm going to give a candy to ya'll. I will give you stickers, too. You must do your homework."
Denise Villegas

"I love you all. I'm glad that you came. I am going to make good rules. I hope that our kids learn a lot in school. I hope all our kids learn how to read. I hope that we can live as long as we can. I hope that we all have a healthy life."
Chandler Maier

"Thank you. I love you. Nice to meet you. My name is Maydeli. What are your names? I will give a present to you."
Maydeli Ortiz

"Thank you. I love you. I am the President. I will help some people. Some people need help."
Brenda Sanchez

"Hi! My name is Seth Thompson. I will read one of my books to you. Did you like my story? Was it good?"
Seth Thompson

"We will ride a pony together. We will go to church. Would you draw something about me? Do you know my name? Do you know Mrs. Henson?"
Audrey DeLuna

"I love you."
Tony Lora

"Let everybody be free. No more slaves! Don't kill animals. My name is Mollie Burnam. Don't play with matches!"
Mollie Burnam

MRS. FLETCHER'S CLASS
Please be nice to everybody. Please share. Please be nice. Share. Mind your mom and dad.
Bayley Garland

Do not break the laws. Help people get well. Be nice.
Cason Finley

Thank you. Make something like a gingerbread man. Do something for the president.
Ruben Ortiz

Do good on your papers.
Brenda Ibarra

I will be the President of the whole world and I want to do everything.
Chase Jones

I want one hundred dollars. I would like some more money and that I want to be a policeman when I grow up.
Angelsino Trejo

I have a million dollars. I have a car. I also have dog. I want for all the people in the world to read their books.
Lindy Weldon

Can you work here, please? Can you do whatever I tell you? Do you want to go with me?
Sofia Tarango

I love you. I will help you to do things. I can give you things. Can you help us? I can give you food.
Yadira Garcia

Thank you. Please pass your papers. Thank you for being nice.
Corey Fletcher
Be nice to the president.
Leala Vanderpol

MRS. WILLIAMS CLASS
Lee, did your mom just bring you here because you did something bad? Would you tell your friends that you are here. Would you bring your friends here. Would you take your friends back where you got them.
Sorrelle Blevins

I will give some money to all the boys and girls.
Lizeth DeSantiago

Play with our kites. Give me candy. Take me to school. Help me to do a kite. Please give me a Kleenex.
Jessica Garica

We are going to make a school. We are going to paint the cars. We are going to make people sell stuff. We are going to make some bread. We are going to make people be teachers. We are going to make some stuff. We are going to make pizza. We are going to make cards. We are going to make hats.
Melissa Montgomery

Sit down. Play with the toys.
Sing music.
Gabriel Rios

I live in the White House. Hi.
Yvette Ruiz

I ride on a horse.
Fernando Saldana

Today is the United States. I am the president of the United States.
Dalila Santillan

Win the football game. Stand up and let them know you are here. Hounds, Hounds, go, go, go! I hope the Greyhounds come out. Let the sun come out. Please catch the bad guys. I hope there are a lo of colors and cups for people. I am the police.
Tim Schultz

I want you all to live. I don't want y'all to die. I hope the animals all live. I hope the groundhogs don't see their shadows. I am going to visit some schools.
Tanner Sherrill

I like to see you at my speech. I like everybody. I like to live in a big house. I like to eat lunch with the kids.
Diana Solis

Gruver News

Jones Makes President's List



Sara Jones, a Psychology major at West Texas A&M University in Canyon, made the President's Honor Roll for the Fall 1995 Semester, with a 4.0 GPA.

She pledged Chi Omega Sorority in the fall, and was the 1996 Sweetheart of Alpha Tau Omega Fraternity. She is employed by Dr. William J. Kleinpeter and Associates.

Sara is a 1994 graduate of Gruver High School. She is the daughter of Sally Jones and Ken Jones, both of Gruver.



Gruver Boys All-District Basketball: (L-R) Josh Mayhew - Honorable Mention, Sammy Renteria - First Team, Wylee Maupin - First Team, Phil DeLaCruz - First Team, Brant Armes - First Team. Brant was also chosen as the MVP for the District.



Gruver Girls All-District Basketball: (L-R) Kaysha Cluck - Honorable Mention, Molly McLain - First Team, Weslyn Maupin - First Team, Kiki Carthel - First Team, Amber Murrell - Honorable Mention, Tara Shapley - Honorable Mention.

Lunch Menu

GRUVER ISD LUNCH MENU
Monday, March 18
Steak fingers, gravy, French fries, roll, fruit, and milk.

Tuesday, March 19
Western burger, corn, salad, jello, and milk.

Wednesday, March 20
Baked ham, fruit, mac and cheese, roll, green beans, and milk.

Thursday, March 21
B.B.Q. Beef, potato salad, apple pie, cornbread, pinto beans, apple pie, and milk.

Friday, March 22
Hamburger, cookie, French fries, lettuce, pickle, cheese, and milk.

BREAKFAST
Monday - Cereal, muffin, juice, and milk.

Tuesday - Scrambled eggs, biscuit, juice, and milk.

Wednesday - Toast, oatmeal, juice, and milk.

Thursday - Two pancakes, juice, and milk.

Friday - 2 Cinnamon rolls, juice, and milk.

James F. Hayes & Co.
AGRICULTURAL REAL ESTATE SERVICES
CLARENDON MULESHOE THROCKMORTON COLEMAN
(806) 874-5200 (806) 272-3100 (817) 849-4100 (915) 625-2200

FARMLAND
SHERMAN COUNTY - Seed milo farm - 1,780 acres good clean irrigated land, 9 irrigation wells.
When land involves cows and plows, You'll find us in the thick of it . . .

Call Owners Exclusive Agent
Gary Sutherland * Office: 806-874-5200
Farm - Ranch Sales & Appraisals • 1-800-299-LAND

Easter Dresses
Size 2-1X
20% OFF
T.J. Malik, Telluride, Central Falls,
Focus, Lindsey Scott, Bonnie Blyton,
Alexander Cambell
Main Street In Gruver

Discovery Family Headline News FOX NBC TNT TBS USA Network PBS PBS Kids HBO The Disney Channel ESPN

BAD TV RECEPTION? NOT ENOUGH CHANNELS?

WHY PUT UP WITH HAVING ONLY A FEW, POOR-RECEPTION CHANNELS TO CHOOSE FROM?

Starting at about \$1 a day and a one-time installation fee you can get PRIMESTAR and your favorite channel choices: all the best basic cable channels, premium service like HBO and The Disney Channel, and pay-per-view channels. Plus you'll get a razor sharp picture, CD-quality digital sound and more!

Nothing to buy! Forget about spending a

small fortune on an expensive mini-dish. With PRIMESTAR, you can rent everything and look what you get:

- Packages start at about \$1 a day for equipment and programming
- No-hassle, professional installation is just \$199
- 100 page monthly guide
- Worry-Free Warranty
- One call. One bill!

PRIMESTAR
PRIMESTAR BY TCI

CALL 1-800-716-0004 OR CALL THIS RETAILER IN YOUR AREA:
Audio Video Electronics 800-279-4904

ABC, CBS, NBC, PBS and FOX channels are available only for homes (1) which cannot receive an acceptable picture from local ABC, CBS, NBC, PBS and FOX affiliates via a conventional, outdoor, rooftop receiving antenna and (2) which have not subscribed to cable television in the last 90 days. Additional charges for complex installations may occur. ©1995 PRIMESTAR BY TCI

Local Internet Service Coming Soon To Your Community

Information On:

- World News
- Weather
- Library of Congress
- Dept. of Agriculture
- College Libraries
- Markets
- A whole world of information is at your finger tips.....

E-Net
Gateway To The World

Local unlimited Internet Access will be available for the Booker, Perryton & Spearman surrounding areas.

Unlimited local Internet Access For Only \$29.95 per Month**
**Does Not Include Taxes & Connection Fees

For additional information, fill out the following form and mail it to: E-Net; P.O. Drawer 889; Perryton, TX 79070; or fax to (806) 435-7194.

Name _____
Address _____
City _____ State _____ Zip Code _____
Home Phone _____ Work Phone _____

Another Service provided By: **Perryton Equity Exchange**

Out At The Lake



by Dorothy Hudson

Lake Depth, March 11, 1996 - 23 feet and 8.5 inches

Jim Derington reports that the warmer weather has brought out people with picnic lunches and with fishing equipment. The fishing was poor this weekend, but it should pick up again soon.

Last May I had a story about rabies and the death of eight year old Idros Wright from a bite from a skunk with hydrophobia. In March of 1879 when this incident happened the post surgeon at Fort Elliott was the closest doctor. Where the story told to me said they got word somehow to her parents who were in Dodge City, I confidently said they could have telegraphed, as I had read somewhere that Fort Elliott was connected to Fort Supply and Fort Dodge by telegraph in 1879.

Later, there was a piece in the Amarillo paper about Ada Lester, president of the Old Mobeetie Association, and how she was going through the post physician's fifteen years of records that are on microfilm. I wrote her a letter and enclosed a copy of the Idros Wright story to see if she had come across the doctor's report.

She replied with an

excellent letter. One of the points she made was that the telegraph line from Fort Elliott to Fort Supply was not completed until October 25, 1879. I apologize for tampering with the historical record.

She included a story copied from Memory Cups of Panhandle Pioneers by Millie Jones Poerter, page 24. Mrs. Porter was visiting with Miles O'Loughlin. He tells of his family:

"There had been three children in our family. One night while we still lived in Kansas, my little sister was sleeping between my parents in camp, when a skunk bit her on the cheek. She seemed to suffer no ill effect from it, but when we were ready to start to Texas, she was not well and knowing the trip would be hard on her anyway, they left her with my Father's brother and sister at Larkin, Kansas. After we had gone she became very ill and died of hydrophobia. She had been dead three months before news reached us in Texas."

He added that his family came to the Texas Panhandle to Cantonment Creek with the first company of Relief soldiers that were sent from Dodge City March 8, 1875.



(Back Row, L-R) Lynette Woodward, Taysia Stephens, Britta Vanderburg; (Front Row, L-R) Garrett Rex, Lorena Briseno

"Who Pushed Humpty?"

The second grade classes of Gus Birdwell Elementary School presented "Who Pushed Humpty?" The play was performed on March 7, 1996 for students and parents.

Following is a list of the cast and crew: **Mother Goose:** Callie Hargis, Janet Mayo, Jessica Brown, Holly Baker, Jena Cherry, and Maribel Moreno; **Messenger:** Kamran Ahmed; **King's Messenger:** Jarik Howard; **Old King Cole:** Jeff Whitworth and Scott Johnson; **Mary Mary Quite Contrary:** Adriana Pinon; **Little Boy Blue:** Lance Henderson; **Jack B. Nimble:** Andrew Correll; **Little Bo Peep:** Brooke Thomas; **Humpty Dumpty:** Garrett Rex; **Flower Singers:** Abby Winegarner, Lorena Briseno, Cathy Hernandez, Daisy Fraire, Britta Vanderburg, Ann Pape, Jessica Villareal, Timber Thomas, Melody Mark, Rachel

Pack, Taysia Stephens, Angelica Briseno-Canale, Lynette Woodward, Keisha Taylor, Priscilla Mendoza, Mabel Varela, Kaylee Meisner, Crystal Anguiano, Melissa Lesly, and Rebekah Goodson; **Numble Dancers:** Tyson Dettmann, Jeremy Burch, Justin Bowman, Josh Fish, Travis Sander, Jared George, Hernado Perez, Roy John Bulls, Brian Close, and Mathew Sandoval; **Announcers:** Jarry Francis, Jeffrey Jackson, Endi Robledo, Chris Russell, Corey Rex, Javier Frayre, Dustin Tomlin, Hervey Rodriguez, Travis Sander, Mike Rodriguez, Jessy Getz, and Alejandro Rios; **Stage Crew:** J.J. Gallegos, Steven Vaquera, Jose Vargas, Manuel; **Programs:** Tori Contreras and Rebekah Goodson.

Extension News

by Peggy Winegarner, County Extension Agent

A paralyzing stroke may be a person's first symptom of abnormally high blood pressure.

Of those who have hypertension, nearly half don't know it and only 11 percent receive adequate therapy.

A person with uncontrolled hypertension is three to four times more likely to experience coronary heart disease and has as much as seven times the risk of suffering a stroke as someone with normal blood pressure.

Besides drug therapy, what's the best answer?

One of the best methods for lowering blood pressure is to lose weight if you are obese. Even 10 to 20 pounds can make a difference.

Many people find that just reducing salt is not very effective, and losing weight and getting more exercise is difficult to do.

You can't change family histories or turn back the clock.

One of the most practical changes you can make is to increase the number of fruits and vegetables eaten daily. That's a lifestyle change most of us could do, if we eat less than the

recommended amounts of 2 to 4 servings of fruits and 3 to 5 servings of vegetables daily.

Fruits and vegetables are high in vitamins, antioxidant nutrients, fiber and various minerals.

Eating more fruits and vegetables protects health in a variety of ways. Few people suffer any harmful effects by increasing their intake of fruits and vegetables.

When it comes to fast, convenient food, it's hard to beat raw fruits and vegetables. Slip some apricots or a banana into your bag for a snack instead of the usual can of pop. It's not only more healthful, it's also more economical.

Congratulations!

Congratulations to Donna Farris! She received \$50.00 from Family Publishers Clearinghouse for being one of the first entries received!

LR ELECTRONICS
Sales & Service
Leelyn Rock • 806-435-1112

To the many citizens of
Hansford County who
helped, supported, and
encouraged me during this
campaign, I give my heart-
felt thanks and gratitude.

Roy Carper

Immunization Clinic

The Immunization Clinic will offering vaccines that give protection against several childhood diseases. Protection is against Polio, Diphtheria, Lock Jaw (Tetanus), Whooping Cough (Pertussis), Measles, Rubella, Mumps, and H1B (Haemophilus Influenzae Type B).

The clinic will be in Spearman on March 20th from 9:30-11:30 a.m. and 1:00-3:00

p.m., at the Texas Department of Health Office 721 South Evans.

The Texas Department of Health is charging money to help with the cost of keeping the clinic open. The amount of money charged will be based on family income and size, and the ability to pay.

INDIVIDUALS WITH MS

If you have a diagnosis of multiple sclerosis and are interested in filling out a research survey about your experiences with MS, please contact:

Alexa Stuijbergen,
RN, PhD

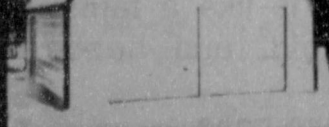
1-800-687-8010

Monday through Friday
Between 9 am and 5 pm

University of Texas at Austin
School of Nursing

Grace Porta

STEEL GARAGES & BUILDINGS



Sanders & Custer Construction
P.O. Box 610 • Booker, Texas 79008
GRACE & PORTA DISTRIBUTORS
1-800-287-6782

SPUR YOUR PIVOT TO GREATER PERFORMANCE



Zimmatic's spur gear center drive outruns the competition.

Get up to 30 percent faster rotation speed and energy savings of 30 percent with Zimmatic's efficient and reliable spur gear center drive. Couple that with a gearbox that's so durable it's often recommended as a replacement on other systems, and you have the most dependable drivetrain around. Backed by the industry's leading warranty—6 years or 6,000 hours—our drivetrain is one of the many reasons why Zimmatic is a leader in automated irrigation.

SPECIAL OFFER

Purchase a Zimmatic irrigation system by March 16, 1996, and receive:

- 7.75%, 5-year LOAN, 10% down payment with a 12-month delayed first payment, or
- 7.75%, 5-year LEASE, 10% security deposit with a 12-month delayed first payment.

For complete details on these offers, see your local Zimmatic dealer. Certain restrictions apply. Subject to credit approval.

Five Star Equipment, Inc.
Spearman, Texas ★★★★★ (806) 659-3743

ZIMMATIC
Built To Be The Leader

Lindsay Manufacturing Company • P.O. Box 156 • Lindsay, Nebraska 68644 • 1-800-829-5300

Out of Touch All Day?



Does your busy lifestyle take you into the middle of nowhere, and leave you stranded with nary a communication link to the rest of the world? **CELLULARONE** will come to your rescue! Whether you need a cellular phone for business, emergencies, or personal use, **CELLULARONE** of the Panhandle has a deal for you. In addition to the specials listed below, we have 8 different rate plans, including our new *Area Wide Plan* which features local airtime throughout the Texas Panhandle! See your **CELLULARONE** of the Panhandle representative today and never be incommunicado again!

- | | | | |
|---|--|--|---|
| FREE
Mitsubishi
Handheld
(price \$33.75,
rebate \$33.75) | AT&T
Bag Phone
w/ Battery
for \$9.95 | Motorola
3-yr. Warranty
Tote \$19.95
(price \$29.75,
rebate \$9.80) | FREE
"Toll Free
America"
(till April 5, 1996) |
| FREE
AT&T
Bag Phone
(price \$24.75,
rebate \$24.75) | No
Activation
Fee | | |

CELLULARONE® of the Panhandle
1329 N. Hobart St., Pampa, TX 79065
1-800-530-4335 • (806) 669-3435

The Kin Gruber Elemer were president, I would say... their responses

MRS. HE "I will gi love all of you mom. Get food like you. Get a You are so nice you've got to going to give a give you stie your homework Denise

"I love came. I am goir hope that ou school. I hope to read. I hope as we can. I h healthy life."

Chandle "Thank y meet you. My are your name to you."

Maydeli "Thank y President. I w Some people ne Brenda S

"Hi! M Thompson. I books to you. Was it good?" Seth Tho

"We wil We will go t draw somethi know my nan Henson?"

Audrey "I love y Tony L

"Let eve slaves! Don't k Mollie Burns matches!" Mollie B

MRS. FLI Please s Mind your mo Bayley C

Do not people get wel Cason F

Thank y like a gingerbr for the preside Ruben C

Do good Brenda

I will b whole wide v everything. Chase J

I want would like se I want to be a up. Angeins

TECH

SUNSHINE NETWORK

SPORTSOUTH

RE-BLAST

QVC

PEN

PRIVATE TICKETS

PLAYBOY

NESN

MSE

KILL

JAPAN

PASS SPORTS

KHIS

HOT CHOICE

STARZ!

WESTERN



Sue Hair and Steve Hilton of WEBTex Technologies, ICP

The Spearman Connection

WEBTex Technologies, ICP, an Internet Content provider who publishes WEB pages, presented a program on Tuesday, March 12th at 7:00 p.m. at the O'Loughlin Center on *The Spearman Connection*.

The *Spearman Connection* (www.webtex.com/spearman/), a division of the Spearman Chamber of Commerce, is a series of WEB pages that are

designed to promote Spearman to prospective citizens.

The program, presented by Steve Hilton and Sue Hair, also consisted of reasons businesses and individuals could use the Internet for marketing.

The event was hosted by the Spearman Chamber of Commerce, and was attended by approximately 25 citizens.

School Lunch Menus

SPEARMAN ISD LUNCH MENU
Monday, March 18
Grilled Cheese Sandwich, tomato soup, dill spears, corn on the cob, pineapple, and milk.
Tuesday, March 19
Green beans with new potatoes, steamed carrots, hot rolls, butter, mixed fruit, and milk.
Wednesday, March 20
Cheese, chili dog, tator tots, blackeyed peas or pork 'n beans, apple sauce, and milk.
Thursday, March 21
Oven fried chicken - high school, chicken patties - jr. high and elementary, whipped potatoes, sweet peas, hot rolls, margarine, pears, and milk.
Friday, March 22
Chicken fried steak fritter on a bun or fish sandwich, French fries, shredded lettuce, sliced tomato, pickle, onion, peaches, and milk.
BREAKFAST
Monday - Breakfast pizza, fruit, and milk.
Tuesday - Pancake pup, fruit, and milk.
Wednesday - Cereal, toast, fruit juice, and milk.
Thursday - Cinnamon rolls, fruit, and milk.
Friday - Biscuit, sausage, egg, fruit, and milk.

PRINGLE-MORSE CISD LUNCH MENU
Monday, March 18
Taco, salad, fruit, cornbread, and milk.
Tuesday, March 19
Baked chicken, potatoes, gravy, salad, rolls, cake, and milk.
Wednesday, March 20
Hamburger, French fries, fruit, and milk.
Thursday, March 21
Baked potato, chili-cheese, broccoli, salad, wheat roll, fruit, and milk.
Friday, March 22
Pizza, salad, fruit, ice cream, and milk.
BREAKFAST
Monday - Cheese toast, toast, juice, and milk.
Tuesday - Banana muffins, toast, juice, and milk.
Wednesday - Sausage, pancakes, juice, and milk.
Thursday - Cereal, toast, juice, and milk.
Friday - Biscuits, sausage, juice, and milk.

Jay's Waterwell
Domestic Waterwell Sales & Service

Submersibles, Windmills, Pressure Pumps & Systems

Beeper: (806) 659-3988
Mobile: 898-3294
(806) 435-2966

DRIVER EDUCATION CLASSES
Independent Driving School
814 S. Main • Perryton
(806) 435-2579
Lanny Hargrove

OSGOOD MONUMENT CO.
Amarillo, Texas
Dealers of Rock of Ages Granite, as well as all colored granites, marble and bronze memorials.

Represented by
BOXWELL BROS. FUNERAL HOME
519 S. Evans • Spearman
659-3802

Century 21
Golden Spread Realty
200 S. Main • Perryton, TX
806-435-5444

GOLDEN SPREAD REALTY
JAYNE HELTON POINTER, BROKER OWNER
435-5444

205 Hazelwood - Great buy, excellent condition
315 1/2 N. Bernice - Lot for sale
East 7th Street - Mobile Homes, lots to lease!!!
Hwy. 207 South - Great potential for new or existing business!

© and ™ trademarks of Century 21 Real Estate Corporation. Equal Housing Opportunity
INDEPENDENTLY OWNED AND OPERATED

COUNTRY HOME FOR SALE
By Owner
Available In July
3334 Total Sq. Ft.
3/4 (+) Acre Lot
3 Bedroom - 3 1/2 Bath
Sunken Living Room w/Fireplace
Balcony & Cathedral Ceiling
Two Story - Formal Dining Room
Office - Basement - Utility
Fenced Back Yard - Lots of Storage
Garage - Patio - 2 Storage Bldgs.
Central Heat & Air
Private Water Well - New Septic System
Satellite System
806-659-3289
By Appt. Only - Serious Inquiries Only

Prairie Garden Flowers

209 Main Street
Spearman
659-2212
659-3329

Among The Neighbors

by Helen Fisher

An outstanding honor was bestowed on a former Hansford County resident last Wednesday in San Francisco. Peggy Bort Jones was named the Outstanding Volunteer for the year for San Mateo and San Francisco counties and a dinner was held to present the award to her in an impressive ceremony.

A San Francisco newspaper detailed the affair, together with an attractive picture of her. The award is known as the VIV, meaning Very Important Volunteer. Peggy had strong leadership roles in the fields of service for youth, health care, seniors, educational issues. The paper listed the various offices she has held and holds now. They are far too numerous to list here.

Other papers also had a write-up.

Attending from Gruver and flying to San Francisco last Tuesday were: Barbara Cluck, Marguerite Winder Nelson, Anna Beth Wood, and Mrs. Beulah Bort. They were joined by Catherine Paddy Goddard, formerly of Gruver, now of Friona and a Sorority sister of Peggy's from Dallas.

Another guest at the dinner mentioned to them that it was the largest crowd attending the event since its beginning. All were lavish in their praise.

Her biographical sketch stated she had been a leader in the volunteer agencies since 1976. It mentioned that she is a trustee in the Bort Cattle Corporation of Gruver; also a director and officer in the Jameson Company. This is a Jones family-owned vitamin corporation in San Francisco.

Peggy and Jim Jones live in Hillsborough, CA, a suburb of San Francisco and are the parents of four sons. She is the daughter of Ralph and Beulah Bort of Gruver and was a 1954 graduate of Gruver High School and a 1958 graduate of S.M.U. in Dallas.

To be selected as an outstanding individual from the multitude of populations in San Francisco and San Mateo counties is indeed an honor.

An after thought to the preceding item - whether Del Cluck was eating his own cooking, or he just missed wife Barbara too much, he became ill. He was hospitalized, for the first time in his life. He went into Hansford hospital on Friday and was released Monday. He is recovering at home now, with her TLC.

Albert and Claudine Clark returned recently from ten days in Hawaii. They flew to Dallas then direct to Honolulu - a seven hour flight. The days spent with their daughter and family were a joy indeed. Carrie and Mark Tidwell, with Emily and Luke, live there. He is in the Air Force and is now safety officer at the base. Until

recently he was the pilot for VIPs, which took him from home much of the time.

The Clarks toured the many places of interest, including Diamond Head and Pearl Harbor. They took a tour to Maui and watched the whales, which was fascinating to them.

They are hoping to return some time during his three year tour of duty there.

Family members report that Avo Tope underwent by-pass surgery on Monday at High Plains Baptist hospital. After the six hour surgery, the surgeon reported that it went fairly well. This is her second by-pass operation. She will be in CCU for several days.

With the world-wide population explosion and the influx of immigrants into this country, the message from other countries to the U.S. seems to be "We breed 'em; you feed 'em!"

Gloria and Don Knox spent last week in Odessa with their grandchildren Lee Isaac and Julia. Their parents, Mr. and Mrs. Danny Knox, were vacationing in Cancun, Mexico.

The 100 year old George Burns passed away last week. The smoke alarmists are expected to say, "We knew his cigar smoking would get him."

Margaret and Robert Novak are at home a couple of months at San Carlos, near Guaymas, Mexico. This is the 27th year they have gone there and have made many friends among the local residents and others who also come for the fishing and water activities. They have noted many changes in the area in these years, notably the construction of the four and eight lane super highways and also luxury hotels and clubs.

Robert enjoyed the fishing and Margaret enjoyed the beaches, scenery and visiting.

Don Allen is recovering at home from a knee replacement at St. Anthony's Hospital. He had it operated on a week ago Friday and left the hospital the following Thursday. He had the other knee replaced several years ago, so is aware of the slow recovery. He walks a little in the house, but is not yet ready to venture outside.

Al and Juanita Tucker were guests of Doris Beck over the weekend. They left on Monday to return to their new home in

Harshman's
VCR & Camcorder Repair
"We do it Right!"
274-4704
Berger, TX 10 a.m.-6 p.m., Mon.-Sat.

San Angelo, taking the last of their household goods with them. They were pleased to meet and greet many of their friends while here.

James and Margaret Lair spent several days at Wilcox, Arizona visiting Floyd and Rosemary Robbs. They all drove to Phoenix and emplaned for Guaymas, Mexico for a few days. The fishing was fair and the country interesting. They noted that the drought extends into Arizona and New Mexico.

The public is cooperating with the fire departments in keeping fires down. There were no bad fires last week, but some minor ones. The firemen have been inspecting likely dangerous areas and doing some controlled burning and making fire breaks

in hazardous places on CRP land.

One of the oldest and most prestigious events in the rodeo profession is held in Guthrie, Oklahoma each year. It pits the world's best ropers in the five timed events - calf roping, heading, heeling, tripping and wrestling.

Spectators were amazed this past weekend when the second place in the entire contest was won by a teenager, formerly of Gruver.

Trevor Brazile, a 19-year-old attending college at Vernon, was up against the likes of the famed Roy Cooper, and other leading ropers.

His parents, Jimmy and Glenda Brazile, lived in Gruver when he was born and were active in Tri-State Rodeo. She taught school and he was involved in ranching. Trevor's grandfather, C.C. Light of Amarillo, was almost an institution in Tri-State.

FUMC Laity Sunday

Sunday, March 17, 1996 has been designated Laity Sunday at First United Methodist Church, Spearman. Special guest for the day is Ed Hill from Amarillo. He will be speaking to the Methodist Men's Breakfast, the adult Sunday School Classes, and in the morning worship service at 11:00.

Ed Hill is the Lay Leader of the Northwest Texas Annual Conference of the United Methodist Church. He will lead the elected delegation of Northwest Texas to the General Conference meeting in Denver in April. General Conference occurs every four years and is the top legislative and governing body of the United Methodist Church.

A member of Polk Street United Methodist in Amarillo, Ed Hill has been very active in United Methodist ministries, serving as a Sunday School teacher, as a Trustee of the Wesley Community Center in Amarillo, and a Director of the Sears Retirement Corporation. Mr. Hill is married and is an attorney in Amarillo.

Laity Sunday is an annual observance of the United Methodist Church in which the roles and responsibilities of non-clergy members are highlighted. The Lay Leader of the Spearman congregation is Mr. Verlan Winegarner. The public is cordially invited to attend these opportunities at First United Methodist Church in Spearman.

For The Bride & Groom

Come by and let us help you set up your special gift table

Couples Currently Registered

Kara Seitz & Justin Armes • March 16th
Heather Vinson & Clint Sasser • April 13
Sunshine Smith & Harold Davis - April 21
Mandi (Porter) Vargas and Gus Vargas
Kara Faries & Robert Womble
Shanna DeArmond & Jimmy Kenney

*Date of Bridal Shower

Gordon's DRUG

314 Main Spearman, Texas
659-2141

SCOTT LAW OFFICE -SPEARMAN-

BY APPOINTMENT
AT 11 W. KENNETH, SPEARMAN
Nuestra Secretaria Habla Espanol

1-800-279-4905
806-435-6121
David T. Scott, Lawyer
Licensed in Texas & Oklahoma

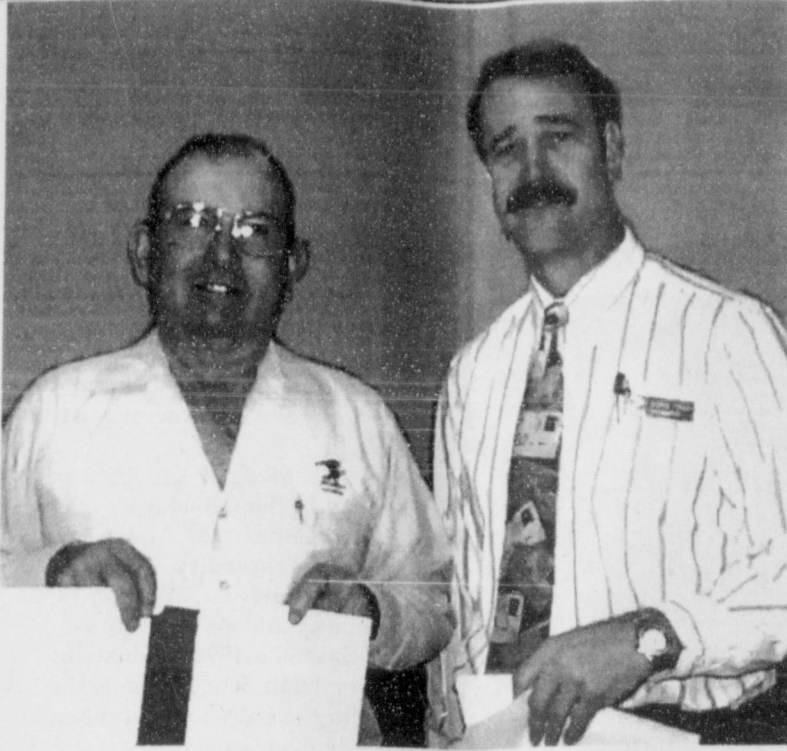
OFFICE HOURS: FRIDAYS 9:00 A.M. - 12:00 P.M.



Gruver Boys All-Academic Basketball (Requirements - 90 or above average, excluding P.E., Band, & Aide): (Front Row, L-R) Daniel Bort, Josh Mayhew, Sammy Renteria, Tye Womble; (Middle Row, L-R) Phil DeLaCruz, Scott Jarvis, Buster McLain, Brant Armes; (Back Row, L-R) Doug Gumfory, Bailey Barkley, Wylee Maupin, Max Frick, Travis Ferguson



Gruver Girls All-Academic Basketball (Requirements - 90 or above average, excluding P.E., Band, & Aide): (Front Row, L-R) Amber Murrell, Kiki Carthel, Amy Gillispie, Autumn Bateman, Tara Shapley; (Back Row, L-R) Joni Hart, Weslyn Maupin, Molly McLain, Mary Dawn Henson, Jill Odom



A.R. (Reg) Roberts is pictured above as George Finley, Spearman Postmaster, presents him with a certificate for 30 years of service to the United States Postal Service.

Lone Wolf District Skill Show

The Lone Wolf District of the Golden Spread Council, BSA will be holding their annual Scout Skill Show and Pinewood Derby mat at the O'Loughlin Center in Spearman, Texas. The two events have been combined this year to allow more Cub Scouts, Boy Scouts and Explorers to participate. The Skill Show allows each group to show off special skills they have learned in the scouting program. The district Pinewood Derby is held to allow scouts from different units to compete against each other. Most Cub Scout Packs have individual derbies, and this allows the winners to see how they stack up against peers from across the district. It also gives the others a chance to tune up their cars and try again.

The public is welcome and encouraged to come see what the scouts are doing. This year

Explorer Post 513, sponsored by the Spearman Fire and Police Department will be fingerprinting children, as a Public Service.

Admission to the event will be one can or boxed food item, which will be given to the Food Bank.

Election Results

Continued from Page 1

John Bradley - pct. 1 - 37, pct. 2 - 3, pct. 3 - 13, pct. 4 - 29, pct. 5 - 15, pct. 6 - 15, pct. 7 - 2, early voters - 11, pct. 9 - 3, total - 128.

State Representative District 88
Warren Chisum - pct. 1 - 149, pct. 2 - 10, pct. 3 - 64, pct. 4 - 158, pct. 5 - 77, pct. 6 - 89, pct. 7 - 14, early voters - 63, pct. 9 - 21, total - 645.

Chief Justice 7th Court of Appeals
John T. Boyd - pct. 1 - 125, pct. 2 - 6, pct. 3 - 52, pct. 4 - 132, pct. 5 - 71, pct. 6 - 72, early voters - 52, pct. 9 - 17, total - 540.

District Judge 84th Judicial District
William D. "Bill" Smith - pct. 1 - 135, pct. 2 - 8, pct. 3 - 55, pct. 4 - 141, pct. 5 - 75, pct. 6 - 84, pct. 7 - 14, early voters - 46, pct. 9 - 21, total - 579.

District Attorney 84th Judicial
Roy Carper - pct. 1 - 109, pct. 2 - 6, pct. 3 - 22, pct. 4 - 52, pct. 5 - 64, pct. 6 - 52, pct. 7 - 11, early voters - 51, pct. 9 - 13, total - 380.

Clay L. Ballman - pct. 1 - 75, pct. 2 - 7, pct. 3 - 56, pct. 4 - 142, pct. 5 - 32, pct. 6 - 60, pct. 7 - 5, early voters - 26, pct. 9 - 15, total - 418.

County Attorney
John L. Hutchison - pct. 1 - 166, pct. 2 - 13, pct. 3 - 65, pct. 4 - 163, pct. 5 - 89, pct. 6 - 100, pct. 7 - 14, early voters - 65, pct. 9 - 23, totals - 698.

Sheriff
R.L. McFarlin, Jr. - pct. 1 - 155, pct. 2 - 13, pct. 3 - 70, pct. 4 - 164, pct. 5 - 85, pct. 6 - 80, pct. 7 - 14, early voters - 67, pct. 9 - 24, total - 672.

County Commissioner Precinct 1
Worley J. Smith - pct. 1 - 126, early voters - 33, total - 159.

Dee Allen - pct. 1 - 79, early voters - 11, total - 90.

County Commissioner Precinct 3
Kent Guthrie - pct. 3 - 61, pct. 5 - 84, pct. 7 - 14, early voters - 16, totals - 175.

County Chairman
Carla Woodington - pct. 1 - 162, pct. 2 - 7, pct. 3 - 55, pct. 4 - 140, pct. 5 - 78, pct. 6 - 85, pct. 7 - 14, early voters - 63, pct. 9 - 17, total - 621.

Precinct Chairman Precinct 1
Karen C. Schnell - pct. 1 - 162, early voters - 34, total - 196.

Precinct Chairman Precinct 2
Medford Lee Decamp - pct. 2 - 3, total - 3.

Precinct Chairman Precinct 3
Marva Burnam - pct. 3 - 64, early voters - 3, total - 67.

Precinct Chairman Precinct 4
Leon "Corky" Champman - pct. 4 - 185, early voters - 6, total - 191.

Precinct Chairman Precinct 5
Alton Ellsworth - pct. 5 - 91, early voters - 12, total 103.

Precinct Chairman Precinct 6
Eschol Blankenship - pct. 6 - 87, early voters - 12, total - 99.

Precinct Chairman Precinct 7
Dennis Stedje - pct. 7 - 14, early voters - 1, total - 15.

WANTED
Unique Items At Affordable Prices
See The Classifieds

NEW TRAMPOLINES
Mats & Springs
Resew Trampoline Mats
Make New Boat Covers
Call (806) 659-2109
Harry Stumpf
301 W. 12th
Spearman, TX

LYNX AND LYNXETTE WEEKEND SCHEDULE

For March 14-16

Track Meets Comanche Relays at Stinnett for all divisions 3-15/16
Tennis Tournaments Plainview 3-15/16
Golf Booker Invitational at 9:00 a.m. 3-14

GOOD LUCK LYNX AND LYNXETTES!

WHAT WILL IT TAKE TO PUT ONE OF THESE CARS IN YOUR DRIVEWAY?

<p>1995 Plymouth Neon 2 Dr. Coup, Emerald Green, Cloth Interior, A/C, Auto Trans., Cruise Control, AM/FM Cass., w/6 Speakers, Tilt Steering, Light Hail Damage \$11,297⁰⁰ Sticker Price - \$13,799⁰⁰</p>	<p>1995 Olds Cutlass Supreme SL 4 Dr., Bright Red, V-6, Auto Trans., A/C, Power Windows & Locks, AM/FM Cass., Fog Lamps, Well Loaded \$16,162⁰⁰ Sticker Price - \$17,995⁰⁰</p>	<p>1995 Oldsmobile 88 LSS 4 Dr. Sedan, Medium Red Metallic, Red Leather Interior, Bucket Seats, V-6, Auto Trans., AM/FM Cass., Remote Entry, Many More Options, Slight Hail Damage \$21,540⁰⁰ Sticker Price - \$24,595⁰⁰</p>
<p>1995 Olds Cutlass Supreme SL 4 Dr. Sedan, Medium Blue, w/Cloth Interior, V-6 Automatic, A/C, Power Windows & Locks, AM/FM Cass., Fog Lamps, Many More Options, Light Hail Damage \$15,307⁰⁰ Sticker Price - \$18,200⁰⁰</p>	<p>1995 Oldsmobile 88 LSS 4 Dr. Sedan, White, Beige Leather Interior, Bucket Seats, V-6, Automatic Trans., A/C, Power Windows & Locks, AM/FM Cass., Much More. Slight Hail Damage \$21,797⁰⁰ Sticker Price - \$25,200⁰⁰</p>	<p>1995 Oldsmobile 98 Regency Top Notch Luxury, Leather Seats, V-6, Automatic, Medium Blue Metallic, Reminder Pkg., Keyless Remote Entry, Many More Options \$24,521⁰⁰ Sticker Price - \$28,500⁰⁰</p>
<p>1995 Pontiac Grand Am 2 Dr. Coup, Bright Red, A/C, Auto Trans., AM/FM Cass., Rear Deck Spoiler, Tilt, Cruise, Much More! Light Hail Damage \$12,509⁰⁰ Sticker Price - \$15,770⁰⁰</p>	<p>1995 Dodge Intrepid 4 Dr. Sedan, White, Cloth Bucket Seats, V-6, Auto, A/C, Remote Entry, Alum. Wheels, Many More Options \$17,388⁰⁰ Sticker Price - \$21,266⁰⁰</p>	<p>1995 Oldsmobile 88 LSS 4 Dr., White, Blue Leather Interior, Bucket Seats, V-6, Auto Trans., A/C, Power Windows & Locks, AM/FM Cass., Remote Entry, Many More Options, Slight Hail Damage \$21,341⁰⁰ Sticker Price - \$24,595⁰⁰</p>

GILLASPIE

AUTO & TRUCK CENTER, INC.
CHEVROLET, OLDS, BUICK, CHRYSLER, PLYMOUTH, DODGE, PONTIAC
Highway 207 South • P.O. Box 430 • Spearman, TX 79081 • (806) 659-2541

All 1995 vehicles advertised above come with full factory warranties and our service promise: "If you have a problem with your car, we'll take care of it."
Check out our used car line for competitive prices on all previously owned cars and trucks.

At Gillaspie Auto & Truck Center in Spearman

ALLSUP'S

EFFECTIVE MARCH 10-16, 1996
305 W. Kenneth • 659-3135
SAVE ON Pepsi-Cola
3 Liter or 6 Pack
\$1.99
25 Pack - \$5.99

1996 FORD PICK-UP XL

5 SPEED WITH OD
4-CYLINDER • POWER STEERING
POWER BRAKES • AIR CONDITIONING
AM-FM CASSETTE
VALUE \$13,500

ALLSUP'S & FRITO LAY'S FABULOUS PICK-UP DAYS
Register at any ALLSUP'S STORE while you are shopping for FRITO-LAY Products.
Register from FEBRUARY 25-APRIL 13, 1996.
Drawing to be held APRIL 26, 1996

<p>ALL SUP'S SAUSAGE, EGG & BISCUIT EACH 99¢</p>	<p>SAVE ON ALLSUP'S CHIMICHANGA BEEF, CHEESE & GRN. CHILI 99¢</p>	<p>GRAB BAGS FRITOS® OR DORITOS® REG. 75¢ EA. 2\$1 FOR</p>	<p>DECKER MEAT BOLOGNA 12 OZ. 79¢</p>
<p>WELLS blue bunny VANILLA OR NEAPOLITAN BLUE BUNNY ICE CREAM SANDWICHES 6 OZ. 2\$1 FOR</p>	<p>SOFT 'N GENTLE BATHROOM TISSUE 4 ROLL PKG. \$1.19</p>	<p>STORE SPECIALS</p> <p>LANCE ALL VARIETIES REG. 39¢ Snack Crackers 4 FOR \$1.00 ALLSUP'S 1.5 LB. LOAF SANDWICH Bread 99¢ EACH OR 2 FOR \$1.00 OZARKA Spring Water 33.8 OZ. 99¢ SHURFINE GRAVY OR CHUNK STYLE Dog Food 20 LB. BAG \$4.49 CHEER WITH BLEACH Detergent 42 LOADS \$6.99</p>	

Surefine Diapers (Reg. \$4.19) - **\$3.29**
Sunny Assorted Cookies - **2/\$1.00**

WE MAKE YOUR SHOPPING DAYS, SAVING DAYS!!!

Sue H
Th
WEBT
an Intern
who pub
presented
March 12
O'Loughl
Spearman
The S
(www.web
a divisio
Chamber
series of
Sch
Grille
soup, dill
pineapple, a
Greer
steamed car
fruit, and m
Chee
blackeyed p
sauce, and r
Oven
chicken p
elementary
peas, hot r
milk.
Chiel
bun or fis
shredded l
onion, peac
Mon
and milk.
Tues
and milk.
Wed.
juice, and n
Thu
fruit, and n
Frid
fruit, and n
Jay's
Don
S
GOLD
JAYNE HE
205 H
exceller
315 1/2
East 7t
lots to li
Hwy.
potentia
busines
© and TM I
Corporation
INDEPEI
COI
3 B
Sunl
Ba
Two
Fenc
Gar
Private
By App

Public Notices

NOTICE OF PUBLIC HEARING

The Board of Adjustment of the City of Gruver will hold a public hearing to discuss a zoning variance which has been applied for by the Guy Cooper Sisters.

The variance applies to property located in blocks 47, lots 14-15 in the original town addition of Gruver. The public hearing will be held on March 27, 1996 at 5:00 p.m. at the City Hall.

A.J. Ratliff, City Manager

NOTICE OF PUBLIC HEARING

The Planning and Zoning Commission of the City of Gruver will hold a public hearing to discuss amending the Zoning Ordinance to provide for a mobile home district and the placement of the district.

The hearing will be held on March 26, 1996 at 5:00 p.m. at the City Hall.

A.J. Ratliff, City Manager

FOR SALE: Country Home, Brick, 3BR, 2B, 2 Car Garage on 5 Acres. Lots of storage, storm shelter. Nice size home - large living area. Located between Sunray and Gruver, in Gruver School District. \$85,000. Call Ad Rem Land Co. at (806) 935-7364 or, evenings, Tom Ferguson, (806) 935-7408.

AA Realty

Spearman's ONLY locally owned and operated Realty.

Allen Alford - Broker 659-3034
Julie Martin - Broker 659-2425

1103 S. Townsend - 3/1/1, good location.
1010 Haney - 4/1/1 w/fireplace.
Hanger & Storage - Old Airport, REDUCED!!!
2 Lots at 7th & Barkley - Builder's Dream
160 Acres - SE of County

NEW LISTINGS

702 S. Bernice - 3/1/1, very clean
515 S. Evans - 3/2/1, two story
718 S. Bernice
1025 S. Townsend - 3/1/1/2, must see
621 S. Endicott - 3/2/2, clean & cozy
807 S. Haney - 3/1/1/2, great home, large lot

We'd Like Your Listing
FOR QUALITY & SERVICE CALL US TODAY!
Equal Housing Opportunity

HOMETOWN REALTY

Selling Spearman!
List your home with the Real Estate Professionals that the BUYERS call!

Rex Hoover - Broker • 800-755-4291
Larry Trospen - Sales • 659-3491
Diana Hoover - Sales • 658-9113

NEW LISTING: 202 S. Endicott - Rental property, make offer
NEW LISTING: 800 Wilmeth Drive - 2 vacant lots. Priced to sell.
NEW LISTING: 200 Acres Farm Ground; 1/2 of Minerals; Close to Spearman.

711 Collier - 3 bedroom, 1 bath, garage, central heat, PRICED TO SELL!

6 1/2 Miles West of Spearman - 2,894 sq. ft. home, 1 1/2 bath, fireplace, basement, 1/2 acres.

1013 Linn Drive - 2,400 sq. ft. 3 bedroom, 2 bath, fireplace, screened porch

730 Gibner - 1,900 sq. ft. 2 bed, 2 bath, beautiful fenced yard, storage building

4 Miles South of Spearman - 320 acres. Irrigated Farm Land

We need and appreciate your listings!

WANT ADS

MAKE US AN OFFER: Great brick home in great location. 2,200 sq. ft., 4 bedrooms, 3 baths, big den with fireplace, basement double car garage. 702 Gibner. Call and let's make a deal! 659-3838 or 733-5555.

FOR SALE OR LEASE: Former Anthony Electric building. Call 659-2819.

FOR SALE: Barn heated and fully insulated. Nice facility. Please call (806) 659-2117 or 3762. Located in Spearman.

FOR SALE: Vacation at home, wet bar, golf course, swimming pool, hot tub, 3 bedroom, 3 baths. All this can be yours at an affordable price. Call to see today. Real Estate and Rental. (806) 435-4623.

FOR SALE: 2,000 sq. ft. Brick, 4 bedroom, 1 3/4 bath, double garage, central air/heat, lots of improvements, 18x27 Morton building in back yard, new fence and gates. Call (home) 659-3071 or (work) 659-3072.

HELP WANTED: Semi truck drivers, CDL required. Must be 25 years old. Conventional new hopper bottom trailers. McCarty Trucking, 806/362-4807.

FOR RENT: 1 bedroom furnished apt. Call 659-3260.

FOR SALE: 1992 Suburban fully 4x4 fully loaded. Below loan value. White with gray interior. 733-2375.

FOR SALE: 1984 Ford Truck with 20' van and lift. V-8 diesel engine. Excellent condition. For more information call 659-2912 or 659-3434.

LAUNDRY SERVICE: Special - 60 cents a pound. Mon., Wed., and Fri. Family Laundry.

ROOF LEAKING? We have the answer. Conklin Roofing Systems. 1-800-359-3131.

WANTING TO BUY: Old Junk cars. Call Hank Salvage collect or anyway you can, and let me know if you got them. No motor necessary. (806) 435-2008.

REWARD: \$500 reward for information on 4 mudgrip tires with 6 hole aluminum wheels. Name or persons who took them out of the barn. Call 753-4511.

HELP WANTED: Outreach Health Services needs a provider in Spearman. Please Call 1-800-800-0697 EOE

HELP WANTED: OUTREACH HEALTH SERVICE WIC program now accepting applications for LVN in Perryton office. Must hold current license in State of Texas. 30% travel required. Please submit application to Frannie Nuttall, 514 S. Main, Perryton. 806-435-4908 or fax to 806-371-9515 EOE.

FOR RENT: 3 bedroom, 1 bath, 811 Roland. Call 659-2103.

HELP WANTED: Now taking applications for full or part time sales position. Anyone interested please apply in person at Lady Fair. 719 A.W. 7th, Spearman.

WANTED: Babysitting in my home, Monday-Friday. Have references. Call 733-9492 in Gruver.

RENT LOT: Trailer house lot for rent or sale. Call 659-2245.

621 S. Endicott: Charming brick home w/3BR, 1 3/4 Bath. Featured yard of the week in '95. For appointment call Julie Martin, 659-2425.

FOR SALE: Main Street Building located at 205 Main. Owner will finance. Call Gus McLain at 659-2274.

UPHOLSTERY
Home Furnishings and Office, Cars, Pickups, Trucks and Tractors
Recovering seats, headliners, etc.
B.G.'s Upholstery
(806) 659-3879

LOST: Large male greyhound. Has long fawn-colored hair. Last seen south of Farnsworth. Call (806) 435-5602.

GARAGE SALE: Saturday, March 16th, 9:00 a.m. -12:00 p.m. at #7 Glover Place in Spearman. Chair, radio-cassette player, white dresser w/mirror, playpen, bicycle, child's bed guard, comforters, bedspread, small end table, clothes, shoes. Call about specific items after 5:00 p.m. at 659-2215

FOR SALE: Matching couch and love-seat, blue. Excellent condition - \$600. Also, nice puppy, free to good home. Needs very loving family. Part German Sheppard. Call 659-9816.

FOR RENT: 1 bedroom house, furnished. Call Gus McLain at 659-2274.

HELP WANTED: RN position open. An exciting and progressively growing Gruver home health agency seeks a highly motivated, energetic individual who is dedicated to providing the highest level of care to patients. Employee benefits and sign on bonus available. Salary negotiable. Interested applicants mail resume to NORTH PLAINS HOME HEALTH, INC., P.O. BOX 709, PERRYTON, TEXAS 79070. Or call 800-996-2000.

FOR SALE: 1994 Mustang Coupe w/Air, Tilt, Cruise, Power Window, Door Locks & Seats, Mach Stereo, 28K Miles. Call 659-3431 after 6:00 pm.

FOR SALE
5 acres with a chain link fence all around and a 40' by 60' shop with offices in the front located at 1006 Industrial Road in the Cramford Addition in Spearman, Texas. For more information, call:
Dean or Jerry Sparks at (806) 733-2972 or (806) 733-2922
or
Hal Shufeldt at (806) 659-3821

GET THE CARD THAT EVERYONE IS TALKING ABOUT! MICHAEL JORDAN ROOKIE!
CALL 659-9816

Public Notice

INVITATION FOR BIDS

Sealed Proposals addressed to Jim Ratliff, City Manager for the City of Gruver, will be received at his office in the City Hall until 3:00 p.m. Wednesday, March 27, 1996 for the construction of approximately 26 blocks of street improvements entitled:

SEALCOATING - 1996
At this time and place the proposals will be publicly opened and read aloud. Any bid received after closing time will be returned unopened.

Contract Documents, including Plans and Specifications, are on file and may be examined without charge in the office of the City of Gruver, 108 E. Broadway, Gruver, Texas, telephone (806) 733-2424 and the offices of Brandt Engineers, Inc., Consulting Engineers, 4537 Canyon Drive, Amarillo, Texas 79110-2217, (806) 353-7233. Contract Documents, including plans and specifications may be procured from Brandt Engineers, Inc. at the above address as follows:

Cost: \$20.00 per set, NONREFUNDABLE

A cashier's check, certified check or acceptable bidder's bond, payable to the City of Gruver in an amount not less than five percent (5%) of the bid submitted, must accompany each bid as a guarantee that, if awarded the contract, the Bidder will, within fifteen (15) days after receipt of Notice of Award, enter into a contract and execute bonds on the forms provided in the Contract Documents.

Performance and Payment Bonds will be required.

In case of ambiguity or lack of clearness in stating proposal prices, the City of Gruver reserves the right to adopt the most advantageous construction thereof, or to reject any or all bids, and waive formalities. No bid may be withdrawn within thirty (30) days after date on which bids are opened.

CITY OF GRUVER
JIM RATLIFF, CITY MANAGER

INVITATION FOR BIDS

Sealed proposals addressed to Kelvin Knauf, City Manager for the City of Spearman, will be received at his office in the City Hall until 2:00 p.m. Wednesday, March 27, 1996 for the construction of approximately 65 blocks of street improvements entitled:

SEALCOATING - 1996
At this time and place the proposals will be publicly opened and read aloud. Any bid received after closing time will be returned unopened.

Contract Documents, including Plans and Specifications, are on file and may be examined without charge in the offices of the City of Spearman, 30 Southwest Court, Spearman, Texas, telephone (806) 659-2524, and the offices of Brandt Engineers, Inc., Consulting Engineers, 4537 Canyon Drive, Amarillo, Texas 79110. Telephone (806) 353-7233. Contract documents, including plans and specifications may be procured from Brandt Engineers, Inc. at the above address as follows:

Cost: \$20.00 per set, NONREFUNDABLE

A cashier's check, certified check or acceptable bidder's bond, payable to the City of Spearman in an amount not less than five (5%) percent of the bid submitted, must accompany each bid as a guarantee that, if awarded the contract, the Bidder will, within fifteen (15) days after receipt of Notice of Award, enter into a contract and execute bonds on the forms provided in the Contract Documents.

Performance and Payment Bonds will be required.

In case of ambiguity or lack of clearness in stating proposal prices, the City of Spearman reserves the right to adopt the most advantageous construction thereof, or to reject any or all bids, and waive formalities. No bid may be withdrawn within thirty (30) days after date on which bids are opened.

YOU work hard for your money. So, WHY rent? YOU can own your OWN HOME!!!
Let your money work for you.

Feature Home: 421 Dressen

- 3 bedroom
- 2 bath
- 1770 sq. ft.
- Close to the Jr. High & Grade School

Interstate Savings & Loan
322 Main • Spearman • (806) 659-2559

UPHOLSTERY
Home Furnishings and Office, Cars, Pickups, Trucks and Tractors
Recovering seats, headliners, etc.
B.G.'s Upholstery
(806) 659-3879

IRWIN'S MIDNIGHT MAGIC SALE
Friday, March 15th 'til Midnight

UNBELIEVABLE PRICES!

Lowest Prices You'll See in 1996!

Live Entertainment by Country Artist Dalene Herriman!

On The Spot GMAC Financing with approved credit!

R1500 Suburban LS (with Conversion Two-Tone)

R1500 Silverado Extended Cab Short-Box Pickup (with Optional Passenger Side Easy-Access)

Special Financing Opportunities Available

Choose From Our Excellent Selection of New Vehicles!

6-Suburbans • 5 - Z71 Extended Cab 4 wheel drive Pickups • 17 Extended Cab Pickups • 3 Door Extended Cab Chevy Pickups • Conversion Pickups • Pickups with 350 Vortex Motors • Much, Much More!

A Vast Selection of Used Vehicles to Choose from!

IRWIN AUTO CO.
409 S. Main, Perryton, Texas Save a Pot of Gold!

TexSCAN

Statewide Classified Advertising Network
More than 300 Texas newspapers for \$300. Call this newspaper for details.

ADOPTION
ADOPTION: LOVING FAMILY wish to adopt your newborn. Call anytime Jackie & John at 1-800-927-8668. It's illegal to be paid for anything beyond medical/legal expenses.

AUCTIONS/SHOWS
6TH ANNUAL PUBLIC collector car auction, Amarillo Fairgrounds, Saturday, April 6. Turn your classic into cash! To buy or sell, call 1-800-BID-1957. Auctioneer: HOTOPP: TX#10313.

BEEF MASTERS FOR sale. 46 heifers, 9 months to 16 months. Two-22 months. Semen for sale also. Call 210-334-8646 or 210-334-3777.

DIPERSION AUCTION MOULTON, TX. 3,500 sq ft home, 405 acres in 18 tracts, Angus cattle, equipment & machinery. Sells Sunday March 24. For brochure 918-250-2012. Williams & Williams, Realtors.

DRIVERS WANTED
DRIVER - TEAMS - IMMEDIATE opportunities. Driver for new US Freightways truckload division (formerly TNT Freightways). Average 5,500+ miles/wk, 1996 Conventional, top pay/benefits (USF) Comet Transport. Call: 1-800-770-3725.

DRIVERS - CALARK INTERNATIONAL offers great pay, benefits and the chance to get home more often! Must be 22 with CDL and HazMat endorsement. 1-800-950-8326.

DRIVERS: CONCERNED ABOUT your future? One of the nation's leading truckload carriers is hiring experienced solo drivers and experienced trainer & driver finishers for expanding fleet. Offering stable company, late model equipment. Satellite communication. Benefits: new rider policy, 1st day health coverage, prescription card, 401(k), stock purchase plan, nonmarried teams welcome. Call Werner Enterprises, 1-800-346-2818.

DRIVERS EXPERIENCED OR inexperienced North American Van Lines currently has owner operator openings (single-op & double-op) in relocation services, high value products & blanket wrap divisions. Tuition-free training! Tractor purchase programs, no trailer maintenance expense, pay for performance plans and much more! 1-800-348-2147 Dept. A-36.

DRIVERS - SINGLES/TEAMS - O/O lease program - no money down. Must meet DOT requirement. Late model walk-in. Call Arctic Express 1-800-927-0431.

DRIVERS - SOLO/TEAMS, \$2,000.00 sign on. Top teams earn \$104,000+, top trainers earn 70k+, major benefits/motel & deadhead pay. Covenant Transport 1-800-441-4394. Students call 1-800-338-6428.

DRIVERS WANTED. E.L. Powell & Sons, Tulsa, OK. We offer late model equipment, good insurance. 22%. One year verifiable flat bed experience. 918-446-4447. 1-800-444-3777.

NEW IMPROVED PAY package offered by Beech Trucking for regional drivers. Home every weekend. Start at 25¢ with monthly bonuses & benefits. Call 1-800-521-0649. EOE.

TRUCK DRIVERS NEEDED to operate 48 states. No Canada. Haul dry freight. No Haz-Mat. Excellent pay & benefits. Minimum 1yr OTR experience. Call Continental Express 1-800-695-4473.

EDUCATION
BECOME A PARALEGAL. Join one of America's fastest growing professions. Lawyer instructed home study. Specialty programs offered. P.C.D.I., Atlanta, Georgia. Free catalogue. 1-800-362-7070, Dept. LLCT22.

EMPLOYMENT
EUROPEAN LIVE-IN child care - culturally enriching, flexible, in-home, 45 hrs/wk; average \$197/wk per family, not per child. U.S. Government designated exchange program places well-screened, English speaking au pairs, 18-26 years old, with qualified host families. Call Sharon at 713-379-1365, or 1-800-713-2002.

FINANCIAL SERVICES
FREE DEBT CONSOLIDATION. Immediate relief! Too many debts? Overdue bills?

Reduce monthly payments 30%-50%. Eliminate interest. Stop collection callers. Restore credit. NCCS, nonprofit. 1-800-955-0412.

NOTES, ANNUITIES, LOTTERIES. Receiving payments? Get cash now! Colonial Financial, the nationwide leader since 1984. 1-800-969-1200.

FOR SALE
3 STEEL ARCH buildings, new, 40x30 was \$6,200 now \$2,990.00; 40x56 was \$10,250 now \$5,990; 50x146 was \$26,850 now \$14,990 end walls available 1-800-745-2685.

GARDEN TILLERS, TROY-Bilt Rear-Tine Tillers, at low, direct from the factory prices. For free catalog with prices, special savings now in effect and model guide, call toll free 1-800-535-6001, Dept. 19.

TANNING BEDS, WOLFF and Sunmaster. Factory direct to public. Eliminate middle man. Save hundreds. Money back guarantee. Home/commercial. Easy payments. Free catalog. 1-800-KEEP-A-TAN, 1-800-533-7282.

WOLFF TANNING BEDS. Tan at home. Buy direct and save! Commercial/home units from \$199.00. Low monthly payments. Free color catalog. Call today 1-800-842-1305.

HEALTH
20/20 WITHOUT GLASSES! Safe, rapid, non-surgical, permanent restoration in 6-8 weeks. Airline pilot developed. Doctor approved. Free information by mail: 1-800-422-7320 ext. 237, 406-961-5570, FAX 406-961-5577. Satisfaction guaranteed.

RAPID WEIGHT LOSS. Only \$17.95 - Burns fat, calories, stops hunger. Lose 3-5 pounds/week. Money back guaranteed. Call for information. United Pharmaceutical 1-800-733-3288 (C.O.D.'s accepted).

REAL ESTATE
GOT A CAMPGROUND membership or timeshare? We'll take it. America's most successful resort resale clearinghouse. Call Resort Sales information toll free hotline 1-800-423-5967.