



The Hansford County Reporter Statesman

PROUDLY SERVING HANSFORD COUNTY SINCE 1907

SCH2
COMP
HANSFORD COUNTY LIBRARY
0122 MAIN ST
SPEARMAN TX 79081-2064

reporter@spearmanreporter.com

VOLUME 100 • ISSUE 48 WWW.SPEARMANREPORTER.COM THURSDAY, DECEMBER 6, 2007

First Baptist Church of Spearman Presents "Experiencing God"

The Christmas season is, or should be, all about the birth of Jesus Christ, the promised Messiah. Our hearts, thoughts, and actions should be centered on the joyful celebration of that history-changing event and what it means to the life of every Christian around the world. The Sanctuary Choir of First Baptist Church is preparing its seasonal musical to be presented for morning worship Sunday, Dec. 9 at 11:00 A.M., but this year's project will not be "just another Christmas musical." In fact, one will have to listen closely to catch the embedded Christmas message, "Jesus is the one Isaiah spoke of when he prophesied 'A virgin will give birth to a son and call his name Immanuel.'"

Experiencing God, the Musical moves singers and listeners beyond the celebration of the birth of the Savior to what it means to truly experience God in one's life and to bring oneself in line with Him to know and do His will. The music is exciting; the narration is challenging; the production is dramatic and powerful. This is like nothing this choir has ever done before. Whether one has gone through the Experiencing God study or not, hearts are going to be touched.

How does this apply to Christmas? Well, without the miraculous birth of the baby Jesus followed by His earthly ministry culminating with His crucifixion, burial, and resurrection, where would any person be today in a relationship with a holy God? The premise of Experiencing God is knowing and doing the will of God. In the words of Henry Blackaby, the originator of the EG study, "Our greatest desire is that God's people encounter Him in a life-transforming way."

The choir presents this musical as an offering of worship. The choir is under the direction of Carol Pack. Featured singers are Shawn Farrar, Kathye Archer, Mike Pack, Teresa Pack, and a trio comprised of Debbie Stopper, Susan Kidder, and Becky Byers. Edward Beck will be the narrator. Pastor Jim Medley and the choir extend an invitation to everyone in the community and surrounding area to join the First Baptist Family to worship with Experiencing God, the Musical.

Weather Forecast

THURSDAY NIGHT - Mostly cloudy. Lows in the lower 30s. Southwest winds 10 to 15 mph shifting to the northwest after midnight.

FRIDAY - Mostly cloudy. Highs in the lower 50s. Light and variable winds becoming southeast around 10 mph in the afternoon.

FRIDAY NIGHT - Partly cloudy. Lows in the lower 30s. Southeast winds 10 to 15 mph.

SATURDAY - Mostly cloudy. Highs in the upper 50s.

SATURDAY NIGHT - Mostly cloudy. Slight chance of rain - light freezing rain - snow and light sleet in the evening - then a slight chance of snow and light freezing rain after midnight. Lows around 20. Chance of precipitation 20 percent.

SUNDAY - Mostly cloudy. Slight chance of snow and light freezing rain in the morning - then a slight chance of rain - light freezing rain - snow and light sleet in the afternoon. Colder. Highs in the mid 30s. Chance of precipitation 20 percent.

SUNDAY NIGHT - Mostly cloudy. Slight chance of snow and light freezing rain in the evening - then a slight chance of snow after midnight. Lows in the lower 20s. Chance of precipitation 20 percent.

MONDAY - Mostly cloudy. Slight chance of rain - light freezing rain - snow and light sleet in the morning - then a slight chance of rain in the afternoon. Highs in the mid 40s. Chance of precipitation 20 percent.

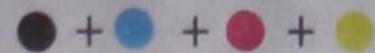
COME TO THE GAME

Spearman Lynx/Lynxettes

12/6-8 VG, VB at Vernon Varsity Tourney
12/6-8 JVG, JVB at Spearman JV Tourney
12/10 7B (5), 8B (6), 9B (7:30) at Stratford
12/10 7G (5), 8G (6), 9G (7:30) vs. Stratford
12/11 JVG (5), VG (6:30), JVB (5), VB (8) at Dalhart
12/13-15 JVB at River Road Tourney
12/14 JVG (4), VG (6:30), VB (8) at Gruver
12/27-29 VG & VB at Lubbock Caprock Tourney
12/31 JVG (12 noon), JVB (1:30), VG (2:30), VB (4:30) vs. Follett

Gruver Greyhounds/Lady Hounds

12/6-8 VG, VB at Hugoton, KS Varsity Tourney
12/6-8 JVG, JVB at Spearman JV Tourney
12/10 7B (5), 8B (6:15) vs. Sunray
12/10 7G (5), 8G (6:15) at Sunray
12/14 JVG (4), VG (6:30), VB (8) vs. Spearman
12/20 JVG(5), JVB (5), VG (6:30), VB (8) at Canadian
12/27-29 VG & VB at Canadian Tourney



Spearman FFA Leadership Team Qualifies for Area Competition



Spearman FFA Senior Chapter Conducting Team - (L-R) Blayne Baker, Amy Boyd, Chance Pack, Tate Batton, Jake Leicht and Jeremy Frost

On Saturday, November 10, 2007 the Spearman FFA Leadership teams competed at the Top-of-Texas District FFA Leadership Development Events hosted by Frank Phillips College in Borger, Texas.

Schools represented at this District competition were Spearman, Perryton, Booker, Darrouzett, Follett, Higgins, Canadian, Ft. Elliot, Wheeler, Miami, Pampa, White Deer, and Sunray. Spearman participated in three team events and two individual events.

The Senior Chapter Conducting Team of Chance Pack, Blayne Baker, Amy Boyd, Tate Batton, Jeremy Frost and Jake Leicht finished in 1st place and qualified for the Area

Contest.

The Junior Chapter Conducting Team placed second and also qualified for the Area Contest. Team members of the Junior Chapter Conducting Team are Cody Benton, Edgar Castillo, Ramon Garcia, Matthew Jarvis, Jose Mendoza, Sawyer Sutterfield, Blayne Schroeder, and Martin Vela.

Spearman also entered a team in the Quiz Team and finished in 5th place. Team members are Juan Aguilera, Stevie Couch, Shylah Sparks and Seth Salgado.

In individual events Stevie Couch placed third, and Juan Aguilera placed fifth as a Greenhand Creed Speaker.

The first two places at District advance to Area Competition to be held on Saturday, November 17th at West Texas A&M University. At this contest the first and second place teams will earn a trip to the State Contest.

The Spearman FFA is under the direction of Keith Park who serves as Chapter Advisor. Dr. Park is in his first year at Spearman ISD and has worked as an agriculture science teacher in four states and has twenty-four years of teaching experience. Dr. Park said that his goal is to bring back some of the old traditions that Spearman FFA is known for.

Gruver State Bank Announces Promotions

The Board of Directors of the Gruver State Bank in Gruver, TX recently announced the promotion of K. Kyle Irwin to President & CEO.

K. Kyle Irwin is a Gruver native and a Texas Tech graduate. He started his banking career with Boatman's Bank in Amarillo and then worked for Bank of Amarillo. He has been with Gruver State Bank for nine years.

Kenneth Irwin, a 57-year veteran of Gruver State Bank, will retain his present title of Chairman, President & CEO of the holding company and its subsidiaries.

Other promotions included Steven (Buster) Davis to Exec. Vice President, Teague Winger to Sr. V.P. & Cashier, Cathy Davis to V.P. & Compliance Officer, and Trisha Fitzgearld to Sr. Executive Secretary.

Steven (Buster) Davis is a Gruver native and a West Texas A&M graduate. He has been with Gruver State Bank for 19 years.

Teague Winger is a Texas Tech Graduate, has a masters degree in business from Southwest Oklahoma State University and has been with the bank for 24 years.

Cathy Davis is a 13-year employee of the bank and had prior banking experience with an area bank.

Trisha Fitzgearld has been with Gruver State Bank for 18 years.



Pictured at right - K. Kyle Irwin

Merry CHRISTMAS

Operation Christmas Greeting

The Hansford Hospital Auxiliary has begun their yearly fundraiser - Operation Christmas Greeting. Instead of mailing greeting cards, individuals who wish to, may donate money to the Hansford Hospital Auxiliary and have their greeting published in this paper. The money is used to purchase equipment and supplies that are not budgeted at the Hospital and Manor.

If you would like to participate in this holiday greeting, please mail your donation to: Operation Christmas Greeting, Chairman Judy Nelson, 130 Nelson Road, Spearman, Texas 79081. Checks should be made to Hansford Hospital Auxiliary and marked Operation Christmas Greeting. Thank you so much for supporting this fundraiser.

Letters to Santa

The Hansford County Reporter-Statesman will print Letters to Santa from children in Hansford County in our annual Christmas edition, which will be published on December 20th.

Letters may be mailed to: Santa Letter, % Reporter-Statesman, 213 Main Street, Spearman, TX 79081, or dropped by the Reporter-Statesman office. Office hours are Monday-Thursday, 9 a.m.-12 noon and 1-5 p.m. (There is a drop-slot located in the window to the right of the door.)

In order for your letter to appear in this issue, it must be in the Reporter-Statesman office by 5 p.m. on Thursday, December 13th. All letters will be forwarded to Santa. (Letters received after the deadline may not have time to reach the North Pole by Christmas.)

Lullabies, Legends & Lies

by Parson Smith, the Prime Minister of Laughter

My daughter's father-in-law, John McNulty, is a Police Officer in Boston, MA. When I read the story about Warren G. Whitelighting (real name) of Crandon, WI, I knew that I would have to share the story with him AND you. Seems that Mr. Whitelighting stole a Krispy Kreme Doughnut truck while trying to get away from the police after stealing some weenies. (This stuff is too good to make up.)

According to The Capitol Times of Madison, WI, "Whitelighting was officially charged in Dane County Circuit Court today in a criminal complaint alleging several offenses. He is being charged with shoplifting eight giant red hot pickled sausages from the Open Pantry on University Avenue, stealing the doughnut truck, ramming a University of Wisconsin Police car, attempting to elude pursuing officers, operating after rev-

ocation, his fourth time drunk driving, and a hit and run." John, I am guessing that you have never been in a high speed pursuit of a doughnut truck. But if such a chase every does occur, call me collect and I will run the story for free. Oh yea... tell Anne thanks for the wonderful dinner last month.

Until the next time,
God bless.

State Capital HIGHLIGHTS

AUSTIN - Speaker Tom Craddick on Nov. 28 and 29 released lists of legislative interim charges for House committees to study and report on before the 81st Legislature convenes on Jan. 13, 2009.

- Here are only a few of the dozens of subjects our lawmakers will be taking a close look at in their respective committees:
- Identity theft;
 - Voter fraud;
 - College scholarships and student support programs;
 - Creation, use, maintenance and preservation of electronic documents;
 - Economic development and job growth programs;
 - Immigration enforcement and border security;
 - Jury service by citizens;
 - Protection of homebuyers in mortgage fraud schemes; and
 - State employee pay and benefit packages.

Texas House will see new faces

Change is certain in at least seven the 150 seats of the Texas House of Representatives.

Not seeking re-election are state Reps. Dianne White Delisi, R-Temple; Robby Cook, D-Eagle Lake; Mike Krusee, R-Round Rock; Fred Hill, R-Richardson; and Mike O'Day, R-Pearland.

State Rep. Anna Mowery, R-Fort Worth, already resigned, and will be replaced in a Dec. 18 special election runoff to fill her vacant seat.

State Rep. Robert Talton, R-Pasadena, gave up his seat to run for Congress. He is seeking his party's nomination for U.S. Congressional Dist. 22, the seat held from 1984-2006 by former U.S. House Majority Leader Tom DeLay. Now holding the seat

is U.S. Rep. Nick Lampson, D-Stafford.

State Rep. Rick Noriega, D-Houston, on Dec. 3 announced he will seek his party's nomination to run against incumbent U.S. Sen. John Cornyn, R-San Antonio.

As far as can be discerned at this point, all sitting state senators intend to hold onto their seats.

Christmas trees arrive at Capitol

On Nov. 28, the state Capitol received shipment of three evergreen trees from a Texas farm in Palestine, including one called "The Angel Tree."

According to House Speaker Tom Craddick's office, the Angel Tree will be decorated with gift tags for 115 foster children currently under the care of Child Protective Services. The tree is on display in the Capitol Extension outside the Capitol Grill cafeteria.

The other two trees will be placed in the governor's and the lieutenant governor's reception rooms.

Record year 2007 looks like record

Agriculture Commissioner Todd Staples announced on Nov. 29 record agriculture production estimates for 2007.

For the first time in history, he said, projections show the Texas agriculture industry will surpass \$100 billion in economic impact for the state. The previous high was \$85 billion in 2004.

Some of the largest increases this year are from crops used to produce biofuels. Production of grain sorghum was up 440 percent compared with last year, while corn production

increased 91 percent, Staples said.

No steroid testing firm named yet

Last spring, the Legislature passed Senate Bill 8, a law requiring random drug testing of Texas high school student athletes, regardless of sport, gender or participation level.

Nearly three-quarters of a million Texas high school students participate in athletics.

The random testing, with oversight by the University Interscholastic League, was supposed to begin in the current school year, but did not, and the UIL has not awarded the testing contract.

The UIL did say Nov. 28 its list of banned steroids will mirror the NCAA's banned anabolic agent list, which contains the names of more than 25 drugs.

TxDOT warns holiday shoppers

'Tis the season to prevent vehicle thieving.

Two holiday season public service announcements by the Texas Department of Transportation remind citizens to lock their vehicles.

In the announcement titled "Open Your Presents First," a man is pictured breaking into a car. The other announcement has a banner that reads, "To a Thief, These Are Holiday Store Windows," and shows cars in a typical parking lot scene.

Group names Perry chairman

The Republican Governors Association elected Texas Gov. Rick Perry chairman for 2008 at the group's annual meeting Nov. 30 at Dana Point, Calif.

Pringle-Morse CISD Board of Trustees Attends Seminar

Board Trustees Carolyn Shields, Jon Mark Tolleson, Robin Wilson and Superintendent Kent Hargis of Pringle-Morse CISD attended the Fall Legal Seminar hosted by Texas Association of School Boards in Amarillo on November 14th. The full-day training event, conducted by Association attorneys, offered guidance in complying with education laws, solutions to potential legal problems, and suggestions on effective district gover-

nance. School board members, administrators, and school law attorneys in attendance received information on how to handle difficult issues that may arise in district operations and gained practical advice to avoid legal pitfalls.

Topics included district compliance with open meetings laws and assignment of school personnel. Other sessions discussed extracurricular activities and resolving disputes. The closing session addressed the latest and

most important changes in school law to ensure that Texas districts are up to date.

TASB is a nonprofit organization established in 1949 to serve local public school districts. School board members are the largest group of publicly elected officials in the state. The districts that represent serve more than 4.5 million public school students.

Thank You!

I would like to thank the Spearman Volunteer Fire Department for their help in rescuing my cat out of a tree. The cat had been missing for four days when it was discovered in a neighbor's tree. John Kunselman, Ron Antalek and Roger Close were wonderful and were able to save Mogly.

Thanks again,
Carla Byrd

Thank You!

I would like to thank everyone who helped make the Gladiola Flower Club Home Tour a success. Thanks again,
M. Evans, Publicity Chairman
Gladiola Flower Club

SUDOKU
PRESENTED BY
VolunteerMatch.org
Where volunteering begins.

	6	5		4	3			
			1	2	9			
1					2			
	2			1				6
		4		5				
5		9			8			
	8						7	
	3	2	4					
7	4			6	1			

© 2007, StatePoint Media, Inc. answer on classified page
Fill in the blank squares in the grid, making sure that every row, column and 3-by-3 box includes all digits 1 through 9.

FREE DIRECTV 4 ROOM SYSTEM!
CHECKS ACCEPTED!
250+ CHANNELS!
Starts \$29.99
FREE HBO+Cinemax+ Showtime+Starz 3 Months!
FREE DVR/HD!
We're Local Installers!
1-800-214-7110

DEFIBRILLATOR DEATH
EXPERIENCE COUNTS
Lawyers with over 85 years combined expertise.

Medtronic®, the largest manufacturer of heart implant devices, withdrew its defibrillator from the market because of a defect in the electrical lead. Known as Sprint Fidelis®, these leads have sent severe electric shock to the hearts of some patients, possibly resulting in deaths. If you or a loved one has been harmed by the Medtronic® defibrillator, call us for professional insight.

Ryan A. Krebs, M.D., J.D.
Doctor-Lawyer in Full-time Law Practice
Richard A. Dodd, L.C.
Timothy R. Cappolino, P.C.
Recent Certified Personal Injury Trial Law and Civil Trial Law by the Texas Board of Legal Specialization - NO FEE FOR FIRST VISIT
CAMERON, TEXAS

1-800-460-0606
www.DefectiveDrugsLaw.com

MOVIE CHARACTERS

- ACROSS**
- Abbreviated school course
 - Robinson in "The Graduate"
 - "When the tail _____ the dog"
 - Bulgarian money
 - Show off
 - Bettie Page, e.g.
 - Julia Roberts' Oscar-winning role
 - Storm in "Fantastic Four" movie
 - Pleasant odor
 - Hepburn's Holly
 - Less than average tide
 - Liquorice flavor
 - A disorder more common in boys
 - Team symbol
 - Jack of the Caribbean
 - How many of the President's men?
 - Cereal grain
 - Distinctive but intangible quality surrounding someone
 - Not a person or thing but it's also a noun
 - Uh-huh
 - "Sink or _____" when he does it
 - Short for linoleum
 - Elusive character Jason
 - Surf turf
 - Board a train
 - One who leaves one country for another
- DOWN**
- Horsefly
 - Spiderman or Batman, e.g.
 - Austin Powers' antagonist
 - Hannibal Lecter, e.g.
 - Left behind by snakes
 - Russian money
 - Remain in place
 - Draw out in great length
 - Dwarf buffalo
 - All American footballer, war hero and famous shrimper, among other things
 - Masseuse's office
 - Island made famous by Stevenson and Gauguin
 - Bear of bamboo forest

These games are brought to you by the Hansford County Reporter-Statesman

- Creature resembling tiny old man
- Mentally quick
- Syrup producer
- "_____ the Family"
- Biased perspective
- Often done to Ahi
- Repenting or regretting
- Abalone found near Channel Islands
- Useless activity
- French city known for silk production
- Romanian money
- The Godfather
- Prevalent on the interstate
- Kids' shirt saver
- He directed "Four Weddings and a Funeral"
- Carries blood from heart to arteries
- Produced by breeding within
- Capital of Morocco
- Manicurist's board
- She was interrupted in 1999 movie
- Margarine
- Jellies seeded cousins?
- Seep
- Female Norse deity
- June 6, 1944
- _____ de deux

CROSSWORD

1	2	3	4	5	6	7	8	9	10	11		
12				13				14				
15				16				17				
18				19				20				
			21				22					
23	24	25				26			27	28	29	
30				31		32	33			34		
35				36			37			38		
39						40			41		42	
43						44			45		46	
						47			48	49		
50	51					52				53	54	55
56						57				58		
59						60				61		
62						63				64		

PRESENTED BY
VolunteerMatch.org
Where volunteering begins.

© 2007, StatePoint Media, Inc. answer on classified page

The Hansford County Reporter-Statesman
213 Main Street • Spearman, TX 79081
Phone - (806) 659-3434 • Fax - (806) 398-9080
www.spearmanreporter.com
reporter@spearmanreporter.com
cathysmith@valornet.com
Mon.-Thurs. 9 a.m.-12 p.m., Mon.-Wed. & 1-5 p.m.
Closed Thurs. afternoon and all day Fri., Sat. & Sun.

Gary Smith - Publisher Catherine Smith - Editor
Contributing Writers: Dorothy Hudson, Jim Derington, Merry Sparks, Cecil Biggers
Contributing Photographer: Charlie Johnson

Subscription Rates
In Hansford County - \$30.00 • Out of County - \$40.00

The Hansford County Reporter-Statesman (USPS 529660) is published weekly in Spearman, TX. Periodical postage paid in Spearman, TX. POSTMASTER: Send address changes to: The Hansford County Reporter-Statesman, 213 Main Street, Spearman, TX 79081.

Publication Policy
The deadline to submit news and advertising to The Hansford County Reporter-Statesman is Monday at 5 p.m. Items submitted after the deadline will be published at a later date, as time and space permit. Publication of all items is at the discretion of the editor.

Advertising
Open Display rates are \$4.00 per column inch. Classified Ads are \$6 for the first 25 words and 10¢ per word for each additional word. (Additional charge for boxed classifieds.) There is a \$1 charge per week if billed.

Member of
Gruver Chamber of Commerce
Spearman Chamber of Commerce
Texas Press Association and Panhandle Press Association

TA **TEXAS PRESS ASSOCIATION** **AWARD WINNER**

Happy Birthday!

Editor's Note: This Happy Birthday list is run as a public service by the Hansford County Reporter-Statesman. We apologize if any names are misspelled. If you know of a name that needs to be changed, added or deleted, please call 659-3434.

Thank you, Catherine

December 7

Birthdays - Sheldon Atwood, Brenda Bayless, Janell Haefner, Bret Hobbs, Cynthia Williams, Emily Williams, C.L. Pierce, Sue Bowling, Carlee Dixon, H.E. Jenkins, Thane McCloy, Zach Gallimore, Dusty Hodge, Beth Dudley, Beverly Antalek

Anniversaries - M/M Willard McCloy

December 8

Birthdays - Stan TeBeest, Reynaldo Garza, Lawrence Tindell, Scott Slater, Hershel Jones, Carmen Arjona, Jason Holton, Michelle Cook Kaman, Theresa Davis, Tim Weldon, Bruce Stinson, Morgan Lackey, LaVerne Parks

December 9

Birthdays - Clayton Smith, Grant Odom, Matt Overbey, Marlene Winger, J.H. Campbell Jr., Gail Vanlandingham, Elodia Flores, Melana Papay, Shawn Cook, Juan Garcia Jr., Elda DeSantiago, Maddie Rose Stork

Anniversaries - M/M Don Knox

December 10

Birthdays - Pat Barkley, Akiko Bort, Marilyn Hart, Harold King, Brent Pittman, Aaron Jackson, Kayla Pletcher, Donald Platt, Kay Barnes, Lelia Bynum, Phyllis Collins, Linda Bartz, Bryce Reed Jarvis, Serina Diaz, Brent Wagner

Anniversaries - M/M John Sprigg, M/M Mark Irwin

December 11

Birthdays - Kasey Davis, Manella Kiser, Dana Steele, Phillip Renner, Maria Martinez, Florence Fletcher, Jim Evans, Betty Dunaway

Anniversaries - M/M Jess Wood, Irene & Butch Baker

December 12

Birthdays - Gene Fletcher, Kaisi Foster, Claudia Barton, Olga Cantu, Mary Ann Martin, Jana (Pittman) Ivey, Babara Ring, Daniel Ochoa, Don Reed, Chance Johnson, Ivin Boyd, Christine Brandvik, Omar Favela, Guadalupe Trejo, Freddy Walton, Marvin Wilkerson, Justin Boyd, Brandon Sauz

Anniversaries - M/M Jon King, M/M John Lopez, Charles & Melanie Elliott

December 13

Birthdays - Betty Burk, James Burk Jr., Holly McCloy, Barbara Schnell, Muriel Boyd, Linda Butt, Bobby Smith, Jack Reed, Georgena Hart, Dan Roach, Dana Wattier, Robert Zamora, Marilyn Cline, Blythe Finley, Leah Smith

Anniversaries - M/M Kurt Bynum

December 14

Birthdays - Bradley Clawson, Ray Etter, Todd Parker, Penny Ralston, Barbara Stavlo, Elaine Odegaard, Ron Schmehr, Bradley Sanders, Lynn Cook, Sandra Grover, Eddie Herrington, Cale Curry, Amy

Gift, Betty Redwine

Anniversaries - M/M Don Maize, M/M Chris Stork

December 15

Birthdays - Dallas Henson, Harvey Profit, Hal Shufeldt, April Davis, Carolyn Davidson, Bob Pearson, Abbe Steger, Clarence Eller, Rosa Pierce, Stephanie Crossland, Donny Davis, Maria Ortiz, Jennie Jones, Jose Vargas, Jim Norton, Joey Bynum, Randall Sauer, LeAnn Shields, Eric Vasquez, April DeLaRosa

December 16

Birthdays - Linda Lackey, Clint Patterson, Marty Bennett, Melanie Clausen, Jennifer Hughes

Anniversaries - M/M Byron Kenney, M/M George P. Odom, M/M John Purvines

December 17

Birthdays - Bobbie Novak, Patsy Bevil, Sergio Favela, Charles Kruse, Stephanie TeBeest, Brandy Urban, Lupe Guero, Francis Floyd, Viola Hutton, Russell Shaver, Lorene Raiz, Charles Layton, Sandi Rich, Michael Park, Pam Cassidy, Jimmy Traylor, Stephanie Tyler, Art Maestas

Anniversaries - M/M Bill Park, M/M Rick Finley, Steve & Karen Hartgraves

December 18

Birthdays - Jimmy Faren, Ronnie Schaefer, Cassie Butt, Malory Martin, Ben Gruber, Monalisa Garcia, Juanita Vera

Anniversaries - Tom & Rita Reed, M/M Dwayne Hart, M/M Dave Karlin

December 19

Birthdays - Steve Bevil, Jim Norton, Steve Watkins, Fausto Ruiz, Betty Vernon, Georgia Gaither, Nan Nicholson, Irene Reed, Sara Dossett, Pat Dear, Gwen McLain, Ford McIntyre, Zachary Brelans, Billy Jo Miesner, Delphine Etling, Cindy Walton, Ruby Katherine Thornton

Anniversaries - Frank & Carol Lemons, Earl & June Spencer, M/M Roy Diaz, Kyle & Jennifer Nollner

December 20

Birthdays - Harletta Carthel, Doug Garrett, Esmeralda Renteria, Bill Turner, Peggy Papay, Charles West, Quentin Hayes, Brittini Beedy Sanders, Alicia Nikolas, Lexie Woodward, Mary Webster, Quentin Harper, Paul Henry Renteria, Brock Schroeder, Megan Evans

Anniversaries - M/M William Porter, Sam & Brenda Pierson, Gary and Cathy Smith, M/M Dale Jones

December 21

Birthdays - Lidwine Carpiaux, Cammie Steele, Anita Ruiz, Linda Garnett, Dallasene Reynolds, Eddy Rojas, Thomas Rodriguez, Johnny Kenny, Terry Womble, Chunky Blackburn, Betty Clifford, Nick Dettmann, Clyde Conley, Michael James Renteria, Robert Dahl, Cheryl Evans, Elaine Bain

Anniversaries - M/M Wayne Cummings, Doris & Danny Hendricks, M/M Bob Tolleson, M/M Kenneth Slough, M/M Steve Duncan, M/M Roy Kauffman, Toby & Sally Thomas

Words from Faith & Grace

by Cecil R. Biggers, Lutheran Lay Minister

In the Season of Advent we experience Hope, Peace, Love and Joy. This week we study Isaiah 11:1-10, Psalm 72:1-7, 18-19, Romans 15:4-13, and Matthew 3:1-12. Isaiah foretells the coming of the Godly King, the Prince of Peace. He shall be endowed with the seven-fold gifts of the Spirit of God-The Spirit shall rest upon Him; He shall have wisdom and understanding (he shall be a judge of his people); He shall have the spirit of counsel and might (he shall have military power); He shall have the spirit of knowledge and fear of the Lord (he shall have all spiritual power). This King shall be the salvation of all peoples. As Isaiah writes, the Jews have been fighting for forty years. Isaiah is tired of war and he eagerly awaits this promise of God. The Psalmist sings the peoples desire for an end to evil, injustice, want and oppression; he sings of the desire for peace.

Paul writes that the faith community must act in unity and be marked by consideration for each other, by scripture study for mutual encouragement, by "hupomene" a spirit of fortitude and perseverance, by hope, by harmony of purpose, and by praise of God. The faith community should be marked by inclusiveness. Those who are strong in faith should not lord it over those who are weaker. All believers should be welcome-Jew or Gentile, rich or poor, man or woman, slave or free. Dear Christian we are not called to a miserable obedience to God's law but by God's grace we, as Christians, should enjoy life because we enjoy God.

After 400 years of silence, the voice of a prophet cries from the wilderness, "Repent for the Kingdom of Heaven has come near!" John the Baptist appears to make the paths straight for the King. John warns those who come from the cities to the desert to hear him that Abraham's faith is not enough to save them from the wrath of God; they themselves must bear fruit of repentance. What then is "repentance"? To John the Baptist repentance involved recognizing one's act as sin, being truly remorseful for the act, desisting from repeating the act, making restitution for the act if possible, and confessing the act to God. The Jewish word for "repent" is "teshuva" which indicates "to turn". The promise of God is that if the sinner repents, God will forgive and forget; the danger is that without repentance, the wage of sin is death. The Jewish tradition was that if all of Israel could truly repent for just one day, the Messiah would come. Our tradition holds that we, as Christians, are in need to be "baptized" daily. That is, we need to daily repent, confess our sin and experience the life-giving forgiveness of God.

In this Season of Advent, as we prepare for the Coming of Christ and to celebrate His birth, may the God of hope fill you with all joy and peace in believing, so that you may abound in hope by the power of the Holy Spirit.

Our Sympathy

JOHN RUSSELL KNUDSON

AMARILLO - John Russell Knudson, 60, of Amarillo, died Sunday, March 4, 2007.

Services were at 10 a.m. Wednesday, March 7, 2007 in Westcliff Bible Church with Steven Waterhouse, pastor, officiating. Burial was in Oslo Lutheran Cemetery. Arrangements were by Boxwell Brothers Funeral Directors, 2800 Paramount Blvd.

Mr. Knudson was born December 16, 1946, in Amarillo to Jodie and Ruth Britson Knudson. He grew up in Gruver prior to moving and attending College at Tarleton State University. He worked at Boys Ranch in the Ag. Dept., then was correctional official at the Neal Unit and substitute teacher at AISD.

He was preceded in death by his father; a brother, Thomas Roy Knudson; and a sister, Sharon Saltzman of Spearman.

Survivors include his wife, Betty Gibson Knudson; two sons, Kory Knudson and wife Michelle of Oregon and Jeremy Knudson of Washington; three stepdaughters, Tessa of Woodward, Okla., Michelle Lowery of Lake Worth and Leigh Link and husband Buddy of Amarillo; a stepson, Richard Lowery Jr. of Amarillo; two sisters, Janice and Charlie Porter of Troy and Judy and Barry Golf of Eagle, Idaho; his mother, Ruth Knudson of Spearman; five granddaughters, Ashley, Darian, Gabrielle, Danielle and Jordan; three grandsons, Hayden, Joshua and Gavin; and numerous nieces and nephews.

The family suggests memorials be to Sharing Hope Ministries, Inc., P.O. Box 19985, Amarillo, TX 79114.

Deadline Notice!

The deadline to submit news and advertising to the Hansford County Reporter-Statesman is Monday at 5 p.m. Items submitted after the deadline will be published at a later date, as time and space permit.

Items may be submitted by phone (806-659-3434), fax (806-398-9080), mail (Reporter-Statesman, 213 Main Street, Spearman TX 79081), or e-mail (reporter@spearmanreporter.com).

Are you interested in a job opportunity with strong earnings potential, great benefits and rapid growth?

Diesel Mechanic and Locomotive Electronic Technician positions are now available in your area as well as many other locations. To learn more about opportunities available with North America's largest railroad visit www.unionpacific.jobs (select "View Open Positions").



An Equal Opportunity Employer

MONUMENTS

Boxwell Brothers Funeral Home

519 Evans • Spearman
659-3802

Dear friends,
When you buy a monument from us we make sure it is exactly what you want at a price you can afford. If it is not right, we will make it right. And you will not have to search the countryside to find us. We are here when you have a need.

Sincerely,
Bob Boxwell

Put the **Akhe** in PAIN RELIEF

Pain relief for arthritis, back pain and muscle soreness

ARTRITIS PAIN
BACK PAIN
MUSCLE PAIN

MAXIMUM STRENGTH THERA-GE-SIC

Penetrating Pain Relief

Replenish the seed of faith through . . . DAILY BIBLE READING, PRAYER & REGULAR CHURCH ATTENDANCE

- | | | | |
|---|--|---|---|
| <p>Spearman</p> <p>Apostolic Faith Church
822 S. Dressen • 659-2870
Sunday School: 10 a.m.
Worship Service: 11 a.m.
Sun. Eve.: 6 p.m.
Wed. Prayer Mtg: 7 p.m.
Pastor - Roland Haney</p> <p>First Assembly of God
401 N. Bernice • 659-2295
Sunday School: 9:30 a.m.
Worship: 10:35 a.m.
Kid's Church: 10:35 a.m.
Evening Worship: 6 p.m.
Wed. Worship: 7 p.m.
Wed. Youth: 7 p.m.
Pastor - Bob Elder</p> <p>First Christian Church (Disciples of Christ)
29 S. Bernice • 659-2036
Sunday School: 9:45 a.m.
Worship: 10:50 a.m.
Minister -</p> <p>First Baptist Church
123 N. Bernice • 659-5557
Sunday School: 9:45 a.m.
Worship: 11 a.m.
Evening Worship: 7 p.m.
Men's Bible Study - Wed., 7 a.m.
Children's Choir - Wed, 6 p.m.
Adult Choir - Wed, 7 p.m.
Wed. Bible Study: 7 p.m.
Pastor - Jim Medley</p> <p>Church of Christ
121 S. Haney • 659-3244
Sunday Bible Class: 9:45 a.m.
Worship: 10:30 a.m.
Evening Worship: 6 p.m.
Bible Study Wed.: 7:30 p.m.</p> | <p>Sacred Heart Catholic Church
901 Roland • 659-2792
Sat. Night Mass: 5:30 p.m.
Sun. Mass: 9 a.m. - English
Sun. Mass: 11:30 - Spanish
1:30 p.m. - Gruver - Christof Rendtorf
Rendtorf Mass - Spanish
Rev. Guillermo Morales</p> <p>First United Methodist
407 S. Haney • 659-5503
Sunday School: 9:45 a.m.
Worship: 8:30 & 11 a.m.
Jr. High Youth: 5 p.m. Sunday
High School: 6 p.m. Sunday
Kids Club: 3 p.m. Wed.
Pastor - Neely Landrum</p> <p>Grace Presbyterian Church (Worships with Faith Lutheran Church)
1101 Bernice • 659-2033
Pastor - Beverly Cook</p> <p>Faith Lutheran Church (ELCA)
1101 Bernice • 659-2252
Sunday School: 9:45 a.m.
Worship: 11 a.m.
(Worships with Grace Presbyterian Church)
Pastor - Beverly Cook</p> <p>Union Church
31 S. Endicott • 659-2644
Sunday School: 9:45 a.m.
Worship: 10:45 a.m.
Evening Worship: 6 p.m.
Bible Study: 7 p.m. Wed
Pastor - Dr. Timothy Minor</p> <p>Fellowship Baptist
1102 S. Archer • 659-2783
Sunday School: 10 a.m.
Worship: 11 a.m.
Sun. Evening Worship: 6 p.m.
Youth/Adult Service: 7:30 Wed.
Pastor - James Washburn</p> | <p>Primera Mision Bautista
502 E. 7th • 659-3991
Sunday School: 9:45 a.m.
Worship: 11 a.m.;
Evening: 6 p.m.
Wed. Prayer Meeting: 7 p.m.
Thurs. Visitation: 7 p.m.
Pastor Joe Garcia Jr.</p> <p>El Aposento Alto U.P.C.I.
1105 S. Roland
Domingos: Escuela-Dominical - 10 a.m.
Culto Evangelistico - 7 p.m.
Jueves: Oracion - 8 p.m.
Mier. Estudio Biblico - 7 p.m.
Pastor - A.G. Martell
(806) 659-2153</p> | <p>Gruver United Methodist
Broadway & Garrett
733-2651
Sunday School: 9:45 a.m.
Worship: 8:30 & 10:50 a.m.
Eve. Worship & UMY: 6 p.m.
Pastor - George Price</p> <p>Spanish Cristo Redentor Church
Sunday Mass: 1:30 p.m.
Friday Evening Mass
Summer - 8:00 p.m.
Fall/Winter - 7:30 p.m.</p> |
| <p>Oslo</p> <p>Oslo Lutheran Church (ELCA)
6 Miles West & 12 Miles
North of Gruver
Sunday School: 9:45 a.m.
Worship: 11 a.m.
Pastor - Arlen Lloyd</p> | <p>Morse</p> <p>Morse Baptist Church
733-2757
Pastor - Mike Martin</p> | <p>He has showed you, O man, what is good. And what does the LORD require of you? To act justly and to love mercy and to walk humbly with your God.
Micah 6:8</p> | |

SIGN UP FOR A FREE SCOOTER

One Scooter Given Away Each Month

Toll Free 800-606-9860

Free 800-606-9860

Med Care MEDICAL SUPPLY

www.medcaremedicalsupply.com

Med Care MEDICAL SUPPLY

Ask us if you qualify for a POWER CHAIR at little or no cost to you.

In most cases, Medicare, Medicaid & Insurance will cover 100% of the cost for your Power Chair.

Toll Free 800-606-9860

www.medcaremedicalsupply.com

PAID CDL TRAINING

Stevens Transport, the premier refrigerated carrier in the US, sponsors the total cost of your CDL training! In 17 short days you will earn your CDL and begin your paid on-the-job training! You earn \$40K first year and up to \$150K fifth year! Excellent benefits and 401K! No Experience Needed!

For more information, call 800-333-8595

www.becomeadrivers.com

Marketing Position Available from Home Right Now

Up to *20K+ Per Month Potential*

No Personal Explaining • No Hiring Staff
No Hassling Friends or Family • No MLM or Pyramid
No Inventory or Shipping Products

We supply the system, training, and help establish your goals with a road map to your success!

Call Sutton's International Today for Free Information
(800) 320-5645 x1650

Ritchie Sutton - Former N.A.S.A. Engineer

Deakin ELECTRIC

OILFIELD • RESIDENTIAL • COMMERCIAL
321 S. MAIN • SPEARMAN
1-800-999-1506 Chris Deakin
806) 659-5016 President

Bartlett's Lumber & Hardware

105 W. Broadway • Gruver, Texas
(806) 733-2404

BERRY CLEANERS

Ann & Vernon Pipkin - Owners
Phone 659-3122 • P.O. Box 1017
207 Main St. • Spearman, TX

Morse Implement & Auto Supply

"Join us in church"

Tom Dortch 733-2668
Box 89 • Morse, TX 79062

PRAIRIE MOTORS INC.

Hwy. 207 South • P.O. Box 430
Spearman, TX 79081 • (806) 659-2541
www.prairiemotors.com

Gruver Cablevision

308 Main
Gruver, TX 79040
733-5295

Hansford County Reporter-Statesman

"Proudly Serving Hansford County Since 1907"

(806) 659-3434
310 Barkley • Spearman, TX

INTERSTATE BANK, ssb

www.interstatebank.net
322 Main • P.O. Box 146
Spearman, TX • 659-2559

HYI

FOR YOUR INFORMATION

Christmas Cowboy Poetry Breakfast

The Christmas Cowboy Poetry Breakfast will be Saturday, Dec. 8, beginning at 8:00 at the beautifully decorated Big Texas Robert E. Lee Room. Tibb Burnett, nationally-known cowboy poet and harmonica player from Benjamin, TX, will headline. Bill Crenshaw will emcee, followed by Southwest Cowboy Poet Association members with poetry, music, songs, and tall tales. For a wonderful old-time Christmas, plan to attend the December Cowboy Poetry Breakfast. Chuck wagon food, omelets, and special delicacies will be offered. Reservations not needed unless group is over 10. For more information call President Ivan Cates at 353-5617 or Coordinator Marianne Logan at 374-4354.

Rushing Wind Emmaus

Rushing Wind Emmaus Community will meet Saturday, December 8, at 6 p.m. at the Waka Christian Center in Waka, TX. There will be a potluck supper, training for sponsors, and a worship service. Members are asked to go to www.rushingwindemmaus.org or e-mail rushwind@ptsi.net for instructions to open the new internet database to update membership records.

Knights of Columbus Annual Tenderloin Sale

The Sacred Heart Chapter of the Knights of Columbus, Council #5552, will hold their annual tenderloin sale on December 16, 2007. Items offered are beef tenderloins and whole pork loins. Meat will be fully cooked, vacuum sealed and delivered on December 16th. Orders can be given to any Knights of Columbus member. For further information, contact Buster Davis at 733-2568 or 733-5061, Richard Wagner at 733-2167 or 659-3743, and Lenny Pecha at 659-5957 or 733-2621.

Spearman High School Blood Drive

Coffee Memorial Blood Center is hosting a Spearman High School & Community Blood Drive on Wednesday, December 12th from 1-7 p.m. in the High School Cafeteria, 403 11th Street. Every eligible donor will receive a Holiday Ornament! (Students must be 17 to donate.) ALL BLOOD TYPES ARE CURRENTLY NEEDED! The need is real. There is no substitute for blood. It can only come from volunteer blood donors. Please support the patients of the High Plains Region...Give the Gift of Life!

Perryton ISD Students Seeking Memories of World War II

Students in Perryton are seeking individuals to interview for the KACV WWII/Texas Panhandle Outreach Project. Participants who are eligible to be interviewed are those that have memories from 1938-1946, especially World War II Veterans. Persons who would like their stories from WWII to be recorded on film should contact Lauren Carroll at (806) 434-0389.

Your Car Could Save a Life

Donate your unwanted vehicle to the American Cancer Society. The end of the year is right around the corner. And for many people, part of wrapping up 2007 means looking for last-minute tax deductions. The American Cancer Society would like to remind you of a wonderful opportunity that may not only be of help to you with your 2007 tax deductions, but will also raise critical funds needed to help the American Cancer Society achieve our mission. The American Cancer Society's Vehicle Donation program, a year-round fundraiser for the Society, allows you to donate your used car, truck, van, motorcycle, or recreational vehicle to the American Cancer Society. In turn, the vehicle is auctioned off and the proceeds help fund cancer-fighting programs and lifesaving research. By donating your unwanted vehicle to the American Cancer Society by Dec. 31, 2007, you can take the allowed deduction on this year's taxes. Please consult your tax advisor for details. There is no "catch" to this program. The vehicle does not have to run. The Society only requires that the vehicle have inflated tires and all vital parts in place. To add to the simplicity of the program, the American Cancer Society arranges for the vehicle to be picked up at no charge to you. Call the American Cancer Society at 1-877-999-CARS (2277) and tell them you'd like to donate your vehicle. Or visit cancer.org/donateyourcar for more information.

'08 High Plains Irrigation Conference & Trade Show

The 2008 High Plains Irrigation Conference and Trade Show will be held Jan. 16, 2008 in the Amarillo Convention Center. The conference will be presented by Texas Cooperative Extension and the Texas Agricultural Irrigation Association. CEU's will be offered for Pesticide applicators, certified crop consultants, certified irrigation designers.

Gruver Elementary Collecting Register Tapes

Gruver Elementary is again participating in the Lowe's Supermarket Register Tapes for Education program. Please help us earn free educational equipment by collecting register tapes from Lowe's. Only tapes dated September 1, 2007 through March 31, 2008 are eligible. You can deposit your tapes in boxes in the Gruver Elementary Lobby, Gruver Library, Gruver City Hall, Nite & Day Beauty Salon and Hitchin' Nails. Jo Alice Clawson is also collecting tapes at 711 Womble, or they may be mailed to PO Box 488, Gruver. Please call 733-2247 if you have tapes you would like to have picked up, or for more information.

You're Never Alone - Narcotics Anonymous Group

Each year individuals struggling with drug and alcohol addiction make the resolution to quit using drugs. For many of them it is a resolution that they cannot keep. Narcotics Anonymous can help. Open meetings are held on Monday and Thursday nights from 8-9 p.m. at the First Christian Church (29 S. Bernice in Spearman) for the "You're Never Alone" group of Narcotics Anonymous. Anyone interested is invited to attend. Drug addiction can leave you feeling helpless and out of control - we can help.

Spearhead AA Group

The Spearhead AA Group meets every Tuesday at 8 p.m. in the Pittman-Shieldknight building. Alcoholics Anonymous* is a fellowship of men and women who share their experience, strength and hope with each other to help solve their common problem and help others to recover from alcoholism. The only requirement for membership is a desire to stop drinking. There are no dues or fees for AA membership; we are self-supporting through our own contributions. Our primary purpose is to stay sober and help other alcoholics achieve sobriety. For information, call 662-1111.

Al-Anon

If you are concerned with someone else's drinking or addiction, the Al-Anon program can help you. Each Al-Anon Family Group has but one purpose - to help families and friends of alcoholics and addicts. The Spearhead Al-Anon Group meets every Tuesday night at 8 p.m. in the Pittman-Shieldknight Building, 511 SW 11th Avenue, Spearman. For more information, call 806-330-0349.

Panhandle Crisis Center Outreach Office

Panhandle Crisis Center (PCC) has an Outreach Office and Resale Store at 306 Hancock, in Spearman. In case of emergencies, please continue to call the hotline, 1-800-753-5308. To schedule an appointment with a worker in Hansford County, call 659-3391 to leave a message, or call the hotline number above. Panhandle Crisis Center serves victims of domestic violence and sexual assault. Call for more information regarding PCC's services. Hours for the Resale Store in Spearman are: Monday, Tuesday, Thursday & Friday from 10 a.m.-5 p.m.

Editors Note...

Freedom of speech is one of the guarantees of the First Amendment of our Constitution, so we encourage readers to express themselves, even if we don't agree with what is said. However, freedom involves responsibility. Therefore, the only letters we will consider publishing are from individuals who are willing for their names to appear with the letter. Letters must contain the telephone number, address and a personal signature of the writer. We will not knowingly publish any letter containing libelous statements.

In the event that numerous letters are received concerning the same subject, letters can be limited to one pro and one con letter per publication. Eligible letters will be published in the order in which they were received.

"Letters To The Editor," like all materials submitted to this newspaper, are subject to editing for space and clarity. The publication of any letter or article is the decision of the Editor and Publisher. Deadline for all news, as well as "Letters To The Editor," is 5 p.m. on Monday.

The Hansford County Reporter-Statesman

Cummings Announces Candidacy for Re-election



Assessor in August, 2007.

I am announcing my candidacy for the office of Tax Assessor-Collector of Hansford County for a second term. It has been my honor and pleasure serving you. One of the requirements of the office is being registered and certified with the Board of Tax Professional Examiners. You must obtain your certification within 5 years. This consists of up to 232 hours of instruction and up to 31 hours of testing. I began my courses in March 2005 and I was able to complete my certification of Registered Tax

The past three years have brought several changes to the office. I will explain the three changes that you have noticed. The Texas Department of Transportation has moved several of its responsibilities into the county offices. This has necessitated the office being closed for training. I feel this has caused an occasional inconvenience but could not be helped. It allows us to receive the knowledge we need to better serve you in a timely manner. Another change is the office hours. I now close the office at 4:45 pm. The end of the day responsibilities cannot be accomplished until the door is closed. This was causing a large amount of overtime. Trying to be a better steward of your taxpayer dollars prompted the change. The one change that affected only the taxpayers of the Spearman ISD is the collection of the schools property taxes. They were moved into the office October, 2006.

Again I thank you for the opportunity and ask for your support in the March 2008 primary.

Give the gift of Christmas Beauty

Poinsettias

available in various sizes

Ready now for pickup or delivery

All Occasion Flowers

202 N. Bernice (across from the Post Office)

659-5180

teleflora

Gordon's

Your place for

Bridal Registry

Couples Currently Registered

Jennifer Lawrence & Aaron Winegarner
Ty & Tarran West
Vanessa Biggs & James Watkins
Scott & Camille (Smith) Prewitt

Baby Registry

Kyle & Stephanie McNett - 12/1
Colby & Sandi (Rich) Wheeler - 12/2
Chad & Shannon Scarlough - TBA
Amber Backus & Mark Gonzales
Nicole Worley & Antiar Outley
Amber Comp

Gordon's 659-2141
314 Main Spearman

ON THE AGENDA

- Spearman Fire Department meets every Thursday at 7 p.m. at the Spearman Volunteer Fire Department.
- Gruver Fire Department meets the 1st, 2nd and 4th Tuesday each month.
- American Legion and Auxiliary Post 254 meets the 1st Monday each month at 7 p.m. at the Senior Citizen Center in Perryton.
- Gruver Chamber of Commerce meets the 1st Tuesday each month at 12 noon at the El Vaquero.
- Hansford County Commissioners Court meets the 2nd and 4th Mondays at 10 a.m. at Hansford County Courthouse.
- Stationmaster's House Museum Board of Directors meets the 2nd Monday each month at 2 p.m. at the Stationmaster's House Museum.
- Spearman ISD Board of Trustees meets the 2nd Monday each month at 7 p.m. in the Spearman High School Library.
- Hansford Hospice meets on the 2nd Monday each month at 7 p.m.
- Palo Duro River Authority meets on the second Tuesday of each month at 2 p.m. at the P.D.R.A. office.
- Genealogy Club meets on the 2nd Tuesday each month at 7 p.m. in the home of Velma Sanders, 1015 Linn Drive, in Spearman.
- Women's Division of the Spearman Chamber of Commerce Board of Directors meets the 2nd Wednesday each month at noon.
- Gruver City Commission meets the 2nd Wednesday each month at 5 p.m. in Gruver City Hall.
- Spearman Chamber of Commerce Board of Directors meets the 2nd Thursday each month at noon.
- Pringle-Morse CISD Board of Trustees meets the 2nd Thursday each month at 7 p.m.
- Spearman City Council meets the 3rd Tuesday each month at 7 a.m. in the City Hall Chambers at City Hall.
- Women's Division of the Spearman Chamber of Commerce meets the 3rd Wednesday each month at noon.
- Gruver ISD Board of Directors meets the 4th Tuesday each month at 6 p.m. in the Board Room at Gruver High School.
- Hansford County Hospital District Board of Directors meets the 4th Wednesday each month at 6:30 p.m. in the Board Room at Hansford Hospital.
- Hansford County Historical Commission Board of Directors meets the 1st Monday of January, April, July and October at 2 p.m. in the Zulu Museum building.

Pies Fruitcakes **Gladys' Bakery** Cookies Pecans

Gladys' Czech Pecan Fruit Cake

A fruitcake loaded with fresh pecans - containing no citron, raisins or spices. these cakes come in a variety of shapes and range in size from 2 - 150 lbs.

A GREAT HOLIDAY GIFT FOR FAMILY, FRIENDS OR BUSINESS ASSOCIATES!

View our cakes at www.gladysfruitcakes.com or call 1-800-725-5254

Celebrate

Gifts for all your celebrations!

Bridal Registry

Shower Dates

Audra Evans & Kyle McLaughlin - TBA
Detsi Vera & T.J. Evans - TBA
Bethany Harris & Nicholas Peterson - 1/5
Vanessa Biggs & James Watkins
Jennifer Lawrence & Aaron Winegarner

Baby Registry

Shannon & Chad Scarborough - TBA
Amber Backus & March Gonzales
Amber Comp
Stephanie & Kyle McNett

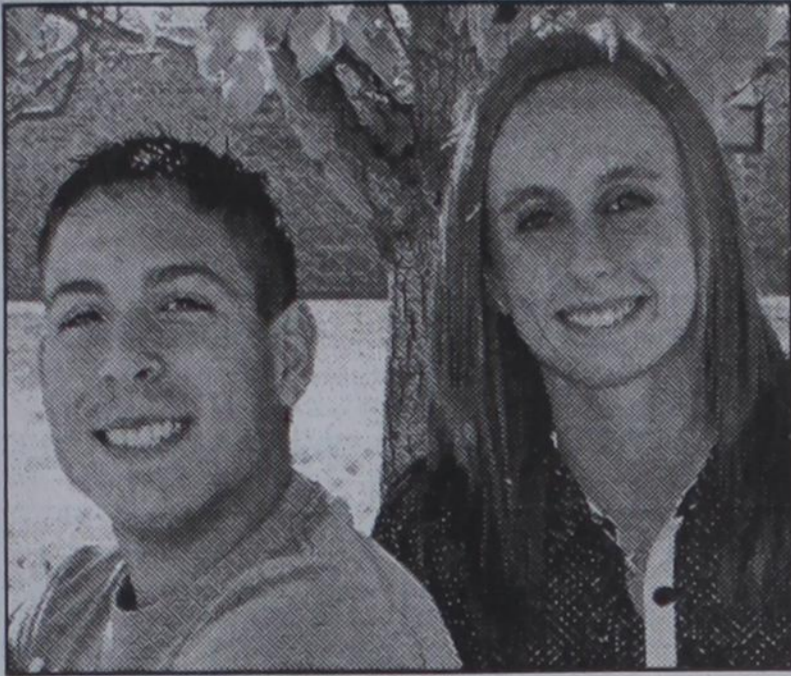
We will be open every Thursday evening until 8 p.m. until Christmas!

Celebrate

203 Main St. Spearman, TX
(806) 659-3350 1-800-663-8026

Pringle-Morse CISD News

Spearman ISD Students of the Month



Ivan Terrazas and Kylee Howard

Ivan Terrazas and Kylee Howard were chosen as the October Students of the Month for Spearman High School.

Ivan is the son of Guadalupe Terrazas and Jorge Terrazas. He has two younger sisters, Joselyn and Janneth.

Ivan competes in cross country, basketball and track. He was named the best art student his freshman, sophomore and junior years.

In his spare time, he enjoys playing sports, watching movies and just hanging out.

After graduation he plans to attend Texas Tech University in Lubbock to study petroleum engineering.

When asked what he likes about Spearman, Ivan said "It's a nice, small town with good people in it." When asked what he likes best about Spearman High School he said, "All the teachers and students."

Ivan said the teacher who was most influential was Coach Ashmore.

Kylee Howard is the daughter of Rick and Jan Howard. She has three brothers, Josh, Jake and Jarick, and a sister, Rebecca.

Kylee competes in basketball, cross country, track, cheerleading, and is a member of the National Honor Society.

She was named All-District in Basketball in 2007 and Academic All-District in 2005, 2006 and 2007.

She enjoys sports, hanging out with friends and talking on the phone.

Following graduation she plans to attend college, but is not sure where - possibly West Texas A&M University in Canyon.

When asked what she likes best about Spearman, she said "Everyone in the community is nice and everyone knows each other."

"All the teachers and students at Spearman High School are friendly. It is also a safe school to be in," she said.

Kylee said the teacher who was most influential was Mrs. Wilkerson.

Basketball Hoopla

Pringle-Morse basketball teams traveled to Oklahoma on Monday, November 26th to defeat the Hardesty Bisons. The Lady Cougars fought the Bisons off the first three quarters and pounced on the Hardesty Lady Bisons in the fourth quarter scoring 11 points for a 23-12 victory. Lady Cougar high point was Halli Mans with 10, followed by Audrey Lieb, 5; Katelyn Wilson, 4; Jennifer Crowl, 2; and Hannah Speck, 2.

The Pringle-Morse boys team took charge in the first quarter and defeated the Bisons 28-15. High point was Reese Clark with 8, followed by Nathan Forrest, 6; Beto Ruiz, 5; Lupe Pena, 3; Christian Fisher, 2; Jace Lane, 2; and Kolton Morrow, 2.

Five States Band

Eight Pringle-Morse Junior High Band students, under the direction of Anna Marie Holland, qualified for the Five States Honor Band. Guymon ISD hosted the auditions on Saturday, November 10th.

The following students qualified: 6th Grade: Jennifer Crowl - alternate clarinet, Jace Lane - alto saxophone, Ismael Ortiz - alternate trombone; 7th Grade: Kaysha Allen - clarinet, Hannah Speck - clarinet, Nathan Forrest - trumpet; 8th Grade: Katelyn Wilson - trumpet, Christian Fisher - tuba.

A concert for the public

will be held December 8th at 7 p.m. in the Guymon High School Auditorium following a band clinic.

All-Region Band

Fifteen Pringle-Morse students qualified for the All-Region Band at competitions held at Panhandle ISD on Tuesday, November 27, 2007. Over 500 students from 13 school districts met with music and horn in hand to play solo before judges.

Those qualifying will participate in a two-day band clinic followed by a concert scheduled January 12, 2008 at the Amarillo Civic Center.

Students selected for the All-Region Band are Kaysha Allen, Clarinet; Reese Clark, trombone; Clancy Cooper, percussion; Jennifer Crowl, clarinet; Christian Fisher, tuba; Erin Ford, flute; Nathan Forrest, trumpet; Gena Gillispie, flute; Jace Hunter, trombone; Ismael Ortiz, 1st alternate trombone; Jace Lane, alto saxophone; Emilynn Robinson, 1st alternate clarinet; Beto Ruiz, tenor saxophone;

Hannah Speck, clarinet; and Katelyn Wilson, trumpet.

Superintendent Kent Hargis said, "I am very proud of the success of all our students who have spent hours preparing for the competition. Pringle-Morse CISD will be well represented in the All-Region Band. We are looking forward to the concert."

Anna Marie Holland directs the Pringle-Morse Band. "Forty-four percent of

our band will participate in the very beneficial band activity in January. Only two districts in the region had more students selected than Pringle-Morse. The competition is good for band students and they get a unique opportunity to play music with students from all over the panhandle," she said.

The time of the All-Region Band Concert will be announced at a later date.

Spearman Chamber of Commerce News

The Chamber is having a shop at home campaign for Christmas. Located at all the retail businesses and restaurants you get a ticket for each \$25 spent. We have encouraged businesses to have their own drawing for their customers, I am not sure how many are doing that. On December the 22nd we will have a drawing of all the tickets for a \$250 Hansford Bucks.

Also the Lyric Cinema will have a matinee show that day for the kids, while Mom shops. We hope Santa will make an appearance there as well.

The Chamber Banquet will be January 19th with Dr. Stan Cobb returning to Spearman for an evening of entertainment and recognition of our accomplishments and special awards for 2007. We will have a tenderloin dinner. Tickets are on sale for \$30/person or corporate tables for \$230/8 tickets.

MONEY'S

BBQ & STEAK HOUSE

435-3945



Stan and Donna Zepp

Under New Ownership
Same Great Service & Menu!

14 SE 3rd Ave.
Perryton, TX

brought to you by these sponsors:

Properties
Shirley Howard
806-886-6536

CASE Zimmatic
FIVE STAR EQUIPMENT, INC.
HIGHWAY 15 WEST • BOX 658
SPEARMAN, TEXAS 79081
PHONE # (806) 858-5743
HOME # (806) 858-3846
CELL # (806) 330-0551
800-478-2759
RICHY THOMPSON
MANAGER

See us for:
AUTO • HOME • CROP HAIL •
FARM & RANCH • MULTIPER-
IL • LIVESTOCK

INSURANCE

BORT AGENCY, INC.
510 Main St. • Gruver, TX
(806) 733-2456

Tong's Chinese Restaurant

511 S. Hwy. 207 • 659-2838 • Spearman

All-You-Can-Eat Buffet Specials

- Tuesday - Steak \$7.99
- Thursday - BBQ Ribs \$6.50
- Friday - Shrimp \$6.50
- Saturday - Catfish \$6.50
- Mon., Wed. & Sat. \$5.50

Buffet Hours: 11 a.m.-2:30 p.m. & 5:30-Close

Miss Vicky's Soul Food

817 SW 5th Street (Corner of 6th & Adams)
Amarillo TX • (806) 372-2247

Down Home Cooking
at it's Best!

All-You-Can-Eat

- Chicken, Pork Chops, Ribs,
- Cheese Meat Loaf Fish, Smothered
- Chicken, Chicken 'n Dumplings,
- and Much More!
- Vegetables, Home-Made Desserts
- Kook-Aid

Hours: Monday-Tuesday, 11 a.m.-3 p.m.
Wednesday-Sunday, 11 a.m.-5 p.m.

LAST CHANCE! TAKE ADVANTAGE OF THIS GREAT OFFER.

FREE
Professional
Installation

SWITCH FROM CABLE
and get **\$5 off** per month
(available with speeds 1.5 Mbps
and higher)

**SANTA-LIKE
SPEED.
JOLLY-GOOD
PRICE.**

PHONE
BROADBAND
DIGITAL TV

HIGH-SPEED INTERNET

\$14.99
PER MONTH
FOR 12 MONTHS WITH
QUALIFYING SERVICES

SPREAD HOLIDAY CHEER

- DOWNLOAD HOLIDAY MOVIES,
MUSIC AND MORE
- E-MAIL YOUR WISH LIST TO SANTA
- SHARE HOLIDAY PHOTOS
- SHOP ONLINE 24/7

Call: 1.877.312.WIND | Buy Now: windstream.com

windstream

VISIT US IN TEXAS:

ANDREWS 112 SW 1st Street 432-523-3323	DALHART 310 Rock Island Avenue 806-249-1100	FREDERICKSBURG 1425 E. Main, Suite 100A 830-990-9299	POST 410 N. Broadway 806-495-3864	SUGAR LAND 403 Highway 6 S, Suite H 281-490-9412
BOERNE 215 W. Bandera Road, Suite 104 830-248-1111	DUMAS 401 W. 1st Street 806-935-1681	KERRVILLE 955 Water Street 830-257-9100	SEYMOUR 400 N. Main Street 940-888-1220	TEXARKANA 2315 Richmond Road, Suite 101 903-223-6888
PERRYTON 301 S. Amherst Street 806-435-2050				



RELIABLE
SAFE • SECURE
mostreliablephone.com

Offer ends 12/31/07 and is available to new Windstream residential Broadband customers. Subject to availability. Requires Windstream local phone service. Broadband Offer: Price for Broadband Lite when bundled with Connect package and/or Digital TV. Includes Broadband transport and Internet access. \$5 activation fee applies to Broadband Lite. Speeds are distance sensitive and availability varies by address. Windstream cannot guarantee speeds or uninterrupted, error-free service. Free Professional Installation: Available on only one computer per household. Cable Switcher Offer: Requires subscription to Broadband 3 or higher. Not available on Broadband Lite. \$5 monthly discount good for 12 months and then regular rate for selected service applies. Requires submission of current Cable Internet bill within 30 days of service activation. Only one offer per residential customer. Additional Information: Credit approval required. Taxes, fees and other charges, including Universal Service Fund, apply. Services convert to the regular tariffed monthly rate (long distance converts to Windstream 30) if any bundled service is disconnected. Windstream reserves the right to alter or discontinue this plan at any time. Other conditions may apply. Subject to Windstream Terms and Conditions available at Windstream stores or windstream.com. Windstream is a registered service mark of Windstream Corporation. ©2007 Windstream Corporation

Is Your Medicare Drug Plan Naughty or Nice?

By Grace-Marie Turner

The holidays are here again. That means it's time for decorations, gifts, family, friends, and food. But during all the celebrating, seniors enrolled in Medicare Part D should carve out time to consider whether they want to stay with their current prescription drug plan.

At the end of each year, from Nov. 15 through Dec. 31, Medicare Part D provides seniors with an open enrollment period, an easy and convenient way to switch plans -- or sign up for the first time.

Thanks to the plan's unique design, seniors can choose from a variety of plans offered by private insurers. Unlike traditional government programs, where there's just one plan for everyone, Medicare Part D is structured so that insurance companies must compete for customers. Consequently, prices have stayed relatively low while coverage options have flourished.

In fact, some plans cost just a few dollars a month.

That's why more seniors than ever before have prescription drug coverage. This past year, Medicare Part D provided benefits to almost 24 million people.

Meanwhile, polls have indicated that most seniors are happy with their coverage.

This isn't to say the program has no pitfalls.

Many plans don't cover every brand-name drug, so members might have to take a generic medication instead of the brand they were using prior to signing up for Part D. Furthermore, for brand-name drugs that still are under patent protection, a generic version won't even exist. To access these treatments, members might have to pay more out of their own pocket. Or they might have no choice but to take an alternative drug.

So be sure to go over the options carefully, as different plans cover different drugs. And the drugs covered by each plan may change from year to year.

Other problems with Part D include the dreaded "doughnut hole," or the gap in coverage between moderate and high drug expenses.

By making smart, informed choices, however, seniors can often avoid the hole. In California, for example, Part D enrollees can choose between 14 different plans that offer coverage within the gap. These plans often lowers costs by promoting generics, but at least one of them still covers brand-name drugs.

And paying for the drugs need not be a problem

either. All the major drug companies have set up patient assistance programs for senior who need a little extra help paying the bills, even if they don't qualify for Medicaid.

Eligibility and application procedures vary by company and drug, but doctors can assist patients with understanding how these programs work.

Everyone who uses Medicare should also consider a Medicare Advantage program. About 20 percent of Medicare enrollees currently utilize an Advantage plan, most of which offer "coordinated care" by covering Medicare Parts A, B, and D.

These plans work through private insurance companies in order to combine medical and drug coverage, doing away with the need to deal with separate providers.

The Medicare prescription drug benefit works because it utilizes the choice and flexibility that comes from the private sector.

At the same time, Part D makes purchasing prescription medications safer, freeing seniors from the scary prospect of going online in search of cheap drugs from foreign distributors. With 10 percent of the world's prescription drug supply now estimated to be counterfeit, it's extremely dangerous to purchase medicine from fly-

by-night Internet pharmacies.

All those seeking drug coverage have a multitude of options to choose from, so there's no reason to stick with a disappointing plan. Meanwhile, anyone who isn't covered should take this opportunity to sign up. With all the options that are available, there's a plan that's right for everyone. Now's the time to find it.

Grace-Marie Turner is president of the Galen Institute, a research organization based in Alexandria, Va., that focuses on free-market ideas for health reform.

Keim Named Winner in Panhandle 4-H District Roundup

Panhandle 4-H members from 22 counties qualified on Nov. 3 to compete in the Texas 4-H Roundup June 10-13 at College Station. Klara Keim of Spearman tied for 2nd place in the Share-the-Fun Vocal, Junior Division.

4-H Roundup is a public speaking and talent event providing 4-H members the opportunity to share their knowledge and skills learned through 4-H projects, said Wendy Scott, Texas Cooperative Extension 4-H program specialist.

Goals of the project include:
 - Learn about organization of materials to present in a speech or performance.
 - Acquire the ability to speak convincingly in public.
 - Become aware of one's relationship to others - family, peers, state, nation, world.
 - Acquire life skills that are essential to become an active, responsible citizen.
 - Learn about vocational/career opportunities and preparation related to a project.

More than 200 boys and girls competed in the 24 activities, including speaking events, illustrated talks, method demonstrations and performing arts, Scott said.

Recognition awards were given in ceremonies at West Texas A&M University.

PPHM Hosts Annual Holiday Season Opener

Tradition continues to grow as the Panhandle-Plains Historical Museum hosts its 31st Annual Christmas Open House Friday, December 7 from 6-9 p.m. and Saturday, December 8 from 2-6 p.m. Admission is free both days during the event.

Last year, nearly 6,000 people experienced the festivities and activities at the museum.

Visitors can stroll through Pioneer Town to be greeted by people in period clothing while listening to musicians

play holiday melodies. Children can share their wish lists with Santa in the People of the Plains or make picture frames and snow flakes in the craft corner. Cookie kids will float among visitors giving treats to those with a sweet tooth.

Children's choirs and instrumentalists from the area will sing and play in the backdrop of the Derrick Room, while guests enjoy exhibits including "No Ordinary Lives", featuring existing galleries and new exhibits telling the stories of

the men and women who contributed to this great cause, emphasizing the impact of World War II on the battle fronts and the Panhandle-Plains home front, JA: The Paloduro Ranch, an exhibit marking the 130th anniversary of the ranch's establishment; Sense of Self, featuring artifacts that define the region's many cultures; and Suitably Dressed, an exhibit illustrating the timeless design of men and women's suits.

MITCHELL THEATRE
NGSP
 GUYMON, OKLAHOMA

MITCHELL THEATRES
NORTHRIDGE CINEMA 8
 Guymon, Oklahoma

Movies beginning 12/7

THE GOLDEN COMPASS
 PG-13 -- Nicole Kidman, Daniel Craig

DAN IN REAL LIFE
 PG-13 -- Steve Carell

AWAKE
 R -- Hayden Christensen, Jessica Alba

ENCHANTED
 PG -- Amy Adams, James Marsden

AUGUST RUSH
 PG -- Robin Williams, Freddie Highmore

HITMAN
 R -- Timothy Olyphant

FRED CLAU
 PG -- Vince Vaughn, Paul Giamatti

BEE MOVIE
 PG -- Jerry Seinfeld (animated)

FRESH POPCORN EVERYDAY!
-PARTY ROOM & ARCADE-

Call for Showtimes
 580-338-3281
www.northridge8.com
 Office -- 580-338-8969
CASH & CREDIT CARDS ONLY
THANK YOU!

WHY WISH FOR SAVINGS?
Get them here.
Christmas Sale 2007
 Sale Prices Good From December 10-24

Men's L/S & S/S Pullover Knit Shirts Tommy, Polo, Chaps, D'Avila, Tabasco	Men's L/S & S/S Dress Shirts Tommy, Polo, Chaps, Van Heusen, Falcon Bay	Men's L/S & S/S Sport Shirts Tommy, Polo, Chaps, Van Heusen, Falcon Bay
--	--	--

25% OFF

Men's Cinch Shirts \$39 ⁹⁵	Boys Fashion Jeans - '29 ⁹⁵ Tommy, Union Bay
Men's Cinch Black Label Jeans \$39 ⁹⁵	Boys 20X Shirts & Jeans - '19 ⁹⁵
Men's Wrangler Riatas \$29 ⁹⁵ Assortment of sizes and colors	Boys L/S George Strait Shirts - '19 ⁹⁵
Men's 20X Shirts \$34 ⁹⁵	Boys Wrangler Snap Shirts - '19 ⁹⁵
Men's George Straight Shirts \$29 ⁹⁵	Boys Sport Shirts - 25% Off L/S & S/S - Company 81, Union Bay
Men's Levis \$29 ⁹⁵ 550 & 560 Jeans - Light, Medium, Dark	Boys Knit Shirts - 25% Off L/S & S/S - Company 81, Union Bay
	Boys Fashion Jeans - '29 ⁹⁵ Tommy, Union Bay

Cates Men & Boys
 221 Main Street
 Spearman, Texas
 (806) 659-3426
 Mon.-Sat., 9 a.m.-6 p.m.

Christmas Countdown Sale



Celebrate the Holiday Season with Family, Friends and
First State Bank

Eat Lunch With Us
Wednesday, December 12th
19th Annual Christmas Hot Dog Cookout
11 a.m.-1:30 p.m.



FSB
First State Bank
 Strength is our Tradition...
 Service our Goal
 1 NE Court Spearman
 659-5565
 Member FDIC

Pictures with Santa
 11:30 a.m. to 1:30 p.m.

Holiday Help

Sun Loan Company can help with your Holiday expenses!

Loans From \$100-\$1135

SUN Loan Company®
 & Tax Service

106 S. Main • Perryton
 (806) 435-7242 Se Habla Espanol

Contact Laura Flores, Manager or Crystal Salinas



REAL ESTATE

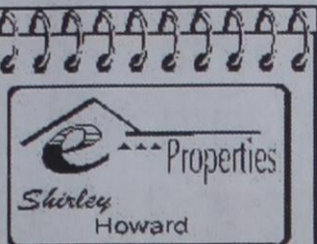
I BUY farmland: This area has good land and good people. Bank references available. 679-6787. 12(10-11-07)B
FOR SALE - Gruver: 2/1 - Priced reduced. Owner will finance. Easy terms. 512-657-4819. 2(12-06-07)P

Blankenship Real Estate
 659-3052 - 670-3774

3/1/1 - Lots of storage, inside & out, corner lot. Close to schools.

NEW LISTINGS WANTED!

Eulalia Blankenship - Sales
 Eschol Blankenship - Broker



904 Wilmetb- 5/3.5/3 5,182 sqft FP, Basement

I would **LOVE** to sell your **HOUSE!**
 Call **ME!**
 Cell: 806-886-6536

SPEARMAN DAIRY - permitted for 3600 hd. (1,400 milking), 320 acre operation, milking started as construction nears completion.
HANSFORD CO. - 315 acres, 2 pivots, cattle pens, good water, on pavement.
MOORE CO. - 1766 acres, fully developed with wells & sprinklers & really nice home on all-weather road, priced to sell!
 Choice milk processing and dairy sites available in Dallam, Hartley, Moore, Oldham, Sherman and Hutchinson Counties.
 SEE OUR WEBSITE OR GIVE US A CALL!
www.scottlandcompany.com
 Shawn Gillispie 806/922-5532
 Ben G. Scott, Broker
 1-800-933-9698 day/eve
 TFN(10-25-07)

MARTIN & ASSOCIATES REALTY
 Serving Hansford County for 14 years
 Julie Martin - Broker - 659-2425
IN SPEARMAN
 703 Collier - 3/1/1 investment property, subject to lease
 1114 S Dressen - 3/1/1 sprinkler system, CACH
 We'd Like Your Listing FOR QUALITY & SERVICE CALL US TODAY!
 Equal Housing Opportunity

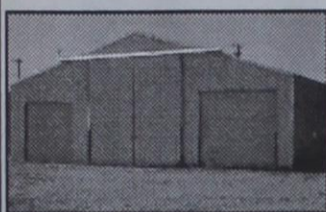
FOR RENT/LEASE

FOR RENT: 1BR apartment. Utilities paid. Call 659-2247. TFN(11-29-07)B
OFFICE SPACE FOR RENT, SPEARMAN: Pittman-Shieldknight building - all sizes available. Call 659-5588 or 659-3399 for more information. TFN(01-27-05)B
FOR RENT: 2BR apartment, \$375.00 per month, water paid. Call Larry O'Neal at 580-772-5617 or 580-819-0007. TFN(7-06-06)B



Golden Spread Realty

1105 Haney, SPEARMAN - 3BR, 1B, 1 attached garage - \$30,000.
1118 Barkley, SPEARMAN - 3BR, 1 1/2B, 2 attached garage - \$45,000.
1104 Dressen, SPEARMAN - 3BR, 1B, 1 attached garage - \$62,500.
Gina Deal, Realtor (806) 435-5444, office (806) 202-0348, cell
1110 Dressen, SPEARMAN - 3BR, 1 1/2B, 1 attached garage. **Price Reduced!**
Deana Foster, Realtor (806) 435-5444, office (806) 202-1061, cell
 INDEPENDENTLY OWNED & OPERATED. ©1992® and TM Century 21 Real Estate Corporation. Equal Housing Opportunity. EOW(11-11-06)B



FOR SALE

\$15,700
 40' X 40' BUILDING
 APPX - 230 FT X 100 FT - LOT
 CONCRETE FLOOR
 ELECTRICITY
 2) OVERHEAD DOORS
 1) MAIN SLIDING DOOR
 LOCATED IN SPEARMAN ON AIRPORT ROAD.

PLEASE CALL:
 806-330-0940 OR
 806-330-0950

FOR RENT: 1BR, 1B, apartment - washer/dryer hookup, central heat/air. \$375 deposit, \$375/month. Call 940-631-0894. TFN(7-5-06)B
FOR RENT: 3BR apartment available Sept. 10th, \$450.00 per month (plus deposit), water paid. Call Larry O'Neal at 580-772-5617 or 580-819-0007. TFN(8-30-07)B

EMPLOYMENT

HELP WANTED: Hansford County Feeders is taking applications for feed truck drivers, yard maintenance and pen riders. Apply in person at 13800 County Road 19, Spearman, 806-736-9533 - Tom, or 806-736-0064 - Matt. 2(11-29-07)B

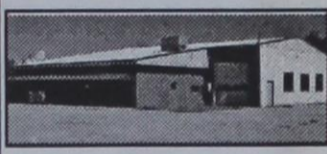


Openings at Hansford Manor

Certified Nurse Aide: Assisting RN and LVN with the care of our residents.

LVN: Must be licensed in the State of Texas

Great working environment and staff, quality facility providing opportunities for professional growth. Great benefit package. Apply at 707 S. Roland, Spearman, TX or contact Jackie Nelson at 806-659-5841. Download application at www.hchd.net EOE 2(12-6-07)B



FOR SALE

\$39,500
 BUSINESS BUILDING
 GLASS FRONT
 SHOWROOM
 SIDE GARAGE
 WITH OVERHEAD DOOR
 OFFICES
 RESTROOMS
 PLENTY OF SPACE
 HEATED AND AIR CONDITIONED
 COME AND SEE

PLEASE CALL:
 806-330-0940 OR
 806-330-0950

HELP WANTED: Hansford County Veterinary Hospital is taking applications for veterinary assistant. Must be able to work 40 hours/week including weekends, and lift 50 pounds. Apply in person. 405 CR 24. 659-2100. 2(11-29-07)B

SERVICES

HOCHIE POCHIE PARLOR
 Call us now for all your pet's grooming and boarding needs. Now accepting reservations for holiday boarding. 806-273-2724. TFN(11-2-07)

FOR SALE

FOR SALE: Flat screen HDTV for sale. Take on small monthly payments. 1-800-398-3970. 2(11-29-07)B

CHEM	MRS	WAGS
LEVA	TOUT	PINUP
ERIN	ALBA	AROMA
GOLIGHTLY	NEAP	
ANTISE	ADD	
MASCOT	SPARROW	
ALL	MILLET	AURA
PLACE	YEA	SWIMS
LINO	BOURNE	NET
ENTRATN	EMIGRE	
LOB	REWLN	
GOER	JAMESBOND	
PILOT	ABEL	ROOD
ARENA	MARL	EZRA
SLOE	STY	DENY

7	2	6	5	9	8	4	3	1
4	3	5	7	1	2	9	6	8
8	1	9	6	3	4	2	5	7
3	9	2	8	7	1	5	4	6
6	8	1	4	2	5	7	9	3
5	4	7	9	6	3	8	1	2
2	6	8	1	5	9	3	7	4
1	5	3	2	4	7	6	8	9
9	7	4	3	8	6	1	2	5

Real Estate & Rental

PROPERTY OF THE WEEK
Spearman Property
 306 Davis - Great storefront in desirable location.
EX- 504 Roland - 3BR, 2B, storm shelter, stg bldg.
222 S. Haney - 2BR, 1B, newly remodeled
Gruver Property
 813 Richardson - 2BR, 1B - BIG REDUCTION!
 802 Womble - 2-3BR, carport, corner lot
Rental Property
 Spearman - 1BR apartment
 Gruver - 1BR, 1B home
Real Estate & Rental for all your real estate needs!
Melinda McCullough, Realtor
 (806) 732-5678

Winter Hours
MurMur's has gone back to their winter hours. We will be open Monday-Friday, from 11:00 a.m.-7:00 p.m.
MURMUR'S CAFE
 100 Roland - Spearman
 (806) 659-3580

ANTA HOPS
at
SIMPLE SIMON'S

Gift Certificates

"The Simple Holiday Gift"

Give the Gift of Movies!
 Gift Certificates available at Anita's Video Madness

SIMPLE SIMON'S PIZZA
ANITA'S VIDEO MADNESS
 312 Main Street - Spearman, TX • (806) 659-9991

STORE HOURS:
 Sun.: 12 noon-9 p.m.; Mon.-Thur.: 11:30 a.m.-9 p.m.
 Fri.: 11:30 a.m.-10:30 p.m.; Sat.: 12 noon -10:30 p.m.

FSB First State Bank
 P.O. Box 247
 Spearman, TX 79081
 Telephone 806-659-5565
 Member FDIC

Planning to buy a home, but not sure if you can get an affordable mortgage?
 Interest too high on your present mortgage?
 Want to do business with a local bank?

We can help!

Come by First State Bank, Spearman.
 Check out our competitive fixed and adjustable rate mortgages for terms up to 30 years.
 We can work with you to find a mortgage that fits your needs and help you buy or refinance your home.
 Contact Ginger Turner and find out more.

"Stick With The Best Food In Town"

Flying X Steakhouse
 By Reservation Only

From Stinnett: Go West on Hwy. 152
 17 miles - Turn Left at Big Red Cactus (About 2 miles on Gravel Road)

From Dumas: Go East on Hwy. 152
 16 miles - Turn Tight at Big Red Cactus (About 2 miles on Gravel Road)

(806) 935-9427
 Sheree & Eddie Burgess

TEXAS STATEWIDE CLASSIFIED ADVERTISING NETWORK

TexSCAN

TexSCAN Week of December 2, 2007

ADOPTION
 Note: It is illegal to be paid for anything beyond medical and legal expenses in Texas adoption.
ADOPT: LOVING COUPLE wishes to adopt newborn. Will give love, warmth and security. Expenses paid. Markell & Tom, Call anytime. 1-800-959-3956.
BUSINESS OPPORTUNITIES
ALL CASH CANDY Route. Do you earn \$800 in a day? Your own local candy route. 30 machines and candy. All for \$9,995. 1-888-625-5481. Multi Vend, LLC.
A REWARDING CAREER in music education. Seeking MusiQ Club directors for Texas communities. Qualifications: music professionals, educators or musicians with business experience. www.musiqclubdirector.com 1-902-455-4464.
EARN UP TO \$500-\$1000 weekly returning phone calls. No selling! Call now. Returning Phone Calls From Home, 1-800-324-8148.
DRIVERS
CALL TODAY! GUARANTEED home Christmas day. Sign-on bonus & benefits. 36-43pm/1.20 pm. \$0 lease! Teams needed. Class A+3 months recent OTR required. Melton Truck Lines, 1-877-258-8782.
CDL-DRIVERS: EXPANDING Fleet offering Regional/OTR runs. Outstanding pay package. Excellent benefits. Generous hometime. Lease Purchase on '07 Peterbills. National Carriers, 1-888-707-7729, www.nationalcarriers.com
DRIVER-OO'S. NEW pay scale plus fuel surcharge. Company drivers. \$5000 signing bonus. Lots drop & hook! Call Guy at 1-800-387-1011 or www.aed.com.
DRIVER: THE RESPECT you deserve. Get it at Swift! As a truck driver with Swift Transportation, you can have it all - freedom, stability and outstanding financial rewards. Call us at: 1-866-907-5482. www.SwiftTruckingJobs.com. EOE

DRIVERS HEAVY HAUL drivers. Multi-axle experience. Owner operators \$325,000+. Company drivers \$85,000+. Anderson Trucking Service. 1-866-231-6472.
DRIVERS- UPGRADE TO truck driver. Training available! Possible \$40K 1st year! \$5000 sign-on with 1 year OTR. Regional/48 state! FFE, Inc. www.ffeinc.com Call 1-800-569-9232.
EXAM / PREP
POST OFFICE NOW hiring. Average pay \$20/hour or \$37K annually including federal benefits & overtime. Paid training, vacations. P/T/F. 1-866-918-1182. USWA. Exam/Fee required.
HELP WANTED
COORDINATE EXCHANGE PROGRAM! International high school program seeks enthusiastic coordinators and ESL instructors. Develop exciting short-term programs for international students. 1-800-333-3802. Ext. 238. LCE@ASSE.com.
HOMES FOR SALE
BRAND NEW MANUFACTURED and mobile homes with warranty. Buy it at the factory for \$15,900. Call for information and color brochures: Factory Expo Home Centers, 1-800-375-1419.
HUD HOMES & FORECLOSURES! 4 bed, 2 bath \$19,600! 3 bed, 2 bath \$12,200! 5 bed, 2 bath 69,500! Won't last. For listings, call 1-800-544-6258. Ext. 9847.
MEDICAL SUPPLIES
SCOOTERS & POWER WHEELCHAIRS. Did you know in most cases Medicare, Medicaid and Insurance pay 100% of the cost? Call Melissa or Jon for details. 1-800-606-9860. www.medicaremedicalsupply.com.
MISCELLANEOUS
AIRLINES ARE HIRING - Train for high paying aviation maintenance career. FAA approved program. Financial aid if qualified, job placement assistance. Call Aviation Institute of Maintenance, 1-888-349-5387.

ATTEND COLLEGE ONLINE from home. Medical, Business, Paralegal, Computers, Criminal Justice. Job placement assistance. Financial aid and computer provided if qualified. Call 1-866-858-2121, www.OnlineTidewaterTech.com

REAL ESTATE
35+ ACRE COLORADO Ranches from \$39,900, call 1-866-OWN-LAND ext. 5034. www.redoreckland.com
ADVERTISE YOUR HOME, property or business for sale in 291 Texas newspapers. Reach almost 1 million readers for ONLY \$450! Call this newspaper or visit: www.texaspress.com & click on the TexSCAN banner.
WEST TEXAS, 137+ acres at \$295/acre, near Sanderson. Deer, dove and quail. Seller finance or TX Vet with 5% down. More available. 1-866-286-0199. www.ranchenterprises1d.com
RV'S FOR SALE
REPO SALE! SIX travel trailers, five 5th wheels at Explore USARV Supercenter, Seguin, Texas. Call Now, 1-866-813-2770.

Run Your Ad In TexSCAN!

Statewide Ad\$450
 291 Newspapers, 954,943 Circulation
 North Region Only\$195
 94 Newspapers, 282,347 Circulation
 South Region Only\$195
 99 Newspapers, 426,079 Circulation
 West Region Only\$195
 98 Newspapers, 246,517 Circulation

To Order: Call This Newspaper direct, or call Texas Press Service at 1-800-749-4793 Today!

NOTICE: While most advertisers are reputable, we cannot guarantee products or services advertised. We urge readers to use caution and when in doubt contact the Texas Attorney General at 1-800-621-0508 or the Federal Trade Commission at 1-877-FTC-HELP. The FTC web site is www.ftc.gov/bizop

Extend your advertising reach with TexSCAN, your Statewide Classified Ad Network.

BP Makes Donation to Big Brothers Big Sisters

The BP America Production Company -Anadarko Asset donated \$2,000 to the Wheatheart Satellite of Big Brothers Big Sisters.

"BP believes in investing in our communities," Teresa Dodson, BP systems operator, said. "Every year our local office supports programs that provide long term benefits to our area and that our employees are involved in."

"Promoting education is one focus of charitable giving of the company," she continued. "Bigs in Schools has grown so much and is helping so many children in our area. We are pleased to be able to help this wonderful program."

Bigs in Schools is the school based mentoring program of Big Brothers Big Sisters. Through this program children (Little Brothers and Sisters) meet with volunteers (Big Brothers and Sisters) each week on the school campus. They read, play games, talk and even do homework together. These intentional friendships impact children in positive ways. Studies show improved academic performance, better attitudes toward school and teachers and enhanced self-confidence.

Responses to a survey of volunteers and teachers conducted at the end of the 06-07 school year in local schools showed that for a majority of students self-confidence (91%), academic performance (77%), and class participation (77%) improved. Littles themselves reported that their grades



BP recently donated \$2,000 to the Wheatheart Satellite of Big Brothers Big Sisters. Several BBBS advisory committee members were present at the check presentation. Pictured are: (front, L-R) Leann Carson and Lewis Richburg; (back, L-R) Tara Leicht, Teresa Dodson and Dal Foster of BP, Debbie McGarraugh, Marilyn Reising, Kurt Hirschler, Johannna Dear and Jimmy Graves.

were better (69%), interest in school was higher (68%) and their "wanting to learn new things" had improved (74%) as well.

Over 90 children in first through eighth grades are matched in seven schools throughout Perryton, Spearman and Booker through the Bigs in Schools program so far this year.

Dal Foster, BP Operations Technician, is a member of the local advisory board. Foster became a Big Brother to Little Brother Patrick this summer. The match is part of the agency's community based program.

Foster and his Little Brother spend a couple

hours together every week doing everyday things like yard work or fix it projects or even taking in a ballgame. "At first I didn't think that I had two hours a week," Foster said. "But it goes by like twenty minutes."

So far the match has played catch, learned about firearm safety and tinkered with Foster's pickup. "Patrick is a smart kid," Foster said. "And he is always on go!"

"Spending time with a kid is the best way to spend two hours. You feel good about yourself and maybe even make a difference," Foster said. "I have really enjoyed the time I've spent with

Patrick."

"I am pleased to accept BP's generous contribution on behalf of the children whose lives are being transformed by genuine one-to-one relationships they experience with their Bigs," Kimberley Lopez, agency case manager, said. "This year we are celebrating our tenth anniversary of serving local children. We are grateful to BP employees for sharing our vision to make little moments, big magic."

For more information about the programs offered locally by Big Brothers Big Sisters or how to donate, contact Lopez at 434-0016.

Deadline Notice!

The deadline to submit news and advertising to the Hansford County Reporter-Statesman is Monday at 5 p.m. Items submitted after the deadline will be published at a later date, as time and space permit.

Items may be submitted by phone (806-659-3434), fax (806-398-9080), mail (Reporter-Statesman, 213 Main Street, Spearman TX 79081), or e-mail (reporter@spearmanreporter.com).

Hoochy Poochy Parlor



Professional Award Winning Stylist

Carmon Baker



A true professional and award winning creative groomer, Carmon has earned numerous awards for her excellent work and demonstrated professional technique. She has served the Texas Panhandle for the past 37 years. Catering to the small to medium pampered pet, we always do our best. Please visit us for a free estimate on your pet care needs.

Hours: Mon.-Fri., 8 a.m. until done Saturday by appointment only

806-273-2724
806-674-5409
116 Madison
421 E. 10th St.
Borger, TX 79007
goingtothedogs@cablone.net

and Missy "The Hoochy Poochy"

Glady's Bakery
Glady's Czech Pecan Fruit Cake
A fruitcake loaded with fresh pecans—containing no citron, raisins, or spices. These cakes come in a variety of shapes and range in size from 2-150 lbs.
www.gladysfruitcakes.com
or call 1-800-725-5254
Impress your holiday guests with Gladys' desserts: Pecan Pies, Angel Cakes, Cinnamon Roasted Pecans, Cookies, and Nutty Fruitcakes!

Teleflora®
Candy Cane Basket
There's nothing sweeter than sending this festive basket. With its festive flowers and candy canes, it will add delicious decor to any room.
• Carnations, chrysanthemums, cedar and fir, along with candy canes, arrive in a white wicker basket with handle, tied together with a red ribbon.
• Approximately 13" W x 14" H
• Item Number: TF86-4
Christmas is Tuesday, December 25th

Prairie Garden Flowers
209 Main Street • Spearman, TX
659-2212 • 659-3329

RadioShack
Do Stuff™
See our flyer in this week's paper.
RadioShack Do Stuff™
Perryton OFFICE SUPPLY RADIO SHACK
123 South Main St, Perryton TX
(806) 435-4812
Holiday Hours:
Fri., Nov. 23 - 6 a.m.-6:30 p.m.
Nov. 24th-Dec. 24th
Mon.-Fri., 8:30 a.m.-7 p.m.
Sat., 9 a.m.-5 p.m.; Sun., 1-5 p.m.

Are You A Victim of Domestic Violence, Sexual Abuse or Physical, Emotional or Sexual Assault?
Call Toll Free Hotline 1-800-753-5308
We can see individuals from Hansford County anytime upon request. Call 435-5008 or 1-800-753-5308 to set up an appointment in Hansford County. We operate a safe place for victims and their children to stay in times of crisis.
Battering Intervention & Anger Management Available
Panhandle Crisis Center
Serving Hansford, Lipscomb & Ochiltree Counties
301 S. Ash • Perryton, TX
Memorials Accepted

DIGITAL TV
Choose your services & SAVE!
One Bill Convenience!
Se habla español
myCustom Pak
You may already qualify to save up to \$200!
Call Today!
721 W 7th Spearman
1-800-562-2556
www.ptci.net
Some restrictions apply.
PTCI Communication & Broadband Solutions