



REPORTER - STATESMAN

Spearman Gruver

Volume 86 • Issue 11

213 Main • Spearman, Texas 79081

Thursday • January 6, 1994

News Briefs

The Pringle-Morse C.I.S.D. Board of Trustees will hold their regular meeting on Tuesday January 11, at 7 p.m.

A C.P.R. renewal course for renewals only will be conducted on Tuesday, Jan. 11 at 7 p.m. at the Spearman Fire Station. Contact Michele Davis at 659-3578 during the day or at 659-3411 after 5 p.m.

The Gruver Christian Women's Fellowship will be sponsoring Christian speaker and vocalist Erron Mercer on Wednesday, Jan. 12 from 12 noon to 1:30 p.m. at the Golden Age Center in Gruver.

Harriet Hargrave machine applique workshop will be held Sunday, Jan. 9, from 1-7 p.m. at the First United Methodist Church in Perryton. Open to public. Fee required. For information call 435-7563 or 435-8175.

The Hansford Hospital Board of Directors will meet Thursday Jan. 13 at 7 p.m. in the hospital board room.

The North Zone 6 T.E.A. (Texas Emu Association) will be offering a seminar in Spearman on Saturday, Jan. 8 at the Church of Christ fellowship hall at the corner of 1st and Haney from 1:30-3:30 p.m.

The Spearman L.S.D. Board of Trustees will hold their regular monthly meeting on Monday Jan. 10, at 7 p.m. in room 114 at the high school.

Gruver City Council will meet Wednesday Jan. 12, at 4:30 p.m. at city hall.

Weather

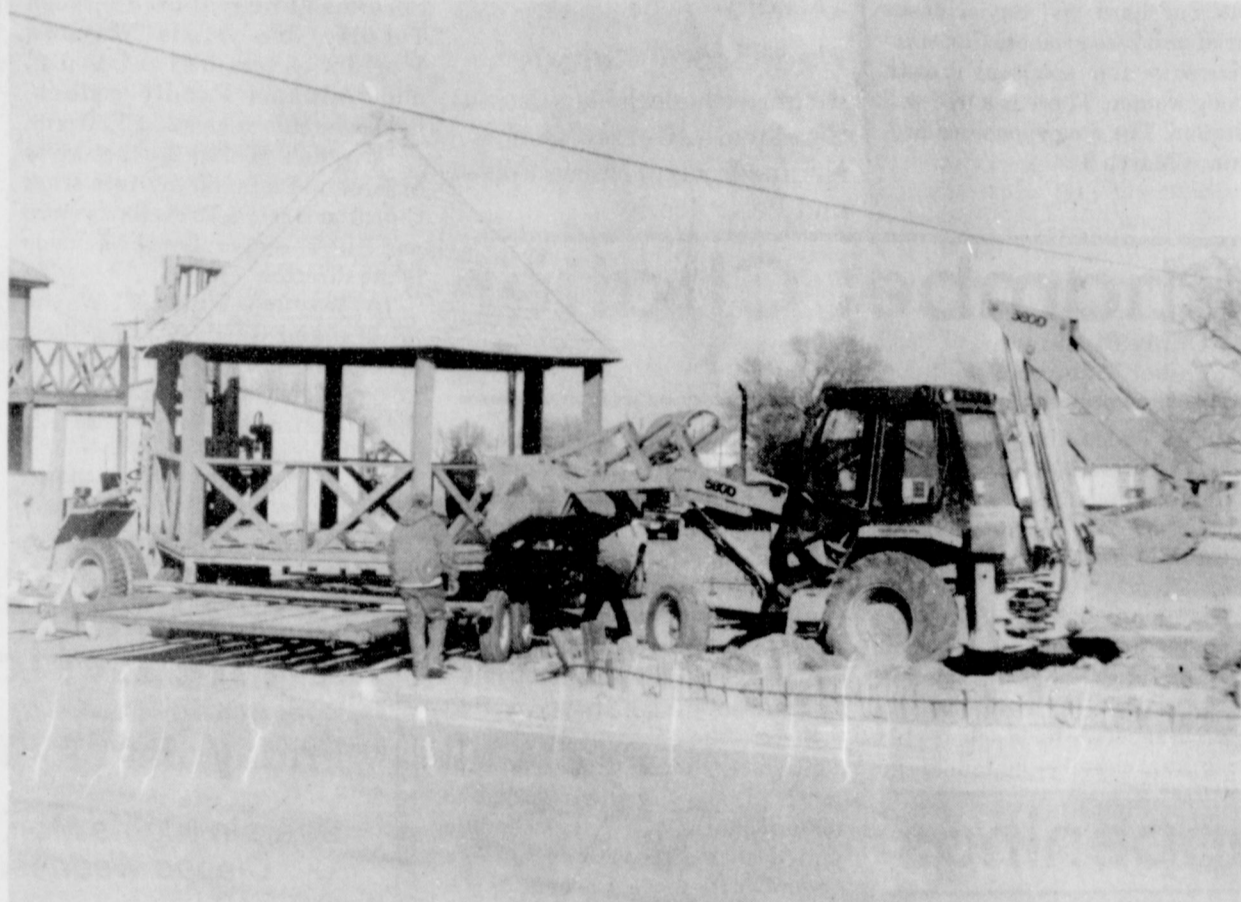
Day	Hi	Lo	Precip
Thu	60	24	.00
Fri	59	29	.00
Sat	57	27	.00
Sun	58	33	.00
Mon	60	23	.00
Tues	52	29	.00
Wed	--	37	.00
Total Precipitation 22.77			

What's Inside

Sports	6, 7
Hansford Happenings	2
Want Ads	2
Obituaries	8
Movies	2
Chamber Chatter	2
Police Report	5
Lunch Menu	2
Spiritually Speaking	3
Neighbors	4
Coffee Time	3
A "Center" Piece	5

Ad Index

Allsups	6
Church Page	8
Beady Furniture	10
Gordon's Oneida	5
Farm Bureau #1	7
Gillaspie Auto and Truck Center	6
Hansford Hospital	3
First State Bank	2
Dobson Cellular	4
Farm Bureau #2	5
Reinke Irrigation	7



City employees work to get the gazebo moved from downtown to Eska Park. After getting the gazebo loaded and balanced it was reported that the rest of the moving process took about 20 minutes.

Hansford County sales tax rebates up

State Comptroller John Sharp recently mailed the sales tax rebate checks for December.

The \$11,032.49 payment to the city of Spearman for December 1993 was up 17.51 percent from the \$9,388.02 sent to the city for the same period last year.

Gruver received a monthly payment of \$3,344.23 for December 1993, up 28.15 percent from the December 1992 figure of \$2,609.48.

Hansford County has received payments of \$219,257.47 to date compared to \$209,645.22 for the same period in 1992, an increase of 4.58 percent.

"Holiday greetings and \$111.8 million are going out to the people of Texas," State Comptroller John Sharp said today, as December sales tax rebates were delivered to 927 cities and 111 counties, a 5.6 percent increase over the payments of

one year ago.

Another \$159.9 million in payments went to six mass transit authorities in the state's largest cities and the two city transit departments.

Texas cities received \$101 million in monthly sales tax payments, up 6.7 percent from the \$94.6 million they received last December. Counties received \$10.7 million, down 3.9 percent from the December 1992 rebates of \$11.2 million.

"Employment in Texas overall is continuing to expand, reflecting a 1.9 percent rise between October 1992 and October 1993," Sharp said. The city of Houston received \$14.1 million, the largest sales tax rebate from December, down 1.6 percent from the city's \$14.4 million in December 1992. "Houston's economic pulse continues to be somewhat erratic," Sharp said, "with new

housing starts dropping to their lowest point since 1991."

The \$9.1 million payment to the city of Dallas for December was the second largest, up 2.9 percent from the \$8.9 million for the same period last year. "Dallas has added more jobs than any other metro area in Texas during the past year, with construction up an impressive 9.3 percent," Sharp said.

The third largest payment in December was the \$5.7 million rebate to San Antonio, a 4.3 percent increase over the December 1992 payment of \$5.5 million to the Alamo city. "The San Antonio metro area continued in its role as one of the state's leaders in economic growth," Sharp said, "with total employment rising by 2.9 percent."

Austin's payment of \$4.5 million for December ranked as the fourth highest rebate, a 5.7 percent increase over the city's December 1992 payment of \$4.3 million. "Austin's 3.2 percent economic growth rate made it the fastest growing major metro area in the state," Sharp said, "with construction up a very impressive 16.1 percent."

Fort Worth received a \$2.7 million rebate, virtually identical to the December 1992 allocation, while Arlington's city sales tax allocation of \$2.7 million reflected a 6.9 percent increase. "Transportation in Fort Worth-Arlington is experiencing losses as American Airlines continues to down-size," Sharp said.

Tax rebates cont. page 2

Filing deadline passes with one contested race in county

by Angela Jones
Editor

For the Primary Election March 8, the Republicans will have one contested race and the Democrats have no contested races as the filing period for County and State offices closed at 6 p.m. Monday, Jan. 3.

It was reported that two Republicans have filed for the office of County Commissioner of Precinct #4. Val Winger, incumbent, and Leon Bagwell will be facing off in the Primary.

Other individuals from the Republican party filing for a position on the ballot include: Kim Vera - District and County Clerk; Carla Woodington, incumbent - Party Chairman for Precinct #1; Medford DeCamp, incumbent - Party Chairman for Precinct #2; Keith Lamb, incumbent - Party Chairman for Precinct #3; Leon (Corky) Chapman, incumbent - Party Chairman for Precinct #4; Alton Ellsworth, incumbent - Party Chairman for Precinct #5; Dennis Stedje, incumbent - Party Chairman for Precinct #7; and Tommy Rogers, incumbent - Party Chairman for Precinct #9.

It is reported that all individuals filing for office from the Democratic party are incumbents. Those seeking office are: Jim D. Brown - Hansford County Judge; Norma

Jean Mackie - Hansford County Treasurer; Michele Davis - Justice of the Peace; Joe T. Venneman - County Commissioner of Precinct #2; J.L. Brock - Party Chairman for Precinct #5; and W.L. Johnson - Party Chairman for Precinct #7.

Voting for the Primary Election is Tuesday, March 8. Early voting for the Primary Election begins on February 16 and ends on March 4.

The General Election will be held on Tuesday, November 8.

Pricing strategies workshop to be held

Drs. Steve Amosson and Mark Waller, Texas A&M extension economists, will be teaching a one day commodity pricing workshop for wheat, feed grains and cattle producers. The course will be held January 12th in Amarillo and January 13th in Stratford.

According to Dr. Amosson, "this may be the most important marketing seminar we've ever taught." He said, "The market conditions that currently exist seem to occur once every five to ten years and should have definite implications for a producer's marketing plan."

The pricing workshop is designed for those having some experience or knowledge of futures and options. Instructors will provide in

depth discussion on several specific pricing strategies in an attempt to provide producers with some basic pricing techniques, showing how and when these strategies work. A basis update and market outlooks for 1994 will be presented along with strategies for developing individual marketing plans will be discussed.

There is a \$25 registration fee to attend the workshop. Advance registration is required by 5 p.m. on Monday, Jan. 10. For more information or registration forms, contact Steve Amosson (806)359-5401 or the Hansford County Extension Office at (806)659-2136 or (806)733-2901.

Gazebo moved; one of many changes for '94

by Angela Jones
Editor

With the changing of the year, often comes changes in people, weather and surroundings. Spearman is no exception. On Monday, Jan. 3, change was in the air as the City of Spearman moved the gazebo from the roadway in front of the post office to Eska Park.

According to City Manager Kelvin Knauf, the gazebo was moved so that it could be enjoyed by more people. In Eska Park, the park between the south hospital parking lot and the water tower, the gazebo can be used for picnics, family gatherings, weddings and many other events.

Not only is it more accessible to public use, the gazebo also sets off the park and makes it look a lot more attractive, Knauf said. He added that the City plans to do

some landscaping around the gazebo and repaint it.

The City also has plans for the space which was vacated by moving the gazebo. "We are planning to do some low maintenance landscaping, such as planting flowers," Knauf explained. He added that the city is not just going to leave the area empty.

According to Knauf, all of the existing City Parks have a master plan which was passed by the city council. In this plan Eska Park is designated to passive recreation. Knauf hopes that the gazebo will help achieve the goal for the park by supplying shelter. This shelter can be used by those playing checkers or chess, or those having a family cookout.

Moving the gazebo is probably just one of the many changes for the individuals in Hansford County in 1994.

Hansford County Angel Tree projects deemed a success

by Angela Jones
Editor

With the hustle and bustle of the holidays just beginning to wind down, the Gruver PTA and the Spearman Post Office personnel reported that this year's Angel Tree projects were very successful.

In Gruver the Angel Tree was located in Gruver State Bank. Shannon Eckhardt of the PTA reported that there were 19 angels on the tree and they were all taken within the first week and a half.

The gifts were delivered on Tuesday, Dec. 21. Shannon said that she wished that each person who gave could have seen the smiles on the children's faces and heard all of the "Thank You's".

Postmaster George Finley reported that there were 46 names

on the Angel Tree located at the Spearman Post Office. These angels were taken within four days.

The packages in Spearman were mostly delivered on Wednesday, Dec. 22. George explained that they had tried to deliver the presents earlier but had difficulty catching anyone at home, so they waited until school was out.

"It was a good deal and it worked out well," George said of this year's Angel Tree project. He continued, "It made Christmas better for more than 40 people."

George and Shannon both concluded by offering their thanks to all those participating. George stated that they appreciate everyone picking up the angels and those individuals getting the names and needs to the project personnel.

Local man uninjured following aircraft accident

by Angela Jones
Editor

On Monday, Jan. 3, at 4:35 p.m. an ultra-light aircraft crashed in the 200 block of N. Schneider and the pilot walked away without any injuries.

According to Sergeant Steve Schmidt-Witcher, the aircraft was

attempting to takeoff from a quonset barn in the 10 block of N. Schneider. The craft reportedly had a mechanical failure causing it to bank. The pilot, Dean Coates of Spearman, was unable to regain control of the aircraft and it crashed.

The case is still under investigation.



Heart Association selling tickets for banquet

Heart Association Big Ticket Event Chairman Carla Gumfory discusses the upcoming annual banquet with board member Jim Brown. The banquet will be held in the Gruver Elementary Gym on Saturday, January 22 at 7 p.m. Tickets are available by calling 733-2600 or 733-2050 in Gruver or 659-2626 or 659-2989 in Spearman.

Spiritually Speaking...

by Dan Carter
Trinity Community Church

LOOSE 'EM AND LET 'EM GO!
Many years ago, and hundreds of miles to the southwest, I worked for the Soil Conservation Service. One sunny morning, while driving my pickup down a ranch road, high on Chupadera Mesa, I happened onto an unusual sight.
A new calf was in a makeshift corral standing alongside the barbed wire fence. As I drove up, and the mama cow bawled, the calf stood transfixed. Having worked some roundups and brandings, I knew something had to be amiss for this young calf not to hightail it to mom.
Stopping, I climbed out of the truck and walked over to the calf. That's when I saw the problem. At

my approach the calf jumped, turned and put on a miniature rodeo, only to fall exhausted, its front leg in a coyote trap that was chained to a stake in the ground. Fueled by fear, and hurting, the calf fought against every effort I made to free it. It took some time, but I finally loosed the calf and it hobbled back to mom.
Since that time, in personal evangelism, and in counseling settings, I have often seen the same response of fear and fight in people I've tried to free from unseen, yet real snares. Our adversary, the devil, has numerous traps he has ingeniously set around the perimeter of life. When trapped, we can become afraid of others who are free, and in our pain lash out at them in their attempts to loose us.
There's a lesson here for those who would be witnesses for Christ

Jesus. We are to "Deliver those who are being taken away to death, and those who are staggering to slaughter, O hold them back", (Prov. 24:11), and we do it "speaking the truth in love", (Eph. 4:15), because only "the truth shall make you free", (John 8:32).
But, like Jesus, we must realize that often times, and for reasons unknown to us, that truth may first create angry reactions. Love is patient and kind, like Jesus, and endures ranting and ravings for the sake of the elect.

Coffee Time

The Lady Fair, located at 719 A. West 7th in Spearman, features fine name-brand ladies clothing, lingerie, jewelry, Dooney & Burke purses and Ester Lauder cosmetics and fragrances.
The Lady Fair owned by Bill and Ginger Pittman, has been managed for the past sixteen years by Eulalia Blankenship. Eulalia and her experienced staff of Tina Wilmeth, Marti Garnett, Lou Garrett, Renee Beaty, and Molly Blackman cordially invite you to come in for coffee and shop the large selection of fall merchandise on the Fall Clearance Sale now in progress.

try in Texas with exciting economic potential to yield a variety of products in the commercial market: **Emu meat**, which is low in fat, calories and cholesterol and high in protein and iron, has a texture and appearance similar to beef; **Leather**, which has a sales potential in the U.S. high-fashion industry. The European market already exists; **Oil**, which is highly penetrating, is being used in cosmetics and pharmaceuticals; and **Feathers and Nails**, which are ideal for the fashion and jewelry industry.
The emu industry is currently in a breeders market. Nearly all emus are sold to other breeders to expand their breeding stock or to newcomers into the industry. This seminar will offer advice to new area breeders to help them successfully hatch and raise their emu chicks for market.
Anyone interested in learning more about Emus are welcome and encouraged to attend. For more information on this seminar contact Sherry Boyd at 659-3844 or Joyce Carter (Sunray) 948-4558.

Emu Seminar scheduled

by Sherry Boyd
The Northern Zone 6 T.E.A. (Texas Emu Association) will be offering a seminar entitled "Incubating and Hatching on a Shoestring" in Spearman on Saturday January 8, 1994. Hosted by several Spearman T.E.A. members, the seminar will be held at the Church of Christ Fellowship Hall located at the corner of First Street and Haney from 1:30 - 3:30 p.m.
The seminar will feature several Panhandle Emu breeders, who will share their tips and advice on incubating, hatching and caring for young emu chicks. This seminar is geared for emu breeders who are experiencing their first season of birds laying and whose funds are limited.
Originally imported from Australia, emus are flightless birds standing 5 to 6 feet tall and weigh in excess of 100 pounds when fully grown. The one-legged emus are related to ostriches, both belonging to the ratite family. Emu production is an emerging livestock indus-

Missionaries to speak at First United Methodist Church of Spearman

Mike and Bonnie Shrode will be at the First United Methodist Church in Spearman on Sunday, Jan. 9.
There will be a question and answer session for the adult Sunday school classes at 9:45 a.m. At 11 a.m. Mike Shrode will preach in the worship service, aired by KRDF-FM. A covered dish luncheon honoring the Shrodes at 12:05 p.m. A snack supper and program with the youth will be at 5 p.m. and at 7 p.m. there will be a slide show presentation.
The community is cordially invited to attend all of these activities.

pointed us to do."
Since 1984 Bonnie and Mike have been dorm parents in Quito for missionary children attending Alliance Academy. Mike, formerly a lease operator for Texas oil fields, says, "We provide a home for OMS MKs (missionary kids) and other MKs who must leave their families to gain an education. We make it easier for their parents to stay where they are and work. Bonnie and I have an opportunity to challenge the MKs under our influence to become second-generation missionaries. These youngsters have the tools. They need the challenge."



Mike and Bonnie Shrode
through the University of Alabama. The Shrodes have four children. A married daughter, Kelly, has two children and is a bilingual teacher in Texas. Troy is an art major at McMurray University. Both Jeremiah and Jessica are students at Alliance Academy, in junior high school and elementary school, respectively.

Bonnie, a graduate of West Texas State University with a B.S. degree in elementary education, taught in the United States and served for two years as a teacher and principal of the OMS school in Guayaquil for children of missionaries from several organizations. In March of 1993 she completed her Master's degree in elementary education

THE BUNKHOUSE

will be closed
Saturday, January 8th
while we do some redecorating

SALE

Beginning Monday, Jan. 10th
20-50% Off
selected items in the store
13 MWZ Jeans for only \$14
One Week Only!

212 S Main • 659-2617

\$2000 Reward

For information leading to apprehension, conviction and/or restitution for damages due to the vandalism in the Southwest area of Hansford County on August 15 and/or August 16, 1992.
Information will be kept confidential as far as possible.

Si McCloy
Box 12
Morse, Texas 79062

Hansford County Hospital District News

Sue April named Hansford County Hospital District Employee of the Year

Hansford County Hospital District's Employee of the Year is Sue April.
Sue came to Hansford County in January 1993. She is a registered radiologic technologist at Hansford Hospital. Sue has been cross-trained in mammography and presents mammography seminars to civic groups upon request. During the Hansford County Health Fair, one hundred thirty mammograms were done as a result of her efforts.
Sue graduated from Amarillo College with an Associate of Science in Radiologic Technology in 1990. She received the Sybil Harrington Scholarship for Academic Excellence and continued her education at WTAM. Sue graduated in August of 1992 with a Bachelor of Science degree and was included in the Who's Who

in America Universities and Colleges and the Alpha Chi Honor Society.
Sue is the mother of three children: Charles Carpenter, a paramedic in Oklahoma City; April Carpenter who is the mother of Sue's first grandchild,



HCHD Administrator Anne Snow (left) presents Sue April with the award for Employee of the Year.

Sean. April is presently enrolled in the RN program in Massachusetts; Amy Carpenter works for the University of Massachusetts and attends the university part time.
Sue transferred from Massachusetts to Colorado in 1987 with St. Anthony's Enterprises Mobile Imaging Services. In 1988, she transferred to Amarillo, Texas where she continued her education.
Sue is a member of the First United Methodist Church in Spearman. She is a dedicated worker, who extends a personable touch to her patients and to the community. "I'm very proud to receive this recognition from my peers. I appreciate the acceptance and friendship shown to me by the citizens of Hansford County," was Sue's response to receiving this award.



Myrle Holt

Solid Gold Selections Myrle Holt named resident of month

Our featured resident for the month of January is Myrle Holt. Myrle was born February 11, 1911 to Ben and Berda Holt, and grew up in the Holt community, south of Spearman. She was a 1927 graduate of Spearman High School and received her BS Degree in 1930 from Texas

Women's University at Denton, Texas, with a joint major in English and Speech. She continued her education at the South Texas College of Law in Houston, and received her L.L.B. in 1940. Myrle became one of the first female attorneys in Texas when she received her license in 1941.
She worked for Continental Oil Company as a Supervisor of Contracts until her retirement in 1973.
After retirement she lived in Antigua, Guatemala, where she and her husband were reconstructing their 300 year old Spanish colonial house.
Myrle suffered a massive stroke on October 20, 1982 on a plane that was bringing her to Houston for medical attention. It was decided that she remain in Texas for rehabilitation.
On life in the Manor, Myrle states, "I love it. It is wonderful here." Myrle has many friends, and is an inspiration to all who know her. We are very happy to have her here with us!

Notes from Activities by Debbie Sanford

Wow! December was a busy month! We had lots of activity and many visitors, some from even as far away as the North Pole.
BIG THANK YOU'S to all of the volunteer's, family members, friends, staff and everyone who helped to make the Holidays a warm and happy time for our Manor residents. As the year draws to a close, we catch our breath and anticipate all the New Year will bring.
The Church of Christ will be our Buffet Sponsor for January. Our Tuesday night Bingo Sponsor will be the Xi Zeta Sorority. We'll be having a tea for all the widows in the manor on the 18th. There will be a program presented by Marianne Dixon, who is the daughter of our Manor resident, Lorane Melton.
Happy New Year to everyone, and get ready for a fun and exciting year!

Resident Birthdays

- 2nd Woodville Jarvis
- 6th Mildred Daily
- 19th Nova Foote
- 19th Jo Richardson
- 26th Evelyn Guthrie
- 29th Buster Schott

Welcome New Residents!

- Evelyn Guthrie
- Francis Rhodes

New Employees

- Veronica Rosales, Dietary
- Maria Torres, CNA
- Debbie Johnson, LVN
- Sylvia Herrera, NH Hskp.
- Esperanza Magana, NH Hskp.

Pharmacy featured department of the month at HCHD

The featured department of the month at Hansford Hospital District is the Pharmacy Department. There are three full time employees - Linda Beeson, who is a licensed pharmacy tech, Vicki Stewart, who has a degree in Business Administration, and Jim Miller R.Ph who is the registered pharmacist on staff. Carey Bridges and Orville Brummett are also registered pharmacists who fill in for Jim when he is gone.
Linda has been employed for eleven years in the hospital pharmacy department. Vicki and Jim have been employed for four

years since the opening of the retail pharmacy within the hospital.
January is the National Fiber month. Some Americans turn to the use of laxatives instead of incorporating the use of dietary fiber to achieve the same results. Laxatives help promote bowel evacuation. Nonprescription laxatives are often misused due to lack of understanding of normal bowel function. In effect, there is no "proper" number of daily or weekly bowel movements. Therefore "regularity" might be once or twice a day for some people or two per week for others.

Older persons are five times more likely to complain of constipation compared with younger people. Constipation can be caused in some people by aluminum or calcium antacids (ex: Maaiox, Mylanta, Tums), antidepressants, antihistamines and antiparkinsonism medicines. Pain relievers such as aspirin or muscle relaxants also could cause constipation when used in excess. It can also be caused when people ignore the natural urge to have a bowel movement.
Self-medication should be restricted to short-term treatment. Chronic use of laxatives

(particularly stimulants) may lead to dependence. Prior to using laxatives, consider living habits affecting bowel function including disease state and drug history. Rational therapy and prevention of constipation includes: adequate fluid intake (a minimum 4-6 glasses (8oz.) of water daily), proper dietary habits including bulk or roughage (avg. 25g of dietary fiber daily), responding to the urge to defecate, and daily exercise. Overuse of laxatives especially in the elderly could cause a decrease in the absorption of nutrients, resulting in possible malnourishment.

Christian vocalist and speaker to be in Gruver

Erron Mercer, Christian vocalist and speaker will be in Gruver, Wednesday, Jan. 12, from 12 noon until 1:30 p.m. Erron will be singing several songs as well as praising the Lord through his own personal life story. He is a winner of numerous talent competitions across Texas and Oklahoma. The event is sponsored by the Gruver Christian Women's Fellowship and



Erron Mercer

will be held at the Golden Age Center, Gruver. The public is invited to attend.

Erron won first place four years in a row in Kid's of America Talent Contest, first place in Moore County Talent Contest and was overall winner at the Gospel Talent Contest in Amarillo. He was a member of Who's Who of American Students three years in a row, past member of Students Against Drunk Driving and was active in school choirs. Erron won first runner-up in both 1992 and 1993 at the Tri-State Fair in Amarillo. Erron won first place in three categories in the 1993 Oklahoma Kids Talent Contest in Oklahoma City. For this rare achievement he was presented the Governor's Award.

Erron, from Borger, Texas was struck by multiple sclerosis at the age of five. He has been an inspiration to others everywhere - with or without obstacles to overcome. Erron's determination, natural talent and faith in the Lord have put Erron in first place in the hearts of all his audiences.

Admission is free. A nursery is provided, located at the United Methodist Church. The event is non-denominational and attendance is encouraged to women of Hansford County and surrounding areas. The

brown bag meeting (bring your own lunch) will be held at the Golden Age Center, Gruver. Tea and coffee provided.

The Gruver Christian Women's Fellowship sponsors Christian speakers and programs. Five events per year are planned with a summer retreat. Representatives from all eight Gruver area churches are involved in planning the programs. The purpose of the meetings is 1) to exalt our Lord and Savior Jesus Christ and 2) to promote Christian fellowship and spiritual growth among women. There is a free-will donation. The next sponsored program is March 9.

Chamber Chatter

by Cindy Blackman
Chamber Manager

Coffee Time this week will be at Lady Fair from 10-11 a.m.

Retail Merchants are reminded of their meeting Wednesday, Jan. 12, at 7:30 a.m. at the Palo Duro Cafe.

The Board of Directors of the Chamber of Commerce will meet Thursday, Jan. 13 at the chamber office.

Several people have asked when the annual chamber banquet is go-

Hospital Report

Dec. 29 - Jan. 5

Admissions

Wednesday - Novea Foote.
Thursday - Richard Shedeck
Friday - Buster Schott and Peter Jesch.

Saturday - Augustina Sandoval and Richard Shedeck.

Sunday - Nadine Sprigg.

Monday - none.

Tuesday - none.

Wednesday Census:

Richard Shedeck, Augustina Sandoval, Buster Schott, Nadine Sprigg, Novea Foote and Peter Jesch.

Tax rebates

from page 1

The December rebate of \$2.4 million to El Paso dropped 1.2 percent from the \$2.5 million sent to the city in December 1992. "El Paso's modest increase in employment of 1.6 percent was the lowest year-over-year growth rate they've experienced in 22 months," Sharp said.

This month's sales tax payments include taxes collected by monthly filers on October sales and reported to the Comptroller in November. The mass transit payments include taxes collected between July and October and reported to the Comptroller in September, October, and November.

At the movies...

Showing at the Lyric Theatre in Spearman Friday, Jan. 7, through Tuesday, Jan. 11, is "Wayne's World 2" on screen #1 at 7:45 p.m. and "Addams Family Values" held over on screen #2 at 7:30 p.m.

"Wayne's World 2" stars Mike Myers and Dana Carvey. It co-stars Charlton Heston, Drew Barrymore and Kim Basinger. Lorne Michaels is the director.

In "Wayne's World 2", Wayne (Myers) and Garth (Carvey) have to deal with it when Wayne's favorite babe (Tia Carrere) comes under the influence of a slimy record mogul (Christopher Walken).

"Wayne's World 2" is rated PG-13.

"Addams Family Values" stars Anjelica Huston, Raul Julia, Chris-

topher Lloyd, Joan Cusak, Carol Kane, Christina Ricci and Jimmy Workman. It is directed by Barry Sonnenfeld.

In "Addams Family Values" Gomez (Julia) and Morticia (Huston) have a son. The mustachioed Pubert, their baby boy, has an affect on the rhythms of their love life and causes Gomez and Morticia to have marital problems.

While Gomez and Morticia are having problems, Uncle Fester is in love. He is engaged to an outwardly normal, but possibly murderous woman named Debbie (Cusak).

"Addams Family Values", a comic sequel, is rated PG-13.

Lunch Menu

Gruver I.S.D.
Jan. 10 - Jan. 14
Lunch

Monday - Salisbury steak with gravy, mashed potatoes, carrots, cake, hot rolls and milk.

Tuesday - Nachos with meat, beans, fruit, and milk.

Wednesday - Fried chicken, mashed potatoes with gravy, corn, jello, biscuits, and milk.

Thursday - Pigs in a blanket, beans, fruit, and milk.

Friday - Hamburgers, lettuce, pickles, cheese, french fries, ice cream, and milk.

Breakfast

Monday - Cereal, cinnamon bread sticks, juice, and milk.

Tuesday - Biscuit, sausage, fruit, and milk.

Wednesday - Cowboy bread, fruit, and milk.

Thursday - Toast, peanut butter and jelly, fruit, and milk.

Friday - Cinnamon rolls, fruit, and milk.

Pringle-Morse C.I.S.D.
January 10-14
Lunch

Monday - Enchiladas, rice, beans, salad, cookie.

Tuesday - Steak fingers, potatoes and gravy, black-eyed peas, salad, rolls, fruit.

Wednesday - Hamburger, french fries, lettuce, brownie

Thursday - BBQ Chicken, potato salad, green beans, bread, fruit.

Friday - Stew, sandwiches, fruit, ice cream.

Breakfast

Monday - Cheese toast, toast, juice.

Tuesday - Cinnamon rolls, toast, juice.

Wednesday - Pancakes, sausage, juice.

Thursday - Cereal, cinnamon toast, juice.

Friday - Eggs, toast, juice.

Spearman I.S.D.
Jan. 10 - Jan. 14
Lunch

Monday - Beef and bean burrito, corn on the cob, buttered carrots, pineapple tibits, and milk.

Tuesday - Pizza and pinto beans, spinach, apple cobbler, and milk.

Wednesday - Chicken pattie, whipped potatoes, gravy, seasoned green beans, hot rolls, butter and peanut butter blend, and milk.

Thursday - Meat and cheese nachos, refried beans, Spanish rice, pears, brownies, and milk.

Friday - Chicken fried steak on a bun, french fries, lettuce and tomato salad, peaches, and milk.

Breakfast

Monday - Waffle, syrup, hash browns, fruit, and milk.

Tuesday - Biscuit, sausage pattie, fresh fruit, and milk.

Wednesday - Breakfast burrito, tortilla, bacon, scrambled egg, fruit, and milk.

Thursday - 2 cinnamon toast, fruit juice, and milk.

Friday - Cereal, toast, fruit juice, and milk.

Hansford Happenings

A fund has been set up at the First National Bank for Kim and Kirby Taylor to help with recent medical expenses.

The Hansford County Division Board of Directors of the American Heart Association cordially invites you to attend "Hoedown for Hearts", January 22, 1994 at 7 p.m. in the Gruver Elementary Gym. Tickets are \$25 per person. All ticket purchases are tax deductible. For more information or tickets call 733-2050 or 659-2626.

Morse parents of pre-schoolers whose children want to participate in PTA "Reflection", a literary/fine arts contest, may contact Jean Ann Behney at Pringle-Morse C.I.S.D. from 2-4 p.m. daily. Entries are due at the school by Friday, Jan. 14 at 8:15 a.m.

The Pringle-Morse C.I.S.D. Board of Trustees will hold their regular meeting on Tuesday January 11, at 7 p.m.

Defensive Driving classes will be held Jan. 19-20. For more information call the chamber office at 659-5555.

The Retail Merchants association will meet Wednesday, Jan. 12, at the Palo Duro Cafe at 7:30 a.m.

The Chamber of Commerce Board meeting will be held Thursday, Jan. 13 at 12 noon at the chamber office.

The Gruver Christian Women's Fellowship will be sponsoring Christian speaker and vocalist Erron Mercer on Wednesday, Jan. 12 from 12 noon to 1:30 p.m. at the Golden Age Center in Gruver. Brown bag lunch, no charge, and nursery provided.

Harriet Hargrave machine applique workshop will be held Sunday, Jan. 9, from 1-7 p.m. at the First United Methodist Church in Perryton. Open to public. Fee required. For information call 435-7563 or 435-8175. Supply list available from Jo's This N That.

The Hansford Hospital Board of Directors will meet Thursday Jan. 13 at 7 p.m. in the hospital board room.

The Spearman PTA "Reflections" contest deadline is Jan. 14. Grades K-12 are encouraged to enter. Prizes have been donated by local merchants, Video Hut, Knack Shoppe, and Mur Murs.

The North Zone 6 T.E.A. (Texas Emu Association) will be offering a seminar entitled "Incubating and Hatching on a Shoestring" in Spearman on Saturday, Jan. 8 at the Church of Christ fellowship hall at the corner of 1st and Haney from 1:30-3:30 p.m.

The Spearman I.S.D. Board of Trustees will hold their regular monthly meeting on Monday Jan. 10, at 7 p.m. in room 114 at the high school.

Gruver City Council will meet Wednesday Jan. 12, at 4:30 p.m. at city hall.

The Spearman City Council will hold its regular meeting on Tuesday, Jan. 18

A.C.P.R. renewal course for renewals only will be conducted on Tuesday, Jan. 11 at 7 p.m. at the Spearman Fire Station. Contact Michele Davis at 659-3578 during the day or at 659-3411 after 5 p.m.

The Hansford County Reporter-Statesman
Serving all of Hansford County
Spearman • Gruver • Morse
USPS # 7660 • 213 Main, Box 458 • Spearman, Tx. 79081
Published weekly at 213 Main, Spearman, Texas
Owned & Operated by
Texas Independent Newspapers, Inc.
16607 Blanco Road #707 • San Antonio, Tx. 78232
(210) 492-8907
Second class postage paid at Spearman, Texas 79081
Any erroneous reflection upon the character of any person or firm will be gladly and promptly corrected upon being brought to the attention of the management.

Publisher - Molly Zimmermann
Editor - Angela Jones
Office Manager - Sheila LaRochelle
Ad Rep - Debra McNeely

The publisher reserves the right to revise or reject at its option any advertisement which it deems objectionable, either in subject or phraseology, or which it may deem detrimental to its business.

Subscription Rate: Hansford County, \$19.95; out of county, \$24.95 annually.
Postmaster: Send address changes to Hansford County Reporter-Statesman, Box 458, Spearman, Tx. 79081.
Advertising & Story Deadlines
Tuesday, 12:00 noon

At The Lyric Theatre...
Friday, Jan. 7 - Tuesday, Jan. 11
Bargain Nights Mon. & Tue. All Seats \$3
Closed Wednesday & Thursday

SCREEN 1 • 7:45 PM SCREEN 2 • 7:30 PM

WAYNE'S WORLD 2 (PG-13)	ADDAMS FAMILY VALUES (PG-13)
-------------------------------	------------------------------------

113 Main, Spearman

Bank 24
pulse
AUTOMATIC TELLER MACHINE

Attention College Students
Has this happened to you?

- Difficulty Cashing Checks
- High Service Charges
- No Personal Service

OPEN a First State Bank Checking Account
Receive a **PULSE** Card and
Experience Cash at your Fingertips

- 24 Hours a Day
- Nationwide
- Service Charge Free

SAVE Your Time for College Activities
Let Us do Your **Banking**
See First State Bank for a Pulse Card

FSB
First State Bank

One NE Court • Spearman
(806)659-5565
MEMBER FDIC

Neighbors

from pg 4

for the year. After the matter was given serious consideration, here follows some of the predictions.

A.D. Reed (after several pungent observations of the political situation) Prediction: that Hillary will stay in complete control.

Paul Hazelwood (out of earshot of Betty) that his wife will continue to mistreat him--he sure does she'd change-but his prediction is gloomy.

Another of his predictions is that the Loch Ness monster will not be identified. (Seems recent news stories state that the monster may be nothing more than a lovelorn Baltic sturgeon who blundered into the Scottish lake in search of a mate) Remember the word is sturgeon--not surgeon.

Ray Phelps--that his old friend, Freeman Barkley, will be hearing wedding bells before the year is over. S'what he predicts--mentions no source!!

Sheriff McFarlin--that he will have a granddaughter to join his three grandsons. Wonder if he realizes the New Year, like the new baby, will require a lot of changes!!

Carl Archer--that 1994 will bring good moisture; which will grow good crops, which will bring good prices. (He mentions in the same breath that in the Panhandle, only newcomers and fools predict the weather) well, since he is no newcomer-----

Pete Fisher--that the economy and situations will be about the same as 1993. On the personal front--he predicts that his wife, Alta, will remain congenial and sweet as ever.

(Seems that several predictions refer to the wives treatment of the husbands. Wonder if the recent news stories on some of the drastic actions taken by annoyed wives while their husbands slept has some connection. It is your neighbor's prediction that many husbands are going to become very light sleepers !!!)

Ira Harbour--is forced to predict that all conditions will get better--since conditions last year has no

A "Center" Piece

by Garland Hopper

HAPPY NEW YEAR EVERYONE
There has been a lot of illness among the members I am told. Hope is that they are all much better. We miss our members when they are absent. Each one is needed to fill their special place.

The Board Members of the Center want people to know the center is still very much a part of the new Community Center. In spite of any unfounded rumors you may hear, no changes have been made. We can continue to look forward to the use of the new facility. Mean while all you Srs. 55 and over, plan to join us for this year.

Now that the holidays are over, the old year gone and the New Year beginning, we will get to a routine and get new plans started. All suggestions are more than welcome.

MAY GOD BLESS YOU

MARY KAY
FACE TO FACE BEAUTY ADVICE™
Leann Gillaspie
Beauty Consultant
659-3889

IMPROVE YOUR LOOKS, HEALTH AND POPULARITY.

QUIT SMOKING.

American Heart Association
© 1992 American Heart Association

direction to go except up. Also he predicts that he will be a first time great grandfather in the near future. (That prediction is based on substantiating evidence)

Bobby Archer--a prediction based on keen perception and being an authority--that the Houston Oilers and Dallas Cowboys will meet in the Super Bowl, and the Oilers will win by a field goal.

Henry Cornelius--predicts that he and Mary will observe their 55th wedding anniversary in Reno and pick up that Jack Pot for \$19,000,000. (Wonder how one could be a share holder in that prediction).

Bart Thoreson--positively predicting that the Gruver High School Girls Basketball team will go to

state. Also predicts that the Houston Oilers and Dallas Cowboys will play in the Super Bowl. Also predicts that before the year is out, Helen Fisher will have a romantic date--UH-OH.

One New Years prediction has already become reality--Ira Harbour was notified that he had become a great grandfather..

Ira's granddaughter, Amanda and David Driver welcomed a 7 1/2 lb boy early in the morning of January 3, 1994 at Greely, Colorado.

Grandparents are Ann and Russell Hindmarch of Cortez, Colorado. Ira was so pleased to be starting his fourth generation that he isn't sure, but believes the baby will be named Jacob Kristen.

Police Files

Spearman Police Report

The Spearman Police Department filed 33 reports for the period of Monday, Dec. 27, through Sunday, Jan. 2.

Topping the reports filed, there were two automobile accidents during the week.

The first accident occurred on Wednesday, Dec. 29. It was reported that a 1975 Chevrolet pickup pulling a 1982 Fleetwood camper was attempting to backup when it struck a 1983 Chevrolet R.V. Both vehicles were heading north in the 10 block of Townsend. Sergeant Steve Schmidt-Witcher reported that a minimum of \$500 in damage was reported but no citation was issued. The case was cleared.

The second accident occurred on Thursday, Dec. 30, in the 500 block of Highway 207. It was reported that a 1982 Oldsmobile passenger car was attempting to park between two parked vehicles when it struck one of the vehicles. Schmidt-Witcher reported that the driver of the car attempted to locate the operator of the vehicle, a pickup. Upon returning to the accident the vehicle had left. The case is still pending.

On Wednesday, Dec. 29 a suspicion was reported at approximately 12:10 a.m. in the 500 block of Highway 207. It was reported that an officer observed the subjects inside a business. The subjects were identified and the case was cleared.

Another suspicion was reported at 12:45 a.m. in the 300 block of W. Kenneth. Schmidt-Witcher stated that a subject was reportedly sleeping in a vehicle. The subject was identified and the case was cleared.

At 3:30 a.m. in the 700 block of S. Townsend a white male was reported unlawfully entering a residence. The subject was identified and the case is pending.

On Friday, Dec. 31, at approximately 9:40 p.m. the Spearman Police Department received a suspicion report from the 300 block of Kenneth. Officers were unable to locate the subject and the case was cleared.

Another suspicion reported was received at 7:30 p.m. This report involved a possible intoxicated driver approaching town. Officers were unable to locate the vehicle and the case was cleared.

On Saturday, Jan. 1, a suspicion was reported at approximately 5:11 p.m. in the 10 block of N.W. Court. Officers were unable to locate anyone matching the description and the case was cleared.

Other calls during the week included two ambulance assists, eight miscellaneous calls, two false alarms and four lockouts. There were nine animal control reports filed during the period.

The department would also like to address the problem with BB guns. Police Chief Joe Raper wants to remind kids and parents that there is an ordinance against shooting BB guns in the city limits. He also urges anyone using a BB gun to have a safe target to shoot at.

Raper also mentioned the departments bicycle engraving. He encourages everyone to have their new or old bicycles engraved due to the recent rash of bicycle thefts. For more information contact the Spearman Police Department.

It's Time for...

The National PTA's "Reflections" program

What is this?

"Reflections" is an annual literary/visual arts program providing students an opportunity to use their creative talents by expressing themselves through their original works. This year's entries will respond to the theme "If I Could Give the World a Gift..." When does this year's "Reflections" program begin?

The program began Monday, January 3, 1994. Pringle-Morse entries are due by 8:15 a.m. on Friday, January 14, 1994.

How does a student participate?

All Pringle-Morse students can participate through the school's PTA. Students answer the theme question through Literature (original poetry, prose and drama), Music (scores and tape-recorded performances of original musical compositions--with or without words), Photography (color or black-and-white photos or groupings of photos) and the Visual Arts (drawings, paintings, collages, printmaking). Jean Ann Behney, middle school language arts teacher, is the Pringle-Morse PTA Chairperson for "Reflections".

Students may enter as many times as they wish in as many categories as they wish. Mrs. Behney and the classroom teachers at Pringle-Morse have the specific rules (sizes, lengths of entries, etc.) for the various categories.

At Pringle-Morse, all students' works will be recognized and awarded. The students' creative efforts will be displayed in the school cafeteria beginning January 17, 1994. Several works from each area will be sent on to the district level of this program, and winners at that level will go to state. Our

emphasis, however, is on the local level and the excitement and self-esteem all participants will gain from their creative efforts.

Teachers have the option of making "Reflections" part of their classroom activities, but students may also write, draw, or compose at home and bring the entry to school.

"Reflections" is divided into five age categories. These are as follows:

Early childhood (Pre-School) Note: This special category does not compete at national level. Primary (Grades Kindergarten through Third), Intermediate (Grades 4-6), and Junior High (Grades 7-9).

(Note: There is a Senior High Level as well which will not involve Pringle-Morse School).

All "Reflections" entries at Pringle-Morse will require an official entry form and will be judged on the basis of creative ability and interpretation of the theme "If I Could Give the World a Gift".

Parents and students who have questions regarding this year's "Reflections" program are welcome to contact Jean Ann Behney at Pringle-Morse School (733-2507) between 1:50 and 4 p.m. daily. Remember, in "Reflections," every child is a winner!

You never know what is enough until you know what is more than enough.

—William Blake

GET THE ALCO Advantage

FREE EVERY TUESDAY!
SECOND SET OF PRINTS

Receive a second set of 3" prints FREE with any exposure of a roll of 35mm, disc, 110 or 126 color print film left for developing and printing at our everyday prices! C-41 process only. Excludes larger 4" size prints, and photo galaxy.

With A Good Cents Home, The Savings Is In The Bag.

The rebate you'll receive from Texas-New Mexico Power Company when you build a Good Cents home is just the beginning of the savings you'll see. A Good Cents home helps you save energy throughout the year--without sacrificing comfort. That's because high efficiency heating and cooling equipment and other energy-saving features work together in a Good Cents home to reduce your home's total energy needs. For more information about the benefits of a Good Cents home, call your local TNP office.

When It Comes To Long Term Savings a CD Can't Hold a Candle To The Deferred Annuity

Consider These Dramatic Differences Between a CD and an Annuity

	Southern Farm Bureau Life's FLEX II	Bank CD
Current Interest Rate*	5.50%	4%
Interest Earnings	Tax Deferred	Currently Taxable
Surrender Charges Limited to 8 Years**	Yes	No
Partial Free Withdrawals**	Yes	No
Safety	Reserves Established by Insurance company	FDIC
30 Year After-Tax Accumulation***	\$187,447	\$117,191
30 Year After-Tax Monthly Income***	\$1,414	\$709

The above chart is for comparative purposes only. Call your county Farm Bureau office for your personal FLEX II Profile!

Southern Farm Bureau Life Insurance Company offers Flex II, a Flexible Premium Retirement Annuity designed to help accumulate wealth for the future. And, it's backed by one of the strongest companies in the country. Southern Farm Bureau Life has been rated A+ (Superior) by Best for all the 17 years such ratings have been awarded.

The A.M. Best Company is an independent commercial insurance company rating organization and information used is based primarily on each insurance company's annual financial statement. Best assigns its highest ratings to those companies which in their opinion have achieved superior overall performance when compared to the norms of the life and health insurance industry. Best ratings, however, are not a warranty of an insurer's ability to meet its contractual obligations.

For more information call: Troy James or Rich Melton (806) 659-3133
Helping You Is What We Do Best

FARM BUREAU INSURANCE

Southern Farm Bureau Life Insurance Company
Jackson, Mississippi

Form 06102 - (12/93)

SAVE 50% on ONEIDA Stainless

GIANT OPEN STOCK SALE!

After Christmas Special • For a limited time only
Save on a full assortment, available in 37 patterns and 4 price groups -- a choice of more than 550 items overall! Included are the LTD®, Golden Accents™, Heirloom®, Community® and Deluxe lines.

Order Before January 15, 1994

ITEM AVAILABILITY VARIES BY PATTERN

ONEIDA®

Gordon's DRUG

314 Main • Spearman, Tx. • 659-2141

Among The Neighbors

by Helen Fisher

It was a thoughtful gesture on the part of Sheriff McFarlin to hang a plaque commemorating the fact that the late J.B. Cooke was Hansford County Sheriff when the sheriff's office annex and jail was built in 1958. The plaque can be seen in the foyer of the sheriff's office.

Sheriff Cooke served from 1945 to 1976.

Customers of Texas-New Mexico Power company will be missing the ever accommodating and genial Jo Dell Tigrett in the local office. She will be commuting to the Perryton office since the local office has closed.

Pete Waits will continue to handle local maintenance competently as he has for several years.

It is always inspirational to attend a shower for a young mother and her first child. It is a thrilling experience for her and there is an atmosphere of cheerful expectation for the future.

Such was the shower for Bryce Jarvis, three weeks old son of April and Bob Jarvis. It was held Sunday afternoon in the recently redecorated home of Billie Jo and Greg Miesner. Of course the main attraction was Bryce, and Billie Jo was a very gracious hostess.

Relatives here were stunned Saturday night to learn of the automobile accident of Pam Stumpf James with her two children. She was enroute to Spearman, about six miles east of the Stinnett turn-off from the Sanford dam when her car over-turned into a ravine. The cause is undetermined at this writing, but a blow-out is suspected.

Her seven year old son, Bradlee, unfastened his seat belt and crawled out of the car. He couldn't rouse his mother, so tried to get his four year old sister, Tayshia, out.

Motorists in the car in front of them saw the accident and returned. They called an ambulance and all three were taken to North Plains hospital in Borger. Later Pam was air-lifted to Northwest Texas Hospital in Amarillo and Tayshia was taken by ambulance.

Pam is in I.C.U. and still unconscious with severe head injuries and several broken bones. Tayshia is in Childrens I.C.U. at Northwest Texas with broken bones.

Pam is the daughter of Carol Stumpf and granddaughter of Hazel and Harry Stumpf. Carol is in Amarillo and Bradlee came home with his grandparents.

Pam is employed at the dialysis center in Amarillo.

A family member reported on Monday that M.D. McLaughlin has been moved to room 249 at St. Anthony's Hospital in Amarillo. He had been in C.C.U. since last Tuesday after undergoing surgery for six by-passes. The surgery was considered successful, but later some complications or reactions occurred and the prognosis is indefinite at this time.

Mrs. Jo McLaughlin has been at his bedside and other family members have been in attendance.

Mary and Henry Cornelius spent

Christmas in the south. On December 18 they flew to Daytona Beach, Florida. They visited a cousin of Mary's whom they had not seen in 17 years.

Unfortunately it was overcast weather rather than the bikini weather they were expecting, rainy and chilly. They flew to Gulf Port, Mississippi for six days where the weather was very pleasant. The main attraction at Gulf Port and near-by Biloxi is the gambling casinos. The Cornelius were surprised to observe the huge crowds that filled all the casinos constantly during the Christmas season. They were especially surprised that most of the gamblers were elderly women, coming in on numerous tour buses.

On Christmas Eve, Mary became acutely ill with bronchitis and had to be taken to the hospital. After her release, they came home, arriving on Thursday.

Amelia Johnson with her five year old grandson, James Peter Dahl, flew to Mustang Island for Christmas. Her daughter, Lora and Garland, with the other two sons, drove thru later.

While there Amelia took three of her grandsons on a boat tour along the coast. Amelia as well as the boys were fascinated by the whooping cranes and the porpoises and other animal life.

Mark and Nick Nelson, her two sons from Houston joined the family for Christmas.

Amelia flew back, this time accompanied by her 21 month old grandson.

Phyllis Owens spent several days in Amarillo in the home of her daughter, Judy and Bill Elliott. Much of the Christmas holidays was spent in discussing the upcoming marriage of one of the grandsons on January 8.

Ira Harbour spent Christmas holidays at South Lake, near Dallas, with his son Ted and Debra and children. He was there several days, and since they had just moved into their new home, he shared their enjoyment of their first Christmas in it.

His granddaughter, Julie Jones, came over from Dallas and other guests were Debra's mother and brother from Wellington.

After his return, his daughter Jeanie and Don Jones of Morse and his son Curtis and Shirley and family had Christmas with him. His grandsons Slaid and Sherman Jones, a senior and a freshman at Tech joined them. Slaid underwent some minor surgery during his school break.

Lou and T.C. Harvey drove through to Fullerton, California to spend Christmas with daughter Peggy and Gary Osborn. Osborn's daughter, Tamra and John King from Portland, Oregon came also. Their little son, Lou and T.C.'s great-grandson, Nicholas, made sure all were entertained.

Rae Butler drove to Midland and spent Christmas with son Rick and family. Their son, Scott came from Houston. She left Spearman the

Thursday before Christmas. Later she went on to San Angelo for a few days with her son Ed and his family. Since he was on vacation, they had much time together.

Betty Lemons was in California for ten days during the holidays. She was a guest in the home of her son James and Thel and Brett and Hamie. They live on Travis Air Force Base. Since it is near San Francisco, they did some interesting sight seeing there.

Marjorie Curtis spent a week in Durango, Colorado for Christmas. Terry Curtis came for her and her aunt and uncle, the Loyd Batsons of Pampa. They drove thru a dangerous blizzard enroute between Clayton and Walsenburg.

Tonya, Marjorie's granddaughter came from Denver to share the holidays with them.

Terry brought them home and is remaining for several days.

Mrs. Aleen Lowder enjoyed a family Christmas in the home of her daughter, Marilynn and Jon Hart at Gruver. Their children and grandchildren joined them. They were Quentin and Loree Hart with Tom Haden, Suzanne Hart with Tessa, Joni Hart and Jon's nephew, Mart.

Andrea and T.J. Bizzo of Austin spent Christmas with her parents, Toni and Bobby Archer. Another guest was Dorothy Chevalier.

Ruth Hill was delighted that her granddaughter, Jennifer Parks and two children could spend some time with her during the holidays. She is the daughter of Jean and they live in Mesquite.

Others sharing Christmas were Joe Mack and Carla Hill. They stayed until Tuesday before returning to their home in Abilene.

Paul Hazlewood may have developed "dishwater hands" with all the guests Christmas, but really has no complaint. Family members coming were Mary Sue Hazlewood and friend, Tim McAuley, Austin; Debbie and Danny Needham and

children, Gregg Hazelwood and friend, Christina Orneles, Billy Paul and Cathy Hazelwood and children all of Amarillo, and Lily Palmer.

Carl and Peggy Archer's guests on Christmas were Mike and Shanna Dixon with Andrew, now of Amarillo; Carlie Dixon, Denver; Carla Gumfory, Gruver with Catherine; Garrett Gumfory, a student at Texas Tech; Julie Gumfory, a teacher from Austin.

Carlie was here several days. She now lives in Denver and is with a computer component company. Her good friend Tanya Curtis shares her living quarters. Tanya is the daughter of Rita and Terry Curtis, all formerly of Spearman.

Alta and Pete Fisher's son, Timmie, spent Christmas with them. He lives in Austin. Their granddaughter, Dawn Fisher and her daughter, Destiny Mae, of Amarillo was with them as were Alta's nephew, Buddy King, of Cash, Oklahoma and Pete's sister, Lois Bance, Borger.

All of the family of Beth and Ray Phelps spent Christmas here. Janice Phelps of Dallas, joined the family on the 23 and all left early the next week. Howell and Sandra Phelps came from Austin with their son Todd who is a student at Texas University. Their other son, Dave, and Stephanie Phelps of Dallas made the gathering complete.

Maxine Banister enjoyed her grandsons, Brent Banister of Brady and Quinn of San Angelo as well as her two great grandsons of Dalhart. The Banisters also visited their

mother, Janice Banister and grandmother, Ivan Allen.

Just prior to Christmas Maxine's niece Cathy and Sonny Herring with three children visited her. They live in Denver.

Ruth Bryan's son, Mansel, visited her a few days. He was accompanied by a co-worker and they came from Ft. Stockton.

Ruth's son, Joe Micheal, with his wife and twins, Dee and Chris, of Richmond spent Christmas with her. Another guest was her third son, James, of Lubbock.

Ruth had barely reached home before Christmas from a good visit with her sister, Mary Hazelwood, in Ft. Worth. Mary's son, Tom, and some friends from Cleburne came up for some pheasant hunting and Ruth rode back with them to Marys.

Ruth Baker enjoyed having her son Don and Barbara for a few days. They are from Springfield, Nebraska. Don, having been born south of Spearman and attending school here until the middle of his high school, was pleased to contact a few old friends.

They all shared Christmas with Butch and Irene Baker. Other guests were the Baker daughter, Deanne and Terry Latham and two children of Kingfisher, Oklahoma. Also coming were their other daughters, Denae and Doug Chandler from West Minister, Maryland and Nita Krob with her year old son, Braden, from Dimmitt. Denae and

Doug were here a week. Other guests of the Bakers were Irene's mother and two sisters of Cheyenne Wells, Colorado, and Albert and Mrs. Graves, Spearman.

Albert LaRoche spent Christmas here with his family, Sheila, and children. He is working in Townshend, Vermont and reports very little snow there so far this year.

Virginia Head was pleased that warm and sunny weather prevailed on Sunday so that some of her Christmas guests could enjoy the outdoors.

Those gathering at her rural home were:

Doug Holmes and family, Amarillo; Elizabeth and Gary Carr, Miami; Cathy and Kristen Ballard, Borger; Kim Brecht, Ardmore, Oklahoma; Catherine and Zane Hall, Pampa; Lawrence and Yvonne Maytum, Guymon; Kiffey White, Borger; Chris White, Beaver; Cathy and Gene Hood, Carlsbad; Ronnie Head and family, Carlsbad; from Spearman-Tammy Kiss, Delinda and Danny McLaughlin and family, and T.J. Evans. There were a total of 35.

1994 came to the Panhandle on a warm and sunny day, stimulating some of the more erudite citizens to make some interesting predictions

Neighbors See pg 5

Gruver Now Has Better Cellular Coverage!



Say 'Hello' to Dobson Cellular Systems.

Dobson Cellular phone service has just gotten better, with the activation of a powerful new cellular tower near Gruver. But that's not all. With it has come the added convenience of clearer cellular coverage between Pampa, Borger, Spearman and virtually all points in the northeastern Texas Panhandle!



What is Cellular? How does it work? What can it do for you? Now, your questions can be answered.

Dobson Cellular wants you to find out what cellular communication is all about. How it works. The convenience and productivity. And of course, the cost related to being a cellular customer.

For more about the most important innovation to hit rural America since the tractor, contact Dobson Cellular today at 1-800-882-4154.

DOBSON
CELLULAR SYSTEMS

1-800-882-4154

2131 Perryton Pkwy. • Pampa • 665-0500

Dobson Authorized Agents:

Gruver Cellular
733-2180

Cellular Communications
659-2848

You are cordially invited to a

Baby Shower

honoring

Tyler Keith Hamilton
newborn son of
Gina & Van Hamilton

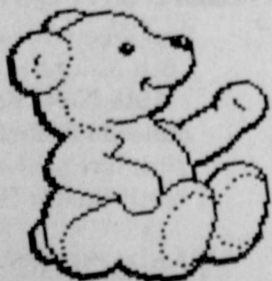
Sunday, January 9
FROM 2-3:30 p.m.
at the home of Beth Brown
907 S. Archer
Given by Hostesses

Guess who's turning
32 on January 10

Happy Birthday!
Love you sis

Baby Shower

honoring



Malory Jane Martin

(daughter of
Scot and Julie Martin)

Thursday,
January 6, 1994
7-8:00 p.m.
27 Golden Circle

Gruver Hounds and Lady Hounds basketball roundup

by Bob Bort

Neither of Gruver's two head coaches were pleased with the performance of their team this past Tuesday night, but for the Lady Hounds, at least it was a victorious night.

"It was good to win a close one at the end," said Gruver Lady Hound coach Steve Myatt about their thrilling 65-63 victory. "That's three or four times for Molly, where it's come down to the nitty gritty, and she's come through." But the near loss to a team the Lady Hounds should have trampled, did not set easy with Coach Myatt.

"The big thing is we're turning the ball over far too many times, and needlessly. It was good that Amber could even dribble the ball down court - I felt the other girls were even looking to get the ball to Amber."

Coach Myatt continued, "Mika was really killing WT - I keep telling her when she's not on the floor, we're not as good a ball team. We need Mika on the floor. She's got to watch her fouls. We can't have her fouling out."

Mika McLain fouled out with 6:21 left in the game, and Gruver leading 54-44. She had scored 25 points, and played magnificently. But when she left the floor, Gruver came un-wound. Until the nitty gritty time, as Coach Myatt put it.

West Texas led 58-57 when Julie Meyer hit a pair of clutch free throws with 1:50 left in the game, to put Gruver up 59-58. But the Lady Comanches came back to lead 61-59, after a three-point play. Then it was all Molly McLain - ice water in her veins, Ms. Clutch.

In the last minute, Molly hit a pair of clutch free throws, to tie the game 61-61. As if that weren't enough, she hit another pair of clutch free throws seconds later to put the Gruver girls up 63-61. Then after the WT girls tied the game up at 63-63, Molly iced the victory with a really nice jumper from the paint just in front of the basket with 7.5 seconds left in the game for the 65-63 victory. The Lady Comanches got the last shot, but it was for naught. For the night, the Lady Hounds were 21-32 from the charity stripe (66%), while the Lady Comanches were 14-23 (61%).

"I feel that a big victory at Stratford Friday night will really help us now," said Coach Myatt. "We're really in a slump."

For the Hounds it was a close

one, that perhaps they should have won. According to Coach Tim Garland, "We gave one away at home, and I feel we have to win our home games to have a shot in this district. It was deflating. But we're not out of it. We've got to turn it on and play well more than just in spurts."

"I hope we are able to play well Friday night in Stratford," said Coach Garland. "We didn't play all that poorly against West Texas, but I feel we were out-rebounded badly, and our 16-28 (57%) at the free throw line was not good."

The Hounds fell behind early, but were able to draw to a tie with 6:17 left in the first half, 18-18. Jace Dawson then hit one of two free throws, and Gruver led 19-18. They fell behind again, until Jarrod Hoel hit a three-pointer to give Gruver back the lead, 37-36, with 4:34 left in the third quarter.

But that was when the Comanches came to life, and the point at which they really won the game. They scored nine straight points for a 45-37 lead, deflating for the Hounds.

But the Hounds didn't quit. They cut the lead to four by the end of the third quarter. Then in the fourth quarter they fell behind by twelve, 61-49, but again they rallied.

The rally started with 3:45 left in the game, as Hoel nailed a trey, and Gruver trailed 63-55. Wylee Maupin got hot with a pair of free throws and a nice score from under the basket, and Gruver trailed 65-59. Then Kenton Odom hit a jumper to draw the Hounds within four, 65-61. Aaron Frick hit a pair of free throws, and Odom hit one of two, and the Hounds trailed by three, 67-64.

After the Comanches had upped the lead to 70-64, Roma Tomlinson hit another trey with 55.5 seconds left in the game, and then Maupin hit again from under the basket, and the Hounds trailed only 70-69 with 28 seconds left in the game. But the Hounds fouled, and lost the game at the opponents free throw line, as they were successful there at the end. WT was 14-17 from the charity stripe in the fourth quarter, when it counted. That's where the game was won. For the night, WT was 19-25 (76%) from the free throw line. Final score was 75-69.

The Hounds and Lady Hounds plus the JV teams will be traveling to Stratford Friday night the 7th of January.

JV Girls (7-8, 1-1)
vs West Texas
TUESDAY 1-04-94

at Activity Center
WT 4 13 25 29
Gru 2 12 15 22
3-Pointers - Crystal Christian, Lexy Spivey.

GRU-Christian-7, Amy Gillispie-4, Robbi Mathews-4, Spivey-3, Mary Dawn Jensen-2, Hailey Lamb-2.

JV Boys (8-8, 1-2)
vs West Texas

TUESDAY 1-04-94
at Greyhound Gym

WT 8 21 28 38
Gru 6 33 51 66
3-Pointers - Scott Jarvis (3), Tye Womble.

GRU-Juan Arreola-12, Daniel Bort-9, Jarvis-9, Fernando Oliveira-9, Sammy Renteria-8, Eric Wright-8, Womble-5, Rosalio Arreola-4, Max Frick-2.

Varsity Girls (17-4, 2-0)
vs West Texas

TUESDAY 0-04-94
at Greyhound Gym

WT 8 22 38 63
Gru 18 28 48 65
GRU-Mika McLain-25, Wynn Maupin-18, Molly McLain-8, Tisha Ralston-7, Julie Meyer-6, Wendy Rodriguez-2, Amber Murrell-1.

Varsity Boys (5-13, 1-2)
vs West Texas

TUESDAY 0-04-94
at Greyhound Gym

WT 14 32 47 75
Gru 11 28 43 69
3-Pointers - Jarrod Hoel (3), Roma Tomlinson (2).

GRU-Hoel-24, Aaron Frick-10, Jace Dawson-8, Wylee Maupin-8, Kenton Odom-7, Tomlinson-6, Travis Ferguson-3, Josh Mayhew-3.

Varsity Girls (15-3) vs Texline
WEDNESDAY 12-29-93
at Stratford Tourney

Gru 22 53 77 89
Tex 7 13 24 38
3-Pointer - Sara Jones

GRU-Julie Meyer-18, Mika McLain-18, Molly McLain-12, Sara Jones-9, Wynn Maupin-8, Kiki Carthel-6, Shanna Jarvis-6, Amber Murrell-4, Tisha Ralston-4, Wendy Rodriguez-4.

SYNOPSIS: Coach Steve Myatt was very pleased with the performance against the outmanned Lady Tornados. "We are out of our shooting slump," said Coach Myatt. "I was really pleased that they held their intensity throughout the four quarters." Gruver was on a pace to break 100 after three quarters. Next up in the Stratford Tournament - the Lady Elks - and if the Lady Hounds win, they will win the tournament.

Varsity Boys (5-10) vs Texline

WEDNESDAY 12-29-93
at Stratford Tourney

Gru 19 32 47 66
Tex 19 32 47 61
3-Pointers - Jarrod Hoel (4), Phil De La Cruz (3), Travis Ferguson.

GRU-Hoel-28, Le La Cruz-11, Jace Dawson-9, Ferguson-9, Aaron Frick-4, Wylee Maupin-3, Josh Mayhew-2.

SYNOPSIS: Hoel had his biggest game of the year, as he hit four 3-pointers, scored 28 points, including 14 fourth quarter points when the Hounds really needed them. Hoel had his streak of 20 consecutive free throws made broken on the 21st attempt. He was 6-7 at the charity stripe against the Tornados. The game with Texline was tied at the end of each quarter, going into the fourth quarter. Coach Tim Garland was very pleased with the effort, and commented that the Tornados are a very good team.

Varsity Girls (15-4)
vs Stratford

THURSDAY 12-30-93
at Stratford Tourney

Gru 19 35 44 62
Str 3 30 51 70
3-Pointers - Sara Jones (2)

GRU-Wynn Maupin-21, Mika McLain-16, Julie Meyer-7, Jones-6, Tisha Ralston-6, Wendy Rodriguez-4, Molly McLain-2.

Varsity Boys (5-11)
vs Stratford

THURSDAY 12-30-93
at Stratford Tourney

Gru 7 20 34 44
Str 10 32 42 58
3-Pointers - Roma Tomlinson (3), Phil De La Cruz, Travis Ferguson.

GRU-Tomlinson-11, Aaron Frick-10, Ferguson-6, Jarrod Hoel-6, Wylee Maupin-4, De La Cruz-3, Jace Dawson-2, Kenton Odom-2.

Varsity Girls (16-4)
vs Wheeler

FRIDAY 12-31-93
at Greyhound Gym

Whe 11 25 34 38
Gru 22 33 48 68
GRU-Wynn Maupin-26, Mika McLain-12, Julie Meyer-10, Wendy Rodriguez-6, Shanna Jarvis-4, Amber Murrell-4, Kiki Carthel-2, Molly McLain-2, Tisha Ralston-2.

SYNOPSIS: The Lady Hounds started sluggishly, with several girls not feeling well, according to Coach Myatt. With the score 33-19, the Lady Stangs reeled off 10 straight points to cut the margin to four. But with the score 39-34, the Lady Hounds did them better by going on a 19-0 run, to up the lead to 24, and the game was over. Wynn Maupin is playing very well at this time, with 21 points last night, and 26 points tonight. Sara Jones injured her ankle, and won't know how seriously until they can get an X-Ray early next week. Gruver will be ready for district season next week, with fire in their eyes.

Varsity Boys (5-12)
vs Wheeler

FRIDAY 12-31-93
at Greyhound Gym

Whe 12 28 49 69
Gru 14 32 42 60
3-Pointers - Jarrod Hoel (3), Jace Dawson.

SYNOPSIS: This game probably meant very little to the Gruver boys, who return to district play next week, and they will be fired up. They did not perform especially well against the Mustangs, especially from the charity stripe, where they were 10-19, barely over 50%. Jarrod Hoel is playing well at this time, and he will be a key in the district race, where the Hounds, despite

their 5-12 record, have an even chance to make the playoffs. In the Wheeler game, Gruver led for most of the first half, and it was 40-40 with 3:17 left in the third quarter. But then the Stangs reeled off seven straight points, and that led them to victory.

GRU-Hoel-28, Travis Ferguson-9, Dawson-7, Aaron Frick-4, Josh Mayhew-4, Ryon Atwood-2, Phil De La Cruz-2, Wylee Maupin-2, Kenton Odom-2.

JV Girls (7-7) vs Wheeler

FRIDAY 12-31-93
at Greyhound Gym

Whe 9 20 38 56
Gru 15 28 43 48
3-Pointer - Crystal Christian.

GRU-Kaysha Cluck-15, Cara Hathaway-13, Hailey Lamb-7, Tara Shapley-6, Christian-3, Mary Dawn Jensen-2, Robbi Mathews-2.

JV Boys (7-8) vs Wheeler

FRIDAY 12-31-93
at Activity Center

Whe 4 11 22 32
Gru 10 23 45 54
3-Pointers - Scott Jarvis (2), Tye Womble.

GRU-Eric Wright-10, Rosalio Arreola-7, Max Frick-7, Fernando Oliveira-7, Jarvis-6, Juan Arreola-5, Womble-5, Jake McCullough-2, Kevin McNett-2, Grant Odom-2, Andy Jones-1.



Expanded Surgical Specialty Care Is Now Available Closer to Home...
JOHN D. MOFFAT, M.D.

FELLOW AMERICAN COLLEGE OF SURGEONS
FELLOW ROYAL COLLEGE OF SURGEONS OF CANADA

13 Years Of Experience Specializing In Disorders Of

- Breast
- Thyroid
- Gallbladder
- Liver
- Bowel
- Stomach/Ulcer
- Circulation
- Endoscopy/Laparoscopy
- Carpal Tunnel
- Varicose Veins and Injection Treatment
- Hernia

By Appointment (316) 624-4946
Country Club Drive, Liberal, KS

If No Answer Call SWMC (316) 624-1651

ANNOUNCING



A New Dealer For Reinke Irrigation Systems



Richard Paschel & Howard Koch, owners

We have joined forces with Reinke Manufacturing Company to offer you the unmatched performance and proven reliability of Reinke Irrigation Systems. After extensive training, we are prepared to recommend the best Reinke center pivot or lateral move system for your particular needs. We look forward to providing you the sales and service of the Reinke Alumigator®, Electrogator®, Maxigator® and Swing Arm Corner Systems. Come in today and find out more about Reinke Irrigation Systems reliability.

Alumigator, Electrogator and Maxigator are Reg. TMs of Reinke Mfg. Co.

© 1989 Reinke Mfg. Co., Inc.

REINKE

THE FIRST NAME IN IRRIGATION

Paschel Irrigation Inc.

Richard & Arlene Paschel
(806) 659-5228

Hwy 15 W. • P.O. Box 69
Spearman, TX 79081

Also available as an IRA

Earn

5.50 Percent

Guaranteed for one year upon issue, subject to change on policy anniversary dates.

Superior ratings by prestigious independent organizations confirm our company's financial strength—

Southern Farm Bureau Life has been rated A+ (Superior) by A.M. Best for all the 17 years such ratings have been awarded.

Our Company has been rated "A" by Weiss Research, Inc. which ranks us among the top 10 of all U.S. life and health companies with over \$1.5 billion of assets.

Information used by such independent rating services comes from each insurance company's financial statements. Such ratings are not a warranty of an insurer's ability to meet its contractual obligations.

For more information call:
Troy James or Rich Melton
(806) 659-3133

Helping You Is What We Do Best.

Form No. 06101 - (12/93)

Our current Flex II Annuity interest rate.

The guaranteed rate is 4% for life of your Annuity.

Southern Farm Bureau Life Insurance Company offers Flex II, a Flexible Premium Retirement Annuity designed for periodic as well as single premiums. Your contributions, less any applicable maintenance fees, accumulate wealth for the future. Early surrender charges apply.



Southern Farm Bureau Life Insurance Company
Jackson, Mississippi



Lynxette Carrie Pearson takes aim for a shot in the Miami Tournament game as the Sanford-Fritch Eagles fall back into defense.



Lynx Jason Varnon (40) lays the ball up in the middle of four Canadian defenders as Clint Schnell (52) fights for good rebound position during the Miami Tournament.

Lynx and Lynxettes basketball roundup

The Canadian Tournament was played Dec. 27, 28, and 29th. The Lynx and Lynxettes both won their first round, with each having no problems with Miami.

Round Two action of the tournament paired the Lynxettes with a formidable Lady Eagle team. Even though the Lynxettes led at halftime, 22-21, the Lynxettes went cold in the 2nd half and despite their effort and hustle, weren't able to stay ahead of the "hot" Lady Eagles, ending with a score of 35-40. In the third place finals on Thursday, the Lynxettes faced the Lady Wildcats of Canadian. Determined not to have a repeat of the day before, the Lynxettes came out to an early lead, 13-8, at the end of the 1st quarter. The Lynxettes never looked back, with the Lady Wildcats pulling within five only once before the Lynxettes finished the game 50-36, and won the third place trophy from Canadian.

Lynxettes vs. Sanford Fritch Canadian Tournament 12/28/93
 Spm 17 22 29 35
 S-F 13 21 30 40
 SPEAR- Carrie Pearson-14, Kara Townsen-13, Telie OQuin-6, and Ashly Shieldknight-2.

Team effort: 21 rebounds; 12 steals; 4 assists; three blocked shots; 13/25 free shots, 52 percent.

Lynxettes vs Canadian Canadian Tournament 12/29/93
 Spm 13 21 29 50
 Can 8 14 24 36
 SPEAR-Townsen-17, Shieldknight-14, Pearson-8, OQuin-5, Samatha Beasley-4, and Traci Martin-2.

Team effort: 20 rebounds; 10 steals; 14 assists; 14/19 free shots, 73.6 percent.

The Lynx took on the Eagles from Fritch in Round 2 in a fast-paced game that had the Lynx on top at game's end, 65-49. Scoring was spread out with four players scoring in double figures. The Lynx scored an unanswered nine points to pull ahead and keep the game out of reach. This victory placed the Lynx in the first place finals on Thursday against the Canadian

Wildcats. At the end of one, the Lynx led narrowly, 9-8, and carried a slim two point lead into halftime, 22-20. The Lynx usually have somewhat of a sluggish third quarter, but this night found the Lynx pulling together to hang on to a 38-32 lead. The final quarter belonged to the Lynx, stretching their lead to 51-40 at the sound of the final buzzer. This was the third year in a row for the Lynx to win first in the Canadian Tournament. The Chicago Bulls don't have anything on the Lynx -- they have a 3-PEAT all their own!

Lynx vs Sanford Fritch Canadian Tournament 12/28/93
 Spm 19 33 48 65
 S-F 13 22 48 49
 3-Pointers - Cass Lasater, Toby Thompson and Chad Wilkerson.
 SPEAR - Clint Schnell-16, Jason Varnon-12, Chuck Cook-10, Thompson-9, Wilkerson-3 and Matt Archer-2.

Team effort: 28 rebounds 23 assists; eight steals; blocked shots; 2/3 free shots, 66.7 percent.

Lynx vs Canadian Canadian Tournament 12/29/93
 Spm 9 22 38 51
 Can 8 20 32 40
 3-Pointers - Cook (4), Lasater.
 SPEAR - Cook-18, Schnell-14, Varnon-8, Lasater-7 and Thompson-4.

Team effort: 33 rebounds; 15 assists; five steals; two blocked shots; 4/11 free shots, 36.4 percent.

Thursday night, January 6, will have the Ninth Grade Lynx matching up with the Gruver Ninth grade

at 5 p.m. Friday night, Jan. 7, the Lynx and Lynxette JV and Varsity teams travel to West Texas for another district game. The Lynxettes will host the Guymon Lady Tigers in a non-district game on Saturday, Jan. 8, with the JV beginning at 5 p.m., immediately followed by the varsity around 6:30 p.m.

The Varsity Lynx faced their second district game of the season, meeting the Roughriders of Boys Ranch. Strong 3-point shooting at key times proved to be too much for the Roughriders as Chuck Cook hit four 3-pointers, Cass Lasater was good for two, and Toby Thompson and Chad Wilkerson each contributed one.

The Lynx had a slow night at the charity stripe, hitting only eight on 21, but were still able to stay on top, 54-48. The District race promises to be tough, but so are the Lynx, improving their overall record to 13-5, 1-1 in District play.
 Spm 18 33 46 54
 BR 13 25 37 48
 3-pointers - Cook (4), Thompson, Lasater (2) and Wilkerson.

SPEAR - Cook-12, Jason Varnon-12, Thompson-10, Lasater-9, Wilkerson-5, Matt Archer-2, Clint Schnell-2, Brad Law-1, and Jason Swink-1.

Team effort: 29 rebounds; 15 assists; 11 steals; four blocked shots; 8/21 free shots - 38.1 percent.

The JV Lynx played the Boys Ranch Roughriders to a 51-40 victory Tuesday night, Jan. 4. The JV led by as much as 19 points during the game.

Spm 17 33 43 51
 BR 12 15 23 40
 3-pointers - Heath Archer
 SPEAR - Jarod Huddleston-10, Archer-9, Derrick Burnett-8, Brent Collins-6, Clay Neff-6, Schane Schneider-4, Jeremy Blain-2, Martin Sanders-2, Coyt Tigrett-2 and Josh Winegarner-2.

Spearman's Jill Lusby, who graduated this past May, will be in action on January 8 at 6 p.m. at the Box in Canyon. Jill is playing for Eastern New Mexico University and will be battling against the Lady Buffs from West Texas A&M.

LA GRONE MONUMENT CO.

Garre LaGrone
901 L. 27th
Amarillo, Texas
1-800-658-6117

Cleta Casdorff
Local Representative
Gruver, Texas
(806)733-2154

Look at these great deals!

Due to the overwhelming response of our year end closeout, we have many nice, clean used cars, vans & pickups

- 1991 Ford F-150 V-8 Automatic 23,000 miles. Matching topper - Must see to believe....\$13,990
- 1993 Chevrolet Cavalier approx. 15,000 miles, A/C Power Door Locks, Tilt, Cruise, AM/FM Cassette, Auto.....\$9,995
- 1993 Buick Century 4 Dr. 18,000 miles, A/C, Pwr. Windows & Door Locks, AM/FM Cass., Auto., Tilt, Cruise, Much more.....\$12,995
- 1993 Buick Regal Custom 4 Dr. 18,000 miles, A/C, AM/FM Cass., Pwr. Windows & Locks, Tilt & Cruise, V6 Engine Automatic Trans., Lots more.....\$13,500
- 1993 Chevrolet Corsica 4 Dr. 15,000 miles, A/C, V6, Auto, Tilt, Cruise, Am/FM Cassette.....\$10,995
- 1993 Oldsmobile Cutlass Ciera 5 4 Dr. 12,000 miles, V6 - Auto., A/C, Tilt, Cruise, Pwr. windows & locks AM/FM Cass., Very well loaded.....\$12,300
- 1993 Pontiac Grand Prix LE 4 Dr approx. 17,000 miles, V6 - Auto., A/C, Pwr. windows & locks, AM/FM Cass., Tilt, Cruise, Well loaded.....\$13,500
- 1993 Chevrolet Lumina Euro Sport Bright Blue, V6, Auto, Pwr. Windows & Locks, Cassette, 19,000 miles, Extra Sharp.....\$12,995
- 1992 Ford Tempo GL Great gas mileage. Only 18,000 miles - Look at this one!.....\$8,900
- 1993 Pontiac Grand Am 4 Dr., Auto, Cruise, Tilt, Air, Cassette, Approx. 18,000 miles, brilliant Blue.....\$10,995
- 1993 Chevrolet Beretta - 2 Dr. Coupe, Bright Red, V6, Auto, Air, Pwr. Door Locks, Cass., Approx. 25,000 miles, 2 to choose from.....\$10,995
- 1991 Buick Skylark Blue, 4 Dr., 65,000 miles, AM/FM Cass., pwr. windows, auto, Great school car.....\$7,300
- 1989 Buick Skylark Grey, 4 Dr., AM/FM radio, Auto., Great School car.....\$5,500
- 1992 Astro Van White w/Blue interior, AM/FM Cass., front & rear A/C, overhead console, pwr. windows & locks, panel doors, 8 passenger seating, locally owned, 38,000 miles.....\$15,300
- 1992 Astro Van Blue & White w/blue interior, 4 capt. chairs, dutch doors in back, 30,000 miles, pwr. door locks, pwr. windows, V6 Auto, Front & rear A/C, Some factory warranty remains, overhead console.....\$15,900
- 1991 Plymouth Voyager Light blue w/blue interior, 51,000 miles, V6 - Auto., one owner, AM/FM Cass., Pwr. windows & door locks, rear A/C, overhead console.....\$13,300
- 1993 Plymouth Voyager Red w/maroon interior, V-6 Auto; A/C, pwr. windows & door locks, 14,000 miles, factory warranty transferable.....\$18,900

BILLASPIE
 AUTO & TRUCK CENTER, INC.
 CHEVROLET, OLDS, BUICK, PONTIAC,
 CHRYSLER, PLYMOUTH, DODGE
 Highway 207 South - P.O. Box 430
 Spearman, Texas 79081
 (806) 659-2541

START THE YEAR WITH THESE SAVINGS

PRICES EFFECTIVE JANUARY 2-8, 1994

HAM, EGG & BISCUIT
FOR ONLY **89¢**

HOT PEPPERONI OR BBO BEEF POCKETS
FOR ONLY **99¢**

ALL FLAVORS DORITOS GRAB BAGS
REGULAR 69¢
2 \$1 FOR

Sylvania Light Bulbs
60, 75 or 100 watt **89¢** pkg of 2

ALL GRINDS FOLGERS COFFEE
13 OZ. CAN **\$1.99**

Allsup's Homogenized Milk
1 gallon **\$1.99**

Shurfine Crispy Rice Cereal
13 oz. box **\$1.79**

ALL TYPES PEPSI-COLA
6 pk. - 12 oz. cans **\$1.99**

BRAWNY PAPER TOWELS
JUMBO ROLL **89¢**

Gatorade Thirst Quencher
Assorted Flavors
16 oz. bottle **69¢**

Krunch 'n Munch
Buttery Toffee Pop Corn
5 oz. box **79¢**

SHURFINE APPLE CIDER
64 OZ. BTL **\$1.49**

ALLSUP'S 1.5 LB. LOAF SANDWICH BREAD
69¢ EACH OR **2 \$1** FOR

COMBO OF THE MONTH
2 CHIMICHANGAS OR 2 BEEF & SALSA BURRITOS AND A TALLSUP FOR ONLY **\$1.99**

ALLSUP'S MONEY ORDERS
EACH FOR ONLY **19¢**

"IT'S FOR YOU"...
 The Classifieds Have Something For Everyone!

The Home Seller...
 The Car Buyer...
 The Do-It-Yourselfer...
 The Mother's Helper...
 The Job Seeker...
 The Bargain Reaper...

When you want results, turn to The Classifieds.



REPORTER-STATESMAN

Telephone: 1-800-395-9482 or (806)659-3434

AA Realty

Allen Alford-Broker-659-3034
 Julie Martin-Sales-659-2425
 Dennis Nelson-Sales-659-3608
 Larry Trosper-Sales-659-3491

405 Townsend - 3 BR, 1B, Det.. Gar.
 706 Collier Drive: 3 BR REDUCED
 1017 S. Townsend-3/2/1 REDUCED
 714 Gibner: 4 BR, Dbl. gar.- REDUCED
 703 East Second: 3 Bedroom, 1 B.
NEW LISTING:
 903 S. Archer: 2BR, 1B, Sing. Gar.
 FOR QUALITY & SERVICE CALL US TODAY
 We Need Your Listing.

Bob Hardy Realty
 803 Wilmetth Dr. • 659-3440

Check with us for the lowest listing fee in '94

Robert Hardy - Broker

REAL ESTATE

For sale by owner: 3 bdrm, 1 3/4 bath brick home located at 1114 S. Barkley. Excellent condition with new roof, new central air and heat, remodeled kitchen, and like-new carpet. Approximately 1500 sq feet with single car garage. Priced to sell! Call 659-2052 after 5 p.m.
 S10-4tp

FOR RENT

Office space for rent: Pittman-Shieldknight Building. Call 659-3731.
 S07-RTN

For Rent - 121 W. 5th, 2 BR, lrg. living/dining room, kitchen, carpeted, ceiling fans. No deposit required. Available now. 659-2184.
 S06-1tc rtn

House for sale in Spearman. 3 bdrm, 1 1/2 b, den with fireplace, garage. 101 E. 10th. Priced to sell.
 Call 733-2942
 S11-4tp

MISC. FOR SALE

Firewood for sale-Split seasoned oak. \$80 per rick, \$160 per cord. Call evenings at 659-3425.
 S10-6tp

For Sale-Queen size tube water bed. Call 659-3134 after 5:30 p.m.
 S11-1tc

Lot for sale - Trailer house lot for sale or rent (will sell like rent). 100 block N. Endicott. Also 3 BR, brick home for rent at 1004 Townsend. Large carport and fenced backyard. \$350 month - \$250 deposit.
 659-2245.
 S03 - 1tc RTN

HELP WANTED

Temporaries needed immediately in your area with strong accounting experience. Send resume to P.O. Box 580, Perryton, TX 79070 or call (806) 435-1104.
 S10-8tc

Home for sale: 3 BR, 2B, central air, central heat, storm windows, garage, good shape. Call 659-3096 or 857-3448.
 S02-1tc RTN

For sale or rent-3 bdrm, 1 bath. 819 Archer. Rent, \$300 a month. Call 659-2024.
 S11-2tp

Several positions are open at Palo Duro Feedlot. Apply at Palo Duro Feedlot, south of Gruver. 733-2416.
 S11-1tc

Truck driver needed. Must have CDL Licence. Call Dennis Baker at 659-2634 before 7 a.m. or after 7 p.m.
 S08-2tp

CLASSIFIED RATE
 \$4.00 first insertion
 \$3.00 each additional insertion (30 words or less)
 13¢ each word over 30
 Legal Notices: 15¢ per word

Give.
 American Heart Association

SERVICES

J & M Service Center 24-Hour Service 406 Hancock, Spearman 79081. 659-5519 or 659-3352 Tires, flats, oil & lube, wash, brakes, batteries & minor repairs
 S07-Rtn

CALL YOUR LOCAL Used Cow Dealer for 7 days a week stock removal. 659-3544 or 1-800-692-4043. Serving Cattlemen for the past 20 years.
 G51-RTN

Drivers Education Classes-Independent Driving School. Lanny Hargrove, 814 S. Main, Perryton, TX. (806) 435-2579. Sign up now!
 S49-rtn

PITS CLEANED Dragline or Loader. Call Lee Roy Mitchell, 733-2384, 733-2057 or 733-2175.
 S47-1tcRTN

Carpenter for hire-Remodeling, siding, decks, garages, sheet rock, painting. Ten years experience. Free estimates. Call 659-3963.
 S11-4tp

Smith's Propane Service
 For all your propane needs. Top off your tank now before winter hits. 5% discount for cash. Also rent a motor home for that weekend ball game or mini-vacation. Call Perryton toll free 1-800-536-5844.
 S51-1tc RTN

NOTICE
Wallace Monument Co.
Monuments, Curbing,
Grave Covers
1-800-999-9506
Spearman, Texas

PUBLIC NOTICE

The Spearman Independent School District will be selling one 1983 Chevy Station Wagon and one 1964 Silver Eagle Trailway bus. Sealed bids will be received until 1 p.m. on January 5, 1994 in the Business Office located at 403 East 11th Avenue, Spearman, Texas 79081.

The Spearman Independent School District reserves the right to accept or reject any or all bids or parts of bids, and to waive any formalities and technicalities. Detail information may be secured from Allen Alford, Business Manager. Telephone: (806)659-2116 or Mr. Bob Hill at (806)659-2032.
 S05-RTN odd

Legal Notice

Hansford County Commissioners' Court will receive bids until 4:00 p.m. on Friday, January 7, 1994 on one new, 1994 heavy, half-ton pickup with and without trade-in. Bids will be opened on Monday, January 10, 1994 at the regular Com-

BROWN BAG SALE
\$5 JAN'S ETC. \$5

Rear Entrance Only
Saturday, January 8 • 9 a.m. - 6 p.m.
Your Choice of clothes, shoes & misc.

I have in stock
 5-14 ft. NEW round
TRAMPOLINES
 Call (806) 659-2109
 Harry Stumpf
 301 W. 12th
 Spearman, Texas

PUBLIC NOTICE

Commissioners' Court meeting beginning at 10:00 a.m. Specifications are available at the County Judge's Office or the County Auditor's Office in the Hansford County Courthouse. The Court reserves the right to accept or reject any or all bids.
 Jim D. Brown
 Hansford County Judge
 S09 3tc

Oil & Gas Report

NEW LOCATION, COMPLETION & PLUGGING REPORT
Week Ending December 30, 1993

NOTICE TO CONTRACTORS OF PROPOSED TEXAS HIGHWAY MAINTENANCE WORK

Sealed proposals for: Excavation of Ditches on highway(s) SH 207 in Hutchinson County (ies). Will be received by the Texas Department of Transportation located at: 5715 Canyon Drive, Amarillo, Texas until 2:00 P.M.; Tuesday, January 25, 1993 then publicly opened and read. All prospective bidders are encouraged to attend the Pre-Bidders' Conference which will be held at the Texas Department of Transportation's District Office at: 5715 Canyon Drive Amarillo, Texas. Time and Date: 3:00 P.M.; Tuesday, January 18, 1993. Bidding proposals, plans and specifications will be available at the Engineer's Office at: 5715 Canyon Drive Amarillo, Texas, Telephone (806) 356-3283. Usual rights reserved.
 S11-2tc

Intensions to Drill
HEMPHILL (WILDCAT & FELDMAN Douglas) Medallion Production Co., #1 Jones (640 ac) 1867' from North & West line, E Spencer Survey, 17 mi east from Canadian, PD 7400' (7130 S. Lewis Ave., Suite 700, Tulsa, OK 74136)

LIPSCOMB (S.W. LIPSCOMB Cleveland) Mewbourne Oil Co., Tubb '424 (640 ac) Sec. 424,43,H&TC, 4 mi SW from Lipscomb, PD 8450', for the following wells:

#3, 1320' from South & 1650' from East line of Sec.
 #4, 2310' from South & 1320' from West line of Sec.

LIPSCOMB (S.W. LIPSCOMB Cleveland) Mewbourne Oil Co., Tubb '423' (640 ac) Sec. 423,43,H&TC, 4 1/2 mi SW from Lipscomb, PD 8300' (Box 7698, Tyler, TX 75711) for the following wells;

#3, 1880' from South & 800' West line of Sec.
 #4, 1320' from South & 1880' from East line of Sec.

LIPSCOMB (S.W. LIPSCOMB Cleveland) Mewbourne Oil Co., Genevieve Nowlan Unit (640 ac)

Sec. 459,43,H&TC, 4 1/2 mi SW from Lipscomb, PD 8150', for the following wells:

#3, 2310' from North & East line of Sec.
 #4, 1980' from North & 1320' from West line Sec.

Application to Plug-Back MOORE (WEST PANHANDLE) Gordon Taylor Oil Co., #5 Ricky (80 ac) 310' from North & 165' from West line, Sec. 170,3-T,T&NO, 3 mi south from Sunray, PD 3367' (Box 670, Sunray, TX 79086)

Oil Well Completions
HEMPHILL (S.E. CANADIAN Douglas) Wolf Creek Exploration Co., #1-81 McQuiddy 'A', Sec. 81,1,G&M, elev. 2415 kb, spud 10-18-93, drlg. coml 11-20-93, tested 12-7-93, pumped 14 bbl. of 46.5 grav. oil + 18 bbls. water, GOR 4857, perforated 7306-7370, TD 17730', PBTD 7500' -- Plug-Back HUTCHINSON (PANHANDLE) Travelers Oil Co., #4 Sanford, Sec. 1,1,B&B, elev. 3231 rkb, spud 9-7-91, drlg. compl 9-12-91, tested 12-16-93, pumped 15 bbl. of 41 grav. oil + 20 bbls. water, GOR 1133, perforated 3050-3080, TD 3104', PBTD 3104' --

OSGOOD MONUMENT CO.
Amarillo, Texas

Dealers of Rock of Ages Granite, as well as all colored granites, marble and bronze memorials.

Represented by
Boxwell Bros.
Funeral Home
 519 S. Evans
 659-3802

G & G ELECTRONICS

- 2-way radio • Repeater • Satellite
- Mobile Telephone • Pagers
- Motorola Radius • Kenwood • Maxon • Vertex & Reim

BRUCE DUNCAN
 (806) 659-3125

TexSCAN
 Statewide Classified Advertising Network
 313 Texas newspapers for \$250. Call this newspaper for details.

WOOD FLOORING SHIPPED direct from manufacturer. Save up to 50%, prices low enough to start a business. Call for information and pricing! Quantity discounts. 1-800-38-TEJAS.

77 YEAR OLD custom lubricant company interested in area sales reps. Paid field training. Contact Primrose Oil, P.O. Box 29665, Dallas, TX 75229, 214-241-1100.

PIZZA IN #1 chain-sales growth • seeking franchisees, full-service and/or delivery restaurants • complete training and ongoing support • 75K minimum cash. Call 1-800-257-5626.

515 FENCED ACRES w/water. Southwest of Rocksprings. Live Oak flats, hills with Oak, Cedar, native brush cover. Lots of deer/turkey. \$395/acre, owner terms 210-257-5626.

SINGLETON SUPPLY METAL Buildings: 24x30x10, \$3,050; 30x40x10, \$4,200; 30x60x12, \$5,995; 40x75x12, \$8,150; 50x100x14, \$12,550. Call for other sizes. Mini-warehouse systems. Competitive pricing. Fast delivery. 1-800-299-6464.

A WONDERFUL FAMILY experience. Scandinavian, European, South American. Japanese high school exchange students arriving August. Become a host family/AISE. Call Kathy(Northern)817-467-4619 / Judy(Southern) 512-850-9192 or 1-800-SIBLING.

MEMORIES WEDDING CHAPEL - in hot Springs National Park Arkansas. Weddings simple to elegant - photographs, flowers, videos, lodging, ordained minister. No blood test, no waiting. 1-800-337-7330.

GOT A CAMPGROUND membership or timeshare? We'll take it. America's most successful resort resale clearinghouse. Call resort sales information toll free hotline 1-800-423-5967.

HAROLD IVESTRUCKING hiring drivers. Free driver training. Students welcome. Excellent benefits, excellent equipment, excellent training, excellent opportunity. Come grow with us: 1-800-842-0853.

COVENANT TRANSPORT \$500 sign-on bonus (after 90 days). Last year our top team earned over \$85,000 starting at \$5.27 to \$29 per mile. Plus bonuses to \$38 per mile. • Solos welcome • Spouse rider program • Truck driving school graduates welcome • Paid insurance • Motel, layover pay • Loading/unloading • Vacation, deadhead pay. Requirements: • Age 23 • 1 yr. verifiable over-the-road • Class A CDL with Hazardous Materials. 1-800-441-4394/915-852-3357.

EARN OVER \$50.00 per hour tuning pianos. Enroll now for 30 day school near Branson, Missouri. Information: Joe Edwards, 1521 E. Whiteside, Springfield, Missouri 65804.

SUNQUEST WOLFF TANNING beds. New commercial-home units from \$199. Lamps, lotions, accessories. Monthly payments low as \$18. Call today - free new color catalog. 1-800-462-9197.

IF YOUR MOBILE home, RV, ETC., has been damaged by leaks in polyethylene plumbing, call 1-800-833-9121. Carl Waldman Board Certified Personal Injury Trial Lawyer. Beaumont/Houston.

BREAST IMPLANT DEADLINE information 1-800-833-9121. Waldman**.

AMERICAN LAND LIQUIDATORS, lots, homesites, acreage/vacant land. For sale by owners across the country. Call for free lists/property data. Buyers: 1-800-480-0090. Sellers: 1-800-364-6612.

ADOPTION: LET US help each other. Loving couple offer a lifetime of happiness and security to your newborn. Allowed expenses. Call JoAnna/Joe anytime 1-800-522-6914. It's illegal to be paid for anything beyond legal or medical expenses.

ADOPTION: A FULL-TIME mom and loving dad await your newborn in home filled with love and happiness. Call Carol & Steve 1-800-864-3994. It's illegal to be paid for anything beyond legal or medical expenses.

Once Again, CENTURY 21® Sets The Standard.

Once again The Winthill Group, a leading research firm, has awarded top honors to CENTURY 21 system professionals. In 12 separate categories, business owners nationwide rated the CENTURY 21 system first, every time. For a wide margin. Trust your home to a member of the real estate sales organization in which business owners trust, the CENTURY 21 system. Discover The Power Of Number 1.

Source: 1993 Nationwide Survey of Homeowners. This survey included 141 telephone interviews with a random sample of homeowners from throughout the USA and was conducted during October 7-10, 1993. The Winthill Group, a leading survey research organization, conducted the survey. Homeowners were asked: "How likely are you to use a real estate sales organization, which one would you use?" - "In the best of finding please the right home?" - "In the best of finding please use this home?" - "Does this organization do the best service?" EACH OFFICE IS INDEPENDENTLY OWNED AND OPERATED. Equal Housing Opportunity.

Golden Spread Realty
 200 S. Main • Perryton, TX
 806-435-5444

HENSON CHIROPRACTIC
 410 S. Davis • Spearman, Tx.
Call for Appointment • 659-5603

OFFICE HOURS:
 Monday, Wednesday & Friday 9:00 to 5:00
 Tuesday & Thursday 9:00 to 11:30

Charles H. Ridge, M.D.
 710 S. Roland Street
Office Hours:
 Monday - Friday
 8:30 a.m. - 12 p.m. & 1-5p.m.
For appointments call: 659-3395

DRY CLEANING
 Shirts & Jeans
 Laundered With or Without Starch.
FREE Pick-up and Delivery
1-800-232-5370
"It's not how cheap but how good"
Perryton Cleaners

Are You A Victim of Physical Abuse?
Call Toll Free 1-800-753-5308

We are in Spearman on the 1st, 3rd, & 5th Wednesdays of each month at the First Presbyterian Church, 1021 Cotter. On the 2nd & 4th Wednesdays we are at the First Christian Church at 510 King in Gruver. We can come to Spearman & Gruver any time upon request. We operate a safe place for victims & their children to stay in times of crisis.

Panhandle Crisis Center
 Serving Hansford, Lipscomb & Ochiltree Counties
 317 S. Main Memorials Accepted Perryton, Tx.

Obituaries

Monsignor George Arthur Husmann

ULYSSES, Kan. - Monsignor George Arthur Husmann, 77, died Monday, Dec. 27, 1993.

At 6:30 p.m. Tuesday, Dec. 28, at Rose Chapel of Gililand-Watson Funeral Home in Hereford, Texas, rosary was recited. Funeral Mass was at 11 a.m. Thursday, Dec. 29, in Queen of Peace Catholic Church at Ulysses with Bishop Stanley Schlarman, Bishop of Dodge City, officiating. Burial was in Fowler Cemetery at Fowler. Local arrangements were by Gililand-Watson Funeral Home in Hereford.

Monsignor Husmann was born in Fowler. He was ordained into Catholic priesthood in 1947. He also served as a chaplain in the Kansas National Guard.

Survivors include two brothers, Arnold Husmann of Amarillo and Henry Husmann of Springfield, Mo.; and two sisters, Frances Diller

of Hereford, Texas, and Catherine Diller of Gruver, Texas.

Otha Lee Emert

QUANAH -Otha Lee "Pete" Emert, 87, died Tuesday, Dec. 28, 1993.

Graveside services were held at 10 a.m. Thursday, Dec. 30, in Quanah Memorial Park with the Rev. John Spangler, associate pastor of First Baptist Church, officiating. Arrangements were by Quanah Funeral Home.

Mr. Emert was born in Dickens and married Earnestine Emert in 1979 in Spearman. She preceded her husband in death in 1989. Mr. Emert was employed in construction and had been a Quanah resident most of his life. He was a Protestant.

Survivors include a daughter, Cindy Woods of Quanah; a son, Danny Darden of Spearman; and two grandchildren.

For the Sport of it

by Bob Bort

I did all right on my collegiate bowl picks, I guess, correctly picking 13 of the 19 winners, for a percentage of .684. Some were lucky picks, others were near misses. I had picked 10 of 11 correctly going into New Year's Day, but missed 5 of 8 Saturday.

Here's what I think will happen in the NFL. But before I give you what I think will happen, here are three scenarios that could make this year's Super Bowl in Atlanta the best ever.

1. Dallas vs Houston - all Texas. Would the people here go crazy or what? Jack Pardee vs Jimmy Johnson. But more notable, Buddy Ryan vs Jimmy Johnson again. They don't like each other, to say the least... It would be known as the Bounty bowl. Buddy Ryan is a bomb waiting to go off, and he is the reason this game will never happen.

2. New York Giants vs Denver. My pick for coach of the year, Dan Reeves vs QB John Elway of the Broncos. Elway blamed Reeves, an ex-Cowboy, for the Broncos problems, but it is proved wrong. Hopefully the Giants would spank little Johnny's bottom again...

3. San Francisco vs Kansas City - Steve Young vs Joe Montana, and this one would hurt. Of course I would root for the 49ers, but I can't say I would be totally unhappy if Montana led the Chiefs on a last minute game-winning drive for his fifth Super Bowl ring. He is the greatest.

Here are a couple of other interesting scenarios.

4. San Francisco (4-0) vs Pittsburgh (4-0) - neither of these two teams have ever lost a Super Bowl.

5. Minnesota (0-4) vs Denver (0-4) or Buffalo (0-3) - None of these three teams have ever won a Super Bowl.

Here are my picks for this week.

(AFC, Saturday) Pittsburgh (9-7) at Kansas City (11-5) - Do you expect me to pick against Joe Montana, especially in a play-off game? I will go with the favorite, Kansas City 20 Pittsburgh 10.

(NFC, Saturday) Green Bay (9-7) at Detroit (10-6) - The Lions will probably be favored, but I like the Packers in the upset. I like their QB Bret Favre. Green Bay 23 Detroit 21.

(NFC, Sunday) Minnesota (9-7) at New York Giants (11-5) - I can't go against the Giants. Dan Reeves is the coach of the year. There is no way Jim McMahon can win this game. At home, it will be the favored New York Giants 30 Minnesota 17.

(AFC, Sunday) Denver (9-7) at Los Angeles Raiders (10-6) - I don't think I've ever picked a Los Angeles team to win anything, and why start now? The Raiders would logically be the favorite, but: Denver 31 Los Angeles Raiders 17.

So, I've picked two favorites, and two underdogs, and I'll probably be wrong on all four games... Here are the playoffs, carried out, I will revise them next week, if necessary.

(Second round)

(NFC) Green Bay (10-7) at Dallas (12-4)

New York Giants (12-5) at San Francisco (10-5)

(AFC) Denver (10-7) at Buffalo (12-4)

Kansas City (12-5) at Houston (12-4)

(Conference Championships)

(NFC) San Francisco (11-6) at Dallas (13-4)

(AFC) Kansas City (13-5) at Buffalo (13-4)

(Super Bowl XXVIII at Georgia Dome, Atlanta)

Kansas City 26 Dallas 23 (overtime)

The Lady Hounds are going through some tough times recently. They have lost a couple of games they shouldn't have lost, and several girls are not totally healthy at this time. Also Sara Jones is injured - and if it is a serious injury to her ankle, that would be a big loss. One thing for sure, look for the Gruver gals to come out with fire in their eyes this Friday, January 7, at Stratford. The Lady Elks don't have a prayer...

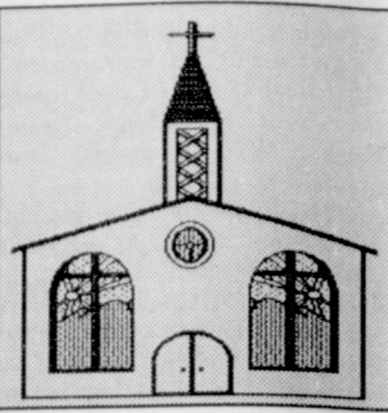
ERRON MERCER
Christian Speaker & Vocalist
will be at the
Golden Age Center in Gruver
Wednesday, January 12
12 Noon to 1:30 p.m.

- Brown bag lunch
- Tea & coffee provided
- Nursery provided (come & go) (no charge)

Sponsored by:
The Gruver Christian Women's Fellowship

Let us replenish the seed of faith through...

REGULAR CHURCH ATTENDANCE, DAILY BIBLE READING & PRAYER



HI-PLAINS AUTO SUPPLY, INC.
Mobile Oil for Irrigation & Industrial Purposes
118 Main • Spearman
659-2506 • (800)657-8742

Palo Duro Supper Club
22 S. Archer
659-2232

C.O.'S SUPPLY CO.
Plumbing & Tire Sales & Service
301 S. Davis • Spearman
659-3781

Bartlett's Ace Hardware
105 W. Broadway
733-2404

GILLASPIE
AUTO & TRUCK CENTER, INC.
CHEVROLET * OLDS * PONTIAC * BUICK
CHRYSLER * PLYMOUTH * DODGE
Hwy 207 South • P.O. Box 430 (800)659-2541
SPEARMAN, TEXAS 79081

ALL OCCASION FLOWERS
MARY MOORE OWNER
M-F 9 a.m. - 5 p.m.
Sat. 9-Noon
PLAINS SHOPPING CTR.
Spearman, Tx. • 659-5180

THE HANSFORD COUNTY REPORTER-STATESMAN
DEDICATED TO SERVE THE COMMUNITIES OF
SPEARMAN, GRUVER & MORSE
213 MAIN • 659-3434 • 1-800-395-9482

Gruver Cablevision
Quality Family Entertainment with
"the Disney Channel"
308 Main • 733-5295

Morse Implement Company
"Join us in church this week"

Boxwell Bros. Funeral Home

Speartex Grain Company
405 Collard • Spearman
659-3711

CORONADO HOSPITAL
Pampa, Texas
(806)665-3721

Compliments of
G&G FOODLINER
516 Main • Gruver
733-2471



PROMISE OF HIDDEN TREASURE

The term "treasure" encompasses a myriad of meanings. To some, treasure is the promise of fortune...to others, natural beauty is their treasure. Yet, fortunes are gained and lost; and even nature falls prey to pollution and natural disasters. So, what is indelible in our search for hidden treasure?

Colossians 2:2-3 gives us the answer as we read, "to have all the riches of assured understanding and the knowledge of God's mystery...in whom are hidden all the treasures of wisdom and knowledge."

Worship the Creator this Sabbath and uncover the mysteries of His miraculous mercy and love as disclosed in God's Word. They will enrich each moment of your life with the indelible beauty of promised treasure.

Sunday	Monday	Tuesday	Wednesday	Thursday	Friday	Saturday
Ephesians 2:1-10	Ephesians 2:11-22	Ephesians 3:1-13	Ephesians 3:14-21	Isaiah 60:1-22	Ephesians 4:1-16	Ephesians 6:10-20

Copyright 1994, Keister-Williams Newspaper Services, P. O. Box 8005, Charlottesville, VA 22906

In Spearman...

Apostolic Faith Church
822 S. Dressen • 659-2870
Sunday School: 10 a.m.
Worship: 11 a.m.
Evening Worship: 6 p.m. Sun.
Wed. Prayer Meeting: 7:30 p.m.
Pastor James Brown

First Assembly of God
401 N. Bernice • 659-2295
Sunday School: 9:45 a.m.
Worship: 11 a.m.
Evening Worship: 7 p.m.
Wednesday Worship: 7:30 p.m.
Youth: 7:30 Wednesday
Pastor Ray Cook

First Christian Church (Disciples of Christ)
29 S. Bernice • 659-2036
Sunday School: 9:45 a.m.
Worship: 10:50 a.m.
Women's Bible Study: 2 p.m. Wed.
Youth: Wed. 6 p.m. & Sun. 5 p.m.
Pastor LaVern Draper

First Baptist Church
123 N. Bernice • 659-5557
Sunday School: 9:45 a.m.
Worship: 11 a.m.
Evening Worship: 7 p.m.
Jr. High Youth: 6 p.m. Wed.
High School Youth: 7 p.m. Wed.
Youth Choir: 6 p.m. Sun.
Pastor Kyle Henderson

Church of Christ
121 S. Haney • 659-3244
Sunday Bible Class: 9:45 a.m.
Worship: 10:30 a.m.
Evening Worship: 6 p.m.
Bible Study Wed. 7:30 p.m.
KRDF Radio Program
Living With Christ 7:50 a.m. M-F
Minister Arnis Pape

Fellowship Baptist
1102 S. Archer • 659-2783
Sunday School: 10 a.m.
Worship: 11 a.m.
Evening Worship: 6 p.m. Sunday
Youth & Adult Serv.: 7:30 Wed.
Pastor Rick Fincher

Primera Mission Bautista
502 E. 7th • 659-3991
Sunday School: 9:45 a.m.
Worship: 11 a.m.
Pastor Guadalupe Carranza, Jr.

Trinity Community Church
717 W. 7th Ave. • 659-2671
Celebration of Praise 10:15
Worship Service and Children's Church 10:30
Sunday Evening 6:30 p.m.
Wednesday evening: 7 p.m.
Pastor Dan Carter

Faith Lutheran Church (ELCA)
1101 Bernice • 659-2252
(Worships with First Presbyterian Church)

First Presbyterian Church
(Worships with Faith Lutheran Church)
1021 Cotter • 659-2033
Sunday School: 9:45 a.m. at Lutheran Church
Worship: 11 a.m. (alternates monthly between addresses above)
Pastor Beverly Cook

First United Methodist
407 S. Haney • 659-5503
Sunday School: 9:45 a.m.
Worship: 11 a.m.
Jr. High Youth: 5 p.m. Sun.
High School: 6 p.m. Sun.
Pastor Jeff Lust

Union Church
31 S. Endicott • 659-2644
Sunday School: 9:45 a.m.
Worship: 10:45 a.m.
Evening Worship: 6:30 p.m.
Bible Study: 7:30 p.m. Wed.
Youth: 7:30 p.m. Wed.

Sacred Heart Catholic Church
901 Roland • 659-2166
Sat. Night Mass: 7 p.m.
Sunday Mass: 9:00 a.m. - English.
11:30 a.m. - Spanish
Rev. Fernand Couture

This feature is made possible through the Sponsorship of these Civic Minded Businesses

"WE SUPPORT OUR LOCAL CHURCHES"
CAPROCK #1 & #2
Mike Heard, Gen. Mgr.
(806)733-5043 or 733-5025
"Custom Cattle Feeding"

In Gruver...
First Baptist Church
402 E. Broadway • 733-2411
Sunday School: 9:45 a.m.
Worship: 10:50 a.m.
Disciple Training: 6 p.m. Sunday
Prayer Meeting: 7:30 p.m. Wednesday
Pastor Larry Miller

Church of Christ
209 King • 733-2760
Sunday School: 9:30 a.m.
Worship: 10:20 a.m.
Evening Worship: 6 p.m.
Wed. Evening Worship: 7:30 p.m.
Minister Bob Setliff

First Christian Church
510 King • 733-2960
Sunday School: 9:45 a.m.
Worship: 11 a.m.
Wed. Bible Study: 7:30 p.m.
Youth: 6:30 Wednesday
Pastor Gary Gumfory

Oslo Lutheran Church (ECLA)
West of Gruver on Hwy 15 & N. FM 1162
339-7646
Sunday School: 9:45 a.m.
Worship: 11 a.m.
Morning Prayer: 9 a.m. Wed.
Pioneer Clubs (Grades 1-6):
4-5:30 p.m. Wednesday
Pastor John R. Chandler

Community Bible Church (Interdenominational)
Hwy. 15 • 733-2443
Sunday School: 10 a.m.
Worship: 11 a.m.
Wed. Prayer Meeting: 7 p.m.
First United Methodist
Broadway & Garrett • 733-2651
Sunday School: 9:45 a.m.
Worship: 8:30 a.m. & 10:55 a.m.
Sunday Evening: 6 p.m.
Pastor Lewis Holland

In Morse...
Morse Baptist Church
Pastor Mike Martin
733-2757

Henton & Co., P.C.
Certified Public Accountants
221 Sanders • Spearman • 659-2518

BERRY CLEANERS
DAN DESIMONE • OWNER
Phone 659-3122 • P.O. Box 1017
207 Main St. • Spearman, Tx. 79081

GRUVER FORD
531 Main • Gruver • 733-2431

Interstate Savings & Loan
322 Main • Spearman • 659-2559

Hagerman Services
Backhoe • Dozer • Welding
North Hwy. 15 • Spearman
659-5131

Gordon Drugs
Dependable Prescription Service
314 Main • Spearman
659-2141
Jim Evans

Compliments of...
AGCO
of Spearman, Inc.
"See you in Church"
659-3751

Annual Winter CLEARANCE Sale

**Sale Starts
Thursday, January 6
at 9:00 a.m.**

Door Busters - Cash & Carry

	Regular	Sale
1 pr. Ivory heartshaped twin headboards.....	198.50 ea.	40.00 ea. (sell as pr.)
Blue & mauve tweed stripe chair & ottoman.....	667.50 2 pc.	299.00 2 pc.
1 pr. Oak end tables.....	267.50 ea.	75.00 ea. (sell as pr.)
1 Red & white child's metal desk.....	4.50	20.00
Set of 3 scrubbed pine occasional tables.....	898.50 set of 3	399.00 set of 3
Solid oak corner entertainment center.....	895.00	399.00
10 rack oak gun cabinet.....	699.50	399.50
Blue & mauve hi back sofa & loveseat.....	1269.50 2 pc.	599.00 2 pc.
Glass top brass base square lamp table.....	289.50	50.00
Black w/mirror top sofa table.....	269.50	98.50
Oak student desk.....	339.50	198.50
Velvet rocker recliners - choice of beige, mauve, hunter green, blue.....	479.50 ea.	249.50 ea.
Green or blue velvet tweed La-Z-Boy recliners.....	419.50 ea.	199.50 ea.

Living Room

	Regular	Sale
Black & mauve sofa.....	519.50	398.50
Black & mauve loveseat.....	469.50	349.50
Blue velvet sofa & loveseat.....	998.50 2 pc.	749.50 2 pc.
Black & beige stripe sofa.....	619.50	439.50
Rust, beige & green plaid sofa & loveseat.....	1295.00 2 pc.	975.00 2 pc.
Choice of brown & blue stripe or mauve, beige & blue print 3 pc modular w/2 recliners, sleeper & console.....	1995.00 3 pc.	1495.00 3 pc.
7 pc. living room group (consisting of black vinyl sofa, loveseat, 3 tables & 2 lamps).....	1350.00 7 pc.	998.50 7 pc.
Blue leather match chair & ottoman.....	1559.50 2 pc.	1050.00 2 pc.
Hunter green leather match sofa.....	1395.00	1050.00
Green & mauve plaid sofa.....	869.50	649.50
5 pc. blue & mauve stripe modular consisting of 1 recliner, 2 wedge tables & sleeper sofa.....	2195.00 5 pc.	1650.00 5 pc.

Dining Room

	Regular	Sale
White & butcher block table & 4 chairs.....	479.50 5 pc.	359.50 5 pc.
White & butcher block table & 4 hi-back chairs.....	619.50 5 pc.	459.50 5 pc.
Black & butcher block table & 4 hi-back chairs.....	739.50 5 pc.	499.50 5 pc.
Cherry & hunter green table & 4 hi-back chairs.....	629.50 5 pc.	469.50 5 pc.
Cherry & hunter green china.....	849.50	639.50
Round 48" oak table & 6 chairs.....	1150.00 7 pc.	859.50 7 pc.
Oak glass door china.....	798.50	599.50
Oak glass door china.....	995.00	699.50
Cherry table & 6 chairs.....	995.00 7 pc.	749.50 7 pc.
White formica top table & 4 chairs.....	875.00 5 pc.	659.50 5 pc.
Black w/ white top table & 4 black chairs.....	699.50 5 pc.	499.50 5 pc.
Glass top table & 4 chairs.....	869.50 5 pc.	649.50 5 pc.

Recliners

	Regular	Sale
Choice of green or blue tweed La-Z-Boy.....	419.50 ea.	199.50 ea.
Blue tweed velvet w/swivel La-Z-Boy.....	609.50 ea.	398.50 ea.
1 small beige velvet La-Z-Boy.....	489.50 ea.	299.50 ea.
Plum or royal blue La-Z-Boy.....	549.50 ea.	385.00 ea.
Blue tweed lift recliner by La-Z-Boy.....	1389.50 ea.	969.50 ea.
Tall man blue or brown velvet La-Z-Boy.....	689.50 ea.	499.50 ea.
All leather black or burgundy leather rocker recliner.....	1095.00 ea.	749.50 ea.
Mauve vibrator rocker recliner.....	479.50	329.50
Beige reclining loveseat.....	1079.50	699.50
Choice of beige, mauve, green or blue velvet rocker recliner.....	479.00	249.50

All Wall & Table Accessories on Sale

All Table & Floor Lamps on Sale

All Bedspreads on Sale

Bedding

Twin mattress.....	89.95 ea.
Full mattress.....	119.95 ea.
Queen sets.....	299.00 set
King sets.....	399.00 set

Electronics

	Regular	Sale
9" AC/DC RCA Color Remote.....	379.50	279.50
13" G.E. TV/VCR Color Combination w/remote.....	539.00	439.00
20" RCA Color Remote.....	359.50	279.50
20" RCA Stereo TV w/FM Radio.....	439.00	329.00
25" RCA Stereo Remote.....	569.00	439.00
26" RCA Stereo Console w/PIP.....	819.00	559.50
31" RCA Stereo Console.....	1389.00	1149.00
35" RCA Stereo Console w/PIP & Storage.....	2459.00	2042.50
4 Head VCR by RCA w/On-Screen Programming.....	398.50	299.00
RCA Full Size VHS Camcorder (lots of features).....	1029.00	798.50
RCA Small Wonder VHS-C Camcorder (approx. 1.7 lb).....	1029.00	819.00

Sleepers

	Regular	Sale
Brown Velvet Sleeper.....	839.50	639.50
Black & Mauve Sleeper.....	839.50	639.50
Blue striped velvet sleeper.....	789.50	598.50
Blue striped velvet sleeper w/reclining loveseat.....	2095.00 2 pc.	1575.00 2 pc.
Mauve, beige, green sleeper w/reclining loveseat.....	2295.00 2 pc.	1699.00 2 pc.
Blue & Mauve sleeper.....	879.50	659.50
Beige & blue velvet sleeper.....	889.50	669.50
Blue plaid sleeper.....	949.50	699.50
Beige & brown print sleeper.....	669.50	499.00
Brown & blue striped sleeper.....	775.00	579.50
Mauve & blue plaid sleeper.....	1069.00	699.50

Bedroom

	Regular	Sale
White dresser, mirror, chest & full or queen headboard.....	1237.50 4 pc.	899.50 4 pc.
White lingerie chest.....	349.50	259.50
White youth desk.....	289.50	217.50
Oak single dresser, mirror, 4 drawer chest & full or queen headboard (group has colored drawer fronts).....	1142.00 4 pc.	849.50 4 pc.
Black lacquer dresser, mirror, chest, headboard & one nite stand.....	895.00 5 pc.	679.50 5 pc.
White washed pine dresser, mirror, wardrobe chest & queen headboard.....	2009.50 4 pc.	1495.00 4 pc.
Nostalgic oak pier chest, mirror, wardrobe chest, queen headboard & nite stand.....	2450.00 5 pc.	1695.00 5 pc.
Oak triple dresser, mirror, door chest & queen or full headboard.....	899.00 4 pc.	649.50 4 pc.

Daybeds & Bunkbeds

	Regular	Sale
White waterfall daybed.....	169.50	119.50
Black lifestyle daybed.....	259.50	198.50
Ivory waterfall daybed w/porcelain knobs.....	179.50	129.50
White daybed w/canopy.....	289.50	219.50
Red or black lifestyle twin/full bunkbed.....	279.50	199.95
Red twin bunkbed.....	249.50	187.50
Black twin/full bunkbed w/red futon mattress (botton bed folds up as sofa).....	589.50	449.50

Appliances

	Regular	Sale
Roper heavy duty washer & dryer.....	819.00 pr.	659.00 pr.
Roper 18 Cu. Ft. Frost-free Refrigerator.....	719.00	589.00
Roper 15 Cu. Ft. Freezer.....	529.00	419.00
Roper Gas or Electric Range.....	369.50 ea.	299.00 ea.
Whirlpool Built-In Dishwasher.....	359.00	289.00
Whirlpool Large Capacity Heavy Duty 2 Speed Washer.....	498.00	399.00
Whirlpool Large Capacity Heavy Duty Dryer.....	398.00	329.00
Whirlpool 20 Cu. Ft. Frost Free Refrigerator.....	819.50	679.00
Whirlpool 22 Cu. Ft. Refrigerator w/ Crushed Ice & Water in the Door.....	1519.50	1269.00
Whirlpool Microwave Exhaust Hood Combination.....	529.00	399.00

•Every Item on Sale•
 Financing available with approved credit:
 Mastercard • Visa • Discover
 Whirlpool Financial Corporation • Bank Rate Financing
 All items subject to prior sale - No Approvals - All Sales Final

BODLEY FURNITURE CO.
 723 W. 7th
 Spearman, Texas 79081
 8:30 a.m. - 5:30 p.m. • Mon. - Sat.