



HANSFORD COUNTY LIBRARY
0120 S. MAIN ST.
SPEARMAN TX 79081
1 04/97

50¢

THE HANSFORD COUNTY

Reporter - Statesman

Serving Hansford County Since 1907

Look for Spearman on the Internet at <http://www.webtex.com/Spearman>

THURSDAY, JANUARY 23, 1997

213 MAIN • SPEARMAN, TEXAS, 79081

VOLUME 90, ISSUE 4

Hansford Happenings

Superbowl Party

A Superbowl Party will be held at the Lyric Theatre on Sunday, January 26, 1997 beginning at 5:00 p.m. Prizes will be given away and food will be furnished. Testimonies from local athletes. Sponsored by the First Baptist Church of Spearman.

"Hearts & Roses" Heart Association Banquet

The Hansford County Division Board of Directors of the American Heart Association cordially invites you to attend the "Hearts and Roses" banquet on Saturday, February 1, 1997 at 7:00 p.m. at the First Baptist Church of Gruver. Tickets are \$25.00 per person and may be purchased from: Rosemary Brown, D'dee Ellis, Lovida Giblin, Al McNeely, Darlene Pierce, Betty Pugh, Margaret Ralston, Colleen Schaefer, and Nita Sumner. A steak dinner will be served. There will be a silent and live auction.

SISD To Offer Adult ESL Classes

English as a Second Language classes will begin Monday, January 20th. They will be held at Spearman High School, east door, from 6:30-9:30 p.m. Call Elodia Bravo at 659-2710 after 5:00, or Cindy Blackman at 659-3233 between 8:00-4:00 daily for more information. There is no charge for this class.

GED Classes

Spearman I.S.D. is offering GED classes on Monday nights at 6:30 p.m. in the Home-Economics Room. If you are interested in taking a GED class, please contact Cindy Blackman at 659-3233

Spearman ISD Offers Scotopic Sensitivity Syndrome Diagnosis

If you or a family member of any age experience difficulty in reading, it may be because of Scotopic Sensitivity Syndrome (as recently reported on ABC Nightly News.) There is a simple, painless test that can be given to diagnose this problem. Students of Spearman ISD will be tested free of charge; all others will be charged \$10. For more information, call Beckee Baker at Spearman Jr. High (659-2563) and leave a message, or call 659-3402 after 4:30.

Lunch & Learn

Lunch & Learn will be held Tuesday, January 28th at noon in the fellowship hall of the Spearman Church of Christ. "Tie One On" features neckties in creative new garments, fashion accessories, Christmas stockings and ornaments. Donna Brauchi of Gray County and Jeanene Sinclair of Carson County will show methods for recycling neckties into new clothing items and accessories. Please bring any items you have created using neckties to show and share ideas. If you cannot attend but would be willing to display vests, quilts, pillows, etc., please call the extension office. Donations will be accepted for the lunch that will be served. Call Peggy Winegarner, County Extension Agent, at 659-4130 or 733-2901 if you have any questions.

College Financial Aid Workshop

A financial aid workshop will be held in the Gruver High School Library on Thursday, January 23rd at 7:00 p.m. Linda Knuce, Frank Phillips College Financial Aid Director, will assist parents in completing the free application for student financial aid. Parents of senior and junior students are urged to attend.

Girl Scout Cookie Sale Begins

Girl Scouts will be taking orders for cookies January 24-February 7. Delivery and direct sale of cookies will be March 14 through April 2. Service Unit Product Chairman is Joan Farr and can be reached at Jo's This N' That, 214 Main, 659-3999.

Spearman Boy Scouts Selling Popcorn

Spearman Boy Scout Troop #551 still has "Trails End Gourmet" popcorn for sale, if anyone is interested please contact Andy Scarborough at 659-3882. Boy Scouts meet every Tuesday evening at the scout hall from 7 - 8 p.m. New members in grades 6-12 are welcome.

Spearman Elementary Turns Box Tops Into Extra Bucks

To help raise money for their school, local students at Spearman Elementary are participating in a unique program from General Mills, maker of popular cereals like Cheerios and Wheaties, called Big G Box Tops for Education. The school will receive 15 cents for every qualifying General Mills cereal box top collected between now and March 31, 1997. A qualifying box top is the top flap of any General Mills cereal box that has the 1996/1997 "Big G Box Tops for Education" symbol.

Local Community Leaders Invited To Business Workshop

The Business Services Office of the Texas Department of Commerce invites city, county, chamber of commerce, and economic development leaders to a business incentives workshop on Wednesday, January 29, at 10:00 a.m. at the Panhandle Regional Planning Commission, located at 415 W. 8th Avenue in Amarillo, Texas. Hosted by the Panhandle Regional Planning Commission, the five-hour workshop is divided into two sessions to inform local community leaders of Commerce's Business Services programs. Session one covers program descriptions and eligibility requirements, while session two, which will begin at 2:00 p.m., is reserved for one-on-one appointments with community leaders to discuss specific projects. There is no fee for the workshop; however, participants must register. For more information and/or to register, contact Perna Strickland of the Panhandle Regional Planning Commission at 806/372-3381.

English Course Offered In Perryton

There will be a 12 hour course on learning to speak English at the Perry Memorial Library in Perryton. Classes will be held in the art room on Friday, January 31 from 5:45 p.m. - 10:00 p.m. and Saturday, February 1 from 7:45 a.m. - 5:00 p.m. Classes are free, and lunch will be provided.

Look Good...Feel Better

Look Good...Feel Better is a very special program which helps people cope with the unpleasant side effects of cancer treatment. With the help of cosmetology professionals, you will learn quick and easy makeup tricks to make you look and feel more like yourself. You'll learn how to compensate for hair loss, including how to use scarves and turbans to your best advantage. You'll be happy to discover that looking good really can make you feel so much better. Date: January 27th from 7:00 p.m. - 9:00 p.m. Location: American Cancer Society Office, 3915 Bell Street, Amarillo, Texas 79109. To register or for more information about monthly programs call: American Cancer Society at (806) 353-4306. Look Good...Feel Better is sponsored by American Cancer Society.

McGill Hired As KRDF Station Manager



Cacy McGill

Cacy McGill was recently hired as Station Manager of KRDF FM Radio Station of Spearman.

Cacy, a 1990 graduate of Spearman High School, comes to Spearman from Amarillo where she was News Producer of KFDA News Channel 10. She has a B.A. degree in English from West Texas A&M University in Canyon.

Cacy is the daughter of Debbie and Sam Abston and Ed and Janice Pearson, all of Spearman. She is

the granddaughter of Charles Caison of Waka, Myrl and Annabell Pearson and Beulah Abston, all of Spearman. She has one son, Merritt Vaughn, age 3.

"I love Spearman, and am happy to be home," commented Cacy. "I am so glad to have the opportunity to raise my son in Spearman where he can experience the same privileges and assets that I experienced during my childhood."

January Is School Board Recognition Month

School board members are ordinary people who have an extraordinary dedication to our public schools. It is time we thanked them for their untiring efforts.

Too often we forget about the personal sacrifices school board members routinely make.

Too often we forget about the important role school board members play in assuring local control over our public schools, control that is in the hands of people we know.... people who are our neighbors.

Too often we forget that, in the tradition of a representative democracy, school board members are our connection to influencing how our public schools are governed.

Too often we are quick to criticize school board members without really knowing all the details that went into any given decision.

Too often the efforts of school board members go unrecognized and unrewarded.

We can begin to correct these oversights throughout January, which has been designated by Governor George W. Bush as School Board Recognition Month. This is a time to show our appreciation and to begin to better understand how school board members work together to provide leadership for our schools.

The school board works closely

with parents, education professionals, and other community members to create the educational vision we want for our students. It then formulates goals, defines results, and sets the course for an adequate and equitable educational program for all students.

The school board is accountable to the public. It is responsible for assuring the public that money allocated to the public schools is providing a good return on the investment. Thus, the board oversees regular assessment of the district's students, staff, and programs.

The school board is a strong advocate for public schools and is responsible for communicating the needs of the school district to the public and the public's expectations to the district.

In January, join with others from throughout our district and state to salute the men and women who provide grassroots governance of public schools. Make a special effort to tell each school board member that his or her hard work has been noticed and is very much appreciated.

Spearman I.S.D. Board of Trustees: Craig Schumann, President; Bob Boxwell, Vice President; Sheri Benton, Secretary; James Schnell, Member; Carol Dunnihoo, Member; Robbie Dewberry, Member; Andy Scarborough, Member.

Stumpf Named Department Chairman For The Eagle Scout Scholarship Award

by Larry Skinner,

The American Legion Department of Texas State Commander Delbert D. Fuhrman has appointed Harry Stumpf of Spearman to be the Department Chairman for the Eagle Scout Scholarship award for 1996 and 1997.

Mr. Stumpf has been an American Legion member of Post 254 in Perryton, Texas for 50 years, and is presently the Commander.

Mr. Stumpf has been involved in the Boy Scout Program for nearly 54 years. He was a Scout 4 years. He served 25 years as a Scout Master in Perryton and Spearman, and has been a Chairman and Board member of

Troop 551 for 25 years.

Mr. Stumpf has been on the Golden Spread Council on Camping Committee in the 18th District for many years and has been the American Legion chairman for Eagle Scouts for the last 3 years. In 1989 he was District Chairman of Lone Wolf District. He received his Wood Badge on March 14, 1974 the Silver Beaver on February 28, 1975, and the Scouter Key on February 28, 1997.

American Legions Scholarships are:

State Scholarship - \$200.00; 1st place National Scholarship - \$8,000.00; 3 other National Scholarships - \$2000.00 each.



GPM SherHan employee's representative David Miser presents a check for \$500 to the Gruver Volunteer Fire Department. (L-R) Sam Gruver, Robert Blount, Matt Johnson, Mike Booth, Curt Fitzgearld, and Jim Deakin.

SOSU Names Honor Students

Honor rolls at Southwestern Oklahoma State University in Weatherford have been announced for the 1996 fall semester.

There were 571 students on the Dean's Honor Roll after completing 15 semester hours of

undergraduate work with a grade point average of 3.0 ("B") or higher with no grade lower than a "C."

Named to the fall semester Dean's Honor Roll were: Monica Blackman and Amy Schoenhals, both of Spearman.

1997 Production Flexibility Contract Payments

Hansford County Farm Service Agency has been making 1997 advance payments for production flexibility contracts which are enrolled the farm program. Producers had the option of receiving advance payments either in December of 1996 or January of 1997. Advance payment rates are as follows:

Wheat (bu.) .305; Corn (bu.) .165/S.L. .13/N.L; Sorghum (bu.) .195/S.L. .11/N.L; Barley (bu.) .125; Oats (bu.) .015.

For fiscal year 1997, 1995 overpayment amounts for corn and grain sorghum are due to Commodity Credit Corporation. Due to market prices in 1995, no deficiency payments were earned on planted acres for corn or grain sorghum. Advance payments for corn were \$.20/bu. and grain

sorghum \$.295/bu. These overpayments were offset from the 1997 advance payments in accordance with the Agricultural Market Transition Act of 1996.

Preston Wright, County Executive Director of the Hansford County Farm Service Agency, has recently resigned to accept a position in Parker County, Texas. He would like to thank the producers of Hansford County for their cooperation during the last year, especially with the implementation of several new programs and the new farm bill. Please don't hesitate to come by the office or call 659-3036 if there are any questions. New regulations concerning legislation on the Conservation Reserve Program will be announced later this month.

Laugh and Live

by Gary C. Smith

gcs@arn.net



Friend Harvey Ellison was kind enough to send me the following information entitled *The Facts of Life*. Now I do not know where Harvey dug up these pearls of wisdom, but they sure do seem to make sense....

The FACTS of Life....

Psychiatrists say that 1 of 4 people are mentally ill.

Check 3 friends. If they're OK, you're it.

Nothing in the known universe travels faster than a bad check.

A truly wise man never plays leapfrog with a unicorn.

It has recently been discovered that laboratory research causes cancer in rats.

Always remember to pillage BEFORE you burn.

The trouble with doing something right the first time is that nobody appreciates how difficult it was.

It may be that your sole purpose in life is simply to serve as a warning to others.

The average woman would rather have beauty than brains, because the average man can see better than he can think.

Paranoids are people, too; they have their own problems.

It's easy to criticize, but if everybody hated you, you'd be paranoid, too.

A diplomat is someone who can tell you to go to hell and make you feel happy to be on your way.

Clothes make the man. Naked people have little or no influence on society.

Vital papers will demonstrate their vitality by moving from where you left them to where you can't find them.

Until Next Time,
May God Bless!
GCS

Dear Editor,

Dear Editor,

I, as a student of Gus Birdwell Elementary, think that the way the streets are around the school are terrible. It took the city two days to get the main street in front of the school cleared. On Monday night, January 13th, there was a big pile of snow in the middle of the road. It was a hazard to get across the snow. We missed the

turn in when we were going to the Little Dribblers basketball game. It takes them at least two days to get the corners of the streets around the school to get them graveled. Tino, one of our janitors, plows the cross walk. Thanks Tino.

Sincerely,
Amy Powers

DUKE'S CHIROPRACTIC CENTER

- Covered by most Insurance, including automobile and bodily injury
- Covered by Workers' Compensation
- Family Chiropractic Care
- Open 9:00 a.m.-5:00 p.m., Monday-Friday

11 WEST KENNETH • 659-5505 • SPEARMAN, TEXAS

The Hansford County Reporter-Statesman

213 Main St. • Spearman, TX 79081

Open Monday-Friday, 9:00 a.m.-12:00 p.m. & 1:00 p.m.-5:00 p.m.
Closed Wednesday Afternoon (1:00 p.m.-5:00 p.m.)

Serving Spearman, Gruver and Morse and all of Hansford County

Published weekly in Spearman, TX

Owned and operated by Gary and Catherine Smith

Gary Smith- Publisher • Catherine Smith-Editor

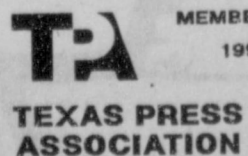
Barbara Rojas - Assist. Editor •

Harletta Carthel - Assist. Pub. (Gruver) /Sales Rep.

Allen Varmon - Sports Photographer • Mindy Davis - Sports Photographer

Periodical Postage Permit USPS 509660

Postage paid in Spearman, TX



Annual Subscription Rates
In Hansford County, \$20.00
Out of County, \$25.00

Advertising and Story Deadlines
Tuesday 12:00 noon



Ellsworth Celebrate Golden Anniversary

Alton and Peggy Ellsworth celebrated their 50th wedding anniversary, Sunday, January 12th, with a reception from 2:00 - 4:00 p.m. at the O'Loughlin Center in Spearman.

Host for the event were the couple's children and grandchildren.

Ellsworth married the former Peggy Jean Gabel, of Amarillo, on Sunday, January 12, 1947, at the First Christian Church, in Amarillo. They have lived in Spearman 48 1/2 years.

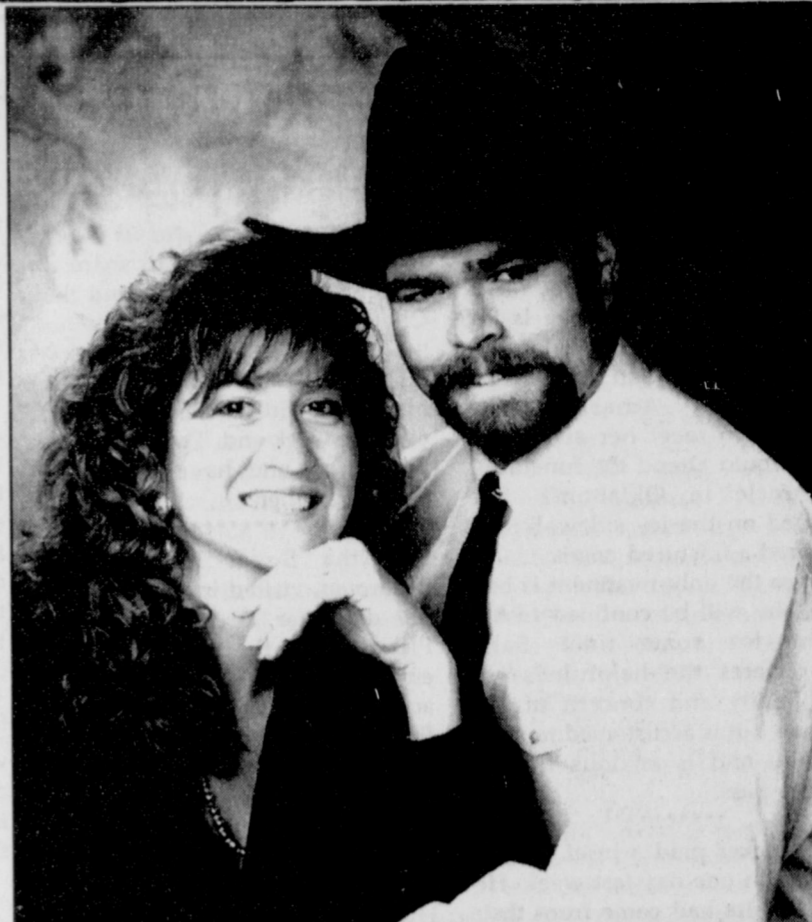
Ellsworth is retired from Ellsworth Oil Co. and Alton's Gulf Service. He is a member and deacon of First Baptist Church, member of Adult 4 Men's Sunday School class and 40 years member of the Spearman Lions Club, serving at present as the secretary. Ellsworth has served as member on the Spearman City Council and on the board of directors, at Hansford Hospital.

Mrs. Ellsworth is retired from Ellsworth Oil Co. and Alton's Gulf Service, also. She is a member of the First Baptist Church and the Esther Sunday School Class, and belongs to the Hansford Hospital Auxiliary.

The couple own and operate the Lyric Theatre.

Children of the couple are Gary Ellsworth and Gayle Smith, the couple also has three granddaughters, Jana, Kacey and Kallie; and step grandchildren, Jennifer and B.J. Hughes.

A family dinner was hosted by the children on the Saturday night before at Ivey's. Those attending were Peggy and Alton Ellsworth, Mrs. Ethel Ellsworth, Gary and Jan Ellsworth, Jana Ellsworth, B.J. Hughes, Jackie and Gayle Smith, Kacey and Kallie, Edith Smith, Richard and Lisa Pipkin, Candice, Kara and David, Robert and Martha Gabel, from Amarillo; Thomas Collard Long, from Dallas; Leann Swan, Chad Knowlton, Don and Lorene Kunselman, Joan and Virginia Trindle, and Lyndy Phillips and Leslie. Lyndy entertained the group with his magician show, which everyone enjoyed very much.



Engagement Announcement

Mr. Hans Bosch of St. Augustine, Florida and Mrs. Allan Frisch of Las Angeles, California, announce the engagement of their daughter, Lesly Kim, to Mr. Jon Mac Annen, son of Mr. and Mrs. Claude Annen of Nazareth, Texas and grandson of Ray and Sylvia Robertson of Spearman, Texas. A March wedding is planned by the couple at St. Thomas the Apostle Catholic Church in Amarillo, Texas.

Ms. Bosch graduated from St. Bernard's High School, Los Angeles, California. She holds a Bachelor of Animal Science degree from California State Polytechnic University Pomona, Pomona, California and a Master of Agriculture degree with an emphasis in public relations from Texas Tech University. She is Public Relations Director for Frank Phillips College in Borger, Texas.

Mr. Annen graduated from Nazareth High School and received a Bachelor of Science degree in Agronomy from Texas Tech University. He is employed as a private crop and irrigation management consultant.

At the Lyric Theatre . . .

113 Main St • Spearman

Friday - Tuesday • Closed Wednesday & Thursday

Zeus & Roxanne



Screen 1 • 7:30 p.m.

Screen 2 • 7:45 p.m.

Adults - \$5.00, Children - \$3.00
Bargain Nights Mon. & Tues.: Adults - \$4, Children - \$3.00

Hansford County Community Calendar

January 23-31

Thursday, January 23-Saturday, January 25

Spearman & Gruver at Gruver Junior High Tournament

Thursday, January 23

2:00 p.m. - Twentieth Century Club Meets - home of Wanda Jones

7:00 p.m. - College Financial Aid Workshop at Gruver High School Library

Friday, January 24

Girl Scouts begin Cookie Sales

Pringle-Morse CISD - No School/Teacher In-Service

2:00 p.m. - Cooking Club at Hansford Manor

4:00 p.m. - Gruver JV Girls vs. Shamrock - T

5:00 p.m. - Spearman JV Girls vs. Canadian - T

5:00 p.m. - Spearman JV Boys vs. Canadian - T

5:15 p.m. - Gruver JV Boys vs. Shamrock - T

6:00 p.m. - Spearman Varsity Girls vs. Canadian - T

6:30 p.m. - Gruver Varsity Girls vs. Shamrock - T

7:30 p.m. - Spearman Varsity Boys vs. Canadian - T

8:00 p.m. - Gruver Varsity Boys vs. Shamrock - T

Sunday, January 26 - Super Bowl Sunday

3:00 p.m. - Hansford Manor Church Service - Spearman Church of Christ

5:00 p.m. - Superbowl Party at Lyric Theatre - Prizes given away, testimonies from local athletes. Sponsored by First Baptist Church

6:00 p.m. - Superbowl Party at Hansford Manor

Monday, January 27 - National Activity Professionals Day

Gruver Sr. Citizens meet at Golden Age Center

5:00 p.m. - Pringle-Morse vs. St. Andrews - H

5:00 p.m. - Gruver 7th Girls vs. Guymon - T

5:00 p.m. - Gruver 7th Boys vs. Guymon - H

5:00 p.m. - Spearman 7th Girls vs. Stratford - T

5:00 p.m. - Spearman 7th Boys vs. Stratford - H

6:00 p.m. - Gruver 8th Girls vs. Guymon - T

6:00 p.m. - Gruver 8th Boys vs. Guymon - H

6:00 p.m. - Spearman 8th Girls vs. Stratford - T

6:00 p.m. - Spearman 8th Boys vs. Stratford - H

6:30-9:30 p.m. - English as a Second Language Classes at Spearman H.S.

6:30-9:30 p.m. - GED Classes at Spearman H.S.

6:00 p.m. - Gruver 9th Girls vs. Guymon - T

7:00 p.m. - Gruver 9th Boys vs. Guymon - H

7:00 p.m. - Spearman 9th Girls vs. Stratford - T

7:00 p.m. - Spearman 9th Boys vs. Stratford - H

Tuesday, January 28

12:00 p.m. - Lunch & Learn at Spearman Church of Christ

5:00 p.m. - Spearman JV Girls vs. Sunray - H

5:00 p.m. - Spearman JV Boys vs. Sunray - H

5:00 p.m. - Gruver JV Girls vs. Booker - H

5:00 p.m. - Gruver JV Boys vs. Booker - H

6:00 p.m. - Spearman Varsity Girls vs. Sunray - H

6:30 p.m. - Gruver Varsity Girls vs. Booker - H

6:30 p.m. - Bingo at Hansford Manor

7:30 p.m. - Spearman Varsity Boys vs. Sunray - H

8:00 p.m. - Gruver Varsity Boys vs. Booker - H

Thursday, January 30-Friday, January 31

Spearman & Gruver at West Texas 9th Grade Tournament

Thursday, January 30

7:00 p.m. - College Financial Aid Workshop at Gruver High School Library

Friday, January 31

2:30 p.m. - Birthday Party at Hansford Manor

5:00 p.m. - Gruver JV Girls vs. Guymon - H

5:00 p.m. - Spearman JV Girls vs. West Texas - T

5:00 p.m. - Spearman JV Boys vs. West Texas - T

5:00 p.m. - Gruver JV Boys (B) vs. Guymon - H

6:00 p.m. - Spearman Varsity Girls vs. West Texas - T

6:30 p.m. - Gruver Varsity Girls vs. Guymon - H

7:30 p.m. - Spearman Varsity Boys vs. West Texas - T

8:00 p.m. - Gruver Varsity Boys vs. Guymon - H

Your school board members work to make your schools the best they can be so that every student gets an excellent education.

Spearman PISA would like to remind you to take time in January to thank them for a job well done!

Spearman ISD Board of Directors

Bob Boxwell • Andy Scarborough
Robbie Dewberry • Carol Dunnington
Sbert Benton • James Schnell
Craig Schumann

School Board Recognition Month

January 1997



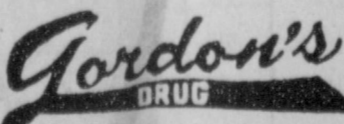
For The Bride & Groom

Come by and let us help you set up your special gift table

Couples Currently Registered

Mendy Lasater & Chad Riggins - February 8th
Lacy Lasater & Bobby Murray - February 22nd

*Date of Shower
**Date of Wedding



314 Main Spearman, Texas
659-2141

Happy Birthday!

January 23 Birthdays - Pat Morley, Marci Roberts, Kay McFarlin, Michael Barnes, Brandon Sutton, Jimmy Kenny, Johnnie Fuller, Louise Archer, Ann Zamora

Anniversaries - Mr. & Mrs. Vic Taylor, Mr. & Mrs. Jim Roberts, Mr. & Mrs. Gene Duncan

January 24 Birthdays - Quentin Hart, Kenneth Irwin, Luis Salazar, Dearl Shelton, Ronnie Goodman, J.W. Pipkin, Stan Frekicks, Alan Leach, Jean Prouty, Charla Roberts, Linda Stalcup

Anniversaries - Larry & Galye Porter, Mr. & Mrs. Archie Smith

January 25 Birthdays - Kevin Babbs, Elizabeth Benton, Mabel Jameson, R.L. McFarlin, Travis Davis, Mike Dodd, Deloris Sloan, Kurt Carson, Joanna Jarvis, Oralia Ochoa, Jackie Sparks, Van Baumgardner, Crystal D. Cantu, Barquel Ferguson, Amy Watley

January 26 Birthdays - Chase Reid, Joe Cage, Gary Wooley, Matt Archer, Patsy Hunt, Jon King, Tiffany Hendricks, Lori Ann Perez, Patsy Brown, Kellie KJos, Mark Thomas, Debbie Hagerman

Anniversaries - Bill & Jody Hamish

January 27 Birthdays - Jack Gillispie, Jerry Womble, Wanda Brown, Lynette Williams, Nickie Lozano, Jerry Hart, Twana Trout, Allen Leach, Andrew Boyd, Amber Ramón, Berry Kirk Patrick, Francis Hathaway

Anniversaries - Mr. & Mrs. Gus Vargas

January 28 Birthdays - Brooke Beville, Rita Williams, Howard Garnett, Marsha Pipkin, Tammy Burch, Jo Archer Jr., Eddie Papay, Melissa Donahue, Mavis Collins, Joyce Wooley, Patty Volden, Randy Burrell, DeAnn Sparks, Brook Adams, Curtis Cernik, Lupe Velasquez

Anniversaries - Mr. & Mrs. Clark Bridges

January 29 Birthdays - Bill Hadley, Erin Derington, Linda Diaz, Johnnie Gaitner, Andy Graham, Richard Larson, Estella Gilmore, Andi Hager, Tanner Beedy, Gerry Davis, Nancy Mitchell

Anniversaries - Mr. & Mrs. Harold Anderson, Mr. & Mrs. Dee Allen

January 30 Birthdays - Vicki Crawford, Terry Jackson, Timothy Schultz

Anniversaries - Mr. & Mrs. Pete Fisher, Mr. & Mrs. Eusebio Vela Sr., Richard & Arlene Paschel

January 31 Birthdays - Breanna Dearin, Charles Lilley, Bryan Stewart, Austin Zimmer, James Schnell, L.C. Owens, Cory Schneider, Charles Lilley

Anniversaries - Mr. & Mrs. Manuel Ruiz, Mr. & Mrs. John Shields, Mr. & Mrs. Dick Hintergardt, Mr. & Mrs. Royce Mathews

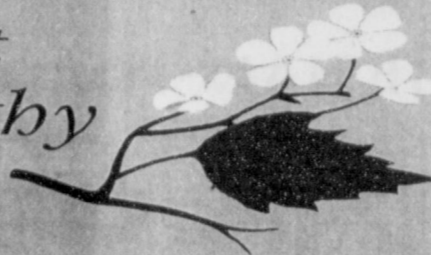
February 1 Birthdays - Cheryl Thompson, Major Lackey, Mary Fern Terry, Lynn Whitefield, Kenneth Lee McClellan, Ann White, JoeBob Breedon, Terri Goodknight, Lacie Baker, Clint Linde, Anthony Renteria, Brian Johnson

Anniversaries - Mr. & Mrs. George C. Lowe

February 2 Birthdays - Sergio Favela Jr., Margie Boone, Michael T. Davis, Sheila Brand, Grace McDade, Nadine Bishard, Connie Garcia, Cayla Simon

Anniversaries - Jeff & Chris Spencer, Bill & Dalene Baker, Mr. & Mrs. Lewis Meiser

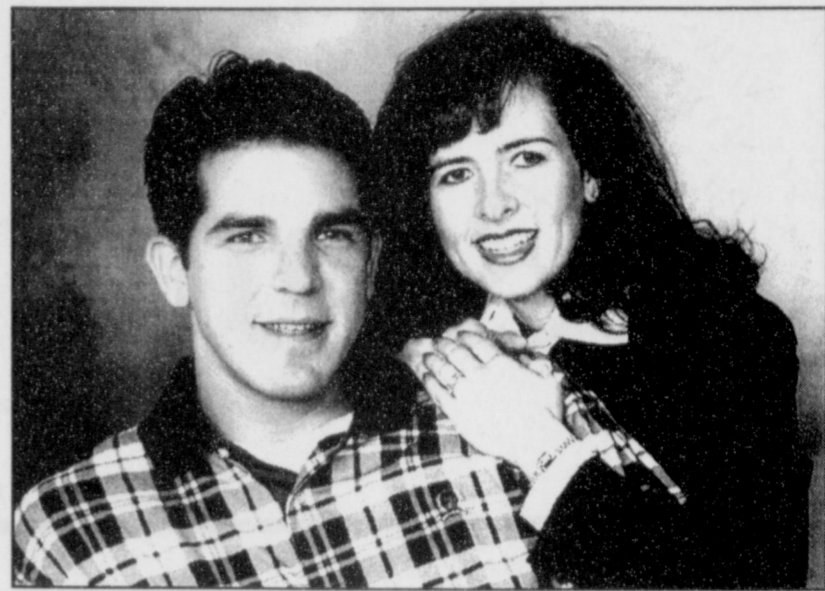
With
Deepest
Sympathy



Michael Dee Yeager

Michael Dee Yeager, 43, of Dallas, died Monday, January 13, 1997. Graveside services were held at 2 p.m. Friday, January 17, 1997, in the Garden of Devotion at Westlawn Memorial Park with the Reverend John Givens, pastor of First Christian Church of Fritch, officiating. Arrangements were by Minton/Chatwell Funeral Directors.

Mr. Yeager was born in Oklahoma City and had lived in Dallas for 10 years. He was in the construction business. Survivors include a daughter, Shelby Collier of Fritch; his father and stepmother, Mr. and Mrs. Howard Yeager of Fritch; his mother, Pat Yeager of Holdenville, Oklahoma; a brother, Dwayne Yeager of Stinnett; three stepbrothers, Mike Parker and Miles Parker, both of New Braunfels, and Mack Parker of Spearman; two stepsisters, Donna Huddleston of Borger and Betty Caddel of Perryton; and two grandchildren.



Engagement Announcement

Mr. and Mrs. Jack Lasater of Spearman, Texas announce the engagement of their daughter, Laci, to Bobby Murray.

Bobby is the son of Mr. and Mrs. Robert Murray of Kingwood, Texas. The bride-elect is a graduate of Spearman High School. She also graduated from Texas Tech Magna Cum Laude with a degree in Mathematics. She is a consultant with Andersen Consulting.

The prospective groom is a graduate of Kingwood High School and graduated from Texas A&M University with degrees in Management Information Systems and Human Resources. He is a consultant with Andersen Consulting.

Thank You

We would like to thank everyone of our friends and family that "braved" the snow to join us at the reception for our Golden Anniversary, Sunday, January 12th. We know we are very blessed and enjoyed visiting with each of you.

We have enjoyed so much, each of the many cards, received. Especially the kind notes and written memories of wonderful and fun past times. The telephone calls let us know you were thinking of us, and we appreciate each one of those. The floral arrangements and plants received added so much color and beauty to the occasion. Thank you.

We sincerely appreciate each and every way you made this a memorable and never forgetful time in our lives.

We certainly want to thank Gary Ellsworth, Archie Smith and Richard Pipkin for cleaning off the snow at the center.

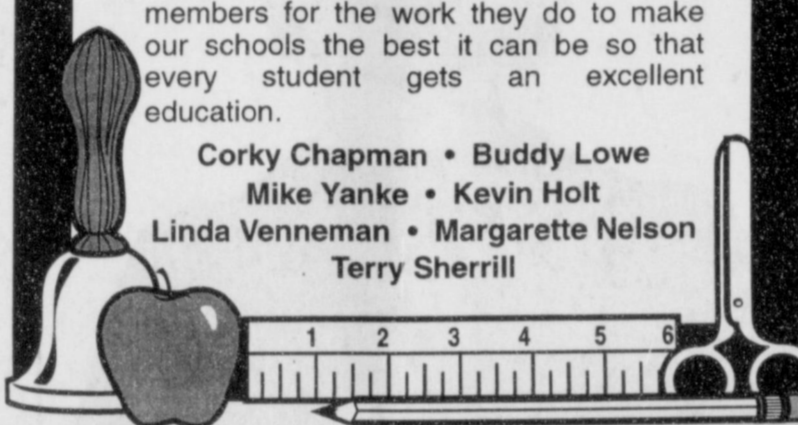
A "Special Thanks" to our children and grandchildren; Lisa Pipkin, Mr. and Mrs. Robert Gabel and Mr. and Mrs. Troy Mays.

May God Bless All of You,
Alton and Peggy Ellsworth

School Board Recognition Month January 1997

Gruver I.S.D. and Gruver PTA would like to remind you to thank our school board members for the work they do to make our schools the best it can be so that every student gets an excellent education.

- Corky Chapman • Buddy Lowe
- Mike Yanke • Kevin Holt
- Linda Vennema • Margarette Nelson
- Terry Sherrill



CASKET SPRAY
4 doz. Carnations \$99.00
All Occasion Flowers
517 Plains Shopping Center

Let us replenish the seed of faith through... DAILY BIBLE READING, PRAYER & REGULAR CHURCH ATTENDANCE

Focus On The Family

QUESTION: Describe in greater detail the mood fluctuations that are associated with the menstrual cycle each month. Is it true that this chemical influence is evident not only during or before a period, but at other times also?

DR. DOBSON: It has been said, quite accurately, that the four weeks of the menstrual cycle can be characterized by the four seasons of the year. The first week after a period can be termed the springtime of the physiological calendar. New estrogens (female hormones) are released each day and a woman's body begins to rebound from the recent winter.

The second week represents the summertime of the cycle, when the living is easy. A woman during this phase has more self-confidence than during any other phase of the month. It is a time of maximum energy, enthusiasm, amiability and self-esteem. Estrogen levels account for much of this optimism, reaching a peak during mid-cycle when ovulation occurs. The relationship between husband and wife is typically at its best during these days of summer, when sexual drive (and the potential for pregnancy) are paramount.

But alas, fall must surely follow summer. Estrogen levels steadily dwindle as the woman's body prepares for another period of menstruation. A second hormone called progesterone is released, which reduces the effect of estrogen and initiates the symptoms of premenstrual tension.

Self-esteem deteriorates day by day, bringing depression and pessimism with it. A bloated and sluggish feeling often produces not only discomfort but also the belief that "I am ugly." Irritability and aggression become increasingly evident as the week progresses, reaching a climax immediately prior to menstruation. Then comes the winter period of the menstrual flow.

Women differ remarkably in intensity of these symptoms, but most experience some discomfort. Those most vulnerable even find it necessary to spend a day or two in bed during the "winter" season, suffering from cramping and generalized misery. Gradually, the siege passes and the refreshing newness of springtime returns.

Focus on the Family is brought to you weekly by Gillaspie Auto & Truck Center.

In Spearman . . .

Apostolic Faith Church
822 S. Drexler • 659-2870
Sunday School: 10 a.m.
Worship: 11 a.m.
Evening Worship: 6 p.m., Sun.
Wed. Prayer Meeting: 7:30 p.m.
Pastor - James Brown

First Assembly of God
401 N. Bernice • 659-2295
Sunday School: 9:45 a.m.
Worship: 10:50 a.m.
Evening Worship: 7 p.m.
Wed. Worship: 7:30 p.m.
Youth: 7:30 Wednesday
Pastor - Walter Greaser, Jr.

First Christian Church (Disciples of Christ)
29 S. Bernice • 659-2036
Sunday School: 9:45 a.m.
Worship: 10:50 a.m.
Evening Bible Study
Worship: 6:30 p.m., Sun.
Interim Pastor - Ernie Williams

First Baptist Church
123 N. Bernice • 659-5557
Sunday School: 9:45 a.m.
Worship: 11 a.m.
Evening Worship: 7 p.m.
Jr. High Youth: 6 p.m., Wed.
High School Youth: 7 p.m., Wed.
Youth Choir: 6 p.m., Sun.
Pastor - Kyle Henderson

Church of Christ
121 S. Haney • 659-3244
Sunday Bible Class: 9:45 a.m.
Worship: 10:30 a.m.
Evening Worship: 7 p.m.
Bible Study Wed.: 7:30 p.m.
KRDF Radio Program
Living With Christ: 7:50 a.m., M-F
Minister - Arnis Page

Sacred Heart Catholic Church
901 Roland • 659-2792
Sat. Night Mass: 7 p.m.
Sunday Mass: 8:45 a.m. - English
(8:45 a.m. Service on KRDF 98.3 FM)
Sunday Mass: 11:15 - Spanish
1:30 p.m. - Gruver - Cristo
Renditor Mass - Spanish
Rev. Scott Raef

Trinity Community Church
717 W. 7th Ave. • 659-2671
Worship Service & Children's Church: 10:30 a.m.
Sunday Night School: 5:30 p.m.
Wed. Night Youth: 7 p.m.
Interim Pastor - Richard Humphries

First Presbyterian Church (Worships with Faith Lutheran Church)
1021 Colter • 659-2033
Sunday School: 9:45 a.m. at Lutheran Church
Worship: 11 a.m. (alternates monthly between Lutheran and Presbyterian Church Buildings)
Pastor - Beverly Cook

Faith Lutheran Church (ELCA)
1101 Bernice • 659-2252
(Worships with First Presbyterian Church)

First United Methodist
407 S. Haney • 659-5503
Sunday School: 9:45 a.m.
Worship: 11 a.m.
Jr. High Youth: 5 p.m. Sunday
High School: 6 p.m. Sunday
Rainbow Kids Club: 3:00 Wednesday
Pastor - Jeff Lust

Union Church
31 S. Endicott • 659-2644
Sunday School: 9:45 a.m.
Worship: 10:45 a.m.
Evening Worship: 6 p.m.
Bible Study & Prayer Mtg.: 7 p.m. Wed.
Pastor - Jerry Pollard

Fellowship Baptist
1102 S. Archer • 659-2783
Sunday School: 10 a.m.
Worship: 11 a.m.
Evening Worship: 6 p.m. Sunday
Youth & Adult Serv.: 7:30 Wed.
Pastor - Gene Foster

Primera Mision Bautista
502 E. 7th • 659-3991
Sunday School: 9:45 a.m.
Worship: 11 a.m.; Evening: 6 p.m.
Wed. Prayer Meeting: 7 p.m.
Thurs. Visitation: 7 p.m.
Pastor - Isaias Martinez

In Gruver . . .

First Baptist Church
402 E. Broadway • 733-2411
Sunday School: 9:45 a.m.
Worship: 10:50 a.m.
Disciple Training: 6 p.m., Sunday
Prayer Meeting: 7:30 p.m., Wednesday
Pastor - Scott Curry

Church of Christ
209 King • 733-2760
Sunday School: 9:30 a.m.
Worship: 10:20 a.m.
Evening Worship: 6 p.m.
Wed. Evening Worship: 7:30 p.m.
Minister - Bob Settiff

First Christian Church
510 King • 733-2960
Sunday School: 9:45 a.m.
Worship: 11 a.m.
Wed. Bible Study: 7:30 p.m.
Youth: 6:30, Wednesday
Pastor - Gary Gumfory

Oslo Lutheran Church (ELCA)
6 Miles West & 12 Miles North of Gruver
339-7709
Sunday School: 9:45 a.m.
Worship: 11 a.m.
Pastor - John R. Chandler

Gruver United Methodist
Broadway & Garrett • 733-2651
Sunday School: 9:45 a.m.
Worship: 8:30 a.m. & 10:50 a.m.
Evening Worship & UMY: 6 p.m.
Pastor - Jerry Moore

Spanish Cristo Redentor Church
Sunday Mass: 1:30 p.m.
Friday Evening Mass
Summer - 8:00 p.m.
Fall/Winter - 7:30 p.m.

In Morse . . .

Morse Baptist Church
733-2757
Pastor - Mike Martin

Morse Implement Company
"Join us in church this week"

Gruver Cablevision
308 Main
Gruver, TX 79040
733-5295

GILLASPIE
AUTO & TRUCK CENTER, INC.
CHEVROLET • OLDS • PONTIAC • BUICK
CHRYSLER • PLYMOUTH • DODGE
Hwy. 207 South • P.O. Box 430
Spearman, Texas 79081
(806) 659-2541

C.O.'S SUPPLY CO.
Plumbing & Tire Sales & Service
421 W. Kenneth • Spearman, TX
659-3781 or 659-3555

Palo Duro Supper Club
22 S. Archer
659-2232

GRUVER FORD
531 Main • Gruver • 733-2431

Interstate Savings & Loan
322 Main • Spearman • 659-2559

This feature is made possible through the sponsorship of these civic minded businesses.

All American Insurance
231 Main • Gruver, TX
(806) 733-2002
"Our Only Business Is YOU"
Gary Johnson Charlotte Hill
249-4555 273-6060

Boxwell Bros. Funeral Home

COLUMBIA Medical Center of Pampa
One Medical Plaza
Pampa, Texas 79065
(806) 665-3721

Compliments of
G&G FOODLINER
516 Main • Gruver, TX
733-2471

Bartlett's Ace Hardware
105 W. Broadway • Gruver, TX
733-2404

BERRY CLEANERS
DAN DESIMONE • OWNER
Phone 659-3122 • P.O. Box 1017
207 Main St. • Spearman, TX

"WE SUPPORT OUR LOCAL CHURCHES"
CAPROCK #1 & #2
Kirk Lippincot, Gen. Mgr.
(806) 733-5043 or 733-5025
"Custom Cattle Feeding"

Compliments of...
AGCO
of Spearman, Inc.
"See you in Church"
659-3751

The Hansford County Reporter-Statesman
Serving The Communities Of Spearman, Gruver & Morse
213 Main • Spearman, TX
(806) 659-3434

Deakin ELECTRIC
OILFIELD • RESIDENTIAL • COMMERCIAL
321 S. MAIN • SPEARMAN
1-800-999-1506
(806) 659-5016
Chris Deakin President

La...
gcs
Friend Harv... following... Now I do no... wisdom, but...
The FACTS
Psychiatr... ill.
Check 3
Nothing... bad check.
A truly v... unicorn.
It has re... research ca...
Always re...
The trou... time is the...
It may be... to serve as...
The aver... brains, bec... he can thir...
Paranoid... problems.
It's easy... you'd be pa...
A diplom... hell and me...
Clothes... no influenc...
Vital pa... moving from... find them.

Dear Editor... I, as a stud... Elementary... the streets ar... are terrible... I days to get th... of the school... night, Januar... big pile of sn... the road. It v... across the sn...

DUKE
• Cov... at...
• Cov...
• Fam...
• Ope...
11 WEST

2... Open Me... Cl...
Sert...
Ow... Gary...
Allen Varno

T
TED... AS!

Facts about Diabetic Eye Disease

Diabetic eye disease is the number one cause of new cases of blindness in the United States in the 20-74 year old age group. The sad thing about this type of blindness is that it is largely preventable. The best way to prevent blindness from diabetic eye disease is to have your eye examined at least once per year through a dilated pupil. I have patients ask me all the time, "Why do I need to have my pupils dilated?" It's really quite simple

when you think about the view of the back part of your eye (retina) it gives your eye doctor. I compare it to the difference between looking through the keyhole (undilated pupil) versus opening the door (dilated pupil). It is quite painless to have your pupils dilated. The dilation is accomplished by placing a couple drops in the eye, which fixes your pupils in a large position. The importance of having your retinas viewed through a dilated pupil

can not be understated.

Diabetes may cause many different eye problems such as diabetic retinopathy, cataracts, and glaucoma. I will cover cataracts and glaucoma in future articles. For now let's focus on the most common of the three, diabetic retinopathy. The retina is the area of the eye that is responsible for gathering the light coming into your eye and sending this information to the brain where it is converted to images. In diabetic retinopathy, the blood vessels of the retina become damaged and begin to leak fluid. These changes, which increase in severity the longer you have the disease, may also cause new, unstable blood vessels to grow on the retinal surface that damage the retina itself. This is a very sight threatening problem, since without the retina you are not able to gather information to send to the brain. In other words, you lose vision as a result of the damaged retina.

Although anyone with diabetes can develop diabetic retinopathy, there are two important risk factors: (1) type of diabetes, and (2) duration of disease. People with Type I

diabetes (non-insulin) are more at risk than Type II diabetics (insulin-taking). In fact, virtually all people who have Type I diabetes for 15 years or more have some degree of diabetic retinopathy. A Type II diabetic has a 50 percent chance of retinopathy after 20 years of having the disease.

Each year more than 8,000 Americans lose their vision to diabetes. There are very few early warning signs of diabetic retinopathy. In most cases there is no pain, no blurred vision, and no ocular inflammation. In fact, you may not develop any visual impairment until the disease is well advanced and by this time you may have suffered from permanent loss of some vision. Early detection is the key to sight preservation in diabetic eye disease. The National Eye Institute recommends that all diabetics have their eyes examined annually through a dilated pupil. I totally agree with this and encourage you to make an appointment with our eye doctor for your dilated exam. Don't lose sight of your diabetic eye disease.

Local Community Leaders Invited To Business Incentives Workshop

The Business Services Office of the Texas Department of Commerce invites city, county, chamber of commerce, and economic development leaders to a business incentives workshop on Wednesday, January 29, at 10:00 a.m. at the Panhandle Regional Planning Commission, located at 415 W. 8th Avenue in Amarillo, Texas.

Hosted by the Panhandle Regional Planning Commission, the five-hour workshop is divided into two sessions to inform local community leaders of Commerce's Business Services programs. These programs include the Texas Manufacturing Assistance Center, Smart Jobs Fund, Texas Capital Fund, Enterprise Zone Program, Texas Leverage Fund, and Capital Certified Development Corporation. Session one covers

program descriptions and eligibility requirements, while session two, which will begin at 2:00 p.m., is reserved for one-on-one appointments with community leaders to discuss specific projects.

The service area of the Panhandle Regional Planning Commission includes the following 26 counties: Armstrong, Briscoe, Carson, Castro, Childress, Collingsworth, Dallam, Deaf Smith, Donley, Gray, Hall, Hansford, Hartley, Hemphill, Hutchinson, Lipscomb, Moore, Ochiltree, Oldham, Parmer, Potter, Randall, Roberts, Sherman, Swisher, and Wheeler. There is no fee for the workshop; however, participants must register. For more information and/or to register, contact Perna Strickland of the Panhandle Regional Planning Commission at 806/372-3381.

Cookies and More



(L-R) Alva Garner, Myrt Bohanan, Virginia Trindle, Gwen Smith, Rosa Lee Butt, Jettie Davis, and Beth Phelps. (Not pictured is Margarette Evans)

by Margarette Evans

The Hansford Hospital Auxiliary has been busy under the able direction of our President Virginia Head.

Each month a designated group bakes pies to host the birthday party for the manor residents.

Each week day, individuals serve drinks and visit with the residents.

In May, we made and delivered cookies for all the medical staff and employees of the hospital and manor and physicians, showing our appreciation for them.

On June 9th, we were honored at an Award Presentation hosted by residents and staff of Hansford Manor.

For the month of June we delivered Meals on Wheels and in July, we hosted Tuesday night bingo at the manor.

Every Thursday, members provide assistance for manor

resident bingo.

On December 2nd, we met at Ivey's for lunch and a short business meeting, then adjourned to the hospital and manor. There we decorated the halls and trees. The 12 foot manor tree is both breathtaking and a challenge to decorate.

On December 20th, we made cookies and hosted the Manor Christmas Party.

On January 6th, we took down the decorations and stored them for another year.

Operation Christmas Greeting is our only fund drive. With this, we purchase needed items for the hospital, manor and kitchen.

Approximately 1200 hours of recorded volunteer service are provided each year. If you would like to be a volunteer contact any member.

Our spring luncheon will be April 14th.

WT Dean's list

Students on the Dean's List achieved a semester grade point average (GPA) of 3.25 (of a possible 4.0) or better with a minimum of 12 undergraduate hours.

From Gruver: Angela S. Overbey, sophomore, reading.

From Spearman: Mandi R. Carter, junior, social work; and John B. Holt, senior, animal science.

WT President's List

Students earning President's List recognition achieved a semester grade point average (GPA) of 3.85 (of a possible 4.0) or better with a

minimum class load of 12 undergraduate hours.

From Gruver: Sara L. Jones, senior psychology.

The Twentieth Century Club

The Twentieth Century Club met January 9, 1997 with Dorothy Wooley as hostess.

Our program was given by Mike Davis on Big Mouth. This program was to inform us of our weather watch system. An automatic dialing system has been installed to warn us of approaching danger from storms, grass fires, etc. They will also call our neighbors living in the country if they will sign up for this service. We are fortunate to have radar systems as close as Stinnett and Guyton, Oklahoma. Mike also urged us to have a first aid kit, water, flash light, radio

and batteries handy in case of an emergency.

We are pleased to present Wren Holt to the Texas Federation of Women's Club Convention for 50 years of continual service in the Twentieth Century Club.

The next meeting will be with Wanda Jones January 23rd at 2:00 p.m.

Those enjoying the meeting and refreshments were Audene Beck, Anita Anthony, Wanda Jones, Verna Gail Keim, Georgiana Hutchison, Donnie Mitchell, Kathleen Sutton and hostess Dorothy Wooley.

We listen to

KRDF

98.3 FM

Hot Country Stereo 'Till Midnight

Prairie Garden Flowers proudly announces the beginning of their

FREQUENT FLYER OOPS!

FREQUENT FLOWER PROGRAM

Call or come by for details

209 Main Street • Spearman, TX
659-2212 • 659-3329

Annual Seed Sales Blitz

Take Advantage of Early Order incentives during Perryton Equity's Annual Seed Sales Blitz. Savings on Performance Proven Asgrow Varieties: Sorghum, Corn & Roundup Ready Soybeans.

Seed Specialist from Asgrow will be at each branch during this sales event to answer your questions.

RX899

Seneca

RX899

Maturity
Rated at 118 days central Corn Belt, 115 days southern region, with 2585 growing degree days.

- Consistent yield contest winner the last several years
- Proven, top-end yield performer
- Plant when soil conditions are good
- Tolerant to southern leaf blight and Gray leaf spot
- Good ear flex response to varied populations
- Attractive field appearance
- Excellent defensive characteristics for high disease environments
- Grain quality is suited for food grade uses

Date	Location	Time
Jan. 21	Town & Country	11:00 a.m. - 1:30 p.m.
Jan. 21	Farnsworth Equity (Community Building)	11:00 a.m. - 1:30 p.m.
Jan. 22	Baker Equity	11:00 a.m. - 1:30 p.m.
Jan. 22	Canadian Equity	11:00 a.m. - 1:30 p.m.
Jan. 23	Morse Equity	11:00 a.m. - 1:30 p.m.
Jan. 23	Spearman Equity	11:00 a.m. - 1:30 p.m.

Perryton Equity is your local Farmer Owned Cooperative

Among The Neighbors

by Helen Fisher

In spite of the accident inviting icy conditions last week, so far as is known Sally Desimone is the only broken bone. On Wednesday she stopped on Main street before leaving for Amarillo. She planned to meet her sister and they would attend the funeral of an uncle in Oklahoma. She slipped on the icy sidewalk and suffered a fractured pelvis.

Since the only treatment is bed rest, she will be confined to her home for some time. Sally appreciates the helpfulness of her family and concern of her friends, but is accustomed to more activity and is anxious for the time to pass.

Al Tucker paid a brief visit to Spearman one day last week. He and Juanita had come from their home in San Angelo to Amarillo to be with her brother, Don Beck. He had undergone surgery for leg amputation as he is a diabetic. At the last report he was doing all right.

The Amarillo Daily News of last Thursday carried a picture of the pretty Kara Townsen, a freshman at West Texas A & M. It was by the sports writer of the paper who discussed her success on the basketball court. She is shooting 54 per cent from the field and 71 per cent from the free throw line. It was a detailed and lengthy account of her basketball ability, and quite complimentary. Kara is the daughter of Mr. and Mrs. Don Townsen and a 1996 graduate of Spearman High.

It was good to speak with Mickey Gribble of Centralia, Washington one day last week. She is looking forward to being here a few days around February 15 as the children of Willard and Jetty Davis will host a reception for him on his 80th birthday.

Jimmy Greene was more than pleasantly surprised on Sunday when a visitor entered the Church of Christ services. Jimmy recognized him, though it had been around 40 years since they were students in high school here. It was Dan Rawls, now of Ft. Worth, who was in the Panhandle visiting relatives and stopped in Spearman to attend church where he and his family were members. His father was Lloyd Rawls and his brother, Thomas, also attended school here. They farmed between Spearman and Waka.

Elizabeth Carr came over from Miami on Monday to assist her sister, Virginia Head, through the trauma of her consecutive 39th birthday by taking her to lunch.

Perhaps that eased her resentment of having to share it with Martin Luther King and the Clinton inauguration!

Dr. Val ad Nell Seiz visited his cousin Billy and Sybil Miller over the week-end. They are from Bridgeport and have visited in Spearman often.

Martha Boyd, formerly of Spearman, visited in the home of her daughter, Brenda and Sam Pierson over the week-end. She enjoyed greeting old friends as she accompanied the family to the First Baptist Church. She is now living in Pampa and employed by Comet Cleaners.

Family members report that Don Allen is now in a room at High Plains Baptist Hospital, having been moved from I.C.U.

He was taken by ambulance the middle of last week after suffering a massive stroke.

The family is encouraged as he has no mental, speech or right side impairment. However the left side is completely paralyzed. His doctor advises that he can expect almost complete recovery but it will require much therapy and a long time.

Don is optimistic, but already anxious to get out of the hospital. He looks forward to company. His wife, Mary, is still with him.

No, it is not true that Orville and Martha Latham had headed south for the winter. They returned on Friday, January 17 after his hospitalization which began on December 27.

They had enjoyed a good Christmas with all their family who left on the 26th. The next day Orville was taken to High plains Baptist with a heart problem. He underwent two heart catheters, and had a stint implanted. All went well and he returned home,

for just one day, then had to return. After some treatment, he was transferred by ambulance to St. Anthony's for treatment of staph infection. After extensive and frustrating treatment, he was finally well enough to come home.

Orville and Martha express deepest appreciation for the thoughtfulness of so many caring friends. Each person who showed concern by a visit, call, card or flowers is personally remembered and appreciated. All contributed to the brightening of the long, tedious days.

(The above was written after a conversation with Orville late Sunday. On Monday morning he was again taken to Amarillo with chest pains. No further information was available with this writing.)

Information on Slim Cates is that he has been moved from C.C.U. into a room at High Plains Baptist Hospital. Family members have not been available for a report, but a statement from a friend is that he was taken by ambulance last week to Amarillo and treated for pneumonia and some complications have developed.

The stock and bond markets continue to show gains-most investors can keep a wary eye on the bulls and bears-it is more difficult to dodge those bum steers!

DO YOU BELIEVE IN PRAYER?

We do, too!

Call the Church of Christ Prayer Line anytime to make a prayer request.

659-5334.

Requests kept confidential.

The Gruver Grapevine

by Harletta Carthel

The main attractions in Gruver this weekend were the basketball games with Hooker on Friday night and the Gruver Stock Show on Sunday afternoon. Details of both events are elsewhere in this week's Reporter/Statesman.

Taking in the stock show on Sunday with Pat and Georgia Holt were grandsons Logan and Carson Edmonds of Morris, Oklahoma. The two lads are the sons of Pat and Eva (Holt) Edmonds.

Val and Marlene Winger made a detour through Dallas last week on their way to Florida. The detour was accurately timed to coincide with the birth of their granddaughter Natalie Christine. Parents of the new baby are Darin and Tanya Winger.

Gruver High School Counselor, Cathy Potts, has received information packets on the Texas Tomorrow Fund, a college education funding plan, sponsored by the state of Texas. Those interested in obtaining more information may pick up a booklet in the counselor's office at the high school.

A junior high tournament will be held in Gruver on Thursday and Saturday. The tournament will be a round-robin with boys and girls teams from Gruver, Stratford, Spearman, and Perryton competing. The Gruver teams will begin play against Perryton on Thursday with the seventh grade girls starting at 4 p.m., the seventh grade boys at 5:10 p.m., the eighth grade girls at 6:20, and the eighth grade boys at 7:30, all in the varsity gym.

Four outstanding junior high

students honored as citizens of the second six weeks have not been sufficiently recognized. The students are David Puebla, 5th grade; Teresa Callas, 6th grade; Sara Bass, 7th grade; and Aaron Weller, 8th grade.

Remember the United Methodist Youth pizza fundraiser on Saturday January 25. The group will be making and delivering pizzas to garner funds for youth activities during the year. Call Gyene Spivey, Mary Jane Henson, or the Methodist Church for advance orders. To order pizza on Saturday, call C.J.'s Pizza or the Methodist Church.

Clint Williams will have day surgery on Thursday to repair his knee which was injured in a recent ski accident. Clint will be recuperating over the weekend at the home of his parents, Ronnie and Donna Williams. Clint is a sophomore at Panhandle State University.

Casey Smith, who received minor injuries in a car accident this week, was able to compete in the stock show Sunday although he was still sporting a neck brace.

The Gruver Senior Citizens will be meeting Monday January 27, in the Golden Age Center.

I have already heard several accounts of the blizzard of '57. I want to include stories and pictures from the Spearman, Gruver, and Morse areas so please contact me or the Hansford/Reporter.

Gruver City Manager A.J. Ratliff reports that Gruver will be receiving a new ambulance on April 15. A sophisticated heart

monitor that will be part of the new emergency vehicle is already being used on the existing ambulance.

The mystery picture found in the remodeling of the varsity gym will be on display in the gym's trophy case. There is a small prize for the person who can correctly identify six-year-old Bill K.

Junior High Principal Laura Blessingame, Superintendent Barry Haenisch, and Morse Superintendent Linda Barnhart will be in Austin January 27-29, for the Texas Superintendents Mid-winter Conference.

January is the time of the year when we reflect on the events of the preceding year. Surely, the bi-district wins of the '95-96 Hounds and Lady Hounds basketball teams were two of the outstanding local events of the year.

Perhaps a part of the season I will remember just as long was the character of the teams. In the Lady Hounds last district game against Stratford, a Gruver senior starter sustained a season-ending injury. As she winced in pain on the gym floor, the four remaining Lady Hounds on the court did not stand idly by or stretch their muscles to keep warmed up, but instead joined hands and bowed their heads in prayer. They then returned to their bench to join hands with their remaining teammates to pray again. The injured player, though heartbroken, became an encourage and supporter for the team in the play-off games that followed. For young ladies such as these, I could not be prouder if they had won the state championship.

Continued on Page 5

Diabetic eye disease is a number one cause of blindness in the U.S. the 20-74 year old a sad thing about blindness is that preventable. The prevent blindness eye disease is to examined at dilated through a dilated patients ask me "Why do I need to dilated?" It's really



(L-R) Alva Garni, Rosa Lee Butt, J. Margarette Evans

by Margarette Ewan

The Hansford Auxiliary has been table direction of Virginia Head.

Each month a des bakes pies to host party for the manor

Each week day serve drinks and residents.

In May, we made cookies for all the and employees of and manor and showing our app them.

On June 9th, we v an Award Presenta residents and staf Manor.

For the month delivered Meals o in July, we hosted bingo at the manor.

Every Thursd provide assistan



DIAMOND M

WATER WELL SERVICE
Box 917 • Gruver, Texas 79040
(806) 733-5113

Benny McCullough Jake McCullough

- Submersibles • Windmills •
- Complete Repairs & Service •
- For Home and Livestock Needs •

In the hustle and bustle of everyday life, we often either forget to say thank you or offer at best a hurried "thanks."

At Gillaspie Auto & Truck Center, we want to take a time out and say "Thank you for your business" because you are really appreciated! We look forward to serving you in the many years to come. If you haven't been in lately, we invite you to come in and allow us to reacquaint ourselves with you.

For all of your automotive needs, sales, service and parts

Gillaspie Auto & Truck Center
Hwy. 207 • Spearman
"We Want Your Business"

NOW IS THE TIME...

Put a ZIMMATIC in your field with SPECIAL REBATES OR 7.95% FINANCING

Purchase a Zimmatic by February 3, 1997 and select either:

Cash Rebates
\$100/Tower Rebate

OR

Special Financing
5 year Loan or Lease

- 7.95% fixed APR
- 5% Down Payment
- 1st Payment in 12 Months

*Certain restrictions and requirements apply. Subject to credit approval.



See your Zimmatic dealer for details.

Five Star Equipment, Inc.
Spearman, Texas ★★★★★ (806) 659-3743

ZIMMATIC
Leadership and strength you can depend on today and tomorrow.

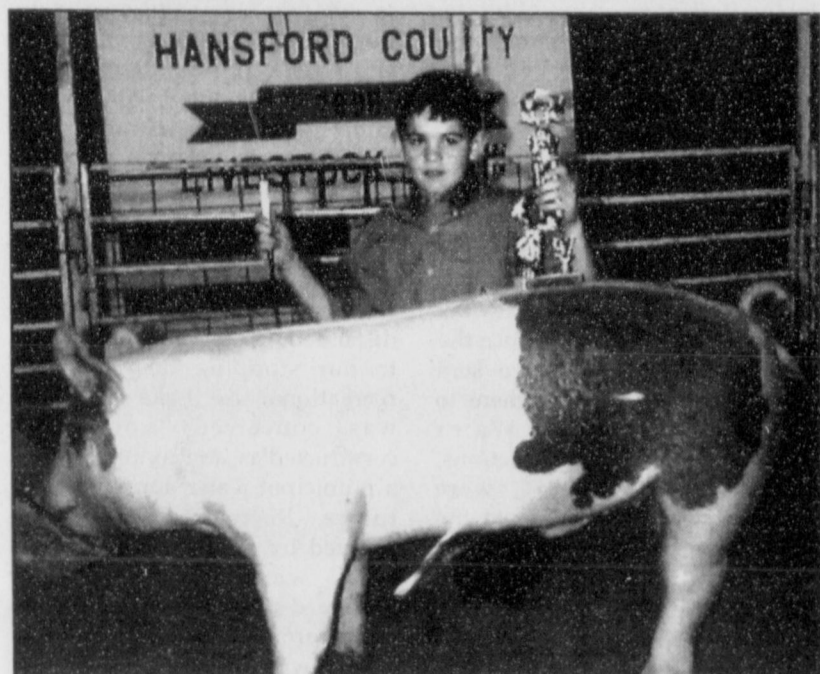


Prat

FRE

209

Gruver Stock Show Held



The Grand Champion Swine in the Gruver Stock Show was shown by Lance Williams.

by Harletta Carthel

Gruver FFA and 4-H youths exhibited their animal projects at the Gruver Stock Show Sunday. Judge for the event was Marty Adams, Hooker FFA Advisor.

Three classes of lambs were shown. Placings in the lightweight, middleweight, and heavyweight are listed.

Lightweight Division

Brandi Morris, first; Jeff McClure, second; Rochelle Holt, third; Amy Gift, fourth; Teal Armes, fifth; Mia Rodruquez, sixth, and Brian Johnson, seventh.

Middleweight Division

Rochelle Holt, first; Brittany Montgomery, second; Sammi Johnson, third; Bray Armes, fourth; and Kristie Balderrama, fifth.

Heavyweight Division

Brandi Morris, first; Brant Armes, second; Brad Holt, third; T.J. McClure, fourth; and Britt Morris, fifth.

Grand Champion Lamb-Brandi Morris, Reserve Champion Lamb-Rochelle Holt, Senior Lamb Showmanship- Brant Armes, Junior Lamb Showmanship-Britt Morris

In the steer show, Casey showed the Grand Champion Steer while Lance Williams exhibited the Reserve Champion. Casey won the Senior Steer Showmanship award, and Lance was named the Junior Steer Showmanship winner.

Nine divisions were exhibited in the swine show. Placings in the weight classes of the four breeds are listed.

Lightweight Durocs

Adam Red, first; Jack Karlin, second; Rochelle Holt, third; Amy Gift, fourth; and Derik Grotegut, fifth.

Heavyweight Durocs

Casey Smith, first; Nick Slough, second; Charlie Slough, third; Brandi Morris, fourth; and Brit Morris, fifth.

Champion Duroc-Adam Red, Reserved Champion Duroc-Casey

Smith

Lightweight Hamp

Dustin Red, first; Taos Weldon, second; Sammi Johnson, third; Jeff McClure, fourth; T.J. McClure, fifth; and Ryan Winger, sixth.

Heavyweight Hamp

Kade Carthel, first; Valerie Burnam, second; Brant Armes, third; Kade Carthel fourth; and Teal Armes, fifth.

Champion Hamp-Dustin Red, Reserve Champion Hamp-Taos Weldon

Lightweight Yorks

Reagan Karlin, first; Mollie Burnam, second; and Bray Armes, third.

Heavyweight Yorks

Kathy Slough, first; Kade Carthel, second; Valerie Burnam, third; Colby Weldon, fourth; and Tanner Irwin, fifth.

Champion York-Kathy Slough, Reserve Champion York-Kade Carthel

Lightweight Crosses

Brock Irwin, first; Dustin Red, second; Mia Rodruquez, third; Tanner Irwin, fourth; Brian Johnson, fifth; T.J. McClure, sixth; and Kadie Grotegut, seventh.

Middleweight Crosses

Mollie Burnam, first; Rochelle Holt, second; Jessica Vela, third; Aaron Cookenour, fourth; and Brad Holt, fifth.

Heavyweight Crosses

Lance Williams first; Brant Armes, second; Bray Armes, third; Kade Carthel, fourth; and Britt Morris, fifth.

Champion Cross-Lance Williams, Reserve Champion Cross-Brant Armes, Senior Swine Showmanship-Bray Armes Junior Swine Showmanship-Kade Carthel

The Hansford County Stock Show will be held on February 7 and 8 in the Spearman County Barn.



Exhibiting the Grand Champion Lamb is Brandi Morris (Left), while Rochelle Holt shows her reserve champion lamb.



Kathy Slough is shown with her reserve champion swine at the Gruver Stock Show.



Lance Williams (Left) had the Reserve Champion Steer at the Gruver Stock Show, while Casey Smith exhibited the Grand Champion Steer.

Alpha Mu Psi Hosts "The Big Feed"

by Lori Schultz

The alarm clocks were going off at 3:00 a.m. in the homes of all the girls in Alpha Mu Psi. The morning had arrived. "The first day of Pheasant Season". To all the girls, this meant lots of hungry men. It has been tradition for many years for Alpha Mu Psi to prepare and serve breakfast to the hunters.

The preparations began at 4:00 a.m. at the Gruver school cafeteria. The grill was fired up. While the ovens were overflowing with buttermilk biscuits and cinnamon rolls. Eggs were being scrambled and bacon was sizzling on the grill. Preparations were also being made for the big drawing. Over 600 raffle tickets had been sold. Two shot guns were given away. The local winner was Harlan Gerardy, and the out-of-town winner was Steve Pace from Eules, Texas. Other prizes for the drawings were binoculars and other camping gear.

The breakfast was well attended by 230 hunters.

Alpha Mu Psi would like to thank the Gruver community and surrounding area for all of your support. Because of your support we are able to provide and meet the needs of others. Thank you for

making the Pheasant Hunters breakfast such a great success.

Members of the Alpha Mu Psi: Lori Schultz, Lisa Link, Tammy Mitchell, Debbie Harrison, Christy Temple, Michele Fanning, Donna Duggan, Eva Spivey, Julie Stedje, Denise Smith, Jennifer Traylor, Teri Montgomery, and Stephanie Tyler.

Prairie Garden Flowers
209 Main Street
Spearman, Texas
659-2212 • 659-3329

Three Sisters Tanning
Back of Main Street in Gruver.
Call 733-5040 for an appointment.

Firestone
FARM TIRES
THE LEADER IN THE FIELD

ALL TRACTOR TIRES ON SALE
ALL TRUCK TIRES ON SALE

Sizes start at \$25.25 up to \$119.25

All retreads or caps on sale.

CASH & CARRY
All brands on sale - subject to stock on hand.

C.O. s SUPPLY CO.
421 W. Kenneth • Spearman, TX 79081
(806) 659-3555 • (806) 659-3781
24 Hour Fuel Card System

Are You A Victim of Domestic Abuse, Violence or Sexual Assault . . .
Physical, Emotional or Sexual?
Call Toll Free
1-800-753-5308

We are in Spearman each Wednesday afternoon at the First Presbyterian Church, 1021 Cotter. We can see individuals from Hansford County anytime upon request. We operate a safe place for victims & their children to stay in times of crisis.

Panhandle Crisis Center
Serving Hansford, Lipscomb & Ochiltree Counties
317 S. Main • Perryton, TX
Memorials Accepted

NEW '97 FOR 3.9 APR
Up to 60 Months(WAC)

NEW '97 CHEVY LUMINA - 4 DOOR
NEW '97 CHEVY CAVALIER - 4 DOOR

NEW 1997 CHEVROLET EXTENDED CAB SILVERADO

- Silverado Package
- Power Windows
- Power Locks
- AM/FM Cassette/ CD Player
- 350 Vortec
- Keyless Remote
- Power Seats
- and Much More

SEVERAL TO CHOOSE FROM. You Make the Choice ...

\$414⁹⁹/Month (60 Months*) or \$273⁸³/Month (36 Months**) or
Manufacturer Price: 25,461.00
Steve's Discount: -2,464.00
Your Price: \$22,997.00

NEW ARRIVAL: The New 1997 Chevrolet Malibu LS 1997 "Car of the Year"

JUST ARRIVED: New 1997 GMC Yukon 4WD 1996 Chevrolet Tahoe 4WD

NOW IN STOCK:
Z-71s
Z-71 3 Doors
2 WD X-Cabs
2WD X-Cab 3 Doors

IRWIN AUTO CO.
409 S. MAIN • PERRYTON, TX

*60 Month Financing: 9.9 APR, 15% Down + TT&L WAC, Total of Payments \$24,899.40. Stock #165323
**36 Month Financing: 9.9 APR, 15% Down + TT&L WAC, Payments: 25 @ \$273.83 and 1 @ \$15,998.71. Total of Payments: \$25,572.76. Stock #165323.

3rd Six Weeks Honor Roll

Spearman Elementary

ALLA's 1st GRADE

Kimberly Bergan, Brittney Bradley, Mattie Davis, Kylee Howard, Amanda Bain, Austin Benton, Amy Boyd, Crystal Bridwell, Jesus Moreno, Kendall Schneider, Daniel Brickman, Callie Cazares, Dane Harbour, Colby Odegaard, Natalie Quintero, Kyla Reed, Elliott Sheets, Amanda Snider,

2nd GRADE

Saylee Flowers, Zackery Nollner, Noemi Rodriguez, Joshua Tuttle, Jamie Brown, Danielle Close, Collin Gillaspie, Clayton Smith, Nicholas Avila, Emily Hood, Kelcee Rex, Tarin Rice,

3rd GRADE

Jessica Brown, Jenna Cherry, Jarick Howard, Maribel Moreno, Brooke Thomas, Abby Winegarner, Lynette Woodward, Kamran Ahmed, Callie Hargis, Lance Henderson, Alejandro Rios, Britta Vanderburg, Holly Baker, Andrew Correll, Jacob Jones, Melissa Lesly, Melody Mauk, Lezlie Phillips, Adriana Pinon, Steven Vaquera, Jeffrey Whitworth

4th GRADE

Wayne Gibson, Dana McLaughlin, Macy Harbour, Cayla Smith, Mark Thomas, Deremy Fleetwood, Linzi McCubbins, Samantha McMinn, Melissa Quillin

5th GRADE

Ashlee Flowers, Tatum Rice, Russell Sheets, Katherine Tuttle, Emily Longoria, Garrett Martin, Claudia Vsquera, Chris Cudd, Jentry Edwards, Diana Flores, Keilee Goodheart, Michael Lozano

A's & B's

1st GRADE

Jose Anaya, Blayne Baker, Matthew Bolen, Amber Comp, Christy Lang, Joe Mayo, Nicholas Moore, Marcos Ochoa, Alyssa Paz, Dustin Walsler, Sandi Carbajal, Jessica Diaz, Lisa Espinosa, Darrell Findley, Alicia Francis, Wendy Gaytan, Maverick Graham, Claribel Hernandez, Jesus Morales, Tyler Rex, Michael Rodriguez, Amy Brown, Lizet Camacho, Mariela Ortega, Ileriselda Perez, Luis Tarango

2nd GRADE

Cody Eslick, Sharon Haney, Karina Hernandez, Jordanna Lozano, Cesar Macias, Aaron Maestas, Cassandra Manry, Alek Mires, Rhett Renner, Aimee Rook, Raquel Arjona, Megan Evans, Wilhna Macias, Ryan Ramón, Ashley Rayl, Jessica Riley, Drifftin Roberts, Bryan Thomas, Haley Young, Laura Gomez, Hannah Haddock, Jessica Jarvis, Stuart Martin, Mirna Ortiz, Anthony Renteria

3rd GRADE

Victoria Contreras, Tyson Dettman, Jared George, Merilee Holmes, Garrett Rex, Anthony Bolen, Lorena Briseno, Brian Close, Larry Francis, Javier Frayre, Cathyana Hernandez, Janet Mayo, Ann Pape, Taysia

Stephens, Daisy Fraire, Corey Rex, Travis Sander, Timberly Thomas

4th GRADE

Cristalina Alvarado, Tracy Brown, Eric Flores, Edgar Fraire, Marcos Navarrete, Kathleen Reed, Jessica Bian, Steven Bolen, Amy Powers, Tessa Thoreson, Rossilyn Bulls, Caleb Gillaspie, Jessica Freeman, Amanda Goodson, Felicia Martinez, Clete Vanderburg

5th GRADE

Samantha Cazares, Justin Eslick, Wade Evans, Homero Martinez, Adrianna Ortega, Miguel Ortega, Bertha Ortiz, Cristina Salgado, Carlos Carmona, Chris Langly, Sara Beth Sawyer, Dana Sharp, Taylor Simpson, Meggan Whitworth, Tanner Hand, Holly Tercero, Jayson Walsler, Jocelyn Whitefield

Spearman Junior High

ALLA's

6th GRADE

Travis Brown, Brianne Burkharmer, Jessica Crossland, Colby Sawyer, Lucilia Villa

7th GRADE

Tanner Beedy, Erin Boxwell, Matt Dunning, Steven Haney

8th GRADE

Andrew Jacobs, Jacob Harbour, Nicole Lozano, Chelsea Nollner, Denise Paschel, Angela Pipkin, Kara Pipkin, Sally Pittman, Jennifer Schnell, Adrienne Simpson, Dusty Vinson, Brady Woolley

ALLA's-1B

6th GRADE

Kevin Beedy, Adam Cherry, Garrett Griffin, Wesley Hathaway, Rodney Howell, Dustin Mackie, David Pipkin, Nicole Ramón, Kallie Smith, Lance Smith, Jeffrey Swan

7th GRADE

Monica Cantu, Leann Earle, Cheryl Gibson, Laura Gillaspie, Marty Miesner, Clara Shieldknight, Jessica Volden

8th GRADE

Cary Cates, David Holt, Haley Lombard, Junior Moreno

Spearman High School

ALLA's

9th GRADE

Dustin Barber, Halee Beasley, Evan Cudd, Tommie Dewberry, Cynthia Goodman, Kelsey Henton, Brooke Lesly, Jeremy Mackie, Lacey Miesner, Kathryn Murphy, Amber Ramón, Reagan Renner, Stephen Salgado, Mickey Schoenhals, Camille Smith, Sydney Woodington

10th GRADE

Brittini Beedy, Kristin Beedy, Betsy Holt, Holly Pipkin, Lisa Swink, Brandi Willis

11th GRADE

Ashley Brown, Mac Butts, Mike

Butts, Kasey Dunning, Jocelyn Edwards, Teresa Gomez, Clint Goodman, Lena Harbour, Brian Howell, Maribel Martinez, Zach McCarmmond, Keisha OQuin, Lindsey Smith, Brooke Trantham

12th GRADE

Shayla Barber, Samantha Beasley, Blake Beedy, Lidwine Carpiaux, Kelly Goodman, Bruce Howell, Amanda Lomeli, Dillon Miller, Candice Pipkin, Britt Savage, Michael Witten

ALLA's & 1B

9th GRADE

Stephanie Bynum, D.J. Jacops, Joseph Sintas

10th GRADE

Mia Burrell, Grace Davis, Doran Schoenhals, Julie Scroggs, Quentin Shieldknight, Mandy Vernon

11th GRADE

Misha Davis, Amber Morgan, Jennifer Neff, Sylvia Ortega, Jamie Townsen

12th GRADE

Hilary Biggers, Kelli Cummings, Tom Kirk, Orlando Ortiz, Nicholas Vinson

ALLA's & 2B's

9th GRADE

Brandi Campbell, Nancy Flores

10th GRADE

Kyla Brown, Kristi Carbajal, Krista Dement, Jennifer Laxson, Dawn Loomis, Landon Miller, Lisa Tarango, Cami Winegarner

12th GRADE

Christa Bergan, Tara Butt, Eric Cudd, Frankie Dominguez, Shauna Poole, Macy Shieldknight, Leann Swan, Eric Varnon, Keith Winegarner

Gruver Elementary

Pre-KINDERGARTEN

Aron Acosta, Luli Hernandez, Valerie Perez, Joel Soto, Jorge Tarango

KINDERGARTEN

Caleb Abernathy, Sydney Clawson, Cody Dahl, Corey Fletcher, Edgar Garein, Roy David Gaspar, Jordan Hicks, Arturo Huerta, Jr., Jordan Lippincott, Ruben Martinez, Roberto Mendoza, Miles Messer, Lindsey Mireles, Payton Mitchell, Mallory Reid, Devlin Reynolds, Matt Salazar, Chevi Smith, Jorge Soto, Anselmo Trejo, Arturo Trejo, Lynn Vela, Dani Wheelock, Taylor Williams

1st GRADE

Mollie Burnam, Yadira Garcia, Bayley Garland, Melinda Hernandez, Chandler Miner, Maydeli Ortiz, Ruben Ortiz, Hexiquio Rios, Tim Schultz, Tanner Sherrill, Sofia Tarango, Seth Thompson, Denise Villegas, Lindy Weldon, Emily Williams, Abbi Yanke

2nd GRADE

Rebecca Abernathy, Conrad Curry, Mason Fletcher, Bonnie Frick, Travis McDowell, Charlie Slough, Justin Thompson, Victoria Vela, Tucker Williams

3rd GRADE

Sheldon Atwood, Timber Barkley, Lauren Bergin, Brad Clawson, Justin Horton, Mike Lora, Matt Messer, Sarah Mireles, Samantha Myatt, Rafael Perez, Allison Reid

4th GRADE

Valerie Burnam, Blythe Finley, Laina Grotogut, Brock Irwin, Ryan Lippincott, Jessica Montgomery, Brittanie Osbourne, Ryan Renick, Mark TeBeest, Ben Williams, Lance Williams

Gruver Junior High

ALLA's

5th GRADE

*Cassie Myatt, Kalee Crawford, Jenny Hart, David Puebla

6th GRADE

*Amy Watley, Alicia Alvarez, Sammie Johnson, Julie May, Christie McDowell, Ashleigh Sherrill, Lori Swink, Curry Porter

7th GRADE

*Kade Carthel, Brian Goad, Kaylee Holt, Brittany Morris, Steven Salazar

8th GRADE

*Brooke Bevell, Monalisa Garcia, *Holly Hart, Brad Holt, Jessica Moore, Ryn Robinson, Brooks Salmans, Cory Schneider, Gisela Soto, Chad TeBeest, Miranda Thoreson, Tessa Yanke

* Denotes Principal's Honor Roll of all grades 95 or better

ALLA's & 1B

5th GRADE

Teal Armes, Kristie Balderrama, Courtney Goad, Garrett Miner

6th GRADE

Rachel Abernathy, Teresa Callas, Brandi Griffin, Eric

Lopez, Bryn Lowe, Modesta Trejo

7th GRADE

Ryan Abernathy, Sara Bass, Elizabeth Duncan, Judy Luciano, Sarah Miser, Sarah Moore, Zack Christian

8th GRADE

Bradley Duncan, Chase Lamb

Gruver High School

ALLA's

9th GRADE

Dallas Henson, Anne Mayhew, Dan Odom, Lacie Osbourne, Mary Puebla, Sandra Sanchez, Janae Watley

10th GRADE

Jennifer Duggan, Brenda Hernandez, Lucas Johnson, Holly McCloy, Wesley Miser, Erika Salmans, Jason TeBeest, Mat Watlington

11th GRADE

Autumn Bateman, Weslyn Maupin, Jill Odom, Steffany Simon

12th GRADE

Kristin Evans, Amy Gillispie, Julie Gumfory, Mary Henson, Tucker Henson, Amber Murrell, Lexy Spivey

ALLA's & 1B

9th GRADE

Esmeralda Bravo, Candice Casdorff

10th GRADE

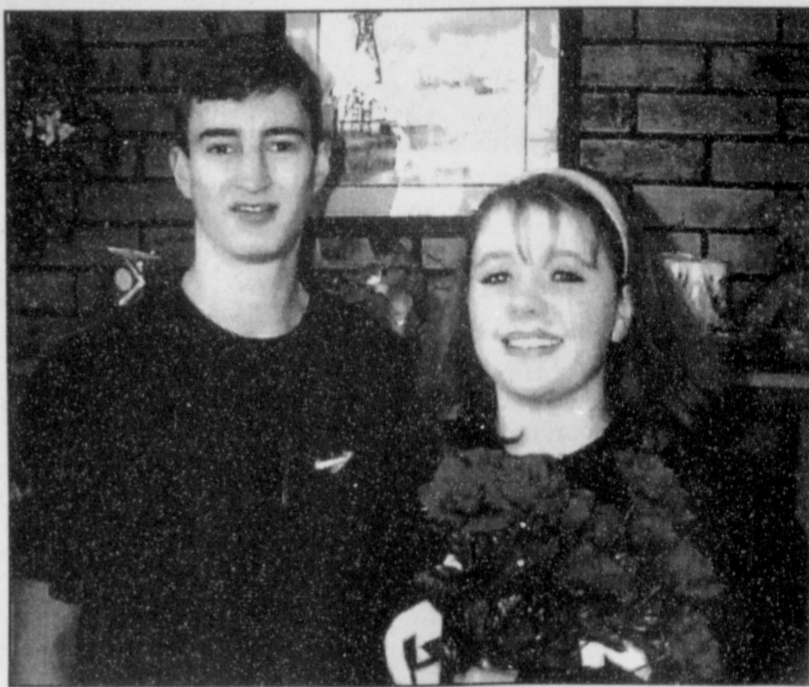
Teresa Crow, Kadie Grotogut, Jennifer Lopez, Dustin Ross, Charlie Stavio

11th GRADE

Brant Arnes, Laura Garcia, Buster McLain, Amber Roberts, Autumn Roberts

12th GRADE

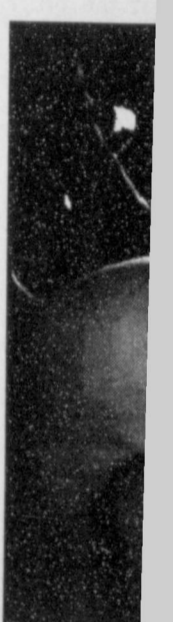
Erikka Barrera, John Duncan, Josh Mayhew, Matt Overbey



Brandea Hicks (Right) was named the 1996-97 Gruver High School Band Sweetheart in ceremonies during the Christmas band concert. Band President, John Duncan, presented Brandea with roses in honor of the occasion. Brandea is a junior and GHS and also serves as drum major for the band.



The Grand shown by L



Kathy Sic Gruver Sto

Alpha

by Lori Sch
The alarm at 3:00 a.m. the girls in morning h day of Ph the girls, hungry me for many to prepare the hunter The prej a.m. at cafeteria. While overflow biscuits at were been was siz Preparati made for 600 raffle Two shot The loca Gerardy, winner Eules, 1 the drawi other can The 1 attende Alpha thank the surround support. we are a the need.

Are Dc Vio Physi C 1- We Wedne Presby can se County operate their ct

Ser 317

DON'T DIG
in streets, alleys or easements until you call the City of Spearman your gas company.
The City of Spearman will then mark their underground gas lines with yellow stakes, flags or spray paint.
Make request 48 hours in advance. This service is available at "no charge"

Our Bridal Registry
... and how it works for you

Over the years we've found our Bridal Registry Service to be one of the most appreciated of all the services we offer our customers. It makes it easy for you to select the perfect wedding or shower gift because you know it's exactly what the bride is looking for.

The engaged couple registers their preferences in china, crystal, flatware and giftware. We record this and update the list as gifts are purchased, to avoid duplications.

Visit us the next time you're shopping for wedding or shower gifts. We'll help you select a gift the bride really wants. We'll gift-wrap it. We'll deliver it. And the service is free!

Shown: Noritake's Lockleigh/Stoneleigh

Couples currently in our registry:
Mendy Lasater and Chad Riggins - February 8th
Lact Lasater and Bobby Murray - February 22nd

Celebrate
203 Main St. • Spearman, TX • (806) 659-3350 • 1-800-663-8026
Gifts for all your celebrations!

Hard Work Pays Off.

So Does Farmland.

Farmland backs up its Total Protection Plan™ lubricants and fuel warranty program with dollars, not just words, as Duane Dueland and son Dale Dueland from McCook, Nebraska recently discovered. "We used Farmland products, followed the maintenance schedule, and sent oil samples," says Duane. "That's all that mattered. Farmland stood behind their warranty 100% and paid the \$4,106.84 claim, without a hitch."

When you're working hard, you need your equipment to do the same. Farmland works hard to produce quality petroleum products that are guaranteed to meet or exceed the performance requirements of your equipment. Products like new MAXTRON™ heavy-duty Synthetic-Blend diesel engine oil and Ruby™ Premium Diesel Fuel.

In fact, MAXTRON is so tough Farmland enhanced its one-of-a-kind Total Protection Plan to cover qualified agricultural equipment up to 10 Years/10,000 Hours. No deductible. No enrollment fee. No burden of proof. No transfer charge.

Visit your nearby Farmland System Co-op for enrollment details. It worked for the Duelands, and it will work for you.

Farmland
Proud to be farmer-owned™

©1996 Farmland Industries, Inc.
Internet Web site: <http://www.farmland.com>
For more information on MAXTRON or the Total Protection Plan Warranty please call toll-free 1-888-MAXTRON.

PERRYTON EQUITY Full Line of Farmland Products Available at Perryton Equity Branch.
Spearman Equity

Houndball Wrap-Up

Gruver Teams 3-0 by Tucker Henson

Last Tuesday, three Gruver teams braved the snow and ice and traveled to Booker for the third district game of the season. The Hounds JV, Lady Hounds, and Hounds walked into the small maroon and white gym determined to protect their undefeated district records. All three teams went to Booker 2-0 in district, and returned home 3-0.

As the fans began to fill up the small visitors section of the Kiowa gym, the hounds JV started waarming up for te first game of te night. Booker came out strong and led the JV 19-17 halftime. However, the JV soon took the lead and outscored Booker 23-10 in the second half. They walked into the locker room victorious, defeating Booker 40-29.

The Lady Hounds gave the Gruver fans quite a scare during he second game of the night. They scored only seven points in te first quarter and had only 18 at the half. At the end of the third quarter, the scoreboard showed a score of 23-31 in favor of Booker. The Lady Hounds battled back and came within three points. With nine seconds left in the fourth quarter, Amber Murrell drove down t he court passed off to Janae Watley. Jane took the shot from outside hte archa nd sent the game into overtime. In the overtime period the Ladies picked up their play and held Booker to four points. The Lady Hounds scored eight pionts and narrowly defeated Booker 53-49. Coach Steve Myatt commented on the game, "It nver hurts to have a little luck. We were blessed."

The Hounds never left the fans wondering about the outcome of te game. Gruver started off slow ad led by two points after the first quarter. The Hounds then played a good all-around second quarter and led 30-21 at halftime. Gruver waked onto t he court in the third quarter and displayed the same intensity and desire from the first half. The Hounds played solid defesne during the second half and maintained their lead. The Hounds out rebounded Booker 31-19, and Gruver earned a win of 53-46.

The Gruver Greyhounds played three outstanding games on Tuesday. They once again handed their opponents a series of losses, and refused to give away a win. The Hounds, Lady Houdns, and Hounds JV increased their records to 3-0 in district, and the Lady Hounds JV remain 1-1.

Greyhounds vs Booker Kiowas

Hounds JV- 10-17-28-40
Booker JV-15-19-23-29
Three Pointers: Matt Watlington (2)

Points: Matt Watlington - 15, Dallas Henson - 6, Jeff McClure - 6, Clayton Henson - 4, Luke Johnson - 4, TJ McClure - 2, Jody Robinson - 2, Wes Miser - 1.

Lady Hounds - 7-18-23-45-53

Booker - 13-25-31-45-49

Three Pointers: Janae Watley (4), Cara Hathaway (1), Points: Weslyn Maupin - 19, Janae Watley - 12, Amber Murrell - 8, Amy Gillispie - 5, Cara Hathaway - 5, Mary Henson - 2, Kahty Slough - 2.

Other: Cara Hathaway - 6 Rebounds, Amber Murrell - 6 Rebounds & 5 Assists.

Hounds - 14-30-43-53

Booker - 12-21-32-46

Three Pointers: Josh Mayhew (2), Brant Armes (1)

Points: Josh Mayhew - 16, Brant Armes - 15, Jim Potts - 9, Buster McClain - 5, Matt Overbey - 2, Jason TeBeest - 2, Jared Johnson - 2, Heath Tolleson - 2.

Other Jim Potts - 9 Rebounds, Buster McClain - 8 Rebounds, Brant Amres - 9 Assists.

Greyhounds Wallop Bulldogs

This past Friday, the Gruver Greyhounds took on the Hooker Bulldogs in a non-district contest. The Greyhound Gym was packed as usual, and the fans from both communities enjoyed a competitive night of basketball. The Lady Hounds JV began the night on a positive note, defeating Hooker 36-29, but the Hounds JV was not so fortunate. They finished first quarter losing 4-14 and never overcame that deficit. The Hounds JV lost 45-33, but they were the only casualty of the night.

The Lady Hounds started out spectacularly and set the tempo for the rest of the game. The first quarter ended with a favorable score of 17-7. In the second quarter, the Ladies continued to build their Hounds captured another victory with a score of 54-39. Coach Steve Myatt called this "the best first half of basketball the Lady Hounds have played all year. They did everything right and kept their intesity throughout the game."

The Hounds also played a solid game and added another mark to the win column. The contest was close throughout the first half, with Hooker leading 22-20 after 16 minutes of play. After a short

halftime speech, the Hounds emerged from the locker room and immediately took control of the game. They continued to play good defense and brought their offensive game to the next level. The Hounds dominated the scoreboard and capped off the night with a 54-42 victory. Coach Tim Garland was pleased with the effort, and the team was satisfied with the win.

Although these games were non-district contest, they were very important and productive. The Lady Hounds discovered a new level of play that will certainly be needed in future games. The Hounds found new confidence in their abilities. They learned that any team is beatable, and the Hounds have the potential to do it. The Hounds and Lady Hounds are having very prosperous seasons, and if this play continues, we will see both teams playing after February 7.

Greyhounds vs. Hooker Bulldogs

Lady Hounds JV - 7-14-18-36

Hooker - 4 - 18-21-29

Points: Annie Mayhew - 10, Kadie Grotegut - 5, Sabrina Cookenour - 4, Lindy Tolleson - 4, Missy Johnson - 3, Janie May - 2, Krystle Deeds - 2, Jennifer Duggan - 2, Erika Salmans - 2, Amber Roberts - 1, Teresa Crow - 1

Hounds JV - 4-11-25-33

Hooker - 14-22-34-45

Three Pointers: Clayton Henson - (1)

Points: Kevin Harris - 8, Dallas Henson - 6, Jeff McClure - 5, Jody Robinson - 4, JT McClure - 3, Clayton Henson - 3, Matt Watlington - 2, Dustin Ross - 2

Lady Hounds - 17-33-44-54

Hooker - 7-16-28-39

Three Pointers: Janae Watley (1)

Pointers: Weslyn Maupin - 15, Janae Watley - 13, Amber Murrell - 6, Mary Henson - 6, Autumn Bateman - 6, Cara Hathaway - 6, Jill Odom - 2; Other: Amber Murrell - 8 Assists, Kathy Slough - 4 Steals

Hounds - 14-20-36-54

Hooker - 12-22-30-42

Three Pointers: Buster McClain (2), Josh Mayhew (2), Brant Armes (1)

Points: Josh Mayhew - 12, Jared Johnson - 11, Brant Armes - 9, Buster McClain - 8, Jim Potts - 8, Charlie Stavlo - 2, Jason TeBeest - 2, Rob Murrell - 2; Other: Jim Potts - 12 Rebounds.

Gruver Junior High basketball teams played Perryton teams Thursday in games that had been postponed by the weather.

Seventh Grade Girls

Gruver 4, Perryton 27

Jacinda Perez 3 and Sarah Moore

Seventh Grade Boys

Gruver 36, Perryton 45

Kade Carthel 12, Ryan Abernathy 2, Reid Wilson 4, Steven Salazar 6, James Duggan 4, Gabriel Lopez 2, and Zack Christian 6

Eighth Grade Girls

Gruver 45, Perryton 30

Tessa Yanke 3, Kim Boyd 4, Miranda Thoreson 4, Brooke Salmans 6, Isela Huerta 2, Brooke Bevil 7, Sammie Stavlo 13, and Shea Lowe 6

Eighth Grade Boys

Gruver 28, Perryton 38

Anthony Villalobos 4, Kirby Johnson 5, Brady Hart 9, Aaron Weller 8, Jr. Baslderama 2

Spearman Elementary Turns Box Tops Into Extra Bucks

To help raise money for their school, local students at Spearman Elementary are participating in a unique program from General Mills, maker of popular cereals like Cheerios and Wheaties, called Big G Box Tops for Education.

The school will receive 15 cents for every qualifying General Mills cereal box top collected between now and March 31, 1997. A qualifying box top is the top flap of any General Mills cereal box that has the 1996/1997 "Big G Box Tops for Education" symbol.

Students are excited about the program and have set a goal of 8,000 box tops. They are collecting box tops from many Big G cereals, though (Lucky Charms, Trix, Honey Nut Cheerios, or others) seem to be the early favorite. They plan to use the money they raise for computer programs and playground equipment.

Mr. Hargis says, "This is an opportunity for parents, teachers, students, and even senior citizens to join together to raise money for our new computer programs and playground equipment. It only takes a couple of seconds and our kids will really benefit." He added, "All you have to do is look for the box Tops logo, cut out

the top of the box and send them to the school. It's that easy."

The students encourage families and friends to pitch-in and collect box tops for the good of the school. Anyone interested in donating box tops can send them to school with a child or bring the box tops by the elementary school office.

This program is open to all accredited K-6 public, private, parochial and military schools in the United States.

Eligible cereals that families should look for include the many varieties of Cheerios, Wheaties, Total, Kix and Oatmeal Crisp cereals as well as Basic 4, Lucky Charms, Trix, Clusters, Fiber One, Golden Grahams, Count Chocula, Frosted Cheerios, Multi-Grain Cheerios, Raisin Nut Bran and selected others.

ASU Announces Dean's List

Three Spearman area students attending Angelo State University in San Angelo, are listed on the Dean's List for the Fall semester at the University.

Those listed include Carey M. Kauffman, a Finance major from Gruver, Joy D'Aun Gafford, a Kinesiology major, and Matt L. Gafford, a Kinesiology major both from Spearman.

To be eligible for the Dean's List, a student must be enrolled as a full time student and have at least 3.25 point average.

Hansford Hospice Update

June 20, 1997 Hansford Hospice met at First State Bank with Sandy Russell opening the meeting with prayer. She gave a lesson on "Resolutions" and "Reasons For Living." Muriel Boyd gave the treasurers report.

There was discussion on the spring garage sale scheduled for May. Plans also are being made for a stew-pie luncheon on February 26 for a fund raiser.

The next meeting will be February 17 at Gruver First State Bank.

Beth Phelps won the door prize.

Those attending were Joan McClellan, Betty Pugh, Rosetta Barrara, Lila Hergert, Garland Hopper, Muriel Boyd, Anna Beth Wood, Opal Wallin, Carolyn Hicks, Doyle Jackson, Edith Womble, Tanya Close, LoRee Booth, Charla Hargis, June Jackson, Cherri Sherrill, Erin Bergiu, Sandy Russell, Ann Snow, Rod McDowell, Beth Phelps, Ruth Bryan.

COME SEE THE ALL NEW 1997 EXPEDITION AT HERGERT FORD

- PEP 685A XLT 4X4**
685A Standard Equipment:
- 4.6I SEFI V-8 Engine
 - 4-Speed Automatic Overdrive Transmission
 - Control-Trac 4-Wheel
 - Dual Air Bags
 - Speed Sensitive Power Steering
 - 4-Wheel Anti-Lock Disc Brakes
 - Air Conditioning
 - Remote Keyless Entry
 - Passive Anti-theft System
 - Premium Electronic AM/FM Stereo/Cassette
 - Rear Window Wiper/Washer Defroster
 - Power Locks/ Windows/ Mirrors
 - Speed Sensitive Intermittent Wipers
 - Solar Tinted Glass
 - Rear Mounted Heat Ducts
 - Tilt Steering Wheel
 - Chrome Rear Step Bumper
 - P255 All-Season BSW Tires

- 685A Standard Equipment:**
- Cloth Captain's Chairs w/ Floor Console
 - Driver/ Passenger Manual Lumbar Support
 - Speed Control
 - Forged Aluminum Wheels
- Popular Equipment Group:**
- 6-Way Power Driver's Seat
 - Privacy Glass
 - Dual Illuminated Visor Mirrors
 - Luggage Rack



- 1- Has Leather & CD Player
- 1- Has Cloth 60/40



3/4 TON TURBO DIESELS
2X4'S AND 4X4'S

1 TON TURBO DIESEL
CAB & CHASSIS 4X4

1 TON CREW CAB



1/2 TON SUPER CABS

4.6 and 5.4's

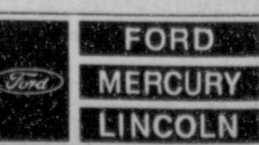
Explorers, Rangers, Supercabs, 2x4's, 4x4's

Where You Deal Directly With The Dealer
Great Selection! Great Deals!

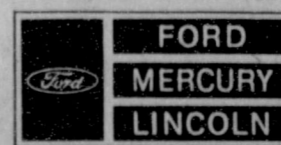
REBATES
AS HIGH
AS \$1000!



INTEREST
RATES AS
LOW AS 2.9%!



420 S. Main-Perryton
420 S. Main St. • Perryton, TX
806-435-7676



Dr. Rick Sheppard, D.D.S.

1-800-687-2010

• Family Dentistry • Braces •

146 Pioneer • Booker, TX

EMERGENCY NO.
658-9831

Diagnosis & treatment of the
hard-to-fit denture patient.

The flash and sparkle of her new diamond is
the lightning



... and the reaction from her friends is
the thunder

Foundation of Fine Jewelry

222 S. Main
Perryton, Texas 79070
806-435-2495



1-800-800-1716

721 W. 7th
Spearman, Texas 79081
806-659-3566

© Copyright, 1997

Eureka® Vacs All On Sale!

Eureka Bravo!
\$54.95
• Triple filter dust bag system
• Dual edge cleaning
60 Amp
Model 9002
SAVE \$50

EUREKA TheBOSS® Bravo! II™
• Easy Assembly
• Easy Bag Change
• Easy Belt Change
\$89.99
Model 7625
SAVE \$70

EUREKA Powerline Plus Victory™
12.0 Amps
• Clean Air Design Has Built-In Motor Fan Protection System & Quieter Operation
• Back Saver™ Handle & Light Weight Reduce Cleaning Effort
As Seen On TV
SAVE \$80
\$139.99
Model 4440
Extra-Wide 15" Cleaning Path

Eureka TheBoss® Mighty Mite II™
\$69.99
• Attachments included
SAVE \$50
Model 3671

Save on Genuine Eureka Bags & Belts

Performance You Demand
Quality You Demand
EUREKA
VACUUM CLEANERS

B&B Sales Co.
205 Dillon
Spearman, TX
659-2662

THIS WEEK ONLY!

Boll Weevil Population Threatening

High Plains regional business sales are expected to drop by \$500 million a year if impending boll weevil populations are left unchecked, a report released today estimates.

The drop will come from a 30 percent loss of cotton production and this translates into a decline of more than \$190 million a year in gross farm income and 9,000 fewer jobs in the region. This also suggests the loss of up to a third of

the cotton gins in the region.

Evidence indicates that the boll weevil has firmly established on the Texas High Plains and can survive harsh winters with existing habitat," said Dr. Ron Lacewell, agricultural economist and assistant vice chancellor of agriculture at Texas A&M.

This comes from a study completed this week by the 18-member Texas A&M/Texas Tech

Boll Weevil Assessment Task Force.

Though the cotton boll weevil has plagued growers across the southern U.S. growing region for more than 100 years, the Texas High Plains has been relatively free of the pest due mainly to the dry climates, harsh winters and an effective diapause program since 1964 which kept the insect from overwintering there.

But in recent years, researchers, county extension agents and crop consultants have reported seeing boll weevils in alarming numbers.

Compelling data and experiences have accumulated that indicate the boll weevil has adapted to the High Plains," said Lacewell.

The analysis used information from agricultural economists, entomologists and consultants to determine the potential weevil infestations up to 10 years in the future. These projections were used to estimate the most likely changes from and adjustments to boll weevil infestations.

Task force members didn't address the question of a region-wide control program. Their results simply indicate that the boll weevil left unchecked on the High Plains leaves the area at an increasingly competitive disadvantage for cotton production, Lacewell said. The 30 High Plains counties annually produce about three million bales of cotton, some 20 percent of the U.S. crop.

"Serious economic damages are expected as far north as Floyd, Hale, Lamb, Briscoe and Bailey counties," Lacewell said.

Dr. James Leser, entomologist with the Texas Agricultural Extension Service, said trap catches by the end of 1996 had increased almost 40 percent over those captured in traps by the end of 1995.

John R. Hunter, Texas Tech professor, consultant and task force member, noted that he began

using boll weevil traps as part of his field scouting technique about three years ago near Lubbock. Since then, he has seen a steady increase in the weevil population.

"It is obvious that the boll weevil cost at least \$100 per acre to some of my clients in 1996," he said.

Though the project strongly suggests serious economic impacts in the absence of a regional weevil control program, the task force acknowledged that the study has some limitations.

"The movement and adaptation of the boll weevil is a biological phenomenon and no one can accurately predict how quickly this insect will move across the High Plains," Leser said.

Dr. Don Rummel, Texas Agricultural Experiment Station entomologist, noted that the study also considered only current technology since it is not known at this time what future developments might include, and the analysis used weather patterns for the past 10 years as an indication of what weather will be like in the future.

Due to uncertainty on the rate of future movement and levels of infestation of the boll weevil, a worst case and best case situation also was evaluated, according to Dr. Don Ethridge and Dr. Eduardo Segarra, agricultural economists with Texas Tech University.

The best case situation showed a reduction in regional business activity of \$57 million compared to an \$820 million loss for the worst case.

On a more optimistic note, the developments from biotechnology, cotton genetics and integrated pest management (IPM) practices can help reduce the potential cotton losses on the Texas High Plains by the boll weevil, Lacewell noted.

Out At The Lake

by Jim Derington

Lake depth - 42 ft. January 20, 1997

A meeting was held last Thursday, January 16, with the member cities. This group had not met, collectively, in about ten years. The Palo Duro River Authority is updating the information compiled in the mid-eighties, on population and water use of the towns that will use the lake water. Surveys were sent prior to the meeting for them to complete. Texas Water Development Board projections, through the year 2050, were presented also. According to the TWDB predictions, Hansford County and the City of Stinnett, will rise in population and water used (slightly) until 2010, then decline until 2050. On the other hand, Moore County is expected to steadily grow and use more water. The figures from each town will be more accurate, but have not been compiled yet.

Attending the meeting, were representatives from Spearman, Gruver, Stinnett, Sunray. Directors of the Palo Duro River Authority, and Freese and Nichols, Inc. Freese and Nichols did the original projections and will be updating the information

to compile an analysis of water treatment and distribution. Dumas and Cactus representatives were unable to attend, but will send the information needed. They are the two biggest water suppliers of the group.

Recent objections from the State of Oklahoma, to the impoundment of water, which could eventually flow into Oklahoma, were discussed. Oklahoma has objected to our stopping the water for recreational use. Lake Palo Duro was conceived, voted for, constructed as, and continues to be, a municipal water supply for our future. Recreation use, while enjoyed by all, is incidental. The cities were asked for their continued support and commitment to our project. Without water, our towns will not exist. We must continually be looking at the future.

Speaking of recreation, the new taxpayer permits are in. The permits are yellow this year. They are available at the office at the lake. With the added water in the lake, we hope everyone will want one this year! Remember, taxpayer or not, you need a permit to enjoy the lake. Thank you for your cooperation.

Quick \$50 Fugitives

Hansford County Sheriff's department will pay \$50.00 cash for information which leads to the physical arrest of persons with outstanding warrants. Do not attempt to arrest or apprehend these fugitives yourself. If you have information on a wanted person, please contact the Hansford County Sheriff's department at 659-4140 or 733-2901. Some warrants may not be extraditable from state to state. Warrants must be confirmed before an arrest is made. Callers will remain anonymous and the reward will be paid within 24 hours of the arrest of the wanted person.

Moncerrat Alfredo Borunda, white male, DOB/09-28-71, 5/5" 135, brown hair, brown eyes. Last known address P.O. Box 353 Gruver, Texas. He is wanted for theft by check.

Charles Timothy Clark, white male, DOB/12-01-71, 5'9", 185, blond hair, blue eyes. Last known address P.O. Box 4 Bellevue, Texas. He is wanted for probation violation.

Elma Enriquez, white female, DOB/08-03-64, 5'4", 144 brown hair, brown eyes. Last known address 202 S. Brandt Spearman. She is wanted for probation violation.

Carl W. Brewer, white male, DOB/03-19-67, 5'7", 180 brown hair, blue eyes. Last known address HCR 3, Box 43 Hardesty, Oklahoma. He is wanted for

theft by check.

Cepriano Carrasco, white male, DOB/01-08-66, 5'7", 150, black hair, brown eyes. Last known address HCR 3, Box 45 Spearman, Texas. He is wanted for bond forfeiture on DWI.

Michael Collins, white male, DOB/-1-17-77, 5'11", 145, bond hair, blue eyes. Last known address Rt. 1 Box 6-14 Amarillo, Texas. He is wanted for bond forfeiture on theft by check.

Douglas D. Denney, white male, DOB/10-06-61, 5'11", 145, brown hair, brown eyes. Last known address P.O. Box 1377 Blue Unit Fort Worth, Texas. He is wanted for theft by check.

Christopher E. Hamilton, white male, DOB/09-10-76, 6'01, 175, black hair, hazel eyes. Last known address 9331 Autumn Sun, San Antonio, Texas. He is wanted for theft by check.

Julia Serna Hernandez, white female, DOB/08-26-70, 5'03, 150, black hair, brown eyes. Last known address 21525 Co Rd R 5 Ft. Morgan, Colorado. She is wanted for interference with child custody.

Christina Belle Loeffelholz, white female, DOB/06-12-63, 5'07, 118, brown hair, hazel eyes. Last known address 318 N Beaver, Guymon, Oklahoma. She is wanted for injury to a child.

In the mood for spring?

for
Silk & Fresh Flowers & Blooming Plants

call
All Occasion Flowers

519 Plains Shopping Center
Spearman, Texas 79081
659-5180

Grapevine

Continued from Page 4

The boys team showed no less character through their team spirit and closeness. One indication of their nature was shown when a senior player, in the thrill of victory, thought of a small boy who had sat on the bench during one game. The senior shared one of his most treasured possessions with the boy, a piece of the net from the district winning game.

Our greatest assets truly are our children.

Pre Super Bowl Sale!

Thank You For Your Past Business - Under New Ownership

Thursday, Friday & Saturday Only

15% OFF

- All NIKE Products- (Including: Tennis Shoes, Shorts, Towels, Etc.)
- A Variety of T-Shirts, Sweatshirts, Adult Shorts, Wind Suits & Baseball Shirts
- Leather Footballs & Basketballs. (NIKE basketballs coming soon).

25% OFF

- Selected Group of NIKE Tennis Shoes
- NFL Jerseys - (Including: Cowboys, Packers & Patriots)

30% OFF

- All NIKE Leather Jackets

BE SURE TO SIGN UP FOR A SUPER BOWL DRAWING
to be held Saturday, January 25th @ 4:00pm

1st Prize: NIKE Leather Jacket
2nd Prize: 1 Pair NIKE Tennis Shoes
3rd Prize: Brett Favre NFL Jersey
4th Prize: Drew Bledsoe NFL Jersey

The Locker Room

621 South Main • Perryton, Texas • 435-3196

MARY KAY

Beauty Consultant

Leann Gillaspie

659-3889

America's best selling brand

2 for 1 SALE

on all Fall and Winter Merchandise.

(Buy one item, get one free.)

Remember your Valentine on February 14th!

Main Street In Gruver

506 Main Ave. • 733-5040 • Gruver, Texas

THANK YOU

Verlin Hagerman,
for cleaning the snow
off of Main Street!

from
The Hansford County Reporter-Statesman
& the Main Street Merchants

THANK YOU

by Tucker E. Last Tu teams brav traveled to district ga Hounds JV Hounds maroon determine undefeated three tams distric, and As the fa small visi Kiowa gy started wa game of te strong an halftime. F took the Booker 23- They walke victorious, 29. The Lad Gruver fan he second g scored only quarter an half. At tl quarter, the score of 23- The Lady and came With nine fourth qua drove dow to Janae W shot from sent the ga the overtir picked up Booker to f Hounds sc narrowly d Coach Stev the game, " little luck. The Hour wonderi game. Gruv led by two quarter. Th a good all-a and led 30-waked onto quarter and intensity an half. The l defesne du and mainte Hounds out 19, and Gru 46. The Gruv three out: Tuesday. Th their oppon and refuse The Hound Hounds JV to 3-0 in d Hounds JV

EMER 658

21 Perryto 801

Public Notice

LEGAL NOTICE

Hansford County Commissioners' Court will receive bids until 4:00 p.m. on Friday, January 24, 1997 on the replacement of the electrical distribution center for the Courthouse. Bids will be opened on Monday, January 27, 1997 at the regular Commissioner's Court meeting, beginning at 10:00 a.m. The Court reserves the right to accept or reject any or all bids. Jim D. Brown Hansford County Judge

3(1-9-97)B

STATE LET MAINTENANCE CONTRACT

County: Dallam; Highway: 0s0054; Length: 1,000 KM; Control Number: 6004-83-001; DBE/HUB Goal: 0.0%; Project Number: RMC-600483001; Type: Seal Crack/Joint pour w/airport runways; Time for Completion: 100 working days; Guaranty: 4,000.00; Est. Cost: 197,214.65; Bids Received Until: 1:00 p.m. February 4, 1997; Bids will be Opened: 1:00 p.m. February 4, 1997; Mail or deliver bids to: Texas Department of Transportation, Austin HQ - Riverside Annex, 200 E. Riverside, Austin, TX 78704-1205, (512) 416-2496; Contact Person: Joyce Davis, P.O. Box 2708, Amarillo, TX 79105, (8806) 356-3283; Limits From: See Plans; Limits To: See Plans. 2(1-23-97)B

NOTICE OF PUBLIC HEARING

The Planning & Zoning Commission of the City of Gruver will hold a Public Hearing on Wednesday, January 29, 1997 at the Golden Age Center at 5:00 p.m. to consider the placement of mobile homes in a residential district of the City. 2(1-16-97)B

LEGAL NOTICE

NOTICE OF PUBLIC HEARING SPEARMAN PLANNING AND ZONING COMMISSION

Date: February 10, 1997; Time: 9:00 a.m.; Place: City Council Chambers, 30 S.W. Court, Spearman, TX; Purpose: To consider in public hearing the rezoning of the property listed below plus one-half of all bounding streets, alleys and public ways:

(A) Lots 1-4, Block 40, OT, City of Spearman, Hansford County, Texas; and

(B) Lots 5-10, Block 40, OT; Block 41, OT; Lots 1-6, Block 42, OT; Lots 1-6, Block 43, OT; 300' x 152.85' of the NW portion of OL 14; Lots 9-13, OL 14; and the NW/2 of OL 15, City of Spearman, Hansford County, Texas.

If the Planning and Zoning Commission favorably considers the request or the applicant files a written appeal with the City

Secretary by 12:00 noon, February 13, 1997, the City Council will hold a public hearing to consider the proposed change as follows:

Date: February 18, 1997; Time: 7:30 p.m.; Place: City Council Chambers, 30 S.W. Court, Spearman, Texas.

For additional information, call 659-2524.

/s/ Cheryl Gibson-Salgado
City Secretary
1(1-23-97)B

NOTICE TO ALL PERSONS HAVING CLAIMS AGAINST THE ESTATE OF ANNA MARIE STEDJE

Notice is hereby given that original Letters Testamentary for the Estate of Anna Marie Stedje were issued on January 13, 1997, in Cause No. 2181, pending in the County Court of Hansford County, Texas, to Dennis Stedje, HCR 3 Box 141, Gruver, Texas 79040. All persons having claims against this estate, which is currently being administered, are required to present them within the time and in the manner prescribed by law.

DATED the 13th day of January, 1997.

John L. Hutchison
Attorney for the Estate
1(1-23-97)B

Gruver ISD School Menu

Breakfast

Monday, January 27
Breakfast Pizza, Juice; Milk

Tuesday, January 28
Oatmeal, Toast, Jelly, Juice; Milk

Wednesday, January 29
Breakfast Burrito, Salsa, Juice; Milk

Thursday, January 30
Two Pancakes, Syrup, Juice; Milk

Friday, January 31
Cinnamon Roll, Juice; Milk

Lunch

Monday, January 27
Chicken Pattie on a Bun, Tator Tots, Fruit, Brownie; Milk

Tuesday, January 28
Lasagna, Salad w/Crackers,

Corn, Fruit, Garlic Bread Sticks; Milk

Wednesday, January 29
Baked Ham, Macaroni and Cheese, Fruit, Green Beans, Hot Roll; Milk

Thursday, January 30
Barbecue Beef, Potato Salad, Pinto Beans, Peach Cobbler, Cornbread; Milk

Friday, January 31
Charger, Lettuce, Pickle, Cheese, French Fries, Rice Krispie Treat; Milk

SPECIALTY ADVERTISING...

PENS, PENCILS, CAPS, JACKETS, T-SHIRTS, CALENDARS, KEYCHAINS, AUTO DECALS, BALLOONS, BANNERS, BUMPER STICKERS, GOLF BALLS & TEES, RAIN GAUGES and 1000's of more items!

THE NEWTON LINE

Representing
Newton Mfg. Co.
Newton, Iowa 50208

Glenn D. Crain
435-9124 • Mobile 435-0040

NOTICE

The Spearman Housing Authority is now taking applications for potential residents. Eligible applicants will be placed on a waiting list. The family size and income guidelines are as follows:

FAMILY SIZE FAMILY INCOME

1 Person	less than \$19,700
2 Person	less than \$22,550
3 Person	less than \$25,350
4 Person	less than \$28,150
5 Person	less than \$30,400
6 Person	less than \$32,650
7 Person	less than \$34,900
8 Person	less than \$37,150

Rent is based on family income minus allowances for elderly occupants, children and allowances for gas and electric utilities. For more information, contact Gary Ellsworth at Spearman City Hall by calling 659-2524. Spearman Housing Authority does not discriminate based on race, religion, sex, age, disability, national origin, or other classification protected by federal and state laws.

EYE CARE

Guymon Vision Clinic

301 N. Main, Guymon, OK
Dr. Elmer Nossaman • Dr. Mack Johnson

Office Hours:
MTWTF
8:30-12:00
1:15-6:00
Th
8:30-12:00
1:15-8:00

- RK and Laser Vision Correction Pre and Post Operative Care
- Cataract Surgery Pre and Post Operative Care
- Diabetic Eye Health Exams
- Glaucoma Treatment
- Emergency Eye Care
- Fitting of Soft and Gas Permeable Contact Lenses
- Advance Treatment of Dry Eye Problems

• Comprehensive Eye Health Exams

For an appointment call 405-338-8437

"Good vision begins with healthy eyes."

Spiritually Speaking

have so much to be thankful for, as we benefit from our citizenship. Yet we too, like those people of Israel in an earlier time, need to be reminded that we can let all this lead to our forgetting our God, who made it possible.

Ours is a wonderful nation. Yet we are one of the most violent nations on earth. We too often

place success on the amount of wealth amassed. Crime has been on the increase, and we trust it is now dropping. Drugs are such a terrible curse. Greed controls too much of our morals. In the Entertainment Business people seem to get what they want, but how destructive is our desires. In a nation where professional

sports players make many times more than our teachers and scientists, we need the cooperation of us all in bringing us back to a sense of responsible Christian citizenship. I trust that we are willing to obey and follow the Lord, our God, and never forget what He has done for us, as a people and as a nation.

Rex Receives Degree From ASU

A Spearman student at Angelo State University was among 276 students to receive degrees during the fall commencement at the

university. Brandon Heath Rex received a Bachelor of Science, with a major in Kinesiology.

Pringle-Morse CISD School Menu

Breakfast

Monday, January 27
Cheese Toast, Toast, Juice; Milk

Tuesday, January 28
Cereal, Toast, Juice; Milk

Wednesday, January 29
Cinnamon Rolls, Toast, Juice; Milk

Thursday, January 30
French Toast, Toast, Juice; Milk

Friday, January 31
Biscuits, Gravy, Juice; Milk

Lunch

Monday, January 27
(A) Senor Chicken or (B) Burrito with Chili, Salad, Fruit, Cornbread; Milk

Tuesday, January 28
(A) Chicken Cass or (B) Steakfingers, Potatoes, Gravy, Black-eyed Peas, Salad, Rolls, Fruit; Milk

Wednesday, January 29
(A) Chicken or (B) Hamburger, French Fries, Fruit, Jell-O; Milk

Thursday, January 30
(A) Stuffed Potato or (B) Spaghetti/Sauce, Salad, Fruit, Bread; Milk

Friday, January 31
(A) Chicken Salad or (B) Pizza, Salad, Fruit, Ice Cream; Milk

Spearman ISD School Menu

Breakfast

Monday, January 27
Cereal, Toast or Waffle Sticks, Fruit or Fruit Juice; Milk

Tuesday, January 28
Cereal, Toast or Sausage Biscuit, Fruit or Fruit Juice; Milk

Wednesday, January 29
Cereal, Toast or Cheese Toast, Fruit or Fruit Juice; Milk

Thursday, January 30
Cereal, Toast or Egg Sausage Pattie, Toast, Fruit or Fruit Juice; Milk

Friday, January 31
Cereal, Toast or 2 Cinnamon Toast, Fruit or Fruit Juice; Milk

Lunch

Monday, January 27
Chicken Nuggets, Sausage Pizza, Hamburger Basket; Side Items: Green Beans & New Potatoes, Gravy, Biscuit, Mixed Fruit, Shredded Lettuce, Crackers, Grated Cheese, Croutons-Bacon Bits; Milk

Tuesday, January 28
Hot Turkey Sandwich, Pepperoni Pizza, Hamburger Basket; Side Items: Whipped Potatoes, Gravy, Sweet Peas, Shredded Lettuce, Crackers, Grated Cheese, Croutons-Bacon Bits, Hot Rolls, Jelly-Margarine; Milk

Wednesday, January 29
Chicken Stir-Fry, Sausage Pizza, Hamburger Basket; Side Items: Fried Rice, Stir Fry Vegetables, Peas, Breast Slice, Shredded Lettuce, Crackers, Grated Cheese, Croutons-Bacon Bits; Milk

Thursday, January 30
Brisket on a Bun, BBQ Sauce, Pepperoni Pizza, Hamburger Basket; Side Items: Pinto Beans, Potato Salad, Shredded Lettuce, Crackers, Grated Cheese, Crouton-Bacon Bits; Milk

Friday, January 31
Breaded Port Pattie, Sausage Pizza, Hamburger Basket; Side Items: Scalloped Potatoes, Whole Kernel Corn, Shredded Lettuce, Hot Rolls, Crackers, Grated Cheese, Crouton-Bacon Bits; Milk

COMBO OF THE MONTH
2 Hot Diggidy Corn Dogs & Tallsup **\$1.89**

<p>COMBOS OF THE QUARTER</p> <p>Sausage or Canadian Bacon, Egg & Biscuit, Hashbrowns, & 22 oz. Soft Drink or 16 oz. Coffee</p> <p>WITHOUT EGG \$1.79</p> <p>\$2.09</p>	<p>COMBOS OF THE QUARTER</p> <p>Sauteeya, Western Style Potato Wedges & Tallsup</p> <p>\$2.29</p>	<p>COMBOS OF THE QUARTER</p> <p>BBQ Beef Sandwich Western Style Potato Wedges & Tallsup</p> <p>\$2.29</p>
<p>ALL VARIETIES Pepsi</p> <p>6 Pack or 3 Liter</p> <p>\$1.79</p>	<p>VALLEY FARE Bath Tissue</p> <p>4 ROLL PKG.</p> <p>79¢</p>	<p>DECKER Meat Franks</p> <p>12 OZ. PKG.</p> <p>69¢</p>
<p>HORNEL Red Label Bacon</p> <p>1 LB. PKG.</p> <p>\$1.69</p>	<p>DECKER Meat Bologna</p> <p>12 OZ. PKG.</p> <p>89¢</p>	<p>LAYS' OR WAKY LAYS' Potato Chips</p> <p>REG \$1.59</p> <p>99¢</p>
<p>US #1 Russet Potatoes</p> <p>10 LB. BAG</p> <p>89¢</p>		

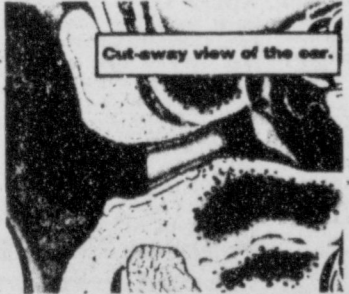
You'll Find All This and More at Your Allsup's Store
305 W. Kenneth • Spearman • 659-3135 • 101 Main Ave. • Gruver • 733-2953

Good Luck, Lynx!

Good Luck, Hounds!

ALLSUP'S **LOW PRICES, GREAT PRODUCTS**
24 HOURS A DAY

Prices Effective Jan. 23rd-Feb. 5th OFFER GOOD WHILE SUPPLIES LAST



Miniscope Deep-Canal Hearing Instrument Now Available

Our office is happy to announce that we are currently fitting a completely in-the-canal hearing instrument. This remarkable new hearing instrument is discreet and comfortable to wear. Its placement deep in the canal of the ear (see illustration at top) makes it barely visible. Others may not recognize you are wearing a hearing aid.

The Miniscope is the smallest hearing instrument ever manufactured by NU-EAR. Call now to schedule an appointment for your hearing assessment and consultation.

Hearing tests are for hearing aid selection and not for medical diagnosis of hearing loss. © 1994 NU-EAR/OTD/DA/9494A

HIGH PLAINS HEARING AID CENTER
Golden Spread Senior Citizens Room in the O'Loughlin Community Center
Every 2nd & 4th Tuesday
2:00 p.m. to 4:00 p.m.
274-5311
1-800-753-1696
659-3866

Lynxette/Lynx Basketball



Misha Davis prepares to shoot in Tuesday nights (January 14th) game against West Texas.

by Linda Wilkerson

The Lynxettes continued district play last Friday and Tuesday nights with one win and one loss. On Friday the Lynxettes captured their first district win when they defeated the Sunray Lady Bobcats 65-37. The following Tuesday night brought a 5366 heart-breaking loss to the WT Lady Comanches.

Last Friday night the Lynxettes hit the road to meet the Lady Bobcats in Sunray. The ladies played an outstanding game with every girl contributing offensively and defensively on the floor. The Lynxettes performed exceptionally well and enjoyed a night of well played round ball.

The Lynxettes controlled this district match from the tip off. First quarter 7 players stepped up and scored for a total of 21 points to Sunray's 12. Second quarter was a little more evenly matched with the Lynxettes scoring 10 points to Sunray's 7. At halftime the Lynxettes led 31 to 19 and from that point on, they never looked back.

The ladies came back third quarter and held the Lady Bobcats scoreless while pumping in 14 unanswered points. The 4th quarter again exhibited the Lynxettes' great offensive and defensive abilities with a scoring drive of 16 to 15. All of the Lynxettes seemed to rise to the occasion and do their part to win this district ball game.

At the charity stripe the Lynxettes swished 9 of 13 shots for a 68% average. Every player scored with three players, Misha Davis, Brooke Trantham, and Camille Smith connecting from the 3 point line. Davis also finished up the night high point with 9, and Keisha O'Quin followed close behind with 8. The rest of the team contributed with Macy Shieldknight, Samantha Beasley, Tara Butt, and Lindsey Smith adding 6 each, Kristin Beedy 5, Shayla Barber and Jennifer Neff 4 each, and Mindy Tigrett, Camille Smith, and Brooke Trantham 3 each. It was a great night for the Lynxettes as they were able to bring home a much deserved district win.

Tuesday night the ladies took on a rather confident Lady Comanche team from West Texas High School. The Lady Comanches found out real fast though that the Lynxettes from Spearman are serious about their basketball and were looking for district win number 2. The Lynxettes fought one of the toughest battles of their season, but fell short to this team. The score of 53-66 is not a fair assessment of the quality of play that the Lynxettes exhibited.

First quarter didn't belong to the Lynxettes as the Lady Comanches out scored the ladies 8-17. The next quarter brought on

a whole new level of play. This group of girls dug down deep and ran all over the Lady Comanches 18-4. Davis found the hoop for 6 points, Barber and O'Quin for 4 and Neff and C. Smith each for 2. The Lynxettes rolled all over the Lady Comanches with some of the best played defense of the season. At halftime they had held Avant to only 5 points and had created numerous turnovers. The Lynxettes led 26-21 at halftime.

This game was one of those situations that you wish you could eliminate half time. The Lynxettes' momentum was on a roll and they had the Lady Comanches somewhat confused. Second half proved to be a Lady Comanche advantage as they out scored the Lynxettes 45-27. Of those 45 points, they earned 16 of them from the free throw line. The ladies from Spearman never gave up. After having a 6 point 3rd quarter they still had the determination and heart to keep on driving and scored 21 points.

Actually, the score was much closer right up until the end than the final outcome indicated.

The Lynxettes were forced into a must foul situation in order to gain possession of the ball. Unfortunately, WT was able to turn the charity shot into points and pulled ahead. The Lynxettes may not have won on the scoreboard, but anyone who watched or listened to this game must agree that they deserved to win. Each Lynxette put their heart into the game and played to win. Unfortunately, the Lynxettes fell short to the Lady Comanches.

Tara Butt played an outstanding game as well as Keisha O'Quin. Each of these girls scored double figures with 11 each. Lindsey Smith and Misha Davis added 8 points. Shayla Barber helped out with 6 and Kristin Beedy put up 3 points. Jennifer Neff, Camille Smith, and Samantha Beasley added 2 each.

TV SCORES

Spearman vs- Sunray
34-15

Amber Ramón 9, Brooke Lesly 6, Kristi Carbajal 6, Halee Beasley 6, Grace Davis 4, Leslie Holton 3.

3 pointers: Leslie Holton 1

Spearman vs- West Texas
26-42

Kristi Carbajal 13, Halee Beasley 4, Brittini Beedy 3, Amber Ramón 3, Leslie Holton 2, Holly Pipkin 1.

3 pointers: Brittini Beedy 1, Amber Ramón 1, Halee Beasley 1

Spearman Lynxette vs. Stratford

Friday night in Stratford was a barnburner for the Spearman Lynxettes and the Lady Elks. After 32 minutes of balanced defense and offense plus a three minute overtime, the Lynxettes put out the fire for the Lady Elks. They were able to grab district win number 2 by defeating Stratford 56-54.

From the second of tip off, the Lynxettes and the Lady Elks went neck and neck on points scored. Each team seemed to enjoy scoring spurts, but the other team would quickly answer those points. The largest quarter spread was at the end of 3rd quarter when the Lynxettes led by 5 points. In the first and second quarters the Lady Elks managed a 2 and 1 point lead, but whenever that final buzzer sounded, it was tied up 50-50. This forced the game into a very aggressive hard fought overtime which delivered the Lynxettes a much deserved victory.

The Lynxettes played consistently throughout the game scoring 11, 19, 13 and 7 points each quarter respectively to Stratford's 13, 18, 7 and 12 points. The Lynxettes stepped up for all the marbles in the overtime and outscored the Lady Elks 6-4. The outcome at the end of regulation game play came down to a Spearman foul and a Stratford 2 point free throw attempt.

Unfortunately Stratford made the bottom end from the charity stripe and sent the game into an overtime. That only seemed to pump the Lynxettes even more as excitement filled entire gymnasium.

Each Lynxette rose to the occasion and took care of the Lady Elks. Again the outcome could have been altered by free throws, but the Lady Elks were only able to find the hoop for two of their four charity shots. Stratford even had possession for the final shot but the sound Lynxette defense did not allow a sure shot. The Lady Elks tried, failed and the Lynxettes got that crucial rebound. When the second final buzzer sounded, the Lynxettes captured a deserving win before a packed crowd of 1000 supportive 1-2A basketball fans.

Lynxette Keish OQuin had an outstanding night with a total of 18 points. She scored 10 of those in the second quarter and seemed to set the momentum needed for the entire team. She also played well defensively by working the boards for those necessary rebounds. Shayla Barber also enjoyed a well rounded game with 11 points. She was able to hit two from downtown with one of them making the swish in overtime. Lindsey Smith added 10 points for the Lynxettes. She hit one from 3 point land and put in 3 of her specialty baseline shots. Misha Davis followed with 9 points. She worked the board and was able to find the hoop for 3 baskets plus 3 points from the charity stripe. Samantha Beasley and Camille Smith popped the net for 4 points each. Samantha hustled with her ball handling and ball stealing skills and fired in assists for several of the points scored. Camille stepped in and did an overall super job for the Lynxettes. She managed to rebound and put in the winning 2 point shot.

Jennifer Neff, Tara Butt and Kristin Beedy helped out defensively as they pulled in rebound and pumped in those much needed assist. Each Lynxette did what was needed whether they were on the floor or the bench to encourage their team to win this game.

The 3-D's, Desire, Determination and Drive with possibly a little bit of luck all helped to win this district ball game for the Lynxettes. It is always a highly competitive game when these teams meet. A Spearman Victory has been a long time coming. Coach Shieldknight summed up the night by simply saying, "This is a wonderful group of girls who deserved to win...Thank you Lord!"

The Lynxettes improved their overall record to 12-13 and 2-2 in district play. The ladies are off

Tuesday as the Lynx play Boys Ranch. Spearman will travel to Canadian Friday night to begin the second round of district play.

Spearman JV vs Stratford JV 14-38

Grace Davis - 3, Brooke Lesly - 3, Brittini Beedy - 2, Leslie Holton - 2, Halee Beasley - 2, Holly Pipkin - 1, Kristi Carbajal - 1.



Eric Cudd looks on as Jake Howard makes a lay-up in Tuesday nights (January 14th) game against West Texas.

time in which to score, the Lynx placed five of their best defensive players on the court. As the final 10 seconds began ticking off the clock, the Comanches made three attempts at the basket, all falling short, and as regulation ended, the score was knotted at 59.

Putting four minutes on the clock, the Lynx and Comanches once again went at each other in overtime. Struggling back and forth, the Lynx would score and then the Comanches would score. Early in the overtime period, Spearman's Jake Howard sunk a three-pointer and with 31.3 seconds remaining in the overtime, Eric Cudd was on the free shot line for the first time of the night. Regardless of the pressure he must have been feeling, Eric stood in there and hit both shots, giving the Lynx the lead, and as it turned out, the victory. Any other attempts for a comeback by the Comanches fell short and the Lynx went 15-2 for the season, 3-0 in the district play. Friday night's game at Stratford will be a huge game for the Lynx as they approach the end of the first half of district. First half play will end on Tuesday night, January 21, as the Lynx host the Boys Ranch Roughriders.

Jamie Townsen - 17; Jake Howard - 14; Dillon Miller - 11; Blake Beedy - 7; Michael Lusby -

5; Britt Savage - 5; Eric Varnon - 5; Eric Cudd - 32; Frankie Dominguez - 2.

Spearman vs Stratford

For all practical purposes, it could have been Friday the 13th at Stratford last Friday night. To coin another phrase, the Varsity Lynx seemed to be playing by "Murphy's Law" because anything that could go wrong--DID! The Lynx were defeated by Stratford in district action 35-53. The one and only quarter the Lynx held an advantage over the Elks was the first quarter where the Lynx owned the edge 16-15.

Trailing by eight at halftime, 22-30, the Lynx came out hoping to make a run at the Elks. Not so; however, as the Lynx were held scoreless the entire third quarter with the exception of two free shots scored by Jake Howard. The Lynx were able to outscore the Elks again in the final quarter of play, but it was not enough and the Lynx fell to a record of 15-3 overall, 3-1 in district play.

Lynx Scoring: Michael Lusby - 12, Jake Howard - 8, Dillon Miller - 5, Jamie Townsen - 4, Eric Varnon - 4, Britt Savage - 2.

Lynx JV-41 vs Stratford JV-48 (1-17-97)

Dusty Barber - 14, Doran Schoenhals - 10, Aaron Winegarner - 8, Jeremy Mackie - 3, Landon Miller - 3, Aaron Witten - 3.

Spearman Lynx vs. West Texas

The Spearman Lynx remained tied with Stratford for first place in District 1-2A action here Tuesday night as they topped the West Texas High Comanches by a score of 68-65 in overtime. The Lynx' tenacious defense seemed to struggle somewhat throughout most of the game.

Coming out in the first quarter, the Lynx managed a five point lead, 18-13. The Comanches outscored the Lynx in the second quarter by four and were able to pull within one point to end the first half, 28-27. On the strength of three 3-point shots in the third by W.T.'s Brian Scott, the Lynx found themselves on the down side at the closing of the third quarter by a score of 40-45. During the opening minutes of the final period of play, the Comanches had four players in foul trouble and the lynx 50% free shot average was good enough to keep them in the game. As the clock ticked down toward the end of the game, several exchanges took place between the two teams. Each team amassed 16 fouls in the second half of play, including the overtime period. With 10.2 seconds left in regulation, the lynx tied the game at 59. Fearing the Comanches had too much

SUPER SALE

**30% Off
ALL Shoes & Equipment**

40% Off ALL Apparel

ALL jackets 1/2 Price
Includes Nike, Addidas, Oakley, Reebok

Just About Sports
1028 Mugert Shopping Center
Borger Texas

**Thursday, Friday, Saturday
9:00 a.m.-7:00 p.m.
Sunday - 1:00-6:00 p.m.**

1996 MORSE BASKETBALL SCHEDULE

DATE	OPPONENT	SITE	TIME
Jan. 27	St. Andrews	H	5:00
Feb. 3	Gruver	T	5:00

1996 SPEARMAN LYNX/LYNXETTES BASKETBALL SCHEDULE

DATE	OPPONENT	SITE	7G	7B	8G	8B	9G	9B	10G	10B	11G	11B	12G	12B
Jan. 23-25	Gruver Tourn.	T												
Jan. 24	Canadian	T												
Jan. 27	Stratford	GT-BH	5:00	5:00	6:00	6:00	7:00	7:00			5:00	5:00	6:00	7:30
Jan. 28	Sunray*	H												
Jan. 30-Feb. 1	West Texas Tourn.	T					5:00	5:00						
Jan. 31	West Texas*	T												
Feb. 3	Gruver	H	5:00		6:00		7:00							
Feb. 3	Boys Ranch	T	5:00(B)	5:00	6:00(B)	6:00		7:00						
Feb. 4	Stratford*	H									5:00	5:00	6:00	7:30
Feb. 7	Guymon	T									6:00		7:30	
Feb. 7	Boys Ranch*	T					6:30					5:00		7:30

*DISTRICT GAMES


1996 GRUVER HOUNDS/LADY HOUNDS BASKETBALL SCHEDULE

DATE	OPPONENT	SITE	7G	7B	8G	8B	9G	10G	10B	11G	11B	12G	12B	
Jan. 23-25	Gruver Tourn.	H												
Jan. 24	Shamrock*	T												
Jan. 27	Guymon	GT-BH	5:00	5:00	6:00	6:00	6:00	7:00			4:00	5:15	6:30	8:00
Jan. 28	Booker*	H												
Jan. 30-31	West Texas 9th Tourn.	T							TBA	TBA				
Jan. 31	Guymon	H									5:00	5:00	6:30	8:00
Feb. 3	Booker	T	4:00	5:00	6:00	7:00								
Feb. 3	Morse	H			5:00	6:00								
Feb. 4	Wheeler*	T					5:15	4:00	4:00	5:15	6:30	8:00		
Feb. 7	Claude*	H							5:00	5:00	6:30	8:00		

*DISTRICT GAMES



HOMES To Live In



Hansford County's ONLY locally owned and operated Realty.

Julie Martin
Broker - 659-2425

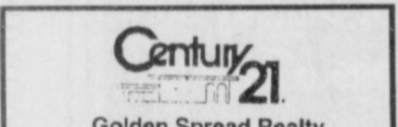
Kym Williams
Sales Assoc. - 733-5163

160 Acres - SE of County 807 S. Haney - 3 1/2, great home, large lot
Lots: make your dreams come true - build your own home on one of several lots.
711 S. Collier - 3/1, New Paint
811 S. Roland - 3 bedroom, 1 bath. Let's make a deal
611 S. Evans - 3 1/4 - 1 priced to sell.

GRUVER
102 Maupin - 3 1/2, Red Brick

NEW LISTINGS IN GRUVER
Harris Addition - Lot and mobile home - \$8,500
2212 Hwy. 15 - 3/2, brick, central air/heat
607 King - 2/1, plus 1/1 efficiency apt.

We'd Like Your Listing FOR QUALITY & SERVICE CALL US TODAY!
Equal Housing Opportunity



Golden Spread Realty
200 S. Main - Perryton
(806) 435-5444

GOLDEN SPREAD REALTY
JANYE HELTON POINTER, BROKER OWNER
435-5444

Sales Associates
Janice Flathers 435-2156
Dana Burnett 435-2698
Sherrie Ryna 435-3294
Gina Deald 435-2772

1013 Linn - 3 1/4, excellent value!
205 Hazelwood - Great buy, excellent condition!
East 7th Street - Mobile Homes, lots to lease!!!
Hwy. 207 South - Great potential for new or existing business!
LOWERED PRICE - 1117 Dessen - 4/2, Finished Basement!

GRUVER
503 E. 10th - Affordable 4 BR, 2B
18 Mi. N.W. of Gruver - Three bedroom home on 3 acres!

© and TM trademarks of Century 21 Real Estate Corporation. Equal Housing Opportunity. INDEPENDENTLY OWNED AND OPERATED.

For Sale By Owner

620 S. Bernice - 2000 Sq. Ft.
Upstairs - 2 BR, 1 B, large kitchen, family room, walk-in closets, hardwood floors, all wood cabinets, central H/A, storm windows, large utility porch with entrance to basement, 20x24 storage building, large driveway. Basement - 3 large finished rooms (tile, paneling, etc.), 1 large unfinished room (built to add 2nd bath).

620 1/2 S. Bernice - 1200 Sq. Ft.
1 BR, 1 1/2 B, kitchen, dining & family room together in one large room. Currently rented @ \$245.00/ month on HUD contract.

Two houses on two lots - \$45,000.00

Call Edwin or Janice Pearson
659-3851



Selling Spearman!
List your home with the Real Estate Professionals that the BUYERS call!

Rex Hoover - Broker • 800-755-4291
Larry Trosper - Sales • 659-3491
Diana Hoover - Sales • 658-9113

NEW LISTING - 203 N. Bernice
Large 2 Story Wood Frame Home - 4 BR, 2 B, extra nice. Large fenced back yard, 2 storage buildings. Very nice property owner willing to work with buyer. Must see to appreciate.

NEW LISTING - Little Fort Worth Area (West Crawford Addition) - 2 large lots, piped fence, corrals, water, elect. Let's talk.

NEW LISTING - 721 Wilbanks -
Emmaculate large 3BR, 2B, large family room, central H/A, fireplace, fenced in back yard. Good location.

NEW GRUVER LISTING - 703 King - 2BR, 1 1/2B, formal living area, central heat/air, lots of storage, 2 car garage, extra large storage building/workshop, sits on extra large lot, immaculate condition.

NEW LISTING - 704 Dessen -
Large 4 BR, 2 B, X-large family room, storm shelter, corner lot. Lots of space, large rooms. Let's talk.

NEW GRUVER LISTING - 207 Richardson - 3BR, 1 1/2B, storage building, 1 car garage, large family/game room. Priced to sell.

210 Bernice - 3 BR, 1B, central heat/air, w/basement, extra large fenced-in, closed yard. Owner wants to talk business.

515 Evans - 2,000 sq. ft. 3BR, 2B single car garage, central heat, air, fireplace, large living room, some hardwood floors, new roof, fresh paint. Let's make a deal.

Large Metal Building & Property - 40x60 Metal Building, Contents and Fixtures. Good location - 202 N. Bernice. Make an offer.

Country Home For Sale
By Owner
Priced Well Below Appraised Value
3300 Total Sq. Ft.
3/4 (+) Acre Lot
3 Bedroom - 3 1/2 Bath
Sunken Living Room w/Fireplace
Balcony & Cathedral Ceiling
Two Story - Formal Dining Room
Office - Basement - Utility
Fenced Back Yard - Lots of Storage
Garage - Patio - 2 Storage Bldgs.
Central Heat & Air
Private Water Well - New Septic System
Satellite System
806-659-2681 or 659-2808
By Appointment Only
Serious Inquiries Only

"Village Treasures"
Antiques & Collectibles
Crafters Mall
112 Main in Perryton
(806) 435-7112

HOMES FOR SALE

NEW LISTING: 3 bedroom, 2 baths, central heat and air, recently remodeled kitchen, covered patio, attached garage, good location. Priced to sell. 1008 S. Barkley. Call 659-3847 nights.
TFN(1-9-97)B

FOR SALE: 2700 sq. ft. split level brick home. 3 bedrooms, 1 3/4 bath, living room, large den with fireplace, playroom, laundry room, 3 car garage, 2 central heat and air conditioning units, lots of storage, corner lot. Call 659-3052 or 659-3215.
RTN(11-7-96)B

MAKE US AN OFFER: Great brick home in great location. 2,200 sq. Ft., 4 bedrooms, 3 baths, big den with fireplace, basement, double car garage. 702 Gibner. Call and let's make a deal! 659-3838 or 733-5555.
RTN(2-15-96)B

FOR SALE - to be moved - 1984 Celtic double wide mobile home - 52' x 28' - 3 bedroom/2 bath with central heat and air (air conditioner new) all in very good condition - \$22,000.00 if interested please call 659-3123.
TFN(11-14-96)B

FOR SALE: 2 BR, 2 B Mobile home w/or without lot. 214 Archer. 659-2288 or 659-2383.
RTN(12-5-96)B

MOVE TO THE COUNTRY: 1996 28x62 (1736 sq. ft.), 3BR, 2 B, Central AC/Heat, on 22 Acres. New sewer, new well, all improvements less than 1 year old. Located on Hwy. 759, 10 miles east of Spearman. Call 659-1725 or 898-5163.
TFN(12-12-96)B

FOR SALE: 4 bedroom, 2 bath home. Office, fireplace, basement, 2 car garage. Would consider trading for a smaller house. See at 1102 Linn Drive. Call 659-3402 after 6:00 p.m.
RTN(1-9-97)B

FOR SALE: 3 BR, 2 B, red brick house. Hardwood floors, formal living room, large family room, utility room, ceiling fans, storm windows, newly insulated, steel trim, 2 door attached garage, high board backyard fence, 1770 sq. ft. (12"x14" steel storage building). Call (806) 733-2272 or see at 102 Maupin, Gruver, TX.
FOR SALE OR RENT: Former Sears Building, 517 Plains Shopping Center. Call L(806) 659-2819.
4(1-23-96)P

FOR SALE: 24x64 Mobile/Modular Home - 3BR, 2B, den w/woodburning fireplace and many other extras. Call 733-2366 for more information.
4(1-16-97)B

LOTS FOR RENT/SALE

RENT LOT: Trailer house lot for rent or sale. Call 659-2245.
RTN(2-22-96)B

HOMES FOR RENT

FOR RENT: Clean 2 bedroom house w/stove, refrigerator, table & chairs, carpet, paneling, washer & dryer hookups. Close to elementary school. \$250/month. \$200 deposit. You pay bills. Call 659-3657.
RTN(1-2-97)B

APARTMENTS

FOR RENT: Furnished 1 Bedroom House, Furnished 1 Bedroom Apartment & 2 Bedroom House. Call 659-3260.
RTN(4-1-96)B

FOR SALE: 1986 Peterbuilt sleeper, wet kit, 350 Cummins. Good condition. Call 733-2746 or 733-2340.
RTN(1-9-97)B

FOR SALE: Phone system & cash register. Call 659-5016 or see at 315 Main.
TFN(10-10-96)B

FOR SALE: 1 King-size waterbed w/bookshelves and mirror, padded sideboard w/new semi-waveless bladder and new solid burgundy comforter and new multi-colored comforter. Call 659-5078 in the evening.
2(1-16-97)B

OSGOOD MONUMENT CO.
Amarillo, Texas

Dealers of Rock of Ages Granite, as well as all colored granites, marble and bronze memorials.

Represented by
BOXWELL BROS. FUNERAL HOME
519 S. Evans • Spearman
659-3802

CLASSIFIEDS

BIG SCREEN TV: Take on small monthly payments. Good credit a must. Call 1-800-398-3970.
2(1-23-97)P

PIANO FOR SALE: Like New - Wanted Responsible party to take on small monthly payments. See locally. Ph. 1-800-658-1724 - Brier & Hale Music - Liberal.
1(1-23-97)B

EMPLOYMENT

HELP WANTED: Caprock Feedyard #2 has position available for assistant mill manager. Previous mill experience preferred. Good career opportunity and excellent benefits. Contact Lonnie Busch or Tom Fanning at Caprock #2 at (806)-733-5025.
4(1-9-97)

NEEDED: Home Health provider needed. Call Outreach Health Services at 1-800-800-0697, ask for D'Anna.
RTN(8-29-96)B

HELP WANTED: Caprock Feedyard #2 has mill production position available, previous mill experience or heavy equipment experience preferred. Good career opportunity and excellent benefits. Contact Lonnie Busch or Tom Fanning at Caprock #2 (806)733-5025.
4(1-9-97)B

HELP WANTED: Students Welcome and others. Up to \$9.00 Conditions Exist. Call between 11-5, M-F, 358-2559. Interview in Amarillo, work in Spearman.
4(1-16-97)B

HELP WANTED: *ATTN: SPEARMAN* Postal positions. Clerks and sorters. No experience required. Benefits. For exam, salary, and testing information call 1-630-906-5570, ext. 5199, 8 a.m.-8 p.m. **DO NOT APPLY AT LOCAL POST OFFICE.**
3(1-23-97)P

HELP WANTED: Full-time secretary/billing clerk position open in Spearman. Interested applicants may call North Plains Home Health at (806) 435-6922.
1(1-23-97)B

HELP WANTED: Gillaspie Auto & Truck Center has an immediate opening in the Service Department.
Call 659-2451.

HELP WANTED: \$200-\$500 Weekly: Mailing phone cards. No experience necessary. For more information send a self-addressed stamped envelope to: Global Communication P.O. Box 5679, Hollywood, FL 33083.
12(1-23-97)B

ADoption

A BABY WILL make our dreams come true. Caring warm couple wish to provide your precious newborn with a bright and love filled future. Vicky/Geoffrey 1-800-747-4937. *It's illegal to be paid for anything beyond medical/legal assistance.*

ADOPTION: A BRITISH/American couple long to adopt newborn to share warm, loving and secure family in London, England. Call Jane and Neil's attorney at 1-800-440-9185. *It's illegal to be paid for anything beyond medical/legal assistance.*

BUSINESS OPPORTUNITIES

LOCAL CANDY ROUTE: 30 Vending machines. Earn approx. \$800 per day. All for \$9,995. Call 1-800-998-1921.

PEPSI/HERSHEY ROUTE!! Your business! Your hours! Your profit! Top local sites. \$1,500+ weekly potential. Minimum investment \$10,800 with immediate cash flow. Call: 1-800-617-6430, Ext. 5900.

DRIVERS WANTED

ARROW TRUCKING COMPANY *flatbed and van operation *regional or long haul *four terminals in Texas *assigned conventionals *experienced drivers - owner operators. 1-888-277-6937, inexperienced training available. 817-246-3733. EOE!

DRIVER - CALARK INTERNATIONAL offers great pay, benefits and the chance to get home more often! Must be 22 with CDL and Hazmat endorsement. 1-888-422-5275.

DRIVERS - ARCTIC EXPRESS, a reefer carrier running 48 and Canada in search of lease purchase/no \$ down, owner operators/company drivers. Call now! 1-800-927-0431. EOE.

DRIVERS. COVENANT TRAINERS earn over \$70,000. Covenant teams earn over \$100,000 and run 225,000 miles a year. Make money and get the most miles. Call today. Experienced drivers and owner/operator teams 1-800-441-4394. Graduate students 1-800-338-6428.

DRIVERSEXPERIENCED OR inexperienced North American Van Lines has owner operator openings in their Relocation Services Division. Tuition-free training! Tractor purchase programs, no trailer maintenance expenses, pay for performance plans and much more! 1-800-348-2147, Dept. A-36.

DRIVERS - HERE ARE the facts! '94-'96 KW conv. walking; 28-30¢/mi. + \$40 tarp/load. Day 1 rider program. Min. 1 yr. experience. Call Melton Truck Lines 24 hrs./7 days. 1-800-635-8669 ext. CH-8.

DRIVERS - NEW 1997 pay

REWARD: \$1000 reward for information leading to the arrest of the person or persons responsible for the killing of a red Border Collie dog on January 3, 1997 between 6:30 a.m. and 9:00 a.m. Call 659-3273.

OUR FAMILY is looking for a very special person to take care of our children in our home and do light housekeeping, 9:00 a.m. - 6:00 p.m. This person must be loving, caring, and responsible. We prefer an experienced person with references. Meals provided. Please call Betty at 659-2846.
RTN(12-26-96)B

CHILD CARE

WILL BABYSIT IN MY HOME, Monday-Friday. Call Robin at 659-3523. Leave message if no answer.
2(1-16-97)P

AUTOMOBILES

FOR SALE: 1988 Nissan Pathfinder, V6 4x4, Auto transmission w/A.C. \$6500 firm. Call 435-2363 or 898-64484.
4(1-16-97)P

FOR SALE: 1995 4x4 Suburban. Loaded, under 42,500 miles, excellent condition. New price. Call (Days) 800-435-0370, or (nights) 806-435-0370.
TFN(1-23-97)B

FOR SALE: 1977 C60 Chevrolet 2 ton truck. Call 659-3938.
1(1-23-97)P

SERVICES

PRIMESTAR SATELLITE TV SYSTEM: \$99 down - 1st month basic programming free, with approved credit. Call for details. (806) 659-3068 or 800-279-4904. See display at All Occasion Flowers, 519 Plains Shopping Center.
TFN(10-3-96)B

JACK OF ALL TRADES: Have work that needs to be done? Get it done right. Honest and dependable handyman. Excellent references. Call 733-5249 after 6 p.m.
2(1-23-97)P

NOTICE

CHURCH OF CHRIST PRAYER LINE - 659-5334. Requests kept confidential.

Jay's Waterwell Service
Domestic Well Troubleshooting
Sales & Service
Large Inventory on Hand

2 Service Rigs in Spearman Area
Submersibles, Windmills,
Solar Pumps, Pressure
Tanks, Pressure Pumps,
Complete Systems Available
Prompt Service

NEW SERVICE AVAILABLE
Live downhole video camera with recording, playback capability for almost all wellbores, for those problem waterwells

Hansford, Sherman County
Representative
Spencer Correll, RFD
659-3908 or 659-2401

*Thanks for your business!
Call us anytime!*
Jay Cox, Perryton, owner

MISCELLANEOUS

FREE: Free Cigarettes, 1-800-254-0811.
6(1-16-97)P

FREE

FREE: 8 year old male poodle. Free to older couple. Call 659-2310 after 6:00 p.m.

FARM & RANCH

SPRING OAT SEED: Call Gayland Ward Seed, 800-299-9273, Hereford.
4(1-23-97)B

BUSINESS OPPORTUNITY

NOW ACCEPTING BIDS for concessionaire at Lake Fryer in Ochiltree County, TX. Duties will include operation of restaurant, building and grounds maintenance, and collection of park fees. For more information, contact Don Hooten, County Auditor, 511 S. Main, Perryton, TX 79070. Deadline is Feb. 7, 1997.
1(1-23-96)B

MAKE MONEY taking orders from friends and relatives for Avon. Call Billie Simmons, independent, advanced unit leader. 1-800-447-2967.
TFN(1-23-97)B

Harshman's Repair
VCR Repair - \$55
Camcorder Repair - \$85
CD Player Repair - \$35
Cassette Repair - \$30

Most Models
Mon.-Sat. 10 a.m.-6 p.m.
(806) 274-4704
1032 Coble Borger, TX

High Plains Liquid Feed

LOOMIX

Ricky Meinen
Box 1173
Perryton, TX 79070
(806) 435-5979
806-435-1996

DON E. The Chimney Sweep

Reliable • Experienced
Clean Jobs • Friendly

TO INSURE THE SAFETY OF YOUR HOME, CALL...
806-435-4316

Since 1989 • Perryton, TX

TEXSCAN

ADOPTION

A BABY WILL make our dreams come true. Caring warm couple wish to provide your precious newborn with a bright and love filled future. Vicky/Geoffrey 1-800-747-4937. *It's illegal to be paid for anything beyond medical/legal assistance.*

ADOPTION: A BRITISH/American couple long to adopt newborn to share warm, loving and secure family in London, England. Call Jane and Neil's attorney at 1-800-440-9185. *It's illegal to be paid for anything beyond medical/legal assistance.*

BUSINESS OPPORTUNITIES

LOCAL CANDY ROUTE: 30 Vending machines. Earn approx. \$800 per day. All for \$9,995. Call 1-800-998-1921.

PEPSI/HERSHEY ROUTE!! Your business! Your hours! Your profit! Top local sites. \$1,500+ weekly potential. Minimum investment \$10,800 with immediate cash flow. Call: 1-800-617-6430, Ext. 5900.

DRIVERS WANTED

ARROW TRUCKING COMPANY *flatbed and van operation *regional or long haul *four terminals in Texas *assigned conventionals *experienced drivers - owner operators. 1-888-277-6937, inexperienced training available. 817-246-3733. EOE!

DRIVER - CALARK INTERNATIONAL offers great pay, benefits and the chance to get home more often! Must be 22 with CDL and Hazmat endorsement. 1-888-422-5275.

DRIVERS - ARCTIC EXPRESS, a reefer carrier running 48 and Canada in search of lease purchase/no \$ down, owner operators/company drivers. Call now! 1-800-927-0431. EOE.

DRIVERS. COVENANT TRAINERS earn over \$70,000. Covenant teams earn over \$100,000 and run 225,000 miles a year. Make money and get the most miles. Call today. Experienced drivers and owner/operator teams 1-800-441-4394. Graduate students 1-800-338-6428.

DRIVERSEXPERIENCED OR inexperienced North American Van Lines has owner operator openings in their Relocation Services Division. Tuition-free training! Tractor purchase programs, no trailer maintenance expenses, pay for performance plans and much more! 1-800-348-2147, Dept. A-36.

DRIVERS - HERE ARE the facts! '94-'96 KW conv. walking; 28-30¢/mi. + \$40 tarp/load. Day 1 rider program. Min. 1 yr. experience. Call Melton Truck Lines 24 hrs./7 days. 1-800-635-8669 ext. CH-8.

DRIVERS - NEW 1997 pay

scale! Across board. 2 more per mile! Make \$36-\$42,000+/year! 3 years OTR with 1 year flatbed req'd. Combined flatbed drivers. Phone apps approved in 2 hours! 1-800-646-3438, Ext. 1020. Owner-operators welcome.

DRIVERS * RUN WITH the best * great benefits * miles * rider program * you need 1 yr. OTR experience and CDL-A * Call 1-800-727-4374 * Dallas Carriers *EOB

DRIVERS * SAMMONS TRUCKING, flatbed/specialized. Recruiting experienced OTR drivers & owner/operators. Lease purchase available. 1-800-457-2349.

DRIVERS WANTED E.L. POWELL & Sons, Tulsa, OK. We offer late model equipment, good insurance, mileage pay. One year verifiable flat bed experience. 918-446-4447, 1-800-444-3777.

HAROLD IVES TRUCKING needs motivated individuals to enter our Training Program. Call 1-888-270-1676 for complete information. Experienced drivers call: 1-800-842-0853.

OTR TRUCK DRIVERS wanted! Experienced or non-experienced. Free training and 1st year income \$30K. Stevens Transport 1-800-333-8595, EOE.

OWNER OPERATORS - MARKETING efforts at Back Trucking have produced more freight than we can haul. Be home weekends, lots of miles, good pay. Call: Arkansas: 1-800-521-0649, Memphis: 1-800-557-5772, Nashville: 1-800-399-3901.

RAPID FREIGHT OF TEXAS, a Texas based carrier seeking OTR teams & singles. 95 or newer conventionals. Call Chuck at 1-800-607-5695.

EMPLOYMENT

MEDICAL TRAINEE: PAID training in medical/dental field. No experience req'd for H.S. diploma grade 17-34. Excellent salary/benefits. Paid relocation. 1-800-292-5703.

FINANCIAL SERVICES

\$DEBT CONSOLIDATIONS. Cut monthly payments up to 30-50%. Reduce interest. Stop collection calls. Avoid bankruptcy free confidential help NCCS non-profit, licensed/bonded. 1-800-955-0112.

\$SLUMP SUM cash now! \$5 We buy your insurance settlement, annuity, mortgage notes, or lottery winnings payments for cash! Quick closings. 1-800-338-5815, Ext. 100.

MONEY TO LOAN.

DRIVERS - NEW 1997 pay

Homeowners - we can help you when others will not. Purchase, refinance, home improvement, more! Call AAA Mortgage & Financial Corporation 1-800-652-1757.

FOR SALE

CAN'T AFFORD THE home you need? Own a home now, without the downpayment most banks require. Complete permanent financing if qualified. DeGeorge Home Alliance. 1-800-335-2884.

HAPPY JACK TRIVERMIDIC: Recognized safe & effective against hook, round & tapeworms in dogs & cats. Available at farm, feed & hardware stores.

WOLFF TANNING BEDS, tan at home. Buy direct and save! Commercial/home units from \$199.00. Low monthly payments. Free color catalog. Call today! 1-800-842-1310.

STEEL BUILDINGS SALES:
30X40X10, \$4,554;
40X60X14, \$8,259;
50X75X14, \$11,150;
50X100X16, \$14,622;
60X100X16, \$16,632. Mini-storage buildings, 30X100, 20 units, \$9,992. Free brochures. Sentinel Buildings, 1-800-327-0790, Extension 79.

HEALTH

2020 WITHOUT GLASSES! Safe, rapid, non-surgical, permanent restoration 6-8 weeks. Air-line pilot developed. Doctor approved. Free information by mail: 1-800-422-7320, Ext. 237, 406-961-5570, FAX 406-961-5577. <http://www.visionfreedom.com> Satisfaction guaranteed.

MISCELLANEOUS

AMERICAN CATTLEMAN MARKETING Network. Outraged? Cattle 1/2 price! Need profit? AMCAT establishes minimum market price 1992 level. Register-receive information packet, send \$5 name, address, telephone: AMCAT, Route #1, Box 156A, Ranger, Texas 76470, 817-647-3454.

REAL ESTATE

BARGAIN HOMES THOUSANDS of government foreclosed and repossessed properties being liquidated this month! Government financing. Low/no down. Call for local listings! 1-800-338-0020 ext. 299.

BUY HOME W/O \$ down! Foreclosure/bank repo's being liquidated now! Call for list. 1-800-400-3308, ext. 2142.

GOT A CAMPGROUND membership or timeshare? We'll take it. America's most successful resort resale clearinghouse. Call Resort Sales Information toll free hotline. 1-800-423-5967.

WILD WEST RANCH 109 ac - \$49,000 So. Colorado Rockies. Located in foothills of Sangre De Cristo. High meadows w/ spectacular views. Loaded w/deer, elk, highhorn sheep. Year-round access w/power & tel. Esc. owner financing. Call Now 719-742-5207 Major Ranch.

Call this newspaper for details on how to advertise statewide.