

SCR2  
 COMP  
 HANSFORD COUNTY LIBRARY  
 0122 MAIN ST  
 SPEARMAN TX 79081-2064



★ HANSFORD COUNTY ★  
**THE REPORTER-STATESMAN**

THURSDAY,  
 MARCH 18, 2010

CELEBRATING 103 YEARS OF SERVICE TO HANSFORD COUNTY  
 HANSFORD COUNTY'S ONLY NEWSPAPER

75¢

WWW.SPEARMANREPORTER.COM

VOLUME 103 • ISSUE 11

reporter@spearmanreporter.com

# Spearman Chamber of Commerce Banquet



Lilia Escajeda, 2009 Amarillo Globe-News Woman of the Year, was the speaker for the Spearman Chamber of Commerce Banquet on Thursday, March 11, 2010.

The Spearman Chamber of Commerce Annual Membership Banquet was held on Thursday, March 11, 2010. The theme for this year's event was "Victory in Volunteers."

Keith Hight, Executive Director of the Spearman Chamber of Commerce, welcomed everyone to the event being held at the O'Loughlin Center. He also recognized Spearman's volunteer organizations - Hansford Hospice, Hospital Auxiliary, Southwest Pioneer Windmill Association, Lion's Club, Rotary Club, Spearman Volunteer Fire Department, Boy Scouts, Girl Scouts, Big Brothers Big Sisters, Circle of Friends, Gladiola Flower Club, Red Hat Society, Spearman Little League, Spearman Swim Team, Little Dribblers, Soccer League, Hansford Stock Show, Hansford 4-H, and the Stationmaster's House Museum.

Keith then introduced the Miss Hansford 2009 winners - Miss Hansford - Marisol Hernandez, 1st Runner Up - Whitney Maestas, 2nd Runner Up - Lynn Vela, Miss Congeniality - Gabbi Davila; Miss Teen - Allison Brown, 1st Runner Up - Brianna Mitchell; Miss Pre-Teen - Vanessa Vela, 1st Runner Up - Callie Yarbrough; Junior Miss - Kaycee Anderson, 1st Runner Up - K.D. McCloy; Little Miss - Serenati Massey, 1st Runner Up - Sydney Silva.

John Kunselman, representing the Spear-

## Weather Forecast

Partly cloudy in the evening then becoming mostly cloudy. Lows around 40. Southwest winds 10 to 20 mph.

FRIDAY - Mostly cloudy. Slight chance of rain showers in the morning - then a chance of light rain in the afternoon. Breezy. Much colder. Highs in the mid 40s. North winds 20 to 25 mph. Chance of precipitation 30 percent.

FRIDAY NIGHT - Cloudy. Light rain and light snow likely in the evening - then light snow likely after midnight. Breezy. Moderate snow accumulations. Lows in the lower 20s. North winds 20 to 25 mph. Chance of precipitation 70 percent.

SATURDAY - Mostly cloudy with a 20 percent chance of light snow. Highs in the mid 30s. North winds 10 to 20 mph.

SATURDAY NIGHT - Partly cloudy. Lows in the lower 20s.

SUNDAY - Mostly sunny. Warmer. Highs in the mid 50s.

SUNDAY NIGHT - Mostly clear. Lows around 30.

MONDAY - Mostly sunny. Warmer. Highs around 70.

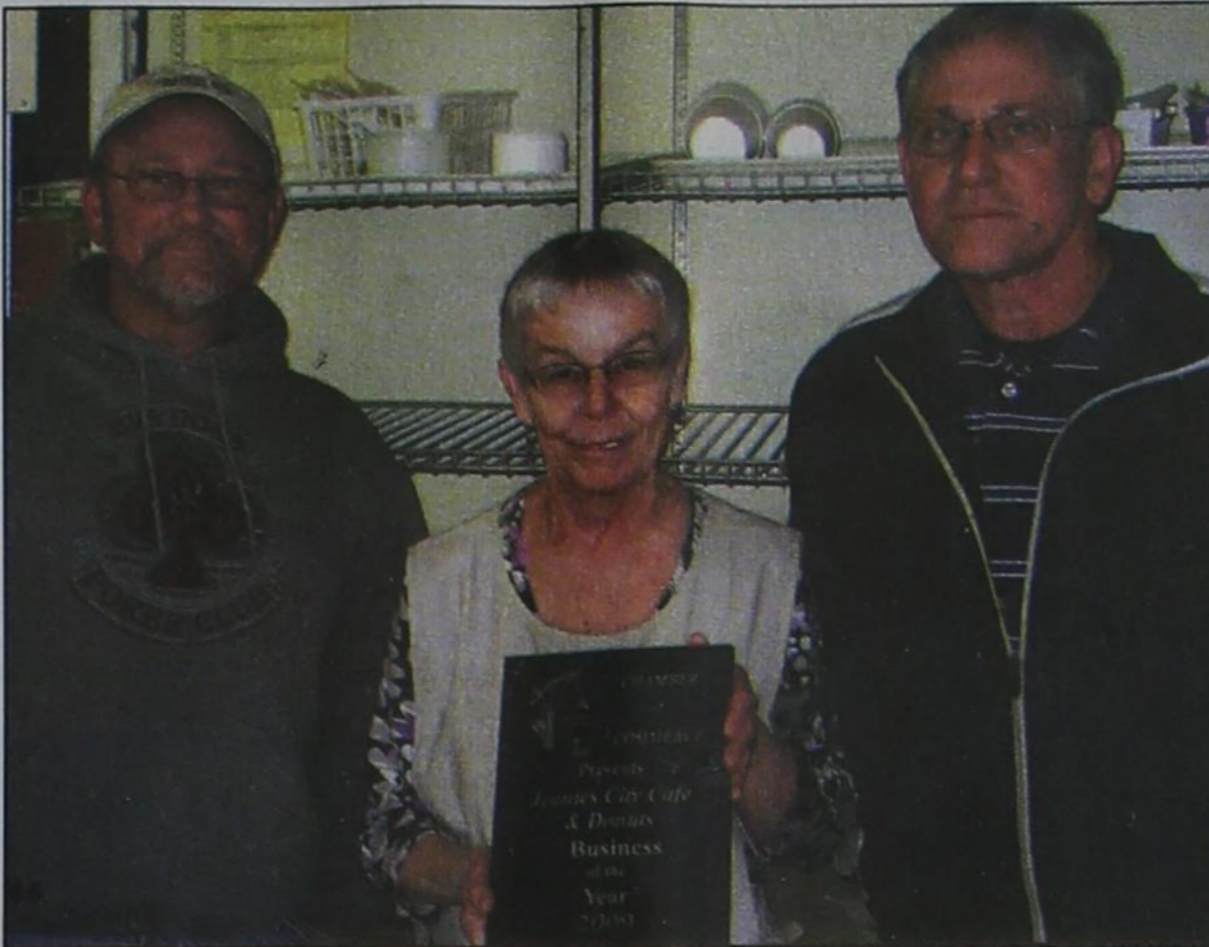
MONDAY NIGHT - Partly cloudy. Lows in the upper 30s.

TUESDAY - Partly cloudy. Breezy. Highs in the lower 70s.

Read more: <http://www.city-data.com/forecast/w-Spearman-Texas.html#ixzz0iXdy1Ccl>

## Texas Crop & Weather

The following specific livestock, crop and weather conditions were reported by Panhandle Extension directors: The weather varied greatly. Warm days were followed by snow, which was followed in turn by warm and windy conditions. The more northern counties received snow on two separate days. The western part of the district received as much as 8 inches of snow. Farmers began preparing for spring planting where fields dried out. Wheat showed growth, and producers were waiting for conditions to dry out further so they could apply fertilizer and spray for weeds. Beef producers were still providing supplemental feed as hay supplies ran low.



## 2009 Business of the Year

City Cafe and Donuts was named the 2009 Citizen of the Year during the Spearman Chamber of Commerce Banquet held on Thursday, March 11th. Pictured are Mark Murray, Jeanie Hand and Mike Murray.

Related story on page 4

man Volunteer Fire Department, recognized Ron Antalek as the Fire Department's Fireman of the Year.

Clay Schnell, First State Bank, recognized Randall Sauer as the Rotary Club Employee of the Year.

Chad Wilkerson was named the 2009 Citizen of the Year. Other nominees were Benny Wilson, Billy Britt Jarvis, Bruce Stinson, Doyle and June Jackson, JD and Rubyjo Wilbanks, Mandy Lusby, Jim Reeves, Mark Murray, Marvin Byers and Verna Lee Shirley.

The City Cafe & Donuts was named the Chamber of Commerce Business of the Year. Other nominees were Celebrate, Deakin Electric, Gordon's Drug, Hansford County Floral Company, J&S Signs & Engraving, and Prairie Garden Flowers.

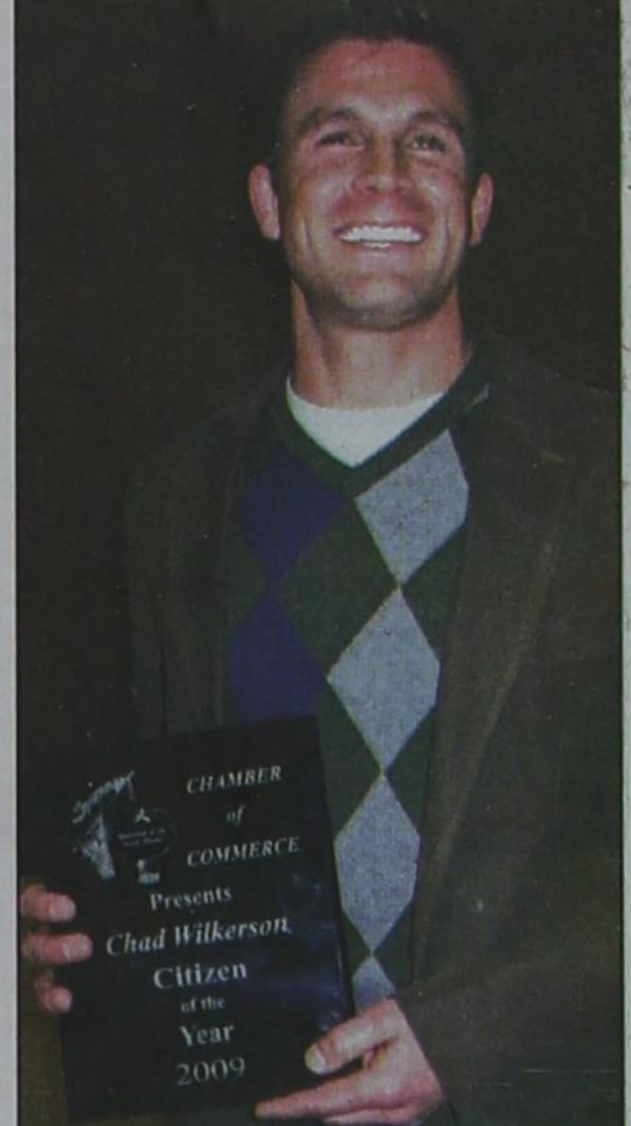
Alvin Byers, Spearman Chamber of Com-

merce Board President, presented the Community Spirit Award to Mandy Lusby in honor and recognition of her persistence and strength leading up to and following her heart and lung transplant.

The Spearman Chamber of Commerce Board of Directors include: Alvin Byers (president), Landon Jackson, Mike Pearson, Kyla Ortiz, Robert Baker, Michelle McCubbin, Kristina Howell, Ed Hanson, Cindy Blackman, Carla Puentes, Rebecca Mathews and Orlando Ortiz. Retiring board members are Cass Lasater, Teresa Barkley and Tammy Murray.

The speaker for this year's event was Lilia Escajeda, the 2009 Amarillo Globe-News Woman of the Year.

Escajeda, 66, has con-



## Citizen of the Year

Chad Wilkerson was named the 2009 Citizen of the Year during the Spearman Chamber of Commerce Banquet held on Thursday, March 11th.

Related story on page 4

sistently exhibited that passion as an elected official, an appointed government representative and a volunteer for numerous philanthropic and community organizations - all reasons behind her selection as the 2009 Amarillo Globe-News Woman of the Year.

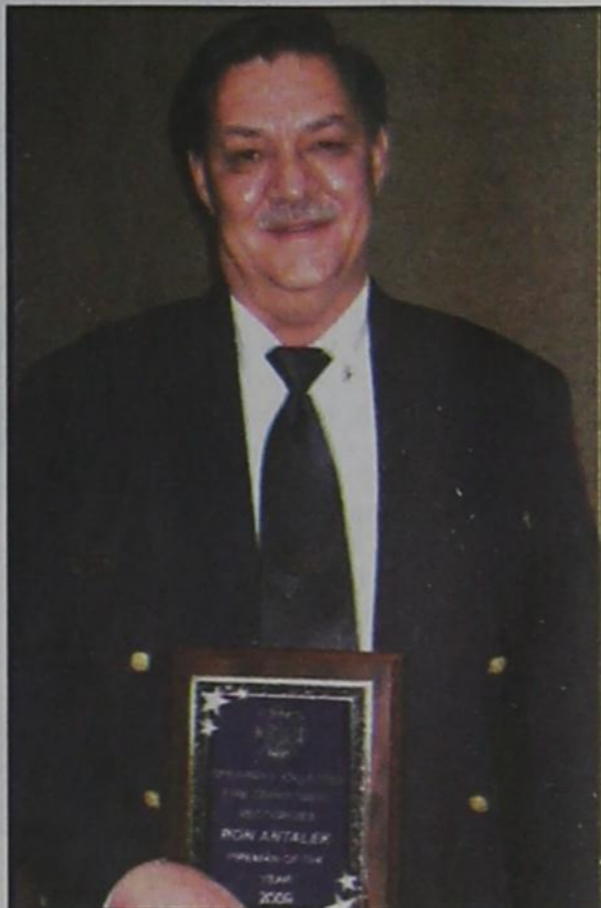
Continued on Page 2



## 2009 Rotary Employee of the Year

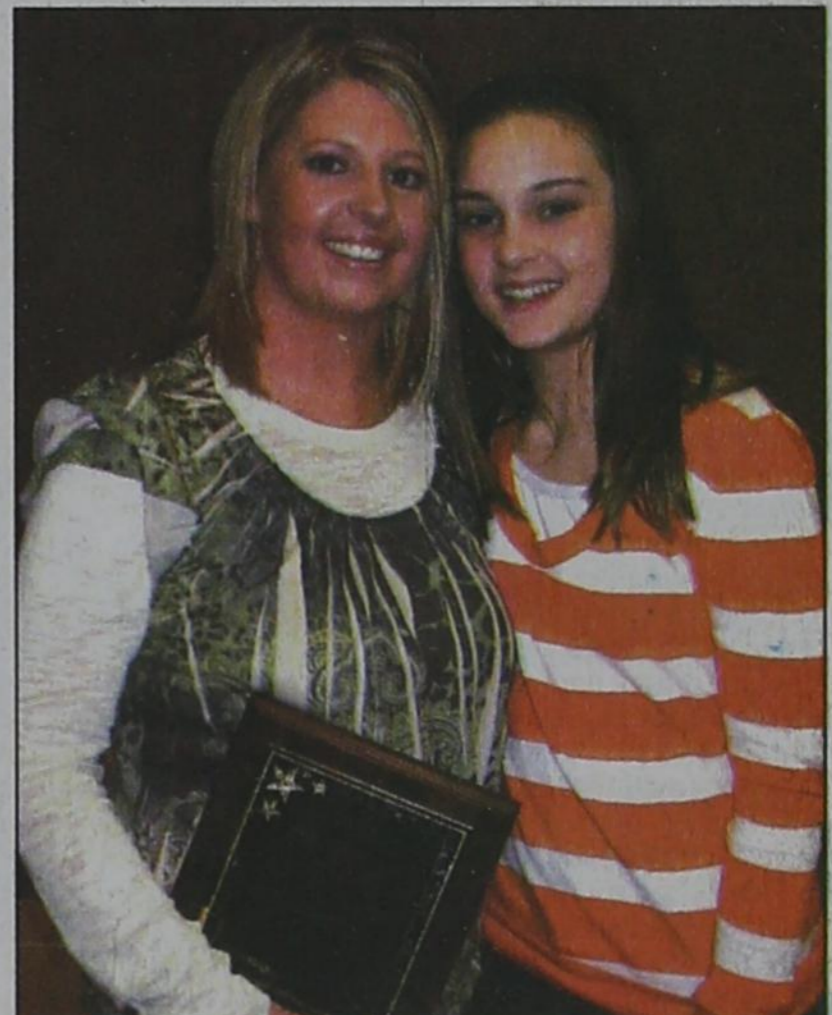
Randall Sauer (right) was named the 2009 Rotary Employee of the Year during the Spearman Chamber of Commerce Annual Banquet on Thursday, March 11th. Randall is pictured with his son, Scott (left).

Related story on page 5



## Spearman Volunteer Fire Dept. Firefighter of the Year

Ron Antalek was named the 2009 Spearman Volunteer Fireman of the Year during the Spearman Chamber of Commerce Annual Banquet on Thursday, March 11th. This is the second year in a row and third time he has received this award.



## Community Spirit Award

Mandy Lusby (left) was honored with the Community Spirit Award during the Spearman Chamber of Commerce Banquet held on Thursday, March 11th. She is pictured with her daughter, Taylor (right).

Related story on page 5



The Gruver Greyhounds competed in the State 1A Division 1 Basketball Tournament on Thursday, March 11th. They played Bronte at 8:30 a.m. on Thursday, losing a hard-fought battle 47-32. (Photos by Lisa Johnson) See story on page 8.

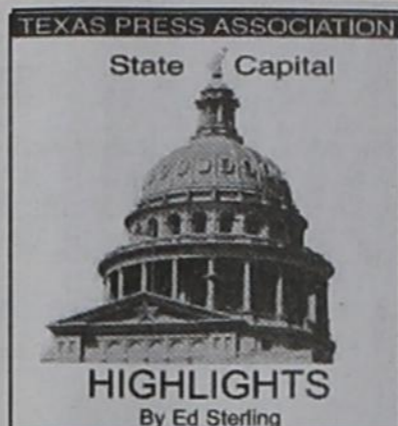


# Chamber of Commerce Banquet

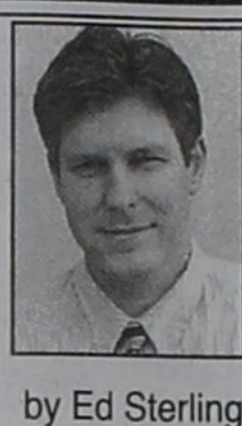
**Continued from Page 1**  
 Escajeda, 66, has consistently exhibited that passion as an elected official, an appointed government representative and a volunteer for numerous philanthropic and community organizations - all reasons behind her selection as the 2009 Amarillo Globe-News Woman of the Year.  
 Escajeda raised three children as a young widow, following the death of her husband, Chilo Escajeda, in 1975. The family moved to Amarillo the following year.  
 Almost immediately, she got involved.  
 Escajeda has played a number of roles in city government, from helping to oversee programs for low- to moderate-income residents as part of the Community Development Advisory Committee, to governing administration of indigent care and other programs as part of the Amarillo Hospital District board. Such service is invaluable to the city, said Assistant City Manager Vicki Covey.  
 Escajeda's role as an

Amarillo National Bank vice president with responsibility for the bank's federal Community Reinvestment Act programs gives her ample opportunity to pursue a pet cause, teaching money classes each quarter for immigrants and refugees who come to Amarillo via Catholic Family Service.  
 Escajeda currently serves on and is a former chairwoman of the Amarillo College board of regents; is chairwoman of the board of governors for Northwest Texas Healthcare System; is vice chair of the city of Amarillo's Comprehensive Plan steering committee; is a member and former chairwoman of the Panhandle Workforce Development board and sits on the Center City Tax Incremental Reinvestment Zone board of directors.  
 The organizations that count her as a leader these days include the Achievement through Commitment to Education scholarship program, Cal Farley's Boys Ranch, Amarillo South Rotary Club, Amar-

illo Museum of Art Alliance and Amarillo Habitat for Humanity.  
 But many more entities have appeared on what Amarillo National Bank President Richard Ware calls "the best resume in Amarillo."  
 "Has anybody ever been chairman of the Amarillo Area Foundation, chairman of the Amarillo College board of regents, and head of the Boys Ranch (Independent) School District?" asked Ware, whose bank has employed Escajeda for more than 30 of her 33 years in Amarillo. "There's nobody that has done that."  
 AC President Paul Matney called Escajeda instrumental in helping the college pass a \$68.3 million bond issue in 2007, when she chaired the AC regents. The funds are allowing the college to build a state-of-the-art science lab building at its Washington Street Campus and a health sciences building at its West Campus.  
 Escajeda has been an Amarillo Habitat board member for three years and chairs a selection committee that screens families seeking to qualify for a home through the agency, Executive Director Steve Smart said.  
 Escajeda is "everywhere," said Beth Duke, executive director of Center City of Amarillo, a downtown revitalization nonprofit. "If you need someone to be on a board who will roll up their sleeves and really get the work done, it's Lilia."



# STATE CAPITAL HIGHLIGHTS



by Ed Sterling

## State Board of Education proposes changes to school curriculum

AUSTIN — Changes to the social studies curriculum for public schools are in the hopper.  
 The State Board of Education on March 12 voted 10-5 in favor of a set of proposed revisions. The next step is for the proposed revisions to be posted in the Texas Register in mid-April, and then a 30-day public comment period will begin.  
 One of several points of contention arose over whether to require that students be taught the names of Tejanos, the Texans of Hispanic ancestry, who were among the 189 that fought for independence and died at the Alamo, but are not named in textbooks. The effort to include those names failed.  
 Comments with suggested changes to the proposed revisions may be sent to rules@tea.state.tx.us. The final steps in the process are for the board to consider additional updates and final adoption at its May meeting.  
 Also on March 12, the board adopted educator certification requirements and voted to enter into agreements with Mesa West Real Estate Income Fund II L.P. and Invesco Mortgage Recovery Fund. Each entity will be allowed to invest \$40 million of the multi-billion dollar Permanent School Fund in real estate. The Texas Education Agency said never before has the board entered into a real estate purchase agreement.

Rural Utilities Service and the Department of Commerce's National Telecommunications and Information Administration to expand broadband access to unserved and underserved communities across the U.S., increase jobs, spur investments in technology and infrastructure and provide long-term economic benefits.

## School fund increases in 2009

The fund that guarantees school district bonds and supports the purchase of student textbooks realized a 25 percent return in 2009, the Texas Education Agency reported March 12.

The Texas Permanent School Fund, the largest public endowment for public schools in the nation, was valued at \$22.2 billion on Dec. 31, 2009, up from \$18.1 on Dec. 31, 2008.

The fund's guarantee of school bonds allows Texas school districts to gain AAA ratings for their bonds, saving them millions in interest and insurance costs. The fund also provides textbooks free of charge to the state's 4.7 million schoolchildren and provides general financial support to the more than 8,000 Texas public schools, the Texas Education Agency said.

## Firm must provide restitution

Texas Attorney General Greg Abbott, attorneys general from 34 other states and the U.S. Federal Trade Commission on March 9 resolved their investigation of Arizona-based LifeLock Inc. and reached an agreement with the private identity theft protection service.

Under the agreement, LifeLock Inc. must provide \$11 million in restitution to eligible customers and must not misrepresent that it: (1) protects against all forms of ID theft; (2) eliminates the risk of ID theft; (3) constantly monitors activity on each of its customers' consumer reports; and (4) always prompts a call from a potential creditor before a new credit account is opened in the customer's name.

## Grief named lottery agency chief

The three-member Texas Lottery Commission on March 9 announced the appointment of Gary Grief as executive director of the agency.

Grief, who had been leading the agency as deputy executive director since October 2008, was appointed on a unanimous vote.  
 An original member of the task force assigned to research and launch the Texas Lottery, Grief has been with the agency since 1992.

## Census 'ambassador' is named

Gov. Rick Perry on March 9 named Secretary of State Hope Andrade the "Texas Census Ambassador" to promote participation by Texans in the 2010 Census. Forms for the 2010 Census will be delivered to residents this month.

Andrade, U.S. Census officials and others joined in Austin on March 12 to encourage all who live in Texas to participate in the census. She will promote the Census statewide until the April 1 deadline.

# Words from Faith & Grace



by Cecil R. Biggers, Lutheran Lay Minister  
 In the fifth week of Lent we learn of love for God and of God's renewal of his people as we study Isaiah 43: 16-21, Psalm 126, Philippians 3: 4-14, and John 12: 1-8.

Isaiah speaks to those in exile in Babylon of God's new creation. God is preparing a new Exodus. Isaiah speaks poetically of the revival and renewal of the physical and animal creation. Isaiah describes who God is by what God does. We can learn from this passage that there is no need to limit God to past mercies. God's love, in West Texas, is 'fixin' to do good things for those who seek Him.

The Psalmist is singing a song of love and renewal. King Cyrus, who ruled Babylon circa 538-530 BCE, has freed the Jews from bondage, provided funds for the rebuilding of their temple, and given them safe passage back to Jerusalem. For the Psalmist, this is too good to be true!

Paul speaks to the Philippians about what it means to have love for Christ. He begins by speaking with pride of his own history. Paul was an Hebrew of Hebrew parents, of the tribe of Benjamin. He is a trained Pharisee who was rigorous in his observance of the law. Paul was zealous for God to the extent that he persecuted the Christian church. Paul declares that he was 'blameless' in the law. He then explains that when he met Jesus Christ all of the things he previously held dear were as dung to him. Paul found righteousness (a right relationship with God) through faith in Jesus Christ. Paul makes no claim to be a 'complete' Christian; Paul wants to know the power of Jesus' resurrection. Yet, at the time of this writing, he is still running toward that goal.

John shows us a picture of Jesus in the week prior to his crucifixion. Jesus is staying with Mary, Martha and Lazarus in Bethany, commuting the few miles to Jerusalem as the day of Pentecost approaches. We see Martha showing her love for Jesus by cooking and serving. We see Mary who is more extravagant in her love for Jesus. She takes a container of expensive perfume and before dinner anoints Jesus' feet. Totally self-conscious she dries his feet with her hair. This action would be scandalous to a practicing Jew of that time. We see Judas concerned that an asset worth a year of a working man's wages is wasted by an emotional act. We see Jesus who answers Judas that the poor will always be with us (See Deuteronomy 15:11) and by her action, Mary has anointed Jesus for his death.

May the Holy Spirit turn your mind from past mercies, present trials and enable you to reflect the love of Jesus Christ as you 'run toward the goal'.

## Wolf Creek Heritage Museum Notes

Virginia and Georgia are in College Station this week attending the Texas Association of Museums and I will fill in a short column for Virginia. We have an unusual exhibit this month called "Bra Talk" and Sunday the 21st of March from 2:00 to 4:00 we will have an open house to display the bra's designed by breast cancer survivors. The Amarillo Area Breast Health Coalition is sponsoring the exhibit to heighten awareness about breast cancer and stress the importance of breast health and early detection.

Internet users may have seen the bra exhibit when Bra Talk began in 2008. The Wolf Creek Museum is fortunate to be able to display the exhibit and to help provide support and promote early detection of breast cancer. We hope you will take a few hours out of your Sunday afternoon to visit the museum.

The deadline for submission of county histories is April 1. We hope you are working on your families.

## Projects to receive federal funds

Agriculture Commissioner Todd Staples on March 12 congratulated the recipients of tens of millions of federal dollars in broadband funding through the U.S. Department of Agriculture to help bring high-speed Internet service to rural areas.  
 Projects in Texas to receive funding will improve broadband service in the Texas South Plains region, the Dalhart and Stratford communities in the upper Texas Panhandle and in the Burk Burnett and Iowa Park community areas in north central Texas.

The money is part of a \$7.2 billion appropriation through the American Recovery and Reinvestment Act directing the USDA's

SUDOKU PRESENTED BY VolunteerMatch.org Where volunteering begins.

2	3		6	9	
	8		6	7	5
			9	4	
3			1		7
4					1
7		5			8
4	1				
1	5	8	3		
8	3		4	5	

© 2010, StatePoint Media, Inc. answer on classified page  
 Fill in the blank squares in the grid, making sure that every row, column and 3-by-3 box includes all digits 1 through 9.

**The Hansford County Reporter-Statesman**  
 Mailing Address - 213 Main Street • Spearman TX 79081  
 Physical Address - 310 Barkley Street • Spearman TX 79081  
 Phone - (806) 659-3434 • Fax - (806) 398-9080  
 www.spearmanreporter.com • reporter@spearmanreporter.com  
 Mon.-Thurs. 9 a.m.-12 p.m., Mon.-Wed. & 1-5 p.m.  
 Closed Thurs. afternoon and all day Fri., Sat. & Sun.

**Gary Smith - Publisher** Catherine Smith - Editor  
 Contributing Writers: Dorothy Hudson, Jim Derington, Merry Sparks, Cecil Biggers  
 Contributing Photographers: Charlie Johnson, Lisa Johnson, Tammy Batton, Bonnie Bergan

**Subscription Rates**  
 In Hansford County - \$30.00 • Out of County - \$40.00  
 E-Mail Subscription - \$35.00

The Hansford County Reporter-Statesman (USPS 529660) is published weekly in Spearman, TX. Periodical postage paid in Spearman, TX. **POSTMASTER:** Send address changes to: The Hansford County Reporter-Statesman, 213 Main Street, Spearman, TX 79081.

**Publication Policy**  
 The deadline to submit news and advertising to The Hansford County Reporter-Statesman is Monday at 5 p.m. Items submitted after the deadline will be published at a later date, as time and space permit. Publication of all items is at the discretion of the editor.

**Advertising**  
 Open Display rates are \$4.00 per column inch. Classified Ads are \$6 for the first 25 words and 10¢ per word for each additional word. (Additional charge for boxed classifieds.) There is a \$1 charge per week if billed.

Member of  
 Gruver Chamber of Commerce  
 Spearman Chamber of Commerce  
 Texas Press Association and Panhandle Press Association

**MARCH MADNESS**

**ACROSS**

- NE's largest city
- \*You need it on a free throw
- Ambush
- \*Found on the scoreboard and shot clock
- One from Laos
- Dashboard instrument
- Vitruvian Man, e.g.
- Cash giver
- Stomach sore
- \*A sweet number
- \*Game tracker
- He had
- It's taken with interest
- Consumed
- Pocket bread
- \*Winner of 10 championships in 12-year period
- Cough syrup balsam
- It introduces a logical conclusion
- One of Ben Franklin's inventions
- Dollar bills
- More sane
- French "idea"
- Capital of Belarus
- Some are worth a million dollars?
- Newborn connection
- Sacred Egyptian beetle
- Invitation request
- Pig's home

**DOWN**

- Elevator manufacturing giant
- Longer than mini
- American stock exchange in NYC
- Late actor Ledger
- Not awake
- \*Indiana's Henderson, member of '92 Final Four Team
- Mob snitch
- Fast food meal
- Baby powder ingredient
- A crowd of ordinary people or things
- "A Death in the Family" Pulitzer-winning author
- Saucy
- Sea bird-produced fertilizer, pl.
- What editor does
- Like one who needs improvement
- Home chore
- Smallest components of elements
- Second T in T&T drink
- Helen in Russian
- Cuisine known for being spicy
- Ear-related
- Famous extinct bird, pl.
- American tennis great
- Always demanding attention
- CCCP
- Perceives by sight
- Poe's poem "The \_\_\_\_\_"
- \*Where basketball's inventor coached
- Feathery neckwear
- Preacher's platform
- More sly
- Nincompoop
- She is
- Beaver's coat, e.g.
- "For Your Eyes \_\_\_\_\_"
- Computer operating system

These games are brought to you by the Hansford County Reporter-Statesman

**CROSSWORD**

PRESENTED BY VolunteerMatch.org Where volunteering begins.

© 2010, StatePoint Media, Inc. answer on classified page



# Happy Birthday!

**March 18**  
**Birthday** - Danny Henson, Tony Harper, Charles Friday, Cody McLeod, Kenny Virden, Laura Garcia, Tobe Shields, Connie Hobbs, Kelsey Henton, Matthew Bain  
**Anniversary** - M/M Edwin Percy, M/M Ken Bullard

**March 19**  
**Birthday** - Barry Haenisch, Melinda McCullough, Kerri Minter, Ron Gibson, Altha Groves, Pete Garcia Jr., Jesse Ruth Gerrard, Rose Marie Bruning, Cathy Davis, April Knight  
**Anniversary** - M/M Michael Wilson

**March 20**  
**Birthday** - Mack Bevell, Travis Ferguson, Chad TeBeest, Martha Stinson, Florencio Martinez, Angela Sinta, Jane Henton, Kim King, Marion Upchurch, Kay Christian, Gary Hathaway, Lisa Tice, Rocio Garcia  
**Anniversary** - M/M R. M. Crawford, M/M Benny McCullough, M/M Rod Barkley

**March 21**  
**Birthday** - Kathy Duncan, Kelly Hart, Nancy Alvarez, Rhonda Riley, Judy Hergert, Chelsey Clark, Pepe Tarrango, Jose Tarango  
**Anniversary** - Bill and Jo Ann Weaver

**March 22**  
**Birthday** - Veta Alloway, Charmaine Gross, Maggie Key, Bob Miller, Payton Mitchell, Marty McCloy, Kelly Rauscher, Randie (Renner) Baumann, Roy Garrard, Rosalinda Vela, Tim Kizzar, Michael Burke, Doug Gurfumy, Tavo Borunda, Jorge Soto, Carla Jones, Debbie Clement, Andy Lindsey, Reid Wilson, J.J. Gallegos  
**Anniversary** - Mr. and Mrs. Benny Wilson

**March 23**  
**Birthday** - Tanner Irwin, Mercedes Perez, Dwayne TeBeest, Annie Houghton, Jamie Sterling, Beth Ann Flowers, Angela Craig, Teresa Russell, Marvin G. Wilson, Christopher Turner, Ramon Garcia Jr., Bernice Flores, Jason Evans, Carter Strawn, Wilbur Hull, Krystal DeLa Garza, Braylen Lusby  
**Anniversary** - Mr. and Mrs. Tony Cazares

**March 24**  
**Birthday** - Dillion Payne, Marie Bell, Mike Floyd, Charles Haight, Frank Sursa, Lesa Deakin, Karie Coates, Patricia Pool, Lera Deakin, Jeri Diane Sterling, Chandra Lee, Carla James, Rebecca Garza, Cory Haight, Beth Phelps, Brae Puentes

**Anniversary** - Mr. and Mrs. Mike Babbs, Mr. and Mrs. John Smith, Mr. and Mrs. Greg Breland, Mr. and Mrs. Blair Traham

**March 25**  
**Birthday** - Scott Jarvis, Jason Ward, Nellie Albrect, Oscar Rojas Jr., Kendra Kay Burke, Mike Dixon, Donna Brogdo, Jean Schaffer, Michael Covington, Joe Baca, Amy Bridges, Chad Howe, Mario Soto, LuAnn Hunter  
**Anniversary** - M/M Josh Reed, Charles & Christina Bowers

**March 26**  
**Birthday** - Keith Dillard, Jamie Smith, George Jackson, Tanda Taylor, James Brown, Judy Irbeck, Greg Holladay, Ruth Baker, John Paul Molina, Danny Bass, Joann Reynolds, Kristi Ann Balderrama, Sabrina Cantu, Joanna Myers  
**Anniversary** - Mr. and Mrs. Andy Riley, M/M Jimmy Morley

**March 27**  
**Birthday** - Tommy Boone, Diana Stork, Carol Scroggs, Ylanda DeLuna, Bill Stevens, Wanda Wagner, Anthony Wilkerson, Clark Dunaway, Gary Urban, Debbie Herrington, Michael McCarney, J.D. Schick  
**Anniversary** - Steve and Debbie Rogers, Mr. and Mrs. Louis Schnell, Tim & Jackie Nelson

**March 28**  
**Birthday** - Ryan Renteria, Roma Tomlinson, Janet Cudd, Mandi Lair, Ray Hawkins, Jarrett Hendricks, Ross Jarvis, Byrnic Callaway, Rick Riggins, Carlos Castillo, Janet Scarborough, Mickey Schoenhals, Mark Hodges, Verna Strawn, Colten King, Tyrell King  
**Anniversary** - M/M Larry Clawson, M/M Howard Hefley, M/M Jerry Tipps, M/M Richard Carter

**March 29**  
**Birthday** - Lacy Barkley, Dixie Karlin, Joshua Kirby, Jessica Stork, Josephine Salgado, Scott Beedy, Melissa Taylor, Tiki Farrar, Chad Guthrie, David West, Marg Cook, Janis Maupin, Josh Harris, Jeann Thompson, Scot Martin, Ruth Shields, Ramon Garcia Jr., Greyson Karlin

**March 30**  
**Birthday** - Jesus Favela, Loni Lamb, Vi Hornsby, Mrs. Elmer Longley, Nikki Strawn, Grady Cline, Denae Baker, Jimmy Blan, Heather Cline, Krystal (Burkhammer) Puentes, Shane Atwood, Mike Schick, Marvin Sparks, Dorothy Longley  
**Anniversary** - M/M Ruben De Santiago

## State to Begin Accepting Reservations April 5th For "Texas Trade Up" Appliance Rebate Program

Texas Comptroller Susan Combs today encouraged consumers to sign up early to receive rebates on selected ENERGY STAR appliances purchased during the Texas Trade Up appliance rebate program April 16-25. Approximately \$23 million in federal stimulus funds are available for the rebate program.

Beginning April 5, a toll-free phone number and an online reservation system will be available for Texans to reserve an appliance rebate. When all of the guaranteed rebates are reserved, consumers may continue to sign up for a waiting list to receive rebates on a first-come-first-served basis. Consumers must give their name, address and appliance type when making a reservation.

Consumers must be on the guaranteed rebate reservation list or the waiting list to be able to print or receive the forms they will mail in to claim rebates. To be eligible for a rebate, a qualifying appliance must be purchased between April 16 and April 25. Consumers will have 60 days from the reservation date to install appliances and submit their paperwork for the rebate. Appliances must be purchased by Texas residents at stores located in Texas.

As further details on the reservation and mail-in rebate systems are finalized in the next few weeks, a new Web site, <http://www.texaspowerfulmart.org>, will become the one-stop resource for information and reservations.

Flat rebates will be available for consumers who buy certain ENERGY STAR certified appliances and replace the same type of functional old appliance, with an additional \$75 rebate for recycling the old appliance.

## OPSU Golf News

By Scott Puryear, OPSU Sports

The Oklahoma Panhandle State University men's golf team was in action on Monday and Tuesday in the Swede Spring Invitational Tournament, hosted by Bethany College. The Aggies finished tied for seventh in the 17-team field. The teams played two 18-hole rounds.

Teams had five golfers each and the Aggies' top finisher was Julian Figueroa, in 23rd place overall, with a two round- total of 153 (80-73). Jake Strain (81-74) and Tyler Harper (80-75) tied for 31st with totals of 155.

Other Aggies in the competition were Brandt Gear who posted a two-round total of 159 and Shane Rice who shot 160.

OPSU head coach Roger McKinnon (in his 11th season) said he was encouraged by the performance of his team and added that he is looking forward to seeing them continue to improve.

## Our Sympathy

JOHN C. ROBINSON

GRUVER - John C. Robinson, 93, died Wednesday, March 10, 2010.

Services will be at 10 a.m. Saturday in First United Methodist Church with the Rev. George Price and the Rev. Brad Reeves officiating. Burial will be at 3 p.m. Saturday in Dreamland Cemetery in Canyon by Boxwell Brothers Funeral Home of Spearman.

John was born Dec. 15, 1916, in Gem City to Elbert C. and Rosa Ann Robinson. He married Mary Jo Avent on June 14, 1940, in Clovis, N.M.

John and Mary Jo lived in Canyon in 1940, where he farmed with his brother and father in Happy. They moved to Panhandle in 1953 as he continued his farming career.

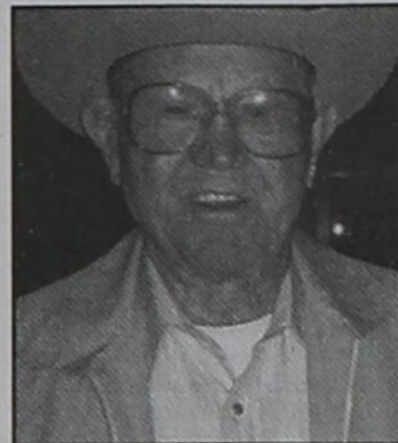
John and Mary Jo moved to Gruver in 1961, where he farmed until 2003. He was a Mason for more than 50 years.

The family truly appreciated the help and support of Hansford Hospice.

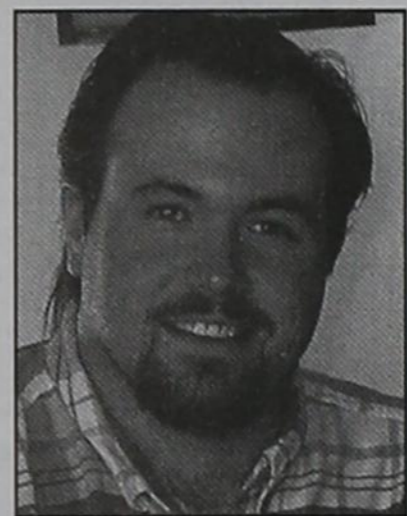
He was preceded in death by his parents, Elbert C. and Rose Ann Robinson; a son, Johnny Robinson; a brother; and four sisters.

Survivors include his wife, Mary Jo Robinson; two daughters, Peggy Robinson of Gruver and Mary Ann Gill and husband Paul of Fairfax Station, Va.; a son, Joe C. Robinson and wife Kay of Gruver; six grandchildren; and 12 great-grandchildren.

The family suggests memorials be to Hansford Hospice, 707 S. Roland St., Spearman, TX 79070; or Gruver United Methodist Church, P.O. Box 977, Gruver, TX 79040.



## BARRY JON GOODALL



Barry Jon Goodall died suddenly on February 11, 2010 at the age of 42. He is at peace with God. He had been Project Technology Coordinator at Jacobs Engineering Group.

He was born December 6, 1967 in Amarillo, Texas to Hugh Jon and Kathy Reynolds Goodall Coventry.

Survivors include his Mother and Step-father; of St. Charles, Mo.; son Cameron Tyler Goodall of Florida; son Christopher Michael Goodall of Kansas; sister Michelle Goodall Griffith of St. Charles, MO; sister Taffy Robbins; brother Matthew Coventry of Ill. Many Aunts, Uncles, Nieces, Nephews; and Cousins.

Barry was preceded in death by his father, Hugh Jon Goodall; Grandmother, Eula Goodall-Laster of Gruver and Amarillo, TX; Grandparents, Cecil and Ellen Reynolds of Spearman, TX; Uncle Cecil R Chisum of Borger, TX and other loved ones.

Memorials may be made to the American Heart Assoc., Diabetes Foundation, or charity of choice.

## MONUMENTS

### Boxwell Brothers Funeral Home

519 Evans • Spearman  
659-3802

Dear friends,  
 When you buy a monument from us we make sure it is exactly what you want at a price you can afford. If it is not right, we will make it right. And you will not have to search the countryside to find us. We are here when you have a need.

Sincerely,  
 Bob Boxwell

## Need Electricity?

Limited Time Offer:  
**\$0 DEPOSIT\*** 1st Month as low as **\$89\*\***

- Includes 1st 30 days electricity
- NO Credit / NO ID
- Hablamos Espanol

**1-866-934-3446**

PaylessPower \*Terms & conditions apply. Plus tax & fees. \*\*Based on 1BR apt. For home only. 1st mo. price subject to change. REP #10110

## Replenish the seed of faith through . . .

### DAILY BIBLE READING, PRAYER & REGULAR CHURCH ATTENDANCE

#### Spearman

**Apostolic Faith Church**  
 822 S. Drexler • 659-2870  
 Sunday School: 10 a.m.  
 Worship Service: 11 a.m.  
 Sun. Eve.: 6 p.m.  
 Wed. Prayer Mtg: 7 p.m.  
 Pastor - Roland Haney

**First Assembly of God**  
 401 N. Bernice • 659-2295  
 Sunday School: 9:30 a.m.  
 Worship: 10:40 a.m.  
 Evening Worship: 6 p.m.  
 Wed. Worship: 7 p.m.  
 Wed. Youth: 7  
 Pastor - Jerry Pollard

**First Christian Church**  
 (Disciples of Christ)  
 29 S. Bernice • 659-2036  
 Sunday School: 9:45 a.m.  
 Worship: 10:50 a.m.  
 Minister -

**First Baptist Church**  
 123 N. Bernice • 659-5557  
 Sunday School: 9:45 a.m.  
 Worship: 11 a.m.  
 Evening Worship: 7 p.m.  
 Men's Bible Study - Wed., 7 a.m.  
 Children's Choir - Wed., 6 p.m.  
 Adult Choir - Wed., 7 p.m.  
 Wed. Bible Study: 7 p.m.  
 Pastor - Jim Medley

**Church of Christ**  
 121 S. Haney • 659-3244  
 Sunday Bible Class: 9:45 a.m.  
 Worship: 10:30 a.m.  
 Evening Worship: 6 p.m.  
 Bible Study Wed.: 7:30 p.m.

**Sacred Heart Catholic Church**  
 901 Roland • 659-2792  
 Sat. Night Mass: 5:30 p.m.  
 Sun. Mass: 9 a.m. - English  
 Sun. Mass: 11:30 - Spanish  
 1:30 p.m. - Gruver - Christo Renditor Mass - Spanish  
 Rev. Guillermo Morales

**First United Methodist**  
 407 S. Haney • 659-5503  
 Sunday School: 9:45 a.m.  
 Worship: 8:30 & 11 a.m.  
 Jr. High Youth: 5 p.m. Sunday  
 High School: 6 p.m. Sunday  
 Kids Club: 3 p.m. Wed.  
 Pastor - Neely Landrum

**Grace Presbyterian Church**  
 (Worships with Faith Lutheran Church)  
 1101 Bernice • 659-2033  
**Faith Lutheran Church (ELCA)**  
 1101 Bernice • 659-2252  
 Sunday School: 9:45 a.m.  
 Worship: 11 a.m.  
 (Worships with Grace Presbyterian Church)  
 Pastor - Cecil Biggers, PLM

**Union Church**  
 31 S. Endicott • 659-2644  
 Sunday School: 10:00 a.m.  
 Worship: 11:00 a.m.  
 Bible Study: 7 p.m. Wed.  
 Youth Service: 6 p.m. Wed.  
 Pastor - Don Baltazar

**Fellowship Baptist**  
 1102 S. Archer • 659-2783  
 Sunday School: 10 a.m.  
 Worship: 11 a.m.  
 Sun. Evening Worship: 6 p.m.  
 Evening Spanish Worship: 7 p.m.  
 Youth/Adult Service: 7:30 Wed.  
 Pastor - Philip Hudson

#### Primer Mision Bautista

502 E. 7th • 659-3991  
 Sunday School: 9:45 a.m.  
 Worship: 11 a.m.  
 Evening: 6 p.m.  
 Wed. Prayer Meeting: 7 p.m.  
 Thurs. Visitation: 7 p.m.  
 Pastor Joe Garcia Jr.

**El Aposento Alto U.P.C.I.**  
 1105 S. Roland  
 Domingos: Escuela-Domical - 10 a.m.  
 Culto Evangelistico - 7 p.m.  
 Jueves: Oracion - 8 p.m.  
 Mier: Estudio Biblico - 7 p.m.  
 Pastor - A.G. Martell  
 (806) 659-2153

#### Gruver

**First Baptist Church**  
 402 E. Broadway • 733-2411  
 Sunday School: 9:45 a.m.  
 Worship: 10:50 a.m.  
 Disciple Training: 6 p.m. Sunday  
 Prayer Meeting: 7:30 p.m. Wednesday  
 Pastor - Scott Curry

**Church of Christ**  
 209 King • 733-2760  
 Sunday School: 9:30 a.m.  
 Worship: 10:20 a.m.  
 Evening Worship: 6 p.m.  
 Wed. Worship: 7:00 p.m.  
 Minister - Gaylord Cook

**First Christian Church**  
 510 King • 733-2960  
 Sunday School: 10:00 a.m.  
 Sunday Worship: 11 a.m.  
 Youth: 7:30 Sunday  
 Adult Bible Study: 7:30 Sun.  
 Wed. Bible Study: 8:00 p.m.  
 Pastor - Gary Gurfumy

#### Gruver United Methodist

Broadway & Garrett  
 733-2651  
 Sunday School: 9:45 a.m.  
 Worship: 8:30 & 10:50 a.m.  
 Eve. Worship & UMY: 6 p.m.  
 Pastor - George Price

**Spanish Cristo Redentor Church**  
 Sunday Mass: 1:30 p.m.  
 Friday Evening Mass  
 Summer - 8:00 p.m.  
 Fall/Winter - 7:30 p.m.

#### Oslo

**Oslo Lutheran Church (ELCA)**  
 6 Miles West & 12 Miles  
 North of Gruver  
 Sunday School: 9:45 a.m.  
 Worship: 11 a.m.  
 Pastor - Arlen Lloyd

#### Morse

**Morse Baptist Church**  
 733-2757  
 Pastor - Mike Martin

#### Waka

**Church of Christ**  
 300 Rogers Ave.  
 202-7126  
 Sunday Worship: 6 p.m.  
 Wednesday Bible Study: 6 p.m.  
 Preacher - James Gordon

He has showed you, O man, what is good. And what does the LORD require of you? To act justly and to love mercy and to walk humbly with your God.

Micah 6:8

This feature is made possible through the sponsorship of these civic minded businesses:

**Deakin ELECTRIC**  
 OILFIELD • RESIDENTIAL • COMMERCIAL  
 321 S. MAIN • SPEARMAN  
 1-800-999-1506 Chris Deakin  
 (806) 659-5016 President

**Bartlett's Lumber & Hardware**  
 105 W. Broadway • Gruver, TX  
 (806) 733-2404

**BERRY CLEANERS**  
 Ann & Vernon Pipkin - Owners  
 Phone 659-3122 • P.O. Box 1017  
 207 Main St. • Spearman, TX

**Morse Implement & Auto Supply**  
 "Join us in church"  
 Tom Dortch 733-2668  
 Box 89 • Morse, TX 79062

**PRAIRIE MOTORS INC.**  
 Hwy. 207 South • P.O. Box 430  
 Spearman, TX 79081 • (806) 659-2541  
[www.prairiemotors.com](http://www.prairiemotors.com)

**MurMur's Cafe**  
 100 Roland St  
 Spearman, TX.  
 659-3580

**Hansford County Reporter-Statesman**  
 "Proudly Serving Hansford County Since 1907"  
 (806) 659-3434  
 310 Barkley • Spearman, TX

**INTERSTATE BANK, sbb**  
[www.interstatebank.net](http://www.interstatebank.net)  
 322 Main • P.O. Box 146  
 Spearman, TX • 659-2559

**TOUGH Affordable Fun!**  
 FamilyGokarts.com  
 • Fantastic ATVs starting at \$569.95. Ships Free!  
 • Quality ATVs for all ages with fast Shipping  
 • Plus Gokarts, Trailers, RC Cars & more...  
 • Long lasting fun!  
 Visit us at [www.FamilyGokarts.com](http://www.FamilyGokarts.com)  
 Call Now... 800-950-2210

**DIRECTV SAVE \$29/MO FOR A YEAR!**  
 PLUS: FREE 1-4 Room System  
**FREE** Standard Installation  
**FREE** HD DVR Receiver Upgrade  
**FREE** 3 MONTHS SHOWTIME & Starz  
 No start costs! Local installs!  
 ASK HOW! CALL DIRECTSTARTV  
**Toll Free 800-214-7110**

**ARE YOUR ENERGY COSTS OUT OF CONTROL?**  
 Join over 1 million people who have made the switch to **Just Energy!**  
 Get a Fixed Rate Plan from **just energy**  
 Plus! Green Energy Solutions  
**CALL NOW to Lock in your Rate**  
**877-540-3806**  
 PUCT Cert. No. 10052

**HOME PHONE SERVICE**  
**1st Month FREE**  
**Starting at \$3.99/mo**  
 \$14/mo including appropriate taxes and fees  
**\$0 Deposit • NO Credit Check**  
**NO Contracts • Everyone Approved!**  
 Restrictions May Apply.  
**NEWTALK 866.934.3448**



# HYI

FOR YOUR INFORMATION

### Medical Fund for Bruce Duncan

A medical fund has been established for Bruce Duncan at First National Bank, Spearman. If you would like to make a donation you may make a deposit with any teller or mail a donation to First National Bank, Bruce Duncan Medical Fund, PO Box 337, Spearman TX 79081.

### 12th Annual "Pot O' Gold" Dinner, Dance & Calcutta

The 12th Annual "Pot O' Gold" Dinner, Dance and Calcutta will be held on Saturday, March 27th at 7 p.m. at The O'Loughlin Center, 502 S. Brandt in Spearman. Tickets are \$60 per person. A Tenderloin meal will be provided, with entertainment by "Insufficient Funds." A Grand Prize of \$2,500 will be awarded with consolation prizes and calcutta. Call 659-3030 for more information.

### O'Loughlin Center Announces New Hours

Beginning March 1, 2010, The O'Loughlin Center will be open for the following hours: Monday-Thursday, 6:00 a.m.-8:00 p.m.; Friday, 6:00 a.m.-6:00 p.m.; and Saturday, 9:00 a.m.-12:00 p.m. (noon). For more information, contact Jada Breden, Manager, The O'Loughlin Center, 502 S. Brandt, PO Box 733, Spearman TX 79081, 806-659-3030.

### Stock Show Sale, Add-Ons & Goat Share Donations

If you were unable to come to the stock show sale, add-ons and goat share donations can be taken at any time by email until March 15, 2010 at hansfordstockshow@gmail.com.

### Concealed Handgun Course Offered

A concealed handgun course will be offered on Saturday, March 6th (9 a.m.-5 p.m.) and Sunday, March 7th (2-6 p.m.) at Mur Mur's Cafe in Spearman. The cost is \$125 for the instructional course with a certificate and targets provided. (The State fee is dependent on age and/or occupation and ranges from \$25-\$140 for a 5-year license.) If interested in attending this class, please contact Dee Mayfield at (806) 330-0269.

### SHS All School Reunion July 2 & 3, 2010

The Spearman High School All-School Reunion will be held July 2nd & 3rd, 2010. If you have information regarding a specific class reunion, please contact the Hansford County Reporter-Statesman. We will list the specific information for each class reunion, as well as the information for the All-School Reunion in the newspaper as we receive it. Information may be mailed to: Reporter-Statesman, 213 Main Street, Spearman TX 79081; e-mailed to: reporter@spearmanreporter.com; faxed: 806-398-9080; or phoned in: 806-659-3434.

### Perryton Area Parkinson's Disease Support Group

The Perryton Area Parkinson's Disease Support Group will meet March 12, 2010 for a noon meeting at the Perryton Menonite Church. Lunch will be provided. Jim Keating, Director of the Parkinson Foundation of the Heartland on Oklahoma City will be the guest speaker. Anyone who has Parkinson's or has a family member or friend who has it, is welcome to attend. For more information contact Bev Burger 435-3437.

### Rushing Wind Emmaus Community

The Rushing Wind Emmaus Community will meet on Saturday, March 13, at 6 p.m. at the Wake Christian Center. Bring your favorite dish for a potluck supper followed by sponsors training and a praise and worship service. Your family and friends are welcome to attend the monthly community meetings and a nursery will be provided for the children during the worship service. Board of Directors will meet at 4 p.m.

### SPWA Seeks Volunteers

The Southwest Pioneer Windmill Association is seeking the next generation of volunteers to continue the work of restoring and maintaining the windmills of the SPWA. If you have an interest in windmills and their upkeep, and/or maintenance of the park, you are needed. For information, call Dwayne Mitchell, 270-0291 or Don Reed 330-0745.

### Fire Department Donations

Persons wishing to make donations to the Fire Departments in Hansford County may do so at the following addresses: Spearman Fire Dept., Box 37, Spearman TX 79081; Gruver Fire Dept., Box 947, Gruver TX 79040 or Morse Fire Dept., Box 28, Morse TX 79062.

### Youth Writing Contest

Panhandle Professional Writers has announced its 2010 Youth Writing Contest. The competition is open to any student in grades three through twelve. Entries must be postmarked no later than April 1, 2010. Complete rules and entry forms may be found online at [www.panhandleprowriters.org](http://www.panhandleprowriters.org). There are three age groups: grades three through five, six through eight, and nine through twelve. Students may enter as many times as they like in these three different categories: short story, poetry, and memoir. All entries will be judged by published authors. First, second, and third place winners in each category will be announced in July. Anyone wanting additional information can e-mail Vicki Schoen at [PPWYouthcontest@gmail.com](mailto:PPWYouthcontest@gmail.com). Panhandle Professional Writers is open to writers at all levels and of all genres.

### Grants Available for Non-Profits Serving Rural Texans

Texas Rural Communities, Inc. (TRC) is pleased to announce the availability of \$30,000 in grants for non-profit organizations serving rural Texans. The grants are intended to fund local environmental, economic or educational programs in the recipients' communities. Two types of grants are available: Recognition Grants of up to \$5,000 and Impact Grants from \$5,000-\$25,000. Recognition grants may be awarded to new or existing programs that are making or have the potential to make a significant difference in the communities they serve. Impact grants may be awarded to programs that also demonstrate innovation or have the potential to serve as model programs for other communities. TRC is a non-profit organization created as part of the New Deal in 1934 and has a long-term commitment to assisting rural communities, individuals and support organizations that improve or maintain the quality of rural life, through independent and cooperative ventures. In addition to its grant program, TRC offers small business loans and Farm and Ranch loans in partnership with the Farm Service Agency. For additional information about TRC's grant opportunities, call 800-787-2589 or email [info@texasrural.org](mailto:info@texasrural.org). Applications must be received by February 26, 2010.

## City Cafe and Donuts 2009 Business of the Year

City Cafe and Donuts was named the 2009 Spearman Business of the Year. City Cafe and Donuts, located on Hwy. 207 South in Spearman, opened about a year ago. Brothers Mike and Mark Murray purchased the building over a year ago with the plans of using it for storage, and possibly allowing churches and youth groups use the front for fund raisers.

Word got around about their purchase, and they were approached by Jeanie Hand about opening the former donut shop for breakfast. After several people inquired about opening a restaurant, the brothers agreed.

City Cafe and Donuts opened in March of 2009, with lunch reservations for 28 Excel employees on the first day.

"We got started with a bang," commented Mike Murray. "Our breakfast business took off from the first day."

City Cafe and Donuts currently employees 11 people, with several more "volunteers."

"I have never been in a restaurant where the customers wait on themselves and other people," said Mike. "At first I thought some of the customers had previously worked at other restaurants. They would get up and get the coffee and go around the restaurant filling up cups."

"There have been several days when we were hit hard, and customers would just pitch in and help," continued Mike. "Thelma has helped roll silverware, Sharon Swan has helped wait tables and cook, Joanne Dettmer has helped cook, Bymice Schmidt has helped cook, and also painted the sign for us. The people of Spearman are really what makes this town what it is!"

Mike retired several years ago after working for 22 years as a manager with LaQuinta.

"At first I thought I would be a bum, but that only lasted about two weeks," said Mike. "I then went to work for the City of Bastrop."

Mike moved to Spearman from Austin a little over two years ago. "I wanted to get away from the traffic and humidity," he said.

"I just can't get over the people in Spearman," said Mike. "When I first came here I probably knew about 12 people by name. Now I can't even count the number of people I know. I just love it!"

There are so many people I would need to thank," continued Mike. "So many people came in when we opened and asked if they could help with anything. I even had a couple of people tell me that Stephanie Crossland of The Bunkhouse had said she would help me in any way she could. You just don't find that in the city. I am loving living in Spearman"

City Cafe and Donuts is open from 4-10 a.m. for breakfast, 10:30 a.m. 2 p.m. for lunch, and is now open on Friday nights from 5-8 p.m.

## Chad Wilkerson 2009 Citizen of the Year

Chad Wilkerson was named the 2009 Citizen of the Year at the Spearman Chamber of Commerce Banquet on Thursday, March 11, 2010. Chad and his wife, Samantha, moved to Spearman in 2005 with their then two-year-old son Jack. Chad and his wife grew up in Spearman, and had returned to raise their family here. They also have a daughter, Emma.



Chad, a fifth grade teacher at Gus Birdwell Elementary in Spearman, erected several skateboard ramps in his backyard. It wasn't long before kids began ringing his doorbell and asking if they could ride on them.

"I realized that there was quite a big of interest in these kids for skateboarding," said Chad. "I thought 'wouldn't it be great if Spearman had a skatepark?'"

In 2006, Chad approached the city government with the prospect of obtaining a skatepark facility in Spearman.

As the project was taking shape, the non-profit organization known as The Skatepark Fundhouse, Inc. was formed. This entity is filed with the IRS as an official 503c3 organization and only uses the revenues to improve and benefit parks such as Palo Duro Skatepark.

The Skatepark Fundhouse, Inc. was basically formed to assist the city parks and recreation department in offering more opportunities for the youth of Hansford County.

With the foresight of the City of Spearman, the support of numerous civic-minded citizens, the enthusiasm of the youth, and the encouragement of Chad Wilkerson, the successful accomplishments of The Skatepark Fundhouse, Inc. has given Spearman one of the best skateparks in the southern United States. To date Palo Duro Skatepark has had visitors from Arizona, California, Colorado, Oklahoma, Louisiana, New Mexico, New York City, Washington, Philadelphia, Kansas, and numerous area and statewide towns.

Chad is the son of Linda and Anthony Wilkerson of Spearman.

## God Saw You

God saw you getting tired,  
When a cure was not to be.  
So He wrapped his arms around you,  
and whispered, "Come to me."



R.L. McFarlin, Jr.  
3/25/1940-3/15/2005

You didn't deserve  
what you went through.  
So He gave you rest.  
God's garden must be beautiful,  
He only takes the best.

And when I saw you sleeping,  
So peaceful and free from pain,  
I could not wish you back  
To suffer that again.

We love and miss you, Kaye, Kelye, Robbie and boys

f  
e  
i  
z

# Cumpleanos

# Alicia

De parte  
de tu  
familia y amigos

# Gordon's

Your place for

## Bridal Registry

### Couples Currently Registered

- Jana McCloy & Jake Mitchell - 3/27
- Ashlee Flowers & David Fox - 3/28
- Kaylee Holt & Trell Etbauer - 4/3
- Crystal Boyd & Douglas Walls - 4/10
- Julie Bravo & Evan Cudd - 4/10
- Sara (George) & Nicholas Wright - 4/17
- Chelsea Martin & Clancy Vanderburg - 5/11
- Roxane Holt & Oren Grossman - 5/11
- Esmerelda Bernal & Heriberto Navarrete - 5/11
- Kaela Parnell & Adam Cherry - 6/26
- Nikki Hill & Matt Davis - TBA
- Kaylee Miesner & Broc Carter - TBA
- Bertha Ortiz & Osiel Flores - TBA

### Baby Registry

- Camille (Smith) & Scott Prewett (Girl) - 3/27
- Holly (Hart) & Marcus McLean - 5/11
- Brooke (Salmons) & Mike Condry (boy)
- Angelica Briseno & Antonio Robledo (boy)
- Jenni & Josh Winegarner (boy)
- Janett (Ortiz) & Andres Hernandez (boy)

Gordon's 659-2141  
314 Main Spearman

## FPC Allen Campus Parent Night

Helping you and your senior prepare for the future!

Tuesday, March 23rd, 6:30pm

FPC Allen Campus

Take advantage of this opportunity to:

- Hear about our academic/technical programs
- Ask questions regarding the admissions process
- Learn about free money (Financial Aid and Scholarship Opportunities)
- Find out about campus life and housing

Frank Phillips College is  
YOUR Community College.

For more information please call the Allen Campus at (806) 648-1450

TO ROTH OR  
NOT TO ROTH

5.00%  
APY  
INSURED/CD

4.01%  
APY  
LIQUID ACCOUNT INSURED

3.75%  
APY  
INSURED IRA/CD

FIRST FIDELITY  
Financial Group, LLC  
Your Safe Money Solution®  
1800 Washington, Suite 110 - Amarillo, TX  
806-373-9480  
1-800-371-9201  
By appointment only

First Fidelity is a financial services firm that provides FDIC insured banking services. The Bank's CD (Certificate of Deposit) accounts are insured by the FDIC. The Bank's IRA (Individual Retirement Account) accounts are insured by the FDIC. The Bank's Money Market accounts are insured by the FDIC. The Bank's Checking accounts are insured by the FDIC. The Bank's Savings accounts are insured by the FDIC. The Bank's Loan accounts are insured by the FDIC. The Bank's Credit Card accounts are insured by the FDIC. The Bank's Other accounts are insured by the FDIC. © 2009 First Fidelity Financial Group, LLC. All rights reserved.



# Mandi Lusby Receives Community Spirit Award

Alvin Byers, Spearman Chamber of Commerce Board President, presented the Community Spirit Award to Mandi Lusby in honor and recognition of her persistence and strength leading up to and following her heart and lung transplant. The award was also in recognition of how the community pulled together in support of Mandi.

"Mandi's donor was the ultimate volunteer," commented Byers. "Mandi's journey is the perfect example of community spirit. The entire community came together to pray for and support her and her family."

Mandi was diagnosed in 2003 at the age of 26 with Primary Pulmonary Hypertension, a disease that causes high blood pressure in the lungs. The heart is also affected by having to work extremely hard against the pressure.

Mandi was told at the time there was no cure. The only solution would be a double lung and heart transplant. After several years of adjusting her medications and treatments, she was left with the last option of a double lung and heart transplant.

Mandi received her transplant on Sunday, September 13, 2009 in the Transplant Center of Houston Methodist Hospital.

The community of Spearman began selling Mandi's Miracle T-Shirts shortly after her transplant, with all proceeds going to Mandi Lusby's Miracle Fund at First State Bank in Spearman.

The T-Shirts say, "Life is good with a new heart and lung" on the front (with a happy face below the words) and "Mandi's Miracle, September 13, 2009" on the back. (For more information, please contact Haley at 806-659-3751, or email agcoahaley@ptsi.net or chad.riggins@thesportzone.net. Donations for Mandi may be sent to First State Bank in Spearman, c/o Mandi Lusby Miracle Fund, PO Box 247, Spearman TX 79081.)

"If you have never lived in a small town, you might not understand how a supporting and loving community can feel like extended family as you go through a tough time," said Mandi's mother Donita Lusby. "It has been an amazing experience for our family. Mandi is now into the sixth month since her transplant and the people of Spearman, Gruver, Morse, and Perryton still continue to show their love and support. I don't go to work, the grocery store, the Post Office, or even the drug store that someone doesn't stop to ask about her.

"God has certainly blessed us with so many things this past year, and the future looks so bright and promising," continued Donita. "It is clear that His plan for Mandi was to have a successful transplant and get on with her life. She is still unsure of what she is going to be able to do about her career, but I can tell you she is constantly talking and figuring how to get things going again."

Following her transplant, Mandi was released by her doctors and allowed to come home to Spearman on Friday, November 20, 2009 for Thanksgiving.

Mandi and her mother were surprised with a highway lined with family and friends dressed in "Mandi's Miracle" T-Shirts and holding "Welcome Home" signs. They drove through town to their home in tears as they waved at the people who had helped them persevere this long journey.

Upon returning to Houston, however, it was discovered that Mandi had an Aortic Aneurysm (during her three-month check-up). She was immediately placed in ICU until her

team of doctors could decide their plans of treatment.

One of Mandi's heart surgeons talked to her father, Ronnie, about needing a divine intervention. Mandi's family immediately got on the phones and began asking for prayers.

"What a mighty sound all of those prayers must have made," said Donita, "because when all of those specialists met on Monday, each group had separately come to the very same conclusion - they would perform the aorta graft. "Only the day before each team still had a different opinion on what had caused the aneurysm and how it needed to be repaired," continued Donita.

According to Donita, the doctors continue to shake their heads in disbelief when it comes to Mandi, and they continue to call her "special one." Mandi's daughter, Taylor, arrived in Houston in time to see her mother on Sunday and Monday before the surgery, as well as other family members who flew down to Houston to be there for support - Jill Butler, Michael & Jess Anne Lusby, and Aunt, Peggy Culp.

Mandi went into surgery at 12:30 p.m. on Monday. At 4 p.m. her doctors came out and told the family she had done great. The decision to replace the aorta was definitely the correct one.

On February 3rd Mandi returned to Houston again for appointments with the lung team. Her pulmonary workups showed that her lungs are working exactly as they are supposed to.

"She is committed to the medication and lifestyle she will maintain to live a long healthy life," said Donita. "God will be with her to sustain her through the many bumps she will

continue to experience. The world of transplants isn't like trading for a brand new car, it's more like getting an engine overhaul. The car works better, but still needs an oil change, and the tires rotated every few months. Mandi's engine is purring like a kitten - as long as she takes care of it."

Mandi waited until the end of the checkup to ask the big question, "Can I go snow skiing?"

The doctor said, "Sure. Go ahead." The only request he had was for her to bring back a lot of pictures. Only four-and-a-half months after her transplant, and only 4 weeks after an aortic aneurysm repair, she was off to Angle Fire, NM with Taylor, Jill, Ben, Bo and Brenna (driving through this year's worst snow blizzard).

Mandi's new heart and lungs tested out beautifully! "Her muscles could use a little more work," said Donita. "She will never take life for granted, and will live each day to the fullest."

On March 13th, Mandi celebrated her six month anniversary with her new heart and lungs. As she and her family sat in the clinic waiting for the doctor, her transplant coordinator visited with her about a very important event this summer. She has put together a team of people of all ages - all organ transplant recipients - to participate in the 2010 Transplant Olympics.

The Games, held July 30th-August 4th, in Madison, Wisconsin, are an Olympic-style event for athletes who have received life-saving organ transplants. Participants compete in a wide range of athletic endeavors - from basketball to bowling, from golf to swimming - and in doing so, support

the Games' mission of demonstrating the success of transplantation, honoring donors who have given the gift of life, and calling attention to the need for more organ donors.

Mandi is definitely planning to participate in the swimming events. (Looks like the Lusby's will make a road trip to Wisconsin for a big swim meet this summer!)

The only issues discovered by her lung and heart doctors during Mandi's six-month check-up can be easily corrected with medicine adjustments.

"Everyone at the Transplant Center continues to praise Mandi for being so compliant with her regimen," said Donita "They have many patients who don't take their diet and medication seriously, and consequently have unsuccessful transplants. Thank goodness we raised a small, but mighty, young woman."

Mandi took her skiing pictures, from 2 different trips, to show her doctors. They asked to keep them to share with other patients, to provide encouragement to strive to live a full life.

Mandi asked her doctors if she could now begin training for the Transplant Olympic Games in which she has entered five swimming events. The answer came back quickly. "Whoa young lady! You can't get into a public swimming pool just yet. It's ONLY been 6 months! The games aren't until August. We are sure you will be ready by that time, but don't push it!"

In the mean time, continue to remember that the Lusby Family is flourishing with Mandi's continued improvements and never let a day go by that they don't praise God's name for the miracle He sent.

# Randall Sauer Rotary Employee of the Year

Randall Sauer was named the 2009 Rotary Employee of the Year. He was presented the award by Clay Schnell, CFO for First State Bank.

Following is the speech that Mr Schnell read when presenting the award.

*It is with great honor that I present this year's recipient of the Rotary Employee of the Year Award. With over 25 1/2 years of dedicated service to First State Bank, Randall Sauer is without a doubt deserving of this award.*

*Randall presently is Senior Vice-President, Cashier, Chief Operating Officer, Bank Secrecy Act Officer, Patriot Act Officer, Compliance Officer, IT Officer, and 1/2 Controller of First State Bank. Randall is the secretary of the Board of First State Bank and is an Advisory Director. He wears many hats in our bank from resident expert on computers to overseeing our day-to-day operations. Randall also keeps up-to-date on the enormous amount of compliance issues that we face each year. He is always the first to arrive at the bank and many times works nights, weekends and holidays.*

*Randall has been very involved in the Spearman Community. He has been a volunteer firefighter, an EMS volunteer, a Boy Scout volunteer (even after his son grew up), a Lions Club member, and now serves on the Hansford County Hospital District Board of Directors. He is past president of the North Panhandle Bankers Association and is a past officer of the Great Plains Bankers Association.*

*Randall's family includes his late wife, Janet, and his son, Scott Sauer and wife, Claudia.*

# Protect Your Rights "Render Your Taxable Property By April 15th"

A "rendition" is a report to the appraisal district that lists all the taxable property you owned or controlled on January 1 of this year. The rendition form is available at the Hansford County Appraisal District.

WHO MUST FILE A RENDITION? You must file a rendition if you own tangible personal property that is used to produce income - such as the inventory and equipment used by a business.

ARE THERE ANY ADVANTAGES TO YOU? Yes, the advantages of filing a rendition are:

- You give your opinion of your property's value. If the appraisal district believes the value is higher, it must notify you in writing of the higher value and explain how you can protest that value to the appraisal review board.
- You record your correct mailing address so your tax bills will go to the right address. If your bill is mailed to the wrong address, the law still holds you responsible for paying your taxes on time or paying extra charges for late payments.
- You can also file a "report of decreased value" to notify the appraisal district of significant depreciation of the value of your property in 2009. The district will look at your property before assigning a value in 2010.

WHAT'S THE DEADLINE? The last day for filing 2010 renditions is April 15th. You can get an extra 30 days if you ask for it in writing by the April 15 deadline.

WHERE DO YOU FILE? File renditions at the:

HANSFORD COUNTY APPRAISAL DISTRICT  
709 W 7th Ave. Spearman, Texas 79081  
806-659-5575

Special care and intermediate care rooms are currently available at

## COLDWATER MANOR

Dignity. Independence. Compassion. Quality care.

Coldwater Manor is a forty-two bed Medicaid-certified nursing facility offering both specialized and intermediate care.

1111 Beaver Road P.O. Box 1189  
Stratford, TX 79084  
Phone: 806.396.5568 Fax: 806.396.5930

Amarillo Networks in HD  
Real Local Channel 2  
OKC & Amarillo Networks

# DIGITAL TV FROM PTCI

# \$29.99\*

per month for six months!

Amarillo Networks in HD  
Real Local Channel 2  
OKC & Amarillo Networks

Amarillo Networks in HD  
Real Local Channel 2  
OKC & Amarillo Networks

\*includes Basic & Expanded Basic Pkgs.  
requires 2-year commitment  
monthly rate returns to \$55.50 at 7th month.

prices subject to change  
not available in all areas  
some restrictions may apply

www.ptci.net

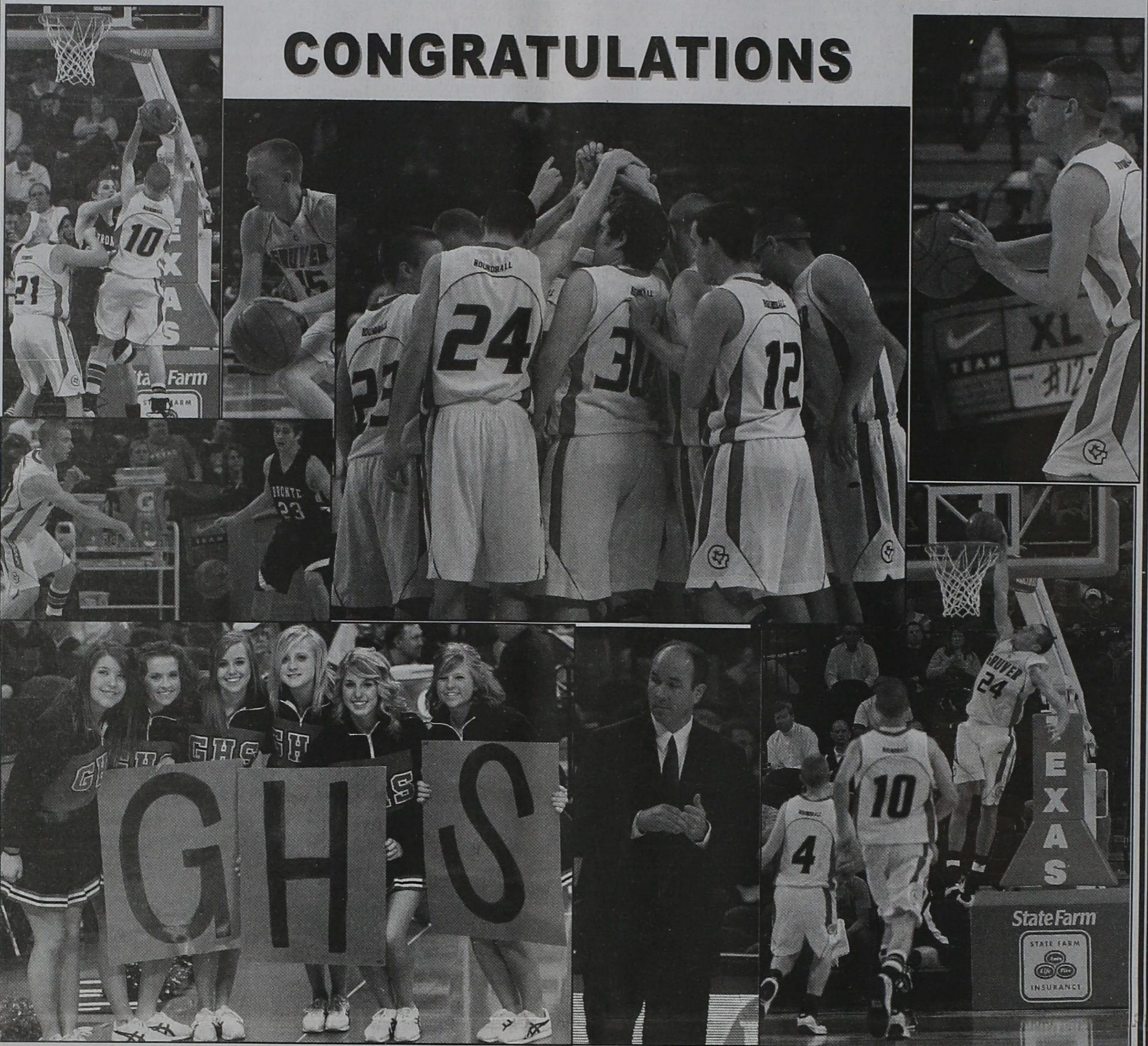
721 W 7th in Spearman

800-562-2556



# GRUVER GREYHOUNDS

## CONGRATULATIONS



# WE'RE PROUD OF YOU!

- |   |   |  |  |
|---|---|--|--|
| <p><b>Adobe Walls Gin, LP</b><br/>Spearman • 659-2574</p> <hr/> <p><b>Aeroflight Publications</b><br/>Gruver • 733-2483</p> <hr/> <p><b>AeroTan</b><br/>Gruver • 733-2483</p> <hr/> <p><b>All Occasion Flowers</b><br/>Spearman • 659-5180</p> <hr/> <p><b>AMA TechTel</b><br/>Gruver • (806) 322-2429</p> <hr/> <p><b>Bartlett's Lumber &amp; Hardware</b><br/>Gruver • 733-2404</p> <hr/> <p><b>Bort Agency</b><br/>Gruver • 733-2456</p> <hr/> <p><b>Boxwell Brothers Funeral Home</b><br/>Spearman • 659-3802</p> <hr/> <p><b>Brown, Graham &amp; Co.</b><br/>Spearman • 659-2538</p> <hr/> <p><b>The Bunkhouse Restaurant</b><br/>Spearman • 659-2089</p> <hr/> <p><b>Cargill Ag Horizons</b><br/>Spearman • 659-3554</p> <hr/> <p><b>Cates Men &amp; Boys Wear</b><br/>Spearman • 659-3426</p> <hr/> <p><b>City Cafe &amp; Donuts</b><br/>Spearman • 330-0676</p> <hr/> <p><b>Dairy Queen</b><br/>Spearman • 659-3324</p> <hr/> <p><b>Bob &amp; Cathy Davis</b><br/>Gruver • Spearman</p> <hr/> <p><b>Dreamer's Salon</b><br/>Spearman • 659-9907</p> <hr/> <p><b>eProperties</b><br/>(806) 886-6536 • (806) 733-5678</p> | <p><b>El Vaquero Restaurant</b><br/>Gruver • 733-2407</p> <hr/> <p><b>Equity Elevators</b><br/>Spearman • 659-2420</p> <hr/> <p><b>Farm Bureau of Hansford County</b><br/>Spearman • 659-3133</p> <hr/> <p><b>Farmers Ag Supply, LLC</b><br/>Spearman • 659-5000</p> <hr/> <p><b>Farm Supply &amp; Service</b><br/>Spearman • 659-5519</p> <hr/> <p><b>First National Bank</b><br/>Member FDIC<br/>Spearman • 659-5544</p> <hr/> <p><b>First State Bank</b><br/>Member FDIC<br/>Spearman • 659-5565</p> <hr/> <p><b>Five Star Equipment Co.</b><br/>Spearman • 659-3743</p> <hr/> <p><b>Frank Phillips College</b><br/>Allen Campus<br/>Perryton • 648-1450</p> <hr/> <p><b>Gigot Agri Products</b><br/>Spearman • 659-3121</p> <hr/> <p><b>Golden Spread Sales Co.</b><br/>Spearman • 659-3776</p> <hr/> <p><b>Gordon's Drug &amp; Photo</b><br/>Spearman • 659-2141</p> <hr/> <p><b>Gruver Agri Industries, Inc.</b><br/>Gruver • 733-5005</p> <hr/> <p><b>Gruver Cablevision</b><br/>Gruver • 733-5295</p> <hr/> <p><b>Gruver Ford, Inc.</b><br/>Gruver • 733-2431</p> <hr/> <p><b>Gruver Fuel</b><br/>Gruver • 733-2282</p> | <p><b>Gruver State Bank</b><br/>Member FDIC<br/>Gruver • 733-5061</p> <hr/> <p><b>H&amp;H Credit Union</b><br/>Stinnett • 878-2452</p> <hr/> <p><b>Hansford County Feeders, LP</b><br/>Gruver • 733-5025</p> <hr/> <p><b>Hansford County Floral Co.</b><br/>Spearman • 644-4000</p> <hr/> <p><b>Hansford County Hospital District</b><br/>Spearman • 659-2535</p> <hr/> <p><b>Hansford County Reporter-Statesman</b><br/>Spearman • 659-3434</p> <hr/> <p><b>Hansford County Vet Clinic</b><br/>Spearman • 659-2100</p> <hr/> <p><b>Hansford Pharmacy</b><br/>Spearman • 659-2226</p> <hr/> <p><b>Hargrove Photography</b><br/><a href="http://spearmansports.smugmug.com">http://spearmansports.smugmug.com</a></p> <hr/> <p><b>The Headquarters Restaurant</b><br/>Spearman • 664-4646</p> <hr/> <p><b>Hi-Plains Auto Supply, Inc.</b><br/>Spearman • 659-2506</p> <hr/> <p><b>Hoochy Poochy Parlor</b><br/>Borger • 273-2724</p> <hr/> <p><b>Hungry Cowboy</b><br/>Spearman • 659-5151</p> <hr/> <p><b>Hunny's</b><br/>Guyton • 580-338-7383</p> <hr/> <p><b>Interstate Bank, ssb</b><br/>Spearman • 659-2559</p> <hr/> <p><b>John L. Hutchison, Attorney</b><br/>Spearman • 659-3703</p> <hr/> <p><b>Money's</b><br/>Perryton • 435-3945</p> | <p><b>Morse Implement</b><br/>Morse • 733-2668</p> <hr/> <p><b>MurMurs</b><br/>Spearman • 659-3580</p> <hr/> <p><b>North Plains Electric Coop</b><br/>(806) 435-5482 • 800-272-5482</p> <hr/> <p><b>Panhandle Anchors</b><br/>Spearman • 659-2558</p> <hr/> <p><b>Dr. James Pinkerton, DDS</b><br/>Spearman • 659-3315</p> <hr/> <p><b>Pizza Hut</b><br/>Spearman • 659-2547</p> <hr/> <p><b>Prairie Garden Flowers</b><br/>Spearman • 659-3329</p> <hr/> <p><b>Prairie Motors</b><br/>Spearman • 659-2541</p> <hr/> <p><b>PTCI</b><br/>Spearman • 800-562-2556</p> <hr/> <p><b>Rockin' F Boot &amp; Saddle Shop</b><br/>Spearman • 659-3342</p> <hr/> <p><b>Rodney Sumner</b><br/>Spearman ISD Superintendent</p> <hr/> <p><b>Simple Simon's Pizza</b><br/>Spearman • 659-9991</p> <hr/> <p><b>Sparrow Photography</b><br/>Spearman • 330-0302</p> <hr/> <p><b>Spearman Farm &amp; Auto Supply</b><br/>Spearman • 659-2588</p> <hr/> <p><b>Storage Depot • Doodlebug RV</b><br/>Spearman • 330-1997</p> <hr/> <p><b>Tong's Chinese Food</b><br/>Spearman • 644-2838</p> <hr/> <p><b>Video Madness</b><br/>Spearman • 659-5046</p> |
|---|---|--|--|



REAL ESTATE

FOR RENT: 1BR furnished apartment and 2BR furnished apartment. Bills paid, free laundry services. Call 659-2247.

HELP WANTED

HELP WANTED: First United Methodist Church, Spearman is currently taking applications for a nursery worker.

SERVICES

CLICK PAINTING & HOME REPAIR Painting, Texturing, Drywall Repair, Fencing & more services.

Blankenship Real Estate 659-3052 - 670-3774. 4BR/2B/2CG Home - Basement, pool, central H/A, fireplace.

NEW LISTINGS WANTED! Eulalia Blankenship - Sales, Eschol Blankenship - Broker.

Shirley Howard, Broker/Owner 806-886-6536, Cell. Melinda McCullough, Realtor (806) 733-5678.

We would LOVE to sell your HOUSE! CALL US!

113 N. Brandt - Spearman: Spacious 3BR, 2B. An 1,848 sq. ft home in need of a FAMILY!

902 9th - Gruver: Horse Stables FOR SALE! 18 pens, circular training pen, arena, & 4500 sf barn on 10.42 acres! PRICE REDUCED!!

712 Womble - Gruver: 1070sf, 3 BR, 1 B, Central Heat, Lrg Corner Lot! REDUCED!

General Carpentry. Serving Perryton, Spearman & Gruver. Don Click, 648-1480, or 202-1391 (cell).

HOOCHY POOCHY PARLOR Call us for all your pet's grooming and boarding needs.

PUBLIC NOTICE

JOB OPENINGS The City of Spearman is accepting applications through March 30, 2010 for: Swimming Pool Manager, Assistant Pool Manager, Lifeguards, Park Maintenance.

NOTICE TO ALL PERSONS HAVING CLAIMS AGAINST THE ESTATE OF WAYNE JORDAN

Notice is hereby given that original Letters Testamentary for the Estate of WAYNE JORDAN were issued on March 15, 2010, in Cause No. 2594, pending in the County Court of Hansford County, Texas.

NOTICE OF PUBLIC HEARING PANHANDLE WATER PLANNING GROUP

4-28-10 - Amarillo, Texas The Panhandle Water Planning Group (PWPG), a Regional Water Planning Group formed pursuant to the re-

MARTIN & ASSOCIATES REALTY. Serving Hansford County for 15 years. Julie Martin: Broker - 659-2425

PRICE REDUCED ON BOTH 804 & 806 Wilbanks New Construction. Call for your private showing!

We'd Like Your Listing! FOR QUALITY & SERVICE CALL US TODAY!

This ad is just a small sample of the properties that we currently have for sale.

Please check our Web site and give us a call! We need your listings both large and small, all types of ag properties (ESPECIALLY CRP).

DALLAM CO. - Three adj. sections of dryland, some native grass, irrigation in area (two new wells across the road).

SWINE PRODUCTION FACILITY - Moore Co., TX - 1200 sow capacity, capable of running 20,000 pigs annually, computerized feed mill, flex-flo feeding system, management in place. PRICED TO SELL!

RITA BLANCA RANCH - Dallam Co., TX - 4,055 acres, 4 circles, 375 acres CRP, good fencing, pens and water. Priced to sell.

DALLAM CO. - 2 1/2 sections CRP. HARTLEY CO., TX - 640 ac. 10 miles to Hilmar Cheese plant, on pvmt., dairy permit, 3 pivots, home, barn, grain storage.

OCEANS OF WATER II - Hansford Co., Texas - 4 sections, strong water, dev. with sprinklers, wells, feedyard, home, barns, pvmt., 2 mi. hwy. frontage.

SEE OUR WEBSITE OR CALL US! www.scottlandcompany.com Shawn Gillispie 806/922-5532 Ben G. Scott, Broker 1-800-933-9698 day/eve TFN(2-04-10)

quirements of Senate Bill 1 (75th Legislative Session), will hold a Public Hearing on April 28, 2010 at the Texas AgriLife Research and Extension Center at Amarillo, 6500 Amarillo Boulevard West, Amarillo, Texas beginning at 6:00 PM, CST.

The Public Hearing will consist of a presentation on the IPP, receipt of written and oral comments from the public, and comments from the PWPG. The IPP is currently available for public review and inspection at www.panhandlewater.org and in the County Clerk's office in each of the Region A Counties listed above.

For more information please contact: Kyle G. Ingham, Local Government Services Director, PO Box 9257, Amarillo, TX 79105; ph: (806) 372-3381; kingham@theprpc.org.

CITATION BY PUBLICATION CV05036

HANSFORD COUNTY TO: AUGUSTIN PINA ZUNIGA NOTICE TO DEFENDANT: YOU HAVE BEEN SUED. YOU MAY EMPLOY AN ATTORNEY. IF YOU OR YOUR ATTORNEY DO NOT

hchd Hansford County Hospital District

Openings at Hansford Manor

LVN: Graduate of an approved LPN/LVN program. Must be able to make independent decisions when circumstances warrant.

CNA: CNA certification required. Must be able to provide assigned residents with routine daily nursing and services in accordance with the resident's assessment and care plan.

Great working environment and staff, quality facility providing opportunities for professional growth. Great benefit package. Apply at 707 S. Roland, Spearman, TX or contact Jackie Nelson at 806-659-5841.

FILE A WRITTEN ANSWER WITH THE CLERK WHO ISSUED THIS CITATION BY 10:00 A.M. ON THE MONDAY NEXT FOLLOWING THE EXPIRATION OF 42 DAYS AFTER YOU WERE SERVED THIS CITATION AND PETITION.

You are hereby commanded to appear by filing a written answer to the Plaintiff's Petition at or before 10:00 o'clock A.M. on the Monday next after the expiration of 42 days after the issuance of this citation before the Honorable William D. Smith 84th District Court of Hansford County, at the Courthouse in said County in Spearman, Texas.

A brief statement of the nature of this suit is as follows:

ISAAC BUS PUPA KENDO ASH PAGER ENDOW SEA INLET DYBBUK DESTINY EON MEAT BAS YARE TICTAC ULAN RINK LOATH TONE MAFIA THAI CHEER LOLL SOLE HARDEN LOOP ELF WICK NOD BUFFALO VENEER ONAIR TEA ILLER OCTAD TAN ELUTE MOST ARE SALEM

5 2 4 3 1 7 6 9 8 3 9 8 4 6 2 7 1 5 6 1 7 8 5 9 2 4 3 8 3 9 2 4 1 5 6 7 4 5 2 6 7 8 9 3 1 7 6 1 5 9 3 4 8 2 2 4 6 1 3 5 8 7 9 1 7 5 9 8 6 3 2 4 9 8 3 7 2 4 1 5 6

ORIGINAL PETITION FOR DIVORCE

As is more fully shown by Plaintiff's Petition on file in this suit.

ISSUED AND GIVEN UNDER MY HAND AND SEAL of said Court in Hansford County, Texas, the March 2nd, 2010.

Attorney for Plaintiff: Cecil R. Biggers PO Box 342 Spearman TX 79081 Kim V. Vera, Clerk Hansford County



Palace Theatre MOVIE SHOW TIMES Friday-Thursday - 7 p.m. Sunday - 2 p.m. Closed Sunday Night

FRESH POPCORN & DRINKS! PARTY ROOM & ARCADE MOVIE RENTALS

Palace Theatre 210 Main Street Canadian TX 79014 806-323-5133 www.palacetheatre.com

The Palace Theatre meets Lucasfilm THX specifications for site and sound quality.

#15 NW Court Spearman TX 79081 Janet Torres, Deputy Clerk 1(3/18/10)B

NORTHBRIDGE 8

Guymon, Oklahoma www.northridge8.com 580-338-3281

SOUTHGATE 6

Liberal, Kansas www.southgate6.com 620-624-5573

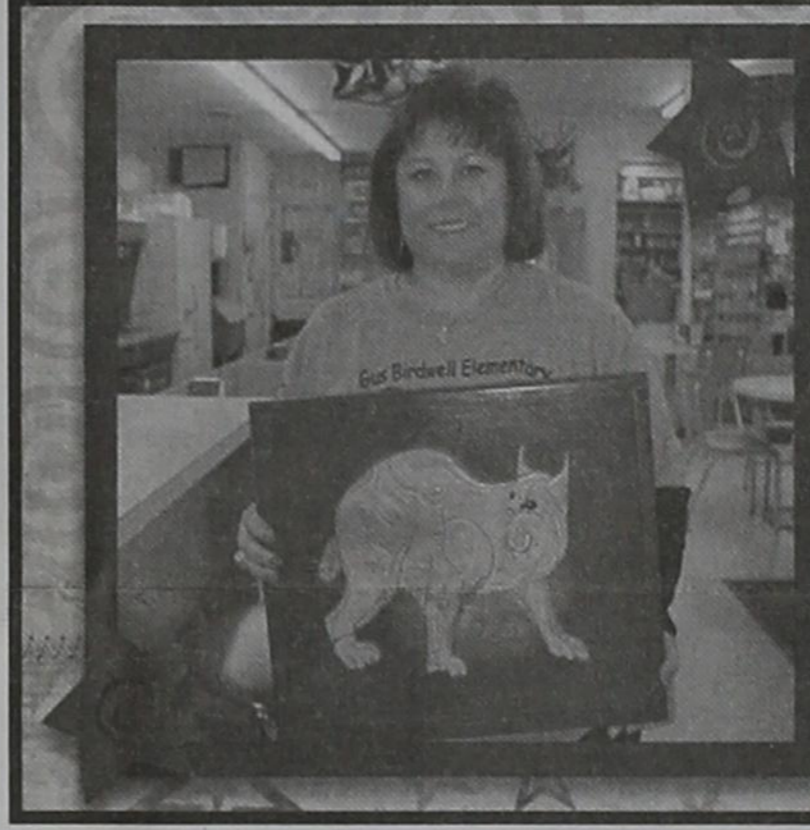
CHISHOLM TRAIL 8

Newton, Kansas www.chisholmtrail8.com 316-283-0555

SEQUOYAH 8

Garden City, Kansas www.sequoyah8.com 620-275-7707

FRESH POPCORN EVERYDAY! -PARTY ROOM & ARCADE-



Jodie Hight displays the Lynx puzzle board that is at Gordon's Drug. Proceeds of the silent auction will go to the Lynxettes Cross Country Ring fund.

Pot O' Gold Dinner, Dance & Calcutta Saturday, March 27 • 7 p.m. The O'Loughlin Center 502 S. Brandt • Spearman Tickets - \$60 per person Tenderloin Meal Entertainment by "Insufficient Funds" Grand Prize - \$2,500 Consolation Prizes & Calcutta Call 659-3030 for more information.

TEXAS STATEWIDE CLASSIFIED ADVERTISING NETWORK TexSCAN

TexSCAN Week of March 14, 2010 BUSINESS OPPORTUNITIES ALL CASH VENDING! Do you earn \$800 in a day? Your own local candy route. 25 machines and candy. All for \$9,995. 1-888-625-5481. Multi Vend, LLC. DISTRIBUTOR - MEDICAL DEVICE call 1-866-934-2873 for more information. DRIVERS CDL-A TEAMS WANTED Celdan company drivers and owners operators! Paid vacation. Great pay, benefit and home time. 1 year verifiable T/T experience. 1-800-729-9770. www.DriveCeldan.com LEASING 34 - 1 TON trucks. Deliver RV's nationwide. Clean MVR, 6 months verifiable over road driving experience within last 3 years or own personal RV. Verifiable past 5 years. Bennett, 1-574-848-7315. NATIONAL CARRIERS needs O/O's. Lease purchase. Company drivers for it's expanding fleet. Offering regional/OTR runs. Outstanding pay package, excellent benefits, generous hometime. 1-888-707-7225 www.nationalcarriers.com OTR DRIVERS New trucks! Average 2,500, 3,000 miles! Up to 41¢ cpm. 12 months experience required. No felony or DUI past 5 years. 1-877-740-6262. www.pt-inc.com PICKUP TRUCKS needed in Hope, AR. Make money now! Seeking qualified pickup truck owners to deliver 11,000 RV trailers from Hope, AR. www.hansfordtransport.comhope EQUIPMENT FOR SALE NEW NORWOOD SAWMILLS - Lumber Mate-Pro handles logs 34" diameter, mill boards 28" wide. Automated quick-cycle sawing increases efficiency up to 40%. www.NorwoodSawmills.com/300N, 1-800-661-7746 Ext 300N 676 ACRES-REEVES County, 15 Miles North Pecan, River frontage. Call Jack 1-214-755-6224. \$106 MONTH BUYS land for RV, MH or cabin. Gated entry, 3,600 down. (\$6,900/10.91%/7yr) 90 days same as cash. Guaranteed financing. 1-936-377-3235

Owned & Operated by Linda & Charles Stephens Double XXL Steakhouse (formerly Flying X Steakhouse) From Stinnett: Go West on Hwy. 152 17 miles - Turn Left at Big White Sign (About 2 miles on Gravel Road) Open: Friday & Saturday Night From Dumas: Go East on Hwy. 152 16 miles - Turn Right at Big White Sign (About 2 miles on Gravel Road) Open anytime for parties of 8 or more (806) 93JESUS www.doublexxlbranch.bravehost.com (806) 935-3787 reservations suggested

NOTICE: While most advertisers are reputable, we cannot guarantee products or services advertised. We urge readers to use caution and when in doubt, contact the Texas Attorney General at 1-800-621-0508 or the Federal Trade Commission at 1-877-FTC-HELP. The FTC web site is www.ftc.gov/bizapp. Extend your advertising reach with TexSCAN, your Statewide Classified Ad Network.



by Dorothy Hudson  
**Out at the Lake**

Jim Derington  
Palo Duro River Authority  
P.O. Box 99  
Spearman, TX 79081  
806-882-4401  
pdra@dishmail.net



Lake Level--March 15, 2010--15.65 feet (0.05)

We have a new record low as last Friday the level was 15.64. This is .03 below the old record of 15.67. However, the Lake was rising when Jim read the level this afternoon, and we can hope, as the gentle rain continues to fall, the level will rise some more.

Saturday was a beautiful day with good activity at the Lake. There were two campers, one on each side; fishermen were trying their luck; mountain bikers were enjoying the rough terrain, and the drive-around lookers were checking the size of the Lake.

It had been quite a while since bow hunters had come to the Park for contests, but Saturday and Sunday morning they were set up on the Gibner side with various types of targets. Jim enjoyed seeing the replicas of animals that were shot at, along with more normal targets. This Sparks Event was organized by Chet Phillips for about 25 shooters.

As to the wildlife at the Park, the cormorants are beginning to return. The eagle count has dropped off to 2. Jim has seen one Yellow-Shafted Flicker among the more numerous Red-Shafted birds.

**Gruver Hotel and Coffee Shop**

Last week the column told of the new hotel made from the remains of the brick Etling building and the hotel from Lucern. In connection with the new building, was a barber-

shop. Ten year old Val Winger, who lived in an apartment in the hotel with his family, did not get along with the barber. He had the shoe shine chair moved to the lobby and went into business shining boots of the cattlemen who frequented the hotel.

The barber shop lost its barber and became "the Bull Pen". Val remembers that a group of men formed a Rodeo Association, and they rented the room to be used as a spot to hang out when they were in town.

Gruver had not had a bank for ten years. The Gruver State Bank was opened in the hotel lobby on September 7, 1946 with Coy Holt, President, Ralph Bort, Vice-President, and

Bob Thom, First Cashier. The bank remained in the lobby until the fall of 1949 when it moved to a new brick building across the street.

The Gruver Hotel and Coffee Shop started with 5 partners. Charmian Lyle sold out to the others. Pauline traded the dry quarter section of land she owned to her brother-law Alfred Henderson for his share. Her brother J. M. Ayres bought out their parents. For some years J.M. Ayres and Pauline Winger jointly owned the business.

In 1967 they sold out to Bob Sutton and his sister Mildred Atkin. In 1970, the business was again sold.

(To be Concluded)

**Greyhounds Struggle Late in Semifinal, Fall to Bronte 47-32**

By Travis Harsch

AUSTIN - Gruver's appearance in the state basketball tournament ended Thursday morning as the Greyhounds struggled with outside shooting in the second half of a 47-32 loss to Bronte in a Class 1A Division I state semifinal at the Erwin Center.

Gruver (28-6) had 20 points in the first three periods but led until the closing seconds of the third quarter. The Greyhounds were just 1-of-8 on 3-point attempts in the second half, allowing Bronte's zone defense to shut down Gruver's inside game.

"We knew that they were going to pack it in, and we were going to have to hit some outside shots," Greyhounds coach Troy Seagler said. "We didn't want to settle for those shots early. We wanted to see if we could get in the flow of things and loosen it up. If we could have hit one or two of those, it might have loosened it up a bit, but it didn't happen."

Gruver's Rily Urban tied the game early in the fourth quarter with a free throw before Kerwin Rawls made a 3-pointer to give Bronte the lead for good. Drew Mireles had a layup on the next Greyhounds possession to cut the margin back to one, but Dakota Rawls had another 3 on Bronte's next possession to push the lead back to four.

The Greyhounds tried to push the pace in the final quarter to get back into the game, but missed shots led to easy baskets for Bronte. "We started rushing," Seagler said. "We thought we needed to hit the outside shot, and when we didn't hit it, it ended up in a fast break for them, which

was two easy points."

Bronte (27-5) advances to face Cayuga, an 82-48 winner against Spurger in the second semifinal, on Saturday for the state championship.

In the first quarter, Blake Fitzgerald and Urban gave Gruver an early lead before Bronte tied the game at 4. Urban added another layup, and Mireles knocked down a jumper as time expired in the quarter for an 8-4 Greyhound lead.

Four more points from Urban on a layup and a jumper extended the lead to 14-8 midway through the second, but Kerwin Rawls hit a 3-pointer that cut Gruver's halftime lead to 16-13.

The Greyhounds had just four points in the third quarter, all from Urban on two free throws and a layup, but did not concede the lead to Bronte until the final seconds of the quarter after the Greyhounds ran the clock down for a final shot.

Fitzgerald missed a 3, with the rebound bouncing straight to Kerwin Rawls, who raced down the court, drew a foul from Danny Bonilla and converted both free throws for Bronte's first lead.

The Rawls brothers combined for 35 of Bronte's points, with Dakota scoring 26.

"We knew they had the majority of their offense for them, so we were really going to concentrate on those two guys," Seagler said. "There were a couple of times we relaxed, and they got open and they knocked it down, and that put us back on our heels."

Urban finished with 17 points and 11 rebounds to lead the Greyhounds in both categories.

Gruver will graduate seven seniors from this year's team, which made the school's eighth state tournament appearance and first since 2006.

"Out of a small town community, to come down to the big town of Austin and play in front of this many people is a great experience," Willis said.

**BRONTE (47):** Rob Rosson 1-4 0-0 2; Heath Richey 1-3 3-4 5; Dakota Davis 8-18 8-11 26; Kerwin Rawls 2-11 4-4 9; Ernesto Castillo 2-4 1-2 5; Terron Charles 0-0 0-0 0. Totals - 14-40 16-21 47.

**GRUVER (32):** Danny Bonilla 0-1 0-0 0; Tyler Willis 0-5 2-2 2; Rily Urban 7-12 3-5 17; Blake Fitzgerald 2-11 0-0 5; Drew Mireles 2-6 0-0 4; Hayden Hart 2-2 0-0 4; Parker Grotegut 0-1 0-0 0; Caleb Miller 0-2 0-0 0; Payton Thoreson 0-0 0-0 0; Justin Bass 0-0 0-0 0; Zach Logsdon 0-0 0-0 0; Cory Graves 0-0 0-0 0. Totals - 13-40 5-7 32.

**Score by Quarters:** Bronte 4 13 21 47, Gruver 8 16 20 32

**Three-pointers:** Bronte 3-14 (D. Rawls 2-6, K. Rawls 1-8); Gruver 1-11 (Urban 0-1, Fitzgerald 1-8, Grotegut 0-1, Miller 0-2).

**Fouls:** Bronte 8, Gruver 18

**Fouled out:** Willis

**Records:** Bronte improves to 27-5. Gruver finishes 28-6.

**Noteworthy:** Bronte outscored the Greyhounds 28-12 during the final 8:01.

Rily Urban was named to the Amarillo Globe-News Athlete of the Week Honor Roll. Urban had a double-double with 17 points and 11 rebounds, both team highs, in Gruver's 47-32 state semifinal loss to Bronte.

**Hansford Bereavement Hospice Classes**

Hansford Hospice Bereavement Classes will begin on April 6th in Spearman. These classes will be led by Rev. Ken Cole. Anyone interested in attending the Bereavement Classes should call 659-5811 or 659-5345 for more details.

**Call 659-5811 or 659-5345 for more details.**

**March School Calendars**

**Spearman ISD**  
18th - Shamrock Relays (Varsity Girls only)  
22nd-23rd - Golf Tournament, Gruver  
23rd-24th, Tennis Tournament, Borger  
24th - PBMAS BE/ESL Focus Group Meeting, HS Library, 1:30 p.m.  
25th - High School UIL Academic Meet, West Texas A&M University  
26th - JH Track Meet, Stinnett  
27th - Amarillo Tennis Tournament; JV Track Meet, Canadian  
29th - Golf Tournament, Canadian (girls only)  
30th - District One-Act Play Contest, Clarendon Junior College  
30th-31st - JH Choir Contest, Amarillo  
31st - RII Leadership Team Meeting, Elementary Conference Room; Spearman Tennis Tournament; Canadian Golf Tournament (Boys only); District Education Improvement Committee Meeting, HS Library, 4 p.m.

**Gruver ISD**  
19th - JH/HS Track Meet, Booker  
23 - Tennis Tournament, Borger  
24th - One-Act Play Zone Contest, West Texas High School, Stinnett; Tennis Tournament, Borger  
25th - HS Track, Stinnett  
26th - HS Academic UIL Contest, Amarillo College; JH Track, Stinnett  
27th - HS Track, Canadian  
29th - 3rd & 4th Grade

Musical, 7 p.m., GISD Auditorium  
30th - One-Act Play District Contest, Canadian; Senior Banquet, Methodist Church, 7 p.m.  
31st - Picture Day (Spring Sports, UIL, Senior Groups); Tennis Tournament, Spearman

**Pringle-Morse CISD**  
25th - 5th Grade Solo/Ensemble Recital  
26th - West Texas Track Meet, Stinnett

**Are You A Victim of Domestic Violence, Sexual Abuse or Physical, Emotional or Sexual Assault?**

**Call Toll Free Hotline 1-800-753-5308**

We can see individuals from Hansford County anytime upon request. Call 435-5008 or 1-800-753-5308 to set up an appointment in Hansford County. We operate a safe place for victims and their children to stay in times of crisis.

**Battering Intervention & Anger Management Available**  
**Panhandle Crisis Center**

Serving Hansford, Lipscomb & Ochiltree Counties  
301 S. Ash • Perryton, TX  
Memorials Accepted

**VERSATILE**

Versatile HHT 4WD Series  
≈ 435-575 hp

Versatile 4WD Series  
305-400 hp

**TEXAS JUST GOT MORE POWER**

Panhandle Implement in Perryton has added Versatile tractors to their product line.

We're proud to be this area's newest Versatile dealership. Stop in today and find out what one of these proven performers can do for your farming operation.

**Panhandle Implement**  
710 N. Main, Perryton  
Phone: (806) 435-6508

Versatile Row Crop  
≈ 250-280 hp

©2010 Versatile Inc. All rights reserved. • 888-524-1100 • info@versatile-ag.com • www.versatile-ag.com

**Living Life to the Fullest**

**Spring 2010 Hospice Volunteer Training**

Hospice Volunteer Classes will begin in April. These classes are for anyone interested in becoming a Hospice volunteer, learning more about hospice care, and/or desiring personal growth.

The class schedule will be decided by those who attend. Classes are free.

**For more information, or to enroll, please call the Hospice Office at 659-5811.**