

# HAPPY THANKSGIVING



## Inside

At the Movies	2	A "Center" Piece	2
Lunch Menus	2	Museum Musings	6
Among the Neighbors	7	For the Short of It	11
Out at the Lake	5	Chamber Chatter	13

## Business Review

Pages 4&5

## WEATHER FOR WEEK OF 11-17 THRU 11-23

Day	Hi	Lo	Precip	Day	Hi	Lo	Precip
Thu	63	44	.00	Mon	53	29	.03
Fri	63	24	.00	Tue	35	29	.00
Sat	49	43	.00	Wed	--	25	.00
Sun	46	32	1.04	Total Precipitation	19.97		

## The Hansford County

# Reporter-Statesman

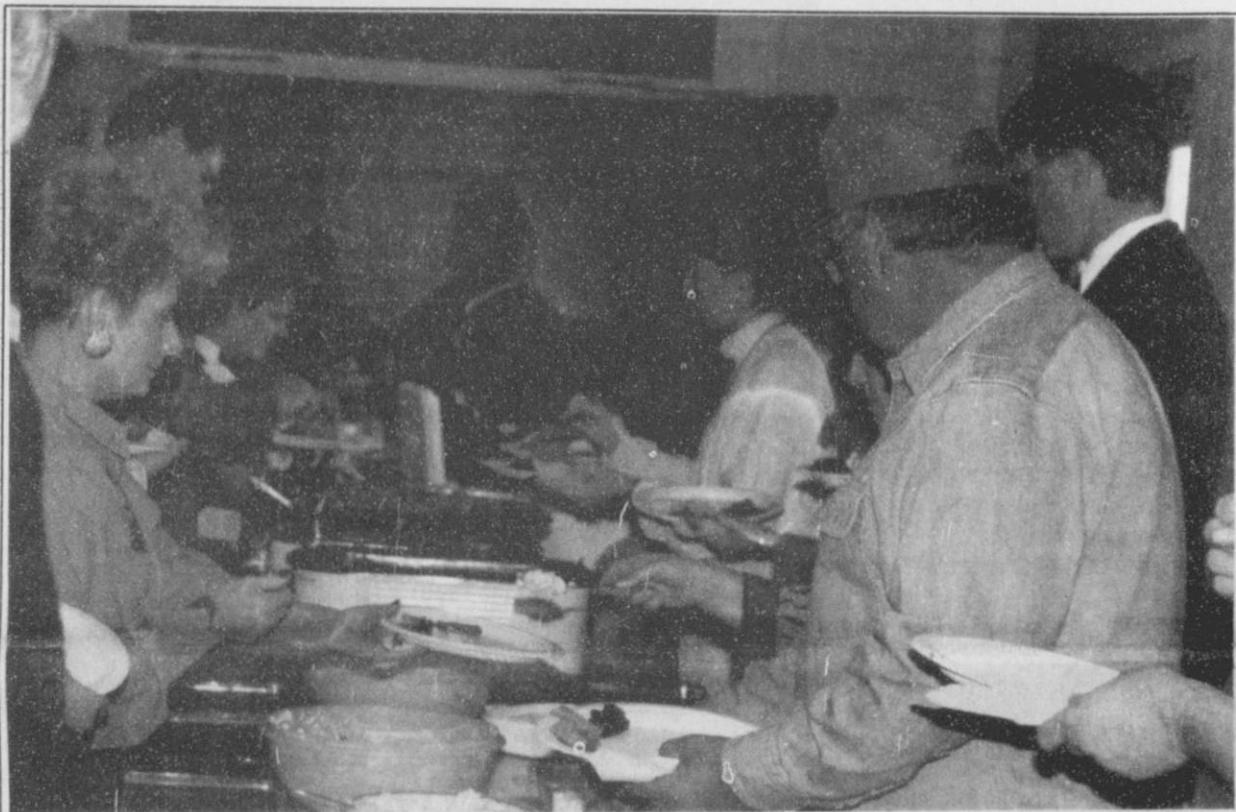
Serving Hansford County Since 1907

Volume 86 • Issue 57

213 Main • Spearman, Texas 79081

Thursday • November 24, 1994

HANSFORD COUNTY LIBRARY  
0120 MAIN ST  
SPEARMAN, TX 79081-2064  
EXPIRES 04/15/1995 THANK YOU



**THANKSGIVING** - The people of Spearman started the Thanksgiving Season off with a delicious Thanksgiving Dinner Thursday, November 17 at the Methodist Church. The dinner was put on by the Methodist Chancel Choir. The lines were long but the food made the wait worth it. Many people put the waiting time to good use and took the opportunity to visit with friends. (photo by Cora Thompson)

## SPS and TNP agree on deal for Panhandle residents

Fort Worth, TX--November 16, 1994--Texas-New Mexico Power company (TNP) and Southwestern Public Service company (SPS) today announced that they have agreed in principle to a sale by TNP of its Panhandle area properties to SPS for \$429.2 million, subject to negotiations and execution of a definite agreement and appropriate regulatory approvals.

TNP President and CEO Kevern Joyce and SPS Chairman of the Board and CEO Bill Helton state that they hope to execute the definitive agreement by Dec. 1, 1994. They said they expect to complete the transaction during the summer of 1995. Joyce said that proceeds from the sale will be used to reduce debt, which will improve TNP's balance sheet and reduce interest expense.

TNP agreed to pursue the sale of its Panhandle area properties, which are located in Hansford, Ochiltree and Lipscomb counties,

as part of the settlement of its most recent Texas rate application. According to Joyce, TNP's Panhandle cities requested the sale because of the disparity in rates between TNP and other area suppliers of electricity.

"Although we would have liked to work out an agreement that would have been satisfactory to our Panhandle area customers, we realized that a sale under the right circumstances probably was the best way to serve their needs," Joyce said. He state that SPS's offer was selected from several offers received for the properties. Joyce noted that the leaders of the cities involved, which were Spearman, Perryton, Booker, Follett, Higgins and Darrouzett, support the sale of the properties to SPS.

"We are excited that our efforts to obtain lower rates for our citizens appear successful," said Burl Buchanan, chairman of the coalition of communities. "SPS is well

known for its low rates and reliable service. We're glad to welcome SPS to our communities."

"It's been a long process and we're pleased that SPS will be the provider of service in our area," said Perryton Mayor David Hale.

As part of its proposal to purchase TNP's properties, SPS would seek approval, upon completion of the acquisition, to immediately reduce rates by 10% to the customers in those communities. Other rate decreases will follow over a ten-year period until the new customers are at the same rates as SPS's other customers in its Texas service area.

"We believe that this sale provides a win-win situation for all of our customers," Joyce said. "Our Panhandle area customers will achieve lower rates as a result of the sale. At the same time, the terms of the sale ensure that our

See TNP, page 11

## Hansford Happenings

### Meals-On-Wheels Service

To sign up for Meals-On-Wheels Service or to receive information, call Ernestina Salgado at 659-2535, ext. 226 between 8 a.m. and 5 p.m.

### Home Tour

The Gladola Flower Club will be having their annual home tour on December 4 from 2 - 5 p.m. Tickets are \$5.00.

### D.A.R.E. Raffle

Raffle tickets for a D.A.R.E. Classic Jacket with leather sleeves, estimated value \$150.00, are now available for \$1 a piece at the Police Department or from D.A.R.E. Officer Jamie Downs. Drawing will be held during halftime of the Spearman/Perryton varsity boys basketball game. You do not have to be present to win.

### Conservation District Tree Sales

The Hansford Soil & Water Conservation District now has order forms for windbreak and landscaping trees. The District is again offering bare rooted and potted evergreen trees. Sign-up time is now and until March 15, 1995. Anyone interested, may come by the office at 909 W. 9th, Spearman.

### Senator to Visit

Senator Teel Bivins will be hosting a town hall meeting in Spearman on Wednesday, November 30 at 1:15 p.m. in the O'Loughlin Center. All are encouraged to attend.

### Quilt Raffle

Twelve Days of Christmas quilt raffle tickets are available. \$2 each or 3 for \$5. Call 659-3866 or any Senior Citizen member.

### Hunters Feed

The Church of the Brethren in Waka, TX will be holding a Hunters Feed on December 10, 1994, from 11 a.m. to 2 p.m., OPENING DAY OF PHEASANT SEASON. All you can eat for \$5.50. We welcome all hunters, friends and community to enjoy a meal with us. Proceeds for the Hunters Feed will be used for the new heater-air conditioner fund.

### Tree Lighting Ceremony

Hansford Hospice will hold its Tree Lighting Ceremony December 5 at 6:00 p.m. Please come by Hansford Hospital for fellowship, Wassall, and to remember former Hospice patients and families.

### "Is It Alzheimer's?"

"Is It Alzheimer's? 10 Warning Signs of Alzheimer's Disease" a program by Sheila West, Executive Director of Panhandle Chapter of Alzheimer's Association, will be held on November 30 at 7 p.m. at the O'Loughlin Center sponsored by Hansford County Hospital District.

## Leimer to pay restitution to Gillaspie Auto

The Hansford County District Court was in session November 22, with the honorable Judge William B. Smith presiding. The judge made decisions concerning many cases.

The first case brought before Judge Smith was the State of Texas

verses Gary L. Whitehead, age 22, from Garden City, Kansas. Whitehead was charge with failure to stop and render aid. He pled guilty. He waived the right to a jury trial and the reading of the indictment.

Whitehead's lawyer, Britt Jarvis, Spearman, and Assistant District Attorney Roy Carper, Berger, agreed on a plea bargain. Whitehead received one-year deferred jurisdiction probation and a \$300 fine to be paid out over the time of probation.

Ramiro Arjona, Jr., age 37, of Perryton, was arraigned on the

charge of assaulting a law officer. He waived his right to a jury trial and the reading of the indictment.

Cecil Biggers, of Spearman, Arjona's lawyer, and Assistant D.A. Carper agreed on a plea bargain, so Arjona pled guilty and received one year deferred jurisdiction probation and a \$300 fine to be paid out over the extent of the probation.

After the lunch break, court was reconvened and Judge Smith was presented the State of Texas verses Van Charles Leimer, age 19, of Elkhart, Kansas. Leimer was arraigned on charges of burglary of a building.

He pled guilty and through a plea bargain was sentenced to one year probation, a \$500 fine, and must pay restitution to Gillaspie Auto & Truck Center Inc. in the amount of \$2050, to be paid over the extent of the his probation.

Solomon Garcia, Jr., age 27, was arraigned on charges of driving while intoxicated (DWI). He was on probation from a previous conviction of DWI. He waived his right to a jury trial and the reading of the indictment. He and his lawyer agreed to a plea bargain presented

See GILLASPIE, page 11

## Bivins to hold town meeting

State Senator Teel Bivins (R-Amarillo) will conduct a town hall meeting at 1:15 p.m., Wednesday, November 30 in Spearman at the O'Loughlin Center located at 5th and Brandt. All area residents are encouraged to attend.

Bivins will discuss the upcoming 74th Legislative Session, including bills he has pre-filed and those he still plans to introduce. He will also answer questions from constituents and solicit their views on state issues.

In January, the legislature is expected to address such issues as juvenile crime, education reform, home equity and casino gambling. "The Texas Legislature has been adjourned for a year and a half now. It's important for me to hear what citizens want out of this next legislative session," Bivins said. "The state also has new leadership and I hope to learn what expectations people have in light of that."

The legislature will convene January 10, 1995 and meet through May.

## Slough receives highest degree of membership by FFA Organization

Sharlet Slough of Gruver joined an elite group of Future Farmers of America (FFA) achievers.

Slough received the highest degree of membership awarded by the National FFA Organization, the American FFA Degree. Along with 1,454 other degree recipients, the Gruver FFA chapter member was honored at the 67th National FFA Convention in Kansas City, Mo., November 10-12.

One of the highlights of the convention, the American FFA Degree ceremony, included the presentation of a certificate and gold key to Slough as she walked across the convention stage with thousands of FFA members in the audience.

The American FFA Degree is

presented annually at the national convention to the top FFA achievers. Awarding the degree is based upon a member's Supervised Agricultural Experience program in agribusiness or production agriculture and on her leadership ability as demonstrated through involvement in FFA, school and community activities.

The American FFA Degree program is a special project of the National FFA Foundation, co-sponsored by American Cyanamid Company, Agricultural Division, of Wayne, N.J.; Case IH of Racine, Wis.; the Farm Credit System of Washington, D.C.; and Pioneer Hi-Bred International, Inc., of Des Moines, Iowa.



SHARLET SLOUGH



# School Lunch Menus

## Spearman School Lunch Menu

### Monday, November 28

Chicken fried stake fritter w/ gravy, whipped potatoes, seasoned green beans, biscuits, jelly, butter, and milk.

### Tuesday, November 29

Ham slice, macaroni & cheese, sweet potatoes, peaches, hot roll, and milk.

### Wednesday, November 30

Fish nuggets, tartar sauce, backed potato (sour cream, butter, ect.), sweet peas, blueberry muffin squares, and milk.

### Thursday, December 1

Hot turkey sandwich w/gravy, steamed vegetables, scalloped potatoes, bread slice, raisin cup, and milk.

### Friday, December 2

Hamburger, french fries, shredded lettuce, tomato, pickle, birthday cake, and milk.

### SISD Breakfast

Monday - Two waffles, fruit, fruit juice, and milk.

Tuesday - Cheese toast, fruit, fruit juice, and milk.

Wednesday - Biscuit, sausage pattie, fruit, fruit juice, and milk.

Thursday - Cereal, Toast, Fruit, fruit juice, and milk.

Friday - Scrambled egg, toast, fruit, fruit juice, and milk.

### Gruver School Lunch Menu

### Monday, November 28

Nachos, ranch style beans, carrot sticks, cornbread, and milk.

### Tuesday, November 29

Stew, crackers, peaches, brownie, and milk.

### Wednesday, November 30

Roast, mashed potatoes w/gravy, corn, blueberry cobbler, hot roll,

and milk.

### Thursday, December 1

Pepperoni Pizza Pocket, tossed salad, fruit, and milk.

### Friday, December 2

Hamburger, french fries, lettuce, pickle, cheese, ice cream, and milk.

### GISD Breakfast

Monday - Cereal, donut, juice, and milk.

Tuesday - Breakfast pizza, juice, and milk.

Wednesday - Two Pancakes, syrup, juice, and milk.

Thursday - Breakfast burrito, scrambled eggs w/ham, fruit, and milk.

Friday - Two cinnamon rolls, fruit, and milk.

### Pringle-Morse School Lunch Menu

### Monday, November 28

Taco, burrito, beans, salad, cornbread, cookie, and milk.

### Tuesday, November 29

Ham stake, onions, gravy, potatoes, roll, vegetable stick, and milk.

### Wednesday, November 30

Sloppy Joe, tator tots, pickles, slaw, chocolate cake, and milk.

### Thursday, December 1

Lasagna, salad, hot roll, pie, and milk.

### Friday, December 2

Pizza, salad, fruit, ice cream, and milk.

### PMISD Breakfast

Monday - Cheese toast, toast, juice, and milk.

Tuesday - Raisin Bread, cereal, juice, and milk.

Wednesday - Sausage, waffles, juice and milk.

Thursday - muffins, toast, juice, and milk.

Friday - Biscuits, sausage, juice, and milk.



**CLASS PROGRAM** - Recently some local Spearman Elementary School students got a chance to see some American Indian artifacts and to learn more about them. Joe and Roger Close, grandfather and father of Brian Close, gave their presentation to the SISD first grader's. The Closes also shared Indian stories with the students. Pictured are members of the Close family - Joe, Roger and Brian. (Photo by Cora Thompson)

## A "Center" Piece

By GARLAND HOPPER

The Golden Spread Senior Citizen Board met November 16th with Charles Newcomb, Helen Etter, Roselee Butts, Jolinda Hutchison, Bob Boxwell, Gene Cudd, Richie Thompson, Arbeta Nobles, and Pearl Pierce present. Arrangements have been made for the center to soon have a new coatrack.

November 15th a large group enjoyed the delicious turkey dinner served by the first National Bank. A great deal of visiting was also enjoyed among friends not often seen.

On December 1st, anyone wishing to make a Christmas Tree Angel may join the Thursday 10 a.m. group. Unfortunately all the supplies did not arrive on time for the project to be finished on one Thursday. Extra supplies are available for a lovely decoration.

Happy Thanksgiving to all! Let us all be thankful for the many blessings bestowed on our nation and homes.

## TDOH to hold flu vaccination clinic

The Texas Department of Health, 720 W. Archer, Spearman, announces that flu shots are available. According to Joanne McClellan, RN, C., the shots are offered free to Medicare and Medicaid recipients when they bring in their identification number. All others will be charged only \$5.00; however no one will be turned away due to inability to pay. Call 659-3996 for an appointment.

Influenza vaccine is strongly recommended for any person above six months of age, who because of age or underlying medical condition, is at risk for complications of influenza. Healthcare workers and others (including household members) in close contact with high-risk persons should also be vaccinated. In addition, influenza vaccine may be

given to any person who wishes to reduce the chance of becoming infected with influenza.

Jim Miller, Registered Pharmacist at Hansford Hospital Pharmacy describes groups at increased risk of influenza-related complication:

1. Persons 65 years of age or older
2. Residents of nursing homes and other chronic care facilities.
3. Adults and children with chronic disorders of the pulmonary or cardiovascular system, including children with asthma.
4. Adults and children who have chronic metabolic diseases, including diabetes mellitus.
5. Children and teenagers (6 months to 18 years of age) who are on long-term aspirin therapy and may be at risk of developing Reyes Syndrome after influenza.

## Hatfield completes ROTC

John P. Hatfield has completed training in fundamental military skills at the Army ROTC Camp Challenge in Ft. Knox, Kentucky.

Camp Challenge is designed to give college juniors and sophomores who have not taken ROTC courses the chance to enter the program. Cadets received training in basic

rifle marksmanship, drill and ceremonies, small arms tactics, and communications.

The cadet is a student at Texas Tech University, Lubbock.

Hatfield is the son of Debra E. Hatfield and stepson of Weldon D. Hatfield of Irving.

He is a 1992 graduate of Wylie High School, Abilene, Texas.

## Students receive free lunch for winning contest

The Gruver High School students were given the chance to enter a essay contest during Red Ribbon Week October 24-28.

The students were given the opportunity to view a video on "Marijuana and Human Physiology". English students were then given the statement: Even though marijuana is the second most widely used and abused drug after alcohol, many people believe marijuana of-

fers harmless recreation, and asked to write a 1-2 page essay in response to the statement.

English teachers were then asked to select the top five essays out of each class (grades 9-12) to be judged by the campus committee.

The winners were: Kiki Carthel, Jill Odom, Amber Murrell, and Janyth Hart. They were awarded a "Free lunch for an hour for two" at the ElVaquero.



**ESSAY WINNERS** - Gruver High School essay winners were announced by Tisha Ralston, Student Council President. Winners; Kiki Carthel, Jill Odom, Amber Murrell, and Janyth Hart were congratulated by Gruver High School Principal Lloyd Looper.

## The Hansford County Reporter-Statesman

Serving all of Hansford County

Spearman • Gruver • Morse

USPS 509660 • 213 Main, Box 458 • Spearman, Tx. 79081

(806) 659-3434 • 1-800-395-9482 • FAX (806) 659-3368

Published weekly at 213 Main, Spearman, Texas

Owned & Operated by

Texas Independent Newspapers, Inc.

16607 Blanco Road #100 • San Antonio, Tx. 78232

(210) 492-8907

Second class postage paid at Spearman, Texas 79081

Any erroneous reflection upon the character of any person or firm will be gladly and promptly corrected upon being brought to the attention of the management.

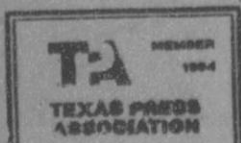
Publisher - Daniel Ramos

Office Manager - Deziree Torres

Staff Writer - Cora Thompson

Staff Writer - Chad Davis

The publisher reserves the right to revise or reject at its option any advertisement which it deems objectionable, either in subject or phraseology, or which it may deem detrimental to its business.



Subscription Rate: Hansford County, \$19.95; out of county, \$24.95 annually. Postmaster: Send address changes to Hansford County Reporter-Statesman, Box 458, Spearman, Tx. 79081. Advertising & Story Deadlines Monday, 5:00 p.m.

## At the movies...

Showing at the Lyric Theatre in Spearman Friday, November 25, through Tuesday, November 29, are "The River Wild" on screen #1 at 7:30 p.m. and "Little Giants" on screen #2 at 7:45 p.m.

In "The River Wild" Meryl Streep and David Strathairn play a couple whose family rafting trip turns into a nightmare when it's interrupted by criminals on the lam. Kevin Bacon co-stars. "The River Wild" is rated PG.

13

In "Little Giants" former football pro Kevin O'Shea (Ed O'Neill) is a car salesman in a small town Urbana, coaching the local kids' football team, the Cowboys. Taking seriously the dream of a state championship, he dismisses the wimps and klutzes at the tryouts, as well as one kid, "The Icebox," who has the misfortune of being a girl, even if she is his own niece. Rick Moranis co-stars. "Little Giants" is rated PG.

## Chamber Chatter

by Cindy Blackman  
Chamber Manager

Christmas promotions will start Monday, November 28. The first drawing will be Saturday, December 3 at the Plains Shopping Center. Special entertainment will be held before each drawing and remember, you must be present to win!

On Wednesday, November 30, Teel Bivins will be at the O'Loughlin Community Center at 1:15 p.m. for a town hall meeting. His visit will be short but he wants to let everyone know about the 1995 Legislature.

December Calendar:  
- Saturday, Dec. 3 - First Christmas Drawing at Plains Shopping Center, 11 a.m.

- Monday, Dec. 5 - Hospice Tree Lighting at Hansford County Hospital, 6 p.m.

- Wednesday, Dec. 7 - Board Meeting with new directors pre-

sented at 900 Maple Drive, 6:30 p.m.

- Saturday, Dec. 10 - Second Christmas Drawing at Spearman Chamber of Commerce Office, 11 a.m.

- Wednesday, Dec. 14 - Women's Division Christmas Meeting at First State Bank, noon.

- Saturday, Dec. 17 - Santa Claus at Plains Shopping Center and Third Christmas Drawing, 11 a.m.

- Saturday, Dec. 24 - Last Christmas Drawing at the Spearman Chamber of Commerce Office, 11 a.m.

Support The Christmas Seal Campaign  
AMERICAN LUNG ASSOCIATION  
1-800-LUNG-USA

**At The Lyric Theatre...**  
Friday, Nov. 25 - Tuesday, Nov. 29

*Bargain Nights Mon. & Tue. Adults - \$4  
Fri., Sat., Sun., Adult \$5 - Child \$3 every night  
Closed Wednesday & Thursday*

SCREEN 1 - 7:30 PM SCREEN 2 - 7:45 PM

<b>The River Wild</b> (PG-13)	<b>Little Giants</b> (PG)
----------------------------------	------------------------------

113 Main • Spearman

**Picnic Place Restaurant**  
11 a.m. - 8 p.m.  
Monday - Saturday  
Serving:  
Hot & cold sandwiches,  
many flavors of ice cream  
and baked potato pile-on  
HAPPY HOUR: 3:30-4:30 p.m. (special prices)  
Saturday Night Special  
Senior Citizens Discount Night  
(65 years & older)  
Discounts on everything (except pie)  
5 p.m. - 8 p.m.  
Mexican Fiesta Plate - Friday  
BBQ Plate - Wednesday

217 Main  
For Take-Out Call 659-3864

**STATIONMASTER'S HOUSE MUSEUM**  
would like to extend a big  
**THANK YOU**  
to the following for all their help during our open house held last Saturday:

Cindy Blackman/Chamber of Commerce  
Shedeck Family Estate  
R.L. McClellan  
Johnnie Lee  
KRDF Radio  
Betty Davis  
Rose Butts  
Bob Martin/Morton Buildings



# Lifestyles



JACK AND ELNORA BATSON

## Batsons celebrate 50th wedding anniversary

J.E. (Jack) Batson and Elnora Close were married 50 years ago on November 24, 1944 in Spearman. Jack and Elnora moved to Stinnett in 1976 several years after they had raised their four children in Spearman.

The Batsons will be honored with a reception at the First Baptist Church in Stinnett on November 26 from 2-4 p.m. The church is located at 200 N. Main in Stinnett. Friends and family members are

invited to visit with Mr. and Mrs. Batson.

Their children and grandchildren will be hosting the anniversary celebration. They are: David and Helen Batson of Plano, their two children, Troy of Nacogdoches and Heather of Plano; Lynda and James Owens of Stinnett, and their son, Michael; Charles and Pam Batson of Bellingham, WA; and Tommy and Kathy Batson of Stinnett, and their daughter, Kim.

## Out at the Lake

By DOROTHY HUDSON

Lake depth--November 21, 1994  
21 feet and 1 inch. The rain gauge at the office showed 1.40 inches Monday morning.

Isn't it great to be outdoors in the spring or fall when the flocks of geese and sandhill cranes are flying overhead in their V-formation? A flyway is the flight corridor that migratory waterfowl use in their biannual migration. The flyways in North America are the Atlantic, Mississippi, Central, and Pacific. All but the Atlantic have part of their origin in Alaska. The Panhandle of Texas is covered by the Central Flyway.

It has been a problem for me to look up at a flock and determine if the birds are cranes or geese. Most people easily distinguish the difference in the sounds from each type, but I confuse them. When you are close enough to see feet, I have learned that the feet of the geese do not stick out behind their tails, whereas those of the cranes trail out some distance behind the tails.

The herons that live in our area year around have bowed or kinked necks as they fly, but cranes fly with their necks fully extended.

So far this season the flocks have not stopped at the lake. The men with the Texas Parks and Wildlife told Jim Derrington that when geese come, the bald eagles would come with them; however, three golden eagles and a pair of bald eagles have been spotted. Jim Derrington says the bald eagles are frequently seen in the big dead trees in the south part of the lake. The golden eagles are seen more often in the trees where the lake joins the creek.

The white pelicans we had at the lake last year created a lot of interest as they are a new bird to this area. Several people have asked me to notify them if the pelicans return.

With Christmas coming, how about a spotting scope or binoculars for an unusual gift? A good camera with a telephoto lens is another suggestion. I hope we will find some people that will get pictures of the animals and birds that live in or visit the Palo Duro Park and Lake, and that we could come up with an album such as Margarette Evans has done for the flowers.

**CHRISTMAS OPEN HOUSE**  
featuring  
**Home Interiors & Gifts**  
by **DEBBIE SEARS**  
Saturday, December 3, 1994  
10:00 a.m. - 5:00 p.m.  
303 Third St. • Morse, TX  
(806) 733-5004  
(Order now for Christmas!)

**D.A.R.E. Officer Jamie Downs and the kids of Spearman Elementary would like to THANK Sergio Vargas and his crew for the hard work they did on the D.A.R.E. patrol car.**



THE D.A.R.E. PATROL CAR

## Fomer residents selected for the Who's Who

Two former Spearman residents are among 58 Texas Tech University students who have been selected for the 1994-95 Who's Who in American Universities and Col-

leges. The recipients were recognized during a reception hosted by the Dean of Students Office in the University Center Courtyard on Nov. 13.

The honorees were selected by a committee of faculty, staff and past Who's Who award recipients at Texas Tech who evaluated academic achievement, community service, leadership in extracurricular activities and potential for professional success. Eligibility for the one-time honor is limited to senior

students with a minimum 3.0 cumulative grade point average.

Established in 1934, the Who's Who program now selects recipients from more than 1,400 higher education institutions around the nation and from several foreign countries. Texas Tech recipients

from Spearman are Jeffery Don Arnold and Kyla Nelson.

Arnold, a chemical engineering major, is the son of Mr. and Mrs. Donnie Arnold of Spearman.

Nelson, a public relations major, is the daughter of Mr. and Mrs. Dennis Nelson of Spearman.



**PAGEANT RUNNER-UP - Cortney Valdez (pictured) finished as first runner-up at the All Star Kids Pageant in Guymon, OK. The pageant was conducted on November 13. She is the three year old daughter of Oscar and Rhonda Valdez of Perryton. She is also the granddaughter of Charles and Carole Wall of Spearman, and Rosa Valdez of Perryton.**

## Lusby awarded scholarship by Greater University

Jill Lusby of Spearman, a sophomore education major at Oklahoma State University, has been awarded a \$1000 Greater University Fund Scholarship for 1994-95.

Announcing the scholarship was Dr. Robert Graalman, director of the OSU office of University Scholarships. This scholarship is made possible by OSU alumni and friends who want to preserve and promote high-quality educational programs at OSU.

She was nominated for this scholarship by Robert Knaub of the OSU College of Education.

She is the daughter of Ronnie and Donita Lusby of Spearman, and is a transfer student from Eastern New Mexico University.

**In the loss of our dear wife, mother, & grandmother, the family of Faye Gillispie would like to thank each of you from the bottom of our hearts for each act of love and kindness shown to us--the flowers, the food, the memorials, the cards, the visits and phone calls, and most of all, your heartfelt prayers--they all ministered to us.**  
**May our Lord bless each of you.**

Jack Gillispie  
Linda & Wirt Davis & family  
Bob & Kathy Gillispie & family  
Judy & Mike Stedje & family  
Dwight & Suzanne Gillispie & family


**You Are Invited to the 80TH BIRTHDAY PARTY**  
Honoring  
**JOYCE DUNCAN**  
Saturday  
December 3, 1994  
2:00 to 4:00 p.m.  
in the home of  
Gene and Fran Duncan  
107 Etling Ave.  
Gruver, Texas

## A Big THANK YOU

- To all who ate with us at the Community Thanksgiving Dinner!
- To all who donated and prepared food!
- To all who helped serve!

**God Bless You All!!!**

Spearman Methodist Church Choir

**SANTA'S VISIT**   
Thursday, December 1, 1994  
2:30 to 5:30 p.m.  
La Casita Room  
in Gruver State Bank  
**EVERYONE WELCOME!**  
We will be selling polorid pictures with Santa for \$2 each.  
Sponsored by Alpha Mu Psi

**Gordon's DRUG**  
**Bridal Gift Registry**

COME BY & LET US HELP YOU SET UP YOUR SPECIAL GIFT TABLE

**Couples Currently Registered**

Brad Brown & Tiffany Kemp  
Ronda (Gibson) & George Jennings  
Mandy (Spencer) & Ryan Wells

\* Date of the Bridal Shower

314 MAIN PHONE 659-2141 **Gordon's DRUG** SPEARMAN TEXAS



## Town & Country Review

Copyright 1994 by Connie Logan Advertising Company, Inc.  
Oklahoma City, Oklahoma, T.M. Reg. U.S. Patent Office, Washington, D.C.  
Newspaper Accounting Service is solely responsible for sales,  
contents and collections of the Review.



**EDWARD D. JONES & CO.**

### Gary A. Schneck - Investment Representative

Edward D. Jones & Co., located at 605 W. 3rd in Borger, phone (806) 274-7301 or 1-800-658-6389, has become one of the leading stock and bond brokers in The Panhandle. Gary A. Schneck, local investment representative, realized that in order to have done this, he had to have the whole-hearted and sincere support of the community of which they are apart. They invite you to call, or drop in anytime. They have dedicated themselves to aiding in every possible way all those who rely on them. As a result, that much discussed word "SERVICE" finds true meaning in the friendly atmosphere that envelopes everyone who comes to them. We commend them for their community-minded activities and interest in the people of this area.

### INDUSTRIAL MACHINE, INC.

Manufacturers, farmers, contractors and industrial concerns have long known that, when it comes to machinery work, precision is required and guaranteed by Industrial Machine at 1426 N. Main in Borger, phone (806) 274-2269. This competent firm can handle most any problem that requires the skill and precision only a top notch machinist can offer. Their work is the standard of the industry and leading businesses which depend on quality, will not settle for anything less! They feature 24 hour emergency service and realize that "DOWN TIME" costs you! They have milling machines, lathes, drill presses, grinders and other sophisticated tools to guarantee you the best service.

### BENNETT FLOORING & ACCESSORIES

Bennett Flooring & Accessories is located at 408 W. Broadway in Fritch, phone (806) 857-2489, and they offer you the best in floor coverings. They handle a complete line of nationally known brands of carpets, besides a vast selection of vinyl, hardwood, and ceramic. If you need new floor covering for your home or place of business call this reliable firm for a free estimate. A friendly representative will give you any advice you may need on your floor covering problems. They will be more than willing to help you in any way they can. This firm also furnishes expert installations by master mechanics that are guaranteed to please you. So, for the finest quality and most reasonable prices, this the place to buy. Go in and look over their beautiful displays.

### WEST WELL SERVICE Teddy West - Owner

West Well Service, located at 1906 Lister St. in Borger, phone (806) 273-6411. Teddy has years of field experience behind every service they may give you well. They maintain at all times, a complete stock of oil field equipment that is of quality to serve you well properly. Your lease is a valuable piece of property. It deserves the dependable service that only West Well Service offers you at the very minimum in cost. Putting your confidence in Teddy's well service will pay big dividends for you and your well lease. This firm has served The Panhandle efficiently for years and will continue to serve it and you with the same courteous dependability that has made it so outstanding. Try them once and you'll use them always.

### DUMAS LUMBER COMPANY Brad Giles - Manager

Looking for better prices on lumber and building materials? Check with the friendly people at Dumas Lumber and find out what value in building materials really means. Located at 413 N. Dumas Ave. in Dumas, phone (806) 935-2716 or 935-3248, this outstanding retail outlet has the selection, the service, and the low prices to draw customers from miles around! The highest quality of lumber is featured here. You are always assured of getting the best at this well respected firm. They are also known as the paneling headquarters for smart do-it-yourselfers. Hardware? Tools? Paints, stains and floor covering. This is the place to get 'em for less! Stop in the very next time you need any type of lumber or building materials! We know you will be glad you did.



### HARVEY'S PRECISION BODY SHOP

People in this area don't have to look far and wide for a firm which is capable of doing the highest quality auto body painting and repair work. Harvey's Precision Body Shop at 3026 Blackburn St. in Amarillo, phone (806) 352-9662, can refinish or repaint any car or truck foreign or domestic. Their work is fast, economical and beautiful! When you bring your car to this outstanding body and paint shop, you can rest assured that the work will be done to your exact specifications and that the estimate will match the final statement. Insurance companies must now permit you to choose the body shop you like best. We suggest you choose this one!

### FAMILY DENTAL CENTER W.L. Bullis, D.D.S.

When people go through life without smiling it makes the whole world glum for everyone. Good dental hygiene enables everyone to light up the world with a smile and it begins when you see your dentist regularly. Visit Dr. W.L. Bullis in Amarillo, at 3409 South Georgia - Suite 12, phone (806) 359-0371. They offer a comprehensive range of personalized dental services for the family, including: cosmetic bonding, bleaching, veneering, capping, fillings, bridge work, equipoise partial dentures, complete dentures and a full range of other dental services in a relaxed atmosphere. Their emphasis is on PREVENTION and they endeavor to make your visit comfortable and affordable. With the aid of modern X-ray techniques, they can quickly pinpoint problem areas in your mouth and begin the necessary work. Improve your dental hygiene by contacting Dr. Bullis for your family dentistry work. They give senior citizen discount and financing with approved credit.



**Bob Johnson  
MOTOR COMPANY**  
S. HWY 136 • 273-7541 • BORGER, TEXAS

Considering a new car this year? Careful consumers in the area have come to regard Bob Johnson Motor Company as one dealership where deals are made to the customer's satisfaction! This respected firm, located at 1300 W. Wilson St. in Borger, phone (806) 273-7541, carries the complete line-up of famous Ford, Lincoln, Mercury, Chrysler, Plymouth, Dodge, Jeep Eagle, Ford & Dodge trucks. If your budget isn't quite ready for a new car, select from one of the area's finest assortments of quality used units. Either way, you get their famous service after the sale! They feature a complete repair department as well as parts and accessories. They're the area's "fully equipped dealership"! When you're out looking for a new car, make them your FIRST stop...it just might be your LAST! John Crawford is still selling vehicles for Bob Johnson Motor Company.

### ALVIN'S RADIATOR SERVICE Donnie Piland - Owner

Alvin's Radiator Service in Borger at 108 N. Main, phone (806) 274-3461, specializes in a complete service for radiator repairing, recoring, and cleaning, heater and gas tank repairs. They have years of experience in specialized radiator recoring on all types and models of vehicles, and they have one of the most complete shops in The Panhandle. There is no firm worth more to truck or car owners as they are stocked with a supply of radiators and supplies for repairing all kinds of radiators. They are your local AUTHORIZED radiator repair station. For the highest quality work, best service, and most reasonable prices. This Review recommends Alvin's Radiator Service.



Crown Supply Co. is located at 515 E. 10th in Borger, phone (806) 274-7178. Their reputation has been built in our area through service, satisfaction, and quality. No where will you find a firm that endeavors more to please its every customer than this reliable company, regardless of the amount of the purchase or the size of the order. Prices are low, quality merchandise paramount. They feature hoses of all type including: Boston Industrial Hose, Federal Metal Hose, Gates Hydraulic Hose, Flexonics Metal Hose, Thermoid Industrial Rubber Hose, etc. Remember, when you are in need of anything in the hose line, contact or visit this firm. This Review recommends to our readers that they trade here regularly.

### BORT AGENCY

**Mike Babbs - Owner/Agent**

There is a deserved place in every community for any business which contributes to the security and well being of its citizens. In this regard, the insurance business is deserving of prominent mention, more particularly the Bort Agency located in Gruver at 510 Main, phone (806) 733-2456. They specialize in planning an insurance program, whereby maximum protection is obtained from each insurance dollar spent. Renewals are promptly and efficiently taken care of. This concern handles crop, livestock, auto, home, and business insurance and will give you prompt and courteous claim service. Regardless of what your present and future insurance needs may be, it will pay you to contact the Bort Agency in Gruver.

### WAL-MART DISCOUNT CITIES - DUMAS Mark Davis - Manager

WAL-MART DISCOUNT CITIES located in Dumas at 14th and S. Dumas Avenue, phone (806) 935-9075, is where your dollar goes a lot further! This full line discount store offers something that most other stores can't compete with... the area's very lowest prices on EVERYTHING! What makes WAL-MART unique? Well, from the moment you walk through the door you'll discover the associates trained in ways that please their customers. You soon recognize the fact---everyone employed here considers it an opportunity to service your needs promptly and courteously! At WAL-MART you're guaranteed satisfaction. It's here you get the service you want, the quality you look for and prices you can afford! Therefore, for the best products, the largest selection and the ultimate in everyday bargains... shouldn't you be shopping at WAL-MART in Dumas? "SHOP EARLY FOR CHRISTMAS."

### PANHANDLE IMPLEMENT OF GUYMON ZIMMATIC The Raining Champion.

Panhandle Implement of Guymon at 1108 N. E. 12th, in Guymon phone (405) 338-8511, is YOUR IRRIGATION HEADQUARTERS. A Zimmatic irrigation system benefits you in many ways. The dependability and economy of the drive train with 5 years or 5000 hour warranty on center drive and gear box is outstanding; equally important is the dependability and economy of the service. Let one of their representatives help you develop an irrigation system tailor-made to fit your needs. A properly developed irrigation system can reduce the gamble concerning rainfall, giving you your share of assurance in production results. They will advise you where irrigation is practical and recommend an efficient, economical system using just the right combination of pump and power for your needs. See them FIRST... information and estimates without obligation.

### NORTH PLAINS CARE CENTER Doug Elliott - Administrator

North Plains Care Center is located at 200 Tyler in Borger, phone (806) 273-3725. We are fortunate to have in our area this nursing home where the best of care is given. This home is under the direction of people who have made this service their life's work. There are several reasons why this home has been the choice of so many people: surroundings are ideal, staff is well trained, rooms are well furnished for each patient, bedridden receive special attention and care, nurses are on duty around the clock, and a healthy diet is assured for all patients including special diets. This is a home where your loved ones can reside in comfortable, safe and pleasant surroundings. We commend the management and suggest that you call them today.

### DR. DAVID RIDDLES PURGER Optometrist

Dr. David Riddles Purger located at 600 E. 1st St. in Dumas, phone (806) 935-6491 or 1-800-765-8253. This outstanding professional specializes in family eye care including the fitting and prescribing of contact lenses, daily wear and extended wear, eye diseases, learning disabilities, sports vision, children's vision and senior citizens vision. Where your eyes are concerned there is no substitute for quality care. Many times eye problems can interfere with learning, driving and your feeling of general well being. Don't put off your visit for an eye examination. Phone today for an appointment to see the professional that can give you a better and clearer outlook on life.

### MESA TECHNICAL COLLEGE

New opportunities are knocking at the door for people of all ages at Mesa Technical College in Tucumcari, New Mexico, located at 824 W. Hines (phone 505-461-4413.) The college has now begun offering associate of applied Science as well as certificate programs in a large range of vocational/technical fields. Full grants are available for women in programs which are non-traditional programs for women, such as the truck driving, diesel technician program, auto technician program, farrier science (horseshoeing) or fine arts bronze foundry program. Full grants are available at Mesa Technical College for men taking the allied health program, early childhood development program or business and office program and for displaced homemakers, single parents and single pregnant women. Other programs available include computer systems training and agricultural business management. All adult basic education classes are offered free of charge. We recommend this reliable school which offers full, part time and evening classes. Another service is free career counseling and testing on request. Call Mesa Technical College at 505-461-4413 for more information.

### CELLULAR ONE OF THE PANHANDLE

If you are concerned with safety, if you enjoy convenience and if time means money to you, then the Cellular is for you and the best place to get that Cellular phone is Cellular One of the Panhandle, "has the largest non-roaming area in The Panhandle" in Dumas at 216 West 1st, phone (806) 935-6307. They offer quality products, fair prices and proven, reliable service. The Cellular phone is truly tomorrow's telephone today and offers mobility, flexibility and convenience. A Cellular phone can be in your car, truck or van, your pocket, your boat or your work site. Cellular phones give you a system with the same quality and convenience you have come to expect from your traditional home or business phones. You can have numerous features available in different model systems. Call for free consultation and planning interview.

### CAPROCK INDUSTRIES Mike Heard - General Manager

Caprock Industries, Lot #1 located southwest of Gruver and Lot #2 located northeast of Gruver, phone (806) 733-5025, specializes in commercial cattle feeding the year around. They feature all modern feed lots and experienced hands who are more than qualified to handle your stock. They feed only the best feed that can be had, to insure you of MORE WEIGHT on your beef in the shortest period of time. Several customer service options are available, including: Guaranteed fat cattle prices at anytime during the feeding and ratio prices can be locked in at anytime. Farmers and ranchers have been using the service rendered at these lots with the greatest satisfaction, knowing they can rely on Caprock Industries to fatten their beef for market. This Review recommends them. Contact Gary Gentry or Julia Williams, customer service representatives to help you with the services offered.

### J. WINSTON Liz Carter - Owner

"WHERE SMART WOMEN SHOP", one of the more renowned firms in the field of ladies ready-to-wear is J. Winston in Amarillo at 2701 Paramount, phone (806) 358-2457. Here you will find a variety of ladies wearing apparel suited to every taste. The clientele of this firm is composed of the discriminating who demand satisfaction in their every purchase. Meeting this demand with high quality clothing and reasonable prices has been a prime factor in the rapid success of this firm. You are invited to make your selections here, where you will be able to choose from a wide range of fine garments. This Review takes pleasure in directing the attention of our readers to this establishment and suggest that you drop in to see them for anything in the ladies clothing line. "SHOP EARLY FOR CHRISTMAS!"

### THE PAMPERED LADY Michelle Gipson - Owner

Distinctive creations await the women of the area at The Pampered Lady located at 2510 Paramount in Amarillo, phone (806) 355-9486. This is one shop where fashion never takes a back seat! They feature outstanding designs and they'll show you some of the absolute latest in glamorous apparel. Quality is the prime concern at this reputable shop. They've been serving the needs of the area's most discriminating women for years, and their dedication to supply you with nothing but the finest is your assurance that every garment purchased here will give you the kind of service that you're looking for! This Review urges all of our readers to stop here and look over the latest creations offered by this outstanding shop. "SHOP EARLY FOR CHRISTMAS!"



## Etter's home to be featured in tour

Another of the homes which will be featured in the Gladiola Flower Club's Home Tour on December 4 belongs to Helen Etter.

Etter's house, 711 Gibner Drive, was built in the early 70's by Roscoe Nelson.

Charles Eaton did the painting and Henry Babitzke was the stone mason. Placing the house on an odd-shaped lot presented some problems, but they were successfully solved. However, when the

insulation people were blowing their product the attic, one of them remarked, "This is the funniest shaped house I ever saw." The tiles in the kitchen are from Mexico and the stone of the fireplace is from Arizona.

Throughout the house are displayed various collections interests - old and new dolls, water color and oil paintings, antique furniture, and old glass.

Other homes which will be shown

on December 4 from 2-5 p.m. are Mr. and Mrs. Simpson, 27 Golden Circle; Mr. and Mrs. Rick Sander, 718 Gibner Drive; and Mr. and Mrs. Danny McLaughlin, 526 Townsend.

Tickets are available from Gladiola Flower Club members or will be sold at the house being shown.

## Hansford Hospice greatly admired

November is National Hospice month. Hospice is a special kind of caring. Although Hospice cares for us as death draws near, Hospice affirms and cherishes life, helping patients and their loved ones live each precious day to the fullest.

Hansford Hospice is an agency licensed by the Texas Department of health and certified by Medicare for the sole purpose of providing care services to individuals as necessary for the palliation and management of terminal illness as well as related conditions. It is supported by the community and by Hansford County Hospital District.

Because of the commitment to the Hospice program and need to provide services, Hansford Hospice relies on donations of funds and memorial gifts as well as funding from Medicare and the Hansford County Hospital District.

## Hansford County Library Book Notes

by Sheri Benton, Librarian

We have just completed our fall segment of Storytime for four and five-year-olds, and it was a big success! We were able to extend Storytime an extra two weeks, thanks to the number of volunteers that we had. We had anywhere from ten to fifteen children attending each session, and all of them assured me that they had a lot of fun. We would like to take this opportunity to thank all of the volunteers that helped make this program work so well. They are: Marva Delk, Jean Ann Behney, Kyle Henderson, Cindy Henderson, Sherry Boyd, Sherry Moore, Lauren Dawn Vanderpol, and Dolores Moreno.

Exciting things are being discussed by our Long Range Planning Committee! We are looking at the various services that the library provides, and trying to find ways that we can continue to improve and grow with the times. We are about to undertake a community survey to assess the needs and concerns of the people with regard to library services, so please give us your input on anything that you feel will be of use to the committee. People serving on this committee are: Jean Ann Behney, James Cunningham, Mike Ladd, Robbie Reid, Worley Smith, Patty Sheppard, Alfred Avila, Alan

Hutchison, Marsha Murphy, Bob Boxwell, Claudine Hardy, Pam Cobb, Myrna Biggers, and Sheri Benton.

Let us hear from you about what we are doing right, what we are

doing wrong, what we should be doing that we aren't or what we shouldn't be doing at all.

We are very open to suggestions, and hope that you will take the time to express your opinions!

## Bryant and Jackson welcomed into Hospice

Hansford Hospice conducted its regular meeting on November 21 at Gruver United Methodist Church. The business meeting was conducted by Verma Lee Shirley, president.

Kathy Bryant and Doyle Jackson were welcomed as new members.

Sandy Russell installed the new officers: Verma Lee Shirley, president; LoRee Booth, reporter; Jo Linda Hutchison, historian; and Carolyn Cummings, secretary.

Other officers, but not present, are: Carolyn Hicks, vice president and Muriel Boyd, treasurer.

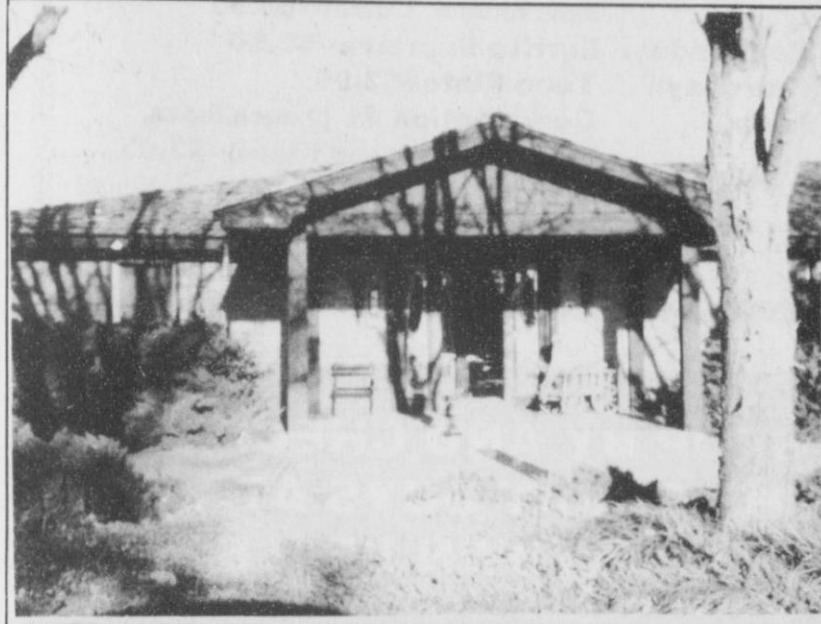
Plans were discussed for the community lighting of the 'Lights of Love Tree' on Monday, December 5 at 6 p.m. This will be at Hansford Hospital.

Charla Roberts gave TB test and TB information to members.

Hospice Director Sue Watts

showed an inspiring film, "A Eucharist Parable." The story exemplified the importance of love and sharing with family.

There will not be a December meeting. January 16, 1995 will be the next scheduled meeting. The following members present were: Kathy Bryant, Doyle Jackson, June Jackson, Anna Beth Woods, Garland Hopper, Jo Linda Hutchison, Eloise Renner, Edith Womble, Opal Wallin, Connie Gammill, Betty Pugh, J.C. Harris, Sue Watts, Carolyn Cummings, Sandy Russell, Charla Roberts and LoRee Booth.



711 GIBNER DRIVE

### BUZZ EQUIPMENT INC.

Buzz Equipment is located at 17 S.E. 12th Avenue Perryton, phone (806) 435-2441 or 1-800-762-9641. They are authorized altronic dealer and do starters, alternators and magnetos. These men are specialist in this field. It is their major field, not just a sideline, and they are capable and efficient in all work they do. You can depend on the reliability of this firm for they have built an envied reputation for themselves throughout this entire section. When you have work of this type call this firm first. They give free estimates gladly. Call them if you want the job done right.

### RANDY'S SAS SHOES

Randy's SAS Shoes in Amarillo located at 2632 Woflin, phone (806) 353-2404, is modern in every respect and features the famous SAS brand shoes. The personnel are efficient and experienced in ensuring you of the perfect fit in the shoe styles of your choice. They offer perfection fitting, as well as shoe value you won't want to miss. Their stock includes SAS shoes for men and women at prices that are always reasonable. Here, quality and style reign paramount and variety is cardinal. So, the next time you think of shoes, think of Randy's SAS Shoes. Here you will always be assured perfect fit in the latest styles. We commend them for excellence, courtesy and dependable service they provide for the people in The Panhandle.

### PERRYTON FEEDERS, INC.

When it comes to the business of raising cattle for profit, the average stockman just doesn't have the facilities to make a decent living without the help of the Perryton Feeders located 13 Miles south of Perryton, phone (806) 435-5466. They specialize in the fast weight-gaining operation that turns a better profit for you. A stockman just can't afford to do this by himself due to fluctuating feed prices and lack of time to devote to the business of custom cattle feeding. Because they buy their feed in huge quantities, this feed lot is in a better position to fatten your stock for market and secure the best price for you. Finish off your cattle the modern, convenient way by having this reliable feed lot "do the work for you"! This Review recommends them.

### SENIOR VILLAGE NURSING HOME

Rita Hargrove - Administrator

Residents of this area can find the best care for those they care for the most when they care for the most when they learn first hand of the extensive facilities at Senior Village Nursing Home affiliated with M.S.C. Associate of Lubbock - Non-Profit Organization - located on Highway 83 south in Perryton, phone (806) 435-5403. Those who have reached the age of retirement and prefer the company of their own generation can find here the kind of pleasant relaxed atmosphere they've spent most of their lives EARNING. Twenty-four nursing care, rehabilitation therapy, physicians and pharmacists available, a healthy diet for all residents including special diets. This is just a part of the service featured here where they add years to senior citizen's lives, and LIFE TO THEIR YEARS. Programmed activities available. You will find that your loved ones will receive the best care here.

### DUKE'S CHIROPRACTIC CENTER

Darrell D. Duke - DC

Many people are troubled with various nerve problems, back ailments and related muscular disorders from work, sports and other physical activities. One of the best places to seek relief from these conditions is Duke's Chiropractic Center located at 11 W. Kenneth in Spearman, phone (806) 659-5505 and in Perryton at 3310 Garrett, phone (806) 435-5362. Dr. Darrell D. Duke features all of the latest advances known to the science of Chiropractic. With the aid of modern x-ray techniques, he can quickly ascertain your problem and begin treatment to correct it. Make an appointment to see him whenever you're having trouble with your spine or experiencing any disorder with your back or muscles. We, in this Review, highly recommend him to all our readers needing Chiropractic help.

### PERRYTON PRINTING CO.

Dan & Becky Hoover - Owners

For a company to handle all of your printing needs, you can do no better than consult Perryton Printing Co., located at 109 S. Ash in Perryton, phone (806) 435-3106, Fax # (806) 435-7724. Their state of the art equipment will quickly and economically do the job from a quick copy to all of your stationery; wedding invitations to special carbonless business forms. But they don't stop there. They can do the artwork, typesetting, folding and binding. Visit them today and look through their catalogs of formats, or just bring them a sketch of your idea. These are the people that will make it happen for you. The Writers of this Review suggest you use this excellent printing company for all your printing needs.

### OCHILTREE GENERAL HOSPITAL

Ochiltree General Hospital is located at 3101 Garrett Drive in Perryton, phone (806) 435-3606. This totally integrated medical facility combines all of the technology currently available. The caring staff of M.D.'s and R.N.'s is supplemented by L.V.N.'s to provide you with the very best of medical care. One of the area's finest medical staff provides the backbone for this outstanding hospital, and couple with maternity, C.C.U., C.T. scanning, physical therapy, obstetrics, home health care, hospice, and outpatient surgery, provides medical care equal to the finest in the Panhandle. They are dedicated to providing the ultimate in health care for the people of the area. This Review urges you to support this fine medical center, one of the cornerstones of the community. They recognize Medicare, Blue Cross, and Approved Insurance Plans.

### TRI CITY JANITORIAL

Tri City Janitorial features the best janitor service including a complete job, wall washing, floor waxing and polishing, and trash removal. Call (806) 435-6954 in Perryton or go by to see them at 1913 Colgate Drive. They feature special clean-ups or regular clean-ups by trained workmen, insured and bonded. They are well known for good and dependable service and are always on the job when promised. If you are in need of janitor service you can do no better than contract with this firm to care of your needs. We, in this Review, are happy to recommend this excellent janitorial service to all our readers.



### PANHANDLE TELECOMMUNICATION SYSTEMS, INC. (PTISI)

This is a wholly owned subsidiary of Panhandle Telephone Cooperative, Inc. PTISI offers a wide range of services including business telephone systems, a 24-hour answering service, a paging service, rural TV satellite programming and cellular telephone service. PTISI sells and services Comdial, Mitel and the Meridian Norstar telephone systems. PTISI has a 24-hour answering service for the medical profession, oil and gas field. PTISI provides paging services to the entire Oklahoma Panhandle. PTISI provides cellular services to the Oklahoma Panhandle. PTISI provides one-stop shopping for satellite TV programming. For any of these services phone 1-800-327-7525.

### A&J AUTO SERVICE

If you're particular about your car or truck, then be particular about who services it! People in the Panhandle make it a point to see A&J Auto Service, located at 3433 Plains Boulevard in Amarillo, phone 353-4552. Equipped with the latest tools and machinery, this establishment can accurately and economically service your car. Now is the time to have your car thoroughly inspected and serviced before the WINTER WEATHER HITS! They offer expert repair service on all makes and models, foreign and domestic, and at reasonable prices. If you have a business in the area that relies on a fleet of vehicles, go by or call and find out how they can work for you! Before you take your car or truck anywhere, see A&J AUTO SERVICE, and get their estimate on your repairs. Depend on the trained mechanics to do a job accurately, economically and in the shortest time possible. Stop in today at A&J AUTO SERVICE for complete automotive repair.

### HEALTH WORLD

Serving The Area Since 1970

For everything you need for healthy eating, it's Health World, where good health is their only business. They are located at 1964 Civic Circle in Amarillo, phone (806) 355-7782. This well known health food store features everything you can think of for a better, more balanced diet. There are all types of vitamins including a complete line of organic vitamin and mineral capsules. Specialty vitamins are also carried and there is an exact combination that's just right for you. Whole grain breads, high protein foods and many other healthful and nutritious items can be found on their well stocked shelves. Make shopping at Health World a regular habit. You'll feel and look better if you do. This Review recommend them to all our readers.

### ELECTRIC MOTOR SERVICE, INC.

Repair-Rewind-Rebuild-Electric Motors-Generators-Phase Convertors

Electric Motor Service located at 334 South Virginia in Liberal, Kansas, phone (316) 624-1132 or 1-800-466-1140 is equipped to render you a complete electrical motor service. When you have electrical motor service. When you have electrical motor repair work to be done, you can rest assured that it will receive the attention of qualified personnel and the best service, if this firm is consulted. They are experienced, trained to do the job efficiently, and use only the best in quality materials. So, from the standpoint of thoroughness, the policies of this reliable company are of the best to be secured. Nothing in the way of an electrical motor is too small for them, and there are none too large. It is with great pleasure that we call your special attention to this firm and that you make this your headquarters for electrical motor work.

### MORSE IMPLEMENT COMPANY

Morse Implement Company located off Highway 136, 1 mile of the road on Main Street in Morse, phone (806) 733-2668. They have had years of experience in furnishing just the right machine for the job. When you buy farm equipment you want to know that you are getting machines that will stand up to the job. The equipment here can be depended upon to give the maximum service per dollar invested. We wish to point to the fine reputation they have built. They are noted for square dealings and will stand behind every purchase. Trade with a firm you can depend upon and this is the one! This Review recommends Morse Implement Company.

### PAMPA NURSING CENTER

Melba Marcum - Administrator

With some of the finest facilities anywhere Pampa Nursing Center "Certified Medicare and Skilled Nursing Care," has become the areas preferred nursing home. They are located at 1321 W. Kentucky Avenue in Pampa, phone (806) 669-2551. Ideally suited for ambulatory and bedfast patients, the patient can get the kind of attention and professional nursing care that's needed when health is failing. There's a staff dietician to keep a close eye on the patient's eating habits and the kitchen prepares individual meals to dietary specifications. Physical therapy, exercise, recreational activities and personal attentions makes this nursing home a nice place to be as well. They feature a specialized Alzheimer's care Center. This Review recommends this fine nursing home to anyone needing the utmost in quality care.

### CORONADO HOSPITAL

There is nothing more important to the onward progress of any community than a modern hospital, such as Coronado Hospital located at 1 Medical Plaza in Pampa, phone (806) 665-3721. Presided over by those who are ready to serve the sick and the injured, with the best of care and medical attention. The very finest equipment, careful nursing, and the most able professional services are at your disposal, when a patient here. They feature general hospital service such as: 24-hour emergency room, obstetrics, breast imaging center, speech, physical and respiratory therapy, radiology, laboratory, one day surgery and home health. They take pride in their hospital and staff. When you or your family need hospital care, remember to call this hospital. This Review recommends Coronado Hospital.





ON DISPLAY - The Spearman Museum is now displaying beautiful pottery. The pottery shown here is what is called "Fiesta Pottery."

## Museum Musings

by Joanne Eaton

By JOANNE EATON

Helen Boyd has been collecting Fiesta pottery since the early days of her marriage. The first piece she bought was a 13-inch yellow chop plate that she wanted to use for a cake plate. The plate increased in value so much that Helen wouldn't dare put a cake on it now.

Fiesta pottery was started by Homer Laughlin in 1936 in New Wall, West Virginia. The six original colors were green, red, yellow, turquoise, dark blue, and ivory. Most pieces are marked, but some rare pieces are not. Rare pieces are hard to find. A whole collection has to be bought to get the rare pieces.

From 1944 to the early fifties, production of Fiesta ceased due to World War II. It resumed again from the early fifties until 1959 with the addition of colors such as rose, forest green, chartreuse, gray, and medium green. At one time dishes were given away in grocery stores as premiums.

On special occasions Helen will get her dishes out. Her family loves to eat from them, but Helen does the dish washing. At one time she had 5000 pieces, but has sold a lot of them.

The hobby of collecting Fiesta pottery also turned into a business for Helen. She used to take her dishes to antique shows and sell or trade pieces. Sometimes she will buy complete collections from people, keep the pieces she wants, and then sell the rest. One collection was bought in Nebraska. It involved a 26-hour round trip with her twin sister, Hazel Stumpf, going along. Hazel was instructed to not comment on any of the pieces, just wrap. There was a beautiful unique piece, a carafe in red, that Hazel wanted to say something about so badly. "Just wrap," Helen would say. Helen did not want the man to go up on his price after she had driven so far. Hazel got even on the trip back as ice was on the road. She didn't want to be responsible for a load of expensive dishes so Helen got to do the driving.

Helen has an autographed book with pictures of the complete collection of Fiesta Pieces. There is also a newsletter about Fiesta from Strongsville, Ohio.

If you're thinking of collecting Fiesta, the medium green is the most rare. Any color 10-inch cake plate is worth \$1,000. A gray juice pitcher sells for \$3,500. The hardest to collect pieces are the red-footed salad bowl with twelve Tom and Jerry mugs in green. In 1986, new colors were added again.

Helen's granddaughter, Jamie, is also interested in Fiesta. Helen gave her a blue and white set of dishes complete with flower vases that match as a wedding gift.

The Stationmaster's House Museum has a display case filled with Fiesta pottery on loan from Helen. The brightly glazed pieces are a joy to see.

The Open House and the dedication of the Harry and Margaret Shedeck Wagon Barn was a big success in spite of the drizzly weather. Many people came to enjoy a few hours of fellowship at the museum. Johnnie Lee was master of ceremonies. There were many stories told of days on the Rolling Plains Mule Train. A lot of us really missed out by not being part of that.

John Hutchinson won a drawing for a clock given by Morton Builders of Dumas. They were the builders of the Wagon Barn and Fort Zulu. Bob Martin, of Morton Builders, was here to give the clock away.

The Museum Board, consisting of Gus and Clementine Renner, Juanita Pierce, Irvin and Helen Boyd, Harry Stumpf, Joel Lee Lackey, Jeff Lackey, Joanne Eaton, Rubyjo and J.D. Wilbanks, and Bill K. Jackson would like to take this opportunity to wish everyone a Happy Thanksgiving.

### Help Us Help Others

Call toll-free 1-800-ACS-2345

## Merchants to conduct "Holiday Homecoming"

Local merchants will again be providing area residents with a little excitement during the month of December as they conduct their annual "Holiday Homecoming" campaign.

Some 14 Spearman businesses will be participating in the "Holiday Homecoming" that features weekly drawings for \$50 gift certificates.

Drawings will be held on each Saturday beginning December 3 and ending on December 24. The location of the drawing will alternate between the Chamber office (downtown) and the Plains Shopping Center. It (the drawing) will be conducted at 11 a.m., and persons must be present to win.

## Gruver 8th grade takes tour to historical museum

The Gruver 8th grade took its second field trip in conjunction with their TEAM unit "Hansford County Old and New." An earlier trip to Air Products had enlightened their knowledge of modern technology. The second trip was to the "Stationmaster's Museum." Mr. and Mrs. Wilbanks did a good job of sharing information on the exhibits and memorabilia of Hansford County to the students.

On December 17, local children are invited to come out to visit with Santa Claus as he makes his annual pre-Christmas appearance here in Spearman. He will be around the shopping center area.

Starting November 28, persons shopping at any of the participating businesses who spend at least \$10 or more will receive a ticket for the drawings. Those tickets placed in the hopper will remain in the hopper until the end of the Christmas shopping campaign. So the more you shop, the more chances you have at winning.

Each Saturday three or four \$50 gift certificates will be drawn, for according to Chamber Manager Cindy Blackman.

Participating in the "Holiday Homecoming" are Jo's This N' That, Cates' Men and Boys Wear, Celebrate, J.G.'s, The Bunkhouse, Beedy Furniture, Gordon's Drug, Kids Stuff, Lady Fair, Prairie Garden Flowers, Hickerson Jewelers, All Occasion Flowers, Earl's TV & Appliance, Alco, First State Bank, and Attic Antiques.

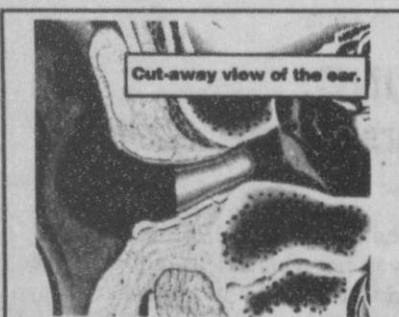
**SHOP HERE for EVERY ONE!**

**"HOLIDAY HOMECOMING"**

**Drawings for 3 or 4 \$50 gift certificates will be held each Saturday at 11 a.m., Dec. 3 thru 24. Must be present to win!**

**Santa Clause will arrive in Spearman on December 17 at Plains Shopping Center.**

<b>JO'S THIS N' THAT</b> 216 Main	<b>CATES MEN &amp; BOYS WEAR</b> 221 Main
<b>ATTIC ANTIQUES</b> 411 Davis	<b>J G'S CELEBRATE</b> 306 Hancock 203 Main
<b>THE BUNKHOUSE</b> 212 Main	<b>ALCO KIDS' STUFF</b> 521 Hwy 207 S. 719 W. 7th
<b>BEEDEY FURNITURE</b> 723 W. 7th	<b>ALL OCCASION FLOWERS</b> 517 Plains Shopping Center
<b>EARL'S TV &amp; APPLIANCE</b> 106 E. Kenneth	<b>LADY FAIR</b> 719 W. 7th
<b>HICKERSON JEWELERS</b> 721 W. 7th	<b>GORDON'S DRUG</b> 314 Main
<b>PRAIRIE GARDEN FLOWERS</b> 209 Main	



### Miniscopic Deep-Canal Hearing Instrument Now Available

Our office is happy to announce that we are currently fitting a completely in-the-canal hearing instrument. This remarkable new hearing instrument is discreet and comfortable to wear. It's placement deep in the canal of the ear (see illustration at top) makes it barely visible. Others may not recognize you are wearing a hearing aid.

The Miniscopic is the smallest hearing instrument ever manufactured by NU-EAR. Call now to schedule an appointment for your hearing assessment and consultation.

Hearing tests are for hearing aid selection and not for medical diagnosis of hearing loss. © 1994 NU-EAR/01201944

**HIGH PLAINS HEARING AID CENTER**  
Golden Spread Senior Citizens Room in the O'Loughlin Community Center  
**Every 2nd & 4th Tuesday**  
2:00 p.m. to 4:00 p.m.  
274-5311  
1-800-753-1696  
659-3866

\*\*\*  
Oh, to be only half as wonderful as my child thought I was when he was small, and only half as stupid as my teenager now thinks I am.  
—Rebecca Richards

## LOZANO'S RESTAURANT

511-D • Plains Shopping Center • Hwy 207 S.  
806/659-2002

Serving Lunch Specials from 11 to 2

**Monday:** Enchilada Plate--\$3.95  
**Tuesday:** Combination #2 (1 enchilada, 1 chile relleno, 1 taco)--\$3.95  
**Wednesday:** Burrito Supreme--\$2.50  
**Thursday:** Taco Plate--\$3.95  
**Friday:** Combination #1 (2 enchiladas, beef or cheese, and 1 taco)--\$3.95

Order early for your holiday tamales or enchiladas (by the dozen).

**STOP BY AND CHECK OUT THE GREAT BUYS AT YOUR HOMETOWN DEALER...**

## GILLASPIE AUTO & TRUCK CENTER

- 1993 CHEVROLET CAPRICE--\$12,900**  
4 door, V8 automatic, pwr windows/locks, A/C, AM/FM stereo w/cass., 23,000 miles, factory warranty remaining.
- 1993 CHEVROLET CAVALIER--\$8,900**  
4 door, air, automatic, pwr door locks, tilt/cruise, 2 to choose from, EZ monthly payments, factory warranty remaining.
- 1993 CHEVROLET LUMINA--\$10,900**  
4 door, white, very well equipped including V6 automatic, A/C, AM/FM cassette.
- 1993 CHEVROLET CORSICA--\$9,500**  
4 door, V6 automatic, A/C, AM/FM cassette, tilt/cruise, factory warranty remaining, bucket seats, EZ monthly payments.
- 1992 FORD TEMPO--\$6,500**  
2 to choose from, great gas mileage, EZ payments!
- 1991 FORD TAURUS GL--\$7,500**  
56,000 miles, V6 automatic, tilt/cruise, cassette, pwr windows/locks, maroon.
- 1990 OLDS CUTLASS SUPREME--\$5,900**  
White and gray, tilt/cruise, AM/FM cassette.



## HOLIDAY GIFT IDEAS !!

Come by the Parts Department to pick out your selection of our collector series toys & banks, the perfect gift for your Christmas shopping list!!!

**GM ACCELERATED EARNINGS NETWORK 10%**  
The GM Card Up to 10% On Parts & Service

**GILLASPIE**  
AUTO & TRUCK CENTER, INC.  
CHEVROLET, OLDS, BUICK, PONTIAC, CHRYSLER, PLYMOUTH, DODGE  
Highway 207 South • P.O. Box 430  
Spearman, Texas 79081





**GRAND TOUR** - The Hansford County Hospital had several little visitors last week, as shown here. Mrs. Reid's class visited the hospital and were given the grand tour. They were shown everything from the x-ray machine to the emergency room, and the youngsters even got to take home plastic gloves and hats. (Photo by Chad Davis)

## Gruver Council hires new chief

The City of Gruver met in regular session on November 16, at 5 p.m. at the City Hall with the following members present: Archie Nelson, Mayor; A. J. Ratliff, City Manager; and Roy Mayhew, Commissioner.

The minutes of the regular meeting October 12, and emergency meeting October 24, were read and

approved.

The accounts payable for the month of October were read and approved.

The City Commission hired Nick Jordan as the new police chief, to replace former Police Chief David Rosser who resigned on October 24. Linda Weller was also appointed to replace Marlyn Been as City

Records Management Officer. Been is retiring at the end of the year.

Bill Kelly from the Hansford Golf Club spoke to the commission about a possible intervention into the operation of the golf course. This was discussed by the commission but no decision was made. The meeting was adjourned.

### BOB JOHNSON MOTOR COMPANY IN BORGER



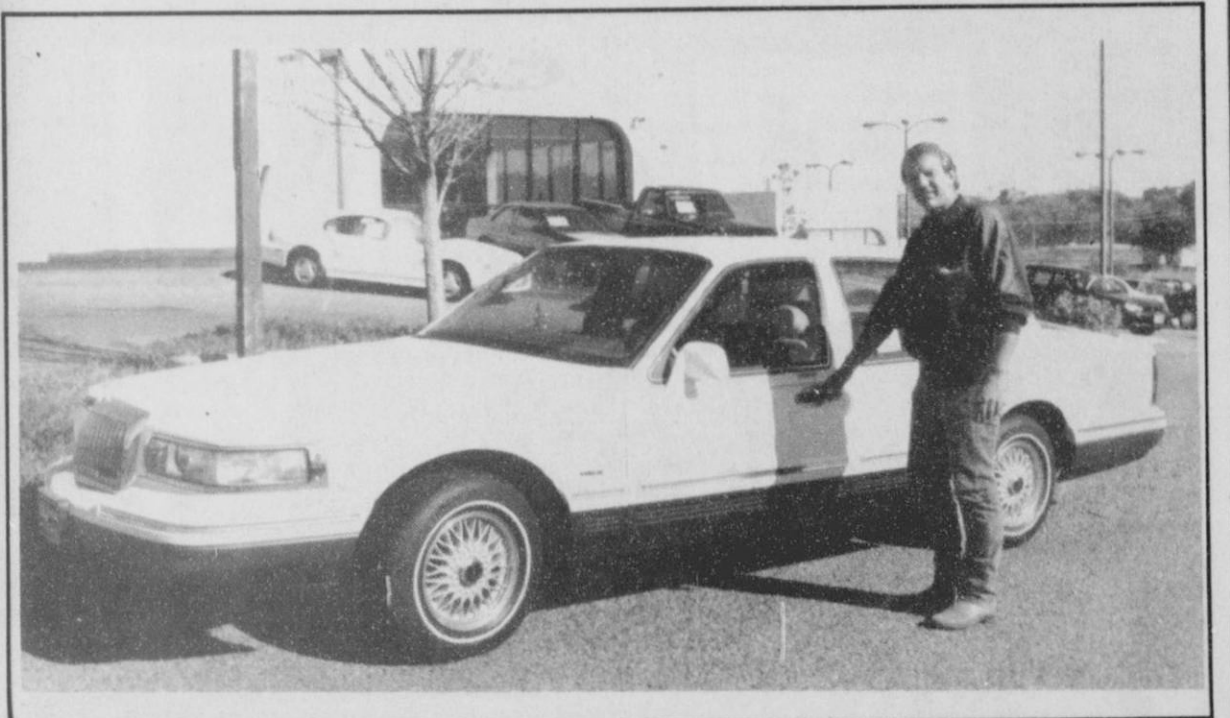
FORD • LINCOLN  
MERCURY



CHRYSLER • PLYMOUTH • DODGE



For all our luxury car needs come by and visit  
**JOHN CRAWFORD,**  
**1993-1994 SALESMAN OF THE YEAR**  
at Bob Johnson Motor Company  
in Borger, TX.



273-7541

**Bob Johnson**  
MOTOR COMPANY

West  
Hyw. 136

SALES (800)753-5370  
PARTS (800)999-3042

## Among The Neighbors

by Helen Fisher

Lois and Woodrow Gibner returned last Wednesday from Oregon where they attended the wedding of their granddaughter. Allysa, daughter of Linn Gibner and Karen Blum, was married to Chad Lemire in a wedding at Vancouver, Washington.

Linn lives at Portland and Vancouver is just over the state line in Washington.

The wedding on Saturday, November 12, was lovely with Lynsey, sister of Allysa, serving as a bridesmaid, and her brother, Kelly serving as an usher.

The Gibners were in Portland when word of the passing of his nephew, Jerry Gibner, of Albuquerque reached them. His funeral was also the afternoon of November 12. The Gibners regret that they were unable to attend the services.

Joyce Frost was in Garden City, Kansas, Monday before last to be present when her daughter, Tracie Keetch Burcham, underwent surgery.

The surgery was successful and her recovery was rapid. She and Joey Burcham and their children, of Sublette, spent the weekend with Harold and Joyce Frost.

No, that is not earth tremors--it is long-gone congressmen, whirling in their graves--those who enacted the immigration laws. News accounts of those aliens, flaunting their illegal status, demonstrating and demanding more concessions and contributions--what next?

Elsewhere in this issue will be a detailed account, by the able writer Joanne Eaton, regarding the ceremony Saturday morning at the Stationhouse Museum. The Margaret and Harry Shedeck Wagon Barn was dedicated.

The attendance was affected by the inclement weather but those present were well rewarded by an excellent dedication program, led by Johnnie Lee and J.D. Wilbanks. Other speakers added to the interest of the occasion.

Much enjoyment for all, of course, was talking with old friends and examining the exhibits. This was a memorable occurrence for the public and was totally provided by the plans, efforts, and physical labor of the board of the historical society. Certainly all the citizens of Hansford County are indebted to them.

See NEIGHBORS, page 8

# This Christmas, Make A Difference for Just \$99!

With The \$99 Difference Maker From Dobson Cellular,  
Security and Convenience Are All Wrapped Up!

Of all the reasons to have a cellular phone, Christmas reminds you of the best reasons: Your Spouse, Family and Friends! And now, real security and convenience come gift-wrapped with a \$99 Motorola® cellular phone (installed, transportable or hand-held) and dependable Dobson Cellular service!

For Just \$99, Ho, Ho, Ho, On The Go!

The affordable, \$99 phone is only half the Christmas story. Difference-making Dobson Cellular service is the other half, with unique features like:

- The PerfectPlan™ or PerfectPlan+™ airtime plans
- Money-saving 48-State Toll-Free Long Distance service
- AutoHelp™, the 24-hour roadside assistance program
- RoadRoamer™ Network's 150,000 square miles of Automatic Call Delivery convenience
- FREE Area Code (405) and (806) long-distance calls
- Local sales, service & on-site cellular technicians

'Ho, Ho, Ho On The Go' With The \$99 Difference Maker!

1-800-882-4154

DOBSON  
CELLULAR SYSTEMS

Airtime not included. Certain terms and conditions apply.

Authorized  
Agents:

**GRUVER CELLULAR**  
733-2180

**W.T. SERVICES**  
273-2092

**SETLIFF CELLULAR**  
733-2180

**CELLULAR COMMUNICATIONS**  
659-2848





**NEW OWNERSHIP** - Gruver Floral announced its new ownership with a ribbon cutting recently. The floral business is located at 502 Main Street in Gruver. Present to officially welcome the business to the Gruver community were (from left) Mike Yanke, Evalyn Dahl, Paulette Watkins, Verlene Bass, Michelle Bass, Sara Bass and Al McNeeley.



**RIBBON CUTTING** - The Hitch in Nail/The Body Works in Gruver held ribbon cutting ceremonies recently to officially announce the new business to the area. The two businesses are located at 417 Main in Gruver. Pictured at the ribbon cutting are (from left) Mike Yanke, Joby Cooper (owner), Janie Jeffries, Angie and Breann Jordan, Mike Floyd, and Al McNeeley.

## Local 4-H learn gun safety tips

Hansford County 4-H clubs met Tuesday, Nov. 8 to learn about gun safety through a program presented by area game warden, James Wilson.

Seventy-five youths and parents from Spearman and Gruver gathered in the Homemaker's Clubroom for the group meeting.

The following are the "10 commandments of shooting safety" discussed by Wilson.

- (1) - Treat every firearm with the same respect you would show a loaded gun.
- (2) - Always point the muzzle in a safe direction.
- (3) - Be sure of your target and what is in front of and beyond your target.
- (4) - Unload firearms when not in use.
- (5) - Handle firearms and ammunition carefully.
- (6) - Know your safe zone-of-fire and stick to it.
- (7) - Control your emotions when it comes to safety.
- (8) - Wear hearing and eye protection.
- (9) - Don't drink alcohol or take drugs before or while handling firearms.
- (10) - Be aware of additional circumstances which require added caution or safety awareness.

## HENSON CHIROPRACTIC

410 S. Davis • Spearman, Tx.

Call for Appointment • 659-5603

OFFICE HOURS:

Monday, Wednesday & Friday 9:00 to 5:00  
Tuesday & Thursday 9:00 to 11:30

## SUTPHEN'S BBQ

303 N. Cedar • Borger, TX  
806/273-6442

### Catering

25 People or More  
\$5 per plate  
(choice of 2 meats)

• BBQ Brisket • BBQ Chicken • Polish Sausage • Ham • BBQ Chicken Strips •

With all the trimmings!

• Onion Rings • Potato Salad • Cole Slaw • Beans •

Coffee or Tea

\*Fruit Cobblers Available\*

### CHRISTMAS DINNER

Turkey & Smoked Dressing and all the trimmings plus dessert for \$7 per person.

## Don't Waste Your Energy On Your Neighbors.



Texas-New Mexico Power Company makes sure you have reliable power, plus free information on controlling your energy budget. ★ For example, adequate insulation is one of the most effective ways you can save energy. It keeps warm air out of your house during the summer and in your house during the winter. ★ Call your local TNP office for your free Energy Management Guide.

 Texas-New Mexico Power Company.

## City parks not up to ADA standards

The governing body of the City of Spearman met in regular session on November 15 at the City Hall.

The meeting was called to order, and the invocation and pledge were done.

The minutes of the regular city meeting held October 18, and the

minutes from the special meeting on October 24, were read and approved.

A monthly report for October was given on the departments of; fire, ambulance, police, municipal court, animal control and solid waste. It was approved.

The monthly bills for October and the current cash position was considered, and the bills were paid.

A request from the Airport Advisory Board to reduce T-hanger rental rates was discussed by the council but no action was taken at this time.

The council approved the purchase of radios for the Utilities Department from WT Services, Ama-

rillo for \$12,724.

A report from city staff on the Americans with Disabilities Act (ADA) was presented to the council. The report showed that it would take \$40,000 to get the city buildings and the city parks up to ADA standards. The council approved the report and will phase the repairs into the budget over a number of years.

The council discussed the purchase of five red oak trees to be planted in Holton Park. The purchase was awarded to D & C Greenhouse in Spearman for the amount of \$575.00.

There was no other business, so the meeting was adjourned.

## Neighbors

CONTINUED FROM PAGE 7

The Shedeck family is appreciated for their donations of the exhibits.

\*\*\*\*\*

Leona Sikes and her friend, Altha Brock, of Portales left Sunday afternoon after a weekend here.

Mrs. Brock visited in the home of her sister, Faye and James Cunningham. Mrs. Sikes was here for the dedication of the wagon barn in memory of her parents, the Harry Shedecks. She was a guest in the home of her sister, Dolly and Jack McWhirter.

\*\*\*\*\*

Another foot in the door by government encroachment on business-the Governor proudly signed a law forbidding, among other items, the insurance companies to give a discount to owners of fleets of vehicles-claiming that is discriminating against owners of one vehicle.

So now, farmers, next it will be illegal to buy oil by the case-price might discriminate against one who buys just one quart!

\*\*\*\*\*

Late word as this issue goes to press is that Bob Thuett of Morse was found dead in his field late Monday. No details are available as yet. His widow is the former Elav Jean Dixon of Morse.

\*\*\*\*\*

Wishing for readers-a sincere Thanksgiving.

\*\*\*\*\*



South of Plains Shopping Center  
721 W. Seventh • Spearman, Texas 79081 • Phone 659-3566  
1-800-800-1716

- Fast Approval
- No Annual Fee
- Payments As Low As \$15 Per Month
- High Credit Limits
- Won't Tie Up Credit on Your Bank Cards
- Chargecard Insurance Protection Is Available

**Turn It On Today!**

**90 Days Same As Cash**

## New Year's Eve DINNER, GAMES, DANCE & SILENT AUCTION

DATE: SATURDAY, DEC. 31, 1994

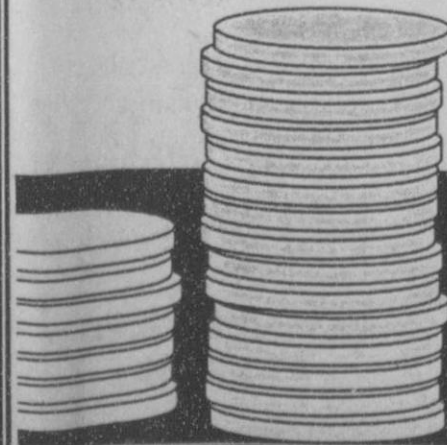
TIME: 6:30 PM - 1:00 AM

PLACE: O'LOUGHLIN COMMUNITY CENTER

TICKET PRICE: \$75 CHAMBER MEMBERS, \$80 NON-MEMBERS

MEAL PROVIDED BY KNIGHTS OF COLUMBUS

SPONSORED BY THE SPEARMAN CHAMBER OF COMMERCE





# Sports

## Gruver Hounds play hard

The Gruver Greyhounds are playing hard against some very tough competition early in the season, and they won their first game over the Claude Mustangs this past Tuesday, November 22 at Greyhound Gym to go 1-2 on the year.

This past Friday, November 18 at Greyhound Gym the Hounds played up in class for the second straight time this year, losing to the AAA Sanford-Fritch Eagles 69-55. Everyone could see how hard the Hounds were playing, and that did not go unnoticed by Coach Tim Garland.

"We played very hard," said Coach Garland. "Against their size, we played especially well. We pushed the ball well, and took good

shots. Very importantly, we played with effort from start to finish. We ran and ran hard, and may have run out of gas. But it was a good all-around effort, and everyone contributed and contributed well."

It was the second straight game that the Hounds had a lead, but as Coach Garland said, ran out of gas. Against Dumas, after taking a six point lead at the end of the third quarter, they were outscored 24-6 in the fourth quarter. Against Fritch, after taking a 37-35 in the third quarter, they were outscored for the remainder of the game 34-18. But Dumas and Fritch were tough competitors. And Coach Garland mentioned that the victories will start coming regularly in January.

The game was tied 33-33 at the half, but Jace Dawson opened the third quarter with a jumper to give Gruver a 35-33 lead. Fritch scored to tie it again, then Travis Ferguson hit a jumper to give the Hounds the 37-35 lead with 6:56 left in the third quarter. That was it for the Hounds.

Fritch then scored ten straight points to break the game open, with a 45-37 lead. The Hounds fell behind by 13, rallied to within 7 with 1:20 to go, but in the end, fell by 14 points.

One very good stat is that the Hounds were 8-11 (73%) from the free throw line.

On Tuesday, November 22, victory finally came the Hounds way. They drilled the Claude Mustangs at Greyhound Gym 58-45, at one point holding a 20 point lead.

Jace Dawson was superb early on, scoring six first quarter points, and leading the hounds to the early lead. The game was tied 6-6 when Dawson hit a jumper with 2:47 left in the first quarter to give the Hounds the lead in the game for good, 8-6. At one point in the third quarter, it was 40-20 in favor of the Hounds.

At that point, it can be said that these Gruver Greyhounds were reminiscent of the Houndball teams of the late '80s and early '90s. They were playing awesome defense, and passing the ball with great skill. And they were shooting well. Roma Tomlinson was awesome, hitting a pair of high, arching treys that reminded one of a former Hounds great of the late '80s, Troy Seagler.

The Hounds will next be playing Berger on Tuesday, November 29 at the Tex Hanna Fieldhouse in Berger.

**Hounds (0-2)  
vs Sanford-Fritch  
Friday 11-18-94**

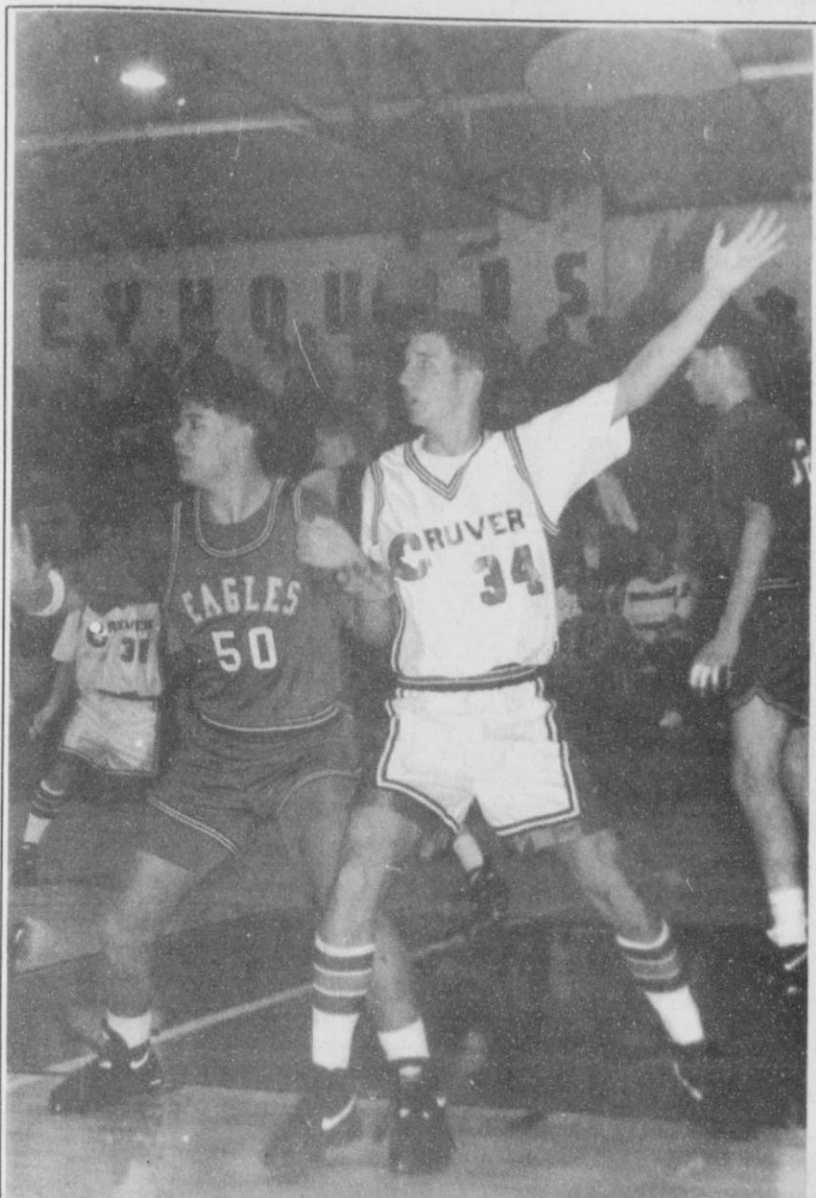
at Greyhound Gym  
Sanford-Fritch 17 33 45 69  
Gruver 19 33 41 55  
3-Pointers - Travis Ferguson-2,  
Roma Tomlinson.

Gruver - Jace Dawson-12,  
Ferguson-12, Tomlinson-7, Wylee  
Maupin-6, Eric Wright-6, Sammy  
Renteria-4, Ricardo Soto-4, Phil  
DeLaCruz-2, Kevin McNett-2.

**Hounds JV (4-1)  
vs Claude  
Tuesday 11-22-94  
at Activity Center  
Claude 12 21 25 40  
Gruver 18 29 51 72  
3-Pointer - Blake Ferguson.  
Gruver - Brant Armes- 18, Juan  
Arreola-16, Scott Jarvis-8, Daniel  
Bort-6, Tucker Henson-6, Tye  
Womble-6, Ferguson-5, Heath  
Tolleson-4, Doug Gumfory-2, Buster  
McLain-1.**

**Hounds (1-2)  
vs Claude  
Tuesday 11-22-94  
at Greyhound Gym  
Claude 8 18 30 45  
Gruver 13 34 47 58  
3-Pointers - Roma Tomlinson-2,  
Sammy Renteria.**

Gruver - Jace Dawson-10, Wylee  
Maupin-9, Travis Ferguson-8,  
Tomlinson-8, Renteria-7, Phil  
DeLaCruz-6, Aaron Frick-4, Josh  
Mayhew-4, Eric Wright-2.



GIVE ME THE ROCK - Gruver's Wylee Maupin tries to work for position against one of the Sanford-Fritch players last Friday during hoop action. Maupin had a tall order in the non-district game as he had to keep all three of the Eagles taller players in check. Despite his efforts the Greyhounds weren't able to get by the Eagles as the lost 55-69. (Photo by Daniel Ramos)

## Lady Hounds remain 3-0, defeating the Eagles

The Gruver Lady Hounds remained perfect on the year going 3-0, with victories over the Sanford-Fritch Lady Eagles and the Claude Lady Mustangs at Greyhound Gym this past week.

This past Friday, November 18 at Greyhound Gym the Lady Hounds defeated the Lady Eagles of Fritch 47-35, breaking the game open in the fourth quarter. With only a 30-28 lead starting the last quarter, Tara Shapley drilled a 3-pointer to open the fourth quarter, to give the Gruver gals a 33-28 lead. After Wendy Rodriguez put in a pair of free throws for a 35-28 lead, the Lady Hounds cruised, at one point taking a 15 point lead.

Lady Hound's managers Kimbo Wagner, Cori Lowe, and Sahala McCloy do an outstanding job, and here is some of their work. The Lady Hounds had 19 team steals against Fritch (Julie Meyer-5, Rodriguez-4), and 31 total rebounds (Meyer 5-offensive, 4-defensive; Cara Hathaway 4-offensive). To that, Coach Steve Myatt added that they had an outstanding 17 offensive rebounds as a team.

"We had only 13 turnovers," said Coach Myatt after the game, "and we forced 24 turnovers. We handled the ball a lot better than we did against Dumas."

The Lady Hounds did not shoot well, and Coach Myatt noticed. "The good news is that we took 57 good shots. The bad news is that we hit only 16." Coach Myatt knows those shots will start falling in later in the season.

The Lady Hounds were 9-15 from the free throw line (60%). According to Coach Myatt, "Our defensive intensity was much better, and our defense is keeping us in games. One of our guards, Tisha Ralston, did not play."

Referring to the Gruver gals slow start, looking a little sluggish and tentative for the second game in a row, Coach Myatt said, "We regained our aggressiveness on offense in the second half." Coach Myatt knows that by January, those good shots will be falling in, and the Lady Hounds will be looking like a top-ranked team.

Against Claude, the Lady Hounds really poured on the defensive heat for the third game in a row, in the game's late stages. With the score 43-39, 1:41 into the fourth quarter, the Gruver gals went on

See HOUNDS, page 10

## Lynxettes rope the Lady Mustangs, 80-47

Last Tuesday night, the Spearman Lynxette varsity girls hosted the Wheeler Lady Mustangs, and for a game with only 8 minutes of play, the Lynxettes destroyed the Lady Mustangs, 80-47.

Although the Lynxettes used mainly substitutions in the second half, the girls dominated every quarter with a third quarter blow-out of 20 points compared to the Lady Mustangs' 9.

Supergirl Kara Townsen blew away the rest of the pack by using her superior talents and scoring an astonishing 34 points. The only Lady Mustang even close to her was Corby Chick, who had a total of just 13 points, but Townsen had 14 in just the first quarter alone.

Showing her usual superb play-

ing ability, Ashly Shieldknight was second on points scored with 19, which was still 6 more points than Chick.

Only one other Lynxette, Shayla Barber, reached double figures with 10 points. Barber is one of the youngest Lynxette's players, but the way she moves and handles herself on the court looks as though she had years of experience.

Also seeing action in the blow-out were Macy Shieldknight with 2 points, Tara Butts with 4 points, Kiki Kelp with 2 points, Keisha O'Quin with 7 points, and Kelly Shieldknight with 2 points.

The Lynxettes will take Thanksgiving off and will resume play the 29th of November, as they will be hosted by the Lady Panthers of Panhandle

## Eagles defeat the Lynx

In spite of a last minute effort by the Lynx last Tuesday night against the Sanford-Fritch Eagles, Spearman came out on the losing end of the game by falling to the Eagles, 59-51.

The Lynx looked great as they came into the second quarter tied with the Eagles, 13-13. However, things soon changed when Spearman was out-scored the second and third quarters, 22-13. The Lynx did make a comeback in the fourth by overtaking the Eagles, 25-24.

Shad O'Quin, better known as Shadquille O'neal, played a fabulous game by knocking in five 2-pointers, one 3-pointer, and making all 5 of his shots from the penalty stripe. O'Quin is just a sophomore this year, but with games like this one, he should have no trouble

in facing older opponents.

Jarod Huddleston, the only other Lynx player to reach double figures and come close to O'Quin, finished the game with 10 points.

Clay Neff also did a great job for the Lynx, and put in two 3-pointers in the first and fourth quarters.

Heath Archer, Chad Wilkerson, and Dillon Miller, all tied the ball game with 4 points. Eric Cudd, the only Lynx freshman, put in a field goal and free shot, while Coyt Tigrett ended the game with 2 points.

The Lynx defense had trouble with the Eagles all night, with three players making double figures. W. Parks, the leader of these three, finished the game with 20 points.

Just like the Lynxettes, the Lynx will take off over Thanksgiving, and will hit the roundball court again when they take on Panhandle.

## Lynxettes come out on top

The Spearman Lynxettes were hosted by the Pampa Lady Harvesters last Friday night, and although the game was not over until the final buzzer rang, the Lynxettes came out on top, 60-54.

In spite of going into the second quarter being down by 5, the Lynxettes went on to take control of the second, third, and fourth quarters. Kara Townsen used her height

and shooting abilities to rack up a total of 19 points, which led all of the Lynxettes' scorers.

Ashly Shieldknight followed Townsen very closely by sinking in four 2-pointers, one 3-pointer, and four free shots, to give her 17 points.

Shayla Barber came in and put some aggressiveness into the game, and she was able to knock in 14 total points.

Although Serenity King put a thrashing on the Lynxette defense by scoring 24 points, the girls held King's teammates to very little scoring.

Macy Shiledknight, Tara Butt, and Samantha Beasley, all put points on the board. Shieldknight came through with 5, Butt put in a field goal, and Beasley ended the game with 3.

Open Thanksgiving for...  
"Your Shopping Convenience!"

YOUR Thanksgiving SHOPPING HEADQUARTERS

Prices Effective November 20-26, 1994  
Gruver, Spearman, Perryton, & Booker Only

SAVE ON PEPSI-COLA  
*Be young. Have fun. Drink Pepsi.*  
6 pk. • 12 oz. cans  
**\$1.99**

SHURFINE BLACK PEPPER  
4 OZ. CAN  
**\$1.99**

ALLSUP'S BREAKFAST BURRITOS  
FOR ONLY  
**99¢**

COCOA CHIP, SUGAR, OR OATMEAL  
SUNNY COOKIES  
5 OZ. PKG.  
**2 FOR \$1**

SHURFINE YOUNG TENDER TURKEY HENS  
10-14 LB. AVG.  
**59¢ LB.**

MADE TO ORDER BBQ BEEF SANDWICHES  
EACH  
**99¢**

ALL VARIETIES REGULAR OR WAVY LAY'S® CHIPS  
\$1.49 SIZE  
**99¢**

DECKER CHOPPED HAM  
10 OZ. PKG.  
**\$1.49**

SAUSAGE, Egg & Cheese or Ham, Egg & Cheese  
**99¢**

ALLSUP'S SANDWICH BREAD  
1.5 LB. LOAF 69¢ EACH OR  
**2 FOR \$1**

PLAIN OR IODIZED SHURFINE SALT  
26 OZ.  
**49¢**

WHOLE KERNEL SHURFINE CORN  
16 OZ.  
**39¢**

18 Count Eggs **99¢**

Assorted Juice 64 oz. **99¢**

Fresh cooked turkeys **\$10<sup>00</sup>**



# Basketball . . .

**Lynxettes JV vs. Borger**  
Thursday 11-17-94  
at Perryton Tourney  
Lynxettes 13 23 25 37  
Borger 6 13 19 28  
Lynxettes - Misha Davis - 20,  
Brooke Trantham - 3, Lindsey  
Smith - 2, Mindy -

**Lynxettes JV vs. Woodward**  
Friday 11-18-94  
at Perryton Tourney  
Lynxettes 12 18 24 27  
Woodward 8 22 28 39  
Teri Rickie - 2, Lacie Baker - 4,  
Lindsey Smith - 4, Carrie Berton -  
4, Brooke Trantham - 2, Mindy Ti-  
grett - 4, Misha Davis - 7.

**Lynxettes JV vs. Borger**  
Friday 11-18-94  
at Perryton Tourney  
Lynxettes 12 24 34 43  
Borger 10 18 26 44  
Misha Davis - 4, Brooke  
Trantham - 5, Lindsey Smith - 16,  
Lacie Baker - 10, Carrie Berton - 4,  
Mindy Trigrett - 4.

**Lynxettes JV vs. West Texas**  
Saturday 11-19-94  
at Perryton Tourney  
Lynxettes 14 31 53 68  
West Texas 12 26 40 55  
Teri Rickie - 5, Lacie Baker - 5,  
Mandy Lusby - 1, Jennifer Neff - 2,  
Lindsey Smith - 18, Carrie Berton -  
6, Brooke Trantham - 2, Lela Gen-  
try - 2, Mindy - 4, Misha Davis - 23.

**Lynxettes JV vs. Wheeler**  
Tuesday 11-22-94  
at Spearman  
Lynxettes 14 22 38 48  
Wheeler 8 23 32 38  
Misha Davis - 7, Brooke  
Trantham - 2, Lindsey Smith - 24,  
Lacie Baker - 5, Carrie Berton - 2,  
Jennifer Neff - 2, Lela Gentry - 2,  
Mindy Tigrett - 4.

**Lynx 7th B vs. Stratford**  
Monday 11-21-94  
at Stratford  
Lynx 8 23 28 35  
Elks 2 6 10 14  
Lynx - Landon Delozier - 4,  
Clayton Wilkinson - 10, Aaron  
Winegarner - 9, Jeremy Mackie - 4,  
M. Schoenhals - 2, J. Whitefield - 6.

**Lynx 8th B vs. Stratford**  
Monday 11-21-94  
Lynx 4 11 19 23  
Elks 3 12 20 28  
Lynx - Quintin Shieldknight - 3,  
Michael Lusby - 2, Carlos  
Hernandez - 8, Aaron Witten - 10.

**Lynx JV vs. Borger**  
Thursday 11-17-94

## Hitt takes 3rd in Allsup's roadrace

The annual Allsup's Fall Roadraces 5k was held October 22, 1994 at Clovis New Mexico at 8:00 A.M. Several area wide runners competed in the heated competition. Both man and women were able to compete in the race with age groups ranging from 14 and under to 60 and over. Cathy Hitt, age 29, of Spearman took third in the competition of several runners with a time of 25:13 in the female age group 20-29. Hitt was just minutes away from second place winner Jill Talbot of Lubock with a time of 23:36.

**The Right One**  
for quality drycleaning and laundry service.  
Shirts-Jeans Starched.  
**PERRYTON CLEANERS & LAUNDRY**  
1-800-232-5370

at Perryton Tourney  
Lynx 19 28 39 41  
Borg 15 23 30 45  
Lynx - Jamie Townsen, Blake  
Beedy - 8, Shane O'Quin - 4, Alan  
Huddleston - 6, Clint Faries - 3,  
Eric Varnon - 9, Brutt Savage - 6,  
Bill Pittman - 2.

**Lynx JV vs. Woodward**  
Friday 11-18-94  
at Perryton Tourney  
Lynx 7 13 19 35  
Wood 17 32 57 67  
Lynx - Jamie Townsen - 2, Blake  
Beedy - 13, Shane O'Quin - 5, Alan  
Huddleston - 7, Clint Faries - 7,  
Eric Varnon - 3, Britt Savage - 4.

**Lynx JV vs. Hounds**  
Saturday 11-19-94  
at Perryton Tourney  
Lynx 16 33 44 54  
GHS 9 22 39 64  
Lynx - Jamie Townsen - 2, Blake  
Beedy - 14, Shane O'Quin - 2, Alan  
Huddleston - 7, Clint Faries - 4,  
Eric Varnon - 13, Britt Savage - 8.

**Lynx JV vs. Fritch**  
Tuesday 11-22-94  
at Spearman  
Lynx 11 30 42 61  
Fritch 7 14 19 22  
Lynx - Jamie  
Townsen - 5, Eric Cudd - 7, Blake  
Beedy - 8, Shane O'Quin - 7, Alan  
Huddleston - 7, Clint Faries - 6,  
Eric Varnon - 5, Britt Savage - 10,  
Dillion Miller - 6.

**Lady Hounds 9th (1-1) vs Sanford-Fritch**  
Thursday, 11-17-94  
at Perryton Tourney  
S-F 0 6 13 24  
Gruver 13 23 28 36  
Gruver - Amber Roberts-12, Vir-  
ginia Barrera-10, Steffany Simon-  
9, Laura Garcia-4, Brandy Morris-  
1.

Synopsis: According to Coach Steve Myatt, despite having only six girls as compared to 15 for Fritch, the Lady Hounds scored the first 17 points of the game and cruised to their first victory.  
**Lady Hounds JV (1-0) vs Sanford-Fritch**  
Thursday 11-17-94  
at Perryton Tourney  
S-F 15 25 31 34  
Gruver 10 22 28 39  
Gruver - Joni Hart-13, Amy  
Gillispie-9, Mary Dawn Henson-6,  
Jill Odom-6, Crystal Christian-2,  
Robbi Mathews-2, Kathy Slough-1.

Synopsis: According to Coach Jim Davis, trailing 34-33 with a minute and a half left in the game, Mary Dawn Henson of the Lady Hounds scored the last six points of the game, and the first six points of the night for her, for the five point victory in the opener for the JV team.

**Hounds 9th (0-2) vs Perryton**  
Thursday 11-17-94  
at Perryton Tourney  
Gruver 7 12 19 28  
Perryton 10 28 45 58  
Gruver - Jared Johnson-11,  
Arturo DeLa Cruz-10, Keith  
Cassady-4, Kyle McNett-2, Rob  
Murrell-1.

**Hounds JV (2-0) vs Perryton**  
Thursday 11-17-94  
at Perryton Tourney  
Gruver 16 22 36 54  
Perryton 6 16 25 44

Gruver - Juan Arreola-13, Brant  
Armes-11, Scott Jarvis-8, Daniel  
Bort-7, Heath Tolleson-5, Matt  
Overbey-4, Tye Womble-4, Buster  
McLain-2.

**Lady Hounds 9th (1-2) vs Borger**  
Friday 11-18-94  
at Perryton Tourney  
Gruver 8 18 22 32  
Borger 15 21 25 38  
Gruver - Amber Roberts-11, Vir-  
ginia Barrera-9, Steffany Simon-6,  
Darby Johnson-5, Brandy Morris-  
1.

**Lady Hounds JV (1-1) vs Woodward, OK.**  
Friday 11-18-94  
at Perryton Tourney  
Gruver 6 12 23 34  
Woodward 11 23 34 45  
Gruver - Amy Gillispie-8, Jill  
Odom-7, Kathy Slough-6, Crystal  
Christian-4, Joni Hart-4. Autumn  
Bateman-2, Lexy Spivey-2, Robbi  
Mathews-1.

**Hounds 9th (0-3) vs Borger**  
Friday 11-18-94  
at Perryton Tourney  
Borger 7 20 30 36 44  
Gruver 10 15 24 36 38  
Gruver - Kyle McNett-15, Arturo  
DeLaCruz-8, Jared Johnson-7,  
Kevin Harris-4, Keith Cassady-2,  
Michael Minter-2.

**Hounds JV (2-1) vs Dumas**  
Friday 11-18-94  
at Perryton Tourney  
Dumas 9 24 36 61  
Gruver 13 23 33 51  
3-Pointer - Tye Womble.  
Gruver - Juan Arreola-22,  
Womble-9, Brant Armes-8, Daniel  
Bort-6, Scott Jarvis-2, Buster  
McLain-2, Matt Overbey-2.

**Lady Hounds 9th (2-2) vs Pampa**  
Saturday 11-19-94  
at Perryton Tourney  
Gruver 4 12 18 28  
Pampa 4 6 14 23  
3-Pointer - Brandy Morris.  
Gruver - Steffany Simon-13, Vir-  
ginia Barrera-6, Darby Johnson-4,  
Brandy Morris-3, Amber Roberts-  
2.

**Lady Hounds JV (2-1) vs Guymon, Ok.**  
Saturday 11-19-94

at Perryton Tourney  
Gruver 7 20 30 43  
Guymon 6 11 17 28  
Gruver - Joni Hart-14, Amy  
Gillispie-10, Jill Odom-6, Autumn  
Bateman-4, Mary Dawn Henson-4,  
Lexy Spivey-2.

**Hounds 9th (0-4) vs Highland Park**  
Saturday 11-19-94  
at Perryton Tourney  
Highland Park 14 32 46 54 63  
75  
Gruver 16 28 29 54 63  
70

Gruver - Jared Johnson-21, Keith  
Cassady-17, Kyle McNett-17,  
Arturo DeLaCruz-8, Nick Lara-5,  
Jody Robinson-2.  
Synopsis: This team, 0-4, is play-  
ing well. They lost two straight  
overtime games in the Perryton  
Tourney, one a double overtime loss.  
In the double overtime loss, a Hor-  
nets boy hit a miracle shot from  
beyond half court to tie it 63-63 at  
the end of the first overtime. The  
Hounds deserve to have a win or  
two.

**Hounds JV (3-1) vs Spearman**  
Saturday 11-19-94  
at Perryton Tourney  
Spearman 9 22 39 54  
Gruver 16 33 44 64  
3-Pointers - Brant Armes-2, Tye  
Womble.

Gruver - Juan Arreola-23,  
Womble-16, Daniel Bort-7, Armes-  
6, Scott Jarvis-4, Matt Overbey-4,  
Buster McLain-2, Heath Tolleson-  
2.

**Lady Hounds JV (2-2) vs. Claude**  
Tuesday 11-22-94  
at Greyhound Gym  
Cla 13 21 35 45  
Gru 2 16 22 32  
3-pointer Jill Odom.  
Gru - Odom - 10, Joni Hart - 8,  
Autumn Bateman - 6, Amy Gillispie  
- 3, Erin Derington - 2, Robbi  
Mathews - 2, Mary Dawn Henson -  
1.

**Lady Hounds 7th Black (2-2) vs. Guymon**  
Monday 11-21-94  
at Guymon  
Gru 13 26 43 46  
Guy 4 6 10 20

## Hounds CONTINUED FROM PAGE 9

an awesome 17-0 run, drilling the  
Lady Mustangs, leading at that  
point, 60-39.

Julie Meyer was 4-7 from the  
field, 6-6 from the free throw line,  
scored 17 points and had an awe-  
some 7 steals. Freshman Weslyn  
Maupin was also 4-7 from the field,  
and had a tremendous night on the  
boards, with 14 rebounds. Kiki  
Carthel also had some key steals,  
and 7 rebounds.

Claude led 10-8 early on, but  
Cara Hathaway hit a jumper to tie  
the game 10-10. Then it was awe-  
some, as Wendy Rodriguez and

Carthel hit back to back 3-pointers  
to give the Lady Hounds a 16-10  
lead.

But the Lady Hounds trailed in  
this game as late as the third quar-  
ter, 35-34. Claude was playing well,  
as did Dumas and Fritch against  
our gals. But when the Lady  
Hounds play defense like they did  
on this night, late in the game, they  
are an awesome sight to see.

The Lady Hounds will be shoot-  
ing for their fourth straight victory  
against the Borger Lady Bulldogs  
at the Tex Hanna Fieldhouse in  
Borger on Tuesday, November 29.

For Your  
BBQ or Smoked Turkey  
call  
**Sutphen's BBQ**  
(in the Pahnhandle for 44 years)  
806/273-6442  
303 N. Cedar  
Borger, TX

\*\*\*\*\*  
★ Jackson Welding Service ★  
★ Agricultural & Oil Field ★  
★ Welding ★  
★ 17 Years Pipe Welding ★  
★ Experience ★  
★ Fully Insured ★  
★ Contact Roy Jackson ★  
★ 659-2137 or 659-5129 ★  
\*\*\*\*\*



# Thrifty.

Everyone who owns a home of any size in Texas has asked these timeless questions. "How can I lower my home energy bills? How can I lower my taxes?" One answer is propane. Propane is the fiscally correct energy fuel that cooks your food, heats your water, dries your clothes and warms your home. Propane won't waste your hard-earned dollars and it won't pollute our Texas skies. Propane. The clean choice. The clear choice. It can lower your home energy bills. We'll get back to you about those taxes.



RAILROAD COMMISSION OF TEXAS  
James E. (Jim) Nugent, Chairman ■ Mary Scott Nabers, Commissioner ■ Barry Williamson, Commissioner  
For more information about propane, call us at 1-800-64-CLZAE.

Gru - Janae Watley -18, Krystle  
Deeds -11, Lindy Tolleson -7, Annie  
Mayhew - 4, Chelsea Hicks - 2,  
Leah Shultz -2, Amanda Snider -2.  
**Lady Hounds 7th White vs. Guymon**  
Monday 11-21-94  
at Guymon  
Gru 2 10 14 15  
Guy 3 6 18 22  
Gru - Cayla Simon - 9, Dusty  
Eckhardt - 4, Lacie Osbourne - 2.  
**Lady Hounds 8th Black (2-0) vs. Guymon**  
Monday 11-21-94  
at Guymon  
Monday 11-21-94  
Gru 2 10 14 16  
Guy 0 6 10 10  
Gru - Teresa Crow -6, Lauren  
Miller -6, Bobbi Christian - 4.

**GET THE ALCO Advantage**

**FREE EVERY TUESDAY!**  
SECOND SET OF PRINTS

Receive a second set of 3" prints FREE with any exposure roll of 35mm, disc, 110 or 126 color print film left for developing and printing at our everyday prices! C-41 process only. Excludes larger 4" size prints, and photo galaxy.

**DUKE'S CHIROPRACTIC CENTER**

**EVENING HOURS AVAILABLE**

- Headaches / TMJ
- Neck Pain / Stiffness
- Low Back Pain
- Shoulder / Arm Pain
- Hip / Leg Pain
- Family Health Care
- Pediatrics
- Athletic Injuries
- Numbness
- Gentle Treatment

AUTO ACCIDENTS • WORK INJURIES  
(Most Insurance Accepted)

**New Hours:**  
2-6 p.m. Mon. thru Fri.

**659-5505**

11 W. Kenneth • Spearman, Tx.

Darrell D. Duke DC

**Look The Competition is About to Copy Us Again...**

**Interchangeable Structural Components**

- Mainline pipes are universal and can be located anywhere in any span.
- Common Truss Supports.
- Universal Truss Rods.
- Interchangeable Tower Tops and Flexjoints.

Come see Booth #3212 at the Amarillo Farm Show, Nov. 29, 30, and Dec. 1 from 10 a.m. to 6 p.m. each day.

**Paschel Irrigation Inc.**

Richard & Arlene Paschel (806)659-5228 Hwy 15 W. • P.O. Box 69 Spearman, TX 79081

**First in Innovation and Technology**

© 1994 REINKE MFG. CO., INC. RNK 2/94



## For the Sport of it

by Bob Bort

Here is the scoop on some tournaments that the Hounds and Lady Hounds will be participating in this basketball season.

The Lake Meredith Classic at Fritch on December 1-3 will have only five teams entered. It will be a round robin tournament since there are so few teams, with the Gruver Hounds and Lady Hounds each playing four games in that tournament. The competition will be Sanford-Fritch (Thu. 12/1:30), Perryton (Fri. 3/4:30), Panhandle (Sat. 10/11:30), and West Texas (Sat. 6/7:30).

In the Amarillo Kids Inc./Toot and Totum Invitational Tournament at Caprock High School for the Lady Hounds, there are 12 teams invited, and the teams are seeded this year. The Lady Hounds are seeded second, with Amarillo High seeded first. Gruver's gals will open on Thursday, December 8 at 10:15 a.m. against 11th seeded Amarillo Caprock. They will play five games in the tournament. The championship game will be played on Saturday, December 10 at 7 p.m.

Other teams in the tournament are: 3-El Paso Hanks, 4-Amarillo Tascosa, 5-Dumas, 6-Perryton, and Amarillo Palo Duro, 8-Sanford-Fritch, 9-Happy, 10-Borger, 12-El Paso High.

If the Lady Hounds do beat the Caprock Lady Longhorns, they will be in for a probable rematch against the Dumas Demonettes on Friday at 12 noon. The Lady Hounds managed to beat Dumas in overtime at Dumas in the season opener, but the Demonettes were without one

of their starters, a 6'2" girl. It could be interesting.

\*\*\*\*\*  
The 7th grade girls beat Sunray in their opener at Greyhound Gym Monday, November 14, 53-10, not 53-19, as was reported in last week's newspaper. As good as their team is, we might as well get the scores of all their victories accurately.

\*\*\*\*\*  
The Lady Hounds have added a game to their schedule over the Christmas holidays. They will be playing the Canadian Lady 'Cats in an afternoon contest at Greyhound Gym on December 20.

The Gruver teams will not be playing this weekend. The next action for the Hounds and the Lady Hounds after the Thanksgiving holidays is on Tuesday, November 29 at Borger. The Bulldogs are still in the football playoffs, so if they win this Friday, November 25, they will be missing some players.



For Your BBQ or Smoked Turkey call

**Sutphen's BBQ**

(in the Panhandle for 44 years)

806/273-6442

303 N. Cedar

Borger, TX

## Spearman Lynx fall prey to the Broncos

Last Friday night at Pampa, the Spearman Lynx took on the Clarendon Broncos, and although the Lynx squad is chalked full of talent, they were no match for the speed demons of Clarendon, 93-57.

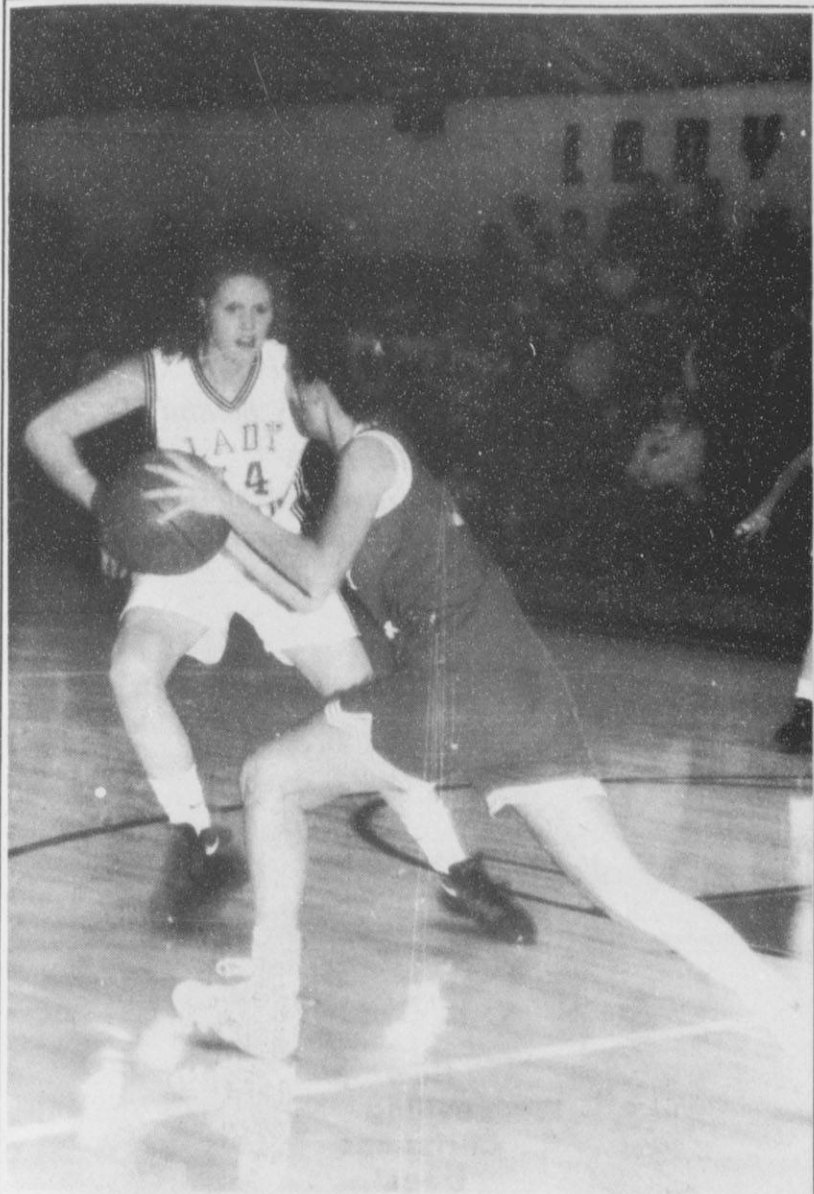
The Broncos took control of the game from the start by out-scoring the Lynx in the first quarter, 31-7. The second, third, fourth quarters were all the same, which led to such an unbelievable score.

Heath Archer came in for Spear-

man and contributed to the cause by making the most points for Spearman with 13.

The big bad boy for the Lynx, Shad O'Quin, followed Archer closely by putting 12 of his own points. Jarod Huddleston tied O'Quin on this close score.

C. Fields, the man considered by many coaches around the area as the best in Texas, had a phenomenal 38 points.



**DEFENSE** - The game between Gruver and Sanford-Fritch was a low scoring affair thanks to the stingy defense played by both squads. In the photo above Gruver's Cara Hathaway applies plenty of pressure against the SF ball player trying to move the ball up the court. The Lady Greyhounds went on to finally shake off the Lady Eagles by a final of 47-35. (Photo by Daniel Ramos)

## Chamber to hold New Year's Eve fund-raiser

Fun-filled plans are currently being set by organizers as they get ready for the Spearman Chamber of Commerce New Year's Eve get-together.

This year's fund-raising event will be held on Saturday, December 31.

The third annual event will feature dinner, dancing, games, and a silent auction.

It will be conducted from 6:30

p.m. to 1 a.m. at the O'Loughlin Center in Spearman. Tickets (for two people) are \$75 for chamber members and \$80 for non-members. The meal, which will consist of tenderloin steak, baked potato, salad and desert, will be prepared by members of the Spearman Knights of Columbus.

"This is the major fund-raiser for the chamber," said Chamber of

See CHAMBER, page 12

## Gillaspie

CONTINUED FROM PAGE 1

to them by Assistant DA Caper. Garcia pleaded guilty and was sentenced to one year confinement in the Hansford County Jail, and one year in the Ochiltree County Jail to be served concurrently.

Carlos M. Espinosa, age 35, of Spearman, was arraigned on charges of DWI. He pled guilty to the charges. He also waived his right to a jury trial and the reading of the indictment. He was on probation from a previous DWI, so his sentence was extended to compensate the revoked probation. Espinosa was sentenced to 180 days in the Hansford County Jail for the revoked probation and 180 day for the present charge, with the subtraction of time served, 65 days.

Fabian Mell Royval, age 19, of Gruver, was arraigned and confined

to the Hansford County Jail. Cecil Biggers was appointed by the court to be his lawyer. A plea of not guilty was accepted and a pre-trial date was set for January 10, 1995. Royval was remanded to jail.

Lazaro Silva Flores was arraigned on charges of indecency with a minor. A plea of not guilty was accepted and David Scott of Perryton was appointed by the court to be Flores' lawyer. Flores was remanded to the county jail.

Some of the cases were passed due to circumstances beyond the court's control. Kenneth Baltes' case was passed due to his still being held by Randle County. Andrew Jason Neal's case was passed pending the court contacting his lawyer. Rodney M. McDowell and Michael Wayne Garrard waived on arraignment.

## TNP

CONTINUED FROM PAGE 1

remaining customers will not be adversely affected."

"TNP employees in the affected communities will be offered employment by SPS," Helton said. "This will facilitate a smooth transition for the affected customer."

Helton said the SPS purchase of the TNP Texas Panhandle properties makes a lot of sense for SPS, which serve the surrounding area, and for the customer involved. "We're pleased that we will be able to provide electric service to the Panhandle communities."

The companies plan to submit a joint filing to the Public Utility Commission of Texas and the Federal Energy Regulatory commission in early 1995, with the goal of receiving regularly approvals no later than mid-1995.

Texas-New Mexico Power company is an electric utility serving 90

towns and cities with more than 215,000 customers in Texas and New Mexico. It is the principal wholly-owned subsidiary of Fort Worth-based TNP Enterprises, Inc. (NYSE:TNP). Southwestern Public Service Company (NYSE:SPS) is a regional electric utility that primarily provides electric service to a population of about one million people in a 52,000-square mile area comprising eastern and southeastern New Mexico, the South Plains and Panhandle of Texas, the Oklahoma Panhandle and southwestern Kansas. Through its Utility Engineering corporation and Quixx Corporation subsidiaries, the company also provides engineering, design and construction management services to a variety of industries and is involved in number of non-profit power generation projects. Corporate headquarters is in Amarillo, Texas.

# How Low Will YOUR FORD DEALER

## Go?



## FIND OUT DURING YOUR FORD DEALER'S AFTER THANKSGIVING SALE.

- Get each dealer's absolute lowest selling price on all Ford cars and trucks.
- Get financing as low as 2.9% APR for 48 months on America's best selling car and truck.<sup>(D)</sup>



**TAURUS**

2.9%<sup>(A)</sup>

or  
up to \$1,350 cash back<sup>(B)</sup>  
with Ford Credit's  
Red Carpet Option



**F-SERIES**

2.9%<sup>(A)</sup>

or  
\$750 cash back<sup>(B)</sup>

Save \$1,950<sup>(C)</sup>  
on the best  
selling compact  
pick-up



**RANGER XLT**

\$1,150 Option Pkg Svngs  
+ 500 Bonus Discount  
+ 300 Down Payment Assistance<sup>(B)</sup>  
\$1,950 Total Savings

**POLLARD FORD**  
Lubbock, TX  
806/797-3441

(A) 2.9% APR financing on '94/'95 Taurus and '94/'95 F-Series Reg. Cab w/4.9L engine and manual transmission (excludes supercab) varies by credit worthiness of consumers as determined by Ford Credit. 2.9% APR for 48 months at \$22.00 per month per \$1,000 financed with 10% down. Dealer participation may affect savings. (B) \$750 Cash Back. Plus \$600 RCO Cash Back for \$1,350 Total Cash Back. For Cash Back, must take new retail delivery from dealers stock by 12/31/94 for F-150 and 1/4/95 for Ranger and Taurus. (C) '94 Ranger XLT \$500 Bonus Discount with 2.3L engine and \$1,150 option package PEP 864E savings vs. MSRP of options purchased separately. Residency restrictions apply. See dealer for details. (D) Based on 1994 CYTD R.L. Polk registrations.





**NEW EXHIBIT** - Several folks braved the cold, rainy weather to attend the official opening and ribbon cutting of the Shedeck Wagon Barn at the Stationmaster's Museum in Spearman. The exhibit features an authentic covered wagon which was used by the Shedeck family. Pictured are several members of the Shedeck family who were in attendance for the event: (from left) Otto and Willie Mae Mangold,

of Pampa; Nina Evans; Cynthia Floyd; Mali Burgess, Wade Burgess and their daughter Channing; Vicki Wilson, of Fritch; Richard Shedeck; Dolly (Shedeck) McWhirter; Leona (Shedeck) Sikes, of Portales, New Mexico; and Jack McWhirter. The exhibit is open to the public. (Photo by Daniel Ramos)

You are cordially invited to attend the  
Lighting of  
Hansford Hospice

**Lights of Love Tree**  
(6:00 p.m.)

Monday, December 5, 1994  
Hansford Hospital Lawn 707 S. Roland Street  
Spearman, Texas  
Wassail served in the Gazebo following Lighting

**BOY SCOUT TROOP 551**

Now selling Christmas trees!  
721 W. 7th  
(beside Hickerson's)  
Weekdays--5 p.m. - ?  
Saturday--9 a.m. - ?

For more information call  
**Linda at**  
659-399•Day  
659-3942•Evening

## Schools considering resurfacing track

Monday, November 14, 1994, in room 114, was the site of the Spearman Independent School District's monthly meeting.

The meeting, which began around 7:00 p.m., brought up several interesting points and issues that have affected and will affect all of the Spearman campuses.

Willard Murrey, superintendent of Spearman schools, presented information concerning the 1993-94 AEIS District Report. This is a "district report card" that is

published by the TEA and will be handed out throughout the district.

Murrey also presented information concerning the use of other vehicles, besides that of school buses, to go to school-based activities. As of now, the school does not cover students on their insurance policy who are not on the buses.

In addition to these two items, the Board discussed the possibility of resurfacing the track. The Board planned a possible meeting with D.S.A. Construction Managers to

see about the cost of such a project. Several people, including members of the Board, the coaching staff, and administration, have all visited other area tracks, and it appears that Spearman's was in much need of a facelift.

Also on the agenda, Murrey reported that superintendents from PSP, Gruver, Pringle-Morse, and Spearman have all met to discuss the possibility of forming a Technology Co-operative and of hiring a co-ordinator for the project. The Board was encouraged to pursue the project.

More encouraging news from the Board was that the Food Service Program received a "perfect" from the recent TEA audit, and Mrs. Flores and her staff were commended on a job well done.

Finally, Murrey stated that the Elementary School will have an open house from 6:30 - 7:30 p.m. on Thursday, November 17th.

The Spearman School Board conducts its meetings every third Monday of each month.

## Chamber CONTINUED FROM PAGE 11

Commerce Manager Cindy Blackman.

The money raised is used for operating expenses, for workshops and other chamber items needed. "This money raised is for the use of the chamber only. It doesn't go towards anything else," Blackman added.

Persons attending the New Year's Eve bash will have several chances at winning some exciting prizes, according to Blackman.

The tickets purchased to enter the gathering will go into a hopper for the grand prize drawing. The top prize is two round-trip tickets from Southwest Airlines to anywhere Southwest flies out of Amarillo.

Tickets to Remington Park in Oklahoma City and other weekend packages will also be drawn during the night.

The silent auction will be conducted during the course of the meal; however, updates on where bids stand will be announced.

Serving of the meal will begin at 6:30 p.m. Dancing will be from 8:30 p.m. to 1 a.m. with music begin provided by Video DJ. Games will be open from 7:30 to 9:30 p.m.

Party favors and play money will be provided.

Tickets may be purchased from any chamber director or at the Spearman Chamber of Commerce. For more information contact, the chamber office at 659-5555.

## Police Report

The Spearman Police Department had a pretty slow weekend. It looks as though the recent crime spree may be over for a time at least.

Sunday, November 20 at 2:12 p.m. the Spearman police were dispatched to the 300 block of Kenneth where Marcelo Briseno Hernandez, age 26, of Spearman was arrested on charges of Driving While Intoxicated (DWI). Bond was set at \$750. Hernandez was bonded out at 6:30 p.m. Sunday night.

At 4:38 p.m. on Sunday the Spearman police were called to 100 block of Endicott to settle a family dispute. The case is under investigation.

**OPEN HOUSE SALE**

Friday, November 25 & Saturday, November 26  
10 a.m. to 6 p.m.

**POINSETTIAS**

Many sizes and varieties!  
Row ready for holiday season!  
Seven inch pot--\$10--wrapped.  
Check our quality & prices!

**D&C GREENHOUSE**  
2 miles west on Highway 15  
659-5171 • 10 a.m. to 6 p.m. Mon. thru Sat.

**WE HAVE A PULSE**

Waiting for You

We are pleased to offer our customers Pulse cards on their savings & checking accounts. These cards may be used at the corner of Avenue A and Endicott or any nationwide Pulse ATM.

**Interstate Savings**  
AND LOAN ASSOCIATION

HOME OFFICE: 3rd & MAIN - PERRYTON, TEXAS 79070  
BRANCHES: SPEARMAN, TEXAS 79081

*Interstate Savings & Loan Association - Your Hometown Savings & Loan Friend*

**IT'S NOT 'THE NIGHT BEFORE CHRISTMAS'**

But it won't be long, and as the holiday season approaches, we say **"THANKS"** for your support!

**5 Day Customer Appreciation Sale**

Friday, November 25 - Wednesday, November 30  
Buy any regular priced fall and winter item and get a second item of equal or lesser value for half price. Dooney & Bourke and Estee Lauder not included.

**Layaway & Free Gift Wrapping**

**Kids' Stuff & Lady Fair**  
719 W. 7th • Spearman, Texas



**"IT'S FOR YOU"...**

The Classifieds Have Something For Everyone!

The Home Seller...  
The Car Buyer...  
The Do-it-Yourselfer...  
The Mother's Helper...  
The Job Seeker...  
The Bargain Reaper...

When you want results, turn to The Classifieds.

# The Hansford County Reporter-Statesman

Serving Hansford County Since 1907

Telephone: 1-800-395-9482 or (806)659-3434

**REAL ESTATE**

**AA Realty**

Allen Alford - Broker - 659-3034  
Julie Martin - Sales - 659-2425  
Larry Trosper - Sales - 659-3491

1017 Townsend - 3/2/1 - New lower price!  
1103 S. Townsend - 3/1 1/2, good loc.  
510 S. Endicott - 3-2, 2 story  
417 S. Dessen - 3, 1 3/4, 1 garden, pati.

NEW LISTING  
1117 Townsend - 3, 2, w/basement  
1107 S. Barkley - 3, 1/2, 2, BELOW APPRAISAL!

Good Hanger & Storage - Old Airport  
1017 Wilmeth Dr. - 5/2/2, two story w/bsmt  
412 Roland - 3/1/1, make offer

FOR QUALITY & SERVICE CALL US TODAY  
We Need Your Listing.

**FOR SALE BY OWNER** - 3 bedroom, 1 1/2 bath, storm door and windows, fireplace, ceiling fans, 14 closets, 1 car garage, 1728 sq. ft. \$35,000 - 605 Cluck, Gruver. Call 733-2015. S28, 3tp RTN

Three Bedroom Brick, two baths, double garage, lots of trees, 1.8 acres, horse barn, 26 by 36 shop. 205 E. 10th, Gruver, Texas. Call J. W. Whitaker at 733-2433. Also 1983 Coachman Motor-home. S30, 1tp/RTN.

**FOR SALE:** Brick, 3 bedroom, 1 1/2 bath, storm windows, elec. fans, attached garage, store room, RV shed, fenced yard. 659-3353. S55, 1tp

**THREE ADJACENT HOUSES FOR SALE - A.** 620 S. Bernice, 2400 sq. ft., \$30,000 - currently occupied by seller. B. 620 1/2 S. Bernice, 1200 sq. ft., \$15,000 - currently rented at \$300/mo. C. 608 S. Bernice, 1500 sq. ft., \$27,500 - currently rented at \$300/mo. Properties A&B together \$39,500; All three properties as a unit, \$65,000. Assumable loans. For more information contact Ed Pearson at 806/659-3851. S31, 1tc RTN

**GREAT HOUSE IN GREAT LOCATION FOR SALE**  
2100 sq. ft., basement, double car garage, 4 bedrooms, 3 baths, big den, fireplace, living room, ceiling fans, central heat and air. 702 Gibner. Call 659-3838, 659-3970, or 733-5555. S42, RTN

**FOR SALE-No Sign:** 3 bedroom, 1 3/4 bath, 1450 sq. ft., remodeled kitchen, 12x12 covered deck, \$31,500. Not for rent/407 W. 12th. Call 659-3956. S48, RTN

**HOUSE FOR SALE:** 3 bedroom, 1 bath with attached garage, private fenced back yard, built-in appliances. Call 659-3523. S53, RTN

**HOUSE FOR SALE: REDUCED!!!!** 5 lots fenced, 2 car carport, shed, hot tub, fish pond, 3 bedroom, 3 bath, handicap accessible, large LR, bar. \$29,000. 605 S. Archer. 659-2235. S55, RTN

**FOR SALE:** 3 bedroom, 2 bath, carport, privacy, fenced, large storage shed, C-8H, trees, fish pond, new paint, dishwasher and stove, \$26,500. 807 Archer. For appointment call 659-2448. S56, 2tc

**REAL ESTATE**

**Century 21**

**GOLDEN SPREAD REALTY**  
Janye Helton Pointer, Broker Owner  
435-5444

712 Collier - 2/1/2, Owners anxious to sell!

117 Brandt - 3/1, REDUCED to \$27,500--immediate possession!  
**Crawford Addition:**  
2 - 1 3/4 • Will look at all offers!  
2 - 1 • Small and affordable!

205 Hazelwood - Great buy, excellent condition.

315 1/2 N. Bernice: Lot for sale.  
East 7th Street - 9 mobile home lots. Buy one or all!

© and TM trademarks of Century 21 Real Estate Corporation. Equal Housing Opportunity INDEPENDENTLY OWNED AND OPERATED

**HOME FOR SALE: REDUCED, REDUCED, REDUCED!!!!** 2400 sq. ft. 3 bedroom, 3 bath, large living area, inside grill, two door refrigerator, dishwasher, furniture (opt.), 6 ft. picket fence-steel posts. Garden area 640 sq. ft. Self sustaining pond 13x15, 300 sq. ft. deck with hot tub, walking and bicycle track, cabanna bar, out building, 160 sq. ft. storage, 9 hole golf course with 210 ft. stream and 5 ponds. Large carport, 24x24. Total under roof 3000 sq. ft. Property offered at \$29,000. Shown by appointment 806/659-2235. S56, RTN

**HOUSE FOR SALE:** 3 bedroom, 1 bath, attached garage, nearly new heating and cooling unit, with major appliances and furniture. 408 S. Barkley, call 659-3464. S57, 6tp

**HOME FOR SALE:** 1,100 sq. ft., 3 bedroom, Lubbock built home to be moved by March 15, 1995. All offers considered. Call Tommy or Sharon Saltzman at 806/733-2809. S57, 14tc

**FOR RENT**

4 BDR: 3 B: 2 living areas, kitchen dining area, utility room with cabinets, panel sunroom, storm cellar, fenced backyard. \$500/month at 703 Steele Dr. Call 802-365-9742.

**FOR RENT OR FOR SALE:** Three bedroom, 1 3/4 bath, attached two car garage, fenced back yard. Call 659-3017. S54, 1tp

**OFFICE SPACES FOR RENT!!!!** 1-Newly remodeled 439 sq. ft. office, \$200 per month. 2-144 sq. ft. offices, \$75 each month. 1-240 sq. ft. office, \$125 per month. All bills are furnished. Please call 659-3133 or come by 307 W. Davis. S56, 3tp

**Are You A Victim of Physical Abuse?**  
Call Toll Free 1-800-753-5308

We are in Spearman on the 1st, 3rd, & 5th Wednesdays of each month at the First Presbyterian Church, 1021 Collier. On the 2nd & 4th Wednesdays we are at the First Christian Church at 510 King in Gruver. We can come to Spearman & Gruver any time upon request. We operate a safe place for victims & their children to stay in times of crisis.

**Panhandle Crisis Center**  
Serving Hansford, Lipscomb & Ochiltree Counties  
317 S. Main Memorials Accepted Perryton, Tx.

**FOR RENT**

**FOR RENT:** Trailer park spaces for rent. Located on S.E. 7th and Loop road, Spearman. \$30 per month. Call 435-5080. S23, 1tc/RTN.

**FOR RENT:** One bedroom newly decorated, furnished apartments, utilities paid. Call 659-3260. S47, RTN

**RENT TO OWN:** 3 bedroom, 1 bath, brick, carport, central air and heat, fenced back yard. See at 1004 Townsend or call 659-2245 or 435-8746. S50, RTn

**FOR RENT:** Small efficient apartment, very clean, nice neighborhood. Can be seen at 119 S. Snider or call 659-2039. S56, 1tp

**SERVICES**

**SERVICES:** Willing to do your Christmas decorating indoor or outdoor. Hanging lights, ornaments, etc. Call Ashley Baker at 659-2634. S57, 1tp

**PITS CLEANED:** Dragline or Loader. Call LeeRoy Mitchell, 733-2384 or 733-2175. S47, 1tc/RTN.

**CALL YOUR LOCAL Used Cow Dealer** for days a week stock removal. 659-3544 or 1-800-692-4043. Serving Cattlemen for the past 20 years. G51/RTN.

**J & M Service Center 24-Hour Service** 415 Collard, Spearman 79081. 659-5519 or 659-3352. Tires, flats, oil & lube, wash, brakes, batteries and minor repairs. Now selling gas. S27, 1tc/RTN.

**Free Bible Correspondence Course.** Write P.O. Box 604, Perryton, TX 79070. S46, RTN

**CLIFCO WINDSHIELD REPAIR SERVICE**  
Don't replace your damaged windshields. Mobile service: 435-0126. Home phone: 435-9149. And toll free at 1-800-753-9849. Ask for Clifford Cox. S43, RTN

**AUTOMOBILES**

**FOR SALE:** 1984 Ford Truck with 20' van and lift. V-8 diesel engine. Excellent condition. For more information call 659-3432 or 659-2912. S52, RTN

**FOR SALE:** 1979 Chevy Fleetside pick-up with new GM issue 350 motor, twin fuel tanks, custom rear bumper for trailer towing, 410 gears, AC, automatic transmission and nearly new tires. Asking \$3750. Call 659-3649 or see at 303 S. Hazelwood. S56, 3tp

**MISC. FOR SALE**

**USED FURNITURE FOR SALE:** Come look at our variety. Call 659-5034 after 7:00 p.m. S57, 1tp

**FOR SALE:** Six-piece sectional couch. Includes queen sleeper, recliner and ottoman. Call 733-2271. S57, 2tp

**FOR SALE:** Nintendo Entertainment System with two regular controllers, turbo controller, zapper gun, and 14 games with storage box. \$75. 659-2518, after 5 p.m. 659-3506. S56, 2tp

**MOTORCYCLE FOR SALE:** Honda Twin Star 200, maroon red, 13,161 miles, tires in great shape, and new chain. Asking \$550. Call 659-3649 or see at 303 S. Hazelwood. S56, 3tp

**FOR SALE**

**BUY DIRECT FROM GROWER:** Locally grown poinsettias, florist quality at wholesale prices, quantity discounts. D&C Greenhouse, 806/659-5171. S55, 4tc.

**FOR SALE:** 6 man hot tub, like new \$2500. Call 5016. S53, RTN

**NEW TRAMPOLINES**  
Mats & springs  
Resew trampoline mats.  
Make new boat covers.  
Call (806)659-2109  
Harry Stumpf  
301 W. 12th  
Spearman, Texas

**HELP WANTED**

RN's and LVN's  
Join the staff of one of the Panhandle's finest facilities. SNF certified. Excellent LVN and CNA staffing. Non-profit with hospital attached. Outstanding survey history. Highly competitive salary and benefit package. Relocation and commuting assistance. Great quality of life for families. Send resume to:  
Linda Sanders, Personnel Director,  
Hansford County Hospital District,  
707 S. Roland, Spearman, TX 79081  
806/659-2535

**HELP WANTED:** Hiring two flaggers and laborers for state highway work, \$6.50 an hour. Work starts Dec. 5, 1994. Leave Name and phone number at City Hall, 108 E. Broadway, Gruver, TX 79040. S57, 2tc

**HELP WANTED:** Part time dispatcher. Can work into full time position. On the job training. Apply at Hansford Co. Sheriff's Dept. S53, 3tc

**POSITION AVAILABLE:** Experienced feed truck driver. Apply in person at Palo Duro Feed Yard. S55, 3tc

**FUEL TRUCK DRIVER NEEDED:** CDL a must. Interested persons may apply at Spearman Equity. S56, 1tc

**DRIVER NEEDED:** Home daily, Class A CDL with hazmat required. Tanker experience necessary. Call 1-800-531-5960. S56, 4tc

**HELP WANTED:** Part-time attendants wanted to help with the handicap and elderly. Call Caprock Primary Home Care at 352-8480. S54, 2tc

**HELP WANTED:** Texas Refinery Corp. needs mature person now in Spearman area. Regardless of training, write W.G. Hopkins, Box 711, Ft. Worth, TX 76101. S54, 4tc

**ROUTE SALES SCHWAN'S HOME FOOD SERVICE**  
Paid Vacations/Excellent Benefits. No prior experience necessary. Must be at least 21 years of age. Good driving record and work history. For interview appointment call: 1-800-437-2068  
An Equal Opportunity Employer

**NOTICE**

The Spearman Housing Authority is now taking applications for residents. Eligible applicants will be placed on a community-wide waiting list. Families with the following incomes are especially needed for occupancy at the Housing Authority:

FAMILY SIZE	From	To
1 Person	\$11,800	\$18,850
2 Person	\$13,500	\$21,500
3 Person	\$15,150	\$24,250
4 Person	\$16,850	\$26,950
5 Person	\$18,200	\$29,100
6 Person	\$19,500	\$31,250
7 Person	\$20,900	\$33,450
8 Person	\$22,250	\$35,600

Rent is based on family income minus allowances for children and elderly occupants. For more information, contact Gary Ellworth at Spearman City Hall or call 659-2524 from 8:00 a.m. until 5:00 p.m. Mondays through Fridays. The Spearman Housing Authority does not discriminate based on race, religion, sex, age, disability, national origin or other classification protected by federal and state laws.

**HELP WANTED**

**OWN YOUR OWN APPAREL OR SHOW STORE** Choose: Jean/Sportswear, Bridal, Lingerie, Maternity, or Accessories Store. Over 2000 name brands. \$24,900 to \$36,900: inventory, training, fixtures, grand opening, etc. Can open 15 days. Mr. Loughlin (612) 888-6555. S47, 2tp

**HELP WANTED:** Sales manager for office machine dealer. Unique advancement opportunities. Must relocate. Call 1-800-233-1247. Ask for personnel recruiter. S56, 3tc

**EXPERIENCED PUMPER:** Strat Land Exploration Company has immediate opening for an experienced oil field pumper. Minimum experience 3 to 5 years. Must be willing to locale in Spearman or Gruver. Salary and benefits are commensurate with experience. Please call 806/435-7292 or write P.O. Box 790, Perryton, TX 79070. S57, 2tc

**LOST & FOUND**

**LOST:** Large, light colored Lab dog lost in the south part of Holt Community. Please call 878-2656. S57, 2tf

**MISCELLANEOUS**

**ARE FLEA MARKETS YOUR BUY?** Give us a call at 659-3030 or write P.O. Box 733, Spearman, TX 79081. S57, 2tc

**COINS WANTED:** We need collector type coins-silver or gold bullion coins, collective or equivalent. Appraisals upon request. To buy/sell/trade call 806/658-4591.

**WANTED**

**EXPERIENCED CHILD CARE PROVIDER:** References available. Call 659-3435. S56, 3tp

**PUBLIC NOTICE**

**NOTICE TO BIDDERS**  
Sealed bids for the following equipment will be received by the City of Spearman, Texas, until 5:00 p.m., December 15, 1994, and then publicly opened and read:  
1) 52,000 lb. GVW truck cab and chassis and  
2) 33 cubic yard side load automated compaction body.  
The City reserves the right to reject any or all bids, to waive informalities, and to accept the bid deemed to be the most advantageous to the City. All bids received after the closing hour will be returned unopened.  
All bids shall be sealed and marked on the outer envelope "Truck, Chassis and Compaction Body". Specifications and bidding documents may be secured from City Hall, P.O. Box 37, Spearman, Texas 79081. S56, 2tc

**PUBLIC NOTICE**

**REQUEST FOR BIDS ON TEXAS HIGHWAY CONSTRUCTION**  
Sealed proposals for 202.118 miles of seal coat at various locations on US 385, US 287, SH 207, SH 15, SH 136, FM 283, SH 102, FM 1913, FM 1262, FM 281, RM 1319 and FM 3044 covered by CPM 41-2-9, CPM 66-3-30, CPM 308-1-8, CPM 355-1-41, CPM 355-4-31, CPM 355-6-27, CPM 379-1-37, CPM 797-1-13, CPM 1141-2-15, CPM 1244-2-15, CPM 1336-1-9, CPM 1885-2-12, CPM 2437-2-7 and CPM 2972-1-4 in Hartley, Sherman, Hansford, Lipscomb, Ochiltree, Hutchinson, Roberts, Dallam, Moore and Hemphill Counties, will be received at the Texas Department of Transportation, Austin, until 1 p.m., December 13, 1994, and then publicly opened and read.  
Plans and specifications, including minimum wage rates as provided by Law, are available for inspection at the office of Kenneth Corse, Area Engineer, Dalhart, Texas, and at the Texas Department of Transportation, Austin, Texas. Bidding proposals are to be requested from the Division of Construction and Contract Administration, D.C. Greer State Highway Building, 11th and Brazos Streets, Austin, Texas 78701. Plans are available through commercial printers in Austin, Texas, at the expense of the bidder.  
The Texas Department of Transportation hereby notifies all bidders that it will insure that bidders will not be discriminated against on the grounds of race, color, sex or national origin, in having full opportunity to submit bids in response to this invitation, and in consideration for an award. Usual rights reserved. S57, 2tc

**JAN'S ETC. NEW & USED & ANTIQUES TOO**

Everything for home and family. Plains Shopping Center in Spearman

Open Monday - Saturday 10 a.m. til 6 p.m.

**Precision Sweep Airseeding**  
Quick, Economical, Minimum Tillage  
-200 Acres (\$6.25/A)  
+200 Acres (\$5.75/A)  
Bob Williams  
435-4835

**OSGOOD MONUMENT CO.**  
Amarillo, Texas

Dealers of Rock of Ages Granite, as well as all colored granites, marble and bronze memorials.

Represented by  
**Boxwell Bros. Funeral Home**  
519 S. Evans  
659-3802

**PUBLIC NOTICE**

**NOTICE TO BIDDERS**  
Sealed bids for the purchase of one (1) Type III Modular, Ford E 350 138" W.B. Ambulance will be received by the City of Spearman, Texas, until 2:00 p.m. on December 21, 1994, then publicly opened and read.  
The City reserves the right to reject any or all bids, to waive informalities and to accept the bid deemed to be the most advantageous to the City. All bids received after the above closing hour will be returned unopened.  
Specifications and bidding documents may be secured from City Hall, P.O. Box 37, Spearman, Texas 79081. S57, 2tc

**PUBLIC NOTICE**

**TO ALL PERSONS INTERESTED IN THE ESTATE OF MATTIE ALZINA REED, DECEASED**

You are hereby commanded to appear before the Honorable District Court of Hansford County, Texas, at the Courthouse in Spearman, Texas, at or before 10:00 a.m. of the first Monday next after the expiration of 42 days from the 10th of November, 1994, the date of issuance of this citation, by filing a written answer to the Petition filed by Charles Brillhart, Administrator, with Will Annexed in the Estate of Mattie Alzina Reed, Deceased, Numbered 4072 on the docket of the Court, and entitled ESTATE OF MATTIE ALZINA REED. A brief Statement of the nature of this suit is as follows:  
A Petition for Declaratory judgement by Administrator for Construction of Will, and a request that this court construe Decedent's will to determine the right, obligations and legal relations of all parties by virtue of the Last Will of Mattie Alzina Reed, and in particular to determine the following questions: (1) (a) under the provisions of the will do legatees take the bequests as therein set forth? (or) (b) was the will a contingent will conditioned on the Decedent's husband perishing with her in an accident or passing away within sixty days after her death, so that on the failure of either of such events, heirs inherit the Decedent's Estate? (2) If the Court determines that the will was a contingent will, that the court determine who are the heirs and only heirs of Mattie Alzina Reed, Deceased, the heirs' respective shares and interests under the laws of the state, if any, in the Estate of Mattie Alzina Reed, (c) was the gift to West Amarillo Christian Church of a residence attempted by the sale of the property by Mattie Alzina Reed prior to death, all as is more fully shown by the Petition on file in this cause.  
If this citation is not served within 90 days after the date of its issuance, it shall be returned unserved. The officer executing this writ shall promptly serve it and make due return according to requirements of law. And the mandates of this citation.  
Issued under my hand and the seal of the court at Spearman, Texas, on the 21st day of October, 1994. Amelia C. Johnson, District clerk, Hansford county, Texas.  
By Kim V. Vera Deputy



# Obituaries

**Robert W. Thuett**  
 MORSE - Robert W. Thuett, 67, died Monday, November 21, 1994. Graveside services will be at 2 p.m. Friday, November 25 in Lieb Cemetery with the Rev. Todd Dyess, pastor of Perryton First United Methodist Church, officiating. Arrangements are by Boxwell Brothers Funeral Home.

Thuett was born in Oldham County. He had lived in the Morse

area for three years, moving from Vega. He was a farmer. He married Elvogene Dixon in 1991 at Raton, N.M. He was a member of the Vega Masonic Lodge and the Morse Lions Club. A son, Alan Thuett, died in 1968.

Survivors include his wife; a daughter, Suzanne Gillispie of Morse; a son, Jim Thuett of Colorado Springs, Colorado; a sister, Betty Jo MacNaughton of Vega; and three grandchildren.

## Borger to hold community Christmas parade for all

**By EDWARD BENZ**  
 The whole community is banding together this year for a very special Christmas parade, according to Borger parade officials.

The parade, hosted by J.M. Huber, is held after dusk on November 28, and floats are asked to light up with colored lights, garland, Christmas music and special displays. Huber sponsors prizes amounting to \$1500 for the non-profit organization junior, nonprofit organization senior, business, individual and best show. Prizes are in the form of Borger Bucks. Arian Archer, the reigning Miss Texas, will be featured in the parade and present at the Museum Open House courtesy of Brown's Flowers.

"A special feature of the parade will be an early kickoff starting with the Hutchinson County Museum's Annual Christmas Open House to be held parade night" said Ed Benz, museum director. "The event takes place from 5 to 6:30 p.m. prior to the beginning of the parade this year as a way of further enhancing an already-popular event."

The museum will serve coffee, hot cider and cookies to help warm

spectators before the parade. The Borger High School brass quintet will entertain the group during the Open House.

This year Paw Pals will again hold their two drawings for an afghan throw and a Christmas wreath and centerpiece. The museum will be decorated in the Christmas spirit. The public is also welcome to visit throughout the day.

Benz said, "Santa Claus has promised to pose for pictures for all the little boys and girls before joining the parade at 6:30."

Polaroid photographs will be available for a small donation. Borger's Channel 11 will film the parade from the museum's balcony for those unable to attend, Benz said. A celebrity MC panel, headed by Chamber of Commerce Executive Vice President Joe Frank Wheeler, George Grover and Ricky Griffin will be on hand to narrate the parade.

Immediately following the parade, the public is invited to gather at the plaza between Borger Bank and the Phillips building for the lighting of the Community Christmas Tree.

## Resident takes exciting trip to Mexico

**By SARA DOSSETT**  
 On Monday, October 31 at 6 o'clock we left for our trip to Mexico. Jim Hughes, Sara Dossett, Gladys Perry and Nora Key from Guymon went on to Buffalo and picked up Orville and Margaret Shuman, then on to Beaver for our last guest, Prycie Myers.

We traveled in style, in a Lincoln Continental Limousine to McAllen. We headed for Oklahoma City where we stopped for lunch, and then on to Waco where we spent the night.

The next day we were on our way to San Antonio. The second night we had some time so we went on the river barge, we saw the bird theater, and also the glass bottom boats.

On the road again the next morning as we drove to McAllen where again we had some leisure time, so I called Buddy at work and later he, Becky and the girls came from San Benito. They took me out to dinner. We had a short visit but a wonderful one.

The following morning we picked up eight other people to complete our tour. Joining us were Pat Tracy from Bartlesville; Ree Allen, Early and Grace Morgan, all from Mission; Juan and Carolina Caratachea; Tony and Josie from Edinburg; Bernice Nelson and Cynthia Duran from Victoria; Ana Rosa Herrera from Raymondsville; the guide Octavio Meza from Mexico City; and our driver Aurelio de la Rosa, also from Mexico City. In all there were now 16 making the trip.

The following day we boarded the Sanborn Tour Bus for nine days into the interior of Mexico at 8 o'clock. We cleared Mexican Customs in Reynosa. Finally, we were on our way. The first stop was Monterrey for lunch, then we continued on to Saltillo where we spent the night.

Did you know that at one time Saltillo was the capital of Texas? The next morning we visited the cathedral, the main plaza, and the Governor's Palace.

After that we were on our way to Chihuahua where we visited Pancho Villa's house, now a museum. We visited another main square and cathedral; and looked

at an aqueduct which was built by the Spaniards in 1754, and which is still being used. Then it was on to Torreon where we spent the night.

The next day was our most exciting one of all as we boarded the train, the Chihuahua el Pacifico, at 8 o'clock to begin our Copper Canyon excursion.

The canyon is supposed to be four times larger than the Grand Canyon. It took us eight hours to get to the top and eight hours to get back to the bottom. The scenery was unbelievable. We saw gorgeous mountains, rivers, water falls and vivid blossoms; we went through 86 different tunnels. On of those tunnels was two miles long.

On the train we had guards in case of trouble. Finally we got to the top where we spent two days at the quaint hotel at the rim of the canyon. There were no telephones or televisions for two days.

We saw how the Indians live in the remote areas. They still live in caves. We didn't see too many.

Finally we boarded the train and headed back to civilization.

The next morning we went to Los Moches. Then on to the beautiful city of Matzatlan where we spent two days at the Matzatlan Hotel right on the beach. The Pacific Ocean was beautiful. I took off my shoes and waded in the ocean. I think that was one of my favorite spots.

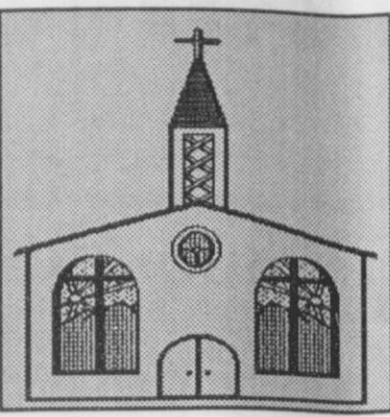
We hated to leave Matzatlan the next morning, but we had to, and we headed to Durango where we spent the night. The next day we drove to the most popular Mexican movie studios where the late John Wayne made many of his films - "Durango" for one.

We were getting weary so we headed for Saltillo. We departed through the high mountains, stopped for lunch in Monterrey, then on to the Rio Grande into Texas and to McAllen arriving at about 5:30.

We were supposed to spend the night there but we decided to head for home. We kept, coming, coming, not stopping for the night. I got home about 1 a.m. Sunday, Nov. 13. We traveled a total of 4,624 miles. Glad to be home.

Let us replenish the seed of faith through...

## REGULAR CHURCH ATTENDANCE, DAILY BIBLE READING & PRAYER



**Curtis' Hot Oilers**  
 806-659-3432  
 "Taking Service to Perfection"  
 806-659-2912 P.O. Box 714  
 800-821-6714 Spearman, TX 79081

**Palo Duro Supper Club**  
 22 S. Archer  
 659-2232

**C.O.'S SUPPLY CO.**  
 Plumbing & Tire Sales & Service  
 421 W. Kenneth • Spearman  
 659-3781 or 659-3555

**Bartlett's Ace Hardware**  
 105 W. Broadway  
 733-2404

**GILLASPIE**  
 AUTO & TRUCK CENTER, INC.  
 CHEVROLET • OLDS • PONTIAC • BUICK  
 CHRYSLER • PLYMOUTH • DODGE  
 Hwy 207 South • P.O. Box 430 (806)659-2541  
 SPEARMAN, TEXAS 79081

**DEKIN REAL ESTATE**  
 OILFIELD • RESIDENTIAL • COMMERCIAL  
 519 Plains Shopping Center  
 Spearman, TX 79081  
 1-800-999-1506 (806)659-5016

**REINKE IRRIGATION SYSTEMS**  
**Paschel Irrigation**  
 (806)659-5228 • 1-800-659-6580  
 Corner Airport Rd. & Hwy 15 West  
 Spearman, Tx.

**Gruver Cablevision**  
 Quality Family Entertainment with  
 "the Disney Channel"  
 308 Main • 733-5295

**Morse Implement Company**  
 "Join us in church this week"

**Boxwell Bros. Funeral Home**

**THE HANSFORD COUNTY REPORTER-STATESMAN**  
 Serving The Communities Of Spearman, Gruver & Morse  
 213 Main • 659-3434  
 1-800-395-9482

**CORONADO HOSPITAL**  
 Pampa, Texas  
 (806)665-3721

Compliments of  
**G&G FOODLINER**  
 516 Main • Gruver  
 733-2471

### A Prayer of Thanksgiving

"We praise Thee, Thou Source of great bounty, as our sincere supplications surpass space and time to reach Thy Heavenly Throne. For the blessings of this year, both material and spiritual, we give Thee thanks...each sunrise a new beginning...each heartbeat a special gift. Moreover, we thank Thee for difficult days that build strength...for sadness, so we might appreciate joy; for anxious moments that teach us of the importance of faith which sustains the human soul. Indeed, Thou hast written, 'Give thanks in all circumstances; for this is the will of God' (1 Thess. 5:18). Each day, may we demonstrate our gratitude as we humbly share our blessings with those who need them most; that by our example, they might come to know Thy merciful and bounteous love. With thankful hearts we pray. Amen."

May you each have a most meaningful Thanksgiving.

Sunday	Monday	Tuesday	Wednesday	Thursday	Friday	Saturday
Revelation	Psalms	Psalms	Psalms	Psalms	Psalms	Psalms
19:1-21	92	95	96	100	104:1-23	104:24-35

Scriptures Selected by The American Bible Society  
 Copyright 1994, Keister-Williams Newspaper Services, P. O. Box 8005, Charlottesville, VA 22906

### In Spearman...

**Apostolic Faith Church**  
 822. S. Drensen • 659-2870  
 Sunday School: 10 a.m.  
 Worship: 11 a.m.  
 Evening Worship: 6 p.m. Sun.  
 Wed. Prayer Meeting: 7:30 p.m.  
 Pastor James Brown

**First Assembly of God**  
 401 N. Bernice • 659-2295  
 Sunday School: 9:45 a.m.  
 Worship: 11 a.m.  
 Evening Worship: 7 p.m.  
 Wednesday Worship: 7:30 p.m.  
 Youth: 7:30 Wednesday  
 Pastor Todd Lillard

**First Christian Church (Disciples of Christ)**  
 29 S. Bernice • 659-2036  
 Sunday School: 9:45 a.m.  
 Worship: 10:50 a.m.  
 Women's Bible Study: 2 p.m. Wed.  
 Youth: Wed. 6 p.m. & Sun. 5 p.m.  
 Pastor LaVern Draper

**First Baptist Church**  
 123 N. Bernice • 659-5557  
 Sunday School: 9:45 a.m.  
 Worship: 11 a.m.  
 Evening Worship: 7 p.m.  
 Jr. High Youth: 6 p.m. Wed.  
 High School Youth: 7 p.m. Wed.  
 Youth Choir: 6 p.m. Sun.  
 Pastor Kyle Henderson

**Church of Christ**  
 121 S. Haney • 659-3244  
 Sunday Bible Class: 9:45 a.m.  
 Worship: 10:30 a.m.  
 Evening Worship: 6 p.m.  
 Bible Study Wed. 7:30 p.m.  
 KRDF Radio Program  
 Living With Christ 7:50 a.m. M-F  
 Minister Arnis Pape

**Fellowship Baptist**  
 1102 S. Archer • 659-2783  
 Sunday School: 10 a.m.  
 Worship: 11 a.m.  
 Evening Worship: 6 p.m. Sunday  
 Youth & Adult Serv.: 7:30 Wed.  
 Pastor Rick Fincher

**Primera Mision Bautista**  
 502 E. 7th • 659-3991  
 Sunday School: 9:45 a.m.  
 Worship: 11 a.m.  
 Pastor Guadalupe Carranza, Jr.

"WE SUPPORT OUR LOCAL CHURCHES"  
**CAPROCK#1 & #2**  
 Mike Heard, Gen. Mgr.  
 (806)733-5043 or 733-5025  
 "Custom Cattle Feeding"

### In Gruver...

**First Baptist Church**  
 402 E. Broadway • 733-2411  
 Sunday School: 9:45 a.m.  
 Worship: 10:50 a.m.  
 Disciple Training: 6 p.m. Sunday  
 Prayer Meeting: 7:30 p.m. Wednesday  
 Pastor Larry Miller

**Church of Christ**  
 209 King • 733-2760  
 Sunday School: 9:30 a.m.  
 Worship: 10:20 a.m.  
 Evening Worship: 6 p.m.  
 Wed. Evening Worship: 7:30 p.m.  
 Minister Bob Setliff

**First Christian Church**  
 510 King • 733-2960  
 Sunday School: 9:45 a.m.  
 Worship: 11 a.m.  
 Wed. Bible Study: 7:30 p.m.  
 Youth: 6:30 Wednesday  
 Pastor Gary Gumfroy

**Oslo Lutheran Church (ECLA)**  
 Vest of Gruver on Hwy 15 & N. FM 1162  
 339-7646  
 Sunday School: 9:45 a.m.  
 Worship: 11 a.m.  
 Morning Prayer: 9 a.m. Wed.  
 Pioneer Clubs (Grades 1-6):  
 4-5:30 p.m. Wednesday  
 Pastor John R. Chandler

**Community Bible Church (Interdenominational)**  
 Hwy. 15 • 733-2443  
 Sunday School: 10 a.m.  
 Worship: 11 a.m.  
 Wed. Prayer Meeting: 7 p.m.

**First United Methodist**  
 Broadway & Garrett • 733-2651  
 Sunday School: 9:45 a.m.  
 Worship: 8:30 a.m. & 10:50 a.m.  
 Evening Worship: 6 p.m.  
 Pastor Lewis Holland

### In Morse...

**Morse Baptist Church**  
 Pastor Mike Martin  
 733-2757

**Henton & Co., P.C.**  
 Certified Public Accountants  
 221 Sanders • Spearman • 659-2518

**BERRY CLEANERS**  
 DAN DESIMONE • OWNER  
 Phone 659-3122 • P.O. Box 1017  
 207 Main St. • Spearman, Tx. 79081

**GRUVER FORD**  
 531 Main • Gruver • 733-2431

**Interstate Savings & Loan**  
 322 Main • Spearman • 659-2559

**Hagerman Services**  
 Backhoe • Dozer • Welding  
 North Hwy. 15 • Spearman  
 659-5131

**Gordon Drugs**  
 Dependable Prescription Service  
 314 Main • Spearman  
 659-2141  
 Jim Evans

Compliments of...  
**AGCO of Spearman, Inc.**  
 "See you in Church"  
 659-3751