



The Hansford County
Reporter



Statesman

reporter@spearmanreporter.com

PROUDLY SERVING HANSFORD COUNTY SINCE 1907

VOLUME 100 • ISSUE 26

WWW.SPEARMANREPORTER.COM

THURSDAY, JUNE 28, 2007

Gruver Residents offered discount to attend TEXAS Musical Drama

The Texas Panhandle Heritage Foundation is pleased to welcome back Gruver's own Cory Schneider to TEXAS Musical Drama for his second season as Calvin Armstrong!

Since graduating high school, Cory has pursued his love for theater. He attended Panola Jr. College on a theater scholarship and performed in 1776. He traveled to Los Angeles where he studied under Lauren Patrice Nadler, performed in Four Dogs and a Bone, and a few short films.

Because the Texas Panhandle Heritage Foundation is so excited to have Cory in the program, they are offering residents of Gruver, Texas a 10% discount Tuesday through Thursday to come and watch Cory Schneider shine in TEXAS as Calvin Armstrong. The play runs Tuesday through Saturday nights from June 8 to August 18. For tickets call the Texas Panhandle Heritage Foundation Texas Box Office at 806-655-2181 Monday through Friday from 8:30 a.m. to 4:30 p.m. and Saturday from 12:30 to 4:30.

Gene & Frances Cudd Memorial Radio Auction to Benefit the Golden Spread Center

The Golden Spread Center has scheduled the "Gene & Frances Cudd Memorial Radio Auction" to benefit the Golden Spread Center to be held on 2 consecutive Saturdays, July 14th and July 21st, from 8:00 a.m. until 12:00 noon. The live auction will be broadcast on Perryton's KXDJ radio station, 98.3 fm. The auction will benefit the Golden Spread Senior Citizen's Center, which is located in The O'Loughlin Center.

The board is seeking donations from businesses and individuals, and they are encouraging "creative" donations as well as the more traditional items and services. They have received items like used cars, used travel trailers, used lawn equipment (all in working condition), exercise equipment, an overnight stay in a Red River condo, backyard cook-outs and fishing or golfing adventures. Hand-painted furniture items and artwork from area artists always draw lots of interest at the auction, and all donations are tax deductible.

Last year, The Frances Cudd Memorial Radio Auction, which served as the major fundraising event for The Golden Spread Center in 2006, yielded \$16,000. Gene Cudd was a member of the GSC board, and this event will be a fine tribute to him, to Frances and to their support of the center.

If you want to donate an item, please contact a member of the Golden Spread Center Board, The O'Loughlin Center Board or Kathy Bryant at The O'Loughlin Center by calling 806-659-3030. Anyone interested in volunteering to work during the event can also contact Kathy Bryant.

Weather Forecast

THURSDAY - Mostly cloudy with a 20 percent chance of showers and thunderstorms. Highs in the mid 80s.

THURSDAY NIGHT - Mostly cloudy with a 20 percent chance of showers and thunderstorms. Lows in the mid 60s.

FRIDAY - Partly cloudy. Highs in the lower 90s.

FRIDAY NIGHT - Partly cloudy. Lows in the mid 60s.

SATURDAY - Mostly cloudy. Highs in the lower 90s.

SATURDAY NIGHT - Mostly cloudy. Lows in the upper 60s.

SUNDAY - Mostly cloudy. Highs in the lower 90s.

SUNDAY - Mostly cloudy. Highs in the lower 90s.

SUNDAY - Mostly cloudy. Highs in the lower 90s.

SUNDAY - Mostly cloudy. Highs in the lower 90s.

SUNDAY - Mostly cloudy. Highs in the lower 90s.

SUNDAY - Mostly cloudy. Highs in the lower 90s.

SUNDAY - Mostly cloudy. Highs in the lower 90s.

SUNDAY - Mostly cloudy. Highs in the lower 90s.

SUNDAY - Mostly cloudy. Highs in the lower 90s.

SUNDAY - Mostly cloudy. Highs in the lower 90s.

SUNDAY - Mostly cloudy. Highs in the lower 90s.

SUNDAY - Mostly cloudy. Highs in the lower 90s.

SUNDAY - Mostly cloudy. Highs in the lower 90s.

SUNDAY - Mostly cloudy. Highs in the lower 90s.

SUNDAY - Mostly cloudy. Highs in the lower 90s.

SUNDAY - Mostly cloudy. Highs in the lower 90s.

SUNDAY - Mostly cloudy. Highs in the lower 90s.

SUNDAY - Mostly cloudy. Highs in the lower 90s.

SUNDAY - Mostly cloudy. Highs in the lower 90s.

SUNDAY - Mostly cloudy. Highs in the lower 90s.

SUNDAY - Mostly cloudy. Highs in the lower 90s.

SUNDAY - Mostly cloudy. Highs in the lower 90s.

SUNDAY - Mostly cloudy. Highs in the lower 90s.

SUNDAY - Mostly cloudy. Highs in the lower 90s.

H&S EMS Recognized for Improvements to Service

Steve Hartgraves, CEO of Hansford Hospital, made a presentation during the Spearman City Council meeting on Tuesday, June 19, 2007, concerning H&S EMS. The presentation focused on the changes in the transfer program, which were made in June of 2006.

Following a Spearman City Council meeting held in the fall of 2005, Hansford County Hospital District agreed to conduct a study to determine the feasibility of taking over EMS services countywide. Findings from that study indicated that the best solution for all EMS stakeholders (city, hospital, physicians, tax payers and patients) was a comprehensive approach of the provision of EMS services along with a realignment of incentives for all participants.

Due to staffing shortages, H&S EMS was not capable of providing dependable ambulance transfer service for patients prior to June of 2006. At that time, half of the transfers to and from Hansford Hospital were conducted by other entities.

EMS coverage shortages had been a problem for at least the past 18 years, city and hospital management had discussed ways to ensure coverage for Spearman and the surrounding communities. Some ideas included: paid personnel to supplement the volunteer force; privatization of service to an outside provider; allowing the hospital to take over the service; or developing better resource management and attempting reconciliation with employers for better deployment of volunteers only when necessary.

Although the primary responsibility of H&S EMS is for the provision of 911 emergency response coverage for Spearman and the surrounding areas, Hansford Hospital felt something could be done to better meet the needs of transfer patients.

Since June of 2006, transfers by H&S EMS have increased 43%, with Spearman taking 100% of all transfers. The number of EMS personnel has increased 73%, with the addition of 37 new EMT graduates (17 EMT-Basic graduates and 20 EMT-Intermediate graduates). The benefit is a quarterly savings of \$13,278 and an estimated annual savings of \$54,912.

According to H&S EMS director Justin Boyd, the success is due to a new 911 and transfer team schedule. "We now have basically two schedules. We have the regular 911 schedule, and a transfer team schedule."

There are 38 volunteers under H&S EMS. The 911 schedule is the same as any traditional ambulance service. The goal of the 911 response team is less than three minutes during the day and six minutes at night.

The transfer schedule consists of people within a 60-minute radius, whoThe transfer schedule consists

of people within a 60-minute radius. The transfer team is activated by nurses at Hansford Hospital. They have a schedule and activate whoever is on call at the time to come in and transfer the patient.

The benefit of this system is that it allows H&S EMS to receive the funds from transfers, keeping the money in Hansford County instead of sending that money to the surrounding communities.

"We still have the other communities available as a

back-up if we need them," Boyd said. "But we are able to use our own resources first."

"The state has been watching this program pretty closely, because our problem was not unique," continued Boyd. "We have added Gruver to our system, using them as a back-up for Spearman. This allows us even more flexibility, without jeopardizing patient care."



Justin Boyd, H&S EMS Director

Cory Schneider of Gruver Stars in "TEXAS"

Cory Schneider, from Gruver, reprises the role of Calvin Armstrong in the musical drama "TEXAS" performed inside Palo Duro Canyon's Pioneer Amphitheatre. This is the 42nd season of the official

play of Texas. The musical, produced by the Texas Panhandle Heritage Foundation, tells the story of the settling of the Texas Panhandle. It runs at 8:30 p.m. Tuesday to

Saturday through Aug. 18. A lone horseman, carrying the flag of the great state of Texas appears atop a 600 foot cliff, signaling the beginning of the most spectacular outdoor musical drama in the world. With a burst of fireworks and a moving swell of the music, the horseman gallops away as a cast of more than 60 actors, singers and dancers take the stage to kick off the show.

Adrienne Rosel portrays Elsie McLean, the niece of Uncle Henry and Aunt Anna and the love interest of Calvin, opposite Cory. Rosel is a native of Liberal, Kan., who played a dancer in 2003's show, "Texas Legacies."

"Adrienne definitely brings a lot to the character of Elsie," Schneider said. "She's very talented and has been fantastic to work with."

Schneider was introduced to theatre in Gruver, where he graduated in 2001. Since then he has performed in "1776" at Panola Jr. College, where he was attending school on a theatre scholarship. He then embarked on a short adventure to Los Angeles, where he performed in "Four Dogs and a Bone," a few short films, and studied under Lauren Patrice Nadler. He was a member of the 2005 "Texas Legacies" production and is excited to be a part of the rebirth of "TEXAS" for his second season in the role of Calvin Armstrong.

Cory is the son of Rhonda Schneider of Austin, the grandson of Jo Hadley of Gruver, and the great-nephew of Richie and Carolyn Fletcher of Gruver.

Additional Information

* "TEXAS" is performed at 8:30 p.m., Tuesday through Saturday through Aug. 18

* Tickets range from \$7.50 to \$27.50 depending on seating and attendee's age

* A steak Dinner by the Big Texan Steak Ranch is available 6 to 8 p.m. for \$12.70 per person (group rate).

* Back stage tours available for \$2.00 per person.

* Palo Duro Canyon State Park entry fee is waived after 5:30 p.m. for "TEXAS" patrons.

* Step-on tour guides are available on a first-come first-served basis for a 30 minute, 10 mile escorted drive through the Palo Duro Canyon, from 6 to 7 p.m.

* Seating in the theatre begins at 7:45 p.m. The show starts at 8:30 p.m.

* Headsets are available for hearing impaired guests.

* Handicapped seating is available upon request.

* For more information, call (806) 655-2181 or visit us at www.texas-show.com

* The Amphitheatre is located 25 miles from Amarillo. (From Amarillo, take I-27 south to exit #110 (US 87). Continue south for 3 miles and into the beautiful city of Canyon. Turn left (east) on 4th Avenue (TX 217) and drive 15 minutes to Palo Duro Canyon State Park. From Lubbock, take I-27 north to exit #106 (TX 217). Turn right (east) and drive 10 minutes to Palo Duro Canyon State Park.)



Adrienne Rosel as Elsie McLean and Cory Schneider as Calvin Armstrong

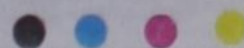
Spearman Chamber of Commerce's
Yard of the Week

Carl Bynum
101 E. 12th

Justin Hodges
416 S. Haney

Moncerret Mendoza
16 S. James

If you have a yard you would like to nominate, please contact the Spearman Chamber of Commerce at 659-5555.



Texas Legislature: Serious About Seniors

Silver Highlights from the 80th legislative session will be the topic of the Senior Seminar program offered at 1:30 p.m. on July 12 at the Amarillo Senior Citizens Center, 1217 S. Tyler, Room 115, in Amarillo.

The increasing senior population affects Texas in many ways, and this year's Texas Legislature knew that. They passed a bevy of bills in answer to the coming surge of seniors.

Alan Abraham, an elected member of the Texas Silver Haired Legislature, will be the speaker. He will discuss the 33 bills that passed and are designed to protect seniors and make their life a little easier.

The seminar is open to the public free of charge. For more information, contact the Texas Cooperative Extension office in Potter County at 373-0713.

Door prizes will be donated by Scott's Flowers.

Senior Seminars are sponsored by the Potter County Extension Coalition on Aging and Amarillo Senior Citizens' Association.

Extension programs serve people of all ages regardless of socioeconomic level, race, color, sex, religion, disability, or national origin.

State Capital



HIGHLIGHTS



by Ed Sterling

LAWMAKERS ASK ATTORNEY GENERAL ABOUT SPEAKER'S POWERS

AUSTIN - The 80th Texas Legislature was a contentious five-month gathering that may have seemed to end quietly on May 28.

Speaker Tom Craddick, R-Midland, had come out on top of a parliamentary battle to stay in office. Then, House members used the closing hours of the session to pass hundreds of pieces of legislation, instead of pressing issues with Craddick to the bitter end.

But the battle over the speaker's authority and the way challenges were rebuffed raised questions.

The speaker refused to recognize members seeking to make a motion calling for a vote to remove him from office, or in House parlance, "vacate the chair."

Reps. Jim Keffer, R-Eastland, and Byron Cook, R-Corsicana, in an attempt to resolve questions about the legal and constitutional scope of the authority of the speaker, asked Attorney General Greg Abbott to render an opinion.

Those who are interested in the details of the request can find RQ-0589-GA on the attorney general's Web site.

Alexis DeLee, Craddick's press secretary, said the speaker welcomes Abbott's opinion.

The state constitution requires the attorney general to issue a written opinion on a question affecting the public interest. The attorney general is required to issue the opinion not later than the 180th day

after the date that it is received, unless before that deadline the attorney general notifies the requesting person in writing that the opinion will be delayed or not rendered and states the reasons for the delay or refusal.

At the beginning of the legislative session, Craddick appointed Keffer chairman of the powerful House Ways and Means Committee and Cook chairman of the Civil Practices Committee.

Keffer and other House members have let it be known that they want to serve as speaker of the House in the 2009 legislative session, but Craddick has said he intends to seek re-election.

Personnel changes are coming Education Commissioner Shirley Neeley announced on June 20 her resignation, effective July 1.

Perry appointed Neeley in January 2004. As commissioner, she served as the head of the Texas Education Agency, overseeing 1,037 school districts and a number of charter schools.

Secretary of State Roger Williams resigned earlier. He will be succeeded in office July 1 by Gov. Perry's former chief of staff Phil Wilson.

The governor's current chief of staff Dierdre Delisi resigned. Perry appointed Brian Newby to replace her on July 1. Newby currently serves as the governor's general counsel.

Perry also announced the appointments of senior adviser

Kathy Walt and deputy legislative director Kris Heckmann as deputy chiefs of staff, effective July 1.

And, Perry announced Donna White, a member of his senior staff for more than six years, will move to a position at the Texas Commission on Environmental Quality. White earlier served in the office of then-Lt. Gov. Rick Perry and in the office of the late Lt. Gov. Bob Bullock.

Other Highlights

• Forty-four Texas lawmakers signed a letter requesting the Public Utility Commission implement measures to protect the state's most vulnerable electric consumers this summer. Chief among those measures is the permanent implementation of a moratorium on electric disconnection during the summer months for low-income elderly and critical care customers. The rule also would allow low-income customers to spread their summer bills out over a period of time to ease the financial burden that increased summer usage creates.

• Gov. Perry issued a disaster declaration on June 19 for Cooke, Grayson, Lampasas and Tarrant counties after storms, flooding and tornadoes struck. Perry summoned military, state and local agencies and private organizations to assist in search and rescue and relief efforts in the affected counties.

• The governor and first lady Anita Perry are on a weeklong visit to Israel and Jordan.

Household Hints

BLENDER CLEANER. I love that my kids are big smoothie fans but I hate cleaning up the blender afterwards. The easiest way for me to clean it is to fill the blender with hot water, add a few drops of dishwashing liquid soap, cover and blend. After a minute or two, the blender is basically clean-all I have to do is rinse the individual parts.

CORK REMOVAL. If you break the cork while trying to open a bottle of wine, you can strain out the cork by pouring the wine through a coffee filter into a pitcher. The filter should catch the tiny cork pieces.

RING OF HAIR BANDS. Ever wonder what to do with all the elastic hair bands your daughter has accumulated? An inexpensive way to keep them all together is to use a couple of plastic shower curtain rings. The elastic bands can be placed on the ring. It is easy to see all of the colors and take off the ones you want.

NO-FOG MIRROR. If you want to keep your bathroom mirror from fogging up, try cleaning it with shaving cream. Just wipe it on, wipe off. Your mirror won't fog up anymore.

SEW ON THE CHEAP. If you are a sewer, you know how expensive sewing supplies can be. Before you buy new things at the craft store, check your local thrift stores. Many items of used clothing yield great buttons, zippers and yardage at a fraction of what you would pay at the fabric store. Old quilts, bedspreads and bed pads can yield cording, yardage and padding, too. Use that imagination and see what you find.

OLIVE PITS. If you need to pit a bunch of olives it can be really difficult to use a knife without making a mess. Try using a wooden chopstick to quickly poke the olive pit out of the olive. It worked for me and saved a lot of time.

'FRIDGE SPACE. If baking pans and food bowls are taking up too much space in your refrigerator,

take a baking sheet and slide it on top of the pan or bowl. You can then stack more items on top without harming the food underneath.

OIL SQUIRTER. I love buying cooking oil in bulk, but it was hard to pour the right amount of oil into the pan from the large containers. So I took a clean, pull-top squeeze water bottle and filled it with some of the oil. Now I can just squirt what I need into the pan without spilling.

RED WINE STAINS. If you get red wine on a washable tablecloth or napkin, spread the stained portion over a bowl and sprinkle salt on top of the stain. Then pour boiling water over the salt and through the cloth to take out the stain.

CLEAN GROUT. I use a battery powered toothbrush to brush my teeth. After a few months, instead of throwing the toothbrush head away, I use it to remove the stains from my tile counters. After using a sponge to wet down the grout, I sprinkle a little cleanser over the grout, let it sit for a few minutes and then let the spinning, vibrating toothbrush clean in all the little nooks and crannies. It requires very little elbow grease. Then I just rinse off the counter and admire the white grout again.

CAKE DECORATIONS. My favorite way to quickly decorate a frosted cake is to take a cookie cutter, place it on top of the frosting and pour sprinkles inside the cookie cutter. When you lift the cutter off, you will have a perfect sprinkle design.

FLEA SOAP. Original blue Dawn dishwashing liquid is good for getting rid of fleas on pets. Soap up your pet and let sit about five minutes, then rinse. This works really well on young pets that aren't old enough for flea products.

KIDS PALETTE. When your kids want to do some painting, squeeze the different color paints into a Styrofoam egg carton to keep them separate. The lid of the carton

is perfect for mixing colors.


SHAMPOO BAG. If you are going on a short trip or an overnight stay, it can be a pain to pack your large bottles of shampoo and conditioner. Just put a small amount of each into plastic zip-type bags—that way you will only be carrying what you will use and you can toss the bag when you return.

TOO MUCH SOAP. If you ever put too much soap into your washer and it begins to overflow, just throw in a capful of fabric softener and the suds will start to go down.

WRINKLED CLOTHES. When I'm traveling, I often open my suitcase to find all my clothes are wrinkled, no matter how carefully I have packed them. A quick way to get rid of the wrinkles is to lightly dampen the piece of clothing with water and then use a blow-dryer to get it dry again. Provided the garment wasn't too wrinkled in the first place, this should do the trick.

If you have any household hints you would like to share, please e-mail them to reporter@spearmanreporter.com or mail them to Reporter-Statesman Hints, 213 Main St., Spearman TX 79081.

SUDOKU
PRESENTED BY



		5		8					
	5	4				9			
6				9	4				1
	8			1					
	3		4		6		8		
				3				1	
8			9	6					2
		2				6	3		
		9			7				

© 2006, StatePoint Media, Inc. answer on classified page

Fill in the blank squares in the grid, making sure that every row, column and 3-by-3 box includes all digits 1 through 9.

These games are brought to you by the Hansford County Reporter-Statesman

PAID CDL TRAINING! **YOUR FUTURE BEGINS HERE**


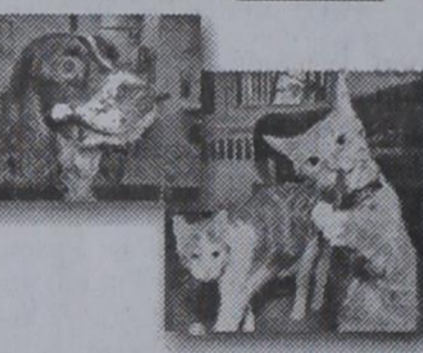
NO EXPERIENCE NEEDED!

Stevens Transport, the premier refrigerated carrier in the US, sponsors the total cost of your CDL training! In 17 short days you will earn your CDL and begin your paid on-the-job training! Earn \$40K first year and up to \$150K fifth year! Excellent benefits and 401K!

For more information, call **800-333-8595**

www.becomeadrivers.com

HANSFORD COUNTY VETERINARY HOSPITAL

Dental Specials

Through the month of June

10% off

All dentals for cats and dogs.

Call 806.659.2100 for an appointment.

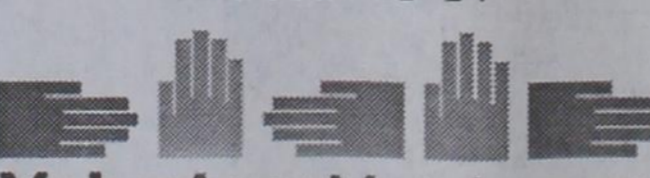
INDEPENDENCE DAY

- ACROSS**
- 1. Kids' get-away
- 5. Through-the-lense
- 8. Pub arrow
- 12. Recover
- 13. Beginner
- 14. Cuckoo for what puffs?
- 15. Song for solo voice
- 16. In bed
- 17. "___ and aahed"
- 18. "Born on the Fourth of July" star
- 20. Greek god of war
- 21. Tiny amounts
- 22. Contraction of it is
- 23. ___ of Allegiance
- 26. America's revolutionary foe
- 30. Electric fish
- 31. Undo a bustle, e.g.
- 34. Dame ___
- 35. Use inefficiently
- 37. Make a mistake
- 38. Itsy Bitsy Spider's route
- 39. Osiris' sister and wife
- 40. 4th of July R&R
- 42. Let sleeping dogs do what?
- 43. Broadway venue
- 45. Floats
- 47. Monotonous routine
- 48. More capable
- 50. Worry unnecessarily
- 52. An explosive celebration
- 56. Hunger for
- 57. Axillary
- 58. Some nervously bite it
- 59. Source of sesame seeds
- 60. Rpms
- 61. Small island
- 62. Stiff hair
- 63. Lyric poem
- 64. Grub
- DOWN**
- 1. Online room
- 2. Prefix for air
- 3. Injure
- 4. Olympic lake
- 5. Shinbone
- 6. Braided hairdo
- 7. Mother ___ of ore
- 8. Threshold
- 9. Heart, ear or tooth condition
- 10. Caviar, pl.
- 11. Slight amount
- 13. Tighten, as in rope
- 14. South American animal resembling raccoon
- 19. Scallywag
- 22. Irritate
- 23. Small European gull
- 24. Dog restraint
- 25. Famous cow
- 26. "___ and raised"
- 27. WWII villain
- 28. Indigenous people of the Arctic
- 29. Hindquarters
- 32. Prince Charles to Queen Elizabeth creature
- 36. Tsar's daughter
- 38. Fastener

CROSSWORD

1	2	3	4			5	6	7			8	9	10	11				
12						13					14							
15						16					17							
18						19					20							
					21						22							
23	24	25									26		27	28	29			
30						31	32	33							34			
35						36					37				38			
39											40				41			42
43											44				45			46
						47					48	49						
			50	51							52					53	54	55
56											57					58		
59											60					61		
62											63					64		

PRESENTED BY



© 2007, StatePoint Media, Inc. answer on classified page

The Hansford County Reporter-Statesman
213 Main Street • Spearman, TX 79081
Phone - (806) 659-3434 • Fax - (806) 398-9080
www.spearmanreporter.com
reporter@spearmanreporter.com
cathysmith@valomet.com

Mon.-Thurs. 9 a.m.-12 p.m., Mon.-Wed. & 1-5 p.m.
Closed Thurs. afternoon and all day Fri., Sat. & Sun.

Gary Smith - Publisher Catherine Smith - Editor
Contributing Writers: Dorothy Hudson, Jim Derington, Merry Sparks, Cecil Biggers
Contributing Photographer: Charlie Johnson



Subscription Rates
In Hansford County - \$30.00 • Out of County - \$40.00

The Hansford County Reporter-Statesman (USPS 529660) is published weekly in Spearman, TX. Periodical postage paid in Spearman, TX. POSTMASTER: Send address changes to: The Hansford County Reporter-Statesman, 213 Main Street, Spearman, TX 79081.

Publication Policy
The deadline to submit news and advertising to The Hansford County Reporter-Statesman is Monday at 5 p.m. Items submitted after the deadline will be published at a later date, as time and space permit. Publication of all items is at the discretion of the editor.

Advertising
Open Display rates are \$4.00 per column inch. Classified Ads are \$6 for the first 25 words and 10¢ per word for each additional word. (Additional charge for boxed classifieds.) There is a \$1 charge per week if billed.

Member of
Gruber Chamber of Commerce
Spearman Chamber of Commerce
Texas Press Association and Panhandle Press Association

Happy Birthday!

Editor's Note: This Happy Birthday list is run as a public service by the Hansford County Reporter-Statesman. We apologize if any names are misspelled. If you know of a name that needs to be changed, added or deleted, please call 659-3434.

June 28
Birthday - Carson Womble, Linda Rowland, Don Allen, Ernie Vanderberg, Terri Brummet, Helen Hand, Mrs. A.F. Loftin, Sue Tindell, Trent England, Meghan Jade Snider

Anniversary - Harvey & Sandra Proffitt, M/M Cecil Biggers, M/M Jim Derington, M/M Bruce Knight

June 29
Birthday - Ira Gross, Hazel Taylor, Scott Strawn, Gary Johnson, Sandra Gumfory, Monica Blackman, Rajan Traften, June Tucker

Anniversary - M/M Charles Bell, M/M Amadeo Cazares

June 30
Birthday - Mike Minter, Ricky Thompson, Esmeralda Vela, John Snider, Margarete Evans, Kyle Brock, Jeff Hohertz, Kerri Lou Schneider, Willie Vera, Paige Burgin, Daniel Crug, Ed Cook, Austin Benton, Katelyn Villarreal, Shari (Smith) Githens

Anniversary - Ishmael & Anna Vela, M/M Claude Sheets Jr., M/M D.A. Cator, M/M Walter Murrell, M/M Paul Stavlo, M/M S.J. Wells, M/M Carl Kunselman, Joe & Elvia Avila

July 1
Birthday - Ida Hendrick, Pauline Lopez, Pauline Jackson, Rosa Rojas, James Cunningham, Loydell Sparks, Dwayne Smith, Manlene Cook

Anniversary - M/M Dee Mayfield, M/M Jerry Hart, M/M Charles Brillhart, Kevin & Ronda Bynum, Clay & Pam Schnell

July 2
Birthday - Lou Chapman, Janet Irwin, Wayne Biggs, Luis Herмосillo, Joe Herмосillo, Kerri George, Channing Burgess, Gary Ellsworth

Anniversary - M/M Jimmy Vanlandingham, Burt & Lynell Williams, Ron & Loretta Cook, John & Debbie DeLaRosa

July 3
Birthday - Julie Gumfory, Randy Lowe, Todd Williams, Charlie Lopez, Audene Beck, Lynn Sheets, Trudie Gordon, Meredith Benton, Ronda Gibson, Gene Reynolds, Trevor Shipley, Debra Gallimore, Verlin Behne, Bill Porter, Cheryl Salgado, Hennieetta Andrews

Anniversary - Bill & Verna

Strawn

July 4

Birthday - Barry Barkley, Donna Been, Gene Duncan, Mary Weldon, Farene Williams, Faye Cunningham, James Umphress, Ofelia Vela, June Patterson, Melvyn Bradley, Kim Swink

Anniversary - Mike & Kathy Peck, M/M Walter Postoak, M/M Jerald Ray Scribner

July 5

Birthday - Sydney Clawson, Kent Benton, Mrs. George Rook, Mack McLain, Linda Walker, Jamie Davis, Tom Dortch, Dawn Bridges, Connie Gibson Dixon, Blayne Schrader, Alfonso Martinez, Melanie Elliott

Anniversary - M/M Bill Been, Mike & Kathy Brown, M/M Anthony Wilkerson, Burton & Wanda Schubert

July 6

Birthday - Alan Biggers, Scott Attwood, Monte Beck, Rickey Shields, Gene Dennis, June Day, Kimberly Ann Vasquez, Cody Benton, Lometa Sparks

July 7

Birthday - Pat O'Connell, Steve Benton, Brenda Sue Bowling, Greg Meisner, Steve Lesly, Virginia Reyes, Magda Rivera, Brian Sparks, Justin Bowman, Daniel Ward, Karen Pierce, Mattie Davis, B.J. Hughes, Reid Swan

Anniversary - M/M Kenny Bratton, Kelly & Johnie Fuller

July 8

Birthday - Buddy Benton, Janna Nickles, Aaron Hart, Craig Morris, Gay Pipkin, Luis Martinez, Jody Fowler, Samantha Prouty, Loree Espinosa, Kathy Lindsey

Anniversary - M/M Rodney Clawson, Leo & Phyllis Cummings, M/M Rod Fulce, M/M Greg Miesner

July 9

Birthday - Edith Smith, Donna Farris, Johnny Jo Roach, Sally Swan, Kyle Kirk, Sean Travers Baker, Donna Custard, Sharolyn Finley, Darlene Hoel

Anniversary - M/M Richard Booth, M/M Dewey Taylor, M/M Jimmy Finley, Joanna (Moore) & Wayne Pierson, Kevin & Ann Rook, Mr. and Mrs. Leon Bagwell

July 10

Birthday - Steven Greever, Donna Sheets, Lorene Kunselman, Carolyn Shields, Cathy Gafford, Mitch Gillian, Belinda Francis, Felex Lopez, Jolynda Vasquez, Justin Bass, Jerrill Key, James Sursa

Anniversary - M/M Randy Kirk

Words from Faith & Grace

by Cecil R. Biggers, Lutheran Lay Minister

In the fifth week of Pentecost we study 1 Kings 19:15-21, Psalm 16, Galatians 5:1,13-25, and Luke 9:51-62. Elijah the prophet is told to anoint Hazael as king over Aram (Syria). Jehu as king over Israel, and Elisha as the successor prophet to Elijah. Elijah finds Elisha plowing with twelve yoke of oxen and throws his mantle on him. Elisha understands that he is to follow Elijah, but he wants to say good bye to his parents. Elijah walks on, Elisha follows after feeding his people. When the Spirit calls—Go! The Psalmist sings for joy! The person who daily holds on to God finds life to be a joy.

Paul warns the Galatians not to submit themselves again to the slavery of the Law but to stand firm in the freedom of Jesus Christ. Dear Christian, freedom is not easy; it is produced by the Holy Spirit and allows us to "love our neighbor as ourselves". Study this scripture carefully and you will find that God calls us to ever greater love, life and freedom. Our struggle therefore is not to be better than our neighbors, but to be better than ourselves through the power of the Holy Spirit. Paul shows us that if we daily hold on to the Spirit we have love, joy, peace, patience, kindness, generosity, faithfulness, gentleness and self-control.

Luke shows us Jesus headed toward Jerusalem by way of Samaria. Now the Samaritans and the Jews did not like each other. Jesus sends James and John ahead of the disciples into Samaria. The "sons of thunder" are sent into a powder keg and become irate. The Samaritans refuse to accept Jesus' presence because He is headed toward Jerusalem. Immediately, James and John want to call upon fire from heaven to consume the Samaritans. Jesus rebukes the "sons of thunder" by explaining such is not His way. Jesus came to save other people, not to destroy them. Abraham Lincoln was once chided for being too kind to the defeated Southerners after the Civil War. Lincoln responded, "Do I not destroy my enemy by making him my friend?" That dear Christian is Jesus' way.

Jesus is then approached by three "wannabe" Christians. One wants to follow wherever Jesus may go, but Jesus warns him that Jesus has nowhere to lay his head. Another wanted to follow Jesus, but wished to do so after "burying" his father. Still another wanted to follow Jesus, but first wished to say good-bye to his kinfolk. Jesus tells them that no one who puts a hand to the plow and looks back is fit for the Kingdom of God. Modern psychology tells us that when we have a fine feeling and fail to act upon it, the less likely we are to act on it at all. When the Spirit calls—go!

May the Holy Spirit keep you free in Jesus Christ each day so that you may have love, joy, peace, patience, kindness, generosity, faithfulness, gentleness and self-control now and forever.

Our Sympathy

CALVING GEX "LAD" BOOTHBY

DUMAS - Calving Gex "Lad" Boothby, 52, died Thursday, June 21, 2007 in Wichita, Kan.

Services were at 1 p.m. Monday in North Plains Christian Church with Rusty Turner and Rollin Boothby officiating. Burial was at 4 p.m. in Texhoma Cemetery in Texhoma, Okla. Arrangements were by Boxwell Brothers Funeral Directors of Dumas.

Lad was born Nov. 19, 1954, in Guymon, Okla. He graduated from Texhoma High School and then Midwest Christian College. He earned a master degree from Texas A&M in Corpus Christi and later received his Ph.D.

He married Myra Myers on Aug. 8, 1999, in Canyon. Lad was a licensed professional counselor and minister at North Plains Christian Church.

He was preceded in death by his mother, Jewel "Julie" Jones. Survivors include his wife, Myra Boothby; four sons, Jeremy Lad Boothby and wife Maricruz of Amarillo, Heath Michael Boothby and wife Samantha of Conway, Ark, Adam Scott Boothby of Guymon, Okla., Bret Higginbotham and wife Brandy of Carrollton; two daughters, Heather Diane Boothby of Guymon and Shea Porter and husband Jerry of Canyon; his father, D.C. Boothby Jr. and his wife Delta of Texhoma, Okla.; three brothers Rick Harkins and wife Carmen and Randy Harkins and wife Teresa all of Chandler, Okla., Rod Harkins and wife Machell of Guymon; four sisters, Sue Clay and David Cann of Amarillo, Jane Trammell and husband Cliff of Texhoma, Vicky Henderson of Gruver and Rhonda Hilderbrand and husband Kent of Midwest City, Okla.; and eight grandchildren.

The family suggests memorials be to North Plains Christian Church, 702 Birge, Dumas, TX 79029.

We will be closed on Wednesday,
July 4th in observance of

Independence Day

INTERSTATE BANK, s.s.b.

www.interstatebank.net

322 Main Street
Spearman, TX
79081
(806) 659-2559
Fax - (806) 659-3276

A Full Service Bank - FDIC Insured

MONUMENTS

Boxwell Brothers Funeral Home

519 Evans • Spearman
(806) 659-3802

Dear friends,
When you buy a monument from us we make sure it is exactly what you want at a price you can afford. If it is not right, we will make it right. And you will not have to search the countryside to find us. We are here when you have a need.

Sincerely,
Bob Boxwell

STOP LEG CRAMPS BEFORE THEY STOP YOU.

Calcet's triple calcium formula is designed to help stop low calcium leg cramps. Just ask your pharmacist.

Mission PHARMACEUTICAL

CALL 800-391-4636. © 2007 Mission Pharmaceutical Company. All rights reserved.

Send a smile

Give Teleflora's Be Happy Bouquet

Make them smile for a long, long while. Surprise them with flowers in a bright ceramic mug wearing the world-renowned Happy Face.

Perfect for any happy occasion, and so easy to send anywhere in the U.S. or Canada. Just call or visit our shop.

Teleflora
Prairie Garden Flowers
209 Main Street • Spearman, TX
659-2212 • 659-3329

LET'S TALK COLORADO

FREE YOUR MIND. FREE YOUR BODY. FREE YOUR WALLET.

Let's talk fun. Let's talk getting away. Let's talk Colorado.
Enter today for your chance to win 1 of 5 amazing vacations at COLORADO.COM.

PERSONAL CHECKS ACCEPTED!

DIRECTV
DIRECTV FREE
4 Room System!
250+ Channels!
Starts \$29.99/month!
FREE HBO/Cinemax!
FREE Showtime!
FREE DVR/HD Receiver!
Call 1-800-214-7110

HERNIA PATCH

EXPERIENCE COUNT'S
Lawyers with over 80 years combined experience.

Kugel Mesh Hernia Patch is surgically implanted and has a "memory recall ring" that opens after insertion. This ring may lead to bowel and intestinal perforations and fistulae. If you or a loved one have had this patch and had problems, call us for professional insight.

Ryan A. Krebs, M.D., J.D.
DABUS-Lawyer in Full-time Law Practice
Richard A. Dodd, L.C.
Timothy R. Cappolino, P.C.
Board Certified Federal Injury Trial Law and Civil Trial Law for the State Bar of Legal Specialization
NO FEE FOR FIRST VISIT
CAMERON, TEXAS

1-800-460-0606
www.DefectiveDrugsLaw.com

SIGN UP FOR A FREE SCOOTER

One Scooter Given Away Each Month

Toll Free 800-606-9860

Med Care MEDICAL SUPPLY
www.medcaremedicalsupply.com

Replenish the seed of faith through . . .

DAILY BIBLE READING, PRAYER & REGULAR CHURCH ATTENDANCE

Spearman

Apostolic Faith Church
822 S. Drexler • 659-2870
Sunday School: 10 a.m.
Worship Service: 11 a.m.
Sun. Eve: 6 p.m.
Wed. Prayer Mtg: 7 p.m.
Pastor - Roland Haney

First Assembly of God
401 N. Bernice • 659-2295
Sunday School: 9:30 a.m.
Worship: 10:35 a.m.
Kid's Church: 10:35 a.m.
Evening Worship: 6 p.m.
Wed. Worship: 7 p.m.
Wed. Youth: 7 p.m.
Pastor - Bob Elder

First Christian Church
(Disciples of Christ)
29 S. Bernice • 659-2036
Sunday School: 9:45 a.m.
Worship: 10:50 a.m.
Minister -

First Baptist Church
123 N. Bernice • 659-5557
Sunday School: 9:45 a.m.
Worship: 11 a.m.
Evening Worship: 7 p.m.
Men's Bible Study - Wed., 7 a.m.
Children's Choir - Wed, 6 p.m.
Adult Choir - Wed, 7 p.m.
Wed. Bible Study: 7 p.m.
Pastor - Jim Medley

Church of Christ
121 S. Haney • 659-3244
Sunday Bible Class: 9:45 a.m.
Worship: 10:30 a.m.
Evening Worship: 6 p.m.
Bible Study Wed.: 7:30 p.m.

Sacred Heart Catholic Church
901 Roland • 659-2792
Sat. Night Mass: 5:30 p.m.
Sun. Mass: 9 a.m. - English
Sun. Mass: 11:30 - Spanish
1:30 p.m. - Gruver - Christ
Rectorator Mass - Spanish
Rev. Guillermo Morales

First United Methodist
407 S. Haney • 659-5503
Sunday School: 9:45 a.m.
Worship: 8:30 & 11 a.m.
Jr. High Youth: 5 p.m. Sunday
High School: 6 p.m. - Sunday
Kids Club: 3 p.m. Wed.
Pastor - Neely Landrum

Grace Presbyterian Church
(Worships with Faith Lutheran Church)
1101 Bernice • 659-2033
Pastor - Beverly Cook

Faith Lutheran Church (ELCA)
1101 Bernice • 659-2252
Sunday School: 9:45 a.m.
Worship: 11 a.m.
(Worships with Grace Presbyterian Church)
Pastor - Beverly Cook

Union Church
31 S. Endicott • 659-2644
Sunday School: 9:45 a.m.
Worship: 10:45 a.m.
Evening Worship: 6 p.m.
Bible Study: 7 p.m. Wed.
Pastor - Dr. Timothy Minor

Fellowship Baptist
1102 S. Archer • 659-2783
Sunday School: 10 a.m.
Worship: 11 a.m.
Sun. Evening Worship: 6 p.m.
Youth/Adult Service: 7:30 Wed.
Pastor - James Washburn

Primera Misión Bautista
502 E. 7th • 659-3991
Sunday School: 9:45 a.m.
Worship: 11 a.m.;
Evening: 6 p.m.
Wed. Prayer Meeting: 7 p.m.
Thurs. Visitation: 7 p.m.
Pastor Joe Garcia Jr.

El Aposento Alto U.P.C.I.
1105 S. Roland
Domingos: Escuela-Dominical - 10 a.m.
Culto Evangelistico - 7 p.m.
Jueves: Oracion - 8 p.m.
Miér. Estudio Bíblico - 7 p.m.
Pastor - A.G. Martell
(806) 659-2153

Gruver

First Baptist Church
402 E. Broadway • 733-2411
Sunday School: 9:45 a.m.
Worship: 10:50 a.m.
Disciple Training: 6 p.m. - Sunday
Prayer Meeting: 7:30 p.m. Wednesday
Pastor - Scott Curry

Church of Christ
209 King • 733-2760
Sunday School: 9:30 a.m.
Worship: 10:20 a.m.
Evening Worship: 6 p.m.
Wed. Worship: 7:00 p.m.
Minister - Gaylord Cook

First Christian Church
510 King • 733-2760
Sunday School: 10:00 a.m.
Sunday Worship: 11 a.m.
Youth: 7:30, Sunday
Adult Bible Study: 7:30, Sun.
Wed. Bible Study: 8:00 p.m.
Pastor - Gary Gumfory

Gruver United Methodist
Broadway & Garrett
733-2651
Sunday School: 9:45 a.m.
Worship: 8:30 & 10:50 a.m.
Eve. Worship & UMY: 6 p.m.
Pastor - George Price

Spanish Cristo Redentor Church
Sunday Mass: 1:30 p.m.
Friday Evening Mass
Summer - 8:00 p.m.
Fall/Winter - 7:30 p.m.

Oslo

Oslo Lutheran Church (ELCA)
6 Miles West & 12 Miles
North of Gruver
339-7646
Sunday School: 9:45 a.m.
Worship: 11 a.m.
Pastor - Arlen Lloyd

Morse

Morse Baptist Church
733-2757
Pastor - Mike Martin

He has showed you, O man, what is good. And what does the LORD require of you? To act justly and to love mercy and to walk humbly with your God.
Micah 6:8

This feature is made possible through the sponsorship of these civic minded businesses.

Deakin ELECTRIC
OILFIELD • RESIDENTIAL • COMMERCIAL
321 S. MAIN • SPEARMAN
1-800-999-1506
(806) 659-5016 Chris Deakin President

Bartlett's Lumber & Hardware
105 W. Broadway • Gruver, Texas
(806) 733-2404

BERRY CLEANERS
Ann & Vernon Pipkin - Owners
Phone 659-3122 • P.O. Box 1017
207 Main St. • Spearman, TX

Morse Implement & Auto Supply
"Join us in church this week"

Tom Dortch 733-2668
P.O. Box 89 • Morse, TX 79062

PRAIRIE MOTORS INC.
Hwy. 207 South • P.O. Box 430
Spearman, TX 79081 • (806) 659-2541
www.prairiemotors.com

Gruver Cablevision
308 Main
Gruver, TX 79040
733-5295

Hansford County Reporter-Statesman
"Proudly Serving Hansford County Since 1907"
(806) 659-3434
213 Main Street • Spearman, TX

INTERSTATE BANK, s.s.b.
www.interstatebank.net
322 Main • P.O. Box 146
Spearman, TX • 659-2559

HYI

FOR YOUR INFORMATION

You're Never Alone - Narcotics Anonymous Group
Each year individuals struggling with drug and alcohol addiction make the resolution to quit using drugs. For many of them it is a resolution that they cannot keep. Narcotics Anonymous can help. Open meetings are held on Monday and Thursday nights from 8-9 p.m. at the First Christian Church (29 S. Bernice in Spearman) for the "You're Never Alone" group of Narcotics Anonymous. Anyone interested is invited to attend. Drug addiction can leave you feeling helpless and out of control - we can help.

Spearhead AA Group

The Spearhead AA Group meets every Tuesday at 8 p.m. in the Pittman-Shieldknight building. Alcoholics Anonymous* is a fellowship of men and women who share their experience, strength and hope with each other to help solve their common problem and help others to recover from alcoholism. The only requirement for membership is a desire to stop drinking. There are no dues or fees for AA membership; we are self-supporting through our own contributions. Our primary purpose is to stay sober and help other alcoholics achieve sobriety. For information, call 662-1111.

Al-Anon

If you are concerned with someone else's drinking or addiction, the Al-Anon program can help you. Each Al-Anon Family Group has but one purpose - to help families and friends of alcoholics and addicts. The Spearhead Al-Anon Group meets every Tuesday night at 8 p.m. in the Pittman-Shieldknight Building, 511 SW 11th Avenue, Spearman. For more information, call 806-330-0349.

Panhandle Crisis Center Outreach Office

Panhandle Crisis Center (PCC) has an Outreach Office and Resale Store at 306 Hancock, in Spearman. In case of emergencies, please continue to call the hotline, 1-800-753-5308. To schedule an appointment with a worker in Hansford County, call 659-3391 to leave a message, or call the hotline number above. Panhandle Crisis Center serves victims of domestic violence and sexual assault. Call for more information regarding PCC's services. Hours for the Resale Store in Spearman are: Monday, Tuesday, Thursday & Friday from 10 a.m.-5 p.m.

Tuesday Night Golf Scrambles

The Spearman Golf Course has begun their Tuesday Night Scrambles. Tee-time will be at 6 p.m. sharp. For more information, or to sign up, call 270-0157 or 659-2233.

Ladies Water Aerobics

Ladies water aerobics began June 4, 2007, and will be held from 6:30 - 7:30 p.m. every Monday, Tuesday & Thursday at the Spearman Municipal Swimming Pool. The cost is \$1.50 per session. This is LADIES HOUR ONLY. If small children must accompany the participant, then they will have to stay in kiddie pool area and will be charged admission. No older children allowed.

PTCI Spearman Upgrade Continues Through June

Construction continues in the upgrade of Spearman's current CATV/Telephone system to provide over 100 channels of Digital TV and upgrade PTCI's High Speed Internet and Voice Services. During this upgrade process some extended disruptions in Telephone, Internet and Television service may be experienced. PTCI will work to minimize the length of these disruptions and appreciates customer patience during this process. Upon completion, this upgrade will enable PTCI to expand its present high-quality, state-of-the-art telecommunications services and features throughout Spearman. PTCI expects this upgrade to be complete by July 1.

Abilene Writer's Guild Writing Contest & Workshop

The Abilene Writer's Guild will hold their annual writing contest and workshop. Contest entry deadline is July 31st, 2007. The workshop & awards luncheon will take place on Saturday October 27, 2007. Guest Speaker - Amy Shoja. Please visit our website at abilenewritersguild.org for rules, entry forms and contest guidelines.

Spearman ISD Kids Kamp 2007

July 2: Lyric Matinee will begin at 10:30am. The movie will be an age appropriate movie for \$6. This included admission, coke and popcorn for grades K-5.
July 10: Money Smart For Kids - This fun camp will introduce children to the way money works and how to manage money wisely. Students will learn principals of money management and begin to develop good financial habits for life. They'll learn about why saving is important and how interest works. Instructors will be First State Bank of Spearman employees. Grades 4-8, 10-11:30 a.m., Spearman High School, \$5
July 11 & 12- Jr. EMT- this camp is sponsored by Spearman EMS. Justin Boyd and other EMTs will instruct students in grades 2-5 on basic first aid and emergency procedures. A great class for kids who are "home-alone." 9:30-11: a.m., Spearman Ambulance Station, \$5

For more information, contact Cindy Blackman, Community Resource Coordinator, 403 E. 11th Street, Spearman, TX 79081; 806-659-3233

ON THE AGENDA

- Spearman Fire Department meets every Thursday at 7 p.m. at the Spearman Volunteer Fire Department.
- Gruver Fire Department meets the 1st, 2nd and 4th Tuesday each month.
- American Legion and Auxiliary Post 254 meets the 1st Monday each month at 7 p.m. at the Senior Citizen Center in Perryton.
- Gruver Chamber of Commerce meets the 1st Tuesday each month at 12 noon at the El Vaquero.
- Hansford County Commissioners Court meets the 2nd and 4th Mondays at 10 a.m. at Hansford County Courthouse.
- Stationmaster's House Museum Board of Directors meets the 2nd Monday each month at 2 p.m. at the Stationmaster's House Museum.
- Spearman ISD Board of Trustees meets the 2nd Monday each month at 7 p.m. in the Spearman High School Library.
- Hansford Hospice meets on the 2nd Monday each month at 7 p.m.
- Palo Duro River Authority meets on the second Tuesday of each month at 2 p.m. at the P.D.R.A. office.
- Genealogy Club meets on the 2nd Tuesday each month at 7 p.m. in the home of Velma Sanders, 1015 Linn Drive, in Spearman.
- Women's Division of the Spearman Chamber of Commerce Board of Directors meets the 2nd Wednesday each month at noon.
- Gruver City Commission meets the 2nd Wednesday each month at 5 p.m. in Gruver City Hall.
- Spearman Chamber of Commerce Board of Directors meets the 2nd Thursday each month at noon.
- Pringle-Morse CISD Board of Trustees meets the 2nd Thursday each month at 7 p.m.
- Spearman City Council meets the 3rd Tuesday each month at 7 a.m. in the City Hall Chambers at City Hall.
- Women's Division of the Spearman Chamber of Commerce meets the 3rd Wednesday each month at noon.
- Gruver ISD Board of Directors meets the 4th Tuesday each month at 6 p.m. in the Board Room at Gruver High School.
- Hansford County Hospital District Board of Directors meets the 4th Wednesday each month at 6:30 p.m. in the Board Room at Hansford Hospital.
- Hansford County Historical Commission Board of Directors meets the 1st Monday of January, April, July and October at 2 p.m. in the Zulu Museum building.

Snider, Moss Wed



Mrs. Gary Moss

Kylie Irene Snider and Gary Lynn Moss were married on June 16, 2007 in a double ring ceremony in the First Assembly of God Church in Dumas, Texas with the Rev. Billy Snider, uncle of the bride, officiating. She was given in marriage by her father, Bobby Snider.

The bride is the daughter of Bobby and Kay Snider of Dumas. Parents of the groom are Mike and Kathy Maciuba of Irving, Texas. The two maids of honor were Karen Riggs of Tampa, Florida, friend of the bride and Lisa Ricketson of Dumas, friend of the bride. Bridal attendants were Melissa Fisher of Rolla, KS, friend of the bride, and LaShera McElhane of Waxahachie, TX, sister of the bride.

The best man was Chris Maloy of Irving, TX, friend of the groom. Groomsmen were Shane Little of Irving, friend of the groom, Kevin West, friend of the bride and groom, and Vance Snider II, brother

of the bride.

Guests were seated by ushers Brian Cummins of Dumas and Justin Donalson of Waxahachie, friends of the bride.

Flower girls were Lanie Snider, niece of the bride, and Alexis Fisher, friend of the bride. Ring bearer was Matthew Taylor, cousin of the groom.

Candlelighters were Brian Cummins and Justin Donalson, friends of the bride.

Special music, "Because You Love Me," was sung by Holly Mares, friend of the bride. Other special music included "Long Trip Alone," the wedding march (acoustic) and "Bless the Broken Road."

Guests were registered by Taryn Snider, sister of the bride.

Kylie wore a gown with an embroidered bodice with taffeta with crystal beading and sequins with a semi-cathedral train. Her bouquet was lavender and white roses with ivy. The groom's boutonniere was a lavender rose.

Attendant's flowers were lavender roses with white baby's breath and the groomsmen's boutonnières were lavender roses with baby's breath. Silver bows adorned the church pews.

Special accessories were: something new - wedding dress and veil (her veil was made by the groom's mother, Kathy Maciuba); something old - her late grandmother, Mary Glassey's wedding ring set; something borrowed - her grandmother, Irene Snider's, amethyst bracelet; something blue - handkerchief with two blue hearts.

Hostesses for the wedding cake were Karen Clemens and Patsy Anderson, friends of the bride. Punch servers were Ranae Wehnt and Laura Morris, friends of the bride.

Kylie graduated from Dumas High School in 2002. She graduated from Southwestern Assemblies

of God College on May 4, 2007.

She is a 3rd grade teacher in Midlothian, Texas with the Midlothian School District.

Gary is a 2001 graduate of Dumas High School. He is currently attending college in Irving, to be a history professor and coach. He is currently employed with a mattress firm in Irving.

The couple will live in Irving,

following a honeymoon to Orlando, Florida.

Grandparents of the groom are Velma and Vern Mayes of Dumas. Grandparents of the bride are the late Steve and Mary Glassey of Perryton and Irene Snider and the late Vance Snider of Spearman.

College Corner

Oklahoma Panhandle State University

Commencement services were held for Oklahoma Panhandle State University on Saturday, May 19, 2007 at 10 a.m. in the Oscar Williams Field House.

The 2007 graduates included the following from Hansford County: Brianne N. Eslick, cum laude - Bachelor of Business Administration in Computer Information Systems; Nicole Dianne Ramon - Bachelor of Science in Elementary Education; Christie Michelle McDowell, cum laude - Bachelor of Science in Health and Physical Education; Barbara Stavlo - Bachelor of Arts in English; Randi Renee Burch Rice - Bachelor of Science, Psychology; and Mary Gale Hamilton - Associate of Science in Business Administration.

Daniel Harris received an Associate of Applied Science in Nursing from Oklahoma State University in Oklahoma City, through a program at Oklahoma Panhandle State University.

WHEN DOES YOUR SUBSCRIPTION EXPIRE?

SCR1
07/07 EXPIRES
JOHN Q. PUBLIC
PO BOX 123
SPEARMAN TX 79081

Expiration dates are printed on the top of all mailing labels. Our readers can help keep the cost of subscriptions down by mailing in renewals in the appropriate month.

Thank you, Catherine Smith

THE HANSFORD COUNTY REPORTER-STATESMAN
213 Main Street • Spearman, TX 79081
Annual Subscription Rates
In Hansford County - \$30
Out of County - \$40

We will be closed on Wednesday, July 4th in observance of Independence Day

FNBANK
First National Bank

Spearman, Texas 79081 Dumas, Texas 79029
806-659-5544 806-934-8455
800-583-4196 866-583-4196
Member FDIC

Gordon's

Your place for
Bridal Registry

Couples Currently Registered

Bethany Harris & Nick Peterson - 6/30
Syd Woodington & Don Coddling - 7/14
Nikki Stewart & Brady Hart - 7/14
Misha Davis & Duane Dorsey - 8/11
Laura Gomez & Richardo Plascencia - TBA
Brooke Salmans & Michael Condry
Jenni Beck & Josh Winegarner
Staci Leonhard & Lee Jarvis
Jesse & Brooke (Trantham) Allen
Rowena May Apacible & Dustin Wade Parks
Daniel & Wendy (Woolley) Jarvis
Janae Watley & Kyle Igo
Kristi Carbajal & David Valdez
Daniele Catron & Randy Duffy
Amy Boorigie & Doran Schoenhals
Charlotte Procter & Tim Bynum

Baby Registry

Mark & Brandea Allen - 6/29 (Gruver)
Tye & Cortney Womble - 6/30
Lenny & Kelly Pecha - 7/7
Mark & Brandea Allen - TBA (Spearman)
Taos & Marcy Weldon
Eric & Tisha Cudd
Schane & Brienne Schneider
Jennifer Ferel & Jeff Coates

Gordon's 659-2141
314 Main Spearman

Celebrate

Gifts for all your celebrations!

Bridal Registry

Shower Dates
Bethany Harris & Nicholas Peterson - 6/30
Syd Woodington & Don Coddling - 7/14
Nikki Stewart & Brady Hart - 7/14
Misha Davis & Duane Dorsey - 8/11
Rowena Apacible & Dustin Parks
Mindee (Gillaspie) & Trampus Woodward
Brooke Salmans & Michael Condry
Janae Watley & Kyle Igo
Kristi Carbajal & David Valdez
Daniele Catron & Randy Duffy
Mikala Reisswig & Kyle Luginbahl
Charlotte Procter & Tim Bynum
Amy Boorigie & Doran Schoenhals

Baby Registry

Courtney & Tye Womble - 6/30
Kelly & Lenny Pecha - 7/7
Kristi & Ross Renner - TBA
Linzi McCubbin
Marcy & Taos Weldon
Brianne & Schane Schneider

Celebrate

203 Main St. Spearman, TX
(806) 659-3350 1-800-663-8026

Wolf Creek Heritage Museum Notes

by Virginia Scott
HISTORICAL HAPPENINGS

The board met last Wednesday and we discussed the educational trips that Georgia and I have made. Final reports were given on two grants we received last year from the Texas Historical Commission: the highway signs that will be erected sometime this summer or fall and the equipment grant that purchased two computer programs for our archival records and an environmental monitor that allows us to have a continuous record of our temperature, light, and humidity.

The Board approved the establishment of the building expansion bank fund with the start up sum of \$10,000. The nominees for the Building Expansion Committee were discussed and will be announced once they have all accepted. Anyone interested in assisting with our campaign or to donate to the expansion please contact us at 806-852-2123. Our goal is to raise enough money to erect an addition of an 50x100 foot building adjoining our present structure.

The Follett School is cleaning house and donated to the museum bound volumes of the school newspaper and issues of the Lipscomb Limelight and the Follett Times. So I have new material to review and use in the column. We thank the school for saving these jewels and for donating them to the museum. Any of you who were on the school newspaper are welcome to come in to the museum and peruse your youth.

The photographic exhibit from Humanities Texas will be on display along with the paintings of Gene Born for two more weeks. Both exhibits are interesting, beautiful, and thought provoking. Make a trip to the museum to take a break from the wind and the heat.

We received information from the weather bureau in Amarillo about our flood. The official recordings are that at a stage of 15.3 feet at 10:45 on May 24, 2007, the Wolf Creek crested. It is recorded that the creek crested at 15.5 ft on June 23, 1957 but the USGS did not have a gauge at the site in '57 so the 15.3 ft is the highest the creek has gotten for this period of record according to the USGS. They also have a record of 12.4 ft on 9/19/1996 and an unofficial crest of 16 ft. from 1890. Therefore, this year is the new official record for the creek.

The Humanities Texas exhibit "The Way Things Were" is in our main alcove area. Mr. Brillhart brought new pieces of cut glass to freshen his exhibit. The new pieces are of vases and pitchers. Beautiful!

Lovella has arranged the brides in the pioneer room, German and church areas. So far, she has four new gowns and one repeat. The repeat is the 1901 dress of Ms. Helena Helber-Koehler Kinzelt which is on permanent display in the German area. Also in this area is the 1894 wedding dress worn by Kathryn Hoffner, bride of George Schultz (on loan from Lee

Schultz). In the pioneer room is the Wedding gown of Kathryn (Laurie) Paul from 1961. Ms. Paul brought her wedding book, the magazine ad for her gown with a letter from the designer, her shoes, gloves, and Bible. In the church area is the gown of Laveta Buchner from the 50's. Ms. Buchner also brought her flower girl's dress. From the 30's is the wedding dress of Reeva Lata (on loan from Kathy Fry).

We still need dresses from the 10's, 20's, 40's, 70's, 80's, and 90's, and 2000's. The dresses are delightful and beautiful. A must see.

We received a scale and display cash drawer from the Booker Hardware store. We will be planning a display for them this summer. All ideas are accepted.

HISTORICAL MUSINGS

The Lipscomb Limelight was published by C.A. Skaggs as the successor to the Lipscomb Herald with the first issue on Nov. 21, 1912. Mr. Skaggs is known for his "way with words". In 1912, Lipscomb was lobbying the railroad to come to Lipscomb and the front page of the Limelight was focusing on this issue.

In the third issue of the new newspaper, Mr. Skaggs reports on the railroad issue as "There isn't any use of 'Waiting Till the Clouds go by Nellie' for our town's bound to be on the map and have steam cars going by our door before two more 'great snows' come. There's something going on. Farmers in all directions up the Wolf Creek valley are coming up with their signatures, their support and willingness in a boost on the new railroad proposition. Enthusiasm is running high, canvassers in the country precincts report things coming along fine....

"Lipscomb, we are forced to

report, has no back numbers in her 'make up' and there is more hustle, push and vim in them than any other 'push' from 'Swanzy way up the creek' and now the whole 'broadside' is turned on the railroad proposition and you can just bet your old socks Lipscomb is going to have cars pulling freight out of this town to other sea ports."

Colorful is his description of the politics of the county. We know that Lipscomb lost out to the northern border. I will research the old papers and try to locate how he describes this event.

I would like to revisit a letter to Will Rogers from A. H. Roden when Will was writing for the Fort Worth Star Telegram. The letter is quite lengthy and contains several stories.

The one I want to relate to you this week is about the court session in Grand, Oklahoma in the fall of 1899. Mr Roden, his friends Carl Fay and Will Hale went to Grand so that Mr. Hale could make his court appearance for the shooting of an New Mexico Puncher. The grand jury no billed him but Mr. Roden relates the following about the trial of Harry Hamilton.

"This was the only time I ever saw Temple Houston, the youngest son of General Sam Houston. He was representing Harry Hamilton for killing Ira Cooper. Temple got drunk and fell in the floor when he attempted to address the jury. The jury gave Hamilton 99 years."

Early western justice.

Alternative Crops Garner a Second Look

by Kay Ledbetter, 806-677-5608, skledbetter@ag.tamu.edu

A change in the agriculture picture in the High Plains is bringing several alternative crops back into the spotlight, according to a Texas Cooperative Extension specialist.

The growing dairy industry has brought a resurgence of interest in triticales as a forage crop, said Dr. Brent Bean, Extension agronomist in Amarillo. By the same token, the increased focus on biodiesel is bringing more attention to the possibility of growing canola.

Bean showed off variety trials of both crops at the recent Cooperative Research, Education and Extension Team Small Grains Field Day at the North Plains Research Field, located north of Dumas just outside of Etter.

With triticales, a natural hybrid of wheat and rye, producers will need to work with dairies to find a compromise on when to harvest the crop, he said. While the producer may want to wait as long as possible to get more harvested tons, the dairy is looking for a higher protein content, which requires harvesting at an earlier stage.

"I advise you to try to get the dairy to pay you on the protein amount," Bean said. "To me, that's the fair way to do it. That's an incentive for you to harvest earlier and get a premium."

Research on the varieties and production is still ongoing; however, if a producer generally makes a 60-bushel wheat grain crop, then he would be looking at about a 13-ton silage crop yield as it is just beginning to head, he said.

Canola is a new crop to the High Plains.

"Canola needs to be planted at least six weeks before the first hard freeze," he said. "We tried growing canola last year and got the crop planted late. As a result, we lost the crop to a hard freeze the first week of December."

The very small oilseed also can have problems with shattering, Bean said. But some of the positive aspects of canola include the ability to produce 3,000-3,500 pounds per acre with 6 to 10 inches of irrigation water, some potential for grazing, and it can be used to clean up grass problems in a field.

What makes it worth looking at, he said, is the fact that the seeds are 40 percent oil. It is possible a new crushing mill at Etter will be able to handle the seed, although it is currently being used only for processing sunflower oil.

"The growing interest in biodiesel may make canola a potential crop for some (producers)," Bean said.

Wolf Creek Heritage Museum

Museum Hours: Monday thru Friday 10 a.m. to 4 p.m., Sunday 2 to 4 p.m. Special hours upon request.
Museum Information: Hwy 305, Lipscomb; telephone: 806-852-2123; fax: 806-852-2117; email: wolfcrk@amaonline.com; website: www.wolfcreekheritagemuseum.com



Ralph Depee, D.D.S.

Member American Association of Orthodontists
Orthodontics For Children and Adults

- Free exam and estimate of cost
- Free second opinion
- Insurance filed



821 S. Amherst Perryton, Texas
1-800-521-0831
(806) 435-2320

See us for:
AUTO • HOME • CROP HAIL • FARM & RANCH • MULTIPERIL • LIVESTOCK

INSURANCE

BORT AGENCY, INC.
510 Main St. • Gruver, TX.
(806) 733-2456

Hotline for Priority Seating - 435-3945

MONEY'S BBQ & STEAK HOUSE

We Are THPLC-2-B

Stan and Donna Zepp

14 SE 3rd Ave. Perryton, TX

Under New Ownership Same Great Service & Menu!

STOP LEG CRAMPS BEFORE THEY STOP YOU.



Calcet's triple calcium formula is designed to help stop low calcium leg cramps. Just ask your pharmacist!

Hansford Implement Company

Power and performance you demand

John Deere 5025 Series Tractors



- Up to 99 engine hp for hauling heavy loads
- Exclusive optional 540E PTO offers real fuel savings
- Standard open station or deluxe cab features comfort, easy-functioning controls, and unmatched visibility
- 5-Year Warranty Available*

John Deere 6030 Premium Series Tractors



- Up to 95 PTO hp
- Optional GreenStar™ guidance applications reduce operator fatigue and operating costs
- Premium hydraulic systems, visibility, and comfort
- 5-Year Warranty Available*

John Deere 568 Round Baler



- Easily build perfect 5'x6' bales
- DiamondTough™ triple-weave belts provide greater durability
- BaleTrak™ PRO monitor-controller gives you true look-ahead baling

Low financing available!
Visit us today for huge savings.

Dumas, TX • 939 N. Dumas Ave • (806) 935-7720
Perryton, TX • South Loop Road • (806) 435-4036
Pampa, TX • 12098 E. Frederic Ave • (806) 665-1888
Spearman, TX • South Highway 207 • (806) 659-2588



*Offer Expires 7/31/2007. Available only at participating dealer. Certain restrictions apply. See dealer for details. www.yourlandandourbrand.com

TRY IT TODAY! 30-DAY-SATISFACTION GUARANTEE!

VERY VERY FAST LANE

HIGH-SPEED BROADBAND

\$19.95 PER MONTH
FIRST 12 MONTHS WITH QUALIFYING SERVICES

HURRY! OFFER EXPIRES JULY 16!

NO CONTRACT REQUIRED!

GET ONLINE FAST WITH HIGH-SPEED INTERNET!

DOUBLE YOUR SPEED **\$5** MORE A MONTH

FREE MODEM (AFTER REBATE)

Call, order online or visit a store near you.
1.877.312.WIND | WINDSTREAM.COM/BUYNOW

PHONE BROADBAND DIGITAL TV

windstream communications

VISIT THESE WINDSTREAM LOCATIONS:

MISSOURI	ESPANOLA	OKLAHOMA	TEXAS	DALHART	KERRVILLE	SEYMOUR
BOLIVAR 1705 S. Lillian 417.326.1013	2000 N. Riverside Drive 505.747.6200 HOBBS 310 N. Shipp Street 505.397.0912	BROKEN ARROW 939 N. Elm Place 918.259.8255 BROKEN ARROW 2449 W. Kenosha 918.258.4769	ANDREWS 112 S.W. 1st Street 432.523.3323 BOERNE 215 W. Bandera Road, Suite 104 830.248.1111	310 Rock Island Avenue 806.249.1100 DUMAS 402 W. 1st Street 806.935.2681 FREDERICKSBURG 1425 E. Main, Suite 100A 830.990.9299	955 Water Street 830.257.9100 PERRYTON 301 S. Amherst Street 806.435.2050 POST 410 N. Broadway 806.495.3864	400 N. Main Street 940.888.1220 SUGAR LAND 403 Highway 6 S., Suite H 281.490.9412 TEXARKANA 2315 Richmond Road, Suite 101 903.223.4688

Limited time offer. Subject to availability. Satisfaction Guarantee: If customer cancels within the first 30 days, first month fee will be refunded and cancellation fee will be waived. Modem equipment must be returned upon termination. Shipping and handling fees are non-refundable. Pricing: Price good only for Broadband 1.5 when bundled with Connect package and/or Digital TV. Includes Broadband transport and Internet access. Broadband Speeds: Windstream cannot guarantee Broadband speeds or that Broadband service will be uninterrupted or error-free. Free Modem: Available after \$49.95 instant credit and \$50 mail-in rebate. A \$9.95 shipping and handling fee applies. Additional Information: Taxes, fees and other charges, including Universal Service Fund, apply. Credit approval required and prepayment may be required. If any qualifying service is discontinued, all remaining services convert to the regular tariffed monthly rate except for long distance, which will convert to the Windstream 10 plan. Windstream reserves the right to cancel or discontinue this plan at any time. Other restrictions may apply. Offers are subject to the Windstream Terms and Conditions available at any Windstream store or at windstream.com. Contact a Windstream representative for details. Windstream is a registered service mark of Windstream Corporation ©2007 Windstream Corporation

YOUR LANE IN YOUR LIFELINE

RELIABLE SAFE • SECURE
mostcablephone.com



CAPITOL COMMENT

U.S. SENATOR

KAY BAILEY HUTCHISON



A MISSED OPPORTUNITY ON ENERGY

High energy costs have a tremendously adverse impact on our economy and our daily lives. Studies have shown that each time oil prices rise by 10 percent, the negative effect on our national economy results in the loss of 150,000 American jobs.

The high cost of foreign oil is the largest single contributor to the record gasoline prices we are experiencing this summer. Over 60 percent of our petroleum comes from overseas—almost all of it from members of the OPEC cartel or third-world nations ruled by dictators who are hostile to America and collude with state sponsors of terrorism.

Thankfully, there is a way out of this trap. America is a land of abundant natural resources and immeasurable ingenuity. We must be willing to tap both these assets to increase energy production within our own borders.

This bill also failed to address a dangerous lack of refining capacity in the United States. A new refinery has not been built in America in 30 years, but our demand for gasoline and petrochemicals continues to rise.

Rather than encourage domestic energy production, some Senators attempted to amend the energy bill with provisions that would have burdened our oil and gas industry with approximately \$29 billion in new taxes.

The continued failure by Congress to confront our core energy challenges will hurt America's families and jeopardize our national security. With our oil imports in the hands of foreign rulers and our domestic industry undercut by misguided policies, it is likely that energy costs will continue to rise.

Sen. Hutchison serves on the Committee on Commerce, Science, and Transportation, Committee on Appropriations, Committee on Veterans Affairs and the Committee on Rules and Administration. Senator Hutchison is the Ranking Republican Member of the Subcommittee for Military Construction, Veterans Affairs, and Related Agencies and Ranking Republican Member of the Subcommittee for Space, Aeronautics, and Related Sciences.



TEXAS TIMES

John Cornyn

UNITED STATES SENATOR • TEXAS

A QUIET HERO REMEMBERED

The civil rights movement of the past 60 years has benefited from the involvement of many Texans, but one man stands out. His generosity and sense of equality have left a mark on this nation, which will always be felt.

Dr. Hector P. Garcia was a man of great moral clarity. When he saw injustice or human suffering, he acted. For that, he was occasionally reviled, and often honored. His life of service is an inspiration.

Hector Garcia was brought to Mercedes, Texas as a small child by parents fleeing the Mexican Revolution in 1917. He proved to be an able student, graduating from the University of Texas Medical School in 1940. He later joined the U.S. Army, serving as an infantryman, a combat engineer and a medical doctor during World War II.

The U.S. military had always taken care to reward performance and merit, but when Garcia returned to Corpus Christi and began working with the Veterans Administration, he noticed a disturbing trend. To his disappointment, he found Mexican-American veterans were not receiving proper medical treatment and educational benefits.

"I had to learn the Constitution to become a citizen," Garcia said. "I knew all the rights, all the things that it gave us." In 1948, he founded the American GI Forum to push for equal treatment. A year later, the GI Forum and Garcia were catapulted into national prominence by what became known as the "Felix Longoria Affair."

Felix Longoria, from Three Rivers, Texas, was a soldier killed by a Japanese sniper in the Philippines during World War II. He was originally interred there, but in 1949, his widow decided to move his body home.

The funeral director, however, declared she could not hold a wake in the town's sole funeral chapel because the dead man was a Mexican-American.

Garcia contacted Texas's junior U.S. Sen. Lyndon Johnson, who arranged a burial for Longoria with full military honors at Arlington National Cemetery, with Garcia and the news media in attendance.

Afterwards, the GI Forum became a forceful advocate and publicist for equal rights, and Garcia became highly controversial. Frank Perales, who now heads the GI Forum chapter in San Antonio, recalls Garcia throwing a blanket over himself in the back seat of a car to elude pursuers.

But Garcia did most of his best work quietly. Judge James deAnda recalled accompanying the doctor to an abandoned railroad boxcar to treat a dying grandfather.

"He took care of the man, and we would go in other homes that were just about as humble," deAnda said. "The people obviously had no means of paying or even getting to his office. He would see all these people and administer to them. They had just absolute faith in the man."

At one point, Garcia overturned an attempt by his accountant to file collection notices against some patients. "If these people could pay me, they would pay me," he told him. "And you writing them a letter is not going to give them any money."

At President Johnson's nomination, Garcia became the first Mexican-American to serve as an ambassador to the United Nations. He was also the first Hispanic on the U.S. Commission on Civil Rights. Before he died in 1996, Garcia received dozens of additional awards and honors.

In 1984, President Ronald Reagan bestowed upon Garcia the Presidential Medal of Freedom. "That was the highlight of his life," recalled Garcia's daughter, Cecilia Akers. "He wore that medal everywhere he went."

Earlier this year, Congress renewed the historic Voting Rights Act, and I received unanimous consent from my colleagues to add two Texas civil rights pioneers, including Garcia, to the official title. We'll present an engraved copy of the bill to Garcia's widow, Wanda, in San Antonio later this year.

Garcia's story reminds us all that progress in our society is often made possible by the devotion of selfless men and women, who give and sacrifice for greater principles. We all benefit from Hector Garcia's legacy, and it is a privilege to bestow this much-deserved honor upon him.

Sen. Cornyn serves on the Armed Services, Judiciary and Budget Committees. In addition, he is Vice Chairman of the Senate Select Committee on Ethics. He serves as the top Republican on the Judiciary Committee's Immigration, Border Security and Refugees subcommittee and the Armed Services Committee's Airland subcommittee. Cornyn served previously as Texas Attorney General, Texas Supreme Court Justice and Bexar County District Judge.

DCP Enrollment Deadline Extended To August 3, 2007

The State Executive Director for the Texas Farm Service Agency (FSA), John T. Fuston, today announced the sign-up deadline for the 2007 Direct and Counter-cyclical Program (DCP) has been extended to August 3, 2007.

"The extension is due to issues involving the performance of the Farm Service Agency's web-based computer system," said Fuston. The late-file fee of \$100 will only be assessed for farms that are enrolled after August 3, 2007 and before September 30, 2007.

USDA computes DCP payments using base acres and payment yields established for each farm. Direct payments provide no incentive to increase production of any certain crop, because the payments are not based on producers' current production choices. Producers receive direct payments at rates established by statute regardless of market prices.

Counter-cyclical payments provide support counter to the cycle of market prices as part of a "safety net" in the event of low crop prices. These payments are only issued if the effective price for a commodity (which takes into account the direct payment rate, market price and loan rate) is below the target price for the commodity. Counter-cyclical payment rates vary depending on market prices.

Enrollment in DCP for the 2007 contract period began on October 1, 2006, and was scheduled to end on June 1, 2007. Fuston noted that the extension applies only to the enrollment time frame, and does not extend the DCP contract period.

For more information about DCP and other FSA programs, please visit: <http://www.fsa.usda.gov>

Advertisement for All Occasion Flowers, featuring a list of services like Wall Crosses, Lighted Solar-Powered Angels, and Wedding Invitations, with contact information for 202 N. Bernice, Spearman, TX, 659-5180.

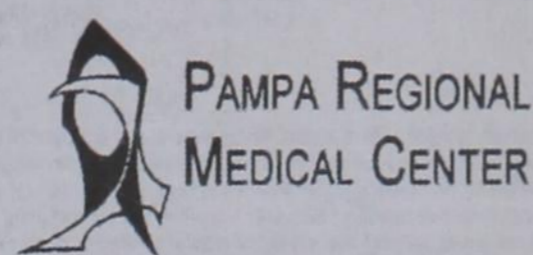
Well³ PAMPA REGIONAL MEDICAL CENTER

Well Equipped. Well Trained. Well Worth It.

State-of-the-art MR imaging now available at PRMC

Pampa Regional Medical Center announces the addition of one of the industry's most compact wholebody high-field magnetic resonance imaging (MRI) systems, the Intera 1.5 Tesla. The Intera provides high performance imaging. Designed with both patient and physician in mind, the system enhances patient comfort without compromising image quality and clinical performance.

By combining high-field features with a design philosophy dedicated to patient comfort, the Intera system delivers new levels of operational productivity and better accommodates the needs of all patients. Because of the level of detail it provides, MRI assists radiologists and physicians in the earlier diagnosis of a variety of medical conditions including brain and nervous system disorders, cardiovascular disease, cancer and organ disease.



Through the best of times. Through the worst of times.



Business Planning and Wealth Management

SPROUSE SHRADER SMITH PC knows that it's not how much you make that counts, it's how much you keep. And quite frankly, fiduciary responsibility can be a daunting task.

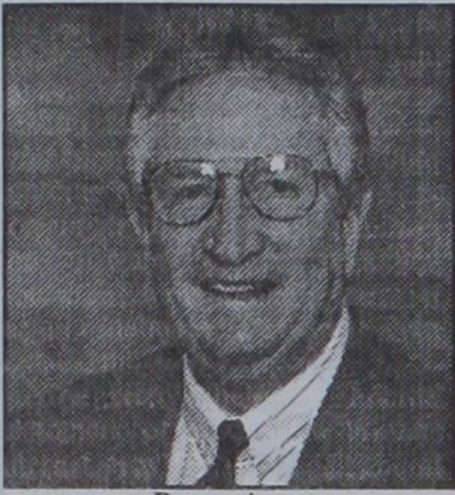
Our law firm offers an array of services to satisfy each client's needs. From Acquisitions and Mergers to Wills and Trusts, our legal staff of nearly 40 attorneys plus support personnel has earned a reputation for reliability, efficiency and solid expertise. And there's no time like the present to get started.

We know law.



701 S. TAYLOR, SUITE 500 AMARILLO, TEXAS 79101 806-468-3300 www.sprouselaw.com

Bruce Ayres Retires from Office of Advancement



Bruce Ayres

Hardin-Simmons University (HSU) donors, alumni, friends, and supporters will miss the easy smile and congenial counsel of development officer and director of church relations Bruce Ayres, as he retires at the end of June. Bruce will close his development portfolio with plenty of time left in the summer to pursue one of his great passions, fly fishing for the crafty and elusive trout of Colorado and New Mexico.

Ayres came to Hardin-Simmons University in 1994 as director of church relations, and became a development officer in 2000. He had previously served as development officer and director of denominational relations at Wayland Baptist University from 1985-1994.

The Gruver, Texas, native operated his own farming-ranching business for over 14 years following careers teaching public school, and writing and performing music in Nashville, Tennessee. A 1967

PTCI Offers Internet Users Innovative Protection Solution

According to Consumer Reports 2006 State of the Net survey of online customers, home Internet users have a 1-in-3 chance of experiencing the negative effects of Internet-delivered issues such as spyware and viruses. 29% of households with Internet access said a virus, spyware or phishing scam caused serious computer problems and/or financial losses in the past two years. Although American consumers invested more than 2.6 billion in protection software over the past two years, they still spent more than 9 billion for computer repairs, parts and replacement to solve problems caused by viruses and spyware.

With all that money spent on protection, why does the problem continue to grow? The majority of consumers rely on free downloads and software in a box solutions. These products require users to install, maintain, and keep them updated.

Now there's help for Internet customers of PTCI, the primary internet provider in the Oklahoma Panhandle Region. PTCI has begun to offer the SecureIT Plus Service from Security Coverage to its customers.

According to Ron Strecker, CEO of PTCI, "Internet security deeply impacts our customers experience when online and consequently affects customer satisfaction with our service. However, people don't really think about security issues until they have a problem, so this solution provides an automatic protection that our customers don't have to worry about."

While other products address one or two Internet protection issues, SecureIT Plus is a single service that is made up of a suite of technologies that are fully managed and supported to protect your computer. The service includes fully managed virus and spyware protection, automated Microsoft Windows updates, an integrated pop-up blocker, firewall protection, ongoing hard drive maintenance and optimization for faster computer performance. SecureIT Plus can be installed remotely by trained technicians, and once installed there is no required maintenance or monitoring on the part of the customer.

For more information on computer protection offered by PTCI, call 338-2556 or 800-562-2556 or log on to www.ptci.net.

Are You A Victim of Domestic Violence, Sexual Abuse or Physical, Emotional or Sexual Assault?

Call Toll Free Hotline 1-800-753-5308

We can see individuals from Hansford County anytime upon request. Call 435-5008 or 1-800-753-5308 to set up an appointment in Hansford County. We operate a safe place for victims and their children to stay in times of crisis.

Battering Intervention & Anger Management Available

Panhandle Crisis Center
Serving Hansford, Lipscomb & Ochiltree Counties
301 S. Ash • Perryton, TX
Memorials Accepted

HSU graduate with studies in English, speech-drama, and education, he has also served in church youth and music ministry positions, music evangelism, and has provided entertainment for church and civic groups for over 45 years.

Ayres counts getting to know the donors who faithfully support the University and helping those individuals achieve their goals, relative to gifts and service to HSU, as the most rewarding part of his tenure in development. "I have done development work at two universities and over the years, have found the following to be true: As I have asked donors who attended HSU why they had a desire to give back to the University, almost without exception, each would mention the strong Christian influence HSU had exerted on their life," says Ayres. "They would also point to a specific incident or a pivotal point in their life as a student that involved a faculty or staff member who had taken a special interest in them, personally, someone who had demonstrated not only that they sincerely cared, but convinced them they were uniquely special."

One only needs to talk to Bruce for a few minutes to discover that

fly fishing isn't his only passion. "All of us stand on the shoulders of many giants when we do our work each day at HSU. Although I feel I have had a positive influence at HSU in the area of advancement and development, I am also keenly aware of the outstanding work and gifts of others who have gone before us. What service I have performed has been enhanced, due to the influence of those giants, along with the indispensable and capable assistance of so many friends on this campus, especially my co-workers in advancement. I will miss those who teach and serve on the faculty and staff, those with whom I have worked on a daily basis and those individuals who, it seems, always possess a higher code of Christian ethics and integrity, and an innate desire to make things better."

Ayres' wife, Martha, also attended Hardin-Simmons University. She is an artist who works in oils. The Ayres are members of Pioneer Drive Baptist Church. They have two grown sons; Dr. Barris Ayres, who has a Christian counseling ministry in Grapevine, and Luke, a 1999 HSU graduate and musician based in Austin.

Precision Ag Expo Scheduled for September 6, 2007 in Plainview

The Precision Ag Expo will be held September 6, at the Ollie Linder Center in Plainview. The Expo is sponsored by the Texas Plant Protection Association (TPPA) and co-sponsored by USDA-ARS, Texas Agricultural Experiment Station, Texas Cooperative Extension, New Mexico State University, Texas Tech University, West Texas A & M University, International Plant Nutrition Institute, National Alliance of Independent Crop Consultants and the Texas Farm Bureau Texas Agriculture publication.

Ray Smith, TPPA Board Chairman explained, "TPPA sponsored the first Precision Ag Expo last June in Corpus Christi. Based on the excellent attendance, interest and suggestions, our Expo Planning Committee has made plans for 2007. Due to its central location for West Texas farmers, Plainview was selected as the site for the 2007 Precision Ag Expo."

The Precision Ag Expo will be a day-long event that will begin at 8 AM. The Expo agenda will include both classroom style presentations and "hands-on" demonstrations and discussions in the field. This will be great opportunity for all involved in farming to learn about the latest precision ag practices and products from those that are leaders in working with this new technology.

Todd Staples, Texas Commissioner of Agriculture, has been invited to present the "Welcome" which will be followed by the presentations and field demonstrations. There will be an overview of precision ag and the benefits it may offer West Texas farmers. Other topics will include use of guidance systems, monitors and equipment to measure soil and crop variables. Information on data collection and use will be discussed. Another presentation will be on irrigation management. A

group of farmers also will discuss their experiences with precision ag and the benefits it offers their farming operation.

Many precision ag firms and other agribusinesses will participate in the Expo and will have both equipment displays and other exhibits. Many of the precision ag firms will also be demonstrating their equipment in a field near the Linder Center.

Continuing Education Credits (CEU's) will be offered during the Expo for Texas Department of Agriculture Commercial Pesticide Applicator License and for Certified Crop Advisers.

Registration and other information can be found on the TPPA website <http://tppa.tamu.edu/pae/2007/> or contact Bob Sasser, TPPA Executive Director, at (936) 539-2349, or by e-mail at TPPA@consolidated.net.

First State Bank
will be closed on **Wednesday, July 4th** in observance of **Independence Day**
The Bank that has the Tradition of Strength and Service

FSB
One NE Court
Spearman, Texas
(806) 659-5565
member FDIC

"Stick With The Best Food In Town"

Flying X Steakhouse

From Stinnett: Go West on Hwy. 152
17 miles - Turn Left at Big Red Cactus
(About 2 miles on Gravel Road)

From Dumas: Go East on Hwy. 152
16 miles - Turn Tight at Big Red Cactus
(About 2 miles on Gravel Road)

(806) 935-9427

Sheree & Eddie Burgess

PLEASE HELP THE ALLEN CAMPUS

The Allen Campus has developed a survey to help us determine what areas of Workforce Education are most important and needed in the surrounding area. The survey can be downloaded from the "Perryton Campus" page of our website (www.fpctx.edu) or can be picked up at many businesses around Perryton as well as at the Allen Campus (2314 S. Jefferson). The survey will take less than 5 minutes to complete but the information we glean from it will be invaluable!

ALSO! Parents, do you have a student home from another college or university? Are you tired of them making a body dent in the couch from lack of movement? If so, enroll them in a class or two during our Summer 2 Session. Summer 2 starts July 6th so don't wait until the last minute! For information, please come by the Allen Campus.



Frank Phillips College is an equal opportunity community college

Here's what you can look forward to when we've finished with the upgrades we're making to your cable TV system.

A state-of-the-art communication system

More channels added to your cable TV line-up

PTCI
Bringing Your World...Home.

We ask for your patience while we work to improve your service.

www.ptcispearman.com 721 W 7th Spearman 1-800-562-2556

Are You A Victim of Domestic Violence, Sexual Abuse or Physical, Emotional or Sexual Assault?

Call Toll Free Hotline 1-800-753-5308

We can see individuals from Hansford County anytime upon request. Call 435-5008 or 1-800-753-5308 to set up an appointment in Hansford County. We operate a safe place for victims and their children to stay in times of crisis.

Battering Intervention & Anger Management Available

Panhandle Crisis Center
Serving Hansford, Lipscomb & Ochiltree Counties
301 S. Ash • Perryton, TX
Memorials Accepted