

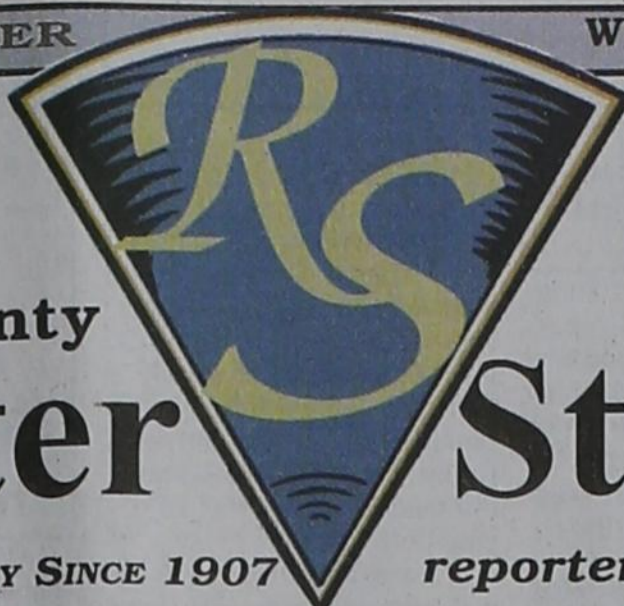


100 YEARS

The Hansford County

# Reporter

PROUDLY SERVING HANSFORD COUNTY SINCE 1907



SCR2  
COMP  
HANSFORD COUNTY LIBRARY  
0122 MAIN ST  
SPEARMAN TX 79081-2064

# Statesman

reporter@spearmanreporter.com

VOLUME 102 • ISSUE 25

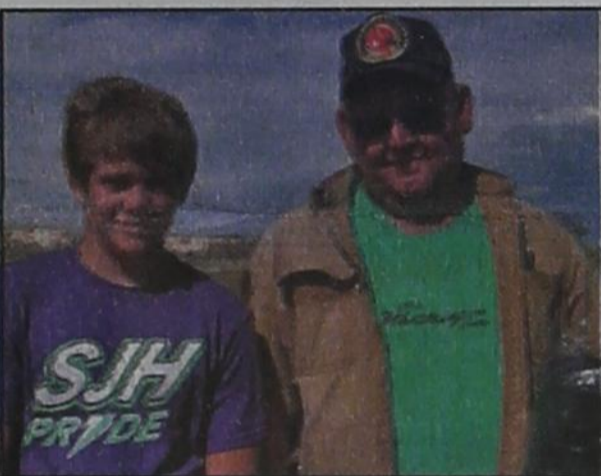
THURSDAY, JUNE 18, 2009

## Cummings Named Director of Safe Place, Dumas



Kelli Cummings is the new Executive Director of Safe Place Inc. in Dumas. She started on March 6. A native Texan, Kelli and was eager to get back home to the Texas Panhandle. Kelli began volunteering at the Pan-

handle Crisis Center in Perryton at the age of 16. She is a graduate from Maryville College in Tennessee with a degree in Human Services. She previously worked in Tennessee at State Services and Helen Ross McNabb Center Inc. Kelli has credited her success of jumping into the executive director position to "the wonderful backing of other executive directors and Safe Place staff." Kelli not only entered her new position during the midst of grant writing season, but was faced with attending the TAASA conference her first week on the job, as well as filling some vacant staff positions at the shelter center. Kelli is glad to be "home" and is thankful for all the support that she has received thus far from the community, her peers and her coworkers. Safe Place is a TCFV Family Violence Program member. For more information on Safe Place, Inc., visit [www.safeplaceinc.org](http://www.safeplaceinc.org).



Ronnie Willis (right) was the over-all winner at the Hansford Gun Club Open .22 Rifle Match on Sunday, June 7th. Kagen Breedren (left) came in second over-all, and was also the winner of the Junior Division. Other winners were: Open Sight - Kade Carthel 1st, Dan Carthel 2nd; Scope - Rex Ralston 1st, Dee Mayfield 2nd; Junior Division - Calvin Cazares 2nd. The Hansford Gun Club plans to hold matches on the second Sunday of each month throughout the summer. For more information, contact Larry Hornsby at 659-3259.

## Weather Forecast

**FRIDAY** - Mostly cloudy. A 20 percent chance of showers and thunderstorms in the afternoon. Highs in the lower 90s. North winds 10 to 15 mph shifting to the east in the afternoon.

**FRIDAY NIGHT** - Mostly cloudy with a 30 percent chance of showers and thunderstorms. Lows in the mid 60s. Southeast winds around 10 mph.

**SATURDAY** - Mostly cloudy with a 20 percent chance of showers and thunderstorms. Highs in the upper 80s.

**SATURDAY NIGHT** - Mostly cloudy in the evening then becoming partly cloudy. A 20 percent chance of showers and thunderstorms. Lows in the mid 60s.

**SUNDAY** - Partly cloudy. Highs in the mid 90s.

**SUNDAY NIGHT** - Partly cloudy. Lows in the mid 60s.

**MONDAY** - Mostly sunny. Highs in the upper 90s.

**MONDAY NIGHT** - Partly cloudy. Lows in the upper 60s.

**TUESDAY** - Mostly sunny. Highs in the mid 90s.

**TUESDAY NIGHT** - Mostly clear. Lows in the mid 60s.

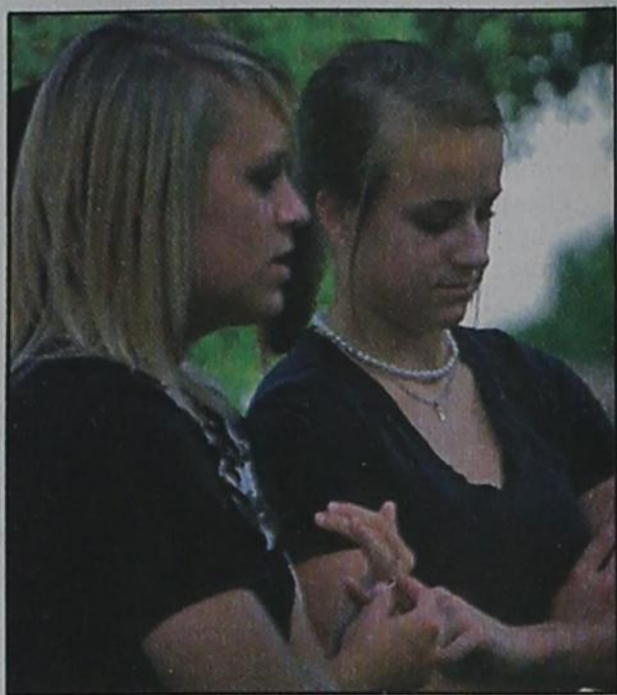
**WEDNESDAY** - Mostly sunny. Highs in the mid 90s.

## Texas Crop & Weather

The following specific livestock, crop and weather conditions were reported by Panhandle Extension directors: Warmer temperatures and some rain allowed the planting of most crops to be completed. Corn and cotton looked good with irrigation in full swing. Thrrips were found in cotton in some areas. The wheat harvest began. Although the first wheat yield reports were initially low, higher ones were expected as the harvest continues. Some areas received hail, but damage assessments were not complete. Cattle were in good condition.



## Hansford 4-H Club Receives Trailer Donation



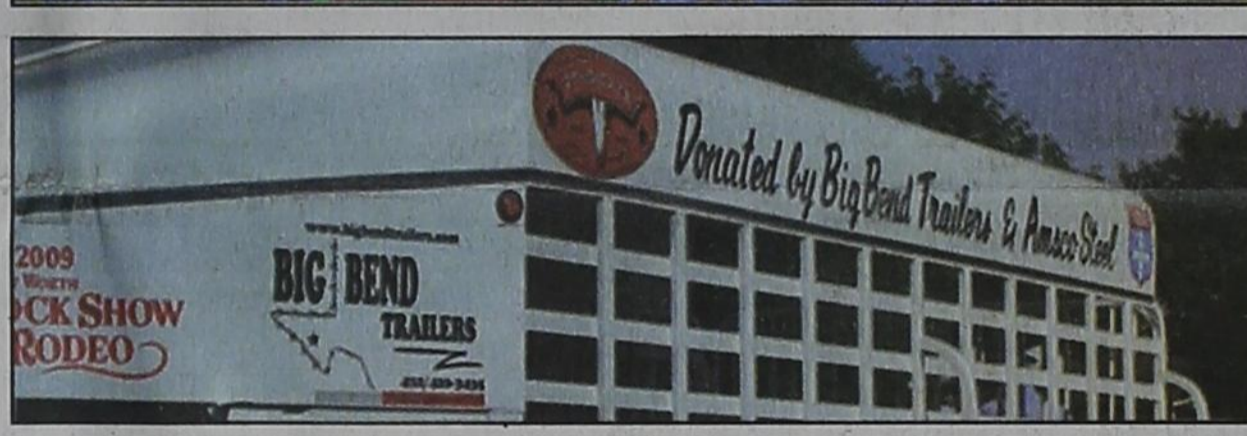
LEFT: Megan Boxwell of Perryton showed the Reserve Grand Champion Steer at the Fort Worth Stock Show this year and Callie Stedje of Gruver showed the Grand Champion Steer. ABOVE: Callie Stedje, Steve Sikes, Burt Williams, Brent Stedje and Howard Pena. BELOW: All of the Hansford County 4-H members, Stedje family members, and Steve Sikes and Howard Pena, representatives of Amsco Steel Company pose in front of the stock trailer that was donated to Hansford County 4-H.

Amsco Steel Company of Fort Worth, Texas and Big Bend Trailer Company of Fort Stockton, Texas presented a new 6x16 stock trailer to the Hansford County 4-H Club. This trailer is donated to the 4-H Club or FFA Chapter who exhibit the Grand Champion Steer at the Fort Worth Stock Show. Steve Sikes, CEO of Amsco Steel Company and Howard Pena, Vice President of Amsco Steel and Chairman of the Fort Worth Stock Show syndicate were in Gruver Tuesday night for this presentation.

Approximately 140 4-H members, parents, and guest attended a barbecue in the Gruver City Park for this occasion. Barbecue was catered by Hungry Cowboy of Spearman. This is the sixth straight year that Amsco Steel and Big Bend Trailer have presented a trailer to the Grand Champion Steer winner.

Callie Stedje, a member of Gruver 4-H exhibited the Grand Champion Steer at the Fort Worth Stock Show this year. Callie is the daughter of Brent and Julie Stedje of Gruver. Callie's steer "Blackjack" was also named Grand Champion at the Hansford County Junior Livestock 2009 Show.

Megan Boxwell of Perryton, daughter of Jeff and Cindy Boxwell was also recognized at the picnic. Megan exhibited the Reserve Grand Champion Steer at the Fort Worth Stock show. The trailer is on display in Gruver for this week.



## Rachelle Holt Rides To Nationals

by Ashley Stockamp

Speed, agility and luck helped an Oklahoma State University barrel racer advance to the College National Finals Rodeo.

Rachelle Holt, 21, is in Casper, Wyo., this week (June 16-20) for CNFR. She finished the season third in the Central Plains region, which includes schools in Oklahoma, Texas and Kansas.

Holt, a senior, will compete in three long go rides and one short go ride. Two of the long go runs occur during a morning slack ride, and the long go occurs during the nightly show. As of June 17th, Holt is sitting in 39th (of 46) with times of 14.73 and 19.25 for a total of 33.98.

The points did not come easy for Holt, formerly of Gruver, Texas, as she was only 70 points above the fourth place contestant.

"It was actually a dog fight until the last rodeo," she said.

She jumped from fourth at the April 9-11 rodeo in Weatherford, putting her in the national qualifying, third place position. She held third for the last two rodeos of the season.

The final rodeo of the season was held April 23-25 in Miami. Holt said she almost lost the third place position when her horse slipped and fell at that rodeo, but she held on to her position.

"Odds say I shouldn't have made it back, but I guess I got lucky," Holt said.

The Central Plains district only sends 30 contestants, three in each contest, and Holt worked to achieve her goal. She was competing against schools with strong rodeo teams and tough competition.

"To be in the same ballpark as those girls was a real honor," she said.

She rides a 13-year-old quarter horse gelding named Money Man. Money Man started training with Holt's mom, Ronda Holt, but was finished by James Ward from Oklahoma.

Rodeo has been in Holt's family for generations, and she has been barrel racing since she was 6 years old. She also has competed in breakaway roping since she was 8.

"There are so many things that you can get involved with ...," Ronda Holt said. "Kevin and I felt that the busier we kept the kids, it would help our kids be responsible adults."

She said this is a family effort because her other children stay in Texas to run the farm while Rachelle's grandparents and parents are traveling to Wyoming to show their support.

OSU Rodeo Club adviser Cathryn Christensen said she was ecstatic when she got the news from Holt.

"I was driving down the road when I talked to her, and if I could have, I would have got out and jumped up and down," Christensen said.

Holt is president of the Rodeo Club for 2009-10. Christensen said she is excited to work with her and looks forward to the next school year.

"I rely on her a great deal," Christensen said. "She is a great representative of OSU and a great representative of rodeo."

The OSU rodeo team is making efforts to help with the financial aspect of CNFR. Members raise funds every year by hosting a roping clinic at the National Cowboy Hall of Fame and Western Heritage Museum.

Holt just hopes for a good ride.

"I'm just going to go in and try to make four good runs," she said.

For more information on the CNFR event, visit [www.cnfr.com](http://www.cnfr.com).



OSU rodeo team member Rachelle Holt is competing in the College National Finals Rodeo Jun 16-20.

## Kids Inc. 3 on 3 Scheduled

Kids, Incorporated, in association with the Courts of Amarillo, is bringing the ultimate in 3 on 3 basketball back to the Amarillo community. We are taking the game indoors and adding paid referees for each and every game. The event will take place July 17-18 at the Courts of Amarillo located at 1111 East Loop 335.

The tournament is open to male and female players. Divisions begin at the 10 & under age group, and progress through the adult Supreme Court division. Teams will be grouped into divisions with teams of similar age and playing ability.

Entry fees are set at \$30 per player with a team limit of four (4) players. The entry deadline is Wednesday, July 15, 2009, 5pm. Entry forms and payment should be submitted to the Kids, Incorporated Warehouse located at 27th

and Osage. Teams may also register and pay their fee online, either \$90 for a team of three, or \$120 for a team of four.

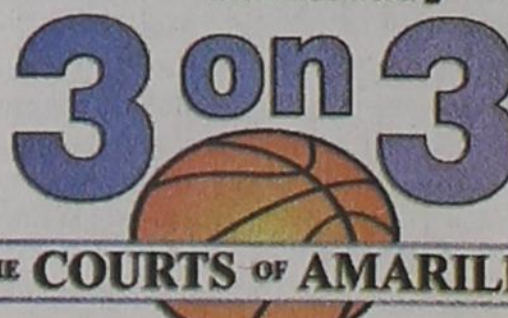
Each player will receive an official event t-shirt, and each team is guaranteed a minimum of three games. Prizes will be awarded to the first and second place winners in each division. All proceeds from this event will support the athletic programs offered by Kids, Incorporated. More than 17,000 individuals participated in Kids, Incorporated sports activities in 2008.

Entry forms are available at the Kids, Incorporated Warehouse, the Bus & Freda Dugger Sportsplex, the Courts of Amarillo, or online at [www.kidsinc.org](http://www.kidsinc.org).

An entry form for the 2009 3 on 3 Challenge is also available online at [www.kidsinc.org](http://www.kidsinc.org).

For more information regarding the 2009 3 on 3 Challenge, please contact Kids, Incorporated at 376-5936 or via email at [info@kidsinc.org](mailto:info@kidsinc.org).

KidsInc Sports  
[www.kidsinc.org](http://www.kidsinc.org)



THE COURTS OF AMARILLO

### Wolf Creek Heritage Museum Notes

#### MUSEUM HAPPENINGS

Well, summer is in full swing at the museum. Our numbers vary each Wednesday with all of us busy with appointments, family commitments, vacations, etc. Fern McGee will not rejoin our ranks until school starts again. We will miss you. Good news is that Lovella returns this week from her surgery. She looks great, so everyone call or drop by and welcome her back. A big THANK YOU to LaVaun Kraft, Dorothy Schoenhals, and Georgia Couch for filling in for her.

Our June/July exhibit is up and you will love it. Jean Weis and her friends and family have brought us a bright, beautiful, and multiple mediums. The pastel paintings are by Jean and Rebecca Ashley; Mosaics are created by Cary Nell Huff; and finally the quilts created and quilted by Jean and Joanne Watson. The combination of these different art forms is a fun and colorful exhibit.

The reception for Jean and

her group will be held Saturday, July 18 from 4-7 p.m. Elaine Littau will also be here that Saturday to introduce her new book *Elk's Resolve*, book II of her *Nan's Heritage Series*. Please mark your calendar for promising evening.

#### HISTORICAL MUSINGS

On June 2, 1911, Carry Nation died in Kansas. Born in Kentucky in 1846, she lived in Texas for several years as a child and again as an adult from 1879 to 1889. While in Texas, she had numerous mystic experiences. Ms. Nation came to believe that she had been elected by God and that she spoke through divine inspiration. Nation, who described herself as "a bulldog running along at the feet of Jesus, barking at what he doesn't like," fet divinely ordained to forcefully promote temperance.

Moving to Kansas, she helped organize a local chapter of the Woman's Christian Temperance Union in 1892. In the name of home protection

she began a crusade against alcohol and tobacco that lasted the rest of her life. Claiming the justification that saloons were illegal in prohibition Kansas, she wrecked "joints" and berated persons who sold liquor. Standing at nearly 6 feet tall and weighing 180 pounds, she cut an imposing figure. In 1900 she adopted the hatchet as her tool of destruction.

Between 1900 and 1910 she was arrested some 30 times after leading her followers in this destruction.

The sale of souvenir hatchets and earnings from nationwide lecture tours allowed her to pay the fines that resulted from the arrests. Although she was a national leader of the extremist element of the prohibitionist movement, she never had the unqualified support of the WCTU or of any other national organization.

In the final years of her life she was increasingly afflicted with mental illness, and died in a Leavenworth hospital. Known as perhaps the most famous prohibitionist in American history, she was a woman of her time.

### State Capital



#### HIGHLIGHTS

AUSTIN — It's bill signing and vetoing time for Gov. Rick Perry.

He suffered a broken collar bone in a June 9 bicycling accident near his residence, but exercised his pen with a pile of legislation awaiting his signature.

On June 11, he signed one of those bills, SB 643, enacting emergency reforms for Texas' state-supported living centers, formerly referred to as "state schools." The legislation increases oversight and protection for residents of centers and for those enrolled in community-based services.

The projected cost of the package of reforms is \$32.7 million through Aug. 31, 2011, and another \$40 million from Sept. 1, 2011 through the end of fiscal year 2014.

Among its many reforms, SB 643 increases penalties for employees who abuse or neglect residents, or fail to report abuse or neglect, Perry's office said. And, it requires the Department of Aging and Disability Services to contract with an independent patient safety organization to conduct mortality assessments to determine if deaths could have been prevented.

Among the many people present for the signing ceremony were primary author Sen. Jane Nelson, R-Grapevine, and House sponsor Rep. Patrick Rose, D-Dripping Springs.

#### Looking ahead to November ballot

During the 81st regular session of the Texas Legislature, which ended June 1, the House and Senate passed eight joint resolutions that will appear on the Nov. 3 general election ballot as 11 proposed amendments to the state constitution.

In the coming months, the Secretary of State's office will publish analyses of the proposed amendments, including what supporters and opponents say about each.

Here are somewhat shortened captions of proposals on the ballot:

- To authorize the state to contribute money, property, and other resources for the establishment, maintenance and operation of veterans hospitals in this state.

- To prohibit the taking, damaging, or destroying of private property for public use unless the action is for the ownership, use, and enjoyment of the property by the State, a political subdivision of the State, the public at large or entities granted the power of eminent domain.

- To establish the national research university fund to enable emerging research uni-

### GOVERNOR SIGNS

#### EMERGENCY BILL

#### ENACTING REFORMS

#### FOR STATE

#### LIVING CENTERS



by Ed Sterling

versities in this state to achieve national prominence as major research universities and transferring the balance of the higher education fund to the national research university fund.

- To authorize the Legislature to provide for the ad valorem taxation of a residence homestead solely on the basis of the property's value as a residence homestead.
- To set uniform standards and procedures for the appraisal of property for ad valorem tax purposes.
- To authorize the Legislature to authorize a single board of equalization for two or more adjoining appraisal entities that elect to provide for consolidated equalizations.

- To provide that elected members of governing boards of emergency services districts may serve terms not to exceed four years.
- To protect the right of the public, individually and collectively, to access and use the public beaches bordering the seaward shore of the Gulf of Mexico.
- To authorize the Veterans' Land Board to issue general obligation bonds in amounts equal to or less than amounts previously authorized.

- To allow an officer or enlisted member of the Texas State Guard or other state militia or military force to hold other civil offices.

- To authorize the financing, including through tax increment financing, of the acquisition by municipalities and counties of buffer areas or open spaces adjacent to a military installation for the prevention of encroachment or for the construction of roadways, utilities, or other infrastructure to protect or promote the mission of the military installation.

#### It'll be back to Austin for lawmakers

Gov. Perry has warned to the idea, but has not set a date for lawmakers to return to Austin to settle unfinished business in a 30-day special session.

The Senate, the House and Perry are under pressure to pass "sunset bills" that would allow the continuation of the Texas Department of Insurance, the Texas Department of Transportation, the Texas Racing Commission and the Texas State Affordable Housing Corporation.

Without the Legislature's approval, those agencies will clock out for good on Sept. 1, 2010.

#### AG chastizes reorganized GM

Texas Attorney General Greg Abbott on June 10 raised Cain with the "new General Motors" for putting thousands of Texas dealers, workers and their families at risk by modifying franchise agreements with take-it-or-leave-it stipulations.

### HANSFORD COUNTY SHERIFF'S OFFICE

## FAST FIFTY

(806) 659-4149 TIPLINE

Here is this week's Fast Fifty. Remember a Fast Fifty dollars will be giving to anyone giving information on the whereabouts of wanted persons. Anyone wishing to give information for the Fast Fifty can call the Crime Stoppers Tipline at (806) 659-4149 and follow the recorded instructions. Once the information is confirmed and the wanted person is arrested you will receive the Fast Fifty. It's that simple! All callers are kept confidential. Remember Crime Stoppers doesn't want you, just your information!

NAME	LAST KNOWN ADDRESS	CHARGE
Aguero, Jorge Cervantes	Spearman, Texas	Probation Revocation/DWI
Garza, Steven Ray	Tipton, Oklahoma	Take Wildlife Resources
Casas, Ramon	Fort Worth, Texas	DWI
Doss, Chyne Desiree	Borger, Texas	No Driver's License
Hernandez, Lucia	Perryton, Texas	No Driver's License

Also information has been brought to the attention of the Hansford County Sheriff's Office that as much as \$50,000 in counterfeit \$100 bills have been passed in the Amarillo area. These bills are actually \$5 bills that have been washed so as to make them feel and look the same as a \$100 bill, but if the bills are held up to the light you can see Lincoln's picture in the right end of the bill. If any one has any questions or concerns they are encouraged to contact the Hansford County Sheriff's Office.

### HANSFORD COUNTY SHERIFF'S OFFICE

**GARY EVANS—SHERIFF**

10 NW COURT SPEARMAN, TX 79081  
 (806) 659-4140 OFFICE (806) 659-2025 FAX

### ROAD TRIP

- ACROSS**

  - What the roadtrippers did in "It's a Mad Mad Mad Mad World"
  - Campfire residue
  - On the dash
  - Angry
  - Gunk or slime
  - "Bing and Bob's Road to Rio" or "Road to Zanzibar"
  - Dan Brown's albino
  - Lennon's wife
  - Coral reef island
  - Outdoor living
  - Route 66, e.g.
  - Paleozoic or Victorian, e.g.
  - It called for the giant in "Jack and the Beanstalk"
  - Magazine famous for shaggy-haired, red-headed boy with big ears
  - It's between Ohio and Ontario
  - \_\_\_\_\_/or
  - "Sittin' on the Dock of the Bay" singer
  - Newborn's hangout
  - Rub out
  - Tropical tuberous root
  - Sound unit, pl.
  - Additional or more
  - Glorify
  - He was a witty Coward

- What the perp did?
  - Public hall for lectures
  - Pertaining to a mountain range in Russia
  - Greek name for "acid"
  - Done to a salad
  - It's popular either hot or cold
  - \*A break
  - \*A must
  - \*What they say in France before a trip
  - A friend in France
  - One of twelve in mouth
  - Used to get traction
  - Jack and Jill did it
  - A fight for Texas
  - Four years for a President, e.g.
  - "I \_\_\_\_" game
  - Dressed to the \_\_\_\_

**DOWN**

  - Reduced instruction set computer
  - Operatic solo
  - Comes before a storm?
  - Troop's day march
  - Emotion that motivates
  - Highly excited
  - \*He sits in the car seat
  - Tumult and commo-

- One who dresses in all black
  - Admit openly and bluntly
  - Desert monster?
  - Like an eel
  - Long-tailed black-and-white bird that chatters
  - Narcotics agents
  - Wrath
  - Shockingly brutal
  - \*Common stop in roadtripping heyday
  - Muscle control problem
  - A founder of quantum physics
  - It smooths out rough spots
  - Not conforming to dietary laws
  - Hiya or howdy
  - County in south-eastern England
  - Like a reed
  - \*It's the key to a driving shoe
  - Brew
  - Wipe it clean to start fresh
  - Interjection for disapproval
  - Holstein sound
  - Famously filed for bankruptcy in 2008
  - A boxer does this
  - Garlic mayo
  - Molotov-Ribbentrop agreement, e.g.

- \*Some do it to their car when stuck in traffic
  - Wedding cake layer
  - Clothing joint
  - Ivy quality
  - Kin group
  - Feeble
  - Greek god of love
  - \*Some are reluctant to use this

### These games are brought to you by the Hansford County Reporter-Statesman

#### CROSSWORD

SUDOKU

PRESENTED BY

**VolunteerMatch.org**  
Where volunteering begins.

	4		5		6	9		
6	1		2	3				5
			4	1		2	7	
7	5	2			1			9
3			6			1	5	7
	6	3		7	4			
8				5	2		4	3
			5	1		3		9

© 2009, StatePoint Media, Inc. answer on classified page

Fill in the blank squares in the grid, making sure that every row, column and 3-by-3 box includes all digits 1 through 9.

**The Hansford County Reporter-Statesman**  
 213 Main Street • Spearman, TX 79081  
 Phone - (806) 659-3434 • Fax - (806) 398-9080  
 www.spearmanreporter.com  
 reporter@spearmanreporter.com  
 cathysmith@valornet.com  
**Mon.-Thurs. 9 a.m.-12 p.m., Mon.-Wed. & 1-5 p.m.**  
**Closed Thurs. afternoon and all day Fri., Sat. & Sun.**

**Gary Smith - Publisher** Catherine Smith - Editor  
 Contributing Writers: Dorothy Hudson, Jim Derington,  
 Merry Sparks, Cecil Biggers  
 Contributing Photographer: Charlie Johnson

**Subscription Rates**  
 In Hansford County - \$30.00 • Out of County - \$40.00

The Hansford County Reporter-Statesman (USPS 529660) is published weekly in Spearman, TX. Periodical postage paid in Spearman, TX. **POSTMASTER:** Send address changes to: The Hansford County Reporter-Statesman, 213 Main Street, Spearman, TX 79081.

**Publication Policy**  
 The deadline to submit news and advertising to The Hansford County Reporter-Statesman is Monday at 5 p.m. Items submitted after the deadline will be published at a later date, as time and space permit. Publication of all items is at the discretion of the editor.

**Advertising**  
 Open Display rates are \$4.00 per column inch. Classified Ads are \$6 for the first 25 words and 10¢ per word for each additional word. (Additional charge for boxed classifieds.) There is a \$1 charge per week if billed.

Member of  
 Gruver Chamber of Commerce  
 Spearman Chamber of Commerce  
 Texas Press Association and Panhandle Press Association

# Happy Birthday!

**June 18**  
**Birthdays** - Ada Joyce Stedje, Doug Lackey, Phil Windom, Jimmy Jackson, Doug Cummings, Susan Pearson, George Martin, Christopher Cummings, Eddie LaFarr, Amy Boyd, Lenis Simpson, Roberta Cole, Emily Bates  
**Anniversary** - Hershel & Wanda Jones, M/M Leon Red, Don & Faye Schmehr

**June 19**  
**Birthdays** - John Williams, Alan Beeson, Christina West, Jan Hunter, Phyllis Smith, Nathan Steger, Randy Coombs, Stanley Gruver, Marlene Miller  
**Anniversary** - M/M Barry Barkley

**June 20**  
**Birthdays** - Mica Been, Pat Irwin, Neal Williams, Terry Patterson, Pete Vera, Brady Chase Brown, Skyler Jordan, Christen Grimsley, Ermal Pond  
**June 21**  
**Birthdays** - Lynn Boyd, Rod Karlin, April Hall, Patrick Meek, Harry Stumpf, Rosa Baker, Rhonda Valdez, Steve Slater, Josh Kunsleman, Robert Breedon, Christi Black, Linda Town, Anita Sumner, Clint Lilly, Cody Mike Ivey, Amanda Thompson, Britani Vasquez, Clayton Acker, Jennifer Nollner  
**Anniversary** - M/M Jim Kuykendall

**June 22**  
**Birthdays** - Tim Tunnell, Melissa Stewart, Ricky Jones, Benny Puentes Jr., Paul Lopez Jr., Tom Haden Hart, Presley Baker  
**Anniversary** - M/M Stanley Gruver, M/M Norman Black

**June 23**  
**Birthdays** - Myriam Alvarez, Robert Blevins, Rob Murrell, Brad Spivey, Andres Benavides, Joan Brown, Shannon Groves, Kali Shields, Amanda Apodaca  
**Anniversary** - M/M Mitch Fedrick, M/M T.J. Been, M/M Mike McLain

**June 24**  
**Birthdays** - Patricia Miner, Ellen Graham, Denise Holliday, Allen Davis, Lee Bob Harper, C.T. Collier, Ed West, Margie Davis, David Pipkin, Nathan Kirk, Patricia Miner  
**Anniversary** - Mary & Julio Vasquez, M/M Bobbie Archer

**June 25**  
**Birthdays** - Betty Womble, Nita Bynum, Pete Stafford, Vickie Stewart, Jennifer Umphress, Joey Woolley, Curtis Wayne Porter, Candice Janzen, Lisa LaFarr, Billie Jo Moore Pierson, Oneida Bynum  
**Anniversary** - M/M B.J. Renner, Mr. and Mrs. Ronnie Williams, M/M Dennis Quimby, Terry & Sherry Moore, M/M Richard Marrs

**June 26**  
**Birthdays** - Paula Kelly, Mike Blanton, Bill McClellan, Omar Sutton, Carla Harper, Doris Pinkerton, Teresa Bennett, Ann Vela, Ronnie Ring, Ashley Baker, Vanessa Cease, Paul Bynum, Joe Rutlin, Chelsea Nollner, Trevor Shields  
**Anniversary** - Will & Tiffany Crane, M/M Garry Hathaway, M/M Joe Lopez, M/M Verlin Beck

**June 27**  
**Birthdays** - Max Frick, Clint Irwin, Steve Baggerly, Elden Allen, Allen Cook, Tyler Scott, Charlie Lopez, Karen Johnson  
**Anniversary** - M/M Bill Turner, M/M Randy Coombs, Judy & Darl Hergert

**June 28**  
**Birthdays** - Carson Womble, Linda Rowland, Don Allen, Ernie Vanderberg, Terril Brummet, Helen Hand, Mrs. A.F. Loftin, Trent England, Meghan Jade Snider  
**Anniversary** - Harvey & Sandra Proffitt, M/M Cecil Biggers, M/M Jim Derington, M/M Bruce Knight

**June 29**  
**Birthdays** - Ira Gross, Hazel Taylor, Scott Strawn, Gary Johnson, Sandra Gumfory, Monica Blackman, Rajan Traften, June Tucker  
**Anniversary** - M/M Charles Bell, M/M Amadeo Cazares

**June 30**  
**Birthdays** - Mike Minter, Ricky Thompson, Esmeralda Vela, John Snider, Margarette Evans, Kyle Brock, Jeff Hohertz, Keri Lou Schneider, Willie Vela, Paige Burgin, Daniel Crug, Ed Cook, Austin Benton, Katelyn Villarreal, Shari (Smith) Githens  
**Anniversary** - Ishmael & Anna Vela, M/M Claude Sheets Jr., M/M D.A. Cator, M/M Walter Murrell, M/M Paul Stavlo, M/M S.J. Wells, M/M Carl Kunselman, Joe & Elvia Avila

**July 1**  
**Birthdays** - Ida Hendrick, Pauline Lopez, Pauline Jackson, Rosa Rojas, James Cunningham, Manlene Cook  
**Anniversary** - M/M Dee Mayfield, M/M Jerry Hart, Kevin & Ronda Bynum, Clay & Pam Schnell

## Our Sympathy

**FLOETTA VIRGINIA HARMAN**  
 AMARILLO - Floetta Virginia Harman, 77, of Amarillo died Thursday, June 11, 2009.

Services will be at 10:30 a.m. Monday in South Lawn Baptist Church with the Rev. Greg Kinch officiating. Burial will be at 3 p.m. Monday in Texhoma Cemetery in Texhoma by Schooler Funeral Home, 4100 S. Georgia St.

Floetta was born Nov. 25, 1931, to Enis and Ella Riggins. She graduated from Gruver High School in 1951. She met Lyle Harman, and they married in 1952. She and Lyle lived in Texhoma from 1962 until 2004.

She was a homemaker and was very proud of her home and her family. While living in Texhoma, she worked in the church nursery, rocking sweet little babies during the services. Mr. and Mrs. Harman joined South Lawn Baptist Church after moving to Amarillo.

She was preceded in death by her parents, four brothers and three sisters.

Survivors include her husband, Lyle; three children, Glen Harman and wife Kendall of Amarillo, Beth Pearce and husband Steve of Seminole, Okla., and Nancy Pearson and husband Mike of Balco, Okla.; seven grandchildren, Matthew and Ryanne Harman, Isaac and Ella Pearce and Chrissy, Sarah and Joshua Pearson; and four great-grandchildren.

In lieu of flowers, the family suggests memorials be to South Lawn Baptist Church, 4306 S. Washington St., Amarillo, TX 79110; or to Goodwell Baptist Church in Goodwell, Okla.

The family will receive visitors from 4 to 6 p.m. today at the funeral home.

Sign the online guest register at [www.schoolerfuneralhome.com](http://www.schoolerfuneralhome.com).

## CECIL CLARENCE HODGE

BORGER - Cecil Clarence Hodge, 82, died Tuesday, June 9, 2009, in Amarillo.

Services will be at 10 a.m. Saturday in Fellowship Baptist Church with the Rev. James Berry, pastor of Southside Baptist Church, and Gary Sams officiating at graveside service. Burial will be in Westlawn Memorial Park by Minton/Chatwell Funeral Directors of Borger.

Mr. Hodge was born Aug. 2, 1926, in Athens to Robert and Emma Hodge. He married Ella Mae "Jackie" Jones on Nov. 11, 1944, in Altus, Okla.

Survivors include three sons, Cecil Kerry Hodge of Lefors, Thomas Robert Hodge of Borger and Lanise Dale Hodge of Gruver; three daughters, Peggy Jean White, Pam Leinen and Kathy Berry, all of Borger; 20 grandchildren; and 42 great-grandchildren.

In lieu of flowers, the family suggests memorials be to Odyssey Healthcare, 6900 W. Interstate, Suite 150, Amarillo, TX 79106.

Visitation will be from 6 to 8 p.m. today at the funeral home in Borger.

**FREE DIRECTV 4 ROOM SYSTEM!**

265+ ALL DIGITAL CHANNELS!  
 130 HD CHANNELS!  
 FREE HBO, Showtime & Starz for 3 Months!  
 Packages Start only \$29.99  
 FREE DVR/HD  
 No Start Up Costs!  
 We're Local Installers!

Channel Pkgs. Start \$29.99 / mo

Toll Free 800-214-7110

**MONUMENTS**  
**Boxwell Brothers**  
**Funeral Home**  
 519 Evans • Spearman  
 659-3802

Dear friends,  
 When you buy a monument from us we make sure it is exactly what you want at a price you can afford. If it is not right, we will make it right. And you will not have to search the countryside to find us. We are here when you have a need.

Sincerely,  
 Bob Boxwell

## Words from Faith & Grace



by Cecil R. Biggers, Lutheran Lay Minister

In the third week of Pentecost, we study Job 38:1-11, Psalm 9:9-20, 2 Corinthians 6:1-13, and Mark 4:35-41.

We learn that we do not know all of what God is like as Job demands to know from God why he has lost his family, fortune and health. God does not answer Job directly. God speaks to Job from a whirlwind (a symbol of God's power) and interrogates Job as to his knowledge of how the universe works. Job cannot answer God, nor could we. The creation is far larger, stranger and more mysterious than we can imagine or grasp with our knowledge and science. The world is God's, not ours. Why bad things happen to good people is not answered. The bottom line is that we must learn to trust in God.

The Psalmist sings of the power of the Lord who is a stronghold for those oppressed, afflicted, and suffering who believe in him. [This Psalm should be read with Psalm 10 as together they form an acrostic (the first word of each line begins with a different letter of the Hebrew alphabet, in order).] We may not learn why we have problems, anxieties and fears, but we learn that God is a refuge for those who believe in him.

Paul tells the Corinthians that now is the acceptable time God has listened to them and now is the day of salvation. Paul then tells Corinthians that he has been commended to God through great endurance in all of the adventures of his ministry. The word Paul used for "endurance" is *hupomone*. This is a Greek word not easily translated but which includes the idea that one with *hupomone* does not just bear adversity, but faces adversity in such a triumphant way that the adverse circumstances are transformed. Paul is reconciled to the Corinthians with an open heart and he asks them to open their hearts, too.

Mark shows us Jesus and the disciples crossing the Sea of Galilee in a boat. Jesus' position in the boat is that reserved for a distinguished person. A position in the rear of the boat which is cushioned. The winds channeled by a canyon whip up the waves upon the shallow sea and the little boat is in peril. The disciples are in fear for their lives; they awaken Jesus, saying, "Master, do you not care that we are perishing?" Jesus woke up, rebuked the wind, and said to the sea, "Peace! Be Still." The wind ceased and there was dead calm. Jesus then chastises his disciples by asking why they were afraid, why they still had no faith.

If we read this only as a "miracle" story it is good. We should learn from this, that as long as Jesus is with us, we have nothing to fear. The disciples asked, "Who then is this, that even the wind and the sea obey him?" Job learned that it was God who controlled and created the sea; hence, if Jesus commanded the elements and they obeyed him, who is he? Jesus is Messiah.

May the Holy Spirit grant you the spirit of *hupomone* so that you may transform your adversities and strengthen your awareness of Jesus Christ's presence in your life.

**FAMILY POOL FUN.COM**

• Our pools create Generations of Memories everyday, vacations never end!  
 • Aboveground & Inground pools at WHOLESALE PRICING  
 • SIMPLE DIY Pool Kit Assembly  
 • SAVE MONEY on All Pool Supplies & Accessories. Ships Fast

Call Today! 800-250-5502

**SIGN UP FOR A FREE SCOOTER**  
 One Scooter Given Away Each Month  
 Toll Free 800-606-9860

**Med Care**  
 MEDICAL SUPPLY  
[www.medcaremedicalsupply.com](http://www.medcaremedicalsupply.com)

**HOME PHONE SERVICE**  
 1st Month FREE with Lifeline  
 Starting at \$12.49/mo • \$0 Deposit  
 NO Credit Check • NO Contracts  
 Everyone Approved!  
 Restrictions May Apply.  
**NEWTALK 866.934.3448**

**GOLDSTON**  
**DENTAL HEALTH CENTER**

Hugh Goldston D.D.S.

Shad Goldston D.D.S.

**DEDICATED TO EXCELLENCE**  
**IN DENTISTRY**

Orthodontic, Implant, Cosmetic and General Dentistry  
 103 E. Broadway  
 Gruver  
 Office Hours 8:15AM until 4:45PM  
 Wednesdays  
 For appointment call 733-2700

Replenish the seed of faith through . . .  
**DAILY BIBLE READING, PRAYER & REGULAR CHURCH ATTENDANCE**

**Spearman**

**Apostolic Faith Church**  
 822 S. Dressen • 659-2870  
 Sunday School: 10 a.m.  
 Worship Service: 11 a.m.  
 Sun. Eve. 6 p.m.  
 Wed. Prayer Mtg: 7 p.m.  
 Pastor - Roland Haney

**First Assembly of God**  
 401 N. Bernice • 659-2295  
 Sunday School: 9:30 a.m.  
 Worship: 10:40 a.m.  
 Evening Worship: 6 p.m.  
 Wed. Worship: 7 p.m.  
 Wed. Youth: 7  
 Pastor - Jerry Pollard

**First Christian Church**  
 (Disciples of Christ)  
 29 S. Bernice • 659-2036  
 Sunday School: 9:45 a.m.  
 Worship: 10:50 a.m.  
 Minister -

**First Baptist Church**  
 123 N. Bernice • 659-5557  
 Sunday School: 9:45 a.m.  
 Worship: 11 a.m.  
 Evening Worship: 7 p.m.  
 Men's Bible Study - Wed., 7 a.m.  
 Children's Choir - Wed., 6 p.m.  
 Adult Choir - Wed., 7 p.m.  
 Wed. Bible Study: 7 p.m.  
 Pastor - Jim Medley

**Church of Christ**  
 121 S. Haney • 659-3244  
 Sunday Bible Class: 9:45 a.m.  
 Worship: 10:30 a.m.  
 Evening Worship: 6 p.m.  
 Bible Study Wed.: 7:30 p.m.

**Sacred Heart Catholic Church**  
 901 Roland • 659-2792  
 Sat. Night Mass: 5:30 p.m.  
 Sun. Mass: 9 a.m. - English  
 Sun. Mass: 11:30 - Spanish  
 1:30 p.m. - Gruver - Christo  
 Rector: Rev. Guillermo Morales  
 Rev. Guillermo Morales

**First United Methodist**  
 407 S. Haney • 659-5503  
 Sunday School: 9:45 a.m.  
 Worship: 8:30 & 11 a.m.  
 Jr. High Youth: 5 p.m. Sunday  
 High School: 6 p.m. Sunday  
 Kids Club: 3 p.m. Wed.  
 Pastor - Neely Landrum

**Grace Presbyterian Church**  
 (Worships with Faith Lutheran Church)  
 1101 Bernice • 659-2033

**Faith Lutheran Church (ELCA)**  
 1101 Bernice • 659-2252  
 Sunday School: 9:45 a.m.  
 Worship: 11 a.m.  
 (Worships with Grace Presbyterian Church)  
 Pastor - Cecil Biggers, PLM

**Union Church**  
 31 S. Endicott • 659-2644  
 Sunday School: 10:00 a.m.  
 Worship: 11:00 a.m.  
 Bible Study: 7 p.m. Wed.  
 Youth Service: 6 p.m. Wed.  
 Pastor - Don Baltazor

**Fellowship Baptist**  
 1102 S. Archer • 659-2783  
 Sunday School: 10 a.m.  
 Worship: 11 a.m.  
 Sun. Evening Worship: 6 p.m.  
 Sun. Evening Spanish Worship: 7 p.m.  
 Youth/Adult Service: 7:30 Wed.  
 Pastor - Philip Hudson

**Primera Mision Bautista**  
 632 E. 7th • 659-3991  
 Sunday School: 9:45 a.m.  
 Worship: 11 a.m.  
 Evening: 6 p.m.  
 Wed. Prayer Meeting: 7 p.m.  
 Thurs. Visitation: 7 p.m.  
 Pastor Joe Garcia Jr.

**El Aposento Alto U.P.C.I.**  
 1105 S. Roland  
 Domingos: Escuela-Dominical - 10 a.m.  
 Culto Evangelistico - 7 p.m.  
 Jueves: Oracion - 8 p.m.  
 Mier: Estudio Biblico - 7 p.m.  
 Pastor - A.G. Martell  
 (806) 659-2153

**Gruver**

**First Baptist Church**  
 402 E. Broadway • 733-2411  
 Sunday School: 9:45 a.m.  
 Worship: 10:50 a.m.  
 Disciple Training: 6 p.m. Sunday  
 Prayer Meeting: 7:30 p.m. Wednesday  
 Pastor - Scott Curry

**Church of Christ**  
 209 King • 733-2760  
 Sunday School: 9:30 a.m.  
 Worship: 10:20 a.m.  
 Evening Worship: 6 p.m.  
 Wed. Worship: 7:00 p.m.  
 Minister - Gaylord Cook

**First Christian Church**  
 521 King • 733-2960  
 Sunday School: 10:00 a.m.  
 Sunday Worship: 11 a.m.  
 Youth: 7:30, Sunday  
 Adult Bible Study: 7:30, Sun.  
 Wed. Bible Study: 8:00 p.m.

**Pastor - Gary Gumfory**  
**Gruver United Methodist**  
 Broadway & Garrett  
 733-2651  
 Sunday School: 9:45 a.m.  
 Worship: 8:30 & 10:50 a.m.  
 Eve. Worship & UMY: 6 p.m.  
 Pastor - George Price

**Spanish Cristo Redentor Church**  
 Sunday Mass: 1:30 p.m.  
 Friday Evening Mass  
 Summer - 8:00 p.m.  
 Fall/Winter - 7:30 p.m.

**Oslo**

**Oslo Lutheran Church (ELCA)**  
 6 Miles West & 12 Miles  
 North of Gruver  
 339-7646  
 Sunday School: 9:45 a.m.  
 Worship: 11 a.m.  
 Pastor - Arlen Lloyd

**Morse**

**Morse Baptist Church**  
 733-2757  
 Pastor - Mike Martin

**Waka**

**Church of Christ**  
 300 Rogers Ave.  
 202-7126  
 Sunday Worship: 6 p.m.  
 Wednesday Bible Study: 6 p.m.  
 Preacher - James Gordon

He has showed you, O man, what is good. And what does the LORD require of you? To act justly and to love mercy and to walk humbly with your God.  
 Micah 6:8

This feature is made possible through the sponsorship of these civic minded businesses:

**Deakin ELECTRIC**  
 OILFIELD • RESIDENTIAL • COMMERCIAL  
 321 S. MAIN • SPEARMAN  
 1-800-999-1506 Chris  
 Deakin President  
 (806) 659-5016

**Bartlett's Lumber & Hardware**  
 105 W. Broadway • Gruver, TX  
 (806) 733-2404

**BERRY CLEANERS**  
 Ann & Vernon Pipkin - Owners  
 Phone 659-3122 • P.O. Box 1017  
 207 Main St. • Spearman, TX

**Morse Implement & Auto Supply**  
 "Join us in church"  
 Tom Dorch 733-2668  
 Box 89 • Morse, TX 79062

**PRAIRIE MOTORS INC.**  
 Hwy. 207 South • P.O. Box 430  
 Spearman, TX 79081 • (806) 659-2541  
[www.prairiemotors.com](http://www.prairiemotors.com)

**MurMur's Cafe**  
 100 Roland St  
 Spearman, TX.  
 659-3580

**Hansford County Reporter-Statesman**  
 "Proudly Serving Hansford County Since 1907"  
 (806) 659-3434  
 310 Barkley • Spearman, TX

**INTERSTATE BANK, sssb**  
[www.interstatebank.net](http://www.interstatebank.net)  
 322 Main • P.O. Box 146  
 Spearman, TX • 659-2559

# H&H

FOR YOUR INFORMATION

### Medical Fund for Krystal Puentes

A medical fund has been established for Krystal (Burkhammer) Puentes at First National Bank, Spearman. If you would like to make a contribution you may make a deposit with any teller or mail a donation to First National Bank, Krystal Puentes Medical Fund, PO Box 337, Spearman TX 79081.

### Medical Fund for Rene Griffin

A medical fund has been established for Rene Griffin at First State Bank, Spearman. If you would like to make a contribution you may make a deposit with any teller or mail a donation to First State Bank, Rene Griffin Medical Fund, PO Box 247, Spearman TX 79081.

### Medical Fund for Bruce Duncan

A medical fund has been established for Bruce Duncan at First National Bank, Spearman. If you would like to make a donation you may make a deposit with any teller or mail a donation to First National Bank, Bruce Duncan Medical Fund, PO Box 337, Spearman TX 79081.

### Medical Fund for Nancy DeLuna Jernberg

A medical fund has been established for Nancy DeLuna Jernberg of Stinnett. Nancy was diagnosed with a rare malignant brain tumor and will be undergoing treatment. If you would like to make a contribution you may make a deposit with any teller or mail a donation to H&H Federal Credit Union, 104 Main Street, Stinnett TX 79083.

### Canyon High School Reunion

The Class of 1974 of Canyon High School is gathering for a reunion in Canyon and Amarillo the last weekend in June. All CHS graduates from the classes of 1972-1976 are invited to join in the festivities. Preliminary plans include a cook-out at Conner Park in Canyon on Friday night, June 26th; tour of the new high school on Saturday afternoon, June 27th; and a big party at the Big Texan in Amarillo the night of the 27th. Make plans to attend now. Current details can be found on Facebook (Canyon High School - Class of '74 Reunion), or by contacting Brenda Brooks at 806-351-0432.

### Understanding Infant Adoption Training

Children's Connections Inc., Panhandle Area Health Education Center (AHEC) and the Frank Phillips College Nursing and Allied Health Department are presenting an Understanding Infant Adoption Training on Tuesday, June 30, 2009 from 12:30-4:30 p.m. at the Frank Phillips College Center for Access and Innovation Conference Room, 1301 W. Roosevelt, Borger. Registration begins at 11:45 a.m. The following Continuing Education Credits will be awarded: Nursing - 4 and Social Workers - 4. The training is free and includes a free lunch. The registration deadline is June 25th. For more information, or to register, contact Karen Russell, Panhandle AHEC, 806-651-3482, or email krussel@mail.wtamu.edu.

### Golden Spread Center Radio Auction Planned

The O'Loughlin Center will be hosting the Golden Spread Center's annual KXDJ-RM Radio Auction on August 22, 2009. Donations of handmade items, goods, services, good furniture, cars, boats, golf carts, etc. are greatly appreciated. Funds will benefit the Golden Spread Center. To make your charitable donation, call Jada Breeden at 806-659-3030.

### Fire Department Donations

Persons wishing to make donations to the Fire Departments in Hansford County may do so at the following addresses: Spearman Fire Dept., Box 37, Spearman TX 79081; Gruver Fire Dept., Box 947, Gruver TX 79040 or Morse Fire Dept., Box 28, Morse TX 79062

### Take Off Pounds Sensibly Meets

Take Off Pounds Sensibly (TOPS) meets on Tuesday morning at 8:30 a.m. at the First Christian Church in Gruver. Anyone interested is invited. Contact Marilyn Been at 806-733-2087.

### IRS won't e-mail you about your refund

If you get an e-mail about your tax refund that appears to be from the Internal Revenue Service, don't be fooled. It's probably coming from internet thieves looking to steal your personal information, like credit card or bank account numbers. "Many folks have tax refunds coming back this time of year, and crooks might take advantage of that fact," Sanford said if the IRS needs to contact you, they will generally send a notice or letter through the U. S. Mail. Delete bogus IRS e-mails or forward them to phishing@irs.gov.

### Third Marine Division Association

The Third Marine Division Association is holding its 55th Annual Reunion in San Antonio, TX on August 24-30th. Any Marines who have served in the Third Marine Division, or were attached to the Third Marine Division in WWII, Korea, Vietnam, Persian Gulf, Iraq, Afghanistan and Peacetime, are invited to attend. For more information, call Mike Sohn at 210-654-3310, or e-mail at jument2@hotmail.com.

### Child Find

Your school district is looking for children ages 3-21 years who may be slow in developing communication skills, social interactions, walking skills and/or have major physical disabilities. We want to give your child the chance to receive the extra help he/she needs, if the disability interferes with his/her education. Please call your elementary campus to get more information or call Peryton SSA, 435-4412.

### Beware of FAFSA Web Scam

Seniors, senior parents, and parents of college students should use the web site www.fafsa.ed.gov when filling out their Free Application for Federal Student Aid (FAFSA) online. There is currently a website that has found an interesting way to get in the college-bound's pocket. Known as fafsa.com, the website charges a fee for submitting the application. There is no fee for submitting the fafsa form on the www.fafsa.ed.gov site.

### Panhandle Crisis Center in Need of Volunteers

The Panhandle Crisis Center is in great need for Volunteers to operate our Spearman Resale Store on Tuesdays, Thursdays and Fridays. The hours would be from 10 a.m. to 5 p.m. Training would be provided and you would be helping us greatly as you work with the public selling items, receiving donated merchandise, and visiting with your hometown friends. If you are willing and able to help with a program that benefits Domestic Violence and Sexual Assault victims in your community, please call 806-435-5008.

### Region 16 ESC offers Free GED Preparation Software

Region 16 ESC is offering free GED preparation software for students interested in obtaining a GED. You will also have access to a free online GED prep program through the public library. If you are interested in finding out more information about these services, please contact: Cindy Blackman at 659-3233, Maria Carbajal or Margaret Ruttman at 659-2231 or stop by the Hansford County Library.

### Panhandle Crisis Center Outreach Office

Panhandle Crisis Center (PCC) has an Outreach Office and Resale Store at 306 Hancock, in Spearman. In case of emergencies, please continue to call the hotline, 1-800-753-5308. To schedule an appointment with a worker in Hansford County, please call 659-3391 to leave a message, or call the hotline number above. Panhandle Crisis Center serves victims of domestic violence and sexual assault. Please call for more information regarding PCC's services. Hours for the Resale Store in Spearman are: Monday, Tuesday, Thursday & Friday from 10 a.m.-5 p.m.

### Spearhead AA Group

The Spearhead AA Group meets every Tuesday at 8 p.m. in the Pittman-Shieldknight building. Alcoholics Anonymous® is a fellowship of men and women who share their experience, strength and hope with each other that they may solve their common problem and help others to recover from alcoholism. The only requirement for membership is a desire to stop drinking. There are no dues or fees for AA membership; we are self-supporting through our own contributions. AA is not allied with any sect, denomination, politics, organization or institution; does not wish to engage in any controversy, neither endorses nor opposes any causes. Our primary purpose is to stay sober and help other alcoholics to achieve sobriety. For more information, call 662-1111.

### You're Never Alone - Narcotics Anonymous Group

Each year individuals struggling with drug and alcohol addiction make the resolution to quit using drugs. For many of them it is a resolution that they cannot keep. Narcotics Anonymous can help. Open meetings are held on Monday and Thursday nights from 8-9 p.m. at the First Christian Church (29 S Bernice, Spearman) for the "You're Never Alone" group of Narcotics Anonymous. Anyone interested is invited to attend. Drug addiction can leave an individual feeling helpless and out of control - we can help.

### Don't Wait to Find Help for Someone Who is Addicted

Trying to help someone who's having a problem with drugs or alcohol? Substance abuse all too often leads to accidents, arrest, illness, financial hardship and even homelessness and death. Don't wait to find help for someone you love. Call Narconon Arrowhead drug rehabilitation and education center for a free addiction consultation or referral to treatment in your area. Call 1-800-468-6933 or visit www.stopaddiction.com.

## Thank You!

We would like to say THANK YOU to the people of Spearman for all the cards, food, flowers, prayers, memorials, and kindness shown to our family after Raye's death. He always thought Spearman was the best town in which to live, and it had the best people in Texas. We Agree! If he knew you, he probably remembered a story about you, something you had said or done, or who you were friends with or were related to. He had a remarkable memory. We thank you for being his friend and making his life in Spearman so happy.

We would like to express a special thank you to Dr. Mark Garnett, the staff at Hansford County Hospital, and the staff at the Hansford County Manor for caring for him during his last few weeks. Also, thank you to Home Health and Physical Therapy for their visits which contributed to his longevity and enabled him to stay at home (where he wanted to be) for as long as possible.

We would also like to thank Rev. John Scott, Rev. Jim Medley, and the First Baptist Church for a beautiful service and for comforting our family. We appreciate the prayers and visits to Daddy throughout the years. He always loved the Christmas carolers and the Christmas goodies that were a treat for his "sweet tooth".

Whether you bought groceries from him at Thriftway; bought used furniture, peanuts, or pumpkins from him; got out of his way while he was still driving; scooted over for him in his electric wheel chair; dropped by to say hi; took time to listen to one of his stories or jokes; or waved to him when he was sitting on the porch, we appreciate it so much. We just thank you from the bottom of our hearts for whatever part you had in Raye's life, and we thank you for remembering our family during this time of sadness. May God Bless.

Sincerely,  
The Raye Gibson Family

## Thank You!

We cannot begin to express our gratitude to all those in our community of family, friends and health care professionals that surrounded us and enveloped us with prayers, love and compassion during these last 2½ years with our daughter, Morgan. Thank you for the cards and letters, pajamas and blankets, flowers and plants, meals and paper goods, donations to memorials and favorite charities in her name. Thank you for the visits and the hugs and words of comfort and for the meal after her memorial service. Thank you for being there in our best and our worst times. Thank you for loving Morgan. We miss her so much.

The parents of Morgan Ross

## Thank You!

I would like to thank everyone who took the time to come to my

Retirement Party. I appreciate each of you so much. Also, thanks to all my special preschool moms who helped with the party and all the surprises at the program. It has been a wonderful journey in my life and I just want to thank all my family and all of you who believed in me.

Thanks,  
Donna Trantham

## Thank You!

Thank you for your support! Spearman Scholarship Foundation, Agco & Don and Mary Allen, it is truly an honor to represent you!

Cara Gwin  
Attending Covenant School of Nursing, Lubbock Texas  
2007 Graduate of Spearman

## You are invited to a Baby Boy Shower honoring

Macklin "Mac" Pierce Boyd  
son of Amee Boyd

on Saturday, June 27, 2009  
from 2:00-3:30 p.m.

in the home of Linda Winegarner  
821 Haney Spearman TX

## You are invited to a Wedding Shower honoring

Laura Gillaspie

(bride-elect of Josh Powell)

on Sunday, June 21, 2009

from 2:00-3:30 p.m. at the  
Home of Stephanie Brock

901 Barkley Spearman, TX

## You are invited to a Baby Boy Shower honoring

Justine Rosales & Skyler Sumner  
on Saturday, June 27, 2009

from 1:00-3:00 p.m.

at The O'Loughlin Center

502 S. Brandt Spearman TX

## You are invited to a Baby Shower honoring

Tim & Whitney Owens

on Saturday, June 20, 2009

from 4:30-6:00 p.m.

in the home of Kristina Howell

620 S. Endicott Spearman TX

## 12 Month FDIC-Insured

LIMITED TIME **5.13%** APY\* Act now...  
this rate won't last!



FIRST FIDELITY

Financial Group, LLC  
Your Safe Money Solution®

1800 Washington, Suite 110 • Amarillo, TX

Annual Percentage Yield (APY) \$5,000 minimum deposit. Rates and deposit amount subject to change without notice. Penalty for early withdrawal. Fractional interest may be included to obtain yield. FDIC - insured by \$250,000 per institution. First Fidelity is a financial services firm that locates FDIC insured banks offering the highest CD yields nationwide.

659-2224

By appointment only



photography

i sing because i'm happy...i sing because i'm free...

For Your Photography Needs  
Senior Portrait  
Wedding  
Engagement  
Family Portrait  
Anniversary  
Birthday



"I sing because I'm happy...  
I sing because I'm free...  
for His eye is on the sparrow...  
and I know He watches me..."

These are words from one of my favorite hymns, "His Eye is on the Sparrow," written by Civilla Martin (1869-1948) and based on Matthew 10:29-31.

This new opportunity of a photography business is yet another example of how God continually watches over and takes care of me. I've always wanted to take pictures professionally, but I never dreamed it would actually happen! I would love to share my passion of taking pictures with you and your loved ones.

Beekee Baker  
806-659-3786  
bbsparrowphoto@gmail.com  
http://www.bbsparrowphoto.com/

## Baby Registry

Mika (McLain) & Matthew Devaney - 6/13

Kandi & Jared Johnson - 6/13

Tiffany Hand & Chancey Servantez - 6/20

Justine Rosales & Skyler Sumner - 6/27

Brianne (Burkhammer) & Eric Eslick - 6/27

Amee Boyd - 6/27

Christin & Michael Lozano - T&B

Haley Tindell & Felix Lopez - T&B

Madeline (Reed) & Jeremy Schenk

Brooke & Wade Stewart

Teal Armes & Joe Lopez

## Celebrate

203 Main St. Spearman, TX

(806) 659-3350

1-800-663-8026

# Gruver High School Scholarship Recipients

A total of \$21,9743.50 in scholarships were awarded during graduation ceremonies on Friday, May 29th at Gruver High School to the following:

**Arnanda Branning:** OPSU Senior Day Scholarship \$450, OPSU Out of State Tuition Waiver \$4,272

**Marisol Hernandez:** PTO Scholarship \$500, Gruver College Fund \$800

**Jordan Hicks:** Livestock Judging Scholarship \$1850, H&H Federal Credit Union School \$1,000, Sharon Saltzman Scholarship \$500, Wes Babbs Memorial Scholarship \$500, Adams Scholarship \$1,000 (4,000), Gruver Alumni Scholarship \$1,500, Wes Maupin Memorial Scholarship \$500, Hansford County Farm Bureau School \$500, Pioneer Hi-Bred Scholarship \$1,000, Gruver College Fund \$800

**Miles Messer:** Karl A. Nielsen & Karen J. Nielsen \$1012.50, Top 10% State Scholarship \$2000 ATBD, Art Salazar Memorial Scholarship \$100, Open Door Ministries Scholarship \$1,000, Gruver Scholarship Fund \$1,000, Gruver Alumni Scholarship \$1,500, Panhandle Plains Student Loan Center Scholarship \$200, WTAMU Honor Scholarship \$2,500, James Dorman Memorial Scholarship \$700, Gruver College Fund \$1,000

**Lindsey Mireles:** Art Salazar Memorial Scholarship \$100, WBU ACT Scholar \$2,000, Baptist Church Matching Scholarship \$200, Gruver College Fund \$800

**Devlin Reynolds:** Art Salazar Memorial Scholarship \$100 Federal Pell Grant \$5,350

**Esmeralda Salazar:** Richard and Marguerite Roth Downer Memorial Scholarship \$1,000, OPSU Senior Day Scholarship \$450, OPSU Out of State Tuition Waiver \$4,272

**Matt Salazar:** Texas Equalization Grant \$3,808, Schreiner Trustee Scholarship \$9,000 (36,000), Federal

Pell Grant \$4,600, Colt Cluck Memorial Scholarship \$1,250, Open Door Ministries Scholarship \$1,000, PTO Scholarship \$500, Gruver College Fund \$800, Gruver CTA \$500, Chamber of Commerce Scholarship \$1,800

**Jorge Soto:** Panhandle Plains Student Loan Center Scholarship \$200, Gruver College Fund \$500

**Veronica Teal:** Karl A. Nielsen & Karen J. Nielsen School \$1012.50, Top 10% State Scholarship \$2,000 ATBD, President's Gold Scholarship Baylor \$44,000, WTAMU Scholarship \$14,000, Gruver FCCLA \$250, Open Door Ministries Scholarship \$1,000, Gruver United Methodist Church School \$1,087, Gruver College Fund \$1,000

**Amy Tolleson:** WTAMU Top Quarter Scholarship \$4,000, WTAMU Art Scholarship \$875, WTAMU Institutional Scholarship \$200, Gruver College Fund \$800

**Justin Vasquez:** Gruver College Fund \$200, OPSU Out of State Tuition Waiver \$4,272

**Gustavo Vega:** WTAMU Camp Scholarship \$4,030, Open Door Ministries Scholarship \$1,000, Gruver College Fund \$500

**Lynn Vela:** Karl A. Nielsen & Karen J. Nielsen School \$1,012.50, Dennis Stejje FFA Memorial Scholarship \$500, The Sharon Saltzman Scholarship \$500, Art Salazar Memorial Scholarship \$100, Gruver National Honor Society Scholarship \$500, Texas Aggie Grant \$1,500, Academic Competitive Grant \$750, Education

Opportunity Grant \$500, Texas Public Education Grant \$2,000, Federal Pell Grant \$1,100, Panhandle Plains Student Loan Center Sch. \$200, Miss Hansford Runner-up Scholarship \$200, Texas A&M Club \$500, Top 10% State Scholarship \$2,000, Gruver College Fund \$1,000, Highest Ranking High School Graduate \$8,840

**Dani Wheelock:** USA Feedyard Scholarship \$2,500 (10,000), Hansford County 4-

H Scholarship \$500, Open Door Ministries Scholarship \$1,000, Hansford County Feeders \$8,000, Gruver College Fund \$800

**Taylor Williams:** North Plains Cooperative Scholarship \$1,500, Hansford County 4-H Scholarship \$500, Art Salazar Memorial Scholarship \$100 United States Tennis Association \$1,000, Gruver College Fund \$500



The 5th & 6th Grade Girls Basketball Team won the Periyton MAYB Tournament May 21 and 22, 2009. Pictured are: (L-R) Jaci Burgin, Jayme Pack, Hannah Patterson, Brooke Walker, Tyann Hight, Coach Walker, Slade Garnett, Klara Keim and Payton Harrell.

## Spearman FFA Holds End-Of-Year Cookout

The Spearman FFA end-of-year cookout was held on May 22, 2009. The meal of hamburgers and hot dogs was cooked by Dakota Cator on his smoker that was built in the Spearman Ag Shop.

Awards were presented to students for their accomplishments in ag-science. Students who received awards were: Dakota Cator - Chapter Farmer, Tylo Farrar - Star Greenhand, Gerardo Chavez - Best All Around Knowledge, Chase Farrar - Welding Project, Cullie Cooper - Best Individual Project, Dakota Cator - Best Shop Project, Seth Coates - Swine Production, Tylo Farrar - Lamb Production, Nikki Boyd - Sr. Creed Speaking & Quiz Team, Brody Hargrove - Quiz Team, Lauren Patterson - Quiz Team, Isvy Acosta - Sr. Creed Speaking, Justin Rindlisbacher - Jr. Creed Speaking.

In addition, Mr. Summer gave a report on the District's new ag-barn/facility which will be ready for students and their animals in the fall.

## OPSU Basketball Camp

Young men and women can improve their basketball skills with participation in the summer basketball camps at Oklahoma Panhandle State University.

The camp for high school competitors (grades 9-12) will be held on June 22 through June 26 and the camp for junior high competitors (grades 6-8) will be held on June 29 through July 2. There will be one session each afternoon, running from 1:00 to 5:00, and all sessions will be held in the Noble Center on the OPSU campus.

Camp information states, "The purpose of the camps is to give individuals a chance to increase their knowledge, improve their skills, and compete against other players at a much lower price than other camps." The OPSU camps will cover the same fundamentals and skills covered at overnight camps while saving on the camp fee.

The cost of each camp is \$65 for a single, \$110 for two from the same family, and \$150 for a family rate. For more information or to register, call Jerry Olson at 580-206-0184.

Youngsters who attend sports camps at Oklahoma Panhandle State University always enjoy the experience.

## Quote of the Month

"When I was 8 or 10 or 12 years old... we changed for gym... (And) people did sometimes stick things in my underwear."

Justice Brayer

**PAID CDL TRAINING!** YOUR FUTURE BEGINS HERE

**NO EXPERIENCE NEEDED!** Stevens Transport, the premier refrigerated carrier in the US, sponsors the total cost of your CDL training! In 17 short days you will earn your CDL and begin your paid on-the-job training! Potential to earn up to \$40K first year! Excellent benefits and 401K!

For more information, call **800-333-8595**

[www.becomeadriver.com](http://www.becomeadriver.com)

**Build now** for \$8,000 tax credit!

New federal tax credit for first time home buyers makes it easier than ever to build your own home!

Now 14 Sales Offices in Texas. Visit [ubh.com](http://ubh.com) to find one near you.

**United-Bilt Homes**  
Homemade just for you.

800.756.2506 @ubh.com

**Celebrate!**

**Father's Day**  
with the perfect gift!

Grilling Brush Sets  
BYO Insulated Bags  
5 Star Ranch Rub and Steak Seasoning  
Cookbooks  
Picture Frames  
Desk Accessories

from **Celebrate**

203 Main St.  
Spearman, TX  
(806) 659-3350  
1-800-663-8026

**Happy Father's Day!** WITH LOVE TO DAD

Don't have time to go shopping? Visit one of our Web sites and order Dad's gift online.

[www.AllOccasionFlowersOnline.com](http://www.AllOccasionFlowersOnline.com)  
[www.SpearmanFlowers.com](http://www.SpearmanFlowers.com) (under construction)  
[www.UntamedKnives.com](http://www.UntamedKnives.com)  
[www.TupeloSuperStore.com](http://www.TupeloSuperStore.com)

More Than 30,000 Gifts To Choose From!  
Free printable Father's Day Cards, coloring pages, gift ideas and more at [www.SpearmanFlowers.com/fathersday.html](http://www.SpearmanFlowers.com/fathersday.html)

**All Occasion Flowers**  
Ye Oldest Flower Shoppe in Towne  
202 N. Bernice (across from the Post Office)  
659-5180 • Spearman • 330-1205  
Come by and visit or call for more details.

Uniquely Yours... Brighton® Your Day

Hours: M-S 9-8 • Sun 1-6  
118 NW 4th St • 338.3332  
Guymon, OK

Men's, Women's, and Kid's Clothing

a CHARMED life...

**Palace Theatre**

MOVIE SHOW TIMES  
Friday-Thursday - 7 p.m.  
Sunday - 2 p.m.  
Closed Sunday Night

FRESH POPCORN & DRINKS!  
PARTY ROOM & ARCADE  
MOVIE RENTALS

Palace Theatre  
210 Main Street  
Canadian TX 79014  
806-323-5133  
[www.palacetheatre.com](http://www.palacetheatre.com)

The Palace Theatre meets Lucasfilm THX specifications for site and sound quality.

**Experience HD and DVR FREE for a month..**  
and you'll never go back to plain old TV again!

"PTCI's new HD is better than satellite!"

"With DVR I never miss a show."

Pay-per-View now available!

**PTCI**  
Communication & Broadband Solutions

Offer ends June 30, 2009. **Call Today!**

721 W 7th in Spearman 1-800-562-2556 [www.ptci.net](http://www.ptci.net)

Services not available in all areas. Some restrictions may apply.

**Spearman High School Scholarship Recipients**

The following scholarships were awarded during the 2009 graduation ceremony at Spearman High School on Friday, May 29, 2009:

**Jose Anaya:** Frank Phillips College Deans Scholarship \$600

**Jordan Ray Ashmore:** Ken Cleveland Memorial Scholarship - sponsored by the Texas Association of Basketball Coaches \$500, Lynx and Lynxette Booster Club, \$500 Spearman Classroom Teachers Association \$250, West Texas A&M University Men's Basketball Athletic Scholarship

**Cha'tae Reann Avila:** Amarillo Women's Network \$500, Lynx and Lynxette Booster Club \$500, Garrett Rex Memorial (sponsored by the Jr. Lynx and Lynxettes) \$500, Spearman High School National Honor Society Scholarship \$300

**Courtney Jean Baca:** Spearman Classroom Teachers Association \$250

**Brittany Elaine Barnes:** Lynx and Lynxette Booster Club \$500, Karl Nielsen and Sister Karen J. Nielsen Award (administered by First State Bank) \$1,012

**Robert Kacee Breeden:** Oklahoma Panhandle State University (Senior Day Scholarship) \$450

**Sabrina Evett Cantu:** Gladiola Flower Club \$1,000

**Ashley Renea Close:** Lynx and Lynxette Booster Club \$500, Spearman High School National Honor Society Scholarship \$300, Texas A&M Aggie Grant \$1,500, Texas A&M Opportunity Award \$1,000, Texas A&M Top 10% State Scholarship \$2,000, Texas Rural Water Association Scholarship \$1,500, Texas Education Agency Highest Ranking Graduate - Tuition at any Texas university for one year

**Seth R. Coates:** Amarillo College Lisa Cherry Book Scholarship \$300

**Cullen Don Cooper:** Hansford County Farm Bureau \$500, Lynx and Lynxette Booster Club \$500

**Dolores Marie Maritza DeLaRosa:** Garrett Rex Memorial (sponsored by the Jr. Lynx and Lynxettes) \$500

**Chase Michael Farrar:** Holt Extension Club \$500, Lynx and Lynxette Booster Club \$500, Ranger College Rodeo Team Scholarship \$1,000 renewable for 2 years

**Addam Britt Ferguson:** Hansford County 4-H \$500

**Dustin Andrew Frost:** United States Army Montgomery GI Bill \$47,556

**Kegan Michael Garnett:** Lynx and Lynxette Booster Club \$500, Wolf Creek Chapter of the Daughters of the American Revolution Good Citizen Scholarship \$200, United States Air Force Academy Military Appointment \$415,000

**Dayne Adam Hargrove:** Lynx and Lynxette Booster Club \$500, Spearman Ex-Students Association \$500

**Tyler Lee Harper:** Garrett

Rex Memorial (sponsored by the Jr. Lynx and Lynxettes) \$500.

**Josue Macario Hernandez:** Lynx and Lynxette Booster Club \$500

**Tayshia Donn James:** Lynx and Lynxette Booster Club \$500

**James Wilfred Kay:** Frank Phillips College Presidential Scholarship \$800

**Colton Thomas Mayfield:** Lynx and Lynxette Booster Club \$500

**Mark A. McCroskey:** United States Army Montgomery GI Bill \$47,556

**Elizabeth Mendoza:** Frank Phillips College Access Scholarship \$400, Seward County Community College Presidential Scholarship - Tuition and Books, renewable

**Jennifer E. Perez:** Association for Compensatory Educators of Texas \$1,000, Frank Phillips College Presidential Scholarship \$800

**Bond Grace Pittman:** Abilene Christian University Dean's Award for Academic Excellence \$10,000, Abilene Christian University Dean's Award for Academic Excellence \$22,000, Karl Nielsen and Sister Karen J. Nielsen Award (administered by First State Bank) \$1,012, Lynx and Lynxette Booster Club \$500

**Victoria Renea Renteria:** Frank Phillips College Licensed Vocational Nursing Class of 1988, Perryton Division (in memory of Victoria's mother Jennifer Sintas-Renteria) \$500, Lynx and Lynxette Booster Club \$500

**Tyler Clay Schnell:** C.A. Gibner Memorial (administered by First State Bank) \$500, High Plains Texas A&M Club Scholarship \$500, Lynx and Lynxette Booster Club \$500

**Haley Dawn Smith:** Lynx and Lynxette Booster Club \$500, Oklahoma Panhandle State University Academic Achievement Scholarship \$500

**Chasity Mae Thomas:** West Texas A&M University Resident Undergraduate Designated Scholarship \$1,000 (renewable for 4 years), West Texas A&M University Scholarship \$1,000

**Brett Michael Winegarner:** Amarillo Area Foundation Senator Grady and Andrine Hazlewood Scholarship \$1,000 (renewable for 4 years), Caprock Holiday Basketball Tournament Scholarship \$500, H&H Federal Credit Union Frank Lewis Memorial Scholarship \$1,000, Lynx and Lynxette Booster Club \$500, North Plains Electric Cooperative Director's Scholarship \$1,000, Panhandle Plains Higher Education Authority, Inc. (Spearman High School Financial Aid Night Scholarship) \$200, Texas Tech University M.S. and Meek Lane Doss Endowed Scholarship \$1,000

**Howard Worley IV:** Lubbock Christian University Bible Ministry Scholarship \$7,050, Lynx and Lynxette Booster Club \$500, Panhandle Plains Higher Education

Authority Scholarship (Spearman High School Financial Aid Night) \$200

**Spearman Scholarship Foundation**

A total of \$105,934 in scholarships was awarded by the Spearman Scholarship Foundation during the 2009 graduation ceremony at Spearman High School on Friday, May 29, 2009 to the following:

**Pedro Anaya:** Jed Miesner Family in Memory of Louis Miesner \$250, Spartex \$250, Showtime Car Club \$500

**Jordan Ashmore:** School Board and Superintendent \$500, Irvin and Betty Davis \$500, Joel & Haley Shields \$250, The SportZone \$200, Gordon's Drug \$100

**Cha'tae Avila:** Billy Britt and Lind Jarvis \$250, Cody and Abby Pipkin \$300, Todd and Krista Baird \$250, Perry and Mary Dixon \$250, Lasater and Co. \$500, James and Karen Schnell \$250, Cates Men & Boys Wear \$100

**Courtney Baca:** Lowe's Marketplace \$750, Crop Chasers \$150, Farmer's Ag Supply \$100

**Brittany Barnes:** First National Bank of Spearman \$500, Bill & Ginger Pittman \$500, Lowe's Marketplace \$125

**Sabrina Cantu:** R&R RV Park \$250, Crop Chasers and Jeanie's Cafe \$200, D&C Greenhouse \$300, Hansford Abstract \$250

**Ashley Close:** Brown Graham & Co. \$250, Charlie Little Memorial Scholarship \$500, Crop Chasers \$200, Brian and Gina Gillaspie \$250, Billy Britt and Linda Jarvis \$500, Anonymous \$500

**Seth Coates:** Golden Spread Sales \$250, B&B Sales Co. \$250, JLW Joint Ventures \$500

**Cullie Cooper:** CHAM \$500, Bob and Jackie Pearson \$250, Retired School Employees \$300

**Gabriela Davila:** Bob and Candy Boxwell \$500, Savage & Salove \$500

**Dolores DeLaRosa:** Brock Insurance Agency \$500, Don and Kayla Schroeder \$300, Hansford Agency \$200, Spearman Scholarship Foundation \$200

**Chase Farrar:** H&H Water Well \$500, James and Faye Cunningham \$250, Jed Miesner Family in Memory of Louis Meisner \$250, Cargill \$250, Billy Britt and Linda Jarvis \$250, Crop Chasers \$250, Isaac's Oil and Lube \$100, DACO \$500, First State Bank of Spearman \$500, Keith and Jodie Hight \$250

**Lance Fishburn:** First National Bank of Spearman \$500, Bill and Ginger Pittman \$500, Bob & Jackie Pearson \$250, Farm Supply and Service \$250, Bunkhouse \$200, Jason Cantrell \$500, Dr. James Pinkerton \$500

**Kegan Garnett:** Bret and Paige Burgin \$200, Spearman Scholarship Foundation

\$800

**Dayne Hargrove:** Renner Pearson \$250, Anthony and Linda Wilkerson in Memory of L.F. and Susie Hand \$500, Spearman Rotary \$667, North Plains Insurance \$500, James and Karen Schnell \$250

**Tyler Harper:** Irvin and Betty Davis \$500, Helen Etter Holt \$500, Interstate Savings \$100, Tim and Paula Cooper \$100

**Josue Hernandez:** FSB Stratford \$500, Hansford Floral \$100, Spearman Scholarship Foundation \$400

**Tayshia James:** Rue Sanders \$500, Renner Pearson \$250, Jocelyn Edwards Miller \$100, Crop Chasers \$150, Spearman Lions Club \$250

**Leo Juarez:** Spartex \$250, Don and Kayla Schroeder \$100, Perry and Mary Dixon \$250, Spearman Scholarship Foundation \$400

**Colton Mayfield:** First State Bank of Spearman \$500, James and Faye Cunningham \$250, Jentry Edwards Williams \$100, Cargill \$250, Billy Britt and Linda Jarvis \$500

**Elizabeth Mendoza:** Jed Meisner Family in Memory of Louis Meisner \$250, Dolly McWhirter and Cynthia Copp \$500, Donahue Ditching \$100, Hickerson Jewelers \$150

**Raul Pena:** Matt Archer \$500, D&D Cattle Hauling \$100, Jim and Mandy Derington \$250, Spearman Scholarship Foundation \$150

**Jennifer Perez:** Anthony and Linda Wilkerson in Memory of L.F. and Susie Hand \$500, Farm Supply and Service \$250, Prairie Garden Flowers & Gifts \$100, Spearman Scholarship Foundation \$150

**Bond Pittman:** Billy Britt and Linda Jarvis \$250, Anonymous \$750, Anonymous \$250, Hansford Implement \$500

**Victoria Renteria:** Five Star Equipment \$500, Matt Archer \$500

**Tyler Schnell:** Spearman Rotary \$667, Spearman Scholarship Foundation \$333

**Haley Smith:** Travis H. Davis Gas \$500, Bill and Barbara Belter \$500

**Dylan Sumner:** First National Bank of Spearman \$500, Bill and Ginger Pittman \$500, Pittman and Sons \$500, Spearman Rotary \$667, Michael and Missy

Bates \$500

**Chasity Thomas:** First State Bank of Spearman \$500, Willis Boyd Dirt Service \$300, Claude and Stephanie Crossland \$200

**Elena Vargus:** Mike and Michelle Davis \$500, Spearman Chamber of Commerce \$500

**Krystal Vela:** Spearman Chamber of Commerce \$500, Spearman Scholarship Foundation \$500

**Blaze Wilson:** Spearman Chamber of Commerce \$500, Spearman Scholarship Foundation \$500

**Brett Winegarner:** Billy Britt and Linda Jarvis \$500, Rod Sumner \$500, Kirk Insurance \$500, Charlie Little Memorial Scholarship \$500, Gene and Francis Cudd Memorial \$500, James and Carol Dunnihoo \$250, Bunkhouse \$200

**TJ Worley:** Hi-Plains Auto Supply \$500, Jed Meisner Family in Memory of Louis Meisner \$250, Billy Britt and Linda Jarvis \$250, Lowe's Marketplace \$125, Anonymous \$100

**Continuing Scholarships**

**Austin Benton:** Hansford Implement \$250, Spearman Scholarship Foundation \$1750

**Brittney Bradley:** Phillip and Lynna Renner \$500, Billy Britt and Linda Jarvis \$250, Spearman Scholarship foundation \$1250

**Francisco Briseno:** Charlie Little Memorial \$500, Crop Chasers \$100, James and Carol Dunnihoo \$250, Dr. and Mrs. Mark Garnett \$250, Chad and Mendy Riggins \$200, Caden and Jackson Riggins \$150, Spearman Scholarship Foundation \$550

**Amy Brown:** Pittman & Sons \$500, Crop Chasers \$150, Hansford Implement \$250, Frontier Feeders \$125, Spearman Scholarship Foundation \$975

**Lizet Camacho:** Spearman Chamber of Commerce \$500, Richie and Karen Thompson \$250, Hansford Implement \$250, Spearman Scholarship Foundation \$1,000

**Mattie Davis:** Darden Charitable Trust \$2,000, Tharin Co. \$2,500, Billy Britt and Linda Jarvis \$250

**Jessica Diaz:** Hansford Implement \$250, Spearman Scholarship Foundation \$1,750

**Ashlee Flowers:** Billy Britt and Linda Jarvis \$250, Spearman Scholarship Foundation \$1,750

**Saylee Flowers:** Jason Cantrell \$250, Billy Britt and Linda Jarvis \$250, Spearman Scholarship Foundation \$1,500

**Cara Gwin:** Don and Mary Allen in Memory of Karen Allen Woodward \$250, Spearman Scholarship Foundation \$1,750

**Sharon Haney:** Spearman Scholarship Foundation \$2,000

**Dane Harbour:** Spearman Scholarship Foundation \$2,000

**Ashley Hernandez:** Spearman Scholarship Foundation \$2,000

**Emily Hood:** Frances Biles \$3,500, John and Jolinda Hutchison \$250

**Kylee Howard:** Spearman Scholarship Foundation \$2,000

**Jarick Howard:** Spearman Scholarship Foundation \$2,000

**Christy Lang:** Crop Chasers \$100, Spearman Scholarship Foundation \$1,900

**Wilhma Macias:** Ago of Spearman \$1,200, Spearman Scholarship Foundation \$800

**Zack Nollner:** Spearman Scholarship Foundation \$2,000

**Ryan Ramon:** Spearman Scholarship Foundation \$2,000

**Kyla Reed:** Spearman Scholarship Foundation \$2,000

**Kelcee Rex:** Jason Cantrell \$250, Spearman Scholarship Foundation \$1,750

**Gerardo Ruiz:** Kent and Glenda Guthrie \$500, Spearman Scholarship Foundation \$1,500

**Reyna Ruiz:** Spearman Scholarship Foundation \$2,000

**Kendall Schneider:** Spearman Scholarship Foundation \$2,000

**Cayla Smith:** Hi-Pro Feeds \$1,080, Spearman Scholarship Foundation \$920

**Si Li (Joanne) Tang:** Carl M. Archer Estate Partnership \$500, Pittman and Sons \$500, Todd and Krista Baird \$250, Crop Chasers \$200, Spearman Scholarship Foundation \$550

**Other Scholarships**

**Christy Lang:** Lloyd Lynn Buzzard Memorial

**SERVANTEZ TREE SERVICE**

- Topping •
- Cleaning •
- Trimming •
- Removal •

also offering quality landscaping

**No Job Too Large or Too Small**

**SERVANTEZ REMODELING & REPAIR**

Offering quality work at a price that will fit your budget.

**No Job Too Large or Too Small**

**Lorne Servantez**  
 121 E. 5th St.  
 Spearman, TX 79081  
 1-806-659-3960

\$47 Give or Take\*

**BIG PHONE COMPANY BILL**

John Q. Public Account Number 806-555-1212		
Monthly Service	Quantity	Amount
Services		47.00
Local Line with Calling Features and High Speed Internet	1	7.00
Extended Area Service	1	0.33
Local Number Portability	1	6.50
Interstate Subscriber Line	1	1.50
Touch Tone	1	0.30
County 911	1	0.96
Municipal Fee	1	1.71
City Tax	1	0.54
TUSF	1	3.15
TIF	1	1.50
Sales State Tax		
Federal Excise		
<b>Your Actual Cost</b>		<b>\$70.99</b>

\* You Give, They Take

**\$50**  
A MONTH AND NOT A PENNY MORE

- Save up to 30% on Phone and High Speed Internet
- No hidden fees, charges or taxes
- Includes 100 Long Distance Minutes
- No cost to switch. Keep your same number!
- 11 calling features (caller ID, call waiting, etc.)
- High Speed Internet

**AMA-TECHTEL**

Switch today and save over \$250.00 a year.

**1-806-322-5500**

REAL ESTATE

FOR SALE, 1 1/2 Miles West of GRUVER, TX: 2500 sq. ft. brick home, 5BR, 3B, 2CG, all electric, lg. fenced backyard, lg. well-insulated shop, includes 10 acres of grass. Call 806-733-2983 - home, or 806-736-6232 - cell. PRICE REDUCED! TFN(4/9/09)B
FOR LEASE: 3BR Apartment. Will be available June 1, 2009. \$490.00 month and \$490.00 deposit; water paid; no pets. Call Larry O'Neal, 405-285-8782 or 580-819-0007. TFN(4/9/09)B
FOR LEASE: 2BR Apartment. Available April 16, 2009. \$375.00 month and \$375.00 deposit; water paid, no pets. Call Larry O'Neal, 405-285-8782 or 580-819-0007. TFN(4/9/09)B

HELP WANTED

HELP WANTED: We have an immediate opening for a sprinkler tech. Generous pay with benefits. Apply in person at Five Star Equipment, Highway 15 West, Spearman. Must be insurable and have a valid drivers license. 806-659-3743. 4/6/18/09)B

POSITION AVAILABLE: North Plains Groundwater Conservation District is seeking to hire a Conservation Education & Public Relations Coordinator. The position requires the coordination and development of multiple conservation education programs, as well as all duties related to public relations. The Conservation Education program duties include developing and conducting programs for groundwater producers, the general public and grades K-12 as well as performing as liaison for the District regarding conservation and agricultural research. The position will coordinate two annual water conservation festivals attended by multiple school districts; develop print and other media resources to deliver groundwater conservation educational messages to the public; and produce conservation education materials such as brochures, public service announcements, and an annual Water Conservation Calendar. Public Relations duties include working with groundwater producers on water conservation methods, preparing multiple informational articles related to the District, as well as writing of articles and development of the District's quarterly newsletter. A full list of job requirements may be found on the District's website at www.npwd.org by clicking on the link for "Vacancies". The District job application is also available under this same link. Applications and resumes should be mailed to P.O. Box 795, Dumas, Texas 79029 or hand delivered to the District offices at 603 East 1st Street, Dumas, Texas 79029. All pertinent materials may also be e-mailed to Steve Walther at swalthour@npwd.org. Expected starting date is immediate. 2/6/4/09)B
HELP WANTED: Firework stand operator needed. Must have camper. Must be 18. Call 806-676-8739. 2/6/4/09)B
HELP WANTED: The Palo Duro River Authority is taking applications for a full-time maintenance employee. Salary, insurance, retirement, and paid holidays are included. Apply at the office at Lake Palo Duro. Call 806-882-4401 for information. 2/6/4/09)B
HELP WANTED: First State Bank, Spearman, TX is taking applications for a New Account/Receptionist. Skills required are typing, computer, customer relation, ability to multi task, and telephone etiquette. Background in accounting, word processing and spreadsheets helpful. Good benefit program. Contact Ginger Turner at 806-659-5565 or email gturner@fbsbspearman.com. First State Bank is an Equal Opportunity Employer TFN(6/4/09)B
SUMMER JOBS! Workforce Solutions Panhandle is seeking youth ages 14-24 who are wanting a summer job. Must meet qualifications. If you are interested, please contact Ivonne Mendoza or Christy Brooks at 806-274-7171. 2/6/11/09)

found on the District's website at www.npwd.org by clicking on the link for "Vacancies". The District job application is also available under this same link. Applications and resumes should be mailed to P.O. Box 795, Dumas, Texas 79029 or hand delivered to the District offices at 603 East 1st Street, Dumas, Texas 79029. All pertinent materials may also be e-mailed to Steve Walther at swalthour@npwd.org. Expected starting date is immediate. 2/6/4/09)B
HELP WANTED: Firework stand operator needed. Must have camper. Must be 18. Call 806-676-8739. 2/6/4/09)B
HELP WANTED: The Palo Duro River Authority is taking applications for a full-time maintenance employee. Salary, insurance, retirement, and paid holidays are included. Apply at the office at Lake Palo Duro. Call 806-882-4401 for information. 2/6/4/09)B
HELP WANTED: First State Bank, Spearman, TX is taking applications for a New Account/Receptionist. Skills required are typing, computer, customer relation, ability to multi task, and telephone etiquette. Background in accounting, word processing and spreadsheets helpful. Good benefit program. Contact Ginger Turner at 806-659-5565 or email gturner@fbsbspearman.com. First State Bank is an Equal Opportunity Employer TFN(6/4/09)B
SUMMER JOBS! Workforce Solutions Panhandle is seeking youth ages 14-24 who are wanting a summer job. Must meet qualifications. If you are interested, please contact Ivonne Mendoza or Christy Brooks at 806-274-7171. 2/6/11/09)

SERVICES

THE FIXER UPPERS: Do you need help around the house? Lawn mowing, repairs, maybe a little remodeling? If so, give us a call at 330-1007. 2/2/26/09)
ELDER CAREGIVER: Are you looking for an in-home caregiver? Call me for more information at 806-736-0031. 2/2/26/09)
HOUSEKEEPER: Are you looking for a housekeeper? Call me for more information at 806-736-0031. 2/2/26/09)
HOOCHY POOCHY PARLOR: Call us for all your pet's grooming and boarding needs. Call now for reservations! 806-273-2724. TFN(11/2/07)
FIREWOOD: Seasoned oak firewood for sale. \$140 a rick, delivered. Call Steve at 620-515-0873 or 580-256-4546. TFN(2/4/09)

1001 23rd Street Canyon, Texas 79015 Phone: (806) 231-3751 Attention: Greg Huseman Plans and specifications may also be available at ABC Blueprint, 906 Tyler Street, Amarillo, Texas 79101 (Phone: 806-376-5671) and online at www.blueprinter.com, Attention: Mike Bahn. In case of ambiguity or lack of clearness in stating prices in the proposal, the construction manager or Owner reserves the right to adopt prices written in words or to reject the proposal. The construction manager or Owner reserves the right to reject any or all proposals and to waive all formalities. All requests for interpretations of the plans and specification shall be in writing and must be received at least 72 hours prior to the time fixed for the opening of the proposals. 2/6/11-09)B

p.m. on Friday, July 10, 2009. Bids will be opened at the regular meeting on July 13, 2009 at 10:00 a.m. Specifications can be obtained at the County Judge's office at 16 NW Court St., Spearman, TX 79081, or the office of the County Auditor, 17 NW Court St., Spearman, TX 79081. The County reserves the right to accept or reject any or all bids. Benny D. Wilson Hansford County Judge 3/6-18-09)B

Are You A Victim of Domestic Violence, Sexual Abuse or Physical, Emotional or Sexual Assault? Call Toll Free Hotline 1-800-753-5308 We can see individuals from Hansford County anytime upon request. Call 435-5008 or 1-800-753-5308 to set up an appointment in Hansford County. We operate a safe place for victims and their children to stay in times of crisis. Battering Intervention & Anger Management Available Panhandle Crisis Center Serving Hansford, Lipscomb & Ochiltree Counties 301 S. Ash - Perryton, TX Memorials Accepted

PUBLIC NOTICE

NOTICE FOR PROPOSALS Proposals addressed to Rodney Sumner, Superintendent of the Spearman Independent School District (Owner), at 403 E. 11th, Spearman, Texas 79081, will be accepted until 2:00 P.M. on Tuesday, June 23, 2009 for the construction of the: Teacher Restroom Renovation Project Plans, specifications, and contract documents have been prepared by A+E Design Group, Inc., P.O. Box 1307, Canyon, Texas 79015 (Phone: 806-655-9361) and may be obtained at no charge at: Huseman Builders, Inc. Construction Managers

LEGAL NOTICE Hansford County Commissioners court will accept bids on one (1) new tractor for each of the four precincts with 95-140 PTO HP, with and without trade-in per-precinct, until 4:00

ACROSS THE COUNTRY... RACED ASH GAGE IRATE GOO MOVIE SILAS ONO ATOLL CAMPING HIGHWAY ERA HARP MAD ERIE EITHER OTIS CRIB ERASE TARO SONES ELSE EXALT NOEL FLED LYCEUM URAL OXY PITSTOP VEHICLE ADIEU AMI MOLAR CLEAT RAN ALAMO TERM SPY NINES

2 4 7 5 8 6 9 3 1
6 1 9 2 3 7 4 8 5
5 3 8 4 1 9 2 7 6
7 5 2 3 4 1 8 6 9
1 8 6 7 9 5 3 2 4
3 9 4 6 2 8 1 5 7
9 6 3 8 7 4 5 1 2
8 7 1 9 5 2 6 4 3
4 2 5 1 6 3 7 9 8

MARTIN & ASSOCIATES REALTY Serving Hansford County for 15 years Julie Martin, Broker - 659-2425 23 N. Hoskins: 3 bed, 1 bath, cent heat/air, hardwood floors, carport, workshop, on 2 lots (FSB broker/owner) We'd Like Your Listing! FOR QUALITY & SERVICE CALL US TODAY! Equal Housing Opportunity

Clift Land Brokers 615 +/- Ac CRP and Irrigated farmland South of Morse, TX. Established Hybrid Bermuda grass. 2 wells and 1 sprinkler. Small set of steel cattle pens. Good 7 wire fence around the irrigated Bermuda grass. Neal Flathers • Perryton (806) 434-1407 (806) 202-0746

Blankenship Real Estate 659-3052 - 670-3774 3BR/1B Home (Spearman) - 2 living good fenced backyard, storage, close to school and hospital! NEW LISTINGS WANTED! Eulalia Blankenship - Sales Eschol Blankenship - Broker

Properties Shirley Howard We NEED listings! Call us now to help YOU sell your home for top dollar!

1010 Dressen: 961 sf, 3 bed, 1 bath, CACH, 1 Carport - Give us a call to take a look! 211 S Bernice: 961 sf, 3 bed, 1 bath, CACH 1113 S Haney: 1,352 sf, 3 bed, 1 bath, CACH, possible 4th bed. Shirley Howard, Broker/Owner 806-886-6536, Cell Melinda McCullough, Realtor (806) 733-5678 We would LOVE to sell your HOUSE! CALL US!

hchd Hansford County Hospital District Openings at Hansford Manor

LVN: Graduate of an approved LPN/LVN program. Must be able to make independent decisions when circumstances warrant. Must possess the ability to deal tactfully with residents, family and public. Medication Aide: MA certification required. Must be able to provide assigned residents with routine daily nursing and services in accordance with the resident's assessment and care plan, and as may be directed by your supervisor. CNA: CNA certification required. Must be able to provide assigned residents with routine daily nursing and services in accordance with the resident's assessment and care plan, and as may be directed by your supervisor. Great working environment and staff, quality facility providing opportunities for professional growth. Great benefit package. Apply at 707 S. Roland, Spearman, TX or contact Jackie Nelson at 806-659-5841. Download application at www.hchd.net EE0E 2/6-18-09)B

NORTHBRIDGE-CINEMA Guymon, Oklahoma FRESH POPCORN EVERYDAY! -PARTY ROOM & ARCADE- Call for Showtimes 580-338-3281 www.northridge8.com

BUY ME! 1113 Haney! This Seller is READY TO DEAL! Who could resist @ 1,342 sq ft with 3, possibly 4 bed, 1 bath, carport, CACH, all in a nice quiet neighborhood! For only \$57,000 this home could be yours! Or better yet, make us a offer! CALL ME!

TEXAS STATEWIDE CLASSIFIED ADVERTISING NETWORK TexSCAN Week of June 14, 2009 AUTOS FOR SALE 2004 HONDA ACCORD only \$2500! Leather Interior! Low mileage, police seized and repos! Free info and list, 1-800-380-7452 (see required) HONDA ACCORDS 2002 solo \$900 Carros, Camionets y SUVs desde \$500! Honda, Toyota, Ford y mucho mas! Llame para las listas al 1-800-510-0670 ext. 5202 BUSINESS OPPORTUNITIES ALL CASH VENDING! Do you earn \$800 in a day? Your own local candy route. 25 machines and candy. All for \$9,995. 1-888-625-5481. Multivend, LLC. DRIVERS ANDRUSTRANSPORTATION seeking team drivers! Dedicated team freight. Also hiring OTR drivers: west states, ez/hazmat end, great miles/home times. Stable family owned \$3 Yrs. 1-800-888-5838, ext. 1402 DRIVER CDL-A WE'VE got the freight! OTR experienced or truck driving training. Reeder and flatbed positions available. Call Now! 1-800-277-0212 GTS NEEDS CDL-A drivers! 1-year OTR experience required. 1-800-326-8889 SLT- IMMEDIATE OPENINGS for CDL-A teams, solo drivers willing to team. \$750 sign-on bonus. \$1100/week minimum pay. Hazmat and 1 year experience. Background check required. 1-800-835-9471. EQUIPMENT FOR SALE SAWMILLS FROM ONLY \$2,990.00. Convert your logs to valuable lumber with your own Norwood portable band sawmill. Log skidders also available. norwoodmills.com/500n. Free information: 1-800-578-1363, Ext330-N. HEALTH INSURANCE BEST PLANS AND RATES in Texas for individual and groups. Most pre-existing conditions covered. Maternity, dental, accident, disability and cancer stand-alone plans available. Call 1-877-611-4829, www.texashealthinsurancemadeeasy.com HOMES FOR SALE 7 BEDROOM, 4BATH HUD \$12,882! 3 Bedroom 2 bath only \$10,000! 5 Bedroom 3 bath only \$10,886! Foreclosures & Bank Reposs! These Homes Will Sell! Fee for local BNI listings. Call 1-800-613-7699 ext. 5851 BUY FORECLOSURES FROM: \$199/month! 1-4 Bedrooms available. Rent to own foreclosures! (5% down, 20yrs @ 8%) Fee for listings, 1-800-279-0716 BANK REPOS & FORECLOSURES! Buy 1-4 bedroom homes starting at \$10K! Payments from \$199/month! (5% down, 20yrs @ 8%) Never a better time to buy! Fee for listings and info, 1-800-279-0716 CASAS DE 3 recamaras y 2 baños desde \$250 mensual! Casas de 4 recamaras y 2.5 baños solo \$399/mensual! Mis casas disponibles comenzando a \$199/mensual! Llame para las listas al 1-800-903-1670 ext. 5102 FORECLOSED HOMES move-in ready! Site-built homes, many to choose from. High discounts plus \$8,000 tax credit. Owner financing available with low down payment. Won't last long on these prices! 1-877-617-5756 FORECLOSURES & BANK REPOS! 5 Bedroom 4 Bath \$17,900 or \$269/month! 4 Bedroom, 2 Bath \$10,580 or \$199/month! (5% down, 30 years, buy @ 8%) These homes won't last! Fee for listings: Call 1-800-544-6258 Ext. 7883 FREE FORECLOSURE LISTINGS. Over 400,000 properties nationwide. Low down payment. Call now! Consumer Resource, 1-800-899-1182. MISCELLANEOUS AIRLINES ARE HIRING. Train for high paying aviation maintenance career. FAA approved program. Financial aid if qualified. Housing available. Call Aviation Institute of Maintenance, 1-888-349-5387. ATTEND COLLEGE ONLINE from home. Medical, Business, Paralegal, Computers, Criminal Justice. Job placement assistance. Computer available. Financial aid if qualified. Call 1-866-858-2121, www.CenturaOnline.com DIVORCE \$99.00. Covers children, custody, property and debts. Uncontested. Excludes Government fees. Satisfaction guaranteed. Unlimited customer support. Call Ram to 9pm, M-F, 1-800-250-8142. HOST FAMILIES for foreign exchange students, ages 15-18 and have own spending money and insurance. Call now for students arriving in August! Great life experience. 1-800-SIBLING, www.aise.com REAL ESTATE \$93 MONTH BUYS land for RV, MH or cabin. Gated entry, \$590 down, (\$5900 10.91%/7yr) 90 days same as cash. Guaranteed financing. 1-936-377-3235 \$106 MONTH BUYS land for RV/motor home/ house, pier, boat ramp, pool, clubhouse, gated entry, on Lake Fork, \$690 down (\$6900 10.91%/7yr) Guaranteed financing. 1-214-696-2315 ABSOLUTELY THE BEST VIEW Lake Medina/Bandera 1/4 acre tract, central W/S/E, RV/motor home/house, OK only \$830 down \$233 month (12.91%/10yr), Guaranteed financing. More information call 1-800-460-8354 AFFORDABLE HILL COUNTY hunting, recreational, retirement property, long term owner financing. 1-800-876-9720, www.hillcountryranch.com TEXAS & OLD MEXICO: Affordable hunting & fishing property, 100 acres for \$79,000 with 10% down & no credit check. All sizes available up to 20,000 acres. Call 1-877-77-BIGLAND (1-877-772-4452) 100.75 ACRES, MEYERS Canyon Ranch #57A, southwest Texas near Sanderson. Good hunting, whitetail deer, \$310 per acre. Owner financed or TX Vet. 1-866-286-0199 Run Your Ad in TexSCAN! Statewide Ad \$500 307 Newspapers, 1,019,288 Circulation North Region Only \$230 99 Newspapers, 279,624 Circulation South Region Only \$230 107 Newspapers, 801,809 Circulation West Region Only \$230 101 Newspapers, 246,981 Circulation To Order: Call This Newspaper direct, or call Texas Press Service at 1-800-749-4793 Today!

THANK YOU The parents and students of the Senior Class of 2009 would like to thank the following businesses and individuals for their generous donations to Project Graduation. We are grateful to you for supporting our efforts to provide a safe and fun-filled environment for our graduating seniors. We appreciate you helping us continue this special tradition. Abston, Sam & Debbie Adobe Walls Gin Adv. Reconst. Foot & Ankle AGCO Allen, Dr. Zoel All Occasion Flowers Area Eye Center Athena Energy B&B Sales Company B&G Electric Baird, Todd & Krista Beck, Verlin & Audene Bed Bath & Beyond Best Buy Big Brothers / Big Sisters Blades Hair Studio Blue Sky Boxwell Brothers Brock Insurance Agency Brock, Stephanie Brown, Graham & Co. Buck's Sporting Goods Bunkhouse C&R Petroleum, Co. Cargill Cates Men & Boys Wear Celebrate Cheddards Childers, Dr. Manon Chill's City of Spearman Coates, Dean Conoco Phillips Cooper, Don & Shirley Cooper, Tim & Paula Coombs, Linda Country Cellular Com. Cowboy church Cudd, Mike & Pat Cunningham, Faye and James D&S Design Dairy Queen Daniel, Wesley & Beth Davis, Irvin & Betty Davis, Mike & Michelle Drake, Sandra Dreamers Salon Dry, Helen E&M Builders Evans, Margarette Exposito School of Hair Design Farm Supply & Service Farmer's Ag Supply Farrar, Shawn & Tiki First Christian Church First National Bank First State Bank Five Star Equipment Franks Floor Covering Garnett, Mark & Karen George, Monte & Mary Anne Gibner, Stinson Gigot Agra Products, Inc. Gladiola Flower Club Gordon's Drug Gordon, Rick H&H Water Well Service Hansford Agency Hansford C. Farm Bureau Hansford Co. TEEA Council Hansford County Feeders Hansford Co. Hospital District Hansford Reporter-Statesman Hergert Ford Hernandez, Marcelo Herrington, Danny & Debbie Hickerson Jewelers High Plains Pizza Hight, Keith & Jodie Hi-Plains Auto Supply Holt, Helen & Nolan Holton Resources, LTD Hunter, Bill & Reba Hutchison, John Interstate Bank J&S Signs & Engraving Jackson, Roy & Aleta Jarvis Law Office Jenkins, Stan Joe's Crab Shack Johnny's Furniture Mart Keilen, Andrea Kirk, Randy & Teresa Landrum, Neely & Sabrina Lasater & Co. Laureate Gamma Gamma Lemon, Shearer, Phillips & Good Logan's Roadhouse Lowe's Marketplace Maestas, Art & Teresa McClellan, Roy L. McDade, Walter & Grace McDonalds, Borger/Bill Benda McLaughlin, Delinda Money's Steakhouse MurMur's Dafe Nelson, Tim & Jackie North Plains Electric Co-op Novak Family Residual Trust Odegard, Roger & Elaine Pacheco, Dr. Tony Pack, Mike & Teresa Panhandle Anchors Pearson, Bob & Jackie Perryton Motor Parts Perryton Office Supply Pinkerton, James Pittman, Bill & Ginger Plains Dairy Prairie Motors Preceptor Epsilon Zeta PTCI Reed, Butch & Debbie Renner Pearson, Inc. Renner, Phillip & Lynna Rex Young Agency Rochelle Originals Rosa's Cafe Ruby Tequilas Rudy's BBA Sheets, S.B. Samples, Chris/KCDJ Radio Sanders, Rue Schneider Welding Schnell, Mike and Patt Schnell, Pam & Clay Sergios Body Shop Servantez Estate Repair Shirley, Verma L. Short, Carol Stewart, Rick & Teresa Simple Simon's Pizza Sonic, Borger Sonic, Perryton Sparks Brothers Spraying Spearman Cattle Feeders Spearman Chamber of Commerce SpearmanLynx Booster Club Spearman Moose Lodge #2212 Spearman Rotary Club Spearman Union Church Spearman Vol. Fire Dept. Stationmaster's House Museum Target TGI Friday's Tharin Company Therapeutic Touch Thomas, Gary & Audra Thompson, Toby & Brandi Tong's Chinese Restaurant Town & Country TEEA Club Transpetco Trencor United Supermarket, Perryton United Supermarket, Canyon Venneman, Joe T. & Linda Wal-Mart, Canyon Dr. Amarillo Wal-Mart, Borger Wal-Mart, Guymon Watson, Ronnie & Lorinda West Texas Gas Western Photo Whitefield, Lisha Winegarner, Verlan & Brenda Womble, Gale Wonderland Park Once again we are shown by Spearman is the Best Place to Live! Without the generosity of these businesses and individuals, our alcohol-free, fun-filled post-graduation party would not have been possible. We cannot say it enough - Thank You Very, Very Much!!!

Extend your advertising reach with TexSCAN, your Statewide Classified Ad Network.

by Dorothy Hudson

# Out at the Lake



Jim Derington  
Palo Duro River Authority  
P.O. Box 99  
Spearman, TX 79081  
806-882-4401  
pdra@dishmail.net



White flowers

Lake Level—June 15, 2009—21.80 feet (-0.28)

Again beneficial rains missed the watershed this week. Jim had .05 inch in his gauge at the office.

The Heritage Days were celebrated at the Park on Saturday along with a Motorcycle Run. The Boy Scouts fed the visitors at noon.

There were 6 RV campers behind the dam and 1 on the office sides. Two of the campers were new to Palo Duro.

This week Jim and Mandy

Mark and Carrie Guthrie and daughters Grace and Chloe from Canyon. Jim pronounced the crawfish as delicious.

### Historians Visit

Monday afternoon, June 15, David Murrah, Rockport, and Selden Hale, Amarillo, brought 3 historians to the county to see some of our historic sites. One of the men, Davy Mitchell, is on the Santa Fe Trail Board and had always wanted to see the site of Zulu. Clint Chambers is studying the Dodge City--Tascosa Trail. After they were taken over a segment of the Old Trail and the spot where Judge Tyler's mansion had been, they saw the Zulu site, and then went on to Old Hansford, where Selden showed them around. They were to wind up over in Ochiltree County with the Texas Archeological Dig going on there.

have been enjoying a visit from their daughter Erin Bickle and their granddaughters Berkley and Halle. Friday afternoon Erin had crawfish shipped in by Fed Ex for a Crawfish Boil Party that evening for the extended family. Out of county guests were



Kirk Adams Memorial Poker Run

# College Corner

### Southwestern Oklahoma State University

Southwestern Oklahoma State University's Department of Chemistry recently honored its outstanding students at a banquet held on the Weatherford campus. Receiving honors for the 2008-09 academic year included Natalie Simpson, Spearman TX, J.T. Cronin Scholarship.

### University of Kansas

The names of more than 4,500 candidates for degrees at the University of Kansas this spring - representing 97 Kansas counties, 43 other states, the District of Columbia, Puerto Rico and 59 other countries - have been announced by the University Registrar.

KU's Class of 2009 numbers about 8,000, including 2,500 who completed degree work in summer and fall

### University of North Texas

Local students listed on the President's Honor Roll are Suzanne Frazier of Gruver and Terri Hansen of Spearman.

### University of North Texas

Kailee Reed of Gruver was named to the University of North Texas President's Honor Roll for the 2009 spring semester. To be named to the Honor Roll, undergraduates must complete at least 12 academic hours with a perfect 4.0 grade point average.

One of Texas' largest universities, UNT has an enrollment of nearly 35,000 students. It offers 97 bachelor's, 101 master's and 49 doctoral degree programs, many of which are nationally and internationally recognized.

### Oklahoma Panhandle State University

Oklahoma Panhandle State University has announced their Spring 2009 President's Honor Roll.

To qualify for the President's Honor Roll, a student must carry at least 12 credit hours of university courses, have no "Fs" or incomplete courses and a 4.0 GPA for the

## Honor A Veteran

Honor your favorite hero with an ad in the Hansford County Reporter-Statesman's Independence Day issue (to be published on July 2nd). The deadline to place an ad in this special edition will be Tuesday, June 30th at 12 noon. Call 659-3434 to place an ad, or for more information.

— Sample Ads —

The Hansford County Reporter-Statesman thanks our veterans and active military for their service!

Lt. Col David McNulty  
US Air Force Active Guard Res.  
Otis ANGB, MA  
In-laws: Gary & Cathy Smith

## It's A Girl!

Rachel and Shannon Ritchie are proud to announce the birth of their daughter, Kaylee Nolan Ritchie. Kaylee was born at 1:30 a.m. on Wednesday, June 17, 2009 in Odessa at Medical Center Hospital. She weighed 7 pounds and was 19 1/2 inches long.

Proud grandparents are Corey and Bobbie Ritchie of Stanton and Dennis and Heather Simpson. Great-grandparents are Gerald and Sandra Ritchie of Granbury, TX and Bill and Cressa Jennings of Sheffield, TX.

She is welcomed by her very proud uncles Jobie Ritchie, Conner Ritchie, and Andy Simpson of Stanton and aunt Allie Simpson of Stanton. She is also welcomed by her proud great-aunts and great-uncles Gary and Cathy Smith of Spearman and Casey and Lisa Ritchie of Midland.

## IT'S A GREAT TIME TO BUY A KUBOTA!

**\$0 DOWN, 0% A.P.R. FINANCING FOR UP TO 48\* OR 60\*\* MONTHS ON SELECT NEW KUBOTAS!**

## PANHANDLE IMPLEMENT CO., INC.

710 NORTH MAIN STREET  
PERRYTON, TX  
806-435-6508

**Kubota**  
EVERYTHING YOU VALUE

## GET INTO ZERO% INTEREST

ON ALL MAGNUM TRACTORS

OR

A FREE GPS RECEIVER VALUE UP TO \$5,000

OR

\$4,000 CASH OPTION

With models ranging from 150 to 275 PTO hp, selecting a Magnum tractor for your row crop operation is easy. Which offer to choose? Well, Magnum tractors are available with AFS AccuGuide™ systems factory-installed. So, buy the AFS receiver, add the navigation controller and AFS Pro 600 display, finance it all at 0% and reap the benefits of auto-guidance accuracy this season. Come in today to select your Magnum tractor and take advantage of these great offers!

**GET IN TO SEE US TODAY!**  
OFFER ENDS JULY 31, 2009.

## FIVE STAR EQUIPMENT, INC.

Highway 15 West • Box 658 • Spearman TX 79081  
(806) 659-3743 • 800-978-2759

\* 50 down, 0% A.P.R. financing for terms up to 48 months on purchases of new Kubota ZG, ZD, BX, R, Grand L, L2800/L2900-1, L3400/L3400-1, M14700, M25500, M35100, M544250/M544500, M745/M745S & CE (excluding L2000, R & RLS Series) models from available inventory at participating dealers through June 30, 2009. Example: A 48-month monthly installment payment term at 0% A.P.R. requires 48 payments of \$20.83 per \$1,000 borrowed. 0% A.P.R. interest is available to customers if no dealer documentation preparation fee is charged. Only Kubota and selected Kubota performance-matched Land Pride equipment are eligible. Inclusion of ineligible equipment may result in a higher blended A.P.R. Dealer charge for document preparation fee shall be in accordance with state law. Not available for Rental, National Accounts or Governmental customers. Financing is available through Kubota Credit Corporation, U.S.A., subject to credit approval. Some exceptions apply. Offer expires 6/30/09. See us for details on these and other low-rate options or go to www.kubota.com for more information.

\*\* 50 down, 0% A.P.R. financing for terms up to 60 months on purchases of new Kubota RTV500, BX Series, L2800/L2900-1, L3400/L3400-1, and M40 Series (excluding M5040-1, M6040-1, M7040-1, M8540-1, M9540-1) and all M40 model variations with -1) models from available inventory at participating dealers through June 30, 2009. Example: A 60-month monthly installment payment term at 0% A.P.R. requires 60 payments of \$18.83 per \$1,000 borrowed. 0% A.P.R. interest is available to customers if no dealer documentation preparation fee is charged. Only Kubota and selected Kubota performance-matched Land Pride equipment are eligible. Inclusion of ineligible equipment may result in a higher blended A.P.R. Dealer charge for document preparation fee shall be in accordance with state law. Not available for Rental, National Accounts or Governmental customers. Financing is available through Kubota Credit Corporation, U.S.A., subject to credit approval. Some exceptions apply. Offer expires 6/30/09. See us for details on these and other low-rate options or go to www.kubota.com for more information.

\* Receive an AFS 262 receiver with a value of up to \$5,000 when you purchase a new Magnum tractor. Offer not valid in combination with 0% financing or cash option. Offer good at participating dealers.

† 0% interest for 12 months, followed by 5.9% interest for 60 months. For commercial use only. Customer participation subject to credit qualification and approval by CNH Capital America LLC. See your Case IH dealer for details and eligibility requirements. Down payment may be required. Offer good through July 31, 2009. Not all customers or applicants may qualify for this rate or term. CNH Capital America LLC standard terms and conditions will apply. Taxes, freight, setup, delivery, additional options or attachments not included in suggested retail price. Offer subject to change or cancellation without notice.

© 2009 CNH America LLC. All rights reserved. Case IH and CNH Capital are registered trademarks of CNH America LLC. www.caseih.com