



THURSDAY  
AUGUST 1, 2002

THE HANSFORD COUNTY

# REPORTER STATESMAN

COMP  
HANSFORD COUNTY LIBRARY  
0122 MAIN ST  
SPEARMAN TX 79081

75¢

213 MAIN ST • SPEARMAN, TX 79081

VOL. 94 • ISSUE 31

NEWS • SPORTS • PICTURES

SERVING HANSFORD COUNTY SINCE 1907

## At A Glance

### Ranch Estate Planning Seminar Set August 4-5

Texans can learn how to reduce their estate taxes and make effective estate planning decisions at an Aug. 4-5 Ranch Estate Planning Seminar at the College Station Conference Center.

"This seminar will focus on how to make wise ranch estate planning decisions," said Dr. Wayne A. Hayenga, Texas Cooperative Extension economist-management. "The information is useful for married couples, spouses, potential estate executors, trustees, and those who want to make estate settlement less burdensome."

The 1½ day seminar will run concurrently with Texas A&M University's 48th annual Beef Cattle Short Course and Trade Show, slated on August 5-7.

The Ranch Estate Planning Seminar will cover:

- Basic estate planning devices such as wills, living trusts, estate tax deferral, gifts and property titles.

- How to treat beneficiaries fairly.

- Estate planning tools for agriculture, including the use of corporations and partnerships; special farm land valuation; family-owned business exclusion; and rules for deferring estate tax payments.

- The role of life insurance in estate planning, and tax valuation rules.

Hayenga is an attorney as well as an Extension economist. He works extensively with farmers, ranchers and family-owned firms in financial, business and estate tax planning.

The seminar runs from 3 p.m. to 7 p.m. on Aug. 4 (including a light snack), and from 8:30 a.m. to 4:30 p.m. on August 5 (including lunch). Registration costs \$100 per person and includes printed materials, refreshments, and meal.

Registration and other information is available by calling Sharon Wehring at (979) 845-2226.

This estate planning seminar is sponsored by Texas Cooperative Extension, in cooperation with Texas and Southwestern Cattle Raisers Association.

More information on the Beef Cattle Short Course is available by calling (979) 845-3579.

### Big Country Wheat Conference Set

The Big Country Wheat Conference sponsored by Texas Cooperative Extension is set for Aug. 22 in the Abilene Civic Center. This year's theme is "Wheat Profitability--Is it Possible?"

Registration opens at 7:30 a.m. for the day-long program, which begins at 8 a.m. Three Texas Department of Agriculture continuing education units (CEUs) will be offered. The day's keynote is State Rep. Rick Hardcastle of Vernon, who will speak at noon on agriculture and the legislature.

The conference is sponsored by the Extension offices in Taylor, Callahan, Shackelford, Jones, Nolan, and Fisher counties.

"An unusually wet July across much of Texas and Oklahoma has producers optimistic about this fall's wheat prospects," said Gary Bomar, Extension agent in Taylor County and the conference coordinator.

"If the moisture holds, the next big question on most farmers' minds is whether it's possible to make money off a good wheat crop. That's our concern at this year's wheat conference. All the speakers and topics have been carefully selected to examine the profitability question from every angle."

The program opens with a price and crop outlook delivered by Dr. Mark Waller, Extension grain economist from College Station.

Other speakers will discuss topics that include wheat niche markets, bio-terrorism, the 2002 farm bill, and a variety of wheat management issues ranging from insects, Karnal Bunt and other plant diseases to grazing and conservation tillage.

Pre-registration by Aug. 16 is \$7.50 per person. Late registration is \$15 per person. Both fees include lunch.

For further information contact the Cooperative Extension office in Taylor County at (915) 672-6048.



Texas Department of Public Safety Drivers License Division workers (Front, L-R) Lisa Manross and Dorothy Dallas, and (Back, L-R) Spearman Police Officer Greg Martin and Police Chief Jarrett Wilde were instrumental in the arrest of a hispanic male and a juvenile hispanic female who tried to pass false documents to obtain a Texas drivers license and identification card. DPS workers Lisa and Dorothy became suspicious of the individuals and contacted Chief Wilde. Officer Greg Martin interviewed the suspects and obtained information that the false documents had been obtained in Guymon. He then notified Detective Kevin Crow of the Guymon Police Department. These actions resulted in a search of a business resulting in the recovery of several documents and the seizure of a 1996 Dodge pickup.



Patty Spoonmore is pictured above with a 118-pound Mako Shark caught in the Gulf of Mexico off of Port Aransas during the 2-day Deep Sea Round-Up Fishing Tournament. Patty is a member of the Corpus Christi Big Game Fishing Club, and is currently in first place in the shark division.

## Gillaspie Sisters Named To 2002 Texas Baptist All-State Choir



Laura Gillaspie



Mindee Gillaspie

Laura and Mindee Gillaspie of Spearman, were selected to be members of the 2002 Texas Baptist All-State Choir. As a result of their auditions, Laura was chosen to participate in the alto section and Mindee was asked to sing soprano. Texas Baptist All-State met on the campus of East Texas Baptist University in Marshall, July 8-14. The choir entertained at retirement homes in Shreveport, LA., on Saturday morning, performed in a concert at Moberly Baptist Church, Longview, on Saturday evening, and led worship at First Baptist Church, Henderson, on Sunday morning.

The week is filled with many activities - rehearsals, Bible study, worship and recreation. The Texas Baptist Student Worship Ministries (TBSWM) is an umbrella organization created to provide motivating, inspirational, and life-changing experiences for students from Baptist General convention of Texas churches. The students must be exemplary in Christian character and desire to excel in church music. This ministry is offered to encourage the development of

future church leaders. This is a unique opportunity for talented students to receive special, in-depth training, as well as fellowship with other Christian youth of like talents and interests.

Scott Herrington, Wayland Baptist University, directed the All-State Choir.

Laura, a 2002 honor graduate of Spearman High School, will attend Wayland Baptist University in the fall. She plans to major in music. While in high school she participated in cross country, basketball, track, as well as choral activities. She was selected as an all-region choir member several years and received "excellent" ratings on solo and ensembles at the state level. This is Laura's third year to be asked to participate in the Texas Baptist All-State Choir. This year she was chosen to sing in a select ensemble, Living Song. Laura also was asked to participate in the auxiliary hand bells, which performed the prelude to the concert on Saturday night.

Mindee will be a Spearman High School senior this fall. She has received "excellent" ratings on her solo and ensemble at the state

level. She is a member of the varsity Lynxette basketball team. Due to knee surgeries, she has served as track manager the past two seasons. This is Mindee's second year to be selected to sing with the Texas Baptist All-State Choir. Also for the second year, she was selected to be a member of the praise team, which helped to lead worship times. Mindee was asked as well to participate in the auxiliary hand bell group.

Laura and Mindee are the daughters of Dick and Leann Gillaspie. Their grandparents are Jimmy and Lois Shieldknight, Spearman, and Elnora Gillaspie of Amarillo.

### Inside This Week

- August Activity Schedule
- SHS Students Award Girls State
- Williams Responds to Pickens Water Panel
- Meetings & Events
- Manor Resumes Senior Open House

## Three-Day Sales Tax Holiday Held August 2-4

This year's sales tax holiday for clothing and footwear begins at 12:01 a.m. on Friday, August 2, and ends at midnight on Sunday, August 4. The tax break is expected to save Texas consumers millions in state and local sales taxes. This is one time hard-working Texans can keep their money in their pockets for their families' priorities.

The rules for the 2002 Sales Tax Holiday are the same as in previous years. They include: Most children's and adults' clothing and footwear priced under \$100 are exempt from sales taxes. Customers may purchase as many tax-exempt items as they wish.

Items previously placed on layaway may be redeemed tax-free during the Sales Tax Holiday, and items placed on layaway during the Sales Tax Holiday may be redeemed tax-free later.

School supplies and backpacks are not tax exempt. Here are some highlights about the sales tax holiday:

- \* The tax holiday occurs every year on the first Friday, Saturday, and Sunday of August. Qualifying items are exempt from state sales taxes and exempt from local sales taxes unless a city chooses not to participate. This year no cities opted out of the holiday; thus, qualifying items will be fully exempt from tax.

- \* Most clothing and footwear that is priced at less than \$100 will be exempt from sales tax. Customers will receive the break on individual items, regardless of the amount they buy. For example, sales tax is not due if a customer buys six shirts that are each priced at under \$100. But, the full tax is due on a shirt that is sold for \$110; the first \$99.99 cannot be exempted.

- \* Clothing and footwear that are used primarily for athletic activities or for protective wear are not eligible for the exemption. Customers buying golf cleats and football pads, for instance, must pay sales tax. Athletic wear that is also used for participation in other non-athletic activities can qualify for tax exemption. For example, tennis shoes, baseball caps, and jogging suits are worn during everyday activities and thus may be purchased tax free during the holiday.

- \* Also excluded from the sales tax holiday are accessories, such as jewelry and watches; items that are carried rather than worn, including handbags, briefcases, and wallets; and clothing rentals, such as formal wear and costume rentals and repairs and alterations.

**Sales Tax Holiday Tax-Free Items:** Baby clothes, Bathing suits, Belts with attached buckles, Boots (cowboy, hiking), Caps/hats (baseball, fishing, golf, knitted), Choir robes, Coats and wraps, Costumes, Diapers (adult and baby), Dresses, Gloves (generally), Gym suits and uniforms, Hooded shirts and hooded sweatshirts, Hosiery, Jackets, Jeans, Jerseys (baseball and football), Jogging apparel (bras, suits, shorts), Neckwear and ties, Pajamas, Pants and trousers, Raincoats and ponchos, Robes, Shirts, Shoes (sandals, slippers, sneakers, tennis, walking), Socks (including athletic), Shorts, Suits, Slacks, Jackets, Sweatshirts, Sweat suits, Sweaters, Swim suits and trunks, Underwear, Work clothes and uniforms

**Sales Tax Holiday Taxable Items:** Accessories (generally - barrettes, elastic pony tail holders, wallets, watches), Backpacks, Baseball cleats and pants, Belt buckles (without belt), Boots (climbing, fishing, rubber work boots, ski, waders), Buttons and zippers, Cloth and lace, knitting yarns and other fabrics, Dry cleaning services, Football pants, Golf gloves, Handbags and purses, Handkerchiefs, Hard hats, Helmets (bike, baseball, football, hockey, motorcycle, sports), Ice skates, Jewelry, Laundering services, Leather goods - except belts and wearing apparel, Pads-football, hockey, soccer, elbow, knee, shoulder, Personal flotation devices, Rented clothing-uniforms, formal wear, costumes, Roller blades and skates, Safety clothing, glasses, Shoes (bicycle (cleated), bowling, golf), Wallets, Watches.

If you have questions about the sales tax holiday, please visit the website at <www.window.state.tx.us>, or call toll free at 1-800-252-5555.



Laugh  
and  
Live



by Catherine R. Smith  
CathyRSmit@aol.com

My dear husband, Gary, read the following "Christian Ways to Reduce Stress" in his sermon last week. They really sounded like great ideas to me, so I decided to share them with you this week.

## 36 Christian Ways To Reduce Stress

1. Pray
2. Go to bed on time.
3. Get up on time so you can start the day unrushed.
4. Say "No" to projects that won't fit into your time schedule, or that will compromise your mental health.
5. Delegate tasks to capable others.
6. Simplify and unclutter your life.
7. Less is more. (Although one is often not enough, two are often too many.)
8. Allow extra time to do things and to get to places.
9. Pace yourself. Spread out big changes and difficult projects over time; don't lump the hard things all together.
10. Take one day at a time.
11. Separate worries from concerns. If a situation is a concern, find out what God would have you to do and let go of the anxiety. If you can't do anything about a situation, forget it.
12. Live within your budget; don't use credit cards for ordinary purchases.
13. Have backups; an extra car key in your wallet, an extra house key buried in the garden, extra stamps, etc.,
14. K.M.S. (Keep Mouth Shut.) This single piece of advice can prevent an enormous amount of trouble.
15. Do something for the Kid in You everyday.
16. Carry a Bible with you to read while waiting in line.
17. Get enough exercise.
18. Eat right.
19. Get organized so everything has its place.
20. Listen to a tape while driving that can help improve your quality of life.
21. Write thoughts and inspirations down.
22. Everyday, find time to be alone.
23. Having problems? Talk to God on the spot. Try to nip small problems in the bud. Don't wait until its time to go to bed to try and pray.
24. Make friends with Godly people.
25. Keep a folder of favorite scriptures on hand.
26. Remember that the shortest bridge between despair and hope is often a good "Thank you Jesus!"
27. Laugh.
28. Laugh some more!
29. Take your work seriously, but yourself not at all.
30. Develop a forgiving attitude (most people are doing the best they can).
31. Be kind to unkind people (they probably need it the most).
32. Sit on your ego.
33. Talk less; listen more.
34. Slow down.
35. Remind yourself that you are not the general manager of the universe.
36. Every night before bed, think of one thing you're grateful for that you've never been grateful for before.

May God bless and keep you; May He make his face to shine upon you, and be gracious to you; May the Lord lift up his countenance upon you, and give you peace.

Numbers 6:24-26

Catherine :)

## Letter To The Editor

Dear Editor:

Regarding the column in your newspaper on July 25th about retirement benefits for members of Congress, this is an e-mail rumor that has circulated since April 2000, and many constituents have written to my office about this issue in past. I am pleased to tell you that the column is completely false.

Under Public Law 98-21, all Congressmen, Delegates, and Resident Commissioners are required to contribute to the Social Security fund. A portion of my paycheck goes into Social Security and the Federal Employees Retirement System. When I retire, I will not receive the hefty retirement benefits that the column indicates, nor will I continue to draw the same pay that I do as a member of Congress.

Pay for elected officials very rightfully belongs in public discussions, but I am pleased to tell you, though, that the column that ran is incorrect.

The latter part of the column addresses a very important subject: the need to strengthen our Social Security system. I look forward to further discussions with you or reading further debate in the pages of your newspaper on this critical issue.

Sincerely,  
Larry Combest  
Member of Congress, 19th District of Texas

Editor's Note:

I would like to thank Congressman Combest for his prompt response to the column I ran in last week's issue of The Hansford County Reporter-Statesman. I would also like to invite him to further explain the benefits and differences in the Federal Employment Retirement System and the Civil Service Retirement System. I am certain our readers would like to have a better understanding of the benefits of being a public servant.

## Southern Methodist University Announces Honor Roll

Elizabeth Adrienne Simpson, a Sophomore at Southern Methodist University in Dallas, is included on the recently released undergraduate honor roll for the Spring 2002 semester.

To be listed on the SMU honor roll, students must achieve a 3.5 or higher cumulative grade point average, which place them in the top twenty-two percent of all SMU undergraduate degree students.

SMU's Spring 2002 enrollment included 5,306 undergraduate students pursuing degrees in Dedman College of Humanities and Sciences, Meadows School of the Arts, Edwin L. Cox School of Business, and the School of Engineering.

## SERVICE

**When You Need It**

- Gasoline
- Oil Changes
- Battery Service
- Flat Tire Service
- Car Washing & Cleaning
- Tire Rotation & Balancing

---

**CORNER SERVICE STATION**

101 Main Street • Spearman, Texas

(806) 659-2722  
.Ioe & Nita Bynum

## Let us replenish the seed of faith through . . . DAILY BIBLE READING, PRAYER & REGULAR CHURCH ATTENDANCE

### Spearman

**Apostolic Faith Church**  
822 S. Drexler • 659-2870  
Sunday School: 10 a.m.  
Worship Service: 11 a.m.  
Sun. Eve.: 6 p.m.  
Wed. Prayer Mtg.: 7 p.m.  
Pastor - Roland Haney

**First Assembly of God**  
401 N. Bernice • 659-2295  
Sunday School: 9:30 a.m.  
Worship: 10:35 a.m.  
Kid's Church: 10:35 a.m.  
Evening Worship: 7 p.m.  
Wed. Worship: 7:30 p.m.  
Youth: 7:30 Wednesday  
Pastor - Walter Greaser, Jr.

**First Christian Church**  
(Disciples of Christ)  
29 S. Bernice • 659-2036  
Sunday School: 9:45 a.m.  
Worship: 10:50 a.m.  
Minister - Gary Smith

**First Baptist Church**  
123 N. Bernice • 659-5557  
Sunday School: 9:45 a.m.  
Worship: 11 a.m.  
Evening Worship: 7 p.m.  
Wed. Fellowship Meal: 6 p.m.  
Wed. Disc. Time: 6:30 p.m.  
Wed. Youth Mtg.: 8 p.m.  
Pastor - Patrick Six

**Church of Christ**  
121 S. Haney • 659-3244  
Sunday Bible Class: 9:45 a.m.  
Worship: 10:30 a.m.  
Evening Worship: 6 p.m.  
Bible Study Wed.: 7:30 p.m.  
KRDF Radio Program  
Living W/Christ: 7:50 a.m.  
Minister - Leonard Harper

**Sacred Heart Catholic Church**  
901 Roland • 659-2792  
Sat. Night Mass: 5:30 p.m.  
Sun. Mass: 9 a.m. - English  
(aired on KRDF-FM 98.3)  
Sun. Mass: 11:30 - Spanish  
1:30 p.m. - Gruver - Christo  
Rendontor Mass - Spanish  
Rev. Scott Raef

**Trinity Fellowship Church**  
717 W. 7th Ave. • 659-2671  
Sunday School: 9:30 a.m.  
Worship Service &  
Children's Church: 10:30 a.m.  
Pastor - Dennis Alger

### First Presbyterian Church

(Worships with Lutheran)  
1021 Cotter • 659-2033  
Sunday School: 9:45 a.m.  
Worship: 11 a.m.  
(alternates monthly between Lutheran &  
Presbyterian Church Bldg.)  
Pastor - Beverly Cook

**Faith Lutheran Church (ELCA)**  
1101 Bernice • 659-2252  
(Worships with  
First Presbyterian Church)

**First United Methodist**  
407 S. Haney • 659-5503  
Sunday School: 9:45 a.m.  
Worship: 8:30 & 11 a.m.  
Jr. High Youth: 5 p.m. Sunday  
High School: 6 p.m. Sunday  
Kids Club: 3 p.m. Wed.  
Pastor - Ken Cole

**Union Church**  
31 S. Endicott • 659-2644  
Sunday School: 9:45 a.m.  
Worship: 10:45 a.m.  
Evening Worship: 8 p.m.  
Bible Study: 7 p.m. Wed.  
Pastor - Bill Sparks

**Fellowship Baptist**  
1102 S. Archer • 659-2783  
Sunday School: 10 a.m.  
Worship: 11 a.m.  
Sun. Evening Worship: 6 p.m.  
Youth/Adult Serv.: 7:30 Wed.  
Pastor - Gene Foster

**Primera Mision Bautista**  
502 E. 7th • 659-3991  
Sunday School: 9:45 a.m.  
Worship: 11 a.m.  
Evening: 6 p.m.  
Wed. Prayer Meeting: 7 p.m.  
Thurs. Visitation: 7 p.m.

**El Aposento Alto U.P.C.I.**  
1105 S. Roland  
Domingos:  
Escuela-Dominical - 10 a.m.  
Culto Evangelistico - 7 p.m.  
Jueves: Oracion - 8 p.m.  
Mier. Estudio Biblico - 7 p.m.  
Pastor - A.G. Martell  
(806) 659-2153

### Waka

**Waka Church of the Brethren**  
435-4598

### Gruver

**First Baptist Church**  
402 E. Broadway • 733-2411  
Sunday School: 9:45 a.m.  
Worship: 10:50 a.m.  
Disciple Training: 6 p.m. Sunday  
Prayer Meeting: 7:30 p.m. Wednesday  
Pastor - Scott Curry

**Church of Christ**  
209 King • 733-2760  
Sunday School: 9:30 a.m.  
Worship: 10:20 a.m.  
Evening Worship: 6 p.m.  
Wed. Worship: 7:30 p.m.

**First Christian Church**  
510 King • 733-2960  
Sunday School: 10:00 a.m.  
Sunday Worship: 11 a.m.  
Youth: 7:30, Sunday  
Adult Bible Study: 7:30, Sun.  
Wed. Bible Study: 8:00 p.m.  
Pastor - Gary Gumfroy

**Oso Lutheran Church (ELCA)**  
6 Miles West & 12 Miles  
North of Gruver  
339-7709  
Sunday School: 9:45 a.m.  
Worship: 11 a.m.  
Pastor - Paul Fiske

**Gruver United Methodist**  
Broadway & Garrett  
733-2651  
Sunday School: 9:45 a.m.  
Worship: 8:30 & 10:50 a.m.  
Eve. Worship & UMY: 6 p.m.  
Pastor - Jerry Moore

**Spanish Cristo Redentor Church**  
Sunday Mass: 1:30 p.m.  
Friday Evening Mass  
Summer - 8:00 p.m.  
Fall/Winter - 7:30 p.m.

### Morse

**Morse Baptist Church**  
733-2757  
Pastor - Mike Martin



**This feature is made possible through the sponsorship of these civic minded businesses.**

Compliments of . . .  
**AGCO**  
of Spearman, Inc.  
"See you in Church"  
659-3751

**PRAIRIE**  
MOTORS INC.  
Hwy. 207 South • P.O. Box 430  
Spearman, TX 79081 • (806) 659-2641  
www.prairiemotors.com

**BOXWELL**  
BROS.  
FUNERAL HOME

Compliments of  
**G&G**  
FOODLINER  
516 Main • Gruver, TX  
733-2471

**COLUMBIA**  
Medical Center of Pampa  
One Medical Plaza  
Pampa, Texas 79065  
(806) 665-3721

**Palo Duro**  
Supper Club  
22 S. Archer • Spearman  
659-2232

**Bartlett's Ace**  
Hardware  
105 W. Broadway • Gruver,  
Texas  
(806) 733-2404

**BERRY CLEANERS**  
Ann & Vernon Pipkin - Owners  
Phone 659-3122 • P.O. Box 1017  
207 Main St. • Spearman, TX

**Morse Implement**  
& Auto Supply  
"Join us in church this week"  
Tom Dortch 733-2668  
P.O. Box 89 • Morse, TX 79062

**Gruver Cablevision**  
308 Main  
Gruver, TX 79040  
733-5295

**Deakin**  
ELECTRIC  
OILFIELD • RESIDENTIAL • COMMERCIAL  
321 S. MAIN • SPEARMAN  
1-800-999-1506 Chris Deakin  
(806) 659-5016 President

**Interstate**  
Bank, ssb  
322 Main • P.O. Box 146  
Spearman, TX • 659-2559

## The Hansford County Reporter-Statesman

213 Main Street  
Spearman, TX 79081  
Phone - (806) 659-3434  
Fax - (806) 659-3368  
CathyRSmit@aol.com  
Mon.-Thurs. (Closed Fridays)  
9 a.m.-12 p.m. & 1-5 p.m.

**Gary Smith - Publisher**  
**Catherine Smith - Editor**  
Haretta Carthel - Assist. Editor  
Contrib. Writers: Helen Fisher, Jeff Beedy,  
Dorothy Hudson, Dwayne Mitchell  
Contrib. Photographer: Charlie Johnson

**Subscription Rates**  
In Hansford Co. - \$25.00  
Out of County - \$30.00

The Hansford County Reporter-Statesman (USPS 529660) is published weekly in Spearman, TX. Periodical postage paid in Spearman, TX. POSTMASTER: Send address changes to The Hansford County Reporter-Statesman, 213 Main Street, Spearman, TX 79081.

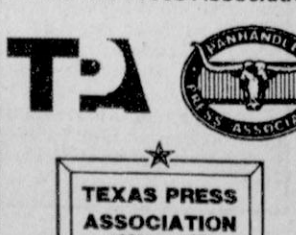
**Publication Policy**  
The deadline to submit news and advertising to The Hansford County Reporter-Statesman is Monday at 5:00 p.m. Items accepted after the deadline will be published at a later date, as time and space permit. Publication of all items is at the discretion of the editor.

### Letter Policy

The Hansford County Reporter-Statesman welcomes letters to the editor on any subject. All letters must be signed and will be published with the name of the writer. Letters must include an address and telephone number for verification. Letters should be kept at a reasonable length. The editor reserves the right to edit all letters. Any letter may be rejected for publication without reason. Letters that are libelous and/or slanderous will not be published. The deadline to submit letters is noon on Monday. Letters in support or opposition to political candidates will not be published. Persons wishing to publicly support political candidates in this newspaper are invited to purchase an ad.

**Advertising**  
Open Display rates are \$4.00 per column inch. Classified Ads are \$5 for the first 25 words and 10¢ per word for each additional word. (Additional charge for boxed classifieds.)

Member of  
Texas Press Association and  
Panhandle Press Association





# Happy Birthday!

Editor's Note: This Happy Birthday list is run as a public service by the Hansford County Reporter-Statesman. We apologize if any names are misspelled. If you know of a name that needs to be changed, added or deleted, please call 659-3434. Thank you, Catherine

**August 1**  
**Birthdays** - Cap Benson, Lisa Link, Kyle Irwin, Frankie Leatherman, Annie Mayhew, Gyene Spivey, Benjamin Williams, Johnnie Williams, Ronnie Williams, Tommy Lovett, Jo Brown, Leann Swan, Yvonda Stokes, Anita Clemmons, Kevin Kirk, Rob Barber, Kelli McWhirter, David Swan, Jim Scarborough, Kiki West, Hershey Martin, Joyce Crooks, Alfonso Cenicerros, Larry Trospier, Patricia Quillin, Gabriel Lopez, Sara Wright  
**Anniversary** - Mr. & Mrs. Mike Minter, Mr. & Mrs. Tommy Cathey, Jr.

**August 2**  
**Birthdays** - Eddie Clemmons, Mary Brock, Frosty Hickerson, Dirk Umphress, Colby Griffin, Earl Griffin, Diedra Deakin, Daniel Bort, Yuki Bort, Misty Vera, Roland Graeber, Neely Hicks, Ryan Wells  
**Anniversary** - Mr. & Mrs. Billy Kelly, Mr. & Mrs. Larry Hays, Mr. & Mrs. Dan Ralston

**August 3**  
**Birthdays** - Clay Gillispie, Tyson Sparks, Mary Wisinger, Laurie Swenn, Kent Guthrie, Kenneth Coates, Olivia Salgado, Sam Abston, Dibrell Kirk, Racheal Garza, Tencha Cazares, Olivia DeSantiago, Maxine Little  
**Anniversary** - Mr. & Mrs. Don Schroder, Mr. & Mrs. Shane Reagan

**August 4**  
**Birthdays** - Jim Derington, Marjorie Hendricks, Penny Gammil, Mrs. Dick Kilgore, Cindy McGhee, Jeanetta Montgomery, Billy Joe Rhea, Mike Riley, V.L. Williamson, Nikki Swenn, Misty Pointer, Shelly Rook, Ramon Rosales, Renee Allen, Lillian Whitford, Joe Allen Bullard, Bond Grace Pittman, Lee Blevins, Lana Salmans, Dawn Weak, Rachel Abernathy, Ronnie Cogdill  
**Anniversary** - Mr. & Mrs. Joe Vanderburg, Mr. & Mrs. Joe Bravo, Mr. & Mrs. E.A. Williams, Mr. & Mrs. Ronnie E. Williams

**August 5**  
**Birthdays** - Chase Reagan, Beth Ann Holt, Tina Adams, Billy Miller, Shirley Stafford,

Erin Boxwell, Stephen Poole, Emidia Borunda, Heath Gaines, Paul Winn, Maria A. Parra, Susan Renick, Rodney Sumner  
**Anniversary** - Mr. & Mrs. J. Garnett, Mr. & Mrs. Roy Flowers, Mr. & Mrs. Samuel Sanchez, Danny & Debby Herrington, Rich & Helen Melton

**August 6**  
**Birthdays** - Paul Winn, Scott Pipkin, Ladd Gafford, Carolyn Hahn, Ray Phelps, Helen Prachar, Raymie Porter, Hoyt Biles, Kathy White, Sharon Swan, Eoldia Bravo, Monica Lara, Susan Rason, Heather Gallimore, Debra McNeely  
**Anniversary** - Mr. & Mrs. Murl Pearson, Mr. & Mrs. Rocky Sharp, Mr. & Mrs. Tim Stedje, Mr. & Mrs. Mack Hoel

**August 7**  
**Birthdays** - Brandon Casdorff, Scott Duncan, Roy Don Gammon, Elwyn Young, Roger Odegaard, Mark Sheets, David Thomas, Marie Sparks, Cassandra Papay, Hilary Biggers, Jean Holland, Patty Sparks  
**Anniversary** - Mr. & Mrs. Carlie Knight, Mr. & Mrs. H.M. Frazier, Mr. & Mrs. Stephen Jacobs

**August 8**  
**Birthdays** - Faye Cluck, Billy Pat Underwood, Ed Berner, Junior Vela, Hosa Casas, George Young, Frankie Dominguez, Elsie Lamb, Kathy Boyd, Jenna Abernathy, Ryan Schnell  
**Anniversary** - Mr. & Mrs. Leonard Garrard

**August 9**  
**Birthdays** - Dody Banks, Christopher Layton, Reba Miser, Inell Trahan, Roy Dunaway, Karla Latta, Anita Garrard, Bob Rylant, Holly Pipkin, Aurora Vela  
**Anniversary** - Mr. & Mrs. Buddy Dossett, Mr. & Mrs. Steve Bevil

**August 10**  
**Birthdays** - Clint Bell, Kyle Deeds, Monica Garcia, Ralph Mireles, Bob Tolleson, Jamie Gomez, David Hagar, Ronnie Burke, Tim Woodington, Chris Strawn, Karen Moyer, Danna Irlbeck, Abbey Edwards, Christopher Vela, Smokey Huse, Art Salazar  
**Anniversary** - Mr. & Mrs. Lucio Vela, Mr. & Mrs. Riche Randall, Mr. & Mrs. J.L. Brock, Mr. & Mrs. Erwin Wright, Mr. & Mrs. Felipe Alvarez, Jim & Karen Johnson, Mr. & Mrs. Keith Lamb

## Our Deepest Sympathy

### WREN LOFTIN HOLT

SPEARMAN - Wren Loftin Holt, 84, died Friday, July 26, 2002. Services were at 2 p.m. Tuesday, July 30, 2002 in First Baptist Church with the Rev. Russell Pogue officiating. Burial was in Holt Cemetery by Boxwell Brothers Funeral Home.  
 Mrs. Holt was born in Iola, TX in 1917. She lived in Spearman for 69 years, moving from Shawnee, Okla. She married Fred Holt in 1939 in Spearman.  
 She was a member of First Baptist Church where she taught Sunday school for 40 years and was a member of Women's Missionary Union. She was the Hutchinson County Extension Clubs Woman of the Year for 2002. She had been a member of the Home Demonstration Club for 53 years and a homemaker for 62 years.  
 She attended Tarleton State College and graduated from West Texas State Teacher's College in 1937. She taught school in Spearman for one year. She was a member of the 20th Century Club.  
 She was preceded in death by her parents, Adolphus and Hazel Loftin; a brother, Paul Loftin; and a sister, Oscilee Loftin.  
 Survivors include two daughters, Susan Kidder of Spearman and Hazel Slyter of Augusta, Kan.; a son, Mike Holt of Pilot Point; seven grandchildren; and 11 great-grandchildren.  
 The family suggests memorials be to Holt Schoolhouse Fund, First Baptist Church Library or Hansford Hospice.

### ROBERT LOMAX

SNYDER — Graveside services for Robert Lomax, 77, of Snyder were at 2 p.m. Tuesday, July 30, 2002 in Ira Cemetery with the Rev. Charles Day officiating. Arrangements were under the direction of Bell-Cypert-Seale Funeral Home of Snyder.  
 Robert died Sunday, July 28, 2002. He was born May 27, 1925, in Groom. He married Sara Kruse in 1953 in Lovington, N.M. She died April 10, 1986. He was a farmer and a member of the American Legion.  
 Survivors include a son, Gene of Ira; three sisters, Wanda Rae of Abilene, Georgia McCleod of Spearman and Betty Davis of Granbury; two brothers, Kenneth and Howard, both of Abilene; and two grandchildren.

## MONUMENTS

Boxwell Brothers Funeral Home  
519 Evans • Spearman  
659-3802

Dear friends,  
When you buy a monument from us we make sure it is exactly what you want at a price you can afford. If it is not right, we will make it right. And you will not have to search the countryside to find us. We are here when you have a need.

Sincerely,  
Bob Boxwell

NT

North Texas Information Systems  
Spearman, TX 664-3233  
Computer sales, service, & repair.  
Networking, house calls, pick up and delivery available.  
\*References available.  
\*Microsoft Certified Professional  
\*CompTIA Certified Professional

IS

Member Spearman Chamber of Commerce

### Spearman Chamber of Commerce

Annual 3 Person Scramble

Saturday, August 10<sup>th</sup>  
 Calcutta following 1<sup>st</sup> round  
 Sunday, August 11<sup>th</sup>  
 Hansford County Golf Course

\$45 per person plus cart

**#7 Hole in 1 Prize**  
**4 FOUR WHEELERS FROM**  
**FIVE STAR EQUIPMENT**

Additional Hole in 1 prizes include  
 \*Set of Wilson Staff Irons  
 \*Vacation Package  
 \*DVD CD Player  
 (Hole in 1 Prizes Saturday Only)

Call Charlie @ 659-2233 Call Justin @ 659-3875 Call Gina @ 659-5555 for details, registration, or to reserve your carts (# of carts ltd.)

## HANSFORD HAPPENINGS

College-Bound High School Students  
 Should Register for ACT Exam by August 23rd

The next ACT Assessment will be administered on September 28, 2002. College-bound high school students must register for the college admissions exam by August 23rd - the deadline for having the registration postmarked. There is a late registration postmark deadline of September 6th, but an extra fee is charged for late registrations. Students can get registration packets from their high school counselors or register online at [www.act.org](http://www.act.org).  
 ACT scores are accepted by virtually all U.S. colleges and universities, including all Ivy League schools. The ACT is not an aptitude test - it is an academic achievement test that measures students on what they learned in high school. Because it is curriculum-based, colleges use ACT scores for more than admissions decisions - they use scores to place freshmen into classes that the students are academically prepared to handle. For admissions decisions, colleges use ACT scores along with a student's high school grade point average, college prep courses taken, extracurricular activities and other information. The test fee is \$25.  
 ACT's website ([www.act.org](http://www.act.org)) has helpful information, sample tests and the opportunity to order test prep materials such as *ACT Prep*, an interactive CD-ROM that contains practice tests with instant scores and study plans to prepare for the real test. A free sample test is available from high school counselors in a brochure called *Preparing for the ACT Assessment*.  
 The ACT Assessment is only given in 13 states in September, including Texas. It is given 5 times per year in all 50 states and is the number one college entrance exam taken by high school students in 25 states. There are four sections to the exam: English, reading, math and science. The ACT Assessment was taken more than 1.7 million times last year by college-bound students.


Area Agency on Aging Seeks Volunteers

The Nursing Home Ombudsman program of the Area Agency on Aging of the Panhandle is actively seeking individuals to serve as advocates for residents of area nursing homes. Volunteer opportunities are available throughout the Panhandle.  
 Ombudsmen promote resident rights, quality of life and quality of care by identifying and resolving complaints by or on behalf of residents.  
 To learn more about this rewarding volunteer opportunity, please contact Jeff Price or Tanya Mock of the Area Agency on Aging of the Panhandle at (800) 642-6008.

National Multiple Sclerosis Society Announces MS Walk

The National Multiple Sclerosis Society, Panhandle Division is pleased to announce this year's Moore County MS Walk. The Panhandle Division serves some 640 MS families in the Texas and Oklahoma panhandles and the four eastern counties of New Mexico. The event will be held on Saturday, September 28, 2002, with registration beginning at 8:30 a.m. and the Walk getting underway at 10 a.m. The first Moore County MS Walk was held last year, raising in excess of \$18,000. The Walk concludes with a great hamburger cookout as a small token of thanks to all the walkers and volunteers. Ralph Bynum, the MS Walk Coordinator, extends a cordial invitation to everyone in Hansford County to join Dumas, Sunray, Cactus/Etter, Stratford and Dalhart walkers in this year's fundraising effort. Details for forming a Walk Team and other volunteer activities can be obtained by contacting Bynum in Dumas at 935-4208, Kevin Bynum at 659-2162, or the Amarillo office of the National Multiple Sclerosis Society at 468-7500. Anyone who is interested in participating is urged to call Kevin Bynum at 659-2162 for more information.

## 50th Anniversary



**Murl and Annabelle Pearson**  
1952 - August 6 - 2002

Please join the Pearson family  
 Celebration  
 Honoring Murl and Ann  
 on their  
 50th Wedding Anniversary  
**Open House**  
 Sunday, August 4, 2002  
 2:00 - 4:00 pm

@  
**First Assembly of God**  
 401 N. Bernice  
 Spearman, Tx 79081

## LYRIC Cinema

113 Main Spearman, Texas (808) 659-2812

On the Web @: [www.antd.com/newweek.asp](http://www.antd.com/newweek.asp)  
 Children 3 thru 11 - \$4.00 Adults - \$6.00  
 Sr. Patrons (65 & older) - \$4.00

\*\* Movies at 7:00 p.m. - 7 Nights a Week \*\*  
 Showing: August 2nd thru August 8th

<p style="margin: 0;"><b>The Master of Disguise</b></p> <p style="margin: 0; font-size: 0.8em;">Starring: Dana Carvey Jennifer Esposito</p> <p style="margin: 0; font-size: 0.8em;">Dated PG For Mild Language &amp; Some Crude Humor</p>	<p style="margin: 0;"><b>Austin Powers in Goldmember</b></p> <p style="margin: 0; font-size: 0.8em;">Starring: Mike Myers</p> <p style="margin: 0; font-size: 0.8em;">Dated PG-13 For Sexual Innuendos, Crude Humor &amp; Language</p>
---	--

For Ratings Conscience Parents: [www.screenit.com](http://www.screenit.com)

Coming August 7th:  
**Spy Kids 2**

## Palo Duro Supper Club

Daily Lunch Buffet

Sunday-Friday,  
 11:00 a.m. - 2:00 p.m.

\$5<sup>97</sup>

Buffet  
is all-you-  
can-eat, and  
includes salad  
bar

Friday Buffet - Fresh Water Catfish  
 Kitchen Closes at 8:00 p.m.

Palo Duro Supper Club  
 22 S. Archer • 659-2232 • Spearman, TX



## August Activities Slated

With the school year rapidly approaching, several important activities dominate August in Hansford County.

**August 1** - Physicals for all Gruver athletes who will be entering grades 7, 9, and 11 as well as other athletes who sustained injuries during the previous year will be given free of charge at the Gruver Medical Clinic. Male athletic physicals will be given from 9-12 a.m. with female athletic physicals to begin at 1:00 p.m.

**August 1-2** - SHS Drum Major, Squad Leaders and Flag Corp practice, 9 a.m.-12 p.m.; Drum Corp practice, 2-4 p.m.

• Cheerleading Camp sponsored by the Spearman High School Cheerleaders. Registration is the first day of camp. Cost - \$5 per day.

**August 2** - SHS Girls Athletic Physicals: 9 a.m. - Senior & Junior Girls; 10 a.m. - Sophomore Girls; 10:45 a.m. - Freshman Girls; 1 p.m. - 8th Grade Girls; 2 p.m. - 7th Grade Girls. Physicals will be given in the High School Library. All students are required to have a physical before they may compete in any athletic activity. Students should have physical forms signed by their parents when they arrive. If student does not have a physical form, a parent should accompany the student in order to sign the form. Local doctors will give free physicals. If students are unable to be at the above scheduled physicals they should make arrangements to get their physicals, at their own expense, prior to their first workout.

**August 5** - First day of high school football workouts

• First day of GHS band drills, 3 p.m. in the band hall.

• GHS football parent/coaches meeting, 6:30 p.m. in HS library.

**August 5-6** - SHS Band marching practice (DM, SL, Flags, Freshmen), 9 a.m.-12 p.m.

• SHS Band playing rehearsal (Freshmen, SL & L DM), 1-3 p.m.

• SHS Drum Corp Practice, DM, football players, 2-4 p.m.

**August 5-9** - Lynxette Basketball Camp: Session I is for girls entering 5th & 6th grades, 8-10 a.m. Cost - \$40. Session II is for girls entering 2nd, 3rd & 4th grades, 1-2 p.m. Cost - \$20.

**August 7-9** - SHS Band marching practice, 9 a.m.-12 p.m.

• SHS Band playing rehearsal, 1-3 p.m.

**August 12** - New student registration at Gruver Schools

**August 12-14** - SHS Band marching & playing practice, 9 a.m.-12 p.m.

**August 12-14** - SHS Staff Development Day

**August 12-16** - PMCISD Staff Development

**August 13** - GISD Board of Trustees to meet in regular session

• SISD Teacher Workday

**August 14** - Assembly for all Gruver teachers and beginning of in-service days.

**August 15-16** - SHS Band marching practice, 9 a.m.-12 p.m.

• SHS Band playing rehearsal, 1-3 p.m.

**August 16** - SHS Band Family Night Picnic (Presentation of Band Camp Awards, short concert & marching demonstration. Each family needs to bring food for themselves. Drinks provided), 6 p.m.

• SISD Teacher Workday/Staff Development Day

**August 17** - First football scrimmage - Spearman vs. Gruver, in Spearman

**August 19** - First day of school, Spearman, Gruver & Morse

## Hansford Youths Awarded FFA Degrees

Five Hansford County FFA students were presented the Lone Star FFA Degree at the 74th annual Texas FFA Convention in Fort Worth. Eric Vasquez of Spearman, Aaron Boyd, Kasey Cazares, Eric Lopez, and Hunter Beville of Gruver were among 1200 other students from across Texas who received the highest state degree offered to FFA members.

The degree recognizes the students who have completed an active program of projects and have participated in FFA activities in various agricultural fields.

The students were accompanied to the convention by their advisors Scott Stedje of Spearman FFA and Weston Born of Gruver FFA.

The Texas FFA Association has more than 57,000 active members and is the largest state affiliate of the National FFA Organization.



## Engagement Announcement

Mr. and Mrs. Gilbert R. Bailey of Leander, Texas are pleased to announce the engagement of their daughter, Julie Ann Bailey, to Wylee Reed Maupin. He is the son of Mrs. Micky Maupin of Gruver and the late Wesley C. Maupin.

The prospective bride graduated from Texas Tech University in August 2001 with a Bachelor of Science Degree in Human Development. She will receive her Masters Degree in Elementary Education in August 2002. Mr. Maupin received his Bachelor of Science Degree in Agricultural and Applied Economics with a minor in Marketing from Texas Tech University in December 2000.

The couple will marry September 14, 2002, at Smilin V. Ranch in Liberty Hill, Texas. They plan to reside in Colorado.

## Oklahoma State University Holds Commencement

A total of 2,163 students were awarded degrees from Oklahoma State University in Stillwater at the end of the 2002 spring session, according to the Office of the Registrar.

Graduates from Hansford County are as follows:  
Gruver: Scott Stedje - BS in Agricultural Education  
Spearman: Brooke Trantham - BS in Management

## You are invited to a Baby Girl Shower

for  
**Braxton Alizéa Smith**  
daughter of Brandi Smith  
on Saturday, August 3, 2002  
from 3:00 - 5:00 p.m.

in the First National Bank Hospitality Room  
Spearman, Texas

The greatest gift of all is love and this is our life.  
Our beginning.

Mr. and Mrs. Lonnie Adrian  
and Ms. Sandra Blankenship  
invite you to share in the joy of  
the marriage uniting their children  
**Christian DeAnne Adrian**  
and

**Matthew Ray Watlington**  
on Saturday, the third of August,  
Two thousand and two  
at seven o'clock in the evening

Richland Hills Baptist Church • Muleshoe, Texas  
Reception following ceremony at home of Mr. and Mrs. Lonnie Adrian

## Call Prairie Garden Flowers for all of your flower needs!



Prairie  
Garden  
Flowers

209 Main Street  
Spearman, TX  
659-2212  
659-3329

## Simon, Ward Wed



Mrs. Jason Ward

Parents of the groom are J.W. and Rhonda Ward of Gruver. Grandmother of the groom is Betsy Ward of Gruver.

Maid of honor was Cayla Simon, sister of the bride. Bridal attendants were Tara Gardiner, Wesley Thacker, Rebekah Eckols, and Monica Ward.

Best man was Travis Ferguson, life-long friend of the groom. Groom's attendants were Quentin Harper, Sammy Renteria, Tommy Lovell, and Jonathon Kirby.

Flower girl was Callie Dumbauld, and ring bearers were Nick and Clay Dumbauld. Wedding party members were Julie Bailey, Laura Christensen, Jill Odom, Lindsey Simon, Amanda Simon, Robyn McClure, and Jessica McClure. Ushers were Wylee Maupin, Brad Thacker, and Lee Ray III.

The wedding reception was held at the O'Loughlin Center in Spearman, Texas.

The bride is a graduate of Texas Tech University with a Bachelor of Art and Science degree in Interdisciplinary Studies.

The groom graduated from Texas Tech University with a Master of Science degree in Agriculture and Applied Economics. He is a market analyst for Stapleco in Greenwood, Mississippi.

The couple honeymooned in Playa del Carmen in Mexico. They will reside in Greenwood, Mississippi.

You are invited to a  
**Bridal Shower**  
honoring  
**Elizabeth Pipkin**  
bride-elect of Jim Alexander, Jr.  
on Friday, August 9, 2002  
from 6:00 - 7:30 p.m.  
in the Country Home of Marti Garnett  
Spearman, Texas

## Bridal Registry

Autumn Bateman & Eric Ratterree - August 3  
Elizabeth Pipkin & Jim Alexander, Jr. - August 9  
Mandy Vernon & Doug Reynolds - August 24  
Tera Red & Eric Cochran  
Christa Bergan & Brad Turner

## Celebrate

Gifts for all your celebrations!  
203 Main St. • Spearman, TX

(806) 659-3350

1-800-663-8026

## For The Bride & Groom

Come by and let us help you  
set up your special gift table

## Couples Currently Registered

Elizabeth Marie Pipkin & Jim Alexander - Aug. 9  
Mandy Vernon & Doug Reynolds - Aug. 24  
Christa Bergan & Brad Turner  
Jamie & Emily (Bomer) Townsen

314 Main  
659-2141

**Gordon's**  
DRUG

Spearman,  
Texas

GIVE A SPECIAL  
GIFT OF LOVE



Call us today!

Grooming, Dipping &  
Clipping for your dog or cat

## The Mutt Hutt

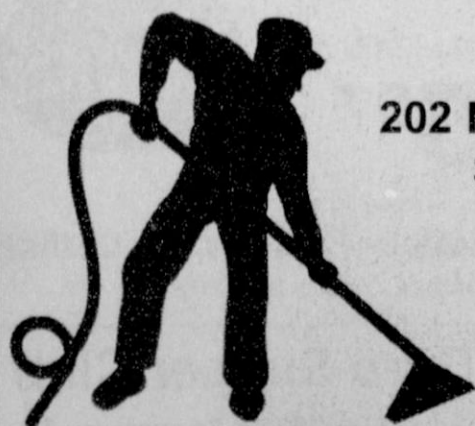
207 S. James • Spearman, Texas  
(806) 659-3354

Mon.-Sat., 6 a.m.-5 p.m., by appt. only  
Serving Spearman & Surrounding Area



## Golden Spread Carpet Cleaning

Carpet Sales • Installation  
Service • Cleaning



202 N. Bernice  
Spearman  
659-3068





Lucy Villa and Kallie Smith

## Spearman Teens Attend Bluebonnet Girls State

Spearman High School students Kallie Smith and Lucy Villa recently attended the American Legion Bluebonnet Girls State held on the campus of Texas Lutheran University in Seguin, Texas.

During their ten-day stay, the assembly of young high school girls from throughout the state of Texas learned the duties, privileges, rights, and responsibilities of American citizenship.

For the purpose of educating the teens on governmental functions, a mythical 51st state was created in which the youths organized their own city, county, and state governments.

The learning process included the choosing of officials in accordance with regular election procedures. The law-making process, in which bills were introduced and debated, was also a part of the "learn by doing" program.

"To me, one of the most interesting parts of Girls State was the actual debating of bills in the Texas Senate Room. It was exciting to be able to stand exactly where the senators do when they debate legislation," Villa said.

Smith was also impressed with being in the the Texas legislative chambers. "In our elections, I served as a campaign manager which I really enjoyed," Smith said.

In addition to the legislative activities, the judicial process was administered by the teens' own law enforcement agencies and courts.

The program was non-partisan and free from propaganda with the teens divided into two political parties known as the Nationals and the Federals.

Notable governmental guest speakers addressed the group during their stay.

"I was very impressed with Carol Keeton Rylander," Smith said.

In addition to the governmental processes learned in the seminar, a highlight is the meeting of new people and the friendships that are formed.

"I was privileged to have a wonderful roommate, Alex Wade of Beaumont, whom I enjoyed very much," Smith said.

The Bluebonnet Girls State program is sponsored by the American Legion Auxiliary Units throughout Texas. The Spearman Rotary Club through the American Legion Auxiliary of Perryton, Unit 254, of which Hazel Stumpf serves as president, sponsored the local teens.

Kallie is the daughter of Archie and Gayle Smith, and Lucy is the daughter of Lila and Hugo Villa.

## Among The Neighbors

by Helen Fisher

Rubyjo and J. D. Wilbanks spent four days last week in Santa Fe. They noted the tremendous growth in population since they bought their condo 22 years ago. The wells from which the city water is pumped are being lowered from 600 feet to 1000, and out of the city many homes and lodges are evident.

Missie Bates has covered many miles in the more than two weeks of her vacation. She accompanied 32 relatives to visit her 75-year-old grandmother in Ruidoso.

After that, she and nine others visited her 90-year-old great-grandmother at Pecos, New Mexico, then spent some time in Juarez.

Last Tuesday, Sybil and Billy Miller flew to Dallas in connection with her eye condition. She was relieved to learn that there had been no deterioration since her last check-up.

Pat Sutterfield attended her father's family reunion from July 19 thru the 21st. It was held at the Methodist Youth Camp south of Abilene where they have met for 11 years. It is not in use that weekend.

The family started having reunions in 1975. One aunt is the only survivor of the generation.

Pat was accompanied by her daughter-in-law Melissa Sutterfield and three children.

Sympathy is expressed to the family of Wren Loftin Holt, 84. She was the widow of the late Fred Holt. She truly lived a life of service in her 69 years in Spearman.

Wilma Clark has nearly recovered from knee replacement surgery which she had done on July 1st. She then stayed ten days with her daughter Lou and Ed Hawk in Amarillo.

Kathleen and Noreen Sutton spent a long weekend, from Saturday thru Monday, in the mountains. One of the stops was at South Fork, Colorado where they visited with Bill and Lil Turner. They are spending time there and are really enjoying it.

Later they spent some time with

Kathleen's nephew, Wally Berner, and his family. The Berners, formerly of Spearman, ranch near Roy, New Mexico.

The Methodist youth are finding it difficult to adjust to the vacancy left by their summer director, Mickey Schoenhals. He is returning to Texas Tech at Lubbock for the fall term.

Mickey is majoring in mathematics, but with college ministry during his school term, the organization is styled "Late Nite."

He states that he has enjoyed his work and fellowship this summer and will miss his associations.

Sympathy is extended to Georgia McLeod and family in the passing of her brother, Robert Lomax, 78, of Snyder, Tx.

Georgia had gone to be with him during his long illness and several surgeries, but was unable to attend his service because of her ill health.

Robert and his family moved from Spearman six years ago.

He is survived by two other sisters and two brothers.

The Lomax family lived in Spearman many years ago.

The reunion of the descendants of the Gray and Litch Sparks families held their reunion July 19-21st. Many of their local families were unable to attend from Spearman.

Fannie Sparks Venneman, sole survivor of the original Gray Sparks branch was one who had to miss it.

The reunion was held at Ashmore Inn in Lubbock with Joyce Ray Sparks Hanes in charge. Some of the entertainment was a talent show with karaoke; auction of handmade items, making a family quilt block, and receiving a family recipe book. Some went to view the Vatican Frescoes at Texas Tech.

Delinda McLaughlin, Spearman;

Liz Carr, Pampa; and former Spearman residents now of Breckinridge. Troy and Frankie Sloan were among the guests.

Rick and Jan Howard, accompanied by Jerrick and Kylee, had a short but enjoyable vacation in Dallas July 23 thru 27th.

Among their activities were going to Hurricane Water Park, Six Flags, and attending a Texas Rangers baseball game.

Delinda and Kyle McLaughlin, Roy and Aleta Jackson with Landon, Clint, and Jeff attended the Morse family reunion at Red River on July 26-28. Joining them from Pampa were Liz Carr with Gary, Zane Hall, Cathy and Danny Ballard.

The weather was cool with evening showers which made the fishing more enjoyable. Riding 4-wheelers and visiting entertained others.

The descendants of Claud and Nannie Sheets met for a family reunion at Quartz Mountain in Oklahoma, July 14-17. There were 71 family members and two afternoon guests present. Those attending from Spearman were Pinky Sheets, Jerry and Jan Sheets, Lee Sheets, Gene and Francis Cudd,

Mike, Pat and Chris Cudd, S. B. Sheets, Russell, Elliott, and Tori. They enjoyed boating on the lake, swimming, watersliding, go-carting, bridge, forty-two, horse shoe pitching, and washer pitching, and as always, eating.

Official weather report for the week of July 22 thru 7 a.m. July 29 shows the highest temperature was on the 26th at 104 degrees; the lowest was on the 29th, at 66. Total moisture for the week was 1.24.

Much more rainfall occurred on Saturday evening in the southern part of the county and northern Hutchinson County.

Dora Lee Jarvis was amazed at the deluge - the water came up on the porch at her home in two separate storms but with a little time between. Terrific lightning caused the electricity to go off and was not restored until morning. There was only a little hail.

About the same report from Roger Buchanan from the Buchanan farm just east of the Jarvis place. His gauge showed 2 1/2 inches.

Bill Hand, east of the highway, had about the same situation. The downpour rushed for Horse Creek. He is of the opinion that it will raise the level of the Palo Duro Lake.



Granville Boyd recently celebrated his 80th birthday with his family at Java Jo's Eating in the newly renovated Santa Fe Depo building at Liberal. After dinner they adjourned to the home of his daughter and son-in-law, Donna and Wesley Brinkley, for an American Flag decorated cake and ice cream. Those present were Mindi, Zachary and Zane Werner from Springfield, MO., Traci, John, Jacob, Joel and Jensen Mettlen of Liberal, Patti and Larry Fryer from Brownfield, Texas, Donna and Wesley Brinkley and Granville and Muriel Boyd.

## Frank Phillips College

### Fall Registration

Spearman High School Videoconference Room  
Tuesday, August 13, 2002, 5-7 p.m.

### Courses Available in Spearman

Integrated Science: Biology • Business Administration • Rhetoric & Composition  
General Biology • Small Business Mgt. • American Govt. 1  
Intermed. College Algebra • Microsoft Applications • US History to 1877  
Other courses available in Borger, Canadian, Texline, Miami, Dalhart & Perryton, or via Internet and the Virtual College of Texas.

Each independent high school may charge additional fees, other than those charged by FPC. Students should contact the high school regarding its fee structure. For more information, call (806) 274-5311 or 1-800-687-2056, ext. 777.



Start Here ... Go Anywhere!

Frank Phillips College

PO Box 5118 • Borger, TX 79008

www.fpc.cc.tx.us

FPC is an equal opportunity community college.

## Panhandle Diner & Deli

217 Main Street • 659-3864 • Spearman, TX

Join Us Every Friday For

# Hap-Pie Hour

Biti Pies & Cakes- 2 for \$5.00

4:00-6:00 p.m. (beginning July 11th)

It's A Pity Not To Buy A Biti!

### New Summer Hours:

Monday, Tuesday & Wednesday: 8 a.m.-2 p.m.

Thursday & Friday: 8 a.m.-8 p.m.

Saturday: 8 a.m.-2 p.m.; Sunday: 11 a.m.-2 p.m.

# Vacation Time

Take Us Along with one of our All New Plans

Simplicity. Choice. Value. Call On Someone You Know

\$20 Partner Plans Available

\$35\*  
3900 Minutes Per Month  
Western Advantage Plan

\$30\*  
3850 Minutes Per Month  
Local Plan

\$45\*  
3950 Minutes Per Month  
National Plan

\$40\*  
4300 Minutes Per Month  
Local Plan

Our system is now digital with Amarillo included in Home Area! Stop by and upgrade your plan!

Analogue phones will be charged roaming in Amarillo. Analogue Partner Plans Still Available

FREE Voice Mail Incoming Text Messaging on ALL plans

FREE 120 Motorola or 9100 Audiovox with any plan \$40 or more



# CELLULARONE®

Authorized Dealer

Clear Across America

See us Today! Country Cellular Communications We do contract renewals

Check Out Our Cellular Phone Accessories

Highway 207 S. Spearman, TX 79081 (806) 659-2541 1-800-692-4657



## Mayor Steve Benton Endorses Governor Perry

Governor Rick Perry recently accepted the endorsement of more than 250 mayors from across the state of Texas. This unprecedented support is a testament to Governor Perry's strong leadership and record of reaching across party lines to get things done. The mayoral support will also help aid in organizing local communities and getting out the vote for Governor Perry in November.

"These 250 mayors are supporting the only candidate for governor with strong experience, a proven record of leadership, and detailed plans to make Texas better," Governor Perry said. "Local mayors can help me take my record and vision to every corner of our state and are powerful allies in my campaign."

The son of a long-time county commissioner, Rick Perry knows the importance of local control, and has long believed that decisions effecting Texans are best made by the citizens and government closest to them. As a state representative, agriculture commissioner, lieutenant governor and now governor, Rick Perry has worked closely with local leaders on education, economic development, health care and transportation issues.

"Rick Perry is a true leader. He is experienced. And he has the vision to lead this great state forward," said Mayor Norberto Salinas, a Democrat from Mission. "This bipartisan group of more than 250 mayors is proud to stand by his side in this campaign. Texans couldn't have it any better than they do now, with Rick Perry leading this great state."

In the past four years, Rick Perry helped balance two state budgets and achieved record tax cuts, record teacher pay raises and record public school funding. More students are passing the TAAS test and more Texans are attending college than ever before. Since 1999, Texas has enrolled more than a half-million children in the new Children's Health Insurance Program, and last year the state invested close to \$6 billion in new money to improve health care in Texas.

"For mayors, it is very important that we have a partner in state government who works side-by-side with us to improve our schools, make health care more accessible, and fund needed transportation infrastructure," Mayor Donna Arp of Colleyville said. "Governor Perry is a proven leader. He listens to local leaders, and he believes government functions best when closest to the people."

These mayors represent 112 Texas counties and millions of citizens. "In this race, Texans have a choice between a proven budget-cutter with detailed plans to make Texas better, and an inexperienced, first-time candidate who issues vague, unfunded plans, and runs away from the press when questioned about them," Perry continued. "Texans want a governor who knows the issues, who isn't afraid to say where he stands on the issues, and who doesn't pass the buck when it's time to take responsibility. I am honored by the endorsement of more than 250 experienced and active community leaders."

For a list of the mayors who endorsed Governor Perry go to [www.rick-perry.org](http://www.rick-perry.org).

## Out At The Lake

by Dorothy Hudson



Baby doves

Lake Depth--July 29, 2002--33.29 feet

The rains Friday, Saturday, and Sunday were happy occasions for Spearman and its environs, but a huge disappointment for the Gruver locality. The Sunday night rain did bring .76 inch to the Lake gauge.

Jim and Mandy spent 4 days last week at a family reunion on Tenkiller Reservoir in Eastern Oklahoma, so he didn't have much to report this Monday morning. The Moose Club did not fill up the spaces on the north side of the Park. The most Ramon counted at any one time was 21. Some of them did stay 10 days so that helped.

Jim said when he took the picture of the baby doves, the mother flew nearby and acted injured. She had made her nest below the restrooms on the office side in a sorry tree without much cover.

This was a contrast to two experiences Wayne Kruse had a week or so ago on his run to pick up oil with his tanker truck. Before he runs the oil into his truck from one

of the area oil tanks, he climbs the cat walk to the top and checks to see how much salt water is mixed with the crude. He found a mother scissor-tailed flycatcher with four babies on top of one tank. She didn't act frightened, but she stood on the edge of the nest with her wings extended as if to protect her babies. He approached her quietly and held out a finger which she hopped up on. He soon put her back on the nest and went on about his business of checking the oil, but he had a golden moment with a wild bird.

Later on at another tank, he was dive bombed by two aggressive western kingbirds. He soon spotted their nest behind a bucket someone had left on top of the tank. They had no plans to make friends.

Wayne and his wife, Penny, who help us so nicely at the Gruver Post Office, are both bird watchers.

Joel Lee and Joyce Lackey have shared 9 pages of early day history written by Joel Lee's mother Gwenfred Jones Lackey. In it is the answer to where Bill and Eula Henson Goodnight lived on the Palo Duro. In January of this year their daughter Louie Goodnight Adams was buried at Guymon on the day she would have been 107.

On page 4, Gwenfred wrote, "Goodnights lived in a dugout on side hill about a thousand yards near where road comes off hill from Josie's house. They moved to Guymon in the early 1900's."

Josie refers to Mrs. Sid Lackey. It will be interesting to see if the remains of the dugout can be located from this description.

## The Gruver Grapevine

by Harletta Carthel

### Students Gain Advanced Placement Credit

Two Gruver students were notified last week that they will be receiving possible college credit for their outstanding scores on the AP Biology test taken in Spring 2002.

Elizabeth Duncan, 2002 GHS graduate, scored a four on the national test while Ashleigh Sherrill, GHS senior 2003, scored a three on the test.

Any score of three or above is eligible for possible college credit and also earns a cash reward for their school.

This is the second consecutive year that GHS AP Biology teacher, Amy TeBeest, has had students earn the award.

This past year blood pressure cuffs for the biology lab were purchased with money awarded by Kade Carthel's score on the AP test, and money received this year will also be used for needed biology lab items.

TeBeest has been the Gruver AP Biology teacher for ten years and has been selected to serve as a grader of essay questions on the national AP Biology Placement test for several years.

### Temperature Breaks 100 Mark

Gruver officially broke the century mark for the first time this year.

Friday, July 26, the City of Gruver recorded 100 degrees and then broke the high degree mark again on Saturday with 101 degrees. The high for Sunday, July 29, was a "cool" 99 degrees.

Rainfall for the week was .23 inch on July 27, .06 on July 28, and .04 on July 29.

### Tennis Camp Held

A tennis camp was recently held in Gruver. Teaching the camp were Page Brown of the University of Kansas and Bethany Griffin of the University of Oklahoma.

The two day camp was held from 10-2 each day and worked on improving the tennis skills of Gruver youths.

Approximately 20 students attended the session with 12 high school students and 8 younger students enrolled.

### Get Well Wishes

Olene Cluck is now recuperating at home.

Henry Key will have surgery in Denver in August to remove a portion of her lung.

Herman Byrd, former Gruver resident now of San Antonio, has a very serious aneurysm problem which may require surgery.

**CENTER STAGE**  
2002-2003 ENROLLMENT  
AUGUST 12TH 7:00 P.M.  
204 S. CRUMLEY, GUYMON, OK.  
580-338-5437

STUDIO DOORS WILL OPEN AT 6:00 P.M.  
WE HAVE RECEIVED A NEW SHIPMENT OF DANCE WEAR.  
COME EARLY. SHOP OUR DANCE WEAR ROOM. PLACE ORDER OF SHOES.

**Book your seedwheat early with Farmers Ag Supply, L.L.C.**

Certified Tam 110 Greenbug Resistant  
Certified Custor • Certified Longhorn  
Certified Thunderbolt

*Come see us for your fertilizer needs.*

**Farmers Ag Supply, L.L.C.**

For more information, call 659-5000.  
703 Collard • Spearman, TX  
Lonnie Clemmons, Manager

**Tax-Free Weekend**  
Friday & Saturday  
August 2 & 3

**CALES**  
CLOTHING QUALITY SELECTION SERVICE  
HALF PRICES GOOD FROM AUGUST 2-3

221 MAIN ST. SPEARMAN, TX 806-659-3426  
STORE HOURS: MON-SAT. 9:00-6:00  
OWNERS: ALFRED & CINDY AVILA

NO SALES TAX COLLECTED ON PURCHASES MADE ON FRIDAY & SATURDAY AUGUST 2-3 (EXCEPT FOR JEWELRY, BUCKLES, WALLETS, OR ANY ITEMS SELLING FOR \$100.00 OR MORE)

**ALL MEN, WOMEN, & BOYS SUMMER CLOTHING**

**30% OFF**

**ALL MENS POLO & TOMMY JEANS \$39.95**

**CINCH JEANS \$32.95**

**SALE MENS LEVI JEANS 550 - 560 501 PREWASH**

30% OFF

**ALL MEN SHORTS-POLO-TOMMY-LEVI-BD BAGGIES-NO FEAR- 30% OFF**

**STRAW HATS WESTERN & FASHION 30% OFF**

**ADIDAS MEN-WOMEN-YOUTH 30% OFF**

**ASSORTMENT OF BOOT & SHOES (DR. MARTEN, BASS, DEXTER, AIRWALK, ADIDAS, RED WING) 1/2 OFF**

**DR MARTEN BOOTS, SHOES---\$99.00 SANDALS-----\$79.00 KIDS SIZE {3-5}---25% OFF**

**ALL BOYS SUMMER S/S SHIRTS & SHORTS-20X - LEVI--- 30% OFF**

**ALL BOYS JEANS-LEVI-WRANGLER-CINCH-(STUDENT-SLIM-REGULAR-HUSKY) 20% OFF**

**(ALL WOMEN CLOTHES-SHIRTS-PANTS-JEANS-(POLO-LEVI-ETC.)- 30% OFF)**

**GO With A Winner!**

**CFI** NOW HIRING:  
\* Company  
\* Solo & Teams!  
\* Owner Operators  
\* Loads With Miles Available Immediately!

\*ASK ABOUT OUR SPOUSE-TRAINING PROGRAM.

**1-800-CFI-DRIVE** [www.cfidrive.com](http://www.cfidrive.com)

**NT**

North Texas Information Systems  
Spearman, TX 664-3233  
Computer sales, service, & repair.  
Networking, house calls, pick up and delivery available.  
\*References available.

**IS**

**IS**

\*Microsoft Certified Professional  
\*CompTIA Certified Professional  
Member Spearman Chamber of Commerce

**E&S Services**

Heating • Air-Conditioning  
Refrigeration • Restaurant Equipment  
**(806) 273-5554**

*We sell and service all major brands.*  
Installations • Maintenance Contracts  
Financing Available • Senior Discount  
Local to Hansford County!  
Residential, Commercial, Industrial  
TACLA017813C

**Back-To-School SAVINGS**

Get an education in savings when you do your shopping with us!

**Tax-Free Weekend Sale August 2 & 3**

**10% OFF Storewide**

**Main Street Store**  
506 Main St. • Gruver, TX  
(806) 733-5040

**McCown PEST CONTROL**

**Total Pest Control Service**  
Serving Spearman & Area for 22 Years  
Specializing in home pest control and farm rodent control  
**(806) 935-7648**

**North Plains Roofing & Siding Co.**

**All Types Roofing**  
Commercial Builtup  
Shakes • Composition  
Free Estimates

Charles Eaton, local representative.  
659-2000

**Spearman Chamber of Commerce**  
Annual 3 Person Scramble

Saturday, August 10<sup>th</sup>  
Calcutta following 1<sup>st</sup> round  
Sunday, August 11<sup>th</sup>  
Hansford County Golf Course

\$45 per person plus cart

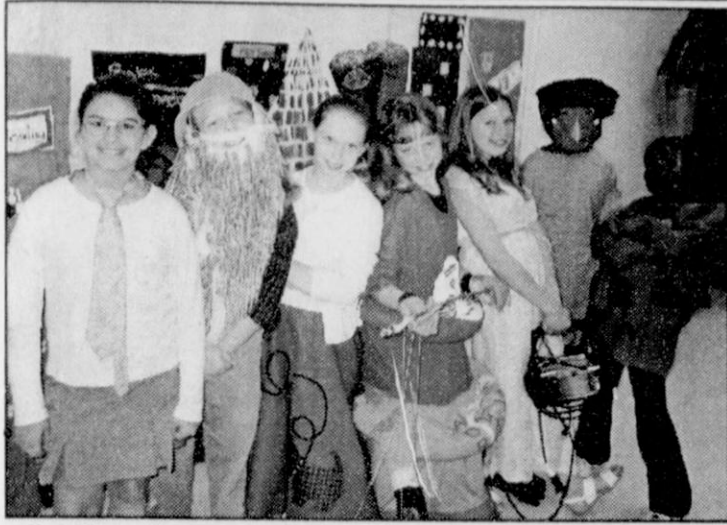
**#7 Hole in 1 Prize**  
**4 FOUR WHEELERS FROM**  
**FIVE STAR EQUIPMENT**

Additional Hole in 1 prizes include  
\*Set of Wilson Staff Irons  
\*Vacation Package  
\*DVD CD Player  
(Hole in 1 Prizes Saturday Only)

Call Charlie @ 659-2233 Call Justin @ 659-3875 Call Gina @ 659-5555 for details, registration, or to reserve your carts (# of carts ltd.)



## Odyssey of the Mind World Competition!



Courtney Vernon (center) is pictured above with her teammates at the Odyssey of the Mind World Competition.

by Courtney and Lynn Vernon  
Courtney Vernon, daughter of Lynn and Sandra Vernon of Friendswood, Texas, granddaughter of Jimmy and Kay Vernon of Spearman, Tx recently competed in the World Finals competition of Odyssey of the Mind.

Courtney and her team mates, Kaver Dillon, Rebecca Dockall, Meagan McKittrick, Wendi Doll, Gracie DeForde, and Afton Parker and coached by Lynn Vernon and Donna Dockall, and representing Bales Intermediate, are one of 32 teams that represented Texas at the Odyssey of the Mind World Competition held in Boulder Colorado on May 22nd through May 25th. There were a total of 700 teams represented from almost every state as well as other countries such as Poland, China, Japan, Russia, and many others.

Odyssey of the Mind is a non-profit competition that is based on creative problem solving and creative thinking. The competition is made up of three parts (long term problem, style, and spontaneous) with teams ranging in age from kindergarten (primary) to college (division IV). The team chooses a long term problem from several problems such as the 2002 problems "It's a Snap," "Ostrich Factor," "Center Stage," "Omer's Earthly Adventure," "Chameleon," and "Me and My Shadow" (primary team only). They then develop, produce, and present their solution to the problem at the competitions starting with Regional, then State, and on to World if they do well enough.

"Center Stage," the classic problem, was the problem chosen by this team this year for their long term problem. For this problem the team had to select a story from a

list of classic literature such as Frankenstein, Dracula, and Rip Van Winkle. They were to read the story and determine what the essence of the story is and produce and present a play based on the essence of the story. This is to be done within several guidelines for the problem such as the background must be altered, it must not cost more than a certain \$ amount for total materials including clothing, it must have a change in scene and time, a dance that is a minimum of 30 seconds long, and the total time to present must be less than 8 minutes long. This Bales' team chose Rip Van Winkle as the story to base their play on with a presentation of the essence of the story that "things change over time."

The team is responsible for developing everything that they do and use without any outside assistance from friends, parents, or even the coaches. The coaches and parents can only provide information and teaching on how to do something, it is up to the team as to how to use it for the problem resolution. An example of this is the coach or parents can teach or arrange a class on how to choreograph a dance but they can not tell the team how to solve the problem using this information. It is truly amazing the solutions that the teams develop for their problems and they are usually things that you would never think of. For example, this team developed several unique props and costumes that resulted in the team placing 13th out of 59 teams in the style portion of the competition at World.

Courtney Vernon's ideas including a caterpillar costume made up of old Odyssey of the Mind t-

shirts, swimming noodles, and gloves and six arms that all move in unison along with her design of the electronic membership sign representing a time machine and a tree trunk that grew over time resulted in Courtney winning an individual award at Regional Competition called the Ranatru Fuscu. This award is for outstanding creative problem solving and solutions and only four were given out at Regional competition. It is considered the highest award in Odyssey of the Mind.

The second part of the competition is style. This part of the problem is a competition of what is the teams style in producing and presenting the play such as keeping the theme of the essence of the play in everything they produced. Part of this team's style was that all of the props and several of the characters changed by many different methods though out the play.

The third part of the competition is spontaneous. During this part of the competition the team is taken into a room where a judge presents to them a problem and they are to develop a solution to the problem at that time. These problems are in categories from verbal, verbal - hands-on, to hands-on. They typically will take less than 15 minutes to complete. An example problem would be "Name things that have fish in it." The more creative the response the more points you receive. A common response would be catfish and this would get 1 point. A creative response would be things sure smell fishy around here or I am fishing for an answer. All of this is at the judgement of the judge as to whether it is creative or common.

This is a great experience to the kids to learn new things, to grow beyond what they know today, and to have the opportunity to meet and create friendships with other kids from around the world. For example this team became good friends with a group from Poland and Hong Kong during the World competition. They even exchanged e-mail address's to keep in touch.

If you want to know more about Odyssey of the Mind then you should go to: <http://www.odyssey-of-themind.com>. There you can learn more about the program and maybe even start a team for next years competition. Good Luck!

## Williams Responds To Pickens' Water Permit

by C.E. Williams, General Manager of the White Deer-based Panhandle Groundwater Conservation District

Newspapers, radio and television stations all across the state had varying versions of "Pickens gets the permit" in their headlines and lead-ins.

It concerns me greatly that this is all that people hear or understand about the process.

I would like to tell, as Paul Harvey says, "the rest of the story."

The board and staff of the Panhandle Groundwater Conservation District have spent the past 20 months working diligently to put safeguards in place to protect the Ogallala Aquifer, and the residents of the district - especially the people of Roberts County - from possible negative impacts of the proposed Mesa, Courson, QUIXX water transport projects.

The district hired Alan Dutton, with the Bureau of Economic Geology at the University of Texas, to do detailed modeling of the aquifer in Roberts County so the board would have good knowledge of the impacts to the aquifer. The district also hired Booth, Ahrens and Werkenith law firm of Austin to represent the district on legal issues.

We are given the authority by the Texas Legislature, through Chapter 36 of the Texas Water Code, to regulate the well spacing and production of water within the boundaries of our district. However, it's also clear in the code that we cannot prohibit the export of water from the district.

With this authority, we have provided several protections for the people of the district, which I would like to describe.

The most important protection is that permits require the producers to adhere to the District Rules and Management Plan, which states that they may not produce more than 50 percent of their water by 2048. Before any well drilling or production, the permit issued requires the applicants to identify destination users, which must be municipal users within the state of Texas, and accomplish this within five years, or the permit expires without further action by our board.

Even after the destination user is

identified, producers must commence construction within two years and complete construction within five years or the permit is terminated. Each destination user must file conservation and drought management plans with the district and agree to abide by those plans.

The district has over-depletion rules that permittees agreed to abide by. The permittees also will be assessed an export fee. The money will be used to do monitoring and recharge projects and may be used to assist affected neighboring landowners, to deepen or re-drill domestic and livestock wells.

The permittees must, at their own expense, construct a minimum of 25 monitoring wells, for all of the projects. These wells and others will be used by district staff to continually monitor and, if necessary, further regulate permittees' production back to acceptable levels.

The permittees agreed to not drill wells closer than one-half mile from any project boundary and will not drill more than two wells per section.

Importantly, the permits are issued "subject to the rules of the District as may be amended thereafter and to the continuing right of the District to supervise and regulate the depletion of the aquifer within the boundaries, as author-

ized by Chapter 36, Texas Water Code, as amended." This clause gives the district the right, ability and authority to see that permittees produce their water appropriately.

The district is continually working on win-win situations that allow the permittees to sell water to others here in the Panhandle and keep water in this area.

If we think outside the box, we can come up with some creative solutions.

The board of directors realizes that the permittees, as landowners and water rights holders, have the legal right to produce their own water under Texas law. The directors, after almost two years of legal wrangling and negotiating, came to the agonizing decision that adequate protections were in place and, by a 6-3 vote, issued the permits.

In my opinion, local control works. The Panhandle Groundwater Conservation District's board of directors and staff have performed their statutorily mandated function, and I guarantee that they will continue to do so.

A critical issue to remember is this: These are only proposed projects with many obstacles to overcome before one drop of water leaves Roberts County.

### Antalek Independent Services

Providing FAST Wireless Internet Service to Hansford County  
Check out our website!

[www.antden.com](http://www.antden.com)

#### 2002 Property Tax Rates

##### In PALO DURO RIVER AUTHORITY

This notice concerns 2002 property tax rates for PALO DURO RIVER AUTHORITY. It presents information about three tax rates. Last year's tax rate is the actual rate the taxing unit used to determine property taxes last year. This year's effective tax rate would impose the same total taxes as last year if you compare properties taxed in both years. This year's rollback tax rate is the highest tax rate the taxing unit can set before taxpayers can start tax rollback procedures. In each case these rates are found by dividing the total amount of taxes by the tax base (the total value of taxable property) with adjustments as required by state law. The rates are given per \$100 of property value.

Last year's tax rate:	
Last year's operating taxes	\$246,608
Last year's debt taxes	\$2,243,420
Last year's total taxes	\$2,490,028
Last year's tax base	\$1,979,022,817
Last year's total tax rate	0.12580 /\$100
This year's effective tax rate:	
Last year's adjusted taxes (after subtracting taxes on lost property)	\$2,486,095
/ This year's adjusted tax base (after subtracting value of new property)	\$1,982,934,222
= This year's effective tax rate	0.12537 /\$100
x 1.03=maximum rate unless unit publishes notices and holds hearing	0.12913 /\$100
This year's rollback tax rate:	
Last year's adjusted operating taxes (after subtracting taxes on lost property and adjusting for any transferred function, tax increment financing, and/or enhanced indigent health care expenditures)	\$246,219
/ This year's adjusted tax base	\$1,982,934,222
= This year's effective operating rate	0.01242 /\$100
x 1.08 = this year's maximum operating rate	0.01341 /\$100
+ This year's debt rate	0.11219 /\$100
= This year's rollback rate	0.12560 /\$100

#### Statement of Increase/Decrease

If PALO DURO RIVER AUTHORITY adopts a 2002 tax rate equal to the effective tax rate of \$0.12537 per \$100 of value, taxes would increase compared to 2001 taxes by \$15,662.

#### Schedule A

##### Unencumbered Fund Balances

The following estimated balances will be left in the unit's property tax accounts at the end of the fiscal year. These balances are not encumbered by a corresponding debt obligation.

Type of Property Tax Fund	Balance
MAINTENANCE & OPERATION	\$190,894
INTEREST & SINKING	\$165,339

#### Schedule B

##### 2002 Debt Service

The unit plans to pay the following amounts for long-term debts that are secured by property taxes. These amounts will be paid from property tax revenues (or additional sales tax revenues, if applicable).

Description of Debt	Principal or Contract Payment to be Paid from Property Taxes	Interest to be Paid from Property Taxes	Other Amounts to be Paid	Total Payment
SERIES 1992	\$1,470,000	\$652,706	\$30,000	\$2,152,706
Total required for 2002 debt service				\$2,152,706
- Amount (if any) paid from funds listed in Schedule A				\$0
- Amount (if any) paid from other resources				\$0
- Excess collections last year				\$0
= Total to be paid from taxes in 2002				\$2,152,706
+ Amount added in anticipation that the unit will collect only 96.00% of its taxes in 2002				\$89,696
= Total debt levy				\$2,242,402

This notice contains a summary of actual effective and rollback tax rates' calculations. You can inspect a copy of the full calculations at HANSFORD COUNTY COURTHOUSE - SPEARMAN TEXAS.

Name of person preparing this notice: HELEN DRY RTA  
Title: HANSFORD COUNTY TAX ASSESSOR-COLLECTOR

Date prepared: July 25, 2002

#### 2002 Property Tax Rates

##### In HANSFORD COUNTY

This notice concerns 2002 property tax rates for HANSFORD COUNTY. It presents information about three tax rates. Last year's tax rate is the actual rate the taxing unit used to determine property taxes last year. This year's effective tax rate would impose the same total taxes as last year if you compare properties taxed in both years. This year's rollback tax rate is the highest tax rate the taxing unit can set before taxpayers can start tax rollback procedures. In each case these rates are found by dividing the total amount of taxes by the tax base (the total value of taxable property) with adjustments as required by state law. The rates are given per \$100 of property value.

Last year's tax rate:		General Fund	Farm to Market/ Flood Control Fund
Last year's operating taxes	\$1,442,278	\$338,600	
Last year's debt taxes	\$0	\$0	
Last year's total taxes	\$1,442,278	\$338,600	
Last year's tax base	\$426,293,264	\$423,461,731	
Last year's total tax rate	0.33833 /\$100	0.07996 /\$100	
This year's effective tax rate:			
Last year's adjusted taxes (after subtracting taxes on lost property)	\$1,439,271	\$337,952	
/ This year's adjusted tax base (after subtracting value of new property)	\$428,100,319	\$425,339,682	
= This year's effective tax rate for each fund	0.33619 /\$100	0.07945 /\$100	
Total effective tax rate	0.41564 /\$100		
x 1.03=maximum rate unless unit publishes notices and holds hearing	0.42810 /\$100		
This year's rollback tax rate:			
Last year's adjusted operating taxes (after subtracting taxes on lost property and adjusting for any transferred function, tax increment financing, state criminal justice mandate, and/or enhanced indigent health care expenditures)	\$1,439,271	\$337,952	
/ This year's adjusted tax base	\$428,100,319	\$425,339,682	
= This year's effective operating rate	0.33619 /\$100	0.07945 /\$100	
x 1.08 = this year's maximum operating rate	0.36308 /\$100	0.08580 /\$100	
+ This year's debt rate	0.00000 /\$100	0.00000 /\$100	
= This year's rollback rate for each fund	0.36308 /\$100	0.08580 /\$100	
This year's total rollback rate	0.44888 /\$100		

#### Statement of Increase/Decrease

If HANSFORD COUNTY adopts a 2002 tax rate equal to the effective tax rate of \$0.41564 per \$100 of value, taxes would decrease compared to 2001 taxes by \$7.

#### Schedule A: General Fund

##### Unencumbered Fund Balances

The following estimated balances will be left in the unit's property tax accounts at the end of the fiscal year. These balances are not encumbered by a corresponding debt obligation.

Type of Property Tax Fund	Balance
MAINTENANCE & OPERATION	\$1,286,199

This notice contains a summary of actual effective and rollback tax rates' calculations. You can inspect a copy of the full calculations at HANSFORD COUNTY COURTHOUSE - SPEARMAN TEXAS.

Name of person preparing this notice: HELEN DRY RTA  
Title: HANSFORD COUNTY TAX ASSESSOR-COLLECTOR

Date prepared: July 19, 2002

#### 2002 Property Tax Rates

##### In HANSFORD HOSPITAL DISTRICT

This notice concerns 2002 property tax rates for HANSFORD HOSPITAL DISTRICT. It presents information about three tax rates. Last year's tax rate is the actual rate the taxing unit used to determine property taxes last year. This year's effective tax rate would impose the same total taxes as last year if you compare properties taxed in both years. This year's rollback tax rate is the highest tax rate the taxing unit can set before taxpayers can start tax rollback procedures. In each case these rates are found by dividing the total amount of taxes by the tax base (the total value of taxable property) with adjustments as required by state law. The rates are given per \$100 of property value.

Last year's tax rate:	
Last year's operating taxes	\$1,379,472
Last year's debt taxes	\$0
Last year's total taxes	\$1,379,472
Last year's tax base	\$426,217,244
Last year's total tax rate	0.32360 /\$100
This year's effective tax rate:	
Last year's adjusted taxes (after subtracting taxes on lost property)	\$1,376,595
/ This year's adjusted tax base (after subtracting value of new property)	\$428,099,377
= This year's effective tax rate	0.32155 /\$100
x 1.03=maximum rate unless unit publishes notices and holds hearing	0.33119 /\$100
This year's rollback tax rate:	
Last year's adjusted operating taxes (after subtracting taxes on lost property and adjusting for any transferred function, tax increment financing, state criminal justice mandate, and/or enhanced indigent health care expenditures)	\$1,376,595
/ This year's adjusted tax base	\$428,099,377
= This year's effective operating rate	0.32155 /\$100
x 1.08 = this year's maximum operating rate	0.34727 /\$100
+ This year's debt rate	0.00000 /\$100
= This year's rollback rate	0.34727 /\$100

#### Statement of Increase/Decrease

If HANSFORD HOSPITAL DISTRICT adopts a 2002 tax rate equal to the effective tax rate of \$0.32155 per \$100 of value, taxes would decrease compared to 2001 taxes by \$1.

#### Schedule A

##### Unencumbered Fund Balances

The following estimated balances will be left in the unit's property tax accounts at the end of the fiscal year. These balances are not encumbered by a corresponding debt obligation.

Type of Property Tax Fund	Balance
MAINTENANCE & OPERATION	\$0

This notice contains a summary of actual effective and rollback tax rates' calculations. You can inspect a copy of the full calculations at HANSFORD COUNTY COURTHOUSE - SPEARMAN TEXAS.

Name of person preparing this notice: HELEN DRY RTA  
Title: HANSFORD COUNTY TAX ASSESSOR-COLLECTOR

Date prepared: JULY 23 2002



# Meetings & Minutes

## Spearman Chamber of Commerce

The Board of Directors for the Spearman Chamber of Commerce met at noon on Thursday, June 13, 2002 at the Palo Duro Cafe. Members present were: Sharon Cook, Lenny Pecha, Kevin McDonald, Cindy Scribner, Justin Boyd, Cindy Blackman, Missie Bates, Rosalee Bueno and Gina Gillispie. Members absent were: Frosty Hickerson, Tindle Ramon, Rodney Sumner, Robert Patrick, Sergio Vargas, Mark Murray and Rosi Martinez.

President Sharon Cook called the meeting to order. Minutes and financials were discussed and approved as presented.

Women's Division: Cindy Blackman reported that the Miss Hansford Pageant was very successful. All proceeds from the quilt/bench/prom will allow for extra scholarships.

Retail Merchants: Gina reported that the windmills greatly appreciated the goody bags the merchants had put together. The Trade Fair was successful.

The July 4th fireworks display at Lake Palo Duro was approved to be held by the Palo Duro River Authority. A motion was approved to place donation boxes at the entrances of the lake.

There was some discussion on the upcoming golf tournament. It will be discussed further at the July meeting.

After discussion about Kid's Korner, the board agreed to donate \$100 per month until December to help with their operating costs. The board feels that this organization is very closely connected to the business climate in Spearman and that the Chamber needs to help in anyway possible for this organization to be able to continue to accommodate the working public. It was discussed that when the 2003 budget is being worked out,

the chamber will allow a portion of the budget to be used for this purpose by including a fundraiser with those proceeds specifically earmarked for that purpose. With no further business, the meeting was adjourned.

## Gladiola Flower Club

The Gladiola Flower Club met in the home of June Jackson on July 18th at 3 p.m.

President Verna Brown called the meeting to order. Roll call was "Show and Tell," demonstrating something you had made. Minutes were read and corrected. A treasurer's report was given.

Judy Yarbrough presented an interesting program on "Starting a Lily Pond, Container Garden and Fountain Containers." She recently finished a lily pond in her front yard.

Virginia Trindle won "Specimen," June Jackson won "Pot Plant."

The next meeting will be held on August 1st at 9 a.m. in the home of Gwen Smith.

Members present were: Wanda Brown, Muriel Boyd, Verna Brown, Dorothy Buzzard, Betty Jean Davis, Margarette Evans, Ann Flowers, Estelle Jackson, Lorene Kunselman, June Jackson, Norma Jean Mackie, Pam Schnell, Gwen Smith, Virginia Trindle and Judy Yarbrough.

## Spearman Rotary Club

Spearman Rotary meets every Monday at 12 noon at the Hungry Cowboy.

The July 15, 2002 meeting included a special meeting with a guest from Borger, Roger

Sepulveda, the Rotary Area 1 Asst. District Governor. He shared ideas with the incoming officers and chairmen on fundraising, club membership, and programs.

After lunch, he spoke to the club on the Rotary International goals for the coming year. The theme for Rotary 2002-2003 is "Sow the Seeds of Love."

Eradication of polio has been an on-going goal and still remains an important work for Rotary. Hunger is another area where Rotary is very active.

As of July 2002, the new officers are: Larry O'Neal - President, Jason Cantrell - President Elect, Jack McWhirter - Secretary/Treasurer.

Spearman Rotary Club is dedicated to our youth and community. We invite you to come by and visit and/or to join or club.

Our Motto of the things we Think, Say or Do is: 1) Is it the Truth?; 2) Is it fair to all concerned?; 3) Will it build good will and better friendships?; 4) Will it be beneficial to all concerned?

## Spearman Chamber of Commerce

The Spearman Chamber of Commerce Board of Directors met at noon at the Hungry Cowboy on Thursday, July 11, 2002. Members present were: Sharon Cook, Robert Patrick, Justin Boyd, Lenny Pecha, Kevin McDonald, Gina Gillispie, and special guest Jimmy Hatley. Absent were: Missie Bates, Cindy Blackman, Rod Sumner, Rosalee Bueno, Frosty Hickerson, Rosi Martinez, Mark Murray, Tindle Ramon, Cindy Scribner and Sergio Vargas.

The minutes of the June 13th meeting were approved as presented.

Jimmy Hatley, Education Correspondent for the IRS, gave a brief presentation on the educational tools and information offered by the IRS. The chamber will plan a workshop in the fall to provide this information to the local businesses.

The Golf Tournament Committee will meet at noon on Wednesday, July 17th at the office to discuss final details of the upcoming golf tournament (August 10-11).

Lenny passed out a proposal for requirements for Business/Citizen of the Year selections. Gina will get copies to all those absent for comments and discussion at the August meeting.

With no further business, the meeting was adjourned.



Pictured above are the Spearman Lions Club Officers for the 2002-2003 Fiscal Year. They are (Back, L-R) Clay Schnell - Director One Year, Harry Stumpf - Membership Chairman, Charles Newcomb - Lion Tamer, Britt Jarvis - Second Vice President, Rod Sumner - Tail Twister, Bret Burgin - President; (Front, L-R) Lenny Pecha - Director Two Year, John Nash - District Governor, Alton Ellsworth - Secretary, Randall Sauer - Co-Third Vice President and Director One Year, Cindy Blackman - Co-Third Vice President and Director Two Year, Brian Gillispie - First Vice President, and James Cunningham - Past President. Not pictured is Cecil Biggers - Treasurer.

# Go Tell Celebration

The Go Tell Celebration with Evangelist Rick Gage is the Texas panhandle's premier evangelistic event, and it's happening August 25th through the 28th, that's Sunday through Wednesday 7pm nightly at Borger Bulldog Stadium. According to Bill & Tammy Loveless, Rick Gage Crusade directors, "The key to a successful Crusade is the involvement of hundreds of Christians from the local churches working together to reach their community for Christ." There are well over 50 area churches now involved in the united effort. Dru Grogan, Crusade General Chairman, stated that "there is still plenty of room for other churches to come on board and join the event and reap the joyful benefits and spiritual renewal for many of their own members."

The next key event for the Rick Gage Go Tell Celebration is the Counselor's training at Cornerstone Church, 10th & Main in Borger. It's on Saturday, August 3rd beginning at 10 a.m. Gregg Moreland, Counseling & Follow-up chairman says, "Becoming a counselor is one of the greatest highs a Christian can attain, there's nothing like leading someone to the Lord. Being a Counselor is an opportunity for a mature Christian to become involved in the Great Commission in a very unique and personal way." For more information about becoming a Counselor during the Rick Gage Go Tell Celebration call Rhonda Register, at 806-273-9942.

## Naturalist Training Seminar - Fall Session

Wildcat Bluff Nature Center (WBNC) is looking for people interested in biology, geology, ecology, archeology, nature, conservation, education, and the Texas Panhandle history who would like to become volunteer naturalists to help WBNC by leading or assisting with educational hikes for groups and individuals.

A training session will be held Saturday, August 10, 2002, from 9 a.m.-3:30 p.m. at the Wildcat Bluff Nature Center (2301 N. Soney Road, Amarillo). Lunch will be provided.

The session will include: 1) introduction and tour of WBNC and the history of the area, 2) explanation of Libb's Trail and it's expansion, 3) challenges of leading hikes, 4) birds and 5) reptiles and amphibians. Plus, a question and answer session. There will also be discussion about Wildcat Bluff's mission statement, goals, policies and a review of the training manuals.

Please call 352-6007 and reserve your spot today; however, walk-ins are welcome.

Wildcat Bluff Nature Center's mission is to foster awareness, understanding, and appreciation of nature within the Texas panhandle and to encourage education in the natural sciences from a current and historical perspective.

For more information contact Sonya Berg at 352-6007.

IT'S THAT TIME AGAIN!

Pre-School is just around the corner.

Kid's Korner, Inc.  
Will be offering  
Pre-K classes for your  
3, 4 & 5 year old  
beginning  
September 3, 2002.

Give your child the foundation for  
SUCCESS!

Call Kid's Korner today for more  
information!

659-3179

## Machine Quilting and Monogramming

available at

Jo's This 'N' That

214 Main St. • Spearman

659-3999

Personalization & Custom Computer Designs Available

WE USE KODAK PAPER, FINE CHEMISTRY

WE USE KODAK PAPER, FINE CHEMISTRY

WE USE KODAK PAPER, FINE CHEMISTRY

WE USE KODAK PAPER, FINE CHEMISTRY

WE USE KODAK PAPER, FINE CHEMISTRY

WE USE KODAK PAPER, FINE CHEMISTRY

WE USE KODAK PAPER, FINE CHEMISTRY

WE USE KODAK PAPER, FINE CHEMISTRY

WE USE KODAK PAPER, FINE CHEMISTRY

WE USE KODAK PAPER, FINE CHEMISTRY

WE USE KODAK PAPER, FINE CHEMISTRY

WE USE KODAK PAPER, FINE CHEMISTRY

WE USE KODAK PAPER, FINE CHEMISTRY

WE USE KODAK PAPER, FINE CHEMISTRY

WE USE KODAK PAPER, FINE CHEMISTRY

WE USE KODAK PAPER, FINE CHEMISTRY

WE USE KODAK PAPER, FINE CHEMISTRY

WE USE KODAK PAPER, FINE CHEMISTRY

WE USE KODAK PAPER, FINE CHEMISTRY

WE USE KODAK PAPER, FINE CHEMISTRY

WE USE KODAK PAPER, FINE CHEMISTRY

WE USE KODAK PAPER, FINE CHEMISTRY

WE USE KODAK PAPER, FINE CHEMISTRY

WE USE KODAK PAPER, FINE CHEMISTRY

WE USE KODAK PAPER, FINE CHEMISTRY

WE USE KODAK PAPER, FINE CHEMISTRY

KID'S STUFF  
719 WEST 7<sup>TH</sup>  
SPEARMAN, TX

FRIDAY  
AUG. 16

PHOTO HOURS  
10-1 & 2-5

\$ 12<sup>99</sup>  
plus tax  
1 - 10X13  
1 - 8X10  
2 - 5X7s  
2 - 3X5s  
16 King Size Wallets  
8 Regular Size Wallets



Shugart's inc.

WE USE KODAK PAPER, FINE CHEMISTRY

## FEN-PHEN Pondimin & Redux

LAWUIT FILING DEADLINES RUNNING SOON!

HEART PALPITATIONS, RACING HEART, SWELLING IN FEET & ANKLES, SHORTNESS OF BREATH, FATIGUE  
If you took these diet drugs for 2 months or longer AND you are having any of these symptoms, then call for a FREE CONFIDENTIAL CONSULTATION. If eligible, a FREE ECHOCARDIOGRAPHIC TEST (non-invasive) will be set up for you and your test results will be kept confidential.

WILLIS LAW FIRM BOARD CERTIFIED  
DAVID P. WILLIS DAVID P. WILLIS  
Attorney at Law Attorney at Law  
Houston, Texas Houston, Texas  
Texas Board of Legal Specialization

Call 1-800-883-9858 or 713-654-4040

## Health Benefits For The Entire Family

only \$74 Per Month  
(With No Deductible!)

FLAT RATE - GUARANTEED ACCEPTANCE!  
SELF-EMPLOYED OR NOT - NO INCREASE!

MEDICAL DISCOUNTS:  
\* DOCTOR \* DENTAL \* VISION \* RX \* MORE!

Call Toll-Free: 1-888-829-8509

NO FEE FOR FIRST VISIT

Industrial or Toxic

May occur 30 to 50 years after exposure to asbestos. Many workers were exposed from the 1940s through the 1970s. Industrial maintenance and operators are among those at risk for mesothelioma, throat cancer or lung cancer. Call us for professional insight.

Ryan A. Krebs, MD, JD  
Richard A. Dodd, L.C.  
Timothy R. Cappolino, P.C.

1-800-460-0606  
www.asbestoslaw.com

## It's Time to Be Debt Free

You can be debt free years sooner with a Debt Management Plan from FCCS.

We have helped thousands of Texas families and individuals just like you.

Low Payments  
Reduce Interest  
No Credit Check  
Stop Late Fees  
Stop Collector Calls

FAMILY Credit Counseling Service www.familycredit.org

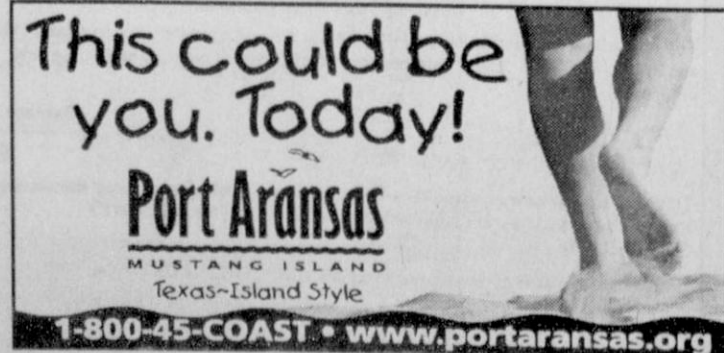
Recorded Message 800-457-6178 Non-Profit Licensed & Bonded

## DIABETICS

Tired of jumping through hoops to get your diabetic supplies?

Have your diabetic supplies delivered to your door for little or no cost!  
Medicare and private insurance welcome (sorry, HMO's not accepted).

Call Priority Medical Supply, LLC  
Your complete satisfaction is our Priority!  
Toll Free: 1-866-680-1716



1-800-45-COAST • www.portaransas.org



# CLASSIFIED ADS

CALL TODAY!  
(806) 659-3434

### REAL ESTATE FOR SALE

**FOR SALE BY OWNER:** 1106 S. Bernice - UNDER CONTRACT - 3BR, 2B home, 2 car garage, storm shelter, storehouse, sprinkler system. Call 659-3809. Shown by appointment only. TFN(5-23-02)B

**FOR SALE OR RENT:** 3BR house, 1B, 1-car garage, 702 Bernice. Call 659-2409 after 5 p.m. or 659-2846 during the day. TFN(6-6-02)B

**FOR SALE:** 3BR house with basement, garage and shop on 10.5 acres. Located 1/2 miles west of Gruver. Call 733-2250. 8(6-13-02)B

**FOR SALE:** 3BR, 1 3/4B, 1CG, large kitchen/utility room, wood-burning stove, Central H/A, sprinkler system, storage building w/office, fenced yard. Great location - excellent condition. Call 659-2628. TFN(7-18-02)B

**FOR SALE:** 3BR, 2B home on 5 acres of land in Gruver School District. Storm shelter, mature trees, 2-car garage, new roof, septic system, two water heaters, house well pump. Call 662-3968. 5(8-1-02)B

### FOR RENT/LEASE

**FOR RENT:** 1BR apartment. Call 659-3260. TFN(10-19-00)B

**FOR RENT:** 2BR apartment. Call 659-9971. TFN(11-16-00)B

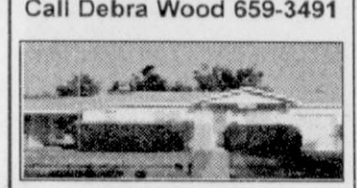
**FOR RENT:** 1BR furnished apartment. Bills paid. Call 659-2247. 1(7-25-02)P

**FOR LEASE:** Cash lease - 405 acres of dry land in Hutchinson County. Call 620-241-1735. 4(7-11-02)

Let Us Sell Your Property!

## HOMETOWN REALTY

Call Debra Wood 659-3491



**NEW LISTING**  
712 Cotter. Very nice, 2/3BR, 2B home. Large living room w/dining area, office, sewing room, 2 car carport & additional RV carport, sunroom w/storage area, very large backyard w/covered patio and storage building. Call for details. **PRICE REDUCED!**

322 S. Haney. Lovely 2BR, 1B, beautiful yard, detached double garage, storage sheds, finished craft room. Includes separate 1BR apartment. Come take a look! Call for details.

**COMMERCIAL PROPERTY**  
For Sale - 517 & 519 Plains Shopping Center. Great location, ready for business. Call for details.

For Rent: Nice office space. Downtown location, off Main.

Debra Wood  
Spearman, 659-3491  
Diana Hoover, Booker, 658-9113  
Rex Hoover, Broker, 866-755-4291

Visit us at  
[www.hometownagent.com](http://www.hometownagent.com)

Real Estate & Rental

**Spearman Property**  
19 N. Hoskins - 2BR, 2B, carport  
702 S. Bernice - 3BR, 1B, 1CT

**Gruver Property**  
809 Richardson - 2-3BR, 2B, carport, ready to move in  
202 Richardson - 2-3BR, 1 1/2B, 2 car garage, utility, sun room

514 Cluck - 2-3BR, 1 1/2B, carport, brick, fruit trees, corner lot  
802 Womble - 2-3BR, carport, corner lot  
311 Chase - 2-3BR, 1B, carport & garage  
120 N Cooper - 4BR, 2 1/2B, 2CG, deck, sunroom - REDUCED  
115 N Cliff - Harris Edition

**Rural Property**  
12 mi E on 759, Cty Rd 5 - 3B, 2B, w/acres

**Rental Property**  
available in Gruver

**Real Estate & Rental**  
for all your real estate needs!

Melinda McCullough, Assoc. (806) 733-5678  
Dawn Brown, Assoc. (806) 274-3568  
Chris Scroggs, Broker  
Toll Free: 1-877-664-5050  
[www.realestateandrental.com](http://www.realestateandrental.com)

### HELP WANTED

**HELP WANTED:** Senior Village Nursing Home has a position open for a Medication Aide. Please apply at 3101 S. Main in Perryton, or call 435-5403. 1(8-1-02)B

**HELP WANTED:** Director of Patient Financial Services - Hansford County Hospital has full-time position open. This position will direct and coordinate patient billing and collections for Business Office and Clinics. Must have strong organizational skills, patient billing and medical records experience. Excellent Benefits package, salary commensurate with experience. Apply at 707 S. Roland, Spearman, TX or contact Scott Beedy, CFO at 806/659-2535, ext. 3343 or Lisa Unruh, Personnel, at ext. 3225. EOE. 1(8-1-02)B

**HELP WANTED:** Hansford Manor is taking applications for a full-time Activities Director. Must be dependable, creative, enjoy working with elders, have supervisory experience, and be a team player. Outstanding benefits, salary commensurate with experience. Applications available at Personnel Office, Hansford County Hospital District, 707 Roland, Spearman, TX 79081, or contact Anne Snow, Hansford Manor Administrator at (806) 659-2535, EOE. 2(7-25-02)B

### SERVICES

**HOUSE SETTLING?** Cracks in brick or walls? Doors won't close? Call Childers Brothers Stabilizing & Foundation Leveling. 1-800-299-9563 or 806-352-9563 Amarillo, TX. 5(2-8-02)P

**I'M MAD...** at banks who don't give house loans because of bad credit, problems or new employment. I do. Call L.D. Kirk, homeland Mortgage, (254) 947-4475. 1(8-1-02)P

**TAKING ORDERS NOW**  
for Colorado Sweet Corn, Peaches and Nectarines. Call 659-3816 or 659-2786, 6(7-11-02)B

### AGRICULTURAL

**FOR SALE:** 94 Rogator Sprayer, 900 ft. booms, GPS, stainless steel tank, 4-wheel drive, raven flow controller, 12,000 gal. fiberglass fertilizer tank w/meter & pump, 1000 gallon Willey poly trailer. Also, 4000 gal. 28% nitrogen fertilizer. Call 659-5950, 898-2922 or 659-3494. 2(7-18-02)P

### VEHICLES

**FOR SALE:** 2001 Camero - \$18,500. Call (806) 733-2818. 1(7-25-02)B

**FOR SALE:** 2001 Suzuki Marauder 800 - \$3,500. Contact Bret Burgin at 659-5565. 1(8-1-02)B

### FOR SALE

**FOR SALE:** Wolfe 24-bulb tanning bed - \$800. Call 733-2809. 3(7-25-02)B

**FOR SALE:** Quality Firewood. Order early for best price! Will also cut and/or split your wood. Call 435-9933, leave message. 1(8-1-02)B

**FOR SALE:** 2 gas-powered clothes dryers. Good condition, reasonably priced. Call 435-9933, leave message. 1(8-1-02)B

### WANTED

**WANTED:** Two cute kittens for good home. Call 753-4423 or 664-8621. 1(8-1-02)

### GARAGE SALE

**ESTATE SALE:** Saturday August 3rd, 9 a.m.-?, Morse, TX. Lydie Cook Residence - 402 S. Third. Electric stove, furniture, household items, bedroom suite, nice dinette set, beds, etc. 1(8-1-02)B

**YARD SALE:** Saturday August 3rd, 8 a.m.-12 noon, 4 miles south Hwy. 207 & 1 mile west CR 2. Baby clothes, toys, furniture, yard tools, shelves, patio furniture, dishes, kitchen items, computer desk, coffee table, couch, and much more! 1(8-1-02)P

### LEGAL NOTICE

**NOTICE OF SHERIFF'S SALE**  
The State of Texas  
County of Hansford  
By virtue of Writ of Execution issued out of the honorable United States Bankruptcy Court, Northern District of Texas, on the 25th Day of June 2002 by the Clerk thereof, in the case of  
Plaintiff: National Loan Investors, L.P.  
vs.  
Defendants: Willard McCloy and Beatrice McCloy  
Cause Number 298-21403-JCA-7, Adv. No. 2012, and to me as Sheriff directed and delivered, I will proceed under National Loan Investors, L.P.'s abstract of judgment lien recorded in volume 209 at page 146 of the Hansford County Records, to sell, at 10:00 o'clock a.m. on the 6th day of August, 2002 which is the first Tuesday of said month, at the official door of the courthouse of said Hansford County in the City of Spearman, Texas, the following-described property to wit:  
An undivided 1/2 mineral interest in all of Section 20, Blk. 5-T & N) RR Company Survey, Hansford County, Texas, less 14.31 acres of abandoned RR Right of way, i.e. a total of 312.845 net mineral acres.  
Levied on this 27th day of June 2002 as the property of: Beatrice and Willard McCloy to satisfy, in part, a judgment amounting to \$1,406,722.12 with interest calculated at the rate of 10% per annum from the date of the judgment until January 27, 1999.  
Given under my hand the 26th day of June, 2002.  
R.L. McFarlin, Jr.  
Hansford County Sheriff  
By: Lance A. Swan  
Hansford County Deputy  
2(7-25-02)B

**NOTICE OF APPLICATION FOR DISPOSAL WELL PERMIT**  
COMPANY NAME: Exxon Mobil Corporation  
ADDRESS: PO Box 4358, Houston, TX 77210-4358  
is applying to the Railroad Commission of Texas for a permit to dispose of oil and gas waste by injection into a porous formation which is not productive of oil or gas. The application process to inject saltwater and oil and gas wastes that are exempt from regulation under Subtitle C of the Federal Resource Conservation Recovery Act into the Glorieta formation, H.J. Collier "E" lease, Well No. 2, located 4 miles southwest from Hitchland, TX and in the Hitchland Field in Hansford County. The oil and gas waste will be injected into strata in the subsurface depth interval from 1050' to 1150' feet.

**Hansford County, TX - 210 Acres**  
divided by Hwy 207, two irrigation wells and U.G. pipe, nice farm  
**Moore, Texas - 1388 acres**, two 1/2 mile sprinklers, 6 ir. wells, fully fenced w/barbed wire & steel post, good help house, 3 mi. hwy frontage.

[www.scotlandlandcompany.com](http://www.scotlandlandcompany.com)  
Bon G. Scott - Broker  
1-800-933-9698 - day/night

## HOME OF THE WEEK



**905 S. Archer**  
Across From Park - This large 2 bedroom, 2 bath, 2 car garage home will delight any buyer.

*New in Gruver - 304 Cluck - 3BR, 1B*

**Century 21**  
Golden Spread Realty  
200 S. Main • (806) 659-5444 • Perryton, TX  
©1992d and™ Century 21 Real Estate Corporation. Equal Housing Opportunity. INDEPENDENTLY OWNED AND OPERATED.

**LEGAL AUTHORITY:** Chapter 27 of the Texas Water Code, as amended Title 3 of the Texas Natural Resources Code, as amended, and the Statewide Rules of the Oil and Gas Division of the Railroad Commission of Texas.  
Requests for a public hearing from persons who can show they are adversely affected, or requests for further information concerning any aspect of the application should be submitted in writing, within fifteen days of publication, to the Environmental Services Section; Oil and Gas Division; Railroad Commission of Texas; PO Drawer 12967 - Capitol Station; Austin, TX 78711-2967 (Telephone: 512-463-6792). 1(8-1-02)B

**NOTICE TO BIDDERS**  
Sealed proposals for a one year contract for bulk fuel will be received by the City of Spearman, Texas, until 11:00 a.m., August 16, 2002, and then publicly opened and read.  
The City reserves the right to reject any or all bids, to waive informalities and to accept the bid deemed to be the most advantageous to the City. All bids received after the above closing hour will be returned unopened.  
All bids shall be sealed and marked on the outer envelope "Bulk Fuel."  
Specifications and bidding documents may be secured from PO Box 37, Spearman, Texas 79081. 2(8-1-02)B

**Alva Monument Co.**  
Formerly Liberal Monument & Memorial Company

**New Location:**  
111 Tucker Road  
Liberal, Kansas

**North of the New Wal-mart**

**Liberal Alva**  
1-888-654-9138 1-800-344-4605

**Peaches** Tell your friends!

**Colorado Peaches & Bartlet Pears from Palisade!**  
Straight from the grower to you! Tree ripe, juicy and bursting with flavor. From the tree to the box, to bring you the best quality shippable. Refrigerated. Semi-load. Reasonable - only \$17.50 per box!  
**Cunningham's - 602-738-4586.**  
Will be in Spearman at the Alco Parking Lot on Thurs., Aug. 8 from 8 a.m.-5:30 p.m.

**Eat & Be Merry At**

## MONKEYS

**BBQ & STEAK HOUSE**  
Hotline for Friday & Saturday Nights - 435-3945

**We offer Priority Seating!**  
Give us a call before leaving, and we will save you a place in the seating line.  
When you arrive, check in with the hostess.

**New Menu (10 new items)**  
**Wed. Night - All-You-Can-Eat Catfish**

## TEXAS STATEWIDE CLASSIFIED ADVERTISING NETWORK

# TexSCAN

**TexSCAN Week of July 28, 2002**

**1-800-CARMIITY!** DONATE YOUR vehicle directly to the original nationally acclaimed Charity Cars, 100% charity - not a used car dealer/fundraiser. 1-800-CHARITY (1-800-242-7489). [www.800charitycars.org](http://www.800charitycars.org)

**BUSINESS OPPORTUNITY**  
ABSOLUTELY A MUST call! Do you earn \$2K a week? Local Candle Route. No selling. Work 4-6 hours/week. \$0 down. O.A.C. Minimum investment - \$8,000.00. 1-800-813-7405, 24 hours. Candles of America.

**DRIVER TRAINING**  
**DRIVER - FREE CDL** truck driver training when you join our Trucking Outdoor Club. Included are meals, lodging, license and permit. Call 1-903-389-5259. Trucking Street, Inc. 113 County Rd. 370, Fairfield, TX 75840.

**EMPLOYMENT INFORMATION**  
**GOVERNMENT POSTAL JOBS** - Up to \$47,578 year. Free call for application/exam information. Government hire - full benefits. Now testing. 1-800-842-1622, ext.250.

**FINANCIAL SERVICES**  
**BE DEBT FREE** - years sooner. Low payments. Reduce interest. Stop late fees. Stop collectors. Family Credit Counseling. Non-profit Christian Agency. Recorded message. 1-800-457-6176. Free quote: [www.familycredit.org](http://www.familycredit.org)

**SECASIS** - IMMEDIATE CASH for structured settlements, annuities, real estate notes, accident cases and insurance payouts. J. G. Wentworth. 1-800-794-7310.

**CREDIT CARD DEBT?** Stop collection calls. Cut finance charges. Cut payments up to 50%. Debt consolidation. Fast approval. No credit check. Avoid bankruptcy. National Consolidators. 1-800-270-9894.

**IMMEDIATE CASH!** US Pension Funding pays cash now for 34 cpm, OTR start 32 cpm. Six months OTR experience w/CDL-A. Ask for Harold/Bob, National Freight. 1-800-666-0380.

**UNSECURED LOANS & Free Cash Grants!** Grant Search, Inc. From \$5,000-\$50,000. Never repay (if qualified), personal, business, educational, medical, etc. Fast approval. 1-800-750-7614.

**FOR SALE**  
**STEEL BUILDINGS...** "ROCK bottom prices!" Go direct and save. 20x24 \$2,200.00. 25x30 \$3,200.00. 30x40 \$4,300.00. 32x44 \$5,800.00. 35x50 \$6,200.00. Many others. 1-800-668-5422. Pioneer, since 1980.

**WOLF TANNING BEDS** - Affordable, Convenient. Tan at home. Payments from \$25/month. Free color catalog. Call today. 1-800-842-1305. [www.wolftanning.com](http://www.wolftanning.com)

**HEALTH**  
**WOMEN ON HORMONES** - Premarin, Prem or Prempre - these drugs may cause breast cancer, heart attack, death, stroke and blood clots. Confidential consultation. Grossman & Waldman, 1-800-833-9121.

**HELP WANTED**  
**EXCELLENT INCOME POTENTIAL!** Become a medical biller. No experience needed. Computer required. Training. Toll free. ClaimCo., 1-866-MED-CLMS - 1-866-633-2567. Dept. 314.

**MISCELLANEOUS**  
**NMPottery.com LOG ON NOW!** Free shipping. Direct Studio Outlet. Easy care elegant cookware and dinnerware. Signed Originals. Wedding, Corporate or Christmas gifts. Wholesale/Retail. 1-505-897-0271.

**PET SUPPLIES**  
**SEVERE TICK PROBLEMS?** Happy Tick's Novation Flea/Tick collar with patented slow release kills quicker with longer residual. Contains no growth regulators. At Farm & Hardware Stores.

**REAL ESTATE**  
**A FREE LIST!** Affordable hunting ranches for sale. 100+ acre tracts, lowest prices. E-Z terms! Texas Land & Ranches. Toll free: 1-866-899-5263.

**BOWHUNTERS RARE OPPORTUNITY!** High fence game ranch liquidation. 150-180 B+C whitetails, turkey, quail, and exotics. \$29,900. EZ terms. Texas Land and Ranches. Toll free 1-866-516-4868.

**436+ ACRES NEAR Sanderson**, end of road, \$175/acre, 5% down. Deer, Javelina and birds. Access to water. Ranch Enterprises, 1-866-286-0199, [www.westsland.com](http://www.westsland.com)

**GRAZING RANCH WANTED!** Profubility, AUMs, water, beauty not important. Interested only in sizeable deeded acres at low per acre price. Serious, qualified buyer. Doug. 1-949-764-9191.

**HIGH FENCE RANCH** Liquidation - Acreage available - \$29,900. Direct deeded access to game preserve. Trophy Whitetail, exotics, fishing. Great recreational opportunity. Financing available. Texas Land and Ranches, 1-888-565-7592.

**LAND BARGAIN! BEAUTIFUL N.E. Texas** piney wood acreage. Private lake and horse stables. As low as \$24,900. Call Texas Land and Lakes, 1-800-707-8038.

**NEW MEXICO MOUNTAINS**, 140 Acres - ONLY \$39,900. Gorgeous grasslands, mature tree cover, 6,500' elevation, snow-capped mountain views, year-round roads, nearby electric. Perfect for horse lovers. Great hunting property, adjacent to national forest. Excellent financing. Call today. SW Properties of NM, Inc. 1-866-350-5263.

**98 ACRES END of road**, borders large ranch, 5-Deer County, heavy cover. Rocksprings, TX. \$650/Acre. owner terms. 1-830-237-5627 - 5926.

[www.texasranchland.com](http://www.texasranchland.com)

**RANCH SALE - 35 acres** \$59,900. Magnificent Colorado ranch at 8,000' elevation. Mix of meadows with spring-fed ponds, aspen and pines. Stunning views. Nearby Ferrisville. Good terms. Call Colorado Land & Ranches, 1-866-353-4809.

**RESORTS/VACATIONS**  
**BRANSON CHRISTMAS DEC.** 9-13. 5D/4N. From Dollywood. Shows, 8 meals, tours, shopping. FIRST CLASS all the way. Reservations or info 1-800-489-0083. 1-830-237-5627 - 5926. [www.resortsales.com](http://www.resortsales.com). Void where prohibited.

**PANAMA CITY BEACH**, Sandpiper-Beacon Beach Resort. Membership/Timeshare. We'll take it. Selling \* buying \* renting! Call the best. Don't use the rest. World Wide Vacations, 1-800-423-5967. [www.resortsales.com](http://www.resortsales.com). Void where prohibited.

**GOT A CAMPGROUND?** Membership/Timeshare. We'll take it. Selling \* buying \* renting! Call the best. Don't use the rest. World Wide Vacations, 1-800-423-5967. [www.resortsales.com](http://www.resortsales.com). Void where prohibited.

**PANAMA CITY BEACH**, Sandpiper-Beacon Beach Resort. Membership/Timeshare. We'll take it. Selling \* buying \* renting! Call the best. Don't use the rest. World Wide Vacations, 1-800-423-5967. [www.resortsales.com](http://www.resortsales.com). Void where prohibited.

**NOTICE:** While most advertisers are reputable, we cannot guarantee products or services advertised. We urge readers to use caution and when in doubt, contact the Texas Attorney General at 1-800-621-0508 or the Federal Trade Commission at 1-877-FTC-HELP.

**Call this Newspaper to Advertise Statewide or Regionally, or Call 512-477-6755**



# Golden Agers Go For Gold In Senior Olympics

Hansford Manor residents brought home a lion's share of honors from the 2002 Golden Senior Olympic Games held in Guymon.

Sixteen Hansford Manor Olympians competed against residents of other nursing homes at the Texas County Fair Building, July 19.

The Spearman team repeated their 2001 performance by bringing home the 2002 Senior Olympic Championship title.

A major victory for Hansford Manor was the first place win in the volleyball competition. Team members were Louis Flowers, Robert Yanke, Paul Allison, J.B. Buchanan, Grace O'Brennan, Bennie Beeson, Opal Bradford, Pauline Pshigoda, Eva Lee Sheets, Sue Ferrell, Georgia Biggers, Pauline Winger, Marie Coates, and Leona Harris.

Other winners included J. B. Buchanan, first place in the special division basketball; Leona Harris, third place in special division basketball; Bennie Beeson, third place in the division I wheelchair race; Robert Yanke, first place in the division I walking contest; and Grace O'Brennan, second place in the division II basketball contest.

Bennie Beeson was honored with the title Ms. Golden Senior Olympian for earning the most individual points in different events.

Assisting the Olympians on the trip were Charles Brillhart, Peggy and Alton Ellsworth, Myrna Biggers, Hilary Biggers, Mary Kay Harbour, Roger Buchanan, Nellie Buchanan, Kelly Cator, Audra Thomas, and Don Burke as well as staff members of the Manor, many who donated their time, to travel with the group.

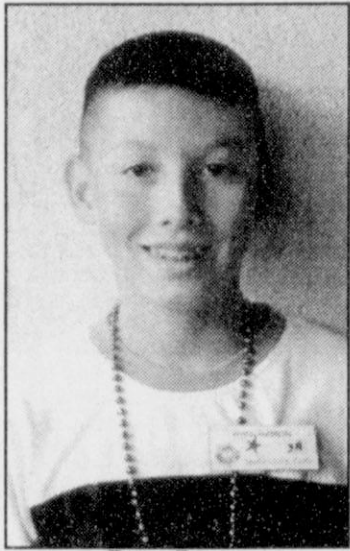


Hansford Manor Olympians who competed in numerous events at the Guymon Golden Senior Olympics are (L-R) Pauline Pshigoda, Bennie Beeson who was crowned queen of the olympics for amassing the highest number of points, Eva Lee Sheets, and E.J. Wade and Daisy



Senior Olympians who competed in the Guymon 2002 Golden Senior Olympics (Front, L-R) Maria Coates, Georgia Biggers, Grace O'Brennan, and J.B. Buchanan. (Back, L-R) - Leona Harris, Alice Kirby, Pauline Winger, and Robert Yanke.

## Ramon Attends Texas Lions Camp



Ryan Ramon

1 diabetes.

This summer, Ryan Ramon of Spearman attended the Texas Lions Camp in Kerrville July 8-12. Ryan was sponsored by Brian Gillispie of Spearman Lions Club. He is the son of Tindle and Kristi Ramon.

The Texas Lions Camp offers camping sessions to children ages seven through 16 who have visual, hearing, or physical disabilities. The camp offers a wide variety of activities for camper's enjoyment, including arts & crafts, field sports, riding horses, swimming, theater, and camping out overnight. The camp is a nonprofit organization, funded by the Lions of Texas and private donations. Children attend the camp at no cost to themselves or their families.

Further information and camper applications may be obtained by contacting a local Lions Club member, or by contacting the Texas Lions Camp, PO Box 290247, Kerrville, TX 78029-0247; V/TDD (830) 896-8500; fax (830) 896-3666. The Texas Lions Camp can also be found on the web at [www.lionscamp.com](http://www.lionscamp.com).

Thanks to the Lions Clubs of Texas, many children with physical disabilities can look forward to an experience that all children dream about - going to summer camp! The Texas Lions Camp in Kerrville offers special camping programs that serve children who have physical disabilities and type



Rounding out the Hansford Manor Senior Olympic team are (L-R) Sue Ferrell, Opal Bradford, Paul Allison, and Louis Flowers.

**SERVANTEZ ESTATE REPAIR**

**Tree Service**  
Topping, Pruning  
Cleaning, Removal

**Carpenter Work**  
Painting, Siding,  
Metal & Shingle Roofing  
Porches, Fences & Decks  
Remodel Work

Cell (806) 886-7885      Home (806) 659-5073

**Dr. Rick Sheppard, D.D.S.**

**1-800-687-2010**

•Family Dentistry •Braces

146 Pioneer • Booker, TX

**TEETH FOR A LIFETIME**

Listen to  
**KRDF-FM 98.3**

Hot Country Stereo  
'Till Midnight

**SUBSCRIBE TODAY**

**The Hansford County Reporter-Statesman**

\$25.00 in County • \$30.00 Out of County

213 Main Street • (806) 659-3434 • Spearman, Texas

GET A  
**400**  
WARP WINCH  
OR PLOW  
for just \$69.95

-PLUS-

**0.0% INTEREST**    **0 DOWN AND 0 PAYMENTS**  
FOR 6 MONTHS

**Five Star Equipment, Inc.**

\*\*\*\*\*

Spearman, TX      659-3743

2000 lb. Warp Winch/Plow offer available through participating Yamaha dealers only, June 14, 2002 - Dec. 31, 2002. Offer good on all new 2003 (or new prior year) Grizzly 660, Kodiak 450, Kodiak 400 4wd/2wd, Big Bear 400 4wd/2wd. Dealer participation may affect this offer. Installation not included. Finance offer available through participating Yamaha dealers only, July 1, 2002 - Dec. 31, 2002, good on any 2003 (or new prior year) Yamaha ATV. On the Yamaha card, subject to credit approval. Finance charges will not be imposed on this purchase and payments will not be required during the 6 months promotional period if your account is kept current. Standard Rate 17.9% APR. For accounts not kept current, the Default rate 21.9% APR will be applied to all balances. Minimum finance charge \$1.00. For the Yamaha dealer nearest you call: 1-800-88-YAMAHA. Visit our website at [www.yamaha-motor.com](http://www.yamaha-motor.com).

ATVs with engine sizes of 90cc or greater are recommended for use only by those age 16 and older. Yamaha recommends that all ATV riders take an approved training course. For safety and training information, see your dealer or call the ATV Safety Institute at 1-800-887-2867.

### NOTICE OF PUBLIC MEETING TO DISCUSS BUDGET AND PROPOSED TAX RATE

The Gruver ISD will hold a public meeting at 6:00 PM, August 13, 2002 in the board room of the high school building at 600 Garrett Street in Gruver, Texas.

The purpose of this meeting is to discuss the school district's budget that will determine the tax rate that will be adopted. Public participation in the discussion is invited.

The tax rate that is ultimately adopted at this meeting or at a separate meeting at a later date may not exceed the proposed rate shown below unless the district publishes a revised notice containing the same information and comparisons set out below and holds another public meeting to discuss the revised notice.

Comparison of Proposed Rates with Last Year's Rates					
	Maintenance & Operations	Interest & Sinking Fund*	Total	Local Revenue Per Student	State Revenue Per Student
Last Year's Rate	\$1.3134	\$0.0000	\$1.3134	\$7,160	\$1,877
Rate to Maintain Same Level of Maintenance & Operations Revenue & Pay Debt Service	\$1.5175	\$0.0000	\$1.5175	\$8,518	\$519
Proposed Rate	\$1.5000	\$0.0000	\$1.5000	\$7,698	\$519

\* The Interest & Sinking Fund tax revenue is used to pay for bonded indebtedness on construction, equipment, or both. The bonds, and the tax rate necessary to pay those bonds, were approved by the voters of this district.

Comparison of Proposed Levy with Last Year's Levy on Average Residence		
	Last Year	This Year
Average Market Value of Residences	\$45,873	\$46,100
Average Taxable Value of Residences	\$30,873	\$31,100
Last Year's Rate Versus Proposed Rate per \$100 Value	\$1.3134	\$1.5000
Taxes Due on Average Residence	\$405.49	\$466.50
Increase (Decrease) in Taxes		\$61.01

Under state law, the dollar amount of school taxes imposed on the residence homestead of a person 65 years of age or older or of the surviving spouse of such a person, if the surviving spouse was 55 years of age or older when the person died, may not be increased above the amount paid in the first year after the person turned 65, regardless of changes in tax rate or property value.

Notice of Rollback Rate: The highest tax rate the district can adopt before requiring voter approval at an election is \$1.6232. This election will be automatically held if the district adopts a rate in excess of the rollback rate of \$1.6232.

Fund Balances	
Maintenance and Operations Fund Balance(s)	\$700,000
Interest & Sinking Fund Balance(s)	\$0

The following estimated balances will remain at the end of the current fiscal year and are not encumbered with or by a corresponding debt obligation, less estimated funds necessary for operating the district before receipt of the first state aid payment:

### NOTICE OF PUBLIC MEETING TO DISCUSS BUDGET AND PROPOSED TAX RATE

The Spearman ISD will hold a public meeting at 7:00 PM, August 20, 2002 in the high school library located at 403 East Eleventh Street in Spearman, Texas. August 12, 2002

The purpose of this meeting is to discuss the school district's budget that will determine the tax rate that will be adopted. Public participation in the discussion is invited.

The tax rate that is ultimately adopted at this meeting or at a separate meeting at a later date may not exceed the proposed rate shown below unless the district publishes a revised notice containing the same information and comparisons set out below and holds another public meeting to discuss the revised notice.

Comparison of Proposed Rates with Last Year's Rates					
	Maintenance & Operations	Interest & Sinking Fund*	Total	Local Revenue Per Student	State Revenue Per Student
Last Year's Rate	\$1.2604	\$0.0742	\$1.3346	\$4,926	\$3,833
Rate to Maintain Same Level of Maintenance & Operations Revenue & Pay Debt Service	\$1.7328	\$0.0009	\$1.7337	\$6,494	\$2,300
Proposed Rate	\$1.5000	\$0.0875	\$1.5875	\$4,719	\$2,166

\* The Interest & Sinking Fund tax revenue is used to pay for bonded indebtedness on construction, equipment, or both. The bonds, and the tax rate necessary to pay those bonds, were approved by the voters of this district.

Comparison of Proposed Levy with Last Year's Levy on Average Residence		
	Last Year	This Year
Average Market Value of Residences	\$36,963	\$36,981
Average Taxable Value of Residences	\$21,963	\$21,981
Last Year's Rate Versus Proposed Rate per \$100 Value	\$1.3346	\$1.5875
Taxes Due on Average Residence	\$293.12	\$348.95
Increase (Decrease) in Taxes		\$55.83

Under state law, the dollar amount of school taxes imposed on the residence homestead of a person 65 years of age or older or of the surviving spouse of such a person, if the surviving spouse was 55 years of age or older when the person died, may not be increased above the amount paid in the first year after the person turned 65, regardless of changes in tax rate or property value.

Notice of Rollback Rate: The highest tax rate the district can adopt before requiring voter approval at an election is \$1.9048. This election will be automatically held if the district adopts a rate in excess of the rollback rate of \$1.9048.

Fund Balances	
Maintenance and Operations Fund Balance(s)	\$1,364,462
Interest & Sinking Fund Balance(s)	\$0

The following estimated balances will remain at the end of the current fiscal year and are not encumbered with or by a corresponding debt obligation, less estimated funds necessary for operating the district before receipt of the first state aid payment: