

The Hansford County Reporter Statesman

PROUDLY SERVING HANSFORD COUNTY SINCE 1907

SCR2
COMP
HANSFORD COUNTY LIBRARY
0122 MAIN ST
SPEARMAN TX 79081-2064

reporter@spearmanreporter.com

VOLUME 101 • ISSUE 9

WWW.SPEARMANREPORTER.COM

THURSDAY, FEBRUARY 28, 2008

March 4th Primary

Early voting will begin Monday, February 19th, and will continue through Friday, February 29th (8 a.m.-5 p.m.) at the Hansford County Courthouse in Spearman and the branch office in Gruver City Hall.

Late night voting will be held on February 28th at the Hansford County Courthouse from 8 a.m.-8 p.m.

Applications for ballots by mail must be received on or before Tuesday, February 26th.

The primary election day will be Tuesday, March 4, 2008 from 7 a.m. to 7 p.m. Polling places will be as follows: **Precinct 1**-City Hall, 30 SW Court Spearman; **Precinct 2**-Renner Ranch, 10175 Co Rd H Spearman; **Precinct 3**-Cristo-Redentor Catholic Church, 202 Hwy 15 Gruver; **Precinct 4**-City Hall, 204 E Broadway Gruver; **Precinct 5**-Assembly of God Church, 401 N. Bernice Spearman; **Precinct 6**-Spearman High School, 403 E. 11th Ave., Spearman; **Precinct 7**-Oslo Lutheran Church, 8605 Co Rd F Oslo; **Precinct 8**-Early Vote-Clerk's Office, #15 NW Court Spearman; **Precinct 9**-Pringle Morse Community Bldg., 301 Main Morse.

The position of Hansford County Sheriff is the only locally contested race. Current Sheriff Gary Evans and former Hansford County Deputy Lance Swan have both filed for the position.

Other candidates filing for office include: **84th Judicial District Judge:** William D. (Bill) Smith, Incumbent; **84th Judicial District Attorney:** Mark W. Snider; **Hansford County Attorney:** John L. Hutchison, Incumbent; **Tax Assessor/Collector:** Linda Cummings, Incumbent; **Hansford County Sheriff:** Gary Evans, Incumbent and Lance Swan; **Republican Chairman:** Dorothy Cator; **Hansford County Commissioner, Precinct 1:** Ira G. "Butch" Reed; **Hansford County Commissioner, Precinct 3:** Tim Stedje.

There will not be a Democratic primary election in Hansford County.

Weather Forecast

THURSDAY NIGHT - Partly cloudy. Lows around 30. North winds 10 to 15 mph in the evening becoming light and variable.

FRIDAY - Partly cloudy. Highs in the mid 60s. West winds around 10 mph shifting to the south in the afternoon.

FRIDAY NIGHT - Mostly clear. Lows in the upper 30s. South winds 10 to 20 mph.

SATURDAY - Mostly sunny. Highs in the mid 70s.

SATURDAY NIGHT - Partly cloudy. Lows in the upper 30s.

SUNDAY - Mostly cloudy. Cooler. Highs in the upper 50s.

SUNDAY NIGHT - Mostly cloudy. Slight chance of rain in the evening - then a slight chance of snow after midnight. Lows in the lower 30s. Chance of precipitation 20 percent.

MONDAY - Partly cloudy. Highs in the upper 50s.

MONDAY NIGHT - Mostly clear. Lows in the upper 20s.

TUESDAY - Partly cloudy. Highs in the mid 60s.

TUESDAY NIGHT - Mostly cloudy. Lows in the upper 20s.

WEDNESDAY - Mostly cloudy. Highs in the mid 50s.

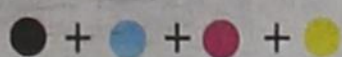
Texas Crop & Weather

The following specific livestock, crop and weather conditions were reported by Panhandle Extension directors: Moisture was received in most counties. Some land preparation for spring crops was begun. Soil moisture was reported as short to very short in most areas. Wheat continued to be rated as poor to very poor. Cattle on were being supplemented or sold because of lack of grazing. Rangeland conditions were rated mostly fair to poor. The potential for wildfire was high. Cattle were in fair condition.

Deadline Notice!

The deadline to submit news and advertising to the Hansford County Reporter-Statesman is Monday at 5 p.m. Items submitted after the deadline will be published at a later date, as time and space permit. Items may be submitted by phone (806-659-3434), fax (806-398-9080), mail (Reporter-Statesman, 213 Main Street, Spearman TX 79081), or e-mail (reporter@spearmanreporter.com).

For more information, please contact Catherine Smith at 659-3434, or e-mail to reporter@spearmanreporter.com



Traveling Vietnam Memorial Wall Makes Appearance in Perryton

The City of Perryton is proud to sponsor the Vietnam Veterans Memorial Wall in Washington DC (replica scaled to 80%) American Veterans Traveling Tribute.

The City of Perryton and surrounding counties are pleased to announce a tribute and celebration of our Veterans from our Revolutionary War to the Soldiers of today.

A parade escort of the Vietnam Veterans Memorial Wall will be held on Wednesday, March 5, 2008 at 5:30 p.m. as it is brought into Perryton. The escort route will be up Highway 83 (Main Street) and on to the Ochiltree County Expo Center. A reception will be held at the Expo for those escorting the Wall into Perryton.

The Presentation of Colors each day will be conducted by branches of the Military and the Boy Scouts of America.

The Celebration will continue from Thursday, March 6th at 6 p.m. through Sunday, March 9th at the closing ceremony, which will begin at 4 p.m. (and will continue until the visitors decide to quit celebrating). This celebration will be held at Whigham Park on SE 9th Avenue and Main Street (Highway 83). The location in case of inclement weather will be in the Ochiltree County Expo Center, 402 Expo Drive.

The Wall and other Tributes will leave Perryton on Monday, March 10th.

LaDonna Gatlin, a famous personality of the Texas Panhandle and sister of the famous Gatlin Brothers Band will sing the National Anthem on Friday at noon.

On Saturday at 1 p.m., there will be a Laying of POW and MIA and Gold Star Mothers' Wreaths. After the ceremony, a plaque will be presented to the parents of Seth Huston.

Lance Cpl. Seth Huston, 19, of Perryton died Aug. 21 in the Al Anbar province in Iraq. He was assigned to the 2nd Battalion, 1st Marine Regiment, First Marine Division of the First Marine Expeditionary Force at Camp Pendleton, Calif.

Seth enlisted in the United States Marine Corps in 2002, and after graduating from Perryton High School in 2003, officially joined the USMC. He was the son of Steve

and Renee Huston, both of whom served in the United States Navy.

On Saturday, March 8th, at 6 p.m., a POW/MIA Table Ceremony and Tribute to those killed in action from our region. One hundred and twenty-three soldiers (the most current information we have on casualties) from our area who have been lost in war will be honored.

An open Church Service will be held on Sunday, March 9th at 10 a.m. The Riders of the 6th Annual Texas Vietnam Veterans Memorial Highway Motorcycle Run will participate in "The Ride of Honor" and will head

down Highway 83 to their destination of Brownwood. At 4 p.m., State Representative Warren Chisum will give a keynote address. This wonderful celebration will end with the Retrieval of Colors and a Rifle Salute.

The American Veterans Tribute committee and Volunteers would like to extend an invitation to everyone in the area to join in this celebration of freedom and tribute to those who have made this freedom possible.

For more information, contact the Perryton-Ochiltree Chamber of Commerce at 806-435-6575.



Traveling Vietnam Veterans Memorial Wall

LaDonna Gatlin to Sing in Perryton

LaDonna Gatlin, singer and motivational speaker believes one defining moment can redefine our lives. She knows firsthand that we can't live someone else's dream. She will appear in Perryton on Thursday, March 6th to share how we can be our personal best as we find our own voice to "Sing the Song in You."

Arkthoma Transports, Inc. and Leadership Perryton will host LaDonna as she presents an entertaining, thought provoking and motivating concert at Community Worship Center in Perryton. Doors open at 6 p.m. and the concert will begin at 6:30 p.m. With the generous sponsorship by Arkthoma Transports, Inc., admission will be free of charge.

LaDonna literally grew up on stage singing with her brothers - the legendary Gatlin Brothers. In the early 1970's the Gatlins took

their family to Nashville. But a detour appeared when LaDonna got married. At this defining moment, she realized that success for her could be measured in a different way. She took a giant leap of faith, chose to follow her heart and "sing a different song" apart from her brothers. She has spent her entire career empowering people to "sing their own song" and to live life from the inside out by words, deeds, and actions.

She has shared her message from corporate powerhouses to prison cells. LaDonna speaks from the heart with stories that are the stuff of life. Her presentation will drive home common sense wisdom for everyday living. She will include gospel, country, pop and patriotic songs as she shares her stories. An active member of the National Speakers Association, she has earned its highest professional designation, the Certified Speaking

Professional. In July 2005, LaDonna was one of 5 inductees into the Speakers Hall of Fame, a lifetime award for speaking excellence and professionalism. She has recorded 4 solo CD's and is a contributing author to the Chicken Soup for the Soul series. To learn more about her, go to www.ladonna-gatlin.com.

Don't miss the opportunity to hear LaDonna. Her outstanding vocal performance along with down-home humor and storytelling will definitely send attendees off on a high note. Families are encouraged to attend along with business and community members. Admission is free.

For more information, contact the Perryton-Ochiltree County Chamber of Commerce at 806-435-6575.

Hansford County Residents to Benefit from Increased Warning Capability

by Ron Antalek

Residents of Hansford County will soon recognize an additional component of warning capability as they begin receiving "test" messages over their phones in the next few weeks. Several partners in Hansford County have financed a new system of warning called "CodeRED". The partners making the new system possible include Hansford County, the Cities of Spearman and Gruver, Hansford Hospital, the Pringle-Morse CISD and GRUVER ISD. Through these partners' efforts every citizen of Hansford County can now be "warned" of impending emergencies and disasters in a matter of only a few minutes.

What is Code Red you might ask? It is a "reverse 911 call system" capable of making 60,000 calls per hour or 1000 calls per minute. Being the population of Hansford County is below 6000, the entire population of the county could be contacted by telephone of any threatening situation in less than 10 minutes. The system replaces "Big Mouth" which was a previous warning system used primarily for warning rural residents. "Big Mouth" was a single modem system using a single phone line to individually call each resident of threatening conditions. The "Big Mouth" system became antiquated and extremely limited in effectiveness from the onset. CodeRED uses multiple phone "banks" from outside of Hansford County to dial county residents. As we test the system, we may find that our entire population can be phoned in less than the time anticipated. The limiting factor is the phone companies ability to handle large volume calling into each phone company "switch". Since Gruver,

Spearman and Morse all have an individual "switch", the potential is great for a speedier result in contacting everyone at one time.

Training for CodeRED will be conducted this week, and testing of the system will begin immediately after operators have been trained. If the tests are successful as expected, you should receive a telephone call announcing the inception of the new warning capability. Once the tests are complete, a campaign will begin to determine that all residents have been included in the dialing database, and to allow additional numbers to be added or updated. Cell phone numbers can be included in the database, but the cell phone must be assigned an address, not that the cell phone must remain at the address, it simply assigns the phone to a location for mapping. As a component of the system a graphical map can be used to shade areas where calls need to be made.

The new system not only will be used as a warning device but also will be used on a day to day basis for relaying information, notifying groups of meetings, and even to remind our residents of community events. Each governing body who participated in the finance of the system will be utilizing the system in their day to day operations. As an example, should a water main break, residents affected by the outage can be called and told how long to expect repairs to take, and any precautions necessary after the water is restored, such as flowing water for a specified time to remove sand or other debris.

Of course as springtime approaches the chance of thunderstorms also increase. As a result, the system will be operational in time for warning of approaching storms and

potential tornadoes. Utilization of CodeRED early, as a storm approach should enable residents to closely monitor other media for additional warning information.

Should you have questions about the new system, want to be excluded from it, or have additional phones added, call either City Hall, the courthouse or any partner who made the system a reality.

McGee Celebrates 90th Birthday

Pauline McGee has returned home after a two-week visit in Henderson, Nevada, in the home of her daughter and son-in-law, Maralin and Mac Moore.

While there she was honored with a 90th surprise birthday party.

Her grandson and wife, Robert and Judy Moore of Portland, Maine, flew in to share her birthday with her. Accompanying them were her two great-grandsons, Justin and Alex Moore, and great-granddaughter, Miranda Moore.

Her son, Gary and wife, Kimi, flew in from Abilene, with son Bailey McGee and friend Brennan Frailing to join in the celebration.

Pauline's granddaughter, Sandi and husband Steve Master live in Henderson and also helped her celebrate. She was a guest in their home for two special dinners and a birthday party.

Her entire family of thirteen members were present, making this a precious occasion, all planned and carried out by Maralin and Mac.

TEXAS Health Matters

Advance Directives Keep You in Charge of Health Care Decisions

Buying a new car or house? Making travel plans? Selecting a new paint color for the living room? These are personal choices that Texans make on a daily basis. But what about decisions relating to the health care we'll receive if we're unable to communicate our wishes?

If you haven't done so already, now is the time to ask yourself two key questions:

What type of treatment do I want in a case where I'm incapacitated and unable to direct my own care?

Who do I want to make those calls on my behalf?

Many Texans already have considered these issues and shared their decisions with family, friends, physicians or clergy. For those who haven't, the Texas Department of Aging and Disability Services (DADS) has a few basic points to consider:

An advance directive is a legal document, such as a medical power of attorney or living will, stating your wishes about your medical treatment. These documents allow you to direct, in advance, what type of medical treatment you want to receive and also to designate other individuals to make those decisions when you can't.

If you haven't made your wishes known through an

advance directive then health care decisions can be made by your family, physician or a judge — whether or not they reflect your actual desires.

A living will allows you to issue instructions about your medical treatment should you become terminally or irreversibly ill and unable to communicate. This document can include your wishes concerning resuscitation, dialysis, withholding fluids or food, artificial hydration and nutrition as well as organ and tissue donation. A medical power of attorney lets you appoint a trusted person to make medical decisions on your behalf if you are not competent. While it is not necessary to have an attorney help you prepare an advance directive, you may want to consult an attorney if you have any special concerns.

Once you've made the decision to complete an advance directive, your next step is to decide who will be the health care agent — that is the person who'll make decisions on your behalf.

A health care agent can be anyone whom you trust, knows you well and will honor your wishes. The health care agent does not have to be a family member, but can be a close friend or business associate. The important point to remember when making the selection is to be sure this person is willing to ask your health care provider questions so he or she can obtain the informa-

tion to make decisions.

To help you make decisions about completing an advance directive, DADS offers the following advice:

1. Obtain the appropriate document (living will or medical power of attorney) and review the contents. Documents are available from medical facilities, doctors, health care organizations or online from the Texas Department of Aging and Disability Services at www.dads.state.tx.us.

2. Discuss your beliefs and wishes with your doctor, family members and friends. Select a health care agent and discuss the decisions you are asking him or her to make in the event you are unable to due to incapacitation.

3. Complete the documents and provide copies to your physician, family members and health care agent.

State Capital



HIGHLIGHTS

by Ed Sterling



DEMOCRATIC CANDIDATES DEBATE IN CAPITAL CITY

AUSTIN - Barack Obama of Illinois and Hillary Clinton of New York met at the University of Texas to debate in a nationally televised forum on Feb. 21.

The two United States senators, vying to be the Democratic Party's presidential nominee, answered questions posed by Jorge Ramos, a reporter for Univision, the Spanish-language television network, and CNN reporter John King.

Among many topics were:

- universal health care
- economy/trade/jobs

- immigration policy
- federal taxation
- Iraq strategy
- care for wounded veterans
- care for military families

Clinton suggested her experience should make her the clear choice for Democratic voters. Obama asked for voters' help in his effort to change the nation's capital from a place "where good ideas go to die" and work with him to help America "live up to its promise" of liberty and justice for all.

Forty-thousand people applied to attend the debate in the UT recreation center, but admittance was limited to 1,000. Pro-Hillary and Pro-Barack crowds gathered outside the building and engaged in loud but peaceful volleys of chants.

Thousands more attended political rallies and debate watches were held at Sholz Garten, the Austin Music Hall and the Hyatt Regency Hotel.

To cap the debate, an Obama rally the following evening in downtown Austin drew a crowd estimated at 30,000. The city of Austin closed off streets near the rally to vehicular traffic.

Meanwhile, Republican candidates U.S. Sen. John McCain of Arizona, former Arkansas Gov. Mike Huckabee, and U.S. Rep. Ron Paul of Clute scheduled appearances in various cities in advance of the Texas GOP primary.

Party primaries are set for March 4, and early voting ends Feb. 29.

SMU chosen as Bush library site
The future site of the George W. Bush Presidential Library will be Southern Methodist University in Dallas.

The SMU board of trustees announced Feb. 22 it had reached an agreement with the George W. Bush Presidential Library Foundation.

SMU is first lady Laura Bush's alma mater. Yale University, President Bush's alma mater, was in the running among eight potential sites.

A "Presidential Center," to be built on SMU's main cam-

pus, will consist of the presidential library containing Bush administration documents and artifacts, a museum with permanent and traveling exhibits and an independent public policy institute.

The library and museum will be operated by the National Archives and Records Administration.

Bush was elected to two consecutive terms as governor of Texas and served from 1995 until 2000, when he resigned to run for president.

City considers owning wind farm
The City of Austin's utility company, Austin Energy, is looking into renewable or "greener" energy solutions for the future.

Michael McCluskey, deputy general manager of Austin Energy, said the utility company might consider buying West Texas land on which to build its own wind farm.

Instead of contracting for power would guarantee a supply of wind power into the future and give the utility more cost control, McCluskey said.

Currently, much of Austin's energy supply comes from coal-burning power plants.

'Own Your Own Future' launched
The Texas Education Agency on Feb. 22 launched a program to encourage youth to stay in school, graduate and pursue a career.

The program, "Own Your Own Future," comes through a grant from the Bill and Melinda Gates Foundation.

Education Commissioner Robert Scott said the program "provides at-risk youth with career options tied to their passions and desires, all while reiterating the need to finish high school to make these achievements a reality."

The program is accessed via www.ownyourfuture.com, a Web site that moves the user through a series of question-and-answer sections that help the student chart a clear path to goals and objectives and participate in the decision-making process.

College Corner

Texas Tech University Students Receive Degrees
Texas Tech University presented degrees to approximately 1,800 graduated students the fall 2007 commencement in the United Spirit Arena on campus on Saturday, December 15, 2007.

Kevin Burton Williams of Spearman received his Doctor of Education in Agricultural Education.

Kalee Crawford of Gruver graduated Cum Laude with a Bachelor of Arts in Photocommunications.

Texas Tech University Honor Roll
Approximately 5,100 students qualified for either the President's List or the Dean's List in the spring semester.

To make the President's List, a student has to take at least 12 qualifying credit hours and have a 4.0 grade-point average (GPA). Students qualifying for the Dean's List also must take at least 12 qualifying hours and have a GPA of 3.5 to 3.9.

President's List: Spearman - Brodie R. Savage, a Junior Petroleum Engineering major; **Gruver** - Benjamin Neal Williams, a Junior Journalism major

Dean's List: Spearman - Rosslyn M. Bulls, a Senior Early Childhood Studies major; Phillip M. Lozano, a Senior Exercise & Sport Sciences major; Kelcee Anne Rex, a Freshman Pre-Nursing major; Cayla Ladohn Smith, a Junior Accounting major; **Gruver** - Kalee Crawford, Senior Photocommunications major; Mark S. Tebeest, a Junior Agricultural & Applied Economics major

SUDOKU
PRESENTED BY

VolunteerMatch.org
Where volunteering begins.

	8		9					2
7	4		2	8	3			1
1		9			7	3		
3	6	2		5				7 9
4	5			2		1	6	3
			4	5			9	8
5				8	9	4		3 7
8					2			5

© 2008, StatePoint Media, Inc. answer on classified page

Fill in the blank squares in the grid, making sure that every row, column and 3-by-3 box includes all digits 1 through 9.

These games are brought to you by the
Hansford County Reporter-Statesman

HEROES

- ACROSS**
- Earl Grey and English Breakfast
 - Gear tooth
 - Laborer who does menial work
 - Toy hoop
 - 1st, 2nd or 3rd in baseball
 - Spoken in southern half of Africa
 - Native-American storytelling tradition
 - Red-encased cheese
 - NBA great Baylor
 - Famous for not giving up her seat
 - Evergreen trees
 - She aided Jason in taking the Golden Fleece
 - Save our souls
 - Relating to atrium
 - First man in space
 - Extra charge
 - Incentive to find bad guy
 - Founder and queen of Carthage
 - Imperial or majestic
 - Hasten
 - Passover meal
 - Relating to ear
 - Doofus
 - School of whales
 - Shah's domain
 - Luke Skywalker sided with them
 - Anger
 - Isolated
 - Russia to U.S. in WWII
 - She was inspired by religious visions
- DOWN**
- God of thunder
 - EU money
 - Exclamation expressive of sorrow
 - Popular on Italian sandwiches
 - Nucleus of political movement
 - Port in Japan
 - Diamonds and rubies, e.g.
 - Fence in
 - Short for engineer
 - "Sittin' On The Dock Of The Bay" singer
 - Mother Teresa, e.g.
 - Parish official who serves as an usher
 - Haze over
 - Found in a clam
 - Unhappy
 - Popular '70s hair-do, pl.
 - Lost and regrown during childhood
 - One of oldest buildings at Roman Forum
 - Rose, as in stature
 - Blue _____

- Shorthand
- Buck's mate
- One who irons
- Washer's partner
- Become of
- Carries blood from heart to arteries
- Major river in Ireland
- A fit of shivering
- Often painted with a gloss
- Fair
- Toward the lee
- Over your head when inside
- Lincoln coin
- _____ Wednesday for Christians

CROSSWORD

1	2	3	4	5	6	7	8	9	10	11	
12							13			14	
15							16			17	
18				19					20		
			21				22				
23	24	25				26			27	28	29
30				31		32	33			34	
35			36			37			38		
39						40			41	42	
43				44					45	46	
			47			48	49				
50	51					52			53	54	55
56						57			58		
59						60			61		
62						63			64		

PRESENTED BY

VolunteerMatch.org
Where volunteering begins.

© 2008, StatePoint Media, Inc. answer on classified page

The Hansford County Reporter-Statesman
213 Main Street • Spearman, TX 79081
Phone - (806) 659-3434 • Fax - (806) 398-9080
www.spearmanreporter.com
reporter@spearmanreporter.com
cathysmith@valmet.com

Mon.-Thurs. 9 a.m.-12 p.m., Mon.-Wed. & 1-5 p.m.
Closed Thurs. afternoon and all day Fri., Sat. & Sun.

Gary Smith - Publisher Catherine Smith - Editor
Contributing Writers: Dorothy Hudson, Jim Derington, Merry Sparks, Cecil Biggers
Contributing Photographer: Charlie Johnson

Subscription Rates
In Hansford County - \$30.00 • Out of County - \$40.00

The Hansford County Reporter-Statesman (USPS 529660) is published weekly in Spearman, TX. Periodical postage paid in Spearman, TX. **POSTMASTER:** Send address changes to: The Hansford County Reporter-Statesman, 213 Main Street, Spearman, TX 79081.

Publication Policy
The deadline to submit news and advertising to The Hansford County Reporter-Statesman is Monday at 5 p.m. Items submitted after the deadline will be published at a later date, as time and space permit. Publication of all items is at the discretion of the editor.

Advertising
Open Display rates are \$4.00 per column inch. Classified Ads are \$6 for the first 25 words and 10¢ per word for each additional word. (Additional charge for boxed classifieds.) There is a \$1 charge per week if billed.

Member of
Gruver Chamber of Commerce
Spearman Chamber of Commerce
Texas Press Association and Panhandle Press Association

Happy Birthday!

Editor's Note: This Happy Birthday list is run as a public service by the Hansford County Reporter-Statesman. We apologize if any names are misspelled. If you know of a name that needs to be changed, added or deleted, please call 659-3434.

Thank you, Catherine

February 28
Birthday - Robert Blount, Max Davis, Karen Sparks, Shannon Bowling, Debbie Carter, James Lair, Sammy Don Jones, Edna Anderson, Willie Shields, Hal Bennett, Davis Nash, Parker Grotegut
Anniversary - M/M Gilbert Salgado

February 29
Birthday - Clifton Harden, Michael Holt

March 1
Birthday - Lori Swink, Justin Ooley, David Stafford, Michael Rosales, Gary Cates, Ruby Mitchell, Mary Saldavar, Nora Baca, John Duncan, Peggy Robinson, Caleb Miller, Danny Parker
Anniversary - M/M Robbie Dewberry, M/M Harold King, Norlan & Linda Winegarner

March 2
Birthday - Wynn (Maupin) Essler, Justin Thompson, Tonni Yanke, Olive "Babe" Pendergraft, Wayne Barber, Matthew Baker, Carma Dorton, Bob Farr, Robin McCullough, Rachelle Moreno, Josh Winegarner, Ryan Hill, Sammy Renteria
Anniversary - M/M Joel Lackey

March 3
Birthday - Sue Smith, Jackie Womble, Vicky Papay, Doris Brogdon, Kim Scroggs, Kelley Hart, Cass Lasater, Andy Scarborough, Brian Black, Darla Black, Amber Fox, Allan Taylor, Denise Schuman, Crystal Harris, Richard Melton, Paxton Pittman, Matti Wheelock, Pam Schnell
March 4
Birthday - Evelyn Dahl, Don Evans, Tanner Sherrell, Tommy Hahn, Jon Garnett, Virgil Jones, Chuck Taylor, Jose Renteria, David Harbour, Ron Fox, Judy Park, Brenda Red, Ronald Kirby, Heather Hamilton, Lucio Vela, Carrie Guthrie, David Rosser

March 5
Birthday - Ron Dunning, Beth Swink, Barry Beck, Brooks Beck, Mark Garnett, Mary Garza, Mike Cowan, Trixie Pearson, Mike Garrard, Alexis Johnson, Benny Brandwick, Steve TeBeest, Shelby Williams, Ramon Garcia, JJ Anaya
Anniversary - M/M Ramiro Morales

March 6
Birthday - Brenda Hart, Charlie Slough, Marcie Womble, Bobby Archer, Tommy Barkley, Travis Patterson, Janet Reger, Doran Dulana, Kenneth Slough, Lindsey Clift, Nancy Evans, Mick Sharp
Anniversary - M/M A.R. Cazares

March 7
Birthday - David Imke, Dee Dee Shelton, Mike Garnett,

Molly Turner, Bernice McBride, Viola Boyd, Donald Lane, Beulah Harris, Howard Thompson

Anniversary - M/M Danny Bass, M/M Anres Ortiz, Pete & Juanita Vera

March 8
Birthday - Patty Cator, Drew Grotegut, Mike McLain, Bill Hamish, Melvin Swene, Kirby McAdams, Deana Shields, Dee Allen, Steve Cruse, Candi Delozier, Ben Cook, Colby Red, Eric Olsen, Rae Lynn Cook, Cindee Thomas, Christi Clift, Michelle Schick
Anniversary - M/M Richard Wagner

March 9
Birthday - Roy Byrd, Craig Cooper, Tommy Henson, Elizabeth Holt, John Brown, Mary Lou Vela, Amy Tucker, Jerry Younger, Cole Ivey, Aletha Lesley, Deann Turner, Karla Acton, Brandon Hathaway, Vickie Urban, Nita Byrd
Anniversary - M/M John Knowles, M/M Shawn Thompson, M/M Kermit Boone, M/M Dwayne Thompson, M/M Dan Wheelock

March 10
Birthday - Shanna Jarvis, Sandy Kirby, Debby Odum, Perry Lamb, Tucker Williams, Roy Uptergrove, Ricky Reger, Reba Ooley, Pam Hart, Shane Pearce, Eugene Barnes, Jr. Barnes, Felipe Lozano, Michael Lozano, Melinda Taylor, Sandy Spivey, Curtis Pearson, Jennifer Keim, Summer Fernandez, Kelly King
Anniversary - M/M Bobby Mosier

March 11
Birthday - Daniel Rojas, Nina Hendricks, Dorothy Buzzard, Monty Dixon, Bob Breedson, Sandi Holt, David Ortega, Willie Jones, Felipe Dominguez
Anniversary - Buddy & Amber Newman, M/M Orville Brummett

March 12
Birthday - Loree Hart, Jason TeBeest, Lindy Tolleson, Judy Martin, Loraine Davidson, Sherry Bullard, J.L. Griffin, Sammi Johnson, Makenzie Crane, Katie Hintergard
Anniversary - M/M Andy Hoel, M/M Tommy Henson

March 13
Birthday - Fran Duncan, Bonnie Frick, Gene Leatherman, Brady Tidwell, Vernon Pipkin, Gary Pracher, Roy Flowers, Shannon (Holton) Steinberger, Chuck Fletcher, Lynell Williams, Kevin Bynum, Gretchen Collinsworth, Jerry Garcia, Dolores Moreno, Larry Butts, Hadley Fletcher, LeAnn Sheets, Thomas Cain, Pam Mayfield
Anniversary - M/M Forrest Acker, M/M Jim Dick Goodall

March 14
Birthday - Sue Gerardy, Chris Johnson, Brandy Shelton, Buck Tidwell, Steve Cook, Barbara Brown, Reagan Renner, James Ray Barimus, David Terry, Kelly Mills, Curtis Dudley, Mike Wilhelm, Madison Williams
Anniversary - M/M Bill Robertson, Charles & Betty West, M/M Jimmy Bishard

Our Sympathy

JEAN BYRD

SPEARMAN - Jean Byrd, 76, died Wednesday, February 20, 2008.

Graveside services were at 2 p.m. Saturday, February 23, 2008 in Hansford Cemetery with the Rev. Bob Elder officiating. Arrangements were by Boxwell Brothers Funeral Home of Spearman.

Mrs. Byrd was born December 28, 1931, in Caddo County, OK, to William and Laura Ballard. She married Red Byrd on December 25, 1948, in Newcastle.

She had lived in the area since 1958. She was a homemaker and a Baptist.

She was preceded in death by her parents, William and Laura Ballard.

Survivors include her husband; a daughter, Tuwana Trout of Elkhart, KS; two sons, Dean Byrd of Amarillo and Gene Byrd of Arpela, OK; a sister, Billye Mackey of Bessemer, AL; a brother, Doug Ballard of Van Alstyne; seven grandchildren; and three great-grandchildren.

The family suggests memorials be to Hansford Manor, 707 S. Roland St., Spearman TX 79081.

RUTH JEOFFROY ROPER



Ruth Jeffroy Roper (86) was born April 29, 1921 in Drummond, OK and passed away in her home in Flower Mound, TX on Feb 25, 2008.

Ruth was born in Drummond, OK to Roy and Grace (Lindley) Jeffroy. Ruth moved to Perryton, TX with her parents and brothers, Ray and Archie. Ruth attended First through 12th Grade at Perryton. College followed, attending Texas State Women's University in Denton, Tx (2 yrs) and West Texas State University in Canyon Texas (1 Yr).

Ruth and Roy Roper of Darrouzett, TX married July 23, 1941. During the years of service in the Air Force, Roy and Ruth were stationed in La Junta, CO and Riverside, CA. Roy served during World War II in the Pacific.

Roy and Ruth lived in Amarillo, where their four children were born. The family moved to a farm near Gruver, TX in 1956. In 1971 Roy and Ruth moved to Guadalupe, Mexico. In 1974 they moved to Arlington, TX, followed by a move to Dallas in 1975. In 1992 they moved to Flower Mound, TX. Roy and Ruth attended Valley Creek Church in Flower Mound.

Ruth served as Beta Sigma Phi Council President in Amarillo. She was responsible for organizing other Beta Sigma Phi chapters in the Texas Panhandle. Ruth served as 4-H leader and Boy Scout leader for many years in Hansford County.

Ruth was an expert seamstress, making many of her own clothes in high school, and later sewing for her children and grandchildren. Ruth had a sewing and alteration business while living in Dallas.

Ruth had the gift of hospitality. She was always sharing her exceptional dishes with others. She also enjoyed landscaping and growing flowers.

Ruth is survived by her husband, Roy Roper of Flower Mound, 4 children, 6 grandchildren, and 8 great grandchildren and many wonderful neighbors and friends. Her children include Jeff Roper of Carrollton, TX.; Jan and husband, Lynn Stedje, of Gruver; Rick and wife, Judy of Granbury, TX; and Ron Roper of Dallas. Grandchildren are Krista and husband Steven Davis, of Gruver; Jill and husband Sam Watson of Gruver; Lee Stedje and wife Becky of Gruver; Angela Roper of Granbury; Natalie Roper and Austin Roper of Dayton, TX, and step-grandchildren Andy and Randy Elliott of Granbury. Great grandchildren include Lori Watson and Michaela, Blaise Luke and Jobi Davis and Peyton Pinson.

Graveside services will be held Friday, February 29, at 10:30 am at DFW National Cemetery.

Memorials may be sent to Odyssey Healthcare Foundation (Hospice) of Dallas.

DIXIE C. TRACY

SPEARMAN - Dixie C. Tracy, 87, died on Monday, February 25, 2008.

Graveside services will be held at 11 a.m. on Thursday, February 28, 2008 at Hansford Cemetery with Rev. Jim Medley and Jay Tracy officiating. Interment will be under the direction of Boxwell Brothers Funeral Home of Spearman.

Mrs. Tracy was born July 25, 1920 in Liberal, MO. She had lived in the area since 1957. She married Everett Tracy on December 28, 1941 in Lamar, MD.

She was a homemaker and a member of the Eastern Star, Daughters of the Nile, Twentieth Century Club, the Gladiola Flower Club and a former board member of the Hansford County Historical Society. She was a member of the First Baptist Church of Spearman.

Survivors include her husband, Everett, of the home; a son, Richard Tracy of Waco; a granddaughter and her husband, Amy Kathryn and Aaron Abel of The colony, TX; and a grandson and his wife, Jay Franklin and Jennifer Tracy of Waco.

The family requests memorials to the First Baptist Church, PO Box 399, Spearman TX 79081; Hansford Hospice, 707 S. Roland, Spearman TX 79081; or one's favorite charity.

MONUMENTS

Boxwell Brothers Funeral Home

519 Evans • Spearman
659-3802

Dear friends,
When you buy a monument from us we make sure it is exactly what you want at a price you can afford. If it is not right, we will make it right. And you will not have to search the countryside to find us. We are here when you have a need.

Sincerely,
Bob Boxwell

SIGN UP FOR A FREE SCOOTER

One Scooter Given Away Each Month

Toll Free **800-606-9860**

Med Care
MEDICAL SUPPLY

www.medcaremedicalsupply.com

High Speed Satellite Internet

\$29.95 /month

- » FREE Installation Kit!
- » \$49 complete system*
- » Now Available in Rural Texas!

Offer valid through March 16, 2008

Replenish the seed of faith through . . . DAILY BIBLE READING, PRAYER & REGULAR CHURCH ATTENDANCE

- | | | | |
|--|--|---|---|
| <p>Spearman</p> <p>Apostolic Faith Church
822 S. Dressen • 659-2870
Sunday School: 10 a.m.
Worship Service: 11 a.m.
Sun. Eve.: 6 p.m.
Wed. Prayer Mtg: 7 p.m.
Pastor - Roland Haney</p> <p>First Assembly of God
401 N. Bernice • 659-2295
Sunday School: 9:30 a.m.
Worship: 10:35 a.m.
Kid's Church: 10:35 a.m.
Evening Worship: 6 p.m.
Wed. Worship: 7 p.m.
Wed. Youth: 7
Pastor - Bob Elder</p> <p>First Christian Church
(Disciples of Christ)
29 S. Bernice • 659-2036
Sunday School: 9:45 a.m.
Worship: 10:50 a.m.
Minister -</p> <p>First Baptist Church
123 N. Bernice • 659-5557
Sunday School: 9:45 a.m.
Worship: 11 a.m.
Evening Worship: 7 p.m.
Men's Bible Study - Wed., 7 a.m.
Children's Choir - Wed., 7 p.m.
Adult Choir - Wed., 7 p.m.
Wed. Bible Study: 7 p.m.
Pastor - Jim Medley</p> <p>Church of Christ
121 S. Haney • 659-3244
Sunday Bible Class: 9:45 a.m.
Worship: 10:30 a.m.
Evening Worship: 6 p.m.
Bible Study Wed.: 7:30 p.m.</p> | <p>Sacred Heart Catholic Church
901 Roland • 659-2792
Sat. Night Mass: 5:30 p.m.
Sun. Mass: 9 a.m. - English
Sun. Mass: 11:30 - Spanish
1:30 p.m. - Gruver - Christo
Renditor Mass - Spanish
Rev. Guillermo Morales</p> <p>First United Methodist
407 S. Haney • 659-5503
Sunday School: 9:45 a.m.
Worship: 8:30 & 11 a.m.
Jr. High Youth: 5 p.m. Sunday
High School: 6 p.m. Sunday
Kids Club: 3 p.m. Wed.
Pastor - Neely Landrum</p> <p>Grace Presbyterian Church
(Worships with Faith Lutheran Church)
1101 Bernice • 659-2033
Pastor - Beverly Cook</p> <p>Faith Lutheran Church (ELCA)
1101 Bernice • 659-2252
Sunday School: 9:45 a.m.
Worship: 11 a.m.
(Worships with Grace Presbyterian Church)
Pastor - Beverly Cook</p> <p>Union Church
31 S. Endicott • 659-2644
Sunday School: 9:45 a.m.
Worship: 10:45 a.m.
Evening Worship: 6 p.m.
Bible Study: 7 p.m. Wed
Pastor - Dr. Timothy Minor</p> <p>Fellowship Baptist
1102 S. Archer • 659-2783
Sunday School: 10 a.m.
Worship: 11 a.m.
Sun. Evening Worship: 6 p.m.
Youth/Adult Service: 7:30 Wed.
Pastor - James Washburn</p> | <p>Primera Misión Bautista
502 E. 7th • 659-3991
Sunday School: 9:45 a.m.
Worship: 11 a.m.
Evening: 6 p.m.
Wed. Prayer Meeting: 7 p.m.
Thurs. Visitation: 7 p.m.
Pastor Joe Garcia Jr.</p> <p>El Apostento Alto U.P.C.I.
1105 S. Roland
Domingos: Escuela-Domical - 10 a.m.
Culto Evangelistico - 7 p.m.
Jueves: Oracion - 8 p.m.
Mier: Estudio Biblico - 7 p.m.
Pastor - A.G. Martell
(806) 659-2153</p> | <p>Gruver United Methodist
Broadway & Garrett
733-2651
Sunday School: 9:45 a.m.
Worship: 8:30 & 10:50 a.m.
Eve. Worship & UMY: 6 p.m.
Pastor - George Price</p> <p>Spanish Cristo Redentor Church
Sunday Mass: 1:30 p.m.
Friday Evening Mass
Summer - 8:00 p.m.
Fall/Winter - 7:30 p.m.</p> <p style="text-align: center;">Oslo</p> <p>Oslo Lutheran Church (ELCA)
6 Miles West & 12 Miles
North of Gruver
339-7646
Sunday School: 9:45 a.m.
Worship: 11 a.m.
Pastor - Arlen Lloyd</p> <p style="text-align: center;">Morse</p> <p>Morse Baptist Church
733-2757
Pastor - Mike Martin</p> |
|--|--|---|---|

Med Care MEDICAL SUPPLY

Ask us if you qualify for a
POWER CHAIR
at little or no cost to you.

In most cases, Medicare, Medicaid & Insurance will cover 100% of the cost for your Power Chair.

Toll Free 800-606-9860

www.medcaremedicalsupply.com

Learn Football From The Best!

JAY NOVACEK FOOTBALL CAMP

Daily instruction by Jay Novacek and several members of the Dallas Cowboys!

Age 7-18 • June 9-13, 2008
University of North Texas, Denton, TX

The Best Football Camp in the USA!

For Free Brochure Call: 1-800-555-0801 or visit www.footballcamps.com

Land Close - Out Sale!

River Access Acreage Homesites

58 Acre River Park, Swimming Pool, Tennis Court & Walking Trails. New Braunfels Most Sought After Acreage Community.

Bring your best offer! • No Closing Costs

Take a Tour by 2/29/08.

Call Today 800-541-4693

Land.riverchasetx.com

• Are you an EXPERIENCED APPLIANCE TECHNICIAN looking for a change?

• Want to work with the BIGGEST NAME IN THE BUSINESS and receive excellent compensation and benefits?

• Are you great with customers?

If you answered YES to these questions, Sears Home Services is looking for you! Apply now for Home Appliance Technician position in the Stephenville, TX area. Apply on line at www.sears.com/careers (requisition #51665BR)

or email resume to hr257@sears.com or fax resume to (972)620-5099. Call 469-222-0021 with any questions. To be considered you must be at least 18 years of age, have a good driving record and be able to work various shifts including some weekends, evenings and holidays.

Sears is an EEO/AA Employer. We support a drug free workplace.

Deakin

ELECTRIC

OILFIELD • RESIDENTIAL • COMMERCIAL
321 S. MAIN • SPEARMAN
1-800-999-1506 Chris Deakin
(806) 659-5016

Bartlett's Lumber
& Hardware

105 W. Broadway • Gruver,
Texas
(806) 733-2404

BERRY CLEANERS

Ann & Vernon Pipkin - Owners
Phone 659-3122 • P.O. Box 1017
207 Main St. • Spearman, TX

Morse Implement
& Auto Supply

"Join us in church"

Tom Dortch 733-2668
Box 89 • Morse, TX 79062

PRAIRIE
MOTORS INC.

Hwy. 207 South • P.O. Box 430
Spearman, TX 79081 • (806) 659-2541
www.prairiemotors.com

MurMur's Cafe

100 Roland St
Spearman, TX.
659-3580

Hansford County
Reporter-Statesman

"Proudly Serving Hansford
County Since 1907"

(806) 659-3434
310 Barkley • Spearman, TX

INTERSTATE
BANK, sssb

www.interstatebank.net
322 Main • P.O. Box 146
Spearman, TX • 659-2559

HYI

FOR YOUR INFORMATION

March 4th Primary Early Voting

Applications for ballots by mail for the March 4th Republican Primary must be received on or before Tuesday, February 26th. Early voting will be held at the Hansford County Courthouse in Spearman and the branch office in Gruver City Hall from February 19th through 29th, from 8 a.m.-5 p.m. Late night voting will be held on February 28th at the Hansford County Courthouse from 8 a.m.-8 p.m. The primary election day will be Tuesday, March 4, 2008 from 7 a.m. to 7 p.m.

Spearman Pizza Hosts SHS Project Graduation Night

Spearman Pizza Hut will donate a percentage of the total meal cost to SHS Project Graduation 2008 on March 13, 2008, 5-9 p.m. All you have to do to donate is eat at Pizza Hut on March 13th!

World Day of Prayer

The 2008 World Day of Prayer will be held on Friday, March 7, 2008 at the First United Methodist Church, 407 S. Haney in Spearman. Activities will begin with coffee and fellowship at 9:30 a.m., followed by the worship service at 10. World Day of Prayer is a worldwide ecumenical movement of women of many faith traditions who come together to observe a common day of prayer each year on the first Friday in March. Each year a different country serves as the writer of the World Day of Prayer worship service. For 2008, the World Day of Prayer Committee of Guyana developed the theme, God's Wisdom Provides New Understanding. This year, First United Methodist Church is the host church in Spearman. Everyone in the community is invited to the service and the coffee and fellowship time.

Cub Scout Pinewood Derby

The Cub Scout 2008 Pinewood Derby will be held on Saturday, March 1 at the First Christian Church Fellowship Hall in Spearman. Weigh-in will begin at 9 a.m., and the race will begin at 10 a.m. All former Cub Scouts, of any age, are asked to bring their cars to the race to demonstrate how the race was won in the good ole days! If you feel brave, you can even race your antique pinewood car against this year's racers. Come show the boys that the legend lives long past cub scouts. For more information, contact Sally Swan at 659-5594.

Hospice Volunteer Training Class

The initial meeting for a Hospice Volunteer Training Class will be held at 6 p.m. on Thursday, March 13, 2008 at the Spearman Church of Christ Fellowship Hall. Participants will determine the class schedule. Thirty class hours are required. To register, call the Hospice Office at 659-2954, Verna Lee Shirley at 659-5345 or Nelle Evans at 733-5057.

Who's Who in Your Family Tree III: The Family Bible

Join the Panhandle-Plains Historical Museum for the third installment of the popular "Who's Who" series on Saturday, March 8, from 10:00 to 11:30 am in the Hazlewood Lecture Hall, 905 S. Roland. The All-You-Can-Eat tickets are \$6 for adults and \$3 for children. Serving will begin at 6 p.m. and end at 7:40 p.m. Take-outs are available. Everyone is invited to come share this holy time with us. For further information, contact Buster Davis at 733-2568, 733-5061 or Richard Wagner at 659-3743or 330-0055.

Knights of Columbus Annual Fish Fry

The Spearman Council of Knights of Columbus Council #5552 will host their Annual Lent Fish Fry and More on February 29th and March 14th at the Sacred Heart Catholic Church Hall, 905 S. Roland. The All-You-Can-Eat tickets are \$6 for adults and \$3 for children. Serving will begin at 6 p.m. and end at 7:40 p.m. Take-outs are available. Everyone is invited to come share this holy time with us. For further information, contact Buster Davis at 733-2568, 733-5061 or Richard Wagner at 659-3743or 330-0055.

Miss Irish Rose Pageant

Once again, Shamrock, Texas, will be hosting their annual Saint Patrick's Celebration on March 14-16, 2008. One of the many highlights of this celebration is the crowning of Miss Irish Rose. This Scholarship Pageant is open to all young ladies who are between the ages of 14 through 18 and enrolled in High School. The contestants do not have to reside in Texas nor do they need to be currently holding a title or reign. The 2008 Miss Irish Rose, along with her three runner-ups and Miss Congeniality, will receive a scholarship to the college of her choice. For further information, please call Betty Lee at 806-334-0929 or Dana Hosack at 806-662-5405, or the Chamber of Commerce Office at 806-256-2501.

Rushing Wind Emmaus Community

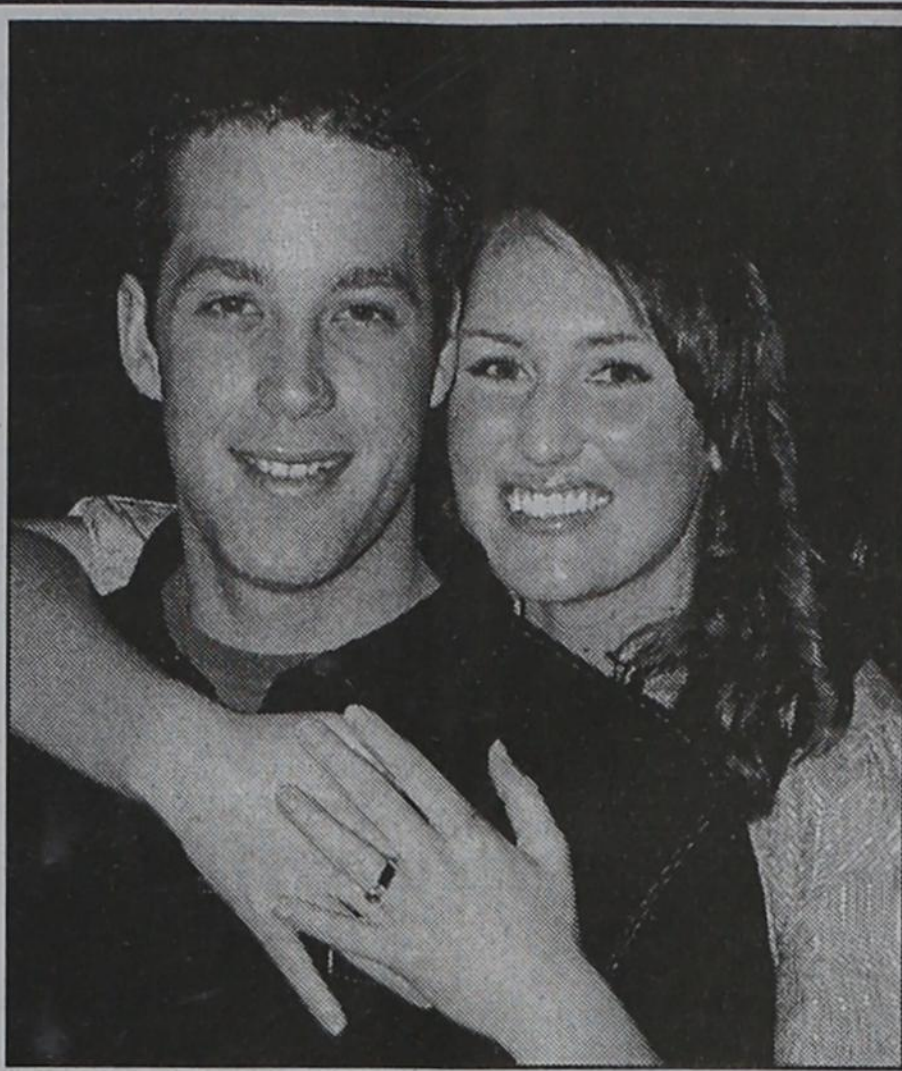
Rushing Wind Emmaus Community will meet Saturday, March 8, at 6 p.m. in the Waka Christian Center in Waka. All Emmaus members are welcome to come and share a potluck supper, training for sponsors, and a praise and worship service. A nursery will be provided. Go to www.rushingwindemmaus.com for information.

Hospice Volunteer Training Class

An initial meeting for a Hospice Volunteer Training Class will be held on Thursday, March 13, 2008 at 6 p.m. at the Spearman Church of Christ Fellowship Hall. Participants will determine the class schedule. 30 class hours are required. To register, call the Hospice Office at 659-2954, Verna Lee Shirley at 659-5345 or Nelle Evans at 733-5057.

Project Graduation

The parents of the Spearman High School Senior Class of 2008 will sponsor and host a "Project Graduation Party" following commencement exercises Friday May 23rd. To encourage the graduates to stay the entire night, door prizes are awarded throughout the evening. In addition, graduates can earn paper monies through their participation in various games so that prizes can be purchased. The graduation party will culminate with the distribution of grand prizes. Prizes, gift certificates, and cash are needed for the evening's gifts. If you, the community, who supported and encouraged these seniors these past 13 years of school, would be willing to share in this final "Class of 2008" memory, making this project "special", please call Bonnie Bergan at 659-5529, Tammy Benton at 659-3071, or Gina Gillispie 659-5341. Contributions can be mailed to: Project Graduation Gina Gillispie, P.O. Box 633, Spearman, TX. 79081 Thank you in advance, for your support!



Engagement Announcement

Kitty and Frank Edwards of Spearman announce the engagement of their daughter Jentry, to Clinton Williams both of Lubbock. Grandparents of the bride-elect are Bobbie and Jack Hart of Amarillo and June and the late Wayman Edwards of Spearman.

Williams is the son of Ricky Williams of Panhandle and Patti Parker of Albuquerque, New Mexico. Grandparents of the prospective groom are Billie Ray and the late Clinton Williams of Panhandle and Ruth and Bob Parker of Amarillo.

The couple plan to wed August 30th at the Amarillo Botanical Gardens.

The bride-to-be is a 2004 graduate of Spearman High School. She will graduate in May 2008 from Texas Tech University with a Bachelor of Arts Degree and will begin the Doctor of Physical Therapy Program at Texas Tech University Health Sciences Center in the summer of 2008.

The prospective groom is a 2003 graduate of Panhandle High School. He is pursuing a dual degree in Architecture and Civil Engineering at Texas Tech University, and is the owner of Broadway Bikes in Lubbock.

Thank You

Thank you to all of you who made my 90th birthday so special with your cards, letters and pictures. Each of the 100 cards I received were read and enjoyed. I will cherish your thoughts and messages forever.

Thanks for making my 90th birthday so happy.
Pauline McGee

PAID CDL TRAINING!

NO EXPERIENCE NEEDED!

Stevens Transport, the premier refrigerated carrier in the U.S., sponsors the total cost of your CDL training! In 17 short days you will earn your CDL and begin your paid on-the-job training! Earn \$40K first year and up to \$150K fifth year! Excellent benefits and 401K!

For more information, call 800-333-8595

www.becomedriver.com

Woman walks again after using Thera-gesic

BEXAR COUNTY - Mary Ann W. applied Thera-Gesic to her right knee and shuffled off to Buffalo. When asked why Buffalo she painlessly replied, "None of your dang business!"

Stay tuned for another Thera-Gesic moment!

Gordon's

Bridal Registry

Couples Currently Registered

- Kandace Boyd & Manolito Cruz - 2/23
- Laura Geer & Cory Jumper - 3/2
- Heather Jumper & Jared Mahan - 3/8
- Danielle Close & Jeff Jackson - 3/15
- Brianne Holmberg & John Thomas - 3/28
- Brooke Winters & Wade Stewart - 3/29
- Christen Imhof & Michael Lozano - 4/5
- Nicole Sander & Bobby Crawford - 4/20
- Courtney Chambers & Keith Winegarner - TBA
- Betsy Holt & Shad Kalisiak - TBA
- Audra Evans & Kyle McLaughlin
- Detsi Vera & T.J. Evans

Baby Registry

- Jason & Amber TeBeest - 2/23
- Chelsey (Villines) Farmer & Kirk Westfall - 2/23
- Jody & Cami (Winegarner) Meason
- Kellyn King & Jeremy Fry

Gordon's 659-2141
314 Main Spearman

Words from Faith & Grace

by Cecil R. Biggers, Lutheran Lay Minister

The Lord does not see as we see, nor judge as we judge. We study I Samuel 16: 1-13, Psalm 23, Ephesians 5: 8-14, and John 9: 1-41 The Lord sends Samuel to anoint a new king over Israel as Saul departed from the way of the Lord. Samuel interviews the sons of Jesse, but the Lord does not choose the sons offered. The youngest son, David is presented and Samuel anoints David as King of Israel. As he was anointed, the Spirit of the Lord entered David. The Psalmist sings of the steadfast love of the Lord which accompanies the believer even in the darkest moments of life.

Paul reminds the Ephesians that they are now "children of the light" and as such need to "strip off" the ways of the world. The believer should be clothed in all that is good, right and true. So as we are washed in the waters of baptism and the Spirit enters our hearts, we should take care that we do not hang on to our old, dark ways but awake in the light of Jesus Christ.

Jesus heals a man who was blind from birth. Jesus points out that it was not "sin" which caused his blindness, but rather that through His healing of the blindness, the glory of God is revealed. Note that the healed man first "sees" Jesus as a man, he later "sees" Jesus as a prophet of God, and eventually he "sees" Jesus as the Messiah, the Son of God! Note too, that when Jesus hears the healed man has been banished from the synagogue. He goes to him and the healed man joins the faith community.

We see a theme of "anointing" in these scriptures. David is "anointed" by Samuel; the Psalmist is "anointed" by the Lord in the presence of his enemies; Christ is shown as the "Anointed One" in our gospel lesson. We see a theme of "seeing" in these scriptures. We know that the Lord does not "see" as we do; we know that those who met Jesus were transformed by His presence and they "saw" differently. So, dear Christian, in this Season of Lent as we examine our lives and our need for repentance and amendment of life, what do you "see" in Jesus Christ?

May the Holy Spirit open your eyes that you may behold the glory of the Lord.

FREE DIRECTV 4 ROOM SYSTEM!

CHECKS ACCEPTED!

250+ CHANNELS!
Starts \$29.99

Over 85 HD Channels!
FREE HBO+Cinemax+
Showtime+Starz 3 Months!
FREE DVR/HD!
We're Local Installers!

1-800-214-7110

You are invited to a
Bridal Shower
honoring
Heather Jumper
bride-elect of Jared Mahan
on Saturday, March 8, 2008
from 10:00-11:30 a.m.
in the Church of Christ Parlor
121 S. Haney Spearman

Celebrate

Gifts for all your celebrations!

Bridal Registry

Shower Dates

- Laura Geer & Cory Jumper - 3/2
- Heather Jumper & Jared Mahan - 3/8
- Danielle Close & Jeff Jackson - 3/15
- Brianne Holmberg & John Thomas - 3/29
- Brooke Winters & Wade Stewart - 3/29
- Betsy (Holt) & Shad Kalisiak - 3/29
- Christen Imhof & Michael Lozano - 4/5
- Nicole Sander & Bobby Crawford - 4/20
- Courtney Chambers & Keith Winegarner - TBA
- Tobi Barrera & Chris Guana - TBA

Baby Registry

- Amber & Jason TeBeest
- Kristin & Quentin Shieldknight
- Chelsey (Villines) Farmer & Kirk Westfall
- Kellyn King & Jeremy Fry

Celebrate

203 Main St. Spearman, TX
(806) 659-3350 1-800-663-8026

Tong's Chinese Restaurant

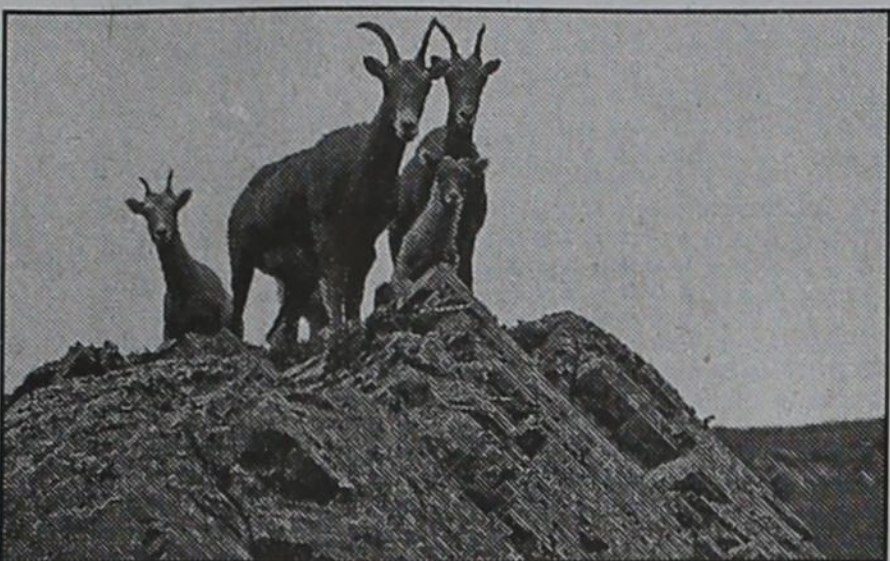
511 S. Hwy. 207 • 659-2838 • Spearman

All-You-Can-Eat Buffet Specials

Tuesday - Steak	\$7.99
Thursday - BBQ Ribs	\$6.50
Friday - Shrimp	\$6.50
Saturday - Catfish	\$6.50
Mon., Wed. & Sat.	\$5.50

Buffet Hours: 11 a.m.-2:30 p.m. & 5:30-Close

by Jim Derington
Out at the Lake



A Mountain Goat Family

Lake Level--February 25, 2008--19.38 feet (-0.12)

The four eagles, 2 with the white heads and 2 immature, are still at the Lake. Ducks are still around, but the geese are gone. Jim enjoys the mountain bluebirds that are being seen near the office.

Last Saturday a grass fire was started near the rim of Horse Creek Canyon. A downed electric line started it, but the Spearman Fire Department soon had it out.

Frank Edwards has been generous about sharing his nature photos with this column, and I've enjoyed hearing about Frank and his family enjoying hiking, canoeing, and mountain biking out at the Park.

He sent some pictures taken on a backpacking trip over in New Mexico. I asked him if he would tell us about it. I am always delighted to hear about someone getting outside and being adventurous.

Backpacking Up Wheeler Peak

Wheeler peak is 13,161 feet high (the highest peak in New Mexico) and about

20,000 acres around it has been designated as wilderness area. It is located between Red River and Taos Ski Valley.

We go in by following a nature trail southeast of Red River. It is about a 20 mile hike with two beautiful high lakes along the way that provide a good place to camp and some good cutthroat trout fishing also. We usually take three or four days to make the trip.

I've made the trip several times over the years and Kitty has been up with me a couple of times. I took each of my daughters up the summer before they went off to college (sort of a rite of passage, I guess).

The rocky mountain bighorn sheep were native to this area but were hunted out. In 1993 they were reintroduced and have done very well as they are now protected. The pictures are of female goats with their young - the males are much harder to get close to. I took these pictures up above Horseshoe Lake (the second of the lakes along the trail) and just below Wheeler Peak.

Wolf Creek Heritage Museum Notes

by Virginia Scott

MUSEUM HAPPENINGS

We have had a good week. My trip to Brownfield for our Trails meeting was uneventful and the meeting was good. I was able to learn about some calendars at performances of Texas that will allow us to advertise summer events. I will be sending them a Lipscomb County calendar so if you are planning events please send me the date, time, title of event, etc. I will also post on the Texas Plains Trail Calendar. I will be contacting city halls for summer programs.

I am also making day trip schedule for distribution to summer visitors at Texas, Tourist rest stops. If you have a destination you would like to appear on a day trip, please send them to me.

Now for the good news. Our museum was selected by the Institute of Museum and Library Services as one of 851 libraries, museums, and archives to receive the IMLS Connecting to Collections Bookshelf. It includes an essential set of books, online resources, and user's guide that will impact the ability of our museum to care for our collections. Look for the press releases. I will send the national release to our papers today and one when we receive the library with photographs of us opening the "candy jar". We and the Amarillo Art Museum were the only museums in the top 26 to receive the references. We applied last year. This will greatly increase our ability to research how to preserve and conserve our artifacts. We will also be able to offer the references to other local area museums.

We will be preparing the art exhibit for Lipscomb County students this week and next. This best is that Dorothy and Vernie are com-

ing home next week. Tomorrow, Friday is the last day for early voting. Please vote now or on the 4th. Your vote does count and influence how our country and leaders lead and your voice is needed.

HISTORICAL MUSINGS

You get an extra day this week. It is February 29, a leap year. Leap year is a year with one extra day to align the calendar with the earth's motion around the sun. A leap year for the Gregorian calendar happens every year divisible by 4.

A leap year is more likely to occur on Mondays or Wednesdays rather than other days because the Gregorian calendar repeats itself every 400 years. Therefore February 29 can occur 15 times on a Monday or Wednesday, 14 times on Friday or Saturday and 13 times on a Sunday, Tuesday or Thursday. (this is a great math question and challenge).

Some people think the 29th is also "Sadie Hawkins Day". Incorrect Sadie Hawkins Day is officially in November. It is confused with Leap Year Day because of the custom of women being allowed to court men on these days. The leap year custom is attributed to the old Irish tradition referring to St. Bridget striking a deal with St. Patrick to allow women to propose to men every four years. This was probably made to balance the traditional roles of men and women in a similar way to how the leap day balances the calendar.

People who are born on February 29th have the privilege of many options about birthday celebrations; some years on the 28th or March 1. Some choose to have a birthday only every 4 years thus staying younger. In some cases, their legal birthdays depend on the rules and regulations of where they live. Driver's License expiration dates cause a unique problem because the computer database may not recognize the 29th as a legal birthday.

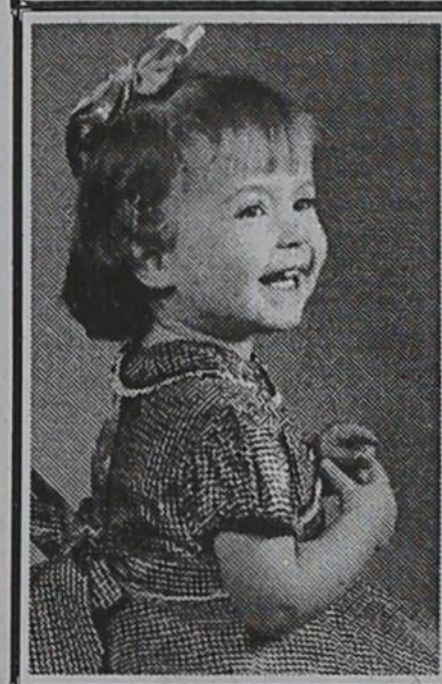
Some members of the Honor Society Of Leap Year Babies choose either February 28 or March 1 for their legal birthdays for legal documents such as driver's license and other government agencies that don't recognize the 29th.

Famous/Infamous birthdays: 1468- Pope Paul III, 1916- Dinah Shore, American singer; 1924- Al Rosen, American baseball player, 1960- Richard

Ramirez, American serial killer; Anthony (Tony) Robbins, American motivational speaker, 1976- Ja Rule, American rapper and actor, and 1980- Chris Conley, American musician and songwriter/composer.

I end this week's column on a personal note. I try to recognize our county citizens when they die especially if they were well known to the museum. This week I have to say goodbye to My Mom, Helen Creager. Some of you met her when she and my dad lived with us. Mom was a great museum docent in Borger being one of their original volunteers and she received two distinguished service awards from the Texas Historical Commission. So I came by my interest from a great lady who passed away on Saturday morning, February 23, 2008. I will truly miss her.

Enjoy the week.



Lordy, Lordy
I can't believe
our baby is 50!
Happy Birthday,
Denise!
Love,
Mom & Dad

BUY HERE! PAY HERE!
Starting as low as \$500 down!

CLASSIC CLOSED CARS, INC.
Devin Cook
Manager
(806) 878-3944
724 S. Main Street
PO Box 1254
Stinnett TX 79083

MITCHELL THEATRE
Northridge Cinema 8
Guymon, Oklahoma

Movies beginning 2/29

SEMI-PRO
R -- Will Ferrell, Woody Harrelson

WITLESS PROTECTION
PG-13 -- Larry the Cable Guy

VANTAGE POINT
PG-13 -- Dennis Quad, Sigourney Weaver

THE SPIDERWICK CHRONICLES
PG -- Freddie Highmore

JUMPER
PG-13 -- Samuel L. Jackson

STEP UP 2, THE STREETS
PG-13 -- Briana Evigan

FOOL'S GOLD
PG-13 -- Kate Hudson, Matthew McConaughey

THE BUCKET LIST
PG-13 -- Jack Nicholson, Morgan Freeman

FRESH POPCORN EVERYDAY!
-PARTY ROOM & ARCADE-

Call for Showtimes
580-338-3281
www.northridge8.com
Office -- 580-338-8969
CASH & CREDIT CARDS ONLY

Department of Homeland Security
Border Patrol, Marfa Sector

NOW HIRING!
(888) 536-6204

U.S. Customs and Border Protection

A Career With Borders, But No Boundaries.

Miss Vicky's Soul Food
817 SW 5th Street (Corner of 6th & Adams)
Amarillo TX • (806) 372-2247

Down Home Cooking at it's Best!

All-You-Can-Eat
Chicken, Pork Chops, Ribs,
Cheese Meat Loaf Fish, Smothered
Chicken, Chicken 'n Dumplings,
and Much More!
Vegetables, Home-Made Desserts
Kook-Aid

Hours: Monday-Tuesday, 11 a.m.-3 p.m.
Wednesday-Sunday, 11 a.m.-5 p.m.

Wolf Creek Heritage Museum

Museum Hours: Monday thru Friday 10 a.m. to 4 p.m., Sunday 2 to 4 p.m. Special hours upon request.

Museum Information: 13310 Hwy 305, Box 5, Lipscomb TX 79056; telephone: 806-852-2123; email: wolferk@amaonline.com; website: www.wolfcreekheritagemuseum.com

got sunflowers?
you could be missing an extra \$480 per acre

California Oils Corporation is currently contracting both NuSun and High Oleic oilseed sunflowers with local delivery options. This is an excellent alternative for current energy prices and fertility costs. Call today and inquire about the benefits of oilseed sunflowers.

California Oils Corporation
ask about early planting premiums

Kerry Ham
Office 806-249-2416
Call 806-220-4650
kerryham@windstream.net
www.caloils.com

Are You A Victim of Domestic Violence, Sexual Abuse or Physical, Emotional or Sexual Assault?

Call Toll Free Hotline
1-800-753-5308

We can see individuals from Hansford County anytime upon request. Call 435-5008 or 1-800-753-5308 to set up an appointment in Hansford County. We operate a safe place for victims and their children to stay in times of crisis.

Battering Intervention & Anger Management Available

Panhandle Crisis Center
Serving Hansford, Lipscomb & Ochiltree Counties
301 S. Ash • Perryton, TX
Memorials Accepted

You'd Better Hang On!
PTCI's Internet speeds will blow you away!

Up to 6 Meg!

Faster Downloads
Online Gaming
Video Streaming

PTCI
Communication & Broadband Solutions

www.ptci.net

721 W 7th in Spearman 1-800-562-2556

DIGITAL TV

Some restrictions apply.

Sample Ballot

(Condado de) Hansford County, Texas
March 4, 2008 (4 de marzo, 2008)

INSTRUCTION NOTE:

Vote for the candidate of your choice in each race by darkening in the oval provided to the left of the name of that candidate.

(NOTA DE INSTRUCCIÓN)

(Vote por el candidato de su preferencia en cada carrera llenando completamente el espacio ovalado a la izquierda del nombre del candidato.)

"I am a Republican and understand that I am ineligible to vote or participate in another political party's primary election or convention during this voting year."

("Yo soy Republicano y comprendo que no estoy elegible para votar o participar en la elección primaria o la convención de algún otro partido político durante este año electoral.")

Preference for Presidential Nominee

(Preferencia para un candidato nombrado para presidente)

You may vote for one presidential candidate whose name appears on the ballot by darkening in the oval provided to the left of the name of the candidate or you may vote as uncommitted by darkening the oval provided to the left of "Uncommitted." Make only one choice. (Usted puede votar por un candidato para presidente cuyo nombre aparece en la boleta por llenando completamente el espacio ovalado a la izquierda del nombre del candidato o usted puede votar como votante no comprometido por llenando completamente el espacio ovalado a la izquierda de las palabras no comprometido. Haga solamente una selección.)

FEDERAL (FEDERAL)	STATE (ESTADO)	STATE (ESTADO)
<p>President (Presidente)</p> <p><input type="radio"/> Hugh Cort</p> <p><input type="radio"/> Rudy Giuliani</p> <p><input type="radio"/> Mike Huckabee</p> <p><input type="radio"/> Duncan Hunter</p> <p><input type="radio"/> Alan Keyes</p> <p><input type="radio"/> John McCain</p> <p><input type="radio"/> Ron Paul</p> <p><input type="radio"/> Mitt Romney</p> <p><input type="radio"/> Fred Thompson</p> <p><input type="radio"/> Hoa Tran</p> <p><input type="radio"/> Uncommitted (No Comprometido)</p>	<p>Chief Justice, Supreme Court (Jefe Presidente, Corte Suprema)</p> <p><input type="radio"/> Wallace B. Jefferson</p> <p>Justice, Supreme Court, Place 7 (Jefe, Corte Suprema, Lugar Núm. 7)</p> <p><input type="radio"/> Dale Wainwright</p> <p>Justice, Supreme Court, Place 8 (Jefe, Corte Suprema, Lugar Núm. 8)</p> <p><input type="radio"/> Phil Johnson</p> <p>Judge, Court of Criminal Appeals, Place 3 (Jefe, Corte de Apelaciones Criminales, Lugar Núm. 3)</p> <p><input type="radio"/> Tom Price</p> <p>Judge, Court of Criminal Appeals, Place 4 (Jefe, Corte de Apelaciones Criminales, Lugar Núm. 4)</p> <p><input type="radio"/> Robert Francis</p> <p><input type="radio"/> Paul Womack</p> <p>Judge, Court of Criminal Appeals, Place 9 (Jefe, Corte de Apelaciones Criminales, Lugar Núm. 9)</p> <p><input type="radio"/> Cathy Cochran</p> <p>State Senator, District 31 (Senador Estatal, Distrito Núm. 31)</p> <p><input type="radio"/> Kel Seliger</p> <p>Railroad Commissioner (Comisionado de Ferrocarriles)</p> <p><input type="radio"/> Michael L. Williams</p> <p>State Representative, District 88 (Representante Estatal, Distrito Núm. 88)</p> <p><input type="radio"/> Warren Chisum</p>	<p>Chief Justice, 7th Court of Appeals District (Jefe Presidente, Corte de Apelaciones, Distrito Núm. 7)</p> <p><input type="radio"/> Brian Quinn</p> <p>District Judge, 84th Judicial District (Jefe del Distrito, Distrito Judicial Núm. 84)</p> <p><input type="radio"/> William D. "Bill" Smith</p> <p>District Attorney, 84th Judicial District (Procurador del Distrito, Distrito Judicial Núm. 84)</p> <p><input type="radio"/> Mark W. Snider</p> <p>COUNTY (CONDADO)</p> <p>County Attorney (Fiscal del Condado)</p> <p><input type="radio"/> John L. Hutchison</p> <p>County Sheriff (Sherife del Condado)</p> <p><input type="radio"/> Gary Evans</p> <p><input type="radio"/> Lance Swan</p> <p>Tax Assessor / Collector (Asesor-Collector de Impuestos)</p> <p><input type="radio"/> Linda Cummings</p> <p>County Commissioner, Precinct No. 1 (Comisionado del Condado, Precinto Núm. 1)</p> <p><input type="radio"/> Ira G. "Butch" Reed</p> <p>COUNTY COMM Prec. 3 5 & 7</p> <p>Tim Stedje</p>
	<p>REPUBLICAN REFERENDUM (REFERENDUM REPUBLICANO)</p> <p>Controlling Government Growth Every governmental body in Texas should be required to limit any annual increase in its budget and spending to the combined increase of population and inflation unless it first gets voter approval to exceed the allowed annual growth or in the case of an official state of emergency.</p> <p>(Controlando el crecimiento del gobierno) (Cada cuerpo gubernamental en el Estado de Texas debe ser requerido a limitar sus aumentos anuales en el presupuesto y gastos en concordancia con los aumentos de población e inflación, al menos que sea aprobado por el voto de la población para exceder el presupuesto aprobado o un estado de emergencia.)</p> <p><input type="radio"/> NO (NO)</p> <p><input type="radio"/> YES (SI)</p>	<p>Photo ID The Texas Legislature should make it a priority to protect the integrity of our election process by enacting legislation that requires voters to provide valid photo identification in order to cast a ballot in any and all elections conducted in the State of Texas.</p> <p>(Identificación con foto) (La Legislatura del Estado de Texas debe proteger la integridad de nuestro proceso electoral en pasando la ley requiriendo identificación con foto para poder votar en cualquier elección en el Estado de Texas.)</p> <p><input type="radio"/> YES (SI)</p> <p><input type="radio"/> NO (NO)</p>
<p>INSTRUCTION NOTE: Darken in the oval provided to the left of the statement indicating the way you desire to vote.</p> <p>(NOTA DE INSTRUCCIÓN): Llene completamente el espacio ovalado a la izquierda de la frase que indica la manera en que quiere votar.)</p> <p>Immigration Federal, state, and local officials should be required to enforce U.S. immigration laws in order to secure our borders.</p> <p>(Migración) (Oficiales del condado, del estado, y del gobierno federal deben requerir que las leyes migratorias sean enforzadas para asegurar la seguridad de nuestras fronteras.)</p> <p><input type="radio"/> YES (SI)</p> <p><input type="radio"/> NO (NO)</p>	<p>Polling Places March 4, 2008 7 a.m. - 7 p.m.</p> <p>Precinct 1-City Hall, 30 SW Court Spearman Precinct 2-Renner Ranch, 10175 Co Rd H Spearman Precinct 3-Cristo-Redentor Catholic Church, 202 Hwy 15 Gruver Precinct 4-City Hall, 204 E Broadway Gruver Precinct 5- Assembly of God Church, 401 N. Bernice Spearman Precinct 6-Spearman High School, 403 E. 11th Ave., Spearman Precinct 7-Early Lutheran Church, 8605 Co Rd F Oslo Precinct 8-Early Vote-Clerk's Office, #15 NW Court Spearman Precinct 9-Pringle Morse Community Bldg., 301 Main Morse</p>	

BASKETBALL HOOPLA

02/21/08

Wellington 47, Gruver 45
Sawyer Sims scored on a layup with 1.8 seconds remaining, lifting the Wellington Skyrocks past the Gruver Greyhounds, 47-45, in an intense and tightly played Class 1A Division I area boys playoff game Thursday night in front of 900 fans at the Tascosa High Activity Center.

With the game knotted at 45-45 and 8.7 seconds remaining, Wellington rebounded under the Gruver basket after the Greyhounds had missed a shot.

Wellington's Jaston Archie tossed the ball to sophomore guard A.J. Johnson, who dribbled up the sideline and fed junior Josh Culpepper about the free-throw line. Culpepper found a cutting Sims on the opposite side of the paint for a layup and the winning points.

Gruver called time out with 1.8 seconds remaining. Greyhound sophomore Drew Mireles attempted a shot at the buzzer from just beyond half court that fell short, ending the game.

"I told our big guys to run the floor (on the last play)," Webb said. "We didn't set up a play. I couldn't be happier for this team."

Wellington was paced by Johnson's 16 points, while Sims added 10. Wellington (18-9) wins its first boys basketball playoff game since 1999 and advances to the regional quarterfinals against tonight's Clarendon-Boys Ranch winner.

Gruver took its last lead at 45-43 on a Taylor Williams drive and basket with 2:33 remaining, and held that lead until

Wellington tied the game with 27 seconds remaining.

Gruver was paced by junior Rey David Gasper's game-high 17 points, while Williams added 10. Gruver had defeated Hale Center, 43-30, in bidistrict and ends its season 11-15.

Wellington 7 17 37 47
Gruver 13 26 36 45

W-A.J. Johnson 16, Sawyer Sims 10, G-Rey David Gasper 17, Taylor Williams 10, Riley Urban 9.

02/22/08

Idalou 51, Spearman 42: At Canyon High, the Wildcats capitalized on an injury to Spearman's leading scorer, Jordan Ashmore, to defeat the Lynx.

Ashmore scored his 13th point midway through the second quarter to put Spearman on top 19-18. However, on the play, he injured his ankle and didn't score another point while playing sparingly. Idalou went into halftime leading 29-28, then outscored the Lynx 14-6 in the third quarter to open a 43-36 lead.

Spearman (21-7) was led by Ashmore's 13 points.

Idalou 12 29 43 51
Spearman 13 28 36 42

I-Blake Dowdy 22, C.J. Parkhill 6, Johnathan Adkins 6, S-Jordan Ashmore 13, Tyler Schnell 11. Records: Idalou 17-5, Spearman 21-7.

World Day of Prayer - March 7, 2008

God's Wisdom Provides New Understanding

The 2008 World Day of Prayer will be held on Friday, March 7, 2008 at the First United Methodist Church, 407 S. Haney in Spearman. Activities will begin with coffee and fellowship at 9:30 a.m., followed by the worship service at 10.

World Day of Prayer is a worldwide ecumenical movement of women of many faith traditions who come together to observe a common day of prayer each year on the first Friday in March. Each year a different country serves as the writer of the World Day of Prayer worship service. For 2008, the World Day of Prayer Committee of Guyana developed the theme, God's Wisdom Provides New Understanding.

This year, First United Methodist Church is the host church in Spearman. Everyone in the community is invited to the service and the coffee and fellowship time.

World Day of Prayer is a worldwide ecumenical movement of women and men of many faith traditions who come together to observe a

common day of prayer on the first Friday in March each year. Throughout the day, we collectively pray all over the world, beginning with the first sunrise and ending at the last sunset. Our prayers follow the sun's path around the globe.

WDP Guyana (2008's writers) developed the theme God's Wisdom Provides New Understanding to express the awesomeness of God's creation and what we can learn

from it. As we survey God's work, we are filled with awe at the beauty and diversity, and we begin to understand that we are called to care for all of creation.

The World Day of Prayer USA committee chose Guyana's Kaieteur Falls, the highest single-drop waterfall in the world, to illustrate God's awesome creation and to symbolize a nation where there is abundance, yet much need.

MONK & NEAGLE

21st Time Tour

Name Your Own Ticket Price & Get A FREE Acoustic CD

When: Sunday, March 9th - 6 p.m.
Where: The O'Loughlin Center, Spearman



PTCI® LIFELINE SERVICE AND LINK-UP PROGRAM AND UNIVERSAL SERVICES

Lifeline Service is a program designed to make basic telephone service available at reduced rates to eligible residential customers. Customers' eligibility to receive the discount must be renewed annually. Link-Up is a program designed to offer eligible residential customers a reduction in installation charges for telephone service.

Who Qualifies?

To be eligible you must participate in at least one of the following programs:

- * Income at or below 150% of the federal poverty level
- * Federal Public Housing Assistance/Section 8
- * Food Stamps
- * Medicaid
- * Low Income Home Energy Assistance Program (LIHEAP)
- * Supplemental Security Income (SSI)
- * Children's Health Insurance Program (CHIPs)
- * Additional eligibility criteria may apply to residents of federally recognized tribal lands

You will save up to \$13.50 on your monthly local telephone bill. These benefits apply to your local telephone service charges that you purchase as a flat rate service. These benefits will also cover your subscriber line charge.

Lifeline customers can also subscribe to optional services at the same rate offered to other customers.

What Universal Services are available to all customers? Universal Services are offered to all customers of PTCI®. Universal Services available include:

- * Voice grade access to the public switched network
- * Local usage
- * Dual tone multi-frequency signaling or its functional equivalent
- * Single-party service or its functional equivalent
- * Access to emergency services
- * Access to operator services
- * Access to interexchange services
- * Access to directory assistance
- * Toll limitation for qualifying low-income consumers

Unlimited local calling is \$17.50 for residential service and \$29.99 for businesses.

Lifeline Texas plan benefits are only applicable on one phone line at the customer's principal place of residence. The Lifeline discount applies only to the residential basic exchange access line. The discount does not apply to optional services, long distance, connection charges, or other miscellaneous charges. The Lifeline discount is not available on a retroactive basis. Only the State of Texas or its vendors can approve a customer's eligibility.

How do Telephone Customers and Applicants for Telephone Service Apply for Lifeline and Link-Up Programs? Customers may request enrollment forms from the PTCI® business office.

How to Apply for Telephone Service? If you do not have telephone service and wish to obtain telephone service and you are in the PTCI® service areas, or if you have telephone service and you move and you qualify for the Link-Up Program and you are in the PTCI® service areas, please call our office number 1-800-562-2556 or 806-648-1111, and we will be glad to assist you.

1-800-562-2556 806-648-1111 222 S. Amherst - Perryton 721 W 7th - Spearman
www.ptci.net

PTCI® Panhandle Telecommunication Systems, Inc.

REAL ESTATE

WILL BUY YOUR FARMLAND for cash and lease it back to you for reasonable rate. Call 806-595-0724 or 806-273-2328. 4(2-07-08)B

FOR RENT/LEASE

FOR RENT: 2BR apartment, \$375.00 per month, water paid. Call Larry O'Neal at 580-772-5617 or 580-819-0007. TFN(7-06-06)B

HELP WANTED

HELP WANTED: Manager needed for apartment complex in Perryton. Must be honest, dependable and have management experience. Fax resume to 817-732-7716 or call 817-732-1055. 4(2-14-08)B

AUTOMOBILES

FOR SALE: 1996 Lincoln Town Car Great School Car, Work Car, Trip Car, Family Car! Super comfortable ride. Leather seats. Huge Trunk. Power everything. 22 miles per gallon. Local car. 175,000 miles. \$2795. Call 806-330-0076. TFN(2-14-08)

SERVICES

HOCHY POOCHY PARLOR Call us for all your pet's grooming and boarding needs. Call now for reservations! 806-273-2724. TFN(11-2-07)

FOR SALE OR TRADE

FOR SALE OR TRADE: King-size bed - includes frame, mattress and box spring. Very nice. Need to downsize. Will sell or trade for full-size bed. Call 659-3808 for more information or to make offer. TFN(2-7-08)

FOR SALE: Full Size mattress set, Brand New, still in package. Sell for \$125. 806-341-6233 TFN(1-31-08)

FOR SALE: Brand Name King pillow top mattress set, new in plastic w/warranty. Must sell - \$250. 806-341-6233 TFN(1-31-08)

FOR SALE: All new QUEEN pillow top set - \$150. NEW in plastic. 806-341-6233 TFN(1-31-08)

FOR SALE: A great deal: NASA memory foam mattress set. Never used. Sacrifice for \$350. 806-341-6233 TFN(1-31-08)

FOR SALE: Twin mattress set new w/warranty - \$100. 806-341-6233 TFN(1-31-08)

WANTED

WANTED: full-size bed. Need to downsize. Have King-size bed - includes frame, mattress and box spring. Very nice. Willing to trade. Call 659-3808 for more information or to make offer. TFN(2-7-08)

at City Hall, 201 E. Broadway, P.O. Box 947, Gruver, Texas, 79040 until:

2:00 P.M.
March 18, 2008

A cashier's check, certified check or acceptable bidder's bond, payable to the Owner an amount equal to not less than five percent of the bid submitted, must accompany each bid as guarantee that, if awarded the contract, the Bidder will, within fifteen days after receipt of Contract Documents, enter into a contract with the Owner and will execute bonds on the forms provided in the Contract Documents. Any bid received after the time and date listed above will be returned unopened and will not be considered.

Bidders are expected to inspect the site of the work and inform themselves regarding all local conditions.

Contract Documents are on file and may be examined in the office of the City Manager, City of Gruver, 201 E. Broadway, P.O. Box 947, Gruver, Texas 79040, phone (806) 733-2424 and the offices of the City Manager, City of Spearman, 30 Southwest Court, P.O. Box 37, Spearman, Texas 79081, phone (806) 659-2524 and the office of Brandt Engineers, Consulting Engineers, 4537 Canyon Drive, Amarillo, Texas 79110, telephone (806) 353-7233.

Plans and Specifications may be obtained from Brandt Engineers, 4537 Canyon Drive, Amarillo, Texas 79110, phone (806) 353-7233 in the following manner:

Cost: Fifty Dollars (\$50.00), non-refundable, for each set of plans and specifications. Performance and Payment bonds shall be set forth in the Contract documents.

The Owner reserves the right to reject any or all bids and to waive any informalities in the bidding. In case of ambiguity or lack of clarity, the Owner reserves the right to adopt such interpretations as may be most advantageous or to reject the bid as informal. No bid may be withdrawn until the expiration of 30 days from the bid opening date.

PUBLIC NOTICE

INVITATION FOR BIDS

Sealed proposals addressed to the Honorable Mayor and City Commission of the City of Spearman and City of Gruver, Texas for sealcoating of approximately 69,600 square yards of streets, alleys, and parking lots entitled:

SEALCOATING - 2008 will be received at the office of the City Manager of the City of Gruver

**CITY OF SPEARMAN
CITY OF GRUVER
2(2-28-08)B**

PUBLIC NOTICE

Gruver ISD is requesting proposals for the replacement of flooring in the high school and junior high. Interested contractors should contact the Business Office for proposal specifications. Address: 601 Garrett Street, P. O. Box 650, Gruver, TX 79040; phone 806-733-2821. Proposals must be received in the school office by March 27 at 1:00 p.m. Proposals will be opened at that time in the Superintendent's office and considered by the GISD Board of Trustees at its regular meeting in March. The Board reserves the right to accept or reject in whole or part of any and all proposals.

2(2-28-08)B

BID NOTICE

The Palo Duro River Authority will receive sealed bids for the sale of a semi-tank trailer with pump, and a fifteen foot Bush Hog bat wing mower. These items are to be bid separately. Bids will be accepted until 5 p.m., Monday, March 10, 2008. Bids will be considered at the regular board meeting, March 11, 2008. Call 806-882-4401 for more information.

2(2-28-08)B

NOTICE TO CREDITORS

Notice is hereby given that original Letters Testamentary for the Estate of Kenneth C. Burke, deceased, were issued on February 21, 2008 in Cause No. P02528, pending in the County Court of Hansford County, Texas, to: Gary Burke.

All persons having claims against this Estate which is currently being administered are required to present them to the undersigned within the time and in the manner prescribed by law.

c/o: Cecil R. Biggers
PO Box 342
Spearman TX 79081

DATED the 2nd day of February, 2008.

Cecil R. Biggers
Attorney for Gary Burke
State Bar No. 02308500
PO Box 342
Spearman TX 79081
Telephone: (806) 659-5531
Facsimile: (806) 659-5531
1(2-28-08)B



Golden Spread Realty

1104 Dressen, SPEARMAN - 3BR, 1B, 1 detached garage, 1104 DRESSEN
32 N. James, SPEARMAN - 2BR, 1B, 1 detached garage.

Gina Deal, Broker/Owner
(806)435-5444
www.century21.com

INDEPENDENTLY OWNED & OPERATED.
©1992 and TM Century 21 Real Estate Corporation. Equal Housing Opportunity. EOW(2-14-08)B

TEAS	CGG	PEON
HULA	BASE	BANTU
ORAL	EDAM	ELGIN
ROSAPARKS	FIRS	
MEDEA	SOS	
ATRIAL	GAGARIN	
FEE	REWARD	DIDO
REGAL	HTE	SEDER
OTIC	DMWIT	GAM
SHAHDOM	REBELS	
TIRE	ALONE	
ALLY	JANOFARC	
AGILLE	URGE	ALOE
SUPER	STAR	LEON
HESSE	TAN	LEFT

6	8	3	9	1	5	7	4	2
7	4	5	2	8	3	6	9	1
1	2	9	6	4	7	3	8	5
3	6	2	4	5	1	8	7	9
9	7	1	3	6	8	5	2	4
4	5	8	7	2	9	1	6	3
2	3	4	5	7	6	9	1	8
5	1	6	8	9	4	2	3	7
8	9	7	1	3	2	4	5	6

WINDMILL SUITES OF ARIZONA - SUITE DESERT DEALS!



Your "home base" for Spring Training...
~ TRUE Suites with private bedroom, wet bar, microwave, mini-fridge, in-room coffee, Wi-Fi Internet and more.
~ Enjoy a generous breakfast each morning.
~ Children under 18 stay free in adult's suite
~ Convenient to local ball parks
To learn more or find out about specials, please call us toll free or check online...

PHOENIX - SURPRISE - CHANDLER - TUCSON
(800) 547-4747 www.windmillns.com ID: T022508X

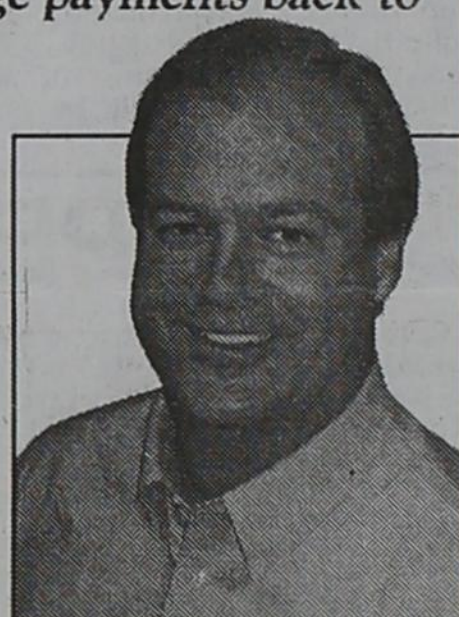


- Feed yard operating loans
- Dairy operating loans
- Crop and livestock production loans
- Real estate loans

Generous Patronage Sets Us Apart

"Unlike traditional lenders, we offer generous patronage payments back to our borrowers."

We don't have to get all your business, just the part where you'd like to save money. We're experts at real estate and other ag-related loans. We've got rates that will compete with anybody in this area, plus you get money back!



Johnny Schmucker, Great Plains Loan Officer

1315 E. 1st Street
Dumas, Texas
(806) 935-6851



greatplainsagcredit.com GREAT PLAINS...GOOD PEOPLE

Shirley Howard Properties
115 Nelson Rd, SPEARMAN - 2/2/2 - 1,900 sq ft. 1/2 acre land - Country & City all at once!
I would LOVE to sell your HOUSE!
Call ME!
Cell: 806-886-6536

MARTIN & ASSOCIATES REALTY
Serving Hansford County for 14 years
Julie Martin - Broker - 659-2425
IN SPEARMAN
1111 S. Townsend - Split level, 3/2/1 Are you looking for a home with that brand new feeling? This home has been redone throughout: all new flooring, paint, fixtures, baths, remodeled kitchen w/new appliances, granite countertops; split level deck \$134,000
703 Collier - 3/1/1 Investment property, subject to lease
1114 S Dressen - 3/1/1 sprinkler system, CACH
We'd Like Your Listing FOR QUALITY & SERVICE CALL US TODAY!
Equal Housing Opportunity

OCEANS OF WATER II - Hansford Co., Texas - 4 sections, strong water, dex, with sprinklers, wells, feedyard, home, barns, pvtm., 2 mi. hwy. frontage.
HARTLEY CO - 640 acres with nice home, landscaped, barns & sprinklers.
PRIME LOCATION FOR DAIRY, FARMING & CATTLE - East of Dalhart, on pvtm., 3 1/2 sections, strong water area, wells & sprinklers, nice home, barns and preon. pens.
SPEARMAN DAIRY - permitted for 3,600 hd. (1,400 milking), 320 acre operation, milking started as construction nears completion.
MOORE CO. - 1766 acres, fully developed with wells & sprinklers & really nice home on all-weather road, priced to sell!
Choice milk processing and dairy sites available in Dallam, Hartley, Moore, Oldham, Sherman and Hutchinson Counties.
SEE OUR WEBSITE OR GIVE US A CALL!
www.scottlandcompany.com
Shawn Gillispie 806/922-5532
Ben G. Scott, Broker
1-800-933-9698 day/eve
TFN(1-17-07)

hchd
Hansford County Hospital District
Openings at Hansford Hospital
Maintenance Person: Performing duties for maintenance of the building, grounds, including carpentry, painting, plumbing, electrical work, air conditioning, gardening, furniture repair, welding, etc.
Insurance/Billing Clerk: Responsibilities include filing and follow up of insurance claims, assisting with admissions and discharges.
Medical Records: Planning, developing, and administering health information, in all aspects, for the hospital consistent with the facilities policies and procedures.
Openings at Hansford Manor
Housekeeping: Providing a clean, neat and sanitary facility for the comfort of our patients, residents and staff.
Certified Nurse Aide: Assisting RN and LVN with the care of our residents.
LVN: Must be licensed in the State of Texas
RN: Must be licensed in the State of Texas
Great working environment and staff, quality facility providing opportunities for professional growth. Great benefit package. Apply at 707 S. Roland, Spearman, TX or contact Jackie Nelson at 806-659-5841. Download application at www.hchd.net
EEOE
2(2-28-08)B

Blankenship Real Estate
659-3052 - 670-3774
3/1/1 - Lots of storage inside & out, other lot. Close to schools.
3/2/1 - Brick 2 living areas, fenced w/storage
2/2/1 - Brick, fenced w/storage
NEW LISTINGS WANTED!
Eulalia Blankenship - Sales
Eschol Blankenship - Broker

Palace Theatre
SHOWING FEB. 29-MAR. 6
Friday-Thursday - 7 p.m.
Sunday - 2 p.m.
Closed Sunday Night
Fool's Gold
PG-13 -- Matthew McConaughey, Kate Hudson, Donald Sutherland
FRESH POPCORN & DRINKS!
PARTY ROOM & ARCADE
MOVIE RENTALS
Palace Theatre
210 Main Street
Canadian TX 79014
806-323-5133
www.palacetheatre.com
The Palace Theatre meets Lucasfilm THX specifications for site and sound quality.

Real Estate & Rental
PROPERTY OF THE WEEK
Spearman Property
306 Davis - Great storefront in desirable location.
1106 S. Haney - 3BR, 1B, 1C attached garage. Ready to move into.
114 S. Barkley - 2BR, 1B, 2CG - basement area/bedroom office
EX- 504 Roland - 3BR, 2B, storm shelter, stg bldg.
222 S. Haney - 2BR, 1B, newly remodeled
Gruver Property
802 Womble - 2 BR, 1B, 1C attached garage
Real Estate & Rental for all your real estate needs!
Melinda McCullough, Realtor
(806) 733-5678

FSB First State Bank
P.O. Box 247
Spearman, TX 79081
Telephone 806-659-5565
Member FDIC
Planning to buy a home, but not sure if you can get an affordable mortgage?
Interest too high on your present mortgage?
Want to do business with a local bank?
We can help!
Come by First State Bank, Spearman.
Check out our competitive fixed and adjustable rate mortgages for terms up to 30 years.
We can work with you to find a mortgage that fits your needs and help you buy or refinance your home.
Contact Ginger Turner and find out more.

TEXAS STATEWIDE CLASSIFIED ADVERTISING NETWORK
TexSCAN
TexSCAN Week of February 24, 2008
BUSINESS OPPORTUNITIES
ALL CASH CANDY ROUTE: Do you earn \$800 in a day? Your own local candy route. 30 machines and candy. All for \$9,995. 1-888-625-5481. Multi Vend, LLC.
AMERICA'S FAVORITE COFFEE distributor. Guaranteed accounts. Multi billion \$\$ industry. Unlimited profit potential. Free information 24/7. 1-800-729-4212. Continental Coffee
CARS FOR SALE
BUY POLICE IMPOUNDS! 97 Honda Accord good MPG \$1,500! 94 Ford Explorer runs/drives good! \$1,400! 97 Dodge Intrepid \$1,500 obol Runs great! More cars available from \$500! For listings: 1-800-544-1092 x L750
DRIVERS
CDL-A DRIVERS: Minimum 2 years OTR, runs to West Coast. Brand new equipment. Great pay miles/benefits. Company long haul. Solo's & Teams. Ask for Marcel. 1-800-253-5148, Ext. 229
CLASS A OTR drivers: Great news-we're growing! \$1500 sign-on bonus! www.hey1.net; O/O package. 1-800-973-9161. Hey1 Truck Lines, Inc.
DRIVER: O/O'S: NEW pay scale/plus fuel surcharge. Company drivers \$5000 signing bonus for minimum 1 year experience. Let's drop & hook! www.aea.com. Guy at 1-800-387-1011.
DRIVERS- CDL- A The grass is Greener at PTL. Students welcome - excellent training program. Company drivers earn up to 46¢ pm. Owner operators earn \$1-21 pm. 12 mos OTR. No forced northeast! Company drivers call: 1-866-606-6200. Owner operators call: 1-877-774-3533. www.ptl-inc.com
DRIVERS: LOVE YOUR JOB! Bonus & paid orientation 36-43 cpm. Earn over \$1000 weekly. Excellent benefits. Class A and 3 months recent OTR required. Melton Truck Lines. 1-800-635-8669.
DRIVERS STUDENTS: START your new career with sponsored training or tuition reimbursement! Possible \$40K 1st year. Experienced drivers, ask about \$5000 sign-on! www.ftenc.com, 1-800-569-9232
POST OFFICE NOW Hiring. Avg Pay \$20/hour or \$57K/yr. Including Federal Benefits, OT. Offered placed by Exam Services, not affiliated with USPS who hires. 1-866-918-1182
HOMES FOR SALE
BUY FORECLOSURES! 3BR/2BA \$11,869 or \$199/Mo! 4BR/2BA \$28,700 or \$230/Mo! 5% down. 20yrs@5%! Must See! For listing 1-800-544-6258 x T303
BUY HUD HOMES! 5BR/3BA \$310/Month or \$38,671! 4BR/2BA \$200/Month or \$14,110! Buy HUD Homes! Only 5% down, 20yrs@5%! For listings: 1-800-544-6258 Ext. 5633
FORECLOSURES & BANK REPOS! 4BR/3BA \$20,300! 3BR/2BA \$12,703! 6BR/3BA \$31,900! These Homes Won't Last! For listings Call 1-800-544-6258 Ext. 9847
HELP WANTED
DELIVER RVs for pay! Deliver "new" RVs to all 48 states and Canada. Get paid to travel! For details log on to www.GorVing4pay.com
MEDICAL SUPPLIES
SCOOTERS & POWER WHEELCHAIRS: Did you know in most cases Medicare, Medicaid and Insurance pay 100% of the cost? Call Melissa or Jan for details. 1-800-606-9860. www.medcaremedicalsupply.com
MISCELLANEOUS
AIRLINES ARE HIRING - Train for high paying aviation maintenance career. FAA approved program. Financial aid if qualified, job placement assistance. Call Aviation Institute of Maintenance, 1-888-349-5387.
ATTEND COLLEGE ONLINE: from home. Medical, Business, Paralegal, Computers, Criminal Justice. Job placement assistance. Computer available. Financial aid if qualified. Call 1-866-858-2121. www.OnlineLidewaterTech.com
SAWMILLS FROM ONLY \$2,990.00. Convert your logs to valuable lumber with your own New-wood portable band sawmill. Log skidders also available. www.newwoodawmills.com/300N. Free information: 1-800-578-1363-Ext:300-N.
WOLFF TANNING BEDS as low as \$28 a month! Free DVD player. Order by 3/3/08. Call ETS Tan today! 1-800-842-1305 www.np.ets-tan.com

REAL ESTATE
NEAR RUIDOSO NEW MEXICO: 140 acre ranch parcels. Great views of Sierra Blanca. Good horse property. Power & gravel roads. Borders national forest, may split. 1-888-812-5830. www.swproperties.com
OWNER SACRIFICE LAKEFRONT land. \$79,900. 3rd largest lake in Texas. Views, trees, easy highway access from DFW. Must sell! EZ terms. Call 1-888-316-2523.
SOUTHERN COLORADO RANCH Sale. 35 acres - \$29,900. Spectacular rocky mountain views, year round access, electricity/ telephone included. Excellent financing available with low down payment. Call Red Creek Land Co. Today! 1-866-696-5263 x 3473.
3.14 ACRES in the heart of Texas. North of Brady, electricity, central water. Oaks, mesquite trees, \$24,500. Owner financing or TX Vet financing. 1-325-456-4678. www.hillcountryranches.com
RV'S FOR SALE
REPO SALE! SIX travel trailers, five 5th wheels at Explore USA RV Supercenter, Seguin, Texas. Call Now, 1-866-813-2770
STEEL BUILDINGS
BUILDINGS FOR SALE! Rock bottom prices! 25x30 now \$4800. 25x40 \$6100. 30x40 \$7300. 35x50 \$9990. 35x70 \$12,290. 40x80 \$14,900. Others, Manufacturer direct since 1980. Pioneer Steel Manufacturing Limited. 1-800-668-5422

Run Your Ad In TexSCAN!
Statewide Ad\$450
303 Newspapers, 1,017,914 Circulation
North Region Only\$195
98 Newspapers, 276,853 Circulation
South Region Only\$195
103 Newspapers, 488,823 Circulation
West Region Only\$195
102 Newspapers, 252,398 Circulation
To Order: Call This Newspaper direct, or call Texas Press Service at 1-800-749-4793 Today!

NOTICE: While most advertisers are reputable, we cannot guarantee products or services advertised. We urge readers to use caution and when in doubt contact the Texas Attorney General at 1-800-021-0508 or the Federal Trade Commission at 1-877-FTC-HELP. The FTC web site is www.ftc.gov/whizop
Extend your advertising reach with TexSCAN, your Statewide Classified Ad Network.

Hansford County Library News

Library Art Show

It's amazing! What began with one patron proudly showing a craft item made using a pattern in a book checked out from Hansford County Library has grown into a full-blown arts and crafts exhibit not to be taken lightly.

"The display of local talent was intended to increase library traffic during dreary winter days," said Maria Carbajal, library co-director. "And has become a very interesting project."

"People coming to check out books find a pleasant surprise and often extend their library visit."

Currently, 56 items from 19 different people are on display with more arriving daily. Items include tote painted ware, oil painted and water color scenes, rustic wooden carvings, embroidery and crochet, beaded Indian-style work, craft items, and much more.

The exhibit changes almost daily, but will remain through the end of March. Anyone wishing to display items may still do so by contacting the library. The public is invited to visit this unusual event. Library hours are 9:30-5:30, Monday through Friday.

Library Seeks DVDs

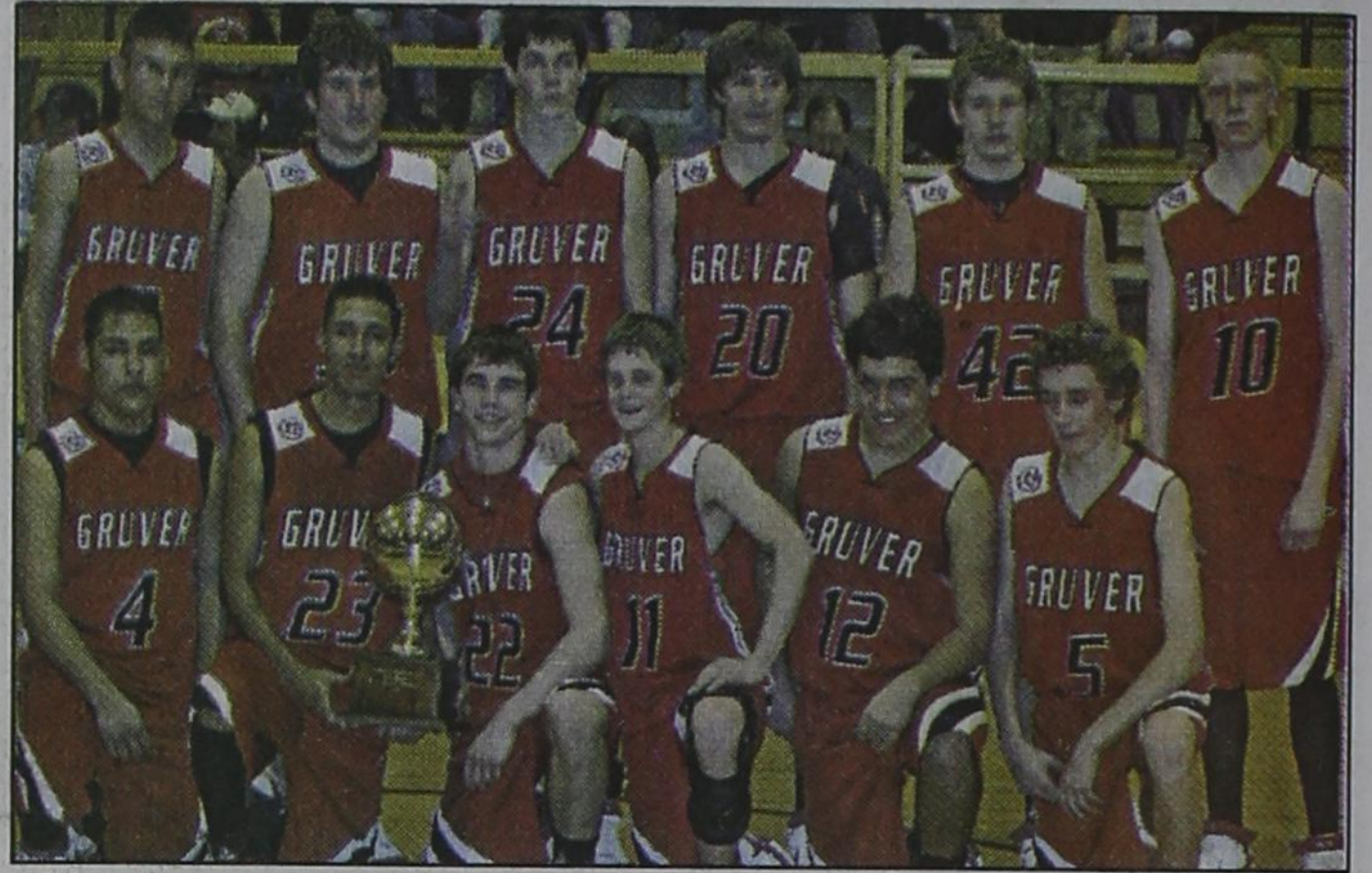
Today's library is no longer just books and research, and Hansford County Library strives to keep abreast of all trends. Currently, your local library offers the latest best selling fiction in print and audio form, a large print section, basic reference and nonfiction materials, educational and children's videos, material via Texas Panhandle Library System interlibrary loan, a homework help hotline, eight in-house public computers, wireless access and a new Book Bistro (an area to enjoy a hot drink while visiting friends or browsing for

items).

To better serve the citizens of Hansford County, Hansford County Library would like to establish a DVD collection. Currently, the library has print, audio and video collections, but no funds to add DVDs. So, we are seeking help from the community. At this time, we would appreciate receiving donations of good quality used educational, family oriented and children's DVDs.

"A grant application will be submitted by the library staff in the summer to fund an extensive DVD section," said Maria Carbajal, library co-director. "We are aware, however, that grants are not always secured so we are asking the public to help start this project."

For further information, come by or call the library (659-2231). Library hours are 9:30-5:30, Monday through Friday. Any help in this project will be appreciated.



The Gruver Hounds defeated Hale Center 48-30 to claim the Bi-District trophy on Thursday, February 14, 2008.

North Plains Electric Offers Free Trip to Washington, DC for Area Teenagers

The Board of Directors of North Plains Electric Cooperative, Inc. has authorized the sponsorship of a speech contest among students attending school in the Cooperative's service area. Two winners of the Government-in-Action Youth Tour contest will be awarded an exciting all-expense-paid trip to Washington, DC, June 12-20, 2008.

This contest is open to any boy or girl, age 15-19, who attends school (either public, private or home taught) in the North Plains Electric Cooperative service area. Students must be either a sophomore, junior or senior in high school. Schools considered to be in NPEC's service area include Booker, Canadian, Darrrouzett, Follett, Gruver, Higgins, Perryton and Spearman.

Each contestant will be required to give a five-to-eight minute speech on the subject, "Rural Electric Cooperative - The Power For Better Living." After each presentation, a panel of judges will ask the contestant three questions about North Plains Electric or rural electric cooperatives in general. Reference and study material will be furnished for each contestant.

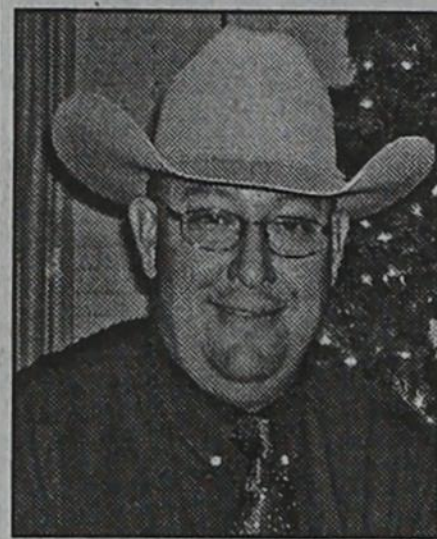
The contest will be held on Tuesday, March 25, 2008 in the "Willie Room" of North Plains Electric in Perryton.

The winners of North Plains Electric's speech contest will travel to Irving, Texas on June 12. There, they will join other young people from Texas who have won similar contests for the flight to Washington, DC. While in Washington, they will meet other youth from all over the United States

and visit many scenic and historic places, including the White House, U.S. Capitol, National Archives, Smithsonian Institution, Library of Congress, Arlington National Cemetery and Mount Vernon, just to mention a few. Tour participants will also meet with and view their congressmen and senators in action.

A representative from North Plains Electric will be visiting the schools concerning the contest during the next week. Students interested in more information about the contest or the Youth Tour should contact Paula Lehew at North Plains Electric Cooperative, Inc., PO Box 1008, Perryton TX 79070-1008, or call 806-435-5482 or 1-800-272-5482.

ELECT LANCE SWAN



for
Hansford County Sheriff

"THE RIGHT VOTE
AT THE RIGHT TIME"

March 4th Republican Primary
Early Voting February 19th-29th

Political ad paid for by Sally L. Swan Treasurer, 1111 S. Bernice Spearman, Tx 79081

PROPERTY WANTED

For several years the Spearman Independent School District Board of Trustees has been talking about ways to make improvements to our current ag-farm facility located at



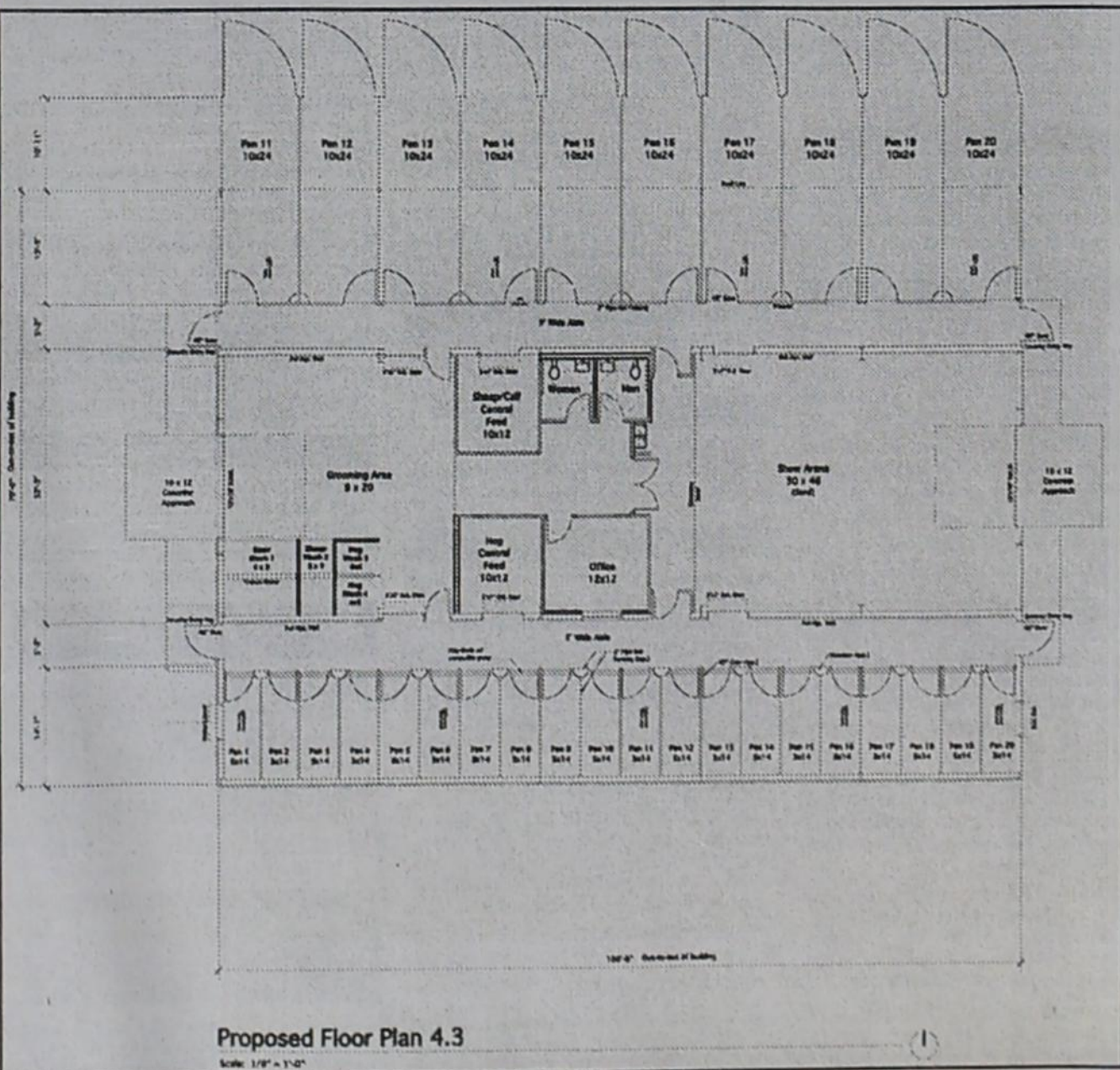
Crawford Pens #19. The Board of Trustees appointed an ag-committee to make recommendations on whether or not to relocate the current ag-facility to another location and to design a new ag-barn/facility for the school district.

After much discussion and input from the ag-committee the Spearman ISD Board of Trustees voted to purchase land to build a new ag-barn/facility on. The driving need from the administration, ag-committee and Board of Trustees was to find property that was more visible than the current location due to concerns about student safety and property that would have access to water and city utilities (to prevent the district from having to drill a water well and put in a septic tank system).

While the need for finding property to locate this facility has become a major concern, the ag-committee continued to work with an architect to design a facility that would meet the needs of our FFA program. Money has been allocated in the past two school district's budget cycles to fund this project. An artist rendition of the design of this new ag-barn/facility has been developed.

Currently, Spearman Independent School District is looking for property to purchase to locate this new ag-barn/facility. At the February 13, 2008, School Board Meeting the Board of Trustees directed the Superintendent to advertise for property on which this new facility could be located. This property should be (+ or -) 10 acres in size and be contiguous to the city limits of Spearman.

Interested property owners should contact Larry Murphy, Asst. Superintendent at (806) 659-3233 for more specifics and for the process to submit a proposal for the District to consider!



Proposed Floor Plan 4.3

GET READY

PRE-SEASON SALES EVENT

0% FOR
48 MONTHS
OR FREE LOADER

0% FINANCING FOR 48 MONTHS ON CASE IH MAXXUM TRACTORS OR A FREE LOADER

Get a jump on spring: Take advantage of fantastic season savings on all Case IH Maxxum Series tractors with models ranging from 90 to 120 PTO hp (67 to 90 kW). Efficient power and a standard high-visibility panel in the cab roof make Maxxum Series tractors perfect for loader work. With these great financing deals, our reliable parts and our expert service, there's never been a better time to talk to your Case IH dealer. Stop by today or visit www.caseih.com/ha for more information.

Five Star Equipment, Inc.

Hwy. 15 West
Spearman
(806) 659-3743

Hurry! Offer ends soon.

*For commercial use only. Subject to customer credit qualification and approval by CNH Capital America LLC. See your Case IH dealer for details and eligibility requirements. Down payment may be required. Offer good through 2/29/2008. Not all customers/applicants may qualify for this rate/terms. CNH Capital America LLC's standard terms and conditions will apply. Taxes, freight, set-up, delivery, additional options or attachments not included in suggested retail price. Offer subject to change or cancellation without notice. ©2008 CNH America LLC. All rights reserved. Case IH and CNH Capital are registered trademarks of CNH America LLC. www.caseih.com