



The Hansford County Reporter Statesman

PROUDLY SERVING HANSFORD COUNTY SINCE 1907

reporter@spearmanreporter.com

VOLUME 101 • ISSUE 5

WWW.SPEARMANREPORTER.COM

THURSDAY, JANUARY 31, 2008

GISD Changes Elementary/Jr. High Drop Off Points

Beginning Monday February 4, 2008, parents will need to drop off and pick up elementary and junior high students in the front Junior High parking lot. The parking lot has been marked for one way traffic. The front of the Elementary will be closed to traffic in the mornings and afternoons. Gruver ISD is making this change for the safety of the elementary students who walk home.

Local Students Named to Frank Phillips College Honor Rolls

Sixteen students (16% of semester enrollment) attending the FPC Allen Campus in Perryton received academic honors for the fall semester 2007.

Five students from Perryton; Ivan Altamirano, Deana Foster, Kat Iglehart, Kathryn Sanford, and Grace Vaquera; and one student from Spearman, Sylvia Tarango, earned places on the President's List. To receive this honor, a student must be enrolled in 12 or more credit hours (this constitutes a full time load of classes) and have a grade point average (GPA) of 4.00, the highest attainable for the semester.

Six students from Perryton; Lyudmyla Battin, Stephen Cano, Jordan Depew, Donna Gilbert, Jennifer Gonzales, and Leota Ramirez; one student from Darrrouzett, Rita Presley; and one student from Follett, Theresa Messner, were named to the Dean's List. To receive this honor, a student must be enrolled in 12 or more credit hours and have a GPA between 3.50 and 3.99 for the semester.

The FPC Allen Campus takes great pride in congratulating each of these students for a job well done.

Weather Forecast

THURSDAY NIGHT - Mostly clear. Lows around 19. Southwest winds around 10 mph.

FRIDAY - Partly cloudy. Breezy - warmer. Highs in the upper 50s. Southwest winds 15 to 25 mph.

FRIDAY NIGHT - Partly cloudy. Lows in the lower 20s.

SATURDAY - Partly cloudy. Highs in the lower 50s.

SATURDAY NIGHT - Partly cloudy in the evening then becoming mostly cloudy. Lows in the mid 20s.

SUNDAY - Partly cloudy. Breezy. Highs in the upper 50s.

SUNDAY NIGHT - Increasing clouds. Lows in the upper 20s.

MONDAY - Mostly cloudy. Breezy. Highs in the mid 50s.

MONDAY NIGHT - Mostly cloudy. Breezy. Lows in the mid 20s.

TUESDAY - Mostly cloudy. Breezy. Highs in the lower 40s.

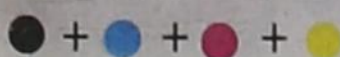
Texas Crop & Weather

The following specific livestock, crop and weather conditions were reported by Panhandle Extension directors: Dry conditions continued. Supplemental feeding was in full swing as colder temperatures arrived. The cotton harvest was nearly complete, with good yields and quality reported. Producers were preparing land for spring planting. Wheat and oat fields were weak from lack of moisture. Wheat farmers sprayed for greenbugs. Grazing for stocker cattle was limited. Cattle were in fair condition. The risk of wild fire remained high.

COME TO THE GAME

Spearman Lynx/Lynxettes
1/31-2/2 7G, 7B, 8G, 8B @ Gruver JH Tourney
2/1 JVG (5), JVB (5), VG (6:30), VB (8) vs. Fritch - SHS Basketball Homecoming
2/4 7B (5), 8B (6), 9B (7:30) vs. Stratford
2/4 7G (5), 8G (6), 9G (7:30) @ Stratford
2/5 JVG (5), JVB (5), VG (6:30), VB (8) @ Panhandle
2/8 JVB (5), VB (6:30) vs Stratford
2/12 JVB (5), VB (6:30) @ Canadian
2/11-12 Girls Bi-District - TBA

Gruver Greyhounds/Lady Hounds
1/31-2/2 7G, 7B, 8G, 8B @ Gruver JH Tourney
2/1 JVG (4), JVB (5:15), VG (6:30), VB (8) vs Boys Ranch
2/4 7G (4), 7B (5), 8G (6), 8B (7) @ Boys Ranch
2/5 JVG (4), JVB (5:15), VG (6:30), VB (8) @ Sunray



Jordan Stuns Crowd - Twice

by Joanne Eaton

The end of the first half has become thriller time for the fans of the Spearman Lynx. As the buzzer goes off, Jordan Ashmore, Lynx high school junior, who at the time, is at the opposite end of the Lynx territory, takes one last shot, before going to the locker room. Swish, the ball goes through the hoop, being thrown from almost the entire length of the court! This happened not once, but two games in a row.

At Stratford, there is .3 seconds on the clock. The ball is thrown in! With no time to aim accurately, Jordan throws the ball to the goal, at the opposite end of the court. The ball went into the basket! The fans went wild, BUT -----the referee said it did not count. He said there is a rule that says, "If the time on the clock is .3 seconds (point three seconds) or less, the only way for the ball to count is for it to be tipped in, when it is thrown in." I tell you though, it was worth the trip to Stratford to see it happen.

Then came the game, here at home, with Canadian. The team is on the court this time, with seconds left to play. The time is running out, when Jordan again throws the ball from the opposite end of the court, almost the entire length. Swish! This time he makes three points. The fans are again on their feet, Spearman and Canadian. Someone next to me said, "He's been practicing!"

All of the players of the Spearman Lynx and Lynxettes have been playing very well. The Varsity Lynxettes are extremely fast. You are really missing good entertainment if you don't come out to watch them.



Photo by Tami Hargrove

Gov. Perry Issues Disaster Proclamation Due to Threat of Wildfires

Gov. Rick Perry today issued a state disaster proclamation for 152 counties, including Hansford County, in response to the threat posed by wildfires rapidly spreading in areas across the state. Burn bans are already in

place in these Texas counties. This disaster proclamation allows affected counties to be eligible for state assistance.

"I urge Texans to exercise extreme caution as conditions remain favorable for the development of wildfires across the state," said Gov. Perry.

"Vigilance and good judgment are key to ensuring Texans' families, homes and places of work remain safe." High winds and lack of precipitation have dried grass and other vegetation across the state, posing significant fire danger. In addition, a major cold front is expected to enter the state, this evening with sustained winds of 30 to 50 miles per hour in some areas.

To address the potential threat, seven Texas Military Forces utility helicopters have been activated and are stationed in Austin, San Antonio and Dallas/ Forth Worth (DFW), and one CH-47 helicopter is currently on standby in DFW area. The Texas Department of Transportation is providing fuel for Volunteer Fire Department personnel and assisting in suppressing the fires. The Public Utility Commission of Texas is restoring power. The State Operations Center remains at the highest level of activation to monitor the situation. The Governor's Division of Emergency Management is coordinating state support for local officials.



This tree was blown down on Monday, January 27th, on the corner of 4th and Barkley, as a result of 55 mph gusts. The high winds and lack of precipitation have dried grass and other vegetation, posing significant fire danger.

March 4th Republican Primary

February 4th is the last day to register to vote for the March 4th primary election. Applications for ballots by mail must be received on or before Tuesday, February 26th.

Early voting will be held at the Hansford County Courthouse in Spearman and the branch office in Gruver City Hall from February 19th through 29th.

The primary election day will be Tuesday, March 4, 2008 from 7 a.m. to 7 p.m.

The position of Hansford County Sheriff is the only locally contested race. Current Sheriff Gary Evans and former Hansford County Deputy Lance Swan have both filed for the position.

Other candidates filing for office include: **84th Judicial District Judge:** William D. (Bill) Smith, Incumbent; **84th Judicial District Attorney:** Mark W. Snider; **Hansford County Attorney:** John L. Hutchison, Incumbent; **Tax Assessor/Collector:** Linda Cummings, Incumbent; **Hansford County Sheriff:** Gary Evans, Incumbent and Lance Swan; **Republican Chairman:** Dorothy Cator; **Hansford County Commissioner, Precinct 1:** Ira G. "Butch" Reed; **Hansford County Commissioner, Precinct 3:** Tim Stedje.

There will not be a Democratic primary election in Hansford County.



The Geometry Class quilt raffle will be held at half-time of the Varsity Boys' basketball game vs. Boys Ranch on Friday, February 1, 2008. Purchase \$1 tickets from any Geometry student (sophomores & juniors) or from Mrs. Wynn Essler. Proceeds go to the GHS Math Department Scholarship Fund. Thank you for your continued support.

Lullabies, Legends & Lies

by Parson Smith, the Prime Minister of Laughter

I don't put bumper stickers on my car. It's not that I mind telling people what I think. It is just that many of the people that need to be told can't read, and even more should not be multitasking while trying to drive. In any event, I have seen quite a few wonderful bumper stickers and thought that I would share a few with you. The more people I meet, the more I love my dog

My border collie is smarter than your honor student. My other car is a broom I used to have a handle on life, but it broke. Save the Baby Humans. Only mothers of teenagers truly comprehend why other species eat their young. Life is Good. Meddle not in the affairs of dragons, for you are crunchy and good with ketchup. Jesus loves me, this I know - that is why I don't

drive slow!
Don't believe everything you think
Your body would look good in my trunk
When life hands you gators, make Gatorade
The Moral Majority is neither.
In case of The Rapture, can I have your car?
Be alert. The world needs more lerts.
My wife says I should get up and go to work, but the voices in my head say I should stay home and clean my guns.
Dyslexics are people poo.
Until the next time,
May God Bless.

State Capital HIGHLIGHTS

AUSTIN - The state House Committee on Elections met Jan. 25 to talk about allegations that there are some folks who pretend to be someone they aren't when they cast a ballot on election day.

Acting on a legislative interim charge, the committee is seeking to (1) determine if voter fraud exists in Texas, (2) explore ideas on what to do about it if it does exist, and (3) report back to the Legislature in January 2009 when election laws could be amended.

Elections committee chair Leo Berman, R-Tyler, asked if Texas, with its estimated 2 million illegal residents, might be in danger of massive voter fraud.

No testimony seemed to confirm such a danger, but there was testimony indicating that 150,000 or more of Texas' registered voters do not have photo identification.

The idea of a state or federal photo I.D. card that could be used to verify voter eligi-

bility is being tested in Texas and elsewhere. Voter I.D. legislation failed to pass in the Texas legislature's 2007 session, but the topic is still hot.

Rep. Joe Farias, D-San Antonio, expressed concern that if voters are expected to produce a state photo I.D., such as a driver's license, some older voters in his district might not have the required photo identification, and could be disqualified at the polls.

Rep. Rafael Anchia, D-Dallas, said there are reliable, published reports concluding that there is little fraud, but what there is of it mainly relates to mail-in ballots.

Kels Farmer, an auditor with the State Auditor's Office, reported a finding that 49,000 registered voters may have been ineligible to vote during the May 12, 2007, special election, because they were felons, duplicates or deceased. Those findings did not show that any of the 49,000 voted.

Jay Dyer of the Secretary of State's Office said half of the 49,000 voters on the roll mentioned by Farmer were duplicates caused by a computer error.

Dale Stobaugh, with the Forensic Document Section of the Texas Department of Public Safety's crime laboratory, said thumbprints would be one way to curb voter fraud, as handwriting samples can be unreliable.

Travis County Clerk Dana DeBeauvoir said that in serving as elections officer in more than 100 elections over the last 21 years, she was aware of only one case of voter impersonation.

Tarrant County elections administrator Steve Rayburn said he has not seen any voter fraud in nine years.

But Harris County Tax Assessor-Collector Paul Bettencourt said he had proof of 381 cases of voter fraud in his county, including dead people, a jailed felon and non-citizens who voted.

Anchia contested some of Bettencourt's assertions, but

both men agreed that if the federal government would give county administrators access to the U.S. citizenship database, it would be easier to prevent voter fraud.

Justice named in complaint

A citizen action group, Texas Watch, filed a complaint with the Texas Ethics Commission against Texas Supreme Court Justice Paul W. Green, alleging he used political contributions to pay for travel to and from his home in San Antonio on 272 separate occasions, violating state ethics laws.

More phone access for prisoners

The Texas Board of Criminal Justice approved a program to allow more than 100,000 Texas prison inmates regular access to a pay telephone. Enabling legislation provides for the installation of one pay phone for every 30 eligible inmates. That's about 4,000 phones.

Perry talks about state economy

Gov. Rick Perry spoke at the annual meeting of the Texas Association of Business on Jan. 25. He said the state economy is strong and expanding. But, he said, healthcare, how to pay for it, how much to provide, and how to succeed in business while doing so "is one of the most pressing issues of our times."

Crab trap program needs help

Texas Parks and Wildlife Department is calling for volunteers to help in the 7th Texas Abandoned Crab Trap Removal Program, Feb. 15-24.

During this 10-day period, all Texas bays will be closed to crabbing with crab traps and any traps left in the bay will be presumed to be abandoned and considered litter under state law, thus allowing volunteers to legally remove any crab traps they find.

TEXAS Health Matters

DFPS Volunteers Help Keep Agency Going

Supervising home visits for children in the care of Child Protective Services. Shopping and providing pet care for people with disabilities. Watching babies who are in the hospital because their parents have been accused of abusing or neglecting them. Knitting blankets for and distributing fans to the elderly.

Every day, about 500 people across the state volunteer their time and abilities to the Texas Department of Family and Protective Services (DFPS). And without their help, public servants would have a much more difficult time protecting children, the elderly, and people with disabilities from abuse, neglect, and exploitation.

"We couldn't do our jobs without them," says Kim White, volunteer and community engagement specialist at DFPS in Austin. "They help coordinate and plan so many activities, such as holiday gift drives and adoption consummation parties. Without volunteers we couldn't run our resource rooms or fill them with emergency supplies for Child Protective Services and Adult Protective Services clients. Volunteers are a valuable resource."

Sometimes, being a DFPS volunteer presents unique challenges, as Bob Muzzy of El Paso discovered. As a member of that city's Extreme Weather Task Force, Muzzy's mission was to deliver heaters to an elderly couple whose children have Down syndrome. When he arrived at their home, he was greeted by an aggressively territorial rooster!

"When the blanket drive started in 2006 I was working 30 to 40 hours per week. It was almost like a full-time job," said Muzzy, who retired from Southwestern Bell Telephone in 1992. Delivering fans, blankets

and heaters was the main function of the Extreme Weather Task Force, but Adult Protective Services volunteers also helped with the organization and inventory of the Silver Star Room, which keeps emergency resources for staff to distribute to clients. Some volunteers helped out with special projects such as Christmas stockings for the elderly. Others aided caseworkers by picking up documentation, groceries and emergency goods.

Like Muzzy, most APS volunteers are looking for valuable ways to channel their free time and energy. "You get bored if you don't work," he says.

Working in the field, a volunteer's value can be immeasurable - especially when they see abuse and neglect firsthand. One case in San Elizario is hard for Muzzy to erase. "There was a lady living in an old 40-foot trailer. It was a 1950s model with no windows - the holes were covered with cardboard. She had a butane bottle outside with a hose running into the trailer. Her electricity came off an extension cord from her neighbor's house. That place was a mess," Muzzy reported her case and says, "She's in a safer place now."

Sometimes being a DFPS volunteer means just being a helpful voice on the other side of a telephone. Every other Monday for about the last seven years, Richard Bolton has left his day job as an IBM financial analyst in Austin a little early so he can put in a three-hour shift as a volunteer at the Texas Runaway Hotline and Texas Youth Hotline. Bolton, who found out about the hotlines through a search on the Internet, says he likes volunteering there because it's rewarding work.

"One of the things that caught my attention is the extensive training," says Bolton. "It helped me learn

how to feel a lot more at ease and confident in my ability to talk to strangers. We learned not only how to refer people to local resources, but how to help guide them in the decision making process so that they could help themselves. Sometimes they're looking for shelter. Sometimes they're looking for ways to survive. There are ways for us to guide them to make the best decisions they can given their circumstances."

DFPS volunteers provide a wide variety of services: accompanying frontline staff on cases, transporting clients, helping with home repairs, recruiting foster and adoptive parents, and even serving as translators between clients and staff. For more information on becoming a DFPS volunteer and to sign up for volunteer opportunities in your area, visit the DFPS website at www.volunteerdps.org.

SUDOKU PRESENTED BY VolunteerMatch.org Where volunteering begins.

		3	8						7
	2	4				3			
1			3					2	6
				7				3	
	7		5		8			1	
	9			4					
6	5				2				3
		2				5	9		
7					5	1			

© 2008, StatePoint Media, Inc. answer on classified page
Fill in the blank squares in the grid, making sure that every row, column and 3-by-3 box includes all digits 1 through 9.

These games are brought to you by the Hansford County Reporter-Statesman

VALENTINE'S DAY

ACROSS

- Lottery-like gambling game
- Levee
- High fidelity
- ___ of March
- Alternative to truth
- Unit of electrical capacity, F
- Editor's job
- Happily ___ after
- Collect
- Famous martyr of love
- Typically on limo window
- Carries blood away from heart
- Hole punching tool
- Attention-grabbing shout
- Formal address
- ___ Wan of "Star Wars"
- Fairy
- Dip it in milk?
- Dome-shaped dessert
- Over the top
- Concluded
- Inflamed lymph node from plague
- Hang out with
- Right-angle building extension
- Storeroom
- Traveling on horseback
- Hole in one
- Virtuoso
- Via
- "Silly Love Songs" author
- Under the vest
- Highly excited
- Tiny amount

DOWN

- Capital of Ukraine
- Poetic source of Norse mythology
- He took one small step for man
- Relating to bones
- Type of crane
- Entertainment venue
- Mother in Paris
- Lord Nelson's true love
- Ahmadinejad's country
- "The ___ and the Furious"
- Proof of identification, pl.
- A bit much
- Ruling in Islamic law
- It's found at the gallows
- Am is to I as ___ is to we
- James Stewart in "Mr. Hobbs Takes a Vacation"
- Approximately
- It tests how low you can go
- Football great
- Graham
- Superior command
- Found on fishing poles
- Swiss singing style
- It's popular on

41. Devastate or pillage
42. Angle less than 90 degrees
43. Opposite of delayed
44. 1980s St. Louis Cardinal outfielder Willie
45. Oak fruit
46. That time
47. A long walk
48. Sail support
49. Film ___
50. Volcano in Sicily
51. Tibetan oxen
52. Romantic destination

CROSSWORD

PRESENTED BY VolunteerMatch.org Where volunteering begins.

© 2008, StatePoint Media, Inc. answer on classified page

The Hansford County Reporter-Statesman

213 Main Street • Spearman, TX 79081
Phone - (806) 659-3434 • Fax - (806) 398-9080
www.spearmanreporter.com
reporter@spearmanreporter.com
cathysmith@valomet.com
Mon-Thurs. 9 a.m.-12 p.m., Mon-Wed. & 1-5 p.m.
Closed Thurs. afternoon and all day Fri., Sat. & Sun.

Gary Smith - Publisher Catherine Smith - Editor
Contributing Writers: Dorothy Hudson, Jim Derington, Merry Sparks, Cecil Biggers
Contributing Photographer: Charlie Johnson

Subscription Rates
In Hansford County - \$30.00 • Out of County - \$40.00

The Hansford County Reporter-Statesman (USPS 529660) is published weekly in Spearman, TX. Periodical postage paid in Spearman, TX. POSTMASTER: Send address changes to: The Hansford County Reporter-Statesman, 213 Main Street, Spearman, TX 79081.

Publication Policy
The deadline to submit news and advertising to The Hansford County Reporter-Statesman is Monday at 5 p.m. Items submitted after the deadline will be published at a later date, as time and space permit. Publication of all items is at the discretion of the editor.

Advertising
Open Display rates are \$4.00 per column inch. Classified Ads are \$6 for the first 25 words and 10¢ per word for each additional word. (Additional charge for boxed classifieds.) There is a \$1 charge per week if billed.

Member of
Gruber Chamber of Commerce
Spearman Chamber of Commerce
Texas Press Association and Panhandle Press Association

TA TEXAS PRESS ASSOCIATION AWARD WINNER

Happy Birthday!

Editor's Note: This Happy Birthday list is run as a public service by the Hansford County Reporter-Statesman. We apologize if any names are misspelled. If you know of a name that needs to be changed, added or deleted, please call 659-3434.

Thank you, Catherine

January 31
Birthday - Breanna Dearin, Brian Stewart, Austin Zimmer, James Schnell, L.C. Owens, Cory Schneider, Charles Lilley, Hudson Williams, Jim Younger, Karen Ferguson
Anniversary - M/M Manuel Ruiz, M/M John Shields, M/M Dick Hintergardt, M/M Royce Mathews

February 1
Birthday - Mary Fern Terry, Lynn Whitefield, Kenneth Lee McClellan, Ann White, JoeBob Breedon, Terri Goodknight, Lacie Baker, Clint Linde, Anthony Renteria, Brian Johnson, Cherlynn Thompson, T.J. Vasquez, Charles Davis, Skylar Tidwell
Anniversary - M/M George C. Lowe

February 2
Birthday - Sergio Favela Jr., Margie Boone, Michael T. Davis, Sheila Brand, Grace McDade, Nadine Bishard, Connie Garcia, Cayla Simon, Toby Thompson
Anniversary - Jeff & Chris Spencer, Bill & Dalene Baker, Louis & Mary Miesner

February 3
Birthday - Jerry Kiser, Joanne Hays, Kelly Davis, Jr. Hart, Pip Craig, Glenna Dibbern, Todd Ware, Donna Roberts, Beth Baker, Jerry Laird, Roy Dee Martin, Evelyn Burch, Traci Clift
Anniversary - M/M Shawn Cook, Bob & Candy Boxwell, M/M Jose Salgado

February 4
Birthday - Mary Dawn Henson, Bill Logsdon, Argelia Rodriguez, Heath Tolleson, Misty Barnes, Roy Lee Uptergrove, Linda Davis, Dale Hendrick, Tina Marie Jenkins, Andres Ortiz, Chris Evans, Cynthia Goodman, Ted Widener, Joan Farr, Bonnie Ball, Landri Burnam, Samantha Myatt
Anniversary - M/M Nick Jordan, Lenis & Holly Simpson

February 5
Birthday - Rose Lopez, Jerry Tipps, Kym Williams, Dorothy Cator, Reba Phillips, Cody Pipkin, Theron Spencer, Zachary McCammond, Matt Watlington, Matison Jones, George DeSantiago, Larue Mayo, Julie Richter, Larry Murphy, Vance Snider II
February 6
Birthday - Erica Blount, Larry Irlbeck, Mrs. Nell Patterson, Carlos Espinosa, Cora Lesly, Ruben Vera, Bradly Laxton, Ofelia Zamora, Courtney Jo Myers, Betty Allen, Kimberly LaFarr, Becky Brown, Moses Lomeli, Tammie Purvines
Anniversary - M/M Jeff Hohertz, Patsy & Jerry Hunt, M/M Curt Fitzgeard

February 7
Birthday - Alicia Barkley, Chris Johnson, Buddy Lowe, Mike Stedje, Monique Yancy, Virginia Poole, Tracy Taylor,

Calvin Pearson, Jill Havens, Kay Atkinson, Michelle Bass, Janice Noble, Dustin Mackie, Sara Eisfeld

February 8
Birthday - Louise Etter, Bobby Mosier, Ben Vaughn, Domingo Salazar III, Verlin Beck, Dorothy Kams, Jesse Briseno, Verlene Bass, Zachary Logsdon, Sue Watts
Anniversary - M/M Tony Herndon

February 9
Birthday - Loren Dahl, Andy Hoel, Elena Salazar, Carole Hall, Sara Avila, Paula Garza, Doris Breedon, Jackie Pearson, Linda Rodriguez, Lori Williams, Rossetta Barrera, Michelle Laughlin, Armando Borunda, Drew Mireles, Betty Scribner
Anniversary - M/M Martin Ochoa, M/M Cecil Reynolds, M/M Dwayne TeBeest

February 10
Birthday - Karen Cotter, Mark Irwin, Tammy White, Robbie Cator, Mary Ann Lasater, J. Travis Garnett, Evelina Martinez, Gregory Brand, Jimmy McLeod, Charles West, Fanetta Pierce, Josie Holt, Debbie Eslick, Karen Schnell
Anniversary - M/M Perry Dixon

February 11
Birthday - Angie Clawson, Craig Schuman, Kari Lou Russell, Joan McClellan, Denise Harbour, Lillian Cooksey, Roy Harbour, Leigh Anne Winger, Addie Williams, Sloan Dominguez, Leo Cummings

February 12
Birthday - Rod Been, Lynn Burk, Louise Evans, Brian McClenagan, Brandon Reagon, Kaci Renteria, Sister Criselda Vela, Mae Hargis, Kelly Goodman, Anselmo Vela, Mary Dixon, Glynn & Lynn Pattison, Jennie Lou Connely, Jana Hawkins, Roy Sutton, Mary Virden, Troy James, Derrick Burnett, Clayton Vanderberg, Stephen Jacobs, Walter Postoak
Anniversary - M/M Buck Tidwell, M/M Gary Evans, M/M Roy Lee Uptergrove, Mr. and Mrs. Larry Ross

February 13
Birthday - Rick Barkley, Rosi Chisum, Kristi Williams, Sherry Lee, Richard Ooley, Bill Watson, Catalina Espinosa, Esther Vargas, Mari Ann Bartimos, Maura Gaspar, Lexi Farmer, Kelly Pecha
Anniversary - M/M Eddy Rojas

February 14
Birthday - Alice Goodman, Nick Nelson, Janice Holt, C.W. Kirk, Tommy Thomas, Laura Umphress, Bubba Smith, Donna Ball, Lena Kathryn Harbour, Betsy Sutterfield, Kenneth Baker, Josiah Lee Vasquez, Courtney Wood
Anniversary - M/M Kip Francis, M/M Roney Clark, Ricky & Cindy Dowdy, Hal & Jeanie Bennett, Terry & Tammy Burch, M/M Omar Sutton, M/M Salomon Tarango, M/M Tony Swink, M/M Rod Holland, M/M Delfino Parra, Rev. & Rev. Joseph Weaks, Garrett & Mika Gumfory

Our Sympathy

FLOYD ALLEN HULL

SPEARMAN - Floyd Allen Hull, 89, died Wednesday, January 23, 2008.

Services were at 3 p.m. Saturday, January 26, 2008 in First Christian Church with Jim Reeves officiating. Burial was in Hansford Cemetery by Boxwell Brothers Funeral Home of Spearman.

Mr. Hull was born July 18, 1918, near Booker to Carl and Ella Hull. He married Ruby Eads on July 21, 1936, in Spearman. She preceded him in death in 2005.

Mr. Hull was a farmer. He was a charter member of First Christian Church in Spearman.

He also was preceded in death by his parents; and two sisters, Viola Boyd and Carol Ratliff.

Survivors include a son, Wilbur Hull and wife Lois of Lago Vista; two grandsons, Allen Hull of Point Venture and Rodney Hull of Lago Vista; a granddaughter, Valerie Hull Guerra of Lago Vista; six great-grandchildren; and a great-great-grandchild.

The family suggests memorials be to First Christian Church, P.O. Box 637, Spearman, TX 79081.

SHIRLEY 'NONNIE' LOVE



BORGER - Shirley 'Nonnie' Love, 57, died Thursday, January 24 in Amarillo.

Funeral services were at 1 p.m. on Monday, January 28 at Grace Fellowship Church in Borger. Interment was under the direction of Minton/Chatwell Funeral Directors of Borger.

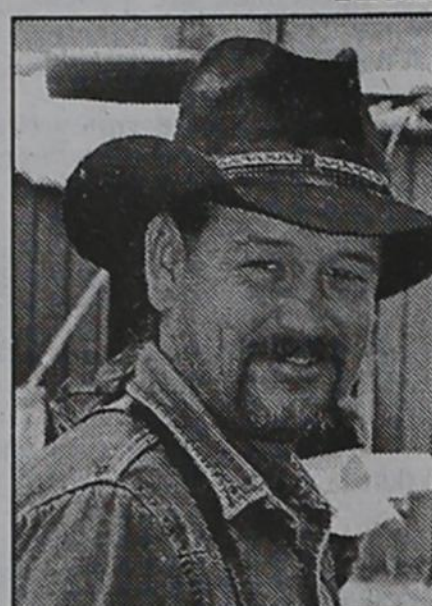
Shirley was born on November 10, 1950 in Buffalo, Okla. and had been a Borger resident for 23 years, moving here from Spearman. She was a book-keeper for County Adult Probation. She enjoyed fishing in the mountains, sketching, arts and crafts, spoiling her her kids and grandkids and her puppy 'precious'.

She was preceded in death by her dad, Aaron Love; her older brother, Jack; a nephew, Timmy Yarbrough, and a great-niece, LaRhonda Love.

She is survived by her mother, Lilly Love of Spearman; two daughters, Sherri Hall of Yukon, Okla., and April Gibbs and husband Robert of Borger; two brothers, Ronnie Love and wife Pat of Fritch, Larry Love and wife Sue of Pampa; sister, Donna Farris and husband LeRoy of Spearman; four grandchildren, Zack Byrd and wife Christina, Ashley Byrd, Brandon Gibbs and Aaron Gibbs; and one great-granddaughter on the way, Brooklyn, numerous nieces and nephews, and a "special friend," David Anderson, and children.

To send condolences, sign the online guestbook at www.mintonchatwell.com.

RICKY JONES



Ricky Jones, 45, of Morse, died Monday, January 21, 2008.

Funeral Services were 10 a.m., Friday, January 25, 2008 at the First Baptist Church in Morse with Dr. Buddy Young, Interim Pastor, First Baptist Church in Morse, officiating with burial at the Snettett Cemetery.

Casket bearers were Jim Bass, Freddy Aguilar, Phillip Naverette, Dave Christian, Johnny Montford & Shelby Reisinger. Honorary Casket bearers were Joey Rodriguez & Anthony DeLuna.

Mr. Jones was born on June 22, 1962 in Tucumcari, New Mexico to Walter Dean & Marie (Evans) Jones. He was a resident of Morse and a member of the First Baptist Church in Morse. He worked as a Pen Rider for USA Feed Yards and married Yolanda Deluna on July 29, 1979.

He is survived by his parents, Walter & Marie Jones; his wife, Yolanda Jones of the home; three daughters, Casey Ivy & husband Dustin of Snettett, Brandi Jones of Morse, Haley Nixon & husband James of Snettett; one brother, Virgil Jones & wife Liz of Amarillo; one sister, Deborah Tracy & husband Gary of Borger; five grandchildren, Dakota, DJ, Darrian, Kolbi and Brandon; nieces and nephews, Clinton Jones, Sandie Denson and Brittni Jones; and many others.

Thank You!

The family of Ricky Dean Jones wish to express our sincere thanks to the community of Morse and the surrounding communities, Dr. Buddy Young, Rex McCloy, Robbie Reid, Wesley Jarvis and the First Baptist Church of Morse, USA Feedlot, the cowboys and so many others who brought food, words of comfort, hugs, flowers/plants, cards, prayers and the memorials that were sent.

Thank you again and God bless you all.
 Yolanda, Brandy & Kolbi Jones;
 Haley & James Nixon & Family;
 Casey & Dustin Ivey & Family; Marie & Walter Jones;
 Deborah & Gary Tracy & Family;
 Virgil & Liz Jones & Family

ROLL-OVERS
ROOF CRUSH — SEAT BELT FAILURE

Death or paralysis can result from auto crashes in defective vehicles. Roof cave-ins, defective tires or seat belts, and roll overs kill or severely injure innocent people every day. If you have been severely injured, or if you have lost a loved one as a result of an automobile wreck, call our office today for professional insight.

EXPERIENCE
COUNT'S
 Lawyers with over 85 years combined expertise.

Ryan A. Krebs, M.D., J.D.
 Doctor-Lawyer in Full-time Law Practice
 Richard A. Dodd, L.C.
 Timothy R. Cappolino, P.C.
 Board Certified Personal Injury, Trial Law and Civil Trial
 Law by the Texas Board of Legal Specialization
 NO FEE FOR FIRST VISIT
 CAMERON, TEXAS

1-800-460-0606
www.YourCarWreck.com

MONUMENTS
Boxwell Brothers
Funeral Home
 519 Evans • Spearman
 659-3802

Dear friends,
 When you buy a monument from us we make sure it is exactly what you want at a price you can afford. If it is not right, we will make it right. And you will not have to search the countryside to find us. We are here when you have a need.

Sincerely,
 Bob Boxwell

BIGGEST
Sales Event of the Year

Get the Best Price of the Year on Your Building

Join us for our three-day Open House
 February 7-9, 2008, from 8 a.m. to 7 p.m.

MORTON BUILDINGS
 For Texas Locations call 800-447-7436
 or dick.www.mortonbuildings.com

Replenish the seed of faith through . . . DAILY BIBLE READING, PRAYER & REGULAR CHURCH ATTENDANCE

Spearman

Apostolic Faith Church
 822 S. Dressen • 659-2870
 Sunday School: 10 a.m.
 Worship Service: 11 a.m.
 Sun. Eve.: 6 p.m.
 Wed. Prayer Mtg: 7 p.m.
 Pastor - Roland Haney

First Assembly of God
 401 N. Bernice • 659-2295
 Sunday School: 9:30 a.m.
 Worship: 10:35 a.m.
 Kid's Church: 10:35 a.m.
 Evening Worship: 6 p.m.
 Wed. Worship: 7 p.m.
 Wed. Youth: 7
 Pastor - Bob Elder

First Christian Church (Disciples of Christ)
 29 S. Bernice • 659-2036
 Sunday School: 9:45 a.m.
 Worship: 10:50 a.m.
 Minister -

First Baptist Church
 123 N. Bernice • 659-5557
 Sunday School: 9:45 a.m.
 Worship: 11 a.m.
 Evening Worship: 7 p.m.
 Men's Bible Study - Wed, 7 a.m.
 Children's Choir - Wed, 6 p.m.
 Adult Choir - Wed, 7 p.m.
 Wed. Bible Study: 7 p.m.
 Pastor - Jim Medley

Church of Christ
 121 S. Haney • 659-3244
 Sunday Bible Class: 9:45 a.m.
 Worship: 10:30 a.m.
 Evening Worship: 6 p.m.
 Bible Study Wed.: 7:30 p.m.

Sacred Heart Catholic Church
 901 Roland • 659-2792
 Sat. Night Mass: 5:30 p.m.
 Sun. Mass: 9 a.m. - English
 Sun. Mass: 11:30 - Spanish
 1:30 p.m. - Gruper - Christo
 Rectorator Mass - Spanish
 Rev. Guillermo Morales

First United Methodist
 407 S. Haney • 659-5503
 Sunday School: 9:45 a.m.
 Worship: 8:30 & 11 a.m.
 Jr. High Youth: 5 p.m. Sunday
 High School: 6 p.m. Sunday
 Kids Club: 3 p.m. Wed.
 Pastor - Neely Landrum

Grace Presbyterian Church (Worships with Faith Lutheran Church)
 1101 Bernice • 659-2033
 Pastor - Beverly Cook

Faith Lutheran Church (ELCA)
 1101 Bernice • 659-2252
 Sunday School: 9:45 a.m.
 Worship: 11 a.m.
 (Worships with Grace Presbyterian Church)
 Pastor - Beverly Cook

Union Church
 31 S. Endicott • 659-2644
 Sunday School: 9:45 a.m.
 Worship: 10:45 a.m.
 Evening Worship: 6 p.m.
 Bible Study: 7 p.m. Wed.
 Pastor - Dr. Timothy Minor

Fellowship Baptist
 1102 S. Archer • 659-2783
 Sunday School: 10 a.m.
 Worship: 11 a.m.
 Sun. Evening Worship: 6 p.m.
 Youth/Adult Service: 7:30 Wed.
 Pastor - James Washburn

Primera Mision Bautista
 502 E. 7th • 659-3991
 Sunday School: 9:45 a.m.
 Worship: 11 a.m.;
 Evening: 6 p.m.
 Wed. Prayer Meeting: 7 p.m.
 Thurs. Visitation: 7 p.m.
 Pastor Joe Garcia Jr.

El Apostolo Alto U.P.C.I.
 1105 S. Roland
 Domingos: Escuela-Dominical - 10 a.m.
 Culto Evangelistico - 7 p.m.
 Jueves: Oracion - 8 p.m.
 Mier. Estudio Biblico - 7 p.m.
 Pastor - A.G. Martell
 (806) 659-2153

Gruper United Methodist
 Broadway & Garrett
 733-2651
 Sunday School: 9:45 a.m.
 Worship: 8:30 & 10:50 a.m.
 Eve. Worship & UMY: 6 p.m.
 Pastor - George Price

Spanish Cristo Redentor Church
 Sunday Mass: 1:30 p.m.
 Friday Evening Mass
 Summer - 8:00 p.m.
 Fall/Winter - 7:30 p.m.

Oslo
Oslo Lutheran Church (ELCA)
 6 Miles West & 12 Miles North of Gruper
 339-7646
 Sunday School: 9:45 a.m.
 Worship: 11 a.m.
 Pastor - Arien Lloyd

Morse
Morse Baptist Church
 733-2757
 Pastor - Mike Martin

He has showed you, O man, what is good. And what does the LORD require of you? To act justly and to love mercy and to walk humbly with your God.
 Micah 6:8

FREE DIRECTV 4 ROOM SYSTEM!
CHECKS ACCEPTED!
 250+ CHANNELS!
 Starts \$29.99

Over 85 HD Channels!
 FREE HBO+Cinemax+
 Showtime+Starz 3 Months!
 FREE DVR/HD!
 We're Local Installers!
1-800-214-7110

STOP LEG CRAMPS BEFORE THEY STOP YOU.

Calcet's triple calcium formula is designed to help stop low calcium leg cramps. Just ask your pharmacist.

Calcet
 Triple Calcium
 (800 mg Calcium, 400 mg Vitamin D)

Mission
 PHARMACY

FAL 66801 Rev 07/06 © 2006 Mission Pharmacy. All rights reserved.

We CLOBBER West Texas Prices!

TEXAS' COMMERCIAL TRUCK HEADQUARTERS

Chevrolet, Ford, HYUNDAI, DODGE, CHRYSLER, Jeep

Your West Texas Hometown Contact:
 Billy Waggoner, General Manager
979-826-7835
 Shop 24/7 at www.lawrencemarshall.com

LAWRENCE MARSHALL
 HEMPSTEAD, TX

SIGN UP FOR A FREE SCOOTER
 One Scooter Given Away Each Month

Toll Free **800-606-9860**

Med Care
 MEDICAL SUPPLY
www.medcaremedicalsupply.com

See Hialeah Español

Deakin
ELECTRIC
 OILFIELD • RESIDENTIAL • COMMERCIAL
 321 S. MAIN • SPEARMAN
 1-800-999-1506 Chris Deakin
 (806) 659-5016 President

Bartlett's Lumber & Hardware
 105 W. Broadway • Gruper, Texas
 (806) 733-2404

BERRY CLEANERS
 Ann & Vernon Pipkin - Owners
 Phone 659-3122 • P.O. Box 1017
 207 Main St. • Spearman, TX

Morse Implement & Auto Supply
 "Join us in church"
 Tom Dortch 733-2668
 Box 89 • Morse, TX 79062

PRAIRIE MOTORS INC.
 Hwy. 207 South • P.O. Box 430
 Spearman, TX 79081 • (806) 659-2541
www.prairiemotors.com

MurMur's Cafe
 100 Roland St
 Spearman, TX.
 659-3580

Hansford County Reporter-Statesman
 "Proudly Serving Hansford County Since 1907"
 (806) 659-3434
 310 Barkley • Spearman, TX

INTERSTATE BANK, ssb
www.interstatebank.net
 322 Main • P.O. Box 146
 Spearman, TX • 659-2559

HWYI

FOR YOUR INFORMATION

Project Graduation

The parents of the Spearman High School Senior Class of 2008 will sponsor and host a "Project Graduation Party" following commencement exercises Friday May 23rd. To encourage the graduates to stay the entire night, door prizes are awarded throughout the evening. In addition, graduates can earn paper monies through their participation in various games so that prizes can be purchased. The graduation party will culminate with the distribution of grand prizes. Prizes, gift certificates, and cash are needed for the evening's gifts. If you, the community, who supported and encouraged these seniors these past 13 years of school, would be willing to share in this final "Class of 2008" memory, making this project "special", please call Bonnie Bergan at 659-5529, Tammy Benton at 659-3071, or Gina Gillispie 659-5341. Contributions can be mailed to: Project Graduation Gina Gillispie, P.O. Box 633, Spearman, TX. 79081 Thank you in advance, for your support!

Rushing Wind Emmaus Community

Rushing Wind Emmaus Community will meet on Saturday, February 9, at the Waka Christian Center at 6 p.m. There will be a potluck supper, training for sponsors, and praise and worship service. All Emmaus members, families and friends are invited to attend, and a nursery will be provided. A Men's Walk to Emmaus will be held on February 21-24 at the WCC.

Perryton ISD Students Seeking Memories of World War II

Students in Perryton are seeking individuals to interview for the KACV WWII/Texas Panhandle Outreach Project. Participants who are eligible to be interviewed are those that have memories from 1938-1946, especially World War II Veterans. Persons who would like their stories from WWII to be recorded on film should contact Lauren Carroll at (806) 434-0389.

Out-of-School Examinee Registration

Individuals who are no longer enrolled in school and who have not previously met minimum expectations on all sections of the TAAS or TAKS tests, but have met all other graduation requirements, may retake the necessary sections. The TAAS and TAKS retests will be given on March 4 (ELA TAKS; Writing TAAS), March 5 (Math TAKS, Math TAAS), March 6 (Science TAKS; Reading TAAS), and March 7 (Social Studies TAKS). A student can register for the TAAS or TAKS tests online by accessing the web site at <http://k12testing.tx.ncspearson.com> or by completing a registration form. Registration forms may be picked up at the high school counselor's office between the hours of 8:00 a.m. - 4:00 p.m. Registration packets are due in Austin no later than 5:00 p.m. on January 25, 2008. Please Contact Krista Baird at 659-2584 if you have any questions.

Los individuos que ya no están matriculados en la escuela y que todavía no han cumplido los requisitos mínimos en todas las secciones del examen del TAKS, pero han cumplido todos los otros requisitos necesarios para graduarse pueden volver a tomar los exámenes necesarios del TAKS. Daremos el examen el 4 de Marzo (ELA TAKS; Escritura TAAS); 5 de Marzo (Matemáticas TAKS; Matemáticas TAAS) el 6 de Marzo (El TAKS de ciencia; Lectura TAAS), 7 de Marzo (el TAKS de estudios sociales). Un alumno se puede registrar para el examen de TAAS y de TAKS en el sitio <http://k12testing.tx.ncspearson.com> o también puede completar una forma de registracion. Las formas de registraciones se pueden recoger en la oficina de la conejera en la escuela preparatoria entre las horas de 8:00 a.m. hasta las 4:00 p.m. Los paquetes de registraciones tienen que estar en Austin antes de las 5:00 p.m. del día 25 de Enero del 2008. Por favor si tiene alguna pregunta comunicarse con Krista Baird al 659-2584 si tiene alguna pregunta.

Gruver Elementary Collecting Register Tapes

Gruver Elementary is again participating in the Lowe's Supermarket Register Tapes for Education program. Please help us earn free educational equipment by collecting register tapes from Lowe's. Only tapes dated September 1, 2007 through March 31, 2008 are eligible. You can deposit your tapes in boxes in the Gruver Elementary Lobby, Gruver Library, Gruver City Hall, Nite & Day Beauty Salon and Hitchin' Nails. Jo Alice Clawson is also collecting tapes at 711 Womble, or they may be mailed to PO Box 488, Gruver. Please call 733-2247 if you have tapes you would like to have picked up, or for more information.

You're Never Alone - Narcotics Anonymous Group

Each year individuals struggling with drug and alcohol addiction make the resolution to quit using drugs. For many of them it is a resolution that they cannot keep. Narcotics Anonymous can help. Open meetings are held on Monday and Thursday nights from 8-9 p.m. at the First Christian Church (29 S. Bernice in Spearman) for the "You're Never Alone" group of Narcotics Anonymous. Anyone interested is invited to attend. Drug addiction can leave you feeling helpless and out of control - we can help.

Spearhead AA Group

The Spearhead AA Group meets every Tuesday at 8 p.m. in the Pittman-Shieldknight building. Alcoholics Anonymous® is a fellowship of men and women who share their experience, strength and hope with each other to help solve their common problem and help others to recover from alcoholism. The only requirement for membership is a desire to stop drinking. There are no dues or fees for AA membership; we are self-supporting through our own contributions. Our primary purpose is to stay sober and help other alcoholics achieve sobriety. For information, call 662-1111.

Al-Anon

If you are concerned with someone else's drinking or addiction, the Al-Anon program can help you. Each Al-Anon Family Group has but one purpose - to help families and friends of alcoholics and addicts. The Spearhead Al-Anon Group meets every Tuesday night at 8 p.m. in the Pittman-Shieldknight Building, 511 SW 11th Avenue, Spearman. For more information, call 806-330-0349.

Panhandle Crisis Center Outreach Office

Panhandle Crisis Center (PCC) has an Outreach Office and Resale Store at 306 Hancock, in Spearman. In case of emergencies, please continue to call the hotline, 1-800-753-5308. To schedule an appointment with a worker in Hansford County, call 659-3391 to leave a message, or call the hotline number above. Panhandle Crisis Center serves victims of domestic violence and sexual assault. Call for more information regarding PCC's services. Hours for the Resale Store in Spearman are: Monday, Tuesday, Thursday & Friday from 10 a.m.-5 p.m.

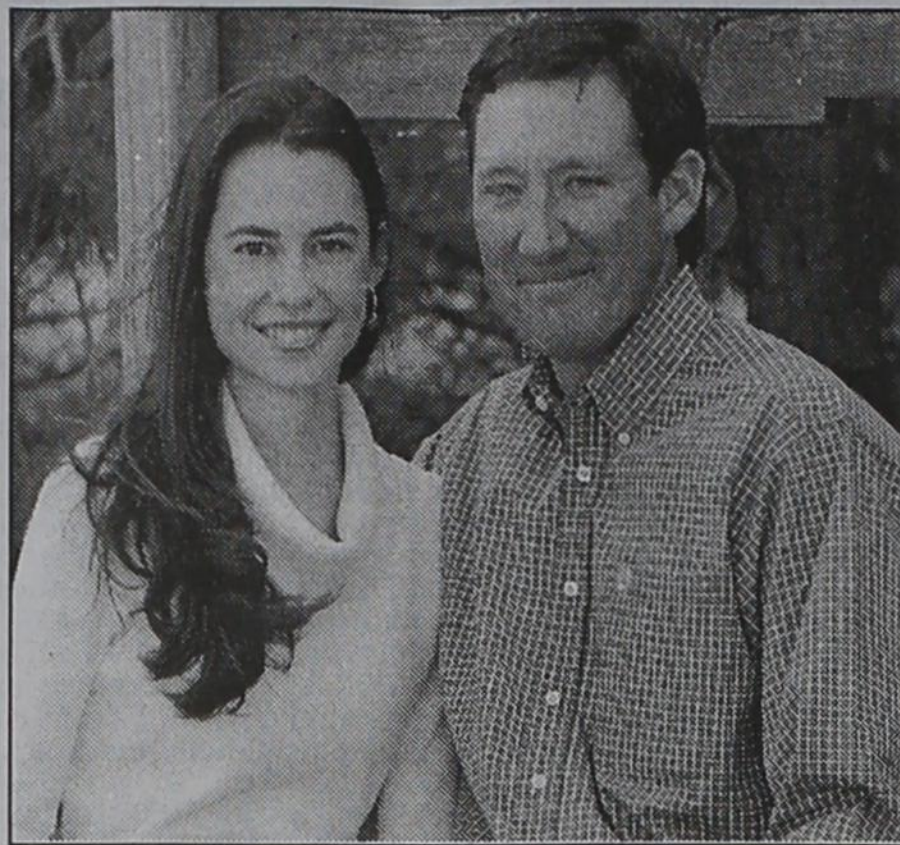
Tong's Chinese Restaurant

511 S. Hwy. 207 • 659-2838 • Spearman

All-You-Can-Eat Buffet Specials

Tuesday - Steak	\$7 ⁹⁹
Thursday - BBQ Ribs	\$6 ⁵⁰
Friday - Shrimp	\$6 ⁵⁰
Saturday - Catfish	\$6 ⁵⁰
Mon., Wed. & Sat.	\$5 ⁵⁰

Buffet Hours: 11 a.m.-2:30 p.m. & 5:30-Close



Wedding Announcement

Mr. and Mrs. Larry Holt of Spearman are pleased to announce the engagement of their daughter, Betsy Jane to Shad William Kalisiak, son of Mr. and Mrs. Roger Kalisiak of Dalhart, TX.

The bride-elect is a 1999 graduate of Spearman High School and a 2001 graduate of Southwest Kansas Technical School and Seward County Community College with a degree in drafting.

The prospective groom graduated from Dalhart High School in 1993, and is currently engaged in farming in the Dalhart area.

Betsy is the granddaughter of John and Virginia Trindle and Nolan and Helen Holt, all of Spearman.

Shad is the grandson of Delphine Azar and the late Fred Azar of Williston, North Dakota and the late John and Vera Kalisiak of Scranton, North Dakota.

Med Care MEDICAL SUPPLY

Ask us if you qualify for a
POWER CHAIR
at little or no cost to you.

In most cases, Medicare, Medicaid & Insurance
will cover 100% of the cost for your Power Chair

Toll Free 800-606-9860

www.medcaremedicalsupply.com

Community GROUNDHOG Dinner

11:30 a.m. to 1 p.m.
Friday, February 1, 2008
Fellowship Hall of the
First United Methodist Church
407 Haney, Spearman
\$7.00 for adults
children 6 and under free

Take-outs will be available by calling
659-5504 by 10:30 a.m.

Gordon's

Your place for
Bridal Registry

Couples Currently Registered

Detsi Vera & T.J. Evans - 2/2
Laura Geer & Cory Jumper - 3/2
Heather Jumper & Jared Mahan - 3/8
Brienne Holmberg & John Thomas - 3/28
Candace Boyd & Manolito Cruz - T&A
Audra Evans & Kyle McLaughlin
Ty & Tarran West

Baby Registry

Kellyn King & Jeremy Fry - 2/2
Jason & Amber TeBeest - 2/23
Chad & Shannon Scarborough - T&A
Quentin & Kristin Shieldknight - T&A
Jody & Cami (Winegarner) Meason

Gordon's 659-2141
314 Main Spearman

Taking Care of Your Heart Topic of February Senior Seminar

Not all fats are created equal. Consequently, some are healthier than others. Knowing which ones to include in our diets and which ones to limit can be a challenge, said a Texas AgriLife Extension Service agent.

The February senior seminar entitled "Let's Have a Heart to Heart: Good Fats and Bad Fats" will be held at 11 a.m. Feb. 14 at the Amarillo Senior Citizens Center, 1217 S. Tyler. (Please note the time change for the Senior Seminars for 2008.)

"It's only fitting that we give attention to our heart health on Valentine's Day this year by focusing on better choices that we can make with fats in our diet," said Sue Church, AgriLife Extension family and consumer sciences agent for Potter County. "Trimming out more of the saturated and trans fats will have long-term benefits."

Elizabeth Kahlich, Amarillo Veterans Administration Clinical dietitian, will present the fat facts to seniors, caretakers or other adults wanting to help their heart health by learning about better dietary choices. She'll offer healthy snack ideas and better suited cooking techniques for reducing fat in diets.

The seminars are open to the public free of charge. For more information, contact AgriLife Extension - Potter County at 373-0713.

Door prizes will be donated by Scott's Flowers. Senior Seminars are sponsored by the Potter Coalition on Aging and Amarillo Senior Citizens' Association.

You are invited to a
Bridal Shower
honoring
Detsi Vera
(bride-elect of T.J. Evans)
on Saturday, February 2, 2008
from 10:30 a.m.-12:00 noon
in the home of Carla Woodington
15 Golden Circle Dr. Spearman

**Jack
the
SCISSORS MAN**

Sharpens knives, scissors, shears, seam rippers, etc.
Friday, February 1st • 9 a.m. - ?
at

Jo's This 'N' That
300 Main St. • Spearman
659-3999

Celebrate

Gifts for all your celebrations!

Bridal Registry

Shower Dates

Detsi Vera & T.J. Evans - 2/2
Laura Geer & Cory Jumper - 3/2
Heather Jumper & Jared Mahan - 3/8
Brienne Holmberg & John Thomas - 3/29
Betsy Holt & Shad Kalisiak - T&A
Kandace (Boyd) & Manolito Cruz - T&A
Audra Evans & Kyle McLaughlin
Jennifer Oller & Clint Jackson

Baby Registry

Kellyn King & Jeremy Fry - 2/2
Amber & Jason TeBeest - 2/23
Sara Barnes & Roman Rodriguez
Cami (Winegarner) & Jody Meason
Kristin & Quentin Shieldknight

Celebrate

203 Main St. Spearman, TX
(806) 659-3350 1-800-663-8026

Our Sympathy

BOBBIE ELLEN REID



MORSE - Bobbie Ellen Reid, 64, died Saturday, January 26 in Morse.

Memorial services will be at 1 p.m. Thursday, January 31, 2008 at the First Baptist Church in Morse with Tim Ramsey, Minister of Full Gospel Church of Perryton officiating. Interment will be in Lieb Cemetery under the direction of Minton/Chatwell Funeral Directors of Borger.

Bobbie was born on May 6, 1943 in Wellington, Texas and had been a Morse resident for 30 years. She married Charles Reid on October 17, 1958 in Morse, and he preceded her in death in 1995. She was a homemaker and member of the First Baptist Church in Morse.

She is survived by her mother - Mary Carter of Dumas, son - Clay Reid of Morse, two daughters - Shanna Graves of Gruver, Tammy Fairbanks of Montezuma, KS, brother - Al Carter of San Angelo, two sisters - Sharon Burnett of Dumas, Kay Blake of Amarillo, seven grandchildren and four great-grandchildren.

MINNIE GANELL EDGMON WEAVER

MIDLAND - Minnie Ganell Edgmon Weaver died on January 27, 2008 in the Hospice Midland In-Patient Unit, Midland, Texas.

She was born in the Hancock Community of Dawson County, Texas, May 5, 1917 to Jewel Hancock Edgmon and Melvin Edgmon.

She was preceded in death by her husband of sixty years, Wilbur Webb Weaver, her parents, one brother, Paul Edgmon, one sister, Catherine Wilcher, and her son Robert Weaver.

She is survived by her son John Weaver and wife, Lixeen of Midland, Texas, her daughter-in-law, Carolyn Weaver of Blanco, Texas, a brother, David Hughes and wife Joann of Kingsland, Texas. Also surviving are three granddaughters and their husbands: Janae and Tad Hall of Lindsay, Texas, Dana and Ralph Johnson, of Littleton, Colorado, Kimie and Kelly Cunningham of Dripping Springs, Texas and three grandsons and their wives: Rick and Chris Weaver of Haslet, Texas, Eric and Connie Weaver of Stanton, Texas, and Vance and Charla Weaver of Big Spring, Texas. Her family also includes eleven great-grandchildren.

Minnie attended public school in the Hancock Community. When her sons were grown, with the help of Webb, she fulfilled a longtime dream. She enrolled as a freshman at Texas Tech University and earned a bachelor's and a master's degree, then for twenty-five years taught in the public schools at Lamesa and Spearman, Texas.

After living in Dawson County for fifty years, and Spearman for thirty, Minnie moved to Midland and Manor Park to be close to family in 1998.

She was a member of the Baptist Church throughout her life, a member of the Lt. Brewer Chapter of the Daughters of the American Revolution, and a long-time member of the Delta Kappa Gamma Society.

Funeral services, conducted by Daniel Armstrong, minister of First Methodist Church, Stanton, were January 29, 2008, 11 a.m., by Brannon Funeral Home Lamesa, with interment following at the Hancock Cemetery.

In lieu of flowers, the family requests memorials to Hospice Midland, 911 West Texas, Midland, Texas 79701, or to Mabee Healthcare Center, 2208 Loop 250 West, Midland, Texas 79707.

The family would like to express our great appreciation to Minnie's wonderful care-givers at the Mabee Center and to Dr. Robert Vogel for his continuing care and support.

R. FLORENCE "SANDY" BUSH



R. Florence Bush, known to all her family and friends as Sandy, of Waco, passed away early in the morning of January 25, 2008, after battling pneumonia and other breathing difficulties for several years.

Services were 1:30 p.m. Tuesday, January 29, 2008 at Wilkison-Hatch-Bailey. Interment followed at Oakwood Cemetery in Waco.

Sandy was born Sept. 26, 1929, to Fred and Ethel Lucas Sanders in Spearman, Texas. Her mother later remarried to N.M. Baker, with whom Sandy developed a close relationship. She was married to Larry Bush on July 22, 1948, in Houston, and moved to Waco in 1949 where they have lived for over 59 years.

Sandy was preceded in death by her parents and step-father.

She is survived by her husband, Larry Bush; her son, David Bush; granddaughter, Tiffani Loreille; great-granddaughter, Sarah Loreille; sisters, Frances Smith, and twin sisters, Hazel Stumpf and Helen Boyd. Memorials may be sent to Methodist Children's Home in Waco.

The family invites you to leave a message or memory in our "Memorial Guestbook" at www.wilkirsonhatchbailey.com.

RUBY SCOTT

PERRYTON - Ruby Scott, 82, died Sunday, January 27, 2008.

Services were at 11 a.m. Wednesday, January 30, 2008 in Key Heights Baptist Church with the Rev. Jeff Staton officiating. Burial was in Ochiltree Cemetery by Boxwell Brothers Funeral Home.

Mrs. Scott was born on June 24, 1926, in Perryton and married Raymond M. Scott on Dec. 13, 1941. She was a member of the First Baptist Church where she worked in the nursery for 20 years.

Survivors include two daughters, Margaret McDonald and Sharon Koch, both of Perryton; a son, C.L. Scott of Venus; three brothers, Harry Stumpf of Spearman, Frank Sword of Claremore, Okla., and Charley Stumpf of Perryton; nine grandchildren; and 23 great-grandchildren.

The family suggests memorials be to Ochiltree Hospice Volunteers, 3101 Garrett Drive, Perryton, TX 79079 or American Cancer Society, 3915 Bell St., Amarillo, TX 79109.

Words from Faith & Grace

by Cecil R. Biggers, Lutheran Lay Minister

As we search for a manifestation of God, we find God within us as we study Micah 6:1-8, Psalm 15, 1 Corinthians 1:18-31, and Matthew 5:1-12. Isaiah conducts a lawsuit brought by the Lord against Israel. Israel has strayed from God's teachings and Isaiah declares to the people what God desires - Do justice, love kindness, and walk humbly with your God. The Psalmist sings of the requirements of the believer - Walk blamelessly, do what is right, speak the truth; do not slander, do no evil to friends, do not take up a reproach against your neighbors; Despise the ways of the wicked and honor those who fear the Lord, stand by your oath even if to your hurt; Do not lend money at interest, and do not accept a bribe against the innocent.

Paul continues his gentle chastisement of the Corinthians for their factionalism. The Jews desire signs and the Greeks seek wisdom and in so doing neither can accept Christ crucified. Paul tells the Corinthians that Jesus is our wisdom, our righteousness, our consecration and our deliverance. The grace that leads us to salvation is free, therefore we cannot boast except in the love of the Lord.

There is more in the Sermon on the Mount than can be written in a book. Consider that in verse 2 the verb used for "taught" is in a tense which means he continually taught these things to his disciples. The word translated as "blessed" is the Greek, "makarios" which literally means "Joy", and this "Joy" is not to be in the future, it is now. Understand as you study dear Christian, that we, as believers, can by "joyful" even in adversity. Hence we can read: "Joyful are the poor in spirit" to mean joyful is the believer who is so destitute of the world's treasures and of the power of the Spirit that he must place all of his trust in God. "Joyful are they who mourn" to mean the believer who is heartbroken for the world's suffering and his own sin as a person who mourns for the dead. "Joyful are the meek" to mean the believer whose every instinct, impulse and passion is under control and who in humility recognizes his own ignorance and weakness. "Joyful are they who hunger and thirst after righteousness" to mean the believer who wants a right relationship with God as a drowning man desires air. "Joyful are the merciful" to mean the believer who is so concerned with others that he can see with their eyes, feel with their feelings, think with their thoughts. To know completely is to forgive entirely. "Joyful are the pure in heart" to mean the believer whose motives are so Christ-like that they reflect God. "Joyful are the peace-makers" to mean the believer who works to produce right-relationships between other people so that their highest good is achieved. "Joyful are those persecuted for righteousness' sake" to mean the believer who because of his Christ-likeness is hated by those who live for this world.

May the Holy Spirit keep your hearts and minds in Christ Jesus.

OUR BODY
THE UNIVERSE WITHIN
Actual Human Bodies
You will never look at your body in the same way again!

January 26 - May 26, 2008

WITTE
MUSEUM

3801 Broadway • San Antonio, TX • 78209
www.wittemuseum.org • 210.357.1910

Department of Homeland Security
Border Patrol, Marfa Sector

NOW HIRING!
(888) 536-6204

U.S. Customs and Border Protection

A Career With Borders. But No Boundaries.

Miss Vicky's Soul Food
817 SW 5th Street (Corner of 6th & Adams)
Amarillo TX • (806) 372-2247

Down Home Cooking at it's Best!

All-You-Can-Eat
Chicken, Pork Chops, Ribs,
Cheese Meat Loaf Fish, Smothered
Chicken, Chicken 'n Dumplings,
and Much More!
Vegetables, Home-Made Desserts
Kook-Aid

Hours: Monday-Tuesday, 11 a.m.-3 p.m.
Wednesday-Sunday, 11 a.m.-5 p.m.

Valentine's Day
Tell Someone You Love Them with ROSES!

Long-Stemmed Roses • Fresh-Cut Arrangements
Green & Blooming Plants
New Silk Arrangements

Plush Animals
Balloon Bouquets
Angel Figurines

Order Early!

All Occasion Flowers
202 N. Bernice (across from the Post Office)
659-5180 • Spearman

PAID CDL TRAINING! YOUR FUTURE BEGINS HERE

NO EXPERIENCE NEEDED!

Stevens Transport, the premier refrigerated carrier in the US, sponsors the total cost of your CDL training! In 17 short days you will earn your CDL and begin your paid on-the-job training! Earn \$40K first year and up to \$150K fifth year! Excellent benefits and 401K!

For more information, call **800-333-8595**

www.becomeadrivers.com

Valentine's Day

Let us help you show your love.

**Long-Stemmed Roses
Fresh Cut Arrangements
Plus Animals • Balloon Bouquets**

Order Early!

Prairie Garden Flowers
209 Main St. • Spearman, TX
659-2212 • 659-3329

Be Mine

Are You A Victim of Domestic Violence, Sexual Abuse or Physical, Emotional or Sexual Assault?

Call Toll Free Hotline
1-800-753-5308

We can see individuals from Hansford County anytime upon request. Call 435-5008 or 1-800-753-5308 to set up an appointment in Hansford County. We operate a safe place for victims and their children to stay in times of crisis.

Battering Intervention & Anger Management Available

Panhandle Crisis Center
Serving Hansford, Lipscomb & Ochiltree Counties
301 S. Ash • Perryton, TX
Memorials Accepted

Save over **\$300** this year with **myCustom Pak**

Call Today!

You may already qualify!

DIGITAL TV

Get a "Quick Quote" at www.ptci.net to see how much YOU can SAVE.

Se habla español

721 W. 7th
Spearman
1-800-562-2556
www.ptci.net

PTCI
Communication & Broadband Solutions

Some restrictions apply.

BASKETBALL HOOPLA

1/25/08		1/29/08	
Lynxettes		Lynxettes	
Canadian 9 19 32 46	Spearman 10 30 47 65	Spearman 8 25 37 47	West Texas 13 24 31 37
C-Saul 18, S-Kendall Schneider 18, Tara Shields 12. Records: Canadian NA, Spearman 21-4, 5-2. JV: Canadian 18, Spearman 27.	Spearman 8 25 37 47	S-Kendall Schneider 16, Christy Lang 10. WT-Jenna Wilson 12, Amanda Snyder 11. Records: S 22-4, 6-2; WT 9-16, 2-6. JV: Spearman 42, West Texas 34.	West Texas 8 18 24 31
Lynx		Lynx	
Canadian 2 12 21 31	Spearman 6 17 30 39	S-Brett Winegarner 14, Tyler Schnell 13, Jordan Ashmore 13. WT-Cody Kelley 11, Brian Kelly 7. Records: Spearman 16-6, 4-2; West Texas 14-10, 2-4. JV: Spearman 45, West Texas 41.	West Texas 8 18 24 31
S-Danny Reyes 8, Zack Knight 8, S-Jordan Ashmore 24, Tyler Schnell 8. Records: Canadian 6-5, 2-3. Spearman 15-6, 3-2.	Spearman 6 17 30 39	S-Brett Winegarner 14, Tyler Schnell 13, Jordan Ashmore 13. WT-Cody Kelley 11, Brian Kelly 7. Records: Spearman 16-6, 4-2; West Texas 14-10, 2-4. JV: Spearman 45, West Texas 41.	West Texas 8 18 24 31
Lady Hounds		Lady Hounds	
Sunray 8 17 26 40	Gruver 14 19 30 42	Vega 12 24 40 44 49	Gruver 12 23 34 44 50
S-Yulibeth Soto 15, Macey Cartrite 11, G-Mattie Yanke 13, Lynn Vela 10. Records: Sunray 1-2, Gruver 2-1. JV: Sunray 46, Gruver 17.	Sunray 8 17 26 40	V-Nogger 12, Matthews 13, Richardson 11, G-Yanke 21, Vela 8. Records: Vega 21-5, 3-1, Gruver 16-10, 3-1. JV: Vega 40, Gruver 34.	Gruver 12 23 34 44 50
Greyhounds		Greyhounds	
Sunray 7 14 22 34	Gruver 5 17 29 39	Vega 19 24 31 41	Gruver 16 35 42 49
S-Gonzales 10, Pounds 7, G-Chandler Miner 16, Taylor Williams 13. Records: Sunray 4-9, 0-3; Gruver 7-13, 1-2. JV: Gruver 44, Sunray 19.	Sunray 7 14 22 34	V-Brady Harwell 16, Wade Meyer 6, Gruver-Taylor Williams 18, Jake Wills 18. Records: Gruver 8-13, 2-2, Vega 14-10, 3-1. JV: Gruver 56, Vega 23.	Gruver 16 35 42 49
1/28/08		JV Lynxettes	
7th Lynx 18	Panhandle 44	JV Lynxettes 27	West Texas 18
8th Lynx 16	Panhandle 56	JV Lynx	
9th Lynx 38	Panhandle 30	JV Lynx 37	West Texas 34
7th Lynxettes 26	Panhandle 15	The SHS Basketball Homecoming and Pep Rally will be held Friday, February 1st at 2:30 p.m. at the Varsity Gym. The basketball king and queen will be crowned.	
8th Lynxettes 31	Panhandle 34	The games will start at 5 p.m. with JV boys and girls. The varsity girls will play at 6:30 and boys at 8 p.m. The parents of the players will be recognized prior to the games.	
9th Lynxettes 9	Panhandle 54	The Gruver JV Red Team game will Spearman in Gruver at 5:30 on Monday, February 4th.	

Counselor Corner

by Darlene Curry, Gruver ISD Counselor
 The following scholarships are now available:
 • H&H School Employees Federal Credit Union
 • Gruver United Methodist Church Open Door Scholarship
 • Amarillo Area Foundation
 • Helium Litigation Scholarship Fund
 • Texas Retired Teachers Foundation Scholarship
 Please see the counselor for details.

The administration of the ACT is right around the corner -- February 9th. Students need to be practicing for the test by using the ACT practice materials located outside the counselor's office.

www.fafsa.ed.gov
 **Please encourage your senior to finalize their college applications as soon as possible so the college of their choice can begin putting a financial aid package together.
 **JUNIOR PARENTS!!!!-- Please encourage your junior to take the ACT this year if they have not already done so. It is a great way to get a jump on the senior year and looking at college scholarships. Ask your student for their PSAT and ASVAB test results--both have been distributed and discussed.

Cotillion Expansion Plans Include Hansford County

The purpose of the NLJC program is to give students instruction and practice in the courtesies that make life more pleasant for them and those around them. Students actively learn courtesies through a creative method employing role playing, skits, and games. Standard ballroom and line dancing is taught using nationally approved top 40 music.

In addition to the usual courtesies connected with dancing and etiquette, character instruction is also provided regarding the following: honor, respect, ethics; sportsmanship, acknowledgments of gifts, behavior at cultural and civic events, correspondence, inter-action in groups, introductions; paying and receiving compliments, receiving lines, table manners, instructional dinners, electronic etiquette, cell phone courtesy, and many other areas of social conduct.

The program, with headquarters in Charlotte, North Carolina, was established in 1979 and has licensed local cotillions nationwide. The cotillion includes monthly classes plus a Holly Ball and Spring Ball, and instructional three, five, and seven course dinners. Says Winters, "The program has met with equal success in metropolitan areas including Atlanta, Orlando, Minneapolis, Houston, and in small communities across the country. We believe it will be an important addition to the training of young people in this area."

Applications or nominations for cotillion director are currently being received. For additional information call 1-800-633-7947, visit our award winning website at www.nljc.com, or email to cotillions@nljc.com.

The organization currently has directors operating hundreds of chapters in 34 states. Says Winters, "This program is making a positive impact on students across the nation and we are delighted to know that more young people in this area will have the opportunity for this vital training." The program currently has active chapters statewide.



Eta Alpha chapter of Delta Kappa Gamma Society for women educators celebrated their 45th birthday on Thursday, January 10, 2008 at the Senior Citizens building in Perryton, TX. Seen here are past presidents Wilma Clark, Wanda Scott, Minta Wilson, Rita Castle and Ceremonials Chairman, Sandra Whittenberg. These women are linking the 45 years of the existence of Eta Alpha.

Spearman, Gruver Community Blood Drives

On January 14th, the Coffee Memorial Blood Center saw 41 people and drew 31 units in Spearman.

On January 22nd, the Coffee Memorial Blood Center saw 19 people and drew 19 units in Gruver.

The Coffee Memorial Blood Center and the patients of the High Plains Region would like to thank those who gave the Gift of Life!

Come Join Us!

We've left the cold field and headed straight to the Gym. The basketball teams are working hard to put that ball through the rim!

The Home Court is crucial for these next 3 games. Helps us support these players with your presence and praise!

Gruver High School

Friday, February 1st vs. Boys Ranch

Spearman High School

Friday, February 1st vs. Fritch

Tuesday, February 4th vs. Stratford

Friday, February 8th vs. Stratford

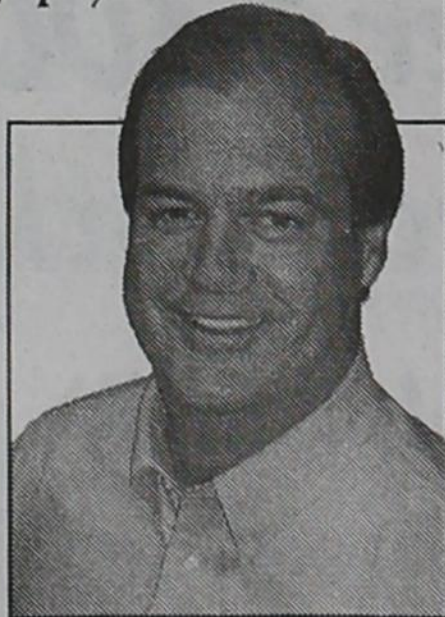


- Feed yard operating loans
- Dairy operating loans
- Crop and livestock production loans
- Real estate loans

Generous Patronage Sets Us Apart

"Unlike traditional lenders, we offer generous patronage payments back to our borrowers."

We don't have to get all your business, just the part where you'd like to save money. We're experts at real estate and other ag-related loans. We've got rates that will compete with anybody in this area, plus you get money back!"



Johnny Schmucker, Great Plains Loan Officer

1315 E. 1st Street
 Dumas, Texas
 (806) 935-6851

greatplainsagcredit.com



GREAT PLAINS...GOOD PEOPLE

SPEARMAN INDEPENDENT SCHOOL DISTRICT STATEMENT OF REVENUES, EXPENDITURES, AND CHANGES IN FUND BALANCE GOVERNMENTAL FUNDS FOR THE YEAR ENDED AUGUST 31, 2007

Data Control Codes	10		60		Total	
	General Fund	Permanent Trust Fund	Capital Projects	Other Funds	Governmental Funds	
REVENUES:						
5700 Total Local and Intermediate Sources	\$ 5,562,517	\$ 77,560	\$ 282,766	\$ 923,115	\$ 6,845,958	
5800 State Program Revenues	2,412,430	-	-	87,101	2,499,531	
5900 Federal Program Revenues	1,194	-	-	561,371	562,565	
5020 Total Revenues	7,976,141	77,560	282,766	1,571,587	9,908,054	
EXPENDITURES:						
Current:						
0011 Instruction	4,036,091	-	19,264	420,407	4,475,762	
0012 Instructional Resources and Media Services	104,676	-	29,169	22	133,867	
0013 Curriculum and Instructional Staff Development	38,871	-	-	10,495	49,366	
0021 Instructional Leadership	2,500	-	-	-	2,500	
0023 School Leadership	354,509	-	461	-	354,970	
0031 Guidance, Counseling and Evaluation Services	136,645	-	-	12,736	149,381	
0033 Health Services	68,839	-	-	-	68,839	
0034 Student (Pupil) Transportation	164,415	-	-	-	164,415	
0035 Food Services	10,671	-	30,072	328,099	368,842	
0036 Cocurricular/Extracurricular Activities	380,881	-	1,732	-	382,613	
0041 General Administration	506,515	-	-	-	506,515	
0051 Facilities Maintenance and Operations	781,889	-	8,927	-	790,816	
0053 Data Processing Services	67,702	-	-	-	67,702	
0061 Community Services	37,769	-	-	79	37,848	
Debt Service:						
0071 Debt Service - Principal on Long Term Debt	-	-	-	295,000	295,000	
0072 Debt Service - Interest on Long Term Debt	-	-	-	502,931	502,931	
Capital Outlay:						
0081 Facilities Acquisition and Construction	64,112	-	5,344,165	-	5,408,277	
Intergovernmental:						
0093 Payments to Fiscal Agent/Member Districts of SSA	53,124	-	-	-	53,124	
6030 Total Expenditures	6,809,209	-	5,433,790	1,569,769	13,812,768	
1100 Excess (Deficiency) of Revenues Over (Under) Expenditures	1,166,932	77,560	(5,151,024)	1,818	(3,904,714)	
OTHER FINANCING SOURCES (USES):						
7915 Transfers In	-	-	-	21,689	21,689	
8911 Transfers Out (Use)	(21,689)	-	-	-	(21,689)	
7080 Total Other Financing Sources (Uses)	(21,689)	-	-	21,689	-	
1200 Net Change in Fund Balances	1,145,243	77,560	(5,151,024)	23,507	(3,904,714)	
0100 Fund Balance - September 1 (Beginning)	3,155,068	1,395,316	7,703,434	28,028	12,281,846	
3000 Fund Balance - August 31 (Ending)	\$ 4,300,311	\$ 1,472,876	\$ 2,552,410	\$ 51,535	\$ 8,377,132	

Texas Agricultural Producers Encouraged to Participate in 2007 Census

by Blair Fannin, 979-845-2259, b-fannin@tam.u.edu

Texas AgriLife Extension Service officials are encouraging the state's agricultural producers to participate in the 2007 Census of Agriculture.

"The agricultural census provides very important data that helps tell the agriculture story in Texas and the nation," said Dr. Roland Smith, associate director. "We strongly encourage producers in every county across Texas to complete their forms by the Feb. 4 deadline in order to have a voice relative to future industry decisions that often are based off the census numbers, such as farm policy, program funding, and other key issues."

Census data is collected every five years by the U.S. Department of Agriculture's National Agricultural Statistics Service. The census provides detailed data

covering nearly every facet of U.S. agriculture and is the only source of uniform and comprehensive agricultural data for every county in the nation.

Government organizations, lawmakers, city planners and individual farm operations use the information in a variety of ways from farm bill impacts to community development, according to Smith.

Dr. Mark Waller, AgriLife Extension program leader for agricultural economics, said census data serves as a vital decision aid in making many on-farm management decisions each year.

"Farmers and ranchers can use this data to see how their costs and returns compare to those of producers in other parts of the country," he said. "When taking into consideration the high production costs many producers are facing today, having detailed information certainly helps plan against risk

and make one more profitable."

"The importance of an inclusive and accurate census of U.S. agriculture has never been greater," said Dr. Mark Welch, AgriLife Extension grain marketing economist.

Welch said producers are responding to shifting demand patterns for food, feed, fuel and fiber "and must cope with ever increasing input costs."

"It's important to monitor the changing face of American agriculture in order to stay current with what farming and ranching today looks like, to appreciate the productivity and role this industry plays in our economy, and to respond to its needs," he said.

Producers can return their forms by mail or, for the first time, fill out the census online. For more information about the 2007 Census, visit <http://www.agcensus.usda.gov>.

Cashing in On High Crop Prices May Be Limited by Water Availability

by Kay Ledbetter, 806-677-5600, SKledbetter@ag.tamu.edu

Before they plant fence row to fence row to take advantage of high commodity prices, producers need to develop realistic expectations of their irrigation capacity, said a Texas AgriLife Extension Service expert.

Leon New, AgriLife Extension irrigation specialist, told producers at the High Plains Irrigation Conference held recently in Amarillo that there is only a certain amount of water available for commodity crops.

"We may want to plant all the wheat and corn we can and maybe some soybeans and cotton," New said. "One of the limiting factors may not be money, as in the past, but water."

There are a number of tools available that will help producers identify how

much water they have available and when to apply it to address peak water-use periods, he said.

"You need to know your seasonal irrigation capacity and then you're going to make a decision on where your water is going," New said.

The Texas High Plains Evapotranspiration Network of weather stations can help producers determine how much water a crop needs throughout the growing season, as well as how much is being derived from rainfall, he said.

Corn may need 20 inches or more water from June to August. A 5.5 gallons-per-minute-per-acre well can only produce 17.5 inches running full-time during that period, so producers will need some stored water in the 6-inch soil profile, New said.

"We want to do more with less, but just how much can you do?" he asked. "You don't want to plant corn with only four gallons per minute per acre available from your well. You are better off with sorghum."

Sorghum requires 12 to 12.5 inches of moisture from mid-July to the end of August, and a four gallon-per-minute-per-acre well can produce somewhere between 9.5-10 inches, New said. That risk can be made up with a full soil-moisture profile.

Also, grain sorghum will do without moisture longer than corn before it starts

stressing.

Cotton is another option where water is limited, he said. A three gallon-per-minute-per-acre well can support the production of three to four bales per acre of cotton.

"Every crop-water-use chart indicates we don't have the water to meet the demand throughout the growing season," New said. "What we try to meet is the demand during peak parts of the season."

"On most crops, you are betting on some free moisture in the form of rainfall, but you don't want a wreck."

Utilizing tools such as soil moisture probes and the weather station network, he advised, wait as long as possible, but be prepared to put on water to fill the 6-inch soil profile for this year's crop.

"You know as well as I know, every year is different," New said. "Wait as long as you can. If you can only put on an inch a week, it takes six weeks to fill the soil profile. So keep that in mind when planning water for critical water-use stages."

"If you have to quit watering on one of these stages, it will hurt you at harvest," he said.

Bumper Crops Could Lead to Bagged On-Farm Storage

by Kay Ledbetter, 806-677-5600, SKledbetter@ag.tamu.edu

Jimmy Hayes, a Calhoun County producer, didn't want to take a chance on having to hold his harvest in the field because the grain elevators were full. He researched on-farm storage in the form of polyethylene bags.

These bags are not the typical seed or feed bag size - they are 200 foot long and can hold the equivalent of about four railcar loads of grain, so they are taking the place of storage buildings, Hayes said.

Because Hayes was working with a new product for storage in Texas, he asked Roy Parker, Texas AgriLife Extension Service entomologist from Corpus Christi, to help him determine if the corn would store sufficiently and if the insects could be controlled.

Pat Porter, AgriLife Extension entomologist in Lubbock, presented some of Parker's early findings during the Texas High Plains Grain Elevator Workshop held in Amarillo recently.

"It's an interesting technology that we need to know much more about before we can make recommendations," Porter said, adding that he wasn't aware of anyone trying it for grain storage in the High Plains yet.

"With the advent of grains for biofuels, we've found that we don't have enough storage capacity," he said. "This might give us another option."

Parker said storage of corn in polyethylene bags started last spring when growers along the coast anticipated that harvest would be delayed as grain elevators exceeded capacity. "We got

involved because people were unsure how the grain would store," he said. "We've had corn in them for about five months now and it still looks good. We took samples of the grain as it went into the bags, had it officially tested, and are now monitoring on a monthly basis. We're taking temperature, moisture readings, bushel weights and counting insects."

In the last two months, Parker said, he's only found one weevil in 16 samples each month. Coming out of the field, the corn had weevils in it, but a month later, there were none. The respiration of the grain is supposed to use up the oxygen resulting in eventual death of the insects. Incubated samples he kept, however, ended up with four weevils per quart sample in two of the 16 samples.

There's been no real problems storing corn in the bags, he said, unless water or rats got in where it wasn't sealed well. An electric fence was placed around the bags to keep feral hogs and other animals out.

He said corn must go into the bags at a moisture level below about 14.5 percent, the ends must be sealed well and the bags should be set up on hard ground.

While the protection looks good so far, the economists still need to look at the method along with insurance considerations and other costs involved, to determine if it is a viable alternative.

"Some are saying this is cheaper to do it this way," he said. "It looks promising for short-term storage, at least in this area."

Hayes believes it is cheaper, and more than just promising.

"This county turned a huge amount of grain this last year, and we knew we had to have some storage," Hayes said. "We found this alternative."

In researching the system, most information came from Argentina, Hayes said.

He said he was able to store 7,400-7,500 bushels of corn per 200-foot bag. They have unloaded some of the bags now, and there was no shrink due to loss of moisture. It went into the bag at 14 percent moisture, and it came out at 14 percent moisture, Hayes said.

"It is a dry grain system," he said. "It doesn't work for high moisture corn. We recommend around 14 percent for corn, 13.5 percent for grain sorghum and 12.5-13 for soybeans. The drier it is, the longer the shelf life."

Hayes said he put up eight bags for himself and another eight bags for the local coop. Several other producers with baggers put up eight bags each. He was the only one who bought an unloader, and he is allowing the other producers to borrow it for now.

When figuring the cost of it compared to a grain tank, he said, a 12-railcar grain tank

would have cost \$100,000. This system, the bagger and unloader cost \$40,000, and one bag that would store the equivalent of 4.4 railcar loads cost \$600.

Continued on page 10

MONKEY'S

BBQ & STEAK HOUSE

435-3945




Stan and Donna Zepp

**Under New Ownership
Same Great Service & Menu!**

14 SE 3rd Ave.
Perryton, TX

We Are THPLC-2-B

Hoochy Poochy Parlor



**Professional Award
Winning Stylist**

Carmon Baker

and Missy

"The Hoochy Poochy"

A true professional and award winning creative groomer, Carmon has earned numerous awards for her excellent work and demonstrated professional technique. She has served the Texas Panhandle for the past 37 years. Catering to the small to medium pampered pet, we always do our best.

Please visit us for a free estimate on your pet care needs.

Hours:
Mon.-Fri., 8 a.m. until done
Saturday by appointment only

806-273-2724
806-674-5409
116 Madison
421 E. 10th St.
Borger, TX 79007
hoochypoochy@att.net

GRUVER INDEPENDENT SCHOOL DISTRICT STATEMENT OF REVENUES, EXPENDITURES, AND CHANGES IN FUND BALANCE GOVERNMENTAL FUNDS FOR THE YEAR ENDED AUGUST 31, 2007			
Data Control Codes	10 General Fund	Other Funds	Total Governmental Funds
REVENUES:			
5700 Total Local and Intermediate Sources	\$ 5,131,479	\$ 29,178	\$ 5,160,657
5800 State Program Revenues	651,673	129,699	781,372
5900 Federal Program Revenues	-	330,777	330,777
5020 Total Revenues	5,783,152	489,654	6,272,806
EXPENDITURES:			
Current:			
0011 Instruction	2,157,385	343,233	2,500,618
0012 Instructional Resources and Media Services	26,787	-	26,787
0013 Curriculum and Instructional Staff Development	11,020	-	11,020
0023 School Leadership	261,553	5,826	267,379
0031 Guidance, Counseling and Evaluation Services	49,030	4,249	53,279
0033 Health Services	56,584	-	56,584
0034 Student (Pupil) Transportation	229,158	2,463	231,621
0035 Food Services	-	132,536	132,536
0036 Cocurricular/Extracurricular Activities	180,490	-	180,490
0041 General Administration	381,486	-	381,486
0051 Facilities Maintenance and Operations	1,071,042	2,039	1,073,081
0053 Data Processing Services	19,333	-	19,333
Debt Service:			
0071 Debt Service - Principal on Long Term Debt	37,969	-	37,969
0072 Debt Service - Interest on Long Term Debt	27,399	-	27,399
Intergovernmental:			
0093 Payments to Fiscal Agent/Member Districts of SSA	24,800	-	24,800
6030 Total Expenditures	4,534,036	490,346	5,024,382
1100 Excess (Deficiency) of Revenues Over (Under) Expenditures	1,249,116	(692)	1,248,424
OTHER FINANCING SOURCES (USES):			
7915 Transfers In	54,698	-	54,698
7080 Total Other Financing Sources (Uses)	54,698	-	54,698
1200 Net Change in Fund Balances	1,303,814	(692)	1,303,122
0100 Fund Balance - September 1 (Beginning)	1,866,932	2,325	1,869,257
3000 Fund Balance - August 31 (Ending)	\$ 3,170,746	\$ 1,633	\$ 3,172,379

Museum Musings

by Joanne Eaton

The Cator-Gilpatrick building will soon have a sign to dress it up. People will then be able to tell that the building belongs with the other Stationmaster's House Museum buildings, at 122 S. Townsend. The Cator-Gilpatrick building sets behind the other buildings, on Archer Street, facing Second Street.

A big highlight of the museum was the wedding of Kandace Boyd and Mono Cruz, which was recently reported in the Reporter-Statesman. This was the first wedding ever performed in the museum. Since she was a little girl, Kandace visited the museum with her grandmother, Helen Boyd,

president of the Museum Board. When Kandace saw the beautiful piano, manufactured in about 1880, displayed in the Cator-Gilpatrick building, she knew she wanted to be married in front of it. It is so wonderful when the younger generation shows an interest in the museum. We wish Kandace and Mono all the best!

Another highlight of the museum was the knife show of Bob Breeden, of Spearman, also held in the Cator-Gilpatrick building. Bob is a very good craftsman. He has made many beautiful knives, with leather holders. Everyone who viewed the knives seemed to have favorites. Bob sold many knives that

day. We wish Bob much success in his endeavor to make these knives.

David Fulp, of the Texas Courthouse Trail, recently called me. He had bought a picture of the courthouse of Hansford County from ebay. He was wanting to know if we had more pictures that could be put on his website, but when he described the one he had and told me the date it had been built, I told him he had a picture of the Courthouse of Old Hansford, not Spearman. I referred him to Rubyjo Wilbanks. She got him the pictures he wanted, but I notice he has put our existing courthouse on the website.

You can go to www.TexasCourthouseTrail.com if you are interested in seeing any of the courthouses, in the state of Texas. This is a work in progress, so some of them may not be on there yet.

I also told David that Nita

Bynum's grandfather designed some of the Texas courthouses, so he called to talk to her also. Sometimes the world just gets smaller and smaller!

On Sunday, I went to the Buchanan Windmill Park and just sat there, watching some of the windmill wheels turn in the wind. Some of them were locked down, as the wind was beginning to increase. It was such a peaceful feeling. There has been so much work put into the windmills. What a wonderful asset to Spearman!

If you have seen me with pen and paper in hand, talking to several people in town, I've been trying to restore the old town of Hansford, on paper. J. B. Buchanan left a detailed map of Hansford, that can be found in the second Hansford County History Book, but I wanted more stories and pictures. I then got Wanda Reed

involved, as she lives in a house that was once at Hansford and has always had an interest in this same project. Eventually, our results will be in the Stationmaster's House Museum.

Any information, or pictures, would be much appreciated. We would copy the pictures, if you do not want to part with them. I also want to restore Farwell, which may be a little more difficult. Phone calls about the history of either town will be gladly accepted.

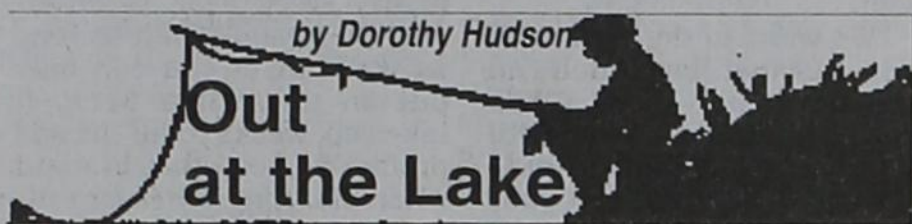
A special thanks goes to Cecil Reynolds and R. L. McClellan, who as boys had grandparents living in the Hansford area. They could tell us many things that we did not know.

Cecil, Wanda, and I toured Old Hansford recently. It was fun to hear things he did as a boy! The house of his grandparents is still there. J. D. Wilbanks and Caro Lee Frantz have also been a big

help. Caro Lee would go with her father to buy license plates at the Hansford Courthouse. J. D.'s father bought a building from Old Hansford. He explained how they moved it from there. Joel Lee Lackey has buildings from Farwell on his property. You would be surprised at the number of buildings in Spearman and Gruver, that came from Old Hansford.

Doris Breeden is now our "Keeper of the Keys," so to speak. She cares for the museum and will gladly show people through, telling them whatever they want to know about the museum.

The museum is open Tuesday through Saturday, from 1:00 until 5:00 p.m. We would love for everyone to come by. We ask that small children be accompanied by an adult.



by Dorothy Hudson

Lake Level--January 28, 2008--19.82 feet (-0.13)

With the warmer weather, the ice on the Lake has melted, and some few fishermen are trying to catch fish in the Lake. Jim said the fish so far are winning.

Jim is seeing more of the beautiful mountain blue birds and cedar wax wings. Lately the geese and eagles have returned again. He saw 8 eagles at one time last week. This morning when I called, he had seen 5.

Ferruginous Hawk from Canada

The following intriguing story was shared by Deanna and Rex Williams.

"While checking fences Stan Seagler saw a rather large bird lying dead under the highlines. Thinking it might be a young eagle, he went over to check; that's when he found it was a hawk and banded.

Talking about it at the coffee shop, Rex asked where it was. Finding out it was only a quarter of a mile from his house, Rex found it and brought it home. He removed the band and sent off the information to the address that was on it.

"Some time later on January 16, a call came from a Doctor in Saskatchewan, Canada saying it was a Ferruginous

Hawk, one of the largest of the Hawks, and that it had been banded in Canada on 7/1/1997 before it could fly.

"The Doctor was glad to know of the reported find and wanted to know if there were prairie dogs near by and if this was prairie land and if there were grain crops in our area. Of course, the answer was yes to all three. He said it was about as old a hawk as he had had reported.

"Everyone assumed the hawk met his fate by hitting the highlines."

Today Rex received a Certificate of Appreciation from the U. S. Geological Survey. They have joined with the Canadian Wildlife Service on this North American Bird Banding Program. Mexico's National Institute of Ecology also helps with it.

Although now they ask you to call 1-800-327-BAND, if you find a bird band, the ten year old band that Rex removed from the dead hawk only said AVISO BIRD BAND then in smaller print WRITE WASHINGTON DC USA and the number 1207-34240. Rex said with no more of an address than that, he didn't really expect his letter to get delivered.

Now I wonder if others in the county have sent in the information on a bird band or if this is a first?

Wolf Creek Heritage Museum Notes

by Virginia Scott

MUSEUM HAPPENINGS

This is my second draft of this week's column. The wind is blowing and the electricity flashed off and my first effort was lost. I hope I get through this one.

Our reception on Sunday was well attended with over 50 people braving the wind and coming to the museum. Jo Le Tennon and her husband greeted the individuals who came to enjoy her art and to visit with her. A good time was had by all.

We had two new hostesses who brought delicious cookies. Coeta Sperry and Karen Goodman assisted us with the refreshments and routine museum duties. Thanks, ladies.

I ventured to Plainview last week to the Texas Plains Trail Board meeting. We have a new regional coordinator with the office in Borger. If any of your civic organizations need guest speakers, please call the museum. The Trails Board and the museum is willing to provide programs to any groups. Call us.

Georgia and I ventured to Amarillo to attend the fiftieth anniversary luncheon for the Amarillo Area Foundation and to Borger for the winter meeting of the Northwest Texas Association of Museums. All in one week. These type of functions allow us to network with fellow professionals and to learn new ideas, programs, etc. that we can incorporate into our program.

HISTORICAL MUSINGS

We need your help with an email query that we have received this week. A military historian in Houston is attempting to research an event that a Mr. Prater reports took place in July, 1944 over Lipscomb. He reports that his airplane developed trouble and the pilot ordered all the airmen to bail out of the plane. They all did and all landed in or around Lipscomb. One man got his chute tangled with the tail section and died upon landing. The plane later landed in New Mexico.

We have begun a search of the Lipscomb Lime Light but have not found anything. Call or write us if you have heard about this incident.

I will end with a poem that Dorothy included in her first issue of the Kiowa Valley Independent.

WHO

There's a clever young fellow named Somebody Else. There's nothing this fellow can't do

He's busy from morning 'til way late Just substituting for you.

You're asked to be this, or asked to do that.

And what is your reply? Get Somebody Else. He'll do it much better than I.

So much, and the workers so few.

And Somebody Else is weary and worn. Just substituting for you.

Next Time you're asked to do something worthwhile, Just give them this ready reply:

"If Somebody Else can give time and support, My goodness, then so can I."

Author unknown.

So much to do in this weary old world.

Be a volunteer today!

Wolf Creek Heritage Museum

Museum Hours: Monday thru Friday 10 a.m. to 4 p.m., Sunday 2 to 4 p.m. Special hours upon request.

Museum Information: 13310 Hwy 305, Box 5, Lipscomb TX 79056; telephone: 806-852-2123; email: wolferk@amaonline.com; website: www.wolfcreekheritagemuseum.com

ATTENTION PROPERTY OWNERS

Property owners have certain rights that may reduce their property tax burden.

HOMEOWNERS

Persons who own their residence on January 1, 2008, may claim their home as a residential homestead. The filing of this document is only necessary if the homeowner has changed homesteads since January 1, 2007, or has become eligible for additional exemptions since last year. Homeowners may also defer the portion of the tax on their residence homestead if the value of the home was raised more than 5% above the previous year. Although the tax collection is deferred, interest continues to run on the unpaid portion of tax at a rate of 8% per annum and the deferred tax remains a lien on the property. To apply for the deferral, the owner should contact the appraisal district which appraised the property in question and complete an application.

DISABLED PERSONS

Persons who are disabled under Social Security law are entitled to additional exemptions on their residential homestead. Disabled applicants must apply with the appraisal district and furnish a determination letter from Social Security. Disabled persons now receive all benefits on their home that are available to over 65 persons (see below)

PERSONS WHO ARE OVER 65 YEARS OF AGE

Persons who are over 65 years of age or disabled persons may file for additional exemptions and a ceiling on school taxes for their residential homestead if they become 65 during 2008. Over-65 persons should apply for this exemption at the appraisal district office in their area. Over-65 persons are also eligible to defer paying the tax on their residential homestead if they wish. The taxes continue to accrue during the deferral along with an interest rate of 8% annually, but no attempt will be made to force payment during the deferral. Details and an application may be obtained from any appraisal district or the State Comptroller.

DISABLED VETERANS

Persons who have been declared disabled by the Veteran's Administration are eligible for additional exemptions on property they own. The declaration letter from VA is mailed annually, but the appraisal district only needs a copy in the first year of eligibility or if the percentage of disability changes.

FARM AND RANCH OWNERS

Farmers and ranchers may be entitled to receive an alternate method of appraisal determined by the farm income to the property. This method is available to farms and ranches commercially raising crops or livestock or which are used as a wildlife habitat under State guidelines. An application for agricultural use value and additional information is available from your appraisal district. Re-filing is only necessary if requested to do so by the Chief Appraiser.

EXEMPTION APPLICATIONS

Exemption applications for all property tax exemptions including total exemptions for charitable, religious, and other total exemptions may be obtained from an appraisal district nearest you or through the State Comptroller's Office at 1/800-252-9121.

CONTACT HANSFORD APPRAISAL DISTRICT
709 W. 7TH AVENUE
SPEARMAN, TEXAS 79081
806-659-5575

ATTENCION CONTRIBUYENTE DE IMPUESTOS SOBRE LA PROPIEDAD

Duenos de propiedades tienen ciertos derechos que pueden reducir sus impuestos

DUENO DE HOGAR

Usted califica para una exención general, si es dueño de su hogar el día primero de enero, 2008. La solicitud para la exención es necesario si el dueño de la residencia cambio de hogar efectivo Enero 1, 2007, o califica para exenciones adicionales desde el año pasado. Un dueño de hogar mayor de 65 años puede aplazar el pago de una porción de sus impuestos si el valoracion de su hogar de residencia aumento mas de 5% que el valor del año anterior. Un aplazamiento de impuestos sin embargo, solo pospone su deuda impositiva. Se aplica un interes de 8 por ciento al año y se mantiene una garantía sobre la propiedad. Para aplicar por el aplazo, contacte al distrito de valoracion de su condado y complete la aplicacion.

PERSONAS INCAPACITADOS

Personas incapacitados bajo la Administracion del Seguro Social califican para las exenciones de dueño de hogar. Personas incapacitados deben aplicar con su distrito de valoracion con su prueba de dishabilitacion del Administracion del Seguro Social. Personas incapacitados reciben todos los beneficios en su hogar igual que personas mayor de 65 años.

PERSONAS MAYORES DE 65 AÑOS

Personas mayores de 65 años o dishabilitados pueden aplicar para mas exenciones. Usted tambien obtiene un tope de impuestos para el total de sus impuestos escolares si usted cumple 65 años de edad durante 2008. Personas de 65 años o mas tienen que registrar una solicitud por la exención en su distrito de valoracion en su area. Usted puede aplazar algunos de sus impuestos sobre su hogar de residencia si lo desea. Los impuestos continúan a pesar del aplazo con interes de 8% anual, pero no se hace esfuerzo de abrir un juicio hipotecario durante el aplazo. La Contraloria de Cuentas Publicas de Texas le podra dar mas informacion.

VETERANOS INCAPACITADOS

Usted puede calificar para una exención del los impuestos sobre su propiedad. Debe tener documentos del Administracion de Veteranos que muestran el porcentaje de su incapacidad relacionada a su servicio militar. El distrito de valoracion solamente necesita documentacion el primer año de calificacion o se su tasa de incapacidad cambia.

TERRENOS AGRICOLAS O GANADEROS

La valoracion/tasacion como terreno agricola disminuye el valor imponible del terreno. Se valora el terreno basandose en su capacidad para producir cultivos, ganado, o vida silvestre en lugar de su valor en el mercado de bienes y raices. Obtenga un formulario de solicitud en la oficina local de su distrito de valoracion. El tasador principal puede requerir que usted someta una nueva aplicacion.

SOLICITACIONES PARA EXENCIONES

Copias de solicitudes se pueden conseguir en el distrito de valoracion mas cerca de usted o del La Contraloria de Cuentas Publicas de Texas, ea el 1/800-252-9121 Tambien se incluye solicitudes para exenciones totales para organizaciones religiosas.

Contact Hansford Appraisal District
709 W. 7th Avenue, Spearman, Texas
806-659-5575

FOR RENT/LEASE

FOR RENT: 2BR apartment, \$375.00 per month, water paid. Call Larry O'Neal at 580-772-5617 or 580-819-0007. TFN(7-06-06)B
FOR RENT: 1BR, 1B, apartment - washer/dryer hookup, central heat/air. \$375 deposit, \$375/month. Call 940-631-0894. TFN(7-5-06)B
FOR RENT: 3BR apartment available Sept. 10th, \$450.00 per month (plus deposit), water paid. Call Larry O'Neal at 580-772-5617 or 580-819-0007. TFN(8-30-07)B

HELP WANTED

HELP WANTED: H&H Water Well Service, Inc is looking for rig hands. Come by 10475 HWY 15 for an application. 659-5577 TFN(1-31-08)B
HELP WANTED: Wolf Creek Feedyard, located in Perryton, TX, is now taking applications for a Cowboy/Pen Rider. Must provide own horse and tack. A monthly horse stipend is included along with an excellent wage, health insurance and retirement plan, with a year-end bonus. Please call 435-5967 and ask for David if you have any questions, or come by the office for an application. 2(1-31-08)B

SERVICES

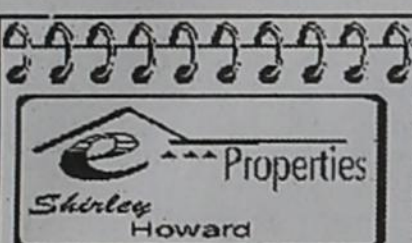
HOOCHY POOCHY PARLOR Call us now for all your pet's grooming and boarding needs. Call now for reservations! 806-273-2724. TFN(11-2-07)
ELM FIREWOOD - Split and cured. \$150/cord, \$75/rick. You haul. Call 806-273-7705. 3(1-17-08)

Blankenship Real Estate
659-3052 - 670-3774

3/1/1 - Lots of storage, inside & out, corner lot. Close to schools.
 3/2/1 - Brick, 2 living areas, fenced w/storage
 2/2/1 - Brick, fenced w/storage

NEW LISTINGS WANTED!

Eulaila Blankenship - Sales
 Eschol Blankenship - Broker



904 Wilmeth, SPEARMAN - 5/3 5/3 5,182 sq. ft. FP, Basement.
 115 Nelson Rd, SPEARMAN - 2/2/2 - 1,900 sq ft, 1/2 acre land - Country & City all at once!

I would LOVE to sell your HOUSE!
 Call ME!
 Cell: 806-886-6536

OCEANS OF WATER II - Hansford Co., Texas - 4 sections, strong water, dev. with sprinklers, wells, feedyard, home, barns, pvtmt., 2 mi. hwy. frontage.
HARTLEY CO. - 640 acres with nice home, landscaped, barns & sprinklers.
PRIME LOCATION FOR DAIRY, FARMING & CATTLE - East of Dalhart, on pvtmt., 3 1/2 sections, strong water area, wells & sprinklers, nice home, barns and preconc. pens.
SPEARMAN DAIRY - permitted for 3,600 hd. (1,400 milking), 320 acre operation, milking started as construction nears completion.
HANSFORD CO. - 315 acres, 2 pivots, cattle pens, good water, on pavement.
MOORE CO. - 1766 acres, fully developed with wells & sprinklers & really nice home on all-weather road, priced to sell!
 Choice milk processing and dairy sites available in Dallam, Hartley, Moore, Oldham, Sherman and Hutchinson Counties.
 SEE OUR WEBSITE OR GIVE US A CALL!
 www.scottlandcompany.com
 Shawn Gillispie 806/922-5532
 Ben G. Scott, Broker
 1-800-933-9698 day/eve
 TFN(11-17-07)

FOR SALE/TRADE

FOR SALE OR TRADE: King-size bed - includes frame, mattress and box spring. Very nice. Need to downsize. Will sell or trade for full-size bed. Call 659-3808 for more information or to make offer. TFN(11-2-07)
FOR SALE: Full Size mattress set, Brand New, still in package. Sell for \$125, 806-341-6233 TFN(1-31-08)
 Brand Name King pillow top mattress set, new in plastic w/warranty. Must sell \$250. Can Deliver 806-341-6233 TFN(1-31-08)
FOR SALE: All new QUEEN pillow top set \$150 NEW in plastic can deliver 806-341-6233 TFN(1-31-08)
FOR SALE: QUEEN ORTHOPEDIC Mattress Set. New, still in plastic w/Warranty. Delivery available \$140 806-341-6233 TFN(1-31-08)
FOR SALE: A great deal: NASA memory foam mattress set. Never used. Sacrifice \$350. 806-341-6233 TFN(1-31-08)
FOR SALE: Twin mattress set new w/warranty \$100. 806-341-6233 TFN(1-31-08)

PUBLIC NOTICE

BID NOTICE
 The Palo Duro River Authority will receive sealed bids for the sale of a 1976 Chevrolet dump truck. Bids will be accepted until 5:00 PM, Monday, February 11, 2008. Bids

will be opened at the regular board meeting, February 12, 2008. Call 806-882-4401 for more information. 2(1-24-08)B

LEGAL NOTICE
NOTICE OF PUBLIC HEARING
ZONING BOARD
OF ADJUSTMENT

Date: February 18, 2008
 Time: 6:00 p.m.
 Place: City Council Chambers, 30 S. W. Court, Spearman, Texas
 Purpose: To consider in public hearing a zoning variance on the property listed below:
 Request a variance to waive the side yard setback in order to make an addition, as per plans, to the First Baptist Church on Lots 1-3, Block 51, OT, City of Spearman, Hansford County, Texas, being addressed as 123 S. Bernice.
 Any interested party may attend the open meeting to speak for or against the proposed variance. For additional information call 659-2524.
 2(1-31-08)B

LEGAL NOTICE
NOTICE OF PUBLIC HEARING
SPEARMAN PLANNING AND
ZONING COMMISSION

Date: February 18, 2008
 Time: 6:00 p.m.



Openings at Hansford Hospital

Maintenance Person: Performing duties for maintenance of the building, grounds, including carpentry, painting, plumbing, electrical work, air conditioning, gardening, furniture repair, welding, etc.

Openings at Hansford Manor

Housekeeping: Providing a clean, neat and sanitary facility for the comfort of our patients, residents and staff.

CNA Class: Class for CNA will start soon, come by Hansford Hospital Human Resource for application.

Certified Nurse Aide: Assisting RN and LVN with the care of our residents.

LVN: Must be licensed in the State of Texas

RN: Must be licensed in the State of Texas

Great working environment and staff, quality facility providing opportunities for professional growth. Great benefit package. Apply at 707 S. Roland, Spearman, TX or contact Jackie Nelson at 806-659-5841. Download application at www.hchd.net
 EEOE
 2(1-24-08)B

Golden Spread Realty

1105 Haney, SPEARMAN - 3BR, 1B, 1 attached garage - \$30,000.

1118 Barkley, SPEARMAN - 3BR, 1 1/2B, 2 attached garage - \$45,000.

1104 Dressen, SPEARMAN - 3BR, 1B, 1 attached garage - \$62,500.

Gina Deal, Realtor
 (806) 435-5444, office
 (806) 202-0348, cell

1110 Dressen, SPEARMAN - 3BR, 1 1/2B, 1 attached garage. **Price Reduced!**
Deana Foster, Realtor
 (806) 435-5444, office
 (806) 202-1061, cell

INDEPENDENTLY OWNED & OPERATED.
 ©1992® and ©Century 21 Real Estate Corporation. Equal Housing Opportunity. EOW(1-11-06)B

Place: City Council Chambers, 30 S. W. Court, Spearman, Texas

Purpose: To consider in public hearing a zoning variance on the property listed below:
 Request a variance to waive the side yard setback in order to make an addition, as per plans, to the First Baptist Church on Lots 1-3, Block 51, OT, City of Spearman, Hansford County, Texas, being addressed as 123 S. Bernice.
 Any interested party may attend the open meeting to speak for or against the proposed variance. For additional information call 659-2524.
 2(1-31-08)B

Public Notice
 Effective January 24, 2008, the

K	E	N	O	D	A	M	H	I	F			
I	D	E	S	D	A	R	E	F	A	R	A	D
E	D	I	T	E	V	E	R	A	M	A	S	S
V	A	L	E	N	T	I	N	E				
				A	O	R	T	A	A	W	L	
H	A	L	L	O	O	R	A	T	O	R		
O	B	I	S	P	R	I	T	E	G	R	E	D
B	O	M	B	E	O	T	T	E	N	D	E	D
B	U	B	O	A	S	S	O	R	T	E	L	L
S	T	O	W	A	G	E	A	H	O	R	S	E
				A	C	E	M	A	V	E	N	
T	H	R	U	M	C	C	A	R	T	N	E	Y
S	H	I	R	T	A	G	O	G	I	O	T	A
P	E	K	O	E	S	E	R	E	M	I	N	K
A	N	E	W	T	E	N	E	R	A	S		

9	6	3	8	2	1	4	5	7
5	2	4	7	6	9	3	8	1
1	8	7	3	5	4	9	2	6
2	4	5	1	7	6	8	3	9
3	7	6	5	9	8	2	1	4
8	9	1	2	4	3	6	7	5
6	5	8	9	1	2	7	4	3
4	1	2	6	3	7	5	9	8
7	3	9	4	8	5	1	6	2

Board of Directors of North Plains Electric Cooperative (NPEC) approved changes to the Tariff for Electric Service. These changes affect Sections 204.1 Trip Fees and 305.1 Line Extension (General Policy).

Section 204.1
 The cooperative trip fee has been increased from \$40.00 to \$50.00 during normal business hours and increased from \$60.00 to \$75.00 for a trip after normal working hours. This fee is generally charged for collection of a bill, disconnect for non-pay, reconnect, or trouble investigation.

Section 305.1
 The cooperative has implemented a formula based limit for its maximum investment for new primary line built along US and state high-

ways, existing county roads or city streets or alleys based on the contract term, projected revenue, load size, and load factor as criteria.

If you have questions regarding these changes or wish to review the NPEC Tariff for Electric Service, please call 806-435-5482 or 800-272-5482; visit the office at 14585 Highway 83 North, Perryton TX 79070; or visit our website: www.npec.org.
 1(1-31-08)B



DCP Midstream, LLC, headquartered in Denver, CO, leads the midstream segment as one of the nation's largest gas gatherers and processors, and is one of the largest natural gas liquid (NGL) producers/marketers in the US. We currently have the following position available at our Hansford location.

Mechanic
 Perform all types of repair work, maintenance, and overhauls on industrial 2 and 4 cycle engines, pumps, vehicles, hydraulic equipment, gas turbines and compressors, mechanical seals, and horizontal coolers.

High school diploma or GED is required with a minimum of 2 years' experience performing maintenance on engines; 2 years' experience as an industrial mechanic maintaining panel board and control equipment; and 2 years' experience working in a gas gathering system or processing plant.

We offer a Total Rewards Program comprised of a competitive salary, benefits, incentives, work-life balance, and wellness programs. For more information and to apply online, please visit our website at www.dcpmidstream.com/careers. DCP Midstream is an equal opportunity employer.

www.dcpmidstream.com

RUAN
 Expanding
 Our Business!

Tanker Drivers Needed

- * All Food Grade
- * Home Each Day
- * 5 Day Work Week
- * Medical, Dental & Vision
- * Excellent 401k Plan
- * Paid Holidays & Vacations

CDL-A w/ tank end and 1 yr. exp.
800-879-7826
www.ruan.com
 Dedicated to Diversity EOE

FloCo2 Needs

Reliant Transportation

- 1 yr. of driving exp. Preferred
- Class A CDL with Hazmat & Tanker
- Good Driving Record

Background check, DOT Drug Screen & Physical

What do you need?
Call Tom Smith at 888-339-0599
LET'S MAKE A DEAL!!!

TEXAS STATEWIDE CLASSIFIED ADVERTISING NETWORK

TexSCAN

TexSCAN Week of January 27, 2008

BUSINESS OPPORTUNITIES
 ALL CASH CANDY Route. Do you earn \$800 in a day? Your own local candy route. 30 machines and candy. All for \$9,995. 1-888-625-5481. Multi Vend, LLC.

AMERICA'S FAVORITE COFFEE distributor. Guaranteed accounts. Multi billion \$\$ industry. Unlimited profit potential. Free information 24/7. 1-800-729-4212. Continental Coffee

DRIVERS
DRIVER- O/O'S. NEW pay scale, plus fuel surcharge. Company drivers. \$5000 signing bonus. Minimum 1 yr. experience. Lots drop & hook! American Eagle Lines, www.acl.com, 1-800-387-1011

DRIVERS: CALL TODAY! Bonus & paid orientation 36-43cpm. Earn over \$1000 weekly. Excellent benefits Class A and 3 months recent OTR required Melton Truck Lines, 1-800-635-8669

DRIVERS- DRIVE A big rig! Tuition reimbursement available! Possible \$40K 1st year! \$5000 Sign-on with 1 year OTR experience. www.tfcinc.com. Call FFE, Inc. 1-800-569-9232.

DRIVERS- IMMEDIATE OPENING for regional & OTR drivers! CDL-A with tanker required. Premium pay & benefits. Call 1-877-810-1041, or visit www.oakleytransport.com

EXAM / PREP
 POST OFFICE NOW Hiring. Avg. Pay \$20/hour or \$57K/yr. Including Federal Benefits. OT Offer placed by Exam Services, not affiliated with USPS which does hiring. 1-866-918-1182

EDUCATION / SCHOOLS
LEARN ADVANCE WELDING in El Paso, train for a better future. Get skills to succeed. Financial aid available to those who qualify 1-866-313-6541 or www.wte-ep.edu

FINANCIAL
CASH IMMEDIATE CASH for structured settlements, annuities, law suits, inheritance, mortgage notes & cash flows. J.G. WENTWORTH #1, 1-866-494-3711.

HOMES FOR RENT
 3 BEDROOM ONLY \$178/month! Foreclosed home! 4% down, 20 years @ 8.5% APR! Buy. For listings 1-800-373-6764. foreclosureagency.com

HOMES FOR SALE
BUY FORECLOSURES! 3BR/2BA \$11,869 OR \$199/mo! 4BR/2BA \$25,300 or \$215/mo! 5% down, 20years @ 8%. Must see for listings. 1-800-544-6258 x T303

BUY HUD HOMES! 5BR/3BA or \$310 a month or \$38,671. 4BR/2BA \$200 a month or \$14,110. Only 5% down, 20 years @ 8%. For listings. 1-800-544-6258 ext. 5633

FORECLOSURES & BANK REPOS: 4BR/3BA \$30,357 OR \$245/mo! 3BR/2BA \$10,300 OR \$199/mo! (5% down, 20 years, buy @ 8%) These homes won't last! For listings call 1-800-544-6258 Ext. 9847

MEDICAL SUPPLIES
SCOOTERS & POWER WHEELCHAIRS. Did you know in most cases Medicare, Medicaid and Insurance pay 100% of the cost? Call Melissa or Jon for details. 1-800-606-9860. www.medicaremedicalsupply.com.

MISCELLANEOUS
AIRLINES ARE HIRING - Train for high paying aviation maintenance career. FAA approved program. Financial aid if qualified. job placement assistance. Call Aviation Institute of Maintenance, 1-888-349-5387.

ATTEND COLLEGE ONLINE from home. Medical, Business, Paralegal, Computers, Criminal Justice. Job placement assistance. Financial aid and computer provided if qualified. Call 1-866-858-2121, www.OnlineTidewaterTech.com

SAWMILLS FROM ONLY \$2,990.00. Convert your logs to valuable lumber with your own Norwood portable band sawmill. Log skidders also available. www.norwoodsawmills.com/300N. Free information: 1-800-578-1363-Ext:300-N.

REAL ESTATE
ACREAGE ON POSSUM KINGDOM Lake. Big Winter Savings. www.thehillshillside.com

NEAR RUIDOSO NEW MEXICO. 140 acres ranch parcels. Great views of Sierra Blanca. Good horse property. Power & gravel roads. Borders national forest, may split. 1-888-812-5830. www.swproperties.com.

SOUTHERN COLORADO RANCH Sale. 35 acres- \$29,900. Spectacular rocky mountain views year round access, electricity! telephone included. Excellent financing available with low down payment. Call Red Creek Land Co. Today! 1-866-696-3263 x 3473.

228 ACRES, WEST TEXAS, near Sanderson, \$315/acre. Deer, dove, quail and javelina. Owner financed or TX Vet with 5% down. 1-866-286-0199. www.ranchenterprisesltd.com

3.14 ACRES NORTH of Brady, electricity, central water. Level, oaks, mesquite. Retirement, investment, country living, \$24,500, owner financing. 1-800-876-9720. www.hillcountryranches.com

Run Your Ad in TexSCAN!

Statewide Ad \$450
 301 Newspapers, 1,009,878 Circulation
 North Region Only \$195
 97 Newspapers, 271,450 Circulation
 South Region Only \$195
 102 Newspapers, 486,030 Circulation
 West Region Only \$195
 102 Newspapers, 252,358 Circulation

To Order: Call This Newspaper direct, or call Texas Press Service at 1-800-749-4793 Today!

FSB First State Bank

P.O. Box 247
 Spearman, TX 79081
 Telephone 806-659-5565
 Member FDIC

Planning to buy a home, but not sure if you can get an affordable mortgage?
 Interest too high on your present mortgage?
 Want to do business with a local bank?

We can help!

Come by First State Bank, Spearman.
 Check out our competitive fixed and adjustable rate mortgages for terms up to 30 years.
 We can work with you to find a mortgage that fits your needs and help you buy or refinance your home.
 Contact Ginger Turner and find out more.

NOTICE: While most advertisers are reputable, we cannot guarantee products or services advertised. We urge readers to use caution and when in doubt, contact the Texas Attorney General at 1-800-621-0508 or the Federal Trade Commission at 1-877-FTC-HELP. The FTC website is www.ftc.gov/bizop

Extend your advertising reach with TexSCAN, your Statewide Classified Ad Network.



Congratulations Mrs. Finley and Mrs. Cooper!

Terry Maxwell (center) from H&H Credit Union presented Gruver 2nd Grade teachers Mrs. Finley (left) and Mrs. Cooper (right) with \$200 for classroom supplies. These teachers had applied for the grant offered by H&H earlier in the year, and their application qualified them for this gift. We are all proud of their efforts and success in this endeavor.

Sheriff Gary Evans Issues Appeal to Citizens in Fight Against Crime

Responding to the increased number of citizens wanting to assist law enforcement officials and build a stronger partnership in the fight against crime, Sheriff Gary Evans today announced that Hansford County Citizens are being invited to become Associate Members of the Sheriff's Association of Texas.

Membership invitations will go out in the mail shortly. The funding provides critical training, technical resources, and legislative support on key criminal justice issues.

In addition, dues will be used to support crime prevention and awareness programs, promote public safety, fight drug abuse, provide additional training for sheriffs and their deputies, and provide scholarships for children of law enforcement officers.

Contributions are tax-

deductible. "The Associate Membership Drive helps provide the funding which is vital to our mission of making our communities safer places to live, work and play," said Sheriff Evans.

Citizens not receiving a membership appeal or desiring more information can contact the Sheriff's Association of Texas at:

1601 S. IH-35,
Austin, Texas 78741
www.txsheriffs.org

The Associate Membership Program was created to provide citizens with an opportunity to lend their support to more effective law enforcement and to better help local Sheriffs protect lives and property of citizens.

"As the need for building stronger public-private law enforcement partnerships in the country continues to escalate, programs such as this continue to grow in

importance," said Sheriff Evans. "I encourage every citizen receiving a membership appeal to consider joining forces with us by becoming an Associate Member. It is a valuable investment in our future."

Founded in 1874, the Sheriff's Association of Texas is a 501 (c) (3) non-profit professional and educational organization dedicated to the preservation of peace and the protection of lives and property of the citizens of Texas. Mr. Steve M. Westbrook serves as the Executive Director. Headquarters are located in Austin, Texas. The Sheriff's Association of Texas **does not** make solicitations by telephone. If you receive a phone call from someone who uses the Sheriff's Association of Texas name, please report it to your local Sheriff or County/District Attorney.

Walk for Kids' Sake 2008

Walk for Kids' Sake 2008, the annual fundraiser benefiting Big Brothers Big Sisters, will be held Saturday, February 9th, at the Ochiltree County Expo Center.

The theme for this year is "Big Brothers Big Sisters: Real People. Real Heroes. No Tights." "Every child who is helped through our organization is helped by a volunteer," Kimberley Lopez, agency case manager, explained. "They are just everyday people who want to reach out to help a child. You don't have to do anything amazing or have super powers to make a difference - you just have to be there. Kids don't care how much money you make or how old you are or any of that kind of thing, they just want someone to listen and pay attention to them."

The Wheatheart Satellite of BBBS of the Texas Panhandle serves the local area - Perryton, Spearman and Booker. "There about 115 children matched with caring volunteers through our school and community programs," Lopez said. "We experienced about 18% growth over last year!"

The mission of BBBS is to help children reach their potential through professionally supported one-to-one relationships, or matches. The BBBS Vision is successful mentoring relationships for all children who need and want them, contributing to brighter futures, better schools, and stronger communities for all.

There are two core programs. In the community-based program, Big Brother and Big Sister volunteers provide children, Littles, individual time and attention, typically a couple of hours a week. Unstructured outings filled with conversations and shared activities develop relationships that help kids manage the every day challenges that are part of growing up. Studies show that children matched with a BBBS mentor are less likely to use alcohol or other drugs, be truant or violent and more likely to have positive attitudes about themselves and others.

Through the second core program, Bigs in Schools, volunteers offer children individual time and attention, with the venue being the child's school rather

than the community. Volunteers and children meet each week during the school year. Whether they play board games, or read together, their relationship promotes a positive school experience for the child: good attendance, positive peer and adult relationships, a positive attitude, and academic enrichment. The program is at work in seven area schools and many high school students in each community serve as volunteers. "A win-win situation for both the younger and older student," Lopez added.

The satellite office is financially independent; no funding is received from the parent agency in Amarillo or the national program. There is no cost to program participants. All of the money raised benefits the local program. "The money is used to create and support the intentional friendships that have such a huge impact on the children," Lopez explained. "Donating will help to recruit new Big Brother and Big Sister volunteers, cover the costs of background checks and insurance, while ensuring trained professionals match children to caring and responsible mentors, offer one-on-one, ongoing supervision and support for every match, and provide match activities and materials."

"Walk for Kids' Sake is not a walk-a-thon. It does not matter how far or how fast you walk - or technically if you even walk at all! During one 45 minute shift, participants can walk but they also get to eat, visit with friends, and maybe even win a prize! It's really like a thank-you party for raising money for our kids. That's what it comes down to, every dollar raised helps us match a child with a caring mentor."

There are many ways individuals, groups and businesses can be involved in this special event.

Teams of walkers made up of friends, neighbors, family and coworkers walk together during one of four forty-five minute shifts on the day of the event. Team members raise at least \$50 each by soliciting donations from their circle of contacts.

Walkers raising \$100 in pledges will receive a prize. This year qualifying walkers can choose between a Willow Tree trinket box or a painted

wall cross supplied by Taylor's Old Times Shoppe. Those raising \$200 will get another prize, a \$20 Sonic gift card donated by Sonic Drive-In.

This year grand prizes will be given to the top four individual overall money raisers.

This year's grand prizes are: a Trip to Amarillo package (includes a two overnight stays donated by the Ambassador Hotel, dinner given by the Olive Garden and movie tickets; Side of Beef (processed) donated by Jimmy and Sharon Graves and Big 4 Packing (about \$800 value); \$250 of dry cleaning donated by Berry Cleaners; and an Automotive Package (includes \$100 of gas donated by Fronk Oil, 10 car washes donated by Ranger Car Wash and an oil change and spring maintenance checkup donated by The Pit Stop).

Every team member receives a T-shirt printed by dsDesign featuring a design by Scott Trotter of Vector Studios, son of Patsy Trotter of the Lemon Law Firm. Walkers at the event are eligible for door prizes given away during their shift. Food and drinks will be provided throughout the day.

Corporate sponsorships ranging from \$50 to \$2,000 are available. Businesses may also donate door prizes for walkers.

A raffle is being held in conjunction with the event. This year the winner of the drawing to be held on February 13th on the KXDJ morning show will receive 5 days and 4 nights at the Riviera Hotel and Casino in Las Vegas. Tickets cost \$5 each or five tickets for \$20. This prize has been donated by KXDJ Radio.

Anyone who would like to serve as a team captain or who needs more information about this event or becoming a volunteer should call 434-0016 or speak to one of the agency's Advisory Committee members who are recruiting team captains and sponsorships. These members are Matt Bartosiewicz, Stacey Brown, Tony Brown, Trish Carroll, Leann Carson, Johnanna Dear, Dal Foster, Jimmy Graves, Kurt Hirschler, Tara Leicht, Jessica McCallie, Debbie McGarraugh, Rob McGarraugh, Marilyn Reising, and Lewis Richburg.

Bagged On-Farm Storage

Continued from page 7

"I'll do it again regardless of the grain situation, because the system is much cheaper than going to commercial storage or building a tank," Hayes said. "The alternative was watching it sit in the field. It's a must for us."

Stephen Tillery, operations manager for Attebury Grain in Amarillo, said while he doesn't see his company using the alternative, it might be one for other commercial grain storage companies or even producers.

"It gives some companies another avenue to store grain without letting it go out of condition," he said. "And, if we keep having good crop years like we did this year, it might be beneficial to the farmer to have some on-farm storage. This would be a viable method for him to keep it for himself for feeding cattle or even (use on) dairies."

He said this was the first time he's seen corn and even

wheat on the ground in a long time, and it immediately starts to deteriorate with the first rain or first snow. "The most positive thing

about them is the fact you have them there if you need them, but you don't have the high dollar cost of building a building," Tillery said.

Funds available for Child Care Assistance

Panhandle WorkSource Child Care Services offers child care assistance to eligible families and manages projects to improve the quality, availability, and affordability of child care in the 26 counties of the Texas Panhandle. Panhandle WorkSource Child Care Services Lead Provider Service Specialist, Julie Harper, stated, "We understand families struggle to make ends meet. By helping families pay for daycare, these families no longer have to worry about losing their jobs because they can't afford daycare. They know they can afford the daycare expenses and have money left to pay bills. Parents can feel good knowing their children are in a safe place while they are working and/or attending school."

Assistance is offered to:

- Low Income Families
- Parents Working and/or Attending School/Training
- TANF/Food Stamp Recipients
- Teen Parents
- Children with Special Needs

Applicants can be seen as a walk-in or may call for an appointment. At this time, there is no wait list. If eligible, applicants will be placed immediately. A Child Care Application Packet and additional child care information is available at our website: www.panhandle-worksource.com.

SERVANTEZ TREE SERVICE

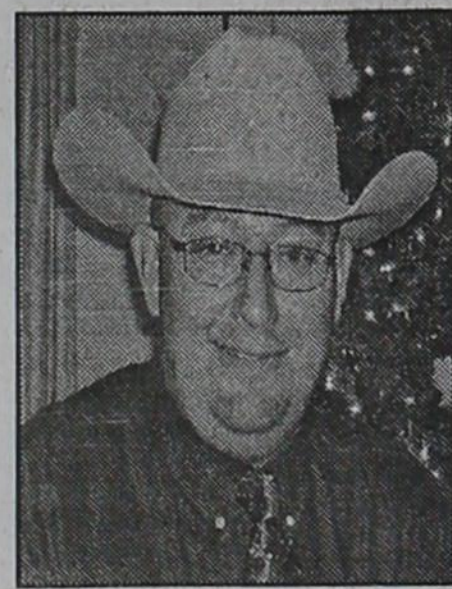
- Topping •
- Cleaning •
- Trimming •
- Removal •

also offering quality landscaping

No Job Too Large or Too Small

Lorne Servantez

Lorne Servantez
121 E. 5th St.
Spearman, TX 79081
1-806-659-3960



ELECT Lance Swan for Hansford County Sheriff

"THE RIGHT VOTE AT THE RIGHT TIME"

**March 4th Republican Primary
Early Voting February 19th-29th**

Political ad paid for by Sally L. Swan Treasurer, 1111 S. Bernice Spearman, Tx 79081