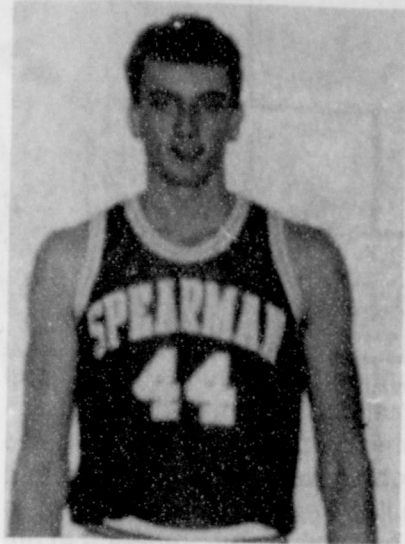
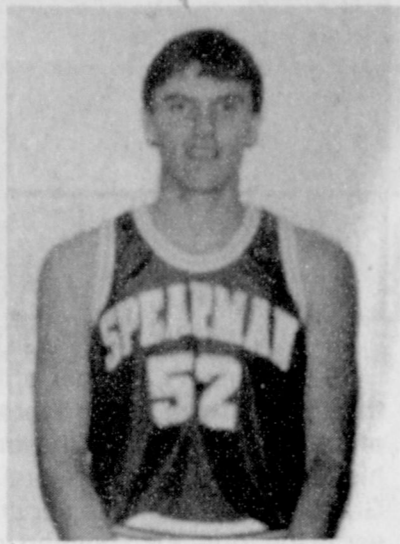


Spearman Lynx and Gruver Greyhounds... each are awarded two places on the 1-AA all district list



Cody Pipkin
All District



Russell Shaver
All District

The Spearman Lynx and the Gruver Greyhounds each placed two players on the 2A-1 All District list according to coaches Wendall Neff and Tim Garland.

Making the all district list for the Lynx were seniors Cody Pipkin and Russell Shaver. For the Hounds it was seniors Kevin Spivey and Brady Pool. Getting an honorable mention were Jeffrey Price, of the Hounds and Jason Varnon, of the Lynx.

Pipkin was the starting post player for the Lynx. He led the team in scoring with 412 points for the regular season. Pipkin was elected Homecoming King this year.

As a starting wing, Shaver was the second leading scorer on the

Lynx team. He scored 328 points in the regular season. He led the team in 3-point baskets.

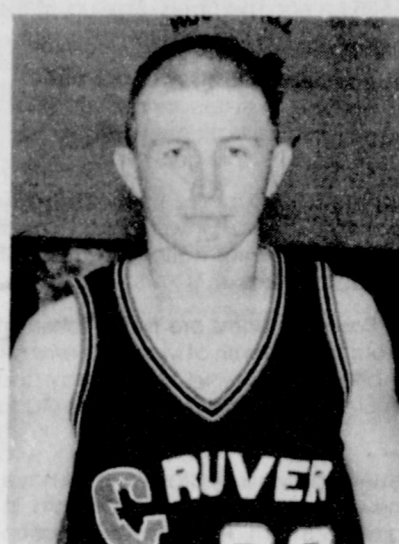
Spivey was the starting wing for the Hounds. He led the team in scoring with 441 points and was the leading 3-point shooter as well.

Pool is a senior and started at the guard position for the Hounds. He was responsible for getting the ball up the floor and defending the opposing teams best ball handler.

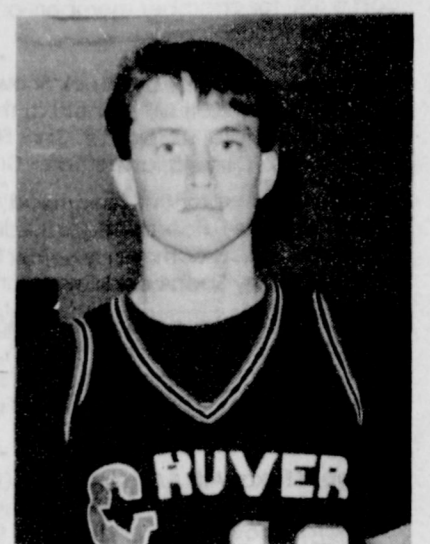
Both Price and Varnon are juniors and were starters for their respective teams.

Other members picked by the coaches to the all district list included Joe Thompson. Thompson was named M.V.P. He is a senior

See All District page 6



Brady Pool-20
All District



Kevin Spivey-12
All District

INSIDE

Society Pages	4, 5
B-Ball Roundup	8, 9
Obituaries	10
Hansford Happenings	2
Want Ads	11
Movies	2
Sports	6

The Hansford County

Reporter-Statesman

Serving Hansford County Since 1907

12 PAGES

VOL. 85, NO. 21

213 Main Spearman, Texas 50¢

THURSDAY, MARCH 18, 1993

WEATHER

Day	Hi	Lo	Precip
Thu	39	29	.00
Fri	33	24	.15
Sat	45	12	.00
Sun	62	26	.00
Mon	69	37	.00
Tue	69	36	.00
Wed	--	24	.00
1993 Precip			2.98

FFA members and 4-Hers... gearing up for livestock show

by Angela Jones
Editor

FFA members and 4-Hers are making last minute preparations for the Hansford County Junior Livestock Show and Sale to be Friday and Saturday, March 19 and 20, at the Spearman County Barn.

The festivities will kick off Friday morning at 8 a.m. with the weighing in of the steers, lambs and companion lambs.

The grand opening of the show will be held at noon. All directors, ag teachers, county agents, FFA chapter presidents, 4-H club chairman and FFA sweethearts are to report to the arena at this time.

Also beginning at noon is the judging of the steer show, which will be followed by the lamb show.

At 6 p.m. Friday or immediately following the lamb show, the swine will be weighed in.

Saturdays events start with the

swine show. Then at 1 p.m. there will be the judging contest. At 6 p.m. floor prices will be auctioned, and the showmanship and commercial steer awards will be presented. Immediately following the awards presentation is the auction of the livestock. The sell order will be one lamb, one swine, one steer, etc.

Though this is the county livestock show many of the individuals showing livestock here have shown else where during the year.

Just recently many Hansford County 4-H and FFA members showed at the Houston Livestock Show and Rodeo. According to Burt Williams, extension agent, eight of the 11 steers shown by Hansford County students made the premium sale.

Randie Renner and her steer Jordan captured the reserve champion shorthorn steer at the show.

Jordan also placed second in the medium weight shorthorn class. In the auction Jordan sold for \$20,000, but because of the cap Renner will only receive \$15,000 of the earnings.

Others placings at the Houston Livestock Show and Rodeo were as follows:

Steers

- Simmental: Tommi Latta, second; Kevin Williams, eighth
- Charolais: Reagan Renner, 12th
- Red Angus: Nancy Flores, third
- Maine Anjou: Brad Holt, 13th
- Hereford: Brant Armes, ninth
- Limousin: Clancy Vanderburg, 11th
- Shorthorn: Ashley Brown, ninth
- Swine
- Yorkshire: Matt Zachary, 28th
- Hampshire: Randie Renner, 22nd
- and Justin Carthel, 23rd
- Cross: Sharlet Slough, fourth



Spearman 5th grader Sydney Woodington (center) out spelled 4 other junior participants and 8 other senior participants to win both the junior and senior divisions of the Hansford County Spelling Bee. Evan Cudd, of Spearman, finished second in the junior bee and Ashley Phillips, of Pringle-Morse, finished second in the senior bee. Woodington will travel to West Texas State University, Canyon on April 17 to participate in the Regional Spelling Bee. This is the second year in a row Woodington has won both county bees.

Gruver City Commission... appoints election judge

by Angela Jones
Editor

The Gruver City Commission appointed Tom Rasor as election judge and Norma Swink as alternate judge during the regular meeting held Wednesday, March 10, 1993.

A.J. Ratliff was appointed as
See Gruver page 2

by Angela Jones
Editor

The Spearman Post Office opened its doors to the public Thursday, March 11, from 7:30 a.m. to 3 p.m. to celebrate their one year anniversary and demonstrate to the public how a post office works.

"I think the new post office is an asset to the town. The temperature is more controlled and the customers don't have to cross a river when it rains..." Postmaster George Finley said.

Debra Dingman, carrier, also stated some of the advantages of the new post office. She said there is more lighting, it is easier to load the vehicles, and the heat and air is distributed evenly. She added, "It makes me proud to pull into a nice, neat work place."

PTFS A. Robertson agreed that the new building is much better.

Juanita Pierce, a highway contract carrier, started working part-time for the post office in 1976 and then began full-time in 1983 or 84. Pierce shared one of her comical

experiences. She began, "During the bad weather I used my new car (9000 miles on it) to deliver mail. Out of Stinnett I pulled up to three mail boxes on a stand. As I was pulling away I started sliding, so I thought I would back up instead. When I started backwards I went sideways instead. The car mirror went in between two of the boxes. One box was at my window and the other box was just above the hood. The snow was blowing hard and was about a -5° wind chill."

She continues, "I went into shock

and didn't know what to do for about 10 to 15 minutes. Finally I woke up and knew I had to do something. I got my tools out and took two of the boxes off the stand. I then got the shovel out and found some rocks to throw under the tires, so I wouldn't slide anymore. Then I very gently pulled forward. Sure enough, it worked. I replaced the mailboxes and was on my way."

Another comical story was shared by David Collins, letter carrier. He told of hearing a man mak-
See P.O. page 12



Spearman I.S.D. singers hit quality notes, qualify for state

by Angela Jones
Editor

Spearman High School students are singing to a different note since they qualified for state to be held in San Marcos Saturday, May 29.

In order to qualify the singers must have received a rating of a one at the UIL Solo and Ensemble Contest held at West Texas State University in Canyon on February 20.

Soloists singing all the right notes to qualify for the state competition were Holly Jarvis, Amanda Burress, Sammy Graham and Brad Butler.

Spearman High School will also be represented in the state competition by a medium ensemble. "This is the first year in a long time we've had an ensemble qualify," Kevin Schaffer, choir teacher, said. The singers in the ensemble are Carol Alvarado, Carey Beaty, Burress, Butler, Mandi Carter, Melanie Cook, Haley Eaton, Carey Fulce, Josh Furlow, Graham, Kiki Kelp,

Chelie Ortiz, Barbara Ring, Gabriel Rodrigues, Amy Schoenhals, Bertha Vargas and Josh Winegarner.

All of the singers qualifying for state sang in class one and received a rating of a one, according to Schaffer.

Schaffer explained that 18 soloists and one medium ensemble from the high school competed and three soloists from the junior high competed.

He said, that the classes ranged from one to three with one being the most difficult. He added, "Singers were rated on a scale from one to five with one being the best."

Others singing in class one were Eaton and Tracy Tigrett. Both of these singers received two ratings.

At the junior high level all three singers sang in class three and were awarded a one rating. Those competing were Christina Odneal, Carrie Alvarado and Gina Kunselman.

High school students singing in

class three medium ensemble were Eaton, Haley Farber, Crystal Ledgewood, Rodriguez and Jose Taranges. They received a three

See Singers page 12



Spearman High School choir soloist going to state are (l-r) Sammy Graham, Amanda Burress, Brad Butler and Holly Jarvis.



Loydell Sparks (r), HCR route carrier, demonstrates how mail is sorted to Reta Lesly during the Spearman Post Office's open house.

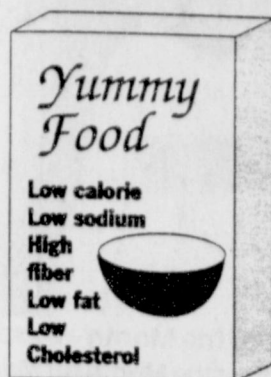
AD INDEX

Allsup's	6	Perryton Cleaners	2
Gruver Ford	12	Constitutional Amend.	8
Gordon's Drug	4	Reagan & Brown	
The Bunkhouse	6	Auctioneers, Inc.	3
Gillaspie Auto & Truck Center	3	Dairy Queen	9
United Supermarket	7	Celebrate	3
Church ad	10	Hansford Implement	12
		Weight Watchers	9

HEALTH WATCH

How to decipher terms on food labels

Figuring out the labels on food packaging can be confusing. Here is what the terms mean.



- Low sodium** - No more than 140 milligrams sodium per serving.
- Low fat** - No more than 2 grams fat per serving.
- Low cholesterol** - No more than 20 milligrams per serving.
- High fiber** - At least 8 grams of digestible fiber per serving.
- Low calorie** - No more than 40 calories per serving and no more than 40 calories per 100 grams (about 3 1/2 ounces).

SOURCE: The Upjohn Co.

MASTER OF CHAOS

There is absolutely no event that is predictable, and the theory of randomness is a farce. That's a theory put forth by Master of Chaos Richard Lahey. Chaos may sound like some evil spy agency, but it's really a theoretical science that is now providing solutions to heretofore unpredictable accidents with nuclear reactors.

Using non-linear mathematic equations, Lahey has proved that nuclear reactors can boil over unexpectedly at low pressure. Now his office at Rensselaer Polytechnic Institute is issuing vital new guidelines for modern nuclear reactors worldwide.

Panhandle Crisis Center

by Mary Frances Ellzey
The PCC offers services free of charge to men or women who are victims of domestic violence, whether physical or "merely" verbal. We give counseling, support, and information to victims, plus a shelter to those who feel themselves to be in danger at home. We are available for help 24 hours a day, at 435-5008. If you want information only, call us from 9 a.m. to 5 p.m. For those who must call us long distance, use the toll-free number: 1-800-753-5308.

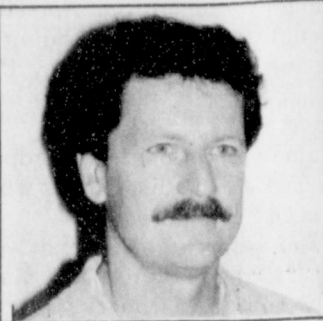
four thousand more dollars to raise, but with your help we know we can do it.) Furthermore, those of us in the kitchen who chopped tomatoes, lettuce, onions, etc., or cooked the rice or prepared the eat or dished up the deserts or, bless 'em, cleaned up afterwards had as much fun as everyone else. This time we didn't run out of anything!

Those of us who protested the deep cuts proposed in the annual budget have received the good news that our shower of letters and telephone calls had its desired effect: not only did the Texas Senate decide to maintain the funding for Domestic Violence at the 1993 level, but they increased it by \$5,000,000! Now it is up to the house. I wrote my 13 letters to the Senate Committee and made my 13 telephone calls. Now I'm busy with the House

See Panhandle page 6



Members of the Spearman Chamber of Commerce joined together at the Video Hut to welcome the new owners into the Spearman business community. The new owners are Pat and John Sutterfield, Hank and Melissa Sutterfield and Sawyer (baby).



RADICAL LIVING

By Dan Carter, Pastor
Trinity Community Church

IT'S WHO YOU KNOW
John 17:3

When passed over for a promotion people often complain that it doesn't matter how much you know, if you don't know the right people. It certainly does seem unfair, when you have been a faithful worker, for the manager's wife's nephew to get the promotion. It's that kind of "unfairness" that is basic to God's kingdom.

Jesus said that eternal life consists in knowing God and Himself, not in accumulation of much experience and many facts. However, many people think there's no God to know. We call them atheists. They are hopeless and their lives are truly meaningless. Others believe there's a God, but He doesn't want to be known, and so no one can know Him. These are agnostics. C.H. Spurgeon, a famous 19th Century preacher was visiting with a man on the streets of London. When asked if he knew God, the man replied that he didn't think it possible to know for sure, and that he was a confirmed agnostic. Spurgeon, in his usual candor, said, "Oh? I believe the Latin for that is ignoramus." And so it is.

Scripture plainly teaches that not only is there a God, but that He has made Himself known in Jesus Christ of Nazareth. To know Him is to have eternal life. Not to know Him is to be dead in your sin, without hope and alienated from God and meaning in life. The apostle Paul, an authority on God and Scripture, said his goal in life was the knowledge of God. Not degree, lands, houses, miracles or even community service, but knowing God was his goal. He accomplished much as a by-product of that pursuit.

As an evangelist might ask, "Do you know that you know that you know?" God, Jesus Christ and eternal life, that is. He wants to be known.

Sponsored by Trinity Community Church, 717 W. 7th, Spearman

World Day of Prayer

World Day of Prayer was hosted by the First Presbyterian Church on Friday, March 5. The program, "People of God: Instruments of Healing" was written by women of Guatemala. Seven local churches were represented in the service and 30 people attended. The collection of \$175 was given to the sponsoring organization, Church Women United, and to the local Panhandle Crisis Center.

It's Our 15th Anniversary... and we're having a Sale-a-bration

March 17 - March 31
Save 15-50% on

- Brass
 - Crystal
 - Food Items
 - Towels
 - T-Shirts
 - Easter Bunnies
 - Children's Gifts
- & MUCH, MUCH, MORE...

Celebrate

203 Main Street, Spearman
Monday-Saturday 9:30-5:30



TAKE A BREAK FROM THE HANSFORD COUNTY JR. LIVESTOCK SHOW...

Stop By and See
ALL THE NEW & USED TRUCKS & CARS AT
GILLASPIE AUTO & TRUCK CENTER

**NEW 1992'S
STILL IN STOCK**

1992 Chevy Diesel 3/4 Ton Silverado List \$22,236
Now \$18,595

1992 Buick Park Avenue List \$28,196
Now \$22,950

USED CARS & TRUCKS

1989 Chevrolet Astro Van	Red/Maroon, V6 Automatic, Stereo, Locally Owned	\$8950
1987 Chevrolet 1 ton Crew Cab Dually	A real Cowboy Truck, Leather interior, Low Miles	\$10,500
1991 Oldsmobile Cutlass Supreme	4 Door, Maui Blue! 37,000 miles, Loaded	\$11,400
1988 GMC Cab and Chassis	2 WD Dual Rear Wheels	\$4500
1991 Chevrolet 1/2 Ext. Cab Pickup	350, Full power and air, Split Bench Seat, 19,000 miles,	\$13,650
1992 Buick Regal - Gray	4 Door, V6, Auto, AM/FM, Lots of Extras, Cloth Interior	\$12,900
1992 Buick Regal - Maroon	4 Door, V6, Auto, AM/FM, Lots of Extras, Cloth Interior	\$12,900
1992 Chevrolet SOLD	V6 Auto, Am/FM, Power and Air, \$14,355 M.S.R.P.	\$9995
1992 Oldsmobile Cutlass Ciera	V6 Auto, 4 Door, Cass, Cruise & Tilt, \$16,493.00 M.S.R.P.	\$11,700
1991 Pontiac Transport Mini Van	Loaded Up, 8 Passenger, 34,000 miles, Blue	\$14,300
1990 Chevrolet SOLD A.P.V. Mini Van	Loaded, 8 Passenger, 29,000 miles, Silver	\$11,700
1984 Ford SOLD Bronco	Great Shape, Must See this one!	\$2500
Ford Super Cab Pickup	Two tone paint, V8, Automatic, Nice!	\$5000
1988 Chevrolet 4x4 Suburban	Copper/Brown Bucket Seats, Silverado, Locally Owned	\$9500
1991 Chevrolet 4x4 S-10 Blazer	Very Nice, Low Miles, Loaded Up, Blue/Silver, Blue Interior	\$15,300
1989 Mazda 626	6900 miles, Looks Good! Local Car	\$7950
1992 Pontiac Grand Prix 4 Door - Maroon	V6 Auto, Cass, Tilt, Cruise, \$16,726 M.S.R.P. M	\$12,500
1992 Pontiac Grand Prix 4 Door - Blue	V6 Auto, Cass, Tilt, Cruise, \$16,726 M.S.R.P. M	\$12,500
1980 Dodge Ram Charger 4x4	Maroon/White, Really Nice, V-8, Auto Chrome Wheels	\$4500



GILLASPIE

AUTO & TRUCK CENTER, INC.
CHEVROLET • OLDS • PONTIAC • BUICK
CHRYSLER • PLYMOUTH • DODGE
Highway 207 South - P.O. Box 430 (806) 49-2541
SPEARMAN, TEXAS 79081

FARM EQUIPMENT AUCTION
Sponsored by GRUVER LIONS CLUB
Friday, March 26, 1993 - 10:30A.M.

LOCATION: From Gruver, TX Go 1 mile West on Highway 15. • WATCH FOR AUCTION SIGNS.

- | | | |
|--|---|---|
| <p>TRACTOR, COMBINE SWATHER AND GRAIN CARTS</p> <ul style="list-style-type: none"> 1-1974 AC 7050 Diesel Tractor, Cab 1-1975 IHC 915 Diesel Combine with New Cylinders, Bars, and Concave 1-Hesston 500 Swather with Double Windrow Attachment 1-Wheel Type Hay Rake 1-Big 12 Grain Cart, 600 Bushel 1-Big 12 Grain Cart, 400 Bushel <p>PICK-UPS, TRUCK & CAR</p> <ul style="list-style-type: none"> 1-1989 Ford F-250 XLT Crew Cab Pickup, 4x4, 460 V8, Automatic, Extra Clean 1-1980 Chevrolet 1/2 Ton Pickup 1-1982 Ford 1/2-Ton Pickup 1-1978 Toyota 1/2-Ton Pickup 1-1970 Chevrolet 1 1/2 Ton Pickup 1-1969 Ford F-7000 Diesel Grain Truck with 3208 Cat Motor, 5-speed, 22-ft. Bed & Hoist with Rollover Tarp 1-1981 Cadillac El Dorado <p>IRRIGATION MOTORS & SUPPLIES</p> <ul style="list-style-type: none"> 2-MM 800 HD Irrigation Motors 1-Cat Irrigation Motor 1-MM 605 Irrigation Motor 1-MM 504 Irrigation Motor 1-IHC 466 Irrigation Motor 1-Ford 534 Irrigation Motor 2-Ford 534 Irrigation Motors for Parts 2-MM 800 Irrigation Motors 2-Irrigation Motor Sheds 1150-ft. Irrigation Pipe, 10-inch 450-ft. Plastic Irrigation Flowline, 6-inch 36-Joints 7-inch Irrigation Flowline 29-Joints 7-inch Irrigation 40-inch Gated Pipe 1-Douglas Tailwater Pump with 292 Motor 1-Amarillo Gearhead, 70-hp 6-Drive Lines 4-Injecto-Meters 1-Waterman Irrigation Hydrant, 10"x10" 1-Lot 7", 8", & 10" Aluminum L's, T's, and 45's 2-GMC V12 Irrigation Motors, Rebuilt <p>FARM EQUIPMENT</p> <ul style="list-style-type: none"> 1-Hutchmaster Offset Disc, 20-ft. 1-Miller Offset Disc, 16-ft. with New Bearing and Disc on Rear 1-Lillian Big Bar Rolling Cultivator, 8-Row 1-3-Bar Sweep Plow, 25-ft., 3-pt. Mulchers 1-John Deere 400 Rotary Hoe, 28-ft. | <ul style="list-style-type: none"> 1-John Deere Rear Fold Field Conditioner, 40-ft. with Harrows 1-Hutchmaster Offset Disc, 18-ft. 1-John Deere 940 Land Plane 1-King Offset Disc, 16-ft. 1-Stanton 5-Bottom Rollover Moldboard Plow 1-Noble Springtooth Harrow, 40 ft. 1-John Deere Cultivator, 6-Row 1-Tool Bar, 8-Row with NH3 1-Land Plane, 40 ft. 3-John Deere DRA Grain Drills 2-IHC Oneways, 21-ft. 1-Tool Bar, 6-Row 7-Drum Harrows, 5-ft. 1-Case 5-Bottom Rollover Moldboard Plow, 18-inch 2-IHC 314 4-Bottom Rollover Moldboard Plows 3-Clod Buster Packer for Moldboard Plows 1-Krause Oneway, 20-ft. 1-John Deere Van Brunt Grain Drill, 14-ft. 1-Noble Springtooth Harrow, 27-ft. 1-Service Bat Wing Shredder, 14-ft. 1-Drum Harrow, 3-Section 2-Drum Harrows, 4-Section 1-Blade, 6 ft., 3-pt. 1-Eversman V-Ditcher, 6-ft. 1-High Lift Arm, 3-pt. 1-Ditch Filler 1-Myers V-Ditcher 1-Noble Plow 1-Blade Pitcher 1-Land Plane 2-Jeff Roy Chisels 1-Hydraulic Blade, 3-pt. 1-Eversman V-Ditcher 1-Rhino Blade, 8-ft., 3-pt. 4-Stabilizer Coulters 2-Saddle Tanks 1-Lot Planter Attachments for Lister 2-Sets Milo Pickup Attachments 1-Lot Maize Fingers 2-Sets Bingham Bros. Markers 1-Shopnade Pasture Chisel, 14-ft. | <p>TRAILERS</p> <ul style="list-style-type: none"> 1-Flying L 6'x20' Gooseneck Stock Trailer, Full Top with Saddle Compartment 1-Stidham 2-Horse Trailer 1-Hale Stock Trailer, 16-ft., Open Top 1-Shopnade Swather Trailer 1-1000-Gallon Fuel Tank on Trailer 2-Round Bale Trailers 1-Pickup Bed Trailer 2-Pipe Trailers <p>MISCELLANEOUS AND UNCLASSIFIED</p> <ul style="list-style-type: none"> 1-Brock 150-Bushel Cone Bottom, Grainery with Auger 1-Speed King Gas Powered Grain Auger, 25"x8" 1-Mayrath Gas Powered Grain Auger, 15"x4" 1-Round Bale Fork, 3-pt. 11-Stockman's Pride Round Bale Feeders 1-500-Gallon Fertilizer Tank 1-500-Gallon Fuel Tank with Stand 1-300-Gallon Fuel Tank with Stand 1-Powder River Squeeze Chute 1-Fiberglass Topper for El Camino 1-John Deere 680 Riding Lawn Mower with Grass Catcher 1-Rally Riding Lawn Tractor with 12-hp Motor, 38-Inch Cut and Grass Catcher 1-Electric Band Saw 1-Heavy Duty Hydraulic Press 2-Motorola HT-10 Walkie Talkie FM Radios 2-Motorola Moxby-Mobile Radios with Antenna 5-Motorola Business Band Radios 1-John Deere 18.4x38 Tractor Wheel 1-Lot Used 18.4x38 Tractor Wheels 1-Lot Used Front Tractor Tires 2-Front Bumper Guards 1-Lot Pickup Tool Boxes 1-Cattle Guard 1-Lot Tool Boxes 1-Lot Hand Tools 1-Lot Fence Chargers 1-Lot Used Office Furniture 2-Parts Washers 1-Lots Miscellaneous Parts and Supplies for Tractors and Implements |
|--|---|---|

Many Items to Numerous to Mention
More Items Being Consigned Daily

TERMS & CONDITIONS OF SALE AND OTHER INFORMATION
Cash or Check with proper I.D. day of sale. Nothing to be removed until settled for.



All descriptions of items are believed to be correct, but in no way a warranty or guarantee. All items are sold "As Is, Where Is," on the personal inspection of the purchaser. Reagan & Brown Auctioneers, Inc. are acting as Agents Only. Lunch Will Be Available. Not Responsible for Accidents

REAGAN & BROWN AUCTIONEERS - OFFICE (806) 249-6776
Dale Reagan (806) 384-2066
TXS-058-007443

Bob Brown (806) 249-4038
TXS-058-007442

Hansford Happening

Defensive Driving will be held Wednesday and Thursday, March 17 and 18. The cost is \$30 for chamber members and \$35 for non members. Sign up at the chamber office.

The **Hansford County Livestock Show** is scheduled for Friday and Saturday, March 19 and 20. It will be held at the County Barn in Spearman. Judges for the event are: sheep - Dr. Chris Skaggs, College Station; swine - David McCormick, Dimmitt; and steers - Dr. Chris Skaggs, College Station.

A **benefit dance for the Spearhead Corporation** is scheduled for Saturday, March 27 at the Farber Livestock Building on the Gruver Highway. All proceeds will go to the new community center fund. For more information call 659-3830 or contact any Spearhead Corporation board member.

Registration for Spearman Little League Baseball teams are being taken at Cates Men and Boys Wear, 221 Main, through the month of March. Teams will be formed and practice will begin in April. Local play will start in May and tournament play will begin in June. For more information contact Mike Cudd at Hansford Implement • 659-2568.

Tip Top of Texas Arts & Crafts Festival (formerly the Market/Craft Day) will have their spring show, April 3, 1993 at the new Sherman County Exhibit Barn, in Stratford. Show hours will be from 9 a.m. to 5 p.m. For more information contact Stephanie Helton (806)948-4508 or Barbara Schoonover (806)724596. Door prizes will be given hourly.

The "Quilt Guild" organizational meeting will be held Monday, March 22, at 7 p.m. at 216 Main in Spearman. It is open to everyone and refreshments will be served. For more information call 659-3999.

Advance Notice—The Gruver Lions Club is sponsoring a Farm Equipment Consignment Auction. The auction is scheduled for March 26 in Gruver. It will be conducted by Reagan & Brown Auctioneers. For more information call (806)733-2421, (806)733-2988 or (806)249-6776. (This sale was originally scheduled for March 19, but has been rescheduled for March 26.)

The **Gruver P.T.A. Associational meeting** will be held Tuesday, March 23, at 7 p.m. in the Gruver auditorium. At the meeting they will honor past president Dorothy Hudson and listen to UIL speaker contestants from the Gruver Independent School District.

"Build Your Own 'from the grill' Quarter Pounder" will be held Friday, March 26 from 11:30 a.m. to 1 p.m. in the Extension Homemakers Clubroom, 309 N. Bernice. For ticket information contact Carma at 659-3634 or the Extension Office at 659-2030. The event is being sponsored by Town and Country and Happy Homes Extension Homemakers Clubs.

A St. Patrick's Day Baked Potato Dinner will be held Friday, March 19 at 6:30 p.m. The dinner is sponsored by Area Christian Singles Group formerly Singles Together Around Christ. For more information call Bernice at 435-4765.

The **First Baptist Church in Spearman** will be holding special events March 28-31 to celebrate Sunday, March 28, a worship celebration will be held at 11 a.m. and 7 p.m. Then Monday through Wednesday there will be a noon luncheon/Bible study with a celebration worship each evening at 7 p.m. For more information about events to be held during the celebration contact the First Baptist Church at 659-5557.

Spearman Junior High School will dismiss at 3:06 p.m. on Monday, Mar. 22. According to Richard Olsen, principal, the school will be on a shorter schedule because of the number of students and teachers participating in the district UIL Academic Meet in Stinnett.

Chamber Chatter

by Cindy Blackman
Chamber Manager

Our first membership luncheon for 1993 brought out a big crowd in spite of the weather. A big thanks to Pam Cobb and Cheryl Sander. Stan Cobb was the sponsor and we served about 75 people.

Miss Hansford Scholarship Pageant entry blanks are available at the chamber office. You can also pick them up at J.G.'s, Lady Fair, Kid's Stuff in Spearman and at Main Street in Gruver.

Miss Rodeo entry blanks are also available at the chamber office. For more information you can call Kathy Rich at 659-2559 or the chamber office, 659-5555.

Remember the Hansford County Stock Show is this Friday and Saturday. Come out and support the kids who are participating in this

show. Plans are being made for work days at the rodeo arena. We are still looking for pipe so let us know if you have some. The round-up plans are still being made. We should have a compiled agenda by April 1st and we will be letting you know what will be going on. The dates are May 29 & 30.

On March 30, I will be attending the first meeting of Rural Economic Development Initiatives. This is a fifteen hour training program designed to assist communities in organizing effective economic development programs. The program is sponsored by Panhandle Regional Planning Commission and SPS. Sessions are scheduled for March 30, April 13, April 27, May 11 and May 25.

Palo Duro River Authority... reorganizes board

by Angela Jones
Editor

The Palo Duro River Authority reorganized the board at the regular meeting held Tuesday, March 9.

According to General Manager, Johnnie C. Lee, Robert Novak of Spearman is president; J.W. Buchanan of Dumas is the vice-president; and Kenneth Evans of Spearman is secretary/treasurer.

In other business, the board discussed construction of a office building and tenant house, but no action

was taken, Lee said.

Then the board members toured the lake site and camping facilities.

A general discussion on the project was held. The boards tentative opening date is July 4, Lee stated.

According to Lee, they currently are working on the parks and placing the rails in the family shelter. The floor in the family shelter has been completed.

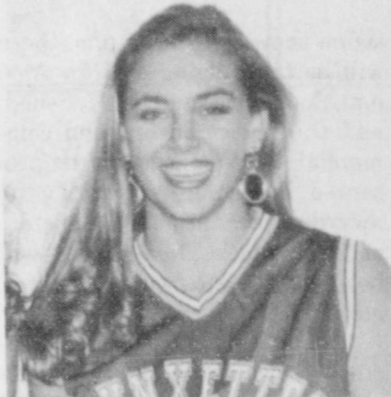
Lee reported the water level was 26.5.



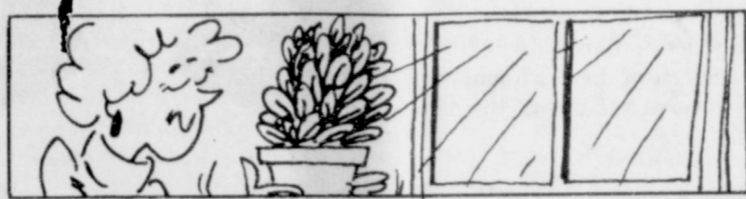
75 Spearman Chamber of Commerce members gathered at the library Friday, Mar. 12 for a their first membership luncheon of the year. Sponsoring the luncheon was Dr. Stanton Cobb and his family. In the picture are Cobb's two daughters Cattie and Grace helping with the serving line and wife, Pam, helping to serve the food. Also helping in the serving and preparing of the food was Cheryl Sander.



During the Spearman Post Office's open house Thursday, Mar. 11 George explains the record keeping system used by the post office to Joe Rapper, police chief, and Spearman Mayor Burl Buchanan.



Spearman sophomore Ashley Shieldknight was a member of the Spearman Varsity Lynxettes Basketball team for 1992-1993. Her picture and name was inadvertently left off of the basketball page last week.



A plant that lives for more than two years without replanting is called a perennial.

At the movies . . .

Showing at the Lyric Theatre in Spearman from Friday, March 19, to Tuesday, March 23, is "Untamed Heart" on screen 1 at 7:45 p.m. and held over on screen 2 is "The Bodyguard" at 7:30 p.m.

"Untamed Heart" casts Christian Slater as Adam, a shy busboy in a Minneapolis diner with an unrequited crush on a waitress. The waitress, Caroline, is played by Marisa Tomei.

"Untamed Heart" is a comedy co-starring Rosie Perez. It is directed by Tony Bill.

Kevin Costner is the co-producer and star. "The Bodyguard" also stars Whitney Houston and Ralph Waite. It is directed by Mick Jackson.

In "The Bodyguard" Costner plays an ex-Secret Serviceman, who feels guilty for not preventing John Hinckley's 1981 shooting of Ronald Reagan. He is now a bodyguard and is the best in his field.

Houston plays a star who has everything. She has hit records, a "loving" sister, a lovely son and an Oscar nomination. She also has an obsessed fan who has been sending her menacing letters. The fan apparently intends to kill her.

So, she hires Costner, but he is unprepared for the public demands of a celebrity's life-style.

Costner breaks all the rules and falls in love with his client.

You won't want to miss Costner and Houston in this thriller.

"The Bodyguard" is rated R.

At The Lyric Theatre . . .

Friday, Mar. 19 - Tuesday, Mar. 23

Bargain Nights Mon. & Tue. All Seats \$3
Closed Wednesday & Thursday

SCREEN 1 • 7:45 PM SCREEN 2 • 7:30 PM

Christian Slater
& Marisa Tomei
star in

Untamed
Heart

The
Bodyguard

starring
Kevin Costner
Whitney Houston

113 Main, Spearman



Wrap up
hot water
comfort and
button down
energy
savings

An insulation blanket can dress your water heater for energy success, especially if the heater is located in an unheated area of your home. Insulating the hot water pipes leaving the heater and adding a heat trap loop can also save energy.

Another way to save on the cost of heating water is to keep the heater set between 120° to 140°F. As a final money-saving accessory, consider a timer for the heater so that the heater doesn't cycle on when you're not home.

For more information about saving energy, call or visit your local Texas-New Mexico Power Company office and ask for the free booklet, "Energy Management Guide."

Texas-New Mexico
Power Company.



MARY KAY
FACE TO FACE BEAUTY ADVICE™

Leann Gillaspie

Beauty Consultant

659-3889

The Hansford County Reporter-Statesman "Serving All Of Hansford County"

USPS 509663
213 Main, Box 458, 359-3434
Spearman, TX 79081
Published Weekly at
213 Main, Spearman, Texas

Owned and Operated by:
Texas Independent Newspapers, Inc.

15915 Alsace
San Antonio, TX 78232
(512) 545-1739

Second Class postage paid at Spearman, Texas 79081.

Any erroneous reflection upon the character of any person or firm appearing in these pages will be gladly and promptly corrected upon being brought to the attention of the management.

Publisher - Robert M. Hulet
Editor - Angela Jones
Bookkeeper - Sheila LaRochelle

Subscription Rate: Hansford County, \$19.95; out of county, \$24.95 annually.
Postmaster: Send address changes to Hansford County Reporter-Statesman, Box 458, Spearman, TX 79081.

The publisher reserves the right to revise or reject at its option any advertisement which it deems objectionable, either in subject or phraseology, or which it may deem detrimental to its business.

Advertising and Story Deadlines:
Tuesday, 12:00 p.m.

MEMBER
TEXAS PRESS ASSOCIATION

"Quilt Guild"
Organizational Meeting
MONDAY, MARCH 22, 7 PM
Open to Everyone • Refreshments Served
Come help establish the group, set meeting dates, elect officers, programs, newsletters, exchange ideas
216 MAIN, SPEARMAN
For information Call:
659-3999

Coupon
DRYCLEANING
SPECIAL!
Bring THREE
Get ONE . . .
FREE!!
Bring three garments OR matching suits,
We will charge for only two WITH COUPON
The lower-priced will be free.
Not redeemable for cash
OFFER ENDS MARCH 31, 1993
QUALITY Drycleaning and Service
FREE Pickup & Delivery Mon. & Thurs.
CALL TOLL FREE 1-800-232-5370
PERRYTON CLEANERS
& LAUNDRY
419 S. Main Perryton, Texas 702 S. Main
Coupon

1986
1987
1991
1988
1991
1992
1992
1992
1991
1990
1984
Ford
1988
1991
1989
1992
1992
1980

Among the Neighbors

by Helen Fisher

Bringing joy to the home of her parents, Eadie and Jody Bradford, Jacy Shaye arrived March 5 at 5:03 p.m. weighing 7 lb. 10 oz. at North-west Texas Hospital in Amarillo.

The Bradfords live in Panhandle where 2 1/2 year old Jade Michael also welcomed his new sister.

Grandparents are Eddy and Anita Clemmons, Spearman and Van and Lee Bradford, Gruver. Great grandparents are Ray and Opal Bradford, Matador.

Wanda and John Brown went in their motor home for a ten day trip down state. They spent four days at Alba with Tom and Sue White. They had looked forward to good fishing at the near-by lake, but had four days of rain. They went on to Lake Texhoma and visited her uncle. From there they went to Almost Paradise near Bridgeport. Here they met their camper group friends for a four day reunion.

They returned Monday. Andy and Frances Rhodes are glad to be home after six weeks in Amarillo. Frances underwent 33 radiation treatments at the

Hayth and Pack... announce engagement



Teresa Hayth and Michael Pack plan their wedding to be held May 8, 1993, at Tallwood Baptist Church in Houston, Texas.

The bride elect is the daughter of Mr. & Mrs. Eugene Hayth of Las Cruces, New Mexico. She is a 1987 graduate of New Mexico State University and holds a B.S. degree in criminal justice.

The prospective groom is the son of Mr. & Mrs. E.N. Pack of Stinnett,

Texas. He graduated in 1980 from Texas A&M University with a degree in agricultural economics.

Both, Teresa and Mishael, are employed in the Houston area and will be residing there following their marriage.

Harrington Center.

Mr. and Mrs. Roscoe Nelson returned Thursday after a trip to Sedalia, Missouri. They were called there due to the illness and surgery of his brother who underwent surgery. The seriousness of it is shown by the operation taking from 10 a.m. until 7 p.m. When they left, he appeared to be recovering.

They also visited her mother and sister at near-by Green Ridge.

Guests of Helen and Rich Melton over the weekend were their daughter, Cindy Rowlette and little son Landon. They live in Tulsa.

Sylvia and Virginio, Jr. Ortega and children spent the weekend here with his parents, Mr. and Mrs. Virginio Ortega. Lubbock is now their home.

Many were saddened by the passing of Sam Watson on Saturday night in Amarillo. Services were Tuesday in Pampa. Sam and Helen Watson were part of Spearman, civic, church and school, for a number of years. Both their children

were born here. During Sam's tenure as band instructor for Spearman School, the band became known far and wide for its constant winning.

Sam had been in very poor health of recent years and their last visit to Spearman was to attend funeral services for Dorothy Davis.

Jim and Pam Beasley announce the arrival of a son on March 12, 1993. Jacob Allan, weighing 7 lb. 12 oz. was born at High Plains Baptist Hospital in Amarillo.

Grandparents are Jim and Edith Buamgardner, Sulphur Springs, Arkansas and Lera and Allan Beasley of Gruver.

Lynn Foltin and little son Dane of Houston are visiting her parents Marva and Bob Hohertz. On Sunday they went to Canadian to visit her grandmother, Mrs. Petree.

Lynn's sister, Liz, and family from Ft. Collins are expected later in the week.

Harold Harris has notified Spearman friends here of the death of Eunice Pugh, former resident. Mrs. Pugh was the mother of Tip, Mrs. Harold Harris, and Barbara, Mrs. Willie Taylor. Both couples moved from Spearman to Greenville, Alabama a few years ago. Services were held Sunday at Greenville with extremely cold and windy weather as the dreadful storm passed through that area.

School menu

Spearman Schools Cafeteria Menu
March 22 - March 26
LUNCH

Monday—Grilled ham & cheese sandwiches, beef stew, dill spears, peaches and milk.

Tuesday—Build your own soft burrito: ground beef, tortilla, refried beans, taco sauce, cheese cup, lettuce, tomato salad, fruit milk.

Wednesday—Chili dog, tator tots, pickle relish, diced onion, pork'n beans, blueberry crisp, milk.

Thursday—Chicken Patti with gravy, one-half baked potato, sour cream, butter, broccoli and cheese sauce, parkerhouse rolls, fruit, milk.

Friday—Fish on a bun, french fries, lettuce, tomato, pickle, onion, tartar sauce, cookie, milk.

Hometown News

ROTC Cadet James D. Jeter, son-in-law of Lloyd Poole of Morse, has been awarded an AFROTC incentive scholarship at Texas Tech University in Lubbock.

The new program, called the Professional Officer Course Incentive Scholarship Program (POC), will allow a full-time non-scholarship junior or senior cadet enrolled in POC to receive up to \$2,000 per year for tuition, books, and fees. Upon graduation from the ROTC program, the cadet will be commissioned a second lieutenant.

Jeter is the son of Gene E. and Janice M. Jeter of Amarillo. His wife, Carol, is the daughter of Lloyd Poole of Morse.

Jesse Davis reports that in a conversation with Delia Kaye Sampson his daughter who lives on Marco Island, off the west coast of Florida, fortunately they escaped severe damage during the tornado.

Her daughter and son who live nearby also had a little damage but had hurricane winds and rain. The 100 mile per hour winds were east of them on the mainland. She said they had no time to evacuate, nor any place to go as all were in the direct path.

Another Spearman couple, Sandra and Robert Eaton, learned that their daughter, Lori and Kent Brickman were not in the path of the hurricane. They live at Pennsacola, in the Florida Panhandle.

Jo Larson is back home recovering from undergoing angioplasty in High Plains Hospital last week. This is her second such surgery since October. She doesn't expect this to be habit-forming.

Last Wednesday, the United Methodist Women and a Sunday School Class honored Altha Kirk with a going away luncheon. There was a good turn out and many memories exchanged. Some gifts to her were a token of appreciation. Altha was church secretary for 17 years and active in the church.

Another courtesy luncheon for Altha was given by her sorority, Laureate Gamma Gamma on Thursday. It was in the home of Marva Hohertz. Much reminiscing and discussion and a presentation of a gift filled the time.

Sue, Mrs. Kenneth Townsend, was a guest and members present were: Mary Dixon, Pat Dear, Barbara McClellan, Barbara Collier, Barbara Schnell, Charolette Jackson, Linda Latta, Carolyn Gressett and the hostess.

Herbert Kirk reports that Altha and Sue were scheduled on a flight Friday but were held over in Amarillo due to the storm in the east. However, they arrived safely late Sunday. Kenneth, who was driving thru with her furniture was snow bound west of the mountains in Virginia. Fortunately he was near some of Sue's people so was not on the road.

For those who may have missed Altha's address last week, it is: Altha Kirk, 741 Thimble Shoals Blvd., #317, Newport News, VA 23606.

Many old friends of Bob Lee (Billy Bob as he was called when he was growing up here) have been concerned about him since he suffered a fall on the ice about two weeks ago. He was alone at his ranch near Colorado Springs when he fell striking his head. After he regained consciousness, he was able to notify his son, who had him taken to a Colorado Springs hospital. He underwent surgery for a cerebral hemorrhage and a blood clot on the brain. He was several days in intensive care but the last report from his wife Patty is that he is able to be in a wheelchair. The prognosis is still indefinite.

His sister, Nancy Robinson, who

was in Arizona returned to be at his bed side.

His home address is: Bob Lee, 1800 Sundown Drive, Colorado Springs, Colo. 80906.

Sympathy is extended to the three families who have suffered a loss of a parent this week.

Rosemary Brown's father died after a long illness and Rosemary was able to spend the last 2 and a half weeks with him. Services were held in Tucson. Judge Jim Brown with sons Cory, Aaron and his wife Beth went from Spearman. Their daughter Qynn Lopez of Lubbock, and sons Eric of Guymon and Kenneth of Fritch also attended the services. All returned to Spearman on Friday, just in time for the snow.

Many friends grieve with Jackie Pearson and her family in the loss of her mother Cornelia Tidwell. Mrs. Tidwell had friends in Spearman and they have expressed the opinion that she was an extraordinarily

gracious person.

Jackie had been in Austin for the three weeks prior to her passing. Bob and the children joined her for the services in Austin on Saturday. They reached home late Sunday.

Condolences are offered to Bill Strawn and his family in the passing of his father, Norvil Strawn, who died suddenly. Services were in Bovina on Friday.

Joining Bill and Verna at the funeral were their children, Shelly Smith, Lubbock, Scott Strawn, Silvertown and Chris, student at Angelo State, and Nikki of Spearman.

Shelly, who teaches in Lubbock is still in Spearman on spring break, as is Chris who is also on spring break.

Cleo and Lowell Denman enjoyed having her grandson, Kyle Little on Saturday and of course his wife Melissa and little Andrew Joseph. They are from Amarillo.

*The Family of Fronye Close
Would like to Invite
You to Celebrate
85 Years of
Friendship, Motherhood & Love
on March 20, 1993
at the
First United Methodist Church
Spearman, Texas
3 to 4:30
Come Help Us Celebrate
with No Gifts Please*

**BRIDAL SHOWER
for
Greg Reimer
and
Lisa Herrmann**

**Sunday, March 21, 2-3:30
in the home of
Laquita Evans
1119 Townsend
Selections at:
Gordon's Drug & Celebrate**

*You are invited to a
Shower for
Dusty and Audrey Hill
March 27, 1993
2:30-4*

*First Baptist Church
Fellowship Hall
Gift Selections at:*

*Gordon's Drug
Celebrate
Alco*



**We would like to thank
the ladies of
the Union Church
for the dinner for
the Allison family.
We also would like to thank
the community for
their thoughtfulness.
Lois Allison**

SHOWER NOTICE Mary Ann Evans

bride elect of

Monte George

**MARCH 20, 1993 • 2:00 P.M.
home of LAQUITA EVANS**

1119 Townsend

Gifts registered at:

Gordon's Drug & Celebrate

Given by Hostesses

**The Family of Walter
Schick would like to Thank
you for the cards, letters,
food, visits, phone calls and
prayers during the time of
our recent sorrow.**

**May God Bless You.
Lorrane Schick
Mike Schick & Family
J.D. Schick & Family**

On The Go With Joy

by Joy Henderson

I'm in the memorabilia mood now. This happened after some friends got to discussing the subject of the high cost of attending a movie. Old Dave swore that about a year ago when he and his wife attended their last movie, it cost them in the neighborhood of \$37. To save money, they went to a \$3 matinee and made their way to the popcorn stand. They settled for medium boxes of popcorn dyed an eerie shade of yellow and each one cost \$4. To wash it down they had two flat tasteless medium soft drinks. After the movie was over, the expenses were totaled: parking—\$5, tickets—\$6, popcorn—\$8, beverage—\$5, after theater pizza—\$13, grand total—\$37. Not included was the cost of fuel etc. that it took to go to the movies. It was

obvious to me that he must have gone to New York City or some place big.

Anyhow, I got to thinking of the last time I was involved in going to a movie. I came up with when my sister-in-law and I took our 3 or 4 kids a piece to the movie in Spearman. Naturally, it was a Walt Disney special or something suitable for the youngsters but everyone liked to see me go to the movies just to see me laugh. When something was so funny, I'd laugh so hard that I'd put on a show that was almost like rolling in the aisles.

Then, I began to let my memory go way back to when I was just a kid and then a teenager. I remember the 4 hour *Gone With the Wind* and other classics, but my specialty was

the Saturday afternoon "shoot-em-ups" or "giddy-upers". They would all begin with a Popeye or Mickey Mouse cartoon, then progress to the serial feature where we would all be hollering and screaming to see if the hero could get his ropes around his feet and hands untied, then jump on his horse to ride 10 miles and rescue the school marm (tied to the railroad tracks) from the iron horse fast approaching the trestle. Wow, just barely, but then guess what? The villains caught them again and we would have to go back next Saturday to find out how they got out of that mess. But now, it was time for the Gene Autry or Roy Rogers feature and I was so in love (at 10 years of age) with them that I wanted to marry them when I grew up.

Later on came some guys named Sunset Lane or Johnny Mack Brown, who mounted his horse from behind, Tom Mix, Tim Holt or Tex Ritter. In most of these movies was a "second banana," a comedian, or a bad guy. Bob Steele was one of my brother's favorites.

Well, off of the movie stars and back to the cost of those exciting Saturday afternoon double-features. I'm not quite sure but seems to me if I was given a quarter, I could see the whole bit plus have popcorn with a free drink at the water fountain then have some change for a big long lasting Hallowsucker. Uh. Oh! I just now remembered for fondness for those Hallowsuckers. I loved them! They are what caused me to be a choco-holic.

One other thing about my memory trip. I was furious when my parents dragged me out of the Saturday double-feature which was on its second go-around of all things! They wanted to take me to the department store and buy a nice new warm coat for me! We were having a snowy cold winter like this one and they wanted me to be warm. But all I wanted was to see Gene or Roy rescue the maiden and kiss their horses.

Now do you understand my fascination with the Boob Tube called T.V.?

Back to the present time. We are all excited to learn that Will and Tifanee Crane have a new daughter. She was born Friday, March 12 1993 in North West Texas Hospital in Amarillo. She has been named Makenzie Rae and weighed in at 7 lbs. 3/4 oz. and 20 3/4 inches long. Paternal grandparents are Jack and Jenie Crane of Gruver and great grandparents are James and Edith Travis of Shattuck, OK. Maternal grandparents are Dwayne and Carolyn Moses of Ralls and great grandparents are J.R. and Ina Terrell and Bernice Moses of Ralls.

We are still having visitors that are involved with Spring break. Among them are Ross Renner and a friend Jeff from ACU who are visiting parents B.J. and Glenda Renner and sister Viva who dropped in from Amarillo. One busy person is Glenda Renner who just returned from a Library conference in San Antonio. She and Ann Dorman represented Gruver from the Texas Panhandle. In addition to their teaching duties, they are preparing for the upcoming UIL contests in which we have many years of winners.

Another teacher, Maelyn (Cator) Webb from Gruver, but now teach-

ing in Amarillo is here visiting her mother Lamoyne Cator. Maelyn's children Jimmy, Kami and Kendall are here enjoying a time off from school.

Flavil and Josephine Ayers are enjoying their son Glen and his sons Scott and Trevor from the Dallas area and Glen is from Albuquerque.

The Stedje and Gammon grandparents will be enjoying Heath and Ashleigh Gammon from Amarillo; although they will be needing to take turns. I didn't see Roy Don here, but Tamra was at least here for part of the weekend.

Pam Evans is visiting grandparents Ted and Louise Evans while she is on Spring break.

Visiting parents and friends were Jody Holland of San Angelo State, Holly Holt of Lubbock, Brenda (Dahl) Hopkins, and Janet Womack of Odessa visiting her mother, Geneva Eddleman.

Erlene Becker from Shannon, Illinois is visiting her friends Mike and Lee Wilhelm. She became acquainted with them while they were residents in Illinois.

Quite a few friends and relatives were here for the baptism of Mark and Carrie Guthrie's infant son Gatlin Matthew. We have registered Kent and Glenda Guthrie, Rosalie Butts, Terry Butts of Spearman and Terry's friend Patty Buzzard of Canyon. Also, Tracey and Steve Bevil and their children Brook and Hunter.

Helen Shapley has been a recent patient in the Hansford Hospital, but hopefully she will be home by the time you read this.

Stacey Williams was dismissed after having successful knee surgery last week. Now for some more therapy and rehab.

I guess we will be seeing you at the Hansford County Livestock Show this weekend and then in a few days, Gruver can look forward to having their Spring break. Is everyone ready?

Intelligent people make many blunders, because they never believe the world to be as stupid as it is.

—Nicolas Chamfort



March Gruver Junior High Citizens of the Month for March. Pictured above are the Gruver Junior High Citizens of the Month for March. Front row (l/r) Kyler Barkley, 5th grade; Kadie Grotegut, 6th grade. Back row (l/r) Laura Garcia, 7th grade; Julie Gumfory, 8th grade.

Danny Fiel is named SPS Friona Manager



Danny Fiel

Danny Fiel has been named manager of Southwestern Public Service Company's office in Friona.

Fiel, 41, has been an SPS employee for ten years, beginning as

an apprentice in the Berger line department. Most recently, he was the SPS local manager in Gruver.

A native of Higgins, Fiel has been active in a number of civic activities in the Gruver area. He has served as President, secretary/treasurer, and director of the Gruver Lions Club, he's been a member of the Gruver Chamber of Commerce, and he has been active in his church.

Fiel and his wife Sue Ann have two children: Sheri, 12, and Lesli, 10.

SPS Panhandle Division Manager Doyle Moore said Fiel should be an asset to the Friona/Bovina area. "Danny has shown that he works hard—not only in his work, but in the community," he said.

Fiel replaces Bill Wilshire, who retired on March 1.

Birth announcement

Johnathan Taylor Gray Sparks was born March 10, 1993 at 12:38 a.m. weighing 8 lbs. 15 oz. measuring 21 inches at the Perryton Hospital.

Johathan's parents are Eldon and Karie Sparks and he has one brother, Tyson, 4 1/2 years old, and one sister, Jessica, 14 months old.

His grandparents are Jerry and Mary Sparks and Diane Sparks all of Gruver and David and Verna Smith of Dumas.

School menu

Gruver School Menu
March 22 - March 26

LUNCH

Monday—Chicken fried steak, mashed potatoes with gravy, corn, pudding, hot rolls, milk.

Tuesday—Pepperoni pizza pockets, tossed salad, fruit, milk.

Wednesday—Fish sticks, macaroni & cheese, green beans, fruit, blueberry muffins, milk.

Thursday—Chili with crackers, fruit, pickle spears, donuts, milk.

Friday—Corn dogs, beans, sherbert, milk.

BREAKFAST

Monday—Cereal, juice, jelly roll, milk.

Tuesday—Toast, peanut butter & jelly, milk.

Wednesday—French toast, fruit, milk.

Thursday—Blueberry muffins, fruit, milk.

Friday—Donuts, fruit, milk.

Have a great spring break next week!

PRINGLE-MORSE
March 22 - March 26

LUNCH

Monday—Sloppy Joe, fries, baked beans, fried pie, milk.

Tuesday—Chicken fried steak, potatoes, gravy, blackeyed peas, salad, rolls, cake, milk.

Wednesday—Hot dog, chips, slaw, fruit, milk.

Thursday—Lasagna, salad, carrots, fruit, rolls, milk.

Friday—Grilled cheese sandwich, tator tots, fruit, ice cream, milk.

BREAKFAST

Monday—Donuts, cheese toast, apple juice, milk.

Tuesday—Oatmeal, cinnamon toast, orange juice, milk.

Wednesday—Waffles, sausage grape juice, milk.

Thursday—Muffins, toast, apple juice, milk.

Friday—Biscuits, sausage, orange juice, milk.

Hometown news

Anna Maria Marquez from Gruver is among nine McMurry University students to attend the fifteenth annual Brown Symposium at Southwestern University in March. The students will accompany Dr. Robert Wallace, assistant professor of sociology, and Dr. Gary Shanafelt, professor of history.

Marquez is a senior sociology major attending McMurry University in Abilene, Texas.

You're Invited
to a
Bridal Shower for
Cacy (McGill) Vaughn
Sunday, March 28, 1993
to be held at
First State Bank • Spearman
2 - 4 p.m.

Given by Hostesses

Gordon's
BRUG
Bridal Gift Registry

Come by & let
Laquita Evans
help you set up your
Special Gift Table

Couples Currently Registered
3/27 Dusty Hill & Audrey Fitzgerald
3/20—Mary Anne Evans & Monte George
3/21—Greg Reimer & Lisa Herrmann
3/28—Cacy McGill & Merritt Vaughn
4/24—Krista Kirkland & Bryan Gerlich
4/3 Cathy Minter & David Boese
Joanne Odegaard & Mark Holly
VeAnn Allsworth & Ron Clark

314 MAIN
PHONE
659-2141

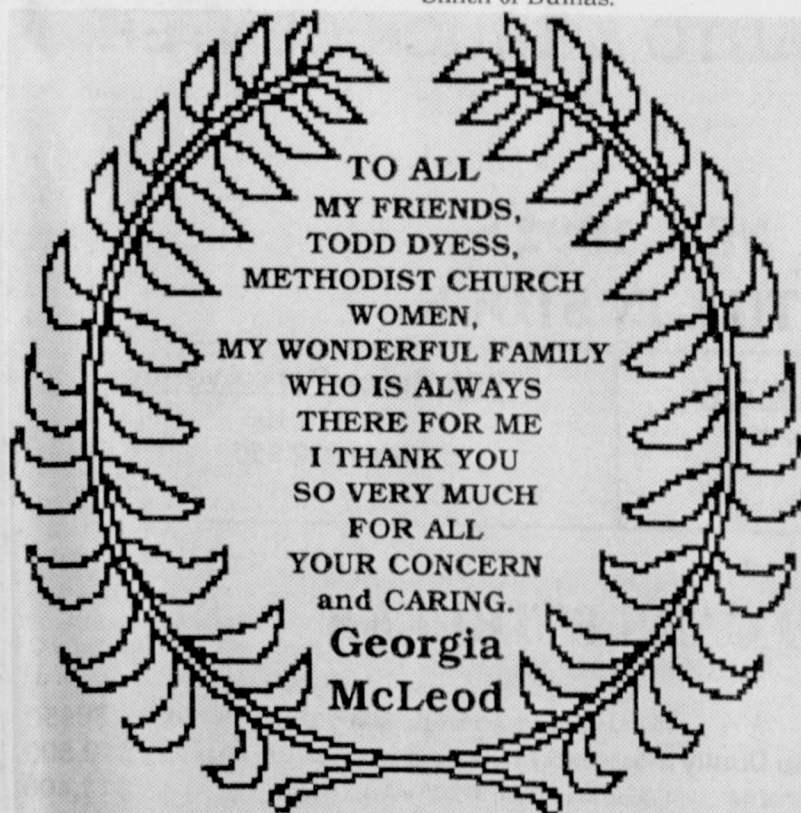
Gordon's
BRUG
JIM EVANS

SPEARMAN
TEXAS

He came into this world March 19, 1943;
Being their first born, cute as could be.
His parents thought he was rather nifty;
Well, that's been awhile, now he is FIFTY!
A son, brother and brother-in-law; father,
uncle, grumpy and a BOSS.
He can be found at the only one in town;
For years he has marked the products
at low cost.
On this day be sure and stop by;
If for nothing else just to say hi.
He's quite the guy, really the BEST!
HAPPY BIRTHDAY! Can you guess?



Love, Your Family



TO ALL
MY FRIENDS,
TODD DYESS,
METHODIST CHURCH
WOMEN,
MY WONDERFUL FAMILY
WHO IS ALWAYS
THERE FOR ME
I THANK YOU
SO VERY MUCH
FOR ALL
YOUR CONCERN
and CARING.
Georgia
McLeod

The family of Emma Seitz wish to thank everyone for their kind expression of sympathy during our time of sorrow. A special thanks to Hospice of the Plains, Bob Boxwell, Todd Dyess, Methodist Choir, Ladies of the Methodist Church, and those who served as Pallbearers and Honorary Pallbearers.

Willa Faye & Jamie Creamer
Billy Dave & Betty Hand & Family
Tamara Lollis & Family
Danny & Cheryl Hand
Cyndi Lyn Creamer
Ester Owens & Family
Estelle Postlewaite & Family
Minnie Lou Burson & Family
Bill Hodel & Family



PRICES EFFECTIVE MARCH 17TH, THROUGH MARCH 23RD, 1993 IN PERRYTON ONLY.



SAVINGS 'O THE GREEN

Great Savings This Week!



RC Cola

Diet Rite, Orange, Strawberry or Grape Crush; & Fires Root Beer

\$1.18

6 pk. 12 oz. cans



2 lb. bag

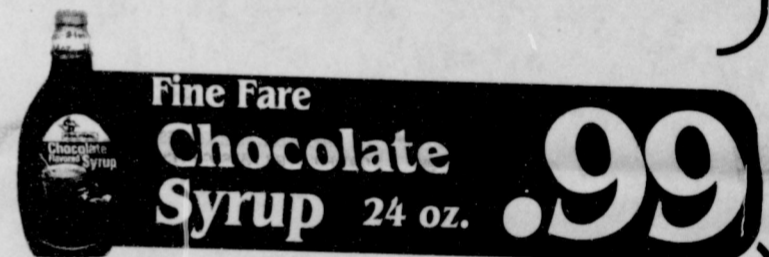
Hunt's Ketchup
.98

32 oz.

Ore Ida French Fries

Golden or Crinkle Cut

.98



Fine Fare Chocolate Syrup 24 oz.

.99



Zee Paper Towels

Prints or Colors Large Roll

2 \$1

for

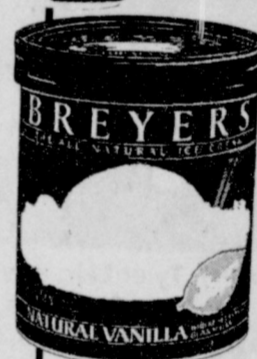
Windex Glass Cleaner Regular or Lemon **\$1.98** 22 oz.



Family Pak Split Fryer Breast

\$1.29

lb.



Breyer's Ice Cream

Assorted 1/2 gal.

2 \$5

for

10 LB. BAG SALE

California Navel Oranges or Texas Fresh Crisp Carrots

10 lb. bag **\$2.98**

U. S. #1 Russet Potatoes 10 lb. bag **\$1.49**

Washington Fancy Red Delicious Apples, Texas Ruby Red Grapefruit, or Medium Yellow Onions

10 lb. bag **\$3.98**

COMPARE AND SAVE!

WED	THUR	FRI	SAT	SUN	MON	TUE
17	18	19	20	21	22	23

Southwest Outdoors

with Mel Phillips

DRESS UP THOSE LURES
Since most public reservoirs receive a tremendous amount of fishing pressure, success frequently goes to the innovative angler who presents a slightly different lure. Several readers called and requested more details about using some cheap iridescent Easter basket grass to add some additional flash to spinnerbaits and jigs.

of grass under the rubberband that holds that skirt on the head of lure. This task, if done at home will take only a couple of seconds. Warning: If attempted in a bouncing boat with wet hands, it can become quite a challenge. This iridescent grass imitates the flash of a live minnow and can be the difference between a look and a bite.

Use the bottom loop of a half opened paper clip as a sewing needle and pull four or five strands

Best part of this idea is that one bag of Easter grass only costs a dollar and will dress up some 1,000 jigs or spinnerbaits. If you miss

buying it during this season, it is available at arts and crafts stores at much higher prices.

NEW IDEAS. Just installed a new rod hanging device in my trusty Suburban. Pro-Tech-YOURod is a unique device for transporting fishing rods without breaking rod tips or having reel handles clash together. Developed by John Silva (817-757-0174) from Waco, the Pro-Tech-YOURod retails for under \$20 and is a terrific gift idea for any angler who drives a van, Blazer, Bronco or Suburban.

FISHING TOURNAMENTS
Mark your calendar to include the following tournaments that are open to all interested anglers. April 3rd—Saturday morning, Lake Greenbelt Fun Tournament, and April 10th—Saturday, Lake Baylor Big Bass Tournament. Sponsors are Sirloin Stockade, K-Mart, Anchor Marine, and Camper Roundup.

See Outdoors page 12



Check with Cargill Inc. for special price on Topdress Nitrogen during the month of March.

Also ask about the Pre Emerge Weed and Grass Control for corn and milo.

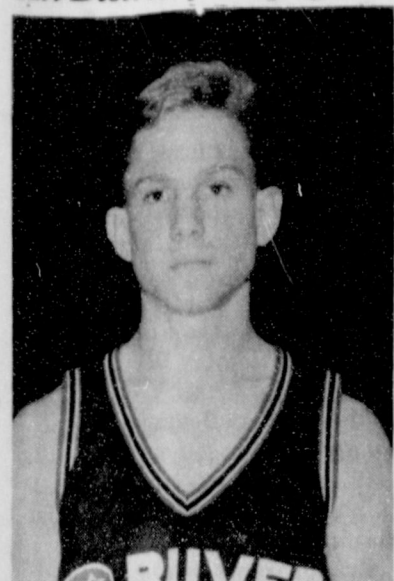
Call 659-3554

Ask for Larry Crouse

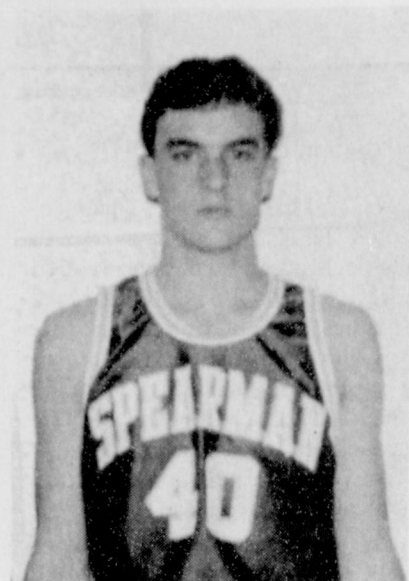
1993 Spearman Tennis Schedule

March	Event
12-13	Hereford Tournament at Sunray
16	Plainview Tournament
19-20	Lubbock Tournament
April	Event
6 & 8	District Tournament at Spearman
9-10	Amarillo Tournament
13-14	Regionals at Abilene
May	Event
14-15	State at Austin

All District from page 1



Jeffrey Price-24 Honorable Mention



Jason Varnon-40 Honorable Mention

Cancellations contribute to sparse sports week

by Bob Bort
The cancellation of the Sunray Bobcat Relays this past week left only a sparse week of sports. Snow and cold were the culprits this past Friday and Saturday, March 12-13.

In golf action, Kim Boone went by her lonesome self to Wellington this past Monday, March 15, and competed in the golf meet there. According to coach Tim Garland, golf is a funny sport, where one week you may have all the elements in your favor, while the next week, such things as wind can wreak havoc on your game. One week, the ball bounces one way, the next week it changes direction. Such was the case for Boone, as last week she won the Memphis Tournament, while this week her score was 91, and she finished in 6th place. Last week at Memphis she shot an 81.

Tennis action was hot and heavy this past Tuesday, March 16 at Canadian, as the Canadian JV and the Gruver teams got together for a dual meet. 29 matches were played, and the Hounds and Lady Hounds won only 10, but there were positive results. One plus was that Gruver foreign exchange student from Spain, Tere Diaz, is still unbeaten, winning twice at Canadian. Jeffrey Price is playing well in singles, as is Trevor Shipley, and the doubles team of Kevin Spivey and Kenton Odom is also doing well. Kaisi Foster and Roxanne Holt also won matches at Canadian. Here are all the results, courtesy of Coach Sheila Watley. The Hounds and Lady Hounds names are capitalized.

(LADY HOUNDS)
TERE DIAZ def. Tisha Carr 8-5;

Amy Carr def. KAISI FOSTER 8-2; Tammy Russell def. ROXANNE HOLT 8-5; Patience Bentley def. VIRGINIA BARRERA 8-4; KAISI FOSTER def. Tammy Russell 8-2; ROXANNE HOLT def. Patience Bentley 8-6; TERE DIAZ def. Tisha Carr 6-2, 6-1; Kara Yarnold def. VIRGINIA BARRERA 8-2; A Maupin/J Schluterman def. TRACI SMITH/TOBY SETLIFF 8-2; K Yarnold/A Purcell def. MOLLY MCLAIN/KIKI CARTHEL 8-4; K Cook/C Campbell def. ANGELA OVERBEY/KIM VENNEMAN 8-1; A Maupin/A Purcell def. TRACI SMITH/TOBY SETLIFF 8-5; J Schluterman/A Carr def. MOLLY MCLAIN/KIKI CARTHEL 12-9; K Cook/A Maupin def. TRACI SMITH/TOBY SETLIFF 8-4.

(HOUNDS)
JEFFREY PRICE def. Jeremy Young 8-4; Kevin Flowers def. TREVOR SHIPLEY 8-6; Trey Kerrigan def. DOUG GUMFORY 8-0; TREVOR SHIPLEY def. Toby Lankford 8-6; Trent Ezzell def. DOUG GUMFORY 8-1; Jeremy Harper def. JEFFREY PRICE 8-4; JEFFREY PRICE def. Kevin Flowers 8-6;

Calib Heatwole def. DOUG GUMFORY 8-3; TREVOR SHIPLEY def. Brian Kelly 8-1; J Harper/C Patton def. KEVIN SPIVEY/KENTON ODOM 8-2; J Jaco/E Garvin def. CLINT WILLIAMS/KYLE DEEDS 8-5; KEVIN SPIVEY/KENTON ODOM def. C Patton/B Kelly 9-8; KEVIN SPIVEY/KENTON ODOM def. J Jaco/E Garvin 8-2; C Heatwole/E Garvin def. CLINT WILLIAMS/KYLE DEEDS 8-5

from Highland Park. The other players named were Luvirt Wells, Highland Park; David Velasquez, Highland Park; Wes Gill, Sunray; Albert Aquilera, Stratford; Chris Monden, West Texas; and Casey Gresham, Boys Ranch.

Named coach of the year was Bruce Carver of Highland Park.

Panhandle from page 3

Committee. If you are interested in writing, try the Chair of the Human Services Committee, The Honorable Hilderbran, Texas House of Representatives, P.O. Box 2910, Austin, Texas, 78769, and Chair of Public Health, The Honorable Berlanga, same address. Do you know that proposed cuts in immunizations would deprive close to 300,000 children of vaccination? Surely you have read of the upsurge of debilitating diseases such as measles, tuberculosis, whooping cough, diphtheria, etc., is due to delinquency in insuring that all children get these vaccinations. If the child down the block is too careless or too poor to get his/her vaccinations, that also endangers my child. Maybe even me, heaven forbid!

The fact that letters and phone calls are an effective persuader has once again been proved by the response of the Senate Committee to the downpour of mail and calls it received.

This community is doing an outstanding job of supporting its centers of success. It has only to be informed of the need. Witness the generous gifts from the Rotary Club (products of their annual cherry pie auction), to various local organizations, ourselves included. And your own participation in fund-raisers.

We have yet to set the precise date for the "opera" to be presented by talented folk from Amarillo, but it will be soon, probably once again in connection with a Potato Bake. Watch for it.

This is grant-writing season for such "biggies" as The Department of Human Services and The Victims of Crime Act, both of which are our major supporters. Pray for us!

will be competing at Stinnett in the West Texas Comanche Relays. The boys golf team will be competing at Booker on the 20th, and girls and boys golf at Dalhart on the 22nd. The tennis team will be competing in the Gruver Meet on the 26th.

Spearman to hold invitational

The first Spearman Invitational Basketball Tournament for both boys and girls, grades 3 thru 6, will be Saturday, March 20, with a few girls games on Friday the 19th. The girls' games on Friday will begin at 5 pm, in all three gyms, and end at 8 p.m. Both boys and girls will begin at 8 am on Saturday and end at 8 p.m.

Three gyms will be used, Varsity Gym, Junior High Gym, and the Activity Gym. The Varsity Gym will have two games at a time in it. The games will be played cross-court as we did in the boys city action. This utilizes four courts which enables us to play a total of 56 games in just 15 hours of court time. This is the first time four courts have been used in this manner.

The school board and Spearman I.S.D. officials have been very cooperative in making this tournament the best in the panhandle for this age group. There will be approximately 400 kids participating from nine different towns: White Deer, Pampa, Perryton, Gruver, Panhandle, Dumas, Morse, Amarillo, and Spearman.

COMBO OF THE MONTH

CHICKEN BREAST SANDWICH & A TALLSUP FOR ONLY \$1.99

ASSORTED SHURFINE VEGETABLES 3/\$1

COKE 12 OZ CANS OR 3 LITER BOTTLE \$1.99

DECKER COOKED HAM 10 OZ. PKG. \$1.99

NEW BREAKFAST BURRITOS 4 OZ. SIZE 89¢

CHUNK OR GRAVY STYLE SHURFINE DOG FOOD 20 LB. BAG \$3.99

HOMOGENIZED ALLSUP'S MILK GALLON \$1.99

HOT FOODS MENU

BARBECUE BEEF SANDWICH	99¢	PIZZA BOX CHICKEN	\$5.99
BARBECUE PORK RIBS (LB.)	\$3.99	BEF & CHEESE CHIMICHANGA	\$1.19
BARBECUE WHOLE CHICKEN	\$3.99	(MEAT) CORN DOG	69¢
ALLSUP'S BURRITO	79¢	DELICIOUS HAMBURGER	69¢
BREAKFAST BURRITO	99¢	WILSON HOT LINKS	99¢
BURRITO BEEF & SALSA	\$1.19	SAUSAGE ON A STEAK	\$1.39
DELICIOUS CHEESEBURGER	89¢	SAUSAGE & BISCUIT	79¢
CHICKEN FRIED STEAK	\$1.59	SAUSAGE EGG & BISCUIT	\$1.09
3 COUNT CHICKEN STRIPS	\$1.49	SAUTEY SAUSAGE	99¢
W/POTATO WEDGES/ CHICKEN (2 PC.) BISCUIT	\$1.99	4 COUNT STEAK FINGERS	\$1.00

CALL IN ORDERS WELCOME CHECK OUR WEEKLY SPECIALS

SAUSAGE & GRAVY, CHICKEN & DUMPLING BISCUIT, OR CHILI CORNBREAD

NEW SUPER STUFF FOR ONLY 69¢

GATORADE 32 OUNCE BOTTLE \$1.09

DECKER MEAT FRANKS 12 OZ. PKG. 69¢

SUNSHINE SALTINE CRACKERS 1 LB. BOX 99¢

SHUR SAVING SUGAR \$1.49 4 LBS.

SHURFINE DOG FOOD 20 LB. BAG \$3.99

AJAX LAUNDRY 30 OZ. \$1.39

Making It Easy To Look Great

At The Hansford County Jr. Livestock Show

March 19 & 20 1993

THE BUNKHOUSE APPRECIATION SALE

Rocky • Panhandle Slim • Sliver Lakes Jeans

Buy One Pair ~ Blouse 1/2 Price

Childrens Jeans & Western Shirts 1/2 PRICE

Resistol Felt Hats 20% OFF

Justins • Texas & Tony Lamas Ladies & Kids Boots 20% OFF

Selected Men's Boots \$50 - \$75

THE BUNKHOUSE

212 S. MAIN • SPEARMAN 659-2476

OPEN: Monday - Saturday 9 a.m. ~ 5:30 p.m.

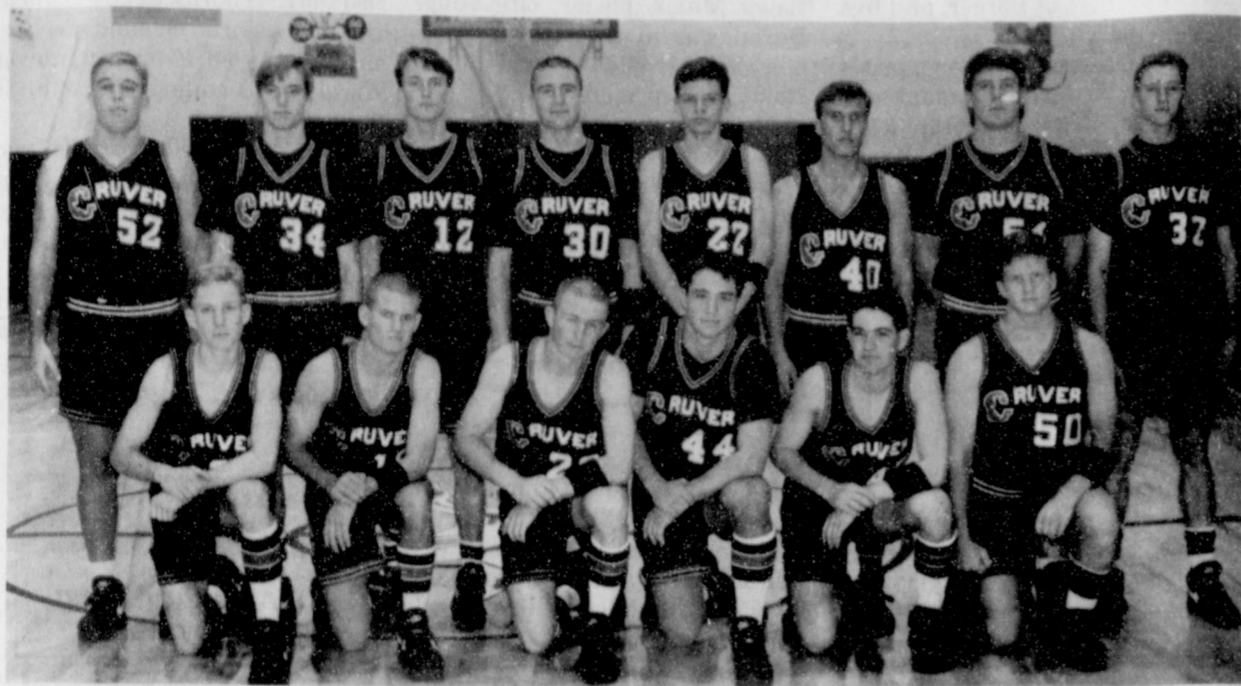
MODERN WOODMEN OF AMERICA Fraternal Life Insurance

Seek individuals with outstanding sales management potential. Our rapid growth has created exceptional opportunities.

No insurance experience necessary; comprehensive 24 month training program available. Excellent starting income. If you consider yourself a high caliber individual, investigate this opportunity.

For interview write Kevin Felix, Box 96, Perryton, Texas 79070, giving past experience, address and phone number. Replies confidential.

Gruver Greyhound 1992-1993 Basketball Roundup



1992-93 Varsity Gruver Greyhounds

Front Row (l-r)
 Ryon Atwood, Sophomore
 Kenton Odom, Junior
 Brady Pool, Senior
 Matt Etheredge, Senior
 Will Etheredge, Sophomore
 Heath Gaines, Senior

Back Row (l-r)
 Aaron Frick, Sophomore
 Cody Barkley, Senior
 Kevin Spivey, Junior
 Jace Dawson, Sophomore
 Tek Ferguson, Junior
 Scott McCloy, Senior
 Carey Kauffman, Senior
 Jeffrey Price, Senior

GRUVER GREYHOUND
 Accumulated Game Totals After 25 Games

	2 Pt Field Goals			3 Pt Field Goals			Sht Pct	Free Throws		Pct	Scoring	
	Attempt	Made	Pct	Attempt	Made	Pct		Attempt	Made		Total	Ave
Kenton	30	13	43	5	1	20	40	25	13	52	42	1.7
Kevin	248	108	44	163	45	28	37	132	90	68	441	17.6
Brady	156	51	33	88	19	22	29	57	35	61	194	7.8
Tek	51	14	27	22	6	27	27	19	6	32	52	2.1
Ryon	14	2	14	2	0	0	13	8	2	25	6	.4
Jace	95	38	40	0	0	0	40	58	21	36	97	3.9
Jeffrey	175	75	43	87	32	37	41	55	32	58	278	11.1
Cody	33	7	21	0	0	0	21	13	8	62	22	1
Scott	2	1	50	0	0	0	50	2	1	50	3	.4
Will	35	9	26	1	0	0	25	19	11	58	29	1.4
Matt	53	19	36	3	0	0	34	34	15	44	53	2.2
Heath	7	1	14	0	0	0	14	0	0	0	2	.1
Aaron	154	48	31	1	0	0	31	33	15	45	111	4.6
Carey	77	33	43	0	0	0	43	22	10	45	76	3.3
Team Total	1130	419	37	372	103	28	35	477	259	54	1406	56.2
Opp. Total	1018	501	49	185	48	26	46	426	246	58	1392	55.7

Accumulated Game Totals After 25 Games

GP	Rebounds		Game		Total	Ave	Fouls	
	Off	Ave	Def	Ave				
Kenton	24	19	.8	35	1.5	54	2.2	28
Kevin	25	79	3.2	106	4.2	185	7.4	45
Brady	25	39	1.6	54	2.2	93	3.7	70
Tek	25	11	.4	19	.8	30	1.2	32
Ryon	17	2	.1	6	.4	8	.5	10
Jace	25	32	1.3	40	1.6	72	2.9	38
Jeffrey	25	48	1.9	69	2.8	117	4.7	41
Cody	23	30	1.3	15	.7	45	2	26
Scott	8	3	.4	0	0	3	.4	0
Will	21	13	.6	14	.7	27	1.3	15
Matt	24	18	.8	20	.8	38	1.6	51
Heath	16	3	.2	4	.3	7	.4	3
Aaron	24	46	1.9	39	1.6	85	3.5	56
Carey	23	15	.7	40	1.7	55	2.4	41
Team Total	25	358	14.3	461	18.4	819	32.8	456
Opp. Total	25	271	10.8	478	19.1	749	30	452



Pictured above are the 1992-93 Junior Varsity Gruver Greyhounds. Front: Jake McCullough, Michael Foster, Eric Wright, Kevin McNett. Middle: Grant Odom, Andy Jones, Roma Tomlinson, Fabian Salazar, Victor Lopez. Back: Brady Tidwell, Ricardo Soto, Paul Renteria, J.D. Christian.



Pictured above are the 1992-93 Gruver High School Cheerleaders. Toby Setliff, Sophomore; Andee Solman, Junior; Kasey Davis, Senior; Shannon Jarvis, Junior; Wendy Rodriguez, Sophomore; Kim Venneman, Sophomore.



Pictured above are the 1992-93 Seventh Grade Gruver Greyhounds. Front Row (l-r): Buster McLain, Cesar Garcia, Kevin Rodriguez, Cody Cazares. Middle: Kevin Harris, Michael Minter, Rob Murrell, Justin Johnson, Brant Armes. Back: Justion Kent, Juan Bravo, Kyle McNett, Roland Herrera, Keith Cassidy.



Pictured above are the 1992-93 Eighth Grade Gruver Greyhounds. Front: James Sursa, John Duncan, Matt Overbey, Blake Ferguson. Back: Tucker Henson, Heath Tolleson, Josh Mayhew, Jarrod Hoel, Quentin Harper.

Holly Venneman... selected to all-star team

Holly Venneman has been selected as a member of the Texas Golden Spread High School All-Star Team.

Venneman, a 5'10" senior from Gruver, just completed her final season for the Lady Hounds. Holly made All-District in district 1-AA and was the captain of the lady Hounds who lost to Panhandle in the Bi-district game. She is the daughter of Joe T. and Linda Venneman.

The Texas Golden Spread High School All-Star Games will consist of four teams made up of girls from the Panhandle of Texas. These are the best seniors in the area. The games will be played April 1-3, 1993 at the Civic Center Coliseum in Amarillo.



Holly Venneman
All District

Volunteer.

American Heart Association

Announcing the arrival of a brand new Weight Watchers for a brand new you.

the new
Weight Watchers

Pay just \$59 for 8 weeks. That's a savings of \$41.

We're coming to your town. And we're bringing with us a simple, sensible approach to losing weight -- including all the great new changes we've made for 1993. So join Weight Watchers today. Attend our pre-paid 8-week series for the low price of \$59 -- that's less than \$7.50 a week.

NOW MEETING IN GRUVER
8-Week Session Begins MARCH 22, 6 P.M.

at
FIRST CHRISTIAN CHURCH, 510 KING
For more information call:
1-800-359-3131

Weight Watchers

Offer valid in participating areas 37, 96 and 107 only. (South Texas, West Texas, and Santa Barbara County, CA.) ©1992 Weight Watchers International, Inc. All rights reserved.

DQ Treats & Eats

Blizzard®
Flavor Treat (12-oz.)
DQ soft serve mixed with your favorite candy, fruit or nuts.
99¢

Breeze®
Frozen Yogurt Treat (12-oz.)
Non-fat, cholesterol-free frozen yogurt with your choice of fruit or nuts.
99¢

On Sale March 15-28, 1993

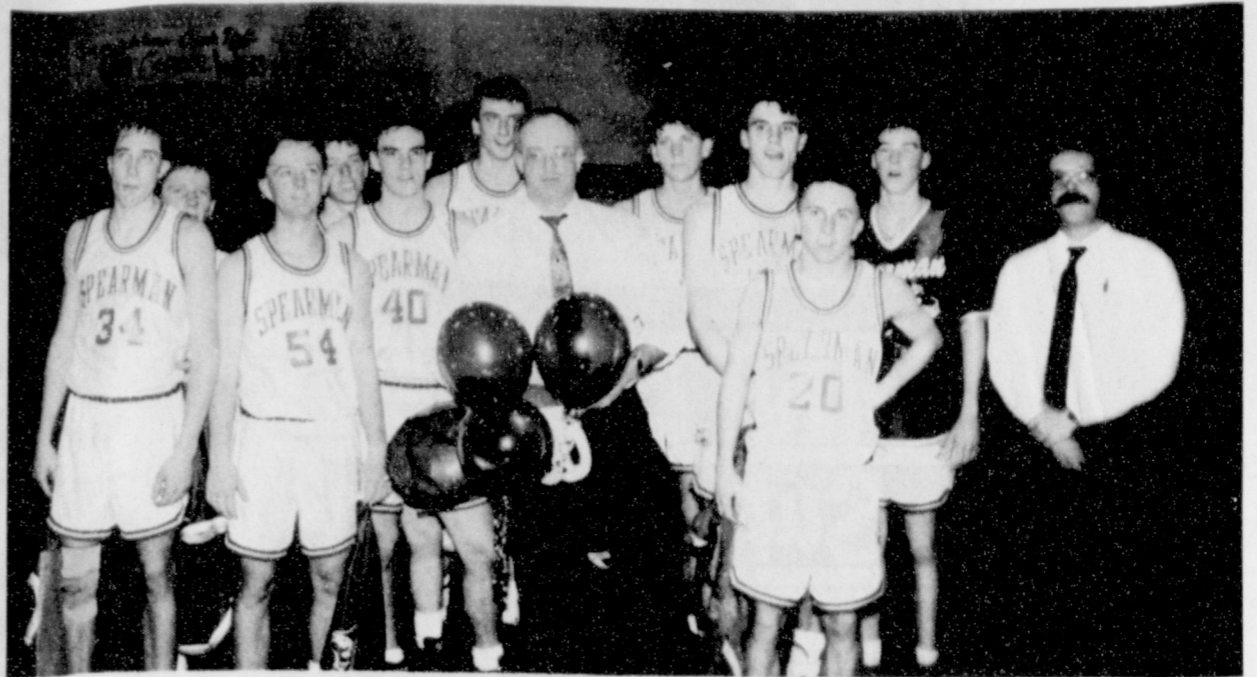
©Reg. TM Am. D.Q. Corp. ©Tx. D.Q. Op. Coun. At participating Dairy Queen stores.

Spearman Lynx 1992-1993 Basketball Roundup

SPEARMAN LYNX Player Stats for SPORTS STATS INC. — All Games As of 2-16-1993

Player	Effort Rating	Gms Ply	Tot Pts	Avg Pts	F. Goals			3-Pts		F. Throw			
					FGM	FGA	FG%	3FG	FGA	FG%	FTM	FTA	FT%
J. Boyd	99	25	98	3.9	37	64	57.8	8	18	44.4	16	35	45.7
W. Dyess	173	28	99	3.5	37	110	33.6	6	30	20.0	19	29	65.5
M. Hager	109	28	92	3.3	35	57	61.4	0	0	0.0	22	29	75.9
T. Law	106	28	143	5.1	58	156	37.2	17	56	30.4	10	14	71.4
C. Pipkin	466	28	412	14.7	167	273	61.2	0	0	0.0	78	132	59.1
B. Reed	124	28	219	7.8	90	226	39.8	23	81	28.4	16	29	55.2
R. Shaver	227	28	328	11.7	140	347	40.3	35	135	25.9	13	25	52.0
C. Cook	8	3	11	3.7	4	8	50.0	2	3	66.7	1	2	50.0
C. Lasater	19	7	13	1.9	6	17	35.3	1	5	20.0	0	0	0.0
T. Thompson	84	23	89	3.9	36	98	36.7	5	30	16.7	12	22	54.5
J. Varnon	235	28	180	6.4	76	148	51.4	1	7	14.3	27	51	52.9
M. Archer	1	1	2	2.0	0	1	0.0	0	0	0.0	2	2	100.0
D. Mayfield	1	1	2	2.0	1	3	33.3	0	1	0.0	0	0	0.0
C. Schnell	3	1	2	2.0	1	3	33.3	0	0	0.0	0	0	0.0
J. Swink	0	1	1	1.0	0	0	0.0	0	0	0.0	1	2	50.0
C. Wilkerson	-3	1	1	1.0	0	2	0.0	0	1	0.0	1	4	25.0
TOTALS	1652	28	1692	60.4	688	1513	45.5	98	367	26.7	218	376	58.0

Player	Rebounds		Assists		Steals		Turnovers		Blk	CH			
	Total	Avg	Off	Def	Tot / Avg	Foul	Tot / Avg	Bik					
J. Boyd	30	1.2	11	19	30	1.2	30	1.2	1	28	1.1	2	0
W. Dyess	50	1.8	13	37	116	4.1	45	1.6	0	51	1.8	2	1
M. Hager	57	2.0	27	30	22	0.8	19	0.7	0	16	0.6	2	0
T. Law	43	1.5	15	28	65	2.3	32	1.1	0	59	2.1	3	1
C. Pipkin	284	10.1	90	194	33	1.2	49	1.8	1	37	1.3	82	4
B. Reed	78	2.8	21	57	79	2.8	25	0.9	0	77	2.8	7	0
R. Shaver	137	4.9	32	105	43	1.5	42	1.5	0	45	1.6	17	0
C. Cook	6	2.0	2	4	2	0.7	0	0.0	0	3	1.0	0	0
C. Lasater	5	0.7	0	5	12	1.7	5	0.7	0	5	0.7	0	0
T. Thompson	17	0.7	8	9	52	2.3	42	1.8	0	43	1.9	0	3
J. Varnon	124	4.4	47	77	65	2.3	55	2.0	0	55	2.0	9	0
M. Archer	2	2.0	1	1	0	0.0	0	0.0	0	0	0.0	0	0
D. Mayfield	2	2.0	0	2	0	0.0	0	0.0	0	0	0.0	0	0
C. Schnell	2	2.0	1	1	0	0.0	2	2.0	0	2	2.0	0	0
J. Swink	1	1.0	0	1	0	0.0	0	0.0	0	0	0.0	0	0
C. Wilkerson	2	2.0	1	1	0	0.0	0	0.0	0	0	0.0	0	0
TOTALS	840	30.0	269	571	519	18.5	346	12.4	2	421	15.0	123	9



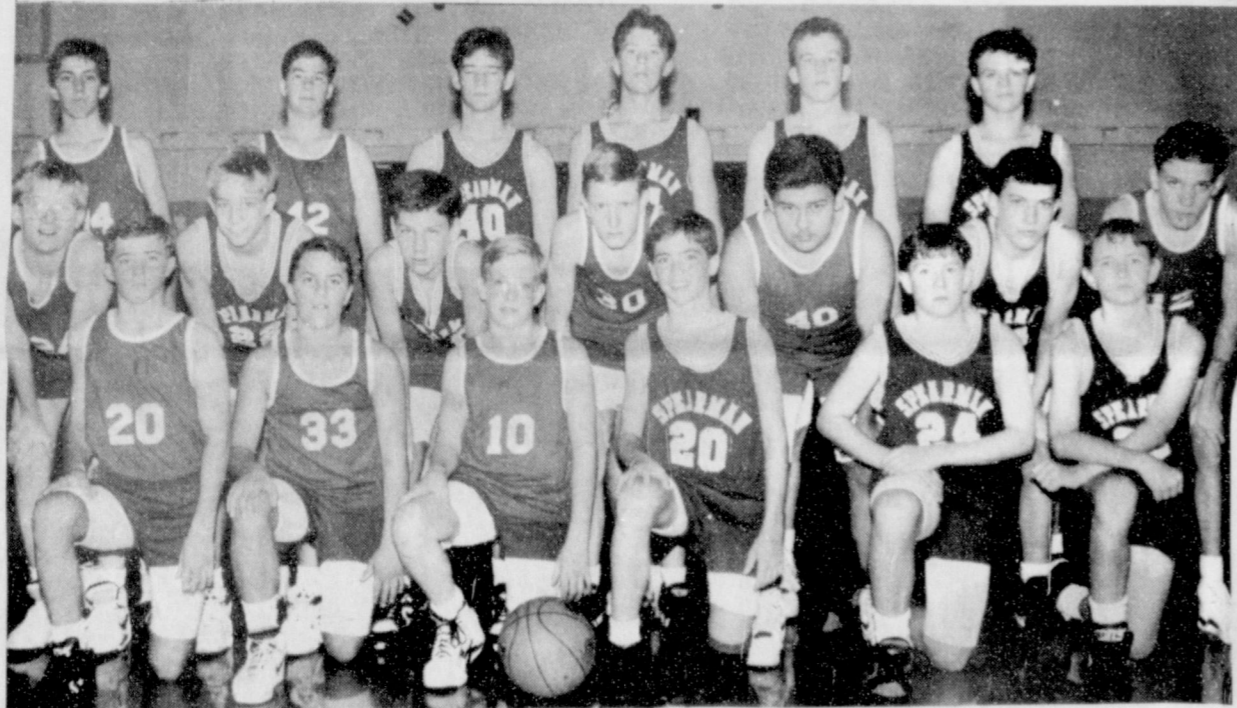
Pictured here are the 1992-93 Spearman Varsity Lynx: Chuck Cook-22, Toby Thompson-20, Cass Lasater-24, Russell Shaver-52, Jason Varnon-40, Justin Boyd-54, Troy Law-42, Cody Pipkin-44, Brady Reed-34, Mike Hager-50, Wesley Dyess-30, Coach Wendell Neff



1992-93 Junior Varsity Lynx.
(Front row, l-r): Brad Law, Brandon Vanderburg, Chad Wilkerson, Dee Mayfield, Jason Swink, Alan Hutchison.
(Middle row, l-r): Matt Fisher, Josh Winegarner, Shane Schneider, Coach Jerry Glass.
(Back row, l-r): Clint Schnell, Jason Swink, Alan Hutchison.



1992-93 Freshman Lynx
(Front row, l-r): Heath Archer, Brent Collins, Jeremy Blan, Clay Neff.
(Middle row, l-r): Jarrod Huddleston, Bill Pittman, Cory Butler, Lee Jarvis, Coach Rowland.
(Back row, l-r): Shad OQuin, Martin Sanders, Derrick Burnett, Coyt Tigrett.



1992-93 Eighth Grade Lynx. (Front row, l-r): Tyler Lair, Kevin Baker, Bruce Howell, Eric Cudd, Travis Loomis, Clint Faries. (Middle row, l-r): Tony Clements, Blake Beedy, Frankie Dominguez, Michael Witten, Domingo Salazar, Britt Savage, Zach Furrow. (Back row, l-r): Pete Vera, Tom Kirk, Eric Varnon, Dillon Miller, Van Baumgardner, Jacob Howard

PUBLIC NOTICE BRIEF EXPLANATORY STATEMENTS OF PROPOSED CONSTITUTIONAL AMENDMENTS SPECIAL ELECTION MAY 1, 1993

PROPOSITION NO. 1 ON THE BALLOT

Section 1 of Senate Joint Resolution 7 proposes a constitutional amendment that would allow the legislature to redistribute among other school districts ad valorem taxes levied and collected by a school district. The amendment would also allow the legislature to create county education districts with the taxable property of existing school districts in one or more counties combined. County education districts may levy, collect, and distribute ad valorem taxes as authorized by general law. The legislature would be allowed to set the rate of the ad valorem tax to be imposed in a school district or county education district or it may authorize the board of trustees of each school district or county education district to set the rate, provided that the rate of county education district ad valorem taxes may not exceed \$1.00 per \$100 valuation of taxable property, unless a higher rate is approved by the voters of the district. The amendment also provides that the amount of ad valorem taxes redistributed among school districts by the legislature and effectively redistributed within a county through county education districts may not exceed 2.75 percent of the sum of the state revenue appropriated for public schools and the revenue from local ad valorem taxes levied and collected for public schools. The term "state revenue" does not include revenue from ad valorem taxes, revenue for the provision of free textbooks, or contributions to a retirement system. Finally, the amendment provides that it does not affect the distribution of the available school fund under article VII, section 5, of the Texas Constitution.

The proposed amendment will appear on the ballot as follows:

"The constitutional amendment allowing limited redistribution of ad valorem taxes for schools, authorizing the legislature or local districts to set

a minimum tax rate in county education districts, and placing a cap on the ad valorem tax levied by county education districts."

PROPOSITION NO. 2 ON THE BALLOT

Section 2 of Senate Joint Resolution 7 proposes a constitutional amendment that would provide that, except for state educational mandates imposed in compliance with the Texas Constitution or federal law, or unless enacted by a vote of at least two-thirds of the members elected to each house of the legislature, a school district may not be required to comply with an obligation requiring expenditure of school district funds unless the obligation is fully funded. The amendment also requires the legislature to provide by law a procedure for determining whether an obligation is fully funded. In the absence of such a procedure, and at the request of a school district's board of trustees, the comptroller of public accounts shall determine whether or not an obligation is fully funded. This amendment applies only to state educational mandates enacted after December 31, 1993.

The proposed amendment will appear on the ballot as follows:

"The constitutional amendment exempting a school district from the obligation to comply with unfunded state educational mandates."

PROPOSITION NO. 3 ON THE BALLOT

Senate Joint Resolution 4 proposes an amendment to article VII, section 5(b), of the constitution, which currently authorizes the legislature to provide for using the permanent school fund to guarantee bonds issued by school districts and certain education-related revenue bonds issued by the state. The amendment would repeal the provision authorizing

the use of the permanent school fund to guarantee state revenue bonds, but would permit the legislature to provide by law for the issuance of general obligation bonds or revenue bonds of the state for the purpose of making loans to, or purchasing bonds of, school districts for the purpose of acquisition, construction, or improvement of instructional facilities, including all furnishings. The amendment also provides that the state, pursuant to general law, may forgive the payment of principal and interest on all or part of a loan made to a school district under the amendment to partially finance an instructional facility. The cap of \$750 million on the amount of bonds that could be issued under article VII, section 5(b), as amended, would be retained. The amendment would repeal the current provision of the constitution permitting the legislature to authorize bonds in excess of \$750 million by two-thirds record vote of both houses of the legislature. While any of the general obligation bonds issued under the amendment or any of the interest on those bonds is outstanding and unpaid, there would be appropriated out of the first money coming into the state treasury in each fiscal year, not otherwise appropriated by the constitution, the amount sufficient to pay the principal and interest on the bonds that matured or became due that fiscal year.

The proposed amendment will appear on the ballot as follows:

"The constitutional amendment authorizing the issuance of \$750 million in state general obligation or revenue bonds to assist school districts in partially financing facilities, authorizing the state to forgive payments of loans made to a school district for partially financing facilities, and repealing the authorization for \$750 million in state revenue bonds guaranteed by the permanent school fund."

Este es el informe explicatorio sobre la enmienda propuesta a la constitución que aparecerá en la boleta el día 1 de mayo de 1993. Si usted no ha recibido una copia del informe en español, podrá obtener una gratis por llamar al 1/800/252/8683 o por escribir al Secretario de Estado, P.O. Box 12060, Austin, Texas 78711

Published by Secretary of State John Hannah, Jr.



Seventh Grade Basketball Team 1992-93: (Back row, l-r): Nick Vinson, Joey Salgado, Keith Winegarner, Clint Goodman, Josh Bynum, Brian Howell and Casey Nobles. (Front row, l-r): Mike Butts, Larry Butts, Jamie Townsen, Cody Williams, Brandon Morgan, Travis Raper, Geder Munoz and Manuel Vasquez. Not pictured are Derek Kuehl, Allan Huddleston and Sam Genn.



1992-93 Spearman Cheerleaders. (l-r): Mary Cook, Kimbre Townsen, Mandi Lair, Rainey Whittington, Kelli Butts, Mika Pipkin, Kara Townsen, Kelly Shieldknight, Loui Lynx-Jill Clements, Sandi Rich.

ho
Ke
To
Ric

Pic
houn
Fergu
Jarro

Hol
sel

Holly
lected
Golden
Team.
Venn
Gruver,
season f
made Al
and was
Hounds
the Bi-d
daughte
Vennem
The T
School Al
of four te
the Panh
the best
games wi
at the Cl
Am -110.

WANT ADS WORK WONDERS!

Reporter-Statesman CLASSIFIEDS 659-3434

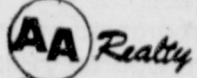
NOTICE

Deadline to place of cancel classified line ads is Tuesday noon for Thursday insertion.

CLASSIFIED RATE

\$4.00 first insertion
\$3.00 each additional insertion (30 words or less)
13¢ each word over 30
Legal Notices: 15¢ per word

Ads must be paid in full in cash before publication, unless advertiser has established credit with the Reporter-Statesman. Payment of out of state classifieds must be in the form of a money order or cashier's check. No tear sheets provided for classified ads. Tear sheets provided on request for legal notices.



Allen Alford-Broker-659-3034
Julie Martin-Sales-659-2425
Dennis Nelson-Sales-659-3608
Larry Trospen-Sales-3491

717 S. Steele-3-1 3/4-2, NICE!
703 E. 2nd-3-1 1/2
1115 S. Haney-3 Br-1 1/2 Bath, \$30,000
706 Collier-3-1 1/2-1. Nice shop!
717 Cotter-3-1/1. Very Cheap!!!
1114 Barkley-3 BR, 1 3/4 Bath
713 Collier-3/1, 2 car garage, storage, central heat/air, REDUCED to 20's
700 Collier-3/2-2-Very Nice.
NEW LISTING —
1104 Dessen-4-1/1, Affordable
720 Haney-3 Br/1 3/4 Bath, 2 car garage formal living room, family room, brick p&b 1700 sq. ft. Priced to sell.
319 S. Bernice-3Br, 1 3/4 Bath, study, extra lg garage, chain fence, brick p&b
FOR QUALITY & SERVICE CALL US TODAY
We Need Your Listing.
Equal Housing Opportunity

Buying A Home? We Can Help.

100% financing available to qualified buyers!

Call today for details!



Golden Spread Realty
200 S. Main - Perryton
435-5444

REAL ESTATE

HOUSE FOR SALE, 819 S. Dessen
2 bedroom, 1 bath, carpet. Sets on two lots. New storage building in fenced backyard. Second storage building on extra lot. Would make nice first home. Close to grade school. Must see to appreciate!! Call 659-3617, leave message.
S19-1tp

6 miles west of Spearman: 3 bedroom, 2 bath country home, 2600 sq. feet, arena, barn, pipe corrals with 42 1/2 acres. Have moved, must sell. Make an offer. Call Jim Eakin, 1-800-375-6328 or 806-525-4221.
S16-1tcRTN

House and Barn for Sale
3 bedroom, 2 bath house - 2340 sq. ft. Plus 2500 sq. ft. barn on 3.4 acres. Located on Spearman-Gruver Highway. Asking \$65,000. Contact FNB Spearman - Brian Gillispie. 659-5544
S46-1tc

FOR SALE: 4 vacant lots. Corner lot has complete trailer facilities. 300 Block of North Hazelwood, Spearman. 659-3780, leave message.
S19-1tnc

4 BRM 1 1/2 bath home on large corner lot near school. Has detached garage, car port, basement, central heat. Price reduced. 659-3944 after 5 p.m.
S11-1tcRTN

REAL ESTATE

UNDERPRICED - Must sale 620 + 620 1/2 S. Bernice on 2 lots with fence, large driveway, 12 X 18 detached garage, water softener, child's play yard, back house (1200 sq. ft.) zoned for day care facility (formerly Debbie's/Michelle's Day Care) or apartment. Main House (2400 sq. ft.) has full basement with 5 rooms upstairs and four rooms downstairs (includes 4 X 7 1/2 Fischer pool table + accessories). Everything \$40,000. 659-3328 or 659-3851 (Financial Aid Available).
S18-1tcRTN

4 Bedroom, 2 1/2 bath, 3 car attached garage with electric opener both ends, 2 story, cellar, brick, new carpet throughout, 1 refinished hardwood floor, central air & heat, huge kitchen, laundry, family, bath. Approximately 2800 sq. ft. Abundant storage, dust-stopper windows & doors. MUST SEE! Call 659-2918.
S10-11RTN

Anthony Electric Building (50' X 100'), 519 Plains Shopping Center. Good location. Call after 6 p.m. 659-2819.
S21-3tp

House For Sale - Three Bedroom, 1 bath. Call 659-3523.
S18-4tc

1500 sq. ft. house for sale - 3 bedroom, 2 bathroom, large kitchen and dining area, large living room, utility room, new carpet, ceiling fans throughout, detached 16 X 24 garage or storage building with extra parking in rear, fenced yard. 608 S. Bernice - \$26,500. Call 659-3851 for Ed Pearson or leave message.
S18-1tcRTN

House For Sale: 708 Steele Drive. 3 bedroom, 1 1/2 bath, free standing fireplace, fenced yard, siding -- MUST sell. Call 659-5189 for showing.
S20-4tp

For Sale or Rent - 3 bedroom trailer. Call (405)254-3888 or 659-3380.
S17-6tc

3 bedroom home with very large shop, satellite dish, play house, fenced yard and lots more. \$28,000 call Susan at 515-352-3395.
S20-2tp

For Sale: REDUCED Price or TRADE large 4 bedroom, 3 bath home. 3100 sq. feet. 714 Gibner. Call 659-3398.
S14-1tp

House For SALE or LEASE 3 Bedroom, 1 1/2 bath, den or 4th bedroom with fireplace. Built-ins in kitchen. Call 659-5108 after 5:00 p.m.
S21-3tp

Commercial Building, for sale in Spearman Shopping Center - 715 W. 7th. Call 359-8330.
S21-4tc

FOR SALE: 4 lots, corner of Hazelwood and D Avenue. Trailer facilities on corner. For information call 659-3780.

REPORTER-STATESMAN CLASSIFIEDS WORK!

TRAILERS

FOR SALE: Good heavy duty shop built trailer. 4 X 4 X 12 ft. with full canvas top. Call the First Baptist Church of Spearman at 659-5557
S20-2tp

NOTICE
Wallace Monument Co.
Monuments, Curbing,
Grave Covers
1-800-999-9506
Local Representative
LEONARD JAMESON
Spearman, Texas

FOR RENT

For Rent-2 bedroom furnished trailer house. Nice fenced yard- Close to downtown. Carport - Ideal for couple with child - No Pets - References required. \$150 Deposit. \$300 per month bills paid. 659-3657 or 659-3469.
S21-1tcRTN

AUTOMOBILES

For Sale: A Classic 1961 Mercedes 220 4 door Sedan. Call 659-2960.
S20-2tp

SERVICES

Will do house cleaning. Dependable, reliable. Call Geneva at 659-2727.
S21-3tp

CALL YOUR LOCAL Used Cow Dealer for 7 days a week stock removal. 659-3544 or 1-800-692-4043. Serving Cattlemen for the past 20 years.
G51-RTN

IS DRINKING AFFECTING your life negatively? Join us at AA or Al-Anon. Tuesdays at 8 p.m. at 30 Hwy 760 (Three blocks south of the Moose). Alateen meets Tuesdays at 7 p.m. at the same location.
S13-10tp

HANDYMAN - You want it done and can't or don't want to do it yourself!!! Call Uncle Ed (Pearson), 659-3851 - anytime - Anything!! House, yard, fence, car, garage, etc. (Cleanup, repair, paint, trim trees & bushes, etc.)
S15-1tcRTN

FIREWOOD

OAK - HICKORY - PINON
\$165 per cord. Fritch, Texas. 857-2035. Delivery Available.
S20-4tp

HELP WANTED

Caprock #1 is now taking applications for a pen rider. Horse and tack required. Contact Dave Christian at 733-5043.
S21-2tc

WANTED: TRUCK DRIVERS
Must be at least 25 years old and have two or more years experience, good driving record and CDL license. If interested call 362-4807 McCarty Trucking.
S21-2tc

JOB OPENING

The City of Spearman is now accepting applications for the following seasonal positions: Swimming Pool Manager, Assistant Manager, four Lifeguards and two Relief Lifeguards. Persons who qualify for these positions shall be able to obtain certified lifeguard training. For further information please contact Jim McWilliams at 659-2524. Applications may be obtained at City Hall, located at 30 S.W. Court. The City of Spearman is an E.O.E.
S20-2tc

Libby's Specials 6 - 8 p.m.

1/4 lb. Hamburger - LOADED \$2
Smothered Burrito -w- Green Sauce
Beans & Rice \$4.95

JAN'S ETC. NEW & USED & ANTIQUES TOO

Everything for home and family.
Plains Shopping Center in Spearman.
Open Monday - Saturday
10 a.m. til 6:00 p.m.

ADVERTISING PROVISIONS

- Publisher reserves the right to reject, edit, revise and properly classify any advertisement at his sole discretion.
- Advertiser assumes all liability for advertisements printed pursuant to his instruction, and shall indemnify and hold the publisher harmless from and against any and all claims and damages, including all costs incurred by publisher in connection therewith. Advertiser represents that all advertising copy is truthful and not misleading. Advertiser shall indemnify and hold publisher harmless from any claim against publisher arising out of or in connection with publication of advertising (except for modifications made by publisher without Advertiser's approval) including, but not limited to, claims for libel, invasion of privacy, commercial appropriation of one's name or likeness, copyright infringement, trademark, trade name or patent infringement, commercial defamation, false advertising, or any other claim whether based in tort or contract, or on account of any state or federal statute, including state and federal deceptive trade practices acts. If advertiser claims copyright ownership in any of the advertising published, advertiser must include proper notice of its copyright claim in the body of the advertisement, otherwise copyright ownership shall remain in the publisher.
- Advertiser agrees to check advertisement in the first issue in which it appears and report any error at once as publisher assumes no responsibility for errors after the first insertion. For any error which is the fault of the publisher and of which publisher has been timely notified, publisher will reprint the corrected advertisement for one extra insertion or refund the proportionate cost of the advertisement containing the error. Publisher shall have no responsibility for errors appearing in the copy submitted by advertiser.

GARAGE SALE

Garage Sale:
416 West 13th from 10 a.m. to 5 p.m. March 18, 19 and 20. Dick Allison's things: enclosed 16 foot horse trailer with tack compartment; John Deere riding lawn mower - 18 horse power. New \$4,000 best offer OVER \$2,500; Greenhouse 12 X 18 best offer OVER \$1,000; Toro roto tiller 7-horse, only used 4 hours. Various misc.
S21-1tp

BACK YARD SALE - Saturday 9 - ???
1101 S. Haney.
S21-1tp

PUBLIC NOTICE

NOTICE TO BIDDERS
Sealed Proposals addressed to Mr. A.J. Ratliff, City Manager, Gruver, Texas, P.O. Box 947, Gruver, Texas 79040 for:
SEALCOATING
will be received by the City of Gruver, Texas, in the City Council Chambers at City Hall, 108 E. Broadway St., Gruver, Texas until:
MARCH 30, 1993
3:30 P.M.

Plans and Specifications may be obtained from the Engineers, Brandt Engineers, Inc., 4537 Canyon Drive, Amarillo, Texas 79110, phone 806-353-7233 in the following manner:
Bona Fide Bidders: Upon payment of \$50.00, of which all will be refunded upon submission of a bid and return of the plans and specifications in good condition with the bid, or return of the plans and specifications in good condition BEFORE the bid opening. Suppliers and Subcontractors: Upon payment of \$50.00, NONREFUNDABLE. Bid security in the amount of 5% of the total bid must be submitted. Bidders to submit cashier's check, certified check, or bid bond payable to the Owner as guaranty the bidder will enter into contract and execute bonds in the forms provided. Performance and Payment bonds shall be set forth in the Contract documents. The Owner reserves the right to reject any or all bids and to waive any informalities. In case of ambiguity or lack of clearness in stating the prices in the bids, to adopt such interpretations as may be most advantageous to the Owner, or to reject the bid. No bid may be withdrawn until the expiration of 45 days from the bid date.
A.J. Ratliff, City Manager
City of Gruver, Texas
S20-2tc

NOTICE TO BIDDERS
Sealed Proposals addressed to Mr. Kelvin Knauf, City Manager, P.O. Box 37, Spearman, Texas 79081 for Sealcoating will be received by the City of Spearman, at City Hall, 30 SW Court, Spearman, Texas until March 30, 1993,
S20-2tc

NOTICE TO BIDDERS
Sealed Proposals addressed to Mr. Kelvin Knauf, City Manager, P.O. Box 37, Spearman, Texas 79081 for Sealcoating will be received by the City of Spearman, at City Hall, 30 SW Court, Spearman, Texas until March 30, 1993,
S20-2tc

Texas lottery number statistics
What's hot, what's not!!
Three page computer printout.
Send \$5 and SASE to
TLS, Box 189, Gruver, Texas 79040.

OSGOOD MONUMENT CO. Amarillo, Texas

Dealers of Rock of Ages Granite, as well as all colored granites, marble and bronze memorials.

Represented by
BOXWELL BROS. FUNERAL HOME
519 S. EVANS
659-3802

PUBLIC NOTICE

at 2:00 p.m.
Plans and Specifications may be obtained from Brandt Engineers, Inc., 4537 Canyon Drive, Amarillo, Texas 79110, 806-353-7233 in the following manner:

Bona Fide Bidders: Upon payment of \$50.00, of which all will be refunded upon submission of a bid and return of the plans and specifications in good condition with the bid, or return of the plans and specifications in good condition BEFORE the bid opening.
Suppliers and Subcontractors: Upon payment of \$50.00, NONREFUNDABLE. Bid security in the amount of 5% of the total bid must be submitted. Bidders to submit cashier's check, certified check, or bid bond payable to the Owner as guaranty the bidder will enter into contract and execute bonds in the forms provided. Performance and Payment bonds shall be set forth in the contract documents. The Owner reserves the right to reject any or all bids and to waive any informalities. In case of ambiguity or lack of clearness in stating the prices in the bids, to adopt such interpretations as may be most advantageous to the Owner, or to reject the bid. No bid may be withdrawn until the expiration of 45 days from the bid date.
S20-2tc

NOTICE TO ALL PERSONS HAVING CLAIMS AGAINST THE GUARDIANSHIP ESTATE OF BESSIE LEE WALLER

Notice is hereby given that original Letters of Guardianship for the Guardianship Estate of Bessie Lee Waller were issued on March 15, 1993, in Cause No. 2052 pending in the County Court of Hansford County, Texas to Nellie Buchanan. The post office address of the Guardian is 1112 Linn Drive, Spearman Texas 79081. All persons having claims against this guardianship estate are required to present them within the time and in the

G & G ELECTRONICS
"2-way radio" Repeater * Satellite * Mobile Telephone * Pagers
* Motorola Radius * Kenwood * Maxon * Vertex & Reim
BRUCE DUNCAN
(806) 659-3125

Oil & Gas Reporting Service
Box 2052 • Pampa, TX 79065
Providing the Oil & Gas Report for Hansford County Readers
Doris Harrison • Phone 665-5800

TexSCAN

Statewide Classified Advertising Network
Advertise in 300 Texas newspapers for only \$250.
Reach 3 MILLION Texans. Call this newspaper for details.

EXPLOSIONS/FIRES/ROLLOVERS, board certified personal injury trial lawyer seeks information/witnesses concerning: gas hot water heater fires/explosions; tire/tire explosions; 3-4 wheel ATV, Jeep, Bronco II & Tractor rollover accidents; GM truck side-impact fire accidents. Call collect D.P. Willis attorney 713-654-4040.

BIG 3-DAY HORSE sale, over 1,000 head, March 19, 20, 21. Clovis Livestock Auction, Clovis, New Mexico 505-762-4422.

CALVERT SCHOOL DISTRICT is seeking a superintendent. Anyone interested in the position may contact Willie Flemings, President School Board at P.O. Box 7, Calvert, Texas 77837.

SEARS CATALOG MERCHANTS! Devco Paint Co., America's oldest paint maker, offers generous starting package suited to your needs. Excellent products, service, profits. Lou Morrow, 1-800-24DEVOE.

COVENANT TRANSPORT. NOW hiring OTR drivers. The best team pay in the industry. • 27¢ - 29¢ per mile plus mileage and longevity bonus • motel/lavender pay • loading/unloading pay • paid insurance; Requirements • age 23 with 1 yr. verifiable OTR • class A CDL with Haz/Mat 1-800-441-4394/ 915-852-3357.

OWNER/OPERATORS TANDEM Tractors, mileage rates, weekly settlements. TX, OK, AR, LA, fuel card, home weekends. Steady work. Call Frank or Bill 1-800-324-5555.

DRIVERS: EXPERIENCED OTR flatbed, assigned new conventional equipment, sign on bonus, benefits, flexible time off and more. Run 48 states. Call immediately. Roadrunner Trucking 1-800-876-7784.

OTR DRIVERS Tired of the same old garbage? Want to drive a nice tractor? Work with good people and get good benefits? Call 1-800-888-7015 E.O.E.

CANDY VENDING ROUTE: Handling Hershey, Nestle, Frito Lay. Avg. census show \$3,200/mo. profit. Excol. locations. \$7,400 inv. req. 1-800-725-1557.

PIZZA INN SEEKING qualified franchisees. "Carry-out/delivery & Full-service restaurants. *Easy to open & operate. *110 franchises sold in the last 12 months. For information call 1-800-880-9955.

GOT A CAMPGROUND membership or timeshare? Peaceful world of love, joy and security await new-born in our happy home. Allowed expenses paid. Please call Trudy and Lou 1-800-453-9409. *Its illegal to be paid for anything beyond legal/medical expenses.*

windmill. Hunt Muledeer, Quail, Javelina. Fish for Blue, Channel and Yellow Catfish. \$195/Acre, Terms. 210-257-5565.

WANTED: OLD GUITARS, \$100-\$5,000 paid. I collect old Fender Guitars 1950-1970. Also certain Gibson, Martin & Gretsch 1930-1970. Call free, Kevin 1-800-383-4361.

TRUCK DRIVERS: \$1,000 sign-on bonus for safe drivers w/6 mo. OTR exp. Up to 30¢/mi +2¢/mi. MPG bonus. Compare our benefits to other Co.'s! New program avail. for teams. Com Trans, Inc. Exp. 1-800-234-1553, Inexp. - 1-800-759-6980. Dept. AY-59.

SWISS BOY 17, anxiously awaiting host family. Enjoys sports, computers. Other Scandinavian, European high school students arriving August. Call Eleanor 612-467-4619 or 1-800-SIBLING.

WOLFF TANNING BEDS new commercial-home units from \$199. Lamps, lotions, accessories. Monthly payments low as \$18. Call today. Free new color catalog. 1-800-462-9197.

HAROLD IVES TRUCKING hiring drivers. Earn up to 29¢ per mile. Assigned tractors with Motorola Communication, rider program, students welcome, insurance, bonuses, call: 1-800-842-0853.

WE BY NOTES secured by real estate. Have you sold property and financed the sale for the buyer? Turn your note into cash, 1-800-969-1200.

HAPPY JACK TABLUCKS: Prevent Fleas, Mother Nature's way without pesticides. Chewable & Nutritional tablet. For Dogs & Cats. At Farmland Co-ops.

HERSHEY-SNICKERS DISTRIBUTOR: Ground floor opportunity for this area. Unlimited potential. Investment of \$9,650 backed by inventory. 1-800-841-4322.

DISTRIBUTORSHIP: HOTTEST NEW business concept in America! First time offered in area. Earn high income a week with established accounts. Income verifiable. Financing available. Minimum investment \$5,000. Tom 1-800-940-2291.

ADOPTION: BIRTHMOTHERS-ASSISTANCE with rent, food, clothing, medical, legal. You select and meet family. Continuous pictures and letters. Call - Winnel collect 24 hours 713-855-0137.

ADOPT: BUTTERFLIES, SUNSHINE and lollipops. Peaceful world of love, joy and security await new-born in our happy home. Allowed expenses paid. Please call Trudy and Lou 1-800-453-9409. *Its illegal to be paid for anything beyond legal/medical expenses.*

Are You A Victim of Physical Abuse? Call Toll Free 1(800)753-5308

We are in Spearman on the 1st, 3rd & 5th Wednesdays of each month at the 1st Presbyterian Church, 1021 Cotter. On the 2nd & 4th Wednesdays we are at the 1st Christian Church at 510 King-Gruver. We can come to Spearman & Gruver any time upon request. We operate a safe place for victims & their children to stay in times of crisis. **Panhandle Crisis Center**
Serving Hansford, Lipscomb & Ochiltree Counties
317 S. Main Perryton, TX.

Obituaries

SAM WATSON
PAMPA—Sam Watson, 67, died Saturday, March 13, 1993.
 Private graveside services were held Tuesday morning in West Lawn Cemetery at Borger. Memorial services were held at 2 p.m. Tuesday in Carmichael-Whitley Funeral Directors Colonial Chapel with the Rev. Mert Cooper, a Methodist pastor, and the Rev. Kenneth Metzger, pastor of First United

Methodist Church, officiating.
 Mr. Watson was born in Stamford and grew up in Borger, graduating from Borger High School in 1943. He received a master's degree in education in 1950 from West Texas State University. He had lived in Spearman and then in Phillips for five years. In 1973 he moved to Pampa. He married Helen Taylor in 1949 at Portales, N.M. He taught school in Spearman,

Phillips and Pampa before retiring in 1986. He served as a cadet in the U.S. Army Air Corps during World War II. He was voted Chamber of Commerce Man of the Year in 1966 in Spearman and as Bandmaster of the year for the state in 1978. He was inducted into the Texas Bandmasters Hall of Fame in 1991. He was a member of Hansford Masonic Lodge No. 1040 AF&AM in Spearman and the First United Methodist Church of Pampa.

Survivors include his wife; a son, Randy Watson of Borger; a daughter, Lee Guest of Borger; and five grandchildren.
 The family requests memorials be to the Arthritis Foundation - Northwest Texas Chapter, 3145 McCart Ave., Fort Worth, Texas 76110 or to a favorite charity.
ROBERT W. STAYTON
GRUVER—Robert W. Stayton, 75, died Friday, March 12, 1993. Services were held Monday,

March 15, at the First Baptist Church in Gruver with the Rev. Larry Miller, pastor, officiating. Burial was in the Gruver Cemetery by Boxwell Brothers Funeral Home of Spearman.

Mr. Stayton, born in Erick, Okla., had lived in Gruver for 49 years. He married Sis Hays in 1941 at Perryton. He was a retired farmer, a member of the First Baptist Church and Gruver Masonic Lodge No. 1326 AF&AM.


Survivors include his wife; two nieces; and two nephews.
Norvell Strawn
BOVINA—Norvell Strawn, 70, died Wednesday, March 10, 1993.


Services were held March 12 in Bovina's First Baptist Church. Reverend Richard Grisham officiated and burial was in Bovina Cemetery by Ellis-Blackwell Funeral Home.
 Strawn was born in Shelby

County and moved to the Bovina area in 1957 from Spade. He married Doris Kendrick at Levelland in 1940. He was a farmer and rancher, and he was an Army veteran of World War II and member of First Baptist Church.

Survivors include his wife; two sons, Bill Strawn of Spearman and Jerry Strawn of Panhandle; two daughters, Vicki Richards of Hereford and Judy Herring of Canyon; two brothers, L.C. Strawn of Tucumcari, N.M., and Jim Strawn of Spearman; a sister, Pauline Williams of Irving; 12 grandchildren; and six great-grandchildren.

HENSON CHIROPRACTIC
 410 S. Davis • Spearman, TX
 Call for Appointment • 659-5603
 Office Hours:
 Mon., Wed., Fri. - 9:00 to 5:00
 Tue., Thu. - 9:00 to 11:30


Concerned about what to do with maturing Certificates of Deposit?
 Call today for assistance.
 K.D. Clenney
 Account Executive
 (800) 776-6815

 DEAN WITTER
© 1992 Dean Witter Reynolds Inc. Member SIPC.

Research works.
 American Heart Association

"A light unto my path"
"The Lord on high is mightier than the noise of many waters, yea, than the mighty waves of the sea" (Ps. 93:4).
 The sea is a treacherous beauty, the glistening waters disguising all manner of danger. It may be difficult to gauge the proximity of a ship to the shore, where a sailor might encounter sandbars and rocks spelling disaster. The lighthouse is a bright beacon ... a signal in the sea.
 God's house is a beacon ... a signal in a world which, despite its beauty, can also be deceivingly treacherous to those who live in the twilight of temptation without God's guiding light.
 This Sabbath, search for a steeple, and enter the sanctuary therein. You will learn of God's loving care as you study His Holy word. "Thy word is a lamp unto my feet, and a light unto my path" (Ps. 119:105). God will guide you safely to shore.

Sunday	Monday	Tuesday	Wednesday	Thursday	Friday	Saturday
Hosea	Psalms	Jeremiah	Jeremiah	Hebrews	Hebrews	Hebrews
9:30-37	12	31:23-40	33:19-26	4:1-13	8:1-13	9:1-28

Scriptures selected by the American Bible Society



Copyright 1993, Kender-Williams Newspaper Services, P.O. Box 8005, Charlottesville, VA 22906

LET US REPLENISH THE SEED OF FAITH THROUGH... REGULAR CHURCH ATTENDANCE, DAILY BIBLE READING AND PRAYER

IN SPEARMAN
Trinity Community Church
 717 S. 7th Ave. 659-2671
 Sunday School and
 Children's Church: 9:45 a.m.
 Worship: 11:00 a.m.
 Sunday Evening: 6:30 p.m.
 Wednesday evening: 7 p.m.
 Pastor Dan Carter

Union Church
 31 S. Endicott 659-2644
 Sunday School: 9:45 a.m.
 Worship: 10:45 a.m.
 Evening Worship: 6:30 p.m.
 Bible Study: 7:30 p.m. Wed.
 Youth: 7:30 p.m. Wed.
 Pastor Jeff L. Burress

First United Methodist
 407 S. Haney 659-5503
 Sunday School: 9:45 a.m.
 Worship: 11 a.m.
 Jr. High Youth: 5 p.m. Sun.
 High School: 6 p.m. Sun.
 Pastor Todd Dyess

Faith Lutheran Church (ELCA)
 1101 Bernice 659-2252
 worships with
First Presbyterian Church
 1021 Cotter 659-2033
 Sunday School: 9:45 a.m. at Lutheran
 Worship: 11 a.m. (alternates monthly between addresses above)
 Pastor Beverly Cook

IN GRUVER
First Baptist Church
 402 E. Broadway 733-2411
 Sunday School: 9:45 a.m.
 Worship: 10:50 a.m.
 Disciple Training: 6 p.m. Sun.
 Prayer Meeting: 7:30 p.m. Wed.
 Pastor Larry Miller

Church of Christ
 209 King 733-2760
 Sunday School: 9:30 a.m.
 Worship: 10:20 a.m.
 Evening Worship: 6 p.m.
 Wed. Evening Worship: 7:30 p.m.
 Minister Bob Setcliff

First Christian Church
 510 King 733-2960
 Sunday School: 9:45 a.m.
 Worship: 11 a.m.
 Wed. Bible Study: 7:30 p.m.
 Youth: 6:30 Wed.
 Pastor Gary Gumfory

Oslo Lutheran Church (ECLA)
 West of Gruver
 On Hwy 15 & N. FM 1162
 339-7646
 Sunday School: 9:45 a.m.
 Worship: 11 a.m.
 Morning Prayer: 9 a.m. Wed.
 Pioneer Clubs (Grades 1-6): 4-5:30 p.m. Wed.
 Pastor John R. Chandler

Community Bible Church (Interdenominational)
 Hwy. 15 733-2443
 Sunday School: 10 a.m.
 Worship: 11 a.m.
 Evening Worship: 7 p.m.
 Wed. Prayer Meeting: 7 p.m.
 Pastor Zane Gray

First United Methodist
 Broadway & Garrett 733-2651
 Sunday School: 9:45 a.m.
 Worship: 8:30 a.m. & 10:55 a.m.
 Sunday Evening: 7 p.m.
 UMY: 6 p.m.
 Pastor Lewis Holland

This Feature is made possible through the Sponsorship of these Civic Minded Businesses.

IN SPEARMAN
Apostolic Faith Church
 822 S. Dessen 659-2870
 Sunday School: 10 a.m.
 Worship: 11 a.m.
 Evening Worship: 6 p.m. Sun.
 Wed. Prayer Meeting: 7:30 p.m.
 Pastor James Brown

First Assembly of God
 401 N. Bernice 659-2295
 Sunday School: 9:45 a.m.
 Worship: 11 a.m.
 Evening Worship: 7 p.m.
 Wednesday Worship: 7:30 p.m.
 Youth: 7:30 Wednesday
 Pastor Ray Cook

First Christian Church (Disciples of Christ)
 29 S. Bernice 659-2036
 Sunday School: 9:45 a.m.
 Worship: 10:50 a.m.
 Women's Bible Study: 2 p.m. Wed.
 Youth: Wed. 6 p.m. & Sun. 5 p.m.
 Pastor LaVern Draper

Sacred Heart Catholic Church
 901 Roland 659-2166
 Sat. Night Mass: 7 p.m.
 Sunday Mass: 9:30 a.m.
 C.C.D.: 10:30 a.m. Sun.
 Father Edward Kieran

Church of Christ
 121 S. Haney 659-3244
 Sunday Bible Class: 9:45 a.m.
 Worship: 10:30 a.m.
 Evening Worship: 6 p.m.
 Bible Study Wed. 7:30 p.m.
 KRDF Radio Program
 Living With Christ 7:50 a.m. M-F
 Minister Arnis Pape

Fellowship Baptist
 1102 S. Archer 659-2783
 Sunday School: 10 a.m.
 Worship: 11 a.m.
 Evening Worship: 6 p.m. Sun.
 Youth & Adult Serv.: 7:30 Wed.
 Pastor Rick Fincher

First Baptist Church
 123 N. Bernice 659-5557
 Sunday School: 9:45 a.m.
 Worship: 11 a.m.
 Evening Worship: 7 p.m.
 Jr. High Youth: 6 p.m. Wed.
 High School Youth: 7 p.m. Wed.
 Youth Choir: 6 p.m. Sun.
 Pastor Kyle Henderson

Primera Mission Bautista
 502 E. 7th 659-3991
 Sunday School: 9:45 a.m.
 Worship: 11 a.m.
 Pastor Guadalupe Carranza, Jr.

HI-PLAINS AUTO SUPPLY, INC.

 Mobile Oil For Irrigation & Industrial Purposes
 118 Main • Spearman
 659-2506 • (800)657-8742

Lemon, Shearer, Ehrlich, Phillips and Good
 "Attorneys and counselors at Law"
 Box 1066 • Perryton 79070
 (806)435-6544

HELP SPONSOR THIS ENCOURAGING MESSAGE CALL ...
THE Hansford County Reporter-Statesman
 659-3434 • (800)395-9482


LADIES READY TO WEAR
 306 Hancock • Spearman
 659-3424


CO'S SUPPLY CO.
Plumbing & Tire Sales & Service
 301 S. Davis • Spearman
 659-3781

GILLASPIE
 AUTO & TRUCK CENTER, INC.
 CHEVROLET • OLDS • PONTIAC • BUICK
 CHRYSLER • PLYMOUTH • DODGE
 Highway 207 South • P.O. Box 427 (800)659-2341
 SPEARMAN, TEXAS 79081

FLOWERS
 ALL OCCASION FLOWERS
 MARY MOORE OWNER
 MON. - FRI. 9 a.m. - 5 p.m.
 Sat. 9 a.m. - 12 noon
 PLAINS SHOPPING CENTER
 Spearman, TX • 659-5180

GOLDEN SPREAD CARPET CLEANING
Don Moore
 659-3068
 "Not Forsaking The Assembling of Ourselves Together"
 HEBREWS 10:25

GRUVER CABLEVISION
 Quality Family Entertainment With
 "The Disney Channel"
 308 Main • Gruver
 733-5295

TRUE VALUE HARDWARE

 205 DILLON SPEARMAN, TX.
 (806)659-2662
 Attend The Church of Your Choice

BOXWELL BROS. FUNERAL HOME

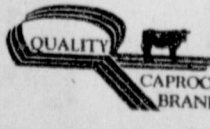
SPEARTEX GRAIN COMPANY
 405 Collard • Spearman
 659-3711

GOLDEN SPREAD SALES CO.
 Petroleum Products
 Gasoline, Diesel, Propane, Farm Fertilizer
 LPG Bottle Filling
 414 S. Hwy. 207 • Spearman
 659-3776
 "Attend the Church of your Choice."


Compliments of
G & G FOOD LINER
 516 MAIN • GRUVER
 733-2471

Compliments of...
AGCO of Spearman, Inc.
 "See you in Church"
 659-3751

GORDON DRUGS
 Dependable Prescription Service
 314 Main • Spearman
 659-2141
Jim Evans

"WE SUPPORT OUR LOCAL CHURCHES"
CAPROCK #1
 Richard Winter, Manager
 (806)733-5043

CAPROCK #2
 Jeff Rudolph, Manager
 (806)733-5025
 "Custom Cattle Feeding"

HENTON & COMPANY
 P.C. Certified Public Accountants
 221 Sanders • Spearman
 659-2518

 **BERRY CLEANERS**
 DAN DEBROCKE - OWNER
 Phone: 659-3127 • P.O. Box 1017 • 7th Main St.
 SPEARMAN, TEXAS 79081

GRUVER FORD

 531 Main • Gruver, TX.
 (806)733-2431

Interstate Savings & Loan

 322 Main • Spearman
 659-2559

GRUVER PRINTING COMPANY
 "We put our customers FIRST!"
 434 MAIN • GRUVER
 (806)733-2662

Nite & Day Beauty Shop
 Open 8 a.m. - 5 p.m.
 Walk - Ins are WELCOME
 518 S. Main • Gruver
 733-2640

Outdoors from page 6

The Lake Baylor Big Bass tournament originally scheduled for March 13th was cancelled due to the snow storm.

PLAYA PETE observes, "To dress properly for springtime outdoor activities in this part of the world requires that anglers take everything from snow suits to swim suits."

Clarity is the politeness of a man of letters.

—Jules Renard

You Decide...

- 1. No Money Down**
No payments for 90 days and 90 day FREE financing with the Polaris StarCard*
- 2. \$200 FREE Goods**
Your choice of \$200 worth of Polaris clothing and accessories.
- 3. Extended Service Contract**
Receive an extended service contract good for one year on your new ATV.

Then Ride!



Choose 1, 2, or 3 when you purchase any new Polaris ATV before May 31, 1993! See your participating Polaris dealer for details.

*On approved credit WARNING: ATVs can be hazardous to operate. These are full-size machines designed to be ridden only by adults 18 and older. For your safety, always wear a helmet, eye protection and protective clothing. Be particularly careful on difficult terrain. Polaris recommends that all ATV riders take a training course. For safety and training information, see your dealer or call Polaris toll-free at 1-800-POLARIS.

POLARIS
Believe It.

Offer ends May 31, 1993.

©1993 Polaris Industries LP.

Available only at participating Polaris dealers.

Hansford Implement

Highway 207 South
Spearman, Texas
659-2568 733-2088

P.O. from page 1

ing a lot of noise in his house. "I thought some people were fighting," Collins stated. But according to neighbors he was just watching football.

Collins also suggested that more boxes on the curb would make his job easier.

Another suggestion to make the postman's job easier was made by Bill Turner, window and distribution clerk. He said, "The thing that would help me the most is to bring in the yellow 'attempt deliver' slips when there is an article to pick up." He added that very few people do that and many times a signature is needed, so another slip must be prepared.

Loydell Sparks said that she enjoys her work. The thing she likes best is the fellowship of all the employees. She added that the paper work is what she likes least about her job.

Another employee, Marjie Crockett, states that she likes meeting people, but that going to work at 6 in the morning is not fun.



Mrs. Clyburn and her Gifted and Talented class conducted an egg drop experiment two weeks ago. Students participating were Russell Sheets, Josh Ridge, Ashlee Flowers, Courtney Parteny, Keilee Goodheart and Claudia Vaquera. The students wrapped an egg in different materials and sealed them in cardboard boxes. The eggs in their boxes were then dropped off the roof of the Spearman Elementary building by Dr. Parteny. All but one of the eggs survived the dropped.

DANCE

SATURDAY, MARCH 20th
9 p.m. - 1 a.m.

MUSIC FEATURED BY:
DESERT RAIN

\$5 PER PERSON
Mr. C's

721 1/2 N. Main • 435-6664 • Perryton, TX



These Spearman choir students will be making their way to Austin to sing in the state choir festival May 29 as an ensemble.

Singers from page 1

rating. Soloists in class three receiving two ratings were Nicole Burgess and Farber.

Those individuals singing in class three and receiving one ratings were C. Alvarado and Tiffany Bruning.

In class two Cook and Vargas received two ratings; while Schoenhals, Vanessa Biggs, Ring, Carter and Kelp received one ratings.

This is not the only competition Spearman Choir Students have competed in.

On Wednesday, March 10, the 56 choir members traveled to West Texas State University at Canyon for a "Concert and Sight Reading Contest." At this contest the group made a two rating in both the concert and sight reading competitions, Schaffer stated.

What does RNA have for YOU?

OMNI-PLUS!

Omni-Plus is the Universal Life plan of insurance offered by Royal Neighbors of America, fraternal life insurance since 1895.

It is a flexible-premium adjustable-life plan. This means premium payments may be flexible as opposed to fixed and the amount of coverage may be increased or decreased, depending upon the insured's needs and desires, provided certain requirements are met. Because of its flexibility, it is often referred to as "one certificate for life."

Since cash values build at a competitive rate of interest** and are sheltered from current income tax, Omni-Plus offers not only life insurance protection but also can serve as an excellent vehicle for savings. Cash values can be used for emergencies, opportunities, or as a supplement to retirement income.

As with traditional life insurance plans, the death benefit is received free of federal income tax by the beneficiary.

This plan is available at ages 0 to 75. The minimum face amount is \$25,000.

For additional information about Omni-Plus, other life insurance and annuity plans for whole family protection, and noncontractual fraternal benefits offered by Royal Neighbors of America, please

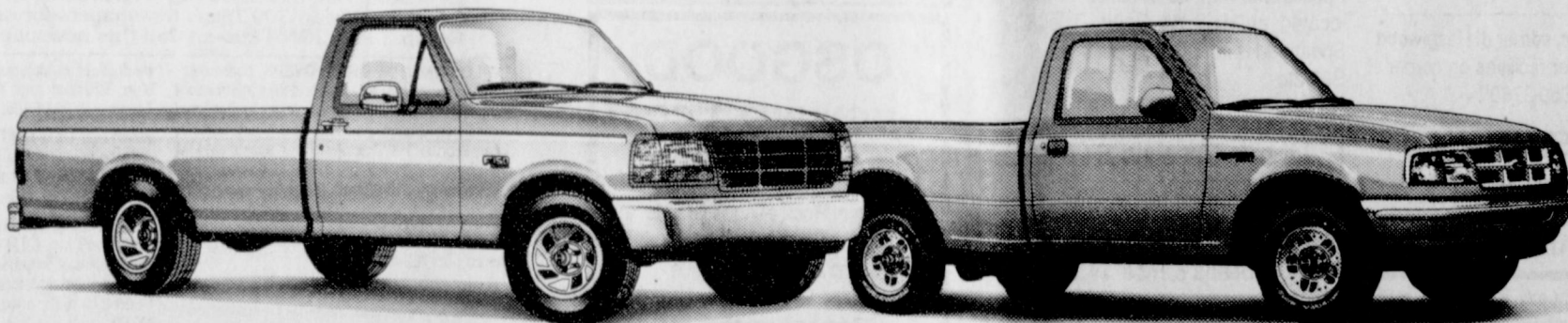
Call or Write
MARILYNN HART
District Deputy
Sales Representative

P.O. Box 426, Gruver, TX 79040
Home: 733-2226 Office: 733-2066

Royal Neighbors of America
Fraternal Life Insurance Since 1895

**Highly competitive interest rates are subject to change but minimum guaranteed interest rates do not change.

Get A New Ford Truck For A Song



F-150
\$266/month⁽¹⁾

• Air • Automatic • AM/FM Stereo • Styled Steel Wheels

Ranger
\$199/month⁽²⁾

• Air • Stereo/Cassette • Deep-Dish Aluminum Wheels

During Truck Month At Your Texas Ford Dealer.

Head into your Texas Ford Dealer during Truck Month and the prices will be like music to your ears. Choose from hundreds of F-150s, Rangers, Explorers, Broncos, Aerostar wagons and Econoline vans.

During the whole month of March, each dealer will have their

absolute lowest selling price and that's why now is the best time to buy. If you go anywhere else you'll be singing the blues, so come over to your Texas Ford Dealer and save hundreds, maybe even thousands, before you make your best deal. All during Truck Month!

GRUVER FORD, Inc
531 Main Gruver, Texas

⁽¹⁾ 1993 F-150 XL Regular Cab 4x2 with 4.9L and Automatic Transmission. MSRP \$266 payment based on \$14,212 MSRP. MSRP \$500 available on models delivered and registered in states of Texas, Oklahoma and Louisiana. Tax, title and license extra. Example based on 11.71% APR Ford Credit financing for 60 months, qualified buyers with 15.3% down. Dealer participation may affect savings. See dealer for his payment and terms. ⁽²⁾ 1993 Ranger XLT 4x2 with 2.3L engine and manual transmission. PEP \$6-E. \$198.99 payment based on \$11,184 MSRP less \$500 cash back. For cash back take new retail delivery from dealer stock by 3/31/93. Tax, title and license extra. Residency restrictions apply. Example based on 11.71% APR. Ford Credit financing for 60 months, 15.3% down to qualified buyers. Dealer participation may affect savings. See dealer for his payment and terms.