

SCR2
COMP
HANSFORD COUNTY LIBRARY
0122 MAIN ST
SPEARMAN TX 79081-2064

Walk for Kids' Sake 2007

Walk for Kids' Sake 2007, the annual fundraiser benefiting Big Brothers Big Sisters, will be held Saturday, February 24th, at the Ochiltree County Expo Center.

The theme for this year is "Be Part of Something Big!" This year marks the tenth year that the Wheatheart Satellite of BBBS of the Texas Panhandle has served the local area - Perryton, Spearman and Booker. "There are 100 children matched with caring volunteers through our programs," explained agency case manager, Kimberley Lopez.

The mission of BBBS is to help children reach their potential through professionally supported one-to-one relationships, or matches. "When kids are successful, or, in other words, growing into confident, competent, caring adults, which is the goal of our program," Lopez said, "there is an enormous impact on our schools, communities and future. It's important enough to touch the life of one child - but the ripple effect that has is amazing!"

There are two core programs. In the community-based program, Big Brother and Big Sister volunteers provide children, Littles, individual time and attention on a regular basis, typically a couple of hours a week. Unstructured outings filled with conversations and shared activities develop relationships that help kids manage the every day challenges that are part of growing up. Studies show that children matched with a BBBS mentor are less likely to use alcohol or other drugs, be truant or violent. They are more confident about school performance and better able to get along with their families and peers. There are 14 children matched in this program locally.

Through the second core program, Bigs in Schools, volunteers offer children individual time and attention on a consistent basis, with the venue being the child's school rather than the community. Teachers identify those children who can most benefit from an extra caring adult in their lives.

Volunteers and children meet each week during the school year. Whether they play board games, or read together, their relationship promotes a positive school experience for the child: good attendance, positive peer and adult relationships, a positive attitude, and academic enrichment. There are 84 children matched in local elementary and junior high schools.

The Bigs in Schools program allows juniors and seniors in high school to spend time each week with a "Little" too. High school Big Brothers and Big Sisters experience the joy and life changing power of service and build their college resume as well. Littles gain the same benefits that are provided by older volunteers and have the opportunity to connect with a role model close to their own age.

There are children ready to be matched; Big Brothers are especially needed. One Little Brother has been on the waiting list for two years!

The satellite office is financially independent; no funding is received from the parent agency in Amarillo or the national program. There is no cost to program participants. All of the money raised benefits the local program. "The money is used to create and support the intentional friendships that have such a huge impact on the children," Lopez explained.

Funds are needed to recruit, screen, and train volunteers and supervise matches. Additionally, two high school mentors are awarded college scholarships. The money raised also underwrites agency match activities and provides materials for school based matches. "In January we hired April Snyder to work part time as an office manager," Lopez said. "We've grown so rapidly in the last couple of years that I just couldn't keep up any more. She's been a great blessing. This is an exciting time to be part of BBBS and we need our fundraising to keep pace with our growth."

"Our goal is to hold one fundraiser a year, so that we don't

take more time away from working with kids," Lopez said.

"There is one big misconception about this event that keeps some people from participating," Lopez said. "Walk for Kids' Sake is not a walk-a-thon. It does not matter how far or how fast you walk - or technically if you even walk at all! During one 45 minute shift, participants can walk but they also get to eat, visit with friends, and maybe even win a prize! It's really like a thank-you party for raising money for our kids. That's what it comes down to, every dollar raised helps us match a child with a caring mentor."

There are many ways individuals, groups and businesses can be involved in this special event.

Teams of walkers made up of friends, neighbors, family and coworkers walk together during one of four forty-five minute shifts on the day of the event. Team members raise at least \$50 each by soliciting donations from their circle of contacts.

Walkers raising \$100 in pledges will receive a prize, a Heartstone photo frame supplied by Taylor's Old Times Shoppe, and those raising \$200 will get another prize, a \$20 Sonic gift card donated by Sonic Drive-In.

This year grand prizes will be given to the top five individual overall money raisers; in previous years only the top three money raisers got a grand prize.

This year's grand prizes are: HP Photosmart A316 Digital Photo Bundle (camera and snapshot printer) from Perryton Office Supply/Radio Shack; a Trip to Amarillo package (includes an overnight stay at the Ambassador Hotel, dinner at the Olive Garden and tickets to a Gorillas hockey game); Jewelry donated by Graham Brothers Jewelers (\$800 value); Side of Beef (processed) donated by Perryton Feeders and Big 4 Packing (about \$800 value); Zoom Bleaching donated by Dr. Annelle Garcia, DDS (\$585 value).

Every team member receives a T-shirt printed by dsDesign featur-

ing a design by Scott Trotter of Vector Studios, son of Patsy Trotter of the Lemon Law Firm. Walkers at the event are eligible for door prizes given away during their shift. Food and drinks will be provided throughout the day.

Corporate sponsorships ranging from \$50 to \$2,000 are available. Businesses may also donate door prizes for walkers.

A raffle is being held in conjunction with the event. This year the

winner of the drawing to be held on February 28th on the KXDJ morning show will receive two tickets to a Texas Rangers game, two weekend nights at the Hilton Arlington, and gift certificates to Shady Oaks Barbeque (\$50) and Joe's Crab Shack (\$40). Tickets cost \$10 each or three tickets for \$25.

Anyone who would like to serve as a team captain or needs more information about this event or becoming a volunteer should call

434-0016 or speak to one of the agency's Advisory Committee members who are recruiting team captains and sponsorships. These members are Tommy Butler, Shelly Cowan, Vickie Barby, Becky Randall, Marva LaMaster, Johnanna Dear, Stacey Brown, Debbie McGarraugh, Marilyn Reiswig, Leann Carson, Dal Foster, Matt Bartosiewicz, Ed Williamson, Tara Leicht, Kurt Hirschler, Susan Andersen and Jimmy Graves.



GHS Students Take First in District Cross-X Debate

Leigh Anne Winger (left) and Lynn Vela (center) went undefeated in the four district rounds to win 1st in the UIL District Cross-X Debate contest. They will be competing at the state level in Austin. Miss Vela and Miss Winger started their CX Debate record with a quarterfinal trophy from the Hereford tournament January 27. Their coach is Annelle Teal (right).

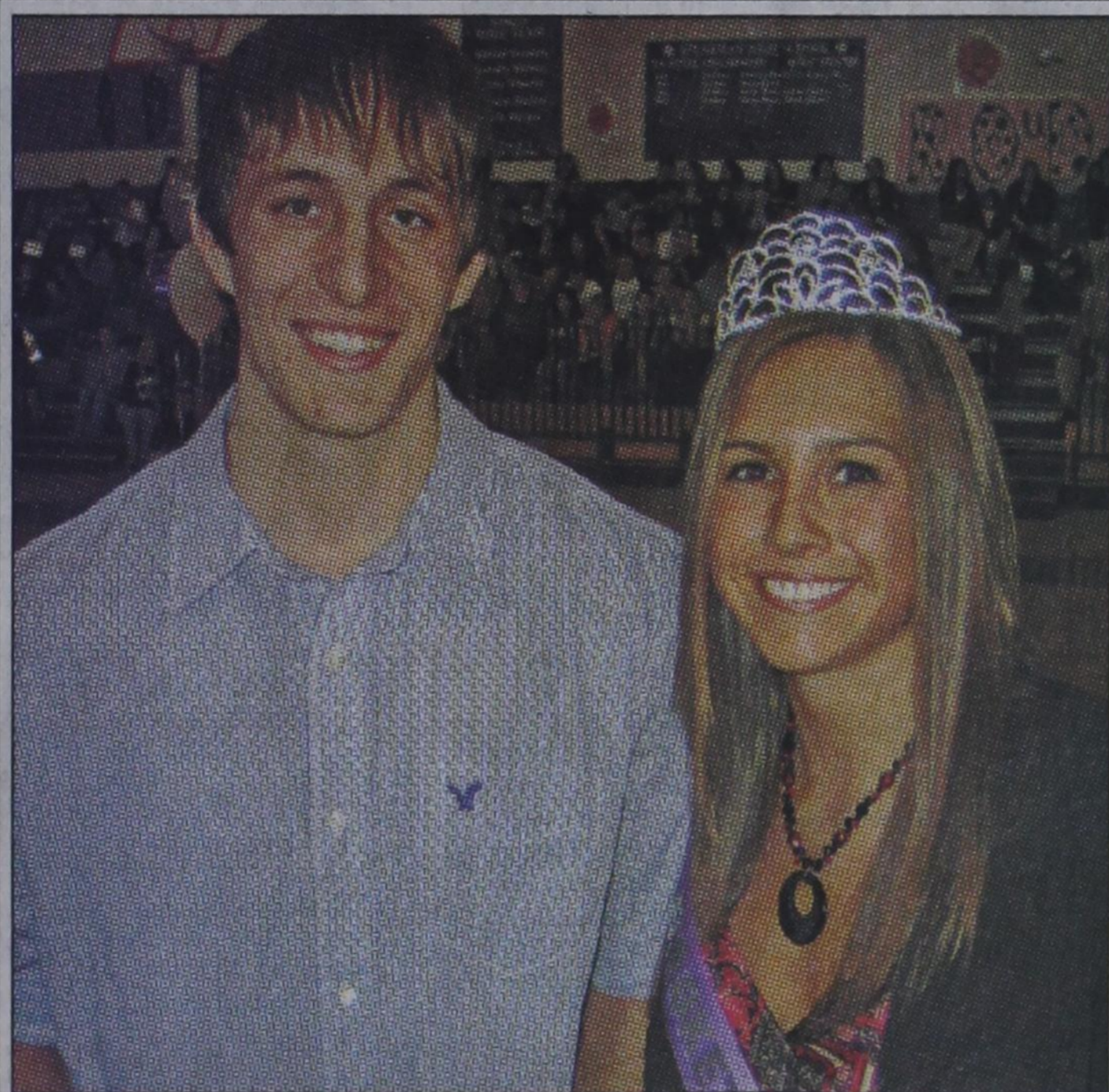
BBBS Recognized as "Perfect Ten"

Big Brothers Big Sisters of the Texas Panhandle has been recognized as a "Perfect Ten" by Big Brothers Big Sisters of America for achievement in match and revenue growth.

"We are one of only 26 agencies nationwide that had 10% or more growth in children served, new matches and revenue. With 424 agencies nationally, that means we are in the top 6% of agencies in the country," Susan Scheffe, Board President, explained. "The Wheatheart Satellite office serving Perryton, Spearman and Booker is commended for their contribution to this success."

Big Brothers Big Sisters (BBBS) is a volunteer driven organization dedicated to placing caring adults in the lives of children ages six to fourteen. Mentors work with children to help develop positive behaviors, life skills, hobbies, career interests and improve academic performance. Research shows children in BBBS mentoring relationships have improved self-esteem, academic performance, social behaviors and even better attitudes at school and home. There is also a reduction in violence, truancy and alcohol and other drug use. "Our mentors are truly transforming children's lives!" Scheffe stated.

Big Brothers Big Sisters of the Texas Panhandle currently serves over 316 children, 100 of those in Perryton, Spearman and Booker. There is room for further growth; more children are ready to be matched. Volunteers are needed for both the school and community based programs. Call 434-0016 for more information.

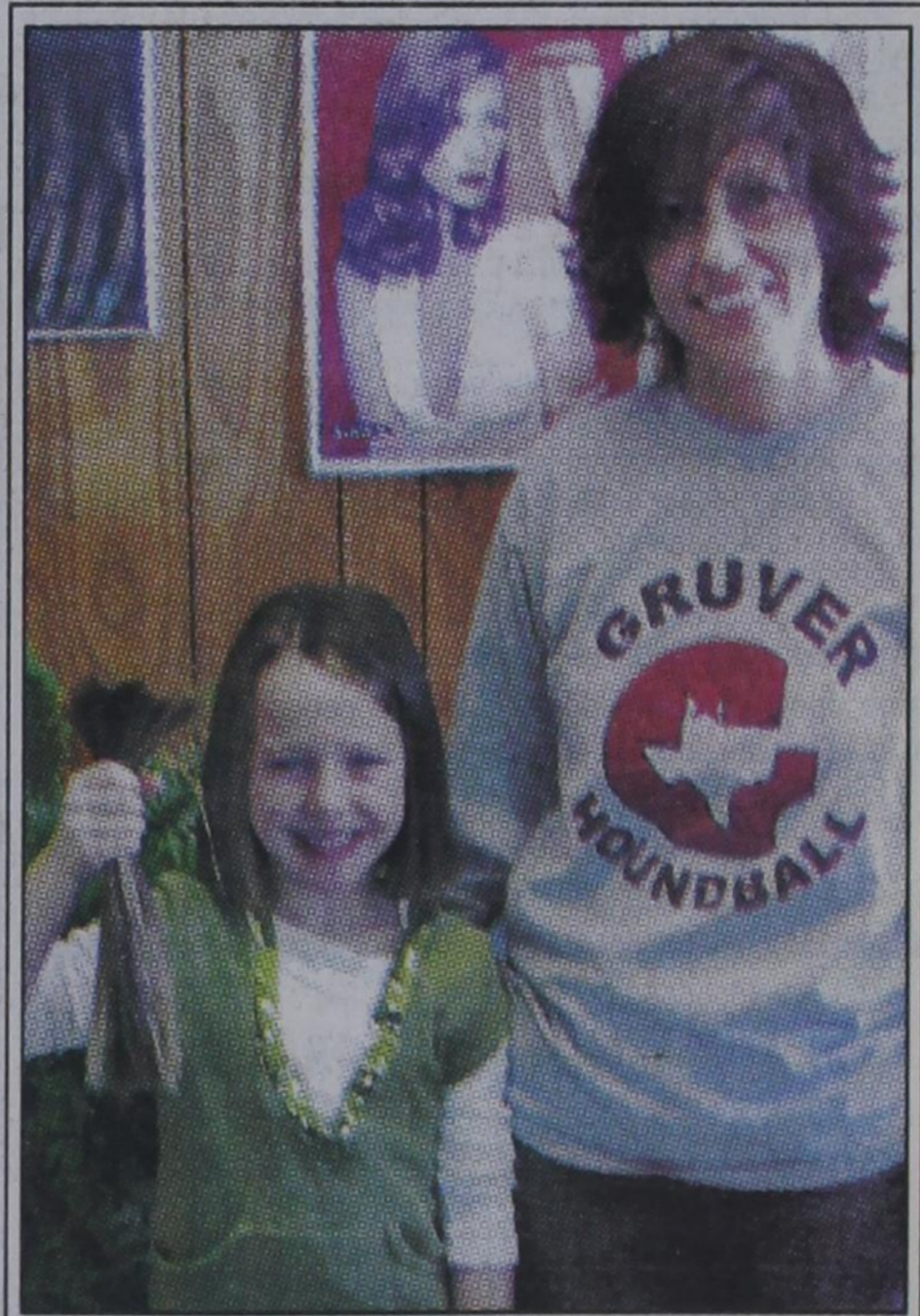


SHS 2007 Basketball Homecoming King, Queen

Nic Cenicerros (left) and Jordanna Lozano (right) were selected as the Spearman High School Basketball Homecoming King and Queen for 2007.

Nic Cenicerros
Senior Lynx and King Candidate Nic Cenicerros is the son of Carrie and Alfonso Cenicerros and Albert Avila. Nic has attended Spearman schools for twelve years and has played basketball two years. This is his first year to play on Varsity. The most exciting thing that has happened during Nic's basketball career at SHS was playing in the Championship game at the Vernon tournament. Nic plans to attend West Texas A&M and major in Biology. The advice that Nic would like to pass on to future Lynx and Lynxettes is to "play hard, act right, and be coachable!"

Jordanna Lozano
Senior Lynxette and Queen Candidate Jordanna Lozano is the daughter of Tina and John Adams and Frank Lozano. Jordanna has attended Spearman Schools for twelve years and has played basketball for ten years. She has played on Varsity for three years and made Academic All-District her sophomore and junior year. The most exciting thing that has happened during her basketball career at Spearman High was when they took first place at the Vernon Tournament while ending Borger's winning streak. Jordanna's future plans after graduation are to attend Air Force basic training in San Antonio and later work on becoming a doctor. The advice that she would like to pass on to future Lynx and Lynxettes is to "play with your heart, enjoy your time, and give 110%."



Locks of Love

K.D. McCloy (left) of Gruver recently cut 10.5 inches of her hair for Locks of Love. Six-year-old K.D. had been growing her hair long for several years and decided she wanted to cut it shorter. After hearing of other children donating hair to Locks of Love and the purpose of doing so, K.D. decided she wanted to donate her hair. Leticia Salazar (right) of Shear Style in Gruver cut her hair. K.D.'s family is very proud of her for making such an honorable decision at such a young age. Photo by Carol Sell

Alternative Energy Meeting

All Ochiltree County agricultural producers and interested citizens are invited to attend an alternative energy meeting at the Ochiltree County Expo Center on February 16.

The meeting will feature Texas Cooperative Extension Specialists speaking on the following topics: Economics of Small and Large Scale Ethanol Production, Wind Energy Opportunities, and The Effects of Alternative Fuel Production on Livestock Feeding.

The free meeting will begin at 9:00 am and conclude at noon. For more information contact Ochiltree County Extension Agent Scott Strawn at 435-4501.

Live,
Laugh &
Love



by Catherine R. Smith
cathysmith@antden.com

This week I am sharing the second installment of the anonymous quotes that were sent to me from Bill Pittman. I hope you enjoy them.

- ~ If you have a lot of tension and you get a headache, do what it says on the aspirin bottle: Take two and keep away from children.
- ~ It is easier to get older than it is to get wiser.
- ~ It is easier to preach ten sermons than it is to live one.
- ~ It's frustrating when you know all the answers, but nobody bothers to ask you the questions.
- ~ Jesus paid the price. You get to keep the change.
- ~ Middle age is when you choose cereal for the fiber, not the toy.
- ~ My mind not only wanders, sometimes it leaves completely.
- ~ My reality check bounced.
- ~ My software never has bugs. It just develops random features.
- ~ My son is an honor student at the state correctional facility.
- ~ My wife and I had words, but I didn't get to use mine.
- ~ My wild oats have turned into prunes and All Bran.
- ~ "Old" is when an "all nighter" means not getting up to pee.

- ~ "Old" is when you are cautioned to slow down by the doctor instead of the police.
- ~ "Old" is when you don't care where your spouse goes, just as long as you don't have to go along.
- ~ "Old" is when your friends compliment you on your new alligator shoes, and you're barefoot.
- ~ "Old" is when your sweetie says, "Let's go upstairs and cuddle" and you answer, "Honey, I can't do both."
- ~ Our days are happier when we give people a bit of our heart rather than a piece of our mind.
- ~ Research has determined that the shelf life of fruitcake is longer than the shelf.
- ~ Should we save Styrofoam peanuts in case we ever meet a Styrofoam elephant?
- ~ Show me a man with both feet firmly on the ground, and I'll show you a man who can't get his pants off.
- ~ Some teenage boys misunderstand when they buy their pants on sale. They think 40% off is how they're supposed to wear them.
- ~ Stop telling God how big your storm is. Instead, tell your storm how big your God is.
- ~ Take my advice. I don't use it anyway.
- ~ Teach a child to be polite and courteous in the home and, when he grows up, he'll never be able to merge his car onto the freeway.
- ~ The 3 stages of man: He believes in Santa Claus He doesn't believe in Santa Claus He is Santa Claus
- ~ The Bermuda Triangle got tired of warm weather. It moved to Alaska. Now Santa Claus is missing.
- ~ The best mirror is an old friend.
- ~ The best way to keep kids at home is to make the home a pleasant atmosphere...and let the air out of their tires.
- ~ The colder the x-ray table, the more of your body is required on it.
- ~ The eyes are open, the mouth moves but mister brain has long since departed.
- ~ The FOUR stages of man: He believes in Santa Claus - He doesn't believe in Santa Claus - He is Santa Claus - He looks like Santa Claus
- ~ The geek shall inherit the earth.
- ~ The IQ of the group is the lowest IQ of a member of the group divided by the number of people in the group.
- ~ The journey of a thousand miles begins with a broken fan belt and a leaky tire.

May God bless and keep you; May He make His face to shine upon you, and be gracious to you; May the Lord lift up His countenance upon you, and give you peace.

Numbers 6:24-26

Catherine :)

Tong's Chinese Restaurant


511 S. Hwy. 207 • 659-2838 • Spearman

All-You-Can-Eat Buffet Specials

- Tuesday - Steak \$7.99
- Thursday - BBQ Ribs \$6.50
- Friday - Shrimp \$6.50
- Saturday - Catfish \$6.50
- Mon., Wed. & Sat. \$5.50

Buffet Hours: 11 a.m.-2:30 p.m.
and 5:30-Close

STATEPOINT SUDOKU
PRESENTED BY



**Taxes Made Easy.
Taxes Done Right.**
www.TurboTax.com

	7			9		2	
	1	9	5	8			
2	8		3			1	9
4							7
	7						4
8							6
	6	8		7		1	2
				2	5	7	6
	9		6			8	


© 2007, StatePoint Media, Inc. answer on classified page
Fill in the blank squares in the grid, making sure that every row, column and 3-by-3 box includes all digits 1 through 9.

These games are brought to you by the
Hansford County Reporter-Statesman

STATEPOINT CROSSWORD

1	2	3	4	5	6	7	8	9	10	11	
12		13		14		15		16			
17			18					19			
20			21						22		
23						24	25	26			
		27			28	29					
30	31	32		33	34			35		36	37
38			39		40			41		42	
43			44		45			46		47	
		48		49			50		51		
52	53					54			55	56	57
58				59	60	61					
62		63		64				65			
66				67					68		
69					70					71	

PRESENTED BY



**We're More than Champion Dogs.
We're the Dog's Champion.**

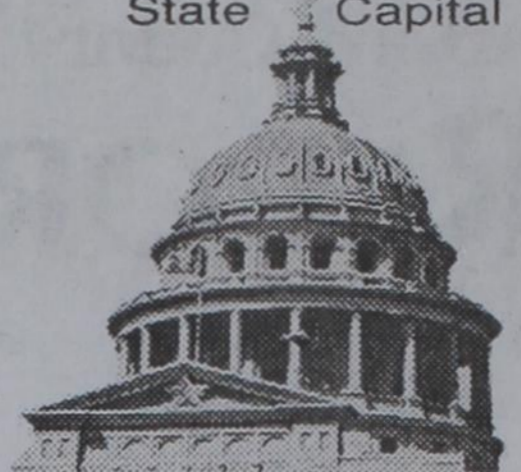
Visit us at akc.org

© 2007, StatePoint Media, Inc. answer on classified page


DOGS

<p>ACROSS</p> <ol style="list-style-type: none"> 1. Ampere 4. Australian buddy 8. Pre-college school 12. President's mom 14. Hangs in back of mouth 16. Rise up 17. Dwarf buffalo 18. Stringed instrument of India 19. Arguably first Holy Roman Emperor 20. Runs game by sight rather than scent 22. TV's Opie Taylor 23. The side where the sun rises 24. Day trip 27. ___ Paolo, Brazil 28. Most popular small breed dog in U. S. 30. ___ and tuck 33. Converts energy into motion 35. Short stanza at the end of poem 38. Blister 40. Gold, silver or bronze 42. Evergreen trees used for archers' bows 43. Hot chocolate 45. Olympic team race 47. Band famous for "Losing My Religion" 48. Unwind 50. Spelling competition 52. American ___ Club, sponsor of this crossword 54. Nobleman in Spain 58. Friend in Paris 59. Change one's opinion 62. Done aloud at school? 64. Make corrections 65. Mountain goat terrain 66. Frenchman's mother 67. 1950s style to today's generation 68. Opposes love 69. Phenyl, tolyl, xylyl, e.g. 70. Contraction of not ever 71. Electronic display 	<p>DOWN</p> <ol style="list-style-type: none"> 1. Degrade 2. Klepto 3. Short for TV programs 4. A-bomb cloud 5. Par ___, airmail 6. "Swan Lake" outfit 7. Zeal or elegance 8. Plays for pay 9. Golden dog 10. Founder of Eaton Corporation 11. Fork tooth 13. Basic monetary unit of Thailand, pl. 15. Fervor 21. There's no I in this group 25. Ukulele 26. Tim of "A Christmas Carol" 28. Singing in the Alps 29. Verbal exam 30. Peacock network 31. U.N. labor agency 32. Involving money 34. Short for territory 36. O in IOU 37. Marxism or Taoism, e.g. 39. Capital of West Germany, 1949-1989 41. Yellow, black or chocolate 44. Hole-in-one 46. 52 weeks 49. Brought on by stress? 51. Methuselah's father 52. TV Earl's principle 53. African chieftain 54. Horror in movies, e.g. 55. Relating to dura mater 56. Related on the mother's side 57. Bordered 60. A sign 61. Boundary line 63. Ctrl+Alt+___
---	---

TEXAS PRESS ASSOCIATION
State Capital



HIGHLIGHTS
By Ed Sterling



HOUSE LIMITS FLOW OF LEGISLATION IN FIRST 60 DAYS OF SESSION

When the Legislature convenes, one of the governor's duties, so says the Texas Constitution, is to recommend to lawmakers "such measures as he may deem expedient."

That means the all-important state budget and the governor's top issues - usually referred to as emergency issues - go to the front of the line.

Other bills can be acted upon quickly too, if a well-oiled procedure is followed: the House simply votes to suspend a constitutional rule that reserves the first 60 days of the legislative session for the passage of bills that top the governor's priority list.

However, as January drew to a close, the House departed from its normal behavior when a motion to suspend the rule, which required a supermajority (four-fifths) vote to pass, failed.

Thirty-four of the House's 150 members voted "no" despite cries that doing so would create a logjam of bills late in the session and likely prevent many local bills from ever making it out of committee.

So, for the first time since the 1981 legislative session, House bills won't get past the committee level in the first 60 days of the session.

The vote not to suspend has been interpreted as retaliation against House Speaker Tom Craddick, who doled out committee assignments perceived as punitive by some members who supported Rep. Jim Pitts, R-Waxahachie, in his short-lived speaker candidacy.

Despite the vote, there is a movement among Craddick lieutenants and other House members to vote again on rule suspension.

Child safety program launched

John Walsh, host of the Fox television program "America's Most Wanted," joined Lt. Gov. David Dewhurst in a Capitol news conference to announce Dewhurst's "Texas First!" child safety initiative.

The initiative teams the state and private sector in helping kindergarten through second grade students learn how to be safe around strangers and to educate the children about the dangers of predators online, in schools and in neighborhoods.

The Safe Side Company, co-founded by Walsh, is donating more than 1,000 Stranger Safety Resource Kits to Texas school districts.

Kits include lesson plans and activities for classroom use, and a media library that includes 25 copies of the "Stranger Safety" DVD for take-home use.

Texas is the first state to participate in the program, Dewhurst's office said.

Order issued for vaccination rules

Gov. Rick Perry on Feb. 2 issued an executive order directing the Health and Human Services Commission to adopt rules requiring girls age 11 and 12 to be vaccinated against the Human Papillomavirus (HPV) before they enter sixth grade.

The rules are to include an opt-out provision for parents who don't want their daughters to be vaccinated.

Perry wants the program to be up and running by September 2008.

Certain strains of HPV are known to cause cervical cancer.

TEA publishing expenditures

Gov. Perry is now publishing his office's expenditures online and on Feb. 1 proposed requiring all state agencies to publish their expenditures online as part of his budget reform package.

The Texas Education Agency went ahead and published its check register online. It can be viewed at <http://tea.state.tx.us> by clicking on the "About TEA" button. The check register will be updated at least quarterly, the agency said.

State lottery may be up for sale

Gov. Perry indicated he is thinking about selling the Texas Lottery to a private firm. Other states are contemplating doing the same in exchange for a chunk of the profits. Perry was to give more details in his Feb. 6 State of the State speech.

Opinion page mainstay dies

Widely read and published syndicated columnist and best-selling author Molly Ivins, 62, died Jan. 31 at her home in Austin after an eight-year recurring battle with breast cancer.

Ivins focused strongly on the Texas Legislature in particular and state politics in general for nearly four decades. In recent years she devoted extra attention to the political career of President George W. Bush.

The Hansford County Reporter-Statesman
213 Main Street • Spearman, TX 79081
Phone - (806) 659-3434 • Fax - (806) 659-3368
cathysmith@antden.com
Mon.-Thurs. (Closed Fridays) 9 a.m.-12 p.m. & 1-5 p.m.

Gary Smith - Publishers
Catherine Smith - Editor • Clayton Smith - Asst. Editor
Contributing Writers: Dorothy Hudson and Merry Sparks
Contributing Photographer: Charlie Johnson

Subscription Rates
In Hansford County - \$30.00 • Out of County - \$40.00

The Hansford County Reporter-Statesman (USPS 529660) is published weekly in Spearman, TX. Periodical postage paid in Spearman, TX. **POSTMASTER:** Send address changes to: The Hansford County Reporter-Statesman, 213 Main Street, Spearman, TX 79081.




Publication Policy

The deadline to submit news and advertising to The Hansford County Reporter-Statesman is Monday at 5 p.m. Items submitted after the deadline will be published at a later date, as time and space permit. Publication of all items is at the discretion of the editor.

Advertising

Open Display rates are \$4.00 per column inch. Classified Ads are \$6 for the first 25 words and 10¢ per word for each additional word. (Additional charge for boxed classifieds.) There is a \$1 charge per week if billed.

Member of
Gruber Chamber of Commerce
Spearman Chamber of Commerce
Texas Press Association and Panhandle Press Association

Happy Birthday!

Editor's Note: This Happy Birthday list is run as a public service by the Hansford County Reporter-Statesman. We apologize if any names are misspelled. If you know of a name that needs to be changed, added or deleted, please call 659-3434.

Thank you, Catherine

February 8
Birthdays - Louise Etter, Bobby Mosier, Ben Vaughn, Domingo Salazar III, Verlin Beck, Dorothy Karns, Jesse Briseno, Verlene Bass, Zachary Logsdon, Sue Watts
Anniversary - M/M Tony Herndon

February 9
Birthdays - Loren Dahl, Andy Hoel, Elena Salazar, Carole Hall, Sara Avila, Paula Garza, Doris Breedon, Jackie Pearson, Linda Rodriguez, Lori Williams, Rossetta Barrera, Michelle Laughlin, Armando Borunda, Drew Mireles, Betty Scribner
Anniversary - M/M Martin Ochoa, Bill & Alice Miller, M/M Cecil Reynolds, M/M Dwayne TeBeest

February 10
Birthdays - Karen Cotter, Mark Irwin, Tammy White, Robbie Cator, Mary Ann Lasater, J. Travis Garnett, Evelina Martinez, Gregory Brand, Jimmy McLeod, Charles West, Fanetta Pierce, Josie Holt, Debbie Eslick, Karen Schnell
Anniversary - M/M Perry Dixon

February 11
Birthdays - Angie Clawson, Craig Schuman, Kari Lou Russell, Joan McClellan, Denise Harbour, Lillian Cooksey, Roy Harbour, Leigh Anne Winger, Addie Williams, Sloan Dominguez, Leo Cummings

February 12
Birthdays - Rod Been, Lynn Burk, Louise Evans, Brian McClenagan, Brandon Reagon, Kaci Renteria, Sister Criselda Vela, Mae Hargis, Kelly Goodman, Anselmo Vela, Mary Dixon, Glynn & Lynn Pattison, Jennie Lou Connely, Jana Hawkins, Roy Sutton, Mary Virden, Troy James, Derrick Burnett, Clayton Vanderberg, Stephen Jacobs, Walter Postoak
Anniversary - M/M Buck Tidwell, M/M Gary Evans, M/M Roy Lee Uptergrove, Mr. and Mrs. Larry Ross

February 13
Birthdays - Rick Barkley, Rosi Chisum, Kristi Williams, Sherry Lee, Richard Ooley, Bill Watson, Catalina Espinosa, Esther Vargas, Mari Ann Bartimos, Maura Gaspar, Lexi

Farmer Anniversary - M/M Eddy Rojas

February 14
Birthdays - Alice Goodman, Ti Harbour, Nick Nelson, Janice Holt, C.W. Kirk, Tommy Thomas, Laura Umphress, Bubba Smith, Donna Ball, Lena Kathryn Harbour, Betsy Sutterfield, Kenneth Baker, Josiah Lee Vasquez, Courtney Wood
Anniversary - M/M Kip Francis, M/M Roney Clark, Ricky & Cindy Dowdy, Hal & Jeanie Bennett, Terry & Tammy Burch, M/M Omar Sutton, M/M Salomon Tarango, M/M Tony Swink, M/M Rod Holland, M/M Delfino Parra, Rev. & Rev. Joseph Weeks, Garrett & Mika Gumfroy

February 15
Birthdays - Lee Bradford, Heath Gammon, Donnie Thoreson, Claude Sheets Jr., Lynn Sheets, Brenda White, Marlane Nollner, Laura Dahl, Toby White, Kirk Adams, J. P. Prouty, Juanna Rosales, Colby Bedell, Rick Finley, Colleen Burkhammer, Steve Hartgraves
Anniversary - M/M Hoyt Biles, M/M Jim Norton

February 16
Birthdays - Johnny Pat O'Connell, David Parker, Mike Larson, Lynda Owens, Ismael Vela, Timothy Peck, Maylynn Ayers, Cliff Lang, Brittany Claxton, Diana Pepper, Rex Reid
Anniversary - M/M Jesus Espinosa, M/M Charles Chritton, M/M Augustine Mejia, M/M Bobby Hohertz, M/M Gene Fletcher, Eschol & Eulalia Blankenship

February 17
Birthdays - Katie Jones, Manuel Ruiz Jr., Mark Guthrie, Lee Ann Schrader, Charles Hall, T.H. Rodriguez, Ernest Wayne Jr., Ric Smith, Isela Huerta
Anniversary - Oscar & Janice Noble, M/M Ed Castillo

February 18
Birthdays - Vickie Bullard, Carla Jo Riggins, Luke Stroud, Beau Roberts, Buck Sell, Edith Breland, Blan Rutherford, J.D. Poer
Anniversary - M/M Richie Fletcher

February 19
Birthdays - Melissa Quillin, Delphine Eting, Bob Womble, Stephanie Hays, Bennie Brogdon, David Kellum, Sylvia Rosales, Niki Taylor, Robert Dean Meire, Chuck Ball, Sylvia Taranto
Anniversary - Charles & Carol Hall, M/M Dorsey Perez, M/M Lupe Moreno, M/M Larry Trospier

Words from Faith & Grace

by Cecil R. Biggers, Lutheran Lay Minister

As we continue in this season of discovery/revelation we study Jeremiah 17:5-10, Psalm 1, I Corinthians 15:12-20, and Luke 6:17-26. Jeremiah was called as a prophet as a young man and served the Lord for some seventy years. In this poem Jeremiah warns that those who trust in mortals for salvation and protection are mistaken and will wither and perish, but those whose hope is in the Lord are like trees planted by water. Jeremiah's theme is, "repent, have faith in the One True God and you will find strength for living". Dear Christian in this world politicians, warriors, and sages will not "save" you.

The Psalmist sings of the blessedness of delighting in/meditating on the law of God. Do not follow the wicked, the enemies of God; do not follow the sinners, those who miss the mark of righteousness; do not heed the scoffers, those who mock and ignore God. The Lord will watch over those who are righteous.

Paul is winding up his advice to the troubled church at Corinth. He proclaims the physical resurrection of Christ. He does this because in Greek philosophy, the soul was the spark of the gods and when the body died it decayed and the soul returned to the gods. In Christian thought, the wages of sin is death. If we die in sin, we die indeed; we are separated from God forever. Through Jesus Christ's resurrection, we are assured of God's forgiveness. That forgiveness through our baptism is our "righteousness", our individual "ticket" to eternal life with God. Paul is showing us our salvation not by the "empty tomb" but by the physical resurrection of Jesus Christ!

Luke's "Sermon on the Plain" shows us Jesus turning conventional wisdom upside down. Blessed are the poor, Blessed are the hungry, Blessed are they that mourn, Blessed are you when men hate you because of me. Woe to the rich, Woe to the satisfied, Woe to the merry, Woe to those who are spoken well of by sinful people. Jesus tells us that if all we seek is what we want in this world, then that is the most we shall receive. Jesus only promised his followers that they would be fearless in time of trial, absurdly happy, and in constant trouble with the rulers of this world. Meditate on this and see if you have a discovery (epiphany). May the Holy Spirit lead you to discover true treasure.

Our Sympathy

DORTHA LEE TAYLOR MITTS

WOODWARD, Okla. - Dortha Lee Taylor Mitts, 94, died Saturday, Feb. 3, 2007.

Services will be at 10 a.m. today in First Church of the Nazarene with Ted Barker, Jack Cornell and Coby Cook officiating. Burial will be in White Rose Cemetery in Reydon by Zwanziger Funeral Home.

Dortha Lee Taylor Mitts was born Oct. 3, 1912, in Canadian, Texas, to John Kirk and Sally Caroline Smith Tomlinson. She attended First Church of the Nazarene and Apostolic Faith Church in Woodward.

Survivors include a daughter, Polly Jean Thorn of Woodward; seven grandchildren; four great-grandchildren; and two step-grandsons.

The family suggests memorials be to the Apostolic Faith Church or the children's activity fund of First Church of the Nazarene in Woodward.

MONUMENTS

Boxwell Brothers Funeral Home

519 Evans • Spearman
659-3802

Dear friends,
 When you buy a monument from us we make sure it is exactly what you want at a price you can afford. If it is not right, we will make it right. And you will not have to search the countryside to find us. We are here when you have a need.

Sincerely,
 Bob Boxwell

NO UP FRONT COST! NO EQUIPMENT TO BUY!

FREE 1-4 ROOM SYSTEM!
 FREE FASTEST INSTALLATION!
 FREE DVR OR HD RECEIVER UPGRADE!

DIRECTV

250+ ALL DIGITAL CHANNELS!
 PACKAGES START \$29.99/MONTH!!
ORDER DIRECTV NOW!
 1-800-574-1938

DIABETICS!

IF YOU HAVE MEDICARE OR PRIVATE INSURANCE, YOU MAY BE ELIGIBLE TO RECEIVE YOUR DIABETIC SUPPLIES AT LITTLE OR NO COST!

We also carry Impotence & Arthritis Supplies

FOR INFORMATION CALL EASY ACCESS MEDICAL SUPPLY
1-800-679-1623
www.foryourhealthmed.com
 Certain Restrictions May Apply • No HMO's, Please

STOP LEG CRAMPS BEFORE THEY STOP YOU.

Calcet's triple calcium formula is designed to help stop low calcium leg cramps. Just ask your pharmacist.

Leg cramps Calcet Triple Calcium

Mission PHARMACEUTICAL
 CA. 06901 Rev. 05/06 © 2006 Mission Pharmaceutical Company. All rights reserved.

Servantez Estate Repair

Tree Service
 Topping, Pruning
 Cleaning, Removal

Carpenter Work
 Remodeling & Repair
 Fences & Decks
 Shingle & Metal Roofing
 Painting - brush or spraying

Owner: Lorne Servantez
 P.O. Box 715 • Spearman
 (806) 659-3960

Reagan & Brown Auctioneers

PO Box 658 • Dalhart, TX 79022 • (806) 244-6776

CONSIGNMENT SALE

WE ARE TAKING CONSIGNMENTS FOR A SALE TO BE ON MARCH 15, 2007 IN GRUVER, TX. IF YOU WOULD LIKE TO CONSIGN SOME ITEMS PLEASE CALL US AT 806-244-6776, EMAIL US AT rbaut@xit.net, FAX US A LIST AT 806-244-4453, OR CALL LEON LANEY AT 806-333-2738.

Reagan & Brown Auctioneers - (806) 244-6776
 LEON LANEY TXS# 16071

YOUR ROAD TO A NEW CAREER!

- Paid CDL Training!
- No Experience Needed!
- Earn \$40 - \$75K Yearly!


Stevens Transport offers the best comprehensive training program for new drivers! Get your career rolling and enjoy exceptional earnings and great benefits from the #1 premier transportation carrier.

For more information, call **800-333-8595**

Stevens Transport
www.stevenstransport.com


Hansford Implement Co.

Gear up for spring!



John Deere 6000 Series Tractors

- Up to 125 engine hp
- High-torque PowerTech™ engine delivers up to 51 percent torque rise
- Shift-free John Deere Infinitely Variable Transmission™ (IVT) offers groundbreaking performance and convenience



John Deere 4895 Windrower

- Powerful, 4-cylinder, turbocharged John Deere diesel engine
- Hydrostatic drive offers precise control of ground speed to match varying conditions
- Deluxe operator station provides optimum comfort and convenience

South Hwy 207 • Spearman, TX • (806) 659-2568
 12098 East Frederic Ave. • Pampa, TX • (806) 665-1888
 South Loop Road • Perryton, TX • (806) 435-4036
 939 N. Dumas Ave. • Dumas, TX • (806) 935-7720

www.yourlandyourbrand.com JOHN DEERE

Replenish the seed of faith through . . . DAILY BIBLE READING, PRAYER & REGULAR CHURCH ATTENDANCE

Spearman

Apostolic Faith Church
 822 S. Dressen • 659-2870
 Sunday School: 10 a.m.
 Worship Services: 11 a.m.
 Sun. Eve.: 6 p.m.
 Wed. Prayer Mtg.: 7 p.m.
 Pastor - Roland Haney

First United Methodist
 407 S. Haney • 659-5503
 Sunday School: 9:45 a.m.
 Worship: 8:30 & 11 a.m.
 Jr. High Youth: 5 p.m. Sunday
 High School: 6 p.m. Sunday
 Kids Club: 3 p.m. Wed.
 Pastor - Neely Landrum

Grace Presbyterian Church
 (Worships with Faith Lutheran Church)
 1101 Bernice • 659-2033
 Pastor - Beverly Cook

Faith Lutheran Church (ELCA)
 1101 Bernice • 659-2252
 Sunday School: 9:45 a.m.
 Worship: 11 a.m.
 (Worships with Grace Presbyterian Church)
 Pastor - Beverly Cook

Union Church
 31 S. Endicott • 659-2644
 Sunday School: 9:45 a.m.
 Worship: 10:45 a.m.
 Evening Worship: 6 p.m.
 Bible Study: 7 p.m. Wed.
 Pastor - Dr. Timothy Minor

Fellowship Baptist
 1102 S. Archer • 659-2783
 Sunday School: 10 a.m.
 Worship: 11 a.m.
 Sun. Evening Worship: 6 p.m.
 Youth/Adult Service: 7:30 Wed.
 Pastor - James Washburn

Primera Mision Bautista
 502 E. 7th • 659-3991
 Sunday School: 9:45 a.m.
 Worship: 11 a.m.
 Evening: 6 p.m.
 Wed. Prayer Meeting: 7 p.m.
 Thurs. Visitation: 7 p.m.
 Pastor Joe Garcia Jr.

El Aposento Alto U.P.C.I.
 1105 S. Roland
 Domingos: Escuela-Domical - 10 a.m.
 Culto Evangelistico - 7 p.m.
 Jueves: Oracion - 8 p.m.
 Mier: Estudio Biblico - 7 p.m.
 Pastor - A.G. Martell
 (806) 659-2153

Gruver United Methodist
 Broadway & Garrett
 733-2651
 Sunday School: 9:45 a.m.
 Worship: 8:30 & 10:50 a.m.
 Eve. Worship & UMY: 6 p.m.
 Pastor - George Price

Spanish Cristo Redentor Church
 Sunday Mass: 1:30 p.m.
 Friday Evening Mass
 Summer - 8:00 p.m.
 Fall/Winter - 7:30 p.m.

Oso

Oso Lutheran Church (ELCA)
 6 Miles West & 12 Miles North of Gruver
 339-7646
 Sunday School: 9:45 a.m.
 Worship: 11 a.m.
 Pastor - Arlen Lloyd

Morse

Morse Baptist Church
 733-2757
 Pastor - Mike Martin

He has showed you, O man, what is good. And what does the LORD require of you? To act justly and to love mercy and to walk humbly with your God.
 Micah 6:8

Deakin ELECTRIC
 OILFIELD • RESIDENTIAL • COMMERCIAL
 321 S. MAIN • SPEARMAN
 1-800-999-1506 Chris Deakin
 (806) 659-5016 President

Bartlett's Lumber & Hardware
 105 W. Broadway • Gruver, Texas
 (806) 733-2404

BERRY CLEANERS
 Ann & Vernon Pipkin - Owners
 Phone 659-3122 • P.O. Box 1017
 207 Main St. • Spearman, TX

Morse Implement & Auto Supply
 "Join us in church this week"
 Tom Dortch 733-2668
 P.O. Box 89 • Morse, TX 79062

PRAIRIE MOTORS INC.
 Hwy. 207 South • P.O. Box 430
 Spearman, TX 79081 • (806) 659-2541
www.prairiemotors.com

Gruver Cablevision
 308 Main
 Gruver, TX 79040
 733-5295

Hansford County Reporter-Statesman
 "Proudly Serving Hansford County Since 1907"
 (806) 659-3434
 213 Main Street • Spearman, TX

Interstate Bank, sbb
 322 Main • P.O. Box 146
 Spearman, TX • 659-2559

HYI

FOR YOUR INFORMATION

You're Never Alone - Narcotics Anonymous Group
 Each year individuals struggling with drug and alcohol addiction make the resolution to quit using drugs. For many of them it is a resolution that they cannot keep. Narcotics Anonymous can help. Open meetings are held on Monday and Thursday nights from 8-9 p.m. at the First Christian Church (29 S. Bernice in Spearman) for the "You're Never Alone" group of Narcotics Anonymous. Anyone interested is invited to attend. Drug addiction can leave you feeling helpless and out of control - we can help.

Spearhead AA Group
 The Spearhead AA Group meets every Tuesday at 8 p.m. in the Pittman-Shieldknight building. Alcoholics Anonymous is a fellowship of men and women who share their experience, strength and hope with each other that they may solve their common problem and help others to recover from alcoholism. The only requirement for membership is a desire to stop drinking. There are no dues or fees for AA membership; we are self-supporting through our own contributions. AA is not allied with any sect, denomination, politics, organization or institution; does not wish to engage in any controversy, neither endorses nor opposes any causes. Our primary purpose is to stay sober and help other alcoholics to achieve sobriety. For more information, call 662-1111.

Panhandle Crisis Center Outreach Office
 Panhandle Crisis Center (PCC) has an Outreach Office and Resale Store at 306 Hancock, in Spearman. In case of emergencies, please continue to call the hotline, 1-800-753-5308. To schedule an appointment with a worker in Hansford County, please call 659-3391 to leave a message, or call the hotline number above. Panhandle Crisis Center serves victims of domestic violence and sexual assault. Please call for more information regarding PCC's services. Hours for the Resale Store in Spearman are: Monday, Tuesday, Thursday & Friday from 10 a.m.-5 p.m.

Hansford County Library Thriftshop Donations
 The Thriftshop that helps support the Hansford County Library accepts donations of any usable kitchen or household items, clothing, furniture, toys, etc. Donations may be brought to the Thriftshop Monday through Friday during library hours - Summer 10-5 and during the school year 10-6. The Thriftshop is staffed entirely by volunteers who donate their time to sort and price items as well as keeping the Thriftshop open each Saturday afternoon. All donations are appreciated, but please keep in mind that items must be in good enough condition for resale. If you bring in small appliances or electronics, our volunteers would appreciate a note attached to the items saying if they are in good working condition or not. If you have questions about the type of items that are accepted, please feel free to call the library at 659-2231.

Hospice Training Class
 Hansford Hospice Volunteer Training Classes will begin on February 19, 2007, at 6 p.m. at the Church of Christ Fellowship Hall, Spearman, Texas. To sign up for the classes or more information, please call 659-5811. These classes provide excellent training for anyone interested in learning more about the Hospice program.

Project Graduation
 The parents of the Spearman High School Senior Class of 2007 will sponsor and host a "Project Graduation Party" following commencement exercises Friday, May 25th. Graduates will be provided with food, games, activities, and fun! In addition, to encourage the graduates to stay the entire night, door prizes are awarded throughout the evening. The graduation party will culminate with the distribution of grand prizes. Prizes, gift certificates, and cash are needed for the evening's gifts. If you, the community, who supported and encouraged these seniors these past 13 years of school, would be willing to share in the final "Class of 2007" memory, making this project special, please contact Teresa Maestas, 659-1025, or Lynna Renner, 659-3587. Contributions can be mailed to: Teresa Maestas, PO Box 337, Spearman, TX. 79081. Thank you, in advance, for your support.

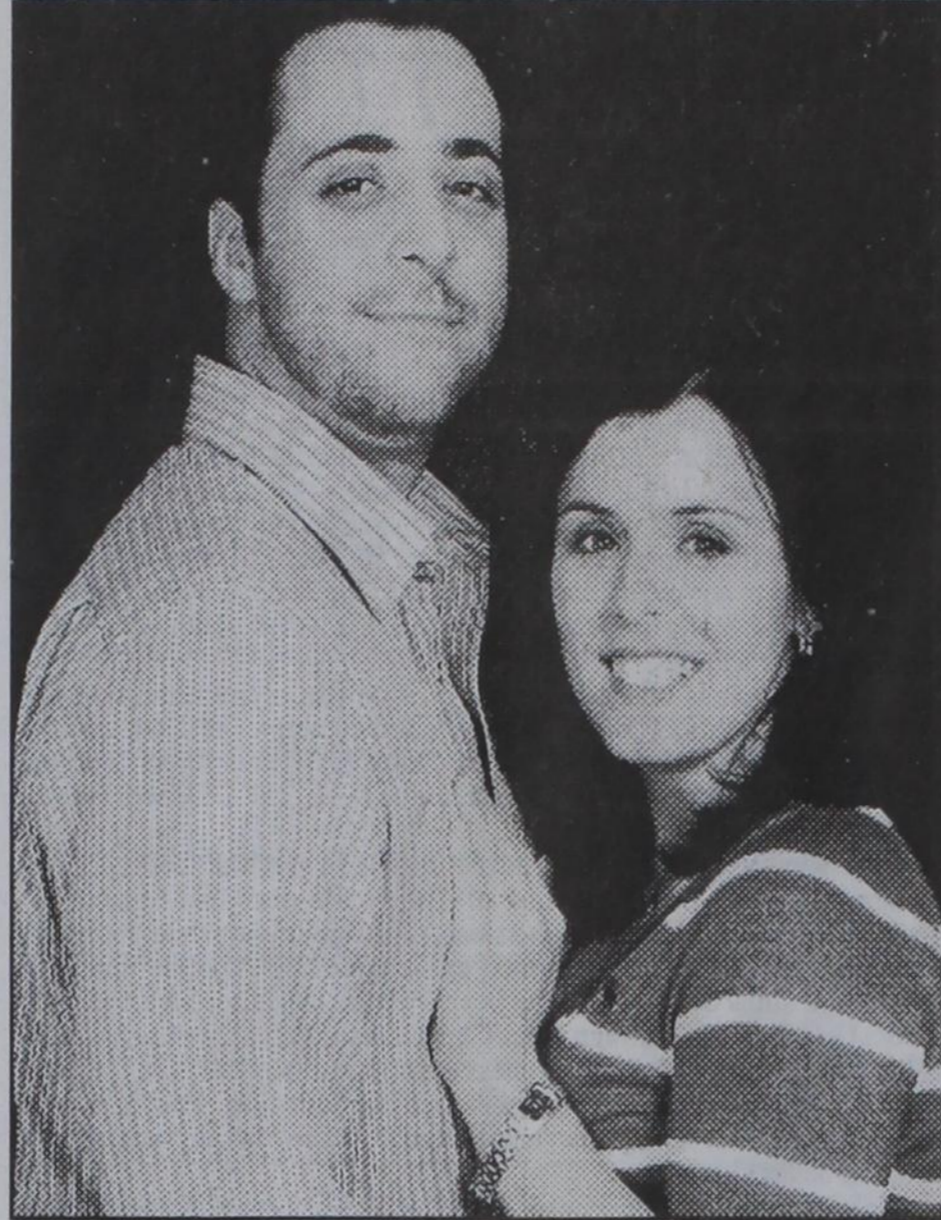
Rushing Wind Emmaus Community
 Rushing Wind Emmaus community will meet in the Waka Christian Center, Saturday, February 10. A potluck dinner will be served at 6 p.m. followed by a training for sponsors and a praise and worship service. A nursery will be provided. Everyone is invited to attend. Additional information may be found at the website rushingwindemmaus.org.

Cowboy Poetry Breakfast
 Saturday morning, February 10, meet the cowboys at the Cowboy Poetry Breakfast at the Big Texan, at 8:00 AM. This family-oriented program is great for those wishing to preserve the cowboy culture and the southwest code of heritage. Don DeHay from Amarillo and Charolyn Gouley from Wildorado will share the headliner stage Saturday. Both have a number of poems on their experiences, and of the antics of the future generation. Following the headliners, members of the Southwest Cowboy Poets Association will entertain with more poems, tall tales, songs and music. Grab your cowboy hat and boots, and be there.

Lunch & Learn - Dame\$ and Dollar\$
 Are you one of those who comes off the whirlwind holiday shopping season wondering how the finances could have spiraled out of control so much? Following the holidays, consumers typically are struggling with their credit card debt and making New Year's resolutions to do better in the months ahead. Everyone knows they should be saving for a rainy day but where do you find the extra cash? To help bring order back into your financial life, Dr. Joyce Cavanagh, Texas Cooperative Extension Family Development Resource Management Specialist, from College Station, will present "Ba\$ic Money Management" in a Lunch & Learn program, Thursday, February 15, from 12:00-1:00 p.m. in the Fellowship Hall of Spearman Church of Christ. Participants will have the opportunity to stay following the presentation for a question/answer session or set up a time for personal private consultation with Dr. Cavanagh. She will help individuals using the PowerPay® debt reduction computer program which can analyze repayment options for debts. Please call Peggy Winegarner, Hansford County Extension Agent, for more information (659-4131 or 733-2901) or to receive a worksheet. The program, sponsored by Texas Cooperative Extension, is free. Donations will be accepted for lunch.

Boy Scout Finance Drive
 The Boy Scout Finance Drive will begin February 13, 2007 in Hansford County. Harry Stumpf is in charge of the finance drive for the Lone Wolf District in Spearman.

TX-OK Panhandle Genealogical Society
 The TX-OK Panhandle Genealogical Society will meet Monday, February 19th from 6-8 p.m. in the Perry Memorial Library, 22 SE 5th Avenue, Perryton. Joe Janeway, Borger, will present the program, "Before the Twin Towers." The public is invited to attend.



Engagement Announcement

Richard and Donna Trantham of Spearman would like to announce the engagement and approaching marriage of their daughter, Brooke Dawn Trantham to Jesse Dean Allen. Jesse is the son of Mr. and Mrs. Richard Allen of Los Angeles, California.
 Brook lives in Scottsdale, Arizona and is currently a store manager for Mervyn's. Jesse is a sales manager for Staples in Phoenix, Arizona.
 The couple plan a wedding date of April 6, 2007 in Red River, New Mexico. The reception will be held at Lifts West in Red River.
 The couple plan to make their home in Phoenix, Arizona.



Espinosa, Hodges Wed

Eva and Miguel Espinosa announce the marriage of their daughter, Loree Marie of Spearman to Justin Shane Hodges of Perryton. The couple wed on January 27, 2007 at Sacred Heart Catholic Church in Spearman, with Father Jose Gomez officiating.
 Justin is the son of Gloria Hodges of Perryton, and Jr. and Cathy Hodges of Enid, Oklahoma. He is also the grandson of Francis and the late Charles Williams of Perryton.
 The bride-elect is a 2003 graduate of Spearman High School. She graduated from Frank Phillips College in 2005 with an LVN degree. She is currently employed by Hansford County Hospital District in Spearman.
 The prospective groom is a 2003 graduate of Perryton High School. He is currently employed by Venable's Construction and Roustabout in Dumas.
 Maids of honor were the sisters of the bride, Lisa and LeAnna Espinosa. Bridal attendants were Christina Ochoa, Amanda Wyrick, and the flower girl was Kayla Wyrick.
 Best man was Joey Wyrick. Groom's attendants were Jason Blan, Anthony Arjona, Carlos Mendoza, and the ring bearer was Kenley Wyrick.
 The couple will reside in Spearman.

You are invited to a
Wedding Shower
 honoring
Dottie & Teddie Whitefield
 on Saturday, February 10, 2007
 from 10:00-11:30 a.m.
 in the First National Bank
 Hospitality Room
 729 W 7th St Spearman, TX

You are invited to a
Bridal Shower
 honoring
Reagan Davis
 (bride-elect of Mickey Schoenhals)
 on Sunday, February 18, 2007
 from 1:00-2:30 p.m.
 in the home of Dennis & Judy Nelson
 130 Nelson Rd. Spearman, TX

Happy Valentine's Day
 Show your love
 with a special gift from
Celebrate
 We have gifts for ALL your celebrations!
 Celebrate
 203 Main St. Spearman
 (806) 659-3350 1-800-663-8026

Gordon's DRUG
 Your place for
Bridal Registry
Couples Currently Registered
 Reagan Davis & Mickey Schoenhals - Feb. 18th
 Brooke Trantham & Jesse Allen - March 31
 Courtney (Edwards) & John Brock
 Dottie (Rickman) & Teddie Whitefield - TB&
 Shelby Phillips & Dusty Vinson - TB&
 Kara Pipkin & Jonathan Taylor
Baby Registry
 Chelsie Hicks
 Missy (Johnson) & Cody Cartwright - Jan 13
Gordon's DRUG 659-2141
 314 Main Spearman

Celebrate
 Gifts for all your celebrations!
Bridal Registry
Shower Dates
 Dottie Rickman & Teddie Whitefield - 2/10
 Reagan Davis & Mickey Schoenhals - 2/18
 Brooke Trantham & Jesse Allen - 3/31
 Kristin Hellinger & Cody Martindale - TB&
 Shelby Phillips & Dusty Vinson - TB&
 Kara Pipkin & Jon Taylor
Baby Registry
 Jill (Clement) & Steve Crum - TB&
 Missy (Johnson) & Cody Cartwright
Celebrate
 203 Main St. Spearman, TX
 (806) 659-3350 1-800-663-8026

VALENTINE'S DAY
 Let us help you show your love.
 Long-Stemmed Roses
 Fresh-Cut Arrangements
 Plush Animals • Balloon Bouquets
Prairie Garden Flowers
 209 Main St. • Spearman, TX
 659-2212 • 659-3329

Angel Food Ministries



"A Food Ministry With A Servant's Heart"

Many people in the Panhandle, like the rest of the country, have a hard time supplying the basic necessities for their family. These people are not necessarily unemployed, but just the victims of being left somewhere in the middle. They make too much money to qualify for public assistance, but make too little to pay all of their bills and put nutritional meals on the table. Fortunately, there is help available.

The First Christian Church in Spearman has been accepted as an Angel Food Ministry host site. This ministry allows anyone to purchase boxes of food at just over half of grocery store prices.

Angel Food Ministries is a non-profit, non-denominational organization dedicated to providing grocery relief and financial support to communities throughout the United States. The program began in 1994 with 34 families in Monroe, Georgia (between Atlanta and Athens), and has grown to serve hundreds of thousands of families every month across 32 states. Angel Food Ministries crosses denominational lines and has spread the good news of the gospel of Christ through salvation tracts that are placed in each food order.

Blessings by the box

Angel Food's groceries are sold in a quantity that can fit into a medium-sized box at \$25 per unit. Each month's menu is different than the previous month and consists of both fresh and frozen items with an average retail value of approximately \$50. Comparison shopping has been done across the country in various communities using a wide range of retail grocery stores and has resulted in the same food items costing from between \$42 and \$78.

Generally, one unit of food assists in feeding a family of four for about one week or a single senior citizen for almost a month. The food is all the same high quality

one would purchase at a grocery store. There are no second-hand items, no damaged or out-dated goods, no dented cans without labels, no day-old breads and no produce that is almost too ripe.

Also offered are specialty boxes such as steaks, chicken and pork. Many participants in this bonus program appreciate the expanded choices. Additionally, there is no limit to the number of units or bonus foods an individual can purchase, and there are no applications to complete or qualifications to which participants must adhere. Angel Food Ministries, like most all other retail grocery stores, also participates in the U.S. Food Stamp program, using the Off-Line Food Stamp Voucher system.

How the Program works

Food sales and distribution are handled by church host sites. Orders and payments are collected by the host sites during the first part of each month. These orders are then turned in to the Angel Food main office in Monroe, Georgia, on a predetermined date. Several days later, in the same month, the host site either picks up the food from Angel Food's 160,000 square foot warehouse to fill the orders on Distribution Day or, because this ministry is growing nationwide, food is delivered to the host site by a pre-arranged delivery mode. In most cases, as long as there is a truck headed in the direction of a community who wants this program and sees its ministry influence, there are no extra transportation costs.

It's both a Bargain and a Blessing!

February orders must be placed by Saturday, February 10th. Orders must be paid at the time they are placed.

Food will be distributed on Saturday, February 24th from 3-4 p.m. at the First Christian Church, 29 S. Bernice, in Spearman.

For more information, or to place an order, contact Sandy Russell at 659-2497 or Bonnie Funk.

FREQUENTLY ASKED QUESTIONS

Who qualifies?

Everyone, there are no applications or qualifications to order Angel Food.

Where does the food come from?

Our food is "restaurant grade" meats, frozen vegetables, fruits, dairy products, etc. which we acquire through our involvement with only the best producers/vendors of high quality, "name brand" foods. Never "seconds" or "day old" type products are involved.

Can we purchase more than one unit or special?

Yes, you can purchase as many regular units as you would like. To purchase a special box you must first order a regular unit.

Where do I pay and pick up my food?

We have host sites all over the United States. Click here to locate a local participant.

FEBRUARY 2007 MENU

- Regular Unit - \$25.00**
 (1) 3 lb. Breaded Chicken Tenders
 (1) 16 oz. Rice
 (1) 1.5 lb. St. Louis Style Ribs
 (1) 7.5 oz. Corn Muffin Mix
 (1) 4 lb. I.Q.F. Chicken Thighs
 (1) 20 oz. Shoestring French Fries
 (1) 1 lb. Ground Beef
 (1) 16 oz. Sugar Snap Peas
 (1) 2 lb. Breaded Chicken Breast Filets
 (1) 16 oz. 4-Way Mixed Vegetables
 (10) 4 oz. Beef Burritos
 (1) 12 oz. Smoked Sausage
 (1) 15 oz. Breakfast Cereal
 (1) 20 ct. Old El Paso Taco Shells
 (1) Dozen Eggs
 (1) 16 oz. Pinto Beans
 (1) 27 oz. Pie

Special 1*
 4 lb. Steak Combo - \$18.00
 4 8-oz. Ribeyes, 4 8-oz. T Bones

Special 2*
 10 lb. Chicken Combo - \$18.00
 2 lb. F.C. Wings, 2 lb. IQF Tenders, 2 lb. Breaded Frying Chicken, 2 lb. F.C. Chicken Strips, 2 lb. B/S Chicken Breast

Special 3*
 5.5 lb. Meat Combo - \$18.00
 4 6-oz. Top Sirloin, 4 4-oz. Steak Burger, 16 oz. Beef Back Ribs, 16 oz. Short Ribs, 16 oz. Italian Sausage

Special 4*
 Overstock Special
 Gourmet Coffee - \$14.00
 1 12-oz. House Blend, 1 12-oz. Hazelnut Cream, 1 12-oz. Brazilian Amizade

* One or more SPECIALS available only with order of one or more regular units

Thank You!

The family of Happy Bess would like to thank everyone for the cards, letters, flowers, food and visits at our time of loss. The care given him by Dr. Rogers and Golden Plains Community Hospital and Borger's Home Health Care, Dr. Gamett and Hansford Hospital and Hospice made his passing so much easier for all of us. Your love, care and compassion meant so much to us and to Dad.
 Betty Bess; Mary and Don Moore and Family; Don and Sheila Bess and Family

Thank You!

My sincere thanks to the Women's Division of the Spearman Chamber of Commerce for honoring me as "Woman of the Year" at the Chamber Banquet. It has been my privilege and pleasure to share with so many women now and over the years in this organization, as we serve our city and our community. May we continue to do our best in all our endeavors that we undertake.

Sincerely,
 Byrnie Callaway

Thank You!

Thank you for the cards, flowers, thoughts, prayers and the many expressions of sympathy expressed to our family after the loss of our brother, James Evans, and uncle, Billy Joe Bates.

Sincerely,
 Evans Family, Stafford Family, Kinsey Family and Logsdon Family

How Do I Love Thee?

Let me count the ways...

- ♥ Heart-shaped Boxed Candy
- ♥ Denim heart-shaped Boxed Candy
- ♥ "Be My Valentine" suckers
- ♥ Chocolate Moon Pies
- ♥ Teddy Bears
- ♥ Big Chocolate Kisses
- ♥ Valentine Party Goods
- ♥ Scented Rose Petals
- ♥ Adult & Children's Valentines
- ♥ Heart-shaped Bath Confetti
- ♥ Sugar-Free Chocolates
- ♥ Jewelry
- ♥ Candles

Celebrate

207 Main St. • Spearman, TX
 (806) 659-3350 • 1-800-663-8036
 Gifts for all your celebrations!

Jack the Scissors Man

Sharpens knives, scissors, shears, seam rippers, etc.
Friday, FEBRUARY 16th
 at
Jo's This 'N' That
 300 Main St. • Spearman
 659-3999

Ralph Depee, D.D.S.
 Member American Association of Orthodontists
Orthodontics For Children and Adults

- Free exam and estimate of cost
- Free second opinion
- Insurance filed

821 S. Amherst Perryton, Texas
 1-800-521-0831
 (806) 435-2320

Are You A Victim of Domestic Violence or Sexual Abuse?
The Panhandle Crisis Center
 Can Help
 1-800-753-5308
 Battering Intervention & Anger Management Available

Thank you for your business!
 Best prices in town!

oil change
 brake job
 minor repairs
 tune-up
 transmission work
 clutch work
 all car models
FREE ESTIMATES

JIM'S Speedy Lube

Hwy. 15 West
 Spearman
 659-2323

Just pay **One Bill** each month!

It doesn't get much easier than that!

Cable TV
 High Speed Internet
 Internet
 Long Distance
 Cable Telephone

PTCI

721 W. 7th Spearman
 1-800-562-2556
 www.ptci.net

Bringing Your World...Home.

Happy Valentine's Day!

MONEY'S
BBQ & STEAK HOUSE
 14 S.E. Third in Perryton • 435-3945
 (Directly behind Interstate Bank)

For that Special Person in your life, take them somewhere unique.
Valentine's Day is Wednesday, February 14

For more information or to make reservations, call 435-3945
 Open Tuesday through Saturday

Remember, We R-TH-PLC-2-B!

Valentine's Dinner

Choice of these Entrees

- Shrimp in Butter & Cream Sauce over Wild Rice and Seafood Chowder
- 12 oz. Steak with Mushrooms & Onions in Wine Sauce and Twice Baked Potatoes
- Salmon Fillet served over Wild Rice

All served with Salad, Garlic Bread and Dessert of Chocolate Lamington topped with Fresh Strawberries, and includes coffee or tea.

Dinner for 2 - \$30 + tax
 Reservations only.
 Must be made by 4 p.m. on Monday, February 12th

Palo Duro Supper Club

Bunkhouse Restaurant



Valentine's Day Special - Feb. 14th

- Prime Rib - Reservation Only
- Additional Special Entrées
- Special Appetizers & Desserts
- Full Menu Available

Limited seating available - make your reservation early!

Bunkhouse Restaurant
 212 Main Street • Spearman • (806) 659-2089
 Hours: Tues.-Thurs., 11 a.m.-9 p.m.; Sat., 11 a.m.-10 p.m.; Sun., 11 a.m.-2 p.m.



SIMPLE SIMON'S PIZZA

Valentine's Special!

2 Large 2-Topping Pizzas
\$16.99 + tax

SIMPLE SIMON'S PIZZA
 312 Main Street • Spearman, TX
 (806) 659-9991

16 oz. Soup (Broccoli Cheese Soup with Florettes or Minestrone) with Ham & Cheese or Sub Sandwich
\$6.99 + tax

Mon.-Thurs. - 11:30 a.m.-9 p.m.
 Fri. - 11:30 a.m.-10:30 p.m.
 Sat. - 12 noon - 10:30 p.m.
 Sun. - 12 noon - 9 p.m.

Valentine's Special



Words to Live By

ALEXA'S ANGELS
 inspired designs

- Lots of new jewelry
- Select Lampe Berger Oil on Sale
- Feb. 12, 13 & 14 - ALL Lampe Berger Lamps on Sale for 20% Off!
- Free gift to all ladies on Feb. 14th - Stop by and see David!



Gordon's DRUG
 314 Main • Spearman • 659-2141

REAL ESTATE FOR SALE

FOR SALE: 1115 S. Bernice, Spearman - REDUCED PRICE! Nice brick, 3BR, 2B home; fenced back yard, central heat/air, 2CG, large shop in back, new sprinkler system. Call (806) 352-3452 or (806) 259-2614. TFN(7-06-06)B

FOR SALE 712 Wilbanks Dr., Spearman: 3BR, 2B, 2CG, newly fenced backyard w/shed. Call 605-484-1705. TFN(1-18-07)B

FOR SALE 13121 CR 18, Spearman - PRICE REDUCED: 3BR, 2B, 2CG brick home on 5 acres, 2,109 sq. ft. Located between Spearman and Gruver, off of Hwy. 15. Call Deana Foster, Century 21, 202-1061. EOW(1-18-06)B

FOR SALE 907 Archer Spearman: 3BR, 1B home. Call Larry O'Neal at 580-772-5617. TFN(02-08-07)B

FOR SALE 722 Wilbanks, Spearman: 3BR, 2 3/4B, 1CG, fenced yard, free-standing fireplace, 2 storage buildings. Call 659-2878 or 806-255-0304. 2(02-08-07)B

FOR RENT/LEASE

FOR LEASE: 729 Acres of Land in Ochiltree County - taking offers - dryland or irrigated, section 23, west Ochiltree County. Call 903-725-6733, Howard Swink. TFN(9-28-06)B

OFFICE SPACE FOR RENT, SPEARMAN: Pittman-Shieldknight building - all sizes available. Call 659-5588 or 659-3399 for more information. TFN(01-27-05)B

FOR RENT: 2BR apartment, \$375.00 per month, water paid. Call Larry O'Neal at 580-772-5617. TFN(7-06-06)B

FOR RENT: 1BR apartment - \$300/month, \$300 deposit. Call 940-631-0894. TFN(12-07-06)B

EMPLOYMENT

HELP WANTED: Church nursery caretaker needed for 3-4 hours per week, mostly on Sunday mornings, \$30 per hour. Please call 659-5503 or come by 407 S. Haney for an application. 18 years or older please apply. TFN(1-25-07)B

HELP WANTED: Pen rider, feedmill personnel, general maintenance and cattle processors needed. Apply in person at Dean Cluck Feedyard, 105 Dean Cluck Ave., Gruver. TFN(09-07-06)B

HELP WANTED: Parts counter sales person for Case-IH dealership in Spearman. Excellent pay with benefits. Must have good communication skills and enjoy working with the public. Experience a plus but will train. Apply in person at Five Star Equipment, Highway 15 West in person or send resume to Five Star Equipment, Box 658, Spearman TX 79081. Phone 806-659-3743. TFN(11-30-06)B

HELP WANTED: Gigot Agra Products, Valley center pivot dealer, is seeking an additional service technician at our Spearman location. Experience desired, but not required. Benefit package is available. Send resume to PO Box 95, Spearman TX 79081 or call (806) 659-3121. TFN(12-14-06)B

HELP WANTED: First State Bank, Spearman, is taking applications for a full-time building and yard maintenance person. Some mechanical skills preferred but not required. Applicant should be self-motivated and be in good physical condition. A strong work ethic is a must. Starting pay negotiable with qualifications. A benefit program that includes group hospitalization insurance, retirement, paid vacation and a sick leave program. Apply with Ginger Turner at First State Bank, PO box 247, Spearman TX 79081, telephone (806) 659-5565. An Equal Opportunity Employer. TFN(1-25-07)B

HELP WANTED: First State Bank, Spearman, has a part-time job opening in the maintenance department. The job involves cleaning duties and washing windows. Working hours would be Monday-Friday from early afternoon (no later than 3:45 p.m. for approximately 2-3 hours, or when job is finished. May need to work some Saturdays. If interested, other maintenance duties could be added for additional working hours. Physical labor and some lifting required. Must be 16 years old or older. Contact Ginger Turner at First State Bank as soon as possible. Telephone: 806-659-5565. An Equal Opportunity Employer. TFN(2-08-07)B

HELP WANTED: PVR Midstream is accepting resumes for operator jobs at the old Spearman plant. Training will be conducted at the Beaver Plant in Clearlake, OK. After training, applicant will oversee construction and operations of Spearman plant. Wages will be based on experience. For more information, or to submit resume, call Ronnie Ashlock at 580-837-5265, or mail to: PVR Midstream, Attn: Ronnie Ashlock, Rt 2, Box 82, Beaver OK 73932. 3(2-1-07)B

HELP WANTED: Experienced oil and gas Lease Pumper/Gauger to inspect, monitor and manage the operation of assigned wells to ensure equipment is maintained in operating condition and well is producing. Responsible for checking meters, daily production reports, gauging tanks and overall care and maintenance of the well site and equipment. Experience with plunger lift systems, compressors, diagnosing casing leaks and other malfunctions desired. Requires experience with word processing and Internet/Email. High school diploma and two years oilfield experience is required. Excellent opportunity with stable, growing regional company. Benefits include company provided vehicle, attractive compensation package including profit-sharing bonus, paid healthcare and dental, \$401(k) plan with up to 8% matching contribution, vacation and time off. Please send resumes or letters of interest to Attn: Human Resources, PO Box 7995, Tyler TX 75711. TFN(2-8-07)B

HELP WANTED: Experienced Natural Gas Compressor Mechanic to maintain, install, troubleshoot, repair and overhaul compressors and other well site equipment. Responsible for monthly and annual preventative maintenance, emergency repairs on engines, compressors and pumping units. High school diploma or Technical School Degree. Excellent opportunity with stable, growing regional company. Benefits include company provided vehicle and tools, attractive compensation package including profit-sharing bonus, paid healthcare and dental, \$401(k) plan with up to 8% matching contribution, vacation and time off. Please send resumes or letters of interest to Attn: Human Resources, PO Box 7995, Tyler TX 75711. TFN(2-8-07)B

HELP WANTED: The Hansford County Public Service Agency will be accepting applications for a Temporary Program Technician to help administer current farm programs. Computer and farm background helpful. Applications must be submitted by February 23, 2007. Application forms may be picked up at the Hansford County FSA Office, 909 W 9th Ave. Ste. B, Spearman, TX 79081. Call 806-659-5565. TFN(2-8-07)B

TX. Hansford County FSA is an Equal Opportunity Employer established under law without regard to race, color, religion, national origin, sex, political affiliation, physical or mental disability, age, marital status, or other non-merit factors. 2(2-8-07)B

FEED, SEED, ETC.

SEED MILO CONTRACTS. Premium prices paid. 806-258-7394. 4(2-08-07)B

PUBLIC NOTICE

TRANSPORTATION MAINTENANCE TECHNICIAN III JOB REQUISITION NUMBER: 01196

The Texas Department of Transportation will be accepting applications for one full-time position at the Ochiltree County Maintenance Office located at 1103 SH 15, Perryton, Texas.

The applicant must have two (2) years experience in maintenance, construction and/or an equipment operation-related field. (Experience requirements may be satisfied by full-time experience or the prorated part-time equivalent.) The applicant must also have a Commercial Class A Drivers License at the time of application.

The starting salary will be \$11,361.57 per hour. A completed application is required and applications will be accepted until 5 p.m., Friday, February 9, 2007. For further application information, including a complete job vacancy notice, contact the nearest Texas Department of Transportation. Information may also be accessed via the Internet at www.txdot.gov/careers/. Mailed applications should be postmarked the day the job vacancy closes and sent to: 5715 Canyon Drive; Amarillo TX 79110; Attn: Human Resources. If more information is needed or if an applicant needs an accommodation in order to apply for this job, contact Barbara Frank at (806) 356-3232.

TxDOT is an Equal Opportunity/Affirmative Action Employer. 2(02-01-07)B

PUBLIC NOTICE

Application has been made with the Texas Alcoholic Beverage Commission for a Winery Permit for Dobler Wines, Ltd. dba Dobler Wines, Ltd., to be located at 307 5th Street, Morse, Hansford County, Texas. Limited Partner of Dobler Wines, Ltd. is Amber Dobler-Dixon. General Partner is Dobler Management, LLC. Manager/Member for Dobler Management LLC is Amber Ann Dobler-Dixon. KEY: Monte Dixon Feb. 2, 2007 2(02-01-07)B

LEGAL NOTICE

Hansford County has decided not to open bids on a 1/2 ton pickup on February 12, as earlier advertised, but instead to take bids on the following:

Hansford County Commissioner's Court will receive sealed bids until 4:00 p.m. on Friday, February 23, 2007 on one new 2006 or 2007 1/2

ton regular cab, 4-wheel drive pickup for Precinct 2, with trade-in. Bids will be opened on Monday, February 26, 2007 at the regular Commissioners' Court meeting beginning at 10:00 a.m. Specifications are available in the County Judge's Office or the County Auditor's office in the Hansford County Courthouse in Spearman. The Court reserves the right to accept or reject any or all bids. Benny Wilson Hansford County Judge 2(02-08-07)B

AMP	MATE	PREP							
BARB	UVULA	REAR							
ANOVA	SITAR	OTTO							
SIGHT	HOUND	RON							
EASTERN	OUTING								
SAO	YORKIE								
NIP	MOTOR	ENVOI							
BLEB	MEDAL	YEWIS							
COCOA	RELAY	REM							
UNCURL	BEE								
KENNEL	GRANDEE								
AMI	COMEAR	OUND							
READ	EMEND	CRAIG							
MEER	RETRO	HATED							
ARYL	NEER	LIED							

3	5	7	1	4	9	6	2	8	
6	1	9	5	8	2	4	7	3	
2	8	4	3	7	6	1	9	5	
4	3	5	9	6	1	2	8	7	
9	7	6	2	3	8	5	4	1	
8	2	1	7	5	4	9	3	6	
5	6	8	4	9	7	3	1	2	
1	4	3	8	2	5	7	6	9	
7	9	2	6	1	3	8	5	4	

LARGE ESTATE AUCTION

Saturday, Feb. 10th • 10 a.m. sharp! • Auction Will Move Quickly!
Hutchinson County Aluminum Dome • 1113 Bulldog Blvd. • Borger, TX

Antiques • Antique Firearms • Coins

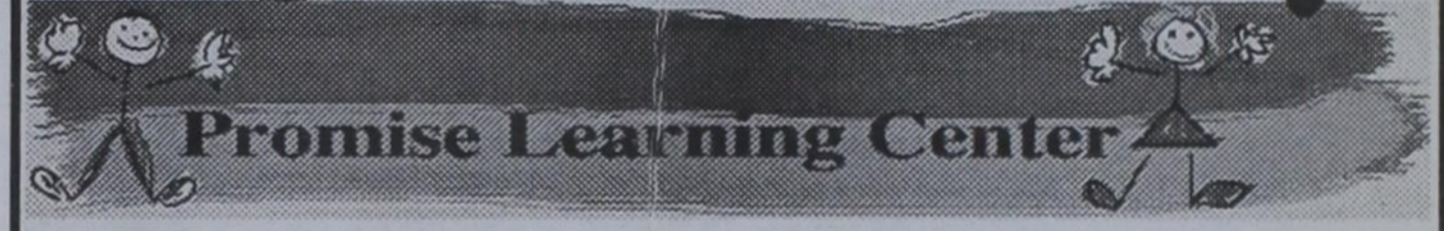
This Great Auction will consist of some of the Finest American Antique, Highly Carved Furniture and Glassware we have ever seen! Some very unusual American Antique Oak and Victorian pieces. Make this a priority NOT to miss this Auction! Doors open at 8 A.M. Everything must be moved day of sale.

A partial list: A Rare Antique "Kalliope" Music Box with Bells, plays large metal disc - Plays Beautifully! The Best Antique American Oak Sideboard with Paw Feet and Bevel Mirror! A Rare Size Antique 1930's 1e Peanut Machine. A Beautiful Carved Antique American Victorian Music Cabinet with Beveled Mirror. A Beautiful Antique American Heavy Carved Oak Secretary Bookcase with Bevel Mirror. A Great American Antique Oak Grandfather Clock - Beautiful Case and Glass. An Antique Oak Carved "Morris Chair" with Carved Lions and Paw Feet. A Rare Antique "10e Jennings" Slot Machine. A Great Antique American Oak Curved Glass China Cabinet with Paw Feet. A Great Lawyers Stacking Bookcase. A Beautiful Antique American Complete Matching Carved Bedroom Suite with Beautiful Bed. A Antique "Marx" Train Set in Box. A Heavy Carved Ladies Writing Desk. A Very Rare Original Antique "Steel Craft" Large Scale Airplane. A Beautiful Antique Tea Cart. A Rare Antique "Victor" Victrola in Great Original Working Condition with Records. A Western Bronze Statue "Coming Thru The Rye" by Fredric Remington and others. An 1890's "Wave Crest" Biscuit Jar. Antique Guns From Estate - A Very Rare Authentic Antique 1873 "Winchester" Saddle Ring Carbine lever action in Great original working condition. A Very Rare Authentic Antique 1873 "Winchester" oet barrel lever action Rifle in Great original working condition. A Very Rare Authentic Antique "Winchester" lever action Shotgun. A Rare Authentic Antique "Colt Six Shooter" Pistol in Great original working condition, and other guns. Coins - 1879 \$20 gold coin, 1932 \$10 Indian gold coin, 1892-S \$5 gold coin, 1909 \$2 - Indian gold coin, 1874 \$1 gold coin, 1877 Silver Trade Dollar, 1875-S Twenty Cent, 1921 Peace Silver Dollar, 1810 Half Cent, 1836 Capped Bust Dime, 1871 Seated Silver Dollar Over 50 Antique Silver Dollars, 1890-CC Silver Dollar, 1810 Bust Half Dollar and many more! Several Fantastic Large Diamond Rings. Leaded glass windows, Portrait Tea Set, Large Heavy Cobalt Cut Crystal Etched Vase, Cat Cookie Jar, Limoges, Ruby Red Heavy Cut Biscuit Jar, Dresden, Leaded glass lamps

Bring Cash or check with proper I.D. No Buyer's Premium!
Dealer's must have copy of sales tax permit or sales tax will be added, no exceptions.

Auctioneer - Michael Miars • TX Lic. #12703 • 405-381-3732
Announcements made day of sale supercede all other advertisement.

Register Today!



Full-Time, Drop-In, After School
Mon.-Fri., 7:30 a.m. - 5:30 p.m.
ages 6 weeks to 12 years

www.promiselearningcenter.com
644-BABY (2229)
405 Archer • Spearman

Scheduled to open February 19th
(We accept CCMS)



MARTIN & ASSOCIATES REALTY

Serving Hansford County for 14 years
Julie Martin: Broker - 659-2425

IN SPEARMAN
722 Wilbanks - 3/2/1 - nice home in nice neighborhood and close to school. Free-standing fireplace.
1109 Haney - 3/1/1 - SOLD - beautiful property 701 Wilmeth - 5/2/2 - SOLD - beautiful corner lot

We'd Like Your Listing
FOR QUALITY & SERVICE CALL US TODAY!
Equal Housing Opportunity

Blankenship Real Estate
659-3052 - 670-3774

NEW LISTING - 3/2/1 brick home - central h/a, hardwood floors, large back yard with storage building. Low maintenance. Great location!

NEW LISTING - 3BR, multi-bath, 2 living areas, office, h/d, 2nd floor, 2 single-car garages and workshop on two lots.

Crawford Addition - Seller Anxious - 3/2/2 with fireplace. **PRICE REDUCED 2ND TIME!** Nice home!

Crawford Addition - 3/2 oversized detached 2-car garage, storm shelter!

BRICK 3/1/1 - new carpet, new paint. Ready to move in!

Eulalia Blankenship - Sales
Eschol Blankenship - Broker
NEW LISTINGS WANTED!

Century 21 Golden Spread Realty

13121 CR 18, SPEARMAN - 3BR, 2B, 2CG brick house (2,109 sq. ft.) located on 5 acres. **PRICE REDUCED!**

Deana Foster, Realtor
(806) 435-5444, office
(806) 202-1061, cell

1108 WILMETH, SPEARMAN - 3BR, 2B, 2CG house - 2,125 sq. ft. - recently updated
Janice Flathers, Realtor
(806) 435-5444, office
(806) 202-1061, cell

INDEPENDENTLY OWNED & OPERATED.
©1992 and ©Century 21 Real Estate Corporation. Equal Housing Opportunity.
EOW(1-11-06)B

See us for:
AUTO • HOME • CROP HAIL • FARM & RANCH • MULTIPERIL • LIVESTOCK

INSURANCE

BORT AGENCY, INC.
510 Main St. • Gruver, TX
(806) 733-2456

SHERMAN COUNTY SECTIONS - three sections, 3 phase electricity, two nice homes and landscaping, Quonset barn, irrigation, sprinklers, 3 miles hwy. front. + caliche. **WILL DIVIDE!**

HORSEMAN'S PLEASURE/CATTLEMAN'S DELIGHT - NW OF GRUVER - 80 acres +/-, nice 4,000 +/- sq. ft. brick home, metal roof, fireplace, two car garage, irrigation, 1/2 mile sprinkler, Quonset barn, pipe-rail pens, covered working area.

HWY. 152 BETWEEN STINNETT & DUMAS - 767 acres +/-, 4,000 sq. ft. +/- home & 1,700 sq. ft. +/- home, beautiful homes and landscaping, large metal barn with office, irrigation, sprinkler, strong water, hwy. front. + caliche road - **CONSIDER DIVIDING!**

SHERMAN COUNTY 1/4 SECTION WITH PERMIT - plus 1/4 sections, hwy. front, nice brick home, Quonset barn, pens, irrigation, wells, sprinklers.

Choice milk processing and dairy sites available in Dallam, Hartley, Moore, Oldham, Sherman and Hutchinson Counties.

SEE OUR WEBSITE OR GIVE US A CALL!
www.scottlandcompany.com
Shawn Gillispie 806/922-5532
Ben G. Scott, Broker
1-800-933-9698 day/eve
1(2-08-07)

EMPLOYMENT

Allsup's Convenience Stores is seeking a store manager, managers-in-training and store clerks for its store in Canadian and surrounding areas. Must enjoy working with the public, be able to work accurately in a fast-paced environment and able to work various shifts, including nights, weekends and holidays.

We offer competitive wages plus medical/dental/life insurance, profit sharing and paid vacations.

For immediate consideration, please apply at the Allsup's nearest you. EOE

hchd
Hansford County Hospital District

Immediate Full-Time Openings at Hansford Hospital

RN and/or LVN must be licensed by the State of Texas. Night shift, 7 p.m.-7 a.m.

Maintenance person with a wide knowledge of the maintenance field in carpentry, painting, plumbing, electrical H/A, grounds care and welding.

Openings at Hansford Manor

Director of nursing with long term and supervisory experience.
RN needed for weekends.
LVN - full-time.

Must all be licensed by the State of Texas.

CNA's - full-time and part-time.

Housekeeping - full-time.

Great working environment and staff, quality facility providing opportunities for professional growth. Apply at 707 S. Roland, Spearman, TX or contact Jackie Nelson at 806-659-5841. Download application at www.hchd.net
EEOE
2(2-1-07)B

Are You A Victim of Domestic Violence or Sexual Abuse?

The Panhandle Crisis Center Can Help
Call Toll Free - Hotline
1-800-753-5308
301 S. Ash - Perryton
435-5008

Battering Intervention & Anger Management Available
Memorials Accepted

Are You A Victim of Domestic Violence, Sexual Abuse or Physical, Emotional or Sexual Assault?

Call Toll Free Hotline
1-800-753-5308

We can see individuals from Hansford County anytime upon request. Call 435-5008 or 1-800-753-5308 to set up an appointment in Hansford County. We operate a safe place for victims and their children to stay in times of crisis.

Battering Intervention & Anger Management Available

Panhandle Crisis Center
Serving Hansford, Lipscomb & Ochiltree Counties
301 S. Ash • Perryton, TX
Memorials Accepted

See us for:
AUTO • HOME • CROP HAIL • FARM & RANCH • MULTIPERIL • LIVESTOCK

INSURANCE

BORT AGENCY, INC.
510 Main St. • Gruver, TX
(806) 733-2456

Are You A Victim of Domestic Violence, Sexual Abuse or Physical, Emotional or Sexual Assault?

Call Toll Free Hotline
1-800-753-5308

We can see individuals from Hansford County anytime upon request. Call 435-5008 or 1-800-753-5308 to set up an appointment in Hansford County. We operate a safe place for victims and their children to stay in times of crisis.

Battering Intervention & Anger Management Available

Panhandle Crisis Center
Serving Hansford, Lipscomb & Ochiltree Counties
301 S. Ash • Perryton, TX
Memorials Accepted

Are You A Victim of Domestic Violence, Sexual Abuse or Physical, Emotional or Sexual Assault?

Call Toll Free Hotline
1-800-753-5308

We can see individuals from Hansford County anytime upon request. Call 435-5008 or 1-800-753-5308 to set up an appointment in Hansford County. We operate a safe place for victims and their children to stay in times of crisis.

Battering Intervention & Anger Management Available

Panhandle Crisis Center
Serving Hansford, Lipscomb & Ochiltree Counties
301 S. Ash • Perryton, TX
Memorials Accepted

WARNING

PARA SEGURIDAD DE SUS FAMILIA, DE SUS NEGOCIOS Y DE SU COMUNIDAD, POR FAVOR LLAME A LA COMPANIA BP AMERICA PRODUCTION COMPANY, A LOS NUMEROS INDICADOS ABAJO, EN ESTE ANUNCIO, ANTES DE ESCARBAR, DE DESMONTAR, DE ARRASAR, O DE HACER CUALQUIER TIPO DE TRABAJO CERCA DE LAS TUBERIAS DE BP AMERICA PRODUCTION COMPANY (INCLUSO AGRICULTURA) 1-800-DIG-TESS

EL GAS NATURAL PUEDE -
... SER TRANSPORTADO EN TUBERIAS BAJO TIERRA
... CONTENER ALTA PRESION

EL GAS NATURAL -
... NO TIENE COLOR
... NO TIENE OLORES
... PESA MENOS QUE EL AIRE

SI SOSPECHA QUE HAYA FUGA DE GAS
... ALEJESE DE ALI CAMBANDO
... NUNCA ENCIENDA UNA FLAMA
... NO PRENDA LUCES, NI MOTORES, NI MAQUINARIA ALGUNA (PUEDEN CAUSAR UNA EXPLOSION)

BEFORE ANY TYPE OF EXCAVATION (including Agriculture) OR IN AN EMERGENCY CALL COLLECT (806) 948-6187 DUMAS (24 hours)

BP AMERICA PRODUCTION COMPANY ANADARKO ASSET

WARNING

FOR THE SAFETY OF YOUR FAMILY, BUSINESS, AND COMMUNITY, BEFORE YOU EXCAVATE OR DIG NEAR A BP AMERICA PRODUCTION CO. PIPELINE OR PROPERTY, PLEASE CALL THE NUMBER LISTED. REMEMBER TO CALL BEFORE YOU DIG, (Including Agriculture), 1-800-DIG-TESS.

NATURAL GAS CAN -
... BE TRANSPORTED IN UNDERGROUND PIPELINES
... CONTAIN HIGH PRESSURE

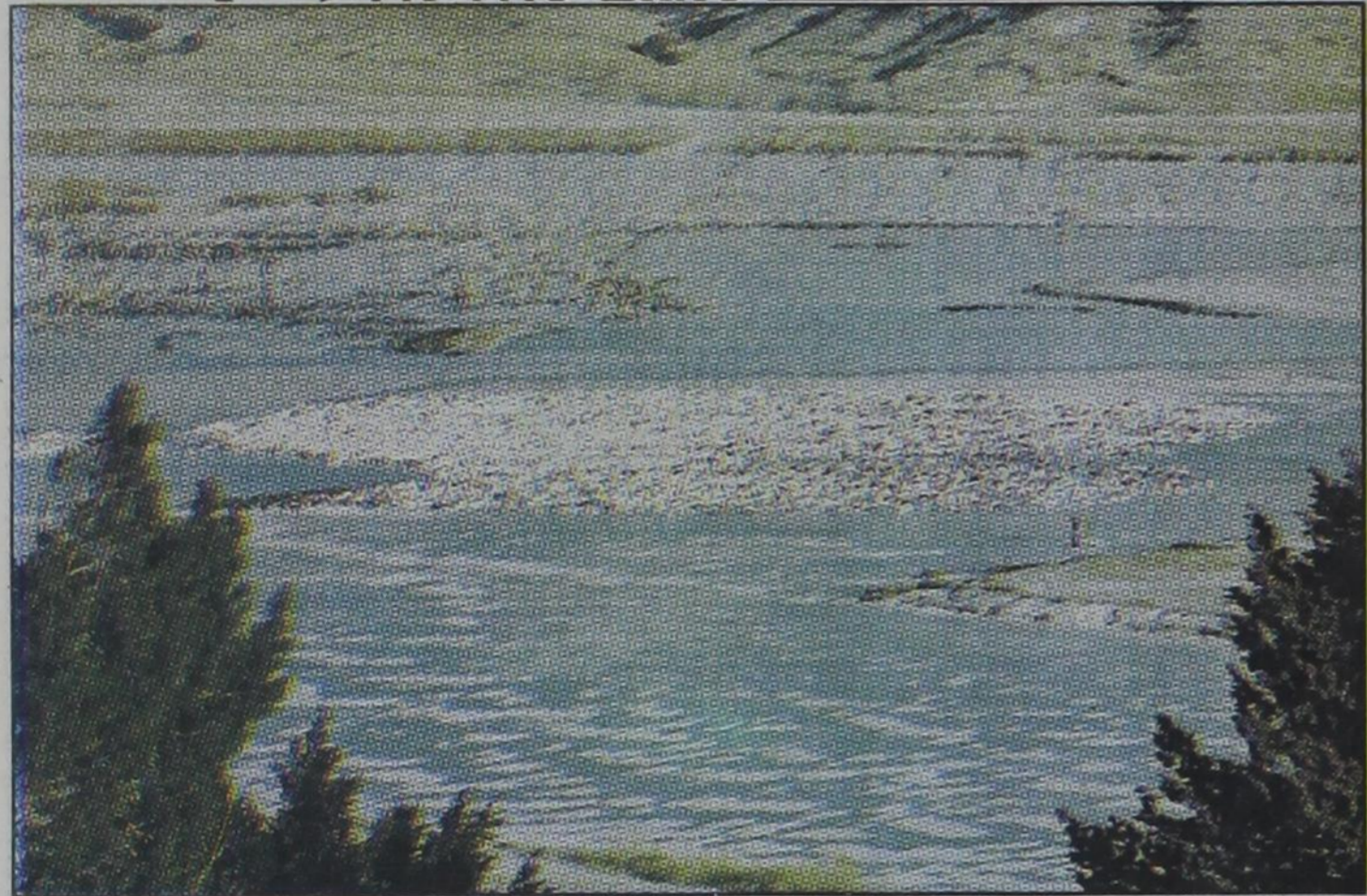
NATURAL GAS IS -
... COLORLESS, ODFLESS, LIGHTER THAN AIR

IF A NATURAL GAS LEAK IS SUSPECTED
... WALK AWAY FROM IT
... NEVER IGNITE A FLAME
... DO NOT TURN ON A LIGHT SWITCH, MOTOR, OR ANY EQUIPMENT (AN EXPLOSION COULD RESULT)

BEFORE ANY TYPE OF EXCAVATION (including Agriculture) OR IN AN EMERGENCY CALL COLLECT (806) 948-6187 DUMAS (24 hours)

BP AMERICA PRODUCTION COMPANY ANADARKO ASSET

by Jim Derington
Out At The Lake



February 5, 2007
Lake level - 21.66 feet

Lake Palo Duro is still mostly frozen, though the warmer days and a little wind will change that, this week. Sunshine is greatly appreciated, after the cold we have had for so long.

The picture shows the ice and many snow geese, along with the Canada geese and various ducks, from the south side of the lake. Today's sunshine really spotlights the white geese, on the lake at mid-

day. The Bald eagle count is up, with five to six seen in the last few days. At least two are mature, the rest don't have white heads, yet. Ramon and Al have confirmed this from the north side of the lake. Margarette Evans and others have seen a Bald eagle, south of Spearman.

The ice on the lake has halted the fishing for a while. Even the most avid fishermen, have not been seen lately. They are probably respooling reels and sharpening

hooks, in hopes of catching the "big one". Record catfish have been caught here in late February and March. Walleye are also cold water fish, and might be caught this time of year.

Don Hudson is home and gaining strength each day. Dorothy may have an article for you next week. She had a visit from a Montana niece and her husband last week. I think there could be an article about their interesting lives.

Russell named Director of Nursing Services for Hansford Manor



Jane Russell, RN

Hansford County Hospital District recently announced the promotion of Jane Russell, RN to the position of Director of Nursing Services (DON) for Hansford Manor. Russell replaces Lelia

Bynum RN, who has been the DON for the past five years.

Ms. Russell has served HCHD for eight years, first as a Certified Nurse Aide (CNA), and later as a Licensed Vocational Nurse (LVN) and Registered Nurse (RN) in both Hansford Manor and Hansford Hospital. Her recent responsibilities at Hansford Manor as Care Plan Coordinator have made her familiar to many Hansford Manor residents and families. She has also served as instructor for the Manor's Nurse Aide certification courses for over one year.

As a nursing student, Ms. Russell was named Outstanding Nursing Student of the Year 1998-1999, and was on the Dean's Honor Roll and President's List. In addition she has been named HCHD Employee of the Month and was a recipient of the HCHD Nursing Scholarship.

Ms. Russell grew up in Bovina, Texas. Her parents, Jim and Scooter Russell, are residents of Spearman, as is her sister, Tammy Kunselman. Russell has two chil-

dren, Rene' Griffin of Spearman and Tony Griffin of Landstuhl Air Force Base, Germany, and six grandchildren.

Bynum has stepped down from the Director's position, but will continue to work for Hansford Manor in the capacity of RN Supervisor. Manor Administrator, Anne Snow, stated, "We want to thank Lelia for her dedication and strong leadership." Snow noted that during Bynum's tenure, Hansford Manor had several deficiency-free state inspections, and achieved the highest quality rating score in the state, 100 points out of a possible 100, a score achieved by only three or four other nursing homes. Bynum also has the distinction of being the longest-serving Director of Nursing Services for Hansford Manor according to Snow.

The community is invited to a reception to honor Hansford Manor's outgoing and incoming Directors of Nursing on Tuesday, February 27, at 4-5 p.m. in the Hansford Manor Dining Room.

LOCAL WEATHER FORECAST

THURSDAY NIGHT - Mostly cloudy. Lows in the mid 20s. Southeast winds around 5 mph.

FRIDAY - Mostly cloudy. Highs in the upper 40s. East winds around 5 mph.

FRIDAY NIGHT - Mostly cloudy. Patchy fog. Lows in the upper 20s. South winds 5 to 10 mph.

SATURDAY - Mostly cloudy. Patchy fog in the morning. Highs around 50. South winds 5 to 10 mph.

SATURDAY NIGHT - Mostly cloudy. Lows in the upper 20s.

SUNDAY - Mostly cloudy. Highs in the upper 50s.

SUNDAY NIGHT - Mostly cloudy with a 20 percent chance of rain. Lows in the lower 30s.

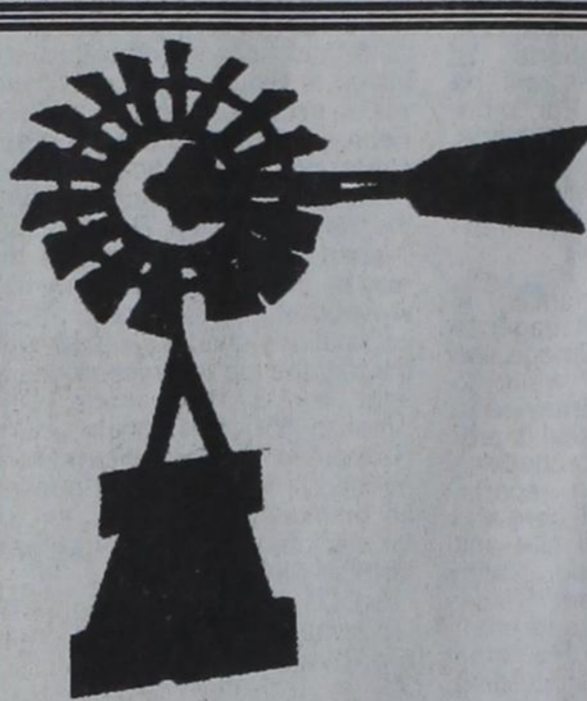
MONDAY - Mostly cloudy with a 20 percent chance of rain. Highs in the lower 50s.

MONDAY NIGHT - Mostly cloudy. Lows in the mid 20s.

TUESDAY - Mostly cloudy. Highs in the lower 40s.

TUESDAY NIGHT - Cloudy. Slight chance of rain and snow in the evening - then a slight chance of snow after midnight. Lows in the lower 20s. Chance of precipitation 20 percent.

WEDNESDAY - Mostly cloudy. Slight chance of rain and snow in the morning - then a slight chance of rain in the afternoon. Highs in the lower 40s. Chance of precipitation 20 percent.



ANNUAL MEETING

of
SOUTHWEST PIONEER WINDMILL ASSOCIATION

at
First United Methodist Church
12:00 noon

Wed., Feb. 14, 2007

Meal will be hamburgers, furnished by the Spearman Lions Club.

Dues for 2006 are \$10 and may be mailed to:
SPWA, C/O Nellie Buchanan, 1112 Linn Dr., Spearman TX 79081.

Membership is open to individuals, families, businesses and organizations. For more information, call 659-3367.

Are You A Victim of Domestic Violence, Sexual Abuse or Physical, Emotional or Sexual Assault?

Call Toll Free Hotline
1-800-753-5308

We can see individuals from Hansford County anytime upon request. Call 435-5008 or 1-800-753-5308 to set up an appointment in Hansford County. We operate a safe place for victims and their children to stay in times of crisis.

Battering Intervention & Anger Management Available

Panhandle Crisis Center
Serving Hansford, Lipscomb & Ochiltree Counties
301 S. Ash - Perryton, TX
Memorials Accepted

MITCHELL THEATRES
Northridge Cinema 8
Guymon, Oklahoma
Movies beginning 2/9

NORBIT PG-13 -- Eddie Murphy

HANNIBAL RISING R -- Gaspard Ulliel

STOMP THE YARD PG-13 -- Columbus Short

SMOKIN ACES R -- Jeremy Piven

BECAUSE I SAID SO PG-13 -- Diane Keaton, Mandy Moore

THE MESSENGERS PG-13 -- Kristen Stewart

EPIC MOVIES PG-13 -- Kal Penn, Jennifer Coolidge

NIGHT AT THE MUSEUM PG -- Ben Stiller

Opening Feb. 14th
MUSIC & LYRICS PG-13 -- Hugh Grant, Drew Barrymore

FRESH POPCORN EVERYDAY!
-PARTY ROOM & ARCADE!
Call for Showtimes
580-338-3281
www.northridge8.com
Office -- 580-338-8969
CASH & CREDIT CARDS ONLY
THANK YOU!

BROADBAND
VERY, VERY FAST LANE

HIGH-SPEED BROADBAND
\$24.95 PER MONTH WITH BUNDLE

IT'S THE FASTEST, MOST RELIABLE SPEED FOR THE MONEY!

HOP ON TODAY & GET **2 MONTHS FREE**

FREE ACTIVATION
FREE MODEM (AFTER REBATE / WITH AGREEMENT)

PHONE BROADBAND DIGITAL TV

windstream grow places

1.877.312.WIND | WINDSTREAM.COM

VISIT US IN TEXAS:

ANDREWS 112 S.W. 1st Street 432.523.3323	DALHART 310 Rock Island Avenue 806.249.1100	PERRYTON 301 S. Amherst Street 806.435.2050	SEYMOUR 400 N. Main Street 940.888.1220	SUGAR LAND 8306 Highway 90A 281.490.9412	TEXARKANA 2315 Richmond Road, Suite 101 903.223.4688
---	--	--	--	---	--

Limited-time offer. Subject to availability in certain locations. 2 Months Free Broadband: Must maintain one-year bundle including Connect Package and Broadband 1.5 Service Agreement to be eligible. Broadband Speeds: Windstream cannot guarantee Broadband speeds or that Broadband service will be uninterrupted or error-free. Free Modem: Free Modem available with 1-year Broadband agreement and after instant credit of \$49.95 and \$50.00 mail-in rebate. A \$9.95 shipping and handling fee applies. Additional Information: Credit approval required & pre-payment may be required. Taxes, fees & other charges, including Universal Service Fund, apply. Windstream reserves the right to cancel or discontinue this plan at any time. If any required bundle component is disconnected, all remaining components convert to the regular tariffed monthly rate. Other restrictions may apply. Offers are subject to the Windstream Terms & Conditions for Communications Services available at any Windstream store or at windstream.com. Contact a Windstream representative for details.

RELIABLE SAFE • SECURE