



★ HANSFORD COUNTY ★  
**THE REPORTER-STATESMAN**

THURSDAY,  
DECEMBER 8, 2011

CELEBRATING 104 YEARS OF SERVICE TO HANSFORD COUNTY  
HANSFORD COUNTY'S ONLY NEWSPAPER

75¢

WWW.SPEARMANREPORTER.COM

VOLUME 104 • ISSUE 49

REPORTER@SPEARMANREPORTER.COM

**COME TO THE GAME**

**Spearman Lynx/Lynxettes**

12/8-12/10 VB @ Ft. Elliott Tourney  
12/8-12/10 JVB @ Borger JV Tourney  
12/8-12/10 JVG @ Spearman JV Girls Tourney  
12/13 JVG (5), JVB (5), VG (6:30), VB (8) vs West Texas  
12/16 JVG (4), JVB (5:15), VG (6:30), VB (8) at Gruver  
12/28-12/30 VG, VB @ Caprock Tourney

**Gruver Greyhounds/Lady Hounds**

12/8-12/10 VG, VB @ Claude Tournament  
12/8-12/10 JVG @ Spearman JV Girls Tourney  
12/8-12/10 JVB @ River Road JV Boys Tourney  
12/12 7B (5), 7G (6), 8G (5), 8B (6) @ Stratford  
12/13 JVG (4), JVB (5:15), VG (6:30), VB (8) vs Liberal, KS  
12/16 JVG (4), JVB (5:15), VG (6:30), VB (8) vs Spearman  
12/28-12/30 VG, VB @ Gruver Holiday Tourney

**Weather Forecast**

THURSDAY - Partly cloudy. Highs in the upper 30s. Southeast winds 5 to 10 mph.  
THURSDAY NIGHT - Mostly cloudy. Lows around 18. North winds 10 to 15 mph.  
FRIDAY - Partly cloudy. Highs in the mid 30s.  
FRIDAY NIGHT - Mostly clear. Lows around 19.  
SATURDAY - Mostly sunny. Highs in the mid 40s.  
SATURDAY NIGHT - Mostly clear. Lows in the lower 20s.  
SUNDAY - Partly cloudy. Highs around 50.  
SUNDAY NIGHT - Partly cloudy. Lows in the mid 20s.  
MONDAY - Partly cloudy. Highs in the upper 40s.  
MONDAY NIGHT - Partly cloudy. Lows in the mid 20s.  
TUESDAY - Mostly cloudy. Highs in the upper 40s.  
Read more: <http://www.city-data.com/forecast/w-Spearman-Texas.html#ixzz1XwhiVZi8>

**Texas Crop & Weather**

The following specific livestock, crop and weather conditions were reported by Panhandle Extension directors for November 29, 2011: Rain fell over parts of the region, with accumulations ranging from a trace to as much as 1.5 inches in isolated areas. Temperatures were near normal most of the week, but by the end of the week, days were cold and very windy. Soil-moisture levels continued to be mostly very short. The cotton harvest was ongoing, and wheat growers continued planting. What winter wheat was already planted was struggling, and producers were irrigating in hopes of producing forage. Some irrigated wheat looked good. Rangeland and pastures were in very poor to fair condition, with most counties reporting very poor. Livestock producers continued supplemental feeding of cattle.

**Deadline Notice!**

The deadline to submit news and advertising to the Hansford County Reporter-Statesman is Monday at 5 p.m. Items submitted after the deadline will be published at a later date, as time and space permit.  
The deadline for the December 22nd and December 29th issues will be Friday, December 16th at 12 noon.  
Items may be submitted by phone (806-659-3434), fax (806-398-9080), mail (Reporter-Statesman, 213 Main Street, Spearman TX 79081), or e-mail (reporter@spearmanreporter.com).  
For more information, please contact Catherine Smith at 659-3434, 806-584-4879, or reporter@spearmanreporter.com

**Hansford Youth Honored at District 4-H Gold Star Banquet**

Hansford County 4-H youth Audrey Lieb and Reese Clark were honored at the District 1 4-H Gold Star Award Banquet Saturday, December 3rd at WTAMU in Canyon. The Gold Star is the highest award presented in 4-H and may be awarded only one time in a member's 4-H career.

Audrey is the 16 year old daughter of James and Sharon Lieb of Morse. She has participated in swine and steer showing, clothing, foods, livestock judging, leatherwork, share-the-fun and leadership projects. She serves as President of Morse 4-H club and President of Hansford 4-H Council. She has placed second in swine and fourth in steers at the county show. She exhibited a 7th place steer at the Houston Livestock Show. Her livestock judging team placed 3rd at district and 18th at state contests. She was on the 1st place team at OSU Big 3 Cattle Day. She was 5th place High Individual at District Livestock Judging and 5th place High Individual at OSU Livestock Judging. Her citizenship activities include Adopt-a-Highway, preparing Care Packages for the elderly at Christmas, hemming blankets for Evelyn Rivers Christmas project, organizing Morse Days celebration and participating in Morse clean-up. Audrey is in the National Honor Society and the Big Brothers Big Sisters program at school and serves as a class officer. She is involved in church youth group, and has gone on mission trips with her church.

Reese is the 17 year old son of Roney and VeAnn Clark of Morse. Reese has participated in beef, sheep, swine, leathercraft, gun safety, community service,

camping and outdoor fun, and leadership projects. He is Treasurer of Morse 4-H club. He has helped with Morse Park Cleanup, city-wide cleanup day and Adopt-a-Highway campaigns, and prepared and delivered Care Packages for the elderly at Christmas. He helps load out pigs and lambs after the county stock show, assists in taking down all pens and cleaning up the barn after the county show. He has been on setup and clean-up crews for the Senior and Over 50 supper. Reese

has received placing awards at the county stock show in sheep, swine and beef as well as placing awards with lamb projects at the Top-of-Texas Stock Show in Pampa. He enjoys hunting, fishing, working on motors, welding, working cattle, and building things out of barbed wire, wood, and horseshoes. He plays basketball and runs track.

Hansford County 4-H is proud to recognize Audrey and Reese for receiving the Gold Star Award.



Hansford County 4-H youth Reese Clark (left) and Audrey Lieb (right) were honored at the District 1 4-H Gold Star Award Banquet Saturday, December 3rd at WTAMU in Canyon.

**Fire Departments Receive Donations**



Danny Womble, representing Hansford County Farm Bureau, presented a check for \$1,334 to Lonnie Clemmens (left) of Morse Fire Department.



Danny Womble, representing Hansford County Farm Bureau, presented a check for \$1,334 to John Kunselman (left) of Spearman Fire Department.



Danny Womble, representing Hansford County Farm Bureau, presented a check for \$1,334 to Sam Gruver (left) of Gruver Fire Department.

The Texas Farm Bureau and its local boards of directors have put their money where their mouth is when it comes to thanking Texas volunteer firemen for a job well done.

Hansford County Farm Bureau presented checks for \$1,334 to each of Hansford County's three fire departments - Spearman Volunteer Fire Department, Gruver Fire Department and Morse Fire Department.

"All of these departments have fought wildfires and grass fires not only in Hansford County, but all over the panhandle," explained Danny Womble, president of the Farm Bureau board of directors for Hansford County. "Texas Farm Bureau wants to show its appreciation for all the hard work these volunteers put in."

Texas Farm Bureau, which operates as a collective of farmers, ranchers and rural families, agreed to a \$3-to-\$1 match (up to \$1,000) of donations from county farm bureaus. Womble and the other Hansford County directors agreed to put up \$334

for each department, and the state office followed up with the maximum match of \$1,000 per department.

As of Oct. 25, more than 1,000 volunteer fire departments had received assistance through the VFD matching program, receiving a grand total of \$1,185,432.50.

County Farm Bureaus had donated \$320,423 and Texas Farm Bureau had contributed \$865,009.50 as of Oct. 25.

"We're grateful for these local heroes who protect our homes, land, animals and families," Womble said. "Volunteer fire departments are ready, at a minute's notice, not just to put out fires, but also to prevent them. They deserve financial

help. More than that, those in our community should say thanks for those who risk their lives to protect our families and resources."

The Texas Farm Bureau was founded in 1933 and has more than 400,000 member families in 206 counties. It is totally controlled by its members and financed by voluntary dues.

Member benefits include vehicle and farm equipment discounts, agriculture insurance and access to group health care plans. It is affiliated with the American Farm Bureau Federation and has legislative staffs in Austin and Washington, D.C., to lobby on behalf of members.

**Odom Retires from GISD**

by David H. Teal, Gruver Independent School District Superintendent

Wednesday, November 16, 2011 was Debby Odom's last day at Gruver ISD. She worked at Gruver ISD for 24 years. During that time she taught thousands of students, worked hundreds of concession stand nights, and sponsored dozens of student activities from cheerleaders to UIL. During the last eight years she served as the school district's business manager and technology coordinator.

Under Debby's leadership, the District received eight straight Superior accounting ratings from the State of Texas. The District's balance sheet has grown to over four million dollars. She personally supervised interior and exterior design for many of the District's renovations. Under her direction the technology at Gruver ISD is second to none.

Great schools are successful because of high expectations, strong traditions and employees that give their heart and soul to the district. Debby Odom is the epitome of all of these. She has been my model of what it means to be a Greyhound. She has been my closest advisor and friend for eight years and I will miss her very much.

The next time you see her please thank her for her service to the district.



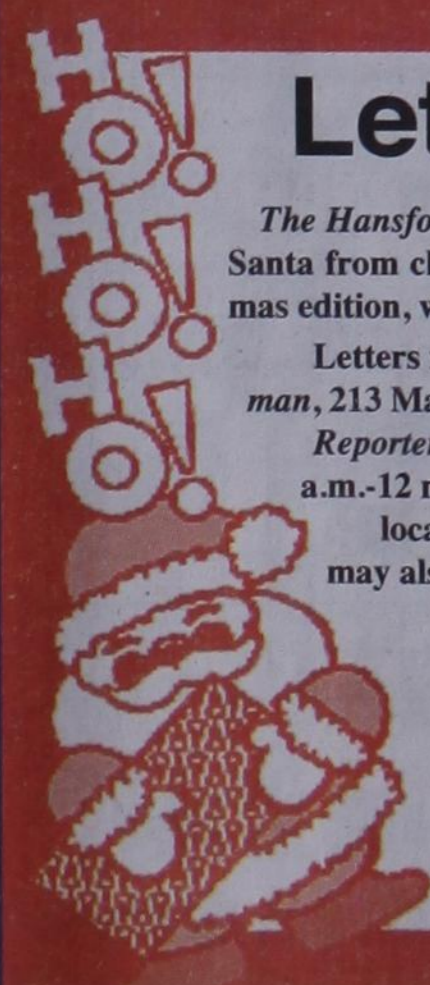
Debby Odom

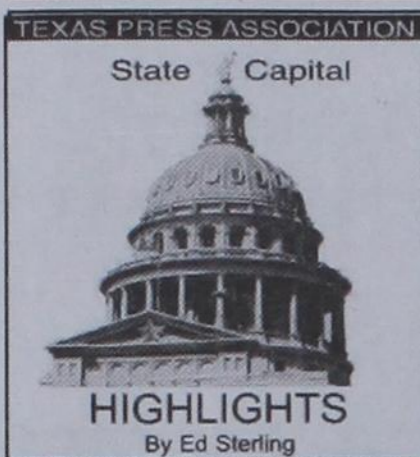
**Letters to Santa**

The Hansford County Reporter-Statesman will print Letters to Santa from children in Hansford County in our annual Christmas edition, which will be published on December 22nd.

Letters may be mailed to: Santa Letter, % Reporter-Statesman, 213 Main Street, Spearman, TX 79081, or dropped by the Reporter-Statesman office. Office hours are Mon.-Thurs., 9 a.m.-12 noon and Mon.-Wed., 1-5 p.m. (There is a drop-slot located in the window to the right of the door.) Letters may also be dropped off at the new home of the Reporter-Statesman, 310 Barkley Street, Spearman.

In order for your letter to appear in the Christmas issue, it must be at the Reporter-Statesman office by 5 p.m. on Thursday, December 15th. All letters will be forwarded to Santa. (Letters received after the deadline may not have time to reach the North Pole by Christmas.)





# STATE CAPITAL HIGHLIGHTS



by Ed Sterling

## High-level bickering continues in re-districting

AUSTIN — Texas Attorney General Greg Abbott last week accused the U.S. Department of Justice Civil Rights Division of delaying the requisite preclearance of new state House and Senate electoral maps adopted last spring by the state Legislature.

In a Dec. 1 letter to Assistant U.S. Attorney General Tom Perez of the Civil Rights Division, Abbott said that such delays harm Texas voters.

Perez responded, attributing the delays to Abbott's legal maneuvers on behalf of the state.

In November, Abbott requested that the U.S. District Court, Western District of Texas, hear the case in mid-December so district lines would be set, candidates could file the necessary forms and the way to normal primary elections in

March would be cleared. But the federal Civil Rights Division requested five additional months of discovery in litigation brought by opponents of the maps.

Abbott said the request "can only be construed as a misguided effort to further postpone an expeditious resolution of this case."

Also, on Dec. 2, Abbott and the state's chief litigator, Solicitor General Jonathan Mitchell, filed a U.S. Supreme Court brief in support of the state's earlier petition for an emergency stay of the U.S. district court's redrawn redistricting maps and asserted again that the state had fulfilled requirements for preclearance under the Voting Rights Act of 1965.

With the state and federal justice systems operating on separate timetables and political urgencies, pressures are mounting. Dec. 15 is the last day to file for a place on the ballot and three months remain until the March 6 primary election date.

## Panels to study border issues

Lt. Gov. Dewhurst, who presides over the state Senate, on Dec. 1 issued charges to three Senate committees to study border security and human trafficking.

The committees on Transportation & Homeland Security and Criminal Justice, in addition to the Joint Interim Committee to Study Human Trafficking, will examine a variety of topics, such as the economic impact of violence and illegal commerce, the effectiveness of law enforcement, and the availability of assistance for victims.

protected under the Endangered Species Act.

In separate announcements, the state agency chiefs agreed that if the lizard is named to the endangered species list, oil and gas production in the Permian Basin would be hampered and jobs would be lost.

## Disaster proclamation renewed

Even with the recent precipitation and cooler weather, most of Texas is in a state of extreme drought and the fire risk is high, very high or exceptional, according to statistics made public by the Texas Water Development Board.

Lt. Gov. David Dewhurst, acting governor, on Nov. 30 extended Gov. Rick Perry's Dec. 21, 2010, emergency disaster proclamation of a statewide wildfire and drought emergency. When Perry is out of the state, Dewhurst serves as acting governor. Perry has been campaigning to be the Republican nominee for president in 2012.

Information posted by The Fitzgerald Lab, Texas A&M University, says the lizard's preferred habitat is in bowl-shaped depressions called "sand dune blowouts."

Program aims to add jobs  
Texas Agriculture Commissioner Todd Staples on Nov. 29 made an announcement about Jobs for Texas, a new program meant to build the state's economy by fostering private job creation and business expansions.

Through "J4T," Staples said, the state has awarded \$17 million to Advantage Capital Partners and \$10 million to Enhanced Capital Partners, firms that are tasked with investing those dollars in entrepreneurs and small businesses that will employ more Texans.

Also, Staples announced, small businesses seeking financial input through traditional lending may apply for the J4T Loan Guarantee Program, which has \$10.5 million available to guarantee business loans.

Input on lizard will continue  
Comptroller Susan Combs, Land Commissioner Jerry Patterson and Railroad Commissioner Barry Smitherman expressed satisfaction in the U.S. Fish and Wildlife Service's Dunes Sagebrush Lizard announcement last week.

The federal agency on Dec. 1 extended the timeline by six months for input before deciding whether the lizard should be listed as

## Pedestrian Safety Tips

\* Be predictable. Stay off freeways and restricted zones. Use sidewalks where provided. Cross or enter streets where it is legal to do so.

\* Where no sidewalks are provided, it is usually safer to walk facing road traffic.

\* Make it easy for drivers to see you - dress in light colors and wear retro-reflective material. It might be wise to carry a flashlight in very dark areas.

\* Be wary. Most drivers are nice people, but don't count on them paying attention. Watch out - make eye contact to be sure they see you!

\* Alcohol and drugs can impair your ability to walk safely, just like they do a person's ability to drive.

\* Use extra caution when crossing multiple-lane, higher speed streets.

## Tips for Drivers

\* You can encounter pedestrians anytime and anywhere - even in places where they are not supposed to be found.

\* Pedestrians can be very hard to see - especially in bad weather or at night. You must keep a lookout and slow down if you can't see clearly.

\* When entering a crosswalk area, drive slowly and be prepared to stop.

\* Stop for pedestrians who are in a crosswalk, even if it is not marked. When you stop for a pedestrian in a crosswalk, stop well back so that drivers in the other lanes can also see the pedestrian in time to stop.

\* Do not overtake and pass other vehicles stopped for pedestrians.

\* When you are turning, you often will have to wait for a "gap" in traffic. Beware that while you are watching for that "gap," pedestrians may have moved into your intended path.

\* Be especially attentive around schools and in neighborhoods where children are active.

## Words from Faith & Grace

by Cecil R. Biggers, Lutheran Lay Minister



During the third week in the Season of Advent, we seek to learn to "rejoice always!" as we study, Isaiah 61: 1-4, 8-11, Luke 1: 47-55, 1 Thessalonians 5: 121-28, and Luke 1: 6-28.

The prophet Isaiah gives an announcement of divine presence and action. God's anointed declares, "The Spirit of the Lord God is upon me, because the Lord has anointed me; he has sent me to bring good news to the oppressed, to bind up the brokenhearted, to proclaim liberty to the captives, and release to the prisoners..." In order to accomplish all that he is tasked to do, God's Anointed must confront the perpetrators and sources of oppression, of marginalization, of hopelessness, and of despair.

A new future through God's grace is possible because God promises an everlasting covenant with his people; they shall see God's salvation.

Mary sings her song, which has come to be called "The Magnificat". This young Jewish girl is chosen by God to bear The Christ. The beauty of her faith is that she does not question, how these things can be. She accepts God's word. "...and my spirit rejoices in God my Savior, for he has looked with favor on the lowliness of his servant. Surely from now on all generations will call me blessed; for the Mighty One has done great things for me, and holy is his name." Mary let go of her will and fell into the Love of God.

In the oldest Christian writing in the New Testament, Paul admonishes the Church in Thessalonica on the disciple life. "Rejoice always, pray without ceasing, give thanks in all circumstances; for this is the will of God in Christ Jesus for you. Do not quench the Spirit. Do not despise the words of the prophets, but test everything; hold fast to what is good; abstain from every form of evil." Take heed, dear Christian, this is our duty also. It is hard to 'rejoice always' when our lives are filled with gloom and despair; yet, it is precisely because we are looking at ourselves and our situation that we despair. If our focus is on Jesus we can always rejoice! To pray without ceasing requires us to let go of our will and fall into the Love of God. We are enabled to do this by the Holy Spirit who is always present with us. We await the Advent of Christ, but the Spirit is with us now!

John, the Apostle, speaks of the man who was sent by God to testify to the light. John was speaking of John the Baptist who is characterized by John the Apostle as being "John the Witness". When the disciples of the Pharisees question John the Baptist as to his identity, John denies being the Messiah, denies being Elijah, denies being the prophet. John says, "I am the voice of one crying out in the wilderness, 'Make straight the way of the Lord', as the prophet Isaiah said. John the Baptist pointed toward The Christ, "Look, Behold! The Lamb of God!"

May the Holy Spirit enable you to let go of your will and fall into the Love of God as we await Messiah's return in the presence of the Holy Spirit. Maranatha!

**The Hansford County Reporter-Statesman**  
Mailing Address - 213 Main Street • Spearman TX 79081  
Physical Address - 310 Barkley Street • Spearman TX 79081  
Phone - (806) 659-3434 • Fax - (806) 398-9080  
www.spearmanreporter.com • reporter@spearmanreporter.com  
Mon.-Thurs. 9 a.m.-12 p.m., Mon.-Wed. & 1-5 p.m.  
Closed Thurs. afternoon and all day Fri., Sat. & Sun.  
  
Gary Smith - Publisher Catherine Smith - Editor  
Contributing Writers: Dorothy Hudson, Jim Detrition, Merry Sparks,  
Cecil Biggers, Virginia Scott, Ed Sterling, Rod Sumner  
Contributing Photographers: Lisa Johnson, Tami Hargrove,  
Tammy Batton, Bonnie Bergan, Rod Sumner  
  
Subscription Rates  
In Hansford County - \$30.00 • Out of County - \$40.00  
E-Mail Subscription - \$35.00  
  
The Hansford County Reporter-Statesman (USPS 529660) is published weekly in Spearman, TX. Periodical postage paid in Spearman, TX. POSTMASTER: Send address changes to: The Hansford County Reporter-Statesman, 213 Main Street, Spearman, TX 79081.  
  
Publication Policy  
The deadline to submit news and advertising to The Hansford County Reporter-Statesman is Monday at 5 p.m. Items submitted after the deadline will be published at a later date, as time and space permit. Publication of all items is at the discretion of the editor.  
  
Advertising  
Open Display rates are \$4.00 per column inch. Classified Ads are \$7 for the first 20 words and 15¢ per word for each additional word. (Additional charge for boxed classifieds.) There is a \$1 charge per week if billed.  
  
Member of  
Gruver Chamber of Commerce  
Spearman Chamber of Commerce  
Texas Press Association and Panhandle Press Association

**20th Century**

ACROSS

1. Mothball substitute

6. "\_\_\_ Whom the Bell Tolls," by Hemingway

9. Equal

13. Camel's relative

14. "Baseball great Gehrig

15. \_\_\_ the tail \_\_\_ the donkey

16. IRS threat

17. Unit of electrical resistance

18. Los \_\_\_, CA

19. "Moldable material that had huge commercial impact

21. "Location of famous fall

23. \_\_\_ Francisco, site of 1906 Great Earthquake

24. "Buddy Holly hit. \_\_\_ On"

25. "Mary \_\_\_," businesswoman extraordinaire

28. "Belushi famously chanted this in "Animal House"

30. Bivouac

35. Big bang theory's original matter

37. "The "Fab Four's" original number

39. "Movie " \_\_\_ Recall"

40. Spanish earthen pot

41. Robin Hood's companion

43. Vegan's protein

choice

44. What you pay to pass, pl.

46. Doctor's order

47. Incision

48. Pearl maker

50. "Colorful building block

52. One from Laos

53. Not yet final or absolute

55. Rangers and Flyers field of play

57. "It carried Gagarin into space

60. "Chilly conflict

64. Can be used intermittently

65. The Jackson 5's "\_\_\_ Be There"

67. Nose of a missile, e.g.

68. Cleverly funny

69. Customer's dread

70. Complete list of Catholic saints

71. Type of list

72. Marines are this and proud?

73. Swedish money

DOWN

1. "It can turn some lights on and off

2. Twelfth month of civil year

3. "Nihilistic cultural movement

4. Awry

5. Knocks on the door, e.g.

6. Farm Labor Organizing Committee

7. Expression of amazement

8. Ballroom dance based on Cuban folk dance

9. Under a window

10. \_\_\_ perspirant

11. "One small step for man?"

12. Half the width of ems

15. "JFK to John-John

20. \_\_\_ and out; on and \_\_\_

22. The day before

24. Typically filled with cheese or meat

25. "\_\_\_ Protocol, a framework for climate change

26. Bronze, e.g.

27. Hollers

29. Encircle

31. Rolled out for guests, pl.

32. Coral reef island

33. "Subject of "The Godfather"

34. "Demoted planet

36. Scotch ingredient

38. "Ill at \_\_\_"

42. Latin for "region"

45. Lookout man

49. Home of 2016 Olympics

51. According to the clock

54. Small boat

56. "J. \_\_\_ Hoover, of the FBI

57. Henry \_\_\_

58. Prefers \_\_\_

59. Comedian \_\_\_ Rogan

60. Ball of yarn

61. A drunk

62. Shakespeare's hometown river

63. Actress \_\_\_ Sofer

64. "Domain of latter part of century

66. "Martial artist, Bruce \_\_\_

Member of  
Gruver Chamber of Commerce  
Spearman Chamber of Commerce  
Texas Press Association and Panhandle Press Association

by GasBuddy.com  
**TexasGasPrices.com**  
Weekly Update

Texas, December 5- Average retail gasoline prices in Texas have fallen 2.4 cents per gallon in the past week, averaging \$3.07/g yesterday. This compares with the national average that has fallen 2.6 cents per gallon in the last week to \$3.29/g, according to gasoline price website TexasGasPrices.com.

Including the change in gas prices in Texas during the past week, prices yesterday were 30.8 cents per gallon higher than the same day one year ago and are 14.4 cents per gallon lower than a month ago. The national average has decreased 13.9 cents per gallon during the last month and stands 35.5 cents per gallon higher than this day one year ago.

"Even as oil and gasoline futures rallied after strong Black Friday sales reports and a drop in unemployment, retail gasoline prices have moved lower," according to GasBuddy.com Senior Petroleum Analyst Patrick DeHaan. "I have a suspicion that as we near 2012, we may see retail prices climb slightly higher again on upbeat holiday spending, which is indicative of a healthier economy. If we remember back to last year, positive holiday sales also led to higher gasoline prices as Christmas approached, which may play out again this year," DeHaan added.

GasBuddy operates, TexasGasPrices.com, and over 225 other local gasoline pricetracking websites that follow prices at over 125,000 gasoline stations in the United States and Canada. GasBuddy also uses Facebook (facebook.com/gasbuddy), Twitter (twitter.com/gasbuddy), and phone apps to keep motorists ahead of changing gasoline prices.

**20th Century**

These games are brought to you by the Hansford County Reporter-Statesman

ACROSS

1. Mothball substitute

6. "\_\_\_ Whom the Bell Tolls," by Hemingway

9. Equal

13. Camel's relative

14. "Baseball great Gehrig

15. \_\_\_ the tail \_\_\_ the donkey

16. IRS threat

17. Unit of electrical resistance

18. Los \_\_\_, CA

19. "Moldable material that had huge commercial impact

21. "Location of famous fall

23. \_\_\_ Francisco, site of 1906 Great Earthquake

24. "Buddy Holly hit. \_\_\_ On"

25. "Mary \_\_\_," businesswoman extraordinaire

28. "Belushi famously chanted this in "Animal House"

30. Bivouac

35. Big bang theory's original matter

37. "The "Fab Four's" original number

39. "Movie " \_\_\_ Recall"

40. Spanish earthen pot

41. Robin Hood's companion

43. Vegan's protein

choice

44. What you pay to pass, pl.

46. Doctor's order

47. Incision

48. Pearl maker

50. "Colorful building block

52. One from Laos

53. Not yet final or absolute

55. Rangers and Flyers field of play

57. "It carried Gagarin into space

60. "Chilly conflict

64. Can be used intermittently

65. The Jackson 5's "\_\_\_ Be There"

67. Nose of a missile, e.g.

68. Cleverly funny

69. Customer's dread

70. Complete list of Catholic saints

71. Type of list

72. Marines are this and proud?

73. Swedish money

DOWN

1. "It can turn some lights on and off

2. Twelfth month of civil year

3. "Nihilistic cultural movement

4. Awry

5. Knocks on the door, e.g.

6. Farm Labor Organizing Committee

7. Expression of amazement

8. Ballroom dance based on Cuban folk dance

9. Under a window

10. \_\_\_ perspirant

11. "One small step for man?"

12. Half the width of ems

15. "JFK to John-John

20. \_\_\_ and out; on and \_\_\_

22. The day before

24. Typically filled with cheese or meat

25. "\_\_\_ Protocol, a framework for climate change

26. Bronze, e.g.

27. Hollers

29. Encircle

31. Rolled out for guests, pl.

32. Coral reef island

33. "Subject of "The Godfather"

34. "Demoted planet

36. Scotch ingredient

38. "Ill at \_\_\_"

42. Latin for "region"

45. Lookout man

49. Home of 2016 Olympics

51. According to the clock

54. Small boat

56. "J. \_\_\_ Hoover, of the FBI

57. Henry \_\_\_

58. Prefers \_\_\_

59. Comedian \_\_\_ Rogan

60. Ball of yarn

61. A drunk

62. Shakespeare's hometown river

63. Actress \_\_\_ Sofer

64. "Domain of latter part of century

66. "Martial artist, Bruce \_\_\_

**CROSSWORD**

1 2 3 4 5 6 7 8 9 10 11 12

13

14

15

16

17

18

19

20

21

22

23

24

25

26

27

28

29

30

31

32

33

34

35

36

37

38

39

40

41

42

43

44

45

46

47

48

49

50

51

52

53

54

55

56

57

58

59

60

61

62

63

64

65

66

67

68

69

70

71

72

73

PRESENTED BY

**VolunteerMatch.org**  
Where volunteering begins.

StatePoint Media answer on classified page

SUDOKU

PRESENTED BY

**VolunteerMatch.org**  
Where volunteering begins.

9	6			2	4	3		5	
	2	4			7			1	
		5				2			
		9		1	5				
2			7		3			4	
				4	8		9		
		3					7		
	8			5			4	9	
5		6	3	7				8	2

Fill in the blank squares in the grid, making sure that every row, column and 3-by-3 box includes all digits 1 through 9.

StatePoint Media answer on classified page

**VolunteerMatch.org**  
Where volunteering begins.

StatePoint Media answer on classified page

# Happy Birthday!

**December 8 Birthday** - Stan TeBeest, Reynaldo Garza, Lawrence Tindell, Scott Slater, Hershel Jones, Carmen Arjona, Jason Holton, Michelle Cook Kaman, Theresa Davis, Tim Welton, Bruce Stinson, Morgan Lackey, LaVerne Parks, Jack Owen Pipkin, Jason Holton, Ed Hibbs  
**Anniversary** - Vicki & Rodney Nickel

**December 9 Birthday** - Clayton Smith, Grant Odom, Matt Overbey, Marlene Winger, J.H. Campbell Jr., Gail Vanlandingham, Elodia Flores, Melana Papay, Shawn Cook, Juan Garcia Jr., Elda DeSantiago, Maddie Rose Stork, Gannon Crum, Don England, Chaz Patterson

**December 10 Birthday** - Pat Barkley, Akiko Bort, Marilyn Hart, Harold King, Brent Pittman, Aaron Jackson, Kayla Pletcher, Donald Piatt, Kay Barnes, Leila Bynum, Phyllis Collins, Linda Bartz, Bryce Jarvis, Serina Diaz, Brent Wagner  
**Anniversary** - M/M John Sprigg, M/M Mark Irwin

**December 11 Birthday** - Kasey Davis, Manella Kiser, Dana Steele, Phillip Renner, Maria Martinez, Florence Fletcher, Jim Evans, Betty Dunaway  
**Anniversary** - M/M Jess Wood, Irene & Butch Baker

**December 12 Birthday** - Gene Fletcher, Kaisi Foster, Claudia Barton, Olga Cantu, Mary Ann Martin, Jana (Pittman) Ivey, Babara Ring, Daniel Ochoa, Don Reed, Chance Johnson, Ivin Boyd, Christine Brandvik, Omar Favela, Guadalupe Trejo, Freddy Walton, Marvin Wilkerson, Justin Boyd, Brandon Sauz  
**Anniversary** - M/M Jon King, M/M John Lopez, Charles & Melanie Elliott

**December 13 Birthday** - Betty Burk, James Burk Jr., Holly McCloy, Barbara Schnell, Muriel Boyd, Linda Butt, Bobby Smith, Jack Reed, Georgena Hart, Dan Roach, Dana Wattier, Robert Zamora, Marilyn Cline, Blythe Finley, Leah Smith  
**Anniversary** - M/M Kurt Bynum

**December 14 Birthday** - Bradley Clawson, Ray Etter, Todd Parker, Penny Ralston, Barbara Stavlo, Elaine Odegaard, Ron Schmeier, Bradley Sanders, Lynn Cook, Sandra Grover, Eddie Herrington, Cale Curry, Amy Gift, Betty Redwine, Kellianne Bynum, Ben Butler, Ed Herrington  
**Anniversary** - M/M Don

Maize, M/M Chris Stork, Keith & Linda Meddock

**December 15 Birthday** - Dallas Henson, Harvey Profit, Hal Shufeldt, April Davis, Bob Pearson, Abbe Steger, Clarence Eller, Rosa Pierce, Stephanie Crossland, Donny Davis, Maria Ortiz, Jennie Jones, Jose Vargas, Jim Norton, Joey Bynum, Randall Sauer, LeAnn Shields, Eric Vasquez, April DeLaRosa  
**Anniversary** - Loyal & Ginger Turner, Joe & Melody Martinez

**December 16 Birthday** - Linda Lackey, Clint Patterson, Marty Bennett, Melanie Clausen, Jennifer Lozano, Colton Cator  
**Anniversary** - M/M Byron Kenney, M/M George P. Odom, M/M John Purvines

**December 17 Birthday** - Bobbie Novak Underwood, Patsy Bevell, Sergio Favela, Charles Kruse, Stephanie TeBeest, Brandy Urban, Lupe Guerero, Francis Floyd, Viola Hutton, Russell Shaver, Lorene Raiz, Charles Layton, Sandi Rich, Michael Park, Pam Cassidy, Jimmy Traylor, Stephanie Tyler, Art Maestas, Britta Vanderburg  
**Anniversary** - M/M Bill Park, M/M Rick Finley, Steve & Karen Hartgraves

**December 18 Birthday** - Jimmy Faren, Ronnie Schaefer, Cassie Butt, Malory Martin, Ben Gruver, Monalisa Garcia, Juanita Vera, Nolan Holt  
**Anniversary** - Tom & Rita Reed, M/M Dwayne Hart, M/M Dave Karlin

**December 19 Birthday** - Steve Bevell, Jim Norton, Steve Watkins, Fausto Ruiz, Betty Vernon, Georgia Gaither, Nan Nicholson, Irene Reed, Sara Dossett, Pat Dear, Gwen McLain, Ford McIntyre, Zachary Brelans, Billy Jo Miesner, Delphine Etling, Cindy Walton, Ruby Katherine Thornton, Marguerite Nelson, Kate Davis, Kristi Jones  
**Anniversary** - Frank & Carol Lemons, Earl & June Spencer, M/M Roy Diaz, Kyle & Jennifer Nollner

**December 20 Birthday** - Harletta Carthel, Doug Garrett, Esmeralda Renteria, Bill Turner, Peggy Papay, Charles West, Quentin Hayes, Britni Beedy Sanders, Alicia Nikolas, Lexie Woodward, Mary Webster, Quentin Harper, Brock Schroeder, Megan Evans, Haylin Derington, Pete Wall  
**Anniversary** - Sam & Brenda Pierson, Gary and Catherine Smith, M/M Dale Jones, Brian & Gina Gillispie

# Our Sympathy

## LOTTIE EDNA TAYLOR SMITH

**SPEARMAN** - Lottie Edna Taylor Smith, 79, died Thursday, December 1, 2011.

Memorial services were at 3 p.m. Sunday, December 4, 2011 at Hansford Manor in Spearman with Rev. Gary Smith, minister of the First Christian Church of Stratford, officiating. Arrangements were by Boxwell Brothers Funeral Home, 519 Evans St., in Spearman.

Mrs. Smith was born May 5, 1932, in Pender County, NC to Ruby Humphries and Isaac James Taylor. She married Jerry Sandlin Smith on December 23, 1949, in Halifax, VA. They lived in Magnolia, NC, moving to Dunn, NC in 1964. Mr. and Mrs. Smith owned and operated Jerry Smith Insurance and Realty in Dunn for several years. Mrs. Smith moved to Wilmington, NC in about 1999. She moved to Tennessee to be closer to her son, Al in 2004, and moved to Texas to be near her son, Gary, in 2006.

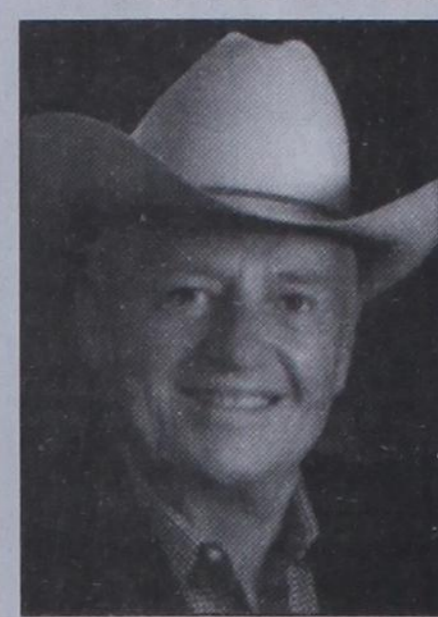
During her lifetime Lottie had many interests including Bingo, golf and duplicate bridge (Gold Life Master certification). She was very active in bridge clubs in North Carolina.

Mrs. Smith was preceded in death by her husband, Jerry, in 1994, a grandson, Jeremy Leon Smith, and her son, James Albert "Al" Smith, both in 2006. She was also preceded in death by her second husband, Donald Houser, in 2008; and her brothers and sisters - Clayton Taylor, Robert Taylor, Pete Taylor, Paul Taylor, Bud Taylor, Charlie Taylor, Frank Taylor, Louise, Betty Ruth, Evelyn and Marie.

Survivors include her son and daughter-in-law, Gary and Catherine Smith of Spearman, TX; a daughter-in-law, Charneal Smith of Riddleton, TN; seven grandchildren, Jennifer and Dave McNulty of Sandwith, MA, Elizabeth Carter of Boston, MA, Heather Alison and Dan Rountree of Hendersonville, TN, Kittrell Taylor Smith of Memphis, TN, Cameron James Smith of Mexico, and Clayton Smith and his fiancée Jill Hall, of Granbury, TX; a step-grandson, Stetson Holder of Hartsville; and six great-grandchildren, Meghan and Katherine McNulty of Sandwith, MA, Logan Smith, Gavin Smith both of Lafayette, TN, Jackson Ears of Lebanon, TN, and Milo Hall of Granbury, TX. She is also survived by many special friends and caregivers at Hansford Manor in Spearman.

The family requests memorials be made to First Christian Church, P.O. Box 626, Stratford, TX 79084.

## DONALD L. "DONNIE" THORESON



**GRUVER** - Donald L. (Donnie) Thoreson, 77, passed away early Tuesday, December 6, 2011 at Hansford Hospital, Spearman, Texas.

The son of Grace (Brinkley) and A.L. Thoreson, he was born February 15, 1934 in Hitchland, Texas. Donnie graduated from Gruver High School in 1952. He was united in marriage to Nella Beth Cluck on August 9, 1952 in Clayton, New Mexico. Donnie farmed and

ranching in the Gruver area where he was a co-founder of DGC Feeders and Caprock Industries. Donnie was always a Gruver supporter and agriculture advocate. Over the years, Donnie volunteered his time and energy on the board of directors, a trustee or was in leadership for the Tri-State High School Rodeo Association, Hansford County Hospital Board, Livestock Board and the Gruver ISD Board. He was honored as an Outstanding Young Farmer Award of Oklahoma in 1965 and served under President Nixon on the Texas Board of Agriculture. Donnie was a member of the Gruver Methodist Church.

Donnie was preceded in death by his parents, his wife, Nell Thoreson who passed away in 1991, three brothers and two sisters.

Survivors include his daughter, Candy Thoreson Golden of Rockwall, TX; son, Bart Donnie Thoreson and wife, Alexa of Gruver. He was an adored "PawPaw" to his grandchildren and great-grandchildren, Miranda and husband Heath Hill of Gruver; Neely and husband Justin A. Holland of Heath, TX; Macy Hicks of Amarillo; and Payton Bart Thoreson of Gruver; two great-grandchildren, Tripp Hudson Hill, Hagen Marie Hill and soon to be born great-granddaughter, Wiley Beth Holland. He is also survived by his sister, Jeanette and husband Les Niles of Amarillo; and a longtime close friend, Mrs. Agnes Wing of Guymon, OK.

Visitation will be Wednesday evening, 6-8:00 PM at the Gruver United Methodist Church.

Memorial services will be Thursday afternoon, December 8, 2011, 2:00 P.M. at the Gruver United Methodist Church with Rev. Jerry Moore and nephew, Mike Wilhelm, officiating. Interment will be in Gruver Cemetery under the care of Henson-Novak Funeral Directors of Guymon.

Memorials may be given to Hansford Hospice, 707 Roland, Spearman, TX 79081. Friends may sign the on-line guest book and send condolences at www.henson-novak.com.

## MONUMENTS

### Boxwell Brothers Funeral Home

519 Evans • Spearman  
659-3802

Dear friends,  
When you buy a monument from us we make sure it is exactly what you want at a price you can afford. If it is not right, we will make it right. And you will not have to search the countryside to find us. We are here when you have a need.

Sincerely,  
Bob Boxwell

*Alva Monument Co.*  
Formerly Liberal Monument & Memorial Company  
**New Location:**  
N Tucker Road  
Liberal, Kansas  
North of the New Wal-mart

Serving Kansas, Oklahoma & Texas for 93 years  
(316) 624-4211 toll free # 888-654-9318

## Replenish the seed of faith through . . .

### DAILY BIBLE READING, PRAYER & REGULAR CHURCH ATTENDANCE

#### Spearman

**Apostolic Faith Church**  
822 S. Drexel • 659-2870  
Sunday School: 10 a.m.  
Worship Service: 11 a.m.  
Sun. Eve.: 6 p.m.  
Wed. Prayer Mtg: 7 p.m.  
Pastor - Jack Cornell

**First Assembly of God**  
401 N. Berrick • 659-2295  
Sunday School: 9:30 a.m.  
Worship: 10:40 a.m.  
Evening Worship: 6 p.m.  
Wed. Worship: 7 p.m.  
Wed. Youth: 7  
Pastor - Brad Smith

**First Christian Church**  
(Disciples of Christ)  
29 S. Berrick • 659-2036  
Sunday School: 9:45 a.m.  
Worship: 10:50 a.m.  
Minister -

**First Baptist Church**  
123 N. Berrick • 659-5557  
Sunday School: 9:45 a.m.  
Worship: 11 a.m.  
Evening Worship: 7 p.m.  
Men's Bible Study - Wed., 7 a.m.  
Children's Choir - Wed., 6 p.m.  
Adult Choir - Wed., 7 p.m.  
Wed. Bible Study: 7 p.m.  
Pastor - Jim Medley

**Church of Christ**  
121 S. Haney • 659-3244  
Sunday Bible Class: 9:45 a.m.  
Worship: 10:30 a.m.  
Evening Worship: 6 p.m.  
Bible Study Wed.: 7:30 p.m.

**Sacred Heart Catholic Church**  
901 Roland • 659-2166  
Sat. Night Mass: 5:30 p.m.  
Sun. Mass: 9 a.m. - English  
Sun. Mass: 11:30 a.m. - Spanish  
Rev. Gregory Bunyan

**First United Methodist**  
407 S. Haney • 659-5503  
Sunday School: 9:45 a.m.  
Worship: 8:30 & 11 a.m.  
Jr. High Youth: 5 p.m. Sunday  
High School: 6 p.m. Sunday  
Kids Club: 3 p.m. Wed.  
Pastor - Toni Bailey

**Grace Presbyterian Church**  
(Worships with Faith Lutheran Church)  
1101 Berrick • 659-2033

**Faith Lutheran Church (ELCA)**  
1101 Berrick • 659-2252  
Sunday School: 9:45 a.m.  
Worship: 11 a.m.  
(Worships with Grace Presbyterian Church)  
Pastor - Cecil Biggers, PLM

**Union Church**  
31 S. Endicott • 659-2644  
Sunday School: 10:00 a.m.  
Worship & Kid's Church: 11:00 a.m.  
Wed. Evening Worship and Bible Study Service: 7 p.m. Wed.  
Pastor - Steve Hinchshaw  
www.unionchurchonline.org

**Fellowship Baptist**  
1102 S. Archer • 659-2783  
Sunday School: 10 a.m.  
Worship: 11 a.m.  
Sun. Evening Worship: 6 p.m.  
Sun. Evening Spanish Worship: 7 p.m.  
Youth/Adult Service: 7:30 Wed.  
Pastor - Phillip Hudson

**Primera Mision Bautista**  
502 E. 7th • 659-3991  
Sunday School: 9:45 a.m.  
Worship: 11 a.m.  
Evening: 6 p.m.  
Wed. Prayer Meeting: 7 p.m.  
Thurs. Visitation: 7 p.m.  
Pastor Joe Garcia Jr.

**El Aposento Alto U.P.C.I.**  
1105 S. Roland  
Domingos: Escuela-Domical - 10 a.m.  
Culto Evangelistico - 7 p.m.  
Jueves: Oracion - 8 p.m.  
Mier: Estudio Biblico - 7 p.m.  
Pastor - A.G. Martell  
(806) 659-2153

#### Gruver

**First Baptist Church**  
402 E. Broadway • 733-2411  
Sunday School: 9:45 a.m.  
Worship: 10:50 a.m.  
Disciple Training: 6 p.m. Sunday  
Prayer Meeting: 7:30 p.m. Wednesday  
Pastor - Scott Curry

**Church of Christ**  
209 King • 733-2760  
Sunday School: 9:30 a.m.  
Worship: 10:20 a.m.  
Evening Worship: 6 p.m.  
Wed. Worship: 7:00 p.m.  
Minister - Gaylord Cook

**First Christian Church**  
519 King • 733-2960  
Sunday School: 10:00 a.m.  
Sunday Worship: 11 a.m.  
Youth: 7:30, Sunday  
Adult Bible Study: 7:30, Sun.  
Wed. Bible Study: 8:00 p.m.  
Pastor - Gary Gumfory

**Gruver United Methodist**  
Broadway & Garrett  
733-2651  
Sunday School: 9:45 a.m.  
Worship: 8:30 & 10:50 a.m.  
Eve. Worship & UMY: 6 p.m.  
Pastor - George Price

**Spanish Cristo Redentor Church**  
Hwy 158 • 659-2166  
Gruver, TX  
Sun. Mass: 1:30 p.m. - Spanish  
Rev. Gregory Bunyan

#### Oslo

**Oslo Lutheran Church (ELCA)**  
6 Miles West & 12 Miles North of Gruver  
339-7646  
Sunday School: 9:45 a.m.  
Worship: 11 a.m.  
Pastor - Arlen Lloyd

#### Morse

**Morse Baptist Church**  
733-2757  
Pastor - Gary Stevens

#### Waka

**Church of Christ**  
300 Rogers Ave.  
202-7126  
Sunday School - 9:30 a.m.  
Sunday Worship: 10:30 a.m. & 6 p.m.  
Wednesday Bible Study: 7 p.m.  
Preacher - Ed Jenkins

He has showed you, O man, what is good. And what does the LORD require of you? To act justly and to love mercy and to walk humbly with your God.

Micah 6:8

This feature is made possible through the sponsorship of these civic minded businesses:

**Deakin ELECTRIC**  
OILFIELD • RESIDENTIAL • COMMERCIAL  
321 S. MAIN • SPEARMAN  
1-800-999-1506 Chris Deakin  
806) 659-5016 President

**Bartlett's Lumber & Hardware**  
105 W. Broadway • Gruver, TX  
(806) 733-2404

**BERRY CLEANERS**  
Ann & Vernon Pipkin - Owners  
Phone 659-3122 • P.O. Box 1017  
207 Main St. • Spearman, TX

**Morse Implement & Auto Supply**  
"Join us in church"  
Tom Dortch 733-2668  
Box 89 • Morse, TX 79062

**PRAIRIE MOTORS INC.**  
Hwy. 207 South • P.O. Box 430  
Spearman, TX 79081 • (806) 659-2541  
www.prairiemotors.com

**MurMur's Cafe**  
100 Roland St  
Spearman, TX.  
659-3580

**Hansford County Reporter-Statesman**  
"Proudly Serving Hansford County Since 1907"  
(806) 659-3434  
310 Barkley • Spearman, TX

**INTERSTATE BANK, ssb**  
www.interstatebank.net  
322 Main • P.O. Box 146  
Spearman, TX • 659-2559

**CAREER OPPORTUNITY**  
Petroleum Engineering Service Company has immediate openings for  
**FIELD PRODUCTION TESTER & WIRELINE OPERATOR**  
in OZONA, TEXAS.  
REQUIREMENTS: Minimum of high school education required. Must be neat in appearance, responsible, dependable and have strong desire to excel. Good work history with excellent references. Must meet DOT Requirements.  
BENEFITS: Group medical insurance, life insurance, liberal vacation policy, 401 K.  
SALARY: Open (commensurate w/ experience)  
Send resume to: **FESCO LTD.**  
P.O. Box 1568  
Ozona, TX 76943  
An Equal Opportunity Employer  
www.fescoinc.com

Maximum strength analgesic for temporary relief from:  
• Back pain  
• Muscle pain  
• Arthritis pain  
• Joint pain  
**THERA-GESIC**  
Go Painlessly with THERA-GESIC.

**Stop the Pain of: Aches, Stress & Unwanted Pounds**  
High Heating Cost  
Liberty Plus Infrared Heater  
• Heat for less with true infrared Heat!  
• Stay warmer (faster)  
• Visit www.SpendLessOnHeat.com  
Heater only \$199!  
PerfectHeat Saunas  
• Soothing Infrared  
• EZ Setup, Ships Free!  
• Visit www.FamilyPoolFun.com/Saunas  
LIFE TIME WARRANTY  
Call Now... 800-950-2210

**MACULAR DEGENERATION**  
Imagine A Pair Of Glasses That Can Help You See Better!  
Ever look through a pair of field glasses or binoculars? Things look bigger and closer, and easier to see. Dr. Larry Chism is using miniaturized binoculars or telescopes to help people who have decreased vision, to see better.  
In many cases, special telescopic glasses can be prescribed to enhance visual performance. He often can help people read, watch TV, and sometimes drive.  
Although telescopic glasses cost between \$1900-\$2500, it is a small price to pay for the hours of enjoyment with better vision and more independence.  
For information and a FREE telephone interview call:  
**1-888-243-2020**  
Dr. Larry Chism, Optometrist  
Abilene • Austin • Fort Worth • Georgetown • Houston  
Plano • San Antonio • Tyler  
www.chismflowvision.com www.IALVS.com

# HYI

FOR YOUR INFORMATION

### Spearman Food Bank 1st Thursday

If you would like to help the Spearman Food Bank, they need help unloading the truck at 11:30 each 1st Thursday of each month. Contact Cecil Biggers for more information.

### Hansford Co. Library Thrift Shop Accepting Donations

The Hansford County Library Thrift Shop, now known as Alley Katz, is accepting donations of quality items. You may ask for the key to the Thrift Shop at the library desk during regular hours (9:30 a.m.-5 p.m., Monday-Friday). Alley Katz is open from 10 a.m.-4 p.m. each Wednesday.

### Spearman Boys Basketball Fundraiser

The Spearman Boys Basketball team is selling Coffee Mugs and Coasters as a fund raiser. Forms are available at the high school and junior high offices, and may be returned there as well. This sale will end Nov. 30th! Purchase your Lynx and Lynxette Coffee Mug and Coasters Today! Great Christmas Gifts! Contact Coach White at the High School if you have any questions. Coffee Mug \$9, Travel Mug \$10, Coasters (4 per set) \$12, Trivet \$8.

### Winter Landfill Hours

Due to a shortage of employees, the City of Spearman has decided to implement the winter hours at the landfill 2 weeks early. Normally it would not change until daylight savings time changes, but they implemented the winter hours beginning Tuesday, October 25, 2011. Winter Hours are: Tues-Sat, 8 a.m. - 5 p.m. Closed on Monday and Sun day. They will also begin the one garbage pickup. If you have any questions, please contact Spearman City Hall at 806-659-2524.

### Rushing Wind Emmaus Community

Rushing Wind Emmaus Community will meet Saturday, December 10, at the Waka Christian Center starting at 6 p.m. Friends and families are welcome to come to the potluck dinner followed with a praise and worship service. A nursery will be provided, and sponsors training will be available for new sponsors.

### Perryton Area Parkinson's Disease Support Group

The Perryton Area Parkinson's Disease Support Group will meet Friday, December 9, 2011 at the Perryton Mennonite Church, 2821 S Ash. Lunch will be served at the 12 noon meeting. Jo Bidwell will be the speaker from the West Texas Parkinsonism Society in Lubbock, TX. Jo will give the latest updates on research and she can answer all the questions about Parkinson's. For more information, call Bev Burger at 435-3437 or 435-0579.

### Gruver PTO Angel Tree

The Gruver PTO Angel Tree is up at City Hall. 'Angels' may be picked up anytime from 8 to 5, Monday through Friday. We have LOTS in need this Christmas season and want to thank the community in advance for their generosity and commitment to our kids. Gifts need to be returned to City Hall by Friday, December 16th, so we can deliver to students before their Christmas break.

### Ali Tyler Memorial Scholarship Fund Bake Sale

A Bake Sale will be held on December 16th during the Gruver vs. Spearman basketball game. All profits will go to the Ali Tyler Memorial Scholarship Fund. If you would like to donate a baked good, please contact Stephanie Tyler at 806-736-0019 or stephannityler@hchd.net.

### Gruver Elementary Register Tapes for Education

Gruver Elementary is participating in the Lowe's Supermarket Register for Tapes for Education. Please help us earn free education material and equipment by collecting register tapes from Lowe's. You can deposit your register tapes in the boxes at the Elementary School Lobby, or the south entrance, Gruver City Library, City Hall, Gruver Library, Night & Day Beauty Salon and Shear Style Salon. Call Jo at 733-2247 for pickup of tapes or for more information.

### Texas SNAP Benefits Assistance

Need help applying for SNAP benefits? We can help! High Plains Food Bank is providing application assistance for Texas SNAP benefits (Food Stamps) in your area. Telephone application assistance is available. If you need to apply for benefits, please call us today at 806374-8562 or 1-800-774-8564.

### OPSU Baseball Clinic

Oklahoma Panhandle State University is hosting a six week baseball camp starting on December 4. Oklahoma Panhandle State head coach Steve Appel will direct the program in conjunction with U.S. Baseball Academy. Classes are available for players in grades 1-12 and are limited to six players per coach. Sessions are offered in advanced hitting, pitching, catching, fielding and baserunning at a cost as low as \$99 for six weeks. Space is limited. Registration is now under way. For more information, visit [www.USBASEBALLAcademy.com](http://www.USBASEBALLAcademy.com), or call toll-free 866-622-4487.

### Don't Text and Drive Decals

If you would like to purchase a lime green 'AMT 1994-2009 Don't Text and Drive' window decal in memory of Ali Tyler, please contact Stephanie Tyler at 806-736-0019. All proceeds go to the Ali Tyler Memorial Scholarship Fund. Decals are also available at Hansford County Floral Company on Main Street in Spearman.

### Help Available for Breast Cancer Survivors

Any woman who has had breast cancer surgery and cannot afford undergarments and prosthetics can get help from the American Cancer Society through a grant from Susan G. Komen for the Cure®. The Amarillo Area Breast Prosthesis and Lymphedema Accessory Program will provide financial help to women in need of breast forms or prostheses, mastectomy bras and accessories to help with lymphedema, which is swelling of the arm caused by a build-up of lymph fluid. For more information, call the American Cancer Society office in Amarillo at (806) 353-4307 or 1-877-227-2345.

## Our Sympathy

### MARGIE FAY STARK BRYSON STRATFORD



Margie Fay Stark Bryson, 83, of Stratford died Wednesday, November 30, 2011, in Amarillo.

Services were at 1 p.m. Saturday, December 3, 2011 in First Baptist Church in Stratford with Roy Harris, pastor, and Jason Stone, pastor, officiating. Burial was at 11 a.m. Monday in Plainview Cemetery in Plainview. Arrangements were by Boxwell Brothers of Stratford, 311 N. Main St.

Mrs. Bryson was born March 26, 1928, at home in Claytonville (Swisher County) to Bun and Fay Stark. She lived in Sherman County for 50 years. Mrs. Bryson was a member of First Baptist Church and was a devoted and faithful follower of Jesus and a prayer warrior.

She was preceded in death by her parents, and three brothers, A.J. Stark, Aaron Stark and Horace Stark.

Survivors include three sons, Billye Cleve Bryson and wife Marjorie of Plainview, Edward Hall Bryson and wife Jeanie of Stratford and Timmy Clay Bryson and wife Ann of Canyon; a sister, Joan Beedy; five granddaughters; seven grandsons; and 10 great-grandchildren.

The family suggests memorials be to First Baptist Church of Stratford, 702 N. Third St., Stratford, TX 79084.

Sign the online guest book at [www.boxwellbrothers.com](http://www.boxwellbrothers.com).

## Thank you!

The family of Lottie Smith would like to thank everyone for their thoughts and prayers during her recent illness and death. Thank you for the expressions of condolence, the flowers, cards, phone calls, memorials and hugs.

We cannot begin to express appreciation for the support we have been given during the past three years that she was in Hansford Manor. It truly is the best nursing home we have ever seen. The staff are very kind and caring, and do everything they can to keep their residents happy and safe.

Thank you, too, to our wonderful hospital staff. Lottie commented that it was the best hospital she had ever been in with the friendliest staff, and she was right. We would also like to thank Dr. Mark Garnett and Dr. Heath Cotter for their diligent care. The Texas panhandle is a wonderful place to live!

God bless,  
The Lottie Smith Family  
Gary & Cathy Smith & Family

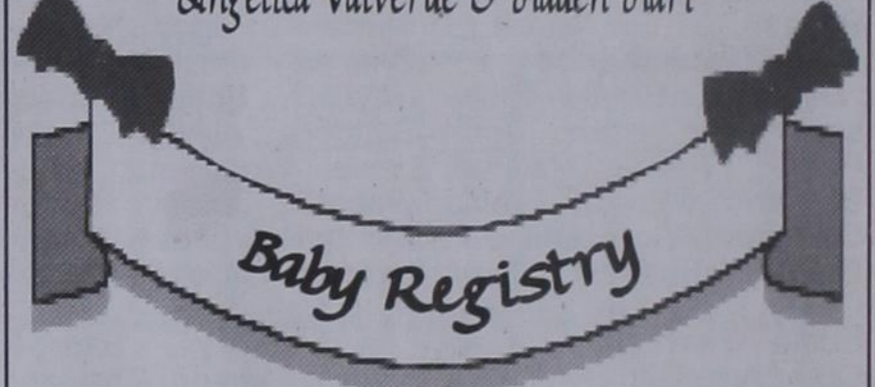
Gruver ISD is offering a \$1,000 reward for information that leads to the arrest of the person or persons in the Thanksgiving holiday incidents in the Junior High and High School building. All information will be kept confidential. Please contact: Micah Davis 733-2081 (Junior High), 736-1444 (cell) or Troy Seagler 733-2477 (High School), 736-0133 (cell).

# Gordon's



### Couples Currently Registered

- Sarah Cowles & Brandon Zehr - 12/10
- Noel Boyd & John McCloy - 12/17
- Heather Ford & Garrett Martin - 1/14
- Dana McLaughlin & Justin Hendrick - TBA
- Lauren Mesneak & Andrew Dixon
- Brittney Bradley & Rhett Renner
- Angelica Valverde & Haden Hart



Baby Boy of Mark & Emily Thomas - 12/10

**Gordon's** 659-2141  
314 Main Spearman

## Sergio's Auto Sales

We appreciate your support!

Sergio Vargas  
120 W Kenneth Ave • Spearman TX 79081  
(806) 659-9971 - day • (806) 330-0173 - night  
Canyon Location Phone Number: (806) 231-8388

**SERGIO'S AUTO SALES**  
**SERGIO VARGAS**  
120 W. KENNETH AVE. SPEARMAN, TX 79081  
806 659 9971 CEL. 806 330 0173

# Merry Christmas!

from

## HANSFORD COUNTY FLORAL COMPANY

300 MAIN • SPEARMAN, TX • 806-644-4000

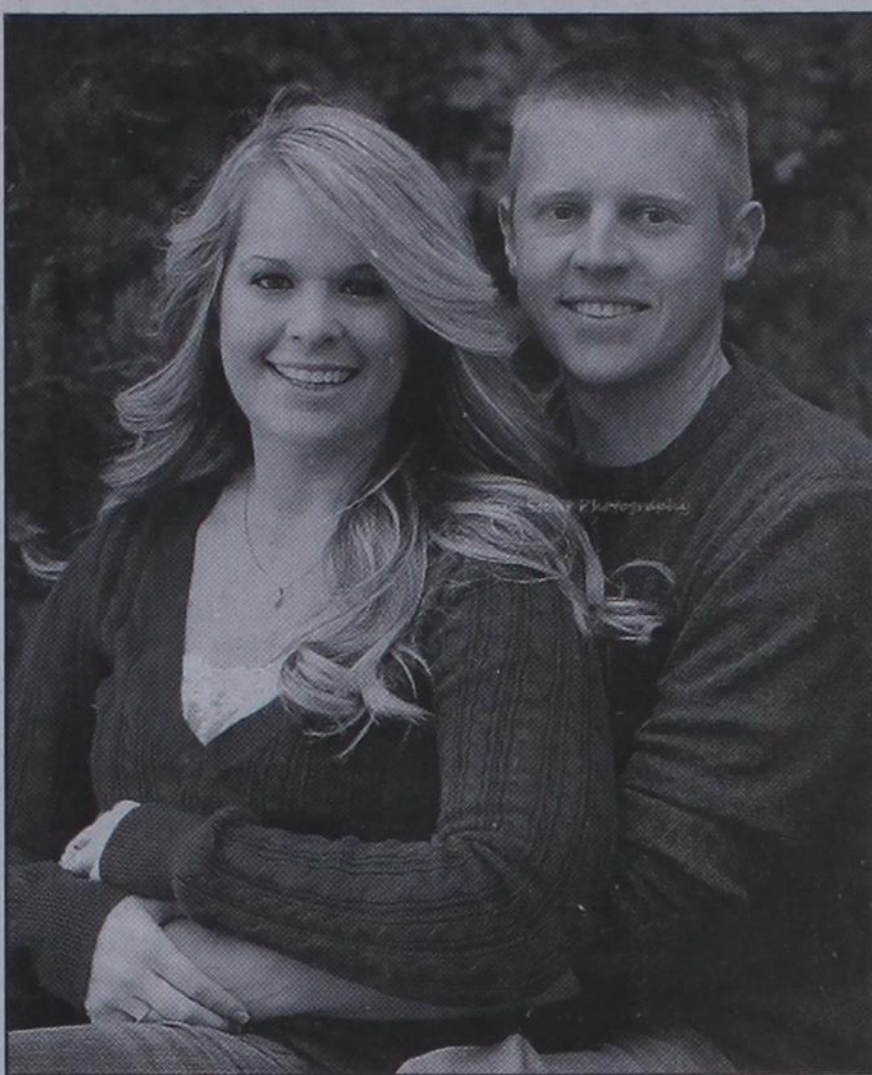
**Hours: Monday-Saturday, 8 a.m.-6 p.m.**

## Holiday Help

**Sun Loan Company**  
can help with your  
Holiday Expenses!

Loans from  
**\$100 - \$1258.11**

**SUN Loan Company®**  
& Tax Service  
106 S. Main • Perryton  
(806) 435-7242 Se Habla Espanol  
Manager - Erika Tafoya



### Engagement Announcement

Mr. and Mrs. Tony Clay Ford of Fort Worth, Texas are pleased to announce the engagement of their daughter, Heather Michelle, to Garrett Ray Martin.

Grandparents of the bride-elect are Mr. and Mrs. Byron Ford of Lockney, Texas and Mr. and Mrs. Thomas Marr of Plainview, Texas.

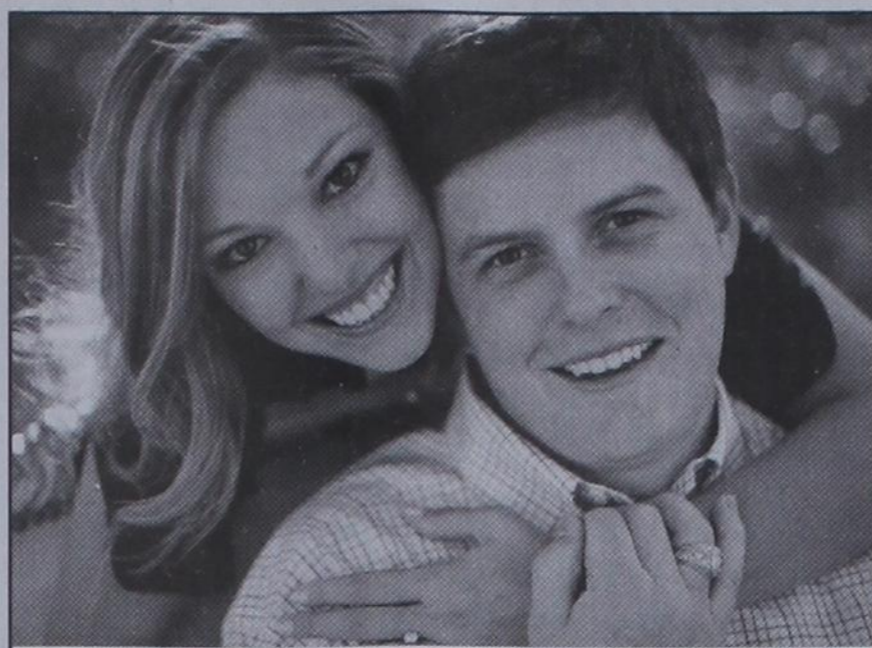
Garrett is the son of Dr. and Mrs. Scot Meek Martin of Spearman, Texas. Grandparents of the prospective groom are Mr. and Mrs. Ray J. Martin of Spearman and Mr. and Mrs. John Japp of Casper, Wyoming.

The couple plans to wed March 10, 2012 at Christ Chapel Bible Church in Fort Worth.

The bride-elect graduated from Arlington Heights High School in Fort Worth in 2004. She is a 2008 graduate of Texas A&M University in College Station, where she received a Bachelor of Business Administration degree in Marketing. She was a member of Chi Omega sorority. Heather is employed as a first grade teacher in Spring Branch Independent School District in Houston, Texas.

The prospective groom is a 2004 graduate of Spearman High School and a 2009 graduate of Texas A&M University in College Station, where he received a Bachelor of Science degree, Cum Laude, in Petroleum Engineering. He was a member of Phi Delta Theta fraternity. Garrett is employed as a Reservoir Engineer by Devon Energy in Houston, Texas.

[www.spearmanreporter.com](http://www.spearmanreporter.com)



### Engagement Announcement

Mr. and Mrs. Tony Clay Ford of Fort Worth, Texas are pleased to announce the engagement of their daughter, Heather Michelle, to Garrett Ray Martin.

Grandparents of the bride-elect are Mr. and Mrs. Byron Ford of Lockney, Texas and Mr. and Mrs. Thomas Marr of Plainview, Texas.

Garrett is the son of Dr. and Mrs. Scot Meek Martin of Spearman, Texas. Grandparents of the prospective groom are Mr. and Mrs. Ray J. Martin of Spearman and Mr. and Mrs. John Japp of Casper, Wyoming.

The couple plans to wed March 10, 2012 at Christ Chapel Bible Church in Fort Worth.

The bride-elect graduated from Arlington Heights High School in Fort Worth in 2004. She is a 2008 graduate of Texas A&M University in College Station, where she received a Bachelor of Business Administration degree in Marketing. She was a member of Chi Omega sorority. Heather is employed as a first grade teacher in Spring Branch Independent School District in Houston, Texas.

The prospective groom is a 2004 graduate of Spearman High School and a 2009 graduate of Texas A&M University in College Station, where he received a Bachelor of Science degree, Cum Laude, in Petroleum Engineering. He was a member of Phi Delta Theta fraternity. Garrett is employed as a Reservoir Engineer by Devon Energy in Houston, Texas.

**Weatherford Construction**  
Septic Systems

Kirk Weatherford (806) 336-2820  
8126 FM 3395 Toll Free: 1-800-585-6047  
Sarıford, TX 79078 Email: [kirk@weatherford-construction.com](mailto:kirk@weatherford-construction.com)

### Claiming Ag Sales Tax Exemption Will Require Registration Number

The Texas and Southwestern Cattle Raisers Association is encouraging all commercial agricultural producers who wish to claim an agricultural sales tax exemption to obtain a Texas Agriculture and Timber Exemption Registration Number before the end of the year.

Under a new law (HB 268), a registration number will be required by all producers who claim an exemption beginning Jan. 1, 2012.

The registration number is free and good for 4 years. Producers will need to provide their registration number to anyone they do business with, including electric companies, in order to claim the exemption.

Producers can register for the registration number online at [GetReadyTexas.org](http://GetReadyTexas.org) or they can download the registration form from that page and mail or fax the completed form to the Comptroller's office.

Basic points of HB 268:

- If someone wishing to claim an agricultural sales tax exemption does not have a registration number, they will be required to pay sales tax but can apply for a refund, like current law, to the Comptroller's office.

- One registration number can be used per agricultural operation. HB 268 allows multiple people associated with that operation to use the same registration number.

- HB 268 does not remove any agricultural items or production qualifications that qualify for the agricultural sales tax exemption.

- Commercial producers who lease pasture may claim the exemption. When registering, they should mark; I raise and sell hay or grasses (alfalfa, clover, grass, etc.), in Section 18 of the registration form.

## Mesothelioma

may occur 30 to 50 years after exposure to asbestos. Many workers were exposed from the 1940s through the 1970s. Industrial and construction workers, along with their families (second hand exposure) are among those at risk for mesothelioma, lung cancer or gastro cancer (throat, stomach, colon). Call us for professional insight.

**EXPERIENCE COUNTS**  
Lawyers with over 100 years combined expertise.

Ryan A. Krebs, M.D., J.D.  
Doctor-Lawyer in Full-time Law Practice

Richard A. Dodd, L.C.  
Timothy R. Cappolino, P.C.

Board Certified Personal Injury Trial Law and Civil Trial Law by the Texas Board of Legal Specialization  
NO FEE FOR FIRST VISIT  
CAMERON, TEXAS

**1-888-MESO-FIRM**  
(1-888-637-6347)  
[www.MesoFirm.com](http://www.MesoFirm.com)

## STOP LEG CRAMPS BEFORE THEY STOP YOU.

Calcet® is designed to help stop low calcium leg cramps. Just ask your pharmacist.

**Petite Tablet with More Calcium & Vitamin D3**

Helps fight leg cramps | For those with milk allergies | Fights osteoporosis

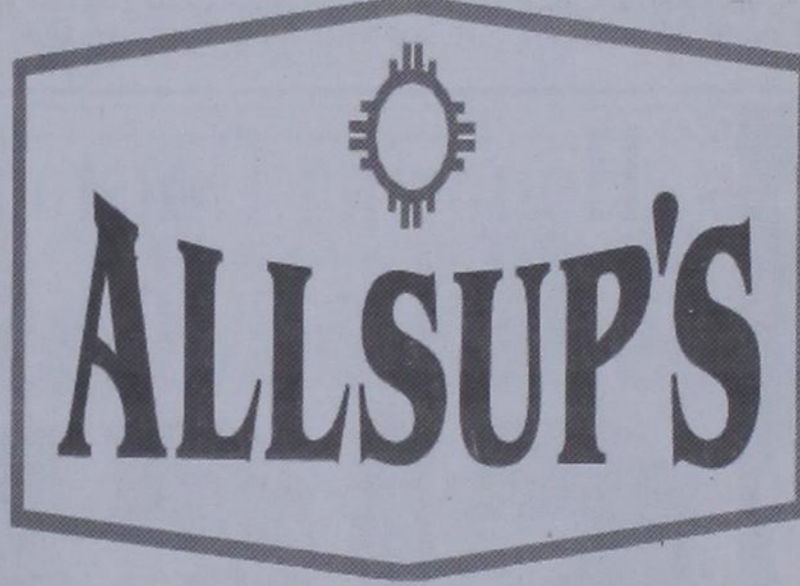
**Mission PHARMACEUTICAL**

Prices Good Thru 12/31/11

# HOT BUYS FOR COLD DAYS

305 W. Kenneth  
Spearman • 659-3135

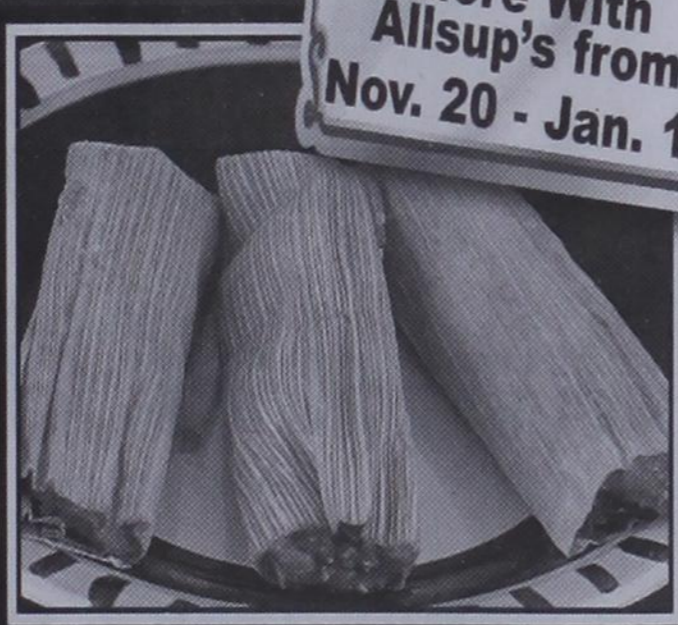
101 Main Ave.  
Gruver • 733-2953



HOT OR MILD  
**Tamales**

BUY ONE ORDER OF 3  
GET ONE ORDER OF 3

**FREE**



Save Even More With Allsup's from Nov. 20 - Jan. 14

Allsup's Sandwich Bread 24 oz. .... 89¢ each or	<b>2 \$1.49</b> FOR	Tic Tacs	<b>99¢</b>
Allsup's Wheat Bread 24 oz. .... \$1.09 each or	<b>2 \$1.69</b> FOR	Pepsi 12 packs.....	<b>2 \$7</b> FOR
Kellogg's Cereal Cups each.....	<b>99¢</b>	Lipton Naturals 20 oz.....	<b>99¢</b>
Jack Link's Jumbo Steak 2 oz. ....	<b>2 \$4.59</b> FOR	Gatorade 32 oz.....	<b>2 \$3</b> FOR
Trident Gum All Flavors	<b>2 \$2</b> FOR	Red Bull 12 oz.....	<b>2 \$5</b> FOR
Candy Bars King Size	<b>\$1.19</b>	Wired 16 oz.....	<b>2 \$2</b> FOR
Keebler Crackers 1.8 oz. ....	<b>2 \$1</b> FOR	Tom's Chips 8.5-9 oz. ....	<b>\$1.99</b>



BUY 12 GALLONS OF FRESH  
**ALLSUP'S MILK**  
GET ONE

**FREE!**



SHURFINE  
**HALF & HALF**  
PINT

**89¢**



SHURFINE  
**WHIPPING CREAM**  
8 OZ.

**89¢**



FRENCH ONION OR GREEN CHILE  
**PLAINS DIPS**  
12 OZ.

**\$1.29**



SHURFINE  
**COTTAGE CHEESE**  
12 OZ.

**\$1.29**

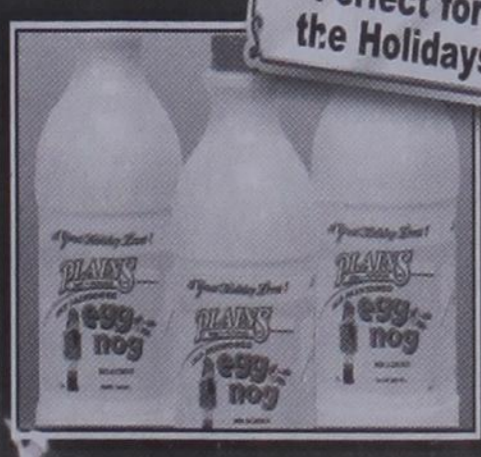


SHURFINE  
**SOUR CREAM**  
8 OZ.

**79¢**

PLAINS  
**Egg Nog**  
QT.

**\$1.79**



Perfect for the Holidays

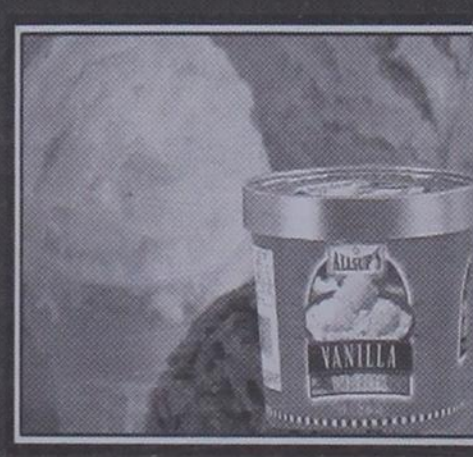
Turkey  
**Legs**  
EACH

**\$2.99**



ALLSUP'S  
**Ice Cream**  
1/2 GALLON

**2 \$5**  
FOR  
OR \$2.50 EACH



**Gruver Basketball Boys Ranch**  
By Coach Wade Callaway

Boys Ranch came to Gruver on Tuesday with a 4-1 record (there only loss to a pretty good Dimmitt team); unfortunately, they left with a 5-1 record. Although Houndball took it on the chin again, there were signs of improvement. For example, the Hounds won the turnover battle for the first time this young season, forcing 26 while committing 19. Still too many, but an improvement. Gruver also did a great job of getting the ball in the paint; however, poor conversion hampered them all night.

Korbin Irwin finished with team highs in scoring and rebounding with 14 and 10. Beau Blankenship added nine points while Forrest Lopez pulled down five rebounds. Irwin also led the team with five steals while junior Lupe Pena pilfered three of his own.

The Hounds are back in action on Thursday versus the same Roughrider team at 1 pm in River Road's Middle School gym (located east of their high school across from Hwy 287).

**12/1/11**

River Road Tournament: Varsity Boys 41 - Boys Ranch 47

River Road Tournament: Varsity Girls 65 - Borger 42

River Road Tournament: Varsity Boys 53 - White Deer 32

**12/2/11**

River Road Tournament: Varsity Boys 42 - Fritch 28

River Road Tournament: Varsity Girls 52 - Sunray 41

**12/3/11**

River Road Tournament: Varsity Boys 37 - Sunray 36

River Road Tournament Championship: Varsity Girls 56 - Clarendon 33

**7th & 8th Lady Hound Basketball**  
by Coach Mica Been

Both the 7th & 8th grade Lady Hound teams have been working hard and are excited about their basketball seasons.

The 7th grade Lady Hounds started their basketball season with 2 wins. They opened the season at home on November 21st with a win over the Lady Comanches. They earned their second win of the season Monday night in Sunray. They look to move to 3 & 0 next Monday night, December the 5th as they host the Canadian Lady Wildcats.

The 8th grade Lady Hounds are currently 2-0 as well. They began their quest with a win against West Texas on November 21st and won a close game Monday night against the Lady Cats.

**Gruver Holiday Classic Tourney**  
by Terry Felderhoff

Gruver ISD is excited to be hosting a Gruver Holiday Classic Varsity Basketball Tournament on December 28, 29 & 30, 2011. It is our desire to make this a yearly event, and plan for it to become the best holiday tournament in the region as we expand the number of teams in future years.

We are opening the tournament up for sponsorships from businesses as well as individuals. There are 4 different levels of sponsorship - Gold Sponsor (\$500 - Sponsor will get a banner in the gym during the tournament, a full page ad in the tournament program, and 4 tournament passes), Frankincense Sponsor (\$250 - Sponsor will get their name in the gym during the tournament, a half page ad in the tournament program, and 2 tournament passes), Myrrh Sponsor (\$100 - Sponsor will get their name in the gym during the tournament, a quarter page ad in the tournament program, and 1 tournament pass), and Program Sponsor (\$20 - Sponsor will their name in the

tournament program).

We realize that many people may not realize the expense of putting on a top notch varsity tournament over the Christmas Holidays. There is "competition" to get teams to come to holiday tournaments. The better the tournament, the more likely the tournament will succeed in following years.

A holiday tournament is not like the average tournament, there has to be a draw for teams to attend. These include quality of teams, facilities, taking care of and feeding all the teams, etc. Gruver ISD's desire in hosting this tournament is also to bring many people in from out of town, which will help local restaurants and businesses.

We estimate that expenses of hosting this tournament will be in the neighborhood of \$10,000-\$11,000. These expenses include, but are not limited to, officials, a meal for each team daily, trophies/awards, hospitality room for visiting coaches, administrators, and officials, janitorial services, etc. We estimate that the gate receipts will cover about 30% to 40% of these expenses.

If you have any questions, or would like to become a sponsor, contact Leticia at the Business Office. The deadline for sponsorship is Monday, December 12th, to allow us time to have the program printed for the tournament.

**Spearman Basketball**  
by Coach Starla Whiteley

**11-29-11**

Spearman JV Purple 56, Texhoma JV 24

**Gruver JV Tournament 12-1 through 12-3**

Spearman JV Purple 40, Stratford JV 11

Spearman JV Purple 47, Perryton JV 18

Spearman JV Purple 61, WT High 20

Championship - Spearman JV Purple 44, Sunray JV 13

**Annual Cub Scout Father-Son Cake Bake**

The annual Cub Father-Son Cake Bake was held Saturday evening at 6:00 at the Methodist Church. The cakes were baked by cubs, and their fathers, grandfathers, uncles, or friends. Requirements for entries were no women were to bake or decorate. The cake must be entirely of edible product. The theme for this year was "sports". Awards given were:

1st Place Tiger - Collden Crum; 2nd Place Tiger - Jack Pipkin; 1st Place Wolf - Marco Salgado; 2nd Place Wolf - Isaac Martine; 1st Place Bear - Gus Gifford; 2nd Place Bear - Christian Dettmer; 1st Place Webelo - Charles Pearson; 2nd Place Webelo - Ethan Cotter

Best In Show - Charles Pearson; Reserve Best In Show - Marco Salgado; Tallest Cake - Kobe Ray; Most Handsome Cake - Sam Turner; Smallest Cake - Man Womble; Most Original Theme - Holden Puentes; Most Unusual - Lucien Burch; Hometown Favorite - Shad Whiteley; Best In All Sports - Sloan Knowlton

Medallions were pre-

sented to the above participants and to the following boys: Jack Davis, Jeb Garnett, Joe T. Gifford, Brayden Hamitt, Eric Martinez, Andrew Renteria, Kyren Silva, Shad Whiteley, Ryan Baker, Jace Greene, Matthew Holmes, Nathan Ruga, Ethan Salgado, Keenan DeLa Rosa, Christian Dettmer, Matthew Elwood, Skyler Rasmussen, Jacob Baker, Landon Burch, Dalton Shields, Kobe Ray, Patrick Ruga, Dalton Shields, and Christian Valles.

Following the awards, refreshments were enjoyed by all and an auction was held. Cakes sold as a fund raiser to help pay for boys to go to camp, or to purchase uniforms, or other scouting needs.

The Cubs want to thank the following for purchasing cakes and supporting Pack 578: Hansford County Veterinary Clinic; Gruver Farm Supply; B&B Sales Co.; Farm Supply & Service; SpearTex Grain Co.; Brock Insurance Agency; Britt & Linda Jarvis; First National Bank; Tindell Electric; Golden Spread Sales Co.; Boss Automa-

tion; Jimmy & Donetta Greene; Gordon's Drug; First State Bank; Green Country Equipment; Mikal Willimon; Renner & Pearson; Morse Implement; Hansford Agency; Five Star Equipment; H&H Water Well; Prairie Motors; Farmer's Ag Supply; Gruver Ford; Bartlett Enterprises; Benny McCullough; Diamond M Water Well; Gruver Parts; Gruver Agra; Gruver State Bank; North Plains Chemical; Bort Agency; D&D Cattle Co.; C&R Petroleum; Dr. James Pinkerton; Dr. Mark Garnett; Dr. Heath Cotter; Will Jarvis; Justin & Holly Gifford; 3J Cattle; Helen Holt; Stefan Coo; Denise Webb; Lyric Cinema; Shad O'Quin; Bob Pearson; Dean Greene; Irwin & Betty Jean Davis; Kyle Ray; Bonnie Burgan; Vernon & Anne Pipkin; SportZone; Rockin' S Saddle Shop.

The Pack also wishes to thank our volunteer auctioneer, Jimmy Greene, and the judges that gave their time to make the Cake Bake a success.

Celebrate the Holiday Season with Family, Friends and **First State Bank**

Eat Lunch With Us  
Tuesday, December 13th  
**23rd Annual Christmas Hot Dog Cookout**  
11 a.m.-1:30 p.m.

**FSB**  
First State Bank  
Strength is our Tradition...  
Service our Goal  
1 NE Court Spearman  
659-5565

Pictures with Santa  
11:30 a.m. to 1:30 p.m.

Honoring Outstanding Service to our Community

**SISD**

Mr. Rodney Sumner  
Mrs. Lynell Williams  
are retiring from Spearman ISD.

Spearman ISD Board of Trustees Invites you to a Retirement Reception on  
Thursday, December 15, 2011  
4:30-4:00 p.m. at the O'Loughlin Center

Mr. Sumner is retiring as the Superintendent of Schools after 12 years of service and Mrs. Williams is retiring after 30 years of service to Spearman ISD

**LYNX**

REAL ESTATE

**FOR RENT:** 1 & 2 BR furnished apartments. All bills paid. Call 659-2247. TFN(11/03/11)  
**WANTED:** Want to rent 2 or 3 bedroom house. Will need by January 1st. Please call Roy or Denise Harbour. 659-3348 or 330-0297. TFN(11/10/11)

HELP WANTED

**HELP WANTED:** Frontier Feedyard is now taking applications for an Experienced Mechanic. Health, dental and vision insurance are offered. We are an EOE, and have an ESOP plan. If interested, contact Gilbert Mendoza or Steve Mitchell, 806-882-4251, or come by and fill out an application. TFN(12/01/11)  
**HELP WANTED:** Wolf Creek Feedyard, located in Perryton, TX, is accepting applications for equipment operator, truck driver and general labor. Experience is not required. We will train the right applicant. We offer a competitive wage, benefits including health insurance and a retirement plan. Please call 435-5697 or come by the office to fill out an application. TFN(12/01/11)  
**HELP WANTED:** Oilfield work, must have drivers license. Good pay and benefits. Call

**HO! HO!! HO!!!** Knives make GREAT gifts. Come see ours at Country Market! Over 200 different knives. 15+ brand names. Discounts up to 50% off regular retail. Special Christmas markdowns each week. TFN(12/1/11)

**Blankenship Real Estate**  
659-3052 - 670-3774

**LET US HELP YOU SELL YOUR HOME.**  
3BR, 2 1/2 B, 2 living areas, dining area, brick, close to schools.  
**NEW LISTINGS WANTED!**  
Eulalia Blankenship - Sales  
Eschol Blankenship - Broker

**Check our websites for other properties.**

**VALLEY VIEW RANCH - Lipscomb Co., TX** - 177 ac. w/extraordinary 5404 sq. ft. +/- home overlooking the property w/ beautiful views of five creek, trees, wildlife (deer, quail, & turkey), covered horse training facilities, stables, excellent cattle working facilities & pens, commercial dog pens, employee housing. We can divide (10 ac. w/main residence or 167 ac. +/- w/other improvements).

**SHERMAN CO., TX - 627 acres**, choice land, four 1/4 mile sprinklers, fully developed, one 1/4 mile off Hwy. 287 on paved CR - CC, 3 phase electricity, new irrigation well drilled in 2010.

**AMARILLO, TX** - 4 MI. N. OF LOOP 335 - development potential (wind energy comm., res.) 4872.8 ac +/- of beautiful ranch country, pvmt. on four sides. Deer, quail & dove. 50% MINERALS!

**CASTRO CO., TX** - on pvmt., 1845.6 ac +/-, sprinklers, irr. wells, employee housing, barns, cattle pens w/covered working area, hydraulic chute & truck/cattle scale.

**WEST OF DUMAS** on pvmt. 606 ac +/-, 17 tower sprinkler, four irr. wells, excellent location for residential or commercial development.

**BUDDY CLINE ROAD - Moore Co., TX** - 1/2 section choice land, two wells (one new) and sprinklers.

**MOORE CO., TX - 800 ac.** with 1/2 section rigged for sprinkler plus 480 acres of CRP. 1 1/2 miles out of Dumas with pvmt. on two sides.

**1200 SOW FARROW TO FINNISH OPERATION - Moore Co., TX** - New 5 yr. lease with major hog company. Two separate units, can be divided - Please contact broker for info package and price.  
www.scotlandcompany.com  
www.texascrp.com  
Shawn Gillispie 806/922-5532  
Ben G. Scott, Broker  
1-800-933-9698 day/eve  
TFN(9-15-11)

806-659-3911 or come by at 1103 West 7th, Spearman. Trencor Enterprises, Inc. TFN(11/10/11)  
**HELP WANTED:** O/O's \$5,000 Sign-On Bonus! Tons of warm, prosperous South TX runs! Frac Sand Hauling, Must have tractor, pneumatic trailer, blower. (817) 980-6095. 1(12/8/11)P

SERVICES

**HOOCHY POOCHY PARLOR** Call us for all your pet's grooming and boarding needs. Call now for reservations! 806-273-2724. TFN(11/2/07)B

**TIRED OF GARAGE SALE PRICES?** Let me buy your good used furniture! 2nd Chance Antiques & Furniture, Don 806-648-1480; 806-202-1391 cell. TFN(1/20/11)B

GARAGE SALE

**GARAGE SALE:** Saturday, December 10, 2011, 9 a.m.-12 noon, 1104 Bernice. Christmas decorations, children & adult clothes, toys & more. 1(12/8/11)B

PUBLIC NOTICE

**PUBLIC NOTICE**  
An Ordinance Amending Chapter 12, Traffic and Vehicles, Section 12.04.031, designation of stop intersections, and Section 12.04.032, designation of yield intersections, of the Spearman Municipal Code, and providing for an ef-

fective date. Placement of a stop sign on 7th Ave. at County Road 24; and the placement of a yield sign on Linn Drive at Walter Wilmet Drive. Effective immediately at publication. 1(12/8/11)B

IMMEDIATE OPENING

Spearman ISD is looking for a unique individual with the appropriate skills to be the secretary and administrative assistance to the newly hired Superintendent of Schools and the Board of Trustees. A copy of the job description and/or application can be obtained by calling the Administration Office at (806) 659-3233. The position pays \$15-\$19 per hour depending on experience + \$249 paid monthly toward your health benefits. This position is subject to being filled immediately. Spearman ISD is an EOE. 2(12/1/11)B



First National Bank has an immediate opening for a credit analyst. College degree preferably in finance /accounting or a background in banking or accounting is preferred but not required. Please email your resume to gpittman@fnbspearman.com or apply in person at 729 West 7th Street, Spearman, Texas. First National Bank is an equal opportunity employer.



**All State Realty**  
Sherrie E. Rima  
806-435-SOLD (7653)

**322 S. DRESSEN**  
Corner Lot, 3 or 4 bedrooms, 2 Living spaces, 3 baths. Newly Remodeled & Priced To SELL!!

**We have Buyers but We Need Listings!**  
Call Us Today & Let us put the Two of you together!



**Maintenance:** Perform a variety of general maintenance duties, including grounds, parking lot, gardening, snow removal, plumbing, electricity, painting, lifting etc. Any duties assigned by the Facility Director.

**Information Technology Assistant:** Maintain daily system data backups, perform routine desktop backups, add users to domain, monitor AV log reports and/or any assigned duties by the IT Director.

Great working environment and staff, quality facility providing opportunities for professional growth. Great Benefit package. Apply at 707 S Roland, Spearman, TX or contact Jackie Nelson, HR 806-659-5841. Download application at hchd.net EEOE (12/8/11)

9	6	1	8	2	4	3	7	5
3	2	4	9	5	7	6	1	8
8	7	5	1	3	6	2	4	9
4	3	9	6	1	5	8	2	7
2	1	8	7	9	3	5	6	4
6	5	7	4	8	2	9	3	1
1	9	3	2	4	8	7	5	6
7	8	2	5	6	1	4	9	3
5	4	6	3	7	9	1	8	2

CEDAR	FOR	SAME
LLAMA	LOU	PINON
AUDIT	OHM	ALTO
PLASTIC	BERLIN	
SAN	RAVE	
KAY	TOGA	ENCAMP
YLEM	FIVE	TOTAL
OLLA	FRIAR	TOFU
TOLLS	DOSE	SLIT
OYSTER	LEGO	LAO
	NISI	ICE
VOSTOK	COLD	WAR
WIPER	ILL	OGIVE
WITTY	FEE	CANON
WISH	FEW	KRONA

See us for:  
**AUTO • HOME • CROP HAIL • FARM & RANCH • MULTIPERIL • LIVESTOCK**  
**INSURANCE**  
  
**BORT AGENCY, INC.**  
510 Main St. • Gruver, TX  
(806) 733-2456

**WHY WISH FOR SAVINGS?**  
*Get them here.*

**Christmas Sale 2011**

Sale Prices Good From December 12-24

**Men's Long Sleeve & Short Sleeve Dress Shirts**  
*Arrow, Van Heusen, Chaps, Foxfire, Izod & More*  
**30% OFF**

**Men's Cinch Shirts \$39.95**  
**Men's Cinch Jeans - Black Label (Medium & Dark Denim) \$29.95**

**Men's Wrangler Riatas \$29.95**  
*Assortment of sizes and colors*

**Men's 20X Shirts \$35.95**

**Men's George Strait Shirts \$38.95**

**Men's Levis 550, 560, 501STF & 501PW & Jeans \$34.95**

**Men's Short Sleeve Pullover Knit Shirts Chaps & Tabasco 30% OFF**

**Boys Long Sleeve & Short Sleeve Dress Shirts - 25% Off**

**Boys Long Sleeve & Short Sleeve Knit Shirts - 25% Off**

**Boys 20X Shirts & 20X Jeans - \$19.95**

**Boys L/S George Strait Shirts - \$19.95**

**Boys Cinch Shirts & Jeans - \$24.95**

**Boys Wrangler Snap Shirts - \$19.95**

**Boys Fashion Jeans - \$29.95**

**Cates Men & Boys**  
221 Main Street  
Spearman, Texas  
(806) 659-3426  
Mon.-Sat., 9 a.m.-6 p.m.

*Christmas Countdown Sale*

**Christmas Specials at Gordon's DRUG**  
314 Main • Spearman • 806-659-2141  
*Where gift-giving is effortless & FUN!*

**Thursday Night Savings** Different Special Each Thursday Night Photo Machine Fast Printing Time Personalized Christmas Cards Poster-Size Photos

Open until 8 p.m. each Thursday through December 23rd

TEXAS STATEWIDE CLASSIFIED ADVERTISING NETWORK  
**TexSCAN**

**TexSCAN Week of December 4, 2011**

**ADOPTIONS**  
LOVING COUPLE WISHES to expand family and adopt newborn. Confidential. call 1-888-305-1422

**AUCTIONS**  
HUGH PUBLIC AUCTION 250+ Travel Trailers, camp models, modular cottages. No minimum price. Online bidding available. Saturday, Dec 10th at 10am. Carenco, LA. www.hendersonauctions.com 1-225-686-2252 License # 136

**AUTOS WANTED**  
CASH FOR CARS We buy any car or truck running or not. Damaged, wrecked, salvaged OK. Get a top dollar instant offer today. 1-800-273-9194

**CABLE/SATELLITE**  
AT&T U-VERVE for just \$29.99/month! Save when you bundle Internet+Phone+TV and get up to \$300 back! (Select plans). Limited time call now! 1-877-577-4394

**DRIVERS**  
ATTENTION FLATEDBEEF tractor, tanker drivers. If you're ready to be the best, join the best. Experienced or recent grad with CDL welcome. Call Prime Inc. today! 1-800-277-0212 or www.primeinc.com

**DRIVER: STABLE CAREER** No experience needed. Sign-on bonuses available. Top industry pay and quality training. 100% paid CDL training. 1-800-326-2778, www.JoinCRST.com

**DRIVERS: GET MILES** and home week-ends, southwest regional! Top pay/benefits. Paid orientation and training. 6 month OTR and CDL required. 1-800-345-1351; www.eyrestruck.com

**OWNER OPERATORS** \$5000 Sign-on bonus. Tons of warm, prosperous South TX runs. Frac Sand Hauling. Must have tractor, pneumatic trailers and blower. 1-817-980-6095

**QUALITY DRIVE-AWAY** is looking for OTR drivers to deliver semi trucks from either Garland or Laredo. Call 1-866-764-1601 or www.qualitydriveaway.com

**TOP PAY** on excellent runs! Regional runs, steady miles, frequent home time, new equipment. Automatic detention pay. CDL-A, 6 months experience required. EEOE/AAP. 1-866-322-4039 www.Drive4Marten.com

**YOU GOT THE drive**, we have the dissection. OTR drivers, APU Equipped, Pre-Pass, EZ-pass, PETS/passenger policy. Newer equipment. 100% NO touch. 1-800-528-7825

**EDUCATION**  
EARN COLLEGE DEGREE ONLINE  
Medical, business, criminal justice. Job placement assistance, computer available. Financial aid if qualified. SCHEV certified. Call 1-888-205-8920; www.CenterOnline.com

**HIGH SCHOOL DIPLOMA** graduates in 4 weeks! Free brochure! Call now! 1-800-562-3650, ext. 55. www.southeasternHS.com

**FINANCIAL**  
\$500 LOAN SERVICE; No credit refused, fast and secure. Easy on the budget. Payments spread out over three months. Toll free: 1-855-626-4373. LoanHere.com

**HELP WANTED**  
CHRISTMAS IN CALIFORNIA: Travel USA with cool business group representing major Rock & Roll, Fashion and Sport publications. Transportation furnished. Must start ASAP. 1-888-440-1181.

**JOB TRAINING**  
AIRLINES ARE HIRING: Train for high paying aviation career. FAA approved program. Financial aid if qualified, job placement assistance. Call Aviation Institute of Maintenance. 1-888-886-7315

**REAL ESTATE**  
\$106 MONTH BUYS land for RV, MH or cabin. Gated entry, \$690 down, (\$6900/10.915/7yr) 90 days same as cash. Guaranteed financing. 1-936-377-3235  
21.5 ACRES North of Brackettville. Heavy oak, cedar cover. Native and exotic game, beautiful! \$1700/acre. Owner or TX. Visit financing. 1-800-876-9720. www.hillcountryranches.com  
676 ACRES Reeves County, 15 Miles North Pecos, river frontage. Call Jack 214-755-6224.  
**ABSOLUTELY THE BEST VIEW** Lake Medina/Bandera 1/4 acre tract, central W/S/E. RV/motor home/house. OK until 5830 down \$235 month (12.915/10yr). Guaranteed financing. more information call 1-830-460-8354  
**AFFORDABLE RESORT LIVING** on Lake Fork. RV and manufactured housing OK! Guaranteed financing with 10% down. Lots starting as low as \$6900. Call Josh. 1-903-878-7265  
**TERREL/BREWSTER** County, Indian Wells Ranch #14, male deer, 4x4 required, 334 acres, \$265/acre. Meyers Canyon Ranch #35, whitetail, 255 acres, \$350/acre. Owner financing. 5% down. 1-210-734-4009. www.westintexasland.com

**VACATION PROPERTY**  
WEEKEND GETAWAY available on Lake Fork. Lake Livingston or Lake Medina. Rooms fully furnished! Great community with clubhouse, swimming pool and boat ramps. Call for more information: 1-903-878-7265. 1-936-377-3235 or 1-830-460-8354

**Run Your Ad in TexSCAN!**  
Statewide Ad ..... \$500  
301 Newspapers, 842,416 Circulation  
North Region Only ..... \$230  
98 Newspapers, 283,811 Circulation  
South Region Only ..... \$230  
101 Newspapers, 368,728 Circulation  
West Region Only ..... \$230  
102 Newspapers, 317,681 Circulation  
To Order: Call this Newspaper direct, or call Texas Press Service at 1-800-745-4793 Today!

NOTICE: While most advertisers are reputable, we cannot guarantee products or services advertised. We urge readers to use caution and when in doubt, contact the Texas Attorney General at 1-800-621-0908 or the Federal Trade Commission at 1-877-FTC. HELP: The TexSCAN website is www.texscan.biz  
Extend your advertising reach with TexSCAN, your Statewide Classified Ad Network.

## SHS Football Athletes Honored

Several Spearman High School Varsity Lynx football players were named to the 2-A All District Football Team for Division 2.

**Defensive MVP:** Marc Ortiz

**First Team Offense:** Running Back - Justin Rindlisbacher; Tight End - Jeffery Thomas; Offensive Line - Marc Ortiz

**First Team Defense:** Defensive Line - Blaine Pack; Outside Linebacker - Jace Swan; Defensive Back - Justin Rindlisbacher

**Second Team Offense:** Quarterback - Jace Swan; Wide Receiver - Stefan Cook; Offensive Line - Caro Jorge

**Second Team Defense:**

Inside Linebacker - Junior Garcia; Defensive Back - Stefan Cook; Kicker - Rosendo Alfredo

**Honorable Mention:** Offensive Line - Blaine Pack, Justin Roberts; Defensive Line - Josh Martinez; Outside Linebacker - Alfredo Rosendo; Inside Linebacker - Christian Fisher

## Local Vets Attend Convention

Scot M. Martin, DVM and Kristina M. Levis of Hansford County Veterinary Hospital recently attended the American Association of Equine Practitioners' 2011 Annual Convention, held in San Antonio this past week. As the world's largest continuing education meeting for equine veterinarians, the convention offered the lat-

est advances in equine medicine, surgery and research. More than 2,400 veterinary professionals from around the world participated.

The American Association of Equine Practitioners, headquartered in Lexington, KY, was founded in 1954 as a non-profit organization dedicated to the health and

welfare of the horse. Currently, the AAEP reaches more than 5 million horse owners through its nearly 10,000 members worldwide and is actively involved in ethics issues, practice management, research and continuing education in the equine veterinary profession and horse industry.

**The Hansford County Reporter-Statesman**  
2011 Holiday Schedule

**SANTA LETTERS:** The Reporter-Statesman will publish Santa Letters in the Thursday, December 22nd edition. The deadline to submit information for this issue will be Thursday, December 15th.


**HOLIDAY GREETINGS:** Anyone wishing to place a holiday greeting in the newspaper is encouraged to call or come by the Reporter-Statesman office as soon as possible (310 Barkley Street). Holiday greetings will be included in the December 22nd Christmas edition, and the December 29th New Year's edition.

**OFFICE CLOSED:** The Hansford County Reporter-Statesman office will be closed December 22-January 2nd for the Christmas Holidays. (The deadline for the December 22nd and December 29th issues is Thursday, December 15th at 5 p.m.)

## Operation Christmas Greeting

The Hansford Hospital Auxiliary has begun their yearly fundraiser - Operation Christmas Greeting. Instead of mailing greeting cards, individuals who wish to donate money to the Hansford Hospital Auxiliary and have their greeting published in this paper. The money is used to purchase equipment and supplies that are not budgeted at the Hospital and Manor.

Your donations can be mailed to Operation Christmas Greeting Chairman Judy Nelson, 130 Nelson Road, Spearman, Texas 79081. Checks should be made to Hansford Hospital Auxiliary and marked Operation Christmas Greeting. Thank you so much for supporting this fundraiser.



**Gary and Cathy Smith**  
**Dennis and Judy Nelson**  
**Roger and Elaine Odegaard**  
**Ruth Ann Jones**  
**Virginia Trindle**

**Margaret Evans**  
**Thomas and Rita Reed**  
**Nell Patterson**  
**Bailey Patterson**  
**Nan Nicholson**

See us for:  
AUTO • HOME • CROP HAIL •  
FARM & RANCH • MULTIPERIL •  
LIVESTOCK

**INSURANCE**




**BORT AGENCY, INC.**  
510 Main St. • Gruver, TX  
(806) 733-2456

**Are You A Victim of Domestic Violence, Sexual Abuse or Physical, Emotional or Sexual Assault?**


**Call Toll Free Hotline**  
**1-800-753-5308**

Battering Intervention & Anger Management Available

**Panhandle Crisis Center**  
Serving Hansford, Lipscomb & Ochiltree Counties  
301 S. Ash • Perryton, TX



*Merry Christmas from*



**First National Bank**

**Open House**  
**December 16, 2010**

*Come enjoy refreshments!*  
*Cookies, wassail and coffee will be served all day.*

*Santa will be here from 10:00 a.m. to 3:00 p.m.*

Member FDIC

**MITCHELL THEATRES.COM**

**NORTHRIDGE 8**  
Guymon, Oklahoma  
www.northridge8.com  
580-338-3281

**SOUTHGATE 6**  
Liberal, Kansas  
www.southgate6.com  
620-624-5573

**SEQUOYAH 8**  
Garden City, Kansas  
www.sequoyah8.com  
620-275-2760

**CHISHOLM TRAIL 8**  
Newton, Kansas  
www.chisholmtrail8.com  
316-283-0555

**FRESH POPCORN EVERYDAY!**  
**-PARTY ROOM & ARCADE-**

Sign up at any PTCI office for a chance to win up to \$250 in Claus Bucks given away daily Dec. 19-23. Claus Bucks can be used for purchases at any PTCI location!

**Hurry! Before SANTA takes it ALL!**

**Amarillo Networks in HD**  
Over 150 channels  
High Definition Programming  
Combined billing of Telephone, Internet, and TV services



**\$29.99**

**Incredible TV**

**\$29.99** mo.\*  
For 6 months!

**FREE HD**  
For 6 months!

**FREE Install**  
up to 4 set-top boxes

ptci.net  
721 W 7th in Spearman  
800-562-2556

Some restrictions apply. See store for details. Offer good thru Dec 30, 2011

\*Requires two-year commitment