

HANSFORD COUNTY LIBRARY  
120 MAIN  
SPEARMAN TX 79081-2064

INSIDE

|                     |     |
|---------------------|-----|
| Hansford Happenings | 2   |
| City Lives          | 2   |
| Basketball          | 6-8 |
| Want Ads            | 11  |
| Obituary            | 12  |

# The Hansford County Reporter-Statesman

Serving All of Hansford County

12 pages

VOL. 84, NO. 11

213 Main

Spearman, Hansford County, Texas

25¢

THURSDAY, JANUARY 9, 1992

| WEATHER     |    |    |        |
|-------------|----|----|--------|
| Day         | Hi | Lo | Precip |
| Thu         | 55 | 28 | .00    |
| Fri         | 56 | 29 | .00    |
| Sat         | 53 | 31 | .00    |
| Sun         | 55 | 34 | .00    |
| Mon         | 57 | 29 | .00    |
| Tue         | 54 | 37 | .40    |
| 1992 Precip |    |    | .65    |

## Grand jury to investigate alleged beating of juvenile

by JoAnn Morton  
Editor

A grand jury will be impaneled on Thursday, Jan. 30 at 9 a.m. at the Hansford County Courthouse, to investigate allegations that a juvenile probation officer struck a Spearman youth with a baseball bat, according to District Attorney Steve Cross.

Cross said that last Thursday, Hansford County Sheriff R.L. McFarlin presented statements from witnesses in the case and Cross then contacted 84th District Judge J.E. "Chunky" Blackburn, asking that a grand jury be impaneled. The judge signed an order for a grand jury and Cross received the order Monday.

The grand jury will look into a case involving assistant juvenile probation officer Jim Layman of Perryton, an officer of the Hansford-Ochiltree County Juvenile Board. Layman is alleged to have beaten a Spearman youth with a baseball bat. The alleged beating occurred as the juvenile was being apprehended after an escape attempt in late December.

Cross explained that the grand jury will subpoena witnesses and records relating to the case, adding that six to eight witnesses will probably testify in the matter. After hearing the testimony and exam-

ining evidence presented in the case, the grand jury will determine whether the evidence is sufficient to take the case to trial, he said.

Grand jury proceedings are conducted in private, said Cross, and the general public can not attend.

After hearing testimony, the grand jury will take one of three actions - "true bill," "no bill" or "pass," said Cross.

"They can 'true bill,' or indict someone. They can 'no bill,' or determine that evidence is insufficient for an indictment, and the case ends there. Or, they can 'pass.' That puts the case on hold and it is not necessarily finished," he said. He explained that a grand jury can pass for several reasons. For example, it could mean that a witness was unable to testify during the current proceedings, or that the grand jury wants evidence developed further, he said.

A grand jury is formed by a grand jury commission, Cross explained, which consists of three to five people selected by the district judge. The commission is charged with selecting 20 residents, representing a cross-section of the county's population, as potential grand jurors.

The names of the potential grand jurors are placed in a sealed envelope and given to the district clerk. When a grand jury is called for, the

judge orders that the envelope be opened by the clerk. The list of names is given to the sheriff, who contacts the persons listed and tells them to appear in court.

The judge questions the potential jurors as to their qualifications for serving on the grand jury, and the first 12 to qualify will be the grand jury, said Cross.

Amelia Johnson, county and district clerk for Hansford County, said that a grand jury is impaneled for a six-month term, which can be extended if necessary to complete an investigation. Terms in Hansford County begin in March and September, she added. During its term, a grand jury will investigate any matter brought before it, rather than being impaneled for only one case, as is a petit jury.

A new grand jury commission is also appointed each six months. The current grand jury commission was appointed on Oct. 3, 1991 for the September term, said Johnson.

Grand jurors are selected by the commission from among all county residents, said Johnson, and are not required to be registered voters.

Impanelment proceedings for the grand jury are public, and will be conducted in the district courtroom of the Hansford County Court-



Seven out of the 12 seniors on the 1991 Gruver varsity football team earned All-District honors. They are Ryan Mathews (6), Shannon Pool (9), Marty McCloy (29), Rex Ralston (64), Max Davis (77), Crockett Tidwell (39) and Garrett Gumfory (70). Other seniors on the team are Chad Stork (62), Matthew Hoel (18), Donald Heath (59), Clint Bell (51) and Felipe Dominguez (10).

## 13 Gruver players earn All-District honors

Greyhound football coach Barry Haenisch released the District 1-A All-District team selections this week. Thirteen Gruver players were listed on the selections.

Carey Kauffman and Max Davis led the Hounds as they were selected to the first team. Following them were Rex Ralston and Kevin Spivey on the second team list.

Receiving honorable mention were Crockett Tidwell, Shannon Pool, Mathew Hoel, Brady Pool, Ryan Mathews, Garret Gumfory, Robert Whitaker and Marty McCloy.

Kauffman, a junior, was selected as a first team offensive lineman. He also received honorable mention as a defensive lineman. He wore number 56 for the Greyhounds.

Joining Kauffman on the first team was senior Davis. He was selected for the defensive line. Davis wore number 77 for the Hounds.

Both Republican Secretary Beck, who is at Baker and Taylor, and Jenkins, Democratic representative, will be available all day Saturday to help any county resident who might want to sign up to run in the March primaries.

Selected as a second team offensive guard was Ralston. He is a senior and wore number 64.

Selected to the second team secondary was Spivey. Spivey is a junior and wore number 4.

Tidwell received honorable mention as a tight end. He is a senior and wore number 39.

Shannon Pool received honorable mention for both the quarterback position and for his defensive secondary play. He is a senior and wore number 9.

Senior Hoel received honorable mention as both a running back and a linebacker. He wore number 18.

Another two way honorable mention recipient was Brady Pool. He was mentioned as running back and defensive lineman. He wore number 34.

Mathews was mentioned as a wide receiver. He is a senior and wore number 6.

Honorable mention on the de-



Carey Kauffman

fensive line was Gumfory. He is a senior and wore number 70.

Whitaker was mentioned as a linebacker. He is a sophomore and wore number 58.

McCloy made the honorable mention list in the defensive secondary. He is a senior and wore number 29.

The first team list is dominated by State Champions Memphis and second place district finisher Wheeler. Wheeler had 11 players selected to the first team roster. Memphis had eight players selected.

### For candidates in March primaries...

## Filing period ends Friday

Friday, Jan. 10, is the deadline for filing to be a candidate in the March party primary elections for the five county offices up for election this year.

The five county offices are Precinct 1 Commissioner, Precinct 3 Commissioner, Sheriff, County Attorney and County Tax Assessor. Of the five county offices up for election, both the Republican Party chairman office and the Democratic Party chairman office report that the Precinct 1 Commissioner's race has the most candidates signed up.

Beverly Jenkins, secretary at Speartex Grain, the offices of county chairman Carl Archer, reports that five candidates have signed up for the Precinct 1 Demo-

cratic primary election. They are Dick Gillaspie, Mike Garnett, Vance Snider, Kathy Patterson and Ernie Vanderburg.

The Sheriff and Tax Assessor's offices each have only one person filing for the primary. Incumbent R.L. McFarlin filed for the sheriff's office and incumbent Helen Dry filed for the tax assessor's office.

Kathy Beck, Republican county executive committee secretary, reports that the Precinct 1 Commissioner's race has the most candidates signed up for the Republican primary. Worley Smith and Jerry Pat Davis have signed up to run for the Precinct 1 Commissioner's position.

She added that Kent Guthrie

has signed up to run for Precinct 3 Commissioner and that incumbent John Hutchison has signed up to run for County Attorney.

The following people have signed up to run for Precinct Chairman: Karla Woodington and Randy Kirk, Precinct 1; Nedford DeCamp, Precinct 2; George Lamb, Precinct 3; Leon Chapman, Precinct 4; Alton Ellsworth, Precinct 5; Stan Cobb, Precinct 6; and Dennis Stedje, Precinct 7.

Both Republican Secretary Beck, who is at Baker and Taylor, and Jenkins, Democratic representative, will be available all day Saturday to help any county resident who might want to sign up to run in the March primaries.

### Area resident dies from exposure...

## Celebration ends in tragedy

by JoAnn Morton  
Editor

A New Year's Eve celebration turned into tragedy for an area resident, who was found dead in a pasture south of Farnsworth on Jan. 3.

Richard Torres, 27, of Perryton and Spearman died from exposure, with acute alcohol intoxication listed as a contributing factor, said Ochiltree County Sheriff Joe Hataway.

Hataway said that Torres had apparently attended a New Year's party at a residence 10 or 12 miles south of Farnsworth, and left the party about 2 a.m., headed toward Spearman. His car, a 1989 Pontiac Grand Am, became stuck on a dirt road in the area and Torres apparently began walking, said Hataway.

Torres' body was found early Friday, Jan. 3 about a mile and a half from his car by employees of Gary Conley, an area farmer.

Relatives of Torres reported him missing about 10 p.m. on Jan. 2, said Hataway, and Ochiltree and Hansford County officials began searching for him that evening near

the Conley elevators on FM 759. The search was hampered by muddy conditions, which prevented deputies from leaving paved roads and looking in remote areas. At about 1 or 2 a.m., a decision was made to begin searching again on the morning of Jan. 3.

At about 8 a.m., Hansford County deputies traveled to the area with horses, and Ochiltree County Chief Deputy Ken Donahue obtained an aircraft to look for Torres from the air, said Hataway. Several Hansford County residents had also volunteered the use of three-wheelers to aid in the search, he added.

But before things could be organized that morning, Conley contacted the sheriff's office with the news that Torres' body had been located. Ochiltree County Coroner Braden Karber was called to the scene, where he pronounced Torres dead and ordered an autopsy. The body was sent to Amarillo for examination by Dr. Sparks Veasey, pathologist.

Hataway said that his office checked on temperatures during the

time that Torres was missing, and said that the low temperature on Dec. 31 was 27 degrees, and the low temperature on Jan. 1 was 28 degrees. The sheriff said that Torres probably died late Dec. 31 or in the early morning hours of Jan. 1.

Hataway expressed thanks to the Hansford County Sheriff's Department for assistance in the search.

Mr. Torres, born in Borger, was a longtime resident of Spearman. He graduated from Spearman High School. He was a truck foreman for Alram, Inc., in Perryton. He was a member of Sacred Heart Catholic Church.

Survivors include his son, Leighton Torres of Spearman; his father, Pablo Torres of Spearman; four sisters, Lila West, Bernice Flores and Denise Apodaca, all of Spearman, and Gloria Casas of Conroe; and a brother, Paul Torres of Borger.

Services were conducted Monday, Jan. 6 in Sacred Heart Catholic Church with the Rev. Norbert Kieferle, pastor, officiating. Burial was in Hansford Cemetery.

## Commodity recipients to re-certify during the month of January

Those who wish to receive USDA commodities in 1992 are requested to come in to the Hansford County Judge's office during January to certify or re-certify.

Eligibility is based on gross income, unless self-employed or farming, which is based on net income, and on size of household and residency.

Income that must be counted includes:

1. Regular wages or salary.
2. Social Security benefits (including Medicare premiums).
3. Veteran's benefits.
4. Worker's compensation benefits.
5. Regular insurance payments.
6. Military allotments.
7. Child support payments.
8. Self-employment income less business expenses.
9. Regular monthly cash contributions or allowances that help the household meet its usual living expenses.
10. Unemployment compensation.
11. Income from rental property.
12. Interest that is received regularly (monthly, quarterly, or yearly).

Recipients of AFDC (Aid to Families with Dependent Children), Food Stamps, MAO (Medical Assistance Only) or SSI (Supplemental Security Income) are automatically eli-

gible upon proof of receipt. Food Stamp identification cards are not proof, since they are not dated. However, a letter from the Department of Human Resources stating that you are to receive Food Stamps is proof.

Applicants must apply in the county of their residence and must provide proof of identity, residency, and income.

The Hansford County Judge's office is open Monday through Friday from 8:30 a.m. until 5 p.m.

## Tim Dooley chosen for All-State honors

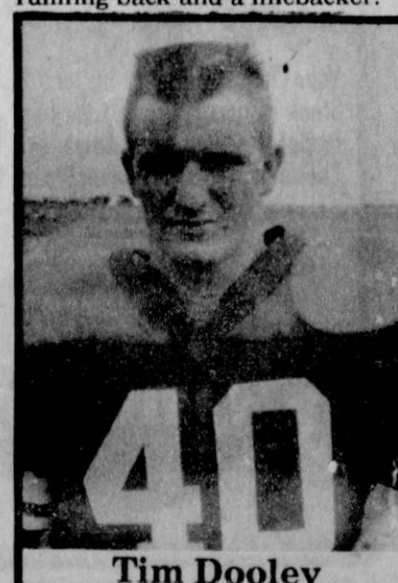
More accolades were heaped on the brow of Spearman varsity running back Tim Dooley as Don Mullins, Spearman football coach, announced last week that Dooley was named to the All-State Honorable Mention Team at both the running back and linebacker positions.

According to Mullins, Dooley earned the running back honor by gaining 1,472 yards on 220 carries in 11 games. Dooley missed one game because of an injury. That averages out to 133 yards per game and 6.68 yards per carry. He scored 18 touchdowns.

As the middle linebacker for the Spearman Lynx, Mullins reported, Dooley led the defense with a total of 533 points on his defensive rating sheet. Dooley had 24 unassisted tackles and was first to the ball 53 times. He was second to the ball 53 times and third to the ball 22 times. Dooley had one pass interception

and two fumble recoveries for the year.

These All State honors were preceded by Dooley being named to the All District first team as both a running back and a linebacker.



Tim Dooley

## Hansford Happenings

The Spearman Elementary School library will hold a Book Fair from Tuesday, Jan. 14 through Friday, Jan. 17, 8:15 a.m. to 3:30 p.m. Interested persons can come to the school and purchase these inexpensive books to be used as gifts for children or grandchildren.

Hansford Hospice volunteers will meet Monday, Jan. 20 at 7 p.m. in the Gruver State Bank LaCasita Room.

Parents of children whose birthdate was before Sept. 1, 1987 and who will be 5 years old on or before Sept. 1, 1992 should come to the elementary school office to complete a Kindergarten registration form, according to elementary principal Richard Partney. The form can be picked up at the elementary school office between 8 a.m. and 4 p.m., Monday through Friday. The form should be completed before Jan. 31.

The Hansford County Activity Center will have a boys basketball sign-up on Sunday, Jan. 12 at 1 p.m., at the Activity Center, for boys in 3rd through 6th grade.

Those who wish to receive USDA commodities in 1992 should visit the Hansford County Judge's office during the month of January to certify or re-certify. Eligibility requirements and more information are available in the Hansford County Judge's office Monday through Friday, from 8:30 a.m. to 5 p.m.

Spearman LaLeche League will meet Friday, Jan. 17 at 9:30 a.m. at First United Methodist Church nursery room, 407 S. Haney. The group informally discusses different phases of breastfeeding, and offers mother-to-mother help, including the latest medical research. Expectant mothers are especially encouraged to attend. The topic for the Jan. 17 meeting will be "Why Breastfeed Your Baby?" All women who are interested in breastfeeding are invited to attend, as are their babies. More information about the Spearman La Leche League Group is available by calling 659-2962.

Entries for the PTA Reflections cultural arts program are being sought. This year's theme is "Exploring New Beginnings." Students in all school grade levels are invited to enter, and entries can be in four categories: literature, music, photography and visual arts. Copies of the rules and entry forms can be obtained at the Hansford County Library or by calling Cindy Clyburn at 659-2306.

## Chamber Chatter

by Cindy Blackman  
Chamber Manager

Spearman Chamber of Commerce manager Cindy Blackman was indisposed this week and was unable to provide her weekly column.

In lieu of her column, she said she would like to remind all chamber members that the Membership Luncheon is scheduled for Thursday, Jan. 16 at noon at Sacred

Heart Catholic Church Parish Hall. Installation of a new board of directors will highlight the luncheon. All Spearman Chamber of Commerce members are encouraged to attend.

Sponsor for the Membership Luncheon is Interstate Savings and Loan.

## City Lites

by Kelvin Knauf  
Spearman City Manager

With the arrival of cold winter weather, the City often receives questions from citizens about their gas bills. We at City Hall want to explain how you can lower your gas consumption.

How your gas bill is determined Using November gas bills and assuming a homeowner used 10,000 cubic feet of gas as an example, your gas bill was made up of the following:

- 43.7% went towards the purchase of wholesale natural gas.
- 2.1% was a correcting figure to adjust November's actual cost of gas to what the wholesale supplier had estimated the cost to be. In some months this percentage will be positive (if the supplier had underestimated the cost of gas) and in other months the percentage will be negative (if the supplier had overestimated the cost of gas)
- 21.2% was the wholesaler's cost of operating and maintaining the gas distribution systems from the gas well to the City's gas distribution system.
- 0.0% was a surcharge that the wholesale gas supplier can include to cover the cost of applying for a rate increase.
- 1.2% was the amount that the wholesale supplier is allowed to recover for lost and unaccounted for gas.
- 31.8% was the City's cost of distributing, repairing and maintaining the gas distribution system to your home or business. The City charges \$4.00 per month plus \$0.95 per thousand cubic feet. Since the gas distribution system generates enough revenue to pay its expenses, no tax money is used to

provide gas service to your home or business.

The cost of wholesale gas is subject to market increases or decreases. While there is not much an individual can do to influence the market rate for natural gas, there are some actions a homeowner or business person can do to lower your gas consumption and minimize your gas bill.

### Reducing your gas consumption:

- add insulation to your attic;
- insulate your water heater;
- clean or replace filters as required;
- lubricate any moving parts on your gas appliances;
- keep the area around the furnace free from dirt and clutter;
- repair your gas appliances as soon as possible;
- weatherproof your home through weatherstripping doors and windows;
- lower your thermostat when you are away or when you are sleeping;
- open the curtains on sun-facing windows;
- use extra blankets and wear sweaters, sweatshirts or other heavy clothing during the winter;
- close doors and close the vent to unused rooms;
- lower the water temperature on your water heater; and
- run the washing machine and dryer only with full loads.

If you have any questions about how your bill was calculated, please call us at City Hall, and we will be glad to answer your questions.

## Police Files

### Spearman Police Department

Between Dec. 23 and Jan. 5, the Spearman Police Department recorded 61 calls for service. Those calls included five reports of vandalism, two family incidents, one DUI, two reports of drunkenness, one report of disorderly conduct and eight reports of suspicious activity.

The SPD also logged five traffic accidents, one hit and run, one ambulance back-up, seven miscellaneous calls for officers, 10 persons locked out of vehicles, two special details and two back-ups for outside law enforcement agencies.

There was one family fight reported and officers provided one motorist assist. There were 11 calls for animal control.

Included in incident reports for the period was the arrest of a 28 year old man for DUI. The arrest was made on Dec. 23 at 10:36 p.m. in the 300 block of West Kenneth.

A two-vehicle accident was investigated on Dec. 24 at 4:58 p.m., at the intersection of 5th and Endicott. According to the police incident report, a 1960 Ford driven by Edward Lee Cook of Spearman was traveling south on Endicott and failed to yield to a 1988 GMC Suburban driven by Sheila LaRochelle of Spearman, traveling east on 5th. Cook was cited for failure to yield right of way and failure to maintain proof of financial responsibility. No injuries were reported.

Officers responded to a domestic disturbance at 10:39 p.m. on Dec. 28, in the 10 block of North Brandt. No violence was reported.

Officers investigated three reports of vandalism in which vehicle windshields were damaged. The investigation resulted in three males making restitution for the damage. No complaints were filed.

At 1:05 a.m. on Jan. 1, a 34 year old man was arrested for assault against a 31 year old man. The suspect was also held on a parole violation warrant, according to the

police incident report. The incident occurred in the 100 block of South Hazelwood.

An investigation is pending in a report of vandalism, in which a vehicle windshield was damaged. The report was taken on Jan. 2 at 10:30 p.m. in the 300 block of South Hazelwood.

### Gruver Police Department

On Thursday, Dec. 26, the Gruver Police Department received a report of criminal trespassing in the 200 block of East Fourth. According to Police Chief Steve Gaines, an unknown subject or subjects entered a storage building at the location. No property was reported to be missing.

On Saturday, Dec. 28, Gruver police were called to unlock vehicles west of the city limits and in the 700 block of Main.

On Sunday, Dec. 29, police were requested to check on the welfare of an elderly Gruver resident in the 500 block of Front. Gaines said the resident had been taken to the hospital by a neighbor.

A report of a domestic disturbance in the 900 block of Womble was received on Monday, Dec. 30. The report was found to be false.

Police unlocked a vehicle in the 700 block of King on Tuesday, Dec. 31.

On Wednesday, Jan. 1, a fictitious call for Gruver EMS was placed to 9-1-1. The call was determined to have been made from the 600 block of Cator by children playing with the telephone, said Gaines.

Also on Jan. 1, a wallet belonging to a New Mexico resident was found and turned in to Gruver police. The wallet was mailed to its owner.

A report of a structure fire in the 300 block of Womble was received on Jan. 1. The report was found to be a false report.

Gruver police responded to an alarm in the 100 block of Main on Jan. 1. The alarm was determined to be a false alarm.

On Sunday, Jan. 5, police received a complaint from the 500 block of Cluck, concerning an animal disturbing residents. Gaines said the matter will be referred to the municipal court.

Gruver police issued one citation for speeding and one warning for speeding, said Gaines.

**At The Lyric Theatre . . .**  
**Friday, January 10 - Tuesday, January 14**  
**Bargain Nights Mon. & Tue. All Seats \$3**  
**Closed Wednesday & Thursday**  
**Screen 1 - 7:30 p.m. Screen 2 - 7:15 p.m.**

**113 Main, Spearman**

## At the movies . . .

Beginning Friday, Jan. 10 and running through Tuesday, Jan. 14 at the Lyric Theatre in Spearman will be "An American Tail: Fievel Goes West" on Screen 1 at 7:30 p.m. and "Cape Fear" on Screen 2 at 7:15 p.m.

"An American Tail: Fievel Goes West" is the second installment in the adventures of Fievel Mousekowitz, the tiny immigrant hero of "An American Tail." We find our courageous little rodent pal wishing for a gunfighter's tough life in the Wild West, and then getting exactly what he wished for.

Fievel, his family, and all the other ethnic, immigrant-type mice are tricked into going west, to a fictional prosperous town where cats, mice, and even dogs all live as friends.

"An American Tail: Fievel Goes West" is rated G.

"Cape Fear" is a boldly imaginative reworking of a 1962 tale about a family besieged by a vengeful psychotic.

In the original, Gregory Peck is an upright country lawyer whose testimony against a rapist (Robert Mitchum) comes back to haunt him years later when the criminal is released and cunningly menaces the attorney and his family. But the new "Cape Fear" is not nearly as cut-and-dry.

The twist here is that Sam Bowden (Nick Nolte) was the lawyer for psycho Max Cady (Robert De Niro) some 14 years ago, and withheld crucial evidence once he realized how dangerous his client really was. In stir, this illiterate Southern "cracker" learned to read, working his way from children's tales to law books and uncovering his own attorney's betrayal. With a maniacal fundamentalist zeal, Cady vows to make Sam pay for his professional and moral "sin" and brazenly asserts his presence in Sam's placid Carolina town.

"Cape Fear" truly does scare the bejeezus out of you, and is rated R.



About half as much hot water is used in the average shower as in the average bath.

**FAMILY VALUES**

**DO KIDS' MEAL \$1.99**

Your Choice Of: Hungr-Buster, Jr., Steak Fingers & Gravy, Corn Dog or Hot Dog. Plus Fries, Drink, Choice of Treats and a Free Prize!

**DAIRY QUEEN**

**FULL MEAL DEAL™ \$2.99**

1/4 lb.† Hungr-Buster® Fries, 16-oz. Drink, Sundae

**ON SALE JANUARY 6-26, 1992**

## PROPANE USERS! Winter is Here!

Call us for all your Propane Needs  
**Commercial & Residential**

Serving Spearman and surrounding area  
 We offer the Following:

- "Keep Full Service" - Filled on Route, No Need to Run Out!
- Radio Dispatched Trucks for Faster Service
- Priced Very Competitive, 5% Cash Discount to Customers Who Own Their Own Tank
- We Supply Tanks If Needed
- 30-day Terms with Good Credit
- 24-hour Emergency Service

Call Toll Free! 1-800-753-6330  
 If Busy Call 1-806-435-5844

Smith's Propane Service (formerly Rutz Oil)  
 Loop 143 East • Perryton, TX  
 Serving the Perryton area for 19 years

## The Hansford County Reporter-Statesman

"Serving All Of  
 Hansford County"

USPS 509660  
 213 Main, Box 458, 659-3434  
 Spearman, TX 79081

Published Weekly at  
 213 Main, Spearman, Texas

Owned and Operated by:  
 Texas Independent  
 Newspapers, Inc.  
 15915 Alsace  
 San Antonio, TX 78232  
 (512) 545-1739  
 Second Class postage paid at Spearman, Texas 79081.

Any erroneous reflection upon the character of any person or firm appearing in these pages will be gladly and promptly corrected upon being brought to the attention of the management.

Publisher - Robert M. Hulett  
 Editor - JoAnn Morton  
 Bookkeeper - Sheila LaRochelle

Subscription Rate: Hansford County, \$19.95; out of county, \$24.95 annually.

Postmaster: Send address changes to Hansford County Reporter-Statesman, Box 458, Spearman, TX 79081.

The publisher reserves the right to revise or reject at its option any advertisement which it deems objectionable, either in subject or phraseology, or which it may deem detrimental to its business.  
 Advertising and Story Deadlines: Tuesday, 12:00 p.m.

MEMBER  
 TEXAS PRESS ASSOCIATION

The Spearman Chamber of Commerce annual banquet is scheduled for Saturday, Feb. 22 at 7 p.m. in the Spearman High School cafeteria. Highlighting the event will be the presentation of awards for "Citizen of the Year" and "Citizen Over the Years." Nominations for those awards can be submitted on the forms below.

**CITIZEN OF THE YEAR ENTRY FORM**

Please complete the following information about your nominee and mail it to:

SPEARMAN CHAMBER OF COMMRECE  
BOX 161  
SPEARMAN, TEXAS 79081

**NOMINEE INFORMATION:**

Name \_\_\_\_\_

Occupation \_\_\_\_\_

Phone \_\_\_\_\_

Address \_\_\_\_\_

(Must be completed to qualify)

Describe why your nominee should receive the Citizen Of the Year Award. (Use another sheet if necessary)

\_\_\_\_\_  
\_\_\_\_\_  
\_\_\_\_\_

February 3, 1992 is the deadline

**Qualifications:**

- \*\*Someone who has made outstanding voluntary contributions toward the benefit of others over the past years, not directly related to his/her employment.
- \*\*Someone who lives within the Spearman School District.
- \*\*May be of any race, age, or sex and from any or no religious or political affiliation.
- \*\*Keep in mind contributions to community welfare, leadership ability, participation in community affairs.

**CITIZEN OVER THE YEARS ENTRY FORM**

Please complete the following information about your nominee and mail it to:

SPEARMAN CHAMBER OF COMMRECE  
BOX 161  
SPEARMAN, TEXAS 79081

**NOMINEE INFORMATION:**

Name \_\_\_\_\_

Occupation \_\_\_\_\_

Phone \_\_\_\_\_

Address \_\_\_\_\_

(Must be completed to qualify)

Describe why your nominee should receive the Citizen Over the Years Award. (Use another sheet if necessary)

\_\_\_\_\_  
\_\_\_\_\_  
\_\_\_\_\_

February 3, 1992 is the deadline

**Qualifications:**

- \*\*Someone who has made outstanding voluntary contributions toward the benefit of others over the past years, not directly related to his/her employment.
- \*\*Someone who lives within the Spearman School District.
- \*\*May be of any race, age, or sex and from any or no religious or political affiliation.
- \*\*Keep in mind contributions to community welfare, leadership ability, participation in community affairs.

**Spiritually Speaking**

by LaVern Draper, minister  
First Christian Church,  
Spearman

**PREPARE THE WAY**

How wonderful it is to know those moments when all is right in the world, when for seconds this earth seems uncorrupted, quiet, still, safe, and at peace.

Those moments are precious to us because for so many of our waking hours, we know it is not true. We watch almost helplessly as things seem to run out of control. The papers are filled with stories of murderers roaming our land, waiting for the moment to unleash chaos upon us.

We read with disbelief that millions upon millions, even billions of dollars have been invested in systems designed to rain unspeakable death upon our designated enemies and perhaps upon our own families. We read how violence among families and among perfect strangers is getting even more brutal and fierce in these times.

We wonder what will happen when resources get scarcer and scarcer, when in my opinion little has been done to deal with the situation, save for a few well-meant words of hope. The absolute paradox of our Christian faith is that the worse things get, the stronger shall be our hope. When hope is absolutely unthinkable, it is all the better to embrace it passionately.

See in your mind, if you can, the prophet Isaiah, writing some six hundred years before the birth of Jesus of Nazareth. There Isaiah sits, in Babylon, with his people, prisoners of war in a strange and foreign land. Their homeland has been torn to pieces by the invading army, families have been separated, the most "valuable" people have been taken captive and forced to live in exile in refugee camps outside the great city. Jerusalem has been devastated, and the seat of the great religion, the Temple, has been completely destroyed.

Forced into the terrible existence of the refugee, without a homeland, torn from families and friends, longing for peace, Isaiah writes about the realities of the situation. (read Isaiah 59:9-11)

Mere pawns in a great international struggle, these people had little hope for restoration. What could a few scraggly POWs do to effect policy changes in the mighty Babylonian nations? Yet, with full impact of the realities of their lives before them, these people could somehow manage a hope. Isaiah expresses it eloquently in the words: (read Isaiah 40:3,4).

Somehow, some way, we are going to get out of this God-forsaken land, and we are going to have this broad freeway from here to Jerusalem - no mountain passes, no deep valleys, no rough trails, no speed traps - a straight shot to home, back to that land flowing with milk and honey.

And do you know, it happened! God's miracles never cease. It happened in a way or form no one would have guessed. The power of God came in the form of a Persian general, Cyrus the Great, the first non-Jew to be called "anointed." You can read about it in Isaiah 45:1. Cyrus got his troops together to take the Babylonian capital, and, in the process, set the Jews free

**FIBER FULL**

Regular consumption of cereals, fresh fruits, and vegetables is highly recommended. The American Cancer Society indicates that diets high in fiber may help reduce the risk of colon and rectum cancer. If your diet does not include these ingredients, change is definitely on the menu!

and homeward bound. The embracing of hopeful ideas for the restoration of peace and justice led to the actual release of the refugees to their homeland.

John the Baptist would see his hopes materialize in the form of a "Messiah" - Jesus of Nazareth - and Israel would once again be delivered from the clutches of oppression and darkness to be ushered into everlasting light and peace.

Now, in these moments, we, too, are in the wilderness. Too much of the time, we don't think about it. Yet, privately, in those quiet moments, we sense the grip of darkness over our lives. We sense the spell of hopelessness taking effect in the hearts of millions across the country. Yet, in its deepest level, in the furthest reaches of the wilderness, once again the word comes to us: "Prepare the way of the Lord, make straight his paths."

To prepare the way of the Lord means to clear out those obstacles littering the entrances of our hearts and to open them up to the exciting entrance of eternal life, the Holy Future, the Divine Kingdom. To prepare the way of God means to clear away the obstacles of daily life, break down the barriers that prevent our seeing God at work in our jobs, our homes, and in our schools, and in the church. We need to smooth over the rough edges of our lives to make ready a path for God to enter and proclaim the new reality.

Have a Happy New Year ...  
LaVern Draper

**School menus**

GRUVER ISD  
JAN. 13 - 17  
LUNCH

Monday - ham and cheese sandwiches, tater tots, fruit, milk

Tuesday - soft tacos with cheese, lettuce, fruit, milk

Wednesday - roast turkey, mashed potatoes with gravy, vegetables, jello, hot rolls, milk

Thursday - stew, peach cobbler, corn bread, milk

Friday - chili cheese dogs, french fries, fruit, milk

Salad bar Monday, Wednesday and Thursday only.

**BREAKFAST**

Monday - cereal, bread, juice, milk

Tuesday - cowboy bread, fruit, milk

Wednesday - biscuits and sausage, fruit, milk

Thursday - toast, peanut butter and jelly, fruit, milk

Friday - cinnamon rolls, fruit, milk

PRINGLE-MORSE CISD  
JAN. 13 - 17  
BREAKFAST

Monday - toast, cereal, apple juice, milk

Tuesday - waffles, sausage, grape juice, milk

Wednesday - muffins, cinnamon toast, orange juice, milk

Thursday - donuts, cheese toast, apple juice, milk

Friday - biscuits, sausage, orange juice, milk

**LUNCH**

Monday - corn dogs,rito pie, broccoli-rice casserole, fries, applesauce, milk

Tuesday - salisbury steak, gravy, potatoes, corn, salad, rolls, jello, milk

Wednesday - sloppy joes, tater tots, baked beans, slaw, milk

Thursday - ham, macaroni & cheese, sweet potatoes, salad, green beans, wheat rolls, milk, peach pie

Friday - pizza, salad, fruit, milk, cookie

\*\*\*

The meeting of two personalities is like the contact of two chemical substances; if there is any reaction, both are transformed.

-C.G. Jung

**HENSON CHIROPRACTIC**

410 S. Davis • Spearman, TX

Call for Appointment • 659-5603

Office Hours: Mon, Wed, Fri - 9:00 to 5:00  
Tue, Thu - 9:00 to 11:30

**ALLSUP'S**

SPECIALS GOOD WHILE SUPPLIES LAST.

305 W. KENNETH, SPEARMAN  
101 MAIN, GRUVER

PRICES EFFECTIVE JANUARY 9-15, 1992

ALL SUP'S  
**HOT LINKS**

2 **99¢**

FOR

ALL TYPES  
**PEPSI-COLA**

6 PACK/12 OZ. CANS

**\$1.99**

ALL SUP'S  
**BATHROOM TISSUE**

4 ROLL PKG.

**99¢**

ALL SUP'S  
**BREAKFAST BURRITOS**

EACH

**89¢**

ALL SUP'S  
**DUBUQUE BACON**

12 OZ. PKG.

**79¢**

ALL FLAVORS  
ALL SUP'S  
**ICE CREAM**

1/2 GALLON

**99¢**

FRITO LAY  
**SNACK CRACKERS**

3 **\$1**

FOR

**HOT FOODS MENU**

|  |        |                                  |        |
|--|--------|----------------------------------|--------|
| BARBECUE BEEF SANDWICH                   | 99¢    | 9 PIECE BOX CHICKEN              | \$4.99 |
| BARBECUE PORK RIBS (LB.)                 | \$3.99 | BEEF & CHEESE CHIMICHANGA (MEAT) | \$1.19 |
| BARBECUE WHOLE CHICKEN                   | \$3.99 | CORN DOG                         | 69¢    |
| ALL SUP'S BURRITO                        | 79¢    | DELICIOUS HAMBURGER              | 59¢    |
| BREAKFAST BURRITO                        | 99¢    | WILSON HOT LINKS                 | 99¢    |
| BURRITO BEEF & SALSA                     | \$1.19 | SAUSAGE ON A STICK               | \$1.59 |
| DELICIOUS CHEESEBURGER                   | 79¢    | SAUSAGE & BISCUIT                | 79¢    |
| CHICKEN FRIED STEAK                      | \$1.59 | SAUSAGE, EGG & BISCUIT           | \$1.09 |
| 3 COUNT CHICKEN STRIPS                   | \$1.49 | SAUTEYA SAUSAGE                  | \$1.09 |
| W/POTATO WEDGES/ CHICKEN (2 PCS) BISCUIT | \$1.99 | 4 COUNT STEAK FINGERS            | \$1.00 |

CALL-IN ORDERS WELCOME CHECK OUR WEEKLY SPECIALS

**Good neighbors with good advice for saving energy**

Set your thermostat on 78° in the summer and 68° in the winter to save energy. If your home is empty during the day, raise the air conditioning thermostat by five degrees when you leave in the summer.

To learn about more ways to reduce the amount of energy you use, call or visit the neighbors at your local TNP office and ask for the free booklet, "Energy Management Guide."



Texas-New Mexico Power Company.

1b/92  
Lorine Benevento, Ft. Stockton, Texas, clerk.

- |  |          |  |        |                             |                   |
|--|----------|--|--------|-----------------------------|-------------------|
| CAMPBELL'S RAMEN NOODLE MICROWAVEABLE SOUP BEEF OR CHICKEN FLAVOR 2.19 OZ. CUP | 2/\$1.00 | SHURFINE GREEN BEANS OR WHOLE KERNEL CORN 16 OZ. CAN | 2/89¢  | SHURFINE POTATO CHIPS 7 OZ. | 2/\$1.00          |
| OCEAN SPRAY JUICE COCKTAIL VARIETY OF FLAVORS 48 OZ. BOTTLE                    | \$2.29   | SWEET 'N LOW SWEETENER 100 PACK                      | \$1.69 | DUBUQUE BACON 12 OZ. PKG.   | 2 PACKAGES/\$1.39 |

# Among the Neighbors

by Helen Fisher

Traci and Mindi Brinkley left Jan. 4 for an eight day trip to Hawaii. Traci, a senior cheerleader at Liberal High School, was selected to be a cheerleader at the Hula Bowl in Hawaii on Jan. 11.

So television watchers will be giving more attention to the cheerleaders than the game, as the girls' grandparents are Muriel and Granville Boyd and Mr. and Mrs. John Brinkley.

Mae and Dale Wofford returned Saturday from a week in New Mexico with her family, the Popes. At Ruidoso, there were 12 brothers and sisters at a reunion with her mother. With their families a total of 75 attended. Only one brother, who is recovering from surgery, was unable to attend. His son and family, the Arniss Popes of Spearman, were with him.

After the reunion the Woffords spent some time in Portales with her mother - and there were 47 of the family there.

Henry and Mary Cornelius spent Christmas "on the road again." They met their son Edwin of Galveston in Dallas and he accompanied them to Twin Falls, Idaho.

They were near the interesting little city of Jack Pot in Nevada and found much of interest there. Henry acknowledges that he made a contribution to the economic condition of Jack Pot during their visits.

They spent a day at the noted Sun Valley, staying at Ketchum. They also visited the spectacular natural falls, Shoshone Falls. The weather was beautiful and Edwin especially enjoyed all the snow, as it is a rare sight for him in Galveston.

On their return trip "Murphy's Law" went into effect. At Salt Lake City, the fog prevented their flight - twice. This triggered a chain reaction so they missed a number of connecting flights, and had long layovers at air ports. However, when they finally reached Amarillo, they were surprised that their baggage was there.

Lois and Woodrow Gibner were in Portland, Ore., over Christmas. They spent a week in the home of their son, Linn, and his family. They returned this past Monday.

Jo and Marcus Larson left Dec. 20 for Houston to be with their family during the holidays, returning Jan. 1. Their daughter Marci and Joe Wood with twin boys live

at Pearland, a suburb of Houston, and son Richard and family live at Cooperville, another suburb. Mike Larson and his family joined them. The high water was evident in every direction, tho they were able to avoid it.

Jo was careful to not repeat her performance of last year while in Houston. It is remembered that she fell and suffered a broken ankle which took months to heal. They returned by way of San Antonio and saw more of the high water.

Holiday guest of R.L. and Betty Uptergrove was Alma Cervantes of Matamoros, Mexico. She is a student at the Children's home there and is acquainted with several members of the First Baptist Church here who annually go to Matamoros and work at the school. She visited the Uptergroves a couple of years ago. They took her to Amarillo on Sunday for her return flight.

A guest in the home of Mr. and Mrs. Joe Cage during the holidays was his sister, Ruby McCullough. Ruby lived here a number of years and now lives at Sunset, Texas. In addition to greeting old friends here, she has been in Gruver in the home of her daughter, Nancy Babbs and son, Benny McCullough.

Through the New Years holiday and school break, Dennis and Judy Nelson have enjoyed having their family with them. Kimberly and Doug Kennedy with five-month-old Jocelyn, of Pampa, as well as Kyla and Kevin are here. Kyla and Kevin are both students at Texas Tech.

This week Judy has been with her mother, who is ill, in Lockney.

Many in Hansford and nearby counties are indebted to Judith Logsdon and Billy Logsdon and families for providing an opportunity to show appreciation to their parents, Bill and Juanita Logsdon, at the reception on their 50th wedding anniversary.

Details were in a previous issue, but the huge gathering Saturday evening at the Golden Age Center in Gruver was one of the most convivial ever as old friends, new friends, old and young, congratulated this popular and respected couple. Laughingly and sadly, reminiscences were shared with them and then with each other.

There is hardly an organization or activity in Gruver or Hansford County which has lacked the inter-

est and participation of their time and effort. They have been part of the social scene as well.

Congratulations, Bill and Juanita, and best wishes for many more anniversaries.

Dorothy Buzzard, Mona Beth Windom, Doris Beck and JoAnn Lee were all with the family of J.D. and Winifred Hester on Tuesday morning. J.D. Hester underwent major surgery at the Coon Memorial Hospital in Dalhart.

The Hesters' daughters, Jennifer from Columbia, South America, and Karen of Los Angeles, were able to be there.

At this writing J.D. is out of ICU but is still in serious condition.

Robert and Margaret Novak were notified of the unexpected death of their son, Bob, 46, on Saturday night, Jan. 4, at Stephenville, Texas. Services were held Tuesday afternoon at Stephenville. He had had heart surgery on Monday and seemed to be recovering but suffered two heart attacks. He leaves a wife and four children.

Bob attended school here, graduating in 1964.

All the friends of Lucille Hagerman are so pleased to learn that she at last is able to resume her duties at Thriftway Grocery where she has been employed so many years. She has not been able to work since Sept. 24, due to her illness and surgery.

Two of her daughters and families were here over New Year's week-end. Their highlight was sharing the very first Christmas with one-month-old Austin David, the first born of Valerie and Mark Huber. Kathy and Richard Lesley were here also, and visited with Richard's parents Bobbie and Rita Lesley. Both couples are from Amarillo.

The family of Mike Melton as well as his old friends are very concerned about his health. He has Hodgkins disease and will undergo further surgery on Wednesday.

Mike finished high school here in 1958 and married the former Vickie Wells of Gruver. They have two sons and live in Rawlins, Wyo. Mike is a brother of Richard Melton, Sue Bowling and Jody Robertson of Spearman.

His address is 1706 Kirkcolm Drive, Rawlins, Wyo., 82301, and the family indicates he will appreciate hearing from old school mates.

As has been their custom for many years, Rubyjo and J.D. Wilbanks had a small group of old and close friends for New Year's Day. They were Billy and Sybil Miller, Tom and Kathleen Sutton, Don and Gloria Knox and Virginia Cates.

This gathering served a double purpose - as the beautiful cake baked by Kathleen reminded them. It was an observance of the 50th wedding anniversary of J.D. and Rubyjo.

Edwin Simmons, an uncle of Rubyjo's, and his family had honored them at a dinner in Pampa

See neighbors page 9

# Shaver-Castillo vows repeated

Maleea Beth Shaver and Jasen Allen Castillo, both of Spearman, were married Saturday, Dec. 21 at 3 p.m. in the First Baptist Church of Spearman. Officiating at the double-ring ceremony was the Rev. Russ Gibbs.

Parents of the couple are Lee and Marsha Shaver and Dr. and Mrs. Charles Ridge of Spearman and Jose Castillo of San Antonio.

Matrons of honor were Cayla Schroeder and Johnnie Fuller of Spearman. Chaci Shaver, sister of the bride, was maid of honor. Cindy Elliott was bridesmaid. Kristin Vernon of Garland, cousin of the bride, and Alexandria Castillo of San Antonio, niece of the groom, served as flower girls.

Best man was Ramon Lozano of Spearman. Groomsmen were Jessie Tindell, Chad Davis and Russell Shaver, brother of the bride, all of Spearman. Shawn Burrell of Guymon, cousin of the bride, and Russell Shaver were candlelighters. Ring bearer was Joshua Ridge, brother of the groom.

Guests were registered by Alisha Burrell of Guymon, cousin of the bride. Ushers were Brandon Vanderburg, cousin of the bride, Chris Williamson and Ronnie Whittington, all of Spearman.

Soloists were Reagan Woodson of Garland, cousin of the bride, and David Furlow of Spearman. Song selections were "There Is Love," "All My Life," and "Always." Piano accompanist was Carol Pack.

Escorted to the altar and given in marriage by her father, the bride wore a formal wedding gown of white crystal organza and reembroided Alencon lace. On the high-necked lace Basque bodice, with its organza sweetheart neckline, was a scattering of iridescent pearls and sequins. The gown featured puffed sleeves with seed pearls and sequins on the wrist-length lacy illusion and an inverted V of organza ruffles on the skirt. The organza ruffles carried onto the back of the dress in a full cathedral train. The dress's back also featured a pearl-draped keyhole cutout and a large bow at the waist.

Her satin bridal hat with its turned-up brim was covered with lace and seed pearls. On the underside of the brim was a cluster of silk flowers with sprays of pearls. A fingertip veil flowed from the back of the hat.

The bride carried a bouquet of red and white silk roses made by her mother. In keeping with tradition "Something old, something new, something borrowed, something blue," she carried her great-grandmother Aliene White's handkerchief embroidered with green holly leaves and red berries. Her pearl teardrop earrings were borrowed from great-grandmother Lois Nollner. Her garter was the traditional blue.

The bridal attendants were gowned in Christmas red moire taffeta tea-length dresses with large bows accenting the back waists. They wore matching red shoes. Each carried a single long-stemmed red rose.

The flower girls also wore red moire taffeta dresses with large bows on the back waists.



MR. & MRS. JASEN CASTILLO

The groom was attired in a white tuxedo with tails and wore a red cummerbund and a red rose boutonniere. Groomsmen wore black tuxedos with red ties, red cummerbunds and red rose boutonnieres.

Mrs. Shaver chose a red jersey knit tea-length dress for her daughter's wedding. It featured a wide matching belt, shirred shoulder insets and red accessories. The mother of the groom, Mrs. Ridge, wore a two-piece blue silk dress with black accessories. Both mothers wore red rose corsages.

The church sanctuary was decorated with large red pew bows with poinsettia leaf centers, which were made by the bride's mother and Kay Loomis. On the altar steps were several dozen red poinsettia plants. Two spiral candelabra with red bows and red candles graced the altar area. At the front pew, the bride and groom lit a white unity candle which was decorated with a pearl beaded circlet inscribed with the words "Let this be our destiny to begin each new day together to share our forever."

After the wedding a reception was held in the church fellowship hall. The bride's table was draped with a red and white cloth and featured a three-tiered white cake, designed by Peggy Varnon, accented with red flowers. Topping the cake were two lace and pearl bells supporting two white beaded doves and a red-ribbon-accented lace and pearl heart.

The groom's table was draped with a green and white cloth. The chocolate cake, designed by Peggy Varnon, was made to resemble a tuxedo'd Bart Simpson.

Serving at the reception were Brandi Schneider, Jana Hawkins and Cam Butts.

The bride wore a green and navy sweater and pants ensemble as the couple left the church to take a five-day wedding trip to San Antonio. The couple will make their new home in Amarillo, where both are students at Amarillo College.

Mr. and Mrs. Jasen Castillo are both 1991 graduates of Spearman High School. They attended West Texas State University at Canyon last fall. In September of 1992, Mrs.

Castillo will begin a dental assistant/hygenist program at Amarillo College. Mr. Castillo is studying x-ray technology at Amarillo College.

A rehearsal dinner for members of the wedding party was hosted by the groom and bride's parents at First Baptist Church in the fellowship hall Friday, Dec. 20. Kay Loomis, Bernice Callaway and Claudine Clark helped with this event.

The wedding photographer was Terry Peak of Perryton. Dave Laughlin and Jimmy Vernon videotaped the ceremony.

Special guests for the wedding ceremony and reception were Jimmie, Kelly, Kristin and Ryan Vernon of Carrolton; Liz and Gary Carr of Miami; Zane and Catherine Hall of Pampa; Starla, Tyson, Callie and Colton Diffie of Dumas; Cathy Ballard of Borger; Terry Wright of Perryton; Lawrence and YaVonne Maytum of Guymon; Kara Lee of Fritch; Eric and Becky Brown of Guymon; Sue and Wendy Woolley of Denton; Troy and Frankie Sloan of Breckenridge; Jan Burk of Lubbock; Johnny, Billy, Carey and Jeff Mayo of Lubbock; Judy and Chris May of Dumas; Chris White of Sunray; Charlette Cooper of Sunray; Kiffie and Linda White of Stinnett; Bob and Nell McCoy of Perryton; Roddy, Stephanie and Reagan Woodson of Garland; Kaye Burke of Hastings, Minn.; Jose, Tina and Alexandria Castillo of San Antonio; Ruth Shaver of Garland; Doug and Tammie Holmes of Amarillo; Alisha and Shawn Burrell of Guymon; and Lindsey Warren of Guymon.

## Elementary book fair set

Beginning Tuesday, Jan. 14 and running until Friday, Jan. 17, from 8:15 a.m. until 3:30 p.m., the Spearman Elementary library will have a Book Fair.

The elementary students are bringing, or have brought home, a listing of some of the book titles available during the Fair.

Any interested persons can come to the school and purchase these inexpensive books to be used as gifts for children or grandchildren.

## QUILT CLASSES

January 18 - Star - 9:00 A.M.  
January 18th - Fabric Selection for Sampler Quilt - 10:00 A.M. to 5:00 P.M.  
January 21st - Sampler Quilt Classes Begin - 6:30 P.M.

Instructor - Jean McCarley

For more information, come by or call:

**JO'S THIS N' THAT**

216 Main • Spearman, TX • 659-3999

You are invited to a  
Bridal Shower  
Honoring

Sandy (Hill) Miller  
Saturday, January 18th  
from 2 to 3:30 p.m.

Hospitality Room  
First State Bank, Spearman

Given by hostesses  
Selections at:

ChaLor's, Celebrate

You are invited to a  
Baby Shower  
Honoring  
Andi Linn  
Scarborough

daughter of  
Andy & Janet  
Scarborough  
and sister of Chad  
Sunday, January 12  
from 2 to 4 p.m.  
First Assembly of  
God Church  
(Size 6 mo. or older)

You are invited to a  
Bridal Shower  
Honoring

April Sinclair  
bride-elect of  
Will Black

Saturday, January 18th  
from 2 to 3 p.m.

Fellowship Hall  
First Baptist Church, Spearman, Texas  
Selections at: Alco, Celebrate, ChaLor's

# Meet the 1991-1992 Varsity Lynxettes



**Laura Pearson**

Laura Pearson is a junior at Spearman High School. She is the daughter of Bob and Jackie Pearson and she has two sisters, Carrie and Ginger. She is a 5'10" post for the Lynxettes and her hobbies include shopping, reading and being with friends.



**Joy Gafford**

Joy Gafford is a senior at Spearman High School. She is the daughter of Ladd and Cathy Gafford and she has one brother, Matt. She is a 5'9" forward for the Lynxettes and her hobbies include cross-country, track and skiing.



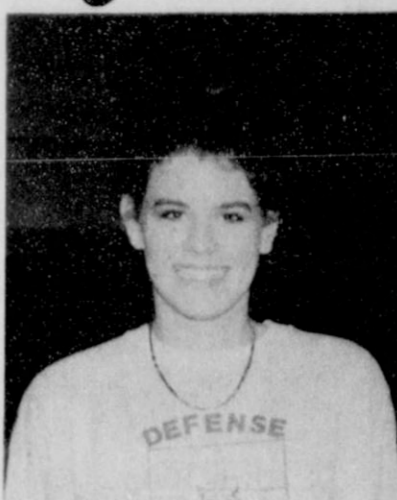
**Jill Lusby**

Jill Lusby is a junior at Spearman High School. She is the daughter of Ronnie and Donita Lusby and she has one brother, Michael, and one sister, Mandi. She is a 5'5" guard for the Lynxettes and her hobbies include running, swimming, shopping, reading and snow skiing.



**Mendy Lasater**

Mendy Lasater is a senior at Spearman High School. She is the daughter of Butch and Mary Ann Lasater and she has one sister, Laci, and one brother, Cass. She is a point guard for the Lynxettes and lists her hobbies as friends, family, swimming and ice cream.



**Tamri Townsen**

Tamri Townsen is a senior at Spearman High School. She is the daughter of Don and Barbara Townsen and she has two brothers, Clint and Jamie, and two sisters, Kimbre and Kara. She is a 5'9" post for the Lynxettes and lists her hobbies as tennis, aerobics, spending time with friends and UMY.



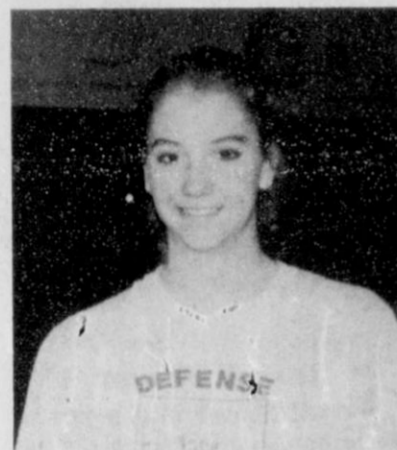
**Michelle Garnett**

Michelle Garnett is a junior at Spearman High School. She is the daughter of Mike and Marti Garnett and she has three older brothers, Jon, Mark and J. She is a 5'7" guard for the Lynxettes and her hobbies include track, shopping, being with friends and snow and water skiing.



**Kristi Williams**

Kristi Williams is a senior at Spearman High School. She is the daughter of Jim and Cathy Williams. She has five brothers, Wyle, Mitch, Matt, Justin and Cody and one sister, Deena. She is a 5'9" post for the Lynxettes and her hobbies include art and church.



**Mary Cook**

Mary Cook is a junior at Spearman High School. She is the daughter of Ron and Loretta Cook and she has three sisters, Stacey, Shelly and Michelle. She is a 5'1" guard for the Lynxettes and her hobbies include skiing, drawing and running.

Tuesday, Jan. 14...

## Lynxettes open district

The Lynxettes open district play at home against the Stratford Lady Elks on Tuesday, Jan. 14. Jim Kirkland, Lynxettes coach, believes he has one of the best defensive teams he has ever coached.

"They are at least as good as the '87 team," said Kirkland when asked to characterize the defensive play of the Lynxettes. He went on to say that the 1987 Lynxettes went to the state finals.

On the offensive side of the game, Kirkland feels his team is getting better with every game. "We're a little more consistent in shooting, we are patient and wait for the right shot," Kirkland says.

In the Lynxette offense, the number one option for taking a shot is to get the ball to one of the post players under the basket. According to Kirkland, most of the time those positions will be filled by Tamri Townsen or Laura Pearson.

If the other team keeps the Lynxettes' post player from scoring under the basket, then they pass the ball back outside to forward Joy Gafford or to one of the guards, Jill Lusby or Mendy Lasater. All three of them have demonstrated the ability to put the ball in the basket from outside.

Kirkland went on to say he expects to get a lot of help from his bench. "We have pretty good depth, Kimbre Townsen and Michelle Garnett can come in and help us a lot," says Kirkland.

In looking at the district this year, Kirkland said he feels the district has improved from top to bottom. He pointed out that Sunray has lost only one game this season.

West Texas has played a tougher schedule and does not have as good a record, but will be tough as well.

Stratford seems to be in a lull, but looks to be tough as well.

Stratford is the opening game for the Lynxettes. Kirkland indicated it is a "must win" for the Lynxettes if they are to repeat as district champions. "It will be a tough game, based on tradition alone," says Kirkland. He feels that their new coach will have the Lady Elks playing a man-to-man pressure defense. They will try to run the ball and get it to one of their three big players under the basket.

The Lynxettes' second district encounter will be at Sunray on Jan. 17. Again, Kirkland expects to see more man-to-man defensive all court pressure. He said that this also is a game the Lynxettes need to win for the district championship.

After an open date and a non-district game with Gruver, the Lynxettes play their third district game on Jan. 28, hosting West Texas. Kirkland feels that this is another game the Lynxettes need to win. He looks for tough play from the West Texas post player, Yeltin, and from their guard, Monden.

The district competition will conclude for the Lynxettes on Feb. 14 at West Texas. In between, the Lynxettes will play at Stratford and host Sunray. There will be an open date and a non-district game thrown in to fill out the schedule. At the end, Kirkland feels that this year's Lynxette team will repeat as district champs.



**Kimbre Townsen**

Kimbre Townsen is a junior at Spearman High School. She is the daughter of Don and Barbara Townsen and she has two brothers, Clint and Jamie, and two sisters, Kara and Tamri. She is a 5'7" 1\2" guard for the Lynxettes and her other hobbies include tennis, cross-country, reading, skiing and being with friends.



**Melodie Schumann**

Melodie Schumann is a senior at Spearman High School. She is the daughter of Craig Schumann and Kari Russell. She has three brothers, Derrick, Josh and Corbin and two sisters, Melissa and Tashiana. She is a 5'8" post for the Lynxettes and her hobbies include spending time with friends and family, water and snow skiing and church.

## Varsity girls continue their winning ways

The Spearman Lynxettes varsity basketball players continued their winning ways by winning all four of their five games played over the holidays, and by winning their first game of the New Year.

The Lynxettes started off their Christmas holidays by beating Perryton, 50-38, on Dec. 20. On Dec. 28 the Lynxettes fell to Nazareth at Nazareth, 34-37.

The Lynxettes ushered in the New Year by winning three games in three days to win the Canadian Tournament, Jan. 2-4. The Lynxettes crushed Shamrock 70-17 on Thursday. Joy Gafford led the Lynxettes with 21 points. Twelve of her 21 points were from 3-point range.

On Saturday the Lynxettes squared off against Wellington. The Lynxettes won, 54-35. In this game it was the inside scoring of Tamri Townsen that led to the most points.

**Spearman Varsity Girls Vs. Dalhart, 1/7 Spr. 47 - Dal. 30**

Scoring: Lasater-10, Lusby-9 (1-3 pt.), Garnett-5 (1-3 pt.), Gafford-12 (2-3 pt.), Schuman-4, T. Townsen-4, Pearson-5.

She had 18 points. The next highest scorer was Gafford, with nine points.

In the championship game on Saturday, the Lynxettes faced off against the host team, Canadian. The Lady Wildcats proved unequal to the task of stopping the Lynxettes' inside-outside offensive attack. Gafford stung the Canadian girls for 15 points from her forward position. Laura Pearson poured in 11 points from her post position.

On Tuesday the Lynxettes posted another win over the Dalhart Lady Wolves, 47-30. Gafford downed two 3-point baskets on her way to her game-high 12 points. She was joined in double figures by Mendy Lasater, who posted 10 points from the outside.

The Lynxettes will travel to Gruver Friday, Jan. 17 to try and keep their winning streak going against the Lady Hounds.

**Canadian Tourny Jan. 2 - Jan. 4 Finished First**

**Vs. Shamrock, Thurs. Spr. 70 - Sha. 17**  
Lasater - 4, Lusby - 7 (1-3 pt.), Cook - 5 (1-3 pt.), Garnett - 6, Gafford - 21 (4-3 pt.), K. Townsen - 7 (1-3 pt.), Schumann - 5, Ashly Shjieldknight - 2, T. Townsen - 3, Pearson - 10.

**Vs. Wellington, Fri. Spr. 54 - Wel. 35**  
Lasater - 8, Lusby - 2, Garnett - 3 (1-3 pt.), Gafford - 9 (1-3 pt.), Schuman - 6, T. Townsen - 18, Pearson - 8.

**Championship Game Vs. Canadian Spr. 50 - Can. 28**  
Lasater - 6, Lusby - 5, Cook - 2, Garnett - 6, Gafford - 15, Schuman - 4, T. Townsen - 1, Pearson - 11  
**Vs. Perryton, 12\20 Spr. 50 - Per. 38**  
Mendy Lasater - 2, Jill Lusby - 9 (1-3 pt.), Michelle Garnett - 4, Joy Gafford - 8 (1-3 pt.), Kimbre Townsen - 2, Melodie Schuman - 4, Tamri Townsen - 10, Laura Pearson - 12.

## JV Lynxettes roundup

**Spearman J.V. - Girls Vs. Perryton, 12\20 Spr. 58 - Per. 33**  
Lisa Lillard - 4, Nikki Strawn - 2, Telie OQuin - 9, Tracy Tigrett - 2, Sara Sanders - 14, Holly Jarvis - 15, Carrie Pearson - 10.  
**Vs. Nazareth, 12\28 Spr. 47 - Naz. 10**  
Sanders - 8, Pearson - 13, OQuin - 12, Jarvis - 2, Lillard - 12.  
**Spearman JV Girls Vs. Dalhart, 1/7 Spr. 46 - Dal. 40**  
Scoring: O'Quin-6, Sanders-1, Strawn-7 (1-3 pt.) Pearson-10, Jarvis-8, Lillard-4, Shieldknight-10.

## Varsity Cheerleaders

- Mendy Lasater
- Kelli Butts
- Rainey Whittington
- Jill Lusby
- Ashly Shieldknight
- Suzanne Sanders
- Mendi Lair
- Mary Cook
- Carla Green, Mascot

## LYNX and LYNXETTES

**GO, FIGHT, WIN DISTRICT!**

supported by

**Bob Johnson MOTOR COMPANY**

106 S. MAIN • 273-7541 • BORGER, TEXAS



**Lusby Cats say Shoot For A Win In District Play! Go Lynx and Lynxettes**

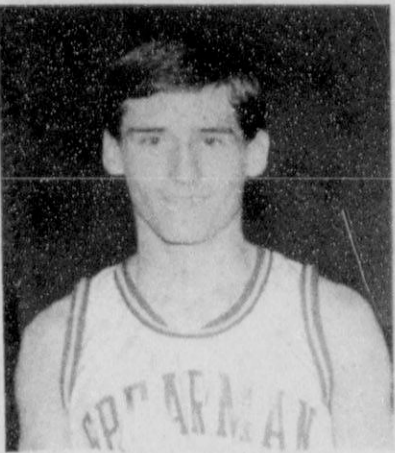
West Gruver Hwy  
659-3766  
Spearman, Texas



**GO! FIGHT! WIN!**

Supported By  
**INTERSTATE SAVINGS and LOAN**  
322 MAIN  
SPEARMAN, TEXAS  
659-2559

# Meet the 1991-1992 Spearman Lynx



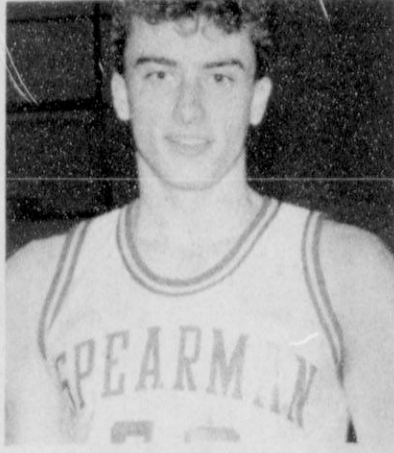
**Brian Beck**

Brian Beck is a senior at Spearman High School. He is the son of Ronnie and Kathy Beck and has one sister, Melissa. He is a 5'10" guard for the Lynx and he weighs 150 pounds. Brian lists his other interest as football.



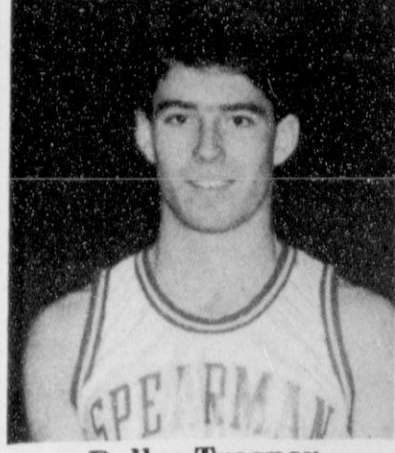
**Khris Kelp**

Khris Kelp is a senior at Spearman High School. He is the son of Reagan and Beckee Baker and he has one brother, Lance, and two sisters, Kiki and Lacie. He is a 5'11" guard for the Lynx and he weighs 145 pounds. He is interested in all sports.



**Cody Pipkin**

Cody Pipkin is a junior at Spearman High School. He is the son of Vernon and Marsha Pipkin and he has two sisters, Mika and Holly. He is a 6'4" post for the Lynx and he weighs 180 pounds. Cody is also interested in football.



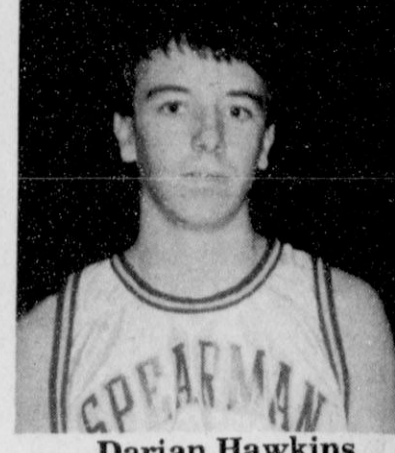
**Dallas Trosper**

Dallas Trosper is a senior at Spearman High School. He is the son of Larry and Janett Trosper. He is a 6'1" guard for the Lynx and he weighs 165 pounds. His hobbies include football, playing the guitar, water skiing and grass hockey.



**Mark Eakin**

Mark Eakin is a senior at Spearman High School. He is the son of Jim and Wanda Eakin and he has three brothers, Matt, Monty and Marty. He is a 6' guard for the Lynx and weighs 170 pounds. He lists his other interest as the rodeo.



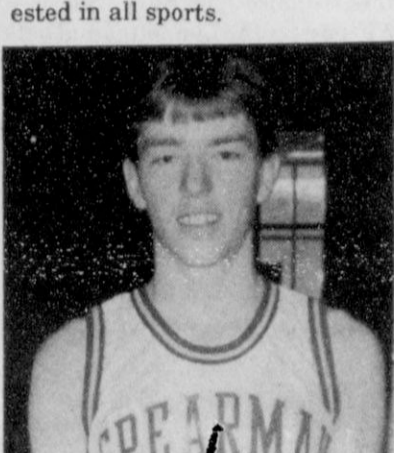
**Darian Hawkins**

Darian Hawkins is a senior at Spearman High School. He is the son of Don and Debbie Hawkins and he has one brother, Daryl. He is a 5'10" guard for the Lynx and he weighs 160 pounds. He is also interested in golf.



**Justin Boyd**

Justin Lewis Boyd is a junior at Spearman High School. He is the son of David and Kathy Boyd and he has one sister, Crystal. He is a 5'10" guard for the Lynx and weighs 143 pounds. He is also interested in golf.



**Troy Law**

Troy Law is a junior at Spearman High School. He is the son of Daniel and Roberta Law and he has five brothers, Dan, Scott, Brad, Bobby and Brett.

## District will be close

"If everybody keeps playing as they are, it will be a very close district," said Wendell Neff, Spearman varsity boys basketball coach. He made that statement when asked to give an overview of the competition in District 1-2A. The Lynx start district play Tuesday, Jan. 14 when they host the Stratford Elks.

Neff went on to say that he hopes the team to beat in the district is the Spearman Lynx. The two reasons he gave for this hope are that the team is a senior team and that they were district champions last year.

To repeat as district champions, Neff believes that two things will have to happen. "To win district we must win at home," said Neff. He also believes the Lynx must win at least two "away" games. "Just like

last year, we won the Stratford and the Boys Ranch games on the road to win the district," recalled Neff.

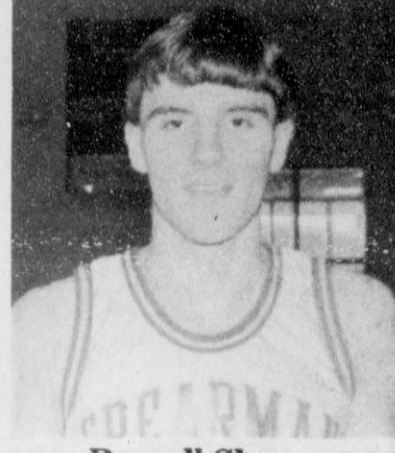
According to Neff, the Stratford team coming to Spearman on Jan. 14 is strong inside. "They have a good inside scorer, number 24, Paul Davis," said Neff. Neff feels that the guards for Stratford are a little weaker. He hopes that by putting a little pressure on them as they bring the ball down the floor, they will turn the ball over. This would keep the ball out of Davis's hands.

The Lynx' second district game will be against Sunray at Sunray. At Sunray the Lynx will be facing inside and outside scoring threats from three players. On the inside is Johnnie Davis, who is 6'2". On the outside will be 6'1" forward Wes Gill and 6'1" guard, Cody Chisum. Again, Neff hopes his Lynx can press Sunray and keep them out of their set offense and force some turnovers.

On Jan. 21 the Lynx travel to Boys Ranch. According to Neff, the Roughriders will be small and fast. "They are good players but young," said Neff. We had success going at them and getting them frustrated."

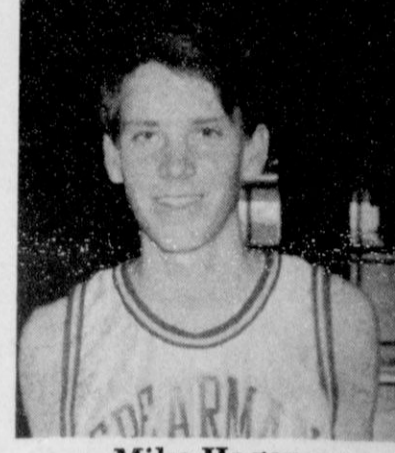
The Lynx host West Texas on Jan. 28. This game will bring to a close the first half of district play. The Comanches do most of their scoring from the outside, according to Neff. Returning starter from last year Craig Daugten can fill up the basket from any where on the floor.

From Jan. 28 until the last district game at West Texas on Feb. 14, the schedule repeats with Stratford and West Texas there and Sunray and Boys Ranch here. In between the district games are some open dates and several non-district games.



**Russell Shaver**

Russell Shaver is a junior at Spearman High School. He is the son of Lee and Marsha Shaver and he has two sisters, Maleea and Chayci. He is a 6'2" forward for the Lynx and weighs 165 pounds. Russell lists his hobbies as skiing, tennis, hunting and croquet.



**Mike Hager**

Mike Hager is a junior at Spearman High School. He is the son of Herb and Wynell Hager and he has two brothers, Aaron and David, and one sister, Andi. He is a 6'1" post for the Lynx and he weighs 135 pounds. His hobby is playing tennis.

*Support the Businesses  
That Support Spearman*



**We're Behind You  
All The Way!**

**Go! Win District!**

**supported by  
Hansford County Farm  
Bureau**

307 Davis  
659-3133

## Lynx win four in a row

The Spearman Lynx varsity basketball team started the year off right by winning its first four games of the year.

The Lynx won three games in three days to win the Canadian tournament, Jan. 3-4. They posted their fourth win by beating Dalhart in overtime on Tuesday, Jan. 7.

At the Canadian tournament the Lynx started off by defeating Shamrock 67-49. Leading the scoring for the Lynx was Brian Beck. He scored 21 points including one 3-point shot.

In their second game on Friday, Jan. 3, the Lynx downed Wellington 61-39. Beck again led the scoring with 14 points. Nine of the 14 points came on 3-point shots. He was joined in double figures by fellow guard Khris Kelp. Kelp scored 11 points. He made three 3-point shots.

In the championship game of the tournament, the Lynx faced

the host team. In this game it was the inside scoring of Cody Pipkin combined with the outside shooting of Darian Hawkins that gave the Lynx their 53-51 victory over the Canadian Wildcats. Hawkins scored 16 points from his guard position. He was followed by Pipkin with 14 down low points.

The Lynx posted another close win when they beat Dalhart in overtime on Tuesday. According to Wendell Neff, Spearman coach, Russell Shaver sank a 40-foot jump shot with only seconds left in overtime to break a 45-45 tie and give the Lynx the victory, 48-45.

"We held the ball for a minute and 20 seconds, to play for the last shot," said Neff. "This time it worked."

Shaver led all Lynx scorers with 12 points. Besides his game winning 3-pointer he had a second 3-pointer as well.

The Lynx hope to continue their winning ways as they travel to Gruver for a Friday night game against the Greyhounds.

**Spearman Varsity Boys  
Vs. Canadian, Sat.  
Championship Game  
Spr. 53 - Can. 51**

Trosper - 8, Pipkin - 14, Beck - 2, Shaver - 2, Shaver 4, Kelp - 9 (1-3 pt.), Hawkins - 16.

**Vs. Dalhart, 1/7  
Spr. 48 - Dal. 45**

Scoring: Trosper-2, Pipkin-6, Beck-13 (1-3 pt.), Shaver-12 (2-3 pt.), Kelp-3, Eakin-3 (1-3 pt.), Hawkins-9.

**Record: 8-10**

**Spr. J.V. - Boys  
Vs. Perryton, 12/20  
Spr. 43 - Per. 36**

Wesley Dyess - 3 (1-3 pt.), Toby Thompson - 12, Justin Boyd - 7 (1-3 pt.), Jason Swink - 2, Mike Hager - 10, Jason Varnon - 5, Clint Schnell - 4.

**at Nazareth 12/28  
Spr. 57 - Naz. 42**

Cass Lasater - 4, Dyess - 8 (2-3 pt.), Thompson - 2, Boyd - 18 (2-3pt.), Dee Mayfield - 10, Sherman Jones - 4, Varnon - 10, Matt Archer - 1.

**Vs. Dalhart, 1/7  
Spr. 49 - Dal. 28**

Scoring: Lasater-4, Dyess-7 (1-3 pt.), Thompson-2, Mayfield-8, Swink-2, Jones-8, Varnon-10, Archer-2, Schnell-6, Chuck-2.

**WE ARE PROUD TO SUPPORT  
OUR  
LYNX AND LYNXETTES  
IN DISTRICT PLAY**



**KIDS' STUFF**

719 W 7th  
SPEARMAN, TX 79081

*Daddy Fair  
719 W 7th  
Spearman, Texas 79081*

# Ceremony unites Dusek, Duncan

Katherine Renee Dusek and Steve Eugene Duncan were united in marriage on Saturday, Dec. 21. The double-ring ceremony was performed by the Rev. Donald Ross of Perryton, at the First Baptist Church in Cameron, Texas.

The bride is the daughter of Mr. and Mrs. Bernay Dusek of Cameron, and the granddaughter of Franklin Dusek of Cameron and Mrs. Dorothy Russell of Temple. The groom is the son of Mr. and Mrs. Gene Duncan of Gruver, and the grandson of Mrs. Joyce Duncan of Gruver and Mrs. and Mrs. James Wisinger of Dumas.

The couple's vows were exchanged amid church sanctuary decorations including candelabra trimmed with greenery and babies' breath, and baskets of poinsettias. Piano music was provided by Mrs. Jane Smith, the bride's aunt. Soloists were Melissa Giesenschlag and Lisa Heitman.

The bride was escorted to the altar by her father and given in marriage by her parents. She selected a gown of white bridal satin, ornately covered with beaded Alencon lace. The Sabrina neckline was perfectly balanced with a high back of illusion lace trimmed with covered buttons. At the Basque waistline, the bridal gown flowed into a full skirt and extended cathedral length train.

The train was decorated throughout with cutouts of beaded Alencon lace. Her two-tiered veil of illusion fell from a headpiece adorned with silk flowers, iridescent sequins and pearl motifs. The bride carried a cascading bouquet of white roses and Stephanotis.

Matron of honor was Mrs. Janet Holloway, sister of the bride, of Houston. Bridesmaids were Elizabeth Russell, cousin of the bride, of Waco, Deborah Kostroun of Oklahoma City, Okla., Sharon Hurlik and Lisa Heitman, both of Austin.

The bridal attendants wore tea-length gowns of hunter green. The velvet bodice formed a Basque waistline with low-cut back. The skirt was made of iridescent taffeta. Each of the attendants carried



KATHY DUSEK DUNCAN

a cascade of red roses.

The groom's brother, Scott Duncan of Houston, served as best man. Groomsmen were Clay Smith of Abilene, Eddie Heath of San Marcos, Michael Harendt of College Station, and Brian Hoel of Lubbock.

Serving as ushers were Craig Thompson of Corpus Christi, Tim Stedje of Gruver and Brian Dusek, brother of the bride, of Cameron.

For her daughter's wedding, Mrs. Dusek chose to wear a dress of burgundy brocade with ivory trim, accessorized with a red rose corsage and black shoes. The groom's mother was attired in a green silk tuxedo swag top over a green chiffon tea-length skirt. Her outfit featured silver decorative buttons, shoes and purse. She also wore a

red rose corsage.

Following the ceremony a reception was held amid decorations featuring hurricane lamps with candles, having a Christmas theme. A four-tiered petal-shaped cake was served.

Members of the houseparty included Miss Alex Alexander, Susan Hardwick, Beth Stewart, and Kellie Crouch, all of San Marcos, Tina Cole of Pennsylvania, Mrs. Diana Zinsmeister of San Antonio, and Melissa Giesenschlag of Cameron.

For a wedding trip to Caesars Pocono Cove Haven Resort in the Pocono Mountains of Pennsylvania, the bride chose an ensemble consisting of a navy and green checked dress, with a tulip skirt. The outfit was trimmed in navy grosgrain ribbon with brass antiqued buttons.

The couple will reside in College Station.

The bride is a graduate of Yoe High School in Cameron and Southwest Texas State University in San Marcos. She is currently working toward her doctorate in clinical psychology at Texas A&M.

The groom is a graduate of Gruver High School and has attended Southwest Texas State. He is currently working toward his degree in civil engineering at Texas A&M. He is involved in a co-operative education program in which he works for Arco Chemical of Channelview every other semester.

## On The Go With Joy

by Joy Henderson

Many of us "old-timers" remember the Amarillo newspaper from the days of Wes Izzard. He was the editor back in the '40s and '50s and no telling how many other years. I clipped several different paragraphs that I was particularly amused or impressed by and now they are yellow with age. Never in my wildest imagination, did I think I would be using his stories in my column.

But now that it seems Russia is opening up and joining America as the land of the free and the brave, it reminded me of a little clipping from Wes Izzard who had in turn clipped it from the Rotary Scandal Sheet. Someone by the last name of Larmour from Graham penned this. Remember, this has to lie in the neighborhood of 35-40 years old.

"Little Ivan, a Russian schoolboy, asked to describe America, replies: 'America is a decadent country where the workers are exploited by the rich and depraved capitalists.'

'Excellent,' said the teacher. 'Now tell us the aim of our great Soviet Republic.'

'To catch up with America,' answered Ivan."

Now, I'm wondering if in 200 years they will have become a great nation such as America was in 1976, but eventually decline and have the problems that we are now facing. Well, one thing for sure, I don't believe I will be alive to witness it, if it does happen.

This past week-end, the first of 1992 was a great one for me. M.H. and I journeyed down to Lubbock

for a two-day visit with Scott, Paula and Dustin. We had planned on lots of little tours of antique malls, arts and craft shows, scenic tours, etc., but I forgot we had to plan our trips around nap times for Dustin and us old folks.

But I decided on a remedy and in order to get one more stop at a fabric store, I told Paula I would hitch a ride with her to work the next morning at 7:00 and she could drop me off at the store which was only a block away. I would gaze and buy to my heart's content, have pit stops and snacks at Denny's then call for Scott and Grandpa to come pick me up when I had shopped till I dropped.

So, the time came, the rain was over and I was tired and out of money. I hunted for a phone and called for them to come get me. They asked for the address and I told them I was at the corner of "Walk and Don't Walk." Those were the only signs I could see, but they finally decided I was near 50th and Slide and they were able to rescue me without much more trouble.

The next trip I make to Lubbock, I may have to go by myself if I want to do any shopping.

Before we went to Lubbock, we had a nice visit with Terry and Judy Brax, their son Nicklaus and month-old daughter Corey Lynn. She is adorable and we are trying to figure out some ways which would allow me to do some babysitting for them.

Some of the visitors registering this past week-end were Lori Wiley of Stratford, guest of Brian Gillispie;

Matt Jones from Plainview visited in the home of Yvette Miller; and Jeffrey King of Rockdale, Texas was guest in the home of Troy Seagler and his parents.

Vernon and Norma Edens enjoyed a visit from Sam Ogan of Geary, Okla. and George Ogan of Weatherford. Kristi King had as guest, her fiancé in the home of her parents Sandi and Kerry Foster. Kristi and Bob Medford are students at McMurry College in Abilene.

Mr. and Mrs. Leslie Nelson of Dimmitt were guests in the home of his son Scott and his family. Ruby McCullough of Sunset and former resident of Hansford County, had a visit with children Nancy Babbs and Benny McCullough and their families.

The UMC had a guest speaker Sunday morning due to the fact that Lewis Holland had a bad case of the flu on Sunday, "the only day of the week" he works. As someone suggested, that was kind of a joke. Ha! Ha! Anyhow, Tom Moore of Canadian kindly consented to fill the pulpit.

Peggy and Rick Barkley have visited family in Washington and the Rod Barkleys announce the arrival of a new granddaughter, born to Clay and Brigitte Barkley on Dec. 26. The baby has been named Blair Alise.

Brooke (Roberts) Mayfield is doing good at home after having surgery. Little Blythe Finley is also at home after being in the hospital during the holidays. Farene Williams will remain in an Amarillo hospital a while longer.

Christine States of Gruver enjoyed a family get-together for the holidays when her son Le Roy from Kaiserslautern, Germany was here. Those present were Mr. and Mrs. Troy States of Higgins, Texas; Hazel Walker of Hugoton, Kan.; Marvin and Vyneta States of Amarillo; Mr. and Mrs. Dennis Mullinax of Liberal, Kan.; Mr. and Mrs. Jim Kauffman and Jason of Liberal; Mr. and Mrs. Ed Scott, Kerri, Shawna and Kassie of Winfield, Kan.

Also Mr. and Mrs. Gary Walker, Jeremy and Nikki of Hugoton, Kan.; Mr. and Mrs. Mel Albright, Dawn and Mel Ray of Balko, Okla.; Mr. and Mrs. Lee States, Joey and Bradley of Medford, Okla.; Mr. Jason States of Oklahoma City, Okla.; Miss Kelly Johnson of Oklahoma City; Jack and Chet Sodon of Wichita, Kan.

In addition, several friends dropped in during the day. Le Roy, after enjoying the holidays, returned to Germany Jan. 3.

## Masonic Lodge officials to visit county lodges

Masonic lodges in Spearman and Gruver will host visits by Masonic District officials during the next two weeks.

Hansford Lodge No. 1040 AF & AM and Gruver Lodge No. 1326 AF & AM will host official visits of Right Worshipful Charles R. Beech of Borger, D.D.G.M. of the 102nd Masonic District of the Most Worshipful Grand Lodge of Texas AF & AM.

The official visit to Hansford Lodge No. 1040 in Spearman will be Monday, Jan. 13 and the visit to Gruver Lodge No. 1326 will be Jan. 20. The district deputy is the official representative of Most Worshipful J.P. Vogel, grand master of the Grand Lodge of Texas AF & AM. The purpose of the visit is to convey the year's programs and goals of the Grand Master to the lodges of Texas.

Among those accompanying Beech on his visits will be the newly elected Deputy Grand Master of the Most Worshipful Grand Lodge

of Texas, Right Worshipful Robert O. "Bob" Schnell, who will become Grand Master next December. Schnell, a member of Hansford Lodge, is a Past Master and Past D.D.G.M. His son, Mike Schnell, is currently Junior Warden of Hansford Lodge.

When Schnell becomes Grand Master of Texas Masons, he will be the second member of Hansford Lodge No. 1040 to attain that position in the fraternity. John R. Colard Sr. was Grand Master in 1964.

Dwayne L. Smith, worshipful master of Hansford Lodge, and Ted Evans, worshipful master of Gruver Lodge, urge all members of their respective lodges to attend and they also invite all Master Masons to attend.

## SPS expands efforts

Southwestern Public Service Company is increasing its efforts toward creating new jobs and economic growth for the area. As of Jan. 1, 1992, the company will reallocate more of its resources toward its economic development department.

Gary Gibson, SPS vice president of marketing, said economic development efforts will continue to focus both within the area and outside.

"Not only will SPS be working to attract new business from other regions, but the company is also making a commitment toward helping local community organizations strengthen their local business base," Gibson said. "We have been working toward these goals all along - now we'll have more people and a greater commitment."

Three employees will be added to the economic development department: Dan Redd, Mary Blinderman and Vickie Watts. Redd will join Thompson Mayberry in "prospecting" for outside companies looking to re-locate or expand. Blinderman will work on local development in Texas, Oklahoma and Kansas, while Watts - who will be based in Roswell - will focus on local development in New Mexico. All three have been working in other marketing departments within the company.

"Mary and Vickie will be working closely with chambers of commerce, economic development organizations and local government to help meet the needs of existing business in our area," Gibson said.

Cheryl Pink, manager of the SPS economic development department, said economic conditions in the region continue to be somewhat flat. But she said improvement can be made, especially with increased efforts by every area resident.

"SPS is dedicated to making this area grow," Pink said. "With the focused efforts of communities, businesses and individuals, we can make that happen."

The SPS economic development

department will now consist of seven employees. In addition to those previously mentioned, Michelle Kupfner and Gloria O'Brien are also working on economic development activities.

"Our area has a lot to offer business," Pink added. "Besides low electric rates, this region has a very favorable business climate, available property, a dedicated work force and a quality lifestyle."

Southwestern Public Service Company is a regional electric utility that primarily provides electric service to a population of about one million people in a 52,000-square-mile area comprising eastern and southeastern New Mexico, the South Plains and Panhandle of Texas, the Oklahoma Panhandle and southwestern Kansas. Corporate headquarters is in Amarillo.

TEXAS

It's Like A Whole Other Country.

**FALL & WINTER CLEARANCE SALE**

**30 % OFF**

SALE STARTS  
Thursday Jan. 9, 1992  
at 9:00 A.M. to 7:00 P.M.

**JG's**  
306 Hancock • Spearman, Texas  
659-3424

**\*\*\*\*\*CUSTOM UPHOLSTERY\*\*\*\*\***

Home and Office Furniture

Custom Made Seat Covers for Pickups, Trucks, and Tractor Seats

Coverlay Plastic Dash Covers - Like the Original

Coverlay Replacement Door Panels - At Half The Cost of New

Nifty Molded Carpets and Rubber Floor Mats

Jeep Tops and Accessories

Plastic Marine Fittings and Ready Made Boat Covers by Bimini

Hundreds of Fabric and Vinyl Samples to Choose From

CALL 806-733-5235 or VISIT

**TEBEST UPHOLSTERY - 304 Main (rear door), Gruver, TX**

1- 10x13 (Wall Photo)

1- 8x10

2- 5x7

2- 3x5

16- King Size Wallets

8- Regular Size Wallets

**30** Color Photos

**99¢ Deposit**

**\$11.00 Due at Pick up (plus tax)**

**\$11.99**

WE USE KODAK PAPER

AT

**KIDS' STUFF**

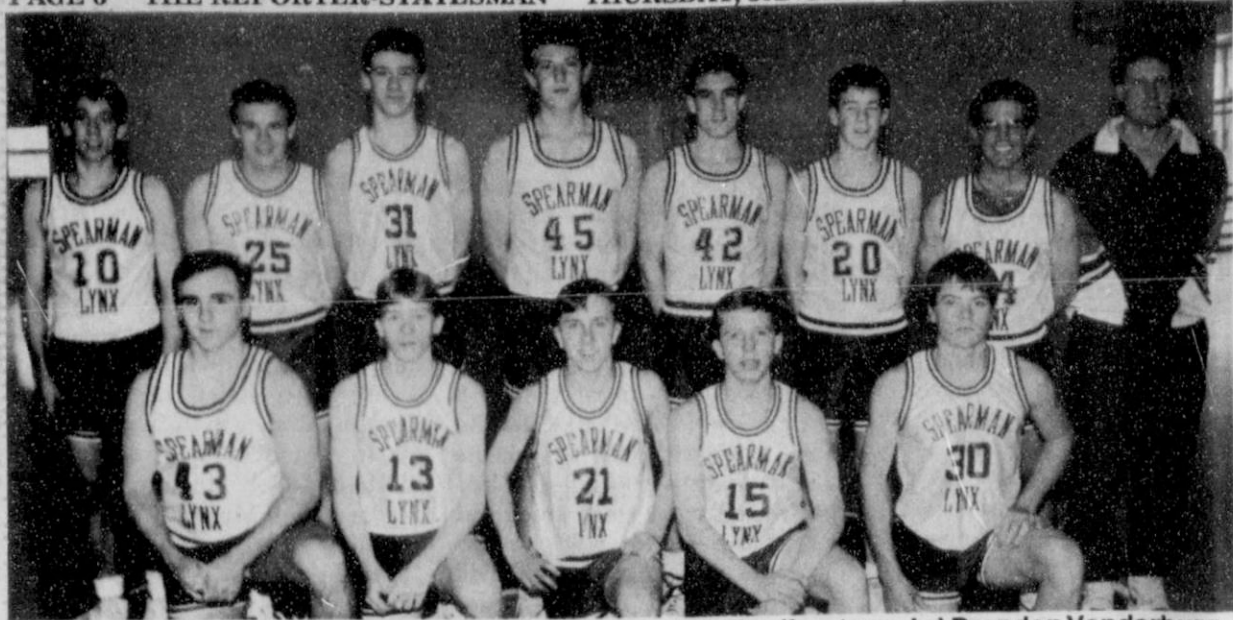
719 WEST 7TH

**TUESDAY, JAN. 14**

**Shugart's inc.**

Group charge 99¢ per person

**Kodak PAPER**  
FOR CREATIVE COLOR PORTRAITS



The Spearman Lynx junior varsity basketball team includes (front row, l-r) Brandon Vanderburg, Toby Thompson, Cass Lasater, Dee Mayfield, (back row, l-r) Chuck Cook, Matt Archer, Jason Swink, Clint Schnell, Jason Varnon, Wesley Dyess, Sherman Jones and Coach Kurt Ashmore.



The Spearman Lynxette junior varsity basketball team includes (front row, l-r) Tracey Tigrett, Christie Taylor, Nikki Strawn, Shea Crawford, Lisa Lillard, (back row, l-r) Coach Richard North, Ashley Shieldknight, Carrie Pearson, Telie O'quin, Holly Jarvis, Tommie Latta and Sara Sanders.



The Spearman Lynx 9th grade basketball team includes (front row, l-r) Josh Winegarner, Shane Schneider, Chad Wilkerson, Valentin Macias, Jeremy Sutterfield, Radar Garcia, (back row, l-r) Shawn Moore, Alan Hutchinson, Josh Furlow, Cameron Kunselman, Ronnie Ring and Joel Stark.



The Spearman Lynxette 9th grade basketball team includes (front row, l-r) Lindee Cook, Rachelle Reid, Nora Nava, Traci Martin, (back row, l-r) Mika Pipkin, Kiki Kelp, Heather Reimer, Jill Clement and Coach Richard North.



The Spearman Lynx 8th grade basketball team includes (front row, l-r) Jason Holten, Mark Parker, Lee Jarvis, Heath Archer, Michael Covington, Jason Villines, (middle row, l-r) Jeremy Blan, Clayton Hergert, Gregg Elliott, Bill Pittman, Cody McLeod, Clay Neff, Cory Butler, (back row, l-r) Coach Read Cates, Darrell Scroggs, Derrick Burnett, Coyt Tigrett, Martin Sanders, Phillip Sanders, Jason Garrett, Shad O'quin, Matt Gafford and Brent Collins. The team boasts a record of 8-2 for the season.



The Spearman Lynxette 8th grade basketball team includes (front row, l-r) Crystal Boyd, Lacle Baker, Kim Healey, Katherine Pipkin, (middle row, l-r) Jennifer Hughes, Carrie Burton, Kelly Shieldknight, Courtney Dooley, Tiffani Rex, Coach Ladale McCallister, (back row, l-r) Regan Boxwell, Tiffany Bruning, Kara Townsen, Chayci Shaver and Summer Riggins.




The Spearman Lynx 7th grade basketball team includes (front row, l-r) Jake Howard, Clint Faries, Travis Loomis, Tyler Lair, Eric Cudd, Kevin Baker, (middle row, l-r) Britt Savage, Tony Clements, Frankie Dominguez, Michael Witten, Blake Beedy, Brad Davis, (back row, l-r) Coach Read Cates, Tom Kirk, Van Baumgardner, Dillon Miller, Pete Vera, Eric Varnon, Domingo Salazar and Zach Furlow. The team boasts a 7-3 record for the season.



The Spearman Lynxette 7th grade basketball team includes (front row, l-r) Virginia Carbajal, Brooke Adams, Ashley Dooley, Candice Pipkin, Shari Smith, Ragina Paul, Jennifer Foquet, Brea Archer, Blanca Anaya, Kelly Goodman, (middle row, l-r) Shayla Barber, Michelle Elliott, Samantha Beasley, Mandi Lusby, Macy Shieldknight, Tracy Powers, Marissa Rodriguez, Leann Swan, Kelli Cummings, (back row, l-r) Maria Hernandez, Shauna Poole, Amanda Anderson, Tara Butt, Kacey Smith, Mendy Tigrett, Misti Vera, Pam Winters and Amanda Lomeli.

**WE ARE PROUD  
TO SUPPORT**

**OUR LYNX AND LYNXETTES  
IN DISTRICT PLAY**




**Northern  
Natural Gas  
Company**

An **ENRON** Company

**THREE POINT  
PLAY**

**LYNX, LYNXETTES,  
AND WINNING!  
WIN DISTRICT!**

supported by



**GILLASPIE**  
AUTO & TRUCK CENTER, INC.  
CHEVROLET, OLDS, BUICK, PONTIAC,  
CHRYSLER, PLYMOUTH, DODGE

Highway 207 South P.O. Box 427 (806) 659-2541  
SPEARMAN, TEXAS 79081

**GO!  
FIGHT!  
WIN!  
LYNX AND  
LYNXETTES**

**SUPPORTED BY**  
Alexander's Office Supply  
607 N. Deahl  
Borger, Texas  
274-4361





Spearman Study Club, with funds raised through its annual Arts and Crafts Show held in October, purchased a wheelchair and donated it to Hansford Manor. Trying out the new wheelchair is Manor resident Bertha Forester, as Spearman Study Club members Virginia Young, treasurer (left), and Cindy Scribner, president (right), look on.

## NHS expresses thanks for aluminum cans

The Spearman High School National Honor Society wants to express its thanks for all the cans which were donated this past year.

With the money from the cans, approximately \$1,350, the NHS members were able to provide a Christmas for six local children at the annual NHS Christmas Party, held Dec. 20, 1991.

Each of the six children were given clothing, a favorite toy, and food for their families.

Since NHS began its project in March 1988, more than 7,000 pounds of aluminum cans have been sold for over \$3,000. All of the money is used for the Christmas project.

The NHS expresses its appreciation to everyone who has supported the project and asks that you continue to support the project by leaving your aluminum cans at the two drop sites - the corner of 7th and Townsend, and on the south side of

the high school.

NHS officers are Alfonso Martinez, president; Darian Hawkins, vice president; and Josie Holt, secretary-treasurer.

Other senior members are Brian Beck, Monica Blackman, Mark Eakin, Joy Gafford, Carla Greene, Karla Kunselman, Mendy Lasater, Leslie Latta, Lori Lieb, James Macias, Dezi Pearson, Chad Riggins, Brandon Rex, Suzanne Sanders, Melodie Schumann, Maria Sumner, Chris Strawn and Kristi Williams.

Junior NHS members are Brad Butler, Amber Cates, Donette Cates, Mary Cook, Jennifer Covington, Wesley Dyess, Jeri Evans, Michelle Garnett, Chris Hornsby, Myrna Lopez, Holly Jarvis, Robert Needham, Laura Pearson, Cody Pipkin, Randie Renner, Sylvia Rosales, Sophia Salgado, Clint Townsen and Kimbre Townsen.

### Neighbors from page 4

earlier in the week. Friends in Amarillo are planning another dinner for them this week.

It was on Jan. 3, 1942 that J.D. and Rubyjo Simmons were married in the Union Church by minister Graves of the local Church of Christ. They left for their honeymoon in a blinding snowstorm. The only wedding attendant still here is Kathleen Greever Sutton. Others still living are Fran Schubert, Jerry Daniels, and Elsie Porter, who sang. The late P.A. Lyon Jr. was best man for J.D. WWII had just started and in a few months J.D. entered the air corps.

After his return, and in addition to his farming, J.D. had a number of successful careers with the full cooperation (and maybe even a little supervision) by Rubyjo. They owned and operated one of the first outdoor theaters; in partnership owned and operated an irrigation well drilling company, drilling over 300 wells; had a photography business here, as he was a skilled photographer; was a silversmith. He still occasionally does some silver crafting. He operated an ammunition reloading business.

He is well known for his participation in the antique farm shows and renovated and operates a very old threshing machine. There may have been other businesses, but these come to mind.

For 34 years J.D. and Rubyjo enjoyed square dancing and for 32 of those years, he was a caller for square dancing.

With all those activities, only close associates were aware of the extent of their charitable involvements. Quietly and behind the scenes, they help the needy, indi-

viduals as well as organizations. Often they do the hard, unpleasant tasks that others avoid, always they keep a low profile. The public is aware of their participation in the Hansford Historical Society and Girls Town.

\*\*\*\*

Dr. Earl and Bobbie Novak have purchased the home on Linn Drive built and owned by Dr. Sangalang. The Novaks will be doing some renovations on this outstanding house which may take several weeks. When this is done, they will put their present residence at 718 Gibner Drive on the market. Bobbie has mixed feelings about the move. They are looking forward to the new home but are a little sad at leaving the house that has been home for 21 years and where they raised their son and daughter, and also regret leaving their good neighbors.

Their many friends join in extending congratulations and best wishes to the Novaks in their change of residences.

### Hometown News

SEARCY, Ark. - Christopher E. Kauffman, son of Mr. and Mrs. Roy Kauffman of Gruver, has been included on the Harding University Dean's List for grades achieved during the fall semester at the university. Kauffman is a freshman majoring in accounting.

The Dean's List is published each semester by Dr. Neale T. Pryor honoring those who achieved high scholarship. To be eligible, a student must be carrying 12 or more hours and have an average scholarship level of 3.50 minimum.

# So Much More InStore!

GOOD THRU JANUARY 14, 1992  
IN PERRYTON ONLY



|     |      |     |     |     |     |     |
|-----|------|-----|-----|-----|-----|-----|
| WED | THUR | FRI | SAT | SUN | MON | TUE |
| 8   | 9    | 10  | 11  | 12  | 13  | 14  |

## Texsun Grapefruit Juice



46 OZ.

**.69**



Regular or Butter Flavor  
3 lb. can

## Crisco Shortening

**\$1.59**

## Charmin Bath Tissue

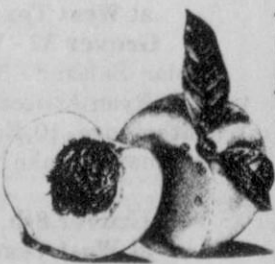


White or Assorted

**.79**

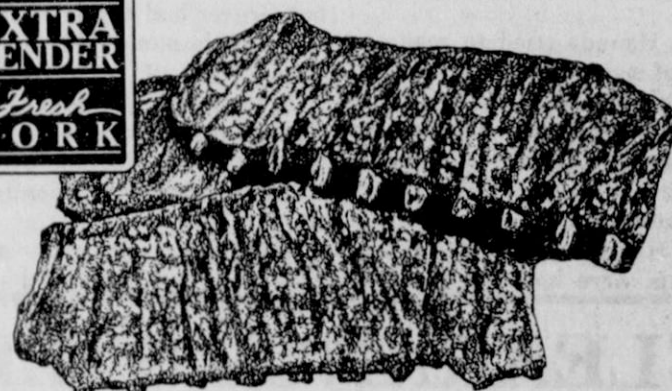
4 roll

## Sweet New Crop Peaches



lb.

**.89**



## Farmland Extra Tender Pork Spareribs

Small 3 1/2 lb. & down

**\$1.19**

lb.



United Extra Lean

## Shoulder Roast

**\$1.68**

Boneless lb.

Single Pak lb. \$1.78

Ore-Ida Mini-Cob Corn  
4-Ct.

**99¢**

United Milk

Homo, 1 1/2%, 1/2%

1/2 gal

**.99**

**UNITED**

**DOUBLE COUPONS**  
7 days a week See store for details

# Canadian defeats Gruver, 68-61

by Bob Bort  
A red-hot Canadian Wildcat team came out Tuesday night and built a seemingly insurmountable lead against the Gruver Greyhounds, but then had to hold on to their hats as the Hounds rallied and almost took the game. Final score was 68-61 in Canadian's favor.

The Lady Hounds disposed of the Lady Cats neatly, 59-47, and both JV teams won, giving Gruver three victories in four games.

In the boys' varsity game, Canadian jumped out to a 17-6 lead in the first quarter and Gruver's only six points came on two 3-pointers by Kevin Spivey. His second shot put Gruver up 6-4, but Canadian then scored 11 straight points for the lead with 3:28 left in the quarter.

The Hounds tried to make a game of it, but the Cats were on fire. Chad Brown hit a 3-pointer with 6:20 left in the half to make the score 21-17, but the Cats built up their lead again and were ahead by 14 at halftime.

The Hounds were as cold as the Wildcats were hot. The Hounds

would get only one shot, as they were being beaten on the boards badly. Midway through the third quarter Canadian had a nice 20-point lead, 45-25. But never count the Hounds out.

In the fourth quarter, with Canadian up 54-39, Trent Seagler hit one and Matthew Hoel hit two jumpers from under the basket, cutting the lead to 54-45. The Hounds were coming back but Canadian scored two buckets and it was back to 58-45.

The Hounds then outscored Canadian 10-3, to cut the lead to 61-55. Spivey had seven of the points, capped off by a pair of Marty McCloy free throws with 2:55 left, to cut the lead to six.

McCloy hit a pair of 3-pointers at the end, cutting the lead to five, but Gruver had fallen too far behind and the game belonged to the Cats.

In their game, the varsity Lady Hounds had a fairly easy time with the Lady Cats, leading by 16 at halftime and by 18 at the end of the third quarter.

Julie Meyer put Gruver up 6-5 with a bucket early in the first

quarter, and the Lady Hounds never trailed after that. Meyer followed with a 3-point play to give Gruver five straight points and a 9-5 lead.

Gruver outscored the Lady Cats 22-5, after they rallied within one point, 13-12, to extend the lead to 35-17. Wynn Maupin sparked that rally with the first seven points of the second quarter. Maupin gave Gruver its biggest lead, 47-27, at the start of the fourth quarter, on a nice jumper.

Holly Venneman had an excellent game at post, with 19 points.

The two JV teams won - the boys in overtime and the girls by a baker's dozen.

Gruver will be at home Friday night, Jan. 10. The boys will play Perryton and the girls will play Spearman.

Gru (G) (12-6) 16 37 45 59  
Can 12 21 27 47

3-point shots: Anissa Ryan, Wilburn, Jaco

G- Holly Venneman-19, Wynn Maupin-15, Julie Meyer-10, Anissa Ryan-9, Mika McLain-4, Traci Crawford-2.

C- Jaco-16, Risle-12, Wilburn-7, Lyons-4, Goodwin-3, VanHooser-3, Godwin-2.

Gru (B) (14-4) 12 21 37 61  
Can 17 35 52 68

3-point shots: Kevin Spivey-4, Marty McCloy-2, Chad Brown, Robbins-2, Hemstra-2.

G- Kevin Spivey-18, Matthew Hoel-10, Marty McCloy-10, Trent Seagler-6, Chad Brown-5, Carey Kauffman-4, Brady Pool-4, Shannon Pool-3, Rex Ralston-1.

C- Robbins-23, Godwin-15, Hemstra-10, Hester-8, Lusby-4, Jergenson-3, Thrasher-3, Krehbel-2.

## Place 2nd and 3rd at Stratford . . .

# Gruver teams play in tournament

by Bob Bort  
The Gruver Varsity Greyhounds and the Gruver Varsity Lady Hounds competed in the Stratford Tournament this past Thursday through Saturday, January 2-4, and each team came away with a trophy for their effort. The Hounds captured second place, and the Lady Hounds captured third place, in the 8-team fields.

Despite the two victories by the ladies, first year coach of the Lady Hounds, Steve Myatt was not altogether pleased.

"We played inconsistently, and we've been doing that all year," Myatt said. "We have to get over that if we're going to do anything this year."

Myatt came to Gruver from coaching jobs at Dimmitt and at Midland, and he sees the Lady Hounds getting better now before district season starts. He would like to see the Gruver program develop like some of the programs down south.

"The number one thing we're going to work on now is the mental part, concentration...anticipation. We'll keep getting better and play more consistently. Now that we're on a regular schedule prior to district starting, with games on Tuesday and Friday, and regular practice sessions, I think we'll play more consistently. This team plays better with a routine."

Commenting on one of the highlights of the tournament, the last second shot by the Texhoma girl that nearly beat Gruver, Myatt stated, "I think she heard the buzzer go off, and threw the ball up at that

time. The buzzer sounded first." Myatt's Lady Hounds now have a record of 11-6.

Head Coach Tim Garland of the Hounds has his team sporting a record of 14-3 at this time. Commenting on the Stratford Tourney, Garland states, "We played well, but we shot poorly. But we played good basketball."

The Texhoma game broke a six-game Gruver winning streak. According to Garland, "Turnovers killed us the first half. We turned it over 16 times in the first half. But Texhoma had a super ball club."

Garland adds, "We will concentrate on cutting down our turnovers, and being more patient on our offense - and also working on our post play, in order to develop a stronger game and to be more effective." That is Garland's agenda prior to the start of district play in three weeks.

SFritch (G) (4-13) 10 20 29 41  
Gruver Gals (10-6) 06 14 22 26

G-Mika McLain - 9, Holly Venneman - 9, Traci Crawford - 2, Wynn Maupin - 2, Anissa Ryan - 2, Cora Meyer - 1, Julie Meyer - 1.

Fritch (12-5) 12 21 29 42  
Gruver (14-2) 06 25 29 43

3-point shots: Bryan Baker, Kevin Spivey - 2, Shannon Pool, Matthew Hoel.

G-Matthew Hoel - 9, Marty

McCloy - 9, Kevin Spivey - 8, Shannon Pool - 7, Trent Seagler - 6, Brady Pool - 4.

Gruver Gals (11-6) 12 21 33 37  
Texhoma, OK (4-4) 06 17 20 36

3-point shots: Traci Crawford, G-Wynn Maupin - 12, Holly Venneman - 10, Julie Meyer - 5, Traci Crawford - 3, Anissa Ryan - 3, Cora Meyer - 2, Mika McLain - 1, Monica Ward - 1.

Gruver Guys (14-3) 17 34 46 68  
71

Texhoma, OK. (8-1) 18 46 55 68  
74

3-point shots: Matthew Hoel - 2, Kevin Spivey, Shannon Pool, Brandon Hyde - 2, Shane Elliott - 2.

G-Trent Seagler - 19, Shannon Pool - 15, Matthew Hoel - 14, Kevin Spivey - 7, Chad Brown - 6, Marty McCloy - 6, Brady Pool - 4.

Gruver (G) (10-5) 08 21 41 49  
West Texas (10-4) 15 25 33 45

3-Point Shot: Kim Batson.

G-Wynn Maupin - 19, Holly Venneman - 14, Mika McLain - 10, Julie Meyer - 4, Anissa Ryan - 2.

Gruver (13-2) 13 32 44 47  
W Texas (5-9) 04 19 27 31

3-point shot: Shannon Pool  
G-Trent Seagler - 10, Shannon

Pool - 9, Marty McCloy - 8, Matthew Hoel - 5, Ryan Mathews - 5, Kevin Spivey - 4, Brady Pool - 3, Rex Ralston - 2, Carey Kauffman - 1.

## CLEARANCE SALE

Canisters and Mugs 50% OFF

Baskets 30% OFF

A good selection of children's gifts 30% OFF

*Celebrate*

203 Main Street  
P.O. Box 402 • Spearman, Texas 79081  
(806) 659 - 3350

## Roundball roundup

Gruver J.V. - Girls  
at Borger, 12\31  
Gru. 30 - Bor. 36  
Andee Salmans - 2, Sara Jones -

13 (3-3 pt.), Shana Jarvis - 2, Gina Hoel - 4, Janelle Haenfer - 2, Sharle Slough - 1, Jana McCloy - 2, Kayce Haenisch - 4.

Gruver 9th - Girls  
Vs. West Texas  
Gru. 22 - W.T. 48

Carmen Ortega - 6, Angela Overbey - 2, Monica Garcia - 6, Melissa Thompson - 6

Gruver 8th - Girls

Red Team vs. West Texas B  
Gru. 22 - W.T.B. 12

Cristy Marquez - 4, Roxane Holt - 2, Cori Lowe - 4, Virginia Barrera - 2, Shannon Acker - 2, Amy Grubbs - 1, Memory Ross - 4, Imelda Arzate - 3.

Black Team Vs. W.T.  
Gru. 38 - W.T. 22

Molly McLain - 5, Josie Pool - 6, Tara Shapley - 9, Joni Hart - 2, Kiki Carthel - 12 (1-3pt.), Hailey Lamb - 4.

Gruver 7th - Girls

Black Team vs. W.T.

Gru 22 - W.T. 15

Lexy Spivey - 2, Kayla Cluck - 2, Amber Murrell - 14, Cara Hathaway - 4

Red Team Vs. W.T.B.

Gru-18 - W.T.-0

Amy Gillaspie - 4, Michelle Bass - 2, Macee Cardorph - 2, Crystal Christian - 4, Erin Derrington - 6.

Gruver J.V. Boys  
Vs. Dalhart, 12\17  
Gru. 61 - Dal. 57

Kenton Odom - 12, Victor Lopez - 5, Jeff Price - 19 (3-3 pt.), Jace Dawson - 17 (3-3 pt.), Aron Frick - 6, Paul Renteria - 2

at Borger J.V., 12\31  
Gru. 34 - Bor. 64

Odom - 8, Price - 6, Dawson - 6, Matt Etheredge - 4

at Borger Soph, 1\3  
Gru. 51 - Bor - 25

Odom 11, Tek Ferguson - 6 (2-3 pt.), Price - 20 (5-3 pt.), Dawson - 12 (2-3 pt.), Heath Gaines - 2.

Gruver 9th - Boys  
at West Texas, 1\6  
Gruver 32 - W.T. 22

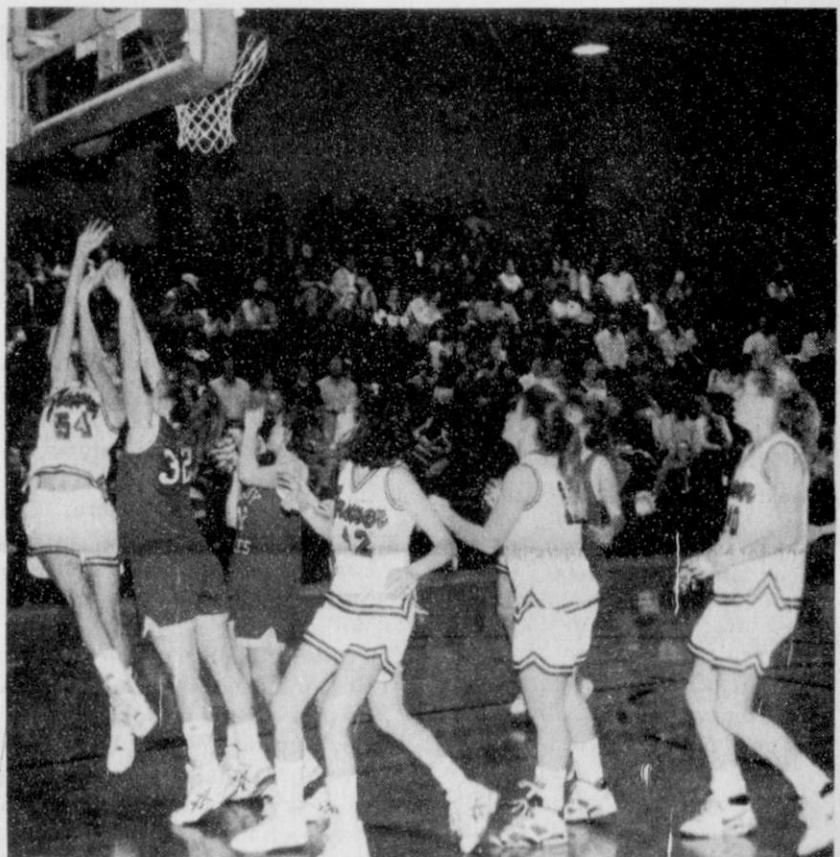
Fabian Salazar - 5, Jeff Christian - 3, Ryan Atwood - 7 (1-3 pt.), Will Etheredge - 10, Eric Wright - 3, Andy Jones - 2, Jake McCullough - 2

Gruver 8th - Boys  
at West Texas, 1\6  
Gru. 29 - W.T. 26

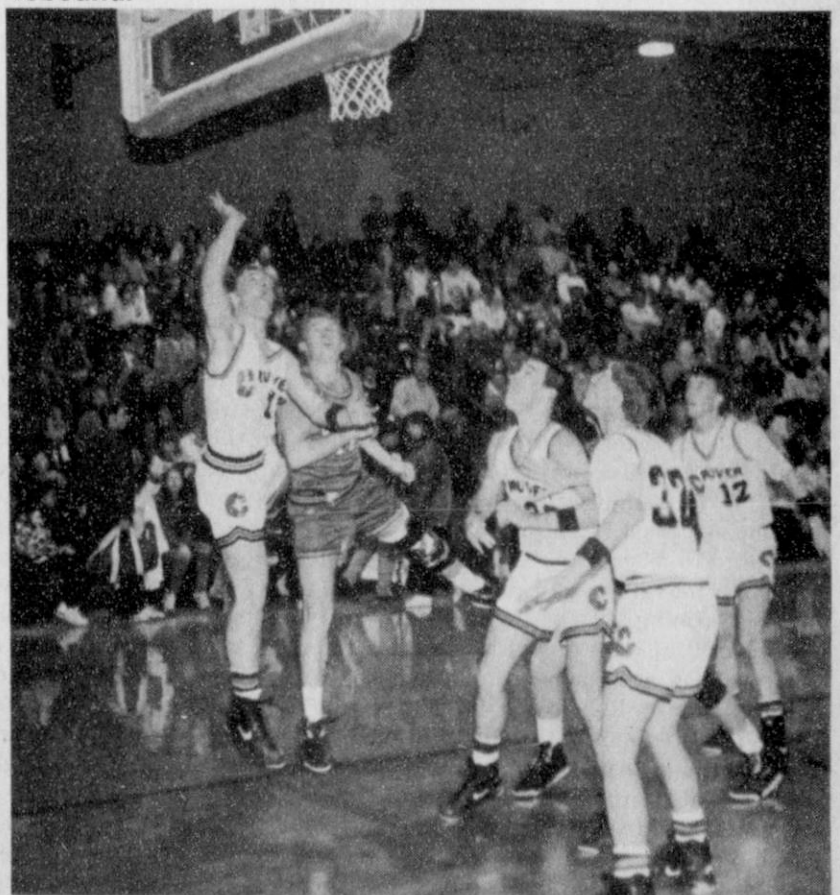
T. Ferguson - 1, B. Barkley - 4, W. Maupin - 14, S. Renteria - 6, M. Frick - 4

Gruver 7th - Boys  
at West Texas  
Gru. 33 - W.T. 35

Jarrold Hoel - 9, Josh Mayhew - 22, Scott Stedje - 2.



Holly Venneman (54) puts up a layup as Mika McLain (42), Anissa Ryan (12) and Wynn Maupin (40) come in to get the rebound.



Marty McCloy (10) finishes up a fast break with a layup basket as Trent Seagler (30), Ryan Mathews (32) and Kevin Spivey (12) get ready to grab a possible rebound.

## Chili cookoff scheduled

PERRYTON - A chili cookoff and arts and crafts show, benefiting the American Heart Association, is planned for Feb. 15 from 10 a.m. to 4 p.m. at the Expo Center in Perryton.

Entry fee for the chili cookoff is \$15 for adults and \$5 for age 18 and under. CASI rules will be observed.

Booth rental for the arts and crafts show is \$15 and donation of

one item under \$5 value for door prize. Booth setup time is 8 a.m.

Reservations for the arts and crafts show can be made by contacting Glenda Snow at 435-9626 from 8:30 a.m. to 5 p.m. daily.

More information can be obtained from Peaches Goldsberry, 2206 Grinnell in Perryton, 435-4871; or David Maxwell, Box 1281, Perryton, 435-4116.

# Introducing

# The 6.5 Liter Turbo Diesel Engine by Chevrolet

"In Stock Now"

**GILLASPIE**  
AUTO & TRUCK CENTER, INC.  
CHEVROLET, OLDS, BUICK, PONTIAC,  
CHRYSLER, PLYMOUTH, DODGE

Highway 207 South P.O. Box 427 (806) 659-2541  
SPEARMAN, TEXAS 79081





## WINTER CLEARANCE SALE

begins Thursday January 9th

ALL FABRICS 25% OFF  
THROUGH JANUARY 18th

FALL and WINTER FABRIC  
30-50% OFF

Country Stitches

715 W. 7th

### Hospital Notes

#### ADMISSIONS

Thursday, Jan. 2 - Nova Lee Walker

Friday, Jan. 3 - none

Saturday, Jan. 4 - none

Sunday, Jan. 5 - Kelli Butts

Monday, Jan. 6 - R.J. Bean

Tuesday, Jan. 7 - none

#### DISMISSALS

Thursday, Jan. 2 - none

Friday, Jan. 3 - none

Saturday, Jan. 4 - Eunice Spivey

Sunday, Jan. 5 - none

Monday, Jan. 6 - Sadie Sutton

Tuesday, Jan. 7 - Clarence Weeks

#### PATIENT CENSUS

Wednesday, Jan. 8 - Kelli Butts, R.J. Bean, Nova Lee Walker

Support  
research.

American Heart  
Association

## Karen's Kozy Korner

by Karen Babitzke  
Extension Agent

### It takes a little reading to know what product to buy

Wise consumers use thoughtful and effective methods of buying goods and services. For those who need help, the U.S. Office of Consumer Affairs and other agencies offer advice on how to be a smart shopper.

Anyone reading this article may take advantage of this wealth of consumer information available to the public. However, one-third of the adults in Texas do not possess the necessary skills to read and understand this material. They must make their consumer decisions with limited, and perhaps incorrect information.

Illiterate persons are unable to use newspapers or yellow pages effectively. Generally, they must rely on close neighbors and friends who can offer them advice, tell them about specials, encourage their use of coupons or help them locate services. This advice may, or may not, be the best guidance or even the correct information, but it is often the only information available to illiterates.

Informed consumers search food market advertisements for bargains and special sales. They are able to compare different stores and brands for prices. However, illiterate consumers are not able to take advantage of newspaper ads and supplements. While shopping, they are forced to rely on visual recognition and memory for selecting the products they want because they cannot read the labels. This is a monumental task since the average grocery store carries more than 17,901 products. Moreover, 200,000 brands, varieties and sizes of over-the-counter drugs are available, according to an article in the July 12 "USA Today" issue.

After purchasing products such as drugs, cleansers and insecticides, illiterate consumers are unable to read directions, safety instructions and warning labels. Clearly, illiterate consumers are at a disadvantage.

Government, businesses and agencies provide a wealth of material to help citizens become more informed consumers. Yet, these materials are of limited use to a large portion of the population because functionally illiterate persons are unable to read and understand this information.

Researchers who have spent a great deal of time with undereducated adults in a range of settings in the United States report that functionally illiterate adults often have well developed skills of other kinds and a wide variety of strategies for dealing with written materials. Illiterates are often fully contributing members of their communities. They often exchange their expertise (such as mechanical experience, gardening, child care, etc.) with others who help them handle written materials. Far from being unable to cope in their own surroundings, many manage quite handily, and are reluctant to trade the comfort of their own setting for an uncertain venture into unknown environs.

There is no denying the positive value of literacy as a tool in this society. Those who can read may vote, drive, advance in their jobs, and become wise consumers. However, care must be taken to avoid the negative assumptions about illiterates which usually accompanies the high positive values this society attaches to literacy. Too often illiteracy is referred to as a social "ill, to be combatted," "eradicated," "wiped out" - as one would talk about a contagious disease. Too often illiterates are considered to be a "drag" on society.

Some television programs dealing with the subject of illiteracy have presented uncensored statements such as "illiterates breed illiterates" or "What can we do to make these people settle down and learn?" They apparently have little concern about the negative impact those programs may have on illiterates in the audience who may have been considering "coming out of the closet" (another negative cliché) to seek needed training.

It takes a major effort for illiterate persons to admit that they cannot read and to seek help. Do not hamper their efforts with negative attitudes.

## Obituary

### Ailene Beck Pierson

SEGUIN, Texas - Ailene Beck Pierson, 94, died Monday, Jan. 6. Graveside services will be Friday, Jan. 10 at 2 p.m. in Cedar Grove Cemetery at Sanderson, Texas, with the Rev. Gary Seager officiating. Arrangements are by Goetz Funeral Home of Seguin.

Mrs. Pierson was the daughter of the late Judge and Mrs. Charles C. Beck Sr.

Survivors include three daughters, Margaret Kiel of Seguin, Harriet Lane and husband Kight of Lubbock, and Colleen Willard and husband Fred of New Braunfels; eight grandchildren; five great-grandchildren; and a sister, Ollie Beck Jarvis of Stinnett.

In lieu of flowers, the family requests that memorials be made to the First Presbyterian Church of Sanderson, Texas, or to a favorite charity.

Financing  
Available

# FINAL DAYS

## SAVE 40% TO 80%

GOING  
OUT OF  
BUSINESS  
WE'VE MADE ADDITIONAL  
MARK DOWNS  
ON HUNDREDS  
OF ITEMS



\$188.

Ref. Retail \$499. Soft velvet contemporary recliner with tufted back and dual position feature.



\$138.

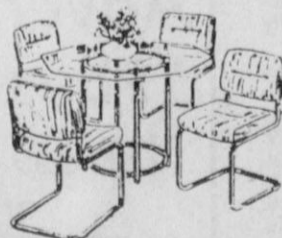
Ref. Retail \$299. Oak finish rectangular cocktail and 2 end tables in a contemporary style.

\$688.

Ref. Retail \$1499. Ridgeway grandfather clock. Features 2 year warranty, 82" tall.

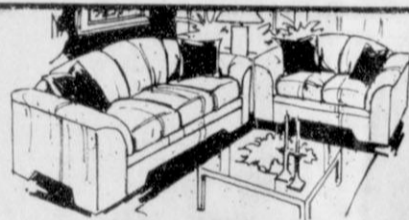
\$298.

Ref. Retail \$799. Benchcraft contemporary soft burgandy.



\$198.

Ref. Retail \$499. Octangle 40"X40" table and four blue velvet seated chairs.



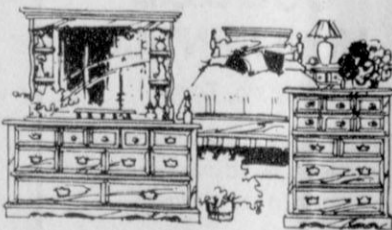
\$597.

Ref. Retail \$1579. You're going to love the way this trend setting sofa and loveseat adds drama to your living room. Both feature bold pillow arms, contoured backs and matching pillows.



\$688.

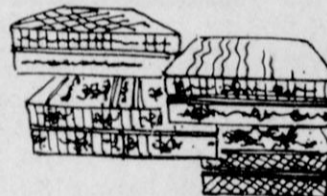
Ref. Retail \$1699. Sophisticated modular seating with dramatic fabric. Features two comfortable built-in incliners.



\$868.

Ref. Retail \$1699. Quaint cottage cozy styling in a 5-piece bedroom with lots of storage space. Dresser, hutch mirror, headboard, night stand and chest, warmly finished with brassstone hardware.

Twin, full & queen size innerspring mattress sets drastically reduced.



Twin Set Ref. Retail \$329.

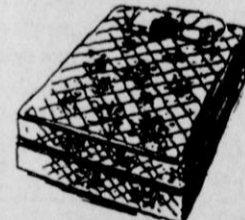
\$88.

Full Set Ref. Retail \$349.

\$124.

Queen Set Ref. Retail \$449.

\$167.



\$378.

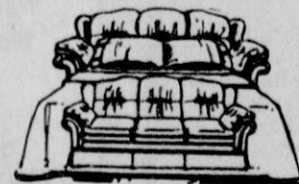
Ref. Retail \$899. King Koil queen sized chiropractic mattress set. Endorsed by the International Chiropractic Association.

\$497.



Ref. Retail \$1299. Riverside cherry entertainment center. Features include pull out T.V. shelf, pocket doors, separate stereo storage, VCR & tape compartments.

\$378.



Ref. Retail \$999. Queen sized sofa sleeper with innerspring mattress. Dark wood trim.

# John Lee Furniture

221 Main Perryton, Texas

Financing Available. Don't Delay!

Special Hours

SHOP MON. - SAT. 9:30 - 6:00  
SUN. 12:00 - 5:00