



★ HANSFORD COUNTY ★ THE REPORTER-STATESMAN

THURSDAY,
MARCH 17, 2011

CELEBRATING 104 YEARS OF SERVICE TO HANSFORD COUNTY
HANSFORD COUNTY'S ONLY NEWSPAPER

75¢

WWW.SPEARMANREPORTER.COM

VOLUME 104 • ISSUE 11

reporter@spearmanreporter.com



Weekly Update

Texas, March 14 - Average retail gasoline prices in Texas have risen 2.9 cents per gallon in the past week, averaging \$3.42/g yesterday. This compares with the national average that has increased 3.8 cents per gallon in the last week to \$3.53/g, according to gasoline price website TexasGasPrices.com.

Including the change in gas prices in Texas during the past week, prices yesterday were 78.8 cents per gallon higher than the same day one year ago and are 46.3 cents per gallon higher than a month ago. The national average has increased 40.5 cents per gallon during the last month and stands 74.5 cents per gallon higher than this day one year ago.

GasBuddy operates GasBuddy.com, TexasGasPrices.com, and over 225 other local gasoline pricetracking websites that follow prices at over 125,000 gasoline stations in the United States and Canada. GasBuddy also uses Facebook (facebook.com/gasbuddy) Twitter (twitter.com/gasbuddy), and phone apps to keep motorists ahead of changing gasoline prices. GasBuddy.com was named one of Time magazine's 50 best websites and to PC World's 100 most useful websites of 2008.

Texas 2011 All-State Basketball Teams Announced



Madison McLain

The Texas Girls Coaches Association is pleased to announce the 2010-11 Basketball All-State Teams. The All-State teams are selected by the TGCA Basketball All-State Committee, comprised of member coaches from corresponding conferences. Athletes are not required to be seniors and member coaches may nominate as many of their players as they choose.

The Committee may choose a maximum of 40 athletes per team, but is not required to choose the maximum amount. Conference 1A is split between Division I and Division II with 20 athletes per team to comprise 40 total athletes for conference 1A.

Included on the list are Madison McLain, a junior at Gruver High School (Coach Rod Been), and Morgan Ashmore and Shelby Hanna, juniors at Spearman High School (Coach Junior Ashmore).



Shelby Hanna



Morgan Ashmore

Burn Ban

Wildfires have swept across the Panhandle over the past couple of weeks due to dry conditions and high winds. On Monday, March 7, 2011, Hansford County Judge, Benny Wilson issued a Burn Ban, effective for 7 days.

The Hansford County Commissioners Court voted to extend the Burn Ban on Monday, March 14, during their regular Commissioners Court meeting. The extension will last an additional ninety days, unless rescinded.

Weather Forecast

THURSDAY NIGHT - Mostly clear. Lows in the lower 40s. Southeast winds 5 to 10 mph shifting to the north after midnight.

FRIDAY - Partly cloudy. Cooler. Highs in the upper 60s. North winds 10 to 15 mph.

FRIDAY NIGHT - Mostly cloudy. Lows in the upper 30s. Northeast winds 15 to 20 mph decreasing to around 10 mph after midnight.

SATURDAY - Mostly cloudy with a 20 percent chance of showers and thunderstorms. Highs in the mid 60s. East winds 10 to 15 mph.

SATURDAY NIGHT - Mostly cloudy with a 20 percent chance of showers and thunderstorms. Lows in the mid 40s.

SUNDAY - Partly cloudy. A 20 percent chance of showers and thunderstorms in the afternoon. Highs in the lower 80s.

SUNDAY NIGHT - Partly cloudy with a 20 percent chance of showers and thunderstorms. Lows in the upper 40s.

MONDAY - Partly cloudy. Highs in the upper 70s.

MONDAY NIGHT - Partly cloudy. Lows around 40.

TUESDAY - Mostly sunny. Breezy. Highs in the lower 70s.

TUESDAY NIGHT - Mostly clear. Lows in the upper 30s.

WEDNESDAY - Mostly sunny. Highs in the upper 60s.

Read more: <http://www.city-data.com/forecast/w-Spearman-Texas.html#ixzz0xgJSWQkT>

Texas Crop & Weather

The following specific livestock, crop and weather conditions were reported by Panhandle Extension directors: Temperatures were near to above average all week. Farmers continued preparing land for spring planting. Soil-moisture levels were short to very short, with most counties reporting very short. Wheat was in very poor to good condition, with most areas reporting poor. Rangeland was in very poor to good condition, with most counties reporting poor. High winds caused some soil erosion. Cattle were in good condition.

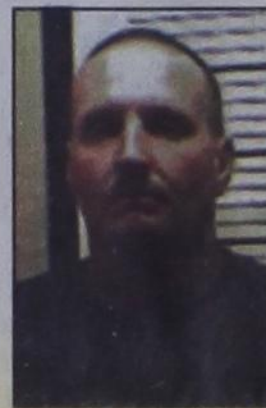
Birds of Prey

You are invited to Hansford Manor on Saturday, March 19, 2011 at 10 a.m. in the dining room. This will be an educational program with live falcons. Come watch them hunt!

HC Sheriff's Office Seeks Suspect

submitted by Gary L. Garrett, Chief Deputy, Hansford County Sheriff's Office

On Saturday, March 12, 2011, at 4:25 pm, Deputies of the Hansford County Sheriff's Office executed two search warrants in the 600 block of Richardson Street in Gruver, Texas. The search warrants had been issued for the recovery of stolen property from local burglaries and thefts.



Ronald Craig Brock

Several agencies assisted in the recovery of property including, the Gruver Police Department, the Sherman County Sheriff's Office, the Moore County Sheriff's Office and the Texas Department of Public Safety. As a result of the search warrant, property from 15-20 different burglaries and thefts, from several different jurisdictions, was recovered.

Arrest warrants have been issued for Ronald Craig Brock for Possession of Stolen Property \$20,000 to \$100,000 and for Burglary of a Building. Anyone having information about the whereabouts of Brock are encouraged to contact the Hansford County Sheriff's Office or CrimeStoppers at (806) 659-4149.

Yanke Named to All-Tournament Team

Gruver's Mattie Yanke, who just completed her freshman season on the Women's Basketball Team at Seward County Community College in Liberal, KS, was the only Lady Saint named to the 2011 Region VI All-Tournament team. The Seward County Lady Saints 2010-2011 season came to an end Friday night, March 4, 2011, in Wichita, KS, as they lost a hard fought 55-51 decision to the Jayhawk East Champion Cowley Tigers. During the Region VI Tournament, Yanke came off the bench to spark her team with 21 points, 8 rebounds, 1 assist, 2 blocks and 3 steals. She led her team in scoring, with 11 points, in the final game against Cowley County.

The Lady Saints finish the season 21-11. Yanke played in all 32 games, starting in 11 of those games, and averaged 21.3 minutes per game. She scored 178 points on the season and grabbed 121 rebounds. She also contributed 3 blocked shots, 32 assists and 45 steals. The Lady Saints will return Yanke and six other players for next year's season. Mattie is the daughter of Tonni and Mike Yanke.



Ali Tyler Memorial 'Don't Text and Drive' Decals

If you would like to purchase a lime green 'AMT 1998-2009 Don't Text and Drive' window decal in memory of Ali Tyler, please contact Stephannie Tyler at 806-736-0019. All proceeds go to the Ali Tyler Memorial Scholarship Fund. Decals are also available at Hansford County Floral Company on Main Street in Spearman.

City of Spearman Receives \$150,000 Federal Grant for Downtown Improvements

Agriculture Commissioner Todd Staples today announced the Texas Department of Agriculture has awarded \$150,000 in federal funds to the city of Spearman for infrastructure improvements through the Texas Capital Fund. The award helps fund upgrades to the safety and appearance of sidewalks in Spearman's historic downtown area.

"The Texas Capital Fund is a smart investment that rejuvenates the economies of Texas communities," Commissioner Staples said. "This award will help enhance economic development in Spearman, proving that great things are possible when Texans partner with Texans."

The Texas Capital Fund, part of the federal Community Development Block Grant program, provides more than \$10 million in competitive awards each year to boost economic development in small Texas communities. Administered in cooperation with the Texas Department of Rural Affairs, the program is housed under TDA's Rural Economic Development division.

"The city of Spearman is extremely grateful for the grant we have been awarded," Mayor Brian Gillispie said. "This grant is going to allow us to redo two blocks of downtown Main Street sidewalks that we would otherwise not have been able to replace at this time. Main Street and its merchants are extremely important in a town the size of Spearman, and it's important for us to support them in all ways possible. This grant will help make that possible."

State legislators agree the Texas Capital Fund offers immediate and long-term benefits.

"This funding will do exactly what it is designed to do, greatly enhance this com-

munity's efforts to grow and improve the quality of life of the citizens of Spearman," Sen. Kel Seliger said.

"I am so excited for the city of Spearman," Rep. Warren Chisum said. "Revitalizing the historic downtown areas of Spearman is going to help boost their economy tremendously. The Texas Capital Fund provides so many great opportunities to rural Texas and I hope it will continue for many years."

The Texas Capital Fund provides fund-

ing for projects under four different programs: Infrastructure Development, Real Estate Development, Main Street Improvements and Downtown Revitalization.

For more information about the Texas Capital Fund, contact the TDA Rural Economic Development division at finance@TexasAgriculture.gov or call the toll-free Rural Assistance line at (877) 428-7848.



TYI

FOR YOUR INFORMATION

Gruver One-Act Play
Gruver High School will perform their One-Act-Play for the public on Sunday, March 27th at 4:30 p.m. in the GISD Auditorium.

Texas Alligator Ranch Round-Up
The Texas Alligator Ranch in Spearman will hold their semi-annual round-up on Saturday, April 16 at 1 p.m. Anyone interested is invited to attend.

Don't Text and Drive Decals
If you would like to purchase a lime green 'AMT 1998-2009 Don't Text and Drive' window decal in memory of Ali Tyler, please contact Stephanie Tyler at 806-736-0019. All proceeds go to the Ali Tyler Memorial Scholarship Fund. Decals are also available at Hansford County Floral Company on Main Street in Spearman.

Youth Writing Contest Announced
Panhandle Professional Writers has announced its 2011 Youth Writing Contest. The competition is open to any student in grades three through twelve. There are three age groups: grades three through five, six through eight, and nine through twelve. Students may enter as many times as they like in three different categories: short story, poetry, and memoir. All entries will be judged by published authors. Entries must be post-marked no later than April 16, 2011. Complete rules and entry forms can be requested at ppwriters@gmail.com First, second, and third place winners in each category will be announced in July. Panhandle Professional Writers, located in Amarillo, Texas, is the second oldest continually functioning writers group in the nation. It is open to writers at all levels and of all genres.

Project Graduation
The parents of the Spearman High School Senior Class of 2011 are hosting a "Project Graduation Party" following commencement exercises Friday, May 27th. This event is sponsored by the Texas Department of Transportation. This project offers the students the opportunity to have an alcohol and drug free celebration. To encourage the students to stay the entire night, door prizes are distributed throughout the evening. All students staying the entire night will be awarded a \$100 gift card. Prizes, gift certificates, and cash are needed for the evening's gifts. If you, the community, who have supported and encouraged these seniors for the past 13 years of school, would like to share in this final "Class of 2011" memory (making this project "special"), please contact either Sharon Kern at 659-2017; Sherry Boyd at 659-3844; or Tammy Benton at 659-3071. Contributions or donations can be mailed to: Project Graduation, Tammy Benton, P.O. Box 415, Spearman, TX 79081. On behalf of the parents and family of the Senior Class, we would like to thank you for all of your support.

Samantha Hart 7th Memorial Scholarship Golf Tourney
On January 19, 2005 we lost our 14 year old daughter Samantha to a car accident. The following June we started the Samantha Hart Memorial Scholarship Golf Tournament. The purpose of the tournament is to provide scholarships to graduating seniors from Stratford ISD. The tournament has continued to grow and this will be our 7th tournament. This year, the Ryan Palmer Foundation has been gracious enough to sponsor our family tournament by offering personalized items from Ryan Palmer to be auctioned, 3-Man Scramble - June 11th & 12th, Stratford Country Club. \$180 per team (carts available, but limited), Dinner Saturday night, Team Auction Saturday night. Hole in One prizes. Tee times 8:30am & 2:00 each day (afternoon tee times limited). Contact info: Brandi Pearce 806-270-0457, Jim Pearce 806-753-6004, Jon Hart 806-676-2931, Roger Allen 806-753-7833.

NOTICE
The District Clerk's Office for Hansford County is no longer issuing applications for passports. The public can have an application issued from the District Clerk's Office at the Courthouse in Stinnett or the Post Office in Perryton.

American Red Cross Murder Mystery Dinner Postponed
The American Red Cross, Eastern Texas Panhandle Chapter announces the murder mystery dinner fundraiser scheduled for Saturday, March 5 has been postponed until April 9th. "The Red Cross has been actively involved in the recent wildfires that not only affected Hutchinson, Carson and Roberts counties but also fires in Lipscomb and Wheeler counties," said Jana Gregory, executive director of the Eastern Texas Panhandle Chapter. "Red Cross has been very busy with preparedness and response activities in February. We want this event to be a successful fund raiser for us and for the attendees to have an evening of entertainment, so we decided to postpone." Your support of this event strengthens the Red Cross and we apologize for any inconvenience.

Take Off Pounds Sensibly
Take Off Pounds Sensibly meets on Tuesday mornings at 8:30 a.m. at the First Christian Church in Gruver. For more information, contact Marilyn Been at 806-733-2087.

Hansford Gun Club Rifle Shoot
The Hansford Gun Club holds a .22 rifle shoot on the second Sunday of each month, starting at 1:30 p.m. at the gun range (located on Hwy. 15 between Spearman and Gruver).

Care Packages
If you would like to help with Care Package Drop Offs, please contact Less Sullivan at lessullivan@hotmail.com. Less is collecting items for care packages in conjunction with AmericaSupportsYouTexas.com. Journals are also located at the O'Loughlin Center, Spearman High School, and Gus Birdwell Elementary for anyone wishing to sign them. For more information, contact Less at 330-0973.

Rainbow Kids Klub is Back!!
Our new building if finished and we are inviting all children Kindergarten -Fifth grade to join Rainbow Kids Klub. This is a weekly after school program with snacks, recreation, character building Bible lessons, memorization, music, games and its all free. Rainbow Kids Klub begins Wednesday, Septem-

Words from Faith & Grace

by Cecil R. Biggers, Lutheran Lay Minister



We begin the Season of Lent, a time for reflection of life, self-assessment toward repentance. We imitate Jesus' withdrawal into the wilderness as we prepare ourselves to experience the death and glorious resurrection of Jesus The Christ. We study Genesis 2:15-3:7, Psalm 32, Romans 5: 12-21, and Matthew 4: 1-11.

We see the "Fall of Man" in our Genesis passage. God called his creation "good"; yet, Sin can arise even within a "good" creation. Man desires to be God rather than to be God's thankful creature. Some blame Eve, and women in general, for the "fall", but a careful reading will indicate that Adam was there throughout the dialogue between the Serpent and Eve. Eve listened to the argument of the Serpent and ate of the fruit of the forbidden tree. Adam just ate it. The woman thought, the man acted, they both sinned. Notice that God still cared for Adam and Eve even though he allowed them to experience the consequence of their sin. By the sin of Adam, we all became sinners; we shall come to see by the righteousness of the man, Jesus, through faith in him, all men are restored to a right relationship with God.

The Psalmist sings a penitential psalm. Silence about sin, hiding it, leads to suffering both mental and physical. Confession of sin to God and a sincere repentance brings forgiveness and relief, both mental and physical. He sings, "Don't be a mule, without understanding, whose temper must be curbed with bit and bridle..." The believer does not need to be forced into following, but must surrender to live God's way. In the steadfast love of God, the believer finds joy. Through faith in Jesus The Christ, all men are restored to a right relationship with God.

Paul extends his message of justification, faith and grace to the Romans. To learn this lesson we must accept that there is nothing we can do for ourselves that will allow us to escape from sin and its consequences. Paul tells the Romans that sin entered the world through the sin of one man, Adam. We are all descendants of Adam and partake of his nature. Paul then tells the Romans that through the righteousness of Jesus all who believe are justified and lead to life. Through God's grace which enables our faith in Jesus The Christ, we are forgiven!

Immediately after his baptism, Jesus goes into the wilderness. There Jesus has time to fast, pray, reflect, and prepare for his ministry. It is in this time of reflection that Satan tests Jesus. In the tests, Satan attacks Jesus' identity as the Son of God. Satan suggests that Jesus can prove his son-ship by turning the loaf-like rocks to bread. This would feed Jesus and if he did this for man-kind they would follow him as a "Bread King". Jesus replies, "One does not live by bread alone, but by every word that comes from the mouth of God". Satan then suggests he perform a mighty deed by leaping from the temple's heights. Jesus replied, "Do not put the Lord your God to the test". Some would follow a wonder-worker, but would demand greater and greater feats. Satan then suggested that Jesus worship him in return for the kingdoms of Earth. Jesus answered, "Worship the Lord your God, and serve only Him." Jesus found his way and through the righteousness of Jesus The Christ, we are redeemed.

May the Holy Spirit allow you to fast, pray, reflect and prepare for the hope of Easter in this Season of Lent.

Words from Faith & Grace

by Cecil R. Biggers, Lutheran Lay Minister



In the second week of Lent we learn that God works his mysterious plan of salvation through people, that our old patterns of life do not reconcile us with God, and that we must be "born again" in the sense of born from above (Spirit). We study Genesis 12: 1-9, Psalm 121, Romans 4: 1-5m 13-17, and John 3: 1-17.

God chooses the seventy-five year old, Abram, to be the instrument of his plan for human-kind. God commands Abram to "Go from your country and your kindred and your father's house to the land that I will show you." God promises Abram that he will become a great nation, that God will bless Abram, that God will make Abram's name great, and that God will give a land to Abram's offspring. Abram believes God and goes.

The Psalmist sings a song of ascent, a travel song. The Psalmist sings a question, "...from where will my help come?" His answer, "My help comes from the Lord, who made heaven and earth". To those who trust in the Lord, to those who let go of their pride and self-will, God grants his protection. God's steadfast love is forever.

Paul tells the Romans that old patterns of belief, the strict adherence to the law, does not lead us to reconciliation with God. Abraham did not gain God's favor by keeping the law (the law was not given until centuries later), Abraham did not gain God's favor by circumcision and the trappings of ritual, but by faith in the word of God. Thus, dear Christian, we learn that we cannot earn our salvation; we cannot work ourselves into the Kingdom of Heaven. Abraham is the father of all who place their faith and trust in God. It is that type of faith that was reckoned by God to be righteousness.

Jesus is meeting with Nicodemus late at night. Nicodemus is a member of the Sanhedrin, the ruling council of the Jews; Nicodemus is a powerful man, but he needs something and he comes to Jesus. The meeting was at night perhaps to avoid the crowds and to avoid political problems for Nicodemus; more likely the meeting was at night because that was the time the rabbi believed was the best time to study God's word. Jesus tells Nicodemus that he must be born again; Nicodemus hears Jesus literally and asks how a man can re-enter his mother's womb. Jesus explains that to be born again, one must be born from above, from the Spirit. Jesus tells Nicodemus that whosoever believes in the Son may not perish, but may have eternal life. God's mysterious plan of salvation is revealed to Nicodemus and to us.

May the Holy Spirit enable you to be born 'again' that you may have eternal life.

God Saw You
God saw you getting tired,
When a cure was not to be.
So He wrapped his arms around you,
and whispered, "Come to me."

You didn't deserve
what you went through,
So He gave you rest.
God's garden must be beautiful,
He only takes the best.

And when I saw you sleeping,
So peaceful and free from pain
I could not wish you back
To suffer that again.

author unknown

We love and miss you, Kaye, Kelye, Robbie and boys

R.L. McFarlin, Jr.
3/25/1940-3/15/2005

You are invited to a
Bridal Shower
honoring
Dane & Kamryn Harbour
Saturday, April 9, 2010
from 10:00-11:30 a.m. at the
home of Becky Beedy
901 Wilmeth Spearman TX

You are invited to a
Baby Boy Shower
honoring
Linzi McCubbin
Sunday, March 20, 2010
from 4:00-5:00 p.m. at the
Hansford Abstract Office
16 Haney St Spearman TX

Thank You!

Many thanks to Hansford Insurance Agency for purchasing our animals at the Hansford County Jr. Livestock Show.

Kyler Cator
Colton Cator

MITCHELL THEATRES.COM
GUYMON, OK • LIBERAL, KS • NEWTON, KS

NORTHRIDGE 8
Guymon, Oklahoma
www.northridge8.com
580-338-3281

SOUTHGATE 6
Liberal, Kansas
www.southgate6.com
620-624-5573

SEQUOYAH 8
Garden City, Kansas
www.sequoyah8.com
620-275-2760

CHISHOLM TRAIL 8
Newton, Kansas
www.chisholmtrail8.com
316-283-0555

FRESH POPCORN EVERYDAY!
-PARTY ROOM & ARCADE-

PTCI Internet - Faster Speeds to More Customers!

"I honestly could not do what I do without PTCI."
They're involved in everything that goes on, whether it's high school sports or a business promotion."
~Gina Gillispie
Editor, High Plains Observer
Spearman, Texas

"Speed is all I need. It is always reliable and no one beats the PTCI service!"
If we have an issue, I can call a local number and get help from someone I know."
~Chris Samples
KXDJ Radio
Perryton, Texas

"PTCI is the only Home Brand for me!
I know I have a winner.
I know I have the best service.
I know I have the people who care."
~Terry Peak
Perryton, Texas

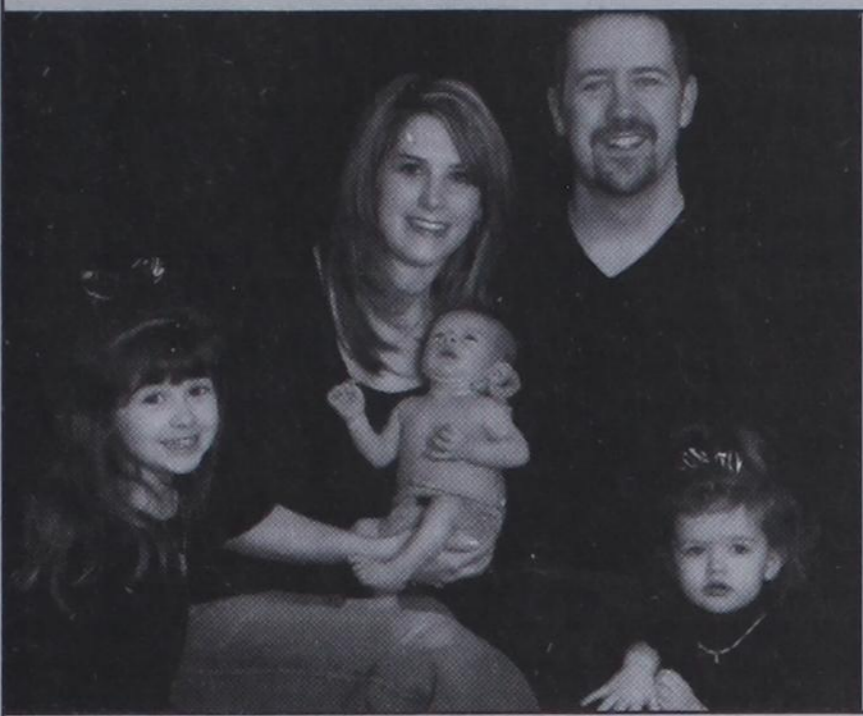
"You have to have dependable service in order to give dependable service."
We couldn't be more happy."
~Debbie Scott
ds Design
Perryton, Texas

Are YOU a PTCI Customer?

PTCI
Communication & Broadband Solutions

www.ptci.net
800-562-2556
721 W 7th in Spearman

It's A Boy!



Dave and KiKi Brabham announce the arrival of Levi David, who was born on January 11, 2011 in Rochester, New York. He weighed 7 pounds, 4 ounces and was 20 inches long.

Levi was welcomed by big sisters Harlie (4) and Skyla (2).

Proud grandparents are Dan and Harletta Carthel of Gruver.

Although Levi was not born in Texas, they vow to get him here as soon as possible, as the family will make their home in Amarillo in June.



GHS Band SOM



Fatima Lizette Barrera, a Junior at Gruver High School, was named the Gruver Band Student of the Month for February. The 16-year-old clarinet player is the daughter of Abelardo and Ana Barrera. She has two siblings, Lalo and Odalys Barrera.

Fatima's favorite subject is math. "Although Pre-Calculus can be challenging sometimes, solving and learning something new every day is essential!"

She received a directors award in 2010 for being an outstanding and valuable member in the Gruver band.

Fatima is involved in her church, serving as a lector and an alter server. In school, she is involved in UIL, competing in Feature Writing and WOW Writing. She is also an FCCLA officer and serves as V.P. of Correspondence/Records.

After High School, she plans on attending college, starting a career with success, having a loving family, but most importantly, following the path God chose for her.

Her favorite thing about band is the feeling of earning straight one's in marching and concert contests, and being a member of the first band in Gruver to receive a Sweepstakes in several years.

"I've been involved in band for 7 years and some of the best memories I have are spending a wonderful time with Ms. Cross and all my friends on our band trips."

Fatima was selected as the Band Student of the Month for January for her outstanding leadership and musicianship. Not a day goes by when she walks into the room without a smile on her face. Fatima has nothing but words of encouragement for her other peers and teachers both.

Fatima has taken pride in being a musician outside of the regular concert band by being a member of the 5-States Honor Band, playing in a small group ensemble for Christmas and currently preparing to compete with a clarinet quartet at the UIL Ensemble contest.

During field marching, when the clarinet soloist hurt her wrist the day of a ballgame, Fatima stepped up and learned an entire solo to perform at the football game that night! No matter what is asked of Fatima, she puts her whole heart into doing the best she can do!

GHS Band SOM



Fatima Lizette Barrera, a Senior at Gruver High School, was named the Gruver Band Student of the Month for March. The 18-year-old trumpet player is the daughter of Romualdo and Cirila Mundo. She has two siblings, Artemio and Gabriel.

Fatima's favorite subject is Art and literature "because they both give me an opportunity to express my imaginations. I believe that literature is a form of art. They both symbolize "freedom" in a way that not everyone understands. Only those who think outside the box find the hidden message at the end of the road."

Mariela was in the Honor band during her sophomore, junior and senior year and received a superior rating at the UIL all-region solo and ensemble contest.

Mariela is involved in band, Jazz band, Band for Christ, NHS, FCCLA, UIL, Big Brothers Big Sisters and youth group.

After High School, she plans on attending Amarillo College for two years and then transfer to West Texas A&M. I would like to pursue a career in Physical Therapy because I love working with people and putting a smile on their faces.

Her favorite thing about band is "playing my trumpet and making music with it. Also, having the privilege of being part of a sweepstakes winning band!"

"I have too many memories to mention, but my favorite was our band trip to Branson, Missouri."

Mariela was selected as the February Band Student of the Month for all of her hard work and dedication to the band over the past 4 years. Mariela was featured as the trumpet soloist during field marching contest and is also doing an outstanding job playing a solo for the concert band contest! She was also a 3 year member of the 5-States Honor Band. As a senior, Mariela took a solo to the UIL solo/ensemble contest where she received a superior rating. Band directors, judges, student and parents always compliment on how beautiful Mariela plays and how talented she is! Mariela comes to band every-day with a positive attitude and ready to work! We are very excited to see Mariela excel in not only her musical abilities, but also in life. She is a wonderful young lady and we have been very blessed by her!

Community College Funding Restored

by Gloria Rummel, Executive Assistant, Frank Phillips College

Frank Phillips College Interim President Dr. Jud Hicks received word late Wednesday, March 9, from State Representative Warren Chisum's office, that funding for four of the State's community colleges, including FPC, has been restored in the proposed House Budget. Frank Phillips College is now funded in the House and Senate Finance Bills.

Dr. Hicks noted that throughout the process of restoring funding to the College, the FPC faculty and staff have maintained their focus on the day-to-day process of educating its students for which he is grateful.

Hicks also expressed his appreciation to Representative Warren Chisum and Senator Kel Seliger and their staff for the help they have provided the College during this legislative process. Hicks also acknowledged the support that FPC has received from its Board of Regents, current students, alumni, business and industry representatives, and members of the community, pointing out that Board Chair Conny Moore and Dan Redd, Borger Economic Development Corporation also traveled to Austin to visit with legislators regarding their support of the College.

The Texas Legislature began its biennial budget process earlier this year with many suggestions on how to address the budget deficit. One such proposal recommended to zero-fund four community colleges, Brazosport, Frank Phillips, Odessa and Ranger. Upon hearing the news, Hicks responded, "We fully expected to address significant funding cuts; however, we had no idea we would have to justify our existence from an appropriations standpoint. That being said, we will gather the facts that led to this proposed budget as it pertains to Frank Phillips College and hope that we get a chance to present our case to the powers that be in Austin. As far as our faculty and staff, I would encourage them to continue to focus on taking care of our students within the communities that we serve."

Legislators invited the State's fifty community college presidents to personally address the House Appropriations Committee regarding proposed cuts in appropriations. Dr. Hicks presented information about FPC including its recent successful completion of the reaffirmation process with The Southern Association of Colleges and Schools, its accrediting agency, with no corrective actions recommended; its second time to be honored by the Washington Monthly Magazine as the 27th of the top thirty community colleges in the Nation. Hicks stressed that, "Frank Phillips College is a necessary and valuable asset to the Texas Panhandle training the future workforce and helping bridge the gap to other institutions of higher education. Frank Phillips College provides education and professional training and experience to the Texas Panhandle that would not otherwise be available to those residents."

www.spearmanreporter.com

AVAILABLE NOW!
E-SUBSCRIPTION
 to the
Hansford County Reporter-Statesman
 Delivered to your e-mail each Thursday for only \$35/year.
 Purchase online at www.spearmanreporter.com
 Call 806-659-3434 or e-mail reporter@spearmanreporter.com for details.

HOME PHONE SERVICE
NO Pre-Payment • NO Deposit Required!
Rates from \$6.99 per month*
 (\$17/month including approximate taxes & fees)
FREE 1st Month of Service
 Caller ID & Call Waiting included in Packages**
New-Talk 866.934.3448

Thera-Gesic Pain Cream
 It Really Works...Compare and SAVE.

GET CASH NOW!
1-866-FUND-108
 Get cash for your structured settlement or annuity payments.
 High payouts. Rated A+ by the Better Business Bureau.
J.G. WENTWORTH
www.jgwentworth.com

Don't get hit with a penalty! "Render" your taxable property by April 15th

A "rendition" is a report to the appraisal district that lists all the taxable property you owned or controlled on January 1 of this year. The rendition form is available at the Hansford County Appraisal District.

WHO MUST FILE A RENDITION? You must file a rendition if you own tangible personal property that is used to produce income - such as the inventory and equipment used by a business.

ARE THERE ANY ADVANTAGES TO YOU? Yes, the advantages of filing a rendition are:

- You give your opinion of your property's value. If the appraisal district believes the value is higher, it must notify you in writing of the higher value and explain how you can protest that value to the appraisal review board.
- You record your correct mailing address so your tax bills will go to the right address. If your bill is mailed to the wrong address, the law still holds you responsible for paying your taxes on time or paying extra charges for late payments.
- You can also file a "report of decreased value" to notify the appraisal district of significant depreciation of the value of your property in 2010. The district will look at your property before assigning a value in 2011.

WHAT'S THE DEADLINE? The last day for filing 2011 renditions is April 15th. You can get an extra 30 days if you ask for it in writing by the April 15 deadline.

WHERE DO YOU FILE? File renditions at the:
HANSFORD COUNTY APPRAISAL DISTRICT
 709 W 7th Ave. Spearman, Texas 79081
 806-659-5575

Owned & Operated by Linda & Charles Stephens

Double XXL Steakhouse

(formerly Flying X Steakhouse)

From Stinnett: Go West on Hwy. 152
 17 miles - Turn Left at Big White Sign
 (About 2 miles on Gravel Road)

From Dumas: Go East on Hwy. 152
 16 miles - Turn Right at Big White Sign
 (About 2 miles on Gravel Road)

Open: Friday & Saturday Night
 Open anytime for parties of 8 or more

(806) 93JESUS
(806) 935-3787

www.doublexxlbranch.bravehost.com
 reservations suggested

HANSFORD COUNTY
THE REPORTER-STATESMAN 75¢
 CELEBRATING 103 YEARS OF SERVICE TO HANSFORD COUNTY
 HANSFORD COUNTY'S ONLY NEWSPAPER

WWW.SPEARMANREPORTER.COM reporter@spearmanreporter.com

Subscription Special

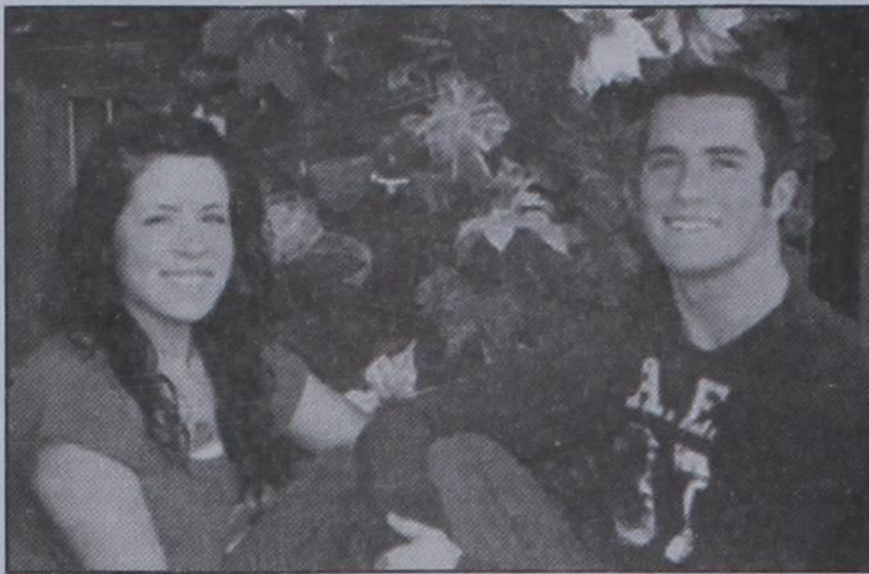
In-County Subscription	E-Subscription	Out-of-County Subscription
\$30	\$35	\$40

15 months for the price of 12

Available through February 14th - new or renewing subscriptions
 Mail to: Reporter-Statesman, 213 Main Street, Spearman TX 79081
 For more info, call 806-659-3434, or e-mail reporter@spearmanreporter.com

SHS December SOM

SHS January SOM



The December Students of the Month at Spearman High School are seniors, Joselyn Terrazas and Cameron Meddock.

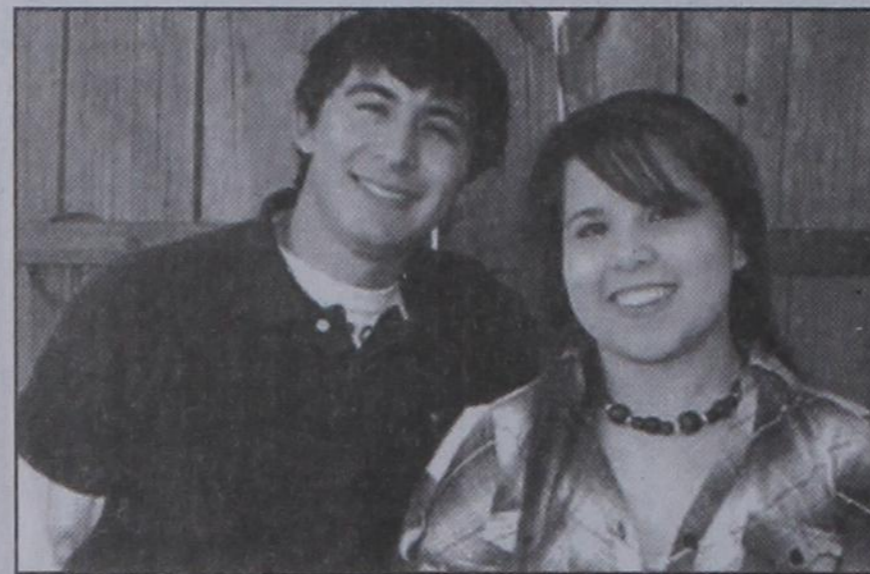
Joselyn is the daughter of Jorge and Guadalupe Terrazas. She has one older brother, Ivan Terrazas, and one younger sister, Janneth Terrazas. Joselyn is also the proud aunt of her new niece, Keira Terrazas. Joselyn has been active in Spearman Lynxette Cross Country, Track, Tennis, Basketball, Cheerleading, and Student Council, where she served as Vice-President. She is a member of the National Honor Society, currently serving as Vice-President, Big Brothers/Big Sisters of the Texas Panhandle, and is currently serving as the Senior Class secretary. While in high school, Joselyn has been named 2010 Football Homecoming Queen, Aca-

demie All-District in cross country and track, Top Student of the Year in US History, and she has been listed on the "All A" Honor Roll. In her spare time, Joselyn enjoys watching movies with Natalie Saldivar, going to Zumba, working out, shopping, and babysitting her niece, Keira. Her future plans include attending West Texas A&M University and majoring in bilingual education. Joselyn states the best thing about Spearman is, "the friendly environment." The best thing about Spearman High School is, "Everyone is always friendly and supports each other." Joselyn's most influential teacher during her school years is Coach Junior Ashmore.

Cameron is the son of Rodney and Vicki Nickel, and Mike Meddock. He has two brothers, Zeke and Rhian Meddock, and one

sister, Raven Meddock. Cameron is active in Spearman Lynx Varsity Football and Track. During high school he has received the following honors/awards: Sophomore Year: Honorable Mention Linebacker, Academic All-District football and track, Regional Qualifier in the 300 meter hurdles and the mile relay; Junior Year: 1st Team All-District Linebacker, Academic All-District football and track, Regional Qualifier in the sprint relay and mile relay, and received the Spearman High School Head Hunter Award; Senior Year: 2010 Football Homecoming King, 1st Team All-District Running Back, 2nd Team All-District Linebacker, Academic All-District Football, and Honorable Mention Academic All-State. In his spare time, Cameron enjoys hanging out with his friends, playing PS3, and sleeping. Cameron plans on attending South Plains College and major in radiology. Cameron states the best thing about Spearman is, "the size and Pizza Hut." Cameron says the best thing about Spearman High School is, "the Sports!" Cameron's most influential teachers during his school years include all of his coaches.

Congratulations to Joselyn and Cameron on being named the Spearman High School December Students of the Month.



The January Students of the Month at Spearman High School are seniors, Nidia Terrazas and Edgar Castillo.

Nidia is the daughter of Luis E. and Imelda Terrazas. She has two younger brothers, Luis and Santiago Terrazas. Nidia has been active in National Honor Society, Spearman High School Band, Spearman High School Color Guard, Family, Career, and Community Leaders of America, UIL Feature Writing and UIL Science. While in high school, Nidia as been named the Top Student of the Year in Pre-AP English II, Pre-AP Chemistry, AP English III, and Elementary Teacher's Aide. Nidia was also named Best Clarinet player, Marcher of the Week, and Who's Who at Spearman High School. She has also been on the Honor Roll every year while in high school. In her spare time, Nidia likes practicing the flag, taking pictures, texting, hanging

out with friends, going to dances, and most importantly, spending time with her family! Her future plans include attending Amarillo College to earn her basics, and then transferring on to a four year university and becoming a Registered Nurse. Nidia states the best thing about Spearman is, "It's a small town; furthermore, a good place to grow up." The best thing about Spearman High School is, "Friendliness - teachers and students are very friendly, and attending SHS gives everyone a chance of being a part of something." Nidia's most influential teacher during her school years is Mrs. Amber TeBeest.

Edgar is the son of Antonio and Maria Angelica

Castillo. He has one younger brother, Kevin Castillo. Edgar is active in Spearman Lynx Varsity Basketball, Cross Country, and Tennis, Future Farmers of America, National Honor Society, Family, Career, and Community Leaders of America, UIL Calculator team and the 1st Place FFA Chapter Conducting team. He also placed 3rd in District in the Mixed Doubles tennis meet. In his spare time, Edgar enjoys playing soccer, tennis, football, and basketball. Math is also his favorite subject in school. Edgar plans on attending West Texas A&M University and becoming a mechanical engineer. Edgar states the best thing about Spearman is, "the small environment". Edgar says the best thing about Spearman High School is, "The faculty is very friendly." Edgar's most influential teacher during his school years is Mrs. Sherry Johnson.

Congratulations to Nidia and Edgar on being named the Spearman High School January Students of the Month.



St. Patrick's Day Word Search

©2000 The Kids Domain www.kidsdomain.com free for non-profit use

IRELAND
IRISH
GOLD
POT
RAINBOW
GREEN
CLOVER
LUCK

SHAMROCK
JIG
PATRICK
SAINT
SNAKES
LEPRECHAUN
SHILLELAGH

Bassinet Bundle Raffle

After months of anticipation, Hansford County Library proudly announces the arrival of "Bassinet Bundle Raffle." In preparation for the precious arrival, library staff members have been busy stitching, crocheting crafting and shopping.

Included in the bassinet give-away are a baby towel set, snugly afghan, bib, grooming essentials and books and toys. Items are available for public viewing at the library circulation desk, Monday through Friday.

At \$1 each or \$5 for six, tickets are now on sale and will be available until the drawing on March 31st. Come in and view the special bundle and purchase your tickets. All proceeds benefit the library's summer reading program.

Hansford County Library
122 Main Street
Spearman TX 79081-2064
(806) 659-2231

Kid Scoop SPECIAL EDITION

Earthquake in Japan

On March 11, 2011 a major earthquake off the coast of Japan damaged buildings throughout the nation and caused a tsunami that brought about even more destruction and loss of life.

This special Kid Scoop page explains how earthquakes and tsunamis happen and ways you can help victims of the disaster in Japan.

Measuring Earthquakes

An earthquake is one of the most powerful forces on earth. Scientists use an instrument called a seismograph to measure earthquakes. Try this activity to get an idea of how a seismograph works.

Try This

1. On a table place a small toy car on a piece of paper.
2. One person holds a pencil with the lead lightly resting on the paper.
3. The other person moves the paper back and forth very slowly. What kind of line does the pencil make? Does the car move?
4. Move the paper so that the car starts to slide around. What kind of line does the pencil make now?

How do earthquakes happen?

When you crack the shell of a hard-boiled egg, you get a lot of separate pieces or plates of shell. The crust of the earth is like the shell of a hard-boiled egg. It is broken up into plates, too. But, unlike the pieces of a hard-boiled egg, the plates of the earth's crust move.

When these plates move and collide, one of the plates can slide beneath the other.

On March 11, 2011 the Pacific plate slid beneath the North American plate causing the earthquake and tsunami in Japan.

How a Tsunami Forms

A tsunami (soo NAM ee) is a series of large ocean waves created by an underwater earthquake or volcano. The waves can cause destruction when they reach land.

1. An earthquake strikes deep below the Pacific Ocean as two plates push against each other.
2. The ocean floor cracks and part of it rises, lifting huge amounts of water above it.
3. Tons of water swells high above normal sea level, forced upwards as the plate below rises.
4. The massive swell spreads out in all directions in the form of large waves.
5. The tsunami hits the shore in waves as high as 30 feet, flooding lower land areas and destroying some buildings.

Kid Scoop Puzzler

When the Ohio and Mississippi Rivers flooded in 1884, a group of six children put on a play, raised money and sent it to the American Red Cross. The money helped a family that suffered greatly from the flood.

To find out how much money the children raised, add up all of the even numbers on the red crosses below.

Standards Link: Math: Compute sums to 100.

Double Double Word Search

Find the words in the puzzle, then in this week's Kid Scoop stories and activities.

EARTHQUAKE
INSTRUMENT
TSUNAMIS
MASSIVE
PLATES
SENDAI
COAST
JAPAN
OCEAN
WAVES
SLIDE
LOSS
LIFE
PUSH

T N E M U R T S N I
E S S I M A N U S T
V L E W J N L O S S
I I N A A P A A O E
S D D P N V O C L T
S E A U N C E E E A
A J I S D A J S Y L
M O U H N E F I L P
E K A U Q H T R A E

Standards Link: Letter sequencing, recognizing identical words, skills and scan reading, recall spelling patterns.

FROM THE LESSON LIBRARY

Helping

Look through today's newspaper for the names of organizations that help people in your local community. Cut out the information and start a scrapbook of these organizations. Select one organization your class could help.

Standards Link: Social Science: Know the responsibilities of citizenship.

Power of the Newspaper

Newspapers provide more than just news about disasters. They also bring people together to help those suffering from disasters like Japan's earthquake. Newspapers help people support each other in their own communities. As you complete this special newspaper page, look around and get to know how your paper delivers news and hope. Newspapers make the world a better place.

Kid Scoop-Joke

Complete the grid by using all the letters in the word CARING in each vertical and horizontal row. Each letter should only be used once in each row. Some spaces have been filled in for you.

C	I		
A	G		
R		A	
I			
N		C	
G			N

American Red Cross

The American Red Cross provides help to people affected by disasters like the Japan earthquake and tsunami. You can help by making a donation to support American Red Cross Disaster Relief.

http://americanredcross.org
1-800-HELP-NOW

Salvation Army

The Salvation Army has been in Japan since 1895 and is currently providing emergency assistance to those in need.

www.salvationarmyusa.org

Save the Children

Save the Children has been in Japan for 25 years assisting with disaster relief in many Pacific nations. Teams are being sent to assist in caring for children in the aftermath of the quake and tsunami in Japan.

www.savethechildren.org
1-800-728-3843

Americares

Americares' emergency team is mobilizing resources and emergency response managers to the region to provide humanitarian aid and medical supplies.

www.americares.org

Spearman Police Blotter

by Chief Robert G. Baker

This month I would like to address several things of importance to all of us in Spearman. First is crime prevention. Spearman has been blessed for quite awhile with a low crime rate compared to some of our neighboring cities. Gruver and Perryton have both been plagued by numerous thefts and burglaries. Due to hard work and persistence, both have made significant arrests in those cases and recovered stolen property. Spearman has had a few burglaries and thefts, but our biggest problem over last several months has been vandalism. Recently, a vacant home was entered and the person or persons kicked holes in walls, destroyed fixtures, and so forth. The windows have been broken out of two vehicles and several houses, and personal property has been torn up around town. These acts of useless destruction, thefts of property, and other crimes, including burglaries, can be reduced with simple crime prevention.

Secure your home, lock your doors and windows, and don't leave bicycles laying out by the curb over night. Tools and equipment left in pick-up beds or exposed on flat bed trucks are easy targets. Any property that is valuable to you will be valuable to some other person, who wants only to steal it and sell it somewhere else. I have driven around town many nights and noticed garage doors open and the lights on. That is an open invitation for a person who is looking to supplement his/her income by stealing and selling your property to take a quick inventory of your possessions and come back later to help themselves. Another thing that helps the criminal is a privacy fence. We all enjoy the privacy that a tall fence offers, but so does a burglar. I'm not saying you need to tear down your expensive wood or metal fence, just be aware that a privacy fence offers just as much privacy to a person intent on stealing your things. Thirdly, don't leave valuables in your car. It takes just a matter of seconds to bust a car window and take something that's lying on the seat and be gone.

Pay close attention to your surroundings while you are running errands around town. Be observant to what's going on around you. Something you could see or hear might help prevent a crime. Take a few minutes to step out on the front or back porch and take a look around. When you take out the trash to the alley, stop and look around briefly. You may not see anything suspicious, but a person looking to commit a crime just might see you and leave. Be proactive in crime prevention. It's not just a law enforcement responsibility, it's every citizen's responsibility.

The second item I want address is rabies. Since January 1st, ACO Mahaffee has captured three skunks in town. A report from The Texas Dept. Of Health Services showed that 10 skunks have been tested and showed positive with rabies since January 1st. Now before you panic, all those cases have been from the counties on the west side of the panhandle. The closest positive skunk to Hansford County was Carson County. Also in the report, it was stated that the skunk population has increased. I would concur with that statement because only three skunks were captured in Spearman during 2010. Again, prevention is the key. Vaccinate your dogs and cats and do not let them stray. If you see or think you have a skunk around, let us know so ACO Mahaffee can set out a trap.

Third item is a substance that has been introduced to our city called Salvia, or you may have heard the street name as K2. This is a leafy green substance that people are smoking instead of marijuana because it is legal. Salvia creates a high and, possibly, hallucinations. Salvia is sold legally from out of state (internet sales) or from smoke shops, tattoo shops and the like. It is in Spearman, and we have researched it to know what it look like, it's effects, and where it comes from. Spearman ISD is aware of it as well. Parents, if you find a green leafy substance, and it doesn't smell like marijuana (it may smell fruity as fruit flavoring is sometimes added) and possibly labeled as incense, please call us. Some cities have passed city ordinances outlawing the possession of Salvia. Spearman has not enacted a city ordinance outlawing Salvia, due to the Texas Legislature considering a bill making the possession of Salvia a Class A Misdemeanor. The bill is expected to pass.

Fourth item is registered sex offenders. There have been issues in the recent past over a person being a sex offender. Do not rely on or expect word of mouth to be accurate, and do not rely on or expect internet sites to have accurate information EXCEPT for The Texas Department of Public Safety website. The TxDPS has many duties, one of which is to maintain the roster of registered sex offenders in this state. Any citizen can find out anything they need to know about registered sex offenders in our area through this website. The TxDPS Sex Offender website address is > txdps.state.tx.us<. You can search by name, zipcode, or county. You can call your local law enforcement agency as well.

Corporal Kay has set up a Facebook site for the Spearman PD. Please check it out, she will be adding more information weekly, and my monthly articles will be posted as well.

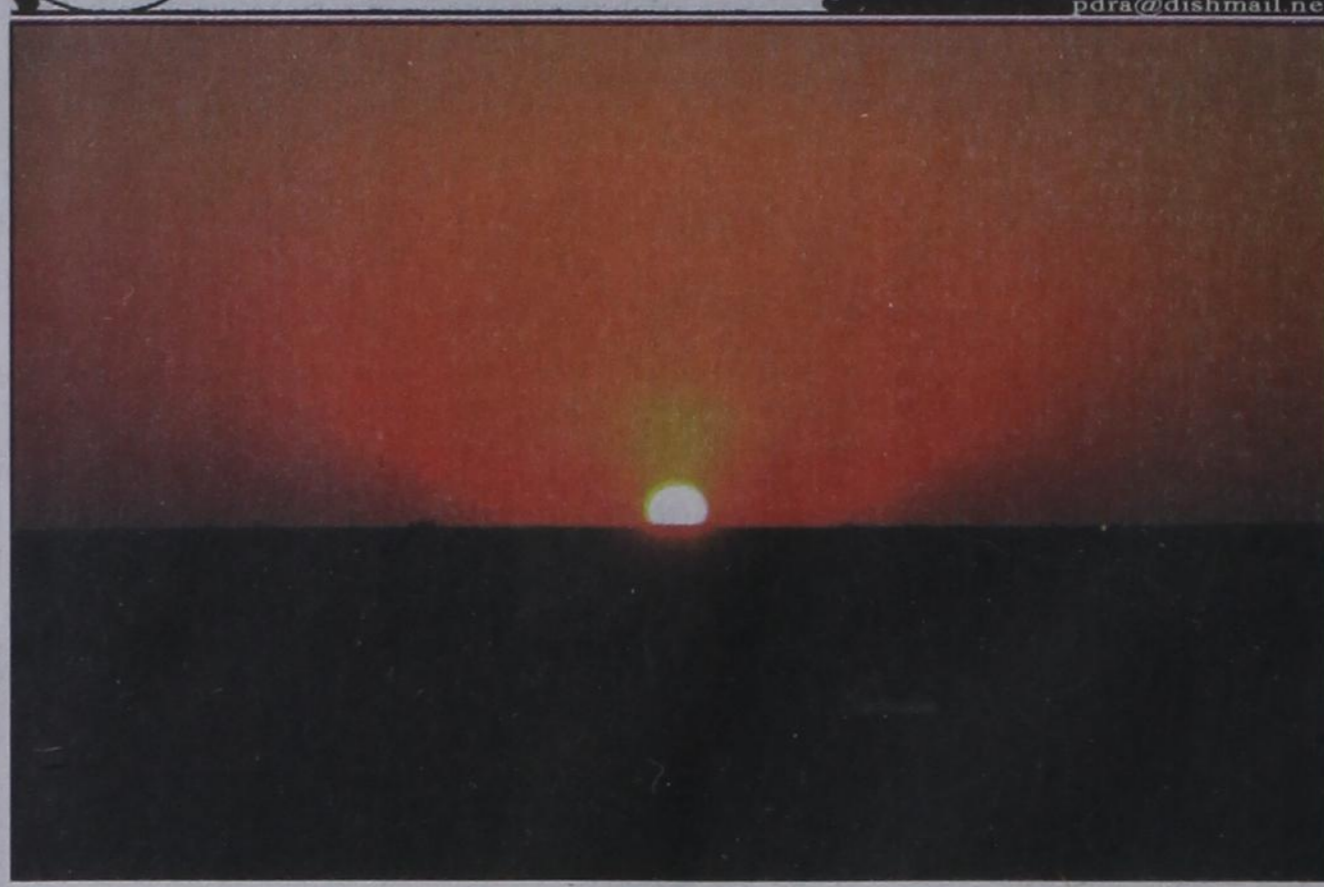
Please feel free to stop and visit with the Officers, come into the office and visit. The best crime prevention is observation, being proactive and a close relationship with your local law enforcement.

by Jim Derington

Out at the Lake



Jim Derington
Palo Duro River Authority
P.O. Box 99
Spearman, TX 79081
806-882-4401
pdra@dishmail.net



Sunset at Lake Palo Duro

March 14, 2011 - Lake Palo Duro level - 44.20 feet

Those who missed last week's article can blame me for it. I completely forgot it. The week of March 1-4, I attended the annual Texas Water Conservation Association meeting, in Austin. Moore County Director, Dr. Arthur Davidson and wife Lena, also attended. This organization includes many different water interests in Texas and beyond. The current legislative session and it's challenges, were discussed, along with topics pertaining to varied water interests. Sen. Kel Seliger, and several agency heads spoke to us. Rep. Four Price attended a breakfast. Tuesday March 8, we had our

monthly Board meeting. March always brings a mix of weather. One day is spring, and the next day may be winter. Activity here at the lake is showing signs of life again. A few campers are trying it, along with the fishermen and occasional picnic. I have not seen or heard about fish being caught, yet.

Hansford County is now under a burn ban. The lake is certainly included. No campfires, or BBQ grills, can be burned here. Last year, we had a grass fire, started by a charcoal grill. Please comply with these rules. Hopefully, rain will change these dry conditions, soon.

The double crested cormorants have returned to the lake. These are the

black duck-like birds that nest in the dead trees in the lake. There are fewer trees each year, for cormorants, blue herons, and bald eagles, to land in. I did see two immature and one mature bald eagle, this week. The cedar waxwings and cardinals have been near the house and office, lately. Coyotes can be heard at night and early in the morning.

Ramon and Alfredo are busy preparing the restrooms and parks, for what we hope will be a busy season, at the lake. They do a great job. The compliments from you always include clean restrooms and well groomed parks. Please help us keep our parks and lake clean.

SAVE THE DATE

POT O' GOLD

Dinner & Dance

To Benefit The O'Loughlin Center

SATURDAY 30 MARCH 26, 2011 30 7PM

Enjoy Tenderloin & All the Fixings
Dance to Insufficient Funds
Win your Pot O' Gold!!!

\$2500 Grand Prize,
Consolation Prizes and Much More!
\$60 per person

Call 806-659-3030 or any Board Member for tickets.

Tong's Chinese Restaurant

(806) 644-2838
22 Archer Street • Spearman

Closed for Spring Break

March 10-22

Will open for regular business on Wednesday, March 23rd

NEW SPRING INVENTORY

ARRIVING DAILY!

NEW Poo-Pourri Scents

NEW Slap Watches

Miss Me JEANS

Amy Lynn's

M-F, 10-5:30; Sat., 10-4
506 N. Main • 274-9200

Got Busted Pipes?

Call who you know and TRUST! Don't let your insurance company make the decision for you!

FREE ESTIMATES

Check Out SmartStand Challenge at franksfloorcovering.com

MOHAWK COLORCENTER flooring made simple

SmartStrand with DuPont Sorona renewably sourced polymer

FRANK'S FLOOR COVERING

806 N. Main St. • 274-3929 • www.franksfloorcovering.com

FREE CARPET INSTALLATION