



HANSFORD COUNTY THE REPORTER-STATESMAN

THURSDAY,
MARCH 25, 2010

CELEBRATING 103 YEARS OF SERVICE TO HANSFORD COUNTY
HANSFORD COUNTY'S ONLY NEWSPAPER

75¢

WWW.SPEARMANREPORTER.COM

VOLUME 103 • ISSUE 11

reporter@spearmanreporter.com



ATTENTION SHS EX-STUDENTS

The Spearman High School 2010 All-School Reunion will be held Friday, July 2nd beginning at 3 p.m. and Saturday, July 3rd beginning at 9 a.m.

The Ex-Students' Association needs your help. In order for us to make plans for the reunion. We need anyone who is planning to attend to RSVP as soon as possible with your updated info (name, mailing address, phone number, e-mail, etc.)

Your \$10 dues are also very important to the Association. The money from dues pays for a multitude of expenses: postage and supplies for a total of 6000 mailings; janitorial services, flowers, refreshments, entertainment and supplies for the school assembly; rental of the O'Loughlin Center and various other expenses. The Ex-Students' Association also gives a \$1,600 scholarship each year to a senior graduate, which also comes from the dues.

Please send in your dues (even if you will be unable to attend the reunion) to: SHS Ex-Students Association, PO Box 132, Spearman TX 79081. Please include your name and class year in any correspondence. For more information, you may call Claude or Jo Nell Sheets at (806) 659-2085.

If you have information regarding a specific class reunion, please contact the Hansford County Reporter-Statesman. We will list the specific information for each class reunion, as well as the information for the All-School Reunion in the newspaper as we receive it. Information may be mailed to: Reporter-Statesman, 213 Main Street, Spearman TX 79081; e-mailed to: reporter@spearmanreporter.com; faxed: 806-398-9080; or phoned in: 806-659-3434.

SHS Class of 1960 Reunion

The SHS Class of 1960 will hold our class reunion on July 1, 2010 at the Country Barn in Amarillo starting at 5 p.m. The next day we will travel to Spearman for the All School Reunion. Contact Tommy Russell at trussell7400@att.net or Mickey Davis Gribble at mickeydg@comcast.net to RSVP. You may also contact Zack Fisher at zbfmem@windstream.net or Penny Dollar Cupp at cupstr4@aol.com for additional information.

Weather Forecast

THURSDAY NIGHT - Partly cloudy. Lows in the lower 30s. South winds 10 to 15 mph.

FRIDAY - Partly cloudy. Breezy. Highs around 70. South winds 15 to 25 mph.

FRIDAY NIGHT - Mostly cloudy with a 20 percent chance of light rain. Breezy. Lows in the upper 30s. South winds 20 to 25 mph shifting to the southwest 15 to 25 mph after midnight.

SATURDAY - Mostly cloudy with a 40 percent chance of light rain. Breezy - cooler. Highs in the upper 40s.

SATURDAY NIGHT - Mostly cloudy. Slight chance of light rain in the evening - then a slight chance of light rain and light snow after midnight. Breezy. Lows in the mid 30s. Chance of precipitation 20 percent.

SUNDAY - Partly cloudy. Highs around 60.

SUNDAY NIGHT - Partly cloudy. Lows in the lower 30s.

MONDAY - Mostly sunny. Highs in the lower 70s.

MONDAY NIGHT - Clear. Lows in the upper 30s.

TUESDAY - Sunny. Highs in the mid 70s.

TUESDAY NIGHT - Clear. Lows in the lower 40s.

WEDNESDAY - Sunny. Highs in the mid 70s.

Read more: <http://www.city-data.com/forecast/w-Spearman-Texas.html#ixzz0j9XDYpVA>

Texas Crop & Weather

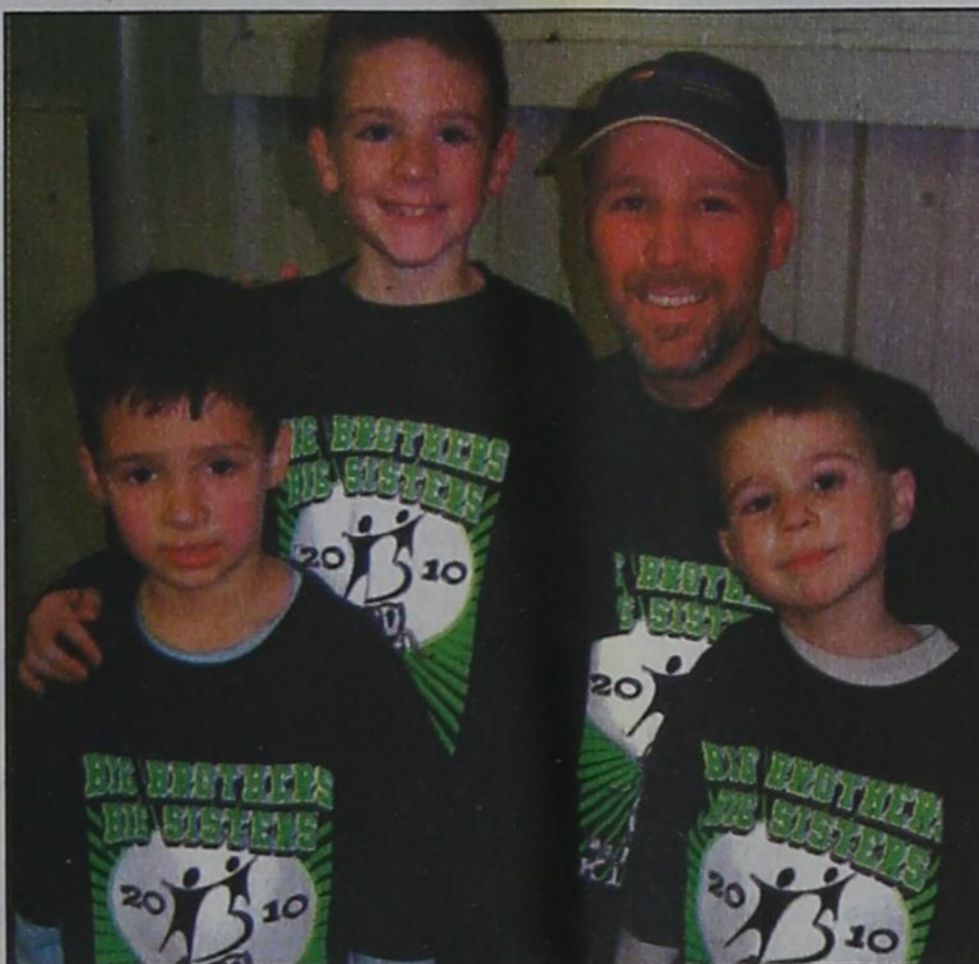
The following specific livestock, crop and weather conditions were reported by Panhandle Extension directors: Rain early in the reporting period was followed by snow and high winds. The rain helped pastures and wheat, but conditions remained too wet in most areas for fieldwork. Some producers pulled cattle off wheat pastures in hopes of having a good grain crop. Producers continued to provide supplemental feed to cattle but were cutting back. Overall, cattle were in good condition.

Hansford County Sheriff's Office Issues Counterfeit Check Warning

The Hansford County Sheriff's Office is issuing a warning to local businesses about Counterfeit Checks being passed in the Spearman and Perryton areas. The checks were written on fictitious accounts drawn on a local account. The names (Robert Shay and Donald Taft) on the account were also fictitious. One description of the person passing the counterfeit check was an older white male with medium length hair wearing a cap. If anyone has any questions they are encouraged to contact the Hansford County Sheriff's Office or their local law enforcement.

Gary Evans, Sheriff
Gary L. Garrett, Chief Deputy
Hansford County Sheriff's Office
10 NW Court, Spearman, Texas 79081
(806) 659-4140 Office, (806) 659-2025 Fax, (806) 659-4142 Voice Mail

Pfizer Inc. Makes Donation to Big Brothers Big Sisters



Big Brother Lee Bob Harper with his sons Max (right) and Leo (front right), and Little Brother Cole (front left). Having a Big Brother is proven to improve lives - theirs and yours!

Recently, Pfizer, Inc. donated \$1,000 to Big Brothers Big Sisters to help serve children in Perryton, Spearman and Gruver. The donation was a matching grant requested by Dr. Lee Bob Harper, a senior veterinarian with Pfizer Animal Health, and a Big Brother to Little Brother Cole since March, 2009.

Through Pfizer's volunteer program the employee's gift of time is matched with company dollars in keeping with Pfizer's commitment to corporate citizenship and community involvement.

Harper and his Little Brother meet together as part of the agency's School Plus program. Through this volunteer option, Harper and Cole see each other once a week at Gruver Elementary School and play checkers, talk, or read AR books. They are also able to visit by phone or see each other

outside of school occasionally to work on a Boys' Club project or play football in the park.

The mission of Big Brothers Big Sisters is to help children reach their potential through professionally supported, one-to-one relationships. These relationships help them develop positive life skills and social values.

"We are grateful to Pfizer for sharing our vision of transforming the lives of local children," local agency case manager, Kimberley Lopez said. "We are especially thankful for Lee Bob and his relationship with Cole. He is making a real difference in the life of this precious boy!"

For more information about the school or community programs offered locally by Big Brothers Big Sisters or how to donate, contact Lopez at 434-0016.

Atomic Bombing Survivors To Speak in Amarillo

A photo exhibit on the 1945 Hiroshima and Nagasaki bombings and a live video conference with survivors will be held March 31 at the Unitarian Universalist Fellowship, 4901 Cornell Street, in Amarillo. It will open with a reception for viewing the photo exhibit from 5:30-7 pm, followed at 7 p.m. by speakers' program and video conference with survivors of the bombings via live internet hookup to the Hiroshima Peace Memorial Museum. There will be a question and answer period in which audience members can pose questions to the survivors.

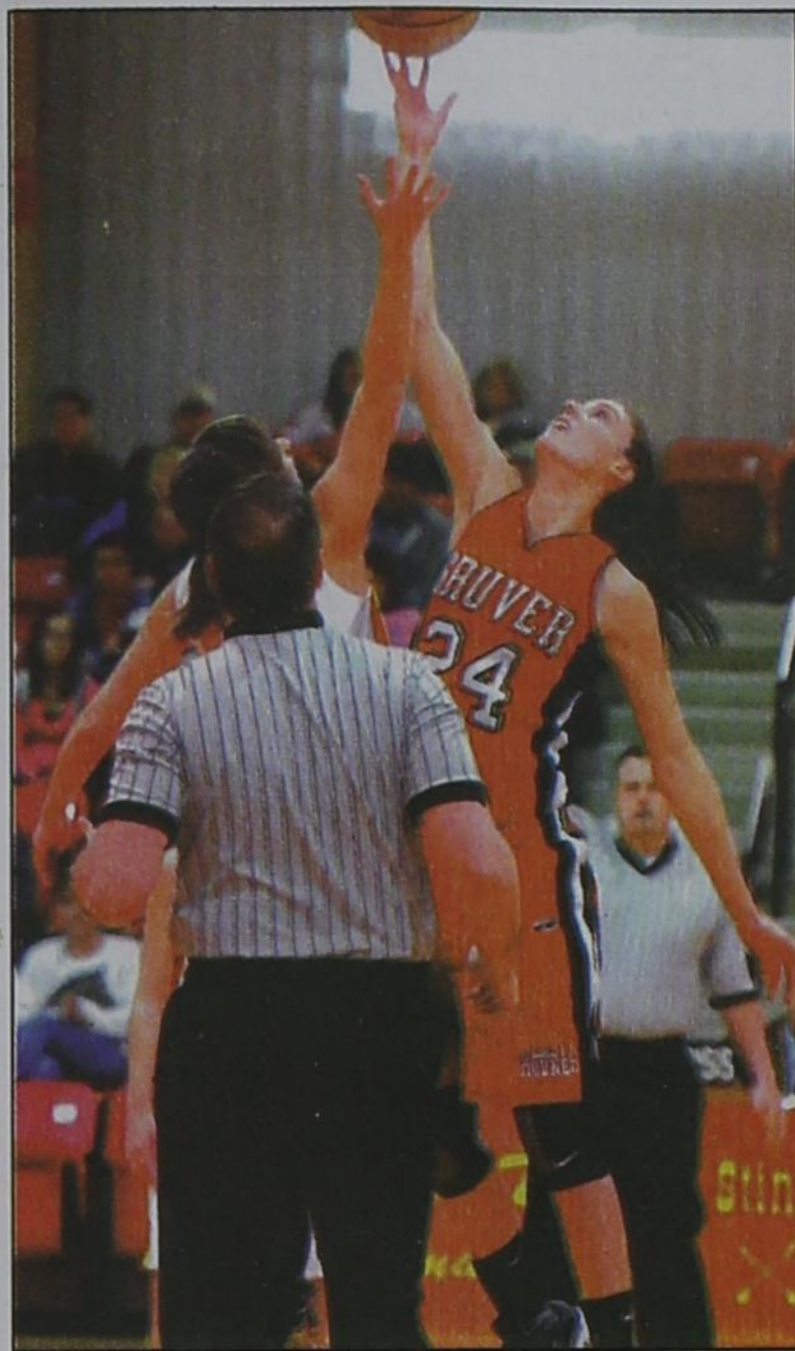
The event is co-sponsored by the Dallas Peace Center, together with Hope for Peace and Justice, the Dallas Peace House, the UN Association, Peacemakers Inc. and Maryknoll Missions. The exhibits and video conferences are organized and presented nationally by the Hiroshima Peace Memorial Museum.

Japan has been a strong advocate of abolition of nuclear weapons, and the Hiroshima and Nagasaki survivors speak with compelling, firsthand moral authority about why abolition is necessary. Event organizers say this is a particularly important year for their voices to be heard here. "A

number of national and international opportunities make 2010 a critical year for those of us calling for a world free of nuclear weapons," said Mavis Belisle, a member of the Dallas Peace Center's Nuclear Free World committee. "These include President Obama's revision of US nuclear weapons policies through the Nuclear Posture Review, a revision of START [the Strategic Arms Reduction Treaty], the UN's five-year review of the NPT [Nuclear Non-Proliferation Treaty], and possible ratification of the CTBT [Comprehensive Nuclear Test Ban Treaty]. The time to call for an end to nuclear weapons is now."

The March 31st event is the first in a series of programs on nuclear weapons issues the Dallas Peace Center is organizing. Subsequent programs will include a book discussion group, education and action tours to the Trinity test site, Los Alamos nuclear Lab, Y-12 at the Oak Ridge National Lab, the Pantex Plant and others.

The event is free and open to the public. The March 31st exhibit and video conference is made possible with the help of funds donated to Hiroshima Peace Culture Foundation specifically for A-bomb exhibitions in the US.



Yanke Named to TGCA Basketball All-Stars

The Texas Girls Coaches Association has announced the 2009-2010 Basketball All-Star Teams. These teams are comprised of senior athletes selected by the TGCA Basketball Committee from athletes of current member coaches in good standing of the Texas Girls Coaches Association.

Mattie Yanke of Gruver High School was named to the 1A-2A-3A-North team.

Tarryn Dixon Awarded Diploma in Le Cordon Bleu Culinary Arts

On June 1, 2008 Tarryn Dixon graduated from Frenship High School in Lubbock. One month later she moved to Austin to attend Le Cordon Bleu-Texas Culinary Academy where she learned everything from very basic knife skills to how to cook gourmet French meals such as Duck Confit.

The program consisted of classroom classes such as math, business management, and nutrition as well as lab classes where the students got hands on training from the remarkable Chef Instructors at TCA. The students went through a restaurant block where they learned everything from how to cook on the line to the perfect etiquette of waiting tables.

Last the students were required to obtain a three-month on the job externship to finish the program. Tarryn completed her externship at the new Dallas Cowboys Stadium where she continues to work and learn. She has catered special events featuring such people as Jerry Jones, Paul McCartney, and Usher.

On January 30, 2010 Tarryn was awarded an Associates Degree in Applied Science and a Diploma in Le Cordon Bleu Culinary Arts at the Riverbend Centre in Austin.

Tarryn is the granddaughter of Ron Gibson and Mr. and Mrs. Perry Dixon.



Maundy Thursday, Easter Services

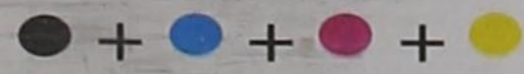
The First United Methodist Church of Spearman will hold Maundy Thursday services on Thursday, April 1, 2010 at 7 p.m.

Gruver United Methodist Church will hold also Maundy Thursday services on Thursday, April 1, 2010 at 7 p.m.

The word "maundy" means new, in reference to the new covenant Jesus gave his disciples, and thus to us, on the night of his arrest. Maundy Thursday services are a time of holy communion & remembrance of Jesus' last supper with His disciples.

The Gruver United Methodist Church will hold their Easter Cantata on Sunday, March 28th at 10:50 a.m. This is a church-wide Easter cantata performance under the direction of Mandy Davis.

GET YOURS TODAY!
E-SUBSCRIPTION
to the
**Hansford
County
Reporter-Statesman**
Delivered to your e-mail each
Thursday for only \$35/year.
Purchase online at
www.spearmanreporter.com
Call 806-859-3434 or e-mail
reporter@spearmanreporter.com
for details.
All e-subscriptions purchased
through March 31st will receive 15
months for the price of 12.



Wolf Creek Heritage Museum Notes

MUSEUM HAPPENINGS
A busy week for Georgia and me. We went to College Station for the annual meeting of Texas Association of Museums.

Georgia and I had a good trip to College Station and learned some new tips for the museum. It is always educational to attend these meetings to visit and network with our peers and to learn from the experts. The trip home was a little frightening due to the snow storm. We ran into the eye of the storm and driving was slow and scary with blowing snow, drifts, and ice. It was great to come out of it and see home territory.

The museum was busy with out of state visitors as well as locals. The open houses (I say houses because I mistakenly typed up two posters, one for the 14th and one for the 21st in error) had good attendance to celebrate the survivors of breast cancer and the educational exhibit BRA TALK. (The exhibit will be here until March 31 so if you haven't seen it, come soon.)

The deadline is nearly here! April 1st for the Family Stories. Document your story for future generations. The faces behind the census of 2010 are the stories we want to include in this second volume.

The stories are 400 or less words with only one photograph (fee for more) printed on glossy photo paper to ensure quality (black and white preferred). Please type and double-space your stories.

Also remember to renew your membership. We will

be mailing out membership information to non-members during April. If you want information, contact us at 806-852-2123. Memberships allow us to operate and develop the museum, our exhibits and programs.

HISTORICAL MUSINGS
March Historical Tidbits

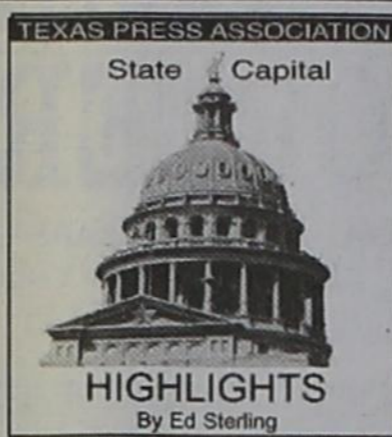
• The convention of 1836 adjourned in haste on March 17 because the Mexican army approached the Washington-on-the-Brazos. Our museum group toured the museum at the Washington-on-the-Brazos this week and relived these events. This site is a wonderful state park. A great site for a spring trip.

• On March 15, the court martial of Capt. Charles Edward Travis convened at Fort Mason. Charles, son of beloved Alamo hero William Barrett Travis, was born in Alabama in 1829 and reared by his mother and stepfather in New Orleans after his father's death. He moved to Brenham in 1848 and became an attorney and Texas legislator. Travis received a commission as Captain in the Second United States Cavalry in 1855. At Jefferson Barracks, Missouri, a fellow officer charged Travis with slander, and he was also charged with cheating at cards and unauthorized absence from camp during a subsequent journey to Texas. At the court-martial at Fort Mason, Travis conducted much of his own defense and pleaded not guilty to "conduct unbecoming of an officer and a gentleman." He was pro-

nounced guilty and dismissed from service. After attempts to exonerate himself, he died of consumption in 1860.

• March 16, 1939, Carol O'Brien Sobieski, television and film writer, was born in Chicago, Illinois. When she was five, the family moved to the Fryling Pan Ranch in the Texas Panhandle near Amarillo. In 1964 she was hired as a scriptwriter for the television series "Mr. Novak." She also wrote scripts for the "The Mod Squad" and "Peyton Place." Her writing credits for television movies included the *The Neon Ceiling*, *Sunshine, Sunshine Christmas*, *Amelia Earhart*, and *Harry Truman: Plain Speaking*. In the 1980's Sobieski became known for her film screenplays, which included *Annie*, *Winter People*, *Honeysuckle Rose* and *Fried Green Tomatoes*. She and Fannie Flagg were nominated for an Academy Award for Best Adapted Screenplay in 1991. She won 2 Emmys - one for *Harry S. Truman: Plain Speaking* in 1977 and one for *Sarah, Plain and Tall* in 1991.

She married lawyer James Louis Sobieski in 1964, and they had three children. She died of liver disease in 1990 in Santa Monica, California on November 4, 1990 at age 51. These daily history reflections are published by The Texas State Historical Association and received by the museum as free subscriber to the Texas Day by Day email service.



STATE CAPITAL HIGHLIGHTS



by Ed Sterling

Governor orders increase to border security measures

AUSTIN — Governor Rick Perry on March 16 ordered the activation of what he called a "spillover violence contingency plan" to address recent fatal attacks on American citizens in Mexico.

The plan increases surveillance, intelligence sharing and ground, air and maritime patrols.

U.S. consular officials Lesley Enriquez and Arthur Redelfs, both of El Paso and stationed in Ciudad Juarez, were murdered in that city on March 13.

Perry had penned a letter to U.S. Homeland Security Secretary Janet Napolitano the day before the murders, asking for the federal government to use unmanned "predator drone" aircraft and 1,000 additional soldiers for missions on Texas-Mexico border.

Perry wrote that 65 percent of the border the U.S. shares with Mexico is in Texas, noting a disparity in federal resources allotted to Texas for border protection.

Napolitano responded that the federal government already maintains sufficient surveillance and interdiction capabilities along the U.S. - Mexico border as a whole.

Since January 2008, a reported 4,700 homicides have been committed across the border from El Paso in Ciudad Juarez, making it one of the most violent cities in the world, the governor's office stated.

Court sentences YFZ Ranch man

A Tom Green County jury in San Angelo on March 19 sentenced Merrill Leroy Jessop of the Yearning for Zion Ranch to 75 years in prison for sexually assaulting a child and of committing bigamy. Jessop also was ordered to pay a \$10,000 fine.

Jessop, 35, is one of several YFZ ranch residents indicted for sexual assault of a child, bigamy or other charges according to the Texas Attorney General's Office.

The ranch, four miles northeast of Eldorado in Schleicher County, is owned by the Fundamental Church of Jesus Christ of Latter Day Saints, a polygamist sect.

In April 2008, state, local and federal agents raided the ranch and removed 440 children. The state Department of Fam-

ily and Protective Services released the children from state care following an order by the Texas Supreme Court in late May 2008 and a state district court order issued a few days later.

Study charts Texas during recession

The Federal Reserve Bank of Dallas on March 16 published a detailed study of how Texas fared in 2009 while the national and world economies slumped.

"After outperforming the nation the previous four years, the state experienced steep declines in economic activity last year that nearly matched the U.S. freefall," according to the report.

"Texas lost 338,600 jobs in 2009, and the state's unemployment rate rose to its highest level in 22 years. The Dallas Fed's Texas Business-Cycle Index — a barometer of the state's economic health — plunged 4.6 percent from December 2008 to December 2009."

But, the report says the state economy is on a steadier course now, with activity growing in several sectors and improvement likely in 2010 and beyond.

Energy projects to receive grants

Comptroller Susan Combs on March 16 announced 32 renewable energy projects around the state have been selected to receive a first round of federal stimulus grants.

Some \$32 million in the first round of Distributed Renewable Energy Tech-

nology Program grants will go to cities, school districts, colleges, universities and other local and state government entities.

Combs said that in addition to generating electricity at those sites, the projects will reduce utility costs, cut emissions and save tax dollars.

Lady Bird's press secretary dies

Mary Elizabeth "Liz" Sutherland Carpenter, 89, of Austin, died March 20 in an Austin hospital.

Liz Carpenter was a Washington correspondent for the Austin American-Statesman from 1942 until 1960, when she joined the staff of then-Vice President Lyndon B. Johnson. She served as a speech writer and joined the staff of first lady, Lady Bird Johnson, as press secretary. After the Johnson presidency Carpenter remained close to the Johnson family for the rest of her life. She was an ardent feminist and a political humorist and author.

Texan who played pioneers dies

Actor Fess Parker, 85, died March 18 of natural causes at his home in southern California.

A Fort Worth native who grew up near San Angelo, Parker graduated from The University of Texas at Austin in 1950 and headed for Hollywood.

His best-known Texas-themed work included the title role in the 1955 Disney film "Davy Crockett, King of the Wild Frontier" and as Jim Coates in Disney's "Old Yeller" in 1957.

My Hometown

by Anne Bort Sikes

One of the greatest gifts of my life, I think was the fact that I grew up in Gruver, TX. Oh, I didn't always realize that when I was a teenager. You know the old story...not enough excitement...nothing to do...etc. etc. But looking back, what a wonderful blessing it was, and still is now, to be from that little town.

It's funny how my vision now, looking back, is so much clearer about how rich I was to grow up there. The whole town is like a big extended family, and actually many of the town is related to each other in one way or another. If someone passes away, pretty much the entire town shows up on the doorstep with food and an arm around you. Assemblies at school...again...the whole town shows up to see the school plays, and the graduations and spring choral and band concerts...not to mention the football and basketball games! You go to the grocery store and everyone you see stops you and greets you and ask how

you are, or vice versa.

Oh how I complained about it in my youth though. Nothing to do...everybody knows your business, etc. And here I am now, 53 years old looking back and cherishing it with all my heart. There are people there that mean the world to me...more than just about anybody, because like I said, we were all family. Now here I am after traveling across the states and even the world, and now find myself living in Atlanta, GA, which is one of the largest cities in the U.S. You know, Atlanta is nice as big cities go. For Ted, it's his home and I respect that. He's lived here in this area his whole life. But for me, I'm a fish out of water to be honest. Try as I might, I don't think I'll ever quite feel like I fit in here. It swallows me up. And that's not to 'dog' Atlanta or its people. It's just me. Now, there are people here that I love too though. But I will never be anything but that small town girl in my heart.

There are so many people

I wish I could thank...all the faces from my childhood and youth, teachers, neighbors, relatives and church family. Speaking of teachers, there is no better school anywhere than Gruver. You have teachers who genuinely care about their students. You do wrong and you get reprimanded. You do good and you're rewarded. You need a hug and you get one. And guess what? Nobody's running to a lawyer to file a lawsuit about it. I had many teachers throughout the years that I appreciate so very much for influencing my life in a huge way. I have to laugh, because even in some cases it's now their voices or disapproving glances in the back of my mind if I do something that I know is wrong. But it's also their arms around my shoulder that I feel, telling me they love me anyway. Priceless!

It's true that there isn't much to do in Gruver if you're just passing through, unless you have people there. But make no mistake about it...I surely am blessed and thankful to be able to call it my hometown.

The Hansford County Reporter-Statesman
Mailing Address - 213 Main Street • Spearman TX 79081
Physical Address - 310 Barkley Street • Spearman TX 79081
Phone - (806) 659-3434 • Fax - (806) 398-9080
www.spearmanreporter.com • reporter@spearmanreporter.com
Mon.-Thurs. 9 a.m.-12 p.m., Mon.-Wed. & 1-5 p.m.
Closed Thurs. afternoon and all day Fri., Sat. & Sun.

Gary Smith - Publisher Catherine Smith - Editor
Contributing Writers: Dorothy Hudson, Jim Derington, Merry Sparks, Cecil Biggers
Contributing Photographers: Charlie Johnson, Lisa Johnson, Tammy Batton, Bonnie Bergan

Subscription Rates
In Hansford County - \$30.00 • Out of County - \$40.00
E-Mail Subscription - \$35.00

The Hansford County Reporter-Statesman (USPS 529660) is published weekly in Spearman, TX. Periodical postage paid in Spearman, TX. **POSTMASTER:** Send address changes to: The Hansford County Reporter-Statesman, 213 Main Street, Spearman, TX 79081.

Publication Policy
The deadline to submit news and advertising to The Hansford County Reporter-Statesman is Monday at 5 p.m. Items submitted after the deadline will be published at a later date, as time and space permit. Publication of all items is at the discretion of the editor.

Advertising
Open Display rates are \$4.00 per column inch. Classified Ads are \$6 for the first 25 words and 10¢ per word for each additional word. (Additional charge for boxed classifieds.) There is a \$1 charge per week if billed.

Member of
Gruver Chamber of Commerce
Spearman Chamber of Commerce
Texas Press Association and Panhandle Press Association

THE 1970's

ACROSS

- Prefix for "four"
- Mature eggs released at ovulation
- Aquarium scum
- "Home run hero"
- "Elizabeth Taylor did it to Richard Burton in 1975"
- Pinocchio became "live boy"
- "NASA sent one of these to Venus and Mercury in the 1970s"
- Hawaiian necklace
- What someone who is biased does
- Walks heavily
- "Reason for oil shortage"
- "This men's adornment widened in the 1970s"
- Free of impurities
- Chips accompaniment
- Seed cover
- "Yes, ___" or "No, ___"
- 15th of March, May, July or October
- Bucolic poem
- "Bob Vila began using these on 'This Old House' in '79"
- This or swim
- 1950s Rock star Jerry Lee
- Little piggies
- Resembling a cone
- Sound of pain
- Volcano in Sicily
- Inflammation of the ear
- Word of mouth
- "___ it isn't so"
- "Cheap Trick lyric: 'I ___ you to ___ me'"
- "Fee ___ Fo Fum"
- "Type of accident at Three Mile Island"
- Artilleryman
- Poppy seed derivative
- Pooh's wise friend
- "___ Wojtyla, aka Pope John Paul II"
- Panna ___, dessert
- "Billy ___ Williams as Bingo Long"
- Rival of Carthage
- "Wounded ___, site of another infamous standoff"
- Poetic "even"
- ___ cypress, popular in home decor

DOWN

- Gregory Hines' shoe plate
- Some only hear what they want to hear
- "When not at full speed, Secretariat did this"
- "One of George Lucas' automatons"
- Deficiency of red blood cells
- Plural of #65 Across
- Victory sign
- Farewell in Paris
- A particular region
- "Producer of 'All in the Family' and 'Maude'"
- "Pre-Eagles, Joe Walsh was in the James ___"
- In addition
- Even though
- State of danger
- "___ Fields Cookies, launched in late '70s"
- Layered wood
- "Saturday Night Fever" music
- Dostoevsky's "The ___"
- 100 ___ equal 1 markka in Finland
- The same, legal citation
- Memorization by repetition
- "1977 mini-series hit"
- Helen in Russia
- English homework?
- Short play
- A person with a long nose?
- State of complete confusion
- Classic foreign film "___ Paradiso"
- One is black and one is red
- Join together
- Deteriorate
- One who is related on the mother's side
- Groove at ends of a bow and end of arrow
- Second word of a fairytale?
- Make a reference
- Plucked string instrument
- "This Campbell hit big with 'Rhinstone Cowboy'"
- "Layla" performer
- "Type of pet fad"
- Itty-bitty
- Put in horizontal position

SUDOKU
PRESENTED BY
VolunteerMatch.org
Where volunteering begins.

		3		1		2	8		
				5					
2	1					7		9	
	3	2		5					
	8	5		4		1	2		
				7		8	3		
5		7						6	2
					7				
	9	8		3		4			

© 2010, StatePoint Media, Inc. answer on classified page
Fill in the blank squares in the grid, making sure that every row, column and 3-by-3 box includes all digits 1 through 9.

These games are brought to you by the
Hansford County Reporter-Statesman

CROSSWORD

1	2	3	4	5	6	7	8	9	10	11	12	
13					14			15				
16					17			18				
19				20			21	22				
23				24								
25	26	27		28		29		30	31	32	33	34
35		36		37		38		39				
40				41		42		43				
44		45						47				
48				49		50		51		52		
				53		54		55		56		
57	58	59	60			61				62	63	
64				65	66			67				68
69				70				71				
72				73				74				

PRESENTED BY
VolunteerMatch.org
Where volunteering begins.

© 2010, StatePoint Media, Inc. answer on classified page

Happy Birthday!

March 25
Birthday - Scott Jarvis, Jason Ward, Nellie Albrecht, Oscar Rojas Jr., Kendra Kay Burke, Mike Dixon, Donna Brogdo, Jean Schaffer, Michael Covington, Joe Baca, Amy Bridges, Chad Howe, Mario Soto, LuAnn Hunter
Anniversary - M/M Josh Reed, Charles & Christina Bowers

March 26
Birthday - Keith Dillard, Jamie Smith, George Jackson, Tanda Taylor, James Brown, Judy Irlbeck, Greg Holladay, Ruth Baker, John Paul Molina, Danny Bass, Joann Reynolds, Kristi Ann Balderrama, Sabrina Cantu, Joanna Myers
Anniversary - Mr. and Mrs. Andy Riley, M/M Jimmy Morley

March 27
Birthday - Tommy Boone, Diana Stork, Carol Scroggs, Ylanda DeLuna, Bill Stevens, Wanda Wagner, Anthony Wilkerson, Clark Dunaway, Gary Urban, Debbie Herrington, Michael McCarney, J.D. Schick
Anniversary - Steve and Debbie Rogers, Mr. and Mrs. Louis Schnell, Tim & Jackie Nelson

March 28
Birthday - Ryan Renteria, Roma Tomlinson, Janet Cudd, Mandi Lair, Ray Hawkins, Jarrett Hendricks, Ross Jarvis, Bryce Callaway, Rick Riggins, Carlos Castillo, Janet Scarborough, Mickey Schoenhals, Mark Hodges, Verna Strawn, Colten King, Tyrell King
Anniversary - M/M Larry Clawson, M/M Howard Hefley, M/M Jerry Tipps, M/M Richard Carter

March 29
Birthday - Lacy Barkley, Dixie Karlin, Joshua Kirby, Jessica Stork, Josephine Salgado, Scott Beedy, Melissa Taylor, Tiki Farrar, Chad Guthrie, David West, Marg Cook, Janis Maupin, Josh Harris, Jeann Thompson, Scot Martin, Ruth Shields, Ramon Garcia Jr., Greyson Karlin

March 30
Birthday - Jesus Favela, Loni Lamb, Vi Hornsby, Mrs. Elmer Longley, Nikki Strawn, Grady Cline, Denae Baker, Jimmy Blau, Heather Cline, Krystal (Burkhammer) Puentes, Shane Atwood, Mike Schick, Marvin Sparks, Dorothy Longley
Anniversary - M/M Ruben De Santiago

March 31
Birthday - Reaetta Gammon, Crystal Gruver, Ken

Jones, Comfort Winders, Kay Patterson, Nellie Buchanan, Dionne Penicille, Santiago Tercero Jr., Johnny Vernon, Cheryl Linde, Jolinda Wilson, David Flowers, Cortney Valdez, Teresa Carter, Weston Castillo, Kenton Johnson

Anniversary - M/M Chuck Sparkman, M/M Daniel Miser, M/M Jim Bass, M/M Dan Carthel, M/M Allan Beasley

April 1
Birthday - Cynthia Henson, Matt Messer, Chris Stork, Wayne Ware, Bob Hohertz, Lorie Acevedo, Jack Duncan, Tanner Brown, Elizabeth Duncan, Ashlynn Miner

April 2
Birthday - Margaret Odom, Dorothy O'Connell, Norma Hermsillo, Kyle Keim, Steve Templeton, Pam Barber, Phillip Turner, Amy Schoenhals, Paulene Galvon, Eugene Sadler
Anniversary - Bob & Debra Dennis

April 3
Birthday - Bob Gillispie, Don Rimmel, Brenda Rudolph, Pam Buzzard, Teri Taylor, Bill Gaither, Doris Beck, Jeff Williamson, Eric Varnon, Ryan Noble, Jared Bass, Tracy Graham, Katie Baehler, Betty Davis

April 4
Birthday - Frank Pittman, Sandy TeBeest, Glenn Mackie, Billy Snider, Lola Salgado, Monte Morris, Randall Schnell, Mark Landon Brown, Carlos Lopez, Midge Mahaffy, Don Ladd, Ramona Reynolds, Violet Lee, Brandon Traylor, Ayana Rosales
Anniversary - Rick & Elanie Morris

April 5
Birthday - Becky Cassidy, Jimmy Finley, Carrie Pressley, Vana Stapleton, Carla Brown, Dickie Allen, Juanita Rodriguez, Deann Green, Deanne Ochoa, Paul Welch, Jimmie Davis, Irene Auld, Darla Jenkins, Leon Bagwell, Wendell Ralston, Kelcee Rex, Sara Jenkins, Vanna Reid
Anniversary - M/M Jack Weldon

April 6
Birthday - Margaret Ralston, Trey Roberts, Jerry Sparks, Eddie Rogers, Cindy Patterson, Bailey Lee Patterson, Redonna Moore, Cameron Kunsleman, Douglas Barnes, Tim Wooley, Ann Sheets, Oberto Balderama Jr.
Anniversary - Dale & Onie Moyer, Kenny & Brenda Red, M/M Skipper Beal, M/M Emit Schmidt

Words from Faith & Grace



by Cecil R. Biggers, Lutheran Lay Minister
 As we leave the Season of Lent and prepare to celebrate Easter, we consider the lessons of Passion/Palm Sunday as we study Psalm 118: 1-2 19-29, and Luke 19: 28-40 for the triumphal entry into Jerusalem and Isaiah 50:4-9, Psalm 31:9-1, Philippians 2:5-11, and Luke 23:1-49 for the Passion.

Jesus descends the Mount of Olives riding on a colt, he is met by a throng of the people who are praising God and saying "Blessed is the king who comes in the name of the Lord!". Some of the Pharisees ask Jesus to stop the demonstration; Jesus replies, "I tell you, if these were silent, the stones would cry out." Meanwhile entering Jerusalem from the West is Pontius Pilate mounted on a war horse, accompanied by a cohort of Roman soldiers, order shall be maintained during Passover. The ruler of heaven and the ruler of the land are about to meet.

The third 'servant song' of Isaiah shows the Servant (who some feel is a symbol of Israel, others the prophet as an embodiment of Israel). The Servant faces mistreatment by others who strike him, pull out his beard, and spit upon him. In all this the Servant is sustained by the Lord God. The Servant is sustained by the Word of God and he in turn sustains the weary with the Word. We learn that if God is for us, who can be against us? The Servant came to be viewed by the early church as a representation of the Passion of Christ.

Psalm 31 is a prayer in time of trouble. The Psalmist sings, "Save me in your steadfast love." In 31:5, the Psalmist sings, "Into your hands I commend my Spirit". The Psalmist is aging, ill, and surrounded by deadly enemies; his only hope is in the Lord. This Psalm has been read to reflect the Passion of Christ.

Paul tells the Philippians that though Christ Jesus was in the form of God, he emptied himself, taking the form of a slave; and, became obedient to God to death-even death on a cross. Paul in his introduction tells the Philippians that if there is any sharing (the word actually connotes a partnership) in the Spirit, they should be of the same mind as in Christ Jesus. We learn that as Christians we should be humble and without selfish ambition. We should be looking to the interest of others.

Luke gives a detailed account of the Passion of Christ. We can see this as a "battle of whose will shall be done." The Chief Priests and scribes wanted Jesus (The Son of the Father) crucified by the Romans for they did not have the authority to kill Him. The people wanted a revolutionary, Barrabas (the son of father, literal translation) released. Pilate wanted the crowds pacified and the Chief Priests and scribes placated. Pilate finds no fault in Jesus and ships him to Herod (the Jewish King of Judea) where He is abused and then returned to Pilate who has Jesus whipped until almost dead. Pilate then orders Jesus to be crucified. Dear Christian, read this story prayerfully and carefully. If you are not moved anew, read it again. "For God so loved the world that he gave his only Son..."

May the Holy Spirit enable you to "partner" with Him that others may be blessed.

LETTER TO THE EDITOR

Dear Editor,
 I would like to correspond with some of my old friends. But I need their e-mail addresses. I am looking to correspond with 1967 graduates of Gruver High School, and any other old friends. My e-mail address is paperboats_woodenships@yahoo.com.
 Thank you for your help.
 Robert 'Bob' Bort

THANK YOU!

We would like to take the time to thank each and every person that supported us throughout our 2009-2010 basketball season.

Thank you for attending and traveling to our games at home, away, and making trips to playoff games in Amarillo, Levelland, and Austin. We feel very blessed as a team to have such community support.

We would also like to thank all of those that made donations to the radio broadcasting of our games. We could not have been as successful without your support, prayers, and encouragement. We will always remember this season and treasure the ride to "The Dance" in Austin!

Our Sympathy

ROY GLENN BRIDWELL

FORGAN, OK - Roy Glenn Bridwell, 49, died Monday, March 22, 2010.

Services will be at 2 p.m. Thursday, March 25, 2010 in Beaver First Christian Church with Leah Jones and Jim Sutherland officiating. Burial will be in Forgan Cemetery by Clark Funeral Service of Beaver.

Mr. Bridwell was born August 2, 1960, in San Bernardino, CA, to Robert Ross and Velma Dorene Mossburg Bridwell. He married Joy Kingcade on March 13, 1993, in Perryton, Texas.

Survivors include his wife; two sons, Kyle and Blake Bridwell, both of Forgan; his mother of Beaver; two sisters, Betty Schollenbarger of Arizona and Roberta Bridwell of Spearman, TX; and one grandchild.

MONUMENTS

Boxwell Brothers Funeral Home

519 Evans • Spearman
659-3802

Dear friends,
 When you buy a monument from us we make sure it is exactly what you want at a price you can afford. If it is not right, we will make it right. And you will not have to search the countryside to find us. We are here when you have a need.
 Sincerely,
 Bob Boxwell

Tardive Dyskinesia Parkinsons Symptoms

Reglan® is used to treat gastrointestinal disorders like reflux, and some side effects of diabetes. Use of Reglan® for more than three months may be linked to Tardive Dyskinesia, a neurological disorder that causes repetitive and involuntary movements of the face, body, arms and legs, and for which there is no effective treatment. If you have taken this drug and suffered ill effects, contact us today for professional insight.

CAPPOLINO | DODD | KREBS
 1-800-460-0606
 www.DefectiveDrugsLaw.com
 NO FEE FOR FIRST VISIT | Cameron, TX

Need Electricity?

Limited Time Offer:
\$0 DEPOSIT* 1st Month as low as **\$89****

- Includes 1st 30 days electricity
- NO Credit / NO ID
- Hablamos Espanol

1-866-934-3446

PaylessPower

TOUGH Affordable Fun!

FamilyGoKarts.com

- Fantastic ATVs starting at \$569.95. Ships Free!
- Quality ATVs for all ages with fast Shipping
- Plus Gokarts, Trailers, RC Cars & more...
- Long lasting fun!

Visit us at www.FamilyGoKarts.com

Call Now... 800-950-2210

DIRECTV SAVE \$29/MO FOR A YEAR!

PLUS: **FREE** 1-4 Room System

FREE Standard Installation (4 lines)

FREE HD DVR Receiver Upgrade

FREE 3 MONTHS SHOWTIME & Starz

No start costs! Local installs!
 ASK HOW! CALL DIRECTSTARTV

Toll Free 800-214-7110

ARE YOUR ENERGY COSTS OUT OF CONTROL?

Join over 1 million people who have made the switch to **Just Energy!**

Get a Fixed Rate Plan from **just energy**

Plus! Green Energy Solutions

CALL NOW to Lock in your Rate

877-540-3806

PUCT Cert. No. 10952

Replenish the seed of faith through . . .

DAILY BIBLE READING, PRAYER & REGULAR CHURCH ATTENDANCE

<p>Spearman</p> <p>Apostolic Faith Church 822 S. Dressen • 659-2870 Sunday School: 10 a.m. Worship Service: 11 a.m. Sun. Eve. 6 p.m. Wed. Prayer Mtg: 7 p.m. Pastor - Roland Haney</p> <p>First Assembly of God 401 N. Bernice • 659-2295 Sunday School: 9:30 a.m. Worship: 10:40 a.m. Evening Worship: 6 p.m. Wed. Worship: 7 p.m. Wed. Youth: 7 Pastor - Jerry Pollard</p> <p>First Christian Church (Disciples of Christ) 29 S. Bernice • 659-2036 Sunday School: 9:45 a.m. Worship: 10:50 a.m. Minister -</p> <p>First Baptist Church 123 N. Bernice • 659-5557 Sunday School: 9:45 a.m. Worship: 11 a.m. Evening Worship: 7 p.m. Men's Bible Study: Wed. 7 a.m. Children's Choir - Wed. 6 p.m. Adult Choir - Wed. 7 p.m. Wed. Bible Study: 7 p.m. Pastor - Jim Medley</p> <p>Church of Christ 121 S. Haney • 659-3244 Sunday Bible Class: 9:45 a.m. Worship: 10:30 a.m. Evening Worship: 6 p.m. Bible Study Wed.: 7:30 p.m.</p>	<p>Sacred Heart Catholic Church 901 Roland • 659-2792 Sat. Night Mass: 5:30 p.m. Sun. Mass: 9 a.m. - English Sun. Mass: 11:30 - Spanish 1:30 p.m. - Gruver - Christo Rectorial Mass - Spanish Rev. Guillermo Morales</p> <p>First United Methodist 407 S. Haney • 659-5503 Sunday School: 9:45 a.m. Worship: 8:30 & 11 a.m. Jr. High Youth: 5 p.m. Sunday High School: 6 p.m. Sunday Kids Club: 3 p.m. Wed. Pastor - Neely Landrum</p> <p>Grace Presbyterian Church (Worships with Faith Lutheran Church) 1101 Bernice • 659-2033</p> <p>Faith Lutheran Church (ELCA) 1101 Bernice • 659-2252 Sunday School: 9:45 a.m. Worship: 11 a.m. (Worships with Grace Presbyterian Church) Pastor - Cecil Biggers, PLM</p> <p>Union Church 31 S. Endicott • 659-2644 Sunday School: 10:00 a.m. Worship: 11:00 a.m. Bible Study: 7 p.m. Wed. Youth Service: 6 p.m. Wed. Pastor - Don Baltazor</p> <p>Fellowship Baptist 1102 S. Archer • 659-2783 Sunday School: 10 a.m. Worship: 11 a.m. Sun. Evening Worship: 6 p.m. Sun. Evening Spanish Worship: 7 p.m. Youth/Adult Service: 7:30 Wed. Pastor - Philip Hudson</p>	<p>Primera Mision Bautista 502 E. 7th • 659-3991 Sunday School: 9:45 a.m. Worship: 11 a.m.; Evening: 6 p.m. Wed. Prayer Meeting: 7 p.m. Thurs. Visitation: 7 p.m. Pastor - Joe Garcia Jr.</p> <p>El Aposento Alto U.P.C.I. 1105 S. Roland Domingos: Escuela-Domical - 10 a.m. Cullio Evangelistico - 7 p.m. Jueves: Oracion - 8 p.m. Miér: Estudio Biblico - 7 p.m. Pastor - A.G. Martell (806) 659-2153</p> <p>Gruver</p> <p>First Baptist Church 402 E. Broadway • 733-2411 Sunday School: 9:45 a.m. Worship: 10:50 a.m. Disciple Training: 6 p.m. Sunday Prayer Meeting: 7:30 p.m. Wednesday Pastor - Scott Curry</p> <p>Church of Christ 209 King • 733-2760 Sunday School: 9:30 a.m. Worship: 10:20 a.m. Evening Worship: 6 p.m. Wed. Worship: 7:00 p.m. Minister - Gaylord Cook</p> <p>First Christian Church 510 King • 733-2960 Sunday School: 10:00 a.m. Sunday Worship: 11 a.m. Youth: 7:30 Sunday Adult Bible Study: 7:30 Sun. Wed. Bible Study: 8:00 p.m. Pastor - Gary Gumfory</p>
<p>Gruver United Methodist Broadway & Garrett 733-2651 Sunday School: 9:45 a.m. Worship: 8:30 & 10:50 a.m. Eve. Worship & UMY: 6 p.m. Pastor - George Pnce</p> <p>Spanish Cristo Redentor Church Sunday Mass: 1:30 p.m. Friday Evening Mass Summer - 8:00 p.m. Fall/Winter - 7:30 p.m.</p> <p style="text-align: center;">Oslo</p> <p>Oslo Lutheran Church (ELCA) 6 Miles West & 12 Miles North of Gruver 339-7646 Sunday School: 9:45 a.m. Worship: 11 a.m. Pastor - Arlen Lloyd</p> <p style="text-align: center;">Morse</p> <p>Morse Baptist Church 733-2757 Pastor - Mike Martin</p> <p style="text-align: center;">Waka</p> <p>Church of Christ 300 Rogers Ave. 202-7126 Sunday Worship: 6 p.m. Wednesday Bible Study: 6 p.m. Preacher - James Gordon</p>		

He has showed you, O man, what is good. And what does the LORD require of you? To act justly and to love mercy and to walk humbly with your God.
 Micah 6:8

This feature is made possible through the sponsorship of these civic minded businesses:

HOME PHONE SERVICE

1st Month FREE

Starting at **\$3.99/mo**

\$14/mo including appropriate taxes and fees

\$0 Deposit • NO Credit Check

NO Contracts • Everyone Approved!

Restrictions May Apply.

NEWTALK 866.934.3448

Deakin ELECTRIC

OILFIELD • RESIDENTIAL • COMMERCIAL
 321 S. MAIN • SPEARMAN
 1-800-999-1506 Chris
 Deakin (806) 659-5016 President

PRAIRIE MOTORS INC.

Hwy. 207 South • P.O. Box 430
 Spearman, TX 79081 • (806) 659-2541
www.prairiemotors.com

Bartlett's Lumber & Hardware

105 W. Broadway • Gruver, TX
 (806) 733-2404

MurMur's Cafe

100 Roland St
 Spearman, TX.
 659-3580

BERRY CLEANERS

Ann & Vernon Pipkin - Owners
 Phone 659-3122 • P.O. Box 1017
 207 Main St. • Spearman, TX

Hansford County Reporter-Statesman
 "Proudly Serving Hansford County Since 1907"
 (806) 659-3434
 310 Barkley • Spearman, TX

Morse Implement & Auto Supply

"Join us in church"

Tom Dortch 733-2668
 Box 89 • Morse, TX 79062

INTERSTATE BANK, ssb

www.interstatebank.net
 322 Main • P.O. Box 146
 Spearman, TX • 659-2559

HYI

FOR YOUR INFORMATION

Medical Fund for Bruce Duncan

A medical fund has been established for Bruce Duncan at First National Bank, Spearman. If you would like to make a donation you may make a deposit with any teller or mail a donation to First National Bank, Bruce Duncan Medical Fund, PO Box 337, Spearman TX 79081.

12th Annual "Pot O' Gold" Dinner, Dance & Calcutta

The 12th Annual "Pot O' Gold" Dinner, Dance and Calcutta will be held on Saturday, March 27th at 7 p.m. at The O'Loughlin Center, 502 S. Brandt in Spearman. Tickets are \$60 per person. A Tenderloin meal will be provided, with entertainment by "Insufficient Funds." A Grand Prize of \$2,500 will be awarded with consolation prizes and calcutta. Call 659-3030 for more information.

O'Loughlin Center Announces New Hours

Beginning March 1, 2010, The O'Loughlin Center will be open for the following hours: Monday-Thursday, 6:00 a.m.-8:00 p.m.; Friday, 6:00 a.m.-6:00 p.m.; and Saturday, 9:00 a.m.-12:00 p.m. (noon). For more information, contact Jada Breden, Manager, The O'Loughlin Center, 502 S. Brandt, PO Box 733, Spearman TX 79081, 806-659-3030.

Kenton Easter Pageant

The Kenton Easter Pageant will be held April 3rd & 4th 2010. Saturday Evenings performance will be at 6 p.m., and Sunday Morning will be held at 6 a.m. (All times are mountain daylight time) Meals will be served at Camp Billy Joe after each performance. Cost is by donation. For more information, call Lea Lavielle at 620-360-0431.

SHS Class of 1960 Reunion

The SHS Class of 1960 will hold our class reunion on July 1, 2010 at the Country Barn in Amarillo starting at 5 p.m. The next day we will travel to Spearman for the All School Reunion. Contact Tommy Russell at tsrussell7400@att.net or Mickey Davis Gribble at mickeydg@comcast.net to RSVP. You may also contact Zack Fisher at zbfmem@windstream.net or Penny Dollar Cupp at cupstr4@aol.com for additional information.

Panhellenic Mother/Daughter Recruitment Meeting

Amarillo Panhellenic will host a Mother/Daughter Recruitment Information Meeting/Tea on Sunday, April 11, 2010 at 2 p.m. at Westminster Presbyterian Church, 2525 Wimberly Road, Amarillo TX. (Please use the Wimberly Road entrance to Ever-hart Hall.) All Amarillo area high school senior women, who are interested in going through Recruitment for membership in college sororities, should attend this meeting to receive information on Recruitment packets and deadlines. A short discussion will be part of the meeting. For information, please call or email Claudia Shelton at 806-352-58853 or bravocrew@gmail.com.

Fellowship, Bruch and Bible Study

A Fellowship, Bruch and Bible Study with Carol Fruge from Lubbock will be held on Saturday, March 27th from 10:30 a.m.-12:30 p.m. at Faith Bible Church, 205 N. Cuyler in Pampa. To RSVP, please call Pat Kennedy at 806-669-3006 or e-mail patk@centramedia.net.

High Plains Public Radio Spring Membership Drive

High Plains Public Radio (HPPR) is holding their Spring Membership Drive through Tuesday, March 30th. This is your chance to show your support for High Plains Public Radio. We need to raise \$75,000 this Spring to keep your public radio station strong! If you're ready to make a pledge, call 800-670-7444, go to www.hppr.org, or e-mailing jbreeden@hppr.org. The amount of your contribution is up to you. You might think of your annual contribution in terms of an amount per month that you believe public radio service is worth to you and your community. Thanks to listener support, High Plains Public Radio has been in touch with the world and at home on the High Plains for nearly 30 years!

SHS All School Reunion July 2 & 3, 2010

The Spearman High School All-School Reunion will be held July 2nd & 3rd, 2010. If you have information regarding a specific class reunion, please contact the Hansford County Reporter-Statesman. We will list the specific information for each class reunion, as well as the information for the All-School Reunion in the newspaper as we receive it. Information may be mailed to: Reporter-Statesman, 213 Main Street, Spearman TX 79081; e-mailed to: reporter@spearmanreporter.com; faxed: 806-398-9080; or phoned in: 806-659-3434.

SPWA Seeks Volunteers

The Southwest Pioneer Windmill Association is seeking the next generation of volunteers to continue the work of restoring and maintaining the windmills of the SPWA. If you have an interest in windmills and their upkeep, and/or maintenance of the park, you are needed. For information, call Dwayne Mitchell, 270-0291 or Don Reed 330-0745.

Fire Department Donations

Persons wishing to make donations to the Fire Departments in Hansford County may do so at the following addresses: Spearman Fire Dept., Box 37, Spearman TX 79081; Gruver Fire Dept., Box 947, Gruver TX 79040 or Morse Fire Dept., Box 28, Morse TX 79062

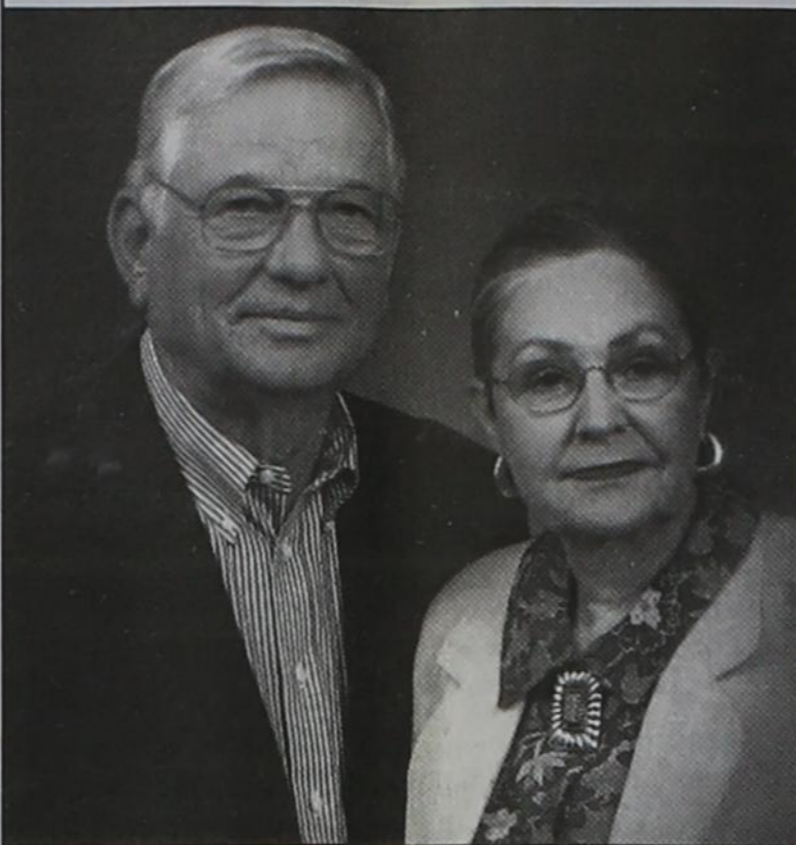
Youth Writing Contest

Panhandle Professional Writers has announced its 2010 Youth Writing Contest. The competition is open to any student in grades three through twelve. Entries must be postmarked no later than April 1, 2010. Complete rules and entry forms may be found online at www.panhandleprowriters.org. There are three age groups: grades three through five, six through eight, and nine through twelve. Students may enter as many times as they like in these three different categories: short story, poetry, and memoir. All entries will be judged by published authors. First, second, and third place winners in each category will be announced in July. Anyone wanting additional information can e-mail Vicki Schoen at PPWYouthcontest@gmail.com. Panhandle Professional Writers is open to writers at all levels and of all genres.

Gruver Elementary Register Tapes for Education

Gruver Elementary is participating in the Lowe's Supermarket Register for Tapes for Education. Gruver Elementary is also collecting the Pink Box Tops for Education and the UPC bar code (yellow) labels for Education from Campbell and Swanson products. You can deposit your register tapes, pink Box Tops, and Yellow UPC Bar Codes in the Elementary School Lobby, Gruver City Library, City Hall, Night & Day Beauty Salon, or Hitchin' Nails. Jo Clawson will also collect them at 711 Womble. Please help us earn free education equipment by collecting these items. Collection ends March 31, 2010.

Mr. and Mrs. Sloan Celebrate 60th Wedding Anniversary



Frankie and Troy Sloan celebrated their 60th wedding anniversary March 17, 2010.

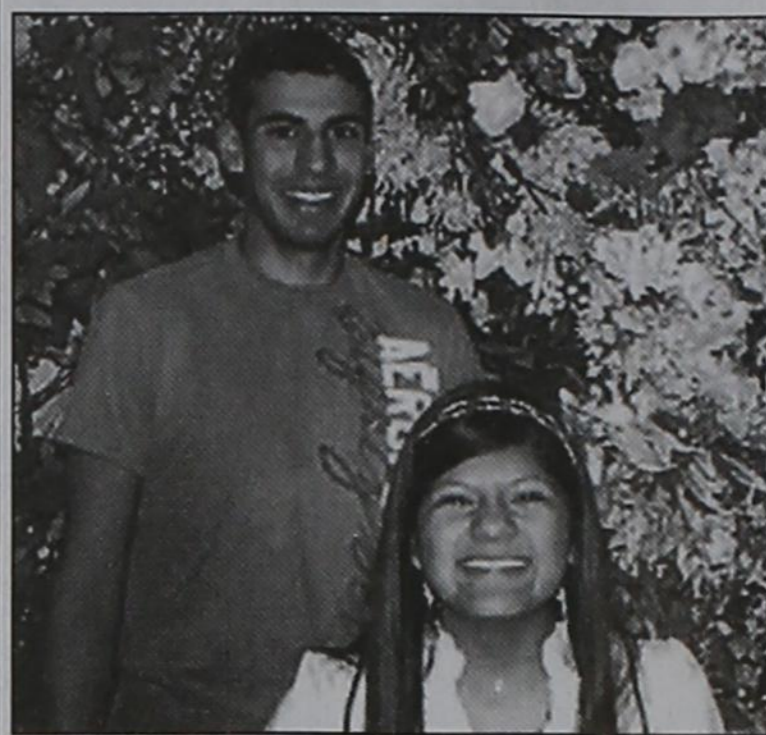
Sloan married the former Frankie White on March 17, 1950. They have lived in Breckenridge, Texas for 21 years and previously resided in Spearman, Texas.

Sloan farmed and worked in tax appraisal in Spearman. When they moved to Breckenridge, he served as the Stephens County Chief Appraiser. Mrs. Sloan is a homemaker.

Children of the couple are Sue Jenkins and husband Seth, and Pat Sloan and wife Diane.

They have 7 grandchildren and spouses; and 11 great-grandchildren.

SHS Students of the Month



The January Students of the Month at Spearman High School are seniors, Rosa Ortiz and Jesus Mendoza.

Rosa is the daughter of Lupe Ortiz and Antonio Ortiz. She has two older brothers Orlando and Tony Ortiz and one older sister, Rosa Ortiz. Rosa has been active in Spearman Lynxette Basketball and Tennis, as well as National Honor Society and Big Brothers/Big Sisters of the Texas Panhandle. While in high school, Rosa as been named Who's Who in Spearman High School, voted "Best Personality" in her senior class, placed 1st in girls tennis doubles, qualified for regional tennis, named Academic All-District for two years in tennis, placed 3rd in UIL Mathematics, qualified for regionals in UIL Mathematics, was named Top Student of the Year in AP US History, and was most recently a basketball homecoming queen candidate. In her spare time, Rosa loves taking pictures of her nephews, playing rock band with her family, and attending The Torch youth group. Her future plans include attending Texas Tech University and earning a degree in Communication Studies. Rosa states the best thing about Spearman is, "all the support the community provides for each event." The best thing about Spearman High School is, "everyone knows everyone." Rosa's most influential teacher during her school years is Ms. Beckee Baker.

Jesus is the son of Alfredo and Maria Mendoza. He has two younger brothers, Joel and Freddy Mendoza. Jesus is active in Spearman Lynx Varsity Football, Basketball, and Track, Future Farmers of America, and he attends First Baptist Church youth. He was named Who's Who in Spearman High School, was the Top Student of the Year in College Psychology, was named Academic All-District in football and track, and has qualified for regionals in both cross country and track. In his spare time, Jesus enjoys riding four wheelers, eating at the Headquarters, and hanging out with his friends. Jesus plans on attending West Texas A&M University and majoring in business. Jesus states the best thing about Spearman is, "I like how you know everybody and it doesn't take very long to get anywhere." Jesus says the best thing about Spearman High School is, "All the teachers care about your grades." Jesus' most influential teacher during his school years is Mrs. Sandra Blankenship.

Congratulations to Rosa and Jesus on being named the Spearman High School January Students of the Month.

OPSU Honor Roll

Oklahoma Panhandle State University recently announced it's Fall Honor Roll.

To qualify for the Dean's Honor Roll, a student must carry at least 12 credit hours of university courses, have no "Fs" or incomplete courses and have between a 3.50 and 3.99 GPA for the semester.

To qualify for the President's Honor Roll, a student must carry at least 12 credit hours of university courses, have no "Fs" or incomplete courses and a 4.0 GPA for the semester.

Local students who made the Dean's List were: Gruver - Suzanne Frazier; Spearman - Christy Lang, Jerri Shields, Jose Tarango, Sylvia Tarango.

You are invited to a
Wedding Shower
honoring
Ashlee Flowers and David Cox
on Sunday, March 28, 2010
from 2:00-3:30 p.m. at the home of
Linda Wilkerson
604 Barkley Spearman TX



WHEN DOES YOUR SUBSCRIPTION EXPIRE?

SCR1
02/10 EXPIRES
JOHN Q. PUBLIC
PO BOX 123
SPEARMAN TX 79081

Expiration dates are printed on the top of all mailing labels. Our readers can help keep the cost of subscriptions down by mailing in renewals in the appropriate month.

Thank you, Catherine Smith

THE HANSFORD COUNTY REPORTER-STATESMAN
213 Main Street • Spearman, TX 79081
Annual Subscription Rates
In Hansford County - \$30
Out of County - \$40
E-Subscription - \$35 (sent through e-mail)

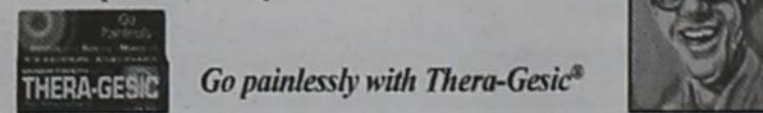
Visit... **FAMILY POOL FUN.COM**

- Our pools create Generations of Memories everyday, vacations never end!
- Aboveground & Inground pools at WHOLESALE PRICING
- SIMPLE DIY Pool Kit Assembly
- SAVE MONEY on All Pool Supplies & Accessories. Ships Fast

Call Today! 800-250-5502

Local Man Gallops 1.2 Miles Without Pain

BEXAR COUNTY - After using Thera-Gesic® pain creme on his sore legs, Tom W. was comfortably romping through town while laughing, according to witnesses. When asked about the laughing, he replied, "The price on this product is silly!"



Go painlessly with Thera-Gesic®

FREE SCOOTER MONTHLY!

Toll Free
1-877-POWER17
(1-877-769-3717)

"Sign up for Monthly Scooter Give-Away"

February Winner
Linda Love
Springtown, Tx.

Hotline for Priority Seating - 435-3945

MONEY'S

BBQ & STEAK HOUSE

We Are THPLC-2-B

14 SE 3rd Ave. Perryton, TX

Stan and Donna Zepp

New, Updated Menu Same Great Service

Jodie Hight displays the Lynx puzzle board that is at Gordon's Drug. Proceeds of the silent auction will go to the Lynxettes Cross Country Ring fund. This plaque was donated in memory of Waurayne Cope by Wayne Cope.

The silent auction will end on March 28th.

All-District Basketball Teams

District 1-2A Boys MVP - Michael Matthews, Bushland; **Offensive MVP** - Jacob Cameron, Panhandle; **Defensive MVP** - Brett Wilhelm, Bushland; **Newcomer of the Year** - Tristan Wilborn, Spearman.

All-District - Tate Batton, Spearman; Joseph Williams, Highland Park; Sawyer Cornelius, Bushland; Trey Hall, Panhandle; Brett Sickles, Bushland; Jared Cunningham, Sanford-Fritch; Travis Price, River Road; Jonny Diaz, Panhandle; Bryan Ponder, Highland Park; Blayne Schroeder, Spearman.

District 1-2A Girls MVP - Morgan Ashmore, Spearman; **Defensive MVP** - Baylee Baker, Panhandle; **Newcomer of the Year** - Emily Duckett, Panhandle.

All-District - Jaycee Crawford, Panhandle;

Rachel Urbanczyk, Panhandle; Kenzie Crabtree, Panhandle; Kori Smith, Panhandle; Leanna Espinosa, Spearman; Shelby Hanna, Spearman; Kyla Walker, Spearman; Kenzie Walden, Bushland; Allison Jones, Highland Park; Courtney Cunningham, Sanford-Fritch; JacyJudd, Sanford-Fritch; Leah Woods, River Road.

Honorable mention - Cayla Neusch, Panhandle; Kelsi Peacock, Panhandle; Maidie Reining, Panhandle; Chloe Gates, Bushland; Lyz Moak, Bushland; Jana Swann, Highland Park; Alyssa Paredes, Highland Park; Shelby Jameson, Sanford-Fritch; Summer Tubbs, Sanford-Fritch; Kyla Wood, River Road; Malory Martin, Spearman.

District 1-1A Division I Boys MVP - Rily Urban, Gruver; **Offensive MVP** - Alex Ramirez, West

Texas; **Defensive MVP** - Kyle Horsford, Stratford. **All-District** - Tyler Wright, Stratford; Blake Fitzgerald, Gruver; LaQuan McGowan, Boys Ranch; Bryce Cummings, Stratford; Tyler Wills, Gruver; Colton Wilson, Sunray; Luis Ortega, Stratford; Drew Mireles, Gruver; Logan Hoff, West Texas; Ty Dooley, Sunray.

District 1-1A Division I Girls MVP - Mattie Yanke, Gruver; **Offensive MVP** - Madison McLain, Gruver; **Defensive MVP** - Madison Hicks, Sunray. **All-District** - Katie Gibson, Gruver; Kaysha Bass, Gruver; Leigh Anne Winger, Gruver; Cynthia Fierro, Sunray; Kaley Green, Sunray; Ruby Ortega, Sunray; Jessica Ibarra, Stratford; Ragan Foss, Stratford; Ruby Rueda, Stratford; Sarah Smith, Boys Ranch.

Panhandle Invitational Track Meet

Panhandle Invitational Track Meet
The Spearman Jr. High track teams competed in the Panhandle Invitational Track Meet on Thursday, March 11th.

The 7th Grade Girls took 2nd place behind Bushland. The 8th Grade Girls came in 6th.

The 7th Grade Boys came in 2nd (120 points) behind Bushland (169 points), and the 8th Grade Boys came in 3rd (85 points) behind Bushland (152 points) and Panhandle (134 points).

The Spearman High School track teams competed in the Panhandle Invitational Track Meet on Friday and Saturday, March 12th and 13th.

Following are the results:

High School Boys Team standings: 1. Bushland 197; 2. Spearman 114; 3. Panhandle 93; 4. Clarendon, 78; 5. Hollis, Okla. 41; 6. Memphis, 28; 7. Stratford 24; 8. Canadian 20; 9. White Deer 14.

Discus: 1. Berry, Canadian, 148-5/2; 2. Lortellme, Stratford, 139-8; 3. Sickles, Bushland, 128-5/2; 4. Stanford, Panhandle, 113-5/2; 5. Brown, Clarendon, 112-10/2; 6. Pack, Spearman, 109-9.

High jump: 1. Sutterfield, Spearman, 6-4; 2. Martin, Bushland, 6-0; 3. Price, Panhandle, 5-8; 4. Henderson, Memphis, 5-6.

Pole vault: 1. Cator, Spearman, 13-0; 2. Graham, Panhandle, 11-0; 3. Thomas, Clarendon, 10-6; 4. Watson, Clarendon, 10-6; 5. Hassler, White Deer, 10-4.

400 relay: 1. Bushland, 45.27; 2. Spearman, 45.63; 3. Hollis, 46.07; 4. Clarendon, 46.69; 5. White Deer, 47.24; 6. Panhandle, 48.57.

800: 1. Mendoza, Spearman, 2:08.10; 2. Henderson, Clarendon, 2:09.39; 3. Lane, Bushland, 2:10.19; 4. Anderson, Stratford, 2:13.27; 5. Tunstall, Bushland, 2:13.45; 6. Cummings, Bushland, 2:15.54.

100: 1. Sternberg, Panhandle, 11.74; 2. Henderson, Memphis, 11.77; 3. Danforth, Bushland, 11.91; 4. Ostler, Bushland, 12.03; 5. Almanza, Spearman, 12.35; 6. Chester, White Deer, 12.52.

800 relay: 1. Bushland, 1:35.66; 2. Spearman, 1:37.02; 3. Clarendon, 1:37.83; 4. Hollis, 1:38.02; 5. White Deer, 1:39.18; 6. Panhandle, 1:43.05.

400: 1. Sternberg, Panhandle, 51.91; 2. Prescott, 53.98; 3. Lane, Bushland, 55.63; 4. Mendoza, Spearman, 56.98; 5. Powers, Panhandle, 57.15; 6. Sutterfield, Spearman, 58.79.

300 hurdles: 1. Kleinschmidt, Bushland, 42.29; 2. McGuire, Bushland, 42.60; 3. Meddock, Spearman, 43.04; 4. Price, Panhandle, 44.71; 5. Barber, Bushland, 44.73.

200: 1. Flores, Spearman, 23.61; 2. Martin, 24.62; 3. Tate, Bushland, 24.63; 4. Boyer, Spearman, 25.64; 5. Chester, White Deer, 25.68; 6. Bell, Hollis, 26.12.

1600: 1. Vogler, Bushland, 5:03.64; 2. Mendoza, Spearman, 5:14.85; 3. Anderson, Stratford, 5:15.38; 4. Henderson, Clarendon, 5:20.93; 5. Reed, Panhandle, 5:29.03; 6. Moore, Panhandle, 5:35.68.

1600 relay: 1. Hollis, 3:38.79; 2. Spearman, 3:39.18; 3. Panhandle, 3:40.06; 4. Bushland, 3:42.50; 5. Clarendon, 3:47.41.

High School Girls Team standings: 1. Spearman 133; 2. Panhandle 109; 3. Bushland 94.50; 4. Clarendon 58; 5. Happy 44; 6. Memphis 43; 7. Shamrock 38; 8. Hollis, Okla. 36; 9. Stratford 16; 10. Canadian 14; 11. White Deer 11.5; 12. Sanford-Fritch 10.

Long jump: 1. Ewing, Panhandle, 16-2/2; 2. Davis, Memphis, 16-0; 3. Garnett, Spearman, 15-9/4; 4. Baker, Panhandle, 14-10/4; 5. Rusk, Panhandle, 14-9/4; 6. Bryley, Clarendon, 14-9/4.

Triple jump: 1. Baker, Panhandle, 32-7; 2. Snider, Spearman, 31-6; 3. Davis, Memphis, 31-4/4; 5. Climer, Bushland, 30-3/4; 6. Urbanczyk, Panhandle, 30-3.

Pole vault: 1. Terrazas, Spearman, 7-6; 2. Garnett, Spearman, 7-0.

3200: 1. Garnett, Spearman, 13:32.86; 2. Meza, Spearman, 13:41.81; 3. Fowler, Bushland, 13:55.51; 4. Smith, Bushland, 14:22.93; 5. Berry, Bushland, 14:44.96; 6. Barnes, Panhandle, 14:47.35.

800: 1. Farrar, Spearman, 2:24.64; 2. Snider, Spearman, 2:32.95; 3. Jackson, Bushland, 2:40.62; 4. Baker, Panhandle, 2:41.17; 5. Shelton, Clarendon, 2:42.75; 6. McKean, Bushland, 2:48.99.

100 hurdles: 1. Garnett, Spearman, 16.37; 2. Bassett, Bushland, 16.50; 3. Climer, Bushland, 16.80; 4. Hall, Clarendon, 18.52; 5. Schmidt, 19.13; 6. Nix, Panhandle, 19.18.

800 relay: 1. Panhandle, 1:52.41; 2. Happy, 1:54.52; 3. Hollis, 1:55.20; 4. Bushland, 1:58.52; 5. Spearman, 1:59.21; 6. Stratford, 2:01.49.

400: 1. Snider, Spearman, 1:02.30; 2. Rusk, Panhandle, 1:05.68; 3. Brooks, Shamrock, 1:07.89; 4. Lozoya, Stratford, 1:09.26; 5. Boen, Panhandle, 1:09.58; 6. McKean, Bushland, 1:10.37.

300 hurdles: 1. Riddell, Bushland, 49.82; 2. Greenwalt, Shamrock, 49.83; 3. Bassett, Bushland, 50.05; 4. Schmidt, Happy, 53.09; 5. Garnett, Spearman, 53.38; 6. Shadle, Clarendon, 56.28.

1600: 1. Velazco, Shamrock, 5:24.30; 2. Farrar, Spearman, 5:48.04; 3. Garnett, Spearman, 5:54.06; 4. Fowler, Bushland, 5:54.88; 5. Shelton, Clarendon, 6:11.68; 6. Meza, Spearman, 6:17.02.

1600 relay: 1. Spearman, 4:16.12; 2. Bushland, 4:24.14; 3. Panhandle, 4:28.57; 4. Shamrock, 4:31.71; 5. Hollis, 4:34.31; 6. Memphis, 4:44.91.

Amarillo Globe-News Track Honor Roll

Boys Track Honor Roll Amarillo Globe-News Thursday, March 18th

300 HURDLES: Michael Stigler, Canyon 39.65, Steven Jurardo, Tascosa 40.28, Bret Scheve, Randall 40.42, Alex Casias, Tascosa 41.90, Cole Hooks, Tascosa 42.24, Cameron Kleinschmidt, Bushland 42.29, Caleb McGuire, Bushland 42.60, Jacob Ramirez, Canadian 42.90, Cameron Meddock, Spearman 43.03, Kylor Williams, Palo Duro 43.34

POLE VAULT: Chase Wolfe, Amarillo High 15-0, Westin Williams, Wellington 14-0, Quinton Travis, Tascosa 13-6, Colton Buchanan, Tascosa 13-0, Jordan Yankovich, River Road 13-0, Dakota Cator, Spearman 13-0, Colton Wilson, Sunray 12-6, Blake Rittenberry, Tascosa 12-6, Blake Boyer, Canyon 12-0, Alex Casias, Tascosa 12-0, Aaron Ricketts, Amarillo High 12-0

400 Meters: Madilyn Newsome, Amarillo High 58.38, Mattie Pugh, Amarillo High 1:00.96, Karissa Kinsey, Hereford 1:01.84, Tsola Omamogho, Amarillo High 1:02.15, Sarah Snider, Spearman 1:02.30, Arin Rice, Canyon 1:02.49, Tanasia Cornish, Childress 1:03.45, Jackie Dykterhuis, S-Earth 1:03.87, Rachel Dickson, Friona 1:03.97, Natalie Parker, Pampa 1:04.21, Kara Stephens, Pampa 1:04.34

800 Meters: Ana Lopez, Hereford 2:23.90, Tylo Farrar, Spearman 2:24.64, Melissa Velazco, Shamrock 2:24.79, Arin Rice, Canyon 2:25.39, Janelle Brown, Hereford 2:25.66, Megan Marquez, Hereford 2:25.86, Halie Herbert, Perryton 2:27.59, Janelle Brown, Hereford 2:29.55, Sarah Snider, Spearman 2:29.94, Lauren Murray, San Jacinto 2:30.52

1600 Meters: Alyssa Diaz, Hereford 5:12.59, Melissa Velazco, Shamrock 5:24.12, Karlee Kleiber, Randall 5:24.63, Ana Lopez, Hereford 5:31.10, Megan Marquez, Hereford 5:34.95, Tylo Farrar, Spearman 5:48.04, Alina Spescia, Perryton 5:48.81, Angela Vasquez, Sunray 5:51.43, Melina Morantes, Hereford 5:51.90, Celeste Enriquez, Hereford 5:53.19

100 Hurdles: Courtney Cunningham, Sanford-Fritch 15.84, Leslie White, Amarillo High 15.85, Aven Covin, Canadian 15.87, Abby Behrens, Canyon 16.24, Gately Garnett, Spearman 16.37, Shaina Basset, Bushland 16.50, Kyndall Whiteley, Sunray 16.55, Climer, Bushland 16.80, Regan Anthony, Friona 16.84, Megan Modersitzki, Amarillo 16.94

1600 Relay: Amarillo High 4:07.98, Canyon 4:11.13, Spearman 4:16.12, Hereford 4:16.76, Perryton 4:17.58, Sunray 4:19.14, San Jacinto 4:21.16, Friona 4:21.56, Randall 4:22.28, Tascosa 4:22.74, Bushland 4:24.14

High Jump: Micah Nolan, Amarillo High 5-8, Marlee Reynolds, Dalhart 5-6, Victoria Ewulo, Amarillo High 5-4, Emily Duckett, Panhandle 5-2, Jaymee Schafer, Canadian 5-0, Courtney Cunningham, Sanford-Fritch 5-0, Maddie Wieberg, Groom 5-0, Malory Martin, Spearman 4-10 1/2, Kelsey Taylor, Sunray 4-10 1/4, Chequita Nanhak, Palo Duro 4-10, Tylo Farrar, Spearman 4-10, Caitlin Gillmore, Canyon 4-10, Karissa Kinsey, Hereford 4-10, Macy Davis, Memphis 4-10, Ciara Brewer, Perryton 4-10, Kendra Wilhelm, Dumas 4-10

Pole Vault: Eden Williams, Amarillo High 10-6, Jessica Willis, Tascosa 10-0, Alex White, Tascosa 9-6, Caley Barnard, Melrose, N.M. 9-6, C.J. Frizzell, Canyon 9-0, Lauren Hill, Plainview 9-0, Joselyn Terrazas, Spearman 8-6 1/4, Kyndall Whiteley, Sunray 8-6, Alexis Allen, Dumas 8-6, Kelsey Draper, Melrose, N.M. 8-6

Girls Track Honor Roll Amarillo Globe-News Wednesday, March 24th

400 Meters: Madilyn Newsome, Amarillo High 58.38, Mattie Pugh, Amarillo High 1:00.96, Karissa Kinsey, Hereford 1:01.84, Tsola Omamogho, Amarillo High 1:02.15, Sarah Snider, Spearman 1:02.30, Arin Rice, Canyon 1:02.49, Tanasia Cornish, Childress 1:03.45, Jackie Dykterhuis, S-Earth 1:03.87, Rachel Dickson, Friona 1:03.97, Natalie Parker, Pampa 1:04.21, Kara Stephens, Pampa 1:04.34

800 Meters: Ana Lopez, Hereford 2:23.90, Tylo Farrar, Spearman 2:24.64, Melissa Velazco, Shamrock 2:24.79, Arin Rice, Canyon 2:25.39, Janelle Brown, Hereford 2:25.66, Megan Marquez, Hereford 2:25.86, Halie Herbert, Perryton 2:27.59, Janelle Brown, Hereford 2:29.55, Sarah Snider, Spearman 2:29.94, Lauren Murray, San Jacinto 2:30.52

1600 Meters: Alyssa Diaz, Hereford 5:12.59, Melissa Velazco, Shamrock 5:24.12, Karlee Kleiber, Randall 5:24.63, Ana Lopez, Hereford 5:31.10, Megan Marquez, Hereford 5:34.95, Tylo Farrar, Spearman 5:48.04, Alina Spescia, Perryton 5:48.81, Angela Vasquez, Sunray 5:51.43, Melina Morantes, Hereford 5:51.90, Celeste Enriquez, Hereford 5:53.19

100 Hurdles: Courtney Cunningham, Sanford-Fritch 15.84, Leslie White, Amarillo High 15.85, Aven Covin, Canadian 15.87, Abby Behrens, Canyon 16.24, Gately Garnett, Spearman 16.37, Shaina Basset, Bushland 16.50, Kyndall Whiteley, Sunray 16.55, Climer, Bushland 16.80, Regan Anthony, Friona 16.84, Megan Modersitzki, Amarillo 16.94

1600 Relay: Amarillo High 4:07.98, Canyon 4:11.13, Spearman 4:16.12, Hereford 4:16.76, Perryton 4:17.58, Sunray 4:19.14, San Jacinto 4:21.16, Friona 4:21.56, Randall 4:22.28, Tascosa 4:22.74, Bushland 4:24.14

High Jump: Micah Nolan, Amarillo High 5-8, Marlee Reynolds, Dalhart 5-6, Victoria Ewulo, Amarillo High 5-4, Emily Duckett, Panhandle 5-2, Jaymee Schafer, Canadian 5-0, Courtney Cunningham, Sanford-Fritch 5-0, Maddie Wieberg, Groom 5-0, Malory Martin, Spearman 4-10 1/2, Kelsey Taylor, Sunray 4-10 1/4, Chequita Nanhak, Palo Duro 4-10, Tylo Farrar, Spearman 4-10, Caitlin Gillmore, Canyon 4-10, Karissa Kinsey, Hereford 4-10, Macy Davis, Memphis 4-10, Ciara Brewer, Perryton 4-10, Kendra Wilhelm, Dumas 4-10

Pole Vault: Eden Williams, Amarillo High 10-6, Jessica Willis, Tascosa 10-0, Alex White, Tascosa 9-6, Caley Barnard, Melrose, N.M. 9-6, C.J. Frizzell, Canyon 9-0, Lauren Hill, Plainview 9-0, Joselyn Terrazas, Spearman 8-6 1/4, Kyndall Whiteley, Sunray 8-6, Alexis Allen, Dumas 8-6, Kelsey Draper, Melrose, N.M. 8-6

100: 1. Sternberg, Panhandle, 11.74; 2. Henderson, Memphis, 11.77; 3. Danforth, Bushland, 11.91; 4. Ostler, Bushland, 12.03; 5. Almanza, Spearman, 12.35; 6. Chester, White Deer, 12.52.

800 relay: 1. Bushland, 1:35.66; 2. Spearman, 1:37.02; 3. Clarendon, 1:37.83; 4. Hollis, 1:38.02; 5. White Deer, 1:39.18; 6. Panhandle, 1:43.05.

400: 1. Sternberg, Panhandle, 51.91; 2. Prescott, 53.98; 3. Lane, Bushland, 55.63; 4. Mendoza, Spearman, 56.98; 5. Powers, Panhandle, 57.15; 6. Sutterfield, Spearman, 58.79.

300 hurdles: 1. Kleinschmidt, Bushland, 42.29; 2. McGuire, Bushland, 42.60; 3. Meddock, Spearman, 43.04; 4. Price, Panhandle, 44.71; 5. Barber, Bushland, 44.73.

200: 1. Flores, Spearman, 23.61; 2. Martin, 24.62; 3. Tate, Bushland, 24.63; 4. Boyer, Spearman, 25.64; 5. Chester, White Deer, 25.68; 6. Bell, Hollis, 26.12.

1600: 1. Vogler, Bushland, 5:03.64; 2. Mendoza, Spearman, 5:14.85; 3. Anderson, Stratford, 5:15.38; 4. Henderson, Clarendon, 5:20.93; 5. Reed, Panhandle, 5:29.03; 6. Moore, Panhandle, 5:35.68.

1600 relay: 1. Hollis, 3:38.79; 2. Spearman, 3:39.18; 3. Panhandle, 3:40.06; 4. Bushland, 3:42.50; 5. Clarendon, 3:47.41.

High School Girls Team standings: 1. Spearman 133; 2. Panhandle 109; 3. Bushland 94.50; 4. Clarendon 58; 5. Happy 44; 6. Memphis 43; 7. Shamrock 38; 8. Hollis, Okla. 36; 9. Stratford 16; 10. Canadian 14; 11. White Deer 11.5; 12. Sanford-Fritch 10.

Long jump: 1. Ewing, Panhandle, 16-2/2; 2. Davis, Memphis, 16-0; 3. Garnett, Spearman, 15-9/4; 4. Baker, Panhandle, 14-10/4; 5. Rusk, Panhandle, 14-9/4; 6. Bryley, Clarendon, 14-9/4.

Triple jump: 1. Baker, Panhandle, 32-7; 2. Snider, Spearman, 31-6; 3. Davis, Memphis, 31-4/4; 5. Climer, Bushland, 30-3/4; 6. Urbanczyk, Panhandle, 30-3.

Pole vault: 1. Terrazas, Spearman, 7-6; 2. Garnett, Spearman, 7-0.

3200: 1. Garnett, Spearman, 13:32.86; 2. Meza, Spearman, 13:41.81; 3. Fowler, Bushland, 13:55.51; 4. Smith, Bushland, 14:22.93; 5. Berry, Bushland, 14:44.96; 6. Barnes, Panhandle, 14:47.35.

800: 1. Farrar, Spearman, 2:24.64; 2. Snider, Spearman, 2:32.95; 3. Jackson, Bushland, 2:40.62; 4. Baker, Panhandle, 2:41.17; 5. Shelton, Clarendon, 2:42.75; 6. McKean, Bushland, 2:48.99.

100 hurdles: 1. Garnett, Spearman, 16.37; 2. Bassett, Bushland, 16.50; 3. Climer, Bushland, 16.80; 4. Hall, Clarendon, 18.52; 5. Schmidt, 19.13; 6. Nix, Panhandle, 19.18.

800 relay: 1. Panhandle, 1:52.41; 2. Happy, 1:54.52; 3. Hollis, 1:55.20; 4. Bushland, 1:58.52; 5. Spearman, 1:59.21; 6. Stratford, 2:01.49.

400: 1. Snider, Spearman, 1:02.30; 2. Rusk, Panhandle, 1:05.68; 3. Brooks, Shamrock, 1:07.89; 4. Lozoya, Stratford, 1:09.26; 5. Boen, Panhandle, 1:09.58; 6. McKean, Bushland, 1:10.37.

300 hurdles: 1. Riddell, Bushland, 49.82; 2. Greenwalt, Shamrock, 49.83; 3. Bassett, Bushland, 50.05; 4. Schmidt, Happy, 53.09; 5. Garnett, Spearman, 53.38; 6. Shadle, Clarendon, 56.28.

1600: 1. Velazco, Shamrock, 5:24.30; 2. Farrar, Spearman, 5:48.04; 3. Garnett, Spearman, 5:54.06; 4. Fowler, Bushland, 5:54.88; 5. Shelton, Clarendon, 6:11.68; 6. Meza, Spearman, 6:17.02.

1600 relay: 1. Spearman, 4:16.12; 2. Bushland, 4:24.14; 3. Panhandle, 4:28.57; 4. Shamrock, 4:31.71; 5. Hollis, 4:34.31; 6. Memphis, 4:44.91.

Why settle for less?
4.07% APY*
INSURED CD
Ask About IRA/401K Specials!

FIRST FIDELITY
Financial Group, LLC
Your Safe Money Solution®
1800 Washington, Suite 110 • Amarillo, TX
806-373-9480
1-800-371-9201
By appointment only

Hansford Hospice Bereavement Classes

Hansford Hospice Bereavement Classes will begin on April 6th in Spearman. These classes will be led by Rev. Ken Cole. Anyone interested in attending the Bereavement Classes should call 659-5811 or 659-5345 for more details.

Call 659-5811 or 659-5345 for more details.

Special care and intermediate care rooms are currently available at

COLDWATER MANOR

Dignity. Independence. Compassion. Quality care.

Coldwater Manor is a forty-two bed Medicaid-certified nursing facility offering both specialized and intermediate care.

1111 Beaver Road P.O. Box 1189
Stratford, TX 79084
Phone: 806.396.5568 Fax: 806.396.5930

Living Life to the Fullest

HANSFORD HOSPICE

Spring 2010
Hospice Volunteer Training

Hospice Volunteer Classes will begin in April. These classes are for anyone interested in becoming a Hospice volunteer, learning more about hospice care, and/or desiring personal growth.

The class schedule will be decided by those who attend. Classes are free.

For more information, or to enroll, please call the Hospice Office at 659-5811.

Gruver School News

Gruver to Compete at Academic UIL

GHS Band Wins Sweepstakes
The Gruver High School Band competed in the Concert and Sight Reading Contest on Tuesday, March 9, 2010. The Gruver Greyhound Band received three Division I ratings in both the Concert and Sight Reading Contests. The Greyhound Band also received three Division I ratings in Marching Contest held in the fall. As a result of these ratings, the Gruver Greyhound Band received the Sweepstakes Award. Congratulations on a great job!

Financial Aid Night Held at GHS
The last financial aid night with Panhandle Plains Loan Center was held on Monday, March 22nd. A \$200 scholarship was awarded to Joel Soto. All seniors who attended were eligible for the scholarship.

Opportunity Plan Scholarship Deadline
Just a reminder that the Opportunity Plan Scholarship Deadline is April 1. Please go to www.opportunityplan.org to download a scholarship application if you have not done so already.

Texas Tech University - Amarillo Spring Reception April 1st
You might want to check this out if you have a junior that is interested in Texas Tech! Texas Tech University is hosting a Spring Reception, in Amarillo, on Thursday, April 1st from 6:30 p.m. to 8:00 p.m. at the Hilton Garden Inn. The event is specifically for high school juniors. This is a great opportunity for your students to learn about the academic programs and opportunities at Texas Tech. Students and their parents will be able to meet admissions, academics and financial aid

representatives. To RSVP, please go to www.visit.ttu.edu/events/amarillo. For questions or cancellations, call Diane Bollom at 806.742.1490 extension 263.

Sky Camp 2010
Odyssey Healthcare provides a camp free of charge for children ages 7 to 17 who are grieving the death of a loved one. If you are interested in obtaining an application for your child please contact the counselor at 733-5111. Applications are due by May 30, 2010. Camp dates are June 18-20. Children are accepted on a first come, first served basis according to the space available. If you have more questions you may contact Allison Rankin, SKY Camp Coordinator at 806-372-7696.

Congratulations to Gruver Super Teen 2010
Congratulations to Drew Mireles for his accomplishment in being chosen as a Next Step Super Teen 2010. Twenty students were chosen to represent Texas out of thousands of entries. Way to go Drew! We are proud of you!!!!

GHS Band News
The Gruver High School Band will be having an enchilada dinner as a fundraiser in order to raise money for their Branson, MO trip in May. The dinner will be served on Sunday, April 11 from 11:30 a.m. to 3:30 p.m. in the school cafeteria. The meal will include enchiladas, beans, rice, salad, chips, hot sauce, and sopapillas. Donations will be accepted and carry outs

will be available. Band T-shirts are being ordered. T-shirts are black, they are \$10 each. If you would like to purchase a t-shirt to help support your Gruver High School Sweepstakes Band, please contact Rhonda Williams at 736-2109. Orders are due March 31.

Citizens of the Six Weeks
Gruver Junior High has announced the Citizens of the Six Weeks for the Fourth Six Weeks. Citizens of the Six Weeks are Joslyn Aguilar, Antolina Mendoza, Brett Wills, and Cassie McKay.

3rd & 4th Grade Musical Scheduled
Gruver 3rd & 4th grade is performing the musical "My Home is Montana" on Monday, March 29, 2010 at 7:00 p.m. in the school auditorium.



Palace Theatre
210 Main Street
Canadian TX 79014
806-323-5133
www.palacetheatre.com

MOVIE SHOW TIMES
Friday-Thursday - 7 p.m.
Sunday - 2 p.m.
Closed Sunday Night

FRESH POPCORN & DRINKS!
PARTY ROOM & ARCADE
MOVIE RENTALS

The Palace Theatre meets Lucasfilm THX specifications for site and sound quality.

See us for:
AUTO • HOME • CROP HAIL •
FARM & RANCH • MULTIPERIL •
LIVESTOCK
INSURANCE
BORT AGENCY, INC.
510 Main St. • Gruver, TX
(806) 733-2456

March School Calendars

Spearman ISD
25th - High School UIL Academic Meet, West Texas A&M University
26th - JH Track Meet, Stinnett
27th - Amarillo Tennis Tournament; JV Track Meet, Canadian
29th - Golf Tournament, Canadian (girls only)
30th - District One-Act Play Contest, Clarendon Junior College
30th-31st - JH Choir Contest, Amarillo
31st - RtI Leadership Team Meeting, Elementary Conference Room; Spearman Tennis Tournament; Canadian Golf Tournament (Boys only); District Education Improvement Committee Meeting, HS Library, 4 p.m.

27th - HS Track, Canadian
29th - 3rd & 4th Grade Musical, 7 p.m., GISD Auditorium
30th - One-Act Play District Contest, Canadian; Senior Banquet, Methodist Church, 7 p.m.
31st - Picture Day (Spring Sports, UIL, Senior Groups); Tennis Tournament, Spearman

Pringle-Morse CISD
25th - 5th Grade Solo/Ensemble Recital
26th - West Texas Track Meet, Stinnett

Gruver ISD
25th - HS Track, Stinnett
26th - HS Academic UIL Contest, Amarillo College; JH Track, Stinnett

Herban Renewal Bath and Body Care Products

Herban Renewal Bath and Body Care offers top-quality bath and body care products. The company's products, made in West Texas by mentally and physically challenged adults, are steeped in love, opportunity and possibility. The special friends at Disabilities Resources, Inc. in Abilene, TX where Herban Renewal is based have been happily employed by the company for over a decade.

Herban Renewal boasts four unique lines: Herban Renewal, the flagship line, offers a range of luxurious and sophisticated bath items for women, including sumptuous soaps, lotions, salts and dusts. Arcelia is the company's other ladies line that's Earth-friendly and has a younger, chic and trendy sensibility. Herban Renewal also has two youth lines: Livi.Lu.Lu - cost competitive skin nourishing products for adolescent "tween" girlie girls - and Sweet Cheeks pampering products for babies. Herban Renewal also offers other kids items like its incredibly popular "Twinkle Toes" body glitter and Shoo! Monster (anti-boogeyman) dusts. Other adult items include whimsical soaps for men like its "Fish'n" and Hunt'n" Lather.

The Angel Kitty Gift Set is one of the items in the Livi.Lu.Lu line. It contains: 1 oz shower gel, 1 oz lotion, lip balm, fun nail polish, colorful star bursts and a stuffed Angel Kitty. It sells for only \$24.95.

Products may be purchased online at <http://www.herbn-renewal.com/>. You may also call Toll-free: 877-691-5409 or send us an email to herbanrenewal@att.net.

(Advertisement)



Are You A Victim of Domestic Violence, Sexual Abuse or Physical, Emotional or Sexual Assault?

Call Toll Free Hotline
1-800-753-5308

We can see individuals from Hansford County anytime upon request. Call 435-5008 or 1-800-753-5308 to set up an appointment in Hansford County. We operate a safe place for victims and their children to stay in times of crisis.

Battering Intervention & Anger Management Available

Panhandle Crisis Center
Serving Hansford, Lipscomb & Ochiltree Counties
301 S. Ash • Perryton, TX
Memorials Accepted

MITCHELL THEATRES.COM
GUYMON, OK • LIBERAL, KS • NEWTON, KS

NORTHRIDGE 8
Guymon, Oklahoma
www.northridge8.com
580-338-3281

SOUTHGATE 6
Liberal, Kansas
www.southgate6.com
620-624-5573

CHISHOLM TRAIL 8
Newton, Kansas
www.chisholmtrail8.com
316-283-0555

SEQUOYAH 8
Garden City, Kansas
www.sequoyah8.com
620-275-7707

FRESH POPCORN EVERYDAY!
-PARTY ROOM & ARCADE-

Gordon's Gift Registry

Come check out our newly updated bridal and baby departments.

Call 659-2141 to schedule an appointment to register.

Happy Easter

Fill Your Easter Basket

at
Gordon's DRUG

314 Main • Spearman • 806-659-2141

Jewelry, Candy, Stuffed Animals, Yellow Box Sandals

Where gift-giving is effortless & FUN!

Gordon's Drug

314 Main • Spearman • 659-2141

REAL ESTATE
FOR RENT: 1BR furnished apartment and 2BR furnished apartment. Bills paid, free laundry services. Call 659-2247.
 TFN(1/14/10)
WINDMILL COURTYARD APARTMENTS: 2BR, 1B unfurnished apartments. Central heat and air, new appliances. Pets allowed with additional deposit. Utilities not included. \$500/month rent with \$500 deposit. Inquire about applications at Deakin Electric, 321 Main St., Spearman. TFN(7/16/09)
READY FOR MOVE-IN! 3 BR home, central H/A, hardwood floors, new paint & lighting, large bath w/2 sinks + tub/shower, lots of built-in storage, laundry rm, attached garage, huge fenced yard. 1017 Townsend St. **REDUCED TO \$59,500!** Call 659-5293 or 330-0384. TFN(3/4/10)

HELP WANTED
HELP WANTED: First United Methodist Church, Spearman is currently taking applications for a nursery worker. Need to be available for Sunday church services and various times throughout the week and for funerals. If interested, please come by the church to pick up an application. (407 S. Haney, Spearman, 806-659-5504)
 4(2/4/10)
HELP WANTED: Now seeking a temporary full/part time dependable salesperson to operate Spearman store. Duties: assisting customers, maintaining plants, and operating cash register. Starting pay: \$8.00/hour - 40 hour work week. No experience necessary. Hiring begins April 1st. Send resume to D&C Greenhouse, 36 Nelson Drive, Spearman TX 79081. 8(3/18/10)
HELP WANTED: The Hansford County Sheriff's Office has an opening for a jailer/dispatcher. Must have a high school diploma or GED. Salary is \$2,028.08 per month with excellent benefits. Apply in person at the Hansford County Sheriff's Office, 10 NW Court, Spearman TX. TFN(3/25/10)

SERVICES
CLICK PAINTING & HOME REPAIR Painting, Texturing, Drywall Repair, Fencing & General Carpentry. Serving Perryton, Spearman & Gruver. Don Click, 648-1480, or 202-1391 (cell). TFN(10/15/09)
HOOCHY POOCHY PARLOR Call us for all your pet's grooming and boarding needs. Call now for reservations! 806-273-2724. TFN(11/2/07)

FOR SALE
FOR SALE: 1997 Ford F100 Pickup. Refurbished with new motor. Good work truck. Call 806-659-2442 or 806-330-0691. TFN(3/25/10)

PUBLIC NOTICE
CUSTOMERS OF PANHANDLE TELECOMMUNICATION SYSTEMS, INC.
 Effective April 1, 2010, the amount of the Federal Universal Service Charge (FUSC) appearing on your bill each month will increase as a result of an increase in the Federal Communications Commission's (FCC) universal service fund contribution factor from 14.1 percent to 15.3 percent. The new FUSC amount is calculated by multiplying the FCC's universal service contribution factor against your interstate access service charges. The federal universal service fund program is designed to help keep local telephone service rates affordable for all customers, in all areas of the United States.
Panhandle Telecommunication Systems, Inc.
 Ron Strecker, CEO
 PO Box 1188
 2222 NW Hwy 64
 Guymon, OK 73942
 580-338-2556
 1-800-562-2556
 1(3/25/10)

CUSTOMERS OF PANHANDLE TELEPHONE COOPERATIVE, INC.
 Effective April 1, 2010, the amount of the Federal Universal Service Charge (FUSC) appearing on your bill each month will increase as a result of an increase in the Federal Communications Commission's (FCC) universal service fund contribution factor from 14.1 percent to 15.3 percent. The new FUSC amount is calculated by multiplying the

FCC's universal service contribution factor against your interstate access service charges. The federal universal service fund program is designed to help keep local telephone service rates affordable for all customers, in all areas of the United States.
Panhandle Telephone Cooperative, Inc.
 Ron Strecker, CEO
 PO Box 1188
 2222 NW Hwy 64
 Guymon, OK 73942
 580-338-2556
 1-800-562-2556
 1(3/25/10)

NOTICE TO MEMBERS OF NORTH PLAINS ELECTRIC COOPERATIVE
 The Nominating Committee, appointed by the Board of Directors of North Plains Electric Cooperative, Inc., met at the Cooperative's headquarters located in Perryton, Texas, on March 3, 2010. Three Directors shall be elected by and from the members at the 65th annual meeting of the Cooperative to be held on April 19, 2010, for a term of three years. The committee has prepared and posted at the Cooperative headquarters a list of nominations for Directors to be elected, listing separately the nominee(s) for each directorate district. Those nominated include:
 District 2 - Richard Schad
 District 3 - Lyndon Imke
 District 5 - Craig Young and Richard Brock
 The actions of this Committee in no way shall prevent additional nominations by petition as provided for in Section 4.06 of the Cooperative Bylaws. Any fifteen (15) or more members of the Cooperative, acting together, may make additional nominations in writing over their signatures, listing their nominee(s) in like manner, not less than fifteen (15) days prior to the annual meeting and the Secretary shall post such nominations at the same place where the list of nominations made by the committee is posted.
 2(3/25/10)

NOTICE OF RECEIPT OF APPLICATION AND INTENT TO OBTAIN WATER QUALITY PERMIT RENEWAL PERMIT NO. WQ00107581001
APPLICATION. City of Gruver, P.O. Box 947, Gruver, Texas 79040-0947, has applied to the Texas Commission on Environmental Quality (TCEQ) to renew Texas Pollutant Discharge Elimination System (TPDES) Permit No. WQ00107581001 (EPA I.D. No. TX0023604) to authorize the discharge of treated wastewater at a volume not to exceed a daily average flow of 200,000 gallons per day. The domestic wastewater treatment facility is located approximately 0.6 mile west of State Highway 15 and approximately 0.8 mile east of State Highway 136, southeast of the City of Gruver in Hansford County, Texas 79040. The discharge route is from the plant site to Farwell Draw, in the drainage area of Palo Duro Creek, a non-designated segment of a river basin flowing out of the state and into Oklahoma. TCEQ received this application on March 4, 2010.

hchd
 Hansford County Hospital District
Openings at Hansford Manor
LVN: Graduate of an approved LPN/LVN program. Must be able to make independent decisions when circumstances warrant. Must possess the ability to deal tactfully with residents, family and public.
CNA: CNA certification required. Must be able to provide assigned residents with routine daily nursing and services in accordance with the resident's assessment and care plan, and as may be directed by your supervisor.
 Great working environment and staff, quality facility providing opportunities for professional growth. Great benefit package. Apply at 707 S. Roland, Spearman, TX or contact Jackie Nelson at 806-659-5841. Download application at www.hchd.net
 EEOE
 (3-18-10)

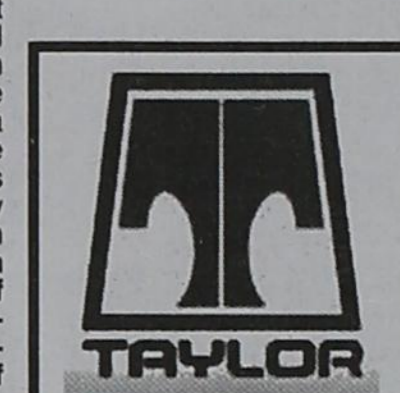
The permit application is available for viewing and copying at Gruver City Hall, 108 East Broadway Street, Gruver, Texas.
ADDITIONAL NOTICE. TCEQ's Executive Director has determined the application is administratively complete and will conduct a technical review of the application. After technical review of the application is complete, the Executive Director may prepare a draft permit and will issue a preliminary decision on the application. **Notice of the Application and Preliminary Decision will be published and mailed to those who are on the county-wide mailing list and to those who are on the mailing list for this application. That notice will contain the deadline for submitting public comments.**
PUBLIC COMMENT / PUBLIC MEETING. You may submit public comments or request a public meeting on this application. The purpose of a public meeting is to provide the opportunity to submit comments or to ask questions about the application. TCEQ will hold a public meeting if the Executive Director determines that there is a significant degree of public interest in the application or if requested by a local legislator. A public meeting is not a contested case hearing.
OPPORTUNITY FOR A CONTESTED CASE HEARING. After the deadline for submitting public comments, the Executive Director will consider all timely comments and prepare a response to all relevant and material, or significant public comments. **Unless the application is directly referred for a contested case hearing, the response to comments, and the Executive Director's decision on the application, will be mailed to everyone who submitted public comments and to those persons who are on the mailing list for this application.** If comments are received, the mailing will also provide instructions for requesting reconsideration of the Executive Director's decision and for requesting a contested

case hearing. A contested case hearing is a legal proceeding similar to a civil trial in state district court.
TO REQUEST A CONTESTED CASE HEARING, YOU MUST INCLUDE THE FOLLOWING ITEMS IN YOUR REQUEST: your name, address, phone number; applicant's name and proposed permit number; the location and distance of your property/activities relative to the proposed facility; a specific description of how you would be adversely affected by the facility in a way not common to the general public; and, the statement "[I/we] request a contested case hearing." If the request for contested case hearing is filed on behalf of a group or association, the request must designate the group's representative for receiving future correspondence; identify an individual member of the group who would be adversely affected by the proposed facility or activity; provide the information discussed above regarding the affected member's location and distance from the facility or activity; explain how and why the member would be affected; and explain how the interests the group seeks to protect are relevant to the group's purpose.
 Following the close of all applicable comment and request periods, the Executive Director will forward the application and any requests for reconsideration or for a contested case hearing to the TCEQ Commissioners for their consideration at a scheduled Commission meeting.
 The Commission will only grant a contested case hearing on disputed issues of fact that are relevant and material to the Commission's decision on the application. Further, the Commission will only grant a hearing on issues that were raised in timely filed comments that were not subsequently withdrawn. TCEQ may act on an application to renew a permit for discharge of wastewater without providing an opportunity for a contested case hearing if certain criteria are met.

TETRA	OVA	ALGA	9	5	3	7	1	6	2	8	4
AARON	WED	AREAL	8	7	4	5	2	9	6	1	3
PROBE	LEI	LEANS	2	1	6	3	8	4	7	5	9
STOMPS	EMBARGO	TIE PURE	1	3	2	6	5	8	9	4	7
DIP	ARIL	SIRREE	7	8	5	9	4	3	1	2	6
IDES	IDYL	TOOLS	4	6	9	1	7	2	8	3	5
SINK	LEWIS	TOES	5	4	7	8	9	1	3	6	2
CONIC	MOAN	ETNA	3	2	1	4	6	7	5	9	8
OTITIS	ORAL	SAY	6	9	8	2	3	5	4	7	1
NEED	FIE	NUCLEAR									
GUNNER	OPIMUM	OWL									
KAROL	COTTA	DEE									
UTICA	KNEE	EEN									
PECKY											

MAILING LIST. If you submit public comments, a request for a contested case hearing or a reconsideration of the Executive Director's decision, you will be added to the mailing list for this specific application to receive future public notices mailed by the Office of the Chief Clerk. In addition, you may request to be placed on: (1) the permanent mailing list for a specific applicant name and permit number; and/or (2) the mailing list for a specific county. If you wish to be placed on the permanent and/or the county mailing list, clearly specify which list(s) and send your request to TCEQ Office of the Chief Clerk at the address below.
AGENCY CONTACTS AND INFORMATION. All written public comments and requests must be submitted to the Office of the Chief Clerk, MC 105, TCEQ, P.O. Box 13087, Austin, TX 78711-3087 or electronically at www.tceq.state.tx.us/about/comments.html. If you need more information about this permit application or the permitting process, please call TCEQ Office of Public Assistance, Toll Free, at 1-800-687-4040. Si desea información en Español, puede llamar al 1-800-687-4040. General information about TCEQ can be found at our web site at www.tceq.state.tx.us.
 Further information may also be obtained from the City of Gruver at the address stated above or by calling Steve McKay, City Manager at (806) 733-2424.
 Issuance Date: March 10, 2010.
 1(3/25/10)

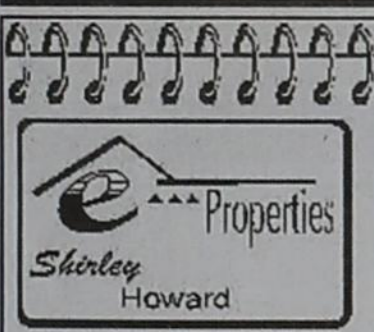
HELP WANTED
 We are looking for an energetic person to work in a fast paced environment. Taylor Petroleum Co. is now hiring for a manager position. Competitive pay with health benefits available. Please apply at 107 Collards. Must pass drug screen and background check.
 1(3/25/10)



Blankenship Real Estate
 659-3052 - 670-3774

4BR/2B/2CG Home - Basement, pool, central H/A, fireplace
3BR/2B Home - 1500 sq. ft., brick, 2CG, patio, walk-in closets
3BR/2B Home - 1460 sq. ft., brick, 2CG, patio, walk-in closets.

NEW LISTINGS WANTED!
 Eulalia Blankenship - Sales
 Eschol Blankenship - Broker



We NEED listings!
 Call us now to help YOU sell your home for top dollar!

113 N. Brandt - Spearman: Spacious 3BR, 2B, 2CG, 1848 sq. ft. home in a FAMILY!
902 9th - Gruver: Horse Stables FOR SALE! 18 pens, circular training pen, arena, & 4500 sq ft barn on 10.42 acres! **PRICE REDUCED!!**
712 Womble - Gruver: 1070sf, 3 BR, 1 B, Central Heat, Lrg Corner Lot! **REDUCED!!**
 Shirley Howard, Broker/Owner
 806-886-6536, Cell
 Melinda McCullough, Realtor
 (806) 733-5678
 We would LOVE to sell your HOUSE!
 CALL US!



Serving Hansford County for 15 years
 Julie Martin: Broker - 659-2425
PRICE REDUCED ON BOTH 804 & 806 Wilbanks
 New Construction. Call for your private showing!

We'd Like Your Listing!
FOR QUALITY & SERVICE CALL US TODAY!
 Equal Housing Opportunity

This ad is just a small sample of the properties that we currently have for sale.
 Please check our Web site and give us a call! We need your listings both large and small, all types of ag properties (ESPECIALLY CRP).

DALLAM CO. - Three adj. sections of dryland, some native grass, irrigation in area (two new wells across the road).
SWINE PRODUCTION FACILITY - Moore Co., TX. - 1200 sow capacity, capable of running 28,000 pigs annually, computerized feed mill, flexible feeding system, management in place. **PRICED TO SELL!**
RITA BLANCA RANCH - Dallam Co., TX - 4.055 acres, 4 circles, 375 acres CPR, good fencing, pens and water. Priced to sell.
DALLAM CO. - 2 1/2 sections CRP.
HARTLEY CO., TX - 640 ac. 10 miles to Hilmar Cheese plant, on pvtmt., dairy permit, 3 pivots, home, barn, grain storage.
OCEANS OF WATER II - Hansford Co., Texas - 4 sections, strong water, dev. with sprinklers, wells, feedyard, home, barns, pvtmt., 2 mi. hwy. frontage.
 SEE OUR WEBSITE OR CALL US!
www.scottlandcompany.com
 Shawn Gillispie 806/922-5532
 Ben G. Scott, Broker
 1-800-933-9698 day/eve
 TFN(2-04-10)

"Pot O' Gold"
 Dinner, Dance & Calcutta
 Saturday, March 27 • 7 p.m.
 The O'Loughlin Center
 502 S. Brandt • Spearman
 Tickets - \$60 per person
 Tenderloin Meal
 Entertainment by "Insufficient Funds"
 Grand Prize - \$2,500
 Consolation Prizes & Calcutta
 Call 659-3030 for more information.

LARGE ESTATE AUCTION
 Saturday, March 27th • 10 a.m. sharp!
Hutchinson County Aluminum Dome ~ 1113 Bulldog Blvd.
ANTIQUES ~ FURNITURE ~ ANTIQUE FIREARMS ~ ANTIQUE COINS
 This Great Auction will consist of some of the Finest American Antique & Highly Carved Furniture, Very Unique American Antique Oak, Victorian Pieces, Glassware and Many More Unique Items. Make this a Priority! Not to miss this Auction. Doors open at 8 am Day of Sale for Viewing. Auction will begin at 10 am Sharp! Come early for a good seat & bring your Truck. Everything must be moved day of sale.
ANTIQUE FURNITURE - A Very Rare Antique "Mira" Large Disc Music Box - Must Hear And See To Believe! A Very Rare Antique 3 Piece Victorian Bedroom Set with Beautiful High Back Bed, Matching Marble Top Deep Well Dresser and Matching Marble Top Washstand. A Very Rare Authentic Antique 1880's Runabout Horse Drawn Buggy in Excellent Original Condition. A Very Rare Antique "Victor" Phonograph - Never Seen One Before! A Great Large Antique Wardrobe with Beveled Mirror Doors and Carvings Everywhere. A Rare Antique "Mills" 25¢ Back Beauty Slot Machine - Working. A Fantastic Enormous Size 2 Carat Solitaire Diamond Ring - Must See! And Many More Beautiful Rings. The Best Antique Oak Curved Glass China Cabinet with Lion Heads and Paw Feet. A Rare Antique "National" Double Dial Clock. An Antique "Rockola" Penny Scales - Works Great! A Very Rare Highly Carved Antique Oak Child's Highchair that Makes into a Stroller - Never Seen One Before! An Antique "Spool Cabinet". A Rare Antique "Globe Wernicke" Tiger Oak Barrister Stack Bookcase. A Rare Antique "Marx" Train Set. A Beautiful Antique Grandfather Clock with Beautiful Inlaid Case. And Many More Unique Pieces of Furniture! A Rare Authentic Antique "Old West" Leather "U.S. Saddle Bags". Fantastic Framed Western Prints by "C.M. Russell" and "Fredric Remington". Unique Western Oil Lamps. An Outstanding Western Bronze Statue Collection Including the Rare Size "Buffalo Horse" by Frederic Remington.
OLD WEST ORIGINAL GUNS FROM ESTATES - The Rarest Authentic Antique 1855 "Colt" Revolving Rifle - Very Few Made - Never Seen One Before, in Excellent Working Condition. A Rare Authentic Antique Large Frame "Colt" Lightning Express Rifle in Excellent Working Condition - Must See! A Rare Authentic Antique "Colt" Frontier Six Shooter Pistol in Excellent Working Condition. A Rare Authentic Antique 1873 "Winchester" Lever Action Rifle in Excellent Working Condition. A Rare Authentic Antique "Colt Bisley" Rare Model in Excellent Working Condition - Must See! A Very Rare Authentic Antique 1894 "Winchester" Saddle Gun in Excellent Working Condition. And Many Other Antique Guns!
ANTIQUE COINS - Very Rare Never Seen 1841-C (Charlotte Mint Mark) \$2 1/2 Gold Coin, Very Rare Never Seen 1892-CC (Carson City Mint Mark) \$10 Gold Coin, 1875-S \$20 Gold Coin, 1908-D \$10 Indian Gold Coin, 1880-S \$5 Gold Coin, 1901 \$2 1/2 Gold Coin, 1853 \$1 Gold Coin, Very Rare 1922 \$10 Gold Note. Over 300 Antique Silver Dollars. A Very Nice Morgan & Peace Silver Dollar Collection 24pc. in Display Folder, Very Rare 1909-S Indian Head Penny, 1883-CC Silver Dollar, 1833 Bust Dime, 1852 Large Cent, 1853 Three Cent, 1809 Half Cent, 1864 Two Cent, 1801 Draped Bust Silver Cent, 1826 Bust Half Dollar, 1875-S Twenty Cent, Confederate Currency and Many More Antique Coins! Fantastic Labeled Glass Lamps, Antique Pocket Watches, Beautiful Tea Set with Matching Tray, Cut Crystal, Cookie Jars, Perfume Bottles, Pickle Castors, Cast Iron Buns. There Are Many More Must See Items. Bring Cash or Check with Proper I.D. Dealer's Must have copy of Sales Tax Permit or Sales Tax will be added. No Exceptions.
 Announcements Made Day of Sale Supersede All Other Advertisements. This is Just a Partial List.
Dealer's Must have copy of Sales Tax Permit or Sales Tax will be added, No Exceptions. Make This Auction A Priority! No Buyer's Premium!
Auctioneer - Michael Miears • TX Lic. #12703 • 405-381-3402

TEXAS STATEWIDE CLASSIFIED ADVERTISING NETWORK
TexSCAN
TexSCAN Week of March 21, 2010
BUSINESS OPPORTUNITIES
ALL CASH VENDING! Do you earn \$800 a day? Your own local candy route. 25 machines and candy. All for \$9,995. 1-888-625-5481. Multi Vend, LLC.
DRIVERS
CDL-A TEAMS WANTED Celadon company drivers and owners operators! Paid vacation. Great pay, benefit and home time. 1 year verifiable T/T experience. 1-800-729-9770. www.DriveCeladon.com
DRIVER-KNIGHT TRANSPORTATION Build your career with a debt free company, 3 raises in 1st year. Solo, O/O and teams welcome. Competitive daily/weekly pay. Class-A CDL/6 months OTR experience. Qualify by phone-start immediately. 1-888-446-5289 or apply online at www.knighttrans.com
DRIVERS-ASAP! Top 5% pay 34¢-38¢ cpm. Excellent benefits need CDL-A and 6 months recent OTR. 1-877-258-8782. www.meltontruck.com
NATIONAL CARRIERS needs O/O's! Lease purchase. Company drivers for it's expanding fleet. Offering Regional OTR runs. Outstanding pay package, excellent benefits, generous home time. 1-888-707-7229. www.nationalcarriers.com
NO MONEY DOWN! No credit checks! Top lease purchase plan, low monthly payments, high % pay package. Owner operators welcome. 1-800-767-6918. www.JoinCRST.com
OTR DRIVERS NEEDED Reefer, Tanker and Flatbed Positions. Prime Inc. is a financially stable, expanding and growing carrier. 9 months + OTR experience. 1-800-277-0212. www.primeinc.com
PICKUP TRUCKS needed in Hope, AR. Make money now! Seeking qualified pickup truck owners to deliver 11,000 RV trailers from Hope, AR. www.horizontransport.com/hopec
EQUIPMENT FOR SALE
NEW NORWOOD SAWMILLS - Lumber House. Pro handles logs 34" diameter, mills boards 28" wide. Automated quick-cycle sawing increases efficiency up to 40%! www.NorwoodSawmills.com/300N, 1-800-661-7746 Ext. 300N
REAL ESTATE
ABSOLUTELY THE BEST VIEW Lake Medina/Bandera 1/4 acre tract, central W/S/E. RV/motor home/house, OK only \$830 down \$235 month (12.91¢/10yr). Guaranteed financing. More information call 1-830-460-8354
BOAT HOUSE READY! Must sell my wooded lakefront with retaining wall approximately 100ft of shoreline. Build when ready, on 3rd largest lake in Texas. Gentle slope. Worth twice this \$70,000. Must see 1-214-390-5532.
\$106 MONTH BUYS land for RV/motor home/house, pier, boat ramp, pool, clubhouse. Pro handles logs 34" diam. \$690 down (\$6900/10.91¢/7yr) Guaranteed financing. 1-214-696-2315
21.74 ACRES north of Brackettville. Dry creek bed, good cover. Native and exotic game, hogs. \$1700/acre, owner or Vet financing. 1-800-876-9720. www.texasranchland.com
676 ACRES-REEVES County, 15 Miles North Pecos. River frontage. Call Jack 1-214-755-6224.
\$106 MONTH BUYS land for RV, MH or cabin. Gated entry, \$690 down, (\$6900/10.91¢/7yr) 90 days same as cash. Guaranteed financing. 1-936-377-3235
EAST TEXAS BANK repo land. 2 acres- \$29,900. This beautiful 2 acre property is perfect for a weekend retreat or a retirement home with access to a state-of-the-art equestrian center, stable and miles of riding trails for horse lovers. Clear title, survey. Priced way below market value! 1-877-462-9139.
NEW MEXICO LAND foreclosures! 10+ acres with views, power for less than \$300/month. Yes your approved! For best lots call now. 1-888-812-5830. www.swpproperties.com
POSSUM KINGDOM LAKEFRONT SALE Saturday & Sunday, March 27 & March 28. 24 acres - \$79,900 (was \$149,900) Save \$70,000 on prestigious lakefront home with pristine shoreline. Gated community with club house & swimming pool. Excellent owner financing, best buy on lakefront ever! Call now, 1-877-888-1636
PAINT MAR: RANCH #4, 131.34 acres, Terrell County in West Texas. Deer, dove, and quail. \$38,745, owner financed or TX Vet. 1-866-286-0199. www.westernexasland.com
SCHOOLS/TRAINING
AIRLINES ARE HIRING. Train for high paying aviation maintenance career. FAA approved program. Financial aid if qualified. Housing available. Call Aviation Institute of Maintenance. 1-888-349-5387
ATTEND COLLEGE ONLINE. From home. Medical, Business, Paralegal, Accounting, Criminal Justice. Job placement assistance. Computer available. Financial aid if qualified. Call 1-888-205-8920. www.CenturaOnline.com
HIGH SCHOOL DIPLOMA graduate in 4 weeks! Free brochure! Call now! 1-866-562-3650, ext. 55. www.southeasternHS.com
 NOTICE: While most advertisers are reputable, we cannot guarantee products or services advertised. We urge readers to use caution and when in doubt, contact the Texas Attorney General at 1-800-621-0508 or the Federal Trade Commission at 1-877-FTC-HELP. The FTC web site is www.ftc.gov/btop
Extend your advertising reach with TexSCAN, your Statewide Classified Ad Network.

by Dorothy Hudson

Out at the Lake

Jim Derington
Palo Duro River Authority
P.O. Box 99
Spearman, TX 79081
806-882-4401
pdra@dishmail.net



Lake Level--March 22, 2010--15.49 feet (-0.16)

The little snow Friday night and Saturday morning didn't do anything for the lake level. Every time Jim takes the level now, he has a new low.

A Boy Scout Clean-up had been scheduled for Saturday morning, but the blowing snow caused a cancellation.

Cormorants are coming back in numbers, and white pelicans were seen last week. Sunday Jim saw a lone bald eagle.

Fishermen are out on the pretty days. Joey Sharp picked up his annual permit and told of catching a 14 pound blue catfish.

El Vaquero

In 1970, the Gruver Hotel and Coffee Shop were sold to Harve and Phyllis Atwood.

Harve Atwood, born in Montrose, Colorado in 1930, moved to Boulder, Wyoming in his teens and began working for Boulder Lake Ranch. Part of his work was guiding fishing trips in the summer and taking out hunters on pack trips in the winter. He met several men from Gruver, and one of them was Nick Holt, who hired him to

come to Gruver and break colts for him in 1949.

In 1950, the Korean War began, and both Nick and Harve served. After Harve was discharged, he went back to Boulder, Wyoming. He and Phyllis Daniels were married in Jackson Hole, Wyoming in 1953. Some years later, he ran into C. A. Davis and H. M. Frazier, and they persuaded him to come back to Gruver. Harve came first, and then Phyllis followed with the three children, Phillip, Sandy, and Ryan. In the summer of 1968 the couple bought the equipment, but not the building of Nancy's Cafe. Phyllis ran the cafe, and Harve worked for Ralph Bort and then Dayton Barkley and Fritz Thompson, among others.

They bought the Gruver Hotel and Coffee Shop in January of 1970. Phyllis would find Herb McClellan, Reuben Hintergardt, and Hez Frazier waiting as she opened the coffee shop at 4:30 a.m. In the beginning they were open on Sundays, too. Harve's parents, Jack and Fern Atwood, ran the Hotel part the first year.

A fire from a newly installed water heater on December 26, 1972 brought

the fire departments from Gruver and Spearman at 2:45 in the morning. Luckily, all the sleepers were able to get out. There was a good bit of damage to the kitchen area. Smoke damage was all over.

The Atwoods decided to renovate the first floor into a restaurant with a banquet room and close off the upstairs. Mindy and Jim Davis get credit for suggesting the name El Vaquero, as it went well with the terrazo floor with the brands. A local craftsman was used to make the decorative iron work on the front of the building. He also made the chairs and some tables.

Harve has retired, and Phyllis now has problems with a shoulder. Peggy Shults helps her with the jobs she can no longer do. The restaurant opens from 11:00 a.m. to 2:00 p.m. and 5:00 to 8:45 at night. It is closed on Sundays.

El Vaquero continues to serve its fine food in a Gruver landmark with a 100 year history for part of the building. The year is also memorable because the Atwoods have owned the business for 40 years, and for 2010 being the year Harve turns 80 and Phyllis 75 years old.

OPSU Alumni Annual Meeting and Banquet Planned

By Troy Morris, Pres. of the Panhandle State Assoc.

On April 17, 2010, the Panhandle State Association of Alumni and Friends will host its annual meeting and banquet at beginning at 6:30 p.m. in the Noble Activity Center on the OPSU campus. The Noble Center will be open at 5 p.m. for those who wish to visit. Harold and Joan Kachel and James A. Countryman will be inducted into the Alumni Ambassador Hall of Fame.

The night will include an auction of a Centennial Quilt handmade by Berdine Rawlins, the #100 Centennial Stein, and the Association's #1 Centennial Buckle. The classes of 1920, 1930, 1940, 1950, 1960, 1970, 1980, 1990, 2000, and 2010 will receive special recognition.

Download a registration form from the OPSU web page, www.opsu.edu. Early registration (before April 7) is \$20 and late registration costs \$25. For more information call 580-349-1390.

Dr. Harold Kachel is an OPSU Emeritus Professor of Industrial Technology/Education (1957-1990). His wife, Joan Kachel, is a retired assistant of the No Man's Land Museum. The couple currently lives on their family

farm south of Beaver, Oklahoma.

Dr. James A. Countryman, retired Guymon veterinarian, began his higher education at PAMC and finished at Oklahoma A&M College. He has supported the University by serving as president of the Panhandle State Foundation and employing numerous OPSU students through the years and providing major support to the Aggies.

Aggie Golfers Compete

By Scott Puryear

The Oklahoma Panhandle State men's golf team was in action earlier this week in a tournament in Silver City, New Mexico (hosted by Western New Mexico University) and nearly sixty golfers competed. Golfers competed in two 18-hole rounds and one nine-hole round.

Julian Figueroa was the low man for the Aggies (in 36th place) with a 45-hole total of 198. Other OPSU competitors were Brandt Gear (201), Shane Rice (218), Jake Strain (224) and Tyler Harper (229).

inventory reduction

CELEBRATE

SALE

40% Off Store Wide

70% Off Seasonal

Celebrate

203 Main St. Spearman, TX
(806) 659-3350 1-800-663-8026

Choose Kubota for Quality That Lasts!

B2320¹

- 23 HP, 3-Cylinder Diesel Engine
- Power Steering • HST Transmission
- Optional Implements include Front Loader, Backscraper, Mid or Rear-Mount Mowers, and More!

ZD326

- 26 HP, 3-Cylinder Liquid Cooled Diesel Engine
- Durable HST Transmission • Hydraulic Deck Lift
- PTO Wet Disc Clutch • OSHA Approved ROPS

L4400

- 45.3 HP, 4-Cylinder Diesel Engine

L2800

- 30 HP, 3-Cylinder Diesel Engine

\$0 DOWN, 0% A.P.R. FINANCING FOR UP TO 60 MONTHS* ON SELECT NEW KUBOTAS!

PANHANDLE IMPLEMENT CO., INC.
710 NORTH MAIN STREET • PERRYTON, TX
806-435-6508

*\$0 down, 0% A.P.R. financing for terms up to 60 months on purchases of select new Kubota equipment from available inventory at participating dealers through 5/31/2010. Example: A 60-month monthly installment agreement term is 0% A.P.R. requires 60 payments of \$16.67 per \$1,000 borrowed. 0% A.P.R. financing is available to customers of the dealer. Dealer's preparation fee is charged. Dealer's charge for document preparation fee shall be a maximum of \$100.00. Only Kubota and selected Kubota performance model Land Pallet equipment is eligible. Excludes all equipment that is not a higher model A.P.R. Not available for Rural, National Accounts or Governmental customers. 0% A.P.R. and low rate financing may not be available with certain interest rates. (C.I.A.) offers. Financing is available through Kubota Credit Corporation, 6554, 2401 Red Oak Blvd., Houston, TX 77052, subject to credit approval. Some equipment only. Offer expires 5/31/2010. See us for details on lease and other vehicle options or go to www.kubota.com for more information. †2010 shown as example only.

Kubota EVERYTHING YOU VALUE

PANHANDLE IMPLEMENT CO., INC. K945-04-9300-1

VERSATILE

Versatile HHT 4WD Series
≈ 435 - 575 hp

Versatile 4WD Series
305 - 400 hp

Versatile Row Crop
≈ 250 - 280 hp

TEXAS JUST GOT MORE POWER

Panhandle Implement in Perryton has added Versatile tractors to their product line.

We're proud to be this area's newest Versatile dealership, stop in today and find out what one of these proven performers can do for your farming operation.

Panhandle Implement
710 N. Main, Perryton
Phone: (806) 435-6508

©2010 Buhler Versatile Inc. All rights reserved. • 888.524.1003 • info@versatile-ag.com • www.versatile-ag.com