

THE BENJAMIN POST

A WEEKLY PUBLICATION PURPORTING TO PRESENT THE FACTS AS THEY OCCUR AND DEDICATED TO THE LIVESTOCK AND AGRICULTURAL INDUSTRIES OF KNOX COUNTY AND ALL WEST TEXAS

VOLUME 27

BENJAMIN, KNOX COUNTY, TEXAS, MAY 4, 1934.

NUMBER 46

SPLINTERS

A merry heart maketh a cheerful countenance.—Prov.

A busload of Dallas Chamber of Commerce boosters passed through Benjamin Saturday on a visit to towns along Highway 24. Reproduced in another section of this paper is the reaction of the visitors as reported by a staff writer of the Dallas News. That Commercial Dallas is becoming interested in this section of the state is a compliment to the growth of West Texas during the past few years because they are a bunch that are only interested in a trade territory where the grazing is good. Knox County is making some rapid strides forward both in the ranching and livestock and the farming industries and production during the past two years has placed her among the leaders of the state.

Tuesday the West Texas Firemen will hold their semi-annual convention at Munday. This is the seventh meeting of the various departments of this section since their organization three years ago. Designed to give the small town volunteer departments useful information and training which many were not able to get at the state conventions the organization has served its purpose well. There has developed among the members of the organization a spirit of fraternalism and friendliness that could have been brought about in no other way. Problems that occasionally arise in a small town department are brought up at the meetings and ironed out. So we say that the West Texas Firemen's Association has been a success and should receive the continued cooperation of the towns of this district.

Knox is one of the few counties in this section of the state that has not yet organized her Young Democrats. The Young Democrats of America is a national organization which has the official stamp of approval of the Democratic Party. It is created to arouse interest of the younger element in the party, to teach the traditions and ideals of the party and to assist the major party in carrying out its aims. This is worth while move which should receive the immediate attention of the Democrats of Knox County.

TEXAS U. ROYALTY \$73,700 IN APRIL

Austin, May 2—Royalty collected in April for the University of Texas permanent fund from oil production on its West Texas lands totalled \$73,700.58, bringing the total of the fund to \$16,916,587. the general land office reported today.

April collections for the permanent fund of public schools were \$172,760.49, of which \$59,060 was royalty on oil production and the remainder land rentals and payments on sales and grazing lands.

Oil production in the Sabine river bed in East Texas netted \$35,064.25 in royalty.

TEXAS POULTRY, EGG SHIPMENTS SMALLER

Austin, May 2—Interstate rail shipments of poultry and eggs from Texas during March totaled 154 cars against 186 cars in March 1933, a decline of 21 per cent, according to the University of Texas bureau of business research. Poultry shipments for the two periods were 102 and 133 cars, respectively, accounting for most of the decline. Egg shipments of 52 cars almost equaled the fifty three cars shipped in March last year. No rail shipments of eggs were received from outside states in March this year whereas five were received last year.

Extension Of Time Granted To Make Loan

The period during which applications for emergency crop loans may be accepted has been extended through May 15, according to announcement today by Charles W. Sherrill, Regional Manager of the Southwestern Emergency Crop Loan Office of Dallas, serving the states of Texas, New Mexico and Arizona. Emergency crop loans are available to farmers for crop production purposes who cannot obtain such a loan elsewhere. The maximum amount available to any one farmer is \$250 and the minimum is \$10, according to the regulations. Cooperation with the Agricultural Adjustment Administration and the Production Credit Associations is given by all borrowers receiving aid from the Emergency Crop Loan Office.

"The Dallas Regional Office has enabled thousands of borrowers with out resources sufficient to obtain credit elsewhere to become bank customers. No loan is denied a worthy farmer who needs financial aid and cannot get it from any other source for lack of adequate security".

Farmers desiring to make loans should bet in touch with their county agent.

TO INSPECT FARMS OF CONTRACT SIGNERS BY NOVEL METHOD

College Station, May 2—Some idea of how Government cotton and corn-hog contract signers' farms may be inspected this spring to insure compliance with contracts may be gained from the wheat farm inspection now beginning in Texas, says H. H. Williamson, vice-director and state agent in the Texas A and M College Extension Service.

County agents are being trained in wheat counties in a unique method of acreage measurement which they in turn will pass on to inspectors. Both the retired wheat acres and the total wheat acres are to be measured, and inspectors are also to make note of the use made of contracted acres. The field notes are to be checked with the contracts by the county wheat production control association officers. The cost of the inspection is to be paid by the associations.

The method of measuring acreage was worked out by the U. S. Bureau of Agricultural Engineering. It consists of pushing some kind of old wheel about the sides of the field and recording the number of revolutions. The wheel is properly calibrated and clicks off each revolution loud enough for the inspector to count. As 100 revolutions are counted the inspector shifts a marble from one pocket to another and thus gets the total for each side of the field. The angles at each corner of the field are also measured by a home-made device. These figures together with notes on the crops growing on contracted acre are delivered to the county wheat allotment committee for checking.

This same system of measuring acreage and of checking compliance with contracts will probably be used with cotton and corn, Mr. Williamson states. Wheat contract compliance work in Texas is in charge of John R. Edmonds, extension service district agent who has made temporary headquarters in Amarillo.

BRIDGE WORK RESUMED

Work on the Rhineland Bridge has been resumed this week and about thirty-five men put back to work. The work was temporarily halted with the wind-up of the C. W. A. work. It is now on E. R. A. project. Completion is expected within the next four or six weeks barring bad weather.

All Members Faculty Reelected By Board

At a meeting of the local board of school trustees Tuesday evening the entire faculty was reelected for the coming year. The board is composed of T. E. Bentley, D. J. Brookerson and T. B. Dobbs. The members of the faculty are Mr. P. L. Armour, superintendent; Mr. Vernon Brewer, principal high school; Mr. G. Robert Martin, principal grammar school; Misses Helen Bisbee, Elizabeth Myers, Mable Moorhouse, Glenn Barker, Juanita Cockrell, Catherine Jones and Francis Moorhouse, teachers. A high scholastic standard has been maintained by the Benjamin school and students graduating from the institution have the advantage of having their credits affiliated with the state department which enables them to enter any first class college without taking entrance examinations.

Library Drive Nets Several Volumes To High School

The Library Drive sponsored by the Benjamin Parent-Teachers Association to increase the number of books in the local school library netted 182 volumes during the past week. Misses Majorie Sams and Leona Patterson tied for first place in getting the largest number of book donations and Lloyd Kilgore won third place. The prizes were \$3 each for the two first winners and \$1 for the third prize.

Knox Club Women Attend Meeting At Wichita Falls

At an inter-county meeting of the Federated Clubs of this district at Wichita Falls April 25 more than three hundred women from this section were in attendance. The clubs of Archer, Montague and Young counties comprised the entertainment committees for the meet. Young county won the attendance prize. Knox County had thirty representatives. This county will help furnish the entertainment at the next meeting. Mrs. Frank Patton of Benjamin is secretary of the organization.

ANNOUNCEMENTS CHRISTIAN CHURCH

Bedford Smith, Knox County Evangelist, will preach Sunday morning at Vera at 11 o'clock on "The Lord's Supper". He will meet with the church at 10 o'clock. At the evening hour of 8 o'clock he will preach at Goree.

The Goree C. E. Society will put on the first program for the newly organized Knox City Christian Endeavor at Knox City at 5 P. M. The Benjamin W. M. S. of the Christian Church will put on a program at Knox City Monday afternoon at 3 p. m. Miss Tillie Smith is the leader.

The Harbert family had a reunion at the home of Joe Harbert at Bryson last Sunday.

Those attending from Benjamin were Mr. and Mrs. M. F. Harbert, Mr. and Mrs. Wallace Harbert and son and Mrs. T. B. Ward. They report a fine dinner and an enjoyable time.

Judge Harbert is a pioneer settler of Knox County, having moved here from Jacksboro with his family in 1900. Many old time friends were seen and all the children were together for the first time in many years.

Tom Stewart of Seymour was a Benjamin visitor Tuesday.

Nix To Make Race For County Judge

To the Voters of Knox County, Texas
After having considered the solicitations from friends from the different parts of the County I have decided to make the race for the nomination of the office of County Judge of Knox County. I was for several years a member of the Commissioners Court of the County and served with different Commissioners Courts and my record as a Commissioner is open for your investigation. While I am not a practicing attorney I feel that I have sufficient knowledge to hear and determine matters which may come before me as a Judge, if I should be elected and I can assure the voters that all people will be given the same fairness and impartiality in matters.

It may be possible that I will be unable to make a house to house campaign, but will try and present my candidacy to as many voters as possible before the date of election.

Will appreciate the earnest consideration of all voters and ask investigation of my character and qualifications.

Respectfully,
M. G. Nix.

PROGRAM OF WEST TEXAS FIREMEN'S ASSOCIATION

Munday, Texas, May 8, 1934

- 9:00—Registration of Delegates, City Hall.
- 10:00—Convention called to order, President Leroy Melton.
- 10:15—Invocation, Rev. W. H. Albertson.
- 10:30—Address of Welcome, M. F. Billingsley.
- 10:45—Response, President Leroy Melton.
- 10:50—Frank G. Williams, Field Instructor Firemen's Training school
- 12:00—Adjourn for noon.
- 1:00—Music
- 1:15—Convention called to order
- 1:30—Roll Call.
- 1:45—Business session.
- 3:15—Report of Secretary-Treasurer.
- 3:20—Drawing for places in races
- 3:30—Races.
- 6:30—Banquet.
- 9:00—Dance.

SUNDAY SCHOOL TO BE ORGANIZED AT LEAGUE

Services at the League Schoolhouse Sunday afternoon, May 6, 3 P. M.

There will be preaching at the League Schoolhouse Sunday afternoon at 3 p. m. Some have expressed a desire to organize a Sunday school at this place so this meeting is for laying plans for the organizing of a Sunday School.

Everyone is cordially invited to come and take part in the services.
Rev. H. F. Gage

ANNOUNCEMENTS BENJAMIN BAPTIST CHURCH

Sunday, May 6th.

Sunday School, 10:00 a. m.
J. O. Cook, Superintendent.
B. Y. P. U., 7:00 p. m.
Plans are being made for the MOTHERS DAY Program on May 13th.
Prayer meeting Wednesday night.
W. M. U. each Tuesday afternoon.
Rev. H. F. Gage

Mrs. Frank Patton was a business visitor in Stephenville and Ft. Worth this week. Mrs. Patton has large ranching interests in Erath county.

Miss Joy Sams was a Dallas visitor over the week end.

McFarlane Asks Return To Congress

Fellow Citizens of the 13th Congressional District:

I am formally announcing to you my candidacy for a second term to Congress, subject to the action of the Democratic primary in July. Two years ago in my candidacy for this position you generously gave me your support and carried me 9 of the 12 counties in the district by a majority of 4,727 votes. The last legislature through redistricting added three counties to this district, each of which gave me an overwhelming majority in my race for the State Senate eight years ago. In my campaign I called to your attention my legislative record at Austin made in your behalf, you recall perhaps that this record was made while I received, during a period of prosperity, but \$5.00 per day for the service rendered. Your Legislators now receive double that amount. I was a candidate two years ago on a definite platform. I assured you that I would carry out its provisions. I am now glad to be able to report that I have kept faith with you in every particular to the best of my ability and to the utmost limits of my resources.

Congress assembled soon after the inauguration of the President a year ago in special session. It then faced the darkest and most deplorable situation that has ever existed in the history of our nation. This situation was brought about in a period of peace, by the maladministration of our predecessors in the management of the government. I need not recount it. You have been and are painfully aware of the critical situation we faced: closed banks, the loss of billions by their depositors, industry wrecked, schools closed, farmers bankrupt, hundreds of thousands of homeless families wandering hungry over the country, 10,000,000 of our wage earners idle and over 40,000,000 of our people, the unemployed and their dependents practically in the breadline.

Deficit and Taxes

I told you in my campaign that on account of my previous legislative experience I would be able to become immediately useful; I do not think or claim that I have brought about the magnificent recovery and reconstruction results thus far, but I do claim my cooperation and work in Washington has contributed to the beneficial effects. Congress found a deficit covering the last three years of the past administration of \$7,124,081,000, and a yearly deficit in the revenue of over \$2,000,000,000 per year. Our first duty, was to balance the budget. Our platform had assured us this could be done by "reduction of governmental expenses, by abolishing useless commissions and offices, consolidating departments and bureaus and eliminating extravagance", keeping in mind all the while economic recovery of the nation and provision for the reemployment of our people. It is and was a tremendous job; to become effective unity of action was necessary and was secured. The difficulties were almost insuperable. We had to combat the element of human greed in the large and powerful moneyed interests that had fattened themselves at the expense of the common people during the so-called prosperous time. Banks, utilities, trust companies, stock brokers, insurance companies, financial manipulators and manufacturing plants through their insidious lobbies presented their needs and demands, but they were unwilling to pay their part of the burdens. They fought bitterly to cut allowances of the dis-

(Continued on page three)

THE BENJAMN POST
PUBLISHED BY
The Post Publishing Company

CHAS. A. BISBEE, EDITOR
WILLIAM F. BISBEE, ASSOCIATE EDITOR

Entered at the Postoffice at Benjamin, Texas, July 1, 1907, as second class matter under act of Congress of March 3, 1879.

NOTICE:—Any erroneous reflection upon the character, standing or reputation of any person, firm or corporation which may appear in the columns of the Post will gladly be corrected upon it being brought to the attention of the publishers.

Issued every Friday at Benjamin, Knox County, Texas

Subscription Price, \$1.00 Per Year

Emergency Legislation

Texas, and more especially this part of West Texas, has been built with the idea that the way to economic independence lay in developing her lands in such a way that they would yield the maximum of production. To this end fine grass lands have given way to such crops as would yield a maximum return. Vast stretches of land have been utilized in the production of what and still more for the production of cotton. Lately experiments with ground feedstuffs as a fatterer and finisher of cattle lead feeders to believe that in maize, cane and other feeds adapted to this country, they may have a potential rival of corn and the production of these row crops may tend to become a money crop. However it is cotton that has been the chief developer of a sparsely settled country until it is now becoming a populous crop.

For these erasons the emergency legislation passed by the present Congress is giving us something new to think about. After years of believing that we could best serve ourselves and the consumers of our products by producing the maximum of them, we found that it has become the universal opinion over the country and incorporated into a law that we reduce our production drastically.

We reprint excerpts from an article by Dale Miller in the Texas Weekly dealing with the subject.

When the one hundred Texans comprising the delegation on the Texas Press "Full-House" Special converged upon Washington Tuesday, April 17th, to honor the administration and tell the story of Texas progress, it was their privilege to hear an address of unusual significance by Henry A. Wallace, Secretary of Agriculture. At a gala banquet held that night at the National Press Club building, a distinguished array of speakers, rarely assembled together on a single occasion even in Washington, presented an impressive first-hand picture of the Government in its various ramifications. But honors rightfully belong to Secretary Wallace for a frank and honest appraisal of agriculture in the New Deal.

Frankly, Secretary Wallace questioned the permanence of the comparative prosperity enjoyed by Texas since the AAA began to function. While others earlier in the evening had endorsed the agricultural program, he himself did not actually endorse it. He characterized the compulsory restriction of cotton acreage as thoroughly an artificial procedure and he lay the responsibility for the Bankhead bill on the doorstep of Southern cotton farmers, who, through questionnaires, had indicated their desire for compulsory control. "Well, you're going to get the Bankhead bill," was the way he referred to it. "You asked for it." And he went on to say that "you'll live over it." While he did not precisely criticize the bill, he by no means expressed the support of the measure that ordinary would have been expressed by the chief of the department which virtually sponsored it.

Pointing out that the South habitually expoted 8,000,000 bales of cotton annually, he declared that the nationalistic policies now followed by the Government, and epitomized in the Bankhead bill, would permit the South to have a "breathing spell" of a year or two, depending upon whether the Bankhead bill is renewed another year when this season ends. During the time the South will be producing largely for a domestic market, being forced to sacrifice at least some of the foreign markets that normally consume more than 55 per cent of the American cotton crop. Secretary Wallace characterized this breathing spell as a period during which the people of the South should make up their minds whether they wished to sacrifice these 8,000,000 bales permanently by producing only for a domestic market or whether they wished a restoration of foreign commerce and a corresponding increase in cotton production and distribution. He did not answer his question, but his unmistakable inference was that the South must work unceasingly for a restoration of their markets abroad. To confine this exporting region to nationalistic programs would be to displace farm labor heavily throughout the South without making any provision for the assimilation of those displaced in other productive activities. How the Government can hope to curtail and eventually abandon relief work and still pursue agricultural policies which will put people out of work is a puzzle of real proportions.

The truth is that it can do nothing of the kind permanently. That is why we should begin thinking about what policies the Government should pursue in the future. And that is what Secretary Wallace meant when he said the people of the South should use the breathing spell provided by the Bankhead bill to decide whether they wanted to sacrifice foreign markets permanently or strive for the restoration of those markets. That is the soundest sort of advise. It is more tahn that—it is a warning. The natural disposition of subjects to a paternalistic government is to rely more and more on that paternalism, but the benefits bequeathed by paternalism are often gossamer and misleading. An example of this can be found in a statement made recently by one of the sponsors of the Bankhead bill. He declared that it is more profitable to produce, let us say, six million bales at 12 cents a pound than twelve million baelts at 6 cents. This is the delusion inspired by all programs havinty to do with either voluntary or compulsory limitation of acreage. In the first place, the smaller acreage can be cultivated by fewer farmers and the revenue from the smaller crop is thus not equitably distributed; and, in the second place, this drastic curtailment in the crop means a proportionate curtailment in the revenue enjoyed by shippers, distributors, retailers, and others identified with the cotton industry, none of whom is compensated for his losses by such things as a processing tax. These facts are simply the first to come to mind; there are numerous others.

MANY SPOTS OF SCENIC BEAUTY SEEN ON NEW LUBBOCK HIGHWAY

An automobile tour over the Northwest Highway to Rhome and from Rhome to Bridgeport over a newly designated highway will be conducted by the Dallas Chamber of Commerce highway committee, within a few days, Z. E. Black, secretary of the committee announced Monday.

The visit to Bridgeport will be for a conference with business men of that city in an effort to secure early paving of the ewenty-two-mile direct route between the two cities, as an extension of the Northwest Highway for which State designation as State Highway 114 has been secured.

Mr. Black accompanied the chamber committee and several other Dallas business men over this route last week and on into Lubbock where plans were made for the completion of several unpaved gaps on a direct route to Dallas from the South Plains territory.

"The committee was thoroughly convinced that Dallas should do every thing in its power to facilitate motor travel to and from this prosperous section of the State," Mr. Black said. "The immediate task ahead for cities on this end of the route is the completion of the Bridgeport gap and of direct route from Olney to Jacksboro. The long gap across King County will be handled by communities at the other end of the line.

Beautiful Scenic Route

"Bridgeport citizens are anxious to have that gap closed and the Dallas committee will co-operate to the fullest."

The route to Lubbock traversed by the committee, which returned to Dallas late Sunday night, passes through one of the most beautiful sections of the State and is a scenic highway without superior in the state Mr. Black said.

"Lake Bridgeport, with 173-mile shore line will become one of the great fishing resorts of the State. It is in Wise County, six and one-half miles from Bridgeport. It has a surface of 10,000 acres. Lake Kemp, in Baylor County, ten miles from Seymour, also draws many Sportsmen. It has a capacity of 177,000,000,000 gallons of water.

"Between Seymour and Benjamin the highway runs along the high divide between the watersheds of the Brazos and Wichita Rivers, the country falling way on each side to magnificently beautiful and fertile valleys.

"In King County the highway passes the 6666 Ranch and herds of buffalo graze near the right of way. In Crosby County the prairie is the scene of many prairie dog towns and everywhere along the route the traveler sees grazing herds of cattle, sheep and horses.

Many Fine Ranch Homes

"Mexican blue quail and bob whites scurry across the road in many counties.

"Through Dickens and King Counties are many fine ranch homes. As evidence of Western hospitality nearly all have signs on their front gates declaring that visitors are welcome.

"All along teh route was evidence of bumper crops this year. Timely rains have made the oat and wheat fields green, the pastures are in fine condition and the water holes are full.

"Few vacant buildings are seen in the towns aolng the route and the citizens now refer to the depression as something in the dim and distant past.

"These are some of the reasons why the Dallas Chamber of Commerce highway committee is anxious to see a well-paved, direct highway over the 325-mile route between Dallas and Lubbock."—Dallas News

HAMLIN FAIR AND RODEO BOOSTERS HERE WEDNESDAY

The Hamlin boosters were here Wednesday advertising the Tri-County Fair to be held there this week end. Stock exhibits and a rodeo are features of the entertainment. The boosters were accompanied by a good band.

CATTLE SALES

Chas. Moorhouse reports the following cattle sales this week.

E. W. Hemp of Olney sold to Milky Way Candy Company 500 head of feeder steer yearlings to go to Tennessee. These cattle are what is known as the "Hash Knife" cattle.

Chas. Hamilton sold 200 heifer yearlings to Orr and Champlin of Oklahoma.

Walter Snody, Roy Snody, Dr. J. C. Coffey and Alex Holt were at the Lake Kemp for the opening of the fishing season. They report a fair catch.

Buck Wallace of Baylor County sold to Clyde Burnett 200 head of high grade three year old cows and calves. These cattle are out of the Fugua cattle at Amarillo and one of the best herds in the state.

Lee Coffman and Penia Meinzer left Thursday for Lake Kemp for a few days fishing. Mr. Coffman is a sportsman without peer and when good catches are reported his generally head the list.

Mr. and Mrs. Thos. F. Glover were Benjamin visitors this week. Mr. Glover is the former county clerk of Knox county and at present is court reporter for the fiftieth district. He resides at Seymour.

Mr. and Mrs. Buster Tolson and children of Bomarton were visitors the home of Mrs. Tolson's parents, Mr. and Mrs. Tom Hudson Wednesday. Mrs. Tolson is a former Benjamin girl and is remembered by many folks in this section of the county by her connection with the local bank in the capacity of assistant cashier.

J. L. Galloway left Wednesday for Houston. He is secretary of the local county conciliation committee.

TEST WELL MAY BE DRILLED NEAR BENJAMIN IN THE NEAR FUTURE

C. H. Burnett has been busy the past several days with preliminary work incidental to securing an oil test on his ranch east of Benjamin. This test is expected to be a deeper one than has been drilled in this country up to this time. It will be remembered that other recent tests made favorable showings although no pay dirt was hit. Reports from the south side of the county indicate that there may be some drilling activities there within the next few months.

Mrs. Ada Gleason of Truscott was a Benjamin visitor this week.

Several members of the local Christian Church attended the fifth Sunday services at Goree Sunday.

Oscar Roberts, foreman of the Patton ranch in Erath county was in Benjamin this week on business.

Mr. and Mrs. Wallace Harbert of Cloud Croft, New Mexico are spending a few days in Benjamin. They will return to Cloud Croft when the school closes for vacation as they have a son in the public school.

Mr. Leroy Melton returned Sunday to Fort Worth where he is pursuing his studies in a pharmacy school there. Mr. Melton is the owner of the local drug company here.

Mr. and Mrs. C. I. Browder and daughter, Virginia, of Truscott were in Benjamin Wednesday afternoon.

A. B. Reese of Knox City was in town this week on business.

Ross Bates of Goree was a business visitor in Benjamin this week. Mr. Bates has been mentioned as a probable candidate for Congress for the 13th district.

Business and Professional Cards

HENRY'S SHOP
Blacksmithing—Repairing
Henry Edge, Prop.
On Highway 16
Benjamin, Texas

HAIL INSURANCE
The time of the year is at hand to insure your grain crop. Let me write yours.
Chas. Moorhouse

Knox County Abstract Company

Benjamin, Texas

J. J. Driver
LIFE INSURANCE

Benjamin, Texas

Stephens & Williams
ATTORNEYS-AT-LAW

Benjamin, Texas

I. T. Wright & Son
GARAGE

Welding, Repairing
Painting
Gas & Oil
Panhandle Products

Benjamin, Texas



BENJAMIN LODGE
No. 976, A. F. & A. M.
Regular meeting May 5
Important business

DR. JOZACH EASLEY

DENTIST

Office Hawkins Building
Seymour, Texas

W. E. JACKSON
Furniture Repairing, Painting
All Work Guaranteed
Benjamin, Texas

W. D. McFARLANE--

abled Veterans and their dependents 50 per cent or more than \$400,000-000. Their only suggestion for additional revenue was an unconscionable sales tax which would rest heaviest upon the poor. I voted to limit the cut on disabled veterans to 25 per cent, and to raise the income taxes sufficient to cover the balance. This program was rejected by the House, I was criticised by the press for not "standing by the President". Legislation is nearly always a compromise. I did the best I could, but continued to stand by the President for the larger result, broad economic recovery, large scale re-employment and a more abundant life for all the people.

Sentiment on Veterans Legislation

In one short year I have seen the mature judgment of our citizens change and endorse my actions. By nearly four to one this Congress approved my position and the position of those of us who voted last session against the so-called economy bill. The economic situation is not solved. Great progress has been made, we are triumphantly on our way under the great leadership of our President. It must be honestly, fairly, courageously carried to fruition, and with the blessing of God and the patience, courage and steadfastness of the people we still will succeed. The goal is clear and with your help it will be achieved.

Committee Assignments

Over forty committees shape legislation in Congress. Twelve of them are called the major committees of the House. The Naval Affairs Committee is one of the Twelve. I received an assignment on this great committee. The Navy carries our flag upon the sea, protects our commerce and is our first line of defense in case of trouble. I have sent you copies of some of my speeches that show my activities in this line

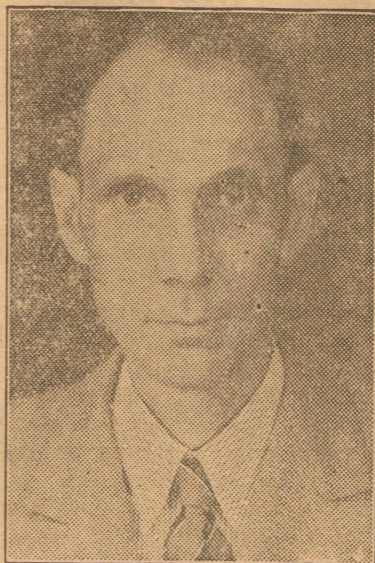
of duty. I was appointed on the special committee to investigate naval aircraft procurement and have diligently worked on this committee trying to find out why it is we are spending so many millions of dollars annually in aviation and still receive so little for our money. This committee appointed me to examine the income tax returns of the aircraft companies and from the results of my investigations I have helped get amendments adopted in our tax laws this session. These amendments will not only bring many millions of dollars into the treasury, but they abolish consolidated corporate returns and require publicity for income tax returns. Furthermore these amendments will help equalize the tax burdens for the great masses of the people and will require chain stores and holding corporations to pay more millions in taxes which they have formerly evaded.

For the President

I also call your attention to the bill I introduced to give the Federal Courts jurisdiction over apprehension and punishment of kidnapers, hi-jackers, bank robbers and other crimes which challenge the attention of the nation. This measure which has been perfected will soon, I trust, become a law.

I favor granting the President power to negotiate tariff agreements; I favor regulating the stock exchanges of the country; I favor the bank guaranty law which we have enacted. I always have favored legislation for human rights when in conflict with property rights. I have always voted for all reasonable economy in conducting the Government. I do not talk about these things—my action on the floor of Congress and in the committees show that I am always fighting for their attainment. If this course in legislation meets your approval I certainly hope that you, my friends, will be active in my behalf and will give me an almost unanimous endorsement in July.

W. D. McFARLANE



JAMES L. McNEESE

Pledging himself to oppose monopolistic control of the Railroad Commission, James L. McNeese, prominent Dallas attorney, has announced his candidacy for the place on the Commission to become vacant at the end of this year.

He pointed out that Texas receives income from oil produced in this State which is given to the school fund, and said he would discourage the importation of oil produced abroad which does not yield school revenue.

He emphasized that the Railroad Commission has become the most powerful agency of government in Texas, vested with wide powers for regulation of railroads, busses, trucks and the oil industry, and that the efficiency of its members should be of interest to the voter.

APPROVAL OF MOST COTTON CONTRACTS EXPECTED BY MAY 15

College Station, May 3—Cotton acreage reduction contracts from 33 Texas counties had been approved by the State Board at Texas A and M College and certified to Washington for payment up to April 27th. The bulk of the counties will be certified by May 15, Review Board officials estimated. It will probably take until June 1st to complete all counties, they added.

Counties approved include: Gray McLennan, Blanco, Comal, Mason, McCulloch, Menard, Williamson, Jim Hogg, Gillespie, Cameron, Uvalde, Burleson, Calhoun, Falls, Fayette, Grimes, Lavaca, Lee, Leon, Madison, Milam, Robertson, Harrison, Cooke, Ellis, Navarro, Hudspeth, Deaf Smith Zavala, Lipscomb, Grayson, Hays.

FOR SALE: A Bargain. Gas Range and General Electric Refrigerator. Both articles are at Truscott and may be seen there.

C. H. Stewart, Winnsboro, Texas.

M. F. Billingsley of Truscott was in Benjamin this week on business.

J. C. Patterson was in Goree Wednesday to hold a court of inquiry following the burning of Addie Warner's home. Addie is a colored woman.

NOTICE TO BIDDERS

Notice is hereby given that the Commissioners Court of Knox County will receive bids up to and including 10 o'clock, May 14, 1934, on the following equipment: One or more Motor graders with 30 horse power or more, tractors, 14 foot moldboards. Will offer for part payment one Russell Patrole No. 3. Balance of payment as follows: Cash, \$704.25; warrants for balance due March 31, 1935, 1936, 1937 in equal parts, interest not to exceed 6 percent.

The Court reserves the right to reject any and all bids.

J. W. Melton, County Judge.

CITATION BY PUBLICATION

The State of Texas, To the Sheriff or any Constable of Knox County—Greeting:

You are hereby commanded, that you summon, by making Publication of this Citation in some newspaper published in the County of Knox if there be a newspaper published therein, but if not, then in any newspaper published in the 50th judicial district; but if there be no newspaper published in said judicial district then in a newspaper published in the nearest district to said 50th judicial district, once in each week for four consecutive weeks previous to the return day hereof, Lula L. Burleson, whose residence is unknown, to be and appear before the Hon. District Court, at the next regular term thereof, to be holden in the County of Knox at the Court House thereof, in Benjamin, Texas on the First Monday in June, 1934, the same being the 4th day of June, 1934 then and there to answer a Petition filed in said Court, on the 16th day of April A. D. 1934, in a suit numbered on the docket of said Court No. 2469, wherein L. B. Burleson is plaintiff and Lula L. Burleson is defendant. The nature of the plaintiffs demand being as follows, to-wit: Suit for Divorce, plaintiff alleging abandonment for a period of more than three years, and further praying for costs of suit, and such other and further relief, as he may be justly entitled. which is more fully set forth in the plaintiff's petition now on file in herein made.

Herein fail not, and have you be this office, to which reference is fore said Court, on the said first day of the next term thereof, this Writ, with your endorsement thereon, showing how you have executed the same.

Given under my hand and seal of said Court, at office in Benjamin, Texas, this the 16th day of April, A. D. 1934.

Mrs. Rowena Phillips,

Clerk, District Court, Knox County. (SEAL)

James A. Stephens was in Denton Monday on legal business.

POLITICAL ANNOUNCEMENTS

The Post is authorized to make the following political announcements subject to the action of the Democratic Party

Announcements made at the following rate, cash in advance. State, District, and County offices _____ \$10.00 Precinct offices _____ \$7.50

FOR CONGRESSMAN, 13th DIST. George Backus W. D. McFarlane

REPRESENTATIVE 114th DIST: George Moffett

FOR DISTRICT CLERK: Mrs. Roy Phillips

FOR COUNTY TREASURER: J. T. (Uncle Trav) House Lucille Harris

FOR COUNTY SUPERINTENDENT: Vernon Brewer J. D. Palmer Mrs. E. F. Branton J. Lyndal Hughes

FOR TAX ASSESSOR-COLLECTOR Earl Sams Geo. Isbell Lee Haymes

FOR COUNTY CLERK: M. T. Chamberlain

FOR SHERIFF: C. R. Elliott Tom Hudson

FOR COUNTY JUDGE: Roy Bullington E. L. Covey M. G. Nix

FOR COUNTY ATTORNEY: Lewis Williams

FOR COMMISSIONER, PREC. 2: Orel Patterson

FOR COMMISSIONER, PREC. 3: Onie Welch

FOR PUBLIC WEIGHER, PREC. 3: W. W. Gleason

CIVIL SERVICE EXAMINATIONS

The United States Civil Service Commission has announced open competitive examinations as follows: Chief Topographic Draftsman, \$2,600 a year, Principal Topographic Draftsman, \$3,200 a year, Senior Topographic Draftsman, \$2,000 a year, Topographic Draftsman, \$1800 a year, Assistant Topographic Draftsman, \$1,600 a year, various services. Senior Scientific Aide (Taxonomic Entomology), \$2,000 a year, Bureau of Entomology, Department of Agriculture.

Full information may be obtained from the Secretary of the United States Civil Service Board of Examiners at the post office in any city which has a postoffice of the first or the second class, or from the United States Civil Service Commission, Washington, D. C.

H. T. Cook of Gilliland was in Benjamin the fore patr of the week on business.

W. M. Moore, prominent Wichita Falls oil man, was a business visitor in Benjamin this week.

D. J. Brookreson was in Crowell Monday on legal business.

Mrs. A. C. McGlothlin, former Benjaminite who now resides in San Angelo, was discharged from the hospital there recently and is now convalescing at her home. Her many friends in Knox county wish her a speedy recovery.

Brooks Chesser of Truscott was in Benjamin thi sweek on business.

Walter Rice, county agent for Knox County, was in Fort Worth and Dallas last week end.

QUALITY MEAT

This week we offer choice cuts of beef fed and finished by the League Ranch and shown at their recent Feeder's Day exhibition.

Note the economical prices:

STEAK	ROUND or LOIN20
	PLAIN15
ROAST	RIB10
	CHUCK12 1-2

CASH MARKETS

Two Stores

Benjamin

4 1/2 per cent Loans FARM & RANCH LOANS

THE NEW "GOVERNMENT LOAN" ON FARMS AND RANCHES UP TO 75 PER CENT OF THE APPRAISED NORMAL VALUE OF THE LAND PLUS 20 PER CENT OF THE INSURABLE VALUE OF THE IMPROVEMENTS.

John Ed Jones

Munday, Texas

4 1-2 PER CENT

4 1-2 PER CENT

Eat At Fred's Lunchroom

Dinners, Short Orders, Sandwiches, Drinks, Candies, Tobaccos, Pastry "Our Customers Come Back"

There's Always A Courteous Welcome

Awaiting You At The

Benjamin State Bank

Of Benjamin

SUMMER CAMPERS ARE WARNED AGAINST TYPHOID FEVER BY HEALTH DEPT.

Austin, May 4—"If you have not been vaccinated against typhoid fever within the last two or three years go to your doctor and be protected against it," Dr. John W. Brown, State Health officer, advises prospective campers, Boy and Girl Scouts, summer vacationists, and all other users of the open road—weather for business or pleasure—as the out-of-doors season approaches.

"Typhoid fever," he continued, "is unnecessary and preventable. Every case is due either to community negligence or to the ignorance or carelessness of some individual.

"A carrier is a person who has had typhoid at some time and who even after recovery carries the germ of the disease in the urine and the discharge of the bowels. Carriers who are careless in their personal habits are likely to infect any food they handle with unwashed hands. Some of the most serious and far reaching outbreaks of the disease have been caused by drinking milk or eating foods that have been handled by carriers. Persons may be carriers without knowing it.

"Typhoid germs are hitch-hikers. They are picked up and spread from person to person by water, flies, fingers, food. Every case of typhoid is contracted by way of the mouth and the digestive system. The State Department of Health and the local health departments can be depended upon to continue their fight against the disease, but there will still be sources of infection that can be warded off only through the protection afforded by vaccination against the disease."

JUNIOR SOROSIS CLUB TO PRESENT PLAY "BACK STAGE"

The Junior Sorosis Club are preparing a play "Back Stage" which will be presented Wednesday next. This is a three act comedy and is directed by Miss Emma Jane Alexander, former teacher of expression in the Benjamin Public Schools.

J. M. Edwards of Seymour was here Tuesday in the interest of his grocery business.

BENJAMIN AND VICINITY RECEIVE LIGHT SHOWER WEDNESDAY NIGHT

A light shower Wednesday night fell in the Benjamin vicinity. Daily newspaper reports indicate that general rains throughout the mid-western states have broken the drought and the wheat producing sections are especially benefitted at this time.

ROOSEVELT TO SEE SON IN RACE CREW

Cambridge, May 2—Reliable Harvard sources say President Roosevelt will attend the Harvard-Yale crew races at New London, Conn., June 22, to watch his son, Franklin D. Jr., row in the Harvard freshman crew in its objective race with the Yale yearlings.

Young Roosevelt will either stroke the Harvard first year men or row at No. 6 position.

Arrangements are being made for the President to follow the races either in the officials' boat or in the coaches' launch.

The President is an enthusiastic alumnus of Harvard, from which he was graduated in 1904, but he has been unable to attend any of the college athletic events since his inauguration.

FOR SALE: A Bargain. Gas Range and General Electric Refrigerator. Both articles are at Truscott and may be seen there.

C. H. Stewart, Winnsboro, Texas.

Mrs. A. C. McGlothlin, former Benjaminites who now resides in San Angelo, was discharged from the hospital there recently and is now convalescing at her home. Her many friends in Knox county wish her a speedy recovery.

POLITICAL CALENDER FOR 1934

January 31. Final day for paying Poll Tax.

February 12. Election judges appointed by commissioners court.

April - On or before this date tax collector furnishes county election boards with list of poll tax payers and exemptions.

May 8. State executive committee of any party which cast as many as 10,000 and fewer than 100,000 votes in next preceding gubernatorial election shall meet and decide if candidates for state, district and county officers are to be nominated by convention or primary election, and shall certify such decision to the secretary of state.

June 4. Last day for filing on party primary ballot for state and district offices.

June 11. State executive committee meets and prepares state ballot, and selects place of meeting of state convention.

June 16. Last day for candidates to file names within counties, including districts within confines of any single county, and candidates for county chairman to file for places on primary ballot.

June 18. County executive committees meet to determine order of the names on ballot, estimate cost of primary and apportion cost. The primary committee of five is appointed.

June 25. Last day for candidates to pay ballot fees.

June 28. The first day the first expense statement may be filed.

July 3. The last day to file first expense statement.

July 8. The first day for absentee voting in person or by mail.

July 16. The first day for filing second expense statement.

July 20. The last day for filing second expense statement.

July 21. Tax collector delivers to chairman of county executive committee list of voters.

July 25. Absentee voting in person ends.

July 26. Absentee voting by mail ends.

July 26. County clerk mails absentee ballots to presiding judges of election precincts.

July 28. First Primary. One copy of returns shall be delivered to the chairman of the executive committee within twenty-four hours after the returns from each election precinct, the chairman shall order the members of the executive committee to convene at the county seat on the succeeding day.

August 4. County executive committee to meet and canvas returns if it has not been done previously.

August 4. County Convention.

August 5. Absentee voting begins for second primary.

August 7. Final expense statement for first primary shall be filed.

August 11. State executive committee meets to canvas returns for all state and district offices and prepares ballot for second primary.

August 13. First day to file expense statement for second primary.

August 17. Last day to file second expense statement for second primary.

August 22. Absentee voting in person ends.

August 23. Absentee voting by mail ends.

August 23. Ballots cast by absentee voters are mailed by county clerk to presiding judges of election precincts.

August 25. Second primary. One copy of returns shall be delivered to the chairman of the executive committee within twenty-four hours after the votes are counted. After receiving the returns from each election precinct, the chairman shall order the members of the executive committee to convene at the county seat on the next succeeding day.

September 1. If executive committee has not previously canvassed results they shall meet for that purpose.

September 4. Final expense statement.

September 10. State executive committee certifies results.

September 11. State Convention.

September 24. Final day for independent non-partisan candidates to file for general election ballot.

October 7. Secretary of state shall prescribe election forms.

October 7. Last day for county judge to give notice of election.

October 17. Absentee voting begins.

November 3. Absentee voting in person ends.

November 4. Absentee voting by mail ends.

November 4. County clerk mails voted absentee ballots to presiding judges of election precincts.

November 12. Commissioners court canvasses the returns and the county judge shall forward by mail to the secretary of state complete returns within forty-eight hours after the same have been canvassed by the commissioners court.

November 17. Last day to file final expense statement.

November 21. Secretary of state in presence of governor and attorney general shall open and count the returns of the election.

January 8, 1935. Legislature convenes.

January 15, 1935. Governor and lieutenant governor are inaugurated.

In all elections, general, special or primary, the polls shall be open from 7:00 o'clock a. m. to 7:00 p. m. in all counties having a population of 150,000 or more, according to the last Federal census, and in all counties other, the polls shall be open from 8:00 a. m. until 7:00 p. m.

John Albus and August Schumacher of Rhineland were in Benjamin this week and took advantage of their visit here to try their luck with the finny tribe at Lake Benjamin. They report a fair catch.

Announcing

A NEW BUSINESS POLICY ALL TAILOR WORK IS CASH

Hereafter all cleaning and pressing work will be strictly CASH & CARRY. We feel that in inaugurating this new policy we can render our patrons better and more satisfactory service so please do not embarrass us by asking us to carry your account for just a few days. We thank you for your past business and hope to serve you in the future.

Veale Tailors

Announcing

REOPENING of JEWELRY and GIFT SHOP

Gifts for every Occassion

MRS. J. D. KETHLEY
Munday, Texas

SPECIALS FRIDAY AND SATURDAY

SYRUP, PURE SORGHUM GALLON	59c
SYRUP, BRER RABBIT GALLON	65c
SUGAR, CANE 10 POUNDS	55c
BREAD, LIGHT CRUST 3 FOR	25c
CATSUP 14 OZ. BOTTLE	15c
TOMATOES, NO. 2 CANS 3 FOR	28c
CREAM WHEAT PER PACKAGE	23c
KO-PA, PER POUND	10c

JACKSON GROCERY Benjamin Texas

THE RED & WHITE STORE

SPECIALS FOR FRIDAY & SATURDAY MAY 4th and 5th

ORANGES, 176's, Red Balls, Dozen	29c
LEMONS, 360's, Dozen	20c
LETTUCE, PER HEAD	5c
STRAWBERRIES, Per Box	10c
APPLES, 100's, Extra Fancy, Winesaps, Dozen	35c
BEANS, FRESH, 3 POUNDS	25c
NEW POTATOES, 6 POUNDS	25c
ONIONS, CHRYSTAL WAX, 3 LBS.	10c
TOMATOES, NO. 2 CANS,	27c
MACKERELL, NO. 1 TALL, CAN	9c
SYRUP, Blue Brer Rabbit,	59c
POST BRAN, PACKAGE	9c
RAISINS, 2 LB. SEEDLESS	19c
MILK, SMALL CANS, 3 FOR	10c
MARSHMALLOWS, 1 LB. PKG.	10c
PEANUT BUTTER, QUART	25c
TOILET TISSUE, 4 FOR	25c
PINEAPPLE, NO. 2, BROKEN SLICES	15c
OLIVES, QUARTS	39c
COCOA, 2 LB. CAN	25c
MARSHMALLOW CAKES, 3 1-2, BOX	74c
FRESH VEGETABLES AT LOWEST PRICES.	

BENJAMIN MERCANTILE CO.