



BAILEY COUNTY JOURNAL

'The Community Of Opportunity-Where Water Makes the Difference'

WEATHER

August 8	85	65	.11
August 9	82	62	3.43
August 10	70	62	3.90

Vol. 22, Number 32

16 Pages Today

Published Every Sunday at Muleshoe, Bailey County, Texas 79347

Sunday August 12, 1984

Heavy Rains Benefit Most Producers

Some Totals Edge Past Eight Inches In Area

And, the rains came! Farmers are pleased, merchants have a new lilt in their voices, and the entire area received soaking rains during the past week.

AS mid-week approached, some area farmers had received moisture over the weekend, and although totals were small, the rain only proved to be the forefront of major rain for the area during the latter part of last week.

Jim Crawford lives three and one half miles west of Highway 84 on the West Camp road. He said he has received 10.1 inches of rain since starting out with three-fourths of an inch last Saturday night.

Crawford said his total from Sunday night through Friday evening about 7 p.m. was more than he received during the entire year in 1983.

"The way the rain fell will help all farmers right now," said Crawford. "If we can get some hot, dry weather now, cotton farmers, especially those who have early planted cotton will benefit the most from all the rain this week."

Lionel Lane, who is a former Muleshoe resident, now of Plainview, said they had not received as much rain, and as a seed salesman, says farmers need 100 degree weather to dry out their crops quickly, adding that the rain will prove to be most beneficial to most producers in the area.

Officially, around seven and one half inches of rain was recorded in the City of Muleshoe since mid-week.

Friday, the rain had slackened off and less than .2 was recorded. This was right on the heels of more than seven inches that fell Wednesday and Thursday.

Amounts varied from the little more than two inches reported near the New Mexico line in the West Camp community to the 7.8 inches reported by the Texas Highway Department to the west of Muleshoe at 7 a.m. Friday.

In the Maple-Goodland area the amounts ranged from 5.5 to

more than six inches during the past several days. And, around Coyote Lake the amount was from four to five inches by Friday morning.

At Progress, the amounts ranged from 6.5 to more than seven inches and at Lazbuddie, from four to seven inches were reported.

At Bula, and in that entire community, the amounts ranged from three to five inches, and little to no crop damage.

In Muleshoe, the rain started Wednesday, when a storm came through in mid-afternoon, accompanied by very high wind, small hail and a drenching two and a half inch rain that fell in something like 45 minutes.

One funnel cloud was reported to the east of town, and although the funnel was large and dipped out of the cloud, it did not appear to ever touch the ground.

Wednesday afternoon's rain turned the streets in Muleshoe into raging rivers, drowning out traffic and creating some problems for local officers. The water ran off into playa lakes around the city, and by Saturday morning, the lakes were all filled almost to capacity.

Bailey County Extension Agent Spencer Tanksley said Friday morning, "Basically, the moisture has been extremely beneficial to the county. Dryland areas received two to five inches of the slow-type rain that their crops need. We had crops beginning to show stress, especially in the eastern part of the county. Around two to three inches of rain fell along the Bailey-Lamb County lines."

"Right at Muleshoe, the rain may prove to be somewhat detrimental as the ground has become saturated and water has no place to go. The lakes are full and the water is beginning to spill over."

Con't Page 6, Col. 1

Around Muleshoe

The '84 Muletrain annuals are in and will be given out on Tuesday, August 14, 11 a.m. till 2 p.m.

High school students who purchased an annual should come to the annual room (Room 5) to pick up their copy of the yearbook. Any balance due must be paid before the annual will be issued.

Muleshoe High School Athletic Boosters will meet Tuesday, August 14, at 8 p.m. at Leal's Restaurant.

Parents of all athletes, especially football players and freshmen athletes are especially urged to attend the meeting.

State Comptroller Bob Bullock said Phillip Land from his Lubbock field office will be at the Bailey County Courthouse in the county commissioner courtroom on Tuesday, August 14, from 2-4 p.m. A Comptroller's representative is available to assist local residents at the courthouse the second Tuesday of each month, reminded Bullock.

Wyle M. Bullock recently attended a sales seminar presented by his company, Brown & Bigelow, a distributor and manufacturer of Advertising Specialties, headquarters in St. Paul, Minn.

Bullock was selected from over 150 sales representative in his region to attend this seminar because of his successful sales performance and high potential, according to Susan Heaston, Public Relations Coordinator.

Whiteface FFA Farm Mechanics won first place in the FFA Farm Mechanics District Contest on the campus of Texas Tech University.

Their instructor is Larry Seales, a 1967 graduate of Muleshoe High School and 1971 graduate of Texas Tech University. He is the son of Mr. and Mrs. Don Seales, and son-in-law of Mr. and Mrs. Leon Lewis.

He has been a Vo-Ag teacher at Whiteface since 1973, moving there from Post High School.

The Jennyslippers will be honoring the Ambassadors during their regular luncheon on Tuesday, August 14, at noon. It will be in the back room of the Muleshoe Public Library.

A 'country meal' featuring rolled roast, black-eye peas and all the trimmings will be served. All members are encouraged to attend.

Con't Page 6, Col. 1

City Officials Have Reminder On Check Policy

Muleshoe merchants and business people received a letter this week co-signed by Linda Huckaby, Municipal Judge and Julian Dominguez, Detective for the Muleshoe City Police Department.

"It has come to our attention that due to the increased amount of forgery; stolen checks and issuance of bad checks," they said, "we feel that it is necessary to remind you and your employees to get a positive identification on all checks."

The officials ask that clerks get current driver's license number and mailing address from the driver's license, reminding they cannot investigate forgeries without this information. They also ask that clerks initial or place their identification mark on checks.

They remind that a certified or registered letter "should" be sent on all checks and upon receiving receipt wait 15 days before taking the check to the court.

Also, they remind that they are not a collection agency, and although the violation is a criminal offense, the party bringing the checks into the office will be the complainant in all check cases.



A MESSY, MESSY ACCIDENT--Thursday afternoon, this was the second of two accidents reported one and one-half miles apart on East Highway 84. The driver of the truck lost control on the rain-slick highway, his truck jackknifed, and the caterpillar he was hauling broke loose from the trailer, overturned and ended up in front of the tractor. No injury was sustained by the driver.

City Tax Rebate Check Up From Last Year

State Comptroller Bob Bullock this week is sending checks totaling \$98.4 million in local sales tax payments to 988 cities that levy the one percent sales tax.

Although bookkeeping changes that were part of last year's tax deadline speedups made the August 1984 payment smaller than the previous August payment, Bullock said year-to-date comparisons can be made accurately.

"This 12 and a half percent

Bus Drivers From Area Attend School

Apparently, certified bus driver instructors are few and are rather far between. This past week, David Gray, Muleshoe High School teacher, who is also a certified bus instructor, conducted such a school in Muleshoe.

He taught a 20 hour course for new drivers, plus an eight hour course for drivers who were required to take a refresher course.

Loading and unloading bus students was thoroughly covered, along with First Aid procedures, driving procedures and other activities all connected with safely transporting school students.

Disciplinary problems were discussed, along with how and when to determine whether or not to drive on some rural roads in bad weather.

Twenty-five students from five locations attended the five day school. From Olton were Kevin Wayne Cooper and Constancio Rosalez. Students from the Springlake-Earth School were Edward Longoria, Ruben Alvarez and Pioquinto Albert Ruiz.

Larry Futch was a student from Comstock and Robert Edward Summer, Linda Gilreath Summer, Patty Gosdin DeLoach, David Dean Quisenberry and Kenneth Richards all attended the school from the Sudan Independent School District.

Attending from Muleshoe were Jerry Johnson, Lonnie Scott, Roy Donaldson, Emilio Estrada, Jerry Robinson, George Washington, Elmer Smith, Bobby Turner, Scott Murray, Fred Bara, Vera Callaway, Kerry Moore, Ronnie Jones and Bob Graves.

Both classroom work and actual bus driving were a part of the 20 hour course. Drivers taking the refresher course were not required to drive the bus as a part of their training.

increase is honest growth over last year because both this August payment and last August's are based on all sales reported during the first half of both years," Bullock said.

Muleshoe's payment for the last period was \$29,538.68, compared to \$28,366.69 for the same period last year. This is an increase of 1.88 percent. To date this year, Muleshoe has received tax rebate checks in the amount of \$142,134.70, and at this time last year had received \$139,513.12.

From Cochran County, Morton received a rebate for the city tax in the amount of \$5,488.33. Last year at this time, Morton had received a check for \$8,541.48. The City of Morton reflects, however, an overall increase in tax rebate checks of 5.65 percent for the year. Total to date at this time in 1983 was \$31,092.24, compared to the figure of \$32,848.55 for the same period of time this year.

At Littlefield, the latest rebate check for city taxes was \$30,138.37, compared to \$35,

Pre-Registration Is Coming Up For Three Way

Tom Johnson from the Three Way Schools said pre-registration will be upcoming for high school students, and all high school students are asked to use the following schedule:

Thursday, August 16, 2:30 p.m. -- all ninth graders; Thursday, August 16, 3:30 p.m. all 12th graders; Friday, August 17, 2:30 p.m., all 10th graders and Friday, August 17, 3:30 p.m. all 11th graders.

Johnson said that all ninth graders are asked to bring a parent or parents if possible, to discuss the changes set out by the Texas Legislature.

School will start at Three Way on Monday, August 20.

Commissioner's Will Consider Home Agent

Several items will be on the agenda for the Bailey County Commissioners Court when they meet in regular session on Monday, August 13.

Commissioners will meet with the Extension office to consider the appointment of a new Home Demonstration Agent; review county treasurer's report for July 1984; payment of routine county bills and miscellaneous items.

\$113.61 for the same period last year. This brings Littlefield's total to \$182,877.22 for the year, compared to \$170,007.82 at the same time last year and an increase of 7.57 percent for the year.

Friona received a check for \$11,542.95, down from the total of \$13,663.00 received for this period last year. To date for the year, Friona's share of tax rebate checks is running 7.14 percent ahead of last year. Total rebates last year at this time were \$64,051.81 and this year the total for Friona for the first seven months is \$68,625.51.

Houston received the largest check, \$17.1 million, bringing

Con't Page 6, Col. 3

'Cruelty To Animals' Case Moved To Canyon

Wednesday afternoon, at 1:30 p.m. a hearing was conducted before County Judge Gordon H. Green in Bailey County Court-at-Law, with L.F. 'Les' Bruns asking for a change of venue for his upcoming "Cruelty to Animals" trial.

Following the hearing, which took approximately an hour with two persons taking the witness stand, a decision was made by

School Board Members To Tour Projects

Members of the Board of Trustees of the Muleshoe Independent School District will meet in regular session on Monday, August 13, at 8 p.m. in the school business office.

Items on the agenda include recognition of visitors and school officials present at the meeting, followed by informational reports: tour facilities in order to note summer maintenance projects; and review 6400 and 6600 sections of 1984-85 proposed budget.

Also to be considered will be all the financial reports.

Underbusiness items, a decision may be made following the consideration of bids for: Apple 11e Computers; gasoline for the 1984-85 school year; milk for the 1984-85 school year; implementation of Chapter 75 of the Texas Education Code; approval of statement of understanding between the school district and Lubbock County Chapter of the American Red Cross.

After the tax collection report will be personnel consideration, and the superintendent's report.

Judge Green to grant the change of venue trial. The trial was moved to Canyon in Randall County. Judge Green will hear the case on Monday, August 20, at 9:30 a.m.

Bruns told Judge Green that he did not believe that six jurors could be found who would be 'impartial and fair.' He also said he believed all the newspaper coverage of the charges against him after he was filed on for "Cruelty to Animals" was slanted against him.

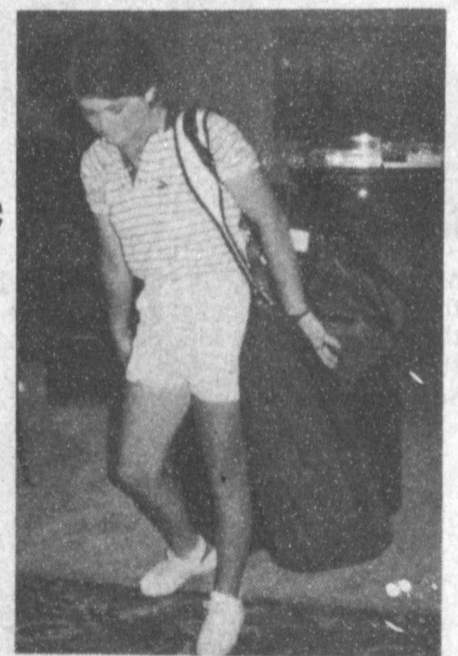
He cited harrasing telephone calls, and through his attorney, Gary Ward, of Lubbock, asked that the trial not even be held close to Bailey County, or to Lubbock, citing the coverage by the Lubbock Avalanche Journal and a Lubbock TV station.

Ward said the case had turned into a fund raiser for the Humane Society and said it was not fair to use a criminal trial to raise funds for the Humane Society.

The other witness to take the stand was Cleta Williams, of the Muleshoe and Bailey County Journals, who was asked her sources for news and stories carried in the July 29, 1984 Bailey County Journal, and followed by another story on August 5, 1984.

Judge Green also granted a portion of a press "gag" order including restricting cameras from the courtroom, or hallway during recess; and said no police department official, sheriff's office official; counsel or officer of the court could discuss any pre-trial procedures.

He also admonished the counsel for the defense and the counsel for the prosecution to refrain from discussing the case with any news media personnel.



DENISE WILSON

Denise Wilson Will Compete In Tournament

Denise Wilson, daughter of Anita Allgood and Leon Wilson, will be participating in the 84th U.S. Women's Championship Golf Tournament in Seattle, Wash.

Tournament play gets underway tomorrow, Monday, August 13 and will conclude on the 18th.

Denise graduated from Muleshoe High School in May, 1983, where she played golf all four years of high school. She won the Regional title two years and won District three years. In her junior year, she was second in the state.

During the summer she has played in several tournaments, including the Silver Bell Golf Tournament in Phoenix, Ariz.; the Broadmoor Tournament at Colorado Springs, Colo.; in Columbus, Ohio and Fort Worth.

In Fort Worth, she qualified to compete in Seattle.

Denise is a student at Oklahoma State University where she is a member of the Oklahoma State Golf Team. Next year, she hopes to qualify for the traveling golf team at OSU.

By Spencer Tanksley County Extension Agent

by Spencer Tanksley
County Extension Agent-Agri.

Each year, production agriculture competes with mining and construction industries for first place in terms of accident-caused fatalities per 100,000 workers. There is no doubt that agriculture is one of the most hazardous occupations in America. In recent years, Texas has experienced approximately 200 farm and ranch work related fatal accidents annually.

Tragic as they are, fatal agricultural accidents are a small part of the rural accident problem. There are approximately 175,000 farms in Texas. Each year, a total of up to 20,000 disabling injuries and up to 250,000 serious injuries requiring medical attention are estimated to occur on Texas farms and ranches.

Studies show that 97 percent of Texas farm and ranch fatalities are caused by firearms (16 percent), drownings (16 percent), burns (15 percent), tractors (13 percent), falls (11 percent), machinery (7 percent), animals (5 percent), suffocation/asphyxiation (5 percent), electrical shock (4 percent), and poisoning (2 percent). Further, studies show the percent of disabling injuries are related to falls (21 percent), animals (19 percent), machinery (12 percent), tractors (9 percent), lifting and carrying (9 percent), hand and power tools (6

percent), and accidents involving trailers and hitching (5 percent). These statistics involve acute traumatic events. Little is known, however, about chronic agricultural occupational health exposures.

Death and injury exposures for rural residents related to home, recreation, and highway accidents are similar to their non-rural neighbors. However, the importance of accident prevention for rural residents takes on an added dimension due to the isolation of rural communities from emergency and other medical services commonly available in urban areas.

Accident-free production means more profits for Texas farmers and ranchers. Accidents not only result in personal injury but also in a combination of economic losses which may not be obvious.

Recent studies show that tractors and machinery account for two out of every five Texas farm and ranch accidents.

Causes of serious tractor and machinery accidents are often the result of not following a few, seemingly simple safety rules. Following these rules, however, can prevent a major portion of tractor and machinery accidents.

Minimum Tractor Safety Rules.

Where possible, avoid operating a tractor near ditches,

embankments, and holes.

Do not permit extra riders. Keep children off and away from equipment. Be sure everyone is clear before moving.

Reduce speed when turning, crossing slopes, and on rough, slick, or muddy surfaces.

Stay off hills and slopes too steep for safe operation. Set wheels as wide as practical for stability.

Watch carefully in the direction of travel. Watch for and avoid obstacles, especially at row ends, roadsides and around trees.

Hitch loads low and only to the drawbar and hitch points recommended by the manufacturer. Use proper front weights to balance tractor.

Keep PTO shielding in place. Repair when necessary. Turn off the PTO and the engine before unclogging, adjusting, or servicing

equipment.

When stopped, set transmission in park position, and firmly set the brakes.

Lock brakes together for road travel. Keep road speeds to a controllable rate. Use proper lighting and SMV markings.

Securely fasten your seat belt, if the tractor has a roll-over protective structure.

Minimum Farm Machinery Safety Rules.

Read the Operator's Manual thoroughly and heed product warnings and recommended safety procedures.

Keep all guards in place when machine is in operation.

Stop engine, disconnect the power source, and wait for all machine movement to stop before servicing, adjusting, cleaning or unclogging equipment. Where machine must be running to be properly serviced,

proceed according to recommendation and with extreme caution.

Permit no extra riders.

Make sure everyone is clear of machinery before starting the engine, engaging power, or operating the machine.

Lock out electrical power before performing maintenance or service on farmstead equip-

ment. Block machinery during repairs.

Michael K. Evans, president, Evans Economics:

"The latest consumer price index is further evidence that inflation has been thoroughly routed."

You Can Own Your Business

and

Be President Of Your Own Company

For More Information
Please Write:
LUDWIG OTTO COMPANIES
803 First State Bank Bldg.
Bedford, Texas 76021

An investment of
\$165.00 is required
upon acceptance
into this program.

NOTICE OF CALCULATION OF EFFECTIVE TAX RATE AND PUBLICATION OF ESTIMATED UNENCUMBERED FUND BALANCES

I, Dale F. Jones, Assessor-Collector for the City of Muleshoe, in accordance with the provisions of Sec. 26.04, Property Tax Code, have calculated the tax rate which may not be exceeded by more than three percent by the governing body of the City of Muleshoe without holding a public hearing as required by the code. That rate is as follows: \$.48 per \$100 of value. The estimated unencumbered fund balance for Maintenance & Operation fund: \$-0-. The estimated unencumbered fund balance for Interest & Sinking fund: \$-0-.

Dale F. Jones Chief Appraiser

August 8, 1984

CALCULATIONS USED TO DETERMINE EFFECTIVE TAX RATE

I. DATA

1. 1983 Total tax levy from the 1983 tax roll	\$ 430,543
2. 1983 Tax rate (\$.63 M&O and \$ -0- I&S)	\$.63/\$100
3. 1983 Debt service (I&S) levy	\$ -0-
4. 1983 Maintenance & Operation (M&O)	\$ 430,543
5. 1983 M&O taxes on property in territory that has ceased to be a part of unit in 1984	\$ -0-
6. 1983 M&O taxes on property becoming exempt in 1984	\$ -0-
7. 1983 M&O taxes on taxable value lost because property is appraised at less than market value in 1984	\$ 22.00
8. 1984 Total taxable value of all property	\$ 91,523,200.
9. 1984 Taxable value of new improvements added since Jan. 1, 1983	\$ 1,200,000
10. 1984 Taxable value of property annexed since Jan. 1, 1983	\$ -0-
11. 1984 Tax levy needed to satisfy debt service (I&S)	\$ -0-
12. Rate to raise 1983 tax due levy to appraisal roll errors (lost dollars divided by 1984 taxable value) (\$ 2,953 + \$ 91,523,200. x 100) .0000322	\$.00032/\$100
13. Rate to regain taxes lost in 1983 due to appraisal roll errors (lost dollars divided by 1984 taxable values) (\$ 2,953 + \$ 91,523,200. x 100) .0000322	\$.00032/\$100
14. 1983 M&O Taxes used to regain lost 1982 levy	\$ 17,440

II. CALCULATION

MAINTENANCE AND OPERATION (M&O) TAX RATE

1. (A) 1983 Total tax levy (Data 1)	\$ 430,543
(B) Subtract 1983 Debt service levy (Data 3)	\$ -0-
(C) Subtract 1983 Taxes on property no longer in unit (Data 5)	\$ -0-
(D) Subtract 1983 Taxes for exemptions (Data 6)	\$ -0-
(E) Subtract 1983 Taxes for productivity valuation (Data 7)	\$ 22.
(F) Subtract 1983 Taxes used to regain lost 1982 levy (Data 14)	\$ 17,440
(G) Adjusted 1983 M&O levy	\$ 413,081.
2. (A) 1984 Total taxable value of all property (Data 8)	\$ 91,523,200
(B) Subtract 1984 Value of new improvements (Data 9)	\$ 1,200,000
(C) Subtract 1984 Value of annexed property (Data 10)	\$ -0-
(D) Adjusted 1984 Taxable value for M&O	\$ 90,323,200.
3. (A) Divide the Adjusted 1983 M&O levy (1-G above) by the Adjusted 1984 taxable value for M&O (2-D above) (\$ 413,081 + \$ 90,323,200.)	\$.004573
(B) Multiply by \$100 valuation	x \$100
(C) Effective M&O rate for 1984	\$.4573/\$100

INTEREST AND SINKING (I&S) TAX RATE

4. (A) 1984 I&S levy needed to satisfy debt (Data 11)	\$ -0-
(B) 1984 Total taxable value of all property (Data 8)	\$ -0-
(C) Divide the 1984 I&S levy (4-A above) by the 1984 Total taxable value (4-B above) (\$ -0- + \$ -0-)	\$ -0-
(D) Multiply by \$100 valuation	x \$100
(E) Effective I&S rate for 1984	\$ 0/\$100

APPRAISAL ROLL ERROR RATE

5. (A) Rate to raise 1983 levy due to appraisal errors (Data 12)	\$ -0-/\$100
(B) Add rate to regain taxes lost due to errors (Data 13)	+ \$ -0-/\$100
(C) Total Rate to adjust for appraisal roll errors	\$ -0-/\$100

TOTAL EFFECTIVE TAX RATE FOR 1984

6. (A) Effective M&O rate (3-C above)	\$.4573/\$100
(B) Add Effective I&S rate (4-E above)	+ \$ -0-/\$100
(C) Add Rate to adjust for appraisal roll errors (5-C above)	+ \$ -0-/\$100
(D) 1984 Effective Tax Rate	\$.4573/\$100

1984 Effective Tax Rate is the tax rate published as required by Sec. 26.04, Property Tax Code.



MULESHOE VISITORS--Visiting in Muleshoe over the weekend in the Eldridge Graves home were members of the Women's Center for the Big Bend Area and friends of Sandra Graves. They are from left, standing, Janice Harvey, director of the Center; and Sandra Graves. Seated from left are Liz Gonzales and Jan Jaeckle, counselor.

BIBLE VERSE

Every Kingdom divided against itself is brought to desolation; a house divided against a house falleth.

1. Who made this statement?
2. To whom was he speaking?
3. What happened just prior to this?

Answers to Bible Verse

1. Jesus.
2. The Pharisees.
3. Jesus had caused a dumb man to speak.

Bailey County Journal

Established March 31, 1963. Published by Muleshoe Publishing Co., Inc. Every Sunday at 304 W. Second, Box 449, Muleshoe, Texas, 79347. Second Class Postage paid at Muleshoe, Texas 79347.

MEMBER 1984 TEXAS PRESS ASSOCIATION

L.B. Hall, President
James Woods, Vice-President
Cleta Williams, News
Evelene Harris, Society
Boile Milsap, Advertising
Lilla Sims, Circulation Classified
Sammie Hall, Bookkeeper

SUBSCRIPTIONS:
Muleshoe Journal and Bailey County Journal
Bailey and surrounding counties \$14.95
Muleshoe Journal and Bailey County Journal
Elsewhere in Texas \$12.95
Muleshoe Journal and Bailey County Journal
Outside of Texas \$13.95
Years by Carrier \$11.50
Advertising rate card on application.

MAKE MONEY SAVE MONEY

Enroll in the H&R Block Income Tax Course now. Make money during tax time. Comprehensive course taught by experienced H&R Block instructors begins soon in your area.

7.5 CEU's Awarded

Enroll Today!

H&R BLOCK
WHO COULD BE A BETTER
INCOME TAX TEACHER?

Classes Start
Sept. 4

For More Information
CALL NOW

Muleshoe

224 W. 2nd

272-3332

Pre-nuptial Shower Honors Janie Contreras

Sunday afternoon, August 5, a pre-nuptial shower was held for Janie Contreras, bride-elect of Eugene Porras.

The shower was hosted at the Summit Savings meeting room and guests were greeted by the honoree; Luisa Contreras, mother of the bride-elect and Mrs. Joe Porras, Sr., grandmother of the bridegroom, and were registered by Esther Contreras, sister of the bride.

Refreshments of punch and cake were served from a table laid with lace over lavender. A

centerpiece of lavender and white silk carnations in wicker basket provided the focus point on the serving table. The honoree was presented a lavender carnation corsage.

Serving from crystal appointments were Liz Garcia, Annie Porras, Juanita Contreras, Maria Alfaro and Dolores Salcido.

Hostess gift was a set of dinnerware.

Special guests were Mrs. Victor Contreras, mother of the bride; Mrs. Joe Porras Sr.,

grandmother of the groom and Mrs. Bearice Romero, aunt of the groom from Weslaco, Tx.

Hostesses were Liz Garcia, Josie Pedroza, Maria Alfaro, Dolores Salcido, Ramona Lopez, Lupe Mendoza, Juanita Contreras, Joyce Gist, Annie Porras, Lupe Torres, Rosie Rodriguez, Luisa Porras, Maggie Torres and Maria Franco.

Who's Dumb

"Say, you're the limit. If I mailed a letter addressed to the 'dumbest man in Boston,' I know who they'd deliver it to."
"So do I, they'd return it to the sender."

Which Face

First Pug--"Let me tell you one

thing, big boy, I'm not two-faced anyway."

Second pug--"That's easy to believe. If you were, you wouldn't be wearing that one."

Similar

The biggest trouble with success these days is that the recipe is just about the same as that for a nervous breakdown.

-Pilot, Norfolk.

Now In Stock

Large Selection

Table & Floor Lamps

Art Loft

1529 W. Amer. Blvd.

272-3485

NOTICE OF CALCULATION OF EFFECTIVE TAX RATE AND PUBLICATION OF ESTIMATED UNENCUMBERED FUND BALANCES

I, Dale F. Jones, Assessor-Collector for Three Way I.S.D., in accordance with the provisions of Sec. 26.04, Property Tax Code, have calculated the tax rate which may not be exceeded by more than three percent by the governing body of the Three Way I.S.D. without holding a public hearing as required by the code. That rate is as follows: \$1.19 per \$100 of value.
The estimated unencumbered fund balance for Maintenance & Operation fund: \$50,000. The estimated unencumbered fund balance for Interest & Sinking fund: \$135,000.

Dale F. Jones Chief Appraiser
August 8, 1984

CALCULATIONS USED TO DETERMINE EFFECTIVE TAX RATE

I. DATA

1. 1983 Total tax levy from the 1983 tax roll	\$ 416,492
2. 1983 Tax rate (\$ 1.15 M&O and \$.04 I&S)	\$ 1.19/\$100
3. 1983 Debt service (I&S) levy	\$ 14,161
4. 1983 Maintenance and operation (M&O) levy	\$ 402,331
5. 1983 M&O taxes on property in territory that has ceased to be a part of unit in 1984	\$ -0-
6. 1983 M&O taxes on property becoming exempt in 1984	\$ -0-
7. 1983 M&O taxes on taxable value lost because property is appraised at less than market value in 1984	\$ -0-
8. 1984 Total taxable value of all property	\$ 38,120,604
9. 1984 Taxable value of new improvements added since Jan. 1, 1983	\$ 278,430
10. 1984 Taxable value of property annexed since Jan. 1, 1983	\$ -0-
11. 1984 Tax levy needed to satisfy debt service (I&S)	\$ 44,145
12. Rate to raise 1983 tax levy due to appraisal roll errors (lost dollars divided by the difference of 1984 taxable values minus over-65 homesteads taxable values) (\$ 2,626 ÷ (\$ 3,812,060.4 - \$ 475,210) × 100)	\$.00697/\$100
13. Rate to regain taxes lost in 1983 due to appraisal roll errors (lost dollars divided by the difference of 1984 taxable values minus 1984 over-65 homesteads taxable value) (\$ 2,626 ÷ (\$ 3,812,060.4 - \$ 475,210) × 100)	\$.00697/\$100
14. 1983 M&O Taxes used to regain lost 1982 levy	\$ -0-
15. 1984 Taxable value of over-65 homesteads with frozen taxes	\$ 475,210
16. Frozen M&O levy of over-65 homesteads with frozen taxes	\$ 802
17. Frozen I&S levy of over-65 homesteads with frozen taxes	\$ 28

II. CALCULATION MAINTENANCE AND OPERATION (M&O) TAX RATE

1. (A) 1983 Total tax levy (Data 1)	\$ 416,492
(B) Subtract 1983 Debt service levy (Data 3)	-\$ 14,161
(C) Subtract 1983 Taxes on property no longer in unit (Data 5)	-\$ -0-
(D) Subtract 1983 Taxes on exemptions (Data 6)	-\$ -0-
(E) Subtract 1983 Taxes on productivity valuation (Data 7)	-\$ -0-
(F) Subtract frozen M&O levy of over-65 homesteads (Data 16)	-\$ 802
(G) Subtract 1983 M&O taxes used to regain lost 1982 levy (Data 14)	-\$ -0-
(H) Adjusted 1983 M&O levy	T \$ 401,529
2. (A) 1984 Total taxable value of all property (Data 8)	\$ 38,120,604.
(B) Subtract 1984 Value of new improvements (Data 9)	-\$ 278,430
(C) Subtract 1984 Value of annexed property (Data 10)	-\$ -0-
(D) Subtract 1984 Value of over-65 homesteads (Data 15)	-\$ 475,210
(E) Adjusted 1984 Taxable value for M&O	T \$ 37,366,964
3. (A) Divide the Adjusted 1983 M&O levy (1-H above) by the Adjusted 1984 Taxable value for M&O (2-E above) (\$ 401,529 ÷ \$ 37,366,964)	\$.010745
(B) Multiply by \$100 valuation	× \$ 100 1.0745
3. (C) Effective M&O rate for 1984	\$ 1.0745/\$100

INTEREST AND SINKING (I&S) TAX RATE

4. (A) 1984 I&S levy needed to satisfy debt (Data 11)	\$ 44,145
(B) Subtract frozen I&S levy of over-65 homesteads (Data 17)	-\$ 28
(C) Adjusted 1984 I&S levy	T \$ 44,117
(D) 1984 Total taxable value of all property (Data 8)	\$ 38,120,604
(E) Subtract 1984 Value of over-65 homesteads (Data 15)	-\$ 475,210
(F) Adjusted 1984 Taxable value for I&S	T \$ 37,645,394
(G) Divide the Adjusted 1984 I&S levy (4-C above) by the Adjusted 1984 taxable value for I&S (4-F above) (\$ 44,117 ÷ \$ 37,645,394)	\$.0011719.59
(H) Multiply by \$100 valuation	× \$ 100 1.1719
(I) Effective I&S rate for 1984	\$.11719/\$100

APPRAISAL ROLL ERROR RATE

5. (A) Rate to raise 1983 levy due to appraisal errors (Data 12)	\$ -0-/\$100
(B) Add Rate to regain taxes lost due to errors (Data 13)	+ \$ -0-/\$100
(C) Total Rate to adjust for appraisal roll errors	\$ -0-/\$100
TOTAL EFFECTIVE TAX RATE FOR 1984	
6. (A) Effective M&O rate (3-C above)	\$ 1.0745/\$100
(B) Add Effective I&S rate (4-I above)	+ \$.1171/\$100
(C) Add Rate to adjust for appraisal roll errors (5-C above)	+ \$ -0-/\$100
(D) 1984 Effective Tax Rate	\$ 1.1916/\$100

1984 Effective Tax Rate is the tax rate published as required by Sec. 26.04, Property Tax Code.



JANIE CONTRERAS



Eric Andrew Quintana

Mr. and Mrs. Fabian Quintana are the proud parents of a son born at 11:21 a.m. August 7 in West Plains Medical Center.

The young man weighed eight pounds and five ounces and has been named Eric Andrew. He has an older sister, Margaret, five years of age.

Grandparents are Mrs. Lucille Marquez of Earth and Mr. and Mrs. Luis Quintana of Goodland.

Great grandparents are Mr. and Mrs. Anisoto Lucero and Mrs. Confe Quintana.

Laura Miki Gerber

Mr. and Mrs. Michael Gerber of Bovina are the proud parents of a daughter born at 3:41 p.m. August 4 in West Plains Medical Center.

The young lady weighed seven pounds and has been named Laura Miki. She is the first child for the couple.

Grandparents are Mr. and Mrs. Vincent Guggemos and Mr. and Mrs. Leonard Gerber, all of Nazerath.

Karima Sanchez

Mr. and Mrs. Rual Sanchez are the proud parents of a daughter, Karima, born at 10 a.m. August 6.

The young lady weighed six pounds 11 ounces. She has an older brother, Raul, Jr. two years of age.

Grandparents are Mr. and Mrs. Ezequiel Hinojos of Mexico and Mr. and Mrs. Luis Sanchez of Muleshoe.

Great grandparents are Jesus Gonzales and Francisca Madrid, both of Mexico.

Candace Dee Hutto

Mr. and Mrs. Terry Hutto are the proud parents of a daughter, Candace Dee, born at 1:39 a.m. August 9 in West Plains Medical Center.

Candace Dee weighed six pounds and eight ounces. She has a brother, T.J., two and half years of age.

Grandparents are Mr. and Mrs. Clyde Vaughn and Joan Hutto, all of Tulia.

Great grandparents are Mr. and Mrs. R. Howard Vaughn and Mrs. "Doc" Brown, all of Plainview.

Best of Press

Man is that peculiar animal who gets a hearty laugh out of an old family album and then looks in the mirror without so much as a grin.

-W.O.W. Magazine.

Perhaps You Sent A Lovely Card,
Or Sat Quietly In A Chair,
Perhaps You Sent A Funeral Spray,
If So We Saw It There,
Perhaps You Spoke The Kindest Words,
As Any Friend Could Say,
Perhaps You Were Not There At All,
Just Thought Of Us That Day,
Whatever You Did To Console Our Hearts,
We Thank You So Much Whatever The Part,
By The Family Of

Lance Puckett

Miss Dulin, Pollard United In Marriage

Before an archway of lemon leaves and pink carnations, Miss Terri Lee Dulin became the bride of Bryan Keith Pollard on Saturday, July 28, at 7 p.m. in the sanctuary of First Baptist Church in Tulia. The Rev. Charles Davenport pastor, officiated the double ring ceremony. Baskets of pink and white gladioli complimented the candle lit setting.

Parents of the couple are Mr. and Mrs. Jim Dulin and Mr. and Mrs. Howard Pollard, all of Tulia. Grandparents are Mrs. Jimmy Dulin of Tahoka, Mr. and Mrs. Donnie Morris of New Home, Mr. and Mrs. Jack Copeland of Causey, N.M. and Mr. and Mrs. Carl Pollard of Needmore.

Kember Phelps, cousin of the bride, of Plainview, greeted the guests with wedding programs.

Guests were registered by Kenee Littlefield of Tulia, at a table draped with a white lace cloth. On the table was the bride's book, a pink plume pen and a bride and groom musical figurine, a gift from the bride's aunt, Glendia Sparkman.

The bride, presented in marriage by her father, wore the wedding gown worn by her mother and aunt in their weddings. The gown is of cloud white silk organza, fashioned

with a portrait neckline and tapered sleeves. Appliques of lace, scattered with seed pearls and sequins enhanced the neckline, bodice and skirt front. Gathered fullness at the back waistline emphasized the full sweep of the chapel train. Her veil if imported silk illusion fell from a chantilly and pearl lace covered cap. She wore matching pearl necklace and earrings.

Along with her engagement ring, the bride wore rings belonging to both of her grandmothers, Mrs. Leo Dulin of Tahoka and the late Mrs. Lois Morris. She carried atop a white Bible, a bouquet of stephanotis, white sweetheart roses, centered with an orchid and surrounded by baby's breath. To complete tradition, the bride wore something old, her wedding dress; something new, her veil; something borrowed, a handkerchief belonging to Mrs. Marjorie Morris of New Home; and something blue was her garter which was made by her paternal grandmother and also previously worn by her mother. She had pennies minted in the years of the couple's birth in her shoe for good luck.

Maid of honor was Miss Toy Dulin, sister of the bride, of Tulia. Bridesmaids were Misses Marleea Cox of Muleshoe, Amy Morris of Tulia and Tawn Dulin,

cousin of the bride, of New Home. They wore dresses of frosted rose moire taffeta with portrait neckline and puff sleeves, and gathered floor length skirts accented by cummerbunds tied in the back. They carried colonial nosegays of fresh pink flowers and mauve streamers.

Mark Pollard of Tulia, served his brother as best man. Groomsmen were Mark Stringer, Chris Wesley, and J. Frank Kiker, all of Tulia. Tom Dulin, brother of the bride, of New Home, Randy Crimmins, cousin of the groom, of Lubbock and Terry Pollard, uncle of the groom of Needmore, served as ushers.

Flower girl was Shannon Sparkman, cousin of the bride, of Pearland. She wore a floor length white taffeta dress with layers of white lace ruffles. Her headpiece was a halo of white baby's breath. She carried a white lace basket of flowers. Ringbearer was Russell Pollard, cousin of the groom, of Needmore. He wore a white tuxedo and carried a white satin and lace pillow.

The candles were lighted by Jennifer Johnson of Tulia. Her dress was similar to the bridesmaids. She also wore a halo of white baby's breath.

Michael Flowers, pianist, of Tulia, accompanied Kim Broadstreet, also of Tulia as he sang, "There is Love," and Carolyn Prater of Tulia as she sang, "Through The Eyes of Love." Prelude music and the bridal marches were played by Norman Goad, organist, of Lubbock. Diana Goad, accompanied by Norman Goad, played "The Lord's Prayer" on her violin.

A reception immediately following the ceremony in the fellowship hall of the church. The bride's table was draped with a white organdy skirt and colored with white lace. It featured a silver candelabra filled with pink roses, mauve alstroemeria and white daisies and baby's breath.

The punch was served by Miss Michelle Harlan of Slaton from a silver punch bowl. The three-tiered white wedding cake was decorated with tiny pink and mauve sugar flowers and topped by a Precious Moment figurine surrounded by pink and mauve ribbon and silk rosebuds.

The cake was served by Shonni Collier, cousin of the groom, of Lubbock, who, along with her mother, Pat Crimmins, also of Lubbock, made and decorated the cake.

The groom's table was covered with a rose linen cloth and centered with a pink ceramic boot filled with eucalyptus and dry flowers. The groom's strawberry cake was baked by his mother. Coffee was served from a silver coffee urn. Attending the groom's table were Misses Risa Adams of Stratford and Mary Beth Dovel of Tulia.

A hors d'oeuvre table, featuring fruit, was covered with a white cut lace cloth. It was attended by Kenee Littlefield.

Members of the houseparty were Mr. and Mrs. Bob Gleason, Mrs. Danny Johnson, Mrs. Don Stringer, Mrs. Buel Lee Thompson, Mrs. Clyde Vaughn, Mrs. Ted Vestal, and Mrs. Murray Vise.

The bride graduated from Tulia High School after attending

schools at Slaton and Muleshoe. She attended West Texas State

University and will resume studies at Texas Tech University.

The groom, also a graduate of Tulia High School, attended Texas Tech University, and is currently employed at Bobby Evans Excavation in Lubbock. After a wedding trip to Ruidoso, the couple is at home in Lubbock.



Mr. and Mrs. Bryan Keith Pollard (nee Terri Lee Dulin)

RECIPE

By Sarah Anne Sheridan

Crabmeat Macaroni

- 8 oz. elbow macaroni
- 1 c cooked crabmeat
- 1 c green pepper chopped
- 1 c chopped celery
- 1/4 c chopped pimientos

- 1/4 c slivered almonds
 - 3 hard cooked eggs chopped
 - 1/2 c mayonnaise
 - 2 t salt
- Pepper to taste
- Cook macaroni by directions. Chill. Flake crabmeat. Combine cooked macaroni, crabmeat and remaining ingredients. Mix thoroughly, but lightly. Chill several hours before serving on salad greens.

Announcing

Public Judging
Adrian Photography's
Picture Perfect Baby Contest
Portraits May Be Viewed At The
Following Sponsors:

Mon. Aug 13 Chick-N-Dock
Tues. Aug 14 1st National Bank
Wed. Aug 15 Citizen State Bank, Earth

Come In And Make Your Selection For The Picture
Perfect Baby

Adrian
Photography

218 W. 2nd 272-3487

True Value

HARDWARE STORES

Your local independently owned True Value® Hardware Store has national chain-buying power.

Sale Ends Staurday Aug. 18

1984 Pre-Labor Day Carnival of Values



12.98
Gallon

44 Colors & White
E-Z Kare™ Latex Flat Enamel

Our best-quality wall and trim finish. Stands up to repeated scrubbing without fading or shining. Dries quickly.



3 for 1.77

Furnace Filters

Quality Amer-Glas® II filters can help you save money on fuel bills when changed regularly. Most popular sizes available.



10.98
Gal.*

WeatherAll

Our finest quality flat acrylic latex house paint leaves a rich, durable finish that resists fading, cracking and peeling. Available in 26 colors, black, white and custom colors. HPX Satin Finish. Black, white, custom colors. SHP 11.98 Gal.* Gloss Finish. Black, white, custom colors. GHP 12.98 Gal.*



1.49

Your Choice

2-Pk. C Batts. TV1400B2
2-Pk. D Batts. TV1300B2
4-Pk. AA Batts. TV1500B4
9-Volt Batt. TV1604B

Fry & Cox, Inc.

401 S. 1st 272-4511

"1984 VICTORIOUS LIVING CRUSADE"

You Are Invited To Hear Pastor

Steve Davis

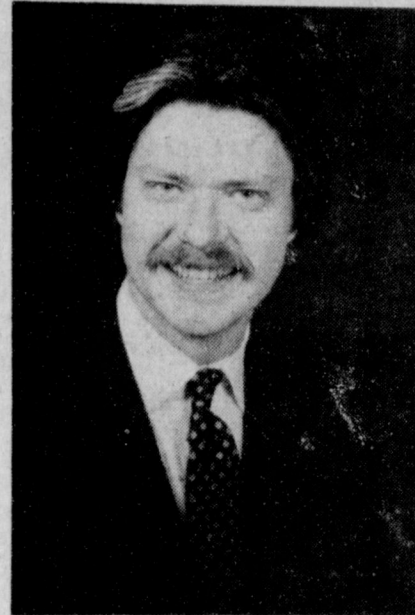
Addressing The Critical Issues Of Today!

- ★ "The Mark Of The Beast"
- ★ "Faith And Healing For Today"
- ★ "Baptism In The Holy Spirit"
- ★ "The Mind Behind Rock Music"

August 12-19

Sunday ... 10:30 a.m. & 6:30 p.m.

Tuesday-Friday ... 7:30 p.m.



The Anchor Brothers Band

Will Be Joining Us
Sun. at 6:30p.m., Mon. & Tues. 7:30 p.m.

Also "Kings Kids Quartet"

Will Be Appearing
Thurs, Fri & Sun, Aug 19
FIRST ASSEMBLY OF GOD

"The Church On The Grow"

521 SOUTH FIRST • MULESHOE, TEXAS

No Service
On Monday
& Saturday

Nursery Care
Provided



Candlelight Ceremony Unites Miss Whitt, Kuehler

Miss Mary Jan Whitt became the bride of Bernard Kelly Kuehler in a candlelight ceremony Saturday, July 21, at 8 p.m. in the First United Methodist Church of Muleshoe. Rev. Bill Kent, pastor, and Father Bob Ibe of Morton, read the double ring vows.

Parents of the couple are Mr. and Mrs. Roy D. Whitt of Muleshoe and Mr. and Mrs. Ben Kuehler of Morton.

Vows were repeated at the altar before a bouquet of pink spider mums, pink carnations, gigi pink carnations, and white daisies, and two spiral candelabras with crystal shades containing white votive candles. A pair of fern stands and memory

candle completed the altar decorations in the bride's chosen colors of pink and green. The windows were adorned with white tapers entwined with greenery.

Vocalists Gwyn and Scott Murray of Muleshoe sang "Just You and I," followed by Janet Nix of Sudan and Clifford Watson of Muleshoe, who sang, "We've Only Just Begun," "Together" and "Me and My House." They were accompanied by organist, Mrs. W.T. Watson, who also provided traditional wedding music.

Melissa Turner of Lubbock, read the passage from the Bible, I Corinthians 13.

Given in marriage by her

father, the bride wore a gown of white tissue taffeta and rose patterned imported chantilly lace, designed and made for her by her mother, Joy, and beaded by her grandmother, Olene Watts. The fitted lace bodice had a pearl encrusted scalloped standing band collar and full sleeves with 10 button gauntlet cuffs that extended to a point over each hand. The heavily beaded lace bodice had a dropped waistline that dipped to a deep point in center front. The lower edge was finished with a pearl encrusted scalloped trim. The back was fashioned with taffeta loops and 68 taffeta covered ball buttons. A very full taffeta skirt fell below the bodice and extended to a full cathedral-length train.

A heavily beaded scalloped alencon lace edging encircled the lower edge of the skirt and the train. A deep, wedge-shaped beaded lace motif was applied on the center front of the skirt above the hemline with small pearl-encrusted lace motifs scattered over the train up the back to the dropped waist.

The bride wore a white pearl-encrusted chantilly lace derby, held up on the left side with a small bouquet of silk flowers. A cloud of beaded lace edge organza tulle encircled the hat and extended down over the train.

In keeping with a four generation tradition, the bride wore a V-shaped pin encrusted with Mother-Of-Pearl worn by the bride's great-great-grandmother during the Civil War. For something, borrowed, the bride wore pearl earrings belonging to her mother; two wedding rings, one of which belongs to her grandmother, Mrs. Webb Watts, and the other belonging to her late grandmother, Mrs. Olan Whitt; and a blue garter worn by the groom's mother at her wedding. The bride also wore the traditional new blue garter and pennies in her shoes minted in the years of their birth.

She carried a cascading bouquet of silk pink rose buds, white gardenias, stephanotis, and white and pink daisies, all accented with silk English ivy.

Beth Whitt, sister of the bride of Amarillo, served as maid of honor. Bridesmaids were Jill Johnson of Lubbock; Stacey Campbell of Lubbock and Sarita Maltzberger of Cotulla.

They wore identical tea-length dresses of pink voile with four

tiered ruffled skirt gathered into a sleeveless bodice with a drawstring neckline and butterfly ruffles at the sleeve. A self fabric ribbon encircles the waistline and tied in a bow in the back. These were made by a friend, Mrs. Kenneth Hanks of Muleshoe.

The maid of honor carried three pink rose buds, flanked by lemon leaves and baby's breath. The bridesmaids carried a single pink rose bud flanked by lemon leaves and baby's breath.

Keisha and Brandy Whitt, nieces of the bride, served as flower girls. They wore green voile dresses patterned like the bridesmaids, and wore pink silk daisies in their hair. They carried white wicker baskets with love knots of satin ribbon in the bride's chosen colors.

James Roy Lewis, cousin of the groom, from Morton, served as best man. Groomsmen were Randy Kuehler, brother of the groom from Del Rio; Kevin Kuehler, brother of the groom, from Odessa; Rory Kuehler, brother of the groom from Morton and Phillip Campbell, cousin of the groom, from Seymour.

Ringbearer was Neal Kuehler, nephew of the groom, from Morton. He carried a taffeta and chantilly lace pillow trimmed with ribbon made by the groom's mother.

Candlelighters were Ronald and Donald Kuehler, brothers of the groom from Morton. They also served as ushers, together with Rusty Whitt, brother of the bride.

The mother of the bride wore a pink crepe dress and a corsage of white cymbidium orchid trimmed in pink. The mother of the groom wore a mauve crepe dress and a corsage of white cymbidium orchid, trimmed in pink.

Registering the guests was Robin Burgess of Canyon and presenting the guests with programs were Greg and Michael Kuehler, nephews of the groom, from Morton.

Immediately following the ceremony, a special slide presentation entitled "The Love Story" was shown by Lonnie Adrian in the sanctuary. This presentation consisted of pictures of Jan and Kelly growing up through the years, falling in love, their engagement,

and plans for marriage.

Following "The Love Story," the reception was held in the fellowship hall of the church. The bride's table featured a four-tiered cake decorated in fresh flowers of pink miniature carnations, baby pink roses, white daisies, pink alstroemeria lilies, leather leaf, lemon and baby breath.

The bride's bouquet was placed at the base of the tall brass candelabra of flowers and greenery.

Appointments used were crystal and gold leaf belonging to the bride's mother, grandmother and great-grandmother. The cloth on the table was made by the bride's grandmother, Mrs. Webb Watts. Cake, punch, mints and nuts were served by Liz Remy from Lubbock and Suzanne Schuster from Bryan.

The groom's table featured an antique copper coffee service, an antique copper candle holder adorned with variegated pittosporum and lemon leaves, German chocolate cake, mints, nuts, and coffee were served from china and brass appointments by Diana Coffman, sister of the groom from Odessa and Angela Dunn from Wolfforth. Fruit, various cheeses, and crackers were served from a fruit table centered with a brass spergne filled with lemon leaves, baby breath and various gifts.

A special table for gifts was covered with an ecru-colored cloth crocheted by the bride's late grandmother, Mrs. Olan Whitt.

Members of the house party were Mrs. Frank Ellis, Mrs. James Crane, Mrs. M.D. Gunstream, Mrs. Eugene Black, Mrs. Carl Bamert, Mrs. Alton Burton, Mrs. George Wheeler, Mrs. David Stovall and Mrs. J.K. Adams.

The couple will make their home at 2706 Genoa, Lubbock, where they are attending college.

The bride is a 1982 graduate of Muleshoe High School and is a junior at Texas Tech University majoring in elementary education, specializing in Special Education. Kuehler graduated in Morton High School in 1980, and will graduate from Texas Tech University in August with a degree in Construction Engineering Technology.

Out of town relatives attending were Mrs. Gladys Trotter, Mrs. W.D. Allen from Greenville; Mr. and Mrs. Bob Hutchinson, Stephen and Angie, of Dallas; Mr. and Mrs. John Roark, Wayne, Alan and Sharron of Temple; Mr. and Mrs. Gary Willingham and Todd Willingham, all of Morton; Annette Willingham of Lubbock; Charles Mike Fowler; Lubbock; Mr. and

Mrs. Edison of Seymour; Mr. and Mrs. Randy Kuehler of Alena of Del Rio; Mr. and Mrs. Kevin Kuehler of Odessa, Mr. and Mrs. Coffman of Odessa; Rory Kuehler, Neil, Michael and Greg, all of Morton; Mr. and Mrs. Billy Jake Myers, Rhineland and Mr. and Mrs. Franklin of Pep.

Friends from out of town attending were from Morton, Lubbock, Dallas, Cotulla, Seymour; Sudan, Bryan, Lazbuddie, Wolfforth, Levelland and Clovis, N.M.

A bridesmaids' luncheon was given in the home of Mrs. Rusty Whitt on Friday, July 20, by Mrs. F.W. Watts, Beth Whitt and Mrs. Rusty Whitt.

A rehearsal dinner was hosted by the groom's parents, Mr. and Mrs. Ben Kuehler at the Bailey County Coliseum banquet room.

Rebekah Lodge

Weekly Meeting

Held Tuesday

Muleshoe Rebekah Lodge members met Tuesday evening for their regular meeting. Sandy Robinson, Noble Grand, called the meeting to order.

Dorothy Chande, Chaplin, gave the opening prayer. Minutes were read by Fern Davis, secretary.

It was reported that the Rebekah members were pleased to have Laurie Quisenberry at Lodge. She is a member who moved to Plano a few years ago.

The members discussed the dinner menu-to be served at Odd Fellow Circle Seven Thursday night.

Ina Wilemon, Warden, closed the Lodge.



Mrs. Bernard Kuehler (nee Mary Jan Whitt)

DON'T KISS \$8,938 GOODBYE

That's how much you could lose just on resale value if you don't buy a John Deere

Looking for a big discount when you buy a tractor? Don't get stuck with an even bigger discount when you want to sell it.

Always consider resale value when you price a field tractor. Because the differences among brands may sometimes be bigger than ANY purchase incentive.

Compare John Deere with our two leading competitors. According to the Spring 1984 Official Guide of the National Farm and Power Equipment Dealers Association, the average 5-year-old John Deere 4440 sells for 106 percent of its 1979 list price. One leading competitor averages 87 percent of its 1979 list price. The other averages 73 percent.

What's that mean in dollars? Add the John Deere gain on original price to the competitor's loss. The John Deere advantage is as much as \$8,938!

Is this only true of one model? No. Every 40 Series 90- to 180-hp tractor has an average resale price that's higher than its new price five years ago.

Is resale your only John Deere advantage? No. Don't forget the remarkable fuel efficiency of today's 50 Series

John Deere tractors. And don't forget our unmatched reputation for high quality and high reliability. See your John Deere dealer. He'll be happy to explain the big difference between a low-price tractor and a low-cost John Deere: 100-hp 4050, 120-hp 4250, 140-hp 4450, 165-hp 4650 or 190-hp 4850.

NOTE: Average resale prices taken from Spring 1984 Official Guide of the National Farm and Power Equipment Dealers Association. Percentages calculated from best currently available information on 1979 list prices.



Dent - Rempe, Inc.

1516 W. American Blvd.

272-4296

MONDAY ONLY SALE!

Special Purchase!

QUEEN SIZE TOPS

•38 to 44•

3.97

regular to 18.

- Short Sleeve
- Sleeveless
- All Summer Styles



Two Full Racks Ladies and Juniors SPORTSWEAR

75% off

All Sales Final

No Refund

No Layaways

New Shipment

Men's HOBIE T-SHIRTS

5.97³ for 15.

Long Sleeve, Shimmels Short Sleeve

Values to 11.

ANTHONY'S



ACCIDENT VICTIM LOADED--Members of the EMT and ambulance service from West Plains Medical Center are pictured loading an accident victim into the ambulance southeast of Muleshoe Thursday afternoon. Two persons were injured in the one-vehicle rollover.

Heavy Rain

Con't From Page 1

"Some crops, especially those in the lake areas may get drowned out," added Tanksley, "and this can occur even in the dryland crop areas. This is not the situation right now, though, (Friday morning)," continued the county agent.

"We can be sure the heavy rainfall has brought the harvest of vegetables to a standstill, and producers can do no cultivation or cropwork. Some producers have hay on the ground, and they are naturally disappointed their hay has been rained on."

Tanksley said a little corn was reported to be blown down by the very high winds on Wednesday, but no major crop damage had been reported.

One side-effect of the rain has been a rash of accidents on east

Highway 84. The first accident was reported at approximately 4:45 p.m. on Thursday. A driver of a pickup lost control of his vehicle about five miles east of Muleshoe and skidded into the median overturning about two times. The driver and a passenger, both of El Paso, were taken by ambulance to West Plains Medical Center for treatment of injuries not believed to be serious.

At about the same time, a semi-truck jackknifed one and one half miles east of the first accident. The truck threw off a caterpillar it was hauling, gouging deep furrows in the highway before the entire rig came to a halt in the right bar ditch. The driver was not injured. Members of the Muleshoe Fire Department were called to wash diesel off the highway for approximately one-fourth of a mile. The diesel apparently spilled while the truck was careening out of control. The highway department also put a load of 'chat' on the diesel covered highway.

Friday afternoon, around 5:30 p.m. a driver lost control of a large truck five miles east of the city, and overturned in exactly the same location as the pickup wreck on Thursday afternoon.

West Plains Ambulance personnel took the driver to West Plains Medical Center for emergency treatment before transferring him to Lubbock. No report was available at press-time on the extent of his injuries.

On Saturday morning, the Mule Day Festival took place as planned, with only one event, the hot air balloon race, being cancelled. All other events were taking place as scheduled.

Muleshoe...

Con't From Page 1

According to Wayne Holmes, due to the heavy rains this past week, the team tournament play has been extended for one week. If you don't have all your games in, you will have an extra week to play them.

Skating is due to start up again on September 14, says Joyce Holmes, manager of the Bailey County Coliseum and Civic Center. She said they need sponsors for the Friday night skatings. Friday night skatings for youth will be scheduled as long as sponsors are available.

Mrs. Holmes may be contacted at 272-4051 between the hours of 9 to noon and 1:30-4:30 p.m., Monday through Friday.

Tax Rebate...

Con't From Page 1

Houston's yearly total to \$99.3 million. Dallas' check was for \$11.7 million, and Dallas has received \$66.9 million so far this year.

San Antonio's check was for \$6.1 million, a 6.1 increase over the July 1983 payment. Austin received \$4.3 million, boosting that city's total for the year to \$24.1 million. The Fort Worth payment was \$3.5 million.

Midland received \$911,000, bringing the yearly total to \$5.3 million, ahead of last year's total through August by 10.7 percent.

Bullock also sent checks to the four Metropolitan Transit Authorities. Houston MTA received \$19.5 million, bringing the total for 1984 to \$114.6 million.

DART's check was for \$15.9 million. San Antonio's VIA payment was \$3.3 million, and the Fort Worth Transit Authority received \$799,000.

Special Season Is Scheduled For Teal Hunt

The Texas Parks and Wildlife Commission has set the special early teal duck season for Sept. 15-23 statewide.

Meeting in Austin last week, the commission also retained the same bag and possession limits as last year, four teal ducks (blue-winged, green-winged and cinnamon) in the aggregate per day, eight in possession.

Shooting hours are sunrise to sunset.

The August checks were for taxes collected on sales made in June and the second quarter and reported to the Comptroller by July 20.

George Gallup (Gallup Polls) dies at age 82.

WANTED: Fast, accurate typist. Immediate opening. Apply in person only. 304 West 2nd. The Journals. tfc

So, Please Don't 'Forget About Me'

Employ A Kid!
Youth Employment Services
272-3002

Ellis Funeral Home
Pre-Need Funeral Plans
Supervised By Texas Department Of Banking
Price Frozen At Time Of Purchase

NOTICE OF CALCULATION OF EFFECTIVE TAX RATE AND PUBLICATION OF ESTIMATED UNENCUMBERED FUND BALANCES

I, Dale F. Jones, Assessor-Collector for Bailey County, in accordance with the provisions of Sec. 26.04, Property Tax Code, have calculated the tax rate which may not be exceeded by more than three percent by the Commissioner's Court of the Bailey County without holding a public hearing as required by the code. That rate is as follows:

\$.0647 per \$100 for farm-to-market/flood control tax;
\$.3237 per \$100 for the general fund, permanent improvement fund and road and bridge fund tax;
+ \$ -0- per \$100 for public road maintenance tax; thus
\$.39 per \$100 TOTAL COUNTY EFFECTIVE TAX RATE

The estimated unencumbered fund balances are as follows:

<u>Farm-to-Market/Flood Control</u>		<u>Public Road Maintenance</u>	
Maintenance & Operation: \$ 161,078		Maintenance & Operation: \$ -0-	
Interest & Sinking: \$ -0-		Interest & Sinking: \$ -0-	
<u>General Fund</u>			
Maintenance & Operation: \$ 437,419			
Interest & Sinking: \$ 23,022			

Dale F. Jones
Chief Appraiser
August 8, 1984

CALCULATIONS USED TO DETERMINE EFFECTIVE TAX RATE

I. DATA

	Type of Tax: <u>A</u>
1. 1983 Total tax levy from the 1983 tax roll	\$ 151,986
2. 1983 Tax rate (\$.08 M&O and \$ -0- I&S)	\$.08/\$100
3. 1983 Debt service (I&S) levy	\$ -0-
4. 1983 Maintenance & Operation (M&O) levy	\$ 151,986
5. 1983 M&O taxes on property in territory that has ceased to be a part of unit in 1984 ...	\$ -0-
6. 1983 M&O taxes on property becoming exempt in 1984 6,819,820.Value x .0008 =	\$ 5455.
7. 1983 M&O taxes on taxable value lost because property is appraised at less than market value in 1984	\$ -0-
8. 1984 Total taxable value of all property	\$ 226,436,294
9. 1984 Taxable value of new improvements added since Jan. 1, 1983	\$ 13,885.50
10. 1984 Taxable value of property annexed since Jan. 1, 1983	\$ -0-
11. 1984 Tax levy needed to satisfy debt service (I&S)	\$ -0-
12. Rate to raise 1983 tax levy due to appraisal roll errors (lost dollars divided by 1984 taxable values)(\$ <u>742</u> ÷ \$ <u>226,436,294</u> × 100) .0000327	\$.00032/\$100
13. Rate to regain taxes lost in 1983 due to appraisal roll errors (lost dollars divided by 1984 taxable value) (\$ <u>742</u> ÷ \$ <u>226,436,294</u> × 100) .0000327	\$.00032/\$100
14. 1983 M&O taxes used to regain lost 1982 levy	\$ 742

MAINTENANCE AND OPERATION (M&O) TAX RATE

1. (A) 1983 Total tax levy (Data 1)	\$ 151,986.
(B) Subtract 1983 Debt service levy (Data 3)	\$ -0-
(C) Subtract 1983 Taxes on property no longer in unit (Data 5)	\$ -0-
(D) Subtract 1983 Taxes for exemptions (Data 6)	\$ 5455
(E) Subtract 1983 Taxes for productivity valuation (Data 7)	\$ -0-
(F) Subtract 1983 Taxes used to regain lost 1982 levy (Data 14)	\$ 742
(G) Adjusted 1983 M&O levy	\$ 145,789
2. (A) 1984 Total taxable value of all property (Data 8)	\$ 226,436,294
(B) Subtract 1984 Value of new improvements (Data 9)	\$ 13,885.50
(C) Subtract 1984 Value of annexed property (Data 10)	\$ -0-
(D) Adjusted 1984 Taxable value for M&O	\$ 225,047,744
3. (A) Divide the adjusted 1983 M&O levy (1-G above) by the adjusted 1984 taxable value for M&O (2-D above) (\$ <u>145,789</u> ÷ \$ <u>225,047,744</u>) ..	\$.000647
(B) Multiply by \$100 valuation	× \$100
(C) Effective M&O rate for 1984	\$.0647/\$100

INTEREST AND SINKING (I&S) TAX RATE

4. (A) 1984 I&S levy needed to satisfy debt (Data 11)	\$ -0-
(B) 1984 Total taxable value of all property (Data 8)	\$ -0-
(C) Divide the 1984 I&S levy (4-A above) by the 1984 Total taxable value (4-B above) (\$ <u>-0-</u> ÷ \$ <u>-0-</u>)	\$ -0-
(D) Multiply by \$100 valuation	× \$100
(E) Effective I&S rate for 1984	\$ -0-/\$100

APPRAISAL ROLL ERROR RATE

5. (A) Rate to raise 1983 levy due to appraisal errors (Data 12)0003	\$ -0-/\$100
(B) Add Rate to regain taxes lost due to errors (Data 13)0003	+ \$ -0-/\$100
(C) Total Rate to adjust for appraisal roll errors0006	\$ -0-/\$100

1984 EFFECTIVE TAX RATE FOR EACH TAX

6. (A) Effective M&O rate (3-C above)	\$.0647/\$100
(B) Add Effective I&S rate (4-E above)	+ \$ -0-/\$100
(C) Add Rate to adjust for appraisal roll errors (5-C above)	+ \$ -0-/\$100
(D) 1984 Effective Tax Rate for this tax	\$.0647/\$100

TOTAL EFFECTIVE TAX RATE FOR 1984

7. Add 1984 effective tax rate for each tax	
A \$.0647 /\$100 + B \$.3237 /\$100 + C \$ -0- /\$100	\$.3884 /\$100

1984 Effective Tax Rate for Each Tax Levied and the Total 1984 Effective Tax Rate are the rates published as required by Sec. 26.04, Property Tax Code.



Clovis High Plains Hospital

welcomes



Thien T. Luu, M.D.

PEDIATRICIAN

to the CHPH medical staff

Temporary Office Location:
811 Lexington

Hours: Mon.-Fri. 9 - 12 and 1 - 5

For appointment call 762-3726

'84 Dove Hunt Hours, Limit Are Released

The Texas Parks and Wildlife Commission Wednesday (July 25) adopted dates, zone boundaries and bag limits for the 1984-85 dove hunting seasons.

The state again will have three dove hunting zones, with provision for a special white-winged dove hunting season in a portion of the South Zone during the first two weekends of September.

The names of the zones were changed: The Panhandle Zone is now the North Zone; the Central Zone retains that name, and the Rio Grande Zone now will be referred to as the South Zone.

Season dates, bag limits and shooting hours for the various

Three Way Meal Schedule Given;

Free And Reduced

The Three Way ISD serves meals every school day and students may buy lunch for 90 cents and breakfast for 45 cents. Those children from families whose incomes falls within the level shown on a scale in the school offices are eligible for either free meals or reduced price meals. The reduced price meals are 40 cents for lunch and 30 cents for breakfast.

To apply for free or reduced price meals, an application must be filled out, signed, and returned to the school offices. All questions must be answered and must contain total household income, names of all household members, social security numbers of all household members 21 years of age or older and the signature of an adult household member. An application cannot be processed without the information requested.

Other items such as reporting changes, reapplications, foster children, and verification may be explained by school officials. No child will be discriminated against because of race, sex, color, national origin, age, or handicap. All applicants have the right to a fair hearing. This can be done by calling or writing the following official: Jack Lane, president, Three Way Independent School Board, Star Route, Goodland, Texas 79327, telephone 946-3688.

For those needing help filling out the application, contact Tom Johnson at the principal's office or call 927-5315. Notification will be given when applications are approved or denied.

zones are as follows:

NORTH ZONE
Mourning dove season is Sept. 1-Nov. 9, 1984; shooting hours one half hour before sunrise to sunset; daily bag limit 12 mourning, white-winged and white-tipped (white-fronted) doves in the aggregate including no more than two white-winged and two white-tipped doves per day; possession limit 24 mourning, white-winged and white-tipped doves, including no more than four white-wings and four white-tips in possession.

CENTRAL ZONE
Mourning dove season is Sept. 1-Oct. 30, 1984, and Jan. 5-14, 1985; shooting hours one half hour before sunrise to sunset; bag and possession limits same as the North Zone.

SOUTH ZONE
Mourning dove season is Sept. 20-Nov. 12, 1984, and Jan. 5-20, 1985; shooting hours, bag and possession limits same as Central and North Zones. In the Special White-winged Dove Area of the South Zone, the fall mourning dove season closes on Nov. 8, 1984.

SPECIAL WHITE-WINGED DOVE AREA
White-winged dove season Sept. 1-2 and 8-9; shooting hours noon to sunset; bag limit 10 white-winged, mourning and white-tipped doves in the ag-

Child Support

Month Receives City 'Boost'

CHILD SUPPORT
Muleshoe Mayor Bratcher issued a proclamation August 6, 1984 declaring August "Child Support Month".

Mayor Bratcher said that child support is an extremely important issue and an issue that needs to be recognized by the people of Muleshoe.

Child support enforcement is a part of the Attorney General's Office. Attorney General Jim Mattox will initiate "Project Pay-Up" August 1. "Project Pay-Up" is a statewide effort to give parents the chance to pay their delinquent child support payments. The project will make a strong push for parents to meet their responsibilities, especially since the school year will begin shortly.

Mayor Bratcher stated "the City of Muleshoe is pleased to assist the Attorney General's Office with this worthwhile project."

Attorney General Jim Mattox said, "I am appreciative of local efforts in support of 'Project Pay-Up' and because of community support in the recent past, child support collection in Texas has increased 41 percent since my office took over the program in September, 1983."

CHILD SUPPORT MONTH IN TEXAS

Whereas, our state's future lies in the strength of our families and the neglect of our children undermines the hope of that future; and

Whereas, the failure of parents to take financial responsibility for their children in this state is recognized as another form of child abuse; and

Whereas, in order to ensure our children the needed financial support from their parents, the 68th Texas Legislature passed resolutions declaring the month of August "Child Support Month" in Texas; and

Whereas, all citizens of the City of Muleshoe are urged to join in acknowledging the significance of "Child Support Month" to emphasize the financial aspects of parental responsibility;

Now Therefore, I, Charles Bratcher, Mayor of the City of Muleshoe, do hereby proclaim the month of August, 1984 as

CHILD SUPPORT MONTH

Charles Bratcher
Mayor

gregate, including no more than two mourning doves and two white-tipped doves per day; possession limit 20 doves in the aggregate, including no more than four mourning doves and four white-tipped doves. One fully-feathered wing must remain on all dressed doves at all times in the South Zone and the Special White-winged Dove area.

Department staff told the commission that extensive surveys in the Special White-winged Dove Area indicate white-winged nesting this year was down approximately 26 percent because of freeze damage to citrus groves. Dove Program Leader Ron George said, however, that sufficient numbers of mature birds are present in the Valley to justify the normal four-day hunting season.

Hunters in the white-wing

area this year will only be allowed to take two mourning doves in their daily bag limit during the four-day white-wing season, compared to 12 last year. George said studies indicate significant mourning dove nesting activity is still underway during the first two weeks of September in South Texas.

Slow Progress

A budget is a pay-as-you-go financial plan that doesn't let you go anywhere.

-Coast Guard Magazine.

Not Likely

Now that political candidates are in full color on TV--it will not crimp the style of the veteran promiser, who is past blushing.

-Enquirer, Cincinnati.

Springlake-Earth Hosts Little Mr. & Miss Pageant

A Little Mr. and Miss Pageant is scheduled to be held at the Springlake-Earth auditorium on Saturday, Oct. 13 at 7 p.m. Ages for this event are divided into the following categories, three to five; five to seven and seven to 11 years of age.

For entry forms and more information you may call 257-3705 Tammy Simpson (work) or 257-2193 (home) or Christy Embry at 257-2193.

A \$50.00 Savings Bond will be given to the winners in each age group. Modeling will include a party dress and play suit. The pageant is being sponsored by the Earth Young Homemakers.

WHO KNOWS

1. What was Annie Oakley's real name?
2. What was the salary of a U.S. Representative in 1949?
3. What is the salary of a U.S. Representative in 1984?

Answers to Who Knows
1. Phoebe Ann Moses.
2. Salary \$12,500 a year, \$2,500 for expenses.
3. Approximately \$60,662.50.

WANTED: Fast, accurate typist. Immediate opening. Apply in person only. 304 West 2nd. The Journals. ttc

NOTICE OF CALCULATION OF EFFECTIVE TAX RATE AND PUBLICATION OF ESTIMATED UNENCUMBERED FUND BALANCES

I, Dale F. Jones, Assessor-Collector for Bailey County, in accordance with the provisions of Sec. 26.04, Property Tax Code, have calculated the tax rate which may not be exceeded by more than three percent by the Commissioner's Court of the Bailey County without holding a public hearing as required by the code. That rate is as follows:

\$.0647 per \$100 for farm-to-market/flood control tax;
\$.3237 per \$100 for the general fund, permanent improvement fund and road and bridge fund tax;
+ \$ -0- per \$100 for public road maintenance tax; thus
\$.39 per \$100 TOTAL COUNTY EFFECTIVE TAX RATE

The estimated unencumbered fund balances are as follows:

Farm-to-Market/Flood Control
Maintenance & Operation: \$161,078.
Interest & Sinking: \$
General Fund
Maintenance & Operation: \$460,441.
Interest & Sinking: \$

Public Road Maintenance

Maintenance & Operation: \$-0-
Interest & Sinking: \$-0-

Dale F. Jones Chief Appraiser
August 8, 1984

CALCULATIONS USED TO DETERMINE EFFECTIVE TAX RATE

I. DATA

	Type of Tax: <u>B</u>
1. 1983 Total tax levy from the 1983 tax roll	\$ 780,325.
2. 1983 Tax rate (\$.38 M&O and \$.02 I&S)	\$ 40/\$100
3. 1983 Debt service (I&S) levy	\$ 39,016.
4. 1983 Maintenance & Operation (M&O) levy	\$ 741,309.
5. 1983 M&O taxes on property in territory that has ceased to be a part of unit in 1984	\$ -0-
6. 1983 M&O taxes on property becoming exempt in 1984	\$ 25,915
7. 1983 M&O taxes on taxable value lost because property is appraised at less than market value in 1984	\$ -0-
8. 1984 Total taxable value of all property	\$ 231,051,664.
9. 1984 taxable value of new improvements added since Jan. 1, 1983	\$ 1,388,550.
10. 1984 Taxable value of property annexed since Jan. 1, 1983	\$ -0-
11. 1984 Tax levy needed to satisfy debt service (I&S)	\$ 32,155.
12. Rate to raise 1983 tax levy due to appraisal roll errors (lost dollars divided by 1984 taxable value) (\$ 3,747 / \$ 231,051,664 x 100) .000162	\$.00162/\$100
13. Rate to regain taxes lost in 1983 due to appraisal roll errors (lost dollars divided by 1984 taxable value) (\$ 3,747 / \$ 231,051,664 x 100) .000162	\$.00162/\$100
14. 1983 M&O taxes used to regain lost 1982 levy	\$ 3,747.

II. CALCULATION

MAINTENANCE AND OPERATION (M&O) TAX RATE

1. (A) 1983 Total tax levy (Data 1)	\$ 780,325.
(B) Subtract 1983 Debt service levy (Data 3)	- \$ 39,016.
(C) Subtract 1983 Taxes on property no longer in unit (Data 5)	- \$ -0-
(D) Subtract 1983 Taxes for exemptions (Data 6)	- \$ 25,915.
(E) Subtract 1983 Taxes for productivity valuation (Data 7)	- \$ -0-
(F) Subtract 1983 Taxes used to regain lost 1982 levy (Data 14)	- \$ 3,747.
(G) Adjusted 1983 M&O levy	\$ 711,647.
2. (A) 1984 Total taxable value of all property (Data 8)	\$ 231,051,664.
(B) Subtract 1984 Value of new improvements (Data 9)	- \$ 1,388,550.
(C) Subtract 1984 Value of annexed property (Data 10)	- \$ -0-
(D) Adjusted 1984 Taxable value for M&O	\$ 229,663,114.
3. (A) Divide the adjusted 1983 M&O levy (1-G above) by the adjusted 1984 taxable value for M&O (2-D above) (\$ 711,647 / \$ 229,663,114)	\$.003098
(B) Multiply by \$100 valuation	x \$100
(C) Effective M&O rate for 1984	\$.3098/\$100

INTEREST AND SINKING (I&S) TAX RATE

4. (A) 1984 I&S levy needed to satisfy debt (Data 11)	\$ 32,155.
(B) 1984 Total taxable value of all property (Data 8)	\$ 231,051,664.
(C) Divide the 1984 I&S levy (4-A above) by the 1984 Total taxable value (4-B above) (\$ 32,155 / \$ 231,051,664)	\$.000139.
(D) Multiply by \$100 valuation	x \$100
(E) Effective I&S rate for 1984	\$.0139/\$100

APPRAISAL ROLL ERROR RATE

5. (A) Rate to raise 1983 levy due to appraisal errors (Data 12)	.00153	\$ -0-/\$100
(B) Add Rate to regain taxes lost due to errors (Data 13)	.00153	+ \$ -0-/\$100
(C) Total Rate to adjust for appraisal roll errors	.00306	\$ -0-/\$100

1984 EFFECTIVE TAX RATE FOR EACH TAX

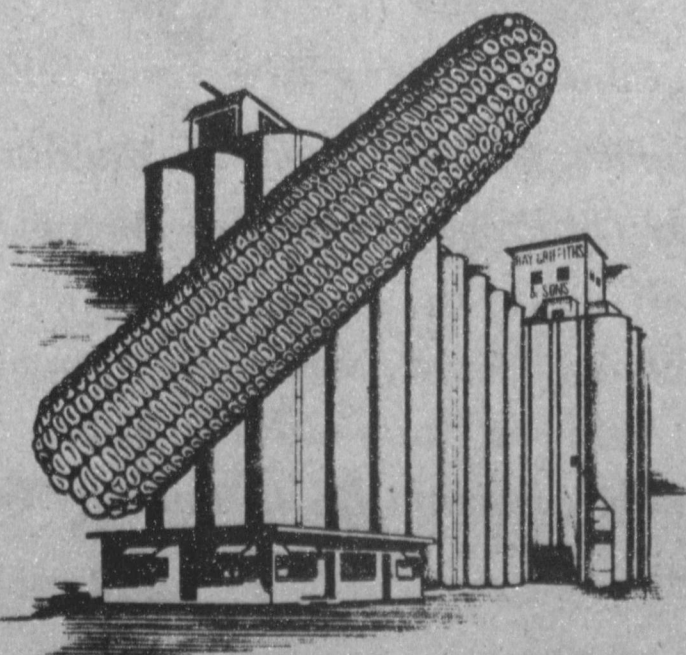
6. (A) Effective M&O rate (3-C above)	\$.3098/\$100
(B) Add Effective I&S rate (4-E above)	+ \$.0139/\$100
(C) Add Rate to adjust for appraisal roll errors (5-C above)	+ \$ -0-/\$100
(D) 1984 Effective Tax Rate for this tax	\$.3237/\$100

TOTAL EFFECTIVE TAX RATE FOR 1984

7. Add 1984 effective tax rate for each tax	\$.3884/\$100
A \$.0647 / \$100 + B \$.3237 / \$100 + C \$ -0- / \$100	\$.3884/\$100

1984 Effective Tax Rate for Each Tax Levied and the Total 1984 Effective Tax Rate are the rates published as required by Sec. 26.04, Property Tax Code.

- Attention Farmers -
We Have TAM 105 Wheat Seed For You!
Bulk.....\$4⁰⁰ bu
Sacked.....\$4⁵⁰ bu



Ray Griffiths & Sons, Inc.

215 E. Amer. Blvd.

272-4585

Enochs News
by Mrs. J.D. Bayless

Visiting in the home of Mr. and Mrs. Bill Key Thursday were his two sisters, Mrs. Mildred Butler of Weatherford, Texas, Mr. and Mrs. Robert Butler and Robert of Littlefield.

Jody Snitker of Dimmitt visited his grandparents, Mr. and Mrs. Clifford Snitker Tuesday.

Mrs. Jerry Nichols and children of Muleshoe came out to the Dale Nichols' Friday to gather peas they also visited her grandmother, Mrs. Etta Layton, Mrs. Juanita Snow also came with her and Mrs. Keith Layton also visited with them.

Mrs. Wilma Petree, Mrs. Ima Roberts and Mrs. Bill Key visited with Mrs. Florence Pine at Morton Tuesday.

Curtis Archer of Houston, Texas visited in the home of Mr. and Mrs. Ed Autry and other friends Tuesday, Curtis was a former resident of our area.

Spending Thursday night with Mr. and Mrs. Dale Nichols was a son Donnie Nichols of Canyon.

The Williams family held their family reunion last Sunday at the home of Mrs. Audra Hill in Lubbock, all 7 of the children were there. Mrs. Wilma Petree of Enochs, Mr. and Mrs. Lamar Williams of Amarillo, Mr. and Mrs. Nash Williams of Lubbock, Mrs. Clara Williamson of Lubbock, Billie and Melvin Cowart of Fort Worth, Rayburn Williams of Bryan, Texas and Mrs. Audra Hill.

Guests in the home of Mr. and Mrs. Clifford Snitker Saturday night and Sunday was a son, Mr. and Mrs. Stanley Snitker and granddaughter, Erica Snitker of Amarillo, and a daughter, Cindy Snitker of La Tresa, California.

Mrs. Winnie Byars is home after visiting her daughter, the Jack Parr family also her grandson Robert Hardaway at Methodist Hospital and drove to Seminole to visit her son, Tom Byars and Family.

Mr. and Mrs. Bob Newton attended a Farm Land Manager Conference the past week at Ruidoso, N.M.

The rain that fell Wednesday, Thursday, and Friday was an inch at the J.D. Bayless farm it was really appreciated.

Mrs. Ruby Nichols of Lubbock came Sunday for a visit with her sister, Mrs. Winnie Byars.

Mrs. Donna Petree and children, Beckie and Kerri of Clovis, New Mexico were guests in the home of Mrs. Wilma Petree



HE'S A HANDY MAN--Fred Clements, of SPS and The Muleshoe Fire Department was caught 'pushing a broom' Thursday afternoon at an accident southeast of Muleshoe on Highway 84. He's a real handy-man.

Sunday.

Visiting in the home of Mr. and Mrs. Goldman Stroud of Brownwood, they also attended the Bula school Homecoming.

Visitors at the Baptist Church Stanley Snitker, Erica and Cindy, also Kim Rowden, Kelly Mosser and a friend from Lubbock. Mrs. Donna Petree, Beckie and Kerri of Clovis, New Mexico.

Guests in the home of Mr. and Mrs. Elwood Autry during the weekend were a daughter, Mr. and Mrs. Mike Romans of Houston they came for their children Tim and Heather who spent a month with their grandparents. Mr. and Mrs. Mitch Autry and children of Muleshoe were also guests Sunday.

Guests in the home of Mr. and Mrs. E.N. McCall for several days were their grandchildren. Kim Rowden and Kelly Mosser and a friend they took to Lubbock they took them home Sunday

afternoon.

Company in the home of Mr. and Mrs. Goldman Stroud Sunday afternoon were Mr. and Mrs. Boyd Maxey of Littlefield.

Mr. and Mrs. Kenny Turney of Denver City honored his mother Mrs. Myrna Turney with a birthday dinner Sunday at their home, other guests were Mr. and Mrs. Terry Drennan Amy and Chad of Bledsoe, Mr. and Mrs. Tom Newton and children, Dennis Turney and children of Enochs, Mrs. Dennis Turney baked her cake.

Mrs. Edward Crume and Mrs. Etta Layton visited their sister, Mrs. Juanita Snow in Muleshoe Thursday afternoon.

True
Some people are born with cold feet... some acquire cold feet... others have cold feet thrust upon them.
-Herald, Austin, Tex.



BUS DRIVER SCHOOL--Twenty-five local and area residents were in Muleshoe during the afternoon all this past week to attend bus driver school, conducted by David Gray. These are just a few of the students who attended either a 20 hour course for new drivers, or an eight hour refresher course. Students were from Muleshoe, Olton, Sudan, Springlake-Earth and Comstock.

Ben Franklin
Better quality for less

2104 W. American Blvd
272-3855

Open 9 a.m. - 8 p.m.



Hi-Dri Towels

2/\$1



Pepsi-Cola SPECIAL

6 Pack \$1.77
12 oz Cans



Running Shoes
W/Velcro Closures



15⁹⁷



Thong Sandals

2 pr. /\$1

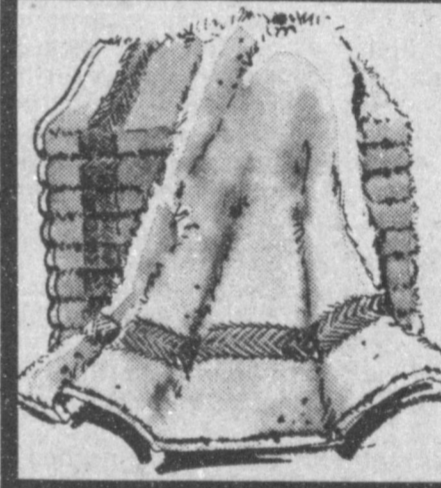
Your Best Buy!



Assortment Fall Flowers

Reg. 69¢

4/\$1



Irregular Bath Towels
\$2.88

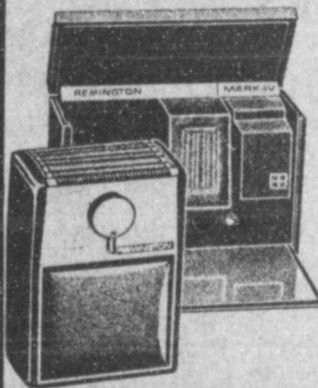


12-oz. Poly Fiberfill
Resilient. Non-allergenic.

97¢ ea.

Good For Making Dolls, Pillows, Puffed & Padded Pictures

REMINGTON™



Micro Screen Shaver

Re-Chargable (Built-In Charger)

Electronic Solid State

\$39⁸⁶

Free Travel Case

(Guaranteed)

Anchor Hocking Glass

Bakeware

Reg. \$2.97

\$1.96

The Original DOLL-BABY™
by Martha Nelson Thomas
Now In Stock



Heads \$6⁸⁸

Bodys \$4⁸⁸



Visit Our Large Craft Department

Ben Franklin
Better quality for less

Crafts

We Have
Flowers, Rug Hooking, Candle Wicking Kits, Cross Stitch, Crochet & Knitting Supplies, Quilting Supplies, Macrame, Needlepoint, Gumbacher Oil Painting Supplies, Metal Boxes For Decorating, Watercolors, Baskets, Hats, Wreath Forms, Metalcraft Punching, Liquid Embroidery Supplies, Embroidery Thread & Patterns, Stained Glass Kits, Doll Supplies, Beads And Instruction Books For Any Craft You Might Need.

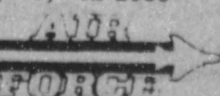
IF YOU ARE INTO ANY KIND OF CRAFT,

COME VISIT BEN FRANKLIN

NO EXPERIENCE REQUIRED

The Air Force has plenty of good positions. And best of all, we don't require experience. We'll teach you the skills you need to compete in our modern world. And we'll pay you a good salary while you learn. See an Air Force recruiter today.

CALL TSGT ISON AT (505) 762-2000

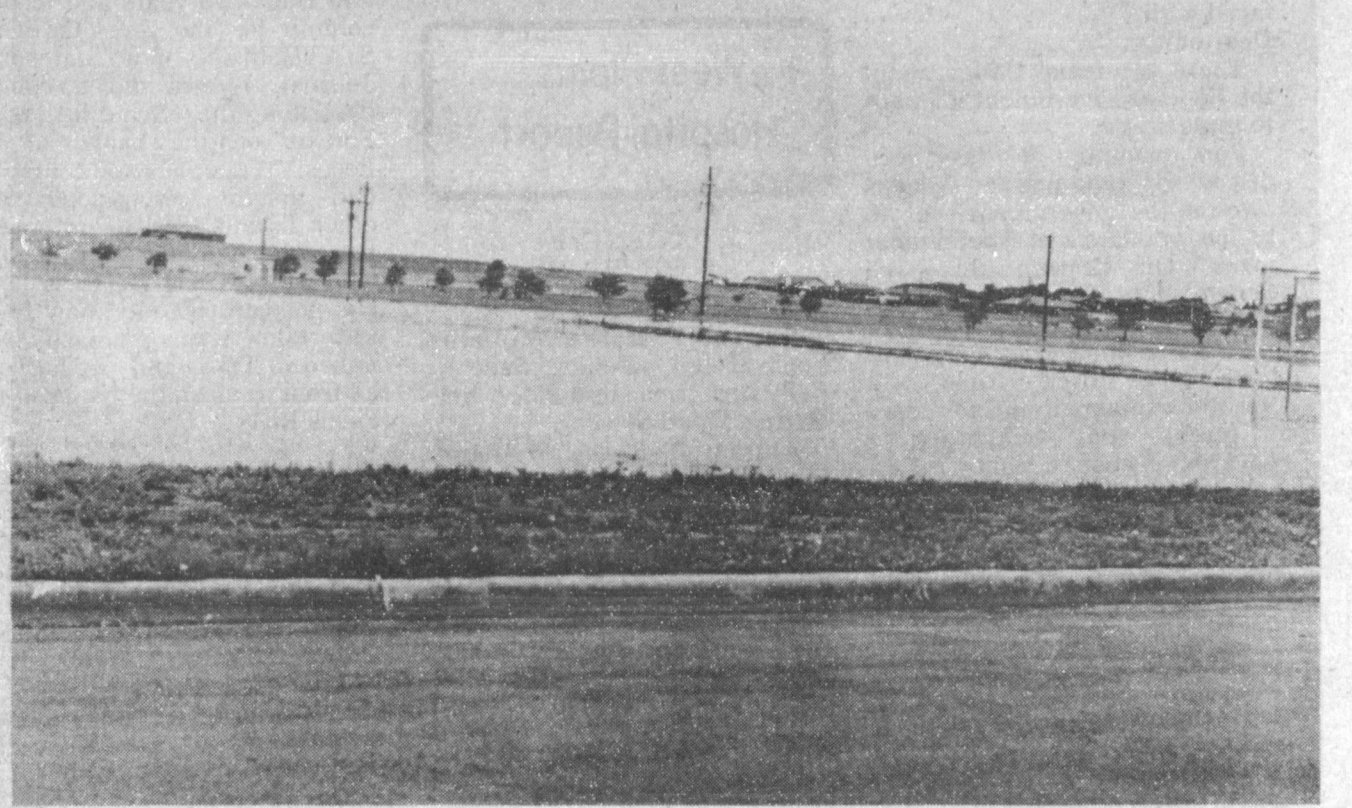


It's Not Nice To Fool With Mother Nature

So The Rains Came....



Funnel East Of Muleshoe



New City Park



2½ Miles West On 1760



Senior Citizen Housing



2 Miles West On 1760



Senior Citizen Housing



Rainslick Highway 5 Miles East On 84



West 12th & American

SANDHILLS PHILOSOPHER

Editor's note: The Sandhills Philosopher on his Johnson grass farm on Sandy Creek looks at another debt Washington is faced with.

Dear editor:

There are many things about the Federal government it's hard to understand.

For example, it has been discovered that private citizens owe the government over 40 billion dollars in delinquent loans. On hearing this, the Senate voted to hire private lawyers to try to collect it.

"This will free government lawyers to fight crime," a Senator explained, on the theory I guess that beating the government out of money isn't a crime, just absent-mindedness.

Some people are puzzled over how the government could have made so many bad loans, but making bad loans is not an uncommon practice even outside of government, as some big banks with billions of bad loans to foreign countries have demonstrated.

The trouble with the 40 billion owed by private citizens is that it's scattered out over too many borrowers. If it was owed by one or two, Washington would bail them out. It would be the Continental thing to do.

As for the private citizens who borrowed that money and won't or can't pay it back, there's a peculiar frame of mine abroad in the country. It says the government has plenty of money or why

else would it pay \$800 for a screwdriver, so why worry about a few thousand dollars you owe it.

As for the lawyers who may be hired to collect the 40 billion, I estimate they'll go after the easy ones, collect maybe 5 billion and turn in a bill for 2 billion. I guess it's better than nothing. Yours faithfully, J.A.

West Plains Hospital Report

PATIENTS IN WEST PLAINS MEDICAL CENTER, INC.

August 7--Rotha Williams, Flois Totten, Benita Sanchez-Baby Girl, Irma Hernandez, Staci Burris, Maud Sowder.

August 8--Rotha Williams, Flois Totten, Cynthia Quintana-Baby Boy, Irma Hernandez, Juanita Busby, Maud Sowder.

August 9--Rotha Williams, Lillie Simkins, Flois Totten, Gregorio Torres, Irma Hernandez, Katherine Rogers, Juanita Busby, Debbie Hutto-Baby Girl.

August 10--Rotha Williams, Lillie Simkins, Flois Totten, Gregorio Torres, Jim Moralez, Debbie Hutto-Baby Girl, Irma Hernandez, Katherine Rogers, Juanita Busby, Johnny Walls, and Callie Campbell.

Letter To The Editor

Dear Editor!

As a transplant from Celina and Dallas 36 years ago to do a column for the then OREGON STATESMAN, now Statesman-Journal, I once did a column describing the "Beautiful Potash Forests on the banks of the Pecos." Facetious, of course, it had instant percussions from other Texans locally, and one in particular a native of Muleshoe who was visiting relatives here. His postcard let me know in no uncertain terms potash was mined in Texas and not harvested from trees on the banks of the Pecos River.

More recently Robert L. Greene of 18150 Fairfield Avenue, Livonia, Michigan Zip 48152, a fellow writer I had known many years ago, wrote to ask if it was true that potash came from trees in Texas. "You also once mentioned a native of Mule Shoe--his spelling--Texas. We think when I retire we may want to sell out here to move to Texas. So tell me more about Mule Shoe, will you?" With appreciation, E. Grant

True Value
HARDWARE STORES

TOOL VALUE OF THE MONTH



249
While Supplies Last

3-Pc. Level Assortment
Incl. line, magnetic torpedo, pocket level with clip. 10192
Quantities Limited

True Value
HARDWARE STORES

HARDWARE VALUE OF THE MONTH



299
While Supplies Last

48-In. Rulevel
Injection-molded ruler with 1 level, 2 plumb vials. MM348
Quantities Limited

True Value
HARDWARE STORES

BARGAIN OF THE MONTH



888
While Supplies Last

32-Gal. Rectangular Trash Container
Withstands temp. extremes. Rugged polyethylene. 7332-BN
Quantities Limited

Fry & Cox Inc.

401 S 1st 272-4511

Doyle Baccus

Funeral Services

Held At Sudan

Services for Doyle Baccus, 68, of Sudan were held at 10 a.m. Friday, Aug. 10 at the First United Methodist Church of Sudan with the Rev. Pitts Davis, pastor, officiating, assisted by the Rev. Carey Hurst of Gruver. Interment was in Littlefield Memorial Park under the direction of Hammons Funeral Home. Baccus died at 12:30 p.m. Tuesday in South Plains Hospital in Amherst following a lengthy illness.

A native of Rocky, Okla., Baccus was a lifelong Sudan resident and a farmer and businessman. He was a member of the First United Methodist Church of Sudan.

Survivors include his wife, Nelda; his mother, Ola of Littlefield; one daughter, Drusilla Moss of Sudan; one son, Jimmy of Spring; one stepdaughter, Kaye Nell Martin of Dallas; eight grandchildren; and two great grandchildren.

Lynskey Services

Held At Morton

Funeral services for Perry Lynskey, Sr., 55, of Morton were held at 11 a.m. Thursday, Aug. 9 at the First Baptist Church in Morton with the Rev. Jack Norwood officiating.

Burial was in Morton Memorial Park under the direction of Morton Funeral Home. Lynskey died at 6:30 p.m. Monday at St. Mary's Hospital in Lubbock following a lengthy illness.

He was a native of Wellington and a retired carpenter.

Survivors include three sons, Perk, Mike and Jeff, all of Lubbock; one daughter, Cheryl Vaughan of Brownfield; two stepdaughters, Lena Parker and Cindy, both of Lubbock; two brothers, Leonard of Garland and Ray of California; one sister, Wilma Beach of Lubbock; his parents, Mr. and Mrs. L.P. Lynskey of Maple; and nine grandchildren.

Courthouse News

MARRIAGE LICENSE
Ricardo Pedro Casarez and Sandra Martinez, Muleshoe;
Robert Lee Zuber and Marchelle Ann Bourgeois, Childress.

NEW VEHICLES
Gary Glover-Joy, 1984 GMC Sub, Robert D. Green, Inc.
J.B.W. Farms, Inc., 1984 GMC PU, Robert D. Green, Inc.
Rufus Williams, 1984 Buick 2 dr, Robert D. Green, Inc.
A.W. Hodges, 1984 Merc 4 dr., Muleshoe Mtr. Co., Inc.
Sheryl Green, 1984 Merc 4 dr, Muleshoe Mtr. Co., Inc.
Dale Oil Co., 1984 Chev. Sub., Robert D. Green, Inc.
Kearney Scoggin, 1984 Chev PU, Robert D. Green, Inc.
Derrell Matthews, 1984 Chev PU, Robert D. Green, Inc.

PAY-OFF YIELD DATA				
YIELD DATA	1980	1981	1982	1983
PAY-OFF YIELDS				
% of competitive pyrethroid	102.0	105.6	105.2	104.4
Pounds more lint/acre (Based on average of 1 bale/acre)	10	18	26	21.5
PROFIT ON YIELD INCREASE				
(Based on \$70/lb cotton)	\$700	\$1260	\$1820	\$1505

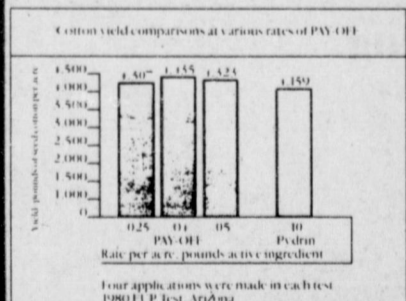
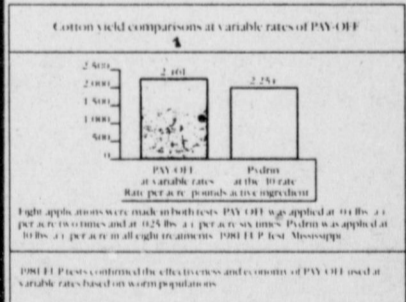
Consistently higher yields

In four years of side-by-side field tests comparing PAY-OFF with other pyrethroids, cotton treated with PAY-OFF consistently yielded more per acre than cotton treated with other pyrethroids. Yield increases ranged from 2% to 5% more lint per acre, as based on tests conducted during 1980, 1981, 1982, and 1983 in fields located throughout the Cotton Belt.

Cost-saving variable rates

PAY-OFF insecticide may be applied at variable rates, depending on the pressure of the *Heliothis* population you must control at a given time. As worm populations vary over the season, so can your rates of PAY-OFF. As a result, PAY-OFF can provide significant cost savings. A good program of field scouting is critical to the success of a variable rate program.

In recent tests and in commercial use, the following variable rates of PAY-OFF were found to be effective. For moderate to heavy *Heliothis* infestations, application can be made at the rate of 2.0-2.5 fluid ozs. per acre. For light-to-moderate infestations, the rate can be 1.3-2.0 ozs.; and for heavy-to-extremely heavy populations, up to 4.0 ozs. per acre may be necessary. Your professional pest consultant can give you complete details on the PAY-OFF variable rate program and its potential for cost savings.




1983 Field experiments at 11 locations. PAY-OFF consistently outperformed the effectiveness of PAY-OFF at rates half or less than other registered pyrethroids.

Single formulation for water or ULV oil application

With PAY-OFF there's no need to bother with multiple formulations. It's been specifically formulated for use in water, or for ULV application, in once-refined cottonseed or soybean oil. Applied either way, PAY-OFF lasts longer than other pyrethroids. And with PAY-OFF there's no limit to the number of applications you may make in a single season.

No other pyrethroid can match the performance advantages of PAY-OFF insecticide



PAY-OFF

RESTRICTED USE PESTICIDE

PAY-OFF

the proven second generation pyrethroid

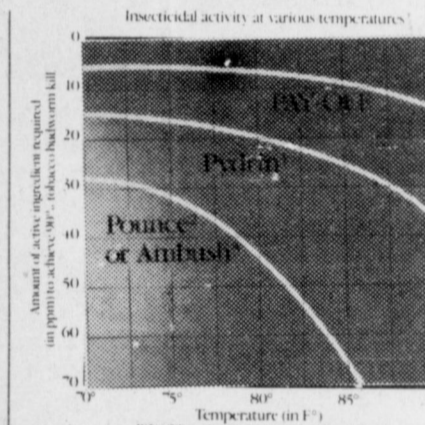
Contact:

Riverside Terra Chemicals

West Highway 84

Muleshoe

272-4203



Effective at high temperatures

High temperatures can reduce the effectiveness of pyrethroids, an important consideration in cotton producing areas where long, hot summer days are the rule rather than the exception. In general, the higher the temperature, the more active ingredient required for worm control. This makes PAY-OFF the pyrethroid of choice for cotton. Laboratory testing shows PAY-OFF retains its insecticidal activity at high temperatures far better than other pyrethroids. The net benefit, when temperatures rise significantly, PAY-OFF will continue to control worms.

Boll weevil control with PAY-OFF

PAY-OFF is registered for control of the boll weevil. It is important to remember that spray intervals for weevil control must be shorter than spray intervals for worm control. Depending on weevil pressure, applications should be made every three to four days and continued for as long as weevil control is necessary. Consult your professional pest control consultant or your local extension agent for weevil treatment thresholds. PAY-OFF will suppress weevils if applied at longer intervals typical of bollworm/budworm control programs.

Least harmful to beneficials

Not only is PAY-OFF the most effective pyrethroid against the *Heliothis* complex, it's also the least harmful to beneficials.

Effective against Heliothis complex

PAY-OFF outperforms the competition when it comes to *Heliothis* control. One female



moth may lay from 1,000 to 5,000 eggs, normally during a period of from one to two weeks. The eggs are minute and are placed singly, usually on the tender terminals in the upper third of the cotton plant. Newly hatched larvae usually feed on the tender leafy portions of the plant. After feeding for a few days these young larvae molt to a second instar which prefers to feed on squares and flowers. As the worms continue to develop, they attack larger squares and bolls further down the stalk.

Summer, The Season For Fleas

With summer finally in full swing, it's time to think about warm, relaxing days, sunshine and sunbats, bikinis and beaches and unfortunately for some of us ... fleas.

Each year, when the weather turns warm, all the flea eggs in carpets, furniture and floors begin to hatch. As anyone knows who has pets, lives in a hot, humid area, or vacations near the beach, fleas can hatch in great numbers.

Any infestation causes problems for pets. If the infestation is heavy, however, or if you live without pets, the problem can affect people too.

In case though, no matter what the situation, flea problems aren't hopeless. According to Patrick Stewart, president of the ConAgra Pet Products Company, fleas can be controlled - as long as you handle the problem one step at a time.

Having developed the "Geisler/Snoopy" brand "Double Duty" flea and tick control products for his company, Stewart understands the problem's cause as well as its solution.

He also knows that, if you have a dog or a cat, the problem can be devastating in summer. In California, he says, half of all households have pets and, therefore, a certainty of fleas, during the warm summer months.

The severity of the infestation varies from year to year, depending upon climate. A wet winter, for example, will bring more fleas the following summer.

Hot, humid weather in summer aggravates the problem and, "The level of infestation increases in direct proportion to the proximity to surf and sand," says Stewart.

Most fleas inside the home originally arrived via the family pet, according to Stewart. "When the pet goes outdoors, he picks up fleas like a vacuum cleaner."

With a warm body close to the ground, an exposed underbelly and fur to trap moisture, fleas have a naturally affinity for the pet. "The pet represents a ready meal," says the pet product expert.

Outside the home, fleas jump on the pet. Inside the home, they change residence to the carpeting. Eggs laid in the carpeting then remain there as larva until new fleas are ready to hatch.

While flea infestations are troublesome under any circumstances, if the family takes a trip, brings the pet along, and leaves the house closed up, fleas can hatch unencumbered and multiply. Many a family, on returning home, has been welcomed by a huge flea population, says Stewart.

Over the years, all sorts of products have been developed to combat the problem. One product, a sonic flea killer, had been popular a few years back, but has since fallen into disfavor.

"The device was originally developed to kill rats and mice in granaries," says Stewart, "but it never worked well for fleas, because they either got used to the sound or learned to stay out of its range."

"The only effective way to kill fleas in the home is with a total system," says Stewart. "There is no single answer."

The first step, he explains, is to rid the family pets of fleas. Give each pet a bath with a flea-repellent shampoo, he says.

Purchasing a flea collar for the

pet is the second step. Once on the pet, pesticides in the collar migrate through the pet's fur. In a short period of time, the pesticides coat the pet with an invisible film, acting as a shield to protect it from fleas.

After the pet is cleaned of fleas, you can begin taking steps to clean the environment. It is important to kill fleas outside as well as inside the home, Stewart says.

A room fogger, or an automatic aerosol device, is the most effective product available for inside the home, he says. "Just choose the right size for each room, set the device on a table, open the can, leave the house and let it do its work."

A room fogger, such as the "Double Duty" room fogger, has enough force to propel the insecticide high into the air, according to Stewart. In time, the insecticide mist settles into the carpet and furniture, killing the flea eggs before they hatch.

As an alternative to the fogger, a powder is also available to sprinkle onto the carpeting. After

the powder has time to sink in and kill insect eggs, you simply vacuum everything up.

Whether you use a fogger or powder, the next step is to spray all the places the pet inhabits. These places could include a doghouse, bed or any of the pet's

favorite spots. You also should spray around baseboards.

If you live in a house, the last step is to rid your yard of fleas.

"With moisture from the sprinkling systems and heat from the sun, lawns are ideal breeding grounds for fleas," Stewart claims.

Outdoor sprays and granular powders are needed for the yard.

Stewart cautions, however, that even with careful attention to all details, fleas will eventually return. "One hundred percent,

permanent elimination of fleas is impossible, especially in California and other hot, humid areas," he says.

ROBE. T D. GREEN, INC.
2400 W. AMERICAN BLVD. — MULESHOE, TEXAS 79347
— HOME OF THE GREEN MACHINES —
TERRY YELL
SALESMAN

OLDSMOBILE BUICK CHEVROLET PONTIAC GMC
BUS. PH. 806 272-4588 HOME PH. 806 272-2942
505 762-2772

A&M
Hi-Protein
Bag Dog Food
50 lb. \$975



Lubbock TV Station Will Host Telethon

inside the telethon. The 19th annual "Jerry Lewis Extra Special Special," the Labor Day Telethon benefitting the Muscular Dystrophy Association will be broadcast again on KLBK-TV, Ch. 13 beginning at 8 p.m., Sunday, September 2, and continuing nonstop until 6 p.m., Monday, September 3.

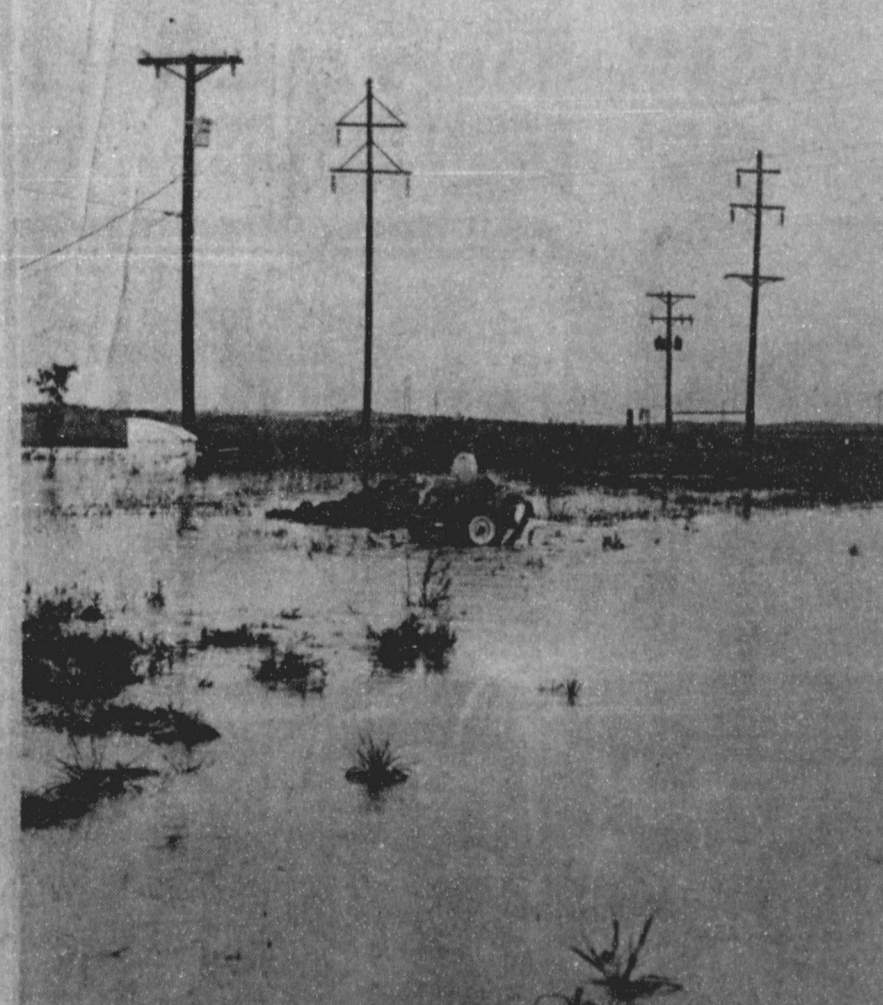
Emcees for the South Plains telethon will be KLBK's Ron Roberts and Eric Summers with veteran telethon emcee, Trudi Lewis. KLBK-TV has been the site for the Jerry Lewis Telethon for over 14 years.

Paul Moore, MDA District Director, said "the telethon toteboard has never reached \$200,000, but due to a successful fund-raising year we should reach or come close to that figure". As an example of the district's success, the MDA district which includes the Permian Basin and South Plains leads the nation in "Hop-A-Thon" events. Moore added that many other fund-raisers were more successful than last year.

The format of the Telethon, which will be broadcast live from Caesar's Palace in Las Vegas and carried by some 200 "Love Network" stations nationwide, includes 45 minutes of national programming and 15 minutes of local programming during most of its hours on the air.

The Telethon is a national health agency's most important single fund-raising event; money raised by the show enables MDA to continue its worldwide research and local comprehensive patient care programs in its fight against 40 neuromuscular diseases.

MDA currently sponsors some 540 individual research projects aimed at finding the causes of and the effective treatments for neuromuscular diseases. MDA also funds some 250 out-patient clinics across the country, where people with neuromuscular disorders receive medical care, orthopedic aids and related services at no direct cost to them or their families. The MDA clinic serving the South Plains area is located at Methodist Hospital.



PUMPING OUT THE WATER-Along with the heavy rain falling this past week around Muleshoe came flooding problems for the residents of the Muleshoe Senior Citizen Housing complex. A pump was started Thursday in an effort to keep water out of the resident's homes.

NOTICE OF CALCULATION OF EFFECTIVE TAX RATE AND PUBLICATION OF ESTIMATED UNENCUMBERED FUND BALANCES

I, Dale F. Jones, Assessor-Collector for Muleshoe I.S.D. in accordance with the provisions of Sec. 26.04, Property Tax Code, have calculated the tax rate which may not be exceeded by more than three percent by the governing body of the Muleshoe I.S.D. without holding a public hearing as required by the code. That rate is as follows: \$.75 per \$100 of value. The estimated unencumbered fund balance for Maintenance & Operation fund: \$151,766. The estimated unencumbered fund balance for Interest & Sinking fund: \$-0-

Dale F. Jones Chief Appraiser
August 8, 1984

CALCULATIONS USED TO DETERMINE EFFECTIVE TAX RATE

I. DATA	
1. 1983 Total tax levy from the 1983 tax roll	\$ 1,383,493.
2. 1983 Tax rate (\$.99 M&O and \$ -0- I&S)	\$.99/\$100
3. 1983 Debt service (I&S) levy	\$ -0-
4. 1983 Maintenance and operation (M&O) levy	\$ 1,383,493.
5. 1983 M&O taxes on property in territory that has ceased to be a part of unit in 1984 ...	\$ -0-
6. 1983 M&O taxes on property becoming exempt in 1984	\$ -0-
7. 1983 M&O taxes on taxable value lost because property is appraised at less than market value in 1984	\$ -0-
8. 1984 Total taxable value of all property	\$ 184,286,270.
9. 1984 Taxable value of new improvements added since Jan. 1, 1983	\$ 1,388,550.
10. 1984 Taxable value of property annexed since Jan. 1, 1983	\$ -0-
11. 1984 Tax levy needed to satisfy debt service (I&S)	\$ -0-
12. Rate to raise 1983 tax levy due to appraisal roll errors (lost dollars divided by the difference of 1984 taxable values minus over-65 homesteads taxable values) (\$ 8,449. / (\$ 184,286,270. - \$ 7,884,150.) x 100) ..	\$.004789/\$100
13. Rate to regain taxes lost in 1983 due to appraisal roll errors (lost dollars divided by the difference of 1984 taxable values minus 1984 over-65 homesteads taxable value) (\$ 8,449. / (\$ 184,286,270. - \$ 7,884,150.) x 100) ..	\$.004789/\$100
14. 1983 M&O Taxes used to regain lost 1982 levy	\$ 28,319.
15. 1984 Taxable value of over-65 homesteads with frozen taxes	\$ 7,884,150.
16. Frozen M&O levy of over-65 homesteads with frozen taxes	\$ 23,383.
17. Frozen I&S levy of over-65 homesteads with frozen taxes	\$ -0-
II. CALCULATION	
MAINTENANCE AND OPERATION (M&O) TAX RATE	
1. (A) 1983 Total tax levy (Data 1)	\$ 1,383,493.
(B) Subtract 1983 Debt service levy (Data 3)	- \$ -0-
(C) Subtract 1983 Taxes on property no longer in unit (Data 5)	- \$ -0-
(D) Subtract 1983 Taxes on exemptions (Data 6)	- \$ -0-
(E) Subtract 1983 Taxes on productivity valuation (Data 7)	- \$ -0-
(F) Subtract frozen M&O levy of over-65 homesteads (Data 16)	- \$ 23,383.
(G) Subtract 1983 M&O taxes used to regain lost 1982 levy (Data 14)	- \$ 28,319.
(H) Adjusted 1983 M&O levy	T \$ 1,331,791.
2. (A) 1984 Total taxable value of all property (Data 8)	\$ 184,286,270.
(B) Subtract 1984 Value of new improvements (Data 9)	- \$ 1,388,550.
(C) Subtract 1984 Value of annexed property (Data 10)	- \$ -0-
(D) Subtract 1984 Value of over-65 homesteads (Data 15)	- \$ 7,884,150.
(E) Adjusted 1984 Taxable value for M&O	T \$ 176,402,120.
3. (A) Divide the Adjusted 1983 M&O levy (1-H above) by the Adjusted 1984 Taxable value for M&O (2-E above) (\$ 1,331,791. / \$ 176,402,120.) ..	\$.007549
(B) Multiply by \$100 valuation	x \$100
3. (C) Effective M&O rate for 1984	\$.7549/\$100
INTEREST AND SINKING (I&S) TAX RATE	
4. (A) 1984 I&S levy needed to satisfy debt (Data 11)	\$ -0-
(B) Subtract frozen I&S levy of over-65 homesteads (Data 17)	- \$ -0-
(C) Adjusted 1984 I&S levy	\$ -0-
(D) 1984 Total taxable value of all property (Data 8)	\$ -
(E) Subtract 1984 Value of over-65 homesteads (Data 15)	- \$ -
(F) Adjusted 1984 Taxable value for I&S	\$ -
(G) Divide the Adjusted 1984 I&S levy (4-C above) by the Adjusted 1984 taxable value for I&S (4-F above) (\$ - / \$ -)	\$ -
(H) Multiply by \$100 valuation	x \$100
(I) Effective I&S rate for 1984	\$ -0-/\$100
APPRAISAL ROLL ERROR RATE	
5. (A) Rate to raise 1983 levy due to appraisal errors (Data 12)	\$ -0-/\$100
(B) Add Rate to regain taxes lost due to errors (Data 13)	+ \$ -0-/\$100
(C) Total Rate to adjust for appraisal roll errors	\$ -0-/\$100
TOTAL EFFECTIVE TAX RATE FOR 1984	
6. (A) Effective M&O rate (3-C above)	\$.7549/\$100
(B) Add Effective I&S rate (4-I above)	+ \$ -0-/\$100
(C) Add Rate to adjust for appraisal roll errors (5-C above)	+ \$ -0-/\$100
(D) 1984 Effective Tax Rate	\$.7549/\$100

1984 Effective Tax Rate is the tax rate published as required by Sec. 26.04, Property Tax Code.

CLASSIFIED ADS

DEADLINE FOR CLASSIFIED ADS IS TUESDAYS AND FRIDAYS 12:00 NOON

CLASSIFIED RATES
 1st Insertion Per Word...\$1.15
 Minimum Charge...\$2.30
 2nd Insertion Per Word...\$1.13
 Minimum Charge...\$2.00
CARD OF THANKS
 Per Word...\$2.20
CLASSIFIED DISPLAY
 \$1.70... per column inch
BLIND AD RATES
 50% more
DEADLINES
 12 Noon Tues. for Thursday paper
 12 Noon Fri. for Sunday paper
WE RESERVE THE RIGHT TO CLASSIFY REVISE OR REJECT ANY AD NOT RESPONSIBLE FOR ANY ERROR AFTER AD HAS RUN ONCE

1. PERSONALS

OPENINGS in registered daycare \$6.00 per day Call 272-3222 z1-21t-tfc

CUSTOM BALING & Stacking. 3 balers, 3 trucks. Ask for Leo Chavez 272-4768. c1-19t-tfc

OWN YOUR OWN Jean-Sportswear, Ladies Apparel, Combination, Accessories, Large Size store. National brands: Jordache, Chic, Lee, Levi, Vanderbilt, Calvin Klein, Izod, E-sprit, Britannia, Sergio Valente, Evan Picone, Claiborne, Members Only, Organically Grown, Healthtex, 700 others. \$7,900 to \$24,900, inventory, airfare, training, fixtures, grand opening, etc. Can open 15 days. Mr. Loughlin (612) 888-6555. 1-33s-1tspts

FOR ALL TYPES decorated cakes, birthday all occasion or beautiful wedding cakes call Ann Johnson 272-5746. 14 years cake decorating experience. Experienced also in full line buffet, catering for all kinds of receptions. j1-31t-1mc

LICENSED DAY-CARE for children over 18 months opening for the fall term. Dianne Allison 272-3304. al-28s-tfc

PROCESS MAIL AT HOME! \$75.00 per hundred! No Experience. Part or full time. Start immediately. Details-send self-addressed stamped envelope to C.R.I. 5288, P.O. Box 3149, Stuart, Fl. 33495. 1-33s-4tp

AMWAY Products mean quality and personnel service. Try us and see. Phone 272-4663. d1-32s-1mc

CONCERNED About Someone's Drinking **HELP IS AVAILABLE** through Al-Anon Call 227-2350 or 965-2870 or Call 227-2350 or come to visit Tuesday nights, 8:00 p.m. at 1116 W. American Boulevard, Muleshoe

3. HELP WANTED

NEEDED experience permanent farmland, apply in person Bamert Seed Co. Office hours 8 a.m. to 5 p.m. b3-31t-4tc

WANTED WOMAN full time to live in & take care of elderly woman. Room & board plus wages. Phone 272-4764. w3-26t-tfc

GOVERNMENT JOBS Thousands of vacancies must be filled immediately. \$17,634 to \$50,112. Call 716-882-2900, EXT. 32023. u3-33s-2tsp

TELEPHONE SURVEY WORKERS needed part time to update the Muleshoe City Directory. Work at home. Send name, address & telephone number in your handwriting to: Muleshoe Survey, 2108 Redbud, Odessa, Tx. 79761. j3-17t-tfc

TRI-CHEM LIQUID Embroidery Instructors wanted. No experience necessary. Party Plan. Sales & Commission. Call 1-806-986-2921. 3-31t-4tp

NEED 4 MEN OR WOMEN full or part time to show safety films. No experience necessary. Will train if accepted. \$500 a week possible full-time. \$200 a week possible part-time. Call Stan 806-247-2469. 13-33s-2tc

CARE FOR THE ELDERLY in our home a couple of ladies, 24 hour supervision home cooked meals Lubbock area. 1-866-4980. g3-3t-4tc

MATURE BABYSITTER needed to keep one child. Call 272-3790 after 5:00 p.m. 3-32s-4tp

NEED RELIABLE person to babysit 4 yr. old & 8 month old in my home. 272-5168 after 5. 13-33s-3tc

HENRY REALTY

11 W. Ave. B Muleshoe, Texas 272-4581 ***

3 Bedroom-1 Bath - 1 car garage in Lenau Addition. ***

800 Acres West of Muleshoe on HWY Excellent Improvements. Priced Right to Sell. Owner Financing. ***

38 Acres West of Muleshoe, 6 Inch Well, Sideroll, All Wheat. ***

One Acre Sites for Home Construction. 3 Miles of Muleshoe on HWY. 3 lots remain. ***

Completely remodeled 2 Bedroom home. Ideal first home, must see to appreciate. Nice location with F.H.A. loan. ***

320 Acres with large beautiful 3 Bedroom, 3 bath, 3 car garage, spacious gameroom, central heating and air, underground sprinkler for yard 30' x 50' shop for building. 5 wells. ***

38 Acres, Northwest edge of Muleshoe, Terms--good water. ***

Apartment complex, mobile home park, vacant land for expansion. Terms available. 8-23t-tfc

J.B. SUDDERETH REALTY INC.
 Drawer 887
 Farwell, Tx. 79325
 Ph. 806-481-3288

160 Acre on Hwy., N.W. of Muleshoe, 2 wells, Excellent Financing. Priced for Immediate Sale.

80 Acres, 2 wells, 1 electric motor, wheat crop grows. West of Muleshoe on highway. Owner says Sell!

480 Acres Irrigated with Circle Sprinklers, lays good, on highway-West of Muleshoe. Owner says Sell!

320 Acres, 3-8 inch wells, 2 electric circle sprinklers approx. 200 ft. of water, approx. 200 ft. to water, Owner says sell immediately. Bargain farm in Pleasant Valley area. 8-23s-tfc

KREBBS REAL ESTATE
 1004 W. 6th
 Phone--272-3191
 Appraisals
 We Specialize in Farms and Ranches
 k8-24s-tfc

Town and Country Real Estate
 John W. Smith
 Broker
 806-272-4307
 903 W. 7th
 Muleshoe, Texas 89347

t8-16s-tfc

JIMMIE CRAWFORD Real Estate & Insurance
 1725 W. Ave E. Muleshoe, Texas
 Phone 272-3666

9. AUTOMOBILES FOR SALE

FOR SALE: 1973 15 ft. Red Dale Travel Trailer. Sleeps 6, has 3 way refrigerator, used very little. Still in excellent condition. Must see to appreciate. Call 272-4343 or come by 302 W. 7th after 6 p.m.

10. FARM EQUIP. FOR SALE

FOR SALE: 1 U.S. 30 horsepower electric irrigation motor with panel box. Call 272-5359. w10-29s-tfc

FOR SALE: Avenger 3 Wheel Hoe Hands with spray tanks attached. Call First National Bank. 272-4515. 10-21t-tfc

11. FOR SALE OR TRADE

FOR SALE KING Cornet just like new call 272-5495. b11-32t-2tc

FOR SALE: Self-cleaning Kenmore stove. Call 272-5113 n11-28t-tfc

40 HORSE Vertical Horeshaft \$800, good shape 927-5423. k11-33s-tfc

1 BR. MOBILE Home 8 x 48 furnished w/washer-dryer. Ideal Lake or harvest trailer. Phone 272-3536 after 6 p.m. r11-31t-4tc

FOR SALE John Deere 6600, 1975 Combine, cab air 1200 hours, farmer owned and operated with or without cornhead, clean, see at Tom Flowers Auction or call 405-326-2935. p11-32t-4tc

FOR SALE or Trade Mobile Home on Acreage 14 x 72 2 bdrm, 2 bath. On approx. 2 acres on airport road, Natural Gas, Private Well. Asking Price \$22,500. Contact J.T. Montgomery 110 West 6th St. Muleshoe, Tx. 79347 (806) 272-4318. 11-32s-4tp

13. PROPERTY FOR LEASE

FOR RENT: Old Chevrolet building, 3600 + sq. ft. office space 10,000 + sq. ft. warehouse. Can be rented separately. See Roy Whitt Phone 272-3058. w13-23s-tfc

FOR SALE or Lease 3500 sq. ft. commercial building across from courthouse. Will lease space or entire building phone 272-4754 after 5 p.m. s13-29t-tfc

15. MISCELLANEOUS

TRAILER SPACE for Rent 272-3006. g15-21s-tfc

LOTS FOR RENT. Phone 272-3718. b15-32s-3tc

TO BE MOVED: 1 Bdr; 1 Bath; approx. 900 Sq. Ft. \$3950 272-3157 or 272-4832. g15-32t-tfc

HOME REPAIRS. F.M. Saldana Construction Licensed and bonded plumber. Specialize in cement, carpenter work, remodeling, painting, acoustical ceilings. 272-4955. 15-16s-tfc

BRUCE & MATTHEWS Inc. Refrigeration & Electrical Contractor's Heating, Cooling, Appliance Service. 424 N. First 272-5114. 15-44t-tfc

WANTED TO BUY Large House to be moved. Call 1-505-276-8431. h15-32t-4tc

ATTENTION Ladies! Demonstrate toys and gifts. Free \$300 kit. No investment! No Collecting! No Delivering! Best Hostess Program anywhere. Call DONNA (806) 293-9128. 15-33s-2tp

ROUND-UP Applications, 30 inch or 40 inch rows, Cotton, Milo, Soybeans. Pipe wicks, mounted on hi-boy. Call Roy O'Brian 265-3247. o15-26t-tfc

18. Legal Notice

NOTICE OF SALE
 By virtue of a Writ of Execution issued out of the District Court of Bailey County, Texas, on a Judgment rendered in said Court on June 15, 1984, in favor of ANA MARIA GONZALEZ and against RAMON GONZALEZ, Number 5085, in said Court, the undersigned did on the 8th day of August, 1984, at 9:00 o'clock a.m., levy upon the following real estate lying and being situate in Bailey County, Texas, as the property of said RAMON GONZALEZ, to-wit:

All of Lot Eight (8), and the Easterly Six Feet of Lot Nine (9), Block Three (3), Highland Addition to the City of Muleshoe, Bailey County, Texas.

Your are further notified that on September 4, 1984, being the first Tuesday of said month, between the hours of 10:00 o'clock a.m. and 4:00 o'clock p.m. on said date, at the courthouse door of said county, all the right, title, and interest of said RAMON GONZALEZ in and to the above described property will be offered for sale and sold at public auction, for cash.

Witness My Hand this 8th day of August, 1984.
 Bob Henderson,
 Sheriff of Bailey County, Texas.
 g18-33s-3tsc

NOTICE
 The president of the board of trustees of the Lazbuddie Independent School District, pursuant to Sec. 23-45 of Texas Education Code and Article 29E vernons anotated Texas statutes has called a meeting of the board of trustees for the 1984-85 fiscal year that will cover all expenditures for the 1984-85 fiscal year for the district. The meeting will be held in the board room at 8:30 p.m. on August 28, 1984. Any taxpayer or citizen of the district may be present and participate in the meeting. 118-33s-1tc

NOTICE
 The Lazbuddie I.S.D. will accept bids for gasoline for school buses. These bids will be accepted until noon on August 27, 1984 and will be presented to the board at 8:30 p.m. on August 28th, 1984. Copies of bid forms can be picked up at Lazbuddie I.S.D. or will be mailed on request. Bids can be submitted to the Lazbuddie I.S.D., Superintendent's office, Drawer A, Lazbuddie, Texas 79053. The Board reserves the right to refuse any or all bids. 118-33s-1tc

BINGHAM & NIEMAN REALTY
 116 E. Ave. C
 272-5285***272-5286
WE CAN HELP OUR BUYERS WITH
 107/8 % A.R.M. INTEREST RATES ON
 30 YEAR LOANS!!!!

RICHLAND HILLS

JUST LISTED 3-2 Brick, Cent. A&H, built-ins, fireplace, office, large utility, covered patio, storage bldg., & beautiful yard!!!

3-1 3/4-1 Brick, Cent. A&H, stove DW, fenced yard. 40's...

3-1 3/4-2 Brick with corner fireplace in den, built-ins, large sunny dining area with built-in planter...

4-1 3/4-1 Brick, heat, Evap. air, built-ins, new interior exterior paint, gas grill, & more. **SOLD**

3-1 3/4-1 brick, Cent. A&H, built-ins, fireplace, large den, storage bldg.!!!

LUXURY LIVING in this 3-2-2 Custom-built brick, loads of built-ins, wet bar, Jacuzzi whirlpool, atrium, basement, Cent. A&H, & more...

3-1 3/4-2 carport Brick, Cent. A&H, built-ins, gas log fireplace, fenced yard!!!

SHOWN BY APPOINTMENT ONLY 4-3/4 Brick home with over 4,000 sq. ft. of living area, built-ins, fireplace, Cent. A&H, finished basement and in immaculate condition!!!

COUNTRY CLUB

3-1 3/4-2 Brick, Cent. A&H, built-ins, fenced yard, water soft. & gas grill...

3-1 1/2-1 Brick, repainted inside & out, built-in range, gas grill, storage bldg. Low 40's!!!

3-1 3/4 Brick, Cent. A&H, built-ins, fenced yard, & over 1950 sq. ft. of Lv. area. 40's...

LENAU ADD.

MAKE AN OFFER in contract carport home on corner lot, nice floor furnace, fenced yard!!!!

3-1-1 home on corner lot, Cent. heat, Evap. air, fenced yard. \$30's.

3-1 3/4-1 carport, nice carpet, fenced yard. a neat well-kept home. 30's!!!!

3-1 3/4-1+1 carport Brick, built-ins, new paint & paper, nice carpet, utility, & large storage. Mid 40's....

CLOVIS HWY. 3-1 & 2-1 home on approx. 4.4 acres, fenced & has sprinkler system. Low 40's....

ENJOY COUNTRY LIFE in this 3-1-3/4-2 home on 1 acre, built-ins, nice large patio, fence, storm shelter, fruit trees!!! **SOLD**

2-1 home on 1 acre, built-ins, nice carpet, on pavement close to town!!!!

JUST LISTED 3-1-1 home, Cent. A&H, paneling, nice carpets, fenced yard, storage bldgs. \$20's!!!!

3-2 3/4 home, corner lot, Cent. A&H, built-ins, 2 fireplaces, approx. 3,000 sq. ft. of lv. area, new carpet, auto. sprinkler. 50's!!!!

3-1-1 home, corner lot, built-ins, Cent. A&H, nice carpet. 30's....

JUST LISTED 2-2+2 carport Mobile home, built-ins, Cent. A&H, utility, covered porch, storage bldg., shop, fenced yard. Close to schools!!!!

3-1 3/4-1 Brick, Cent. heat, Evap. air, gas grill. 4 yrs. old. 40's....

3-1 home, built-ins, fireplace, wall furnace, fence yard, close to hospital. \$20,000...

2-1-1 home on corner lot, close to schools. Priced to Sell!!!!

3-1 3/4-1 carport, built-ins, Cent. heat, fireplace, fenced yard. 40's....

EXTRA NICE 2-1+1 carport home, new paint, countertop, fenced yard & storage bldg. \$19,500!!!!

2-1 3/4 Mobile Home + 2 carport, covered porch, built-ins, cable TV, large barn & corrals on approx. 2 acres on pavement close to town. 30's....

Near New Brick home and 32' x 96' metal barn on 32 acres on pavement close to town!!!!

4-1 on 5.3 acres, 5 hp. sub. pump, tractor & equip., barn & more. 40's ... Building on 2 lots, approx. 2350 sq. ft., paved parking!!!! **FARMS**

2-1 home on 20 acres, 20 hp. sub. pump, domestic well, large barn & corrals, 1/4 mile sprinkler pipe, & more. \$42,500....

2-1 home on 32 acres, 6" well, close to town on pavement....

120 acres- good 6" well, good farm, close to town. \$700 per acre....

1062 acres, 3 wells, 2 circles, large metal barn, 9% Owner financing....

80 acres, close to town, 6" well, undergrd. tile.

40 acres, 8" well, undgrd. line & sideroll sprinkler....

We have numerous other farms, commercial property, & lots listed. Contact us for details on these and other listings.

"WE APPRICIATE YOUR BUSINESS"
 GEORGE NIEMAN, BROKER
 DIANNE NIEMAN, BROKER

8-27s-tfc

SMALLWOOD REAL ESTATE

232 Main 272-4838

3 BEDROOM, 2 Bath, Brick, 2 Car Garage, Refrigerated air, Fireplace, fenced yard.

3 B.R. Brick, 2 Bath, 2 Car Garage, 2 Storage Bldg. Central heat Refrigerated air, Fireplace, Electric Garage door openers, fenced back yard, good location, Priced to Sell!

3 bedroom, 2 bath, brick, 2 car garage, fireplace, air, fenced back yard.

8-23s-tfc

CLASSIFIED ADS

AMERICAN VALLEY INVESTMENTS
REAL ESTATE
272-4266

JUST LISTED--2 Bedroom, 2 Bath, Brick home with Garage located in Country on 1 1/2 Acres. Low \$30's.

NEW ON THE MARKET--Richland Hills--3 bdrm, 1 3/4 bath, single car garage, 6 years old and just like new.

LARGE 3 BEDROOM, 1 3/4 Bath home in Country Club Addition, Ceiling Fans, 2 Storage Buildings, Fenced Garden Space. Priced in the \$40's. h-46.

BETTER THAN NEW--3 Bedroom, 1 Bath Brick Home with Single Car Garage. Fenced Back Yard. 2 years old. h-48

NEW LISTING--Service Station on Corner Lot on American Boulevard. Priced to Sell.

BEAUTIFUL CUSTOM BUILT--3 Bedroom home in Richland Hills. Stunning floor plan, fireplace, jacuzzi, 2 courtyards, sprinkler system, stereo sound system, humidifier. Well built quality home with many extras. b4-45

CLOSE TO TOWN--3 Bedroom, 2 Full Bath, 2 Car carport, lots of storage, located on 1 acre. h-42.

CORNER LOT--3 Bedroom, 1 1/2 bath, 1 CAR Garage, storm cellar, good location. h-41.

NEAT CLEAN--2 Bedroom 1 Bath, 1 Car Garage in Lenau A44. Extra room built on behind garage. **SOLD** windows and doors. Nearly new roof. In good condition. h-36

JUST ON THE MARKET--2 Bedroom, 1 Bath home in Lenau Addition. Fireplace.

SPACIOUS FAMILY HOME--Nice 3 Bedroom 1 3/4 Bath, double car garage, brick home. Lots of Storage. Well-kept Mid 40's. h-4

BUILDER SAYS SELL NOW--3 Bedroom, 1 3/4 Bath, 2 Car Garage, Fireplace, Cathedral Beamed Den. h-26

SMALL ACREAGE--1 1/2 Acres Close to Town.

STARTER HOME--1 Bedroom home for only \$7,500.00. New Carpet and wall heater. h-37

PRICE REDUCED--READY TO SELL!--Nice 2 Bedroom, 1 Bath, Single-car Garage. Well-Insulated. New Roof. Storm Doors and Windows. h-19

160 ACRES in Lazbuddie Area. 2-8" Irrigation Wells. Good Land in Good Area. f-4

3 BEDROOM, 1 Bath home with large fenced backyard. h-34.

280 ACRES in Lazbuddie Area--Electric Valley Sprinkler, 2 Siderolls, 1-8" Well, 1-6" Well, 3/4 Mile Underground PVC, 1/4 Minerals, 25 hp. Lake Pump, 32 Acres of Improved Grasses. **PRICED TO SELL!** f-6

GOOD RENT PROPERTY--2 Bedroom and 1 Bedroom Homes. In Good Condition. \$22,500.00. h-1

JUST LISTED--Nice 2 Bedroom, 1 Bath, Mobile Home. 14 x 64 skyline.

80 ACRES in YL Community, 1-6" Well--30 hp. Elec. Motor, 1/2 Mile Underground Pipe Domestic Well. Some Minerals. f-3

160 ACRES--in Lazbuddie Area. Good Water. Priced to Sell. f-15

LARGE BUILDING in Back for Workshop, Storage, or Hobbie. 3 Bedroom, 1 Bath Home in Lenau Addition. h-7

4 BEDROOM--2 Bath, Large Living Room, Dining Room, Fireplace. h-3

MOBILE HOME--2 Bedroom, 1 Bath. Partially Furnished 12 x 64. \$9,500.00 h-13

2 BEDROOM--Home at only \$15,000.00 h-10

HAVE BUYERS needing homes in the \$50's \$60's, and \$70's. Call today and get your house on the market.

Thursie Reid--272-5318
Roy Whitt--272-3058
Darrell Matthews--965-2127
Karen Harris--272-5183
Joy Whitt--272-3058
Lucille Harp--272-4693
Rex Harris--Broker
Max Crim--965-2742

8-27s-stfc

NOTICE PUBLIC SCHOOL LAND OFFERED FOR LEASE IN BAILEY COUNTY
The Commissioners' Court of Foard County, Texas, offers for lease for a three-year term, beginning January 1, 1985, the surface only of the following described land located in Bailey County, Texas, and belonging to the Foard County School District:

1. Abstract No. 335, Labor No. 6, League No. 192, Foard County School Land, containing 177 acres of land, more or less.
2. Abstract No. 335, Labor No. 15, League No. 192, Foard County School Land, containing 177 acres of land, more or less.
3. Abstract No. 335, Labor No. 16, League No. 192, Foard County School Land, containing 177 acres of land, more or less.

Detailed information as to the terms and covenants upon which any lease will be conditioned may be obtained by writing to Charlie Bell, County Judge, Foard County, Box 660, Crowell, Texas, but sealed bids will be received by the Court only until 10:00 a.m., on Monday, September 24, A.D. 1984.

Charlie Bell, County Judge, by order of the Commissioners' Court, Foard County, Texas. b18-33s-2tsc

FIRST CHRISTIAN Church Building and Lots, 2nd and Ave. G., Muleshoe, Texas for Sale by sealed bids.

Lots numbered thirteen (13), Fourteen (14), fifteen (15), and sixteen (16) in Block number forty-three (43), Original Town of Muleshoe, Bailey County, Texas.

Sealed bids will be accepted through August 25, 1984. Mail bid to: First Christian Church P.O. Box 202, Muleshoe, Texas 79347. The congregation of the First Christian Church reserves the right to reject any and all bids.

Anyone wanting to inspect building before making bid, contact Mr. S.E. (Doc) Goucher during morning hours at the Muleshoe State Bank for appointment.

Sealed bids will be opened August 28, 1984 at approx. 8:30 p.m. during congregational meeting at the First Christian Church. f18-29s-7tc

Texas Charolais to Korea

(AUSTIN)--Three hundred ninety-one head of Charolais cattle were flown to Korea through the Texas Department of Agriculture livestock export facility in Houston Feb. 4, part of the Korean government's program to upgrade cattle production.

According to export facility manager Harry Foresman, the shipment was valued at \$136,850.

The animals, all heifers, were purchased at auction in Texas. The Korean government planned to distribute them to farmers and ranchers participating in the national breeding program.

Foresman said 1,050 heifers have been shipped to Korea since May. Four more shipments have been scheduled this year.

Korea has also bought cattle from Australia, New Zealand and Canada. Most of the animals have been Charolais though some have been Herefords.

Texas Longhorn Sale Set

Lashawn Wardlaw, "Miss Rodeo Texas," will make a guest appearance at the Shahan HV Ranch's "Texas Longhorn Sale of the Century," Saturday, June 16th. Valentino and the Shahan Express Band will be providing the live entertainment, immediately following the sale.

The sale beginning at 1 PM will be conducted at the famed, "Alamo Movie Location," on the Shahan's ranch, 7 miles north of Brackettville on Highway 674.

This is the first time ever that Texas Longhorn Breeders will have the opportunity to select their choice of the Shahan's best longhorns, selective breeding stemming from the original herd put together for the filming of John Wayne's epic, "The Alamo." Offering, along with the Hutto and Pinon Ranches, 78 cows, calves and heifers, 3 bulls and 3 trophy steers out of the most prominent pedigrees available: WR, King Ranch, Y-O, Classic, Hon-do, Texas Ranger, Bold Ruler, Yates, Wright.

Scott and Shahan. The cows in this sale will average a little over 6 1/2 years of age with combinations of bull and heifer calves at side to choose from. There will also be an offering of the best open and bred heifers available. It will be an exciting sale in front of the "Alamo" replica.

Alamo Village is open to the public, the stagecoach will be running and mom and the kids will be able to explore the town that was built to make movies. Stepping back into the 1800's with museum type walk-ins, Cantina, serving food and soft drinks, blacksmith shop, general store, Indian store, trading post, in a town with board walks and no

pavement. There will be live entertainment consisting of music, singing and western melodrama. An "Arkansas Hillbilly," comes to the dusty streets of the town built for movies with his horse, donkey and mule named "Blue."

It will be an exciting sale in front of the "Alamo"

where John Wayne filmed his movie epic. Come and take part "where history meets on June 16th." "Miss Rodeo Texas," will be there, at the "Texas Longhorn Sale of the Century," the only place in the world you may see Texas Longhorn cattle sold in front of the Alamo, on the Shahan HV Ranches, in Brackettville.

ROY WHITT

AMERICAN VALLEY INVESTMENTS
REAL ESTATE

WEST HWY 84 MULESHOE, TEXAS 79347

HOME PHONE 806/272-3058 **BUSINESS PHONE 272-4266**

A&M

CLOVIS • PORTALES • MULESHOE
OPEN ALL DAY SATURDAY
OPEN SUNDAY 12:30-5PM
CLOVIS AND PORTALES ONLY

2600 E. Mabry Dr. Clovis, N.M. 1601 So. Ave. D Portales

SPECIALS GOOD THROUGH AUG. 18, 1984

WD-40 Lubricant 1.29

9 Oz. spray. Prevents rust. Stops squeaks.

Air Conditioner Freon 1.09

14 Oz. Puts the cool back in your A/C with safety top.

Supreme	
Supreme 10W40	1.05
Supreme 10W30	1.05
30 W Heavy Duty	.97
20 W Heavy Duty	.97
Quaker State	
Deluxe 10W40	1.08
Super Blend 10W30	1.04
Deluxe 20W50	1.04
Sterling 10W40	1.25
30 Wt. Heavy Duty	.97
Pennzoil	
10W30	1.04
10W40	1.08
20W50	1.12
30 Wt.	.98
40 Wt.	.98
50 Wt.	.98

CASITE DEPTH-TYPE OIL FILTERS 1.99

Choose from CF 1A or CF 35 Oil Filters.

Most GM and Ford applications.

Stacked Tool Chest 149.95

Basic chest offers six drawers in four different sizes for easy tool and supply sorting. The basic roller cabinet provides three drawers in two sizes plus 9 1/2" high bulk storage compartment. 31106/33303

Cross-Over Pickup Tool Box 74.95

Overlapping rubber sealed lids. Covered continuous hinges. Reinforced rolled edges.

OPEN SUNDAY FROM 12:30 P.M. TO 5:00 P.M.

EATING OUT

By Ross Hughes
THE high intake of salt has an adverse affect on the health of millions.

UNFORTUNATELY many of America's favorite eating-out spots are sources of too much salt. And this includes most of the fast-food chains.

IF you think Chinese food is good for you, it may be--but not if you eat where all dishes are loaded with monosodium glutamate (MSG). Most Chinese restaurants use it liberally, and soy sauce is heavily loaded with sodium.

IF you like Italian food, be careful about the highly-seasoned dishes, which are not only spicy but loaded with salt. This is also true of much German and Hungarian food.

WORST of all the threats to Americans are the processed foods, including meats and even dairy products, which are heavy in salt. If eating out, it's difficult to know what is a processed, heavily salted food and what is fresh. One need not be timid about asking.

ON airliners one can order low-sodium meals and stewardess will almost always have them available. In some restaurants that's also possible today--and in future years more will likely offer such meals.

One of the things that kills time in life is the necessity to beat around the bush and not come out and call a spade a spade.

MAGICAL TOUCH
that's it... the CLASSIFIEDS



SELL or BUY ANYTHING!
CALL
272-4536