

Defense Loses Zamora Battle

MIAMI (AP) - The defense has lost an early battle to introduce questions on television violence in the murder trial of Ronald Zamora, the 15-year-old portrayed as an addict of TV crime shows.

A jury of nine men and three women was seated late Tuesday after two days of questioning during which defense lawyer Ellis Rubin prevented several times from asking prospective jurors about their TV viewing habits.

Zamora's defense on charges that he and another teen-ager killed an elderly woman during a robbery is that he suffered "insanity induced by too much television."

Television and still photographers are being allowed to cover the trial under a 2-month-old Florida State Supreme Court experiment that expires next year.

Zamora was arrested last June. Police said he and Darrell

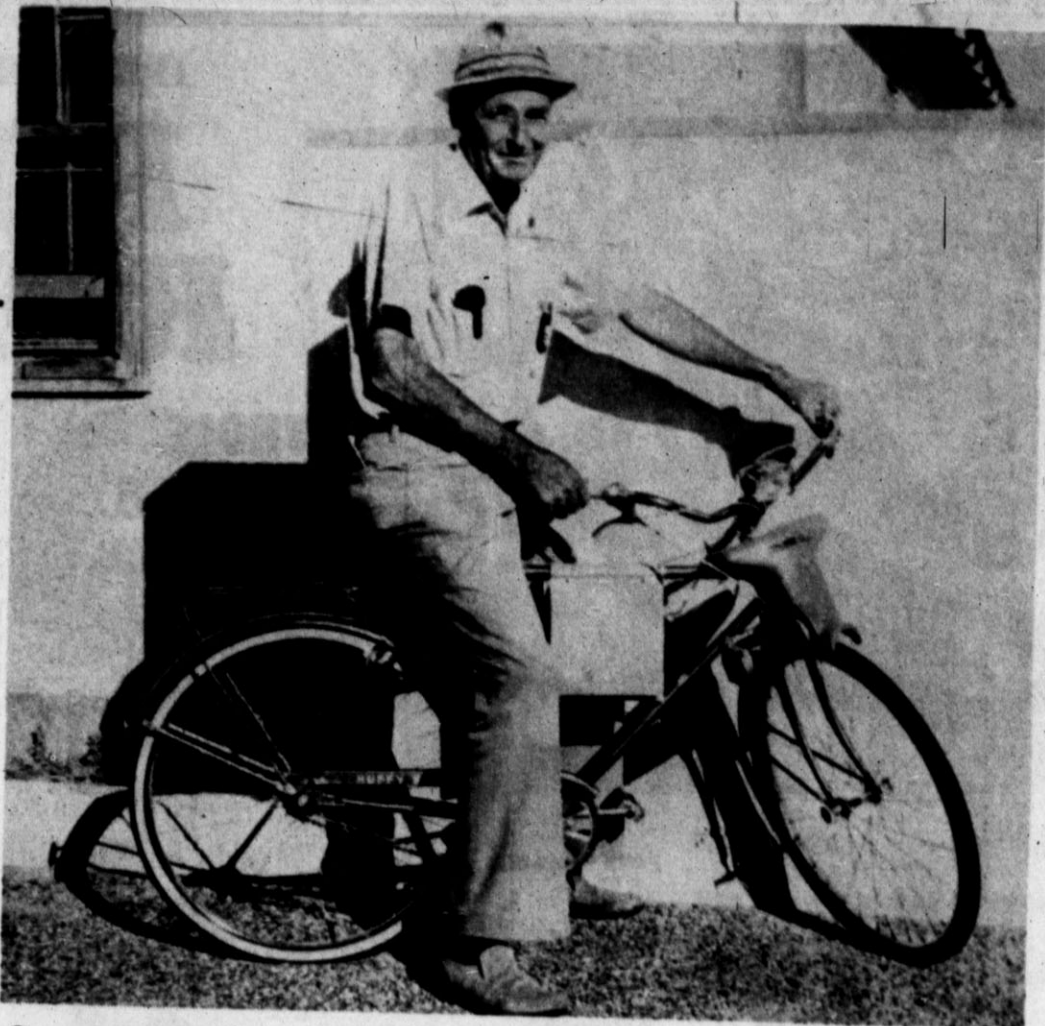
Agrella, 14, broke into the Miami Beach home next to Zamora's where Elinor Haggart, 83, lived alone.

The home was ransacked, more than \$400 was stolen and Mrs. Haggart was shot with her own .32-caliber pistol, police said. They said Zamora rounded up some friends for a trip to Disney World, using the dead woman's car and money.

Both boys were charged as adults with first-degree murder. Agrella's trial is to be held next month.

The TV insanity defense, the courtroom TV experiment and the possibility that Telly Savalas, star of the TV show "Kojak" may appear at the trial have drawn a large press corps.

Savalas is to appear next week for a deposition and, possibly, court testimony. The defense has said "Kojak" was one of Zamora's favorite shows, and may have contributed to his alleged insanity.



Speedy Bike

Taylor Holland demonstrates a contraption which may be a feasible, economical way to beat pollution—the electric bicycle. Holland sells and mounts a device attached to the bike which produces speeds up to 15 miles per hour. (Brand photo)

IRS Wants Its Money After Man Kills Self

WINNSBORO, Tex. (AP) - Ever since Melvin Cain killed himself Winnsboro residents have been trying to recoup the deposits they lost when the Cain Banking Co. failed.

But now the Internal Revenue Service has stepped in and is trying to get any money that might be available. Unfortunately the 3,500 depositors, the IRS can move right to the head of the line. The deposits in the private bank were not insured.

When Cain committed suicide he left a note saying he was leaving his estate to the troubled bank to help make up for his "gross mistakes."

One of those mistakes involved an East Texas contractor who owed \$986,000 when the institution went under. H.L. Quinn was the bank's largest debtor and efforts to collect the money ended in his bankruptcy.

Early this month the IRS filed a \$51,557 claim against Quinn's assets for unpaid Social Security and withholding taxes. Other claims are pending.

If upheld, those claims could deplete Quinn's estate, leaving no money for the bank, nor its former depositors.

Lee Ray, former Winnsboro mayor, is among the unhappy local people.

"We've got some people here who are 70, 75, 80 years old who lost as much as \$27,000 in that bank - just about everything they had in their lives. My own mother lost \$7,000 in the bank, and she's lying flat on her back," Ray said.

But local residents, including Winnsboro News editor and publisher Grayford Jones, know the IRS has first crack at the money.

"The IRS is going after the tax payments for Quinn's employees because they're

probably owed," Jones said. "But let's face it, the depositors have been paying Quinn's employees salaries for the past two or three years."

The local people have appealed to Sen. John Tower's office for help but a spokesman there says there is probably little the senator can do.

Family Circus Stuck in Sapulpa

SAPULPA, Okla. (AP) - The Hanneford Family Circus came to Sapulpa two weeks ago and put on a two-show performance. It's still here.

Officials of the show say they are stranded three miles east of Sapulpa because they have not been paid according to an agreement.

Parked on property of Dr. Bill Swafford, a veterinarian, are the troupe of four elephants, eight ponies, a dozen dogs and a chimpanzee, plus the human cast.

The Creek County sheriff's office says there apparently are no complaints and the scene is quiet.

Swafford also is pleased enough with his unexpected guests.

"It was a magnificent little short show - real good family entertainment," he said. "And the people are above what you generally consider traveling show people to be. They're nice and clean-living."

"They have a beautiful big red, white and blue tent."

The circus owners say they have not been paid for performances in Joplin, Mo., and Vinita, Okla. They have told residents here they cannot continue to put on shows without fuel, feed for their animals and other expenses.

The group is scheduled to perform at Enid and Oklahoma City early next month.

The owners, Mr. and Mrs. George Hanneford, say a West Coast promoter owes them \$10,000 for their last five shows.

Sponsor of the circus in Oklahoma is the Oklahoma Reserve Officers' Association, which was to receive a percentage of the total earnings.

Capt. Larry Silver of the Bartlesville Police Department and president of the association, said his group is upset about the complaint and is investigating the matter.

Local residents say they have been told that if the circus people can scrounge up enough money, they may head home to Venice, Fla.

HOME IMPROVEMENT SPECIALS!
ARMSTRONG FLOOR COVERING... \$1.99 yd
CARPET... \$3.99 yd
CARPET PAD... .75c yd
CEILING TILE... 18c ft.
1/2" x 10"
SHEETROCK... \$2.00 Sh.
DOOR UNITS... \$29.95
LATEX WALL PAINT GALLON... \$3.86
QUART... .96c
30 GAL. WATER HEATER... \$89.95
18 x 20 LAVATORY... \$7.05
1 LITE TEMPERED STORM DOOR - WHITE... \$59.95
ROCKWELL BROS. LUMBER
104 S. Main 364-0033

Suburb Seeks Subway Funds

LITTLETON, Colo. (AP) - City officials of this Denver suburb say they will seek \$30 million to \$45 million in government and private funds to build a mile-long subway for coal trains.

A report to the Littleton City Council said 20 coal trains rumble through the city now on their way from Wyoming coal fields to Texas, and rail traffic is expected to double by 1980 as Western energy development increases.

Officials say the money might come from federal energy and transportation agencies, the Regional Transportation District and the railroads, which officials said can make money by developing the covered areas of their rights-of-way.

The trains mostly belong to Rio Grande Railroad and the Atchison, Topeka and Santa Fe Railroad.

The trains now cause traffic delays of up to 90 minutes a day at rail crossings, the report said, besides shaking the ground and increasing noise and dirt.

To get the trains out of sight, the report proposes lowering the track for about 1 1/2 miles, one mile of which would be covered with 10 feet of earth. Housing

and businesses could be built above the tracks.

"It will be so quiet people can live above the trains," said Assistant City Manager Al Salazar.

Railroads would save time and money with the tunnel because they could go up to 25 miles an hour faster, the report said.

City manager Gale Christy said finding money for the project is not impossible.

"I think it's as feasible for Littleton to try to deal with this problem and get state, federal and coal money as it is for Rifle to get new schools and roads because it is impacted by the energy crisis," Christy said.

Rifle, on Colorado's Western Slope, is undergoing major changes because of intensified oil shale and coal development.

Some 25 per cent of the annual 1.4-million ton potato crop produced in Maine is harvested by hand, says National Geographic.

Monarch butterflies have bright orange and black wings which serve as self-defense coloration and as a danger warning to hungry birds.

Exxon Has Record For Foreign Payoffs

WASHINGTON (AP) - Exxon, the world's largest corporation, also holds the record for payoffs to foreign officials, government investigators say.

The Securities and Exchange Commission said in a civil complaint that the Exxon Corp. paid at least \$56.5 million to foreign governments, most of it to Italian officials.

Previously, the \$38 million by the Lockheed Corp. was the largest total to come out of the government's four-year investigation of bribes paid overseas by American companies.

Exxon, while not admitting any guilt, agreed to a permanent injunction barring it from violating securities laws.

There is no U.S. law prohibiting bribery of foreign officials. The SEC complaint charged Exxon with failing to disclose the payoffs in its regular statements, which are

required by the securities laws. So far about 360 companies have reported paying off foreign officials. The SEC has taken 32 firms to court.

Most of the bribes have been to get government contracts or to speed up action on contracts, and are illegal in many of the countries involved.

The SEC said Exxon made payoffs in at least 15 countries. Some \$55.2 million was allegedly channeled through Italy by Esso Italiana, from 1963 until at least 1972.

Exxon had maintained the payments were legal political contributions, but the SEC charged much of the money went to political parties and government officials to influence governmental decisions.

At least half the money, it said, was spent by Vincenzo Cazzaniga, who was fired as president of the Italian

subsidiary in 1971. The SEC said top-level management knew about these payments, which were allegedly channeled through 40 unrecorded bank accounts or overdraft accounts. The company said after Cazzaniga was fired, it did not believe it had to disclose its investigation publicly because the Italian payments were not material to its financial situation.

A fully grown sperm whale is from 40 to 80 feet long and can weigh up to 100,000 pounds.

The nature of the earth's interior is now known only from indirect evidence collected from studies of rocks and minerals, seismic waves, heat flow from the interior, the earth's magnetic field and gravity, and through comparisons of the earth with other planets, meteors, the sun and other stars.

Now going on...

TWO-DAY Firestone CLEARANCE

Radials! Belts! Bias 4-Ply!

DISCONTINUED-DESIGNS
OVERSTOCKS
BLEMISH TIRES
RETIRES
TAKE-OFFS

FOREVER BATTERY
Maintenance Free
only \$49.00 ANY SIZE
12 volt exchange

LUBE & OIL CHANGE
Includes up to 5 quarts of high grade oil.
\$4.88 Any Amer. car and light truck.
Call for an appointment to avoid delay.

FRONT END ALIGNMENT
Precision alignment by skilled mechanics.
\$7.88 American cars.
Parts extra, if needed. NO ADDITIONAL CHARGE for factory air or tension bar cars.

Heavy duty MONROE SHOCK ABSORBERS
\$9.88 INSTALLATION AVAILABLE
LIMITED WARRANTY
Monro-Matics will last (in normal use) as long as you own your car - or Firestone will replace them on proof of purchase from Firestone, charging only for installation.

105 N. Main Hereford 364-4333

farmer-to-farmer.

"My P-A-G SX98 yielded well and was easy to harvest"

DONALD HICKS
Hereford, Texas

"I have planted SX98 for two years in a row. It has yielded well and is easy to harvest. I will plant it again this year."

FOR MORE INFORMATION CONTACT

JACK ANDREWS
Hereford, Texas

Ask your P-A-G Dealer about the 1978 **REBATE PROGRAM.**
It will save you money on your P-A-G purchases.

PAG P-A-G SEEDS
BOX 10303
LUBBOCK, TEXAS 79408

Performance of this seed may be adversely affected by environmental conditions, mutant strains of insects or diseases, or other factors beyond the control of P-A-G.

MAKE-A-DATE FOR

Open House

Sunday October 2, 1977

●Register to be a Millionaire-For-A-Day
●Entertainment - Prizes - Refreshments

Come see our new **Banking Facility.**

Hereford STATE BANK

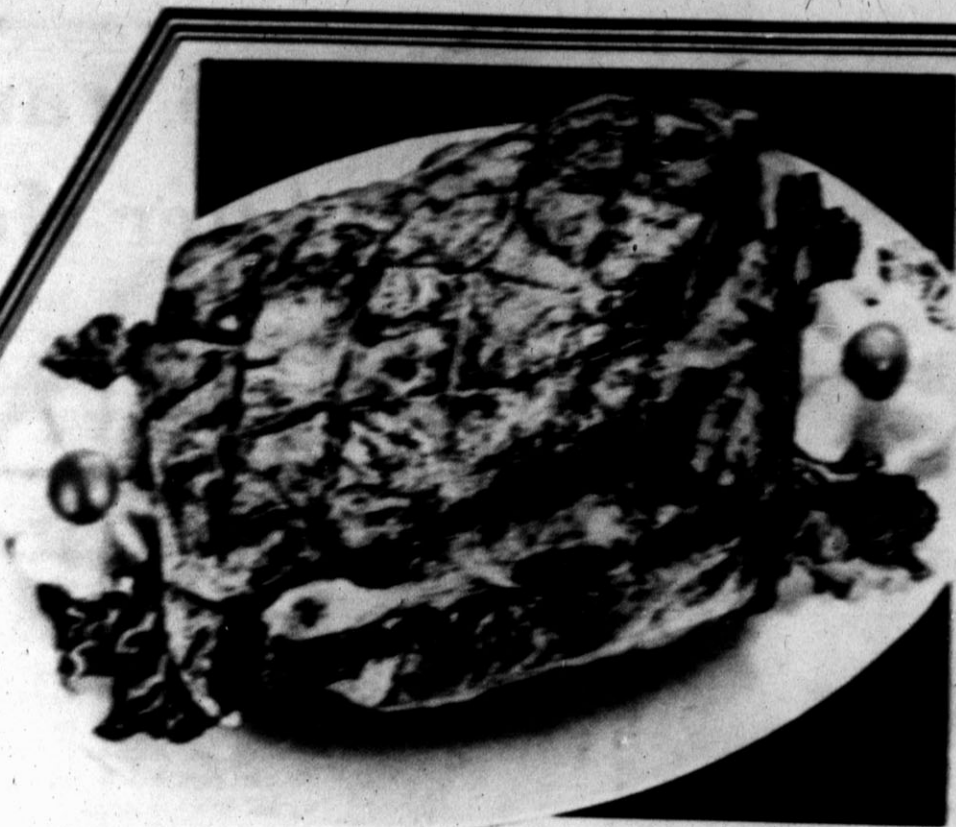
Time & Temp. 364-5100 Member FDIC

Your nextdoor neighbor.

Ideal
FOOD STORES

PRICES EFFECTIVE THRU SATURDAY,
OCTOBER 1, 1977. NONE SOLD TO
DEALERS. LIMIT RIGHTS RESERVED.

MONDAY THRU SATURDAY
OPEN 8 a.m. To 10 P.M.
SUNDAY 9 a.m. To 9 p.m.
1105 W. PARK AVENUE
PARK PLAZA SHOPPING CENTER



FRESH...PORK SHOULDER PICNIC
PORK ROAST

WHOLE
6 TO 8-LB.
AVERAGE.

59^c

LB.

WHOLE...HICKORY SMOKED
Smoked Picnics
6 TO 8-LB. AVERAGE

69^c

LB.

HICKORY SMOKED
Sliced Picnics

Water Added **79^c**

PORK SHOULDER CUTS

Arm
Roast

79^c

PORK SHOULDER...ARM SLICES

Pork
Steak

99^c

HICKORY SMOKED...SLAB CUT

Sliced
Bacon

99^c

FOR FRESH PRODUCE...
DELICIOUS MEATS
AND NAME BRANDS...

SHOP IDEAL 'CAUSE

PURE
CRISCO
SHORTENING



\$1.78

3-LB.
CAN

VAN CAMP'S
PORK and BEANS



\$1.41

16-OZ.
CANS

CAMELOT HOT DOG OR
HAMBURGER BUNS



\$1.31

PKG.
OF 8

ENRICHED
GOLD MEDAL FLOUR



58^c

5-LB.
BAG

GREEN GIANT...NIBLETS...WHOLE KERNEL
GOLDEN CORN



378^c

12-OZ.
CANS

KEEBLER...ZESTA
SALTINE CRACKERS



48^c

ORCHARD
Breakfast Drinks..... 64-OZ. **69^c** JUG

DUNCAN HINES...ALL FLAVORS...LAYER
Cake Mix..... 18 1/2-OZ. **58^c** BOX

HUNT'S...SHRINK PACK
Puddings..... PKG. **68^c** OF 4

ALL FLAVORS JELL-O
Gelatin..... 5 3-OZ. **95^c** BOXES

MEADOWDALE CUT
Green Beans..... 4 16-OZ. **95^c** CANS

HUNT'S...WHOLE
Tomatoes..... 2 15-OZ. **79^c** CANS

CAMELOT
Pear Halves..... 16-OZ. **39^c** CAN

MILE-HIGH
Fruit Mix..... 29-OZ. **43^c** CAN

JIF...CREAMY OR CRUNCHY
Peanut Butter..... 28-OZ. **\$1.48** JAR

BETTY CROCKER
Hamburger Helper..... 2 8-OZ. **\$1.00** BOXES

KRAFT
Sandwich Spread..... 14-OZ. **\$1.08** JAR

KRAFT...MINIATURE
Marshmallows..... 3 10 1/2-OZ. **\$1.00** PKGS.



VALUABLE COUPON
THIS COUPON
GOOD FOR... **30^c OFF**
ON 1 LB. CAN.
ALL GRINDS... Hills Bros. Coffee
LIMIT 1 COUPON PER CUSTOMER...OFFER GOOD ONLY
AT IDEAL FOOD STORES. EXPIRES OCTOBER 1, 1977.

BY ANCHOR BUCKING
WEXFORD CRYSTAL
ON SALE THIS WEEK:
ON-THE ROCKS
49^c
ONLY



Health & Beauty Aids...
Sure Deodorant..... **\$1.17**
1.5 OZ. ROLL ON

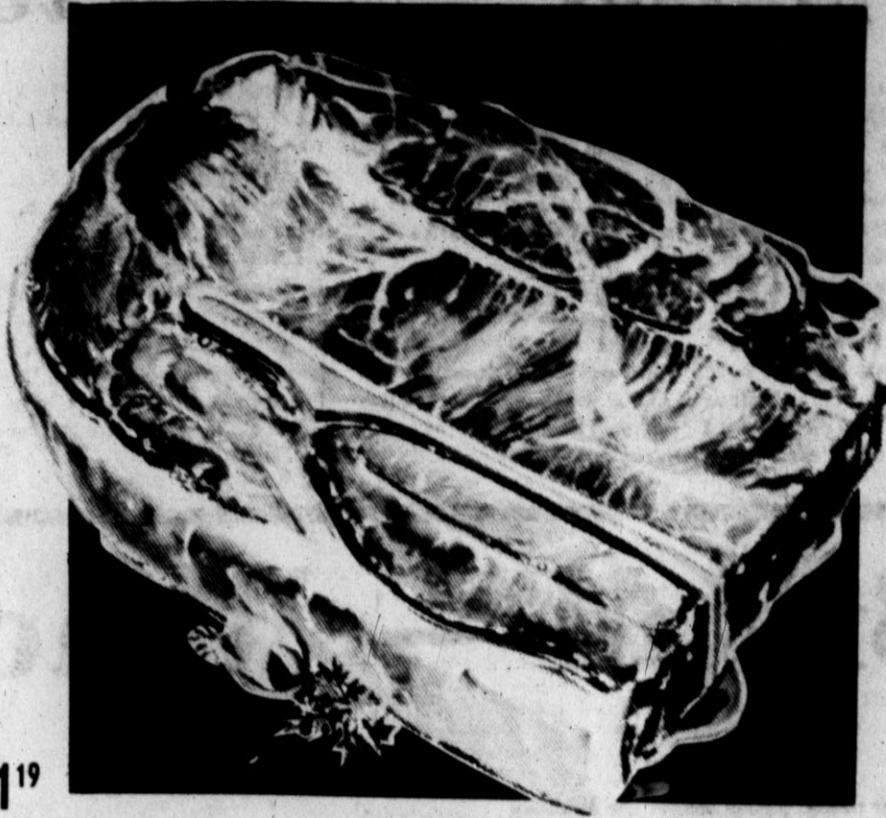
SHOP IDEAL...WHERE THERE'S MORE VALUE IN STORE

U.S.D.A. CHOICE BUTCHER BLOCK BEEF

CHUCK STEAKS

BLADE CUTS...
BEEF CHUCK

LB. **59^c**



BLUE RIBBON...SMOKED
Boneless Turkey Hams

FULLY COOKED...
HALVES
2 TO 3-LB.
AVERAGE
LB. **\$1⁵⁹**

BLUE RIBBON
Turkey Franks

12-OZ.
PACKAGE **59^c**

BLUE RIBBON Turkey Bologna	12 OZ. PKG.	79^c
BLUE RIBBON Turkey Pastrami	8 OZ. PKG.	\$1⁰⁹
BLUE RIBBON Turkey Salami	12 OZ. PKG.	89^c
BLUE RIBBON Turkey Breast	8 OZ. PKG.	\$1²⁹

U.S.D.A. CHOICE BUTCHER BLOCK BEEF BONELESS ROAST LB. **99^c** U.S.D.A. CHOICE BUTCHER BLOCK BEEF BONELESS BEEF STEW LB. **\$1¹⁹**

FRESH, EXTRA LEAN GROUND CHUCK 3 TO 5-LB. PKG. LB. **89^c**

FRESH, DIET LEAN GROUND STEAK LB. **\$1²⁹**

U.S.D.A. CHOICE BUTCHER BLOCK

Swiss Steak ARM CUTS BEEF CHUCK LB. **98^c**

U.S.D.A. CHOICE BUTCHER BLOCK BEEF

Rib Roast LARGE END BEEF RIB LB. **\$1³⁹**

BLUE RIBBON CORN DOGS 13 1/2-OZ. PKG. **\$1⁰⁰** 27 OZ. PKG. **\$2¹⁷**

NOTHING LESS WILL DO...

CORONET ULTRA IV

BATH TISSUE



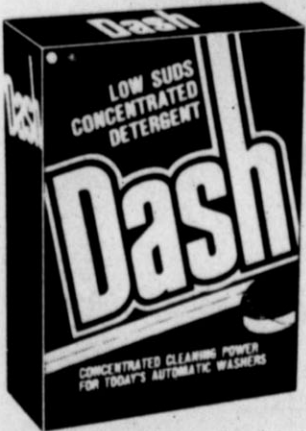
4-ROLL
PACKAGE

58^c

LOW SUDS CONCENTRATED

DASH DETERGENT

100-OZ. BOX



\$2²⁴
JUMBO SIZE

KRAFT



American Singles 16-OZ. PKG. **\$1³³**

CAMELOT Cottage Cheese 12-OZ. CAN **46^c**

KRAFT, DIET Parkay 1-LB. CTN. **51^c**

HUNGRY JACK Biscuits 10-CT. CANS **\$1⁰⁰**

FLAKY BUTTERMILK BUTTER TASTING

KRAFT COLBY or CHEDDAR...MIDGET

Longhorn 16-OZ. ROUND **\$1⁶⁸**

KRAFT GRATED Parmesan 8-OZ. PKG. **58^c**

JAYHAWK Choc. Milk PLASTIC GALLON **\$1⁶⁸**

FRESH DAIRY

CAMELOT GRADE 'A'...MEDIUM

EGGS

56^c

DOZEN

CAMELOT GRADE 'A' Large Eggs

DOZEN **63^c**

FROZEN FOODS



MEADOW GOLD

ICE CREAM

ALL FLAVORS

\$1⁰⁹
1/2-GAL. ROUND CTN.

WELCH'S Grape Juice 16-OZ. CAN **74^c**

WELCH'S...ALL FLAVORS Donuts CTN. OF 6 **63^c**

BANQUET...ALL VARIETIES Cook-in-Bags 4 5-OZ. PKGS. **\$1⁰⁰**

MEADOWDALE

French Fries

38^c
2-LB. BAG

MEADOWDALE FROZEN FLORIDA

Orange Juice

52^c
12-OZ. CAN

CALIFORNIA

Iceberg Lettuce

3 HEADS **\$1⁰⁰**



CALIFORNIA...CRISP FRESH

Carrots 1-LB. BAG **23^c**

Onion Ring Mix ZEBBIES 1-KG. **39^c**

Delicious Apples U.S. FANCY GOLDEN 3 LBS. **\$1**

CALIFORNIA VALENCIA

Oranges

5 LBS. **\$1**

TROPICANA...FLORIDA

Orange Juice QT. BTL. **59^c**

GREEN MARKET STREET
GREEN MARKET STREET
GREEN MARKET STREET

BLOOMING
Kalanchoe Plant
22 to 24-INCH TALL...RED BLOOMS

\$2⁹⁸
6-INCH POT

FOR YOU!.....



FOOD STORES



SHOP AT IDEAL'S TASTY BAKERY

DELICIOUS
Long Johns

4 FOR 79^c

FRESH BAKED

Vienna Bread 18-OZ. LOAF **59^c**

GOLDEN

Pound Cake 12-OZ. **99^c**

Oil Discovered at Ft. Polk

FORT POLK, La. (AP) — They've struck oil at Fort Polk, but the commander of the Army base promises that it won't interfere with artillery practice. The well was drilled by A.J. Hodges Industries Inc. of Shreveport, which has owned mineral rights in the area for years and has been looking for oil at Fort Polk since July, 1976. Maj. Gen. W.B. Steele, post commander, said the well began flowing Monday night and was

reported capable of producing about 200 barrels of crude a day. However, Steele said, "The Army and the people at Fort Polk are not in the oil business and have no other connection with the A.J. Hodges firm other than an agreement to allow exploration for a much-needed resource. "The Army, at the onset of the agreement, established strict requirements in regard to protection of the environment

and the continuous training mission of the Army and the 5th Infantry Division, Mechanized, at Fort Polk," Steele said. Fort Polk, which covers 311 square miles in west central Louisiana, is used for training National Guard and regular Army personnel. The well, known as No. 1 Hodges Fee, was reported to be the first oil discovery in Vernon Parish. The well is situated about seven miles east of the

town of Hornbeck. Hodges was reluctant to comment on his find. He said the well, brought in at 3,428 feet, was not likely to wind up as a producer of 200 barrels a day. "We haven't gotten all our geological information together," he said. "This is only the third well to be drilled on the 33,000 acres of that artillery range. The other two were dry holes drilled back in the 1940s.

Doctors Separate Twins

MANHASSET, N.Y. (AP) — A team of 20 doctors worked for five hours to separate tiny Siamese twin girls in a delicate operation, The Associated Press reported Wednesday. Officials at North Shore University Hospital declined comment early today, saying an announcement would be made later. However, sources said the five-hour operation was performed Tuesday and was successful.

It was learned that the 5½-month-old girls, the daughters of a Nassau County couple, were in satisfactory condition today as a result of the operation. A hospital source said the girls were joined at the chest and the upper abdominal region. As soon as the girls were separated, the doctors split into teams of 10 each. One of the was born without a liver.

sources said. A source at the hospital said the girls were born 5½ months ago at a nearby Long Island hospital and were transferred to North Shore where they could be cared for in the hospital's high risk unit. The combined weight of the premature girls when they were brought to the hospital reportedly totaled only three pounds. Prior to the operation, a

carefully monitored program at the hospital raised the combined weight of the girls to about 10 pounds. The AP learned. Even the fact that the Siamese twins were at the hospital was a carefully guarded secret. It was learned that the hospital had not planned to announce the operation until later this week. The identity of the parents could not be learned immediately.

Hereford Brand — Readership Survey

Your opinion is important to us. For us to better meet your needs, please answer the following questions. Your vote for your favorite news topics and columns will help to insure their continuance. The results of this survey will be published soon in The Hereford Brand.

ABOUT YOU, THE READER

Please check the appropriate box:

- Your age is: Under 18
 18-25
 26-45
 46-65
 Over 65
- You completed: Some High School
 High School
 Some College
 College
- Your Sex: Male
 Female
- Your marital status: Single
 Married
- Your ethnic background is Mexican-American
 Black
 Anglo
 Other

NEWS TOPICS

On the following news topics, please check the appropriate box:

	Always Read	Often Read	Seldom Read	Never Read
County Commissioners	<input type="checkbox"/>	<input type="checkbox"/>	<input type="checkbox"/>	<input type="checkbox"/>
City Council	<input type="checkbox"/>	<input type="checkbox"/>	<input type="checkbox"/>	<input type="checkbox"/>
School Board	<input type="checkbox"/>	<input type="checkbox"/>	<input type="checkbox"/>	<input type="checkbox"/>
Hospital District	<input type="checkbox"/>	<input type="checkbox"/>	<input type="checkbox"/>	<input type="checkbox"/>
Law Enforcement	<input type="checkbox"/>	<input type="checkbox"/>	<input type="checkbox"/>	<input type="checkbox"/>
Sports	<input type="checkbox"/>	<input type="checkbox"/>	<input type="checkbox"/>	<input type="checkbox"/>
Agriculture	<input type="checkbox"/>	<input type="checkbox"/>	<input type="checkbox"/>	<input type="checkbox"/>
Business	<input type="checkbox"/>	<input type="checkbox"/>	<input type="checkbox"/>	<input type="checkbox"/>
Human Interest Features	<input type="checkbox"/>	<input type="checkbox"/>	<input type="checkbox"/>	<input type="checkbox"/>
Branding Iron	<input type="checkbox"/>	<input type="checkbox"/>	<input type="checkbox"/>	<input type="checkbox"/>
Weddings	<input type="checkbox"/>	<input type="checkbox"/>	<input type="checkbox"/>	<input type="checkbox"/>
Engagements	<input type="checkbox"/>	<input type="checkbox"/>	<input type="checkbox"/>	<input type="checkbox"/>
Social Clubs	<input type="checkbox"/>	<input type="checkbox"/>	<input type="checkbox"/>	<input type="checkbox"/>
Civic Clubs	<input type="checkbox"/>	<input type="checkbox"/>	<input type="checkbox"/>	<input type="checkbox"/>
Obituaries	<input type="checkbox"/>	<input type="checkbox"/>	<input type="checkbox"/>	<input type="checkbox"/>
Church News	<input type="checkbox"/>	<input type="checkbox"/>	<input type="checkbox"/>	<input type="checkbox"/>
Letters to the Editor	<input type="checkbox"/>	<input type="checkbox"/>	<input type="checkbox"/>	<input type="checkbox"/>

Of the above news topics your favorite 3 are:

- _____
- _____
- _____

Which of the following best describes the Brand's coverage of controversial issues:

Check Only One

- Both sides of issues always given well
 Both sides usually given
 Both sides hardly ever given

OTHER TOPICS

Please check the appropriate box:

	Always Read	Often Read	Seldom Read	Never Read
Sunday Comics	<input type="checkbox"/>	<input type="checkbox"/>	<input type="checkbox"/>	<input type="checkbox"/>
Daily Comics	<input type="checkbox"/>	<input type="checkbox"/>	<input type="checkbox"/>	<input type="checkbox"/>
TV Schedules	<input type="checkbox"/>	<input type="checkbox"/>	<input type="checkbox"/>	<input type="checkbox"/>
Classified Ads	<input type="checkbox"/>	<input type="checkbox"/>	<input type="checkbox"/>	<input type="checkbox"/>
School Menu	<input type="checkbox"/>	<input type="checkbox"/>	<input type="checkbox"/>	<input type="checkbox"/>

LOCAL COLUMNS

Please check the appropriate box:

	Always Read	Often Read	Seldom Read	Never Read
HEREFORD BULL - Speedy Nieman	<input type="checkbox"/>	<input type="checkbox"/>	<input type="checkbox"/>	<input type="checkbox"/>
IT SIMS TO ME - Paul Sims	<input type="checkbox"/>	<input type="checkbox"/>	<input type="checkbox"/>	<input type="checkbox"/>
ON THE TURNROW - Jim Steiert	<input type="checkbox"/>	<input type="checkbox"/>	<input type="checkbox"/>	<input type="checkbox"/>
SCRIBBLES & SCRATCHES - Kerrie Steiert	<input type="checkbox"/>	<input type="checkbox"/>	<input type="checkbox"/>	<input type="checkbox"/>
SPORTS COLUMN - Bob Nigh	<input type="checkbox"/>	<input type="checkbox"/>	<input type="checkbox"/>	<input type="checkbox"/>
THE PENULTIMATE WORD - Doug Manning	<input type="checkbox"/>	<input type="checkbox"/>	<input type="checkbox"/>	<input type="checkbox"/>
ABUNDANT LIFE - Bob Wear	<input type="checkbox"/>	<input type="checkbox"/>	<input type="checkbox"/>	<input type="checkbox"/>

SYNDICATED COLUMNS

Please check the appropriate box:

	Always Read	Often Read	Seldom Read	Never Read
Paul Harvey	<input type="checkbox"/>	<input type="checkbox"/>	<input type="checkbox"/>	<input type="checkbox"/>
Ann Landers	<input type="checkbox"/>	<input type="checkbox"/>	<input type="checkbox"/>	<input type="checkbox"/>
Erma Bombeck	<input type="checkbox"/>	<input type="checkbox"/>	<input type="checkbox"/>	<input type="checkbox"/>
Jack, McGuire, Talk of Texas	<input type="checkbox"/>	<input type="checkbox"/>	<input type="checkbox"/>	<input type="checkbox"/>
Booting Philosopher	<input type="checkbox"/>	<input type="checkbox"/>	<input type="checkbox"/>	<input type="checkbox"/>

Your favorite three local columns are:

- _____
- _____
- _____

ABOUT YOUR PREFERENCES

You are more likely to get news about Hereford and Deaf Smith County from:

Check Only One

- Hereford Brand
 Another Newspaper
 Radio
 Television

You are more likely to get information about local merchants - their sales and services - from which of the following:

Check Only One

- Hereford Brand
 Another newspaper
 Radio
 Television

In reading ads in the Hereford Brand are you more likely to:

Check Only One

- Read an ad on a left hand page
 Read an ad on a right hand page
 No difference at all

In reading ads in the Hereford Brand are you more likely to:

Check Only One

- Read an ad that is toward the front of the paper
 Read an ad that is in the middle of the paper
 Read an ad that is toward the back of the paper
 Makes no difference where ad is located

COMINGS AND GOINGS ABOUT YOUR NEIGHBORS

What best describes your reading habits about personal items about folks in Hereford and the area. Please check the appropriate box:

	Always Read	Often Read	Seldom Read	Never Read
King's Manor	<input type="checkbox"/>	<input type="checkbox"/>	<input type="checkbox"/>	<input type="checkbox"/>
Stateline News	<input type="checkbox"/>	<input type="checkbox"/>	<input type="checkbox"/>	<input type="checkbox"/>
Summerfield News	<input type="checkbox"/>	<input type="checkbox"/>	<input type="checkbox"/>	<input type="checkbox"/>
Along the Frio	<input type="checkbox"/>	<input type="checkbox"/>	<input type="checkbox"/>	<input type="checkbox"/>
Vega News	<input type="checkbox"/>	<input type="checkbox"/>	<input type="checkbox"/>	<input type="checkbox"/>

AND FINALLY

Any additional comments about what you feel the Hereford Brand is doing right and you would like to see continued:

Any additional comments about where you feel the Hereford Brand needs the most improvement:

Optional: Name _____
 Address _____ Phone _____

WE WANT YOUR SUGGESTIONS AND PREFERENCES!
PLEASE RETURN BY MONDAY OCTOBER 3,

Please check preferences and questions and include any suggestions you'd like to make. Bring survey sheet to The Brand office, 130 W. 4th St., or mail before Oct. 3. To mail, fold page and place in stamped, addressed envelope, or fold entire page so that lower right hand corner provides mailing cover. (Staple or tape if no envelope is used)

Place stamp here if you fold page for mailing.

THE HEREFORD BRAND
BOX 673
HEREFORD, TX. 79045

Thanks for Your Time in Answering This Survey!



Displaying Sterling

A collection of sterling silver commemorative coins and plates is being exhibited at Deaf Smith County Library during the month of October by Mrs. L.W. Combs, 109 Kingwood. Included in the collection are coins commemorating the "Great American Triumphs of History," a St. Patrick's day coin, and a coin citing the last silver producing countries of the world. Mrs. Combs is shown here with a silver plate by Spencer in commemoration of Mother's Day. (Brand photo by Dianne Banner)

At Wits End

BY ERMA BOMBECK

I don't own a phonograph. There was never any reason to. First, with three teenagers in the house, all making their own decibels, I've been reading lips since 1967, and second, I never cut an album for Warner Brothers before. Yesterday, I did something I promised myself I would never do. I knocked on my son's bedroom door and asked to come in. (I visited the room in 1973, and on the basis of two medical opinions never went back.) "I want to play something on your phonograph," I said. "Is it a record?" "No, it's a giant cookie." I stepped inside. Sound bounced off all four walls, causing my teeth to swell. He turned it off. "To begin with, Mom," he said, "this is not a phonograph. It's a stereophonic system. Give me the record." I took it out of the package and he held it at eye level before he grabbed a rubber suction ball to remove the dust. (This, mind, in a room that was so cluttered it would have to be cleaned before they could condemn it.) "Who's the artist?" he asked. "I am." "Get serious." "I am serious. It's a comedy album they recorded at two of my lectures." "What's the name of it?" "The Family That Plays Together Gets on Each Other's Nerves." "I don't know if my system can play comedy. It's used to Chicago, the Doobie Brothers and Fleetwood Mac." He must have flipped 18 knobs. Each time the arm rejected it and switched off. "What's wrong with it?" I said. "It's never acted like this before. I think it's having an anxiety attack. Let me work with it." A couple of hours later, I passed by the door and he had his headphones on laughing his head off. That could only mean one thing. I was a hit. Goodbye, wax build-up. Hello, Dick Clark. I grabbed the earphones and put them over my ears. He was playing my voice at 78 rpm. If Olivia Newton-John is smart, she'll never marry.



Getting Acquainted Here

The Dennis Stephens family of 517 Ave. J. are new residents of Hereford. The newcomers recently moved here from McCook, Neb. Stephens is employed by Armour Foods as a meat grader. Pat Stephens is shown with her infant five month old son Chad and two year old Andrew. Christopher (right) is five years old and is in kindergarten at Aikman Elementary School. (Brand Photo by Dianne Banner)

Calendar of Events

THURSDAY
Deaf Smith County Crops Tour, to leave Museum parking lot at 1:15 p.m.
Kiwanis Club, First Presbyterian Church, noon.
Hereford Jaycees, Civic Club Center, 8 p.m.
Hereford TOPS Club, Community Center, 9 a.m.

FRIDAY
Coffee for Deaf Smith County Library volunteers, at the library 10:30 a.m.
Tour of Homes and Flower Show sponsored by Garden Beautiful Club, public invited the view the Armon Lauderback, Dana Rush and Glenn Watts residences.
Merry Mixers Square Dance Club, Community Center, 8:30 p.m.
Kiwanis Whiteface Breakfast Club at Dickies Restaurant, 6:30 a.m.
Community Duplicate Bridge at REC Medallion Room, 7:30 p.m.

MONDAY
Deaf Smith General Hospital Auxiliary, luncheon meeting at Dickies Restaurant, noon.
Order of Rainbow for Girls, Masonic Temple, 7:15 p.m.
Rotary Club, K-Bob's Steak House, noon.
Odd Fellows Lodge, IOOF Hall, 8 p.m.
Evening Lions, K-Bob's Steak House, 7:30 p.m.
TOPS Evening Chapter, Community Center, 6 p.m.
Dawn Lions, Dawn community building, 8:30 p.m.
Summerfield 4-H Club, First Baptist Church of Summerfield, 6:30 p.m.
Buffaloes 4-H Club, Community Center, 4 p.m.

TUESDAY
Hereford Association of the W's, Community Center, 7:30 p.m.
La Plata Study Club, home of Mrs. Bob Sims, 8 p.m.
Tierra Blanca Home Demonstration Club members to meet at The Yellow Daisy, 2 p.m.
La Afflatus Estudio Club, home of Mrs. Sam Morgan, 814 Ave. K, 3 p.m.
Young Homemakers of Texas, La Plata Junior High School, 7:30 p.m.
American Legion and Auxiliary, Legion Hall, 8 p.m.
Xi Epsilon Alpha Chapter, Beta Sigma Phi Sorority, First National Bank, 7:30 p.m.
Alpha Alpha Chapter, Beta Sigma Phi Sorority, Community Room, Hereford State Bank, 8 p.m.
Rebekah Lodge, IOOF Hall, 8 p.m.
Planned Parenthood Clinic open at 101 Ave. E from 8:30 a.m.-3 p.m.
Hereford TOPS Club 576, Community Center, 9 a.m.
Weight Watchers at First Baptist Church, 6:30 p.m.
Singles group in Fellowship Hall of First Baptist Church, 8 p.m.
Preschooler story hour at Deaf Smith County Library, 9:30 a.m.
Free blood pressure and diabetes tests from 1-4 p.m. for senior citizens at Hereford Senior Citizens Center.



Opening Account

Marlene Farley, at right, acted on behalf of Citizens Forum of the Panhandle at Hereford State Bank this week by opening a special fund. Donations to this account will be utilized to send delegates to the Counter-IWY Conference in Houston. Assisting Mrs. Farley was a bank employe, Joy Bunch. (Brand photo)

IWY Fund Opened At Local Bank

The International Women's Year Fund has been established at Hereford State Bank by Hereford's Association of the W's. Donations will be used to send Panhandle women to a counter-conference, to be held in conjunction with the national IWY and its goals, as viewed by the Association of W's. The fund will be under the direction of Marlene Farley, who is also treasurer of the local Association. Contributions to the IWY fund will not be used for other Association projects. Information concerning the fund or any aspect of the IWY convention may be obtained by telephoning 364-1960, 364-4436, or 578-4433. Snakes' eyes remain permanently open behind a clear covering called a spectacle, hence creating an unblinking stare. This stare may account for many of the superstitions and fears that snakes have inspired over the ages. Brigham Young University has a permanent campus in Hawaii at Laie, on the island of Oahu. One thousand students are enrolled and represent nearly 25 cultures throughout Asia and Polynesia.

State-Line News

MRS. C. L. HUTCHINS

The 40th. Annual Old Timer's Day will be held Sunday, Oct. 2nd with Rosedale Baptist Church as host.

Following regular church services a basket dinner will be spread in the Fellowship Hall of the church for all guests present. An hour of informal fellowship and visiting will be held with the afternoon program beginning at 2 p.m.

Mrs. Opal Moore, program chairman, has an interesting program scheduled. Special music will be rendered and a memorial will be given by Mrs. Wayne Tate. A short business meeting will be held following the program.

All former residents of the Hereford area are especially urged to attend this social event.

Wayne Tate has returned home after attending the I.O.O.F. Sovereign Grand Lodge of the World, held in Oklahoma City, Okla. for the past ten days.

Tate arranged for a chartered bus which took forty-six, junior OddFellows children to the convention.

Jim Hutchins of Estelene, was Monday overnight guest in the home of his cousin C.L. and Mable Hutchins.

Jim also visited with his uncle, W.C. Hutchins Sr. and a cousin Mrs. Jaunita Melton on Tuesday.

Mrs. Hazel Cage of Las Cruces, N.M. spent the weekend visiting in the home of her aunt, Miss Inez Short. Mrs. Cage was enroute back home after having spent the past week in Missouri visiting with her son.

Mr. and Mrs. Neise Pearce and daughter, Mrs. Margaret Mote of Broadview, N.M. spent Monday and Tuesday in Lubbock, with Mrs. Pearce having medical tests.

Mr. and Mrs. Pearce were overnight guests in the home of his sisters, Mrs. Amy Smithie and Mrs. Gulie Groves in Abernathy. Mrs. Mote spent the night in the home of her cousin and his wife, Mrs. and Mrs. Chester Pearce near Abernathy.

Mrs. Eldred Brown and her sister Mrs. Rosalie Colwell of Hereford visited with their mother Mrs. Jennie King, who is a resident in Friona Prairie Acres Rest Home.

Mrs. King a former Bellview pioneer resident is in failing health.

Clinton Burnett.

All local men are welcome to attend the monthly Baptist Men's Brotherhood Breakfast to be held 6 a.m. Saturday in the fellowship Hall of Rosedale Baptist Church. Rev. Richard Clymer stated that a program will follow the meal.

Mrs. W.C. Hutchins Jr. of Albuquerque, N.M., has been hospitalized the past week in an Albuquerque hospital. She is reported being serious condition.

Miss Becky Potts has enrolled in Boulder Fashion College at Arlington. Becky is the daughter of Mr. and Mrs. Walter Marion Potts and the granddaughter of Mrs. Opal Potts and Chester Rhine.

Clinton Burnett was admitted to the Clovis hospital Monday afternoon suffering from an apparent heart attack. After a series of tests, it was decided that Burnett was ill because of a virus and was released on Wednesday.

Mr. and Mrs. Leonard Mitchell returned Sunday afternoon from a ten-day fall vacation. They first visited with their daughter, Helen and John (Buz) Meagher in Fort Collins, Colo., then they visited with relatives in Nebraska and Minnesota, making the trip in their private plane.

Mrs. Billie Vaughn of Friona, and her sister and husband Glen and Rudeene Pulliam enjoyed driving to Levelland, Sunday morning.

Morton Coffman of Camp Verde, Ariz., arrived Tuesday to visit his sister Mrs. Letha Bailey and a nephew's family, Mr. and Mrs. Leroy Bailey and children for the next two weeks.

Mrs. Hobart Mote attended memorial services held for Horace Horn, 88, of San Jon, N.M., Monday afternoon in the United Methodist Church.

Several residents from this area attended the New Mexico State Fair and Horse Races held in Albuquerque this past week.

Residents included Mr. and Mrs. Jerry Northcutt and sons Kemp and Todd; Mr. and Mrs. C.J. Blackburn, Jay Lynn, Lisa and Julie; Mr. and Mrs. Joe Burnett and daughters, Gina and Julie; Mr. and Mrs. Arnold Hutchins and Mr. and Mrs.

Mr. and Mrs. Howard Duncan and children Delinda and Danny were honored Saturday evening with a Farewell Party held in the home of Mr. and Mrs. Paul Harrison and sons with 45 guest attending.

A hamburger fry was held in the backyard of the Harrison residence. Watermelon, chips and dips and assorted cakes were also served.

The youth enjoyed volleyball and ping pong while the children enjoyed backyard games. The adult group gathered in a semi-circle and enjoyed informal visiting.

The Duncan family have sold their state-line irrigated farm recently and have moved to Texico to make their home.

Out-of-community guests included Mr. and Mrs. Herman Grissom and son Skip of Bovina and Mr. and Mrs. Joe Allen and children of Rhea community.

Mrs. Opal Potts enjoyed spending the past weekend in the home of her daughter Mrs. Gail Neeley and daughters Donna and Gwendlyn in Lubbock.

Mr. and Mrs. Blain Burton will be celebrating their 60th. wedding anniversary Sunday.

Their children, Mr. and Mrs. Norman Burton of Canadian, Mr. and Mrs. Cloyd Burton of Claude, Mr. and Mrs. Hobart Mote of Broadview, N.M.; and Mr. and Mrs. Cecil Liles of Logan, N.M., will be holding a reception at the Grady lunchroom from 2 to 5 p.m. friends and neighbors are invited to attend.

Mrs. Jordan Miller has been confined to her home the past several days with a virus infection.

Local farmers have almost completed seeding their winter wheat crop. Ernest Riley, Coke Cates and Ralph Burnett hop to complete planting wheat this week. The community is needing moisture badly as some young wheat is dying due to moisture stress and worms.

Seeing at night is possible because of a pigment called visual purple or rhodopsin. Light bleaches visual purple and it must be reformed before vision is restored after going from light to darkness.

The Everglades in Florida were formed by centuries of overflow from Lake Okechobee. Their total area exceeds 5,000 square miles.

Boots WEST

Mens Long Sleeve SHIRTS \$8.95 3/\$24.95

Wrangler Cowboy Cut and Flare DENIM JEANS \$15.00 3/\$39.00

E Hwy 60 364-5961

e.o.m. SALE

sportswear, dresses, long dresses, lingerie, pantsuits reduced 1/4, 1/3, 1/2 and more

Nedine Jeter, Mgr. Sugarland Mall

Sweet Brian

COOK'S CHOICE

ALL THE FISH YOU CAN EAT \$2.95

FRIDAY FROM 5 P.M. TO 10 P.M.

BANNERED BEEF restaurant

1309 EAST FIRST

TFB Wants Meet With President To Discuss Bad Farm Situation

WACO — Farm Bureau is asking for an audience with President Carter and Secretary of Agriculture Bob Bergland to discuss the seriousness of the income and price situation in agriculture.

according to Carrol Chaloupka, Dalhart, president of the Texas Farm Bureau.

Chaloupka was among Farm Bureau leaders from 21 states, meeting in Chicago Sept. 19-20.

who asked that American Farm Bureau President Allan Grant seek a meeting as soon as possible with President Carter and Secretary Bergland. The AFBF has officially requested such a conference.

The group listed more than 20 topics to be discussed in a possible meeting with Administration leaders.

Among top priorities for discussion is the seriousness of farm prices, especially in wheat and feed grains, the Dalhart grain and cattle producer said.

The state Farm Bureau leaders asked that Grant request that a more positive attitude be placed on expanding exports, that action be taken to open new export markets, and that Public Law 480 (the Food for Peace Program) be expanded.

The farm leaders asked Grant to seek a feed grain acreage set-aside "large enough to be

meaningful and effective and price supports on wheat and feed grains at levels to permit the U.S. to be competitive in world markets."

Among other recommendations by the state Farm Bureau leaders were these:
-Implement and accelerate energy research program to find new uses for farm products (for example, grain conversion to alcohol-type fuels) and added research on new crops.

-Plan now for preventing union work stoppages (through invoking Taft-Hartley Law), particularly at ports during harvest time.

-Expand rural credit availabilities, through banking institutions, and plan price support loans so they do not mature during harvest season.

-Place more emphasis on an international monetary fund, and less emphasis on international grain reserves and

commodity agreements.

The state Farm Bureau leaders also recommended that their own state organizations take steps to help producers in the worsening cost-price squeeze.

Specifically, they recommended expanded voluntary market promotion for red meat and poultry. They wanted members to be encouraged to carry out orderly marketing practices and not place an undue amount of grain on the market at harvest time.

They urged that members take land not really suited for crops out of production. They suggested that members carefully consider the impacts of entering into deferred pricing contracts.

More than four out of five agricultural producers in the U.S. who belong to a farm organization are members of Farm Bureau, Chaloupka said.

ASCS News

Loan Requirements On Corn Numerous

By JOHN FUSTON
Executive Director
COUNTY LOAN RATES
Corn - \$2.07 bu. \$3.69 cwt.
Grain Sorghum - \$3.35 cwt.
Soybeans - \$3.50 bu. national rate

Cotton - 44.60 cents, based on strict low middling white, 1-1/16th.

REQUIREMENTS FOR THE LOAN

Corn - The corn must be merchantable for food or feed or for other uses as determined by CCC, and must not contain mercurial compounds, toxins or other substances poisonous to man or animals. It may be ear or shelled corn, but it must be shelled for warehouse storage loan and for delivery to CCC under a loan or purchase. Ear corn under farm storage loan may be shelled and retained under loan with approval of the county office.

Warehouse stored corn to be eligible for loan must, except for moisture, grade No. 3 or better, or No. 4 or better on the factor of test weight only, except the corn may contain over 15.5 per cent moisture if the warehouse

receipt is accompanied by a supplemental certificate indicating delivery will be made of corn containing not over 15.5 percent moisture. Like wheat, warehouse receipts for corn and grain sorghum must show storage paid through the last day of the 11th month following the month the warehouse receipt is issued.

Producers are reminded that on grain placed into the loan, it will be necessary to secure a lien waiver from the lienholder prior to disbursement of such loan.

DISASTER MILO & CORN
Come by the office and let us go look at the crop if you are not going to cut it for grain. Some people have lost some good payment by cutting the corn for silage before we appraised the corn.

NEW PROGRAM
We still do not know anything for sure. As soon as we do, we will let you know.

HOLIDAYS
The County office will be closed October 10 in observance of Columbus Day and October 24 in observance of Veterans Day.

State Fair of Texas To Honor Steve Douglas

Steve Douglas of the Hereford 4-H will be among 50 youths saluted by the State Fair of Texas at the 31st annual Honor Award Dinner to be held Friday, Oct. 14.

The dinner honors Future Farmers of America, Future Homemakers of America and 4-H Club members at the kick off of Rural Youth Day activities.

The award dinner, which is sponsored jointly by the State Fair of Texas and the Dallas Chamber of Commerce, is expected to attract about 400 people to the Grand Ballroom of the Sheraton Hotel for the 7 p.m. affair, and begins Rural Youth activities the following day, Oct. 14.

Featured guest speaker this year is the honorable Dr. Donald A. Cowan, president emeritus of the University of Texas at Dallas. He will address the honored youths and their parents and Agricultural teachers, plus a multitude of Dallas' business leaders and their wives.

The youths, who were selected at state-wide conventions last spring and during the summer for achievements in (in livestock, agricultural and homemaking projects, and in some cases leadership programs, will receive necklaces with small, engraved maps of Texas, and for the boys, engraved tie tacks.)

Honey Will Cost More

WASHINGTON (AP) - Honey will be in scarcer supply and probably will cost more this winter, according to new production figures announced by the Agriculture Department.

This year's honey output by commercial beekeepers is expected to total 101.3 million pounds, down 8 per cent from more than 110 million pounds last year and 7 per cent less than the 108.5 million pounds produced in 1975.

Officials said that the number of bee colonies, about 1.8 million in the 20 major honey-producing states, is down about 1 per cent from 1976. But

the main reason for the drop-off in production is that the yield of honey per colony is expected to average only 55.3 pounds, compared with 59.7 pounds in 1976 and 62.1 pounds in 1975.

The department said severe cold weather in Florida early this year reduced production and that dry weather during part of the summer in Iowa also hurt.

Florida honey production was estimated at about 8.1 million pounds, down 37 per cent from more than 13 million in 1976.

Iowa's output was estimated at 2.7 million pounds, down 23 per cent from more than 3.5 million last year.

TGSPB Elects New Directors

LUBBOCK--The Texas Grain Sorghum Producers Board has announced that all four candidates seeking positions on the board were elected to serve six-year terms.

Names to the board are Paul Cobb, of Plains, who received 508 votes; Lee Hill of Dalhart, 514 votes; Worth Jones, of Happy, 509 votes; and C.C. (Pap) Reed of Tulia, 511 votes.

There were 542 votes cast, 31 of which were for write-in candidates. A maximum of three votes were received for any one of the write-in candidates.

The four directors, three of them incumbents, were chosen by fellow grain sorghum producers in the 29-county TGSPB area.

The canvassing committee members were Lubbock County Judge Rodrick Shaw; Ken Cook, Lubbock agent; Lynn Kemper, Texas Department of Agriculture marketing supervisor and Larry Witten, TGSPB director.

Texas Grain Sorghum Producers Board works to solve production problems, develop new markets for sorghum and provide information on grain marketing.

California entered the Union in 1850 as a bilingual state, its constitution requiring that all laws be published in both Spanish and English.

The largest area in Indian tribal-owned land is in New Mexico, with 3,329,270 acres distributed among 24 reservations.

Farmers Union Applauds Growing Protest Move

WACO — Officials of the Texas Farmers Union are applauding efforts of out-of-state groups which are joining the growing protest movement and are further encouraging all farmers to get involved in some phase of direct action.

"We welcome the efforts of any group of farmers or farm wives seeking 100 per cent parity," said Jay Naman, President of TFU. "Our members have been tailoring various protest actions at the county level for three months, trying to gain attention and dramatize the serious problems which confront agriculture. We're glad to see the movement taking on a larger form and spreading to other states."

Members of Texas Farmers Union were instrumental in earlier efforts to symbolically tell their problems to President Carter through a mass mail-in of commodities and letters to Washington. Since then, tractor protests have been staged on

major highways during Labor Day, backed up by a tractor convoy into the state capital.

"Public awareness to the problem has been our immediate goal," says Ron Butler, public information officer for TFU. "But, we have always known that any real change in the situation might eventually require tougher action. We're glad to see farmers getting involved at all levels and stand ready to lend support to our members in any form they request."

The Farmers Union has historically supported full parity since its beginning seventy-five years ago. Policy written from the grass roots level in each county determines the specific means and goals which the members feel will obtain a fair price.

"Our organization has always worked to achieve a unified front under the banner of full parity," Naman commented. "We look forward to the day

when all farmers supporting this concept can work together from one solid base."

Plans for future action are currently in the making among Texas protesters who feel that "success can only be measured in terms of a fair price for all farmers and ranchers."

Henry O. Flipper was the first black to graduate from the U.S. Military Academy at West Point, in 1877.



Hereford Ranch Has Winner

Greg Rystad of Hereford and Jim Harl of Hastings, Nebraska show off the Champion Angus Female at the Panhandle South Plains Fair in Lubbock. The female, Dynamic Eiba of TUA E was named Grand Champion Female during the Open Angus Show Tuesday. The animal is owned by Quirk Land & Cattle Co. and Thunder Valley Angus Ranch of Hereford. (Photo Courtesy Lubbock Avalanche-Journal)

Thunder Valley Shows Champ At Abilene

The Thunder Valley Angus Ranch of Hereford displayed the intermediate champion heifer at the West Texas Fair in Abilene recently.

The local ranch won the honors with Ankonian Miss Futurity.

Junior and adult Angus

The underground stem, or rhizome, of the bloodroot secretes a scarlet juice when cut. American Indians used the almost indelible fluid as war paint.

breeders participated in the junior show and 54 heifers and event, with 33 heifers in the 38 bulls in the open show.

A.O. THOMPSON ABSTRACT COMPANY
A. J. SCHROETER — MARGARET SCHROETER
P.O. Box 73 Room 205 Courthouse 364-1504

Abstracts
Title Insurance Policies
Free City & County Maps

Save \$4 a gal.

Annual Interior Paint Sale

Classic 99™
our finest flat latex wall & trim paint
\$8.97
a gal. reg. \$12.97 a gal.

Save \$5 a gal.

A-100™, our longest lasting latex house paint
Flat or Gloss
\$8.99
a gal. reg. \$13.99 a gal.

Save \$3 a gal.
Mollo-Tone™ washable latex wall paint
in a choice of 680 decorator colors.
\$5.99
a gal. reg. \$8.99 a gal.

Satisfaction Guaranteed
In the use of these coatings or your purchase price will be refunded.

Save \$1-\$5 on these specials.

Latex Satin Enamel	Reg. \$11.93	Sale \$ 9.93
Ceiling Paint	Reg. \$10.93	Sale \$ 8.93
SWP™ Oil House Paint	Reg. \$15.99	Sale \$10.99
Patching Paste	Reg. \$ 2.99	Sale \$ 1.99

Save ends Oct. 17

"How many kisses do I get for a dollar?"
"Just one, schmutzball."
"You won't throw in an extra one free?"
"What d'ya think I am?"
"Well, it's a cinch you're not a Pizza Inn."
"How's that?"
"Because at Pizza Inn you can

buy one pizza Get one free."

"Really?"
"Yeah. Buy a pizza at the regular menu price and get one of the next smaller size free."
"But I don't have a next smaller size kiss."
"Then how about a hug?"
"But I don't even know you."
"Hi, I'm Ernie."

Buy one pizza get the next smaller size free
With this coupon buy any giant, large or medium size thin crust pizza or any large size thick crust pizza at the regular menu price and receive one pizza of the next smaller size with equal number of ingredients and the same type crust free.

Valid thru **October 6, 1977**
Valuable Coupon - Present With Guest Check

Pizza inn.

"We've got a feeling, you're gonna like us."

511 N. 25 Mile Avenue	364-6012
2531 Paramount Blvd./Amarillo	353-7401
3320 Bell Avenue/Amarillo	353-6641
2801 I-40 East/Amarillo	376-4297

SHERWIN Williams

A paint. A store. A whole lot more.

Free decorating service. Use Master Charge, BankAmericard, Visa, or our extended credit terms.
1600 stores including one near you.

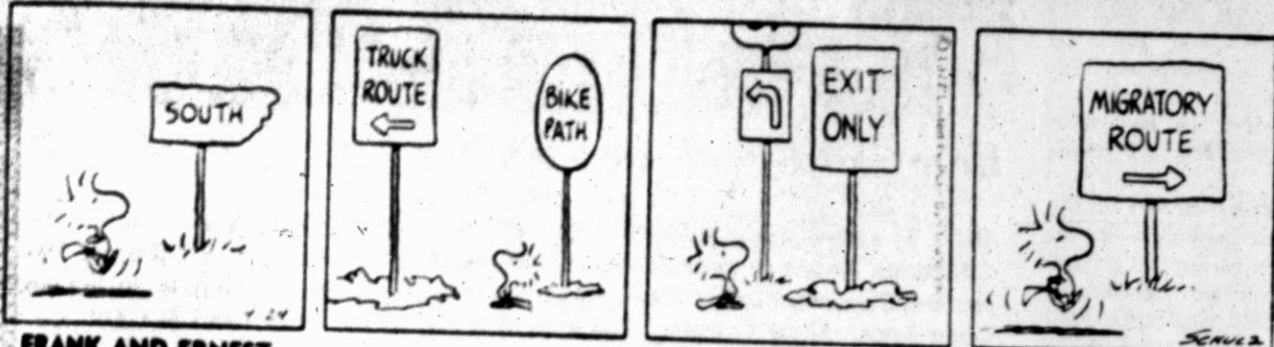
Hereford 1003 West Park Ave. 364-4484
In Park Plaza



"His stomach talks in his sleep!"

THE HEREFORD BRAND

Comics & Television Schedules



FRANK AND ERNEST

by Bob Thaves



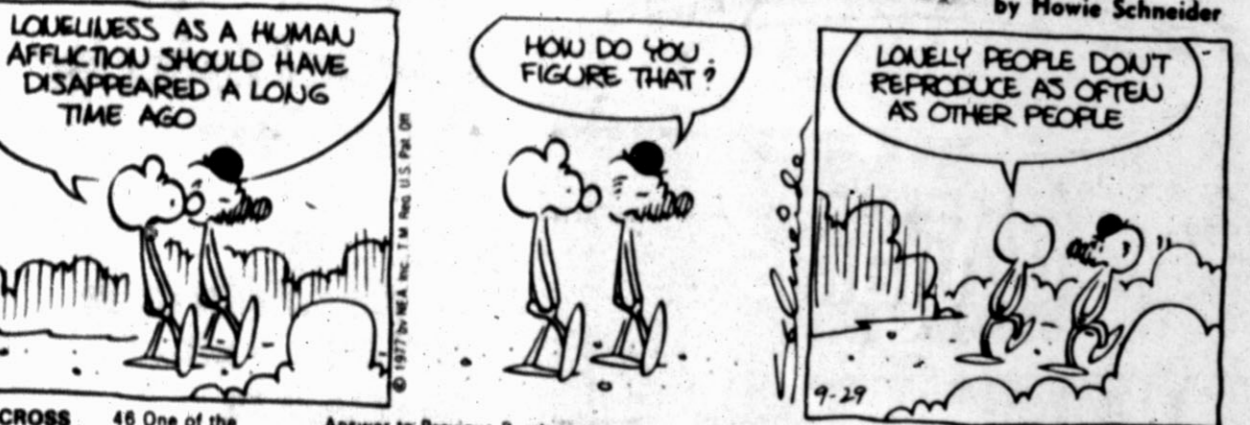
THE BORN LOSER

by Art Sanson



ECK & MEER

by Howie Schneider

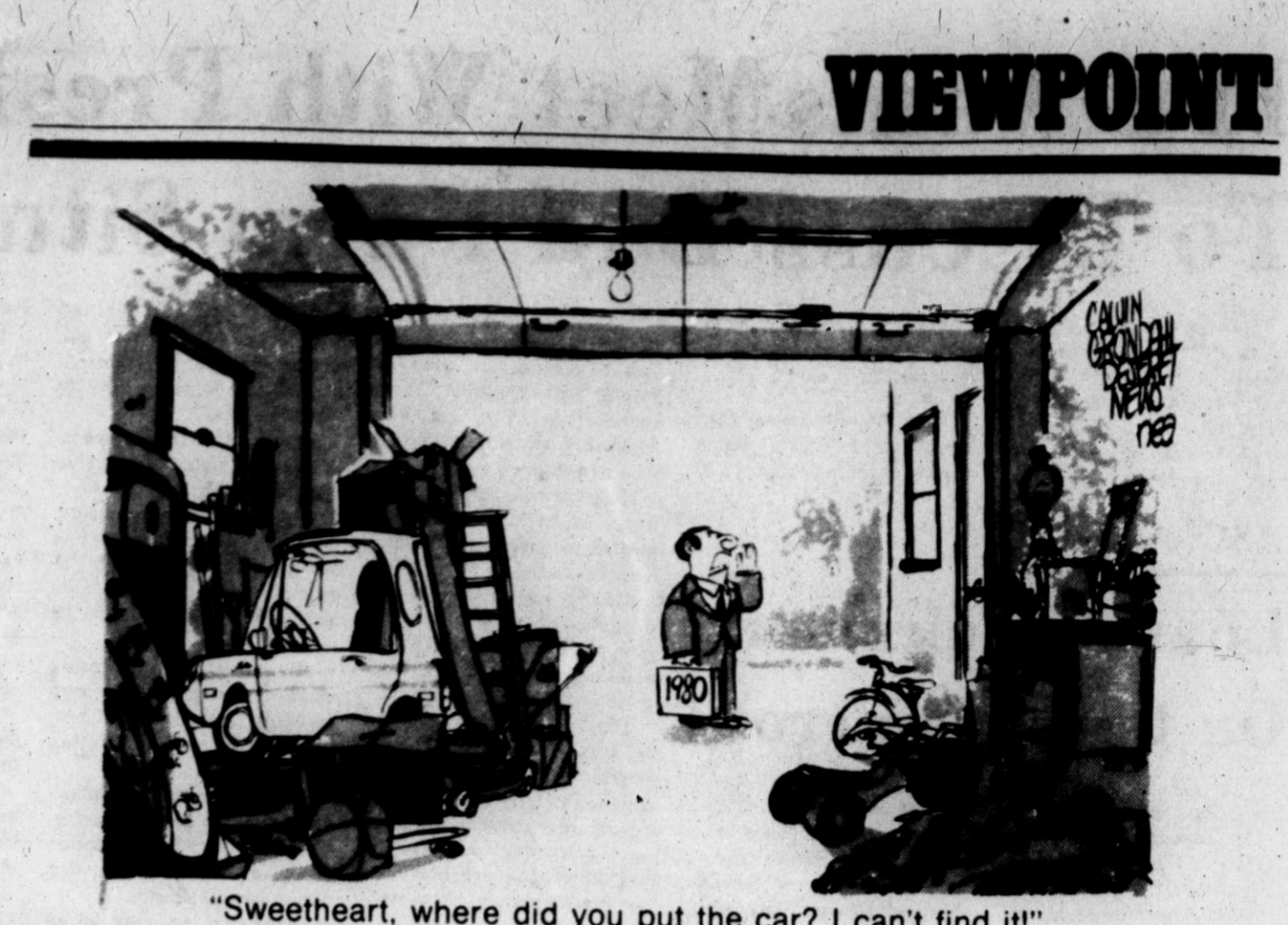


ACROSS

Answer to Previous Puzzle

Crossword puzzle clues: Body of water, Florida, Tax agency, etc.

Crossword puzzle grid with numbers 1-64.



"Sweetheart, where did you put the car? I can't find it!"

IN WASHINGTON Martha Angle and Robert Walters

WASHINGTON (NEA) — On the day Bert Lance finally resigned, a little-noted proceeding on Capitol Hill provided an illuminating glimpse of the double standard which Congress applies to questions of political ethics.

THURSDAY

6:00 NEWS
7:00 NEWS
8:00 NEWS
9:00 NEWS
10:00 NEWS
11:00 NEWS
12:00 NEWS

FRIDAY

6:00 NEWS
7:00 NEWS
8:00 NEWS
9:00 NEWS
10:00 NEWS
11:00 NEWS
12:00 NEWS



SACK UP SAVINGS

STORE HOURS
WEEKDAYS
8 TO 10 P.M.
SUNDAYS
9 TO 9 P.M.

WE RESERVE
THE RIGHT TO
LIMIT
QUANTITIES



YAMS
39¢
EAST TEXAS
FINEST
LB.

**BIRDSNEST
FERN**

PLANT
4-INCH
POT. EACH **\$2.79**

PRICES EFFECTIVE
THRU 10-1-77

BANANAS CENTRAL AMERICAN FRESH, LB. **4 FOR 88¢**

GRAPEFRUIT TEXAS RUBY RED LB. **4 FOR \$1.00**

BELL PEPPERS LARGE, GREEN PODS, EACH..... **6 FOR \$1.00**

YELLOW ONIONS LB..... **10¢**

PEARS MEDIUM SIZE BARTLETTS LB..... **4 FOR \$1.00**

CABBAGE TEXAS LB..... **13¢**

BONUS
S&H GREEN STAMPS
Specials

SUGAR
FOOD CLUB
5 LB. BAG
49¢
WITH EACH FILLED S&H BONUS SPECIALS BOOKLET

CRISCO
3 LB. CAN
SHORTENING
\$1.39
WITH EACH FILLED S&H BONUS SPECIALS BOOKLET

EGGS
FARM PAC MEDIUM DOZEN
5¢
WITH EACH FILLED S&H BONUS SPECIALS BOOKLET

FLOUR
GOLD MEDAL 5 LB. ALL PURPOSE
29¢
WITH EACH FILLED S&H BONUS SPECIALS BOOKLET

SALAD DRESSING SEVEN SEAS, GREEN GODDES 16-OZ. BOTTLE..... **99¢**

ERA LAUNDRY DETERGENT 64 OZ. (GET 69" SIZE FREE WITH PURCHASE)..... **\$2.59**

JELL-O GELATIN, ASSORTED FLAVORS 3-OZ. PACKAGE..... **6 FOR \$1.00**

FLOUR GAYLORD 5-LB. BAG..... **49¢**

PEARS HILLSDALE NO. 2 1/2 CAN **49¢**

TISSUE AURORA, WHITE, ASSORTED OR PRINTS, 2-ROLL PKG..... **49¢**

NAPKINS ZEE COUNTRY GARDEN 140- CT..... **58¢**

FOAM CUPS TOPOC 20-9 OZ. **29¢**

STARCH NIAGARA SPRAY 22-OZ. CAN..... **92¢**

CUP REFILLS DIXIE, 9-OZ. SIZE, 40-CT. PKG..... **63¢**

CUP REFILLS DIXIE, 9-OZ. SIZE, 80-CT. PKG..... **\$1.18**

HAMBURGER HELPER
BETTY CROCKER ASSORTED PACKAGE. **59¢**

CAKE MIX PILLSBURY PLUS, WHITE, YELLOW, DEVIL FOOD, PKG. **67¢**

BAKED BEANS B & M 18-OZ. JAR..... **64¢**

GALA TOWELS DECORATOR LARGE ROLL..... **67¢**

WRAPPLES
KRAFT CARAMEL **79¢**
(14 OZ. CARAMEL 73")

SHOP Furr's MIRACLE PRICES

SheerSupport
EXCLUSIVE AT FURR'S

SUPPORT PANTY HOSE
INTRODUCTIONARY OFFER. 2 SIZES FIT ALL
REG. \$1.99 PAIR..... **\$1.29**

OVAL THROW CARPET
18" X 30" SIZE PRINCE EDGING, ASSORTED COLORS AND QUANTITIES, EACH..... **\$1.49**

PRESTONE ANTI FREEZE
STOPS FREEZE-UP & BOIL OVERS
\$3.75

GIRLS KNEE HI FASHION SOCKS
ASST. COLORS **\$1.00**

DURA FLAME II FIREPLACE LOG
LASTS 3 HRS. IN COLORS **\$4.99**

90 DAY FLEA COLLAR
GEISLER
DOG, PUPPY, CAT, EACH..... **\$1.00**
LARGE DOGS EACH..... **\$1.19**

ROUND & SQUARE BOUQUET WASTE BASKET
BLUE & YELLOW **\$2.49**

EVERY TIME

Furr's Proten Beef DOUBLE YOUR MONEY BACK GUARANTEE

Furr's Proten Beef is cut only from heavy, mature grain fed steers, trimmed of excess fat and Fresh Dated for your convenience. Your satisfaction is guaranteed or you will receive double your money back. That's Furr's Proten Beef guarantee.



ROUND STEAK FURR'S PROTEN LB.....	ADV. SPECIAL!	\$1 09
RUMP ROAST FURR'S PROTEN LB.....	ADV. SPECIAL!	\$1 09
CHUCK ROAST FURR'S PROTEN LB.....	ADV. SPECIAL!	69¢
BEEF ROAST FURR'S PROTEN BONELESS CHUCK LB.....	ADV. SPECIAL!	\$1 09
GROUND BEEF FRESH GROUND LB.....	ADV. SPECIAL!	68¢
SIRLOIN STEAK FURR'S PROTEN, LB.....		\$1 09
CLUB STEAK FURR'S PROTEN, LB.....		\$1 59
T-BONE STEAK FURR'S PROTEN, LB.....		\$1 79
7-BONE ROAST FURR'S PROTEN SHOULDER, LB.....		89¢
SWISS STEAK FURR'S PROTEN ROUND BONE ARM, LB.....		\$1 09
STEW MEAT FURR'S PROTEN BONELESS, LEAN CUBES, LB.....		\$1 09
SAUSAGE FARM PAC EXTRA LEAN, LB.....		79¢
LINK SAUSAGE FARM PAC 12-OZ. PKG.....		89¢
BACON FARM PAC OR RANCH HAND 1-LB. PKG.....		\$1 29
RANCH STEAK FURR'S PROTEN 7-BONE CUT, LB.....		89¢
FAMILY STEAK FURR'S PROTEN BONELESS SHOULDER, LB.....		\$1 09
BEEF RIBS FURR'S PROTEN, BAR-B-Q EXTRA LEAN, LB.....		79¢

REDEEM MAILED COUPONS AT FURR'S FOR UP TO 200 EXTRA STAMPS

FAMILY SPECIAL

15-PIECE BUCKET OF CHICKEN, 1-PINT COLE SLAW..... **\$5 25**

DELICATESSEN

PORK CHOPS

FAMILY PACK ASSORTED - 14 PER PACKAGE, LB..... **\$1 29**

CENTER CUT LB..... **\$1 69**

PORK LOIN ROAST SIRLOIN CUT LB..... **\$1 29**

CANNED PICNICS FARMLAND 3-LB. CAN..... **\$4 29**

WE GIVE **S&N GREEN STAMPS**

ICE CREAM TOWELS FARM PAC ASSORTED FLAVORS 1/2 GALLON CARTON..... **88¢**

VIVA DECORATOR, ASSORTED OR FIESTA, LARGE ROLL..... **49¢**

CUP-O-NOODLES

SHRIMP OR CHICKEN, 2 1/2 OZ..... **57¢**

BEEF 2 1/2 OZ..... **48¢**

CANDY BARS PETER PAUL MOUNDS OR ALMOND JOY, 5-BAR PKG..... **85¢**

MUSHROOMS B & B CHOPPED 3-OZ. CAN..... **65¢**

COFFEE HILLS BROS. 1-LB. CAN..... **\$3 59**

SALAD DRESSING GAYLORD 32-OZ..... **67¢**

MAYONNAISE HELLMAN'S 32-OZ. JAR..... **99¢**

THIS COUPON ENTITLES YOU TO **SAVE 40¢**

MAX PAX COFFEE DRIP OR ELECTRIC PERK, 12-OZ. CAN

WITH COUPON..... **\$3 19**

WITHOUT COUPON..... **\$3 59**

EXPIRES 10-1-77
LIMIT ONE COUPON PER FAMILY

MARGARINE FLEISCHMANN'S CORN OIL, QTRS. LB..... **81¢**

Frozen Food Favorites

BEEF ENCHILADAS PATIO, 16-OZ. PACKAGE..... **69¢**

APPLE PIES MRS. SMITH 46-OZ..... **\$1 49**

HONEY BUNS MORTON 9-OZ. PACKAGE..... **39¢**

PIZZA JENO'S SNACK PIZZA 7 1/4 OZ. PKG..... **99¢**

CRINKLE FRIES CARNATION TATER TOTS 2-LB. PKG..... **59¢**

PIZZA TOTINO'S SAUSAGE OR HAMBURGER 13 1/2-OZ. SIZE..... **89¢**

MARGARINE FLEISCHMANN'S UNSALTED, 1-LB. PKG..... **79¢**

COOKIES REGAL 5 FLAVORS 16-OZ. PKG. **49¢**

DOWNY FABRIC SOFTENER 15' OFF LABEL 64-OZ. SIZE **\$1 59**

SET A BEAUTIFUL TABLE WITH **Springtime** FLATWARE

FEATURE OF THE WEEK **SALAD FORK** EACH **39¢**

YOU'LL LOVE THESE ELEGANT COMPLETE PIECES

4-PIECE TEA SPOONS **\$1 19**

BAYER ASPIRIN PACKAGE **87¢**

MITCHUM DEODORANT NON AEROSOL REG. OR UNSCENTED 3.5-OZ. SIZE **\$1 65**

HAIR COLOR MISS CLAIROL PKG. **\$1 42**

BIC LIGHTER EACH **39¢**

VISINE EYE DROPS 1-OZ. SIZE **\$1 78**

FABERGE SHAMPOO WHEAT GERM & HONEY OILY-REG. EACH **\$1 10**

NOTEBOOK PAPER TOPCREST 300 COUNT **\$1 19**

TOPCREST ENVELOPES 6 1/4", 100 COUNT **47¢**

GO HERD! BEAT THE AMARILLO SANDIES (FOLLOW THE HERD FRIDAY NITE)

SAFEWAY

GREAT MEATS AT SAFEWAY!



PRICES EFFECTIVE THRU 10-1-77

CORNISH HENS 99¢
 MEDALLION CORNISH GAME HENS 18-oz. Size
BONELESS STEAK \$1.18
 TENDERIZED OR ROAST BOTTOM ROUND
 SUPER SAVER

TURKEY ROAST 35¢
 HINDQUARTERS 2 to 4 lbs.
BEEF BRISKET 89¢
 BONELESS PACKER TRIM WHOLE 7 to 10-lb. Size
 SUPER SAVER

MRS. WRIGHT'S LAYER CAKE MIXES 49¢
 18 1/2-oz. Pkg.

CATFISH STEAKS 99¢
 FRESH WATER
PREMIUM FRANKS 99¢
 SAFEWAY MEAT OR BEEF SUPER SAVER
SLICED BOLOGNA 89¢
SLICED SALAMI 1.29
BEEF LIVER 69¢
EYE OF ROUND STEAK 1.09

SLICED SLAB BACON \$1.09
 WILSON'S Random Weight Pkg. Super Saver
SMOKED PICNICS 69¢
 SLICED PICNICS N. 79¢ Super Saver
SMOKED SAUSAGE 1.59
CHICKEN FRIED STEAKS 1.19
FISH STICKS 1.09
FISH FILLETS 1.39

TOWN HOUSE MAC. & CHEESE 20¢
 7 1/4-oz. Pkg.

PILLSBURY FLOUR 67¢
 PLAIN
 PILLSBURY'S BEST XXXX FLOUR
 SUPER SAVER

DRINKS 33¢
 WARMER ORANGE, LOW CAL ORANGE & GRAPE
 SUPER SAVER

CATSUP 49¢
 TOWN HOUSE BRAND
 26-oz. Bott.

SAUSAGE 29¢
 VIENNA
 SUPER SAVER

SOFT 'N PRETTY 79¢
 BATH TISSUE
 SUPER SAVER

SHORTENING 1.34
 nu-made
 VEGETABLE SHORTENING
 SUPER SAVER

TOMATO JUICE 57¢
 TOWN HOUSE BRAND
 48-oz. Can

DASH 2.37
 DETERGENT
 25¢ OFF LABEL
 100-oz. Pkg.

DOG FOOD 99¢
 SOLO
 5-lb. Bag

GOLDEN CORN 25¢
 WHOLE KERNEL TOWN HOUSE
 SUPER SAVER

ICE CREAM 88¢
 VANILLA, CHOCOLATE & NEAPOLITAN
 SNOW STAR
 SUPER SAVER

DRINK MIX 99¢
 CRAGMONT
 FRUIT FLAVORS
 26 1/2 OZ. CAN

ORANGE DRINK 79¢
 INSTANT TOWN HOUSE
 SUPER SAVER

WHITE BREAD 2.89
 PREMIUM BREAD MRS. WRIGHT'S
 24-oz. Loaves

GREEN BEANS 5.1
 ENGLISH MOUNTAIN
 SHORT CUT ENGLISH MT.
 16-oz. Cans

BEEF TACO'S 1.09
 TACO RECIPE FROZEN
 SUPER SAVER

OCEAN SPRAY 99¢
 CRANAPPLE DRINK & CRANBERRY JUICE
 SUPER SAVER

TOMATOES 33¢
 GARDENSIDE CANNED
 16-oz. Can

CHEEZ-ITS 69¢
 SUNSHINE
 SUPER SAVER

FABRIC SOFTENER 1.67
 WHITE MAGIC
 30¢ OFF LABEL
 96-oz. Bott.

BLEACH 59¢
 LIQUID WHITE MAGIC
 Gal.

DINNERWARE 59¢
 MONTICELLO
 4-CUP

ENCYCLOPEDIA 2.49
 FUNK & WAGNALL
 VOL. 6 & 7

LAWN BAGS 1.49
 & LEAF KITCHEN CRAFT
 SUPER SAVER

SLO-COOKERS 9.98
 GRANDINETTI
 3 1/2 Qt.

FILM PROCESSING 2.99 \$4.59
 12 EXP. 2 PRINTS 20-EXP. 2 PRINTS
 RECEIVED 2 PRINTS INSTEAD OF 1!

PINEAPPLE 49¢
 SLICED, CHUNK & CRUSHED TOWN HOUSE
 Super Saver 20-oz. Can

GRAPES 35¢
 TOKAY RED FLAME
 lb.

HONEYDEW MELONS 59¢
 Sweet Flavorful
RED POTATOES 99¢
 U.S. No. 1
CARROTS 49¢
 Crisp & Fresh
YELLOW ONIONS 49¢
 3-lb. Bag

APPLES 29¢
 JONATHAN NEW CROP
 lb.

WHITE BREAD 4.1
 ROUNDTOP or SANDWICH STYLE MRS. WRIGHT'S
 16-oz. Loaves

STILWELL COBBLERS 1.19
 VARIOUS
 SUPER SAVER

ORE-IDA COB CORN 79¢
 4-Ear Pkg.
 SUPER SAVER

TOTINO'S PIZZA 79¢
 VARIOUS
 13-oz. Pkg.
 SUPER SAVER

LARGE EGGS 65¢
MARGARINE 29¢
STILWELL OKRA 59¢
MARGARINE 34¢

BROCCOLI SPEARS 51¢
COOKING BAGS 1.00
MEAT PIES 31¢
CUT CORN 1.00

WHIP TOPPING 49¢
STRAWBERRIES 52¢
BEL AIR PEAS 37¢
POTATOES SHOESTRING 59¢

PARKAY MARGARINE 49¢
 WHART
 SUPER SAVER

SWISS STYLE YOGURT 25¢
 LUCERNE BRAND
 SUPER SAVER

FLEISCHMANN'S MARGARINE 69¢
 CORN OIL
 SUPER SAVER