

Progress Is—
Making
Good Things Happen

THE RISING STAR

Where Three
Good Texas Counties
Get Together

Rising Star, Texas © 1988 Eastland County Newspaper Co. Established in 1890 Thursday, August 11, 1988 25 cents Number 32

County Commissioners Requests Approved

Eastland County Commissioners approved a number of items on Monday's agenda, and discussed others. All the Commissioners were present at the meeting, including Richard Robinson, Comm. of Pct. 1, Norman Christian, Pct. 2, L.T. Owen, Pct. 3, and Billy Bacon, Pct. 4.

County Judge Scott Bailey presided, with L.T. Owen also presiding briefly.

The appointment of General and Special Election Officials for 1988-1989 was finalized. These names, with addresses, will be published in the Eastland County Newspapers.

Among the Commissioners' approvals Monday was a Resolution authorizing Eastland County's participation in the West Central Texas Economic Development District. The Commissioners expressed the hope that this inclusion would help boost the economy in the area. When a county is in such a District, it gets preferential government treatment in the area of certain grants and loans. Businesses also receive preference when bidding for government contracts.

Also approved Monday was a request for permission to cross County Rd. 485 in Pct. 2 with a buried industrial electrical power line. This request was by Comer Hudson of Hudson Bros. Mining Co. Another approval was given North Ridge Corp. to cross three County roads in Pct. 4 with a pipeline.

The Commissioners agreed to pave a strip of road near the home of B.L. Files, who lives on the Long Branch Rd. southwest of Carbon. L.T. Owen, Commissioner of this Precinct, told the other Commissioners that Files would pay for the paving.

There was some discussion as to whether the County should pay for repair to a radio used by Alford Bush, Justice of the Peace in Pct. 2.

Mr. Bush owns the radio, but uses it in his J.P. work.

After consultation with District Attorney Emory Walton, the Commissioners agreed to pay this bill, which was \$52. Walton told the Court that Bush was often called to assist in another Precinct, and that the radio was especially needed during these times.

The Commissioners tabled another bill for more study of guidelines on payment for indigent Health Care. This was a bill from a Brownwood Hospital for a private room for a patient. The Commissioners had previously voted to pay for this patient, but were apparently not made aware of

the non-emergency status of the case, and the use of a private room.

Judge Bailey noted that Eastland Memorial Hospital is the mandated provider for County Indigent Care patients, but that no local Doctor has been named as mandated provided.

On another matter, Probation Officer Joe Housson told the Commissioners that he had a shortage in about \$3,500 in funds to pay for housing juveniles in the Taylor County Juvenile Detention Center.

He said that in 1988 15 juveniles have been housed in Taylor County a total of 86 days at \$60 per day.

Housson's request for addition funds was approved, with the Commissioner asking that payments to Taylor County be made near the end of this fiscal year - or carried over to the next year if possible.

On other payment matters, County auditor Ray Pruitt was asked to pay allowable bills out of the Commissioners state Lateral Road Money before taking funds from their other accounts. This year each Commissioner received \$6,298 in Lateral Road funds. The accounts must show a zero balance before the state pays any more money.

Commissioner Billy Bacon reported that the jail costs should be down a bit - there were only 13 prisoners in jail Monday. Two were due to be released, but others were expected to be incarcerated during the upcoming Garcia trial. Bacon said that the new ice machine was working, and things "looked good" at the facility.

Judge Bailey mentioned plans of the Eastland County Tax Appraisal District office to move out of the Courthouse to the Perry Building, when the acquisition of this building is approved by the various tax

entities in the County. Approval of this gift is expected shortly. The County will pay around 20 percent of the cost of renovating the Perry Building, but will gain the use of the space occupied by the Appraisal District office.

Several items on the agenda were not considered, because the people who had requested them did not appear. Among these were Bengal Oil and Gas, which had requested a pipeline crossing west of Cisco.

There was little time during Monday's meeting for detailed discussion of the 1988-89 budget. The Commissioners agreed to call a special budget meeting for Thursday, August 11, at 10 a.m. in the Commissioners Courtroom. This will be open to the public.

These were Bengal Oil and Gas, which had requested a pipeline crossing west of Cisco.

There was little time during Monday's meeting for detailed discussion of the 1988-89 budget. The Commissioners agreed to call a special budget meeting for Thursday, August 11, at 10 a.m. in the Commissioners Courtroom. This will be open to the public.

These were Bengal Oil and Gas, which had requested a pipeline crossing west of Cisco.

There was little time during Monday's meeting for detailed discussion of the 1988-89 budget. The Commissioners agreed to call a special budget meeting for Thursday, August 11, at 10 a.m. in the Commissioners Courtroom. This will be open to the public.

Wildcat Booster Supper Is August 18

The Rising Star Booster Club is having a free hamburger supper for everyone who supports the Wildcat team. This supper is Thursday, August 18, at 7:00 p.m. at the Wildcat football field. The players, new coaches, and cheerleaders will be introduced. Everyone is invited to come and get acquainted. See you August 18.

The Rising Star Booster Club is having a free hamburger supper for everyone who supports the Wildcat team. This supper is Thursday, August 18, at 7:00 p.m. at the Wildcat football field. The players, new coaches, and cheerleaders will be introduced. Everyone is invited to come and get acquainted. See you August 18.

The Rising Star Booster Club is having a free hamburger supper for everyone who supports the Wildcat team. This supper is Thursday, August 18, at 7:00 p.m. at the Wildcat football field. The players, new coaches, and cheerleaders will be introduced. Everyone is invited to come and get acquainted. See you August 18.

Alcohol And Drug Rally

Fred Hyde, ex-Bourbon Street Entertainer and Country & Western personality from New Orleans will speak at Kendricks Amphitheater 5 mi. west of Eastland, on Thursday & Friday nights, August 18-19, 1988 in a special alcohol/drug deliverance rally.

Hyde's subject will be "Raised From the Ruins". He will give his life's story of how his career was ravaged by alcoholism and how he found deliverance through a dynamic miracle and has walked in complete freedom from alcoholism for over 28 years.

Hyde will speak on the progressive symptoms of alcoholism and drug use and give some shocking statistics.

Should you know an alcoholic or if you are having alcohol or drug related problems in your own life or family, this program should be of great interest to you.

The Rally is Thursday & Friday nights, August 18-19, 1988 at Kendricks, 5 miles west of Eastland.

The public is invited and there is no charge.

Students Register for Fall Semester August 23, 24

Rising Star school students register for the fall semester on Tuesday, August 23, and Wednesday, August 24.

On August 23 seniors and juniors register from 9:00 to 11:00 a.m. and sophomores and freshmen register from 1:00 to 3:00 p.m.

On August 24 eighth grade and seventh grade students register from 9:00 to 11:00 a.m.

GO WILDCATS!

Rising Star school students register for the fall semester on Tuesday, August 23, and Wednesday, August 24.

On August 23 seniors and juniors register from 9:00 to 11:00 a.m. and sophomores and freshmen register from 1:00 to 3:00 p.m.

On August 24 eighth grade and seventh grade students register from 9:00 to 11:00 a.m.

GO WILDCATS!

PTO Plans for New Year

Kathy Bush called the meeting to order, Paula Collins read the minutes. Kathy Wolf gave the treasurers report, old business.

Discussed was the 4th of July activities. We brought in \$165.45 selling tea and T-shirts.

We would like to thank the following for their help: Debbie Cooksey, for a container for the tea and for helping serve, Sandi Wright, for a container for the tea and an ice chest, Joyce Baker, for a container for the tea, First State Bank, for donating the cups, Gail Rutledge, for helping serve the tea, Gala and Chester Headrick, for selling T-shirts, and the Chamber of Commerce, for the tea. Thank you all for helping us with this.

New business was discussed on dates of meetings and programs for this coming school year. In this years reports we are going to mention the importance of the \$2.00 membership cards and your attendance at all P.T.O. functions. We're going to name a few items each month that the P.T.O. has bought with the money that we received on membership fees, projects and programs. And we hope to continue doing as well with your help and support. Thank you.

Reporter, Carol Cook

Kathy Bush called the meeting to order, Paula Collins read the minutes. Kathy Wolf gave the treasurers report, old business.

Discussed was the 4th of July activities. We brought in \$165.45 selling tea and T-shirts.

We would like to thank the following for their help: Debbie Cooksey, for a container for the tea and for helping serve, Sandi Wright, for a container for the tea and an ice chest, Joyce Baker, for a container for the tea, First State Bank, for donating the cups, Gail Rutledge, for helping serve the tea, Gala and Chester Headrick, for selling T-shirts, and the Chamber of Commerce, for the tea. Thank you all for helping us with this.

New business was discussed on dates of meetings and programs for this coming school year. In this years reports we are going to mention the importance of the \$2.00 membership cards and your attendance at all P.T.O. functions. We're going to name a few items each month that the P.T.O. has bought with the money that we received on membership fees, projects and programs. And we hope to continue doing as well with your help and support. Thank you.

Reporter, Carol Cook



The Rising Star Chamber of Commerce & Agriculture pancake breakfast for members and prospective members was Tuesday at the school cafeteria.

Speaker was Terry Wilson, executive vice president of the Brownwood Chamber of Commerce. Mr. Wilson drew from his six years' experience with the Brownwood Chamber to give advice to local Chamber members about sponsoring activities and enticing new businesses to our area.

Class of 1953 Holds Reunion



The Rising Star High School Class of 1953 held a reunion July 9 at Lakewood Recreation Center. Among those attending were, kneeling, from left, Peggy Winfrey, Roy Maddux, Bonnie Campbell, Betty Carman and Harriet Houston; center row, Patsy Laughlin, Annie Loflin, Bobbie Wilson, Joyce Shetter, Francis Valentine and Arlene Conn; and, back row, Mary Ann Struthwolf, Joe McCollum, Nelda Clifton, Dean Madison, Ben Jarrett and Mary Ida Brown. Not pictured were Glenn Winfrey and Bruce Stovall.

The class of 1953 held their 35th class reunion July 9, at Lakewood Recreation Center. Twenty-eight attended the day's activities, nineteen of which were members of the graduating class.

The group enjoyed a full day of visiting, picture taking, and recalling events of "the good old school days." Each class member in attendance received a memory booklet compiled by Betty Carman - updating the lives of all members of the class. The class was honored to have Irene Mayfield, former teacher, to come out and visit.

The day was finalized with a barbeque dinner served by Oscar's of Cisco.

Class members attending were: Mary Ann (Barton) Struthwolf, Betty (Westerman) Carman, Peggy (Grisham) Winfrey, Bonnie (Millwee) Campbell, Roy Maddux, Dean Madison, Nelda (Maples) Clifton, Harriet (Spenny) Houston, Arlene (Jones) Conn, Frances (Jackson) Valentine, Glenn Winfrey, Annie

Rummage Sale to Benefit May VFD Is Saturday

The May Volunteer Fire Department Auxiliary will have a rummage sale at the fire station building Saturday, August 13, from 8 a.m. to 6 p.m. Proceeds will benefit the fire department. If you have any items to donate, please call Teri Murphree at 259-2708 or 643-7410 and arrangements will be made for pick up.

Man Dies in Wreck Here

A 37-year-old Amarillo man was killed about 12:15 a.m. Sunday in a one-vehicle accident at the curve at W. Pioneer on Highway 183 in Rising Star.

Andy Joe Fuller was pronounced dead at the scene by J.V. Heyser, Cisco justice of the peace.

Richard Treece, Department of Public Safety trooper investigating the accident, said Fuller, who was alone, was traveling south in his 1979 Chevrolet pickup on U.S. Highway 183 when the accident occurred. While traveling at an extremely high rate of speed the pickup missed the curve and struck a telephone pole broadside.

Fuller's body was trapped for a time and was removed by the Cross Plains Fire Department operating the Jaws of Life, Treece said. The Rising Star Police Department assisted at the scene, he said.

Caution! Fire Season

The weather is very dry again and with the low humidity and high temperatures, sparks can easily ignite grass and brush fires. Everyone is urged to be especially cautious again.

Some areas have had even less rainfall than we have had in town and the grass and weeds are dead and brittle. Range fires are already occurring again in the Cisco area.

Again, be cautious of anything that might start a fire.

community calendar ...

- 3rd THURSDAY SCOTTISH RITE
- 3RD FRIDAY LADIES LUNCHEON, Lakewood
- EACH THURSDAY SENIOR CITIZENS
- EACH SATURDAY BINGO, American Legion Hall
- 3rd MONDAY EMS Volunteers
- 3rd TUESDAY BIRTHDAY PARTY, R.S. Nursing Center
- RUMMAGE SALE A rummage sale at the fire station in May will be held August 13 from 8 to 6 to benefit the fire department.

\$2,500.00 REWARD

Money may be mailed to First State Bank, Rising Star, 76471, to be deposited in the Witt Reward Fund. The account number is 72-360-6. No arrests have been made in the rape/murder case. Era Witt, 87, was found dead in her home on June 7.

Any person with information leading to the arrest and indictment of the person or persons responsible for the crime may call 643-4261 or 643-3421. Information may be given anonymously and arrangements will be made for the payment of the reward.

Saluting The Youth Who Are Our Future

With the beginning of the new public school term, your local newspaper will be cooperating with local firms and individuals in recognizing in a special way, the young people who are active in the local public school activities.

Naturally, fall means football; but that's just one of the many extra-curricular activities sponsored by our schools. The program will extend into the winter, with emphasis on basketball during that season.

Then in the Spring, three other major activities—baseball, track and UIL Literary -- will be keynote points for recognition.

The local bands and their members will be equally featured throughout these seasons.

Participation in the special support pages will give vivid evidence of the community's backing of its athletic, musical and academic stand-outs.

Representatives from the local newspapers will be contacting firms and individuals immediately to further explain the program. Details may be secured by contacting either of the offices of your local newspaper.

Academic achievements will be recognized as well as athletic wins and losses. Thrust of the program will be to include photographs and data about as many of our public school youth as possible throughout the school year.

FOR SALE

FOR SALE Golf carts & golf cart trailers. To see, come to 3rd house on I-20 west of Union Hill Rd. between Baird & Clyde, or call 915-893-2262 b52

FOR SALE washer & dryer, 643-5361 32-33

BOYS BLACK OR GRAY Wranglers, sizes 8-14, reg or slim, \$14.99. Johnson's Dry Goods, Cross Plains 32

STUDENT SIZES BLACK OR GRAY Wranglers, 26-30 waist, \$15.99 Johnson's Dry Goods, Cross Plains 32

LADIES LONG SLEEVED shirts in assorted stripes, 100 percent cotton, S M L, \$16.99. Johnson's Dry Goods, Cross Plains 32

AS ESTATE SALE, too many items to list. Located at Sabanna, 7 mi North of Pioneer, watch for signs. Friday thru Sunday. 32

HAVE FOR SALE washer & dryer & small deep freeze. Inquire at 643-3028 or come by 405 S. Main. 32-33

New Crop IVEY HONEY Now Available in Baird AT: Boydston's Hardware, Callahan County CO-OP, Robertson's Ham House, Roger's Food Store and at D & D Feeds in Abilene. Or call 915-854-1673. RS33

AUTOS

FOR SALE A nice '81 model Chev Pickup, may be seen at corner of Brewster & W. Pioneer St. 31-32

HELP WANTED

LIVE IN NANNIES needed for professional Dallas-Ft. Worth families, must have experience in childcare and have good references. Salary, room and board, and excellent benefits. Interviewing at Friendship Inn, Eastland, Sat., August 13th 9:00-5:00. RS33

NURSES AIDE, 2-10 shift, 3 days on, 3 off; nurses aide, 6-2 shift. Apply in person at Rising Star Nursing Center. 31-39

WANTED

NEED SOME HOUSE cleaning to be done? We clean offices too. Call Lynda at 643-2501 29-32

HANDY MAN No jobs are too big or too small. Do a little of everything: welding, fencing, painting, plumbing, etc. Call Travis at (817) 643-2501 29-32

FOR RENT

FmHA non-discrimination APARTMENT FOR RENT. 817-842-5294. rs52

Public Housing Authority has apartments for rent for senior citizens. Equal housing opportunity. 817-643-3812 or 643-6791. RISING STAR

HOUSE FOR RENT OR SALE, rent is \$200 month. 304 N. Anderson in Rising Star. Phone 725-7767 29-39

LIVESTOCK

FOR SALE: Angus Bulls and females. Call 647-1260 or 647-1667 in Ranger. RS32

FOR SALE: BRANGUS BULLS. Call 647-1155 or 647-1182 in Ringer. recrsb104

AUCTIONS

Brownwood Cattle Auction

Market report for Aug. 3 compared to last week: slaughter cows & slaughter bulls were fully steady, steer & heifer calves were \$1 to \$2 higher, feeder steer & heifer yearlings were \$1 higher, pairs were steady to \$20 higher, springers were \$20 to \$30 higher. Demand was very good. Estimated receipts, 850 head.

TOP OF THE MARKET: Mel Anders, Gustine, red spt bull, 1520 lbs, \$63; Jimmy Coffman, Brownwood, blk wf pr, 800; Wesley Warren, Gorman, rd wf hfr, 380, 88; Worth Gaines, Brownwood, T.S. cow & cf, 1330, 820; Till Stone, Stephenville, Bra cow, 1335, 635 hd; C.Q. Davis, Brownwood, blk wf str, 315, 119; Henry Vogler, Brownwood, blk wf str, 585, 84; A.C. Spinks, Mullin, rd wf b yrl, 395, 104; Ed Anderson, Brookesmith, rd wf str, 585, 84; Robert Conner, Brookesmith, Char x hfr, 655, 70; Pat McClatchey, Bangs, Char str, 305, 118; Joe Skalak, Rochelle, rd hfr, 495, 79; Jim Tongate, Brownwood, blk mf str, 675, 79.50; Jim Ray Cox, Rising Star, Char str, 120, 142.

MISCELLANEOUS

AIR CONDITIONING SERVICE All makes and models. Residential-Commercial sales and service. Reasonable rates. 20 yrs. experience. 24 hr. service. Call 442-3253, Cisco. Johnson Air Conditioning. RS35

REAL ESTATE

100 ACRES near Okra, most all in cultivation. Pavement, good fence. \$450 per acre. 238 ACRES, Sipe Springs. Pavement, 2 tanks, good deer & turkey area, only \$350 ac., 20 percent down

320 ac. most all Kline grass, excellent fences, 1 mi. of creek, big tank, 2 mi. road frontage. \$500 ac. 80 A. all timber at Sipe Springs, pavement frontage, excellent deer, good tank. \$600 ac. 15 percent down.

80 A. near Carbon, about 20 cultivated. 1 well, tank, big oak trees & road on 3 sides. \$575 ac.

3 BR 1 bath rock house, 2 lots, on N. Main, has attached double garage. \$25,000 145 A. SW of Rising Star. Steel corral, excellent fences, 75 Coastal & Ermelo, fine hunting, 1/2 off pavement, low taxes. \$550 ac. 1/4 down.

161 A. Lots bottom land, pecans, 60 tillable, well fenced, 1/2 mile Sabanna, good deer hunting, lots big oak, pecans. \$550 ac. Agent owned.

34 Yrs. in Business Listings appreciated.

COGBURN REALTY 893-6666 893-5898 893-2642 DE LEON

ACTION REALTY WE NEED LISTINGS!!! Equal Housing Opportunity 915-643-6516

Rising Star **GREAT LITTLE HOUSE!** Nice 2BR 1B, partially carpeted with hardwood floors. Water well, carport with storage shed. First time on market. Call Stella

A FIXER-UPPER Corner lot, older home close to town and churches. 2BR, 1B, 2 story home. Lots of yard, garden area, double carport. Call Stella today

LOOK NO MORE, 2 BR, 2B, carpeted, ceiling fans, double garage with Genie door opener, siding, lots of closets. All on 2 big lots. Call Stella **DON'T DELAY** on this one, 3 BR 1B, large master bedroom, carpeted, garage, water well, pecan trees, on paved street. Call Stella

WHAT MORE could you need? 2BR, 2B, fireplace, built-ins, carpeted, mature pecan trees. Out of town owner. Call today **VERY NICE!** 3BR, 2B, double wide, built-in china cabinet, laundry room, has garden area, carport, fruit trees. Don't wait, call Stella today!

NEAR PARK, 2 BR, 1B, some appliances, metal roof, large corner lot. Priced below appraised value. Ready to sell. Call today

OPEN FOR business soon! Prime location for beauty or barber shop. Some equipment available or just use as an office. On highway. Call Stella today

LOOK NO MORE! 3 BR, 1B, big kitchen with snack bar, carpeted, lots of closets, garden area, carport, laundry room, sheds nice yard. Call Stella today!

1 1/2 story, carpeted, 2 BR, 1 B, large lot. All this plus more. **SOLD** garden area, all on corner lot. Priced to sell 3 BR, 2 B, UR, kitchen-den combo, lots of closets, just out of city limits. Call today. Priced below appraised value.

3 BR 2 B stucco, laundry room with sink, carpet, 2-car garage, with storage shed, fenced garden area. **GROCERY STORE**, full inventory. Meat market, vegetables, bins. Call for appointments.

2 LOTS at Shamrock Shores. Priced right!! **SOUTH OF MAY**, 9 acres of grassland, some trees. On Hwy 183

James Smith broker 646-0297 **IN RISING STAR** STELLA WARE 643-3591

LAND FOR SALE: 320 acres, 2 miles south of Ranger. Some minerals, pavement, deer, turkey. Owner finance. Call 647-1182 or 647-1155 in Ranger. R-104

GORMAN HOUSE 2 bedroom, hardwood floors, metal siding and roof, oak trees on double lot \$19,500.00 817-575-4953. RS

NEW, SMALL 2 BR house on 56 x 172 lot in Rising Star for sale. Insulated, unfinished inside, has good water well. Priced to sell, \$6,500 firm. Contact B.P. Underwood, 817-643-2502. 31-34

HOMES

SELLING YOUR HOME OR BUYING? Call Stella Ware, 643-3591, your local real estate agent for Action Realty, Brownwood, James Smith, broker. 26-52

FOR SALE: 2 bd. on 1/2 ac., carport and storage. \$15,000 or best offer. 442-1693 or 643-3129, agent. RS34

SERVICES

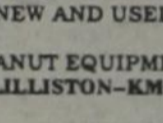
JIM RATLIFF WELDING Oilfield and Farm 817-643-6464 Rising Star

Need things fixed up around the house? or wooden furniture made or repaired? Call Joe Campbell, **CAMPBELL'S CABINET SHOP**, (817) 842-5875 Rt. 5 Box 107B, Comanche, TX 76442 If no answer call (817) 643-2251.

WE WOULD APPRECIATE YOUR JOHN DEERE, LILLISTON & KMC PARTS BUSINESS.

LOWEST PRICES IN AREA ON ADAMS PLOW SHARES AND BALDAN DISK BLADES, IN STOCK SIZES TO FIT MOST BRANDS.

CLARK TRACTOR & SUPPLY INC.  COMANCHE (815) 256-3922 DeLeon (817) 883-2061

JOHN DEERE TRACTORS NEW AND USED PEANUT EQUIPMENT LILLISTON-KMC  PLANTERS-DISKS-DRILLS ROLLING CULTIVATORS-CHISELS SELL OR TRADE

CLARK TRACTOR & SUPPLY INC. (817) 883-2061 DeLeon (815) 256-3922 COMANCHE Where your business is appreciated.

BUDDY COOK Residential, Commercial Refrigeration & Plumbing 817-643-7312 Rising Star rs-102

D & R UPHOLSTERY 643-3942 Rising Star For your upholstery needs. Country, Continental & Baloon style curtains. Debbie Jones, owner

Bring your TV, radio, stereo, small appliances to **DAD'S DOO-DADS & REPAIR SHOP** at 300 S. Graves, off W.Hy. 36, Rising Star. New & used merchandise. Shop work only. 817 643-5909

FAST DEPENDABLE Film Developing **PALACE DRUG STORE** 643-3231 Rising Star

RISING STAR EXXON 643-3130 Tires Batteries All types of tire repair

TREE SPRAYING SERVICE Residential/Orchards Fruit & nut tree spraying Call (817) 643-4871 Certified Applicators LeRoy Livingston Don Darden

WILLIE VANDIVERE TRUCKING Dirt, Caliche Hauling Build Lease Roads, Driveways, etc. 9-5 Call 643-2023 After 5 Call 643-6451

OLIVER WEST, PUMP SALES & SERVICE 817-643-4683 Rising Star, Texas Complete systems sold & serviced 2 1/2 miles south of town

THANK YOU

The family of James R. Hogan would like to say "thank you," for the kindness and prayers said during our loved one's illness and death. Thank you for all the cards, flowers and the lovely lunch that was served by the ladies of First Baptist Church. A special thanks to Dr. Carpenter and the nursing home and the Revs. Dale Jackson and Dick Williams.

May God bless you all. Alpha Hogan Perry & Joy Curtis L.T. & Josie Owen & family Roland & Opal Atwood & family Chuck & Rita Cannistraci & family

Words are inadequate to convey the deep sense of appreciation felt by all of us to our many friends for the countless courtesies and concern before and following the passing of our loved one, Ina Butler. For the prayers, flowers, calls, visits, food and kind expressions of sympathy we are most grateful.

Thank you and may God's richest blessings rest on each of you. A.M. Butler & family

Thanks to everyone who help extinguish the fire at our garage and home Sunday.

Special thanks to Mike Nall and Fred Rabe for bringing the fire trucks, to Buddy Cook for helping hook up water hoses to save our home and to those who helped move the dogs. We're very grateful to each of you for your help. J.R. & Edythe Morrow Bob Morrow

The family of Ezra A. McBeth wishes to express our sincere thanks to Dr. Bily Carpenter, the nurses and the staff of Rising Star Nursing Center for the loving care they provided during his long illness.

We wish to thank the Rev. Dale Jackson and Mrs. Pat Walker for helping to make the service so meaningful. Also, thanks to the many ladies of First Baptist Church who prepared the delicious lunch for the family.

Sincerely, Polly & George Hewitt Kay, Becky & Greg Scarborough Jani, Mickey, Caety & Reagan Edwards Jann & Gary Johnson

OPPORTUNITIES

OWN YOUR OWN apparel or shoe store, choose from: jeans/sportswear, ladies, men's, children/maternity, large sizes, petite, dancewear/aerobic, bridal, lingerie or accessories store. Add color analysis. Brand names: Liz Claiborne, Healthtex, Chaus, Lee, St. Michele, Forenza, Bugle Boy, Levi, Camp Beverly Hills, Organically Grown, Lucia, over 2000 others. or \$13.99 one price designer, multi tier pricing discount or family shoe store. Retail prices unbelievable for top quality shoes normally priced from \$19 to \$60. Over 250 brands 2600 styles. \$17,900 to \$29,900: inventory, training, fixtures, airfare, grand openings, etc. Can open 15 days. Mr. Loughlin (612) 888-6555

Friendly home parties has openings in this area for managers and dealers. Earn free Hawaiian trip. Free training, commission up to 25 percent. Highest hostess awards, no delivering or collecting, no handling or service charge. Over 800 dynamic items - Toys, gifts, home decor and Christmas decor. For free catalog call 1-800-227-1510. 32-38

Smell Gas? Call City Hall 643-4261

Popovers Camp

The Eastland County Popovers will be holding a Summer Gymnastics Camp August 15th thru 18th from 10:00 a.m. till 12:00 noon. Registration will be Saturday, August 13th from 10:00 a.m. until 12:00 noon at their new location on S. Seaman Street in the Old Eastland National Bank Building. They will offer instruction for boys and girls, ages 3 and up in Beginners, Intermediate and Advanced. If you cannot register on Saturday the 13th you may call the gym at 629-8072 or Marilyn at 629-8700. Experience is not necessary. The cost will be \$20.00 for all four days.

HAPPY BIRTHDAY

AUGUST 14 Rita Wilson Sandy Hutton
AUGUST 15 Maxine Crisp Courtney Ezzell Jessie Headrick
AUGUST 16 H.L. Killion Michael Clark Dorothy Calloway Mrs. W.P. Lyon Danny Medley Geneva Boben Dianne Mitchell Danny Wade White
AUGUST 17 James Jackson James Hokett Johni Weathersby Larry Earp Scott Hutton
AUGUST 18 Inez Elliott Stephen Hughes
AUGUST 19 Vernetie Allgood Dusty Bilbrey Heather Wright
AUGUST 20 Steven Cox Sybrinna Killion Nikki Claborn Ike Hickman Lester Linney Elizabeth Alldredge

THE RISING STAR 817-643-4141
Box 127 Rising Star, Tex 76471 104 N. Main St. ©1988 Eastland County Newspaper, Inc. Publication No. (USPS 466500)
Second Class Postage paid at Rising Star, Texas, under Act of Congress in March, 1879. Published every Thursday. Publishers, Mr. and Mrs. H.V. O'Brien
Subscription Rates Per Year: Eastland County and 30 mi. radius of Rising Star, \$8; other Texas counties, \$12; out of Texas, \$18 No out of U.S. without APO.
POSTMASTER: Send address changes to The Rising Star, Box 127, Rising Star, TX 76471.

PUBLIC AUCTION
1:30 PM
Sunday, August 21, 1988
WILLIAM D. SCARLETT ESTATE
1008 West 12th Cisco, Texas
Books - all kinds, encyclopedia sets, albums, numbered sets, Occasional tables, dishes, cookware, bookcases, file cabinets, brief cases, stereos, electronics, jam box, antique typewriters, adding machines, antique bottles, beds, dressers, chests, lamps, antique washing machine, cassette tapes, blank & filled, cook stove, paint mixers, misc. hardware, wire, fluorescent lights, black lights, old radios, TV's, tubes, electric meters, testers.
Many other items, too numerous to list.
ROCKY ASH AUCTION CO.
TXS 019-006684
Clyde, Texas
(915)893-5663

REAL ESTATE
WEBB PLACE -For Sale--2 mi directly south of Rising Star traffic light (The intersection of HWY 36 & 183) approx 1800 sq. ft. living area- INCLUDES guest house near back door--with panelled bedroom--bath & WBFP-A-C/C-H-- 3 ceiling fans-utility room--fully carpeted--drapes--contemporary kitchen--brk bar--Range--Oven--Dishwasher--fenced yard--2 car garage--Above ground pool--4 1/4 AC--well fenced-- Satellite dish--barn with large hayloft--TAC--storage bldgs--natural gas--insulated pump house--95 ft. water well--storage tank & new water softener--Good garden spot--some fruit trees--elec. fence--On paved Brown Co. road #441. PRICE \$49,500---Additional acreage available if desired--550 AC.
817-643-6144

EASTLAND FARM AND RANCH CENTER
Offering You Only The Best
PURINA HI-PRO DOG FOOD (after rebate)....\$10.95 50 #
PURINA HORSE FEED, Omolene 200.....\$7.60 50 #
BALING WIRE.....\$35.00/Roll
ROUND BALER TWINE.....\$23.90/Box
Give Us A Try,
We Appreciate Your Business!
Open Early-7 am Close Late-6 pm Sat.-7-5
629-2173 CERRS104 301 N. Seaman 629-8035

REBUILD ENGINES Aluminum Welding AUTO TRANSMISSION
JAKE'S SHOP GENERAL MECHANICAL & WELDING FABRICATION Body Work & Painting
OWNER JAKE LANDESS 817-643-3031 404 N. MAIN RISING STAR, TX rs52

Main Street Auto Repair
Open Monday - Friday 8 - 5 P.M.
Jackie Palmore - Mechanic
643-1701
Hwy. 183 Rising Star, Texas

Hale Trailer Dealer
2 Horse Trailers
Gosneck Horse & Stock Traders, Covered & Open Bumper Pull Stock Trailers, Covered & Open Top
Barker's Garage
817-259-2252 May, Texas

Pioneer Patchwork

LaVerne Hutton and her mother, Ella Dean of Cross Plains, were visitors in Eastland Monday on business.

Lottie Sooter's son and grandson, Don and Thomas Sooter of Abilene, visited her this week.

Teresa Koenig's little son, Cole, rode with his grandfather, Harold Merrill, and Kim Merrill to Cross Plains from Pioneer Saturday on Harold's wagon hitched up to white mules. At the county line, they caught up with the Rising Star riders. Needless to say, young Cole had a great time riding in the wagon and throwing out candy and gum to the children along the parade route.

Mrs. Becky Lipstraw said: We are writing these articles about autism to inform

Irma Miller parents who may not be aware of its symptoms and implications. As a child grows, he may outgrow some of the symptoms, but there is no known cure for autism. When adolescence starts, they may become aggressive, or rarely, may hurt themselves. A few begin to have seizures. Autistic people usually can do things normally with their hands, but some have difficulty with muscular ability. Next time we will note some of the medical findings regarding autism.

John Miller has been getting some help in the cemetery and elsewhere by a very capable and hard working young man, Joe Gardner. Irma Miller especially appreciates the assistance he is giving John.

Rising Star Nursing Center

MONDAY: We did exercise, passed out mail and played bingo. Players were Martha Irby-2, Maggie Christian-2, Joe Fox-2, Pearl Petty-3, Jennie Turner-3, Lena Scott-2, Vera Forbes-2, Pauline Hill-2, Mary Crisp-1, Buster Rixford-2.

TUESDAY: had in-room exercise, passed out mail. Terry Horton played the piano for us.

WEDNESDAY: Played indoor basketball, passed out mail and played bingo. Players were Martha Irby-6, Joe Fox-0, Pearl Petty-2, Grace Goss-0, Jennie Turner-2, Vera Forbes-2, Pauline Hill-2, Mary Crisp-3, Buster Rixford-3.

THURSDAY: We did craft, passed out mail and some of our residents played dominoes.

FRIDAY: We did exercise, passed out mail and played bingo. Players were Martha Irby-2, Maggie Christian-3, Jennie Turner-2, Lena Scott-1, Pauline Hill-2, Mary Crisp-2, Buster Rixford-1, Vera Forbes-2, Rada King-1, Pearl Petty-4, Ethel Moore-5, Grace Goss-1.

Visitors of Mary Crisp were her granddaughter and Mrs. Allen Hall and two sons.

Willa Fae Harrington and Naoma Fisher from Brownwood visited Martha Irby.

Laura, Kevin and David Yager, Jennifer Brusenhan, and Rhonda Ashley from San Antonio visited Floyd Cornett.

Carrie Paul from Fort Worth visited Maggie Morrow.

Our monthly Birthday party is August 16 at 2:30. Our birthday honorees are Vesta Cozart, 8-14-1893, and Jasper Hill, 8-29-1898.

Thursday, Aug. 11, we will have a group from Brownwood who will sing for us.

We want to extend our sympathy to Ezra McBeth family and to the family of Claudia Fox, in their recent loss. We thank both families for the lovely flowers they gave to the nursing home. Jennie Turner went out over the weekend to the Horton reunion at Flat Rock Park.

We wish to thank Curtis Hill, Bill Yoes, and Henry Robinson for giving the nursing home tomatoes, and another thanks to Billy Ruth Lewis and Kenneth Hill for the cantaloupes.

Thanks to the Baptist Church for Sunday services.

Obituaries

Claudia Fox

Services for Claudia Ray Fox, 46, died Wednesday at his residence. Services were at 3 p.m. Friday at Higginbotham Funeral Home Chapel with the Rev. Vernon McGinn officiating. Burial was in Merriman Cemetery near Ranger.

Born on June 24, 1942 in Gun, he lived in Rising Star most of his life. He was a farmer and a member of Assembly of God Church. Survivors include three daughters, Sherry Fox of Abilene, and Tammy Bradley and Patricia Fox, both of Rising Star; four sons, Gary Fox, Bebo Fox, Jody Fox and Michael Fox, all of Rising Star; five brothers, George Fox of Rising Star, Bud Fox of Granbury, Nick Fox of Dallas, Jim Fox of Poplar Bluff, Mo., and Melvin Fox of Brownwood; three sisters, Wanda Jacober of Anderson, Calif., Linda Martin of Breckenridge and Brownie Williams of Rising Star; and two grandchildren.

Ezra A. McBeth

Ezra A. McBeth, 92, of Rising Star died Wednesday at a local nursing home. Services were at 10:30 a.m. Friday at First Baptist Church with the Rev. Dale Jackson officiating. Burial was in Elm Cemetery, directed by Higginbotham Funeral Home.

He was born on March 28, 1896, in Indian Territory. He was a farmer and a Baptist. Survivors include a daughter, Polly (Mrs. George W.) Hewitt of Fort Worth; four grandchildren; and four great-grandchildren.

Iva McQueen

EARLY - Iva McQueen, 87, died Thursday at a Brownwood hospital. Services were at 2 p.m. Sunday at Davis-Morris Funeral Home Chapel with Alvis Fisher officiating. Burial was in Eastlawn Memorial Park.

Born in Collin County, she lived in Brown County most of her life. She was a homemaker and cake decorator. She was a member of Brady Avenue Church of Christ.

Survivors include a daughter, Melba Baker of Early; two sisters, Billie Dudley of Brownwood and Stella Mitchell of Fairfield, Calif.; two brothers, Virgil Bramlet of May and Truet Bramlet of Abilene; eight grandchildren; and eight great-grandchildren.

James Lewis

HOUSTON - James Walter Lewis, 48, died August 3 after a lengthy illness. Mass

was held Friday at 10 a.m. at St. Luke the Evangelist Catholic Church with the Rev. Dominic Pistone officiating. Graveside services and burial were at Forest Park East in League City under the direction of Forest Park Lawndale Funeral Home.

Born January 16, 1940 in Odessa, he was a longtime resident of Houston and educator with Pasadena ISD. He was a graduate of Cross Plains High School, North Texas State University (B. of Music) and The University of Texas at Austin (M. of Music) with graduate work in counseling at the University of Houston. He was past president of Texas Orchestra Directors Association and organist at St. Luke the Evangelist Catholic Church in Sagement and Church of the Good Shepherd in Friendswood.

Jim was in Rising Star June 10 to attend the class reunion of the Rising Star High School graduating class of 1958. He attended school in Rising Star prior to his senior year at Cross Plains.

Survivors include his wife, Joyce; a son, Kevin; a daughter, Leigh Anne; a sister, Judy Jones of Rankin; and a host of other relatives. Memorials may be made to the Leukemia Society of America.

Ina Butler

Ina Selma Butler, 79, died Saturday at an Abilene hospital. Services were at 2 p.m. Monday at the First Baptist Church in Rising Star with the Rev. Dick Williams officiating, assisted by the Rev. Dale Jackson. Burial was in the Rising Star Cemetery, directed by Higginbotham Funeral Home.

Born Dec. 25, 1908 in Gorman, her parents were Joe Sevey and Dovie Pittman Gilmore. She married A.M. Butler June 29, 1929 in Rock Bluff and they moved to Rising Star 56 years ago. She was a homemaker and a Baptist.

Survivors include her husband, A.M. Butler of Rising Star; a son, Joe Butler of Abilene; a brother, Dee Gilmore of Gorman; two sisters, Idell Warren and Modess Burgess, both of Gorman; seven grandchildren; and seven great-grandchildren.

NOTICE

Need to contact anyone knowing Henry Albright, Marcena (Mearse) Albright, or Onie G. Albright, Call N.J. Albright (915) 263-7983.

Remember your loved ones. Help the Rising Star Heritage Cemetery!

Susan J. Schaefer
Certified Public Accountant
 9th & Main P.O. Box 501
 Cross Plains, Tx. 76443
 Office: Home:
 817-725-6747 817-442-3784

HOUSTON'S FABULOUS
Tides II
MOTOR INN
 8700 SOUTH MAIN
 Dick Maagie, V.P.
SUMMER DISCOUNT
\$3995 DBL
 KIDS FREE 12 & UNDER
 • ASTROWORLD/WATERWORLD TICKETS AVAILABLE AT FRONT DESK
 • EXCELLENT BUFFET AT REASONABLE PRICES
 • BEAUTIFUL POOL AND GARDEN AREA
 • CABANA ROOMS AND SUITES
 • FREE PARKING
 • RISING TIDES CLUB
 • MAJOR CREDIT CARDS ACCEPTED
 713-522-2811
HOUSTON, TEXAS
 Across From Texas Medical Center
 5 Minutes to Astrodome, Astroworld and Waterworld
 Rice Stadium - Zoo - Golf Course - Fat Stock Show - The Summit

Cisco Baptist Association To Hold Monthly Rally



D.L. LOWRIE

The Cisco Baptist Association will have their monthly Rally at The First Baptist Church, Gorman, Monday, August 15. The featured speaker will be D.L. Lowrie, of Dallas.

Dr. Lowrie is presently State Missions Commission Director for Texas Baptists, having recently come from the pastorate of the great

First Baptist Church of Lubbock.

Other pastorates include First Baptist, Texarkana, and North Fort Worth Baptist. Dr. Lowrie is widely acclaimed as a great expository preacher, and is recognized as one of the most outstanding preachers today in Southern Baptist life.

Dr. Lowrie is speaking and the message will be preceded by a spirited song service led by Jon Viertel of Albany, and special music that is being arranged.

The schedule for the August 15th Rally is as follows:

Executive Board & WMU Meeting - 5:30 p.m.
 Supper by the host church - 6:30 p.m.
 And the rally at 7:15 p.m.

MAY HOMECOMING
SEPT. 23-24

RISING STAR HOMECOMING
Sept. 30-Oct. 1

Engagement



Mr. and Mrs. Charles Cox of Cisco wish to announce the engagement and approaching marriage of their daughter, Mary Ann, to Darrell Stuart, son of Mr. and Mrs. Ed Stuart of Cisco.

The bride-elect is a graduate of Cisco High School, and Cisco Junior College. She is presently attending Tarleton State University.

The prospective bridegroom is a graduate of

Cisco High School, Cisco Junior College, and Tarleton State University, where he received a Bachelor of Science in Ag Business. He is currently employed by the firm Earl Tompson Construction in Stephenville.

The couple will be married at 7:00 p.m. on Saturday, August 20, 1988, at East Cisco Baptist Church in Cisco.

All friends and relatives are invited to attend.

Cross Plains Medical Clinic
 1042 Main Street
Office Hours: Mon.-Fri. 9-5
Sat. 9-12
P. Eksaengsri, M.D.
 (817)725-6728 & (817)734-2292

Stop In & See Our Selections
 Grapevine Wreaths
 Art Supplies
 Paintings
 Gifts
Hubbard Gift & Gallery
 Rising Star 817-643-6242

AUGUST CLEARANCE

Dining Room - Bedroom 33% off

Chairs-Rockers-Recliners 33-50% off

Cedar Chests 25% off

Sofas - Sleepers 33-50% off

Mirrors 33% off

Posture Form Sealy

Mattress Set
 Twin reg. \$210⁰⁰ **\$162⁵⁰**
 Full reg. \$280⁰⁰ **\$220⁰⁰**
 Queen reg. \$333⁰⁰ **\$256²⁵**
 King reg. \$434⁰⁰ **\$336²⁵**

Instamatic reg. \$49⁰⁰

Bed Frames \$36²⁵

Mattress Also on SALE

Pads & Pillows

Contract Carpets \$4³⁹-6⁷⁵

Williamsburg Melody Carpet \$6⁹⁵ reg. \$9⁰⁰ sq. yd.

Williamsburg Dupont Certified "STAINMASTER" reg. \$19⁰⁰ sq. yd.

Carpet \$12⁹⁵ sq. yd. (40' Only)

Tarkett Vinyl Flooring SALE Priced

Quasar
 13" diagonal Fashion Remote Portable Color TV \$297⁵⁰
 19" diagonal Table Color TV \$289⁹⁵
 20" diagonal Remote Table Color TV \$399⁹⁵
 Deluxe Rack Audio System* with AV Unified Wireless Remote Control \$539⁹⁵
 Quasar Video Cass Recorder \$319⁹⁵

BROYLES Carpet, Inc.
 4242 N. 1st Abilene, TX
 COMMERCIAL AND RESIDENTIAL SPECIALIST
 WEST TEXAS FINEST CARPET STOCK
FREE NO MILEAGE CHARGE UP TO 100 MILES WHEN PURCHASING CARPET BY THE SQ. YD.
Image Collection \$13.99 Sq. Yd.
 DuPont Certified StainMaster Hi-Low
 And Plush
 Price includes Carpet, Pad And Labor
 CER 63

HIGGINBOTHAM'S
 Over 100 Years of Quality and Service
 Mon.-Sat. 8 a.m. - 5 p.m.
 N. Main St. Rising Star

Could 'Senior Citizens' Be Our Strongest 'Industry'?

(ED. NOTE: A local citizen called this Wall Street Journal article to our attention, and wondered if our area couldn't be built on and expanded. It's a fact that we have the climate and the resources here for better serving this segment of our society. Comments would be welcome.)

KEOWEE KEY, S.C.—In the past, rural areas with the economic blahs would reflexively try to collar a new industry. But the hustling and scheming to attract new business aren't yielding good results anymore. So a growing number of distressed regions like this one are looking for salvation from a different kind of industry.

Forget about landing that widget factory; this industry is better. It gives a tremendous boost to local retail, services and construction businesses. It adds greatly to the tax base and requires little or no extra spending on police or schools. It chokes local banks with fresh money, and it doesn't belch noxious fumes into the air or turn the landscape into a moonscape.

The industry: old people. Or, more specifically, retirees with loose change and a hankering to look for the good life in rural America.

Here in Keowee Key, a retirement community expanding across a stretch of this raw, piney-woods corner of South Carolina, every moving van unloading a new upscale migrant gives a life to the once-laggard economy of Oconee County, hammered by decline in its textile industry. The tax rolls swell a bit. The average income goes up a bit. A new job is generated.

The Prune Juice Belt
"It's like somebody came around with a watering can and things just started popping up," marvels local restaurateur Britt Adams. His storefront establishment, Le Champignon, is one of several restaurants that have blossomed in Seneca, S.C., the nearest town to Keowee Key. Since

1981, when retirees first started coming here in numbers, the town has been transformed into one of the state's fastest-growing commercial areas. Says Seneca City Councilman Devoe Blackston: "We ought to be looking at retirement communities as a whole new form of light industry."

Elsewhere, a growing influx of retirees into rural areas is creating similar bright spots in the economic gloom that covers much of the countryside. A 1986 study by the Federal Reserve Bank of Kansas City found that rural counties of what might be called the Prune Juice Belt - those whose economies are based on retirees-have out-paced all others in per-capita income growth.

Until recently, however, most rural authorities didn't appreciate what retirees could do for them, and those attracting them did so mainly through luck and not concerted effort. Old people meant poor people, they thought, and so they kept on lusting after conventional industries.

Wooing the Big Spenders
Many still do. "It's hard to overcome the smokesack-chasing mindset," says Mark Drabenscott, an economist at the Kansas City Fed. Retirees, he adds, are still "an overlooked part of the economy."

But that is changing, and fast. Thanks in large part to vastly improved pension arrangements, retirees and those nearing retirement have more to spend than any other segment of the population. Younger, healthier and more active than their counterparts of a generation ago, they are willing to spend - and spend big. Understanding this, more towns, counties and even whole states are beginning to woo them.

Michigan's Upper Peninsula and Minnesota's Iron Range, both of them depressed mining areas, are promoting their potential for outdoor recreation in trying to win retirees. When Silver Bay, Minn., lost its major industry, Reserve Mining Co., residents pooled their

resources for far-flung newspaper ads (some appeared in Florida papers) offering their homes to retirees. Several dozen have already moved in.

In hard-pressed Bennettsville, S.C., officials reluctantly decided they couldn't afford the tax abatements and other incentives needed to land a new electronics plant, the town's first employment choice. Now they are cozying up to developers, hoping to get a retirement community built. The pitch: the area's rolling terrain is "ideal for golf."

'Economic Salvation'
The state government of South Carolina is after retirees, too. In 1986, it bought more than 3,000 acres of land adjoining Clarks Hill Lake, near a sparsely settled stretch of the Savannah River. The state plans to put in roads and other amenities, then sell the property to a developer to build a retirement town of 12,000 people.

In doing so, the state is trying to use retirees as a vehicle to achieve a public-policy aim: pumping more jobs and money into its poorest region. Morrison Parrott, head of the Clarks Hill-Russell Authority, the state agency overseeing the development, predicts it will create 3,400 new jobs.

"It's going to be our economic salvation," Mr. Parrott says. Massachusetts is using

the same strategy. It has been assembling 1,040 acres for a similar but smaller development near Mount Greylock in the northern Berkshire Mountains, an area that has lagged behind the rest of the state economically. It is estimated that the project's 2,000 residents, who will pay up to \$250,000 to live among a golf course, tennis courts and ski trails, will generate about 700 permanent jobs.

For its part, Exxon Corp. is hoping that retirees will help it recover some of its investment in one of the biggest resources busts of recent years. In 1982, Exxon gave up on its giant Colony oil-shale project on Colorado's beautiful but isolated Western Slope - deflating the hopes of everyone in the region and leaving Exxon stuck with Battlement Mesa, a 3,200-acre, partly developed townsite it had set up to house workers and their families. What to do with it?

After analyzing its options, Exxon decided that retirees offered, as one official puts it, "the best return we could get." The company has changed its model-home plans from big split-levels to smaller, single-story ranch homes, beefed up insulation (warmth was a primary retiree concern), and added a golf course and indoor swimming pool. About 1,500 people have moved in to date.

Buying a Buick
Though the Prune Juice Belt overlaps much of the Sun Belt it is not limited to it, as shown by places like

Battlement Mesa. Self-contained retirement communities are springing up everywhere. In other cases, large numbers of retirees are moving into existing rural towns, seeking safer streets, cheaper and more ample housing, cleaner air, less crowding, a sense of community. And wherever they settle, in town or in a retirement enclave, they generally bring disposable income that can and does make a big difference.

When Howard Heggem retired as president of a Chicago abrasives company, he paid cash for a 2,200-square-foot home in Hot Springs Village, a retirement community in central Arkansas. Mr. Heggem and his wife transferred their six-figure nest egg to a local bank. They hired a local contractor to build their home. When they decided to trade in their Cadillac, they bought a Buick from a local dealer.

Many people like him live in Hot Springs Village. A survey shows its residents annually spend about \$10,000 each in the area. Mr. Heggem says that while county officials ignored the fledgling development at first, "we began hearing from them when they realized we were putting \$20 million a year into the local economy."

Clashing With the Locals
Developers say that large retirement communities generally produce one service job for every eight residents. Hot Springs Village, with 4,400 of them, does better than that. It is credited with spawning 75 new area businesses and creating more than 1,400 new jobs for rural Garland and Saline Counties. But if retirees bring

money and create jobs, they also can change the entire nature of a rural area, inspiring friction that didn't exist before. The interests and priorities of retirees often don't coincide with those of old-time residents, who may also resent the comparative affluence of the strangers in their midst.

No one denies, for example, that the upper-income retirement community of Heritage Village has transformed the economy of its host town, Southbury, Conn. Southbury used to be a one-horse town, a place where a doctor visited only twice a week. Now the Yellow Pages list a whole sheaf of doctors. There are two big shopping plazas now. And the road is snarled with rush-hour traffic and lined with retail businesses and office buildings.

Voting Down Tax Increases
But Heritage Village, which has 4,400 residents is viewed with something akin to awe by the local educational establishment. The residents of the village mobilized a solid bloc of voters who rejected four school tax increases in a row before relenting. Such opposition to taxes for services they don't use is common among retirees in many places, and other residents find them formidable opponents. "These are people who ran corporations," says John Fitzsimons, superintendent of Southbury's schools. "They're smart cookies and boy, are they well organized."

Some grumbling and resentment have also been directed at the well-to-do residents of Keowee Key, here in South Carolina, who are as different from

the people around them as night from day. Their average household income is above \$90,000, more than quadruple that of the rest of the county, and many of the houses they live in cost well over \$200,000, several times the average county price for homes.

The people of Keowee Key are mostly northerners who incline toward Methodism, Lutheranism, Catholicism and Republicanism - in an area where the Baptist church has long held sway and elected Republicans are as rare as 12-inch snow falls.

Money Makes Friends
So it isn't surprising, perhaps, to find a dumpster on the road to the development spray-painted with the message "No more damn Yankees." Or to learn that some politicians are nettled at the efforts of Key residents to get anti-littering and leash-law

measures passed. "This is hunting country," says Jerry Dyar, a member of the Oconee County council. "Leash laws are kind of taboo around here."

But money makes friends, too. Keowee Key has already generated several hundred construction and other jobs, and its developer expects that when it is finished it will produce 550 permanent ones. That would make it the fourth-largest private employer in the county. Also, the kind of jobs it is creating, while paying almost as much as factory work in this fiercely non-union area, aren't likely to disappear in the next recession or shift in industrial policy, as local textile and sawmill jobs have.

None of this is lost on local residents. Says James DuPrey, the county superintendent of education: "Those folks aren't a cost item. They're a revenue item."

Eastland Telegram - Ranger Times - Cisco Press
Rising Star And Callahan County Star

Thursday, August 11, 1988

This MINI-BILLBOARD FOR RENT

Call Your Local Newspaper Today!

Rollin' Pen Skating Rink
200 Avenue E
Cisco, Texas 76437
442-2027 or 442-3593

Hours:	Price:
Friday & Saturday 7-11 p.m.	\$ 3.00
Sunday 2-4 p.m.	1.50

SPECIAL!!!

Housewives & Preschoolers:	1.00
Every Monday & Tuesday 9-11 a.m.	
Everyone else	1.50

(All Children must be accompanied by skating parent!)

BEIL Interiors

Draperies
In-House Beauty

Just Call or Come By

1706 W. Commerce (Hwy. 80 West)
Eastland CER104 (817)629-1319

Area Chairmen Appointed For Annual Cattlemen's Round-Up

Abilene-230 volunteer area chairmen statewide have been appointed for the 29th annual Cattlemen's Round-Up for Crippled Children, according to James Alexander of Abilene, CRCC general chairman. Aubrey Stokes of San Angelo serves as general co-chairman.

The Cattlemen's Round-Up for Crippled Children is a vital fundraiser which benefits the West Texas Rehabilitation Center in Abilene and San Angelo.

Chairmen for the Eastland area include Sid Wayne of Carbon; Jim Choate, Cisco; Lloyd Coan and Mrs. Austin McCloud, Eastland.

"Sales of livestock are converted to dollars which provide out-patient treatments for the increasing number of individuals who will be treated at Rehab Center facilities," explains Shelley V. Smith, WTRC president/executive director.

Scheduled 1988 CRCC sale dates include Haskell Sale - Sept. 24; Cattle Sale - Sept. 26 at Abilene Auction; Horse Sale - Oct. 1, Abilene Auction; Coleman Sale - Oct. 5; Stephenville Sale - Oct. 5; Junction Sheep and Goat Sale - Oct. 10; San Saba Sale - Oct. 13; and Brownwood Sale - Oct. 26.

"Ranchers whose sale calendars do not correspond with Round-Up sales may make a pledge then respond as soon as they can," adds Alexander. "Some stockmen cut out an animal or more throughout the year and ask their local auctions to send the sale proceeds to the Rehab Center."

Persons wishing to make a donation of livestock or cash, or those needing to arrange for transportation of animals should contact the

local chairman or call the nearest WTRC facility.

Since its establishment 35 years ago, West Texas Rehab Center always has focused on treatment of the individual rather than just the handicap. Trained, licensed professionals provide physical therapy, occupational therapy, speech/language therapy, audiology, orthotics, education, diagnostic clinics, social services and work evaluations. Patients are admitted by referral, and are treated without charge except for braces and hearing aids.

WAL-MART
Pictureland Portrait Studio

Back To School Special

Save 25% on our 20-piece portrait package

NOW ONLY **9.70** (plus 95c printing fee) (Reg. 12.95)

two 8x10s, three 5x7s and fifteen wallets on your choice of a traditional, nursery, spring or fall background

Bring in any lower-priced advertised offer and we'll match it! We welcome everyone...babies, children, adults and family groups. No appointment is ever necessary. Satisfaction guaranteed!

Poses our selection. Black and White Backgrounds. Double Exposure and other Special Effects Portraits not available in advertised package \$1.50 for each additional person in portrait. Minors must be accompanied by an adult. (approximate size)

Studio Hours: Daily 10 a.m. until one hour prior to store closing; Sunday (where open): store opening until one hour prior to store closing

The photographer will be here through
Sunday, August 14

Eastland, TX U.S. 80 East

TRAVELING IS EASY
When We Do The Planning

BEATY/TALLEY TRAVEL
A Full Service Agency

Maynard Bldg., Suite 1A

Eastland 5-104 817-629-8504

Prater Equipment Co.
Heavy Equipment Contractors
Dams Utilities
Roads Developments
Brush Work

Free Estimates

817-842-5878 817-842-5244

No Job Too Small or Too Large 5-104

Discounts For Cash Delivery

Gayle & Charles
Warrangas

Chaney Gas Co
708 W. Main, Eastland
(Across From H & R Lumber)
629-1751

After Hours 5-104
Gayle - 629-2128 Charles - 629-8614

DEMO SALE

1988 Tempo G.L.
4 door, med. red:
clear coat color-loaded

Save
Pierce Ford
Cisco, Texas I-20
817-442-1566

MAJESTIC THEATRE
(A Non-Profit Organization)
EASTLAND 629-1322

BIG BUSINESS
Two's company; four's a riot.

Fri.-Sat.-Sun. 7:30 p.m.

"GRAND SLAM!"

BULL DURHAM
— Gary Franklin, NBC-TV/Los Angeles

Fri.-Sat.-Sun. 9:56 p.m.

SHORT CIRCUIT

Saturday Matinee Only
2:00 p.m.

All Seats \$2.50

KING INSURANCE AGENCY
REAL ESTATE

207 MAIN RANGER 647-1171
106 SIXTH ST. CISCO 442-2552

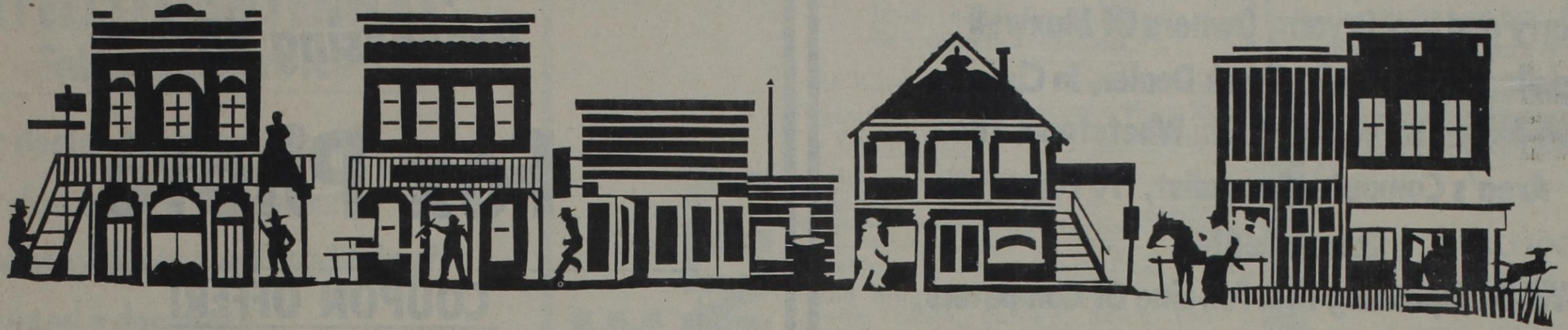
RANGER
NICE BRICK 3 bedroom, 1 1/2 bath, builtins, 1 car garage, utility and fenced backyard.
REDUCE PRICE 3 bedroom 1 bath, living room, formal dining room, 2 storage buildings.
NICE 2 large bedroom, 1 bath, living/dining room, kitchen/breakfast area, large den, carport plus secondary residence apartment and carpet.
SMALL neat dwg, 1 bedroom, 1 bath, kitchen/dining area, large utility, MAKE OFFER.
BUSINESS OPPORTUNITY store building (needs repairs) 12 hookup trailer space, 2 bedroom dwelling, 1 bath on 9 lots on Hwy. 80 East.
CLOSE TO SCHOOL 3 bedroom, 1 bath, fenced yard on 8-plus acres, horse stalls and pens. REDUCED PRICE.
GOOD LOCATION 2 bedroom, 1 bath, living/dining room, utility, 2-plus lots.
ACREAGE 83 acres, 4 tanks, excellent hunting and fishing, on Hwy. 10 miles west from Ranger.
ACREAGE 50 acres, five miles NW from Ranger, excellent hunting.

CISCO
BRICK, 3 bedroom, 1 bath on 3/4 acres old hamburger stand near college.
FRAME 2 bedroom, 1 bath corner lot older home. PRICED RIGHT.
STRAWN 3 bedroom, 1 bath frame dwelling, new plumbing, corner lot, storage building, partially furnished.

OPAL KING BROKER 647-1171
LEE RUSSELL 647-1383

NEED LISTINGS TRY US CER104

EASTLAND COUNTY



ADVERTISER

Total Market Coverage

TIME VALUE	BULK RATE
POSTAL CUSTOMER	U.S. Postage Paid
LOCAL	PERMIT NO. 27
	Eastland, Texas
	Car.-Rt. Sort

THE ADVERTISER is a new publication which will help local merchants reach more customers more efficiently AND more economically!

THE ADVERTISER IS MAILED TO OVER 6,000 additional mail patrons in Eastland and adjoining counties. Every rural route postal patron in Eastland County receives a copy, and post office box holders throughout this area.

THE ADVERTISER IS ALSO a weekly supplement to each of the Eastland County Newspapers: Cisco, Eastland, Ranger and Rising Star.

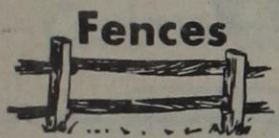
THE ADVERTISER is mailed to every rural route patron out of Eastland, Carbon, Cisco, Ranger, Rising Star and Gorman.

THE ADVERTISER goes to Mingus, Caddo,

Desdemona, Gordon, Santo, Palo Pinto, Strawn, Olden, Carbon, Gorman and Rising Star post office boxes.

THE ADVERTISER is the MOST ECONOMICAL advertising vehicle that has ever been offered. Advertisers are advised to call their local Eastland County Newspaper Office immediately to get the information on low, low rates and to rush copy into this IMPORTANT SALES PUBLICATION.

THE ADVERTISER will help stimulate retail sales in this county...but time is of the essence, and participants are urged to get their copy ready quick--and get into this publication! It's the one that's going to generate business.



Fences

Steinman Fencing
(817) 647-1946

LEE ROY STEINMAN
P.O. BOX 85 • EASTLAND, TX 76448

- CHAINLINK FENCING
- RESIDENTIAL
- COMMERCIAL
- PRIVACY FENCE
- WHITE WOOD
- RED WOOD
- CEDAR
- FARM FENCING
- CUSTOM GATES
- WELDING

THE ADVERTISER

Deadline Friday Noon For Next Week



**HURLEY
PEST CONTROL
& TREE SERVICE**



We control both indoor & outdoor pests. Do landscaping, tree work & offer a Chem-Lawn Service. Reasonable rates. Satisfaction guaranteed. 20% DISCOUNT WITH THIS AD. Call 442-4881

GREER'S

WESTERN STORE RANGER

BACK TO SCHOOL



SALE ITEMS

- *GROUP OF KNIT LEVIS & WRANGLERS AND \$14.98
- *GROUP OF COLORED DENIM LEVIS \$14.98
- *WRANGLER BOOT JEANS \$17.98
- *PERMANENT PRESS DENIM WRANGLERS \$17.98
- *LONG SLEEVE TRADITIONAL WESTERN SHIRTS \$18.98
- *WRANGLER COWBOY CUT JEANS \$18.98
- *WRANGLER SLIM FIT STRAIGHT LEG JEANS \$18.98
- *WRANGLER REG. FIT STRAIGHT LEG JEANS \$18.98



HAT SALE

- * MEN'S STRAW HATS.....\$10.00 OFF
- * LARGE GROUP OF FELT HATS.....\$10.00 OFF

BOOT SALE

- *Group of Tony Lamas
Several Styles - Limited Sizes Now \$69.98
- *Most Tony Lama & Nacona
Cowboy Styles - Cowhide - Bullhide Now \$89.98
- *Justin Ropers Now \$89.98
- *George Strait Roper - Gray Now \$89.98
- *George Strait Roper - Elephant Now \$110.00
- *Tony Lama & Nocona Exotics
Lizard Reg. \$216.98 Now \$179.98
Elephant Reg. \$215.00 Now \$179.98
Smooth Ostrich Reg. \$199.98 Now \$129.98
Snake Reg. \$215.00 Now \$129.98
Shark Reg. \$195.00 Now \$125.00
Bush Kangaroo Reg. \$150.00 Now \$129.98
- *All Mens Acme Boots \$10.00 OFF
- *All Kids Acme Cowboy Boots
(8½ to 6) \$10.00 OFF
- *Kids & Ladies Acme Ropers \$5.00 OFF
(Kids 2½ to 6)
- *Durango Steel Toe Western \$69.98
- *Durango Western Work Boot \$69.98
- *Durango Dress Western Boot \$49.98

25% OFF

- *LADIES DONNKENNY SPORTSWEAR
- *LADIES CLASSIC COUNTRY SPORTSWEAR
- *LADIES CHEROKEE SPORTSWEAR
- *LADIES HANG 10 SPORTSWEAR
- *CIRLET & CAMEO ROSE LADIES
WESTERN FASHIONS
- *GIRL'S HANG 10 & KANGAROO

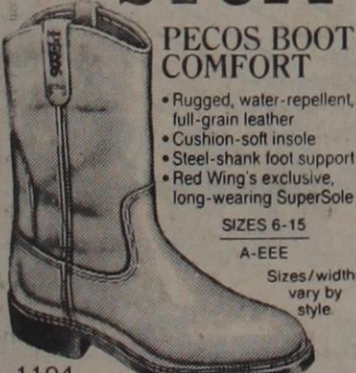


FRESH STOCK

- *LADY WRANGLER COWBOY CUT JEANS
Pre-washed & Acid Washed
Blue-Gray-Black-Purple-Turquoise
- *MENS 501 LEVIS AND WRANGLER COWBOY CUT
Pre-washed & Stone Washed Blue-Black-Gray-Tan
- *KIDS WRANGLER COWBOY CUT JEANS
Pre-washed & Acid Washed Blue-Gray-Black
- * MEN'S 501 SHRINK-TO-FIT LEVIS
- * KID'S WRANGLER STRAIGHT LEGS
- * KID'S LEE STRAIGHT LEGS



TOUGH STUFF



1104
\$75.00 TO \$79.98

RED WING
SHOES

CompuCenter

Larry and Kay Bryant, Owners Of Maxwell Appliance and Radio Shack Dealer, In Cisco, Have Joined Forces With Ken Whetstone, The Area's Computer Specialist, To Form CompuCenter.

We Will Be Expanding To A Full Line Of Computers, Monitors, Printers And Accessories.

SPECIAL

AMSTRAD AT COMPATIBLE WITH 2 DISK DRIVES

COLOR MONITOR

MOUSE

SOFTWARE ----- \$1495⁰⁰

5-1/4 FLOPPY DISKS (10) ----- \$7⁹⁹

3-1/2 FLOPPY DISKS (10) ----- \$14⁹⁹

3-1/2 DISK BOX ----- \$6⁹⁹

AOC ENHANCED GRAPHICS MONITOR ----- \$399⁰⁰

You Can't Beat These Prices In Abilene.

442-1439 712 Conrad Hilton Cisco

Eastland Drug Now Has
 One-Day Color Print Film
 Processing With

Fox Photo

COUPON OFFER!

For the week of Aug. 15 - Aug. 19 you can get these special prices on color, single print processing
 Don't Miss This Exceptional Value!

SINGLE PRINTS

12 Exposure.....\$1.99

15 Exposure.....\$2.69

24 Exposure.....\$3.99

36 Exposure.....\$5.59

EASTLAND DRUG COMPANY

201 West Main

817/629-1791

Eastland, Texas

CLIP & SAVE

must have coupon to receive savings

WAL-MART

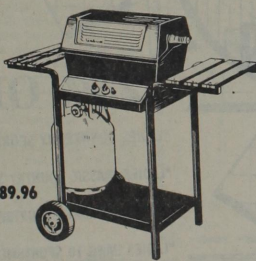
Sunbeam
Cart Gas Grill

SALE PRICE

\$70

Reg. 89.96

- Cart Gas Grill
- 2.25 Square inch cooking area
- 2 Redwood side tables
- Chrome plated cooking grid
- 24,000 BTU dual burner
- Push button ignitor
- 20 lb. LP tank and lava rock included
- No. 3048



Valvoline 10-40

*Multi-viscosity motor oil
 *One quart size *No. 141

SALE PRICE

9.00

case

Reg. 11.28/case

12 pack case



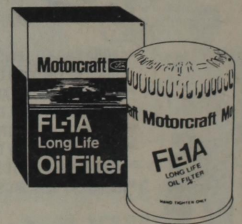
Motorcraft

Oil Filter
 FL-1A Only

Reg. 2.59

SALE PRICE

1.97



Ol' Roy Dog Food
 21% Protein

- Nutritionally complete
- 25 Lbs.

SALE PRICE

3.50

Reg. 4.47



Windex
 Glass Cleaner

- Reg. Only
- 32 Oz.

SALE PRICE

97¢

Reg. 1.44



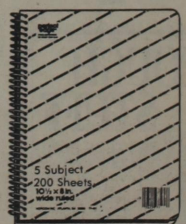
NORCOM
 5 Subject Notebook

Reg. 1.18

- 200 Sheets - Wide or narrow rule - Spiral bound

SALE PRICE

75¢



Prices Good Tuesday, August 9th
 Through Friday, August 12th

Hwy. 80 E. Eastland
 9-9 Mon.-Sat. 12:30-5:30 Sun.



WAL-MART'S ADVERTISED MERCHANDISE POLICY - It is the intention to have every advertised item in stock. However, if due to any unforeseen events, an advertised item is not available for purchase, Wal-Mart will issue a Rain Check on receipt for the merchandise to be purchased at the sale price whenever available or will sell you a similar item at a comparable reduction in price. We reserve the right to limit quantities. Limitations void in New Mexico.

THE ADVERTISER

GOLDSTON SATELLITE ANTENNAS Sales and Service

- Is your dealer out of business?
- Is your dish in need of repairs?
- Does your receiver need modifying?
- Do you need a decoder?
- Do you need programming?
- Do you want to update your system?
- Do you want a dish?

If the answer is "YES" to any of these questions...

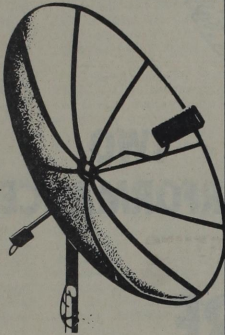
CALL US, WE CAN HELP.

We repair and sell most major brands.

Commercial and residential.

Your Eastland County Dealer since 1982.

817-643-3077



**SHOP AND SAVE
IN EASTLAND COUNTY**

Wayne's Discount Hobbies

(Inside Cheryl's Beauty House)
108 S. Connellee - Eastland, Tx.

Air Water Rockets | Balsa Gliders
Radio Control Boats, | Aerobically Flying Ring
Planes & Cars | Estes Rockets

SHOP Open Tuesday-Friday NIGHTS
629-2435 8:00 am-5:00 pm 653-2335

Creative Crafts Unlimited, Inc.

Build and take orders on wooden crafts. Lawn, garden, home and Christmas decorations.

Buy for gifts of kinds. We also have wooden bookmarks, pins, gun racks, speaker boxes, etc.

Prices reasonable. Open Tues-Fri
9:30-5:30 Sat 10- ?

306 W. 11th Cisco

FOR SALE:
1977 Dodge Van 400 & 1977 28 ft. travel trailer with E-Z lift hitch, \$3500 each, or both for \$6000 and take pickup & trade. 1976 Taurus travel trailer, 24 ft. twin beds & a/c, \$4000 Trailer 4x7 two spare tires & wheels, \$250. Call 647-1343

KEYS MADE LOCKS CHANGED OR REPAIRED

ELROD'S MOBILE LOCK SHOP

423 W. MAIN
RANGER, TEXAS 76470
PHONE 647-3444

BONDED LOCKSMITH
AUTO—RESIDENCE—COMMERCIAL 5-61

ALL SPRING AND SUMMER MERCHANDISE

2 FOR THE PRICE OF 1!

prices good through
Saturday, August 6th

P.J.'s FASHIONS
708 Conrad Hilton

442-4841
Cisco



YOUR ELECTRICAL SUPPLY STORE

WIRE	12/2 NM W/G 250'	\$29 ⁹⁵
	12/2 UF W/G 250'	\$49 ⁹⁹
	4/3 AWG Alum. 1000'	\$597 ⁰⁰
In Stock Wire 18 ga. thru 2/0 ga.		

LOAD CENTERS	In Stock Load Centers 30 amp thru 200 amp
	125 amp 2-4 Space Outdoor \$28 ⁴⁷
	125 amp 2-4 Space Indoor \$16 ⁹⁹

48 K Incandescent Bulbs	\$1 ⁵⁹
48" Shop Light without Bulbs	\$8 ⁷⁷ 6030 WH

FLOURESCENT BALLASTS

48" 2-Light	\$12 ⁰⁰
96" 2-Light	\$19 ⁹⁵

Other Ballasts in Stock including some High Output

Good Selection Fluorescent Bulbs 14" through 96"

CONDUIT

1/2"x10' EMT	\$1 ⁹⁹
3/4"x10' EMT	\$2 ⁹⁹
1"x10' EMT	\$5 ⁹⁹
1 1/2"x10' EMT	\$10 ⁷⁹

Fittings for EMT, Flexible, and Water Tight in Stock

Brown or Ivory Duplex Receptacles 39¢

Brown or Ivory Single Pole Switches 49¢

We stock the following Breakers: GE, Crouse-Hinds, Federal Pacific, Bryant, Square D, Sylvania

CISCO ACE LUMBER & BUILDING SUPPLY

110 Sandler Sq.

Cisco

442-2320

Get TWO^{New} Subscriptions For The Price Of ONE

Buy A Subscription NOW At The Regular Price And Get A Second Subscription For A Relative Or Friend FREE.

Especially Good For College Students

New Subscriptions Only

Good On Same Value Paper Through Sept. 1, '88

EASTLAND COUNTY NEWSPAPERS

Cisco Press

P.O. Drawer 1072
Cisco, Texas 76437

\$17. a year - in county

Ranger Times

P.O. Box 118
Ranger, Texas 76470

\$17. a year - in county

Eastland Telegram

P.O. Box 29
Eastland, Texas 76448

\$17. a year - in county

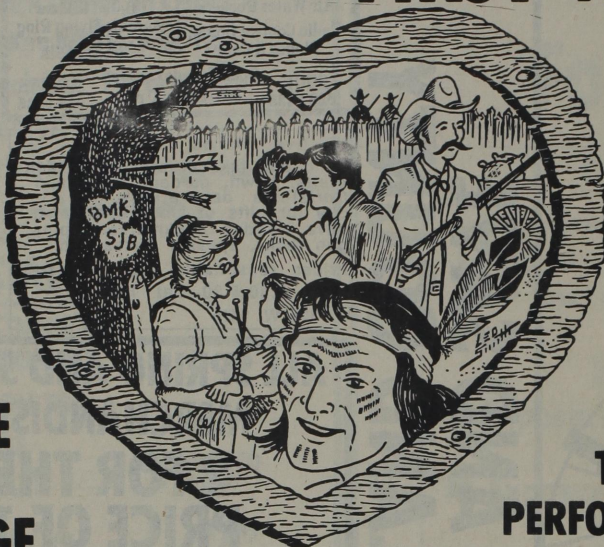
The Rising Star

P.O. Box 127
Rising Star, Texas 76471

\$8. a year - in county

"EASTLAND COUNTY'S

FIRST WEDDING"



**LIVE
ON
STAGE**

**TWO
PERFORMANCES**

MAJESTIC THEATRE

EASTLAND, TEXAS

SATURDAY, AUGUST 20TH 8:00 P.M.

SUNDAY, AUGUST 21ST 2:00 P.M.

**Tickets Now Available at
CHAMBER OF COMMERCE**

ALL SEATS — \$3.00

**SPONSORED BY
EASTLAND COUNTY'S HISTORICAL SOCIETY**

**ALL PROCEEDS TO BENEFIT
THE EASTLAND COUNTY HISTORY BOOK**

(A Non-Profit Organization)

Offices:

CISCO

EASTLAND

RANGER

Get TWO^{New} Subscriptions For The Price Of ONE

Buy A Subscription NOW At The Regular Price And Get A Second Subscription For A Relative Or Friend FREE.

Especially Good For College Students

New Subscriptions Only

Good On Same Value Paper Through Sept. 1, '88

EASTLAND COUNTY NEWSPAPERS

Cisco Press

**P.O. Drawer 1072
Cisco, Texas 76437**

\$17. a year - in county

Ranger Times

**P.O. Box 118
Ranger, Texas 76470**

\$17. a year - in county

Eastland Telegram

**P.O. Box 29
Eastland, Texas 76448**

\$17. a year - in county

The Rising Star

**P.O. Box 127
Rising Star, Texas 76471**

\$8. a year - in county

**SHOP AND SAVE
IN EASTLAND COUNTY**

RANGER Fall term pre-registration will begin at Ranger Junior College on August 15, 1988, and continue through Aug. 23. Students new to RJC should plan to attend a scheduled time for testing. On Aug. 15, 16, 17 and 18. This required test is given at 10 a.m. in the Library Auditorium, and Registration for classes will follow. Returning students are advised to pre-register Aug. 15, 16, 17 and 18 between 8:30 a.m. and 10 a.m. Returning students can begin the registration process at the Registrar's office. Dormitories will open on Sunday, Aug. 21 between 1 and 5 p.m. Regular registration and testing for those who did not pre-enroll will be on Aug. 22. Evening registration is also available Aug. 22 and 23, but the only evening testing period is scheduled for Friday, Aug. 19 at 7 p.m.

Stephens and Martin Paving Inc. began construction on Main Street in Ranger on Tuesday, Aug. 9, and the work will continue through Aug. 16. The area includes Hwy. 80 to FM 101, and Main Street is being blocked in sections and reopened as the construction is finished. This work consists of laying new asphalt on the street.

The Ranger Exes Association will meet Saturday, Aug. 13 at 2 p.m. in the Ranger Room over Olney Savings. Final plans for the 1988 Homecoming will be discussed. Everyone interested in helping or being a part of Homecoming is encouraged to attend.

Don't forget that the Ranger Volunteer Fire Department Ladies Aux-

iliary will have a Garage Sale Saturday, Aug. 13 from 9 a.m. - 5 p.m., and Sunday, Aug. 14 from 1-5 p.m. at the Fire Station. Any donations of usable items would be greatly appreciated. For more information call 647-1505.

Joe Williams has been named Ranger Chairman and Coordinator for the MDA Jerry Lewis Labor Day Telethon. The date for the Telethon are Sept. 4 and 5, and KTAB TV in Abilene will bring it to the public in this area. Williams asks that everyone get involved for this very worthy cause. Anyone who would like to volunteer please call 647-1505.

Fifty Thousand dollars worth of jewelry was recovered by Callahan County Sheriff Bill Skinner and Abilene Police after they received a tip from a pawn shop on stolen goods. The jewelry was stolen from Mrs. Judy Wilson of Abilene during a Horse Show July 17 at the Rogers Horse Ranch south of Clyde. She reported that her purse was stolen from the office, and it contained a watch and four rings valued at \$50,000. The watch was pawned in a shop of Pine Street on July 26, and Sheriff Skinner and the Abilene Police followed up the name and address on the ticket. After obtaining a search warrant they arrested a Sara Garcia, who turned over other items belonging to Mrs. Wilson. Garcia is being held on \$35,000 bond.

The Community Sign that the Baird Chamber of Commerce put up on the Cour-

se is now ready for use. The letters have arrived and the sign is available for any events which concern the community. So drive past the Courthouse and find out what is happening in Baird!

The Texas Department of Agriculture would like to know who would be willing to donate hay from CRP acres, if they were able to recover their baling costs of approx. \$30 per ton. Secretary Lyng has made this allowance in Minnesota and it is expected that Texas farmers will soon be allowed to help their neighbors. To give an idea as to how much acreage would be available, please call the 1-800-DIAL-HAY program.

On Monday the Eastland County Commissioners approved the County's admission into the Area Development District Program. This Development Program is under the U.S. Department of Commerce, which provides most of the funding. The West Central Texas Council of Governments also helps with funding, and participating counties may eventually have to pay a fee. When a county is in such a district, it gets preferential government treatment in financing, contract bidding, and other matters. This could lead to business growth and new hiring, a solution to the local unemployment problem.

The Cisco Friends and Fellowship Ministry group of East Cisco Baptist Church visited the Ben Richey Boy's Ranch in Abilene on July 28. Members of the group car-

ried items the boys might need, like toothpaste, soap, towels, washcloths, etc. They had a 3:30 appointment to meet Charlie Jordan, the Director, at the ranch, but he was unable to be present. The receptionist showed them around the living quarters, and also outside the buildings. The receptionist told them that the ranch often received calls to take boys much younger than they were permitted to care for at this facility.

The proposed budget for the City of Cisco is expected to be adopted when the City Council meets this week. Other business up before the Council includes a request from parents of the 1989 Senior Class to close the 100 block of East 5th St. for a High School and Street Dance on Aug. 27. The Council members will also consider approval of a Resolution Approving Acquisition of Real Property (Old Perry's Bldg.) by the Eastland County Appraisal District.

The Cisco High School Class of '46 is planning to hold a reunion starting at 10 a.m. Saturday, Aug. 20 in the Corral Room. Lunch will be catered. Those planning to attend are asked to please make reservations by calling Wanda Nelms after 5 p.m. at 442-3326. All former teachers are also invited.

In a called meeting of the Eastland City Commission last Monday evening, commissioners approved the after-hours use of the Park Hill city pool for conducting scuba diving classes. Terry Edwards obtained the approval. On another matter, the Commissioners decided to request input from city personnel before updating or improving the city's dangerous building ordinance. Possible ordinance changes reportedly will not have any effect on buildings presently considered to be dangerous.

Crowds at the Old Rip Bucks drawings at 10 a.m. each Saturday are growing larger, and so is the prize money available. You must be present to win - and a number of people have missed out by not being on the Courthouse Square when their names were drawn. More than 30 Eastland businesses are participating in this giveaway, and the Old Rip Bucks will be redeemable at those places for the dollar amount of merchandise.

On Monday the Eastland County Commissioners approved the County's admission into the Area Development District Program. This Development Program is under the U.S. Department of Commerce, which provides most of the funding. The West Central Texas Council of Governments also helps with funding, and participating counties may eventually have to pay a fee. When a county is in such a district, it gets preferential government treatment in financing, contract bidding, and other matters. This could lead to business growth and new hiring, a solution to the local unemployment problem.

The Cisco Friends and Fellowship Ministry group of East Cisco Baptist Church visited the Ben Richey Boy's Ranch in Abilene on July 28. Members of the group car-

ried items the boys might need, like toothpaste, soap, towels, washcloths, etc. They had a 3:30 appointment to meet Charlie Jordan, the Director, at the ranch, but he was unable to be present. The receptionist showed them around the living quarters, and also outside the buildings. The receptionist told them that the ranch often received calls to take boys much younger than they were permitted to care for at this facility.

The proposed budget for the City of Cisco is expected to be adopted when the City Council meets this week. Other business up before the Council includes a request from parents of the 1989 Senior Class to close the 100 block of East 5th St. for a High School and Street Dance on Aug. 27. The Council members will also consider approval of a Resolution Approving Acquisition of Real Property (Old Perry's Bldg.) by the Eastland County Appraisal District.

The Cisco High School Class of '46 is planning to hold a reunion starting at 10 a.m. Saturday, Aug. 20 in the Corral Room. Lunch will be catered. Those planning to attend are asked to please make reservations by calling Wanda Nelms after 5 p.m. at 442-3326. All former teachers are also invited.

In a called meeting of the Eastland City Commission last Monday evening, commissioners approved the after-hours use of the Park Hill city pool for conducting scuba diving classes. Terry Edwards obtained the approval. On another matter, the Commissioners decided to request input from city personnel before updating or improving the city's dangerous building ordinance. Possible ordinance changes reportedly will not have any effect on buildings presently considered to be dangerous.

Crowds at the Old Rip Bucks drawings at 10 a.m. each Saturday are growing larger, and so is the prize money available. You must be present to win - and a number of people have missed out by not being on the Courthouse Square when their names were drawn. More than 30 Eastland businesses are participating in this giveaway, and the Old Rip Bucks will be redeemable at those places for the dollar amount of merchandise.

On Monday the Eastland County Commissioners approved the County's admission into the Area Development District Program. This Development Program is under the U.S. Department of Commerce, which provides most of the funding. The West Central Texas Council of Governments also helps with funding, and participating counties may eventually have to pay a fee. When a county is in such a district, it gets preferential government treatment in financing, contract bidding, and other matters. This could lead to business growth and new hiring, a solution to the local unemployment problem.

The Cisco Friends and Fellowship Ministry group of East Cisco Baptist Church visited the Ben Richey Boy's Ranch in Abilene on July 28. Members of the group car-

ried items the boys might need, like toothpaste, soap, towels, washcloths, etc. They had a 3:30 appointment to meet Charlie Jordan, the Director, at the ranch, but he was unable to be present. The receptionist showed them around the living quarters, and also outside the buildings. The receptionist told them that the ranch often received calls to take boys much younger than they were permitted to care for at this facility.

The proposed budget for the City of Cisco is expected to be adopted when the City Council meets this week. Other business up before the Council includes a request from parents of the 1989 Senior Class to close the 100 block of East 5th St. for a High School and Street Dance on Aug. 27. The Council members will also consider approval of a Resolution Approving Acquisition of Real Property (Old Perry's Bldg.) by the Eastland County Appraisal District.

The Cisco High School Class of '46 is planning to hold a reunion starting at 10 a.m. Saturday, Aug. 20 in the Corral Room. Lunch will be catered. Those planning to attend are asked to please make reservations by calling Wanda Nelms after 5 p.m. at 442-3326. All former teachers are also invited.

In a called meeting of the Eastland City Commission last Monday evening, commissioners approved the after-hours use of the Park Hill city pool for conducting scuba diving classes. Terry Edwards obtained the approval. On another matter, the Commissioners decided to request input from city personnel before updating or improving the city's dangerous building ordinance. Possible ordinance changes reportedly will not have any effect on buildings presently considered to be dangerous.

Crowds at the Old Rip Bucks drawings at 10 a.m. each Saturday are growing larger, and so is the prize money available. You must be present to win - and a number of people have missed out by not being on the Courthouse Square when their names were drawn. More than 30 Eastland businesses are participating in this giveaway, and the Old Rip Bucks will be redeemable at those places for the dollar amount of merchandise.

On Monday the Eastland County Commissioners approved the County's admission into the Area Development District Program. This Development Program is under the U.S. Department of Commerce, which provides most of the funding. The West Central Texas Council of Governments also helps with funding, and participating counties may eventually have to pay a fee. When a county is in such a district, it gets preferential government treatment in financing, contract bidding, and other matters. This could lead to business growth and new hiring, a solution to the local unemployment problem.

The Cisco Friends and Fellowship Ministry group of East Cisco Baptist Church visited the Ben Richey Boy's Ranch in Abilene on July 28. Members of the group car-

ried items the boys might need, like toothpaste, soap, towels, washcloths, etc. They had a 3:30 appointment to meet Charlie Jordan, the Director, at the ranch, but he was unable to be present. The receptionist showed them around the living quarters, and also outside the buildings. The receptionist told them that the ranch often received calls to take boys much younger than they were permitted to care for at this facility.

The proposed budget for the City of Cisco is expected to be adopted when the City Council meets this week. Other business up before the Council includes a request from parents of the 1989 Senior Class to close the 100 block of East 5th St. for a High School and Street Dance on Aug. 27. The Council members will also consider approval of a Resolution Approving Acquisition of Real Property (Old Perry's Bldg.) by the Eastland County Appraisal District.

The Next Best Thing -

...to a clear conscience and a good night's sleep is the feeling of security in owning your own home with a clear title. Peculiar to the real estate field, values are based on land and the improvements thereon, if any. But values on these are based on the title. The title then becomes the most important item to be considered when purchase of real property is contemplated. So be careful to buy good title based on an abstract of title or a policy of title insurance.

Eastland County Abstract Company, Inc.

Eastland, Texas

817-629-1077

CERRS104

PAT MAYNARD REAL ESTATE

WE APPRECIATE YOUR BUSINESS!!

629-8568 MAYNARD BUILDING HIGHWAY 80 EAST EASTLAND, TEXAS

EASTLAND HOMES AND LOTS

Oak Hollow Area, 3 BR, 2 Bath, Brick, CH/CA, Fireplace, Ceiling Fans, Builtins, Privacy Fence, Sprinkler System, Solar-Powered Hot Water Heater, \$62,500. Unique 3 BR, 2 Bath, Mission Brick, Approx. 2,471 sq. ft., 2CH/CA Units, Rock Fireplace, Builtins, Wet Bar, Garden Tub, & More! \$99,500. Magnificent 4 BR, 3 Bath, Brick, Approx. 3,000 sq. ft., Formal Liv/Din. Rm., Modern Kitchen w/Bkfst. Nook, Large Den w/Woodburning Fireplace, Sep. Master BR Suit, Beautiful Wooded Backyard & Patio, \$130,000. Comfortable 3 BR, 1 1/2 Bath, Approx. 2000 sq. ft., Situated on Lovely S. Seaman, CH/CA, Ceiling Fans, Custom Drapes, Formal Din. Rm., Big Kitchen, Concrete B-B Court, Patio, 3-Rm. Enclosed Detached Garage, \$60,000. Attractive 4 BR, 1 1/2 Bath, Yellow Frame, Spacious Liv. Area & Kitchen, Central Heat, Fenced Backyard, Carport, Stor. Shed, Pecan Trees, Hillcrest Addition, \$38,500. Priced To Sell: Cute 2 BR Frame Home w/Yellow Siding, CH/CA, Formal Din. Rm., New Carpet, Ceiling Fans, Storm Windows, Covered Patio w/Gas Grill, Stor. Shed, Fenced yard, Big Oak Trees, JUST \$29,500! Luxurious 2-Story Brick Home, Corner Lot, Approx. 5,000 sq. ft., All The Amenities, Exclusive Oak Hollow Area, Call for App. to See! Huge 5 BR, 3 1/2 Bath, Brick, Sep. Liv. Areas, Formal Din. Rm., Double-size Master BR Suite, Storage Galore, Solarium, Upstairs Studio, Garage Apt., Corner Lot, The Worlds of Space and Livability of this home is indescribable! \$109,500. Pretty 3 BR, 2 Bath Brick, CH/CA, Custom Drapes, Ceiling Fans, Fireplace, Utility Rm., 2-Car Garage, Sprinkler System, Fenced Yard, Stor. Shed, \$72,500. Historic White 2-Story Situated on 1 1/2 Acre Scenic Area, Stately Oak Trees, CH/CA, New Carpet, Drapes, Formal Din. Rm., 5 BR, 2 Baths, Wide Hallways, Covered Porch and Balcony overlooking Estate, Completely Fenced, Detached Gar. & Stor., \$135,000. Let's Talk Terms! Price Reduced on this 3 BR, 2 1/2 Bath, Brick, Approx. 3,000 sq. ft., Huge Gameroom w/Wet Bar, Bookcases, Fireplace, CH/CA, Formal Din., Big Kitchen w/Bkfst. Area, Guest House, Pool, & Jacuzzi, \$99,500. Owner Says Sell! 2-Story 3 BR Brick, Approx. 2,000 sq. ft., plus Garage Apt. which could be fixed up for more space or Rental Income, \$39,500. Nice 3 bdrm, 1 1/2 bath, brick, circle drive in front, paved rear entrance drive in back, formal living-dining room, large den with fireplace, CH/CA, built ins with microwave, beautiful patio, fenced back yard \$68,500. Still Time To Choose Your Colors on Brand New "Spec" Home situated on S. Seaman! 3 BR, 2 Bath, CH/CA, Builtins, \$72,000. 2-Story, 5 BR, 2 Bath, Approx. 2,500 sq. ft., CH/CA, Situated on 2 Lots, 2 Stor. Houses, plus 1 Older House w/Kitchen & Liv. Rm., \$45,000. In The Heart Of Crestwood, 3 BR, 1 1/2 Bath, Brick, CH/CA, Carpet, Custom Drapes, Fireplace, Wet Bar, 3-Car Garage, Circle Dr., \$88,000. See To Appreciate! 3 BR, 2 Bath, Brick, CH/CA, Builtins, Sauna w/Whirlpool, Brick Patio, Corner Lot, Crestwood Addition, \$69,500. 3 BR, 2 Bath Double-Wide, CH/CA, Builtins, Double Carport, Large Stor. Bldg., \$17,500. 3 BR, 2 Bath, Brick, Large Livingroom, CH/CA, Builtins, Fireplace, Ceiling Fans, Energy Efficient, Corner Lot, Approx. 1,710 sq. ft., \$48,500. 3 BR, 2 Bath Mobile Home, 14'x80', CH/CA, Builtins, \$10,700. 2 BR Frame, CH/CA, Ceiling Fans, Patio, Garage, Fenced Backyard, \$35,000. Fresh Paint! 2 BR Frame, Carpet, Paneling, Ceiling Fan, Carport w/Stor., Fenced Backyard, \$22,000. Large 2 BR, 1 1/2 Bath, Sep. Liv. Areas w/Huge Den, CH/CA, Carpet, Appliances, Double Carport, Sep. Apt. in Back, Chainlink Fence, \$30,000. Bright as Sunshine, 3 BR on 1/2 Lots, Detached Garage, Storm Cellar, Pretty Trees, Close in, Owner Finance, \$21,500. Newest Listing! Like New 2 BR, 1 Bath Mobile Home, Fully Furnished, Builtins, CH/CA, Only Lived in 8 Mo., Small Equity & Assume FHA Loan! Pymts. \$157.97 Mo. \$500 Down & Take Over Payments, Nice 3 BR, 2 Bath Mobile Home, CH/CA, Builtins, Sunken Tub, Wood Siding, Shingle Roof, Pymts. \$296 per mo. Extremely Nice 3 BR, 2 Bath Double-Wide situated on approx. 1 ac. overlooking Lakeside Golf Course, CH/CA, Fireplace, Builtins, \$43,000. 3 BR Near Schools, CH, Carpet, Ceiling Fans, Refrig. Air, Stor. Shed, Large Carport, Pretty Trees, \$33,000. Neat 2 BR Frame/Stucco on W. Main, Dishwasher, Chainlink Fence, \$17,500. Ideal Starter Home, 2 BR Frame, CH/CA, Carpet, \$28,500. Attractive 3 BR Frame w/Brick Trim, Good Carpet, CH/CA, Dishwasher, Ideal Kitchen, Fenced Yard, Stor. Shed, \$35,500. Like New, 3 BR, 2 Full Baths, CH/CA, Storm Windows, New Plumbing & Wiring, 5 Ceiling Fans, Fenced yard, \$33,000. Brick Duplex, 2 BR, 1 1/2 Bath on Both Sides, CH/CA, Builtins, Carport w/Stor., \$36,000. Hilltop View from this 3 BR, 2 Full Baths, Good Location near Schools, \$29,500. 2 BR (Could be 3), corner lot (4 lots in all), Stately Oak Trees, Fireplace, \$28,000. 3 BR Frame w/Siding, Woodburning Stove, Ceiling Fans, Fenced Yard, Fruit Trees, Near School, \$35,000. 4 BR, 1 1/2 Bath, Abt. 1,800 sq. ft., near major convenience store, \$20,000. 2 BR (Could be 3), Frame, on 2 lots, Fenced Yard, Storm Cellar, \$15,500. 2 BR Frame w/Siding, New Carpet, Dbl. Carport w/Stor., Woodburning Heater, Fruit Trees & Garden Spot, \$30,000. Lake Leon, 3 BR, 1 1/2 Bath Mobile Home under Full Roof, 14'x70', CH/CA, Builtins, Boat House & Dock, Carport, Stor. Shed, Staff Water, Deeded Lot, \$35,000. Lake Leon, 3 BR, 1 1/2 Bath Brick Home on Deeded Lot, Staff Water, Boat Dock, Deep Water, Furniture can stay! \$45,000. Lake Leon, 3 BR, 2 Bath Brick, approx. 2,000 sq. ft., CH/CA, Deeded Lots, plus 3 Rental Units (2 BR Mobile Home, 1 BR Frame House; 1 BR Frame/Sliding). All For \$92,500. Must See! Lake Leon, 3BR Frame, CH/CA, Woodburning Heater, Carpet, Staff Water, Situated on 2 Deeded Lots, plus small guest house, \$40,000. Residential Lots in Oak Hollow Subdivision, \$7,500 ea. Heavily Wooded Lot near Eastland Lake, Approx. 1/2 Ac. \$9,200. First Time Ever On Market: Exceptionally nice lot, Hillcrest Addition. Residential Lots Just Listed, Good Eastland Location, 8 lots in all! Lake Lots, Lake Leon, La Mancha Area, Please Call For Details!

HOMES AND LOTS: CARBON, GORMAN, CISCO, RANGER, OLDEN

Cisco, Beautiful Victorian 2-Story w/Attic and Basement situated in Nice Neighborhood, Corner Lot, Priced for QUICK SALE! Cisco, 2 BR Fletwood Mobile Home, CH/CA, Builtins, Stor. Bldg., Can Assume Lease Purchase on Lot, \$70,500. Cisco, 2 BR w/Den, New Carpet, New Paint, New Copper Piping, Garage, \$21,000. Olden, 2 BR (Could be 3), 1 1/2 Bath on approx. 2.96 ac. city water, storm windows, storm cellar, fences, \$39,500. Olden, 3 BR, 1 1/2 Bath Brick on approx. 2.2 ac., New Carpet, CH/CA, Ceiling Fans, Utility Rm., Covered Patio w/Gas Grill, 2 Water Wells, 18 Pecan Trees, \$65,000. Olden, 3 BR, 1 1/2 Bath Brick on approx. 1 ac., CH/CA, Fireplace, Builtins, Utility Rm., Covered Patio, Stor. Sheds, Chainlink Fence, \$69,000. Carbon, 3 Room House, Owner Finance, \$2,500. Carbon, 8.9 ac. due South of Carbon School, part wooded, Hwy. Frontage, \$10,000.

LAND: FARMS, RANCHES & SMALL ACREAGE WITH HOMES

Horse Operation, 51 ac., 3 tanks, 3 water wells, 20 ac. cult., remainder in coastal, good fences, w/3 BR, 3 Bath Brick Home w/all the Amenities! Approx. 2,800 sq. ft., \$197,000. 22 ac. w/4 BR Home, Approx. 2,000 sq. ft., Fireplace, Large Kitchen w/lots of cabinet space, 2 tanks & water well, \$65,000. 26 ac. w/3 BR, 2 Bath Triple-Wide Modular Home, Approx. 2,000 sq. ft., CH/CA, Builtins, Deck w/Hot Tub, Extra Nice! \$79,000. 50.6 ac. Near Eastland Lake, Some Coastal, Good Fences & Set of Pens, Creek, Pecan Trees, 3 Tanks, \$80 per ac. 26.15 ac., Hwy. 80 between Eastland & Cisco, Westbound Water, 1 tank, mostly all Coastal, \$825 per ac. 20 ac. near Lake Leon, 1 tank, mostly kline grass, owner finance, \$27,000. 136.7 ac., 30 ac. cult. & rest in coastal, love, & K.R., good fences, 4 tanks, water well, 20 pecan trees, \$90,000. 249.3 ac., 2 tanks, Sabana River, 140 ac. cult. & rest pasture, Oak & Pecan Trees, 1/2 Minerals, \$650 per ac. 12 1/2 ac., 1-20 Frontage, City Water, 1 Tank, Some Coastal, Near Eastland, Owner Finance. 46 ac. near Olden, City Water, 20-25 ac. lake, coastal, oak & pecan trees, good fences, lots of game, \$75,000. 60 ac. w/3 BR, 2 Bath Home, Fireplace, City Water, 2 Tanks, Coastal & Kline, New Fence, Call for details. 40 ac. Wooded Tract, Owner Finance, Easy Terms, \$38,000. 167 ac. W. of Cisco on Old Abilene Hwy., fair fences, 2 tanks, 112 ac. cult., 1/4 minerals, \$454 per ac. 260 ac. near Scrampton, approx. 140' cul., spring fed tank, 3 water wells, barn & shed, 1/2 of Seller's Minerals, \$525 per ac. 166 ac. NW Eastland, good road frontage, good fences, excellent hunting, lots of trees, some cultivation, corrals, \$550 per ac. 75.5 ac., all wooded, fair fences, good hunting, near Olden, \$525 per ac. 146 ac. pasture land, oak trees, 1 tank, Hwy. frontage, fenced, some minerals, \$550 per ac. Approx. 14 ac. coastal SE Eastland, county Rd. frontage on 2 sides, \$16,000.

COMMERCIAL

TURN KEY OPERATION, Service Station, 2 Bays, Office, 2 Restrooms, 20'x26' metal shop bldg., all equipment, busy location, \$60,000. Bargain! 5,000 sq. ft. Metal Bldg. on Approx. 1/2 ac. 1-20 Frontage near Eastland's busiest 1-20 Intersection, \$76,000. Brick Bldg., Approx. 1,800 sq. ft., Situated on W. Main, Eastland, ideal business or office location! PRICED FOR QUICK SALE! \$42,700. 1-20 & Hwy. 6 Intersection, property on three corners, call for details. Commercial Lot on Hwy. 80 E., Eastland, REDUCED! \$45,000. 50'x100' Metal Bldg. on 38.693 ac., 1-20 Eastland, \$214,000. 1,800 sq. ft. Bldg. on corner lot, well-known business location, \$45,000. 31 ac. RV Park, 1-20 Eastland, 10 Overnight Campsites w/water, sewer, & Elec., 1/2 minerals, Let's Talk! TAKE ADVANTAGE OF THE LOWER INTEREST RATES! WE BUILD NEW HOMES ON YOUR LOT OR OURS. CERRS104

Eastland County Popovers Summer Gymnastics Camp Registration Saturday, August 13th Classes begin on Monday, August 18th from 10:00 a.m. until 12:00 noon each day in the Old Eastland National Bank Building on South Seaman St. If unable to attend the registration please Call 629-8072 or 629-8700

BIG COUNTRY R.E. 1101 1/2 W. 12th 442-1693 FEATURING 2bd. Central H/A, 2 lots, good price HUD Repossessions. We handle them Rising Star: Home on 1/2 ac. \$15,000 Acreage: 3 AC and Up-Some with homes. We Have More - CALL US DANA (BKR) 442-3958 PENNY 442-1707 JEFFREY 643-3129 Margaret 643-3313 CERRS104

ANN WILLIAMS REAL ESTATE 610 Conrad Hilton Ave., Cisco 442-1880 Business & Home Phone CISCO HOMES Choice of two homes on corner lots, possible owner finance, \$7,500. each. Investment property, only \$1,000 down, \$150 per month. Call us about our 2 & 3 BR homes under \$12,500. 2 and 3 BR mobile homes from \$9,500. to \$16,500, each have large yards. Only \$18,000 for this 2 BR home, sep. DR, utility rm, recently painted exterior, large pecan trees. Many Possibilities! Residential or commercial, 4 BR, 2 bath, rock home on approx. 2 lots. Have you called about 2 & 3 BR homes under \$20,000? Energy efficient, 2 BR home, wooden deck, garage, nice landscaped yard. Humbletown area. Affordable Large 2 BR, 2 bath home, CH/CA, double garage, located on 2 lots, pecan trees, owner fin. available. Unique older home on 3 lots, large 3 BR, 1 3/4 bath, CH/CA, 2 living areas, plus detached apartment. Don't Miss this lovely 2 BR home on 4 lots, large shop with 3 phase wiring, beautiful yard, water well. Affordable! Cozy 3 BR, 1 3/4 bath home, breakfast nook, formal DR, double garage, and workshop. Victorian style, 2 story home, 5 BR, 2 bath, 2 fireplaces, double carport, on lovely tree shaded property. Remodeled 5 BR, 2 bath, 2 story home, insulated, storm windows, CH/CA, rewired and replumbed, water treatment system, many extras. Need Animal Space? Come see this 3 BR 1 3/4 bath home on 14 lots. Spectacular Buy! Extras Galore! 3 BR 2 baths, DR/LR combination, sep den, privacy fence, carport. 13 Lots make a beautiful setting for this lovely 3 BR, 1 3/4 bath home, CH/CA, also has an unfinished 2 BR, 1 3/4 bath home, all city utilities, plus water well. Convenient location! Exceptional 3 BR, 1 3/4 bath home, CH/CA, 2 living areas, DR, office space, new carpet, large shaded yard. Nice selection of 3 & 4 BR brick homes with CH/CA, ranging from \$29,000 to \$48,500. Call for details. Several Residential Lots available. HUD REPOSSESSIONS- Call for information. LAKE CISCO AREA: Several homes in various sizes, from \$5,000 to \$35,000. Call for details. MORAN: Triplex, Residential or Commercial. COMMERCIAL PROPERTIES Doctor's clinic or large office building, like new, CH/CA, large parking area. Large metal building on 4 lots, excellent location. ACREAGE AND COUNTRY HOMES 3 BR brick home on 29.6 acres, mostly wooded, 1 tank. South of Cisco, 48.63 acres, partly wooded, \$21,500. Approx. 50 acres, mostly wooded, some cultivation, 2 tanks, water well, 3 BR home, good hunting and fishing. 160.7 acres, pasture and farmland, tank, creek, lots of turkey and other game, \$370. per acre. Approx. 173 acres of peanut land near Rising Star. Approx. 179 acres, mostly coastal fields, good hunting, 2 water wells, 5 tanks, barn, pens, good fences, many improvements, 2 BR home plus hunting cabin.

Ann Williams Cathy Wallen Broker Associate 442-1880 CERRS104 442-2120

Town & Country REAL ESTATE Barbara Love, Inc. Highway 80 East Eastland, Texas 76448 Broker 629-1725 629-8391 EASTLAND LOTS AVAILABLE 75'x150'. \$750 down. Owner financing E14 GREAT FOR YOUNG FAMILY OR RETIREE! 14x56 mobile home with 2 BR, 1 bath, cen. H/A, kitchen appliances & washer/dryer. Fenced yard. E17 THIS IS IT! Beautifully landscaped, 3 BR, 2 bath with many extras, approx. 2,000 sq. ft. Swimming pool, satellite, sprinkler system. CALL TODAY! E19 BEAUTIFUL EXECUTIVE HOME available in prestigious neighborhood. 4 BR, 2 1/2 bath brick and frame home w/many amenities, and PRICE HAS BEEN REDUCED. E28 PRICED REDUCED on this neat 2 BR, 1 bath frame home with fenced yard, 25'x40' steel building. SEE THIS ONE TODAY! E29 YES, YOU CAN OWN A BRICK HOME for under \$40,000.00! See this 3 BR, 1 1/2 bath home on large lot. Many extras! E32 PRETTY AS A PICTURE! This quality home has it all - prestige location, 3 bedrooms, 2 baths, formal dining, large living room, hot tub, in-ground swimming pool, MORE!! E31 UNUSUAL OPPORTUNITY to own a large 3 BR, 2 bath home for under \$18,000.00! CALL US! E32 REMODELLED - Neat 1 BR, 1 1/2 bath frame home. New wiring, re-plumbed CH/CA kitchen. ONLY \$25,000.00! SEE THIS ONE TODAY! E30 COUNTRY LIVING IN TOWN! Nearly new large custom home. Heat pump, rock fireplace, office. Beautiful oak covered lot. E23 NEED TO BUILD? Lot in prime location, near schools, great neighborhood! E34 "DOLL HOUSE" - perfectly remodeled 2 BR home with warm, homey atmosphere. Beautiful country kitchen, more. E32 PRICED TO PLEASE! Charming brick 3 BR, 1 1/2 bath home in excellent neighborhood. A "must see" home! E7 OAKWOOD BEAUTY 3 BR, 2 bath brick with fireplace, enclosed patio, CALL US! E29 BUDGET PRICED! Neat 2 BR, 1 bath frame home, carport, Stg. Nice location, pretty yard. E10 BRICK, 2 BR, 1 1/2 bath. Formal living & dining. Den with fireplace. A "Nice" home. E20 NEAT STARTER HOME, on beautiful wooded lot. 2 BR, 1 bath. Ceiling fans, Privacy fence. E15 SPACIOUS 3 BR, 1 1/2 bath frame home on large lot. Nice location, beautiful, large trees. E18 VACANT LOT - COMMERCIAL AREA, near downtown. Frontage on N. Lamar, access from Patterson St. Owner will finance. E30 ON A BUDGET! PRICED REDUCED on this affordable 2 BR, 1 bath home - lg. living area, gar./carport. E25 CLOSING? Then see this 1 1/2 bath 2 BR older home with Cen. H/A, remodeling. Nice lot, large trees. E8 CHARMING DUTCH A-FRAME on 2 wooded lots - 2 BR, 1 1/2 bath, only 8 yrs. old. Like New! E33 SMALL DOWN, ASSUMPTION & OWNER 2ND makes it easy to buy this cozy 2 BR with insulated siding. Don't wait! E34 PERFECT LOCATION near school, churches, doctors & downtown. 3 BR, 1 1/2 bath, remodeled and priced just right! E37 LIVE AT THE LAKE & VACATION YEAR-ROUND in this 2 BR, 2 bath home, many amenities. Redwood deck, boat dock, deeded waterfront lot. O10 RANGER - LOW DOWN, EXCELLENT FINANCING for qualified buyer. 2 BR, 1 1/2 bath home, Cen. H/A, large cor. lot. LET US SHOW YOU! O9 LAKE LEON-New 3 BR, 2 bath, brick home on deeded waterfront lot, under construction. BUY NOW and choose carpet. O11 PICTUREQUE WOODEN SETTING and large lakeview lot (not SOLD) enhance this 12 x 72 mobile home. Staff Water. REASONABLE! O10 LAKE LEON-Beautiful waterfront lot with large 2 BR home, fireplace, central H/A, Staff water. VERY NICE! O10 LAKE LEON - VERY NICE 3 yrs. old 3 BR, 2 bath home on large lot with oak LAKE, PLUS small cabin. Fruit trees, garden spot, MORE! O11 RANGER - SMALL EQUITY & ASSUME. Very neat, remodeled 3 BR, 2 bath frame home, Cen. H/A, appliances. O18 PEGGYE SWAFFORD BARBARA BOSTICK 647-1050 442-3822 BARBARA LOVE CINDY FOSTER 647-1397 629-8227

Legal Notice

CAUSE NO. 9513
NOTICE TO ALL PERSONS
HAVING CLAIMS AGAINST
THE ESTATE OF
MARGARET ELIZABETH
GOW

Notice is hereby given that Original Letters of Administration With Will Annexed for the Estate of MARGARET ELIZABETH GOW were issued on July 13, 1988, in Cause NO. 9513, pending in the County Court of Eastland County, Texas, to: Nancy J. Childress Rt. 1, Box 137 Cross Plains, TX 76443

All persons having claims against this Estate, which is currently being administered, are required to present them within the time and in the manner required by law.

Dated: August 1, 1988. Respectfully submitted, (signed) Brad Harris BRAD HARRIS P.O. Box 1177 Baird, Texas 79504 State Bar No. 09061800 (915) 854 1002

Attorney for the Estate of MARGARET ELIZABETH GOW, Deceased

1988 PROPERTY TAX RATES IN Rising Star City

This notice concerns 1988 property tax rates for Rising Star City. It presents information about three tax rates. Last year's tax rate is the actual rate the taxing unit used to determine property taxes last year. This year's effective tax rate would impose the same total taxes as last year if you compare properties taxed in both years. Compare it to the tax rate the taxing unit proposes for this year. This year's rollback tax rate is the highest tax rate the taxing unit can set before taxpayers can start tax rollback procedures. In each case these rates are found by dividing the total amount of taxes by the tax base (the total value of taxable property) with adjustments as required by state law. The rates are given per \$100 of property value.

LAST YEAR'S TAX RATE:

Last year's operating taxes \$48,925.02
Plus Last year's debt taxes \$-0-
Equals Last year's total taxes \$48,925.02

Divide Last year's tax base \$9,026,758

Equals Last year's total tax rate \$5.42 per \$100

THIS YEAR'S EFFECTIVE TAX RATE

Last year's adjusted taxes (after subtracting taxes on lost property and taxes to correct appraisal roll errors) \$48,613.16

Divide This year's adjusted tax base (after subtracting taxes on new property) \$9,046,357

Equals This year's effective tax rate \$.53737 per \$100

Times 1.03
Equals Maximum rate unless unit publishes notices and holds hearings \$55349 per \$100

THIS YEAR'S ROLLBACK TAX RATE

Last year's adjusted operating taxes (after subtracting taxes on lost property and taxes to correct appraisal roll errors and adding taxes lost in court suits) \$48,613.16

Divide This year's adjusted tax base (after subtracting taxes on new property) \$9,046,357

Equals This year's effective operating rate \$.53737 per \$100

Times 1.08

Plus This year's debt rate \$0.0000 per \$100

Equals This year's rollback rate \$.58035 per \$100

SCHEDULE A: UNENCUMBERED FUND BALANCES

The following balances will probably be left in the unit's property tax accounts at the end of the fiscal year. These balances are not encumbered by a corresponding debt obligation.

Type of Property Tax Fund Maintenance & Operation Balance -0-

SCHEDULE B: 1988 DEBT SERVICE

The unit plans to pay the following amounts for long-term debts that are secured by property taxes. These amounts will be paid from property tax revenues (or additional sales tax revenues, if applicable).

NONE-NA

Total required for 1988 debt service \$NONE

Subtract Amount (if any) paid from funds listed in Schedule A \$NONE

Subtract Excess collections last year \$NONE

Equal Total to be paid from taxes in 1988 \$NONE

Plus Amount added in anticipation that the unit will collect only 91% of its taxes in 1988 \$NONE

Equal Total Debt Service Levy \$-0-

This notice contains a summary of actual effective and rollback tax rate calculations. You can inspect a copy of the full calculations at: City of Rising Star Tax Office-Rising Star, Texas

Name of person preparing this notice: Steve Thomas

Title: Chief Appraiser - Eastland County Appraisal District

Date Prepared: August 5, 1988

1988 Property Tax Rates in Eastland County

This notice concerns 1988 property tax rates for Eastland County. It presents information about three tax rates. Last year's tax rate is the actual rate the county used to determine property taxes last year. This year's effective tax rate would im-

pose the same total taxes as last year if you compare properties taxed in both years. Compare it to the tax rate the county proposes for this year. This year's rollback tax rate is the highest tax rate the county can set before taxpayers can start tax rollback procedures. In each case these rates are found by dividing the total amount of taxes by the tax base (the total value of taxable property) with adjustments as required by state law. The rates are given per \$100 of property value.

LAST YEAR'S TAX RATE:

Last year's operating taxes - General Fund: \$889,387.55; Special Rd./Bridge Fund: \$327,529.03; Farm-to-Market: \$NA

Plus Last year's debt taxes - General Fund: \$146,602.45; Special Rd./Bridge Fund: \$-0-; Farm-to-Market: \$NA

Equal Last year's total taxes - General Fund: \$1,035,990; Special Rd./Bridge Fund: \$327,529.03; Farm-to-Market: \$NA

Divide Last year's tax base - General Fund: \$488,674,865; Special Rd./Bridge Fund: \$481,660,345; Farm-to-Market: \$NA

Equal Last year's tax rate for each fund - General Fund: .212/\$100; Special Rd./Bridge Fund: .068/\$100; Farm-to-Market: NA

Equal Last year's total tax rate - Special Rd./Bridge Fund: .28/\$100

THIS YEAR'S EFFECTIVE TAX RATE:

Last year's adjusted taxes (after subtracting taxes on lost property and taxes to correct appraisal roll errors) - General Fund: \$1,022,780.20; Special Rd./Bridge Fund: \$322,902.93; Farm-to-Market: \$NA

Divide This year's adjusted tax base (after subtracting taxes on new property) - General Fund: \$451,210,808; Special Rd./Bridge Fund: \$444,075,018; Farm-to-Market: \$NA

Equal This year's effective tax rate for each fund - General Fund: \$.22667; Special Rd./Bridge Fund: \$.07271; Farm-to-Market: \$NA

Times This year's total effective tax rate - Special Rd./Bridge Fund: \$.29938/\$100 x 1.03;

Equal Maximum rate unless unit publishes notices and holds hearings - Special Rd./Bridge Fund: \$.30836/\$100.

THIS YEAR'S ROLLBACK TAX RATE:

Last year's adjusted operating taxes (after subtracting taxes on lost property and taxes to correct appraisal roll errors and adding taxes lost in court suits)

- General Fund: \$878,047.07; Special Rd./Bridge Fund: \$322,902.93; Farm-to-Market: \$NA

Divide This year's adjusted tax base (after subtracting taxes on new property) - General Fund: \$451,210,808; Special Rd./Bridge Fund: \$444,075,018; Farm-to-Market: \$NA

Equal This year's effective operating rate - General Fund: \$.07852/\$100; Special Rd./Bridge Fund: \$.07271/\$100; Farm-to-Market: NA/\$100

Times 1.08

Equal This year's maximum operating rate - General Fund: \$.21016/\$100; Special Rd./Bridge Fund: \$.07852/\$100; Farm-to-Market: NA/\$100

Plus This year's debt rate - General Fund: \$.03095/\$100; Special Rd./Bridge Fund: \$.00000/\$100; Farm-to-Market: \$NA/\$100

Equal This year's rollback rate for each fund - General Fund: \$.2411/\$100; Special Rd./Bridge Fund: \$.07852/\$100; Farm-to-Market: \$NA/\$100

Equal This year's total rollback rate - Special Rd./Bridge Fund: \$.31962/\$100.

SCHEDULE A: UNENCUMBERED FUND BALANCES

The following balances will probably be left in the unit's property tax accounts at the end of the fiscal year. These balances are not encumbered by a corresponding debt obligation.

Type of Property Tax Fund: General Fund (Maintenance & Operation) Balance: \$426,346.00 (Bond) Balance \$162,893.00 Road & Bridge Balance: \$433,882.00

SCHEDULE B: 1988 DEBT SERVICE

The unit plans to pay the following amounts for long-term debts that are secured by property taxes. These amounts will be paid from property tax revenues (or additional sales tax revenues, if applicable).

Bond - Principal \$115,000; Interest \$19,388; Due June, 1989 - Total Payment \$134,388

Total required for 1988 debt service \$134,388

Subtract Amount (if any) paid from funds listed in Schedule A \$-0-

Subtract Excess collections last year \$5,396.01

Equal Total to be paid from taxes in 1988 \$128,991.99

Plus Amount added in anticipation that the unit will collect only 90% of its taxes in 1988 \$14,332.44

Equal Total Debt Service Levy \$143,324.43

This notice contains a summary of actual effective and rollback tax rate calculations. You can inspect a copy of the full calculations at: Eastland County Auditor's Office - Eastland, Texas.

Name of person preparing this notice: Steve Thomas

Letter to the Editor

Several people have telephoned the State Fire Marshal in Austin regarding the unprotected status of Rising Star in so far as insurance coverage is concerned.

Ike Williams from that office has reviewed the file which shows that an inspection four or five years ago indicated equipment problems in this department and even though notice and inspection have been made at intervals since then, the equipment has not been brought to standard. Their report shows Rising Star does not have enough volunteers, not enough training, no specific organization and required reports have not been forwarded to the Fire Marshal's office monthly.

Williams indicated these reports must be made timely, accurately and complete regarding training of at least two hours per meeting, twice each month with attendance records kept concerning all persons who will be fighting fires. He says professional help may be secured by telephoning A & M Extension Service and that it is necessary, he believes, for this service to be utilized. Primarily and finally he insists that all persons involved whether city, rural, either or both, must come together in a united effort to accomplish the afore mentioned goals before Rising Star is again given protected status for insurance purposes, and even more important, before they can accomplish a workable satisfactory volunteer fire department. All the residents in this entire community are directly affected by an inefficient fire department.

Name withheld by request.

DEAR EDITOR

I would like to direct my letter to the person who wrote you last week.

We are not trying to give the city officials a hard time but it seems we have gotten a hard time turned on us (the rural people). I did not elect the City of Rising Star officials - I'm rural; I can't vote for your mayor and councilmen. I have just tried to work with them to form a better fire department to no avail.

The rural had run their own department since 1972

Title: Chief Appraiser - Eastland County Appraisal District

Date Prepared: August 3, 1988

or 1973 when the mayor then said the city could no longer send trucks to rural fires. All we want now is our separate department again as it was voted at the last area meeting. The two departments were joined in January 1986. The rural was doing fine on their operation of their department at the time. It was one of those meetings that was not well publicized. All our area meetings have been publicized and from your letter you have not attended, because you do not seem to know what is going on.

I have talked to the State Fire Marshal's office in Austin personally; this insurance going up is not a problem that has come up this year or last year. He said it has been a problem for Rising Star for 10 or so years. All we have heard is that is the Board of Directors' fault. This is not so. The reports of the firefighters' training, Fire Marshal reports and a list of volunteer firefighters need to be kept up and are not. The Board of Directors is to keep the equipment running and in good shape.

For a while last year that was impossible with so many fires. Yes, they were rural fires and rural people have always come around and supported the fire department when the chips are down. We know we need the fire department and firefighters. They give their time and at times risk their lives and they are greatly appreciated. Without them where would we be?

Have you ever taken your tractor and plow to a fire? How about a shovel and wet sack? I think not. Everyone needs to work together.

We tried to do that with our by-laws. They were basically how the department was being run; we just wanted it on paper so there would be

no more secret meetings to elect new boards of directors.

Where do you think Rising Star would be without rural people buying in the stores there? Ask Higginbotham's, Family Food, the convenience stores, cafes, etc. They can tell you a lot of rural money goes through your town.

All the trucks do not belong to the City. Rural members of the Board of Directors found two of the trucks. I can show you our phone bills where they were found. My husband and Larry White went to Brookbrook and picked up that truck after finding it on a trip to the Fort Worth area. All trips and phone calls were on us - having nothing to do with the city. The 4-wheel drive was picked up from REA after contacting them about a used truck.

The building in which the trucks are housed was built by a combination of the two departments. It was built in 1984 with people working together. I saw and heard about the building going up first hand. My husband, father and father-in-law all worked on the building numerous hours.

I'm not talking about a subject I know nothing about. I have been involved with the fire department in one way or another for the last 12 years. My dad was a director of the Rural Fire Department, followed by my husband.

Yes we are Christians and have tried to work out all our problems correctly. We have done no gossip, everything has been taken care of through the proper channels. I have chased down many stories thrown our way and have found them to just that - stories.

We've been to lawyers, called the Attorney General's office, Secretary of State, Board of Insurance, Fire Marshal's office, etc. We have covered all avenues and there has been no need to gossip.

We feel if you'd poll the town you'd find no one wants to see the fire department split. But we have tried everything possible to work all this out.

The paperwork in the past was not under the control of the Board of Directors but we hoped to change that. A local lady offered to keep up these reports to get Rising Star back on its feet and some of the insurance woes healed but that was quickly stopped by the mayor and council.

Sorry, city people. It seems you must bear the brunt of this! Rural people, as you know, you insurance is unchanged. You pay totally unprotected rate anyway.

For the record I have lived in this area all my life. I will sign my name because I have checked all avenues and I know what I'm saying. NO GOSSIP HERE.

Barbara Murphree

PERSONAL

The Carlton Clarks have returned home to Eastland after vacationing three months at Ruidoso, N.M. They visited in the home of the Virgil Clarks on Sunday, along with the Ray Finleys of Moran and the H.D. Clarks of Kermit.

The Carlton Clarks informed us they enjoyed a rain every day except three since the 4th of July. We're hoping the rain will follow them home.

The Chuck Wagon Cafe

will be Closed from

2 P.M., Fri, Aug. 12 until
7 A.M., Mon, Aug. 15

Thanks for your Patronage,
Ken & Ethel

Gun--Knife-Coin Show

Sept. 3-4-5

Adams Street
Community Theatre,
Brownwood

Dealers Wanted

Table Reservations
being accepted now

8 foot table-\$25.00

GARY FUNDERBURG

(405)949-0019 Work

(405)789-6896 Home

or Call

(915)348-9282

Custom Application of Dry & Liquid Fertilizer



Acco Feed Line
All Types Seed

Fertilizer
Complete Line of Hydraulic Oil, Motor Oil,
Grease and Filters.

Winfrey

Feed & Peanut Co.

S. Mayben at E. Smith

(817)643-6251 Rising Star

THE CARROUSEL CLUB

IS COMING!
WATCH FOR IT SOON!

CER
RS69

Comanche County Electric Cooperative Inc.



Comanche County Electric
Cooperative Annual
Membership Meeting

August 19, 1988

Comanche High School-Highway 16 North
Registration Gifts-Refreshments
-Door Prizes-

Registration: 7:00 p.m.

Business Session 8:00 p.m.

PONDEROSA BALLROOM

3881 Vine Street
Abilene
(915)698-2102

PRESENTS

FREE Bar-B-Q Every Sunday

Plus Two Bands

Billy Thompson 4 p.m. - 8 p.m.

Cindy Seaman & Breakaway 8 p.m. - Midnight

Admission \$3.00 Per Person

\$1.00 Admission, Tue., Wed., & Thur.

With \$100.00 Door Prize Every Wed. & Thur.

KOUNTRY KITCHEN

Beginning Aug. 4
6:00 a.m.-8:00 p.m.
Mon.-Fri.
Sat.-6:00 a.m.-6:00 p.m.

Home Phone 643-5742 Gasoline & Diesel

CAREY'S AUTOMOTIVE

Open Mon.- Fri. 7:30 a.m. - 6 p.m.
Sat. - Sun. 8 a.m.- 12 noon

James Carey, Mechanic

Hwy. 36 East Rising Star
Shop Phone 643-7009

Rs52

L&J CONSTRUCTION

New Const. - Remodels
Add-Ons - Steel Bldgs.
Sheet Rock - Tape & Bed
Acoustic - Texture

Jim Ratliff Lynn Hutton
817-643-6444 Rt. 1, Box 145A
Rising Star Cross Plains, Tx. 76443

L&J CONSTRUCTION

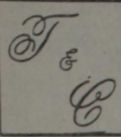
EASTLAND FARM AND RANCH CENTER

Special Livestock Feeds For Champions
GRAND ENTRY HORSE FEEDS
SHOWMASTER CALF FEEDS
SHOWMASTER LAMB FEEDS
SHOWMASTER PIG FEEDS

Give Us A Try,
We Appreciate Your Business!

Open Early-7 am Close Late-6 pm Sat.-7-5

629-2173 CERRS104 301 N. Seaman 629-8035



VILLAGE MARKET

QUANTITY RIGHTS RESERVED

WE GLADLY ACCEPT FOOD STAMPS

EVERY MONDAY IS SENIOR CITIZENS DAY 5% DISCOUNT ON YOUR TOTAL PURCHASES.

We Accept FOOD STAMPS & WIC CARDS

WEEK LONG SPECIALS

SAVE THIS AD, SHOP ANY DAY YOU LIKE - SPECIAL PRICES IN THIS AD EFFECTIVE August 10 thru August 16, 1988

STORE HOURS
MONDAY-SATURDAY 7 A.M.-8 P.M.
SUNDAY 8 A.M.-7 P.M.
QUANTITY RIGHTS RESERVED

Phone 725-7131 Cross Plains, Texas

We Have Postage Stamps & Money Orders

DOUBLE COUPONS 7 DAYS A WEEK

BACON
SILVER SPUR SLICED
LB.
98c
BULK

PORK CHOPS
ASSORTED FAMILY PAC
LB.
\$1.59

FRANKS
SHURFRESH 12 OZ. PKG.
79c

CHUNK BOLOGNA MR. TURKEY LB. **99c**
SMOKED TURKEY BREAST MR. TURKEY LB. **\$3.79**

OVEN ROASTED TURKEY BREAST MR. TURKEY LB. **\$3.79**
HILLSHIRE FARM SMOKED SAUSAGE LB. **\$2.29**

CRYVOC BONELESS BRISKET LB. **\$1.19**
CENTER CUT PORK CHOPS LB. **\$2.19**

FANCY CALIFORNIA VALENCIA LB.
ORANGES 49c

CALIFORNIA RED 5 LB. BAG
GRAPEFRUIT \$1.49

POTATOES U.S. NO. 1 RUSSET 10 LB. **99c**
PLUMS CALIFORNIA FRIAR LB. **69c**

CARROTS FRESH 2 LB. BAG **59c**
APPLES NEW ZEALAND GRANNY SMITH LB. **79c**

HOT PEPPERS JALAPENO LB. **69c**
WHITE ONIONS 4 LB. FOR **\$1**

MILK
GANDY'S DAIRYGOLD HOMO
GALLON **\$1.89**

TUNA
STARKIS1 CHUNK LIGHT 6 1/2 OZ.
79c

FLOUR
GLADIOLA 5 LB.
88c

TOMATO SAUCE
DEL MONTE 8 OZ.
5/\$1

ALMOST HOME COOKIES 11 OZ. **\$1.19**
POST ALPHA BITS 15 OZ. **\$2.49**
KELLOGG'S FROSTED FLAKES 20 OZ. **\$2.79**
DUNCAN HINES TIARA DESSERTS SAVE \$1 PER BOX **\$2.99**

LEMON SCENTED COMET 17 OZ. PLASTIC **2/\$1**
NORTHERN NAPKINS 140 CT. **79c**
SOLO PARTY CUPS 20 CT. 16 OZ. **99c**
CHARCOAL STARTER **\$1.79**

BANQUET POT PIES 7 OZ. **49c**
JENO'S PIZZAS 16 OZ. **99c**
COUNTRY CROCK 1 LB. QUARTERS **49c**
COUNTRY CROCK 24 OZ. SPREAD **99c**

BAR-B-Q SAUCE
KRAFT 18 OZ. (SAVE 51c PER JAR)
88c

BEANS
RANCH STYLE (SAVE 11c PER CAN)
15 OZ. **39c**

LUNCH MEAT
SPAM 12 OZ. CAN (SAVE 40c PER CAN)
\$1.49

REYNOLDS WRAP
3 7/8 SQ. FT. (SAVE 30c PER ROLL)
\$1.39

DETERGENT
SURF LAUNDRY 147 OZ.
\$4.99

SOAP
IVORY PERSONAL BAR 4-BAR BUNDLE
99c

COCA-COLA
6 PACK 12 OZ. CANS
\$1.39

RITZ CRACKERS
20 OZ. FAMILY SIZE
\$2.49

NALL'S QUIK STOP

Prices Good Till 8-13-88

Open 6 am-11 pm

Video Movies

Rent 1 Get 1 FREE

Tony's Microwave Pizza
Pepperoni & Supreme,
8.5 oz.

\$1.49



Red Baron Pizza
Sausage, Pepperoni &
Hamburger; 22 oz.

\$2.59

Bacon & Supreme \$2.99

Coca-Cola

6 Pack Cans **\$1.69**

3 Liter Btls. **\$1.39**



Mrs. Bairds Cinnamon Rolls

Buy 1 Get 1
FREE



Pepsi, Mountain Dew & Diet Pepsi

2 Liter Btls. **99¢**



Holsum Thin Slice Bread

79¢



Tom's Tortilla Chips

Reg. \$1.49

ONLY **99¢**



Frito Lay Big Grab Chips

2 for **89¢**

Gandy's Ice Cream

1/2 Gallon

\$1.99



Watermelons

20-30 Lbs.

ONLY **\$2.00**

Cantaloupes

3 for **\$1.00**



Dolly Madison

Zingers & Buttercrumb Cakes

4 for **\$1.00**

Earrings

\$1.99

T-Shirts \$6.95

Come Check Out Our New Expansion!

FAMILY FOOD STORE

North Main St.

Affiliated Food Store

Rising Star

NEW STORE HOURS
Monday-Sunday
8:00 a.m.-6:00 p.m.

Phone 643-2221

Prices Effective:
Wed., Aug. 10-Sat., Aug. 13

We Make Deliveries

★ **Support Your Town - Shop At Home** ★

<p>US No. 1 Russet Potatoes 10 lb. bag</p> <p>89¢</p>	<p>Southeastern Free Stone Peaches</p> <p>39¢ Lb.</p>	<p>California Lemons 2 lb. bag</p> <p>99¢</p>
<p>Fresh Carrots 2 lb. bag</p> <p>59¢</p>	<p>Jalapeno Hot Peppers</p> <p>69¢ Lb.</p>	<p>White Onions</p> <p>4 lbs. \$1.00 for</p>
<p>X-Fancy Driscoll Strawberries</p> <p>79¢ Pt.</p>	<p>Family Pack Pork Chops Asst.</p> <p>\$1.59 Lb.</p>	<p>Pork Chops Rib Cut \$1.79 Lb. Loin Cut \$1.89 Lb.</p>
<p>Silver Spur Slab Bacon</p> <p>88¢ Lb.</p>	<p>Delta Pride Catfish Nuggets</p> <p>\$1.59 Lb.</p>	<p>Soft N Pretty Toilet Tissue 4 roll pkg.</p> <p>99¢</p>
<p>Crisco Oil 64 oz.</p> <p>\$3.59</p>	<p>Kraft Miracle Whip Reg. or Light, 32 oz.</p> <p>\$1.79</p>	<p>Kraft Dressing Asst., 8 oz.</p> <p>99¢</p>
<p>Kraft BBQ Sauce Asst., 18 oz.</p> <p>90¢</p>	<p>Del Monte Green Beans Cut or French Style, 16 oz.</p> <p>3 for 99¢ Limit 6</p>	<p>Del Monte Corn Cream Style or Whole Kernel, 17 oz.</p> <p>3 for 99¢ Limit 6</p>
<p>Del Monte Peas 17 oz.</p> <p>3 for 99¢ Limit 6</p>	<p>Del Monte Spinach Leaf or Chopped, 15 oz.</p> <p>2 for \$1.00</p>	<p>Del Monte Tomato Sauce 8 oz.</p> <p>6 for \$1.00 Limit 6</p>
<p>Light Crust Mixes Pancake, Yellow or White Cornbread; 6 oz. pkg.</p> <p>5 for \$1.00</p>	<p>Sweet N Low Sugar Substitute 50 ct. pkg.</p> <p>79¢</p>	<p>Shurfresh Ice Cream Square, 1/2 Gallon</p> <p>2 for \$3.00</p>
<p>Patio Burritos Asst., 5 oz.</p> <p>3 for \$1.00</p>	<p>Kraft 1/2 Moon Horn Cheese Cheddar or Colby, 10 oz.</p> <p>\$1.79</p>	<p>Pillsbury Country Pleasin' Buttermilk Biscuits 5 oz.</p> <p>4 for \$1.00</p>

Grand Prize, 1988 Oldsmobile Cutlass Supreme - Over \$90,000 in Prizes

43rd Anniversary Sale

See Store For Further Details
Come Help Us Celebrate With Store Wide Specials
Register To Win Great Prizes!