



© 1990

Vol. 29, No. 39

10 PAGES TODAY

Published Every Sunday At Muleshoe, Bailey County, Texas 79347

Member  
**TEXAS PRESS  
ASSOCIATION**

**20¢**

Sunday, September 30, 1990

# Cemetery Association Chooses Directors

around  
muleshoe

\*\*\*  
Timothy L. Roberts, son of Burley L. and Carolyn S. Roberts of Enochs, has been appointed a sergeant in the U. S. Air Force.

The new non-commissioned officer completed training in management, leadership, human relations and NCO responsibilities, before being awarded this status.

The sergeant is a fitness and recreation specialist at Bitburg Air Base, West Germany.

Cont. Page 6, Col. 1

## Adult Classes

Start Tuesday

At Junior High

English, reading, arithmetic, science, government, and other courses will be taught in free classes for adults at Watson Junior High School. Classes are for adults with less than a high school diploma, said Elizabeth Watson, assistant superintendent for instruction.

"This program is designed to improve a person's ability to secure employment," said Mrs. Watson, "to qualify for a job promotion, achieve a certificate of high school equivalency (GED), and to become a more efficient consumer and a more active citizen."

Supplementary areas of instruction include consumer education, occupational opportunities and requirements, health education, citizenship, government, home and family life, science, history, and literature. Classes are also available for adults who cannot read, write, or speak English.

The first class will be Tuesday, October 2, at 7 p.m. in the Watson Junior High School.

Classes will meet on Tuesday and Thursday evenings from 7-9:30 p.m.

Adults may enroll anytime that classes are in session. For further information, call Elizabeth Watson at 272-3325.



**QUARTERBACK RUNS INTERFERENCE**--Muleshoe Mule Quarterback Larry Gonzales, No. 11, left, runs interference for John Orozco, No. 30, at the right, as he grinds out some of the more than 100 yards he ran for the Mules Friday night. In the background, Eric Richardson, No. 40, is trying to make it up to help make a way for Orozco. The Mules took their homecoming victory from the Lubbock Cooper Pirates, defeating them 8-7. Next Friday night, the Mules travel to Amarillo River Road for their last non-district game of the season. (Journal Photo)

## Mules Take Homecoming Win; Defeat Lubbock Cooper 8-7

It was a perfect night for homecoming, and for football. The crowd of cars around Muleshoe High School looked like graduation night, and it was not a disappointed crowd. They saw the Muleshoe Mules take their second victory of the season, downing the Lubbock Cooper Pirates, 8-7.

This evened out the Mules for the year at 2-2 and dropped the Cooper Pirates to 2-2 for the year.

Preceding the game, the 1990 Homecoming Queen was named --Marsha Wilson, who was escorted by John Orozco.

Her attendants were Monica Swint, Melissa Martinez and Tiffany Angeley. Their escorts were David Quintana, Larry Gonzales and Mike Friend.

Taking the ball on the initial kickoff, the Mules immediately received a penalty, and after three plays, had moved the ball only eight yards, so kicked the

ball away to the Pirates.

After four plays, and one first down, the Pirates fumbled the

Cont. Page 6, Col. 1

## SWCD Election, Cotton Meet Set Thursday

Blackwater Soil and Water Conservation District will conduct an election for District directors for Zones One and

Two in Bailey County on October 4, at the Bailey County Civic Center at 8:30 a.m.

Both of these zones are located in the north part of Bailey County.

Zone One's south boundary is Farm Road 746 and the Arch Highway (mailing, West Camp and Progress Communities). Zone Two has a south boundary of Rabbit Road Number Two and a west boundary of Riverside pavement.

A cotton educational program will be presented at this meeting by Dr. James Supak, Extension specialist in cotton.

Topics to be covered by Dr. Supak will be harvest aid chemicals and fall weed control for cotton. The program should serve as an excellent opportunity for area cotton producers to receive timely information on preparing cotton fields for harvest before a killing freeze occurs, said Bailey County Extension Agent Spencer Tanksley.

To be eligible to vote in a soil and water conservation district director election, a person must live and own agricultural land within the county and must be at least 18 years of age. A person who is being elected as a director to the county soil and water conservation local board must own land in the zone, be 18 years of age, and be actively engaged in farming or ranching. Soil and water conservation district directors serve four-year terms.

Tanksley said the purpose of the Blackwater SWCD is to promote sound soil and water

Cont. Page 6, Col. 4

## Hospital District Board Approves New Budget

Thursday night, the administrator for Muleshoe Area Hospital District, Richard Murphy, presented a projected budget for fiscal year 1990-91.

According to the figures released, the revenues expected for the hospital and nursing home will be \$2,942,800 and expenses are projected to be \$3,100,000, for a loss of \$157,200.

Tax collections from Bailey County are expected to be \$560,372 and Parmer County tax collections for the hospital district should be around \$69,784.

This will be offsetting the deficit from operating expenses.

A lengthy discussion was held on operation of all the departments, and the current financial status of the hospital was given.

Alfred Hicks, newly appointed board member, was present. However, an oath of office was not administered before the meeting. Richard Murphy explained that new state mandates require certain paperwork to be filed at Austin prior to the administration of the oath.

Murphy reported that Dr. Austin Dixon had completed his application with the state to do surgery at Muleshoe Area Medical Center and he will maintain office hours in Muleshoe on Tuesday and Friday at Muleshoe Area Medical Center. He will be doing elective surgery.

Two anesthetists from Portales were approved to work in the surgery department at the hospital. Both have current Texas licenses.

Also approved by the board was the appointment of Dr. Andrew Walsh, who will be part of a pilot program instituted by Methodist Hospital of Lubbock to check on quality assurance. He will be coming to Muleshoe, and check the local doctors. He has already met with the three physicians in Muleshoe, and they were reported to be in

## Trust Fund Discussed; Water Well Planned

Tuesday evening, the Muleshoe Cemetery Association conducted their first annual meeting, and elected two new board members.

Ruby Spurlock conducted the 8 p.m. meeting at Ellis Chapel of the Chimes, with nearly 25 people present.

Clifton Finley, currently serving as treasurer, was re-elected, and Joe Embry was elected new board member. Outgoing board member Pat Moore, elected not to seek another term on the board.

### CofC Meeting

### Date Changed

### To Monday

Nancy Kidd, manager of the Muleshoe Chamber of Commerce and Agriculture, said she has been forced to make a change in the Merchants' Midnight Madness Sale meeting.

Although local businesses received notices of a Tuesday meeting, the meeting has been changed to Monday, October 1 (tomorrow).

Mrs. Kidd said the meeting will be held at 6:30 p.m. in the city council chamber at the Muleshoe City Hall.

All local business owners and operators are encouraged to attend this planning meeting.

Mrs. Spurlock reported that the Association purchased the former Bailey County Memorial Park for \$10,000, and recovered \$70,000 of the trust fund.

In the past year, the trust fund has grown to \$78,450.

Also, the Association has over \$33,000 in the bank for operating expenses.

Funds for the Association are in First Bank, and the trust fund is in CDs at the bank.

During the past year, memorials and donations have been \$2,075; the women's garage sale has been another \$1,555.75 and the Association received \$1,139.52 from the Radio-Thon.

Twenty-six adult lots were sold at \$450 each; and three Babyland lots sold at \$150 each.

Of the lot sales, \$50 from each lot sold went into the trust fund, and \$25 from each Babyland lot went into the trust fund.

At this time, there are 556 lots in the cemetery for sale. This does not include the unimproved acreage owned adjacent to the present cemetery grounds.

Mrs. Spurlock told those present how the trust fund is set up, and talked about the terms for board members. They are all on one, two and three year terms.

Also discussed was the need for an additional water well to help water the cemetery. Those at the meeting voted to pursue

Cont. Page 6, Col. 3

## Church Property Given To Members

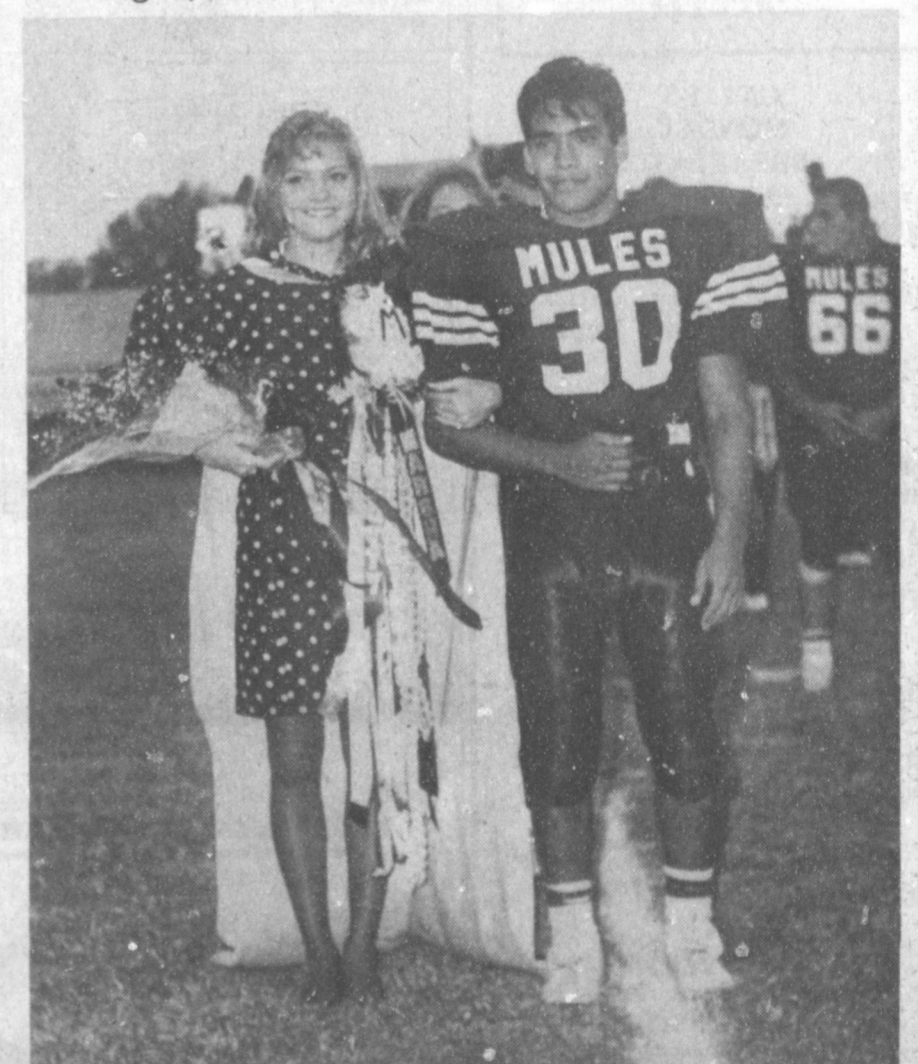
### After Hearing

Friday morning, following a hearing in 287th District Court, District Judge Jack Young ruled that Mort Cross, former pastor of Community Church, turn all church property, including the building and equipment, back to the members on the same date, Friday, September 28.

He further ruled that Cross could continue to occupy the mobile home behind the church, for 60 days, and turn possession of the mobile home to the church members no later than November 30.



**A WINNING COMBINATION**--Thursday night, the annual MHS homecoming bonfire was held in the new city park. A good crowd was on hand for the bonfire and cheers. Three of the MHS varsity cheerleaders are pictured here, with the huge bonfire in the background. Muleshoe played Lubbock Cooper in homecoming action. (Journal Photo)



**PRESENTING--THE 1990 HOMECOMING QUEEN**--Immediately prior to the 1990 Homecoming football game Friday night, the 1990 Homecoming Queen was crowned. Marsha Wilson was chosen the 1990 Homecoming Queen. She is escorted by John Orozco, who had over 100 yards in the game Friday night against the Lubbock Cooper Pirates. (Journal Photo)

### Muleshoe Menu

**OCT. 1-5 MONDAY BREAKFAST**  
Milk, Cereal, Toast and Fruit  
**LUNCH**  
Milk, Steak & Gravy, Creamed Potatoes, Green Beans, Hot Rolls and Fruit  
**TUESDAY BREAKFAST**  
Milk, Cheese Toast and Fruit  
**LUNCH**  
Milk, Hamburgers, Lettuce & Tomato, Pickles & Onions, French Fries and Fruit  
HS/JR. Juicy Burger  
**WEDNESDAY BREAKFAST**  
Milk, Blueberry Muffins and Juice  
**LUNCH**  
Milk, Burritos, Buttered Corn, Cole Slaw, Crackers and Fruit  
**THURSDAY BREAKFAST**  
Milk, Pancakes, Syrup, Sausage and Fruit  
**LUNCH**  
Milk, Cheese Nacho's, Beans, Corn Bread, Salad and Fruit  
**FRIDAY BREAKFAST**  
Milk, Oatmeal, Cinnamon Toast and Fruit  
**LUNCH**  
Milk, Turkey & Gravy, Creamed Potatoes, Green Beans, Hot Rolls and Fruit

### Lazbuddie Menu

**OCTOBER 1-5 MONDAY BREAKFAST**  
French Toast, Juice and Milk  
**LUNCH**  
Burritos, Corn, Green Salad, Pudding and Milk  
**TUESDAY BREAKFAST**  
Biscuits, Sausage, Juice and Milk  
**LUNCH**  
Sloppy Joes, French Fries, Pickles, Cake and Milk  
**WEDNESDAY BREAKFAST**  
Cereal, Toast, Juice, and Milk  
**LUNCH**  
Beef Stew, Cheese Toast, Crackers, Peach Halves and Milk  
**THURSDAY BREAKFAST**  
Toast, Bacon, Juice and Milk  
**LUNCH**  
Pizza or Pizza Pockets, Corn, Green Salad, Fruit and Milk  
**FRIDAY BREAKFAST**  
Cinnamon Rolls, Fruit and Milk  
**LUNCH**  
Hamburgers, French Fries, Lettuce & Tomatoes, Cobbler and Milk  
**SALAD BAR SERVED MONDAY-THURSDAY**

### Three Way Menu

**OCT. 1-5 MONDAY BREAKFAST**  
Breakfast Burrito, Juice and Milk  
**LUNCH**  
Beef Stew, Veg Sticks, Crackers, Butterscotch Pudding and Milk  
**TUESDAY BREAKFAST**  
Eggs/Sausage, Juice, Toast, and Milk  
**LUNCH**  
Fish, English Peas, Slaw, Cornbread, Apple Cobbler and Milk  
**WEDNESDAY BREAKFAST**  
Biscuit/Gravy, Juice and Milk  
**LUNCH**  
Frito Pie w/Cheese, Corn Salad, Beatnik Cake and Milk  
**THURSDAY BREAKFAST**  
Cereal/Fruit, Juice and Milk  
**LUNCH**  
Chicken Strips w/Gravy, Creamed Potatoes, Mixed Veg., Hot Rolls, Cookies and Milk  
**FRIDAY BREAKFAST**  
Pancakes, Bacon, Juice and Milk  
**LUNCH**  
Hamburger w/Cheese, Tator Tots, Jello w/Fruit and Milk

### Patients in Muleshoe Area Medical Center

**SEPT. 24-27 MONDAY**  
David Johnson, Ruby Sigala, Cindi Smith, Cuca Cuevas, Sheila Black, Auriela Alanize,

Gil Lamb, Arnulfo Luyan, Fred Horn, Eric McElroy, Audrey Langfitt and Harold Allison

**TUESDAY**  
David Johnson, Norman Hinchliffe, Warren Gulley, Anthony Francis, Cindi Smith, Winona Jordan, Sheila Black, Aurelia Alanize, Gil Lamb, Farren Harris, Airs Haney, Arnulfo Luyan, Fred Horn, Eric McElroy, Becky Williams, Harold Allison, Graciela Martinez and

Baby Girl Martinez  
**WEDNESDAY**

David Johnson, Norman Hinchliffe, Warren Gulley, Jewell Bruton, Shani Rasco, Mozelle Rippee, Cindi Smith, Winona Jordan, Sheila Black, Aurelia Alanize, Gil Lamb, Farren Harris, Airs Haney, Arnulfo Luyan, Fred Horn, Mae Wilterding, Becky Williams, Harold Allison, Kathleen Weaver and

Baby Girl Weaver  
**THURSDAY**

David Johnson, Norman Hinchliffe, Warren Gulley, Jewell Bruton, Shani Rasco, Mozelle Rippee, Cindi Smith, Winona Jordan, Sheila Black, Aurelia Alanize, Gil Lamb, Farren Harris, Airs Haney, Arnulfo Luyan, Fred Horn, Mae Wilterding, Becky Williams, Harold Allison, Kathleen Weaver and Baby Girl Weaver.

### IN FASHION

Leggings are definitely in for fall wear. The very slim miss can wear solid or figured leggings with a variety of tops.  
A few tricks are offered for those with not-so-slim hips or waist. Wear a big, roomy sweater or a long jacket to cover up those bulges.



**Mastercraft Oil Filter**  
For most domestic cars. **sale 1.99**

**Mastercraft Air Filter**  
Fits most domestic cars and light trucks. **sale 3.49**

**Heavy Duty Shock Absorber** **sale 7.99**  
Fits most passenger cars and trucks. Made by Monroe. Each. (741-0020 thru 0822)

**Monro-Matic Plus Shock Absorber** **sale 14.99**  
Sizes to fit most cars and light trucks. Each. (741-1028 thru 3230)

**Havoline Motor Oil** **sale 89¢**  
Havoline 10W-30 or 10W-40 oils deliver engine protection you can trust. Controls sludge and varnish deposits. Resealable plastic quart bottle. Each. (766-2612, 2638)

**Zerex Antifreeze & Coolant** **sale 3.99**  
Formulated to protect all metals. Protects against freeze-ups, boil-overs and corrosion year round. Gallon. (768-0853)

**Ultra-Tech 700 Battery** **sale 59.99**  
700 cold cranking amps. Universal top and side post design. (767-5069) **75 Month Warranty**

**Windshield Washer Fluid** **sale 89¢**  
Keeps your windshield clean in all types of weather. Tested to -25°F. Gallon. (768-1018)

**Remington Express 12 Gauge Shotgun** **sale 209.99**  
Model 870 Express pump shotgun, 12 gauge, 26 or 28" vent rib barrel with modified choke tube. Hardwood stock and forearm. Shoots 2-3/4 or 3" shells. (600-2992, 3008)

**Heavy Game Loads, Your Choice** **sale 5.77**  
Remington, Winchester or Federal. Box of 25 plastic shells. 2 3/4" 12 gauge—4 or 6. 16 gauge—6. 20 gauge—4 or 6.

**2 Piece Torch Kit** **sale 9.99**  
Pencil flame torch kit with 14.1 oz. propane fuel cylinder in kit. (311-5797)

**2 Speed Cordless 3/8" Reversing Drill** **sale 32.99**  
By Skil. Powerful triple reduction gearing, 230 rpm. Full charge in 3 hours. UL listed. #2130 (314-3260)

**Poulan 14" Chainsaw With Case** **sale 159.99**  
2.0 cu. in. engine. Solid state ignition. Automatic chain oiling system. Anti-vibration front handle. (500-1631)

**Symphonic Space Saver VCR** **sale 199**  
Slim design! Programmable 14-day/4-event and 1 weekly timer recording, 21-key/24 function infrared remote, quartz frequency synthesizer tuner, 11 channel cable compatibility, 2-speed search, dew protection system, electronic tape counter with memory, record/playback up to 8 hours. (208-4150)

**Duracell Alkaline Batteries**  
Long-lasting power for radios, tape recorders, and flashlights!  
**Two 'AA' or 'AAA'** **sale 1.59**  
(465-0362, 0404)  
**Two 'C', 'D' or One 9 Volt** **sale 2.09**  
(465-0305, 0339, 0438)

**Admiral Self-Cleaning Ranges** **sale 499**  
Gas. Decorative backguard with clock and timer. Porcelainized steel grates with chrome drip bowls. Lift up cook top. White. 30 x 46" H. (239-4047)  
**Electric**. Black glass door, automatic oven timer control and clock. White. Colors extra. (239-5036)

**Admiral Ranges, Your Choice** **sale 299**  
Gas. Porcelain oven, dual burners and lift-up cooktop. White. Colors extra. (239-0011)  
**Electric**. Porcelain oven. Two piece broiler pan. White. Colors extra. (239-5010)  
Certain state and federal regulations may prohibit the sale of ranges with pilot light ignition. Check local codes.

**Admiral Built-In Dishwasher** **sale 299**  
6 cycles, detergent dispenser, 2-level tower wash. White, black or almond color inserts. (239-9012)

**Admiral Portable Dishwasher** **sale 429**  
The top surface is a cutting board! Extra capacity lower rack. 2 flatware baskets and soft food disposer. Eight-cycles including plate warmer. Extra sound insulation. 36 x 24 1/2 x 36 3/4" White. (239-9517)

**Admiral Self-Cleaning Ranges** **sale 499**  
Gas. Decorative backguard with clock and timer. Porcelainized steel grates with chrome drip bowls. Lift up cook top. White. 30 x 46" H. (239-4047)  
**Electric**. Black glass door, automatic oven timer control and clock. White. Colors extra. (239-5036)

**Admiral Portable Dishwasher** **sale 429**  
The top surface is a cutting board! Extra capacity lower rack. 2 flatware baskets and soft food disposer. Eight-cycles including plate warmer. Extra sound insulation. 36 x 24 1/2 x 36 3/4" White. (239-9517)

**Admiral Self-Cleaning Ranges** **sale 499**  
Gas. Decorative backguard with clock and timer. Porcelainized steel grates with chrome drip bowls. Lift up cook top. White. 30 x 46" H. (239-4047)  
**Electric**. Black glass door, automatic oven timer control and clock. White. Colors extra. (239-5036)

**Admiral Portable Dishwasher** **sale 429**  
The top surface is a cutting board! Extra capacity lower rack. 2 flatware baskets and soft food disposer. Eight-cycles including plate warmer. Extra sound insulation. 36 x 24 1/2 x 36 3/4" White. (239-9517)

**Coast to Coast Home & Auto**

**P O Y N O R S**

103 Main Muleshoe 272-4552

MasterCard VISA Discover

# Junior High EMS Essays

Peter Loewen  
English 7-7  
September 19, 1990

"E.M.S."

What is the E.M.S.? The E.M.S. is an Emergency Medical Service which men and women are working together in a community to help save lives. They help people who have been injured in a wreck, or people who have broken bones or any emergency. They are hard working individuals in our community.

Riley Byers  
English 7-5  
September 19, 1990

E.M.S.

E.M.S. is a life saving team. E.M.S. personnel need to be well trained. E.M.S. does great things for Muleshoe.

E.M.S. does shows for kids. E.M.S. taught me C.P.R. They help anyone in need. If I were sick, I know I could call on E.M.S. They have two emergency vehicles.

Irene Logan  
English 7-1  
September 19, 1990

"EMS SAVES LIVES"

What is EMS? EMS is a service for our community that saves lives. Who is EMS? The caring personnel who are there to help us when in need.

EMS plays an important role in our community. EMS includes helpful equipment, and a caring personnel who are willing to save lives.

Clapp, Robbie  
English 7-4  
September 19, 1990

HONORABLE MENTION  
A VISIT FROM THE  
MULESHOE E.M.S.

What is the purpose of the Emergency Medical Service?

Many people do not realize the dedication and work that is put into a paramedics day in attempt to save lives. After seeing all the medical equipment that the E.M.S. use, their job must be complicating. Their purpose is to save the lives of people who have been injured and they do this very well.

Reyes Jo  
Pd 7-7  
September 19, 1990

HONORABLE MENTION  
"E.M.S."

The Emergency Medical Service came yesterday to show us about what they can do for a patient when they are ill. Our E.M.S. is well trained for doing their job. Yesterday they showed us how to put a patient on the ambulance. They also showed us what they do with their inside the ambulance. They are good service workers because they help our home town.

Maria Rodriguez  
English 7-2  
September 19, 1990

HONORABLE MENTION  
"THE E.M.S."

The E.M.S. is very helpful to save many lives. The E.M.S. is an organization. It is located in our community. Every minute it is there to help you. It can help you if you are in an emergency. It has good people that help you.

Samantha Caswell  
English 7-2  
September 19, 1990

HONORABLE MENTION  
"EMS"

EMS is an effective organization. EMS helps many people because they are always on the job, and they are prepared to do their job. EMS goes on the job because they want to make a difference and everyone appreciates their effort to help the community. EMS is truly of great importance to everyone.

Joshua Otwell

HONORABLE MENTION  
"WHO IS THE E.M.S."

The E.M.S. team is a special team. This team of personnel has the knowledge and the equipment to save lives.

The personnel are very friendly. The equipment they use is very advanced in technology. The E.M.S. team is always ready when someone needs help.

McElroy, Reagan  
English 6-1  
September 19, 1990

EMERGENCY MEDICAL  
SERVICE(E.M.S.)

Yesterday I learned a lot of important information. I learned where they keep in all the supplies in the ambulance and how they group it. For instance they keep all the heart supplies in one shelf and all the stuff for cuts in another. I learned how they help people who are in shock, the put the in this suit and squeeze all the blood from their legs to their brain and upper bodie. Also where the put people with a hurt neck or back. They put them on a flat hard board. It was very interesting, but I think the part I liked best were the story's and information given by Cindy Brown. She told lot of neat stories. I really learned alot yesterday.

Yagdalena Garcia  
9/9/90

HONORABLE MENTION  
EMERGENCY MEDICAL  
SERVICES (E.M.S.)

I would say the purpose of Emergency means a lot I think it is very important. I know that Emergency is very serious and it is. The purpose of it is that it sometimes is very important and very dangerous. Emergency Medical Service can also save lives when somebody is very ill.

Schuster, Carolyn  
English 6-2  
Sept. 19, 1990

HONORABLE MENTION  
(E.M.S.) EMERGENCY  
MEDICAL SERVICES  
E.M.S. is important be-

cause it helps people that are having problems with their heart or if they have a back cut. The ambulance has alot of equipment to help people. They have a medicine box that has pill, suringes, needles, liquid medicine and alot of other type of medicines. The men that were there they were nice and took very good care of their equipment. E.M.S. is very special in a abundance of ways. People are thankful for them to help people stay alive. E.M.S. is the BEST!!

Sulton, Stefan  
English 6-3  
September 20, 1990

HONORABLE MENTION  
HOW GREAT THE  
E.M.S. IS

The Emergency Medical Services are very helpful to Muleshoe, Tx. They are there when there has been a bad accident. They are friendly and brave. We pay taxes to help them buy equipment for they can save other peoples lives. The Emergency Medical Services are a very great help to us.

Guzman, Bridget  
English 6-3  
September 20, 1990

HONORABLE MENTION  
THE SPECIALTIES OF E.M.S.

Im very greatful we have an Emergency Medical Service. We saw a great dimstration all there equipment they were kind of neat to look at. In the ambulance they could carry 4 persons in the ambulance. They showed us how the siran rang. It was kind of neat for them to tell us about all the things they learned. If we did not have ambulance people would be died some old people would be having strok and heart attaches. This is what I learned that day of E.M.S.

Nichols, Kristen  
English 6-4  
September 19, 1990

HONORABLE MENTION  
EMERGENCY MEDICAL  
SERVICES (E.M.S.)

E.M.S. is very important because with them some lives would be resting. I really like their system and I feel that we should keep up the good work. I think that people should give them Thanks for their hard work and their good cooperation. Thank you for always being at the place they need to be at when they get a call. This system is a great system and people should respect that because they save lives.

Villalobos, Leticia  
English, 6,3  
September 20, 1990

I'am grateful for the people that work for the Emergency Medical Service. If we would not have them, many more people would die, in car accidents. If some body was having a heart attack, that person could die because he there no one to take care of him. I'am so happy that I live in a town that has a Emergency Medical Service.

(Editor's note: The final winning essays from Watson Junior High School on EMS Week will be presented in the Thursday edition of *The Muleshoe Journal*.)

Whatever befalls in the course of nature should be considered good.

-P.B. Shelley.

It is hard to make out whether (nature) is a kind parent or a harsh stepmother to man.

-Pliny the Elder.



EMPLOYEE OF THE MONTH--Monday morning, Nancy Kidd, manager of the Muleshoe Chamber of Commerce and Agriculture, presented a plaque to Helen Head. Mrs. Head has been named Employee of the Month. (L-R) Gordon Wilson, Lonnie Adrian, Helen Head, Nancy Kidd, Ray Day, and Gene Atkins.

**Kiwanis News**

By R.A. Bradley

Nine Kiwanians and one honorary Kiwanian, Chad Johnson, met Friday morning at the LaPlacita Cafe. Those who missed are the losers, because it was decided that the 'Cream of the Crop' was present. So the rest of you must be 'Skimmed Milk.'

This writer would like to say Welcome to Chris Lopez to the Kiwanis Club. Chris was asked if he was just coming off duty after a long night, or about to go on duty. They thought that Chris was sleepy, about ready to go to sleep, or was not awake yet. Chris said he was just going off duty after a long night.

President Jim Lutz called the meeting to order. Keith Turner led the club in the pledge to the flag and the invocation was given by Julian Dominguez.

Don Clapp, who has had the friendship coin for the past week, decided he would try to get Keith Turner to be a friend. Good luck, Don.

It was reported about three weeks ago that Keith and Linda were getting the baby bed and baby clothes out. Linda, you can now relax as I just found out that this was for a garage sale. So, if you need any baby clothes or baby bed, go by and help Linda out, OK?

Our program was a discussion about everyone who was not there this morning. My thanks to Larry Parker for writing last week's report. Larry must have been to Kiwanis (in spirit) this morning as his name tag was on a water glass. Larry, it was good to have you there, at least in spirit.

A list of the *Shame, Shame*

members: If you see any of these sleepyheads, be sure and say *Shame, Shame!* Scott Churchman, Oscar Hernandez, Lyndon Huckaby, Jerry Hutton, Randy Lewis, Lonnie Merriotti, Mickey Merriotti, Robert Montgomery, Merlyn Neel, J. O. Parker, Larry Parker, Howard Watson, Hugh Young.

Kiwanis Installation banquet, October 16th. All Kiwanians, and their mates -- BE THERE!!

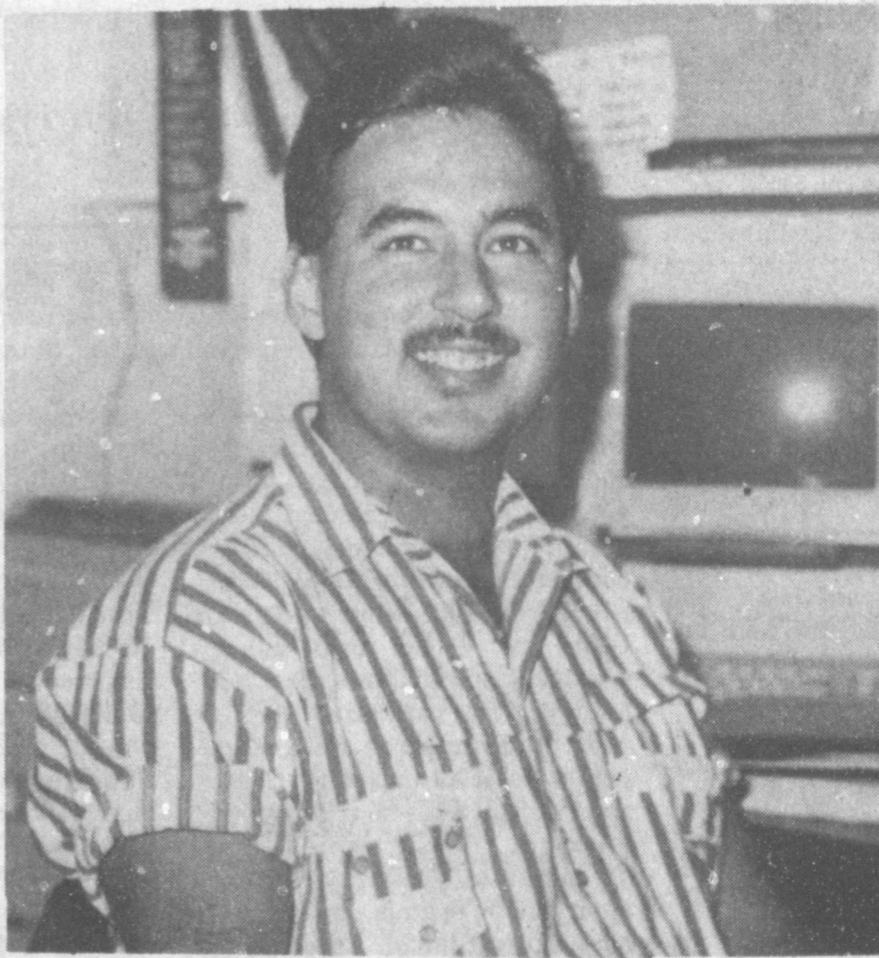
Shop  
**Muleshoe**  
First!

1990 Crop		
	Sale Flat	Month
Feed Corn.....	4.21,0.08cz	..... Dec.
White Cobb Yellow.....	4.70,0.35cz	..... Dec.
Red Cobb Yellow.....	4.34,0.15cz	..... Dec.
White Food Corn.....	5.80,0.97cz	..... Dec.
Milo.....	3.82,-0.14cz	..... Dec.
Soybeans.....	5.54,-0.64sx	..... Dec.
Wheat.....	2.44,-0.36kwz	..... KC Dec.

96 1/4 %  
Prices effective Sept. 28, 1990

**Farmer's Co-Op Elevators**  
272-7561

## Welcome To Muleshoe



WELCOME TO MULESHOE--This week, we would like to welcome Carlos Acevedo to Muleshoe. Acevedo comes to Muleshoe from Amarillo where he was the band director at Caprock High School. Here in Muleshoe, he is the new band director at Muleshoe High School. As hobbies, he enjoys writing and recording his own music, and playing racquetball and softball. Carlos graduated from West Texas State University in 1983 and tried his hand at playing professionally awhile before returning to the teaching field. When you see Mr. Acevedo about town, give him a "Hearty" Muleshoe Welcome!

(Journal Photo)

U.S. POSTAL SERVICE  
STATEMENT OF OWNERSHIP, MANAGEMENT AND CIRCULATION  
(Required by 39 U.S.C. 3685)

1. TITLE OF PUBLICATION  
Bailey County Journal

2. FREQUENCY OF ISSUE  
Weekly

3. ANNUAL SUBSCRIPTION PRICE  
\$16.50

4. COMPLETE MAILING ADDRESS OF KNOWN OFFICE OF PUBLICATION (Street, City, County, State and ZIP Code) (Not printers)  
304 W. Second, Muleshoe, Texas 79347, Bailey

5. COMPLETE MAILING ADDRESS OF THE HEADQUARTERS OR GENERAL BUSINESS OFFICES OF THE PUBLISHERS (Not printers)  
304 W. Second, Muleshoe, Texas 79347, Bailey

6. FULL NAMES AND COMPLETE MAILING ADDRESS OF PUBLISHER, EDITOR, AND MANAGING EDITOR (This item MUST NOT be blank)

PUBLISHER (Name and Complete Mailing Address)  
L.B. Hall 1007 W. 7th, Muleshoe, Texas 79347

EDITOR (Name and Complete Mailing Address)  
Cleta Williams Jacobson 615 W. Third, Muleshoe, Texas 79347

MANAGING EDITOR (Name and Complete Mailing Address)  
L.B. Hall 1007 W. 7th, Muleshoe, Texas 79347

7. OWNER (If owned by a corporation, its name and address must be stated and also immediately thereunder the names and addresses of stockholders owning or holding 1 percent or more of total amount of stock. If not owned by a corporation, the names and addresses of the individual owners must be given. If owned by a partnership or other unincorporated firm, its name and address, as well as that of each individual must be given. If the publication is published by a nonprofit organization, its name and address must be stated.)

8. KNOWN BONDHOLDERS, MORTGAGEES, AND OTHER SECURITY HOLDERS OWNING OR HOLDING 1 PERCENT OR MORE OF TOTAL AMOUNT OF BONDS, MORTGAGES OR OTHER SECURITIES (If there are none, so state)

9. FOR COMPLETION BY NONPROFIT ORGANIZATIONS AUTHORIZED TO MAIL AT SPECIAL RATES (Section 4711, OMM only)  
The purpose, function, and nonprofit status of this organization and the exempt status for Federal income tax purposes (Check one)  
 HAS NOT CHANGED DURING PRECEDING 12 MONTHS  
 HAS CHANGED DURING PRECEDING 12 MONTHS (If changed, publisher must submit explanation of change with this statement.)

10. EXTENT AND NATURE OF CIRCULATION

AVERAGE NO. COPIES EACH ISSUE DURING PRECEDING 12 MONTHS	ACTUAL NO. COPIES OF SINGLE ISSUE PUBLISHED NEAREST TO FILING DATE
A. TOTAL NO. COPIES (Net Press Run)	
B. PAID CIRCULATION (SALARIES, FEES, AND OTHER SALES)	2800
C. MAIL SUBSCRIPTION	1200
D. TOTAL PAID CIRCULATION (Sum of B and C)	1200
E. FREE DISTRIBUTION BY MAIL, CARRIER OR OTHER MEANS (SAMPLES, COMPLIMENTARY, AND OTHER FREE COPIES)	2124
F. TOTAL DISTRIBUTION (Sum of D and E)	150
G. COPIES NOT DISTRIBUTED (COPIES LEFT OVER, UNACCOUNTED, SPOILED, AFTER PRINTING)	526
H. RETURNS FROM NEWSAGENTS	
I. TOTAL (Sum of F, G, and H) (Should equal net press run shown in A)	2800

11. I certify that the statements made by me above are correct and complete.

Signature: *[Signature]*  
Date: \_\_\_\_\_

**Bailey County Journal** USPS 040-200  
Established March 31, 1963. Published by Muleshoe Publishing Co., Inc. Every Sunday at 304 W. Second, Box 449, Muleshoe, TX 79347. Second Class Postage paid at Muleshoe, TX 79347.

**MEMBER 1990**  
**TEXAS PRESS ASSOCIATION**

L. B. Hall, Publisher  
Sammye Hall, Vice President/Controller  
Cleta Williams-Jacobson, News  
Evelene Harris, Society  
Holly Millisp, Advertising  
Dora Toscano, Classified

SUBSCRIPTIONS  
Muleshoe Journal and Bailey County Journal  
Bailey and surrounding counties  
Muleshoe Journal and Bailey County Journal  
Elsewhere in Texas \$14.75  
Muleshoe Journal and Bailey County Journal  
Outside Texas, \$16.50  
Yearly By Carrier \$12.50

Advertising Rate Card on Application  
\*Advertisers should check their ad the first day of insertion. The Journals will not be liable for failure to publish an ad or for a typographical error or error in publication, except to the extent of the cost of the ad for the first day of insertion. Adjustment for errors will be limited to the cost of that portion of the ad where the error occurred.

**James Crane Tire Co.**  
**GOOD YEAR**  
322 N. 1st

**Henry Insurance Agency**  
111 W. Ave. B. 272-4581

**Damron Rexall Drug**  
308 Main 272-4210



**ENGAGEMENT ANNOUNCED**--Mr. and Mrs. W.B. "June" Wagon, Jr. announce the engagement and approaching marriage of their daughter, Melissa Lyn to Todd Knowlton, Sr., son of Mr. and Mrs. James Knowlton of Lytle, TX. Vows will be exchanged December 29 in the Broadway Church of Christ Chapel in Lubbock. Miss Wagon is a graduate of Muleshoe High School and Lubbock Christian College. She taught in the Dallas Independent Schools and is currently teaching at Jackson Elementary in Lubbock. Knowlton is a graduate of Lytle High School and will complete a Computer Science Degree from Texas Tech University in May 1991.

## Creative Living

By Sheryl Borden

"Creative Living" begins its thirteenth season on KENW-TV & will feature information on dry carpet cleaning systems and making decorative pillows. These topics will air on Tuesday, October 2 at 12 noon and Saturday, October 6 at 2 p.m. (All times are Mountain.)

Joan McClain, representative of Iona Appliances and Milliken Textiles, is going to talk about what's new in carpet maintenance, demonstrate a machine for dry cleaning carpet and show a new product for stain removal. Ms. McClain lives in Manhattan Beach, CA.

Suzi Holder, with the N.M. State 4-H office in Las Cruces, will discuss the importance of throw pillows in the scheme of decorating. She will also show how to make some simple lap-back pillow tops.

On Tuesday, October 2 at 9:30 p.m. and on Thursday, October 4 at 12 noon, "Creative Living" will present information on easy furniture repair and making chocolate artistry.

Homer Formby, a third generation furniture restorer, will demonstrate some very simple tips and hints from his years of personal experience. Mr. Formby lives in German Town, T.N.

Kathy Farrell, with Nestle Foods in Purchase, N.Y., will present some elegant and unusual desserts through the use of chocolate artistry. Ms. Farrell will demonstrate making white chocolate clay and a delicious chocolate marbled terrine.

"Creative Living" is produced and hosted by Sheryl Borden. The show is carried on more than 100 PBS stations in the United States, Canada, Guam and Puerto Rico and is distributed by Pacific Mountain Network, Denver, CO. Viewers can request copies of materials offered on the show by sending one 25 cent stamp for each handout requested. Send the stamps, along with your name, address and booklets requested to:

"Creative Living" Requests

% KENW-TV Station #52  
Eastern New Mexico University  
Portales, N.M. 88130

### CHOCOLATE MARBLED TERRINE WITH TWO SAUCES

One 8-oz. pkg. (4 foil-wrapped bars) Nestle sem-sweet chocolate baking bars

2 cups heavy cream divided  
Two 6-oz. pkgs. (6 foil-wrapped bars) Nestle premier white baking bars.

### CHOCOLATE SAUCE RASPBERRY SAUCE

Grease an 8X4X3-inch loaf pan. Line with plastic wrap leaving extra wrap hanging over the sides.

Combine Nestle semi-sweet baking bars and 1/2 cup heavy cream over hot (not boiling) water, stirring until chocolate is melted and mixture is smooth. Gradually stir in remaining 1/2 cup cream; pour into small mixer bowl; refrigerate until cool and thickened, but not set, about 20 minutes.

Repeat with Nestle premier white baking bars and remaining cream; cool.

With mixer beat semi-sweet chocolate mixture at medium speed until soft peaks form, about 2 minutes. Repeat with premier white mixture. Spoon chocolate mixture into large bowl. Top with white mixture. Using only 4 to 6 turns with a spatula, fold mixtures together until slightly marbled; gently pour into prepared pan. Tap gently to level mixture. Cover and refrigerate 4 hours or overnight.

To serve: loosen sides of terrine with spatula, invert loaf onto cutting board, slice 3/4-in. thick. Spoon some Chocolate and Raspberry Sauce onto individual dessert plates. Place slices of terrine in center of plate. Makes about 12 servings.

### The Best

One of the best face-saving ideas is to keep the lower half of it shut.

-W.O.W. Magazine.

# Miss Wieck, Bartley United In Marriage

Karen Wieck became the bride of Lee Bartley Saturday afternoon, Aug. 18 in St. Mary's Catholic Church in Umbarger. Rev. Pat Carathers of St. Ann's Catholic Church in Canyon read the double ring vows.

Parents of the couple are Mr. and Mrs. Fred Wieck of Canyon and Mr. and Mrs. Gene Bartley of Sudan.

Marci Grabber, organist, accompanied Jessica Garrett Andy Milligan and Michelle Sanford as they sang "The Wedding Song", "He Has Chosen You For Me", "The Parent's Prayer", "Seek Ye First" and "Peace is Flowing".

The altar was decorated with two brass candelabras, and a unity candle, accented with southwest print bows and entwining ivy. Matching bows marked family pews.

Presented in marriage by her father, the bride wore a designer white regal satin gown, featuring a sweetheart neckline trimmed with beaded Venise lace, dipping to a V in back. Venise lace overlaid the shoulders with pearl medallion accents and strings of hanging pearls. The Edwardian sleeves were topped with pearl medallions and pearl streamers.

Her princess waistline was accented with pearl swirls, and flowing satin skirt featured Venetian lace medallions and crystallized hand-beading. A band of Schiffler lace accented the front of the cathedral-length train, decorated with pearl medallions and crystallized hand beading with ruffled edge.

Her bridal veil, held to pearl headband with side spray of tiny hanging silk flowers and pearl filaments was ruffled pouff with a double-tier of fingertip-length illusion--a gift from her maternal grandmother and previously worn by the bride's sister, Kim Birkes.

She carried a cascade of white roses and baby carnations, accented with baby's breath and miniature ivy. Entwined in it was a rosary, gift from the bride's maternal grandparents. The fourth degree pin of Knights of Columbus, belonging to the bride's deceased grandfather, Ben Koch, was attached to the white satin streamers.

Honor attendant was Shelli Beerwinkle of Earth. Bridesmaids were Kim Birkes of Canyon, sister of the bride; Marci Elder and Tiffnie Skeen, both of Amarillo; Leann Lehmann of Odessa; and Misty Newton of Canyon. They wore fuschia taffeta tea-length dresses.

Kimber-Lea Raef was flower girl and ring bearer was Kristopher Raef, both of Canyon.

Lyn Bartley of Sudan served as his brother's best man. Groomsmen were Michael Bartley of Sudan, brother of the groom; Brad Carter of Amherst, Monte Sewell of Canyon, Gordon Martin of Lubbock and Jeff Taylor of Floydada. They wore gray shadow tuxedos and the groom wore a white tuxedo with tails.

Sharon Meyer registered the guests.

Ushers were Dean Birkes, brother-in-law of the bride, and Micheal Jenkins, of Canyon.

Candlelighters were B.J. Koch and Jerry Wieck, cousins of the bride.

A reception was served in St. Mary's Hall. The table was laid with a white linen cloth, holding a three-tiered wedding cake, accented with flowing fountain and white staircases with baby's breath descending to six hexagon-shaped smaller cakes, outlined with silk flowers. The top tier was accented with a cascade of desert lily flowers and tiny pearls.

A six-branch candelabra held white candles, and a crystal punch bowl was filled with fuschia colored fruit punch.

Serving were Tracy Cox and Joni Hester of Canyon, and Nichole Skarke of Umbarger.

The groom's table, covered with a beige linen cloth and decorated with a cactus arrangement, held the cactus-shaped strawberry groom's cake, served by Rebecca Jones, Dumas and Marci Veach, Canyon.

The couple now reside in Amarillo.

A 1988 graduate of Canyon High School, the bride is a sophomore computer information systems major at WTSU.

Bartley is a 1986, graduate of Sudan High School and a 1990, graduate of WTSU with a degree in ag business and economics. He is currently employed with Iowa Beef Processors as a production supervisor.

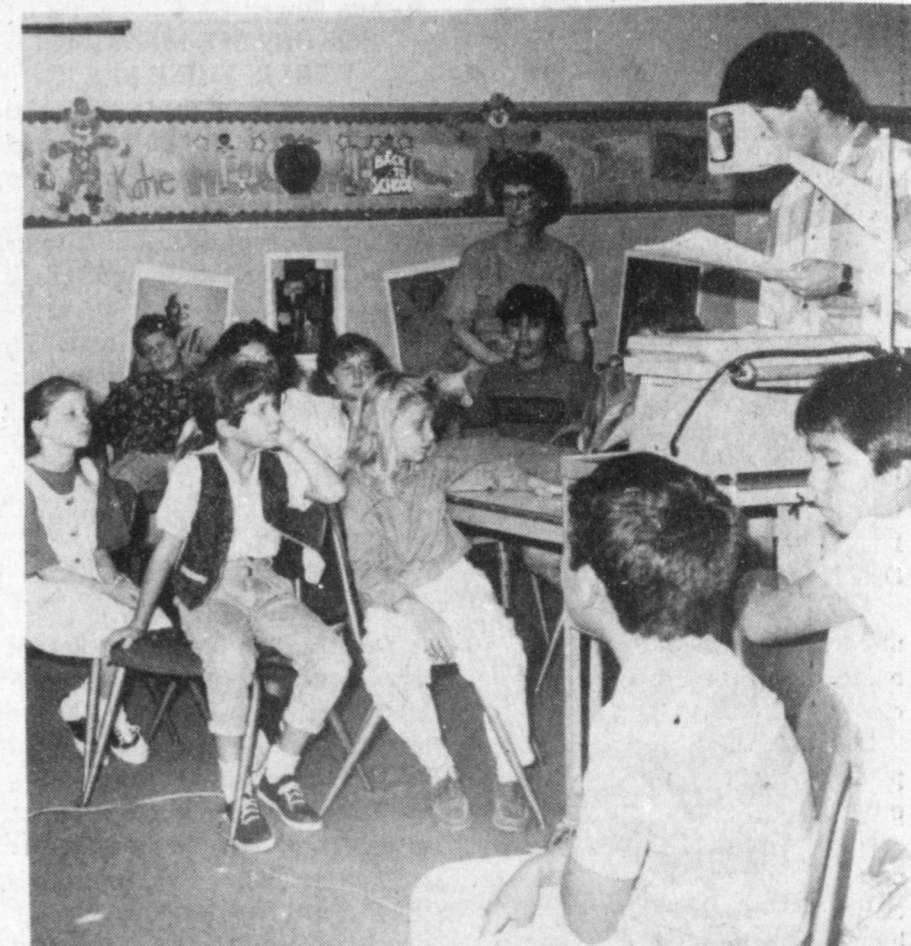
## Retired Teachers Association News

The Muleshoe Area Retired Teachers met Friday, Sept. 21 at the 16th and Ave D. Church of Christ friendship room for a covered dish luncheon and business meeting.

Hostesses were the executive officers, Mabel Wolfe, Wilma Smith, Mary B. Cbenhaus and Letha Patterson. Other members present were: Joyeline Costen, Alene Bryant, Carrie Lee Bishop, Nettie B. Hilbun, Betty Jo Davis, Ethel Allison, Mary Louise Thaxton, Pauline Guinn, Maude Blaylock, Margie Moore, and Maxine Ragsdale.

The business meeting was conducted with president, Mabel Wolfe, presiding. Programs for the year ahead and forms for keeping records of volunteer hours were distributed to everyone present.

The next meeting will be at the 16 and Ave D Church of Christ at 3 p.m. October 19 with Maurine Biggs from Carillon Retirement Home, formerly Knox Village, presenting the program.



**NEW ART DEPARTMENT**--Pictured are third grade students in Mrs. Ward's class at Mary DeShazo Elementary. This is the first year that DeShazo Elementary has had an art department. Mrs. Chera Foster teaches Theater and Visual Arts to grades three through five. Johnny Castanon is a teacher in training from Eastern New Mexico University in Portales, N.M. The fall display in the art department was donated by Ben Roming and Bill Jim St. Clair. (Journal Photo)

## Jennyslipper News

The Muleshoe Jennyslippers met at noon Tuesday, Sept. 25, at the library, for a brown bag lunch and business meeting.

Mary Ann Ramirez called the meeting to order followed by the reading of the minutes of the previous meeting by Bobbie Harrison.

Vivian White reported on the annual barbecue to be served during the bazaar.

A report was given on the 'Bells Across America' celebration held at the court house. Approximately 200 red/white/blue balloons were released by fifth grade students from Mary DeShazo Elementary. Nelda Merriott reported that Perry's donated a large percentage of these balloons.

A discussion was held on the next meeting, which is a quarterly membership meeting on Tuesday, Oct. 9. All members are encouraged to attend and take a prospective member.

Mrs. White reported on the response she got to the pins, supporting our Armed Forces, on her recent trip to Washington. Evelyn Peat stated that they had made three or four hundred of the pins. The Jennyslippers have a few of these left if you want one.



**With Us, You're  
A Friend - Not  
A Number.....**

*Personal  
Touch*

**The Reason We Are  
Number 1, We Take The  
Business Of Serving You Very**

**Seriously. That's Why Our Staff Puts**

**You At Ease As Soon As You Step Through Our Doors.**

**We Want You To Feel Comfortable About Asking**

**Questions, Asking For Help, Or Any Other Little**

**Thing We Can Do For You. You See, We Appreciate**

**Your Business.... And It Shows.**

**1ST BANK  
MULESHOE**

Member F.D.I.C.

202 S. 1st

272-4515

Roses are red  
Violets are blue  
Look who is 30  
Boo Hoo Hoo  
Happy Birthday  
From You, Know Who



For Your  
Mary Kay Cosmetics  
Josie Flowers  
272-3865  
8 a.m. - 12 noon  
8 after 6 p.m.

## Save Now For College Education

By Sandra Avanti

Next to buying a house, a college education is the most expensive big-ticket item facing the average family.

Nancy Granovsky, a family economist specialist with the Texas Agricultural Extension Service, suggests that if you have a 10-year-old child, plan on saving roughly \$29,000 by 1998 to cover such costs as tuition, books and room and board.

This estimate assumes that you'll be paying half the costs, and that your child will go to a state university in Texas. But you'll need to save much more if your child doesn't receive any scholarships, doesn't pay part of the college bill, or goes to a private school where tuitions usually run higher.

"That amounts to an annual

savings goal of about \$2,200 per year, assuming you can get six percent on your money after taxes," Granovsky said.

If your child is one year old, you have 17 years to save, but college costs are expected to be even higher--roughly totaling \$54,000 for parents planning to pay half the expenses, she said.

"These figures, based on an estimated inflation rate of seven percent for college costs, illustrate how important it is to start saving now," she said. "College costs of \$7,400 per year in 1990 will be \$16,700 per year by the year 2000."

Today, people use a combination of loans, savings and work-study to pay for college, Granovsky said. Many parents pay educational costs out of their current income--some taking additional jobs.

Government bonds are one type of investment that guarantee complete safety. The United States Series EE Savings Bonds for College are good choices for financing education, she said. They can be tax-free and purchased at market-based rates. Interest rates for the bonds vary with the market rate, but go no lower than the market rate set at the time of purchase.

Stipulations for these bonds include:

- When you use EE bonds to pay for higher education and your taxable income is below \$60,000, bond income is tax free, but the federal tax break phases out at a joint income of \$90,000.

- They must be redeemed in a year the owner pays qualified educational expenses (tuition and fees, but not room and

board).

•Interest is fully exempted only if the qualifying tuition and fees paid during the year are equal to, or more than, the redemption proceeds. Otherwise, exemption is proportional to the percentage value used for tuition and fees.

•Certain records must be kept for income tax purposes.

Other options for financing college education include zero-coupon securities, mutual funds, children's custodial accounts and insurance policies. However, there are risks and limitations involved, and a prudent investor should check with a professional who specializes in financial planning for college.

"Becoming better informed is part of the financial planning process for college education," Granovsky said. "Parents and students, especially those who think they can't afford college need to know what financial aid is available and how to qualify for such options as loans, work-study programs and grants."

High school guidance counselors have a wealth of reference material on college programs and costs. Most public libraries keep current references on U.S. colleges and universities.

The saying that "education pays" is still true, Granovsky said. Figures from the U.S. Census Bureau show that what people earn is a direct reflection of their level of education.

In 1987, census figures indicated that high school graduates earned an average income of \$12,000, while college graduates earned \$22,400 and those with master's degrees earned \$30,600.



Latest Arrivals

### Lindsay Christena Clark

Tena and Darin Clark of Amarillo are the proud parents of a daughter born Tuesday, Sept. 25 at 8:30 a.m. in the High Plains Baptist Hospital in Amarillo.

The young lady has been named Lindsay Christena.

Lindsay Christena weighed seven pounds and 13 ounces and was 19 and half inches long. She has a brother, Westen, who is almost three years.

Grandparents are Mr. and Mrs. Henry Landers and Tootie Middlebrooks, all of Muleshoe and Mr. and Mrs. Thomas Clark of Pampa.

She was born on her grandfather Clark's birthday.

### Rebecca Kristen Martinez

Graviel and Graciela Martinez of Sudan are the proud parents of a daughter, Rebecca Kristin, who was born at 7:15 a.m. Tuesday, Sept. 25 in Muleshoe Area Medical Center.

The young lady weighed six pounds and six ounces. She is the second child for the couple. They have a son, Graviel, Jr. five years of age.

Grandparents are Francisco Martinez and Margaret Martinez of Canyon and Francisco and Carolina Reyna of San Angelo.

### Shelby Lynn Weaver

Jimmy and Kathleen Weaver are the proud parents of a daughter, Shelby Lynn, who was born at 1:57 p.m. Wednesday, Sept. 26 in Muleshoe Area Medical Center.

Shelby Lynn weighed eight pounds. The couple have two other children, Kristine, 5 and Tiffeny, 17 months.

Grandparents are Ted and Elva Weaver of Austin and Sam and Kathy Kinnamor of Bellville, Ill.

Great grandparents are Alice Kelton of Muleshoe and Woody and June Weaver of Levelland.

### Song O' Owe

All that I am, or ever hope to be, I owe.

-Appeal, Memphis.

True

Plastic surgeons can do almost anything with a human nose except keep it out of other people's business.

-Pilot, Norfolk



**CELEBRATING SEPTEMBER BIRTHDAYS**--Six residents of the Muleshoe Health Care Center celebrated birthdays during the month of September and were honored with a birthday party Thursday afternoon. The party was hosted by the Needmore Community Club. Decorators Floral provided the flowers and Opal Robison and the Needmore Club provided the music. Two of those celebrating birthdays were Stella Morgan, born September 28, 1899 and Joe Weaks, September 23, 1896. Not pictured: Wilmoth Clements, September 10, 1913; Ernest Kerr, September 18, 1914; Arnold Morris, September 29, 1897; and Homer Milsap, September 18, 1908. (Journal Photo)

### Rebekah Lodge

Muleshoe Rebekah Lodge met Tuesday, Sept. 25 in regular session at the Lodge Hall.

Dorothy Browning Noble Grand presided. The flags were presented by Mildred Kindricks and Lucille Harp.

Fern Davis, chaplain, gave the opening prayer and Less Lambert read a letter stating that a called meeting of Grand Lodge has been scheduled for Oct. 14 at Waxahachie.

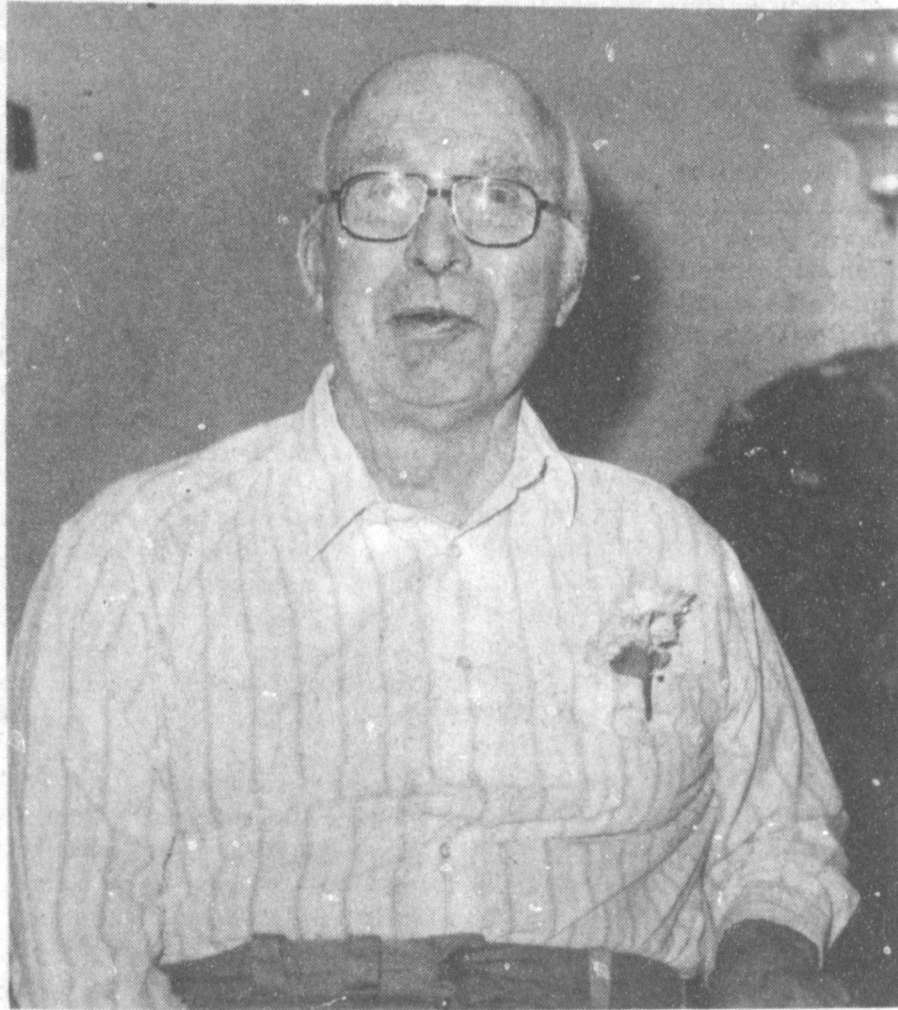
A discussion was held and important decisions need to be made, according to Fern Davis, reporter.

Louise Allen reported that plans for the anniversary are progressing.

Noble Grand, Dorothy Browning appointed Patsy Chance chairman of the Thanksgiving luncheon scheduled for Nov. 1. It was noted that the date has been changed from the last report.

Happy birthday was sung for Lucille Harp.

Refreshments were served to 17 members by Ona Befry and Lucille Harp.



**HAPPY BIRTHDAY**--Ernest Kerr was among those celebrating birthdays at a party Thursday afternoon at the Muleshoe Health Care Center. Kerr was born September 18, 1914. The Needmore Community Club hosted the party. (Journal Photo)

## Mr. Corn Farmer

We are now accepting feed

&

food corn

at

215 E. Amer. Blvd.

or the Main Elevator in Muleshoe.

Come by either location in Muleshoe and discuss our food corn program today.

Farmer's Cooperative Elevators

Muleshoe

272-4335 or 272-5959

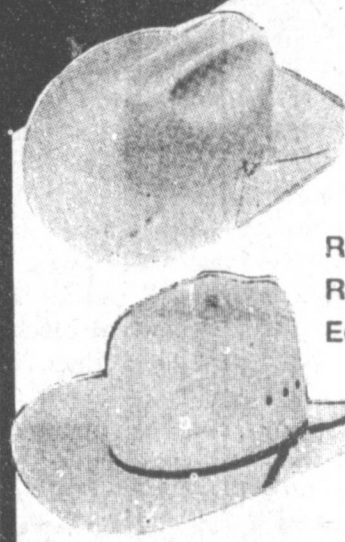


### FROM HEAD

SPECIALS FOR THE WHOLE FAMILY

## HATS

HAND-CREASED ESPECIALLY FOR YOU



RIP'S 4X Black Felt \$65  
RIP'S 5X "Silver Belly" \$75  
Eddy Bros. for Children \$24.98

All 4X to 20X

Resistol & Stetson

20% off

# Rip's

## WESTERN WEAR IN TEXICO

314 Wheeler 482-3363

OPEN 8:00 a.m. - 6:30 p.m. c.d.t.  
LAYAWAYS WELCOME

# SPECIALS

- Coats
- Vests
- Wind Breakers

By Comfy, Miller And Schafer

20% off

One Group of Vests

\$1998

While Supplies Last

All Men's Shirts

20% Off

Western Shirts for Little Girls

50% Off



### JEANS

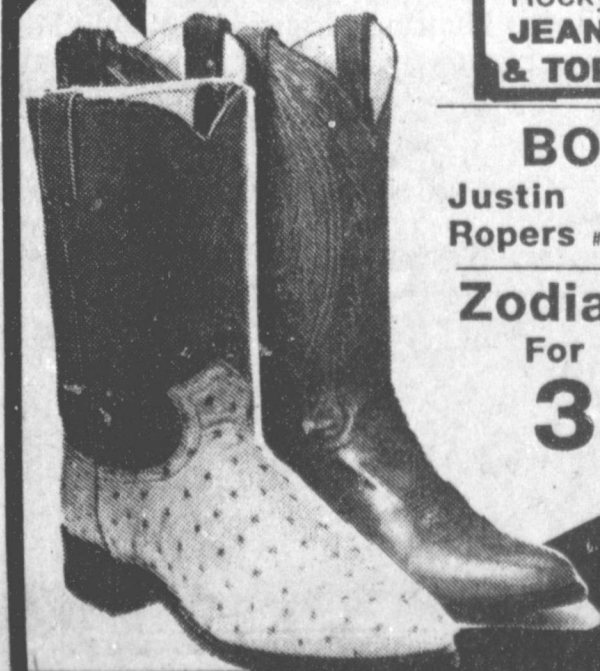
Wrangler 13MWZ..... \$14.98  
Wrangler Color 13 MWZ..... \$19.98  
Wrangler Snow Canyon..... \$29.98  
Levi 557..... \$14.98  
Levi 501..... \$19.98  
Levi 550..... \$29.98

Rocky Mountain JEANS & TOPS 10% off

### BOOTS

Justin Ropers #3802 \$79.98

Zodiac Boots For Ladies 30% Off



...TO TOE

## Muleshoe Mules

Cont. from Page 1

ball away to the Mules.

Again, the Mules failed to capitalize on the fumble recovery and turned the ball back to Cooper on a fourth down play.

Showing some teeth, the Pirates managed seven plays and another couple of first downs before running into penalty trouble and after a couple of quarterback sacks, punted the ball back to the Mules.

As the first quarter ran out, it was a scoreless ball game as the Mules and Pirates waged a defensive battle on the field.

At the end of the first, it was a 0-0 ball game.

In the second, the Pirates started out with the ball and failed to move more than three yards, so again, the Mules took over on downs, then ran into penalty trouble themselves, immediately after making a first down.

John Orozco started grinding out yardage and managed another first down before the Mules bogged down again and punted the ball away again.

With 7:03 to the half, Lubbock Cooper started putting a drive together and moved the ball for 27 yards in seven plays before turning it back to the Mules with 3:17 left in the half.

Two quick penalties punished the Pirates, but the Mules again ran into a tough defense and

## Muleshoe...

Cont. from Page 1

Sandi Chitwood, who teaches eighth grade science, was Educator of the Week at Watson Junior High School.

Principal awards went to Rita Locker, sixth grade; Daniel Gararino, seventh grade and Robert Jaime, eighth grade.

Sgt. Charlie Simmons, of the Plainview Highway Patrol Office said in Bailey County, troopers investigated no fatal accidents, and one personal injury accident in the month of August. Six persons were injured in the accident.

failed to move the ball to the end zone.

Late in the second, a roughing the kicker penalty put the Mules out of scoring range, and it was a 0-0 game going into halftime.

Taking the second half kickoff the Pirates put together a drive that resulted in a touchdown in a drive that took up 11 plays and took the Pirates to the two yard line where they made it into the end zone with 5:51 left to play in the third quarter.

The Pirates' PAT was good, and they took a 7-0 lead over the Mules.

The Mules really came out slugging on the kickoff, and Galin Latham, John Orozco, Eric Richardson, and Danny Rodriguez put together a long drive that took them to the Pirates three yard line, but they failed to punch the ball over and turned the ball over on downs to the Pirates.

This was followed by Mike Friend and Michael Hardwick trapping the Pirates' Brandon White in the end zone for a safety.

At 11:04 of the fourth quarter the Mules trailed by five points. With the kickoff, the Mules started putting another drive together, a drive that culminated in a John Orozco touchdown at 7:03 of the fourth. He slammed through from the nine yard line after nine plays. The PAT failed, but the Mules had a one point, 8-7 lead over the Lubbock Cooper Pirates.

A fired-up defense recovered a Pirate fumble, but the Mules only managed to grind out four yards before turning the ball back to the Pirates on downs.

Getting the ball back, the Pirates had a field goal blocked by Ruben Mata, and then, the Mules just snapped and QB Larry Gonzales fell on the ball.

When the time ran out on the clock, the Mules had won their second game, 8-7. A fitting and proper end to a homecoming week for Muleshoe High School and the Muleshoe Mules.

Next Friday, the Mules will travel to Amarillo to play River Road at 8 p.m.

## Cemetery Association

Cont. from Page 1

the possible drilling of a new water well to help 'boost' the present well.

Bob Palmer, who has been acting as caretaker for the cemetery, said he would work through the month of October, but no longer.

A retired farmer was at the meeting to apply for the position of caretaker, but was informed that the question must come before the board of directors for action.

Further discussion was held on the possible disposal of dead trees and dead shrubbery at the cemetery. Mrs. Spurlock said at one time, someone was hired to remove the dead trees and shrubs, but did not follow through with it.

R. L. Scott was asked about county equipment being used to knock down the dead trees, but told Mrs. Spurlock he would have to discuss this with the commissioners court before he could commit the use of county equipment, even for pay.

Also discussed was the weed

## Hospital...

Cont. from Page 1

obtaining training for an assistant. Murphy was asked to check into what training was necessary for a 'back-up' for the present respiratory therapist.

Murphy also reported that the nurse call system needs extensive work or replacement. He said not all beds are fully covered with the nurse call system, and said a new system would cost \$15-20 thousand. Murphy was asked to do further checking.

Also coming under discussion was the fire alarm system for the hospital, which Murphy said is not in compliance with state statutes. He said one smoke detector in a patient room is set off to hair spray and perfume.

The possibility of a new family practitioner for Muleshoe was discussed, and further details will be known in the near future. A contract will be proposed to the physician, who has indicated an interest in moving to Muleshoe.

situation at the cemetery. Restrictions on the types of weed spray that can be used was also an item of discussion.

The moderator at the meeting said attorney Nolan Greak prepared all the papers for purchase of the cemetery, and did not charge the Association for the work he did.

She also talked about the garage sales, and said people had been very generous in donating items to be sold with benefits going into the operating fund for the Cemetery Association.

The first sale was held at Western Auto, and the owners would not charge any rent.

Then, St. Clair's donated a building, at no rent. However, the last of October, he will need possession of the building, as Mrs. Spurlock said he has either sold or leased the property.

The Cemetery Association is currently seeking a new location to conduct the garage sales, and said they can now pay a small rent.

They are also seeking volunteers to help with the garage sales. Both male and female help is needed. For additional information, contact Mary Frances Holt at 272-5727.

## SWCD...

Cont. from Page 1

conservation programs on farm and ranch lands within Bailey County and to serve as a voice for other farmers and ranchers on conservation practices conducted in the county. The district board of directors coordinates the conservation efforts of various local, state and federal agencies and has the authority to enter into working agreements with these governmental agencies.

The meeting is open to every land owner in the county, added Tanksley, and all are encouraged to attend.

## Letter To The Editor

Dear Editor and Readers,

We would like to use this means to publicly thank the Xi Omicron Xi Sorority for the cash donation made to the Muleshoe Heritage Foundation.

We also thank the Terry Huttons, the Tom Bonds, the C. L. Myers and the Charles Lewis for the use of their homes during the Spring Home Tour, from which the funds were received.

This and other monies will be used for the completion of the Janes Ranch House and other projects at the Heritage Center.

We appreciate the contribution this organization makes to our community.

Thanks again,  
Heritage Board and Members

Dear Editor

The members of Bailey County EMS organization would like to thank everyone who made EMS week a success.

During this week, we wanted to bring EMS to the public.

A special thanks, to the school kids that participated in the coloring, poster, and essay contests, and to the teachers that supervised this project.

The donations of the following businesses and individuals help to make the coloring, poster, essay contests, Cans for Life project, and other EMS week activities possible.

Thanks, so much:  
Thriftway, Pay-N-Save, Sonic Drive In, Church's Fried Chicken, La Placita Restaurant, Pizze Hut, Dairy Queen, Leal's Restaurant, Poynor's, Perry's, Bob Stovall Printing, Spudnut Shop, CareLink Helicopter, City of Muleshoe and Muleshoe Area Medical Center.

Also, Fry & Cox, Inc., KMUL, Channel 6, West Texas Ranger, Muleshoe and Bailey County Journals, Decorator's Floral, Creations by Helen, Muleshoe Independent School District, Janie Moraw, Marilyn Cox, Kenneth King and Clea Williams-Jacobson.

Thanks Again!!!  
Bailey County EMS Organization

## Nursing Home News

by: Joy Stancell

Jack Knowles had out of town relatives visiting him Tuesday.

Please help us make welcome two new residents. They are Opal Sowder. She was born in Cook Co. Tex. July 10, 1912. She is a Baptist. Ethel Chitwood, another new resident was born in Arkansas April 21, 1895. She is also a Baptist. Welcome ladies to our HealthCare Center family.

Ottile Weisan was visited by Hilbert Weisan Tuesday evening.

Joe Weaks celebrated his 99th birthday in the home of his daughter, Billie Mason. Billie cooked him all of his favorite foods.

Marilyn Wilson and Grace Scarbrough made and brought a large batch of rice krispie treats to us Tuesday. We really thank them for doing this for us.

Marilyn Wilson visited Bernice Amerson Tuesday. She was also visited by her sisters, Juanita and Lorene.

Thursday afternoon J.E. Embry, Johnnie Kimbrough, Rue Kimbrough and Nathan Doyle, Winnie Berry, S.W. Inman came to visit and play Sip-Bo and dominoes with the residents.

Sunday afternoon the Progress Baptist Church came to have church services with the residents. Laverne James served watermelon afterwards.

Friday afternoon Rev. and Mrs. Dale Reid of the First

Assembly of God Church came to have music and a devotional with the residents. Lona Embry served watermelon afterwards.

Tuesday afternoon Bonnie Green, Beth Watson, Claudine Embry, Nobie Phipps and Laverne James came to shampoo and set the ladies hair. Helen Free and Shelly Lopez did manicures.

Our thanks to Grace Scarbrough for mending our residents clothes. She is doing a good job mending rips, sewing on buttons etc. We just couldn't make it without our volunteers.

Mrs. Rippee was hospitalized in our local hospital Wednesday. Buck Ragsdale underwent surgery and is back in the HealthCare Center. We ask your prayers on their behalf.

Guy Kendall went out on Sunday to spend the day with his family.

Our thanks to Pat Clements for arranging for the special Gospel Ventriloquist to visit us Tuesday afternoon.

Mr. and Mrs. Weldon Crim helped us to a site to wait the arrival of the Carelink Helicopter Friday morning. Our thanks to them and our special friend.

Cash Rewards  
Up To \$1,000  
For Information!  
Call  
Bailey County  
Crime Line  
272-HELP



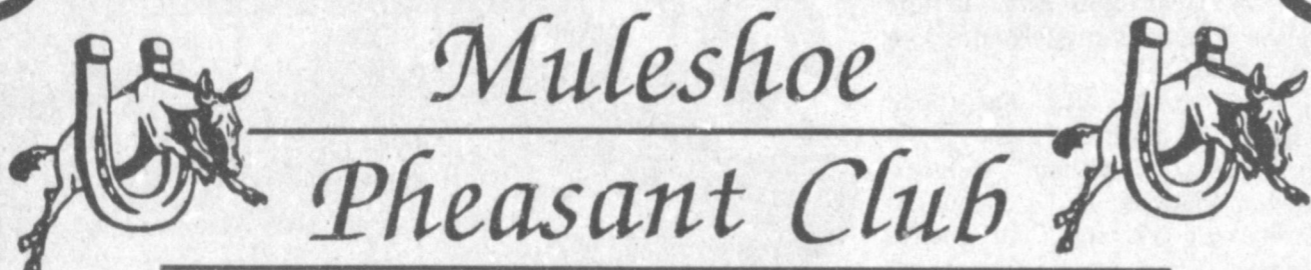
## Freeze Dates

- 1965.....October 28
- 1966.....October 15
- 1967.....October 17
- 1968.....October 18
- 1969.....October 13
- 1970.....October 8
- 1971.....October 31
- 1972.....October 20
- 1973.....October 31
- 1974.....October 16
- 1975.....October 17
- 1976.....October 8
- 1977.....November 2
- 1978.....November 7
- 1979.....October 24
- 1980.....October 19
- 1981.....October 22
- 1982.....October 20
- 1983.....September 21
- 1984.....October 19
- 1985.....October 5
- 1986.....October 12
- 1987.....November 10
- 1988.....November 1
- 1989.....October 19

Presented by:

MULESHOE STATE BANK

MEMBER FDIC  
101 West American Blvd. Phone 806/272-4561  
MULESHOE, TEXAS 79347



## Muleshoe Pheasant Club

Here's what the  
MULESHOE PHEASANT CLUB  
offers you!

Remember!! Double Daily Limit!  
4 Birds Per Day Guaranteed!

Cost For This Hunt Is \$200.00 Per Day, Per Hunter

You may reserve your hunting date by remitting only 1/2 (\$100.00)

per day, per hunter!! Act Now!! Limited Number Of Hunters

Deposits Are Non-Refundable

Name \_\_\_\_\_

Address \_\_\_\_\_

Telephone \_\_\_\_\_

Number Of Hunters \_\_\_\_\_

Date (s) Desire To Hunt \_\_\_\_\_

Second Choice \_\_\_\_\_

Checks should be made payable to:

**Muleshoe Pheasant Club**

Texas Hunting Licenses Available For Out-Of-State Residents At A Nominal Fee. (\$25.00 - 5 Day Permit)

You May Obtain Additional Information Or Pre-Register By Completing The Form And Returning It By October 31, 1990

**Group Rates For 15 Or More Hunters!**

LIMITED NUMBER OF HUNTERS ALLOWED.

Call now for more information:

**Walter B. "Jack" Little**

Home:

806-272-4805

(or leave message for call back)

Mobile:

806-272-4086

or write to:

P.O. Box 525

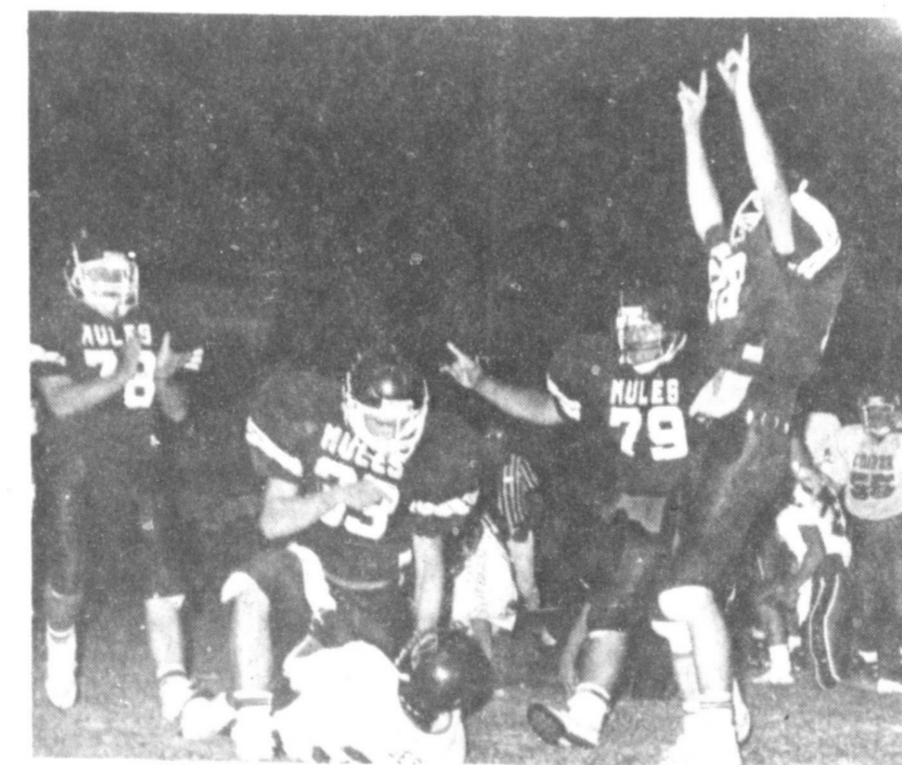
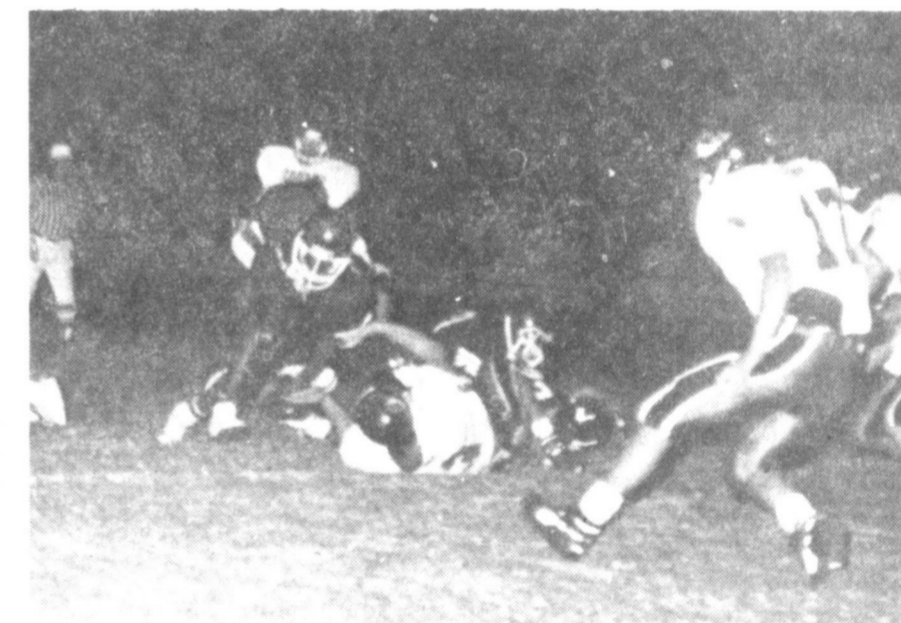
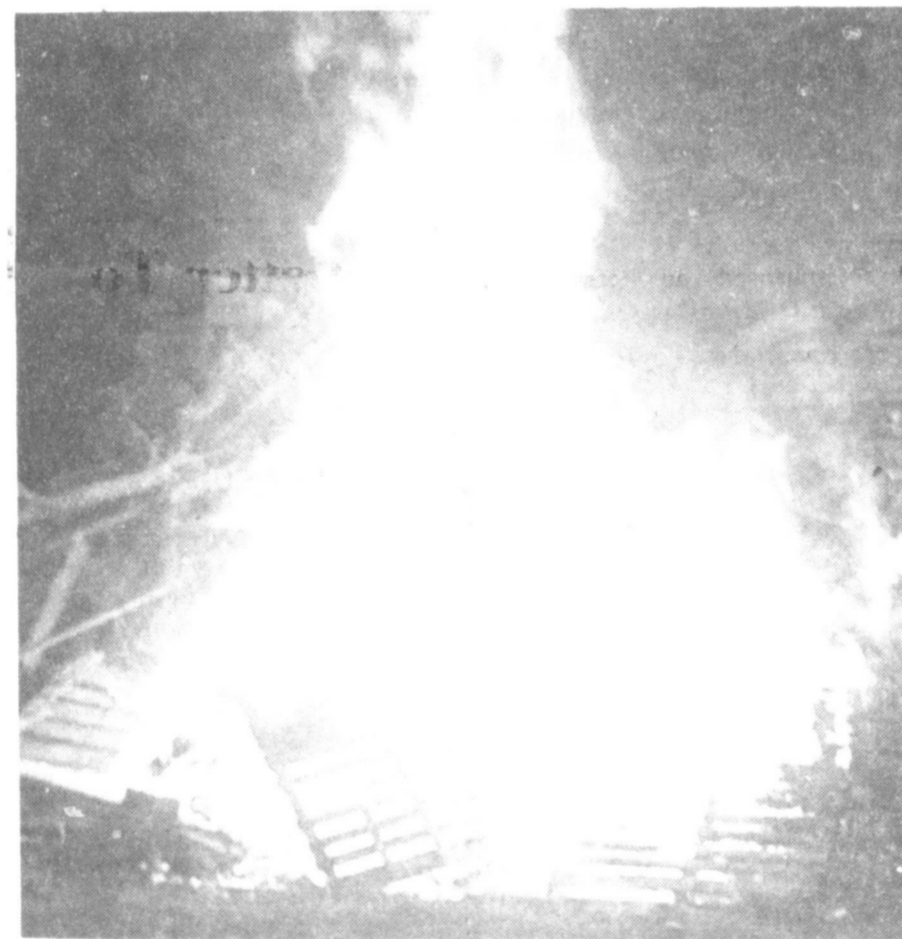
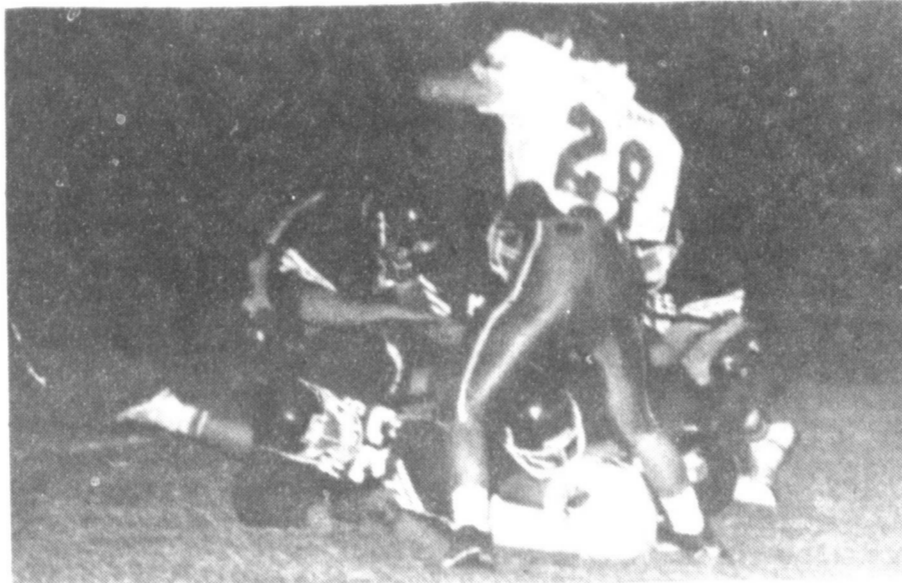
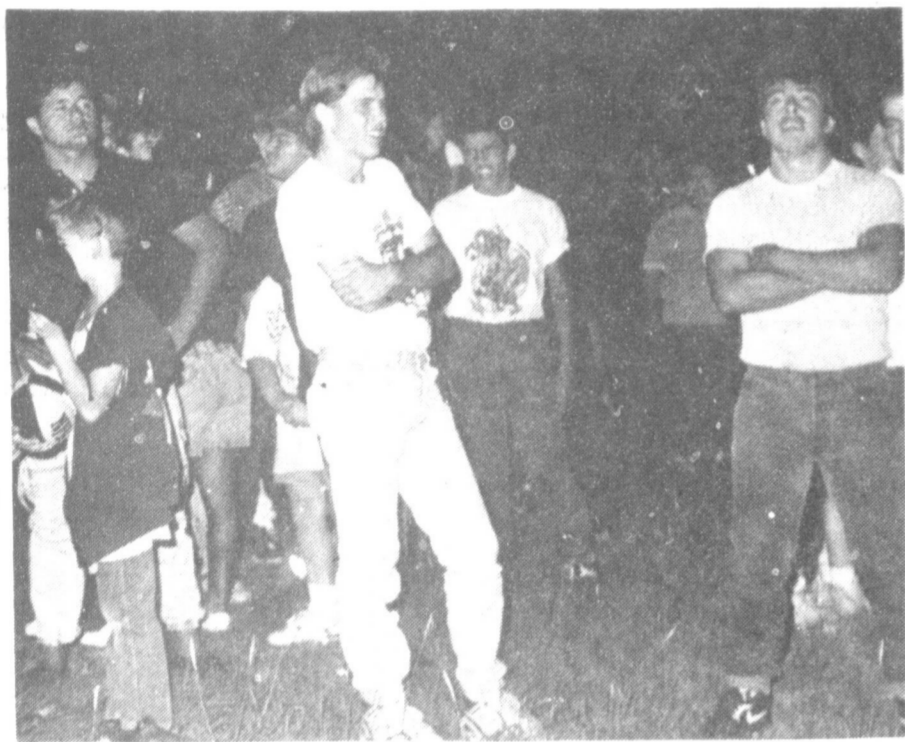
Muleshoe, TX 79347

## And The Winner Is?

# Muleshoe 8 - Lubbock Cooper 7

Bonfire - Pep Rally - Queen Coronation - Game

Friday, September 28, 1990



## Courthouse News

### MARRIAGE LICENSE

Juan Fernando Arias and Diana Isabel Medina, Friona  
James Paul Barker and Mechelle Ann Moncus Townsend, Portales, N.M.

Steven Scott Griswold and LaTanya Karen McCall, Muleshoe.

Emanuele Paul DiMattia, Haverhill, Mass. and Kristi Diane Henry, San Antonio.

Joe Kindall Richards and Tammy Gaye Wallace, Sudan.

Walter William Coburn and Debra Ann Bryant, Muleshoe.  
Edgar Fabricio Posada and Gloria Belen Regalado, Sudan.

### WARRANTY DEEDS

Patsy Young Jungman Stacy, James O. Young and Peggy Young Taylor Ogerly to Tonya Kay Petty Seale-(SE/4) of Section 73, Block "B" in the Melvin Blum & Blum Survey in Bailey County Texas.

Robert J. Montgomery & wife Sharon K. Montgomery to Security State Bank of Littlefield (E/21.58') of Lot 194, All of Lot 195, & the (W/6.71') of Lot 196, Richland Hills Addition to the City of Muleshoe, Bailey County, Texas.

Llanos Altos Baptist Association to Young's Diamond & Cattle, Inc.-A 3 acre tract of Land, located in the Southeast corner of Labor 10, League 170, Hale County School Lands in Bailey County, Texas.

Valley Grain Products, Inc. to Wells Fargo Bank, N.A.-Subject to Lien: All that part of Sect. (58), Block "Y", W.D. & F.W. Johnson Subdivision No. 2, Bailey County, Texas.

Frank Mann, Norma Mann, June Perkins, Chester Perkins, Darlene Prather, J.T. Prather, Myrtle Foster and Duane Foster to Pete Franco and wife, Carmen Franco--A 5.08 acre tract of land out of Section 33, Block Y, W.D. & F.N. Johnson Subdivision No. 2, Bailey County, Texas.

Josie Toscano to Homemakers Finance Service Inc.- Lot (1), (2), (3), (All of 95 feet by 75 feet), Block 39, Original Town of Muleshoe, Bailey County, Texas.

George T. Edwards, Jr. and wife Margaret Johnson Edwards to Muleshoe State Bank- (E/2) of Lot (18) and all of Lots (19) and (20), Block (6), Highland Addition to the town of Muleshoe, Bailey County, Texas.

Joe P. Rhodes and wife Darla Faye Rhodes to Flo-Lo TRUST--All of the West 120 acres of the (N/W 4) of Section (22) Block Z, W.D. & F.W. Johnson Subdivision, Bailey County, Texas.

Gilbert Aguirre to Alejandro Aguirre and wife, Cordelia Aguirre---Tract No. 7, Aylesworth Subdivision No. 2, out of a part of the (NE/4) of Section 36, Block Y, WD&FW Johnson Subdivision No. 2, Bailey County, Texas.

Alice Kelton to Loyce Kelton Metcalf--(N/2) of Section No. (93), Block "Y", WD&FW Johnson's Subdivision No. (2), Bailey County, Texas.

### COUNTY COURT

Santiago Leal-DWI-\$1,000 fine, 90 days jail.

David Rincon Jr.-DWI-\$300 fine, 60 days jail, 1 year probation.

Jesus Jose Marquez-DWI-60 days jail, \$300 fine, 1 year probation.

Royce Newton Wrinkle-DWI-60 days jail \$300 fine, 1 year probation.

Frank Arredondo-DWI- 60 days jail, \$300 fine, 1 year probation

Adan Zuniga-DWI-2nd Offense-\$600 fine, 60 days jail

Saul Lopez Araujo-DWI-60 days jail, \$300 fine, 1 year probation

Phillip J. Williams-DWI-60 days jail, \$300 fine, 1 year probation.

Jay Lance Gleason, Reckless Conduct, 6 Months Probation

Guadalupe Montes, Possession of Marijuana, \$100 Fine, 3 Days Jail

Angela Arguello, DWI, 60 Days Jail, \$300 Fine, 1 Year Probation

Gilberto Gloria, Possession of Marijuana, under 2 ounces, 30 Days Jail, \$300 Fine

**CIVIL MINUTES**  
First Bank of Muleshoe VS Billy D. Williams and Sharon Williams-Order for Substituted Service.

Bailey County Appraisal District VS Altman, Ronnie Jack-Order of Dismissal

Bailey County Appraisal District VS Pearson, J.C.- Order of Dismissal

Bailey County Appraisal District VS James and John Fowler-Order of Dismissal

**Trust To Last**  
Most people don't have to be led into temptation--they can find their own way.

-Line, Cedar Rapids.

**For Shame**  
One husband recently complained that his wife is leading a double life; his and hers.

-Record, Columbia, S.C.

## Verney Towns Funeral Services Held Tuesday

Funeral services for Verney Towns, 77, of Wichita Falls, were held at Hampton-Vaughn Chapel on Monday and at Wilson's Rest Lawn Mausoleum of Wolforth on Tuesday with the Rev. Dale Rouse of the First Baptist Church of Clovis, N.M. officiating.

Towns died of a heart attack in his home on Saturday, Sept. 22.

He was born Dec. 27, 1912, to John Edward and Pearl Thompson Towns in Vernon. He married Mona Hancock on Dec. 24, 1933, in Lamesa. He moved to Farwell in 1941, and lived near Muleshoe from 1950 to

1975 when he moved to Wichita Falls. He was a farmer and owner of Dr. Pepper Bottling Company. He was a member of Colonial Baptist Church in Wichita Falls.

Survivors include his children, Karolene and Marlon Inman of Farwell and Dr. Jim Towns of Nacogdoches; grandchildren, Brent and Lisa Inman of Abilene and Suzahn Inman of Brownfield; two sisters, Pauline Jamison of Marble Falls and Doris Towns of Kingsland; nephews, Dennis Rainy of Dallas, and Leon Jamison of Marble Falls.

Pall bearers were Hurshel Harding, Elvis Childs, Don A. Williams, Carleton Davis, Carl Deaton and Sherman Inman.

Towns was preceded in death by his parents, an infant daughter, Scharlane, and his wife in 1967.

## Noema Clem Funeral Services Held Friday

Funeral services for Noema Clem, 86, of Early, formerly of the Muleshoe area, were held at 10 a.m. Friday in the Early First Baptist Church with the Rev. Everett Yeilding, Brownwood, and the Rev. Scott Harrison, pastor of the Early First Baptist Church, officiating.

Graveside services were at 10:30 a.m. Saturday, Sept. 29 in Muleshoe Memorial Park. Local arrangements were under the direction of Ellis Funeral Home of Muleshoe. Mrs. Clem died at 4:30 p.m. Wednesday in Brownwood Regional Hospital.

Born Jan. 17, 1904, in Sour Lake, she had been a resident

of Early since 1972, moving there from Muleshoe. She was a homemaker and a member of the Early First Baptist Church. She married Troy H. Clem on May 21, 1928 in Brownwood. Survivors include her husband, Troy H. Clem; a son, Troy H. Clem, Jr. of Laguna Beach, Calif.; two daughters, Jeane Morgan of Austin and Nona Griffin of Muleshoe; two sisters, Marjorie Kenemer of Marble Falls and Odessa Gartman of Arlington; a brother, Elstyn Bates of O'Donnel; eight grandchildren; and four great grandchildren.

Let us permit nature to have her way: she understands her business better than we do.

Accuse not nature, she hath done her part: Do thou but thine!

## Immaculate Conception Catholic Church

Father Patrick Maher  
Northeast of City

## First Baptist Church

220 West Ave. E.  
Barry Bradley, Pastor

## Emmanuel Baptist Church

Iglesia Bautista Emmanuel  
107 East Third  
Isaias Cardenas, Pastor

## Trinity Baptist Church

314 E. Ave. B.  
Rev. Dale Berry

## Circle Back Baptist Church

Intersection FM 3397 & FM 298  
Pastor, Glen Price  
946-3676

## Calvary Baptist Church

1733 W. Ave. C.  
Rev. Rick Michael

## Victory Baptist Church

605 West 8th  
James Williams, Pastor

## Progress Baptist Church

Charles Fisk, Pastor  
Progress, Texas

## Richland Hills Baptist Church

17th and West Ave. D.  
Allen Petersen, Pastor

## St. Matthews Baptist Church

Corner of West Boston & West Birch  
M.S. Brown, Pastor

## Progress Second Baptist Church

1st and 3rd Sunday  
Rev. Arthur Hayes

## Primitive Baptist Church

621 South First  
Elder Cleveland Bass, Pastor

## 1st Baptist Church

Lazbuddie, Tx.  
Gary Wilcox, Pastor  
965-2126

# NEGLECT

This highway began to decay the day that it ceased to be used and repaired. Deterioration sets in with the onset of neglect. When a nation's spiritual life is neglected there is a possibility that nation will not long endure. Let us strengthen our nation and our society by attending church regularly and reaffirming our faith in God.

"And let us consider one another to provoke unto love and to good works: Not forsaking the assembling of ourselves together as the manner of some is; but exhorting one another: and so much the more, as ye see the day approaching." Hebrews 10:24, 25.

The Church is God's appointed agency in this world for spreading the knowledge of His love for man and of His demand for man to respond to that love by loving his neighbor. Without this grounding in the love of God, no government or society or way of life will long persevere and the freedoms which we hold so dear will inevitably perish. Therefore, even from a selfish point of view, one should support the Church for the sake of the welfare of himself and his family. Beyond that, however, every person should uphold and participate in the Church because it tells the truth about man's life, death and destiny; the truth which alone will set him free to live as a child of God.

Coleman Adv.

## The Community Church

Morton Hwy  
Mort Cross, Pastor  
272-5992

## St. John Luthern

Sunday School and Bible Classes 9:30 a.m.  
Church Services 10:30 a.m.  
Rev. Mac Bearss, Pastor

## Lazbuddie Methodist Church

965-2121  
Doug Chapman, Pastor

## New Covenant Church

Plainview Hwy  
Sunday 10:00 a.m.  
Wednesday 7:00 p.m.  
Jimmy Lowe, Pastor

## Jehovah Witness

Friona Hwy  
Jack Tiffin, Minister  
Warren Meeks, Minister

## Templo Calvario

507 South Main  
Sunday 10:00 a.m.  
Sunday Evening 7:00 p.m.  
Evangelistic Services  
J.L. Soto, Pastor

## Church Of The Nazarene

9th and Ave. C.  
Dennis Hayes, Pastor

## Primera Iglesia Bautista

223 E. Ave. B.  
Roy Martinez, Pastor

## Lariat Church Of Christ

Sunday School 10:00 a.m.  
Worship 11:00 & 6:00 p.m.  
Wednesday Services 7:00 p.m.  
Sam Billingsley, Minister

## Muleshoe Church Of Christ

Clovis Hwy  
Bret McCasland, Minister

## 16th & Ave. D. Church Of Christ

Sunday 10:30 a.m.  
Evening 6:00 p.m.  
Wednesday 8:00 p.m.  
Curtis Shelburne, Minister

## Lazbuddie Church Of Christ

Minister, Keith Courmier  
Sunday School 9:30 a.m.  
Morning Services 10:00 a.m.  
Evening Services 6:00 p.m.  
Wednesday Night 7:00 p.m.

## First Assembly Of God

Rev. G. Dean Reid, Pastor  
Sunday School 9:45 a.m.  
Morning Worship 11:00 a.m.  
Evening Services 6:30 p.m.  
Mid-Week Services 7:30 p.m.  
272-3984

## Spanish Assembly Of God

East 6th and Ave. F.  
Mike Doyle, Pastor

## First United Methodist Church

507 W. 2nd Street  
Richard Edwards, Pastor

## El Divino Salvador Methodist Church

5th and Ave. D.  
Jose M. Fernandez, Pastor

## United Pentacostal Lighthouse Church

207 East Ave. G.  
Rev. N.W. Thompson  
272-3258

## Truth Tabernacle Pentecostal Church

200 E. Ithaca & Fir  
Pastor, Les James  
272-3391

<h3>Western Drug</h3> <p>114 Main 272-3106</p>	<h2>Attend The Church Of Your Choice!</h2>		<h3>Dairy Queen</h3> <p>1204 W. Amer. Blvd. 272-3410</p>
<h3>Sparkle Cleaners</h3> <p>114 E. Ave. C. 272-3570</p>	<h3>W. T. Services, Inc.</h3> <p>319 E. Amer. Blvd. 272-4888</p>	<h3>American Valley, Inc.</h3> <p>W. Hwy 84 272-4266</p>	<h3>Robert D. Green, Inc.</h3> <p>2400 W. Amer. Blvd. 272-4588</p>
<h3>Fry &amp; Cox, Inc.</h3> <p>401 S. First 272-4511</p>	<h3>Bob Stovall Printing</h3> <p>221 E. Ave. B. 272-3373</p>	<h3>James Roy Meat Market</h3> <p>506 W. Amer. Blvd. 272-4361</p>	<h3>Lookin' Good</h3> <p>206 Main 272-5052</p>
<h3>Main Street Beauty Salon</h3> <p>115 Main 272-3448</p>	<h3>1st Bank</h3> <p>Member F.D.I.C. 202 South First 272-4515</p>	<h3>Bratcher Motor Supply</h3> <p>107 E. Ave. B. 272-4288</p>	<h3>5-Area Telephone Co-Op</h3> <p>302 Uvalde 272-5533</p>
<h3>Irrigation Pumps &amp; Power</h3> <p>W. Hwy 84 272-4483</p>	<h3>Farmer's Co-Op Elevators</h3> <p>Muleshoe 272-4335</p>	<h3>Wes-Tex Futures, Inc.</h3> <p>1910 W. Amer. Blvd. 272-5585</p>	<h3>Richland Hills Texaco</h3> <p>1914 W. Ave. B. 272-4875</p>



# CLASSIFIEDS 272-4536

## CLASSIFIED RATES

15 Words & Under Minimum Charge \$2.30  
Thereafter \$2.00  
16 Words & Over 1st Insertion 15 cents per word  
2nd Insertion 13 cents per word

CLASSIFIED DISPLAY RATES \$1.75  
Per Column Inch

DEADLINES 12 noon Tues. For Thursday Paper 12 noon Friday For Sunday Paper

To receive the reduce rate after the first insertion ad must run continuously.

We reserve the right to classify, revise, or reject any ad. We are not responsible for any error after ad has run once.

## 1. Personals

**CONCERNED** About Someone's Drinking? **HELP IS AVAILABLE** through Al-Anon. Call 272-2350 or 965-2870 or come to visit Tuesday and Thursday nights, 8:00 p.m. and through AA call 965-2870 or come visit Tuesday nights, 8:00 at 620 W. Second, Muleshoe.

## 3. Help Wanted

**TOWN & COUNTRY FOOD STORES**  
We are seeking career minded individuals for part time and full time employment. Must be dependable, have good customer relations, work, learn, and contribute. Applications available at both stores. Drug test required.

**HELP WANTED**  
Full time or part time hairdressers. Come by Ana's House of Beauty. A3-37t-tfc

**WANTED:** Experienced machinist and gearhead man. Call (806) 238-1596 days or 238-1328 nights-after 9 p.m. B3-25s-tfc

## 4. Houses For Rent

**FOR RENT:** 2 bedroom, 1 bath, fireplace. Call Gene Atkins at 272-3292 or 272-5813. G4-38s-4tc

## 9. Automobiles For Sale

**FOR SALE:** 1988 Red Chevrolet Beretta. Automatic, tilt, stereo, tape deck, low mileage, tilt cruise. 272-3743; 510 20th. C9-39t-tfc

## 11. For Sale Or Trade

**FOR SALE or Trade:** 1980, 33 foot Fore-travel. Low mileage; always garage. Very clean. Call 505-763-7484. S11-39s-4tc

**FOR SALE:** 16' tandem axle Donahue grain trailer; hydraulic lift, 10,000 lb. Capacity, 5th wheel hook-up. Call 272-4708. P11-37t-tfc

**PIANO for sale:** Spinnet size. \$500. Call 272-3288 after 6 p.m. E11-36s-8tc

**TOMATOES,** peppers and other vegetables on the 84 bypass in Littlefield. Call B.E. Turner at 385-5980. T15-36s-8tc

**1979 R MODEL Mack.** New paint, extra clean \$9,500. 285-2127. S11-38s-4tc

**TOMATOES AND GREEN PEPPERS.** 965-2471.

## 8. Real Estate

**FOR SALE:** Trailer house. 16x80. 3 bedrooms, 2 baths. Small down payment; take up payments. Call 272-5263. H8-39t-3tc

**FOR RENT OR SALE:** 3 bedroom house in the country. Call 946-3417. K8-34s-tfcs

**BY OWNER - House for sale or rent.** 3-1-1 covered patio, big back yard. Large storage building. 806-272-3321. Y8-35t-4tcs

## 3. Help Wanted

## 8. Real Estate

### Smallwood Real Estate

232 Main Muleshoe 272-4838

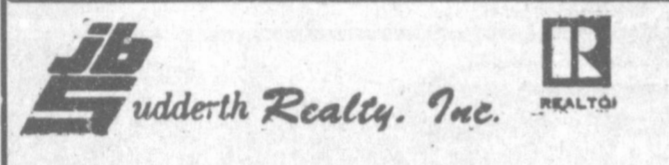


On pavement in Country. 3 bedroom, 2 bath, large kitchen and dining area, living room, large den, and playroom. 1 acre.

All electric energy efficient, central heat and air, 2 Bedroom, 1 1/2 Bath, living room and den, 1 car garage with storage. Corner lot.

3 Bedroom, 2 Bath, living room and dining area, large den, utility and large play room. Corner lot. Priced to sell.

3 Bedroom, 1 Bath, 1 car, carport, large kitchen, nice living room. Stove and dishwasher.



109 Fifth Street Farwell, Texas Realtors/Certified Appraisers

Have Buyers. Need Farm land to sell.

Good 160 Acres irrigated. Near Clays Corner. Nearly new circle.

J.B. Sudderth Broker Daren Sudderth Broker Master Senior Appraiser

806-481-3288

## IRWIN REALTORS

806-792-6373 806-879-2348

160 Acres - West of Muleshoe. Lays perfect, two wells, with lovely home. 3-3-3, large game room, loads of closets and storage, sunroom, central heat and refrigerated air, covered patio, gas grill, auto-sprinkler, fenced back yard. Nearly new shop building-much more! On pavement.

## Bingham & Nieman Realty

116 E. Ave. C George Nieman, Broker 272-5285 or 272-5286

**RICHLAND HILLS**  
IMMACULATE 3-2-2 Brick, Cent. A&H, built-ins, FP, sunken lv. area with cathedral ceiling, ceiling fans, earthtones, storage bldg. \$50's!!!

**NICE RESIDENTIAL LOTS-\$5,000 UP...**  
3-2-2 Brick, large corner lot, Cent. A&H, built-ins, basement area, & more!!!!

**PRICE REDUCED-Nice 3-2-2 Brick, Cent. A&H, FP, earthtone carpets, fenced yd. \$60's!!!!!!**

**3-2-2 Home, heat pump, built-ins, FP, earthtone carpets, fenced yd., & more. PRICED TO SELL!!!\$30's**

**3-2-2 Brick, corner lot, Cent. A&H, built-ins, FP, patio. \$60's..**

**HIGH SCHOOL**  
3-2 Home, remodeled, heat pump, storm win. & doors, fans, stor. bldg., fenced yd. \$20's!!!

**PRICE REDUCED 3-1-1 Home, earthtone carpets, workshop, cellar, fenced yd....**

**IMMACULATE 2-1-1 Home, Cent. A&H, nicely remodeled, storm win. & doors, fenced yd., cellar. \$20's!!!!!!**

**2-1/2-1 Brick, fl. furn., Cent. Air, fenced yd., & more. \$20's!!!!**

**FmHA FINANCING to qualified Buyer - 3-1-1 Brick, Cent. heat, earth-tone carpet, ceiling fans, miniblinds. \$20's!!!!!!**

**HIGHLAND AREA**  
VERY NICE 4-2-1 Brick, Cent. A&H, built-ins, earthtone carpets, util., encl. patio, storm win. & doors, grill, spktr. sys., stor. bldg., fenced yd. \$60's!!!!

**3-2-1 Brick, Cent. Heat, evap. air, fenced yard, & more!!!!**

## Highway Department Says No Political Signs On Highway

Political campaign signs may be beautiful to candidates and their supporters, but they're litter to the highway department.

## 15. Misc.

Let us disc your corn ground DEEP! -EARLY Get your volunteer up.

L&R Custom Farming Lee Kimbrough 272-5255 (m)272-6283

## 8. Real Estate

**FOR SALE:** 14X70 2 bedroom, 2 bath Mobile Home located in Muleshoe. Good condition. Phone 272-5489. D8-40t-tfc

**BAILEY COUNTY LAND FOR SALE**  
Owner will finance the following size blocks: 2-80 acres, 3-160 acres, 4-800 acres, and 1-277 acres. Wheat, milo and cotton allotments. 1 1/4 circles of permanent grass. 7 Center Pivots, A Sweet Cattle Set-Up.  
If interested, contact T.L. Timmings 806-385-4487 (Day) 806-925-6499 (Night)

## HCR REAL ESTATE

3-1 3/4 Brick, 2 ceiling fans, large den, lots of storage space, fenced back yard, large lot.

Thursie Reid 272-5318

## PHE Prudential Ada, Realtors

294 Acres (plus or minus). Excellent land, excellent water. Can be sold in two separate partials. Owner financing Call Patricia Yeager.

806-655-1093 Canyon, Texas

The highway beautification act prohibits most campaign signs within sight of the main lanes of any federally funded highway in Texas. Safety rules ban the signs from all highway rights-of-way in the state.

Campaign signs, like any advertisement, can be posted on private property if they are licensed and permitted under current billboard guidelines. However, most campaign signs don't qualify.

Signs are allowed on private property along farm-to-market roads and other state-funded roadways as long as they can't be seen from federally funded roads and don't violate local laws against such signs.

"We have two very legitimate concerns regarding these campaign signs," said highway department Engineer-Director Arnold Oliver. "Safety concerns and litter control laws dictate that we keep the rights-of-way free of clutter, whether it's for political candidates, real estate companies or anyone displaying advertising on the highways."

State highway maintenance forces are busy notifying political organizations to remove unauthorized signs. If candidates don't remove the signs, maintenance workers will, leaving the candidate subject to a fine under the litter abatement act.

"This can be an expensive activity for us and the candidates. We're asking their help to save both of us time and money," said Oliver.

He said if the state does not attempt to comply with federal beautification regulations, the federal Highway Administration can extract a 10 percent penalty from the state's federal highway funds.

Questions regarding the placement of campaign signs can be answered by local highway district or maintenance offices.

## 8. Real Estate

## Three Way News by: Mrs. H.W. Garvin

Mr. and Mrs. Lamar Pollard and Brian and Mr. and Mrs. Wade Pollard from Whitherrell spent Wednesday with her parents, the Rayford Mastens.

H.C. Toombs spent the past 10 days fishing at Lake Kemp.

Mrs. Bill Dolle and Darla were in Lubbock Wednesday on business.

The Three Way School Superintendent and part of the school trustees spent the weekend in Houston on school business.

The Three Way football team played Meadow there Friday night with Three Way winning the game. Three Way has won all three games this year.

The Three Way girls volleyball team played in a tournament in Lubbock Saturday.

Camron Vaughan from Plainview is visiting his grandparents the Adolph Whittners.

Mrs. Rodger Hatcher and girls from Clovis, N.M. visited her parents, the Jack Lane family, Thursday.

The community has had rain over the community this week with amounts varying.

Those going to the rest home from Three Way Baptist Church Thursday to hold the birthday party were Mrs. Bud Huff, Mrs. Jack Robinson and Mrs. Jack Lane.

Mrs. H.W. Garvin visited her brother, George Tyson, Friday afternoon.

Mr. and Mrs. Bill Dolle and Darla visited his parents, the Dolles, Saturday afternoon.

Mr. and Mrs. Robert Kindel spent the weekend in Roswell visiting Mrs. Kindel's sister.

The farmers in the community has most of the wheat sowed at this time.

## PSAT Test Next Month To Be Given

On Tuesday, October 23, Muleshoe High School will be administering the PSAT/NMSQT to all interested juniors and qualifying sophomores. The PSAT/NMSQT gives students practice for taking the SAT, explained the counselor for high school, Linda Marr. She said these tests have the same kinds of questions and similar scores. Taking this test helps students plan for college and it gives them an idea of how they will do on a college admissions test.

Mrs. Marr said taking the PSAT is the first step in entering the scholarship programs conducted by the National Merit Scholarships Corporation. Some 6,000 Merit Scholarships worth about \$25 million will be awarded to finalists in this competition. The only way to enter this competition is through the PSAT/NMSQT.

The fee for the 1990 PSAT is \$6. Students will need to pay the fee when they register to take the test. Students must register early so that they will have ample time to study the review booklet provided them upon registration. Students may begin registering immediately for the PSAT in the counseling office.

Individuals with questions concerning the PSAT should contact Linda Marr at Muleshoe High School.

272-4536 THROUGH THE CLASSIFIEDS! SELL-RENT-TRADE OR BUY

**MULESHOE AREA MEDICAL CENTER**  
Now Accepting Applications For: LVN'S For Shifts 3-11 and 11-7  
APPLY IN PERSON Contact Kay Swint, D.O.N.  
EQUAL OPPORTUNITY EMPLOYER  
708 SOUTH FIRST STREET MULESHOE, TEXAS 79347

Shop Muleshoe First!

 SHURSAVING <b>BATH TISSUE</b> 4 ROLL PKG. <b>59¢</b>	 SHURSAVING <b>PAPER TOWELS</b> JUMBO ROLLS <b>289¢</b> FOR	 SHURSAVING <b>CHUNK DOG FOOD</b> 25 LB. BAG <b>\$289</b>	 ALL PURPOSE SHURSAVING <b>FLOUR</b> 25 LB. BAG <b>\$289</b>	 SHURSAVING C.S. OR W.K. <b>GOLDEN CORN</b> 16 OZ. CANS <b>389¢</b> FOR	 SHURSAVING CUT <b>GREEN BEANS</b> 15.5 OZ. CANS <b>389¢</b> FOR	 SHURSAVING <b>TOMATO SAUCE</b> 8 OZ. CANS <b>689¢</b> FOR	 ALL TYPES 6 PK 12 OZ. CANS <b>PEPSI</b> <b>\$159</b>
--	---	--	--	--	---	--	---

SHURSAVING CRISPY <b>RICE CEREAL</b> ..... 13 OZ. BOX <b>\$139</b>	ALL PURPOSE SHURSAVING <b>FLOUR</b> ..... 5 LB. BAG <b>79¢</b>	SHURSAVING ALUMINUM FOIL..... 2 25 FT. ROLLS <b>89¢</b>	SHURSAVING ASSORTED <b>SPAGHETTI SAUCE</b> ..... 32 OZ. CAN <b>89¢</b>
SHURSAVING <b>SPINACH</b> ..... 2 14 OZ. CANS <b>89¢</b>	SHURSAVING BEEF/CHICKEN/LIVER <b>RATION DOG FOOD</b> ..... 5 15 OZ. CANS <b>99¢</b>	SHURSAVING <b>LONG SPAGHETTI</b> ..... 32 OZ. PKG. <b>99¢</b>	SHURSAVING <b>ELBO MACARONI</b> ..... 32 OZ. PKG. <b>99¢</b>
SHURSAVING GOLDEN OR WHITE <b>HOMINY</b> ..... 3 15 OZ. CANS <b>89¢</b>	SHURSAVING RICE..... 4 LB. BAG <b>\$139</b>	SHURSAVING LAUNDRY <b>DETERGENT</b> ..... 10 LB. BOX <b>\$389</b>	SHURSAVING LIQUID GREEN/PINK <b>DISH DETERGENT</b> ..... 32 OZ. BTL. <b>99¢</b>
SHURSAVING <b>FRUIT MIX</b> ..... 16 OZ. CAN <b>59¢</b>	WESTERN FAMILY ULTRA ASSORTED <b>WEIGHT LOSS</b> ..... 14 OZ. CAN <b>\$379</b>	SHURSAVING AUTOMATIC <b>DISH DETERGENT</b> ..... 50 OZ. BOX <b>\$169</b>	SHURSAVING TALL <b>KITCHEN BAGS</b> ..... 30 CT. BOX <b>\$169</b>
SHURSAVING SLICED YELLOW <b>CLING PEACHES</b> ..... 16 OZ. CAN <b>59¢</b>	SHURSAVING <b>FACIAL TISSUE</b> ..... 150 CT. BOX <b>69¢</b>	SHURSAVING <b>WHITE NAPKINS</b> ..... 300 CT. PKG. <b>\$159</b>	
SHURSAVING BARTLETT <b>PEAR HALVES</b> ..... 16 OZ. CAN <b>59¢</b>	SHURSAVING <b>APPLE JUICE</b> ..... 64 OZ. BTL. <b>\$139</b>		
SHURSAVING <b>PLASTIC WRAP</b> ..... 200 FT. ROLL <b>\$119</b>			

# SHUR SAVING FALL HARVEST Sale

SHURSAVING <b>SHORTENING</b> 42 OZ. CAN <b>89¢</b>	SHURSAVING <b>MAC. &amp; CHEESE DINNERS</b> 7 OZ. BOXES <b>689¢</b> FOR	SHURSAVING <b>SALTINES</b> 1 LB. BOXES <b>289¢</b> FOR	SHURSAVING ASSORTED <b>COFFEE</b> 13 OZ. BRICK BAG <b>\$149</b>	SHURSAVING <b>DIAPERS ELASTIC LEG</b> 44 MED./32 LGE. <b>\$589</b>
--	--	---	---	--

SHURSAVING REG. OR HOT  
**PORK SAUSAGE**..... 1 LB. ROLL **99¢**

FULLY COOKED 2-3 LB. AVG.  
**SHURFINE BONELESS TURKEY HAM**..... LB. **\$169**

QUALITY  
**SHURFINE MEAT FRANKS**..... 12 OZ. PKG. **99¢**

QUALITY SLICED  
**SHURFINE MEAT BOLOGNA**..... 12 OZ. PKG. **\$119**

WAFFER THIN SLICED BEEF, HAM, CHICKEN OR TURKEY-2.5 OZ. PKG.  
**SHURFINE SMOKED MEATS**..... 2 99¢  
FOR

LEAN DANISH SLICED  
**SHURFINE COOKED HAM**..... 12 OZ. PKG. **\$129**  
4 OZ. PKG. \$3.39



Vacuum Packed  
**SHURFINE SLICED BACON**  
1 LB. PKG.  
**\$139**



BONELESS CENTER CUT  
**ROUND STEAK**  
LB. **\$199**

HEAVY GRAIN FED BEEF  
**ROUND STEAK**  
LB. **\$179**

QUARTERED  
**SHURSAVING MARGARINE**  
1 LB. BOXES **389¢**  
FOR

SHURSAVING AMERICAN  
**SINGLES**..... 12 OZ. PKG. **\$119**

SHURFINE HALF MOON  
**CHEDDAR CHEESE**..... 8 OZ. PKG. **\$149**

S.M. OR B.M. TEXAS STYLE  
**SHURFINE BISCUITS**..... 2 12 OZ. CANS **99¢**

SHURFINE  
**CINNAMON ROLLS**..... 9.5 OZ. CAN **\$119**

SHURFINE  
**BREADSTICKS**..... 11 OZ. CAN **99¢**

SHURFINE  
**CRESCENT ROLLS**..... 8 OZ. CAN **99¢**

SHURFINE FROZEN  
**ORANGE JUICE**  
12 OZ. CAN **89¢**

SHURFINE WHIPPED TOPPING..... 12 OZ. TUB **89¢**

SHURFINE WHOLE KERNEL  
**GOLDEN CORN**..... 2 10 OZ. PKGS. **99¢**

SHURFINE CUT BROCCOLI OR  
**GREEN PEAS**..... 2 10 OZ. PKGS. **99¢**

SHURFINE  
**BRUSSEL SPROUTS**..... 10 OZ. PKG. **69¢**

SHURFINE  
**BROCCOLI SPEARS**..... 10 OZ. PKG. **69¢**

SHURSAVING FRENCH FRY  
**POTATOES**..... 2 LB. PKG. **89¢**

NEW CROP RED OR GOLDEN DELICIOUS  
**APPLES**  
3 LB. BAG **89¢**

FRESH GREEN  
**CABBAGE**..... 5 LBS. **\$100**

TANGY  
**LEMONS**..... 10 FOR **\$100**

BUNCH OF  
**GREEN ONIONS**..... 4 FOR **\$100**

FRESH CRISP  
**CARROTS**..... 4 1 LB. BAGS **\$100**

RUSSET  
**POTATOES**  
20 LB. BAG **\$199**

Our Best to you!  
The Grocers Gang

SHURSAVING <b>EVAPORATED MILK</b> 12 OZ. CANS <b>389¢</b> FOR	SHURSAVING <b>SALAD OIL</b> 48 OZ. BTL. <b>\$189</b>	SHURSAVING <b>LIQUID BLEACH</b> 1 GAL. JUG <b>79¢</b>	SHURSAVING CRUNCHY/CREAMY <b>PEANUT BUTTER</b> 18 OZ. JAR <b>\$119</b>	SHURSAVING ASSORTED <b>SODA POP</b> 64 OZ. BTL. <b>59¢</b>	SHURSAVING <b>SWEET PEAS</b> 17 OZ. CANS <b>289¢</b> FOR	SHURSAVING <b>WHOLE TOMATOES</b> 16 OZ. CANS <b>289¢</b> FOR	SHURSAVING <b>TOMATO CATSUP</b> 32 OZ. BTL. <b>89¢</b>	SHURSAVING PLAIN/RIPPLED <b>POTATO CHIPS</b> 1 LB. BAG <b>\$139</b>
--	--	---	--	--	---	---	--	---

SHURSAVING FABRIC <b>SOFTENER SHEETS</b> ..... 40 CT. BOX <b>\$149</b>	SHURSAVING FABRIC <b>SOFTENER RINSE</b> ..... 1 GAL. JUG <b>\$159</b>	SHURSAVING SQUEEZE BOTTLE <b>CHOCOLATE SYRUP</b> ..... 24 OZ. BTL. <b>\$119</b>	SHURSAVING <b>COFFEE CREAMER</b> ..... 22 OZ. JAR <b>\$129</b>	SHURSAVING ASSORTED <b>CAKE MIXES</b> ..... 16.5 OZ. POUCH <b>69¢</b>	SHURSAVING WHITE OR FUDGE <b>FROSTING MIX</b> ..... 13.5 OZ. POUCH <b>69¢</b>	SHURSAVING <b>PANCAKE MIX</b> ..... 32 OZ. BOX <b>79¢</b>	SHURSAVING <b>PANCAKE SYRUP</b> ..... 32 OZ. BTL. <b>99¢</b>	SHURSAVING <b>SALAD DRESSING</b> ..... 32 OZ. JAR <b>89¢</b>
SHURSAVING <b>RAISINS</b> ..... 15 OZ. BOX <b>99¢</b>	SHURSAVING HOT <b>COCOA MIX</b> ..... 10 PK. BOX <b>99¢</b>	SHURSAVING <b>COFFEE FILTERS</b> ..... 200 CT. PKG. <b>89¢</b>	SHURSAVING 30 W <b>MOTOR OIL</b> ..... 1 QT. CAN <b>59¢</b>	SHURSAVING TYPE A AUTO <b>TRANSMISSION FLUID</b> ..... 1 QT. CAN <b>59¢</b>	SHURSAVING CRANAPPLE DRINK/CRANBERRY <b>JUICE COCKTAIL</b> ..... 64 OZ. BTL. <b>\$179</b>	SHURSAVING ASSORTED SANDWICH <b>CREME COOKIES</b> ..... 32 OZ. PKG. <b>\$149</b>	QUICK OR OLD FASHIONED <b>SHURSAVING OATS</b> ..... 42 OZ. BOX <b>\$169</b>	SHURSAVING TOASTED <b>OAT CEREAL</b> ..... 15 OZ. BOX <b>\$139</b>
WESTERN FAMILY REG. OR THIN <b>MAXI PADS</b> ..... 30 CT. PKG. <b>\$239</b>	WESTERN FAMILY THICK & SOFT <b>BABY WIPES</b> ..... 80 CT. PKG. <b>\$269</b>	WESTERN FAMILY MINT/TARTAR CONTROL <b>TOOTHPASTE</b> ..... 6.4 OZ. TUBE <b>99¢</b>	WESTERN FAMILY MINT/CINNAMON <b>ANTI-PLAQUE RINSE</b> ..... 16 OZ. BTL. <b>\$169</b>	WESTERN FAMILY 12 HOUR <b>NASAL SPRAY</b> ..... 1 OZ. BTL. <b>\$159</b>	WESTERN FAMILY EX.-STRENGTH <b>NON-ASPIRIN CAPLETS</b> ..... 100 CT. PKG. <b>\$289</b>	WESTERN FAMILY <b>EYE CARE DROPS</b> ..... 5 OZ. BTL. <b>\$169</b>	WESTERN FAMILY <b>PETROLEUM JELLY</b> ..... 7.5 OZ. JAR <b>99¢</b>	

**thriftway** 

**AT** AFFILIATED FOODS INC. MEMBER STORE

WE RESERVE THE RIGHT TO LIMIT QUANTITIES.