

Progress Is
Making Good Things
Happen

THE RISING STAR

WHERE THREE GOOD
TEXAS COUNTIES
GET TOGETHER

Rising Star, Texas

© 1979-Eastland County Newspaper Co.

Established in 1890

25¢

Thursday, October 23, 1980

Number 43

Record Crowd Attends 24th Annual Homecoming



Pictured above are Coming Home King, Gid Bowers of Cisco and Coming Home Queen, Lottie Mae Roach of Rising Star. Mrs. Roach was presented a bouquet during half-time activities at the football game between Goldthwaite and Rising Star.

A record crowd returned to Rising Star for the 24th Annual Homecoming.

The registration and coffee held at the gym was highlighted with the presentation of 2 "OUTSTANDING TEACHER" awards. Presented plaques were Mrs. C.A. (Mary) Claborn and H.L. Geye.

Mike Howard, former RSHS graduate kept the crowds attention with tales of his work as a Secret Service Agent for former Presidents and their families.

During the business meeting, the organization voted to retain the same slate of officers for the coming year. The are: President: Jack Shults Vice-President: Karen Davis Secretary and Treasurer: Sara McGowen Reporter--Publicity: Evelyn Donham and Bobbie Wilson. Officers in the future will be elected for two year terms. The permanent

board of directors include: Mrs. C.A. Claborn, Jeannine Bailey, Lenell Henry, Irene Mayfield, Weldon Hill and James Steel. Dutch and Adelia Shults were recognized for the earliest class present (1917).

Alice Robert Dombrowa of Aberdene, Scotland was recognized as traveling the farthest distance to Homecoming.

All classes ending in a 0 were also given special recognition.

Elected Coming Home Queen and King were Lottie Mae Roach of Rising Star and Gid Bowers of Cisco, both members of the 1930 RSHS class which was celebrating its 50th anniversary.

Approximately 240 people were served by the PTO at the luncheon held in the new cafeteria.

Parade Chairman, Tommy Pernel, assisted by Constable Gene Hicks and Chief of Police, Dennis Ed-

wards led the entourage of floats, buses, decorated cars, bikes, donkeys and other assortment of vehicles for the parade at 2:00 p.m.

Winners this year were: First--Seniors Second--Sophomores Third--4-H and Honorable Mention went to the Rising Star Nursing Center.

The Rising Star Wildcats lost a tough battle to Goldthwaite 46-15.

During half-time ac-

tivities, the Coming Home Queen, Lottie Roach was presented a bouquet of flowers by Coming Home King, Gid Bowers.

Football sweetheart, Angie Bass, daughter of Mr. and Mrs. Doc Bass was crowned and presented a bouquet of yellow roses. She was escorted on the field by Captains, Alfonso Martinez, Tommy Kitchens, David Morris and Richard Watson.



Football Sweetheart, Angie Bass is crowned and escorted off the field by football captains, David Morris, Richard Watson, Alfonso Martinez and Tommy Kitchens.

Goldthwaite Dominates RS

There was a tremendous crowd Saturday night to watch the Wildcats take on the Goldthwaite Eagles. The Eagles stayed out in front, dominating the game 42-15.

Tim Carova scored from the one yard line for the first scoring. The PAT was good, score 29-7. Clay Shults scored on a pass from Damon Cooper. PAT good, score 29-15. Brent Dennis captured another pass to make the score 35-15. Last scoring drive was around the left end for

scored on a small pass and the PAT was also good--score 15-7 Eagles. Eagles, Ricky Carova scored up the middle for one yard to score six more. PAT was good--score 22-7. Andy Gwinn scored on a pass for 20 yards. PAT was good, score 29-7. Clay Shults scored on a pass from Damon Cooper. PAT good, score 29-15. Brent Dennis captured another pass to make the score 35-15. Last scoring drive was around the left end for

12 yards, PAT was good and the final score read Eagles 42--Wildcats 15.

The Wildcats travel to Gorman this week.

See you there!! Gwynn Tharp

4-H Awards

The 1980 Awards Banquet will be hosted by the Eastland Happy-Go-Getters 4-H Club on Oct. 27 at 7:00 in the Siebert Elementary School lunchroom. The general theme will be Clowning. There should be lots of fun and entertainment for everyone.

Admission will be \$2.00 per person. If you have turned in a complete record book this year, the admission is free.

4-H'ers will be receiving a letter from the Extension Office this week. 4-H'ers, be sure to reply to this letter so Donna will know how many from our club will be attending.

The following presentations will be made at the Awards Banquet: Recordbook Awards and Year Pins; Outstanding Secretary Guide; 4-H Spirit Week Award; Outstanding 4-H'er Awards; Outstanding Adult Leaders; Design for Discovery; Certificates, 10 year 5-H'er Awards, Danforth Award and the Gold Star Award.

The happiness of your life depends upon the quality of your thoughts.



These Centennial Sweet Potatoes were grown by W.H. (Hamp) Kornegay of Rising Star. The largest one weighs 7 and one-fourth pounds, while the smaller ones will average 4 to 5 pounds each. These were grown on his home place in Rising Star.

RSISD Board Convenes In Regular Session

The Rising Star School Board of Trustees met Tuesday, October 14, 1980 in regular session.

Members present were: R.L. Rust, Jack Shults, Sue Barnes, Jack Hubbard and Aubrey Lawrence.

Members not present were: Douglas Walker and Bob Clark. President Jack Hubbard called the meeting to order.

Business was as follows:

1. Minutes of the regular board meeting September 9, 1980 were read and approved by general consent of the board with no corrections or additions. 2. Motion by Sue

Barnes and seconded by R.L. Rust that the bills incurred by the Rising Star Independent School District be ordered paid. Motion carried.

3. Motion by R.L. Rust and seconded by Sue Barnes to increase the Fire and Extended coverage on all Rising Star ISD school buildings ten (10) percent effective on the renewal date of each policy. Motion carried.

4. Motion by Jack Hubbard and seconded by R.L. Rust to accept bids on the 4 sewing machines that the school wishes to dispose of. The bids will be opened at the next regular board meeting November 11,

1980 at 8:00 o'clock in the school board room. Motion carried.

5. Motion by R.L. Rust and seconded by Aubrey Lawrence that the Rising Star Independent School District agrees to reimburse the Transportation Fund at a rate equal to the actual cost for extra-curricular activities from the Local Maintenance Fund.

6. Discussion: a. Monthly Lunchroom report b. Financial statement c. School personnel d. Superintendent's report.

7. By general consent, the board agreed to adjourn at 9:30 p.m.



Halloween Carnival

The Rising Star Senior Class is sponsoring a HALLOWEEN CARNIVAL at the warehouse beside Jerry Winfrey's office building. It will be held on Saturday, October 25th from 6:00 to 9:00 p.m. There will be Bar-B-Que Buns available for \$1.50 each. This years events include: Spook House, Dunkin Board, Dart Board, Cake Walk and Auction, Bingo, Fish Pond, Arm Wrestling, Fortunetelling, Hay Find, Country Store, plus many varied miscellaneous activities. Any donations of toys, cakes, or any item that can be used in the country store would be greatly appreciated.

For more information, please contact: Mrs. Donald Watson at

State Fair Winner

Sam Scott had the Grand Champion Limousin Heifer at the State Fair of Texas Oct. 16. Sam's heifer, Miss Dyers-Sims 25 L, bred by Dyers-Sims Ranch at Baird is an April 25, 1979 heifer. Sam also showed two

other Limousin heifers and won second and fourth in class.

Sam is the son of Payton Scott and Johnnie Scott of Rising Star and a member of the Rising Star 4-H Club.

Surprise Speaker

Thursday, October 16 there were 28 present. We had a surprise luncheon speaker. Irene Mayfield brought an encouraging talk with several poems with a mixture of seriousness and fun we could all identify with. We had invited her several months ago but she was unable to come at that time. It was worth waiting for Irene-- especially the nice compliments. She and Louis ate lunch with us and promised to come again more often.

Starbrite news will be a little slow, our band director is on vacation for a week or so. We did surprise our band sweetheart, Lela Clark with a corsage for homecoming. She said after the shock of

surprise she wore it with pride and felt real dressed up. Everyone wanted to know where it came from so she got to tell them about the band.

We would also like to express our appreciation to the class of 1957, who gave us a nice donation for the use of our building, where they held their class reunion during Homecoming.

We would like to extend an invitation to the new comers-- 55 years of age and over of our town and community. October 30th will be a good day to come have lunch and get acquainted and spend the day. We are located in the east wing of the hospital building.

Reporter, Rilla Richburg

What Does Your Bank Mean To You?

"Just a minute, while I drive through for some cash," we often hear. Without seriously considering its implications, we simply dismiss the statement, collect the money from the drive-in teller's window, and move on. It is easy for us to take our Eastland National Bank for granted: we fully trust its proven soundness. Convenient location and accessibility make the bank such an integral part of our familiar, immediate environment that the purposes it serves tend to blend into the background.

The Eastland National Bank is more than just a fancy "shoebox" for savings, or ready cash at the drive-in window. By providing funds and

extending credit to local manufacturers, merchants, and consumers, this institution strengthens our economy. It lubricates the national monetary system by converting currency and coin into demand deposits and making these two money forms interchangeable.

The bank also provides facilities for storing purchasing power, allowing customers to plan for the future. Our idle monies grow with interest accrued in savings accounts. Certificates of deposit allow the highest interest rates possible. And for a nominal fee, we can rent a fire and theft-proof safe deposit box - and security - for articles of value.

By virtue of its construction, the bank

provides unparalleled protection for the consumer's money. Yet the banker himself instills a sense of security and well-being in his customer. He acts as a professional, personal advisor in fiscal endeavors - anything from establishing suitable conditions for a purchasing loan to the planning of the family budget. The banker's interests extend outward, from individual problems to those of the community as well. He offers a fair share of active and monetary support in an effort to solve local problems, for his bank, he knows, will grow only as does its environment.

It is interesting to note that this particular philosophy of

service and growth, and its closely associated facilities, are the developments of over two hundred years of trial, error, and correction. Having evolved in the spirit of individualism and self-help, the banking system of this country is uniquely American. Freedom in banking is as prized as freedom in all other areas of endeavor, and early bankers refused to accept any restraint they considered a denial of their inalienable right to conduct business as they saw fit. The need for stabilizing limitations were evident, however, and through legal statutes (such as that establishing Alexander Hamilton's Bank of the United States, or the post-Crash Banking Act of

1933), certain necessary controls have been authorized.

A cursory glance at some elements involved in commercial banking reveals its interworkings as an intricate system indeed. National, local, and individual influences merge to manifest the personal banking service we so often take for granted at Eastland National Bank: even as we sleep, our futures are protected. And now, with dedicated effort indicative of a truly conscientious yet progressive attitude, Eastland National Bank brings us the all-new modern facilities located on 201 E. Main. There's more behind that round vault door than meets the depositor's eye.

Eastland National Bank Presents....



NEW BANKING HOUSE OPEN TO PUBLIC

The management of the Eastland National Bank cordially invites the citizens of Eastland to an open house in its new banking facilities. The recently-completed structure is located on 201 E. Main Street in Eastland and will be open to the public on October 25, from two until five. Directors and employees will be on hand to point out various features of the new banking house and the customer services they afford. Refreshments, including ice cream, will be served and each visitor has a chance to win the door prize. Please come by.

ENB TODAY

Eastland National Bank is happy to announce the opening of its new banking house, located on 201 East Main in Eastland. Inadequate space and construction led the management to Tittle, Luther, and Loving of Abilene, architects, who designed the facilities recently completed by Rose Construction Company. The move has been made from previous banking site, the Petroleum Building on 114 S. Seaman Street, to the new building, and everyone is proud of the results.

By purchasing the lots where the old Coca-Cola building and Fina station stood,

Eastland National more than doubled its entire area available for construction. The banking house, approximately 15,000 square-feet, is twice the size of the old quarters, leaving area available for future expansion. This increase allows the different departments much needed space for both personnel and equipment. The new facilities offer the public a community room in response to the popularity of its predecessor, and include a multipurpose employees' conference room for meetings, classes, and bank examinations. The exterior brown stucco and large panes of

tinted glass create a cool and pleasing appearance beneath the West Texas sun, while practical, attractive appointments of royal blue and cranberry furnish the interior.

The new facilities feature the most modern of motor banking services. Chairman H.T. Wilson and President Grover Hallmark personally tested and chose Diebold's top-of-the-line system at the factory in Canton, Ohio. Facilities include one commercial and three express lanes, with room and means for installing three more units in the future. The new system allows the customer to initiate the transaction, thereby eliminating much of his wait and increasing teller efficiency. Its construction enables one teller to operate all units simultaneously during slack periods. Customers enter the drive-in facilities from Commerce Street and exit onto Bassett.

Other new equipment includes the fully illuminated Diebold Securomatic After-Hour Depository, and

are brand new and undoubtedly the best available. The vault area is impenetrable - there are fifty tons of concrete in the ceiling alone. And customers will recognize the 21,000 lb. round vault door, taken from the Petroleum Building. Some things just can't be improved.

At Eastland National Bank, the prime consideration is better service. That does not mean simply being nice; instead, Eastland National wants to deliver the best to its customers. Planning and hard work go unnoticed sometimes, but this October 1980, Eastland National Bank is proud to present its finest effort yet.

The security system found in the facilities

NEW BANKING HOURS ANNOUNCED

New banking hours for the Eastland National have been approved by the board of directors. The new hours are as follows: main lobby and commercial drive-in window, 9 a.m. to 2:30 p.m., Monday through Friday; late hours on

Friday, 3:30 to 5:30 p.m. All other drive-in windows will be open Monday through Friday from 8:30 a.m. until 5:30 p.m. The longer hours have been adopted in hopes of making banking more convenient for the customer.

Directors Help Community Grow

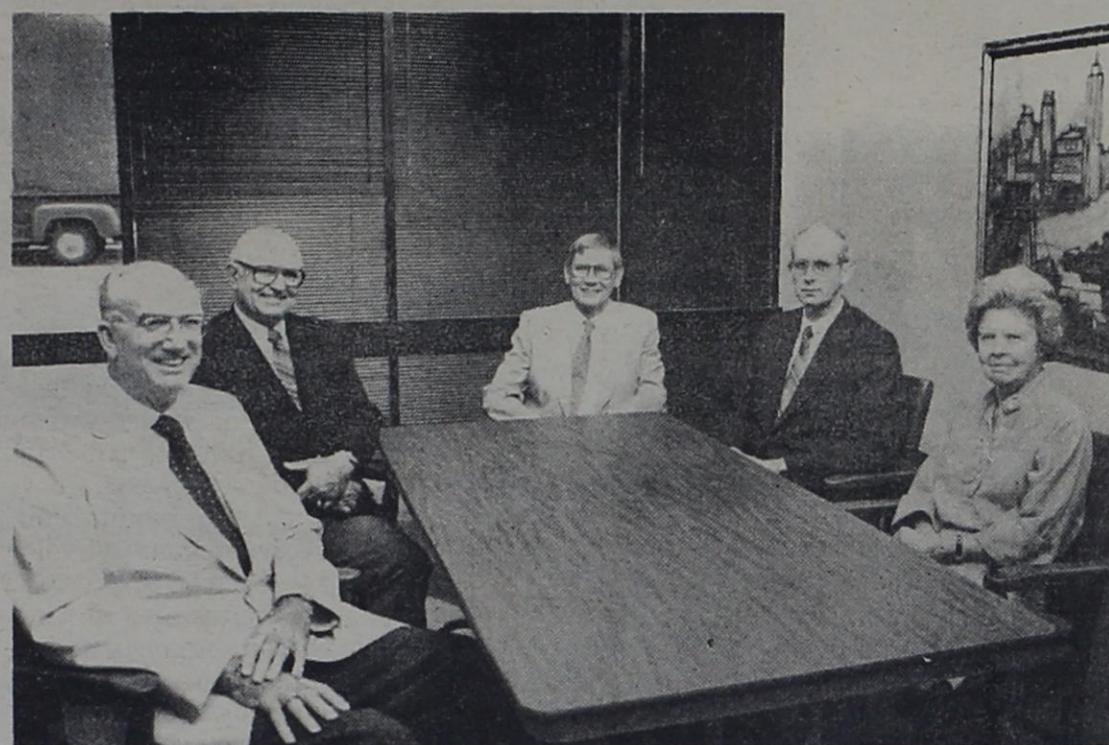
The progress made by Eastland National Bank, particularly as manifested in the new banking house, is due in large part to the community-minded efforts of the board of directors. These men have taken every precaution for the safety of deposits, while providing the best possible choices to make money grow. They have actively extended their concerns beyond the bank itself and into the community, so that in all aspects of their lives, they have worked for the growth of Eastland.

H.T. Wilson was appointed to the board on July 16, 1954. Born in Hereford, Texas, on July 24, 1927, he attended and graduated high school from Philips Exeter Academy in Exeter, N.H. After serving with the Marines for 18 months, he began his college career at the University of Texas at Austin where he graduated with a B.B.A. in 1949. On August 24, 1956, Wilson graduated from the Colorado School of Banking at the University of Colorado, one of 17 graduates from a class that had originally contained 63. He has served his community, not only as a progressive banking leader, but as a city commissioner, president of the Rotary Club, president of the Eastland United Fund, member of the Chamber of Commerce, the Industrial Foundation, and the Water Board. The Golden Deed Award Winner of 1964, Wilson has worked hard to build a solid economic base in Eastland. He is also an elder in the First Presbyterian Church.

Dr. M.A. Treadwell joined the board soon after Wilson. Born April 10, 1924 in Bauxite, Arkansas, the physician is a graduate of Rice Institute and the University of the

Texas Medical School at Galveston. After completing his internship and surgical residency at Scott and White Hospital in 1951, he came to Eastland to practice medicine. A Gold Deed Award winner in 1976, he has been active in the Rotary Club and has served two terms as city commissioner as well as in the Chamber of Commerce. Dr. Treadwell is currently a deacon of the First Baptist Church of Eastland, and a member of the Eastland County Medical Society, the Texas Medical Association, the AMA, the Texas Academy of Family Physicians and the American Academy of Family Physicians.

On January 14, 1965, M.H. Perry became a director of Eastland National Bank. After graduating from his hometown high school in San Saba, Texas, Perry attended Southwestern University in Georgetown and graduated in 1941. He taught and coached high school football in Grandview until April of 1942 when he joined the service. After his release in 1946, Perry came to Eastland where he first taught at Eastland High School and then at Eastland County Veterans Vocational School. He was made director of that organization in 1948 and continued there until July of 1953, when he became associated with Southland Life Insurance Company. Throughout the years, Perry has belonged to both the Rotary and the Lions clubs, the school board (serving as chairman for thirteen years), the Chamber of Commerce, the Water Board, the Eastland Industrial Foundation, and was chairman of the Construction Committee when Eastland built her hospital in the early 1950s. He is a member of the



Dr. M.A. Treadwell, M.H. Perry, H. Tom Wilson, Grover Hallmark, Mrs. Kitty McCracken.

Methodist Church and has served as chairman of trustees. Winner of the Golden Deed Award in 1965, Perry has also won numerous awards in connection with his business.

Grover Hallmark joined the board in 1973. Born in Flatwood, Hallmark was first employed at the bank in 1956 and worked his way up. "When I went to work for the bank," he says, "I started out filing checks: I just barely stayed out of the janitor's way." By 1972, Hallmark was executive vice-president and soon appointed to the board. Chosen Eastland's Outstanding Young Man in 1963 and a Golden Deed Award winner in 1973, the bank president has served the community in many capacities over the years, including president of the Jaycees, campaign chairman for the Eastland United Fund, director of the Eastland County Farm Bureau, city commissioner, member of the Chamber of Commerce and of the Industrial Foundation, to name a very few. He is a member of the Cisco Chamber of Commerce, the Methodist Church in Eastland.

In 1976, J.P. McCracken retired from the position of chairman of the board and Wilson assumed these

responsibilities. Mr. McCracken had been on the board since 1954. Born in 1907 in Fort Worth, he soon moved to Romney, Texas near Cisco and began work in the banking business soon after his 1924 high school graduation. He received no pay other than experience during his first six months at the Cisco Banking Company. After finishing his stint in the service in 1946, he returned to Cisco to work in the First National Bank. It was McCracken who gave Wilson his first banking job and they continued to work together until February 7, 1977 when McCracken passed away.

At this time, Mrs. J.P. McCracken replaced her husband on the board at Eastland National. She originally hails from Romney, West Virginia and came to Cisco with her husband soon after WWII. A director at Eastland National Bank, she also holds a position of equal responsibility at the First National Bank of Cisco. She is a member of the Cisco Chamber of Commerce, the Presbyterian Church, and a rancher, while managing the estate of her late husband.

On July 17, 1980, Eastland National suffered the loss of director Russell Hill. A native of Eastland, he was born in 1902 and had worked for the bank since its opening, rising through the ranks to the position of cashier in 1944 and director in 1945. With the advent of the new management in 1954, he was promoted to vice-president and served as secretary to the board and chairman of the Advisory Committee for the profit sharing plan. Although retired from active duty in 1968, he remained on the board until his death.

Over the years, the Eastland National has been guided by a competent and progressive board memberships, persons who consistently look for new and better ways to serve the community. "Our banking philosophy over all has been more or less three-fold," says chairman Wilson. "We must be fair to the shareholders, and see that they get a fair return on their investment; but along with that fairness should extend to the community also and to the employees who work with the bank. If we can balance this fairness three ways, then we never have anything to worry about."

From page 6

It had jumped to 9,368. In 1919, the building permits for one week in Eastland totaled \$420,000, compared to Dallas' \$136,000 or Houston's \$53,000. Such tremendous growth drastically affected the banking situation in the county; banks kept opening until the county-wide total reached 18 in 1920. In 1918 Eastland had four banks: City National, American National, Guaranty State, and First State, each doing a healthy business. During this period of accelerated growth, First State's (now Eastland National's) impressive round vault door, weighing 21,000 lbs., was hauled from the train station to the present Petroleum Building, the wagon sinking in the muddy streets.

The early twenties brought a decline in oil production and many left the county for new fields in East and West Texas. As might be expected, the banks duly suffered. In the spring of 1920, American National merged into First State. Guaranty State followed suit in 1921. City National had become Security State Bank & Trust, only to close its doors in '21. The First State Bank, which had salvaged so many, went under in January of 1924. In that same month Texas State Bank was chartered, assuming the banking house and fixtures of the defunct First State. It was joined by the Exchange National Bank in 1924, and these two aided by the short-lived state Guaranty Fund, attempted to strengthen Eastland through the nationally prosperous twenties. One might speculate that wounds would have healed successfully had not the lightning bolt struck that shook the world - the Great Depression.

By 1930 the number of banks in the county had decreased to seven, with a total value of \$314,840. It was early in that year that the Exchange National merged into the Texas State. Soon

after, in October of 1931, Texas State closed, leaving Eastland without a bank. Times were poor: depositors could only get 18% on the dollar, and one fellow remembers that he could not cash his paycheck of \$25, because no merchant in town had that kind of money.

It was not until 1934 that Eastland was again served by her own banking facilities. In February of that year, an organizing committee of three was appointed: Jess Williams, J.A. Beard, and P.L. Parker - public-spirited men who had lost money when Texas State closed. With Albert Taylor of Austin soon added to their number, the committee raised the required capital from individuals and the Reconstruction Finance Corporation. An arrangement was made with the State Banking Department for the purchase of the Petroleum Building, previous site of the defunct Texas State, and the Comptroller of the Currency granted the charter. The new Eastland National Bank opened for business on November 5, 1934, numbering the fifth bank in the county, a figure unchanged to this day.

The institution opened with W.C. Campbell serving as president; Albert Taylor, vice-president and cashier; Guy Parker and Russell Hill as assistant cashiers; and Lahoma Hathcock, bookkeeper/secretary. J.A. Beard, Albert Taylor, Milburn McCarty, G.W. Fisher, Eastland through the nationally prosperous twenties. One might speculate that wounds would have healed successfully had not the lightning bolt struck that shook the world - the Great Depression.

By 1930 the number of banks in the county had decreased to seven, with a total value of \$314,840. It was early in that year that the Exchange National merged into the Texas State. Soon

after, in October of 1931, Texas State closed, leaving Eastland without a bank. Times were poor: depositors could only get 18% on the dollar, and one fellow remembers that he could not cash his paycheck of \$25, because no merchant in town had that kind of money.

It was not until 1934 that Eastland was again served by her own banking facilities. In February of that year, an organizing committee of three was appointed: Jess Williams, J.A. Beard, and P.L. Parker - public-spirited men who had lost money when Texas State closed. With Albert Taylor of Austin soon added to their number, the committee raised the required capital from individuals and the Reconstruction Finance Corporation. An arrangement was made with the State Banking Department for the purchase of the Petroleum Building, previous site of the defunct Texas State, and the Comptroller of the Currency granted the charter. The new Eastland National Bank opened for business on November 5, 1934, numbering the fifth bank in the county, a figure unchanged to this day.

The institution opened with W.C. Campbell serving as president; Albert Taylor, vice-president and cashier; Guy Parker and Russell Hill as assistant cashiers; and Lahoma Hathcock, bookkeeper/secretary. J.A. Beard, Albert Taylor, Milburn McCarty, G.W. Fisher, Eastland through the nationally prosperous twenties. One might speculate that wounds would have healed successfully had not the lightning bolt struck that shook the world - the Great Depression.

By 1930 the number of banks in the county had decreased to seven, with a total value of \$314,840. It was early in that year that the Exchange National merged into the Texas State. Soon

profit-sharing plans written to date was immediately adopted. Usually banks do not go on a full accrual system of payment until they reach \$25 million, yet it was utilized when Eastland National was worth only \$8 million. In 1960, the capital stock was raised \$100,000 and then again in 1979 to total \$500,000. The banker's blanket bond has always equaled or superseded those of banks many times its size.

The bank has also expanded and improved customer services, from providing credit cards to both consumer and merchant to its unique consolidated monthly statement. The special services department has adopted the copyrighted Special Organizational Services program (SOS) in order to further serve customers in times of change or stress. And when Eastland National computerized its operations in 1969, direct deposits, automatic transfers, and today's Double Eagle accounts were made possible.

The transfer to computer was not the first equipment improvement Eastland National has made over the years. The original Burroughs Sensomatic posting machines, purchased with the banking house in 1954, were quickly replaced with the National Postronics system, allowing Eastland National to be one of the first banks in the country to issue account numbers. After computerization in 1969, an even more advanced system was adopted in 1975, while microfilm and microfiche record transactions efficiently. Checks and deposit forms are printed in the bank's own shop. And the security equipment has always been the very best available, giving customers the most for their money.

Just as the management of the Eastland National Bank has consistently offered the

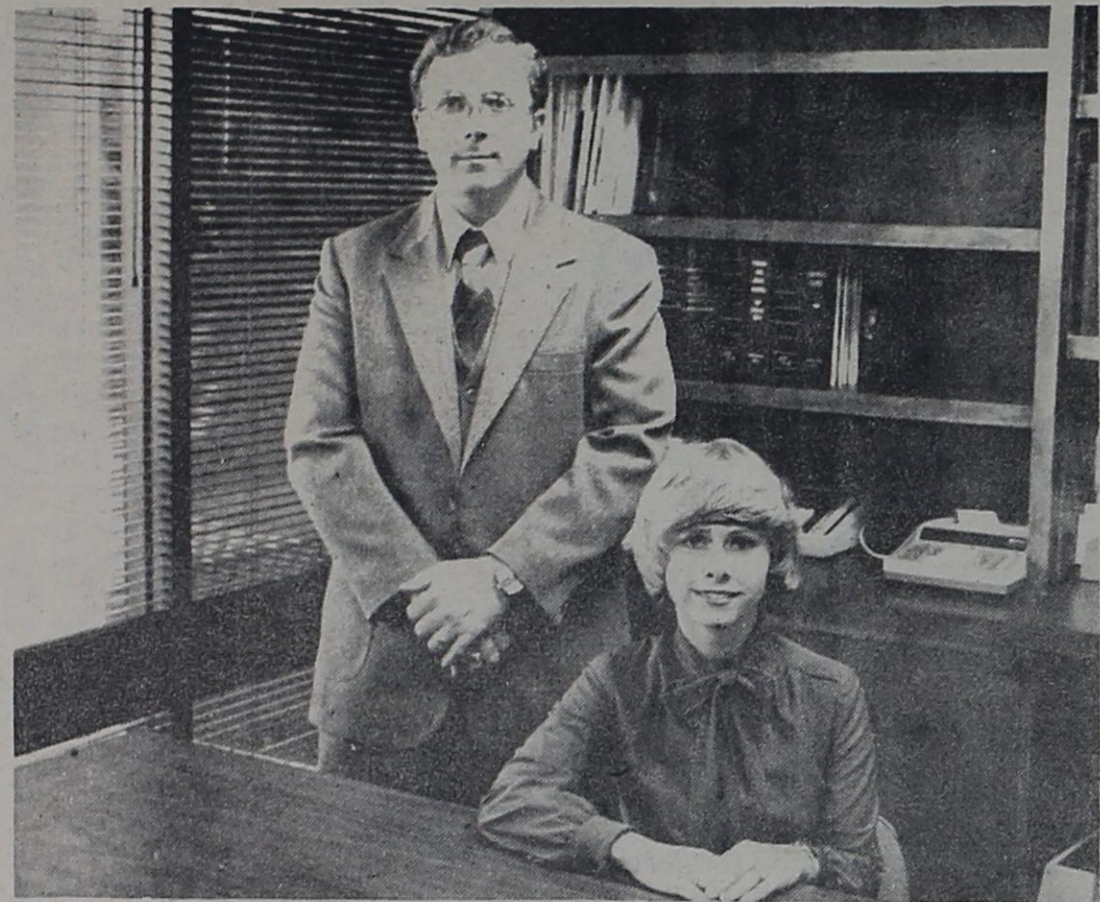
most in services, so it has continually updated its facilities to better serve. The first remodeling was done in the spring of 1960, when the safe deposit vault was moved from the basement to the first floor, all new fixtures were installed, and the convenient time and temperature clock was placed on the Square. Three years later, motor banking facilities were built, while a second window was installed in 1971. Also in that year, the bookkeeping department was completely remodeled to keep up with its modern computer-based system; the kitchenette and community room were added in the annexed Western Auto Building for the convenience of both employees and customers. In 1973 saw the safe deposit vault expanded three times its original size, and the proof, bookkeeping, and savings departments moved and enlarged. An upper floor of the building was also remodeled to rent as office space.

The innovative attitude of Eastland National Bank has consistently proven itself. And 1977 was no different. It was in this year that the management requested permission to buy the Coca-Cola building and the Pina property in order to build all-new facilities. These men recognized the inadequacy of ground floor space, drive-in facilities, and customer parking at the old Petroleum Building, as well as its energy inefficiency, and looked to the future. Architects were engaged, the plans drawn up, and now after months of construction, the people of Eastland reap the benefits of time, hard work, and money spent. Once again, citizens can be proud of the intelligent, practical planning, characteristic of Eastland National Bank as it works for the growth of the community.

From page 5
Eastland National. She began as a teller, worked as a drive-in teller, and spent time at the front desk.

Thane Arther was promoted to assistant cashier in August of this year, and works in all departments as he is needed and may be seen almost anywhere about the building. Before coming to work for the bank in June of 1978, he was employed at Bray's Department Store. Thane is currently taking college night courses and is working toward American Banking Institute certificates.

The customer's tour of the new bank familiarizes him with the staff at Eastland National and each of their functions. With proper appearance, punctuality, and a confidential attitude, the employees are expected to reflect credit on the bank. In return, they receive many benefits, including cost-free insurance, profit sharing, and paid vacations. They are encouraged to participate in political and civic activities (their opinions do not reflect the bank's, of course) as seen in their outstanding support of the yearly United Fund drive. These friendly people are happy to give Eastland its new banking house, while maintaining the ex-



Craig Beskow, Kay Hughes.



Thane Arther, Pam White.

cellent service that customers have learn-

ed to expect. Look for them all at the open

house. They will be looking for you.

A Glance Backward

It takes a prosperous, innovative community to support the building of a progressive bank like the new Eastland National: such modern facilities are certainly a sign of the times. Yet Eastland's progressive attitudes were not formed in a vacuum; they are products of its rich and vital history, which began almost 125 years ago. On February 1, 1858, the Seventh Legislature of Texas approved a bill

creating the county, along with several others, and named it after Captain William Mosby Eastland who, as one of the ill-fated Mier Expedition, died a hero in Mexico on March 25, 1843. Through the efforts of a young lawyer, Silas C. Buck, Eastland County was organized in 1873.

Pioneers faced the existing populace: the friendly Caddo and the fierce Comanche, the

opossum and the hardy mesquite. The settler soon occupied this borderland of civilization, so that two adventurous men decided to invest both time and money in the newly organized county. On January 15, 1875, Jack Daughtery and C.U. Connellee staked out the public square of the city of Eastland, and in May of that year, with the assistance of J.B. Ammerman, they set about building a frame store-house. Lumber

and goods were wagon-hauled from Dallas by way of Granbury and Stephenville, completing the trip through Desdemona and Merriman on the Fort Griffin military road. Eastland's population grew, settlement encouraged by offering fee simple title to any lot bought for the purpose of building a residence or business house. In 1876, the county seat was moved from Merriman to Eastland City.

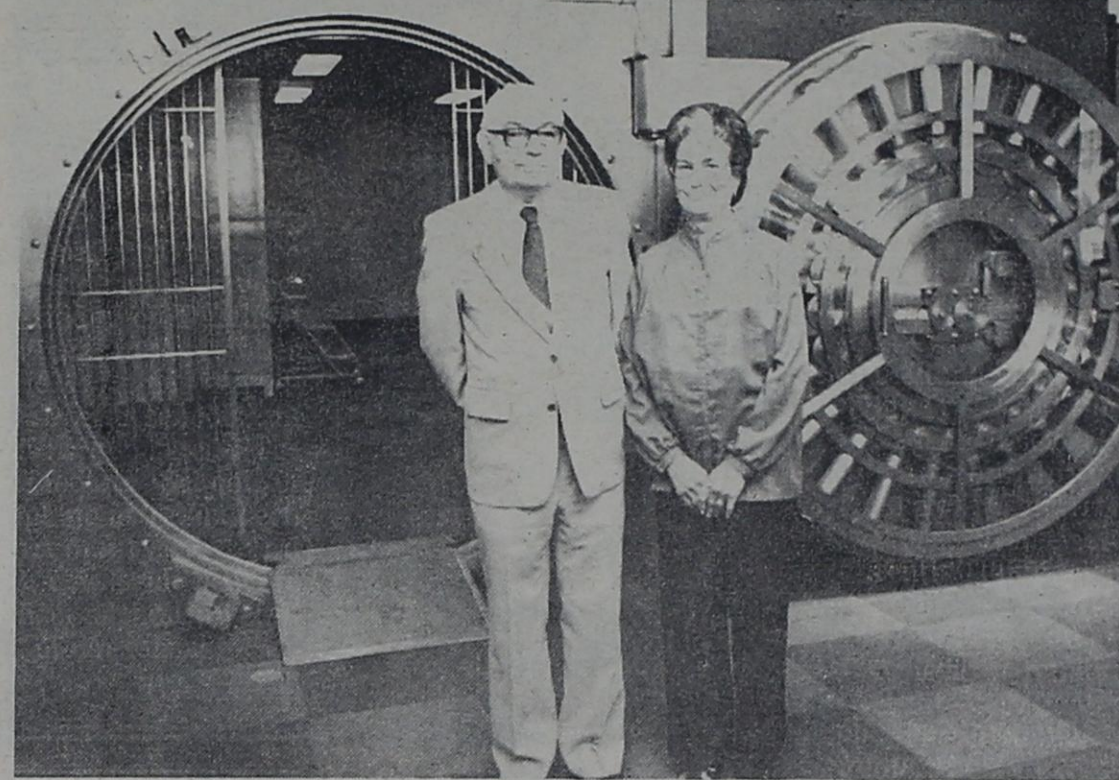
The Texas and Pacific Railway Company laid a line through Eastland in October of 1880, transforming the tiny village into a distributing point for stage and U.S. mail lines. The town's growth created its first real need for banking services, and concomitant with custom, a Mr. Berry of Stephenville opened a banking business in Jake Alexander's store. Although the first national bank to be organized in the county was located in Cisco, Eastland soon had the second. In the fall of 1890, it opened its doors on the Square, with Major W.H. Parvin as its president and John T. Yearin, the cashier. Unfortunately this venture did not last, for by the year 1900, only five banks were operating in the county: three in Cisco (First National, Citizens National, and Merchants and Farmers), one in Gorman, and one in Carbon. (The latter three had the same president, Mr. W.H. Edleman.) The economy was relatively static and unable to support another financial institution: collective deposits of the county banks in 1907 were just over one million dollars, less than that of any one bank in the county in the year 1950. The agricultural community, producing mostly cotton, desperately needed a "shot in the arm."

On July 2, 1917, W.K. Gordon of Texas Pacific Coal and Oil Company began production in Eastland County. The J.H. McClesky well gushed on October 27, opening up the Ranger oil field. Initial production was 1600 barrels with three million feet of gas. At the height of the boom, the field produced 73,000 barrels of oil a day over a 120 square-mile area.

With the oil came the inevitable population boom. The census of 1910 shows Eastland's population at six or seven hundred. By 1920

Continued on 7

The E.N.B. Staff



G.A. White, Becky Powell.



Ann Johnson, Wendy Trout, Ruth Smith.



Joe W. Taylor, Marcia Pack, Mike Perry.

At Eastland National Bank, excellent customer service has always been a major goal. Constant facility and equipment updates have improved services throughout the bank's nearly fifty years. Yet these improvements would be virtually meaningless without the courteous staff of Eastland National. And they are delighted to invite the public in to see the new banking house at 201 E. Main. Each one is ready to introduce you to his new location.

As the customer enters the bank by the main north entrance, he notices the familiar round vault door. Becky Powell, in charge of safe deposits and collections, greets him. Becky came to Eastland National as a proof operator in October of 1973 after working as a teletype operator for brokerage firms of Abilene. She also worked as a teller and in new accounts before her recent promotion.

A turn to the right, and the customer enters the loan department. He is welcomed by secretaries Ruth Rosenquest Smith, Ann Johnson, and Wendy Trout. Ruth came to work for the bank in May of 1960 as a secretary. She was later named executive secretary. Ann attended the Nixon Clay Business College in Austin and worked at the University of Texas as a secretary previous to her employment at Eastland National. Beginning in 1968 as a part-time bookkeeper, she later worked in savings and new accounts until November of 1976 when she moved to the loan department as a secretary. Wendy came to work for the bank in 1975 after attending Cisco Junior College. She moved quickly from her original position as teller to new accounts and then to the lobby desk in 1976. Since her initial employment, Wendy has attended the Abilene branch of the American Institute

of Banking. Her appointment as loan secretary is a recent promotion.

In offices surrounding the secretaries' area are the loan officers themselves. Joe Taylor came from Karnes City, Texas, and the Karnes County National Bank to assume duties as vice-president of Eastland National in September of 1976. He has attended several schools, including the Intermediate School of Banking at Texas Tech University and I.B.A.A. Bank Officers School at the University of Arkansas.



Marcia Pack has been recently promoted to the position of loan officer. She was self-employed as a bookkeeper and tax return specialist for two years, then came to Eastland National in April of 1978 to train as a loan secretary. In July of 1977, Mike Perry left his association with the Crum and Forster Group of insurance companies to be named vice-president of Eastland National. By September, he was a vice-president and loan officer. Mike received his B.B.A. from North Texas State University in 1967.

The meeting room for the board of directors is located in the northwest corner of the new banking house. Moving south, one finds President Grover Hallmark. A native of Eastland county, he began working at the bank in 1956, filing checks. Chief Executive Officer H.T. Wilson's office is adjacent to Mr. Hallmark's and as one walks past his door, he finds himself in the southwestern area of the bank, and at the offices of G.A. White and

Continued on page 4

Continued from page 3

Kay Hughes. Mr. White moved to Eastland from Putnam in January of 1965 to become co-owner of Super Save Grocery. In January of 1979, he joined the Eastland National Bank staff as field representative. After graduating in 1977 with a B.S. from Panhandle State University in Goodwell, Oklahoma, Kay received experience as a bookkeeper until her association with Fidelity Bank in Oklahoma City as audit representative. She came to Eastland National to train for the position of comptroller and auditor. In August of this year, Kay received her C.P.A. certification and now holds the position of auditor.

From these offices, one only need look east down the hall to see the big new Customer Identification File run by Nona Fox. Nona worked at Irving Bank and Trust before joining Eastland National in 1971 as a teller. The Note and Credit Department is located here with Marianne Walker in charge. Marianne came to work as a filing clerk in June of 1957. After rising through the ranks and attending the American Institute of Banking, she is presently assistant cashier. She is assisted by Bernice Hunt, who was employed in August of this year. Pam Bernice received previous banking experience in Midland.

Hilde Squiers' office, containing the check printing machine, is a little farther down the hall. In July of 1961, she was employed as housekeeper but was later placed in charge of the print shop. She is assisted by Billie Mahaney, who started at Eastland National in September of 1979. She works in housekeeping as well as in printing.

PBX operator, Darlene Basham, answers telephone calls at her board located immediately

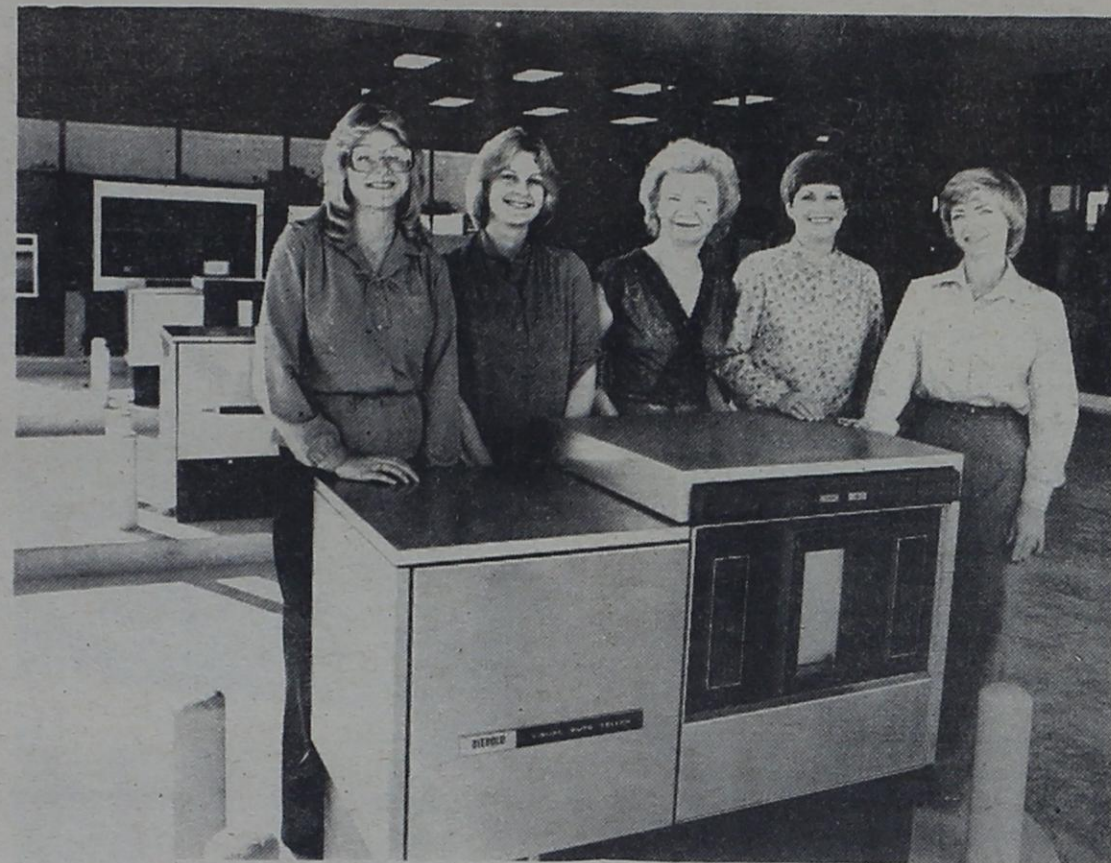
east of the check printing office. She was previously with Southwestern Bell before coming to the bank in December of 1975. Her new Horizon system is the first in Eastland to have push button dialing and required almost a mile of cable to install.

The drive-in tellers' cages are found just southeast of Darlene's board. Lennie Sue Koen is in charge of the commercial window. She worked in Midland before moving to Eastland, and began working at Eastland National in June of 1976 as a teller. Paula Ovalle came to the bank from Perry Brothers in February of 1979. She began as a teller and today her talents are utilized in several departments.

LaJuan Rollins was associated with Super Save Grocery in Eastland before becoming a teller in November of 1979. One of the newest employees, Carol Snyder, joined the bank in August of 1980. She had previous banking experience at Granbury State Bank and First National Bank of Pecos. Mary Anderson worked at Fort Worth National in the special deposits department, then came to Eastland National in January of 1979 as a part-time teller, or wherever she is needed.

The proof department is located behind Lennie's cage. Pam White, proof operator, was employed as a secretary before moving to Eastland. She started at the bank in January of 1973 as a drive-in teller. Her present job can be rather hectic, for almost every document that comes to the bank must be run through proof.

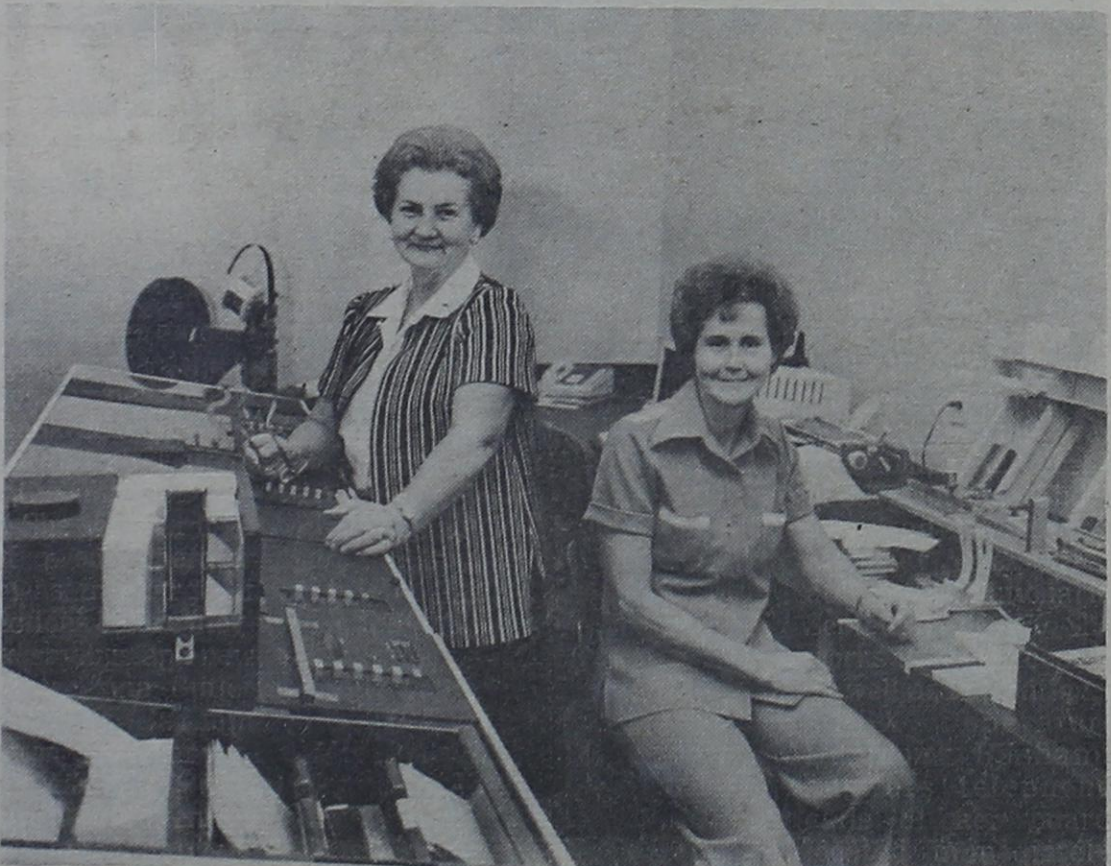
Just north of the drive-in windows is the bookkeeping department. Head bookkeeper Myrna Lewis worked for six and a half years at West Side State Bank in Fort Worth before joining



Carol Snyder, Nannette Eaves, Mary Anderson, LaJuan Rollins, Lennie Koen.



Marianne Walker, Nona Fox, Bernice Hunt.



Hilda Squiers, Billie Mahaney.

Continued from page 4

the Eastland National in April of 1964. She has been a safe deposit attendant in addition to her duties as bookkeeper. In November of 1949, Patsy Hill came to Eastland National as file clerk after two years at Cisco Junior College and a year in the Eastland School Tax Office. She is now head file clerk. Rebanell Steinman is in charge of the general ledger and is assisted by the brand new Apple computer. She came to the bank in February of 1976 as a relief proof operator and teller after working for Permian Oil, the City of Eastland, and the Georgetown Hospital.

As the customer walks towards the front of the bank, he passes the tellers in their modern accommodations, backed by the Eastland National Bank logo mural. Elaine Glenn was employed in August of 1976 as a teller. She had previously had two years of experience at First National Bank of Breckenridge. Faye Frazier worked at the Eastland County tax office before coming to Eastland National in March of 1978. She began her duties as a teller, as did Ruth Guy, who joined the bank in March of 1980. Ruth had spent 23 years at the Eastland Auction.

Jean Flinn started at Eastland National in April of 1967 as a proof operator on the old manual proof machine. Her previous experience included work with Republic National in Dallas, Bank of America in Fullerton, California, the First State Bank of Dimmitt and First National Bank of Breckenridge. After advancing through almost every department, Jean was elected assistant cashier in November of 1975 and is now head teller in charge of all vault operations, tellers, and overdrafts. She also serves as board member of the American Institute of Banking.

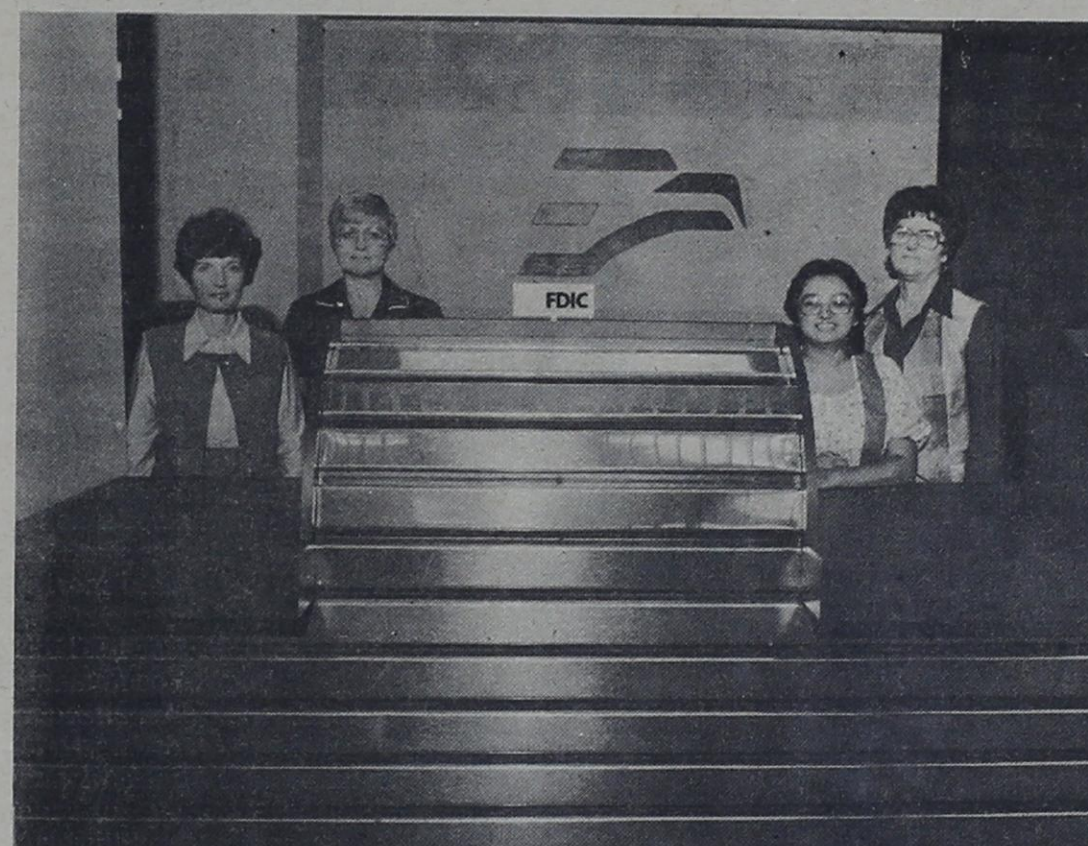
Craig Beskow's office is located east of the tellers' counter. He attended Cisco Junior College and then received his B.B.A. in Business Management from Tarleton State in 1974. He has continued his education at the Abilene branch of the American Institute of Banking. Craig began as a bookkeeper and teller in March of 1975 and was promoted repeatedly until finally in February of 1979, he was made vice-president/cashier.

Pass the lounge and community room entrance, and the customer finds himself at the special services department, headed by Inez Harrell Bourdeau. Mrs. Bourdeau was employed as advertising manager for the Breckenridge American newspaper before 1952 when she went to work for Eastland National Bank as a teller. Today she is a vice-president. Since the inception of the department, she has worked to build her charge, serving as Special Organizational Services (SOS) Advisor for Eastland County. She is also head of the women's department.

The savings and new accounts department is adjacent to special services, with Pat Burns in charge. Pat had been secretary/receptionist to the president of the First National Bank in Lordsburg, New Mexico before coming to work at Eastland National in August of 1974. She began as a teller and after moving to savings and new accounts was promoted to assistant cashier. Sharon Arther joined the bank as a teller in July of 1975 after attending Cisco Junior College. She worked as a relief proof operator and was in charge of collections before moving to savings and new accounts. Tina Butler graduated from Tarleton State University in May of 1979 with a B.B.A. and went to work immediately for



Rebanell Steinman, Jean Flinn, Darlene Basham, Patsy Hill, Myrna Lewis.



Elaine Glenn, Faye Frazier, Paula Ovalle, Ruth Guy.

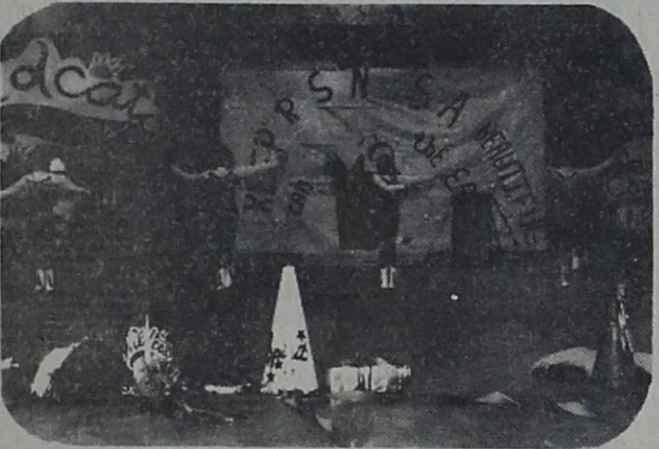
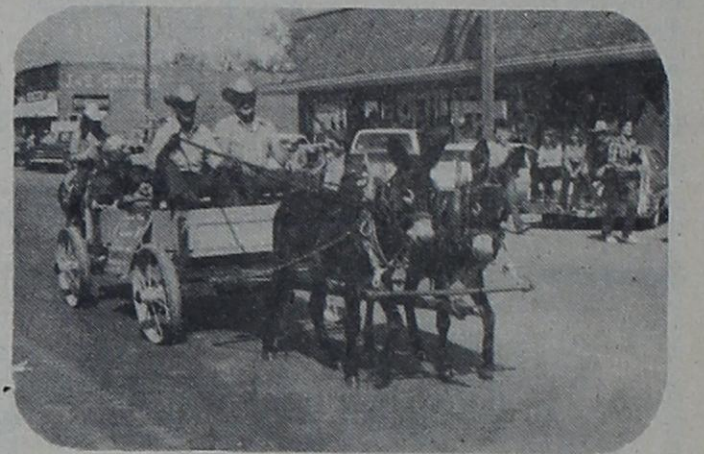
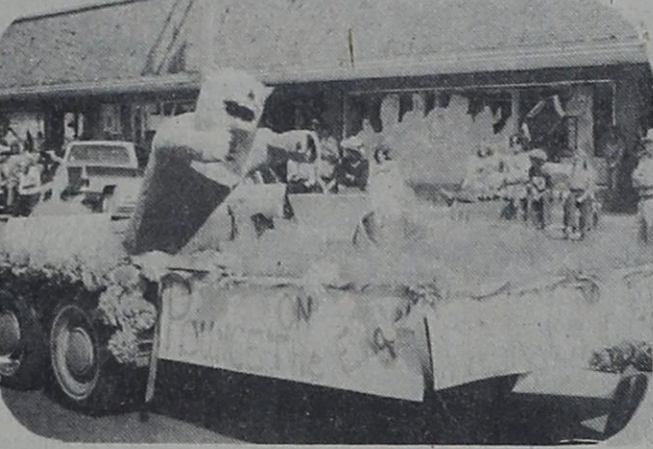


Tina Butler, Pat Burns, Sharon Arther, Inez Harrell Bourdeau.

Continued on page 5

Continued on page 6

HOME COMING

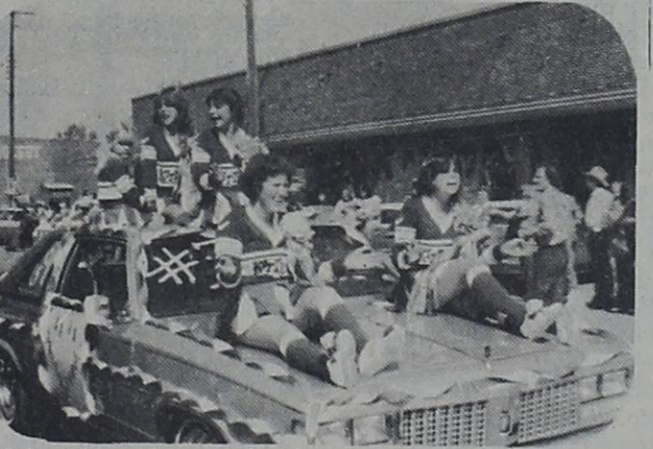


San Angelo; Mrs. Maxine Robinson and Mrs. "Pete" Buchanan, Rising Star; Mr. and Mrs. Palmore, Dublin, Texas.

The reminiscence of their school years was enjoyed by all and are looking forward to when we can meet again. Mrs. Era Branton presented each member with a booklet containing a copy of the original program for the 1930 class and the names and addresses of the members as of now, which was appreciated.

To the surprise to two of the class members, the King and Queen of the school reunion was chosen at the business meeting, being Mrs. Lottie Mae Roach and Gid Bowers. This was certainly a nice surprise and we do say "Thank You" to each and every one. Seems our reunions get larger and larger each year and its nice to have people to come back home to see us.

After the pep rally the final get together was hosted by Mrs. Maxine Robinson at her home with Mrs. Era Branton and Mrs. Lottie Mae Roach helping. Then it was "Till We MEET AGAIN."



Photos by Carolyn Ratliff



Class Of 1930 Meets

The class of 1930 celebrated their 50th year class reunion with a get together hosted by Mrs. Era Branton and Mrs. Lottie Mae

Roach at the home of Mrs. Roach on Friday night, October 17th. Some brought pictures and a copy of the Rising Star record of May

15th, 1930, the week of graduation. Of the twenty-seven graduates, there was ten who came, ten others were either unable to come or could not be located and seven have deceased.

A buffet supper was

served to the following: Mrs. Florence (Davis) Maness, Hobbs, New Mex.; Mr. and Mrs. Hosea and Era (Ghormley) Branton, Plano, Texas; Mrs. Jo Beth (Horton) Winter, Kerville, Texas; Mrs. Zula (Taylor) Thomas, Stephenville, Texas; Mrs. Helen (Clarkson) Spruill, Dublin, Texas; Mr. and Mrs. Willie Gardner, Rising Star, Texas; Mr. and Mrs. Gid Bowers, Cisco, Texas; Mrs. Nophlett (White) Hill, Abilene, Texas; Mrs. Mildred (Irvine) Miller, Austin, Texas; Mrs. Mary (Cain) Beard, former classmate, Sheridan, Ind.; Mrs. Lottie Mae Roach, Rising Star, Texas. Others who came were: Mrs. Earldene Smith, Abilene; Miss Martha Jay Childress,



Family Page...

Courthouse News

Marriage Licenses
Randy Bruce Anderson and Marjorie Karen Duncan
Don Curb and Cynthia Burton Morris

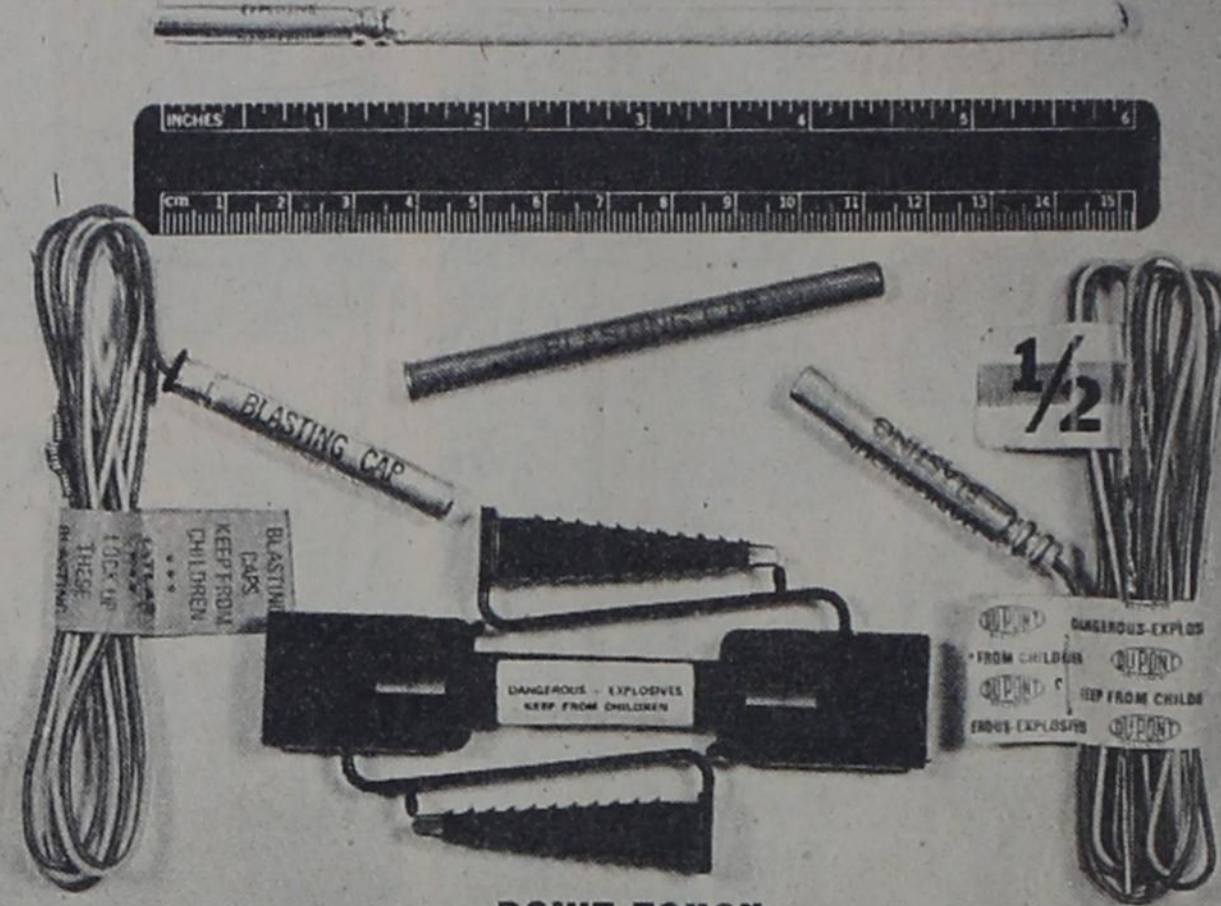
Howard Phillips Pont. 2
Dr. Rising Star
Rozelle M. Uffelman
Buick 2 Dr. Cpe. Eastland

ship
The State of Texas for the best interest and protection of Heulon L. Perrin, Jr. as a mentally ill person

Antares Oil Corp. To Hal C. Porter & Others Asgn ORRI
Antares Oil Corp. To Basin Gas Corp. Asgn ORRI

Merle Thomas Hopper To Cabrito, Inc. OGML
Otha Thomas Hunt To Cabrito, Inc. OGML
Imperial Swine Co. To Imperial Swine Co., Inc. Warranty Deed

HANDS OFF! DANGEROUS • BLASTING CAPS • EXPLOSIVE



Call The Police Immediately
IF YOU FIND ANYTHING THAT LOOKS LIKE THIS

Wife Warranty Deed
Edward V. Rodgers To Mobil Pipeline Co. Easmt
D. Mae Rumph & Others To C.B. Hazel, Inc. OGML

We are a team



Our Freedom Safeguards Your Freedom
National Newspaper Week, October 12-18

Between the lines of your newspaper lies a network of ambitious hard-working people.

Your Local NEWSPAPER



Loyd E. Castleberry To W. Thomas Castleberry OGL
Alma Castleberry To W. Thomas Castleberry OGL
Wanye T. Castleberry To W. Thomas Castleberry OGL

Al Gaeta Ice Co. Inc. To Citizens Natl Bk, Breckenridge Deed of Trust
Al Gaeta Ice Co. Inc. To Al Spark Ice Co. Warranty Deed

WHERE YOU ALWAYS BUY THE BEST FOR LESS

GIBSON'S

DISCOUNT CENTER
GIBSON'S SALE DAYS
WED., OCT. 22nd Thru SAT., OCT. 25th
 Store Hours: 9 A.M.--7 P.M. Monday Thru Saturday
 629-1747 Eastland, Texas

Lysol
BOWL POWER
 6.5 oz.
 Reg. \$1.99 SAVE 70%
\$1.19

48 oz.
 Granules
SANIFLUSH
 Reg. \$1.43 SAVE 50%
93¢

PLUSH
 16 oz.
 Reg. \$2.99 SAVE 70%
\$1.79

MOTH BALLS
 10 oz. Box
 Reg. 83¢
 SAVE 30%
53¢

Old English Lemon
FURNITURE POLISH
 9 oz. Aero
 Reg. \$1.33
 SAVE 40%
93¢

LAVORIS
 12 oz.
 Reg. \$1.99 SAVE 80%
79¢

Crystal Beauty
SPONGES
 200 CT
 Reg. \$1.99
 SAVE 60%
99¢

SHOWER TO SHOWER
 8 oz.
 Reg. \$1.83
 SAVE 50%
\$1.33

Clairel Condition
SHAMPOO
 24 oz.
 Reg. \$2.73
 SAVE \$1.00
\$1.73

Clairel
FINAL NET
 12 oz.
 Reg. \$2.99
 SAVE \$1.00
\$1.99

Pond's
COLD CREAM
 13.4 oz.
 Reg. \$4.99
 SAVE \$1.00
\$2.99

Colgate
TOOTHPASTE
 7 oz.
 Reg. \$1.47 SAVE 50%
97¢

Armour
POTTED MEAT
 5 1/2 Oz.
 Reg. \$1.13 SAVE 50%
2/79¢

CHILI WITH BEANS
 15 1/2 oz.
 Reg. \$1.13 SAVE 50%
63¢

WINDEX
 22 oz With Trigger
 Reg. \$1.99 SAVE 50%
99¢

Gillette Foamy
SHAVE CREAM
 11 oz.
 Reg. \$1.83 SAVE 70%
\$1.13

G.E. Steam And Dry
IRON
 Reg. \$16.99 SAVE \$5.00
\$11.99

Dazey
SEAL-A-Meal
 No. 5AM 11
 Reg. \$2.69
 SAVE \$8.00
\$18.89

Rival Electric
CAN OPENER
 W/Knife Sharpener
 No. 782
 Reg. \$14.99 SAVE \$4.00
\$10.99

Sunbeam
TOASTER
 2 Slice
 Sunbeam No. 20-130
 Reg. \$18.99 SAVE \$5.00
\$13.99

POPCORN MACH
 11 No. 18-26
 Sunbeam Great American
 Reg. \$32.99
 SAVE \$10.00
\$22.99

BLENDER
\$34.99
 Sunbeam 20 Speed
 Reg. \$47.99
 SAVE \$13.00

G.E. Do It
HAIR DRYER
 1400 Watts Pro 16
 Reg. \$19.99
 SAVE \$5.00
\$14.99

G.E. Deluxe Hand Speed
HAND SPEED MIXER
 Reg. \$19.99
 SAVE \$5.00
\$14.99

Rival Electric
FOOD SLICER
\$43.99
 Reg. \$53.99
 SAVE \$10.00

Sunbeam
Multi-Cooker COOKER FRYPAN
 No. 7-260
 Reg. \$34.99 SAVE \$10.00
\$24.99

G.E. Compact Mist
MIST CURLER
 No. C5-018
 Reg. \$13.99 SAVE \$4.00
\$9.99

Kenner No. 88220
T-ZZZERS CRASH SET
 Reg. \$9.99
 SAVE \$2.70
\$6.49

Strawberry Shortcake
SNAIL CART
 Reg. \$12.99 SAVE \$3.50
\$8.99

Fuzzy Pumper Monster
PLAY-DOH SET
 Kenner
 Reg. \$15.99
 SAVE \$4.00
\$11.99

Tonka
ROAD GRADER
 No. 2510
 Reg. \$17.99 SAVE \$5.00
\$12.99

Goldberger's
BABY IN A BASKET
 Reg. \$24.99
 SAVE \$7.00
\$17.99

RAND MCNALLY COLORING BOOKS
 25% OFF

LAY-A-WAY YOUR CHRISTMAS TOYS
 NOW WHILE SELECTION IS GOOD

Strike King Timber Buzz
LURES
 Reg. \$2.99 SAVE 70%
\$1.79

Zebco 404
ROD AND REEL COMBO
 Reg. \$13.99
 SAVE \$4.00
\$9.49

Zebco 202
REEL
 Reg. \$4.99 SAVE \$1.30
\$3.39

Polaroid
ONE STEP LAND CAMERA
 Reg. \$38.95 SAVE \$7.00
\$31.95

Pocket AM GE No. 7-2705
RADIO
 Reg. \$8.99
 SAVE \$2.90
\$5.99

GE No. 3-5152
CASSETTE RECORDER
 Reg. \$41.99
 SAVE \$10.00
\$31.99

Ladies Long Sleeve
BLOUSE
 No. 2027
 Reg. \$8.99
 SAVE \$2.00
\$6.49

KNIT SHIRT
 Boys Long Sleeve
 No. 1759 Reg. \$6.77
 SAVE \$2.50
\$4.27

Mens Long Sleeve
KNIT SHIRT SWEATERS
 No. 572-149
 Reg. \$5.99
 SAVE \$2.00
\$3.99

Boys Pull-Over Long Sleeve
SWEATERS
 Reg. \$8.97
 SAVE \$3.00
\$5.57

Ladies **HOUSE SHOES**
 No. 1372
 Reg. \$3.99
 SAVE \$1.20
\$2.19

Mens Lace-Up
WORK SHOES
 No. 7848
 Reg. \$34.99
 SAVE \$12.00
\$22.99

Mens Long Sleeve Cardigan
SHOES
 No. 2532
 Reg. \$14.99
 SAVE \$6.00
\$8.99

Ladies Casual Ramblers
SHOES
 No. 8411
 Reg. \$15.99
 SAVE \$6.00
\$9.99

Mens Slip-On Insulated
BOOTS
 No. 1527 Reg. \$59.99
 SAVE \$15.00
\$44.99

GIBSON'S RESERVES THE RIGHT TO LIMIT QUANTITIES OF SALE ITEMS

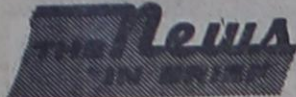
GIBSON'S PHARMACY
 Pharmacy Hours 9 A.M. To 7 P.M.
 Eastland, Texas Hwy. 80 East
 Greg Bennett R.Ph.

BUF-PUF
 Nonmedicated Cleansing Sponge
 For beautiful skin
 Reg. \$2.97
\$1.90

MYOFLEX
 Reg. \$2.96
\$1.81

Debrox
 Drops
SOFTENS and REMOVES EARWAX
 CONVENIENT 1/2-OZ. SIZE
 Reg. \$2.97
\$2.06

NEW Ambenyl-D
 DECONGESTANT COUGH FORMULA
 ■ FAMILY STRENGTH
 ■ PLEASANT-TASTING
 Reg. \$3.12
\$2.50



Mr. & Mrs. Stanley Wells of New Albany, Mississippi visited Mr. and Mrs. Giles Lockhart over the weekend. Other visitors were Larry & Debra Tunnell, Mandy & Diana of Dublin;

Gary & Cindy and Heath from Brownwood; Butch & Greta Burkett from Sweeney.

Mr. and Mrs. Kenton Joyce and little daughter, Alicia Michelle of Williston, N.D. came for

homecoming and to visit their parents, John & Martha Joyce & Marita & Kenneth Smith and grandparents, Floyd & Lucille Joyce and Conova & Squab Weaver.

Laura McLeod of Ft. Worth visited her grandparents, Mr. and

Mrs. Floyd Joyce over the weekend. Other visitors were Mrs. Mary (Cain) Beard of Sheridan, Ind. and Maurice McCready of Joshua, Tex.

Mr. and Mrs. Merle Roach of Midland visited his mother, Mrs. John Roach and

Mr. and Mrs. Robert Butler over the weekend and attended homecoming.

COUNT DOWN--15 days until Harvest Festival in Fellowship Hall, First United Methodist Church--Nov. 7-8.

Pink And Blue Shower

BABY SHOWER
A pink and blue shower honoring Mrs. DeWayne (Schanda) Teague will be given on Saturday,

November 1st from 2 p.m. to 4 p.m. in the First State Bank Community Room. All friends are cordially invited.

Thursday, October 23, 1980

CHRISTMAS GIFTS NEEDED!!
Look at gift shop-crafts-country store: Fellowship Hall, First United Methodist Church, Friday, Nov. 7.

BUY, SELL, TRADE OR RENT THROUGH THE
CLASSIFIED ADS

SALE

SHEETS

By Cannon
"Royal Family"



5⁹⁷ ea.

FULL FITTED OR FULL FLAT
STANDARD CASES
20"x30" **5⁴⁷** Pr.
TWINS, KINGS, AND QUEENS
AVAILABLE ON REQUEST

NO-IRON PERCALE

"Cotswolds"
Colors: Multi or Rust

SHEETS

by J. P. Stevens



6⁹⁷ ea.

FULL FITTED OR FULL FLAT
STANDARD CASES
20"x30" **6.47** pr.
Twin Flat or Fitted **5.97** ea.
Queen Flat or Fitted **11.97** ea.
King Flat or Fitted **14.97** ea.
King Cases **7.47** pr.

NO-IRON PERCALE

"Versailles"
Color: Bone

BATH TOWELS

"Turin"



Full-sized velour bath towel with flower garden print. Matching hand towel and wash cloth. Colors: Parchment, Sky, Blue, Pink.

MADE IN U.S.A.
CANNON

BATH TOWEL 22"x44" **3⁹⁷**
HAND TOWEL **2⁹⁷**
WASH CLOTH **1³⁷**

"Santa Cruz"



A touch of Spanish elegance returns in this large solid color velour bath towel. Its jacquard design is matched in hand towels and wash cloth. Colors: Rust, Brown, Pistachio, Green, Yellow.

BATH TOWELS

BATH TOWEL 22"x42" **2⁹⁷**
HAND TOWEL 16"x26" **1⁹⁷**
WASH CLOTH 12"x12" **1³⁷**

BATH TOWELS

By Franco
"Monarch"



Butterfly print on cotton terry. Matching hand towel and wash cloth. Colors: Bone, Yellow, Blue.

for the kitchen!

"Herbs and Spices"



Ensembles by Franco

KITCHEN TOWEL 16"x26" **1⁷⁷**
DISH CLOTH **1⁴⁷**
POT HOLDER **1⁴⁷**

Warm colors of Herbs and Spices on a White ground.

BATH TOWEL 22"x42" **4⁹⁷**
HAND TOWEL **3⁹⁷**
WASH CLOTH **1⁷⁷**

BATH SETS



12⁸⁸ ea.

"Santa Cruz"
21"x34" Rug with matching lid cover. Solid color designed to coordinate with bath towel ensemble. Non-skid black. Colors: Brown, Yellow, Rust.



"Monarch"
2 piece set matches "Monarch" Bath Towel Set. Non-skid backing. Colors: Bone, Yellow, Blue.



RUG RUNNER

Mr. Candy **1⁹⁷** ea.

24"x60" NON-SKID LATEX BACK

"Istanbul" THROW RUG

6⁹⁷ 24"x42"

100% NYLON HEAVY DUTY WAFFLE BACK



Colors: Blue, Brown, Rust

Sugar Sack



Dish Towels

3 for **3⁹⁷**

Waffle Weave DISH CLOTHS

LARGE SIZE 14"x15" **44^c**

ORANGE OR BROWN



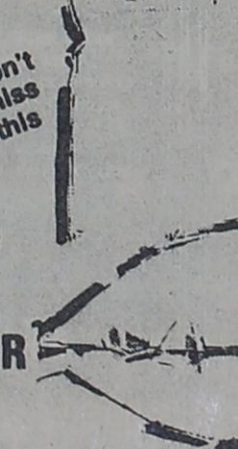
HOLLANDER BED PILLOWS

Don't miss this

3⁸⁸ 21x27

"Paula"

100% POLYESTER
● ALLERGY FREE
● MACHINE WASHABLE



#1 Select IRREGULARS

Chatham BLANKETS

8⁸⁸ Full Size 72x90 Only!

ASSORTED COLORS
Cozy White, Blue, Green, Camel, Yellow, Apricot, Pink and Gold.



HIGGINBOTHAM'S
18 FRIENDLY LOCATIONS TO SERVE YOU
Main Street, Rising Star

Rising Star Nursing Center

Mary Harmon, Activity Director

Monday is Bingo & Popcorn and everyone looks forward to it. It seems like it starts the week off right. The winners along with the popcorn made the day. The winners were: Martha Irby, Ora Clark (3 games), Ethel Degman, Leo Atkinson, (2 games), Bryant Houston (2 games), and Mary Hord.

Tuesday is newsday. We get a list of everyone's visitors which you see at the end of every article. we then compile the events of the week and try to include everyone that participated. Everything we do is based on the help we get from the nurses and aides and volunteers from the community. Without these people there would be no activity program.

Wednesday is one of the days the ladies exercise. They enjoy this and do it very willingly.

Thursday the domino games were well underway. They usually begin around one or two o'clock and sometimes last until supper.

Friday Mrs. Odom conducted the Bible Study. The class is one activity that is very enlightening and enjoyed by all that attend.

Saturday, if you watched the parade, you noticed that we really out did ourselves this time. This is one project that we really enjoyed and hope you did too. The residents

riding on the float were: Bryant Houston, supplying the fantastic fiddle music for the event, Buster Rixford, Emma West and Dollie Harrelson, enjoying a good game of dominoes, and Mary Hord was just enjoying the ride. We must not forget the "Queen of the Bedpan," Alta Mae Moore.

P.S. Would the person taking the pot plant by the front door please return it? We miss it, besides, it belongs to someone else other than you.

VISITORS:
Rose Roach, Mary Hammett--Eleanor Nunnally, Merle & Eunice Roach, Wanda Siekman, Mae Clare Crownover, Geneva Wallace, John & Ima Yochem, Dorothy Bearden, Nadine White, Bertha Dunlap, Sara McGowen, Grace Norris.

Martha Irby--Grace Akin Norris, Wanda Siekman, Marjorie Lacy.

Leonard Norris--Rev. Elwood Norris & Ruth, Mr. & Mrs. Weldon Garner, Ruth Garner, Ree Pancake, Mrs. Vera Westerman, Mrs. Bee Jones, Mrs. Emma Morrison, Ruby McCowen, Winnie Flippen, Rodney McCarty, Sara McGowen, Mrs. Robert Butler.

Emma West, Nancy Matthews--Lorraine Gray, Grace Norris, Winnie Flippen.



This full blooming peach tree is at the southeast corner of the Mrs. Gertrude Harris home located in the northwest corner of the town site of May, Texas. The picture was made on October 9, 1980, by her daughter, Mrs. Ray Lancaster.

Ora Clark--Winnie Flippen, Grace Norris.

Dellah Roberts, Annie Gotcher--Wendy Green, Mavis Hart.

Dollie Harrelson, Ethel Degman--Donald McKinnerney, Donna Jo McKinnerney, Luella McKinnerney.

Tennie Crutchfield, Maude Hill--Era & Hosea Branton, Bertha & Kathy Dunlap, Dinky, Judy, Kerry & Chad Hill, Kathy & Clint Wolf, Mrs. Amis, Dennis, Blanton & Lillie Childers.

Hattie Boatman, Georgia Miller--Mrs. Wade Byrd, Edna Atherton, Mavis Hart, Charles Cox, Cassie Allen, Maurice Martin, Mrs. Mae Phillips.

Mr. and Mrs. John Starkey--Arvil & Mattie Adams.

Mary Hord, Lavora Smith--Era & Hosea Branton.

Mary Crisp, Linnie Brashear--Louella McKinnerney, Maurice Martin, Nell Maynard.

Mattie Cosper, Oma Poteet--Mrs. Odom, Arvil & Mattie Adams.

Red Cook, Buster Rixford--Mary Cook, Katie Cook, Ben Cook, Donald Chalk.

Leo Atkinson, Alvin McNutt--Shawnah & Matthew Harmon.

Lizzie Jacobs--Elizabeth & Joe Mistro, Dorothy Bearden, Lucene & C.R. Moore, James Willett.

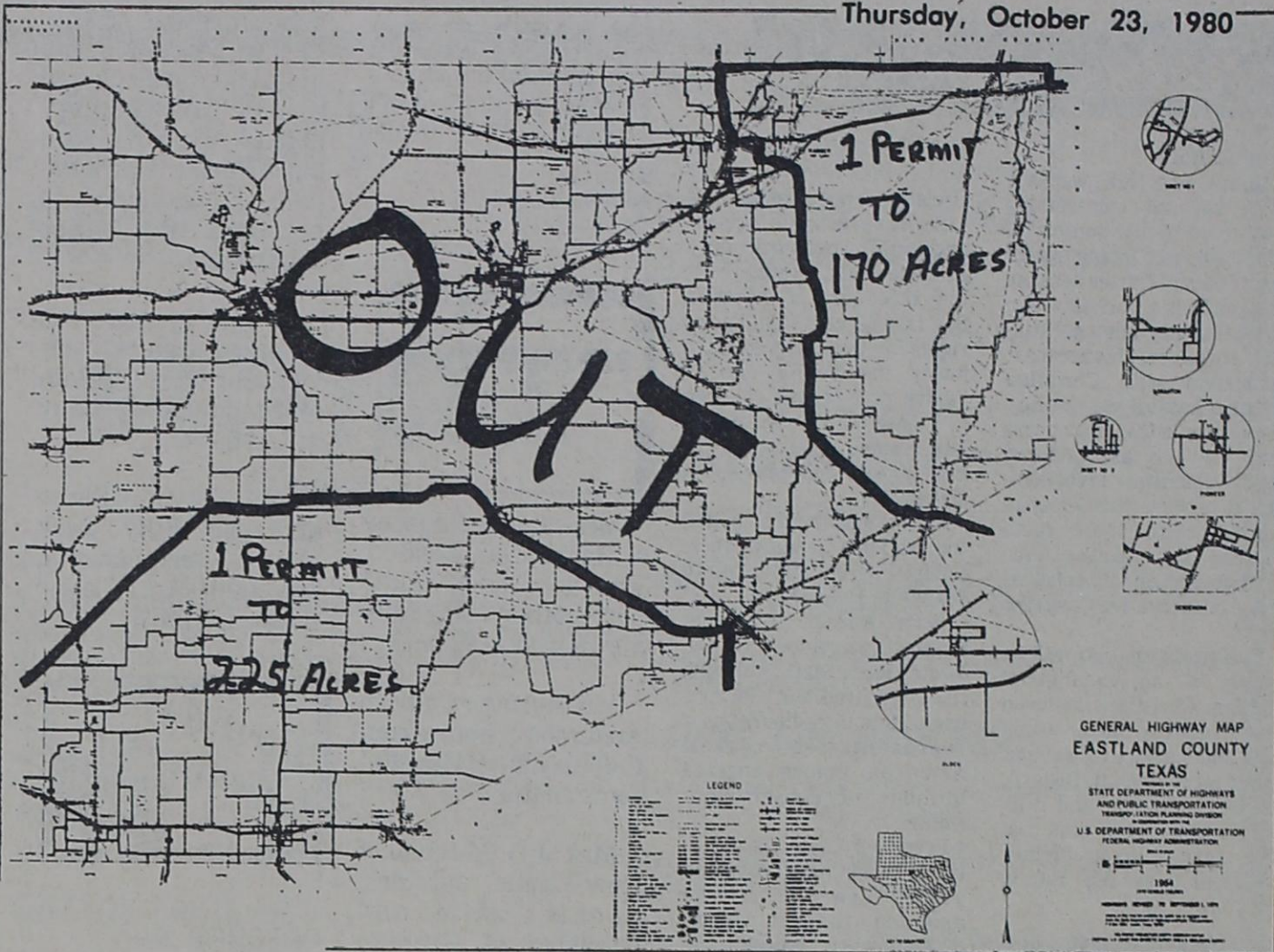
"Is your home insured for what it's worth, or just for what it cost you..?"

See me about State Farm's automatic inflation coverage that can increase with the value of your home.

Eddie McMillan
801 Ave. D Cisco
817-442-1671

Like a good neighbor, State Farm is there.

STATE FARM FIRE AND CASUALTY COMPANY
Home Office: Bloomington, Illinois



Antlerless Deer Permits Issued Oct. 30

Carolyn S., Carolyn R. And Faye W.

Are Celebrating 40 During December!

There Will Be A Celebration With Lots Of Gifts Deserved.

Given By The Thirty-Sixers.

The Texas Parks & Wildlife Department will issue antlerless deer permits for Eastland County on Oct. 30 from 8-12 noon and 1-5 p.m. in the Comm. Court Room. A map with antlerless deer permit issuance rates and issuance compartments will be posted in the Eastland County courthouse prior to the issuance date. To qualify for at least one permit, a landowner must own or control acreage at least equal to one half of the permit issuance rate of the compartment where the tract is located.

TEXAS PRESS ASSOCIATION

Roy Emfinger, Weaver Smith--Troy Clem, Mae Underwood.

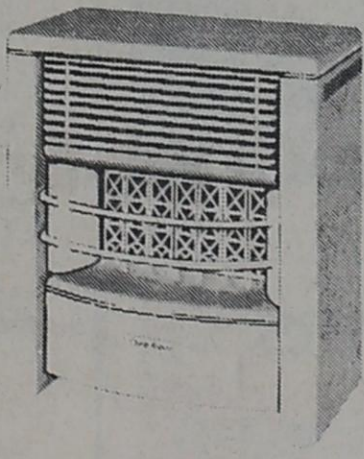
Mr. and Mrs. Carl Burns--Audine Johnson, Robert & Naomi Burns.

Personals

Visiting in the home of Mr. & Mrs. E.T. Hudnall on Monday, Oct. 20th was Mr. & Mrs. Merle Claborn, Zephyr, Tex.; Olene Claborn, Rising Star, Tex.; Mr. & Mrs. Athol Claborn, Mineral Wells, Tex.; Mr. & Mrs. George Johnston, Hobbs, New Mex.; Mr. & Mrs. Linden Click, Farmington, New Mex.; Mr. & Mrs. James Melton, Kermit, Tex.; Mr. & Mrs. Ricky Purvis & Daniel, Olden, Tex.; Homer Claborn, Cisco, Tex.; Denise Jackson, Yanya & Delwin, Cisco, Tex.; Mr. & Mrs. Joe Ward and Opal Hill of Rising Star.

WHEN YOU CHOOSE DEARBORN IT'S FOR A LONG, LONG TIME

Chases chills from hard to heat spots and fills a room with delightful warmth in almost no time. Features the Forward Heat Flow that keeps the cold from settling along your floors. Often copied, but never matched in efficiency and durability, the Deluxe has a cool-to-touch cabinet for extra safety, a lifetime burner -- and is Dearborn crafted for dependable, long life. Natural or LP gas. Sizes 12,000 to 39,950 BTUs.



- DWC10 119.95
- DRC12CM 144.95
- DRC20CM 157.95
- DRC30CM 176.50
- DRC40CM 198.50

The most respected name in gas area heating

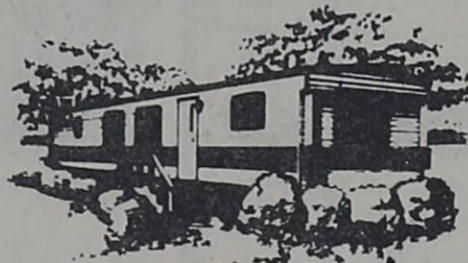
Dearborn
STOVE COMPANY - DALLAS, TEXAS
A Division of Addison Products Company

Available in LP or Natural Gas.

HIGGINBOTHAM'S
18 FRIENDLY LOCATIONS TO SERVE YOU

Main St. Rising Star

DISCOUNT SALE



\$500 DISCOUNT

Stock no. 56 MELODY, 70x14, large 3 bedroom, 2 bath home, carpeted except kitchen, furnished. Discount good this week only!

SAVE \$500

Stock no. 57. MELODY 2 bedroom 56x14, with extra large front kitchen with lots of cabinet space, front bay window. A 1981 model home...this discount good this week only!

\$500 OFF

Stock no. 61. MELODY 2 bedroom (front and rear), 14x56, carpeted except kitchen, never before discounted....good this week only.

\$120.22 MONTHLY 14 WIDE MANATEE

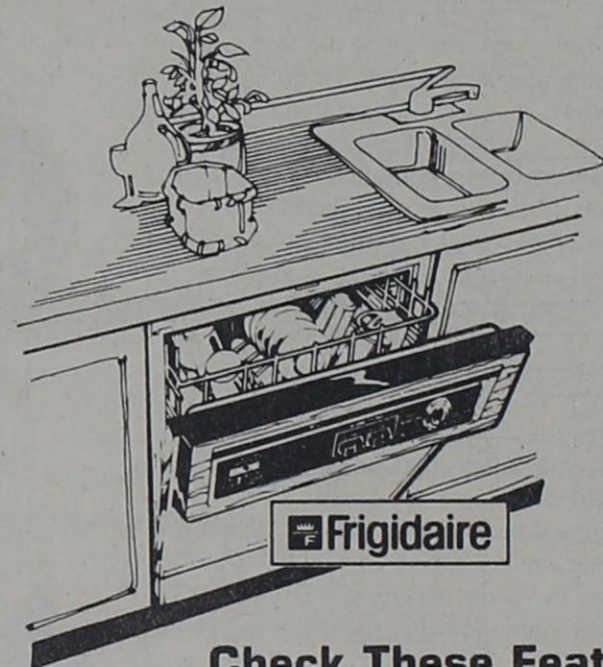
2 bedroom, stock no. 49. Selling price \$8334, down payment \$767.54, 180 monthly payments of \$120.22. Annual Percentage Rate 15 1/2%.

SAVE \$300

Stock no. 64, REDMAN FLAMINGO, 14x60, front kitchen with large walk-in bay window. A super deluxe 1981 model home at a low price! Discount good this week only.

Abilene Mobile Homes
4818 No. 1st The Housing Giant 872-8408

You'll save time and energy while enjoying sparkling clean dishes with this Frigidaire Electri-Saver Dishwasher.



Check These Features



To resist staining, fading and the absorption of food acids and odors, you can't beat the durability of a Porcelain-Enamel-On-Steel tub.



Doesn't make a lot of noise thanks to thick, Sound-Absorbing Insulation on the back and all around the top and sides of the tub as well.



Cleans pots, pans and crusty casseroles as easy as pie thanks to a triple wash Pots & Pans Cycle.



For easy loading of silverware and utensils, this Frigidaire Dishwasher offers a removable Open-Mesh Basket.



You can change the color anytime with this Frigidaire Dishwasher. Interchangeable door panels offer a choice of Almond, Avocado, Harvest Wheat or White.



No more embarrassing water-spotted glasses and silverware. A Spots-Away Rinse Injector dispenses a liquid rinse additive in the final rinse cycle.

WEST TEXAS UTILITIES COMPANY
WTU
A Member of The Central and South West System

Qualified Factory-Trained Servicemen Offer You The Finest In Appliance Service.

Letters to the Editor

Dear Editor:
In the past few weeks I have become increasingly concerned by the number of Christians who intend to vote for President Carter because he says he is a Christian. Apparently, they have not asked themselves if his record is consistent with Christian principles—all they remember is that, four years ago, he ran as a "born again" Christian. I feel compelled to write this letter to simply state some facts about the Carter Administration and its betrayal of the conservative Christian voter.

The traditional American family is an endangered species. Christians believed that President Carter would hold and support values that would strengthen it. Instead, he has initiated and supported many measures that will result in a further weakening of the family unit. There have

also been decisions and policies in other areas which stand in direct opposition to conservative Christian beliefs and values. Consider:
1. President Carter has supported the ERA and has used the White House to further its causes. The ERA is seen by conservative Christians as a measure that would weaken the family by eliminating the responsibility of the father to support his family and by withdrawing special protections and privileges, such as freedom from the draft, for wives and mothers. The ERA would also take away from the states many powers they now enjoy. Carter has vowed to "do everything within my power" to ratify the ERA.
2. He was responsible for forming the Department of Education, which will extend federal control over all education. He appointed Shirley Hufstetler, a leading secular humanist, to head the department. As a result, the humanist values of anti-God, anti-prayer, and anti-family will gain an even stronger foothold within our schools to further erode the values we desire to teach our children.

3. President Carter has made NO conservative Christian appointments. He has, however, made several anti-family appointments: Patricia Wald, nominated to the U.S. Court of Appeals. She is a fervent "children's rights" activist who wants to lower the voting age to twelve and permit children to choose their families. She has likened the traditional child-parent relationship to slavery.

Sarah Weddington, called the nation's leading abortionist lawyer, appointed to the White House Staff.

Bella Abzug, an ardent feminist appointed to the White House Staff. Although the later fired her, Carter's use of this ultra-liberal as a representative of all American women angered millions of conservative women.

4. President Carter is opposed to voluntary prayer in public schools on the grounds that it might discriminate against an atheist's child.

5. President Carter supports legislation which would remove homosexuality from a list of sexual aberrations.

6. Although he says he is personally against abortion, he has done nothing to stop it. The National Platform supports federally funded abortions, and Carter is against a constitutional amendment which would overturn the Supreme Court decision permitting abortions.

7. President Carter supports the drafting of women.
8. Under the Carter Administration, the IRS proposed a rule that would deny tax exemption to religious schools unless racial quotas were adopted.

9. The Carter Administration is gradually moving away from our traditional pro-Israel stand.

I could continue about the weakness of the Carter Administration's policies on defense, Salt II, the energy crisis, and the economy, but I feel that the moral issues are what conservative Christian voters MUST use as their guideline in making their decision. God will hold

each one of us personally responsible for placing a man in office at any level whose policies are in direct opposition to the principles of His word.
Sincerely,
Patricia Bane
314 College Ave.
Weatherford, Texas 76086

SIPE SPRINGS NEWS

Mrs. Lucile Monsey of Hobbs, New Mexico, was here and visited her mother Mrs. Minnie Houser last week.

Mr. Herman Claborn Anderson is home from the Eastland Hospital some better.

Mrs. J.D. Mitchell of New Castle and Mrs. Connie Little and daughter of Graham visited Mr. and Mrs. John McKeenan one day last week.

Mrs. Ruby Boswell returned home Wednesday after visiting relatives in Arlington and Whitney.

Mr. and Mrs. Dick Wyatt visited his sister Mrs. Vern Screws in Little Rivers last week.

Mr. and Mrs. Michael Butler and little daughter of Westlake, La., Mr. and Mrs. Paul Leonard and son of El Paso, and Mr. and Mrs. J.W. Rye of Albuquerque, New Mexico have been visiting with the N.L. Leonard's.

Relatives and friends received the

death message of Mrs. Ott (Williams) Morgan of Lubbock who passed away Wednesday night, funeral and burial there. Our sympathy is extended to her son and other relatives.

Mr. Harry Anderson attended funeral services for Mrs. Ott-Sam Morgan funeral Friday in Lubbock.

Mrs. Elayne Millwee and son Billy Jack visited her parents, Mr. and Mrs. Layne Cotter in Baird.



OCTOBER 25—
Hattie Boatman
Judy Kay Ware

OCTOBER 26 —
Ladell Key
H.L. Geyer
Theresa Scott
Jaylinda Crisp

OCTOBER 27—
Sula Harris
Earl Allen

OCTOBER 28 —
Billy Owens
Kelly Owens

OCTOBER 29 —
Brandy Harris
Kallie Gray
John L. Cozart
Toby Chambers
Bob Cohen
Rosemary Harrell

OCTOBER 30 —
Mildred Hounsel
L.C. Hounsel
Dwight Hutchinson
Brad Carroll
Irene Sims

OCTOBER 31 —
Grady Bush, Sr.
Kirby Dale Bush

Thursday, October 23, 1980

Norma Carpenter Speaks To Saturday Club

Irene Mayfield, president, in opening the meeting of the Saturday Club reminded each member of the right to vote on Tuesday, Nov. 4, urging all to use that important privilege.

Mary Claborn gave the invocation, which was followed by the Pledge of Allegiance.

Dorothy Shook called the roll and read the minutes.

Emma Jean Steel presented Norma Carpenter, who gave a delightful program.

Norma introduced the talk with the words: "Why are we here?"

Rising Star is the center of Everything for my Family. We love it here and have been very happy here.

This little town is my background—where I belong."

The talk was filled with family life before meeting and marrying Dr. Billy T. Carpenter; experiences in teaching, securing an education, and as the wife of a doctor.

"It amazes me how the Lord works and places you where you need to be;" and we, in Rising Star, are Blessed that the Lord did br-

ing you and your family to us, Norma—dedicated not only in the medical world but in the church, school, and all community interests.

The refreshment table was covered with a Jack O'Lantern cloth, a large Jack O'Lantern filled with many pyracantha berries as the centerpiece added to the decorative theme.

Silver and crystal appointments were used in the serving of open faced Jack O'Lantern sandwiches, pumpkin cake, nuts, and coffee by Lela Clark and Emma Jean Steel, program-hostess coordinators.

Members attending were Gladys Carter, Blanche Cawley, Mary Claborn, Rosa Van Cox, Linda George, Lenell Henry, Pauline Hudson, Olice Jones, Lucille Joyce, Hazel Marsh, Irene Mayfield, Hazel McCollum, Eleanor Nunnally, Bonnie Polk, Lottie Mae Roach, Dorothy Shook, Clotfogene Witt, Vera Westerman and guests—Betty Gray, Norma Carpenter, and Harriett Rutherford. Mary Claborn, reporter

OILFIELD CHEMICALS
Diamond G Company Announces The
Opening Of Its Oilfield Chemical Yard In
Brownwood.
Authorized Distributors For TRETOLITE
And Other Fine Oilfield Chemicals.
Phone: 915-646-5817 4TP

**NOW'S A GOOD TIME....
TO THINK ABOUT RENEWING
YOUR SUBSCRIPTION**
...virtually all subscriptions to your local
newspaper expire on Jan. 1, and will be
stopped unless renewals are paid before
that time.
So, Now's a Good Time.... to think about
renewing your subscriptions to someone
special away.
Thank you.

**FOR TOP QUALITY...
REPLACEMENT PARTS
For Car, Truck Or Tractor
Check With**
FEATURING A COMPLETE LINE OF TOP
BRAND NAME ACCESSORIES, TOOLS AND
AUTO CARE PRODUCTS.
Cross Plains Auto Supply
833 MAIN STREET PHONE 725-6217
ALL MAJOR BRANDS OF MOTOR OIL AT
MONEY- SAVING PRICES!

Majestic Theatre
Eastland 629-1220

**One Showing Only Each Evening
Open 7:30 Showtime 7:50 P.M.**

Thurs.-Fri.-Sat.

When over 100 million people saw
"Close Encounters of the Third Kind"
for the first time, they were dazzled.
And they wanted more.
**NOW THERE IS MORE.
FOR THE FIRST TIME,
FILMGOERS WILL BE ABLE TO SHARE
THE ULTIMATE EXPERIENCE
OF BEING INSIDE.**

THE SPECIAL EDITION
**CLOSE
ENCOUNTERS
OF THE THIRD KIND**
A COLUMBIA/EMI Presentation
A PHILLIPS Production A STEVEN SPIELBERG Film
Starring RICHARD DREYFUSS also starring TERI GARR and MELINDA DILLON
with FRANCOIS TRUFFAUT as Lacombe
Music by JOHN WILLIAMS Visual Effects by DOUGLAS TRUMBULL
Director of Photography VILMOS ZSIGMOND A.S.C. Produced by JULIA PHILLIPS
and MICHAEL PHILLIPS. Written and Directed by STEVEN SPIELBERG
Original Soundtrack Available On Arista Records And Tapes.
Read the Dell Book. DOLBY STEREO. Panavision. Pictures.

Sun.-Mon.-Tues.

Inflation Nite Tues. All Seats \$1.00

The Ninja,
unholy masters of terror.
Only one man can stop them.
**THE
OCTAGON**
CHUCK NORRIS LEE VAN CLEEF
From American Cinema Productions, Inc. • An American Cinema Release
©1980 American Communications Industries, Inc. All Rights Reserved

RANGER DRIVE-IN THEATRE
Ranger 647-3802

**One Showing Only Each Evening
Open 7:30 Showtime 8:00 P.M.**

Thurs.-Fri.-Sat.

**'The Blues Brothers'
is a Scream...**
One of the all-time great comedies...
a flat-out winner!" Gene Siskel, Chicago Tribune
"Don't miss the 'Blues' brother...
a miracle of sound, action and high
spirits you cannot afford to miss. An
extraordinary movie!"
Archer-Winsten, New York Post
"Fervid, flaky, fast and funny...
just what this summer has needed!"
Gene Shalit, "Today" NBC-TV

**JOHN BELUSHI DAN AYKROYD
THE BLUES BROTHERS**
JAMES BROWN • CAB CALLOWAY • RAY CHARLES • CARRIE FISHER
ARETHA FRANKLIN • HENRY GIBSON
THE BLUES BROTHERS BAND

Sun.-Mon.-Tues.

Every girl is frightened
the night before her wedding
But this time there's good reason!
**He Knows
You're Alone**
"HE KNOWS YOU'RE ALONE"
DON SCARDINO CAITLIN O'HEANEY
EDGAR LANSBURY JOSEPH BERUH
GEORGE MANASSE ARMANDO MASTROIANNI
MGM United Artists

No Taxation Without Representation.

Texas' rural counties are in danger of being gerrymandered and combined with urban areas to the point that rural Texans face the possibility of being virtually without representation in either Washington or Austin. Redistricting will be the single most important issue facing the next session of the legislature. Bob Glasgow knows that rural Texans carry the burden of supporting state government. He will fight to keep a single one of our rural counties from losing its representation by being swallowed up in an urban district. Bob Glasgow believes that those who pay the taxes deserve representation.



**A Conservative Investment
In The Future**

GLASGOW

**DEMOCRAT
FOR SENATE**

Pd. Pol. Adv. by Bob Glasgow for Senate Campaign Perry D. Elliott, Treasurer P.O. Box 1250, Stephenville, Texas 76401

Ezzell's To Celebrate 60th Wedding



W.W. And Ruby Ezzell

Willie Winfield is the son of the late William Richmond Ezzell and Sara Ann Williams. He was born in Sabanno, Texas, April 14, 1900. He attended schools at Haskell, where there was only one teacher and one room, and at the two-story Atwell High School which had two teachers. He was the sixth of seven children.

Ruby Frances Brashear was born in Rising Star, Tex. February 23, 1900. Her parents were Guy Thomas Brashear and Ann Morrow. Ruby attended schools at Sabanno and Atwell. She was seventh of 14 children, of which 11 are still living.

When asked by a granddaughter how they first met, W.W. replied, "I think I was about 10. I was playing in a yard full of kids and when I looked up I saw her. I said right then that I was gonna marry that girl!" Ruby replied, "I don't know why! I was such a toymob and so dirty!"

and their grandchildren and great-grandchildren. The couple will greet guests in the fellowship room of the Rising Star Church of Christ from 2:00 to 4:00 p.m. on Sunday, October 26, 1980.

60th ANNIVERSARY W.W. and Ruby Ezzell invite all relatives and friends to join with them in celebration of their Sixtieth Wedding Anniversary, hosted by their son and daughter-in-law, R.T. and Olena,

Ten years later on October 26, 1920, they climbed in a buggy and drove to Putnam. There they left the horse and buggy with a man who asked if they were running away. He said that if they were, he wouldn't keep the horse and buggy for them. After convincing him that they were not running away, they climbed aboard the train in Putnam and rode to Baird where they were married by a judge in the courthouse.

They lived at Atwell and Jan. 1, 1940, they moved to Rising Star where they placed their membership with the Church of Christ. They have attended here for 40 years, where W.W. served as elder from 1947 to 1962. They farmed peanuts until retirement in 1965.

They have one son, R.T. Ezzell. He is married to Olena Hellums. He served in the U.S. Navy from August 1942 to September 1945, aboard the USS Taylor in the Southwest Pacific. He and his wife live on their farm near Rising Star and raise peanuts, milo, cattle and watermelons. He and his father have raised watermelons jointly for the last several years which have also been big winners at the West Texas Fair.

W.W. and Ruby have seven grandchildren and nine great-grandchildren. They are R.T. (Skipper) JR., who is married to Roberta Mitchell of Cisco. They have three children, Jackie, Kathy, and John David and live in Arlington. Anna teaches at North Mesquite, lives in Garland. Linda is married to Mike Worley of Columbia, Tennessee. They have two children, Tommy and Misti and they live in Hewitt. Willie is married to Brenda Stokes of Brownwood and they live near Rising Star. They have two children, Will and Courtney. Janet is married to Doc Murphree of May. They and their daughter, Becki, live in the Sidney community. Benny is married to Kathy King of May. They live in Brownwood with their son, Cal. Bryan and his wife, Lisa Shults, have recently moved to San Antonio.

The couple requests NO GIFTS please.

Quilt Show

The Stephenville Senior Citizens is sponsoring a quilt show and sale on Thursday, October 23rd, from 10 a.m. to 4 p.m. at the Center, 164 E. College Street, Stephenville, Texas.

A number of very old and beautiful antique quilts will be on display. Each show quilt will have a card with as much history as is available on it.

Tables will be available for quilt makers to show and sell their wares. Crib quilts may be included but no other craft items may be shown. Each person will be asked to take care of their own items with 10 percent of sales going to the Center.

Farm Production Costs Tied To Machinery Ownership

College Station—With increasing production costs continually nibbling away at farm profits, a producer must give closer attention to cost control. This is where his machinery ownership habits come in.

"A farmer can control some of his operating costs by the number of hours he uses a piece of equipment per year and the number of years he owns that equipment," points out Lawrence A. Lippke of Corpus Christi, area economist with the Texas Agricultural Extension Service, Texas A & M University.

The more or longer a piece of equipment is used, the cheaper the per-hour cost of operation, explains the economist. For example, it costs a farmer about \$27 an hour to operate a \$30,000 tractor 300 hours a year for seven years. He can reduce his cost of operation to \$21 an hour by using the tractor 500 hours a year.

"Given that most farmers will spend about two hours of tractor time for every acre of land in cultivation, using the same \$30,000 tractor for 500 hours a year instead of 300 would reduce pro-

duction costs by \$12 per acre," says Lippke. "On a 500 acre farm, that's a savings of \$6,000 a year."

However, the effect of years of ownership is not really so dramatic, notes the economist. If this tractor is used only four years at 500 hours per year, cost of operation is about \$23 per hour, only \$2 more than if used the same amount of time for eight years.

"The main reason that hours of use per year is so important is related to the interest either paid or foregone on the investment," emphasizes Lippke. "Interest paid per year remains independent of the number of hours used. Thus the more the equipment is used, the cheaper the interest per hour of use."

Increasing equipment usage has some drawbacks, however, notes the economist. Increased usage implies owning fewer items of equipment. That could lead to more days needed to complete certain farm operations, thereby increasing the risk to adverse weather.

"A farmer must therefore make a tradeoff to find the right balance of risk and cost with which he can live," adds Lippke.

Clark Smith Receives BS From NTSU

Some 987 students were awarded degrees Aug. 16 at the North Texas State University summer commencement ceremonies.

In addition to 509

bachelor's degrees, the university granted 410 master's and 68 doctorate degrees, during ceremonies in the NTSU Coliseum.

Among the NTSU

Thursday, October 23, 1980

graduates was Clark Hopkins Smith, a 1976 graduate of Rising Star High School. He received the bachelor degree in secondary education (guidance studies, cum laude).

NATIONAL BUSINESS WOMEN'S WEEK
OCT. 19-25

OPENING SOON! THE JOY PECAN SHOPPE

We Buy And Sell

PECANS

Wholesale-----Retail

643-3011

643-2061

Hwy. 36 West In Rising Star

LOOK for the little Red Building!

42-2TC

A GIANT, AREA-WIDE PRAISE GATHERING IN CONCERT



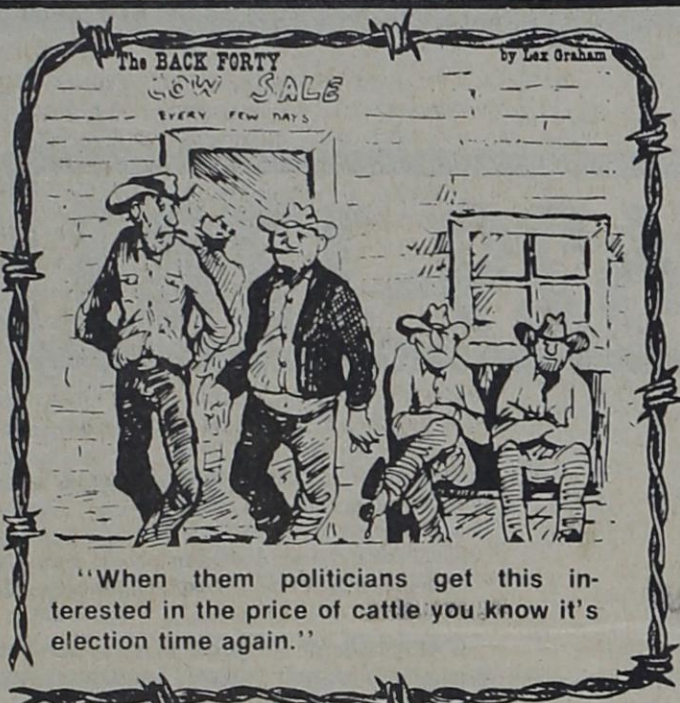
The BLACKWOOD BROS.

Friday, Oct. 31

8:00 P.M.

Brownwood Coliseum
Brownwood, Texas

ADMISSION - FREE



Elections come and go, promises are broken, but at First State Bank we strive to give you the best possible service when you open a checking or savings account. We promise to take good care of your money. We don't break our promises.



STATE BANK

RISING STAR, TEXAS 76471

Member F.D.I.C.

EXCELLENCE IN BANKING

PARKING

DRIVE-IN BANKING

LEGAL ASSISTANCE

FREE Initial Consultation

25% Personal Injury
(Prior to Suit)

25% Social Security
(Disability)

25% Workmen's Compensation
(817) 442-1402

By Appointment Only

Other Civil And Criminal Fees
Quoted After Consultation.

C. S. Boose & Associates, Attorneys

REGISTERED HEREFORD BULL — SALE —

- Selling 90 Bulls
- 20 High Quality Heifers

(Bred To H.H. Advance A482 And CI 1 Domino 913)

On October 28, 1980

At 12:39 P.M.

LEE CAMPBELL RANCH

Dublin, Texas 76446

Phone 817- 445-3060

5 Miles Southwest Of Dublin On Highway 377 And 67



Joe Gosch Curtis Hays Jack Shults
Mgr. Of Agent Of Agent
Eastland Ranger Rising Star



Texas Farm Bureau
Insurance Companies

Eastland Co. Farm Bureau - 629-1704

WHEN
YOU NEED
INSURANCE
SERVICE FOR
YOUR ... HOME
RANCH
FARM
AUTO
CROPS
LIFE

Think of
Low Net Cost
With Service

FOOTBALL

RIISING STAR WILDCATS vs GORMAN THERE 7:30

Photos By Bob West



Jenkins Insurance Agency
Ph. 643-2251

Rising Star Chamber Of Commerce
643-2251

Pioneer Farmers Co-Op
725-6564

Medley Motor Company
643-6211

Rising Star Clinic
643-3141

Wylie Drilling & Well Service
643-1851

Luncelford Truck Stop
643-2241

Star Club
643-6981

Twin Drilling & Well Service
643-7100



Kountry Kitchen
643-6831

Rising Star Oil Field Supply
643-5101

Kizer Insurance Co.
643-4421

Bibby's Creations
643-6691

Rising Star Nursing Center
643-2681

L.T. Owen W.G. REED

Quik Stop
643-1441

The Honey Bee And Honey Bee Melon And Produce
643-1515

Bramlett Implement Co. Inc.
643-4311



Burgess Conoco
643-2461

Quickway Grocery
643-1490

Chambers Grocery
643-5292

Butler Motor Company
643-3261

Rainbow Cafe
643-9911

Palace Drug Store
643-3231

First State Bank
643-2811

Higginbothams
643-2271

J & S Grocery
643-2221