

The Slaton Slatonite

A MEMBER OF MOST FAMILIES IN THE SLATON TRADE AREA
LUBBOCK COUNTY, SLATON, TEXAS

July 6, 1972

No. 40



...at Texas
...Morrison
...Davis
...Kay
...routine
...TTENCE
...Walter
...Walter
...of Dana
...Hand in
...VISTING
...in the
...E. E.
...Mrs. M.
...31st of Aug



HOLIDAY HAPPENINGS -- From the expressions on the faces of the youngsters, it's easy to see that the fireworks display

here Tuesday was a success. In center photo, Mr. and Mrs. John Fondy enjoy hamburgers made by the Knights of Columbus,



and at right, Dubbin Englund is going down repeatedly in the icy water below the dunking board, as young Geron Stricklin set a record of 12 strikes in a row.

Celebration Is Real Cool Deal Here

The weather was more like Christmas than the Fourth of July, but Slaton's annual Independence Day celebration in the county park went on as scheduled and, considering the adverse weather conditions, was a big success.

The kids ran their races, in sacks and with potatoes, and caught eggs. Hamburgers, hot dogs and other food and drinks were sold, a ping pong tournament was held, and there even

was some activity on the dunking board prior to the main event of the day, the fireworks display. Tennis courts were surrounded by what some old-timers described as a "job-lolly" of mud, so the scheduled tennis tournament was postponed.

Wayne Edwards, chairman of the overall festivities, reported that despite the weather with temperatures in the low 60s and wet grounds following more than 2 inches of rain in two nights, enough money was raised "to just about break even" on the expenses of the fireworks. Nearly \$500 worth of fireworks went up in brilliant displays -- and a few dollars worth just fizzled out.

Regene Reigns Supreme

Slaton Lions Club provided another evening of good-humored entertainment Saturday evening as they once again presented the "Miss America" Contest.

Roger (Regene) Evans, owner and operator of Slaton Flying Service, alias Miss Colorado, took first place in the competition after appearing in "hot pants" and then donning regal attire to pantomime "Hello, Dolly". Among other honors, he received a crown, a bouquet of red roses, and a smacking kiss from last year's queen, Glen Akin.

Playing a harmonica solo. Intermission entertainment was provided by a can-can line made up of Bill Adams, Joe Miles, Edwin Knight, Col. C. O. Bowen and Earl Bartley. Ted Gentry was in charge of ticket sales, with Dubbin Englund and Knight in charge of decorations.

It was plenty chilly for the volunteers on the dunking board, but several brave ones got on it to raise funds for the event, including T. J. Wallace, bank president, who mounted the board and was dunked in the cold water after the first three throws with him on the board were auctioned off.

Running a close second, mini-skirted Jimmie Sikes, as Miss Arizona, sang her (his) version of "I've Got a Brand New Pair of Roller Skates". Curtis "Cutie" Christopher took third place with his hot pants, roman sandals and a saxophone solo.

Dee Bowman served as master of ceremonies, and judges for the contest were T. J. Wallace and Mrs. Norma Bowman. J. C. McClesky was named "Miss Congeniality".

Aztec Manufacturing Co. of Fort Worth was awarded a contract for signing on IL7 miles of Loop 289 in Lubbock County. Low bid was \$215,290.47.

Fee Eliminated On Flea Market

Sponsors of the July 14 Sidewalk Sale and Flea Market in Slaton decided this week to eliminate the \$3 per space charge which previously had been set on flea market spaces.

The action was taken in the hope of attracting more participation in the event. While merchants around the square have a sidewalk sale during the day Friday, individuals and organizations are urged to set up booths and spaces to sell items around the city square.

No reservation will be necessary, according to Chamber of Commerce officials.



UGH -- Slaton Lions Club's "Miss America" winner, Roger Evans is kissed by last year's winner, Glen Akin in a stimulating climax to Saturday night's fun-filled contest. (SLATONITE PHOTO)

Wrecks, Vandalism Investigated Here

A couple of wrecks and three vandalism incidents headed the reports on file at Slaton Police Dept. for the past week. On Sunday at 9th and Dayton, a wreck involved a 1970 car driven by Lawrence Edward Stebano of Route 1, Slaton, and a 1967 auto driven by Mary Rodriguez, 910 S. 2nd. Miss Rodriguez later was treated by a physician and released.

room Tuesday. Method of entry by burglars was not determined. On Monday, Godwin's Service Station, 1150 S. 9th, reported cash and merchandise, total value of \$74.57, missing.

Weather		
DATE	H	LOW
July 5	66	60
July 4	69	61
July 3	86	66
July 2	100	70
July 1	92	64
June 30	96	59
June 29	88	70
Total Prec. for Week - 3.00		

Friday night, Southwestern Public Service Co. reported street lights shot out in the area of 1100 S. 14th St., possibly with a shotgun, about 11:30 p.m. John McCray, 1400 E. 7th St., reported Wednesday that someone had slashed a tire on his 1969 car parked at that address. Value of the tire was set at \$60.



SPLASH DAYS -- Common scene on Slaton's streets during the early part of this week is repeated here as a pickup splashes through an intersection after the heavy rains. (SLATONITE PHOTO)

On Monday, Mrs. Olivia Martinez, 155 S. 2nd, said someone had broken a window at the residence by firing a bullet through it. Johnnie Taylor, 1140 S. 4th, Sunday reported a black wallet missing with \$102 inside. And Emory Stokes Jr., 1050 W. Crosby, reported loss of \$48 cash from a table in his bed-

Two Win Bikes In Subscription Campaign Here

The Slatonite subscription campaign to get 400 new subscribers has gotten off to a fast start as 20 young people entered the contest, hoping for a new bicycle. Monday's tabulations brought the total new subscribers to 74 in the first week of the contest.

Contestants must sell 20 new subscriptions to receive the bike, and the contest is open until July 31. Billy Whitehill, 11, son of Mrs. Docia Whitehill of 255 S. 4th, was the first contestant to win his bike. He turned in five new subscriptions Wednesday morning and came to claim his prize.

Contract Awarded For Lubbock County Highways

New subscribers who enabled Billy to win his bike include: Shirley Brooks, E. B. Morgan, Teresa Esquivel, Hubert Gorge, Linda Kahlich, Myrtle Brown, Glen Bell, Tommy Elmore, Gir- da George, Kenneth Patterson, W. C. Elkins, John Ramirez, Charlie Woodfin, Terry Nieme- ler, Frank Moore, S. E. Stef- fens, Claud E. Phipps, Lena Stahl, Tony Hernandez, Jim Newhouse and T. A. Davis. Sherra Basinger, daughter of Mr. and Mrs. Don Basinger of Rt. 1, Slaton, finished her quota Wednesday afternoon, and claimed her bike.

Subscribers buying from Sherra include: Robin White, Dwayne Preston, W. A. Basinger, J. C. Henderson, William Becker, Willie Becker, Selma Kiesel, Robert L. Jones, Car- ton Lee Jones, Ray Robinson, Travis Lancaster, Paul Jones, Earl Bartley, Mike Ward, Ford Rinne, Pat Moses, Ronnie Jones, Patty Melcher, Bill Bas- singer, and Otis Neill.

Manuel Metrano leads the re- maining contestants with ten subscriptions reported last Friday. Others included in the con- test are James Rogers, Mit- chell Bartley, Topsy Alford, Henry Rogers, Craig Denney, Greg Denny, Russell Blevins, Leon and Leo Enloe, Betty Wright, Debbie Weaver, Chris Hernandez, Linda Romero, Terri Wright and Doug Pounds. Up to 20 bikes will be given away if the contestants can reach the 20 subscriber mark.



WINS FIRST BIKE -- Billy Whitehill accepts the congratulations of Bill Cirone, manager of White's Auto Store in Slaton, upon winning the first bicycle to be given away in the Slatonite's circulation campaign. Billy picked up his new bike Wednesday morning after selling his 20th new subscription to the Slatonite. The campaign runs through July. (SLATONITE PHOTO)

...dirty, lazy lout in boots and
...who likes to scare housewives
...roaring down residential
...one who likes to pop wheelies
...such racket he can make so every-
...at him.
...hang that description on me,
...I have a leather jacket.
...
...ALLY, I make a halfhearted effort
...my desk, clean out some of the
...just to throw away extraneous
...has accumulated on top of it.
...I decided to clean out a wire
...has been on the far corner of
...I took it over in January.
...I had put there for possible
...some material left me by my
...Some of the things he left
...puzzles, trying to figure out
...had also their purpose. Among
...those baskets:
...of a biplane flying low over a
...On the back it says "Kitten
...if it weren't for all the people
...around here, I might have a
...about that.
...of a bunch of folks in front of
...says "Welcome to Slaton."
...a man plowing with a team of
...
...reproduction proofs on a "Re-
...ma" series. Pretty good, so
...sometime.
...port on the Texas Water Plan,
...dated from 6 years in the basket.
...the Canyon Lakes project. We'd
...for some background material
...the Daily Mirror, a sensational
...Great Britain, dated May 9, 1972.
...series campaign literature. Who
...the telephone company, a rising
...thing to do when you get an ob-
...hang up imm-diatly.
...Wayne Connally, who also didn't
...
...Pat Moore and Bill Shaver
...and Curtis Ford and Paul
...Watts Jones and Frances Whatser-
...Ralph Yarborough and Dolph
...a big winner!
...ashed throwing away about half
...the basket, it still was too full
...use. So it will just have to set

...ly 4th
...et, Cold

...es of rain during the last
...at on the wettest and coldest
...ly in recent years for Slaton
...rounding area, and it possi-
...coldest ever, depending on
...looks at maximum or mini-
...atures.
...at records appeared to be
...Slaton, but in nearby Lub-
...reported that the maximum
...was the lowest maximum ever
...in the normally sizzling holi-
...er, it was noted that the low
...outside by a low of 60 in 1967
...Slaton listed a low of 61
...and a low of 59 on June
...g to Pioneer Natural Gas Co.

...reached 100 per cent, which
...ard, since that's as wet as
...nial rainfall for the year
...7 inches, boosted by rains of
...Saturday, 1.25 early Mon-
...and another inch early on
...of the Fourth.
...general throughout the area,
...to crops, and put the young
...in good shape, according
...cultural observers.



RECEIVES ADMINISTRATOR'S LICENSE--Mrs. Bobbie Greer, present administrator of Slaton Nursing Home, received her license Saturday after two days of tests in Dallas. Shown with Mrs. Greer is Rev. Vernon Haggar, former Slaton administrator and now preceptor for Challenge Homes.

Bobbie Greer Receives License

Mrs. Bobbie Greer, administrator of Slaton Nursing Home, returned from a week-end trip to Dallas where she underwent intensive tests to receive her degree in nursing home administration. She has completed 200 actual college hours in the applied subject at South Plains College in Levelland.

Mrs. Greer is now serving a one year internship under Rev. Vernon Haggar, representative of Challenge Homes. Rev. Franklin Brown has served as preceptor over Mrs. Greer in the past. The job of preceptor means that he will be at the nursing home one day of every week to guide and study the work of Mrs. Greer and the nursing home as a whole. She will complete her internship Sept. 1, 1972.

THIS WORLD OF OURS

If an appliance breaks down, and for your use is beyond repair, give it to the local Goodwill, Lighthouse, Salvation Army or similar group. By doing this you are helping your environment. The group you give the appliance to will find use for it, thus recycling it and keeping off the junk heaps.

Slaton Students On Dean's List

LUBBOCK, Texas (Spl.) -- A total of 468 students in the College of Home Economics at Texas Tech University qualified for the dean's honor list for the 1972 spring semester, according to the Interim Dean Donald S. Longworth.

To qualify for the honor list, a student must be enrolled in 12 semester hours of courses, excluding pass - fall courses, and have at least a 3.0 grade point average, Texas Tech uses a 4.0 grading system.

The College of Home Economics is one of six colleges and two schools at Texas Tech University, with a total spring enrollment of more than 19,500 students. The others are the colleges of Arts and Sciences, Agricultural Sciences, Business Administration, Education, Engineering and the Graduate School and the School of Law.

Area students recognized for their high academic achievement in the College of Home Economics are:

LORENZO -- Nancy R. Kventon, Route 1.

POST -- Anita M. Blanton, 106 E. 12th.

SLATON -- Jane C. Webb, Box 156; Tyra J. Martin, Route 1; Carol L. Mosser, Route 1.

TAHOKA -- Lexi A. Adams, 2500 North 2nd; Sheila K. Fillingim, Route 4; Elva J. Edwards, Route 1; Mary B. Kiser, Route 4; Donna A. McAllister, Box 1287; Betty K.

Owens, 1908 N. 3rd.

WILSON -- Carolyn R. Schneider, Route 1; Karen Z. Cook, Box 844.

Smith Appointed Area Director

AUSTIN (Spl.)--Steve Smith, franchised Ford dealer in Slaton has been appointed to the key post of Area Director of the Texas Automobile Dealers Association.

Gene N. Foutren, TADA Executive Vice President in Austin, said Smith will report to the TADA Board of Directors on all phases of activity relating to the motor vehicle buying public in the Slaton area.

"Mr. Smith will work closely with legislative and other governmental officials on all matters pertaining to the industry and the auto buying public," commented Foutren.

"The job of Area Director is one of the most important in our giant statewide association," says TADA President John N. Cleveland, San Angelo, "and we are confident Steve Smith will serve with distinction."

The first bale of cotton in the U. S. was ginned June 20 at San Juan in the Rio Grande Valley.

Watkins, Rea Vows Read

Wedding vows were spoken Saturday for Mrs. Nan Rea and Corky Watkins. The double ring ceremony was held in the home of the bride's mother, Mrs. Auden Nowell. The Rev. J. L. Cartrite officiated.

Leisa Rea served her mother as maid of honor. Best man was the bride's uncle, Elton Smith. Mrs. M. G. Davis provided piano selections for the ceremony.

A reception was held immediately following the ceremony. Miss Lavada Watson of Lubbock and Mrs. Elton Smith served the punch and cake. Marsha Dea Davis registered guests.

The family will make their home in Denver, Colo.

Senior Citizens Club Meets

Twenty-eight Senior Citizens met at the Club House Friday for the regular weekly meeting. Rev. Nolan Pierce, pastor of Slaton's First Christian Church, led the devotional period.

Mrs. Fannie Patterson returned home after visiting with her brother, J. T. Lokey who had been ill in Dallas. Lokey passed away early this week.

Mrs. E. M. Lott is a patient in Mercy Hospital.

Nieman Named To Board

O. G. (Speedy) Nieman, publisher of the Hereford Brand, Hereford, and former editor of THE SLATONITE, has been named a member of the Texas Press Association board of directors, according to a news release from Don Coppedge, newly elected president of the powerful newspaper organization.

Perishable Foods Most Important

COLLEGE STATION -- "Foods kept too long or under poor storage conditions are prime victims for spoilage," Miss Sally Springer, Texas Agricultural Extension Service foods and nutrition specialist, reminded.

"Proper temperature and humidity act as barriers to food deterioration."

According to Miss Springer, low temperatures are essential for storing most perishable foods. These temperatures retard loss of quality in the foods by slowing down the action of food enzymes and growth of spoilage organisms present in air, water and soil.

"Not all kinds of spoilage make food harmful to health," the Texas A&M University specialist pointed out. "Rancid odor and flavor of fats, slime on meat and fermentation of fruit juices lower quality and make foods unpalatable. But they aren't dangerous."

However, if off odors or a sour taste in bland foods can be detected, this may indicate dangerous bacterial spoilage.

"Foods vary in degree of temperature and amount of moisture needed to retain quality during storage," she said. "However, most fresh perishable meats plus fruits and vegetables keep longest in the refrigerator. Some apples and root vegetables are exceptions; they keep best when stored in a cool area."

Miss Springer said that green leafy vegetables should be refrigerated in the crisper or in a plastic bag to retain cold, moist air. But for some fruits -- cherries and berries in particular -- this type of storage encourages mold and rot.

"Any refrigerated food that loses quality through drying should be kept covered. Refrigerate loosely - covered fresh meats for no more than one or two days."

The average refrigerator temperature ranges from 38 to 42 degrees F. The specialist said that continued storage at higher temperatures may hasten loss of quality. And frequent opening of the refrigerator door, especially on warm days, raises refrigerator temperatures.

"Only through proper home storage and refrigeration can the quality of fresh, perishable items be maintained for any length of time," Miss Springer concluded.



MRS. GREGORY WILLINGHAM

Mr. Willingham, Mrs. Ehler Wed In Lubbock

Miss Emily Marie "Amy" Ehler and Gregory L. Willingham pledged nuptial vows at 6:30 p.m. Saturday in St. Elizabeth's Catholic Church, Lubbock. Father Tom Irlbeck officiated at the double ring ceremony.

Parents of the couple are Mr. and Mrs. Ervin John Ehler of the Canyon community and Mr. and Mrs. Ray Willingham of Quemado, N.M.

Presented in marriage by her father, the bride wore a formal gown with a lace bodice, petal

Cooper FFA's To Attend State Meet

Ten members of the Cooper Future Farmers of America Chapter will attend the State FFA Convention in Dallas July 12-14.

The three day meeting of representatives of over 800 chapters from throughout the state will include the awarding of Degrees, Scholarships and Awards to outstanding members of the organization.

Tim Burke, National FFA President, New Hampton, Iowa, will address the convention. Jimmy Burkett of the Cooper chapter will receive a \$500 Santa Fe Railway Scholarship during the convention.

Other members of the Cooper chapter attending are Jon Fehleidon, Dale Schaffner, Jim Kahlich, Joel Green, Dennis Pate, Robbie Buskemper, Randy Hagens, Larry Childers and Randy Holloway.

Thought For Food

Gardening calling? Casseroles can come to a busy woman's rescue, if she gives them a chance. Prepared early in the day and refrigerated, they free a cook of concern for meal preparation while she's out or away. It takes little time to brown ground beef to add flavor and food value to made ahead rice, macaroni, spaghetti or noodle casserole combinations that travel with ease from refrigerator to oven to table.

Salads are the hit of the season, and they are so easy to make. You are only limited by your imagination for creating summer salads. There are no rules, so try something creative. Everyone will enjoy "salad" nights if you come up with something different each time.

KENDRICK INSURANCE AGENCY
AUTOMOBILE INSURANCE

The Christian Women's Fellowship wishes to invite All the Ladies of Slaton to a Tea honoring MRS. NOLAN PIERCE Sunday afternoon, July 9, 3:00 p.m. in Fellowship Hall FIRST CHRISTIAN CHURCH



JULY LAYAWAY Blanket SALE

A Small Down Payment Puts Your Blankets In Lay-Away

LAY-AWAY IS THE THRIFTY WAY TO BUY



SPECIAL SALE PRICES ALL OF OUR 4.99 BLANKETS

4.66 2 FOR \$9.

SPECIAL SALE PRICES ALL OF OUR 6.99 BLANKETS

6.33 2 FOR \$12.



CAMEO ROSE—a lovely rose design on a 72" x 99", 100% acrylic blanket with 6" nylon binding. In gold, plum and rose.

DAISY SWIRL—the freshness of daisies and the warmth of a 100% acrylic fiber-woven blanket 72" x 90". In lilac, gold or green.

THERMA-GLO KING — 108" x 90", 100% polyester thermal blanket with 5" nylon binding all around. In gold, avocado, royal, or flame.

ZODIAC—72" x 90" 100% polyester blanket with 5" nylon binding features popular Zodiac design. In blue only.

FLORET—72" x 90" polyester needle-woven blanket with a lovely floreted rose pattern on the 6" binding. In white, lilac, lt. blue and gold.

EMBLEM STORY—for kids and teens! 72" x 90" 100% polyester blanket features a youthful design of happy faces, butterflies and other emblems kids love. In blue or orange.

LUXURY DOUBLE — 80" x 90" 100% acrylic blanket with 6" nylon binding. In gold, lilac, royal, green, tangerine or white.

THERMA-GLO — 2 1/2 pounds of warmth in this 80" x 90" 100% polyester thermal blanket with 6" nylon binding. In gold, avocado, royal blue, lilac and flame.

SALE PRICES ON 5.99 BLANKETS

5.66 2 FOR \$11.

FLOWER SQUARE—A cheerful floral print on a 72" x 90" blanket. With 5" nylon binding. In orange or green.

FROSTY CHECK—For frosty nights! 72" x 90" acrylic polyester blanket with 6" nylon binding in azalea, green, orange or lilac.



ANCO ELECTRIC BLANKETS

Single Control 15.99 Value **14.88**

Dual Control 18.99 Value **17.88**

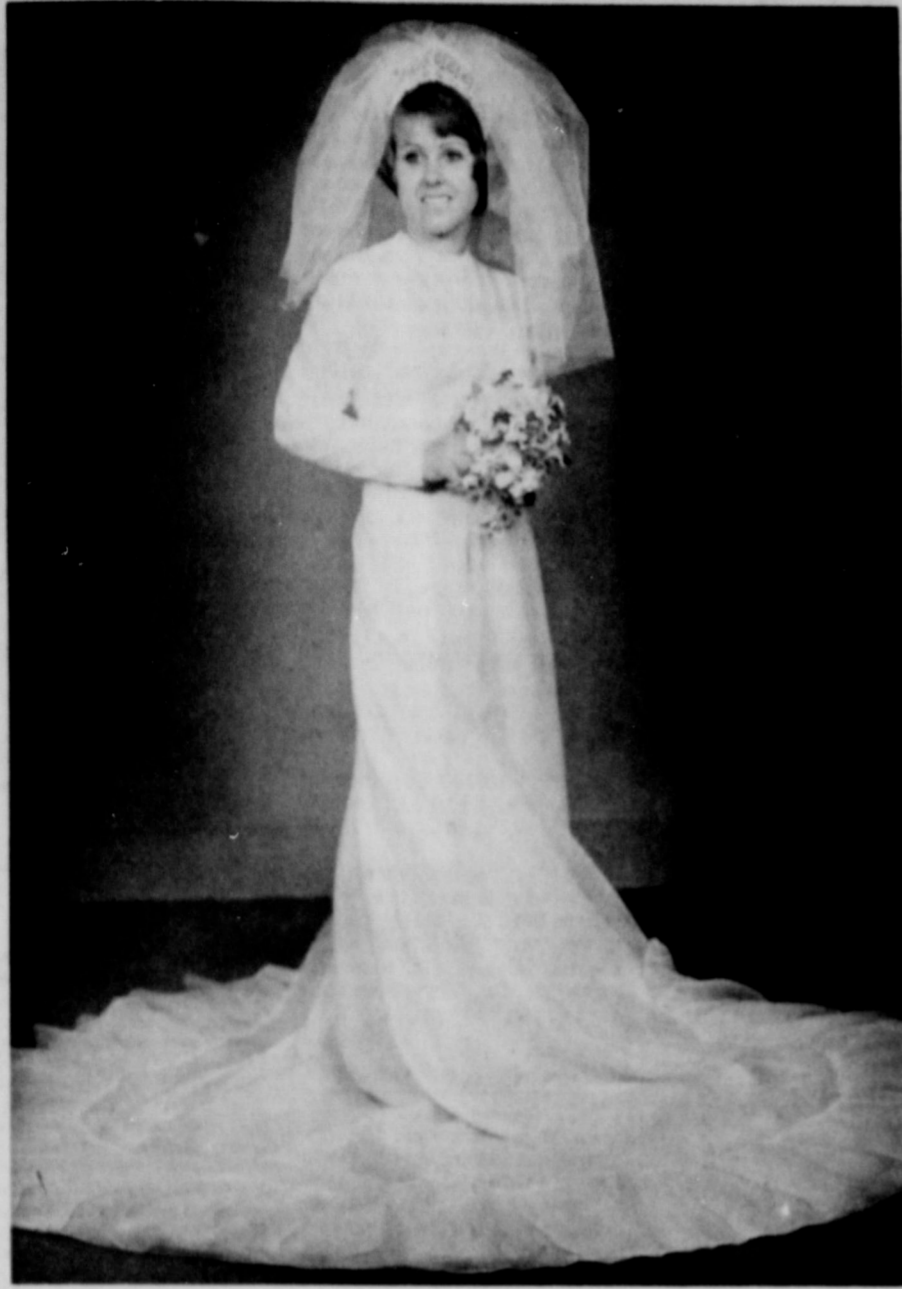
Save now on single or dual control electric blankets. All electric blankets have a two-year over the counter guarantee. In pink, blue, green, gold or lilac.

ki -
Walt
Dan
Frid
Church,
was the
pastor.
the couple
Libri West
and Mr.
Gatzki of I
stage by the
wore a
married bar
anna form
a Victorian
a featured
a f
organza v
them that i
with train.
the front
The l
let cap of
leters of illu
bouquet of
mens and y
the Bible.
person pro
and Mrs.
of the b
Prayer
prayer.
Gregor, sist
atron of be
Mrs. Moara
the gl
ids. They
w volle v
es edged
They feat
length sle
The en
sted with l
ice. Softly
with a deep flo
hell floor le
rimmed
salle with
they carried
yellow feath
Wunsche
pieces of
ever girls.
with gowns of
chiffon cov
back featur
box with
Ehlers, r
Lynn Sta
thers, was
green crepe,
covering the
served his
man, and Ja
ber of the b
Staboo
wing bearer
The Jewels
onal, Inc.
auty & app
diamonds, mo
\$40 per ce
Box 232, Sla
3316.
OUR
WA
AIRM

We S
Service
Insta
Finan
And
Guaran
ELECT
WAT
HEAT
828-62

Wuensche Vows Read Friday

Mrs. Dan Bail-
wedding cere-
m. Friday in
Church, Wil-
was the Rev.
of pastor.
the couple are
Wuensche
and Mr. and
Gatzki of Rt. 2,
age by her fa-
wore a gown
carried stands
forming a
Victorian bod-
featured long
and a flared
organza with
a bon that swept
with train. Tiny
of the front and
The head-
let cap of lace
ers of Illustion.
bouquet of white
ons and yellow
the Bible.
provided
Mrs. Ray
of the bride,
Prayer and
ayer.
eger, sister of
nron of honor,
an Mears and
an of the groom
s. They wore
s vale with
s aged with
They featured
length sleeves
t. The empire
sted with rows
ase. Softly ga-
a deep flounce
ell floor length
ell floor length
with long
carried cir-
yellow feathered



MRS. DAN GATZKI

Gregory Ehlers, nephew of the bride. Guests were seated by Lenro Brieger, Mike Gatzki, and Lawrence Stabeno.

A reception followed. Hostesses were Mmes. Arlis Ehlers, James Wuensche, Jimmy Gickhorn, Howard Mearbe, Ronnie Nolte, Bruce Schaffer, Alvin Kaatz, and Misses Sherry Herzog and Janis Talkmitt.

The bride is a 1971 graduate of Wilson High School and a former employee of Lubbock State School. Gatzki is a 1967 graduate of Wilson High School and attended Beeville Jr. College. He graduated from Draughtons Business College in 1971. He is presently employed at Southwest Wheel Co. in Lubbock.

The couple will reside at Rt. 2, Wilson.

For the honeymoon trip the

bride wore a yellow polyester crepe dress with long lace sleeves and a softly pleated skirt. Along with yellow accessories she wore a corsage of yellow rose buds, taken from her bouquet.

Kern Appointed Local Registrar

Bob Kern, Jr. of Slaton has been appointed registrar for Texas Local Board No. 88, Selective Service System, Lubbock, Texas, according to W. H. Mayes, chairman of the board. Kern will serve as un-compensated personnel in the Selective Service System until his services are terminated.

From Where I Stand

By Merle King



A coke party Friday night was a farewell courtesy for MRS. BILLIE THORP and daughter, Brenda. MRS. VIRGIL SMITH was hostess in her home.

Gifts were presented to the honorees from those attending, including Sally Holmes, Donna Basinger, Paula Jones, Donna Busby, Barbara Aycock, Pauline McCoy, Jeanie Tomlinson, Tincie Fondy, Debbie Oats, Patsy Barker and Merle King.

Shower Honors New Bride

Mrs. Jerry Bournes, the former Miss Marilyn Meeks, was honored with a wedding shower Friday night in the Slaton Club House.

In the receiving line with the honoree were Mrs. Robert Meeks and Mrs. Fern Bournes, mothers of the recently married couple.

Jo Edna Smith registered the guests.

The serving table, covered with white lace over yellow, featured an arrangement of yellow flowers and tapers. Crystal appointments were used. Miss Debra Greenfield served.

Hostesses were Mmes. Elza Smith, Bill Alspaugh, Joe Glass, Floyd Boyd, Bernie Greenfield, James Riney, Gordon Gass, Augusta Brasfield, Robert Drake, Roy Sange, Alex Webb, Robert Breedlove and Merle King.

Hostess' gift was an electric sweeper.

Mr. and Mrs. Reyes Magallanes Celebrate 25th Anniversary

Mr. and Mrs. Reyes Magallanes celebrated their silver wedding anniversary with a renewal of vows ceremony and reception in Primera Iglesia Bautista in Lubbock.

Mrs. Magallanes is the former Lydia Cantu'. The couple was married June 28, 1947 in Del Rio, Texas. They moved to Slaton in 1966. Magallanes is employed by Smith Ford, Inc.

Attendants and hosts were the couple's children, Bertha and Richard Magallanes of the home, and Mrs. George Guevara of Lubbock.

Serving at the reception were Misses Diana Garcia and Irene Hinojosa, nieces of the couple. Miss Diana Sue Cano, another niece, registered guests.

Out of town guests included Mrs. Lorenzo Cantu', mother of Mrs. Magallanes, Mr. and Mrs. Reynaldo Cantu' of Langtry, Mr.

and Mrs. Antonio Cantu' of Del Rio, Mr. and Mrs. Diego Cano of Midland, and Salome Cantu' of Deerfield, Florida. Mr. and Mrs. Raymon Magallanes, Jr. and Mr. and Mrs. Eusevio Guevara of Plainview also attended.

ITEM: Shopping needs of senior citizens are getting more attention as the over-65 group has become the fastest growing segment of this nation's population. High on the list is a need for package sizes smaller than the usual family-sized packages. There are now more than 20 million people over 65 years of age in the United States.

ITEM: How would you like to have livestock and meat prices rolled back to where they were 20 years ago? Sounds good? But what about rolling back income as well? The average breadwinner, while paying some 30 percent less for meat would find that his take home pay had been cut to less than half of what it is today!

Wuensche and
pieces of the
er girls. They
gowns of yellow
lution covering
back featured a
new with long
Ehlers, niece
Lynn Stabeno
sisters, wearing
green crepe, with
covering the bod-
honor
served his bro-
man, and James
of the bride,
Stabeno were
ing bearer was

Wuensche and
pieces of the
er girls. They
gowns of yellow
lution covering
back featured a
new with long

Wuensche and
pieces of the
er girls. They
gowns of yellow
lution covering
back featured a
new with long

Wuensche and
pieces of the
er girls. They
gowns of yellow
lution covering
back featured a
new with long

Wuensche and
pieces of the
er girls. They
gowns of yellow
lution covering
back featured a
new with long

Wuensche and
pieces of the
er girls. They
gowns of yellow
lution covering
back featured a
new with long

Wuensche and
pieces of the
er girls. They
gowns of yellow
lution covering
back featured a
new with long

Wuensche and
pieces of the
er girls. They
gowns of yellow
lution covering
back featured a
new with long

Wuensche and
pieces of the
er girls. They
gowns of yellow
lution covering
back featured a
new with long

Wuensche and
pieces of the
er girls. They
gowns of yellow
lution covering
back featured a
new with long

Wuensche and
pieces of the
er girls. They
gowns of yellow
lution covering
back featured a
new with long

Wuensche and
pieces of the
er girls. They
gowns of yellow
lution covering
back featured a
new with long

Wuensche and
pieces of the
er girls. They
gowns of yellow
lution covering
back featured a
new with long

Wuensche and
pieces of the
er girls. They
gowns of yellow
lution covering
back featured a
new with long



MRS. PHILLIP RAY NOBLE

Phillip Noble, Cathy Long Wed In Slaton Ceremony

Miss Cathy Jo Long became the bride of Phillip Ray Noble in a double ring ceremony Sunday in the Slaton Church of Christ.

Parents of the couple are Mr. and Mrs. Robert Long of Southland, and Mrs. Alene Noble of Post.

Given in marriage by her brother, Larry, the bride wore a formal length gown of organza over bridal taffeta. The dress featured an empire waist with lace bodice and wide lace cuffs on long full sleeves. She carried a bouquet of white carnations with a detachable corsage.

Donald Sikes and Micky Miles sang for the occasion.

Maid of Honor was Laura Bevers, and bridesmaid was Connie Abshire, both of Route 2, Post. They wore formal dresses of white lace bonded on purple, with purple velvet belts on an empire waist.

Gary Ray of Post served as best man. Groomsman was Joe Bevers, also of Post.

Allen Dale Noble, brother of the groom, and Stanley Abshire were ushers.

The bride is a 1972 graduate of Southland High School. Noble is a 1970 graduate of Post High School and is employed at Piggly Wiggly in Post.

After the ceremony, a reception was held in the fellowship hall of the church.

The couple will make their home at 206 West 14th Street in Post.

TX-69 Tops Club

The TX-69 Tops Club met in regular session with leader, Donita Johnston presiding.

Eighteen members weighed in with thirteen losing or maintaining their weight. Two new members were present, Margaret Bartley and Joan Burns. Donita Johnston, Ruby Patterson and Lola Montgomery all tied for the grab bag prize for losing the most weight for the past week.

Toni Cardenas was crowned Tops Queen and Lucille McMeeken was crowned Tops Queen for the month of June. Donita won the pig contest and Toni was runner up. This contest was for losing the most weight for a period of three months.

Mickey Jones, Margie Green, Helen Meeks, Mary Wilson and Billie West were awarded scrap books for attending 20 meetings in a row.

The Tops pin for attending 8 meetings in a row went to Thelma Smith.

Secret pals were revealed and the group drew again for phone pals.

Mary Wilson read the devotional "I'm Glad I Touched Shoulders With You."

Auction prizes were passed out and auction was held again. Marie Ander was a visitor.

The club welcomes visitors every Thursday night at 7:00 in the Mercy Hospital dining room or call 6706 for more information.

Family SHOPPING BAG

ITEM: Today's consumer borrows six times as much money as he did only 20 years ago. In 1950 the total amount of consumer credit was \$20 billion, whereas at the end of last year there was \$124 billion borrowed.

ITEM: The average food consumption per person has increased every year since 1965.

ITEM: Before they began shopping for carpet, 60 percent of all potential buyers already have a definite color preference and a fiber preference. Almost 50 percent also have a texture preference. Nine out of ten consumers actually buy what they decided upon beforehand.

ITEM: Between 1957-59 and August 1971, the price of food purchased for use at home was up 33 percent. The average income per person, for the same period, rose 82 percent.

ITEM: To speed up check-out time, as well as to cut man power costs, supermarkets, in increasing numbers, will adopt automated systems, say food marketing experts. The products will be coded and passed under a scanner to be automatically totaled. The technology is currently available and several chains are experimenting with this concept already.

SPECIALIZING IN "PERMA-ALLURE" EYELASHES also Candle Cutting Cinderella Beauty Salon & Merle Norman Cosmetic Studio 215 S. 4 -- 828-3516

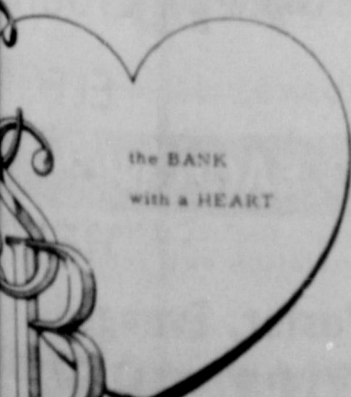
OUR CONGRATULATIONS TO

WAYNE EDWARDS

CHAIRMAN OF THE JULY 4 ACTIVITIES



CONGRATULATIONS, TOO, TO ALL THE ORGANIZATIONS INDIVIDUALS WHO WORKED ON THE COMMUNITY-CELEBRATION OF JULY 4.



At Citizen's we try to explode the theory that bankers are cold-hearted. We like everybody. (Well, nearly everybody)



we never sleep

Minute by minute, day and night year in -- year out, the power lines of the South Plains Electric Cooperative, Inc. pulsate with a wide-awake, dependable supply of clean, low-cost electricity that rural people depend on. We never sleep, so our member-owners can sleep more soundly, confident of an ever ready source of reliable power that is Helping Texas Grow.

South Plains Electric Cooperative, Inc.

- Hawaiian Ham Salad
 - 2 cups cubed cooked smoked ham
 - 1 cup drained pineapple chunks
 - 1 cup sliced celery
 - 1/2 cup pitted ripe olives, halved
 - 1/2 cup mayonnaise
 - 1 tablespoon lemon juice
 - 1/2 cup peanuts
 - Lettuce cups
- Combine ham, pineapple, celery and ripe olives. Mix mayonnaise and lemon juice and lightly stir into ham mixture. Chill in refrigerator 1 hour or more. Stir in peanuts and serve in lettuce cups. 6 servings.

LEVIS In Blue Denim and Sta-Pressed Jeans McWilliams Dry Goods north side square 130 W. Garza -- 828-3907

Pen-Jel's Mr. Pen-Jel-y makes jelly jell and jam set. So you can make perfect jams and jellies with half the work and cost! There's a folder with 33 no-fail recipes inside every box of Pen-Jel. Including Pen-Jel's famous "Cook-No-More" recipe for berry jam.

THE PEN-JEL CORPORATION 2400 Nicholson Ave. Kansas City, Mo. 64120



THAT'S MY KIND --- Mrs. Susie Bradshaw, resident of Slaton Nursing Home, tries out an antique sewing machine that was recently donated to the home in memory of the late C. L. Bassinger.

Nursing Home News

by Bobbie Hogue

It has been a good week here at the Nursing Home. Several out of town visitors were reported. Residents remaining in the hospital include Ira Crooks, Ollie Vermillion, Daisy O'Conner, Bertha Watson and Clarence Johnson. They are all reported to be improving.

Mrs. Bobbie Greer passed her administrators test this week. Congratulations, Bobbie. She is certainly doing a wonderful job here at the home.

Our crafts are coming along good. We hope to have more items for sale soon. Some of our craft helpers are in the hospital, and this has put us behind.

It is good to have Sandra Warren (nurses aid) back working with us after a leave of absence.

We had lots of fun figuring out how to sew on a Minnesota (1900 model) sewing machine. The antique machine was donated to the home in memory of C. L. Bassinger, who was a resident of the home before his death.

Susie Bradshaw was the first lady to try it out. She had a dress she had cut out over a year ago. As she sat down to sew, she remarked, "How Beautiful! It makes me feel at home sure enough."

Would you believe, there is a

Allen Howard

Army Private First Class Allen D. Howard, 19, son of Mr. and Mrs. Alfred D. Howard, of Slaton, recently was assigned to the 26th Signal Battalion in Germany.

Pfc. Howard, a radio relay and carrier attendant with Company C of the Battalion near Heilbronn, entered the Army in October, 1971, completed basic training at Ft. Polk, La., and was last stationed at Ft. Gordon, Ga.

He is a 1971 graduate of Slaton High School.

ITEM: Although bacon can keep under refrigeration for a longer period, for top quality it should be used within a week.

waiting list of ladies waiting their turn to sew? The only problem so far is, forgetting to peddle.

I close with this thought, "The way to great Faith is through great Trials".

DEATHS

Mrs. Gene Moore

Mrs. Gene (Bobbie Ann) Moore, 43, of Post, died Wednesday at 6:30 p.m. in the Garza Memorial Hospital following a lengthy illness.

Services were held in the First Baptist Church at Post Friday at 10 a.m. with the Rev. Robert Griffin, pastor, officiating, assisted by Rev. J. L. Cartrite of Slaton.

Interment followed in Englewood Cemetery, Slaton, under direction of Mason Funeral Home, Post, and Englund's of Slaton.

Mrs. Moore was born Dec. 13, 1931, in Soper, Okla. to Mr. and Mrs. Frank B. DeMent. The family moved to Slaton in 1935. Mrs. Moore attended Slaton schools, graduating from Slaton High School in 1950. She was married to Gene Moore, October 28, 1950. She was a Baptist.

Survivors include her husband, Gene; a daughter, Jacquelyn Ann and a son, Clay Gene, of the home; her mother, Mrs. Frank B. DeMent, of Amarillo; two brothers, Clinton Bullard of Amarillo and Neil DeMent of Lubbock; and three sisters, Eva Lovell and Alpha Carroll, both of Lubbock; and Dean Gaffney of South Gate, Calif.

Pallbearers were Pete Williams and Coy Biggs of Slaton; Cliff Clark of Tahoka; Dee Hodges, Lester Josey and Jimmie Redman, all of Post.

Bert McDonald

Services for Bert McDonald, 68, a retired Santa Fe Railway conductor who died Sunday in a Temple hospital, were at 10 a.m. Tuesday in Grace Lutheran Church.

Rev. Delmas Luedke, pastor, officiated. Burial was in Englewood Cemetery under direction of Englund's.

He had lived in Slaton from 1926 until his retirement.

Survivors include his son, Welker of Slaton; two sisters, Mrs. C. L. Tanner of Slaton and Miss Mikey McDonald of



MRS. GENE MOORE

John T. Lokey

Services for John T. Lokey, 79, a former Slaton resident who died Sunday morning in a Dallas hospital, were held Tuesday in the First Baptist Church.

Rev. John Cartrite, pastor, officiated. He was assisted by the Rev. W. S. Ferguson of Lubbock. Burial was in Englewood Cemetery under direction of Englund's.

Lokey lived in Slaton from 1916 until he moved to Lubbock in 1934. He moved to Dallas in 1942. He was a cotton merchant in Lubbock and Dallas.

Survivors include his wife; a daughter Mrs. Therna Cox of Marlin; five sisters, Mrs. C. R. Cato of Amarillo, Mrs. J. A. Elliott and Mrs. Fanny Patterson, both of Slaton, Miss Pauline Lokey of Tulsa, Okla., and Mrs. Myrtle Adair of Hampton, Va.; a brother, C. T. Lokey of Olton; a grandchild and a great-grandchild.

Tulsa, Okla., a brother, Ed McDonald of Bryan; and one grandchild.

Revival Planned At Bible Baptist

An eight-day revival is planned at Bible Baptist Church, 505 W. Panhandle, with the pastor, Rev. H. E. Summar, preaching each night at 7:30, except for Sunday services which will be at 11 a.m. and 6:30 p.m.

Special music is planned each night, Rev. Summar said. He also noted that anyone desiring transportation to the revival may call 828-6200 for this free service.

Card of Thanks

Our sorrow is eased to bear with the help of our friends. We want you to know how much we appreciate all that was done for us in our recent bereavement.

The Family of
Traley A. Bownt

I would like to express my thanks and appreciation to all my friends for their cards, flowers and visits during my hospital stay. And a special thanks to Dr. Jaynes and the staff at Mercy Hospital.

Don Bourn

Plans to establish 154 new manufacturing plants in Texas and to expand 115 others were reported during the first six months of 1972, according to the University of Texas Bureau of Business Research.

Your help in the time of our need was a great comfort to us. Thank you for your unfailing sympathy and kind assistance.

Gene Moore, Jackie and Clay
Mrs. Frank DeMent



FIRST DOLLAR -- Mrs. Donald G. Brown, member of Commerce "First Dollar" award for Slaton on South Ninth Street from Ansil O'Neal, Chamberlaine. This business has been in operation for many years.



The "recycling way" is gathering momentum in the United States through active individuals. Today, recycled materials represent a minute portion of what is available if we wish to view our discarded goods as raw materials. The "recycling way" has a difficult road ahead before it becomes a way of life. You, however, can think recycling at home and work. Try to think of secondary uses for bottles, cans and paper. When you purchase goods, think of their durability and recyclability.

We must be thank and justice if we are to be useful? It isn't difficult to pray to God for help. The Lord's help will keep these high have made America today -- one great God.

Gene Moore, Jackie and Clay
Mrs. Frank DeMent

Attend The Church of Your Choice Sunday

- SLATON SAVINGS & LOAN ASS'N**
"We Pay You To Save!"
- SLATON CO-OP GINS**
"Owned and Operated By Farmers"
- JAMES-PRENTICE INC.**
SAND & GRAVEL
For the Construction Industry
- ACUFF FRIENDS**
ACUFF CO-OP GINS
"It's Your Association"
- WILSON STATE BANK**
- BECKER BROS.**
MOBIL SERV. STA.
405 So. 9th 828-7127



a weekly message relating the world of today to the lessons of Faith and Church . . .



If the blind lead the blind, both shall fall into the ditch. —Matthew XV, 27

Sight is a most valued possession. Those who are unable to see the rock, the fence, the ditch need guidance, else they will stumble and fall. Even though the child may see, he does not recognize nor consider the dangers of life — unless he has been taught, unless he has the benefit of guidance. There is only the joy of climbing a tree, racing across the street, running and jumping with the joy of youth. Take a child by the hand and lead him with wisdom and love, until his feet are strong and his eyes alert to the pitfalls of life.

- UNION COMPRESS AND WAREHOUSE COMPANY**
- O.D. KENNEY AUTO PARTS**
"Your Automotive Parts Distributor"
- The Slatonite**
"A member of most families in the Slaton Trade Area"
- BOWNS BODY SHOP**
100 S. 9th 828-6647
- CITIZENS STATE BANK**
The Bank With A Heart
- WHITE'S**
The Home of Greater Values



WILSON NEWS

Brenda & Sue Crowson

4-H NEWS
Tuesday, June 27, 4-H members from Wilson attended a record-book meeting to study records and plan the Lynn County Dress Review. The Jr. Leaders from Wilson there were Terie Steen, Carla Wilke, Jan Wilke, Terry Mears, Twilla Talkmitt and Rosario Ortiz.

YOUTH GROUP
Youth group from the First Baptist Church are going to the Youth Encounter Crusade at Fair Park Coliseum in Lubbock on Thursday at 7 p.m. and on Friday morning at 9:15 and afternoon at 1:45 p.m.

The Youth Group went to see "What's up Doc?" last Thursday night.

NEW RESIDENTS
Mr. and Mrs. Gary Gardener and son, moved to Wilson from Colorado City Saturday. He is the new Superintendent of Schools here.

Herman Brown was released from St. Mary's of the Plains Hospital last Tuesday after undergoing an operation.

Mr. and Mrs. Phillip Noble of Post spent Sunday afternoon with Mrs. Clara Phillips.

Mr. and Mrs. Paul Henderson and daughters of Houston spent the weekend with Mr. and Mrs. Virgil Henderson.

Guests of the Sam Crowsons this past week were: Mr. and Mrs. Edward Stone of Mesquite and Dicky Thomas and Phillip of Morgan City, La.

Mrs. R. A. Kahlich's guests over the weekend were Mr. and Mrs. Ralph Kahlich of Irving, Maj. and Mrs. Jack Gray, Jenifer and Brian of Alabama are visiting with Mr. and Mrs. Sam Gatzki and Jan. They were on their way to Las Vegas where he will be stationed.

Also on Sunday night in the Sam Gatzki home there was a family reunion. Attending were Mr. and Mrs. Raymond Gatzki, Mark and David, Mr. and Mrs. Dan Gatzki, Mr. and Mrs. Gus Gatzki, Mr. and Mrs. Mike Gatzki, Michael and Scott, Mr. and Mrs. Danny Redman, Raylenn and Stewart, of Lubbock, and Mrs. Ruby Stewart, also of Lubbock.

Mrs. Kay Berry and Tanya of Odessa are staying with Mr. and Mrs. Jim Coleman and family.

Guests of Mr. and Mrs. Ed Crowder this past week were

Wayne Raymond of Mr. and Mrs. C. and family, of Lubbock, Mrs. Danny Wilke, and Mr. and Mrs. of Lubbock.

Visiting Mr. and Mrs. Crowson, Wade and Jackie Lloyd of Wams Underwood.

Mrs. Urna Brewer of Slaton visited on Tuesday afternoon with Mr. B. Gum, and Mrs. Mr. and Mrs. Jack Schaefer and Vance of Slaton two weeks on the way to Youngstown with Kios' next sightseeing in Buffalo, N. Y., and Canada. They book Sunday afternoon.

IF YOU WANT TO CARPET CALL 828-6200 SLATON

These Church Listings Presented as a Public Service By the Above Firms

Slaton Churches		
FIRST ASSEMBLY OF GOD 14th and Jean Rev. Henry Russell	TRUMP BAPTIST East Geneva Rev. M. A. Brown	CHURCH OF CHRIST 11th and Division Kenneth Burnett
BIBLE BAPTIST 525 West Panhandle Rev. H. E. Summar	21st ST. BAPTIST 1010 South 21st Rev. Jack Bell	IVORY ST. CHURCH OF CHRIST 896 Ivory St. Lester Means
FIRST BAPTIST 255 South 9th Rev. J. L. Cartrite	WESTVIEW BAPTIST 830 South 15th Rev. Clinton Eastman	CHURCH OF GOD 206 Texas Ave. Rev. Raymond A. Tomlin
FREEWILL MISSIONARY BAPTIST Rev. E. Canady	OUR LADY OF GUADALUPE 710 South 4th Rev. Emilio E. Abeyta	CHURCH OF GOD IN CHRIST #2 7th & Jean Sts. Joe Willie Butler
MT. OLIVE BAPTIST Corner of Jean & Geneva Rev. Clifton Peoples	ST. JOSEPH'S CATHOLIC CHURCH 19th & Lubbock Msgr. Peter Morsch	CHURCH OF THE NAZARENE 635 W. Scurry Rev. Jerry Rose
TEMPLO BAUTISTA (Latin Baptist Mission) East Panhandle Rev. Glenn Smith	GRACE LUTHERAN 840 W. Jean Rev. Delmas L. Luedke	FIRST METHODIST 305 West Lubbock Rev. Merriel Abbott
WILSON BAPTIST Rev. Darold Baldwin	WILSON METHODIST	TRINITY EVANGELICAL METHODIST 700 So. 19th Rev. Linam Prentice
ST. JOHN LUTHERAN Louis Balderach	WOODROW COOPER FIRST METHODIST	PENTECOSTAL HOLINESS 105 W. Knox Rev. Darryl Manning
ST. PAUL LUTHERAN Rev. George Ascher	COOPER FIRST BAPTIST	FIRST PRESBYTERIAN 425 W. Lubbock Rev. Don Coleman
ASOCIACION BAUTISTA EMANUEL	SOUTHLAND BAPTIST Rev. C. T. Jordan	CANYON UNITED CHURCH BAPTIST 1st & 3rd Sunday Rev. Curtis Jackson
	SOUTHLAND METHODIST Rev. Charles Hastings	METHODIST 2nd & 4th Sunday Rev. Grady Adcock
	GORDON CHURCH OF CHRIST Jim Beyer	POSEY IMMANUEL LUTHERAN Rev. Richard Owens
		ACUFF CHURCH OF CHRIST Lawrence Ward ROOSEVELT BAPTIST Rev. Oscar Newell
		PLEASANT VALLEY BAPTIST CHURCH Rt. 1, Post Rev. Sherman H. Ervin

REVIVAL

JULY 9-16

SERVICES 7:30 P.M. WEEKDAYS, 11 and 6:30 SUNDAY

SPECIAL MUSIC EACH NIGHT

Those who need transportation call 828-6200

H.E. Summar, Pastor, Evangelist

BIBLE BAPTIST CHURCH

505 W. Panhandle

TEAGUE DRUG WINS CHAMPIONSHIP

Little League All-Stars Chosen; Slaton To Host Area Tournament

Teague Drug wound up the Little League regular season with a 21-4 win over Slaton Co-Op last Thursday to nail down first place with a 14-1 record. Appropriately, the championship team had four players named to the all-star team, as did the second place Trainmen.

Fourteen players were selected on the all-star team for Slaton, which will be host to the Area Little League Tournament July 18-20. Slaton will play Wolfthorpe in the opening game of the tournament at 5:30 p.m. July 18.

All-stars selected areas follows: VFW--Lonnie Ardrey and Jerome Whaley; Lions Club--Tim Bourn and Steve Wood;

Teague's --Phil Bruedigam, George Biers, Barry Copeland and Roddy Smith; Trainmen--Ricky Burton, Bob Melton, Stan White and Steve White; Hackberry Co-Op--Brad Clark; Slaton Co-Op--Geron Stricklin.

The Slaton-Wolfthorpe game winner will play Shallowater at 5:30 p.m. Wednesday July 19, and the loser will play a consolation game at 5:30 p.m. Thursday, July 20, against the loser between Crosbyton and North Lynn all-stars, who will meet at 7:30 p.m. on the 18th. The winner of that game will play Falls at 7:30 p.m. Wednesday.

The championship game which will determine the area

winner that will go on the regional playoffs will be at 7:30 p.m. Thursday, July 20.

Tournament director will be Wayne Moses. Slaton's all-stars will play a practice game here at 8 p.m. Friday against Post all-stars.

Phil Bruedigam led the league in several batting categories. He had 25 hits to 23 for Roddy Smith. Bruedigam hit nine home runs, had 38 runs batted in, and an average of .543, all tops in the league. Lonnie Ardrey had the fewest strikeouts, only two, and George Biers had the most walks, 17.

Closing out the season last week, Lions Club beat Slaton

Co-Op 10-7 with a big five-run fourth inning, in which the Lions had only two hits, but drew five bases on balls and one batter hit by a pitched ball. Mayberry, Bourn and Taylor each had hits for the winning club, but James Maxwell of Slaton Co-Op rapped a double and two singles.

On Wednesday the VFW blanked the second place Train-

men 3-0, although each team had four singles in the game. VFW pitcher Ardrey also led his team at the plate with two singles to go with his shutout, which was aided by several good plays from the VFW infielders.

Teague's 21-4 win over Slaton Co-Op Thursday was only a five inning game, with the

Druggists tallying their 21 runs in four frames. Bruedigam had a single, double and two home runs, with seven RBI's. Mark Heinrich, only 10, pitched the entire game for Teague's.

The season's finale between Lions Club and Hackberry Co-Op was a real thriller, with Hackberry barely winning it 9-8. Hackberry scored six runs in the first inning to make it shape up as a runaway, but the Lions went ahead 6-7 in the top of the sixth inning after a controversial play.

However, in the last of the sixth, with one away and runners on second and third, Don Taylor drove a base hit to

right center to bring in both runs for Hackberry's win. David Baker had two singles for Lions Club.

A makeup game between Lions Club and Hackberry Co-Op will be played at 7:30 p.m. Friday at Wolfthorpe. A makeup game between Lions Club and Hackberry Co-Op will be played at 7:30 p.m. Friday at Wolfthorpe.

FINAL STANDING IN SLATON LITTLE LEAGUE

TEAM	WON	LOST
Teague Drug	14	1
Trainmen	11	3
Hackberry Co-op	6	9
VFW	6	9
Lions Club	4	10
Slaton Co-op	2	13



TRAINMEN --- Wallace White, back and Edsel Speer have coached the Trainmen this year. Team members include: (BACK ROW) Steve White, Ricky Barton, Stan White, Chris Mosser, Billy Jack Haire, Gerald Moore (FRONT) Tory Taylor, Leon Enloe, Eddie Speer, Todd Taylor, and Bob Melton. Not pictured is Irving Washington.

Three From Area Qualify For Meet

LUBBOCK -- Three youngsters, including one from Slaton, who participated in the South Plains Special Olympics at Texas Tech University April

22 have advanced to the nationals to be held in Los Angeles Aug. 13-18, according to an announcement by the Texas Association for Retarded Children, Inc., (TARCS).

Courts All Wet; New Try Planned

The Fourth of July Tennis Tournament planned by Slaton Rotary Club was washed out as heavy rains Sunday night and Monday night left the courts under water. Tournament director Dalton Wood said it would be rescheduled to begin at 6 p.m. Friday if the courts were dry enough by that time.

First round matches will be played at that time, and play will resume at 9 a.m. Saturday and wind up that day, he said. These plans also are contingent on the weather and if it still is too wet, the tournament will be canceled.

Three boys age 14 were signed up for singles and eight men had signed for singles in that division, with four doubles teams listed. Also four sophomore girls had entered girls-women's singles. Wood said more entries would be accepted in any of the divisions, at \$1.50 per entry (\$3 for doubles teams). Anyone in Slaton, Wilson, Roosevelt, Cooper or Southland school districts is eligible to enter.

"We'd like to have women's doubles and mixed doubles," he said.

Three From Area Qualify For Meet

Dr. A. E. (Gene) Coleman, professor of physical education at Texas Tech who was director of the South Plains Special Olympics, said the cost includes a round-trip air fare, ground transportation in California, a "Texas Team" uniform, insurance, and room and board at the meet.

The Tahoka Lions Club is sponsor of the two winners from that community, and Slaton High School is the sponsor for Washington.

At the state meet in San Antonio in May, Berta Thompson qualified for the standing long jump national competition and Katy Martin and Washington qualified to compete in the 300-yard-run.

Contributions for the competitors' expenses may be sent to the Texas Association for Retarded Children, Inc., 833 Houston, Austin, Tex. 78756.

Local sponsors may be reached through Jackie Burkhalter, Tahoka Lions Club, and Duane Mitchell, Slaton High School.



TENNIS SCHOLARSHIP--Terry Wood, 18, a May graduate of Slaton High School, this week signed a letter of intent with Howard County Junior College, Big Spring. Tennis Coach William C. Roan is at right and Wood's parents, Mr. and Mrs. Dalton Wood, look on.

SHS Grad Signs Letter With HCJC

Slaton High graduate Terry Wood, 18, who won District 4-AA singles this year, has signed a letter of intent to attend Howard County Junior College, Big Spring, on a tennis scholarship.

HCJC Tennis Coach William C. Roan told Wood he would be one of four freshmen signed for the coming year. Others signed include players from El Paso, Big Spring and Jay Box of Crane.

Wood, a left-hander, was runner-up in tournaments at Brownfield and Idalou and won first at Denver City in school tournaments last season. He won the district title and one match in regional at Odessa before losing in the semifinals.

Slaton High School's tennis team, coached by Kenneth Housden, won the district championship trophy for the first time in history this past season.

SLATON CO-OP

PLAYER	AB	R	H	2B	3B	HR	BB	SO
Geron Stricklin	32	9	15	4	1	0	11	3
James Maxwell	45	14	14	2	0	0	2	8
Billy Daniels	42	13	9	5	0	0	7	14
Milton Smith	15	3	3	0	0	0	3	1
Jimmy Ramirez	7	0	1	1	0	0	0	2
Joe Mercer	22	3	2	0	0	0	11	15
David Davis	20	2	1	0	0	0	3	10
Chad Sikes	24	5	1	0	0	0	13	11
Johnny McCormick	31	0	1	0	0	0	6	13
Greg Johnson	21	3	0	0	0	0	9	13
Lee Tomlinson	22	5	0	0	0	0	10	4

VFW

PLAYER	AB	R	H	2B	3B	HR	BB	SO
Jerome Whaley	40	14	21	2	3	0	3	3
Lonnie Ardrey	43	16	17	4	2	1	6	2
Louis Chew	19	4	5	0	0	0	2	7
Tom Gaydos	45	11	9	0	0	0	8	8
Mike Jones	41	9	8	1	0	0	8	5
Don Patterson	37	5	7	0	0	0	9	12
Chris Wimmer	38	9	5	0	0	0	8	13
Ronnie Tinker	30	5	3	1	0	0	7	8
Dennis Bednarz	27	2	2	0	0	0	13	13
Danny Ardrey	24	1	1	0	0	0	6	17

TRAINMEN

PLAYER	AB	R	H	2B	3B	HR	BB	SO
Steve White	36	16	13	1	0	0	11	7
Ricky Burton	41	15	14	3	0	0	8	6
Bob Melton	41	20	13	1	1	0	10	9
Todd Taylor	32	12	10	1	0	0	12	10
Leon Enloe	29	12	8	2	0	0	9	7
Eddie Speer	15	4	4	0	0	0	3	3
Stan White	40	17	10	1	1	0	6	5
Irvin Washington	25	6	6	0	2	0	2	6
Billy Haire	45	8	8	1	0	0	0	12
Chris Mosser	32	8	5	0	0	0	5	8
Tory Taylor	2	1	0	0	0	0	7	1

HACKBERRY CO-OP

PLAYER	AB	R	H	2B	3B	HR	BB	SO
Ed Kitten	38	15	10	1	0	0	10	16
Brad Clark	40	15	10	1	0	1	15	4
Kevin Kern	38	9	9	1	0	0	12	17
Wayne Heinrich	30	8	7	2	1	0	11	8
Randy Cisneros	41	13	8	1	0	0	9	11
Don Taylor	29	7	5	2	1	0	6	6
Steve Evans	12	2	2	0	0	0	6	8
Phillip Maxwell	41	9	5	1	0	0	5	18
Darrell Heinrich	10	3	1	0	0	0	8	3
Robbie Johnson	16	4	1	0	0	0	8	10
Joe Holland	23	10	1	1	0	0	19	18
Carl Maxwell	5	2	0	0	0	0	5	4

LIONS CLUB

PLAYER	AB	R	H	2B	3B	HR	BB	SO
Tim Bourn	31	14	12	1	3	1	14	8
Gary Taylor	35	5	12	2	0	0	3	3
Ronnie Rackler	42	14	8	1	0	0	3	4
Ricky Davis	35	8	5	2	0	0	8	15
Kenny Taylor	28	6	4	0	0	0	3	6
David Baker	21	7	3	0	0	0	7	5
Timothy Beck	16	0	2	1	0	0	1	11
Henry Gonzales	8	2	1	0	0	0	13	6
Steve Wood	41	14	4	2	0	0	7	8
Craig Mayberry	31	5	3	2	0	0	10	18
James Sadler	23	2	0	0	0	0	11	18
Kenneth Mask	10	3	0	0	0	0	7	8

TEAGUE DRUG

PLAYER	AB	R	H	2B	3B	HR	BB	SO
Phil Bruedigam	46	31	25	6	3	9	11	6
Roddy Smith	52	17	23	3	2	0	4	4
John Johnson	12	0	5	0	0	0	0	5
Barry Copeland	46	22	14	0	0	1	10	5
George Biers	43	25	12	4	2	0	17	8
Kevin Meeks	38	13	9	0	0	0	10	5
Rudy Ramirez	48	8	11	0	0	0	6	9
Cary Jones	31	11	5	0	0	0	13	9
Jay Callaway	35	12	5	1	0	0	15	14
Jeff Busby	14	4	2	0	0	0	2	6
Jeff McClanahan	8	1	1	0	0	0	3	6
Mark Heinrich	31	15	1	0	0	0	10	13

ONE WAY YOUTH CRUSADE

Lubbock Fair Park Coliseum
July 6-7

July 7-8-9
8 P.M.

AT FIRST BAPTIST CHURCH
Slaton

YOUTH - ADULTS - ALL WELCOME !

JIM STANDRIDGE
EVANGELIST

ALVIN WALKER
SINGER

Family SHOPPING BAG

ITEM: Total meat production in the United States during 1971 was a record 37.8 billion pounds, an increase of 1.6 billion pounds over 1970. Beef topped the various categories with 22 billion pounds, up nearly 316 million pounds. Pork production was 14.7 billion pounds, up 1.3 million; veal, 520 million pounds, down 68 million; lamb and mutton, 560 million pounds, up slightly.

KENDRICK INSURANCE AGENCY

HOSPITALIZATION INSURANCE

828-5443

A PHONE NUMBER TO REMEMBER

(The Dairy Queen Is Coming !)

IF YOU NEED A
PAINTER

CALL 828-6255
SLATON LUMBER CO.

**SALUTE
to
Wilson's Little
League Players,
Sponsors and
all those who
contributed
to a successful
1972 season !**



CARDINALS -- (FRONT) Lucio Trevino, Jay Ross, Joel Clary, Robert Roys, Kevin Clasky, (BACK) Troy Mitts, Junior Vaca, Donnie Clary, Lewis Pena, Billy Todd, Greg Costillo, COACHES David Wied and Alfred Clary.



ORIOLES -- (FRONT) Les Howell, Fabian Ortega, Bobby Garcia, Robert Ortiz, David Weaver, (BACK) Ricky Raindi, Billy Nava, Quinton Talkmitt, Kurk Burkett, Carlton Henderson, COACHES, Darrow Talkmitt and C. W. Stone.

Contributors

- Slaton Savings & Loan
- Texas Grocery, Wilson
- The Slatonite
- Frank Greathouse, Lynn
- County Commissioner
- Texas Inc. Tahoka
- Smith Ford Inc.
- Huffaker & Green
- Biggs & Son
- White Funeral Home
- Bray Chevrolet
- O. D. Kenney Auto Parts
- J. W. Morton & Son
- Wilson Lumber & Supply
- Maeker Seed & Supply
- Campbell Grain
- Wilson State Bank
- Wilson Insurance Agency
- Southwestern Public Service

- Tahoka Auto Supply
- Lynn County News
- First National Bank, Tahoka
- Bryant Farm Supply
- Lyntegar Electric Co-Op
- Wharton Motor Co.
- Slaton Lumber Co.
- Englunds
- Taylor Tractor & Equipment
- Hackberry Co-Op
- Bryant Seed & Delinting
- Wendel T. V. & Appliance
- Eblen Pharmacy
- KCAS Radio
- Bownds Body Shop
- Supreme Feed Mills, Inc.
- O. Z. Ball & Co.

- Wilson Oil Co.
- Wilson Co-Op Gin
- Gatzki Gin
- Lynn County Farm Bureau
- Parker Pharmacy
- E. L. Short, State Representative
- New Lynn Gin
- Union Compress & Warehouse, Slaton
- Pioneer Natural Gas Co.
- Clubb Grain Co.
- Pat Campbell Cotton Co.
- American Legion, Post 438
- Wilson Garage
- Tucker Butane
- Cinderella Shoppe
- Bain Auto Store
- Slaton Implement

CARDINALS
Wilson State Bank

ORIOLES
Clubb Grain
Wilson Oil Co.

Texas Grocery

Weather Doctors

INDIANS

WEATHER DOCTORS



INDIANS -- (FRONT) Ricky Stone, Mark Wuensche, Ricky Hall, Randy Hall, (BACK) Daniel Thomas, Robert Nolte, Billy Bishop, Andy Maeker, Coach Dean Daniels.



WEATHER DOCTORS -- (FRONT) Ronnie Clary, Kent McClesky, Tony Rios, Ronald Jones; (BACK ROW) Ricky Jones, Ken Wilke, Phillip Munoz, David Cook, Ricky Kahlich, Scott Beck (COACHES) Mr. Beck, Dan Cook.

★★★★★ Fourth of July Celebration ★★★★★



EYES LIGHT UP AND MOUTHS FLY OPEN at the sight of the gigantic fireworks display July 4 in Slaton's park. (SLATONITE PHOTO)



OOOOOOOOOO, THAT'S COLD -- So says Wayne Edwards as he takes a turn on the dunking board. Edwards was in charge of the Fourth of July festivities for the Chamber of Commerce-sponsored project. Quite a large crowd gathered in the late afternoon despite the damp weather. (SLATONITE PHOTO)



MANNING THE AID STATION -- Candy Strippers Mary Martin and Cheryl Emert aid Mrs. Buxemper in manning the first aid station Tuesday at the July 4 celebration. Their services were not called upon however. (SLATONITE PHOTO)



GOING UNDER -- Dubbin Englund dons scuba gear after Gerron Stricklin dunked him twelve times in a row at the July 4 festivities. (SLATONITE PHOTO)



PING PONG WINNERS -- Scott and Larry Beard won first place in the 14 and under ping pong doubles Tuesday against Kevin Meeks and Danny Evans.

YOUR LIBRARY CARD
Passport To The World's Knowledge

There have been 241 children register for the summer reading club, since it began June 1, at the Slaton Branch Library, with 59 gaining the honor roll, by reading 20 or more books. After the children read three books, they receive their Charlie Brown poster, and receive a book sticker for every book read thereafter. Last summer there were 176 children completing twenty books or more, gaining the honor roll. Volunteer helpers during the summer program, at the Slaton Branch have been Rhonda Hoffman and Nora Torres. Mrs. Ted Melugin, librarian reports a great increase in the circulation with 4,693 books circulated during the month of June. This is the highest number of books recorded for a months circulation, at the Slaton Branch Lib-

rary, according to... increase, is the... compared to... limit, to children...

Storytime hour... urday morning... Branch Library... hours of 10-11... R. C. Hall Jr.,... program of... stories, Mrs. T... Mrs. Melugin... ies. Storytime... each first sat... th, and is spon... Friends Club...

The Slaton Branch closed Tuesday, holiday. Library 11:30 - 6 p.m., 9 a.m. - 4:30 p.m.



HAMBURGERS AWAY -- The Knights of Columbus barbecue hamburger stand during the holiday celebration reported selling more than 600 hamburgers. (SLATONITE PHOTO)

Trap Crops Can Corner Boll Weevil

Cotton "trap crops" spotted with a boll weevil sex attractant and treated with a systemic insecticide can lure the destructive pest away from regular crops and kill it in large numbers.

The new technique for combating the nation's costliest agricultural pest came to light in the pilot boll weevil eradication experiment, now nearing the end of its first year in parts of Mississippi, Alabama and Louisiana.

Researchers see it as a potentially effective method of reducing cotton crop losses to the boll weevil and of lowering the costs of controlling the pest. "It is very exciting news, especially in that it comes fast on the heels of the recent ban imposed by the Environmental Protection Agency on DDT," said Dr. George A. Slater, manager of entomology research at the Cotton Incorporated Research and Technical Services Center in Raleigh, N.C.

Cotton Incorporated, the research, sales and marketing company sponsored by America's cotton growers through their dollar-per-bale program, is participating with USDA, the State of Mississippi, and others in the pilot boll weevil eradication experiment.

Slater said the new development occurred in southern Mississippi, where samplings showed that experimental plantings of trap crops treated with Grandure and Temik attracted and killed hundreds of weevils emerging from hibernation, while some samplings of regular cotton in adjacent rows yielded weevil counts of near zero.

A trap crop is a tiny fraction of the grower's total cotton acreage. A few trap-crop rows of an earlier-fruiting variety are planted adjacent to the regular crop, thus offering more succulent fare to the weevils than the immature regular crop next door.

Grandure is a chemical duplication of the boll weevil pheromone--the naturally occurring sex attractant given off by male weevils.

Temik is a systemic insecticide developed commercially as an outgrowth of earlier Cotton Incorporated research. It is placed in the ground, absorbed by the cotton plant, and transmitted in lethal doses to the boll weevil as it feeds upon the plant.

Although preliminary samplings yielded weevil counts of zero in grower cotton bordering the trap crops, Slater said later samplings revealed the presence of minimal numbers of weevils.

He also pointed out that samplings so far have been taken while weevils are still emerging from their overwintering state of hibernation.

"Even so, these experiments tell us that a combination of Grandure and Temik makes a powerful weapon for killing boll weevils," he said.

"From an environmental standpoint alone, the possibilities suggested by the experiment are enormous," he said. "If the use of trap crops using Grandure and Temik prove out, it could significantly lower the total chemical load placed in the environment by growers seeking to control the boll weevil."

Slater explained that because Temik is a systemic insecticide, it poses practically no threat to the environment, even though it is highly toxic. "This method of boll weevil control could replace other less desirable control measures now being used by growers," he said.

Slater said the experimental trap crops in Mississippi were deliberately planted along the

NIH THE SEARCH FOR HEALTH
A REPORT FROM THE NATIONAL INSTITUTES OF HEALTH
BETHESDA, MARYLAND

Chronic Leukemia

First in a series of four articles dealing with cancer research.

Leukemia is usually thought to be a disease of childhood but at least half of all cases occur in adults. Each year in the United States, leukemia develops in about 19,000 persons and takes the lives of approximately 15,000.

Leukemia is a cancer of the blood-forming tissues characterized primarily by uncontrolled multiplication and accumulation of abnormal white blood cells. Leukemia may be either chronic (less swift, running a more prolonged course) or acute (rapidly progressing if untreated).

Whether chronic or acute, leukemia is also classified by the type of white blood cell that predominates. Thus, a diagnosis specifying lymphocytic leukemia indicates excessive numbers of lymphocytes, the white blood cells formed in the lymph nodes. In granulocytic leukemia (also known as myelocytic or myelogenous leukemia), there are abnormal quantities of granulocytes, the white cells produced in the bone marrow.

Chronic leukemias, both lymphocytic and granulocytic, occur most often among those aged 30 to 60. (Acute lymphocytic



BLUE TEAM --- Coaches Mrs. Harley Martin and Mrs. Johnny Romero flank their team made up of: (STANDING) Susie Keck, Lynn Webb, Sylvia Romero, Margie Gonzales, Jamie Forrester; (KNEELING) Kandice Martin, Cindy Gonzales, Donna Parrish, Linda Romero, Loy Sadler, and Sheronda Koonz. NOT PICTURED, Cynthia Robinson, Delma Peguino, Carolyn Devroe, Pam and Charlotte Castle. (SLATONITE PHOTO)



RED TEAM, GIRLS' SOFTBALL --- Featured on the "Red" team this year were Kathy Thornberry, Debbie Heinrich, Rheda Mossley, Karla Kitten, (coach) Debbie Bednarz, Peggie Alspaugh; BOTTOM ROW, Linda Morse, Estilva Whaley, Connie McCormick, Brenda Gary and Terri Wright. NOT PICTURED ARE Chris Kennedy, Janee Jensen, Chele Hughes, Barbie Pettigrew and Leisa Ray. (SLATONITE PHOTO)

outer edges of regular plantings, in rows next to wooded areas known to be ideal overwintering quarters for boll weevils.

"We wanted to make realistic test of the technique," he said. "So far the results have exceeded expectations." He said test samplings also show indications of problems with bollworms and budworms that are usually associated with control measures applied to the boll weevil. But he said special implications suggest that the traditional problems might be converted to an advantage for growers by proper use of the trap crop technique.

In New York City, J. Duques Wooters Jr., president and chief executive officer of Cotton Incorporated, said the new development is the latest in a series of spin-off benefits from the boll weevil eradication experiment that "fully justifies the million-dollar investment of America's cotton growers as a major participant in the experiment."

He pointed out that the eradication experiment takes the largest single expenditure of producers' dollar-per-bale funds devoted to agricultural research.

"Cotton Incorporated is now making an all-out effort to translate these experimental results into practical techniques that growers can put to immediate use," he said.

Business and Professional Directory

SLATON IMPLEMENT CO.
SALES & SERVICE
Harvester
Jimmy Applewhite, Manager
Slaton

TG & Y
The Family in Slaton

G. D. KENNEY AUTO PARTS
Your Automotive Parts Distributor
828-6147

Art
Your Art Supply
Slaton

RCA Wendel TV
Quality Products
Service you can trust.

SOUTHWEST BARBER SHOP
Roffler SculpturKut
Refrigerated Air
125 N. 9th Slaton

FONDY
Western Leather
Slaton

BAIN AUTO
We Service Whirlpool
PHILCO ADMIRAL What We Sell

TYPERS
Sales - Rentals
THE SLATONITE
828-4500

BOURN CYCLE
Bicycles-Lawn Mowers-Small Engines
Sales & Service
640 S. 9th

Anthony's
"Thank You" Cards
Our Specialty for Brides
The Slatonite

Next Week: Cancer of the Skin
SHOP SLATON
KENDRICK INSURANCE AGENCY
PAY BY THE MONTH

House Passes Bill Including Water Import Study Funds

The House of Representatives in Washington last week approved the big annual Public Works Appropriation bill which includes funds to complete the West Texas - Eastern New Mexico Water Import Study. House action was based upon the recommendations of the Appropriations Committee, headed by George Mahon.

The \$691,000 appropriated this year will bring the amount spent on the seven-year study to a total of \$6.1 million.

The bill also includes \$481,000 to complete the three-year comprehensive water resource study of the Lower Mississippi Valley, which is closely associated with the Import Study. This \$2.4 million water resource study is essential to supplement the information being developed as part of the import study concerning the nature and extent of the availability of surplus water for export from the Lower Mississippi region.

The next step to be taken will be largely dependent on the findings of the present reconnaissance study, scheduled for completion by June 30, 1973. Authorization must then be obtained to proceed with the follow-on feasibility study.

Mahon said, "We do not know what the recommendations will be, but we are, of course, hoping for the best because our needs are very great and time is running out."

Water, Inc., officials were pleased by the report from Washington. The recommended appropriations to the Bureau of Reclamation, Corps of Engineers and the Mississippi River Commission wind up the seven year undertaking, and findings released by the agencies by next June will testify to their activities.

The Mississippi group is making a determination of surplus water in that river, and the Corps and Bureau have been investigating possible canal routes and distribution systems for the West Texas-New Mexico area.

The big question, and key to the future of the proposed project is "Is there indeed any surplus water in the Mississippi?" That question will not be completely answered until next June. Meanwhile, Water, Inc., officials point out that preliminary reports conclude that water will be available from the Mississippi. In a paper delivered at the Ninth Annual West Texas Water Conference in Lubbock last year Fred H. Bailey II, the assistant chief, Planning Division, Mississippi River Commission said "Some preliminary figures have been developed which indicated that a surplus above the 50-year demands (of all interests in the Lower Mississippi Basin) will

OSHA Rules Stir New Complaints

Increasing complaints about the unreasonable burdens being imposed by the Occupational Safety and Health Act have resulted in the House Small Business Subcommittee scheduling hearings and the introduction of several bills to amend OSHA. U. S. Rep. George Mahon sponsored a bill which passed the House and which would exempt from the regulations any non-manufacturing business, or any business having 25 or fewer employees. Sen. John Tower of Texas and Sen. Curtis of Ne-

braska also offered a bill (S 3262) to exempt those with 25 or fewer workers. Anyone who has complaints he would like to put before the House subcommittee may write Rep. William Hungate, House Office Building, Washington, D.C. 20515.

NEW NAME FOR MUSEUM LUBBOCK -- What has come to be known on the Texas Tech University campus as the "old Museum" will ceremoniously have its name changed July 9 to Holden Hall, honoring History Prof. Emeritus William Curry Holden.



BIG HAZARD ... Golfing in Bermuda is an experience - gently rolling terrain, deceptive water hazards (arms of the ocean, in most cases) and beautifully flowering "roughs." Courses range from a 6,000 yard championship course to a 9-hole, par three layout.

BUMP STICK
BURIED TREASURES REARRANGED IN FIRST PLACE
Choice Building FOR SALE SEE SLATON

This week's JACKPOT \$100 Get your Jackpot card punched today

PIGGLY WIGGLY

Save 20¢

Cheer Detergent

49 Ounce Box **69¢**

With this coupon & purchase of one Cheer Detergent 49 Oz. Box Limit one coupon per family Good at Piggly Wiggly through July 9, 1972

Assorted Flavors

Farmer Jones Mellorine

1/2 Gallon Carton **29¢**

Piggly Wiggly or Rite Good

Canned Pop

All Flavors, 12 Oz. Cans **6¢**

On First 12 Cans With Purchase of \$7.50 or More Excluding Cigarettes Price Thereafter 6 For 66¢

Country Manor

Boneless Canned Ham

3 Lb. Can **\$2.99**

Seedless Grapes

California Thompson's Lb. **49¢**

Lettuce

Large, Crisp Heads Each **18¢**

Fresh, Milk Filled Ears Corn on the Cob

Each **6 For 49¢**

Hershey's Topping Chocolate Syrup

16 Ounce Can **29¢**

Mixed Vegetables

Cut Corn, Broccoli, Green Peas, Mixed Vegetables 10 Ounce Packages **4 \$1**

French Fries

2 Lb. Bags **3 \$1**

Pork & Beans

15 1/2 Ounce Cans **7**

Tomato Sauce

8 Oz. Cans **3 2**

Bath Tissue

2 Roll Pkg **4**

Flour

5 Lb. Bag **3**

Bayer Aspirin

100 Ct. Bottle **69¢**

Style Hair Spray

13 Oz. Can **49¢**

Style Creme Rinse

Lemon 16 Oz. Bottle **49¢**

Aluminum Foil

Standard 25 Foot Roll **19¢**

Dog Food

Twin Pet 15 1/2 Ounce Can **6¢**

Pear Halves

16 Ounce Cans **4 \$1**

Cake Mix

18 1/2 Ounce Packages **35**

USDA Choice Beef Arm Cut

Swiss Steak

Lb. **98¢**

USDA Inspected

Whole Fryers

Lb. **29¢**

Mixed Family Pack Combination of Loin Chops & Rib-end Chops

Pork Chops

Lb. **78¢**

Decker's Quality 6 to 8 Lb. Avg.

Smoked Picnics

Lb. **47**

50 EXTRA

With This Coupon And Purchase of One 5 Oz. Tube

McLEAN'S DENTAL CREAM

Good at Piggly Wiggly Through July 9, 1972

SAVE 15¢

At Piggly Wiggly When You Buy One 16 Oz. Jar of

BORDEN'S CREMORA COFFEE LIGHTENER

Price With This Coupon 66¢ Offer Expires July 9, 1972

SAVE 12¢

At Piggly Wiggly When You Buy One 10 Lb. Bag

GOLD MEDAL FLOUR

Price With This Coupon 1.15 Offer Expires July 9, 1972

SAVE 30¢

At Piggly Wiggly When You Buy One 4 Oz. Jar

LIPTON'S TEA

Deal No. TJL-083 Price With This Coupon \$1.45 Offer Expires July 9, 1972

50 EXTRA

With This Coupon And Purchase of One 40 Count Box Regular or Super

KOTAM'S TAMPONS

Good at Piggly Wiggly Through July 9, 1972

50 EXTRA

With This Coupon And Purchase of One 2 Pound Bag

SIMPLIOT HASH BROWN POTATOES

Good at Piggly Wiggly Through July 9, 1972

50 EXTRA

With This Coupon And Purchase of One Lb. Package

OSCAR MAYER All Beef or All Meat WEINERS

Good Only at Piggly Wiggly Through July 9, 1972

100 EXTRA

With This Coupon And Purchase of One

SWIFT BUTTERBALL TURKEY

Good Only at Piggly Wiggly Through July 9, 1972

Welcome Subscribers

This week, The Slatonite would like to welcome the following new subscribers, and thank them for helping the youngsters in the contest:

Joe Guerra, Howard Chapple, Mrs. Wayne Edwards, Mrs. J. F. Richey, Luther L. Jones, Mae Cleckler, Linda Abbott, Wayne Odom, Hugh Alexander, James H. Perry, Charles Rudd, Mrs. Raymond Sanchez, Robin White, Mrs. Dwayne Preston, Mrs. W. A. Basinger, J. C. Henderson, Mrs. William Becker, Jr., Willie Becker, Selma Klesal, Robert L. Jones, and William T. Scott.

Also Mr. and Mrs. Floyd Fisher, Mr. and Mrs. Frank BENSON, Mrs. Mike King, J. T. Kindrick, John Ramirez, Jack Ham, Charlie Woodfin, Mrs. R. L. Moore, Southland Hardware, Jo E. Basinger, Rita Garcia, Alice Hernandez, Irene Quintero, Clyde McAllister, Melvin Norwood, Mrs. Larry D. Ilford, Jim Newhouse, Claud E. Phipps, Tony Hernandez, Lena Stahl, S. E. Steffens, Terry Niemeler, Frank Moore, Carlton Lee Jones, Roy Robinson, Travis Lancaster, Paul Johnson, Earl Bartley, Mike Ward, Ford Rinne, Pat Moses, Ronnie Jones, Mrs. Myrtle Bratcher, Mrs. L. D. Roberts, Sarah Bone, Arland Harris, Mr. and Mrs. James Wright, Mrs. L. J. Brown, Evelyn Vaughan, Bill Basinger, Otis Neil and Patty Melcher.

TURN ON'S

HOW CAN I EVER REARLY HAVE KINDNESS TO ME P
BY CASH CHECK OR MONEY ORDER

PIGGLY WIGGLY

WIN

THIS WEEK'S POT

NOTHING TO BUY

\$

1000

FREE CASH!



You do not have to be present to win



Get your card punched today!

JACKPOT Day



Register just once...you're in the pot every week!

Register just once, get your Jackpot Card punched each week and you will be eligible to win free cash dollars.

Register at the following Piggly Wiggly Store only...

**Slaton
Texas**

**PIGGLY
WIGGLY**

RULES;

Q—How do I participate?

A—Fill in and deposit Registration Card and then sign and punch your Jackpot Day Card for first award of \$100.00.

Q—How do I continue to participate?

A—Punch your Jackpot Card at our store each week thereafter for each new award.

Q—How big is each award?

A—Never below \$100.00. Award increases \$50.00 each week if not claimed, then begins again at \$100.00

Q—Do I have to buy anything to punch my Jackpot Card?

A—No. There is no charge or obligation of any kind.

Q—Do I have to be present to win?

A—No. Winner will be notified or name posted in our window.

Q—How many times can I register?

A—One time. Your registration Card remains in our Jackpot Day container.

Q—Who is qualified to register and obtain a Jackpot Card?

A—Any adult person.

Q—When and where will the drawings be held?

A—At our store each Friday at 6:00.

Q—If my name is drawn and my card is punched for week before but not for week of drawing, can I win?

A—No. Your CARD MUST BE PUNCHED FOR WEEK YOUR NAME IS DRAWN.

Q—Can card be punched in advanced or ahead of time?

A—No. Cards punched in advance are VOID.

Q—Can one person punch Jackpot Day Card for another person?

A—No. Each person MUST punch his own card.

Q—Who does the drawing?

A—Some disinterested party not connected with the store.

Q—If I lose my Card, or if it gets ruined, can I get another one?

A—Yes, but it is not necessary to register again. We do not pay on card that has been punched ahead or name erased.

Q—Is this program secret?

A—No, please tell everyone.

Q—How long do I have to claim award?

A—Until Tuesday at closing.

Southland News

BY TOMMIE WILKE



Greetings from the Southland Community. We had a real good rain early Monday morning. Up until that time, the rains had missed us, but now things are looking up. Some of the farmers around the Pleasant Valley Community got halled out last week.

L. B. Pounders of Houston has been here visiting his uncle and family, Mr. and Mrs. D. D. Pennell. Thursday night they went to Plainview for a cookout with Mr. and Mrs. Harvey Louis.

TO GERMANY
Sterling Curry from Germany has been in Post visiting with his folks and in Southland with his aunt and family, Mr. and Mrs. D. D. Pennell. He is returning to Germany today.

Mr. and Mrs. D. D. Pennell, Mrs. Karen Gale Callaway and Mr. and Mrs. Carl Cederholm spent July 4 with Mr. and Mrs. Arvil Ferguson in Post for a cook-out.

Mr. and Mrs. Sam Ellis have had one of their grandsons visiting them for the past week. He is the son of Mr. and Mrs. Sammy Ellis.

Mrs. Danny Kennedy's parents and grandmother from Oklahoma have been here visiting with them.

Mrs. Bill Bevers and baby has been here visiting with Mr. and Mrs. Spence Bevers and with her parents in Post.

Bobby Rankon, his mother and sister were in Southland Sunday driving around to see if they could find any familiar landmarks. They are former residents of Southland.

COUPLE WEDS

Congratulations to Mr. and Mrs. Phillip Noble on their marriage Friday. Mrs. Noble is the former Cathy Long. They are making their home in Post.

WELCOME PARTY

A "Welcome to Our Community" party was given Thursday night in the School Cafeteria for Mr. and Mrs. Ray Simmons, new Superintendent; Mr. and Mrs. Danny Kennedy, new Coach; and Mr. and Mrs. Gene Beck, new Hackberry Gin Manager. A large crowd was present and homemade ice cream and cake were served.

SCHOOL WORK DONE

When the school children and teachers return to school this fall, they are really going to find some nice changes have

been made. All the rooms, in fact, the whole school is being painted this summer and some new furniture is being bought. The Southland Trustees met Thursday night last week and Monday this week.

I hope all of you had a safe and happy fourth of July.



CALENDAR

JULY 6

Cliff Heinrich
Eddie Bilderback
John McCrummen
Mrs. Claude E. Porter

JULY 7

Mrs. Lee Limmer
Jerry Lee Brown
Marvin Biffle
Mrs. L.C. Odum
Mrs. M.G. Davis
Mrs. Willie Burleson

JULY 8

Steve Sinclair
Ray Farley

JULY 9

Mrs. John Berkley
W.A. Wilke
Mrs. Magnus Klattenhoff
Jerry Tefertiller
Robert Eugene Calaway
G.C. Davis, Jr.
J. C. Gentry

JULY 10

Clark Self, Jr.
Mrs. J.E. Rucker
Doris Schwertner

JULY 11

Mrs. Marlee Holloman
Luther Roberts
Mrs. Ray Cook
Susan Hendrix

JULY 12

Randall Lindsey
Mrs. Bob Norris

250 Students Enter Tutoring Program

A summer tutoring and free lunch program began June 19 at Stephen F. Austin School with an enrollment of 160 that climbed to 250 by the end of the first two weeks. The program will continue through Aug. 11.

Any school student, as well as pre-schoolers, may take advantage of the program designed to help students with studies that may be troubling them, as well as to give self-confidence to participate in classroom discussions. The records on the progress of the children leaves little doubt as to the benefits of the project.

Supervisors of the school are Mrs. Eloisa Gonzales and Mrs. Eula Mae Clemmons. The funds for tutors salary come through the Community Action Agency, while the free lunch program is provided by the U. S. Department of Agriculture. Classes are held each morning from 10 a.m. to noon.

It was started as a free lunch program when officials decided they could do more by adding the tutoring program. Father Emilio Aboyta launched the drive to get such a program for Slaton.

Ten teachers are aided by high school and college age students, as many as 18 per day, on a rotating system. Some parents also participate in the aid work.

Mrs. Clemmons stressed that there are no requirements for attending the sessions, only a desire to get help in school studies. Students of all races and ages, and children from the special education classes are included in the schooling. She said, "If a child needs help, we will try to help them, even if it is just a little." Help is provided in the subject that the student needs help with.

Mrs. Gonzales expresses the appreciation for the use of Stephen F. Austin School. The facilities were made available for the first time this year, and she said that the program was going very smoothly. Classes were held last year in Guadalupe Hall and Evans Multi-Service Center. Mrs. Gonzales was in charge of the Guadalupe classes and Mrs. Clemmons the Evans classes.

The paid teachers for the two-hour per day school include Patricia Clemmons, Myrtle Smith, Ernestine Perez, Georgia Wallace, Gloria Perez, Nancy Hernandez, Yolanda Zapata, So-



TEACHER MARILYN SMITH works with her first grade students in the Summer Tutoring Program at Stephen F. Austin School. (SLATONITE PHOTO)



YOLANDA ZAPATA and fifth grade students work on special problems during sessions of the Summer Tutoring Program. (SLATONITE PHOTO)

nora Gipson and Rosemary Gonzales.
Chess sets often commemorate battles. After Waterloo, many were made depicting Wellington leading English soldiers against Napoleon and the French. A set made after the battle of Saratoga had George Washington with Liberty as his queen, flanked by Generals Gates and Morgan. Rank opposite them were George III and Britannia, with Generals Howe and Burgoyne.

History in Chess!
A ton of recycled paper represents 17 trees left growing in our forests.

IF YOU NEED A PAINTER
CALL 828-6255
SLATON LUMBER CO.

KENDRICK INSURANCE AGENCY
PAY BY THE MONTH

The Jaycees need YOU
and vice versa!
Join the Slaton Jaycees.
call Bobby Brake, 828-6850

Photography
Janis Forehand
Photographer
Specializing in Wedding Photography
Phone 828-3898
320 W. Edwards Slaton

GET INTO THE SWING OF THINGS
By opening a Savings Account at Slaton Savings and Loan Assn.

CURRENTLY PAYING THE HIGHEST MAXIMUM RATES PERMITTED

passbook accounts :
5 1/4 % \$1,000 minimum held 6 months to 1 year
5 3/4 % \$1,000 minimum held 1 to 2 years (90-day penalty clause if cancelled before maturity)
6 % \$5,000 minimum held 2 to 5 years (90-day penalty clause if cancelled before maturity)

5% No minimum balance per annum, compounded quarterly

SAVINGS AND LOAN ASSOCIATION
SLATON SAVINGS and Loan Association
100 W. GARZA SLATON, TEXAS 79364

FEDERAL SAVINGS AND LOAN INSURANCE CORPORATION
SAFETY OF YOUR SAVINGS UP TO \$100,000

Floydada Open Tennis Tourney Set July 13-15

The first Floydada Open Tennis Tournament is scheduled for July 13, 14 and 15. Entry deadline is July 11, and all entries must be received on or before that date.

Entry fees must accompany all entries, and none will be accepted unless fees are enclosed. Mail entries and make all checks payable to the tournament director, Miles Davis, 308 South Tree Street, Floydada, Texas 79235.

There will be divisions for junior high and high school boys and girls and adult men and women. Trophies will be awarded to the winners in all divisions, and plaques will be awarded to the runners-up. The nine-point tie break will be used if a set reaches 6-6. Junior-high and high-school singles matches will start at 8:30 a.m. on the first day of the tournament. Men's and women's singles will start at noon the first day. All doubles matches start at 8:30 on the second day.

All players should report to the Floydada Junior High courts at the time designated. The draw will be posted there. Junior high and high school division players needing to stay overnight may stay in homes which will be provided by families in Floydada. Adults must make their own arrangements. Players may enter a maximum of three events. Those entering doubles may have until noon on the first day of the tournament to select a partner, but all fees for doubles must be enclosed with the entry. No refunds will be made after the deadline.

Underground Water
Lakes, rivers, and reservoirs cover less than 1 percent of Nebraska's 77,227 square miles. But Nebraska has a bigger underground water supply than any other state in the nation.

...light up for summer living

WITH AN ELEGANT READY-LITE
A READY-LITE KNOWS DAY FROM NIGHT. AUTOMATICALLY



TRADITIONAL
Black or White
\$59.50
PLUS TAX



LAWN-GLO
Black or White
\$69.50
PLUS TAX



SENTINEL
Antique Gold
Swedish Iron
\$79.50
PLUS TAX

NOW you have seven choices of attractive finishes ... in three different price ranges. Prices include photo electric cell, weatherproof outlet and installation. Ready-lites are versatile—change bulbs to color for holiday display ... plug in electric yard tools, barbecuers or Christmas decorations.

Modern ELECTRIC Lighting
100% SO MANY PEOPLE

Trees Can Boost Interest

STATION--Citrus Texas homeowners and attractive their landscapes. Their plants have been planted as specifically as specimens, mass plantings, container plants, large areas of Texas and the exciting commercial citrus trees using citrus trees can be very beautiful. Dr. Will Welch, Texas Agricultural Extension Service, says that citrus trees are well liked in the large areas of South Texas and are fairly dependent on a relatively small number of fruit. Some fruits for making pre-mixtures.

Area Men In Service

Rodney Mears
Eddie Hutchison

Sp/4 Rodney Mears, son of Mr. and Mrs. Lloyd Mears and Sp/4 Eddie Hutchison, son of Mrs. D.J. Hutchison of Wilson, are stationed at Ft. Carson, Colo., and are presently at Ft. Irwin, Calif. for six weeks to participate in the training of the National Guard of California and Arizona. The training and testing will be to determine the capabilities of the National Guard for future combat call. While in California, Eddie and Rodney toured Los Angeles, Disneyland, Long Beach, and Marineland. They will tour Las Vegas, Nev. July 1 and 2. They return to Ft. Carson July 20 to perform the same tests there.



Tommy Dyer

GREAT LAKES, ILL. (FHTNC) June 20--Navy Seaman Recruit Tommy R. Dyer, nephew of Mrs. Magnolia Roseman of Cooper recently graduated from recruit training at the Naval Training Center in Great Lakes.

ITEM: Advances in agricultural science - including such ecology-related practices as soil conservation, erosion control and wildlife preservation - have boosted production. Food for 50 million more people is now being provided, using no more land than was required 35 years ago.



FFA CONFERENCE -- Joel Green, left, of Cooper, is greeted in Washington, D.C., by Phil Johnson, right, of Mead, Neb., National Vice President from the Central Region of the Future Farmers of America. Green is attending the week-long National FFA Washington Conference program.

Rural Housing Eligibility Expanded

Many additional families in Texas are now eligible for rural housing loans from the Farmers Home Administration, FHA State Director J. Lynn Futch announced this week. "In families where both husband and wife are employed," Futch explained, "the new policy permits half of the wife's gross income to be excluded in determining whether the total family income is within the maximum limit for loan eligibility."

For example, the husband is the principal source of income with \$6,000. His wife earns \$4,000. His entire income, plus half of his wife's, or \$2,000, total \$8,000. This is within Texas' moderate income level of \$8,000 so the family may be eligible for a Farmers Home Administration loan.

James V. Smith, National Administrator of Farmers Home Administration emphasized that newly-eligible families must

demonstrate that they otherwise merit FHA financing, and that credit is not available from regular commercial sources.

"The new policy will assist families in which the wife's income is needed to improve the standard of living. Note that if the wife is the principal breadwinner, the rule does not apply.

This change will in no way affect our expanding service to low-income families," Smith

said. Loans may be made to families that will buy or build homes in open country or towns of up to 10,000 population, and who are not able to secure credit from regular commercial sources. Complete information is available from the agency's 143 county offices located in county seat towns throughout Texas.

Students Named To Dean's List

A total of 2035 students in the College of Arts and Sciences at Texas Tech University qualified for the dean's honor list for the 1972 spring semester, according to Dean Lawrence L. Graves.

To qualify for the honor list, a student must be enrolled in 12 semester hours of courses, excluding pass-fail courses, and have at least a 3.0 grade point average. Texas Tech uses a 4.0 grading system.

Area students recognized for their high academic achievement in the College of Engineering are:

- Ronald Felty, fresh, Government; Norman Piwooks, fresh, Zoology; Nathan Griffin, fresh, Pre-Law; Ruth Melcher, fresh, Liberal Arts; Vicki Davies, fresh, Government; William Jaynes, soph, Greg Kitten, soph, Liberal Arts; Clifford Kitten, junior, Pre-Med; Randall Johnson, senior, Chemistry; Rita K. Payne, senior, Pre-Med; Betsy Bryant, senior, Art; William Kitten, senior, Math; Janet Williams, soph, Speech; Patrick Edwards, Jr., Pre-Med.

ITEM: Last year Americans ate 191 million meals and snacks away from home every day! Lunch was the most popular meal, then came snacks, dinner, and breakfast.

ITEM: If a half ham is too large for a family meal and a packaged ham slice too small, consider baking or broiling a slice cut 1 1/2 to 2 inches thick.

Help Your Student Avoid Money Problems

COLLEGE STATION--"According to Drake University's Director of Financial Aids, over-protection and not giving youngsters guidance and experience in the responsibilities of handling money are the two biggest causes of students' money problems," Mrs. Doris Myers said. She is a home management specialist with the Texas Agricultural Extension Service.

She emphasized that children must learn at an early age to handle some of their own affairs if they are to learn to manage money successfully.

"They must have an opportunity to make some mistakes with small amounts of money at an early age," Mrs. Myers said. The Texas A&M University specialist noted that many parents are unaware that spending and saving attitudes developed

by children are essentially those they carry with them into adolescence and beyond.

"One way to teach children about money," the specialist said, "is to let them participate in family financial discussions. This helps them gain an insight into the costs of living and have a greater appreciation of money that's spent for their needs."

According to Mrs. Myers, giving children an allowance so they can handle some of their own finances often costs no more than the amount given in casual handouts.

"When a child is given an adequate allowance, he doesn't beg parents for more, especially if the parents are firm in not giving extras. Also, he may be more careful about spending his own money than he would be if given an uncertain amount from time to time."

Mrs. Myers said that parents can help students become responsible money managers by following guides at home.

"Instill the merit of working for money at an early age," she advised. "But don't pay the child for ordinary home chores that are his responsibility as a family member." Let him have a checking account so you can offer supervision while he's learning to use it. The student who learns how to budget funds also learns how to budget time -- an essential for high school and college.

"Help your youngster learn how to shop for best buys, compare prices and recognize good quality. He'll need all these skills for intelligent shopping throughout life."

The specialist said to keep communication open and assure the youngster you're willing to discuss money problems with him before they become too great.

"Be willing to admit you have made a few mistakes, too."

Mrs. Myers said to encourage the student to keep simple records showing where the money goes. These can help in predicting when and how much money will be needed. "The type and amount of allowance depends on the maturity of the student," she pointed out. "Some students are responsible enough to handle all expenses while others can only manage incidentals."

She added that students who have developed a particular skill in money management find it much easier to pay their way through school.



Hog Cholera Threat In Area Emphasized

With the confirmed cases of hog cholera in Dawson and Terry counties, swine producers are urged to use all precautions to curb the disease.

"This costly disease is easily transmitted and if producers notice any sign of sickness among hogs, they should suspect hog cholera first," said Dr. Gene Cope, area veterinarian, and Dr. Gilbert Hollis, area swine specialist, Texas Agricultural Extension Service. The animals should be checked immediately by a local veterinarian or state or federal animal health official. Farrowing problems, abortions, still-born pigs and weak or "shaker" pigs may be due to cholera.

If a swine owner has the disease confirmed in his herd, federal and state law requires that the entire herd be destroyed and buried under governmental supervision, the specialists report. Indemnities can be collected on any hog that dies or is destroyed after the herd has been inspected.

To protect pigs from cholera, the specialists list the following precautions:

1. Buy pigs from reputable sources -- bargain pigs may not be bargains after all.
2. Isolate newly purchased pigs for 30 days.
3. Don't mix pigs with those of your neighbor.
4. Keep visitors out of the hog lots. Cholera can be spread by either direct contact from animal to animal; or indirectly on boots, shoes, clothing, vehicles or contaminated feed, water or handling equipment.
5. Haul hogs only in trucks and trailers that have previously been cleaned and disinfected.
6. Do not feed garbage or table scraps to swine unless it is properly cooked (30 minutes at 212 degrees F.). To be absolutely safe, avoid feeding garbage altogether.
7. Turn in any hog cholera report. Indemnities can be collected on your farm to a local, state or federal animal health official.
8. Eradicate all rodents on the farm to prevent the spread of any of the cholera virus that might be present.

Cope and Hollis reminded producers that there are no specific symptoms of hog cholera. At first the pigs are dull, listless, show a decrease in feed consumption, usually a diarrhea, weakness and temperature of 106 degrees F. to 107 degrees F.

The disease usually spreads slowly through a herd; often requiring one to two weeks to affect all individuals. Hog cholera does not affect any other domestic animal or man.



Always A-Go-Go

You can tell at a glance that this is the kind of dress you'll always reach for. It's yoked and handily pocketed. No. 3353 comes in sizes 10 to 18 (bust 32 to 40) and also in bust size 42, 44, 46. Size 12 (bust 34) takes 2 1/2 yards of 44-inch fabric.



749

Embroider these designs for pillowcases or other linens. Nylon transfer No. 749 tells how. Send 30¢ for each dress pattern, 30¢ for each needlework pattern (add 15¢ for each dress pattern, 10¢ for each needlework pattern for mailing and handling) to AUDREY LANE BUREAU, Morris Plains, New Jersey 07950.

SEE US FOR DEPENDABLE CAR CARE!

HAS YOUR NEW BOYFRIEND KISSED YOU YET?

NO, BUT HE STEAMED MY GLASSES TWO TIMES.

FREE AIR FROM

Wilson Oil Company

Phone 628-2061 Wilson, Texas

After you see your doctor...

bring your prescription to

Teague's Drug Store

822-6535 Night Phone 828-6500

THE LIVING BIBLE \$9.95

The entire Bible paraphrased in the clear and direct style of today's language. This skillful and scholarly contemporary version by Kenneth N. Taylor gives new understanding to every page of Scripture.

at **The Slatonite**

510-COIL MATTRESS

\$ **79** 50

Slaton Family Furniture

828-5474 630 So. 20th

1/2 MILE SOUTH OF THE CEMETERY

We never sleep

Minute by minute, day and night year in -- year out, the power lines of the South Plains Electric Cooperative, Inc. pulsate with a wide-awake, dependable supply of clean, low-cost electricity that rural people depend on. We never sleep, so our member-owners can sleep more soundly, confident of an ever ready source of reliable power that is Helping Texas Grow.

Shop United DISCOUNT PRICES



Plus THE EXTRA VALUE OF S&H GREEN STAMPS



PLAY UNITED'S BONUS SHIELDS!
GET 1,000 EXTRA S&H GREEN STAMPS



Folger's Inst. Coffee 6 oz. Jar 99¢

MC-2 ALL PURPOSE DETERGENT 49¢ GT BOX

MEY HALF GALLON BLEACH 29¢ 64-oz. BTL.

UNITED'S ASSORTED FLAVORS MELLORINE 3 HALF GALLONS \$1

ICE CREAM SALT MORTONS 4lb. Box 19¢

CRYSTAL CLEAR ICE CUBED BAG 39¢

Shurfine 'INDEPENDENTS' DAYS for Savings!

WHOLE PEELED TOMATOES... 5 303 CANS \$1
EVAP. MILK... 6 TALL CANS \$1
PORK & BEANS... 7 300 CANS \$1
FRUIT DRINK *GRAPE *FRUIT PUNCH *ORANGE 4 6 OZ CANS \$1

SHURFRESH QTR'D OLEO 5 1 lb. CRTNS. \$1

RANCH STYLE BEANS 6 300 CANS \$1

SWIFT'S Jewel SHORTENING 3 59¢ LB. CAN

MORTON FROZEN DINNERS MEAT LOAF TURKEY FRIED CHICKEN Salisbury Steak 3 39¢

SOFILIN assorted colors TOWELS 4 1 JUMBO ROLLS \$1

SOFILIN BATHROOM TISSUE ASSORTED COLORS 10 ROLL PACKS 79¢

SHOP UNITED MEAT DEPT. AND SAVE!

United PREMIUM QUALITY BEEF ROAST 59¢ LB. BLADE CUT CHUCK



FRESH GROUND BEEF 65¢ LB. 100% ALL BEEF FAMILY PACK

UNITED PREMIUM QUALITY SWISS STEAK 89¢ LB.

King Size JOY LIQUID 20¢ OFF LABEL Reg. 89¢ 32-oz. BOTTLE 59¢

STEAK FINGERS TENDA-MADE LB. 89¢

Farm Fresh United Produce

THOMPSON SEEDLESS GRAPES 49¢ LB.

POTATOES CALIF. LONG WHITE 10 59¢ LB. BAG



UNITED PREMIUM QUALITY GRADE "A" CAGED EGGS 3 \$1.00 Doz.

FRESH GREEN CABBAGE 8¢ LB.

FRESH VINE RIPE CALIFORNIA CANTALOUPE 15¢ LB. LARGE SIZE

MEMBER OF AFFILIATED U PRICES GOOD THROUGH JULY 8
UNITED SUPER MARKETS WE GIVE S&H GREEN STAMPS