

THE SLATONITE

Volume 3.

SLATON, LUBBOCK COUNTY, TEXAS: SEPTEMBER 12, 1913.

Number 2.

SCHOOL OPENS NEXT MONDAY

The 1913-14 term of the Slaton public schools will open next Monday, Sept. 15, in the handsome new school house. County Supt. E. R. Haynes will be present and a number of the patrons of the school.

The corps of teachers this winter is composed of P. M. Faulkner, superintendent; Miss Hallie Dickerman, principal; Miss Myrtle Robertson, assistant high school instructor; Mrs. Maude Wallace, 5 and 6 grades; Miss Frankie Vermillion, 3 and 4 grades; and Miss Pearl Dunscomb, primary.

The opening of school will be a sort of informal dedication of the new school building, of which every citizen of Slaton is justly proud. The building is beautiful in architecture and is well arranged for comfort and convenience. In the building are seven class rooms 23x29 feet, a library room, a laboratory, and several cloak rooms. One-half of the second story is set apart for an auditorium 36.9x63.10 feet, with a stage and dressings rooms 36x14 feet.

The opening of the school will be observed by the following program, to which all patrons of the school are most earnestly invited. The program will start at 9 a. m.:

Song.

Prayer by the Rev. J. R. Balch. Opening Address, Mayor R. J. Murray.

Music, Miss Susie Talley.

Address, Judge E. R. Haynes. Address, Prof. J. K. Webster. Reading, Miss Bertha Proctor. Address, Hon. Jno. R. McGee. Reading, Miss Hallie Dickerman.

Address by C. C. Hoffman, member of school board, outlining policy of the board.

Reading, Miss Vyola Talley.

Open discussion.

Final Address, Prof. P. M. Faulkner.

Closing prayer by Rev. J. P. Calloz.

J. W. Patterson, floor manager.

SLATON-LAMESA BRANCH GOES ON TO STERLING CITY

Jos. Weidel, chief engineer of construction of the Santa Fe railroad, was in Slaton the first of the week, and stated that the work of extending the Slaton-Lamesa road from Lamesa to Sterling City would be started just as soon as the Cut-off is completed.

This will be added reason why work will start soon on the new depot and the addition to the round house.

The case of the State of Texas vs. Taylor, former night watchman at Lubbock, who was under indictment for murder, was decided in the district court at a last week by the State. He was transferred from Lubbock to Lynn county. Taylor was clear on the first case by a jury.

Check Your Orders



and you will find the items absolutely correct after we make a delivery. Not only in number weights and quantity, but you get the best qualities, too, and the prices are no higher than you pay for lower grades elsewhere. We are prompt and polite in our service

Slaton Sanitary Grocery

YOU ONLY PAY FOR WHAT YOU BUY, AND AT LOWER PRICES

"THE SANITARY WAY IS THE ONLY WAY"

TRAINS OVER SLATON-CLOVIS DIVISION IN FEW WEEKS

Trains will be running over the entire lines of the Coleman-Texico cut-off of the Santa Fe railroad by January 1, according to information received by Col. L. J. Polk, commercial agent of the Santa Fe. Col. Polk was in Fort Worth Tuesday on his way to Galveston after a trip through the northern and eastern states.

Work on the cut-off is progressing rapidly, and the road will be in good shape by the first of the year if present plans materialize.—Fort Worth Record.

The steel has reached Hurley, about 20 miles of Texico, and should be in Texico by the first of October. A large number of material and freight trains will begin running over the line as soon as the last rail has been

SANTA FE BRASS COLLARS HERE

Santa Fe officials visited Slaton last week looking over the grounds for the new depot and for the addition to the round house. It is reported that orders have already been issued for some of the general offices to be moved to Slaton the first of the year, and this necessitates immediate action in the depot matter, as the offices will be located in that building.

laid, even before a schedule has been arranged for train service. The payroll at Slaton will begin to grow larger at that time.

Ed Keightley is here to stay; take your blacksmith work to him.

PUTTING IN UNDERGROUND SILO FOR MAIZE AND KAFFIR

Landrum Brasfield is putting in an underground silo at his farm six miles west of Slaton. The silo is 18x30 feet and will be ready for ensilage this week. Mr. Brasfield will fill the silo with Maize and kaffir corn, leaving the heads on the kaffir.

The Brasfields have done some good farming this year, and as a result have splendid crops. The one that looks the best to them is 120 acres of cotton which will pick one-half bale to the acre. Half-bale cotton looks pretty good to a man who is just getting raw prairie broke up good so he can really farm it.

Mrs. L. F. Gamble will have her millinery opening Friday and Saturday at Simmons & Robertson's dry goods store.

TIME TO COME HOME.



SLATON COMING INTO ITS OWN

One of the best indications that Slaton will soon begin to come into its own was caught by a Slatonite reporter this week when the assertion was made by a prominent official of the Santa Fe road, an official who knows what he is talking about, that Slaton will double in population in eight months. This report has come to us from several different sources lately, but none as direct as this.

Everything indicates that the doubling of Slaton's population is a modest boost. The early completion of the Cut-off will necessitate more work and many more train crews for the Slaton division, and a number of trainmen are already beginning to plan to move here. It is said that in a short time the branch trains of the Lamesa road will run out of Slaton and back instead of staying all night in Lamesa, as they do now. This will also place more families in Slaton.

It is also repeated from good sources that the new depot will start on the first of October. This depot building will be three stories and will include offices for division officials. These officials, including Superintendent, Road Master, Train Dispatchers, and their working forces, have already been instructed to move here by January 1st.

Additional stalls for the accommodation of the big mallet type engines will also be added to the round house and with the materialization of these matters Slaton will begin to take its place as the railroad center of the Plains.

FRISCO OFFICIALS REPORTED AS BEING IN SLATON

The officials of the Frisco railroad visited Slaton Wednesday last week, but gave out no official word as to the purport of their visit. The Frisco officials seem to have quite a liking for Slaton, judging from their repeated visits, and the whistle of the Frisco trains for the Slaton union depot will be a common occurrence a few years from now.

Don Biggers was down from his farm near Lubbock Monday with a load of sweet potatoes for E. N. Twaddle. Mr. Biggers can't keep away from the scent of printer's ink, and of course made a call on the Slatonite force. He says that his experience with irrigating with well water this year has convinced him beyond a doubt that irrigation even in a small way is the making of this country.

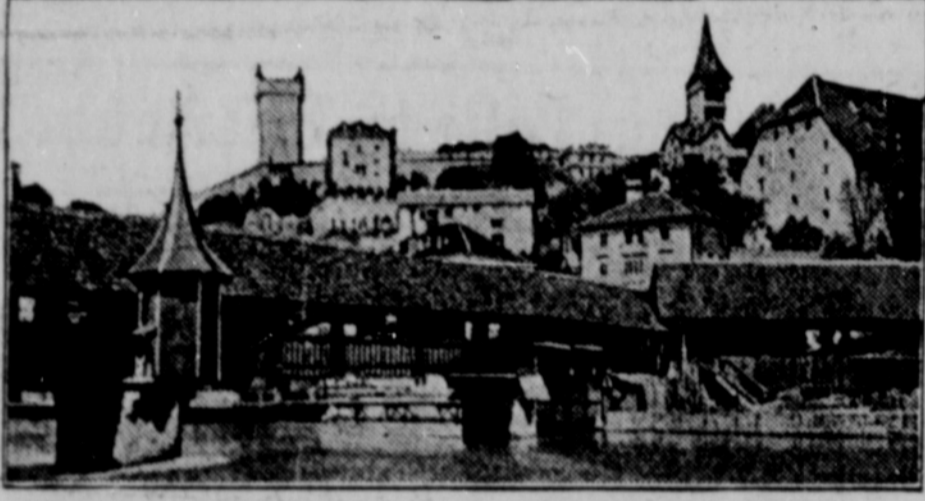
Ed Keightley and family moved to Slaton this week from Post City, where they have been conducting the Algeria hotel. Mr. Keightley has reopened his blacksmith shop here, and he and wife expect to locate in Slaton permanently. Old friends of the family are pleased to welcome them to our city.

The Measure of a Man--

Measure yourself without a bank account.
It proves you have no self restraint.
It proves you have no regard for the future.
It proves you are drift-wood on the river of life.
Prove yourself a man and start a Bank account

First State Bank of Slaton

Where Bothwell Left Mary



Borthwick Castle, in Midlothian, is one of the places closely connected with the romantic story of Mary Queen of Scots. When, after her marriage to Bothwell in 1567, she found Edinburgh and many of the nobles were hostile she fled with her new husband to Borthwick. The hostile lords pursued and Bothwell ran away alone, leaving Mary in the castle. The castle was built by Sir William, the first Lord Borthwick, in 1430, and is by far the biggest keep north of the Tweed.

W. Holt Harris, Chairman Mercantile Committee C. S. Association, says: "It is easy enough to distinguish between the store that advertises and the one that does not. One is packed with customers who eagerly buy the goods for sale while the other is conspicuous by the absence of purchasers. Nowadays a merchant who does not advertise is doomed to a certain commercial death and while the demise is sometimes slow and without clamor it is inevitable nevertheless. Uptodate men of business realize this and yearly set aside a fund for advertising. The appropriation for this department is looked upon as an investment

Every Town Has One Substantial Store. That Substantial Store Has a Satisfied Trade.

In Slaton It's
SIMMONS & ROBERTSON

The Newest in Dry Goods
The Freshest in Groceries
Phone 7 Free Delivery

Slaton Auto Supply Comp'y.

BRIGGS ROBERTSON, MANAGER

Texas, Fordyce, and Pennsylvania Oils,
Gasoline and Greases

Agency Fisk and Goodyear Tires. Inner Tubes in Stock. The only supply house south of Amarillo.

When Your Liver Goes Wrong

Nearly Everybody Needs a Liver Stimulant at One Time or Another.

Nearly everybody now and then is annoyed with a sluggish lazy liver or by constipation or by biliousness.

It is for this reason that Dodson's Liver Tone is such a good medicine to keep about the house. Either children or grown-ups can take Dodson's Liver Tone without bad after-effects and without restriction of habit or diet. It is a vegetable liquid, with a pleasant taste; but a reliever of constipation and liver trouble, and entirely takes the place of calomel.

The Red Cross Pharmacy

guarantees every bottle of Dodson's Liver Tone they sell. It costs 50 cents per bottle and if you are not satisfied that it is not worth the money, they will hand your half-dollar back with a smile. Don't be fooled by preparations imitating the claims of Dodson's Liver Tone. Just remember THE RED CROSS PHARMACY will give back your money if Dodson's Liver Tone fails you. That is a guarantee that guarantees.

rather than an expense, just as a person invests money in real estate or stocks and bonds. It is sure to come back with interest providing of course the merchant delivers the goods.

Advertising is of little account unless the goods are behind it.

Don't forget that all school books are cash. We can't sell them otherwise. Red Cross Pharmacy.

Service car at all times, phone No. 7.



DR. LEGEAR'S STOCK POWDERS MAKE HEALTHY STOCK

Healthy, vigorous stock is the only kind that makes money for you. A horse can't work you to good advantage—can't give first-class service—unless he's right. Your steers and cows can't create beef or milk to advantage if they are feeling "under the weather." Sheep and hogs won't yield wool and pork profitably unless they are healthy and vigorous. Put your horses, cattle, sheep and hogs into fine condition, and then keep them in that fine condition by feeding the famous Dr. LeGear's Stock Powders. A tip-top Tonic—an unrivalled Milk Producer. Gives horses strength and endurance, sleek coats and good spirits. A money maker for every man who owns stock. Large 25c, 50c and \$1.00 size boxes; also 25-pound pails at \$2.50, and 100-pound pails at \$9.00.

THE RED CROSS PHARMACY

Agents for Dr. LeGear's Stock and Poultry Remedies, consisting of Stock Powders, Colic Remedy, Antiseptic Healing Oil, Antiseptic Healing Powder, Dip and Disinfectant, Gall Remedy, Spavin Remedy, Liniment, Hoarse and Cough Remedy, Worm Remedy, Powdered Lice Killer, and a full line of Poultry Remedies.

Miss Hallie Dickerman who was employed some time ago to teach in the Slaton schools, arrived here last week.

For sale.—2 room house near Baptist Church, \$50.00 cash, balance \$10 per month. See H. D. Talley.



Founded and Owned by the Pecos & Northern Texas Ry. Company

SANTA FE SYSTEM

LOCATION—Southeast Corner of Lubbock County, Texas, in Central Section of the South Plains; on the new Main Trans-Continental Line of the Santa Fe System, of which the Clovis Extension is now under construction; connects North Texas lines of that system at Canyon, Texas, with South Texas lines at Coleman, Texas; junction of the Lamesa branch of that system.

ADVANTAGES AND IMPROVEMENTS—The Railway Company has completed Division Terminal Facilities at this point, constructed mostly of reinforced concrete material and including a Round House, a Power House, Machine and Blacksmith Shops, Coal Chute, a Sand House, Water Plant, Ice House, etc. Also have a Fred Harvey Eating House now open, and a Reading Room for Santa Fe employees. Have extensive yard tracks, preparatory to handling a heavy trans-continental business, both freight and passenger, between the Gulf and the Atlantic Coast and the Pacific Coast territories, and on branch lines to Tahoka, Lamesa and other towns.

3000 FEET OF BUSINESS STREETS are graded and macadamized and several residence streets graded; there are 26 business buildings of brick and reinforced concrete, with others to follow; 200 residences under construction and completed.

A FINE AGRICULTURAL country surrounds the town, with soil dark chocolate color, sandy loam, producing Kaffir Corn, Milo Maize, Cotton, Wheat, Oats, Indian Corn, garden crops and fruit. An inexhaustible supply of pure free stone water from wells 40 to 90 feet deep.

THE COMPANY OFFERS for sale a limited number of business lots remaining at original prices and residence lots at exceedingly low prices. For further information address

P. & N. T. RAILWAY CO., Own
SOUTH PLAINS LAND COMPANY, and HARRY T. McGEE,
Local Townsite Agents, Slaton, Texas.

CHRISTIAN ENDEAVOR.

Subject, Our Neglected Neighbors.

Leader, Prof. Faulkner.

Song.

Devotional.

Scripture reading, Acts 1:8, Leader Bible Contest.

Song.

Scripture, Acts 6: 1-7, Bennett Smith.

Scripture, Acts 4: 6, Noel Loomis.

Scripture, Acts 6: 5, Columbus B.

Instances of Personal Power, Miss Dickerman.

Duet, Ruth Smith and Dorothy Blanton.

What can a Body of Young Christians do in behalf of Neglected Neighborhoods? Vyola Talley.

Song, Endeavor Benediction.

Every one is requested to bring bibles.

"NUMBER" SOCIAL.

The Christian Endeavor will give a Number Social Sept. 19th at the home of Mrs. Joe Smith.

PROGRAM.

1. Scripture reading, Numbers 26: 63-65.

2. Each guest must wear a number in plain sight. It may be the date of birthday, age, marriage anniversary, graduation, or date in history.

3. Each guest is again numbered and do whatever their number calls for.

4. A number contest.

5. Menu:

2 P K S.

1 in 2.

1 G L S Crys 7 L C L R.

2 M 8 O P K L.

G L 18.

L. H. Starr returned yesterday from Post City, where he had been in a sanitarium six weeks recovering from an operation for appendicitis. He had a pretty serious attack and his many friends in town, especially the railroad boys, are very glad to see him back again. He is a brakeman, and his case was so serious that there was no time to take him to a Santa Fe hospital, so a special train was made up here to take him to Post, the run being made in 31 minutes. The operation was performed within two hours from the time the train left Slaton. The prompt manner in which his case was handled is deserving of much credit both to Dr. S. H. Adams and to Division Foreman, W. C. Eddington.

J. R. Balch, pastor of the First Baptist Church of Slaton, closed a very successful protracted meeting at Wilson Sunday. Nine new members were added to the Slaton church as a result of the meeting.

F. E. Shuey, Western Union operator, is back at work again, having returned from a month's visit with relatives in Kansas and in central Texas.

I have reopened my blacksmith shop on North Panhandle Avenue and will be ready at all times to serve you in this line.—Ed Keightley.

For Sale.—A few Frontz Winter Laying Strain White Leghorn Cockerels at \$1.50 each—less than half value. Mrs. R. C. Edets at

Slaton Hicks, barber in the West have the barber Shop, went to Semphoover Monday to visit home folks. can be a number of Slatonites

Bring the Sunday services of farm District meeting at Wilson.

can, inc. nize a home concern.—tables Auto Supply Company.

GOOD RAIN OVER SLATON COUNTRY

Over two inches of rain fell here Wednesday night, commencing shortly before midnight and continuing until after 7 a. m. yesterday. Reports from outlying points indicate some rain over a large area of the Plains and on below the Caprock.

This is the second rain at Slaton within a week, altho the first rain was slightly less than a half-inch and covered only the immediate Slaton country.

All late crops will mature without additional rainfall and the yield of maize and kaffir corn will be heavy except in a few localities in the northwest part of the county.

Maize heads are selling around \$14 a ton with very few sellers. On account of the scarcity of grain growers expect a higher price.

FISH LIVED WITHOUT MOUTH

It seems strange that a fish can live and thrive without a mouth. J. W. Fehlmann describes this apparent simplification of life on the part of a carp four years of age. Its mouth was absolutely shut. Yet there were numerous mayfly larvae, crustaceans, pieces of plants and the like in the food canal. The animal must have not only breathed but fed through its gill clefts.

Briggs Robertson returned Monday from a business trip through east Texas and Louisiana.

Dunn & Delong have bought the tailoring business of Ras Gamble on Texas avenue.

Best line of inks, pencils, and tablets for the school children at the Red Cross Pharmacy.

For Sale or Trade.—Second-hand buggies and harness. G. L. Sledge Livery Barn.

O. B. Freeman and family returned last week from a visit to Wingo, Ky.

For \$1.00 we clean that car of yours. Slaton Auto Supply Company.

For auto livery service day or night call the Slatonite.

WHETHER YOU USE CALOMEL OR NOT

You Will Realize How Much Better for You This Safe Vegetable Remedy Will Be.

The liver is such a delicate organ that most people have learned from experience the danger of flogging it into action with the dangerous drug—calomel. The Red Cross Pharmacy sells and recommends Dodson's Liver Tone, a pleasant tasting, harmless vegetable liquid that encourages the liver, relieves constipation and biliousness without restriction of habit or diet.

There are no bad after effects from taking Dodson's Liver Tone. It does just what it is intended to do and no more. Dodson's Liver Tone cannot harm either children or grown-ups and is an excellent preventative of chronic liver troubles.

The Red Cross Pharmacy sells Dodson's Liver Tone for 50 cents per bottle and every bottle sold is guaranteed to give satisfaction and you get your money back without a question if it fails you. Some remedies are sold in imitation of Dodson's Liver Tone—look out for them. Remember the guarantee.

BIGGEST LINE OF SCHOOL SUPPLIES IN SLATON

That's the kind of stock we carry—the biggest in Slaton. Not only big in VARIETY, but big in VALUES as well. You can count on getting more PENCILS, TABLETS, INK, CRAYONS, ERASERS, PEN HOLDERS, PEN POINTS, DRAWING PAPER, and other Supplies for School Children at the RED CROSS PHARMACY for the same money.

Come in with your children and help make the selections for the beginning of school Monday—but whether you come or not, your children will receive the same courteous treatment.

R. L. BLANTON, Proprietor

RED CROSS PHARMACY

This Space Is for Sale

at very reasonable rates

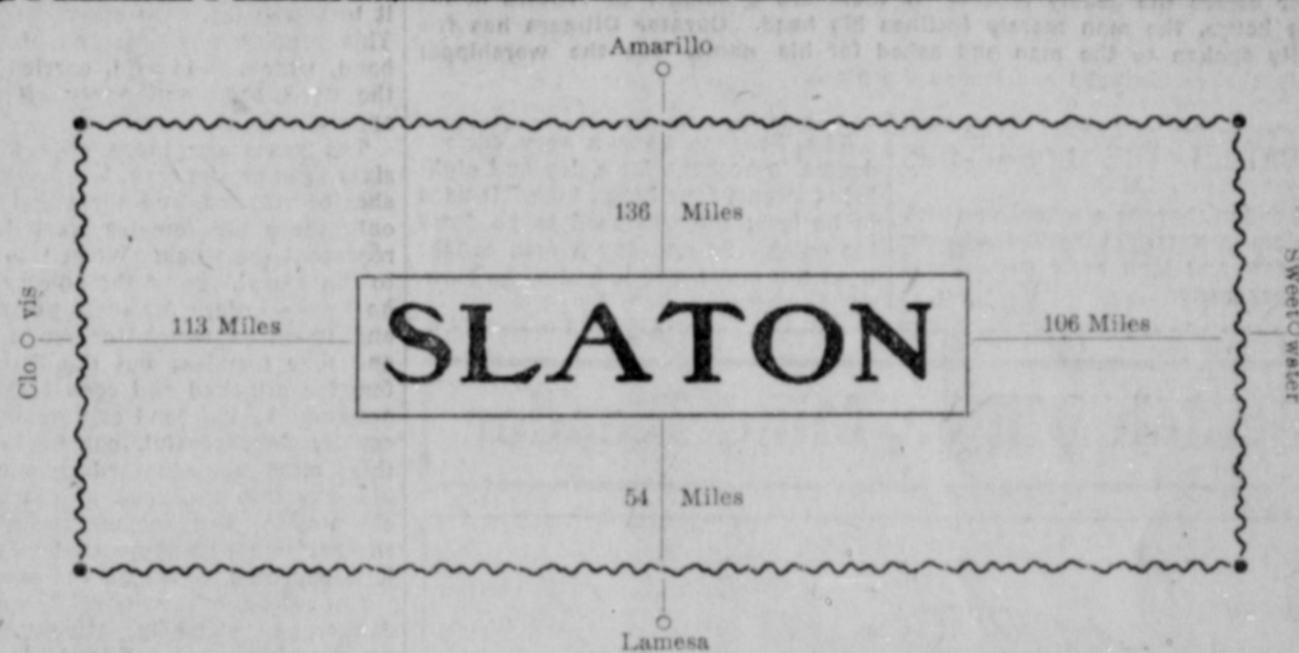
Why not use it to advertise your wares?

Slaton Auto Supply Comp'y.

BRIGGS ROBERTSON, MANAGER

Texas, Fordyce, and Pennsylvania Oils, Gasoline and Greases

Agency Fisk and Goodyear Tires. Inner Tubes in Stock. The only supply house south of Amarillo.



Founded and Owned by the Pecos & Northern Texas Ry. Company

SANTA FE SYSTEM

LOCATION—Southeast Corner of Lubbock County, Texas, in Central Section of the South Plains; on the new Main Trans-Continental Line of the Santa Fe System, of which the Clovis Extension is now under construction; connects North Texas lines of that system at Canyon, Texas, with South Texas lines at Coleman, Texas; junction of the Lamesa branch of that system.

ADVANTAGES AND IMPROVEMENTS—The Railway Company has completed Division Terminal Facilities at this point, constructed mostly of reinforced concrete material and including a Round House, a Power House, Machine and Blacksmith Shops, Coal Chute, a Sand House, Water Plant, Ice House, etc. Also have a Fred Harvey Eating House now open, and a Reading Room for Santa Fe-employees. Have extensive yard tracks, preparatory to handling a heavy trans-continental business, both freight and passenger, between the Gulf and the Atlantic Coast and the Pacific Coast territories, and on branch lines to Tahoka, Lamesa and other towns.

3000 FEET OF BUSINESS STREETS are graded and macadamized and several residence streets graded; there are 26 business buildings of brick and reinforced concrete, with others to follow; 200 residences under construction and completed.

A FINE AGRICULTURAL country surrounds the town, with soil dark chocolate color, sandy loam, producing Kaffir Corn, Milo Maize, Cotton, Wheat, Oats, Indian Corn, garden crops and fruit. An inexhaustible supply of pure free stone water from wells 40 to 90 feet deep.

THE COMPANY OFFERS for sale a limited number of business lots remaining at original low list prices and residence lots at exceedingly low prices. For further information address

P. & N. T. RAILWAY CO., Owners.

SOUTH PLAINS LAND COMPANY, and HARRY T. McGEE, Local Townsite Agents, Slaton, Texas.

SLATONITE

Loomis & Massey, Publishers.

Issued Every Friday Morning

SUBSCRIPTION, A YEAR \$1.00

Entered as second-class mail matter September 15, 1911, at the post office at Slaton, Texas, under the Act of March 3, 1879.

JNO. R. MCGEE
ATTORNEY AT LAW
LUBBOCK, TEXAS
Practice in all State Courts

R. A. BALDWIN
ATTORNEY AT LAW
Office West Side of Square
Slaton, Texas

S. H. ADAMS
Physician and Surgeon
Office at Groner's Drug Store
Residence Phone 36
Office Phone 3

DR. ORVILLE H. WESTLAKE
MEDICAL ELECTRICIAN
Practice limited to diseases of Ladies and Chronic Diseases of Men and Children.
Office at Residence, Phone No. 164, Lubbock, Texas.

J. G. WADSWORTH
Notary Public
INSURANCE and RENTALS

Fire, Tornado, Plate Glass, Automobile, Accident, Health and Burglary Insurance

Office at FIRST STATE BANK
Slaton - Texas

"Don't Walk Your Legs Off 'Looking' for that Fellow Brown—

The QUICKEST way to catch him is to sit still and extend your arm just far enough to grasp your



--then tell "central" you want to talk to Brown and--" "Hello, there's Brown already." So easy

Western Telephone Co. Y
Slaton, Texas

Job Printing

We are here to serve you with anything in the line of printed stationery for your business and personal use. □ □ □ □

Letter Heads Bill Heads
Envelopes Cards
Wedding Invitations
Posters or Announcements
Of All Kinds

The best quality of work at prices that are RIGHT

BACK TO THE NEWSPAPER GAME.

ANONYMOUS.

Oh, yes, I had quit it "forever,"
The scissors and paste and all that,
The haste and the frantic endeavor,
The typewriters' merry rat-tat;
I tired of the holler for "copy,"
I longed for a life that was tame,
And my friends called me shabby and sloppy,
So I dropped from the Newspaper Game.

But something kept whispering, "Billy,
You're out of your element here.
This sinecure's meant for some Willie
Who don't know a scoop from a beer,
This joint is too tied by decorum,
This routine is always the same;
Your clothes don't wear out where you wore 'em
When playing the Newspaper Game."

Whenever the newsboys would holler,
Whenever the extras came out,
I tugged at my unsweated collar
And my heart-strings were tugged by a doubt,
Till at last--well, I doubted no longer,
I passed up my cinch, and I came
To the call that I knew was the stronger,
And I plunged in the Newspaper Game.

The typewriters rattled to greet me,
The smell of sour paste-pots was sweet,
I found the old "mill" there to meet me,
I dropped in my battered old seat.
The news room was dingy and smoky,
But a shiver of joy shook my frame,
For I'd quit the "good job" that was poky,
And was back to the Newspaper Game.

Below were the linotypes clicking,
And the smell of hot lead came to me;
The sport man was nervously flicking
The ash from his "cigarootie."
My typewriter acted unruly,
My fingers felt clumsy and lame,
But I knew I was back again, truly,
To the joy of the Newspaper Game.

You can swear you will leave it behind you,
You can flee to wherever you will,
But the newspaper fever will find you,
The newspaper fervor will thrill,
It makes--or more likely, it breaks you,
You die--and leave scarcely a name;
But not until death overtakes you
Are you free of the Newspaper Game.

The Taboka News says that business got pretty brisk before the district court one day last week. In the case of Bartley vs. Robinson a fracas was precipitated between a witness and an attorney, when a lie was passed. The attorney heaved a heavy inkstand at the witness, barely missing the latter's head and indenting the wall where the inkstand's flight came to a sudden end. Judge Spencer decided that the fireworks were worth the money, so tacked a fine of \$100 on each of the participants, and continued the case for the term.

A gentleman from a neighboring town, not over 100,000 miles of Slaton made the statement at the Slaton depot one day last week that our town would never be any larger than it is now. A Santa Fe official heard him make the remark and called his hand. He asked him how much forfeit he wanted to put up that the town would not be twice as large six months from now as it is at the present time. The gentleman acknowledged that he was a little prejudiced in favor of his own town, and backed out of his statement altogether.

Several showers of rain fell at Slaton the first of the week, and while they were not heavy they were a great boost for late crops.

A number of farmers are figuring on moving to town this fall to give their children the benefit of the Slaton schools.

Slaton Trades Days are trade getters. Let's make the next one the best yet.

It is only a matter of a few short months until Slaton will "come" in a way that will make all other towns sit up and take notice, and then everybody will be "I-told-you-so's."

If the coal strike at the V ranch proves to be a paying mine it will mean one new railroad at least, and possibly more, for Slaton.

With the best crops of any section of the Plains country Slaton vicinity looks good to the agriculturist this fall.

R. B. Hutchinson went to Cameron, Texas, Monday where he will meet the future Mrs. Hutchinson. They were to be married Wednesday this week, and will return to Slaton to live. Mr. Hutchinson has purchased the W. A. Turner residence property. The Slatonite has no particulars of the marriage, but takes pleasure in joining a host of friends in congratulating "Doc" and welcoming his wife to our city.

R. N. Williams, mayor of Texico, N. M., visited friends in Slaton the first of the week. Mr. Williams came overland with Ras Gamble.

Ras and Frank Gamble were in Texico, N. M., on a business trip last week. They made the trip in their Buick car.

Mrs. L. F. Gamble will have her millinery opening Friday and Saturday at Simmons & Robertson's dry goods store.

For blacksmith and woodwork see Ed Keightley, North Panhandle Avenue.

City Directory and Railway Guide.

CHURCHES.

METHODIST CHURCH.

J. P. Calloway, Pastor.
Sunday School every Sunday at 10 o'clock a. m. J. I. Mabry, Superintendent
Preaching services every second and fourth Sundays in the month at 11 o'clock a. m., and at 7:30 p. m.
Womans' Missionary Society meets every Monday afternoon at three o'clock.
Union Prayer Meeting every Wednesday evening at 8 o'clock at the Methodist church. Everyone welcome.

BAPTIST CHURCH.

J. R. Balch, Pastor.
Sunday School every Sunday at 10 o'clock a. m. J. W. Patterson, Superintendent.
Preaching services every first and third Sundays in the month at 11 o'clock a. m., and at 7:30 p. m.
Ladies Aid Society meets every Monday at 3 o'clock p. m.

PRESBYTERIAN CHURCH.

Rev. Word, Pastor
Preaching every fourth Sunday in the month at 11 o'clock a. m., and at 7:30 p. m.

SLATON COMMERCIAL CLUB.

R. J. Murray, president; R. C. Edgell, secretary. Club meets every Thursday evening at 8.00 o'clock at the McRea Hall on Texas avenue.

INDEPENDENT ORDER ODD FELLOWS.

Slaton Lodge meets every Friday night at 7.30 o'clock in the MacRea hall. L. P. Loomis, Secretary. R. C. Edgell, N. G.

WOODMEN OF THE WORLD.

Slaton Camp 2871 W. O. W. meets 1st and 3rd Tuesday nights in each month at MacRea Hall. J. T. Bellomy, C. C., J. M. Simmons, Clerk.

WOODMEN CIRCLE.

Slaton Grove Woodmen Circle No. 1320 meets on second and fourth Thursday evenings each month at 3.30 o'clock in the MacRea hall. Visitors cordially welcomed. Mrs. Ida Bellomy, Guardian. Mrs. Carrie Blackwell, Clerk.

RAILWAY TIME TABLE.--Santa Fe South Plains Lines

SOUTH BOUND.

No. 27, Arrives from Amarillo 2:30 p. m.
" " Departs for Sweetwater 2:55 p. m.

NORTH BOUND.

No. 28, Arrives from Sweetwater 10:40 a. m.
" " Departs for Amarillo 11:05 p. m.

AMARILLO LOCAL.

No. 93, Arrives from Amarillo 5:15 p. m.
No. 94, Departs for Amarillo 6:00 a. m.

LAMESA LOCAL.

No. 803, Departs for Lamesa 3:20 p. m.
No. 804, Arrives from Lamesa 11:30 a. m.

CHEAP HOG WIRE

Two Foot Hog Wire Fencing at only 20c per rod. This is a lower price than the mail order houses make for the same grade. If you contemplate fencing soon, do it now.

Forrest Hardware

Farm Mortgage Loans

Vendor's Lien Notes Bought and Extended

FRANK M. MADDOX

First National Bank Bldg. Lubbock, Texas

SLATON PLANING MILL

R. H. TUDOR, Proprietor

Contracting and Building

Estimates furnished on short notice. All work given care and prompt attention. Give us a trial.

North Side of the Square