

SOUTH PLAINS BUSINESS AND INDUSTRIAL GUIDE

Morisset Pen Points
Stapling Machines
Adding Machine Paper
Paper clips, hooks, & punches
Indelible Marking Sets
Many Other Items

at the
SLATONITE

AUTO LOANS

AUTO INSURANCE

F. A. Drewry
145 Texas Ave. Phone 53
We write all kinds of Insurance

George W. Gibson

ATTORNEY-AT-LAW

Citizens State Bank Building
PHONE
Office 758

SLATON LODGE

NO. 1094, A. F. & A. M.

Stated Meetings on
Second and Fourth
Thursdays
Of Each Month
J. H. Gordon, Worshipful Master
W. T. Brown, Secretary
All Members and Visitors Invited.



YOU
KNOW
BOB —

Bob Knows Your
Ford and Chevrolet
BOB'S GARAGE
1300 Blk. So 9th St.

Insure

**SURE
Insurance**

with the
J. H. Brewer
Agency
For Sure
Protection

DUNLAP
MOTOR FREIGHT

Formerly Alcorn Motor Freight
Daily Truck Service To and From Lubbock. Pick Up
and Delivery Service
Phone Day 80 Lubbock Phone 6303 Evenings 781-W

LIVESTOCK OWNERS
Free Removal of Dead Animals

CALL CALVIN KLAUS SERVICE STATION
Slaton, Texas Phone 684
Gulf Tires Gulf Batteries
OR
KEETON PACKING CO.
Lubbock, Texas Phone 6671 — Collect

Have your prescriptions filled
at **TEAGUE'S DRUG STORE** by
a registered pharmacist.

Expert
Upholstering
in Slaton at
Spradley's

Upholstering and Repair Shop
166 Texas Ave. Phone 10

Nat D. Heaton

Attorney-at-Law
General Practice

**CITIZENS STATE BANK
BLDG.**
Slaton, Texas

**Williams
Funeral Home**

Member West Texas Burial
Association
Phone 125 — Day or Night
SLATON, TEXAS

DEAL'S MACHINE SHOP

All Kinds of Machine Work
155 N. Ninth Slaton

Your Patronage Appreciated
**Groce Furniture
Company**

Complete Home Furnishings
Free Parking
1881 Broadway, Lubbock

Band Instruments Records
Teaching Material
Sheet Music

**B. E. ADAIR
MUSIC COMPANY**
Complete Stock Musical
Supplies
1012 Main St. Next to Hilton
Hotel
Lubbock, Texas
We Solicit Your Mail Order
Business

LICENSED — BONDED
PLUMBING

REPAIRS A SPECIALTY
Fixtures, Tubs, Lavatories, Com-
modes, Sinks, Water Heaters.
658 S. 12th St. Phone 128-W
Allred Plumbing

**Lubbock Firm Has
Air Coolers In
All Sizes-Types**

The Lubbock Tire and Appliance
Co., 1519 Ave. H, in Lubbock, has
on display the latest models in
Arctic Circle Air Coolers by Inter-
national. These coolers feature
evaporative cooling, nature's way
to cool. When in Lubbock, call and
see these coolers which are offered
in the correct size and type of
unit to fit all residential require-
ments and whose wide range of
capacities meet every possible type
of commercial air cooling require-
ment.

Lubbock Tire and Appliance Co.,
carries a complete line of the best
household appliances. It will pay
you to visit them when in need of
anything in this line.

Star Tires are featured at this
store. They will be glad to figure
with you on equipping your car or
truck. See them at 1519 Ave. H.,
Lubbock.

Oat Producing States
Oats are grown chiefly in the
region from New York to North
Dakota and south thereof. Two ma-
jor areas, designated as the North-
Central oats belt and the Southern
oats belt, account for about 90 per
cent of the total acreage. The
North-Central belt includes the
block of states bounded by Ohio
and Michigan on the east and the
Dakotas, Nebraska and Kansas on
the west. It contains slightly more
than three-quarters of total acreage
and produces about four-fifths of
the entire crop. The Southern oats
belt includes Maryland and Delaware,
the states south of the Potomac and
Ohio rivers, Oklahoma, Texas, Ar-
kansas and Louisiana.

The Cracker State
The motto of Georgia is "Wisdom,
Justice and Moderation." Its flower
is the Cherokee rose and its unoffi-
cial bird, the brown thrasher.

**OFFICE
SUPPLIES**

Ink-Out Erasers
Staples
PIN TICKETS
Large Size Manila Envelopes
Thumb Tacks
Scotch Tape

AT THE

SLATONITE

Home Furniture Co.

"Furnisher Of Your
Home's Furniture"
112 Texas Ave. Phone 9

O.A. Cunningham

Frozen Food Lockers
LOCKERS FOR RENT
BEEF & PORK AVAILABLE
AT ALL TIMES . . .
709 College Ave.
Lubbock, Texas

DR. B. E. BUSCH
Chiropractic Service Clinic
Electro Therapy - Infra-red-lights - Diets
Scientific Adjustments
Phone 565 Hours 8:30-6:30 150 N. 8

TONTINE SHADE SHOP

"HOME OF THE BLIND PEOPLE"

Manufacturers of
WINDOW SHADES — VENETIAN BLINDS

1107 19th St. Dial 7861
Lubbock

THE AMERICAN WAY



Moon Televised



WASHINGTON, D. C.—(Sound-
photo) — The Man in the Moon
wasn't around when this close-up
of the moon appeared on the tele-
vision screens in the first regularly
scheduled public telecast.

—WANT ADS GET RESULTS—

★ **SAVE** ★

BUY STAR TIRES
AND YOUR HOME
APPLIANCE NEEDS AT
**LUBBOCK TIRE &
APPLIANCE CO.**

★ 1519 Ave. H.—Lubbock ★

FOR
PLUMBING
HEATING
AIR CONDITIONING
REPAIRS
BRASFIELD
PLUMBING SHOP

**NOTICE OF INTENTION TO
INCORPORATE**

Notice is hereby given the pub-
lic of the intention of the owners
of the Slaton Motor Company, of
Slaton, Lubbock County, Texas, to-
wit, H. G. Stokes, Aileen Stokes,
and E. R. Childress, to incorporate
said business under the laws of
the State of Texas, using the cor-
porate name, "Slaton Motor Com-
pany." 423

Copied From Ming Porcelain
The design on ceramic tiles made
in 17th century Holland often was
copied from those of the famous
Ming porcelain of China.

**TEXAS
ROOFING COMPANY**
Roofing, All Kinds,
Overhead Doors
Window Type, Evaporative
Air Conditioners
1902 Ave. F., Lubbock, Tex
Telephone 8577

Learn To Fly

With The
**E&L Flying
SERVICE**
Piper Cub Dealer
C.A.A. & G.I.
Approved School
Pleasure Rides



See our display of Granite Monu-
ments, or our representativ
will call at your invitation.

**South Plains
Monument Co.,**

2909 Ave. H Lubbock

Panacea of Fruits
Rhubarb once made quite a name
for itself as a "cure" for almost
every spring ailment. Later, people
discovered that it could be made
into good pies — hence, the popular
name "pieplant." Aside from its
generous quantities of vitamins A
and C, it contains a fruit acid which
nutritionists say is good for the di-
gestion. Rhubarb leaves never
should be eaten as greens.

Extended Coastline
Due to the many indentations, the
coastline of Norway is equal to the
circumference of the earth.

ODIE A HOOD
REPRESENTING
Southland Life Insurance Co.

WOODMEN OF THE WORLD
Camp No. 2871
Slaton, Texas
Meets 1st. & 3rd. Mondays
7:30 p. m. Woodman Hall
Over Teague Drug

Auto Repairing
ALL MAKES, ALL KINDS
ALL WORK GUARANTEED
100%
Pete Grandon
and
Leo Wendel
218 Texas Ave. Phone 583

KRUEGER, HUTCHINSON AND OVERTON CLINIC
Lubbock, Texas

| | |
|--|---|
| GENERAL SURGERY J. T. Krueger, M. D., F.A.C.S. J. H. Stiles, M. D., F.A.C.S. (Ortho) H. E. Mast, M. D., F.A.C.S. (Urology) | INFANTS AND CHILDREN M. C. Overton, M. D. Arthur Jenkins, M. D. J. B. Roundtree, Jr., M. D. |
| EYE, EAR, NOSE & THROAT J. T. Hutchinson, M. D. Ben B. Hutchinson, M. D. E. M. Blake, M. D. | INTERNAL MEDICINE W. H. Gordon, M. D., F.A.C.P. R. H. McCarty, M. D. |
| OBSTETRICS O. R. Hand, M. D. Frank W. Hudgins, M. D. (Gynecology) | GENERAL MEDICINE G. S. Smith, M. D. (Allergy) R. K. O'Loughlin, M. D. |
| X-RAY AND LABORATORY A. G. Barsh, M. D. J. M. Felton, Business Manager | |

FOR PROMPT ATTENTION
AND EXPERT WORK
N. J. Wicker
FOR
ELECTRICAL
Wiring and Repairs
665 So. 9th St. Phone 47-M

**DOCTORS
CAULEY & WELCH**
OPTOMETRISTS
1114 Ave. L. Dial 7180
Lubbock, Texas
(One block west Hotel Lubbock)

NEW HEAVY 16" CASING
\$3.75 A FOOT
Early Delivery With Genuine Byron Jackson Pumps.
Make Your Reservations Now—
F. M. DENTON
"DEPENDABLE IRRIGATION EQUIPMENT AND SERVICE"
Dealer For ATLAS PORTABLE IRRIGATION SYSTEMS
Attractive Yearly Payment Plan
2201 4th. Street Dial 4209

NOTICE STOCKMEN
WE PICK UP DEAD STOCK
No Charge
KIRK'S SERVICE STATION
SLATON PHONE 573

Churches

CALENDAR

SUNDAY:
 Bible Classes 9:45 a. m.
 Morning Worship 10:50 a. m.
 Youth Meetings:
 Methodist 6:15 p. m.
 Baptist 6:30 p. m.
 Presbyterian and Christian
 Youth Fellowship 6:15 p. m.
Evening Services:
 Church of Christ 7:30 p. m.
 Methodist 7:30 p. m.
 Baptist 7:30 p. m.
 Presbyterian 7:30 p. m.
 First Christian 7:30 p. m.

MONDAY:
 Missionary Programs.

TUESDAY:
 Baptist Choir Practice, 7:30.

WEDNESDAY:
 Methodist Choir Practice, 7:30.
 Baptist Prayer Meeting, 7:30.
 Study Course, First Christian,
 7:30 p. m.

THURSDAY:
 Church of Christ, 7:30.
 Presbyterian Choir Practice,
 7:15.

The God Of Hezekiah..

Rev. Cal Wright of the Methodist Church brought in the following editorial taken from the Abilene Reporter-News and with which he was very much impressed as to its applicability to our times:

Sennacherib, king of Assyria— Old Funny-whiskers — was doing pretty well until he ran up against the king of an insignificant little broad-place-in-the-road and met the first major frustration of his brilliant career of conquest and extortion.

That would be approximately 2650 years ago. Assyria-Babylonia, called by historians the cradle of civilization and by their contemporaries the Twin Terrors of the Tigris, were alternately or jointly masters of Western Asia.

Sennacherib's father, Sargon, was the Alexander of his time. Before he was assassinated in his palace, King Sargon had spread his empire from the Black Sea to the Persian Gulf, and from the Mediterranean to the borders of India.

Some of the quislings set up by Sargon became restive after the old king's death and tried to throw off the yoke. Babylon, momentarily secondary to Assyria in the scheme of things, suffered a second visitation by Merodach-

baladan. This bold Chaldee was promptly sent flying by Sennacherib's Molotov, and Bel-Ibni was appointed in his stead.

Then Sennacherib set out to subdue other restive segments of his empire and met with resounding success until he came to Jerusalem.

He sent a blasphemous letter to Hezekiah, king of Judah, demanding capitulation and pointing out that the kings of Assyria had destroyed many peoples, and their gods along with them. Why did Hezekiah suppose his God could be more powerful than the gods of other lands?

First, Hezekiah tried appeasement: he gave Sennacherib the gold doors of the temple, and all the silver in the house of the Lord. No good. Appeasement didn't work any better in B. C. than it has in A. D.

The good and great King Hezekiah took his problem to the Lord, and through the mouth of his prophet Isaiah the Lord brushed off the upstart Assyrian with scant ceremony. Who is this Sennacherib? the Lord asked. Why, the daughter of Zion had despised him and laughed him to scorn; the daughter of Jerusalem had shaken her head at him. Sennacherib had made easy conquest of other places because they were sinful and knew not the Lord. Their gods were false gods.

But as for Sennacherib and his blasphemy, why: "Because they rage against me and thy tumult is come up into mine ears, therefore I will put my hook into thy nose, and my bridle in thy lips, and I will turn thee back by the way which thou comest."

In short, as for the king of Assyria, "He shall not come into this city, nor shoot an arrow there, nor come before it with shield, nor cast a bank against it. For I will defend this city, to save it, for mine own sake, and for my servant David's sake."

That very night, the Scripture says, the angel of the Lord went out to the camp of Sennacherib and smote the Assyrians so that 185,000 of them died. "They were all dead corpses."

Sennacherib escaped, only to be put to death by two of his sons later while worshipping in the house of his little tin god, Nisroch.

The Higher Critics may be able to point out a few historical inaccuracies here and there in this story as told in II Kings, but there is plenty of historical evidence to sustain the belief that those who put their trust in false gods come to a bad end sooner or later, and that those who believe in and trust God are usually justified of their faith in one way or another.

Illinois Farm Output

The major crops grown in Illinois are corn, soybeans, oats, winter wheat and tame hay; they account for over 95 per cent of the total acreage of crops harvested.

New Officers Are Announced For United Council

At the last Fifth Monday meeting, the United Council of Church Women elected new officers as follows: Mrs. Dudley Berry, President, and Mrs. Earl Reasoner, Secretary-Treasurer. Mrs. Berry has appointed the following chairmen and committee members: Program, Mrs. R. H. Todd, chairman, Mrs. H. S. Crews, Mrs. Elbert Lovelless, and Mrs. Arthur Dennis. Reporters, Mrs. W. E. McCain, Mrs. Carl Lewis.

The next regular meeting will be held May 31, at the First Christian Church.

W.S.C.S. Meets For Study Course

The Women's Society of Christian Service of the Methodist Church met at the Church Monday afternoon, with Mrs. J. H. Brewer presiding.

Mrs. Sug Robertson led the study entitled, "Committed Unto Us."

Several of the Slaton members were planning to attend the District Conference of the W.S.C.S., which met in Brownfield Thursday of this week.

MRS. C. A. PORTER IS HOSTESS TO CLASS

The Loyal Workers Class of the First Methodist Church met in the home of Mrs. C. A. Porter, April 8 at 3 p. m.

Meeting was called to order by Mrs. Otis Browning, acting president. Prayer was offered by Mrs. S. P. Ferguson. Roll call was answered with Scripture verses. Business was discussed, appointments made and Mrs. Fondy was chosen as recreation leader. Reports were heard.

Mrs. Baugh brought the devotional subject, "Love." I Cor. 13, was read.

Mrs. C. L. Heaton gave a reading on, "Service in Small Things." Mrs. Cal Wright gave a talk on, "Missionary Work and Needs."

Closing prayer by Mrs. Wright. Refreshments were served to seventeen members and three visitors.

The class will meet again May 13th in the home of Mrs. W. E. McCain at 205 N. 5th.

Jordan Unnavigable

The Jordan, which forms part of Palestine's eastern boundary with the newly independent state of Trans-Jordan, is not considered navigable. Canoeists, however, have paddled its calm stretches and shot its rapids, crossing old routes of the Israelites and visiting New Testament sites.

Enough Books for All

Nearly two and a half million books are now in the libraries of the various campuses of the University of California.

SEE HOW YOU SAVE!



- Pineapple CRUSHED NO. 2 CAN 30c
- Orange Juice ADAMS 46 OZ. CAN 25c
- Grapefruit Juice 46 OZ. CAN 15c
- CHERRIES RED, PIE NO. 2 CAN 25c

SUGAR
10 POUNDS
83c

DREFT
LG. BOX
29c

COCONUT
1/4 LB. PKG.
19c

CRUSTENE

SHORTENING 3 Lb. Can

\$1.03

15c

BOX
15c

POUND
53c

PRESERVES

PURE GRAPE, TASTEST
POUND JAR
19c

TOMATOES

NO. 2 CAN
12 1/2c

LG. CAN
22c

2 1/2 CAN
35c

"Attention Housewives"
BRING US YOUR COUPONS FOR SOAP

- Cashmere Boquet 12c
- Super Suds 35c
- VEL 29c
- Palmolive, bath size 14c
- TEA, 1-4 lb. Schillings 23c
- TAPIOCA, Minute 18c
- OLEO, Mayflower, lb. 37c

CELERY
ea. 15c

BANANAS
lb. 15c

GRAPEFRUIT
REDS, POUND **5c**

RADISHES
BUNCH **5c**

LETTUCE
POUND **10c**

BEST QUALITY

BEEF SHORT RIBS
POUND **39c**

BEEF ROAST
4-H CLUB, POUND **59c**

SAUSAGE
PURE PORK, POUND **43c**

FISH
BONELESS PERCH, POUND **49c**

HAMS
1/2 OR WHOLE, POUND **63c**

PORK ROAST
POUND **55c**

BABY WEEK

April 24
to
April 30



and we take this occasion to call your attention to the fact that we have one of the largest stocks of ...

Baby Needs in West Texas

including the best in Baby Cosmetics, and Items for Babys good health, comfort and convenience, and our prescription department gives extreme care to the filling of prescriptions for the Baby ...

SLATON PHARMACY

Headquarters for Nationally Famous Brands
PIGGLY WIGGLY

CARD OF THANKS

We wish to thank the many friends for their acts of kindness and words of sympathy during the illness and death of our beloved husband, father and grandfather, Mr. W. W. Ward. Words cannot express the depth of gratitude and appreciation we feel in our hearts for your thoughtfulness. May God's richest blessings be yours in our prayer.

Mrs. W. W. Ward and Children

Free Mail for Soldiers
American soldiers who fought in the Revolutionary war had the privilege of postage-free mail just as do present-day servicemen. The franking privilege was first granted in the United States in January, 1776, to the soldiers engaged in the American War of Independence.

Mahon Reports On Washington



GEORGE MAHON

Most West Texans will approve the action of the House of Representatives last week with respect to two important subjects, public roads and the U. S. Air Force.

The House approved a new three year public roads program to succeed the program which is now being completed. Under the new law a total of \$1 1/2 billion dollars will be expended by the Federal government over a three year period. The money will be spent in cooperation with the states for various phases of public road construction, including farm-to-market roads.

The bill approved by the House for the Air Force provides funds for a total of 2900 modern military aircraft. An additional 1500 planes are provided for the Navy. The number of additional planes for the Air Force is far in excess of the number originally requested by the President. This increase was provided in view of the unsettled world conditions and refusal of Russia to cooperate in our efforts to promote peace. I spoke in favor of the program for the expansion and modernization of the Air Force and served as a Member of the Committee which wrote the legislation and presented it to the House for action.

The passage of this legislation for an expanded and improved Air Force is one of the most significant and important steps taken by Congress since V-J Day. Undoubtedly the American people favor such a program. We had some difficulty in the House in securing passage of an important amendment, but on final passage of the bill the House was almost unanimous, passing the measure with only three dissenting votes.

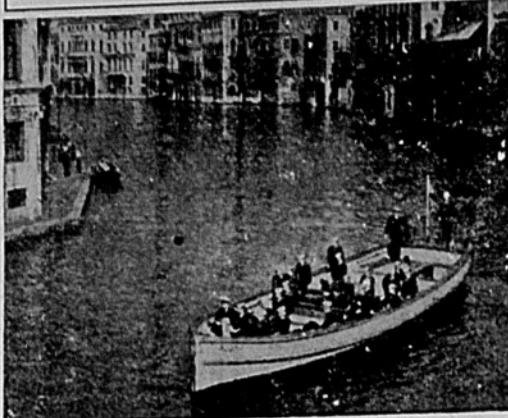
Boys' Blouses

In sewing for small boys who wear their trousers buttoned to a blouse, make the blouses long enough to allow for moving buttons down. Turn up a wide hem on the bottom of the blouse, and use it as a stay for the buttons, or sew twilled tape on the underside of the waistline for the same purpose.

Protected Fields

Fields lying next to forests are seldom damaged by hail storms. Because the temperature of the trunks, branches and twigs of the forest trees is lower than the temperature of the air, dew is formed and carried over near-by fields by air currents. The resulting fog protects the fields from hail in the summer and from frost in the spring and fall.

GONDOLA, NAVY MODEL, ON GRAND CANAL



(Official Navy Photograph)

Bluejackets Tour Venetian 'Main Street'—Crew members of the USS Yellowstone give a sailor's version of a busman's holiday as they enjoy a sightseeing trip through picturesque Venice. The main water artery cuts through the city for two miles and from it the sailors could view the many churches and palaces for which Venice is famous.

SOUTHLAND MRS. FLOY KING

The Baptist Revival is being conducted this week at night only. Rev. Nixon, the local pastor, is doing the preaching.

The Junior-Senior Banquet was held at the Hilton Hotel in Lubbock Friday night.

Mr. Brooks and his pupils had a weiner roast Friday night and afterwards Barbara Brooks, Cieta Fern Lewis and Evelyn Claiborne were guests of Sybil Smith.

Robert Sartain of Slaton spent Sunday with the Samson Gillilands.

J. G. Gray of California and Arizona is visiting old friends here.

The J. F. Winterrows visited relatives in Lubbock Sunday.

Mrs. Ruby Ellis and children visited her sister, Mrs. O. E. Boyd and family of Crosbyton Friday night.

Connie Shelton left for Houston Thursday to visit Mr. and Mrs. Carlos Waggoner and plans to try to find work there.

Mr. and Mrs. Alford Basinger and baby are visiting their son, Harlan Basinger and family in Houston.

John Stotts of Lubbock spent the week end with his son, Harvey Stotts and family.

Mrs. Edd Denton has been visiting relatives in New Mexico.

Roy King of Bellflower, Calif. is here visiting his brothers, Grady and Clyde King, and families, and his parents, the E. L. Kings of Lubbock.

Mr. and Mrs. Juan Reyes and little daughter, Josephine, and Josephine Zomma left by train Thursday for California. They will spend a few days at Los Angeles

and San Diego before going to Fresno to visit their children, Joe Reyes, Manuel Reyes and Mary Rocha, and their families.

Mrs. Smith spent part of last week with her son, Howard, of Muleshoe.

Mr. and Mrs. C. Spurlock and children of Lubbock spent the week end here with her sister, Mrs. Kenneth Davies, and family.

The T. L. Weavers spent the week end with her mother at Levelland.

The girls and boys played Wilson in Volley Ball Friday. Southland won two games and lost four to Wilson.

Mrs. Noel Oats underwent surgery recently at Mercy Hospital.

Little Mike Merrell had his appendix removed last Friday a week ago at Mercy Hospital.

Lawrence Herschel King, who has been in Mercy Hospital with pneumonia was removed to his home Saturday.

Mrs. August Becker is home after being in Mercy Hospital for several days.

We still have mumps and now measles have started in our community.

The Freshman Class party was enjoyed by about 24 boys and girls Thursday night at the Gym. They served ice cream and cake after playing games. Their sponsor, Mrs. R. Tillery, had charge.

The Ladies Aid of Southland Lutheran Church held their monthly business and social meeting at the home of Mrs. Marcus Wilke, Wednesday afternoon. Rev. Pohlman opened the meeting with a scripture reading and prayer, followed by readings by two of the ladies. Those present were Mesdames Pohlman, Gertrude Gindorf, Marie Klessel, Selma Klessel, Lena Voight, Bessie Becker, Elsie Beck-

er, Pauline Siewert, Erna Klaus and Sidonia Wilke.

Mr. and Mrs. Alvin Gary of Southland were injured Wednesday evening when the motorcycle they were riding collided with the rear of a truck driven by E. O. Lee of Dalas. Alvin Gary, 24, suffered a mangled leg and cuts and bruises and Mrs. Gary, 20, suffered a fractured pelvis. The accident occurred one mile east of the Y on the Slaton Highway. The driver of the truck was not injured. Both Mrs. and Mrs. Gary will be hospitalized for some time.

Soap Powder

To convert bar soap into soap powder, be sure the soap is well dried. Cut it into small pieces and run them through the meat grinder. Then let them dry thoroughly and pulverize them.

- PENCILS
- MARKING TAGS
- PENCIL SHARPENERS
- SHIPPING TAGS
- LETTER TRAYS
- TAPE DISPENSERS
- RING BOOKS
- Punches of all sizes
- SECOND SHEETS
- ONION SKIN PAPER
- ERASERS, RUBBER BANDS
- RING BOOK FILLERS
- INDEX FILES
- CARD TRAYS
- Informal Cards and Envelopes
- WEDDING INVITATIONS
- SPARTAN DESK PIN

SLATONITE

Remove Broken Shell
If bits of shell fall into the pan when cracking eggs, don't try to remove these bits with a spoon or a fork. Take a sizable piece of egg shell. The sharp edge of shell cuts white, making it easy to remove pieces.

Almond Hulls for Cows
To determine the value of dried almond hulls as feed for dairy cows, tests are being conducted at the University of California. Early tests showed that although hogs refuse to eat almond hulls they are eaten readily by dairy cows.

TIME FOR NEW

SLIP COVERS AND DRAPES

SEE US



SPRADLEY'S UPHOLSTERING
We Can Give You A Good Selection

FOR GIFTS TO PLEASE

We Suggest:
DIRILYTE FLATWARE
STERLING SILVERWEAR
TIP-TOE IRONS
RED WING POTTERY
BRASS WEAR
ELGIN VANITIES
COSTUME JEWELRY
LAMPS...
Decorative Plates,
Baby Gifts, and
Many Gift Items
for
GRADUATION
and
MOTHERS DAY
AT THE
Slaton
Decorator
and
Gift Shop
On North Side
Of Square

ELECTRICIAN
For Electrical Wiring and
Repairing of Quality
C. M. MAGUIRK
WORKSHOP ALLRED'S PLUMBING SHOP
RESIDENCE: 1400 S. 5TH. PHONE 128

Thanks

To the business firms who so generously cooperated with this organization by donating many prizes and by advertising our...

Womanless Wedding

We wish to express our sincere appreciation... Your help was instrumental in making the undertaking a success.

SLATON LIONS CLUB

SPECIALS
That Are The Talk of The Town

| | | |
|--|---|---|
| CIGARETTES CARTON \$1.69 | SHORTENING ADVANCED, 3 LBS. 95c | COFFEE MAXWELL HOUSE, 1 LB. 53c |
| PEACHES HEART'S DELIGHT, LARGE CAN 27c | CATSUP WHITE SWAN, 14 OZ. BOTTLE 21c | LETTUCE LARGE HEAD 15c |
| PEAS WALLA WALLA, FANCY SWEET 15c | CREAM STYLE CORN REINBECK, NO. 2 CAN 16c | TOMATOES CARTON 30c |
| ORANGE JUICE LARGE CAN 25c | FLOUR SUNNY BOY 25 lbs. \$1.89 50 lbs. \$3.89 | GROUND MEAT POUND 45c |
| APPLES POUND 12c | CARROTS BUNCH 10c | OLEO ALLSWEET, POUND 39c |
| | | CHUCK ROAST POUND 55c |
| | | LOIN STEAK POUND 79c |
| | | BACON DRY SALT, POUND 42c |

Texas Grocery & Market
WE DELIVER PHONE 7 V. O. NEWTON, MANAGER

FOR SALE OR TRADE
NEW 10 Column
REMINGTON - RAND
Adding Machine
HAND OPERATED
WITH SUBTRACTION
AT THE
SLATONITE

SLATON PUBLISHING COMPANY, Slaton, Lubbock County, Texas
 Slaton Times purchased 1-20-27.
 Entered as second class mail matter at the postoffice, Slaton, Texas.
 A. M. JACKSON, Editor and Publisher

ADVERTISING RATES
 Display Advertising 50 cents per column inch to all agencies, with usual discounts.
 Local Readers, set in 8-pt. 10 cents per line of five words, net. To agencies, 10 cents per line with usual discount.
 Card of Thanks, 75 cents.

NOTICE TO THE PUBLIC—Any erroneous reflection upon the reputation or standing of any individual, firm or corporation, that may appear in the columns of The Slatonite will be gladly corrected when called to our attention.

Obituaries, Resolutions, Memoirs (excepting accounts of death, news originating in this office,) 5 cents per line. Poetry 10c per line.

SUBSCRIPTIONS IN ADVANCE
 Lubbock, Lynn, Garza Counties, \$2.00. Outside these counties, \$2.50.

want to be bothered about the weather unless someone sees a cloud.

When I complimented Harry Stokes last week upon the fact that there were several spots on his desk that were bare and not covered with unanswered letters, unpaid bills and scraps of papers covered with notations that he could not decipher. Harry said that he cleans his desk at least once each week by pushing everything off into the trash can and that he gets along fine however he reported that his friend Judge Smith is very careless and does not even open his letter. Harry sent Judge a check for \$10.00 not long ago and discovered several weeks afterwards that the check had not been cashed. When he asked Judge why he had not cashed it Judge said that he thought that the envelope was another dunn and that he had thrown it into the trash can.

There is one advantage in living in West Texas . . . you can enjoy more different kinds of weather in one day than you can in most parts of the country in two months.

Last Sunday morning the weather was cool, by noon it was hot, at six o'clock we had a sand storm, at seven it was hot again, at eight three drops of rain fell, at nine my wife was complaining of being cold and when we went to bed at ten it was so warm that a sheet felt like a wool blanket.

From now until the first of July one should never start out on any trip over ten miles without a fan, an overcoat, a rain coat and an aspirin, that is if you live in West Texas. But after all it is better than being down in the East Texas bottoms where it gets boiling hot on the first day of May and seldom gets below 100 until Christmas.

A broker, newly moved to the rural community, ordered an elaborate, pre-fabricated chicken house. Receiving word that it had arrived he set out with a truck and houseman to bring it home.

No one was about when he finally located the railway station, but there was the chicken house. They soon had it loaded on the truck and were on their way.

Half a mile up the road, they passed a little man in blue, with

"Station" "ster" written on his cap. He took a look, shouted wildly for them to stop. "Whatcha think you've got on that truck?" he asked.

"Why, my new chicken coop," said the broker.

"Chicken coop, heck," shouted the official. "That's Grisby Junction!"

After a lengthy examination, the doctor told the patient that rest was the answer to his illness. "The best thing for you to do," said the doctor solemnly, "is to give up drinking and smoking, get up early in the morning and go to bed early at night."

The tired gentleman looked up at the man of medicine. "Somehow," he said, "I don't deserve the best. What's second best?"

The tiny brat on a fire escape in the Dead End district was hurling

debris and shouting abusive language at a passer-by, who shook his fist at the moppet and said: "C'mon down here and I'll beat the living daylight out of you."

"C'mon down?" responded the moppet. "Why, ya creep, are ya nuts? I can't even walk yet!"

Wire baskets, regular and large sizes at the Slatonite.

One only 2 drawer steel letter box at the Slatonite.

CARL POOL

Safty flight

ACTION BACK



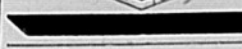
TALON ZIP JACKET

FRONTIER SUITS

For Sports and Leisurewear

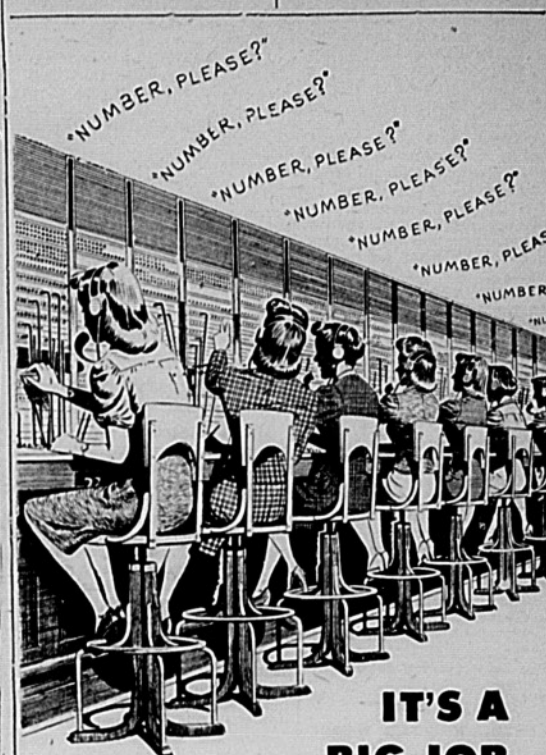
For Every Man Who Works Or Plays Outdoors

Made of preshrunk and mercerized fabrics. Jackets with zip front and chest pocket, sports back, self adjusting buckles; full rayon lining. Pants to match bartacked reinforced. Five pockets plain bottoms for wear with or without boots. Smartly styled for every outdoor use — at work or play.



Walnut Capital
 Not California, but Kansas City, Mo., is the walnut products capital of the United States, leading all cities in the manufacture of walnut products. During World War II, Kansas City produced more walnut gun stocks than any other area.

Record Horsepower
 The installed electric horsepower capacity of the U. S. is now about 1,400,000,000 or equivalent to a force of working men about 100 times greater than the entire population of the nation, according to SKF statistics.



IT'S A BIG JOB THESE DAYS

One of the first things a new telephone operator learns is to be always ready for the next call—your call—anybody's call!

Operators have a lot of calls to handle nowadays. There are more telephones in use than ever before and calling is at an all-time high. The switchboard at times is literally ablaze with lights—each one calling for "Number, please?" and each one getting a "Number, please?" as quickly as skilled and courteous operators can manage. If your call is not answered at once, you'll know that nimble fingers will reach it as soon as they possibly can.

As soon as much-needed new equipment can be obtained and installed, we'll be ready to handle your calls quicker and better than ever before.

SOUTHWESTERN BELL TELEPHONE CO.

JUST TALK

by **A.M.J.**



There is something about the Lions Club that I like and that is that they do things and they do not fiddle around when it comes to getting their tasks accomplished, in other words they are not fuddy duddies. There are a lot of folks and organizations that have plans for accomplishing great things, for themselves and their communities, but it takes so long for them to get going that the enthusiasm trickles out.

Hack Lasater is one of the most active members of the Lions Club and I'd like to take my halo off to him and to George Brassell, Clark Self, Bill Sledge and Melvin Tudor for their activities with the Lions Club. Hack is one of the busiest men in Slaton and Mrs. Hack is not far behind him when it comes to knowing what is going on.

If there is anything you would like to know ask her.

My friends have been of very little help to me in suggesting things to eat for dinner and the evening meal, whatever that is supposed to be called. In my language the three meals are: breakfast, dinner and supper, but with the women my wife has come to the house it is breakfast, lunch and dinner and those who I have interviewed on what they have at their house at the evening meal have been very uncooperative or else the husbands are getting mighty little to eat, a fact which their figures belie.

It occurred to me that some of my friends might be kind enough to tell me what they go home and cook for supper each night but to date I've had no help whatever and this is an SOS to all men for some suggestive help.

My efforts in the past have been

opening canned soup, a can of deviled ham, hard boiling eggs, ham sandwiches, fried eggs and hamburgers, but with spring coming on and my thoughts lightly turning to a change in menu, I would greatly appreciate a little help. Leonard Harral, who lives next door, says that he opens up a can of fruit and pours cream over it or eats Post Toasties. Doc Crow on the other side, I am surrounded by automobile dealers and have an old wreck car every three months, says that he eats soft boiled eggs most every night. Mrs. Crow and Mrs. Harral say they just go in and pick up most anything that is left over from dinner and all the women claim that they pay no attention to the evening meal at all. Most of the men say they get up and cook their own breakfast and I have not been able to find out a thing about what the average noon meal is but what ever it might be, it certainly takes a terrible lot of fine cabinet space in the average kitchen to turn out the one meal that most housewives even make much of an attempt to cook. Has any one in Slaton seen an old fashioned biscuit in the past ten years. Personally I doubt that many children under ten years old in Slaton would know what a biscuit is if he or she could see one. Oh for the good old days!

Last week a farmer said to me that he would welcome any kind of moisture even if it comes in a two foot snow fall. While such a load of snow is most unlikely it could happen. Several people have told me of snow falling on the South Plains as late as June. Personally I am beginning to feel about the same as the above quoted farmer. He reminds me of the negro who was on a transport during the war. He became sea sick and when another negro came rushing to him with the exciting news that the ship was about to be torpedoed by a German submarine he said "don't bother me unless you see a tree."

The drought is getting so long and drawn out and the chances for a rain so remote that I do not

Need a LAXATIVE?

Black-Draught is 1—Usually prompt 2—Usually thorough 3—Always economical 25 to 40 doses only 25¢.

BLACK-DRAUGHT

CAUTION: USE ONLY AS DIRECTED

It's a Treat

TO TAKE THE SEAT OF A WHIZZER-POWERED BIKE

Enjoy Life Outdoors

Treat yourself to a wonderful experience. Come in for a free ride on a Whizzer-powered bike. You'll appreciate its smooth, effortless performance and 6 Miles for a penny operation.

WHIZZER BIKE MOTOR

A Whizzer Motor Fits All Popular Makes Of Mens Ballon Tire Bicycles. Goes 125 Miles On A Gallon Of Gas . . .

Still Only \$103.50 Complete COMPLETE MOTOR BIKES, REBUILT BIKES & MOTORS COMPLETE WHIZZER SALES AND SERVICE GENUINE SCHWINN BICYCLES ELECTRIC MOTORS GAS ENGINES

DON BOURN

650 So. 9th St. Phone 297-J

RIDE ONE AND YOU'LL BUY ONE!

... to help Uncle Sam come thru..

AND HELP YOURSELF, TOO.. Reduce your use of grains to a minimum through greater use of pastures, roughages and protein.

Take full advantage of available supplies of Protein Concentrates to produce milk and meat at less cost.

West Texas Cottonoil Co.

PROFITABLE WAYS TO SAVE GRAIN...

FEED COTTONSEED MEAL & CAKE FOR PROTEIN

Have you seen this amazing new Range?

The MAYTAG Dutch Oven Gas Range

- Cooks superbly by conventional cooking methods
- Cooks automatically; you don't even need to be there
- Cooks by the never-equalled Dutch Oven method

Come in today and see its many features. See the Sizzle Service Broiler, shown at left. See how the Spiral Flame burners focus the heat—and save gas. Note how easily it's kept sparkling clean, because top and burner bowls are all in one piece of porcelain. In every way you'll find the Maytag Dutch Oven Gas Range is truly outstanding. See it right away!

Slaton Furniture Co.

101 W. Garza Phone 584

The Gospel of Christ

A MESSAGE TO INSPIRE CHRISTIAN UNITY

J. LLOYD MOYER Phone Box 583, Res. 295-J Slaton, Texas Office 333

SUBJECT: LIFE GIVING WORD

Rom. 1:16 I Cor. 9:16 Gal. 1:18

"Having been begotten again, not of corruptible seed, but of incorruptible, through the word of God which liveth and abideth,"—I Peter 1:23.

The best evidence of the divine inspiration of the Bible is the very word itself, and the above text of life-giving word is an outstanding example. As in natural propagation, life only can produce life, so spiritual life must be and is produced, by the seed of the kingdom which Jesus said was the word of God and in which he has placed the germ of immortality.

What a thrilling experience it must have been for the apostles in Jerusalem as they preached the first gospel sermons; to see thousands converted to the new religion, with new hearts, new spirits and new lives, unlike anything ever witnessed before! With a fellowship and love that caused them to sell their property so that none should lack, the "whole multitude of them that believed were of one heart" and "great grace was upon them all." All this by the simple process of Christ's gospel being preached and by them believed and obeyed.

Perhaps it is not so simple after all, for, as scientists have never been able to see the germ of life in a kernel of grain, so no man is wise enough to discern how God puts into His word His spirit and life, true as we know this to be. Romans 1:16 declares the gospel of Christ is the "power of God unto salvation." No wonder of earth is more profound than that of a wicked man converted to Christianity by the word of God which by faith he has received into his heart. Once worldly and evil, he is now holy in life, charitable in heart, his life a benediction in his community, and "having favor with all the people."

This Word by which Christians are begotten is an "incorruptible seed." It is not strange, with all the error and change since the Bible was given, that it is still as pure and uncorrupted as it came from the lips and pen of inspiration? All else has perished and decayed, but the perils of opposition, of wars, the Dark Ages, and wisdom of the world have left it unimpaired. Wherever it has touched a country, that country has pulled away from the other nations in progress; wherever it has touched a community, the whole population sees its uplift and advancement; and wherever it has been truly received into a human heart, it has made a little of heaven, and if it abide, that soul shall be preserved alive forever.

"IT IS WRITTEN."

Early in sacred history we find the revealed Word finding lodgement on parchment, papyrus and tablets of stone, so unerringly recorded by inspired men that it was said to be "written by the finger of God." As Christ's gospel was preached, by the Holy Spirit, began to write it down. By the close of the first century, the writing of the Scriptures had been completed, and the closing verses of John's Revelation, like a holy seal, enjoins all men forever against any addition, or taking therefrom. In due course of time the inspired writings were compiled into the Bible, universally recognized as the foundation of the Christian faith.

The CHURCH of CHRIST

SLATON, TEXAS

Mrs. Meading Will Lecture To Child Study Forum

Mrs. P. G. Meading, first grade teacher in West Ward School, is to lecture to the Slaton Child Study Forum, which meets Wednesday, April 28, in the chapel of the Methodist Church, at 4 p. m. The lecture topic is to be, "Art and Music Appreciation for the Pre-School Child."

A nursery will be open, supervised by Mrs. Mack's troop of Girl Scouts. Facilities will be prepared to care for any pre-school age child. The lecture is open to all mothers of pre-school age children.

A social hour and business meeting is being planned for the May meeting. The play school, sponsored by this group, will be conducted through May. It is held on Wednesday mornings from 9:30 until 11, in the Children's division of the Methodist Church.

Jr. Civic-Culture Club Met Tuesday

The Junior Civic and Culture Club met Tuesday night in the home of Mrs. Don Hatchett.

Twenty-three members answered roll call with miscellaneous items.

Mrs. E. B. Morgan was in charge of the program and presented Mrs. Gus Clevenzer, who gave a lecture on "The History of the Navajo Race."

The hostess served delicious refreshments.

BLUEBONNET CLUB MEETS

The Bluebonnet Club met Wednesday, April 14, in the home of Mrs. R. C. Sanner, with 19 members answering roll call with remembrances of Easter Styles. A social hour of visiting and sewing was enjoyed.

The next meeting will be April 28, in the home of Mrs. Geo. Culwell and roll call is to be answered with household hints.

We have just received two new Underwood Portable typewriters. First here gets them at the Slatonite.

Mrs. Driver Bids Friends Farewell

A farewell party to her friends was given on Monday at 7:30 p. m. by Mrs. W. T. Driver in her suburban home. Mrs. Driver is leaving soon for California because of ill health. She expects to remain in California for an indefinite period after which she will make her home in Sweetwater.

More than fifty friends, members of her Sunday School class, Order of the Eastern Star, Past Matron's Club, neighbors and others enjoyed Mrs. Driver's hospitality.

Games were played, following which a refreshment plate consisting of chicken sandwiches, fruit salad, cakes and punch, was served. A surprise shower of personal gifts was given Mrs. Driver and with the hostess at the piano, the group sang, "Blest Be The Tie That Binds." Rev. W. F. Ferguson offered prayer at the close of the evening.

BIRTHDAY PARTY GIVEN PATRICIA SCHILLING

Mrs. W. J. Schilling gave a birthday party in her home Saturday, April 17, honoring her little daughter, Patricia, on her seventh birthday.

Games were played, pictures made, and refreshments of angel food cake and punch were served. Patricia received many gifts.

Those present were: Bobby Baxley, Clara Duckworth, Ronnie Burns, Donnie Burns, Peggy Merrell, Patty Merrell, Robbie Loy Merrell, David Ray Elder, Tommy Sanders, Cynthia Ann Clark, Linda Brown, Patricia McGinn, Linda Martindale, all of Slaton, and Mary Elder, Tommie Elder, Kimsey Lee Woods, and Peggy Jean Britt of Lubbock.

MRS. M. R. JONES IS HONORED WITH SHOWER

Mrs. M. R. Jones was honored with a lullaby shower Tuesday night in the home of Mr. and Mrs. H. C. Maxey, Sr., 435 Garza St. Decorations through the house were white and purple. The centerpiece was purple iris and white spirea. She received many beautiful gifts. Punch and cookies were served.

Society - Clubs

TCU JUNIOR CLASS BEAUTIES



Selected by vote of their classmates for full-page pictures in the "Favorites" section of the 1948 Horned Frog—TCU yearbook—are Jeanne Webb, Waxahachie; Mopsy Morrison, Midland; and Jo Ann Rutherford, Waxahachie.

Miss Hannah Is Hostess To Study Club

The Daughters of the Pioneer Study Club met Monday night in the home of Miss Wilda Ruth Hannah, with seventeen members and guests present.

Mrs. V. J. Johnson and Mrs. Troy Pickens were in charge of the program and presented as guest speaker, Mr. Howard Hoffman, who spoke on, "The United States In This Modern World."

Roll call was answered with current events. Delicious refreshments were served by the hostess. The next meeting will be May 3 in the home of Mrs. Melvin Tudor.

Artists To Exhibit Pictures Friday

The Slaton Art Club will hold their annual exhibit and tea at the Club House next Friday evening, April 30, from three until eight. All artists of this vicinity have been invited to participate.

Among the artists who will exhibit pictures is Mrs. Emma Hendricks, mother of Mrs. J. H. Adair, who will exhibit her best known painting, "Pala Duro Canyon." Mrs. Hendricks is listed in Who's Who, American Dictionary of Artists. She is also a member of the Southern States Art League, the Society of Independent Artists of New York, and the American Federation of Artists in Washington, D. C.

GIRL SCOUT NEWS

Troop No. 7, Girl Scouts, sent a box of sweets at Christmas time to Anne Zandbergen of Enschede in Holland. Anne's parents were members of the underground and her father was executed by the Germans the day before her town was liberated. The names of these girls were obtained through the Scout organization and each troop adopted one. Bonnie Holt of Troop 7, Slaton, wrote to Anne and recently received a very nice letter in reply. Anne does not know English, but a friend of her father helped her write the letter. She says she is ten years of age and has a sister nine, and a brother, ten. She wishes to know more about the Wrens, which is the name of the troop, of which Mrs. Herod is sponsor.

O. E. S. TO MEET TUESDAY, APRIL 27

Regular meeting of the Order of the Eastern Star is scheduled for Tuesday, April 27. Mrs. Birdie Culver, Worthy Matron, urges that all officers be present to practice for Friendship night, which is to be held April 30.

Royal Service Program Given In Young Home

The Royal Service Program of the Baptist W. M. U. was held Monday afternoon in the home of Mrs. Clifford Young. Twenty-one members and guests were present.

Mrs. R. L. Smith was leader of the program on, "That They May Have Life." Assisting her were the following: "Compassion," Mrs. Carter Shaw; "World Need," Mrs. Clifford Young; "We Care and Share," Mrs. W. F. Ferguson; "Not Weary in Well Doing," Mrs. J. B. Butler; "Gratitude," Mrs. J. C. Smith, jr.

Two songs were sung by Jackie Shepard, accompanied by Vinita Green. Prayers were offered by Mrs. T. E. McClanahan, Mrs. A. C. Strickland and Rev. W. F. Ferguson.

The meeting closed with a prayer song by Jackie Shepard. The hostess served refreshments.

FORMER RESIDENTS ARE VISITING HERE

Mr. and Mrs. Tom Dial of Richmond, Calif., are visiting Mrs. Dial's foster parents, Mr. and Mrs. Claud Herndon of Slaton, and other relatives and friends in Slaton and Lubbock. Enroute to Slaton they visited in Grand Junction, Colo.

Mr. and Mrs. Herndon accompanied them to Paris, Cooper, Vasco and San Angelo, where they visited relatives and old friends. They report a wonderful trip and some fine fishing at San Angelo.

They also report some few crops up, but most farmers were waiting for rain to plant. Some of them got the rain while the Herndons were there and they say the black mud is the same as it was thirty years ago.

Tom Dial was an employee of the Santa Fe railway when they lived in Slaton. After moving to Richmond he worked in the shipyards during the war. He is now employed at the Ford Plant.

PAST MATRONS MEET WITH MRS. SIMMONS

Past Matrons of the Order of the Eastern Star met Thursday night, April 15, in the home of Mrs. Clifford Simmons for their regular monthly business and social meeting. Nine members enjoyed the hour spent in the discussion of business and visiting. The hostess served ice cream and angel food cake.

SANTA FE WOMEN'S CLUB HAS REGULAR MEETING

The Santa Fe Women's Club met in the home of Mrs. W. M. Sanders. The Club decided that each member adopt for a day, an elderly, lonely woman for Mothers Day.

Exchange of Sunshine gifts was made and delicious refreshments were enjoyed by ten members present.

COBY DANTON SWAGGERTY ARRIVES IN ARIZONA

A boy, named Coby Danton, was born to Mr. and Mrs. Fred Swaggerty of Winslow, Arizona, April 14th. Mr. Swaggerty is the son of Mrs. F. S. Swaggerty of Slaton. Mrs. Swaggerty is the former Helen Johnson, daughter of Mr. and Mrs. Joe Johnson, also of Slaton.

Mrs. Harmon Thompson and daughter, Jane, spent the week end in San Angelo.

E. R. Legg returned Monday from Vernon where he spent a few days visiting in the home of his sister.

Paula Maxey To Represent Slaton At State Rally

Mrs. R. V. Carlton, Home Economics teacher, and Paula Maxey, who was elected official representative of the Slaton chapter of Future Homemakers of America left Wednesday of this week in a special chartered bus, along with 55 other girls from this area, to attend the State Rally being held in Galveston today and tomorrow.

On the way to Galveston the girls were to stop in Austin for a tour of the State Capitol, and on the return trip they were to stop in San Antonio for a tour of that city. They expected to arrive at home late Sunday night.

Bridal Shower Is Compliment To Mrs. Stevenson

Mrs. Bobby Ray Stevenson was complimented with a surprise bridal shower recently at the W. V. Brake Lome. Hostesses were Mesdames J. E. Brake, Dean Gilliland, M. Brown, C. A. Brown and Clifford Brown.

Pot plants decorated the party rooms where Mrs. J. E. Brake registered guests. Mrs. C. A. Brown presided at the refreshment table which was laid with a lace cloth and centered with an arrangement of spring flowers.

The theme of the party was a treasure hunt, the bride finding the beautifully wrapped gifts. The hostesses presented Mrs. Stevenson a set of dishes.

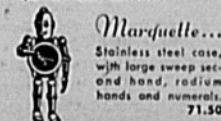
Timekeeping Perfection thru Multiple Protection



Mido MULTIFORT Superautomatic

The watch that reminds itself to rewind itself

See the handsome Mido watch. It's anti-magnetic, shock-resistant, and 100% waterproof. And should the case ever have to be opened or the crystal replaced, continued waterproof quality is assured by our skilled repairmen using genuine Mido parts. 17 Jewels with cases ranging from stainless steel to 14K gold. \$57.50 to \$240. Fed. Tax Incl.



Marquette... Stainless steel case, with large sweep second hand, radium hands and numerals. 71.50

LESTER'S 1010 BROADWAY LUBBOCK

SPECIALS

SUGAR 10 lb. BAG 83c

SARDINES 25c
TWO CANS FOR

PEAS 25c
BLUE HAVEN, 2 CANS

PEAS 25c
PICTSWEEP, 2 CANS

PINEAPPLE 15c
DENTON'S, CRUSHED, CAN

RINSO 37c
LARGE BOX

SUPER SUDS 37c
LARGE BOX

VEL 29c
LARGE BOX

DREFT 29c
LARGE BOX

COFFEE 53c
WHITE SWAN, POUND

CATSUP 19c
FLOTTIL, BOTTLE

TOMATO JUICE 10c
DEL MONTE, PER CAN

CORN 16c
WAPCO, GOLDEN SUGAR, CAN

GRAPE JELLY 23c
BEST GRADE

MEATS for Delicious MEALS

STEAK 69c
SIRLOIN, POUND

STEAK 69c
PORTER HOUSE, POUND

ROAST 51c
RUMP, POUND

FLOUR \$1.75
O KEENE, 25 POUND BAG

Drive-In Food Mkt.

B. H. SOKOLL H. C. HEINRICH
WE DELIVER - PHONE 146



One of six favorite suits for Easter is shown above as pictured in the March issue of Good Housekeeping. Gracefulness is the keynote of this tight-waisted gray suit, with a curve of collar and a swing of skirt. It is available in sizes 10 to 16 and costs about \$45.

P. G. MEADING

Candidate For COMMISSIONER

"Conscientious Straightforward Dependable"



ASK US ABOUT MOBIL TIRES

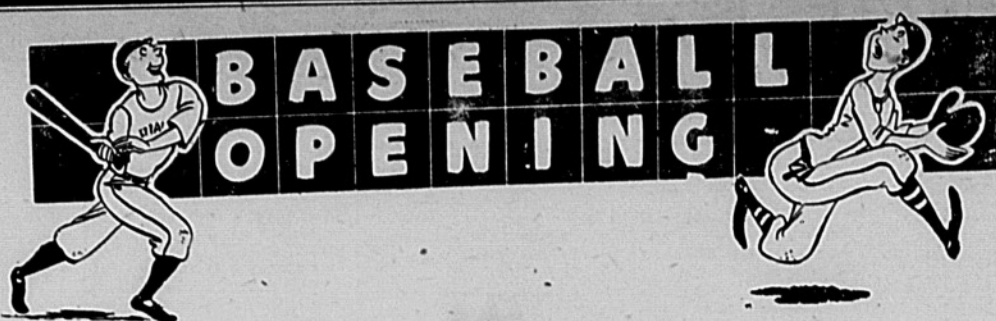
AND WHILE WE EXPLAIN THEIR ADVANTAGES LET US CHECK YOUR BATTERY, TIRES, ACCESSORIES AND GIVE YOUR CAR A FIRST CLASS LUBRICATION JOB AND . . .

Fill 'Er Up With Mobil Gas

In Our Hands, Your Car Is In Good Hands.

Self's Service Station

PHONE 95



IN
SLATON
 NEXT SUNDAY AT
3:00 P.M.
SLATON vs SUNDOWN

ADMISSION

50 c

New And Better
 Seats At ---

**TIGER
 BASEBALL
 PARK**

West Of The
 Slaton Club
 House Park

If you enjoy good clean Sport and Wish to encourage sports in Slaton, you should support and encourage the

**SLATON TIGER
 BASEBALL TEAM**

*We Have One Of The Best Semi-Pro Teams In The Oil Belt League ...
 The Slaton Home Town Boys Made A Good Showing Last Season
 And Have The Material And Spirit To Do Even Better This Season.*

**BE AT THE GAME SUNDAY and
 BRING A FRIEND**

This Publicity Sponsored by The Following Firms

McCoy's Grocery and Market

Slaton Auto Supply

Norris Barber Shop
WEST SIDE OF SQUARE

White Auto Store

Home Furniture

Spradley's Upholstering Shop

Layne Plumbing & Electric Co.

Palace Barber & Beauty Shop
FEATURING SOFT WATER SHAMPOO

City Drug

Cudd Implement Co.

Carrolls Service Station

Magnolia Petroleum Co.
J. W. CHENOWETH, Agent

Slaton Venetian Blind Co.

Brasfield Plumbing

Self Service Station

*Southwestern
 PUBLIC SERVICE
 Company*

Ray C. Ayers & Son

Slaton Motor Co.

O. D. Kenney Auto Parts

POSEY ITEMS

R. L. BOYD

Miss Barbara Stahl has returned home after visiting her sister, Mrs. William Kempen of San Antonio. She plans soon to return to San Antonio where she has secured employment.

Mr. A. S. Carroll and son of Paducah were week end visitors of Mr. and Mrs. A. M. Carroll.

W. C. Guetersloh, who tied with Jim Sain for the second trustee, will serve another term.

The Posey Soft Ball team outscored a team from Slaton in a game played Friday night.

Waner Boyce of Lubbock was a Sunday School visitor.

The Home Demonstration Club met Wednesday with Mrs. Sam Gentry.

Mrs. William Kempen and son James have returned to their home in San Antonio after spending the week end with Mrs. Julius Stahl and other relatives.

J. M. Sain is now owner of a late model large automobile.

W. G. Boyd of Wilson who had been fishing at Possum Kingdom visited relatives here Thursday.

Several persons from here attended the Fourth Quarterly Conference held at the McClung Methodist Church Sunday afternoon.

Rev. Ray Cox of Lubbock will be present Sunday April 25th for morning and evening services.

It is reported that the Church building which was purchased at Woodrow will be ready to be moved about May 1st.

R. B. Boyd has started work on a large, modern home which will be on the new highway. Mrs. Susie Caudle is also going to build a new home a few miles farther northwest.

E. J. Macker says because of the public demand he has installed a new deep freeze unit which holds ice cream and frozen foods.

C. W. Boyce, who recently purchased a store here, also has a unit ordered.

Mr. and Mrs. Conrad Melcher of Levelland visited his relatives on Sunday.

Mrs. Clara Hayes who lives on the M. F. Klaitenhoff homestead has recently purchased one of the new jet type water pumps.

Some corn and sudan has been planted and a few of the irrigation farmers say they may plant cotton this week.

The school trustees have been accepting applications for three teaching positions.

Crop prospects are not very bright and some trees have been slow budding out because of the dry weather.

Mr. and Mrs. Alton Sumrall are leaving soon on a trip to California.

★ ★ Fashions ★ ★



Emphasis on the very small waist is placed by the midriff dress shown above as pictured in the April issue of Good Housekeeping magazine. It's two-piece striped cotton, in brown, oxford, green. Sizes 10 to 18; about \$17. Majestic.

News Summary Featured Weekly

"My Baby Was Born Under Hypnosis." Painless childbirth without drugs? Read this interesting and factual answer in the American Weekly, that great magazine distributed with next Sunday's Los Angeles Sunday Examiner.

"Yesterday's Fashions Today." See how famous hat designers delve into history for today's "New Look." Read this intriguing article in the American Weekly, that great magazine distributed with next Sunday's Los Angeles Examiner.

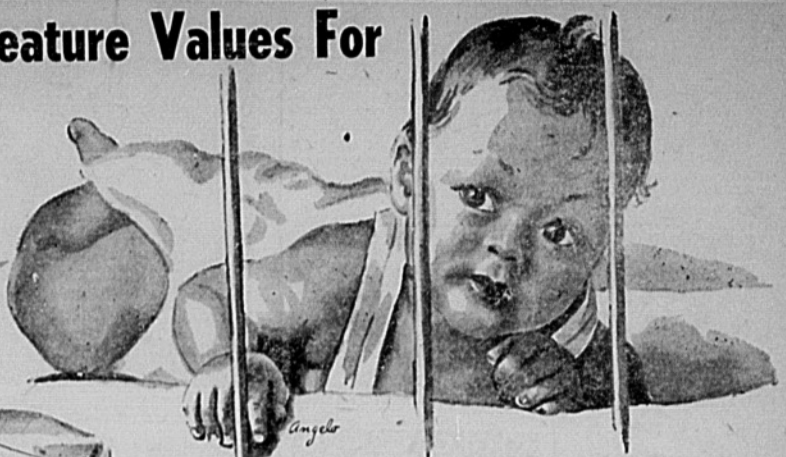
The school trustees have been accepting applications for three teaching positions.

Crop prospects are not very bright and some trees have been slow budding out because of the dry weather.

Mr. and Mrs. Alton Sumrall are leaving soon on a trip to California.

At Anthony's . . . Feature Values For

Baby Week



Honest Values for the Little Tots . . . That Cost You Very Little . . .

Genuine Birdseye Diapers, 27x27 In. Size

Soft, absorbent genuine birdseye diapers made to outwear their needed time. Pure white and neatly hemmed. Ideal square size 27x27 in. **\$2.49** doz. pkg

Playtex Crib Sheet 27x36

Nationally famous Playtex crib sheets. Transparent and come in sanitary tube package. **89c**

Handmade Phillipine Dresses

Darling dainty hand-embroidered batiste dresses. Colored or white on white hand embroidery. **\$1.98**

Playtex Rubber Panties

Nationally famous Playtex panties. A waterproof panty in black or natural. **69c**

Tie Style Knit Gowns

Combed cotton yarn, very soft and absorbent. Tie front, arm and bottom. **89c**

Embroidered Bib Overalls

Cool broadcloth, plique or twill material. Cute embroidery trim bib, 1 to 4. **\$1.98**

Summery Tot's Bonnets

Organdy or batiste bonnets. Ribbon trim. Head sizes to fit 1 to 6 years. **\$1.98**

Cotton Knit Polo Shirts

Polo shirts in colorful stripes and solid colors. Sizes 0 to 3. **79c**

Embroidered Cotton Creepers

Cotton creeper, belted waist. Mercerized combed cotton. White, maize, blue. **49c**

100% Wool Knit Tams

100% all wool tam. Rib knit. White, pink and blue. **49c**

Bopeep Receiving Blanket

Soft combed cotton blanket. Scroll stitched ends. White, pink, blue. 26x34. **59c**

Esmond Jacquard Blanket

Individually boxed Esmond Jacquard pattern blanket. All cotton. 36x50 in. **\$1.98**

Short Sleeve Knit Wrapper

Soft absorbent combed flat knit cotton. Medium length sleeves, three tie front. **98c**

Embroidered Sun Suits

Dainty embroidery or applique trim bib. Sanforized white plique or broadcloth 0 to 23. **98c**

Elastic Waist Training Pants

White combed cotton training pants. Soft and absorbent. Elastic waistband. 0 to 12. **19c**

Embroidered Tot's Creeper

Animal design embroidered on front. In blue, white, maize. 0 to 3. **\$1.98**

Mother's Utility Bag

Shoulder strap style bag with waterproof lining. Assorted colors. **\$2.98**

Porto Rican Hand Made Dress

Fine counte batiste. 6 styles with collar or collarless. Infants' sizes. **1.49**

100% Wool Knit Shawl

All wool all self over design shawl. Tied self fringe border. Pink, blue and white. **\$2.98**

Pink or Blue Log-o-Life Book

Pink or blue covered Log-o-Life baby book. Ideal for baby records. **\$2.98**

Rayon Crepe Slips

Soft Rayon crepe slips. Wide ruffled bottom. Tea rose. 2, 4, 6. **79c**

Short Sleeve Knit Shirts

Short sleeve knit shirts for summer. Tie back or slip over style. **35c**

Soft Cotton Knit Binders

Extra soft combed cotton binders. Pin around style. 2 for **25c**

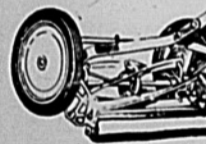
3 Pc. Towel Wash Cloth Set

Pink or blue colored border 3 pc. towel and wash cloth set. **89c**

'PERCE STRINGS' by SLATON HARDWARE



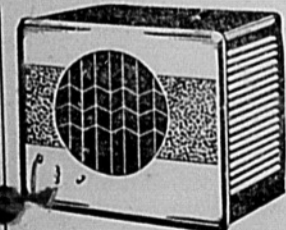
A \$7.50 Green Rayon Cord GARDEN HOSE 50 ft. with brass connections for only \$6.95



A \$27.50 light-weight Well Built Danglish LAWN MOWER for \$25.00



THERMOS JUGS 1-gal. regular \$4.00 \$3.49 2-gal regular \$8.00 goes for \$7.25



A \$49.95 WIND-O-COOL AIR CONDITIONER for \$45.00

ALSO Ice Cream Freezers

Phone 55 **SLATON HARDWARE CO. Inc.** 106 W. GARZA STREET a friendly store for the world's friendliest people

Anthony's Slaton, Texas

Magnetic Brake
A small electric motor traveling at 16,000 revolutions a minute, can be halted in six turns by magnetic brake. This is equivalent to stopping an auto, speeding 60 miles an hour, in less than three feet.

Interchangeable Parts
Jethro Wood in 1814 patented an iron plow with interchangeable parts. This invention established an era of manufacturing by making it possible for the farmer to replace a worn out or broken casting with a new one from the factory.

SLATON THEATRE

MATINEE DAILY 2:00 P. M.

FRIDAY — SATURDAY



KIDDY CADDY

COME AT 10:00 O'CLOCK EACH SAT. SEE 2 SHOWS FOR THE PRICE OF 1 —

SAT. PREVUE AT 11:30 SUNDAY — MONDAY



—also—
A DATE WITH DUKE IT COULD HAPPEN TO YOU NEWS

TUESDAY ONLY
PLAY —



\$100.00

—ON THE SCREEN—



—also—
CHILDRENS VILLAGE CARTOON

WEDNESDAY — THURSDAY



—also—
SO YOU ARE GOING ON A VACATION NEWS

PALACE THEATRE

NOW SHOWING



—also—
CARTOON
TENNIS IN RHYTHM

SAT. MATINEE AND NITE

HERE COMES 'HOPPY'



—also—
SUDDEN FRIED CHICKEN
FAST WORK
G-MEN NEVER FORGET NO. 3

SUN. MATINEE AND NITE
ALSO MONDAY NITE



—also—
SING NO. 6
ISLAND FLING

TUESDAY — WEDNESDAY



—also—
PLAYING BY EAR
AMAZING MR. NORDILL

NEXT THUR. — FRI.

BUSTER CRABBE

—IN—



—also—
TOMMY TUCKER TIME
FLICKER NO. 2



ANGELA LANSBURY coldly eyes the embrace of DEBORAH KERR and WALTER PIDGEON. A scene in MGM's 'IF WINTER COMES.'

Slaton Theatre, Wednesday and Thursday



Adventure calls Larry Parks and Ellen Drew in 'The Swordsman.' A Columbia picture in Technicolor with George Macready.

Slaton Theatre, Sat. Prev., Sun. - Mon.

Texas Tech Notes

Texas Technological College is this week making ready its campus and facilities for the Region One Intercollegiate League meet slated April 24. High schools throughout the Panhandle and West Texas are to come here to participate in 43 events.

General Director Ernest Wallace has received reservations from entries in the three part meet, AA, A and B, and has forwarded participating schools schedules for events beginning at 9 a. m. Saturday through Saturday night.

Winners from the regional contests will be entries in the final State Interscholastic League meet.

Senior engineering students at Texas Technological College promise spectator crowds to look at "what has never been before" during their visit to the campus on April 23 and 24 for the sixteenth annual Engineers' Show.

Magic and mystery ever present in the field of science and mechanics will be harnessed by the physics, chemical, mechanical and electrical departments. These groups have listed among their exhibits "miniature fog and rain," a "Lena the Hyena box," radio controlled car, a "magic stream."

Arthur H. Leidigh, a member of the original staff of Texas Technological College, and the first dean of agriculture, will be honored at the annual Aggie club banquet on April 27 at the Lubbock Hotel. He will be honored further at an open house in Memorial auditorium of the Agriculture building May 2.

Sleep While You Want Ads Work

Old Industry

Fishing is the oldest industry in the world. About 190,000 people in the United States work for fisheries and fishery industries. More than 90 per cent of the sea fish landed in American ports is consumed within 200 miles of the sea.

Cleaning Rugs

Before starting your vacuum cleaner pick up all metallic objects: hairpins, needles, clips, coins. They're troublemakers in your vacuum; they puncture the bag, cut the belt, damage the motor. A magnet tied to the end of a stick is an easy way to pick them up.

Philadelphia Tea Party

Pennsylvania had a Philadelphia Tea party, similar in scope to the Boston Tea party.

ESTERBROOK—Desk Sets & Fountain Pens

Stamp Pad Ink

Typewriter Paper & Ribbons

Adding Machine Ribbons

NOTE BOOK—ruled or unruled fillers

Parcel Post Labels

INDEX CARDS, Letter Size

RUBBER PAPER CEMENT

At The SLATONITE



"OK SON--You've Got a Job!"

THERE ARE SOME NOISES WE CAN'T STOP. BUT IF THEY'RE COMING FROM THE BODY OR CHASSIS OF YOUR CAR, WE SURELY CAN. DRIVE ON TO OUR GREASE RACK—IN JIG TIME YOU'LL DRIVE AWAY IN A "HUSHED" SMOOTHER RIDING CAR.

Gulf Service Station
OPEN 24 HOURS
350 S. 9th. Phone 9514

BANK'S OFFICIAL STATEMENT OF FINANCIAL CONDITION

Of the Citizens State Bank at Slaton, Texas, at the close of business on the 12th day of April, 1948, pursuant to call made by the Banking Commissioner of Texas in accordance with the Banking Laws of this State.

RESOURCES

| | |
|---|--------------|
| 1. Loans and discounts, including overdrafts (\$38,171.73 CCC Loans) | 658,330.76 |
| 2. U. S. Government obligations, direct and guaranteed | 2,099,185.00 |
| 3. Obligations of states and political subdivisions | 38,000.00 |
| 4. Other bonds, notes, and debentures | None |
| 5. Corporate stocks, including stock in Federal Reserve Bank | None |
| 6. Cash, balances due from other banks, including reserve balances, and cash items in process of collection (including exchange for clearing house) | 1,297,478.02 |
| 7. Banking house, or leasehold improvements | 1,300.00 |
| 8. Furniture, fixtures, and equipment | 1,210.00 |
| 9. Other real estate owned | None |
| 10. Other assets | 96.50 |
| 11. Total Resources | 4,095,600.28 |

LIABILITIES AND CAPITAL ACCOUNTS

| | |
|---|----------------|
| 1. Common Capital Stock | 50,000.00 |
| 2. Income debentures | None |
| 3. Surplus: Certified \$50,000.00, Not Certified, None | 50,000.00 |
| 4. Undivided profits | 10,167.17 |
| 5. Capital reserves (and debenture retirement account) | 10,000.00 |
| 6. Demand deposits of individuals, partnerships, and corporations | 3,853,773.93 |
| 7. Time deposits of individuals, partnerships, and corporations | None |
| 8. Public funds (Incl. U. S. Govt., states and political subdivisions) | 96,441.68 |
| 9. Deposits of banks (excluding reciprocal balances) | None |
| 10. Other deposits (certified & cashier's checks, etc) | 25,217.50 |
| 11. Total all deposits | \$3,975,433.11 |
| 12. Bills payable, rediscounts, or other liabilities for borrowed money | None |
| 13. Other liabilities | None |
| 14. Total Liabilities and Capital Accounts | 4,095,600.28 |

MEMORANDA

1. Liability, account assets sold with or without recourse, where bank has agreed rebally or otherwise to repurchase or guarantee payment thereof before, at or after maturity
2. Customer's securities held for safekeeping, Series "E" Bonds held for sale under issuing agency agreement etc.

STATE OF TEXAS)
COUNTY OF LUBBOCK)

I, Wm. R. Sewell, being Cashier of the above named bank, do solemnly swear that the foregoing statement of condition is true to the best of my knowledge and belief.

(Signed) WM. R. SEWELL
Subscribed and sworn to before me this 15th day of April, 1948.
(Signed) R. D. HICKMAN
(SEAL)
Notary Public, Lubbock County.

CORRECT—ATTEST
J. S. EDWARDS
C. F. ANDERSON
H. T. SWANNER
Directors

'42 OLDSMOBILE
FIVE PASSENGER COUPE
FOR SALE, \$850.00
SEE
JOEL NEUGEBAUER
ROUTE 2, GORDON ROAD
SLATON, TEXAS

COURT CHUCKLES by S. M. REGI

I THINK YOU'LL FIND IT DIFFICULT TO PROVE ALL YOUR ASSERTIONS THAT YOUR HUSBAND IS A BRUTE, LIAR AND A FOOL. WHY DID YOU MARRY HIM IF YOU KNEW ALL THAT?



ELECTRICIAN
Prompt, Expert Service for Less. Electrical Wiring, Refrigerator and Motor Repairs. Pick Up and Delivery.
ALBERT KUSS -- Phone 120
ELLIOTT'S ELECTRIC SHOP

From where I sit... by Joe Marsh

Homer Does Some "Back-Seat Sewing!"

Homer Bentley's missus was working on her new sewing machine, when Homer comes in, draws up a chair, and starts talking: "Don't you think you're running too fast?" he says. "Slow down! Watch out! Be careful!"

When the missus finally turns with murder in her eyes, Homer says goodnaturedly: "I thought you might like a little help, dear—like you help me drive the car."

The missus can't help but burst out laughing—and they settle what might have been a quarrel over a friendly glass of beer. The missus agrees to give up back-seat driving and nagging Homer about ashes on the rug. Homer agrees to quit criticizing Sarah's taste for flowery hats and parsley salad.

From where I sit, the key to getting on together is meeting every issue half way—and overlooking any petty differences in tastes—whether these tastes apply to beer or flowery-looking hats!

Joe Marsh

DON'T LET THE BUGS, WORMS OR WEEDS DESTROY YOUR GARDEN

Dust Or Spray Your Plants With SCIENTIFICALLY MIXED INSECTICIDES

We have Arsenate of Lead, prepared Sulphur and Mixed preparations for killing all kinds of garden pests... in small or large quantities... also...

WEED-NO-MORE

For killing weeds and dandelions and we recommend the use of...

ALKEMI

For activating your ground to make flowers and vegetables grow fast and extra large... Make Your Garden Pay.

Play For Cash

Test your? **HORSE SENSE?**

BY Dr. GEORGE W. CRANE, Ph.D.
COPYRIGHTED BY CHICAGO TRIBUNE

Tuesday Nite, 8:30 p. m.
R. B. Boyd Was The Winner Of \$100.00 Last Tuesday

\$100.00 FREE CASH
AT SLATON THEATRE

THE STATE OF TEXAS COUNTY OF LUBBOCK TO ALL WHOM IT MAY CONCERN:

BE IT KNOWN that Charles Greer and Howard L. Liner, each of Lubbock, Lubbock County, Texas, and W. E. Smith of Tahoka, in Lynn County, Texas, are engaged in the business of manufacturing, selling and dealing in carbonated goods, soda water or other beverage requiring the use of bottles and other types of containers upon which the names, brands, marks or trade-marks of ownership or proprietorship are stamped or otherwise marked upon said containers; and in this connection the above named individuals have heretofore adopted for use a certain label, trade-mark, design, device or imprint and have heretofore filed the same for record in the office of the Secretary of State of the State of Texas and in the office of the County Clerk of Lubbock County, Texas, as provided by law, and the same is claimed by the said parties as their exclusive property, and that they are the sole owners thereof and the said parties have exclusive right to use the same and no other person, institution, or girl from about her waist upward

organization or legal entity has the right to use the same in the identical or resemblance thereof such as would be calculated to deceive or mislead the public.

The description of said label, trade-mark, design, device or imprint is that it consists of a picture or design with the words "Plains-Maid" in a semi-circle above the design, and the word "Beverages" in a straight line below the design or picture; and the picture is of a cowgirl facing the reader, wearing a large western style hat with the brim turned up, and with a western type scarf about her neck, and with the cowgirl holding in her right hand part of a rope which is circled generally about her head and shoulders, and said picture showing the features of the cow and said picture being located above a horizontal strip showing a design of cowboy boots, bits and spurs.

SIGNED this 15th day of March, A. D. 1948.

CHARLES GREER (Signed)
HOWARD L. LINER (Signed)
W. E. SMITH (Signed)

Garden Suggestions

COLLEGE STATION, April 19—

The man with the hoe, or the rake, or the shovel, or a handful of seed packages is the man that plans to save on the food bill this spring and summer. And right now is the time for this man to make an April check-up on his garden, says J. F. Rosborough, extension horticulturist of Texas A. & M. College.

Check-up on the plantings already in the ground, or that are now coming up: sweet corn, peas, beets, lettuce, cabbage, swiss-chard, carrots, spinach and mustard. Make a second planting of mustard. It's just about too late in the south and south-central parts of the state to plant cabbage, carrots, and english peas.

Plant both pole and bush beans, and don't forget to inoculate with nitrogen-fixing bacteria—a dust or powder that can be bought at seed stores. This gives the beans extra vigor and growth, and helps to increase yields. Wait until the weather warms up to plant limas. This bean is warm natured and "catches cold" easily.

Yellow Crookneck, Acorn and Fordhook are three good squash varieties to plant, and give a harvest range of 30 to 60 days. Sow cucumber seed in rows one foot apart, and when the vines begin to run, thin out to one vine every two feet. Cucumbers are good for slicing into salads or pickling.

Leaf lettuce may be planted now for late spring and summer production, and this is a good time to start okra if the soil has warmed up pretty well. Okra takes lots of heat, and won't grow until the sun begins to bear down. Allow two to three feet of space between peppers and eggplants so they will have lots of room to grow.

Thin late planted beets to two to three inches apart, and use the ones that are taken out to fill in skips to get a uniform stand. Set out tomato plants at this time and don't forget the cut worm menace that will hit many of these vegetables, says Rosborough. After making this check-up, the spring gardener may take comfort in knowing he is off to a good start for this year's garden.

Mini for Glue Use
To prevent glue cracking when repairing furniture, add sawdust about the texture and fineness of flour to the glue. This can be obtained at most paint stores.

THE SLATONITE

Lures for Walleyes

Because walleyed pike are deep feeders and like minnows, streamers are effective artificial lures. But the fly rod should be of the bass weight. A stout leader is recommended.

Reduce Draft Colds

Colds caused by drafts are reduced in a properly insulated home. It is stated by the U. S. bureau of mines, which adds that mineral wool is most widely used for this purpose.

CROSSWORD ~ ~ ~ By A. C. Gordon

| | | | | | | | | | |
|----|----|----|----|----|----|----|----|----|----|
| 1 | 2 | 3 | 4 | 5 | 6 | 7 | 8 | 9 | 10 |
| 11 | | | | 12 | | 13 | | | |
| 14 | | | 15 | | 16 | | 17 | | |
| | 18 | 19 | | | 20 | 21 | | | |
| 22 | 23 | | | 24 | 25 | 26 | | 27 | |
| 28 | | | 29 | | 30 | | 31 | | |
| 32 | | 33 | | | 34 | 35 | | 36 | |
| 37 | 38 | | | 39 | 40 | | 41 | 42 | |
| | | | 43 | | 44 | | | | |
| 45 | | 46 | | | 47 | 48 | | 49 | |
| 50 | | | | 51 | 52 | | | | 53 |
| 54 | | | | 55 | | | 56 | | |

- ACROSS**
- 1—Ancient country invaded by Caesar
 - 5—Ancient Biblical country
 - 7—Natural hazards surmounted by Hannibal
 - 11—Famed Swedish operatic soprano
 - 12—Continent (abbrev.)
 - 13—Ditch around medieval castles
 - 14—Name of first great ship in history
 - 15—Early American founder of a colony
 - 17—To employ
 - 18—Neither
 - 20—Son-in-law of Mohammed
 - 22—Japanese statesman (post.)
 - 24—Roman 99
 - 26—Being
 - 28—Rembrandt's accomplishment
 - 29—Legendary Swiss patriot
 - 31—Equitable (poetic)
 - 32—Preposition
 - 33—Old Omens (abbrev.)
 - 34—Exist
 - 36—Traveling Scientist (abbrev.)
- DOWN**
- 1—Ancient Roman warrior
 - 2—This was conquered by the Wright brothers
 - 3—No one but Alexander could do this to the Gordian knot
 - 4—Lord (abbrev.)
 - 5—Embody
 - 6—Spel
 - 7—Exist
 - 8—Girl's name
 - 9—Dance step
 - 10—Famed Scottish novelist
 - 15—Proportional Representation (abbrev.)
 - 16—Chemical symbol for sodium
 - 19—Bone
 - 21—Liberal Education (abbrev.)
 - 23—Scene of famous ancient siege
 - 24—Symbol for "that is" (abbrev.)
 - 25—Chemical symbol for chlorine
 - 27—Son of Nash
 - 29—Preposition
 - 30—Measure of weight
 - 33—Land of the famous "wisard"
 - 35—Initials of the founder of Yale
 - 38—Ancient English king
 - 39—Roman 1005
 - 40—Three-toed sloth
 - 42—Byzian poet (post.)
 - 43—Poem
 - 44—Expire
 - 45—Exclamation
 - 46—To supplement
 - 48—Rudent
 - 49—National Education Association (abbrev.)
 - 50—Exclamation of silence
 - 51—Spanish affirmative
 - 52—Greek letter
 - 53—The elder (abbrev.)

CAMERA TOPICS

By T. T. Holden



An outstanding picture of the year, this prize-winner from the Graflex Photo Contest was made possible only because the photographer, Ernest King, knew how to plan his picture quickly and avoid all the simple faults that so often spoil photos.

NINE EASY WAYS TO BETTER PHOTOGRAPHS

The most common faults which spoil many an amateur's photographs are, strangely enough, the most simple things to avoid. It is easy to understand how one misplaced light in an intricate setup can happen to anybody, but so simple a fault as holding your finger over the lens while taking a picture doesn't make sense.

To help you make sure of getting the picture you want as often as possible, here is a checklist of things it pays to watch every time you click the shutter:

Poor exposure will ruin any picture. The answer is a reliable meter or to stick closely to the exposure charts furnished with every package of film. Don't guess.

Out of focus shots are wasted time and film. Measure the distance carefully or use a range-finder. If your camera is of the fixed-focus type, don't get any closer to your subject than the manufacturer suggests in his instruction book.

Double exposures spoil two pictures. Make it a habit to wind the film or switch your film holder immediately after each shot so you won't forget and expose the same film again.

Camera movement calls for a tripod on exposures of more than 1/25 sec. and a carefully braced camera when hand held. Use the fastest convenient shutter speed for all hand shots.

Subject movement is usually the photographer's fault. You must learn to judge the right moment and to shoot before your subject has a chance to move. Use the faster shutter speeds when working with children, animals or other active subjects.

Confusing backgrounds show poor planning. Move your subject or your camera position. Don't make a picture until you have checked the background for annoying details.

Obstacles before the lens always show up as premlina in the picture. Watch stray fingers and keep dust, smears and other foreign matter off the lens with a fine camel's hair brush or lens tissue. Check lens before and after every picture session.

AYER'S SUPREME CHICK STARTER

FOR EXCEPTIONAL RESULTS AT NO EXTRA COST

RAPID DEVELOPMENT

Always keep Ayers Chick Starter before your baby chicks and observe the remarkable results. Your chicks will become heavier, healthier birds and will feather out earlier.

GET AYERS SUPREME FEEDS AT

Huser Hatchery

225 W. GARZA PHONE 224

PLAN YOUR LIGHTING

When you plan your home

Now it can be done. You can plan your lighting just as carefully as you plan the placing of windows, or the color scheme of your home.

Today a sufficient variety of fixtures and lamps are available so that you can have the correct light and the correct fixture in every room. When you plan your new home, or remodel your present home, plan your lighting for pleasant living.

And living will be pleasanter, too, when you take full advantage of all the benefits of low-cost electrical living.

FOR THE BEST IN LIGHTING

FIRST GET A PEAN FROM THE MAN WHO PLANS

CALL YOUR PUBLIC SERVICE OFFICE

SOUTHWESTERN PUBLIC SERVICE COMPANY

23 YEARS OF GOOD CITIZENSHIP AND PUBLIC SERVICE

Rail travel made easier

via **Santa Fe**

Ask about these special features now available for Santa Fe travelers

Rail Travel Loan—Travel Santa Fe now—pay later in easy monthly installments. Funds available for rail accommodations and other expenses for your trip. Simply make application for this service with your railroad ticket or travel agent.

Travel Credit Cards—Charge Santa Fe tickets as easily as you would department store purchases. Anyone with proper credit rating may have a rail credit card. Present it at any Santa Fe ticket window to charge rail, parlor-car, or sleeping-car tickets (amounting to \$5.00 or more) to any part of the country. Bills rendered monthly.

Rail Auto Service—Enjoy the comfort and economy of rail travel—and still have the convenience of a late-model automobile at your destination. Moderate cost. This plan now in operation in many U. S. cities.

Prepaid Tickets—Tickets can be delivered to any point in the U. S. by making a deposit with your Santa Fe ticket agent. Pullman accommodations, incidental cash included, if desired. A particularly attractive service for transportation arrangements of elderly people, invalids, students, etc.

Parmelee Transfer—Passengers holding tickets through Chicago may ride Parmelee coaches from the Dearborn station to any out-going depot, hotel, or downtown destination. Baggage included. This service available by presenting the Parmelee coupon which is a part of your through rail ticket.

For complete information just call your Santa Fe Agent

Cuba Standards High

The income and living standards of Cuba are "well above those in many other Latin American countries and far above those in Far Eastern countries," according to the United States department of agriculture.

Ohio Water Cover

Rain and snow provide Ohio with an annual average of 38 inches of water over each foot of surface. Since weather records have been kept, the most water precipitated in Ohio in one year was 50.4 inches in 1890; and the least amount was 26.6 inches in 1934, when the deficiency compelled farmers in many areas to haul water for livestock, and to see their crops wither.

Load of a Train

Average freight train load last year was 1,086 tons, compared with 774 tons in 1936.

DR. P. K. PALMER
OPTOMETRIST

OFFICES IN LESTER'S JEWELERS LUBBOCK
1010 Broadway Phone 5794

USE YOUR CREDIT
PAY ONLY \$1.00 A WEEK

WE WILL PAY

5¢ PER POUND

FOR CLEAN COTTON RAGS AT THE SLATONITE

Army Tests New Survival Rations



LONG ISLAND CITY, N. Y.—Survival rations which will maintain strength, prevent tissue breakdown, and require minimum water are being developed in U. S. Army tests on Welfare Island. Eleven enlisted volunteers lived during a March test on a day's ration averaging 28 of the small biscuits shown (about one-third of a pound) plus three glasses of water. Here one volunteer watches closely as the dietitian measures out his day's allotment.

Such tests are the end-stage of research. The Army's formula has been changed many times since January, 1945, with production research in the big bakery here of Sunshine Biscuits. Sunshine has cooperated with the Army by baking free of charge more than 250,000 experimental biscuits for the ration studies.

An unexpected result has been a flood of inquiries from diet-conscious persons which has caused the baking firm to announce that the ration is solely for Army research and is not available for civilian consumption.

Forest Air Cleaner

Forest air is much more free from bacteria of all kinds than is the air just outside the forest. According to the Encyclopaedia Britannica, there are generally 23 to 28 per cent fewer bacteria in the forest air, since the foliage acts as a kind of filter, retaining dust and other particles in the air. The bacteria on the leaves are then readily killed by exposure to the sun.

Bruised Meat

An average of one animal of every seven (of all species) slaughtered in federally inspected packing plants carries bruised meat that must be cut out.

Personals

Mrs. Allen Crowley and daughter, Iva, spent the week end in Canyon visiting Mr. Crowley.

Dr. W. E. Payne plans to attend the State Health Association meeting to be held in Houston next Monday, April 26.

Mr. and Mrs. Bobbie Edmondson and Mr. and Mrs. Bob Fondy are on a vacation trip to Denver, Colo., this week.

Master Gregg Nowlin of Taylor is a guest in the home of Mr. and Mrs. Earl Reasoner.

Mr. and Mrs. Whit Walker spent the week end in the home of Mr. and Mrs. W. J. Walker, 140 W. Panhandle.

Mrs. Grady Wilson spent the week end in Abilene with her daughter, Lavenia, and with other relatives.

W. R. Wilson left Sunday to join his wife in San Antonio, where they expect to spend a week or ten days.

Mrs. Ronald Woolever was quite ill in Mercy Hospital the first of the week, but is reported as improved at present.

Miss Cynthia Loveless of Lubbock was the week end guest of Miss Martha Mack this week.

Jack Nesbitt of Texas Tech spent the week end visiting in the R. D. Hickman home.

Mr. and Mrs. W. T. Davis and John and Judy visited Sunday in the Porter Davis home in Plainview.

Mr. and Mrs. Emmett Fleming spent several days in Wichita, Kansas visiting relatives recently.

Payne's Ready-to-wear is undergoing a face lifting and the interior of the store is in the course of being completely redecorated.

Mr. and Mrs. C. A. Porter left for Tres Ritas last Thursday where they have a summer home.

Mr. and Mrs. Bob Ellis of Coleman spent the week end in the home of Mr. and Mrs. H. G. Stokes.

Shipments tags of all kinds at the Slatonite.



To Be Smart
You Must
Look Smart...

and nothing adds so much to your appearance as a suit tailored to your measure.

Our new woollens are now here. Select the pattern you like best and the style most becoming to you... and we assure you of a garment that will look well and fit to perfection.



Quality in Abundance AT **RED & WHITE**



SHOP IN COMFORT
SATISFACTION GUARANTEED

| | | |
|---|--|--|
| PILLSBURY'S FLOUR 25 LB. SACK \$1.79 | Mixed Vegetables SAINT ELMO, NO. 2 CAN 10c | Fruit Cocktail HUNT'S, NO. 2 1/2 CAN 35c |
| 50 LB. SACK \$3.39 | Pork and Beans ARMOUR'S STAR, 1 LB. CAN 12 1/2c | Apple Juice CRYSTAL, QUART BOTTLE 15c |
| | Grape Fruit Juice RED AND WHITE, 46 OZ. CAN 15c | Prune Plums IN HEAVY SYRUP, NO. 2 1/2 CAN 19c |

| | | | |
|--------------|-------------------|------------|--|
| SUGAR | 10 lbs. Pure Cane | 83c | KRAUT RED & WHITE, 2 1/2 CAN 10c |
|--------------|-------------------|------------|--|

| | |
|---|---|
| SWEET RELISH C.H.B. 8 Oz. Jar 9c | MIRACLE WHIP Qt. Jar 59c |
|---|---|

| |
|--|
| SPRY 3 lb. Can \$1.07 |
|--|

| | | |
|---|--|---|
| VIENNA SAUSAGE RED AND WHITE, 2 CANS 35c |  LETTUCE LARGE CRISP HEADS 15c | Selected Fruits & Vegetables |
| TUNA SWEEPSTAKE, GRATED, CAN 29c | GRAPEFRUIT 5c TEXAS, POUND | APPLES 15c WASH. FANCY DEL., LB. |
| CRACKERS KRISPIES, 1 POUND 25c | CELERY 15c LARGE STALKS | ORANGES 10c CALIFORNIA, POUND |
| DREFT BOX 29c | | LEMONS 12c CALIFORNIA, POUND |
| VEL BOX 29c | | CARROTS 15c LARGE BUNCHES |

| | |
|---|--|
| GRAPE JUICE Welch's Qt. Bottle 39c | COFFEE RED & WHITE, LB. JAR 53c |
|---|--|

| | |
|--|---|
| APRICOTS GALLON, SOLID PIE PACK 69c | FRYERS FRESH DRESSED, POUND 69c |
| SPINACH HEARTS DELIGHT, NO. 2 1/2 CAN 15c | HAMS WILSON'S PICNIC, CERTIFIED, POUND 49c |
| BEETS KUNERS CUT, NO. 2 1/2 CAN 18c | BACON SQUARES SUGAR CURED, POUND 39c |
| PRUNE JUICE 12 OZ. BOTTLE 10c | FISH ... 49c BONELESS PERCH, POUND |
| | BARBECUE 55c HOT EVERY DAY, POUND |
| | MARGARINE 37c NUCOA, POUND |



BERKLEY AND HADDOCK
Fine Foods
PHONE 197
WE DELIVER