

WEATHER

November 12 60 31
 November 13 41 22
 November 14 61 22
 November 15 58 23
 November 16 61 24
 November 17 67 27
 Moisture to Date: 16.93

BAILEY COUNTY JOURNAL

'The Community of Opportunity-Where Water Makes the Difference'



20¢

Volume 17, No. 46

14 Pages

Published Every Sunday at Muleshoe, Bailey County, Texas 79347

Sunday November 18, 1979

Mules Scalp Indians 27 To 8 ; Win District

Judge Explains County Operations

When asked about the general operations of Bailey County government and county finances, Judge Glen Williams said, "Though we are operating on a tight and conservative budget, the County is solvent and expects to remain that way."

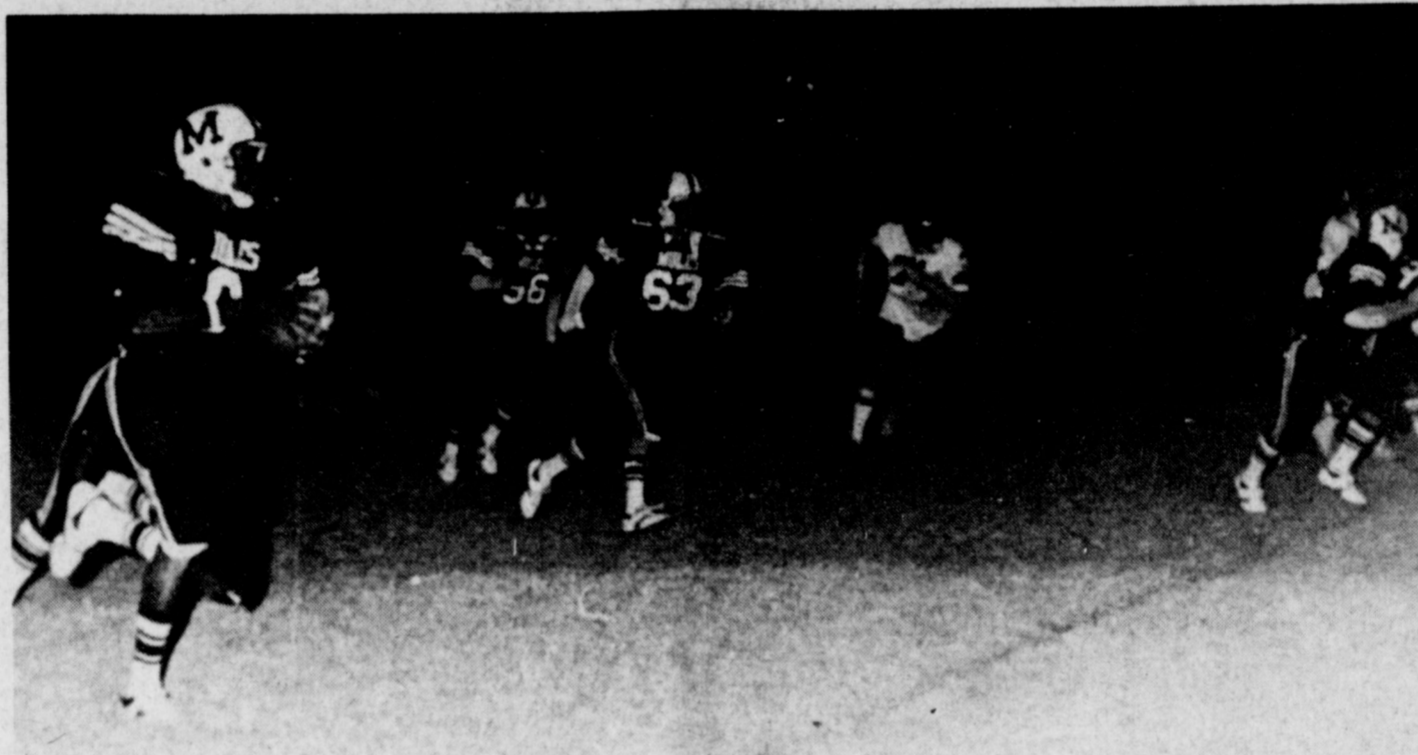
"Bailey County was revalued for tax purposes in 1975, both real and personal, we have tried to stay current with values and changes, so we believe they are fairly equitable," the Judge explained. "But because of escalating costs of operation, we are having to raise taxes for another year. This is un-

pleasant, but a failure to do so would create problems later on."

The County's total valuation, for tax purposes, is about \$48,000,000.00, and the tax rate is \$1.12 for each \$100.00 of taxable value. Twenty two cents of this is subject to a \$3,000.00 homestead exemption. The State rate is ten cents, subject to homestead exemption. Seventy five cents of the \$1.12 will be used for general governmental expenses relative to the courthouse, Law Enforcement Center, Coliseum, County automobiles, and other phases of County government, such as maintenance, utilities, supplies, jail operations, feeding prisoners, ambulance services, court and jury expense, and to retire Courthouse and Jail and Coliseum Bonds. The remaining 37 cents will be used for operating the County roads, as will approximately \$160,000.00 of vehicle registration fees, and \$21,000.00 of Lateral Road Funds. It now appears that the Lateral Road Funds will be discontinued after 1980. \$67,000.00 in Revenue Sharing Funds will be received during the next entitlement period. Total fees of office for 1980 will be approximately \$140,000.00. Thus the total receipts should be about \$930,000.00 and will come from the following sources. Taxes-\$515,000.00, Vehicle Registration-\$160,000.00, Fees of Office-\$14,000.00, Lateral Road-\$21,000.00, Revenue Sharing-\$67,000.00, Miscellaneous -\$27,000.00 and the total being \$930,000.00.

The County Commissioner has recently adopted the budget for 1980. The budget does include some items that are relatively new. "A 7 per cent salary increase for the officials and employees-with small added increases for some that were out of line on the down-side provided also. A copy of the proposed Salary schedule, and the formula by which they were arrived at, are available for inspection by anyone."

Con't on page 6 col 1.



RUNNING FOR YARDAGE--Charles Walker, 40, getting extra yardage after receiving a handoff from Northcutt. The Mules defeated the Indians last night with a total score of 27-8 becoming 1979 District Champs.

Around Muleshoe

Mrs. Charles Shankes, returned from Louisville, Kentucky, where she attended the funeral, of Mr. Ishmael Day, brother-in-law of Charles and a Cousin of Izetta Shankes.

Mrs. Charles Shankes and Janet visited Julian Shandes at M.S.U., at Wichita Falls and attended the Alpha Phi sorority "Forget Me Not Ball".

Valley Wins Over Lazbuddie

Thursday night Lazbuddie played Valley in the District 2-B Championship game at Plainview. Final score was 29-15 a victory for the Valley Patriots.

In the first quarter, Lazbuddie got off to a roaring start with a 78 yard drive for the first touchdown. It took the Longhorns only 11 plays to score. Valley responded by outrunning everybody for a 67 yard touchdown.

Lazbuddie gained nothing in the next quarter, on three plays they were forced to punt. Then the patriots scored in the second quarter. After that Lazbuddie could never overtake Valley again.

Although Lazbuddie did not win the North Zone District, they are winners of their district.

Iron Horse Has Arrived

Finally, after months of construction, planning and working, the iron horse has arrived at Tolk Station east of Muleshoe. Very recently the first rail cars were unloaded at the site of the new coal-fired electric generating station being constructed east of Muleshoe.

Bob DeLoach said the boiler structure is presently up to 167 feet on the south and west sides and the east side is under construction.

He added that the circulating water line has just reached the first phase and the perimeter lighting is in place.

DeLoach commented that four of the 100 foot light poles are in place and are in operating and the plant

site currently has 24 hour security service.

Con't Page 6, Col 4

City Council Special Meeting

City Council will have a special meeting, Tuesday, November 20, 1979, 8:30 a.m. at the City Hall. On their agenda the Council will consider an agreement with Bailey County for the provision of fire services to the residents of rural Bailey County.

Also, consider an agreement between the City of Muleshoe and the State Department of Highways and Public Transportation for the placement and

Con't Page 6, Col 3

City Maintains Modern Accounting System

Last year, the Municipal Finance Officers Association of the United States and Canada (MFOA) awarded a Certificate of Conformance in Financial Reporting to the City of Muleshoe for its annual financial report.

In order to be awarded a Certificate of Conformance, a governmental unit must publish a comprehensive Annual Financial Report, whose contents include its basic financial statements prepared in

Pheasant Hunters To Begin

With pheasant season beginning on December 8, the Lazbuddie Volunteer Fire Department will sponsor a breakfast for pheasant hunters on the opening day. Breakfast will be served at the Lazbuddie School cafeteria from 6 a.m. to 9 a.m. on December 8.

Bacon, sausage, eggs, pancakes, jelly, syrup, milk and coffee will be served for a \$3.50 donation to the Lazbuddie Volunteer Fire Department.

Hunting permits for the Lazbuddie Fire Department hunting preserve will be available at the breakfast, according to fire Chief, Glen Lust.

He said the fire department will be sponsoring the hunt on shooting preserves, licensed by the Texas Parks and Wildlife Department.

Hunting permits for the sponsored pheasant hunt will be \$25 per weekend or \$50 for the season, per person, which will be a donation to the Lazbuddie Fire Department.

Chief Lust said each hunter must also have a valid Texas Hunting license.

Hunting permits are available from Gilbert Lue- Con't Page 6, Col 3

substantial conformance with generally accepted accounting principles, an appropriate letter of transmittal and extensive statistical section, and whose representations are organized into an efficiently communicative format.

A Certificate of Conformance is valid for a period of three years subject to two Annual Reviews.

City manager, Dave Marr, explained that the City's accounting records for general governmental operations are maintained on a modified accrual basis, with the most important revenues being recorded when earned and expenditures when incurred. Accounting records for the Water and Sewer Fund are maintained on a full accrual basis.

Budgetary control is maintained through the budget process. Budgetary accounts are set up to record the estimated revenues and appropriations for all City operations and are monitored through a computerized monthly statement which compares actual and budgeted expenditures.

Recently approved by the Muleshoe City Council was a total budget of \$1,174,246, which is \$114,942 above the record budget for last year. In 1978, the budget broke the \$1 million mark at \$1,059,304.

An additional \$333,684 was budgeted for the Water and Sewer Revenue Fund, for the second largest item on the budget.

For payment of accruing interest for the General Debt Service Fund, and redeeming serial bonds and warrants as they mature, the amount of \$92,248 was budgeted.

Valuation, .54 will be placed in the General Fund and the additional .12 will be placed in the interest

and Sinking Fund.

A second ordinance established the tax rate and methods of payment of the taxes, including penalties for late payment, and discounts for early payment.

Deadline For Annual Christmas Parade Nears

The Llano Estacada Civic Club wants to remind you that the deadline for entries in the 20th Annual Muleshoe Christmas parade is nearing. The deadline is November 23, 1979.

The theme of this year's parade is "The Old Fashion Christmas". Cash prizes will be given for the top three floats.

The parade will be held on December 1, 1979, at 2

Flag Football Team Organizing

The Muleshoe Jaycees are organizing a flag football team that will represent the city of Muleshoe.

Competition with area and state Jaycee Chapters will continue through the state tournament which is to be held in Austin during January. Project chairman Ricky Smallwood announces the first practice will be held this Sunday, Nov. 18 at 3:00 p.m. behind KMUL radio station. Competition rules require that all participants be registered Jaycees. The club invites all Jaycee members, as well as all prospective Jaycees, to attend the practice. The Jaycees is a state and nationally recognized organization for young men between the ages of 18 and 35 involved in personal and community development.

ments of the taxes on both real and personal property.

However, the city council decided against a tax increase, and the current tax rate of .66 per \$100 valuation was continued for the next year.

A resolution was adopted establishing the amounts budgeted for various operations of the city budget. For the General Fund for general operating expenses and capital outlay, the sum of \$686,069 was budgeted.

Street Lighting Fund Making Good Progress

The Chamber of Commerce reports that good progress is being made toward the Christmas lighting

for the streets of downtown Muleshoe.

Major contributors include several clubs: The Rotary Club, Triangle Club, Beta Sigma Phi Chapter of Alpha Zeta Phi, Williams, Adair, Faver, Sudduth & Co., Mrs. Skipworth's 5th grade class of Mary DeShazo, AAUW.

Preceptor Chapter of Beta Sigma Phi, Xi Omicron Xi of Beta Sigma Phi, Epsilon Delta, John Gulley would also like to say a special thank you to all those individual contributors.

Any extra money raised over the goal will be used toward the replacement of the older lighting equip-

ment. If you wish to contribute call 272-4248 or go by the Chamber of Commerce at 100 E. Ave. C.

Youth Skating Held Today

Today, November 18, from 2-5 p.m. youth skating will be conducted at the Bailey County Exhibition Center and Coliseum.

Admission is 50 cents for three hours of skating. So bring your skates and join your friends for an afternoon of wheeling around the large arena.

Any adults interested in skating, check with members of the Muleshoe Area Youth Activities Committee Inc. for special adult skating. Adults, too, may be able to join the skaters for an afternoon of exercise and enjoyment.

Con't on page 6, Col. 6

BY PANCHE MORRIS

Only two blemishes appeared in Muleshoe's 27-8 victory over the Morton Indians Friday night in Muleshoe, and although they did not effect the outcome of that game, they could have a significant impact on the Mules chances for the state title.

Curtis Elder and Zeke Pecina both key players in the Muleshoe attack, suffered injuries in Friday night's game and if the first indications are correct, both players could be out of action for the entire playoff picture.

Elder, a 150-pound senior defensive tackle, suffer a dislocated elbow midway through the second quarter. Pecina, a 150-pound senior tailback suffered what appeared to be a separated shoulder in the third period after he had fumbled on a punt return. Neither player returned to action and just how long they will be out is still undecided.

But there was good news in the fact that the Mules won the district championship outright for the second consecutive year.

The Mules entered the contest in a somewhat must situation. A victory in Friday night's contest, would have assured them of the district crown, but a loss would have thrown the district into a three-way tie. But from the opening kickoff, the Mules showed that they meant business.

The Mules took the opening kick off and drove down to the Indians' two-yard line before Jim Norman fumbled into the arms of Morton's Sambo Coleman. And although the Mules did not score on their first possession, they proved that they could move the

Street Lighting Fund Making Good Progress

The Chamber of Commerce reports that good progress is being made toward the Christmas lighting

for the streets of downtown Muleshoe.

Major contributors include several clubs: The Rotary Club, Triangle Club, Beta Sigma Phi Chapter of Alpha Zeta Phi, Williams, Adair, Faver, Sudduth & Co., Mrs. Skipworth's 5th grade class of Mary DeShazo, AAUW.

Preceptor Chapter of Beta Sigma Phi, Xi Omicron Xi of Beta Sigma Phi, Epsilon Delta, John Gulley would also like to say a special thank you to all those individual contributors.

Any extra money raised over the goal will be used toward the replacement of the older lighting equip-

ment. If you wish to contribute call 272-4248 or go by the Chamber of Commerce at 100 E. Ave. C.

Youth Skating Held Today

Today, November 18, from 2-5 p.m. youth skating will be conducted at the Bailey County Exhibition Center and Coliseum.

Admission is 50 cents for three hours of skating. So bring your skates and join your friends for an afternoon of wheeling around the large arena.

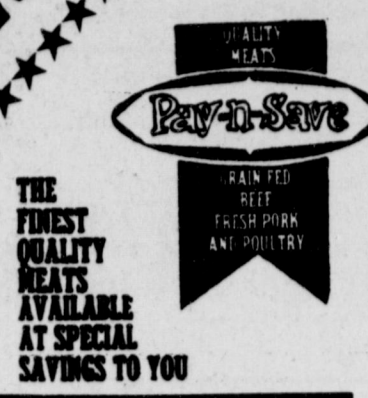
Any adults interested in skating, check with members of the Muleshoe Area Youth Activities Committee Inc. for special adult skating. Adults, too, may be able to join the skaters for an afternoon of exercise and enjoyment.

Con't on page 6, Col. 6



RIBBON CUTTING CEREMONY--Perry's Dept. Store has been celebrating the opening of their new facilities this past week. Pictured from L to R is Chamber president, Merlyn Neel, Mayor of Muleshoe, Charles Bratcher, Chamber of Commerce Manager, John Gully, Perry's Manager, Carson Clayton, Perry's District Supervisor, Bill Wood, Store Manager of Childress, Carter Reed, and Store Manager of Snyder, Dewane Seay. Perry's had their Ribbon Cutting Ceremony Thursday morning.

WE'VE GOT YOUR DOLLARS WORTH AT **Pay-n-Save**



IT PAYS TO SAVE WITH US!

- TURKEY** U.S.D.A. GRADE 'A' SHURFRESH HEN TENDER 79¢
TIMER SELF-BASTING 10-14 LB. AVG. LB.
- HENS** GRADE 'A' BAKING LB. 59¢
- TURKEYS** COUNTRY PRIDE SMOKED 8-10 LBS. AVG. LB. \$1.39
- BACON** OSCAR MAYER SLICED FINEST QUALITY 16 OZ. PKG. \$1.59
- BOLOGNA** OSCAR MAYER SLICED MEAT/BEEF/THICK/THIN 12 OZ. PKG. \$1.39
- MEATS** OSCAR MAYER SQUARE VARIETY PACK 12 OZ. PKG. \$1.89
- SMOKIE LINKS** OSCAR MAYER 12 OZ. PKG. \$1.69



U.S.D.A. GRADE 'A' SHURFRESH SELF-BASTING WITH TENDER TIMER 18-22 LBS. AVG.

TURKEYS 69¢ LB.

WRIGHT'S HICKORY SMOKED WATER ADDED WHOLE 17-22 LBS.

HAMS 99¢ LB.

SHANK PORTIONS \$1.09 LB.
BUTT PORTIONS \$1.19 LB.

TENDERCRUST BROWN & SERVE ROLLS

279¢

12 CT. PKG.

BROTH SWANSON'S CHICKEN 3 14 OZ. CAN 69¢

GRAVY MIX SCHILLING TURKEY 2 7/8 OZ. PKG. 49¢

CROUTETS KELLOGG'S REGULAR 7 OZ. BOX 59¢

STUFFING PEPPERIDGE FARM MIX 8 OZ. PKG. 69¢

SPECIALS FROM THE GROCERY DEPARTMENT

- TOWELS** SPILLMATE PAPER JUMBO ROLL 69¢
- NAPKINS** MARDI GRAS DECORATOR 140 CT. PKG. 59¢
- FOIL** REYNOLD'S STANDARD ALUMINUM 12" x 25' ROLL 39¢
- BAGS** PRESTO COOKING TURKEY 2 CT. BOX 59¢
- DAWN** 13" OFF LABEL DISH LIQUID 22 OZ. BTL. 89¢
- FILTERS** MR. COFFEE 50 CT. BOX 49¢
- SUGAR** SHURFINE PURE GRANULATED 5 LB. BAG \$1.19
- SUGAR** IMPERIAL BROWN OR POWDERED 2 LB. BAG 79¢
- KARO** RED LABEL SYRUP PT. Btl. 59¢
- COCONUT** 25" OFF LABEL BAKER'S ANGEL FLAKE 14 OZ. BAG \$1.19
- PECANS** ELLIS HALVES OR PIECES 6 OZ. BAG \$1.09
- DRESSING** MIRACLE WHIP SALAD 32 OZ. JAR \$1.19
- TEA BAGS** SHURFINE BLEND 100 CT. BOX \$1.49
- PICKLES** SHURFINE SWEET MIDGETS 12 OZ. JAR 99¢
- DRESSING** KRAFT CATALINA 16 OZ. BTL. \$1.19

- ### DAIRY AND FROZEN FOODS
- ROLLS** PILLSBURY CRESCENT 8 OZ. CAN 69¢
 - CHEESE** PHILADELPHIA CREAM 8 OZ. BOX 69¢
 - PARKAY** MARGARINE QUARTERS 1 LB. BOX 59¢
 - EGGS** SHURFRESH GRADE 'A' EXTRA LARGE DOZ. CTN. 69¢
 - DIPS** BORDEN'S PREPARED 2 8 OZ. CTN. 79¢
 - EGG NOG** BORDEN'S MIX QT. CTN. 89¢
 - CREAM** BORDEN OR SHURFRESH SOUR-WHIPPING 2 1/2 PT. CTN. 79¢
 - TOPPING** COOL-WHIP 8 OZ. CTN. 59¢
 - SHERBET** ASSTD. FLAVORS BORDEN'S 1/2 GAL. CTN. \$1.29
 - NOVELTIES** BORDEN'S FROZEN 6 CT. BOX 79¢
 - PUMPKIN PIE** PET RITZ 24 OZ. BOX 79¢
 - MINCE PIE** PET RITZ 24 OZ. BOX 89¢
 - VEGETABLES** SHURFINE BROCCOLI SPEARS OR LIMAS FORD HOOK 10 OZ. CTN. 49¢
 - ASPARAGUS** SHURFINE SPEARS 8 OZ. CTN. \$1.39

Folgers COFFEE

ALL GRINDS FOLGER'S

\$269

1 LB. CAN

WITH \$7.50 OR MORE PURCHASE EXCLUDING CIGARETTES

BETTY CROCKER CAKE MIX

SUPER MOIST

69¢

18 OZ. BOX

- SAUCE** SHURFINE STRAINED/WHOLE CRANBERRY 2 NO. 300 CANS 79¢
- ORANGES** SHURFINE MANDARIN 2 11 OZ. CAN 99¢
- PUMPKIN** FOR PIES LIBBY'S 2 NO. 303 CAN 79¢
- COCKTAIL** SHURFINE FRUIT 2 16 OZ. CANS 99¢
- PEACHES** DEL MONTE WHOLE SPICED NO. 2 1/2 CAN \$1.29
- CIDER** TREE TOP APPLE 1/2 GAL. BTL. \$1.49

SUGARY SAM CUT YAMS

NO. 2 1/2 CAN

69¢

CRISCO

ALL VEGETABLE SHORTENING

\$199

3 LB. CAN

- ### SPECIALS FROM THE GROCERY DEPARTMENT
- BEANS** SHURFINE WHOLE GREEN 2 NO. 303 CAN 89¢
 - BEETS** SHURFINE SMALL WHOLE 2 16 OZ. GLASS 99¢
 - CORN** SHURFINE GOLD CREAM STYLE/WH. KERNEL 3 17 OZ. CANS 99¢
 - ASPARAGUS** DEL MONTE TIPS 10 1/2 OZ. CAN \$1.19
 - PEAS** PETIT POIS SHURFINE 2 NO. 303 CAN 89¢
 - MARSHMALLOWS** MINIATURE KRAFT 16 OZ. BAG 49¢
 - DRINKS** SHURFINE ASSORTED CANNED 6 12 OZ. CANS \$1.00

- HAIR SPRAY** ADORN NON-AEROSOL 8 OZ. CAN \$1.69
- RINSE** TAME CREME 8 OZ. BTL. \$1.19
- LIGHTERS** BIC BUTANE DISPOSABLE EACH 39¢
- BAND-AID Brand Plastic Strips Medium** 30 CT. BOX 89¢
- BAND-AID Brand Sheer Strips Medium** 30 CT. BOX 89¢

We Welcome USDA Food Stamp Coupons

WE RESERVE THE RIGHT TO LIMIT PRICES EFFECTIVE NOVEMBER 18-24, 1979

COME TO PAY 'N' SAVE FOR YOUR WIC CARD PURCHASES

Store Hours: Open 8:00-10:00 Monday - Saturday Sunday 9:00-8:00

CALIFORNIA PASCAL **CELERY**

LARGE STALK

29¢

- ### PRODUCE SPECIALS
- YAMS** NEW CROP GOLDEN LB. 29¢
 - ONIONS** YELLOW SWEET LB. 15¢
 - CRANBERRIES** OCEAN SPRAY 1 LB. PKG. 69¢
 - TANGELOS** FLORIDA LARGE 3 LBS. \$1.00
 - APPLES** RED DELICIOUS 3 LBS. \$1.00



GINNIE SEIFERT

Ginnie Seifert Artist Of Month

The Library is happy to announce, Ginnie Seifert has been named artist of the month, for November. Her paintings will be on display at the Library.

Ginnie started painting approximately ten years ago, although she hasn't painted much during this time.

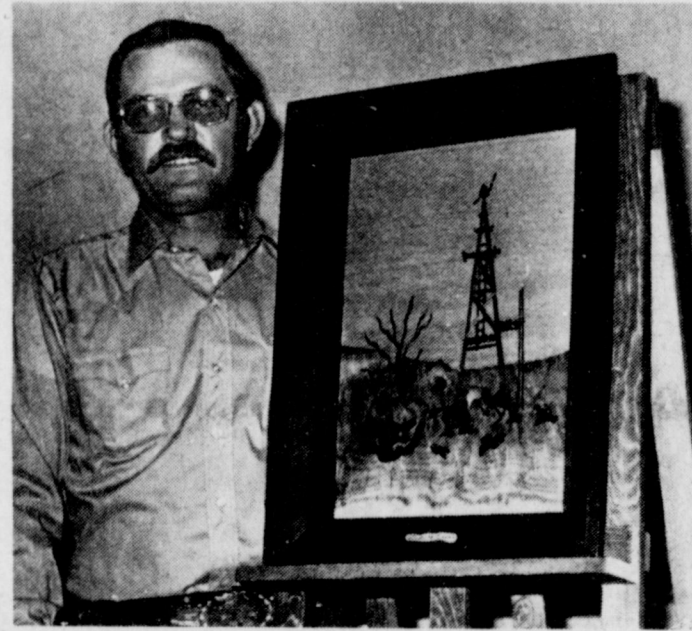
She enjoys mostly oils, but has done a few pastels and some gouache. Ginnie enjoys every subject, but prefers portrait and animal life.

As positive proof she is

showing a portrait of Muleshoe's own Mr. Cunningham at the library. She met him last year, and was very excited.

She is a member of the Muleshoe Art Association, and Pintores Art League in Clovis.

Country life is very important to Ginnie. She has developed a set of values and lifestyle, she would like to preserve in her paintings. It also made her an ardent lover of nature which provides inspiration, subject, teacher and even Church for her.



CALVIN MASON

Hobby Club Meeting Held

Muleshoe Hobby Club met Nov. 15, at Muleshoe State Bank community room, with 12 members and one guest, present.

Ola Epperly called the meeting to order. Roll call was by Secretary Vickie Hendricks. Allie Barbour served as reporter in the absence of Mabel Caldwell.

Craft items shown included: red house shoes, ceramic owl, double knit quilt, crystal cream pitcher, rub our picture which won first prize, snow men,

made of baby socks, Christmas crocheted ornament, tailed book marker, blue insulator, molded resin trau, set of resin butterflies.

Opel Robinson drew the hostess gift of kitchen towel and wrought iron trivet.

Those attending were: Fiddle Shafer, Myrtle Chambliss, Gurtie Kirk, Sammie Ethridge, Levina Pitts, Opal Robinson, Halie Briscoe, Mae Loyd, Dora Phipps, Vickie Hendricks, Ola Epperly, Allie Barbour and guest Mary Phipps.

Mabel Caldwell was unable to attend due to the illness of her mother.

XI Omicron XI Sorority of Beta Sigma Phi

XI Omicron XI Sorority of Beta Sigma Phi, met on Tuesday night, Nov. 6, in

the home of Mrs. Dick Chitwood.

Progressive Home Club

The Progressive Homes Club, met at the Corral Restaurant, Nov. 14, for lunch then went to Vera Engleking's home for their meeting.

The girl scouts were discussed and we voted to donate much needed dish cloths to them, at our next meeting which will be our Christmas Party on Dec. 19, at Norene Thomas' home.

Pie and coffee were served by the hostess, Vera Engleking, to eight members, Zida Mae Black, Lucille Harper, Norene Thomas, Wenona Gibson, Oma Stritton, Roxie Hoover, Margaret Epton, and we welcome back, Lois Newsom to the club.

Margrett drew the hostess gift and Lucille a birthday present.

Art Association Meets

Muleshoe Art Association, met in the Muleshoe State Bank community room, Nov. 13th.

Guest artist for this month was Cal Mason of Clovis, N.M. He showed how he uses woods of the world, as his palette for assembling his pictures. He calls this (artistry in wood). All wood is in its natural state, with only a hand rubbed finish, used to bring out natural coloring and grain.

Members present included: Dickie Magness, Hazel Nowell, Marie Cox, Corrie Lee Bishop, Lois Smith, Barbra Carpenter,

the meeting was called to order by president, Mrs. Bob Finney. The minutes of the last meeting were read by secretary, Mrs. Ken Box and Mrs. Tom Merritt read the treasurer's report.

After a lengthy discussion, it was decided that the sorority will not sponsor the annual home tour this year. Hopefully, we will be able to have the home tour next year during the Christmas season.

The sorority voted to donate the money allocated for our service project to the downtown Christmas lights project. It was also decided to adopt a needy person again this year to help at Christmas.

Mrs. Ken Box and Mrs. Bob Finney presented the program on Saudi Arabia. They showed a filmstrip and discussed the customs, manner of dress, and the living habits of these people.

Refreshments of a fruit

pie, cokes, and a hot punch were served by Mrs. Steve Black and Mrs. Dick Chitwood to the following members: Mrs. Clifford Black, Mrs. Ken Box, Mrs.

Green as co-hostess and the program will be on India and Southwestern Asia.

..... The calories in our diet should come from all three macronutrients -- carbohydrate, fat and protein. Nutritionists now recommend that about 55 percent of our calories come from carbohydrate (bread and cereal groups and the fruit and vegetable group), 30 percent from fat and 15 percent from protein foods.



the ready bank

MULESHOE STATE BANK

101 AMERICAN BLVD. • 272-4561 • Member FDIC

OPEN!

168

hours a week

... the

24 hour bank

A FULL SERVICE BANK

321 MAIN

Anthony's

C. R. ANTHONY CO.

321 MAIN

FOUNDER'S DAY

LAST 3 DAYS!



LADIES PANTS AND TOPS

\$9.00

Your choice while styles last. **HURRY!**



Warm Men's Flannel Shirts

Long sleeve sanforized flannel shirts. Seven button top center.

\$4.97

Reg. \$6.99 Ea.



Junior Sweaters

100% Acrylic sweaters in assorted colors. Be ready for cold weather in style. Sizes S-M-L.

Reg. \$12.-\$15. **9.88** ea.



MENS WESTERN SHIRTS

\$7.88

Sit tall in the saddle in these fancy pattern and solid western shirts. Polyester and cotton blend 2 pocket long sleeve shirts. Sizes 14 1/2-17.



Sunny Isle FASHION PANT

Made to fit comfortably

Klopman 100% Polyester two-way stretch gabardine slacks. Many solid colors available. Sizes 3-15.

Reg. \$12. **\$8.88**



Entire Stock LUGGAGE

Amer. Touristor Samsonite

1/3 OFF

MULESHOE

Comin' in for good

at the



1422 W. Amer. Blvd.

Muleshoe

Good

Just Got Better.

Comin' in for good.



\$2 OFF

\$2 off any large pizza. Or \$1 off any medium pizza. Making our pizza by hand really makes it good. And saving on our pizza really makes it better.

One coupon per party per visit at participating Pizza Hut restaurants. Offer good only on regular menu.

HOLIDAY OPEN HOUSE
Sunday, November 18
1:30 to 5:30 p.m.

Please stop by.

We'll have wall-to-wall ideas for the season awaiting you.

Gifts -- Unique and Colorful

Decorations -- Festive and Imaginative

Cheer in every corner to add more fun and enjoyment to your holiday.

We look forward to seeing you!

Darla Chris
Margaret Christie

Flowers Unique

904 West 6th Street Muleshoe, Texas



MRS. GRADY [SUSAN] FREE

Mrs. Grady Free Feted With Baby Shower

Mrs. Grady (Susan) Free was feted with a baby shower, Monday, Nov. 12, at 7:30 p.m., in the Fellowship hall of the Richland Hills Baptist Church.

Guest were greeted by Mrs. Grady Free, Mrs. Joan Head and Mrs. Bobby Free.

Hot spiced apple cider, coffee, sausage balls and thumb print cookies were served from silver and crystal appointments, by Mrs. Camron Morgan and Hope Free.

The serving table was covered with a white lace trimmed polyester cloth. The centerpiece was a white tree trimmed with baby needs, rattlers, pacifiers, socks, etc.).

Special guests were, Mrs. Marshal Head, Mrs. Bobby Free, Mrs. D.B. Head, and Mrs. Melton Head.

Hostess presented Mrs. Free, with a corsage, made of blue and white baby

socks, also a wooden maple highchair.

Serving as hostesses were Mrs. S.P. Stockard, Mrs. Nicky Nickels, Mrs. Bobby Dodd, Mrs. Finis Kimbrough, Mrs. Danny Noble, Mrs. Frank McCamish, Mrs. Loyd Garlington, Mrs. Leon Sikes, Mrs. Ed Nickels, Mrs. Lonnie Merriott.

TOPS Has Weekly Meeting

The TOPS Club met, Thursday, Nov. 15, in the community room of Bailey County Electric.

Clara Lou Jones, president, called the meeting to order. The TOPS song was sung and the pledge recited.

Evelene Harris called the roll, with 25 members present. Best looser for the week was, Brenda Mur-

Class Of '54 Reunion

The class of '54 held their 25th anniversary, Sept. 2, in the Muleshoe Civic Center.

Kenneth Henry led a short business meeting, followed by prizes given for coming the farthest, Geleta, Calif. Mrs. Hopper is the former Jo Dean Warner.

Rodney Lambert of 29 Palm Calif. had the most children. The most grand children prize went to Mr. and Mrs. Ted Millsap, Muleshoe, former Holly Ann Cox.

Mr. and Mrs. Pat Largent, of Danciger, Tx. had the youngest child.

There was a tie for the least amount of hair between Joe Coffey of Lamesa, Tx. and Sammy Donaldson of Los Alamos, N.M.

Every one had a good time visiting and remem-

bering their school days.

Those attending were: Mr. and Mrs. Joe Coffey and Family, Lamesa, Tx.; Sam Donaldson and Lola Roark Donaldson, Los Alamos, N.M.; Sonny Shafer Muleshoe; Bill R. Holman, Albuquerque, N.M.; Mr. and Mrs. Richard Rogers (Sue Young), Mr. and Mrs. Ray West and Family, Midland; Mr. and Mrs. Travis L. Clements, Lubbock; Doris Underdown Jackson, Adrain; Mr. and Mrs. Don Hopper, (Joy Dean Warner) Geleta, Calif.

Bennie Bickel and Sons, Muleshoe, Mr. and Mrs. Don Harmon, Muleshoe, Mr. and Mrs. Frank Mann, Saginaw, Tex., Mr. and Mrs. Roland Stevens, Dimmitt, Tx., Rod Lambert, 29 Palms, Calif., Mrs. Don Moore, Gwen Workmen Sterling, Colo.,

Nelda Jo Wilson Teter, Lubbock, Mrs. Martel LeVeque, Amarillo, Tx.

Mr. and Mrs. Marvin Mooney, and family, Bea Knowlton, Eules, Tx., Mr. and Mrs. Robert Richards, Littlefield, Tx., Mr. and Mrs. Kenneth Hall (Beverly Arnold) Friona, Tx., Mr. and Mrs. Ted Millsap, (Holly Ann Cox), Muleshoe, Helen Stovall Alexander, Judsonia, Ark., Mr. and Mrs. Joe Horsley and family, Dorothy Lowery, El Paso, Tx., Mr. and Mrs. Pat Largent, Marion Harris, Danciger, Tx. Mr. and Mrs. Jimmy Allison, Littleton, Colo., Roger Gorrell and daughter Austin, Tx., Mr. and Mrs. Kenneth Henry and Family, Muleshoe, Tx.

Other guests attending were Mrs. Elizabeth Watson, Mrs. Beatrice Blackburn, Mr. and Mrs. Gordon Wilson, Ronald "Buck" Johnson all of Muleshoe.

Snack and Beverage: Holly Huckaby, blue ribbon. Bread and Dessert: Pam Plank and Krystal Derrick each received a blue ribbon.

The District 2 4-H Food Show will be held on Saturday, Dec. 8th, on the campus of Texas Tech University. Winners from the County contest whom will represent Bailey Co. in the District show will be Senior Division: Main Dish Marlin Bynum, Side Dish, Delia Shaw, Snack and Beverage: Tamara Gilliland, Bread and Dessert: Tim Sain.

Junior Division: Main Dish, Zanna Huckaby, Joey Kramer, alternate. Side Dish: Mandy Plank, Snack and Beverage: Sharla Morrison, alternate. Bread and Dessert: Brenda Flowers, Mercedes Sayago, alternate.

ing by studying food costs. Learning work and time management in planning, preparing and serving nutritious meals is also an important part of the project.

Nineteen 4-H members participated in this year's event. In the Senior Division were:

Main Dish: Marlin Bynum, and Delia Shaw each won blue ribbons. In the

In the Pee Wee Division: junior division were: Main Dish: Zanna Huckaby and Joey Kramer, each won a blue ribbon. Mandy Plank received a blue ribbon for her side dish.

Snack and Beverage: Audrey Marshall, received a red ribbon, blue ribbons went to Sharla Morrison and Glen Flowers.

Bread and Dessert: Jayna Harris, Chantel Robison, Jamie Roberson and Debbie Isaac, red ribbons. Blue ribbon winners were, Mercedes Sayago, Brenda Flowers.



CHECK PRESENTED ... Thursday afternoon, Pat Black presented Wayne Holmes with a check for the Youth Activity Committee to be used for the miniature golf course. The check is the proceeds from the Money Doll, given at the Alpha Zeta Pi bingo party. L to R is Pat Black, Betty Hopper, Joyce Holmes, Galin Bock and Sgt. Wayne Holmes.

Brownies Visited Police Department, Library

Brownie Troop #247 met Tuesday, Nov. 3, at the Muleshoe Police Department. Deputy Sheriff, James Williams took the Brownies on a tour of the Sheriff's department, explaining the function of the tele-type machine.

Deputy Sheriff Williams, then explained the procedure used in finger printing and booking a criminal. He then took the girls on a tour of the jail section, explaining where each type of criminal is kept.

On Tuesday, Nov. 13, the Brownie Troop met at the Muleshoe Area Library, where head librarian, Anne Camp, took them on a tour.

Mrs. Camp, explained

the different sections of books and showed the Brownies where the books for their age level were located. The girls studied the paintings of the Artist of the Month, and viewed a beautiful rock collection, displayed there in the library.

Mrs. Camp then took the

girls to the basement and showed them a filmstrip and read them the story of Thanksgiving.

Brownie's attending both tours were: Misty Hillin, Brandi Estep, Lillie Garza, Beth Johnson, Julie Recio, Lisa Coleman, Marcia Blackwell and LaTavia Copley.

Brownie Troop #247 appreciate both, Mrs. Camp and James Williams for taking the time to help us learn about their jobs.

The children and grandchildren of Mr & Mrs John A Johnson request the pleasure of your company at a Reception Honoring the Sixtieth Wedding Anniversary of their parents Sunday, the eighteenth of November Nineteen hundred seventy-nine from two till four o'clock. Bailey County Civic Center 2200 West American Blvd. Muleshoe, Texas

Your friendship is a cherished gift we respectfully request no other.



The average human body consists of about 50 trillion cells.

Friends Of The Library

November 15-19, 1979. Each person who visits the library will receive a sticker with the emblem "Be With a Book for a Day" slogan. You may check out a book or the library will give you a book from the basement to be with for a day.

Also the Friends of the Library of Muleshoe are beginning a membership drive for 1980. The group is made up of anyone who contributes to support special projects of our library. All money raised by the Friends of the Library is used by our librarian, Anne Camp, to purchase special items for the library such as films, children's books, bookcases, bookshelves, display cases, material for the weekly storyhour, and the prizes and certificates of the Summer Reading Program. As of now the membership drive is the only money-raising project of the Friends of the library. The library and all of its projects touch everyone in the community at some point. Individual membership is \$1.00 per year, family membership is \$5.00 per year, and life-time membership is \$100.00. All donations are tax deductible. Checks should be made to Friends of the Library and left at the Muleshoe Public Library or mailed to the Library, 322 W. 2nd.

Memorials and honors should be mailed to Mrs. Mildred Davis, Memorial Chairman, c/o the Muleshoe Public Library, 322 W. 2nd. This money is used to purchase new books.

We urge you to contribute whatever you can afford.

As most of you know, the Muleshoe Area Public Library is a major asset for our community, schools, and families. The friends of the library wish to encourage all residents of the Muleshoe Area to visit the library and participate in the "Be With a Book for a Day" Program, a nationwide support campaign for the White House Conference on Libraries which will be held in Washington

Now Open
The Dinner Bell Cafe
Is Now Open Under New Management!
Come In & Get Acquainted With Clara Tutt.
Open 5:30 a.m. - 10 p.m.

BRIDES BOOKS • BRIDAL REGISTRY SERVICE • CHINA
CRYSTAL • ANNIVERSARY GIFTS • BRIDAL CAKE KNIVES • WATCHES

Great new quartz watches with a battery life of up to 5 years from Seiko.

Here, Seiko combines strong contemporary design with unerring quartz accuracy and dependability that can operate up to 5 full years on a single ordinary battery. Plus convenient precision details, like an instant setting date calendar. Exceptional quality watches that are water-resistant to 100 feet. In stainless steel, with a white or blue dial. Seiko Quartz.

Layaway Now For Christmas
Lindsey Credit Jewelry
202 Main 272-3355

WATCH BANDS • TOASTING GLASSES • SILVER

St. Clair's FASHION **BOOT SALE**
Since 1930

ENTIRE STOCK LADIES AND GIRLS BOOTS ON SALE

| | | | |
|-------------------|--------------------|--------------------|--------------------|
| GIRLS | REGULAR | NOW | 20% OFF |
| WEBER OR | \$25 ⁰⁰ | \$20 ⁰⁰ | |
| JJ Jumping-Jacks. | \$30 ⁰⁰ | \$24 ⁰⁰ | |
| | | \$35 ⁰⁰ | \$28 ⁰⁰ |

ENTIRE STOCK LADIES FASHION OR WESTERN FASHION BOOTS **33% OFF**

| | |
|--------------------|--------------------|
| REGULAR | NOW |
| \$68 ⁰⁰ | \$45 ⁵⁰ |
| \$80 ⁰⁰ | \$53 ⁵⁰ |
| \$85 ⁰⁰ | \$56 ⁹⁵ |

SPECIAL GROUP BOOTS & CLOGS \$29⁹⁷ value to \$55⁰⁰

Karen Moyer, Jimmy Seales United In Double Ring Ceremony



MR. AND MRS. JIMMY SEALES [KAREN MOYER]

Karen Moyer, became the bride of, Jimmy Seales, on Thursday, Oct. 18, at 8 p.m., at the Trinity Baptist Church, in Muleshoe. Rev. Gene Prevo officiated the double ring ceremony.

Parents of the couple are, Mr. and Mrs. Bert Seales of Muleshoe and Mr. and Mrs. Joe Paul of Spearman.

The couple stood before an altar decorated, with a fifteen branch arched can-



Tooth decay is the most universal of human diseases.

dleabra, with white taper candles, flanked on either side by basket arrangement of orange and apricot carnations and yellow cushioned mums with various greenery and ivory lace bows.

The bride chose a floor length quiana knit gown, fashioned with a deep scoop neckline and long sleeves, edged with a lace ruffle. The bottom of the gown, featured a deep flounce ruffle.

The bride carried a cascading bouquet of orange carnations with white German statice with ivory lace streamers. She wore a hair corsage of orange carnations and white German

statice.

A reception followed the ceremony in the fellowship hall of the Church.

After a wedding trip to Dallas, the couple will make their home in Muleshoe.

The groom is employed at Missouri Beef Packers, at Friona and the bride is a beauty operator at Chubby's Beauty Shop.



Latest Arrivals

David Lowell

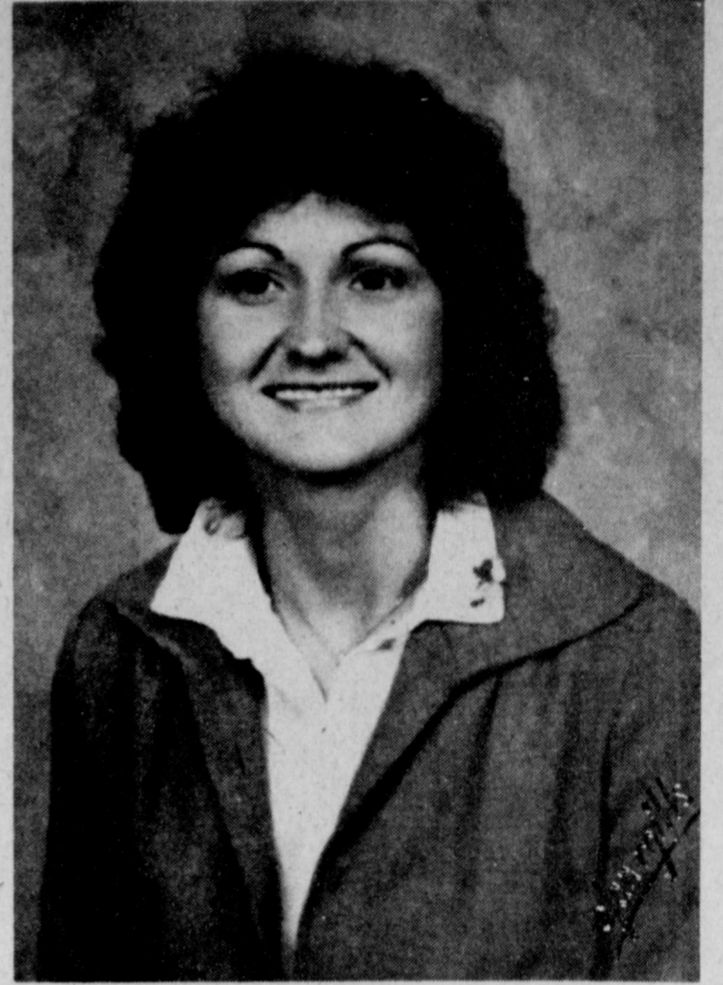
Michael Thomas Vaughn

Mr. and Mrs. Gerald Vaughn, are the proud parents of twin boys born Saturday, Nov. 17, in the Health Science Center in Lubbock.

The boys have been named Michael Thomas, and David Lowell. Michael was born at 9:38 p.m. and weighed 5 lbs. and 7 oz. David was born at 9:45 p.m. and weighed 4 lbs. and 11 ozs.

They have an older sister, Kimberlee, 20 months old. Grandparents are Mr. and Mrs. Darrell Kenner, Muleshoe and Bobby Tune, Tyler and Roy Fender, Buckeye Lake, Ohio. Great grandparents are Mr. and Mrs. Lowell Walden, Earth, Mr. and Mrs. Ira Martin, Tyler.

Great great grandmothers are Mrs. L.T. Walden, Bula and Mrs. L.F. Fitzgerald, Tyler.



ENGAGEMENT ANNOUNCED ... Mr. and Mrs. R.E. Jackson formerly of Muleshoe have announced the engagement of their daughter, Viola Jackson, to Stan Carson, son of Mr. and Mrs. J.W. Carson, of Dumas. The couple plan a December first wedding in the Camp Maybry All Faiths Chapel, of Austin. The bride elect plans to enter nursing school this fall in Dallas. She is presently employed as a medical assistant in Austin. The prospective bridegroom is a graduate of Texas Tech, and is presently attending graduate school in Austin. The couple plan to live in the Dallas area, upon completion of his graduate work.

ADYSUKNOW?

That many major fast food chains are now offering drinks in pint and quart size foam cups?

That "big" drinks mean you pay less per ounce for your favorite beverage and you can finish your meal before you finish your "big drink"?



That foam cups keep your drink, no matter what the size, at the right temperature? According to the Foam Cup and Container Division of the Society of the Plastics Industry, foam cups keep hot drinks hotter and cold drinks colder than any other kind of disposable cup.

That foam cups are sanitary because they are used only once.

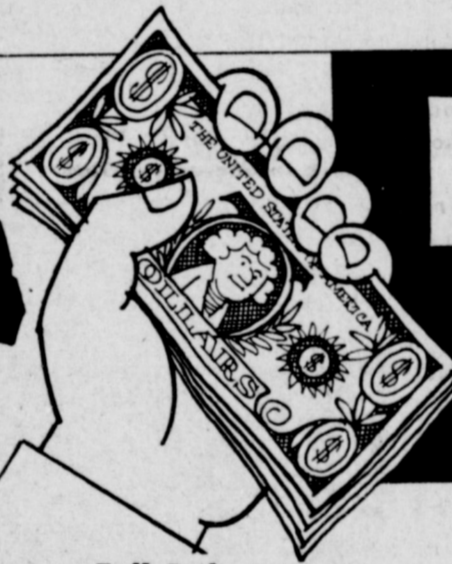


BIRTHDAY PARTY ...Ruth Myers and Dorsha Dykes celebrated their birthdays in November. Ruth was born 11-26-81 and Dosh's birthday was 11-25-90. The Needmore Community Club held a birthday party for them. Flower Land furnished the flowers and J.C. Shanks provided the music.

321 MAIN
MULESHOE



SEW WITH THE BEST!



FABRIC SALE

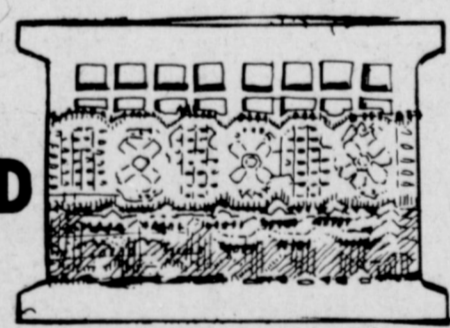


**ANTHONY'S
SUPER
SHEARS
\$1.57
2 FOR \$3.**

Beautiful Fall Fabrics • Full Bolts
45" COTTON BLEND PRINTS & SOLIDS.....
Special Purchase Just Arrived
60" CEZANO SHEER SOLIDS.....

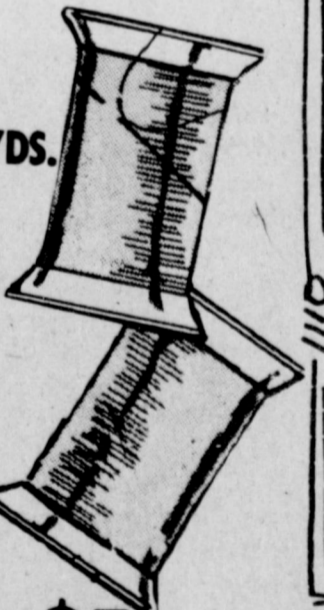
97¢ YARD

**BEAUTIFUL GROUP
INTERLOCKS AND
SOFT KNITS.....** \$1.57 YD.
Just Received!
**SPECIAL PURCHASE OF
KNITS & INTERLOCKS.....** \$1.77 YD.



Lace Trim
8 yds. for \$1.

Over 3,000 YDS.
In Stock
Now!



Spun Polyester Thread

For the penny-wise shopper, a marvelous buy. Every color imaginable! 100% spun polyester. 225 yards per spool.

8 FOR \$1.



**COATS & CLARK
RED HEART
worsted
hand knitting yarn**

**88¢ EACH
6 FOR \$5.**



Special Purchase Compare at 5⁹⁹
**VELOUR SOLIDS AND
FASHIONABLE PRINTS**

2 YARDS \$5

- Over 1000 YDS.
- Beautiful Rich Colors
- Just Received
- 54" Bolted
- First Quality



Flame Retardant Reg. \$1⁹⁹
COTTON FLANEL
\$1.37 YD.

- Just Arrived
- Suitable for Sleepwear

**NON-CURL ELASTIC
6 YDS. FOR \$1.**



Mules...

Cont. From Page 1.

Jesse Lackey and then used a key block by Cam Haskins for a 26-yard touchdown. The Mules try for two was no good, so the lead stayed 12-0 with just over five minutes left in the half.

Morton suffered another turnover, but not the had some excitement of their own. On a third and six from the 20, Dent took the ball up the middle and went 65 yards before Jim Norman caught Dent and dragged him down at the 15-yard line. But three plays later, a bad pitch by Cadenhead went into the arms of Lewis and the Mules had the ball at their own 12-yard line.

Northcutt got the final touchdown of the first half off with a 19-yard run. After two plays netted minus five yards, Northcutt connected with J. Norman for a 35-yard gain which was nullified because of an illegal motion penalty on the Mules. Northcutt took matters into his own hands and rambled 21 yards to the 42 for a first down. In all Northcutt rushed for 73 yards on 13 carries.

Northcutt and J. Norman or "Bones" as he is called, connected on a 47-yard pass play which took the ball all the way down to the 11-yard line with 52 seconds left in the half. Pecina carried it the last 11 yards, after breaking a couple of tackles and getting a good block from Norman. Northcutt hit Whalin for the two-point conversion and the half ended with Muleshoe leading 20-0.

If the Indians had any thoughts of getting into the ball game, they quickly ended as Cadenhead hit Watson with another pass, this time the second play of the half, and the Mules had the ball on Morton's 48-yard line.

Five plays gained 31 yards for the Mules and they had the ball first and 10 at the 17. Pecina, on a trap play, broke two tackles at the line of scrimmage and raced left for his second touchdown of the game, this one on a 17-yard run. Whalin converted the extra point and the Mules led 27-0 with 8:44 left on the clock.

The Mule defense stopped the Morton attack throughout most of the second half. After giving up 149 yards in the first half, the Indians were only able to get 82 yards the final two periods, with 52 of those yards coming of a 52-yard screen pass from Joe Bob Wynn to David Moore with eight seconds left in the ball game.

On the other side of the field, the Mules amassed 302 yards in total offense for the game. Northcutt the team's leading rusher with 73 yards added another 72 yards through the air as he was two of two for the evening.

F. Norman was next high on the team in rushing with 50 yards and was followed by Walker with 40 and Pecina with 39.

The Mules are now 8-1 overall and finish the district with at perfect 5-0 record. The Mules suffered their only defeat in the first game of the season as the Portales Rams defeated them 7-2. Following that contest, the Mules had victories over Floydada and Tulia, (9-7, 24-0).

PHOTO SHOW
NEW YORK (AP) — "Photography Rediscovered: American Photographs 1900-1930" is on view at the Whitney Museum of American Art through Nov. 25. The museum says the show is "a survey of the major trends in the development of photography as an independent art in America during the early 20th century."

then were tied by Abernathy, 20-20. The Mules have now run off six consecutive victories included in those were wins over Idalou, 21-15, Friona, 36-23, Littlefield, 16-3, Olton, 27-7, Dimmitt, 34-0 and Morton 27-8.

The Mules will now take on Idalou with the winner to meet Childress who is still undefeated this season.

City Council...

Cont. From Page 1.

maintenance of passive warning devices at public railroad grade crossings in the City of Muleshoe.

They will discuss the potential participation by the City of Muleshoe in a joint rate review of a forthcoming rate increase request by Southwestern Public Service.

Attend Union Thanksgiving Services Today

Today, Nov. 18, at 8 p.m. all local and area churches will be participating in the Union Thanksgiving Services. The services this year will be at the First Assembly of God Church on South First Street. Host Pastor is Joe Stone.

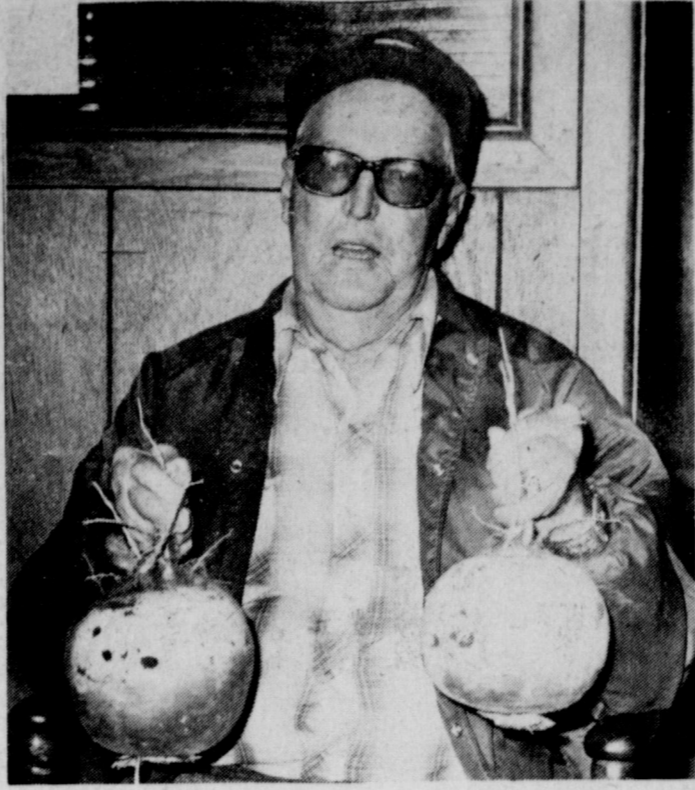
A community choir, composed of choir members of the various churches in the area will be presenting

Pheasant...

Cont. From Page 1.

ras, pheasant hunt chairman at Sherley-Anderson Grain, Lazbuddie, Box 23, or call him at 965-2934. They will also be available from Eddie Matthews at Lazbuddie Grain Inc. or call 965-2926, P.O. Box 186, Lazbuddie; or from Glenn Lust, fire chief, Route Three, Muleshoe, 965-2828, or at the Lazbuddie Volunteer Fire Department breakfast.

Chief Lust explained that all donations will be used to help pay operating expenses and buy new equipment for the fire department at Lazbuddie, which is operated strictly by volunteer firemen and through contributions and donations.



HARVEST TIME ... These large turnips were grown by Orly Jarman on his farm, one mile North of Muleshoe. They averaged four and one half pounds each. Measuring about nineteen inches around. Orly planted the turnips the first week of August.

special music, along with the "King's Kids" from the First Assembly of God Church.

Choir practice for the special community choir will be from 5:30-6:30 p.m.

Iron Horse...

Cont. From Page 1.

According to the plant spokesman, the coal handling facility is waiting for drawings to start on the scale construction, and the preliminary dirt work has been completed, with other work, such as the railroad approximately three weeks away from completion of the first phase.

Foundation supports are underway and being prolific at this time. The crew at the plant killed 25 rattlers Tuesday, with two of them being 45 inches long, and a spread of about seven inches. He cures and tans the hides, using them for hatbands, watchbands and other ornaments.

It was also reported that Talk Station has a new father. Construction superintendent and Mrs. Eddie Barron became the parents of their first child on Saturday, November 3. Jason Truitt weighed in at six pounds, ten ounces, and it is already predicted that he will be a future SPS employee.

at the First Assembly of God Church. The Thanksgiving message will be delivered by Rev. J.E. Meeks, pastor of the First Baptist Church.

Participating in the services will be Rev. David Hamblin, pastor of First United Methodist Church and president of the Bailey County Ministerial Alliance.

Other Ministerial Alliance members participating will be Rev. Walter Barthold, First Christian Church; Terry Bouchelle, 16th and Ave. D Church of Christ; Carroll Rhodes, First Baptist Church; Gene Davis, First Assembly of God Church; and Douglas Gardner, Circleback Baptist Church. Also, Rev.

Gene Prevo, Trinity Baptist Church; Rev. David Hamblin, First United Methodist Church; Rev. E.E. McFrazier; Rev. J. E. Meeks, First Baptist Church; Rev. Joe Stone, First Assembly of God Church and Rev. H.D. Hunter, Community Church.

All members of all faiths are urged and encouraged to attend the Union Thanksgiving Service. A free will offering will be accepted to help the Ministerial Alliance with their work in the up-coming year.

Judge...

Cont. From Page 1.

one desiring to see it," stated the Judge.

For working the roads Bailey County has twelve motor graders, four dump trucks, four pick-ups, four front-end loaders and other minor equipment such as trailers, shredders, etc. Each Precinct has three motor grader operators, but recently, for economic reasons, they have to some extent, curtailed their operations.

Bailey County has three cars for the Sheriff's Department, two pickups for the Extension Service, two ambulances, one Senior Citizen Van, and one car for use by the County Judge and other officials. A Bookmobile is owned and used jointly by Bailey, Parmer, Lamb and Cochran Counties.

The recently constructed Exhibition Center and Coliseum, including land, pavement and equipment, cost approximately \$500,000.00. There is \$220,000.00 outstanding debt on it in bonds payable over fifteen years, drawing 5.4 per cent interest. \$75,000.00, is outstanding on the Law Enforcement Center; making a total debt of \$295,000.00.

"Bailey County has never defaulted on a bond or warrant payment and

It's easy to find an excuse for delaying hard work.

Talent, plus over-confidence, can ruin a life's work.

Law Enforcement Center Report Sheriff And Police

The Bailey County Law Enforcement Center reports a vandalism of a windmill owned by Larry Flowers, south west of Baileyboro and Lucky Spurloc has either lost or had stolen a reddish-brown horse with a Brown face. One arrest for driving while intoxicated reported in the last week.

The Muleshoe City Police reports three public intoxications, two reports of criminal mischief-broken windows on a motor home and a vehicle. Reported also was items taken from a pickup parked in front of a residence. Also three juvenile runaways were found.

there is no good reason why the county should," said Glen Williams. Judge Williams also mentions that "According to the 1980 budget EVERY fund is in balance-showing a small surplus. And we plan to operate within it."

The books are audited every three months, and an annual audit made at the end of each calendar year by Webb, Webb & Alright CPA of Littlefield. Copies of those audits are on file and are available for examination at all times. "As everyone is aware, rapidly rising prices has forced the cost of operation upward at a fast pace. For example, fuel that, a short time ago, cost 25 to 30 cents a gallon now costs

from 70 to 80 cents," explained Judge Williams. He also added,

"Motor graders that did cost about \$30,000.00 now cost about \$80,000.00 and the same thing has happened to grader blades, repairs supplies, utility bills-everything."

"Additional personnel has been required for the Coliseum, the Sheriff's Department and the Extension Service. Greater cash outlays are being required in several areas, but the Commissioner's Court has prepared to cope with them. Thus Bailey County is financially sound and will remain that way. The Court and other officials will exercise proper financial restraint," said the Judge.

OPEN!
1440 minutes a day ... the 24 hour bank

the ready bank

MULESHOE STATE BANK A FULL SERVICE BANK

101 AMERICAN BLVD. • 272-4561 • Member FDIC

The BACK FORTY

"If you would't stop, you would't get stuck."

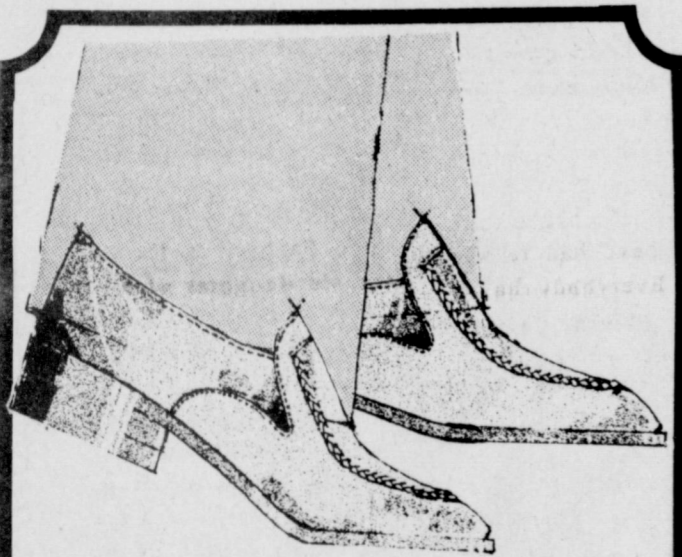
Free Turkeys!

Come by & Register For A Chance At Turkeys To Be Given Away November 21.

Layaway Now For Christmas!

ee's Lay-A-Way WESTERN WEAR

1910 W. Amer. Blvd. Muleshoe



FREEMAN Free-Flex
FIRST STEP FLEXIBILITY

In handsome Signature Calfskin, footwear so flexible, it won't break a raw egg when pressed down. Our unique construction duplicates the flexibility of your foot, from the first step. You don't have to break them in. No wonder satisfied Free-Flex customers come back again and again. The Frontier—Caramel or Black

ALBERTSON'S SHOP FOR MEN

228 Main

272-3000

Bailey County Journal (ISSN 040-208)

Established March 31, 1961. Published by Muleshoe Publishing Co., Inc. Every Sunday at 300 W. Second, Box 449, Muleshoe, Texas. "918". Second class postage paid at Muleshoe, Texas. 5317

TEXAS PRESS ASSOCIATION

L.B. Hall, President
James Wood, Vice President
Cora Williams, News

Polly Howell, Office

Elaine Parker, Subscription

SUBSCRIPTIONS:
Muleshoe Journal, And Bailey County Journal, Bailey and surrounding Counties. \$10.50
Muleshoe Journal and Bailey County Journal, Elsewhere in Texas. \$11.95
Muleshoe Journal, and Bailey County Journal, Outside of Texas. \$12.95
Yearly by carrier. \$9.50
Monthly by carrier. \$1.50
Advertising rate card on application.



FOR A SMALL MONTHLY CHARGE, SHE COULD'VE ANSWERED IT BY THE DRYER.

Every time Barbara Phillips' phone rings, it's long distance - the distance from her to her phone, that is.

If you spend a lot of time running to the phone, maybe you're in the running for an extension phone. For much less than you'd expect, you can start reaching for your

phone. Whether you're stuck in the laundry room, glued to the TV or deep in sleep.

What's more, you know you've got a phone that's as reliable as the phone company. So the next time you run to the phone, call your General Telephone business office. And make it the last time.

EXTENSION PHONES

the warwick
In New Orleans

Elegance Plus...
the BEST VALUE for Quiet Luxury at most moderate rates

Elegance Plus...
private dressing rooms, walk-in closets and two telephones in all rooms and suites; free valet parking

Elegance Plus...
Great location; 2 blocks to the Superdome, 1 block to Medical Center, 3 blocks to Central Business District, 6 blocks to French Quarter and the Civic Center and Oil Center are right across the street

Elegance Plus...
fabulous New Orleans cuisine and Continental dishes

MAIL COUPON FOR BROCHURES AND SPECIAL PACKAGE INFORMATION.

the warwick HOTEL

1315 Gravier Street
New Orleans, La. 70112
(504) 588-0100
Toll Free
1-800-535-9141

NAME _____
ADDRESS _____
CITY _____
STATE, ZIP _____

Gobble It Up
Thursday
November 22
At The Capitol Freehold Land & Investment Co., Ltd. Restaurant

Turkey & Dressing
Served At Your Table
With All The Trimmings
\$3.95
Including Coffee Or Tea

We Will Be Open
11 a.m. - 2 p.m.
ONLY
In Order That Our Employees May Observe Thanksgiving Day With Their Families.

Located At
Ranch House Motel
Hwy. 81 W. 272-1261

GIBSON'S
DISCOUNT CENTERS

Store Hours:
Mon-Sat. 9-7
Sun. 1-6
Prices Effective
Nov. 18-21

Vinyl
Tablecloths \$3⁹⁹
Reg. 5⁹⁹



Crisco
Shortening \$1⁹⁹
3 Lb.

Hi-Dri
Paper Towels 2/ \$1



Boys Long Sleeve
Knit Shirts \$1⁹⁹
Reg. 2⁷⁹-3⁷⁹
\$2⁹⁹
Reg. 4²⁹
\$3⁹⁹
Reg. 5⁷⁹



Jrs. and Ladies
Blouses \$3⁹⁹
Reg. 4.97- 5.97
\$5⁹⁹
Reg. \$7.97
\$8⁸⁸
Reg. \$9.97- \$10.97 - \$11.97

Excedrin

\$1²⁵

60 ct.

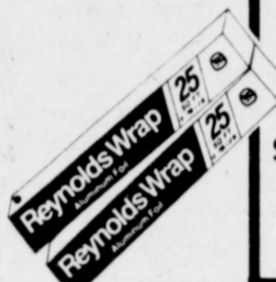


Havoline 10W40 Qt. Motor Oil 69¢
97.



Reynolds
Aluminum Foil 3/\$1⁰⁰
25 Sq. ft.

3/\$1⁰⁰



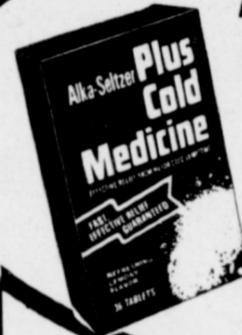
Red Heart
Yarn 85¢
4 Ply 3 1/2 oz.

85¢

Alka-Seltzer PLUS COLD MED.

\$1⁷⁵

36 Tab.



Grand Award
Christmas Cards \$1²⁵
20 ct.



All Girls Winter
Sleepwear 25% OFF



Stuart Hall Notebook
Filler Paper 66¢
200 Ct. Filler

200 ct.



Tricycles



10" Reg **\$14⁹⁹**
\$24.99

13" Reg **\$17⁹⁹**
\$26.99

Big Ben Electric
Alarm Clocks \$6⁹⁹

\$6⁹⁹



Holiday
Cloth Ribbon 99¢
Reg. 1⁶⁷

99¢

Men's Vinyl
Dress Gloves \$1⁹⁹



Men's Long Sleeve
Knit Shirts \$2⁶⁶
Reg. 3⁷⁹



6-Pc. Steak Knife Set \$1²⁵

\$1²⁵

Delsey
Bathroom Tissue 83¢

83¢

4 Roll Pkg.



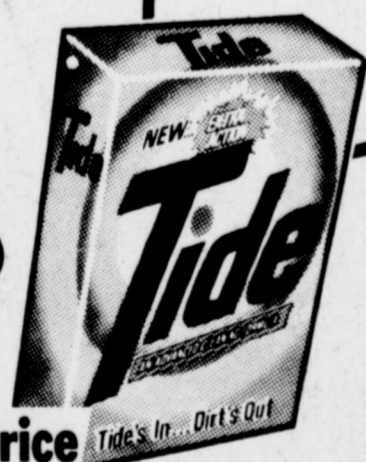
St. Regis
Paper Plates 89¢
100ct. - 9in

89¢

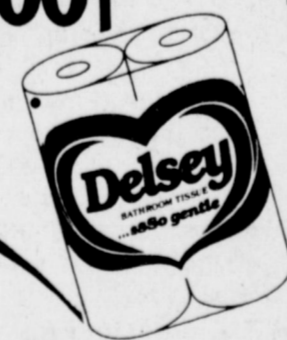
Men's
Jackets 20% Off
All Styles
Reg 19⁹⁹ thru \$43⁹⁹



20% Off
Reg. Price



Family Size
TIDE \$4⁴⁹



Ocean Spray Jelled
CRANBERRY SAUCE 2/89¢
No. 300



Rosemilk Skin Cream \$1⁷⁵
12oz.



Anchor Hocking
Refreshment Set 7-Pc \$3⁹⁹
6 Iced Tea Glass-1 pitcher

\$3⁹⁹

The Party Perk \$9⁹⁷
Automatically Brews
12 to 30 cups of coffee

\$9⁹⁷

EVERY DAY LOW PRICES

| | |
|----------------------|-------------------|
| Gal. Homo Milk | \$2 ⁰⁵ |
| 1/2 Gal. Homo Milk | 96¢ |
| Gal. Lowfat Milk | \$1 ⁸⁹ |
| 1/2 Gal. Lowfat | 94¢ |
| 1/2 Gal. Buttermilk | 98¢ |
| 2 Lb. Cottage Cheese | \$1 ⁶⁹ |
| 1 Lb. Cottage Cheese | 91¢ |
| Sour Cream | 19¢ |
| Whipping Cream | 58¢ |

Elementary PTA

The Muleshoe Elementary PTA held its regular monthly meeting Monday Nov. 12, in the Richland Hills Cafeteria.

The meeting was called to order by Doris Palmer. Thank you notes were read from, Elsie Smith for the District 14 workshop that was held in Muleshoe, and from the Richland Hills and Mary DeShazo schools for the cakes they received from PTA, during teacher appreciation week, Nov. 5-9.

Room count was won by Mrs. Brewer, Mrs. Prather, Mrs. Obenhous, and Mrs. Morris at Richland Hills Cafeteria.

The meeting was called to order by Doris Palmer. Thank you notes were read from, Elsie Smith for the District 14 workshop, that was held in Muleshoe and from the Richland Hills and Mary DeShazo schools for the cakes they received from PTA, during teacher appreciation week, Nov. 5-9.

Room count was won by Mrs. Brewer, Mrs. Prather, Mrs. Obenhous, and Mrs. Morris at Richland Hills and by Mrs. Finney and Mrs. Guinn at Mary DeShazo.

Margaret Copley, halloween carnival chairman, gave a report on the proceeds of the carnival. PTA members present voted to

reserve the civic center for the carnival again next year.

Mrs. Norma Prather introduced Mrs. Vernelle Craig, Director of Special Education, Muleshoe ISD, as the speaker for the meeting.

Mrs. Craig began her talk by asking all those present to remember that "A learning disabled child is more like, than unlike other children".

She went on to say that learning disabilities are common, possibly 20 percent of school age children have some type of learning disabilities. They have average or above average intelligence but are unable to connect what they hear with what they say or do.

Learning disabilities are generally defined as disorders of the central nervous system and involve, (1) collecting information, (2) sorting information, (3) storing information, or (4) expressing information.

Experts believe that learning disabilities are caused by illness or injury in any of the following three stages, pregnancy, birth, or sometimes they are hereditary.

Common disabilities affect speaking listening and or writing.

When a learning disability goes untreated, the child is caught in a vicious

circle of trial and error, frustration but once the disability is identified the child can be helped by, working around his disabilities at home and in the

schools. Punch was provided for refreshment by the first grade room mothers. The meeting was adjourned by Doris Palmer.

Mrs. Blackburn Presents Program to Study Club

The home of Mrs. Mervin Wilterding was the meeting place for the Muleshoe Study Club, Nov. 8.

Members answering the roll call were Betty J. Carpenter, Wilma Thompson, Wilson Witherspoon, Mrs. Joe Costen, Mrs. Rufus Gilbreath, Mrs. A. C. Neely, Mrs. Horace Blackburn, Mrs. Doyle Turner, Mrs. John Agee, Mrs. J.G. Arnn, Mrs. Luther Pitts, Mrs. Thurman White, Mrs. Walter Bartholf, and the hostess Mrs. Wilterding.

Mrs. Neely led the women in the song "America the Beautiful" with Mrs. Agee at the piano.

The Federation report for the day was given by Mrs. Costen on the topic "Safety". For 30 years the Federation of Womens Clubs to be the first to assist them in this project.

They placed a grant of \$15,000 at the hands of the Federation to use to extend the campaign and to implement it with instructive informational materials.

Their chief function was to educate it's membership, to influence public opinion, to encourage the building of better cars and better and safer highways and several other projects, along this line of safety.

The success was phenomenal and in 1936 the Federation adopted a slogan "Women and the War on Accidents".

1937, saw the Federation starting a crusade to improve drivers licensing procedures. 1940 the Federation conducted a "Safety Facts Finders" survey in every state.

1944, the Federation took it's first step toward improving traffic courts procedures with a program entitled "So Your Going To Court" and in 1957 this program was extended Nationwide. Then in 1958 "Passport to Safety" to help drivers improve their performances was started. Also the Federation has

instigated to also provide safety in the homes and also in several other fields where help was needed.

The program for the day was given by Mrs. Blackburn on our first president of the United States.

George Washington had his name changed from De-Wessington to Washington. His great grandfather came to this country working his way as a mate on a ship. His father was a miner of iron ore.

His mother's name was Mary Ball. George only had seven or eight years formal education. He was an expert dancer, his sports included sailing, rowing, hunting.

At the age of 20 he applied for a commission in the military. In 1783 he was commissioned Major. He was a wheat farmer and also raised fruit trees.

By 1773 he had acquired about 40,000 acres of land. He was the only President to be inaugurated in two different cities. Also he is the only President to have a birthday celebrated in all the states of the United States.

The year 1793 shows him laying the corner stone to the National Capitol.

Just before he died, in the wee hours of the morning he awakened Martha and told her he was going, took his own pulse and died.

The first census taken showed our country to have a population of 3,929, 214 including 697,000 slaves.

Shortly before Mrs. Washington died, she burned all the letters she had received from George.

The thought for the day was the Gettysburg address given by Mrs. Agee. Desserts of pecan pie, tea and coffee were served by the hostess, Mrs. Wilterding.

A diet designed to help lose or maintain weight should be one that can be lived with for a lifetime. Food should be one of our greatest pleasures in life. Therefore, we should learn to adapt our preferences for certain types of foods to a daily meal pattern that will meet our nutrient and caloric (energy) needs without adding excess weight. Your personal diet plan should not become a hardship -- it should satisfy not only your nutritional needs but also the social aspects associated with food.

A diet plan that overemphasizes any one food or food group to the exclusion of others could probably be labeled a "fad" diet. There is no magic food which will help "burn" fat and thus bring about immediate and permanent weight loss. There is also no feed which magically reduces appetite. When just a few foods are allowed on a diet, you tire of the foods and have less desire to eat, but this is not the way to develop a lifetime diet plan.

Enochs News

By Mrs. J.D. Bayless

Mr. and Mrs. Randy Robinson, of Whitharral are the proud parents of a baby daughter, who was born 7:00 a.m. Thursday Nov. 8, at the Amherst Hospital, her name is, Randy Machelie, she weighed six pounds and nine ounces and was 19 1/2 inches long.

Her grandparents are Mr. and Mrs. Henry Hardaway of Brownfield. Great grandparents are Mrs. Winnie Byars of Enochs and Mr. and Mrs. Ray Hardaway of Littlefield. This is the first child for the couple.

Mrs. Winnie Byars, was in Amherst, one day last week, to see her new great granddaughter, Randy Machelie, who was born at the Amherst Hospital.

Mrs. Pruda Coffman, sister-in-law, of the J.D. Bayless, will be seeing a heart Dr. in Lubbock, Wednesday 14th. Her daughter, Mrs. C.T. Cunningham of Alliance, Neb. is still staying with her.

Rev. Cecil Golden, of Plainview, preached both services at the Baptist Church Sunday.

Mrs. J.C. Snitker, was admitted, to the Methodist Hospital, in Lubbock Tuesday, for tests and observation, she was dismissed Monday.

We wish to express our sympathy to Mrs. Lorello Jones and family, and Mrs. Jim Claunch and families in the loss of their brother, E.P. Farmer of Muleshoe.

Lawrence Hall, of Anaheim, Calif. son of Carl Hall underwent surgery

after returning home from visiting at Enochs.

Mrs. J.W. Layton and Mrs. Jerry Nichols and daughter, Kristen visited in Muleshoe Monday afternoon Nov. 12 with Mr. and Mrs. H.H. Snow.

Company in the home of Mr. and Mrs. Jerry Waltrip, during the weekend, was her sister, Miss Tammy Baker a student from San Angelo.

Mr. and Mrs. Junior Austin and Jeff of Lubbock, visited his parents, Mr. and Mrs. Jack Austin, Sunday, and were supper guests in the home of, Mr. and Mrs. J.E. Layton.

The WMU women met at the Church 9:30 Tuesday morning, for their program taken from the Royal Service, titled "Facts about European Baptist at Work in a Federation". Mrs. J.W. Layton was in charge and others taking parts were Mrs. Chester Petree and Mrs. Buford Peterson, she read James I: 19-27

gave the call to Prayer, and offered the prayer for the Missionaries and benediction.

There were six present, Mmes. Dale Nichols, J.W. Layton, Chester Petree,

Bill Key, Buford Peterson and J.D. Bayless.

Read The Classifieds

BARLEY SEED

Cert. Post
N/C Tambar 401
N/C WILL

Cleaned, Double-Treated, & Sacked.



Call Us For
Your Fall
Planting Needs

"We Grow For You"
P. O. Box 366
FARWELL, TEXAS 79325

806-481 3810

Coming Soon!

Christmas Show

Sunday, November 25th
2-5 p.m.



The Christmas Season Is Here Again,
We Would Love To Share It With You.

There's Prizes, Refreshments, & Items
Galore --- So Come By & See Us!
Please Do!

Muleshoe Floral
121 Main St.

&

Decorators Floral & Nursery
616 S. 1st St.



FRANKOMA
POTTERY
Sale

NOW
1/2 Price
Williams Bros.
Office Supply

322 Main 272-3113

E Hwy 60

Boots
WEST

364-5961

HEREFORD

Pre-Christmas Sale

ALL Mens Boots Reduced 30% Ostrich Boots Reg. \$200 \$140

African Antelope Boots Reg. \$145 \$101.50 Justin Ropers Reg. \$95 \$65.00

Great Selection Of 16" Top Boots All 30% off Justin Elephant Ropers Reg. \$220 \$154

Beaver Felt Hats 20% Off Reg. \$125 \$84 Reg. \$100 \$80 Reg. \$85 \$68 Cowboy Cut Wranglers \$12.95

Mens Long Sleeve Shirts 3/ \$36 20% Off Tempo Down Jackets & Vests Reg. \$114 \$91

Reg. \$106 \$86 Reg. \$92 \$75 Reg. \$86 \$75 Reg. \$56 \$45 Reg. \$50 \$39

Christmas Items: Cuspidors, Name Belts, Billfolds, Belt Buckles, Snuff Can Lids

Open Till 8:00 Mon. - Sat.

Church of
Christ

16th and Avenue D

SERVING CHRIST AND
OUR FELLOW MAN

Sunday 10:30 am
6:00 pm

It's easy to see where
many of our priorities are.



The children of today are looking to us for ways they can prepare for their own style of life... families... and job opportunities.

To help, we'll need more electricity. It's true, electricity will play a big role toward helping expand the job market to include these adults of tomorrow. The modern use of electricity has contributed to a better educational system to prepare our young people for the new experiences yet to come. Almost 10 years ago, the folks at

Southwestern Public Service wanted to make sure there was enough electricity to keep today's wage earner working. They decided that the fuel used in their power plants should be coal because, coal would be more abundant and cheaper to use than the conventional fuel... natural gas. Now, Southwestern Public Service has a new coal plant in operation and more on the way. Yes, coal plants will help stabilize fuel costs while providing a long-term, reliable, energy source to provide electricity.

It's good to be able to tell someone
what they can depend on.

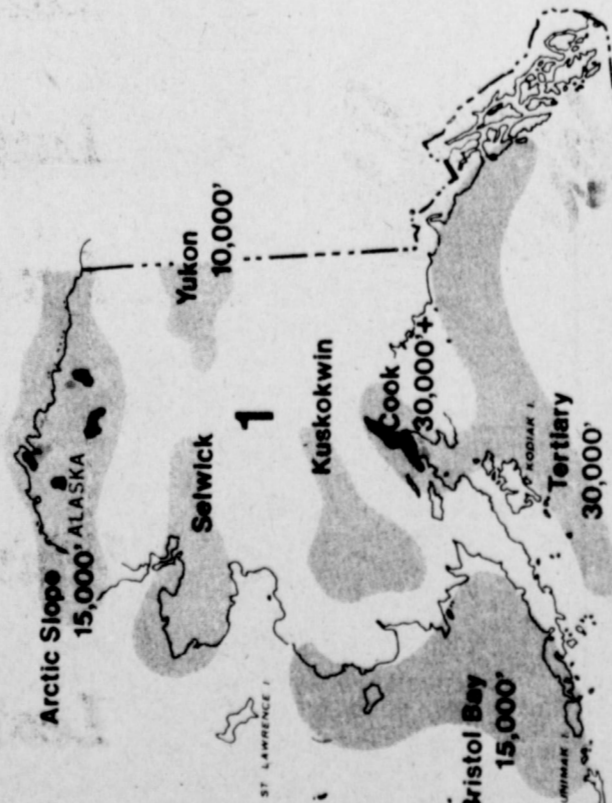


MOST OF AMERICA'S OIL & GAS MAY STILL BE UNTAPPED!

Vast Supplies of Oil & Gas Remain To Be Produced Because Over Twenty Years Of Politically Motivated Low Prices Have Left 98% Of The Prospective Sediments Untouched By Drilling.

THE OIL & GAS IS THERE!

Geologists have known for years that only one-third of our discovered oil is recoverable without expensive special techniques, and that huge quantities of new natural gas exist in geological areas where very expensive drilling and production methods are required to recover the gas. Artificially low prices have prevented drilling for new gas, and have left billions of barrels of oil in the ground. Future supplies fall into the four general categories described to the right.



1. DEEP GEOLOGIC BASINAL AREAS where the largest reserves of natural gas have long been expected to come from depths below 15,000 feet. In 1978 only 463 such deep wells were drilled (1 1/2% of the total of 49,937 wells) due to uncertainty of gas prices sufficient to provide an investment return. Many of these areas already produce oil and gas from shallow wells. Production from deeper zones is common in such areas when the higher drilling costs can be met with adequate product prices. Distinguished Washington geologist Wilson Laird believes old basins may yield as much oil and gas in future years as has already been used since oil was first discovered.

2. LOW-PRODUCTION AREAS where wells may produce slowly for many years, or require expensive recovery treatment, neither of which is economic under past price regulation. In the Fort Worth Basin of Texas, where natural gas prices rose by 600% in an unregulated market, gas supplies swelled by 3000% in parts of the area and a surplus of gas exists today. Thousands of older oil wells will respond to special recovery treatment in areas where low oil prices have prevented expenditures to increase yields. Experts say two-thirds of all the oil ever discovered in America is still in the ground, largely because of low price controls. Only one-half of that remaining oil is an amount equal to all the oil our nation has used in its entire history. Politicians who claim our oil and gas is exhausted are misinformed.

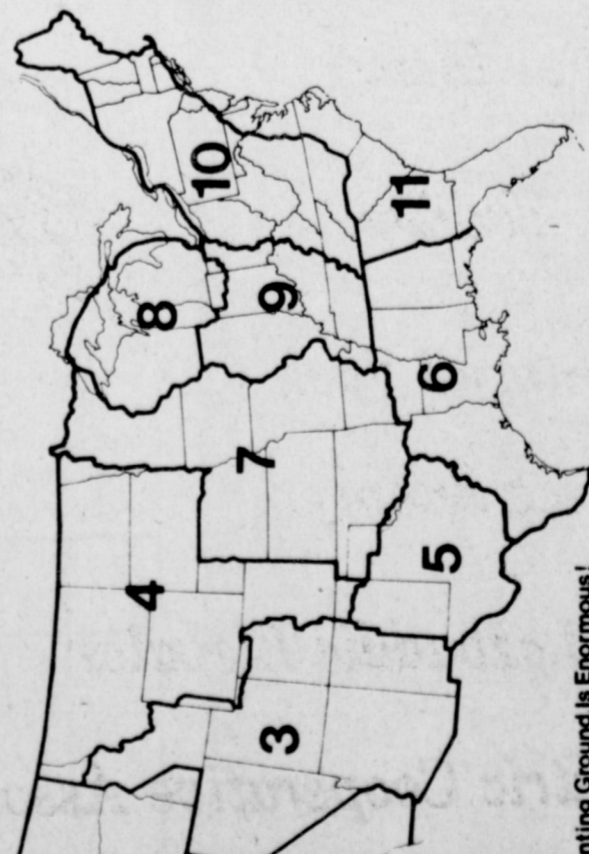
3. FRONTIER AREAS at remote distances from existing pipelines, where no immediate market is available and long term investment for development has not been justified by low oil and gas prices. This includes offshore areas and millions of acres of Federal lands where government restricts normal development and thus denies American oil and gas to Americans.

4. SPECIAL CATEGORY AREAS, such as the Texas Gulf Coast where 105,000 trillion cubic feet of gas has been calculated to exist in high-pressure, hot salt water at 8,000 to 25,000 feet. If only 10% of this special gas would supply the needs of the entire nation for 200 years. Its development awaits the assurance of proper pricing which should still be below the cost of imported liquefied gas.

WILL WE RUN OUT?

Yes. As finite resources, they will some day be exhausted. We must therefore proceed with coal conversion, solar research and other sources of energy. **But it is not wasteful to use our oil and gas now!** To the contrary, the nation must decrease its expenditures for foreign oil and gas and spend that money for developing new energy sources. The least expensive way to do that is to spend the money to accelerate development of our own vast oil and gas supplies and use them while other energy alternatives are developed.

Distribution Of Sediments Prospective For Oil And Gas In The United States

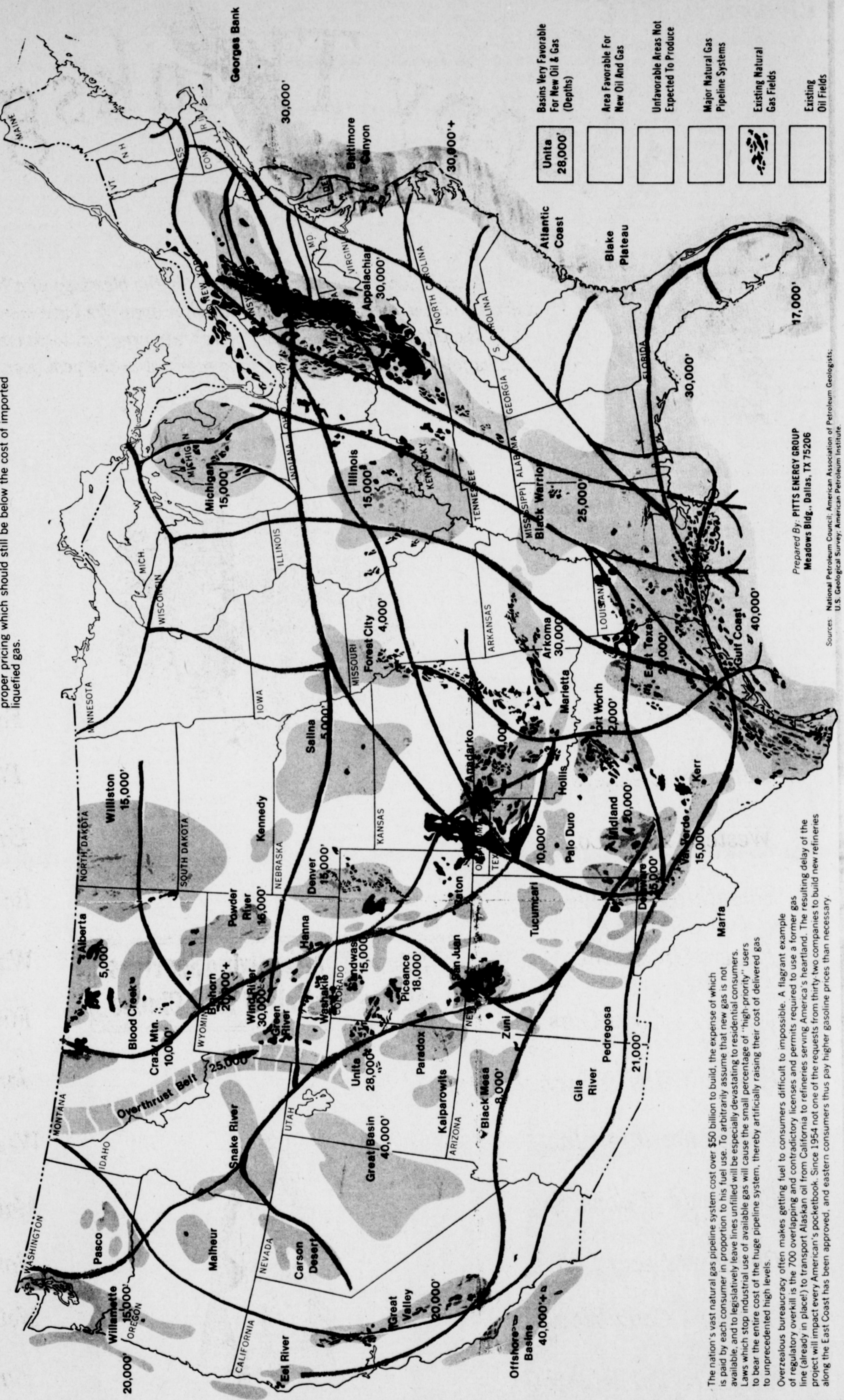


The Hunting Ground is Enormous!

A study by the National Petroleum Council divided the United States into 10 provinces for analysis of oil and gas potential. Part of that study calculated the square miles covered by geologic conditions favorable to oil and gas accumulation, and estimated the cubic miles of potentially favorable sediments in each of the 11 areas, as adapted and listed below.

| AREA OF INTEREST | SQUARE MILES OF PROSPECTIVE BASINS | CUBIC MILES OF PROMISING SEDIMENTS |
|---------------------------------|------------------------------------|------------------------------------|
| 1. Alaska | 368,000 | 534,000 |
| 2. Pacific Coast States | 726,133 | 751,508 |
| 3. Western Rocky Mountains | 222,750 | 545,556 |
| 4. Northern Rocky Mountains | 283,800 | 283,800 |
| 5. West Texas & East New Mexico | 862,600 | 453,750 |
| 6. Midcontinent States | 290,200 | 290,200 |
| 7. Michigan Basin | 122,000 | 37,000 |
| 8. Eastern Interior States | 166,154 | 203,774 |
| 9. Appalachian States | 130,000 | 305,000 |
| 10. Appalachian States | 268,000 | 558,700 |
| 11. Eastern Gulf/Atlantic Coast | 3,202,000 | 4,088,437 |
| TOTAL UNITED STATES | | |

Oil and gas production has been established in only about 30,000 square miles (less than 2%) of the 3,000,000 square miles identified as having oil and gas potential. Furthermore, a large part of established production is from shallow zones, with the deeper, prospective zones remaining virtually untested. Tremendous quantities of new natural gas and oil will be produced from the 98% of untested, potential sediments as oil and natural gas prices rise to their true market value.



Happy Thanksgiving

A traditional day of thankfulness for the blessings of a bountiful harvest, means more to us in the Muleshoe area. We have many things to be thankful for. The following merchants urge you to pause & give thanks for all the blessings you have received in the past year.



John's Custom Mill

Black Ins. Agency

Lambert Cleaners

Western Drug Co.

Something Special

Robert Green, Inc.

Muleshoe Coop Gins

Ray Griffiths & Sons

Foster Fertilizer, Inc.

Earl Ladd & Sons, Inc.

Chubby's Beauty Shop

Farmers Coop Elevator

Muleshoe Publishing Co.

Albertsons Shop For Men

Cliff Allen Custom Saddles

Bailey County Memorial Park

Williams Bros. Office Supply

Sherley-Anderson Lazbuddie Elevator

Bailey County Electric Cooperative Association

Fair Dept. Store

Plains Auto Parts

San Francisco Cafe

Ranch House Motel

Watson Alfalfa Inc.

First National Bank

James Crane Tire Co.

West Plains Pharmacy

Main Street Beauty Shop

North Lazbuddie Gin Co.

McCormick Seed & Grain

Farmers Spraying Service

Lazbuddie Garage & Supply

Lazbuddie Farmers Supply Inc.

Lowe Pump Service & Supply

Smallwood-Harmon-Field Ins. Co.

White's Cashway Grocery & Mkt.

Leo's Blacksmith & Machine Shop

**Attend Thanksgiving Services
At The Church of Your Choice**



LET US
BE...
Thankful

Three Way News

By Mrs. H.W. Garvin

Mr. and Mrs. Gary Toombs and girls from Muleshoe spent Sunday with his parents the H.C. Toombs.

The Three Way football team played Loop Friday night at Loop with Three Way winning the game.

Dinner guests in the home of Mrs. H.W. Garvin, Tuesday night honoring her sister, Mrs. Jessie Wilhelm, from Oklahoma City, were Rev. and Mrs. James Gillentine and Mr. and Mrs. Tommy Durham from Lubbock, Mr. and Mrs. Kenneth Fox from Clovis, N.M., Mr. and Mrs. George Tyson, Mr. and Mrs. S.C. Long and Mrs. D.A. Williams, and son from Enoch.

Mr. and Mrs. T.D. Davis spent part of last week in Houston, to be with her sister in law, who underwent Surgery.

Mrs. Terry Pollard was honored with a baby shower Saturday afternoon in the home of Mrs. Joey Kindle.

Mr. and Mrs. Rayford Masten honored his mother, Mrs. Addie Masten Sunday with a birthday dinner. Mrs. Masten is 88 years old. Also dinner guests were Mr. and Mrs. Lamar Pollard and boys from Whitharral.

Mrs. S.C. Long is spending this week in Amarillo with her grandchildren.

The Three Way Baptist women met at Morton First Baptist Church, Monday for the area world of prayer meeting.

Mr. and Mrs. Roy Oxford and daughter from Plainview visited her parents Mr. and Mrs. W.H. Eubanks, Monday.

Mrs. H.W. Garvin took her sister, Mrs. Jessie Wilhelm, to Clovis Thursday to the bus to return home to Oklahoma City.

The Three Way Baptist women met at the First Baptist Church Monday, for the area world of prayer meeting.

Mr. and Mrs. Roy Oxford and daughter, visited her parents, the W.H. Eub-

anks Monday.
The Three Way girls basketball teams, played Smyer, Tuesday night on the home court winning both games Friday night the Three Way football team played Whitharral at Whitharral winning the game.

Mr. and Mrs. George Tyson spent Thursday night, in Lubbock, with their daughter.

Roy Gillentine, from Lubbock, ate lunch Wednesday, with his grandmother Mrs. H.W. Garvin.

Mr. and Mrs. Monte Toombs and children, from Mission, and Mr. and Mrs. Gary Toombs and girls, from Muleshoe, spent the weekend with their parents, the H.C. Toombs.

Mr. and Mrs. S.G. Long, spent the past week in Amarillo, and Canyon visiting.

Mr. and Mrs. Jack Ferguson, visited their children, the Jim Green family in Lubbock Saturday.

Mr. and Mrs. Keith Harmon from Panama is visiting her mother Mrs. L.M. Dupler. Other guests in Mrs. Duplers home Sunday were Mr. and Mrs. Pat Hayes from Wichita Falls, Mr. and Mrs. Don Hayes and family from Lubbock, Mr. and Mrs. Leon Dupler and girls from Maple, Mr. and Mrs. Carl Dupler from Levelland, Mr. and Mrs. Carlos Dupler and children from Lubbock, Teresa and John Sladen from Muleshoe, Gerry Dupler and family from Goodland, Carrie Rice from Levelland, Mr. and Mrs. Gib Dupler and Doug from Maple, Mr. and Mrs. Chuck Dupler from Maple, Mr. and Mrs. David Ross from Morton, Mr. and Mrs. Bill Dupler and girls from Maple, Marie Sowder from Muleshoe, Mr. and Mrs. Lenord Gilmore from Shallowater, Dianne Dupler from Shallowater, J.R. Hays from Lubbock, Phillip Sinclair from Morton and others.

Life for little people is a struggle to secure power.

Paying debts should be a pleasure to an honest man.

The optimist believes in luck; the pessimist, in fate.

Busy Texas Bees to Produce 7.5 Million Pounds of Honey

AUSTIN—With both the number of bee colonies and average yield per colony up substantially, Texas beekeepers are expected to harvest some 7.5 million

pounds of honey in the state this year. Agriculture Commissioner Reagan V. Brown has announced.

"Reports from the Texas

Crop and Livestock Reporting Service show that honey harvest for 1979 should increase by about 1.7 million pounds over the previous year when drought conditions severely cut into honey output," Brown said.

Texas production for the current year is up despite an overall decline in honey production nationwide. Texas is currently ranked third in the nation in total number of bee colonies, Brown pointed out.

In the 20 major honey-producing states, production from commercial apiaries will drop 2 percent this year to 144 million pounds. These states (Texas included) harvested just over 147 million pounds

last year. An estimated 1.95 million colonies of bees were held by these apiaries in 1979, up 2 percent from the 1978 level of 1.92 million colonies. Average yield per colony nationwide should be down by 2.8 pounds.

Brown noted that while Texas honey production suffered from drought in 1978, California recorded unusually high yields. This year, however, production in that far western state has declined to more normal levels.

There are no rules that apply to every human being, and no human being that obeys all the rules.

OFFICIAL RECORDS

K.K. Krebbs and wife, Fay Krebbs to Ronald Spies and wife Ronda Z. Spies. All of (N. 150') of (E. 20') of Lot No. 11 K.K. Krebbs Subdivision of a portion of the East 155 acres of section No. 58 Block Y. W.D. and F.W. Johnson Subdivision.

J.R. Carter and wife, Maxine Carter to Howard I Watson and wife Julia A. Watson. All of (SW 1/4) of section No. 58 Block Y. W.D. and F.W. Johnson Subdivision.

Susie Jesko individually independent executive of estate of Harry Jesko deceased to A.E. Moore and wife Alice Moore all of Lot No. 4 Block No. 7 of the Northside Addition to the town of Muleshoe.

Jimmie Jene Terrill to Ray D. Terrill and wife Joyce Terrill all of Lot No. 59 Block No. 5 on Apple Street in the town of Progress.

MARRIAGE LICENSE Robert Dean Templeton, Lubbock and Connie Lynn Harmon, Muleshoe

COUNTY COURT Liandro Torres Cumpain Judgement

DISTRICT COURT Jimmy Duke DBA Duke Electric VS Johnny Collins Dismissed

Frankie D. Fine and wife Jeanette Fine VS General Life and Accident Insurance Company Dismissed Carolyn Collins and David Collins VS The Aetna Casualty and Surety Company Judgement

OPEN!
8760
hours
a
year
... the
24 hour bank

MULESHOE STATE BANK A FULL SERVICE BANK

101 AMERICAN BLVD. • 272-4561 • Member FDIC

ATTEND THE CHURCH OF YOUR CHOICE




THE JOY OF SHARING

There is pleasure in doing things with others. It may be looking at a picture magazine, or riding toys, or for parents it may even be sharing knowledge of the day's events that bring joy. God's people have a desire to share with you in the greatest joy, that of worshipping together in God's House. **ATTEND CHURCH**

The Church is God's appointed agency in this world for spreading the knowledge of His love for man and of His demand for man to respond to that love by loving his neighbor. Without this grounding in the love of God, no government or society or way of life will long persevere and the freedoms which we hold so dear will inevitably perish. Therefore, even from a selfish point of view, one should support the Church for the sake of the welfare of himself and his family. Beyond that, however, every person should uphold and participate in the Church because it tells the truth about man's life, death and destiny; the truth which alone will set him free to live as a child of God.

Coleman Adv. Serv.



CHURCH OF THE NAZARENE
Ninth and Avenue C
Dana Shunko, Pastor

FIRST CHRISTIAN CHURCH
130 W. Avenue G
Rev. Walter Bartholf
Suncay School 10 a.m.
Worship 11 a.m.

LATIN AMERICAN METHODIST MISSION
Avenue D. and Fifth Street
R.O. Chavez, Pastor

THE COMMUNITY CHURCH
H.D. Hunter, Pastor
Morton Highway

CALVARY BAPTIST CHURCH
James Williams, Pastor
1733 W. Avenue C

FIRST UNITED METHODIST CHURCH
Rev. David Hamblin
507 West Second, Muleshoe

PRIMITIVE BAPTIST CHURCH
621 South First
Elder Bernard Gowers

MULESHOE ASSEMBLY OF GOD
517 South First
Rev. Joe Stone

EMMANUEL BAPTIST CHURCH
Iglesia Bautista Emmanuel
107 E. Third
Isaia Cardenas, Pastor

RICHLAND HILLS BAPTIST CHURCH
17th and West Ave. D
Roy L. Sikes, Pastor

SPANISH BAPTIST MISSION
Rev. Ynes Aleman
East Third and Avenue E

TRINITY BAPTIST CHURCH
314 Ave. B.
Rev. Gene Prevo

MULESHOE CHURCH OF CHRIST
David Cox, minister
Clovis Highway

FIRST BAPTIST CHURCH
220 West Ave E
Rev. J.E. Meeks

PROGRESS SECOND BAPTIST CHURCH
Clifford Slay, Pastor
1st and 3rd Sundays

ST. MATHEW BAPTIST CHURCH
Corner of West Boston & West Birch.
Rev. M.S. Brown, Pastor
LONGVIEW BAPTIST CHURCH
Pastor B.C. Stonecipher
Phone 946-3413

SIXTEENTH AND AVENUE D CHURCH OF CHRIST
Sunday - 10:30
Evening - 6 p.m.
Wednesday - 8 p.m.
Terry Bouchelle, Minister

PROGRESS BAPTIST CHURCH
Progress, Texas
Rev. Geardl Albers, Pastor

NORTHSIDE CHURCH OF CHRIST
117 E. Birch Street

SPANISH ASSEMBLY OF GOD
East 6th and Ave. F.
Rev. Hipolito Pecina

ST. JOHN LUTHERAN CHURCH
Lariat, Texas
Herman J. Schelter-Pastor
Sunday School Classes
10:00 a.m.
Worship Services
11:00 a.m.

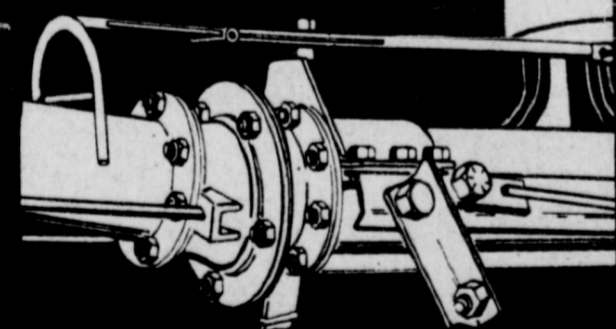
MULESHOE BAPTIST CHURCH
8th Street and Ave. G.
Bob Dodd, Pastor

JEHOVAH'S WITNESS
Frona Highway
Boyd Lowery, Minister

IMMACULATE CONCEPTION CATHOLIC CHURCH
Father Timothy Schwertner
Northeast of City in Morrison Edition

UNITED PENTECOSTAL GOSPEL LIGHTHOUSE CHURCH
207 E. Ave G
George Green, Pastor

Comparing Center Pivots?





If some salesman tells you his flex coupling is just as good as Olson... ask him why they don't match Olson's five year warranty.

Only Olson gives you steel flex ball joints... the strongest, most reliable, most trouble-free flex coupling in the center pivot industry. It rotates smoothly in any direction. No in-pipe connections to interrupt the full water flow. No changing of worn out rubber boots either.

See why Olson's steel flex ball joint gives you the only 5 year flex coupling warranty in the industry?

CAL JORDAN
IMPLEMENTS
E. MABRY CLOVIS, N.M. 505-763-5517

OLSON
CENTER PIVOT IRRIGATORS

| | | | |
|---|---|--|--|
| Western Drug 114 Main 272-3106 | Johnnie's Safety Center 320 E. Amer. Blvd. 272-3043 | Lee's Western Wear 1910 W. Amer. Blvd. 272-4663 | Roy Whitt Chevrolet 201 Main 272-3100 |
| Bratcher Motor Supply 107 E. Ave. B 272-4288 | Cobb's 218 Main 272-5511 | Whites Cashway Grocery 'Where Friends Meet & Prices Talk' 402 Main & Prices Talk' | Bailey County Memorial Park 'Every Service A Sacred Trust' 272-4383 |
|  Margie Hawkins, Manager 272-3412 | Watson Alfalfa Alfalfa Hay 272-4038 272-3552 | Dent-Rempe Implement Co. John Deere Dealer Muleshoe 272-4297 | Dari-Delite Drive In 'Take Out Orders' 210 N. First 272-4482 |
| St. Clair's 110 Main 272-4453 | James Roy Meat Market Co. 506 W. Amer. Blvd. ph. 272-4361 | Muleshoe Co-Op Gins | First National Bank 'Home Owned' 224 S. First |
| Baker Farm Supply, Inc. 1532 W. Amer. Blvd. 272-4613 |  401 S. First Muleshoe Ph. 272-4511 | Western Sprinklers, Inc. ZIMMATIC CENTER PIVOT SYSTEMS | Lambert Cleaners Steam Carpet Cleaning Drapery Cleaning 123 Main |

AID TO MILLIONS CLASSIFIED ADS



**Deadline For Classified Ads Is 11:00
Tuesdays And Fridays**

CLASSIFIED RATES
1st insertion,
per word -- \$1.11
Minimum Charge --
\$1.80

2nd insertion,
and thereafter
per word -- \$0.99
Minimum Charge
\$1.50

CARD OF THANKS
25 words -- \$3.00
Over 25 words
charged at regular
classified rates

Classified Display --
\$1.55 per column inch
Double Rate for
Blind Ads.

**DEADLINE FOR
INSERTION**

11 a.m. Tues. for Thurs.
11 a.m. Fri. for Sun.
WE RESERVE THE
RIGHT TO CLASSIFY,
REVISE OR REJECT
ANY AD.

**NOT RESPONSIBLE
FOR ANY ERROR
AFTER AD HAS RUN
ONCE.**

1. PERSONALS

WE BUY
USED FURNITURE &
APPLIANCES
CALL 272-3030
HARVEY BASS
APPLIANCE

1-18s-tfc

3. HELP WANTED

HELP WANTED: Muleshoe Publishing Co. is now accepting applications for employment. Must be able to type 55 words per minute and some creative ability would be helpful.

Apply in person, to Polly,
at Journal Office, 304 W.
Second St.
3-23t-ftfch

EXPERIENCE John Deere parts personnel, insurance paid, vacation, uniforms, sick leave. Call 257-3785 after 6 p.m.
3-46t-tfc

OPERATOR WANTED: Contact Faye Montgomery at Patio Beauty Shop. Phone 272-4318.
3-42s-tfc

WANTED: Night watchman. Call 806-825-2103.
BOVINA FEEDERS, INC.
3-46s-2tc

Immediate Opening for LV N or RN with established progressive Home Health Agency. Mileage, excellent benefits. Muleshoe area. Call 806-747-2814 for application, for more information.
3-46s-4tc

7. WANTED TO RENT

ROBERT RUIZ, INC. wants to cash lease, with option to buy, 1/4 or 1/2 section of good vegetable land in Bailey or Parmer Counties. Must have good wells with sufficient water. Contact Mr. Ruiz at 512-383-6236, Edinburg, Tx. or W.H. Lee at 806-272-3728, Muleshoe.
7-46s-8tp

8. REAL ESTATE FOR SALE

THREE LOTS for sale on Ivy in Country Club Addition. Call 214-572-9264 or 214-572-5628 after 5 p.m.
-43t-tfc

HOUSE IN RICHLAND HILLS, 3 bedroom, 2 bath, livingroom and den, 2 car garage, 2124 sq. ft. Call 72-4744.
-38t-tfc

3 bedroom-Single garage on 9th Street, \$25,000.00.

3 bedroom brick with double garages in Country Club Addition.

Country Home
1 year old 3 bedroom, 2 bath, fireplace, double garage on 1/2 acres of land, 2 miles from town. Approximately 2150 sq. ft.

5 bedroom, 3 bath house on corner lot; West 10th. Ideal for large family or convert to 2 apartments.

4 chair Beauty Shop for sale. Immediate possession. Bargain Price.

3 bedroom house in Lenua Addition. \$28,500.00. Immediate possession. Single garage, fence and storm cellar.

4 bedroom house on Ave. J, \$26,500.00

FARMS RANCHES HOMES

JOHN W. SMITH,
Broker

HIGHWAY 214 NORTH
MULESHOE, TEXAS

TOWN and

COUNTRY

REAL ESTATE

806-272-4678
or 4307
8-44s-tfc

FOR SALE: Buildings to be moved, formerly Bill's Drive-In on Hwy. 84. Contact Lewis Garnett, 799-5550 or at night 799-6265.
8-46s-3tp

HOUSE FOR SALE: 3 bedroom, 2 bath, brick, carpet, drapes, carport, fenced backyard. 1627 W. Ave. C. Call 272-4794 daytime, 272-3791 evenings for appointment.
8-44s-tfc

ib Suderth Realty, Inc.
Box 627 - 109 5th St.
Farwell, Texas 79325
Phone (806) 481-3288 or 481-9149

160 acres North of Progress, good water area, 1 well, priced to sell.

160 Acres northwest of Muleshoe, 2 wells, lays good, on FM highway.

160 Acres near Nichols Gin, 1 1/2 miles north of Highway 70. Good water area, lays good.

WE NEED YOUR FARM & RANCH LISTINGS

320 Acres in Lazbuddie area, good water area, circular sprinkler, 1 mile off highway.
8-42t-tfc

FOR SALE: 3 bedroom, 2 bath stucco home, cellar and lots of extras, must sell. Call 272-4403.
8-43t-tfc

If you have good credit and make \$16,000 or less you can qualify for a FmHa approved home. In most cases no down payment, only loan closing cost required.
Call J & R Construction, your National Home Builders. 272-3758 or 272-4347
8-31s-tfc

For all your real estate needs
Call:
GLAZE & GOFORTH
112 Ave. C
272-4208

8-11s-tfc

FOR SALE: 2 bedroom home, Large livingroom and kitchen. Built in appliances. Laundry Room, office, Sewing room. Large Yard with water well, Brick fence, & large bearing pecan & fruit trees. 218 W. 18th. Shown by appointment. Phone 272-4860 after 6 or weekends.
8-39t-tfc

FOR SALE: New 3 bedroom home in Earth, 601 NE 5th. Under 20 percent down, owner financed. Ph. 806-795-7732.
8-46s-6tp

SMALLWOOD REAL ESTATE
272-4838 232 Main Street
Joe Smallwood & Ricky Smallwood

907 W. 7th, 3 bedroom, 2 bath, car port, brick, fenced back yard.

New brick homes, 3 bedroom, 2 bath.
8-43s-tfc

New 3 bedroom home in Earth 601 N.E. 5th. Under 20 percent down, financed. Call 806-795-7732.
8-46t-2tp

100 Acres with 10 inch well.

160 acres, 1 well, Valley water driven circular sprinkler.

39 1/2 Acres all in cultivation - 1 - six inch well, 29 percent down.

2/3 acre with Mobile home, rent house.

158 A 2 wells.

5 A. nice improvement 29 percent down.

Approximately 26 acres 29 percent down.

We want your business "remember" REID REAL ESTATE THURSHIE 272-3142 REID or
Lucille Harp 272-4693
8-43s-stfc

FOR SALE: 1973 model Castle Mobile Home 14 x 68. Call 965-2666.
8-46s-tfc

KREBBS REAL ESTATE
122 W. Ave. C
Ph. 272-3191
All Your Real Estate Needs.
APPRAISALS
8-18t-tfc

9. AUTOMOBILES FOR SALE

FOR SALE: 1979 Monte Carlo, 1,500 miles, sport wheels. Call 272-4144 after 5 p.m.
9-44s-htfc

FOR SALE: 1963 Ford Farlane, 4 door, excellent running condition. \$600. Call 272-4753.
9-46s-2tc

FOR SALE: Short bed 1975 Chevy P.U. 1/2 ton Custom Deluxe 350, S. Shift, steering. Good shape. Call 272-4696.
9-45s-3tc

DIESEL CARS: 2 new 1979 Olds Delta 88, 4 door, loaded, \$9150. 98 Regency, 2 door, fully loaded, \$11,950. Call Portales 505-356-4006.
9-46s-4tp

FOR SALE: 1975 Dodge Charger Special, 2 door, vinyl top, air conditioner, AM/FM radio. \$1,900.00 Call 965-2153 after 5 p.m.
9-46t-2tc

77 4x4 GMC BLAZER.. 18,000 miles, loaded. Perfect condition \$6750. Portales 505-356-4006.
9-46s-4tp

78 TRANS AM.. Beautiful, fully loaded, high perfect. Big radio and speakers \$500 below book \$6400. Portales 505-356-4006.
9-45s-4tp

10. FARM EQUIP. FOR SALE

USED & NEW center pivots and siderolls for sale. Call after 6 p.m. Gary 272-3891 or Ray 272-4808.
10-42s-tfc

FOR SALE: Model 33 J.D. cotton stripper, 24-A Hess-ton stripper, basket model, fits J.D. 4010 - 4020. Call 946-3679.
10-42s-tfc

FOR SALE: 1963 Chevrolet Burr truck. Fab-steel five auger bed. Call 965-2768.
10-46t-tfc

FOR SALE: 1 new 6 row Lilliston Roll cultivator with burning off discs. 1 new Wylie Spray Rig, 8 row with 400 gallon poly tank, 1 Hoeme 15 shant with Noble scratcher, 1 Green gear head - 75 HP, 1 lot of stand pipes. Call 825-3822.
10-45s-4tc

FOR SALE: 560 tractor with 22 stripper and basket. Call 927-5423.
10-43t-8tc

FOR SALE: Honda On-off Road Bike, 1972 SL 350, good motor-500 miles ince overhaul. Good condition. Call 272-4793.
11-40s-tfc

11. FOR SALE OR TRADE

FOR SALE: Honda On-off Road Bike, 1972 SL 350, good motor-500 miles ince overhaul. Good condition. Call 272-4793.
11-40s-tfc

FOR SALE: 1978 Arrow-glass Lynx Boat, 16 ft., 85 HP Johnson motor, with some extras. Call 272-5038 after 6 p.m.
11-46s-2tc

FOR SALE: 2 Cocker Spaniels, AKC. One male, 1 female, both blonde. Black Chinese Pug, male, AKC. Call 965-2363 after 3 p.m. or anytime on weekends.
11-46s-2tc

FOR SALE: Used sheet iron and lumber. You take all at 10 percent of new price. Call 925-6445.
11-46s-2tp

12 HOUSEHOLE ITEMS

BURROWS UPHOLSTERY & FURNITURE REPAIR

118 W. Ave. C
in the rear.
Phone 272-4255
12-39s-tfc

15. MISCELLANEOUS

ELECTRICAL WORK: Reasonable rates, jobs large or small, Jerry Teaff Electric. Phone 931-4659, Bala 15 31t-tfc

PYROTHERM INSULATION

Guaranteed for life of structure
FREE ESTIMATE
Marvin or George Nieman
272-5564 or 965-2488
15-29s-tfc

ANTIQU AND COLLECTIBLES SHOW & SALE
Saturday, November 24 - 10 a.m. - 6:30 p.m.
Sunday, November 25 - 1 p.m. - 6 p.m.
Knights of Columbus Ballroom, East 21st St., Clovis
Admission \$1. per person.
15-46s-2tc

FRESH HONEY for sale, with or without comb. Nick Landers, 334 W. Ave. J., Muleshoe. Phone 272-3096
15-44s-tfc

CUSTOM HOME - ADD ON - REMODELING CALL J & R CONSTRUCTION 272-3758 OR 272-4347 15-14t-tfc

LET US figure your new home or remodel your present one. Cabinet and finish work our specialty. References. Ph. 927-5320 or 797-8400.
15-45s-8tp

FOR SALE: Mobile home double wide 64 x 24, 3 bedroom, 2 full baths 18 ft. off set Miller, 7 row JD lister, 8 71 Flex plantes. Call 965-2453.
15-46t-4tc

Repossessed houseful of furniture. Includes stove, refrigerator, washer & dryer, livingroom suite, 2 bedroom suites, box springs & mattresses, dining room suite. Can be bought all or part, take over payments. Free delivery. **DISCOUNT FURNITURE 7th & PRINCE CLOVIS, N.M. Phone 505-769-0887 12-46t-3tc**

ASPHALT ROOFING COMPOSITION SHINGLES new roof and repairs. Free estimates. Call Collect Ron Foshee 385-5680 LITTLEFIELD ROOFING 15-16s-tfc

Are You Ready For Winter? Call RICK'S Insulation And We'll Get You Ready FREE ESTIMATES Rick Claybrook 272-3159 or 272-4818 15-40s-tfc

Public Notice
NOTICE TO ALL PERSONS HAVING CLAIMS AGAINST THE ESTATE OF RUBY M. ACTKINSON, DECEASED
Notice is hereby given that original Letters Testamentary for the Estate of Ruby M. Actkinson, Deceased were issued on September 18, 1979, in Case No. 1347, pending in the County Court of Bailey County, Texas, to: Troy L. Actkinson.
The residence of such Executor is Bailey County, Texas. The post office address is: 1634 W. Ave. D, Muleshoe, Texas.
All persons having claims against this Estate which is currently being administered are required to present them within the time and in the manner prescribed by law.
Dated the 15th day of November, 1979.
(s) Troy L. Actkinson
Troy L. Actkinson, Independent Executor of the Estate of Ruby M. Actkinson, Deceased.
15-46s-1tc

Paul A. Volcker, Federal Reserve Board Chairman:
"I have no hesitation in saying that the kinds of policies we are following will bring interest rates down."

True Value TOOL VALUE OF THE MONTH

STANLEY
While Supplies Last
now 1.69
MINI-HACK™ SAW
A small tool for big jobs in small places. Uses regular blades or broken pieces. Durable molded frame with contoured handle. 15-210
Quantities Limited

Cry & COX INC.
Ph. 272-4511
401 S. 1st
Muleshoe, Texas

West Plains Medical Center Report

ADMITTED
Nov. 12-Ynes Aleman, Birdie Warren, Ed Garner, Tommy Stormes.
Nov. 13-Leon Cuevas, Garry Gonzales, Lucille Branscum, Darlene Dupler, Hector Garcia, Beatrice Vaughn.
Nov. 14-Paul Davis, Micaela Escabedo, Filomena Suarez, Thurman Bartlett,

WANTED: One irrigated wheat field, 100 acres or more with large chicken house or large barn. Will pay a premium. Call 915-459-2215.
15-46s-6tc

OPEN! 604,800
seconds a week
the 24 hour bank

MULESHOE STATE BANK
101 AMERICAN BLVD. • 272-4561 • Member FDIC

PIONEER Harvest Hotline

Lionel Lane reports
Bailey Co. Results # 1

Again this year Pioneers brand seeds are delivering outstanding yields in field after field. But we know it takes more than one year's performance to tell the whole story. Look at these results, then ask your Pioneer dealer to show you records from several years. You'll see for yourself why Pioneer brand seeds have become famous for their consistency.

This hybrid is a well-established favorite of many across the U.S. and this year's performance in Bailey County has made it a top choice for many who planted it here. In 32 hybrid comparison tests in this area, 3183 showed a per-acre yield advantage of 308 lbs./A. over top competitive varieties. In these tests 3183 averaged 10,797 lbs./A. Gene Paul Jarmon reported a yield of 12,418 lbs./A. with this outstanding hybrid near Muleshoe. Bailey County farmer, Larry Kemp, recorded a yield of 11,781 lbs./A. In addition to its top yield potential, 3183 has earned its popularity with excellent drought tolerance and excellent tolerance to head smut and MDMV.

This tall, semi-upright leaved hybrid proved its consistency again this year as it out-produced competitors by 285 lbs./A. in 10 tests in Bailey County. 3360 averaged 10,002 lbs./A. in these tests to yield a full 5.0 bushels more than its top competitors. Outstanding early-season vigor and good tolerance to head smut and MDMV add up to make 3360 one of the most well-suited hybrids for the Bailey County area. Its top performance and yield potential will make it a favorite again in '80.

In 37 hybrid comparison tests in this area, 3184 averaged 9,643 lbs./A. more per acre than competitive hybrids. With an average yield of 9,645 lbs./A. in these tests, 3184 proved again that it's a consistent hybrid with excellent yield potential. Dave Engelking reported a yield of 10,380 lbs./A. with less than 1 percent lodged plants. 3184 performed well for J.R. Johnson with a yield of 11,129 lbs./A. despite a late-season hail storm. Muleshoe farmer, Gene McGuire, reported a yield of 10,315 lbs./A. with 3184.

Order by December 15
Get this wallet FREE!

Performance
Year After Year It's...
PIONEER SEEDS

The Limitation of Warranty and remedy appearing on the label is part of the terms of sale.

Good Storage Gives Vegetables More Life

MULESHOE--Home gardeners who find themselves with fresh vegetables on their hands can keep certain types of those vegetables fresh right through winter.

"Many people have an abundant harvest from their home gardens, which can be a valuable food source throughout the winter if they are stored properly now," says County Extension Agent Spencer Tanksley.

Fresh vegetables are a valuable source of vitamins, minerals, and food enjoyment. They're expensive, and their cost will probably go higher during the winter, he added.

Tanksley said the objective in storing vegetables is to maintain the highest possible food value and to maintain eating quality by slowing the life processes of the vegetable to as low a point as possible. This is accomplished by careful curing and then keeping vegetables at the proper temperature and relative humidity.

"Winter squash and pumpkins will last in good condition for several months if the skin is hardened by exposure to the sun and dry air for about a week to 10 days after the vines are killed," he said. "Then the squash should be stored on benches or racks in the dark where cool, dry air can circulate freely around them."

"Optimum conditions for squash are 55 to 60 degrees Fahrenheit and 70 to 75 percent relative humidity. If the stem of the fruit has been cracked at its attachment to the fruit, it should be completely removed to prevent rot at this point."

Tanksley said that Irish potatoes will keep for five to six months when placed in 38- to 40-degree storage at 90 to 95 percent relative humidity. Tubers do not need to be cleaned. Merely remove the excess soil before storing them.

"In West Texas, root crops such as carrots, parsnips, beets, radishes, rutabagas, and turnips can be stored right in the garden soil," he said. "Simply draw the soil up around the base of the petioles to cover the shoulder of the root. A light mulch of straw or dry grass clippings applied to a depth of two or three inches will keep the soil from drying around the roots and will prevent the crowns from freezing. These root crops can then be dug and brought to the house as they are needed."

Frost-hardy vegetables such as collards, buttercrunch lettuce, Brussels sprouts, mustard, endive, and parsley can be left in the garden until very cold weather, Tanksley said. Even after the night temperatures drop below 25 degrees these crops can be protected from harm by covering with a tarpaulin, sheet, or plastic cover. The cover must be removed during the day to prevent overheating of these plants.

Sweet potatoes can be enjoyed throughout the winter, but they are a special case when it comes to handling and storage. The Extension agent explained that immediately after harvest the sweet

potato must be cured. The curing process simply allows a thick, secondary skin known as periderm to form beneath the thin, outer skin.

The most rapid curing takes place at 85 degrees and 85 percent humidity. This curing process should continue for about a week. The curing process is completed when the skin no longer slips under finger pressure to expose the wet, raw interior of the potato.

After the curing period is finished the sweet pota-

toes should be stored at 60 degrees Fahrenheit with a relative humidity of 75 to 80 percent. There is danger in allowing the sweet potatoes to stay in the soil during the fall, Tanksley warned. When the soil temperature drops below 55 degrees, the sweet potato roots will be chilled and the surface skin will begin to break down and become more susceptible to rot.

"Onions are at a premium at this time and should be treated carefully to extend their storage

life," the county Extension agent said. "Once the bulbs are air-dried they should be placed in open mesh bags and hung from hooks in a cool place, preferably as close to 32 degrees and 70 to 75 percent relative humidity as possible."

Tanksley said that although precise optimum conditions for vegetable storage are probably not available in and around the home, by careful placement of the various vegetables it is possible to provide near ideal conditions.

'Highest degree'

AUSTIN, Texas (Spl.) -- Mexico has said "Viva!" to a University of Texas scholar by awarding her one of its rare honors.

President Jose Lopez Portillo has bestowed on Dr. Nettie Lee Benson the Order of the Aztec Eagle, "a distinction of the highest degree" which recognizes services

rendered to Mexico or to humanity by non-Mexicans. Dr. Benson, a scholar of Mexican history, is an internationally known authority on the acquisition of Latin American research materials. For more than 30 years, she directed UT's pre-eminent Latin American collection, helping it to become one of the most important libraries on Latin America in the world.

Singleton-Ellis Funeral Home
24 Hour Ambulance Service
Ph. 272-4574 Muleshoe

CAR-SENSE
Ed Edmiston
Before you buy a recreational vehicle you might be wise to check the recreational value of a four wheel drive, either sport vehicle or a four wheel drive pickup to carry a camper. If you are a back country enthusiast there is nothing like four wheel drive vehicles. There is another thing to remember if you buy a four wheel drive vehicle - it has uses after the vacation. In the mud and on the ice, it can be the handiest vehicle for a lot of months of the year, that is, both in summer and winter. It might also surprise you even with these advantages - the price differential between a four wheel drive vehicle and a true RV.
Muleshoe Motor Co
1225 W. Amer. Blv. Ph. 272-4251

OPEN! 10,080
minutes a week... the 24 hour bank
MULESHOE STATE BANK
101 AMERICAN BLVD. • 272-4561 • Member FDIC

Start Gathering Tax Records Now

Be prepared--that's good advice for taxpayers who plan to itemize on their 1979 tax returns. "By starting to gather records now, taxpayers can spend a little extra time organizing them and pay attention to deductible items they might overlook later," said A.W. McCannless, IRS Director for the Dallas District. "Sorting records into the categories--medical, interest, taxes, charitable contributions, employee expenses--will also enable taxpayers to locate supporting evidence which IRS auditors may request during an examination."

When itemizing, taxpayers should keep track of interest paid on loans and mortgages, as well as payments for medical insurance which are documented on various financial statements. These amounts are often deductible and easily overlooked by the taxpayer.

Medical expenses, union dues and charitable contributions are a few other commonly-claimed deductions for which IRS auditors often request supporting evidence. McCannless noted that it's a good idea to keep both cancelled checks and bills when possible.

"Good recordkeeping is a fine start to filling an accurate tax return," McCannless said. "Gathering records now will enable taxpayers to file an early return, and, if a refund is due, get an early check from Uncle Sam."

For more information on recordkeeping and deductible items, ask IRS for a copy of Publication 17, "Your Federal Income Tax." It's free at any IRS office.

TURKEYS
U.S.D.A. Graded 10 to 20 lb. Avg. Royal Rock
59¢ lb.
88¢ lb.
Butterball Turkeys
Swifts 10-20 lb. avg. size
Poultry Seasoning Schilling 75-oz. pkg. 77¢

PIGGY WIGGLY
Kraft Philadelphia Cream Cheese 8-oz. pkg. 68¢
Morrell Hot or Mild Pork Sausage 1 lb. 98¢
Tender Western Beef, Small End Rib Roast \$2.69
Tender Made Chicken Fry Fingers 16-oz. pkg. \$1.49
Morrell, stick Braunschweiger 1 lb. 69¢

Smoked Ham
Shank Portion 88¢ lb.
Butt Portion 98¢ lb.
Whole or Half Smoked Ham 1.08

CELERY
Crisp Crunchy For Dressings, Soups or Relish Tray Delights
4 stalks \$1
Fresh Broccoli 48¢
Baking Potatoes 5 \$1
Red Grapes 68¢
Winter Squash 38¢
Bunch Radishes 5 \$1

Sweet Potatoes
Golden, Sweet Meat -- Bake or Candy
4 lbs. \$1

Your Thanksgiving Starts Here!

Prices Good Thru Sat., Nov. 17, 1979
Libby Pumpkin Pie Mix 30-oz. can **68¢**
Libby Pumpkin Croutettes 16-oz. can 39¢
Kellogg's Ass'l Fruit Flavors 7-oz. pkg. 58¢
Jell-o 6-oz. pkg. 43¢
Schilling Pumpkin Pie Spice 1.25-oz. 85¢
Lipton Onion Soup Mix 2-cl. pkg. 67¢
Betty Crocker Potato Buds 18 1/2-oz. pkg. 89¢
Schilling Ground Sage .87-oz. pkg. 95¢
Vlasic Sweet Pickles 16-oz. jar 89¢

Whip Up Fresh Dessert Topping
Dream Whip 6-oz. pkg. **\$1.19**
WIN \$1,000 TODAY! PLAY Instant VEGAS Bingo

All Grinds
Folgers Coffee 1-lb. can **\$2.99**
Pet. A Cooking & Baking Aid Evaporated Milk 13-oz. can 43¢
Libby Peaches 17-oz. can 59¢
Libby Chunky Fruit Mix 17-oz. can 65¢
Sunvale, Sliced, Frozen Strawberries 10-oz. pkg. 41¢
Stillwell, Cauliflower, Broccoli or Brussel Sprouts 8-oz. pkg. 49¢
Holeum, Stuffed Manzanilla Olives 5-oz. jar 89¢
Early California, Giant, Pitted Ripe Olives 15 1/2-oz. can 83¢
Libby Chunky Pears 17-oz. can 65¢

Stove Top, Chicken or Corn bread Stuffing Mix 6-oz. pkg. **69¢**
Ocean Spray, strained or whole Cranberry Sauce 16-oz. can **44¢**

Mrs. Smith's Frozen Pumpkin Pie 26-oz. pkg. **99¢**
Kraft Miniature Marshmallows 10 1/2-oz. pkg. **3 \$1**

Sugary Sam Cut Yams 30-oz. can **68¢**
Heavy Duty Reynold's Foil 37 1/2 ft. roll **88¢**

Mericco Refrigerated Crescent Rolls 8-oz. pkg. **289¢**
Del Monte Fruit Cocktail 17-oz. can **48¢**

Kraft, Refrigerated Orange Juice 64-oz. bit. (1/2 gal.) **1.08**
Libby Tomato Juice 46-oz. can **56¢**

Piggly Wiggly, Ass'l. Flavors Ice Cream 1/2 Gal. Ctn. **1.09**
White Swan, Frozen Whip Topping 9-oz. tub **39¢**

True Value HARDWARE STORES
GENERAL ELECTRIC FROSTED BULBS
MAGOO SPREADS THE NEWS... LIGHT FOR THE SHORTER DAYLIGHT HOURS
STOCK UP AND SAVE
SPECIAL VALUE 4/1.19
Cox 401 S. 1st Muleshoe 272-4511