



### What They Write

Dear Editor,  
 Have you ever thought of it? If not, why not do so.—Just how much do the business men of Slaton support the boys of the Slaton community who show and sell livestock at the Lubbock Fat Stock Show? I was an exhibitor at the Lubbock Show this year, and I was surprised and saddened to note that not ONE business man or firm of Slaton offered a bid in the sale. All of the other towns supported the boys of their community. Why can't Slaton do this? It's business is large enough and certainly prosperous.  
 We support the people who have business houses in Slaton. We buy their feed to feed our animals. We buy its food to eat and its clothing to clothe ourselves. I certainly

### ELECTRIC CO-OPERATIVE TO HAVE MEETING

The South Plains Electric Co-operative, Inc., Lubbock, will hold its annual membership meeting on Monday, April 7, at 10 a. m. Fourteen Lubbock appliance and equipment dealers will display their latest electrical merchandise and equipment. C. E. Lilley is vice-president and Edmund Kitten is a member of the board of directors.

think they, in a small return, could support the boys of their community at a livestock show.

I will be an exhibitor next year and, I'm sure, a number of other agricultural minded boys. Can the situation be changed, I certainly hope so, for my benefit and the benefit of this agriculture section.

Yours truly,

A member of the Future Farmers



Romance, high humor and a heart-warming whimsical story involving some of the most unusual and lovable characters the screen has ever known are combined in "Wake Up and Dream," Twentieth Century-Fox's Technicolor filmization of Robert Nathan's best-seller which opens Sunday at the Palace Theatre. The picture starring John Payne and June Haver, was directed by Lloyd Bacon and produced by Walter Morosco with an outstanding supporting cast headed by Charlotte Greenwood.

Telling a simple but enchanting story of dreams that came true, through a strange and beautiful adventure, for a young sailor and the girl he left behind, the picture presented a real challenge outside the ordinary groove of Hollywood movie making. The story is filled with situations straight from the never-never land which appeal so strongly to every imaginative per-

son, but which are extremely difficult to film. Preview reports acclaim it as one of the most delightful screen experiences of the year. John Payne plays the role of the awkward but romantic young farmer, Jeff, who leaves the soil to join the Coast Guard. Fresh from her triumph in "Three Little Girls in Blue," Miss Haver is seen as the waitress who dreams of some day meeting a gallant prince. In addition to Charlotte Greenwood, other important roles are

played by Connie Marshall, John Ireland, Clem Bevans, Charles Russell and Lee Patrick.

Three hit songs by the famed tune team of Harry Ruby and Rube Bloom are heard in the picture, the screenplay for which was written by Elick Moll.

#### EFFICIENTLY DEFICIENT

"Is your secretary very efficient?"  
 "Yes, but she's kind of clock-eyed."—Rotary Spokes, Pueblo.

### News Summary Featured Weekly

"Unmarried Millionaires"—Howard Hughes' philosophy was aptly expressed by Kipling: "He travels alone and there's rarely anyone around to bid him hello or goodbye. You can read this story of an amazing young man in the American Weekly, the magazine distributed with next Sunday's Los Angeles Examiner."

"Hollywood's Little Home-ers."—All over the film chubby little hands and smiling little faces are working their chemistry of love in the hearts of the glamorous parents. You can read this thrilling story of real heart interest in the American Weekly, the magazine distributed with the next Sunday's Los Angeles Examiner.

## BROILER ALL-MASH

EXCEPTIONAL RESULTS  
 AT NO EXTRA COST

**RAY C. AYERS AND SON**  
 SLATON, TEXAS

Look for the  
**AYERS DEALER**

Make Your  
**EASTER GREETING FLOWERS**

We have ready for delivery—

**EASTER LILIES**  
**HYDRANGEAS**  
**TULIPS**

in Potted Plants and  
**Selected Cut Flowers**

WEAR A  
**CORSAGE**

We have them - at the  
**SLATON FLORAL CO.**

## SEE HUSER HATCHERY FOR

TEXAS U. S. APPROVED  
 PULLORUM TESTED  
**Baby Chicks**

HATCH DAYS:  
 TUESDAYS & FRIDAY  
 OF EACH WEEK

BREEDS:  
 WHITE ROCKS  
 BARRED ROCKS  
 WHITE LEGHORN  
 BLACK LEGHORN  
 AUSTRA-WHITE AND  
 RED-WHITE HYBRIDS

FEEDS:  
 PURINA CHOWS  
 MERIT  
 EVERLAY

BROODERS:  
 ELECTRIC  
 GAS OR BUTANE  
 KEROSENE

We can supply you with high quality chick and hen feeders, water founts, sprayers, brooder parts and remedies.

## HUSER HATCHERY

Phone 224  
 "Your Checkerboard Store"

It stands against a whirlwind's wrath  
 ...and **OIL-PLATES** your engine!

**AGAINST THE COMBINED, MIGHTY FORCES** of wind and electricity, even the world's tallest building seems frail. Yet, though it may sway, it will not fall, for in its slender columns and girders, particles of steel are bonded together by a still mightier elemental force . . . the tremendous force of *molecular attraction!*

**WHEN YOU CHANGE FOR SPRING** to Conoco N<sup>th</sup> motor oil, the same elemental force of *molecular attraction* bonds molecules of a special lubricating ingredient to molecules of engine metal! So close is this bond of molecule to molecule,

that cylinder walls and other engine parts are actually **OIL-PLATED!**

**BECAUSE OIL-PLATING STAYS UP** on cylinder walls . . . doesn't all drain down even overnight . . . a change to Conoco N<sup>th</sup> gives you **EXTRA** protection when you first start your engine "dry" . . . **EXTRA** protection from corrosive acid action when your engine is idle . . . **EXTRA** protection from sludge and carbon caused by wear . . . **EXTRA** smooth, cool, silent miles.

**STOP WHERE YOU SEE THE RED** of Your Conoco Mileage Merchant. Continental Oil Company

**Make a date to OIL-PLATE...NOW!**

## CONOCO PRODUCTS

Sold in This Territory By

<b>HEINRICH BROS.</b> Slaton, Texas	<b>RAYMOND GENTRY</b> Posey, Texas
<b>B. W. WEST</b> Slaton, Texas	<b>KISER AND HINZ</b> Wilson, Texas

**M. L. MURRAY, Agent**

# NOW better than Ever WILSON'S

Home made ---- delicious ---- Fresh

## Cakes, Cookies, Pies

On Sale Daily at Slaton Grocers  
 Made in Slaton by

# The SLATON BAKERY

HOT  
 DONUTS  
 DAILY  
 AT THE BAKERY



### POSEY ITEMS

R. L. BOYD

In the election of Sunday School officers for the Spring Quarter, S. N. Gentry was given the position of superintendent, a place which has been held by W. E. Lourance. Other officers elected were Mrs. J. H. Stone, pianist; Mrs. J. M. Sain, song leader and La Verne

Gentry, secretary. Three teachers were also elected; Mrs. C. E. Birdwell, Mrs. M. M. Briegers and Mr. Lourance. New members of the young married groups class are Mr. and Mrs. J. Riney and Mr. and Mrs. Rudd.

Mr. and Mrs. Stewart now live in the house which was vacated by the Truman Bureson family.

A telephone has been installed

in the Raymond Gentry Store.

The names of the donors of the first \$250 to the Posey Church building funds are: S. N. Gentry, George Hayes, T. A. Johnson, A. L. Havis, Monroe Briegers, W. E. Lourance, Larkin Taylor, J. M. Morrisson, Mrs. Jess Pennington, Carl Miller, M. P. Gentry, J. G. Harper, J. P. Pennington.

The polls for the school trustee election of Saturday, April 5th will open at 8 a. m. and close at 7 p. m. Three local trustees are to be elected and also one or two county trustees.

The Wild Cat soft ball team has been playing practice games with Pleasant Valley and Southland.

Mr. and Mrs. W. T. Gentry have been ill with influenza. Mr. Gentry returned recently from Dallas where he had gone with his son, J. C.

Rev. Schulte is the new Lutheran pastor. He is from the state of Colorado.

Mr. and Mrs. Emrick P. Kolodziejczyk have moved to Odessa. He is a son-in-law of I. J. Kempf and has been employed in the bank at Slaton since his return from foreign service.

Louise Gentry has been employed in Lubbock at an auto supply house.

Wallace M. Cox has recently purchased a Ford delivery panel car.

Rev. Williams, the step father of Mrs. Fred Stolle has been visiting the Stolle family this past week.

A. L. Johnson and R. B. Boyd are adding a few more acres to their farming land by breaking patches of sod.

Raymond Gentry served as substitute mail carrier for a few days this past week in place of Mr. Wilkinson, the regular carrier.

The new radio station is about completed. According to the night-watchman the aerials are 315 feet tall and the workmen, who are from Pampa, are paid \$22 per day each. Also, a telephone has been installed there.

Mrs. Elmer Fincher from Morton visited Mr. and Mrs. A. L. Johnson Saturday night and other relatives here and at Slaton Sunday.

The small son of Mr. and Mrs. James Vannoy has recovered from recent illness.

There are now three Women's Clubs which have regular meetings. They are the Home Demonstration Club, the Women's Society of Christian Service and the Sunshine Club which is a form of the Parent Teachers Association.

### Chief Topics

H. R. Fondy and E. W. Woody have been put on the firemen's board.

Machinist M. C. Akin and Engineer C. C. Geron are both sick.

Clerk Gus Clevenger and his entire family are sick with the flu.

Boilermaker J. W. McCarver and Sheetmetal Worker J. E. Robertson have gone on a fishing trip.

Travelling Car Clerk Beeder,

whose headquarters are in Galveston, was in Slaton this week.

Wilda Ruth Hannah, daughter of Switchman and Mrs. J. M. Hannah, is in the hospital with pneumonia. Machinist Helper L. T. Jordan is off duty due to personal injury. Stationary Fireman P. M.

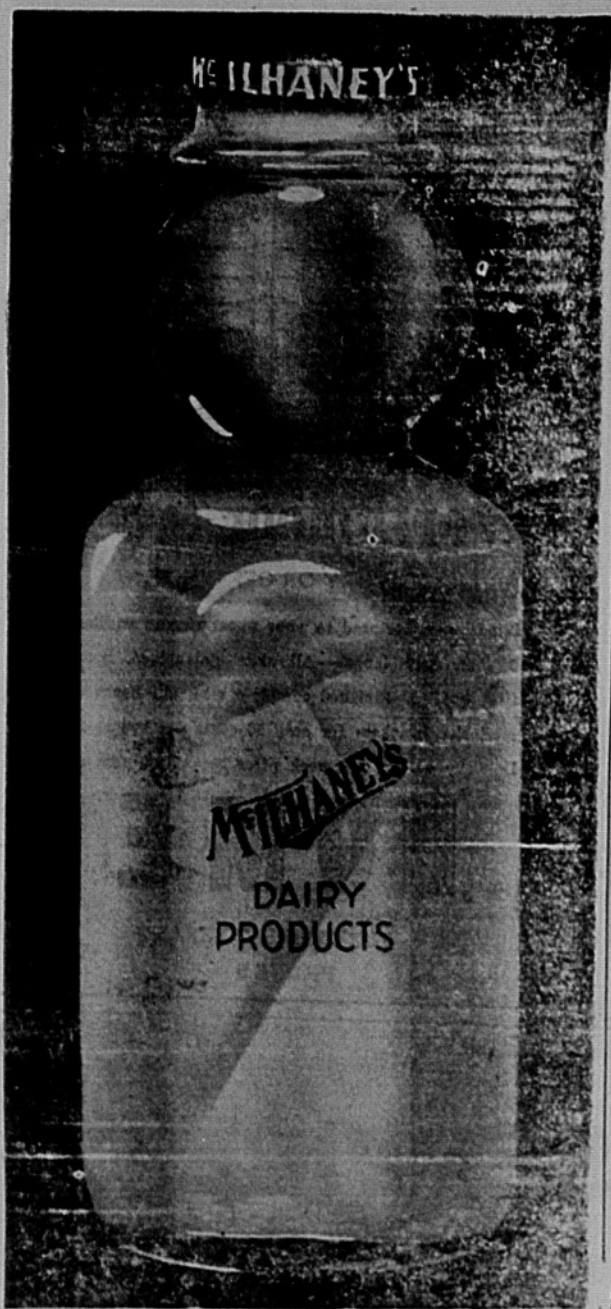
Wheatley has returned after a week's illness.

Card Cabinets, index ca

indexes at the Slatonite

Stamp Pads and stamp

at the Slatonite.



At your Grocers or delivered at your door --- phone 370-J

### Heave Ho!



SAN PEDRO, CAL. — (Sound-photo) — Twenty thousand dollars worth of Tony Cornero's gambling equipment was hurled into the sea off Point Firmin. Torn from his gambling boat, the "Lux", which was seized by the federal government, the loot included 128 slot machines. Photo shows a huge pile of the machines with government men preparing to throw them overboard.

### CARD OF THANKS

We wish to express our appreciation to all friends, neighbors, and relatives, also the Slaton Baptist Church and the Williams Funeral Home for the beautiful floral offerings, the many kindnesses and favors shown us during our recent bereavement of our Mother and Sister, Mrs. E. J. Cowart.

The Cowart Family and Mr. and Mrs. A. C. Ownsby

## MEN!

We have many scarce items for you—

CARHART OVERALLS AND WORK CLOTHES, CLOTH HATS, SUMMER SLACKS, FELT HATS AND — ROSE SUITS

Also a nice showing of PIECE GOODS AND READY-TO-WEAR

## McWilliams

SLATON'S DEPARTMENT STORE  
125 So. 8th St.

Now comes our Spring Clearance of all 1946 styles in WALL PAPER

AT 1/2 PRICE

JUST RECEIVED!  
New 1947 styles in washable Imperial Wall Paper  
This is not included in sale—

PLENTY OF WHITE PAINT NOW HERE  
Higginbotham - Bartlett Co.

## Are You Trying To CURE SYMPTOMS ?

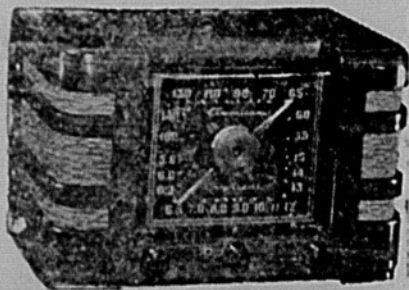


HEADACHE is a symptom and there are many different kinds and causes—some simple and some serious. Taking painkilling medicines only temporarily stills Nature's warning to you. Only a trained physician can distinguish between the various kinds of headaches, caused from high blood pressure, kidney trouble, eye strain or various toxic conditions. There is the migraine or "sick headache" which in itself can be caused by any one of a number of things, and takes many forms. "Toxic" headache can result from infections in gall bladder, prostrate glands, tonsils, sinus, teeth or elsewhere in the body.

WE COOPERATE IN EVERY WAY WITH YOUR PHYSICIAN —

## SLATON PHARMACY

## Get The Extra Values in RADIOS and COMBINATION SETS



SPECIAL Model no. 201 E.C.A. Radio 34.95 value for 24.95 plus tax

Reduced Price E.C.A. Radios of 44.95 value for 34.95 plus tax

Combination Record Player 99.50 value for \$75 plus tax

This is a close out SALE on E.C.A. Radios Only

## BAINS AUTO STORE

130 North 9th St.

### Each Expert Gets Wide Recognition

The recent spectacular developments made in grain-sorghum breeding throughout the Southwest have been attributed to the Lubbock Experiment Station, and to its agronomist in charge of sorghum investigation, R. E. Karper. The increasing usefulness of this crop in the semi-arid Southwest is largely due to the number of combines and crossbreeds created at the Lubbock Station by Karper, who has given it a flexibility that has lifted it to a place of importance in farm economy.

National publicity has been given these developments in the April issue of Country Gentleman, in an article titled "Sorghums are Eager Beavers," which traces the research history of grain-sorghums in the Southwest.

Karper first became interested in sorghums while a student at Kansas State College. He was assigned to the Fort Hayes Experiment Station to look after sorghum and corn plots. "It was 1913, one of the driest years on record," he recalls, "and 66 of the corn varieties added up to a complete zero. The sorghums, on the other hand, produced an impressive though small yield of grain and forage."

has devoted almost his entire attention to the crop, sharing his findings with farmers, scientists and other agronomists concentrating on sorghums. J. B. Singer, of Woodward, Oklahoma, and W. P. Martin, of Lubbock, are men who have rendered invaluable assistance to Karper.

The future of sorghums in the Southwest is promising. They will undoubtedly lend themselves to industrial use, and with increased advances in breeding, there will be greatly increased per-acre yields.

#### THIS WEEK'S LESSON

"Unreality" is the subject of the Lesson-Sermon which will be read in all Churches of Christ Scientist, on Sunday April 6.

The Golden Text is: "Every tree that bringeth not forth good fruit is hewn down and cast into the fire" (Matthew 7:19).

Among the citations which comprise the Lesson-Sermon is the following from the Bible: "As ye have therefore received Christ Jesus the Lord, so walk ye in him" (Colossians 2:6).

The Lesson-Sermon also includes the following passage from the Christian Science Textbook, "Science and Health with Key to the Scriptures" by Mary Baker Eddy: "Every step towards goodness is a departure from materiality, and is a tendency towards God Spirit" (page 213).

- For -

## SHOE REPAIRS

AND HAND-TOOLED  
**LEATHER WORK**

See  
**BURN'S SHOE SHOP**  
and  
**FONDY'S LEATHER SHOP**

N. 9th St. next door south  
Tuckers Home & Auto Supply

**KRUEGER, HUTCHINSON AND OVERTON CLINIC**

<b>GENERAL SURGERY</b>	<b>OBSTETRICS</b>
J. T. Krueger, M.D., F.A.C.S.	R. Hand, M.D.
J. H. Stiles, M.D., F.A.C.S. (Ortho)	Frank W. Hudgins, M. D. (Gynecology)
H. E. Mast, M.D. (Urology)	
<b>EYE, EAR, NOSE &amp; THROAT</b>	<b>INTERNAL MEDICINE</b>
J. T. Hutchinson, M.D.	W. H. Gordon, M. D. (F. A. C. P.)
Ben B. Hutchinsin, M.D.	R. H. McCarty, M.D.
E. M. Blake, M.D.	
<b>INFANTS AND CHILDREN</b>	<b>GENERAL MEDICINE</b>
M. C. Overton, M.D.	G. S. Smith, M.D. (Allergy)
Arthur J. Kins, M.D.	R. K. O'Loughlin, M.D.
J. B. Roundtree, M.D.	
	<b>X-RAY AND LABORATORY</b>
	A. G. Barsh, M.D.

**LUBBOCK MEMORIAL HOSPITAL**

**PATHOLOGICAL LABORATORY, X-RAY and RADIUM**

School of Nursing fully recognized for credit by Univ. of Texas

J. O. Bush Jr., Administrator      J. H. Felton, Business Mgr.

### GENERATORS - STARTERS

REBUILT — REPAIRED — NEW

AUTOMOTIVE — IRRIGATION — FARM TRACTOR

**13TH ST STARTER SHOP**

702 - 13th    MASTER OF STARTERS    LUBBOCK

FOR PROMPT ATTENTION AND EXPERT WORK

## N. J. WICKER

FOR

### ELECTRICAL

Wiring and Repairs

105 North 19th St.      Phone 494-W

## DR. P. K. PALMER

OPTOMETRIST

OFFICES IN LESTER'S JEWELERS  
LUBBOCK

1010 Broadway      Phone 5794

USE YOUR CREDIT  
PAY ONLY \$1.00 A WEEK



# EASTER

The Bible tells us that it happened. The cross shows us how it came to pass. The flowers symbolize the resurrection. Flowers and cross and Bible; they are more than a pretty picture. They present an answer to the greatest of life's question, "After death, what then?"

You can't explain mysteries, but you can believe them. For nineteen hundred years Christians have been unable to explain the resurrection of Jesus Christ, but they have believed it. For those who have not read, or reading, have not believed, the answer to life's greatest question is, "After death, nothing!" For Christians, who know that Jesus Christ proved eternal life—for them the answer is, "After death, life!"

The Bible tells us that He died and rose again from the grave. The cross tells us that He did it for us. The flowers tell us that through Easter we, too, have the hope of everlasting life. Bible, cross, flowers! They are the Easter story. They are the message of the Church.

**THE CHURCH FOR ALL... ALL FOR THE CHURCH**

The Church is the greatest factor on earth for the building of character and good citizenship. It is a storehouse of spiritual values. Without a strong Church, neither democracy nor civilization can survive. There are four sound reasons why every person should attend and support the church of his choice. They are: (1) For his own sake, (2) For his children's sake, (3) For the sake of his community and nation, (4) For the sake of the Church itself, which needs his moral and material support. Plan to go to church on Sunday and read your Bible daily.

*This advertisement contributed to the cause of the Church by the following patriotic citizens and business establishments:*

- |   |   |   |
|---|---|---|
| <b>Magnolia Petroleum Co.</b><br>J. W. Chenoweth, Agent | <b>Citizens State Bank</b><br>Member F.D.I.C. | <b>O. D. Kenney Auto Parts</b>  |
| <b>Slaton Bakery</b><br>Barney Wilson, Mgr.             | <b>Slaton Implement Co.</b>                   | <b>Pember Insurance Agency</b><br>26 YEARS YOUR AGENT   |
| <b>Crow-Harral Chevrolet Co.</b>                        | <b>Dickson's Hatchery</b>                     | <b>Clifford and Ethel Young Real Estate</b>   |
| <b>Carroll Service Station</b>                          | <b>L. E. Brasfield, Plumbing</b>              | <b>Chicken Village</b><br>1318 19th Street, Lubbock<br>"Make me worthy of the love of a little child" |
| <b>Holt Grocery</b>                                     | <b>Butler Monument Works</b>                  | <b>Bell Ice Cream and Milk Co.</b>  |
| <b>Union Compress and Warehouse Co.</b>                 | <b>Palace Barber and Beauty Shop</b>          | <b>Mead's Fine Bread</b>  |

### Baptist W M S Is Hostess To Federation Of Church Women

The Federation of Church Societies met Monday, March 31, at the Club House with the Baptist W. M. S. as hostesses.

Mrs. W. F. Ferguson and Mrs. Clifford Young greeted guests at the door. Mrs. H. G. Stokes, President of the Federation, presided for a short business session. Mrs. Luther Kirk gave the devotional. Mrs. M. C. Hodge sang "Why Should I Love Him So," accompanied by Mrs. Allen Ferrel.

Mrs. B. B. Castleberry offered a violin solo, "Ave Maria" accompanied by Mrs. L. B. Hagerman. An Easter pageant was given by the ladies of the First Christian Church, with Mrs. Jack Smith as soloist.

The tea-table, at which Mrs. E. E. Culver and Mrs. H. T. Hord presided, was laid with a white linen Maderia cloth and arranged with crystal appointments and held a bowl of calla lilies. Daffodils and forsythia blossoms decorated the remainder of the Club House. Fifty guests registered.

The next meeting will be June 30, with the First Christian Church Women as hostesses.

### JOLLY QUILTING CLUB MEETS APRIL 1 WITH MRS. BEN MANSKER

The Jolly Quilting Club met April 1 in the home of Mrs. Ben Mansker for an all-day meeting and a covered dish luncheon. A short business was held and members answered roll call with helpful household hints.

One quilt was completed and another was stamped ready for quilting at the next called meeting. The next regular meeting will be held with Mrs. H. H. Edmondson on May 6.

The following members were present: Mesdames Jess Burton, E. E. Wilson, J. W. Scott, J. F. Richey, Jack Cooper, H. H. Booher, Stella Shelton, H. H. Edmondson and the hostess.

Guests were Mesdames R. C. Sanner, C. E. Jarman, I. E. Banks, Pat Murphy, and T. S. McClanahan.



WE NOW HAVE

A NEW—Supply of bath fixtures, electric clocks, washing machines, floor furnaces, hot water heaters, and other household needs - - - 50 ft. Garden Hose \$5.95

See Us For Your Plumbing and Appliance Needs—

**LAYNE PLUMBING & ELECTRIC**



### MRS. J. A. WRIGHT TO PRESENT PUPILS IN PIANO RECITAL

Mrs. J. A. Wright will present her piano pupils in an Easter Recital at the Slaton Club House at 8 p. m. April 4, 1947.

The following pupils will present the program: Nancy Jane Mosley, Scott Mack, Edith Ann Holloman, Patricia Wyatt, Rudy Dominguez, Linda Livingston, Linda Ward, Suzanne Neill, Bryan Morgan, Dalene Meyers, Billy McCarver, Marie Chambliss.

Ronda Campbell, Lorrye Lou Livingston, Betty Sue Layne, Patsy Mosley, Barbara McCoy, David Collins, Barbara Felty, Patricia Wells Fay Ely, Janice Greer, Philip Morgan, Julia Nell Brasfield, Donita Brown, Irma Lou Gregory, Helen Ruth Barton, Shirley Ball, Peggy Jean Ely, Kay Porter and Martha Mack.

### BLUEBONNET CLUB HAS MEETING MARCH 26

The Bluebonnet Club met Wednesday, March 26, in the home of Mrs. H. H. Edmondson with lte chairman, Mrs. Dan Liles, presiding. After the short business session refreshments carrying out the Easter motif were served to 11 members.

The next meeting will be with Mrs. Dudley Berry, 405 South Ninth Street. Roll call will be answered with a current event.

Mr. and Mrs. Don Cherry and Paula from A. and M. College are spending the Easter holidays with Mr. and Mrs. W. T. Cherry.

# Society - Clubs

### CHILD STUDY FORUM HAS MEETING DURING WEEK

Dr. Don Hatchett spoke to the members of the Child Study Forum at the meeting on Wednesday, March 27. A round table discussion followed. It was brought out that in order to prevent mottled tooth enamel it is necessary to use commercial water free of chlorine for drinking and cooking until the permanent teeth are formed. Too much sweets and fats contribute to tooth decay; children's teeth should be checked from the third through the sixth year for decay and defects. A social hour was enjoyed after the lecture.

On Wednesday, April 2, the first play hour for children of the Forum members was held in the basement of the Methodist Church. Approximately 40 children attended. The play hour will be held each Wednesday from 10 to 11:30 a. m. Mrs. Richard O'Loughlin lectured to the Prenatal Study Group at 4 p. m. Wednesday, April 2, on "Clothing for Infants." The Parental Study Group of Children from ages Two to Six will meet Wednesday, May 9, at 4 p. m. in the chapel of the Methodist Church. The discussion topic will be "Emotional Phases of the Small Child."

Mr. and Mrs. Kirby Scudder Jr. and Gary are here from Amarillo to visit Mr. and Mrs. Kirby Sr. Joining them for Easter will be Mr. and Mrs. A. C. Sanders Jr. and two children from Lubbock.

### SLATON HD CLUB MET WEDNESDAY, APRIL 2

The Slaton Home Demonstration Club met at the Club House with Mrs. Carter Shaw hostess, Wednesday, April 2. "Eggs Every Day" was the topic for study. "Mealtime Madness" and "Egg Salad" was demonstrated by Mrs. Cleta Young; "Main Dish Eggs" by Mrs. Carter Shaw; and Mrs. D. Wilson "Egg Deserts."

The next meeting will be on April 16. The County Home Demonstration Agent will speak on "Building Materials."

### CATHOLIC DAUGHTERS MET SUNDAY MARCH 30

The Catholic Daughters of America met Sunday, March 30, at 2:30 p. m. with 18 members present. Ada Mae Kitten read a poem, "The Blind Man and the Elephant." Misses Rose Kahlich, Stephen Bednarz, and Marie Kolodziejczyk were appointed to serve as a nominating committee for the election of officers, which will be held at the next meeting in May. All members are urged to attend.

Buck Miller, petroleum engineer of Midland, visited in the S. S. Forrest home over the week-end. Mr. Miller returned recently from four years overseas service where he was a captain in the Engineers Corps in Persia.

### P. H. APPLINGS TO HAVE EASTER HOMECOMING

Mr. and Mrs. P. H. Appling will have all their children with them this Easter. Pat, Don and John, will come from McMurry College, Abilene; Mr. and Mrs. W. L. Jones and family from Plainview; Mary Helen, Educational Director at St. Johns Methodist in Lubbock; Melba Ruth, with Lubbock Sash and Door Co., Lubbock, and W. A. Appling, pastor of Olton Methodist Church.

### WIN ONE CLASS HAS MEETING MARCH 28

The Win One Class of the First Methodist Church met Friday, March 28, in the basement of the Church with 20 members and one guest present.

The devotional was given by Mrs. C. R. Westerman, and the program by Mrs. Louis Smith. The closing prayer was by Mrs. J. T.

Pinkston, Sunshine Sisters were revealed. Hostesses were Mrs. Minnie Smith and Mrs. Jerry Mudgett.

Kathleen Eidson, who is a junior at San Marcos Academy will arrive today to spend the Easter holidays. She is bringing her room mate, Vivian McKnight of Illum with her.

**SPRADLEY**  
UPHOLSTERY & REPAIR

ADD YEARS TO YOUR FURNITURE

New webbing and fresh upholstery will revive the most saggy, shabby chair! Our work's 100 percent reliable.

116 Texas Ave. — Phone 10

NOW you can get prompt dependable—

**REPAIRS**  
ON ALL RADIOS

**REPAIRS**  
ON ELECTRICAL APPLIANCES

Hugo Mosser has opened a fully equipped Radio Repair Shop on North 9th St. in former location of Burns Shoe Shop and is ready to service car and home radios and electrical appliances.

**ALL WORK GUARANTEED**

**MOSSER'S**  
Radio Shop

95 North 9th St.

# Announcing

## The Opening Of The

# F. KEY ELY GROCERY

at 705 South 9th St.

We have installed what we believe to be the best arranged and best equipped Food Store in Slaton - - we have secured many very special values for our opening and

**INVITE EVERYONE TO COME SEE US!**

Opening Special  
**FLOUR**  
PILLSBURY'S BEST  
25 LB. SACK **\$1 89**

Opening Special  
**COFFEE Folger's**  
1 lb can . . . . . 49c  
2 lbs. . . . . 97c

Opening Special  
**CIGARETTES**  
ANY BRAND  
CARTON **\$1 69**

Opening Special  
**SUGAR**  
10 lbs . . . . . 95c  
5 lbs. . . . . 48c  
STAMP NO. 11

Opening Special  
**Armour's Star BACON**  
THE BEST  
1 LB. SLICED **69c**

**SOAPS**  
Rinso, Vel, Dreft, etc.  
PER BOX **35c**

**CARROTS**  
Large Bunch  
EACH **5c**

**TOMATOES**  
NO. 2  
CAN **12c**

**CRACKERS**  
1 LB. KRISPY **21c**

**COOKIES**  
Ice Box  
1 LB. PKG. **23c**

**VIENNA SAUSAGE**  
VAN CAMPS  
CAN **15c**

# F. KEY ELY GROCERY

705 South 9th St.

Phone 794







**Moscow Arrivals**



MOSCOW, USSR—(Soundphoto)—Photo shows Georges Bedault, (extreme right), French Minister of Foreign Affairs, as he arrived at Moscow Byelorussian station. With him are Madame Bedault, Andrei Vyshinsky and other unidentified persons.

**Silage Pays Off In West Texas**

Some of the best feed insurance a West Texas farmer can have is a few tons of good silage, says Bailey County Agriculture Agent D. W. Sherrill.

The type insurance the county agent is talking about is well-illustrated by the eye-to-the-future policy of Herschel L. Thomason, farmer of the Pettit community, Bailey County. Last fall, Thomason bought 200 tons of hegari from a neighbor and dug a trench silo that would hold it. Over-all cost of the silo full of good feed was \$1000.

Feed prices being what they are now, Thomason estimates his "feed insurance" silage to be worth at least \$2000, or \$10 a ton. County Agent Sherrill says that the stockman has the choice of selling the feed at a good profit, or buying more cattle and feeding it out. At any rate, he has the hegari where it won't spoil, won't burn, be eaten

**UNION NEWS**

MRS. M. D. GAMBLE

Mr. Jesse Johnson, J. P. Clark and W. D. Meyers came back from El Paso Sunday with a load of gin equipment. Mr. Johnson is putting in new machinery in his gin here.

A large crowd attended the Senior play at the school house Friday night. The class made \$85 after expenses were paid. The name of the play was "A Little Clodhopper." Characters were H. G. Burkett, Bobby Womack, Rayburn Billingsley, Betty Carter, Bernice Wylie, Joy Tims, Betty Wortham, Peggy Richardson, Mary Helen Bruce, Anny Jo Reynolds, Louise Hoesch, Bernice Ward, Arlene Womack, Howarth, Summers, by rats nor peppered with West Texas sand.

Sherrill believes that more farmers "would do well" to plan a feed crop that will give them a silo full of insurance next fall.

Gene Vinson, Harlan Coleman, and Liappy Ward.

Bobby Reynolds was operated last week at the Plains Hospital and last report, she was to come home Sunday and was doing fine. We wish her a speedy recovery.

Mrs. W. D. Meyers spent a few days in Dallas with her daughter. Mr. and Mrs. H. F. Doyle came home Sunday from Hot Springs, New Mexico where they had spent a two weeks vacation.

Mr. and Mrs. Otto Edwards and daughter have been to Dallas

**How women and girls may get wanted relief from functional periodic pain**

Cardui, many women say, has brought relief from the cramp-like aches and nervous strain of functional periodic distress. Taken like a tonic, it should stimulate appetite, aid digestion, thus help build resistance for the "time" to come. Started 3 days before "your time", it should help relieve pain due to purely functional periodic causes. Try it!



where Mrs. Edwards and daughter went through the clinic.

There are still several moving. Mr. Alvis Peterson has moved back across the Lubbock and ta-

hoka highway, Bill Frank White moved where he lived and Mr. Parks has moved.

Mrs. J. B. Patterson was honored on her birthday with a miscel-

laneous shower in the home of Mrs. Pat Patterson, Saturday afternoon, assisted by Mrs. G. L. Nelson.

Mr. and Mrs. Joe Gamble, Joyce and Larry Me spent Sunday with

her parents, Mr. and Mrs. B. E. Stephenson, near Tahoka.

Index cards, indexes, filing boxes at the Slatonite

**Easter FOOD SALE**

- CARTON OF 48 **45c**
- NO. 2 1-2 LIBBY'S SYRUP PACK **39c**
- NO. 2 1-2 SYRUP PACK **29c**
- CARNATION MILK tall can **13c**
- FANCY CLING Dried Peaches lb. **23c**
- DREFFT OR OXYDOL lg. pkg. **34c**

**Grapefruit Juice can 15c**



- Picnic Hams lb. **49c**
- BEEF SHORT Ribs lb. **29c**
- 2 lb. AMERICAN Cheese box **89c**
- CURED 1-2 or Whole HAM lb. **59c**

- PURE CANE (NO. 11 STAMP) 10 lbs. SUGAR 10 lbs. **94c**
- 75c Size SHAMPOO MODART jar **39c**
- SEA PREM Light Meat TUNA can **43c**
- No. 2 size TEXAS TOMATOES can **12 1/2c**
- 2 lb. jar (Sugar Made) GRAPE JAM jar **55c**

- STRAWBERRY OR CHERRY Preserves TASTEST Jar PURE FRUIT **49c**
- LOUISIANA MOLASSES Gallon Can **\$1.28**

- We have a full stock of Birdseye
- FROZEN FOODS** FOR Delicious Meals
- 1 Doz. Large Tortillas pkg. **23c**
  - Green Peas pkg **29c**
  - Strawberries **55c**
  - FANCY Mixed Fruits pkg **24c**
  - GREEN Cabbage lb. **5c**
  - Lg. bunch Carrots **9c**
  - FIRM Lettuce lb. **12c**
  - TEXAS Oranges lb. **10c**

**PIGGLY WIGGLY**

You are Cordially **INVITED** to visit **Curly Martindale** at his Service Station Formerly McWilliams Service Station

I have leased the Service Station on corner of Garza and 8th Streets and will do my very best to give my friends and customers the BEST IN— Auto Service of all kinds—Come see me —

OPEN 7 A. M. UNTIL 7 P. M. CLOSED ALL DAY SUNDAYS

**Curly Martindale**

**WE BUY POULTRY EGGS AND CREAM**

MAKE THE DRINKING WATER SAFER For Your Baby Chicks and Poultry

FUNJOL, the new antiseptic, KILLS germs of fowl cholera, pullorum, some strains of fowl typhoid . . . and the fungus Monilia Albicans . . . in 5 to 10 minutes . . . IN THE WATER!

**FUNJOL** Use it from the very start. Come in and get a bottle today.

**Gland-O-Lac**

THE HATCHING SEASON is about over - - - if you want more Baby Chicks you'd better hurry and get them from us now!

**DICKSON HATCHERY**

Double your profits WITH **STANTON'S CHICK STARTER**

SAY PEEP! YOU OUGHTA EAT STANTON'S CHICK STARTER TOO.

ALWAYS FEED STANTON'S FOR BEST RESULTS

"Making their way by the way they're made"

ATTEND . . . .

# EASTER CHURCH SERVICES

and hear the Message of Christ and  
the music of well trained choirs



The months have been many since the end of conflict, and we have slowly assumed the calm of peace while building up the stability which will enable us to make that peace endure. As we join the joyous Church through this Easter, surrounded by loving family, cheering friends and friendly neighbors we can make one simple resolution in behalf of that peace. We can resolve to live the spirit of Easter throughout the year . . . . and not shed our "Sunday manners" of tolerance and sincerity when we hang away our "Sunday clothes." And as the meaning of Easter now fills our hearts, let it also guide our deeds day in . . . . day out.



*This appeal made possible by the following Slaton firms:*

**Magnolia Petroleum Co.**  
J. W. CHENOWETH, Agent

**Layne Plumbing & Electric**

**Model Grocery & Market**

**Slaton Implement Co.**

**Higginbotham-Bartlett Co.**

**Fitzgerald Drug**

**Woolever Shoe Repair**

**White House Cafe**

**Allred's Plumbing Shop**

**Pember Insurance Agency**

"26 YEARS YOUR AGENT"

**Williams Funeral Home**

**Crow-Harral Chevrolet Co.**

**O. D. Kenney Auto Parts**

**Slaton Bakery**

**Alford's Grocery**

**J. H. Brewer Insurance Agency**

**THE SLATON SLATONITE**  
**SLATON PUBLISHING COMPANY**, Slaton, Lubbock County, Texas  
 Slaton Times purchased 1-20-27.  
 Entered as second class mail matter at the postoffice, Slaton, Texas.  
 A. M. JACKSON, Editor and Publisher

**ADVERTISING RATES**  
 Display Advertising 50 cents per column inch to all agencies, with usual discounts.

Local Readers, set in 8-pt. 10 cents per line of five words, net. To agencies, 10 cents per line with usual discount.  
 Card of Thanks, 50 cents.

**NOTICE TO THE PUBLIC**—Any erroneous reflection upon the reputation or standing of any individual, firm or corporation, that may appear in the columns of The Slatonite will be gladly corrected when called to our attention.

Obituaries, Resolutions, Memoirs (excepting accounts of death, news originating in this office), 5 cents per line. Poetry 10c per line.

**SUBSCRIPTIONS IN ADVANCE**  
 Lubbock, Lynn, Garza Counties, \$2.00. Outside these counties, \$2.50.

**JUST TALK**

by  
**A.M.J.**



J. J. Maxey said that last week my comments about the unfavorable impression that our business section makes on visitors was brought forcibly to his notice by some out of town business men who came to Slaton last week. The droopy signs, the peeled off paint and the chewing tobacco stains on the lamp posts did not make our town very popular with these men who were prospecting for new business locations.

Maxey said my observations about conditions over town were correct and he glanced out our front door and said the towns reputation was not being helped a lot by the dead weeds and scrub trees that are so prominent in front of the Slatonite. After he left I thought of a few things I could say about the City Hall but I guess I might as well try to take his suggestion and try to do something at my own place of business. The trouble now days is that if you could get some one to do the work it is almost impossible to get the paint, if you could get the paint and the painter it brings on paying the bill and right there is where I must stop and consider.

Last fall I watched a little thing I thought was a weed struggle up a crack in the cement outside our office door. Every week I sat at my desk and considered the idea of bringing the hoe down town and chopping the thing up but I never did get around to it and it started blooming way late in October. The blooms looked ratty at first but when the little plant was still standing up and taking all that the weather man could dish out until well up in December I could not help but admire its blooms, although they were a faded pink in color and pretty moth eaten

when compared to what we see in the spring and summer. And so it proves that one should never cut down little weeds that grow in the cracks of the sidewalk for they may turn out to be orchids or something.

The people in every town or city seem to feel that the most important thing for general good is for the town or city to grow larger, but they are wrong.

If growth would make the community more prosperous it should be welcomed but mere numbers do not make for prosperity or a better community. What I would like to see in Slaton is a town where everybody is prosperous, a town that is well lighted and where every citizen has all of the modern conveniences, a lively town and a town where its citizens have respect for the law and for each other, where the stores are clean and inviting, where the business men work together and where competition is lively but not so great that those who are in business must operate at such a close profit that it leaves no room for expansion, in fact I believe a good small town is a much better place in which to live than a large town full of people who do not have an interest in their neighbors or in the town itself.

While visiting a business man who is in the advertising business

in Lubbock I got into quite an argument with him about radio and he claims that television is not very far off. The installation of equipment and lines to establish F-M broadcasting is now in progress and several F-M stations have been built in Texas including one at Wichita Falls and if permission is granted by the Government, one will be built in Lubbock in the near future.

Those who will listen to F-M broadcasting will have to have different radio receivers from those that are in general use today, the present radius for these stations is not very far, he said not over 150 miles at the greatest, the reception is almost perfect and when television is in general use the F-M stations can broadcast the programs and the F-M receivers can receive television.

Competition in the regular radio field has gotten to be extremely active as most anyone who wants to start one can now do so, if they have the money, but most experts think that television will make the present broadcasting a "dodo" in a few years.

It would seem to me that television, to be greatly appreciated would have to be shown on a screen as large as a motion picture uses and I am wondering if television might not hurt the Hollywood producers more than it will the blah-blah soap screechers that seem to do their best to nauseate one with their silly tunes over the present radio broadcasts.

**THE WEATHER**—Over the week end we will have high winds and cooler weather and then the rain will start about Monday and if you do not have overshoes, an umbrella and a slicker you had better make plans to stay indoors for quite a spell for the spring rains are on their way, and I'd like for whoever gets the plank bridge across the Slaton river in front of the Post Office to get it ready for I certainly do hate to wear hip boots to get my mail.

One persons guess is as good as another but I do not believe that the United States and Russia will go to war at the present but I do think that Russia is going to have to back up. The United States is not bluffing but the Russian Gov-

ernment is and neither one of the nations can afford a war.

Whether Slaton grows larger or not is not important but what is important is whether we are progressive, have good schools, keep our town clean and work in unison to make each other prosperous. It is not my belief that one should buy from any firm for any other reasons than because the services, quality and prices are what they should be and if such is not obtainable I do not blame any one for going elsewhere and I do not think that any business man should howl if he loses business to another concern because he cannot deliver the goods himself.

**BRING 'EM IN**  
 Employment clerk: "Chief, there is an applicant here who says he used to make his living by sticking

his right arm into a lion's mouth."

Chief: "How interesting! What's his name?"  
 Clerk: "Lefty."—The Wendley Drizzle, Santa Rosa, New Mexico.

**TO THE POINT**  
 The cub was told to cut his story to bare essentials. Following his orders he did so and produced one the next day:  
 "J. Smith looked up the elevator shaft to see if the car was on its way down. It was. Age 45.—The Mountaineer, Weaverville, Calif.

**TURN ABOUT**  
 Two little girls were playing. One pretended to rent the other's playhouse.  
 "Have you any parents?" the playhouse owner asked.  
 "Yes—two," was the reply.  
 "I'm so sorry," the small land-lady said, "but I never rent to

children with parents. They're so noisy and destructive."—The Rotary Hub, Hornell, New York.

Her father: "What? She's consented to marry you? Young man you're the second-happiest man in the world."—Rotary Talk, Humboldt, Iowa.

**OPPORTUNITY KNOCKS in '47**

Opportunity knocks for the cotton grower to cash in on cotton in a big way in 1947. The acute shortage of cotton goods, livestock feed, vegetable oils and fats can be remedied only by greater production. This means a vast market for cotton and cottonseed products. It means strong prices for a long time to come. Farmers will do well to plan a substantial part of their farm program around cotton for high yields.

**West Texas Cottonoil Company**  
 DIVISION OF WESTERN COTTONOIL CO.  
 SLATON, TEXAS

"Cash-in on Cotton this year!"

Wanted To  
**BUY**  
 USED  
**ADDING MACHINES**  
**CASH REGISTERS**  
 and  
**TYPEWRITERS**  
 at the  
**SLATONITE**

**FIELD SEED!**

CHOICE FIELD SEEDS ARE IN HEAVY DEMAND AND SUPPLIES ARE NOT TOO PLENTIFUL. RESERVE YOUR NEEDS NOW.

*Our Stocks are Now Limited to:*

- Arizona Martin and Plainsman
- Combine Milo
- Arizona Regular and Combine Hegari
- Texas Common and Sweet Sudan
- Texas Red Top Cane and
- Martin's Pedigreed Combine Milo
- Grown only by W. P. Martin & Sons

**Ray C. Ayers & Son**

**A WORD OF THANKS--**

To my friends and customers who have been so faithful to me so many years—I have leased my Service Station to Curly Martindale—I feel sure he will take good care of you—Come see me at our new store ---

**ORAN McWILLIAMS**

How you can

**Charge Your Santa Fe Tickets**

Apply now for your Travel Card entitling you to this service



Effective April 1, 1947, you can charge Santa Fe tickets on the new Railroad Travel Card Plan as easily as you charge department store purchases. There is no "red tape" or deposit necessary. Here's how it works:

Railroad Travel Cards will be available to any individual or company with proper credit rating.

Upon presentation of your Travel Card at any Santa Fe ticket office you can charge rail, parlor car, and sleeping car tickets (amounting to \$5.00 or more) to any part of the country even if part of your trip is on other railroads. Your Travel Card also covers excess baggage charges.

Bills will be rendered monthly for the transportation furnished to holders of Railroad Travel Cards.

Apply Now! To secure an application blank for your Travel Card, simply write to Rail Travel Credit Agency, 436 Union Station, Chicago 6, Illinois.

**Santa Fe System Lines**  
 Serving the West and Southwest





**BREAK THE BANK**

You'll get a mental workout and scads of laughs as the contestants win wads of dough in radio's greatest downpour of money!

Friday 8:00 P. M.  
**KFYO**

1340

Have your prescriptions filled at **TEAGUE'S DRUG STORE** by a registered pharmacist.

All kinds of Stationery, and Note paper, at attractive prices. The Slaton Slatonite.

**HUGO MOSSER OPENS RADIO REPAIR SHOP ON NORTH NINTH ST.**

Hugo Mosser has opened his radio repair shop in the former location of Burns Shoe Shop on North Ninth Street and is now ready to give prompt and dependable service on both car and home radios and on all kinds of electrical appliances as well.

Hugo has had considerable experience in this type of work, having received his training in the Maritime Radio School in Boston. He served as radioman in the Navy.

Mrs. Clifford Simmons left last Saturday to spend a week with her two sisters in Amarillo.

WE ARE AGENTS FOR NATIONALLY FAMOUS

**Cobelin CHOCOLATES**

Limited supply Just received - - -

**FITZGERALD DRUG**

**GIRL SCOUT NEWS**



Bland Tomlison of the Home Furniture Company has been named a "good scout" for his donation of an old-fashioned, but very serviceable phonograph to the cause of Girl Scouting in Slaton. Folk Dancing and Day Camp projects should profit from this gift, and it should add greatly to the enjoyment of the girls in their scout activities.

The Senior Girl Scouts held a regular meeting Friday of last week in the home of Mrs. Bruce Pember, with the assistant leader, Mrs. Jack Shepard, also present. The girls learned to make mesh bags.

Those present were Josephine Shepard, Lois Smith, Maybelle Pember, Peggy Sparkman, Melba Ham, Paula Maxey, Ailene Tefer-tiller, Carol Lemon, Bonnie Taylor, Shirley Teague, Gwendolyn Douglas, and Barbara Stephens.

**LITTLE VARIATION IN NUMBER OF SCHOLASTICS FROM PREVIOUS YEAR**

Mrs. R. H. Bailey, secretary to the school board of Slaton Independent School District, announces that she has practically completed the school census for this year.

Although the exact number of scholastics enumerated has not been determined, the number is about the same as last year. There will be little variation in number from previous years, according to Mrs. Bailey.

Rita Jo Adkins of Albuquerque is spending the Easter holidays with her parents, Mr. and Mrs. W. D. Adkins.

**SPORTS NEWS FROM SLATON HIGH SCHOOL**

According to the Tiger's Cage, Slaton participated in the boxing tournament which was held in Tahoka last part of last week. Among those entering the tournament were Jackie Pearson, Lefty Lambright, Eugene German, Buddy Riggs, Ed Burton, Johnny Melcher and Tommy Swanner.

In the district tennis meet held in O'Donnell Bobby Hoover represented Slaton in boys' singles. Ed Burton and Bill Green won over Seminole in boys' doubles.

**TWO LOCAL PERSONS RECEIVE SCHOLARSHIPS**

Miss Annie Lou Shaw, a high school senior, and Mrs. L. K. Hart, a teacher in Slaton High School, have won scholarships offered by a ready to wear shop in Lubbock. These scholarships carry a definite amount of money to be used to attend the school of the choice of the recipients.

**IS YOUR FORD**



Winter-Weary?

Bring it to us for a

**SPRING TUNE-UP**

—to restore its **POWER AND PEP**

... then, you'll be all set for spring and summer driving

**CALL US TODAY**



**Slaton Motor Co.**

**RADIO REPAIR**

Expert Repair Service on Home and Auto Radios  
REASONABLE PRICES QUALITY PARTS

ALL WORK FULLY GUARANTEED

One Day Service For Out Of Town Customers

\$4.80 SPECIAL \$4.80

AB FARM PACK BATTERIES

1000 hr. GUARANTEE

NEW AND USED HOME AND AUTO RADIOS  
YOU'LL SAVE ON REPAIRING OR PURCHASING  
YOUR RADIOS AT

**RADIO LAB**

Dial 8391

Lubbock, Texas

1509 Avenue Q

**POSSUM FLATS . . . BISCUIT STOP!**



By GRAHAM HUNTER

**GLADIOLA FLOUR**

FINE MILLING COMPANY  
SHERMAN, TEXAS



only 3 Days till **EASTER**

and



has just unpacked New

**DRESSES**

to supply the late shopper - - - other items that have arrived to complete the Easter costumes are—

**Ladies Hats & Purses**

Gloves in Fabric or Kid,  
and New Easter **SHOES**

in Black, Brown, or Blue

**For the Men -- New Spring Hats**

in Gray, Brown, Tan—Light feather weight . . . . . \$10

Everything for men from head to foot including Van Heusen and E. W. Shirts

**BERKLEY and HADDOCK**

We deliver **Fine Foods** Phones 197 and 198

Get **McILHANEY'S PASTEURIZED** and **HOMOGENIZED MILK** HERE