

The Slaton Slatonite

PUBLISHED EVERY FRIDAY IN THE INTEREST OF SLATON AND SLATONITES

VOL. XXXVII

Slaton, Lubbock County, Texas, FRIDAY, OCTOBER 17, 1947

NO. 7

West Texas Roundup

The Chamber of Commerce will take action on a program to underwrite \$50,000 worth of home construction in Ralls at its meeting Monday night.

Last month a committee composed of A. L. Winfrey, John Thomas and Ernest Joiner was appointed to inquire into the procedure for incorporating a group of local citizens for the purpose of building small homes of the 5,000 class to be sold to prospective home-owners. The organization, if approved Monday night, will be a non-profit effort to relieve the existing housing shortage.

—Ralls Banner

A call for bids for the construction of the proposed state highway from Wells to Draw, a distance of a little more than 15 miles, is being published in this issue of the News. Bids is to be noted, are to be opened on Tuesday, October 21, in Austin, and contract let presumably on that day.

—Lynn County News

A budget of \$79,067.50 for the 1947-48 term was approved recently by the board of trustees and a copy sent to the state department of education. This is by far the largest budget in the history of the local school.

—Crosbyton Review

Interest of the Scurry County oil fraternity was centered in Southwest Scurry County this week as four wells shared the spotlight of the area. Two recent completions were chalked up, and two others were eyed with anxiety.

—Scurry Co. Times

Several carloads of Terry County Fair boosters will leave Wednesday, October 15, on the first of a two-day series of trips which will carry them throughout the trade territory in advertising the coming event, which opens Thursday, October 23, and continues through Saturday night, October 25.

—Brownfield News

Plans and specifications are being prepared by engineers for the last lap of Hockley's \$850,000 county road construction program. Judge Z. O. Lincoln said yesterday that he hopes bids will be requested for the project by the end of this year.

—Hockley County Herald

Sixty-two farmers and stockmen from the Hereford area met at the City Hall Monday night with Chris Schmidt of Detroit, Michigan, to discuss the possibilities of a cattle feeding program in this area.

Schmidt, who had indicated interest in building a two million dollar packing plant in this area probably to be located in Hereford made no definite commitment, but said he was here to investigate the potentialities, and after he had determined whether or not the area was capable of supplying fat cattle was the scale required, he would decide whether or not to construct the plant.

—Hereford Brand

Hopes for the construction of a first-class modern hotel in Hereford have been renewed and negotiations are underway between the Chamber of Commerce Hotel Committee and Preston W. Fowlkes, Okmulgee, Oklahoma, hotel man, Chamber of Commerce Secretary Pete Cowart revealed this week.

—Hereford Brand

SLATON WELFARE LEAGUE TO MAKE DRIVE FOR FUNDS HERE

Dr. John Cobb Is Associated Here

Dr. M. Jay McSweeney, Jr., reported this week that Dr. John Littleton Cobb, formerly of Seminole, Texas, is now associated with him.

Doctor Cobb is a graduate of the Baylor College of Medicine, had his Pre-Med education at Texas Technological College and served his internship at the Gallinger Hospital in Washington, D. C. He served as a Physician and Surgeon in the Army from 1943 until his discharge in 1946.

His father and mother, Mr. and Mrs. Cleve Cobb, are residents of Lubbock, were at one time residents of Slaton. Mr. Cleve Cobb has long been associated with the Panhandle and Santa Fe as a special agent. They are well known in Slaton.

P-T.A. Plans Big Halloween Party

The Junior-Senior P. T. A., met Thursday, Oct. 9th, at the High School at which time the year books were presented. Plans were discussed for the coming year's projects and for a School Carnival to be held Thursday, Oct. 30th, which will start at 6:30 p. m. As in the past much good food will be served and the entertainment is open to the public.

The membership drive is in full swing and the new ruling allows parents who now belong to the Elementary P. T. A. to join the Junior-Senior P. T. A.

Mrs. W. T. Cherry spoke on "A Goal — Bettering Human Relations." Miss Mary Ann Cudd sang, she was accompanied by Mrs. Key at the piano.

Mrs. Lee Green, president of the Slaton Welfare League, met this week with the directors of the organization and set Oct. 20 through Oct. 25 as the time for a Slaton Welfare League drive for funds. On these days the business firms will be contacted by workers to ask them to contribute to the expenses of keeping the organization in operation.

Not only will the business firms be contacted but a number of booths will be placed in prominent spots over town and individual donations will be asked from the citizens. Mrs. Green explained the purpose of the Slaton Welfare League is to care for any person, or group of persons, who are in distress of any kind on a temporary basis. This is a time when people who find themselves in unfortunate circumstances will suffer even more than when prices were lower and the League has taken over the duty of giving temporary assistance while other organizations such as the Red Cross, Salvation Army, etc., are making investigations often requiring long periods of time.

The Slaton Welfare League helped a number of Mexicans this past year until they were investigated and given permanent help by other means. While there have not been a great many calls for such help it is felt that when such cases come before the public that some means should be provided to give immediate help and this is the place that The Slaton Welfare League expects to fill.

M. H. Lasater is Vice President, Mrs. R. L. Smith is Secretary and Howard Swanner Treasurer.

News Summary Featured Weekly

"These Are My Hands" Harold Russell's own story of his courageous battle to overcome the handicap of artificial hands. Read this and many other colorful features in the American Weekly, that great magazine distributed with next Sunday's Los Angeles Examiner.

"Women Against The Law" It's a thriller! America's Feminine crime wave is dramatized with actual cases and a statement by J. Edgar Hoover. Read this dramatic true story in the American Weekly that great magazine distributed with next Sunday's Los Angeles Examiner.

ESTERBROOK FOUNTAIN PENS \$1.50 at the Slatonite

Sales books, 60 cents per dozen at the Slatonite.



SATURDAY SPECIAL—Bill Stern, NBC's director of sports, is at the microphone every Saturday afternoon, broadcasting top football games of the week. He gets excited—but stays neutral.

Mrs. Lee Green, president of the Slaton Welfare League, met this week with the directors of the organization and set Oct. 20 through Oct. 25 as the time for a Slaton Welfare League drive for funds. On these days the business firms will be contacted by workers to ask them to contribute to the expenses of keeping the organization in operation.

Not only will the business firms be contacted but a number of booths will be placed in prominent spots over town and individual donations will be asked from the citizens. Mrs. Green explained the purpose of the Slaton Welfare League is to care for any person, or group of persons, who are in distress of any kind on a temporary basis. This is a time when people who find themselves in unfortunate circumstances will suffer even more than when prices were lower and the League has taken over the duty of giving temporary assistance while other organizations such as the Red Cross, Salvation Army, etc., are making investigations often requiring long periods of time.

The Slaton Welfare League helped a number of Mexicans this past year until they were investigated and given permanent help by other means. While there have not been a great many calls for such help it is felt that when such cases come before the public that some means should be provided to give immediate help and this is the place that The Slaton Welfare League expects to fill.

M. H. Lasater is Vice President, Mrs. R. L. Smith is Secretary and Howard Swanner Treasurer.

Mrs. Lee Green, president of the Slaton Welfare League, met this week with the directors of the organization and set Oct. 20 through Oct. 25 as the time for a Slaton Welfare League drive for funds. On these days the business firms will be contacted by workers to ask them to contribute to the expenses of keeping the organization in operation.

Not only will the business firms be contacted but a number of booths will be placed in prominent spots over town and individual donations will be asked from the citizens. Mrs. Green explained the purpose of the Slaton Welfare League is to care for any person, or group of persons, who are in distress of any kind on a temporary basis. This is a time when people who find themselves in unfortunate circumstances will suffer even more than when prices were lower and the League has taken over the duty of giving temporary assistance while other organizations such as the Red Cross, Salvation Army, etc., are making investigations often requiring long periods of time.

The Slaton Welfare League helped a number of Mexicans this past year until they were investigated and given permanent help by other means. While there have not been a great many calls for such help it is felt that when such cases come before the public that some means should be provided to give immediate help and this is the place that The Slaton Welfare League expects to fill.

M. H. Lasater is Vice President, Mrs. R. L. Smith is Secretary and Howard Swanner Treasurer.

Last Rites Held For M. L. Elliott

Funeral services were held last Saturday afternoon at four o'clock from the Methodist church for M. L. (Mike) Elliott who died unexpectedly Thursday night, Oct. 9th, while undergoing an examination at a Lubbock Hospital.

M. L. Elliott was born August 26, 1881, at Rocholds, Ky., and came to Texas at an early age. He had lived in Slaton for the past twenty three years and was a pioneer in the installation of electrical wiring and in the sales and service of electrical equipment in this area. "Mike" was one of the best known and highly respected men in the community.

The funeral services were under the direction of the Williams Funeral Home and the services were conducted by Reverend Cal C. Wright and interment in Elwood Cemetery.

Survivors are the widow, a daughter, Mrs. W. T. Wyatt,

Hugh L. Boyle Made S. Sergeant

Hugh L. Boyle, son of Mr. and Mrs. D. D. Boyle, 345 West Panhandle St., has recently been promoted to the grade of Sergeant.

After completing Basic Training at the AAF Military Training Center in San Antonio, Sgt. Boyle was then attached to a USO Camp Show to perform in the Aleutian Islands and Alaska. Upon completion of the show he was attached to Hq. Q Sq. Co., Aleutian Sector, Adak, as a Secretary to another USO Camp Show to perform in the Aleutian Islands during the Holiday Season.

Sgt. Boyle is a graduate of the Slaton Public High School and attended Deatur Baptist College, Deatur, Texas, for a short time before his enlistment in the Air Force. Upon his discharge from the Air Force he plans to attend the University of Virginia.

As the tour of Foreign Service in the Aleutian Islands has been lessened, Sgt. Boyle will return to the Zone of Interior in February or March 1948.

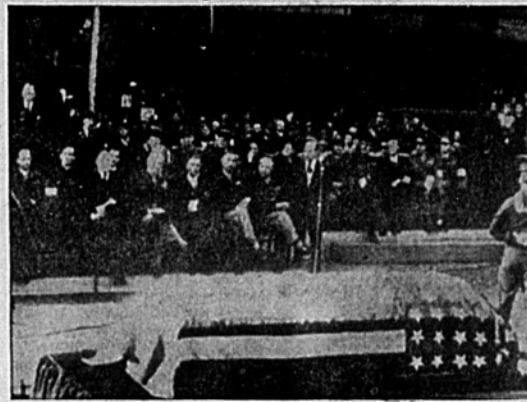
All Grain Supplies Must Be Stretched

Reduced grain supplies from 1947 crops will make it necessary for every pound of feed available to do a better job than usual if livestock producers "cash in" on the large demand and favorable markets for livestock, dairy and poultry products, feeding authorities say.

Careful management and feeding will be required this season to solve the problem of converting reduced tonnages of corn, grain sorghums, oats and other feed grains into needed volumes of meat, milk and other products.

Some of the practices that will help to solve the problem include: Culling of unprofitable livestock; wider use of pastures, stalk fields and home-grown roughages; careful attention to health, mineral and water requirements of livestock; use of better balanced rations; use of relatively cheap protein concentrates to supply nutrients in addition to protein needed to balance rations; and general sound management and feeding practices.

Begin Returning Bodies of U.S. Soldiers



ANTWERP, BELGIUM—(Soundphoto)—Scene at ceremonies in Antwerp marking the departure of Transport Joseph V. Connolly, bearing the first American war dead from Europe to the U.S. The flag draped coffin containing the body of a soldier selected at random rests in state at Catafalque, foreground, as U.S. Ambassador A. G. Kirk addresses gathering. Seated left to right: Gen. Lucius Clay, U.S. Commander in Germany; Cardinal Van Roey, Belgian Prelate; Robert Gillon, Pres., Belgian Senate; Lt. Gen. Heubner; Col. De Fraiture, Belgian Minister National Defense; Brig. Gen. Smith; Brig. Peckham, Comm., American Graves Registry. Transport is bringing home first of 5,600 bodies of American soldiers who died in World War II, at the request of their families.

Famous Organist To Be Here Wed.

Those who enjoy good music have a treat in store for them. John Josey, an outstanding organist of Amarillo is scheduled to give a concert of Religious music on the newly installed pipe organ at the First Baptist Church next Wednesday night beginning at 7:30 p. m. He will be assisted by local choir members in the vocal numbers.

Mr. Josey is well known over the Southwest as an organist on many radio programs. Anyone who wish to do so may attend.

Safety Department Opens Office Here

Beginning next week, Slaton will have a Department of Safety representative here every second and fourth Tuesdays to give examinations and to issue drivers licenses.

Legionnaires To Celebrate Sat.

LUBBOCK, Oct. 11—West Texas Legionnaires will get a chance to show other Texans how old western styles can be carried out while honoring George S. Berry as State Department Commander of the American Legion here on October 18.

Gov. Beauford H. Jester and many other state officials and top officials of the Legion and Veterans of Foreign Wars throughout the state will be invited to take part in the Texas American Legion Roundup at the "Jersey Lilly" in honor of Berry.

Barbecue, son-of-a-gun and sour dough biscuits will be served to World War I and II veterans from 5:30 to 10:30 p. m. at "Big Foot" Davis' near replica of Judge Roy Bean's establishment on the Pecos

Cecil Long Now Has Auto Heater Agency

A new wholesale and retail connection for this area for Stewart Warner Southwind automobile and truck heaters was announced here this week by Cecil Long who has secured the agency for Slaton.

The Southwind is a different kind of heater from the conventional car heater as it burns gasoline and gives almost instantaneous results.

Mr. Long has a stock of these heaters on hand and is placing them both through the retail and wholesale channels. He will remain at his present location on South 9th St.

Mr. and Mrs. L. R. Teston, of Riverside, Calif., are visiting in the home of Mr. and Mrs. W. E. Pohl.

The Jolly Twelve Quilting Club will meet Tuesday October 21st with Mrs. E. M. Lott, 520 West Lubbock Street.

TIGERS HOPE TO EAT CHOICE COWHAND STEAKS IN GAME HERE

Slaton Soldiers Body Returned

Mrs. W. E. Pohl received word last Wednesday from the War Department that the body of her son, former Tfc. Carlton Smith had arrived in San Francisco.

Tfc. Carlton Lee Smith was killed on November 24th in Hawaii while on regimental maneuvers and was buried in that country. At the request of his mother the body has been sent back to the United States and will arrive in Slaton from Fort Worth early next week. A full military funeral will be held by the V.F.W. of Slaton at the First Baptist Church and interment will be at Elmwood Cemetery. Reverend W. F. Ferguson will hold the ceremonies and Williams Funeral Home will have charge of the arrangements.

Joe W. Tate To Be Buried Sunday

Funeral services will be held on Sunday at 2:30 for Joe W. Tate, who died a Wednesday night, at Slaton, last week, on October 14, 7:30 after a long illness.

Mr. Tate had lived on the South Plains over a long period, having come here at an early age from Erath County where he was born. From 1934 to 1944 the Tate family lived in California, returning to Slaton from there. He was employed by the Panhandle and Santa Fe for twenty years but for the past three years had been attending to his farming interests.

The funeral services will be in charge of the Williams Funeral Home and will be conducted by Reverend W. F. Ferguson from the Baptist Church. Interment will be at the Englewood Cemetery.

Survivors are: Mrs. Joe W. Tate, a daughter, Jolene Tate, one sister, Mrs. W. D. Elkins of Hamlin, Texas, and five brothers, P. Y. Tate and M. H. Tate, both of Big Spring, N. P. and E. L. Tate both of Loop, Texas, and M. B. Tate of Slaton.

Coach Clarence Tillery said this week that he has no excuses for the Tigers who took it on the chin last week to a tune of 19 to 13 when they bit off more than they could chew in the game with a rough and tough Rochester team.

A lot of folks thought that because Rochester is a much smaller town than Slaton it would not be too hard for the Tigers to win but Coach Tillery knew at the time that he scheduled the game, that the Tigers would have to go all out to take the game.

The Rochester School is a consolidated one and they have a large number of students from which to secure their players. Their record shows they have scored 176 points this season. They have won over schools that boast a much larger scholarship than Slaton and the local boys should not feel too badly about their defeat.

In the game to be played tonight with the Lubbock Cowhands the Tigers will be handicapped because Tip Culver will not be able to play on account of a strained back, Ray Walters has a sprained ankle and Johnny Schmidt a charley horse in one of his legs.

Ward will likely be taken out of his guard position and used at quarterback and Tom Smith from his place at end and placed as fullback.

Even with all of the injuries reported the Tigers have an excellent chance of coming out on top with the Cowhands and it will likely give Coach Tillery an opportunity to test some of his players in positions to which they are not used to playing.

The Lubbock Cowhands always give a good performance and the game tonight should be a fast one.

Get this PEP 'G ONLY 1

New Crop Beans	
PINTOS 5 lbs.	95c
GRAPEFRUIT JUICE 46 oz can	15c
No. 2 Can Favorite Apple Sauce can	15c

Mesh Bag POTATO 10 lbs.

GRAPES, Tokay, lb.

YAMS, Maryland Sweet, lb.

APPLES, Del. Wash., lb.,

LEMONS, Sunkist, lb.,

LETTUCE, Calif., lb.,

PEARS, Calif. Bartlett, lb.,

PIGGLY



The Boy Scout Troop at the Texas Scottish Rite Hospital for Crippled Children in Dallas, maintained by voluntary financial aid, gets a lesson in knot tying from Ned Frits, chairman of the Youth Welfare Committee of the Junior Chamber of Commerce, sponsor of the scout troop composed entirely of hospital patients. The boys take their scouting seriously despite their illness.

SLATON THEATRE

FRIDAY & SATURDAY

Sold, Buffalo Meat
The famous Western scout and Indian fighter earned the picturesque nickname of "Buffalo Bill" as a result of the contract of William F. Cody to supply buffalo meat to construction forces engaged in building the Union Pacific railroad.

Kels to Cure Rheumatism
In some areas eel skins, along with rabbit feet, buckeyes and copper bracelets, are believed to be of aid to rheumatism sufferers. So far science and the medical profession have not endorsed these methods of treatment.

Where Food Is Sold
Public eating places account for the sale of one-third of all farm products.

Remodeling Erases Years From Old House



THIS cheerful, modern-equipped black, white and red kitchen with inlaid linoleum covering chromium-edged counter surface, is an example of what can be done to erase years from an old house by a smart remodeling job.

The Elmer Klever family did just that when Mr. Klever bought a farm in Scott county, Iowa, four years ago. Betty Lindsay points out in an article in Capper's Farmer, a leading farm magazine. The old-fashioned house was gloomy and run down. It had few conveniences.

So mother and dad and the three children, Marilyn, Joan and Al made plans for modernizing the house. Soon carpenters were at work. The kitchen is just one instance of what was done inside and out, Miss Lindsay tells the readers of the

farm magazine that reaches 1,300,000 farm families. Off came three unused porches. White asbestos shingles masked the age of the exterior. Gray red shutters gave a streamline effect. By adding a dormer, wasted space over the living room was made into a bedroom. A hallway was built upstairs to save going through one room to get to another. Some windows were changed.

There was electricity in the house. So Klever installed a water system with a softener, making possible a new kitchen sink and a bathroom. A new furnace with stoker and blower was added. Modern materials pepped up the aged interior. The Klevers slipcovered and refinished old furniture so it would look better in new surroundings.

Haggis New Sausage
A national Scotch dish which consists of a well-cleaned sheep stomach filled with minced, blanched and cooked sheep's heart, liver and lungs, mixed with oatmeal, onions, beef suet and herbs, was cooked for two to three hours. Haggis is now sold in thick sausage form.

Source of Gelatine
Gelatine is obtained from various animal substances, such as skin ligaments and bones of animals, by treatment with boiling water. It is commonly obtained when making soup where considerable bone is used. While it is a protein, it is not a complete one.

Keep to the Right
Although in some states it is the law that bicyclists should ride on the left hand side of the streets, it is generally recommended that riders, for their own safety and that of others, follow the accepted rule of traveling on the right.

Scrip Purchased Building
Franklin Institute was one of the first issuers of scrip in the United States when it purchased a building for \$100,000 and financed the loan by scrip issues, in 1837.

Corn Speeds Up
With a two-row picker and facilities for hauling and cribbing corn, yields of 60 to 70 bushels per acre can be harvested with only one and a half to two man hours per acre. Hand picking and scooping would require about nine man hours per acre to harvest a 70 bushel yield.

Capital Investment
In capital investment, the petroleum industry ranks below only agriculture, railroads and public utilities.

Many Unsafe Wells
Three out of every four farm wells in the nation are unsafe for human use, according to a survey of the department of agriculture.

James Oliver Curwood's
NORTHWEST TRAIL
Gorgeous Color
With a Gale All-Star Cast including
JOHN LITEL · JOAN WOODBURY
BOB STEELE · MADGE BELLAMY

10 MILLION PEOPLE ROARED AT THE PLAY... NOW ALL AMERICA WILL LOVE THE MOVIE!

It rocked New York... it socked Chicago... from coast to coast it clocked millions of laughs. Now it's the Screen's Gayest Love Story!

William HOLDEN
JOAN CAULFIELD
BILLY DE WOLFE
EDWARD ARNOLD
MANA FREEMAN

Dear Ruth

MIDNITE SHOW SATURDAY
SUNDAY & MONDAY

TUESDAY ONLY

Hit Parade of 1947

with Eddy Albert - Constance Moore - Joan Edwards

Woody Herman Orchestra

THE HEART STORY OF TODAY!
A Miracle of ENTERTAINMENT!

MAUREEN O'HARA
JOHN PAYNE
Miracle on 34th Street

WEDNESDAY THURSDAY

Written for the screen and Directed by GEORGE SEATON

For Your Further Entertainment "Everybody Talks About It" & Latest News

PALACE THEATRE

THUR. - FRI.
Clark Gable
Loretta Young
—in—
Jack London's
"CALL OF THE WILD"

SAT. ONLY
Charles Starrett
Smiley Burnette
—in—
"LANDRUSH"
Cartoon & Comedy

SUN. - MON.
Jack London's Spectacular
"WOLF CALL"
—with—
John Carroll
—and—
Movita

TUES. - WED.
Thrilling Action
Drama
"BACKLASH"

When You Need
TRACTOR SERVICE
Come To A
TRACTOR SHOP
We Also Do All
Kinds Of
WELDING
and
MAGNETO WORK
at
LEO'S Tractor Shop
Garza at 7th. St.

SOMETHING NEW UNDER THE SUN

TH' PLEASURE'S ALL YOURS FOLKS!

HERE'S WHERE I'M GOING TO HAVE A TOUGH TIME GETTING TO READ THE PAPER. THE DAYS "SPEEDY" APPEARS!

YOU MEAN WE'LL NEVER BE ABLE TO SEE IT, WHILE YOU ARE LOOKING OVER THE SWELL BARGAINS "SPEEDY" WILL TELL YOU ABOUT.

INTRODUCING "SPEEDY" A NEW COMIC STRIP BY Slaton Motor Co.

Below is the first of the "SPEEDY" comic strips: Watch for them and follow the good advice that goes with it.

"SPEEDY" by Slaton MOTOR CO.

THESE "SPEEDY" COMIC STRIPS ARE NOT BEEN TAKEN FROM THE ORIGINAL AND WHO SUDDENLY FIND THEMSELVES MAKING WITH THE FEET FOR EXAMPLE?

EXAMPLE: I'M NOT ONE!

SLATON MOTOR CO. REGULARLY CHECK OVER MY CAR AND KEEP IT IN FIRST CLASS RUNNING ORDER THAT SAVES WEAR AND TEAR ON SIDE LATHER—RELIEF ME!

Ford SLATON MOTOR CO. Ford
"Your Friendly Ford Dealer"
PHONE 133 • SLATON, TEXAS 6

CARD OF THANKS

We wish to express our sincere thanks to our many friends for every work of comfort during the illness and death of our dear husband and father. For the beautiful floral offerings and the bountiful food and for each kindness shown we extend our thanks. May God's richest Blessings be yours.

Mrs. C. W. Dean,
Harlan Dean and family,
Doris McKnight and family,
Thema Joe Dan and children

BANK'S OFFICIAL STATEMENT OF FINANCIAL CONDITION

Of the Citizens State Bank at Slaton, Texas, at the close of business on the 6th day of October, 1947, pursuant to call made by the banking Commissioner of Texas in accordance with the Banking Laws of this State.

RESOURCES

1. Loans and discounts, including overdrafts	738,308.46
2. United States Government Obligations, direct and guaranteed	1,175,000.00
3. Obligations of states and political subdivisions	2,000.00
4. Other bonds, notes and debentures	none
5. Corporate stocks, including stock in Federal Reserve Bank	none
6. Cash, balances due from other banks including reserve balances, cash items in process of collection (including exchanges for clearing house)	1,300,066.24
7. Banking house, or leasehold improvements	1,500.00
8. Furniture, fixtures and equipment	1,250.00
9. Other real estate owned	none
10. Other assets	none
11. Total Resources	3,218,064.70

LIABILITIES AND CAPITAL ACCOUNTS

1. Common Capital Stock	50,000.00
2. Income debentures	none
3. Surplus: Certified \$35,000.00 not certified none	35,000.00
4. Undivided profits	36,530.53
5. Capital reserves (and debenture retirement account)	2,500.00
6. Demand deposits of individuals, partnerships, and corporations	3,014,614.84
7. Time deposits of individuals, partnerships and corporations	none
8. Public funds (Incl. U. S. Govt. states and political subdivisions)	69,277.77
9. Deposits of banks (excluding reciprocal balances)	none
10. Other deposits (certified & cashier's checks, etc.)	10,141.56
11. Total all deposits	\$3,094,034.17
12. Bills payable, discounts, or other liabilities for borrowed money	none
13. Other liabilities	none
14. Total Liabilities and Capital Accounts	3,218,064.70

STATE OF TEXAS COUNTY OF LUBBOCK

I, Wm. R. Sewell, being Cashier of the above named bank, do solemnly swear that the foregoing statement of condition is true to the best of my knowledge and belief.

(Signed) WM. R. SEWELL

Subscribed and sworn to before me this 14 day of October, 1947.

R. D. HICKMAN

(SEAL)
Notary Public, Lubbock, County Texas.

CORRECT-ATTEST
H. T. SWANNER
C. F. ANDERSON
A. KESSEL
DIRECTORS



THEY'RE ALL IN "DEAR RUTH," Paramount's delightful picturization of the stage hit, that arrives Sunday at the Slaton Theatre. In foreground are Will

iam Holden, Joan Caulfield and Billy De Wolfe. Edward Arnold brings up the rear. Also featured in the comedy are Mona Freeman, Mary Phillips, Virginia Wells, and Kenny O'Morrison.

Bill Campbell of Slaton is a member of the McMurry College Indian Band which will play host to more than a dozen West Texas high school bands Saturday, Oct. 18, at McMurray's second annual band clinic.

Most Uniform Climate
Africa has a more uniform climate than any other great division of the world.

WE MAKE BELTS BUCKLES BUTTONS
24 Hour Service
335 S. 11th. Phone 234-J

First Music School
First music school in the United States was Music Vale seminary at Salem, Conn., opened by Oramel Whittlessey in 1835.



From where I sit... by Joe Marsh

Mystery of the Missing Farms

Yep, the number of farms in America is shrinking (by a quarter-million in the last five years!). What's happened to the missing farms? The land has been taken in by other farms, increasing the average size by twenty acres!

Does this growth mean farming's no longer a family enterprise? Just the opposite! More families own farms today than ever—only with labor-saving equipment they can handle more land, more work.

That's as it should be. The family farm is a fortress of democracy—

where our free, American life is secure. Where every member cooperates and shares the work... living together in temperance and tolerance—temperance that prefers a moderate beverage like beer, and tolerance for a taste that may be different from one's own.

From where I sit, our Family Farms (and they're 98% of all farms) are something that this country can be proud of!

Joe Marsh



When a girl graduates,
the gift for her tomorrow is
INTERNATIONAL STERLING

Her next milestone will probably be marriage and a home of her own, so now is a good time to start her table silver. She'll always thank you for your foresight in giving the finest.

Come in and let us show you our breathtaking International Sterling patterns, artist-designed, rich solid silver finished with craftsman's care.

Prices on famous International Sterling have not been raised. The same silver-weight and workmanship can be purchased for as little as \$11.38 for a place-setting (six-pieces). You can build your own or a gift set by the setting plan. The lovely pattern shown above is Prelude.

LESTER'S
JEWELERS SILVERSMITHS SINCE 1910
1010 BROADWAY
LUBBOCK



SCOTT TISSUE Roll 1000 Sheets Limited Supply **11c**

- Crystal White SOAP, 3 giant bars 25c
- Hershey Bars, ea. 5c
- Catsup, CHB 14 oz. 19c
- Lux, bath size, 2 for 27c
- Colombus Kraut, 2 1/2 size 10c
- Vel, lg. pkg. 35c

OLEO
Blue Bonnett
lb. 29c

PINEAPPLES
No. 2 can Libbys
Cru. - Sli.
can 29c

- Oxydol lg. 35c**
- Milford Asparagus, no. 1 19c
- BACON, Slab, lb. 69c
- Beef Stew, Rib, lb. 33c
- Ground Veal, lb., 39c

- MILK, tall Carnation can 11c
- VIENNAS, Snack Time, can 12 1/2c
- PEACHES, 2 1/2 can, good taste 25c
- Blackberries, no. 2 can Wolco 19c
- Cranberry Sauce, tall can 25c
- Tomato Juice, 46 oz. Hunts 23c
- Apricots, 2 1/2 can, Hunts, who. 25c
- Fig Preserves, lb. jar. 23c

- WEINERS, Skinless, lb. 49c**
- SAUSAGE, Pure Pk, lb. 59c**
- BOLOGNA, 1st Gd, lb. 49c**
- CHEESE, Velveta, 2 lb. 89c**

CRISCO 3 lb. Can **98c**

- New Crop Beans
- PINTOS 5 lbs. 95c**
- GRAPEFRUIT
- JUICE 46 oz can 15c**
- No. 2 Can Favorite
- Apple Sauce can 15c**



- 2 lb. Box Salted
- CRACKERS 35c**
- HY FLYER
- APPLE JELLY 19c**
- White House 12 oz. Glass

- Mesh Bag No. 1's
- POTATOES 10 lbs. 59c**
- GRAPES, Tokay, lb. 12 1/2c
- YAMS, Maryland Sweet, lb. 7 1/2c
- APPLES, Del. Wash., lb., 17c
- LEMONS, Sunkist, lb., 14c
- LETTUCE, Calif., lb., 12c
- PEARS, Calif. Bartlett, lb., 19c

- HEINZ TOMATO SOUP**
- 3 cans for 35c
- 1 Can FREE Any Kind
- FRUIT JUICES**
- Orange, Nu-Zest, no. 2 14c
- Grapefruit, no. 2 10c
- Apricot Nectar tall can 12 1/2c
- Pineapple, no. 2 can 19c
- PEAR, pint 19c
- KRAUT, pint 13c
- CARROT, no. 2 can. 20c



Increase Farm Production
Agricultural production could be increased by 50 per cent by large-scale soil conservation and land development, a survey of Twentieth Century fund points out.

Railroad Mail Volume
Railroads of the United States handle more than 90 per cent of all mail in this country, amounting to nearly seven billion pounds annually.

Report On Europe
By GEORGE MAHON

In a previous report I made reference to England where food is scarce and where life is hard for the British. From London our Congressional committee on Foreign Aid proceeded to Germany for three days. This was not time enough to see much but one of our sub-committees will spend three weeks in Germany.

Generally speaking, Germany after the lapse of two years since V-J Day is still a nation of rubble and ruin. It hardly seems possible that places like Berlin, Essen and Frankfurt could be rebuilt within a decade. Some progress is being made in clearing the rubble and reestablishing business and industry but Americans who have not seen the war damage in Germany cannot possibly visualize what German cities look like. At long last the German people known with complete certainty what war is like.

Here is one of our difficult problems in Germany; Russia and Poland have control of the pre-war breadbasket of Germany. The United States and Britain have joint control of the industrial heart of Germany but our area is far from being self-sufficient in food. Under our agreement with Russia, the Potsdam Agreement, Germany was to be operated as an economic unit but Russia has refused to live up to the agreement. Under the law of nations an occupying power must prevent starvation in the area occupied. We can escape this responsibility by pulling our troops out of Germany, but if we stay we must maintain order and prevent starvation. If we pull out of Germany, few doubt but that the vacuum would be filled by the Communists, which would mean that the full industrial capacity of the Ruhr would be at the disposal of the Russians.

I saw hundreds of German farms. I went into some of the farm homes and walked over some of the fields. The farms are extremely well cared for and, generally speaking, they have not suffered war damage. Fertilizer and equipment are needed but otherwise I doubt that there is much room for the improvement of European agriculture. The farmers apparently use every foot of ground to the best advantage. This year the crops are short because of the severe drought. Some of the Irish potatoes which were being harvested in Germany were little bigger than marbles.

German coal production is the key to economic recovery and coal miners are being given extra food rations to encourage output of coal. I visited a mine, talked with the miners and tasted some of

the rations. If the coal and industrial production in the British-American Zone can be sufficiently increased, this will enable the Germans to export enough to get the money to make up the deficit in food. That is the objective now being sought to help the people help themselves.

There is no evidence of happiness in Germany. Indeed, there is little for these defeated people to be happy about. Yet they have no one to blame for their misery but themselves and their leaders. The people are not inclined to be friendly or to smile at passersby. Perhaps I mistook a state of hopelessness and bewilderment for unfriendliness.

Rarely do you see a man or woman on the streets of a German city who does not carry a satchel or small handbag of some kind. They are black-marketing, trading, and trying to devise means for getting food and other necessities. We went into some of their homes in the basements and

bomb shelters of their devastated cities where conditions are the worst. Their cupboards were almost bare. Of course, there are variations of misery among the people. Some of them live better than others. The people who live on the farms are in far better position than the rest of the population.

Prior to the war many of the nations of western Europe relied on Germany for coal and steel and heavy machinery. Germany's neighbors are now in difficulty because these products are no longer available to them. How to permit the revival of Germany without encouraging the future rebirth of German militarism is the big question. The French are very vocal in opposing the revival of German production. America and British are trying to work out a level of industry for Germany which will enable Germany to become self-supporting without becoming a menace to the peace of the world. Of course, the Big Three have not yet made sub-

stantial progress on the Peace Treaty with Germany and until the treaty is made, makeshift policies will have to be relied upon.

Washington's Population
Thomas Jefferson thought that at the end of 100 years, Washington, D. C., might have 100,000 inhabitants, and might hope ultimately to attain a population of 200,000, according to Encyclopaedia Britannica. The 1940 census listed the district's population as 663,091.

NOTICE
I have sheer black Ninon Zar blouses, also Alpacas, Romanes and Faille materials in black and navy. 44 in. wide, 98c to \$1.49 per yard.
200 S. 11th. Phone 192-W

AUTUMN...

Stitches in time... for the first fall breeze!
Seaming magic... to minimize a junior waist!
The result: a go-everywhere casual that's nothing short of perfect. Sand Dune rayon gabardine in ocean spray, cafe, jade, blue. Junior sizes 9 to 15.

\$16⁹⁵



Carole King
DRESSES FOR JUNIORS



LARGE OR SMALL BUILDING OR REPAIRING

More and better lumber, paints, plumbing roofing, flooring, and numerous other building needs are now available and we are ready to help with any of your building or repairing needs. We will estimate the cost, recommend workmen and do our best to make you another one of our many satisfied customers.

Just Receive A Shipment of Panel Doors-Standard Sizes
HIGGINBOTHAM-BARTLETT CO.
"GOOD LUMBER"
Phone 1

First Fall Showing A LINE OF NEW Cotton FABRICS



KILKARNIE PLADS
and Comal CHECKS... STRIPES
BROADCLOTH CHAMBRAYS
Mrs. J. C. Powers
200 S. 1st. Phone 192-W

Specials For This Week

One Only 4-Piece Hardwood Bedroom Suite Walnut \$119.50	We Have Too Many Kerosene Heaters Special Prices To Reduce	ONE ONLY 2 Pc. Kidney Living Room Suite Blue Tapestry Was \$179.50 Now \$149.50
12 Cubic Foot - Home Deep Freeze Was \$486.00 - Now \$354.00 - Terms	ONE YEAR GUARANTEE	
ONE 2 Pc. Studio Suite only \$77.50	HEATERS Gas and Butane Better To Be Safe Than Sorry	Solid Oak Dinnetts From \$36.95 up
Good Used Refrigerator - Terms		
Gas and Butane Ranges Bed Springs Mattresses	Living Room Tables Magazine Racks Corner Shelves Vanity Benches Record Cabinets Mirrows & Pictures	Battery & Electric Radios Combination Radio Record Player Table & Console

HOME FURNITURE COMPANY
Phone 9 We Deliver 112 Texas Ave.

GET READY FOR WINTER

Have Us Install A **STEWART - WARNER SOUTHWIND GASOLINE HEATER** In Your Car or Truck

The Southwind Is The **ONLY HEATER** That Produces Almost **INSTANT HEAT**

If you do not know the comfort of a Southwind Heater you cannot know how much it can mean even on short distances.

Come in and let us demonstrate one to you. They come to fit most all models of cars and trucks.

We are the SALES AND SERVICE HEAD-QUARTERS FOR THIS AREA.

ALSO WHOLESALE REPRESENTATIVES

CECIL LONG
850 South 9th. Street

☆☆ Fashions ☆☆☆



For the special and formal occasions—dance, dinner or party—the gray dress of rayon slipper satin, shown above as pictured in the October issue of Good Housekeeping magazine, is ideal. Also available in black, royal, pink, turquoise, pimento red, and emerald green.

Alcohol From Manioc
Brazil now manufactures commercial alcohol from manioc (cassava). The starch from this plant is the Brazilian arrowroot of commerce. In Florida, where sweet cassava is grown, the roots are graded and used directly as a food for man and also fed to stock.

Watch Beauty Care During Housecleaning

DON'T forget beauty care during housecleaning, Jean Gray advises homemakers in an article in nationally-circulated Capper's Farmer.

"Too often good natures as well as rooms are upset by taking out rugs and moving furniture," she writes. "The family will be happier in the cleaning confusion if you remain unruffled and well groomed. And feeling neat will keep your spirits high as you attack the grime!"



Even though it may be old, your cleaning dress can be clean, neat and mended. Wear an apron or smock that can be whisked off to reveal a clean dress.

"Protect your skin from dirt by applying a powder base before starting to work. After dusty duties, wash vigorously with a turkish washcloth or complexion brush—this in addition to usual morning and evening washing.

"Benefit from the exercise of cleaning. When dusting and making beds, stretch your middle, keep it tense. This keeps muscles firm. When sweeping or running the vacuum, keep shoulders back and don't bend in the middle. Carrying your body straight and tall is slenderizing since much waist thickness is slump. If you get tired, lie down for 15 minutes with your feet on a couple of pillows."



Enjoy Driving With A Smooth Running Car

Service Battery
Balance Wheels
Lubricate
Change Oil
Replace worn Tires, Tubes, and Accessories.
AND FILL 'ER UP WITH MOBIL GAS & MOBIL OIL AT

SELF Service Station
Phone 95

FOR PLUMBING HEATING AIR CONDITIONING REPAIRS
BRASFIELD PLUMBING SHOP

'Wish You Wouldn't's' Apply to Parents, Too

SINCE turn about is fair play, any list of "Wish you Wouldn't's" for teen agers should be accompanied by a few "Don't's" for parents, too, Holly Miller points out in nationally-circulated Capper's Farmer.

Discussing the teen agers' viewpoint, she writes:

"Seems as if 'I wish you wouldn't' is the preface to a good many statements by the older generation. 'The way you dress, eat, walk, talk—gadzoos—nothing seems to please them.

"But before you get too huffy and cast their admonitions to the breeze, go into a huddle with yourself. Down deep you may find the grace to admit that a lot of so-called characteristic adolescent behaviorisms are not calculated to make the populace love you. And that just because simply everybody acts a certain way is not sufficient reason for anybody as special as you to follow suit."

Among the "Don't's" which Miss Miller says teen-agers might suggest to parents are:

"Don't laugh at us. We're self-conscious enough. Tho our plans may seem a little fantastic and some of our actions silly, it's probably part of being young. Don't you remember?"

"Don't treat us like kids. You can help us grow up by treating us like grown-ups. Trust us a little more.

"Never, never say, 'I told you so.' It's too curdling. And we have to learn the hard way to make it stick."

Wallpaper Producing Center
Illinois is the world's leading wallpaper producing area, and Joliet the leading city in this industry. Annual production in the state exceeds nine million dollars, according to University of Illinois. Each of the block-long wallpaper presses at Joliet can produce 100 miles of product, 10,000 rolls, a day.

Cool Off the Cows
American railroads have a plan to paint the tops and ends of livestock cars with aluminum paint to lower the temperatures of the interiors 5 to 10 degrees. Cool livestock will lose less weight when en route to market and bring more for the shipper.

First Fire Department
Earliest volunteer fire department in this country was organized in New York by Peter Stuyvesant in 1659. Leather buckets and a supply of hooks and ladders were purchased. A tax of about 38 cents was levied on each home to maintain this fire-fighting equipment.



Even at that age I had a swell head of hair—only then it was my own!

KRUEGER, HUTCHINSON AND OVERTON CLINIC
Lubbock, Texas

GENERAL SURGERY J. T. Krueger, M. D., F.A.C.S. J. H. Stiles, M. D., F.A.C.S. (Ortho) H. E. Mast, M. D., F.A.C.S. (Urology)	INFANTS AND CHILDREN M. C. Overton, M. D. Arthur Jenkins, M. D. J. B. Roundtree, Jr., M. D.
EYE, EAR, NOSE & THROAT J. T. Hutchinson, M. D. Ben B. Hutchinson, M. D. E. M. Blake, M. D.	INTERNAL MEDICINE W. H. Gordon, M. D., F.A.C.P. R. H. McCarty, M. D.
OBSTETRICS O. R. Hand, M. D. Frank W. Hudgins, M. D. (Gynecology)	GENERAL MEDICINE G. S. Smith, M. D. (Allergy) R. K. O'Loughlin, M. D.
	X-RAY AND LABORATORY A. G. Barsh, M. D.

J. H. Felton, Business Manager

THERE'S A "RIGHT LIGHT"

 CEILING LAMP	 BED LAMP	 FLUORESCENT	 FLOOR LAMP
 TABLE LAMP	 STUDY LAMP	 WORK LAMP	

—FOR EVERY USE

Today's homemakers have a wide choice of electric fixtures. These fixtures are available in every design, for every use. You'll find them scientifically designed to give you the best lighting, and carefully designed to add loveliness to your home.

With the cost of electric service so low, you can place lamps wherever you need them, and use them whenever you please.

I'LL COME TO YOUR HOME OR PLACE OF BUSINESS

A Public Service Company lighting specialist will come to your home, office, or place of business to give you recommendations as to how to obtain the best in lighting. There's no obligation. Just call or write your nearest Public Service office.

We Have Nothing to Sell But Good Electric Service

SOUTHWESTERN PUBLIC SERVICE COMPANY
23 YEARS OF GOOD CITIZENSHIP AND PUBLIC SERVICE

What did you say?

BRING IT BACK TO CHEVROLET!

FOR SERVICE • PARTS • ACCESSORIES

Crow-Harral Chevrolet Co.
Phone 470 120 N. 9th St.

WILSON'S EXTRA FINE BREAD

DEMAND

**A Home Product!
A Good Product!
A Heathful Product!**

On Sale at Your Grocers

And When You Want
COOKIES, PIES, AND HOT DO NUTS
STOP AT WILSON'S

SLATON BAKERY

American Mortgages Up — American homes now are carrying 25 billion dollar mortgage debt, the biggest in history.

Growth of Poison Ivy — Poison ivy or poison oak will not grow in mountain elevations above about 6,000 or in arid lands.

Society — Clubs

*** Fashions ***



New this fall is the wrapped look—high neck, draped skirt, shown above as pictured in the October issue of Good Housekeeping magazine. For five feet five and under this is ideal. Available in black, green, wine, and cinnamon.

Men! LOOK

At Your

SHOES

Then

COME

Where you can get the shoe you want in the following lines such as

W. L. DOUGLAS

\$9.00 and \$10.00

PACKARD

at \$12.50

CITY CLUB

at \$12.00

JUSTIN

\$10.00 and \$11.00



Stringer - Berry Marriage Told

Mr. and Mrs. Lee Jones of Meadow announced this week the marriage of their daughter, Virginia Jones Stringer, to Lester C. Berry, son of Mrs. O. L. Berry of Seagraves. The marriage took place Oct. 11 in the home of Mr. and Mrs. Dudley C. Berry in Slaton.

Miss Billy Jean Tucker sang "I Love You Truly" and "Because." Howard Smith lighted the candles.

The bride was given in marriage by her father. She wore a dress-makers suit of gray with black accessories and a red rose bud corsage adorned the suit. For something old she wore a gold ring, forty years old, the property of Mrs. Lora Wicker, for luck, a penny in her shoe and a garter for something blue. Dorothy Knight, Matron of Honor, was dressed in black and white crepe with black accessories. She wore a pink rose bud corsage. Joe Van Ness was Best Man.

A reception followed the wedding which was attended by forty people. Mrs. Mart Collins, Mrs. Fannie Patterson and Mrs. E. E. Culver assisted Mrs. Berry with the reception.

Posey Club Meets

The Posey Home Demonstration Club met Wednesday afternoon in the home of Mrs. Fannie Patterson with Mrs. Monroe Brieger presiding. The study was on Mexico. Those who took part in the program were Mrs. Monroe Brieger, Mrs. Fannie Patterson, Mrs. Buck Craig, Mrs. O. E. Patterson and Mrs. C. F. Schutte. One guest, Mrs. J. G. Harper, was present.

CARD OF THANKS

We wish to thank all our friends, neighbors and Church members who were so kind and thoughtful of us during the death of our Loved One.

May God Bless you every one.
Mrs. M. L. Elliott
Mr. and Mrs. W. T. Wyatt
Mrs. Thomas Gray
Mr. and Mrs. J. A. Elliott
Mr. and Mrs. W. D. Elliott

Sub Debs Elects New Officers

The Delta Sigma Sub-Deb Club chose their girl and boy Sweetheart for the coming year on October 9th when they met in the home of Nancy Teague. The names of the Sweethearts will be given at a Presentation event later in the year. Officers were elected on October 13 at the home of Irma Gregory. They are Lena Schmidt, President, Mary Ann Cudd, Vice President, Nancy Teague, Sec. and Treas., Irma Gregory Reporter.

Bridal Shower Given For Mrs. Berry

A bridal shower honoring Mrs. Virginia Jones Stringer, bride-elect of Pete Berry, of Roswell, New Mexico, was given last Friday, Oct. 10, in the home of Mrs. Ed Haddock. The bride is the daughter of Mr. and Mrs. Lee Jones of Meadow.

Guests were met at the door by Mrs. Haddock and introduced to the receiving line which was made up of Mrs. Jones, Virginia, and Mrs. Dudley Berry. The table was laid with an imported linen cloth and centered with pink roses. Nuts, cookies and punch were served. Seventy-five guests signed the bride's book. The house was decorated with roses and rose corsages were worn by members of the house party. Hostesses were Mesdames Roy Mack, John Berkeley, W. T. Cherry, J. Lloyd Moyer, L. O. Lemon, W. Ellis, E. E. Culver, Fannie Patterson, Emmett Kidd, E. N. Pickens, B. G. Guinn, J. C. Champion and Miss Dorothy Knight.

Personal Shower Given Mrs. Harris

A personal shower honoring Mrs. Ed Harris, formerly Miss Melba Appling, was given in the home of Miss Billie Sledge last Wednesday evening. Mrs. Wayne Lamb, Miss Dorothy Lee Jones and Miss Sledge were the hostesses.

A large punch bowl containing dry ice and banked with yellow and red autumn leaves centered the lace covered refreshment table and marigolds and yellow tapers in crystal holders decorated the buffet.

Guests were Miss Frances Sikes, Mrs. Deemus Altman, and Mrs. Lowell Merrel.

Mrs. W. R. Lovett Is Club Hostess

The Civic and Culture Club met in their regular meeting Saturday afternoon, Oct. 12, in the home of W. R. Lovett, 415 West Lynn St. Mrs. S. S. Forrest led the program on "Our World" and her subject was "Neutrality—Isolationist Attitudes of the Past."

Mrs. A. C. Strickland talked on the question of "The Dardanelles." Mrs. J. W. Chenoweth gave a very unique and helpful critics report and Mrs. S. S. Forrest and Mrs. R. H. Todd were appointed to represent the Club at the County Federation in Lubbock Saturday, Oct. 18.

The house was beautifully decorated throughout with fall flowers. Refreshments were served by the hostess, Mrs. W. R. Lovett.

Girl Scout Supper To Be Oct. 28th.

A Girl Scout Supper and Jamboree is being planned for October 28 in the Slaton Club House Park starting at 6:30 p. m. in observance of Girl Scout week.

The parents of the Girls Scouts, all Girl Scouts and all members of the Brownie Scouts will be welcome. Any one wishing to secure details concerning the entertainment may secure them from Mrs. Charley Walton.

LOTTIE MOON CIRCLE MEETS

The Lottie Moon Circle of the Baptist Church met with Mrs. Dudley Berry Monday. Mrs. J. B. Huckabay brought the bible lesson. There were 13 members present.

Scratch pads of good grade bond paper, 25c per pound at the

G.I.G. Club Meets

The G. I. G. Club of the Methodist church held their regular meeting last Monday, Oct. 13, at the home of Mrs. L. A. Harral. Joyce Pember led the opening prayer, the group then sang "Love Divine," after which Lena Schmidt gave the Devotional. Nancy Teague and Betty Gentry sang "Are Ye Able" accompanied by Anna Phillips. The program, "Indian Oberammergau," was given by Mrs. Harral. Refreshments were served.

Home Makers Class Installs Officers

The Home Makers Class of the Baptist Church met in the home of Mrs. A. P. Wilson on October 9th with Mrs. Fannie Patterson presiding. After the devotional by Mrs. A. P. Wilson, the new officers were installed. They are Mrs. B. J. Norman, teacher, Mrs. Fannie Patterson, President, Mrs. E. M. Lott, 1st Vice President, Mrs. L. T. Arthur, 2nd Vice President, Mrs. C. V. Jarman, 3rd Vice President, Mrs. C. W. Wilks, 4th Vice President, Mrs. Alice Jarman and Mrs. Fannie Teague as Secretaries, Mrs. C. V. Martin and Mrs. L. S. Jeffcoat song leaders and Mrs. A. P. Wilson, reporter. Refreshments were served to twenty-two members and five guests.

Half Carry Insurance — Latest statistics show that there are more than 71 million life insurance policy owners in the United States, or half the population.

Methodist Circle To Have Golden Tea

Circle Four of the Methodist Church met last Monday at 4 p. m. in the home of Mrs. Vascar Browning. Mrs. Oree Glasscock was co-hostess.

The study was directed by Mrs. Howard Hoffman and the subject was "We the people of the United Nations." Mrs. Cal C. Wright was the only guest. She discussed the new membership drive. Mrs. Joe W. Walker presided at the business meeting and plans were discussed for a Silver Tea which is to be held Nov. 1st, beginning at 3:15 p. m. at the Slaton Club house. Mrs. J. L. Teal of Lubbock will be guest speaker and the meeting will be open to the public.

Miss Woillard Has Birthday Party

Little Miss Zona Jeanne Woillard was honored on her Fourth Birthday with a party given by her mother, Mrs. H. E. Woillard. Marigold corsages were given and worn by each child and balloons were given as favors. A white and pink birthday cake and lemon punch was served. Those attending were Don and Dan Edwards, Judy Ann Smith, Caroline and Elaine Burns, Judy and John Frank Davis, Mike Mudgett and Mrs. W. T. Davis.

Keeping Matches Dry — A book of paper matches may be slipped inside the cellophane jacket of a package of cigarettes to keep them from absorbing dampness in the shirt pocket.

EAVES WEEK-END FOOD SPECIALS

SPUDS
No. 1 White
Rose
10 lb. Mesh Bag
43c

PEACHES
No. 2 1/2 Can
25c

SNOWDRIFT
3 lb. can
\$1.09

FLOUR Pillsbury Pancake 1 1/2 lb. pkg. **15c**

SOAP Crystal White Bar **8c**

MEATS for Delicious MEALS

CHEESE lb. 59c
Long Horn
BACON, lb. 47c
End Pieces
WEINERS lb. 39c

LOIN OR T-BONE, lb. **69c**

MIRACLE WHIP DRESSING Pint **34c**

APPLE BUTTER 28 oz. **29c**

BROOMS 5 Strand each **99c**

EVERLAY EGG MASH GETS RESULTS BRING US YOUR

CREAM - EGGS - POULTRY

EAVES PRODUCE Grocery and Market **WE DELIVER**
Phone 289

The First Baptist Church

Rev. W. F. Ferguson, Pastor

INVITES YOU TO HEAR THE NEW

WURLITZER ORGAN



Since the beginning of time, music has been an integral part of man's worship. For many centuries, profound religious music has found its highest expression in the organ.

Presenting

Mr. John Josey, Organist
From First Baptist Church Amarillo
Irvin O. Tolzien, Violinist

First Baptist Church Congregation

Wednesday Evening, October 22nd., 8:00 P. M.

A program dedicated to those who love organ music

An organ which exemplifies the highest degree of scientific development

CLASSIFIED

FOR SELLING BUYING RENTING LOANS SERVICE

FOR SALE 12

Fire Proof, Insulated Lock Boxes for valuable papers at the Slatonite.

FOR SALE—32x 44 heavy gray card board, good for store room walls and for inexpensive wall materials — not expensive — at the Slatonite.

ALL STEEL—Kitchen cabinets in large or small units at Allred Plumbing Shop.

Oscillating electric fans. All the small electric supplies and repairs for the home at Allred Plumbing Shop. Phone 128.

WE CAN now furnish you with that PAYNE floor furnace that will insure you with comfortable warmth in the coldest days of this winter. Allred Plumbing Shop. Phone 128.

FOR SALE: Commodes, Bath Fixtures, and Floor Furnaces at the Layne Plumbing and Electric. See these before you buy and save.

FOR SALE: 1944 ten foot McCormick-Deering broadcast binder. J. R. Riney, Rt. 1 Slaton. 10-17

FOR SALE: 160 acre E. E. Bussell farm 4 miles south of Slaton. Modern home, R.E.A., bath, etc. \$80 per acre with out 1947 rent. \$90 with rent and minerals. G. W. Bussell on farm. 10-31

FOR SALE: New 5 burner white perfection kerosene range. See at 115 N. 4th. 10-24

WANTED to exchange food locker in Lubbock for one in Slaton. Phone Mrs. V. O. Newton, 159-J, 305 So. 12th. 10-31

FOR RENT 9

FOR RENT—Floor sander, edger and electric polisher.—Johnson-Hoffman Hardware. 10-17

FOR RENT: Front bed room. 325 South 5th. Phone 191-J. 10-17

FOR RENT: New Johnson's floor polisher at Ely Grocery, 705 So. 9th. 11-7

FOR RENT: Furnished apartment, 1405 South 13th. St. Slaton. 10-17

REAL ESTATE 6

Any one who has small house worth the money for sale, we have a buyer.

Would appreciate listing on ft. Several irrigated farms for sale.

Would appreciate all listings.

Clifford & Ethel Young
Telephone 786

G.I.'s, if you want to build, we will help you with your plan and financing. You can still have a home. See us for 100 per cent loans.

5 room modern suburban home with acreage and plenty of out buildings. Owner sick, says sell it. 5 room modern home, 2 lots easily financed and reasonably priced.

Pember Insurance Agency
27 Years Your Agent. 11-7

6 rooms and bath, West Lynn. We would appreciate additional listings on city property.

Extra good 320 acres of land west of Slaton. In irrigation district. Priced reasonable.

4 room house located on 2 lots on 6th St. priced at \$2250. 5 room and bath and out buildings on South 10th.

2 room house on South 6th. St. 7 room and bath, floor furnace, weather stripped, insulated, garage attached in west part of Slaton. Priced at \$4750.00.

920 acre ranch, beautiful brick home, 3 bedrooms, 2 baths, hardwood floors, within 30 miles of Abilene, \$42.50 per acre.

100 acre farm 6 miles south of Slaton.

Brick building 22 x 60. Priced \$2500.00.

Good barn for sale. **Wickman and Neill Agency**
Citizen's State Bank Bldg. Phone 60

6 room & bath home on corner lot, East front. Located on South 10th, immediate possession.

5 rooms and bath, garage, store room, corner lot, east front, \$7000. Furnished.

7 rooms and bath, newly decorated inside and out, 3 lots, \$7000.00.

140 north 5th. St. A large 6 room and bath. Newly decorated inside and out with garage and 2 lots.

New 4 rooms and bath, \$3750.00

Modern 5 room home with 2 lots on 6th Street.

6 room Stucco and bath. Garage and other nice new outbuildings on West Panhandle.

We have several desirable small acreage tracts ranging from 5 to 40 acres adjoining city limits.

We have several well improved farms ranging in size from 40 to 320 acres. If in the market for farms, see us.

We would appreciate additional farm listings as well as City property.

One new 4 room and bath. Close in on pavement.

2 well improved 320 acre farms west of Slaton, in irrigation district. 11-7

Well located suburban store with 5 room home attached. Corner lot. Price 8,000.

ATTENTION G. I.'s
We are now making G. I. and F. H. A. Loans

MEURER and BROWNING

HELP WANTED 2

Secretarial work wanted in Slaton by woman with 5 years experience. Typing, shorthand and general office procedure. Write Clara M. Scott, care West Texas Hospital, Lubbock. 10-17

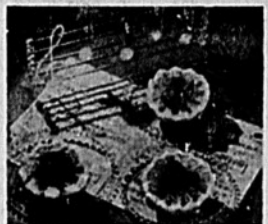
WANTED: Experienced waitress Apply at the Snack Shack. 10-24

LOST and FOUND 5

Claude S. Cravens
Attorney-at-Law
Teague Drug Building

Grapefruit Dessert Bans 'Sugar Blues'

"Although we all join in the chorus of 'Sugar Blues' these days, you can change those blue notes to gay notes by serving grapefruit for dessert!" the Country editor of nationally-circulated Capper's Farmer tells housewives.



"Nary a grain of sugar is used on this trio of grapefruit halves," she writes in the magazine read by 1,300,000 farm families.

"Topped with jams, jellies and preserves, they merrily sing out good eating. So strike up a new tune by having grapefruit for dessert."

Cheese-Hoop Hassock

A round cheese box may be made into an inexpensive, attractive hassock to match a slip-covered chair, according to the Rural Home editor of nationally-circulated Capper's Farmer. Pad the lid; cover with material. Cover hassock with matching fabric. The hassock with its removable lid can double as a box for children's toys.

Lamp Kills Germs

An ultra-violet lamp which will kill bacteria and food odors in a home refrigerator at the cost of five cents a month has been developed. This lamp screws into a niche in the refrigerator's cabinet interior.

Dangerous Lumber Industry

The communications industry has the fewest number of disabling injuries per million man-hours worked, according to National Safety Council, and the lumbering industry has the most.

First Championship

Michael Phelan and John Seeritter played the first national championship billiard match in Detroit in 1859. Phelan won the title and a \$15,000 stake.

Oil From Brazil Nuts

Brazil nuts yield 67 per cent of a transparent, yellowish, tasteless and odorless oil, which soon turns rancid. The fresh oil can be used in food as well as in fine soaps.

Railway Union

Grand International Brotherhood of Locomotive Engineers, which was organized in 1863 at Detroit, Mich., as the Brotherhood of the Footboard, is the oldest railway labor organization in the United States.

SHOE AND BOOT shop in good town, best possible location, \$3750 stock and equip. Rents \$45.00.

6 room, lots of built-ins, large closets, 100 ft. front, corner lot. \$11,000.00.

3 bedroom brick, close in, double garage, quick sale. \$9,000.00.

Beautiful 5 room rock veneer, 2206 7th. St.

5 room 23rd. St. A real buy, \$10,500.

6 room 22nd. St. \$18,000.

4 room Ave. V. \$6850.

6 room 29th. St. \$14,500.

5 room 28th. St. \$7850.

3 room modern house, 1-2 acre \$3750.

4 room modern house, 1-2 acre \$5500.

6 room brick near Tech. \$15,750

OSCAR KILLIAN

212 Conley Bldg.

Office 5932; Res. 8114

MISCELLANEOUS 8

LOOK

Why Pay More When You Can Buy Good Furniture At C. E. MAGERS FURNITURE. 11-7

SEE:

A. P. WILSON

FOR YOUR LIVESTOCK and

POULTRY MINERALS

Phone 345-W 855 S. 21 St.

POULTRY RAISERS — Quick-rid poultry tonic is one of the best all around poultry remedies on the market; prevents and stops coccidiosis, a good conditioner and a positive flock wormer. Guaranteed by your dealer. 11-14



HALLOWE'EN HIJINKS — Skeletons and such seem to strike no fear in Jonnie and Shirley Berch, making the most of the frost-on-the-punkin season with dad before heading upstairs to bed. Dad is Jack Berch, whose Monday-to-Friday song and chatter show is a popular feature of the NBC morning log.

Loyal Workers Meet

The Loyal Workers class of the Methodist Church met in the basement of the Methodist Church Thursday afternoon, Oct. 9th, for their monthly business and social meeting.

The hostesses, Mrs. W. E. McCain and Mrs. Paul Walker, served ice cream and cake to ten members as a part of the social activities of the meeting.

ATTEND MISSIONARY UNION AT IDALOU

Those from Slaton who attended the School of instructions for the Men's Missionary Union recently held at Idalou were Mrs. Fannie Patterson, Mrs. A. R. Keys, Mrs. Dudley Berry, Mrs. A. C. Strickland, Mrs. George Marriott, Mrs. Guy Brown and Mrs. P. G. Stokes.

you the best of prescription service in our present location.

SLATON PHARMACY

GET ready for winter. See the new PAYNE CONSOLE HEATERS at Allred's Plumbing, 650 South 12th. Phone 128.

FOR SALE: Sugar and Potato (Toe-Sacks) at Key Ely Grocery, 705 South 9th. 11-7

FOR SALE: 2 registered Polan-China sows and weaning pigs. F. P. Wrenn. Ask at Starnes Gin, Rt. 2 Slaton. 10-31

FOR SALE: Willys Jeep motor, new ring job, in perfect condition Calvin Lamb, 425 West Panhandle Phone 06-J. 10-31

FOR SALE OR TRADE: 8 foot Deep Freeze unit in use only 2 months, but too large for us. Would accept smaller unit in trade. Phone 194-J or see at 220 South 5th. St. 10-31

FOR SALE: 1939 Modle Dodge panel truck. Reconditioned motor in first class shape, good body, good paint, good tires. \$1300.00. See at Slaton Bakery or 630 South 12th. 11-7

FOR SALE: Hohner piano accordion, advanced model, 34-treble keys, almost new, phone 341-R or see Stinson Behlen 819 South 8th Street, after 6:30 p. m.

Swimming pool with 6 1-2 acres 4 room house, 6 lots on S. 12. 3 lots on South 15th. 22-lots in Southwest Slaton. Good home with apartment. Located in Lubbock, close to Tech. West Side Grocery, cheap. F. D. BOSTICK 505 W. Garza Slaton, Texas

FOR SALE: 12 inch band saw with motor and stand, new 2 1-4 H. P. air cooled grain loader engine, new 1-4 and 1-3 H. P. electric motors, rebuilt Firestone motor bike with new engine, 75 amp. electric welder. Don Bourn, 650 S. 9th. Phone 297-J. 11-7

FOR SALE: Good Remington Typewriter for sale. \$35.00 at the Slatonite.

GOOD 2-wheel trailer for sale or trade. See Allred Plumbing Co. 8-8

ATTENTION MEN: New 38 cal. revolver, also 12 ga. Winchester double barrel shotgun. See George Brassell or Bain Auto Store. 10-17

SEE THE NEW Permaglass Hot Water Heaters "Heated with gas, stored in glass" now for sale at Allred's Plumbing Shop. Unconditionally guaranteed for ten years. 11-7

LADIES HOSE... for \$1.00. 39c value. Choice of semi-sheer seamless rayon, or full-seam service weight cotton. Fall shades.

MEN'S COTTON SOX... pairs for \$1.00. 25c value. Medium wt., long style or short elastic top. Assorted colors.

BIRDSEYE DIAPERS... \$2.95 per dozen. First Quality. 27x27 hemmed, in sanitary sealed package.

MEN'S DRESS SOX... 5 pairs for \$1.00. 35c value. Fine rayon long style or shirt elastic top. Assorted colors.

Hosiery are slight imperfects. Please state sizes wanted.

Satisfaction Guaranteed! No. C.O.D.'s We Pay Parcel Post Southern Sales Company P. O. Box 2029 Dept. 84-S Knoxville Tenn.

For Old Line — Legat Reserve LIFE INSURANCE See Mrs. Bertha Stottlemire, Special Agent, Slaton, Texas Grady W. Bownds, Gen. Agent, Lubbock, Texas American United Life Insurance Co. Est. 1877

See - A. P. WILSON When you want to buy or sell REAL ESTATE of any kind Phone 345-W 855 S. 21st St.

* CHROMIUM * SILVER * COPPER * BRASS * CADMIUM * RETINING * REPAIRING

LUBBOCK PLATING WORKS 2222 Ave. H Phone 7261 Lubbock

New safes now available. Safes and steel vaults for sale. Auto locks installed and repaired. Keys made for all locks. Safe locks and safes repaired. Luggage locks and keys. Saws machine filed and set. Lawnmowers sharpened and repaired.

WE REPAIR MOST ANYTHING PANGBURN SAFE AND LOCK COMPANY 2432 Ave. H. DIAL 5022

CIGARETTES
Carton \$1.69

Swifts All Meat BABY FOOD
15c

Household AMMONIA
10 oz. bottle 19c

PICT-SWEET CORN
no. 2 can 19c

NOTE THESE BETTER BUYS OF QUALITY FOODS

PRUNE PLUMS
Hunts 2 1/2 Can, Heavy Syrup 19c

Spic and Span CLEANER
19c

Parkay OLEO
29c lb.

NIL Oderless Deoderant
69c pt.

SLICED PEACHES
Hunts 2 1/2 Can, Heavy Syrup 25c

BROOKS HOMINY
3 cans 25c

White Swan COFFEE
Pound 45c

Brooks Tomato SOUP
no. 303 can 8c

F. Key Ely Grocery
705 So. 9th OPEN DAILY UNTIL 9 p. m. Phone 794

SOUTH PLAINS BUSINESS AND INDUSTRIAL GUIDE


AUTO LOANS
AUTO INSURANCE
F. A. DREWRY
 145 Texas Ave. Phone 53
 We write all kinds of Insurance

George W. Gibson
 ATTORNEY-AT-LAW
 145 Texas Ave.
 PHONES

Res. 182 Office 758

THE Branchway
RUG CLEANERS
 Res. Carpets and Furniture Cleaned
 Pick Up and Delivery
 DIAL 2-1628 1905 AVE. O
 LUBBOCK, TEXAS

DR. CHAS. C. MURRAY, JR.
 OPTOMETRIST
 2408 BROADWAY
 LUBBOCK
 Dial 2-5575

YOU KNOW BOB —

 Bob Knows Your Ford and Chevrolet
BOB'S GARAGE
 1205 South 10th St.

Insure
 in
SURE Insurance
 with the
J. H. Brewer Agency
 For Sure Protection

DUNLAP
MOTOR FREIGHT
 Formerly Alcorn Motor Freight
 Daily Truck Service To and From Lubbock. Pick Up and Delivery Service
 Phone Day 80 Evenings 781-W
 Lubbock Phone 6303

LIVESTOCK OWNERS
Free Removal of Dead Animals
 CALL CALVIN KLAUS SERVICE STATION
 Slaton, Texas Phone 684
 Gulf Tires Gulf Batteries
 OR
KEETON PACKING CO.
 Lubbock, Texas Phone 6671 — Collect

See the big assortment of Personal Stationery at the Slatonite.

Nat D. Heaton
 Attorney-at-Law
 General Practice
CITIZENS STATE BANK BLDG.
 Slaton, Texas

Direct Mattress Company
 Felted mattresses and inner-spring mattresses made to order.
 1715 Ave. H Phone 5081
 Lubbock, Texas

Williams Funeral Home
 Member West Texas Burial Association
 Phone 125 — Day or Night
 SLATON, TEXAS

DEAL'S MACHINE SHOP
 All Kinds of Machine Work
 155 N. Ninth Slaton

Your Patronage Appreciated
Groce Furniture Company
 Complete Home Furnishings
 Free Parking
 1801 Broadway, Lubbock

Band Instruments Records Teaching Material Sheet Music
B. E. ADAIR MUSIC COMPANY
 Complete Stock Musical Supplies
 1012 Main St. Next to Hilton Hotel
 Lubbock, Texas
 We Solicit Your Mail Order Business

LICENSED — BONDED
PLUMBING
 REPAIRS A SPECIALTY
 Fixtures, Tubs, Lavatories, Com-modes, Sinks, Water Heaters.
 650 S. 12th St. Phone 128W
Allred Plumbing

CHICK CHATS
 By Robert Huser of Huser's Hatchery

FOWL CHOLERA TIME IS HERE
 Fowl cholera, one of the most deadly of poultry diseases, occurs in all domestic fowls and many free-flying birds. It is most prevalent during the fall and winter among flocks of laying age. It rarely is seen in brooder chicks. You must suspect cholera when birds suddenly die in their nests or on the roosts without previously displaying symptoms of any kind. Sometimes the disease kills so quickly that the first indication that cholera has broken out comes when the poultry raiser finds up to two per cent of his flock dead when he enters the laying house in the morning.

Symptoms
 Birds which linger for a few days after becoming infected by cholera organisms will display these symptoms: sudden listlessness, ruffled feathers, loss of appetite, green or yellow diarrhea, and a dark purple or blue color in the comb, wattles, face and throat. Cholera also appears as a chronic infection which may localize to form abscesses in various body parts, inflammation and swelling of the joints, infection of the middle ear, exema of the wattles, or infection of the nasal cavities. In the chronic form, affected birds lose flesh gradually and become thin and poor before dying.

These symptoms all are suggestive of fowl cholera, but to get a positive diagnosis, the poultry raiser should consult a poultry specialist who is qualified to identify the disease by microscopic examination.

Preventing Cholera
 Since cholera is highly infectious, good sanitation is important both as a preventative and as a control measure. Keep the laying house interior and equipment clean. Disinfect frequently. The yard and runs should be kept as clean as possible also, and should the soil become contaminated with droppings containing cholera organisms, it may be necessary to remove the birds until the soil has been purified by the sun, wind, and rain.

When an outbreak occurs, dead and sick birds should be destroyed by burning; or should be buried deep enough to remove the possibility of their being retrieved by dogs or other animals. The amount of corn or protein in the flock's ration should be reduced for a few days and replaced with bran and oats.

Some poultry raisers find that vaccinating with bracterins (killed cholera organisms) is helpful.

Deep Sea Mining
 Coal deposits in the mines of Lota, Chile, are being worked at 400 meters under the sea.
Removing Tea Stains
 To remove tea or coffee stains from china cups, rub them with a damp cloth dipped in baking soda.

TONTINE SHADE SHOP
 "HOME OF THE BLIND PEOPLE"
 Manufacturers of WINDOW SHADES — VENETIAN BLINDS
 1107 19th St. Lubbock Dial: 7851

DR. P. K. PALMER
 OPTOMETRIST
 OFFICES IN LESTER'S JEWELERS LUBBOCK
 1010 Broadway Phone 5794
 USE YOUR CREDIT
 PAY ONLY \$1.00 A WEEK

CUTIES •• By E. Simms Campbell
 Registered U. S. Patent Office



"I wouldn't dream of accepting such an expensive gift! Just give me money!"

Make Ivory Combs
 First maker of ivory combs in America was Andrew Lord of Saybrook, working about 1789.

WOODMEN OF THE WORLD
 Camp No. 2871
 Slaton, Texas
 Meets 1st. & 3rd. Mondays
 7:30 p. m. Woodman Hall
 Over Teague Drug

ODIE A HOOD
 REPRESENTING
 Southland Life Insurance Co.

Have That Old Mattress Made New
 WE PICK UP AND DELIVER — PHONE 121 FOR FREE ESTIMATE
Slaton Mattress Co.
 435 N 9th

Auto Repairing
 ALL MAKES, ALL KINDS
 ALL WORK GUARANTEED 100%
Pete Grandon and Leo Wendel
 218 Texas Ave. Phone 583

Billiard Tournaments
 Billiard tournaments have been held in the United States for more than 100 years.

Expert Upholstering
 in Slaton at **Spradley's**
 Upholstering and Repair Shop
 166 Texas Ave. Phone 10

TEXAS ROOFING COMPANY
 Roofing, All Kinds, Overhead Doors
 Window Type, Evaporative Air Conditioners
 1902 Ave. F., Lubbock, Tex
 Telephone 8577

Learn To Fly
 With The **E & L Flying SERVICE**
Piper Cub Dealer
 C.A.A. & G. I. Approved School
 Pleasure Rides

See our display of Granite Monuments, or our representative will call at your invitation.



South Plains Monument Co.,
 2909 Ave. H Lubbock

SLATON LODGE
 NO. 1094, A. F. & A. M.
 Stated Meetings on Second and Fourth Thursdays Of Each Month
 J. H. Gordon, Worshipful Master
 W. T. Brown, Secretary
 All Members and Visitors Invited.

Morriset Pen Points
 Stapling Machines
 Adding Machine Paper
 Paper clips, hooks, & punches
 Indelible Marking Sets
 Many Other Items at the
SLATONITE

We will print Christmas Cards from

Christmas Cards
 From Portrait Negatives
 any Negative you have or from any Negative in our files - - -
 Card Portrait Envelope **25c**
KERTAN STUDIO
 "OUR PORTRAITS SPEAK FOR THEMSELVES"
 125 North 9th. Phone 756

Invitations. Mrs. Carl C. Wright was the only guest. She discussed the new membership drive. Mrs. Joe W. Walker presided at the business meeting and plans were discussed for a Silver Tea which is to be held Nov. 1st, beginning at 3:15 p. m. at the Slaton Club house. Mrs. J. L. Teal of Lubbock will be guest speaker and the meeting will be open to the public.

Don and Dan Edwards, Judy Ann Smith, Caroline and Elaine Burns, Judy and John Frank Davis, Mike Mudgett and Mrs. W. T. Davis.

Keeping Matches Dry
 A book of paper matches may be slipped inside the cellophane jacket of a package of cigarettes to keep them from absorbing dampness in the shirt pocket.

DR. C. M. NEEL
 Optometrist
VISUAL TRAINING
 1620 Broadway Phone 7155

DOCTORS CAULEY & WELCH
 OPTOMETRISTS
 1114 Ave. L Lubbock, Texas
 Dial 7180
 (One block west Hotel Lubbock)

REPAIRS ELLIOTT'S
 RADIO AND ELECTRIC SHOP
 ON ALL RADIOS
 Will repair your REFRIGERATORS
 RADIOS — MOTORS
 and all Electrical Appliances at reasonable prices
Pick Up and Delivery Service
 Phone 120



New Heavy 16" Casing
\$3.25 A Foot
 Early delivery with genuine Byron Jackson pumps.
 Make your reservation now—
F. M. DENTON
 "DEPENDABLE IRRIGATION EQUIPMENT AND SERVICE"
 Attractive Yearly Payment Plan
 2806 AVENUE H DIAL 4209

NOTICE STOCKMEN
WE PICK UP DEAD STOCK
No Charge
 KIRK'S SERVICE STATION
 SLATON PHONE 573

Apply Lime Early
Lime should be applied six months to a year before legumes are seeded. It takes lime that length of time to sweeten acid soils that good stands of clover and alfalfa can be grown.

Concrete Seagoing Ship
First concrete seagoing ship was built during World War at Redwood City, Calif. She was launched six weeks after construction began.

Make Wallboard Putty
To fill cracks in wallboard, an economical putty can be made from paper which is boiled to a pulp. Add whitening to make a stiff paste and enough glue to hold the mass together.

Hard Material
Boroncarbide is the hardest material known, except diamonds, and has been used as an abrasive, for nozzles used for sandblasting, and to replace jewels in watches.

Texas Tech Notes

LUBBOCK, TEXAS, Oct. 13 — Presentation of awards to outstanding Future Farmers of America members will be featured at the Area I banquet to be held in Lubbock Oct. 13, according to O. T. Ryan, assistant professor of agricultural education at Texas Technological College, who is the area supervisor.

About 300 persons are expected to attend. Area I includes a block of 45 West Texas counties extending south and east from Oklahoma and New Mexico to Stonewall Co.

LUBBOCK, TEXAS, Oct. 13 — Winston Churchill and William Jennings Bryan are no longer the only Texas Technological College students who may have difficulty convincing folks they aren't using assumed names.

This year's freshman class has brought to the college such additional names as Paul Reviere, Armistic Day and Sam Johnson.

LUBBOCK, TEXAS, Oct. 13 — European nations today are as disrupted by hatred and suspicion of their neighboring countries as by the tangible destruction of war, according to Mrs. Luta P. Eaves, assistant professor of accounting and finance at Texas Technological College.

Mrs. Eaves recently returned to the Texas Tech faculty following a year's leave of absence spent teaching commercial courses to American military personnel in Germany.

First U. S. Tariff
The United States levied its first tariff in 1790. It was on importation of liquor.

Record Train Holdups
Manchuria in 1933 had 4,784 train holdups during which 9,220 persons were killed.

Jack Huckabay Now In Japan

WITH THE EIGHTH ARMY IN CAMP CRAWFORD, JAPAN — Technician Fifth Grade John B. Huckabay, Jr., of Slaton, is presently serving with the Army of Occupation in Japan as chief of section in the Recruiting Office of 11th Airborne Division Headquarters. His parents, Mr. and Mrs. J. B. Huckabay, reside 925 South Tenth in Slaton.

In September '46 T/5 Huckabay joined the Army at Fort Worth, Texas, and was sent to Fort Bliss, Texas, where he finished his artillery basic training in November.

After a short furlough "Huck"

signed for Airborne training and was sent to Fort Benning, Ga., where after six weeks of running and callisthenics and five jumps from C-47's and C-82's, he qualified as a parachutist and gliderist in February '47.

From jump school to Slaton, and from Slaton to Japan the young paratrooper went. Once overseas he joined the 11th Airborne Division and was assigned as a Company Clerk to the 152nd Anti-Aircraft battalion. In May '47, trooper Huckabay was transferred to Division Headquarters where he quickly worked his way up to his present assignment as chief of section in the Division Recruiting Office.

Huckabay graduated from Slaton High and furthered his education at Texas Technological

College. Upon completion of his 18-month service in the Army, "Huck" plans to attend college.

Have You Had Your Salt?
It takes only 17 years for the average American to eat his weight in salt.

Have your prescriptions filled at TEAGUE'S DRUG STORE by a registered pharmacist.

Name From the South Weeping willows in Chile are called "sauces."

We regret that we have been so long delayed in getting our

STORE REMODELED

But we believe you will agree with us . . .

IT IS WORTH WAITING FOR

Until then we will give you the best of prescription service in our present location.

SLATON PHARMACY

LUBBOCK Supper Club
DINE AND DANCE
BARN DANCE
Will Be Held Thursday Oct. 16 Only, Thereafter Every Wednesday Night "SUNSHINE TRIO"
Open Every Night Band Every Wed. - Fri. - Sat. 4206-22nd. Phone 2-9413



SAVE MONEY ADD NEWNESS - REUPHOLSTER

Save the quality of that prewar built furniture. It is hard to find goods so well constructed today but we can save it for you. If your furniture looks old and worn and you want something new looking . . . Save money by having us reupholster your suites and chairs. Come in or call us and we will make a free estimate on any job. You will be delighted with the savings you will make.

next season, you can't lose by having your old tractor overhauled now. Money spent for reconditioning will

TEAGUE MERCANTILE COMPANY

Phone 796 330 N. 9th. St. on Highway
Let's All Back Our Football Team.

Ironing Board 1.25 Pure Hog Lard 35c
Cover and Pad Bring pail 50 lb. Drum, lb. 33c

SUGAR Imperial Cane 96c
10 lbs.

CHEESE, lb. 49c PRUNES, 10c
Long Horn Dried, pound
Full Cream

WEINERS, lb. 37c PINTO BEANS, lb. 19c
All Meat New Crop, 100 lbs. \$17.50

COFFEE, lb. 45c SYRUP, 1 gal. 95c
White Swan Brer Rabbit

BACON Sugar Cured Sliced in our Market, lb. 63c

MILK, 11c YAMS, lb. 5c
Tall Cans Bakers.

COCO COLA 25c FIRST AID KIT 35c
6 Bottle Carton

Salad Dressing Miracle Whip Quart 49c

We Can't Help It Cause We Sell So Cheap.

Announcing The



Of The New

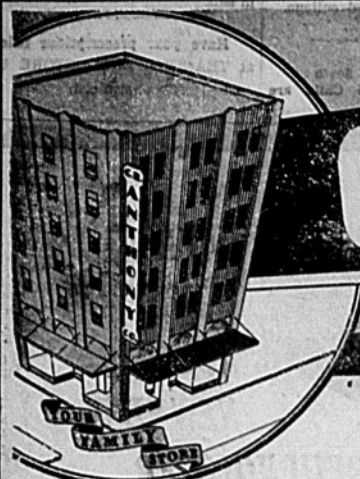
Slaton Butane And Appliance

COME IN AND VISIT OUR NEW PLANT

We have just opened our new plant and are now ready to serve all Butane and Propane users with IMMEDIATE DELIVERY of Tanks, Heaters, Hot Water Heaters, Ranges and Appliances. We are equipped to fill your Propane bottles while you wait.

Slaton Butane And Appliance

Just Outside the City Limits On The Highway to Lubbock - Phone 789



OCTOBER

is...

Anthony Month

A STORE WIDE SELECTION OF TIMELY VALUES !!

Once a year only your friendly Anthony store holds this money-saving event. The outstanding values offered during this event are our expression of appreciation to you for your loyal patronage throughout the year. Anthony's "serve you better and save you more" always.



Cotton Dresses
\$2.77

Colorful prints or solid colors. Fast to sun and tubbing.



Fabric Gloves
87c

Brown, black, red, green and beige. Suede rayon and cotton.



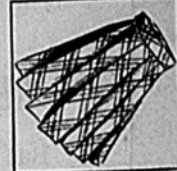
Cotton Anklet
37c

Looped toe, transfer top. Brown, blue and white.



Nylon Hose
\$1.17

Slight irregulars of \$1.98. 51 gauge nylons. Fall shades.



Wool Skirts
\$2.77 to \$6.77

Plaids or solids in all wool materials. Women's sizes.

At Anthony's You Save on all Your Infant's Needs



Dial 2-5575



A. Handmade Dress—Iac trimmed or embroidered trim. Boys or girls. **98c**

B. Training Pants—Soft combed cotton. Elastic reinforced crotch. **15c**

C. 2 Pantor Pajama—Outing flannel in color juvenile patterns. Footed styles. Sizes 2 to 8. **\$1.98**

D. Training Pants—Soft cotton with elastic waist, double crotch. Knit cuff. Sizes 0 to 12. **25c**

E. Child's Dress—Cotton prints and solid colors. Fast to tubbing and sun. Sizes 1 to 3. **\$1.98**

F. 27x27 in Diapers—Birds-eye or Flannelite diapers in Sanitarily sealed packages of 12. SPECIAL **\$2.98**

G. Infants' Blankets—Lovely jacquard patterns. Satin binding. All cotton. Boxed. Pink and blue. **\$1.98**



G.



F.

DEAL'S MACHINE SHOP



B.



C.



D.



E.



Bur-Mil Rayon
Precision
Sized

SLIP
277

Here is the perfect tailored slip, designed and cut to fit you exactly, whatever your size or height... made of famous bur-mil rayon crepe in the new longer length... turquoise or white, sizes 32 to 44.



Colorful Cotton Prints
47c

80 squares in new colorful plaids, florals, geometrics and plaids patterns. 36-inch wide.

HANDBAGS AT A SAVING

Large Assortment

\$2.77

Every style imaginable included in the assortment. Leathers and plastics in pouch, envelope and shoulder strap styles.



Tough Work Shoe
\$5.77

Heavy tough leather uppers with raw-card sole and heel. Size 6 1/2 to 12.



Girls' Oxfords
\$4.77

Perforated toe with leather sole and moccasin toe with composite sole.



New Fall BLOUSES
\$3.77

Tailored and classic styles in rayon. Whites and colors. You can select your blouse from new arrivals.

Feature Values in Women's All Wool SUITS

Gabardines, flannels and worsteds in solids, stripes and diagonals. All wool and in colors of brown, green, wine, black. Sizes—9 to 15 and 12 to 20.

\$22.75



ALL WOOL HOODED COATS
\$24.75

They are new, different. Smart hooded styles. Hoods removable. Many new colors and weaves. Sizes 9 to 15 and 12 to 20.



SCUFF RESISTANT JACKET GENUINE PONYSKIN \$18.75



Long wearing scuff and peel resistant ponyskin in golden tan. Rayon lining, zipper closing. Sizes 38 to 46.

For Suits — Dresses — Jackets Wide Wale Corduroy 87c yard



You will surely want to sew when you see all the new fall shades and the quality of this corduroy. Every imaginable color or shade.

87c yard



Double Blanket
\$6.77

Warm 5% wool double blanket. Large 72x84 in. wide satpen binding.

SOLIDS — FANCIES DRESS SHIRTS \$2.87

Broadcloth, madras and chambray in solids, fancies and whites. Full cut throughout, long tail. Sizes 14 to 17.



MEN'S AND BOY'S UNDERWEAR



MEN'S SHORTS

Striped broadcloth with elastic insets at side. Full cut. **67c**

MEN'S BRIEFS

Combed cotton. Flat knit. Elastic waist band. Non-creep. S, M, L. **57c**

Boys' Sizes, Small **47c**

MEN'S SHIRTS

Rib knit mercerized cotton. Long length. Roomy armholes. Sizes 36 to 44. **57c**

Boys' Sizes, 26 to 34 **47c**



Rib Knit Unions
\$1.77

Men's 12 lb. rib knit cotton unions. Non-sag shoulder. Sizes 34 to 44.

Men's Denim JEANS \$2.17

9 oz. blue denim with orange color stitching and copper rivet reinforcement. Tight rider style cut. 28 to 38.



Men's Tweed TROUSERS \$7.77

All wool mixed tweed with or without pleats. Zipper fly closing. For dress or business wear. 28 to 44.

THE SLATON SLATONITE
 Slaton Publishing Company, Slaton, Lubbock County, Texas
 Slaton Times purchased 1-20-37.
 Entered as second class mail matter at the postoffice, Slaton, Texas.
 A. M. JACKSON, Editor and Publisher

ADVERTISING RATES
 Display Advertising 50 cents per column inch to all agencies, with usual discounts.
 Local Readers, set in 8-pt. 10 cents per line of five words, net. To agencies, 10 cents per line with usual discount.
 Word of Thanks, 75 cents.

NOTICE TO THE PUBLIC—Any erroneous reflection upon the reputation or standing of any individual, firm or corporation, that may appear in the columns of The Slatonite will be gladly corrected when called to our attention.

Resolutions, Memorials (excepting accounts of death, news items in this office), 5 cents per line. Poetry 10¢ per line.

SUBSCRIPTIONS IN ADVANCE
 Annual, Garza Counties, \$2.00. Outside these counties, \$2.50.

JUST TALK
 by
A.M.J.

Last week I very proudly reported on the front page that the Citizen's State Bank had \$70,000.00 more on deposit than it had ninety days ago. This article was written from notes taken while I was in the bank and the amount I had jotted down was \$700,000.00 but when I looked at the notes I felt sure it was way too much money so I cut it back to \$70,000.00 which was a mistake the correct amount really is \$700,000.00, an amount so astronomical that it was past my imagination. In fact \$70,000.00 is a whale of a lot of money in my estimation and I have never even gotten on familiar terms with over \$100.00 at a time.

When I get as much as \$100.00 in my hand I feel like I imagine folks feel when they win in a sweep stake or answer some simple question on Take It Or Leave It. A check for \$100.00 does not get me excited for it seems like a piece of paper, but a big hunk of green backs makes me want to go on whing ding, a spending spell or buy myself a new pair of shoes. Has anyone \$100.00 that they can let me play with for a few minutes?

J. B. Hutchens was commenting on the activities of his wife last week said that she was either knitting or crocheting some little whim whams that she puts on the backs of their living room chair. They always roll up and fall down your back when you sit down, said J. B. Just what do you suppose Mrs. Hutchens is making?

Mrs. Bill Duckett was over at the house last week and she looked me over and said that I am not as much like a farmer as she thought I would be. Whether this was a disappointment to her or not I do not know but if I look like a farmer at all I feel complimented for the farmers are the most fortunate folks I know of even if they do complain all the time about the weather, the high cost of picking cotton and the high cost of everything except the prices on the products they raise.

While I have no ideas as to how

to operate a farm and am too lazy physically to try to do so I feel sure that I could do well on the complaining angle and if I were a farmer I believe I could howl as loud as any of them about all the disadvantages of this kind of work.

If only there had been enough paint in town about a year ago when the Junior Chamber of Commerce organization wanted to paint signs on the street corners Slaton would have been a much better place in which to live, but now the Junior Chamber of Commerce has broken up and no one else wants to take over the job. Its queer how close and yet how far good or misfortune can come and still miss. We are fortunate to have the streets even if you cannot tell what street you are on.

As a weather predictor I am even losing confidence in myself. According to all past experiences and actions of the weather there should have been a heavy down pour before now and we should be knee deep in mud on the South side of the High school, but just because I predicted a rain last week the sun is shining as strong as it did in August. From now on I am going to depend upon Charley Austin's red long handles. So far he has not put them on and I am sure that we will not have a freeze for a few days but as for rain or dry spells I am going to leave it up to the clouds, the farmers and the devil.

While there has not been as much building of homes in Slaton as there has been in some of the bigger towns I am glad to see that most of the houses, even the smaller ones, that have been built are substantial, well planned and attractive in appearance. It would be just as disastrous to over-build and have a lot of uninhabited houses here, when normal times do come, as it would be not to have any places at all for folks to live and I'm believing that Slaton is moving along in a substantial way that will pay dividends in the long run.

We do need more public spirited cooperation among the citizens of Slaton, we need to get some objectives that would benefit the town in a way that make it a more enjoyable town in which to live and to bring more shoppers and visitors to town the year around. The Christmas Holidays are not very far in the future and the people in all parts of this area have more money to spend than in any time in our history. A

well planned Holiday promotion could be of great benefit to the town and to the merchants, but unless some organization or group of citizens take hold and do something about it we will go through the next few months and have a lot of good business days but not near as many as we could have by the proper plans and actions.

So far as I can tell the meatless Tuesdays and chickenless and eggless Thursdays are just propaganda and I have got my very serious doubts that the plan will work. If it could be put into action how would it help anyone?

Admitting that many people in the United States do eat more than is necessary, even that many of us would be better off if we should cut down on the amount of food we poke into our mouths that does not mean that food saved would help the ones that need it in Europe. From a great many reports it seems that we need to devise a way of proper distribution of the thing we give away and if the folks that get it do not make some effort to earn it then it is very doubtful to me that they will ever make such effort to work for something that can be gotten without work. Perhaps the United States Government does have a way of getting food to the most deserving but I've never seen an account of the plan and I've read a lot of magazines on many, many phases of the relief to Europe.

Plywood in California
 More fir plywood is consumed in California than any other state. Next largest consumer is Illinois, followed in order by Washington, New York, Pennsylvania and Michigan. Fir plywood is manufactured only from prime logs of giant (old growth) Douglas firs, usually from three to eight feet in diameter.

Testing Fresh Eggs
 To test eggs for freshness, place them in a pan of water. A fresh egg will lie on its side on the bottom of the pan, while an old and stale egg will rise to the surface.

MARKET NEWS

As of Oct. 13 (USDA)—Spots of strength and weakness checked southwest farm markets last week in very uneven trends, according to the Production and Marketing Administration, U. S. Department of Agriculture.

Wheat and oats registered rather sharp advances for the week. Corn hardly recovered early losses as continued favorable weather aided crop prospects. Sorghums fluctuated widely but closed Friday unchanged from a week earlier, at around \$3.65 per hundred-weight. Wheat stood at \$3.02½ per bushel, base grade.

Spot cotton sales increased during the week, as harvesting went forward at full pace. Prices scored net advances of \$2 to 3 per bale.

Eggs continued to sell at firm prices last week, while poultry showed light weakness at some places. Most heavy hens brought 22 to 24 cents per pound at Fort Worth, 28 at Dallas, 22 to 26 at Denver, and 31 to 33 at New Orleans. Fort Worth and Dallas paid around 55 cents per dozen for best candled eggs, and New Orleans gave 56 for fresh No. 3 Extras. Denver took best current receipts at 43 to 47.

Cattle varied some during the

week but closed mostly steady to strong, with Texas cows and calves the principal exceptions. Medium and good cows sold generally from \$14 to \$16 at Texas markets, where common and medium kinds ranged largely from \$12 to \$14, and canners and cutters from \$8.50 to \$11. Other southwest terminals paid around \$13.50 to \$18 for common to good cows. Canner and cutter cows brought \$9.20 to \$12.90 at Oklahoma City and Wichita, and \$11 to \$13.50 at Denver.

Slight daily ups and downs left hog prices largely steady to 50 cents higher for the week. San Antonio set a new all time time high of \$28.50 but closed a little below the peak. Closing top prices on butcher hogs ranged from \$29

to \$29.50 at other southwest markets. Sows brought mostly \$25 to \$27, and pigs \$20 to \$26.

Hybrid Forest Trees
 Hybrid forest trees to produce wood faster than present kinds are being developed, reports the department of agriculture. Trees of saw-timber size are being cut and destroyed each year 1½ times as fast as they are replaced by growth.

Beet or Cane Sugar
 Cane sugar and beet sugar are, when completely purified, the same substance, that is, sucrose.

Mending Rubber Gloves
 To mend a leak in a rubber glove, use the same method as to mend a leak in a rubber tube; that is, with a tire-patching outfit. The rubber patches that are included in the kit may be cut to any size.

STOP

USING YOUR STOMACH FOR CONSTIPATION
 WHEN constipation hangs on and you have that listless, "half alive" feeling chances are it's not your stomach but your intestinal tract that's at fault. Sluggish intestinal muscles permit waste to accumulate... pass is formed and often you feel miserable, nervous and out of sorts.
 For real relief... take the new, improved, ADLERIKA the Tone-Up Laxative. It moves waste quickly but gently to relieve constipation and gas. You'll enjoy a new feeling of pep and vitality when your digestive system is in perfect order. Try ADLERIKA today and you'll learn why over 20,000,000 bottles have been sold. *Caution: take only as directed.*



Be Quick To Treat Bronchitis

Chronic bronchitis may develop if your cough, chest cold, or acute bronchitis is not treated and you cannot afford to take a chance with any medicine less potent than Creomulsion which goes right to the seat of the trouble to help loosen and expel germ laden phlegm, and aid nature to soothe and heal raw, tender, inflamed bronchial mucous membranes. Creomulsion blends beechwood creosote by special process with other time tested medicines for coughs. It contains no narcotics. No matter how many medicines you have tried, tell your druggist to sell you a bottle of Creomulsion with the understanding you must like the way it quickly allays the cough, permitting rest and sleep, or you are to have your money back. (Adv.)

SEE HUSER HATCHERY

- FOR FEEDS:**
 AYERS SUPREME
 PURINA CHOWS
 EVERLAY
 POULTRY SUPPLIES
- FEEDERS
 FOUNTS
 HEN NESTS
 BROODERS
 SEEDS**
- GARDEN (pkg. or bulk)
- SANITATION PRODUCTS**
 D. D. T.
 CARBOLINEUM
 LICE POWDERS
 POULTRY TONICS
 SULFA DRUGS
 POX VACCINES
- We Try To Supply You With All Your Poultry Needs.**

HUSER HATCHERY
 Phone 224
 "Your Checkerboard Store"



Even if you are able to buy a new tractor next season, you can't lose by having your old tractor overhauled now. Money spent for reconditioning will boost your trade-in value. So don't wait. Let us put your name on our advance service schedule now, and order any needed parts. Don't risk not being ready.

Slaton Implement Co.
 300 South 9th. Phone 8
 McCORMICK-DEERING MACHINES
 PARTS AND SERVICE

STOP FIRES IT'S UP TO YOU!

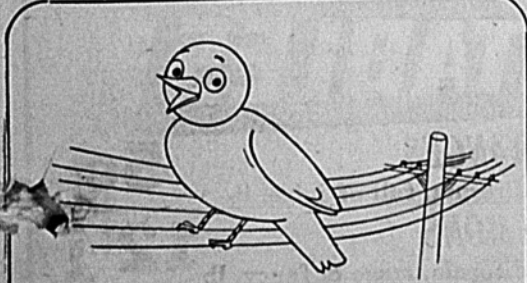


Danger! Man Smoking!

THAT last cigarette before you fall asleep may well be your last cigarette. It's a dangerous habit—high on the list of causes of major fire losses—and death. Remember—smoldering blankets give off toxic gases that kill without flames. To save your life—don't smoke in bed!

FIRE PREVENTION WEEK IS OVER BUT THE IDEA IS GOOD THE YEAR AROUND....

Pember Insurance Agency
 "27 YEARS YOUR AGENT"



Please don't shoot!

Blazing away at a bird on a telephone wire may break the wire and interrupt important long distance calls.

Last year stray shots put 2,500 telephone wires out of action. That's why we ask:

Please don't shoot at birds on telephone wires or poles.

SOUTHWESTERN BELL TELEPHONE CO.

From Fisher Styling to Knee-Action Comfort BIG-CAR QUALITY AT LOWEST COST is yours only in Chevrolet!



TEST THESE THRILLS!
 You're master of every motoring situation when you own a new Chevrolet. You have power, getaway, dependability, in extra measure, for Chevrolet's proved Valve-in-Head Engine has delivered more miles, for more owners, over a longer period, than any other engine built today.

REVEL IN THIS RIDE!
 Just settle down in the form-fitting seat cushions—and relax! Travel over any road—from boulevard to by-way—is made smoother, steadier, safer by the Utilized Knee-Action Ride—another advantage found only in Chevrolet and higher-priced cars.

STUDY THE STYLING!
 What a beauty leader this car is! Trim as a yacht in line and contour—luxurious as a drawing room in upholstery and appointments! The body is a Fisher body—exclusive to Chevrolet in the lowest-price field.



INSIST ON SAFETY!
 You have every right to demand the highest degree of motoring safety for your family; and you get it with Chevrolet's Unisteel Body by Fisher, Knee-Action Ride and Positive-Action Hydraulic Brakes—features combined only in Chevrolet and higher-priced cars.

Be sure your car is ready for winter! Bring it to us for service and let us get it ready for the bad-weather days ahead!

CHEVROLET
 LOWEST-PRICED LINE IN ITS FIELD!

Crow-Harral Chevrolet Co.
 120 N 9th. St. Phone 470

SOUTHLAND
MRS. FLOY KING

Coach Green's six man football squad rolled to a 25 to 6 triumph over the Petit team last Friday afternoon in a conference game. Southland has two victories and one defeat this season. J. Martin Bassinger and Harold Hampton sparked the Southland team each scoring two touchdowns. Southland's next game will be with Whiteface at Whiteface this Friday.

Little Miss Kay Anderson was honored with a Birthday party last Saturday afternoon by her mother. Nineteen little guests were present.

Mr. and Mrs. E. L. King and son, Leslie, visited B. H. Thomas and family in Shallowater last Sunday.

Supt. and Mrs. C. L. Lindsey of the Southland Schools left Sunday for Quitman to attend the funeral services of their son who was killed at Pearl Harbor when the Japs started the last war. The body arrived last week from Pearl Harbor and was sent to Quitman, former home of the Lindseys.

Mrs. W. M. Warner returned home this week from the Mercy Hospital in Slaton where she had been ill. She is much improved.

Mrs. Riley Wood was taken to the Mercy Hospital last Saturday but has returned home.

A. Wilki has gone to Houston to be with his brother who was reported to be very ill.

Mrs. W. W. Ogle, who has been ill is much improved.

Mr. and Mrs. Fred Wood have bought the Southland telephone exchange and they were visited last Sunday by Mrs. Fred Sooter of Slaton. Mrs. Sooter is a sister of Mrs. Wood.

Mrs. G. W. Davis, Jr., and her sons of Carlsbad, N. M., visited Mrs. G. W. Davis, Sr., last week. Mrs. G. W. Davis, Jr., Maxine

POSEY ITEMS
R. L. BOYD

Mr. and Mrs. W. T. Gentry of Italy, Texas, have been visiting relatives here for several days.

Mrs. N. C. Darland, a former resident is now seriously ill in a Morton Hospital.

The new song books were used for the first time Sunday. They are composed of full cloth board and are entitled Precious Hymns.

Mr. and Mrs. Sam Gentry, accompanied by an aunt and uncle of California, visited Mrs. Gentry's parents at Levelland Sunday.

A Singing Group was entertained Sunday evening in the T. A. Johnson home.

Mrs. Mattie Bundrick who lives in Ellis County has been visiting relatives here the past week.

Mel Havis of Lubbock visited his parents, Mr. and Mrs. A. L. Havis Saturday afternoon.

Monday Mr. and Mrs. M. P. Gentry, Mr. and Mrs. A. M. Carroll, and Mrs. M. Bundrick went

Davis and Mrs. Ethel Barber accompanied them back to Carlsbad.

Mr. and Mrs. C. A. Bloxom visited the Ben Bloxoms last Sunday.

Mrs. Ella Pernel is with her daughter-in-law, Mrs. Robert Pernel who recently underwent an operation.

Mr. and Mrs. Charley Anderson of Hollister, Calif., are here visiting L. K. Anderson and Fred Wood.

Mr. and Mrs. Roy Williams visited his brother Olin Williams and his family in Littlefield last week.

Mr. and Mrs. W. W. Gilliland visited in Slaton last week.

Miss Wilma Wheeler of Lubbock visited her parents, Mr. and Mrs. H. V. Wheeler last week.

Mrs. R. M. Waldon of Plainview was visitor in Southland last week.

to Pep, N. M., to visit Jay Carroll and Mrs. Bert Darland.

Mrs. Sam Morgan and Bud Morgan of Italy, Texas, have been visiting relatives S. N. and Mert Gentry.

Jay Carroll who lives near the New Mexico line was here Sunday to see his parents.

The Womens Society of Christian Service met Tuesday afternoon at two o'clock with Mrs. M. M. Brilger.

The John Cates family spent Sunday on an outing at MacKenzie State Park.

Mr. Jordan who had a stand at the recent fair said that he only made expenses, because the people did not seem to be spending their money freely.

The damp weather benefited

farmers who ginned some of their cotton then as the staple was better.

K. Boyd is adding a room to her home.

The shortage of cotton pullers has not been worrying J. Kuback who lives about two miles southwest of Posey. Up to October 9th, five members of Mr. Kuback's family had gathered 32 bales of their own cotton.

Many Synthetic Fibers
No longer is rayon the only commercially accepted synthetic fiber. Glass, vinyon, nylon, aralac, all these have proved their values as textile fibers. They often are used in combination with cotton and wool and may be had in many combinations. Since introduction of rayon in 1911, it has increased in volume so that it now ranks second only to cotton in the amount produced.

First Secretary of National Defense



WASHINGTON, D. C.—(Soundphoto)—James V. Forrestal, of New York, took the oath of the nation's first Secretary of National Defense in a ceremony at the Navy Department. Left to right: Kenneth C. Royall, Secretary-Designate of the Army; Gen. D. D. Eisenhower, Army Chief of Staff; John L. Sullivan, Secretary-Designate of the Navy; Fred M. Vinson, Chief Justice of U.S. Supreme Court, administering oath; W. Stuart Symington, Secretary-Designate of Air Force; James V. Forrestal, Secretary of National Defense; Maj. Gen. Alfred M. Gruenther, Director-Designate of Joint Staff under the Joint Chiefs of Staff, and Thomas J. Hargrave, Chairman of the Munitions Board.



Money-back Guarantee

Every Red & White Product Is Guaranteed to Give Satisfaction or Money Refunded

Red & White CORN
Fancy Co. Gentleman no. 2 can 23c

GREEN BEANS Red & White Fancy Cut No. 2 Can 23c

SUGAR 98c
Pure Cane, 10 lb. Bag
PRUNE PLUMS 19c
Hunts, heavy syrup, 2 1/2 can

PEAS
Red & White No. 3 Sieve no. 2 can 23c

GRAPEFRUIT JUICE Red & White 46 oz. can 15c

MEATS

Bacon, Morrell Pride, lb., Sli., 89c
HAMS, Picnic, lb., 55c

OLEO Blue Bonnett Lb. 30c

Cheese, Kraft Velveta, 2 lb. 89c
Hens, nice & fat dressed, lb. 55c

OYSTERS, pint 89c

Prune Juice Sunsweet Qt. .23

Texas no. 2 can **CHILI** 39c

Gallon, solid pie pack **APRICOTS** 89c

MY-T-FINE, pkg. **DESSERT** 7 1/2c

FLAVOR-JEL 8c
Red & White, asst. flavors

Regans, no. 2 can **ORANGE JUICE** 10c

COFFEE Del Monte 1 lb. can 39c

BOOTHS FROZEN - SLICED - SWEETENED
Strawberries Lb. Pkg. 43c

CLOROX, 10c
Pint Bottle

SYRUP 27c
Log Cabin, 12 oz. bottle

PEACHES no. 2 1/2 can 25c
Air Mail, Syrup Pack

TOBACCO 10c
Prince Albert, can

Miracle Whip Qt. Jar 28c

VEGETABLES

APPLES 5c
Washington Fancy Delicious

LEMONS 12 1/2c
California, large & fancy, lb

YAMS 7 1/2c
Maryland Sweet, lb.

SPUDS 5c
U. S. No. 1 Russets, lb.

LETTUCE, head 15c
Large Calif., Ice Berg, lb.

NOTICE

TO GRAIN GROWERS
We Pay TOP PRICES for MILO MAIZE

40 car storage, excellent unloading facilities - - - can handle high moisture content grain at standard discount.

SOUTHLAND GRAIN CO.

S. A. Westergren, Mgr.
Phone 32 or 52 Southland, Texas



When The Car Needs A Drink . .

OR IF YOU'RE TRYING TO LOCATE A "CLINK" LET THIS SERVICE STATION BE YOUR AUTOMOTIVE TROUBLE SHOOTER! OUR ATTENDANTS ARE REALLY HELPFUL, AND KNOW EVERY MAKE OF CAR FROM INSIDE OUT. DRIVE IN TROUBLE - DRIVE OUT WITH RIDING PLEASURE REDOUBLED.

E. B. CUSTER'S GULF SERVICE STATION

Road Service When You Need It
So. 9th and Floyd Phone 9514

BERKLEY & HADDOCK