

HISTORY

Post Office Survives

-See Page 3

POLITICS

Spray Damage Prompts Questions

-See Below

LOCAL

Liquor Tax Rebate

-See Page 6



BAILEY COUNTY JOURNAL

'The Community Of Opportunity-Where Water Makes the Difference'



Vol. 25, No. 32

10 Pages Today

Published Every Sunday at Muleshoe, Bailey County, Texas 79347

20¢

Sunday, August 2, 1987

around muleshoe

Joyce Holmes, manager of the Bailey County Civic Center and Coliseum, said fall and winter skating will be getting underway on Friday, September 17, and needs sponsors.

Mrs. Holmes said any organization interested in sponsoring one or more skatings during the fall or winter, please contact her in person at the civic center, Monday through Wednesday mornings at the Civic Center.

Very spotty rain fell in Bailey County Tuesday evening and again on Wednesday evening. Reports were received of up to three inches in one location, however, Muleshoe received .73 to one inch on Tuesday; and .39 to .60 on Wednesday afternoon.

More showers were predicted for the weekend.

Bailey County commissioners will meet in regular session at 10 a.m. on Monday, August 10.

After approval of the minutes, commissioners will pay routine bills; review the treasurer's report for July; review departmental reports and consider miscellaneous items.

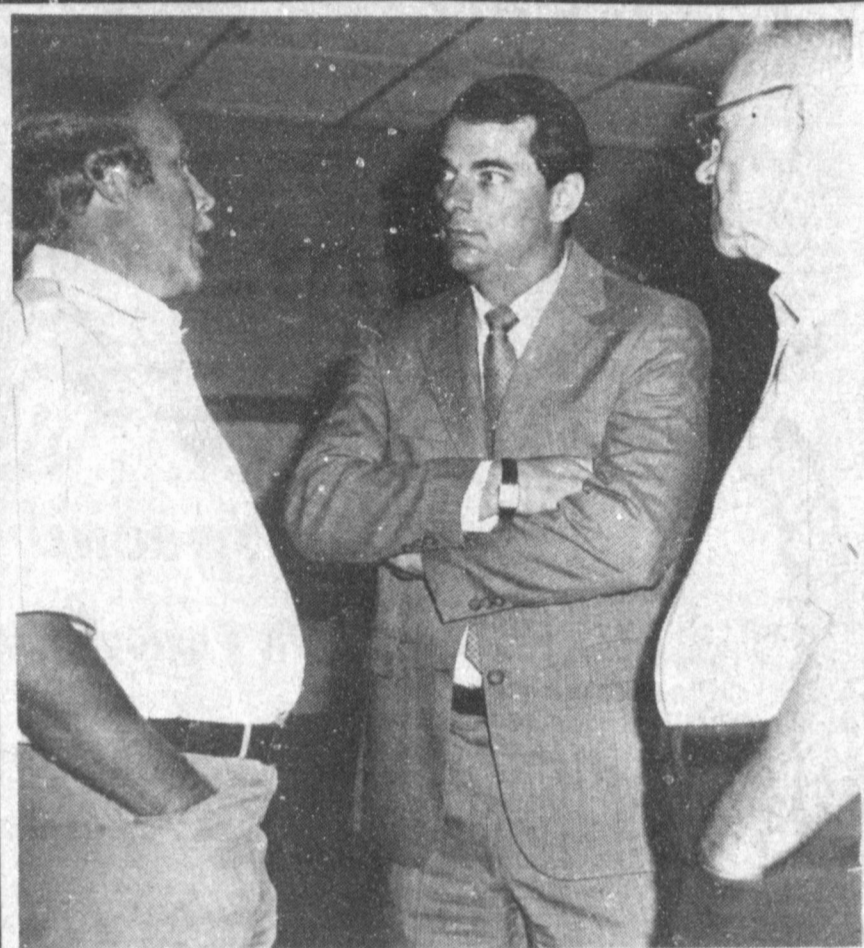
The Student Community Action Club will meet Monday, August 17, in the home of Debbie Isaac, 706 West 20th Street, at 7:30 p.m.

New officers will be installed, and both the new and old officers are asked to attend the meeting.

On Monday, August 10, the Muleshoe Activities Committee will host their next round of tournaments at the Mule Putt Miniature Golf Course.

Action gets underway with the sign-up for the 'Lo-Ball Partnership' tourney at 6:30 p.m. and you can register until 8 p.m.

Cont. Page 6, Col. 1



SENATOR SARPALIUS LISTENS--Friday morning, Senator Bill Sarpalius was in Muleshoe to meet with his constituents and explain some of the tax and budget actions taken during a special session of the legislature. He also listened to questions from local residents. Pictured from left and Dave Marr, city manager; Sen. Sarpalius; and Harvey Bass.

Former Farmers May Get Job Re-Training

If you have quit farming -- since January 1, 1985 -- either through bankruptcy or failure to obtain loans to continue farming, you are a prime candidate for a new program in this area.

Called "New Beginning - Farmer Assistance Program," it focuses on job training, or re-training for farmers and/or their spouses.

James Martin, Farmer Assistance Program Coordinator for the South Plains Community Action Association at Levelland commented, "We feel this program that's going to be very beneficial and our goal is to retrain the (former) farmer and

get them started in another occupation."

Following the evaluation of a 1986 pilot program, that saw 82 persons retrained either through classroom work or on-the-job training, the program was funded by state and federal funds.

In order to qualify for the program, according to Martin, a farmer must provide proof that the producer no longer will be in the farming business. Documents may either be from a bankruptcy proceedings, foreclosure, or a bank stating that credit no longer will be extended.

He explained that in order to be in the program, either spouse may qualify from the defunct farm, and there is no limit on age or income level.

Individuals may qualify from Bailey, Cochran, Crosby, Dickens, Floyd, Hale, Hockley, King, Lamb, Lynn, Motley, Terry and Yoakum Counties.

Once the criteria are met, Martin said, the program can provide life coping skills, employment skills assessment, interest assessment, career counseling and classroom training. Services also include on-the-job training, job referral, job search assistance, job development and job placement.

"About 50 percent of the applicants in the pilot program last year chose to go through on-the-job training," said Martin, himself a farmer from Wellman in Terry County. "We try to counsel them and place them in a business that fits them and the company."

Martin said a benefit for the training company is that half of the applicant's salary for six months can be paid with the program funds.

If the person instead chooses to attend a vocational or trade school in the region or elsewhere in Texas, Martin added, program funds will pay for books, fees and tuition. In some cases, if a person had attended but did not complete college, the program may assist that person in completion, he said.

"I have a 50-year old mortician's school who has a job

Cont. Page 6, Col. 3

Senator Bill Sarpalius Visits; Explains Budget

Farmers Ask Restrictions On 2-4-D

When Bailey County commissioners met Monday morning, they were quite surprised to see 32 concerned farmers show up to meet with them.

Bailey County Judge Gordon H. Green said the farmers asked the commissioner's court to impose restrictions in this county on the use of the pesticide, 2-4-D.

Judge Green explained that in the State of Texas, counties have the option of imposing restrictions on the use of certain pesticides.

He also said counties surrounding this county do have restrictions on the use of pesticides.

With numerous reports received about pesticide damage in Bailey County this year, an investigation was conducted.

Farmers, the Bailey County Extension Agent Spencer Tankley and investigators from the Texas Department of Agriculture at Lubbock did find 2-1/4-D damage in the county.

According to Don Gibson, of the TDA, who was a visitor in The Journal Friday afternoon, damage was found to crops in the county.

Some producers have suffered severe damage, and some crops may survive the pesticide damage and grow out of the problem.

Judge Green explained that county commissioners can only impose restrictions on the use of pesticides following a public hearing, and only in the months of October, November and December of a calendar year. Any such order will go into effect the following January 1.

There are a few options for commissioners, including total

Cont. Page 6, Col. 5

South Plains Registration Here Aug. 10

Registration for courses from South Plains College, Levelland, to be offered on the Muleshoe ISD Campus will begin tomorrow, Monday August 10, and continue through Friday, August 21.

The following courses have been scheduled:

Math 130 - Monday, 6:30 - 9:30; Spanish 141 - Monday, 6:00 - 10:00; Government 231 - Tuesday, 6:30 - 9:30; English 131 - Thursday, 6:30 - 9:30; English 232 - Thursday, 6:30 - 9:30.

A minimum enrollment of fifteen persons is required for a course, and persons must be high school graduates or possess the GED certificate. Cost of the courses will be approximately \$70 for a three-hour course.

Registration will be in the Office of the Assistant Superintendent of Muleshoe ISD, Room 20, in Watson Junior High School. Classes will begin August 31.

For further information, please call Elizabeth Watson, 806/272-3325, between the hours of 8 a.m. - 5 p.m.

No Education Funds Cut; Commerce Department Formed

A good cross-section representing Muleshoe residents met at the Muleshoe State Bank community room Friday morning to welcome Senator Bill Sarpalius (D) back to Muleshoe.

Senator Sarpalius was introduced by Bailey County Democratic Chairman Gerald K. Reid, and was welcomed, along with the more than 20 people who heard comments from the senator on the latest special session of the Legislature, along with brief comments on the budget, and tax increases.

The senator told the group that the Legislature had been in session over 230 days out of the last year, but the session is now completed.

He said the budget was the biggest item handled by the state legislature, but they did not accomplish their goal. He added that the tax system was written in 1961 and was written around income from Oil & Gas and agriculture. "We need to develop a new tax system," he commented. "A system that does not lean on Oil & Gas and agriculture, and take the burden off those two depressed areas."

Senator Sarpalius said the legislature had abolished several agencies, and consolidated several others, and almost all agencies underwent major budget cuts, except for education.

"If we cut the budget for education, local school districts would be forced to raise taxes," he said. "This was proposed by Governor Clements, but last

year, we made big cuts in higher education, and the state lost 300 college professors -- the best in the state. So, we added money back into higher education. Cutting funding in education is the wrong way to take."

He cited that 93 percent of the budget is among the following: higher education, 62 percent; Mental Health and Mental Retardation, 17 percent; the Texas Department of Highways and Public Transportation, 14 percent; the Department of Public Safety and state prisons comprise the next highest figures in the budget.

Senator Sarpalius said highway construction workers are the number one state employer.

"I still feel good about the direction the state is taking," added the senator, as he spoke on the proposed super-collider and the two locations proposed in West Texas.

If the super-collider does move to Texas, added the senator, it will bring other industries, such as micro-chip manufacturers; support industries and many more members of the medical profession.

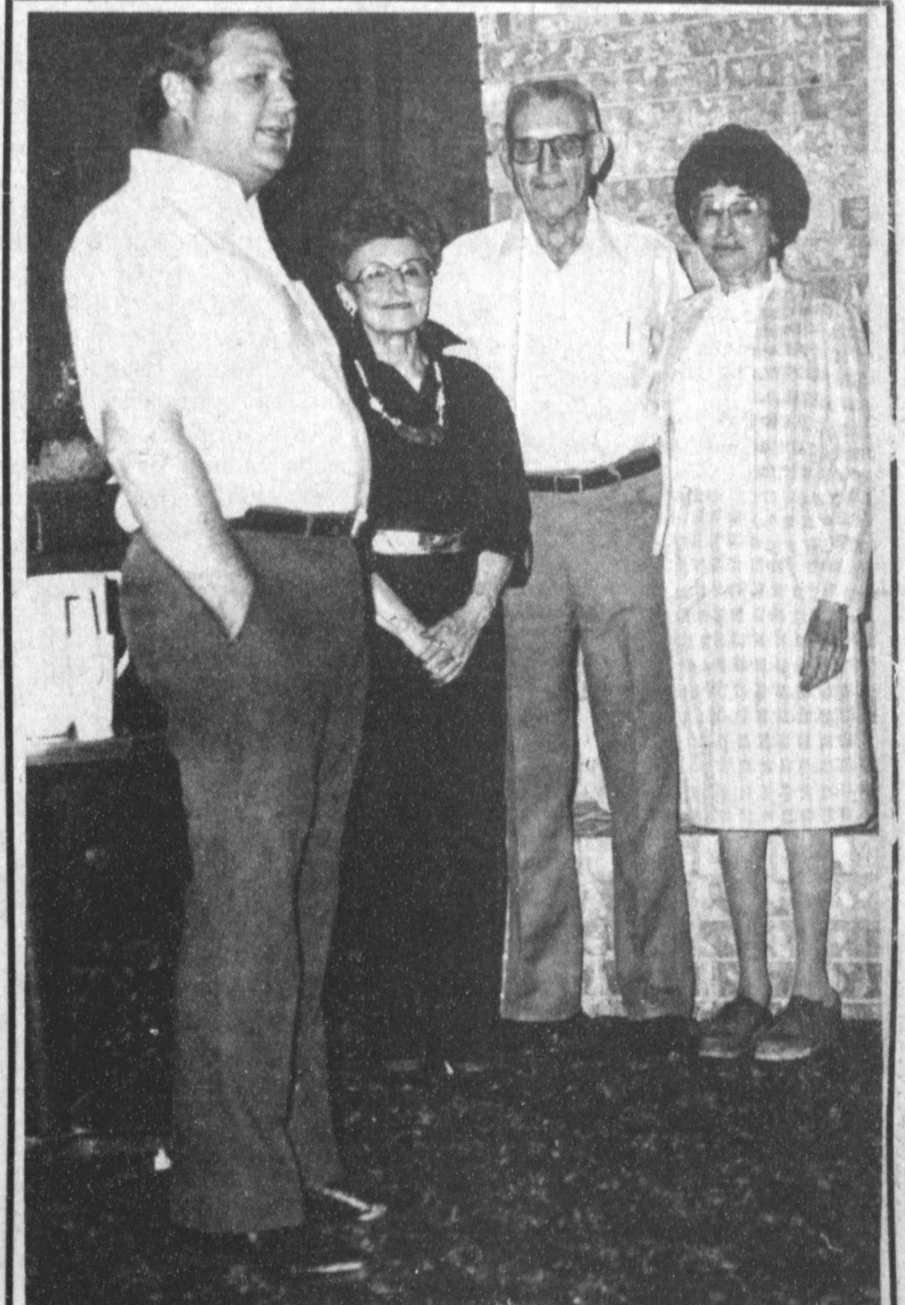
The Legislature formed a new department, the Department of Commerce; an agency developed to combine several agencies into one, dealing with the economy. He predicted the Department of Commerce would become as big as the Railroad Commission.

He also spoke briefly about

Cont. Page 6, Col. 2



OMAR AND MR. TURTLE--Five year old Omar Romero is proudly showing off 'Mr. Turtle,' who he was really counting on Saturday morning to win his division at the annual turtle races during the annual Mule Day Festival. The turtle races have always been one of the more popular early events at the Festival.



A FOND FAREWELL GIVEN--Tuesday night, the directors, officers and employees of the Muleshoe State Bank feted retiring tellers Cozette Blackwood and Billye 'Littleone' Jones with a dinner at the Muleshoe Country Club. From left, Bob Finney, president of MSB, tells the group of many of the activities of the longtime employees; Cozette Blackwood, her husband, Robert; and Billye 'Littleone' Jones. The bank presented Mrs. Blackwood a VCR and Ms. Jones two place settings for her sterling silver. The employees presented each of the retirees an 'enamel-on-enamel' by Marie Lenau.

Courthouse News

MARRIAGE LICENSE

Ariel Isaac Sanchez, Amarillo and Iris Lopez, Muleshoe.

Mathew Lee and Shiela Faye Jones, Muleshoe.

Jose Antonio Ibarra, Sweetwater and Martina Diaz, Muleshoe.

Armando Toscano and Angela Quintanilla, Muleshoe.

Ray Max Sageser and Joan Marie Hobbs, Earth.

Joaquin Chavez Andrade and Margarita Rodriguez, Bovina.

WARRANTY DEEDS

L. A. Green and wife, Ruby O. Green to Crispin E. Green and wife, June Green-- A tract of land out of the SE/4 of the NE/4 of Section No. 21, Block Y, WD&FW Johnson's Subdivision No. 2, Bailey County, Texas.

L.A. Green and wife, Ruby O. Green to Tommy D. Green and wife, Felicia Green--A one tract of land out of the SE/4 of the NE/4 of Section No. 21, Block Y, WD&FW Johnson Subdivision N. 2, Bailey County, Texas.

Bill Beran to John R. Beran--The NE/4 of Section 14, Block X, WD&FW Johnson Subdivision, Bailey County, Texas.

Mary Ann Beran Allen to John R. Beran-- The NE/4 of Section 14, Block X, WD&FW Johnson Subdivision, Bailey County, Texas.

William F. Wimberly and wife, Ruth Wimberly to Gene R. Smalling and wife, Rama Gean Smalling--The (NE/4) of Section (53), Block Y, WD&FW Johnson's Subdivision Number (2), Bailey County, Texas.

Joe Robert Gonzales to Joe L. Smallwood--The Northwesterly 75 feet of Lot 6, Block 2, Warren Addition No. 3 to the Town of Muleshoe, Bailey County, Texas.

Joe Copley and wife, Lela Copley to Bill Copley--The (S/2) of Tract (4), Aylesworth Acres, a subdivision of part of Tract

Summer Band

Gets Underway

Next Monday

Mark Heidel, band director at Muleshoe High School, said Summer Band will be getting underway next Monday, August 10, and will continue through August 28.

Freshmen and all new band members are asked to report to the MHS band hall at 10 a.m. on that day, and will be there until 11:30 a.m. Then, at 6 p.m. until 11:30 a.m. Then, at 6 p.m., till 9 p.m., all band members, including freshmen and new band members will be in session.

The band director said the music will be harder than last year, and the drill design will also be harder. "I feel comfortable with what we will be working with this year, and am really looking for a successful year," said Heidel. "I am really looking forward to this school year."

Some of the songs for this year are "Going The Distance," from "Rocky;" "Don't Cry For Me, Argentina," from "Evita;" "Benny Goodman's jazz standard 'Sing, Sing, Sing;" and Quincy Jones' ballad, 'Just Once.'

(16), W.A. McElroy Subdivision of the (SW/4) of Section (32), Block Y, WD&FW Johnson's Subdivision No. 2, Bailey County, Texas.

Alvina Ruth Beran Keeion to John R. Beran, Bill Beran and Mary Ann Beran Allen--The NE/4 of Section 14, Block X, WD&FW Johnson Subdivision, Bailey County, Texas.

Quannah Cotton Oil Company, A Division of Archer Daniels Midland Co., a corporation to Tim Campbell and Stephen Bell--FIRST TRACT: A tract of land out of the Southeast corner of that portion of the (SE/4) of Section 14, Block X, WD&FW Johnson Subdivision in Bailey County, Texas. SECOND TRACT: A tract of land out of the S/2 of Section 19, Block X, WD&FW Johnson Subdivision, Bailey County, Texas.

J.M. Vaughn and wife June Vaughn to Don Locker and Freddie Locker--The SE/4 of the NW/4 of Section No. 51, Block Y, WD&FW Johnson's Subdivision No. 2, in Bailey County, Texas.

Grain Sorghum Board Slates '87 Election

August 15 is the last day to mail ballots in the Texas Grain Sorghum Producers Board director election. Ballots must be postmarked no later than midnight, August 15.

Texas Grain Sorghum Producers Board (TGSPB) is the state sorghum checkoff program for financing and conducting market development, education, and utilization research for grain sorghum. It is governed by a board of fifteen directors who serve six-year terms. Five directors will be elected to the board this year--three in the West Texas region and two in the East Texas region.

The TGSPB West Texas region is the area of the state west of a line from Montague County, south along county boundaries, then west to exclude all counties south of Bandera, Uvalde, and Kinney.

The nominees from the West Texas region are Floyd C. Borchardt of Crowell, Billy Bob Brown of Panhandle, Ralph Mabry of Lubbock, and Kenneth B. "K.B." Parish of Springlake.

The TGSPB East Texas region includes 76 counties in the area of the state defined by a line from, and including, Cooke County on the Oklahoma border, south along county boundaries to include Comal County, then east along county boundaries to include Newton County on the Louisiana border.

The four men who have been nominated from the East Texas region are Eric Akins of Howe, Alton Norman of How, Dale K. Spurgin of McKinney, and Wilbert Vorwerk of Taylor.

Anyone involved in grain sorghum production within either region is eligible to vote for the candidates for that region.

Any qualified voter who has not received a ballot in the mail may obtain one at the County Agricultural Extension Office or any grain elevator which handles grain sorghum. Ballots are also available from the TGSPB office. Any sorghum producer who needs ballots or who has questions about the election may call, toll-free, 1-800-692-4169.

Burley Lee Roberts, Individually and for Torrey Brawn Roberts and wife, Carolyn Sue Roberts, Melonie Gay Roberts Burton, and husband, Gregory Allen Bruton, Brian Lee Roberts and wife, Dana Joette Roberts, Timothy Lynn Roberts and wife, Lisa Roberts and Torrey Brawn Roberts to Wendell E. Jones--80 acres out of the Fisher County School Land, Bailey County, Texas.

Summit Savings and Loan Association, a Texas Corporation, formerly Tri - County

Travel Scams On Increase

"Everybody loves travel bargains, including crooks," warned J. Don Clark today, director of the state highway department's Travel & Information Division.

Clark said that Texas travelers are being victimized by spurious "travel packages" offered by shady travel-service operators. "Initial contact is often by telephone," Clark said, "offering what sounds like a certificate good for round-trip air fare to Hawaii -- for only \$29."

"Actually," Clark explains, "the certificates are usually nothing more than reservations forms for advance bookings. After the first payment, more fees keep appearing -- deposits, pre-payment for transportation, lodging, and other hidden costs than can amount to hundreds, or thousands of dollars."

Clark voiced special caution against giving telephone solicitors your credit-card number. "If a 'travel package' sounds too good to be true, it probably is," he emphasized.

He cited a recent "come on" related to investment in vacation-resort time sharing. A potential "investor" was told that she had already won an all-terrain vehicle, requiring payment of only \$29.95 for "handling, processing, and insurance." The all - terrain vehicle turned out to be a lawn chair with four wheels attached.

Such fraudulent vacation-travel schemes, which the 'HOUSTON CHRONICLE' has labeled "selling travel dreams and delivering nightmares," are currently under investigation by the Texas Attorney General's office.

Clark said that people who receive phone calls or post cards announcing they've "won" a travel bargain, or have been "selected by computer" for some fantastic travel deal, should be immediately suspicious. "I'd recommend that anyone who's approached with a cut-rate travel scheme, check it out with one of our many reputable travel agencies, or the local Better Business Bureau," he cautioned.

Persons having direct knowledge of such travel scams are urged to contact the Consumer Protection section of the Texas Attorney General's Office at (512) 463-2070.

Savings and Loan Association to Frank H. Ellis and wife, Marcella P. Ellis--A 2.077 acres tract of land out of the (N/2) of Section NO. 33, Block Y, WD&FW Johnson's Subdivision No. 2, Bailey County, Texas.

G.E. Free to Dennis Whitley and wife, Lanette Whitley--All of Lot Number (8), and the (W/2) of Lot Number (7), Block Number (8), Highland Addition the Town of Muleshoe, Bailey County, Texas.

COUNTY COURT Henry Hettenga, Driving On Wrong Side Of Road, \$25 Fine.

John Phillip McCutchen, DWI, \$250 Fine, 1 Year Probation.

Israel Infante, Jr., DWI, \$350 Fine, 2 Years Probation.

DISTRICT COURT Muleshoe State Bank VS Scott

Ellard, Default Judgment. Gary Mrris, Default Judgment.

An orator isn't always a thinker

Think this through: It's too hot to go to church.

NOTES ... COMMENTS

A smile can be contagious.

It's easy to make promises.

Nervous tension is an expensive trait.

Flattery often conceals jealousy.

Don't expect everyone to agree with you; variety of opinion makes the world interesting.

Stop worrying about what your neighbor does and you might be able to take better care of yourself.

22 More Days Till School!



August Special

No Kill Charge On Custom Processing

Or

A Free Bag Of Jerky (per animal)

(*16.00 Value)

August 10-31

Processing prices have not changed since January 1982.



Rib Eye By The Loin

\$3.69 LB.



T-Bones By The Loin

\$2.89 LB.



1/2 Hog By Live Weight

86¢ LB.



1/2 Beef

\$1.29 LB.

IT'S ELECTRIC. BUT WORKS WITH GAS.

Dual Fuel Heat Pump



It cools. It heats. It works with your present gas system. The Dual Fuel Heat Pump offers you the best of both energy worlds. It is electric, so you get modern, clean, quiet heating and cooling. The Dual Fuel Heat Pump takes care of 100% of your cooling and about 80% of your heating needs. It is only when temperatures are extremely low that your gas furnace goes to work and the Dual Fuel Heat Pump rests. Each system works at the temperature at which it is most efficient . . . and most economical.

ASK THESE HEATING AND COOLING SPECIALISTS —



Bob Bomer Bomer Electric



Dee Puckett Southwestern Geo-Thermal



Stanley Wilson Southwestern Geo-Thermal

INMIGRACION?

NECESITA EXAMEN FISICO?

NO SE NECESITA CITA

ADULTS \$38

CHILDREN UNDER 14 \$10

Aprobado por el INS para hacer examen fisicos de inmigracion

MEDICO CIRUJANO

ANTONIO P. SERRANO, M.D., P.A.

Family Practice & Emergency Medicine

SLIDE MEDICAL CLINIC

ACROSS FROM SOUTH PLAINS MALL

5705-D SLIDE ROAD, LUBBOCK (806) 795-5844

OPEN 7 DAYS A WEEK—8:00 A.M. to 10:00 P.M.

TOUCH OF HISTORY

Post Office A Survivor In Townsite Tug-Of-War

Amid the tug-of-war between struggling townsites and the coming of the railroad as basis for survival, the U.S. Post Office serving Muleshoe area pioneers, along with other business places, was moved in search of prosperity on this frontier.

From the time the Post Office was established in Old Hurley with John Metsker as postmaster until sometime after it was firmly located in Muleshoe, it was located in general stores, barber shops, hotels, and finally to a separate building.

In the early days the mail was brought to Old Hurley three times each week by Joshua Blocher, first by carrying it on his bicycle and later as more people came and the load increased, he attached a pony cart to haul the mail.

With the beginning of the settlement of Janes, M.P. Smith built a general store. The post office was moved there with the prospects of the railroad coming. However, with the dedication of the townsite of Muleshoe and the railroad being established, the post office to this city. Smith remained as postmaster until 1919 when E.E. Hagler took the job along with his barber shop business. In early 1920, Hagler resigned due to ill health and was succeeded by Mrs. Beulah Carles.

Soon after 1920 when she assumed her duties, she bought a house and moved the post office into it, for the first time without some other business being in the same building. When the new YL school house was built, she bought part of the old building, added to the office; the family lived in the back portion. In 1928, it was again moved into the building formerly occupied by M.P. Smith Merchantile store.

During the 15 years Mrs. Carles served as postmaster (incidently, Mrs. Carles says

there is no such word as 'postmistress' as far as the postal department is concerned and W.B. McAdam and Gil Wollard still call her "Dear Sir") she had many experience on the comical side of life. She recalls the effort to establish Star Route 2 in the southern part of the county when Helen Bearden and Irene Bradley to oceptions around to be signed to verify the need of the route. "The People wanted the Dallas News brought to them but they were afraid to sign their names to any kind of paper. Also some of them had been eating cranes, which was against the law. They were afraid we would find the feathers, which we did, and report them, which we did not," Mrs. Bradley said. The route was established and the first carrier was a young man who took the money that people left for money orders and cried when they started asking about their packages.

Mrs. Carles recalls the depot agent, D.E. Cox, during the early '20s who pushed the mail from the depot in a two-wheeled cart and his daily report to the post office employees concerning an elderly man named Crigs who came to Muleshoe and said a young woman who he had just married would be there in a few days. The days became weeks and Cox reported daily that she did not arrive. Finally, he came in with his report "Well, Mrs. 'Christ' has come!"

In 1932 while Mrs. Carles was in Washington attending a Postmaster's convention, a team ran away with Ed Riddle who was carrying the mail from the office to the train and back on a flatbed wagon. Riddle came in the door one afternoon with the First Class mail pouch in one hand, the other hand dangling from a broken wrist and said "The team ran away with me and there is 22 sacks of mail in the west end of town and I want

a drink of water - I'm sick!" Ruth Bearden ran to the kitchen and brought a glass of water. Fay Elrod, who was a postal clerk, took him to the doctor while Ruth remained with the office and Irene Bradley went to the west end of town to count the mail sacks people had gathered up along the route of the run-away team.

Upon her return, Mrs. Carles said "Well, Ed, I heard you had an accident." "Yes, Mam, I had two of them." "Two! How's that?"

Ed replied, "When the team threw me off the wagon and broke my wrist, I swallowed my chewin' tobacco and that like to have killed me!"

POST OFFICE EXPLOSION
Explosion of accumulated gas in the Muleshoe post office November 26, 1946, injured five of the staff, A. J. Gardner, postmaster; Mrs. A. J. Gardner, clerk; Mrs. W. B. McAdams, substitute carrier; Gil Wollard, carrier; and C. D. Troutman, carrier; and destroyed the building and fixtures.

Muleshoe and the countryside were rocked by the explosion, which occurred at about 7:50 that Tuesday as the postoffice workers prepared to open up for the day, the Muleshoe Journal reported.

"Gil Wollard applied the match to the stove and the explosion followed.

"Employees of nearby business places immediately ran to the scene and began frantically to dig the victims out. The men at the C&H Chevrolet Company garage, just across the street, were among the first to get to the scene.

"Buck Wood, of the Western Drug, was standing in the doorway and Clinton Briscoe said they saw the roof of the post office building go up into the air high enough to see from their barber shop.

"Many people right in town failed to hear the explosion for some reason. On the other hand, it was heard by people several miles away.

"Damage was not confined to the post office building. Many windows in near businesses were broken. The front plate glass window of the English Food Market was blown into the street and broken to bits. The ceiling in the store was also badly damaged. Eugene English the proprietor, was alone in the

building at the time. Miraculously, he was not hurt.

"A flash fire went through the room as the accumulated gas exploded.

"As soon as word of the disaster began to reach the outside world, editors of the Associated Press and United Press, and of city daily papers, began to tie up all the telephone lines in an effort to get the story," the Journal story concluded.

Letter To The Editor Policy

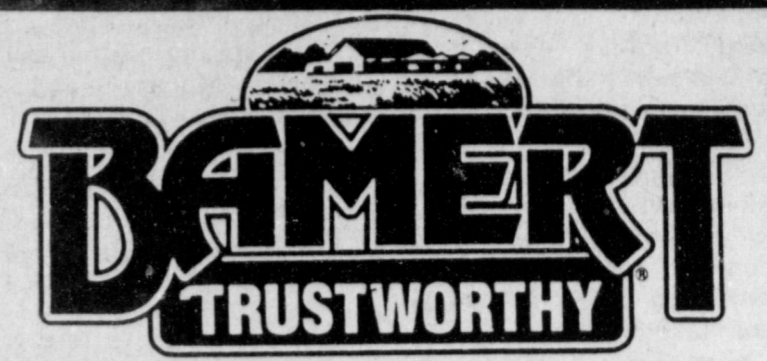
The Muleshoe Journal and Bailey County Journal welcomes letters to the editor on issues of concern to readers. Such letters must meet certain qualifications in order to be considered for publication.

Letters must bear the writers signature, address and phone number in order that the authorship may be confirmed. Under some circumstances we will delete the name of the writer, if, in our judgement, the request to do so is justified.

Letters should not exceed 250 words and must meet standards of good taste as well as legal guidelines. Letters attacking another person, a church or specific religion will not be published. Comments on issues are encouraged in order to maintain a forum for discussion of public views.

Usually the victim of gossip has something others are jealous of.

Kindness has never yet done anyone serious harm.



- Approved Cover Crop for CRP
- Hegari- 65% Germ \$200 Bag (No.50)
- Pearl Millet \$1600 Bag
- Sorghum Almond \$1100 Bag
- Sorghum Sudan- \$800 Bag
- German Millet - \$1100 Bag

Bamert Seed Company

Rt.3 Box 1120
Muleshoe, Tx. 79347
272-4787 or 272-3539

JONES • BLAIR JONES • BLAIR
LOWEST PRICES OF THE YEAR

	\$ 6.98	GAL. Mfg. Sugg. Retail \$10.50 SAVE \$3.52 SUPER-KOTE LATEX WALL PAINT • Excellent coverage • Easy to apply • Dries to touch in 30 min.
	\$ 9.98	GAL. Mfg. Sugg. Retail \$15.52 SAVE \$5.54 SUPER-KOTE LATEX HOUSE PAINT • Easy to apply • Desirable low lustre • Offers good color retention
	\$ 8.98	GAL. Mfg. Sugg. Retail \$13.28 SAVE \$4.30 DECORATOR LATEX WALL PAINT • Excellent touch-up and coverage • Good washability • Spot resistant, fade resistant
	\$ 10.98	GAL. Mfg. Sugg. Retail \$18.20 SAVE \$7.22 DECORATOR ACRYLIC LATEX HOUSE PAINT • Resists flaking, peeling and blistering • Dries in 30 minutes • Colorfast, stain and mildew resistant
	\$ 10.98	GAL. Mfg. Sugg. Retail \$17.97 SAVE \$6.99 SATIN LATEX WALLPAINT • Easy to apply, spatter resistant • One coat coverage • Spot and fade resistant
	\$ 12.98	GAL. Mfg. Sugg. Retail \$21.84 SAVE \$8.86 POLYFLEX LATEX HOUSE PAINT • Sunfast colors • Resists flaking, peeling, blistering • Durable, long lasting
	\$ 14.98	GAL. Mfg. Sugg. Retail \$23.98 SAVE \$9.00 POLYFLEX HOUSE & TRIM PAINT • Beautiful medium gloss finish • Sunfast colors • Dries in 30 minutes



THEY DON'T STAY LITTLE LONG
Neither do their expenses...

Don't look now but your children and grandchildren are growing up. So are the costs of raising and educating them.

Let us help you plan for the future of your children and grandchildren. We can also help you plan for their education...by starting while they ARE young.

Come in tomorrow. Children and grandchildren grow up VERY quickly.

When you need a helping hand.



202 S. 1st Member FDIC 272-4515

"Quality And Service At The Right Price"
Higginbotham-Bartlett
215 Main 272-3351



Rebekah Lodge Plans Noon Meal August 17

Muleshoe Rebekah Lodge was opened Tuesday evening by Noble Grand, Pat Langfitt. Patsy Chance presented the flag and Louise Allen, Chaplain, gave the opening prayer. Eighteen members and seven guests were present. Visitors were welcomed from Clovis Lodges. The roll was taken and minutes of the previous meeting were

Local Youths Place In District Competition

Four Bailey County 4-H'ers participated in the South Plains District 4-H Show Monday, August 3 at Texas Tech University in Lubbock.

Zanna Huckaby, daughter of Lyndon and Linda Huckaby, placed second in the senior non-tailored daywear buying category. By placing second, she is the alternate to the state fashion show to be held in Amarillo on August 17 and 18.

Jeanne Cox, daughter of Edwin and Carol Cox, placed third in the Junior 1 casual category. District competition is as far as Junior 4-H'ers may progress.

Holly Huckaby, daughter of Lyndon and Linda Huckaby, and Courtney Tanksley, daughter of Spencer and Linda Tanksley, also participated in the Senior nontailored daywear construction and Junior 1 dressy categories respectively.

Accompanying these 4-H'ers to Lubbock were Carol Cox, Linda Huckaby, Linda Tanksley and Kandy McWhorter, county Extension agent.

"Congratulations to these 4-H'ers on a job well done!" said Ms. McWhorter.

read by Ruby Green.

Among those listed as ill were Arnold Morris and Eric Thompson, who have had recent surgery. The mother of the Rebekah Assembly president, Marie Mason, is seriously ill. Bob Mitchell is recovering.

A discussion was held regarding several upcoming events: Ruby Green is getting together the recipe book which will include good recipes and other ideas. She asked each member to include a few story lines about cooking.

Dimple Sims is working and planning for a noon meal to be offered to the public from 11:30 a.m. until 1:30 p.m. on Monday, August 17 at the Lodge Hall. The cost will be five dollars for adults, three dollars for children 12 and under. The menu will consist of roast beef, gravy, buttered potatoes, corn, green beans, bread and fruit salad.

The Rebekah Lodge encourages everyone to go out for this home cooked meal. You may contact a member for tickets or purchase tickets at the hall on the 17th. Fern Davis is in charge of the tickets.

Opal Talley and Adele Tompkins head the committee to ensure paper goods are on hand and the kitchen is prepared for these dinners as planned.

Novella Price will be chairperson for the Thanksgiving dinner menu planning. The dinner has been scheduled for Thursday, November 5.

On Thursday, August 13, at 7 p.m. all Rebekahs and Odd-fellows and guests are urged to attend the Circle 7 open house. All members are requested to take a dish and each lodge is asked to take a form of entertainment.

Everyone was reminded of the "Annual Under the Stars" at the Ned Houk Park in Clovis August 15 at 6:30 p.m. All members are asked to take a dish and enjoy an evening of fellowship.

Novella Price read a poem of "Hevens Grocery Store" which it was reported to be enjoyed by all those present.

Thursie Reid and Ona Berry conducted the program which included a Hat Parade. Hats and dress according to the type of hat worn by members. Lena Hawkins has a reading and the program was concluded with Ona Berry as Betsy Ross with a needlepoint flag.

The meeting was closed with a prayer by Pat Langfitt.

Reed Returns From ENMU Orientation

Lynette Reed of Sudan recently returned from Eastern New Mexico University in Portales, N.M. where she attended orientation. These sessions involved math placement test, music theory test and English, student affairs, and visiting sororities on campus. She also attended the Intra-Fraternity Council dance.

After testing, she qualified for ENMU Honor Courses. Ms. Reed's parents, Willie and Rosa Dell, attended the orientation

Muleshoe
Fire Department
Auxiliary
By: Becky Churchman

The Muleshoe Fireman's Auxiliary met Tuesday night August 4th. The meeting was called to order by the vice president Leavell Parker. Which was followed by roll call given by Elaine Parker who then gave the minutes. The minutes were read and approved. A treasurer's report was given by Brenda Stephens. And they stood approved.

The auxiliary will have a concession stand on Mule Day at the Civic Center during the Fireman's Playday events. We will be serving cokes and chili dogs from 11:00 to 3:00 or till the games are over.

We will be having the six men pugger team races, three man or woman as the case may be hose lay races, and water polo. That afternoon, we would like to invite everyone to come out and enjoy the fun.

It was voted to have a cookout for the auxiliaries families on the 29th at the fire station. We will be cleaning the station on the 24th at 7:00 p.m.

Our guest was Carrie Drager from Texico. Who showed Prke Lane jewelry. We would like to thank her for coming.

Refreshments were served by Deanna Rasco and Barbara Reeder. We enjoyed a delicious lemonaid pie and another fruit dessert that was very good.

The door prize was won by Ann Clements. She got a very nice rug with little ducks on it.

The meeting was adjourned by Cindy Magby.

Girl Scouts Plan Busy August

Muleshoe Girl Scouts have planned a full month for August. Activities began on Saturday, Aug. 1 with a Brownie workshop at the Girl Scout Hut. They also had a float in the Mules Days Parade Saturday, Aug. 8.

Coming activities include a workshop at Plainview on Thursday, Aug. 20. It will be Outdoor Fun for Juniors and Plants and Animals for Brownies. Scouts will earn these badges. Nelda Merriott said "I hear that some troops are planning on going to the waterslide afterwards."

Cost for the workshop is two

dollars and the cost to get in to waterslide is six dollars. Those planning on attending are asked to get in touch with Renee' Rudd at 272-5214 after 5 p.m. or Mary Franklin at 272-4316.

Saturday, August 22 is the Service Team School. Those needing to attend are: Rosa Guillen, Cheryl Puckett, Mary Franklin, Renee' Rudd, and Nelda Merriott. "Anyone else who wishes may attend." The meeting will be held at Westmount Christian Church at 4808 Utica in Lubbock from 9:30 a.m. to 1 p.m. (Turn North on Utica off 50th Street).

Monday, August 24, all Girl Scouts are needed at the Girl Scout Hut at 7 p.m. to practice for the bridging ceremony.

Open House will be held at the Girl Scout Hut on Thursday, August 27 at 7 p.m. Refreshments will be served and the public is invited, this will be followed by an Appreciation to Muleshoe ceremony at 7:30

p.m. Following will be the Bridging Ceremony, which is a pretty ceremony in which the girls advance into the next rank. "All leaders and girls are needed at the Scout Hut" Mrs. Merriott continued. "Please come!" "All family and friends are also invited."

Saturday, August 29 is Leaders and Mothers Day. This will be a fun day at the Wildlife Refuge. Don Clapp, manager of the Wildlife Refuge has a very interesting tour planned. Anyone interested in helping to make this a fun day are asked to meet with the Girl Scouts at the Girl Scout Little Hut at 9 a.m. The group will leave at 9:30 for the refuge. Everyone is asked to take a sack lunch.


A reception is planned in Lubbock on Sunday, Aug. 30 for Myra Burris, the new lady in charge at the Caprock Council. The reception will be held at the Texas Tech Museum from 2 until 4 p.m. "Everyone is urged to attend".

Kids SPS Cooking School

Ages 6-13
Monday, August 10th
1:30 - 3:00 P.M.
Trinity Baptist Church
312 E. Ave B

Learn to prepare recipes. Then have tasting of prepared food.

Kay Davis
Home Economist



FREE HEARING TESTS FOR SENIOR CITIZENS

MEET AT
WESTERN DRUG — MULESHOE
114 MAIN
Wednesday, August 13, 1987
COME BY OR CALL 272-3106 7:30 a.m. 10:30 a.m.
10 DAY FREE TRIAL 12 BRANDS TO CHOOSE FROM
SATISFACTION GUARANTEED

Sponsored by
LIVINGSTON HEARING AID CENTER

1903 19TH LUBBOCK TX 79401 806 762 2951
606 B QUINCY PLAINVIEW TX 79072 806 293 8874

RICHARD R. DAVILA
CERTIFIED HEARING AID AUDIOLOGIST

Summer Merchandise

1/2 Price

Lookin' Good

206 Main 272-5052

Get Away to Casual Luxury at the Most Exclusive Beachfront Condominium Resort on Galveston Island.



CALL TODAY FOR SPECIAL SEASONAL RATES

- All Condos are Beachfront
- Two Lighted Tennis Courts
- Efficient, 1-2 and 3 B.R. Units
- Miles of Sandy Beach at Your Door
- Quiet Location, Away From Traffic and Commercial Development
- Only 3 Minutes to Downtown Galveston
- Soundproof Design
- Only 50 Minutes From Houston's Hobby Airport
- Large Heated Swimming Pool
- Only a Few Minutes to Port Holiday Mall, Golf, Fishing, Sea, Arama Marine World, Galveston's Eabled Historic District, Nightclubs and Restaurants
- Hot Tub, Jacuzzi, Overlooking Gulf on Elevated Deck to Afford Privacy With a Spectacular View

Sales Information or Reservations Call 409/765-6161


THE GALVESTONIAN

1401 East Beach Boulevard • Galveston, TX 77550


True Value

Carnival of Values


Sale Runs Thru August 15th
The best protection your home can wear




10.98* Gallon
Flat Acrylic Latex House Paint stands up to tough weather. White, ready-mixed colors. HPS




11.98* Gallon
Satin Acrylic Latex House Paint sheds dirt, so low sheen stays beautiful. SEP




13.98* Gallon
Gloss Acrylic Latex House Paint for exterior siding, trim, shutters. GHP



1.99
18-Kt. Gold Plate Spray Paint makes picture frames gleam with gold look. 765



1.99 Pack
While Supplies Last
Coverall® Banana Bags™ in 4 sizes for storage. 2-mil thick. With ties. 60340 45 60
QUANTITIES LIMITED



4.98 Your choice
Red Metal Primer seals out unwanted moisture to prevent rust. Quart. 1267
Aluminum Paint prevents rust. Perfect for hot pipes, radiators. Quart. X010
Gloss Rust Enamel protects metal and wood. Crack and peel resistant. Qt. X0
Pint X0 3.98 1/2-Pint X0 1.98
Spray Enamel puts a glossy finish on wood and metal. 16 fl. oz. X0 2.78

Fry & Cox, Inc.

401 S 1st
272-4511

Muleshoe Squares

By Elizabeth Ann T...

Muleshoe Squares dance night scheduled for Thursday, Aug. 13 has been cancelled. Our club caller will be out of the area as well as a number of members who plan to attend the Annual Square and Round Dance Festival in Ruidoso, N.M. August 14, 15 and 16.

We wish to thank those who have purchased our state festival tickets over the years. This is our only money raising activity, and the proceeds are used to promote square dancing with a percentage being return-

Jesko Family

Reunion Held

At Hereford

The 36th Jesko family reunion hosted by the Koelzer family was held on Saturday, Aug. 2 at the Bullbarn in Hereford. Ninety family members were in attendance.

Those attending were from Lubbock, Amarillo, Dalhart, Plainview, Hereford, Friona, Bovina, Muleshoe, Clovis, N.M. and Eglin Air Force Base in Florida.

Prizes were given for traveling the farthest distance, Catherine Anstatt and daughter; for the oldest of the first generation, Ida Jesko; for the youngest person in attendance, Eva Elizabeth Anstatt, three weeks old; for the tallest lady, the shortest man, the baldest man, the female with the longest hair, and the youngest bride and groom, winner had been married three weeks.

Items given as prizes were hand crafted by members of the family, Jim and Judy Sewell of Plainview.

The next Jesko reunion is scheduled for the first Sunday in August 1988.

ed to the local club helping to defray club expenses.

We always hope that the lucky ticket number will be local or in our area. We are sorry your number didn't win, but thanks for your support. This years winners were Ed Hull, Weatherford, TX the 1987 Cadillac, Eiko Hollis, San Antonio, TX, the 1987 Chevrolet S-10 pickup, and Carolyn McCall, Dallas the \$2,000.00 gift certificate.

Two of the winners were square dancers and the other bought their ticket from someone selling them on the shopping center parking lot. Wouldn't it be nice to receive a call notifying you that you had won??

August 13 Muleshoe Squares Dance--cancelled; August 21 and 22--Curry County Fair, Clovis, N.M. 8 p.m. (CDT), callers, James Pettus and Bobby Graham; cuers, Jack Orio and Herschel Wall.

August 27, Muleshoe Squares Dance, American Legion Hall, Muleshoe 8 p.m. (CDT) caller James Pettus.

August 28, Pettus Plus, Farwell Community Center, Farwell, TX 8:30 p.m.(CDT) caller James Pettus.

September 3, Roosevelt County Fair, Portales, NM, cuer Jack Orio, Prerounds 8 p.m. (CDT) caller James Pettus, Squares 8:30 p.m. (CDT).

SMILES

Only Once

"Were you ever bothered by athlete's foot?"
"Once--when a football player caught me out with his girl."

Has A Point

Professor: Can you tell me something about the word "statistics"?
Sophomore: Well, they're something like a bikini--what they reveal is interesting, but what they conceal is vital.



COUPLE CELEBRATES ANNIVERSARY--Mr. and Mrs. Dee Brown of Muleshoe will celebrate their 50th wedding anniversary with a reception Sunday, August 16, in the Bailey County Coliseum in Muleshoe. Mr. and Mrs. Brown will receive friends between the hours of 2 and 4 p.m. Hosting the event will be their children, Mr. and Mrs. James Brown and Mac Brown, all of Muleshoe. Brown and the former Dorothy Harris were married August 15, 1937, in Texico, N.M. They have seven children.



Bobby Harold Grumbles, III

Mr. and Mrs. Bobby Grumbles, Jr. are the proud parents of a son born at 9:42 a.m. Wednesday, July 22 in Lubbock General Hospital.

The young man weighed eight pounds and nine ounces and was 20 inches long. He has been named Bobby Harold Grumbles, III.

Grandparents are Mr. and Mrs. Charles Jones of Amarillo and Mr. and Mrs. Bobby Grumbles, Sr. of Muleshoe.

Great grandparents are Mr. and Mrs. Buddy McLaughin and Mrs. Lavaner Kinard of Floydada.

Ramon Salcido, Jr.

Ramon and Anita Salcido of Friona are the proud parents of a son born at 4:33 p.m. Thursday, July 30 in South Plains Hospital in Amherst.

The young man weighed eight pounds and three ounces and was 22 inches long. He has been named Ramon Salcido, Jr. He has a sister, Veronica Ann, who is one year old.

Maternal grandparents are David and Ramona Bautista of Friona and paternal grandparents are Maude Jesses and Prisciliano Salcido of Mexico.

Bobby Lynn Armstrong, Jr.

Bobby and Maria Armstrong of Bovina are the proud parents of a son, Bobby Lynn Armstrong, Jr., who was born at 2:05 p.m. Tuesday, July 28 in South Plains Hospital at Amherst.

Bobby Lynn weighed six pounds and 11 ounces and was 20 inches long. He has two sisters, Amanda Lee, two years and 10 months, and Maria Elena, one year and 10 months.

Maternal grandparents are Sandiago and Maria Lucio of Farwell and paternal grandparents are Donald and Emmy Armstrong of Muleshoe.

MICROWAVE COOKING

By Linda Attaway
In choosing cookware for your microwave oven, be extremely careful not to choose items that have metal in them.

Microwaves cannot pass through metal and "arcing"—electrical sparks shooting from the metal—could damage your oven.

Most kitchen cupboards contain an abundance of items that may be used safely inside a microwave oven.

Glass measuring cups, ceramic bowls, plastic containers, and paper items are all safe because they "transmit" the microwaves (allow them to pass through the container).

TOPS CLUB

Muleshoe TOPS Club chapter Number 34 met at 6:00 p.m. Thursday, August 6 in the Heritage Thrift Shop. Laverne James, leader, called the meeting to order. The TOPS pledge was recited and the fellowship song sung.

Orvide Burris called the roll with 14 members giving the amount they had lost or gained. Thresia Davis read the minutes of the previous meeting and they were approved as read.

Jean Kemp was named best loser for the week. Runners-up were Rose Sain, first, and Evelene Harris, second.

Mrs. Sain was named monthly best loser. First runner-up for the month was Ruth Clements and second runner up was a tie between Mrs. James and Mrs. Burris.

Nan Gatlin was named KOPS

Queen for the month of July.

The fish contest ended and those putting on a skit for the club will be Retha Knowles, Johnnie Ivy, Ernestine Steinbock, Jackie Jean Whatley, Ruth Clements and Wanda Kemp. An auction will be held next week and everyone is asked to take a gift.

Lori Burgess presented a program on South Africa. It was reported that everyone enjoyed the program. She was presented a gift from the club.

The meeting was closed by singing the goodnight song.

NOTES ... COMMENTS

As a rule, the bigger the talker the smaller the brain.

Too many geniuses make for inefficiency.

In case of doubt, don't borrow and don't lend.

Ben Franklin

Better quality for less

Mon.-Sat. 8 a.m.-8 p.m. Sun 12-5 p.m.

272-3855

2104 W. Amer. Blvd.

Your Complete Back To School Headquarters

Imaginary Line Tablet

For 1st, 2nd & 3rd Grades
Special 77¢

Aladdin

School Lunch Kits With Thermos Bottles
Special \$4.77

2 Pcket

Portfolios
8 For \$1.00

70 Sheets

Composition Notebook By Mead
3 For \$1.00

Trapper Keeper Data Center

By Mead
Special \$3.77

Kleenex Tissue

175 Count White & Assorted
Special 87¢

School Sissors

Blunt & Sharp Point
Special 69¢

See Through

Binder Black Or White
Special \$1.99

Snoopy Pencils

Pkg. of 4
2 Pkgs. For \$1.00

Garfield Erasers and Jumbo Pencils

Two Per Pkg.
2 For \$1.00

Country Crafts & Gifts
Dejon Cole
Craft Supplies Class Instruction
Delivery Available
New Location
No. 9 Highland Shopping Center
Main & Manana Clovis NM 88101 (505)762-2277

Figure Perfection Salons International
2401 N. Main Clovis 769-2105
O.K. GALS. . .
VACATION TIME IS ABOUT OVER. . .
IT'S STILL TIME FOR OUR SUMMER SPECIAL
12 WEEKS \$200.
EVERY DAY FOR AN HOUR AT THIS SPECIAL LOW LOW PRICE.

You said it was cold... He thought you called him old.

To someone with a hearing loss, a casual remark can often lead to misunderstandings and hurt feelings. Feelings you may never be able to set right. Because even though a friend or relative may hear what you say, he or she may have trouble understanding certain words. And one misunderstood word is all it takes.

Why take the chance? Be a good friend. Show someone how much you care. Call Beltone and make an appointment for a loved one now. Many hearing problems can be helped.

Free Hearing Tests
Friday, August 14, 1987
10A.M.-12P.M.
Beltone®
Call Now For An Appointment To Avoid Waiting
Bailey County Coliseum
272-4114

Playmates LIQUIDATION SALE

• All Sales Final
• No Lay-A-Ways

Portales Location Only...
Bargains Storewide!!
Further Reductions

UP TO **75% OFF**

Playmates
1015 W. 2nd, Portales

Come In & Register For A 19" Colored TV, Camera, and \$250 in Gift Certificates To Our Clovis Store

Bill Sarpalius

Cont. from Page 1

amendments that would be on the ballot in November, including two bond amendments; an amendment on the super-colider and an amendment to allow the exchange of state land for private land.

He spoke about the prison system, and said crime had increased over 90 percent in the state in the last 10 years. "Texas has the third largest prison system in the world," he added. The latest session of the legislature saw an approval for an additional 8,500 prison beds.

Muleshoe...

Cont. from Page 1

"The Chamber of Commerce and Agriculture wishes to remind everyone that the clean up campaign is not over, but is an ongoing effort," said Toni Eagle, CofC manager.

"Muleshoe has tourists passing through town every day, and we are in need of those people stopping," she continued. "Also, Mule Days is just around the corner and we need to insure that Muleshoe looks 'her' best.

"Take time to check the area around your business and home. If you need help with the work, call the Chamber office and hire a YES worker to assist you."

Caution

A modern country is one which bans fireworks and produces nuclear bombs.

-Tribune, Des Moines.

He said Dalhart has proposed they be the site of a new maximum security prison; while Tulia has proposed their location for a new minimum security prison.

"I am convinced that one reason the prisons are overcrowded is that Texas has the weakest juvenile system in the nation," added Senator Sarpalius. "When a juvenile commits a violent crime, his average stay in the TYC is seven months."

He also said that 85 percent of the prisoners in Texas prisons are school dropouts. He cited the Dallas school dropout rate is 50 percent; and is 45 percent in the state overall.

He said the state is working on a whole new juvenile system.

He touched briefly on agriculture, and of new legislation to make it somewhat easier on farmers in the application of chemicals. He also said the use of 2-4-D is controlled by state regulations.

Another startling statement by the senator was that "Texas leads the nation in teenage pregnancies."

Before Senator Sarpalius left the meeting for Littlefield, he was thanked by Hubert Kidd for helping on the Telephone Enabling Act; and Dave Marr thanked him for his help on the Bailey County School District Project.

Senator Sarpalius said if the state went back into another special session, maybe the hospital district project could be brought before the legislature and hopefully, be approved.

Re-Training

Cont. from Page 1

waiting in this area upon his completion," Martin noted. "And a lady who had been farming with her husband and had not finished college - we're helping her finish and she has an offer to teach in an

Bus Beautification Listed On Agenda For School Board

Members of the Board of Trustees of the Muleshoe Independent School District will meet at 8 p.m. on Monday, August 10, in regular session, in the temporary school administration offices located in the Watson Junior High School gym foyer.

Under business items will be considering awarding bids for reroofing Watson Junior High, Muleshoe High School cafeteria and the bus barn and informational reports will include school improvement update. Also, board members will consider setting the price for lunches for the coming year.

Financial reports on all phases of school operation will be given and the 1987-88 proposed school budget will be reviewed.

Following the tax collection report, board members will consider appropriate personnel action, including considering accepting resignations and employment contracts.

Special reports will be given by the school board president and the superintendent of schools and a report on bus beautification.

independent school district when she's through."

Martin said during last year's pilot program, 82 farmers or farm wives were assisted. Forty of those opted for classroom training and 42 chose on-the-job training.

"We had a 90 percent employment rate and a \$6.35 average placement wage," said Martin, who became program coordinator about three weeks ago.

"If this three-month period is successful, we're hoping to receive a much larger grant," said Martin, who explained that the success will be judged by the number of applicants and placements.

"We will not just be spending our money on a few, but will be spreading it as equally as we can," he continued. "This is not a welfare program. We want to get a productive person back in the work force as fast as we can."

Martin said some who have farmed all of their lives or who were nearing retirement age when the farm failed do not believe that they are capable of other occupations.

"It is a devastating feeling for these people, and depression can set in when they feel down on their luck and think there's no hope," Martin said. "They have more experience than they realize. All we need to do is get with them to show them. I feel that our association can give them hope."

City, County Get Liquor Rebate

State Comptroller Bob Bullock late last week sent checks totaling \$10.9 million to the 219 counties and 430 cities as their share of the state's 12 percent mixed drink tax collected during the second quarter of 1987.

Bullock said the state collected \$45.3 million in mixed drink taxes for the second quarter, compared to \$50.7 million collected during the same period in 1986.

Bailey County remitted \$5,526.52 to the state and their share of the tax was \$690.82; and Muleshoe remitted \$4,338.73 to the state and received a check for \$542.34.

For Cochran County, the remittance was \$861.69, and the county received \$107.71.

Lamb County remitted \$6,268.68 and received a check in the amount of \$783.59; and Littlefield returned \$3,956.90 to the state and received \$494.61.

According to the Comptroller, Parmer County remitted \$588.12 in taxes, and received \$73.52.

Texas cities and counties each receive a 12.5 percent share of the tax collected on mixed drinks sold within their bound-

2-4-D...

Cont. from Page 1

prohibition of the pesticides containing 2-4-D; or may restrict the use of such pesticides to persons licensed to apply the pesticide.

He anticipates commissioners court will hold a public hearing in the last quarter of this year to see what the public wants them to do about the problem.

aries under the law that legalized the sale of mixed drinks in the state.

Of the total \$45.3 million in state collections, counties received \$5.6 million, down from the \$6.3 million received in the second quarter of 1986. Cities received \$5.3 million, down from the \$5.8 million rebated to cities last year during the first quarter. The \$34.4 balance was deposited in the state's general revenue fund, down from \$38.6 million collected in the second quarter of 1986.

The mixed drink tax is collected by the Alcoholic Beverage Commission. City and county rebates are sent out quarterly by Bullock's office.

Shultz Defends Reagan

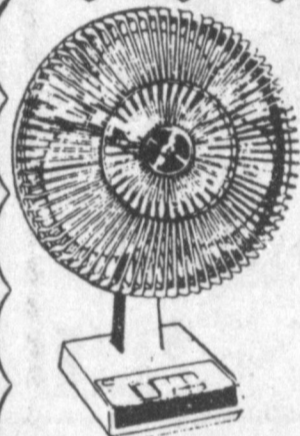
Secretary of State

George P. Shultz said that he found recent revelations about the Iran-Contra affair

"sickening." He also defended the Reagan administration's foreign policy, denying that the details emerging from the congressional hearings sum up the administration's approach to foreign affairs.

Needs Help in Gulf

The United States has asked West Germany and Japan to help defray the cost of the Persian Gulf protection program. Rozanne L. Ridgway, assistant secretary of state, said The Netherlands told the United States that it might be willing to deploy ships in the Gulf if the need arose.



12" 3 Speed Oscillating Fan

Now Just:

\$24⁹⁹

Reg. \$28.95

Adjustable head Full 90° Turning No. 1200 Lakewood, Eng.

A legend in jeans.

Wrangler

Cowboy Classic



For:

\$10⁴⁹

Regular or Slim

Make Your Lawn Green as can be with "Turf Magic" Super Lawn Food

At: \$5⁹⁹

40 Lb. Bag Covers 6,000 sq. ft.

SUPER LAWN FOOD

WEED EATER

14" cutting path Gas Trimmer

Now: \$84⁹⁹

Reg. \$104.99

No. 1400

- 22.2 cc engine
- 14" cutting path
- 34" drive shaft
- Direct Drive
- 11.5 lbs.

GALAXIE BUG KILLER

25 Watt Insect Killer

At: \$31⁹⁹

Reg. \$37.99

RAIN TRAIN metal traveling sprinkler

Just: \$44⁹⁹

Reg. \$61.99

NEILSON RAIN TRAIN 200 metal traveling sprinkler

Maximum coverage 1000 sq. ft.

Adjustable arms give coverage width from 15 to 55 ft.

Follows pattern laid out by hose.

Extra powerful - cuts hose easily up.

Plastic "rain" covers.

22 forward speeds and a neutral for maintenance use.

No. 1860

HOMELITE

3 1/2 HP Jacobsen Lawn Mower

Now: \$279⁹⁹

No. S21

3-bushel rear grass catcher

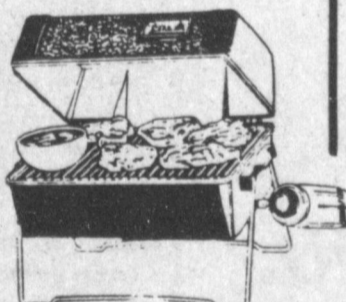


Turco OUTDOOR GAS GRILLS

The Toter Gas Grill

For: \$19⁹⁹

Reg. \$24.99

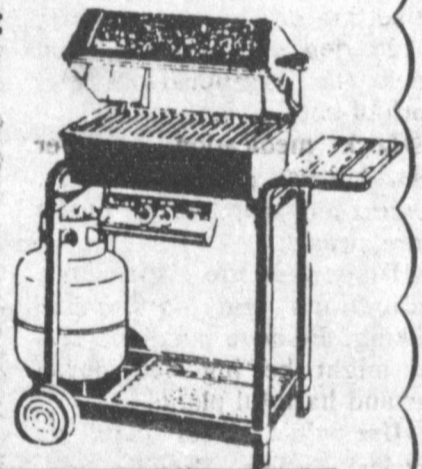


All Propane Gas Grills

Now \$20⁰⁰ Off

Entire Inventory On Sale.

Table Top Excluded



A legend in jeans.

Wrangler

Student Cowboy Cuts

For Only:

\$12⁸⁸

Reg. \$17⁹⁹



NO. 13MWZS

HOMELITE

Weed Trimmer

At Only: \$44⁹⁹

Electric

No. ST-60

Reg. \$59.99



RUDDOCK

Shirts

"NEW"

Short Sleeved Snap or Button Shirt

Regular \$10⁹⁹

Regular Sizes:

Big Men's \$13⁹⁹

No. 91015

Choose From: Stripes, Solids or Plaids



Nelson Knitting Co.

Cushioned Crew Socks

Only \$1⁴⁹

Reg. 1.99

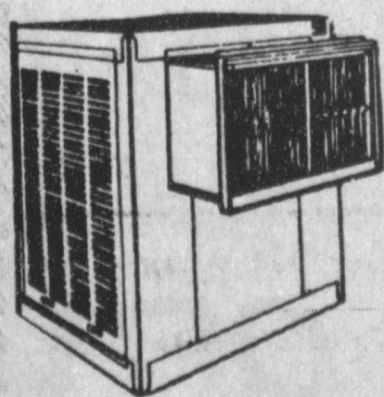
No. 1500



Any Air Cooler in Stock is on Sale

"SAVE" \$25⁰⁰ Off

On Evaporative Air Coolers



A legend in jeans.

Wrangler

Cowboy Cut Jeans Western Comfort

Just: Regular \$13⁴⁹

Sizes:

38" Inseam \$14⁴⁹

No. 1860



Farm & Ranch Supply



VISA

DISCOVER

MasterCard

All Stores Open Monday - Saturday 7:30 A.M. - 6: P.M. Sundays 12:30 - 5:00 P.M.

2600 Mabry Dr., Clovis, N.M.

1-505-762-7717

1601 S. Ave. D. Portales, N.M.

1-505-356-8543

1302 W. American Blvd. Muleshoe, Texas

1-806-272-5571

Caring For A Dementia Victim - Make Home Safer

Taking a bath, cooking a meal and walking around the block -- these are just some of the things taken for granted in every day life. But for the victims of dementia, even ordinary activities can cause increased agitation and eventually become dangerous.

According to the National Institutes of Mental Health, dementia is a brain disorder which affects about one out of seven older families. Fifty percent of the cases are probably Alzheimer's Disease. This incurable disorder results in a progressive memory loss which eventually leaves the victim unable to function normally.

"Managing a loved one with progressive dementia isn't easy. It involves understanding the disease, patience and skill," says Dr. Judith Warren, a gerontologist with the Texas A&M University Agricultural Extension Service.

She explains that impaired people must be monitored constantly, because of the problems their memory loss invites, so it's important for family members to inventory possible sources of danger in the home. These dangers include high windows, stairs, power tools, appliances, knives, hot water, poisons, firearms, matches, medications, small objects, loose rugs, and improper lighting.

To make the dementia victim's environment safer, the specialist advises taking the following steps:

• Secure high windows and install gates at stair entrances.

• If the victim is still functioning enough to use appliances such as a hair dryer or electric razor, supervise the activity.

• To prevent burns, ask the utility company to alter the stove so the dementia victim cannot easily turn it on. Lower the setting on the water heater to 120 degrees or lower, and check the temperature and depth of bath water.

• Lock medication, power tools, knives, poisons, liquors, firearms and matches out of the victim's reach.

• Dispense the person's medications and supervise smoking. Remove small objects that might be ingested, loose rugs and harmful plants.

• Use child proof caps on electrical outlets. Provide adequate lighting in all areas and use night lights in hallways and bathrooms.

The gerontologist notes that some dementia victims tend to wander to relieve the tension of their confinement. In that case, an 8-foot wooden fence completely enclosing part of the yard will provide a safe space for the victims to wander outside.

For safe outside activity, the person should wear well-fitted shoes with nonskid soles. If the ground is very uneven or if a walker is necessary, consider adding a smooth sidewalk.

The specialist also suggests adding a porch swing or rocking chair under a sheltered area for a rest spot, since the back and forth motion seems to have a calming effect on many dementia victims.

"Keeping the home environment safe also means that the care giver should not be overwhelmed and exhausted," emphasizes Warren. "Health care

Louise Ellis Muleshoe Native Dies

Funeral services for Louise Ellis, 49, of Hart were held at 2:30 p.m. Friday, Aug. 7 in the Hart Church of Christ with Roy Shave, Church of Christ minister of Hereford, officiating.

Burial was in Muleshoe Cemetery under the direction of Ellis Funeral Home of Muleshoe. Mrs. Ellis died at 1:28 p.m. Wednesday in Lubbock General Hospital.

Born Feb. 13, 1938, in Muleshoe, she moved to Hart in 1968, from Muleshoe. She married Vernon Ellis on Dec. 21, 1957, in Muleshoe. She was a homemaker and a member of the Hart Church of Christ.

Survivors include her husband, Vernon; a daughter, Tiwana Kay Ellis of Hart; her mother, Lela Gatlin of Portales, N.M.; and a sister, Mrs. Faye Nunn of Portales, N.M.

professionals and community groups such as the Alzheimer's Disease and Related Disorders Association (ADDA) can offer some good ideas and advice. Care givers can also make use of community services as home health agencies, adult day care and private sitters to provide needed relief time.

Mike Sullivan, Governor of Wyoming, on drinking age:

"I think there's a basic sort of conservative state's rights view of Wyoming, and we probably have a little more respect for our 19- and 20-year-olds than other places."

Phil Gramm, Senator (Tex.): "Balanced budgets are like going to heaven, everybody wants a balanced budget but nobody wants to do what you have to do to balance the budget."

Immaculate Conception Catholic Church

Father Patrick Maher
Northwest of City

First Baptist Church

220 West Ave. E.
Barry Bradley, Pastor

Emmanuel Baptist Church

Iglesia Bautista Emmanuel
107 East Third

Isaias Cardenas, Pastor

Trinity Baptist Church

311 E. Ave. B.

Rev. V.L. "Buster" Huggins

Circle Back Baptist Church

Intersection FM 3397 & FM 298
946-3676

Calvary Baptist Church

1733 W. Ave. C

Rev. Darrel Martin

Muleshoe Baptist Church

8th and Ave. G.

Bob Dodd, Pastor

Progress Baptist Church

Paul Brigham, Pastor
Progress, Texas

Richland Hills Baptist Church

17th and West Ave. D.

David McAdams, Pastor

St. Matthew Baptist Church

Corner of West Boston & West Birch

M.S. Brown, Pastor

Progress Second Baptist Church

1st and 3rd Sunday
Clifford Slay, Pastor

The Community Church

Morton Hwy.
H.D. Hunter, Pastor

Get Garden Pesticides Out Of Your Clothing

When you're dusting the roses or spraying the trees, it's easy to get pesticides on your body as well as the plants. Taking a shower removes the pesticides from you -- but what about your clothes?

"Spills and spray from common garden pesticides contaminate clothing, so it must be specially treated to avoid potential health hazards," says clothing specialist Dr. Ann Beard.

"It's best to change clothes in the garage, if possible, and put contaminated clothes aside before going inside to shower," advises the Texas A&M University Agricultural Extension Service home economist.

"Don't put the clothes in the hamper to wash with the family

laundry," she cautions. "Research shows that pesticide residues are transferred from contaminated clothing to other clothing, especially when laundered together."

Pre-washing will help remove pesticide particles from the fabric, advises the specialist. You can pre-wash clothes outdoors by hosing them down or soaking them in a bucket, or bring them inside to machine wash on the pre-wash cycle.

She emphasizes that pre-washing is highly recommended when a wettable powder-type pesticide concentrate spills on clothing, because it clings to clothing fibers.

"Pesticide residues from less toxic or dilute pesticides can usually be washed out in one machine washing," says Beard. "However, use both pre-wash-

ing and several machine washings on spills from wettable powder or concentrated liquid pesticides."

According to the specialist, how you machine wash the clothes is important too. Washing them in hot water will remove more pesticide than washing in warm or cold temperatures. Cold temperatures in particular, are relatively ineffective in removing pesticides from fibers.

Use either a liquid or powder heavy-duty detergent containing phosphate carbonate to wash clothes. Laundry additives such as bleach can be added, but they don't help remove the pesticide residues.

Beard also advises using a full water level on your machine, even if you have only one or two contaminated garments. That will allow the water to thoroughly flush the fabric.

The heat from either line-drying or machine-drying will provide further chemical breakdown of pesticide residues, she

adds. "After you've washed the clothes, a pesticide carry-over to other laundry loads is possible," notes the specialist. "Rinse the washing machine with an empty load using hot water and detergent, just as you did the contaminated clothes."

"Exposure to garden pesticides can cause skin rashes, headaches, nausea and a number of other problems," says Beard. "It just makes good sense to adequately wash gardening clothes so these hazards are minimized."

Laws and commandments, in some people's opinions, were made to guide some other fellow.

When you pay your taxes, do you ever stop to think of what you are contributing to?

A good meal often changes an individual's entire viewpoint on life and its problems.

Likeness

The artist is capturing the physical likeness of this lovely girl on her paper. The likeness is amazing. But her inward beauty, her wonderful Christian heart and soul, can only be captured fully on God's canvas. The Bible says that "Man looketh on the outward appearance but God looketh on the heart."

How would God's painting picture you and me?

One good way to improve your heart condition is to attend church and hear God's word proclaimed from the pulpit. Learn God's plan for your life by listening to His word. We invite you to attend the church of your choice this week.

EVERYONE IN THE CHURCH
THE CHURCH IN EVERYONE

The Church is God's appointed agency in this world for spreading the knowledge of His love for man and of His demand for man to respond to that love by loving his neighbor. Without this grounding in the love of God, no government or society or way of life will long persevere and the freedoms which we hold so dear will inevitably perish. Therefore, even from a selfish point of view, one should support the Church for the sake of the welfare of himself and his family. Beyond that, however, every person should uphold and participate in the Church because it tells the truth about man's life, death and destiny; the truth which alone will set him free to live as a child of God.

©Coleman Adv.

St. John Lutheran

Sunday School and Bible Classes 9:30 a.m.
Church services
Church Services 10:30 a.m.
Rev. Mae Bearss, Pastor

Lazbuddie Methodist Church

965-2121
Larry Raid Farris, Pastor

Templo Calvario

507 South Main
Sunday 10:00 a.m.
Sunday Evening 7:00 p.m.
Evangelistic Services
J.L. Soto, Pastor

Jehovah Witness

Priona Hwy.
Boyd Lowery, Pastor

New Covenant Church

Plainview Hwy.
Sunday 10:00 a.m.
Wednesday 7:00 p.m.
Jimmy Lowe, Pastor

Church Of The Nazarene

9th and Ave. C.
Dennis Hayes, Pastor

Longview Baptist Church

965-3413

B.C. Stonecipher, Pastor

Primera Iglesia Bautista

223 E. Ave. E.

Roy Martinez, Pastor

Lariat Church Of Christ

Sunday School 10:00 a.m.

Worship 11:00 & 6:00 p.m.

Wednesday Services 7:00 p.m.

Sam. Billingsley, Minister

Muleshoe Church Of Christ

Clovis Hwy.

David Alessandro, Minister

16th & Ave. D. Church Of Christ

Sunday 10:30 a.m.

Evening 6:00 p.m.

Wednesday 8:00 p.m.

First Assembly Of God

Rev. David C. McCune

9:45 Sunday School

11:00 Morning Worship

6:30 Evening Services

7:30 Mid Week Services

272-3984

Primitive Baptist Church

621 South First

Elder George Johnson, Pastor

Spanish Assembly Of God

East 6th and Ave. F.

Luis Campos, Pastor

First United Methodist Church

507 W. 2nd Street

Richard Edwards, Pastor

El Divino Salvador Methodist Church

5th and Ave. D.

Jose M. Fernandez, Pastor

1st Baptist Church

Lazbuddie, Tx. 965-2126

Gary Wilcox, Pastor

Lazbuddie Church Of Christ

United Pentacostal

Lighthouse Church

207 East Ave. G.

Rev. J.A. Torres

Western Drug 114 Main 272-3106			Dairy Queen 1204 W. Amer. Blvd. 272-3412
Serv-All Thriftway 401 W. Amer. Blvd. 272-4739	KC Mufflers Inc. 201 North First 272-3620	American Valley Inc. Hwy. 84 W. 272-4266	Kemp's Discount Furniture 414 W. Amer. Blvd. 272-5023
Farmers Spraying Service Lazbuddie 965-2624	West Tex Feed Yards 272-7555	Central Texico 221 W. Amer. Blvd. 272-3915	Fry & Cox, Inc. 401 S. 1st 272-4511
Main Street Beauty Salon 115 Main 272-3448	Lenau Lumber 202 E. Ash 272-4222	Bratcher Motor Supply 107 E. Ave. D 272-4288	Five Area Telephone Cooperative, Inc. 302 Uvalde 272-5522
Irrigation Pumps & Power West Hwy. 84 272-4483	Lindsey Jewelry 202 Main 272-3355	Foster Fertilizer Lazbuddie 965-2921	Bobo Insurance 108 E. Ave. C 272-4264

18. Legal

ADVERTISEMENT FOR BIDS MULESHOE MUNICIPAL AIRPORT STAGE I CONSTRUCTION CITY OF MULESHOE, TEXAS

The City Council of the City of Muleshoe, Texas, will receive sealed proposals for construction of the Muleshoe Municipal Airport Stage I Construction until 1:30 p.m., August 20, 1987, at the Council Chambers in the City Hall Building, Muleshoe, Texas, at which time bids will be publicly opened, read aloud and tabulated. Proposals should be addressed to the City Manager, City Hall Building, Muleshoe, Texas. The bids received will be considered by the City Council at its next regular meeting or at a special meeting as may be required. No bid will be received or considered if received by the City Manager after the hour of 1:30 p.m.

Copies of plans and specifications together with contract documents are available for public inspection at the office of the City Manager, City Hall Building, Muleshoe, Texas and at the office of Leedshill-Herkenhoff, Consulting Engineers, 500 Copper Avenue N.W., P. O. Box 1217, Albuquerque, New Mexico 87103 and may be obtained from the Engineer upon a deposit of Fifty Dollars (\$50.00) which will be refunded to each contractor submitting a bid upon return of the bid within ten (10) days after bid opening. Each bidder shall be prepared to furnish the owner with satisfactory evidence of his competency to perform the work contemplated if requested.

Each bidder will be required to submit with his bid, a certified check, cashier's check or bid bond in the amount of 5% of his bid, made payable to the City of Muleshoe, Texas.

The City Council agrees to carefully canvass and consider each bid submitted. In consideration thereof, no bids may be withdrawn after the scheduled closing time for receipt of bids for at least thirty (30) days.

The City Council reserves the right to reject any or all bids, to waive technicalities and to

accept the proposal it deems to be in the best interest of the City to accept.

Minimum wage rates on this project shall be determined by the U.S. Department of Labor Wage Rate Decision No. TX-87-39.

The proposed contract is under and subject to Executive Order 11246 of September 24, 1965, and to the equal opportunity clause, and the equal opportunity (Proposer) must supply all the information required by the bid or proposal form. The successful bidder will be required to submit a Certification of Non-segregated Facilities prior to the award of the contract, and to notify prospective subcontractors of the requirement for such a Certification where the subcontract exceeds \$10,000. Samples of the Certification and the Notice to Subcontractors appear in the specifications. Affirmative action requirements appear in the Instructions to Bidders.

Women will be afforded equal opportunity in all areas of employment. However, the employment of women shall not diminish the standards of requirements for the employment of minorities.

Contracts in Excess of \$50,000. A contractor having 50 or more employees and his subcontractors having 50 or more employees and who may be awarded a subcontract of \$50,000 or more will be required to maintain an affirmative action program within 120 days of commencement of the contract.

Additional Notices for \$1 Million Contracts.

A. Preaward Equal Opportunity Compliance Reviews. Where the bid of the apparent low bidder is in the amount of \$1 million or more, the bidder and his known all-tier subcontractors which will be awarded subcontracts of \$1 million or more will be subject to full, on-site, preaward equal opportunity compliance reviews before the award of the contract for the purpose of determining whether the bidder and his subcontractors are able to comply with all the provisions of the equal opportunity clause.

B. Compliance Reports. Within 30 days after the award of this contract, the contractor shall file a compliance report (Standard Form 100) if:

1. The contractor has not submitted a complete complian-

ce report within 12 months preceding the date of award; and

2. The contractor is within the definition of "employer" in Paragraphs 2e(3) of the instructions included in Standard Form 100.

The contractor shall require the subcontractor on all-tier subcontracts, irrespective of dollar amount, to file Standard Form 100 within 30 days after award of the subcontract if the above two conditions apply. Standard Form 100 will be furnished upon request.

FOR THE PURPOSES OF THIS CONTRACT SPECIFIC GOALS OF 1 PERCENT HAVE BEEN ESTABLISHED FOR MINORITY BUSINESS ENTERPRISES (EXCEPT WOMEN) AND A GOAL OF 0.5 PERCENT HAS BEEN ESTABLISHED FOR WOMEN'S PARTICIPATION EXCLUSIVELY. If the bidder or proposer does not meet or exceed these goals, or demonstrate why it could not despite its best efforts, that bid may be considered non-responsive and may not be considered for award of the contract.

The work to be performed on this project consists of two lots. Lot I involves the construction of runway, taxiway, airplane apron, and access road surfaces including all earthwork, seeding, markings, signing, underground electrical ducting, fencing, grading, and incidental items not described under Lot II. Lot II is comprised of the installation of all electrical items including the medium intensity runway lighting system, three-hundred light, lighted wind cone, beacon tower and light, and all electrical items required by the installation of electrical ducts under paved surfaces.

CITY OF MULESHOE, TEXAS
By Dave Marr, Jr.
City Manager

NEWSVIEWS

George P. Shultz, Secretary of State:

"The worst thing in the world that could happen to the United States is to be pushed out of the Persian Gulf."

Ronald Reagan, President:
"If all of Congress' spending measures turn out like these, this year's 13 appropriations bills won't be a baker's dozen, they'll be a 'Dirty Dozen.'"

Sudan New By Evelyn Ritchie

The members of the Sudan Church of Christ were in Shiprock, N.M. recently when they held a four day Vacation Bible School for the Navajo Indians. Attending from Sudan were John Harlan, Michael Conley, Janie Corley, Linda Wiseman, Misty Bartley, Suzanne Ried, Michol Maxfield, Kyle Maxfield, Jamie Ingle, Linda Locke, Mike & Denese McDonald, Rita Conley, Pudd and Kay Wiseman, Doris Pierce and Leonard Pierce. Others attending were from Littlefield, Whiteface and Muleshoe including Chad & Shana Ethridge, Kelly West, Shannon Stephens, Donnie Vaughn, Randy Vaughn, Jaynie Harmon and Lauren Corckery.

Visiting last week with Mr. and Mrs. Edwin Harper and Mrs. her brother, David Sager of Santa Fe, N.M.

Christa and Danielle, daughters of Susan Nettles of Lubbock visited some last week with their grandparents, Mr. and Mrs. Glen Cardwell.

Allyson, daughter of Debbie Bingham of Lubbock, visited last week with her grandparents, Mr. and Mrs. L.S. Fields.

Mr. and Mrs. B.A. Beauchamp visited recently in Mansfield, Ohio with their daughter, Mr. and Mrs. Gene Vickers, Kristi and Amy and with other friends and relatives.

Winonna Dudgeon vacationed last week in Ruidoso, N.M. as did Mr. and Mrs. Elray Rasco.

Visiting this week with Mr. and Mrs. Harold Haynie has been their grandson, Sean of Hobbs, N.M.

Arlene Grigsby of Guymon, Okla. visited last week with her children, Mr. and Mrs. Damon Provence and family, Mr. and Mrs. Darren Provence and family and her sister, Mr. and



DOLLIE RED READY FOR FESTIVAL--Dollie Red, who was the first mule pulled by Jeff Smith, is patiently waiting for the annual Mule Day Festival activities. Dollie Red is docile and cooperative, not like some of her compadres. Many mules, and donkeys were expected this weekend for the annual Festival.

Mrs. Bobby Carson and Angie and other friends and relatives.

Mr. and Mrs. John Williams, Mrs. Jay Ford and Jackeryn were in Medicine Mound during the weekend to visit their son and brother, Jim Williams, and also in Quanah to visit John A. Williams.

Mrs. Anita Gordon and Paula of Austin left Sunday after a few days visiting with their father-in-law and granddad, Waymon Gordon, and also with Mr. and Mrs. Philip Gordon, Jeff and Kay Lynn. Anita brought Waymon home following a visit there with them and attending a family reunion.

Caring For Muleshoe Area Families

Since 1959

Ellis Funeral Directors

272-4524

Pre-Need Funeral Plans

Monuments

Granite-Marble-Bronze

Surge!!

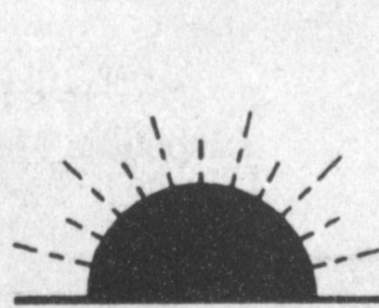
Irrigation!!

Wiedebush & Company

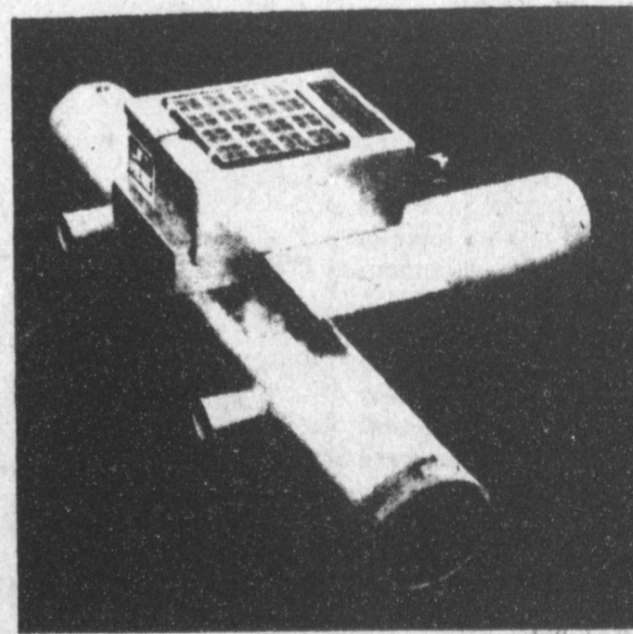
272-4611

Put The MMS, Inc. Surge Tee To Work For You!

It Watches The Water So You Can Do Other Things.



MINIMAL SUNSHINE
REQUIRED PER DAY
SUPPORTS THE LOW
LOAD M M S, INC.
SURGE TEE.



- Surge System Management Of Gated Pipe Water Offers Something Good For All Concerned.
- TO THE LENDER OF THE PRODUCTION MONEY: Lower Irrigation Expenses - Conservation Of Capital.
- TO THE LANDOWNER: Less Water Taken Out Of The Underground Supply.
- TO THE OPERATOR: Less Expense In Energy, Faster Coverage Of Ground, Cover More Ground With Available Water, Less Wear And Tear On Well.

LESS EXPENSE = MORE PROFIT

SURGE IS REVOLUTIONIZING FLOOD IRRIGATION
M M S IS REVOLUTIONIZING SURGE

NEW AMT 600

Carries a big load and a small list price



\$3,395

- John Deere AMT™ 600 All Materials Transport features 600 pound payload capacity on level ground.
- Adapts to many jobs.
- Landscaping.
- Plant maintenance.
- Construction.
- Hunting, trapping, fishing.
- Grounds care operations.
- High flotation, 5-wheel configuration for low ground pressure and stability.
- Four-wheel tandem drive for excellent traction.
- Locking differential for added pulling power.
- 1000 pounds of towing capacity.
- 8.5 hp (341 cc) gasoline engine.
- Tilting 43 x 48-in. box.
- Automatic transmission with reverse gear.
- Shock absorbing front fork design.
- Comfortable saddle seat with backrest for low fatigue operation.

Nothing Runs Like a Deere®



Dent & Co.

W. Hwy. 84

Muleshoe

272-4296

Bailey County Journal

Classified

Call 272-4536

CLASSIFIED RATES
Per Word.....\$15
Minimum Charge \$2.30

Consecutive Insertions
Minimum Charge \$2.00

CLASSIFIED DISPLAY RATES
\$1.75
Per Column Inch

DEADLINES
12 noon Tues.
For Thursday Paper
12 noon Friday
For Sunday Paper
We reserve the right to classify, revise, or reject any ad. Not responsible for any error after ad has run once.

1. Personals

MARY KAY COSMETICS Josie Flowers 272-3865. fl-49s-tfc
CUSTOM ROUND hay baling call after 7:00 Larry Free 925-6739. fl-18s-tfc
OFFICE SPACE & storage space for rent call 272-4754. s1-29s-tfc
MAKE THE friends of your dreams worldwide. Rush stamped envelope for free details!!! Young, P.O. Box 2511, Quincy, Ma. 02269. 1-32t-tfc
PIANO TUNING & Repair. Douglas Rittenberry; Technician for McBrayer - Day Baldwin, Amarillo Symphony, E.N.M.U., 15% Discount to farm families NO MILE-AGE 359-9878. 1-30s-4tsp
REGISTERED CHILD care available in nice location with large back yard and hot meals and snacks provided. References available, call Cynthia Quintana at 272-5430 or come by 124 W. 7th after 5:00. q1-32t-3tp

PROFESSIONAL CARPET CLEANING
Reasonable Rates
Free Estimates, Call Carlos after 5 mon.-fri. 272-5362. Week-ends call anytime. cl-32s-5tc

STORAGE
Rooms Available
For Storage \$25.00-\$30.00 per month
Ted Barnhill 272-4903
b1-42s-tfc

CONCERNED About Someone's Drinking? HELP IS AVAILABLE
through AI-Anon
Call 227-2350 or 965-2870 or come to visit Tuesday nights, 8:00 p.m. or Saturday mornings at 10:30 a.m. at 1116 W. American Blvd., Muleshoe.

3. Help Wanted

\$100 PER 100 Envelopes Paid. Process mail from home. No Quotas. Limits. Free Details. Rush Self-Addressed-Stamped Envelope. Blackman, 20 Lynwood Cir., Asheville, NC. 28806. 3-20s-tfc

Winter didn't seem so cold now, after all.

3. Help Wanted

MEDICAL TECHNOLOGIST
Clovis High Plains Hospital

Clovis High Plains Hospital is a 106-bed acute care hospital located in Clovis, New Mexico. Clovis, located in the heart of cattle country, has a population of approximately 34,000. Applicants must be either MLT registered or Medical Technologist (ASCP) registered with a minimum of one year's experience. This clinical position is either full-time or part-time on the evening shift. An excellent benefit package is provided. Qualified applicants may send resumes to **Clovis High Plains Hospital, Personnel Department, P.O. Box 1688, Clovis, NM 88101.**

Southwest Community Health Services
EOE M/F/V/H 3-32t-2tc

3. Help Wanted

PART TIME LVN, RN or EMT to take health history for insurance company. Reply to Portamedic P.O. Box 6705 Lubbock, Texas 79493. Include Telephone number. p3-32s-4tc

SALES REPS HYDROTEX, Inc a multi-million dollar, 50 year old established lubrication company needs Sales Reps to call on Commercial and Industrial Accounts in the Muleshoe area. High Commissions. Training, Life/Health Ins. No Over-night travel. Call 1-800-443-1506 or send resume to Hydrotex, P.O. Box 47843, Dept. 555E. Dallas, TX 75247. 3-32s-2tp

HELP WANTED
Muleshoe Independent School District is now accepting applications for qualified bus drivers for the 1987-88 school year. Applicants must be able to obtain, prior to employment, a Texas Class A or B License, pass a physical examination provided for by the school, have a safe driving record from the Texas Department of Public Safety, and have completed or be enrolled in a twenty hour driving course provided by the school.

The next Bus Driver Training Course is scheduled for August 3 through August 7, 1987 at the Muleshoe High School. Salary range is from \$232 to \$332 per month with driving time being two to three hours each day. Application forms may be picked up at the bus garage or the school business office. m3-30s-9tc

BOOKKEEPER WANTED
Full time. Responsible for T&L; A/R; A/P; P/R; computer experience required. Apply in person. Bamert Seed Co. b3-32s-tfc

NEW PARTY PLAN
Candles by House of Lloyd is now hiring demonstrators to show beautiful line of candles & accessories that sells itself. Free kit & supplies. No collecting or delivering. Call Ernestine Barretero 938-2618. b3-32s-6tcts

People get old; life is continually new and full of change.

3. Help Wanted

MEDICAL TECHNOLOGIST
Clovis High Plains Hospital

Clovis High Plains Hospital is a 106-bed acute care hospital located in Clovis, New Mexico. Clovis, located in the heart of cattle country, has a population of approximately 34,000. Applicants must be either MLT registered or Medical Technologist (ASCP) registered with a minimum of one year's experience. This clinical position is either full-time or part-time on the evening shift. An excellent benefit package is provided. Qualified applicants may send resumes to **Clovis High Plains Hospital, Personnel Department, P.O. Box 1688, Clovis, NM 88101.**

Southwest Community Health Services
EOE M/F/V/H 3-32t-2tc

4. Houses For Rent

2 - 2 BEDROOM homes for rent. Call 272-5383 after 6:00. m4-32t-4tc

5. Apts. For Rent

FOR RENT NICE 1 bdrm., unfurnished apartment with cook-stove & refrigerator. Call 272-4986 or see at 101 W. Ave. J. w5-32s-1tc

1 BEDROOM FURNISHED apartment. Good location. Water paid. Phone 272-7575. p5-32s-tfc

116 E. Ave. C. 272-5285 --- 272-5286

BINGHAM & NIEMAN REALTY
We have homes for as little as \$600.00 total move-in cost, with payment scheduled according to income for qualified buyers!!!!

RICHLAND HILLS
NICE-3-2-2 Brick, Cent. A&H, built-ins, FP, fenced yard, & more..... *****

IMMACULATE 3-2-2 Brick, corner lot, Cent. A&H, built-ins, FP, loads of storage & closet space, sprinkler sys.!!!! *****

PRICE REDUCED-3-1-1 Brick, Cent. heat, Evap. air, built-ins, fenced yard..... *****

SPACIOUS 3-2-1/2 Brick Home on corner lot, Cent. A&H, built-ins, fireplace, loads of storage, 2900+ sq. ft. of living area, lots of extras, undgrd. sprinkler sys., fenced yard. A GREAT BUY!!!! *****

SPACIOUS 3-3-2 Brick Home, Cent. A&H, built-ins, fireplace, sunroom, basement, & more!!!! *****

3-1 home, wall heat, evap. air, nice carpets, fenced yard. PRICED TO SELL!!!! *****

3-1 home one .59 acres on highway at edge of town plus a 1 *****

3-1 home on .59 acres on highway at edge of town plus 1-1 mobile home for rental unit, storage, or workshop. A GOOD BUY!!! *****

PARKRIDGE *****

IMMACULATE 3-2-2 Brick Home, Cent. A&H, built-ins, fireplace, energy efficient, nicely decorated, plus beautifully landscaped yard. \$50's!!!! *****

HIGH SCHOOL *****

PRICE REDUCED-3-2-2 Brick, Cent. A&H, built-ins, nice carpet, FP, basement!!!! \$40's. *****

JUST LISTED-3-2-2 home, corner lot, nice carpet, fenced yard. \$30's!!!! *****

3-1-1 home, corner lot, Cent. A&H, built-ins. \$30's..... *****

5. Apts. For Rent

2 BEDROOM apartment. Good location. Range & refrigerator, furnished. Water paid. Plumbed for washer & Dryer. Phone 272-7575. p5-32s-tfc

8. Real Estate

HOUSE FOR SALE by owner. 2 bdrm., 1 bath, fireplace, and efficiency apartment in back. Owner financing. Call 272-3006 or 272-5813. g8-18s-tfc

1981 ARTCRAFT Mobile Home, 14x76, 3 bedroom, 2 bath, refrigerated air conditioning, central heat, fully skirted, 1 carpeted porch, 150' chain link fence, 10'x9' storage building, very good condition, Call Mike Dale at 965-2683 or 272-5576. 8-30s-6tp

FOR RENT OR SALE: Spacious clean 2 bath, 3 bdrm, home. Fireplace, built-ins, carpet, garage. Call 272-5679 or 272-4567. b8-31t-4tc

FOR SALE: Methodist Church Building, Bula, Tx. 3,072 sq. ft. must be moved. Sealed bids received through Aug. 20, 1987. Rev. Bruce Parks Box 1299, Plainview, TX 79073. 8-29s-9tp

FOR RENT NICE 1 bdrm., unfurnished apartment with cook-stove & refrigerator. Call 272-4986 or see at 101 W. Ave. J. w5-32s-1tc

1 BEDROOM FURNISHED apartment. Good location. Water paid. Phone 272-7575. p5-32s-tfc

116 E. Ave. C. 272-5285 --- 272-5286

BINGHAM & NIEMAN REALTY
We have homes for as little as \$600.00 total move-in cost, with payment scheduled according to income for qualified buyers!!!!

RICHLAND HILLS
NICE-3-2-2 Brick, Cent. A&H, built-ins, FP, fenced yard, & more..... *****

IMMACULATE 3-2-2 Brick, corner lot, Cent. A&H, built-ins, FP, loads of storage & closet space, sprinkler sys.!!!! *****

PRICE REDUCED-3-1-1 Brick, Cent. heat, Evap. air, built-ins, fenced yard..... *****

SPACIOUS 3-2-1/2 Brick Home on corner lot, Cent. A&H, built-ins, fireplace, loads of storage, 2900+ sq. ft. of living area, lots of extras, undgrd. sprinkler sys., fenced yard. A GREAT BUY!!!! *****

SPACIOUS 3-3-2 Brick Home, Cent. A&H, built-ins, fireplace, sunroom, basement, & more!!!! *****

3-1 home, wall heat, evap. air, nice carpets, fenced yard. PRICED TO SELL!!!! *****

3-1 home one .59 acres on highway at edge of town plus a 1 *****

3-1 home on .59 acres on highway at edge of town plus 1-1 mobile home for rental unit, storage, or workshop. A GOOD BUY!!! *****

PARKRIDGE *****

IMMACULATE 3-2-2 Brick Home, Cent. A&H, built-ins, fireplace, energy efficient, nicely decorated, plus beautifully landscaped yard. \$50's!!!! *****

HIGH SCHOOL *****

PRICE REDUCED-3-2-2 Brick, Cent. A&H, built-ins, nice carpet, FP, basement!!!! \$40's. *****

JUST LISTED-3-2-2 home, corner lot, nice carpet, fenced yard. \$30's!!!! *****

3-1-1 home, corner lot, Cent. A&H, built-ins. \$30's..... *****

8. Real Estate

PRICE TO SELL: Nice 3 bdrm., 2 bath, brick home, 2 car garage, high efficiency, central refrig. air & heat. Concrete patio with back yard. Call for appointment. 909 Hickory, 272-5045. c8-27t-tfc

8. Real Estate

HOUSE FOR SALE: Priced Right!!! 2 bedroom, 1 1/2 bath, living room with dining area, large kitchen with breakfast area, den with fireplace (den could be 3rd bedroom), double garage, large lot with sprinkler system. Located at 510 E. Chicago. Call Marilyn between 7:30 am to 4:00 pm at 965-2123, after 5:00 pm call 272-5690 or 505/392-1173. b8-31t-7tc

HOUSE FOR SALE: beautiful 2 story country home on 1.3 acres, 1 mile E. on Plainview Hwy - approximately 3,000 sq. ft. 4 bdrm, 2 1/2 bath, 2 living areas. 272-3907 or 272-4987. l8-31s-5tsc

HOUSE FOR SALE: 2 bedroom, 1 bath, garage, wood - burning stove, storm windows, 24 x 14 shop, 2 car carport. \$28,000, 218 E. Fir. Call 272-3298. 8-30t-8tp

Silence is an underplayed virtue.

11. For Sale Or Trade

FOR SALE forney welder, 180 amp. \$75.00 110 gallon L-type fuel tank \$50.00. Call 272-3338. b11-31s-4tc

FOR SALE 8 hp Troy-built tiler, recliner, and a grill. Call 272-4683. a11-31s-tfc

FOR SALE: Black rat-ran chairs with white ultra suede cushions. 272-3747.

15. Misc.

FOR LEASE BY THE acre 2 - 510 Internationals, double disc drills. Phone 272-3733. 11-32s-tfc

8. Real Estate

STOP!
Before you pay next months rent. Call collect Alliance Homes 806-763-4051. a15-30s-tfc

9. Automobiles For Sale

76 AMERICAN Motors Hornet, 4 door, \$500. 272-5156 or 272-7526. See at 1821 W. Ave. B. j9-32s-2tc

11. For Sale Or Trade

FOR SALE forney welder, 180 amp. \$75.00 110 gallon L-type fuel tank \$50.00. Call 272-3338. b11-31s-4tc

FOR SALE 8 hp Troy-built tiler, recliner, and a grill. Call 272-4683. a11-31s-tfc

FOR SALE: Black rat-ran chairs with white ultra suede cushions. 272-3747.

15. Misc.

FOR LEASE BY THE acre 2 - 510 Internationals, double disc drills. Phone 272-3733. 11-32s-tfc

8. Real Estate

JAMES F. HAYES & CO.
AGRICULTURAL REAL ESTATE
Vic Coker-Agent
(806) 965-2468

8. Real Estate

8,000,000 POUNDS OF CORN STORAGE in two steel bins with concrete hopper bottoms, boot pit, leg, and aeration system. Additionally there is a 80' X 90' X 16' steel barn with 30' door. Underground fuel storage. Domestic well. All this on 5 acres enclosed by a chain link fence. Call Vic for further details.

160 ACRES WITH MODERN HOME N.E. of Muleshoe in Parmer County. Electric Sprinkler. Good soil, Best water. \$700 / acre.

640 ACRES IN PLEASANT VALLEY- 3 electric sprinklers, excellent water, productive soil, can be divided. Seller is motivated.

1050 ACRES OF DRYLAND- 350 acres cultivated, balance is grass. Wheat allotment. 2 windmills. Absentee landowner is anxious.

160 ACRES IN LAMB COUNTY- Excellent water, electric sprinkler, fully allotted, fenced, prime opportunity for first time buyer.

640 ACRES- 4 electric sprinklers, steel pens with concrete bunks, domestic well, all fenced. Best soil & water. Rare opportunity, good value.

15. Misc.

SMALLWOOD REAL ESTATE-BROKER
232 MAIN 272-4838
2-bedroom, one bath, stucco, small lot. \$500.00 Down, \$160.00 per month.

STUCCO. 3-bedroom, two bath, central heat, evaporative cooling on roof, carpet. 1360 sq. feet. \$19,900.00. *****

RICHLAND HILLS. corner lot, 3-bedroom, 1 1/2 bath, 2-car garage, central heat, evaporative roof cooler, range, dishwasher, carpet, drapes. *****

15. Misc.

FEED WHEAT
Several varieties of Roth and Haas High Germination Hybred Seed Wheat cleaned, bagged & treated. \$3.60 PER BUSHEL
Bruegel & Son Elevators Box 1069 Dimmitt 79027 ph. 806-647-3138 b15-32s-8tc

GOVERNMENT HOMES from \$1 (U-repair) also tax delinquent & foreclosure properties. Available now. For listing call 1-315-733-6062 EXT J1741. 15-31s-6tspts

15. Misc.

GRAIN PRICES
CORN.....320 cwt
MILO.....290 cwt
SOYBEANS.....SQ 50
NEW WHEAT.....225
COMMODITY CERTIFICATES 107%
Prices-August 7, 1987
FARMERS CO-OP
--- 272-4335

15. Misc.

Is it accidental that the word "NEWS" contains the four letters of the directions?

15. Misc.

Think Classified!

DIANNE NIEMAN, BROKER
"WE APPRECIATE YOUR BUSINESS"

GEORGE NIEMAN, BROKER