

S-E Wolverines Win One Lose Three

The Slew were defeated by a 40-0 count at the hands of their hosts, the Hale Center Owls Friday night. Due to poor field position early in the game, the Crew fell behind 21-0 before the second quarter. Hale Center tacked on another 14 points before half and things did not look good for the Wolverines.

On the third play of the second half, the Crew pounced on a loose ball deep in Owl territory. Three chances proved futile for the Wolverines as they could not penetrate the goal line.

The second half saw the Crew's defense keep Hale Center bottled up inside their own 40 yard line for the majority of the game.

For four weeks the Wolverines have been trying to shake their losing streak. They have been working extra hard on their basic strategy. Open this week, Coach Taylor's Crew are readying themselves to battle a fine Morton ball club who will be hitting town October 13.

Players of the week were Rex Fennell, Offense, Allen Moore, Defense and Elizaz Ontiversis, Big-Hit.

The JV lost a close one 14-6 to a tough Hale Center club. They will play at Morton next Thursday night, October 12.

It was a hard fought contest here Thursday night but it ended on a losing note for the 8th grade Crew. The score 22-20 in favor of the Owls.

In the first half, all the scoring was Springlake-Earth and all the defense. Clifford James engineered several drives, one drive going 80 yards down to the one yard line where Danny DeLeon took the ball for that one yard plunge to score the first TD, coming right back with a half back sweep pass for the ex pt. to Hector Flores from Lorenzo Monreal. The rest of the half was defense, hard

nose defense, not letting the Owls out until the last few seconds of the half when they were driving on the goal but time ran out.

Second half began with the Owls recovering on a side kick on kickoff on the 50. The Owls making adjustment at half to Springlake-Earth defense were able to quick pitch and moved the ball well on Springlake-Earth but were stopped on the 1st drive.

Again Springlake-Earth buckled down and drove the ball to the 10 yard line where James Price scored, but the ex pt. was not good.

The Owls got in to the scoring game with good drives and scored twice picking up 4 pts on ex pts. on both scores. This put them ahead of the S-E 8th grade in pts.

The young Crew not wanting to be denied of a victory was able to break Lorenzo Monreal open for a 75 yard run for a TD but again the ex pt failed. This put the 8th grade up by 4 pts. with 2 minutes left.

The Owls put together one more drive and were able to score with less than 50 seconds left in the game. The S-E 8th graders tried but were unable to score in the time remaining. The 2 ex pts made the difference of victory by 2 pts. or defeat by 2. The game was well played by both teams, both offense and defense. It was just a great disappointment to have played so well and have gotten beaten by only 2 pts.

Next game will be at Morton at 6:30 on Thursday, October 5.

The 7th grade Slew Crew got back on the winning track Thursday night with a convincing win over the

Owls of Hale Center, by a score of 26-0.

The defense started the scoring off with a 40 yard interception run made by Jeff Hamilton who was playing corner back when the ball came to him. Jeff was also accredited with 1 fumble recovery and several tackles on defense. David Duran and Jessie Samaniego also had a good defense night with 1 fumble recovery each. Samaniego with his fumble recovery stopped an Owl drive on the 9 yard line. Charles James also intercepted one pass to round off the night with a good defense which seems to be getting stronger each week.

The offense which was much improved over last week, ran, blocked, and executed their way to 3 more touchdowns. All TD runs being over 30 yards. The first score came with Charles James on a sweep around left end. With a burst of speed, Charles left the defenders behind in his dust. Jeff Hamilton connected with Mark Jordan for a 2 point conversion.

After Jessie Samaniego fumble recovery on the 9 yard line, stopping the Owls drive, Jeff called an offense tackle lead play and the ball went to Felix Garcia who opened up the gas and raced 30 yards for a TD, ex. pt. failed.

The last score of the night came from Charles James with another long run of 80 yards. Of course all the back will be quick to recognize that the line blocking this week was much better than before and the holes opened up. Some of the linemen who had good nights were C. Nail, Jon Bailey, S. Longoria and Jessie Samaniego.

Earth News Sun

Volume 24 Earth, Lamb County, Texas, Thursday, October 5, 1978 8 Pages Number 1



REX FENNELL
"OFFENSE"



ALLEN MOORE
"DEFENSE"



ELIZAZ ONTIVERSIS
"BIG HIT"

How It Looks From Here

By RAY FREEDMAN

The U.S. General Accounting Office has released some interesting statistics comparing the number of U.S. Postal Service employees and salaries in 1970, with those as of September 30, 1977.

	1970	1977
Total USPS Employees	741,216	655,097
Total Salaries and Benefits	\$6,541,816	\$13,124,065
Average Salary & Benefits 1970-1977	\$8,826	\$20,034
Decrease in employees for 1970-77		11.6%
Increase in Total Salaries & Benefits 1970-77		100.6%
Increase in Average Salaries & Benefits 1970-77		127.3%

SEE PAGE 2

Hance Speaks Out

"One of the prime examples of Government meddling can be seen in the occupational safety and health administration's anticipated control standards on cotton dust in gins and textile plants," Kent Hance, State Senator now campaigning for Congress in this district said the seat being vacated by George Mahon, declared the week.

"The greatly increased cost of ginning, cotton oil mills and textile mills is going to price cotton out of the textile markets, and it's going to cost the farmer in the West Texas area most of all," Hance added.

"Hills will be turning to synthetic fibers, cotton imports will increase, and many older gins and plants will have to go out of business because the standards being set by OSHA are unreasonable and cannot be complied with by older plants," Hance said.

"It's not only our farmers, ginners and cotton industry that will suffer, either. Increased imports will greatly damage the national interest, the trade balance will worsen, businesses will close, jobs will be exported."

"We certainly understand the importance of health and safety in every industry. But in the cotton business we would strive to the best of our ability to have both without sacrificing the entire cotton industry and the prosperity it has brought to our area," Hance said.

Effective date for the new standards was September 4 and include projects controlling respirable cotton dust through oil additives and new air filter methods in gins and mills. Cost of the new facilities is estimated at between \$1.8 billion and \$2.6 billion.

Band Boosters

Mrs. Jimmy Craft called the meeting of October 2 to order with 14 members present.

Treasure's report was approximately \$5,500.00 Jenna V. Kellar moved that we amend the by-laws by adding a signature of either the president or the projects chairman as co-signer of checks in the future. The motion was seconded by Evelyn Verden and it carried.

Projects Chairman, Gayle Jones reported that Yvonne Jones would be chairman of the Enchilada Supper October 13th.

Melvin Kinnison will act as chairman for the "Halloween Carnival" on October 31st. Naomi Brown will be chairman for the "Community Arts and Craft Fair" in December.

It was suggested that the books be audited for this past year by Pat Jordan.

The group viewed possibilities for the band trip and general support from the group came for the trip to Kansas City on May 27th.

The Band Boosters meet the first Monday of each month in the Band Hall at 8:00 p.m. These meetings are printed on the Band Calendar and all parents of Junior High and High School Band students are urged to attend.

Baptist Revival

The services for the "Biblical beliefs and Christian Behavior" revival in the First Baptist Church at Earth began last night. The services will continue through this Sunday evening, October 8. Their services will begin at 8:00 p.m. Monday through Saturday. Sunday services will start at 11:00 a.m. and 6:00 p.m. A nursery will be provided for children three years old and under.

SEE PAGE 3

Ambulances Purchased

The communities of Earth, Sudan and Olton will each have new ambulances for emergency service, due to action taken by the Lamb County Commissioners Court last Friday.

Each community will receive a van type ambulance on a 138 wheel base, 40 gallon gas tank and a 54 inch inside clearance from roof to top.

Three bids were received, two from Ford dealers and

SEE PAGE 3

Glenn Branscum Wins Contest

In this week's contest, there was an entry that was disqualified, due to the fact that it was late. Please remember the deadline is 4:30 p.m. on Friday. If they are late, they cannot be accepted. If an entry is mailed, it must be postmarked on Friday.

There was a 3-way tie with 9 games correct, the tie breaker giving 1st place to Glenn Branscum, 2nd place to Vickie Kelley and 3rd place to Allen Moore.

Those having 8 games correct were Doug Jones, Larry Cole, Rocky Lunsford, Larry Price and Lexie Fennell.

Having 7 games correct were Richard E. Moore, Lonnie Neinast, Jodie Riley, Kevin Anderson, William P. Holland, Jr., Mike West, James Hanson and Jeff Hamilton.

Those with 6 games correct were Jason Hinchliffe, Christy Clark, Dusty Stovall and Mark Jordan.

With 5 games correct were Sonny Duckworth, Lupe Duran, Rodney Geissler, LaVerne Fennell, B.J. Angeley and John Messer.

Jo Eddy Riley, Kevin Riley and Ronnie Dent had 4 games and David White had 3 games correct.

Overall standing to date: Glenn Branscum, 32 games; Vickie Kelley, 31; and those with 30 games correct are Rocky Lunsford, Allen Moore and Lexie Fennell.

Democracy In Action

Farmer cooperatives, perhaps more than any other, have a special interest in the 1978 Cooperative Month theme, "Cooperatives—Democracy in Action."

That's because the theme describes how cooperatives operate. It proclaims that the farmers who are the owners really control the cooperative.

During the October observance, farmer cooperatives will emphasize that they are truly "Democracy in Action" because—

...Farmers Establish Their Cooperatives. Cooperatives are established when farmers recognize a need for services that they don't have. By going together, and investing some of their own money for initial capital, farmers can realize the benefits of group selling and buying.

SEE PAGE 3

Commissioners Court Meet

The Lamb County Commissioners were presented a petition last Friday by the Littlefield Chamber of Commerce, asking the Commissioners Court to consider re-districting the precinct within the county.

State law requires counties to periodically re-district precincts in accordance with population. Each precinct must not have more or less than two percent difference with other precincts in the county.

The petition read: "To the Honorable Commissioners of Lamb County, Texas. Whereas, the law of the land is the one man, one vote principle, and Whereas, such principle applies to county precincts as well as the political subdivisions of the State and Nation, and Whereas, it has come to my attention that the precincts in Lamb County, Texas do not comply with the one man, one vote rule and because of the fact that the city of Littlefield, Lamb County, Texas has less than their fair share of the Commission by reason of dilution, therefore, I LeMoyné Grissom, a resident of Littlefield, Lamb County, Texas, do hereby request that the County Commissioners of Lamb County, Texas re-district the county precincts in accordance with the law and the one man one vote principle."

Presently the county is divided into four precincts, with each having the same amount of lateral road miles. This leaves 44 percent of the county's population in precinct three, having about 8,000 people. Each other precinct has about 3,000 each.

If the county is re-districted, Littlefield would have two commissioners, while the rest of the county would be divided up between the other commissioners. The law states that not less than four commissioners will serve a county.

SEE PAGE 3

Gin Celebrates

October is Cooperative Month in Texas and across the nation. The Earth Co-op Gin will be celebrating Cooperative Month by serving free coffee and donuts every Friday morning during the month of October.

The Earth Co-op is in its 49th year of business and serve to the community and invites everyone to come by and visit.

Letter To The Editor

Dear Editor,

We would like to use this means to communicate with the people, what has been done to secure a shorter school day. A petition stating our desire for this change, and signed by some 425 plus parents and taxpayers, was presented to the school board at their regular August meeting. There was also discussion at this meeting during which we gave our reasons for requesting this change. Some reasons given were: To allow more time to be spent with the family, 2. To allow more time for out of school activity such as church, work, etc. 3. The school day is too long for grades K through 3rd and really all ages. At the time we met with the board the kids were spending 7 1/2 hours at school; since the breakfast program has been in effect, they now spend 8 hours and this does not count bus time to and from school.

Much research into state laws and information from other school schedules was gathered to insure that it is possible to shorten the day and still be an accredited school. Several school schedules were presented to show their hours:

Mulshoe, 8:30-3:15
 Olton, 9:00-3:30
 Farwell 9-3:30 with zero period
 Bovina, 9-3:30 with zero period. All of these schools have a shorter day and still offer as much in their curriculum as Springlake-Earth. Also some alternative suggestions were offered such as: going back to the 6 period day or the zero period (which will be explained in a following article.)

In light of the information we had gathered and the number of signatures on the petition, we requested a called meeting of the board to vote on shortening the day. A group of interested parents met with the board again at the regular September meeting to find out what had been done and to present the zero-period in more detail. We sincerely hope this change can be made as we know it will be in the best interest for our children and school. We in no way want to cause any dissention in our school or communities, but like the majority of the people are interested in what is best for our children and in what things can be done to improve our school. Those interested in supporting this cause can show their support by letting our board know we want the change made and meeting with us at a time to be announced at a later date.

Thank You
 Interested Parents Who Care
 Names withheld by request.

How It Looks From Here

From Page 1

How do you go about convincing your wife after coming in at 6 a.m. that you were playing softball from 7 p.m. until 4 a.m.?

You might keep it straight and report matter-of-factly that "I began losing my stuff in the 30th inning" and hope she buys your story. But, if you are lucky like Eddie King, accounting director for General Telephone Company of the Southwest, the local newspaper along with the New York Times, New York Herald, Newsweek, several other publications and the major wire services will help you out of the doghouse by reporting your whereabouts.

Otherwise you might be in trouble.

King, longtime softball pitcher in amateur softball leagues, had the experience when he pitched 25 innings of the 31 inning game recorded as the longest national tournament softball game. The

game occurred during the 19th game of the National Softball Tournament in Clearwater, Fla., Sept. 24, 1963.

During the game, King walked one batter, intentionally allowed only eight hits and struck out 25 in leading the 10 time National Champion Clearwater, Fla. Bombers to a 4 to 3 victory over the Portland, Ore. Beavers.

King started his softball career in St. Petersburg, Fla. and played for the Clearwater Bombers of Clearwater, Fla. 14 years before taking a one year retirement after which he played another two years. The telephone accountant estimates he pitched over 3,200 innings in over 500 games for Clearwater. He first started pitching for Clearwater in 1955.

Highlights of his softball years include an invitation in 1966 by the Venezuela Softball Association to conduct a 10 day softball pitching clinic.

He was named to the Amateur Softball National tournament All-Star Team six times during his career with the Clearwater Bombers. He participated in eighteen National Tournaments.

Never ask of money spent
 Where the spender thinks it went.
 Nobody was ever meant
 To remember or invent
 What he did with every cent.

The Hardship of Accounting
 Robert Frost, 1936

Intentional or not, Mr. Frost's lighthearted defense of inept accounting was tailor-made for the federal government; especially some agencies of the government. Take Amtrak, for example, Back on May 1, 1971 Amtrak began operating government subsidized passenger trains under the Rail Passenger Service Act of 1970.

The law envisioned limited, interim federal funding. It had two goals: first, to breathe new life into a passenger train system that was failing rapidly and, second, to turn passenger train service back into a profit-making venture.

Senator Lloyd Bentsen shared with his colleagues the dream of revitalizing and rejuvenating passenger train service in this country and worked hard to see that Texans could participate in the rail renaissance.

But the dream has gone sour.

Beyond question the service has improved, in terms of sheer numbers at any rate. The basic Amtrak system has grown from 23,000 miles in 1971 to 27,000 miles last year. But in Texas, and in most other states, there are so few trains running to so few cities that not many people take the trouble to use this mode of travel.

And the cost of even this limited service has mushroomed to the point that there is no way the taxpayer can be asked to foot the bill for an expanded service.

It is time someone stood up for the taxpayer!

In 1971 he was asked to cover a \$22.7 million operating deficit for the infant Amtrak system. Instead of decreasing as the law envisioned, though, the deficit has grown tremendously over the past seven years. Last year the deficit reached \$521.6 million -- a 2300 percent increase!

In 1971, Amtrak passenger revenues covered almost half of total operating costs; today the tickets that passengers buy cover only 37.4 percent of the costs.

In spite of Robert Frost's admonition to "Never ask of money spent where the spender thinks it went," We think it is time to re-examine the passenger train program and put a stop to the seemingly endless spiral of increasing federal subsidies.

If those in Congress lack the courage to trim back on deficit spending such as this, there is no hope that they will ever be able to balance the federal budget.

The Inter-American has consistently been among the least productive in the Amtrak system, according to the Department of Transportation. Its operating losses last year came to nearly \$10 million. For every \$1 paid by passengers who rode it, taxpayers who didn't ride it paid an additional \$3.72.

Although he worked hard to secure this route for Texas, Bentsen's experience has shown that the revenue customers are simply not there. The only responsible action is to put an end to the enormous taxpayer subsidy of this and other unsuccessful routes.

So few people want to ride a train from Chicago to Mexico City or from New York to Los Angeles these days that it would be easier on the taxpayer if we gave them all a free plane ticket.

Notice

The Springlake-Earth Homecoming of *Ex-student and teachers will be Friday, October 20.

An Enchilada Supper, with all the trimmings, will be held at the school cafeteria, prior to the Springlake-Earth-Farwell game. Serving will be from 5:00-7:00 p.m. Prices for the supper are adults \$2.50, children \$1.50. The program after the game will be honoring following classes: 1928, 38, 48, 58, 68, and 78.

The PTA will hold their meeting, Thursday, October 12 at the school cafeteria at 7:00 p.m. with Dr. Burum, president, presiding.

The Springlake-Earth Band Boosters will sponsor Enchilada Supper Friday night, October 13, in the school cafeteria before the Crew-Morton Indian football game. They will be serving from 6:00 p.m. to 8:00 p.m. Price admission is Adults \$2.50, children \$1.00.

The proceeds will go to the Wolverine Band to pay expenses for this year's band trip.

SAVE SAVE

SAVE A LOT AS WE CLEAR THE LOT! SAVINGS HAVE NEVER BEEN BIGGER



2 - Catalina Cpe
 1 - Catalina 4 Dr
 1 - Catalina 4 Dr. Demo \$7613.00 - \$6227.00
 1 - Catalina 4 Dr. Drive Ed Car \$7743.50 Now \$6327.00



5 - Grand Prix "SJ"
 4 - Grand Prix "J"
 2 - Grand Prix "L" Demo
 2 - Grand Prix "J" Demo
 1978 Grand Prix PS-PB-TH-WW-PBR \$5199.00
 1978 Grand Prix Demo Loaded \$9004.00 - \$7493.00
 1978 Grand Prix Demo \$7318.00 - \$6034.00



3 - Fiat 128 4 Dr \$3592.00 - \$3199.00
 1 - Fiat Sport Cpe
 1 - Fiat Cpe 128 \$3530.00 - \$3260.00
 2 - Fiat 124 Spiders \$6648.00 - \$5931.00



1 - Phoenix 4 Dr
 1 - Phoenix 4 Dr Demo \$6142.00 - \$5144.00



1 - Lemans Wagon
 1 - Lemans Demo Loaded \$7019.00 - \$5900.00
 1 - Lemans Service Loaner \$6953.00 - \$5849.00

CROW PONTIAC GMC

SERVICE & PARTS HOURS
 7:30 TO 5:30 MON-FRI.

Mr. Goodwrench

HWY. 60-70-84
 CLOVIS, N.M.
 762-2986

G.W. WARRANTY

SAVE SAVE

BOOTS

Men, Women & Childrens

Sandors Cowtown Acmo
 Nacona Texas Shoyenne
 Tony Lama Justin

20% OFF

Mustang
 No Layaway On Sale Items
 Work Boots Not Included



"Jest luck son, jest luck. You can ask anybody that don't have some of 'em!"

ee's WESTERN WEAR

Open Mon.-Sat. 9A.M.-6P.M.

1910 W. Amer. Blvd.

PLACE AROUND THE CORNER

NEXT TO VILLAGE PIZZA
 Plainview

ROUND-THE-CLOCK PANTY HOSE

Now Thru Oct. 7





Nude & Naughty
 Sandie Foot, Demi-Toe
 Reg. \$2.50
 NOW \$1.25

Tummy Control
 Sandie Foot, Demi-Toe
 Reg. \$3.00
 NOW \$1.50

KNEE-HI
 Reg. \$1.75
 NOW \$2.65

If Your Legs are	Height is	Weight is	You Wear
Short, Slender	4'8" to 5'3"	Up to 120 lbs.	SHORT*
Average	5'3" to 5'7"	115 to 135 lbs.	REGULAR*
Average	5'7" to 5'8"	130 to 145 lbs.	LONG*

TREAT YOURSELF TO TRUE QUALITY

Daily Basic
 Sandie Foot, Demi-Toe
 Reg. \$2.00
 NOW \$1.00

GOOD YEAR

SNOW TIRE

Tiempo

\$38

P155/80R13 (blackwall) plus \$1.01 F.T. and air tire

RAIN TIRE

Steel Belted Radials
 Eliminate Winter Tire Changeover

ONE TIRE

PROVED IN HISTORY'S WORST WINTER

Metric Size (mm)	Size	OUR PRICE	Plus F.T. and air tire
P185/75R13	8878-13	\$42.00	\$1.92
P195/75R14	8878-14	\$46.00	\$2.35
P205/75R14	8878-14	\$47.00	\$2.56
P215/75R14	8878-14	\$48.00	\$2.61
P225/75R14	8878-14	\$49.00	\$2.67
P205/75R15	8878-15	\$53.00	\$2.68
P215/75R15	8878-15	\$54.00	\$2.74
P225/75R15	8878-15	\$57.00	\$2.90
P235/75R15	1878-15	\$57.00	\$3.00

*Flat repaired or replaced promptly • Tube valves replaced! • Tires liquid-filled! • Tire sales & service for every truck, tractor, and auto on your farm!

PIT STOP

ON-THE-FARM TIRE SERVICE

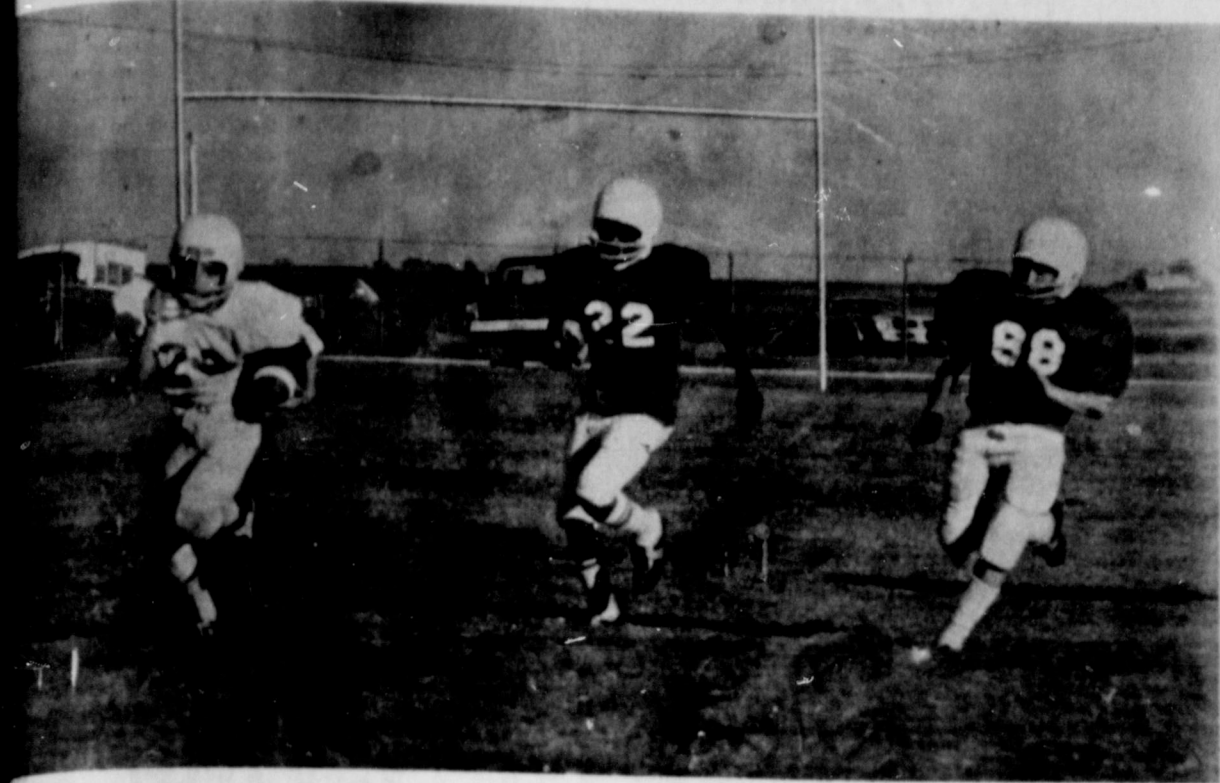
PAXTON Tire & Service

58 3rd on 385 Hwy. South Dimmitt 647-4121

Confidence Starts Here

GOOD YEAR

JUST CALL 647-4121
 After hours call 647-2878



ANOTHER TD for the 7th grade as an unidentified player runs downfield for some added yardage in the 26-0

victory. (Photo by Steve Shepard)

Democracy

(Cont. from page 1)
 Farmers Control Their Cooperatives. Cooperatives controlled by a board of directors elected by farmers to own and use the business. The farmer directors set policies and employ a manager who oversees the day-to-day operation of the cooperative.
 Farmers Realize Savings From Their Cooperatives. Cooperatives are run to help members get a better return on farming. Unlike most other businesses, cooperatives are operated in a non-profit manner. Any excess of income over expenses is returned at the end of the year to the farmer member in proportion to the amount of business done with his cooperative.
 Farmers Have A Voice In Their Cooperatives. Cooperatives encourage farmer members to attend and actively participate in the annual meeting. Each member exercises his control in the cooperative by voting on

business matters and director elections. Active participation is encouraged, and training programs are conducted. Over the years, cooperatives have provided one of the best training grounds for the democratic development of leadership in rural America.
 Much of the efficiency for which the American farmer is renowned today has been provided through his cooperatives. They have had to expand and grow to effectively compete with giant companies in agribusiness and the food industry. This growth has helped America's family farmers maintain their independence.

Without their cooperatives, farmers could not produce as efficiently as they are able to at the present. Any lack of efficiency would serve neither the family farmer, nor the consumer, nor the cause of free enterprise.

Revival

(Cont. from page 1)
 The evangelist for the 5 day revival meeting is Dr. Strauss Atkinson. He is the missionary for the Caprock Plains Area of the Baptist General Convention of Texas. He attended Hardin Simmons University in Abilene, and Southwestern Baptist Theological Seminary in Fort Worth. Before assuming his present position he served as pastor at First Baptist Church of Moran, Texas; First Baptist Church of Kermit and First Baptist Church of Canyon. He is married to Gertrude Marie Yohnes of Littlefield.

The music evangelist for the revival services is David Gibson. He is the minister of music and education at the First Baptist Church of Guthrie, Oklahoma. Before filling that position of leadership Mr. Gibson served as the minister of music at the Knob Hill Baptist Church in Oklahoma City, Oklahoma, and at the First Baptist Church of Purcell, Oklahoma. He obtained his education at Southwestern State College in Weatherford, Oklahoma. He is married to the former Alethea Henderson of Fort Cobb, Oklahoma.

Commissioners Court

(Cont. from page 1)
 Presently money for county use is divided into four ways, in accordance to the road miles, making three precincts with 3,000 people draw as much as as one precinct with 8,000.
 Also the county draws revenue sharing money on the number of population. This money is also divided four ways, according to road miles, however Littlefield has less road miles taken care of by the county than does the other precincts.
 After some discussion the commissioners stated that the realignment would not be as easy as just going by population. They cannot divide ethnic groups if it would the realignment would not be as easy as just going by change all the voting precincts and Justice of the Peace precincts.
 The commissioners will have to decide on a plan and send it to the Justice Department in order for it to be approved before they can ever proceed with the plan. Also a public hearing must be held in each community in the county before re-districting can be done.

line with specifications asked for by the commissioners. Marion Williams Ford of Sudan, being the low Ford bid, was accepted by the Commissioners. County Judge Joyner said it could take more than 60 days to get the vans in, then the county would have to advertise for bids for two weeks in October for someone to convert the vans into ambulances.
 The ambulances could be in service sometime during the latter part of the year.

J & C Study Club

The Town and Country Study Club met Thursday, September 28 in the home of Mrs. Ray Kelley. "Understanding Robert's Rule" was the theme of the study.
 Roll call was answered to questions on Parliamentary Procedure. Mrs. Gladys Parish gave a review of Robert's Rules, which was very informative. Mrs. Parish closed her review with a question and answer session on the subject.
 Mrs. Marie Ross gave the Federation Counselor report.
 Mrs. Lillian Hamilton, president, conducted a short business session.
 The Finance Chairman, Mrs. Adria Welch gave a report on the pecan project and stated that each member now has pecans in her possession to sell.
 It was voted to extend an invitation to the former members of the Amherst Study Club to visit our club when possible.
 In closing the club collect was led by Mrs. Ray Kelley.
 Next meeting will be October 12 in the home of Mrs. Jessie Sanders.
 Delicious refreshments of ribbon loaf sandwiches, cake, coffee and tea were served. Members present were: Mrs. Mary Butter, Mrs. Sam Cearley, Mrs. Ola Fanning, Mrs. Lillian Hamilton, Mrs. Carra Morgan, Mrs. Galdys Parish, Mrs. Faye Queen, Mrs. Blanche Ramseur, Mrs. Marie Ross, Mrs. Zella Mae Rutherford, Mrs. Beatrice Shirey, Mrs. Adria Welch and hostess, Mrs. Helen Kelley.

MARMADUKE
 by Brad Anderson
 Sponsored By
 Tom Lively's
WHITES
 Home and Auto

"Believe it or not, he was the runt of the litter."



Don't let the cold in the cold
 Mrs. Whittier
Call Us
Morton Buildings, Inc.
 Since 1933-1986 Moon 1928 Plainview



Her phone is ringing. Unfortunately it's ringing in the kitchen.

If she had an extension phone in the bedroom, she not only wouldn't have to get out of bed, she wouldn't even have to open her eyes.
 General Telephone offers extensions in a wide range of styles and colors. And each and every phone is backed by all our years of experience.
 Extension phones are a convenience you deserve and they're not expensive. Just a few dollars per month and think of all the legwork they'll save you.
 You can't be two places at once. But your phone can.

GTB EXTENSION PHONES

Ambulances Purchased

From Page 1
 one from a Dodge representative. Although the Dodge bid was lower than the other two, the Ford dealers offered longer length, better suited for ambulance service, and in

COOPERATIVES ARE PEOPLE!

All kinds of people belong to cooperatives. More than 23 million American families are members of one kind of co-op or another. They have joined together to provide themselves with all kinds of goods and services.

Through cooperatives, people market farm products and buy farm supplies, fuel oils, gasoline, and even groceries.

Other cooperatives provide their members with credit, health care, electricity and telephone service. Still others provide housing, insurance and other services.

Whatever the human need, people can fill it themselves through cooperatives.

OCTOBER IS CO-OP MONTH!

Earth Co-op Gin

REGISTER NOW FOR THIS COACHMEN CAMPING TRAILER

TO BE GIVEN AWAY
 Must Be Licensed Driver
 And 18 Years Of Age



CLOVIS' MOST COMPLETE R.V. CENTER!

WE HAVE 25+ MORE CARS & PICKUPS
 IN STOCK TO CHOOSE FROM

AUTO MART
 American Motors
 Jeep, PLYMOUTH, CHRYSLER
 CAR RENTAL SYSTEM

OPEN: 8 AM TILL 6 PM
 MONDAY THRU SATURDAY
 OPEN ANYTIME
 BY APPOINTMENT

800 MAIN CLOVIS, N.M. PHONE (505) 762-7743

Fidelis Circle

Fidelis Circle of United Methodist Women met Tuesday morning in the home of Mrs. Beula Coker to begin the study on Revelations. Lena Grace gave the introduction and completed three chapters of the study. Discussions were held in conjunction with Bible study.

Present for the meeting were members: Gayle Littleton, Naomi Burgess, Lena Grace Griffin, Bessie Cearley, Lillian Holland, Mattie Axtell, Gladys Goodwin, Otellie Wisian, Norma Dawson, Lovelle Lorriss, the hostess Beula Coker and 2 guests, Mrs. Joel Jones and Mrs. Mary Butter.

Next meeting will be October 10 at the home of Bessie Cearley. Bring your Bible and attend.

Buy Early & Save In Stock-Ready For Immediate Delivery

35,000 BTU-Natural Gas
 List-\$203⁰⁰ Now-\$166⁸⁵
Save-\$36¹⁵

50,000 BTU-Dual Wall
 List-\$273⁰⁰ Now-\$221⁰⁰
Save-\$52⁰⁰

Prices Good While Current Stock Last

Higginbotham-Bartlett Co.

Manor News

Beverly and Bud Watson from Pampa visited Mrs. Stine. Truman and Odessa Stine were here Sunday. Sherry Haydon and Odessa Stine were here Tuesday. Opal McCaghren visited the Manor residents. Charlene Blume visited her mother, Agnes Phelps. Lewis Rackley visited Jerome Buchanan. Mr. and Mrs. R.O. Dickson were here to visit Mrs. Davis. Chloe Carter visited with Mr. E. Beason. Norman and Carolyn Patton held Methodist services. Mrs. Etta Jones was honored as the Resident of the Month party Thursday afternoon at Amherst Manor. She was presented with a green ribbon with her name written in glitter and a box of powder. Mrs. Carl Kasten provided and served cake and ice cream to the honoree, other residents and staff and special guests, Mr. and Mrs. Charles Jones. A special thanks to the Kastens. Lizzie Nicholson visited the Manor residents. Bill Johnson and L.A. Bales held Church of Christ services. United Methodist Church of Sudan including Mr. and Mrs. Charles Rich, Mrs. Joe Rone, Mrs. Bill Curry, Mrs. M.H. Tollett, Mrs. Marion Williams, Mrs. Don Lewis, Mrs. Sterling Reese, Sudan singers sang for the Manor residents. Mrs. Joe Rone played the piano. A special thanks to the Sudan singers from the Manor residents.

Martha Ferguson was to visit Mr. E. Jones. Etta Jones had lunch with Mr. and Mrs. John Wednesday. Edie Landers visited with his sister Sue. Mrs. Frank Rogers and Mrs. Phelps. Mr. and Mrs. Adolph were here to visit Beason and Mrs. Eddie and Sherry and Truman and Odessa Stine were here to Mrs. Stine, Mrs. Mrs. Jones and Coffer. Edna and Dail Burnett and R.L. Gunn. Mr. and Mrs. Clois visited with Annie Tomes. Charles D. Jones visited with Mrs. Etta Gertrude Cowan visited the residents. Georgia Young of Littlefield was here to Mrs. Faye Gory of Amherst was here to visit her cousin, Etta Jones. Dorothy Abbott was here to visit her mother, Mrs. Jones. W. Fife visits his sister, Lura Fife. Alex Berry was here to visit Susie Lindsey. Carl and Elsie Kasten brought the Bible lesson. Mrs. T.M. (Willie) Patton played the piano. Carolyn Patton sang a special song. Bill and Roger Boyles of Sudan visited Griff Boyles. Leonard Campbell visited Mr. Beason. Louzell Serratt visited with Ruby White and Susie Landers. Doug Farr visited all the residents.

Hospital Report

September 25
SDM.
Leslie Brantley
Wendell Clayton
Alva Sturdivant
Kelly McChesney
Ansil Locke
DISM.
Jane Garin
Addis Williams
Teodora Flores
Baby Girl Flores
Pedro Sanchez

September 26
ADM.
Baby Boy McChesney
A.E. Wheatley
DISM.
Michael McDaniel

September 27
ADM.
Theola Hulcy
DISM.
Wendell Clayton
Bobbie Maseley
Ora Bule Streeby
Pauline Downing
Ansil Locke

September 29
ADM.
William Grant
Francis Sierra
DISM.
Alva Sturdivant
Leslie Brantley
W.O. Parish
Baby Boy McChesney
A.E. Wheatley

Pauline Downing
Michael Kidd
Betty Kidd
DISM.
None

Anniversary Observed

Norman and Betty Sulser had a lovely surprise recently. Two of their three children came to visit and celebrate the Sulser's 25th wedding anniversary. A lovely cake decorated for the occasion along with punch and trimmings, were served to L'Anna and Keith Kniffen of Lubbock, Carl Sulser and Donna DeBose of Dallas and the honorees, Norman and Betty Sulser. The children also presented their parents a lovely pewter pitcher and tray. Truly it was an occasion to remember.

Party Lines

Beulah Newton attended a floral design school in Amarillo Sunday.

Reunion

The annual Jones family reunion was held in Littlefield Sunday, October 1. The setting this year was at the community building in the city park. In previous years, this event was in the home of Mr. and Mrs. Harvey Messamore at Amherst, but the group outgrew a family home.

An extra table had to be set up this year to accommodate all the delicious dishes contributed by each one who attended.

The daughters and sons of the late Mr. and Mrs. W.O. Jones, Sr. were all in attendance, those being W.O., Jr., Bud and Joel of Earth, Ruby Jones and Naomi Burgess, also of Earth, Alma Moore and Lessie Messamore of Amherst, Elva Ellis of Monett, Missouri and Ida Allen of Edgewood, Texas. Two members Minnie Bulls and Tom Jones are deceased as well as the parents.

A grandson, Stan Ellis and his wife from Alabama traveled the greatest distance to attend. Family members were from Earth, Amherst, Littlefield, Amarillo, Edgewood and Monett, Missouri. Friends who were also invited, were from Dimmitt, Amarillo and Corona, Calif.

Delicious food, singing, lots of talk and laughing were enjoyed by the 101 persons attending.

D & L Fertilizer And Grain 2-Locations

For All Your Needs Animal Health Products-Horse-Cattle-Hog-Chicken-Dog And Cat Foods Quality -Service-And Economy Is Our First Pledge To All Of The People In Our Area

If We Don't Have What You Need When You Ask For It We Will Do Our Best To Get It As Quickly As Possible

We Believe There Is No Substitute For Fair And Honest Dealing

"Keep Jimmy Davis Castro County Attorney"

Pd. Pol. Adv. By Jimmy Davis For County Attorney Committee, Robert McLean, Treasurer



Winterize Now For An Earlier & Nicer Lawn Next Spring

ferti-lome

OPEN SATURDAY
GARDEN & AG SUPPLY
385-5605 FERT., SEED, FERTILIZER & PAINT 409 W. DELANO

National 4-H Week



Citizens State Bank
Member F.D.I.C.

Muleshoe Motor Co.

Introduces . . .

1979 Ford LTD. A new American road car.

- More hip room
 - More leg room
 - More acceleration
 - More economical to operate
 - More handling ease
 - More visibility
- ...than last year's Ford LTD!

Friday, Oct. 6th



New 1979 LTD, engineered to be a new American road car, meets today's driving demands. With more room, acceleration, handling ease, and visibility than last year's LTD.

More room. LTD's totally new design offers full-size comfort on long trips. With more hip room, legroom, shoulder room, trunk space than the '78 LTD Official U.S. Government figures show LTD with more interior room than any other full-size, comparably priced car. Yet it's easy to handle, easy to park.

Economical to operate. A reduced maintenance schedule helps keep operating costs low. And LTD's standard V-8 engine has been EPA-rated at 20 mpg city.

Easy handling. LTD's new suspension system helps give you the maneuverability and handling ease you look for in a full-size car.

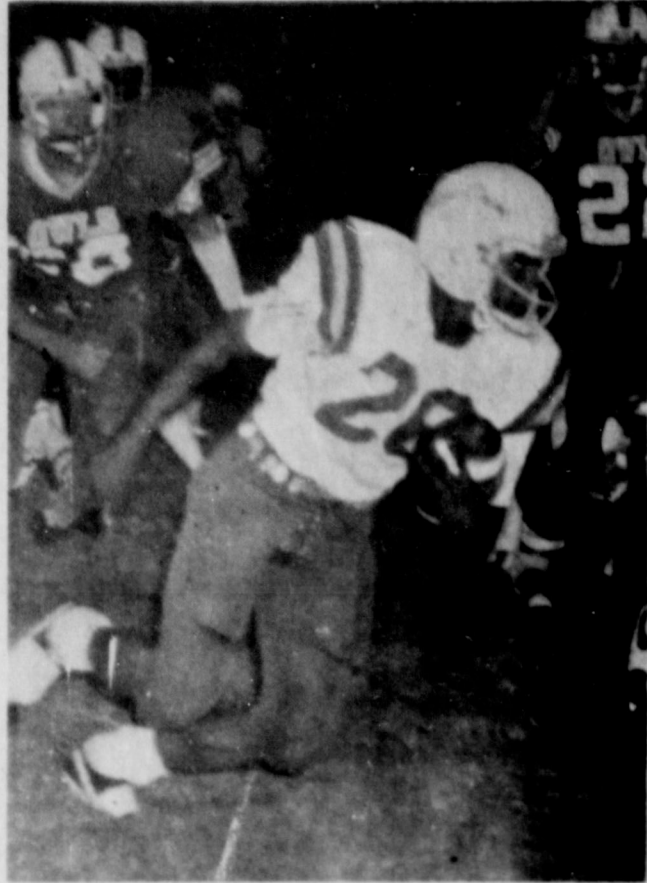
Comfort. The new Ford LTD combines the room and riding comfort of some of the world's finest cars. Come in today and see why we call LTD a new American road car.

Register For A FREE Color T.V. Set Drawing To Be Held On Monday, Oct. 9th
Test drive Ford LTD roadability now at
Muleshoe Motor Co.

1225 W. Amer. Blvd.

Muleshoe, TX

271-4251



RONNIE JAMES puts forth extreme effort for that extra yard which was needed so badly in the 40-0 loss by the Slew Crew. (Photo by Steve Shepard)

National 4-H Week



Good grooming counts at State Fair time! Before competing in the show ring, dairy calf gets brush and powder treatment from 4-H members. 4-H dairy projects and activities are supervised by the Cooperative Extension Service and supported by Insurance Company of North America. Young people 9-19 also work with farm animals in the national 4-H sheep program, sponsored by Wilson Foods Corporation.

Miss Jordan Installed

In a beautiful and impressive ceremony, Sheila Jordan was installed as Worthy Advisor of Earth Assembly No. 156, September 30, 1978.

She had chosen as her motto, "And let your best be for your friend. If he must know the ebb of your tide, let him know the flood also." Her theme was "Friends, Better than Diamonds or Gold."

The installing officers were: Installing officer, Kathie Shirey; Installing Marshall, Pansy Byers; Installing Chaplain, Barbara Lewis; Installing Musician, Jean Craft and Installing Recorder, Kelly Jo Wheatley.

The welcome to the guests was given by Mrs. Pat Jordan, Mother Advisor, before these girls were installed: Sheila

Jordan, Worthy Advisor; Stephanie Parish, Worthy Associate Advisor; Sheryl Clayton, Faith; Darch Randolph, Chaplain; Carmen Kelley, Drill Leader; Joy Parish, Love; Cathy Cain, Religion; Stephanie Herring, Nature; Roan Nix, Immortality; Dyan Jones, Fidelity; Jennifer Wood; Patriotism; and Cindy Parish, Service.

Stephanie Parish read the Worthy Advisors scripture, John 15:13, and poem "St. Francis of Assisi." Brenda Parker from Happy, Texas sang the Worthy Advisors song, "Pass It On."

Kelly Jo Wheatley, Grand Recorder, Brenda Parker, Grand Representative from Nebraska to Texas, and Mrs. Ann Kelley, Grand Visitor, all of Grand Assembly of Texas, International Order of Rainbow for Girls were presented behind the bow and to the East for introduction and given Grand Honors. The Worthy Advisors parents, Mr. and Mrs. Earl Jordan and her brothers, Royce and Mark, were presented to the East where Brenda Parker sang, "You've Got a Friend" in their honor.

Sheila chose as her sponsors, Mrs. Ann Kelley and Mr. Melvin Kinnison. Her mascots and little sisters were Brandon Mason, Tyson Shirey, Stephanie Byers and Melaney Lowe. Registering guests was Shawnda Kinnison.

The Jr. Past Worthy Advisor, Stephanie Parish was presented a gift and escorted around the color stations where each girl read a few lines to her.

Sheila dedicated her term as Worthy Advisor to her parents and family, saying that they are her best of friends.

The benediction was given by Earl Jordan followed by the closing march and refreshments served by Miss Jeanne Hayden.

Party Lines

Beulah Newton and Mary Foster were in Dimmitt Saturday evening. They visited in the Cecil Ginn home, ate supper at K-Bob's and visited friends at the South Hills Manor Nursing Home. *****

Agape Workers

Agape workers met in the parlor of United Methodist Church Monday at 5:00 for a regular meeting. A short business meeting, presided over by Circle Chairwoman, Beulah Newton, was held. Spiritual Life Retreat at Ceta Canyon, October 13 and 14 was discussed. 5 from this circle plan to attend. The treasurers report was given and rehearsal dinners were discussed but tabled for further information.

The first session on the book of Revelations was attended by 9 women. Beulah Newton gave the introduction and covered the first Chapter. The seven letters, Chapters 2

and 3 was presented by LaMoyné Matlock. The seven letters were read by Ann Hamilton, Beulah Newton, Lucille Campbell and Gladys Parish, each being read from a different translation. These along with several Bible commentaries and discussion made the session very interesting and enlightening.

Members attending were LaMoyné Matlock, Beulah Newton, Gladys Parish, Ruby Jones, Ann Hamilton, Marie Ross and 2 guests, Alene Griffin and Lucille Campbell.

The next session will be presented by Gladys Parish and will be Monday, October 9.

Card Of Thanks

We wish to sincerely thank all who sent flowers, cards, food and every other kindness shown at the time of our sorrow in losing our brother Buck McClure. May God bless each one is our prayer.

Jaunita White
Bo McClure
Howard McClure
Bob McClure
Elizabeth Packard
Betty Sepeda
Lorene Perkins

Mr. and Mrs. Charles Rattliff
request the honour of your presence
at the marriage of their daughter
Sharon Gail
to
Bryan Weldon Taylor
on Saturday, the seventh of October
at seven-thirty
nineteen hundred and seventy-eight
Victory Baptist Church
9th and G.
Olton, Texas

Mrs. Morales Honored

On Sunday, September 24, Mrs. Morales, daughter of Mr. and Mrs. R.J. Carr, was honored with a surprise baby shower.

The living room where she opened her gifts was decorated with blue, pink, yellow and red, white and blue streamers. The cake decorated with blue and pink icing, was centered with a stork. The table was decorated with crepe paper tablecloth, sterling silver forks for the cake

and a crystal punch bowl for the punch.

Greatest appreciation goes to the hostesses, Kim Herriage and Mrs. Melba Vassar.

Present were Mrs. R.J. Carr, Mrs. Clarence Webb, Mrs. Bertie Herriage, Mrs. Claudie Cantrell, Miss Tammy Fulenwider, Miss Kelli Herriage, Miss Cindy Fulenwider, Miss Elena Gonzales and Miss Michelle Herriage.

hello.

Welcome to the Dallas Dupont Plaza. It's a wonderful big hotel. Big rooms. Big drinks. Big meals. Oh yes, and lots of Great Big friendly hellos.

DALLAS DUPONT PLAZA
On the Stemmons, east of Market Center
(214) 740-8000 or (800) 421-0802

AUTOMOBILE DEALER

Save Money Now!!

New Car Showing October 6

Come In And Look Around

Test Drive The New Mercury Marquis

Year End Sale All 1978 Models

Good Selections Of Fairmonts

1 Bobcat Station Wagon

1 Cougar 351-Loaded

Good Selection Of Courier Pickups

Special On Used Cars

1973 Monte Carlo 350, Automatic Transmission \$2495⁰⁰

1974 Chevrolet Nova 4 Door, Low Milage \$2595⁰⁰

1976 Granada 2 Door, 6 Cyl., Power Steering, 3-Speed, Air, 1-Owner \$3695⁰⁰

1977 Courier Demonstrator

FORD MERCURY

Cal Jordan
Ford-Mercury, Inc.

385-5164 525 Phelps Ave.

We Rent Ford Cars & Pickups

R.T. Aley 385-5744 Henry Cowan 233-2481 T.A. Henson 385-3449 Mike Nix 227-2360

"WE DO BUSINESS THE WEST TEXAS WAY"



"THE ELECTRIC SAVINGS MACHINE"



SAVING FOR THE FUTURE

Coin banks help teach children how to save for the future. You can save for the future, too, with the electric heat pump. That's why we call it the electric savings machine. This efficient heating/cooling system can deliver as much as two units of heat for every one heat unit of electricity it uses. But the savings don't stop there. With fuel costs expected to rise during the next two decades, the electric heat pump is a smart investment that will save energy today and in the future.

It's never too soon to start saving... with the electric heat pump. Start today before your future gets here. You'll be glad you did.

CALL US ABOUT THE HEAT PUMP



SOUTHWESTERN PUBLIC SERVICE

Football Contest

Wolverines At Hale Center Friday 8:00 P.M.

3 PRIZES

GIVEN AWAY EACH WEEK NOTHING TO BUY - NO OBLIGATION

FIRST PRIZE-\$5

SECOND PRIZE-\$3

THIRD PRIZE-\$2

SIMPLY FILL OUT AND DEPOSIT ENTRY BLANK

CONTEST RULES

The teams that are playing this week are listed side by side in the official entry blank on this page.

Use the entry blank and mark out the teams you predict to lose. Print the scores you predict in the tie-breaker game in the space provided.

Each week's entry must be turned in or mailed to the Earth News-Sun office. Contestants are given a week to prepare and turn in their entries.

Entries must be in by 4:30 p.m. Friday or postmarked on that date. All late entries will be discarded.

In case of tie, the winner will be determined by a toss of a coin.

Each week the number of games correctly predicted will count toward each contestant's season total. The person predicting the most games correctly for the entire season will receive the grand prize. In the event of a tie on the season total, the winner will again be determined by a toss of the coin.

The weekly prizes will be given to the persons picking the most number of games correct for that week. The tie-breaker will count as one of the games picked, and the predicted score will be used to determine the top three places in that week's contest, if necessary.

Only one entry per person will be accepted.

Grand Prize
For Season Winner
Two Tickets
To The
Cotton Bowl Game
New Year's Day Plus \$25 Cash

Deadline for entry is Friday, October 13 at 4:30 p.m.

Official Entry Blank
October 13-14-15

Amherst _____	Sundown _____
Lazbuddie _____	Sudan _____
Muleshoe _____	Idalou _____
Bovina _____	Sunray _____
Texas Tech _____	N.Mex. _____
UCLA _____	Wash. St. _____
Long Beach St. _____	Utah St. _____
Dallas _____	St. Louis _____
Green Bay _____	Seattle _____
Miami _____	San Diego _____

Tie Breaker

Springlake-Earth _____ Morton _____

NAME _____
ADDRESS _____
CITY _____ STATE _____



Dimmitt Agri Ind. Inc. Phone 647-2141	Sports World Littlefield 385-3243	Parson-Ellis-Singleton Funeral Home Earth - Phone 257-3350	Earth Ag Supply, Inc. Earth - Phone 257-3762
SPS NORTHWESTERN PUBLIC SERVICE	VALL, INC. JACKIE CLARK Off. 285-2648	4-D Leasing 257-2143 Earth	Earth Pump & Machine, Inc. 257-3434
Sunnyside Grain & Supply Ricky Byers - 346-2281	Earl Ladd & Sons, Inc. 602 W. American Blvd. Muleshoe 272-3308	Earth Oil & Gas Co. Inc. Marvin & Jerry Been	Chem Tex, Inc. Eldon - Earth 257-2195 Earl - Dimmitt - 647-3551
Frontier Saving Association 257-2017 We Look To Your Future With Interest	Wood-Jordan, Inc. Earl Jordan - Calvin Wood Earth - Phone 257-3484	Higginbotham-Bartlett Earth - Phone 257-2165	Earth Co-Op Gin Inc. Fertilizer Division James Sheppard-Mgr.
Wolverine Drive In Restaurant	First Federal Savings & Loan Of Littlefield 301 XIT Drive - Littlefield, Tex. 385-5197	Dent Farm Supply Earth Your John Deere Dealer 257-3421	Sunbelt Delinting Formerly Littlefield Seed & Delinting 385-4468
Citizens State Bank Member FDIC Earth	First State Bank Member FDIC Dimmitt 647-4151	Flagg Grain & Dodd Elevator 647-2133 965-2327	T-Bar Western Store Earth
Whites Home & Auto Tom Lively Earth	Sherley Anderson Lazbuddie Elevator Phone 965-2922	The Other Place 965-2666	Superior Muffler Earth 66 Harold Britton Phone 257-2110
Earth Locker Custom Slaughtering & Pork Curing 257-3393 Owners Carlos & Gloria Duran	Jones Spraying Service Springlake - 986-2781	WESTERN SPRINKLERS INC. Muleshoe, Hwy. 84 W. - 272-4544	Grain Handling Corp. Springlake - 986-2311
H.S. Sanders Lmbr. Earth - 257-2005 We Appreciate Your Business	City Insurance Agcy.	Olton Paint & Body 285-3348	Bailey County Electric Muleshoe - 272-4504
Muleshoe Bi-Products 7 Days A Week Stock Removal Laibuddie Your Used Cow Dealer 962-2903	Pay-N-Save Earth Raiford Daniel - Mgr.	Springlake Cattle Company Earth 965-2640	Earth News-Sun

Sunnyside News

By: Teeny Bowden

Rev. and Mrs. Raymond Jones, Mrs. David Sadler, Mr. and Mrs. Gale Sadler, Lee Bradley, and Mrs. Thomas Parson attended the Sunday School Conference in First Baptist Church in Dimmitt Monday night. Rev. Jones and Lee Bradley attended the conference for pastors and general officers taught by Roy Kornegoy of the First Baptist Church of Amarillo. Mrs. Jones attended the conference for youth taught by Mrs. Dan Kent of Wayland Baptist College. Mrs. David Sadler attended the nursery taught by Mrs. Olin Thornton of First Baptist Amarillo. Gale Sadler attended the adult conference taught by Dr. Dan Kent. Mrs. Sadler attended conference for the teachers of older children taught by Mrs. Robert Saunders of First Baptist Church of Amarillo, and Mrs. Thomas Parson attended the Pre-school conference taught by Mrs. Barbara Cook of Paramount Baptist Church in Zmarillo.

Mrs. Thomas Parson and Mrs. Paul Williams of Dimmitt attended the State SMU meeting in Ralls Tuesday. Mrs. Parson is the Mission Friend's Director for Llanos Altos Association and Mrs. Williams is the Baptist Women's President for the association.

The local W.M.U. had its annual planning meeting Tuesday morning with the Director, Mrs. Raymond Jones in charge. Those present were Mrs. L.B. Bowden, sec. treas., Mrs. Cliff Brown creative arts director, Mrs. E.R. Sadler Baptist Women president, Mrs. Lee Bradley, BYW president, Mrs. Hershel Wilson, G.A. Director, and Mrs. Bruce Bridges, Mission Friends Director.

50 inch of rain was received Monday with a trace Tuesday making 3.70 inch for the month of September.

Charles Axtell attended the Castro County Democratic Executive Committee meeting in

Dimmitt Tuesday morning.

Tommy Graham enrolled in T.S.T.I. in Amarillo Tuesday to study construction technology.

Ginny Guy was in Lubbock Thursday to have the stitches out of her knee. The doctor was pleased with her progress, but she cannot go back to school for another week. He put her on an exercise program to strengthen the knee.

Rev. and Mrs. Raymond Jones, Mr. and Mrs. Roy Phelan, Mr. and Mrs. Hershel Wilson attended the revival services at Enochs Thursday night conducted by Rev. M.E. McGlamery, Director of Missions in Las Vegas, Nevada.

E.E. Lewis flew to his home in Missouri last Monday after a visit here with his daughter, Mr. and Mrs. Gale Sadler and Susan.

Baptist Women and Baptist Young Women made baby blankets and bibs for the Rio Grande River Ministry New Mother's Ministry Tuesday afternoon. Those present were Mrs. Lee Bradley, Mrs. David Sadler, Mrs. Jimmy Waggoner, Mrs. Jerry Weiland, Mrs. Raymond Jones, Mrs. E.R. Sadler, and Mrs. Alton Louder.

Mr. and Mrs. Dee Jones and their son, Hubert of San Angelo were in Lubbock Monday for his medical check-up and spent Monday and Tuesday with Rev. and Mrs. Raymond Jones.

Mrs. Lloyd Blanton entertained in her home with a Tupperware party Thursday morning.

Mr. and Mrs. Gale Sadler visited in Lubbock with Cindy Sadler Tuesday.

The G.A.'s met Thursday afternoon for their weekly meeting with Mrs. Hershel Wilson and Mrs. Carl Dean Carson.

Mr. and Mrs. L.B. Bowden and Mrs. Ed Thompson took a foliage

tour in New Mexico and Colorado over the weekend.

Springlake-Olton

By Mrs. Tom Stansell

Mr. and Mrs. Matt Simpson of Springlake are the proud parents of a daughter, Kellie Anne, born Wednesday, September 20, in the Amherst Hospital. She weighed 8 pounds and 4 ounces and was 20 inches long.

Grandparents are Mr. and Mrs. Wayne Davis of Springlake and Mr. and Mrs. Jerry Houchin of Earth.

Great-grandparents are Mr. and Mrs. D.F. Byerly of Lockney, Mrs. Ginger Ingram of Ceres, Calif., Mr. and Mrs. Carl Pollard of Three Way and Mr. and Mrs. C.L. Houchin of Dallas.

Services for Allen Church Edgin, 49, of Clovis, N.M. were held Tuesday at 2:30 in Steed-Todd Funeral Home of Clovis, with burial in Lawn Haven Cemetery of Clovis.

Edgin was drowned Saturday at Sumner Lake near Ft. Sumner. He was nephew of Mrs. E.W. Walden and a former resident of this area.

Survivors are his wife Melba of Clovis; three daughters, Barbara Sue Willis of Ulysses, Kansas, Tina Martin of Lubbock and Becky of Clovis; one son, Dave of Clovis; his mother, Mrs. Clara Hillard of Clovis; one sister, Dorothy McLaughlin of San Antonio and two brothers, Leroy Edgin of Glendora, Calif. and Harold Edgin of Tom's River, N.J.

Mr. and Mrs. Ernest Baker attended Revival services Tuesday evening at Spade First Baptist Church.

Saturday afternoon callers of Mr. and Mrs. Almon Whitford were her cousins, Mr. and Mrs. E.W. Johnson of Amarillo and Mr. and Mrs. Mike Walters of Cherokee. They also visited Mr. and Mrs. B.V. Padon and Mr. and Mrs. J.R. Banks.

Mr. and Mrs. Earl Fox of Texarkana were here from Tuesday until Thursday with her uncle and his wife, Mr. and Mrs. Elmer King.

Mr. and Mrs. Lowell Walden of Earth and Mr. and Mrs. Delvin Walden, Kelley and Richard attended the Walden family reunion held at Bula Saturday.

Mrs. Shirley McClure returned to her home at Wichita Falls Sunday after staying several days with her grandmother, Mrs. Ola Gambrel.

Recent guests of Mr. and Mrs. E.L. Dawson were their daughter and family, Mr. and Mrs. Larry Crawford and Doug of Midland and another son-in-law and daughter, Mr. and Mrs. Nathan Griffin of Carrollton.

Mr. and Mrs. Clarence Davis of Quanah were here last weekend with their son-in-law and daughter, Mr. and Mrs. Vernon Britton.

Visiting Mrs. Ola Gambrel are her granddaughter, Millie Jones accompanied by her mother-in-law, Mrs. Ruth Wolstenholme, both of Demopolis, Ala.

Mr. and Mrs. Ralph Rudd were in Clovis, N.M. during the weekend with her sister, Mrs. Opal Cain.

Mrs. Dora Hutchison of Springtown came Friday to stay until Sunday with her brother-in-law and sister, Mr. and Mrs. William Stradley.

Sunday dinner guests of Mr. and Mrs. A.W. Kersh were their sons and families, Mr. and Mrs. Leroyce Kersh, Billy and Leigh Ann and Mr. and Mrs. David Kersh and Micah. Also the host couple's daughter and family, Mr. and Mrs. Bill Lunford, Teresa and Rocky.

Mr. and Mrs. J.T. Gibson and Mr. and Mrs. Hollis Cain, Cathy, Connie and Suzanne had lunch in Plainview Sunday. In the afternoon they visited Mrs. Gibson's sister, Mrs. J.E. Fuller of Olton.

Mr. and Mrs. James Packard spent the weekend with their son and family, Mr. and Mrs. Ray Tom Packard, Tim and Jana of Amarillo.

Mr. and Mrs. E.L. Dawson attended the Texas Tech-State University football game Saturday night and

visited their son Clint, student at Tech.

The Thursday Bridge Club met last week with Mrs. Hollis Cain. Guests were Mmes. J.T. Gibson, Sandy Sanderson, Orville Drake, K.B. Parish, Donnie Clayton, Kenneth Hinson and J.J. Coker.

Mr. and Mrs. Glen McCleskey of Earth and their daughter, Mrs. Sam Barden spent the weekend in Lubbock with the McCleskey's son-in-law and daughter, Mr. and Mrs. Tommy Largent.

Thursday evening dinner guests of Mr. and Mrs. Ernest Baker were Mr. and Mrs. Clint Kniffen and Wendy.

Sharon Jones spent Saturday night and Sunday with her grandparents, Mr. and Mrs. Almon Whitford.

Sunday luncheon guests of Mr. and Mrs. J.W. Dear were Mr. and Mrs. Lowell Watson and Mr. and Mrs. Mrs. Floyd Crawford.

Mr. and Mrs. Hilbert Wisian visited Sunday with their granddaughter and her husband, Mr. and Mrs. Marten Crossland of Midland.

Recent dinner guests of Mr. and Mrs. E.L. Dawson were Mr. and Mrs. Eugene Cleavinger of Laguna Hills, Calif., Mr. and Mrs. Jim Cleavinger, Mr. and Mrs. Goldman Dyer, their granddaughter, April Bennett and Mr. and Mrs. Joe Bob Sanders and Will, all of Dimmitt, Mrs. Mattie Axtell, Mr. and Mrs. O.M. Cleavinger, Mr. and Mrs. John Cleavinger, Mike Cleavinger, Mr. and Mrs. R.A. Cleavinger and their grandchildren, Dan and Matt Templeton.

Mrs. Dess Stafford of Lubbock, Mrs. David Grimsley of Friona and Mrs. Esther Bomar were recent visitors of Mrs. Marvel Caruthers in King's Manor of Hereford.

Mrs. Robert Conner and Mrs. Elmer King were in Plainview Saturday.

Fishing at Kickapoo Lake recently were Ed Truelock of Olton, Earl Watson, Arden Field, Bill

Watson, Harlon Watson and Leslie Watson.

Mr. and Mrs. Ernest Goforth had as guests Saturday and Sunday their son and family, Mr. and Mrs. Max Goforth, Miles and Demita of Hereford.

Mrs. A. Hollingsworth spent Sunday with her mother and sister, Mrs. Zona Simmons and Mrs. Betty Simmons, both of Lubbock.

Mr. and Mrs. Lee Brown moved Saturday from Lubbock to Goldsmith where he is employed by El Paso Gas Co. Assisting in the move were Mrs. Brown's parents, Mr. and Mrs. A.J. Jones and their daughter, Karen.

Visiting Sunday and Monday with Mr. and Mrs. O.M. Cleavinger were his uncle and aunt, Mr. and Mrs. Eugene Cleavinger of Laguna Hills, California.

Mrs. Matt Simpson and Kellie Ann visited Tuesday with their aunt and family, Mrs. Chris Payne, Stacie and Jan of Lubbock. Accompanying Mrs. Simpson and her daughter were Mrs. Jerry Houchin and Celeste Simpson, both of Earth and Mrs. Wayne David.



4-H members practice "metric sewing" by following a pattern guide. Most home-sewing products now include both metric and standard measurements. The greatest effect of the switch to metric may be psychological — for example, a 26-inch waist is expressed as 66 centimeters! Learning about clothing can be fun as well as educational in the national 4-H clothing program, supported by Coats & Clark Inc., and in the fashion revue program, supported by Simplicity Pattern Co. Inc.

DRIVERS WHO KNOW, TRUST OUR AUTO SPECIALISTS

CHECK THOSE BRAKES NOW!

GOOD BRAKES MEAN SAFER DRIVING, REGARDLESS OF THE WEAR YOUR BRAKE SYSTEM HAS HAD WE CAN SOLVE YOUR PROBLEM. SEE US FOR ANY BRAKE TROUBLE TODAY.

Plains AUTO PARTS

1001 S. 3rd St.
Muleshoe, Texas 79047

South Main
Muleshoe
Phone 272-4574

The Earth News-Sun

Publication No. 781180
Published at Earth, Texas, 79031 every Thursday except the first Thursday following Christmas
Second Class Postage paid at Box 568, Earth, Texas 79031

SUBSCRIPTION RATE	
Earth and Trade Territory, per year	\$6.30
Elsewhere in United States, per year	\$7.35
CLASSIFIED RATES	
Ten cents per word, \$1.50 minimum	

Ray Freedman
Diana Freedman
Grace Stovall
Publisher
Bus. Mgr.
Circulation Mgr.

October Special

1978 14x70
Mobile Home
Fully Furnished
Selling Price
\$10,695.00

\$958.00 Down
\$133.98 Per Month

Del Rey
Mobile Homes

3101 West 7th Clovis 763-3870

Whether You're A NIGHT OWL or an EARLY BIRD
WANT ADS Work 'round the Clock

Boot and Shoe Repair At Western Store

House For Sale
New Three Bedroom Home For Sale Or Trade
1-795-7732 Or 257-3962
Earth, Texas

To Rest Assured
Use SAFETY DEPOSIT BOX
Protection
FIRST STATE BANK
DIMMITT, TEXAS

Monuments

Winnabowo Blue Granite
White Georgia Marble
and others, including Bronze for Memorial Park
Specifications See or call Collect
Percy Parson, Olton
Phone 285-2621
or Frank Ellis, Muleshoe
Phone 272-4574

Money Tree Pawn Shop
1st & Main
Clovis, N.M.
762-6471

Loans
Buy-Sell-Trade
Unredeemed
Bargains & Gifts
A Little Bit Of Everything

Love to fish?

The Texas Fisherman covers ALL Texas fishing. We show and tell you where to go, what lures to use, how to catch the big ones! Monthly!

Subscribe now. Mail coupon with check to:

The TEXAS FISHERMAN
5314 Bingle Road Houston, Texas 77092

YES! Start my subscription.

Enclosed is: \$6 for 12 months \$10 for 24 months

Please print:

Name _____
Address _____
City _____ State _____ Zip _____

EARTH NEWS-SUN

**CONVENTIONAL MORTGAGES
VA HOME LOANS
VA HOME LOANS
HOME IMPROVEMENT LOANS**

EQUAL HOUSING LENDER

FIRST FEDERAL

<p>MAIN OFFICE 301 XIT Dr. Littlefield 385-5197</p>	<p>BRANCH OFFICE 707 8th St. Levelland 894-4926</p>
---	---

New Lockney Meat Co., USDA Inspector. Kill Monday thru Friday. Custom Processing, wholesale and retail meats, hams and quarters, cut, wrapped, frozen and fully guaranteed. Sam and Kelly Fortenberry. 652-3305, Corner U.S. 70 and FM 378 South. 9/28/tfc.

GARAGE SALE: Saturday and Sunday from 9:00 a.m. to 5:00 p.m. Stovall residence. 9/28/1tp.

FOR SALE: Used Ferguson 35 tractor. Call 986-2284. Almon Whitford, Springlake. 10/5/1tc.

WE ARE now accepting applications for groundman or apprentice lineman. Apply at our office in Muleshoe or Morton, Texas. EQUAL OPPORTUNITY EMPLOYER. Bailey County Electric Cooperative Assn. 9/28/2tc. EM

FOR SALE: Mobile home, 14x80, 3 bedroom, 2 bath, kitchen appliances. Call 257-2185 or 257-2150. 10/5/1tp. ESA

FOR SALE: 1977 Pontiac Catalina, 1973 Plymouth, 1977 Chevy Pickup, 1974 Chevy Pickup and 1974 Ford Maverick. 4-D Leasing, 257-2193. 6/22/tfp.

WANTED: Irrigated land to rent. Call Johnny Williamson 246-3260 or J. C. Franks 246-3404. 8/17/TNSC SEA

DUE TO ILLNESS. Goodland Store is for sale. Goodland, Texas. 806-927-5313. 10/5/2tc. ASEM

HOME INSULATION CO. you pick the coverage and decide how many bags of cellulose insulation you need and pay only \$11.00 for 30 lb. bag installed in attic. Call Sudan 227-2204 or Littlefield 385-4362. tfe

HELP WANTED: Salesman, auto mechanic and parts man. Apply in person at Johnson Chevrolet, Sudan or call 227-2050. 4/20/tfc.

HELP WANTED: Food waitress, cocktail waitress, kitchen help. Apply in person or call 965-2666, Dodd Community. 1/13/tfc.